



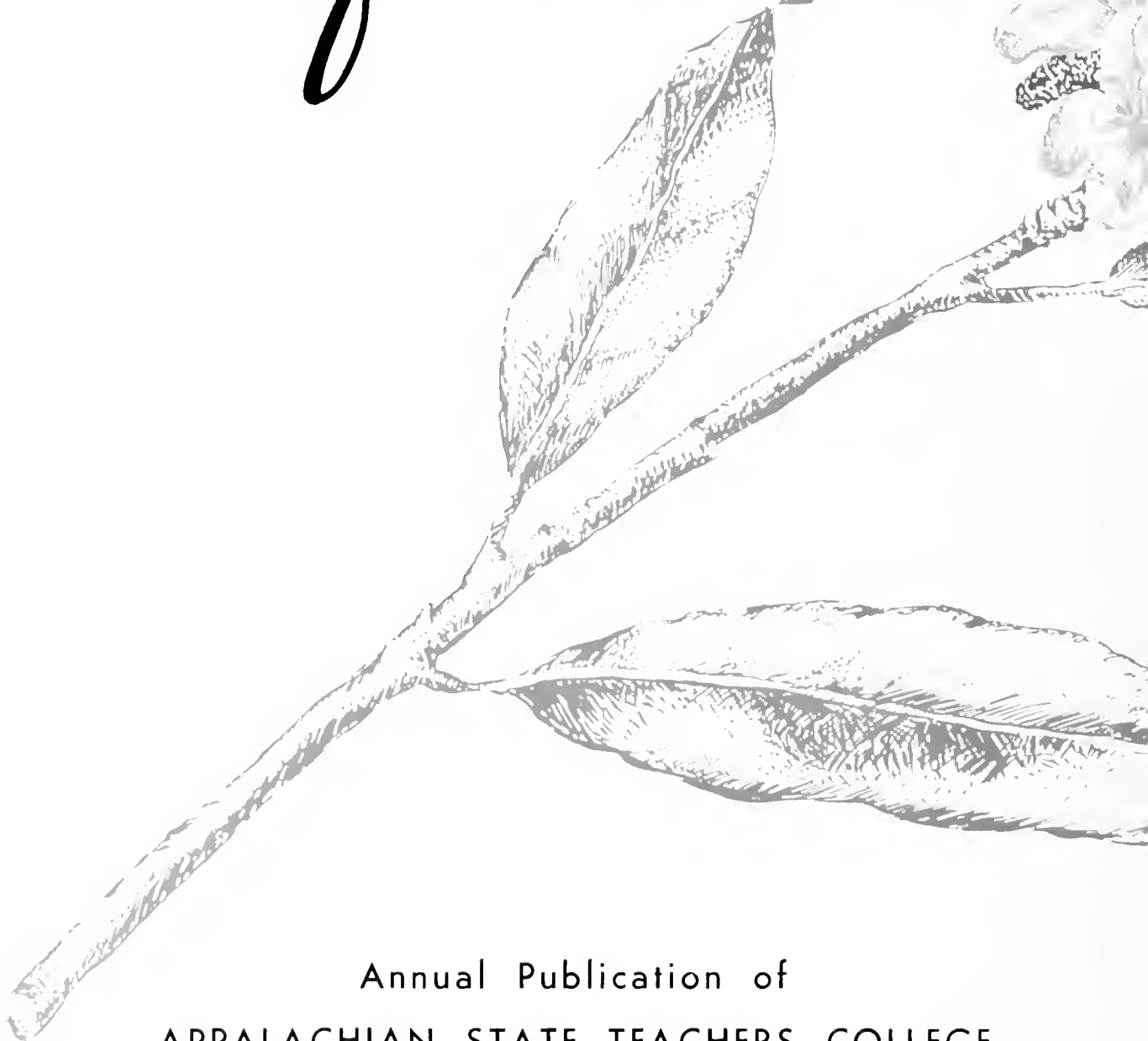
Handwritten text, possibly a signature or name, in cursive script.

Handwritten text, possibly a date or address, in cursive script.

Digitized by the Internet Archive
in 2009 with funding from
University of North Carolina at Chapel Hill

*R*hododendron
of 1949

*R*hododendron of 1949



Annual Publication of
APPALACHIAN STATE TEACHERS COLLEGE



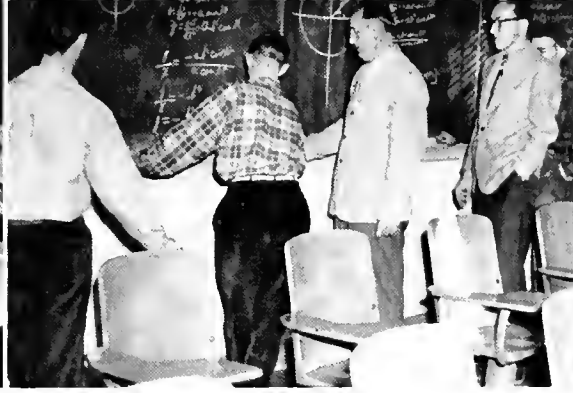
ANNE GRAHAM, Editor

SARA FRANCES WEAST, Business Manager



Foreword





SUSPENDED between earth and heaven . . . grey spires on
Olympian sunset—taking great gulps of pure air, as huge as Her-
man's "yard per-try" record . . . taking Winston-Salem and
Catawba . . . taking Johnson City and . . . exams . . .
T-Squares and formaldehyde . . . Freud, Napoleon and Shake-
speare . . . Idioms and hypotheses . . .

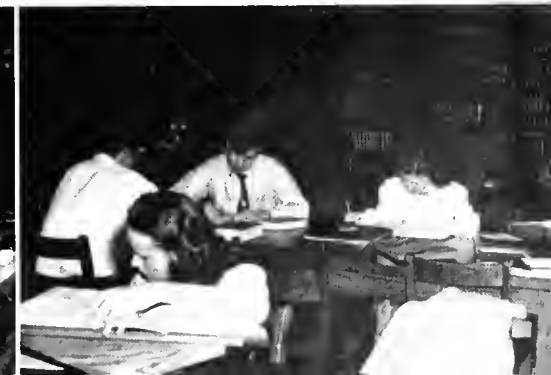
For some begins the harvest . . . to these may the reaping
be as pleasant as was the planting . . . for us who still must sow
. . . Do we need more than the privilege of sowing?

BOOK ONE—CLASSES

BOOK TWO—ATHLETICS

BOOK THREE—ACTIVITIES

BOOK FOUR—FEATURES





Dedication

As a professor and instructor his feats are unsurpassable. As a kind and devoted counsellor he is among the foremost. His friendly personality and pleasing disposition have won the admiration and respect of all. It is with the greatest of pleasure that we, the staff of the 1949 RHODODENDRON, dedicate to Professor CRATIS D. WILLIAMS, this volume.





Faculty

Administration

B. B. DOUGHERTY
B.S., Ph.B., D.Litt., D.Ed.

President



J. D. RANKIN
A.B., A.M., S.T.D.

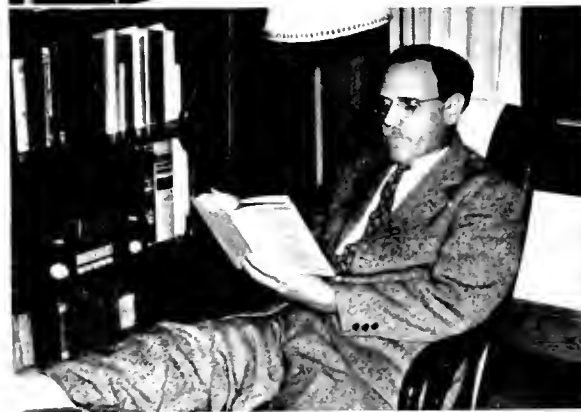
Dean, English



HELEN BURCH
A.B., M.A.
Dean of Women, Education

HERMAN R. EGGERS
A.B., M.A.

Registrar, Education



BARNARD DOUGHERTY
B.S.

Business Manager

CHAPPEL WILSON
A.B., M.A.

Director Demonstration School



HERBERT WEY
A.B., M.A.

Principal High School

JOHN E. HOWELL
B.S., M.A., M.Ed.

Principal Elementary School



MYRTLE BRANDON WILSON
B.S., M.A.

Primary Education



Faculty

ART

CATHERINE J. SMITH
B.S., M.A.Ed.



BUSINESS EDUCATION

ELLA MAE FOGG
B.S., M.A.

SAMUEL L. HARLESTON
B.S.



VERA SMITH SPEARS
B.S., M.A.

HOME ECONOMICS

LUCY BROCK
A.B., M.S.

POLLYANNA GORDON
B.S.

MADGE RHYNE
B.S., M.S.

VIVIAN WOOD WELLBORN
B.S.



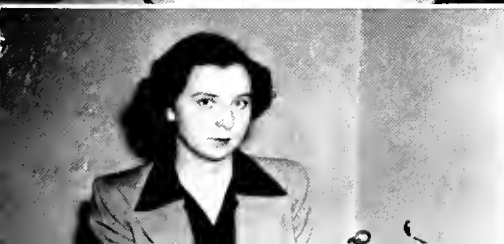
LIBRARY SCIENCE

EMMA H. MOORE
Librarian

LEONARD EURY
A.B., B.S. in L.S.

MRS. WILLIAM GARVEY
B.A.

ALLIE AUSTIN HODGIN
B.S., B.S. in L.S.



Faculty

MARY ARICE HULL
A.B., B.S. in E.S.



LOUISE MOORE
B.S., B.S. in E.S.



LUNICE QUERY
A.B., A.B. in E.S.

VERA C. JUSSELL
Librarian



MUSIC

VIRGINIA WARY FINNEY
B.M., M.M.

R. R. BEASTON
B. S. in Music



GRACE BURDICK
B.M., M.M.

NICHOLAS ERNESTON
B.M., M.M., M.I.d.



O. M. HARRIS
A.B., M.A.

MAUREN K. LOVELLY SOKOL
B.M., B.A., B.S., M.S.



BIOLOGY

IDA BELL FEDDERER
A.B., M.A.

F. RAY DERRICK
B.S., M.S.



Faculty

PAUL W. GRAFF
B.S., A.M., Ph.D.



CHEMISTRY

A. R. SMITH
A.B., A.M.

LILLIAN REEVES
B.S. Laboratory Assistant



EDUCATION

JOHN G. BARDEN
B.A., M.A., Ph.D.

LEE J. REYNOLDS
B.S., M.A., Ed.D.



HEALTH AND PHYSICAL EDUCATION

CLEON HODGES
A.B., M.S.

R. W. WATKINS
B.A., M.A.



ROBERT W. BROOME
B.S.

GAIL CLAY
B.S.

FRANCIS L. HOOVER
B.S.



J. FREDERICK KIRCHNER
B.S., M.S.

JOY MILLER KIRCHNER
B.S.

Faculty

MADLEINE MCCAIN
B.S., M.P.H.



ENGLISH

GRAYDON P. EGGERS
A.B., A.M., Ph.D.



CATHERINE A. BURNS
A.B., A.M., Ph.D.



ELIZABETH CRADDOCK CASALE
B.S., M.A., Ph.D.

RENAIO CASALE
B.A., B.D., M.A.

DAVID HODGINS
A.B., A.M.



WILLIAM H. MORGAN
B.S., M.S., Ph.D.

LORIS SHIPMAN
A.B., B.S., M.A.



JOHN J. VAN NOPPEN
A.B., M.A., Ed.D.

CRAVIS WILLIAMS
B.A., M.A.

MATHEMATICS AND PHYSICS

F. T. C. WRIGHT
A.B., A.M., Ph.D.



WALTER G. HAWKINSON
B.S.



Faculty

ALLEN G. MONTGOMERY
B.A., B.S., LL.B., M.A., M.S.



STARR N. STACY
B.S., M.A.

PSYCHOLOGY

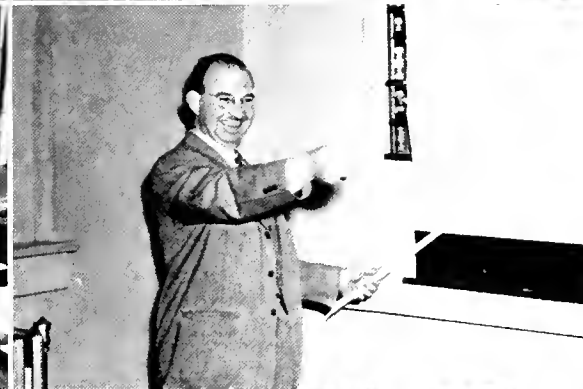
WILEY P. SMITH
A.B., M.A., Ph.D.



SOCIAL SCIENCE

D. J. WHITENER
A.B., M.A., Ph.D.

EDWIN DOUGHERTY
B.S., M.A.



E. C. DUGGINS
B.A., M.A.

VANCE C. HOWELL
A.B., A.M.



LEO K. PRITCHETT
A.B., M.Ed.D.

GEORGE L. SAWYER
A.M., M.A.

INA W. VANNOPPEN
B.S., M.A., Ed.D.



JOHN H. WORKMAN
A.B., M.A., Ph.D.

JULIAN C. YODER
B.S., M.A.



BOOK ONE

Classes



CHAPEL . . . NO CUTS . . . OBSERVATION
STAIRS . . . EXAMS . . . LABORATORIES





OFFICERS

- RALPH WALTERS *President*
BEULAH PERKINS *Vice-President*
AUDREY HOPE *Secretary*
BILL HALSTEAD *Treasurer*

Seniors



ADKINS, LINDA . . . Summerfield, N. C. . . . Home Economics and Science . . . Home Economics Club 1, 2, 3, 4; Y.W.C.A.

ALLEN, EDITH . . . Marshville, N. C. . . . Primary Education . . . Wingate Junior College; B.S.U., Council 3; A.C.E. 3, 4.

ALLRED, FRANCIS . . . Linwood, N. C. . . . Home Economics and Science . . . Home Economics Club 1, 2, 3, 4; Secretary 3; Y.W.C.A.

AMOS, LORENE . . . Sandy Ridge, N. C. . . . Music and Grammar Grade Education . . . Y.W.C.A. 1, 2, 3, 4; Girls' Chorus 1; Mixed Chorus 2; A Cappella Choir 3, 4; Junior Cabinet Y.W.C.A. 3.

ANDREWS, LOUISE . . . Pittsboro, N. C. . . . Primary Education . . . White Hall Club 1, 2; A.C.E. 3, 4; Y.W.C.A. 1, 2, 3, 4.

AYERS, DOYLE . . . Marion, N. C. . . . Physical Education and History . . . "A" Club 1, 2, 3, 4, Treasurer 3; Var-souvianna Club 2, 3.

BARBER, ODELIA . . . Reidsville, N. C. . . . Home Economics and Science . . . Pfeiffer College 1, 2; Home Economics Club 1, 2, 3, 4, President 4.

BINGHAM, JOSEPHINE BROWN . . . Boone, N. C. . . . Home Economics and Science . . . Virginia Intermont 1; Home Economics Club 2, 3, 4; Modern Dance Club 2, 3; Y.W.C.A. 2, 3, 4; White Hall Club 2.

BLACK, DOROTHY . . . Thomasville, N. C. . . . Business Education and Mathematics . . . Y.W.C.A. 1, 2, 3, 4; Business Club 1, 4; Math Club 2, 3, 4, President 4; L.S.A. 1, 2, 3, 4, President 4, Secretary 3; Religious Council 4; Lovill Club 1, 2.

BRALOCK, D. B. . . Kings Mountain, N. C. . . . Physical Education and History . . . Mars Hill 1, 2.

Senior Class of 1949

BLANKENSHIP, WILLIAM . . . Swannanoa, N. C. . . .
Mathematics and History . . . Mars Hill; B.S.U. 1, 2, 3, 4;
Chorus 3; Math Club 3, 4; Y.M.C.A. 4; Religious Council 4.

BLEVINS, JAMES . . . Bakersville, N. C. . . . English and
History . . . Playcrafters 2, 3, 4, Vice-President 4; Y.M.C.A.
3, 4; Veterans Club 3.

BOWMAN, JAMES . . . Winston-Salem, N. C. . . . Physical
Education and History . . . "A" Club 1, 2, 3, 4; Football
1, 2, 3, 4.

BOYETT, THOMAS . . . Charlotte, N. C. . . . Physical Edu-
cation and History . . . "A" Club 1, 2, 3, 4, Vice-President
1, Secretary 4; Football 1, 2, 3, 4, Captain 1; Baseball 1,
Co-Captain 4; Basketball 1.

BRADLEY, ALBERT . . . Forest City, N. C. . . . English
and History.

BRENDELL, J. R. . . . Boone, N. C. . . . Mathematics
and Social Science . . . RHODODENDRON Staff 4, Assistant
Business Manager 4; Playcrafters 1; Football 1; Modern
Dance 3.

BROOKS, HELEN . . . Sparta, N. C. . . . Home Economics
and Science . . . Home Economics Club 1, 2, 3, 4.

BROOKSHIRE, COZETTE . . . Taylorsville, N. C. . . . Busi-
ness Education and Social Studies . . . White Hall Club
1, 2; Y.W.C.A. 1, 2, 3, 4; Dormitory Council 3; Playcrafters
1, 2; *Appalachian* Staff 1; Forum Club 3, 4; I.R.C. 3, 4;
History Club 1, 2, 3; Business Club 1; Spanish Club 1.

BROWN, EVELYN HOPE . . . Moravian Falls, N. C. . . .
Mathematics and Library Science . . . I.R.C. 2, 3, 4, Offi-
cer 4; Library Science Club 2, 4; Math Club 3, 4, President
4; B.S.U. 1, 2, 3, 4; Y.W.C.A. 1, 2.

BROWN, LETHA DOBSON . . . Nebo, N. C. . . . Primary
Education.



A.S.J.C. 1951



BUNCH, STEF . . . Statesville, N. C. . . . Home Economics and Science . . . *Appalachian* Staff 1, 2, 3, 4; White Hall Club 1, 2; Pep Club 3, 4; Home Economics Club 1, 2, 3, 4; Debaters Club 1; Playcrafters 1, 2, 3, 4; *Playbill* Staff 1, 2, 3, 4; Vernician Literary Society 4; Y.W.C.A. 1, 2, 3, 4; Westminster Fellowship 1, 2, 3.

BURRIS, PEGGY . . . Stanfield, N. C. . . . Home Economics and Science . . . Future Teachers of America 3, 4; Y.W.C.A. 1, 2, 3, 4; Baton Club 1, 2, 3, 4, President 3; Band Majorette 2, 3, 4; Forum Club 2, 3, 4, Officer 2, 3; B.T.U. 1, 2, 3, 4, Home Economics Club 1, 2, 3, 4; White Hall Club 1, 2.

BUTLER, CLARENCE MABION, JR. . . . Rutherfordton, N. C. . . . Mathematics and Science . . . Presbyterian Junior College; Playcrafters 3, 4; College Band 3, 4; College Orchestra 3, 4.

BUTLER, PEGGY . . . Coats, N. C. . . . Physical Education and History . . . Basketball 1, 2, 3, 4; Y.W.C.A. 1, 2, 3, 4; A.A.A. 1, 2, 3, 4.

CALDWELL, ROBERT VICTOR . . . Concord, N. C. . . . Physical Education . . . Presbyterian Junior College 1, 2.

CALTON, DOROTHY . . . Bostic, N. C. . . . Home Economics and Science . . . Home Economics Club 1, 2, 3, 4; White Hall Club 1.

CAMP, DAN . . . Shelby, N. C. . . . Physical Education and Mathematics . . . Gardner-Webb Junior College 1, 2; Math Club 3, 4.

CAMPBELL, WILLIAM . . . Erwin, Tenn. . . . Physical Education and Mathematics.

CANTRELL, JAMES . . . Avondale, N. C. . . . Physical Education and History . . . Football 3, 4; Baseball 3, 4; Men's "A" Club 4.

CARROLL, JENID . . . Boone, N. C. . . . Primary Education.

Senior Class of 1949

CARTER, BETTY LOU . . . Zebulon, N. C. . . . Business Education and Social Science . . . Flora Macdonald College 1; History Club 2; Vernician Literary Society 3, 4, President 4; Business Club 4, Reporter 4; Y.W.C.A. 2, 3, 4, Council 3; Religious Council 4; Mixed Chorus 2; A Cappella Choir 3; Future Teachers of America 4; Westminster Fellowship 2, 3, 4; RHODODENDRON Staff 4.



CASEY, ALMA . . . Cycle, N. C. . . . Home Economics and Science . . . Home Economics Club 1, 2, 3, 4.

CASKEY, JOHN . . . Mooresville, N. C. . . . Physical Education and Mathematics . . . Men's "A" Club 3, 4; Little All-American Football 4; I.R.C. 3, 4; Who's Who 4.



CLICK, LOUISE . . . Woodleaf, N. C. . . . Home Economics and Science . . . Pfeiffer Junior College; Home Economics Club 1, 2, 3, 4; Lovill Club 2; Y.W.C.A. 1, 2.

COFFEY, EULA MAE . . . Blowing Rock, N. C. . . . Home Economics and Science . . . Mars Hill College; Home Economics Club 1, 2, 3, 4; Playcrafters 3, 4.

COLE, CARRIE BESS . . . High Rock, N. C. . . . English and Science . . . Forum Club 2, 3, 4, Officer 3, President 4; College Chorus 1, 2; Lovill Club 1, 2, 3; B.S.U. 1, 2, 3, 4; I.R.C. 4; Y.W.C.A. 1, 2, 3, 4; Le Cercle Francais 2, 3, 4, Officer 3, 4; B.S.U. Council 2, 3, 4.



COLLINS, R. M. . . . Francisco, N. C. . . . Physical Education and History . . . Men's "A" Club 2, 3, 4; Varsity Basketball.

COLLINS, WILLA DEANE . . . Lenoir, N. C. . . . Physical Education and History . . . Lees McRae College; Playcrafters 4; Y.W.C.A. 4.

COOK, FRANCES CAROLINE . . . McBane, N. C. . . . Physical Education and Science . . . Y.W.C.A. 1, 3, 4; Women's "A" Club 2, 3, 4; W.A.A. 1, 2, 3, 4; Varsouvianna Club 2, 3, 4, Secretary 2, 3.



CORNETTE, BETTY . . . West Jefferson, N. C. . . . Primary Education and Music . . . I.R.C. 3, 4, Vice-President 4; Choral Club 1, 2, 3, 4; Future Teachers 3, 4, President 4; B.S.U. 1, 2, 3, 4, Officer 3, 4; Baton Club 2, 3; Debating Club 4; Y.W.C.A. 1, 2, 3, 4; A.C.E. 3, 4.



A.S.J.C.



COUNTS, PHILLIP . . . Alleghany, Va. . . . Physical Education and History.

CRESS, MARTHA . . . Salisbury, N. C. . . . Primary Education and Music . . . Girls' Glee Club 1; Mixed Chorus 1, 2, 3, 4; Y.W.C.A. 1, 2, 3, 4, Pianist 4; A.C.E. 3, 4; Future Teachers of America 4; Vernician Literary Society 3, 4, Vice-President 4; Westminster Fellowship 3, 4; Religious Council 4.

CROUCH, JERRLYN . . . Mooresville, N. C. . . . English and Business Education . . . Future Teachers of America 4; RHODODENDRON Staff 4; Alpha Psi Omega 3, 4, Cast Secretary 4; Business Club 1, 4, Secretary 4; Spanish Club 3, Officer 3; Playcrafters 3, 4; President New Dorm 4; Pep Club 3; White Hall Club 1, 2.

DALTON, INEZ . . . Edneville, N. C. . . . Home Economics and Science . . . Home Economics Club 1, 2, 3, 4, Vice-President 4; Y.W.C.A. 1, 2, 3, 4.

DAVIS, CLARA . . . Rockingham, N. C. . . . Primary Education.

DENNIS, JAMES . . . Wilkesboro, N. C. . . . Physical Education and History . . . Mars Hill Junior College; Spanish Club 3.

EDMISTEN, ELISHA HAL . . . North Wilkesboro, N. C. . . . History and Mathematics . . . N. C. State; Playcrafters 4.

EDMISTEN, MADELINE . . . Sugar Grove, N. C. . . . Primary Education . . . Y.W.C.A. 1, 2, 3; A.C.E. 2, 3, 4, President 4; Pep Club 3; Vernician Literary Society 3, 4.

EDMISTEN, THOMAS . . . Boomer, N. C. . . . Physical Education and History.

EDWARDS, ELLEN . . . Bald Creek, N. C. . . . Home Economics and Science . . . Home Economics Club 3, 4.

Senior Class of 1949

EDWARDS, RUBY . . . Concord, N. C. . . . Mathematics and Physical Education . . . Y.W.C.A. 1, 2, 4; W.A.A. 1, 2, 3; Math Club 1, 2, 3, 4; Lovill Club 1, 2, 3; Methodist Youth Fellowship.



ENGLAND, FRANCES . . . Marion, N. C. . . . Grammar Grade Education and Library Science . . . B.S.U. 1, 2, 3, 4; Y. W. C. A. 1, 2, 3; A.C.E. 4; Future Teachers of America 4; Library Science Club 4.



ENGLAND, KENNETH FRANKLIN . . . Morganton, N. C. . . . English and Physical Education . . . Football 2, 3, 4; Playcrafters 2, 3, 4; I.R.C. 2, 3, 4; Forum Club 4; Future Teachers of America 4.

ESSIC, JOHN FRANCIS . . . Cane, N. C. . . . Physical Education and History . . . Men's "A" Club 1, 2, 3, 4, President 3; Business Manager *Appalachian* 3; Who's Who 3; Freshman Class Officer; Baseball 1, 2, 3; History Club 3; Student Council 4; RHODODENDRON Staff 3.



ETHERIDGE, JOYCE . . . Baltimore, Md. . . . Grammar Grade Education.

FAIRCLOTH, DORIS . . . Clinton, N. C. . . . Primary Education . . . Campbell Junior College 1, 2.

FAIRCLOTH, ELIZABETH . . . Clinton, N. C. . . . Primary Education . . . Campbell Junior College 1, 2.



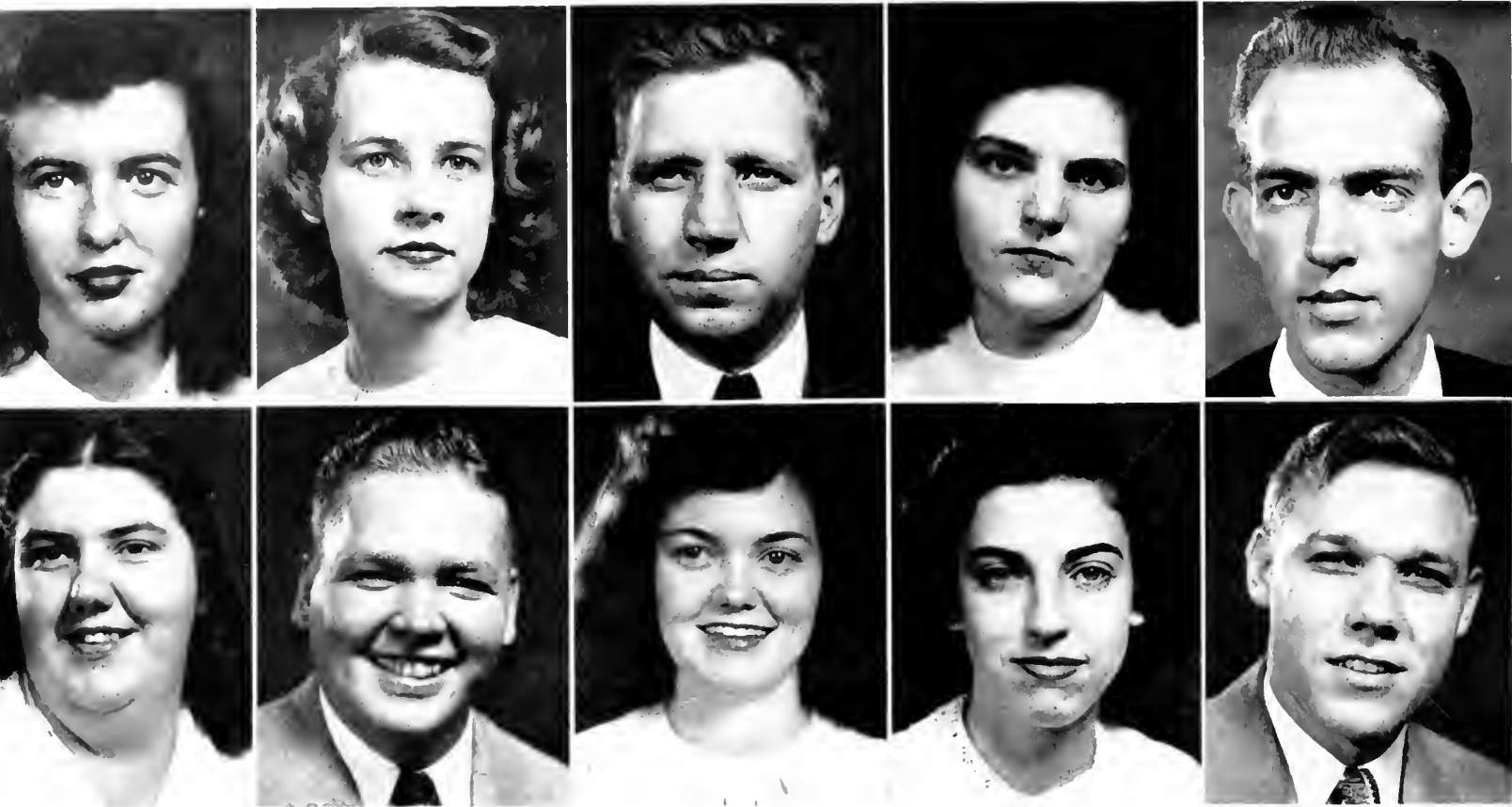
FENDER, NORMA . . . Glade Valley, N. C. . . . Home Economics and Science . . . Forum Club 2, 3, 4, Secretary and Treasurer 3; Playcrafters 4; Home Economics Club 1, 2, 3, 4; Y.W.C.A. 1, 2, 3, 4; May Court 3; RHODODENDRON Staff 4.

FOXX, JAMES RAY . . . Boone, N. C. . . . History and Physical Education . . . Football 1.

FRANCIS, LOUISE . . . Francisco, N. C. . . . Physical Education and History . . . Spanish Club 1; Y.W.C.A. 1, 2, 3; W.A.A. 1, 2, 3.



A.S.T.C. 



FRAZIER, MARY LOU . . . Julian, N. C. . . . Business Education and History . . . Y.W.C.A. 1, 2, 3, 4; French Club 2; Secretary 2; White Hall Club 1, 2.

GARDNER, MARY . . . Shelby, N. C. . . . Home Economics and Science . . . Home Economics Club 1, 2, 3, 4, Secretary 3; Y.W.C.A. 1, 2, 3, 4; May Court 3; Vernician Literary Society 3, 4, Treasurer 3.

GARVEY, WILLIAM . . . Boone, N. C. . . . Business Education and History . . . Sports Publicity Director 2, 3, 4; Veteran Adviser 2, 3, 4.

GODBY, RUBY . . . Mocksville, N. C. . . . Grammar Grade Education . . . Mitchell College.

GOFORTH, BEN . . . Kings Mountain, N. C. . . . Mathematics and Science . . . College Orchestra 3, 4; Cheerleader 1, 2, 3, 4, Chief Cheerleader 3, 4; Student Council 3; Band 2, 3; Chorus 1, 2, 3, 4; Who's Who 3; Class President 1, 3; President Pep Club 3.

GOODMAN, LESSIE . . . Morganton, N. C. . . . English and Social Studies . . . I.R.C. 4, Secretary 4; Intramurals 1, 2, 3, 4.

GORDON, T. BRUCE . . . Winston Salem, N. C. . . . Physical Education and Social Studies, Grammar Grade . . . I.R.C.; Varsouvianna.

GORDON, JACQUELYN . . . Cramerton, N. C. . . . Business Education and History . . . May Court Attendant 3; Baton Club 2, 3, 4; Majorette 4; Y.W.C.A. 2, 3, 4; Playcrafters 2, 3; *Appalachian* Staff 3; Pep Club 3; History Club 1, 3; Business Club 1, 4; White Hall Club 1, 2, 3; Intramural Sports 2, 3.

GRAHAM, ANNE GABRIEL . . . Concord, N. C. . . . Home Economics and Science . . . RHODODENDRON Editor 4, Associate Editor 3; Playcrafters 2, 3, 4; Future Teachers of America 2, 3; Modern Dance Club 2, 3, 4, President 3; Alpha Psi Omega 3, 4, Assistant Cast Director 4; Home Economics Club 1, 2, 3, 4; Y.W.C.A. 1, 2, 3, 4; Pep Club 3; White Hall Club 1, 2.

GREENE, GEORGE . . . Ronda, N. C. . . . Business Education and Social Science . . . Veterans Club 3; Business Education Club 4.

Senior Class of 1949

HADLEY, JACK . . . North Wilkesboro, N. C. . . . Physical Education and Science.



HALSTEAD, WILLIAM IRA . . . Pennington Gap, Va. . . . Physical Education and Mathematics . . . Men's "A" Club 1, 2, 3, 4, President 4; Varsouviana Club 2, 3, 4, President 2, 3, 4; Modern Dance Club 3; RHODODENDRON Staff 3; War Memorial Association 2, 3; Student Council 4; Class Treasurer 3, 4.



HARDIN, FRED . . . West Jefferson, N. C. . . . History and Science.

HARDY, RUBY . . . Pinnacle, N. C. . . . Home Economics and Science . . . Vernician Literary Society 3, 4; Y.W.C.A. 1, 2, 3, 4, Vice-President 4; Future Teachers 3, 4, Social Chairman 4; Forum Club 2, 3, 4; Home Economics Club 1, 2, 3, 4; Wesley Fellowship 3, 4.



HAYES, VIRGINIA FAYE . . . Seagrove, N. C. . . . Home Economics and Science . . . Pfeiffer Junior College; Y.W.C.A. 3; Home Economics Club 3, 4.

HEMINGS, BERTHA JEWEL . . . Dobson, N. C. . . . Home Economics and Science . . . W.C.U.N.C. 1, 2; Modern Dance Club 2, 3, 4; Home Economics Club 2, 3, 4; Pep Club 3; Spanish Club 3.



HENDREN, MARY SUE . . . Moravian Falls, N. C. . . . Primary Education . . . Y.W.C.A. 1, 2, 3, 4; B.S.U. 1, 2; A.C.E. 2, 3, 4; Pep Club 3; Lovill Club 1.

HENSON, JAMES . . . Rutherfordton, N. C. . . . Mathematics and Business Education.

HAFT, ALBERT . . . Mount Airy, N. C. . . . Physical Education and Science . . . Men's "A" Club; Basketball 1, 2, 3, 4; Football 1, 2; Y.M.C.A.



HOPE, AUDREY . . . Grover, N. C. . . . English and French.



HOWARD, HELEN ELAINE . . . Sherrills Ford, N. C. . . .
Primary Education . . . White Hall Club 1, 2, 3; A.C.E.
3, 4, Y.W.C.A. 1, 2, 3, 4, Secretary 4.

JACKSON, DAVID H. . . . Shelby, N. C. . . . Physical Edu-
cation and History.

HUNTER, EDGAR FRANCIS, JR. . . . Burnsville, N. C. . . .
Grammar Grade Education and History . . . Mars Hill
College; U.N.C.; Burnsville Unit; Future Teachers of
America 4; Naval Reserve Unit 3, 4; Intramural Basketball
3, 4; Intramural Softball 3, 4.

JEFFERS, DWIGIT . . . Delwood, N. C. . . . Physical Edu-
cation and History.

INGLE, HERBERT . . . Boone, N. C. . . . Physical Educa-
tion and History.

JENKINS, ROBERT EUGENE . . . Gastonia, N. C. . . .
English and Social Studies . . . Belmont Abbey 1, 2.

IRVIN, LULA KATHERINE . . . Wilkesboro, N. C. . . .
Home Economics and Science . . . Virginia Intermont;
Home Economics Club 3, 4.

JENNINGS, WILLIA VIRGINIA . . . Pores Knob, N. C. . . .
Library Science and History . . . Pfeiffer Junior College;
I.R.C.; Y.W.C.A. 1, 2, 3, 4; Spanish Club 3; Library Science
Club 4.

JACKSON, B. CLEO BEBER . . . Asheville, N. C. . . .
English . . . Montreat; W.C.T.C.

JOHNSON, ALTA BRICE . . . East Bend, N. C. . . . Primary
Education and Library Science . . . Y.W.C.A. 1, 2, 3, 4;
Forum Club 3, 4; Library Science Club 1, 4; A.C.E. 1, 2, 3, 4,
Officer 4.

Senior Class of 1949

JOHNSON, GWENDALYN . . . Hays, N. C. . . . Grammar Grade Education . . . Lenn Wesleyan College.



JOHNSTON, CLEDA BOLICK . . . Huntersville, N. C. . . . Grammar Grade Education.

JOLLY, HELEN . . . Polkville, N. C. . . . Grammar Grade Education and Music . . . Y.W.C.A. 3, 4; Youth Fellowship 4; College Chorus 1, 2, 3, 4.



JONES, CLYDE HOWARD . . . Elon College, N. C. . . . Mathematics and Physical Education . . . Future Teachers of America 4.

JONES, HOUSTON G. . . . Pelham, N. C. . . . English and History . . . Editor *Appalachian* 4; President Wesley Fellowship 3; Vice-President Carolina Methodist Student Conference 3, 4; Managing Editor RHODODENDRON 3; Who's Who 4; Junior Marshal 3.



JONES, JOHN T. . . . Greensboro, N. C. . . . Business Education and History . . . Men's "A" Club 1, 2, 3, 4; Varsity Basketball 1; Intramural Basketball 2, 3, 4; All Conference 1.

JONES, MADGE . . . Lattimore, N. C. . . . Music and Social Studies . . . Band 1, 2, 3, 4; Librarian 3, 4; Secretary and Treasurer 3, 4; Chorus 1, 2, 3, 4; Playcrafters 1; Vernician Literary Society 1, 2, 3, 4; Dance Band 1, 2, 4; White Hall Club 1.

LEITH, CHARLES MARTIN . . . Cumberland, Md. . . . English and History . . . Football Manager 1, 2, 4; Basketball Manager 1, 2; *Appalachian* Staff 1.

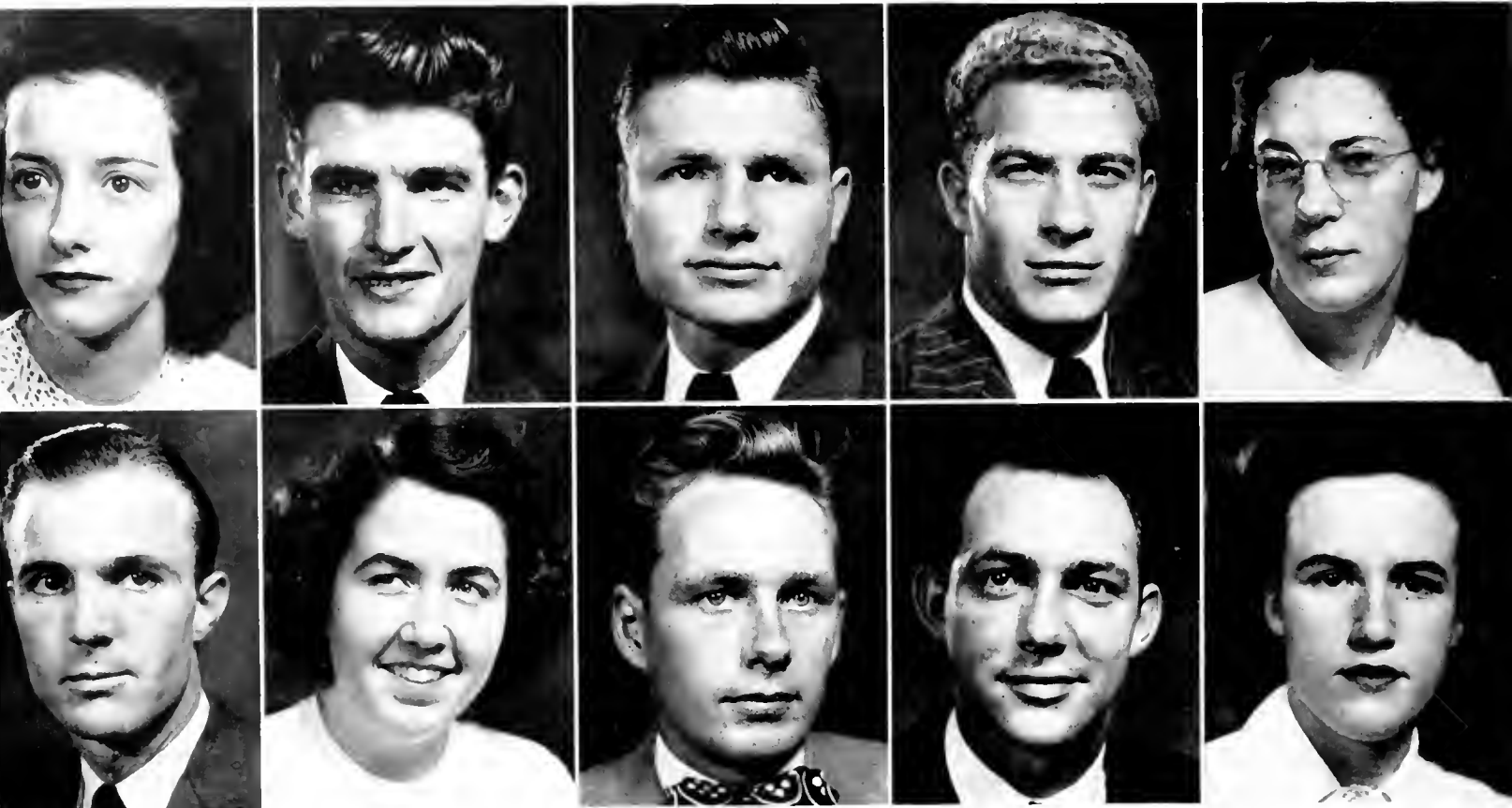


LITTLEFIELD, BROADUS . . . Fairmont, N. C. . . . Mathematics and Science . . . N. C. State; Band 2; Church Choir 1, 2; College Chorus 2; Spanish Club 1.

LITTMAN, DONALD HOWARD . . . Elkin, N. C. . . . Grammar Grade Education.



A.S.T.C. 



LOVILL, JOAN . . . Boone, N. C. . . . Physical Education and History . . . Women's "A" Club; W.A.A.

LOWDER, EDGAR REID . . . Lilesville, N. C. . . . Physical Education and History . . . Mars Hill College; Wingate College; Men's "A" Club 3, 4; Basketball 3, 4.

LOWERY, JOHN WARREN . . . Wingate, N. C. . . . Science, Physical Education and Mathematics . . . Wingate Junior College.

LYONS, EUGENE . . . Boone, N. C. . . . Physical Education and History . . . Men's "A" Club 2, 3, 4; Baseball 1; Football 1, 2, 3, 4, Varsouvianna Club 3.

MAINE, EDITH . . . Boone, N. C. . . . English and Social Studies . . . Spanish Club 1.

MALCOLM, JAMES . . . Winston-Salem, N. C. . . . History and Physical Education . . . U. of Delaware; Coach Junior Varsity Football 3, 4.

MARLOWE, EDITH ELOISE . . . Marion, N. C. . . . Mathematics and Social Studies . . . B.S.U. 1, 2, 3, 4; White Hall Club 1, 2; Forum Club 4; Future Teachers of America 4, Treasurer 4.

MARTIN, DANIEL . . . Charlotte, N. C. . . . Physical Education and Social Studies . . . Assistant Coach Junior Varsity Football 4.

MAYBERRY, LOYD . . . Jonesville, N. C. . . . History and Physical Education . . . Men's "A" Club 4; Veterans Club 2, 3; Baseball 1, 2; Football Manager 3, 4.

MCCLIBRE, ALWAYNE . . . High Point, N. C. . . . English and Social Studies . . . Mars Hill College; Forum 3, 4; I.R.C. 4.

Senior Class of 1949

McCLURE, JAMES . . . Rutherfordton, N. C. . . . Business Education and History.

McCOLLUM, ROBIE ODELL . . . Elkin, N. C. . . . Science and Physical Education . . . Tri-County Basketball Official 3, 4; Varsouvianna Club 3, 4; Veterans Club 1; Wrestling 4; Marshal Summer Graduating Class 3.

McLEAN, LEON MOORE . . . Lumberton, N. C. . . . Science and History . . . Lees McRae 1, 2; Y.M.C.A. 3, 4, President 3; Spanish Club 3; Men's "A" Club 3, 4; Westminster Fellowship 3, 4; Wrestling 3, 4, Varsity 3.

McMAHAN, LEMUEL . . . Forest City, N. C. . . . Science and History.

MELVIN, HELEN GRACE . . . Jackson Springs, N. C. . . . Physical Education and History . . . Pfeiffer Junior College 1; Women's "A" Club 2, 3, 4, Secretary 3; W.A.A. 2, 3, 4; Flying Fish 2, 3, 4, President 4; Varsouvianna Club 2, 3, 4; Y.W.C.A. 2, 4; Varsity Basketball 2, 3, 4; Intramural Manager 4.

MIKEAL, COY . . . Todd, N. C. . . . Mathematics and History.

MILLS, MARY LUCILLE . . . Greensboro, N. C. . . . Physical Education and History . . . W.C.U.N.C. 1, 2; W.A.A. 3, 4; Women's "A" Club 3, 4; Flying Fish 3, 4; Varsouvianna 3, 4; Modern Dance Club 3, 4; Y.W.C.A. 3, 4; Varsity Basketball 3, 4.

MOIR, SAMUEL A., JR. . . . Boone, N. C. . . . Physical Education and History . . . Men's "A" Club 1, 2, 3, 4; Varsity Basketball.

MOORE, MARTHA LILLIAN . . . Willard, N. C. . . . Home Economics and Science.

MORETZ, NELL . . . Lenoir, N. C. . . . Grammar Grade Education . . . Mars Hill College 1, 2; Mission Forum 1, 2, 3, 4, Secretary 2, 4.



A.S.T.C.



MORGAN, CAROLYN . . . High Rock, N. C. . . . Physical Education and History . . . Women's "A" Club 3, 4.

NELSON, CHARLES . . . Ellenton, Fla. . . . Physical Education and Mathematics.

OWENS, CHARLES DONALD . . . Forest City, N. C. . . . Physical Education and Social Studies.

PACK, DITSIIE . . . Mount Airy, N. C. . . . Physical Education and Business Education . . . Women's "A" Club; W.A.A.; Basketball 1, 2, 3, 4.

PADGETT, OSCAR . . . Ellenboro, N. C. . . . Social Studies and Science . . . Gardner Webb College.

PARKS, JAMES F. . . . Tangier, Va. . . . English and History . . . Playcrafters 1, 2, 3, 4, President 4; Debating Club 2; *Appalachian* Staff 3; Alpha Psi Omega 4; Future Teachers of America 4; Veterans Club 1; Rhododendron Staff 3, 4, Junior Editor 3, Senior Editor 4.

PARRISH, WILLIAM CLAY . . . Summerfield, N. C. . . . English and History . . . Guilford College 1; High Point College 2; College Chorus 3; B.S.U. 4; Y.M.C.A. 4.

PEELER, MARTHA FRANCES . . . Gold Hill, N. C. . . . Grammar Grade Education . . . Y.W.C.A. 3, 4; Wesley Fellowship 3, 4; Religious Council 4; I.R.C. 4; Future Teachers of America 4; A.C.E. 4.

PERKINS, BEULAH MARION . . . Dobson, N. C. . . . Grammar Grade Education . . . Lovell Club 1, 2, 3, President 2; May Court 2; Vernician 3; Y.W.C.A. 1, 2, 3, 4, President 4; Wesley Fellowship 3, 4; Future Teachers of America 3, 4; Student Council 3, 4; Religious Council 4; Who's Who 4; Vice-President Senior Class; Corresponding Secretary Student Council 4.

PHARR, ELIZABETH BELLE . . . Wilkesboro, N. C. . . . Library Science and French . . . Forum Club 3, 4, Secretary 4; I.R.C. 2, 3, 4; French Club 1, 2, 3, 4; Y.W.C.A. 1, 2, 3, 4; Westminster Fellowship 2, 3, 4, Vice-President 4; Library Science Club 4.

Senior Class of 1949

PLYLER, BETTY JO . . . Monroec, N. C. . . . Grammar Grade Education . . . Y.W.C.A. 1, 2, 3, 4; Playcrafters 2, 3; Baton Club 3, 4; Intramural Sports 2, 3, 4; White Hall Club 1, 2, 3; *Appalachian* Staff 3; Pep Club 3.



RAY, DOLLIE JANE . . . Mars Hill, N. C. . . . English and History . . . Mars Hill College 1, 2; A Cappella Choir 3, 4; Vernician 4; *Appalachian* Staff 3, 4, Assistant Editor 4; Y.W.C.A. 3, 4; Playcrafters 4; Future Teachers of America 4.

RAYBURN, JAMES SPURGEON . . . Shelby, N. C. . . . History and Physical Education . . . Lenoir Rhyne; Gardner Webb 2; Y.M.C.A. 3, 4.



RHODES, FAYE . . . Wilkesboro, N. C. . . . Home Economics and Science . . . Home Economics Club 1, 2, 3, 4; I.R.C. 2, 3, 4; Future Teachers of America 4; Vernician Literary Society 4; B.S.U. 4.

RIDDLE, CHARLES . . . Spruce Pine, N. C. . . . History and Science . . . Mars Hill College 1; Veterans Club 2; Y.M.C.A. 3; Pep Club 4; *Appalachian* Staff 2, 3, 4, Sports Editor 4.

RINER, JANE MARGARET . . . Castlewood, Va. . . . Business Education and History . . . Veterans Club 1; Y.W.C.A. 1, 2, 3; Forum Club 3; Business Club 4, Vice-President 4.



ROBINSON, MERRITT . . . Newdale, N. C. . . . Business Education and History . . . Men's "A" Club 1, 2, 3, 4; Y.M.C.A. 2; Business Club 4.

ROBINSON, SHIRLEY . . . Wilmington, N. C. . . . Grammar Grade Education . . . Campbell College 1, 2.

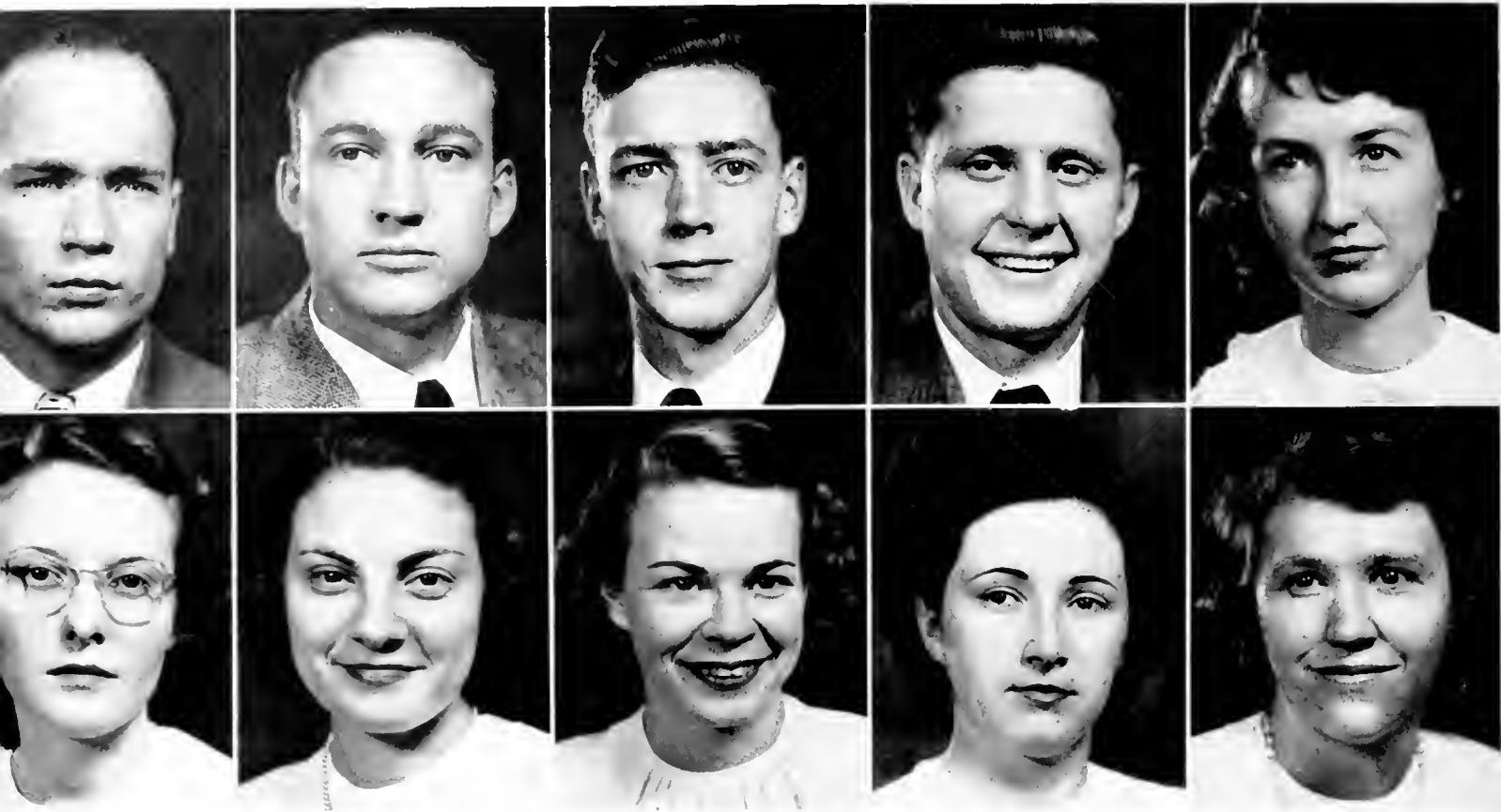
RODGERS, MOZELLE . . . Thomasville, N. C. . . . Physical Education and Science . . . W.A.A. 1, 2, 3, 4, Treasurer 3, Vice-President 4; Women's "A" Club 1, 2, 3, 4, President 4, Vice-President 3; Y.W.C.A. 2, 4; Varsouvianna Club 2, 3, 4; Flying Fish 1, 2, 3, 4, Secretary 2, Vice-President 4; Assistant Business Manager *Appalachian* 3; RHODODENDRON Staff 4; Secretary and Treasurer Sophomore Class.



ROGERS, JULIAN . . . Clarkton, N. C. . . . Mathematics and Science . . . Student Council President 4; Alpha Psi Omega, Cast Director 4; Playcrafters 1, 2, 3, 4; Chorus 1; Managing Editor RHODODENDRON 4; Pep Club 2; Who's Who 4.



A.S.T.C.



ROOKS, JOHN ELTON . . . Brunswick, N. C. . . . English and History . . . Y.M.C.A. 1, 3, 4; I.R.C. 3, 4; Playcrafters 2, 3, 4; Debating Club 2.

ROWE, OFIMIG DANIEL . . . Nebo, N. C. . . . History and Physical Education . . . Varsouvianna Club 4.

SCOTT, FRED . . . East Bend, N. C. . . . Mathematics and Science . . . Basketball 1; Y.M.C.A. 1.

SEASE, WILLIAM . . . Norfolk, Va. . . . History and Physical Education . . . Wingate Junior College 1, 2; Varsouvianna Club 4.

SHEPHERD, CLARA MAE . . . Sugar Grove, N. C. . . . Grammar Grade Education and Library Science . . . Y.W.C.A. 1; Lovill Club 1; A.C.E. 4; Future Teachers of America 4; Library Science Club 4; White Hall Club 2, 3.

SHEPPARD, IZORIA TOY . . . Sandy Ridge, N. C. . . . Grammar Grade Education . . . White Hall Club 1, 2; French Club 1; A.C.E. 3, 4; Wesley Fellowship 1, 2, 3; Y.W.C.A. 1, 2, 3, 4; Future Teachers of America 4.

SILVER, EVELYN . . . Micaville, N. C. . . . Home Economics and Science . . . Brevard College; Home Economics Club 3, 4; Wesley Fellowship 3.

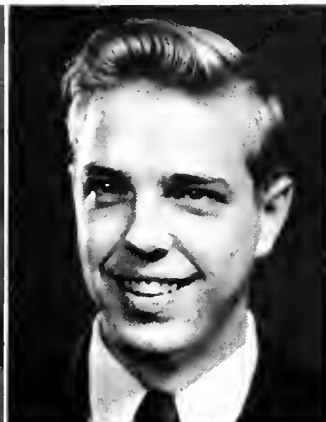
SMITH, ELIZABETH JEAN . . . Lenoir, N. C. . . . Primary Education . . . Girls' Chorus 1; White Hall Club 1; Y.W.C.A. 1, 2, 4; A.C.E. 1, 2, 3, 4; Vernician Literary Society 1, 2, 3, 4.

SMITH, LENORA . . . Lawsonville, N. C. . . . Grammar Grade Education and Music . . . Y.W.C.A. 4; A Cappella Choir 4.

SMITH, RITA LOUISE . . . Charlotte, N. C. . . . Physical Education and Science . . . W.A.A. 1, 2, 3, 4; Flying Fish 3, 4; Y.W.C.A. 1, 2, 4; Religious Council 4; College Band 1, 4; Orchestra 1.

Senior Class of 1949

SMYRE, DANE ERNEST . . . Newton, N. C. . . . Music and Mathematics . . . A Cappella Choir 3; Dance Band 3, 4, Vice-President 4.



SOUTH, STANLEY . . . Boone, N. C. . . . Grammar Grade Education . . . Chorus 1, 2, 3, 4; Rat's Den 2, 3, 4; Spanish Club 1; Veterans Club 2; Band 1, 2; Playcrafters 1, 2.

STATON, EVELYN . . . Flat Rock, N. C. . . . Home Economics and Science . . . Mars Hill Junior College.



STEELMAN, JOHN BRITT . . . Wilkesboro, N. C. . . . Physical Education and History . . . Varsouviana Club 2, 3, 4; Modern Dance Club 3, 4; Men's "A" Club 1, 2; Football 1; Basketball Manager 1.

STEPHENS, BINA CELESTE . . . Creston, N. C. . . . Home Economics and Science . . . Home Economics Club 1, 2, 3, 4, Vice-President 4; Y.W.C.A. 1, 4; Lovill Club 1, 2; Glee Club 2; Vernician Literary Society 3; Westminster Fellowship 3, 4.



TALLET, HELEN HUDSON . . . Charlotte, N. C. . . . Physical Education and Science . . . Y.W.C.A. 1, 2, 3, 4, Cabinet Member 4; Women's "A" Club 3, 4; Flying Fish 2, 3, 4, Secretary 3; W.A.A. 1, 2, 3, 4, President 4.

TAYLOR, JESSE . . . Kannapolis, N. C. . . . Physical Education and History . . . Football; Men's "A" Club 4.

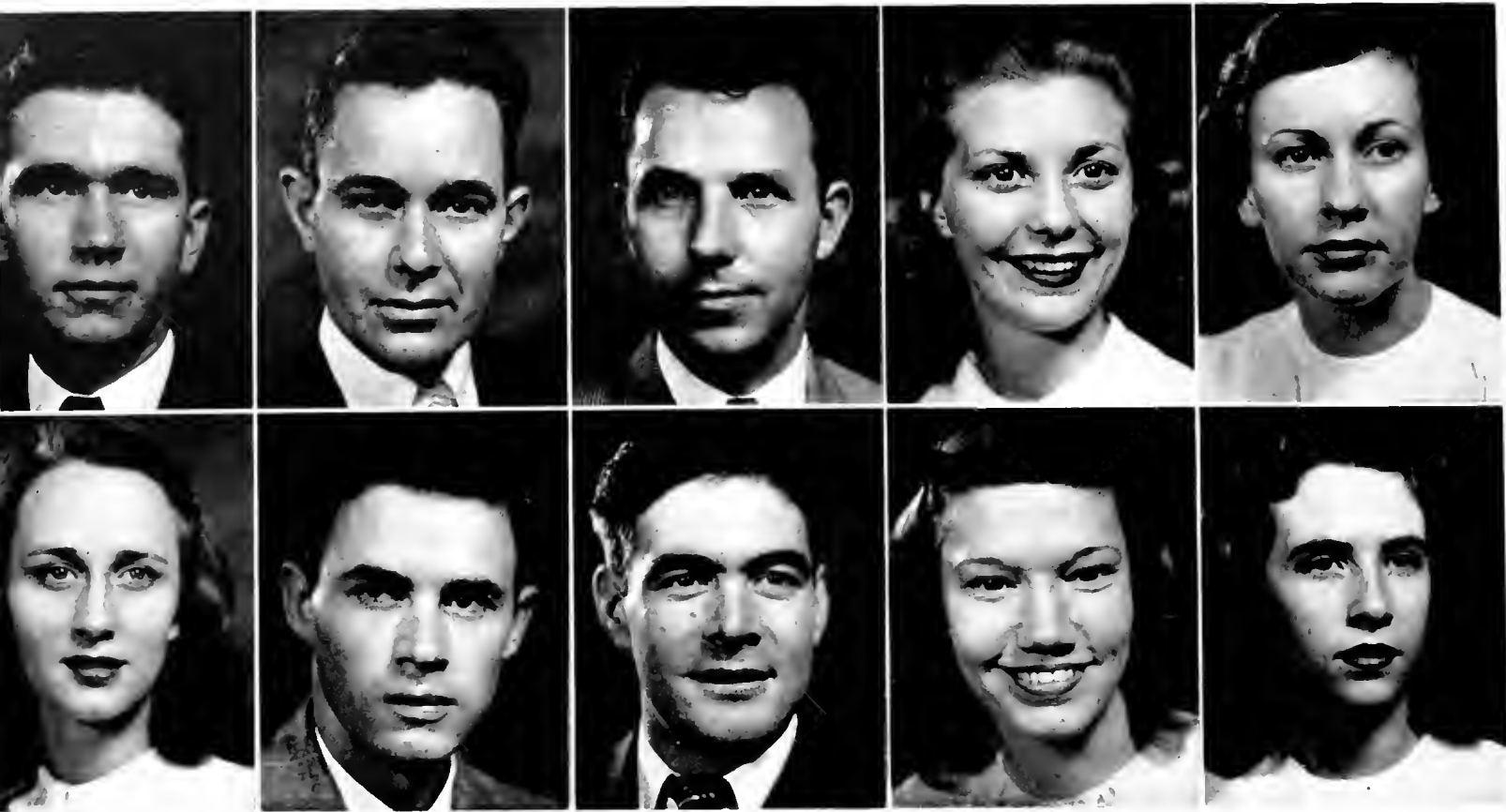


TEEMS, RAY . . . Boone, N. C. . . . Physical Education and History.

THOMPSON, BETTY . . . Saluda, N. C. . . . English and Spanish . . . Brevard College; Spanish Club 3; Pep Club 3; Lovill Club 3.



THREATTE, BETTY JUNE . . . Dobson, N. C. . . . Grammar Grade Education . . . Anderson College 1, 2; Y.W.C.A. 4.



THURMAN, MICHAEL WARREN . . . Ruby, S. C. . . . History and Physical Education . . . Wingate Junior College 1, 2.

TIMMONS, TOMMY . . . Mount Airy, N. C. . . . Physical Education and Science.

TUGNAN, JOHN . . . North Wilkesboro, N. C. . . . History and Physical Education.

VANCE, RACHEL ANNE . . . Boone, N. C. . . . English and French . . . Business Manager *Appalachian* 4; Vernician Literary Society 1; French Club 1, 2, 3, 4; Spanish Club 1, 2; Future Teachers of America 4; Band Sponsor 2, 3, 4; Who's Who 3, 4; Junior Marshal 3; May Court 3; Student Council 3, 4, Secretary 3.

VERNON, LUCILLE ADELINE . . . Sandy Ridge, N. C. . . . Home Economics and Science . . . Home Economics Club 1, 2, 3, 4, Secretary-Treasurer 4; White Hall Club 1; Y.W.C.A. 1, 2, 3, 4.

WAGONER, PAULINE ROZELLE . . . Elkin, N. C. . . . Physical Education and History.

WALKER, JAMES . . . Lawndale, N. C. . . . Mathematics and Science.

WALTERS, RALPH RHYNE . . . Mooresville, N. C. . . . Physical Education and Social Studies . . . Davidson College 1; Men's "A" Club 2, 3, 4; Varsouvianna Club 2; Class Officer 1, President 2, 4; Who's Who 4.

WATSON, VIRGINIA . . . Maxton, N. C. . . . Primary Education.

WEAST, SARA FRANCES . . . Mount Ulla, N. C. . . . Physical Education and Library Science . . . Business Manager *Rhododendron* 4; Westminster Fellowship 1, 2, 3, 4, President 3, 4, Officer 2; Y.W.C.A. 1, 2, 3, 4, Cabinet Member 2, 3; Library Science Club 1, 4; White Hall Club 1; New Dormitory Council 4; Religious Council 4.

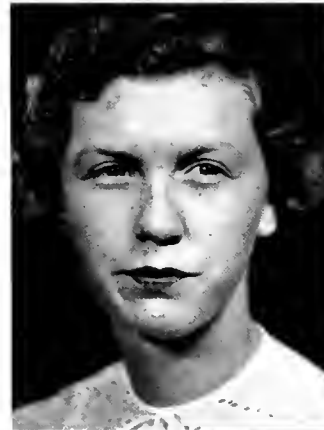
Senior Class of 1949

WEAVER, ANNE . . . Brandon, N. C. . . . Primary Education.



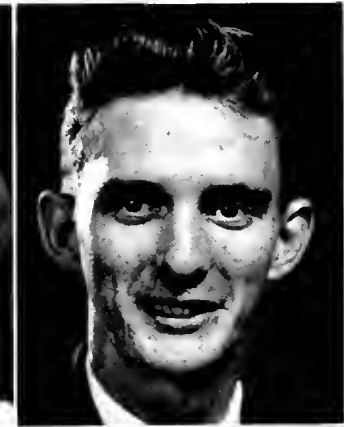
WEBB, NELLIE GRAY . . . Reidsville, N. C. . . . Home Economics and Science . . . Pfeiffer Junior College 1; Home Economics Club 2, 3, 4; B.S.U. 2, 3, 4; Y.W.C.A. 1, 2, 3, 4.

WEEKS, FLORENCE . . . Clinton, N. C. . . . Primary Education.



WELLMON, MARGARET . . . Belwood, N. C. . . . Home Economics and Science . . . Gardner Webb Junior College 1; Home Economics Club 1, 2, 3, 4, Officer 1; Playcrafters 3, 4; B.S.U. 3, 4; Y.W.C.A. 1, 2, 3, 4; Pep Club 3; W.A.A. 1; Future Teachers of America 4.

WILDE, RUBY COMER . . . Union Grove, N. C. . . . Primary Education.



WILDE, SIMPSON . . . Asheville, N. C. . . . English and History . . . *Appalachian* Staff 4; Debating Club 4, President 4.

WILLIAMS, BEVIN JACKSON . . . Laurinburg, N. C. . . . Physical Education and Social Studies.

WILLIS, LEE . . . Spruce Pine, N. C. . . . Mathematics and Physical Education . . . Math Club 3, 4; Naval Unit 3, 4; Varsouvianna Club 3, 4.



WILLIS, MARIE . . . Wing, N. C. . . . Music and English . . . Mars Hill 1, 2; A Cappella Choir 3, 4; Modern Dance Club 4; Varsouvianna Club 3, 4.

WILSON, WILLIAM MARTIN . . . Boone, N. C. . . . History and Science . . . Basketball 1, 2; Men's "A" Club 2; Forensic Club 3; Class Officer 1; Class President 2.



A. S. J. C. 



WITHROW, JOHN DURHAM . . . Hollis, N. C. . . . History and Physical Education . . . Gardner Webb Junior College 1; Men's "A" Club 2, 3, 4, Officer 4; Forum Club 3, 4; International Relations Club 3, 4, President 4; Future Teachers of America 4.

YOUNG, ROBERT . . . Bakersville, N. C. . . . History and Physical Education.

ALVAREZ, ALICIA . . . Placetas, Cuba . . . Post Graduate.

WITHROW, ROBERT . . . Hollis, N. C. . . . History and Physical Education . . . Baseball 1, 2, 3, 4; Men's "A" Club.

WORKMAN, VERA . . . Hickory, N. C. . . . Music . . . A Cappella Choir 1, 2, 3, 4; Y.W.C.A. 1; W.A.A. 1; Lutheran Student Association 1, 2, 3, 4; Modern Dance 4; White Hall Club 1, 2, 3; Varsouvianna Club 4.

WORRELL, JACK . . . Boone, N. C. . . . History and Science.

WORRELL, MARIANNE . . . Boone, N. C. . . . French and Science.

Senior Class of 1949



A. S. J. C.

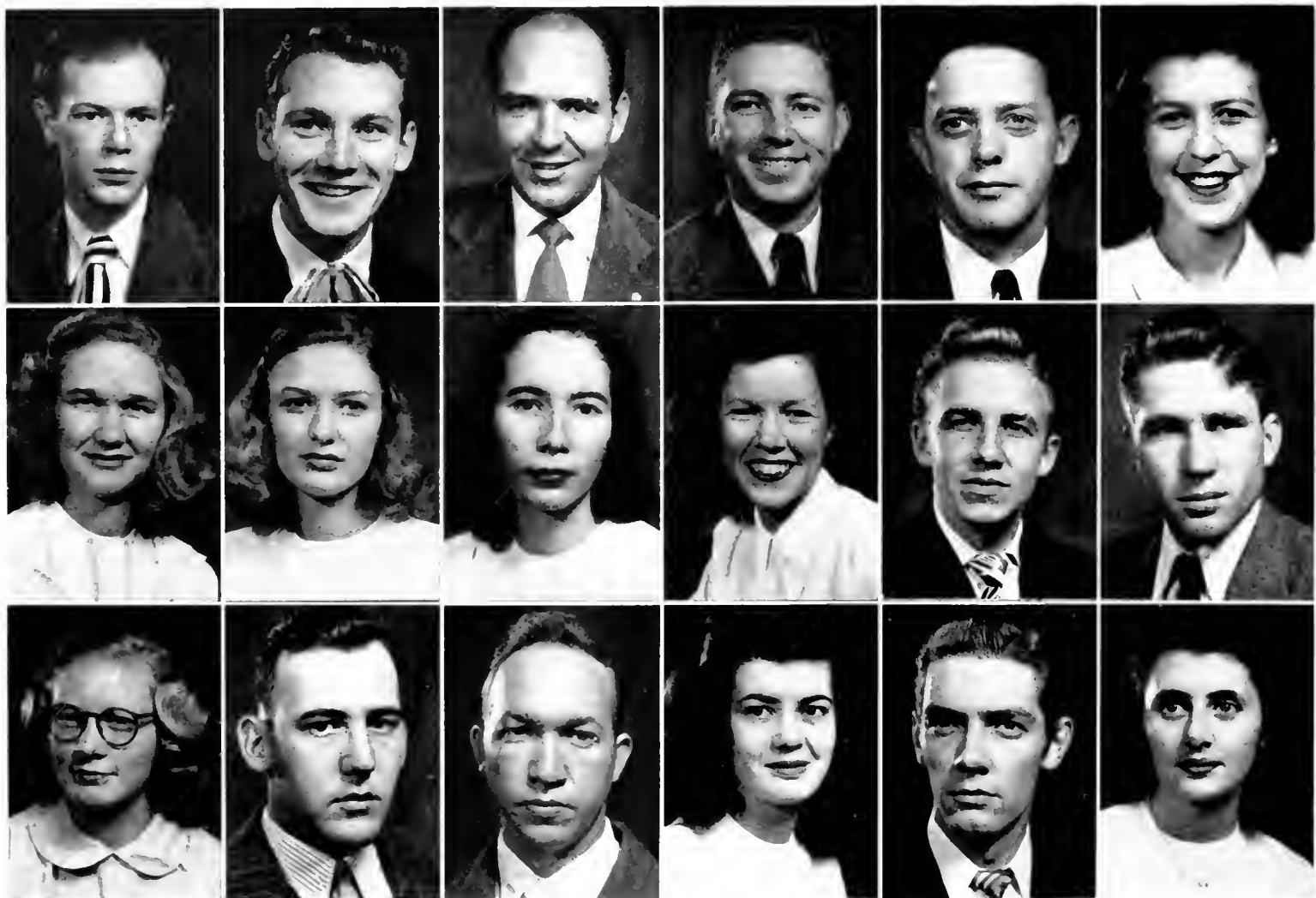




OFFICERS

- MARTHA ANN VOSSPresident
GLENN CAUSEYVice-President
SARAH MILLER MATTHEWSSecretary
EUNICE FOLGERTreasurer

Juniors



ABERNATHY, HARRY H., JR. Statesville
 ALBEA, JOHNNY Winston Salem
 ALSTON, RAY Hamlet
 ANGEL, CAROL WESLEY Burnsville
 ANGLIN, WOODROW Burnsville
 ASHBY, BLANCHE Concord

BAUGUESS, AMELIE Lomax
 BAUGUESS, AUDREY Lomax
 BISHOP, MARJORIE Ferguson
 BISHOP, MARY EVELYN, Browns Summit
 BLACKBURN, CHARLES Boone
 BOLICK, CLOYD Boone

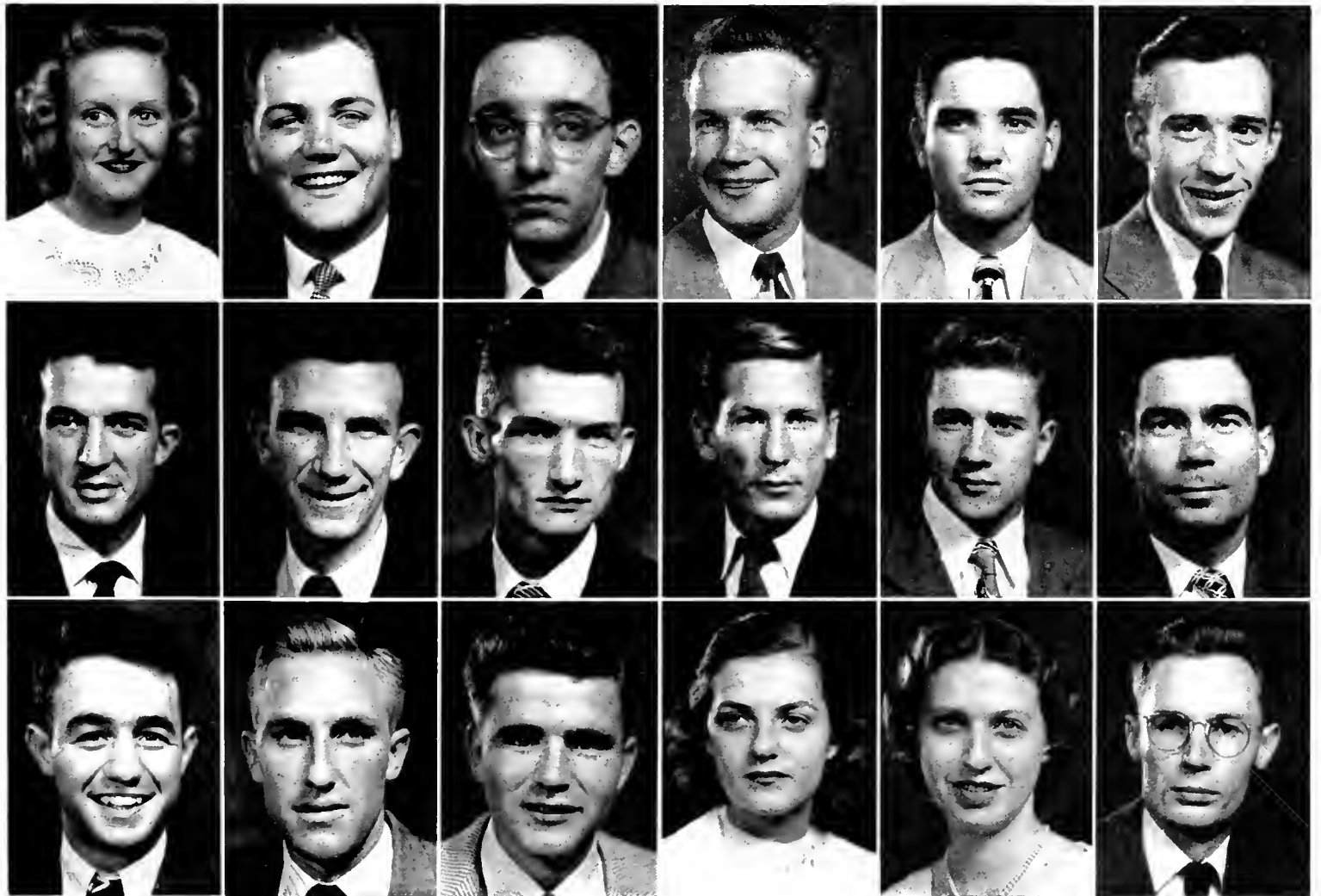
BRADLEY, MILDRED Charlotte
 BRANDON, JAMES Yadkinville
 BRASWELL, TED Spruce Pine
 BRINTLE, RACHALL Mount Airy
 BROWN, BOBBY JOE Hillsboro
 BROWN, MARGARET IRENE, Huntersville

Junior

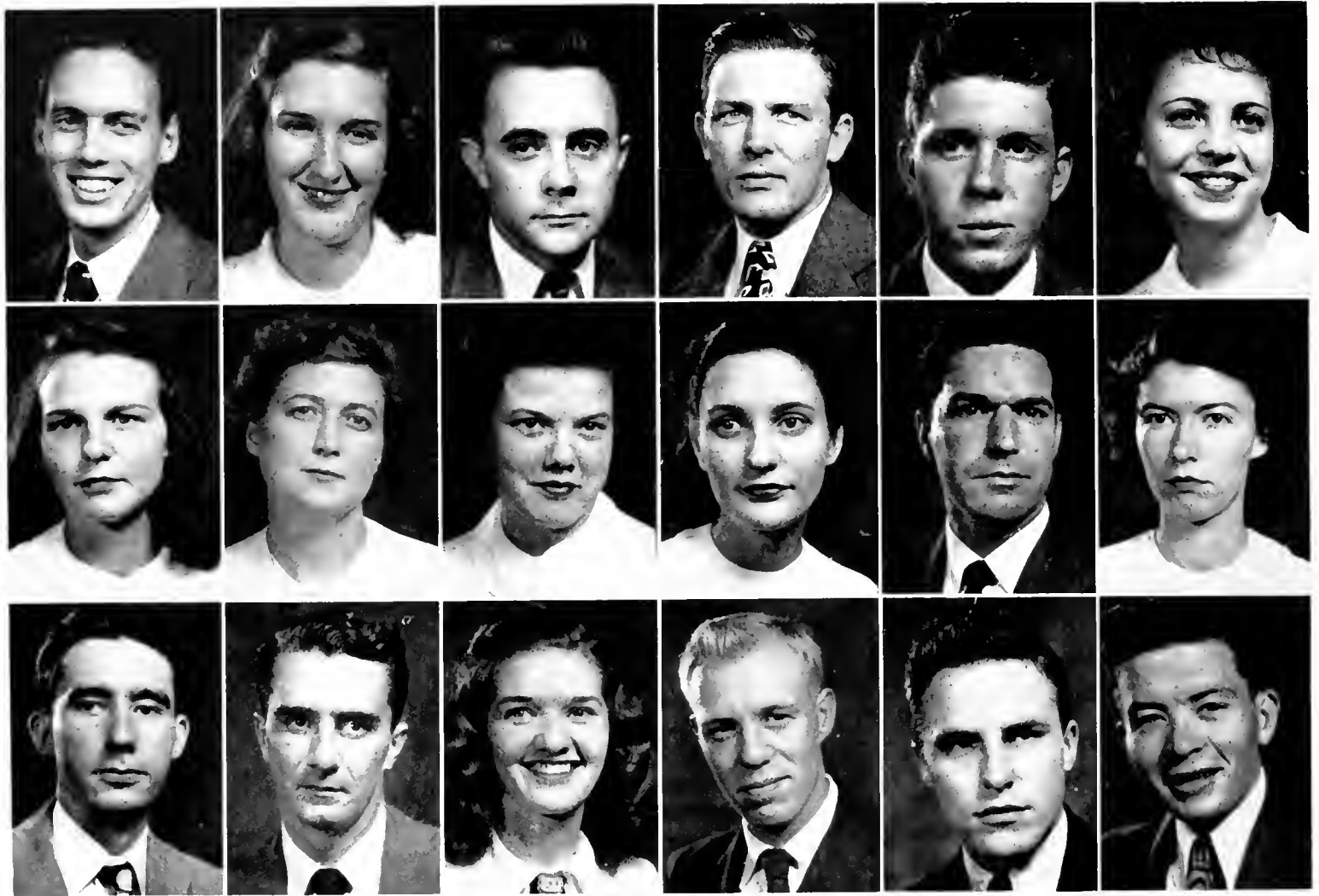
BROWN, MARYNorth Wilkesboro
 BUMGARDNER, DAHLBelmont
 BURRESON, J. D.Spruce Pine
 CADICK, DENLEYEvansville, Ind.
 CARR, JULIANHillsboro
 CARTER, ROBERTWinston-Salem

CASHION, LEONARDMooreville
 CAUSEY, GLENNGreensboro
 CHILTON, ROBERT E. ...Winston-Salem
 CLENDENIN, HARRY E. ...Greensboro
 CLINE, RALPHCollettsville
 COLEMAN, ELTONWhiteville

COX, GENEWhiteville
 CROOKS, EUGENEConcord
 DAVIDSON, DEWEYLexington
 DAVIS, FRANCESDurham
 DAVIS, LAURAEast Bend
 DAY, ROBERTBoone



Class of 1949 A. S. J. C.



DIXON, JOSEPHPleasant Garden
 DUKES, WILFORDGibson
 EASTRIDGE, WILLIAMBoone
 EDWARDS, ELLISMorganton
 FAHRHART, WAYNELexington
 FARROW, CATHERINEShelby

FERGUSON, BETTYFerguson
 FISHER, CHARLOTTEHobucken
 FISHER, LENOREEllington, Fla.
 FOLGER, EUNICEDobson
 FRADY, WORTHRutherfordton
 GENTLE, LVELYNFletcher

GEORGE, PHILSpruce Pine
 GINNINGS, WENDELLGreensboro
 GRANT, JUANITAWoodleaf
 GREEN, CYRUSDeep Gap
 GRIFFITH, WILLIAMDavidson
 GRIGG, LAWRENCEShelby

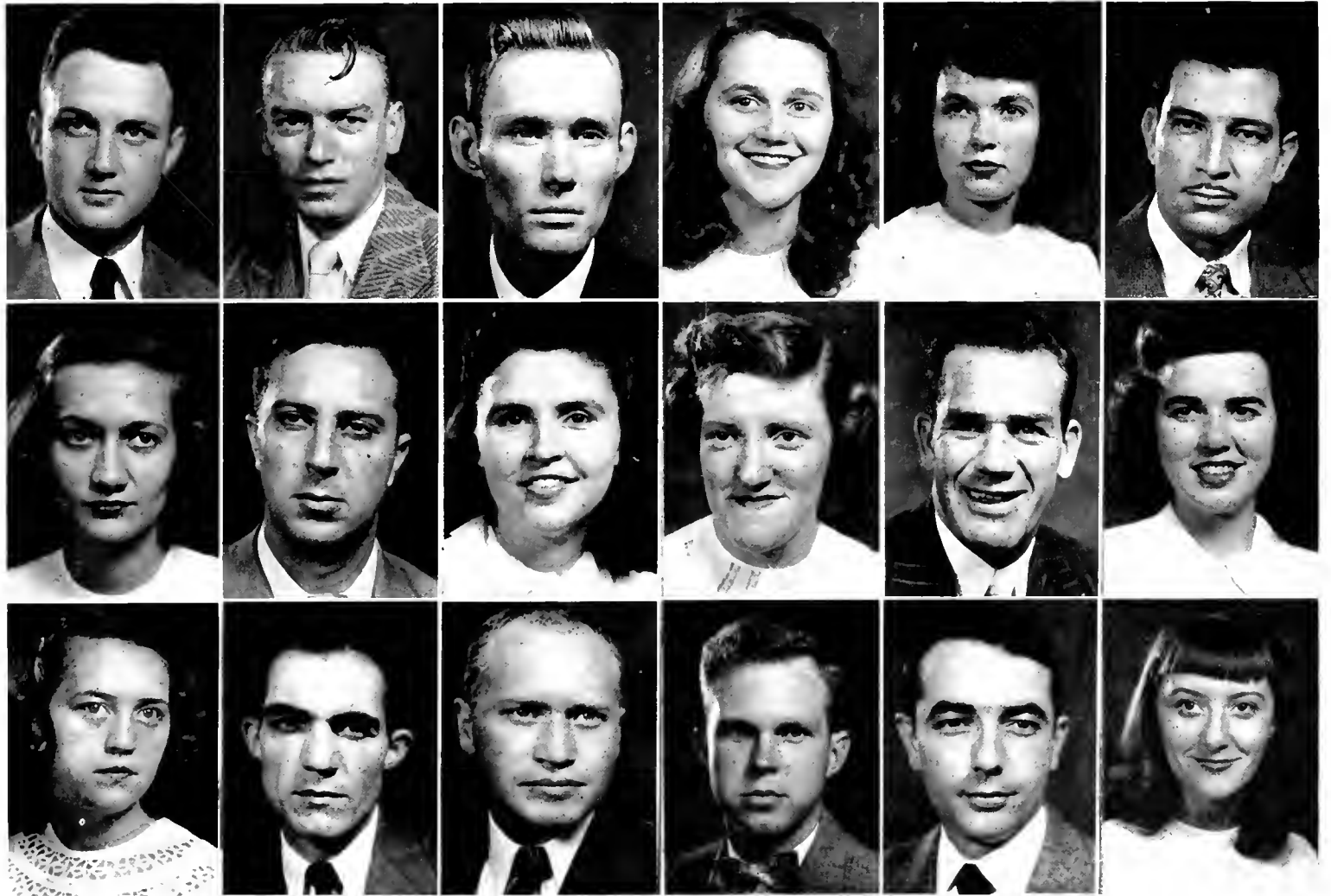


Junior

GRIMES, REIDChina Grove
 HAGAMAN, VONBoone
 HANSON, COLEMAN ..Lancaster, S. C.
 HAUSER, ELEANORHigh Point
 HAWKS, MAXINE ELLAN ...Greensboro
 HAYNIE, CARROLLTangier, Va.

HEGE, HAZELBoone
 HEFFNER, KENNETHShelby
 HIATT, PORTIAMount Airy
 HODGES, THELMAVilas
 HONEYCUTT, J. C.Kannapolis
 HOLCOMBE, HAZELMars Hill

HOLLIFIELD, BETTYDrexel
 HOPE, CHARLESEllenboro
 HOWELL, ROBERTBurnsville
 HUNTER, ROBERTHuntersville
 HUNTER, THOMASWinston-Salem
 JARRETT, BARBARAShelby



Class of 1949 A. S. J. C.



JARVIS, CHARLESWinston Salem
 JOINES, IMOGENEBoone
 JOINES, WESLEYBoone
 JOHNSON, CHARLIEWinston-Salem
 JOHNSON, WILLIAMJavetteville
 JOHNSTON, ALBERTHuntersville

JONES, FRED Grassy Creek
 KELLER, VERDOLABoone
 KELLEY, ROBERTNorth Wilkesboro
 KIRKPATRICK, GENEShelby
 LAMM, J. C.Bailey
 LAST, CARLCharlotte

LANNING, IRISCharlotte
 LEWIS, ELDREDGEHigh Point
 LEWIS, JACKGastonia
 LINNEY, JAMES JOSEPHWilkesboro
 LONG, WILLIAMRaleigh
 LOWE, FRANKPores Knob



Junior

LOWE, ROGERLow Gap
 MARSH, ROYBoone
 MARTIN, CLARENCEMount Airy
 MARTIN, JOHNBlacksburg, S. C.
 MARTIN, ROBERTSummerfield
 MASON, MARGARETFayetteville

MATTHEWS, SARAHLenoir
 MCCALL, NEDDenver
 MCCREIGHT, SARAHMorganton
 MCCURRY, JOHN LITTONBostic
 MCGALLIARD, EMMAMarion
 MCLEAN, FREDCricket

MCNEAL, RITA DARE..Ridley Park, Pa.
 MCPHERSON, JAMESCameron
 MILLER, ADOLPH G.Lenoir
 MILLER, ERNEST ...Lake View, S. C.
 MOORE, MARYLow Gap
 MOOSE, MIRIAMConcord



Class of 1949 A. S. J. C.



MORITZ, HERBERT Boone
 NORRIS, LYDIA Todd
 OSBORNE, PEGGY Cordele, Ga.
 PARDUE, ROBERT Winston Salem
 PARKER, PHYLLIS Charlotte
 PAYNE, WILLIAM Sugar Grove

PENNICK, WILLIAM Boone
 RAGAN, WALTER Boone
 RICHARDSON, WILLIAM R. Galax, Va.
 ROBBINS, MAX Boone
 SAUNDERS, A. J. Gastonia
 SELLERS, LEAY Kings Mountain

SIDES, JOHN OGDEN Charlotte
 SIMMONS, JERRY Marion
 SOWERS, NORMA Lexington
 SPRINKLE, ALBERT Winston-Salem
 STANSBERRY, LANGDON Jefferson
 STEPHENS, EMORY Mooresville



Junior

SUMNER, THOMAS O'TOPPINGS
 Cherryville

THOMPSON, DONALD Mills Springs

TROUTMAN, HOMERConcord

TURNER, JONNIE RUTHHigh Point

VOSS, MARTHAWinston-Salem

VOSS, THOMASWinston-Salem

WATSON, DONALD, JR.Albemarle

WAUGH, DORISGreensboro

WEBB, THOMASFlorence, S. C.

WELLS, EVA NELLMarble

WILSON, KEITHDavidson

WOOD, WANDANorth Wilkesboro



Class of 1949 A. S. J. C.

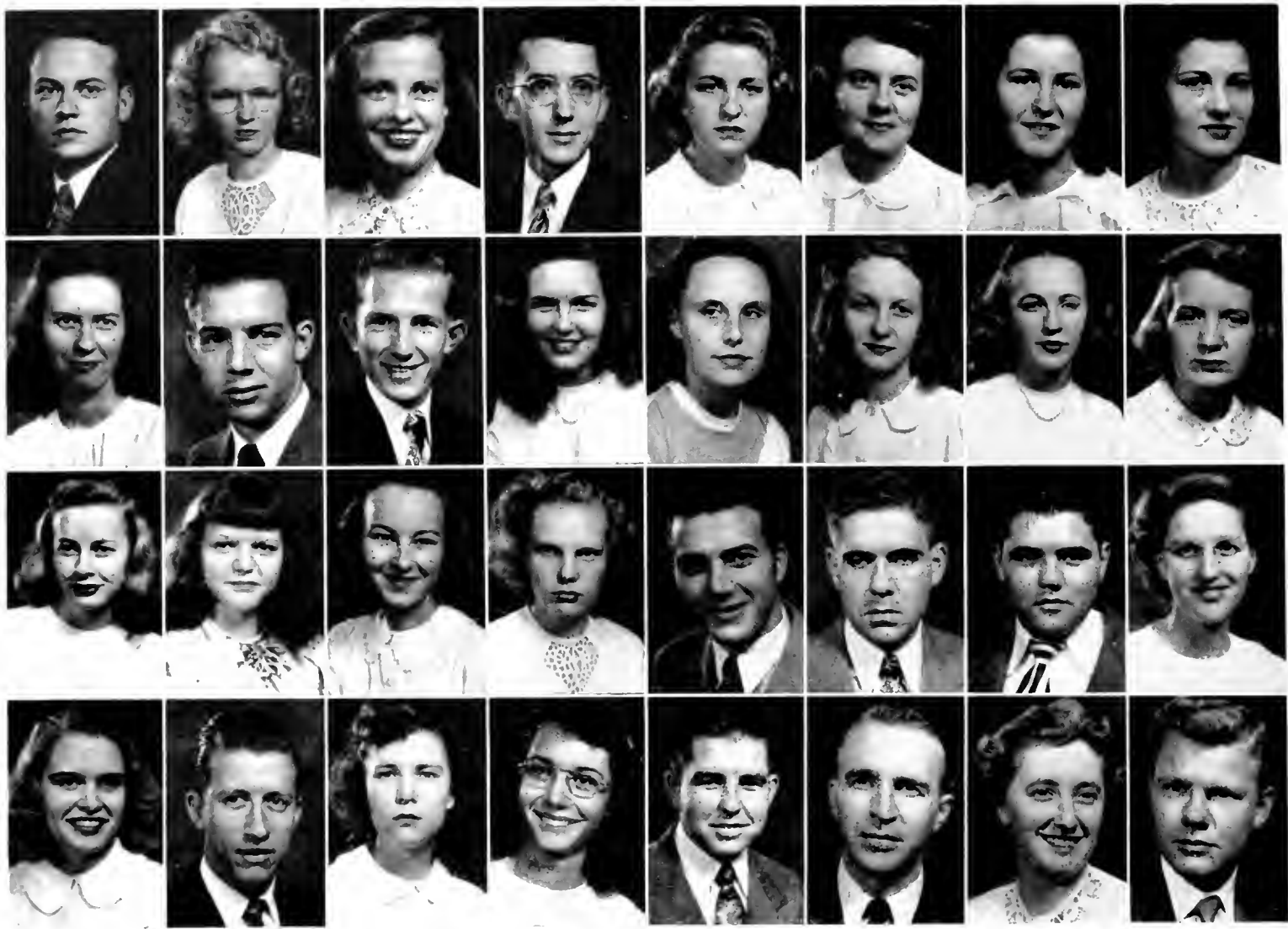




OFFICERS

- CECELIA WARLICK*President*
CLAYTON SWICEGOOD*Vice-President*
POLLY WORRELL*Secretary*
BETTY PRESTWOOD*Treasurer*

Sophomores



ADCOCK, JAMESDunedin, Fla.
 ALEXANDER, BETTYHuntersville
 ALEXANDER, COLLENKannapolis
 ALEXANDER, WILLIAMShulls Mills
 ANDREWS, MARYGlade Valley
 ANNAS, NINAFroy
 ARTHURS, DOVIE LOUFruitman
 ARTHURS, MARTHAFruitman
 ATKINSON, RUTHNorwood
 AUSTELL, MAYNARD ..Blacksburg, S. C.
 BAMF, HARRYChina Grove

BERRY, BETTYDrexel
 BINGHAM, BONNIEBoone
 BOST, CATHERINEKannapolis
 BRASWELL, MARGARETMonroe
 BREWER, JOWinston Salem
 BROWN, BOBBE LOUStatesville
 BROWN, IRENEShelby
 BROWN, MARJORIELayetteville
 BROYHILL, ANNPores Knob
 BURLISON, WILLIAMCrossnore

BURWELL, ROBERTRutherfordton
 BYRD, CHARLIENorwood
 CARNIS, MILDREDCramerton
 CARROL, ANNIE MAEBoone
 CHEEK, DONALDRaleigh
 CLARK, BETTY RUTHMorganton
 CLAWSON, BETTYBoone
 CLEARY, WILLIAMSavannah, Ga.
 COCKERHAM, THOMASElkin
 COLLETTE, ELIZABETHGastonia
 COMBS, CARLBoonville

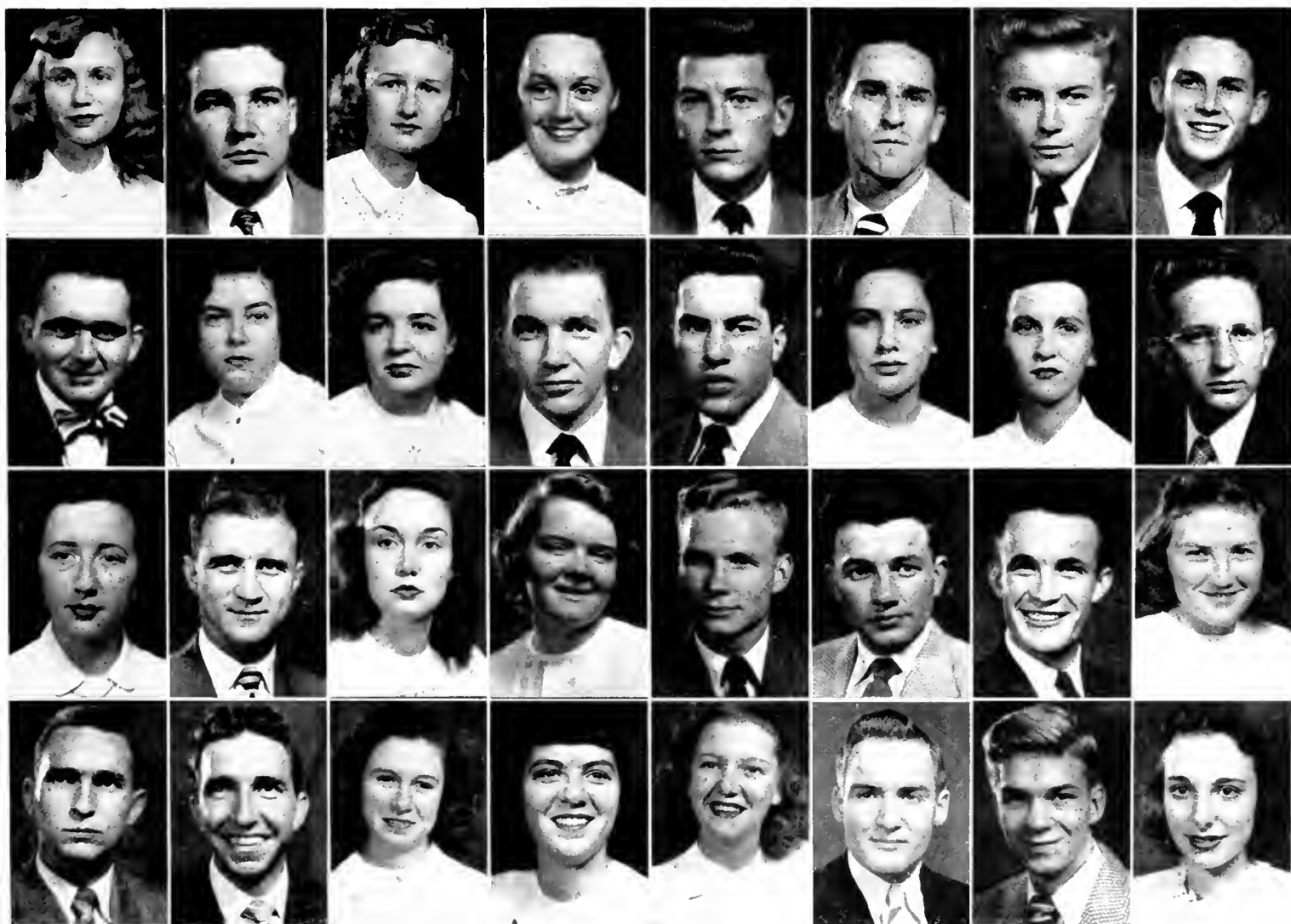


Sophomore

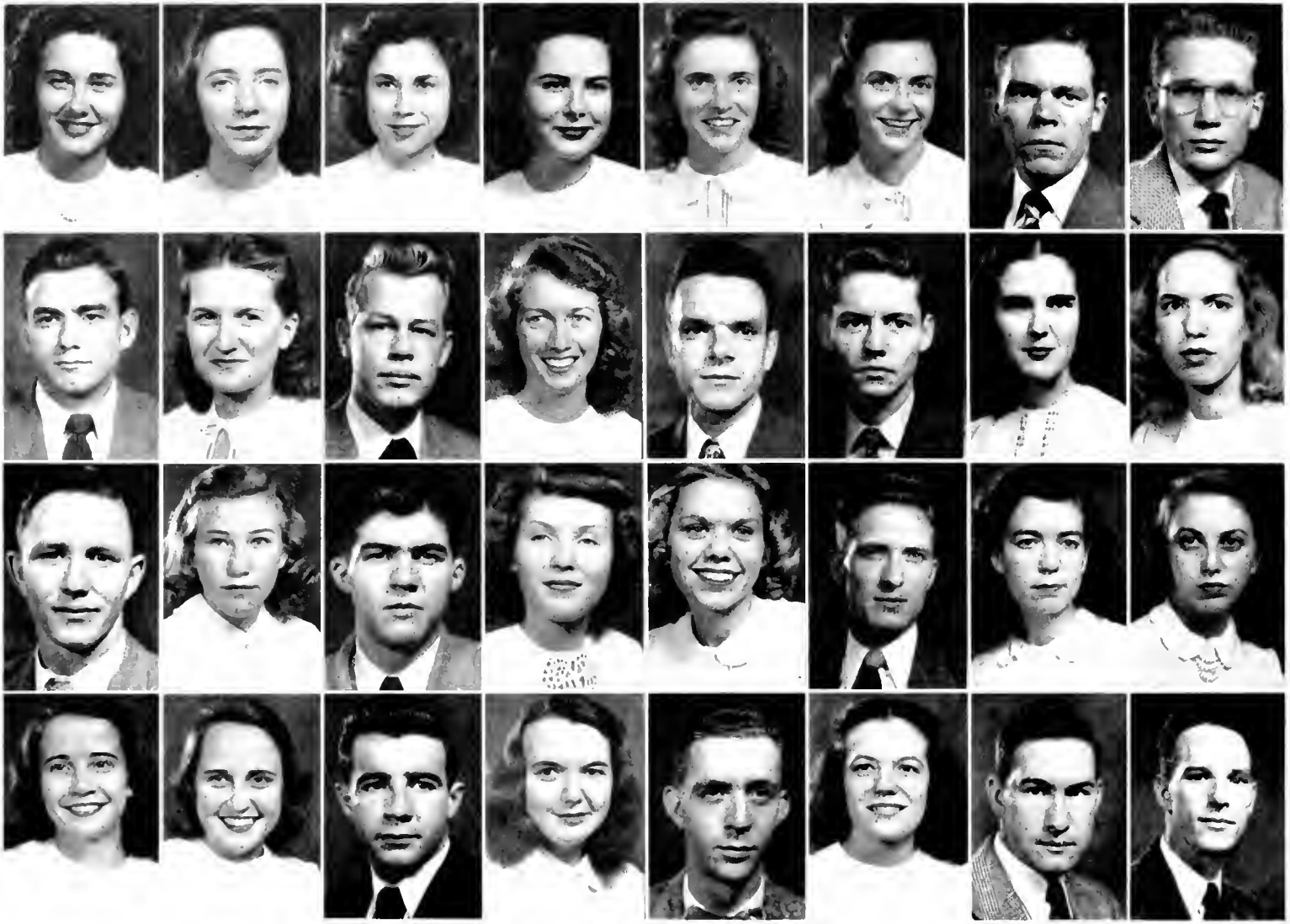
COOK, RUTHFayetteville
 CORUM, RICHARD EDWARD ...Boonville
 COX, FRANCESTabor City
 CRAIG, EULA MAECharlotte
 CRANFORD, JAMESThomasville
 CRISSMAN, ROBERTOxford
 DANCY, HUBERTWilkesboro
 DAVIDSON, JOSEPHStatesville
 DAVIS, BERNARDFairmont
 DAVIS, DORISPeachland
 DAVIS, JUNECharlotte

DELANEY, ROBERTWinsted Salem
 DENTON, ROBERTLenoir
 DIXON, ANNEPleasant Garden
 DUNN, CATHERINECharlotte
 EDMISTEN, CLIFFORDBoone
 EDMISTEN, LILLIANSugar Grove
 ELDRIDGE, CLAUDEState Road
 ELLIS, MARGARETShelby
 EPTING, BETTYCharlotte
 EVANS, JAMESBoardman

EVANS, LEWISForest City
 FARHING, RHEABoone
 FAULKNER, EMMAPeachland
 FELTON, JAMESRocky Mount
 FELTON, HORACERocky Mount
 FORMYDUVAL, ELDEWISS ...Old Dock
 FORMYDUVAL, GLADYSHallsboro
 FOWLER, DORISMars Hill
 FREEMAN, HENRYVienna, Va.
 GARRIS, EDWARDSumter, S. C.
 GETTINGER, GEORGIANNE ...Charlotte



Class of 1949 A. S. J. C.



GILES, JESSIE Linden
 GREENE, MARY Boone
 GREER, DORIS Lexington
 GRIFFITH, FLORA Reidsville
 GRIMES, JACQUELINE Charlotte
 GRIMES, JOSEPHINE Charlotte
 HALL, JAMES FRANK Mount Airy
 HAMILTON, STORES Charlotte
 HAMPTON, JAMES Kannapolis
 HARGRAVE, MARY Laurel Hill
 HARRIS, JACK Lincolnton

HART, DOROTHY Charlotte
 HAWPE, JAMES Greenville
 HECE, JOE Winston Salem
 HENNESSIE, FRANCES Granite Falls
 HODGES, BETTY SUF Caroleen
 HOLCOMBE, CLAUDE Chandler
 HORNE, RUTH Polkton
 HOPE, HARRY Ellenboro
 HUGHES, JACQUELINE Frank
 HUTCHINSON, MARY Abshers

JAMES, NOAH Wilkesboro
 JAYNES, OMEGA Marion
 JEFFREYS, MARTHA Mebane
 JENKINS, MADELINE Cramerton
 JENKINS, MARCIA Cramerton
 JOHNSON, WORTH Spindale
 JONES, EVELYN Shelby
 JONES, FREDERICK Purlcar
 KISER, RUTH Concord
 KUYKENDALL, ELLIS Tryon
 LANCASTER, GEORGE ... Hendersonville

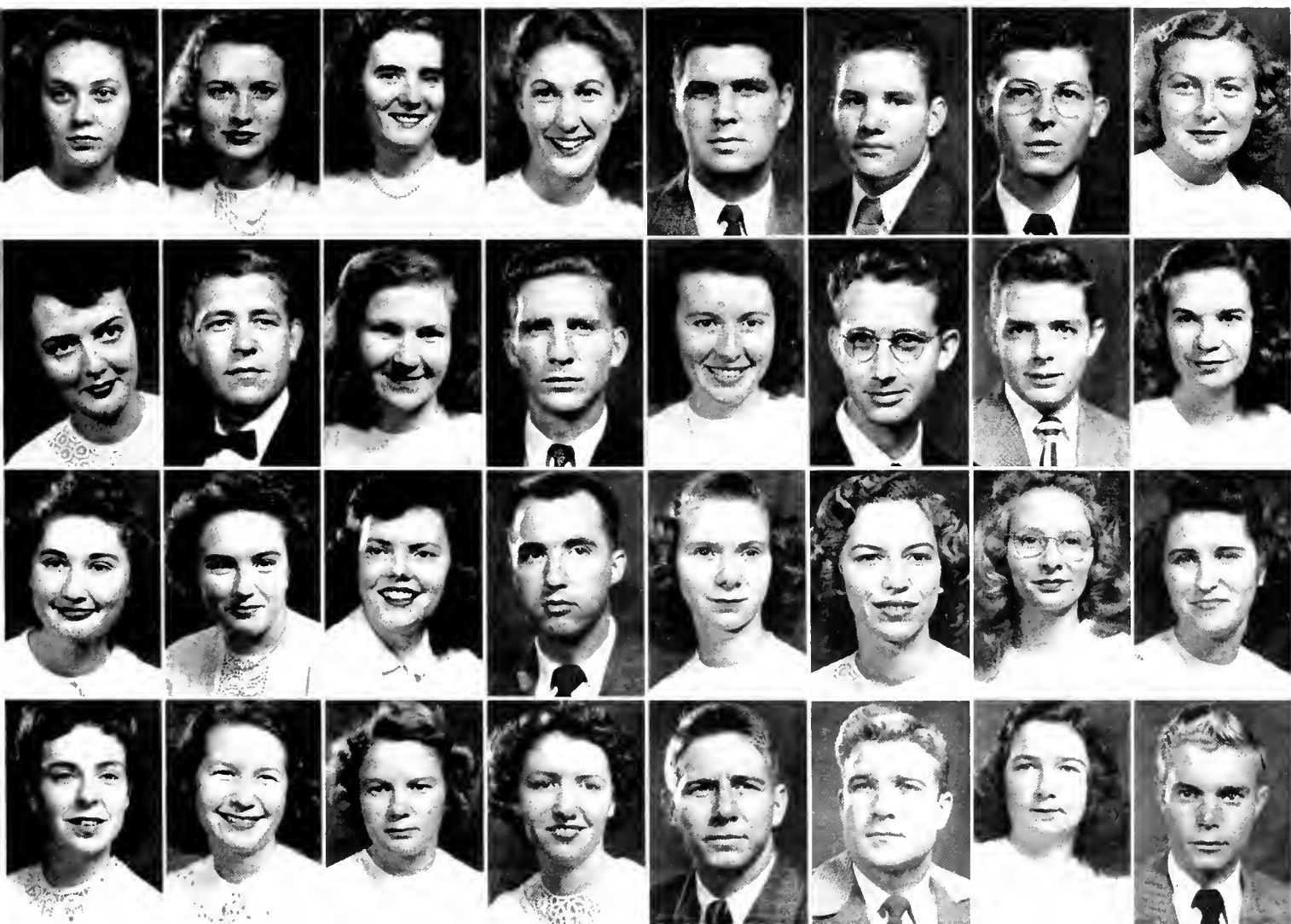


Sophomore

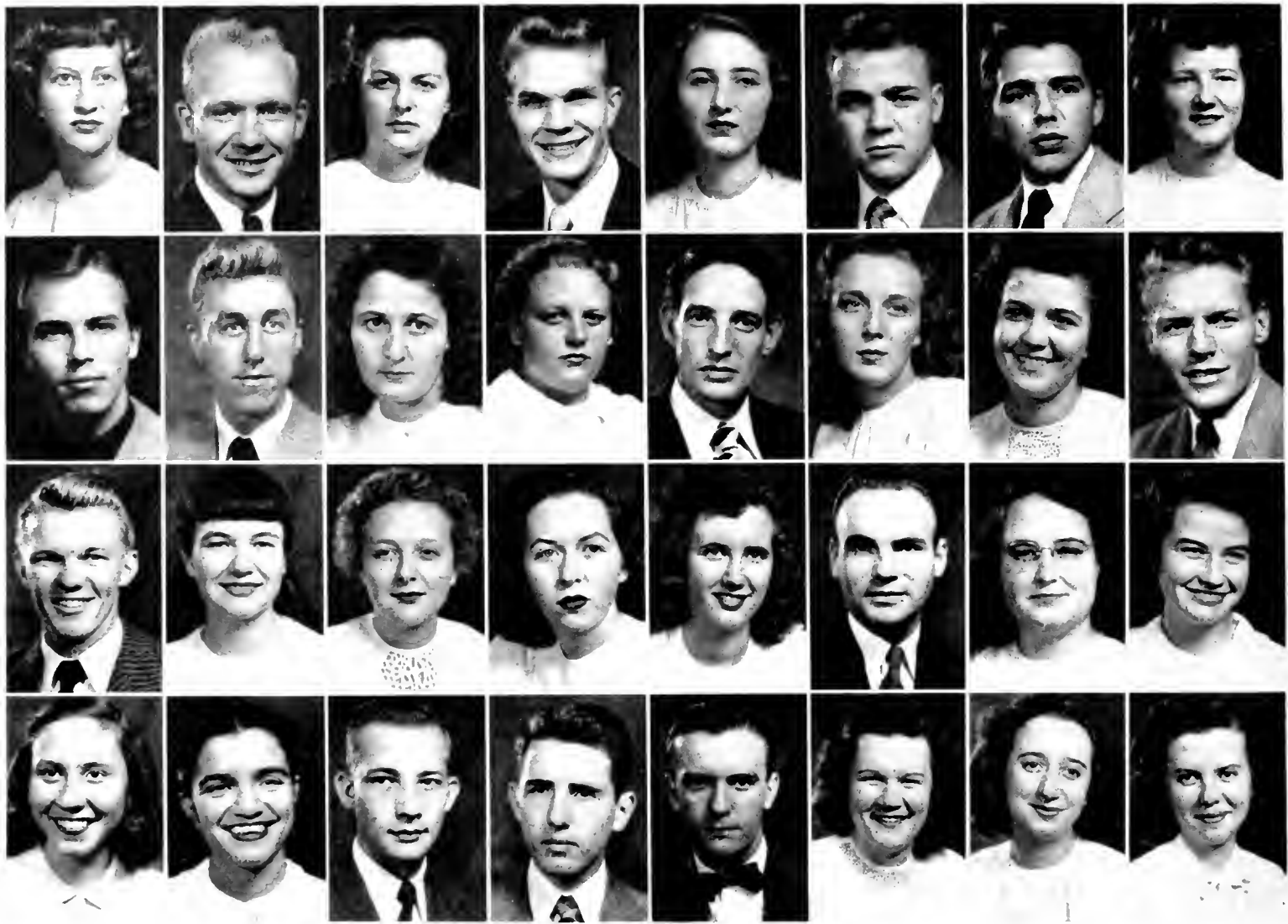
LAWS, MARTHAMoravian Falls
 LAWSON, MARTHAMount Airy
 LEATHERMAN, DOROTHYVale
 LEHMAN, DORISCharlotte
 LIGON, WALTERSpindale
 LIPPARD, JESSEStatesville
 LITTLEWOOD, J. R.Sturgills
 LOPP, JNOGENELexington
 LYONS, RACHEL F.Lawsonville
 MACK, LEWISCramerton
 MAGNESS, MARYShelby

MAPLES, DWIGHTRockingham
 MARTIN, DOLLIEUnaka
 MARTIN, GORDONStoney Point
 MARTIN, WILLIAMCramerton
 McALLISTER, THERESAMorganton
 McBEE, NELLSpruce Pine
 McCALL, ALMAMarion
 McClURE, ANNIE B. ...Rutherfordton
 McClURE, RUFUSHigh Point
 McGINNIS, BETTYMooresboro

McGRADY, SUESparta
 McKEE, BETTYMill Springs
 McSWAIN, PAULINEShelby
 MEACHUM, JEANNINELexington
 MEDLIN, MARGARETMontoe
 MIDKIFF, MARYMount Airy
 MILLER, RUTHCrumpler
 MILLS, HURLEYHenderson
 MISHOE, CHARLESConway, S. C.
 MITCHELL, SARAHSparta
 MORROW, HUBERTStatesville



Class of 1949 A. S. J. C.



MOSS, MARY Boone
 MORETZ, WILLIS Boone
 MOXLEY, TOMMY SUE Laurel
 MYERS, HARRY Thomasville
 NEAL, SARAH Jefferson
 NELSON, EUGENE Mooresville
 NICHOLAS, ALEXIS Winston-Salem
 NORRIS, ERMA Boone
 OGLESBY, RANDY ... Wrightsville Beach
 OWLEN, WILLIAM Gastonia
 PEELER, RUBY Shelby

PENNICK, SALLIE Boone
 PLEASANT, JAMES Yanceyville
 PLOTT, PEGGY Richfield
 PRESTWOOD, BETTY Lenoir
 PROPST, NORMAN Newton
 RHODES, CHARLES Thomasville
 RICHARDSON, MOZELLE
 Havre de Grace, Md.
 ROBERTS, JULIA Stokesdale
 RUDD, ANNE Reidsville
 RUPPE, JEANETTE Mooresboro

SAFRIT, HOYT China Grove
 SANFORD, JOSEPHINE Union Mills
 SAVAGE, IMOGENE Willard
 SCOTT, BETTY Winston-Salem
 SEASE, MARIA DEL CASTILLO
 Norfolk, Va.
 SILAW, DWIGHT Edgewood, Md.
 SHEPHERD, THOMPSON ... Laurel Springs
 SHORI, RALPH East Bend
 SIMS, FAYE Waxhaw
 SINK, MAXINE Lexington
 SLOAN, KATHERINE Statesville

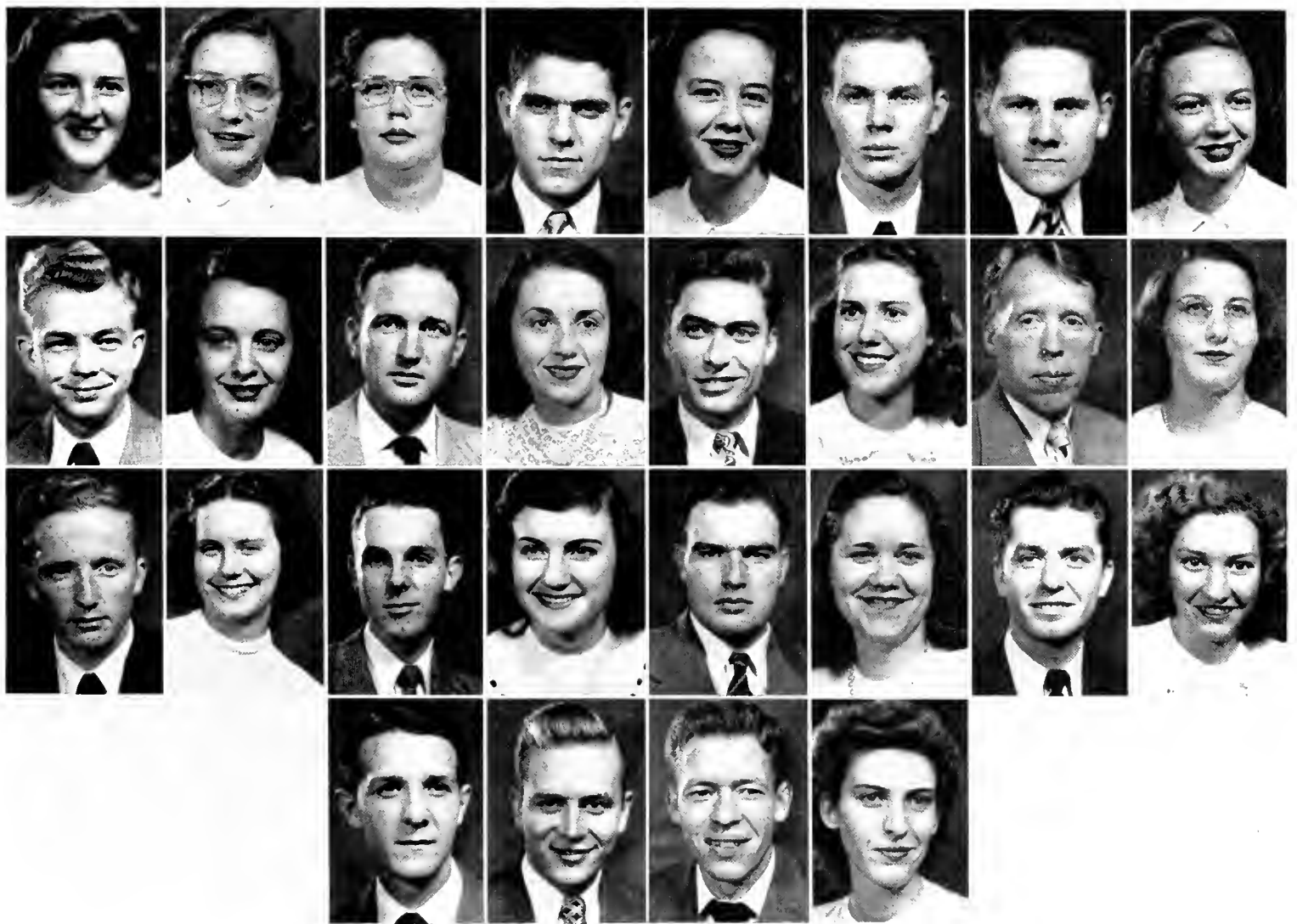


Sophomore

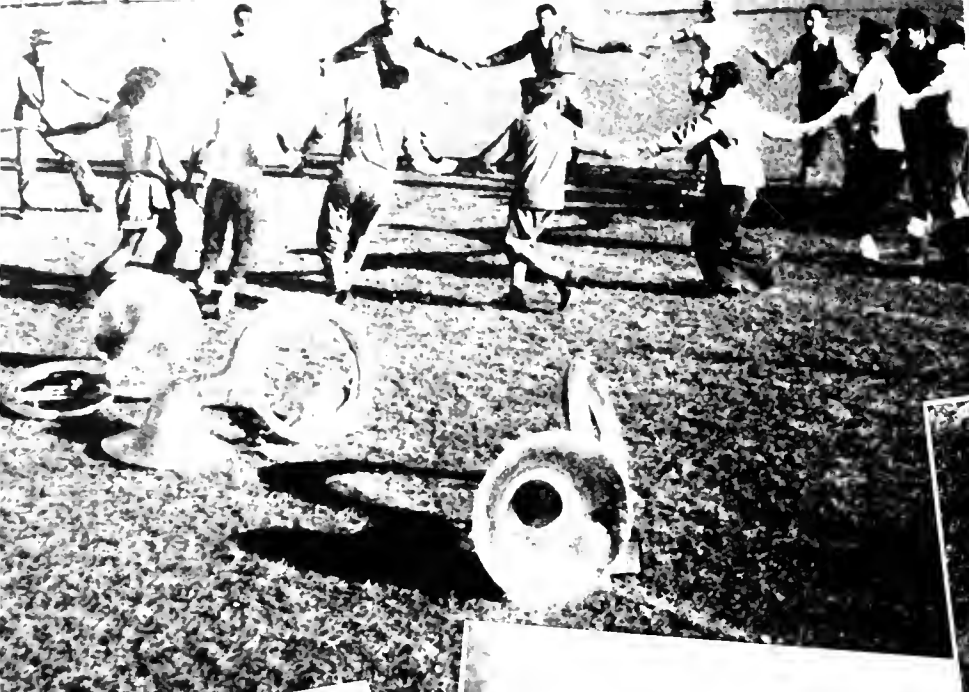
SMITH, BETTY L.Concord
 SMITH, DOROTHYMount Airy
 SMITH, LAURAGastonia
 SMITH, ROYPinnacle
 STOUT, RUTHStar
 SWICEGOOD, CLAYTONLexington
 SWIFT, CARLTONSugar Grove
 STIREWALT, VALDAKannapolis
 SYKES, VICTORSpring Hope
 TEMPLETON, MILDREDBoone

THOMPSON, ROBERTMarion
 TRUETT, WANDASparta
 VICK, ROBERTBailey
 WALSH, CLEOBoomer
 WARICK, CECELIABelwood
 WARD, JAMESCanton
 WATTS, JOSEPHMorganton
 WHITESIDES, DOROTHYLincolnton
 WILLIAMS, JOHN, JR.Sugar Grove
 WILLIAMS, MARGARETCharlotte

WILSON, JAMESNewport, Tenn.
 WINFREE, JOSEPHINEGibsonville
 WINKLEB, TOMBoone
 WORRELL, POLLYLow Gap
 YODER, ROBERTRichmond, Va.
 YORK, CLINTON WAYNEHigh Point
 YORK, DEWEY, JR.Ronda
 YOUNG, ELIZABETH HITOWEEN
 Minneapolis



Class of 1949 A. S. J. C.





OFFICERS

- HERBERT BRANTLEY *President*
SARA NEAL WILSON *Vice-President*
GUY ROSE *Secretary*
PEGGY BLANTON *Treasurer*

Freshmen

Freshman



ADAMS, ELIZABETH Four Oaks
 ADAMS, SAM Elkin
 ALEXANDER, GERALDINE Stoney Point
 ALEXANDER, JOSEPHINE Stoney Point

ALEXANDER, VIRGINIA Absbers
 ALLEN, VIOLET Mooresboro
 ARMFIELD, ROBERT Troy
 ARMSTRONG, JAMES Hendersonville

ARNER, JEANNE Charlotte
 AUSTIN, ANNA Bald Creek
 AUSTIN, MARTHA Shulls Mills
 AUSTIN, MARY Shulls Mills

BABB, JIMMY High Shoals
 BALDWIN, MARIE Beckley, W. Va.
 BARDEN, VISTA Fairmont
 BARNHARDT, JEWEL Churchland

BARRETT, ED Burlington
 BATES, DORLISS Forest City
 BEARD, BOBBY Thomasville
 BECK, DONALD Concord

BECK, LAURA Spencer
 BECK, RUFUS Jamestown
 BENFIELD, RAY Newland
 BERRY, RAY Morganton

BESSER, MINNIE Charlotte
 BIDDIX, PANSY Marion
 BLACKBURN, EUGENE Boone
 BLANTON, JAMES Shelby

BLANTON, PEGGY Cliffside
 BLEDSOE, JOSEPH Todd
 BLEDSOE, WILLIAM Wagoner
 BOLEJACK, MONA Rural Hall

BRADSHAW, MARVIN Salisbury
 BRANTLEY, HERBERT Spring Hope
 BRANTLEY, WILMUR Spring Hope
 BRIDGES, HAROLD Ellenboro

BROCK, WILLIAM Hendersonville
 BROWN, DOROTHY Avondale
 BROWN, LOIS Forest City
 BULL, VIRGINIA Lincolnton



Class of 1949

BUMGARDNER, EARL Belmont
 BUMGARDNER, OLA Morganton
 BURNS, MARTHA Granite Falls
 CAISON, AUDREY Roseboro

CALLOWAY, JOHN Southern Pines
 CAMPBELL, FLOYD Spindale
 CARPENTER, FLORA Three Miles
 CARPENTER, JEAN Lincolnton

CARPENTER, WALLACE Shelby
 CASPER, WILLIAM China Grove
 CATLETT, ALBERT Henderson
 CAUBLE, FAYE Salisbury

CAUDLE, ARNOLD Pinnacle
 CHAPPELL, ELSIE Dobson
 CHILDERS, LEE Lenoir
 CHRISTENBURY, JAMES Gastonia

CLARK, CARL Belmont
 CLOER, AGNES Morganton
 CLUBB, GLENN Winston-Salem
 COE, BOBBY Saltville

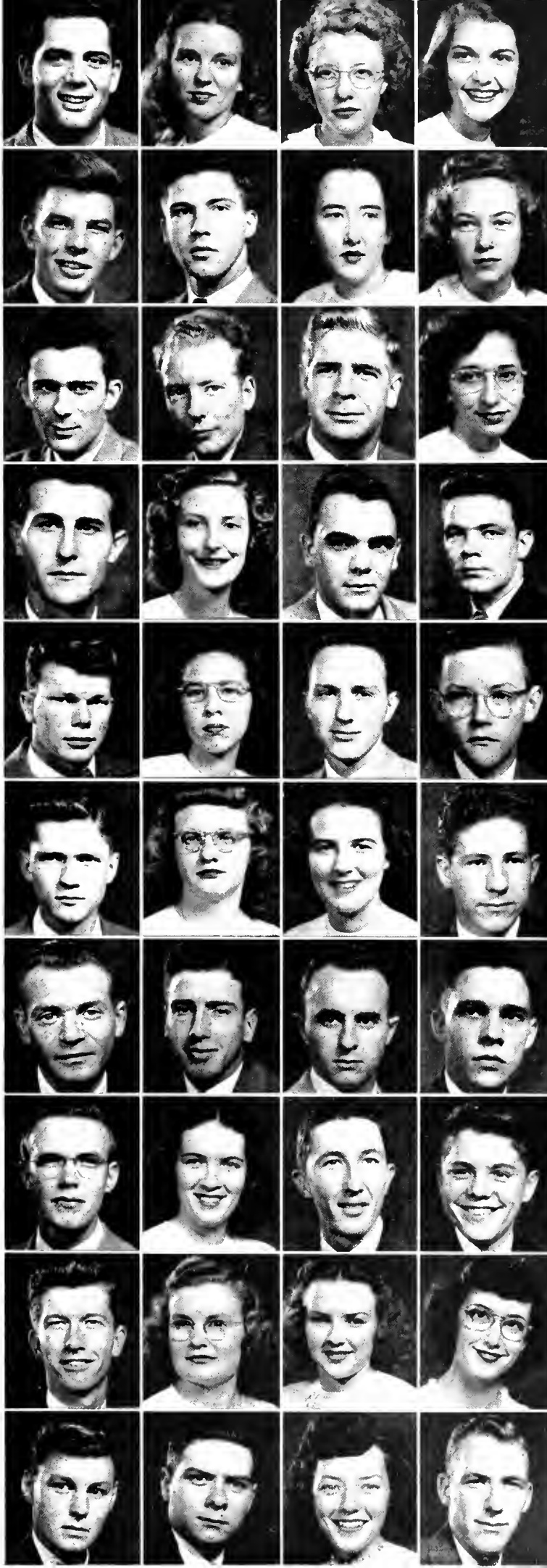
COFFEY, CLYDE Collettsville
 COFFEY, SUZANNE Blowing Rock
 COHEN, BETTY Salisbury
 COLE, HERBERT Boone

COLLINS, LEANDER Egan, S. Dakota
 COLLINS, THOMAS Francisco
 CONNER, HUGH Lincolnton
 COSTER, JOE Avondale

COTTEN, MAX Pittsboro
 CRABTREE, COLLEEN Charlotte
 CRAIG, WILLIAM Wilkesboro
 CRAVEN, CHARLES Boone

CRAWFORD, JAMES Cliffside
 DALTON, IDA Louisville
 DANIEL, BLANCHE Charlotte
 DAVIS, MARY Glen Alpine

DEAL, BOBBY China Grove
 DELLINGER, CHARLES Altamont
 DEVLIN, ELIZABETH Canton
 DIXON, CLARENCE Fallston



A. S. J. C.

Freshman



DOBINS, NELL Bostic
 DOLLAR, WALTER West Jefferson
 DOTSON, JAMES Boone
 DUNCAN, DOYLE Statesville

DRUM, ROBERT Statesville
 DWIGGINS, MARJORIE Winston-Salem
 EDWARDS, MARY West Jefferson
 ELLER, ARTHUR Purlear

ELLER, OWEN Salisbury
 ELLIS, PAT Elizabethton, Tenn.
 EURE, CARROLL Roduco
 FARTHING, VAN Boone

FAUCETT, GENE Brown Summit
 FENDER, EARL Glade Valley
 FERRELL, JIMMIE Mooresville
 FESPERMAN, CAROLYN Charlotte

FINERBERG, DELORES Wilmington
 FINGER, MICHAEL Maiden
 FLOYD, CAROLYN Fairmont
 FLOYD, DOROTHY Fairmont

FOSTER, CLARA Purlear
 FOSTER, SARA Mills Springs
 FRAZIER, WORTH Claremont
 FREEZE, MARKS China Grove

GABRIEL, RICHARD Lincolnton
 GARDNER, ERNEST Shelby
 GARWOOD, NANCY North Wilkesboro
 GEBRICH, JOHN Spruce Pine

GILLIS, ROBERT China Grove
 GOBLE, BETTY Lenoir
 GOOD, MARY Mount Airy
 GRAGG, BOBBY Newland

GRAHAM, DONALD Bethania
 GRAHAM, JAMES Todd
 GREEN, BLANCHE Sugar Grove
 GRIFFIN, VIRGINIA Reidsville

GRIFFIN, HAROLD Charlotte
 GRIFFITH, MELVIN Davidson
 GRILL, DORIS Valdese
 GRIMES, IRENE Charlotte



Class of 1949

HABIB, JOSEPHNew Bern
 HALSTEAD, VIRGINIAPennington Gap, Va.
 HAND, HORACEBelmont
 HARDIN, WILLIAMWest Jefferson

HARMON, IVA JEANSugar Grove
 HARMON, LENALenoir
 HARMON, RAYMONDSugar Grove
 HARRELL, TOMMYGastonia

HARRIS, DEWEYSpring Hope
 HARRIS, JOEMooreville
 HARTLEY, JOSEPHLenoir
 HARTMAN, JAMESGastonia

HARVEY, WILLIAMJohnson City, Tenn.
 HATHOWAY, CHARLESSpring Hope
 HAWKINS, DAVIDGastonia
 HAWKINS, ROBERTMarion

HAYNES, BETTYSmithport
 HAYNES, MACMount Airy
 HENRICK, GEORGEWinston-Salem
 HENRICK, GUYWinston-Salem

HENDERSON, BETTYCanton
 HENDERSON, LOUISEHuntersville
 HENDRICKS, EARLMocksville
 HESTER, JOHN ROBERTRoxboro

HODGE, CHARLESRutherfordton
 HOLLAND, LILYRoseboro
 HOOKS, ALVINRocky Mount
 HORNER, EDWARD CLARKOxford

HORNER, THURMONDOxford
 HUBBARD, JULIUSWilkesboro
 HUFFMAN, GRACESalisbury
 HUFFSTETLER, JAMESGastonia

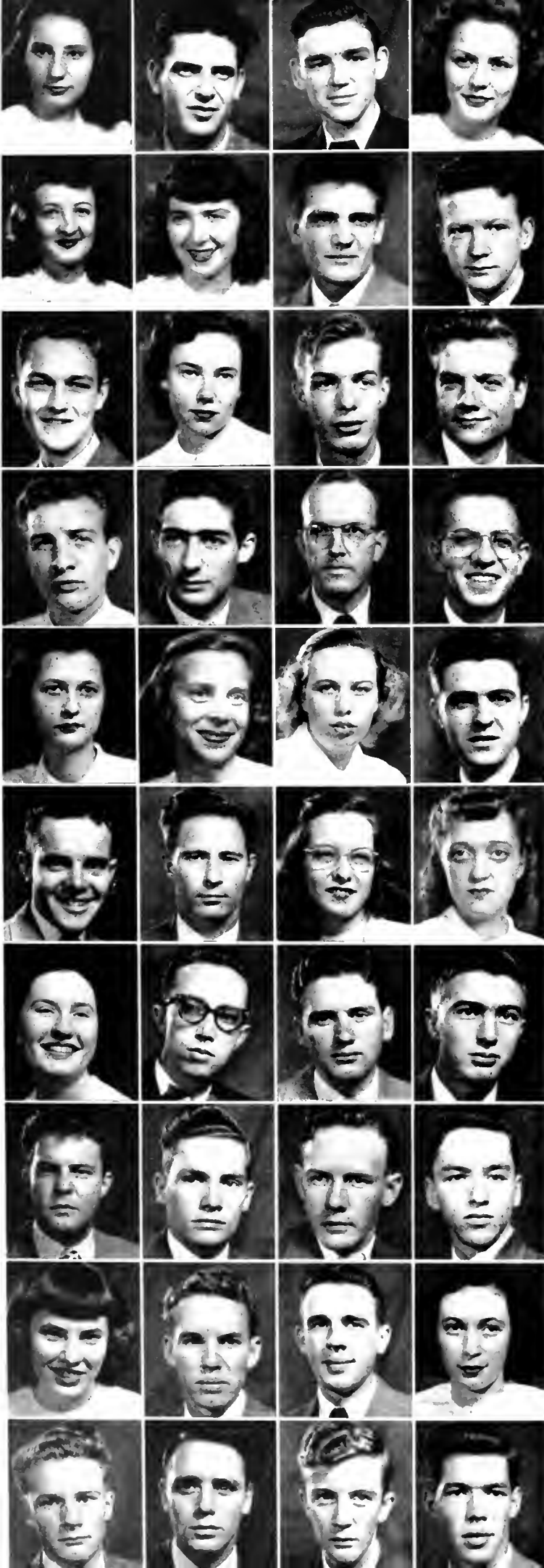
HUNT, JOEMatthews
 HUSKEY, WOFFORDAvondale
 HUTCHENS, BETTYBoonville
 IDOL, KENNETHDeep Gap

ISOM, ROSALINDMiami, Fla.
 JARVIS, NANCYDobson
 JOHNSON, JIMMYRural Hall
 JOHNSON, MARVELFour Oaks



A. S. J. C.

Freshman



JOHNSON, MARY Reece
 JOHNSON, WILLIAM Boone
 JONES, FRED Purlear
 KELLEY, BETTY Concord

KEY, JEWEL Hayes
 KIRKLAND, JOYCE Clinton
 KISER, KENNETH Concord
 KISER, ROBERT Castlewood, Va.

KORNEGAY, DAVID Charlotte
 LAMBETH, SYBIL Guilford College
 LAND, JACK Lenoir
 LASSITER, BOBBY Troy

LAWRENCE, ROBERT Winston-Salem
 LAWSON, WILLIAM Flat Rock
 LEWIS, ELDRIDGE High Point
 LEWIS, RAY Walnut Cove

LEWIS, RUTH Burnsville
 LITTLE, LOUISE Charlotte
 LOGAN, BETTY Graham
 LONG, WILLIAM Concord

LOWERY, CHARLES Canton
 MABRY, WILLIAM Norwood
 MACKEY, LENA Old Fort
 MARION, SUE Boone

MARLOWE, RUBY Glenwood
 MARSHALL, ROBERT St. Paul, Va.
 MARTIN, NED Mount Airy
 MAST, JAMES Sherwood

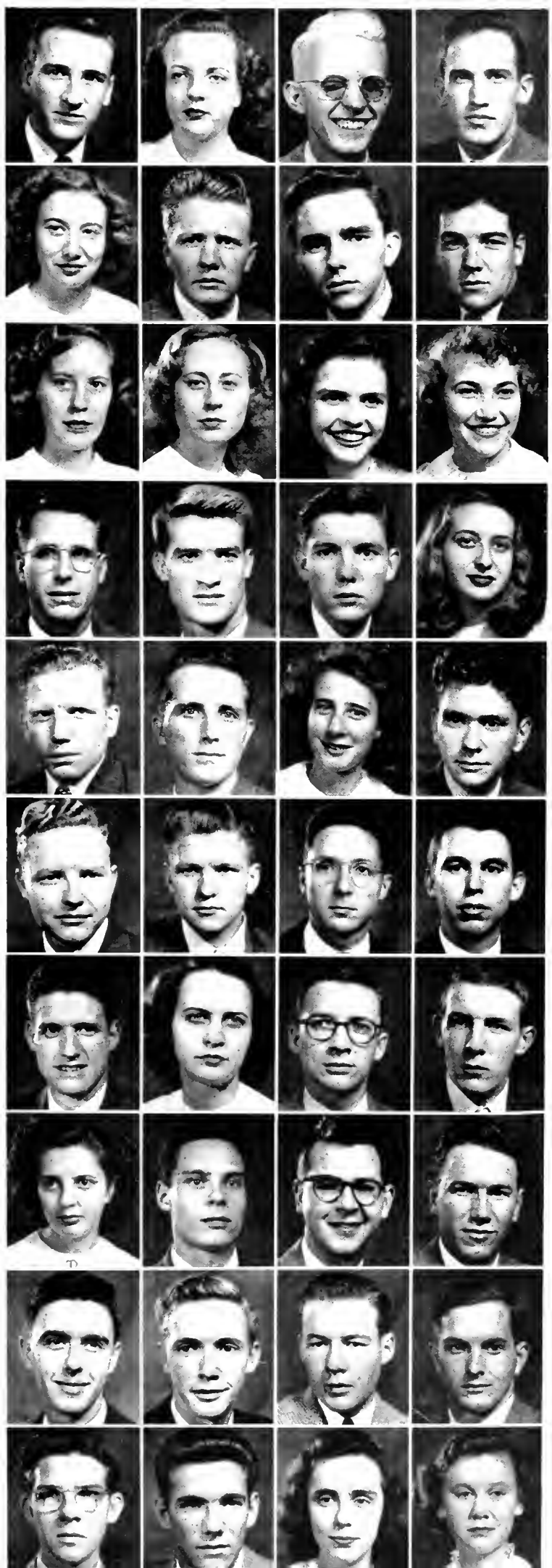
MCENTIRE, WILLIAM Spindale
 MCKEE, JAMES Newland
 MCRAE, HARRY Laurinburg
 MILLER, JAMES West Jefferson

MILLER, SHIRLEY Mooresville
 MITCHELL, JOSEPH Hillsboro
 MOIR, CHARLES Francisco
 MONEY, VIRGINIA Mooresville

MORETZ, ELMO Boone
 MURRAY, KENNEY Spring Hope
 MYERS, CLYDE Hayes
 NEAL, JACK Fort Mill, S. C.



Class of 1949



NOBBS, JACK Boone
 NORTHINGTON, EMILY Charlotte
 ORR, BOYCE Hendersonville
 OSTWALT, PRESSLY Statesville

OWENS, MARTHA Rutherfordton
 PACK, NED Belmont
 PARKS, JACK Elkin
 PARKER, GRADY Mill Spring

PATTON, DOROTHY Marion
 PAYNE, BONNIE Westfield
 PAYNE, DOLLY Belmont
 PENLEY, DOROTHY Swannanoa

PHIPPS, DAVID Nathans Creek
 PICKLER, GERALD Burlington
 PINNIX, JOEL CLAUDE Cycle
 POOLE, MARY Taylorsville

PRIVETTE, LLOYD Statesville
 RADER, JULIUS Collettsville
 RAMSEY, SUE Winston-Salem
 RAY, BOBBY Fort Mill

RHINEHART, BILL Gastonia
 RHODES, JAMES Thomasville
 RICHARDS, NORMAN Cliffside
 RICHARDS, WELCOME Mount Airy

RICHARDSON, IRA Boone
 RICHARDSON, JO Pennington Gap, Va.
 RIVES, WILLIAM Sanford
 ROBERTS, STUART Winston-Salem

ROBINSON, RUBY Catawba
 ROBINSON, WILLIAM CARSON Flat Rock
 ROBINSON, Wm. CURTIS Castlewood, Va.
 ROLAND, TED Clifton

ROSE, GUY New Bern
 ROSEMOND, KENNETH Hillsboro
 ROSS, EUGENE Lincolnton
 ROSS, GEORGE Fallston

RUSSELL, CHARLES Matthews
 SCROGGS, JOE Thomasville
 SEALS, IDAH Morganton
 SETTLEMYRE, ELEANOR Drexel

A. S. J. C.

Freshman



SHIFTON, COLLEEN Francisco
 SHERWOOD, NANNIE Sugar Grove
 SHIFFINGLAW, PHILIP York, S. C.
 SIDS, BETTY Concord

SIMMONS, LOIS Mount Airy
 SIMPSON, ELLNA Concord
 SMITH, BETTY ANNE Linville
 SMITH, CHARLES Winston Salem

SMITH, ETHEL Bostie
 SMITH, JEANETTE Westfield
 SMITH, MARGARET Linwood
 SMITH, ROBERT High Point

SMITH, ROY Raleigh
 SNOW, IMOGENE Dobson
 SPEARS, RUBY West Jefferson
 STORIE, JONES Boone

STOUT, MARY Boone
 SUBBATT, MARILYN Salisbury
 SWICEGOOD, MAUD Woodleaf
 TALLEY, ELMO Reidsville

TEDDER, MARGIE Cherryville
 THORNTON, NANCY Gastonia
 TOMLIN, RALPH Statesville
 TRANHAM, BETTY Lexington

VEAL, NANCY Huntersville
 WAGONER, CHARLIE Boonville
 WALKER, WILLIAM Statesville
 WARD, RAY Sugar Grove

WATSON, CLARA West Jefferson
 WATTS, HERMAN Charlotte
 WAYNICK, FRANK Jamestown
 WEAVER, ANITA West Jefferson

WEISSER, MARILYN Winston Salem
 WHISNANT, HAZEL Polkville
 WILKES, BOB Winston Salem
 WILLIAMS, MARGARET Fleetwood

WILSON, FLOYD Kannapolis
 WILSON, HORACE Lincolnton
 WILSON, SARAH Granite Falls
 WINICOLL, CHRISTINE Concord



Class of 1949



WINGATE, PATSYCharlotte
WINKLER, HELENLenoir
WINN, JAMESCliffside
YOUNG, GRACECelo

ZIMMERMAN, BILLYENorth Wilkesboro



A. S. J. C.



BOOK TWO
Athletics



TOUCHDOWN... "2 POINTS, APPALACHIAN"... FANS
... ALL-CONFERENCE ... "THE WHIP" ... PHYS.-ED.

MEN'S "A" CLUB

The Men's "A" Club is one of the most active organizations on the campus. This club is composed of letter-winners in the four major inter-collegiate sports in which Appalachian participates: football, basketball, baseball, and wrestling.

Among the diversified duties of the "A" Club are found: management of all concessions at athletic events, gate stalls, ushers, and the maintenance of order at campus events.

With pride we point to the superlative personalities of the "A" Club.



- BILL HALSTEAD*President*
- JOHN WITHROW*Vice-President*
- FLAY SELLARS*Secretary*
- BILL CROSS*Treasurer*
- BLOIS GRISSOM*Sergeant-at-Arms*



MEMBERS

AYERS, DOYLE
 BOWMAN, HARRY
 BOYETTE, TOM
 BUMIGARDNER, DAHL
 CANTRELL, JAMES

CASKEY, JOHNNY
 CAUSEY, GLENN
 COLLINS, R. M.
 CRAVEN, RONALD
 DANCY, HUBERT

ESSIC, FRANCIS
 FELTON, DON
 GRIFFITH, WILLIAM
 HALSTEAD, WILLIAM
 HENDRICKS, TOM

HIATT, ALBERT
 HONEYCUTT, J. C.
 HOPE, CHARLES
 JONES, JOHNNY
 KIRKPATRICK, GENE

LONG, WILLIAM
 LOWDER, REID
 LYONS, EUGENE
 MAYBERRY, LOTT
 MOIR, SAM

OLDFIELD, EMIL
 PIERCE, DAVID
 PINNICK, WILLIAM
 RAGAN, WALTER
 ROBINSON, MERRITT

SELLERS, FLAY
 STEPHENS, EMORY
 TAYLOR, JESSE
 WALTERS, RALPH
 WEBB, THOMAS

WILSON, KEITH
 WITHROW, JOHN
 WITHROW, ROBERT



Football...

SEASON'S RESUME

Scrapping their way through a conglomeration of North State talent, the Apps battled their way into the famed Burley Bowl at Johnson City, Tennessee, on Thanksgiving Day. Not since 1937 has the Mountaineer victory cry been sounded in triumph of a conference crown.

Their only defeat came at the hands of a potent West Chester State Teachers College eleven in a thrilling 7 to 2 contest, giving the Yankees a taste of the old Rebel courage. The Boonemen had their regular season record tainted only once by a 14-14 tie from the inspired Lenoir Rhyne Bears. To Coach E. C. Duggins goes the honor of handing Appalachian her first Conference title since 1937, her first participation in a bowl event, and in the producing of a Little All-American.



COACHES

E. C. DUGGINS

BOB BROOME

FRANCIS HOOVER

JAMES MALCOLM



RESULTS

Appalachian.....21	Guilford14
Appalachian.....14	W.C.T.C.13
Appalachian.....33	Elon13
Appalachian.....14	Lenoir Rhyne14
Appalachian.....20	Catawba13
Appalachian.....40	High Point14
Appalachian.....34	Emory & Henry14
Appalachian.....47	E.C.T.C. 0
Appalachian.....27	A.C.C. 6
Appalachian..... 2	*West Chester 7
Totals.....252	Opponents108

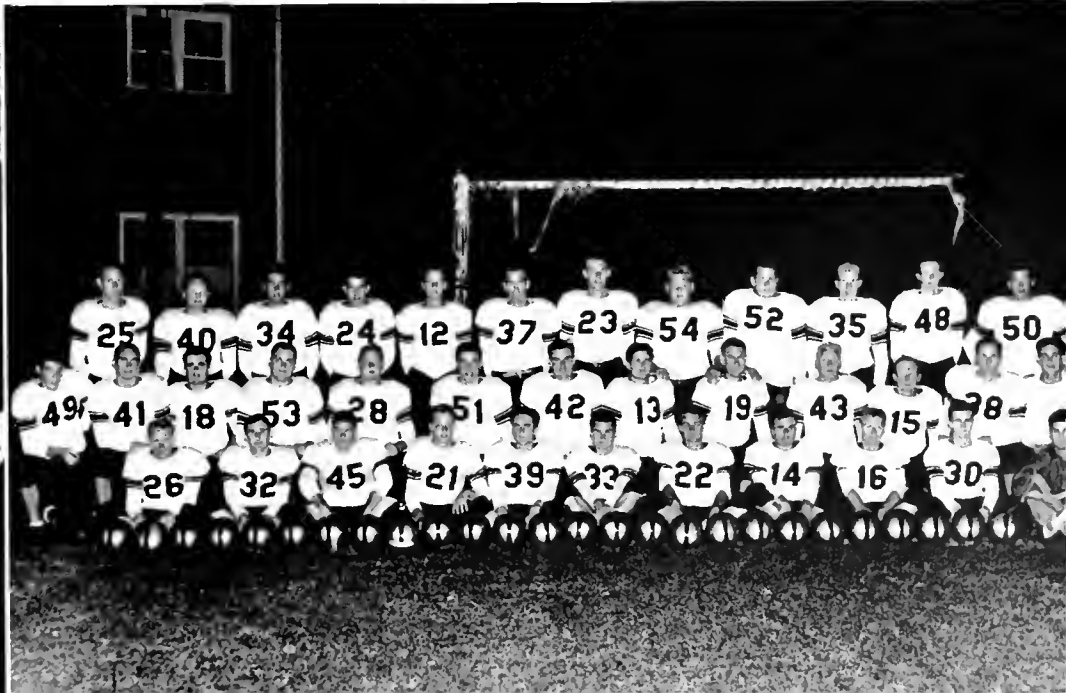
* Non-Conference Contest
 Won 8, Lost 1, Tied 1.



E. C. DUGGINS, Coach

SQUAD

Front row: Boger, Cross, P. Mills, Hooks, Ragan, Bryson, Murdock, Webb, Propst, Eldridge, Leith, *manager.* *Second row:* Neil, Felton, Cleary, Bumgardner, Alford, Haines, Wilson, Long, Cantrell, Pennick, Boyette, Halstead, Mayberry, *manager.* *Third row:* Caskey, Bowman, Small, Cashion, Pierce, Honeycutt, Hendrix, B. Grissom, J. Grissom, Lyons, Taylor, Powers.





P. MILLS
B. LONG
T. BOYETTE



T. MURDOCK
B. GRISSOM
R. WALTERS



D. FELTON
W. RAGAN
H. BRYSON



J. HONEYCUTT

J. CASKEY

D. AIKEN



B. CROSS

W. ALFORD

J. SMALL



G. LYONS

T. HENDRIX

C. ELDRIDGE





J. TAYLOR

T. WEBB

D. BUMGARDNER



W. HALSTEAD

H. BOWMAN

J. GRISSOM



A. HOOKS

J. CANTRELL

F. BOGER



K. ENGLAND

E. PENNICK

W. CLEARY



M. HAINES

J. WILSON

J. NEAL



Manager

L. MAYBERRY

Trainer

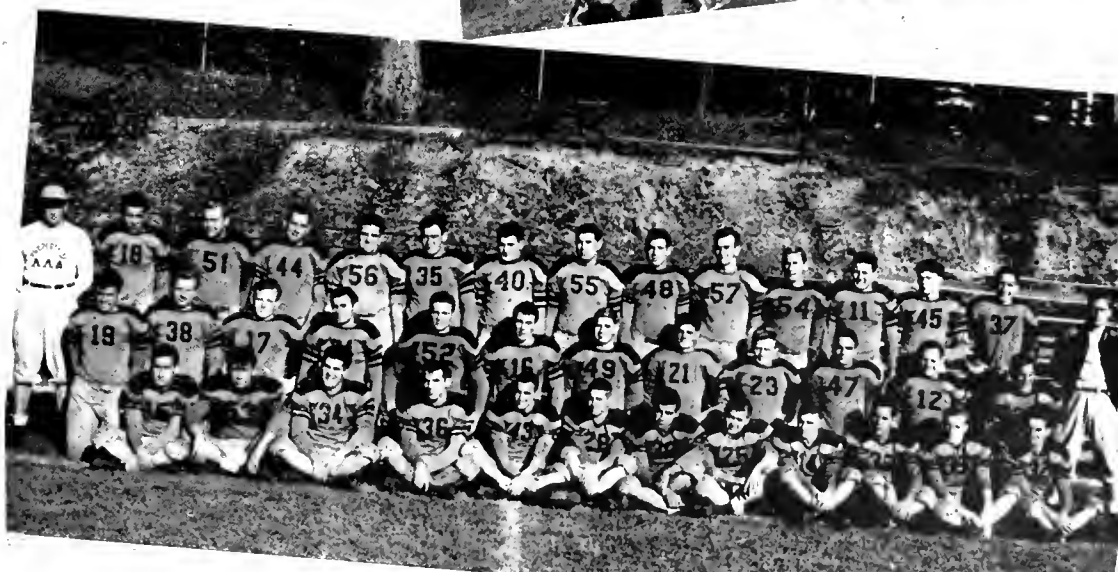
J. PARKS

Manager

C. LEITH



"B" SQUAD





FRANCIS HOOVER, Coach

Basketball

RESULTS

<i>Appalachian</i>	<i>Opponent</i>	
53.....	East Tennessee	56
74.....	Kannapolis "Y"	61
54.....	Guilford	52
71.....	McCravy	52
52.....	Lenoir Rhyne	50
57.....	W.C.T.C.	59
57.....	High Point	60
72.....	Georgia Teachers	57
81.....	Kannapolis "Y"	48
63.....	A.C.C.	46
86.....	Elon	53
54.....	E.C.T.C.	43
59.....	Lenoir Rhyne	52
57.....	McCravy	63
46.....	Catawba	61
66.....	Elon	41
60.....	Guilford	52
81.....	High Point	69
67.....	Catawba	50
61.....	East Tennessee	67
73.....	Chatham	75
58.....	W.C.T.C.	39
49.....	Chatham	43
82.....	A.C.C.	50
69.....	E.C.T.C.	52
55.....	Lenoir Rhyne	57
Won 18.....		Lost 10

SQUAD

First row: E. Stephens, S. Moir, A. Hiatt, C. Wev, P. Martin.

Second row: G. Lancaster, B. M. Collins, R. Lowder, G. Causey, C. Hope, B. Craven.



RESUME

The Mountaineers emerged from the 1948-49 basketball season with a record of eighteen wins against ten losses. Getting off to a slow start, the courtmen staged a mid-season rally to cop nine straight Conference wins, placing them in the second-place position behind Catawba in the Conference race. The Boonemen took runner-up honors in the North State tourney after losing to Lenoir Rhyne in the finals at Elkin, North Carolina.



SAM MOIR, Captain





P. MARTIN

C. HOPE



R. CRAVEN

A. HATT



G. CAUSEY

G. LANCASTER



S. MOIR

E. STEPHENS

R. LOWDER



R. COLLINS



C. WEY



P. COFFEY, *Manager*



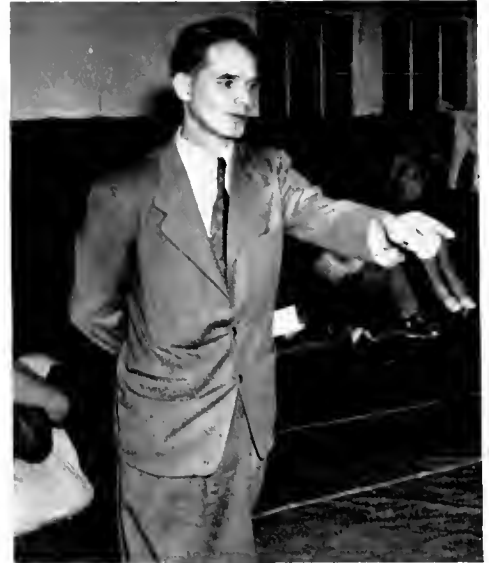
"B" SQUAD



Wrestling

RESULTS

<i>Appalachian</i>	<i>Opponents</i>	
28.....	High Point	3
38.....	Western Carolina	0
29.....	High Point	5
11.....	Auburn	15
34.....	Western Carolina	0
25.....	Pensacola	3
36.....	Newport News	0
32.....	Presbyterian	5
38.....	Presbyterian	0
31.....	Pensacola	3
Won 9.....		Lost 1



R. W. WATKINS, *Coach*

SQUAD

First row: H. Dancy, J. Ward, F. Waynick, W. Griffith.
Second row: F. Sellers, E. Tomick, P. Joines, L. McLean, W. York, B. Davis, T. Voss, *Manager.*



G. COX



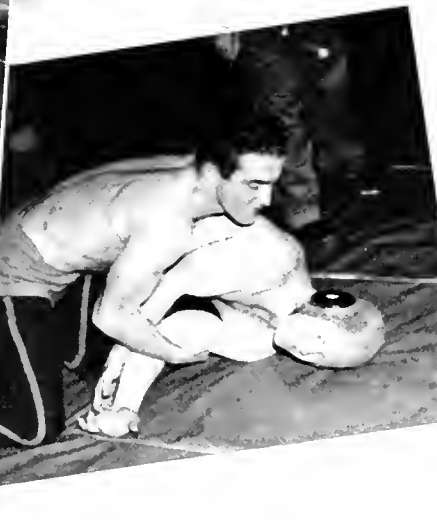
H. DANCY



B. GRIFFITH
and J. WARD



M. SPARKS
and F. SELLERS



W. YORK



E. TOMICK



L. McLEAN
and P. JOINES



B. DAVIS





BOB BROOME, COACH

Baseball

RESUME

Baseball is one of the lesser sports at Appalachian due to the inclemency of the weather, however, Coach Bob Broome is blessed by the matriculation of eleven lettermen. The Mountaineers promise plenty of trouble for other North State diamondmen.

Squad: Herman Bryson, Calvin Morgan, Keith Wilson, Bobby Withrow, John Withrow, Leo Gever, Doyle Ayers, Reece Shugart, Pete Mills, Gene Kirkpatrick, W. D. Akins, Robert Withrow, Emory Stephens, Tom Weber, *manager*, Dennis Franklin, Jack Hooks, Charles Hope, Johnny Hollar, William Long.



D. AYERS



E. KIRKPATRICK



H. BRYSON



J. WITHROW



K. WILSON



WOMEN'S "A" CLUB

OFFICERS

MOZELLE RODGERS *President*
 CECELIA WARLICK *Vice-President*
 CAROLYN MORGAN *Secretary*
 DELSIE PACK *Treasurer*

Members: Lois Simmons, Mary Mills, Mozelle
 Rodgers, Frances Cook, Polly Worrell, Mildred
 Bryson, Delsie Pack, Cecelia Warlick, Helen
 Melvin, Joan Lovill, Norma Green, Helen
 Tallent, Peggy Plott.



OFFICERS

WOMEN'S "AA"

CECELIA WARLICK *Secretary*
 MARSHA LAWS *Treasurer*
 HELEN TALLENT *President*
 MOZELLE RODGERS *Vice-President*
 HELEN MELVIN *Intramural Manager*

D. PACK and J. LOVILL



L. SIMMONS
and C. WARLICK

F. COOK and M. MILLS



M. BRYSON and H. MELVIN

R. SMITH and M. RODGERS

L. LITTLE, A. CARROLL
and B. SCOTT



L. MIDKIFF, E. ADAMS
and J. FAULKNER

L. FISCHER, P. PLOTT
and G. ALEXANDER



M. LAWS, N. GREEN
and P. WORRELL

GAIL CLAY Coach



SOFTBALL

Forty eight girls participated in the Softball tournament which was held in the fall of the year. Softball games were interrupted before they were finished because of inclement weather.



VOLLEYBALL

A tournament in Volleyball was held during the winter quarter. A group of sixty Physical Education majors participated in the series of exciting and interesting games.



BASKETBALL

Midkiff, Melvin, Faulkner, Carroll, Rodgers, Lovill, Little, Laws, Worrell, Scott, Pack, Mills, Cook, Bryson, Smith, Plott, Warlick, Simmons, Alexander, Green, Fischer, Adams.





MODERN DANCE CLUB

Johnny Albea, Jewel Barnhardt, Audrey Caison, Horace Felton, Annie B. McClure, Sue McGrady, Mary Mills, Tom Webb.

Mrs. Joy Kirshner, *Director.*



VARSOUVIANNA

Johnny Albea, Gabe Austelle, Jo Brewer, Doris Byrd, Johnny Caskey, Glenn Causey, Harry Clendenin, Frances Cook, Horace Felton, Gladys Formyduval, Bill Halstead, Mary K. Halstead, Eleanor Hauser, Marty Laws, Tommy Ligon, Annie B. McClure, Helen Melvin, Mary Mills, Miriam Moose, Norman Probst, Mozelle Rodgers, Daniel Rowe, Flay Sellers, Britt Steelman, Helen Tallent, Marty Voss, Polly Wag-
 oner, Tommy Webb.



FLYING FISH

M. Besser, C. Warlick, M. Sease, H. Tallent, M. Voss, M. Mills, H. Melvin, J. Lovill, R. Smith, L. Fischer, D. Pack, J. Giles, M. Bradley, E. Collette, M. Rodgers, A. Carroll.



BOOK THREE
Activities

ASTC



Pep Rally... Elections... "S. P. Week" ... Snow ... Winkler's
Creek . . . Initiations . . . Le Cercle Francais

Rhododendron Staff



EDITORIAL STAFF

ANNE GRAHAM	Editor-in Chief
ROBERT CHILTON	Associate Editor
JULIAN ROGERS	Managing Editor
MAXINE HAWKS	Feature Editor
CARL LANE	Sports Editor
MOZELLE ROGERS	Assistant Sports Editor
JAMES PARKS	Senior Class Editor
EUGENE CROOKS	Junior Class Editor
REID GRIMES	Sophomore Class Editor
TOMMY HARRELL	Freshman Class Editor
JERRLYN CROUCH	Typist
NORMA FENDER	Typist
BOBBY BROWN	Typist
COLEMAN HANSON	Typist



BUSINESS STAFF

SARA FRANCES WEAST Business Manager
 J. R. BRENDLE ... Assistant Business Manager
 BILL MARTIN Circulation Manager
 BETTY CARTER Typist
 L. ROBERT CARTER Typist
 MR. V. C. HOWELL Faculty Adviser



The Appalachian



EDITORIAL STAFF

H. G. JONES	Editor-in-Chief
JANE RAY	Assistant Editor
COLEMAN HANSON	Assistant Editor
CARL LANE	Feature Writer
BERNARD DAVIS	Feature Writer
SIM WILDE	Feature Writer
MARY FRANCES GOOD	Reporter
JUNE DAVIS	Reporter
JAMES HENSON	Reporter
BOBBY COE	Reporter

SPORTS STAFF

CHARLES RIDDLE	Sports Editor
BOB CHILTON	News Editor
WALLACE CARPENTER	Reporter
DIXON ROBERTS	Reporter
LENORE FISCHER	Reporter



BUSINESS STAFF

RACHEL ANNE VANCE . . .	Business Manager
ROBER L. PARDUE . . .	Asst. Business Manager

CIRCULATION STAFF

NINA ANNAS	Circulation Manager
EUGENE NELSON	Circulation Manager
DOROTHY WHITESIDES, Asst.	Circulation Mgr.
BETTY SUE BERRY	Asst. Circulation Mgr.
MARGARET BRASWELL, Asst.	Circulation Mgr.
HARRY HOPE	Asst. Circulation Mgr.
JULIUS HUBBARD	Asst. Circulation Mgr.
VERDOLA KELLER	Asst. Circulation Mgr.





STUDENT COUNCIL

OFFICERS

JULIAN ROGERS
President

RALPH WALTERS
Vice-President

RITA McNEAL
Recording Secretary

BEULAH M. PERKINS
Corresponding Secretary

ROBERT CHILTON
Treasurer



Senior Representatives

RACHEL ANNE VANCE
BEULAH M. PERKINS
EUGENE LYONS
RALPH WALTERS
BILL HALSTEAD

Junior Representatives

MARTHA ANN VOSS
RITA DARE McNEAL
EMIL TOMICK
ROBERT CHILTON

Sophomore Representatives

NORMAN PROBST
DONALD CHEEK

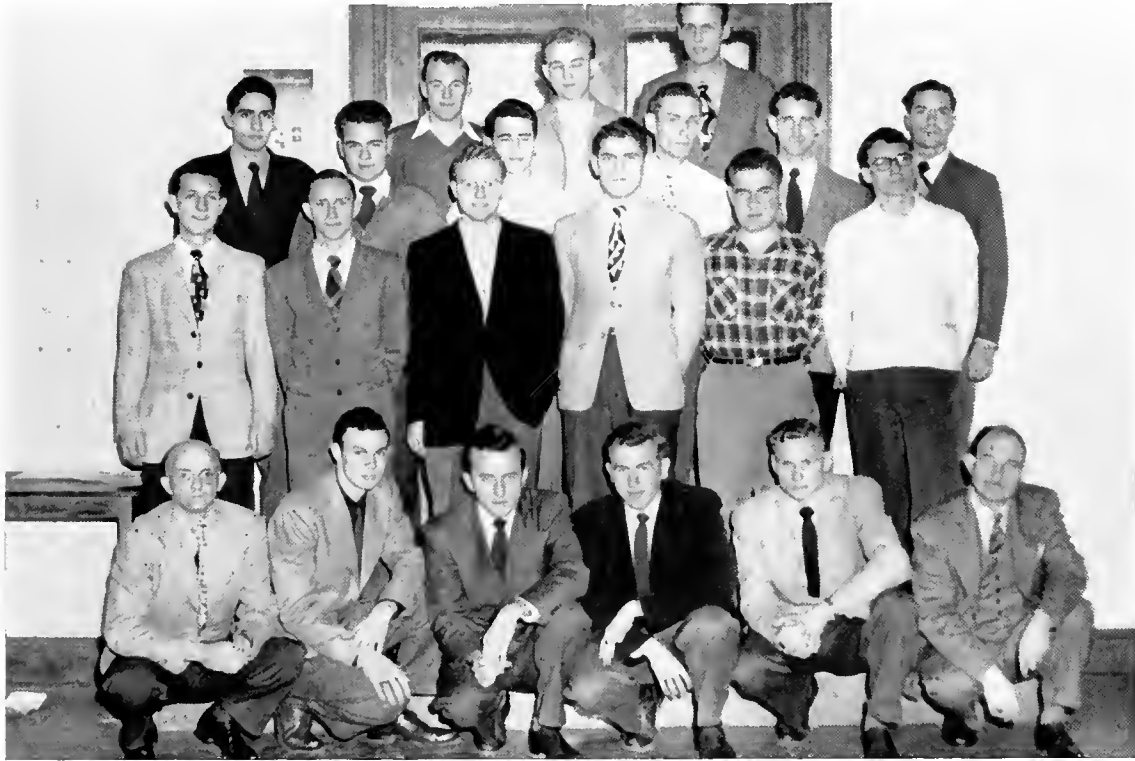
Freshman Representatives

GUY ROSE
HERBERT BRANTLEY

Y. M. C. A.

OFFICERS

CLAYTON SWICEGOOD*President*
JAMES EVANS*Vice-President*
WAYNE SMITH*Secretary-Treasurer*
GORDON MARTIN*Chaplain*
LEO K. PRITCHETT*Sponsor*



MEMBERS

SAMUEL ADAMS	EARNEST GARDNER, JR.	CHARLES RHODES
EARL BLANKENSHIP	COLEMAN HANSON	BILL RIVES
JIMMY BLANTON	CLAUDE HOLCOMBE	JOHN ROOKS
JAMES BLEVINS	J. C. LAMM	A. J. SAUNDERS
ROBERT BURWELL	GORDON MARTIN	THOMPSON SHEPHERD
BERNARD DAVIS	LEON MCLEAN	WAYNE SMITH
JOSEPH DIXON	EUGENE NELSON	CLAYTON SWICEGOOD
LESTER DIXON	JACK PARKS	VICTOR SYKES
KENNETH ENGLAND	WILLIAM PARRISH	ELMO TALLEY
JAMES EVANS	JAMES RAYBURN	ROBERT VICK
WORTH FRADY	BILL RHINEHART	ROBERT YODER



Y. W. C. A.

OFFICERS

<i>Office</i>	<i>Senior Cabinet</i>	<i>Junior Cabinet</i>
President	BEULAH M. PERKINS	IZORIA SHEPPARD
Vice-President	RUBY HARDY	CLESTE STEPHENS
Secretary	HELEN HOWARD	MARJORIE DWIGGINS
Treasurer	MICKEY BRADLEY	BLANCHE ASHBY
Program Chairman	BELLY CORNETTE	DOROTHY LEATHERMAN
Chapel Program Chairman	RYTA SMITH	TOMMIE SUE MOXLEY
Social Service Chairman	MARGARET BRASWELL	KATHERINE SLOAN
Chorister	JUANITA GRANT	IRMA NORRIS
Membership Chairman	HELEN TALLENT	SARAH MCCREIGHT
Pianist	MARTHA CRESS	LENORA SMITH
Social Chairman	EVELYN BISHOP	JONNIE TURNER
Publicity	JANE RAY	HAZEL HOLCOMBE

Y. W. C. A.

BETTY ALEXANDER
LORENE AMOS
LOUISE ANDREWS
NINA ANNAS
MARTHA AUSTIN
MARY AUSTIN
AGNES BALDWIN
JEWEL BARNHARDT
DORLESS BATES
AMELIE BAUGUESS
AUDREY BAUGUESS
LAURA BECK
BETTY SUE BERRY
DOROTHY BLACK
PEGGY BLANTON
MONA BOLEJACK
CATHERINE BOST
MICKEY BRADLEY
MARGARET BRASWELL
RACHEL BRENTLE
COZETTE BROOKSHIRE
LOIS BROWN
MARJORIE BROWN
ANNE BROYHILL
VIRGINIA BUFF
SUE BUNCH
JANE BURNS
AUDREY CAISON
ALMA CASEY
ESTELLE CARPENTER
BETTY CARTER
BETTY CAULIFIELD
AGNES CLOIR
SUZANNE COFFEY
CARRIE BESS COLE
FRANCES COOK
BETTY COPEN
BETTY CORNETTE
FRANCES COX
COLLEEN CRABTREE
EULA MAE CRAIG
MARTHA CRESS
JERRY CROUCH
BLANCHE DANIEL
CLARA DAVIS
FRANCES DAVIS
LAURA DAVIS
ANN DIXON
NELL DOBBINS
WILLODEEN DUKES
MARJORY DWIGGINS
RUBY EDWARDS

BETTY EPTING
CATHERINE FARROW
RACHEL FLINCHUM
EUNICE FOLGER
LOUISE FRANCIS
MARY GARDNER
NANCY GARWOOD
GEORGIANNE GETTINGER
RUBY GODBY
JACKIE GORDON
ANNE GRAHAM
JOHNNIE GRANT
TEMPLE GRIFFITH
VIRGINIA GRIFFIN
DORIS GRILL
IRENE GRIMES
VIRGINIA HALSTEAD
RUBY HARDY
MARY HARGRAVES
DOROTHY HART
ELEANOR HAUSER
MAXINE HAWKS
LOUISE HENDERSON
MARY SUE HENDREN
BETTY SUE HODGES
HAZEL HOLCOMBE
DORIS HOLLAND
HELEN HOWARD
GRACE HUFFMAN
MARGARET JARVIS
VIRGINIA JENNINGS
BRICE JOHNSON
HELEN JOLLY
BETTY KELLEY
JOYCE KIRKLAND
POLLY LAMBETH
MARTHA LAWS
JOYCE LAWSON
DOROTHY LEATHERMAN
DORIS LEHMAN
LOUISE LITTLE
BETTY LOGAN
JEAN LOPP
RUBY MARLOWE
SARAH MATTHEWS
ALMA MCCALL
SARAH MCCREIGHT
SUE MCGRADY
RITA DARE MCNEAL
MARGARET MEDLIN
HELEN MELVIN
RUTH ANN MILLER

MARY MILLS
MARY RUTH MOORE
NELL MORETZ
TOMMY SUE MOXLEY
ERMA NORRIS
PEGGY OSBORNE
DOT PATTON
MARTHA PEELER
BEULAH M. PERKINS
ELIZABETH PHARR
PEGGY PLOTT
JO PLYLER
BETTY PRESTWOOD
JO ELLEN RICHARDSON
JULIA ROBERTS
RUBY ROBINSON
MOZELLE ROGERS
JEANETTE RUPPE
JOSEPHINE SANFORD
ELEANOR SETTLEMYRE
IZORIA SHEPHERD
BETTY SIDES
LOIS SIMMONS
MAXINE SINK
KATHERINE SLOAN
BETTY JEAN SMITH
DOROTHY SMITH
LAURA SMITH
MARGARET SMITH
LENORA SMITH
RITA SMITH
CELESTE STEPHENS
HELEN TALLENT
BETTY JANE THORNTON
BETTY JUNE THREATTE
BETTY SUE TRANTHAM
JOHNNIE RUTH TURNER
RACHIEL ANNE VANCE
NANCY VEALE
LUCILLE VERNON
POLLY WAGONER
CLEO WALSH
CECELIA WARLICK
DORIS WAUGH
SARA FRANCES WEAST
MARTHA WEISNER
MARGARET WELLMON
DOROTHY WHITESIDES
SARAH NELL WILSON
WANDA WOOD
NANCY ZACHARY



DORMITORY
MATRONS
AND
PRESIDENTS

MRS. LILLIE BELLE HARDIN *Matron of Dauphin-Blanford Hall*
 JERRLYN CROUCH *President of Dauphin-Blanford Hall*
 MRS. J. W. MASSEY *Matron of White Hall*
 EULA MAE CRAIG *President of White Hall*
 MRS. JETHRO BARNES MAJETTE *Matron of Lovill Hall*
 CECELIA WARLICK *President of Lovill Hall*

WESLEY
YOUTH
FELLOWSHIP



OFFICERS

MARTHA PEELER *President* CLAYTON SWICEGOOD *Vice President*
 DOROTHY HART *Secretary-Treasurer*

Members: Nina Annas, Bob Armfield, Bill Beattie, Virginia Bull, Jane Burns, Bob Burwell, Mildred Carnes, Ida Dalton, Ann Dixon, Joe Dixon, Lester Dixon, Marjory Diggins, Mary Edwards, Steve Gabriel, Ernest Gardener, Jr., Melvin S. Griffith, Ruby Hardy, Dorothy Hart, Helen Howard, Madeline Jenkins, Marcia Jenkins, Imogene Joines, Wesley Joines, Helen Jolly, H. G. Jones, Doris

Lehman, J. R. Littlewood, Ned McCall, Sue McGrady, Ruth Ann Miller, Mary Moss, Rev. S. B. Moss, Eugene Nelson, Peggy Osborne, Cornelia Owens, Martha Peeler, Beulah Perkins, Betty Prestwood, Norman Richards, Bill Richardson, Ruby Robinson, Maxine Sink, Katherine Sloan, Clayton Swicegood, Doris Waugh, Dorothy Whitesides.

BAPTIST
STUDENTS
UNION
COUNCIL



OFFICERS

COLEMAN HANSON *President*
MARJORIE TOOLE *Student Secretary*

H. R. EGGERS *Faculty Adviser*
W. G. BOND *Pastor*

Members: Margaret Braswell, Juanita Grant, Carrie Bess Cole, Edith Allen, Clara Ruth Davis, James Evans, Mary Ruth Moore, Gordon Martin, Fave Rhodes, Laura Davis,

Dolly Martin, Sara Nell Wilson, Wayne Smith, Peggy Burris, Floyd Campbell, Rachel Ann Vance, Imogene Lopp, Victor Sykes, Earl Blankenship, Helen Watson.

WESTMINSTER
FELLOWSHIP



OFFICERS

SARA FRANCES WLAST *President*
ELIZABETH PHARR *Vice-President*

JUNE DAVIS *Secretary-Treasurer*
REV. J. K. PARKER *Pastor*

Members: Betty Alexander, William Alexander, Rachel Allen, Pansy Biddix, Irene Brown, Marjorie Brown, Charlie Byrd, William Campbell, Betty Carter, Charles Clontz, Eula Mae Craig, Edward Cooper, John Calloway, Ruth Cook, Gene Craven, Suzanne Coffey, June Davis, Catherine Dunn, George Elliott, Bill Eastridge, Carolyn Fesperman, Betty Gable, Anne Graham, Jacqueline Grimes, Josephine Grimes, Gene Cox, John Sides, Doris Grill, Martha Cress, Blanch Daniels, Max Hawks, Betty Holli-

field, Betty Jo Henderson, Louise Henderson, Mary J. Hargrave, Herbert Ingle, William Linker, Betty McFadden, Sue Ann Marion, Leon McLean, Elizabeth Pharr, Bobby Ray, Laura Smith, Mary Lee Stont, Lucinda Seals, Helen Tallent, Nancy June Veale, Thomas Voss, Martha Voss, George Wilson, Keith Wilson, Mary Alice Washam, Patsy Wingate, Robert Yoder, Sara Frances Weast, Celeste Stephens, Irene Grimes, Joe Hunt, Charles Smith.



MATH CLUB

OFFICERS

HOPE BROWN	<i>President</i>	THOMPSON SHEPHERD	<i>Secretary Treasurer</i>
WANDA WOOD	<i>Vice-President</i>	EUGENE COX	<i>Publicity Chairman</i>
DR. J. E. C. WRIGHT		<i>Sponsor</i>	

Members: Dorothy Black, Earl Blankenship, Hope Brown, Anne Brovhill, Dan Camp, Eugene Cox, Ruby Edwards, William Johnson, Frank Lowe, Gordon Martin,

Thompson Shepherd, Wanda Wood, Howard Jones, Dwight Shaw, Lee Willis.

ALPHA BETA CHI



OFFICERS

ERNEST MILLER	<i>President</i>	JERRLYN CROUCH	<i>Secretary</i>
JANE RINER	<i>Vice President</i>	THOMAS HUNTER	<i>Treasurer</i>
BETTY CARTER		<i>Reporter</i>	

Members: Jackie Bantv, Dorothy Black, Rachel Ann Brintle, Betty Carter, E. Robert Carter, Jr., Jerrlyn Crouch, Thomas Edmisten, Eunice Folger, Mary Lou Frazier, Mary Frances Good, George Green, Lewis L. Green, Von Hagaman, Coleman Hanson, Hazel Hege, James P. Henson, Thelma Hodges, Grace Huffman, Thomas Hunter,

Robert C. Kerlev, Ruth Lewis, Ernest Miller, Mary Ruth Moore, Mazon Murphy, Rober L. Pardue, Bill Rhinchart, Mozelle Richardson, Jane Riner, Merritt Robinson, John Scott, Faye Sims, Betty A. Smith, Betty Smith, Miss Ella Mae Fogg, Mrs. Vera Spears, Mr. S. L. Harleston.



VERNICIAN LITERARY SOCIETY

OFFICERS

BETTY CARTER *President*
 MARTHA CRESS *Vice-President*

MARTHA VOSS *Secretary*
 MARY GARDNER *Treasurer*

Members: Jerry Alexander, Jo Alexander, Nina Annas, Martha Austin, Mary Austin, Vista Barden, Peggy Blanton, Josephine Brown Bingham, Margaret Braswell, Jo Brewer, Marjorie Brown, Sue Bunch, Betty Sue Berry, Betty Carter, Martha Cress, Blanche Daniel, Catherine Farrow, Carolyn

Floyd, Mary Gardner, Doris Grill, Maxine Hawks, Betty Jo Henderson, Hazel Holcombe, Sarah M. Matthews, Betty Jean McGinnis, Rita McNeal, Mary Poole, Sue Ramsey, Lucinda Seals, Jeanne Snow, Marty Voss.

LE CERCLE FRANCAIS



OFFICERS

MARIANNE C. WORRELL *President*
 AUDREY HOPE *Vice-President*

MADLINE JENKINS *Secretary Treasurer*
 SARAH MILLER MATTHEWS *Reporter*

Members: Ed Barrett, Jane Burns, Carrie Bess Cole, Georgianne Gettinger, Audrey Hope, Madeline Jenkins, Fred Jones, Gordon Martin, Sarah Matthews, Evelyn Mitchell, Elmo Moretz, Randy Oglesby, Johnny O'Neil,

Peggy Osborne, Elizabeth Pharr, William Curtis Robinson, Dorothy Smith, Rachel Ann Vance, Josephine Watson, Joe Watts, Marianne Worrell.
 Mrs. Elizabeth Craddock Casale, *Sponsor.*



HOME ECONOMICS CLUB

OFFICERS

ODELIA BARBER *President*
LUCILLE VERNON *Secretary*

CELESTE STEVENS *Vice-President*
MISS BARBARA HUNT, MISS POLLYANNA GORDON, *Sponsors*

Members: Margaret Adkins, Josephine Alexander, Frances Alfred, Mary Andrews, Pauline Ashley, Martha Jean Austin, Mary Jane Austin, Odellia Barber, Vista Barden, Jewel Barnhardt, Josephine Bingham, Marjorie Bishop, Helen Brooks, Irene Brown, Lois Brown, Madeline Brown, Sue Bunch, Peggy Burris, Dorothy Calton, Alma Casey, Louise Click, Lula Mae Cottle, Ruth Cooke, Eula Mae Craig, Inez Dalton, Nell Dobbins, Ellen Edwards, Catherine Farrow, Norma Fender, Charlotte Fisher, Carolyn Floyd, Wanda Lee Freeman, Mary Gardner, Nancy Garwood, Bobby Jean Gragg, Anne Graham, Ruby Hardy, Faye Hayes, Betty Jean Haynes, Bertha Jewel Hemmings, Mary Hutchinson, Katherine Ivin,

Rosalind Isom, Evelyn Jones, Iris Lanning, Doris Lehman, Dolly Martin, Nelle McBeck, Etheta McBraver, Sarah McCreight, Beth McLayden, Mildred McKinney, Rita McNeal, Miriam Moose, Tommy Sue Moxley, Emily Northington, Ruby Lee Peeler, Faye Rhodes, Wilma Schell, Lucinda Seals, Evelyn Silver, Katherine Sloan, Anne W. Small, Ethel Smith, Laura Smith, Imogene Snow, Evelyn Stator, Celeste Stevens, Wanda Truett, Lucille Vernon, Nellie Gray Webb, John Wellborn, Margaret Wellmon, Lora Williams, Christine Wilson, Miss Lucy Brock, Miss Pollyanna Gordon, Miss Barbara Hunt.



A. C. E.

OFFICERS

MADLEINE EDMISTEN *President*
BRUCE JOHNSON *Vice President*
JUANITA GRANT *Second Vice President*
ANNA LEE WEAVER *Third Vice President*

MARY SUE HENDRON *Secretary*
MARGARET MASON *Treasurer*
ELIZABETH SMITH *Reporter*
MRS. CHAPPELL WILSON *Sponsor*

Members: Louise Andrews, Mary Jo Barrier, Betty Sue Berry, Margaret Braswell, Faye Cauble, Ruth Clark, Frances Cox, Colleen Crabtree, Martha Cress, Ida Dalton, Clara Ruth Davis, Ann Dixon, Doris Greer, Marjorie Dwiggin, Lillian Edmisten, Margaret Ellis, Frances England, Gay Ethridge, Eldiweiss Formyduval, Ruby Godbey, Betty Lou Hollifield, Helen Howard, Barbara

Jarrett, Imogene Lopp, Mary Sue Magness, Margaret Medlin, Nell Moretz, Alma McCall, Emma McGalliard, Pauline McSwain, Martha Peeler, Betty Prestwood, Sue Ramsey, J. Ella Richardson, Shirley Robinson, Eleanor Settlemvire, Clara Mae Shepherd, Loria Sheppard, Carolyn Sherwood, Maxine Sink, Margaret Smith, Florence Weeks, Nell Wells, Dorothy Whitesides, Ruby C. Wilde, Grace Young.



MIXED CHORUS

OFFICERS

CARL LANE *President*
 CHARLIE JOHNSON *Vice-President*
 RACHEL ANNE VANCE *Secretary-Treasurer*
 MADGE JONES *Librarian*
 JANE RAY *Reporter*

Members: Johnny Albea, Nina Annas, Lorene Amos, Jimmie Blanton, Marvin Bradshaw, William Brock, Doris Byrd, Bobby Coe, Rufus Cooley, Gene Craven, Colleen Crabtree, Martha Cress, Nell Dobbins, Carolyn Fesperman, Sara Elizabeth Foster, Doris Fowler, Wofford Huskey, Charlie Johnson, Madge Jones, Helen Jolly, Kenneth Kaiser, Carl Lane, Ernest Miller, Erma Norris, Boyce Orr, Peggy Osborne, Mary Poole, William Robinson, Hoyt Safrit, Lenora Smith, Rachel Ann Vance, Gwendolyn Johnson, Jean Wallace, Bill Walker, J. D. Watson, Hal Whisnant, J. W. Williams, Vera Workman.





FORUM CLUB

OFFICERS FIRST HALF

CARRIE COLE *President*
 JUNE DAVIS *Vice-President*
 ELIZABETH PHARR *Secretary*
 AUDREY HOPE *Treasurer*
 BRICE JOHNSON *Publicity Chairman*

Members: Albert Bradley, Hope Brown, Peggy Burtis, Don Cheek, Betty Clawson, Carrie Cole, June Davis, Kenneth England, Norma Fender, Juanita Grant, Ruby Hardy, Audrey Hope, Brice Johnson, Noah James, Eloise

OFFICERS SECOND HALF

RUFUS McCLURE *President*
 BETTY CLAWSON *Vice-President*
 MARY MOSS *Secretary*
 KENNETH ENGLAND *Treasurer*
 JOHN WITHROW *Publicity Chairman*

Marlowe, Gordon Martin, Alwayne McClure, Rufus McClure, Mary Ruth Moore, Mary Moss, Elizabeth Pharr, Jane Riner, John Withrow.

INTERNATIONAL RELATIONS CLUB



OFFICERS

JOHN D. WITHROW *President*
 BETTY CORNETTE *Vice President*
 JOHN CASKEY *Treasurer*

I. BRYCE GORDON *Recording Secretary*
 HOPE BROWN *Corresponding Secretary*

Members: Hope Brown, Albert Bradley, John Caskey, Don Cheek, Carrie Bess Cole, Betty Lou Clawson, Betty Cornette, George Cushwa, Robert Day, June Davis, Kenneth England, I. Bryce Gordon, Noah James, Charles Jarvis, Madeline Jenkins, Martha Laws, Alwayne McClure,

Rufus McClure, Sarah Matthews, Mary Ruth Moore, Martha Peeler, Elizabeth Pharr, Betty Prestwood, Fave Rhodes, John Rooks, Flay Sellers, John D. Withrow, Robert Withrow, Wanda Wood.



FUTURE TEACHERS OF AMERICA

OFFICERS

BETTY CORNETTE <i>President</i>	ELOISE MARLOWE <i>Treasurer</i>
DONALD CHEEK <i>Vice-President</i>	RUBY HARDY <i>Social Chairman</i>
MARTHA VOSS <i>Secretary</i>	IZORIA SHEPPARD <i>Program Chairman</i>
EDGAR HUNTER <i>Publicity Chairman</i>	

Members: Evelyn Bishop, Peggy Burris, Julian Carr, Betty Carter, John Caskey, Glenn Causey, Donald Cheek, Elton Coleman, Martha Cress, Jerrlyn Crouch, Frances England, Kenneth England, Norma Fender, Anne Graham, Ruby Hardy, Audrey Hope, Edgar Hunter, Portia Hiatt, Dorothy Hart, Fave Rhodes, Howard Jones, Martha Laws,

Dollie Martin, Edith Maine, James Parks, Martha Peeler, Beulah M. Perkins, Jane Ray, Clara Mae Shepherd, Stanley South, Izoria Sheppard, Rachel Vance, Cecelia Warlick, Nellie Grey Webb, Anna Lee Weaver, John Withrow, Ralph Walters, Margaret Wellmon.

ALPHA PSI OMEGA



OFFICERS

JULIAN ROGERS <i>Cast Director</i>	JERRLYN CROUCH <i>Secretary-Treasurer</i>
ANNE GRAHAM <i>Assistant Cast Director</i>	MR. CRATIS WILLIAMS <i>Adviser</i>

Members: Jerrlyn Crouch, Anne Graham, Maxine Hawks, James Parks, Julian Rogers.



Appalachian Band

OFFICERS

CHARLIE JOHNSON President
 DANE SMYRE Vice-President
 MADGE JONES Secretary-Treasurer
 JOHNNY ALBEA Publicity Manager
 HELEN WINKLER Librarian
 ROY BLANTON Director

Members: Johnny Albea, Bill Armstrong, Agnes Baldwin, Lawrence Barden, Ted Barnett, Jimmie Blanton, Bill Brock, Rosco Brown, Bobby Coe, Eleanor Collins, Martha Council, Gene Craven, Mary Davis, Marjory Dwiggin, Pat Ellis, Rhea Farthing, Betty Greer, Gordon Hartzog, Frances Hennessee, Guy Hunt, Bud Hunter, Claude Jarrett,

Charlie Johnson, Madge Jones, Bill Lawson, Otis Ledbetter, Evelyn McCracken, Nell Norris, Lawrence Phillips, Dixon Qualles, Bill Robinson, Eleanor Settlemyre, Reba Smith, Dane Smyre, Lois Townsend, Hal Vannoy, Bill Walker, Donald Warman, Sonny Williams, George Wilson, Sara Wilson, Helen Winkler.



Playcrafters

OFFICERS

JAMES PARKSPresident
 JAMES BLEVINSVice-President
 NINA ANNASSecretary-Treasurer
 MAXINE HAWKSPlaybill Editor



Members: Nina Annas, Bob Amfield, Amelia Bauguess, Audrey Bauguess, James Blevins, Bobbie Brown, Lois Brown, Sue Bunch, Marion Butler, Doris Byrd, Julian Carr, Carl Clarke, Jerry Crouch, Bernard Davis, Joe Dixon, Hal Edmisten, Kenneth England, Norma Fender, Anne Graham, Doris Grill, Frank Hall, Maxine Hawks, Audrey Hope, Robert Howell, Charles Jarvis, Ruby Johnson, Fred

Jones, J. R. Littlewood, Nelle McBee, Sara McCreight, Sue McGrady, Harry Myers, James Parks, Betty Prestwood, Sue Ramsey, Bill Rhinehart, Charles Rhodes, James Rhodes, Julian Rogers, John Rooks, Bill Ross, Lucinda Seals, Juanita Tedder, Margaret Wellmon, Hal Whisnant, Dorothy Whitesides, Sonny Williams, Robert Yoder. Mr. Cratis Williams, *Sponsor.*





PEP
CLUB

OFFICERS

FIAY SELLERSPresident

Members: Elizabeth Adams, Jo Alexander, Ray Alston, Jeanne Arner, Martha Austin, Mary Austin, Agnes Baldwin, Mona Bolejack, Vista Barden, Jewel Barahardt, Dorliss Bates, Audrey Bauguess, Laura Beck, Minnie Besser, Peggy Blanton, Carlyle Bledsoe, Catherine Bost, J. R. Brendell, Maynard Bridges, Dot Brown, Lois Brown, Margaret Brown, Audrey Caison, Bill Campbell, Estelle Carpenter, Wallace Carpenter, Julian Carr, Suzanne Coffey, Betty Sue Cohen, Lib Collette, Ruth Cook, Colleen Crabtree, Lula Mae Craig, James Cranford, Hubert Dancy, Catherine Dunn, Bob Delaney, Nell Dobbins, Mary Edwards, Horace Felton, Carolyn Floyd, Dot Floyd, Gladys Formyduval, Cladine Gable, Nancy Garwood, J. J. Geffrick, Mrs. J. J. Geffrick, Robert Gillis, Mary Frances Good, Ben Goforth, Bobby Jean Gragg, Melvin Griffith, Femple Griffith, Eleanor Hauser, Mary Jo Hargrove, Dorothy Hart, Betty Holliheld, George Hemrick, Guy Hemrick, Doris Holland, Betty Sue Hodges, Charles Hathaway, Rosland

LOUISE LITTLESecretary-Treasurer

Isom, William Johnson, Fred Jones, Margaret Jarvis, Joyce Kirkland, Bob Kiser, Carl Lane, Bob Lawrence, Doris Lehman, Polly Lambeth, Martha Laws, Louise Little, Emogene Lapp, Jeannine Meachum, Betty Jean McGinnis, Hubert Marrow, Shirley Miller, Wilma Marion, Louis Mack, Betty McFayden, Kenney Murray, Phil Parker, Dorothy Patton, Mozelle Payne, Jean Payne, Gerald Pickler, Peggy Sue Plott, Mary Poole, Bill Rhinehart, Jimmie Rhodes, Charles Rhodes, Norman Richards, Mozelle Richardson, Charles Riddle, John Rooks, Guy Rose, Jr., Millie Scheel, Betty Scott, Bill Sease, Marie Sease, Colleen Shelton, Lois Simmons, Faye Simms, Maxine Sink, Catherine Sloan, Betty Ann Smith, Charles P. Smith, Margaret Smith, Robert Smith, Jeanne Snow, Ruth Stout, Marilyn Suratt, Elmo Talley, Betty Thornton, Harry Tucker, Martha Ann Voss, Joan Weisner, Christine Winecoll, Bobby Yoder.

BATON
CLUB



SARAH MATTHEWSPresident

Members: Blanche Ashby, Peggy Burris, Audrey Caison, Ruth Dare Cook, Mary Hutchinson, Gwen

PEGGY BURRISLeader

dolyn Johnson, Vista Martin, Sarah Matthews, Jonnie Ruth Turner, Nancy Veale, Nancy Zachary.

CHEERLEADERS



"BOLO"
"MARTY"
MARIA
"LIB"

"YOSEF" BURLERSON
BEN
"DOC"

"BOB"
"FORMY"
"JO"
"SHADY"

SURRATTE — RHODES — BESSER — HEMRIC — GARWOOD



LIBRARY SCIENCE CLUB

OFFICERS

JUANITA GRANT *President*
 FRANCES ENGLAND *Vice-President*
 VERDOLA KELLER *Secretary-Treasurer*

Members: Audrey Bauguess, Hope Brown, Virginia Buff, Faye Cauble, Elizabeth Devlin, Frances England, Juanita Grant, Betty Jo Henderson, Betty Sue Hodges,

DORIS WAUGH *Publicity Chairman*
 MISS EUNICE QUERY *Sponsor*
 MRS. LOUISE MOORE PLYBON *Sponsor*

Brice Johnson, Virginia Jennings, Verdola Keller, Sarah Matthews, Ruth Anne Miller, Elizabeth Pharr, Clara Mae Shepherd, Mary Alice Washam, Doris Waugh.

THE BARN BOYS



OFFICERS

J. D. BURLISON *President*
 JOE DIXON *Vice President*

Members: Ed Barrett, Bobby Beard, Donald Beck, Ray Benheld, Bill Campbell, Buddy Christenbury, Bill Craig, James Crawford, Bernard Davis, Charles Dellinger, Howard Dollar, Gene Faucette, Tommy Harrell, James Hartman, Guy Hemrick, Pat Hullstetler, Howard Huntley, Robert

JAMES R. PLEASANT *Secretary-Treasurer*
 BILL JOHNSON *Monitor*

Marshall, Mazon Murphy, Clyde Meyers, Randy Oglesby, Oscar Padgett, David Phipps, Gerald Pickler, Bill Reeves, Norman Richards, Swanson Richards, Bill Robinson, George Ross, Jr., Joe Scroggs, Ralph Shore, J. D. Watson, Herman Watts, James Winn.





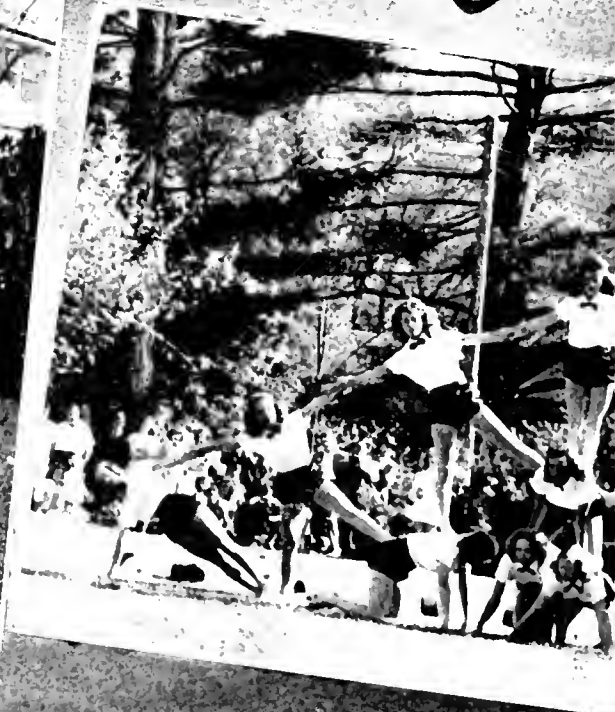
BOOK FOUR *Features*



MAY DAY . . . WOMEN! . . . WHO'S WHO
. . . WOMEN! . . . DANCES . . . WOMEN!



May

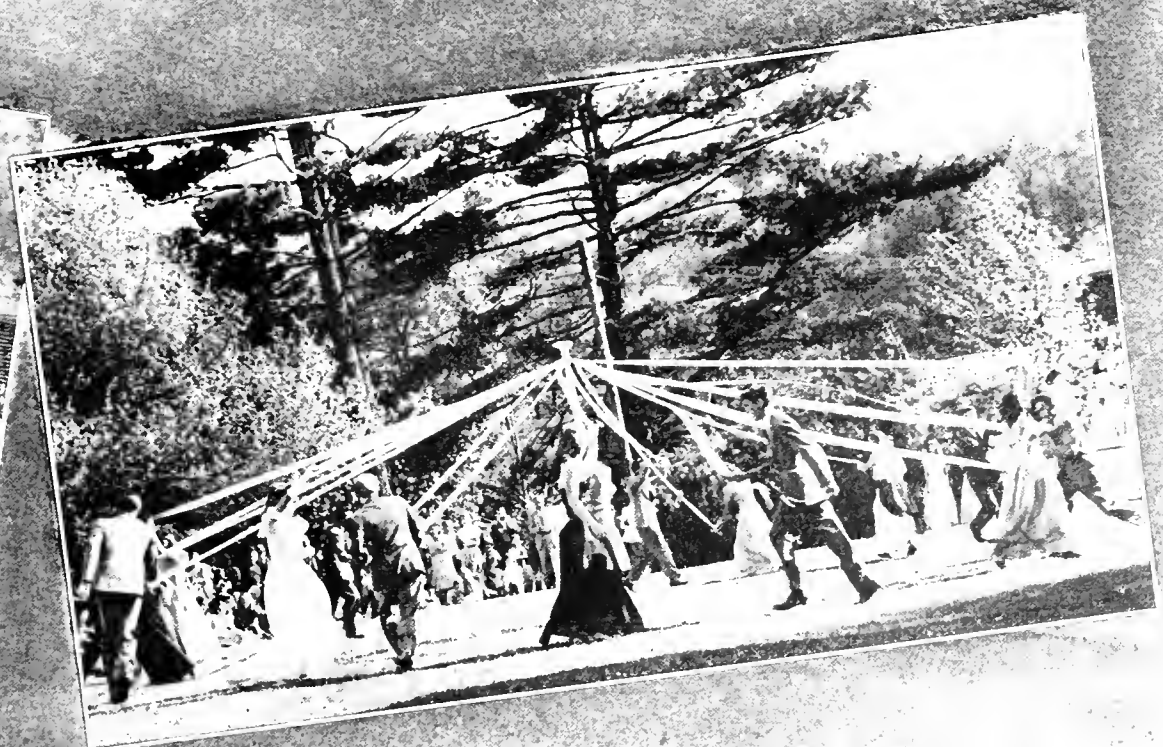
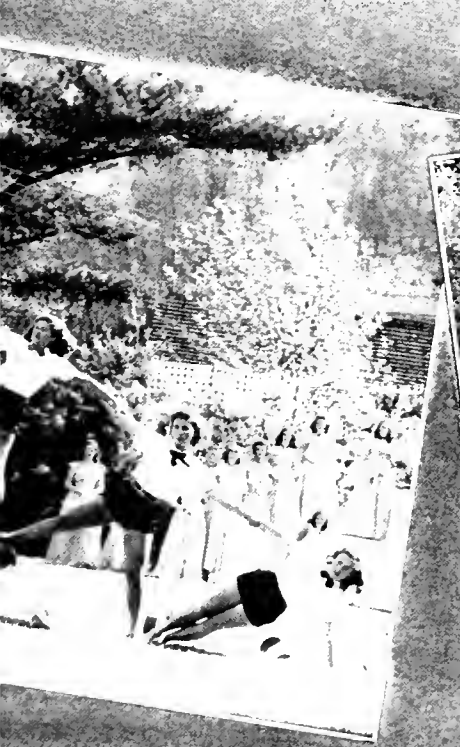


Helen Howard
May Queen

Rachel Anne Vance
Maid of Honor



Day





1949 May Day

JERRYLYN CROUCH
Senior Attendant

SARA FRANCES WEASI
Senior Attendant

MARTHA PEELER
Senior Attendant

AUDREY BAUGHNESS
Junior Attendant

PEGGY OSBORNE
Junior Attendant



Attendants

JONNIE RUTH TURNER
Junior Attendant

MARTHA LAWS
Sophomore Attendant

DOROTHY HART
Sophomore Attendant

MARTHA AUSTIN
Freshman Attendant

MARY AUSTIN
Freshman Attendant



Senior Superlatives

RALPH WALLERS

Most Handsome

STANLEY SOUTH

Most Versatile

HELEN HOWARD

Most Attractive Girl

RELY SMITH

Most Athletic Girl

JOHN WITHROW

Most Intelligent

TOM BOYETTE

Most Athletic Man

H. G. JONES

Most Likely to Succeed

JERREYS CROUCH

Most Friendly

Who's Who Among Students In American Universities and Colleges

JOHNNY CASKEY
 ROBERT CHILTON
 EUGENE COX
 COLEMAN HANSON

H. G. JONES
 SARAH MATTHEWS
 RITA DARE MCNEAM
 BEULAH M. PERKINS

JULIAN ROGERS
 RACHEL ANNE VANCE
 MARTHA ANN VOSS
 RALPH WALTERS





Campus

Johnny Caskey

"Mr. Appalachian"

Pauline Wagoner

"Miss Appalachian"



Superlatives

Robert "Bolo" Pardue

Most Popular

H. G. Jones

Most Valuable

Sponsors

RHODODENDRON STAFF

Mrs. C. A. Graham

ANNE GABRIEL GRAHAM
Editor-in-Chief



Mrs. F. C. Weast

SARA FRANCES WEAST
Business Manager



Sponsors

APPALACHIAN STAFF

Mrs. Paul H. Jones

H. G. JONES
Editor-in-Chief



Mrs. P. H. Vance

RACHEL ANNE VANCE
Business Manager



Sponsors

STUDENT COUNCIL

Miss Mary Lou Culler

JULIAN ROGERS
President

Y. W. C. A.

Mr. Carol Perkins

BEULAH MARION PERKINS
President



Sponsors

SENIOR CLASS

Mrs. Ralph Walters

RALPH WALTERS
President



JUNIOR CLASS

Mrs. J. J. Voss

MARTHA ANN VOSS
President

Sponsors

SOPHOMORE CLASS

Mrs. W. J. Warlick

CECELIA WARLICK
President



FRESHMAN CLASS

Miss Juanita Grant

HERBERT BRANTLEY
President





ADVERTISEMENTS



Advertisements



EXCLUSIVE

RHODODENDRON PHOTOGRAPHY

BY

STANLEY SOUTH

BOONE, N. C.

PALMER'S PHOTO SHOP

"Boone's Leading Photographic Center"

PORTRAITURE OF DISTINCTION

213 W. Main

Phone 280-W

CITY MEAT MARKET

FRESH AND CURED MEATS

"We Try To Please"

Phone 29

121 Main Street

BOONE, N. C.

ANGELS CAFE

"We Cater To The Students"

BEST SANDWICHES IN TOWN

J. COON CREED, *Proprietor*

HI-LAND CLEANERS

Hi-Land Cleaning Is
Mothproof Cleaning

Phone 153-J

BOONE, N. C.

Compliments of

Watauga Hardware

INCORPORATED

"THE FRIENDLY STORE"

BOONE, NORTH CAROLINA

Meet Your Friends At

CAROLINA PHARMACY

Phone 47

BOONE, N. C.

Campus Clothes For College Men
And Women

Van Heusen Shirts and Ties Holeproof
Calvert Hanes Cross Country
Topcraft Sport Shoes

TARHEEL TOGS

"The Men's Store"

**MADDUX ESSO
SERVICE**

"COMPLETE SERVICE FOR YOUR CAR"

WILLYS-JEEP Dealer

Milk Is Healthful

GRADE "A"

Hillside Products at

Better Stores, Cafes and Hotels

MILK, BUTTERMILK, CREAM
BUTTER, AND ICE CREAM

HILLSIDE DAIRY

Telephone 194-M

BOONE, N. C.

"Your Leading Dairy"

Home-Owned and Home Operated

PARKWAY COMPANY

HARDWARE

ELECTRICAL SUPPLIES

Phone 46-J

BOONE, N. C.

Compliments of

THE NORTHWESTERN BANK

Every Banking Service Consistent
with Sound Banking

W. D. FARTHING, *Cashier*

BOONE, N. C.



APPALACHIAN
THEATRE

BOONE, N. C.

"Everybody Likes Boone"



WATAUGA DEMOCRAT

"Established 1888"

R. C. RIVERS, *Owner*

BOONE, N. C.

Compliments of

PEOPLES CAFE

"We Appreciate Your Patronage"

Located Next To Pastime Theatre

BOYD BLANTON, *Proprietor*

WALKER'S JEWELRY
STORE

WATCHES—DIAMONDS

General Line of Jewelry

WILL C. WALKER, *Owner*

BOONE, N. C.

Compliments of

The Coca-Cola logo is written in its signature script font. Below the main text, there is a small rectangular box containing the words "TRADE MARK" and "BOTTLED IN THE U.S.A.".

Bottling Company

HICKORY, N. C.

SMITHEY'S DEPARTMENT
STORE

Boone's Largest New Daylight Store

DRY GOODS, GROCERIES, FEEDS

"One Place Stop"

Visit Our Lunch Room

TRAILWAY LAUNDRY and CLEANERS, Inc.

"The Best In Laundry and Cleaning"

BOONE, N. C.

BOONE DRUG COMPANY REXALL

"The Professional Store"

W. R. RICHARDSON

O. K. RICHARDSON

G. K. MOOSE

Owners

Three Registered Pharmacists

Phone 17

THE ECONOMY SHOE AND READY-TO-WEAR STORE

COMPLETE LINE OF READY-TO-WEAR

Shoes Featuring Joyce and Other Well
Known Brands

JUNE RUSSELL, *Owner*

Phone 36

BOONE, N. C.

Craven Furniture Company

Complete Home Furnishings

Main Street

Phone 95

BOONE, N. C.

BOONE BODY SHOP

REBUILDING WRECKED BODIES
OUR SPECIALTY

Expert Refinishing

Phone 144

Compliments of

B. W. STALLINGS

"Your College Jeweler"

BOONE, N. C.

Watches—Diamonds—Jewelry

Watauga Sales and Service

BUICKS AND G.M.C.'S.

*"When Better Cars Are Built
Buick Will Build Them"*

STUART WINKLER, *Manager*
Phone 124-J

HOLLARS GROCERY

Fresh Vegetables, Local and
Western Meats, Frozen Foods,
Fancy Groceries, Feeds

Free Delivery in City

PHONE 52

B. W. ELLIS

A Good Start Is Half The Battle

WATAUGA BUILDING and LOAN ASSOCIATION

BANK BUILDING

BOONE, N. C.

CREST STORES COMPANY

Boone's Modern Shopping Center

"Service with a smile"

D. A. STARNES, *Manager*

BOONE, N. C.

BELK'S DEPARTMENT STORE

BOONE, N. C.

"The Home of Better Values"

GOODNIGHT BROTHERS

*"Packers, Shippers, and Distributors of
Mountain Produce"*

BOONE

GASTONIA

NEWTON

SKYLINE RESTAURANT

"Boone's" Newest and Most Modern

BOONE, N. C.

MR. & MRS. G. C. GREENE AND G. C. GREENE, JR.

Owners

Newton's Department Store

Complete Line of

MEN'S AND LADIES' READY-TO-WEAR

At Popular Prices

BOONE, N. C.



"a health food"

PET DAIRY PRODUCTS COMPANY

JOHNSON CITY, TENN.

Travel By

TRAILWAYS

CHARTER BUSES

TO

ANY POINT IN THE

UNITED STATES

CANADA AND MEXICO

QUEEN CITY TRAILWAYS

CHARLOTTE, NORTH CAROLINA

HOME JEWELRY STORE

Watch Repairing

WATCHES—DIAMONDS—GIFTS

BOONE, N. C.

BOONE FLOWER SHOP

"Flowers For All Occasions"

Students Headquarters For Flowers

*Authorized Member of Florist Telegraph
Delivery Service*

PHONE 214-J

BOONE, N. C.

Compliments of

THE FASHION SHOP

"Clothes For College Girls"

BOONE, N. C.

BUCHANAN'S AUTOMATIC LAUNDRY

"Your Washing Is Our Business"

Efficient Washing and Drying Service

Phone 66-M

BOONE, N. C.

APPALACHIAN SODA SHOP

Next To Theatre

College Students Always Welcome

TOASTED SANDWICHES
COFFEE—DRINKS

Z. M. KOONTZ

PHONE 167

Compliments of

FARMERS HARDWARE CO., INC.

"Everything in Hardware and Associate Lines"

BOONE, NORTH CAROLINA

HIGHLANDER MOTOR COMPANY, Inc.

CHRYSLER-PLYMOUTH *Sales and Service*

PARTS MOPAR ACCESSORIES

Factory Engineered and Inspected

AUTO PARTS COMPANY

Jobbers and Distributors of

Electrical and Automotive Parts
and Equipment

West Main Street

BOONE, N. C.

LOTT KENERLY, *Manager*

PHONE 219-J

WATAUGA INSURANCE AGENCY

"All Lines of Insurance"

TRI-COUNTY REALTY COMPANY

"Houses, Businesses, Farms"

Depot Street

Box 12

BOONE, N. C.

Phone 146-M

E. F. COLE, *Manager*

ELECTRICITY SERVES YOU

Time-Saving and Penny-Wise

NEW RIVER LIGHT AND POWER COMPANY

Appalachian State Teachers College

BOONE, NORTH CAROLINA



DEVOTED EXCLUSIVELY TO
TEACHER TRAINING FOR PUBLIC
EDUCATION IN THE SOUTH



Fall Summer Quarter

SCHRAFFT'S

"The Nation's Leading Candies"

ON SALE AT GOOD
STORES EVERYWHERE

\$1.00 — \$1.75

Morgan Bros., Inc.

Wholesale Distributors

67 Broadway, Asheville, N. C.



DANIEL BOONE HOTEL

"In the Mountains
of the Blue Ridge Parkway"



Dining Room Service



Elevation 3333 Feet

J. B. McCoy, *Manager*

BOONE, NORTH CAROLINA

GULF CAFE

STEAKS
APPALACHIAN CLUB SANDWICHES
CHICKEN



"A Friend of the Campus"



Phone 344-W

BERT SHRAKE, *Owner*

Boone Trail Cafe

"WESTERN STEAKS ARE
OUR SPECIALTY"

RALPH HARTLEY, *Owner*

PHONE 9110

BOONE, N. C.

Boone Tire and Bargain Store

Furniture
Electric Appliances

BOONE, N. C.

Phone 152

Reins-Sturdivant of Boone, Inc.

Funeral Directors and Licensed Embalmers

Phone 24—Day and Night

BOONE, NORTH CAROLINA

REINS-STURDIVANT MUTUAL BURIAL ASSOCIATION, INC.

North Wilkesboro, Boone, Newland, West Jefferson, Sparta, Lenoir, N. C.



COLLEGE BOOK STORE

Student Headquarters

SCHOOL SUPPLIES

LUNCHEONETTE

HOWARD J. COTTRELL, *Manager*





We Are Headquarters for Clothing and Shoes for

A. S. T. C.

HUNT'S DEPARTMENT STORE

Boone's Favorite Department Store



Autographs

Autographs





