

*John Adams*

# R I D E R's

British *Merlin*:

For the Year of our LORD GOD

7 6 7,

Being the Third after

BISSEXTILE OF LEAP-YEAR.

Adorn'd with many delightful  
and useful Verities, fitting all  
Capacities in the Islands of  
*Great Britain's* Monarchy.

W I T H

Notes of Husbandry, Fairs, Marts,  
High Roads, and TABLES for many  
necessary USES.

Compiled for his Country's Benefit,  
By **CARDANUS RIDER.**

LONDON: Printed by H. WOODFALL,

For the Company of Stationers. 1767.

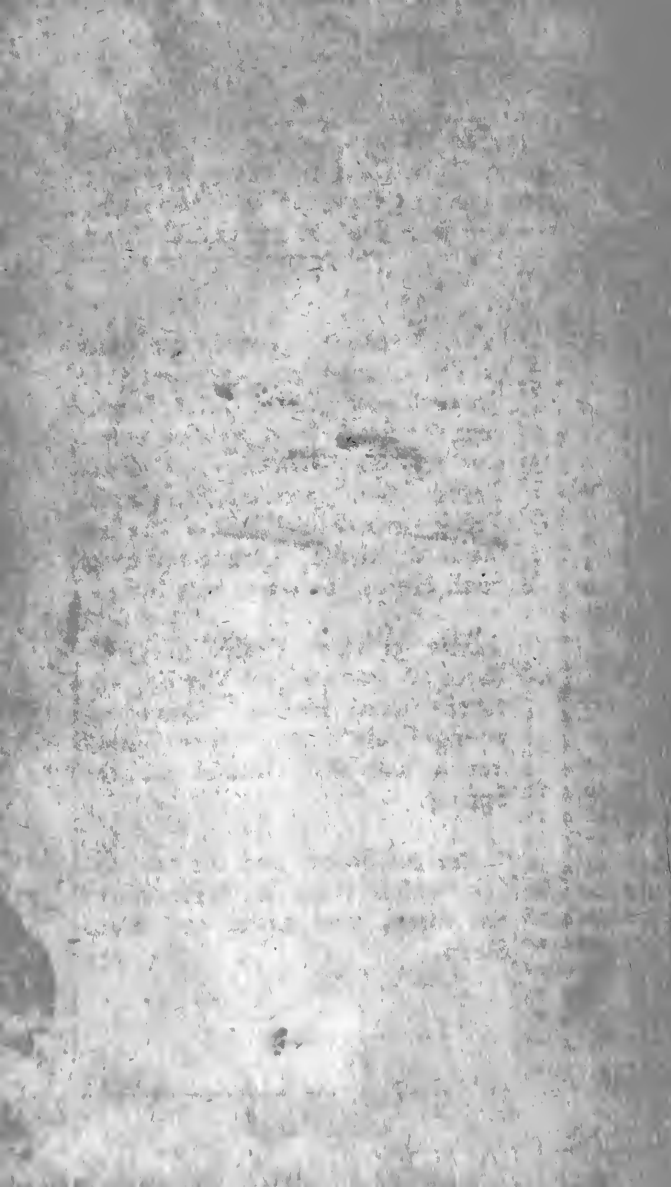
[ Price Stitch'd NINE-PENCE. ]



# JANUARY hath xxxi Days.

1	a	Circumcision	4	A 52	3	A 4	
2	b		6	24	3	42	Snow
3	c		7	55	4	17	or cold
4	D	2 S. after Christ.	9	21	4	58	Rain.
5	e	Old Christ. - Day	10	44	5	35	
6	f	Epiphany	Morn.		6	24	
7	g		0	8	7	16	
8	a	Lucian, Pr. & M.	1	30	8	14	
9	b		2	51	9	19	
10	c		4	9	10	29	Sharp
11	D	1 Sun. aft. Epiph.	5	22	11	38	Frosts,
12	e	Old N. Year's D.	Plow-Monday				and
13	f	Cam. Term beg.	7	10	0M	40	perhaps
14	g	Oxf. Term beg.	7	46	1	33	Snow.
15	a		D Riles		2	24	
16	b		5	A 55	3	0	
17	c	Old Twelfth-D.	7	6	3	29	
18	D	2 Sun. aft. Epiph.	8	15	3	54	
19	e	Q. Char. B.-D. kept.	9	23	4	22	
20	f	Fabian, B. & M.	10	32	4	51	Cold,
21	g	Agnes, V & M.	11	43	5	22	wet,
22	a		Morn.		5	59	and
23	b	Term begins	0	58	6	47	windy.
24	c		2	14	7	39	
25	D	3 Sun. aft. Epiph.	Conv. of St. Paul				
26	e		4	48	10	4	
27	f		5	51	11	25	Sharp
28	g		6	41	0A	37	frosty
29	a		7	16	1	43	Wea-
30	b	K. Cha. I. Mart.	D Sets		2	41	ther.
31	c		6	A 44	3	19	

Adams' 245.6



# Observations on January, 1767.

First Quarter the 7th Day, at 9 in the Morning.  
 Full Moon the 15th Day, at 1 in the Morning.  
 Last Quarter the 23d Day, at 6 in the Morning.  
 New Moon the 30th Day, at 4 in the Morning.

D	☉	R	☽	S
1	8	9	3	51
2	8	9	3	51
3	8	8	3	52
4	8	7	3	53
5	8	6	3	54
6	8	5	3	55
7	8	5	3	55
8	8	4	3	56
9	8	3	3	57
10	8	2	3	58
11	8	1	3	59
12	8	0	4	0
13	7	59	4	1
14	7	58	4	2
15	7	56	4	4
16	7	55	4	5
17	7	54	4	6
18	7	52	4	8
19	7	51	4	9
20	7	50	4	10
21	7	48	4	12
22	7	47	4	13
23	7	45	4	15
24	7	44	4	16
25	7	42	4	18
26	7	40	4	20
27	7	39	4	21
28	7	37	4	23
29	7	35	4	25
30	7	34	4	26
31	7	32	4	28

In this Month uncover the Roots  
 of Trees, and cover with Dung the  
 Roots of new-planted Trees, to pre-  
 vent the Frost from injuring them.  
 Cut all dead Branches off Fruit  
 Trees. Plant Quicksets, and cleanse  
 Trees from Moss. Sow Cresses,  
 Mustard, Radish, Letuce and other  
 small Herbs, in warm rich Soil.

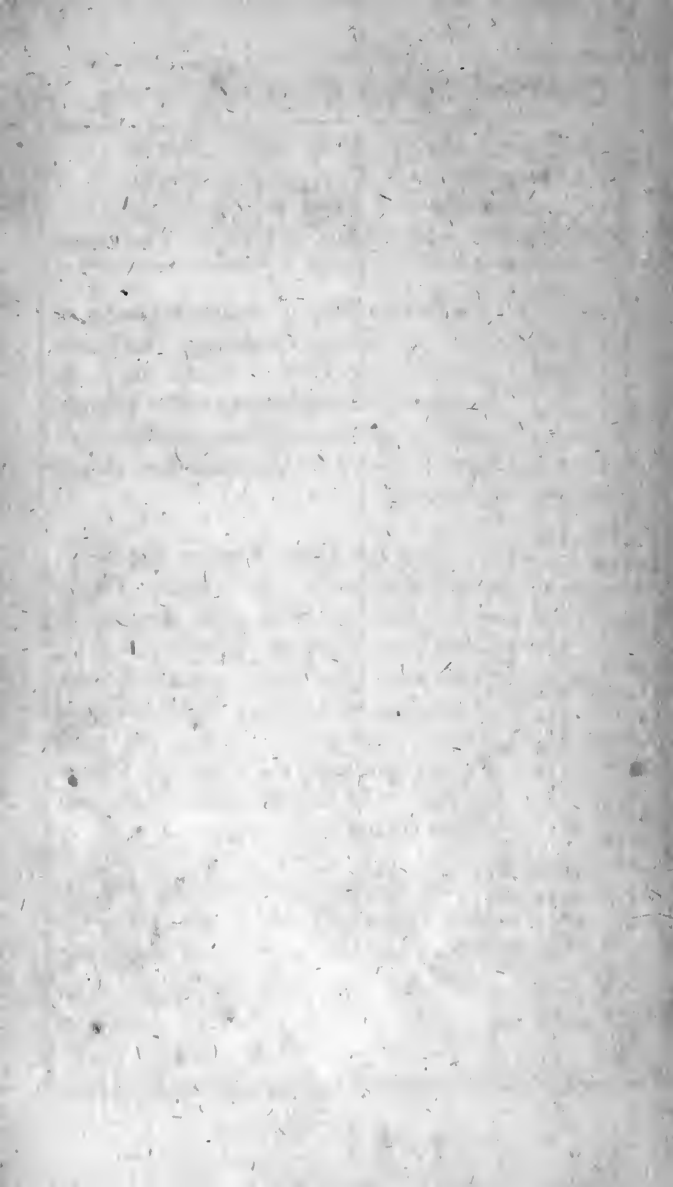
Sow Hotspur Pease, put fresh  
 Earth to your Sage, Thyme, and  
 other sweet Herbs. Transplan  
 young Fruit Trees, prune Vines  
 trench and soil Ground for the  
 Spring.

Let not Blood, and use no Phy-  
 sick, unless there be a Necessity:  
 Eat often, and avoid too much  
 Sleep.

# FEBRUARY hath xxviii Days.

M.D.	W.D.	Holy-Days and other Remarks.	Moon R.&S.	High Water.	Weather.
1	D	4 Sun. aft. Epiph.	8 A 13	3 A 52	Wind, with cold
2	e	Purif. B. V. Mary	9 39	4 27	
3	f	Blase, B. & M	11 4	5 6	Rain, or Snow.
4	g	Agatha, V. & M.	Morn.	5 47	
5	a		0 29	6 41	
6	b		1 51	7 39	
7	c		3 6	8 47	
8	D	5 Sun. aft. Epiph.	4 12	10 0	Sharp Air, and froly weather.
9	e		5 5	11 7	
10	f		5 44	Morn.	
11	g		6 11	0 9	
12	a	Term ends	6 33	1 0	
13	b	Old Candl. Day	D Rises	1 46	
14	c	Valentine	6 A 0	2 29	
15	D	Septuag.-Sunday	7 9	3 0	
16	e		8 18	3 27	
17	f		9 28	3 51	
18	g		10 42	4 19	
19	a		11 56	4 51	
20	b		Morn.	5 27	
21	e		1 13	6 15	Moderate Weather.
22	D	Sexagesima Sund.	2 28	7 12	
23	e		3 36	8 23	
24	f	St. Matthias	4 30	9 45	
25	g		5 11	11 3	
26	a		5 41	0 A 18	Wet and windy.
27	b		6 4	1 20	
28	c		D Sets	2 15	







# Observations on February, 1767.

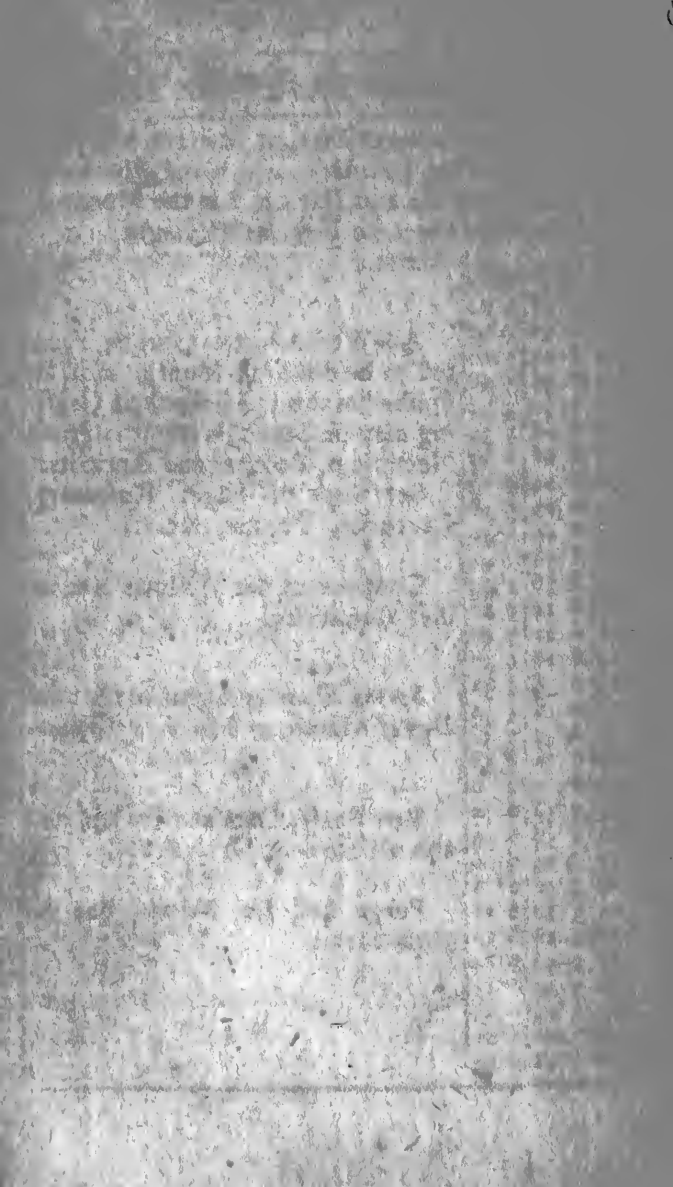
First Quarter the 5th Day, at 8 at Night.  
 Full Moon the 13th Day, at 8 at Night.  
 Last Quarter the 21st Day, at 9 at Night.  
 New Moon the 28th Day, at 2 in the Afternoon.

D	☉	R	☽	S	
1	7	30	4	30	In this Month remove Grafts of former Years Grafting. Cut and lay Quick Sets. Vines may be planted the Beginning of this Month, and Fruit that grows on Bunches. Set all Sorts of Kernels and strong Seeds.
2	7	29	4	31	
3	7	27	4	33	
4	7	26	4	34	
5	7	24	4	35	
6	7	22	4	38	
7	7	20	4	40	
8	7	18	4	42	
9	7	16	4	44	Sow on shady Borders the Seeds of Polyanthus. Sow Beans, Pease, Corn Salad, Marigold, Anniseeds, Radishes, Parsnips, Carrots, Onions, Garlick, Beets and Dutch Brown Letuce. Set Osiers, Willows, and other Aquaticks. Rub Moss off Trees after Rain. Cut off Caterpillars from Quicks and Trees, and burn them.
10	7	14	4	46	
11	7	12	4	48	
12	7	11	4	49	
13	7	9	4	51	
14	7	7	4	53	
15	7	5	4	55	
16	7	3	4	57	
17	7	1	4	59	
18	6	59	5	1	
19	6	57	5	3	
20	6	55	5	5	
21	6	53	5	7	
22	6	52	5	8	
23	6	50	5	10	Be sparing in Physick, and let not Blood without absolute Necessity, and be careful of catching Cold.
24	6	48	5	12	
25	6	46	5	14	
26	6	44	5	16	
27	6	42	5	18	
28	6	40	5	20	

# MAREH hath xxxi Days.

1	D	Shrove-Sunday	David	2	A	58	
2	e	Chad	8	A	38	3	33 Sharp
3	f	Shrove-Tuesday	10	6		4	5 Air
4	g	Ash-Wednesday	11	31		4	46 and
5	a	Prs. Hesse born	Morn.			5	28 frosty.
6	b		0	52		6	23
7	c	Perpetua	2	5		7	21
8	D	1 Sun. in Lent	3	4		8	28
9	e		3	48		9	36
10	f		4	19	10	41	
11	g	Ember-Week	4	42	11	39	
12	a	Gregory	5	1	Morn.		High
13	b		5	17	0	30	Winds
14	c		5	29	1	13	and
15	D	2 Sun. in Lent	D	Rises	1	52	some
16	e		7	A	23	2	33 Show-
17	f	St. Patrick	8	36	3	4	ers.
18	g	Edw. K. W. Sax.	9	51	3	32	
19	a	Prs. Lou. Anne b.	11	8	4	0	
20	b	Equal D. and N.	Morn.		4	36	
21	c	Benedict	0	22	5	16	More
22	D	3 Sun. in Lent	1	33	6	7	calm
23	e		2	30	7	9	and
24	f		3	14	8	19	tempe-
25	g	Lady-Day	D.	of York bo.			rate.
26	a		4	13	10	51	
27	b		4	31	11	59	
28	c		4	48	0	A	56
29	D	Midlent-Sunday	D	Sets	1	47	Wet
30	e		7	A	39	2	40 and
31	f		9	8	3	19	windy.





# Observations on March, 1767.

First Quarter the 7th Day, at 10 in the Morning.  
 Full Moon the 15th Day, at 3 in the Afternoon.  
 Last Quarter the 23d Day, at 8 in the Morning.  
 New Moon the 29th Day, at Midnight.

D	☉	R	☉	S.
1	6	38	5	22
2	6	36	5	24
3	6	34	5	26
4	6	32	5	28
5	6	30	5	30
6	6	28	5	32
7	6	26	5	34
8	6	24	5	36
9	6	22	5	38
10	6	20	5	40
11	6	18	5	42
12	6	16	5	44
13	6	14	5	46
14	6	12	5	48
15	6	10	5	50
16	6	8	5	52
17	6	6	5	54
18	6	4	5	56
19	6	2	5	58
20	6	0	6	0
21	5	58	6	2
22	5	56	6	4
23	5	54	6	6
24	5	52	6	8
25	5	50	6	10
26	5	48	6	12
27	5	46	6	14
28	5	44	6	16
29	5	42	6	18
30	5	40	6	20
31	5	38	6	22

All Works in the Garden directed to be done last Month, must be finished in this: All Sorts of Grafting may be done this Month: Prune Nectarines, Peaches and Apricots. Set Slips of Sage, Rosemary, Lavender, Thyme, &c.

Continue to set Willows and other Aquaticks.

*Spring Quarter begins on the 20th Day of March, at 8 in the Afternoon.*

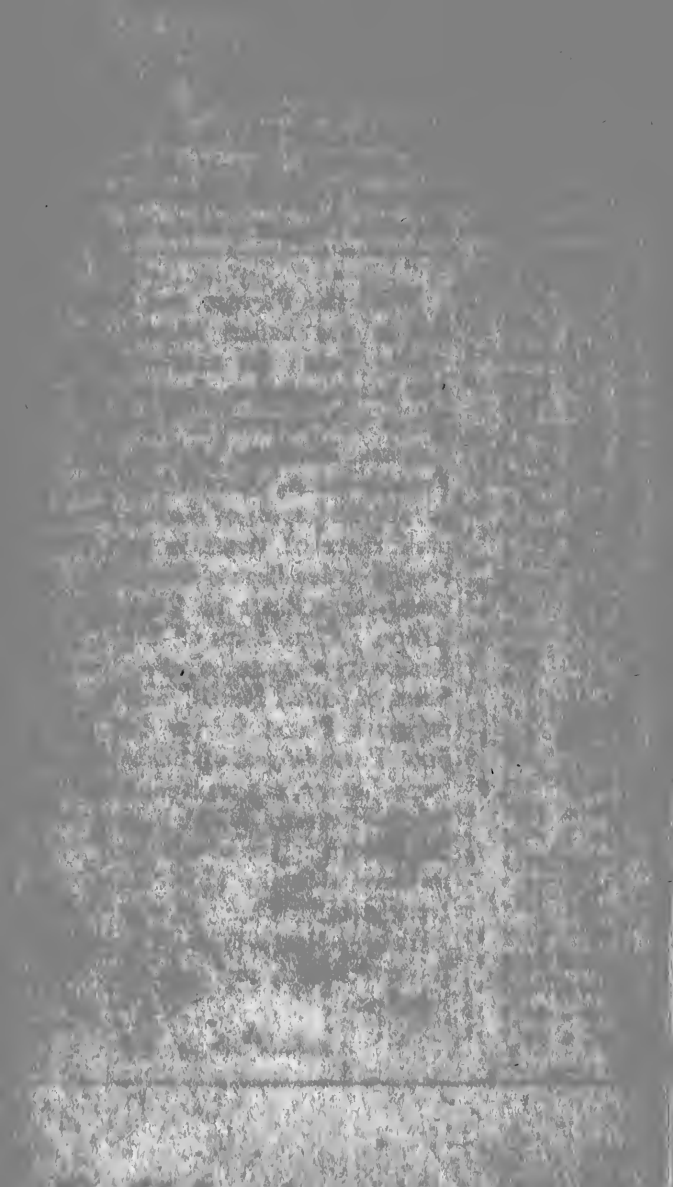
Sow Pease, Oats and Barley, and also all Sorts of Grass Seeds.

Purge and let Blood: Eat no gross Meats.

# APRIL hath xxx Days.

1	g		10 A 35	3 A 55	
2	a		11 53	4 36	Wind,
3	b	Richard	Morn.	5 18	but
4	c	St. Ambrose	0 59	6 9	mostly
5	D	5 Sun. in Lent	Old Lady-Day		fair.
6	e		2 28	8 5	
7	f		2 54	9 7	
8	g		3 15	10 7	
9	a		3 30	11 0	
10	b	Cam. Term ends	3 44	11 51	Some
11	c	Oxf. Term ends	3 56	Morn.	gentle
12	D	Palm-Sunday	4 8	0 36	Show-
13	e		4 20	1 20	ers
14	f		D Rises	2 4	about
15	g		9 A 2	2 46	this
16	a	Maundy Thurs.	10 19	3 20	time.
17	b	Good-Friday	11 30	3 51	
18	c		Morn.	4 30	
19	D	Easter-Day	0 31	5 14	
20	e	Monday	1 19	6 6	Fair
21	f	Tuesday	1 56	7 6	and
22	g		2 22	8 13	plea-
23	a	St. George	2 43	9 24	fant.
24	b		3 0	10 29	
25	c	St. Mark	3 15	11 32	
26	D	Low-Sunday	3 32	0 A 32	Wind
27	e		3 49	1 28	and
28	f		D Sets	2 25	some
29	g	Oxf. & Cam.-T. beg.	9 A 34	3 8	Show-
30	a		10 47	3 45	ers.







# Observations on April, 1767.

First Quarter the 6th Day, at 3 in the Morning.  
 Full Moon the 14th Day, at 7 in the Morning.  
 Last Quarter the 21st Day, at 4 in the Afternoon.  
 New Moon the 28th Day, at 9 in the Morning.

D	○	R	○	S	
1	5	36	6	24	<p>With the Farmer and Gardener this is the busiest Month in the whole Year; for now whatsoever you have a mind to plant or sow, the Earth is fit to receive. Hough your Carrots, Radishes, Onions, &amp;c. set French-Beans, plant Asparagus, separate the Layers of Artichokes, and plant three of them in one Hole. Plant Garden Beans, Rouncival and other large Pease to succeed other Crops. Plant Slips of Sage, Rue, Rosemary, Lavender, &amp;c. Sow all Sorts of Sallad Herbs, and Spinage in moist Places for the last Time. Sow Turnips, and all Sorts of Cabbage-Letuce, and transplant Cos and Silesia Letuces which were sown last Month. It is now a good Time to bleed and take Physick; abstain from much Wine, or other strong Liquors; they will cause a Ferment in your Blood, and ruin your Constitution.</p>
2	5	34	6	26	
3	5	32	6	28	
4	5	30	6	30	
5	5	28	6	32	
6	5	26	6	34	
7	5	25	6	35	
8	5	23	6	37	
9	5	21	6	39	
10	5	19	6	41	
11	5	17	6	43	
12	5	15	6	45	
13	5	13	6	47	
14	5	11	6	49	
15	5	9	6	51	
16	5	7	6	53	
17	5	5	6	55	
18	5	3	6	57	
19	5	2	6	58	
20	5	0	7	0	
21	4	58	7	2	
22	4	56	7	4	
23	4	54	7	6	
24	4	53	7	7	
25	4	51	7	9	
26	4	49	7	11	
27	4	47	7	13	
28	4	45	7	15	
29	4	44	7	16	
30	4	42	7	18	

# MAY hath xxxi Days.

1	b	S. Phil. and Jacob	11 A 46	4 A 24	
2	c		Morn.	5 7	Wind,
3	D	2 Sun. aft. Easter	0 29	5 52	but
4	e		1 0	6 42	not
5	f		1 23	7 30	much
6	g	Term begins	St. John, A.P.L.		Wet.
7	a		1 55	9 19	
8	b		2 8	10 11	
9	c		2 19	11 2	
10	D	3 Sun. aft. Easter	2 31	11 56	
11	e		2 45	Morn.	Some
12	f	Old May-Day	3 2	0 45	Show-
13	g		D Rises	1 35	ers,
14	a		9 A 21	2 27	about
15	b		10 28	3 8	this
16	c		11 19	3 45	Time.
17	D	4 Sun. aft. Easter	11 59	4 24	
18	e		Morn.	5 9	
19	f	Q. Charlotte bo.	Dunstan	5 58	
20	g		0 50	6 52	Fair,
21	a		1 8	7 49	and
22	b		1 24	8 50	windy.
23	c		1 40	9 57	
24	D	Rogation-Sunday	1 54	10 59	
25	e		2 13	0 A 7	Wind,
26	f	August. J. A. Ca. t.	2 36	1 4	and
27	g	Ven. Bede.	D Sets	2 3	some
28	a	Holy-Thurday	9 A 31	2 55	Show-
29	b	K. Cha. II. Rest	10 21	3 33	ers.
30	c		10 58	4 6	
31		6 Sun. aft. Easter	11 23	4 44	





# Observations on May, 1767.

First Quarter the 5th Day, at 9 in the Afternoon.  
 Full Moon the 13th Day, at 8 in the Afternoon.  
 Last Quarter the 20th Day, at 10 in the Afternoon.  
 New Moon the 27th Day, at 7 in the Afternoon.

D	☉	R	☽	S
1	4	40	7	20
2	4	38	7	22
3	4	36	7	24
4	4	34	7	26
5	4	33	7	27
6	4	31	7	29
7	4	29	7	31
8	4	28	7	32
9	4	26	7	34
10	4	24	7	36
11	4	23	7	37
12	4	21	7	39
13	4	20	7	40
14	4	19	7	41
15	4	17	7	43
16	4	16	7	44
17	4	15	7	45
18	4	13	7	47
19	4	12	7	48
20	4	10	7	50
21	4	9	7	51
22	4	8	7	52
23	4	7	7	53
24	4	5	7	55
25	4	4	7	56
26	4	3	7	57
27	4	2	7	58
28	4	1	7	59
29	4	0	8	0
30	3	59	8	1
31	3	58	8	2

Sow Cucumbers in the natural Ground, as also Parslane and Cabbages; sow Pease and Beans in a moist Soil for a latter Crop; plant Kidney-Beans for a second Crop, and transplant Sellery into Drills; hough your Winter Crop of Carrots, Beans, Onions, &c. which will save much Labour the succeeding Months. Sow Turnips, and if Rain comes soon after it will very much encourage the Plant. Sow Buck-Wheat and latter Pease. Weed young Quicksets and Ivy; fallow your Ground; lock well to your Sheep, if the Weather proves wet, for fear of a Rot. The Blood and Humours being now in Miction, we must be careful to avoid eating Salt, strong or stale Meats; fat People must avoid Excess of Liquors of any Kind.

# JUNE hath xxx Days.

1	e	Term ends	11 A 44	5 A 22	Wind,
2	f		11 59	6 2	but
3	g		Morn.	6 45	mottly
4	a	K. Geo. III. bo.	Oxf. Term ends		fair.
5	b	Boniface	0 24	8 15	
6	c		0 36	9 9	
7	D	Whit-Sunday	0 48	10 7	
8	e	Monday	1 4	11 5	
9	f	Tuesday	1 22	Morn.	Wind,
10	g	Ember-Week	Prs. Amelia bo.		and
11	a	St. Barnabas	2 23	1 5	some
12	b		D Rises	2 4	Show-
13	c		9 A 54	2 55	ers.
14	D	Trinity-Sunday	10 28	3 35	
15	e		10 51	4 12	
16	f		11 11	4 54	
17	g	Oxf. Term beg.	Alban	5 35	
18	a	Corpus Christi	11 42	6 25	Hot
19	b	Term begins	11 57	7 16	and
20	c	Tr. Edw. K. W. S.	Morn.	8 13	dry
21	D	1 Sund. aft. Trin.	Longest-Day		Wea-
22	e		0 34	10 28	ther.
23	f		1 1	11 37	
24	g	St. John Baptist	1 37	0 A 42	
25	a		2 26	1 41	Hot
26	b		D Sets	2 36	and
27	c		9 A 21	3 15	fultry,
28	D	2 Sund. aft. Trin.	9 42	3 46	perhaps
29	e	St. Peter & Paul	9 58	4 13	Thun-
30	f		10 13	4 46	der.







# Observations on June, 1767.

First Quarter the 4th Day, at 3 in the Afternoon.  
 Full Moon the 12th Day, at 7 in the Morning.  
 Last Quarter the 19th Day, at 3 in the Morning.  
 New Moon the 26th Day, at 6 in the Morning.

D	☉	R	☽	S	
1	3	57	8	3	Sow Broccoli the Beginning of
2	3	56	8	4	this Month for a second Crop.
3	3	55	8	5	Transplant Sellery for blanching;
4	3	55	8	5	transplant Cabbage and Savoy Plants
5	3	54	8	6	for Winter Use. Sow Kidney-
6	3	53	8	7	Beans and brown Dutch Cabbage-
7	3	53	8	7	Lettuce for a late Crop.
8	3	52	8	8	
9	3	51	8	9	Gather such Herbs for drying as
10	3	51	8	9	are now in Flower, and let them
11	3	50	8	10	dry leisurely in a shady Place, and
12	3	50	8	10	not in the Sun. Sow all Sorts of
13	3	50	8	10	small Sallad Herbs every three or
14	3	49	8	11	four Days. Keep your Garden
15	3	49	8	11	free from all Sorts of Weeds, for
16	3	48	8	12	they spoil whatever Plants they are
17	3	48	8	12	near. Weed your Corn, and sow
18	3	48	8	12	Rape, Cole-Seed, and Turnip-Seed.
19	3	48	8	12	
20	3	47	8	13	
21	3	47	8	13	
22	3	47	8	13	
23	3	48	8	12	<i>The Summer Quarter begins the</i>
24	3	48	8	12	<i>21st of June, at 7 in the Afternoon.</i>
25	3	48	8	12	
26	3	48	8	12	Cooling Sallads, as Letuce, Sor-
27	3	48	8	12	rel, Purslane, &c. will prevent too
28	3	49	8	11	great a Perspiration, and throw off
29	3	49	8	11	feverish Disorders.
30	3	50	8	10	

# JULY hath xxxi Days.

1	g		10 A 20	5 A 17	
2	a	Visita . P. V. M.	10 36	5 51	Fair
3	b		10 48	6 32	and
4	c		11 3	7 17	very
5	D	3 Sund. aft. Trin.	Old Midf.-Day		hot
6	e		11 41	9 11	Wear-
7	f	Cam. Commenc.	Tho. à Becket		ther.
8	g	Term ends	0 M 10	11 31	
9	a		0 52	Morn.	
10	b	Cam. Term ends	1 50	0 40	Wind,
11	c		D Rises	1 43	and
12	D	4 Sund. aft. Trin.	8 A 49	2 40	some
13	e	Oxford Act beg.	9 11	3 21	Show-
14	f		9 28	3 56	ers.
15	g	Swithia	9 44	4 32	
16	a		9 58	5 10	
17	b		10 15	5 52	
18	c	Oxf. Term ends	10 35	6 44	
19	D	5 Sund. aft. Trin.	11 1	7 42	Hot
20	e		11 33	8 49	and
21	f		Morn.	10 3	dry -
22	g	Q. Denmark bo.	St. Mary Mag.		Wear-
23	a		1 14	0 A 22	ther.
24	b		2 20	1 18	
25	c	St. James	D Sets		2 9
26	D	6 Sund. aft. Trin.	S. Anne		2 51
27	e		8 A 18	3 22	Hot
28	f		8 31	3 47	and
29	g		8 42	4 12	fultry,
30	a	Dog-Days begin	8 54	4 43	perhaps
31	b		9 7	5 13	Thunder.





# Observations on July, 1767.

First Quarter the 4th Day, at 7 in the Morning.  
 Full Moon the 11th Day, at 4 in the Afternoon.  
 Last Quarter the 18th Day, at 8 in the Morning.  
 New Moon the 25th Day, at 7 in the Afternoon.

D	☉	R	☽	S
1	3	50	8	10
2	3	51	8	9
3	3	51	8	9
4	3	52	8	8
5	3	52	8	8
6	3	53	8	7
7	3	53	8	7
8	3	54	8	6
9	3	55	8	5
10	3	56	8	4
11	3	57	8	3
12	3	58	8	2
13	3	59	8	1
14	4	0	8	0
15	4	1	7	59
16	4	2	7	58
17	4	3	7	57
18	4	4	7	56
19	4	5	7	55
20	4	6	7	54
21	4	8	7	52
22	4	9	7	51
23	4	10	7	50
24	4	12	7	48
25	4	13	7	47
26	4	15	7	45
27	4	16	7	44
28	4	18	7	42
29	4	19	7	41
30	4	21	7	39
31	4	22	7	38

Sow Turnips and Onions to stand  
 the Winter; as also Carrots, Cole-  
 worts and Cauliflowers. Keep your  
 Garden clean from Weeds, and do  
 not neglect to weed in this Month  
 your new-planted Quicks.

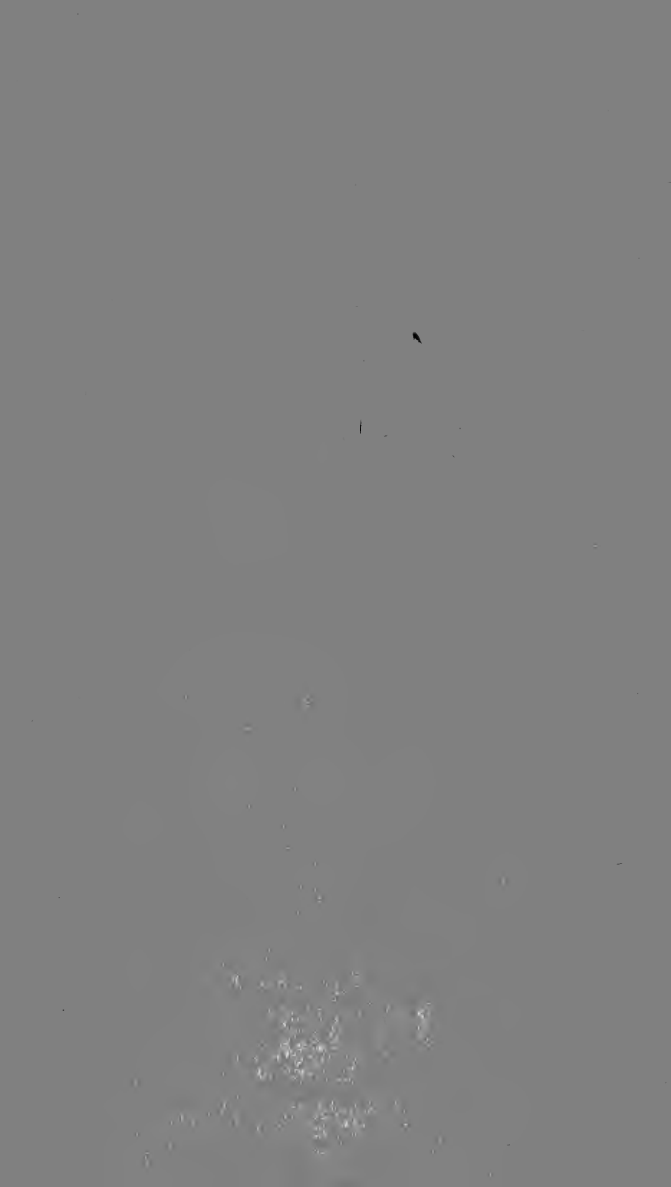
Gather such Seeds as are ripe, as  
 also Flowers, and dry them in the  
 Shade, and then in the Sun.

Forbear superfluous Drinking.  
 Use cold Herbs. Shun boil'd, salt  
 and strong Meats, and abstain from  
 Physick.

# AUGUST hath xxxi Days.

1	c	Lammas Day	9	A 22	5	A 49	Good
2	D	7 Sund. aft. Trin.	9	41	6	36	Har-
3	e		10	6	7	30	vest
4	f		10	41	8	34	Wea-
5	g		11	30	9	49	ther,
6	a	Transfiguration	Morn.	11	5		now
7	b	Name of Jesus	0	35	Morn.		about.
8	c		1	55	0	19	
9	D	8 Sund. aft. Trin.	D	Rises	1	23	
10	e	St. Laurence	7	A 32	2	20	Wind,
11	f	Prs. Brunswick b.	7	49	3	5	and
12	g	Pr. Wales born	O.	Lammas Day			some
13	a		8	22	4	10	Show-
14	b		8	41	4	51	ers.
15	c	Assumpt. B. V. M.	9	6	5	33	
16	D	9 Sund. aft. Trin.	Pr.	Frederick b.			
17	e		10	19	7	24	Fair
18	f		11	10	8	33	and
19	g		Morn.		9	49	hot
20	a		0	14	10	58	Wea-
21	b	Pr. Will. Hen. b.	1	25	0	A 3	ther.
22	c		2	37	0	55	
23	D	10 Sun. aft. Trin.	3	50	1	40	
24	e	St. Bartholomew	D	Sets	2	23	
25	f		6	A 54	2	56	Some
26	g		7	7	3	24	Show-
27	a		7	19	3	49	ers,
28	b	St. Augustine	7	35	4	15	at the
29	c	Decol. St. J. Bapt.	7	52	4	48	End.
30	D	11 Sun. aft. Trin.	8	15	5	24	
31	e		8	45	6	11	







# Observations on August, 1767.

First Quarter the 2d Day, at 11 at Night.

Full Moon the 9th Day, at Midnight.

Last Quarter the 16th Day, at 2 in the Afternoon.

New Moon the 24th Day, at 10 in the Morning.

D	☉	R	☽	S
1	4	24	7	36
2	4	25	7	35
3	4	27	7	33
4	4	28	7	32
5	4	30	7	30
6	4	32	7	28
7	4	33	7	27
8	4	35	7	25
9	4	36	7	24
10	4	38	7	22
11	4	40	7	20
12	4	41	7	19
13	4	43	7	17
14	4	45	7	15
15	4	47	7	13
16	4	49	7	11
17	4	50	7	10
18	4	52	7	8
19	4	54	7	6
20	4	56	7	4
21	4	58	7	2
22	4	59	7	1
23	5	1	6	59
24	5	3	6	57
25	5	5	6	55
26	5	7	6	53
27	5	9	6	51
28	5	10	6	50
29	5	12	6	48
30	5	14	6	46
31	5	16	6	44

Sow Cauliflowers, Spinage, Onions, Cabbages, Coleworts, Lettuce, Cresses, Chervil, and Corn-Sallad, for Winter Use. Transplant Broccoli into the Ground, where it is to remain for flowering. Plant Slips of Savory, Thyme, Sage, Hyssop, Rosemary, Lavender, Mastick, and other aromattick Plants. Continue to sow Rape, Radish, Mustard, Cresses, and Turnip-Seed, every Week; they will now soon grow large enough for Use.

This Month use moderate Diet; forbear to sleep soon after Meat; for that brings Opilations, Headachs, Agues, and Cathars, and other Distempers of the same Kind. Take great Care of sudden Cold after Heat.

# SEPTEMBER hath xxx Days.

1	f	Giles	9 A 27	7 A 6	
2	g	London burnt	10 24	8 14	Wind,
3	a	1666	11 35	9 34	but
4	b		Morn.	10 49	mostly
5	c		0 59	Morn.	fair.
6	D	12 Sun. aft. Trin.	2 28	0 3	
7	e	Dog-Days end	3 59	1 4	
8	f	Nativ. B. V. M.	D Riles	2 1	Some
9	g		6 A 34	2 48	Show-
10	a		6 54	3 25	ers,
11	b		7 16	3 59	about
12	c		7 45	4 40	this
13	D	13 Sun. aft. Trin.	8 24	5 23	Time.
14	e	Holy-Cross-Day	9 14	6 17	
15	f		10 15	7 17	
16	g	Ember-Week	11 24	8 26	
17	a	Lambert	Morn.	9 34	
18	b		0 36	10 38	Fair,
19	c		1 47	11 39	and
20	D	14 Sun. aft. Trin.	2 59	0 A 30	very
21	e	St. Matthew	4 8	1 13	plea-
22	f	K. Geo. III. Cr.	5 18	1 52	sant.
23	g	Equal D. and N.	D Sets	2 32	
24	a		5 A 51	3 3	
25	b		6 10	3 31	
26	c	St. Cyprian	6 30	3 59	
27	D	15 Sun. aft. Trin.	6 57	4 34	Wind,
28	e		7 35	5 14	and
29	f	St. Michael	Pfs. Royal born		some
30	g	St. Jerome	9 30	7 2	Rain.





# Observations on September, 1767.

First Quarter the 1st Day, at 1 in the Afternoon.

Full Moon the 8th Day, at 8 in the Morning.

Last Quarter the 15th Day, at 1 in the Morning.

New Moon the 23d Day, at 3 in the Morning.

D	☉	R	☽	S
1	5	18	6	42
2	5	20	6	40
3	5	22	6	38
4	5	24	6	36
5	5	26	6	34
6	5	28	6	32
7	5	30	6	30
8	5	32	6	28
9	5	34	6	26
10	5	36	6	24
11	5	38	6	22
12	5	40	6	20
13	5	41	6	19
14	5	43	6	17
15	5	45	6	15
16	5	47	6	13
17	5	49	6	11
18	5	51	6	9
19	5	53	6	7
20	5	55	6	5
21	5	57	6	3
22	5	59	6	1
23	6	1	5	59
24	6	3	5	57
25	6	5	5	55
26	6	7	5	53
27	6	9	5	51
28	6	11	5	49
29	6	13	5	47
30	6	15	5	45

Plant Liquorice Roots about two Feet asunder, in a moistish Earth. Set Artichokes, and sow Seeds for Winter-Herbs. Sow Wheat and Rye. Cut Quicks towards the End of the Month.

Sow Parsnips and Carrots in a free open Air, and moistish Soil.

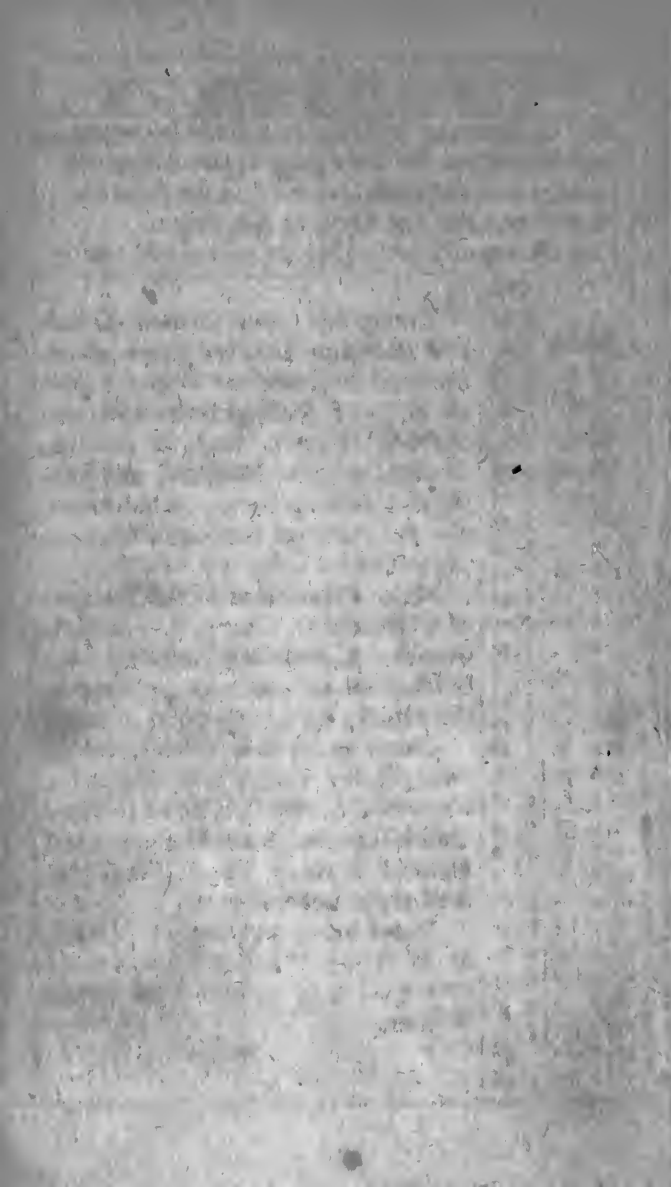
Remove and set Slips of Flowers. Set Rows of Strawberries, and Barberries.

*Autumn, or Harvest-Quarter, begins the 23d of September, at 8 in the Morning.*

# OCTOBER hath xxxi Days.

1	a	Remigius	10 A 46	8 A 8	Moderate Weather.
2	b		Morn.	9 20	
3	c		0 9	10 33	
4	D	16 Sun. aft. Trin.	1 35	11 42	
5	e		3 5	Morn.	Windy and wet Weather.
6	f	Faith, V. & M.	4 33	0 43	
7	g		D Rises	1 38	
8	a		5 A 25	2 32	
9	b	St. Dennis	5 52	3 13	
10	c	Oxf. Cam. Term beg.	Old Mich.	Day	
11	D	17 Sun. aft. Trin.	7 13	4 32	
12	e		8 12	5 18	
13	f	Tr. K. Edw. Con.	9 20	6 9	Windy, but fair, for the most part.
14	g		10 32	7 6	
15	a		11 45	8 7	
16	b		Morn.	9 7	
17	c	Etheldred	0 57	10 4	
18	D	18 Sun. aft. Trin.	S. Luke	10 57	
19	e		3 15	11 49	
20	f		4 24	0 A 33	
21	g		5 32	1 17	
22	a		D Sets	2 1	
23	b		4 A 42	2 44	Crispin
24	c		5 8	3 17	
25	D	19 Sun. aft. Trin.	K. Geo. III.	In.	
26	e	K. Geo. III. Proc.	6 30	4 26	
27	f		7 28	5 8	
28	g	St. Simon & Jude	8 30	5 58	
29	a		9 59	6 54	
30	b		11 21	7 57	
31	c		Morn.	9 0	







# Observations on October, 1767.

First Quarter the 1st Day, at 1 in the Morning.  
 Full Moon the 7th Day, at 5 in the Afternoon.  
 Last Quarter the 14th Day, at 3 in the Afternoon.  
 New Moon the 22d Day, at 8 at Night.  
 First Quarter the 30th Day, at 11 in the Morning.

D	☉	R	☽	S
1	6	17	5	43
2	6	19	5	41
3	6	21	5	39
4	6	23	5	37
5	6	25	5	35
6	6	27	5	33
7	6	29	5	31
8	6	31	5	29
9	6	32	5	28
10	6	34	5	26
11	6	36	5	24
12	6	38	5	22
13	6	40	5	20
14	6	42	5	18
15	6	44	5	16
16	6	46	5	14
17	6	48	5	12
18	6	50	5	10
19	6	52	5	8
20	6	54	5	6
21	6	56	5	4
22	6	58	5	2
23	7	0	5	0
24	7	2	4	58
25	7	4	4	56
26	7	6	4	54
27	7	8	4	52
28	7	9	4	51
29	7	11	4	49
30	7	13	4	47
31	7	14	4	46

Transplant your brown Dutch  
 and common Letuces upon warm  
 Borders, to abide the Winter; sow  
 all Sorts of Sallad-Herbs upon de-  
 cay'd Hot-Beds, such as Letuce,  
 Cresses, Radish, Mustard, and Spi-  
 nage. Earth up Sellery, Chardoons,  
 and the Stems of Broccoli Plants, to  
 protect them from the Frost.

Make Plantations of the Suckers  
 of Gooseberries, Currants, and Ras-  
 berries. Cut Artichokes with long  
 Stalks, which you may preserve in  
 the House, by setting them in Sand.

Continue to sow Wheat, set up  
 your Barley Land, sow Malts for  
 Coppices or Hedge-Rows; plant  
 Quick-Sets and plash Hedges; and  
 plant all Sorts of Forest-Trees that  
 shed their Leaves.

Avoid being out late at Nights,  
 or in foggy Weather; for a Cold  
 now got, may continue the whole  
 Winter.

# NOVEMBER hath xxx Days.

1	D	20 Sun. aft. Trin.	All Saints	10	A	6	Mode-
2	e	All Souls	2 M 10	11	11		rate
3	f		3 36	Morn.			Wea-
4	g		5 5	0	15		ther.
5	a	Papists Conspir.	6 35	1	14		
6	b	Term begins	Leonard	2	12		
7	c	D. of Cumb. bo.	D Rifez	3	1		Wind,
8	D	21 Sun. aft. Trin.	5 A 59	3	41		and
9	e	L. Mayor's D. Lond.	7 4	4	18		fre-
10	f		8 17	5	3		quent
11	g	St. Martin	9 32	5	46		Show-
12	a		10 45	6	37		ers.
13	b	Britius	11 54	7	25		
14	c		Morn.	8	16		
15	D	22 Sun. aft. Trin.	1 3	9	9		
16	e		2 11	10	2		
17	f	Hugh, Bp. Linc.	3 20	10	53		
18	g		4 28	11	47		Dark,
19	a		5 38	0 A 36			cloudy
20	b	Edmund, K. & M.	6 50	1	27		Wea-
21	c		D Sets	2	19		ther,
22	D	23 Sun. aft. Trin.	O. Martin.	Day			and
23	e	St. Clement	5 A 19	3	38		some
24	f		6 26	4	12		Rain.
25	g	D. of Glouc. bo.	7 43	4	55		
26	a		9 5	5	37		
27	b		10 28	6	28		Wind,
28	c	Term ends	11 50	7	20		but
29	D	Advent-Sunday	Morn.	8	19		mostly
30	e	St. Andrew	Prs. Dowager of Wales born				fair.





# Observations on November, 1767.

Full Moon the 6th Day, at 2 in the Morning.  
 Last Quarter the 13th Day, at 10 in the Morning.  
 New Moon the 21st Day, at 1 in the Afternoon.  
 First Quarter the 28th Day, at 8 at Night.

D	☉	R	☽	S
1	7	16	4	44
2	7	18	4	42
3	7	20	4	40
4	7	21	4	39
5	7	23	4	37
6	7	25	4	35
7	7	27	4	33
8	7	29	4	31
9	7	30	4	30
10	7	32	4	28
11	7	34	4	26
12	7	36	4	24
13	7	37	4	23
14	7	39	4	21
15	7	40	4	20
16	7	42	4	18
17	7	44	4	16
18	7	45	4	15
19	7	46	4	14
20	7	48	4	12
21	7	49	4	11
22	7	50	4	10
23	7	52	4	8
24	7	53	4	7
25	7	54	4	6
26	7	56	4	4
27	7	57	4	3
28	7	59	4	1
29	8	0	4	0
30	8	1	3	59

If the Season prove mild, you may continue to prune Apple-Trees; be they Standards, Wall-Fruit, or Espaliers; but you should not prune them later, lest Rains and Frosts should hurt the Trees, when the Wounds are fresh.

Trench your Ground, by laying it up in Ridges to mellow. Set Crab-Tree Stocks to graft on; continue to plant Suckers and Cuttings of Gooseberries, Currants, and Raspberries; make Hot-Beds for Asparagus; fell Coppices, and lop Trees; plant Timber and Fruit-Trees, if the Weather be open.

The best Physick this Month is good Exercise, warm Clothes, and wholesome Diet: But if any Disorder afflict you, finish your Physick this Month, and so rest till *March*.

# DECEMBER hath xxxi Days.

1	f		2M36	10A30	
2	g		4 1	11 39	Dark, cloudy Wea- ther.
3	a		5 27	Morn.	
4	b		6 51	0 44	
5	c		D Rises	1 45	
6	D	2 Sun. in Advent	4A3	2 43	
7	e		5 46	3 23	
8	f	Conc. B. V. M.	7 2	3 57	
9	g		8 17	4 36	
10	a		9 29	5 10	
11	b		10 39	5 48	Frosty Wea- ther, about this Time.
12	c		11 46	6 30	
13	D	3 Sun. in Advent	Morn.	7 13	
14	e		0 54	7 59	
15	f		2 2	8 50	
16	g	Ember-Week	Cam. Term ends		
17	a	Oxf. Term ends	4 23	10 46	
18	b		5 35	11 47	
19	c		6 45	0A46	
20	D	4 Sun. in Advent	7 48	1 43	Cold Rain, Snow, or Sleet.
21	e	St. Thomas	Short	Day	
22	f		D Sets	3 20	
23	g		6A39	3 54	
24	a		8 3	4 30	
25	b	Christmas-Day	9 25	5 9	
26	c	St. Stephen	10 47	5 51	
27	D	1 Sun. aft. Christ	St. John, Evang.		
28	e	Holy Innocents	0M9	7 32	
29	f		1 32	8 37	Frosty Wea- ther.
30	g		2 56	9 50	
31	a	Silvester	4 19	11 5	