



Digitized by the Internet Archive
in 2013

<http://archive.org/details/royalpurple21corn>

ALLEN COUNTY PUBLIC LIBRARY



3 1833 01234 4682

GENEALOGY
977.702
M865CC
1922

The
Royal
Purple
Vol. 21.

The Royal Purple



The Annual of
the Class of
Nineteen Hun-
dred Twenty-two
of Cornell
College.

Johnson

To
Professor William H. Norton

—one whose tireless and faithful endeavor, whose scholarship and broad range of interests have the esteem and respect of every Cornell Student, this book is affectionately dedicated.





Foreword

Quips for the merry, laughter for the light of heart, stories, scenes and sayings are the materials from which our book is made. Recorded in its pages are the events of the past year, and through this simple chronicle of happenings we have tried to reveal the spirit and achievements of the "College on the Hill".

To please our readers, to portray the life of Cornell, and to bring back memories of youthful, student days, has been our threefold purpose. With that aim in view, we present the 1922 ROYAL PURPLE for your consideration.

The Contents

BOOK ONE THE COLLEGE

BOOK TWO THE CLASSES

BOOK THREE ATHLETICS

BOOK FOUR ORGANIZATIONS

BOOK FIVE POTPOURRI



The College



CHAPEL—*“Thy vine clad walls, thy storied halls,
Stand where the shadows slant across the hill.”*

Nineteen—Twenty-two



BOWMAN HALL—*How many a tale of love and youth
This hall could tell!*



GUILD—*An edifice with a checkered career but an unsullied reputation.*





SOUTH HALL—*Mid sunshine and shade old South Hall has sheltered reluctant yet eager youth.*

Nineteen — Twenty-two



MAIN HALL—*From the days of entrance to those of graduation, Main Hall holds our joys and our sorrows.*





SCIENCE HALL—*Where science opens to the student the mysteries of life.*

Nineteen → Twenty-two



FOUNTAIN—Here youth has found the fountain for which Ponce de Leon searched vainly.



ROOD HOUSE—*Maidens live within and often charm the sterner sex to enter.*

yr. Nineteen ~~to~~ Twenty-two

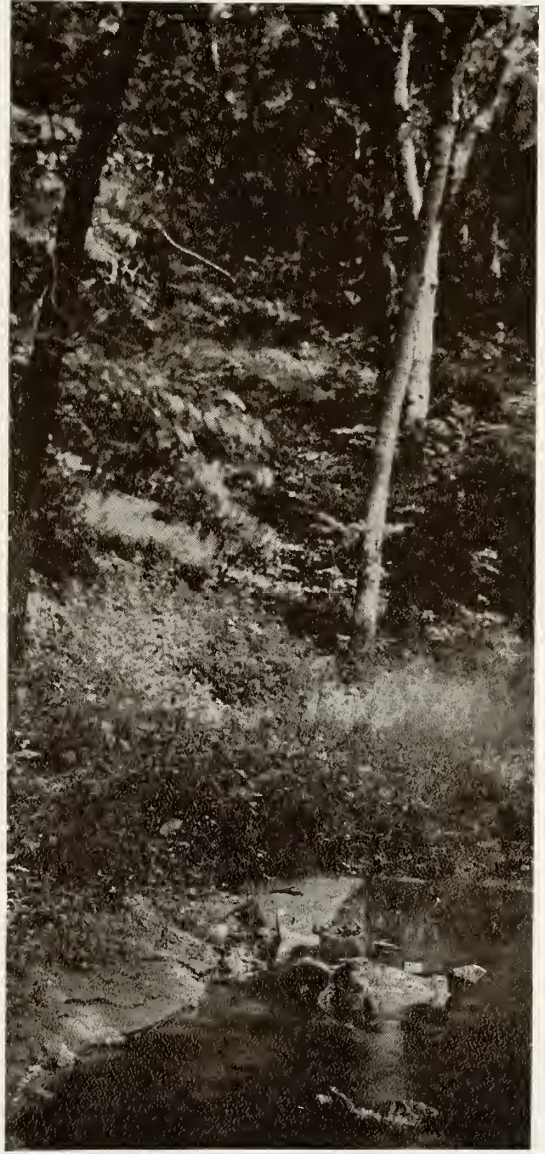


LIBRARY—*Its rooms are thronged with seekers after knowledge.
Its steps become a rendezvous for youth.*

Nineteen—Twenty-two



ROCK—Beside this monument the student finds a welcome rest amid a busy campus.

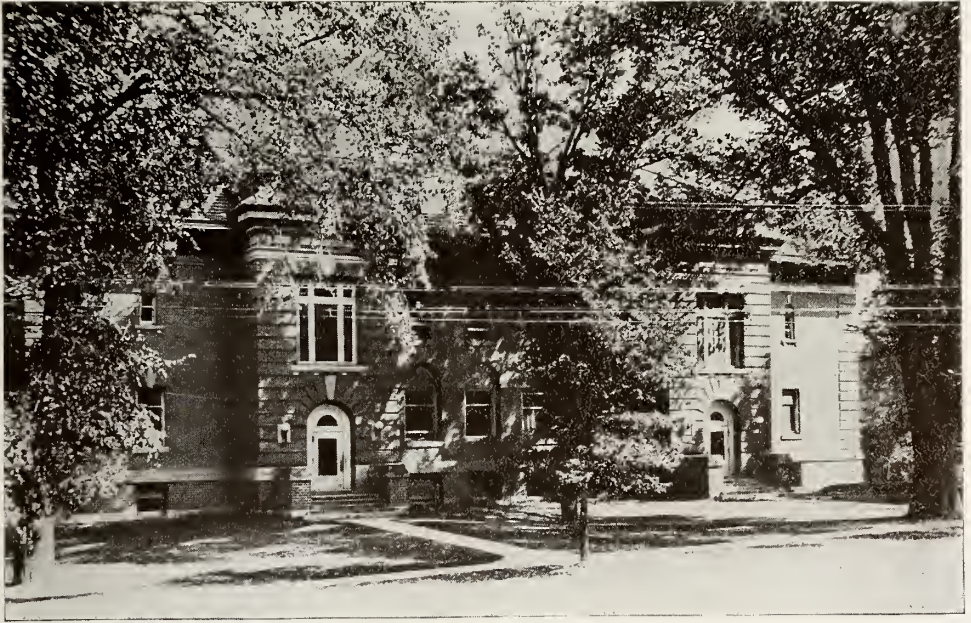


PALISADES—*The dearest memories of college days are those associated with the truest of Cornell friends—the Pal.*



ALTOONA—*Its walls once echoed to the martial tread, but now they hold a gentler tenancy.*

Nineteen — Twenty-two



GYMNASIUM—*Brawn and brain combine herein to win new honors for the Purple and the White.*





PREXY'S HOME—*Here dwells the master mind.*

the Nineteen and Twenty-two



CAMPUS—*“Thy wooded slope, thy templed steep,
Call back to Old Cornell.”*



FAIR OLD CORNELL

Nineteen-twenty-two



Faculty



CHARLES WESLEY FLINT, A. M., LL. D.
President of Cornell College



HENRY ALBERT MILLS, Professor of Fine Arts.

JESSIE RIGBY, A. B., Librarian.

ROCKWELL C. JOURNEY, A. M., Professor of Economics
and Business Administration.

LOUIS R. HERRICK, A. M., PH. D., Professor of Ro-
mance Languages.



WILLIAM E. A. SLAGHT, A. M., S. T. B., Professor of
Psychology and Philosophy.

RUTH E. REED, A. M., Chairman of the Women's Ad-
ministrative Committee, and Instructor in English.

CLYDE TULL, PH. B., A. M., Professor of English.

ELMER A. OLANDER, Principal of Cornell Academy.





ELMER E. MOOTS, M. S., C. E., Professor of Mathematics and Engineering.

ELISA GERTRUDE MADISON, A. B., A. M., Instructor in English, and Dean of Bowman Hall.

RALPH E. HIMSTEAD, A. B., Professor of Public Speaking.

MAY L. FAIRBANKS, PH. B., Librarian.

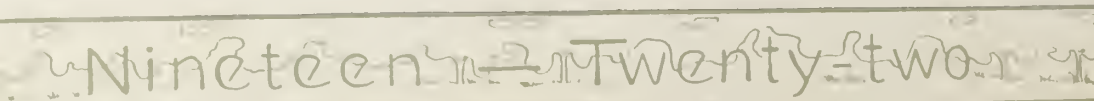


OTIS H. MOORE, A. B., Alumni Secretary, and Instructor of Sociology.

WILLIAM STAHL EBERSOLE, A. M., LITT. D., Professor of Greek and Archaeology.

EDITH THURLOW, Instructor in Piano.

FREDERICK MILTON MCGAW, A. B., A. M., B. S., Professor of Mathematics.





ETHEL TRAUTMAN, B. S., Instructor in Home Economics.

HORACE ALDEN MILLER, MUS. BAC., Professor of Organ, Harmony, and Counterpoint.

HARRY MCCORMICK KELLY, A. B., A. M., LL. D., Professor of Biology.

ELSIE BARRETT, Financial Secretary.



OTTIS PATTON, MUS. BAC., Instructor in Voice.

ALICE R. BETTS, Secretary to the President.

LOUIES M. BROCKMAN, Matron of Bowman Hall.

WILLIAM HARMON NORTON, A. B., A. M., LL. D., Professor of Geology.



SIDNEY LEVI CHANDLER, A. B., A. M., Professor of Sociology.

M. ESTELLE ANGIER, A. B., B. P. E., Director of Physical Education for Women.

ANNE PIERCE, Instructor in Voice.

NICHOLAS KNIGHT, A. B., A. M., PH. D., Professor of Chemistry.



RUBY CLARE WADE, A. B., A. M., Instructor in French.

ORRIN HAROLD SMITH, A. B., A. M., PH. D., Professor of Physics.

ROSE EVELYN BAKER, PH. B., Professor of Oratory.

EDWARD R. RISTINE, A. M., College Bookkeeper.





FRANK HOLCOMB SHAW, MUS. BAC., Professor of Piano-forte, and Director of the Conservatory of Music.

LAURA F. RISTINE, Office Secretary.

JOHN MERRILL BRIDGHAM, A. B., A. M., PH. D., Professor of Latin.

SHERMAN WILLIAM FINGER, PH. B., Director of Physical Training for Men.



CHARLES REUBEN KEYES, A. M., PH. B., Professor of the German Language and Literature.

M. LILLIAN SMEDLEY, PH. B., Instructor in English.

ERWIN O. FINKENBINDER, A. M., PH. D., Professor of Education.

HENRY CLAY STANCLIFT, PH. B., PH. D., Professor of History and Politics.



CLYDE E. WILDMAN, S. T. B., Professor of Bible.
 GLADYS ELEANOR PHELPS, R. N., College Nurse.
 TRACY E. THOMPSON, M. A., Instructor in Economics,
 and Executive Secretary.
 DOROTHY SCOTT HIMSTEAD, A. B., Instructor in French.



ARTHUR L. PHELPS, A. B., Instructor in English.
 CLARICE HELEN DILLENBERG, A. M., Instructor in
 Home Economics.
 HELEN TRIPLET JOURNEY, A. B., Instructor in Eco-
 nomics.
 DANIEL LEONARD HUFFMAN, MUS. BAC., Instructor
 in Piano.
 ARLO SANDERSON, B. A., Assistant Director of Men's
 Physical Training.
 GLENN ROUSE, A. B., Instructor in Mathematics.
 MYRTLE JOHNSTON, A. M., M. S., Bowman Hall Ma-
 tron, and Instructor in Domestic Science.



**AT
EASE**



Nineteen Twenty-two



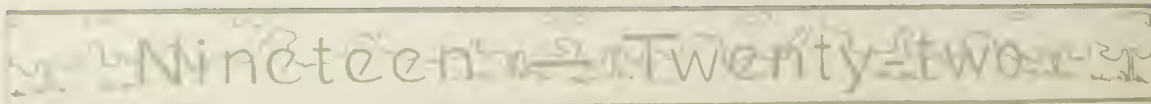
In Memoriam

DEAN HAMLIN HURLBURT FREER

Died August 26, 1920

With all his admirable qualities he was unswerving in the cause of the right when his duty was clear. We can hardly expect to see his like again, though the Providence that has favored us in the past will care for us in the future. It will be hard to find a man as good, as kind, and as self-sacrificing as Hamline Hurlburt Freer. Let us confidently hope that his memory shall long be revered and shall inspire many to follow his example.

—PRESIDENT EMERITUS KING.





The Classes



The Class of 1922

President DAY M. NEWSOM
Vice-President FLORENCE TENNANT
Secretary and Treasurer FRANCES HARVEY

Arriving here in the fall of 1919, fresh from the glory of high school accomplishments, we had the damper suddenly placed on our opinion of ourselves and very soon were made to realize our sphere of insignificance. During our first semester at Cornell the strain of war was felt on all sides. There was very little social or college life compared to that which came later.

The second semester, however, brought changes. Things began to return to normal, but the Class of 1922 did not follow the precedent set by former Freshman classes. Our members never wore the "green derbies". We were victorious in the struggle for existence commonly known as the tug-of-war.

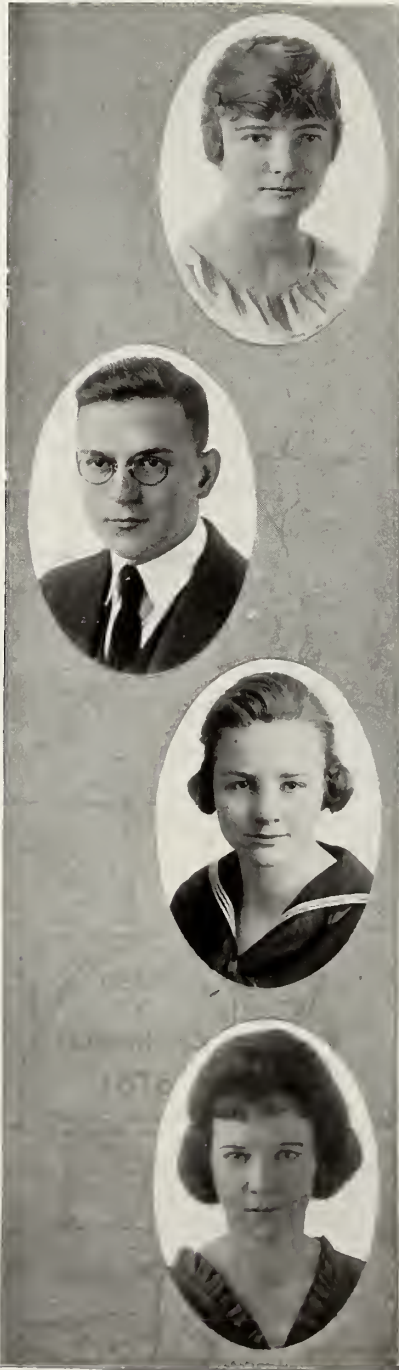
Finally, as a class, we passed from the stage of the oppressed to that of the oppressor. Then as never before did we begin to understand, slowly but surely, the effect of college surroundings, and the much needed alterations being made in us by education.

Now that we have passed through those days of simplicity, days of bluster, and have entered into the kingdom of Juniors, we feel that we have cemented many life friendships. Even more than this we feel we have acquired a good feeling and understanding toward each other. We accept the responsibility of our position readily, and feel justifiably proud of what we have done for our college. We rejoice in what she has done for us. In the field of college activities, the Class of 1922 has not been found wanting. From our ranks every branch of activity has drawn some of its ablest material.

With the light of the Senior's dignity already shining upon us, we firmly resolve to do our share in this little world of ours. We shall make a record worth while for Cornell and the Class of 1922.

L. H.





ARIEL M. MERRITT

There are those who say that Ariel lives in Mount Vernon because it is only a short distance from Marion. Behind a quiet exterior she hides a lively wit.

Oratorio (1); Class Hockey (1); All-Star Hockey (2). Major, English. Aonian

ARLANDO BALDWIN

"Violet"

Newton is the home of Arlando, to whom neither Irving Berlin nor Bach offer difficulties. He has surprised people in more than one way since his advent at Cornell.

Accompanist Glee Club (1); Y. M. Cabinet (1); Glee Club (3). Major, Sociology

GRACE VOSS

Grace is that cheering sort of an individual whose presence makes a born pessimist forget his troubles. She came to us from Aspinwall, and since then her pleasing manner has added constantly to her list of friends.

W. S. G. A. Treasurer (3); Y. W. C. A. Cabinet (3); W. S. G. A. Senate (3). Major, Romance. Alethean

ISABEL SCROGGIE

Apparent dignity masks a lively disposition in this Mount Vernon girl. She recently showed her preference for Cornell by moving here.

Major, English. Aonian



MABELLE EDDY
"Mandy"

Mabelle readily found herself after arriving on the campus and in turn was readily found. Cherokee is her home.

Girls' Glee Club (1), (2), (3); Y. W. C. A. Cabinet (2); President Y. W. C. A. (3); W. S. G. A. Senate (3); Student Volunteer. Major, Romance. Alethean

EDGAR R. HOFF
"Doc"

Like another of Cornell's prominent "Docs", he has an intimate knowledge of everything chemical. Nachusa, Illinois, claims him as her son.

Orchestra (3). Major, Chemistry. Amphictyon

RUTH EVELAND

Noble is her town and Noble is her nature. Small in stature, but big in everything else.

Inter-Society Debate (2). Major, Home Economics. Promethean

HELEN ROBBINS

A "Robbin" that sings not only in the spring but all the year round. Mount Vernon is glad to call itself her home.

Oratorio (1), (2), (3); Girls' Glee Club (3). Major, Voice. Alethean





HAROLD W. OLESON

"Ole"

He told us Forest City was his address. As we haven't been able to find that on the map, we will take his word for its existence.

Oratorio (2), (3). Major, Economics.
Zetagathian

KATHERINE MOSES

"Kate"

The capital of the state is "Kate's" home. As an enthusiastic member of the English Club, she can talk to celebrities without a qualm. Her sayings are full of wit and originality.

W. S. G. A. Senate (3). Major, English.
Alethean

CARL E. SPANGLER

Carl is one of the favorite products of Franklin Grove, Illinois. He doesn't waste words on everybody, but saves them for his evenings at B. H.

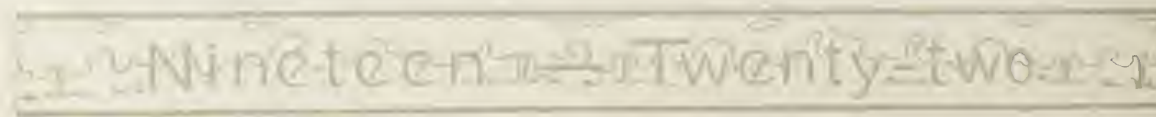
Cross Country (1), (2); Freshman Football (2). Major, Economics. Parmenian

JEANETTE FERRIS

"Jean"

Oneida, a small town because it has so many railroads that it can't keep its population, is Jeanette's home town. She is best known for her mirthful, gurgly giggle and her piano playing.

W. S. G. A. Senate (3). Major, Piano.
Alethean





ELVA HILL
"Elva"

When Elva left Lowmoor her mother told her to beware of the fast men. But, contrary-like, she didn't. Men of speed hold no terrors for her.

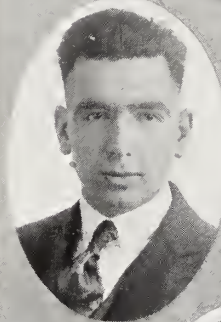
Major, Piano. Aonian



SHERMAN SHAFFER
"Sherm"

"Sherm" hails from Parkersburg. He believes that Vera (P) helps at all times and in all things.

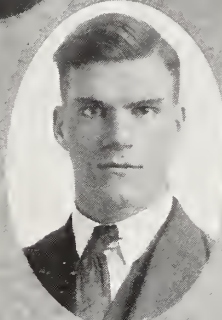
Glee Club (3). Major, Chemistry. Miltonian



EDWIN G. SPURGEON
"Purity"

"Ed" comes from the "Windy City" and never loses an opportunity of telling how it is done in "Chi". He believes in the theory that women are the root of all evil, and lives up to his idea.

Major, Economics. Amphictyon



GRACE MCCREEDY
"Mc"

Grace says she comes from Tampico, Illinois, and we dare not dispute her. Quiet in action, but watch out for people whose names begin with Mc.

Oratorio (2), (3); Illinois Club Secretary (3). Major, History. Alethean





JAMES W. ENSIGN
"Buck"

"Jimmy" is a Burlington lad. While there he established a good record, and since coming here he has more than lived up to the past by making new ones.

President Class (2); Class B. B. (1); Varsity B. B. (3); Class Football (1), (2); Varsity Football (3); Baseball (1); Track (1). Major, Engineering and Mathematics. Zetagathian

ALISON GOWANS

Alison Gowans is one of Emmetsburg's favorites. She is a sister of the mighty Alan.

W. S. G. A. (3). Major, History. Pro-methean

WALTER A. AVERILL
"Nosey"

Seattle, Washington, is his home port. This young man was born an hour late and has been hurrying ever since to catch up. He has an erring nose for news.

Oratorio (3); "Nothing but the Truth" Cast (2). Major, Economics. Parmenian

VERA PHELPS
"Vera"

Glenwood is her home. Vera is one of those home-seeking girls whom we all like to see, but, as usual, we were all too late—all but one.

Major, Home Economics. Anonian

CLARENCE E. HOLM
"Shorty"

Boone is the home of this embryo Ringling Bros. circus performer. A man small in size, but large enough to do most anything.

Varsity Football(2); Inter-Society Debate (1); President Masonic Club (3). Major, Biology. Adelphian

HAZEL BENNETT
"Hazel"

Hazel is another of the neighboring girls who run over from Lisbon just long enough to take in classes, and no longer.

Major, English. Aonian

BOYD A. THOMPSON
"Red"

"Red" is noted for perseverance in all branches of athletics. He is Renwick's sole contribution to Cornell.

Track (2), (3); Football (2), (3); Athletic Representative (2); "C" Club. Major, Geology. Zetagathian

THERON ERICKSON
"Theron"

Theron migrated here from Reinbeck. After careful consideration, we have decided that his chief claim to notoriety lies in his consistent fussing.

Student Volunteer. Major, Chemistry. Parmenian





LOWELL S. HENSHAW
"Bill"

"Bill" hails from Clarinda, which keeps the insane. He looks like a groucher; a lady's at Goucher—perhaps that's the reason; to tell he'll not deign.

Business Manager *Cornellian* (3); ROYAL PURPLE Staff. Major, Economics. Adelphian

RUSSELL D. COLE
"Red"

One of the Davenport boys. "Red's" main object in life is to get out of doing things. Still, when he does get started, he goes fast enough to win gold watches at Urbana.

Freshman Track (1); Varsity Track (2), (3); "C" Club; ROYAL PURPLE Staff. Major, Economics. Adelphian

JOYCE HARRIS
"Betsey"

"Betsey" says she was born at least sixteen years ago in Grundy Center. Her way of laughing belongs to Joyce, and Joyce alone, but we like it.

Class Basketball (2); W. S. G. A. Senate (3). Major, Sociology Alethean

DWIGHT F. WINDENBURG
"Windy"

One of our Mount Vernon lads who lost a lot of time because of the war. If you want to know anything about physics, ask "Windy". He picks news out of the air between Chapel and Science.

Y. M. C. A. (1); Inter-Society Debate (1). Major, Physics. Miltonian



FLORENCE TENNANT

Florence calls it Deep River, and we wouldn't dispute. We only ask that they send more like her; Cornell needs them.

Vice-President W. S. G. A. (3); Y. W. C. A. Cabinet (3); Vice-President Class (3); Glee Club (3); ROYAL PURPLE Staff. Major, Romance. Alethean

FRANCES CROWELL
"Fran"

Like many of her sex, "Fran" was born with the gift o' gab, and has since used it effectively from the debate platform. She left Manson to come to Cornell.

Inter-Society Debate (2); Inter-Collegiate Debate (3). Major, English. Alethean

DONALD D. CORLETT
"Don"

"Don", very early in his school career, thought that two could live cheaper than one. Now he is proving it.

Cross Country (2), (3). Major, Chemistry. Miltonian

GAIL MILNE

Gail is an aspiring physicist, who comes from LaPorte City. She stands very highly in the esteem of a certain member of the tribe of Bruce.

Class Basketball (1). Major, Mathematics. Alethean





GLENN G. SONES
"Scoop"

"Scoop" comes from Anamosa. He uses his big voice to a very good advantage, and his enthusiasm bubbles over, especially after winning a debate.

Inter-Collegiate Debate (3). Major, Biology. Miltonian

JOHN PECHT
"Red"

Rockford is the home site of John, or "Red", whichever you wish to call him. It is predicted that he will make some one a good husband because of the way he handles a broom around the chapel.

Major, Chemistry. Parmenian

MILDRED YOLLIS CONMEY

Mildred first learned to use a dictionary at Coggon, and since then the use of long words has been her favorite avocation.

Major, Home Economics. Promethean

STANLEY N. HOWARD
"Stan"

Although "Stan" is a long way from Crapaud, Canada, he makes himself very much at home in Cornell. He flivvers back and forth from his charge at Ryan with all the sheer abandon of a Barney Oldfield, and bits of auto wreckage back of Science Hall testify to his skill.

Student Volunteer; Freshman Football (1).
Major, Sociology. Miltonian



SENA ANDERSON

A big apron seems to be just made for Sena, who plans to teach others the domestic arts and sciences. She comes from Calamus.

Major, Home Economics. Thalian

HAROLD R. DAVIS
"Davy"

Van Horne is the home of this laddie, who says, "The happiest hours that e'er I spend, are spent among the lassies."

Major, Economics. Parmenian

MYRTLE BURROWS

Myrtle comes from Dows, where early in life she formed the habit of saying little and learning much.

Major, Mathematics. Thalian

JOSEPH C. CLEVELAND
"Joe"

It was at Stanwood that Joe learned the art of fusing. Since then continuous practice has kept him in training. His work on the cornet is a valuable addition to the band and orchestra.

Student Volunteer; Orchestra (1), (2);
Band (1), (2). Major, Chemistry. Parmenian





RAYMOND W. HOUSTON
"Bud"

As a member of the Flower Shop twins he likes everything from a sprig to a Bush. This Ryan representative is known for his unflinching good nature.

ROYAL PURPLE Staff. Major, English.
Miltonian

CLIFFORD MILLEN
"Cliff"

Cliff first borrowed a match at Earlville. His first year at Cornell was a heart-breaker for many of our fair co-eds. It is rumored he had twenty-eight dates with twenty-nine different girls. He broke the last one without even going near her.

Editor ROYAL PURPLE. Major, English.
Miltonian

DORIS VALENTINE

Doris of St. Ansgar is just as her name signifies, always reminding you of the 14th of February by her very quiet, pleasing manner.

Y. W. C. A. Cabinet (3); Oratorio (1), (2), (3); Assistant Romance Department (3); Treasurer Cosmopolitan Club (2).
Major, Romance. Thalian

DAY M. NEWSOM

Day first saw light at Morning Sun. It has been said of him that if you are a good listener, hunt up Day.

Glee Club (1), (2), (3); Oratorio (1), (2), (3); President P. K.'s (3); President Class (3); Inter-Society Debate (1).
Major, English. Miltonian





RUTH ELLA PETTY

Ruth's home is in Clinton. She enjoys life and is generous with her smiles and good nature. Studies to her are the inevitable part of a college career.

Oratorio (1), (2); W. S. G. A. Senate (1), (2). Major, Home Economics. Aesthesian

ALBION J. TAVENNER
"Tav"

From Polo, Illinois, comes this master of the trombone art. His pleasant manners and skillful playing have made him one of Cornell's favorite entertainers.

Orchestra (1), (2), (3); Band (1), (2), (3); Inter-Society Debate (3). Major, Economics. Zetagathian

WANETA KEVE
"Waneta"

Waneta is another Mount Vernonite. Her father placed two lions at the door to keep bold men away from her, but what are lions to some men?

Major, History. Alethean

MERRIL M. DRYDEN
"M. D."

Merril is another of the Clarinda Bunch. He does things, but never seems busy over them. The girl situation holds no serious worries for him.

Glee Club (1), (2), (3); Vice-President Glee Club (3); Oratorio (1), (2), (3); Class Treasurer (2); Class Basketball (3); Band (1), (2); Business Manager ROYAL PURPLE. Major, Economics. Adelpian





ELMA KIDDER

Elma comes to us from Epworth. If you want to know about her life, ask how she swung that hockey club last fall. May domestic duties not subdue her pep.

Alethean

BESSIE BOWERS

"Socks"

Bess, who comes from Des Moines, has a will of her own; also, a way. She would rather be dead than out of style, so do not be surprised.

Student Volunteer; W. S. G. A. Senate (1); Y. W. C. A. Cabinet (3); Inter-Society Debate (1); Inter-Collegiate Debate (3); Treasurer Alethean Society (3). Major, Economics. Alethean

FRED FOSTER

"Fritz"

Fred is one of the local boys and can, therefore, fuss the same girl twelve months a year, and from reports we judge he doesn't loaf on the job.

"Nothing but the Truth" Cast (2). Major, Economics. Parmenian

ELIZABETH ASH

In Balboa Heights, Canal Zone, Elizabeth gained the knowledge of Spanish which made her an assistant in the Romance Department. Her home is now in Mount Vernon.

Assistant Romance Department. Major, English. Aesthesian



MARY ANN DARRAH
"Mary Ann"

Mary uttered her first witty remark in a little Iowa village, and that village was Gilman. We feel safe to say that Cornell would not be the same without Mary, neither would Mary be the same without Cornell.

Freshman Hockey (1). Major, English. Philomathean

FRANKLIN W. O'NEEL
"Frank"

Frank comes from Oelwein, which must be the home of giants if Frank is a good specimen.

Freshman Football (1); Varsity Football (2), (3); Captain-elect of Football Team, '22; Freshman Track (1); Varsity Track (2), (3); Inter-Society Debate (1). Major, Psychology. Amphichtyon

ROSE TALLMAN
"Rosy"

Rose is one of our Mount Vernon girls. A rose without a thorn. A look at her major would almost signify something, but we hesitate to accuse her of that.

Oratorio (1), (2), (3); Swimming Honors (2); Brush and Palette Club (3). Major, Home Economics. Alethean

NAOMI HENKEL
"Henke"

Naomi's home is in Detroit, Michigan, the place that so many good things come from, and she is no exception to the rule.

Accompanist Girls' Glee Club (1), (2), (3); Oratorio (1), (2), (3); Orchestra (2), (3). Major, Piano. Philomathean





DOROTHY AREINGAST
"Arby"

Dorothy is at home in Mount Vernon—that is, when she is at home. Her general good nature and ready smile have won for her many friends.

Class Basketball (3); W. A. A. (3). Major, Sociology. Philomathean

EDITH LAUCAMP
"Edith"

Edith carries her violin over from Lisbon every day. She is another girl in whom bobbed hair is an outward manifestation of genius.

Orchestra (2), (3). Major, Violin. Alethean

W. RILEY RICHARDSON
"Riley"

Riley hides rare genius behind his bashfulness. His actions are quiet but well meant, and if more of us had his ability we would rise higher on the ladder of success.

English Club. Major, English. Parmenian

EULA DOWNER
"Eula"

Every freshman girl at B. H. finds a friend in Eula, who came to Cornell from Letts.

Major, Mathematics. Thalian

BETTY COTTINGHAM
"Betty"

Vivacious and lively, "Betty" has always had a hankering for the spotlight. She has two homes, one just back of Bowman Hall and one at the Library.

Girls' Glee Club (1), (2), (3); Oratorio Society (1), (2), (3); Class Basketball (2); English Club; Brush and Palette Club; W. A. A.; Inter-Society Debate (2). Major, English. Aonian

BERTRAM Z. HAYES
"Governor"

Bertram comes from Columbus, Ohio, a long ways for such a small man to go. Nevertheless, we look for him to do big things before he leaves us.

Major, Biology. Irving

LEAFY FERNE YARD

Creston is the home of this flower, and she is, as has been said of her, "Bright as a flaming leaf".

Oratorio (1), (2), (3); Student Volunteer; W. S. G. A. Senate (3). Major, English. Thalian

HARRIS E. DICKEY
"Dickey"

From Grundy Center has journeyed this disciple of the doctrine of the self-satisfaction of youth. The object of his interests exists at present neither in Cornell nor in Mount Vernon.

Major, Chemistry. Miltonian





LEE DUBRIDGE
"Du"

Des Moines is the home of this rubber-tired genius with ironclad convictions. He is a disciple of hard work.

Y. M. C. A. (3); Oratorio (3); Inter-Collegiate Debate (2), (3). Major, Physics. Miltonian

ERWIN H. MAUCH

Lisbon is the home of this lad, and he thinks no more of hiking over to class via the tie line than we do of going to town.

Band (1), (2), (3). Major, Economics

ALTA NEFF

Alta's favorite question is, "Is my nose shiny?" but she never allows her vanity to interfere with her good time. She lives in Mount Vernon.

Girls' Glee Club (2), (3). Major, English. Philomathean

PAULINE STONER
"Polly"

"Polly" came to us this year from South English. She's rather a quiet girl who does things without a great deal of noise about it.

Major, Education. Thalian

FLORA D. LEE

"Flora"

Flora's home is in Charles City. She is never so much at home as when she is given free range of the pool, the basketball floor, or the hockey field.

Class Hockey (1), (2); Varsity Hockey (2). Major, History. Thalian

CAROL CHEN

"Carol"

Carol came to us from afar off across the seas, Foochow, China. If everyone worked as earnestly as she does, Cornell would be a different place.

Y. W. C. A. (3); Student Volunteer. Major, Education. Promethean

JAMES E. SCOVEL

"Jimmy"

"Jim" first saw "the green" at Deep River and since he came to Cornell he has been seeing Green (Alice) all the time.

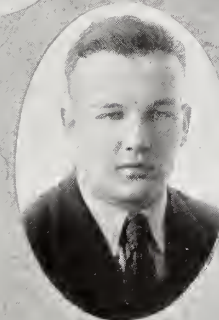
Varsity Football (1); Band (1); Class Basketball (1); Junior Athletic Representative (3); "C" Club. Major, Economics. Adelpian

AGNES JOHNSON

"Ag"

Agnes lives in Mount Vernon. If you want to know what she can do, notice the art work of this book. A display of rare genius. She is also very much interested in athletics in an indirect way.

ROYAL PURPLE Staff. Major, English. Aesthesian





FRANCES HARVEY
"Fran"

"Fran" sailed from Benton Harbor, Michigan, and she found port with a school teacher. Her idea in coming to college was to acquire an education, but what a mistake she made. All she needs is more time in every day.

Class Hockey (1), (2); Tennis (2), (3); W. S. G. A. (3); Y. W. C. A. (3); Class Secretary and Treasurer (3); ROYAL PURPLE Staff. Major, Sociology. Aesthesian

JOHN RUDKIN COULSON
"Jack"

If spirits have voices we shall recognize "Jack" in the hereafter. He comes from Esmond, Illinois.

Assistant Cheer Leader (3); Oratorio (1), (2), (3); Illinois Club; P. K. Club. Major, Chemistry

HELEN BEDE
"Speedy"

Pine City, Minnesota, is the home of Helen, and not Troy at all. She presides over B. H. and expounds her ideas to the Freshman girls with great diligence.

English Club. Major, English. Philomathean

PAULINE ROACH
"Polly"

Pauline, who came from Plainfield, is one who does all things quietly and well, and has a good time when she has finished.

Major, Home Economics. Promethean



HAZEL M. SNYDER
"Hazel"

Hazel, who comes from Freeport, Illinois, has a way of her own. Among other qualities this Illinoisite has the advantage of being a good student.

Major, Home Economics

HORTENSE MAYNE
"May"

Hortense is another who comes from Emmetsburg. She is one who is very studious, kind, and pleasant.

Major, Latin. Alethean





"M.D." DRYDEN

"BUD" HOUSTON

BILL HENSHAW

DAY NEWSOM

"FRAN" HARVEY

"RED" COLE

FRANK O'NEEL

"CLIFF" MILLEN

MAYBELLE EDDY

"SCOOP" JONES

"BUCK" ENSIGN

FLORENCE TENNANT

'22
BRIGHT SPOTS
OF CAMPUS TRY



Seniors



SENIOR OFFICERS

President	GLENN BROWNING
Vice-President	HAROLD McILNAY
Treasurer	DORIS KOHT





"AL" GOWANS

GEORGE BRETHOU

KENNETH DANKIN

CRAIG OVERHOLSER

"PERC" EDWARDS

CHARLES CHRISTENSEN

KATE SKINNER

GLEN FISHBAUGHER

HAROLD DEE

"BERT" HOGLE

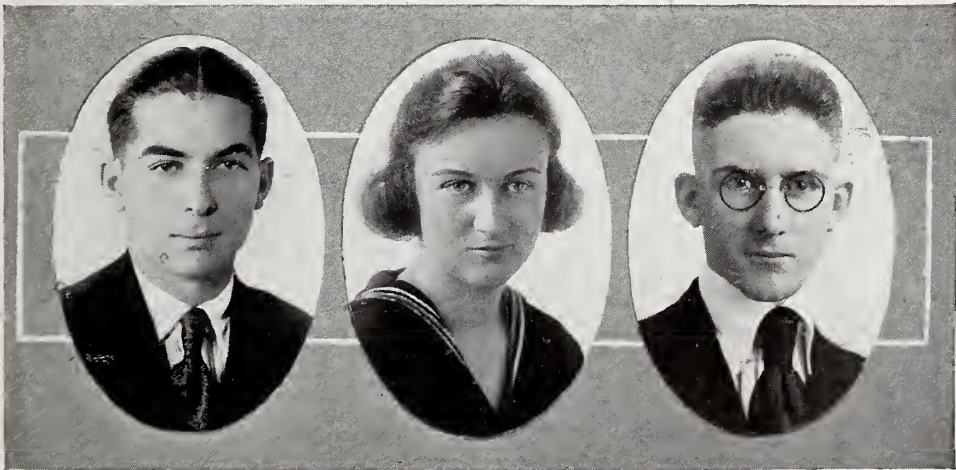
JAS. OLSON

"JUDGE" GALLOPWAY

**CAMPUS
BRIGHT SPOTS
'21**

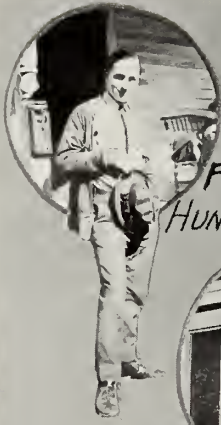


Sophomores



SOPHOMORE OFFICERS

President	HARLAN BETTS
Vice-President	MARY PLUMMER
Treasurer	GEORGE DUNHAM



FRANK HUNT



LEO CHAPMAN



PAYSON PETERSON



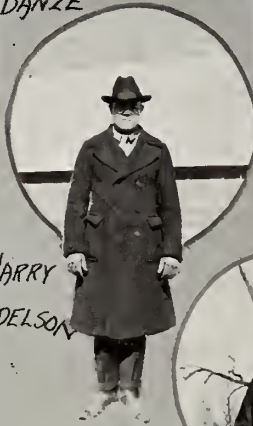
HARRY BANZE



MILDRED COURT



RAY FARAGHER



HARRY HUDELSON



LOUIS MAXWELL



"RAL" GATEWOOD



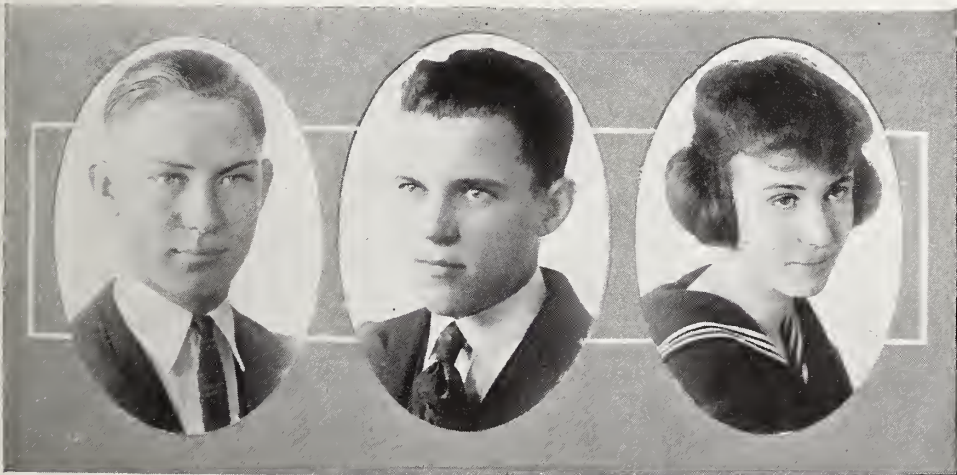
JESSIE MCKAY

BRIGHT SPOTS OF CAMPUSTRY

1923



Freshmen



FRESHMAN OFFICERS

President	CARL KERWIN
Vice-President	RUTH MOORE
Treasurer	NORMAN PIERCE





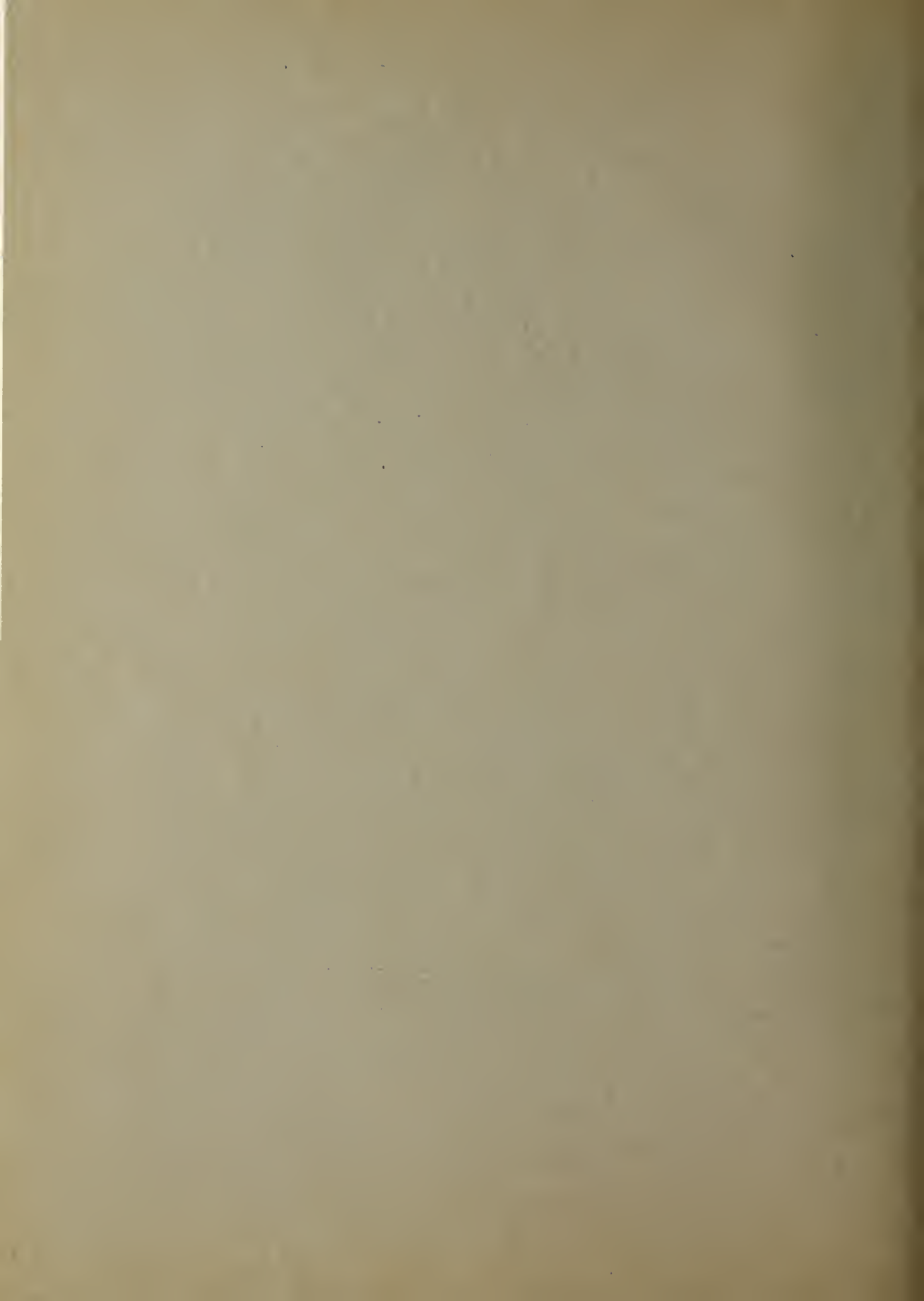
DON ERUBAKER
 RALPH YEISLEY
 'HERB' SAGLE
 RALPH DEARDORF
 MARY FIVES RICHARDSON
 HAROLD BOLTON
 'EDDIE' HINES
 RUTH MOORE
 'HERB' OWENS
 CARL KIRWIN
 LEONARD BIEBER
 CATHERINE MUSSELMAN

BRIGHT SPOTS
OF CAMPUSTRY

24



Athletics





Men's Athletics





COACH "SHERM" FINGER



ASSISTANT COACH SANDERSON



The C-Club

The C-Club was organized some years ago for the purpose of promoting athletics at Cornell. Only the men of the school who have won a "C" in one of the major branches of athletics are eligible for membership. It is an exclusive organization composed of men who believe in clean, sportsmanlike play. Thus the standard of athletics is kept high, as in former years.

Two invitation meets are held during the year for high schools in the state. The Invitation Interscholastic Track Meet and the Interscholastic Basketball Meet have influenced many a young athlete to pursue his academic work at Cornell. Invitations are sent out to all the high schools in the surrounding territory, and, heretofore, the responses have been so general that some of the best meets in the state resulted.

The official C-Club banquet, which is held annually, is the peer of social events for the year. On this occasion even athletes of non-fussing tendencies shine in the light of feminine society, and the rules of the training table are ignored.





"BERT" HOGLE

"Bert" deserves mention for his work in both football and basketball. As halfback on the grid-iron he won the respect of his opponents and the praise of his teammates. As guard on the basketball floor he had the knack of holding his man to a minimum of points. "Bert" will be graduated this year.



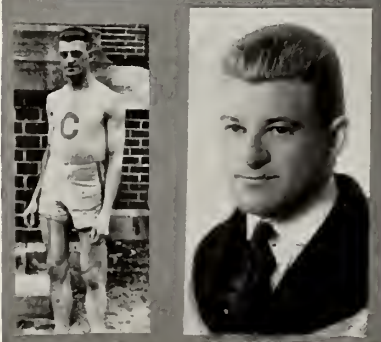
FRANK DAY

In his first year on the cinder path Day developed into a good two-miler. With experience he will become exceptionally fast in that race. During two seasons on the cross country team he won a good reputation as a hill-and-dale runner.



JAMES OLSON

"Ole" played the pivot position on the Varsity eleven. Strong on defense and an accurate passer, he made the central position one to be avoided by his opponents. A big vacancy will be left when "Ole" is graduated in June.



OSCAR ANDERSON

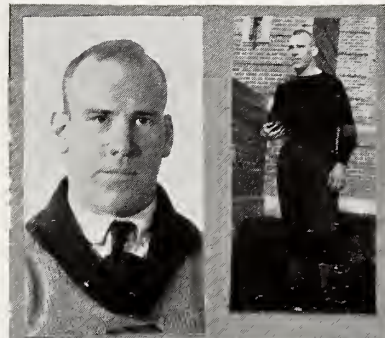
"Andy" is a letter man of two seasons. He runs the half-mile in fast time and is always sure to place. "Andy" also runs a good quarter. His work on the mile team at the Drake Relays was worthy of note.





FRANKLIN O'NEEL

O'Neel, who will captain next year's football team, played halfback during most of the 1920 season, and showed exceptional ability at hitting the line and running open field. He is also well versed in the art of playing tackle. On the cinder path Frank took third in the high hurdles at the state meet. He is also a reliable point gainer in the high jump, shot put, and discus throw.



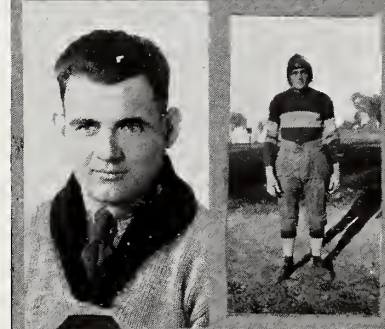
GLENN BROWNING

"Brownie" stars in the half-mile, two-mile, and mile. In the latter he holds the state record of 4:30 2-5, made in 1919. He also holds the Iowa Conference record of 4:34. "Brownie" is a sure first-place man, and will be missed when he graduates in June. He led the 1919 track team.



"DANNY" DANSKIN

Much to the sorrow of the opposing teams, this big tackle was sure to be in every play. Always full of fight, he was an ideal mate for Gowans. "Danny" will be missed in the games next year, as he is graduated in June.



"CEPH" MILLER

"Sox" will captain the 1922 basketball varsity. He was out of the game in the early part of this season, but when he came back his presence was noted. As a hard player and a dependable guard, he was one of the mainstays of the team.





GEORGE BRETNALL

"Skin" runs anything up to the mile, and his record in all is enviable. He specializes in the quarter, having won that event at the state meet. At the recent Olympic Games, Bretnell ran on the U. S. 1600-meter relay team. He captains the 1921 track team in his last year at Cornell.



LAWRENCE WEST

West played a whirlwind of a game at left end. He is exceptionally good at breaking up end-plays, but due to an injured arm was out of the last few games. West has another year of varsity ball left.



RAY FARAGHER

Playing his first year of varsity basketball, Ray showed unusual promise. He is fast on the floor and has an exceptionally good eye for the basket. Ray will be back next year to hold down his berth at forward.



"JIM" SCOVEL

"Jim" won his letter at guard for two seasons. He is an aggressive player and hard to stop. Sickness hindered Scovel this season, but he will be back strong next year.



HARRY HUDELSON

"Hud" has played one year of football at end and two at quarterback. He is not only a fast, shifty player with unlimited fight, but his head-work has pulled the team out of many a tight place. He is an expert at running back punts.



"ORRIE" LAWRENCE

"Orrie" was track captain in 1920. He runs the dashes successfully, but specializes in the low hurdles. On the football field he plays a formidable right end, being the first man down on punts and a sure hard tackler. This is his last year of varsity service.



"TOM" KEPLER

"Long Tom's" record denotes an all-round athlete. It includes two years at guard and end on the varsity eleven, four seasons as center on the quintet, one year as pitcher on the nine, and service as a quarter-miler and weight man on the track team. His hard, fast playing twice won him a place on the all-state basketball team.



REED MORSE

Morse won his letter at fullback. On offense he not only hits the line hard, but never fails to get his man on interference. On defense he shows ability in backing up the line. Morse also boots a mean kickoff. He will be graduated in June.





"AL" GOWANS

Upon this man's broad shoulders rested the captaincy of the 1920 football team. With ir-repressible pep and energy, "Al" played a wonderful game at guard during the whole season. Injuries hindered him during the last few games, but he succeeded in making the all-state second team as guard and was on the Conference first string at the same position.

MAYNARD SCHELL

Schell runs the mile, the half-mile, and the two-mile. He is a consistent runner and is always good for fast time in a fast field. Schell captained the cross country team for two seasons and is one of the best C-C men in the school. He will be graduated in June.

DWIGHT NICHOLS

"Nick" is a smashing fullback. He is always a sure ground gainer and backs up the line in great style. "Nick" has played three years of football and will be back next fall for a place on the varsity.

RUSSELL COLE

"Red" never fails to make good time in the quarter and half-mile. He is a good relay man, and an experienced cross country runner.



PAYSON PETERSON

On the gridiron "Pete" plays halfback, where his speed and ability made him a man to be watched. "Pete" not only specializes in the high hurdles, but also runs a fast two-twenty, quarter, and half-mile. He is a valuable relay man as well.

"BUCK" ENSIGN

Whether he is playing halfback on the gridiron, forward on the basketball floor, or first base on the baseball diamond, "Buck" never loses his fight. He is a hard and consistent player.

HENRY MAXWELL

"Max" was a member of the pony backfield. Although short in stature, he hit the line extra hard. He also played a great game at end, breaking up many plays. "Max" has played three seasons of varsity ball and will be missed next year.

BOYD THOMPSON

Thompson can be found on the gridiron in the fall and on the track in the spring. He is not only a good halfback, but participates in the two-twenty, quarter, relay, and high jump.

"SKINNY" DEE

Dee captained the 1920 basketball varsity. He plays a consistent game at center. On the football team he holds down a tackle position.





KEPLER



RAINES



KLAUSS



HURLBURT

1920 TENNIS TEAMS



JUNIOR, INTER-CLASS BASKETBALL CHAMPIONS



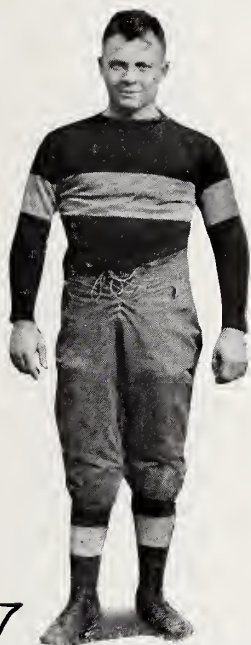
"Mussy"



HOME CROSS-COUNTRY MEET



VARSITY CROSS-COUNTRY



1920
Varsity
Football



VARSITY SQUAD



FRESHMAN SQUAD

Nineteen-twenty-two



The 1920 Football Season

The football season this year, if judged only by the number of games won, probably was not up to the usual standard of the past. The old-time Cornell pep and spirit were present, however, and the team was a creditable one in spite of the many obstacles that had to be overcome.

The beginning of the first week of training showed the loss of many of last year's veterans. No doubt the backfield was weakened when several of the expected players failed to come back. To make up for this deficiency the line was strengthened by the return of "Danny" and other ex-service men who had come back to resume their work. As many of last year's freshman squad were on hand to give battle for varsity positions, the squad was one of the largest ever turned out.

The enthusiasm and interest shown by such a large group of aspirants was very pleasing to "Sherm" and "Sandy". Sanderson had come back to help in the task of building up the line. With three or four huskies struggling for each one of the eleven positions, the prospects for the future seemed encouraging. In the warm weather of the first weeks of practice much excess avoirdupois was removed, and, by a gradual process, the rounding out of a team for the first conflict with Upper Iowa was finally accomplished.

UPPER IOWA, THE FIRST VICTIM

On Saturday, October 2nd, there appeared on Ash Park gridiron, Upper Iowa's speedy aggregation from the north. Coached in all manner of multiple passes, criss-crosses, spread formations, and other bewildering plays, our smaller Methodist cousin hoped to wrest victory from us. In the sweltering heat they sweated their fond ambitions away, and we won our first game, 34 to 7. The team seemed to have hit a good stride and showed up well in all departments.

AT IOWA CITY

The annual game with Iowa was our next encounter, and the indications pointed to a close fight. Something went wrong at the very beginning, and Iowa, represented by all-conference and all-western men, rolled up 48 points to our zero in the first half. With the substitution of many new men, Cornell came back in the last two periods and by sheer fight and determination held the powerful Big Ten team to only two touchdowns and a dropkick. The final score was 63 to 0, with Iowa at the big end of the count.





THE KNOX DEADLOCK

There was indeed an atmosphere of gloom while the team was preparing for Knox. After a long, bitter fight the game resulted in a tie. Neither team was able to score, and the ball sagged back and forth with the advantages even. It was a well-fought game and showed that the team had a real comeback.

SIMPSON TAKES THE COUNT

Our next contest took place at Indianola, where the strength of the Cornell combination was too much for Simpson. Several of the new men proved themselves to be real performers, when, in the last quarter, they brought the game to a finish by showing across four touchdowns, making the score 40 to 0.

DUBUQUE 19, CORNELL 7

After Simpson had been disposed of, the team's energies were concentrated on the game with Dubuque. The river aggregation had been going strong all season and it was a hard-fought game with all of the breaks going against us. Due to fumbles, Dubuque was allowed to score three times while we registered only once, and the final result was 19 to 7. O'Neel, playing at half in this game, did great work and was afterwards closely watched by all of our opponents.

THE AUGUSTANA SWIMMING-MEET

On a field that was covered with mud and water, which made good playing impossible, another scoreless game was the result of the encounter with Augustana. Early in the game our fighting Scotch captain, "Al" Gowans, received a wrenched knee which caused him to be out of the greater part of the remaining games. During the last quarter, it was miraculous luck which enabled the visitors to stave off defeat. Cornell brought the ball down to the five-yard line again and again only to lose it there.

THE CONTEST WITH COE

On Armistice Day, the eleven, accompanied by the band and the entire student body, journeyed up to Cedar Rapids to meet our ancient rival, Coe. We were none too optimistic, but when the first half ended 7 to 7 our spirits were considerably warmed in spite of the zero weather. In the second half, however, Coe put over three touchdowns to our one. Though the score was 27 to 14, it was a hard-fought game, and both teams deserve credit for the brand of football displayed. We cannot forget the good work done by Lawrence, and the terrific bump which Collins received from O'Neel.

GRINNELL CLOSES THE SEASON

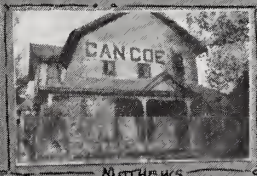
Homecoming was a beautiful day as far as the weather was concerned, but Grinnell took some of the joy out of life when the game ended 17 to 6 in her favor. It looked as if it were going to be a shutout for us, but, in the last period, by a combination of a good return from kickoff and excellent forward passing, the ball was put across, and a few moments later the football season of 1920 passed into history.



THE PARADE



FRESH STUNT



MATHEWS



THE TEAM



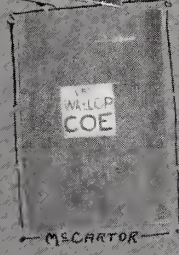
THE GAME



SKIN COE



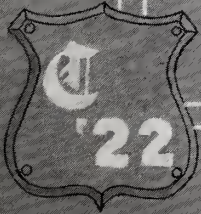
CROWN COE



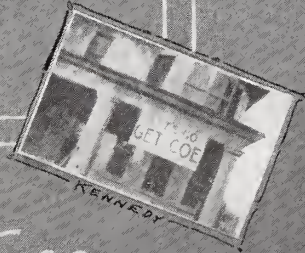
MCCARTOR



THE SPECIAL



THE GAME



KENNEDY

Getting Coe







THE TEAM



TOUCH DOWN



UPPER IOWA



WITH GRINNELL



KNOX



THE PEP-MAKERS



"PERC"



KNOX



CORNELL KICKS GOAL



GRINNELL



KNOCK THE GRIN
OFF OF
GRINNELL





THE SOPH-FROSH GAME

THE HOME GAMES



1921
Varsity
Basketball





The Varsity Basketball Team



TOP ROW: Coach Finger, Pippert, Gatewood, P. Dee, Lakey, Maxwell, Assistant Coach Sanderson.
BOTTOM ROW: Hogle, Ensign, H. Dee, Miller, Faragher.

The 1920-21 Basketball Season

With the first call for varsity basketball, in the early part of December, some thirty men reported for practice. By gradual elimination the squad was cut to fifteen of the most likely candidates. The real work then began, the science of the game was learned, the basket eye was put in trim, and condition was developed.

THE OPENING GAME WITH IOWA

Coach Finger, with two veterans of varsity ball, Hogle and Captain Dee, developed a team which put up a creditable fight against Iowa on January 10. It was Iowa's game, 44 to 13, but it showed that Cornell had a team which was full of fight and never willing to give up.

MONMOUTH INVADES AND CONQUERS

On January 12, Cornell battled Monmouth in a hard-fought game on the home floor. The contest went Monmouth's way by a 23 to 18 score.

KNOX PULLS DOWN TWO VICTORIES

The following Saturday, January 15, eight men made the trip to Galesburg to meet the Knox quintet. In a closely contested game Knox won, 16 to 14. On January 21, Knox again defeated Cornell, this time by a score of 27 to 22 on the home floor.

Nineteen to Twenty-two



THE SIMPSON-DRAKE TRIP

Showing a complete reversal of form, Cornell defeated the strong Simpson team by the score of 26 to 10 at Indianola on February 4. The tide had turned, and the varsity was playing real ball. The following afternoon Drake defeated Cornell 37 to 17 in a game which was much closer than the score would indicate.

THE COE ATTACK REPELLED

Bent on securing a victory, our up-river rivals came to Cornell en masse on February 8. In one of the fastest and hardest fought games of the season Coe was defeated 16 to 14. It was a great battle from start to finish, being anybody's game until the final gun.

IOWA WESLEYAN 26, CORNELL 24

In a game requiring an extra five minutes of play, Iowa Wesleyan defeated Cornell 26 to 24 on our home floor.

DUBUQUE SCORES A DOUBLE VICTORY

On February 22, Cornell journeyed to Dubuque, a trip which resulted in our defeat by a score of 24 to 11. The game was characterized by hard, rough playing throughout. On February 26, Dubuque again defeated the Purple and the White, this time by a score of 17 to 8 on the home floor.

THE CLIMAX

A victory over Coe on the Cedar Rapids floor, March 2, ended the season. In a game which was hard fought, close, and full of thrills the Purple and White wound up the season with a 24 to 21 victory.

The season although not successful from the standpoint of the number of games won, was, nevertheless, a very satisfactory one. With little but new material to work on, our coach developed a team which never knew when to stop fighting. Hogle and Captain Dee are lost through graduation this year, but with Faragher, Ensign, and Captain-elect Miller as a nucleus, the prospects for next season are bright.

The following men were given "C's": Ensign, Faragher, Hogle, Captain Dee, and Captain-elect Miller.





The Freshman Basketball Squad



TOP ROW: Coach Sanderson, Kober, Erbe, Oleson, Paulson, Maxwell, Benish, Robinson.
BOTTOM ROW: Bolton, Yeisley, Sagle, Bieber, Hines, Owens.

The Freshman Basketball Season

The class of nineteen twenty-four was represented by one of the fastest Freshman teams of some years. Composed of stars from their respective high schools, they soon developed into a formidable team.

Their first opponents, East Waterloo High, were defeated by the score of 27 to 15. Not satisfied with this victory the Freshmen won from Monticello High School with 30 points to the latter's 14. The Monticello Independents, however, restored the reputation of the town by a 19 to 17 victory.

On February 12, Boone beat the Freshmen 25 to 15 on Cornell's floor. This was followed by a second game with Monticello High in which the Freshmen secured a 30 to 14 victory. The season was closed by defeat at the hands of the varsity. The final score of this game was 22 to 17.



1920
Varsity
Track

Nineteen Twenty-two



The 1920 Track Squad



TOP ROW: Cole, Zea, Haven, Peterson, Kepler, Renner, Dobson, Thompson, Bird, Smith, Day.
BOTTOM ROW: Coach Finger, Hurlburt, Schell, Anderson, Brettnall, Lawrence, O'Neel, Musselman,
Nichols, Dice.



The 1920 Track Season

A review of the track season of 1920 shows that the schools throughout the entire country were all represented by strong, well-balanced teams. The meetings of such teams gave a season of fast track in which many records were broken.

Although Cornell did not have a winning season, it was one which showed the Cornell spirit throughout. Under the able leadership of Captain Lawrence the men produced the best that was in them during the whole season.

Cornell opened the season at the Drake Relays, April 24. The mile team, composed of Anderson, Kepler, Thompson, and Lawrence, copped third place in an exceptionally fast field. The two-mile took second place, being nosed out at the tape. Cole, Schell, Brettnall, and Peterson ran in the order named.

The following week, Grinnell, 1919 state champs, came to Mount Vernon. Through the efforts of a strong, well-balanced team they defeated Cornell by the score of 71½ to 55½.

On May 8, a triangular meet was held with Dubuque U. and Iowa State Teachers' College, at Cornell. The Purple and White romped away with this meet, scoring 96 points. Dubuque grabbed off 25 points, while all the Tutors could get was an unlucky 13.

The Iowa Conference Meet held at Cedar Rapids on May 15 resulted in a victory for Coe with 68 1-3 points. Cornell ranked second with 45 points. The rest scored as follows: Union, 29 points; Dubuque, 20 1-3; Iowa Wesleyan, 7; Simpson, 3; Penn, 1; Parsons, ½. Brettnall took the two-twenty in the fast time of 22 seconds flat, and Peterson cleared the high hurdles in 16.

The week following, Cornell sent five men to the State Meet. Brettnall took the quarter in 49¾ seconds. Brettnall also took third place in the two-twenty. O'Neel landed third place in the high hurdles, in a fast field. Iowa easily won this meet with 77 points.

The season ended with a dual meet with Coe at Cedar Rapids on May 22. Coe won, 85 to 55. Fast time was made throughout the meet.

The prospects for a winning team in 1921 are good, and another fast season of track is to be expected. The following men received "C's" for exceptional work during the season: Musselman, Hurlburt, O'Neel, Peterson, Schell, Cole, Anderson, Day, Thompson, Zea, Kepler, Captain Lawrence, and Captain-elect Brettnall.



Coe-Cornell Dual

100 yard dash—Bretnall; Holt, (Coe); Schlotterbeck, (Coe).....	0: 10.1
Mile run—Burger, (Coe); Snider, (Coe); Smith.....	4: 44
120 high—Schlotterbeck, (Coe); O'Neel; Haven.....	0: 15 $\frac{1}{4}$
440 yard dash—Bretnall; Frentress, (Coe); Loftus, (Coe).....	0: 50
220 low—Tullar, (Coe); Lawrence; Jorgensen, (Coe).....	0: 26 $\frac{3}{4}$
Half mile—Brown, (Coe); Schell; Newell, (Coe).....	2: 00 $\frac{1}{4}$
220 yard dash—Bretnall; Holt, (Coe); Frentress, (Coe).....	0: 22 $\frac{1}{4}$
Mile relay—Cornell, (Hurlburt, Cole, Peterson, Bretnall).....	3: 30
2 mile—Burger, (Coe); Harris, (Coe); Day.....	10: 29
Half mile relay—Coe.....	1: 35 $\frac{1}{2}$
Shot put—West, (Coe); Kepler; Hurlburt.....
Discus throw—West, (Coe); Gatewood; Schlotterbeck, (Coe).....	114 ft., 10 in.
Javelin—Schlotterbeck, (Coe); Zea; O'Neel.....	142 ft., 3 in.
Pole vault—Nichols; Candalaria, (Coe); Renner.....	10 ft., 4 in.
High jump—Chambers, (Coe); Thompson; O'Neel.....	5 ft., 7 in.
Broad jump—Jorgensen, (Coe); Hurlburt; Chambers, (Coe).....	19 ft., $\frac{1}{4}$ in.

Cornell-Grinnell Dual

120 high—Peterson, C; O'Neel, C; Harriott, G.....	0: 18.2
Mile run—Sechrist, G; Schell, C; Reece, G.....	4: 33.2
100 yard dash—Paula, G; Bretnall, C; Smith, G.....	0: 10.2
440 yard dash—Bretnall, C; Peterson, C; Winters, G.....	0: 52.2
220 low—Evans, G; Lawrence, C; Vinsell, G.....	0: 26.4
Half mile—Minty, G; Richards, G; Cole, C.....	2: 04
220 yard dash—Paula, G; Bretnall, C; Smith, G.....	0: 22.2
Discus throw—O'Neel, C; Musselman, C; Harriott, G.....	117.1 ft.
Pole vault—Bochinler, G; Renner, C; Parker, G.....	10 ft., 4 in.
Shot put—Daubenberger, G; Hicks, G; Harriott, G.....	36 ft., 10 in.
High jump—Thompson, C; O'Neel, C; Vinsel, G; Harriott, G; tie for 1st.....	5 ft., 4 in.
Mile relay—Grinnell, (Winter, Evans, Richards, Minty).....	3: 37
Two mile—Sechrist, G; Schell, C; Reece, G.....	10: 35
Javelin—Harriott, G; O'Neel, C; Parker, G.....	137.6 ft.
Half mile relay—Cornell, (Lawrence, Thompson, Peterson, Bretnall).....	1: 36



Iowa Conference Meet

100 yard dash—Lewis, (Union) ; Bretnall; Holt, (Coe).....	0: 10
Mile run—Burger, (Coe) ; Schell; Paylinec, (Coe).....	4: 37 $\frac{4}{5}$
120 high—Peterson; Schlotterbeck, (Coe) ; O'Neel.....	0: 16
440 yard dash—Frentress, (Coe) ; Peterson; Loftus, (Coe).....	0: 52
220 low—Tullar, (Coe) ; Lewis, (Union) ; Lawrence.....	0: 26 $\frac{1}{5}$
Half mile—Johnston, (Union) ; Brown, (Coe) ; Cole.....	1: 59 $\frac{1}{5}$
220 yard dash—Bretnall; Holt, (Coe) ; Lewis, (Union).....	0: 22
Mile relay—Cornell; Coe; Union.....	3: 32
2 mile—Burger, (Coe) ; Preston, (Coe) ; Harris, (Coe).....	10: 32 $\frac{1}{5}$
Half mile relay—Coe; Cornell; Union; Iowa Wesleyan.....	1: 36
Shot put—West, (Coe) ; Kennedy, (Union) ; Vennell, (Iowa Wesleyan)	37 ft., 7 in.
Discus—West, (Coe) ; Musselman; Conn, (Dubuque).....	112 ft., 9 in.
Javelin—Smith, (Dubuque) ; Longnecker, (Iowa Wesleyan) ; Zea.....	136 ft.
Pole vault—Armstrong, (Dubuque) ; Candalaria, (Coe) ; Zea.....	10 ft., 6 in.
High jump—Chambers, (Coe) ; Duke, (Dubuque) ; Helmbrecht, (Union) ; tie for first.....	5 ft., 7 in.
Broad jump—Duke, (Dubuque) ; Helmbrecht, (Union) ; Van Meter, (Coe).....	21 ft.

Triangular Meet

Cornell-Dubuque-State Teachers

100 yard—Bretnall, C; Duke, D; Brown, S T.....	0: 10.3
Mile—Schell, C; Smith, C; Bessemer, D.....	4.44 min.
120 hurdles—Peterson, C; Hersey, S T; O'Neel, C.....	0: 16.2
440 yard—Peterson, C; Methfessel, S T; Howell, C.....	0: 53.2
220 hurdles—Lawrence, C; Hersey, S T; Armstrong, D.....	0: 27.3
Half mile—Cole, C; Anderson, C; Schell, C.....	2: 06
220 yard—Bretnall, C; Brown, S T; Hemphill, C.....	22: 4
Mile relay—Cornell; State Teachers.....	3: 40.2
2 mile—Day, C; Temple, C; Olander, C.....	11: 11.4
Half mile relay—Cornell; Dubuque; State Teachers.....	1: 39.1
Pole vault—Armstrong, D; Andrews, S T; Renner, C.....	10 ft.
Discus throw—Musselman, C; O'Neel, C; Hersey, S T.....	110 ft.
High jump—Thompson, C; Duke, D; O'Neel, C.....	5 ft., 3 in.
Shot put—Hurlburt, C; Dobson, C; O'Neel, C.....	33 ft., 5 in.
Broad jump—Duke, D; Thompson, C; Lawrence, C.....	19 ft., 11 $\frac{1}{2}$ in.
Javelin throw—Smith, D; Armstrong, D; Zea, C.....	148 ft.



GEORGE S. BRETNALL



Cornell's Olympic Star

The greatest honor that can come to a track athlete is to represent his native country at the Olympic Games. These games are held every four years, and only the best athletes in their respective countries are eligible to attend. Cornell proudly boasts of having an athlete of such high caliber in George S. Bretnall, who carried the United States' colors to the Olympic Games held at Antwerp, Belgium, in 1920.

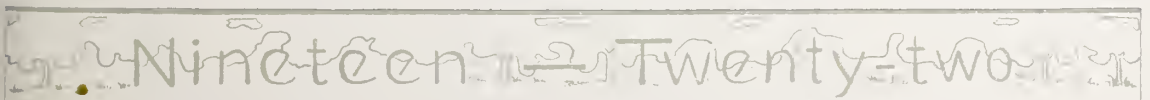
Bretnall runs the four-forty, "The devil's race". In the early part of the season his ambition was to run the quarter-mile in fifty-one seconds. "Skin" started the season by running the half-mile in 1:59 at the Drake Relays. Due to lack of sprint men, Bretnall ran the hundred and the two-twenty until the state meet. As a dark horse, he took the four-forty in $49\frac{3}{5}$ seconds, the fastest quarter ran in the state meet for thirteen years. He also placed fourth in the two-twenty yard dash. In the quarter-mile race at the Coe-Cornell Dual, Bretnall also showed up remarkably well.

In the Western Conference Meet at Ann Arbor, Michigan, Bretnall gained further honors. Running a quarter in 49 seconds, he was only a few inches behind Emery of Illinois, who took first place in $48\frac{4}{5}$. In the sectional tryouts at Chicago, "Bret" had little trouble in placing third, thus qualifying for the finals to be held at Harvard. At an Elks' program on the third of July, he won the special three hundred yard race, beating Emery of Illinois.

Frank Shea, Ted Meredith, Emery, and Bretnall finished in the order named at the final tryouts for the American Olympic team. Emery of Illinois was the only college man to beat Bretnall in the quarter during the whole season.

At the Olympic Games, Bretnall was third on the 1600 meter relay team, which took fourth place. At a meet held in London between the United States and the British Empire, Bretnall ran on the 1600 meter relay team which took second place.

George is now back at Cornell for his last year, and he leads the track team of 1921. Cornell has a track captain who ranks among the foremost quarter-milers in the United States.





Nineteen-twenty-two



Relay Teams

At the Drake Relays, held April 21, 1920, Cornell was represented by two fast teams. In a close race, the two-mile team, which was composed of Cole, Schell, Bretnall, and Peterson, was nosed out of first place. Although Peterson broke the tape with his arm, the judges gave the decision to Wabash, who made the fast time of 8 minutes and 15 seconds. The mile team, composed of Anderson, Kepler, Thompson, and Lawrence, succeeded in placing third.

The half-mile relay team, which ran in the meets, was only defeated twice. Lawrence, Thompson, Peterson, and Bretnall ran in the order named. The fastest time made by this team was 1 minute and 34 seconds.

The mile team, which also ran in the meets, came through the season without a defeat. Among their victims was the crack mile team from Coe, which won the college mile relay at Drake. The Coe team was twice defeated, the Purple and White runners covering the distance in 3 minutes and 30 seconds. Hurlburt, Cole, Peterson, and Bretnall ran in the order named.

On March 5, 1921, Cornell's crack two-mile relay team, which had formerly taken second at the Drake Relays, won first at the Illinois Indoor Relay Carnival held at Urbana, Illinois. Running in a match contest with Wabash, one of the fastest college teams in the middle west, Cornell won easily. Schell, Cole, Peterson, and Bretnall ran in the order named, and the latter broke the tape with over a two hundred yard lead.



Varsity Cross Country Team



TOP ROW: Temple, Schell, Corlette.
BOTTOM ROW: Cole, Day, Erritt.

The 1920 cross country season was a decided success. About sixty men reported at the first of the season among whom were four C. C. men, Captain Schell, Corlette, Day, and Temple. Three times a week the men braved the cold weather, and by the time of the tryouts for the Iowa meet they were ready for the tough grind of four and seven-tenths miles. Cole took the tryouts in 27:02, followed closely by Erritt, Corlette, Temple, Yaw, and Day.

The Iowa meet was staged in the rain, and road conditions were very bad. However, the Purple and White came out on top with the score of 24 to 31. Ristine of Iowa covered the course in the fast time of 25:35; Schell was a close second; Pederman of Iowa, third; followed by Day, Cole, Erritt, Corlette, and three Iowa men.

On November 13 the team journeyed to Grinnell and under adverse conditions copped fourth place in the Missouri Valley Meet. The Purple and White runners finished in the following order: Schell, Cole, Corlette, Day, and Temple.

The Home Meet was held Homecoming Day, November 20. Erritt, Freshman, romped over the course in 27:18 for first place.

Six men received the C. C. for this year's work: Schell, Day, Erritt, Corlette, Temple, and Cole.





Women's



Athletes

Nineteen-twenty-two



M. Estelle Angier

In the early fall, almost immediately after registration, one could hear queries and wonderings from almost every corner of the campus about the women's new athletic instructor. It was not long, however, before all the girls realized that the new "coach" knew her job and was at work.

Miss Angier deserves much credit for building up the department, primarily, by creating rivalry and interest in all the work. Her efficiency in her work and her personality have helped to make women's athletics a real part of every Cornell girl's activities.

The Women's Athletic Association



OFFICERS

President	GLADYS SHERK
Vice-President	FRANCES HARVEY
Secretary	GLADYS CURRENT
Treasurer	MILDRED COURT

The Women's Athletic Association was reorganized in February of this year upon the standard basis for American collegiate associations.

A large number of new members were admitted soon after the reorganization. Two delegates were sent to the triennial convention at Bloomington, Indiana, in March. Track and baseball played an important part in the program of spring athletics. The May Fete was produced very effectively.

It is expected that next year the organization will place women's athletics in the front rank of Cornell activities.



The Spring Fete



The Greek pageant was presented last spring on the 26th of March, 1920. The opening scene of the pageant was a festal day. Diana and her huntresses were in the foreground until the blowing of a horn called them away.

The story ran as follows: King Nesta, the son of Eos, killed Diana's favorite bird, and Diana demanded the king's death in return. The people went to Eos' temple to pray for intervention; while they were there, praying, Diana brought in the king. Suddenly Eos, clothed in the colors of the dawn, sprang from the temple to save her son. There was much rejoicing because the king was saved, but it was quieted when Eos entered the temple and darkness fell.



Advanced Hockey Team (Class Champions)



TOP ROW (left to right): Cork, Jordan, Avery, Bradley, Reeve.
MIDDLE ROW: Lee, Mishler, Kidder, Kennedy.
BOTTOM ROW: Crowell, Wales, Everman, Merwin.

The 1920 Hockey Season

Hockey in 1920 created more rivalry and pep than has been generated for some time. Girls' sports seemed to have won a definite place in college life, at least during the hockey season. Interest ran high, and the competition brought out so many players that it was very difficult to choose the various teams.

The players were chosen according to class, Juniors and Seniors uniting to form the advanced team, while the Freshmen and the Sophomores supported teams of their own. The tournament was won by the combined force of the upper-classmen, but they encountered real opposition in the underclass teams.





SOPHOMORE HOCKEY TEAM.



FRESHMAN HOCKEY TEAM.

Nineteen and twenty-two



Advanced Basketball Team (Class Champions)



TOP ROW (left to right): Arbingast, Mishler, Cork, Harris.
MIDDLE ROW: Cottingham, Milne, Jordan, Lee, Wilcox.
BOTTOM ROW: Kennedy, Avery, Sturdevant.

Basketball 1920-21

The 1921 basketball tournament resulted in the victory of the advanced team, although the contest was by no means one-sided. Considerable interest was aroused by the various games, and, indeed, the whole season marched along with an accompanying spirit of coöperation and college support similar to that of the fall athletics.

As the new "gym" rules do not require basketball for credit, every girl who "tried out" played because of a real love for the sport. Thus the quality of the material was probably superior to what it might have been had basketball been a part of the required curriculum.

The future of girls' basketball at Cornell is a promising one. We are looking forward to real conquests in the next few years. Perhaps even intercollegiate games may soon become a part of girls' basketball at Cornell.





FROSH BASKETBALL TEAM.



SOPH BASKETBALL TEAM.



Spring Awards for 1920

Freshman Class C's

FAYE BALDWIN	ELVA MADDEN
ELEANOR BOSSERMAN	ISABELLE SONES
CHARLOTTE CARPENTER	LILLIAN WILCOX
VERA CATES	CAROLINE WITZIGMAN
HARRIETT HOOVER	HELEN BRESEE
FERN MCNEIL	MARCELLA QUICK
MARY PLUMMER	MARGARET CARHART
GLADYS SHERK	ELSIE KOBERG

Junior Class C's

GENEVRA STURDEVANT	BESS KENNEDY
--------------------	--------------

Sophomore Class C's

RUTH HEALD	RUTH JOHNSON
------------	--------------

FRANCES HARVEY

Senior Swimming C's

ELEANOR STALLARD

Junior Swimming C's

HELEN MISHLER

Sophomore Swimming C's

ROSE TALLMAN	RUTH LARSON
--------------	-------------

FLORA LEE

Varsity C's

GERALDINE HUGHES	ORA ROGERS
GRACE TIPPET	MARJORIE HUGHES
RUTH MOLLISON	MARY CLEMENS
MARGARET WARD	KATE CLEMENS

Medals

FRANCES SKARSHAUG	RUTH JORDAN
-------------------	-------------

Freshman Tennis C's

ELEANOR HICKS	ALICE GREEN
---------------	-------------

Sophomore Tennis C's

FRANCES HARVEY	RUTH LARSON
----------------	-------------

Varsity Tennis C's

FRANCES HARVEY

Freshman Swimming C's

STELLA RIGBY	GLADYS SHERK
HELEN BRESEE	DAPHNE SHAFER
KATE CLEMENS	EVA COFFMAN



The 1920 Tennis Season

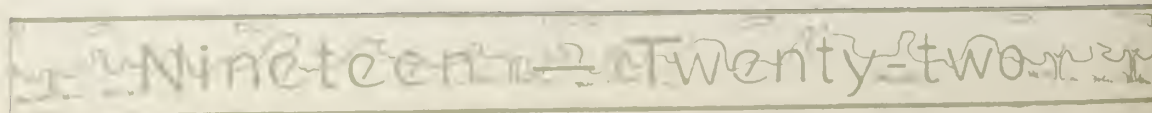
Last spring tennis was unusually popular among the girls. Each class sent out a large amount of good material. Rivalry caused interest and enthusiasm to run unusually high. Miss Eleanor Hicks was champion of the Freshman class, and Miss Frances Harvey represented the Juniors. After a hard fought battle between these two Miss Harvey was victorious.

The ability of Miss Harvey was also shown at Lake Geneva, where she won the championship of the Conference by defeating girls from all the colleges and universities of the middle west.

Swimming

The annual swimming meet was held near the close of the 1919-20 school year. Each girl who wished credit in this department was required to swim the length of the pool. Then the different classes united their talent and staged the following stunts:

- Plain diving.
- High diving.
- Backward diving.
- Under-water swimming.
- Floating.
- Relay races.
- Pied Piper and Rats—High School.
- Old Fashioned Swimming Pool—Sophomores.
- Huckleberry Finn—Advanced Classes.





Organizations



Nineteen-Twenty-two



Nineteen-Twenty-two



Adelphian



Founded 1858

Presidents

Fall term ALAN GOWANS
Winter term JAMES OLSON

ROLL

FRED MCKEE, O'NEAL MASON, CRAIG OVERHOLSER,
JAMES OLSON, REED MORSE.

ALAN GOWANS, TOM KEPLER, HAROLD DEE, JAMES
SCOVEL.

BERTON HOGLE, CLARK GALLOWAY, KENNETH DAN-
SKIN, GLENN BROWNING, MELVIN NICHOLS.

RUSSEL COLE, HARRY HUDELSON, CLARENCE HOLM,
LOWELL HENSHAW.

WARREN MCKUNE, ANDRES JENSEN, LOUIS MAXWELL,
CEPHAS MILLER, MERRIL DRYDEN.

NATHAN WILLIAMS, PAUL DEE, PAYSON PETERSON,
MELVIN LAKEY, RALEIGH GATEWOOD, WESLEY
KENNEDY.

MYRON ARBUCKLE, ROBERT NOBLE, NEWELL FISHEL,
HARLAN BETTS, LEO CHAPMAN, HALE HAVEN.



Nineteen-twenty-two



Philomathean



Founded 1858

Presidents

Fall term RUBY WASSER

Winter term LUELLA RICH

ROLL

RUTH JORDAN, WILMA HANN, LAURA EVERETT, DORIS
MALIN.

BESS KENNEDY, RUBY WASSER, FORESTINE DEVINE,
KATE SKINNER, LUELLA RICH.

ALTA NEFF, HELEN BEDE, DOROTHY ARBINGAST,
NAOMI HENKLE.

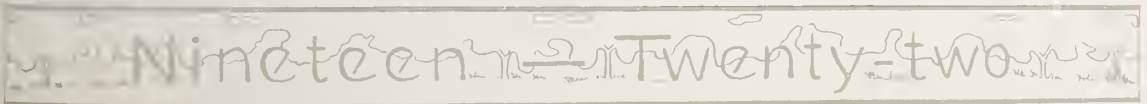
CAROLINE WITZIGMAN, WACIL TURNER, JESSIE MC-
KAY, RUTH ROBB, MARY ANN DARRAH.

HELEN BRESEE, LAURA SWENSON, FREDA TIEDENS,
ALTHEA WALES.

IDA JANE REEDER, FERN MCNEIL, LUCIA MILLER,
MARGARET MASON, BETHA POWERS.

MARGARET CARHART, MABEL CAMPBELL, ROSE FERRIS,
RUTH KIDDER.

FAYE BALDWIN, DARLENE BARKER, MILDRED COURT,
MAUDE BEAMAN, THEO DARLING.





Nineteen Twenty-two



Amphictyon



Founded 1853

President

Fall term PERCY EDWARDS

ROLL

PERCY EDWARDS, FRANKLIN O'NEEL.

EDWARD SPURGEON, EDGAR HOFF, STANLEY KLAUS.

STANLEY WILCOX, WESLEY TRIESCHMAN.





Nineteen-twenty-two



Aesthesian



Founded 1872

Presidents

Fall term FRANCES HARVEY
Winter term . GENEVRA STURDEVANT

ROLL

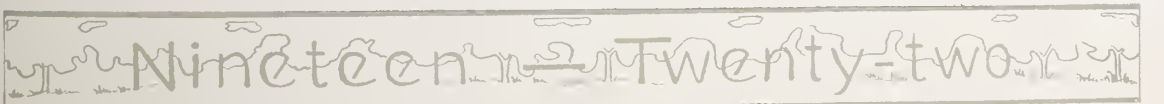
AGNES JOHNSON, ELIZABETH ASH, DOROTHY SMEDLEY,
ALICE CORK.

GLADYS BRADLEY, MILDRED CARSON, CAROLINE HELM-
ING, FRANCES HARVEY, HELEN DURNO.

DOROTHY HELMING, RUTH ELLA PETTY, LILLIAN WIL-
COX, HARRIET HOOVER.

GLADYS CURRENT, HELEN STONE, MARY ROGERS,
GENEVRA STURDEVANT, ELEANOR BOSSERMAN.

MARTHA LAHMAN, MARGARET WAGNER, MARY
CLEMANS, ELINOR BUMAN.





Nineteen-twenty-two



Irving

Founded 1888

President

Fall term BERTRAM HAYES

ROLL

FRED BIRCHARD, ORA MOHN, ELLSWORTH LORY.

DAVID ASH, KENNETH MONEY, BERTRAM HAYES.





Nineteen — Twenty-two



Thalian



Founded 1917

Presidents

Fall term MYRTLE KEENER
Spring term MADELINE PARMENTER

ROLL

MYRTLE KEENER, LEAFY YARD, FRANCES HIPPLE,
DORIS VALENTINE.

GLADYS SHERK, SENA ANDERSON, FLORA LEE, EULA
DOWNER, VERA CATES.

LOIS WHEELER, EVA CARVEY, GERTRUDE PFEIFFER,
DOROTHY PUFFER.

STELLA RIGBY, EVA GILBERT, MYRTLE BURROWS, LULU
JEFFERS, VELMA PLANK.

MADLINE PARMENTER, MINA DAY, PAULINE STONER,
EVA LU WERLING.





Nineteen—Twenty-two



Miltonian



Founded 1871

Presidents

Fall term CLAIR LAHMAN
Winter term MERLIN SONES

ROLL

STANLEY HOWARD, MERLIN SONES, DWIGHT WINDENBERG, ELMER OLANDER.

HARRY CARR, CLIFFORD MILLEN, DAY NEWSOM, RAYMOND HOUSTON, CARL ALLEN.

HARRIS DICKEY, LEE DUBRIDGE, SHERMAN SHAFFER, ERROLL MILLER.

GLENN SONES, GEORGE DUNHAM, HOMER CODDINGTON, FOREST MILLIKEN.

GLENN ASPINWALL, GLENN GIDDINGS, HAROLD BALLZ, DONALD CORLETT, GEORGE WHITTAKER.

WINTHROP OLNSTEAD, LYLE PIPPERT, ARTHUR COOK, ARTHUR DAMEROW.





Nineteen - Twenty-two



Aonian



Founded 1901

Presidents

Fall term DORIS KOHT

Winter term HELEN KRUSE

ROLL

DORIS KOHT, MARION BARNES, FLORENCE COOPER,
GLADYS AVERY.

BETTY COTTINGHAM, ISABEL SCROGGIE, STELLA
PLAEHN.

HAZEL BENNETT, ELVA HILL, DARLENE WOLCOTT,
HELEN KRUSE.

VERA PHELPS, MILDRED STAHL, ESTHER HALL. .

ARIEL MERRITT, RUTH POTTER, MARY PLUMMER,
ELSIE KOBERG.

DOROTHY SCROGGIE, HELEN ARNOLD, THELMA
SCHERGER.

CLARA BELLE WILSON, ELEANORA SOULE, BESSIE
REITZEL, WILMA KLAISS.

ISABELLE SONES, ALICE GREEN, HELEN PECK, EMILY
WOLF, VELVA HANSULD.





Nineteen twenty-two



Parmenian



Founded 1912

Presidents

Fall term JOSEPH CLEVELAND

Winter term HERBERT TEMPLE

ROLL

JOHN PECHT, CARL SPANGLER, HERBERT CHENOWETH,
HERBERT TEMPLE, OSCAR ANDERSON.

GLENN ROUSE, RILEY RICHARDSON, WALTER AVERILL.

HAROLD DAVIS, THERON ERICKSON, ENJI TSUKASAKI,
JOSEPH CLEVELAND.

FRED FOSTER, LAWRENCE SWANSON, HARRY BONZE.

HOMER FRIES, ARTHUR HEMPHILL, WILLIAM ELDRIDGE,
GLENN JONES.

GLENN CARLSON, LOWELL CRAMER, PHILLIP PAXSON,
IVAN SCHULTZ, RONALD SCANTLEBURY.





Nineteen-twenty-two



Promethean



Founded 1914

Presidents

Fall term HELEN MISHLER

Winter term HELEN PIERCE

ROLL

ELNORA GRIFFITH, CLARA FARNUM, LETHA DAUBEN-
DICK, IRENE EVERMAN.

ALISON GOWANS, HELEN MISHLER, HELEN PIERCE,
CORINNE KEILMAN, AGNES WILSON.

GLADYS SHADDUCK, PAULINE ROACH, ELIZABETH
ANNIS, MILDRED CONMEY.

BESSIE McNEIL, WILMA WILCOX, MARION MENOLD,
CENA JOHANNESSEN, GLADYS WILDER.

EULA CLARK, RUBY LENT, MERCIE HEISE, ISABEL
BROWN.

RUTH HO, MILDRED GALE, RUTH WILSON, CAROL
CHEN, ORAL LENT.

RUTH EVELAND, OLIVENE HAHN, MITYLENE NEWTON,
VELMA SCOTT.

MILDRED DAVIDSON, PEARL FEAR, MARGARET DAVID-
SON, HELEN WHITNELL, LENORE SEYDEL.





Nineteen—Twenty—two



Zetagathian



Founded 1877

Presidents

Fall term WILLIAM MOORE

Winter term MAYNARD SCHELL

WILLIAM MOORE, KENNETH SMITH, HAROLD MC-
ILNAY.

CHARLES CHRISTIANSEN, CHARLES MALONE.

GEORGE BRETNALL, MAYNARD SCHELL, GLENN FIS-
BAUGHER.

JAMES ENSIGN, ALBION TAVENNER.

HAROLD BRUCE, HAROLD OLESON, BOYD THOMPSON.

GEORGE GARDINER, SELMAR STORBY.

LESLIE YAW, STEPHEN SERGEANT, WARREN BIEBER.

FRANK DAY, MARSHALL CHEEVER.





Nineteen-twenty-two



Alethean



Founded 1888

Presidents

Fall term MARY TALLMAN
Winter term KATHERINE MOSES

ROLL

ROSE TALLMAN, OLIVE BRYANT, MARY TALLMAN,
ELMA KIDDER, DOROTHY BATEMAN.

ELEANOR HICKS, FLORENCE TENNANT, BESSIE BOWERS,
FRANCES CROWELL, GAIL MILNE, GRACE VOSS.

WANETA KEVE, JOYCE HARRIS, JEANETTE FERRIS,
KATHERINE MOSES, ALMA LACOCK.

DENA KREAGER, MAREE PETERSON, ONA KATING,
ALICE REEVE, CHARLOTTE COBB, MABELLE EDDY.

GLADYS BOSTON, EDITH EVANS, LUCY FERGUSON,
HELEN ROBBINS, ALICE EDDY.

EDITH GREYHER, ISABEL FRY, EDITH LAUCAMP, ELIZABETH STEVENS, CHARLOTTE CARPENTER, BERNICE ERICKSON.

BEATRICE DAVIDSON, ISABEL MAYNE, LORA TIMMONS,
HORTENSE MAYNE, MELITHA SANDERSON.

GRACE MCCREEDY, MARGARET MERWIN, MARY MYERS, CARRIE GROTE, LUCY SWINDELL, LAURA MITCHELL.





Nineteen - Twenty-two



Freshman Men's Literary Society

Founded 1920

President

Fall term . . . MAURICE HARTUNG

ROLL

ROLAND GRANT, HAROLD BOLTON, WILLIAM TAN,
LLOYD TAYLOR, RAYMOND McCONNELL.

JAMES ROBINSON, DAYTON NIEHAUS, BUELL MAX-
WELL, EARL SCHERF.

MYRON HARTLEY, HOWARD MATHEWS, FRIELIE CONA-
WAY, CARL KIRWIN, FRED KLEEMEIER.

DONALD KNIGHT, HOBART WALKER, MAURICE HART-
UNG, WILLIAM CHAPMAN.

HERBERT OWENS, WILLARD HUNTER, CHARLES ROB-
ERTS, JIM MOORE, HAROLD HENKLE.

SAMUEL BEERS, CLARENCE OLESON, LESTER LAIDIG,
HOMER HALE, HOWARD HARTMAN, DONALD BRU-
BAKER.

WALDEN HILMER, FLAVEL BUNNELL, LEONARD BIEBER,
WINNIE NICHOLAS, LAWRENCE KINDRED, NEAL
PARCHER.





Nineteen-twenty-two



Emeraldian

(Freshman Women)

Founded 1920

President

Fall term . . . GERTRUDE STILLWELL

ROLL

MINA LOVELESS, VIOLA SCHWIEGER, RUTH BAKER,
HELEN M. PECK, GERTRUDE PENN, HARRIETT
HOGLE, BERNICE HOWARD, LUCILE PECKHAM.

ELSIE SCHLUE, ALBERTA STOFFEL, ETHEL McCON-
NELEE, LEILA LINTNER, JEANETTE BRAUN, BER-
NICE BERTRAM, HELENA WILCOX.

PRETORIA GARVER, WILMA MANLY, MILDRED JORDAN,
BEATRICE KROGH, KATHERINE MUSSELMAN,
MERNA FOUNTAIN, MERVYN ELLIS, SARA LOU
JORDAN.

KATHERINE IRVINE, HELEN HOY, LEILA KIRLIN,
FRANCES SNYDER, FRANCES DANIELS, GOLDIA
LONG, OPAL MUNGER.

ELIZABETH MORRIS, ROSANNA SWENSON, LUCILE LA-
COCK, VIVIAN DYKE, MARY KEISTER, HETTIE
BELLE TRAVIS, MARGARET BELKNAP, EDITH H.
MILLER.

NELLIE GREISON, ISABELLE GROOMES, MAY VIRDEN,
NELLIE ELLIS, LILLIAN RAPER, RUTH MOORE,
CONSTANCE LOE.

MABEL HARTNEY, RUTH HORNER, HASOL RICKEY,
ALMA RUE, RUBY RITTER, LORA CONN, RUTH
KEGLEY, GERTRUDE STILLWELL.

INA THOMPSON, LADONNA CORNS, MARJORIE DAVIS,
ROBIE SARGENT, JANE SMITH, FLORENCE STIMP-
SON, CRYSTAL MUNGER.

EVELYN BRETNALL, JESSIE RAGUE, VIOLA LATHE, ELZA
PIPPERT, MILDRED DICE, ETTA HILER, VIOLA
BRYSON, GRACE RIDENOUR.





The Society Year



During the year of 1920-21 Cornell has rested from the stress and struggle of society competition. The opening months of the school year did not see the usual signs of the rusher's activities. No eager upperclassmen buttonholed the attractive candidates in hall and classroom. Epidemics of homesickness spread through the new class, but the usual division of allegiance did not occur.

Due to this trial of Sophomore rushing the Freshmen saw none of the unusual sights which proclaim the arrival of initiation on a busy campus. The fountain which was formerly the center of initiation activities no longer saw the meeting of the Philo Salvation Army, or the signals of Miltonian "cops" directing the campus traffic. No more Adelphean worshippers gathered around the fountain and performed Oriental devotions. Rust accumulated on the wheels of the Parm baby buggies and the Zet wheelbarrow taxis.

Yet in spite of the absence of these outward signs, inactivity was not entirely characteristic of society life. The newly-formed Freshman organizations adequately fulfilled their function. Society plays were well attended. Closed door meetings were regular occurrences in many societies.

It has been a quiet season, but not an inactive one.

Nineteen-twenty-two



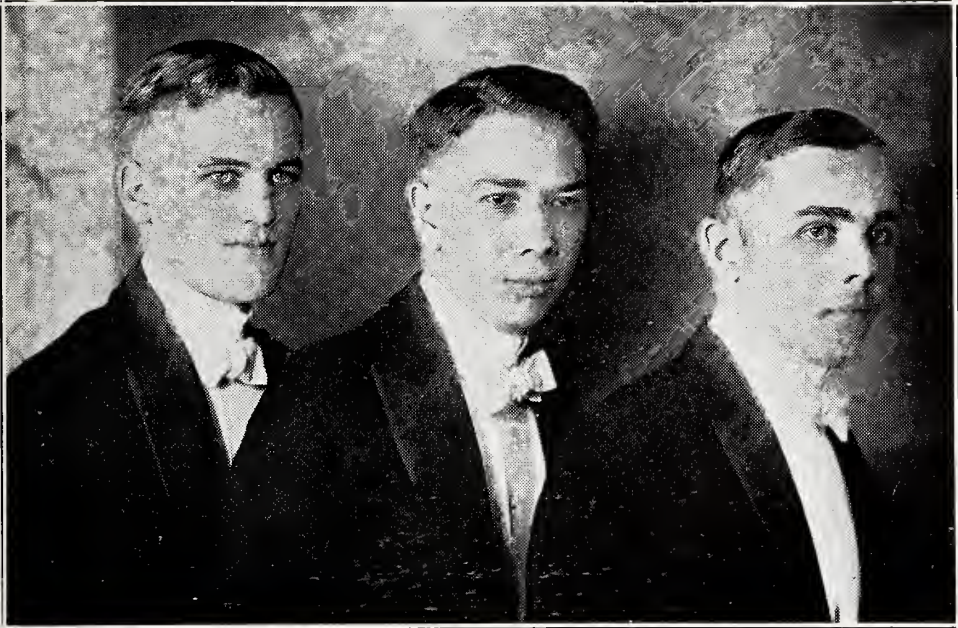
Forensic



PROFESSOR RALPH E. HIMSTEAD
Coach of Debating



Triangle Inter-Collegiate Debate



March 11, 1921

Cornell *vs.* Carleton at Mount Vernon

QUESTION

Resolved: That the Esch-Cummins plan is a desirable solution of the railroad problem.

Cornell, Affirmative

GLENN FISHBAUGHER
CHARLES CHRISTIANSEN
PERCY EDWARDS

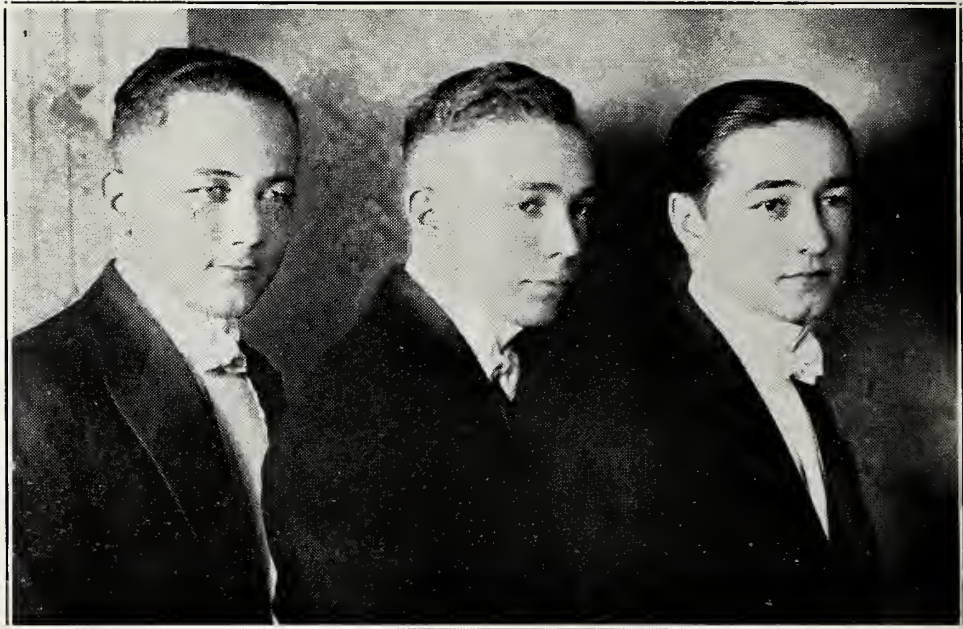
Carleton, Negative

CHARLES HOWARD
H. PHILLIPS CONSTANS
ARTHUR M. WHITMORF

Decision: Cornell 2, Carleton 1.



Triangle Inter-Collegiate Debate



March 11, 1921

Cornell *vs.* Grinnell at Grinnell

QUESTION

Resolved: That the Esch-Cummins plan is a desirable solution of the railroad problem.

Cornell, Negative

FRANK HUNT

GLENN SONES

HARRY BANZE


Grinnell, Affirmative

WILLIAM EGLOFF

CARLOS ROWLINSON

ANGUS McDONALD

Decision: Cornell 2, Grinnell 1



Women's Dual Inter-Collegiate Debate



May 16, 1921

Cornell vs. Iowa State Teachers at Mount Vernon

QUESTION

Resolved: That the employees of industrial corporations, as such, should be permitted to select at least one-third of the members of the board of directors.

Cornell, Affirmative

JESSIE MCKAY

FRANCES CROWELL

RUBY WASSER



Women's Dual Inter-Collegiate Debate



May 16, 1921

Cornell *vs.* Iowa State Teachers at Cedar Falls

QUESTION

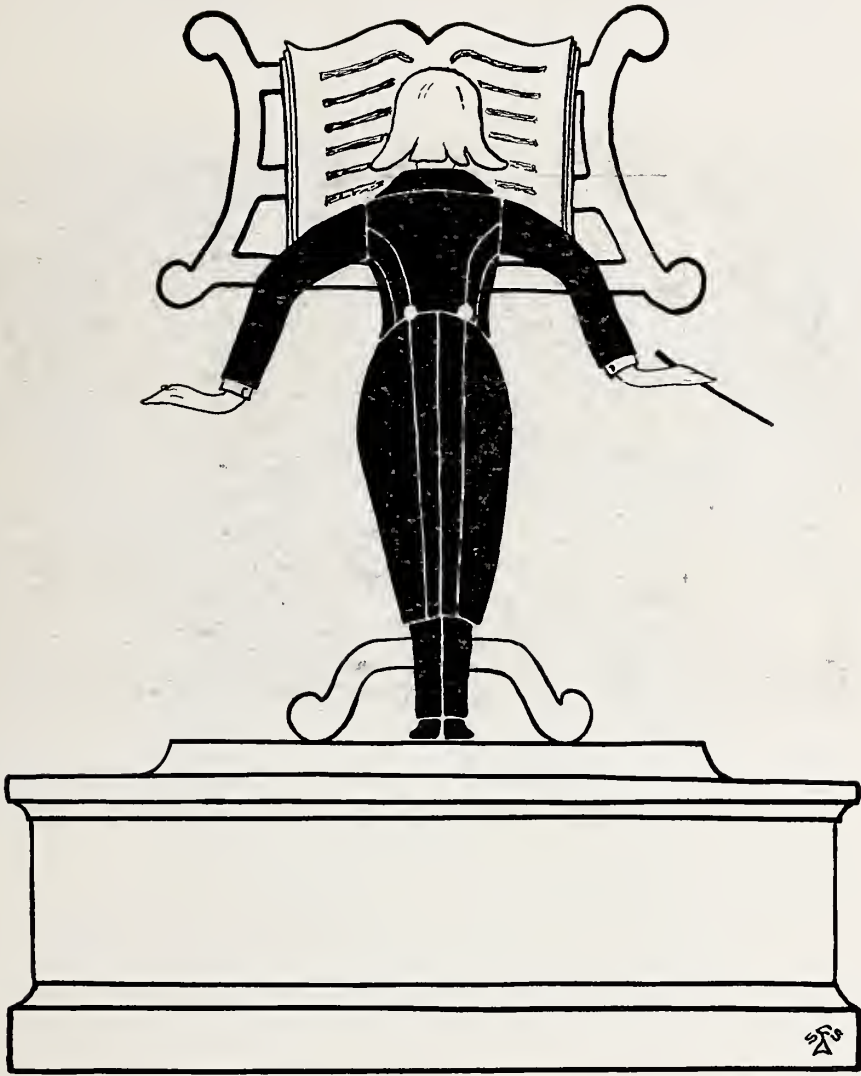
Resolved: That the employees of industrial corporations, as such, should be permitted to select at least one-third of the members of the board of directors.

Cornell, Negative

DORIS KOHT

MILDRED COURT

VERA CATES



MUSIC





PROFESSOR FRANK H. SHAW
Director of Conservatory



Men's Glee Club



PERSONNEL

OTTIS E. PATTON, Director

First Tenors

LEE POTTER
CRAIG OVERHOLSER
GEORGE WHITTAKER

First Basses

CLARK GALLOWAY
FRANK HUNT
GILBERT HENNING
DAY NEWSOM

Second Tenors

ARLANDO BALDWIN
HAROLD BALLZ
HARRY CARR
ERROLL MILLER

Second Basses

RALPH DEARDORF
MERRILL DRYDEN
LAWRENCE KINDRED
SHERMAN SHAFFER





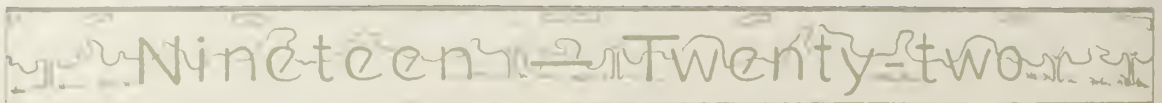
Men's Glee Club Tour of 1920

The eighteenth Annual Spring Concert Tour of the Men's Glee Club, which took place in 1920, was a great success. Business Manager Musselman arranged a trip through Illinois and eastern Iowa, which included Prophetstown, Illinois, where "Percy and Hercy" failed to register in their song hits.

At Sterling, Illinois, the Club was welcomed at a Cornell banquet, and the debaters in the Club made good in their after-dinner speeches. At Polo, Illinois, a slot machine in the hotel was the high spot of attraction. The High School at Lanark was next to take the Club. The last concert in the Sucker State was given at Freeport, where a packed house insisted on hearing every number and encore.

The Club put up at the hotel at Muscatine, but the Button Workers' Union furnished the entertainment. A sacred concert was given at Davenport, then Clinton was next. The jazz orchestra which had been so successful everywhere else was not so well received here.

Four short concert trips were taken during the spring to Marion, Springville, Blairstown, and to Killian's at Cedar Rapids. Much credit for the success of the season is due to Professor Patton, Professor Huffman, and Business Manager Musselman.





Girls' Glee Club



PERSONNEL

Miss ANNIE PIERCE, Director

First Soprano

ALICE EDDY
MABLE S. HARTNEY
RUTH KIDDER
FERN McNEIL

CATHERINE MUSSELMAN
ALTA NEFF
VELMA PLANK
ALBERTA STOFFEL

HELENA L. WILCOX

Second Soprano

ELEANOR C. BOSSERMAN
MARGARET CARHART
LOUISE ELFRINK

ALICE E. HEALD
FRANCES HIPPLE
HELEN ROBBINS

First Alto

MABELLE EDDY
LAURENE KEPLER

ISABELLE SONES
HELEN E. STONE

FLORENCE TENNANT

Second Alto

MAUDE E. BEAMAN
BETTY COTTINGHAM

ALICE M. GREEN
LOIS E. WHEELER

NAOMI HENKLE, *Accompanist*



The Girls' Glee Club Trip of 1920

A DIARY

Wednesday—Glad to be through with books for awhile. We left Mount Vernon on the noon train. Looked like a traveling sewing bee as we had to make our stunt costumes while en route to Toledo. In spite of the usual opening night rain we had a very good crowd.

Thursday—And still it rained. Early morning train late. When it did come the train crew happened to be accommodating or two of us would have been left. "Betty" and Velya talked to one man so effectively that he forgot to get off at Goldfield and had to walk back. The old Cornelliars teaching here treated us royally. In spite of the fact that the rain changed to a blizzard a good audience came out anyway.

Friday—We shopped during the morning and then went to Renwick where we draped ourselves around the Post Office and Hotel most of the afternoon. The quartette made a big hit here.

Saturday—An appreciative crowd were at the depot to see us off. We went back to Lu Verne, where we ate dinner and entertained ourselves until the train left for Britt. Arrived in Britt we put up at the Allison Hotel for the week-end.

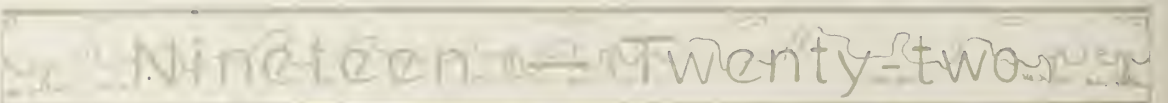
Sunday—Shines, fortune-telling, letter writing, and trips to the Post Office and the Alcove occupied most of our time. We gave a sacred concert in the evening with good success considering the fact that we had no previous preparation.

Monday—Our 6:30 A. M. train left at 10:30 A. M., so no one was left behind. We finally reached Algona in time for dinner. We were driven around in cars and had a fine time and a reception. Naomi played the pipe organ for a specialist from Chicago.

Tuesday—At Independence. We visited the asylum here, of course. No one was absent at roll call later in the day. An appreciative crowd greeted us here.

Wednesday—Mason City was our destination this time. The Men's Glee Club from Coe was here at the same time, and a number of our girls decided that Coe wasn't so bad after all.

Thursday—Home again. After such a good time and so successful a trip it's not going to be easy to start studying again.





Orchestra 1921



OFFICERS

HORACE A. MILLER	Conductor
ALBION TAVENNER	President
FLORENCE GODDARD	Secretary
GORDON MOSBY	Treasurer

PERSONNEL

First Violin

JULIA SEILER SHAW
 LUCY MOODY BOYD
 NELLIE L. RICHARDSON
 ELEANOR CURRENT
 FRIEDA TIEDENS
 LOIS BROWN

Second Violin

EDITH LAUCAMP
 FRANCIS MCKAY
 ELEANOR HICKS
 MARION BARNES
 MARY CLEMENS
 EDGAR HOFF

Viola

DOROTHY HELMING
 MYRON ARBUCKLE
 RUTH SILVIUS

Piano

HELEN LITTLE

Drums

RAYMOND MCCONNELL

Cello

FLORENCE GODDARD
 MARSHALL CHEEVER

Double Bass

MRS. LUELLE MILLER
 MAURICE HARTUNG

Flute

ARIEL MERRITT
 MARGARET MERWIN

Clarinet

MR. E. W. RICHARDSON
 MELITHA A. SANDERSON

French Horn

GLENN CARLSON
 ARTHUR HEMPHILL

Cornet

PROF. JOHN M. BRIDGHAM
 GORDON MOSBY

Trombones

ALBION TAVENNER
 HERMAN O'MAY
 ROLAND GRANT





Cornell College Orchestra

Fifteenth Annual Concert Tour .

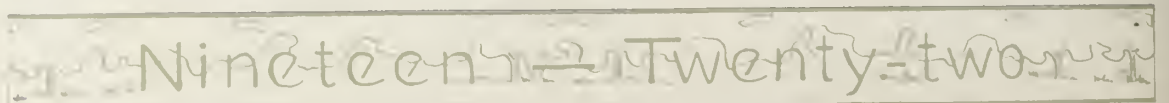
March, 1920

PROGRAM

- La Reine de Saba—Marche et Cortege *Ch. Gounod*
 Symphony No. 1, Op. 21 *Beethoven*
 Andante Cantabile con moto
 Menuetto
 Adagio—Allegro molto e vivace
 Trombone Solo—"Toreador Song" from "Carmen" *Bizet*
 ALBION TAVENNER
 Reading—An Italian's View of the Labor Question *Joe Kerr*
 DOROTHY BATEMAN
 Adoration *Felix Borowski*
 Hungarian Dances No. 1 and 2 *Joh. Brahms*
 Vocal Solo—
 My Laddie *W. A. Thayer*
 Don't Come in, Sir, Please *Cyril Scott*
 RUTH HEALD
 Le Coucou (The Cuckoo) *Arensky*
 Prelude *Glazounow*
 The Mill *Adolf Jensen*
 Violin Solo—Serenade, from the Ballet "Les Millions d'Arlequin" . . . *Drigo-Auer*
 JULIA SEILER SHAW
 "Oberon," Overture *Weber*

ITINERARY

- | | |
|--------------|----------|
| Center Point | Rockford |
| Hazleton | Hampton |
| Sumner | Waterloo |
| Greene | Vinton |
| Cedar Rapids | |





Cornell Oratory Society

MR. FRANK H. SHAW Director
 C. H. GALLOWAY President
 L. E. KINDRED Secretary-Treasurer
 GILBERT HENNING Librarian

Soprano

ESTELLE ANGIER	CARRIE GROTE	MINA LOVELESS	THELMA SCHERGER
HELEN ARNOLD	FRANCES HIPPLE	CATHERINE MUSSELMAN	ELEANORA SOULE
MARGARET BELKNAP	MABLE HARTNEY	ESTHER MALTBY	ALBERTA STOFFEL
GLADYS BOSTON	RUTH HORNER	EDITH MILLER	ROSE TALLMAN
FLORENCE COOPER	CENA JOHANNESSEN	RUTH MOORE	HELENA WILCOX
ELEANOR BOSSERMAN	RUTH KIDDER	OPAL MUNGER	HELEN WALN
BEATRICE DAVISON	ELSIE KOBERG	ALTA NEFF	BLANCHE WILEY
EMMA DORMAN	ONA KATING	MAREE PETERSON	HAZEL LAWYER
ALICE EDDY	ROMAINE KEPLER	VELMA PLANK	ROSE FERRIS
NELLIE ELLIS	RUTH KEGLEY	HALLIE PEET	FERN MCNEIL
MERVYN ELLIS	EDNA KLINE	ERMA RIGBY	RUTH ROBB
LUCY FERGUSON	BEATRICE KROGH	IVY RICE	WILMA MANLY
EDITH GREYER	RUBY LENT	ELIZABETH STEVENS	MILDRED CARSON
MILDRED GALE	HELEN LITTLE	ELSIE SCHLUE	

Alto

MILDRED AZELTINE	ALICE DAY	FRANCES MCKAY	DORIS VALENTINE
ELIZABETH ASH	MABELLE EDDY	WINIFRED MAYNE	LILLIAN SMITH
MRS. J. BROWN	LOUISE ELFRINK	CRYSTAL MUNGER	ISABEL SONES
LOIS BROWN	JEANETTE FERRIS	STELLA RIGBY	MADELINE PARMENTER
MAUDE BEAMAN	NAOMI HENKLE	ALICE REEVE	ALICE GREEN
BETTY COTTINGHAM	ALICE HEALD	HELEN ROBBINS	FLORENCE TENNANT
LAURA CONN	LAURENE KEPLER	HAZEL SNYDER	LOIS WHEELER
VERA CATES	LEILA KIRLIN	HELEN STONE	FRANCES SNYDER
EULA CLARK	ISABEL MAYNE	BLANCHE SCOTT	FRANCES AGNEW
LETHA DAUBENDICK			VIOLA BRYSON

Tenor

FRIELIE CONAWAY	ERROLL MILLER	CRAIG OVERHOLSER	ROBERT HOLMES
J. R. GRANT	GEORGE WHITTAKER	DONALD BRUBAKER	FRED MCKEE
LEE POTTER	HAROLD BALLZ	MELVIN LAKEY	ARLANDO BALDWIN
HARRY CARR			MR. PATTON

Bass

W. A. AVERILL	GLENN COLEMAN	DAY NEWSOM	IVAN SCHULTZ
JAMES ASH	WILLIAM CHAPMAN	DAYTON NIEHAUS	C. H. GALLOWAY
F. D. BIRCHARD	LEE DUBRIDGE	HAROLD OLESON	GLENN GIDDINGS
HOMER CODDINGTON	THOMAS HAINES	CLARENCE OLESON	FRANK HUNT
JOHN COULSON	GILBERT HENNING	SHERMAN SHAFFER	RALPH DEARDORF
HERBERT CHENOWETH	LAWRENCE KINDRED	LAWRENCE SWANSON	LOWELL CRAMER
ARTHUR COOK	MERRILL DRYDEN		JOHN SHERK

Nineteen-Twenty-two

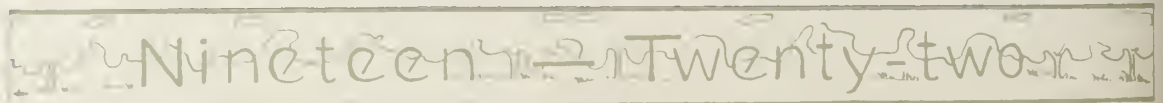


The Cornell College Band



Spurgeon, Oleson, March,
Mosby, Chapman, Cleveland, Prof. Bridgham,
Hemphill, Carlson, Scholtz, Allen, Draden,
Weber, Hale, Beers, Kindred, O'May, Tavenner, Grant, Bruce.

Through the efforts of Professor Bridgham, Cornell has a band this year of which she can be very proud. The band has appeared at everything from pep meetings and athletic contests to the Sars Souci, and has always added a great deal to these varied occasions. Not only to Professor Bridgham, but to the members, each one of whom has given up some personal pleasure to help keep up the spirit of the school in this way, has the success of the band been due. Many of the athletic victories which have come to Cornell this year and which will come in the future, may be attributed partly to the excellent work of the College Band.





Religious



The Y. M. C. A. Cabinet



TOP ROW: DuBridg, Browning, Danskin, Hogle, Betts.
BOTTOM ROW—Temple, Allen, Sones, Anderson.

The year 1920-21 will be remembered as a successful one for the Cornell Y. M. C. A. Under the leadership of "Slav" Allen and a loyal cabinet it has really accomplished something.

An all-college stag at the gym. served to show the freshmen that the Y. M. was on the campus. The revival of the old-time freshman joints and the loyal support of the Thursday night meetings by the upper classmen have been other features that gave the "Y" a good send-off. About the middle of October a successful financial drive for \$360 for the year's budget was staged as well as a successful membership campaign.

There have been a number of big features of the year's work which can only be mentioned. Among these are the socials and stags that have been held, the large number of gospel teams that have been sent out, and the chess and checker tournament held in the new "Y" room in Main Hall.

But the climax of the year's activities was the Stitt Wilson campaign of religious education held the first week in March. It was toward this series of meetings that the prayers and work of the officers were directed. How great the results will be cannot yet be estimated. But if Stitt Wilson has succeeded in bringing to the student body as a whole as well as to many individuals a fuller concept of the Christian life of service, the aim of the Y. M. and Y. W. in bringing him here will have been accomplished.



Y. W. C. A. Cabinet



MABELLE EDDY	President
GRACE VOSS	Vice-President
BERNICE ERICKSON	Secretary
DORIS VALENTINE	Treasurer
FLORENCE TENNANT	Financial
FRANCES HIPPLE	Religious Work
DORIS KOHT	World Fellowship
DOROTHY SMEDLEY	Publicity
FRANCES HARVEY	Undergraduate Representative
ORAL LENT	Social Service
JESSIE MCKAY	Social

This year Freshman Joints were inaugurated once again and gave to the Freshman class a unity and *esprit de corps* which they have not had, perhaps, since these joints were in vogue a few years ago.

Thanks to the coöperation of the girls and of the College, we now have a Y. W. room of which we can be proud; newly decorated walls and floor refinished, a complete set of wicker furniture, a mirror, and a beautiful hand painting by Professor Mills all contribute to its comfort and charm.

On a proposed budget of \$2100, we secured a total of \$1600, and we believe that with the probable shrinkage in estimates and the balance still to be secured, we will be able to close the year in good business condition. \$1000 we will send to our College in Foochow, China; \$350 will go toward the expenses of a Chinese student at Cornell; and \$90 will help pay the expenses of our Lake Geneva Student Conference delegates; and the remainder divided up among the various committees for our own work.

Splendid enthusiasm has been shown by the high school girls in their Association which was started this year also.

We have had a number of joint Y. M. and Y. W. get-togethers, and hope for more in the future. We hope and believe the Y. W. C. A. has filled a real need at Cornell this year.





The Student Volunteer Band



"The Evangelization of the World in this Generation," which was the motto of the Student Volunteer Convention at Des Moines last year has been adopted as a standard for the group of volunteers at Cornell.

Although the end of the year 1919-20 meant the loss of a large percentage of the membership, those who were left have succeeded in doubling their number. The regular weekly meetings held at the home of Professor McGaw have been the center of interest for those contemplating foreign service.

The Band has been especially fortunate in having in their midst a large representation from distant countries. These members have made the appeal for help more vital, and the realization of the completion of the task more possible.

MEMBERS

GLADYS AVERY
 CARROL CHEN
 MABELLE EDDY
 EVA GILBERT
 SARALOU JORDAN
 SAKAE MATSUCHUTA
 ELLA PRATT
 MERLIN SONES
 JOSE VALENCIA

RUTH BAKER
 LETHA DAUBENDICK
 PEARL FEAR
 RUTH HO
 MYRTLE KEENER
 MRS. MILLER
 STELLA RIGBY
 ENJI TSUKASAKI
 MAY VIRDEN

BESSIE BOWERS
 MR. DING
 MILDRED GALE
 A. K. JENSEN
 MISS KLEIMER
 HAROLD MCILNAY
 IVAN SCHULTZ
 WILLIAM TAN
 LEAFY YARD





The Home Service Association



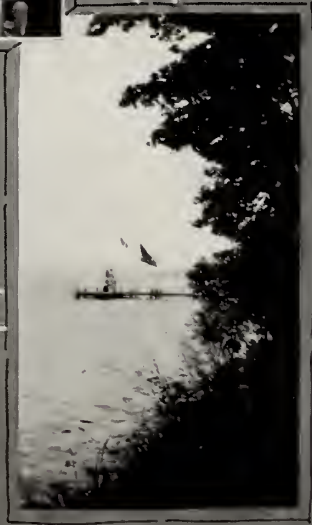
OFFICERS

VERA CATES	President
R. E. SCANTLEBURY	Vice-President
RUTH EVELAND	Secretary

The organization was formed last fall by a group of students who were enthusiastic about home missions, at the suggestion of Dr. Helms. The group, small at first, set their membership goal at thirty and have now nearly reached this mark.

The purpose of the organization is to afford a chance for those interested in any form of home missionary work to get together and study the different fields, thus helping them to find the life work best suited to them. It also helps to hold up the morale of the group, and it is hoped that in years to come it will help those who come here interested in this type of work to keep in touch with the things that are being done along these lines, and with the problems which are constantly arising. Thus, ever conscious of the need, these students will accept some form of this work as their life task.





Geneva

1922



BOOSTER



The Women's Self-Government Association



OFFICERS

GLADYS AVERY	President
FLORENCE TENNANT	Vice-President
FRANCES HARVEY	Secretary
GRACE VOSS	Treasurer
STELLA PLAETHN	Social Chairman

The W. S. G. A., with the coöperation of the Women's Administrative Committee, has been very successful this year in coping with the campus problems of the girls. The W. A. C., made up of the deans, one from each district, has taken the place of one dean of women.

The W. S. G. A. gave the annual Pal picnic in the fall, and a little later came the Pilgrimage by which the traditions of Cornell were made known to the Freshmen.

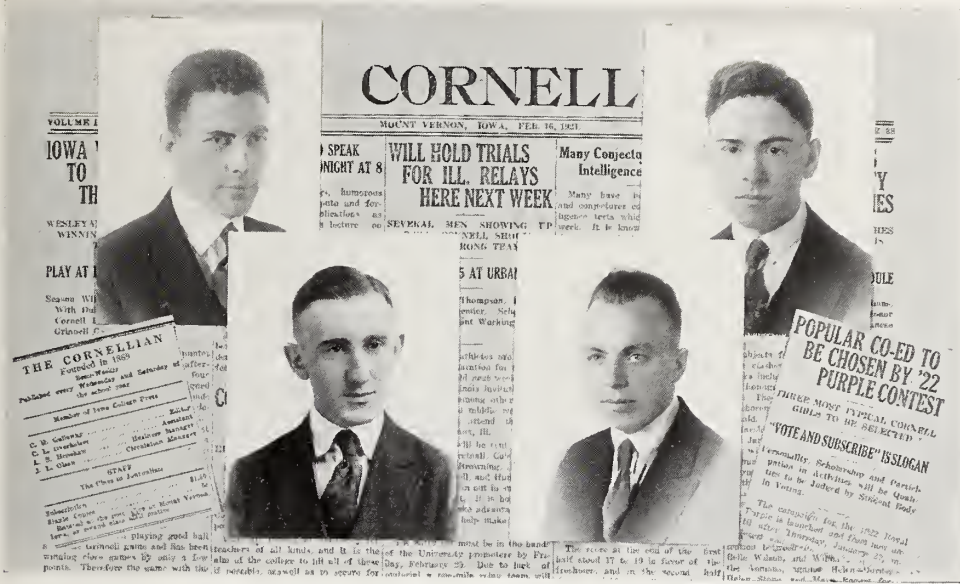
The girls look forward with eagerness to the Girls' Grex which takes place each spring. There will be several vocational conferences this year.

The excellence of Cornell's organization has been proven by the fact that it has belonged to the Western Inter-Collegiate Association for Women's Self-Government for two years.





The Cornellian



THE STAFF

- CLARK GALLOWAY Editor-in-Chief
- CRAIG OVERHOLSER Assistant Editor
- LOWELL HENSHAW Business Manager
- JAMES OLSON Circulation Manager

The first paper published by the Cornell students was *The Collegian*, a monthly, which made its initial appearance on the campus October 1, 1869, published by two of the literary societies. In these papers such articles as "A Discussion of the Freedom of the Will", and essays on Dante and Milton were featured. In April, 1879, *The Cornell Graphic*, put out by two of the other societies, was first published. In June, 1880, these consolidated under the name of *The Cornellian*, which was put out jointly by all the societies.

On April 18, 1890, *The Breeze*, a semi-weekly on the order of the present *Cornellian*, was started by a group of students. The number of September 18, 1895, announced the consolidation of these two papers, the new paper to be called *The Cornellian Breeze*, with a semi-weekly publication, and on January 8, 1896, the name was again changed to the *Cornellian* and has so remained since then. Some time later *The Cornellian* passed from the control of the societies into private ownership. Last year the College took it over and now runs it, paying the men who are on the staff fixed salaries.

The Cornellian this year has been a decided success both editorially and financially. An excellent staff aided by the members of the Journalism class, who have used *The Cornellian* as a laboratory have given this paper high rank among the college papers of the state. The paper is a booster for Cornell and is a source of news for all Cornellians, new and old.





The Masonic Club



Founded 1920

MEMBERS IN FACULTY

S. L. CHANDLER
 W. E. SLAUGHT
 H. A. MILLER
 F. H. SHAW

R. E. HIMSTEAD
 C. W. FLINT
 S. W. FINGER
 E. A. RISTINE

MEMBERS IN COLLEGE

C. E. HOLM
 K. L. DANSKIN
 I. R. GATEWOOD
 L. S. HENSHAW
 A. K. JENSEN

HOMER CODDINGTON
 M. M. DRYDEN
 O. W. LAWRENCE
 H. J. JOY
 DONALD CORLETTE

G. W. ASPINWALL





The Illinois Club



OFFICERS

WINTHROP OLMSTED	President
HELEN STONE	Vice-President
GRACE MCCREEDY	Secretary
HERBERT SAGLE	Treasurer

The Illinois Club saw action this year—five social engagements and one pose for the photographer. If a Cornell student isn't from Iowa or any of the other states you may be sure he is from Illinois. Our group includes about seventy-five Illinoisans several of whom are prominent faculty members. One of the favorite occupations of the Club members during vacation is to boost for Cornell. The present crowd is the result of the past, the future will speak for the present.

“We're the girls, we're the boys,
We're the kids from Illinois”—That's us!





Nineteen-twenty-two



The 1922 Royal Purple Staff

Editor-in-Chief	CLIFFORD MILLEN
Assistant Editor	LOWELL HENSHAW
Business Manager	MERRIL DRYDEN
Art Editor	AGNES JOHNSON
Literary Editor	FRANCES HARVEY
Men's Athletics	RUSSEL COLE
Women's Athletics	FLORENCE TENNANT
Organizations	RAYMOND HOUSTON

ACKNOWLEDGMENTS

In appreciation of the aid and interest which has made possible the publication of the 1922 ROYAL PURPLE, the management wishes to thank:

The Staff, for their coöperation and willing service.

President Flint, for the grant of an office, and for other favors.

Professors O. H. Smith and Clyde Tull, for valuable suggestions which they have given.

Our advertisers, for their patronage, without which this book would never have been published.

Craig Overholser, Herbert Owens, "Steve" Sargent, Vernon Vance, and Riley Richardson, for cartoons which appear throughout this volume.

Our contributors, for their willing assistance.

Mr. Curtis, for the special attention which he has given the Royal Purple pictures.

Dwight Windenburg, Lester Laidig, and Herbert Owens, for many of the snapshots which appear in this Annual.

Especially we wish to express our appreciation of the efficient and splendid coöperation rendered by the Bureau of Engraving and the Clio Press.

THE EDITOR AND BUSINESS MANAGER.





JOURNALISM CLUB AND CLUB ROOM.



P.K. CLUBS



"HOWLING HUNDRED"



GOSPEL TEAMS

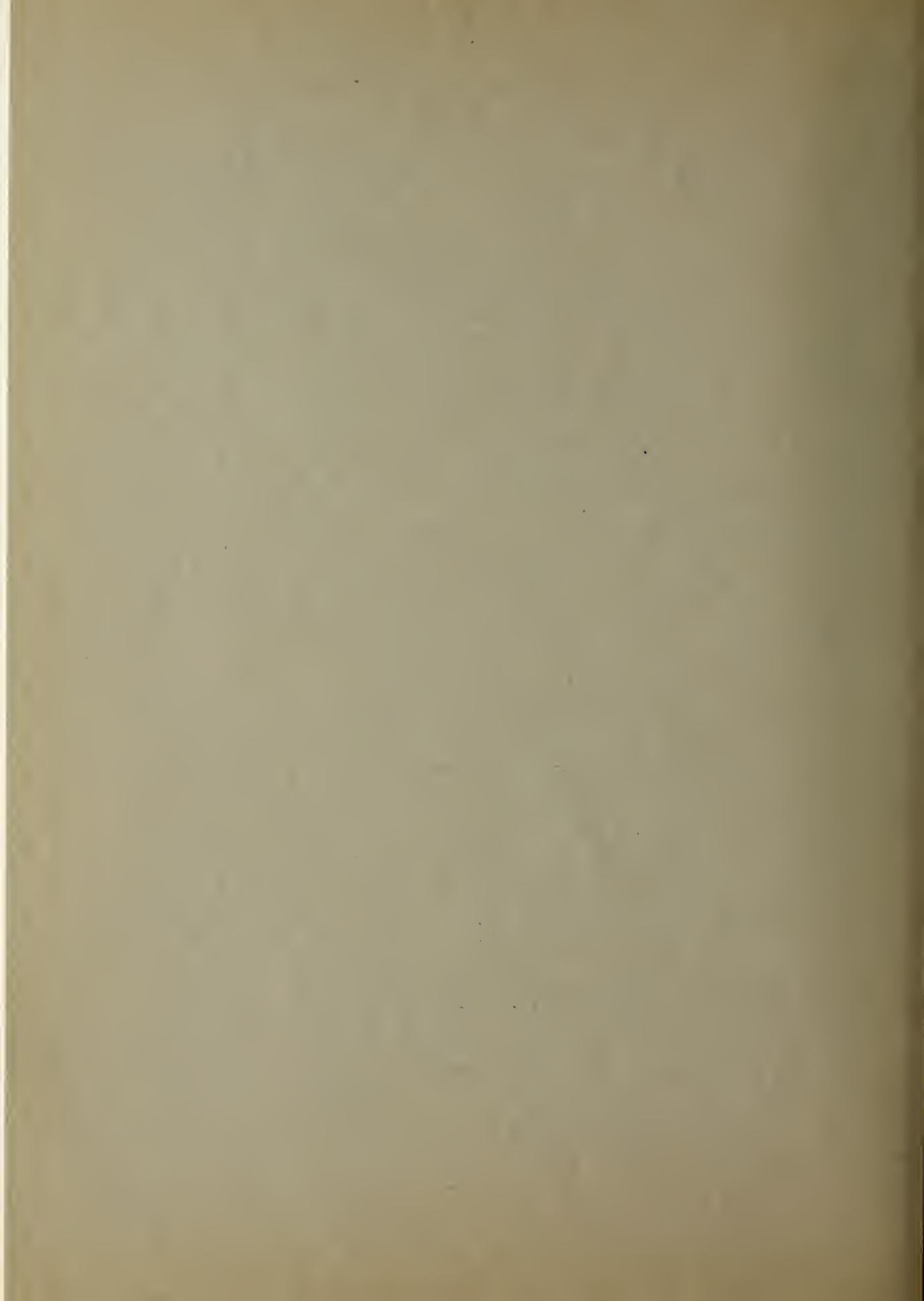
**MORE
BOOSTERS**



REINBECK CLUB.



Potpourri





Representative Women

To lovers of Cornell not the least of her attractions is the charm of her co-eds. In a way of their own they embody the spirit of the Cornell campus. The girls whose pictures are in this section have been elected upon a basis of personality, scholarship, and participation in college activities as being the best representatives of the ideals of the "College on the Hill".

We take pleasure in announcing these three girls as being worthy of such distinction:

MISS KATE SKINNER
MISS FRANCES HARVEY
MISS GLADYS AVERY



Photo by Lasswell

Nineteen ~~22~~ Twenty-two



Photo by Lasswell





Miss Gladys Avery

Photo by Lasswell





*WITH THE
PLAYERS*

Nineteen-twenty-two



Nineteen-twenty-two



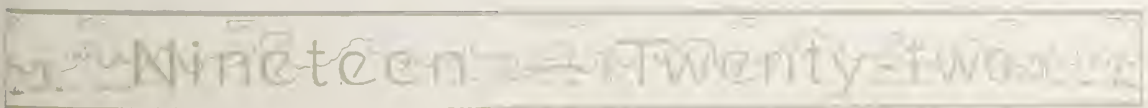
“Nothing but the Truth”

By James Montgomery

Presented by the Parmenian Literary Society
at Homecoming, November 20, 1920

THE CAST

Clarence Van Dusen	HOMER FRIES
E. M. Ralston	WALTER AVERILL
Bishop Doran	HERBERT CHENOWETH
Dick Donnelly	IVAN SCHULTZ
Bob Bennett	FRED FOSTER
Mrs. Ralston	EULA CLARK
Ethel Clark	AGNES WILSON
Gwen Ralston	RUBY LENT
Mabel	IRENE EVERMAN
Sabel	ORAL LENT
Martha	LENORE SEYDEL





Nineteen-twenty-two



“The Truth”

By Clyde Fitch

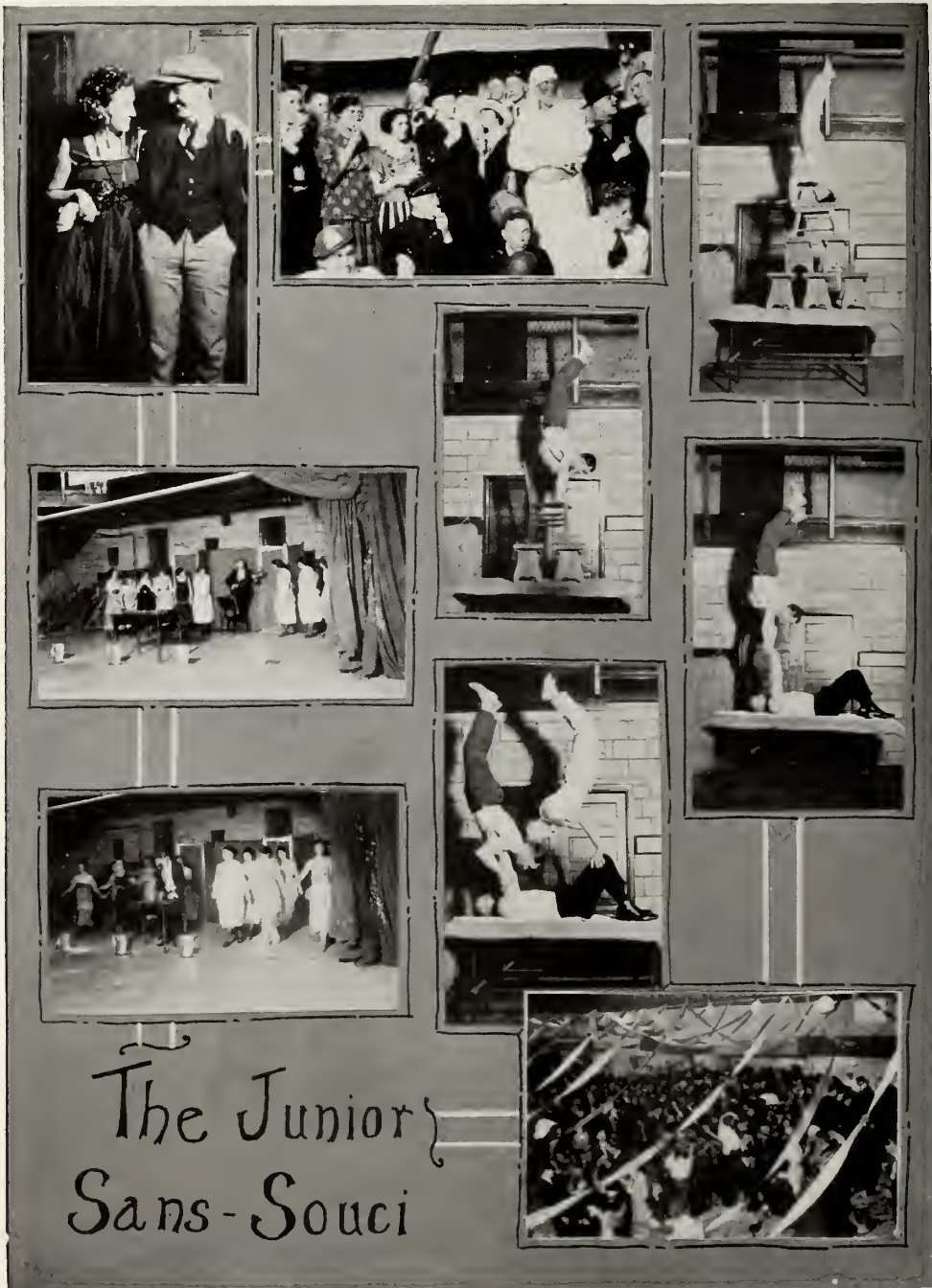
Presented by the Alethean Literary Society

March 12, 1921

THE CAST

Becky Warder	ISABELLE MAYNE
Tom Warder	MAYNARD SCHELL
Mrs. Lindon	LAURA MITCHELL
Mr. Lindon	MARSHALL CHEEVER
Laura Frasier	CARRIE GROTE
Mr. Roland	CARL ALLEN
Mrs. Crespigny	ALICE REEVE





The Junior
Sans-Souci

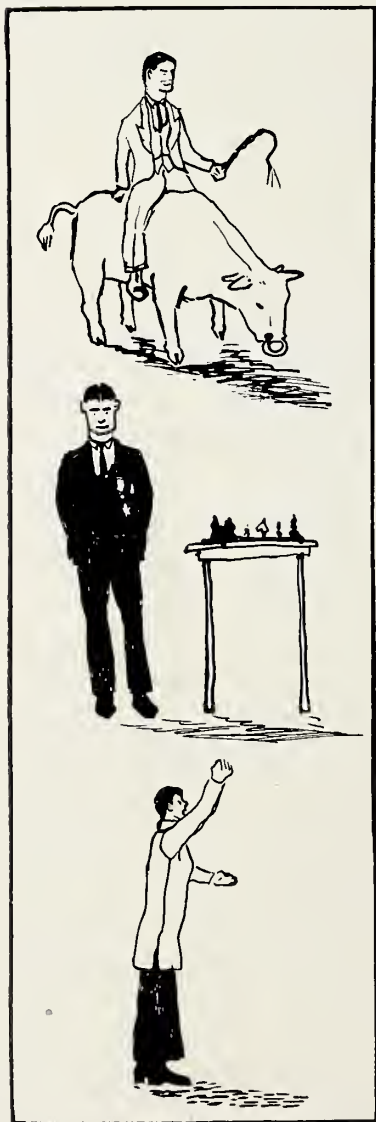


COLLEGE LIFE





The Cornell Portrait Gallery



Percy Edwards is here seen at his favorite occupation. Percy would never think of going anywhere without his little friend.

This, gentle reader, is Payson Peterson, the Norwegian chess-hound. Mr. Peterson is as modest as he is successful. Chess, by the way, is not his only athletic indulgence. He is quite a halfback, runs a good quarter, and clears a mean hurdle.

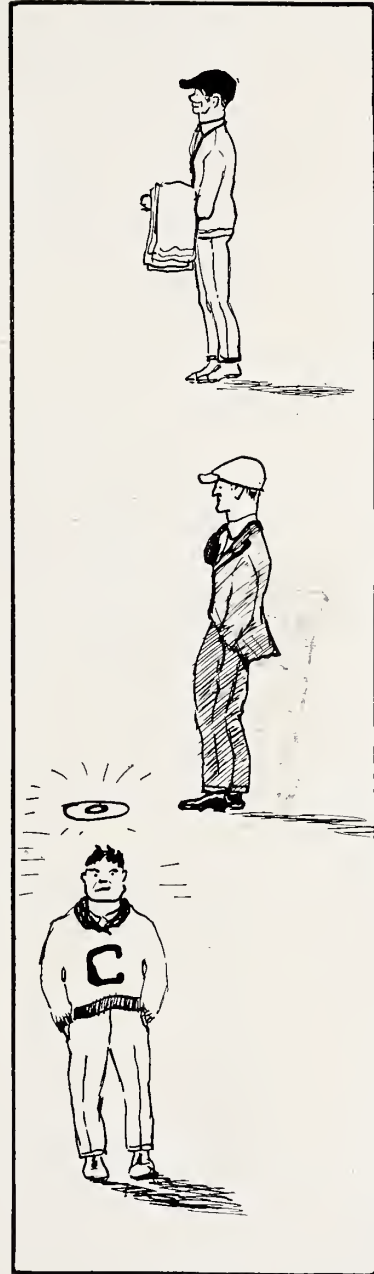
No, Fontleroy, this isn't a member of a vested choir or Ajax defying the lightning. This is "Bill" Tamm, the Yellow Peril, saying, "Who think I have something in this hand?" "Bill" is trying to work the faith cure at Cornell. So would we if we had a stand-in at the mint or something.

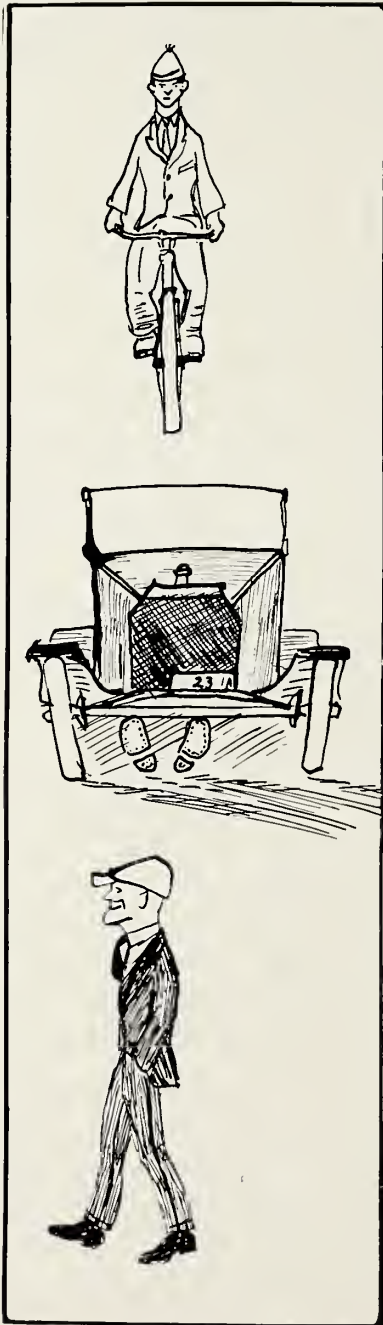


Can any good come out of Denmark? Yea, verily, Jack, that's where Andreas Jensen, towel monkey and Rood House razorback, comes from. "Himmy" was right when he said that Kris has a good "platform face".

Next, gentle reader, you see Cephas Miller, alias "Sox", alias "Fittig", in his usual thoughtful pose. "Ceph" heaves a nasty basketball. He is really a kindhearted fellow, even if he does put formaldehyde in the laboratory alcohol.

This angelic specimen is none other than "Al" Gowans, the Scotch daisy. Take a good look, they don't make many like him.





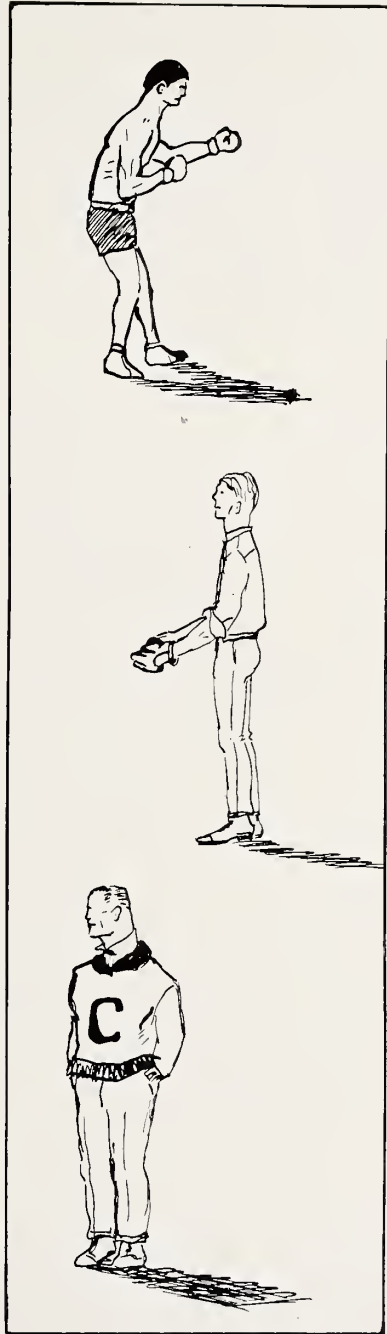
Yes, this is Samuel Beers, the boy with the aggravating name and the angel face. Samuel is a product of hot-house, high school processes, but he'll get there just the same. At the request of the faculty he is said to consider changing his name to Milk or Bevo.

Here is Stanley Howard, the Canuck, manicuring his flivver, and we venture a guess that he would just as soon be fussing. Reasonable, isn't it?

Take a slant at this facsimile of "Slav" Allen. Get that Apollo form, those flashing eyes, the firm even lips, the masculine chin. There is no truth in the rumor that Mr. Allen has signed up with the Ringlings as a Pithecanthropus Erectus. He is going into Y. M. C. A. work.



Gents and sports, we have wid us tonight One-round Zuzu, the De Kalb Kid. He has won fame and fortune in his native state and now he comes out to Iowa to develop his brain.



This, Archibald, is Paulsen, the Graettinger baseball team. Baseball is meat and drink to this boy, and he carries the game into his private life to the extent of making an occasional hit at Bowman Hall. Like all great men he has his little failings. He is passionately fond of peanuts, for instance.

Here, children, is O'Neel, the Wild Irishman. This is the baby who is going to knock the "byte" out of the Presbyterians next fall. Can he do it? Ask Collins.



The Cynical Co-Ed

My friends, after the dear old hectic days of S. A. T. C., when the town resounded to the "Clump! Clump! Clump!" of the over-big shoes of the boys on the boulevard, when the Chapel walls echoed, "Good morning, Mr. Zip, Zip, Zip" and "Ka-ka-ka-Katie" instead of Methodist hymns, when Captain Tooze flirted with the flappers, when Myrtle Keener had to write apologies and the pretty second-lieutenants were juggling with the hearts of my sisters, when I deemed it my duty to help maintain morale by writing "Co-Ed Cynicisms" for the *Cornellian*, I thought I should be allowed to fall into the proverbial "innocuous desuetude". But now comes the editor of the ROYAL PURPLE asking for more lucubrations in the same vein. As a senior I am not nearly so cynical as I was when a sophomore. But I don't mind knocking off a few observations just to accommodate the afore-mentioned editor.

When I fall to brooding over the rules for girls in Cornell and the complex machinery for enforcing them, I wonder why we Methodists and Catholics aren't more friendly. We have so many similar ideas on girls' education. If Bill weren't here, I think I'd hie me away to a nunnery.

As I hurried to my home the other night tremulously fearful that I should not get in by nine o'clock and therefore would be disciplined by the house-president, the W. S. G. A., the W. A. C., the faculty committee, and the administration, I passed a group of Cornell men merrily going to the movies. And I said bitterly to myself, "It's a *man's world*, my sisters; it's a *man's world*."

Bill says all the lounge lizards and porch vipers of the college are opposed to the introduction of dancing. They say it would tend to eliminate spooning.

The year has been a very happy one. It is hard to be cynical over it. There has been little agony in it. Probably the acutest unhappiness was experienced by the professor who agonized over the Girls' Glee Club kimono stunt. Real horror and distress were evidenced.

As I sit in the Chapel and look at the professors, I have a problem. I ask myself over and over, "Are they professors because they are bald, or are they bald because they are professors?"





I was growing a bit old and blasé in attitude and then I had to stand up in education class to indicate that I knew the answer to a question. I became as a little child. I had an instinct to ask the teacher to go out and play "Farmer-in-the-Dell" with us. It was a startling recapture of a youthful emotion.

It is one of life's little ironies that people who have never danced know so much more about dancing than those who have.

Nothing would keep me from the "Pal" these fine afternoons but the fear of what would happen to me if I should "cut" Gym. The Kaiserin who rules that institution with a mailed fist has developed a docility in me that would amaze the folks at home. With her I have the responsiveness of a marionette.

My Dad who took me and my younger sister to a nice dance one evening during vacation said to me as I took train for Mount Vernon, "Now, young lady, don't you dance or do anything else that's dreadful while you are away. Remember!" I stuck out my tongue at him and said, "You never mind. When you are hopping about on the griddle regardless of the time element, I'll be dancing a slow dreamy waltz with Miss Madison on the gold-paved streets."

I understand that every few months the W. A. C. or the W. S. G. A. send questionnaires to other colleges. Then if any college has any rules that we haven't, these are added to our list. This system tends to make our table of rules comprehensive.

And now, my sisters, I think I'll switch off the motor. I've got to be serious. Within three months, according to all the chapel speakers, I'll have to begin to solve the problem of capital and labor, to throw some light on inter-racial problems, to make war impossible, to christianize China, and illuminate *Main Street* where I expect to teach school. I'll go brood over my program. It's a mad world, my sisters. Bye-bye.





THE AEROPLANES



AEROPLANE VIEWS

Nineteen-Twenty-two



THE CORNELL DICTIONARY

Allowance: See quicksilver.

Board bill: Excuse for another check.

Books: Things to sell during the summer.

Chapel: Sure cure for insomnia.

College-bred: A four-year loaf.

Course: 1. Those that you pass. 2. The punk ones.

Cram: To learn six months' work in ten hours.

Date: Another evening gone.

Dormitory: Rumor factory.

Flunk: To get in bad with Prof.

Fuss: To go to unnecessary trouble.

Grades: All you get out of some courses.

Grind: A guy who thinks college is a preparation for life's battles.

High School: A Freshman's favorite phrase.

Pass: To do work satisfactorily.

Prof.: 1. Those that are prejudiced. 2. Those that pass you.

Semester: The time from one vacation to the next.

Tea-fight: A popular indoor sport.

Thesis: A good reason for avoiding a course.

Work: Handy word to use in letters home. See Fiction.

Coach Sanderson is a recent initiate of the "I Am Papa" fraternity.

WHY, MARY!

Mary Plummer: "Gee, girls, my mouth tastes fishy."

"I hear that Frances kissed John last night."

"Well, did he kiss her back?"

"No, she wasn't wearing that kind of a gown."

"Where is Temple going in such a hurry?"

"Mercy, don't you know?"



Faculty Contestants



Student Contestants



VANITY FAIR



Our Vanity Fair Beauty Contest

In this day and age when a beauty contest ornaments every up-to-date newspaper, the ROYAL PURPLE feels that Cornell's aesthetic triumphs should not go unrecorded. Therefore, on the opposite page, you will find bits of beauty chosen from Cornell's faculty and student body by a well-trained and unprejudiced committee. A single glance will assure the reader that the contestants have been chosen wisely and well. In the faculty contest the gentle air and charming demeanor of Miss Otissafatima Moore won her the honor of first place. When asked the secret of her success Miss Moore threw one arm around the neck of her questioner and said, "As Joe Brown, '04, once told me, 'A beautiful face is due to a spirit of humility and contriteness in the owner's soul!'"

Mme. Wilma Eubroka Slaght, who won second laurels, refused to divulge any beauty hints, giving as an excuse the statement that, "Modern girls use enough cosmetics as it is." The further decisions of the judges were as follows: Third place, Miss Rouletta Journey; Alternates, Miss Clydella Tull and Miss Trixie Finkensbinder. Miss Tull, when interviewed, remarked: "I advise all young girls wishing to attain real aesthetic success to take painstaking care of the hair. Woman's glory lies in her hirsute adornment, and through it alone can she hope to possess real beauty."

Without leaving their seats except to revive those members prostrated by the strain, the committee awarded first place in the student contest to Miss-Information Averill. Miss Averill modestly refused to make any statement concerning the contest, excusing herself by the remark that she could tend to her own publicity. Second honors were conferred upon Mme. La Portina Bruce by a unanimous vote of the judges, while third place was a walk-away for Miss Slingahasha Spurgeon. Roberta Noble and Gwendolyn Sones were given dishonorable mention.

Any attempt to locate the judges will be useless. Precautions have been taken to keep the identity of the parties secret, and neither bribes nor argument will have any effect.





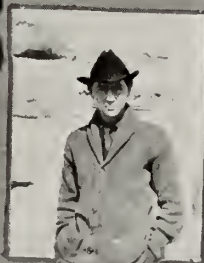
THE
MOST
IMPORTANT



THE
MOST
TALKATIVE



THE
NEATEST



THE
MOST
ECCENTRIC



THE
LOUDEST



THE
MOST
SPECTACULAR

**VOTED
BY THE
STAFF**



THE
MOST
CONSISTENT
FUSSER.



THE LEGAL RIGHT OF THE PARTY DRESS

It is useless for college authorities to argue against the short-sleeved dress. The constitution states, "The right to bear arms shall not be interfered with." Which is all right as far as it goes.

AT THE SANS SOUCI

"Ha, ha, ha," cried the wild man in the "Chamber of Horrors" booth, "I'm mad, I'm mad!"

"I'll bet," said a voice from the crowd, "you ain't near as mad as us fellows that paid to get in."

Rev. Keeler: "I'm glad to see that you come to church every Sunday, Georgie."
Georgie: "I do now, but just wait till I'm a little older."

A certain Freshman girl was heard to say that Cornell rules and regulations make the blue laws seem licentious.

A CHEM REACTION

Little drops of acid,
Little specks of zinc,
Put into a test tube,
Make an awful odour.

"Zeke," the mailman, reports the loss of a cigar box of evening gowns addressed to Bowman Hall.

GREAT MEN ARE ALWAYS MISUNDERSTOOD

Prexy (perusing the menu): "How's the chicken tonight?"

Waitress: "Oh, pretty good; how're you?"





A COLLEGE COURSE BY CORRESPONDENCE

Dear Papa:

I minded your directions and got here safely, though I pretty near got off at Lisbon. I like Cornell College fine. We don't march into class like we did at Hixville High, otherwise this place is just as good. A Senior sold me a season ticket to chapel real cheap, and I'm getting along real fine, but nobody here knows how to play dominoes. Love to Carrie and the pup from your son,

JOE.

SIX MONTHS LATER

Dear Pater:

I indite this epistle to inquire after the health of yourself and mater. How do Caroline and the canine comport themselves? Observe "alliteration's artful aid". My literary abilities are the envy of the class, and Miss Madison can hardly contain herself.

Au revoir,

J. JEFFERSON SMITH.

THIS ONE PUZZLED FATHER

Dear Dad:

Rush the pew rent along, for lil Jeff's plumb stony. Scarcity of the wherewithal that induces the mare to go has forced me to part with my Century Handbook—you can see by that how desperate I am! I'm into the Student Volunteers up to my gills,



so I'll need fifteen bucks for semester dues. Ditto for Y. M. C. A. Jazz the jack along before I have to pawn my Bible.

JEFF.

THE FOURTH EPISTLE

My dear Mr. Smith:

I regret to state that because of his deficiency in his studies, bad conduct, and heavy indebtedness it has been decided not to permit your son to register here next year. Your coöperation in this matter is requested.

W. S. EBERSOLE,
Registrar.

Altoona: "Hasn't he got the handsomest mouth?"

Bowman: "Yes, it impressed me the same way."

A student and a stenographer have at least one thing in common, they both get their money by the touch system.

MERELY RENOVATED

"Didn't I see you with a new girl last night?"

"Nope, it's just the old one painted over."





BOWMAN HALL



KNOX GRILL



"FILLING STATION"

"AT YOUR SERVICE"



Nineteen-twenty-two



SPOONERS' HILL ANTHOLOGY

OR

INTERVIEWS IN A GRAVEYARD

GLADYS AVERY

He loved me,
I know he loved me,
But when that cannibal woman
Smiled on him
He got bit,
And I longed for him all my life.

GLENN GIDDINGS

Here I lie;
I used to get A's in college.
Once, while laying tile,
I fell in the ditch
And broke my neck.

GRAVY

How the girls used to like me,
And when I saw them
I used to spread myself out
Over the bread and potatoes.
But a woman came
And did away with me.

PAYSON PETERSON

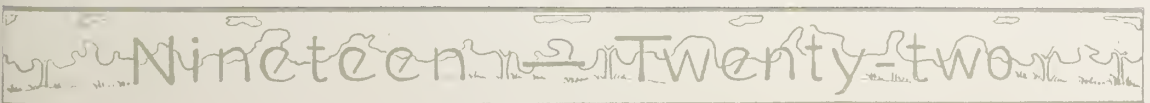
I could yell
Louder than anyone else
In school.
But now
I can't drown out
The still small voice
Of calm.

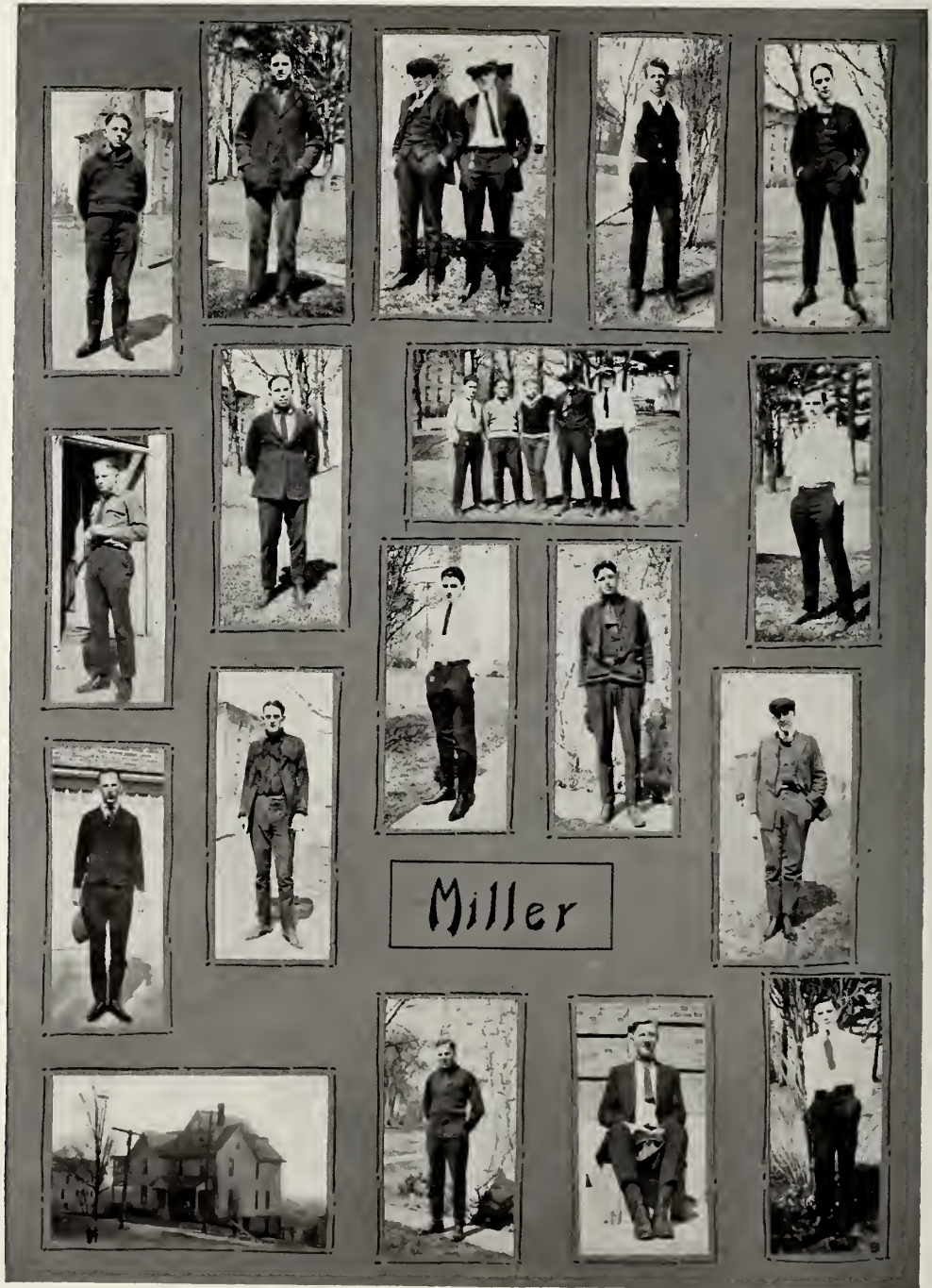
CLYDE TULL

I was a Prof at Cornell,
Happy with Wag and Jewell.
Once I was reading
Sandburg's poems;
While I was analysing
My cerebrations
A reaction
Set in,
And now
I'm happy
With Hamlet
And Shakespeare.

BESSIE BOWERS

To dress in style was my aim at Cornell;
Stanley's Ford turned over and I said farewell.
If I only had goggles and overshoes here
I'd make a big hit, now that's very clear.





Nineteen-twenty-two



FAMOUS SAYINGS OF FACULTY FOLK

Phelps: "This is a point for departure. It registers a mood."
Tull: "What's your reaction?"
Slaght: "A young lady I once knew—"
Finkenbinder: "Ah—just a minute—"
Kelly: "I s'pect so."
McGaw: "You see, I know this; I've been over it a number of times."
Reed: "Just what do you mean by that?"
Stanclift: "Be so kind as to close the door."
Keyes: "I don't think it will do you any harm to memorize this."
Mills: "I forgot what that was to illustrate."
Madison: "Now run to bed, dearie."
Smedley: "Put this down in your notebook."
Wade: "Traduisez en Anglais, s'il vous plait."
Knight: "Brace up now, get to work."
Journey: "F'rinstance, notice Paderewski, the great violinist."
Herrick: "Perhaps you have heard the story about Napoleon."
Huffman: "Oh, dear me!"

Fond Mater: "Do you detect any musical ability in Mildred?"
Prof. Shaw (coldly): "Madame, I am not a detective."

Second floor: "Let's see, whom were we discussing?"
Fourth floor: "I don't remember; who went out of the room last?"

HOW TO GET ON IN CHEM

Don't fail to laugh at Doc Knight's jokes,
Whatever they may be.
We know that they're not laughable,
But it's darn good policy.

She: "How dare you? I never kissed a man in my life!"
He: "Well, don't get excited. Neither did I."





THE ADVANTAGES OF SUMMER SCHOOL

"French House. A part of Bowman Hall will be reserved for students desirous of further practice in French."—Summer School Bulletin.

Maybe that fellow who wrote for a room in Bowman Hall last year can get it now.

SHAKESPEARE MODERNIZED

Exam and exam and exam
Creep in this petty pace from class to class
To the last question of the last quiz.
And all our yesterdays have seen us flunking
Courses that we studied most. On, on, oh, Frosh!
Eternity is but a going-on, a never-ending day
Wherein one longs for June and graduation
And knows they ne'er will come. It is a round
Of hash and beans, filled with trials and tribulation,
Ending never.

WHAT DUES?

Teacher: "What is the prominent women's club of America?"

Wise Boy: "The rolling pin."

AT THE PAL

They sat there in the gloaming,
And watched the fireflies dart,
And presently the young man felt
A yearning in his stomach.

They sat while the twilight faded,
They saw the big moon rise,
He put his arm around her
And gazed into her lunch basket.

And as the night wore on,
He learned that love was bliss,
He gently pressed her to him
And slyly stole a sandwich.

"College professors are certainly theoretical."

"I'll say so. Prof. Jahn Diss starts out his class by saying, 'Now, suppose you had a dollar.'"





HOW THOUGHTFUL!

Bass: "Did you ever notice how Coleman closes his eyes when he sings?"

Soprano: "Yes, I guess he can't stand it to see us suffer."

There was a professor who taught education;
He believed in socialized recitation,
But he talked in such indefinite terms
That all of his dear students, poor worms,
Missed the point of his dissertation.

Nellie: "I didn't know Mike was studying music."

Mary Reeves: "Didn't you? He's been taking ear training ever since we've been going together."

WHAT HAVE WE HERE, WATSON?

Cornellian headline: "Sixteen Cornell Profs. Enjoy a Hike and Stew."
Either they still have a little or else they have a little still.

David Ash: "What's the roast sirloin like?"

Sentimental waiter: "Tender as a woman's heart, sir."

David: "Give me sausages and mashed potatoes."

YOU KNOW HOW PERCY IS

"I see Percy has a difficult part in the new play."

"Difficult? Why, he doesn't say a word."

"That's just what makes it so hard for Percy."

After a little research along optical lines one can't help but note that the wise virgin still trims her lamps.





— ABBEY CREEK —



— THE MOVIE —



— THE GRILL —



**FUSSER'S
RETREATS**



**AT
THE
"PAL"**





THE FACULTY OUTING

One dark Knight Professor Tull, in a new suit and Kelly, made a Journey in his Chandler to the Mills on the Fairbanks of a creek. The Miller had gone with Moore flour to the Baker, but had left the Keyes.

Tull tried to Wade through the waters, but finally had to Bridgham with some Ash Slaghts. He hurt his Finger on a Reed and almost couldn't Barrett, but he was hard as Flint and just said, "Oh, Shaw!" He let Finkenbinder and said he was glad it hurt Himstead of Ebersole, because he Betts he'd act like a Wildman.

MOUNT VERNON

Freshman: "Going out surveying?"

Senior: "Nope, measuring the town for a coffin. It's dead."

THAT SWIMMING SENSATION

By A. Co-ed

A cold liquid mass swirls about me,
I stretch out my arms to beat it back,
It rises like a giant, towering, its fingers out-spread,
I feel its grasp,
My limbs become numb,
Hollow echoes answer my voice,
Green livid waves smother me,
A fire scorches my eyes,
A knife passes through my chest,
Bubbles rise,
I sink
And sink
And
Sink.

"I think Kate Moses is the most forgiving girl."

"Why?"

"She overlooks everything."

Yes, Doc, Cornell is a match factory. We make the heads here and get the sticks from the country.





ALTOONA

Nineteen → Twenty-two



The Advertising Section

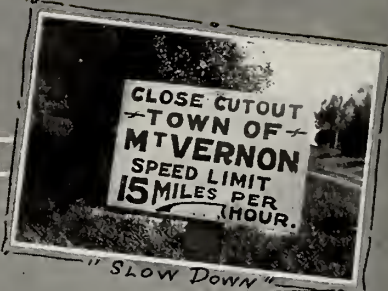
The reader is urged to remember, while looking through the following section, that the business firms represented therein have made possible the 1922 ROYAL PURPLE, and deserve, on that account, the patronage of Cornell men and women.

Business men advertise in the ROYAL PURPLE because they have goods and service to sell; and unless it is demonstrated that this advertising does aid them to secure the desired results, their future support of Cornell publications cannot justly be expected.





MAIN STREET



"SLOW DOWN"



YOU ALL KNOW HIM.



THE BOOK STORE



N.Y. DEPOT



PRESBYTERIAN CHURCH



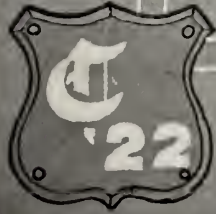
AFTER THE FIRE



ON THE OVERHEAD BRIDGE.



M.E. PARSONAGE



CITY FIRE DEPT



THAT NEW HOUSE

AROUND MT. VERNON

**Society Brand
Clothes**

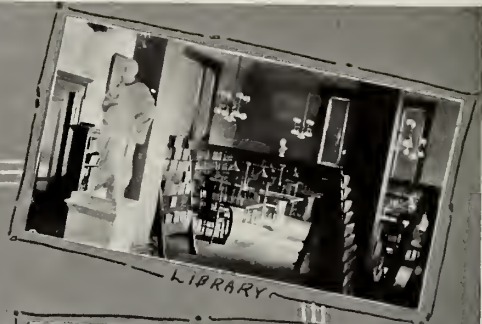


© A·D· & C·1921

FRED A. BAUMAN
CLOTHING AND HABERDASHERY
MOUNT VERNON, IOWA



THE GYM



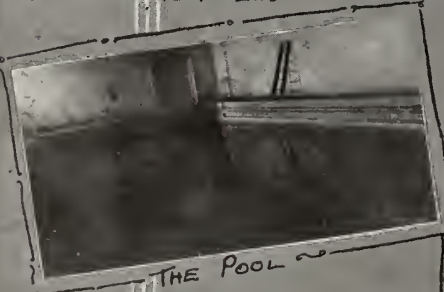
LIBRARY



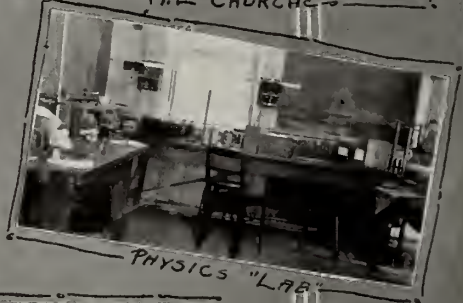
CHEM "LAB"



M.E. CHURCH



THE POOL



PHYSICS "LAB"



CWS BOWMAN HALL
CAFETERIA



B.H. DINING ROOM



CHAPEL

INTERIORS



OSHEL GROCERY CO.

Cash and Carry

Student Headquarters for Fancy Groceries

MOUNT VERNON, IOWA

The **HAWK-EYE PRESS**

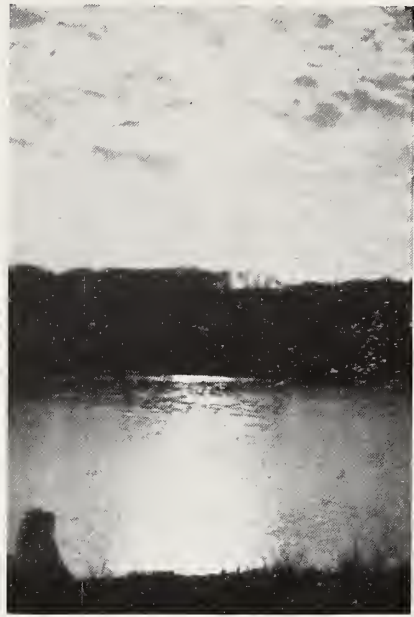
—BY—

A. A. BAUMAN

MOUNT VERNON

IOWA

*Your patronage solicited
for all kinds of
PRINTING ORDERS*



W. F. ZACHE

TAILOR

DRY CLEANING : REPAIRING : PRESSING



Nineteen-twenty-two



No matter what you need
you can get it at—

GOLDBERG'S

Agents for

Phoenix Hose

**

*R. & G.
Corsets*

**LOOMIS MEAT
MARKET**

All Kinds of

FRESH MEAT

AND

Picnic Specialties

If you are going to the "Pal", start
filling your lunch basket here

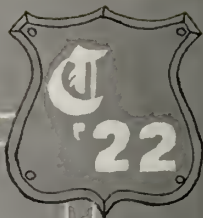




WAITING FOR THE PULL



SOPH LIGHTWEIGHTS



TUG-O-WAR



FROSH!!



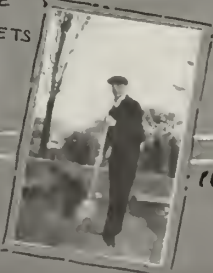
FROSH!!



CLEANING THE STREETS



FOOTBALL STUNT



"FOLLIES OF 1924."



“Killian’s for Cornellians”

Correct out-fitters for the
College young men and women,
with quality merchandise

The
KILLIAN
Cedar Rapids Co.

Nineteen-twenty-two



MATHEWS



Nineteen-twenty-two



It shows a mark of discrimination to be photographed at the

Lasswell Studio

213 FIRST AVENUE

CEDAR RAPIDS, IOWA

*THE PORTRAITS FOR THE CUTS OF THE REPRESENTATIVE
WOMEN SHOWN IN THIS BOOK WERE MADE BY THE ABOVE*

SERVICE : SATISFACTION : UNLIMITED SITTINGS
ALL DAYLIGHT

Pleased to have you call and see portraits in Sepia, Royal
Blue, Buff Steel, Brown Tone Etchings, Black and White.
Only studio in this part of the state making motion pictures.



Nineteen-twenty-two



U.S. MAIL



"ALL ABOARD"



HORSE SHOES



SUMMER SCHOOL



"SLACK YER HOLD BACK"



???



DURING CHAPEL



A BAD EXPOSURE



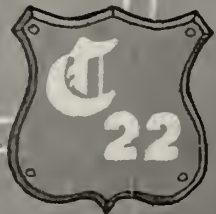
AT THE "PAL" STATION



"PAL"



"DO NUTS"



SOME OF THE "FELLERS"



I Know the Place — Do You? It's

HOOVER'S—The Ideal Jewelry Store

Where you find New and Full Lines in

SOUVENIR SPOONS, MEDALS, SOCIETY AND CLASS PINS

W. H. HOOVER. *Jeweler*

THE FLOWER SHOP

MILLER & HOUSTON

Student Florists

Phone 138

If Flowers Don't Express It—What Does?

*COLD AIR VAULTS for
STORAGE of FURS*

ESTABLISHED 1894

N. Schoen

Exclusive Furriers

We remodel worn furs to
as good as new. Our stock
is complete in every detail

210 THIRD AVENUE

CEDAR RAPIDS : IOWA

Ladies!

Munsing Wear

Kabo Corsets

Wayne Knit Hose



H. C. GILLILAND

Mount Vernon, Iowa

Nineteen—Twenty-two



Nineteen-twenty-two



Second Door West of Post Office for

Pure Drugs, Sundries, and Stationery
Soda Fountain

JOSEPH BENNETT, PROPRIETOR

PARAMOUNT PICTURES—seen by millions of persons every month
—proclaims them to be the *VERY BEST PICTURES EXHIBITED ANYWHERE*

If *Paramount Pictures* weren't the very best, Paramount advertising
wouldn't be worth a plugged nickel

*No man who builds a national trade-mark of Good Will for his goods dares
trifle with his chief asset. Only the nameless are unafraid of discredit.*

THE STAR THEATRE

The Home of the Better Photo-Play

The Local Home of Paramount Pictures

**MOUNT VERNON
BAKERY**

Headquarters for

**Quality
Bakery
Goods**

Fancy Fruit and Nuts

Students Always Welcome

Phone 257

J. F. BARRETT, PROP.

Furniture

Chas. W. Neff

We have Furnishings for
Your Rooms

Picture Framing

LET US MAKE YOU COMFORTABLE

South Side Barber Shop

Four Barbers

First Class Work

Prompt Service

*Opposite
Post Office*

G. E. TILTON

Nineteen-Twenty-Two



KETTLESON HOUSE TRIO.



WINDENBURG - OUR WIRELESS WIZARD



SONES IN MONTANA



QUIET ZONE



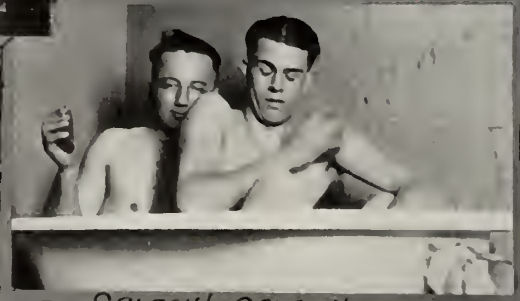
HE WON'T BITE



C-C-COR



MILLER HOUSE KEWPIES



SPLASH! SPLASH!



LOTT HOUSE !!



Everything New That's Good in

Footwear

KEPLER & BERGMAN

Shoe Repairing

J. A. KEMP & CO.

MOUNT VERNON

GROCERS

IOWA

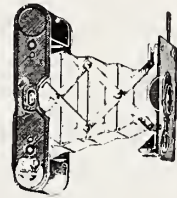
We are especially prepared to furnish the very best of good things to eat at your luncheons, picnics, spreads or when you are serving party or society dinners
Exclusive Quality at prices no higher than for inferior goods

THE BOOK STORE

Stationery : Fountain Pens : Memory Books
Pennants : Kodaks and Supplies

EVERYTHING FOR THE STUDENT

POWER & BLOOM



ELECTRIC

SERVICE

WAPSIE POWER & LIGHT CO.

MOUNT VERNON, IOWA

Nineteen-twenty-two



M^cARTOR

Nineteen-twenty-two



Exclusive Apparel

For thirty-five years Denecke apparel has been the choice of Cornell College women. In 1921 we have added the services of an exclusive French buyer.

Imported gloves, lingerie, handkerchiefs, jewelry and novelties distinctly Parisienne are here.

It is that individuality of the costume that marks the college woman. Such individuality always in good taste, accounts for Denecke popularity.

Denecke's

Cedar Rapids, Iowa





STRITE





This Bank welcomes and Appreciates the accounts of the students of Cornell College—believing that its development during thirty-seven years of consistent, considerate service, is a splendid endorsement of the satisfactory accommodations accorded to its patrons.

MOUNT VERNON BANK

CAPITAL, \$100,000.00

Established 1884

W. C. STUCKSLAGER, PRESIDENT

CHAS. W. HARTUNG, CASHIER

D. U. VAN METRE, ASSISTANT CASHIER

Let the

ROYAL PURPLE PHOTOGRAPHER

Do Your Work

*Duplicates of Royal Purple Photos
may be had at any time*

PRINTING AND DEVELOPING

S. A. CURTIS





*Where Cornellians Meet
For the Best of Eats*

MARTHA WASHINGTON
CANDIES

KNOX GRILL

CORNELL'S HANDY SPOT

BANQUETS AND
DINNER PARTIES

*"Take Her to
the Grill"*



Nineteen → Twenty-two



S U P R E M A C Y

For the past fifteen years the Educational Department of the Bureau of Engraving, Inc., has been collecting a vast fund of information from the experiences of hundreds of editors and managers of Annuals.

This data covering organization, financing, advertising, construction, selling and original features has been systematically tabulated and forms the subject matter for our series of reference books. These are furnished free to those securing "Bureau" co-operation in the making of engravings for their books.

Begin where others have left off. Profit by their experience and assure **success** for your Annual.

BUREAU OF ENGRAVING, INC.
500 SOUTH FOURTH STREET
MINNEAPOLIS

Nineteen-twenty-two



More than a Business
an INSTITUTION

To enthusiastically give that service which will at all times deserve to win the confidence, respect and friendship of those whom we serve.

This creed zealously believed in and earnestly followed by every employe for more than twenty years has made this company a national institution well and favorably known to men in every line of business endeavor.

**The
Economy Advertising
Company**

IOWA CITY, IOWA

Nineteen-twenty-two



Autographs

Mount Vernon, Iowa

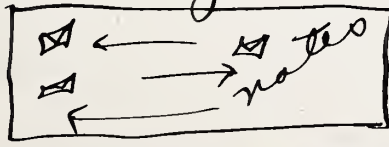
June 5, 1921.

Dear Elisabeth —

At this last evening before I leave, I could write a book or two. When I try to think of the things that have happened, I remember our diaries, your dinner, the party where we danced till 12 o'clock — how long if Mrs. B hadn't called to us? The joke of the ginger ale was rather turned around, don't you think? We want forget an other sister that left us — she couldn't stand our gabble — she had good sense, and were just silly kids.

TINY

only
CURLING IRON (and what it caused)



MAX

||

Nineteen Twenty-two

Much love — Bess Bowers



Autographs

Dear Elisabeth - "Lizzy"

Two years of each other - mercy how
love you stood it! - But then, old scout,
we've had some awfully good times haven't
we - and I'd miss your shrill whistle
and merry call when you come in the
door.

Success to you next year -
be too hard on the poor youngsters -
and don't get mad. Now.

Much lovin' - from
Mary Alice.

Dear Elisabeth

you pitied me did you, well no more than
did you, at times, but they say you're a nice
girl just the same & I'm sure we'll have a
good time at the lakes this summer. As
Elisabeth, I live at "Barnes City" and if you ever come
from Wides, there "stop". you'll remember all the rest of
little jobs, just read between the lines as I told
you to do. Come with this summer - when I
have some I'll just imagine you are playing
with

Nineteen - Twenty-two

me and I love - like almost no night with



Autographs

Well, "Liz" - how did you happen to turnover the new leaf -
and have my name signed here ☺ - We have had
good times for alarm clocks of "wee small hours".
- how did you ever find the curling-iron? - ☺
But - will miss hearing "ting" yell for the light -
But - I like you - you're good-hearted as can be
found (when you let yourself, ☺) Don't be too
hard on the kids next year - Hope you'll
remember some of the times, too. -
Florence M. J.

June 10-1921.

Dear Elizabeth.

Well here we sit around
the table, and I am trying to think what I
shall write in your book, and what I shall
not write. There is so much I would like to put
but there is not room. We have certainly
enjoyed your being with us this year. Try and
remember the good times we have had. My pr
m. - but will not hold all of my good clothes. The
books, tips & Leilas, removing storm windows

Nineteen-twenty-two

washing Dost thru the mud, pruning the trees. the
flower shop, serving dimes. Sincerely Mrs Barker



June 10, '21.

Autographs

Dearest Elizabeth:

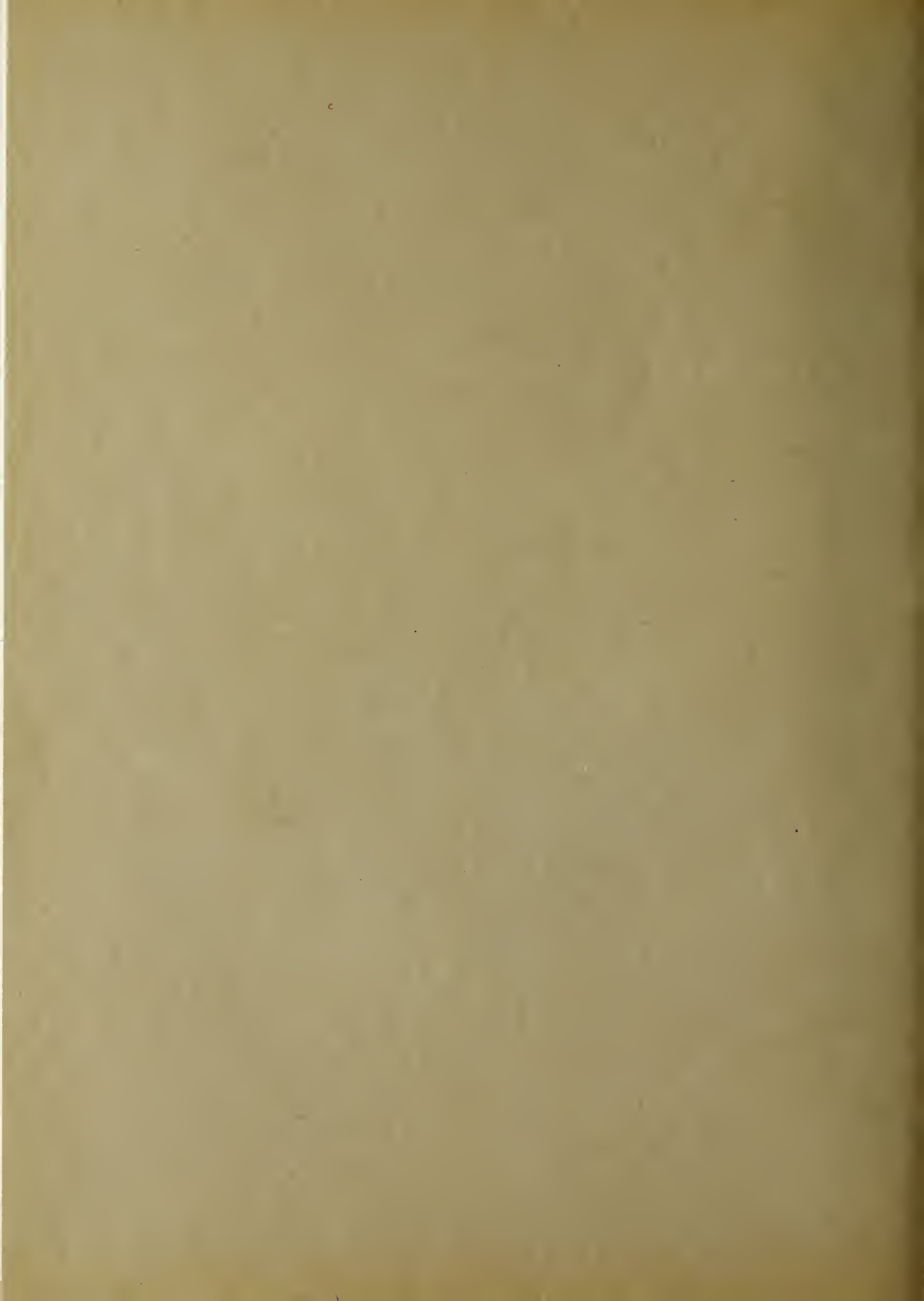
There's no use telling you how much I like you, or why, but you know I love you, just because your our Elizabeth. Lots of our views on certain subjects agree, don't they? Some day we'll have a real house-party, with the unknown quantity in the wedding-plans and all other necessary essentials. Don't forget that I'm going to be ring-bearer or matron-of-honor. Seriously. Elizabeth, I think you are about the most fair-minded, truest-blue person I know of. Here's to our success next year and always. I'll miss you awfully, but of course you'll come back often.

Lots of love

Darlan Barker
P.S. I know you don't care much for love, but also that I don't believe in blarney, so take this for what it's worth.

"Toady" B.

Nineteen-twenty-two



HECKMAN

BINDERY, INC.

Bound-To-Pleas[®]

JAN 01

N. MANCHESTER, INDIANA 46962

