



THE
ROYCROFT
LEATHER
BOOK





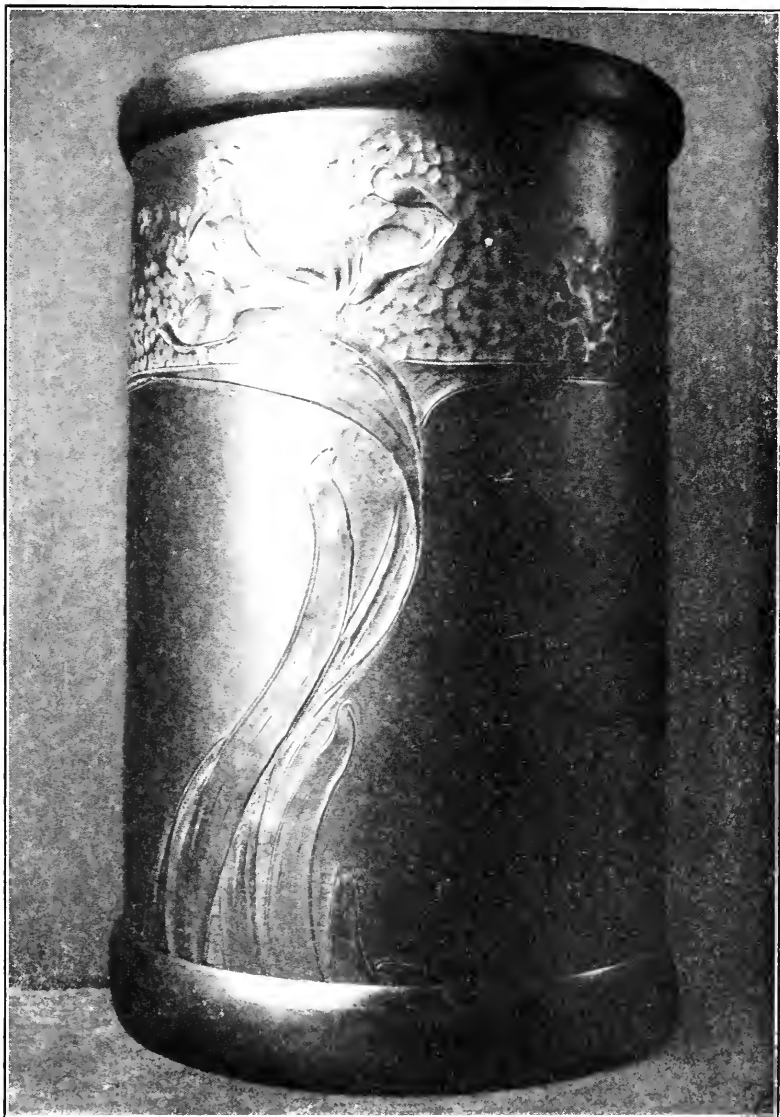
*THE HENRY FRANCIS du PONT
WINTERTHUR MUSEUM
LIBRARIES*



Digitized by the Internet Archive
in 2011 with funding from
LYRASIS Members and Sloan Foundation

<http://www.archive.org/details/roycroftleatherb00royc>





MODELED-LEATHER WASTE-BASKET



The Roycroft Leather-Book

Being a Catalog of Beautiful
Leathern Things made Roycroftie
by Hand by Roycroft Artists

The Institution of the
dear love of comrades
— *Walt Whitman*

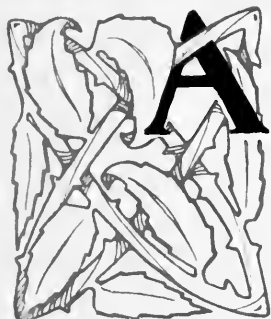


THE ROYCROFTERS
East Aurora, New York, U.S. A.

Copyright, 1909
Elbert Hubbard

The Leather=Book

MODELED LEATHER

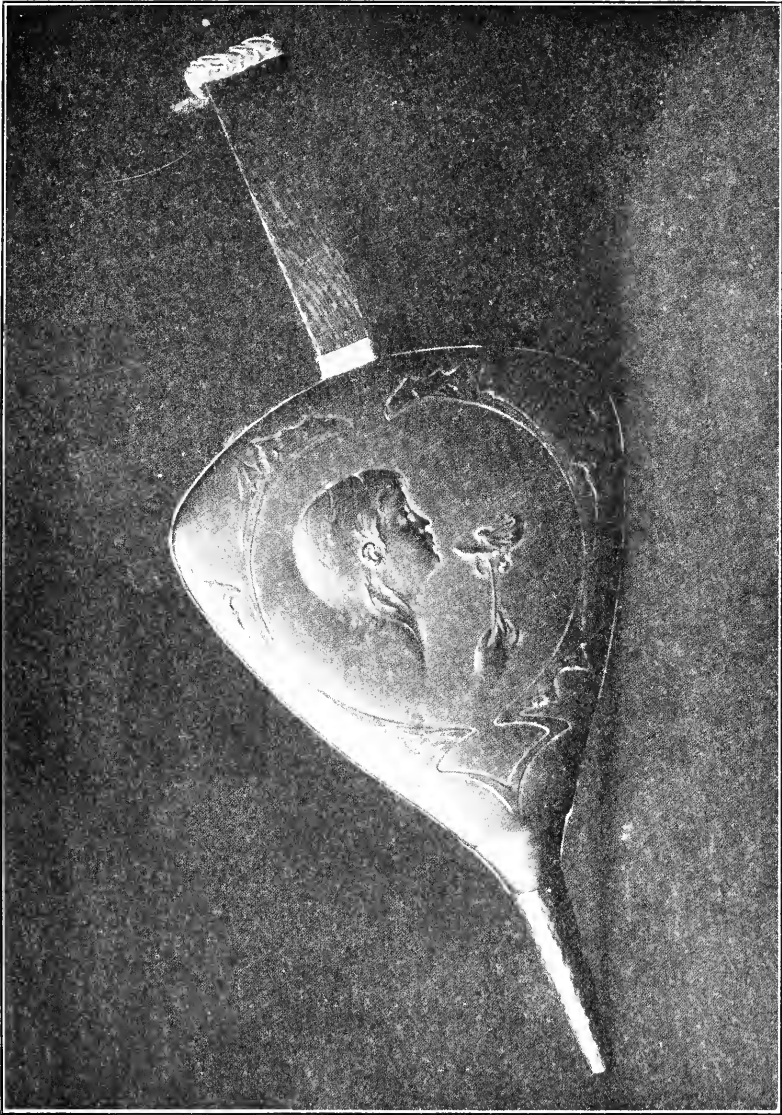


AN idea of the Moors, carried into Spain, reaching its height in Venice, about Fifteen Fifty, surviving in degenerate type in Mexico, but recently revived as an art in Germany—Germany the land that is now setting the world a pace in architecture, decoration and book-binding!

The Germans lead the world in craftsmanship, just as they have in musical composition. The Roycrofters imported the Germans—the Teutons did the rest!

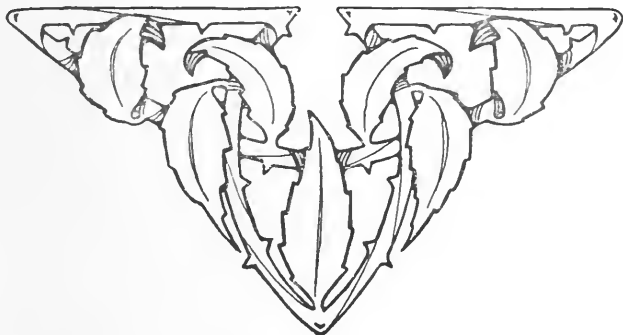
They have taught this wonderful Art to a score or more of Roycroft boys and girls, so now we believe we are producing the best work in this line in America.

Modeled leather is simply a high grade of heavy leather, decorated by hand. The staining of the leather also plays an important part in the Art. Modeled leather is non-breakable, lasts four hundred and forty years, is individual, peculiar, distinct and highly artistic. Do not confuse this work with “stamped leather”—that is something else.



OLD-STYLE MODELED-LEATHER BELLOWS

Every piece of work we send out is done by hand, and shows the loving mark of the tool, and the firm yet gentle touches of the human hand. Being done by hand according to original designs, the production is limited—there are no duplicates: just bear this in mind when buying for presents. Glassware and Pottery have a short life, because the Law of Gravitation is always lying in wait for them, but Leather lasts. For Christmas Presents these unique and individual articles are always in good taste. They suggest that which is beautiful in color and proportion—they symbol the useful and lasting. ¶ Following is a list of a few pieces of this wonderful work we have in stock. Make your selections and we will forward on suspiciousness.



TERMS

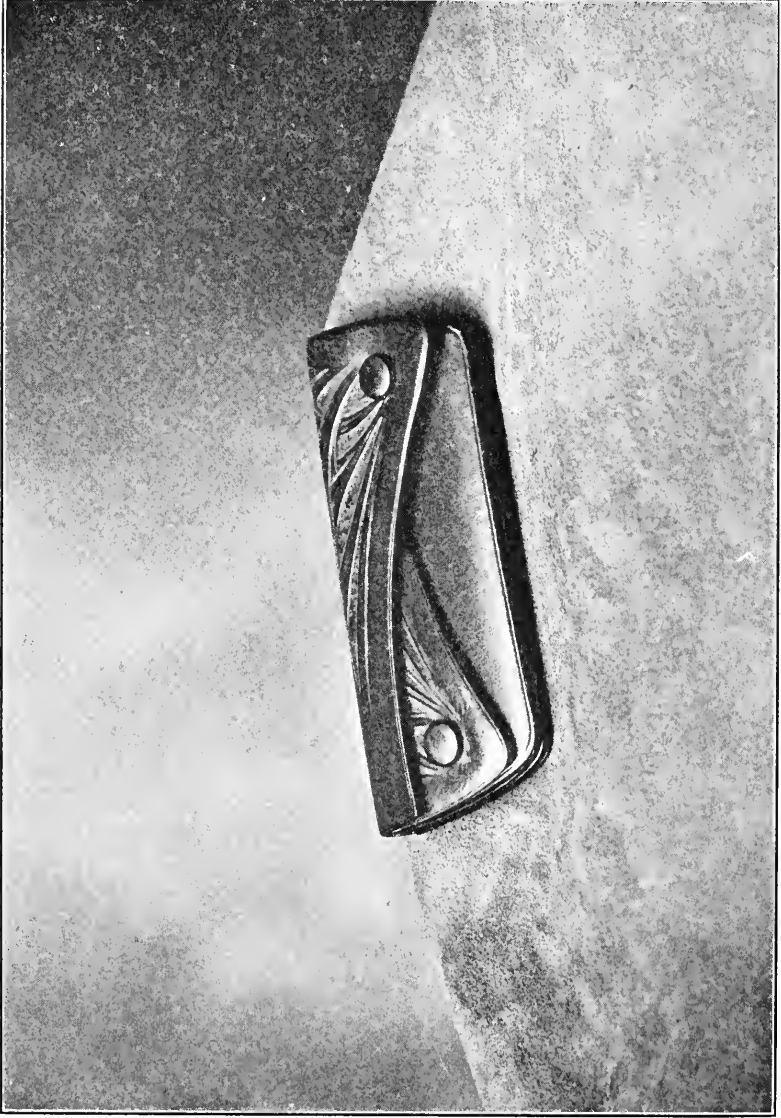


THE profits are so close on these rare articles, and the output so limited—each piece being made by hand—that we ask you to **REMIT WITH ORDER.** Shipment is then made the day your order is received, express or postage prepaid. On receipt of the goods, if you wish to exchange for something else, or if you desire your money back, we will promptly meet your wishes without question or correspondence. Please address all orders to **THE ROYCROFTERS, East Aurora, New York.**





MODELED-LEATHER MANICURE-CASE, SHOWING STYLE OF MONOGRAM



LADIES' PURSE

The Leather-Book

PURSES

| | |
|---|--------|
| CHILD'S WHEEL PURSE (unmodeled calf) | \$.75 |
| COIN-FOB, conventional design . . . | 1.00 |
| CHANGE-PURSE, lily-of-the-valley design | 1.25 |

SADDLE-PURSES:

| | |
|---|------|
| (a) Acorn design, depth 2½ inches . . . | 1.50 |
| (b) Conventional design, depth 3 inches . | 4.00 |
| (c) Same as (b), with finger-strap . . . | 4.50 |

HORSESHOE PURSES:

| | |
|--|------|
| (a) Wheat design, depth 2 inches . . . | 3.00 |
| (b) Wheat design, depth 3 inches . . . | 4.00 |

GENTLEMAN'S PURSE:

| | |
|---------------------------------------|------|
| Snowdrop design, four pockets | 9.00 |
|---------------------------------------|------|

LADIES' PURSES:

| | |
|---|-------|
| (a) Three pockets (see page 14) | 2.50 |
| (b) Five pockets, turned edge (see page 14) | 10.00 |

T H E L E A T H E R - B O O K

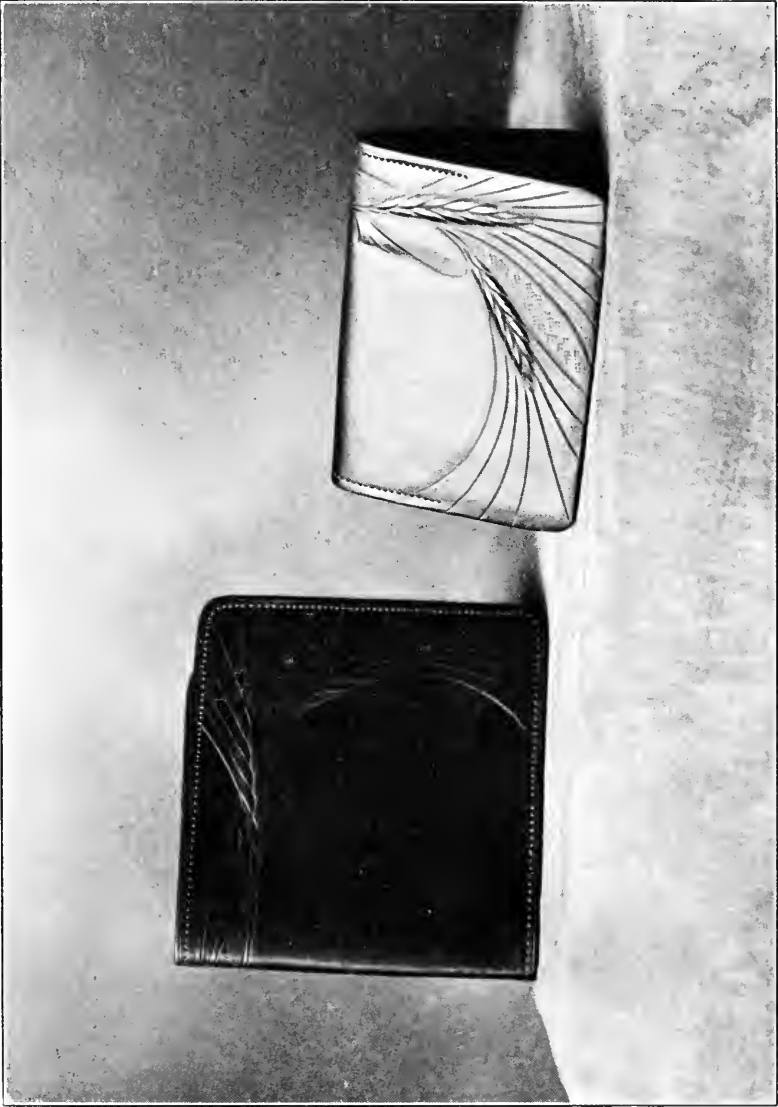
BILL-BOOKS

| | |
|---|---------|
| WHEAT DESIGN, with bill-pocket and four flat card-pockets, silk-lined (see page 17) | \$ 5.00 |
| COMBINATION PASS-CASE, CARD-CASE AND BILL-FOLD, Wheat design, with bill-pocket and four flat card-pockets, silk-lined . . | 7.50 |
| CONVENTIONAL ROSE DESIGN, leather-lined, four gusset pockets: | |
| (a) $3\frac{1}{2}$ x $6\frac{1}{2}$ inches | 8.00 |
| (b) $4\frac{1}{4}$ x $8\frac{1}{2}$ inches | 10.00 |
| OAK DESIGN, leather-lined, two gusset pockets and four flat pockets, $4\frac{1}{2}$ x $8\frac{1}{2}$ inches | 10.00 |



CIGAR-CASES

| | |
|--|---------|
| CONVENTIONAL OAK DESIGN, unlined case | \$ 2.00 |
| PINE-CONE DESIGN, leather-lined . . . | 3.00 |
| WHEATOR PINE-CONE DESIGN, leather-lined case, with inside opening for photograph | 4.00 |
| LEATHER MATCH-CASE, with same design as card-cases | .50 |
| Snowdrop design, natural leather, \$.25 and | .35 |



BILL-BOOK AND CARD-CASES—WHEAT DESIGN



GLOVE-CASE—NASTURTIUM DESIGN

T H E L E A T H E R - B O O K

CARD-CASES

CLOVER OR SNOWDROP DESIGN, with flat pockets, leather-lined case, $2\frac{1}{2} \times 3\frac{1}{2}$ inches \$ 1.00

CLOVER DESIGN, with flat pockets, leather-lined case:

$2\frac{1}{2} \times 4$ inches 1.25
 $2\frac{1}{2} \times 4\frac{1}{2}$ inches 1.50

CONVENTIONAL, CLOVER OR WHEAT DESIGN, with flat pockets, silk-lined case, turned edge, $2\frac{1}{2} \times 4$ inches 2.00

WHEAT DESIGN, gusset pockets and turned edge (see page 17):

(a) $2\frac{1}{2} \times 4$ inches, silk-lined 2.50
(b) $2\frac{1}{2} \times 4$ inches, leather-lined 3.00
(c) $2\frac{3}{4} \times 4\frac{1}{2}$ inches, silk-lined 3.00
(d) $2\frac{3}{4} \times 4\frac{1}{2}$ inches, leather-lined 4.00

CONVENTIONAL ROSE DESIGN, four gusset pockets, leather-lined case:

(a) $2\frac{1}{2} \times 4$ inches 4.00
(b) $3 \times 4\frac{1}{2}$ inches 5.00

MAPLE DESIGN, two gusset pockets, leather-lined case, 3×5 inches 5.00

COMBINATION CARD-CASE AND POCKET-BOOK, conventional design, leather-lined 4.00

T H E L E A T H E R - B O O K

PHOTOGRAPH-CASES

| | |
|--|---------|
| LEAF DESIGN, natural leather, leather-lined case, two square openings, $1\frac{3}{4} \times 2\frac{1}{2}$ inches | \$ 1.00 |
| LILY-OF-THE-VALLEY DESIGN, silk-lined case, two square openings, $1\frac{3}{4} \times 2\frac{1}{2}$ inches | 1.50 |
| CONVENTIONAL DESIGN, silk-lined case, two oval openings, $3 \times 4\frac{3}{4}$ inches | 3.00 |



STANDING PHOTOGRAPH-FRAMES

(See page 33)

- (a) Plain, stained, calf frames, outside measurement, 10×7 inches; square opening for photograph, $7\frac{3}{4} \times 4\frac{7}{8}$ inches
- (b) Outside measurement, $8 \times 5\frac{1}{2}$ inches; opening for photograph, $3\frac{1}{2} \times 5\frac{1}{2}$ inches

We can make to your order modeled-leather frames of any design and measurement.



SCISSORS AND KNIFE CASES

(See page 22)

| | |
|--|--------|
| PLAIN LEATHER, ooze-lined knife-case | \$.35 |
| SNOWDROP DESIGN, leather-lined scissors-case | .50 |
| OAT DESIGN, leather-lined shears-case | 1.50 |



MANICURE-CASE, OPEN



NIFTY KNICKKNACKS IN MODELED LEATHER—COIN-PURSES, WATCH-FOBS, MATCH-CASES, SUIT-CASE TAGS, BOOK-MARKS, NAPKIN-RINGS, ETC.

T H E L E A T H E R - B O O K

SUIT-CASE TAGS—PLAIN LEATHER

(See page 22)

| | |
|--|--------|
| (a) Opening for card, 1 x 2½ inches . . . | \$.50 |
| (b) Opening for card, 1¼ x 2½ inches . . . | .75 |
| (c) Opening for card, 1½ x 3 inches . . . | 1.00 |



WATCH-FOBS

(See page 22)

| | |
|--|--------|
| SNOWDROP DESIGN | \$.50 |
| WHEAT DESIGN | .75 |
| WHEAT DESIGN, with copper buckle . . . | 1.00 |



BOOK-MARKS

(See page 22)

| | |
|----------------------|--------|
| OOZE CALF | \$.50 |
| PLAIN CALF | .75 |



NAPKIN-RINGS

(See page 22)

| | |
|---|--------|
| CONVENTIONAL DESIGN | \$.50 |
| LILY-OF-THE-VALLEY DESIGN, leather-lined stamp-box | 2.50 |

JEWEL-BOXES

(See page 38)

| | |
|--|---------|
| OAK DESIGN, leather-lined, stick-pin strap on cover | \$ 6.00 |
|--|---------|

T H E L E A T H E R - B O O K

GLOVE-CASES

NASTURTIUM DESIGN, ooze-calf lining,
turned edge, $13\frac{1}{2}$ inches long (see page 18) \$15.00



BAGS

All kinds of sewing and shopping bags in ooze calf
of various colors, \$1.00, \$2.00, \$2.50, \$3.00, \$4.00

Ooze-calf opera-glass bags, . . . \$1.00 and \$ 1.50

Ooze-calf collar-bags, all colors. 1.50

CHATELAINE BAGS, with belts: Gray ooze
calf, silk-lined 8.00

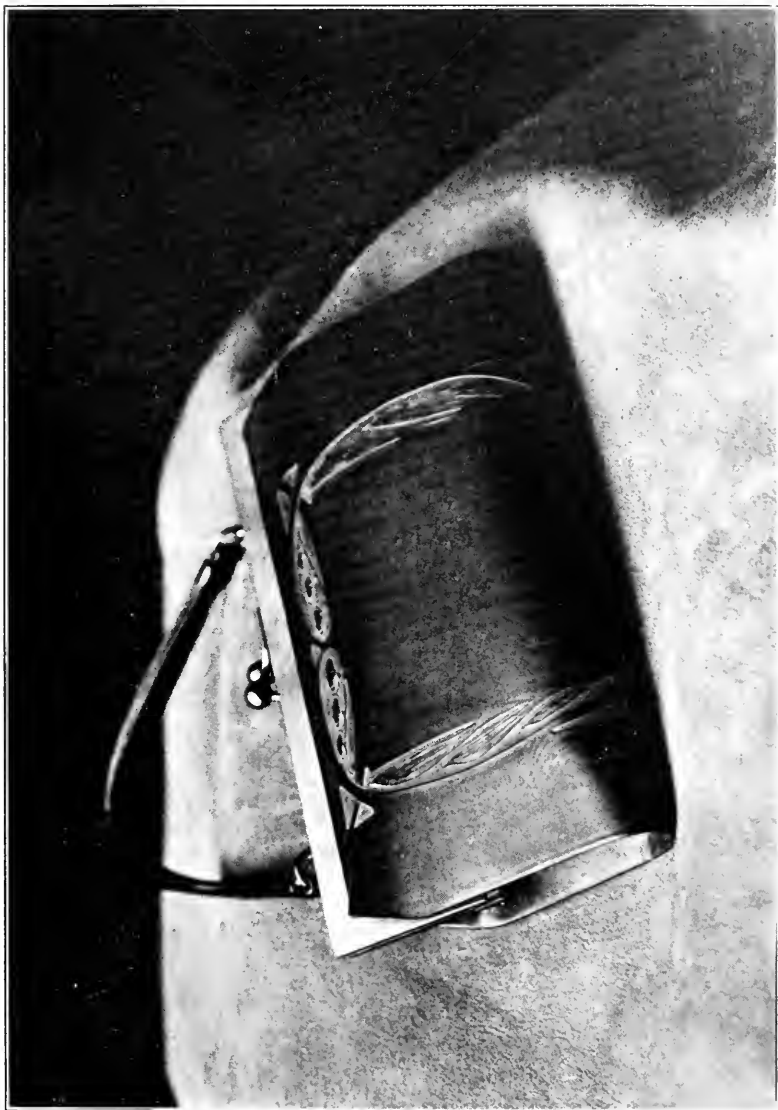
Conventional design, leather-lined 15.00

MODELED-LEATHER HAND-BAGS:

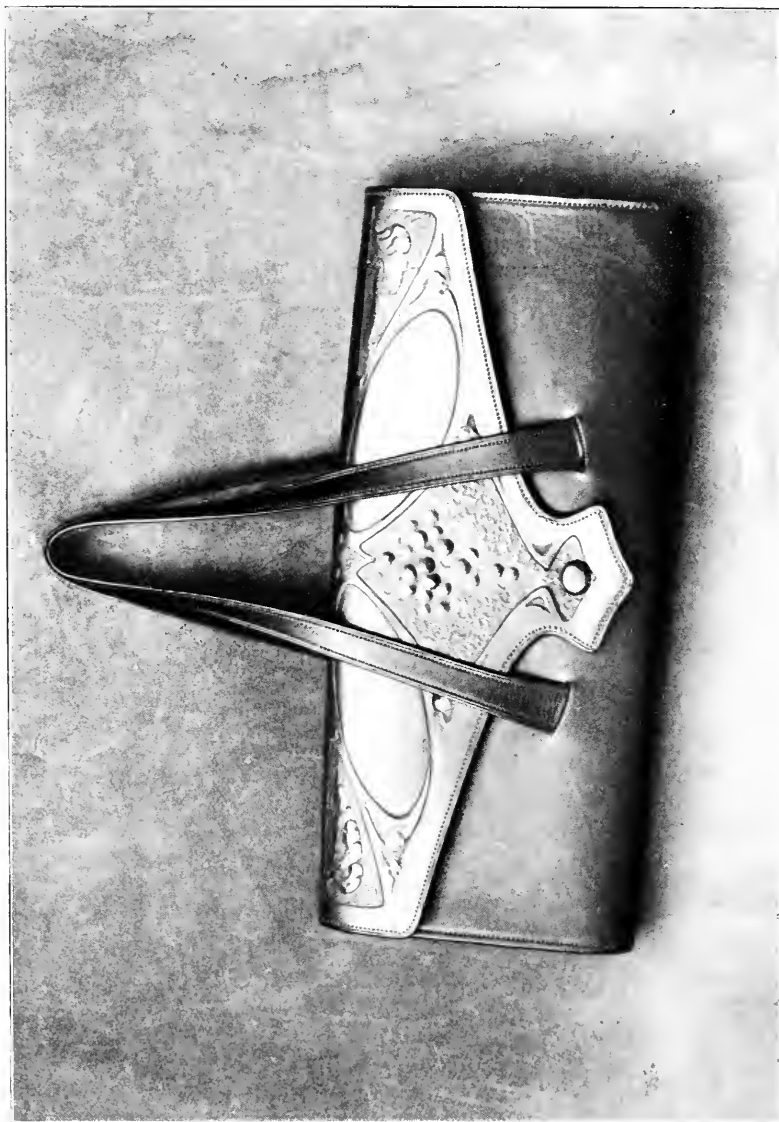
Oak design, leather-lined hand-bag; three
outside pockets, $5\frac{1}{2}$ x $4\frac{1}{2}$ inches 15.00

LILY-OF-THE-VALLEY DESIGN, leather-lined,
one inside pocket and modeled-leather
change-purse, 8 x 5 inches (see page 25) 18.00

CONVENTIONAL DESIGN, leather-lined, one
inside pocket and modeled-leather change-
purse, $8\frac{3}{4}$ x $5\frac{1}{4}$ inches 20.00



LADIES' HAND-BAG—LILY-OF-THE-VALLEY DESIGN



MUSIC-SATCHEL—GRAPE DESIGN

T H E L E A T H E R - B O O K

MUSIC-SATCHELS AND ROLLS

CONVENTIONAL DESIGN, leather-lined,
music-satchel, $14\frac{3}{4} \times 6\frac{1}{2}$ inches (see page 26) \$ 7.50

GRAPE DESIGN music-satchel, turned
edge, ooze-calf lining, $14\frac{3}{4} \times 6\frac{1}{2}$ inches,
(see page 26) 15.00

CONVENTIONAL DESIGN, leather-lined
music-rolls \$4.00 and 6.00

With hand-turned edges 10.00



BELTS

CONVENTIONAL DESIGN, unlined, copper
buckle \$2.50 and \$ 3.00

PLAIN LEATHER, turned edge, leather-
lined, modeled slide with invisible fastenings 3.50

MODELED LEATHER, turned edge, leather-
lined, modeled slide with invisible fastenings 4.50



OFFICE FILE-BOXES

Oak (size 10 x 13 x 3 inches) \$ 1.00

Mahogany (size 10 x 13 x 3 inches) 2.00

T H E L E A T H E R - B O O K

MATS

Vase and table mats of varied conventional designs, all leather-lined:

| | |
|-------------------------------------|--------|
| (a) 6-inch | \$.75 |
| (b) 7-inch | 1.00 |
| (c) 8-inch | 1.25 |
| (d) 9-inch (see page 29) | 1.50 |
| (e) 10-inch | 1.75 |
| (f) 12-inch | 2.25 |
| (g) 15-inch (see page 29) | 3.50 |
| (h) 18-inch | 5.00 |
| (i) 20-inch | 7.50 |



LOUNGE-PILLOWS

Two whole skins laced together over a pillow, all colors, 20 x 20 inches \$ 5.00

PLAIN SKIN, with laced edge (see page 44) 6.00

MODELED-LEATHER PILLOW, conventional design, 20 x 20 inches 20.00

WOVEN-SILK PILLOWS, mixed colors, 20 x 20 inches 2.50

WOVEN-RAG PILLOW-COVERS, mixed colors, 20 x 20 inches 1.50



MODELED-LEATHER MATS AND SHEEPSKIN



WOODEN WASTE-BASKETS, IN OAK OR MAHOGANY

T H E L E A T H E R - B O O K

S K I N S

(See page 29)

| | |
|---|---------|
| Velvet-finish Sheepskins, discreetly marked in corner with Roycroft trade-mark, suitable for spreads, pillows and various other uses, all colors | \$ 2.00 |
| Goatskins, velvet finish, all colors | 3.50 |



WASTE-BASKETS

**SHEEPSKIN-COVERED BASKETS, solid, Bind-
ing-board Frame:**

| | |
|---|---------|
| (a) Plain, four or five sided | \$ 3.00 |
| (b) Plain, laced corners | 4.00 |
| (c) Conventional design | 4.50 |

WOODEN BASKETS

| | |
|--------------------------------------|------|
| (a) Oak (see page 30) | 4.00 |
| (b) Mahogany (see page 30) | 6.00 |

MODELED-LEATHER BASKETS:

| | |
|--|-------|
| (a) Fleur-de-lis design (see page 4) | 12.00 |
| (b) Oak design, round, leather-lined | 40.00 |

T H E L E A T H E R - B O O K

DESK ACCESSORIES

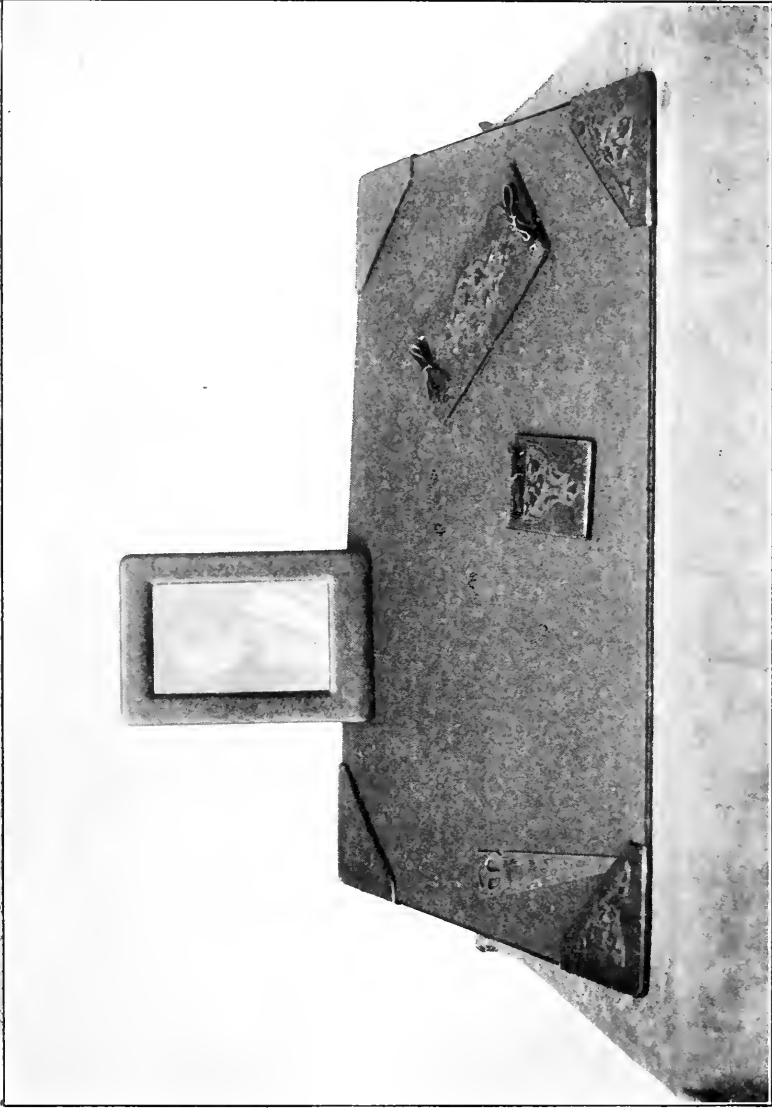
DESK SETS, with Blotter and Pen-wiper:

| | |
|--|---------|
| (a) 12 x 16 inches, in conventional snow-drop, oak and clover designs . . . | \$ 2.50 |
| (b) 16 x 22 inches, in same designs as (a) (see page 33) | 3.00 |
| (c) 12 x 16 $\frac{1}{2}$ inches, in wheat design . . . | 6.00 |
| (d) 15 $\frac{1}{2}$ x 23 $\frac{1}{2}$ inches, in wheat design . . . | 7.50 |
| (e) 12 x 16 $\frac{1}{2}$ inches, in conventional design, ooze-calf back and turned edge | 7.50 |
| Same pad as (e), 15 $\frac{1}{2}$ x 23 $\frac{1}{2}$ inches | 9.00 |
| Separate blotters in all designs | .50 |
| Separate blotters in all designs | 1.50 |
| Separate blotters in all designs | 2.00 |
| Separate pen-wipers, all designs | .25 |
| Separate pen-wipers, all designs | .50 |
| Separate pen-wipers, all designs | 1.00 |

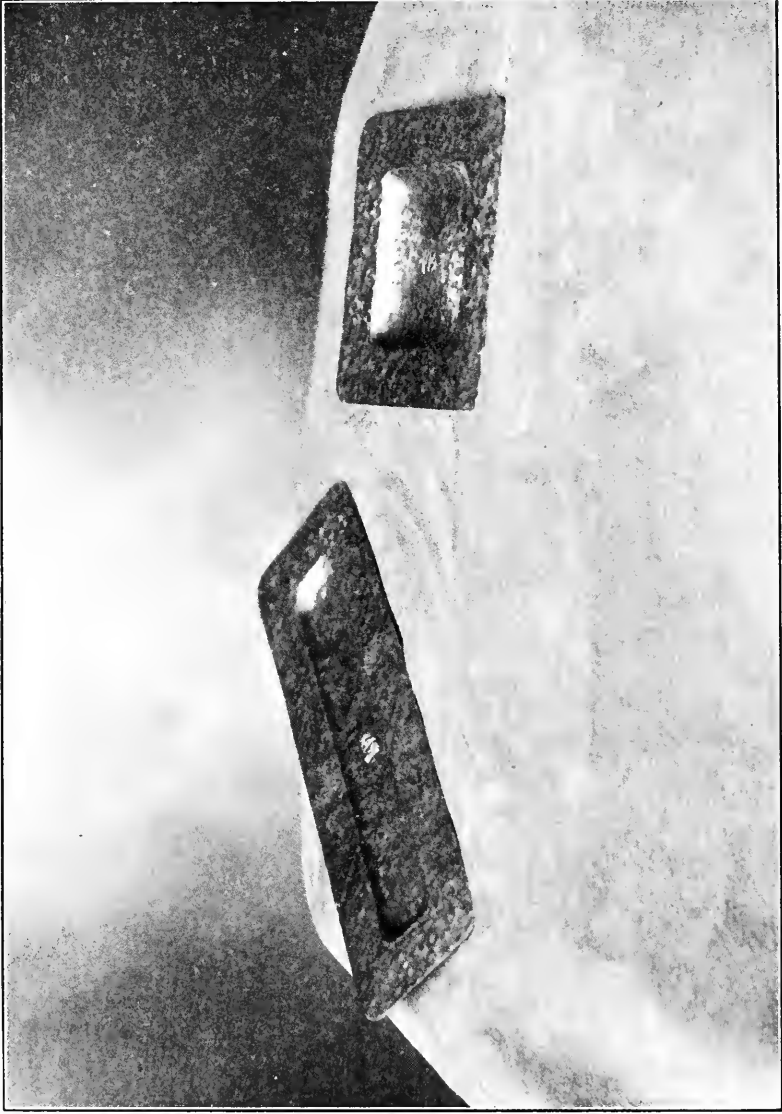
VERY SPECIAL DESK SETS, hand-colored leather, of seven pieces, including stationery-rack, ink-base with cut-glass ink-well, desk-pad, penholder, blotter, stamp-box and brush-cup 20.00

HAND-WROUGHT PAPER-KNIVES:

| | |
|---|-----|
| (a) Flat blade and handle (see page 33) | .50 |
| (b) Round handle, with flat, hammered blade | .50 |



DESK SET, WITH BLOTTER AND PEN-WIPER



HAMMERED-COPPER DESK-TRAYS

T H E L E A T H E R - B O O K

DESK-TRAYS

| | |
|---|----------------|
| ROUND HAND-HAMMERED COPPER TRAYS | \$ 1.50 |
| HAMMERED COPPER AND BRASS DESK-TRAYS, all bearing the Roycroft trade-mark (see page 34) | \$.50 and .75 |
| HAND-HAMMERED BRASS AND COPPER DESK-TRAYS, all bearing the Roycroft trade-mark: | |
| (a) Brass trays (see page 34) | .75 |
| Brass trays (see page 34) | 1.00 |
| (b) Copper trays, odd-shaped | .50 |
| Oblong and round trays | .75 |
| Oblong and round trays | 1.50 |



STATIONERY

STATIONERY, with Roycroft trade-mark on paper and envelopes:

| | |
|---|--------|
| YELLOW ROYCROFT BOND, the quire | \$.40 |
| Italian hand-made paper, in colors brown, white or green, the quire | .50 |

OUR PRINTING DEPARTMENT is equipped to fill special orders for names, addresses, monograms, or any inscription desired on paper and envelopes, the price proportionate to order.

T H E L E A T H E R - B O O K

WRITING-CASE

COMPLETE AND BEAUTIFUL WRITING-CASE for travelers, with compartments and pockets for paper, pens, pencils, stamps and elastic bands. Air-tight ink-bottle and lap blotter-pad.

Made of the finest calf, modeled in ornamental design, compact, useful, desirable

(see page 37) \$15.00



ROYCROFT RAG RUGS

Woven Roycroftie by hand on the Old-fashioned looms—by girls who are at least sixty years young! Some of these girls work three hours a day and some work less; meeting as a Social Sewing-circle with an aim to perpetuating local topics. Freedom of Speech and a great disdain for things financial lift our weavers above the level.

But the rugs reflect the care and skill of the last generation—the yard \$ 1.25

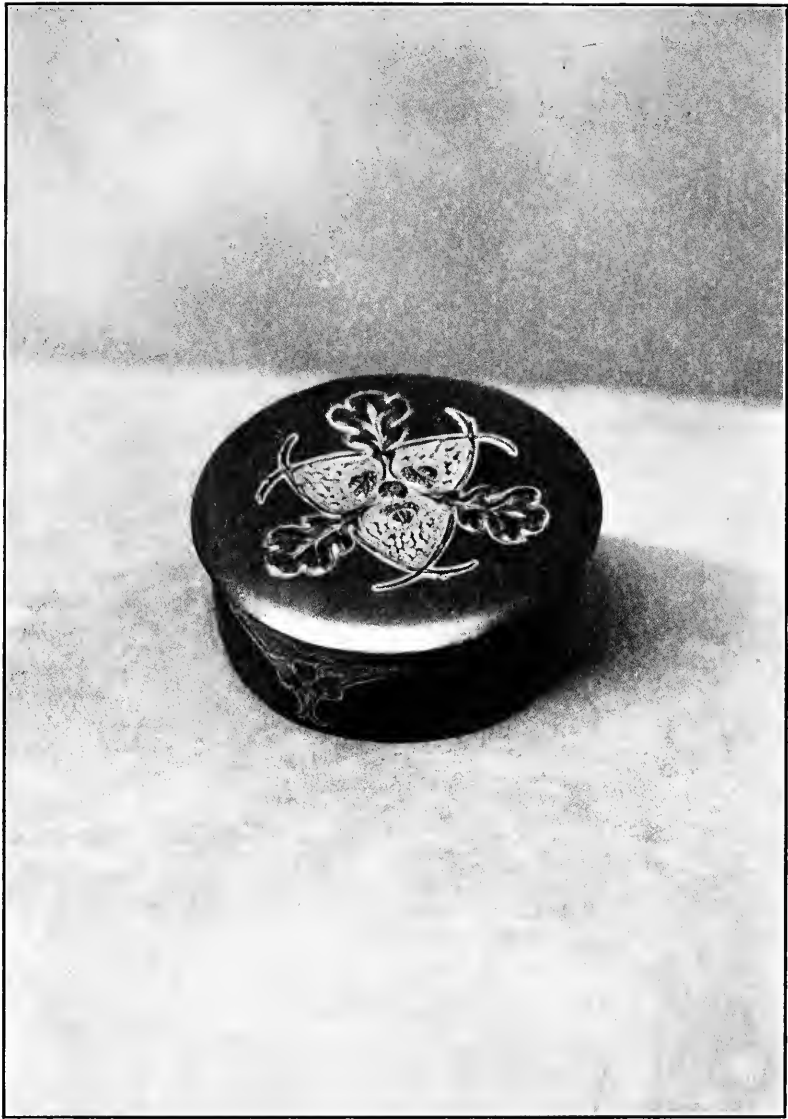
Special orders, your own colors, yard 1.50

Silk portieres, the pair 5.00

Bath-mats, pure outing flannel, 3½ feet 2.00



MODELED-LEATHER WRITING-CASE



JEWEL-BOX—OAK DESIGN

T H E L E A T H E R - B O O K

PORTFOLIOS

- (a) Conventional design, $7\frac{3}{4} \times 9\frac{3}{4}$ inches, one pocket, leather-lined, insert blotting-sheets \$10.00
- (b) Oak design, $7\frac{1}{4} \times 11\frac{1}{2}$ inches, two gusset and five flat pockets, lined with finest ooze-calf 25.00

OLD-STYLE MODELED-LEATHER BELLOWS
(see page 10) 20.00

MANICURE-CASES $6\frac{1}{4} \times 9\frac{3}{4}$ inches open measurement, modeled-leather case, with finest ooze-calf lining and fitted with the best instruments made (see page 21) 12.00

THE MONOGRAM on the back of the manicure-case (see page 13) is an example of the work in modeled initials and monograms from our modeling department.

SPECIAL ORDERS for initials, the letter 75

We also make outline initials on any of our leather goods, the letter 25



ROYCROFT SEAL-PINS AND BUTTONS

- (a) In bronze \$.50
- (b) In gold 3.50

T H E L E A T H E R - B O O K

ROYCROFT TIES

Immortals on the way will recognize each other by the tie—ELBERTUS.

These official ties are made of the best black and tan, red, white, and gray crepe de chine, both ends being hemstitched with two hands:

All colors \$ 2.00



MEDICINE-BALLS AND HAND-BALLS

Roycroft stands for head, heart and hand: beside these, for health and happiness. Try the medicine-ball for the grouch and the hand-ball for the limp chronic:

(a) MEDICINE-BALL, 3 pounds . . . \$ 3.00

MEDICINE-BALL, 5 pounds . . . 5.00

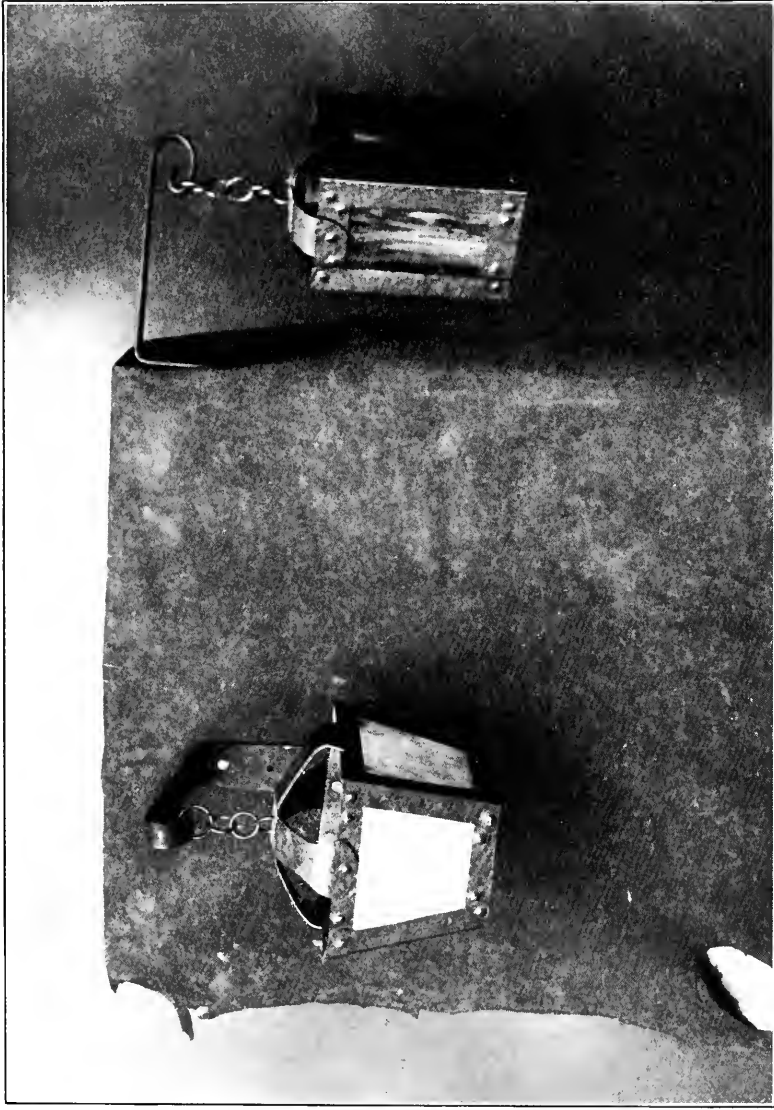
(b) HAND-BALLS, two sizes, \$.50 and 1.00



BUNGALOW-LAMP

(See page 41)

HAND-HAMMERED BRASS AND COPPER LAMP with green, lavender and yellow art-glass, heavy, fine-wrought, iron wall-hooks with hand-made copper chains, \$8.00, \$10.00 and \$12.00.




ART-GLASS BUNGALOW-LAMPS




ALI BABA BENCH, SHOWING BOOK-RACK AND BOOK-BLOCKS

T H E L E A T H E R - B O O K

LIBRARY-TABLE LAMPS


OAK STAND AND BODY, square art-glass shade securely held in place by copper corner supports, made for four electric lamps \$35.00


TRAYS AND BELT BUCKLES

HAND-HAMMERED COPPER CIGAR-TRAYS with two cigar-rests and match-box holder \$ 2.00
PLAIN HAND-CUT COPPER BELT-BUCKLES .40
WROUGHT-IRON BUCKLES


BOOK-RACKS

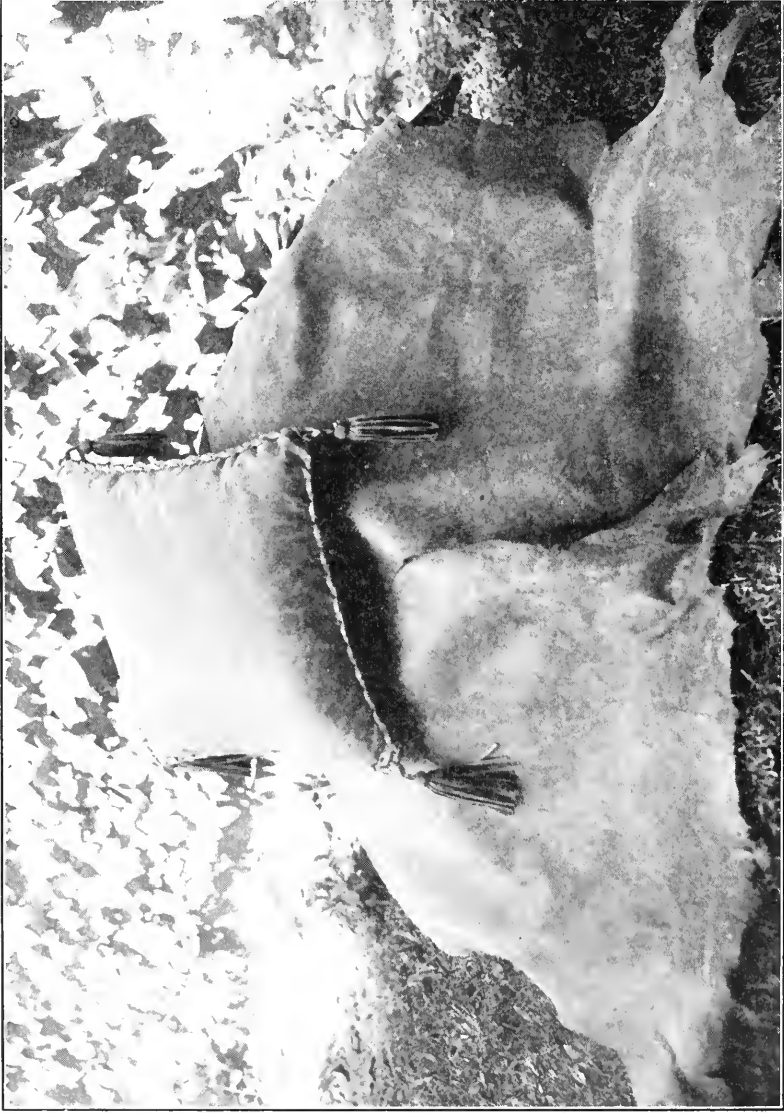
(See page 42)

(a) BOOK-RACKS, oak \$ 1.50
Mahogany 1.75
(b) BOOK-BLOCKS, oak, the pair, 4.50
Mahogany, the pair 5.50


ALI BABA BENCHES

(See page 42)

Made of oak half-logs, set up on sturdy oak legs, not to be taken away by stealth . \$10.00
Roycroft oak walking-sticks \$.25 and .50



LOUNGE PILLOW, LACED EDGES—PLAIN SKIN

T H E L E A T H E R - B O O K

PORTRAITS

Duotone reproductions from Gaspard's drawings:
Joe Jefferson, Walt Whitman, Victor Hugo Thomas
Jefferson, Friedrich Froebel, Beethoven, Emerson,
Lincoln, Ellen Terry, Tennyson, Susan B. Anthony,
Jesus of Nazareth, Carlyle, Franklin, Stevenson.
Ideal wall decorations for ideal homes.

| | |
|---|--------|
| Unframed | \$.25 |
| Oak frames, 5¼ x 6¼ inches | 1.00 |
| Oak frames, 7 x 9 inches | 1.00 |
| Oak frames, 16 x 20 inches | 3.00 |
| Mahogany frames, 5¼ x 6¼ inches | 1.00 |
| Mahogany frames, 7 x 9 inches | 1.00 |



SOUVENIR POSTAL CARDS

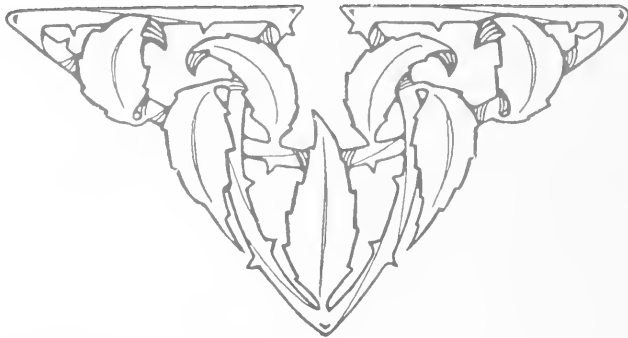
| | |
|---|--------|
| Of Roycroft views, in colors, two for | \$.05 |
| Of Roycroft views, black and white, three | .05 |
| In sets of ten, uncolored | .10 |
| Roycroft mottoes on postals, in sets of ten | .10 |

T H E L E A T H E R - B O O K

THE KANDY KITCHEN

We are making just three kinds of kandy—maple-cream patties, maple-nut creams, and maple kisses. You see we believe that discrimination and concentration boost quality. Our kandy proves the theory. If you don't happen to know any girls who can make real, sure-nuff, home-made kandy, address a postal of appeal to the **WHITE KITCHEN, EAST AURORA, ERIE COUNTY, NEW YORK**

| | | |
|---------------------------------|------------------|-------|
| Maple-cream patties, the pound, | . . . | \$.80 |
| Maple-nut cream | the pound, . . . | .80 |
| Maple kisses | the pound, . . . | .80 |





copy

