

Spec. Col.  
cl D  
1017  
.C88  
1915

# SEQUELLE

1915



Carlson Library





Digitized by the Internet Archive  
in 2010 with funding from  
Lyrasis Members and Sloan Foundation

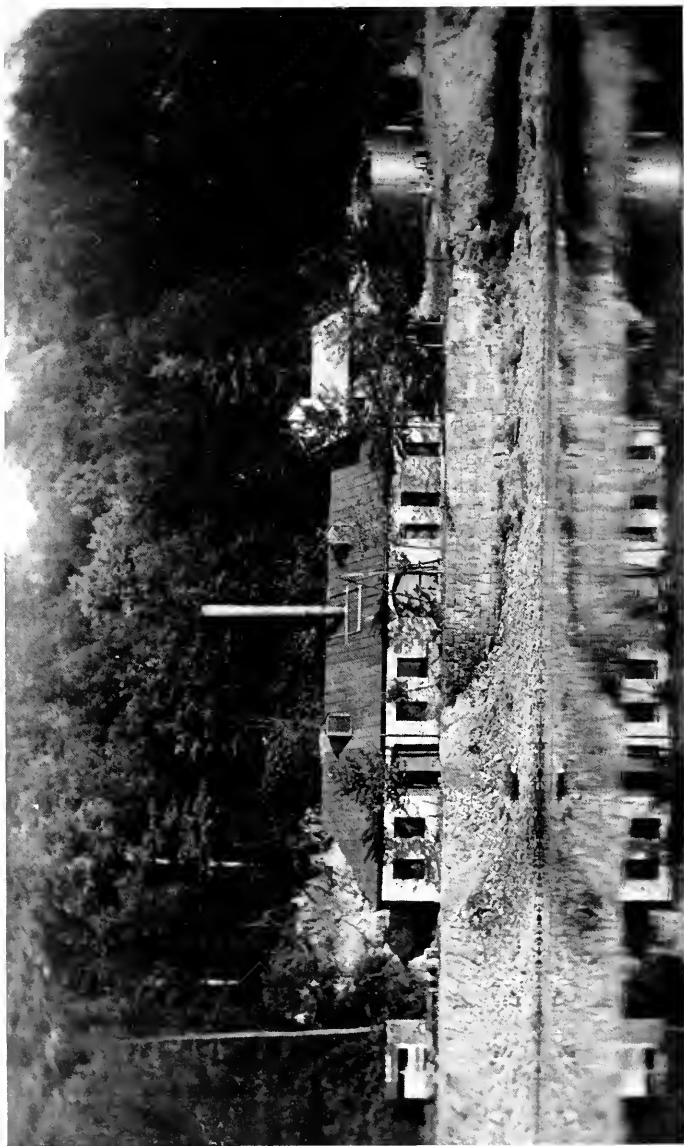
<http://www.archive.org/details/sequelle1915clar>





W. W. BROWN

THE CHAMPLIN PRESS  
COLUMBUS, OHIO



Pump Station





## Foreword

In the preparation of this issue of the SEQUELLE, it has been the aim of the staff of editors to advance the work begun in former issues of this book by adding another faithfully recorded volume to help complete the illustrious history of our Alma Mater.

LIBRARY  
CLARION STATE COLLEGE  
CLARION, PA.







THE CLASS OF 1915  
RESPECTFULLY DEDICATES THIS  
VOLUME TO

AMOS PHILIP REESE

Our worthy and efficient Principal.



## Board of Trustees

### REPRESENTING THE STOCKHOLDERS

Roswel, G., Yingling, Wilkensburg, Pa., 1300 Wood st.	Term expires 1915
J. T. Rimer, M.D., Clarion, Pa.	Term expires 1915
John M. Fitzgerald, M.D., Clarion, Pa.	Term expires 1915
Albert G. Corbett, Clarion, Pa.	Term expires 1916
Fred L. Pinks, Rimersburg, Pa.	Term expires 1916
Chas. W. Bell, Clarion, Pa.	Term expires 1916
Harry M. Rimer, Clarion, Pa.	Term expires 1917
Francis Joseph Maffet, Clarion, Pa.	Term expires 1917
James A. Haven, M.D., Brookville, Pa.	Term expires 1917

### REPRESENTING THE STATE

C. E. Andrews, New Bethlehem, Pa.	Term expires 1915
Theo. L. Wilson, Clarion, Pa.	Term expires 1915
C. F. McNutt, Clarion, Pa.	Term expires 1915
John Gibson, Clarion, Pa.	Term expires 1916
Samuel F. Brush, Clarion, Pa.	Term expires 1916
William Day Wilson, Clarion, Pa.	Term expires 1916
Samuel K. Clarke, Clarion, Pa.	Term expires 1917
Hon. John B. Patrick, Harrisburg, Pa.	Term expires 1917
Frank L. Harvey, Foxburg, Pa.	Term expires 1917

### OFFICERS OF THE BOARD

Albert G. Corbett, President	Walter A. Graham, Treasurer
S. F. Brush, Secretary	

### STANDING COMMITTEES

- Committee on Instruction—S. K. Clarke, F. J. Maffett, R. G. Yingling, J. M. Fitzgerald, J. T. Rimer.
- Committee on Finance—H. M. Rimer, John Gibson, C. E. Andrews, Jr., F. L. Pinks, F. L. Harvey.
- Committee on Household—W. Day Wilson, H. M. Rimer, Theo. L. Wilson, C. W. Bell, C. F. McNutt.
- Committee on Buildings and Grounds—S. F. Brush, C. W. Bell, F. L. Harvey, W. Day Wilson, Theo. L. Wilson.
- Committee on Printing—W. Day Wilson, S. F. Brush, C. F. McNutt, R. G. Yingling, C. W. Bell.
- Committee on Library—S. K. Clarke, Theo. L. Wilson, J. A. Haven, J. B. Patrick, A. G. Corbett.
- Sanitary Committee—J. M. Fitzgerald, J. T. Rimer, J. A. Haven, S. F. Brush, F. J. Maffett.
- Special Committee on Rates—Dr. J. M. Fitzgerald, John Gibson, F. L. Pinks.

1915 **ONS** SEQUOIA



RAY HUMPHREYS  
*Editor-in-Chief*



DESMAS D. CALVERT  
*Associate Editor*



LULU BOWMAN  
*Literary Chairman*



RALPH E. MAYES  
*Business Manager*



BLANCHE MCCLUNE  
*Assistant Business Manager*

THE BOARD

# THE 1915 *ONS* SEQUEL

## Staff of Editors

	<i>Editor-in-Chief</i>	
	RAY HUMPHREYS	
	<i>Associate Editor</i>	
	DESMO D. CALVERT	
	<i>Business Managers</i>	
RALPH E. MAYES		BLANCH McCLUNE
	<i>Artists</i>	
JUNE CALVERT		GENEVIEVE WEETER
MARY ARNOLD		LULU BOWMAN
	<i>Literary Chairman</i>	
	LULU BOWMAN	
	<i>Literary Committees</i>	
	<i>History</i>	
MARTHA RYLANDER		ANNA RHODES
	<i>Poet</i>	
	MARY LOWRY	
	<i>Music</i>	
	HANNAH YINGLING	
	<i>Christian Associations</i>	
DESMO CALVERT, Y. W. C. A.		JOHN MOONEY, Y. M. C. A.
	<i>Model School</i>	
	VIRGINIA AMSLER	
	<i>Literary Societies</i>	
HERMAN SCHRECONGOST, Bancroft		FRANK GOODROWE, Franklin
	<i>Dramatics</i>	
ALICE KERR		RUTH ARNER
ESTHER STOVER		HERBERT ERWIN
	<i>Athletics</i>	
ESTHER STOVER		HERBERT ERWIN
	<i>Wit</i>	
BETTY BROWN		ALVERA HOCHINSON
	<i>Junior Editor</i>	
	JOHN BOLAM	
	<i>Sophomore Editor</i>	
	DON ROBISON	
	<i>Freshman Editor</i>	
	GLENN ROSSMAN	
	<i>Censors</i>	
W. R. EGBERT		W. Y. WELCH





THE 1915 CONS SEQUOIA



JOHN BALENTINE  
Department of Latin



WILLIS Y. WELCH  
Department of Science



JOHN W. F. WILKINSON  
Department of Mathematics



MARY LORENA GIVAN  
History and Art

THE 1915 CONSISTORIAL



CHARLOTTE BARTON  
Geography and Geology



ALMA G. RICE  
Principal of Model School



ANNA M. KLAHR  
Kindergarten



LILLIAN W. BITNER  
Primary Supervisor

THE 1915 CAS SEQUOIA



IRENE R. FITZGERALD  
German and French



EISIE STAHLMANN WARBURTON  
Director of Music



LORA GOODROWE WELCH  
Laboratory Assistant



STEWART E. ACOR  
Manual Training  
Book-keeping

THE 1915 **CONY** SEQUOIA



L. GUY CARSON  
Physical Training  
Athletic Coach



SARAH E. NOLIN  
Domestic Science  
Nurse



JOHN ANDREW FAGLEY  
Engineer



U. ELIZABETH BELL  
Expression and Rhetoric

1915  SEQUOIA



LEWIS J. ROHR  
Stringed Instruments



CATHERINE MERCER  
Stenographer

WALTER R. EGBERT  
English

MARY A. TRUE  
Librarian

MRS. A. S. THOMSON  
Mathematics

JAMES E. MATHEWS  
Steward

MRS. J. E. MATHEWS  
Matron



# 1915 CONS SEQUELUE



Andrew Samuel Thomson, professor of Psychology and Agriculture, through his large understanding of life, of the best that is in people, and his rare sympathetic qualities, has popularized learning, humanized friendship, and endeared himself in the loving memory of the students of the Clarion State Normal School. He is a large man in body, intellect, and spirit; his rare appreciation of life and nobility of character serves through his teaching, to point to higher realms and to lead the way to greater endeavor and finer ideals. Students always speak in the highest terms of the inspirational qualities of his work; of its power and dignity and permanence. With a forceful personality and a highly trained philosophical mind, he always goes to the root of things; he stands for intellectual honesty. He holds himself in an intimate and personal relationship with students—has appreciation of the needs of young people—loves his fellow men.



## Alma Mater

As Alma Mater's children, we  
Proclaim our filial loyalty,  
For Clarion is of regal fame,  
And proudly do we bear her name;  
The purple robe of power she wears  
Above a heart that dreams and dares,  
While golden Truth her forehead crowns,  
And far and wide her praise resounds.

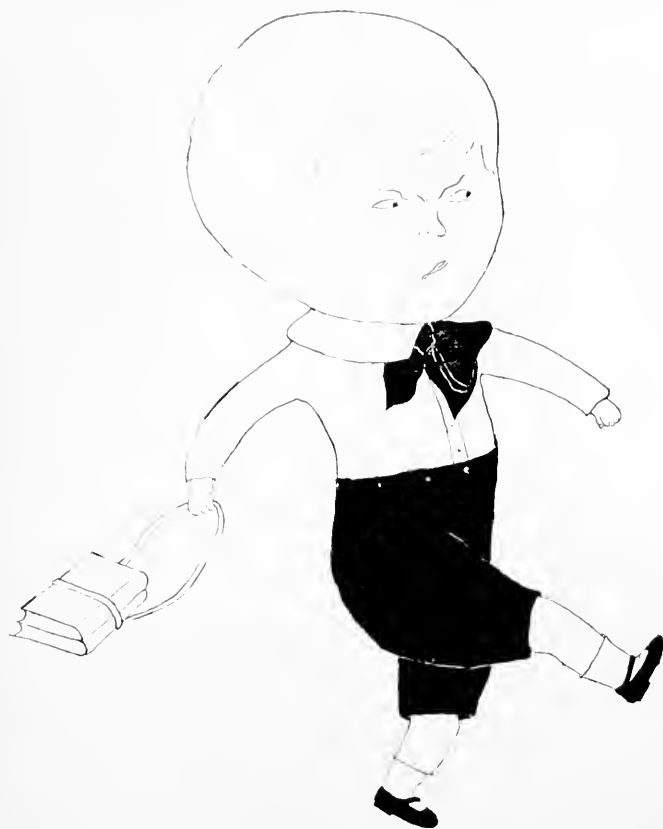
In dignity enthroned she waits  
For all who seek her open gates,  
The Book of Knowledge wide outspread  
With Wisdom's light upon it shed;  
Her gestures invitation spell,  
Her eyes a radiant welcome tell,  
Each stranger may adopted be  
Into her royal family.

To her we render homage due,  
And daily pledge our vows anew,  
To her we bend the willing knee  
In token of fidelity;  
Her touch uplifts to manhood's height,  
Her counsel girds the soul with might,  
As forth into the world we fare  
To plant the gold and purple there.

"Air, "The Watch on the Rhine."

E. O. S.





Model School

# THE 1915 CONS SEQUENTIAL

## The Model School

**T**HE Model School is an institution of learning in itself. As a place for preparation for teaching, it is a very potent factor in any Normal School. It is putting theory into practice under competent guidance.

Clarion gives special attention to this part of teacher-training and perhaps there is no more marked success than is here developed. The children, themselves, get the benefit of many differently qualified teachers and a variety of methods and theories and learn to discriminate shrewdly as to those who meet their needs and requirements.

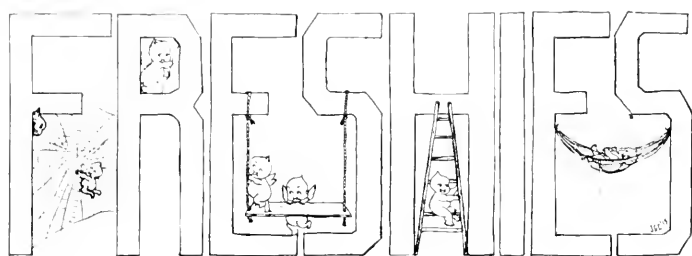
If one passes successfully through the ordeal of the Model School, he cannot enter other schools without a store of useful and valuable experience in discipline, character-reading and building, and the art of imparting knowledge to others in the most approved and modern methods.

With the excellent supervision of Miss Rice, the principal, and Miss Bitner, the primary instructor, the student teachers are especially favored. Miss Bitner is especially qualified as a primary teacher and has charge of the four lower grades.

It is now esteemed of supreme importance to start school children right to obtain later satisfactory results. Miss Klahr is director of the Kindergarten department and the student teachers help in this work also; so there is every chance to become familiar with the whole system of child instruction from infancy to eighth grade.

This year Domestic Science is being taught in the Model School in connection with formerly taught branches and this makes a pretty full program of efficient instruction on all prescribed lines.







FRESHMAN CLASS

# THE 1915 *CNS* SEQUENTIA

## OFFICERS

<i>President</i> .....		ROSSMAN, GLENN O.
<i>Vice President</i> .....		KEYS, MARION M.
<i>Secretary</i> .....		KEEFER, LEDA R.
<i>Treasurer</i> .....		FOX, BERTON M.

CLASS MOTTO—In omnia paratus.  
 CLASS FLOWER—Red and White Rose.  
 CLASS COLORS—Red and White.  
 CLASS POET—Eugene Fields.

## CLASS YELL.

One-Two-Three-Four!  
 Three-Two-One-Four!  
 Who for? We're for the Freshmen!  
 That's the way we yell it,  
 Here's the way we spell it,  
 F—R—E—S—H—M—E—N.

## BASKET BALL TEAMS

### *Girls' Team*

Captain .....	AMANDA WILSON
Right Forward .....	LULU BURNS
Left Forward .....	AMY HEETER
Center .....	MARION KEYS
Right Guard .....	AMANDA WILSON
Left Guard .....	MILDRED CUMMINGS
Subs .....	DELTA SELL
	BERTHA HAFNER

### *Boys' Team*

Captain .....	FRANK MAST, JR.
Right Forward .....	GLENN ROSSMAN
Left Forward .....	EDWIN AMY
Center .....	FRANK REBOLT
Right Guard .....	FRANK MAST, JR.
Left Guard .....	LAWRENCE DINGER
Subs .....	MASON THOMPSON
	PHILIP STAHLMAN



## Class History

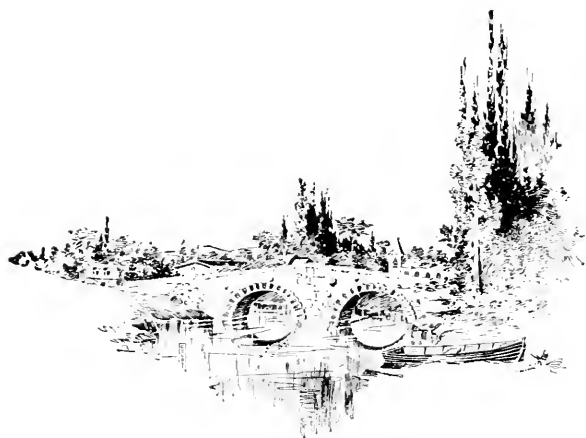
**S**OME good-hearted persons thinking that we needed a better education presented our names to the Principal of C. S. N. S. He gladly sent us a copy of the school catalog. After pondering over it for some time we decided to come to Clarion to get a better education. On a beautiful September day we started out from our various homes in a state of great excitement. On reaching Clarion we were welcomed by the teachers and older students. Towards the latter part of the fall term the Freshmen were called together. At this meeting we elected our class officers. Later we selected our class colors, motto, flower, and Eugene Field as our class poet. We also organized two basket ball teams, of which the boys took the honor for the class games. We are represented in baseball and tennis. We are all enjoying our school work and think Clarion is one of the best places to come to get a good education.



amy, edwin  
ballentine, kathryn  
beatty, alma  
beckwith, madella  
burns, lula  
burns, bank  
cummings, mildred  
daugherty, maude  
davis, chesleigh  
dinger, esther  
dinger, lawrence  
elder, osa  
fox, berton  
furman, wayne



gathers, alic  
hafner, bertha  
hecter, amy  
himes, anna  
humes, zelda  
hugus, edgar  
johnson, farris  
kerr, nathen  
keffer, leda  
keys, marion  
kirby, lula  
mast, frank  
martz, eugene  
minich, dora  
miller, william  
morrison, nell  
oakes, mae  
painter, valera  
reed, alva  
rebolt, frank  
rossman, glenn  
roberts, freda  
sell, della  
sigworth, harold  
strothman, iga  
stover, shirley  
stahlman, philip  
stewart, catherine  
stewart, clara  
stroup, clara  
sheesley, myrtle  
schnabinbaner, helen  
thompson, mason  
warner, estella  
wilkinson, herbert  
wilson, amanda  
zerby, mary





# 17 SOPHOMORE 17





SOPHOMORE CLASS

# THE 1915 CLASS SEQUENCE

## CLASS OFFICERS

DON ROBISON	<i>President</i>
BARR RIMER	<i>Vice President</i>
ERNA D. BUNKE	<i>Recording Secretary</i>
SUSIE BONSALE	<i>Treasurer</i>
GRACE CALDWELL	<i>Corresponding Secretary</i>

## CLASS FLOWER

White Carnation

## MOTTO

Nulla Vestigia restor sum

## COLORS

Sky Blue and Gold

## YELL

Trick-a-lacka, Trick-a-lacka, Trick-a-lacka, lack!

Boom-a-lacka, Boom-a-lacka, Boom-a-lacka, lack!

1917, Sis! Boom! Bah!

Clarion Normal! Rah! Rah! Rah!



## History

**T**HE Class of 1917 is so well known that it will not be necessary to relate in detail its history.

September 9, 1914, brought us back to old C. S. N. a loyal, and enthusiastic, but somewhat diminished class. Here we were met with open arms by the Faculty and our fellow students. We were enrolled at the office and took up our regular routine the following day.

We Sophomores have already shown a tendency to shun all hazing affairs, campus quarrels, and other childish plays, and devote all our time to clean athletics, to study, and to taking an active part in the literary and Christian associations.

A long time ago when we were Freshmen the State Board of Examiners listened eagerly to our enthusiastic class yells and songs, patted us on the head and told us that the future held great things in store for us.

In class spirit we certainly rank first. In the spring of 1914 the three other classes floated their banners from Seminary Hall but we scorned the tower's height and floated our "Blue and Gold" *thousands* of feet above the green campus.

Thus shall it ever be with the class 1917. When some day we look back to commencement day in 1917 we can hold our heads high and say, "I was a member of that class."

ERNA DOROTHY BUNKE.

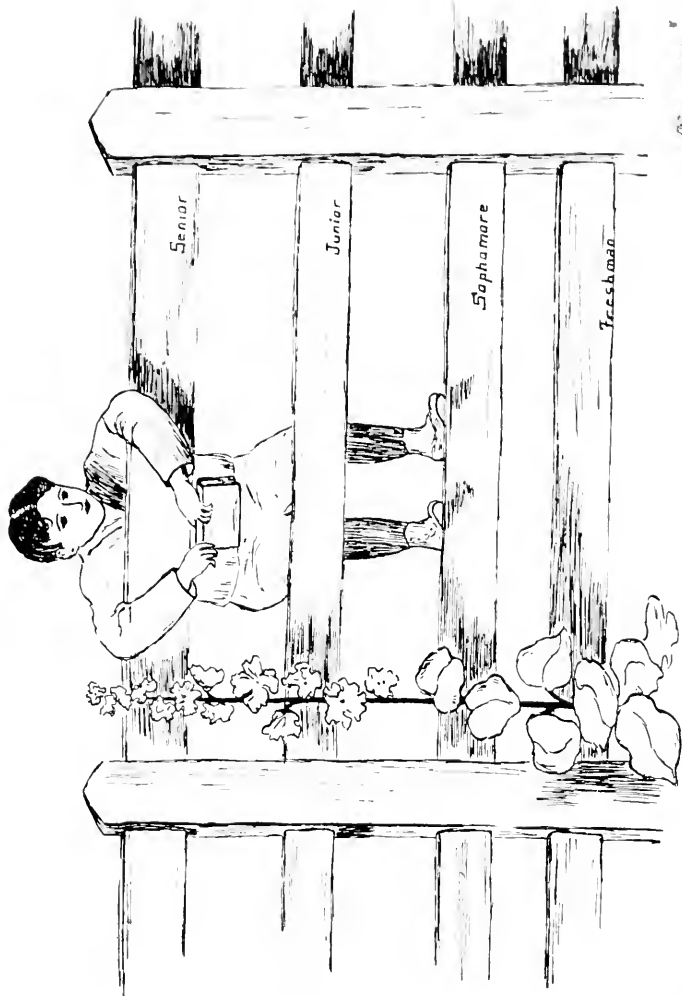


## Class Roll

- JAMES ARNER—Liked by all the girls and teachers.  
LAURA AMSLER—Dainty Sophomore and Caesar Shark.  
ERNA BUNKE—Our little "Dutch Girl."  
SUSIE BONSALE—Irresponsible Sophomore.  
GRACE CALDWELL—Studies like a fish swims (naturally).  
GERALD CARRIER—I almost lost my keys.  
MABLE COOK—If George married, would Mable Cook?  
ELEANOR DAVIS—Sweetness and love personified.  
ESTHER DUNSMORE—Gentle and shy; with mischief in her eye.  
MARGUERITE DUNCAN—"I can't do it,"—her chief expression.  
EVELYN FRAMPTON—"I know more than you think I do."  
MILDRED GRAFF—Uses Campbell's powder. Why?  
HAZEL HARRIGER—"I'se a bashful 'ittle dirl."  
GERDA KRANTZ—Is she Irish? Nope; she's a Swede.  
LENA MCMANIGLE—"Is she a Freshman?" (meaning Miss Bell).  
VIOLET MCHENRY—"Did Whittier write 'Hiawatha'?"  
CLAIRE MCHENRY—"Where is my Caesar pony?"  
RUTH PARK—"He opened his ears to see."  
BARR RIMER—"What's the attraction in Brookville?"  
MARY RIMER—"Irresistible"—Bob thinks so anyway.  
JAMES RILEY—"I love the ladies."  
DON ROBINSON—"A pretty nice fellow,"—so Florence thinks.  
ESTHER REYNER—"Who said 'Dinger'?"  
HELEN REED—Quiet, studious, never-get-into-a-fight girl.  
ETHEL SWABB—"Washington's farewell address was Heaven."  
FINLY SIMPSON—A true supporter of woman suffrage.  
FLORENCE WALTERS—"Oh, girls, I'm crazy about him!"  
ISLAND WALTERS—Very quiet, but bright in Caesar.  
GEORGE WHITEHILL—Has capacity unlimited.  
CLYDE WEAVER—How about that astronomy invention?  
EDITH ROBINSON—She smiles a dazzling smile.  
DOROTHY JOHNSON—"Dot" likes to laugh in "Jackie's classes."  
FRED BYERS—A promising Sophomore.  
NORMAN BARNETT—Basket ball shark.



A GRAY DAY IN WINTER





## The Junior Class

### CLASS OFFICERS

<i>President</i> .....	.....JOHN M. BOLAM
<i>Vice President</i> .....	.....OSCAR W. JOHNSON
<i>Recording Secretary</i> .....	.....LEEDA ELLITHORPE
<i>Corresponding Secretary</i> .....	.....MABEL LINES
<i>Treasurer</i> .....	.....SIDNEY KENNEDY

CLASS COLORS—Crimson and Steel.

CLASS FLOWER—Red Rose.

CLASS MOTTO—Nihil sine Labore.

### YELLS

#### I

Rickety, rickety, rickety, racks,  
Clickety, clickety, clickety, clacks,  
Hirgo, congo, tongo, bah!  
Juniors, Juniors, rah, rah, rah.

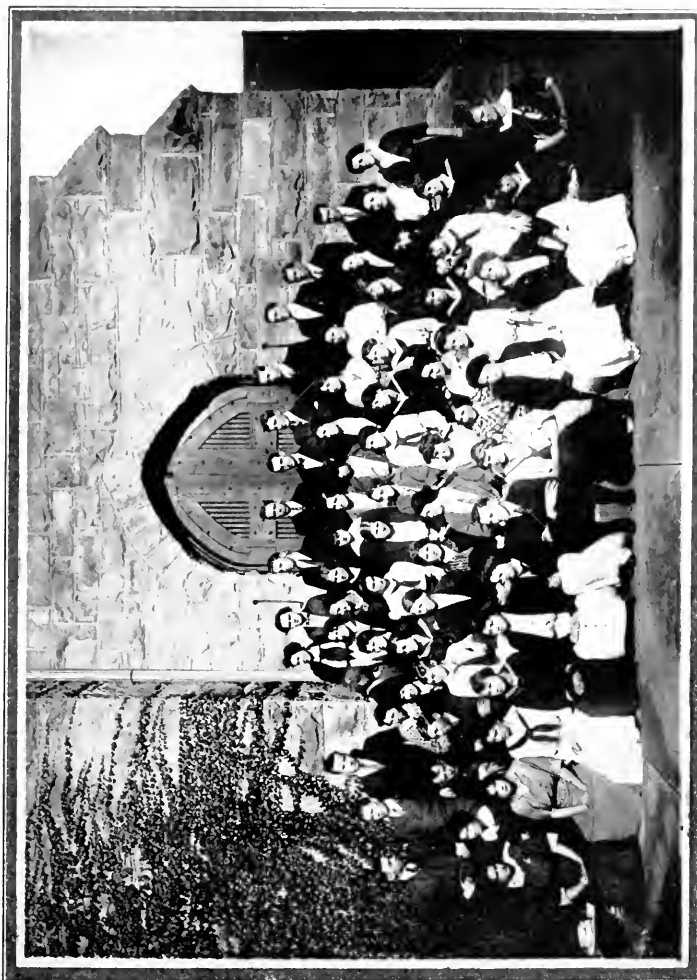
#### II

Zim bay zay; Zim bay zay!  
The Junior Class will win the day;  
Stand them on their heads,  
Stand them on their feet,  
1916 can't be beat.

#### III

Hilla carow, caree canip,  
Skippity rip, skippity rip  
Floppity flip, flippity flop,  
Who won't say that we're on top  
Hi—iky, sky—iky,  
Slippery bay  
All you cheap people get out of the way,  
For we're all members as can be seen  
Of the wonderful class of 1916.





THE JUNIOR CLASS



## The Class of 1916

Victoria Bloomgren	Frances Knight
John Bolam	Helen Kresge
Joseph Bonidy	Leonore Lemmler
Florence Borland	Margaret Levier
Alice Braden	Mabel Lines
Florence Buckley	Elizabeth Lipsie
Madeline Burt	Lawrence Marks
Daisy Campbell	Evelyn Mercer
Minie Clark	Bertha Mitchell
Ruth Clark	Horace Mooney
Bernice Colwell	Elizabeth Moore
Dean Conner	Madeline Moore
Mabel Cook	Nellie Moore
Nathan Croasmun	Ruth McClain
Samuel Crooks	Ruth McClune
Althea Curtis	Nelle McElhatten
Sophie Darling	Besse McFarland
Chester Davis	Helen McKee
Merritte Davis	Marie McKenna
Frances Davis	Elsie McLaine
Edna Dickey	Margaret McMahan
Merle Dudley	Iva Neely
Alice Duntley	Mabel Reed
Leeda Ellithorpe	Lucy Roof
Grace Exley	Estella Schrecongost
Charles Fenstamaker	Clara Steltzer
Virginia Glass	Beulah Strotman
Gertrude Holt	Edna Taylor
Stella Ittel	Myrtle Taylor
Oscar Johnson	Nellie Titus
Gusta Kahle	Donald Walker
Kathleen Kahle	Nancy Walters
Sidney Kennedy	Esther Weisgarber
Grace Kifer	Edna Wentling



SENTORS



## Class Officers

<i>President</i> .....	JOHN MOONEY
<i>Vice President</i> .....	RALPH MAYES
<i>Recording Secretary</i> .....	JUNE CALVERT
<i>Corresponding Secretary</i> .....	BERNICE AMO
<i>Treasurer</i> .....	RUTH ARNER

### COLORS

Orange and Black

### FLOWER

Black-eyed Susan

### MOTTO

Semper Fidelis

### CLASS YELL

Chick-a-rick-a  
Chick-a-rick-a  
Chick-a-rick-a-chow,  
    Wizzle-wazzle  
    Wizzle-wazzle  
Wow-wow-wow.  
Seniors, Seniors,  
    Sis! Boom! Ah!  
Nineteen Fifteen,  
    Rah, Rah, Rah.



## Class History

It was just at the close of the summer vacation when the strong north wind was scattering the leaves of maroon and gold hither and thither, over field and glen, that a group of merry youths and maidens arrived at the campus of C. S. N. S.

Having arrived here in search of knowledge, we were assisted through the intricacies of enrollment and organization by many kind friends and thus began our career as Freshmen with the motto "Always Faithful," and colors of "Orange and Black."

Backed by grim determination and enthusiasm we strove to become recognized by the higher classmen.

Many were the tasks we mastered and our aim was fulfilled, for, in 1912, we stood second in basket ball and held our own in all other athletics. We proved that we were workers and true to our colors and motto so much so that the following verse was written to us:

"All hail to thee, old nineteen fifteen,  
The fairest class in all our land;  
Our cordial love to thee confess,  
An ardent youthful band.  
Our hearts beat firm and strong for them,  
Our voices sing thy praise;  
In one accord we pledge to thee  
Devotion of our days."

After successfully completing our Sophomore year also, we returned in the fall of 1913, bearing the name of "Jolly Juniors." We still took an active part in all athletics and were recognized by the other classmen. One important feature of our Junior year was the Junior party for the Senior class. This was given Feb. 22, 1914, and was in form of an old Colonial party. Our colors were carried out in the decorations and light refreshments were served.

Our class was also conspicuous by its colors and decorations, which consisted of torches, transparencies, banners, etc., in the Amity parade.

Last of all we were ushered into the mysteries of the State Board.

We returned for our Senior year with much determination to make it our best. We presented at Thanksgiving our class play, "Pygmalion and Galatea," which is said to have been one of the best that has ever been staged in connection with our school.

# THE 1915 SEQUEL

As we now look back upon our four years of school life spent here, we realize that it has been only a short but happy part of our lifetime.

We hope that in the few days of happy school life remaining to us we will still keep up the standard to which we have attained, and that we will always be true to the "Orange and Black" and "Semper Fidelis" to our Alma Mater.

MARTHA O. RYLANDER, '15

## SENIOR FAREWELL

(Air—"Tramp, Tramp, Tramp.")

In our heart of hearts we dream  
Alma Mater, now of thee,  
Of the bright and happy halls so long our home;  
Swift the passing seasons seem  
Of our youthful liberty,  
Undisturbed by sterner duties soon to come.

## CHORUS

Alma Mater! Alma Mater!  
How the words our spirits thrill,  
As beneath the circling fold  
Of the purple and the gold,  
Do we homage to the school upon the hill.

Thou hast been a mother fond,  
Thou has been a guardian true,  
Thou hast set our feet upon the upward way;  
Glad we own the gracious bond,  
Glad our filial vows renew,  
Pledging loyalty for every coming day.

Now the time has come to part  
From these comrades, true and tried,  
Other scenes to enter, other friendships form;  
Treasured deep within the heart  
Shall these happy hours abide,  
In affection folded 'gainst a world of storm.



## Class Song 1915

(Air—"Dearest Mae.")

We love the stately halls that rear  
Their towers high in air;  
No name as "Clarion" half so dear,  
No Normal half so fair.  
"Nineteen Fifteen" in black and gold  
Their fealty glad proclaim,  
And "always faithful," stand enrolled  
To magnify her fame.

### CHORUS

Our love, our love to thee;  
Our loyal love to thee;  
Thy honored name we proudly claim,  
And pledge our love to thee.

The years of friendly brotherhood,  
How swiftly they have passed.  
We stand in retrospective mood  
To count them while they last.  
In joy and sorrow, work and play,  
The seasons took their toll;  
Triumphant now, Commencement Day  
Doth glorify the whole.

E. O. S.

THE 1915 *CONS* SEQUELUE



*Desma S. Calvert.*

*"A perfect woman, nobly planned—  
To warn, to council and command."*

*Ruth L. Shaffer*

*"A friendship that makes the least noise is  
very often the most useful; for which reason I  
should prefer a prudent friend to a zealous one."*

*Kathryn Kirby.*

*"On bravely through the sunshine and the  
showers,  
Time has his work to do and we have ours."*



THE 1915 *CNS* SEQUOIA

Martha O. Rylander.

*I know a girl with a heart of gold,  
And a mind that acts as but few;  
And I know that I'll always remember her,  
And love her well. Won't you?*

Dee Radaker

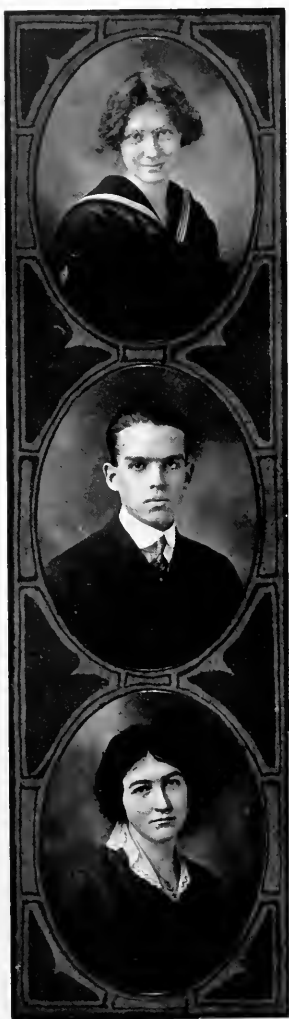
*"Let us love so well  
Our work shall be sweeter for our love  
And still our love be sweeter for our work."*

Reed Weaver

*We are growing awfully learned  
There's lots more of the kind—  
But we do not mind confessing  
That it's all a beastly grind.*



THE 1915 **CONS** SEQUOIA



Mary Arnold.

*"On her sunny way she goes;  
Much she wonders—little knows.  
Love's as yet a folded rose:  
All her smiles in dimples die;  
Glad is she, nor knows she why,  
Just to live in ecstasy!"*

Herbert Ennum

*"Look out upon the stars my love,  
And shame them with thine eyes,  
On which, than on the lights above  
There hang more destinies."*

Blanche McFlume

*She is a girl, whom we recall  
As one of the leaders of basket ball  
She played not for glory,  
She played not for fame;  
But just to enhance  
The class' good name.*

THE 1915 *ONS* SEQUENTIA

*Ruth Arner.*

*She had such pretty color  
And a mighty winning way;  
You know hers was the leading part  
In the last Thanksgiving play.*

*Mae Myers*

*"Her voice was ever soft, gentle and low. An excellent thing in women."*

*Florence Elliott.*

*"For her eyes alone smile constantly;  
Her lips have serious sweetness,  
And her front is calm; the dimple rarely ripples  
on the cheek;  
But her deep brown eyes smile constantly, as if  
in discreetness, they  
Keep the secret of a happy dream she did not  
care to speak."*



THE 1915 **YOUNG LADIES** SEQUOIA



*June Calvert.*

*She needs not fashion's narrow rule  
To guide her feet secure;  
Her wildest ways are beautiful,  
Her freest thoughts are pure!*

*Esther E. Stover.*

*Of her bright face one glance will trace  
A picture on the brain,  
And of voice in echoing hearts  
A sound must long remain.*

*Christine Schneider.*

*That inexhaustible good nature, which is the  
most precious gift of heaven, spreading itself  
like oil over the troubled sea of thought, and  
keeping the mind smooth and equable in the  
roughest weather.*

THE 1915 *CYCLIST* SEQUOIA

*Elizabeth Brown*

*She was one with the big brown eyes,  
Hair with a bit of curl,  
Gazing from under her velvet hat  
Just a bewitching girl.*

*Martha Williams*

*"True friendship is love with the element of  
selfishness eliminated."*

*Lena Krebs*

*"He is a rare well doer, who does as well  
as he knows how."*



1915 *ONS* SEQUENTIAL



*Alvera Hochinson*

*"Always cheerful; her beaming smiles,  
If strung together, would reach for miles."*

*Flora Kibbs*

*Flora is a whisperer!  
Of her we'd "a tale" unfold;  
But she threatens all kind of vengeance  
If her secrets were ever told.*

*Genevieve Welter.*

*"Thou hast a mind that suits this, thy fair  
outward character."*

# THE 1915 CLASS SEQUENTIAL

*Alice Kerr.*

*"Why, pretty rogue, do you protest  
The trick of stealing you detest?  
'Tis what you're doing every day,  
Either in earnest or in play.  
Cupid and you, 'tis said, are cousins  
(Au fait in stealing hearts by dozens)  
Who make no more of shooting sparks  
Than school boys do of wounding larks."*

*John Mooney*

Perhaps no one of the Class of 1915 is more worthy of special mention than our President, John Mooney, a young man of unusual aptitude for scholarly attainments, sterling character, and amiable and gentlemanly bearing. These qualities of merit make him a general favorite among Faculty and Classmates.

He is president, also, of the Y. M. C. A., in which organization he has done splendid work.

He is a champion debater, a good singer, and, as Pygmalion, the hero in the Class Play, he won our admiration as an actor.

May the coming years amplify the good beginning he has made.

*Katharyn Morrison*

*"Lo, those who know thee not  
No words can paint!  
Lo, those who know thee  
Know all words are faint."*



THE 1915 <NS> SEQUENTIAL



Phyllis Thomson.

*"I care for nobody; no not I,  
If nobody cares for me."*

Alberta Hill.

*"A maiden never bold,  
Of spirit so still and quiet that her motion  
Blushed at itself."*

J. W. McQueen.

*"The highest thoughts no utterance find,  
The holiest hope is dumb,  
In silence grows the immortal mind,  
And speechless deep joys come."*



THE 1915 *CONS* SEQUELUE

*Lulu Bowman*

She is generally known as attractive,  
With a dancing eye and a smile,  
But the friends who really know her  
See, beneath all, a girl worth a mile.

*Edith Imhoff.*

Soft elocution does thy style renown  
Gentle or sharp according to thy choice  
To laugh at follies, or to lash at vice,  
—Dryden.

*Ray Humphreys*

"Procrastination is the thief of time;  
Year after year it steals, till all are fled,  
And to the mercies of a moment leaves  
The vast concerns of an eternal scene."



THE 1915 *CONY* STEQUINIA



*Mabel Pollard.*

*"Let not your thoughts be deep,  
For fear you drown in them."*

*Cora Mullin*

*I guess you all know Cora,  
She's a girl of quiet mien.  
She never could smile or whisper out,  
That's easy to be seen.*

*Avis Jordan*

*"There's life alone in duty done,  
And rest alone in striving."*

THE 1915 *CONS* SEQUEL

*Caryl Elliott*

"Oh! there's nothing half so sweet in life as  
love's young dream."

*Franklin J. Goodrowe*

Love is not altogether a delirium, yet it has  
many points in common therewith. I call it  
rather a discerning of the infinite in the finite;—  
of the ideal made real.

*Clara A. Shadle*

"Like the morning glory,  
Was this child with the mocking eyes;  
Yet down beneath those glances  
Something lovely lies."





*Wilda Harst.*

*"What studies please  
What most delight,  
They fill her thoughts; she dreams them o'er  
at night."*

*Florence Allio.*

*"Thy silence quite becomes thee, little lady."*

*Grace Frampton*

*What is our duty here? To tend  
From good to better thence to best;  
Grateful to drink life's cup—then bend  
Unmurmuring to our bed of rest;  
To pluck the flowers that round us blow,  
Scattering our fragrance as we go.*

# THE 1915 *CONS* SEQUELLE

*Mariella Robinson*

*And many a lowly friend has she,  
Or sick or sad of heart;  
Who hails her coming steps with joy,  
And sighs when she departs.*

*Eva Rodgers.*

*"For if we chance to fix our thoughts elsewhere,  
Though our eyes open be, we cannot see."*

*Marquette Shirley*

*"I care not, Fortune, what you me deny:  
You cannot rob me of free Nature's grace,  
You cannot shut the windows of the sky,  
Through which Aurora shows her brightening  
face;  
You cannot bar my constant feet to trace  
The woods and lawns, by living streams, at  
eve.  
Let health my nerves and finer fibres brace  
And I their toys to the great children leave.  
Of fancy, reason, virtue, naught can me  
bereave."*

*—Thomson.*



THE 1915 *CON* SPOURDUE



*H. G. Schrecongost*

*"Though I'm always in haste  
I am never in a hurry."*

*Mary O'Neill.*

*A normal school is very trying; it never can  
present images of rest and peace.*

*Margaret Moore*

*I know of no such thing as genius  
It's nothing but labor and diligence.*

*Virginia Amster.*

*Let us not forget our athlete,  
She is very bright, though small;  
Her name is Virginia,  
And she's greatly loved by all.*

*Ralph Mayer.*

*"He that worketh high and wise  
Nor pauses in his plan;  
Will take the sun out of the skies  
Ere freedom out of man."*

*Alice Rodgers.*

*I take it to be a principal rule of life, not to  
be too much addicted to any one thing.*



THE 1915 *KANSAS* SEQUOIA



*Mary B. Amo*

*There's such a charm about her  
We couldn't get on without her,  
Her ways boyish, mad, and bold,  
Strung upon a thread of gold.*

*Ethel Schwartz.*

*"Cares, cares, go away!  
Come again some other day.  
Little Ethel wants to play."*

*Lulu Crossman*

*"There's none like her, none;  
Nor will be until our summers have ceased."*



THE 1915 *ANS* SEVENTH

*Ethel Klugh.*

*"She sports a witching gown  
With a ruffle up and down  
On the skirt.  
She is gentle; she is shy;  
But there's mischief in her eye,  
She's a flirt."*

*Mary Lundy*

*"If thou wouldst read a lesson that will keep  
Thy heart from fainting and thy soul from sleep,  
Go to the woods and hills!—No tears  
Dim the sweet look that Nature wears."*

*Grace Darling.*

*"Who she is, her form and face,  
These to the world of dream belong;  
She moves through fancy's visional space,  
Unbodied, like the cuckoo's song."*



THE 1915 *CONS* SEQUENTIA



*Anna E. Rhodes.*

*If I were the rose at your window,  
Happiest rose of its crew,  
Every blossom I have mould bend inward,  
They'd know where the sunshine grew.*

---

We may build more splendid habitations,  
Fill our rooms with paintings and with sculptures,  
But we cannot buy with gold the old associations.

—LONGFELLOW.

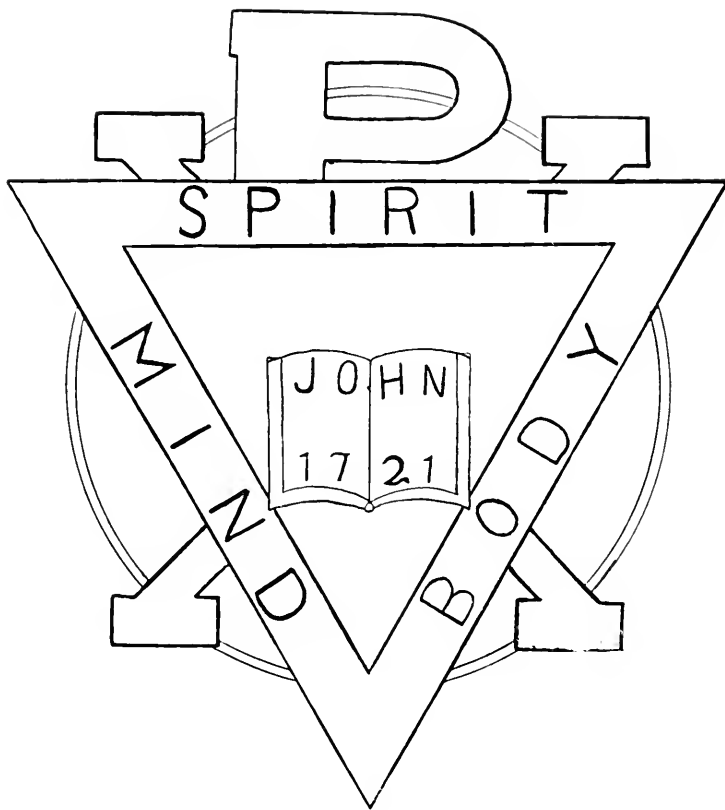
---

COMMENCEMENT SPEAKERS

JOHN MOONEY

GENEVIEVE WEETER

JUNE CALVERT



THE 1915 **Y. M. C. A.** SEQUOIA



Y. M. C. A. Cabinet

UPPER ROW—Acor, Davis, Johnson, Wilkinson  
MIDDLE ROW—President Mooney, Secretary Weaver  
LOWER ROW—Erwin, H. Mooney, Dinger, Schrecongost

# THE 1915 CAS SEQUENCE

## Y. M. C. A.

<i>President</i>	JOHN MOONEY
<i>Vice President</i>	HERMAN SCHRECONGOST
<i>Recording Secretary</i>	CLYDE WEAVER
<i>Corresponding Secretary</i>	OSCAR W. JOHNSON
<i>Treasurer</i>	MERRITT DAVIS

### CHAIRMEN OF COMMITTEES

<i>Devotional</i>	STEWART E. ACOR
<i>Membership</i>	LAWRENCE DINGER
<i>Social</i>	J. W. F. WILKINSON
<i>Missionary</i>	HERBERT ERWIN
<i>Music</i>	HORACE MOONEY
<i>Bible Study</i>	H. G. SCHRECONGOST

## Y. M. C. A.



THE Young Men's Christian Association of Clarion Normal, many years after its organization, yet stands at the center of all the Christian activities in the school, and also as a great factor in promoting the social standard and in creating a co-operative spirit among the entire student body.

The aims of the Association are to uplift the individual, train him in doing some service for God, and to bring all into a closer relationship with their Savior.

During the past year our Association has been represented at the Y. M. C. A. presidents' convention, held at Bucknell University, Lewisburg, Pa., and at the Y. M. C. A. State Convention which was held at Johnstown, Pa.

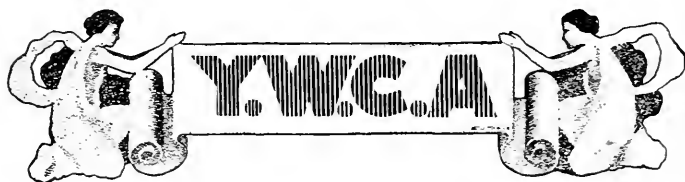
In addition to the regular Bible Study Classes, which convene every Sunday morning at the various Sabbath Schools, the Association provides for a prayer service every Wednesday evening. Beginning with the winter term "Student Standards of Action," a practical treatise on school life, was taken up and studied in the Wednesday evening meetings. On Sunday evenings, we have a joint vesper service with the Y. W. C. A.

We have sufficient reasons to believe that our work during the past year has been helpful and fruitful, and we hope that with the strong cabinet for the coming year, the great work of invigorating the moral stamina of the young men of Clarion Normal, and of directing them on toward the great goal of Christian citizenship and success may be even more successful than it has been in the past.

J. M.



THE 1915 **CONGRESS** SEQUEL



*President* ..... DESMA D. CALVERT  
*Vice President* ..... MARTHA O. RYLANDER  
*Secretary* ..... ALICE KERR  
*Treasurer* ..... MARY AMO

CHAIRMEN OF COMMITTEES

*Devotional* ..... MARTHA RYLANDER  
*Membership* ..... MABLE LINES  
*Social* ..... ESTHER STOVER  
*Missionary* ..... ELIZABETH BROWN  
*Music* ..... LEANORE LEMMLER  
*Bible Study* ..... MARGUERITE SHIRLEY  
*Social Service* ..... ETHEL KLUGH  
*Information* ..... JUNE G. CALVERT



## Y. W. C. A. Cabinet

LEFT Row, Top to Bottom—Amo, Stover, Klugh, Lines  
MIDDLE Row—Rylander, President Calvert, Kerr  
RIGHT Row—Lemmler, J. Calvert, Brown, Shirley



## Y. W. C. A.

**T**HE Young Women's Christian Association is one of the special features of Clarion Normal which is demanding the attention of the religiously inclined and one of the factors which distinguishes this school from others of less importance.

The Association is of special value in a social way, exerting a good influence, developing latent talents and capabilities, as well as providing an opportunity for service in a practical and Christian way. No student gets the full benefit of school life without having some part in these efforts for mutual benefit.

Both Y. M. and Y. W. C. A. work in harmony with excellent results and much pleasant fellowship. The co-operation of the Faculty, Mrs. Reese, the principal's wife, and the members of the association, in all respects indeed has been very helpful.

Miss Richardson, our Field Secretary, and an earnest and zealous worker in the interests of the association, made a very pleasant and much appreciated visit to our school during the fall term. In this way the connection may remain unbroken between the main body of the association and those in school for a longer or shorter period.

During the winter term, in the absence of the President, Desma Calvert, who, with Miss Martha Rylander, was sent to Eaglesmere Conference last June, to represent Clarion, Miss Rylander, the Vice President, assumed the duties.

This organization is a link which connects our school with other schools in the common endeavor to upbuild the kingdom of God.

We are looking forward to a fruitful association year under the leadership of the new cabinet.







“Music hath Charms.”



## The Music Department

The Music Department of the school, under the direction of Mrs. Elsie Stahlman Warburton, in piano and voice and of Prof. L. J. Rohr in Orchestral instruments, has become one of the great assets of the institution, and has progressed rapidly during the past year.

Mrs. Warburton is a graduate of the Ithaca Conservatory of Music and we are very fortunate to have such a talented and experienced teacher in this department.

The special music furnished by the student choir adds very materially to the pleasure and spiritual benefit derived from our Sabbath Vesper service, and the early morning Easter Carols were a most pleasing feature of the day.

The male and mixed quartets of the Literary Societies have been an added attraction to our Saturday evening entertainments.

The well trained orchestra has been a most helpful and entertaining factor at the various functions of the school.

The graduating class in the Music Department will give their recital on the evening of June 21, 1915.

The program is as follows:

<i>Beethoven Sonata in D</i>	
MISS HAYES	
<i>Rondo in C Major</i> .....	Beethoven
MISS STONER	
<i>At Dawning</i> .....	Cadman
<i>Nightingale Song</i> .....	Nevin
MISS YINGLING	
<i>Gondoliera (two pianos)</i> .....	Reinecke
MISS HAYES AND MRS. WARBURTON	
<i>Menuet</i> .....	Paderewski
<i>Gondolier</i> .....	Godard
<i>Waltz in A Flat</i> .....	Chopin
MISS STONER	
<i>Moonbeams</i> .....	Gladis Greene
<i>The Bird of Wilderness</i> .....	Horsman
<i>The Boat Song</i> .....	Harriet Ware
MISS YINGLING	
<i>Cavotte and Pastoral</i> .....	Reinecke
MISS STONER, ASSISTED BY MRS. WARBURTON	
<i>The Italian Street Song</i> .....	Herbert
	from "Naughty Marietta"
MISS YINGLING AND CHORUS	
<i>Chromatique Valse</i> .....	Godard
MISS HAYES	

# THE 1915 *CONSE* SEQUITE



IVA MAY STONER. "Sock"

Iva came to Clarion and joined the music makers of 1915, in order that she could accomplish the wonderful art of playing "I Love You Truly" on the piano as well as in reality; and Miss Rice, the mail carrier, and her wife know why that longing look of hers is always hanging around at mail time.

She is a very vain girl. Upon entering the dormitory she asked very quietly, "Are we allowed to use liquid powder?" She doesn't, but probably she saw some one and we will give her the benefit of the doubt.

"Oh people of the country, look out to see  
The bride, the bride, that is to be."

MARY HAYS. "Bob"

Mary came to Clarion about five years ago from the beautiful little city of Knox. She was then so young and unsophisticated, but, oh!—what these last five years have done to Mary.

She is exceedingly fond of "Red Hair" and Saxons, and also has an "Art" at selecting furniture. She is a great musician and within the next two years we expect to hear her playing duets with Paderewski.



HANNAH YINGLING  
Cincinnati, Ohio

"Red" announced her entrance into this vast and beautiful world at Coalport, Ky., in the year 15—? (no one seems to know). She attended school at the Sue Bennett Memorial School, London, Ky.; Cardome, Visitation Academy, Georgetown, and the Maxwell School, Lexington, Ky., entering upon her eventful career at Clarion in the fall of 1914. Here she has devoted her time and energy to training her voice, which possesses a tone of exceptional sweetness.

She trusts that as "Music hath charms to soothe the savage beast," she may employ those same charms to pacify the "Cross-man."

Hannah never worries and, though excitable at intervals, due to the heating effect of her red locks upon her brain, she truly feels with the poet that

"Thus we sail on without care or sorrow,  
With trust for today and hope for tomorrow"



## Keynotes

Keynote of Good Breeding—B natural  
Keynote of Wisdom—C sharp  
Keynote of Stupidity—B flat  
Keynote of Shrewdness—B sharp  
Keynote of Youth—A minor  
Keynote of an Army Officer—A major  
Keynote of the Driver—G

## Modern Maid

"Where are you going, my pretty maid?"  
"I am going to a lecture, sir," she said.  
"May I go with you, my pretty maid?"  
"Men are not admitted, sir," she said.  
"What is the lecture, my pretty maid?"  
"The 'Suppression of Man in the World,'" she said.  
"What is your fortune, my pretty maid?"  
"My learning's my fortune, sir," she said.  
"Then I can't marry you, my pretty maid."  
"The Normal girls don't marry, sir," she said.





# THE 1915 *CNS* SEQUENTIAL

## Senior Class Play

**I**N DRAMATIC writing, the psychological theme of *Pygmalion* and *Galatea*, man's innate yearning for an object simultaneously embodying his own creative energy and congenial companionship,—has found expression in literature as remote as the Hebrew unmetred epic, wherein Eve is metamorphosed from an osseous member of our "general ancestor's" frame to his "solace dear," "best image" of himself; and as recent as Bernard Shaw's contemporaneous social satire.

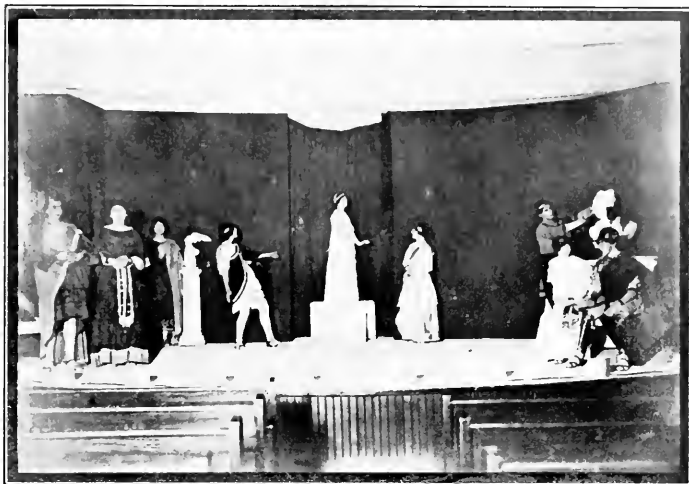


"PYGMALION AND GALATEA" ACT III

The class of 1915 chose W. S. Gilbert's modern interpretation, deviating from the classic tradition by presenting *Pygmalion* as a "Benedict" at the outset, as its Senior class play, produced Thanksgiving night, 1914.

At the opening of the play careful study and painstaking work were shown in the short dialogue between two slaves, the boasting Agesimos, characterized by Mr. Reed Weaver, speaking for Athens' wealthiest art patron; and the self-possessed Mimos, played by Mr. Chester Davis, answering for Athens' most talented sculptor, concerning a meeting between their masters.

## THE 1915 CYNISCA SEQUENTIAL



"PYGMALION AND GALATEA" CAST OF CHARACTERS

in which the respective types of persons later revealed in the major parts were reflected and forecast. The pleasing domestic scene which ensued between the sculptor, Pygmalion, enacted with notable facility and sustained dignity, by Mr. John Mooney; his wife, Cynisca, personated by Miss June Calvert, in a fine spirited manner; Pygmalion's sister, Myrine, presented most attractively by Miss Elizabeth Brown; and her soldier-lover, interpreted with delightful animation and vigor by Mr. Ray Humphreys; established a human and kindly setting to alleviate the more tense succeeding situations.

During Cynisca's absence from home, as Pygmalion was soliloquizing upon the limitations of the sculptor's art, which can make "but a statue after all," his "unreflecting prayer" to the gods was answered by the awakening of his latest and most perfect statue into the living Galatea, impersonated by Miss Ruth Arner, who fulfilled the requisites of the rôle in the ingenious love scene which followed, with the utmost grace and natural charm.

The second act presented a series of complications due to the presence of Galatea in the studio. The estrangements between Galatea, Pygmalion, Myrine, and Lucippe were furthered by the arrival of Chrysos, Athens' wealthiest art patron, performed with conspicuous earnestness by Mr. Donald

## THE 1915 CYNISCA SEQUEL

Walker, and his wife, Daphne, represented most realistically by Miss Edith Imhoff. The entanglement and denouements resulting from the unusual circumstances furnished the occasions for the most sympathetic acting of the performance. The premature return of Cynisca precipitated the action thru the fall of her curse of blindness upon Pygmalion.

The third and final act displayed a high order of sustained character interpretation, wherein each actor developed and maintained his particular rôle intensively. The reconciliation of Myrine with Lucippe; of Daphne with Chrysos, and of Cynisca with Pygmalion, with the consequent resubstantiation of Galatea into marble, brot the play to a close, while the curtain fell before an appreciative house.

The selection of the play, possessing a main plot of sustained interest, entwined with minor plots of enlivening interest; suited to simple and effective staging; the choice of participants peculiarly fitted to realistic interpretation of their rôles; the distinctness of articulation, and excellence of expression, showed a fidelity in preparation, due in great measure to the patient devotion, skilled coaching, and natural artistic ability of Miss Elizabeth Bell, head of the Department of Expression.







## "The Cruise of The Expression"



*"His clear and eloquent blood so distinctly wrought,  
That one night almost say his body thought."*

**W**ITH this motto written across her prow, the good ship "Expression," set off on her voyage of Evolution, last September.

She started from port "Animation," and in due time landed at "Obedience" wharf. The captain and all the crew report a pleasant and profitable voyage with only a few days of storm while passing through the Straits of "Slide," "Vital Slide" and "Slide in Volume." By far the calmest part of the voyage was the time passed in the harbor of "Smoothness," but on the fourth day the "Magnanimity of Atmosphere" became so intense that the party set sail for "Ellipse" Island where they paused during two days of exceedingly cloudy weather. The "Expression" sailed into many channels and seas and touched the seaport town "Taste."

As the ship sailed further and further away she grew more venturesome and before Thanksgiving had crept down upon her she found herself anchored for a six weeks' stay near the scenic islands of "Pygmalion and Galatea." Throughout this entire stop over, the captain drilled her subordinates in the art of bodily expression. Very often the entire crew would be seen standing about the decks in puzzled attitudes or would be heard in their staterooms making strange but melodious noises.

Before it was time to commence her homeward voyage, "Expression" became very courageous and dared to sail straight for the continent "Debate." She worked her way in and out among the icebergs of "Introduction," "Argument" and "Conclusion," and floated bravely up to the wharf of "Presentation" and made her way successfully through "Rebuttal" bay and on to the port of "Victory."

After anchoring there for some time she turned about and headed joyously for home where she successfully squeezed through straits of "Examination."

EXTRACT FROM THE LOG OF THE SKIPPER



DEBATING TEAM

Back Row—Mitchell, Bonmidy, McMahon, Mooney, Amo. Front Row—Davis, Arnold, Johnson, Holt, Kennedy.

## Normal Debating Club



Mary Arnold  
Bernice Amo  
John Bolam  
Joseph Bonnidy  
Elizabeth Brown  
Mr. Beyers  
Florence Buckley  
Dean Conner  
Desma Calvert  
June Calvert  
Merret Davis  
Merle Dudley  
Frances Davis  
Virginia Glass  
Gertrude Holt

Fred Haines  
Oscar Johnson  
Avis Jordan  
Sidney Kennedy  
Alice Kerr  
Gerda Krantz  
Helen Kresge  
Rose Levine  
Margaret McMahon  
Bertha Mitchell  
John Mooney  
Helen McKee  
Anna Rhodes  
Marguerite Shirley  
H. G. Schrecongost

Arthur Thomas



## Inter-Normal Debate

**L**AST year an Inter-Normal Debate was established between the California Normal and Clarion. California chose the question and Clarion had the choice of side. After California State Normal School and the Clarion State Normal. California only a few weeks of preparation, our debating team went to California for the debate and were defeated by a majority vote of the judges. While the Clarion team lost the debate, the blow of defeat was lessened because they felt that "indeed the enemy was worthy of their steel," and the courteous treatment afforded them by the faculty and students of California Normal made their stay there a very pleasant one.

This year knowing that the debate was again to take place, a debating club was organized early in the fall under the able supervision of Prof. Thomson. This club met every Monday evening for one hour of debate on various topics. As it was Clarion's turn to choose the question for the Inter-Normal debate, the following was selected: "Resolved, That local option with the county as a unit is a better solution of the liquor problem in Pennsylvania than state-wide prohibition." As California had the choice of sides, they took the affirmative, thereby giving us the negative, or the prohibition side of the question.

After weeks of hard fought battles on various topics, such as the Immigration question and many others, the debating club turned their attention to the question to be debated by the two Normal Schools. From the club ten members, composed of the best debaters, were selected to debate in the preliminary contest. Prof. Thomson took charge of the debaters on the negative side; Miss Barton had charge of the work on the affirmative side; and Miss Bell, our elocution teacher, trained all the contestants in the oratorical work. This debate was open to the public and disinterested parties were chosen to act as judges. In this preliminary contest the prohibition side won. It was very hard to select the team that would meet and we hoped, defeat, the California team this year, for in the trial debate there were many good debaters. Finally from the ten three young men and one young woman—Merritt Davis, Sidney Kennedy, John Mooney and Margaret McMahon for the alternate, were chosen to represent Clarion Normal School.

## THE 1915 CLARION SEQUENCE

Then came the question of who would act as judges. Prof. M. J. Baldwin of DuBois, Prof. George W. Mitchell of Johnsonburg, and Rev. J. Allen Barr of Brookville, were requested to act in that capacity and very kindly consented to do so.

When the evening for the final debate arrived we had reason to be very proud of our team. Their argument was logical thruout. Not once did they leave the question at issue. Without sarcasm, without any personal attack, they presented their points with great clearness and drove them home with masterly force. As a result, by unanimous decision of the judges, Clarion won the debate. After the contest, the debating teams, the judges and the members of the faculty who had so generously assisted in the work, were entertained by Prof. and Mrs. Reese.

We believe heartily in athletics and in athletic contests, but we are proud to have Clarion Normal in the rank of schools that seeks not only to develop the physical man, but that also believes in intellectual contests which develop brainy men and women. We will look forward to the work of the Debating Club next year and trust that the high standard of excellence set this year will be maintained.



# THE 1915 <ONS> SEQUENTIA

## Galerusquisque

Dramatis personae: Princeps primus.  
Princeps proximus.  
Aeolus.  
Notus vividus.  
Porta innocens et invita.  
Galerus veterus.  
Galerus novus.  
Amici sociique.  
Populi scholastici.

Act I—Scene: Campus extremus.

Aeolus to Notus vivi., reclining at his ease.  
Up, thou care-free, adling elf,  
Bestir thy mischief-loving self  
To fright one of our dearest foes—  
House-sheltered man,—shake his repose.

Notus vivi., springing up, searches the environs and discovers an open window thru which he enters stealthily, to find a blameless door ajar.

Notus vivi. to Porta innocens,  
Thou stolid over-trusted slab  
Whose swollen virtues *thus* I stab,  
Bend thy stiff neck beneath my heel,  
All the great power of Notus feel.

Porta innocens *et invita* draws back, resists, wrings his handles and cries for mercy, but is overpowered, dragged helplessly away to an unfrequented spot, and there ignominiously forced to crush the frame of an aged neighbor.

Porta innocens *et invita*, apologetically to aged neighbor,  
Alas! respected honored friend,  
Rent is my heart that I must lend  
My weight and force against my will  
Thy long-lived usefulness to kill.

# THE 1915 SEQUELLE

Galerus veterus, giving a last gasp,  
Ah, woe is me, ah woe! ah woe!  
To learn that friends may use one so!

Galerus veterus expires, Porta innoc. et invit. faints, and Notus vivi. retires triumphant. In the dim distance Aeolus is heard boisterously laughing. A little latter Amici et Socii are seen dragging away the cold remains of Galerus Veterus.

Act II—Scene as Before.

Aeolus to Notus vividus,  
Again, thou faithful, busy sprite,  
Wreak thy full enmity and spite  
Upon the conqueror, man, who stays  
Our course, and none, but Zeus, obeys.

Notus vivi. frisking madly about, seeking whom he may annoy, finds no convenient victim, and at last, in desperation, returns to the scene of his former onslaught, to find Porta *invita*, but no longer *innocens*, drooping limp and dejected from his recent rout, attempting to conceal a *Galerus Novus*. Notus vidius, speechless with rage, rushes upon Porta *invita*, pummels him, grapples with him, and finally hurls him upon Galerus novus, who piteously cries aloud,

Farewell, a last farewell, appearance trim,  
For whilst I thot, smooth, circling brim  
And dapper crown, how sweet thou wert,  
Unkindly fate hath done me mortal hurt!

Amici et socii tenderly carry off the field Galerus novus, battered and nearly unrecognizable.

Act III—Scene: Templi Auditorium.

Principes primus addresses the assembled Amicos, Socios, Populos scholasticos et Principem proximum,

Attend assembled hordes, and hear  
Calamities that cause us fear  
Some secret foe within our midst doth lurk.  
Let conscience sting him, if within this kirk.

# 1915 <ONS> SEQUENTIA

Great astonishment and lamentations among the hordes, who scatter to discuss and attempt to seek out the unknown offending wretch. At last all return disconsolately to their appointed places, awaiting the further counsels Principium. A prolonged silence ensues, and "all the air a solemn stillness holds," whilst Princeps primus advances, raises his hand to the hushed throng and speaks,

List, friends and allies true,  
To the first cause, and how the story grew:  
On Science's second floor  
The wind smashed in the hat that hung behind the door.

Much waving of handkerchiefs, clapping of hands, and shouts of rejoicing, while the vast hordes leave the Templi Auditorium with martial tread, following Principem primum et Principem proximum, *crowned with an Italian phantasy.*





# THE 1915 <CNS> SEQUENTIAL

## Pageant



IT HAS been the custom of our school for several years to give a pageant. These pageants are always based upon some historical theme, which theme, worked out by dances, drills and pantomimes, portrays the facts in a way that is at once beautiful, interesting, and instructive.

The tenth of these pageants was given last year, the theme being "William Penn."

The program was as follows:

### I—Social position of Admiral Penn.

English garden scene.

Charles I, the king of England.

Admiral Penn, Courtiers and Ladies playing cards.

#### 1. Maidens entertain the royalty by a

May Pole dance ..... Irregular Class Girls

#### 2. The Milkmaids are invited to give a drill.....

Freshman Class Girls

#### 3. Menuet .....

Juniors and Seniors

### II—Opposition to the Levity of the Age.

#### 1. Cromwell and the Puritans meet and discuss the situation.

#### 2. Cromwell drilling his army of select men.

#### 3. Charles I appears with his army.

Conflict between the Puritans and Cavaliers, or

Royalists ..... Freshman Class Boys

### III—George Fox.

Preaching to a group of Oxford students..... Irregular Class Boys

### IV—Admiral Penn.

#### 1. Denouncing William and turning him from home because of his sympathy with the despised sect of Quakers.

"Forget also thine own people and thy father's house."

#### 2. Tableaux.

(a) The banishment.

(b) The reconciliation.

### V—Penn's Visit to the French Court.

#### 1. Louis XIV, Colbert, Maria Theresa and Madame de Montespan.

#### 2. Penn arrives.

#### 3. Dance, "Pavanne"—King and Court Favorites.....

Sophomores

#### 4. Aesthetic Dance, "The Nightingale".....

Junior and Senior Girls

#### 5. Fencing.....

Junior and Senior Boys

### VI—Penn Returns to England.

And hearing of George Fox, again confirms his faith in Quakerism.

#### 1. Penn preaching.

# 1915 SEQUELLE

2. Arrested and put into prison for preaching at a meeting.
  3. Writing in prison. Defends the Liberty of Conscience.
  4. Released. Back preaching again.
  5. Arrested.
- VII—Marriage of William Penn to Gulielma Maria Springett.  
A Quaker Wedding.
- VIII—Tableau.  
Granting of Pennsylvania to Penn by Charles II.  
The King affixes his signature to the charter.
- IX—Solicitation of Immigrants.  
He secures a crowd of Quakers and Germans to go to America.
1. Reaping the Flax, Quakers.....Model School Girls
  2. Weavers, Germans.....Irregular Class Boys
  3. Bidding Penn farewell as he leaves for  
    Pennsylvania.....Model School Girls
- X—In America.
1. The Swedes welcome him with a  
    Dance of Greeting.....Third and Fourth Grades
  2. Dutch Dance of Greeting.....Sophomore Girls
  3. Indian Dance.....Model School Boys
  4. Treaty with the Indians.
  5. Penn leaves America and goes to England.
- XI—The Awakening of a Commonwealth.  
Tableau—  
Commonwealth.  
Historical Characters.  
Laborers.  
School Children.  
Athletes.  
Finale ..... March
- The theme of the pageant this year is "Peace." As the Sequelle goes to press, the program of the Pageant has not been fully arranged.





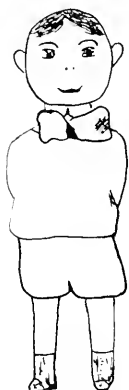
PAGEANT, '14

# FRESHIES

M. Arnold.



Before the first B.B game.



After the first game.



After the second game.

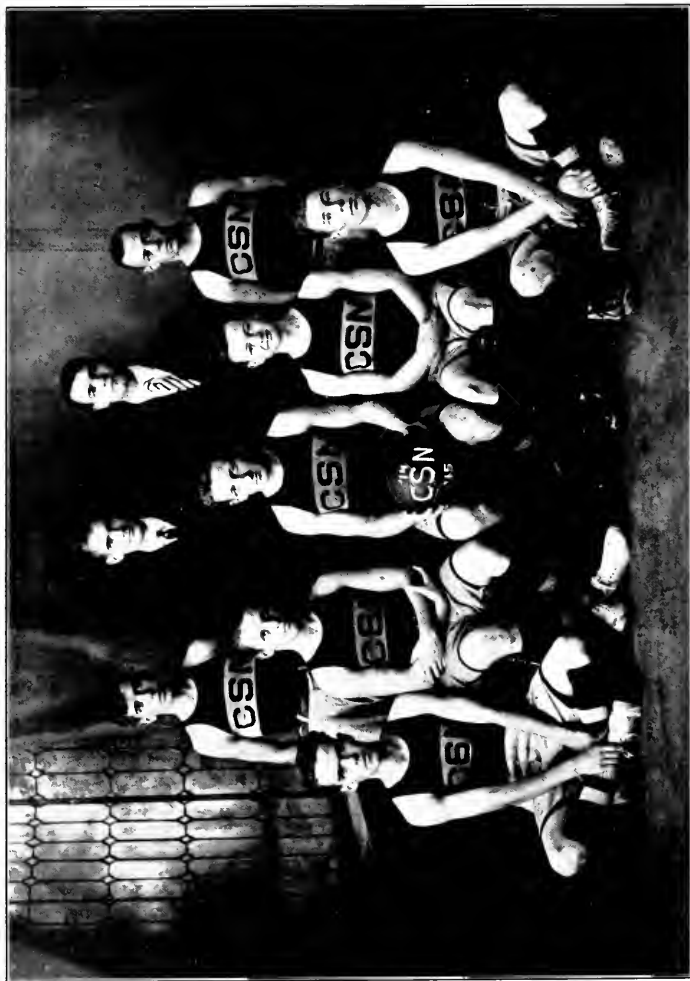


After the last game.



ATHLETICS.

VARSTY BASKET BALL TEAM



FRONT Row—Erwin, Mooney, Captain Mayes, Weaver, Bruce. BACK Row—Cyphert, Manager Schrecongost, Coach Carson, Crossman.



## Basket Ball

Basket ball started off with a rush this year. The prospects for a fast team were very gratifying from the first. Two of last year's players were back on the job and there seemed to be considerable material from which to choose a team to represent our school.

Although practise did not begin until rather late in the season on account of repairs in the gymnasium, plenty of enthusiasm was manifested by students and faculty alike and a team was chosen to play against the Alumni on Thanksgiving day.

Because of the lack of weight of the team, more games were lost than won during the Fall Term, but with the addition of Beatty, Cyphert, and Kerr, who came in for the Winter Term, the team was greatly improved both in weight and team work.

The personnel of the team—

Mayes, '15. Captain, Guard and Center. He was always found capable.

Croasmun, '16. Forward. Nate was always where his guard was *not*. He made up for his light weight in speed, and always managed to get his share of the points.

Cyphert. Forward. Judging from the generous amount of applause he received, one would take "Cy" for a star. Well, that is no mistake. He is one of the brightest in this constellation.

Beatty. Guard. "Tucker" was our sensational shot. He always played all over the floor, though he was a good guard and held his man to only the average number of points.

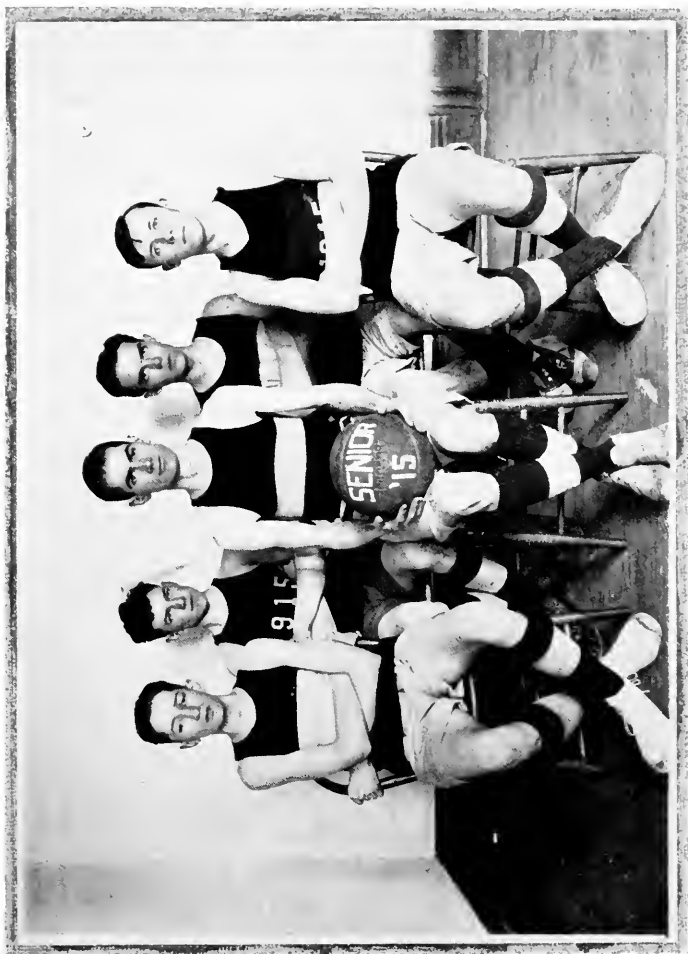
Mooney, '16. Guard. While not sensational, Tiel always gave us an exhibition of cool-headedness.

Kerr. Center. Kerr came here from Kingsville, where he had played for a year or two, and so was quite an addition to the team.

While most of this year's men will not be back next year, there are still fine prospects for a good team next year, that will do honor to the school.

H. M. E.

SENIOR BOYS' BASKET BALL TEAM



BACK ROW—Humphreys, Erwin. FRONT ROW—Goodrowe, Schrecongost, Mooney.



SENIOR GIRLS' BASKET BALL TEAM



Back Row—Frampton, Kribbs, McClune.  
Front Row—Mullin, Shurley, Amsler, Weeter.



JUNIOR BOYS' BASKET BALL TEAM

BACK ROW—Walker, Johnson, Haines.  
FRONT ROW—Davis, Fenstamaker, Bolam.



JUNIOR GIRLS' BASKET BALL TEAM

BACK ROW—Mitchell, Walters, Lavere.  
FRONT ROW—McKenna, Knight, Ittle.



FRESHMAN BOYS' BASKET BALL TEAM

BACK—Rebolt.  
MIDDLE ROW—Dinger, Thompson, Stahlman.  
FRONT ROW—Rosman, Mast, Amy.



FRESHMAN GIRLS' BASKET BALL TEAM

BACK ROW—Burns, Cummings, Hafner.  
FRONT ROW—Keys, Captain Wilson, Sell.



## Baseball

**S**INCE the opening of the Spring Term and good weather, baseball practice has begun. Every available spot on the rear campus has been taken up for practice before the diamond is in condition to be played upon. Prospects are very bright for a good team. Many of last year's fellows are back and, with the experience they have had together, we may expect a strong team to represent the school.

Manager Walker and Prof. Wilkinson are preparing an excellent schedule, including several of the strongest teams in this vicinity. Coach Thomson has been out on the job and is getting the men in readiness to choose a first and a second team.

Among those who have come back to work is Riley. We all know "Jim's" ability to hold down his position and also to wield the "big stick."

Then there is Nate, fast as ever on third and always ready for a little hit when it is most necessary.

Mooney, also, is back in the box with more speed than ever before.

So we look forward to an excellent season—not a repetition of last year, which was very good, but one that will be long remembered in the history of baseball at C. S. N. S.

As the Sequelle goes to press we are pleased to record the fact that out of eight games played we have not yet met defeat.

The team in batting order—

Regular	Position	Substitute
Croasmun.....	Third Base.....	Ballentine
Kunselman .....	Short Stop.....	Weaver
Hepler .....	First Base.....	Walker
Riley, C.....	Second Base.....	Rossman
Stitt.....	Center Field.....	Manson
Thomson.....	Left Field.....	Haynes
Mayes .....	Catcher.....	Byers
Mooney .....	Pitcher.....	Davis
Bolam.....	Right Field.....	Johnson

# THE 1915 SEQUEL

## Tennis



ENNIS is one of the games in which all may participate. Everyone belonging to the Tennis Association is eligible to play on the courts during recreation hours.

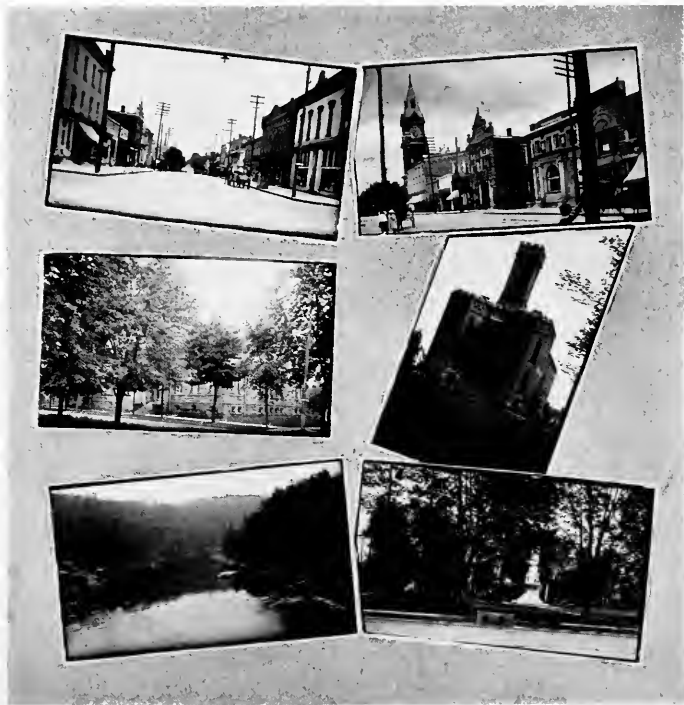
Each year we hold a School Tournament and an Internormal Tournament is held annually among the Indiana Normal, the California Normal, and our own Normal.

In preparation for the School Tournament a schedule of games for all who wish to try for it is made out. By a process of elimination the best players are chosen for singles and doubles, and these play in the School Tournament. This Tournament is taken as a preliminary for the Internormal Tournament.

The Internormal Tournament was held last year at Indiana Normal School and our players came off victorious, bringing home with them the large silver cup as a trophy. This cup was held by Indiana for several years prior to 1913, when California won it on the Clarion Courts.

The tournament, this year, will be played at California Normal, and we are unanimous in wishing our players the best of luck and that the "Cup" may grace our parlor for another year.





HERE AND THERE ABOUT TOWN



LITERARY SOCIETIES



## The Franklin Literary Society



THE Franklin Literary Society was organized in 1905 by Dr. J. George Becht, and since its organization it has proven itself to be one of the most important and most beneficial of the school activities.

The President of the Society chooses a committee of five students, including himself, to arrange the programs, which are presented to the supervising teacher for approval.

The programs are presented on alternate Saturday evenings during the terms. At the beginning of each term a joint meeting of the two societies of the school is held.

The aim of the Society is to present a program, which will be both entertaining and instructive.

A contest is held at the close of each school year between the two Societies. The students taking part in these contests are chosen by the members of the society but the names must be presented to the faculty for approval. In the last contest the Franklin Society was again victorious, carrying honors by four points. At the present time, the Franklin Society is eight points ahead of the Bancroft Society.

This year has been a most successful one for the Franklin Literary Society and we feel that in the coming contest the Franklinites will acquit themselves with honor.

### OFFICERS FOR THE YEAR

#### *Fall Term*

*President* .....FRANK GOODRWE

*Secretary* .....MARGARET SHIRLEY

#### *Winter Term*

*President* .....ANNA RHODES

*Secretary* .....GENEVIEVE WEETER

#### *Spring Term*

*President* .....OSCAR W. JOHNSON

*Secretary* .....MARY ARNOLD



# THE 1915 *ANS* SEQUINNE

## The Bancroft Society



It would perhaps be hard to over-estimate the advantages which are available to those who participate in a well-conducted literary society.

With becoming modesty we mention the Bancroft as a society of which we feel justly proud. Nothing of a common or uninteresting character is presented on its programs and the students participating evince marked enthusiasm and give their best efforts.

Its value to our school work has been inestimable as well as providing a feature of entertainment very pleasant and much appreciated.

### OFFICERS FOR THE YEAR

#### *Fall Term*

*President* ..... HERMAN SCHRECONGOST

*Secretary* ..... ESTHER STOVER

#### *Winter Term*

*President* ..... HERBERT ERWIN

*Secretary* ..... ALVERA HOCHINSON

#### *Spring Term*

*President* ..... JOHN MOONEY


*Secretary* ..... ELIZABETH BROWN

The following people have been chosen to represent the Bancroft and the Franklin Societies in the annual contest to be held in Commencement this year.

BANCROFT SOCIETY		FRANKLIN SOCIETY
	<i>Essay</i>	
MRS. NELLIE MOORE		BERTHA MITCHELL
WINIFRED KERN		RUTH McLAIN
	<i>Oration</i>	
JOHN BOLAM		OSCAR W. JOHNSON
DONALD WALKER		CHARLES FENSTAMAKER
	<i>Recitation</i>	
EDNA TAYLOR		SOPHIE DARLING
FLORENCE HAZLETON		GUSTA KAHLE
	<i>Story Telling</i>	
GERTRUDE HOLT		MARGARET McMAHON
MARY ELIZABETH RIMER		LEEDA ELLITHORPE
	<i>Debate</i>	
MERRITT DAVIS		FRED HAINES
JOSEPH BONNIDY		GERALD CARRIER



## The Library

HE Library, situated as it is in a well-lighted room in Seminary Hall, containing not only some four thousand (4,000) books, but a majority of the best current magazines, as well as daily and weekly newspapers, is an interesting center of the school life. Here students spend their time between classes, preparing lessons, looking up subjects assigned by teachers, reading the magazines, and news in the home papers.

Several hundred books have been added to the Library during the past two years, and are selected with reference to the needs of the various departments of the school. Among those recently accessioned are the following:

New Standard Dictionary.  
Cambridge Bible for Schools and Colleges.  
Who's Who in America—1914-1915.  
From Alien to Citizen. Stiener.  
Promised Land. Antin.  
They Who Knock At Our Gates. Antin.  
Alice Freeman Palmer. Palmer.  
Long Labrador Trail. Dillon.  
Dr. Grenfel's Parish. Duncan.  
Art for Life's Sake. Caffin.  
Among Country Schools. Kern.  
Better Rural Schools. Betts and Hall.  
Rural Life and Education. Cubberly.  
Food and Dietetics. Hutchinson.  
Moral Instruction. Gould.  
Education for Social Efficiency. King.





## The Poet's Confusion

Tell me not in mournful numbers  
The breaking waves dashed high;  
For the gods see everywhere,  
Like a diamond in the sky.

Life is real, life is earnest;  
Maud Muller, on a summer's day,  
Had two stone bottles found  
A mile or so away.

Not enjoyment, and not sorrow;  
All service ranks the same with God;  
But childish troubles will soon pass by  
The hills our fathers trod.

Art is long, and Time is fleeting;  
In fact, there's nothing that keeps its youth.  
To see the form of a maiden fair  
And the fiery heart of youth.

In the world's broad field of battle,  
Long has it waved on high;  
The rich man's son inherits cares—  
There, little girl, don't cry.

Trust no future, howe'er pleasant!  
For what is so rare as a day in June?  
He prayeth best who loveth best  
Thy turned up pantaloons.

Lives of great men all remind us  
Paths of glory lead but to the grave;  
Stone walls do not a prison make,  
I could not deem myself a slave.

1915 SEQUELLE

Footsteps, that perhaps another  
Wandering 'round this world of care,  
Unwarned by any sunset light,  
Thy creature whom I found so fair.

Let us, then, be up and doing,  
By the rude bridge which arched the flood;  
Like one who lies down to pleasant dreams  
Defects of doubt, and taints of blood.

SEQUELLE, '09.

DO, RE, MI, FA, SOL, LA, SI

*A Major* loved a maiden so,  
His warlike heart was soft as *Do*.

He oft would kneel to her and say:  
"Thou art of life my only *Re*."

"Ah! if but kinder thou wouldst be,  
And sometimes sweetly smile on *Mi*."

"Thou art my life, my guiding star,  
I love thee near, I love the *Fa*."

"My passion I cannot control,  
Thou art the idol of my *Sol*."

The maiden said, "Oh, fie! ask pa;  
How can you go on thus? Oh, *La*."

The Major rose from bended knee,  
And went her father for to *Si*.



## Laughs

Miss Barton—"Have you read 'Freckles'?"  
Bess (quickly)—"Oh, no; that's my veil."

### AN INKING

Ima Nut—"Does your fountain pen leak that way all the time?"  
Soami—"Oh, my, no. Just when I have ink in it."—C. W.

### A PRACTICAL PROVERB

Stover—"I see you are getting quite chummy with your Profs.?"  
George Showers—"Yep; familiarity sometimes breeds exempts."

Florence had a little "Billie,"  
His fleece was red as fire,  
And everywhere that Florence went  
He was always by her.

The three most used words in C. S. N. S. are, "I don't know."

Prof. Thomson—"There are two things I always think of when I think of Holland, windmills and what else?"

Anna Rhodes—"Dutch girls."

"Weight is not lost but just buoyed up."

"Dad"—"That's just the trouble—there is too much *boying* up around this place."

Prof. Egbert—"What are the principal parts of the verb sick?"

Shirley—"Ill, sick, dead."

Martie—"Are you sore too, Ethel?"

Ethel—"Yes, what about?"

John was rehearsing his business for blind Pygmalion and stood before his mirror with eyes tightly closed. Thus Ray found him when he entered the room and asked: "I say, old boy, what are you doing, anyway?"

"Why, trying to see how I look with my eyes shut."

# THE 1915 CONSEQUENCE



Rossman—"How much do you weigh?"

Beans—"I weigh 165 lbs."

Rossman—"You must have been weighed with your coat on!"

Beans—"No, I wasn't. I held it in my arms all the time."

"Phyllis, do you have your photographs yet?"

"Yes, and I sent them back in disgust."

"Gracious! How was that?"

"Why on the back of every photo was written this: "The original of this is carefully preserved."

Bolam and Weaver down the street, meet a pretty girl.

Weaver—"Say, Bolam! Did you see the way she smiled at me?"

Bolam—"Huh! Can't blame her. The first time I saw you I laughed aloud."

Ray—"John, where did we get our wide collection of buttons?"

John—"Oh! I just put them in my pocket as they came off."

## THE 1915 SEQUELLE

Prof. Thomson (in Agriculture) — "Ah-h, Miss Hochinson, how many ears can be grown on one stock of corn?"

Hochy — "Just one."

Prof. Thomson — "What was the question?"

Hochy — "Why, how many beans can be placed in one ear at one time?"

Stella Ittel — "Why is 'Schrec' like Christmas?"

Bright One — "Because he's so slow in getting around."

"Miss B —, did you ever get a proposal?"

Miss B. — "Cnce. A gentleman asked me to marry him over the telephone, but he had the wrong number."

A Friend — "Don't you know that drinking will ruin your work in life?"

Mayer — "Life's nothing! I'm working for the Sequelle."

The only sucker that was ever popular is the vacuum cleaner.

"Dad" — "I have to filter my alcohol to take the drunk out of it."



## Nonsense

Did you ever see a rabbit climb a tree?  
Did you ever see an oyster catch a flea?  
Did you ever? No, you never,  
For he simply couldn't do it.  
Don't you see?

Talk about "Sara and the Girls!"—  
What about "Sara and the Rats?"

Esther—"Make a sentence containing the word indigo."  
Bright Model Student—"The baby is indigo cart."

If Cicero had nerve, Caesar had Gaul.

Bulletin Board—"Lost Teacher in School book with Mildred Graff's  
name in front."

Dudley Pessimist—"The best luck any man can have is never to have  
been born; but that seldom happens to anyone."

"How far back does past time extend?"  
Mary Lowery—"To eternity."

Trying to make out the hieroglyphics commonly known as stage direc-  
tions.

"Well, what does L. E. R. mean?"  
Earnest Actress—"Why—er—the left end of the right door, of course."

## NICE NAMES

What is domestic science, hey?  
That's just a little quirk  
To keep from scaring girls away  
Who don't like kitchen work.





Esther (telling a story of a centipede)—“And a big cyclopedia got after me.”

Mable Pollard (in German Class)—“I don’t know the gender of Esel (donkey).”

Fraulein F.—“Why—masculine, of course.”

Shirley Stover (discussing his teacher of Expression)—“And she wants our speech to be full of angelic power.”

Miss Stover—“We were in the reception room all alone and he told me how they won the Dubois game—a regular dramatic narrative.”

Miss Kerr—“Did he hold his audience?”

“Uncle Andy”—“Kennedy, why do men hate to teach English?”

Kennedy—“I don’t know.”

“Uncle Andy”—“Well, I thought perhaps you would know from your case. Not from the present one, but—”

#### SMALL CHILDREN PLAYING SCHOOL

First Child—“Who discovered America?”

Second Child—“I don’t know.”

First Child—“Why yes you do.”

Second Child—“Oh, it was Prof. Wilkinson.”

#### FOUR STAGES OF HAIR

Bald

Fuzz

Is

Was

## In the Class Room

Alvera in German class—"And the cats barked."

In Rhetoric class, studying the difference between "vocation" and "avocation."

"If Mr. Reese's vocation is teaching, what is his avocation?"

Observant pupil—"Croquet."

Prof. Egbert (reading in History of Ed.)—"We study music in order to make us beloved. Miss Amo, did you read that quickly or did you think about it?"

"B."—"I thought about it a lot."

Miss Bell, working for breath control. "Now, Miss Elliott, say this.—'And-the-Lord-God-formed-man-out-of-the-dust-of-the-ground-and-

breathed-into - his - nostrils - the-

breath-of-life.'"

Florence Elliott—"All in one breath?"



# THE 1915 <NS> SEQUENTIAL

Little Bob—"Teacher was Robinson Crusoe an acrobat?"

Teacher—"I don't know. Why?"

Bob—"Well here it reads that after he had finished his day's work he sat down on his chest."

The pupils in Elocution class were reading "Old Ironsides" when Lena Krebs, coming to the line "Ay, tear her tattered ensign down," was heard to exclaim with deep feeling—"I'd tear her tattered insides out!"

Pupil—"Teacher, may I be absent this afternoon, my aunt's cousin is dead?"

Teacher—"Well, yes, I suppose so; but really I wish it were some nearer relative."



# THE 1915 SEQUENCE

Miss Hochinson—"Now children, name some of the lower animals beginning with Calvin."

Mr. Reese—"Which is right: 9 and 5 are 14, or, 9 and 5 is 14."

Miss Allio—"9 and 5 are 14."

Prof. Reese—"I thought 9 and 5 were 13."



# THE 1915 CON'S SEQUELLE

Oh Phonics! What sins are not committed in thy name.

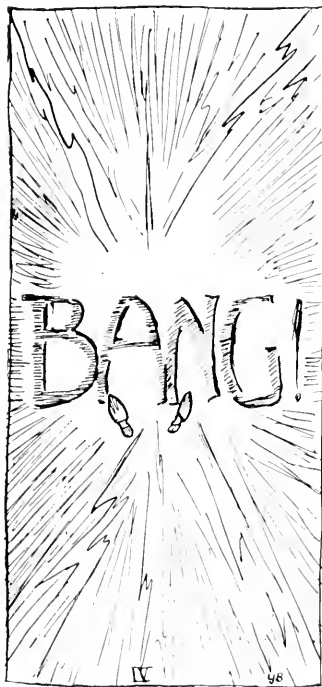
Miss Bitner—"Now class you need not be afraid to give these sounds. You are all in the same boat for no one knows any more about them than anyone else."

Then—"Now Mr. Humphreys see if I've given you new courage," and she held the letter "h" beside the "ug" sound on the chart saying, "come on."

Needless to say Mr. Humphreys was rather embarrassed.

Miss Bitner—" 'x' has the sound of 'ks.' "

Miss Bowman—"It is almost a kiss."





## Coming of the Juniors

The Juniors are coming to C. S. N.  
We look for them each day.  
We listen to catch the first mild strain,  
For they will follow where we lead.

Their president, he'll come first you know,  
Like a monster from the sea,  
And make the class wait behind  
To learn from our learned men.

And then he assembles his faithful crew,  
To verse them in our work so good,  
For us to guide, and then to lead  
In the path of knowledge straight and broad.

Oh, then we must have them here to tell  
The coming class what to do.  
Hush, "Juniors," listen, for you must be  
A model like we have set for you.

MARY LOWRY

## Pen and Inklings

(Shirley and Girl)

Icy walk;  
Snow fall;  
Feet slip;  
Downfall!

Eta Psi Pi—"Dad's Greek Letter Fraternity.

Greeting—"I hail."

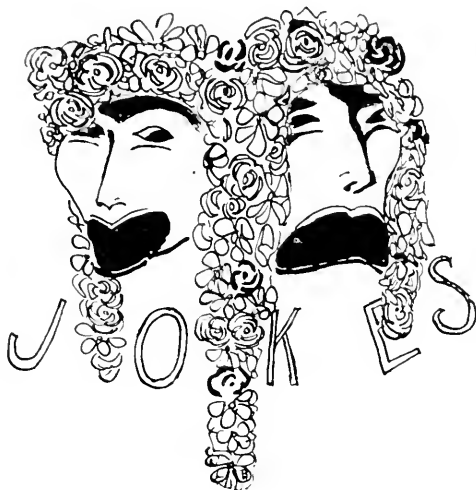
Response—"O yes."

Members—Betty Brown, Alice Kerr, Cora Mullin.

Miss Nolin—It strikes me that she goes home every—ah—ah—occasionally.

Lives of editors remind us  
That their lives are not sublime,  
And they have to work like mischief  
To get the Sequelle out on time.

# THE 1915 <ONS> SEQUELLE



Avis Jordan to Mariella—"Lie down and take it easy."

Mariella—"I can't write on my back; I write on paper."

Miss Bell, coming home from the Mill Creek picnic—"Didn't we have a gigantic time?"

Miss Nolin—"No, we had a *guy*gantic time."

Betty (getting into bed in the dark)—"Marty, are you sure I turned that light off?"

Heard by Allio—"Listen, we are having onions for dinner."

"Schrec" (at breakfast)—"I didn't sleep much last night."

Miss Rice—"What was the trouble?"

"Schrec"—"Oh, I couldn't sleep for worrying about getting up in the morning."

Bright Freshie—"Where does time go the fastest?"

Brighter Senior—"In Italy because every time you turn around you see a *Dago*."

Betty (writing jokes for the Sequelle)—If you girls see any mistakes here, just put them in.

# THE 1915 <NS> STOUVENUR

## SUBSTITUTION

Nancy Walters—"Have you a circulating library?"  
 Clerk—"No, ma'am; but I can show you some nice revolving bookcases."  
 "Fran' (the afternoon before the feed)—"Mr. Herman, do you have any butter?"  
 Mr. Herman—"No, Miss Knight, but we have some good cheese."  
 Manasseh—"I want something to hang my clothes on."  
 Bright Young Clerk—"Yes, sir; suspenders, sir?"  
 "Here's a fellow," said the "Answers to Correspondence" editor, "who wants to know what musical instrument produces foot notes."  
 "Tell him a shoe horn," suggested the sporting editor.  
 "Mirandy, fo' de Lawd's sake, don't let dem chickens outer dis here yard. Shut dat gate."  
 "What fur, Aleck, dey'll come home, won't dey?"  
 "Not so'ze you can see it. Dey'll go home."—Jester.

## FAVORITE SONGS OF CLARIONITES

Landing of the Pilgrims.....	Freshman Class
The Battle Cry of Freedom.....	Senior Class
I'm Looking For a Nice Young Man That's Looking For a Nice Young Girl .....	Miss True
Has Your Heart Grown Cold For Me?.....	Prof. Egbert
Manuel .....	Miss Bell
Ich Liebe Dich .....	Miss Fitzgerald
I'm the Guy.....	Miss Nolin
"Good Night," Nurse.....	Mr. Carson
Too Much Ginger.....	"Dad"
Alice, Where Art Thou Going?.....	Mr. Johnson
The High Cost of Loving.....	Don Walker
This Is the Life.....	Mason Thompson
I Love the Ladies.....	Dean Conner
Who Will To the Greenwood Hie?.....	Helen Kresge
Why Did You Make Me Care?.....	B. Amo
Take Me Back To Babyland.....	Betty Brown
Loch Lohmond.....	Ralph Mayes
Home, Sweet Home.....	Alice Kerr
A Perfect Day (May 3, 1915).....	Ethel Klugh
The Moony, Moony Man.....	Esther Stover
Come Back To Er(w)in.....	Grace Darling



# THE 1915 CONSEQUENCE

Ch, Promise Me!	John Mooney
Two Little Love "B's"	Ray Humphreys
Row, Row, Row	Kay Morrison
Sing Me To Sleep	Billie Bruce
Absence Makes the Heart Grow Fonder	Phyllis Thompson
Hold Thou My Hand	Martha Rylander
I Need Sympathy	Frank Goodrowe
I Could Learn To Love You When I See You Smile	Clyde Weaver
Papa, Please Buy Me An Airship	Lu Bowman
How Can I Leave Thee?	Mary Lowry
I'm Afraid To Come Home In the Dark	"Lu" Croasmun
I Love the Moonlight	James Riley
I'll Do It All Over Again	Nate Croasmun
I'm Afraid I'm Beginning To Love You	Herbert Erwin
Where Did You Get That Girl?	Chester Braden
Do You Take This Woman—?	Mellie Skinner
Everybody Loves My Girl	"Joe" Bomdy
Curly Head	Merritt Davis
Isch Ga Bibble	Bess Ekis
You Gotta Quit Kickin' My Dawg Aroun'	O. W. Johnson
Old Black Joe	Leeda Ellithorpe
My Orchard Is Short a Peach	"Beans"
Peg O' My Heart	Sid Kennedy
And the Green Grass Grew	Mr. Ambrose
He's a Devil In His Own Home Town	Chas. Ellenberger
Somebody's Crazy 'Bout Me	Philip Stahlman



### SLIPS

Miss Fitzgerald (explaining German)—“You know so many people get divorces before they are married.”

Prof. Thompson—“I’ll venture to say ninety-nine out of every ten of you Seniors will go out and teach that way.”

### THOSE KUEENS AGAIN

It—“I dreamed last night I took the classiest queen on the campus to the Junior Party.”

She—“Did I dance well?”

Miss Stover (discussing “Minna von Barnhelm”)—“It seems to me when I propose to a man I won’t take a week to do it. I will come to the point at once.”

“Freshie—“What time does the 5:30 train come in?”

Senior—“Just a little behind the engine.”

“Betty” noticing green path in snow caused by steam pipes beneath, innocently remarked—“Now wouldn’t that be pretty if I were coming up along there?”

Genevieve W.—“What comes after that last sentence?”

Prof. Egbert—“A period.”

Miss Rice (in Senior Methods)—“Now, class, I’m just going to call your last names without taking the time to say Mr. or Mrs.”

Miss Bell—“Why do you not like Shakespeare?”

Miss Klabbatz—“Well, I’ve read and read and read ‘Ben Hur’ and I just can’t understand it.”

Dr. B. (in Virgil)—“No, class. His mother was the son of—”

June (suggesting a joke to be written by Betty)—“You can say ‘Bright Student’ if you don’t want to use your own name.”

Betty—“No, every one would know who that is.”

### ON THE CAMPUS

“How about a little tango tea, Alice?”

“If you grow one I’ll never speak to you again. So there!”



ROCK NEAR THE OLD INDIAN CAVE

THE 1915  SEQUENCE

N. B.

MARRIAGE!

A little miss, a little kiss, a little bliss,  
It's ended.  
A little jaw, a little law, and lo, the bands  
Are rended.

"YOU"

"Did you ring 74?"  
"Yes."  
"What do you want?"  
"I want YOU."

I'LL BET THIS DON'T GET BY

"Who are you going to take to the dance tonight?"  
"Oh, I'm going to take tickets."

WHEN?

Miss Rice—"When I was a little girl I remember there was an earthquake in Charleston."

Amos Reed—"How long ago was that?"

Prof. Thomson—"McQueen, why do they paint the inside of a chicken coop?"

McQueen—"To keep the hens from picking the grain out of the wood."

Amy (describing a new "find")—"Sweet? Well I'd say so. Her cheeks are like peaches, her lips are like cherries—"

"Hep"—"What next? We understand she has a face like a fruit stand."

# THE 1915 CONSEQUENCE

## THE WISDOM OF CHILDREN

Teacher—"Well, children, what shall we give the Belgian sufferers?"  
Pupil (in the rear)—"I move that we give them three cheers!"

## ACT NATURAL

Braden—"Say, that's a darn sour look you gave me."  
Thomson—"By golly, you have a sour look, but I didn't give it to you."

## GENTLY

Haynes—"I just love to dance!"  
"She"—"Well, why don't you learn?"

Cheer up, there's one thing about flunking a course—you don't have to buy a new book.



1915 **CONSEQUENCE**

TITLE ? ? ?

"In the Sweet By and By."  
 "When the Swallows Homeward Fly."  
 And "The Mocking Bird" makes "Music in the Air,"  
 "In the Woods" near "Home, Sweet Home"  
 "In the Gloaming" we will roam  
 Till the Senior Class has climbed the "Golden Stair."

"Annie Rooney," "Old Black Joe,"  
 And "Uncle Ned," with us will go,  
 After "Dancing in the Barn" till bats do fly;  
 Then on "Paddy Duffy's Cart"  
 For the Woodland we will start,  
 And choose partners while we're "Comin'  
 Through the Rye."

"When the Robins Nest Again"  
 We will leave the quiet glen,  
 And a moment "In the Starlight" we will stay;  
 Then we'll slowly wander down  
 To the "Tavern in the Town,"  
 And "Tramp, Tramp, Tramp" to bed we'll file away.



The popular conception of the "Fresh" basket ball team.

A PARADOXICAL REPLY

Merritt—"Dr. Bone, do you think that glasses would improve my appearance?"

Dr. J. B. Bone—"No, but I think they would improve your looks."



#### NEAR RELATIVES

"Who is that lady dressed in black, Ethel?" asked Little Eva, as she and Ethel Swartz walked down street.

"That is a Sister of Charity, my dear," replied Ethel.

Eva pondered deeply for a moment, and then she said, "Which is she, Ethel, Faith or Hope?"

Horace—"This match won't light."

John Bolam—"That's funny. It lit all right a minute ago."

The nickel show no longer stands  
Beloved by youth throughout the nation;  
There's too much light for holding hands—  
Darn indirect illumination!

P. P.

#### FROM THE FRONT

Mason Thomson—"I see the Germans are spelling culture with a K."

Mathew Ambrose—"What's the answer?"

Mason—"England has control of the seas."

"Dad"—Here, you're not doing that experiment the way I showed you."

Merritt (wearily)—"No, I haven't broken a flask yet."

I thought of our little quarrels and strife,  
And the letter that brought me back my ring,  
And it all seemed then, in the waste of life,  
Such a very little thing. *Aux Italiens*

This touching little extract is in very pronounced favor with one Mr. H. C. Shellito at the present time. Why? We are very sure we don't know unless it has to do with a certain "Bull of Excommunication" issued on or about Mothers' Day.

We are told, however, that Miss Mary Amo is in possession of the particulars of this most startling development that has done so much toward destroying Hays C's domestic happiness.



## THOUGHTS

"What is meant by a strong personality?"

Miss Kahle—"Strong personality is making people believe you know more than you do."

## WRONG INTERPRETATION

Miss Buckley (after rendering a violin solo in Society)—"Well, what do you think of my execution?"

Her room-mate—"I'm in favor of it."

Rhetoric Teacher—"Mr. Weaver, write a short theme on the subject of baseball."

Mr. Weaver handed in the following on the next day—"Rain, no game."

The Wobbly One—"Offisher, did you shee me f-fall?"

Officer—"Yes."

The W. O.—"Had you ever seen me before?"

Officer—"No."

The W. O.—"Then how d-did you know it washz me?"

## PARRIED

She was very much in love with him and one evening while they were alone she asked—"Frank, tell me truly; you,—you have kissed other girls, haven't you?"

"Yes," replied the young man, "but no one you know."

## GLEANED IN ASTRONOMY

Miss Clark—"The moon goes around the earth—the earth goes around the sun—the sun goes around the moon and they all go around each other."

Miss Knight—"The shape of the moon is opaque."

## A TRAGEDY IN THREE ACTS

(Soft Music)

*Act I*

Bull and two matadors.

*Act II*

Bull and one matador.

*Act III*

Bull.

(Slow Curtain)

M. G.

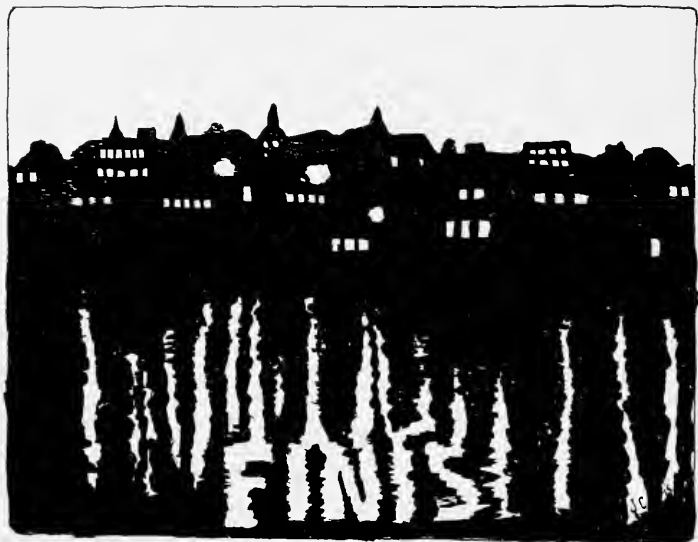


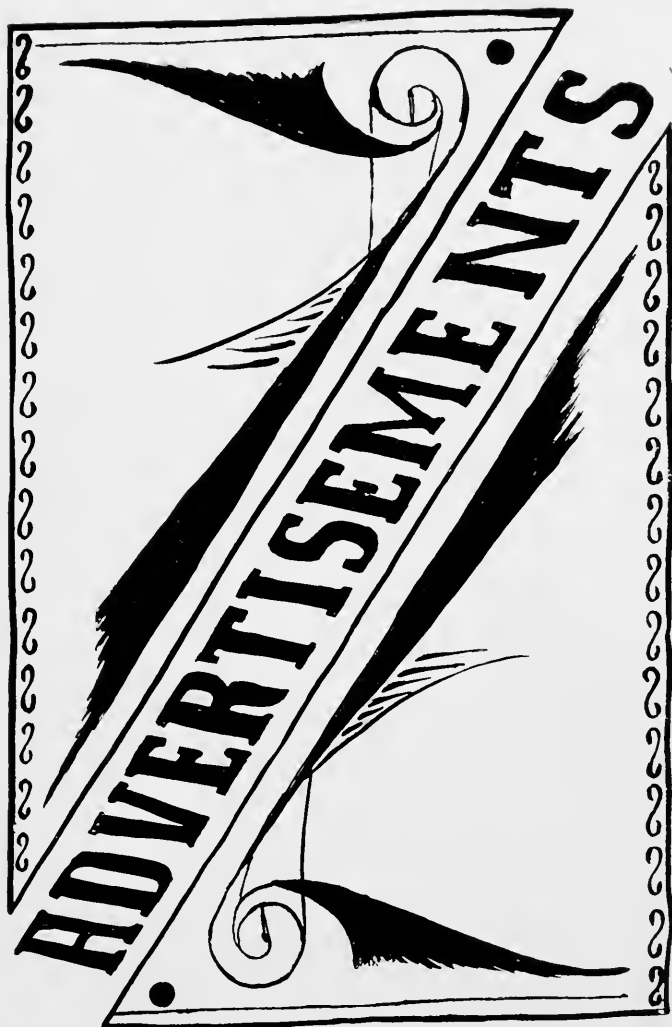
THE 1915  SEQUELLE

If

If, through the years that swiftly roll,  
    And cast their shadows on the past,  
Obscuring the thoughts of yesterday  
    On the waters dim and vast;  
If, when the future bears you out  
    On Life's uncertain rushing tide,  
Calling you further and further away  
    From the school's protecting side;  
If, in the rush of busy days,  
    You cast one backward thought  
Toward the land from which you sailed,  
    And the battles you have fought.  
If, in the years that come and go  
    Though years of school have long been done,  
Your heart comes back to memories dear,  
    And you think of Clarion;  
If, to one heart, this book recalls  
    Some sweet forgotten strain  
In future years; we shall not think  
    Our labors have been in vain.

SEQUELLE BOARD





# Bastian Bros. Co.

---

---

M A N U F A C T U R E R S   O F

Class Emblems, Rings, Fobs  
Athletic Medals, Wedding and Com-  
mencement Invitations and Announce-  
ments, Dance Orders, Programs, Menus  
Visiting Cards, Etc.

SAMPLES AND ESTIMATES FURNISHED UPON REQUEST



616 Bastian Bldg.  
Rochester, N. Y.

H  
A  
M  
S



B  
A  
C  
O  
N

The Hams and Bacon Produced by  
**MERRIS BEEF COMPANY**

DuBOIS, PA.

Cannot be Surpassed

ASK YOUR GROCER AND MEAT MARKET FOR THEM

**Kuhn's**  
**Bakery**

FOR  
BREAD PIES  
and CAKES

Wholesale and Retail

—  
BOTH PHONES  
—

Main Street

Domestic Science  
Outfit

IN CLARION STATE  
NORMAL SCHOOL

Furnished by  
Demmler & Schenck Co.  
434 Penn. Ave., Pittsburgh, Pa.

C. F. and W. L.  
MCNUTT

Home of  
GOOD SHOES

Clarion, Pa.



Burt  
Packard  
Regal  
FOR MEN

Queen  
Quality  
Duchess  
FOR WOMEN

STANDARDS OF EXCELLENCE IN FOOTWEAR

## Maheys' Shoe Store

1897

SHOES THAT SATISFY

1915

## The Bazaar

A COMPLETE LINE OF  
Clothing, Dry Goods, Shoes,  
Furnishings, and Ready-to-Wear  
Ladies Apparel.

THE STORE THAT SAVES YOU MONEY

Main St. Clarion, Pa.

## A. G. Corbett Drug Co.

Clarion, Pa.

DRUGS AND BOOKS  
NORMAL SCHOOL STATIONERY  
PENNANTS, BANNERS, ETC.

## JOS. HERMAN

DEALER IN

General Groceries,  
Fruits, Confectionery,  
Cakes, Crackers,  
Cigars and Tobacco

CLARION, PA.

Phone 101

## DITZ - MOONEY HARDWARE CO.

Everything in  
HARDWARE

CLARION, PENN'A

The place to buy  
DAILY PAPERS      MAGAZINES  
BOOKS

and everything in the line of

CANDIES

is at

DIEFFENBACHER'S

OPPOSITE CITIZENS TRUST COMPANY

watch our windows for bargains and special sales



THE 1915 SEQUELLE

sincerely wishes to thank  
its advertisers who have so  
largely contributed in making  
this work possible.



Who's Your Tailor?  
ALEXANDER & MOORE



Local Phone 5

CLARION · PA.

Farmers Phone 138

If it is Amusement You  
Want, Go to the New

**ORPHEUM**

The Place Where You Are  
Never Disappointed

Vowinckel  
**ART STUDIO**

Clarion, Pa.

THE HOME OF GOOD POR-  
TRAITS & LET US MAKE  
YOUR REUNION PHOTOS.

Anso Cameras

Enlarging

Framing

Amateur Supplies

**UNITED STATES  
STORES CO.**

**5c-10c-25c Store**

CANDIES CIGARS NOTIONS  
DRESS GOODS MUSLINS  
CALICO GINGHAMS  
Ladies Hats and Flowers  
MAIN STREET, CLARION, PA.

Our Famous Products

GUMPERT'S CHOCOLATE PUDDING  
GUMPERT'S QUALITY EXTRACTS  
UP-RISE BAKING POWDER

Ask Your Grocer

**S. Gumbert & Co.**

BUSH TERMINAL - BROOKLYN, N. Y.

Manufacturers of  
SPECIALTIES FOR BAKING



**P**ENNSYLVANIA  
STATE NORMAL  
CLARON SCHOOL PENNA.



A Superior School for a general education  
as well as for the training of teachers.

Faculty of trained specialists. Delightful  
home-life. Healthful location. Large shady  
campus and athletic grounds.

Fall Term Begins Sept. 7, 1915.

For further information write to the  
Principal.

AMOS P. REESE



# E. R. MOORE COMPANY

---

---

¶Makers of Collegiate Caps, Gowns and  
Hoods, Judicial, Clerical, Baptismal and  
Choir Gowns. ¶Originators of Moore's  
Official High School Cap and Gown.  
¶Renting of Caps and Gowns to Graduating  
Classes a Specialty. ∴ ∴ ∴ ∴

---

932 to 938 Dakin St.

CHICAGO

## The Clarion ❁ ❁ Dry Goods Co.

will always welcome you  
to their Dry Goods  
Store where you will  
always find WHAT'S  
WHAT IN

### Ladies' Ready-To-Wear Suits - Coats - Dresses

and about every wanted  
article that should be  
found in a first-class up-  
to-date Dry Goods Store.

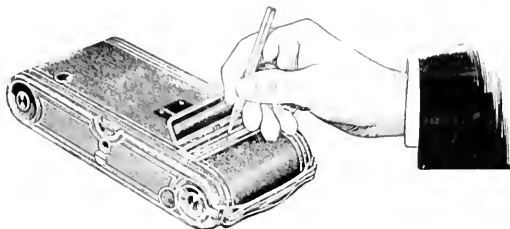
## E. GUTH

The Up-To-Date  
JEWELER



Opposite the New Jones House

Engraving Free

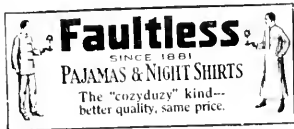


No. 3A Auto. Kodak

## Live Your School Days Over

It's not much larger than a note book, and tells the story better

**Reid's Drug Store**  
 "THE REXALL STORE"  
 CLARION, PA.



**F. L. Crooks & Co.**  
 Clothing

Clarion,        ::        ::        Penn.

Columbia Talking Machines and Weaver Pianos.

For sale by

**H. H. IMHOFF**

Clarion, Pennsylvania

Resources over one million, four hundred thousand dollars

**Citizens  
 Trust Co.**

Clarion, Pa.

John Gibson     -     -     -     President  
 C. W. Amsler    -     -     -     Vice President  
 W. A. Graham   -     -     -     Treasurer  
 H. M. Huffnagel -     -     -     Asst. Treasurer  
 C. C. Moore     -     -     -     Asst. Treastrer

# Clarion Music House

---

---

The truth must sell my goods, and the truth must be in the goods. This is what has built up the extensive music trade which I have enjoyed.

"To know Mr. Poulain's pianos as we do is to admire them as we do" says A. A. Schierberl, A. A. Heinrich, Fred Miller, W. J. Brocius, J. K. Boggs, Professor Egbert and two hundred others in and around Clarion.

I sell all makes of Phonographs and records. I have special values in violins, mandolins, guitars, banjos and accordeons.

I astonish you on sewing machine prices. Instead of paying a road man, I pay you. Investigate and be convinced.

Good Pianos for \$135.00, Brass  
trimmed, solid copper bass. . . .

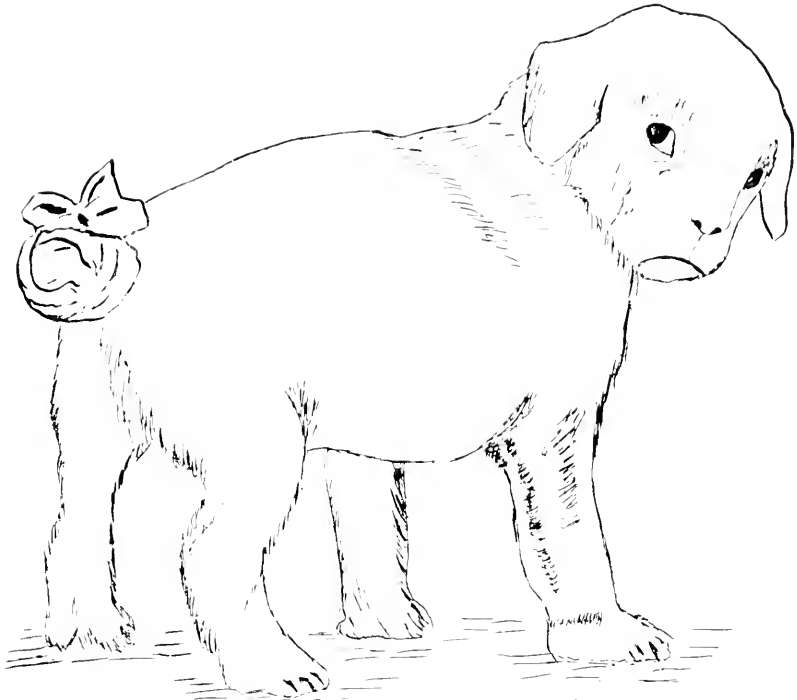
## Louis Poulain

606 Main St.

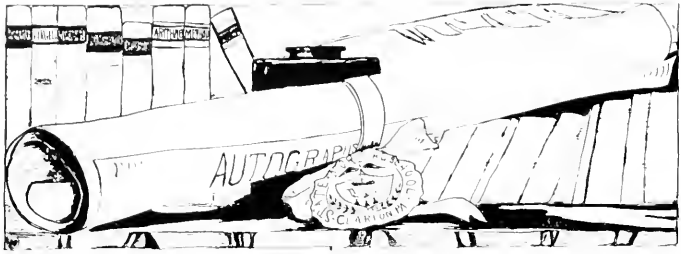
Clarion, Pa.

---

**T**HE BOARD OF EDITORS  
reserves this space to extend  
their most sincere thanks to all  
who have aided in any way in  
the publication of this issue of  
the Sequelle.    :-:    :-:    :-:



"ALL'S WELL THAT ENDS WELL"



## A STACK OF EXPERIENCE



**F**OR a number of years this Company has made a specialty of College Engravings. Each year showing an increase in the contracts handled, and each year has added to our experience and knowledge in the special requirements of this class of work.

**This Experience is at your service. Coupled with it is our reputation for Fair Dealing, Prompt Service, High Quality of Work and Reasonable Prices.**

The above illustration shows only a part of the beautiful and well known books for which we have furnished the engravings in the past.

Write us **NOW** for a list of managers for whom we have done work this year, and to whom we invite you to refer. Also ask for our proposition for next year.

**The Northern Engraving Company**  
**COLLEGE ENGRAVERS**  
**CANTON OHIO**





3 9363 00151 7296

Sncc. Col.

atp

1017

,058

1015

