

Spec. Col.  
qLD  
1017  
.C88  
1923

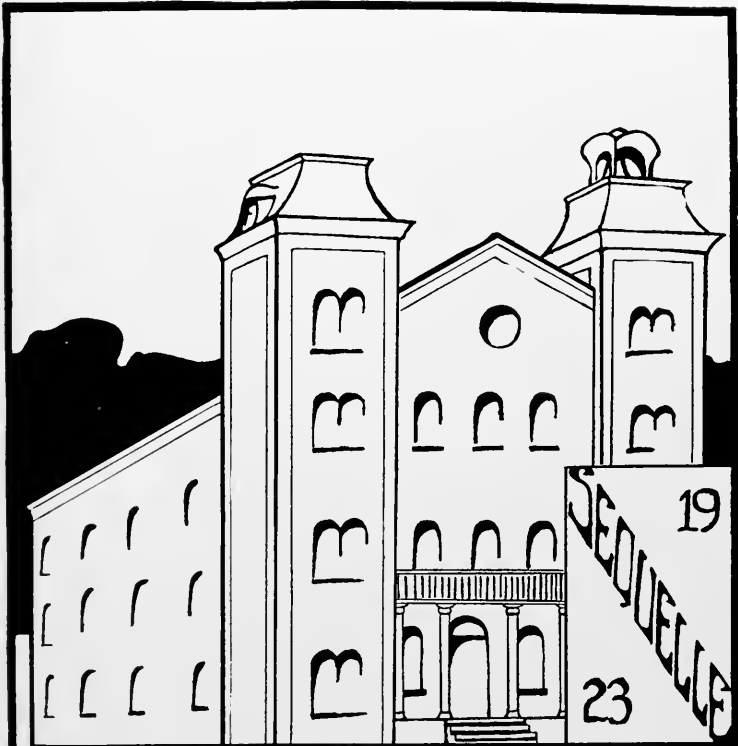
# The Sequelle



One Hundred Twenty-three



Carlson Library



*Clarion State Normal School*

AL

## FOREWORD

We hope as through this book you leaf,  
In critical or other mood,  
At least some memories fond and sweet  
You'll find preserved for solitude.

*THE STAFF '23*

## TABLE OF CONTENTS

FACULTY

CLASSES

ORGANIZATIONS

ATHLETICS

HUMOR

LITERARY

ADVERTISEMENTS



HARRY LUTHER KRINER, A. B.

To

Harry Luther Kriner

We gratefully dedicate this book as a  
slight token of our appreciation for his interest and  
his sincere friendship for the students of  
Clarion State Normal



CLYDE CHAPMAN GREEN, A. M.  
PRINCIPAL



## CLARION STATE NORMAL SCHOOL

The State Legislature passed an act in 1886 establishing the Thirteenth Normal School District, and steps were taken at once to establish the Clarion State Normal School. Citizens contributed forty thousand dollars and the legislature appropriated twenty-five thousand dollars. Carrier Seminary was purchased from the Erie Conference of the Methodist Church, additional ground was bought and work was begun on the buildings. By February two large dormitories were completed, and on April 12, 1887, the school was formally opened and approved by a committee representing the State. The school was managed jointly by the state and the stockholders until February 9, 1916, when the local stock was purchased by the State in the name of the Commonwealth.

Clarion Normal has had seven principals. A. J. Davis, 1887-1902; Samuel Weir, 1902-1904; J. George Becht, 1904-1912; Harry M. Shaffer, 1912-1913; Andrew Thomas Smith, 1913-1914; Amos P. Reese, 1914-1918; Clyde C. Green, 1918.

During Principal Green's administration great developments have been made. The enrollment has grown from 287 different students of normal and secondary school grade in 1918 to 819 in 1923, of which 672 were resident students of Normal grade. The summer school was established in 1920 and the registration has been steadily growing. The Training School has been completely reorganized. In 1918 there were only 60 pupils with two teachers, while now there are 300 pupils and eight teachers. The course of study in all of the Normal Schools of the State has been completely revised and strengthened so that the professional work is now of unquestioned college grade. In respect to professional standards, Clarion now ranks with the best in the State.

The educational and business administrations have been established on modern methods, and modern equipment and systems provided. All of the buildings have been refinished, the dormitories refurnished, and many thousands of dollars spent on educational equipment. Student welfare has been improved by the employment of a trained nurse, dietitian, and dean of women. A well-equipped infirmary, a school post office, and a school store have been established. Much student help has been employed, thus aiding many young men and women to secure an education.

Student activities have been promoted. The dramatic club has been organized and new life has been put into the library societies, athletics, and the musical organizations, and "The Clarion Call", a monthly newspaper has been founded.

Among miscellaneous improvements may be cited: A new heating plant, new machinery for the laundry, electrification of all machinery, a refrigerating plant, cafeteria, campus lights, the painting of the buildings, installation of hardwood floors.



SEQUELLE STAFF .

### SEQUELLE STAFF.

KATHRYN KENNEDY .....	Editor-in-Chief
NELLIE McGINNIS .....	Assistant Editor
GOLDA McHENRY .....	Assistant Editor
F. H. HETRICK .....	Business Manager
JAMES BEATTY .....	Assistant Business Manager

### ASSOCIATE EDITORS.

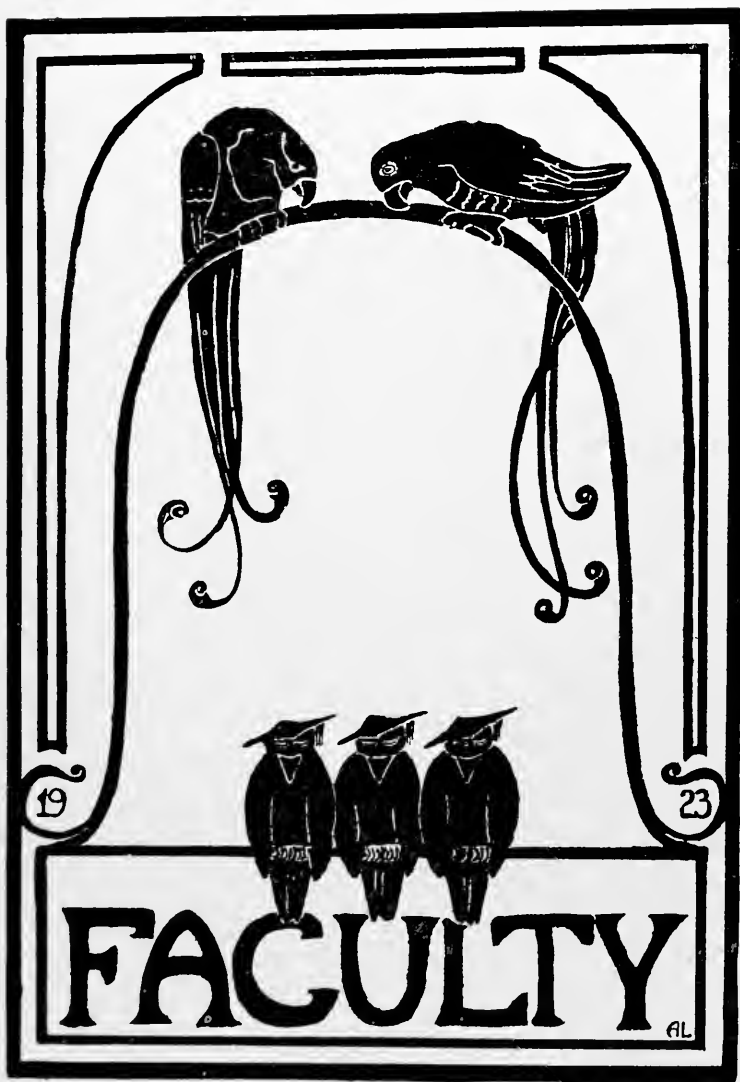
ANNA LOGUE .....	Art Editor
VALLIE SHUMAKER .....	Assistant Art Editor
MARTHA SMITH .....	Assistant Art Editor
JULIA MOORE .....	Dramatics
RUTH BARTLETT .....	Y. W. C. A.
HAROLD TRAISTER .....	Y. M. C. A.
MARGARET SPACKMAN .....	Music
CLAIRE PATTERSON .....	Literary
WILMA ARNER .....	Jokes
WALTER DOVERSPIKE .....	Boys' Athletics
LOUISE FENSTAMAKER .....	Girls' Athletics
RACHEL ANTHONY .....	Campus News
FLORENCE HORNER .....	Literary Societies
FACULTY ADVISER .....	Mr. Green

SEQUELLE 1923



BOARD OF TRUSTEES

- F. L. HARVEY, President . . . . . Foxburg, Pa.
- F. P. HAZLETON, Vice President . . . . . Clarion, Pa.
- H. M. RIMER, Secretary . . . . . Clarion, Pa.
- F. L. ANDREWS, . . . . . New Bethlehem, Pa.
- N. C. BALL . . . . . Clarion, Pa.
- C. Z. GORDON, . . . . . Brookville, Pa.
- MRS. C. C. ROSS . . . . . Clarion, Pa.
- MRS. W. B. RANKN, . . . . . Clarion, Pa.
- W. W. WINSLOW, . . . . . Punxsutawney, Pa.



**SEQUELLE 1923**



MCINTIRE



WELCH



CARPENTER

Josephine McIntire..... Home Economics  
Dean of Women.  
Teachers College, Miami University.

Willis Yardley Welch, Sc. M.,  
A. M., Ph. D., Science  
Starkley Seminary.  
Union Christian College.  
Rochester Athenaeum and Mechan-  
ics Institute.  
Oswego State Normal School.  
Cornell University.  
University of Wisconsin.

Lida May Carpenter.....English  
Mansfield State Normal School.  
Cummock School of Oratory, North-  
western University.

Bertha Virginia Nair, A. B., A. M...English  
Westminster College.  
University of Pittsburgh.

John W. F. Wilkinson,  
A. B., A. M., Mathematics  
Dean of Instruction.  
Bacon Academy.  
Princeton University.

Ida Shive Bentz.....Art  
Pratt Institute.  
University of Chicago.



NAIR



WILKINSON



BENTZ

SEQUELLE 1923



BECK



SOWASH



KRINER

Paul E. Beck, A. B. .... Music  
 Moravian College.  
 Violin Instruction, J. F. Schaeberle.  
 Organ Instruction, Dr. David D. Wood.  
 Voice and choir training, Dr. W. W.  
 Gilchrist.  
 Public School Music, Cornell University.

Grace Sowash, B. M. .... Piano and Voice  
 Westminster College.

Harry L. Kriner, A. B. .... Social Studies  
 Lock Haven State Normal School.  
 University of Pittsburgh.  
 Columbia University.

C. B. Wilson, B. S. .... Education  
 Dean of Men.  
 Lock Haven State Normal School.  
 Grove City College.  
 Columbia University.

Florence Winifred Peter,  
 Physical Education  
 Oberlin College.  
 Chautauqua School of Physical Education.

Wilkie O. Moody, Ph. B.  
 Physical Education  
 Denison University.



WILSON



PETER



MOODY

SEQUELLE 1923



DAUGHERTY



SMITH



HILEMAN

Lucille Daugherty.....Dietitian  
Battle Creek Sanitarium.

Elfreda C. Graham, A. B.....Latin  
Grove City College.

R. Estelle Smith, R. N.....Resident Nurse  
Slippery Rock Normal.  
Adrian General Hospital.  
McGee Memorial Hospital,  
Chicago School of Civics and Phil-  
anthropy.

Joseph A. Arnold, B. S.....Science  
Director of Secondary School.  
Gettysburg College.  
Gettysburg Theological Seminary.

Janet E. Hileman.....Librarian  
Packer Collegiate Institute.  
Pratt Institute Library School.

Hannah A. Parks, A. B.  
Modern Languages  
Beaver College.



GRAHAM



ARNOLD



PARKS



**SEQUELLE 1923**



**SMALLEY**

**Mary F. Smalley, Ph. B.... Social Studies**

Clarion State Normal School.  
Denison University.



**MIDDLESWARTH**

**C. A. Middleswarth, Ph. B., A. M.**

**Director of Training School**

Valparaiso, Indiana.  
Shippensburg Normal.  
Grove City College.  
State College.  
University of Pennsylvania.



**HANBY**

**Labrida Hanby..... English and Science**

Clarion State Normal School.

**Alice C. Lemon**

**Intermediate Training Teacher**

Dayton Normal Institute.  
Grove City College  
State College.  
Strayers Business College.

**Julia Connell**

**Intermediate Training Teacher**

Juniata College.  
University of Pittsburgh.  
Harvard University.  
Columbia University.

**Effie B. Hepler.. Primary Training Teacher**

Bellefonte Academy.  
Grove City College.  
Ebensburg Summer Assembly.  
University of Pittsburgh.  
Clarion State Normal School.



**LEMON**



**CONNELL**



**HEPLER**

**SEQUELLE 1923**



**FONNER**



**STUTZMAN**



**PERKINS**

Jessie U. Fonner, A. B., B. S.  
Junior High Training Teacher

Waynesburg College.  
University of Pittsburgh.

Bertha J. Stutzman, B. S.  
Primary Training Teacher

Slippery Rock State Normal School.  
Margaret Morrison School. Carnegie  
School of Technology.  
Columbia University.  
University of Pittsburgh.

Reba N. Perkins, A. B.  
Junior High Training Teacher

University of Illinois.  
Columbia University.

Evelyn Strohecker, B. S.  
Junior High Training Teacher  
Susquehanna University.

Anna B. Graham  
Junior High Training Teacher

Clarion State Normal School  
Chautauqua.  
University of Pennsylvania.

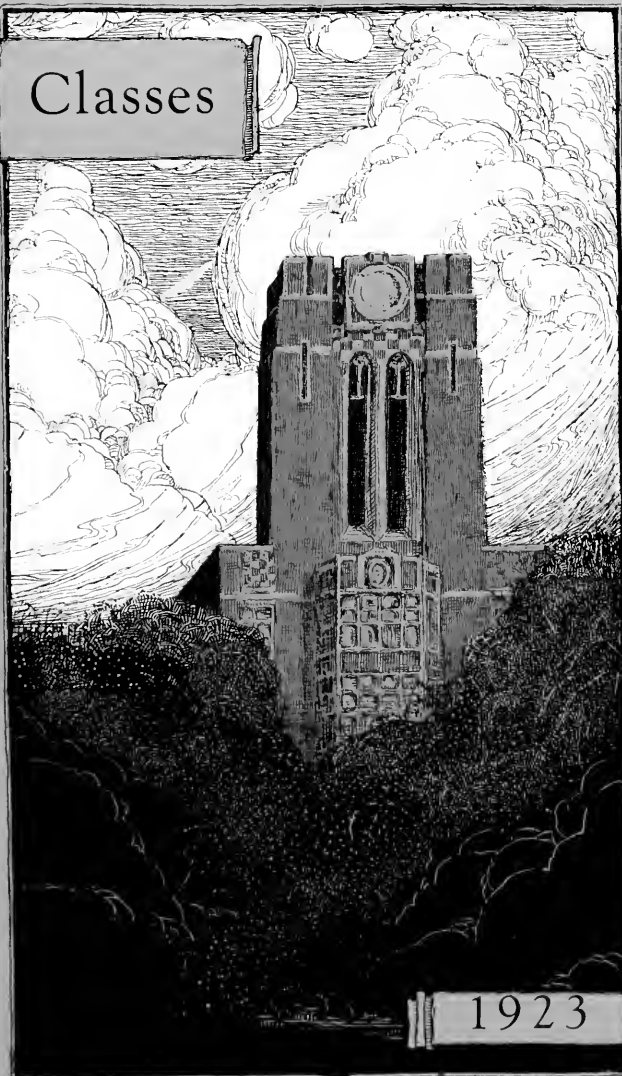


**STROHECKER**



**GRAHAM**

Classes



1923





SEQUELLE 1923

SENIOR CLASS OFFICERS

CAROLINE STROMQUIST .....	President
CLAIRE PATTERSON .....	Vice President
MARTHA CAMPBELL .....	Secretary
KENNETH HESS .....	Treasurer

CLASS COLORS  
MAROON AND WHITE

CLASS FLOWER  
American Beauty Rose.

CLASS MOTTO  
Non Solum Nobis

CLASS YELL

Boom a lack a  
Boom a lack a  
Hi a racka ree  
WE are the class of '23  
Nifty and peppy  
Smart 'n high steppy,  
Admit it you must  
We've kicked up a dust  
We'll win out or bust—  
See-E?  
1 - 9 - 2 - 3  
RAH!



SEQUELLE 1923



CLASS POEM

As the liquid flow of music  
From the robin's throat at dawn  
Prophesies the coming of the day;  
So this bright commencement morning,  
As its light steals o'er the lawn,  
Brings us to the parting of the way.  
Let us peep into the future,  
Though its misty veil is spread,  
Keeping from all eyes the wonders there.  
Down the long, green, hallowed vista  
Souls by great ambition led  
Find their courses planned with utmost care.  
Though we draw aside the curtain,  
And our eager, anxious eyes  
Search for secrets that the fates fortell;  
Question after question rises,  
Yet no answer can we find.  
Is there naught to break this magic spell?  
But our vision of the future  
Merely blurs as visions will.  
Here and there some landmark standeth clear  
As a dream, a plan, or fancy,  
While the rest in shadow steps;  
So we turn away with mingled joy and fear.  
Then a voice from out the silence,  
Like the winds at eventide,  
Solemnly is wafted to our ears:—  
    You have chosen for your lifework  
    Through the storm of coming years  
    Not a beautiful bed of roses,  
    Not a dreary vale of tears  
    But a garden has been planted,  
    Duty bids you tend the flowers  
    Guard and guide each tiny tendril,  
    Work with patience hours and hours;  
    Work with prayer through all tomorrows,  
    Through the sunshine, through the showers.

—Helen Burtop, '23.

# SEQUELLE 1923

## CLASS HISTORY

The Class of 1923! What a thrill those magic words will give us when, old and hoary, we quietly reminisce about our school life!

You wonder what pleasures you can recall? How about your first day, your first hour at this co-educational institution? Did you not feel then that, as a class, you were destined to do great things?

Maybe at that time you did not know that you were to be gazed upon, frowned upon, and beamed upon by your superiors (the Seniors) every time you tried to have a particular day for stunts. However, you soon discovered this to be the case.

If, during your reminiscence you have a girl friend near you—a girl friend who roomed in Navarre Hall—she may be able to tell you how she discovered (on a certain Saturday when the Seniors were conspicuously absent) what good housekeepers they were. You must be very careful, however, not to ask her any embarrassing questions!

Can you remember the picnic on the Decoration Day of your Junior year? Did you have enough sandwiches? Did you show the Seniors what a good time you could plan for them.

Perhaps you think your Senior year was rather uneventful. If you were lucky enough to teach the first semester, think of Stony Lonesome. What a picnic that was, and what a congenial chauffeur Mr. Curl was!

You must not forget the various informal parties, the athletics in the school, the class you had, the pupils you taught, and perhaps the most pleasurable of all—the opportunity, long looked forward to, of delightfully entertaining the student body and the faculty with a brief talk on current events, or of guiding them along the flowery paths of music by waving a baton.

The date, February 5, you will want to pass over rather hurriedly. That was the day Navarre Hall was almost submerged under a flood of tears. The teaching grades for first semester were at last "out".

At this point, the last episode of your reminiscence, you will probably take your granddaughter on your knee and tell her that she must plan to go to Clarion State Normal School, so that when she is old and hoary like you, she will have as much enjoyment thinking of her school days as you have had.

—Mary Horton '23.

# SEQUELLE 1923



GLADYS AGENS. . . . . Kane, Pa.

Intermediate Group.

Critic of Bancroft Literary Society.

Glee Club.

Gladys surely was born on a sunshiny day, for the reflection of the sun still shines from her face. No one can feel down-hearted when our Gladys is around, except the fond males, for she will have none of them. Her professors like best to hear her make speeches, for she goes at so rapid a pace that for once everybody is awake and alert.

RACHAEL ANTHONY. . DuBois, Pa.

Intermediate Group.

Franklin Literary Society

Y. W. C. A.

Sequelle Staff

Glee Club

Cheer Leader

Class Song

Orchestra

"Is there anything she cannot do?"

R is for Rachel, so blithe and gay

A is for Antics she likes to play,

C is for Cheer she spreads around—

High and low wherever she's found,

A alert with racket or ball;

Ever soaring, oh, may she not fall.

Life is at the morning.

WILMA ARNER. . . . . Clarion, Pa.

Intermediate Group.

Bancroft Literary Society.

Captain of Varsity Basket Ball Team.

After having pestered Clarion High School for numberless years, Wilma decided to reform, so she entered the Class of '23. However, all her interest in the High has not been lost. We wonder why.

Through Wilma's encouragement as captain of the basket ball team, we won many a victory. We see before her a great career, and wish her success in what ever she undertakes.



SEQUELLE 1923

JAMES BEATTY. . . . .Clarion, Pa.

Junior High Group.

Franklin Literary Society  
Asst. Business Mgr. of Sequelle Staff  
President of Dramatic Club.

Here is no common personage, as one glimpse of his dramatic features will verify. Does he study? Well—he worries.

He is interested in the Drama, and is a wizard in theatrical news. He plays the leading role in all our entertainments, so we can rightly predict for him a glorious future.

RUTH BARTLETT. . . . .Oil City, Pa.

Primary Group.

Bancroft Literary Society  
Vice-President of Y. W. C. A.  
Treasurer of Dramatic Club  
Sequelle Staff  
Glee Club

Here is Ruth with her laughing eyes and glossy curls:

A leader wise,  
A friend that's true,  
A jolly pal  
Who's never blue;  
We love her for her gaiety,  
Her dignified, but happy way.

WENDELL BARNES. . . . .Clarion, Pa.

Junior High Group.

Franklin Literary Society  
Married Men's Club.

"But he is constant as the northern star,  
Of whose true-fix'd and resting quality  
There is no fellow in the firmament."





CLARA BELL . . . . . Brookville, Pa.

Primary Group

Bancroft Literary Society  
Y. W. C. A.

This happy little girl comes from Brookville and is known to her many friends as "Claribel". Three days a week she is heard to exclaim, "I just hate gym", yet "Jim" seems to be her favorite subject.

She aims to be a dignified school teacher but a certain visit during Christmas vacation has changed her plans.

"Make it snappy" or "Tell it to Sweeney" — which?

ORVETTA BONER. . Falls Creek, Pa.

Intermediate Group.

Secretary of Dramatic Club.  
Franklin Literary Society.  
Glee Club.  
Y. W. C. A.

First we think of Bett as a fantastic dancer, entertaining a group of girls in room 69. Then she starts to play her "uke" and her soft voice sings, "I've a Garden in Sweden". We know from Bett's red hair that she isn't from Sweden, but the song tells us "he" is.

LORETTA BROGAN,

Summerville, Pa.

Junior High Group

Franklin Literary Society.

Loretta is one of our staunch and sturdy students. She is a willing worker being faithful to the interests of the class. We see a bright future for her, and our best wishes go with her.

MARIE BROSIOUS. . . . . Pansy, Pa.

Intermediate Group.

Franklin Literary Society.  
Y. W. C. A.

Marie always has a smile and a pleasant word for everyone. She is usually very studious, but is does not hurt her conscience to have a good time. We know that Marie is a temperate girl. She won't drink coffee because she thinks it tastes like tobacco.

HELEN BURTOP. . Reynoldsville, Pa.

Junior High Group

Franklin Literary Society  
Glee Club  
Y. W. C. A.

Certainly the muses have beamed upon Helen, for she can both sing and write poetry, and goodness knows what else. Although at present Helen plans a teaching career, we feel that she is destined for greater things.

MARTHA CAMPBELL

Punxsutawney, Pa.

Primary Group.

Class Secretary  
Rancroft Literary Society  
Glee Club.

Marty is our little "Class Beauty". Always bright and cheerful, she loves to sing, dance, and play. She casts a spell upon all whom she meets, spreading joy and gladness. It can truly be said, "Many a heart has been broken on account of her."



# SEQUELLE 1923



VIRGINIA COLLNER . . . Clarion, Pa.

Primary Group.

Franklin Literary Society.  
Glee Club.  
Dramatic Club.  
Y. W. C. A.

Virginia has a keen sense of humor and a ready giggle, but she has suffered for it. As long as one laughs, one can never be lean, and this girl is full of pep, 'tis easily seen.

We are very much worried for fear Virginia will lose her hearing. The first evidence was noticed by Prof. Wilkinson, who moved her seat in Arithmetic class to the front of the room(?).

JULIA CONNELL . . . Ebensburg, Pa.

Y. W. C. A.

Miss Connell came from Ebensburg, and united with our class in 1923.

It is an inspiration to be with her because of her pleasing personality. She is always ready for a good time.

Her hobby is making coffee.

ETHEL CROOKS . . . . . Clarion, Pa.

Primary Group.

Bancroft Literary Society.  
Glee Club.  
Varsity Basket Ball Team.

"Crooks" is a good dancer, a good talker, and a very peppy individual. According to rumor, she can always be depended upon to make things less monotonous. Having seen the ice broken many times, I can—never mind, "Crooks" you're all right from your head up to your feet down; and if you didn't do it, some body else would be bored to death. This isn't a slam, honest, 'cause you're a good sport and we're strong for you.

DALLAS DITTY. . . Summerville, Pa.

Junior High Group.

Bancroft Literary Society.  
Y. M. C. A.

Only during our Senior year have we really know Dallas, for, while a Junior, he rode each day on the L. E. F. & C. Now, some folks say that Dallas is quiet, but just wait till they know him. He isn't a trifle more saintly than the other members of his sex.

HELENA DOVENSPIKE

Hawthorne, Pa.

Intermediate Group.

Dramatic Club.  
Franklin Literary Society

If there is any mischief in the air, we know on whom to blame it. She tries to hide her thoughts by assuming a calm and tranquil mien, but when you know her better, "Oh, my!" She is not the quiet little mouse one might think.

Helena has many interests, but highest of them all is to be a good teacher. Our good wishes go with her. We know she will succeed.

WALTER DOVERSPIKE

New Bethlehem, Pa.

Junior High School.

Bancroft Literary Society.  
Secretary of Y. M. C. A.  
Sequelle Staff.  
Football Team.  
Varsity Basket Ball Team  
Tennis Team.

If it weren't for "Dovey" how would our game scores stand? If ever we need a touch-down, "Dovey" is sure to come to the rescue, and go over the line in the last second. Not only is he first and foremost in athletics, but he is also in demand on the dance floor. His genial personality has won for him a host of friends who all wish him success.





HELEN DUNKLE . . . . . Kane, Pa.

Intermediate Group.

President of Franklin Literary Society  
Y. W. C. A.

Although "Dunky" has been in our midst only one year, she has won a permanent place in our hearts.

It only takes a few minutes to get acquainted with Helen, and anyone who wants a real friend shouldn't miss the opportunity of knowing her.

"Dunky" has shown herself to be capable along many lines. Her favorite pastime, however, is teaching.

HAZEL EVANS . . . . . Kittanning, Pa.

Primary Group

Bancroft Literary Society  
Y. W. C. A.

When we speak of Hazel, our mind just naturally dwells on lovely things. Especially does she shine in story telling. We cannot imagine Hazel becoming an "old maid school teacher" because 'tis told that Hazel is a staunch believer in the mystery of the Key and Bible. If this be true, we can predict but few years of single blessedness for Hazel.

LOUISE FENSTAMAKER Clarion, Pa.

Junior High Group.

Franklin Literary Society.  
Varsity Basket Ball Team.

"Fenstie" is a graduate of the Clarion High School. Feeling that her education was not complete, she entered the Normal in 1921. She has won popularity among her classmates by the good work she has done on the basket ball team. We know she will be a success in the future.

FAYE FITZSIMMONS

Summerville, Pa.

Intermediate Group.

Bancroft Literary Society.  
Y. W. C. A.

The sparkling blue eyes speak worlds for the sunny disposition of this lovable Faye. Who has ever seen her angry or has known her to refuse to do something? She is always ready for a good time and, as for making lemonade, "Oh! say," she can do it.

She is a good student and with her persistent efforts we are sure there are great things in store for her.

MARGARET FRAMPTON

Clarion, Pa.

Junior High Group.

Bancroft Literary Society  
Varsity Basket Ball Team  
Tennis Team

Among our class of 1923 was this quick and brilliant athlete. In basket-ball she was one of the best in the school. What would our team have done without Peg? The only time she is not talking or laughing is when she is asleep. Her many friends wish her success and happiness in the future.

ANNA GUNDRUM . . . . Clarion, Pa

Primary Group.

Bancroft Literary Society.

Hark! what approaches at such a rapid pace—see, it flies past us! "What is it?" you cry. Why that is Anna trying to get to class on time.

Anna might be styled as "Ann in a hurry". But when she does take time to stop and visit, you can plan on meeting one of the sweetest and jolliest little maids that ever smiled on our Clarion Normal.





IRMA HAMBLETON. . . Warren, Pa.

Intermediate Group.

Franklin Literary Society  
Y. W. C. A.

A happy disposition united with a smile that won't wear off makes Irma an important member of the Class of "23". However, we can't blame Irma for smiling—who wouldn't with dimples like hers?

Irma's contagious giggle and "Come let's do something" have saved more than one dark day.

VIVIAN HAMBLETON. . Warren, Pa.

Intermediate Group.

Bancroft Literary Society.  
Y W. C. A.

"Bizzy" might be considered one of the quiet, modest girls of the class, but her own friends know she is far from quiet. If there is any commotion on third floor side hall, you may be sure "Bizzy" is taking an active part

Vivian says she expects to teach, but from the number of boxes she gets we doubt it.

SARA HARRIGER. . . . Clarion, Pa.

Primary Group.

Franklin Literary Society.

Sara is another of our members who came from the C. N. S. S. Her talents are many and her cares are few. She was never known to worry over work. She takes great interest in music, especially one song "When You Come Back". We prophesy a bright future for her and a long and happy life. Our parting words are, "Success to you."



ELEANOR HASKELL . . . Clarion, Pa.

Intermediate Group.

Franklin Literary Society.

"L" danced her way out of C. N. S. S. and is still dancing along at a good rate. She takes a great interest in her work and the teachers, especially "Dad".

She likes to read, her favorite book being "Robinson Crusoe". We wish her well.

MYRTLE HEASLEY . . . Brookville, Pa.

Junior High School Group.

Bancroft Literary Society.

President of Y. W. C. A.

Myrtle is a careful girl,  
Who always does things right.  
She is noted for her winning smile,  
And helping's her delight.

If you wish a true pal and friend, call for Myrtle. Never too busy to help, and active in all school affairs, she has won a place in the hearts of all who know her. True success is our wish and prophecy for her.

EFFIE HEPLER . . . New Bethlehem, Pa.

Y. W. C. A.

When you step into the school room,  
Kind of weary like and sad,  
And are dreading what the critic's going to say,

Now joy takes the place of gloom,  
For Miss Hepler's in the room,  
And you feel that you can do your best that day,

If her candy box is there,  
You are sure to get a share,  
For Miss Hepler is unselfish to the core  
Her heart is just as sweet  
As her candy that you eat;  
And we know that we all love her more and more.





KENNETH HESS . . . . . Salem, Pa.

Junior High Group

Franklin Literary Society.  
Vice President of Dramatic Club.  
Y. M. C. A.

Kenneth came from Salem High with an "A" record back of him. He has entered into all the activities of C. S. N. S., proving himself to be especially a star in dramatics. Kenneth has many friends who wish him success.

FLORENCE HORNER . . . Oil City, Pa.

Junior High Group.

Secretary of Class '22.  
Vice President of Franklin Literary Society.  
Varsity Basket Ball Team '23.  
Sequelle Staff.  
Y. W. C. A. Cabinet.

"Horner's" ability places her among the first members of the class. She is industrious capable, and dependable. Florence is studious, religious, and athletic. She's an impenetrable guard on the varsity. That is not all—"Horner" is a "peach". She laughs easily and falls in love and out again with equal grace and ease.

FRANCIS H. HETRICK . . DuBois, Pa.

Junior High Group.

President of Bancroft Literary Society  
Business Manager of "Sequelle."  
Married Men's Club.

The world belongs to the energetic! Prominent in all school activities, he has made his mark in more ways than one. He has been able to make A's in most of his studies. Honest, sincere, and attractive, he is held in high esteem by all who know him. But girls—F. H. is married!

SEQUELLE 1923

MARY HORTON . . . . .Foxburg, Pa.

Junior High Group.

Vice President of Class '22.  
Dramatic Club.  
Franklin Literary Society.  
Glee Club.

We may place Mary none too high, for she is capable of commanding the trust, admiration, and respect of all who know her. No destiny may be greater than to become a character so rare.

Mary has shown herself a devotee to music during her days at Clarion Normal. Her ambition, however, is to become a shark in French and Latin.



ISABELL JONES . . . . .Turkey City, Pa.

Intermediate Group.

Bancroft Literary Society.  
Y. W. C. A.

This is our "Izzy" who considers life worth while,  
Whose troubles quickly vanish in the magic of her smile.

She's an oasis in a desert, with her sunny cheerful ways,  
And says she laughs when things go wrong  
And finds it always pays.

KATHRYN KENNEDY

Clarendon, Pa.

Primary Group.

Y. W. C. A. Cabinet.  
Secretary of Franklin Literary Society.  
Editor in Chief of "Sequelle."

Words fails us when it comes to "Katie." Her accomplishments are numberless. As for counting them—well, it ju-t isn't done. Gracious, kindly, charming, and loved by all. "Katie" is one of our number whom we shall not soon forget.

SEQUELLE 1923



MARIE KROH . . . . . Sligo, Pa.

Primary Group.

Bancroft Literary Society  
Y. W. C. A.

"Post No Bills."

Why can't she be good? We know she likes to talk and laugh too well. Marie takes no stock on that old saying that "children should be seen and not heard." She would rather be both. In order to save the expense of mantles for the hall lights, Marie was moved to the second floor in Navarre. Since then she says she has felt very much "suppressed."

ALICE C. LEMON . . . . . Clarion, Pa.

Dramatic Club.

Y. W. C. A.

Miss Lemon is one of us in spite of her superior position, for she does not hold herself aloof from our good times, but rather joins right in for her share. We hardly know what kind of a future the "hand of fate" has planned for her, but the sincere best wishes of the class are with her always.

ANNA LOGUE . . . . . Clarion, Pa.

Intermediate Group.

Bancroft Literary Society.  
Sequelle Staff.

This charming lass with her golden hair and blue eyes has absorbed all the artistic ability of our class. She intends to be an intermediate teacher for awhile, but her greatest ambition is to become an art teacher. From all evidence we have now we are sure she will accomplish whatever she attempts. Our parting words are "Success to you."

DORIS LOVE . . . . . Falls Creek, Pa.

Primary Group.

Bancroft Literary Society.  
Y. W. C. A.

To look at this little lassie, one might think her quiet, but acquaintance dispels the illusion. Doris is very energetic and loves to talk about—various things.

There is a trite saying, "Precious articles are done up in small packages." Why is "Doc's small package made of "Love"? Ask him. She has specialized in the Primary group, in fact we venture to hint that her work will be so primary as to consist of only two.

ROSAMOND LUTHER

Brookville, Pa.

Intermediate Group.

Treasurer of Franklin Literay Society.  
Y. W. C. A. Cabinet.

First impression are not always lasting. To the stranger Rosamond is very dignified and demure, but at "feeds" she is a favorite hostess.

She is "A" student never seen in the halls between seven and ten. Why? Rosamond says, "Don't ask embarrassing questions."

FLORENCE MITCHELL . Clarion, Pa.

Intermediate Group.

Glee Club.  
Bancroft Literary Society.  
Dramatic Club.  
Y. W. C. A.

Her sunny disposition and charming manner have endeared her to all. She is a very brilliant conversationalist, so never fear to approach her if you are a bit bashful, for she can "keep the ball a-rollin'."

She plans to teach, but she may succeed Alma Gluck or Galli Curiel. Success to you Florence.





FIDELIS MOHNEY. . Falls Creek, Pa.

Junior High Group

Franklin Literary Society.  
Y. W. C. A.

"Fiddle" is Irish—Nuf Ced! She is a happy-go-lucky girl whose two main occupations are having a good time and studying. (placed in the order of their importance).

In appearance she is very dignified and imposing. It is said that at first sight some of the Juniors mistook her for a member of the faculty. That's right!

DOROTHY MOORE. . . Corsica, Pa.

Intermediate Group.

Bancroft Literary Society.  
Y. W. C. A.

"Dot" entered our ranks in her Senior year, and has proved in that time to be a loyal, sincere friend. Dot's avowed ejaculation, "forever more" (Moore), secretly amuses us. We wonder how long "forever more" will be. Whether long or short, we wish her the greatest success.

JULIA MOORE. . . Reynoldsville, Pa.

Junior High Group.

Bancroft Literary Society.  
Dramatic Club.  
Y. W. C. A. Cabinet.  
Sequelle Staff.

"Jewel" is conscientious, responsible, and one who takes things as they come with little grumbling. Her sincere, open-hearted, and thoughtful ways make her admired and liked by all those who know her. Wherever she goes she will have the warmest of friends.

VERA MOORE. . . . Reynoldsville, Pa.

Primary Group.

Bancroft Literary Society.  
Y. W. C. A. Cabinet

Vera is a quiet, demure little maiden, who takes life very seriously "at times". Her one ambition is to become a famous teacher. Judging from her work here, we certainly think she will have a bright future.

NELLIE McGINNIS. . . . . Salem, Pa.

Junior High Group.

Franklin Literary Society.  
Y. W. C. A.  
Assistant Editor of Equelle Staff.

Nellie is the girl with the dancing eyes. Her jolly ways and ready smile have won for her a high place among her Normal chums. Did you say she was Irish?

Nellie's ambitions run along a classical line. She is frequently heard to murmur, "amo, amas, amat". We predict for her a successful career inventing a new Latin dictionary.

GOLDA McHENRY. . . . . Clarion, Pa.

Primary Group.

Bancroft Literary Society  
Assistant Editor of Sequelle Staff  
Y. W. C. A.

If you hear a stifled giggle, you know "Mac" is around.

Golda has an unusual ability of doing well any task assigned to her. We only wish her as great success in her life work as she has had with us.



SEQUELLE 1923



MARY McKEE . . . . . Kittanning, Pa.

Intermediate Group.  
Franklin Literary Society.  
Y. W. C. A.

Beware of our Mary! 'Neath those serious looks is concealed a sense of humor that can keep you at your wits end. She simply won't let you feel pensive or downhearted. It's all right, Mary. We wish there were more people in the world like you.

ELIZABETH NEFF . . . . . Clarion, Pa.

Junior High Group.  
Franklin Literary Society.  
Orchestra.

Elizabeth is one of our serious, quiet students. Her talents are many; her cares are few. We are sure that she will succeed in anything that she attempts and our best wishes go with her

KATHERINE NEELEY . Ensworth, Pa.

Intermediate Group.  
Bancroft Literary Society.  
Y. W. C. A. Treasurer.

This tall brunette hails from the vicinity of Pittsburgh. "Katie's" sense of humor has driven the idea of homesickness from many a girl. One's first impression of her is that she is very reserved and dignified, but on the contrary we have found that her "childish prattle" is a sure cure for "lacerated feelings."



NETTIE NORRIS. . . . .Reynoldsville, Pa.

Primary Group.

Bancroft Literary Society.  
Y. W. C. A.

We consider the event of "Nett's" entrance to C. S. N. S. too important to be overlooked, for in every way she has been one of the most agreeable members of our class. When everyone is "raving", leave it to "Nett" to hold her own till the last; then make some remark which turns the crowns to laughter.

BESS O'NEIL. . . . .Strattonville, Pa.

Intermediate Group.

Bancroft Literary Society.  
Y. W. C. A.

Bess is one of our patient, faithful workers. Nevertheless, she is always ready for a friendly chat. Bess is never late to class even though she may start later than any of us, being able to cover the ground at such a rapid rate. We are sure she will have success in whatever she attempts, and our best wishes go with her.

CLAIRE PATTERSON

Brockwayville, Pa.

Junior High Group.

Vice President of Bancroft Literary Society  
Vice President Class '23.  
Sequelle Staff.

"Her grace of motion and of look, the smooth  
And swimming majesty of step and tread,  
The symmetry of form and feature, set  
The Soul afloat, even like delicious airs  
Of flute and harp."





BEULA PIFER . . . Reynoldsville, Pa.

Intermediate Group.

Franklin Literary Society  
Y. W. C. A.

This modest, unassuming Beula has been known to her classmates as "Billy". "Billy" seems to have been an especially good friend of the nurse during the year, but with all her troubles has proved an efficient student. Her ambition is to become a teacher. By the number of letters she receives, though, we rather feel she will change her profession soon.

MARY PORTER . . . Summerville, Pa.

Intermediate Group.

Bancroft Literary Society.  
Glee Club.  
Y. W. C. A.

Active in study as well as in play,  
Never a task to be laid away,  
To her we must always look for cheer,  
Herself will prove it, never fear.  
Oh! We shall miss her when we go hence,  
No one for her can recompense.

PAULINE RAINEY . . . Ansonville, Pa.

Junior High Group.

Y. W. C. A.  
Critic of Franklin Literary Society.  
Glee Club.

"Polly" cannot be judged by her last name for her famous giggle brings sunshine into every room she enters. Saltines and strawberry jam afford her amusement for leisure hours.

As a means to an end "Polly" is especially interested in science. We suggest as a climax the dental department of Pitt.

HELEN SHERMAN . . . . Clarion, Pa.

Primary Group.

Bancroft Literary Society.  
Glee Club.  
Varsity Basket Ball Team.

Helen of Troy, the fairest of Trojan women, is surpassed by our Helen, for among the beauties of our wonderful world she is one of the choicest treasures. Helen is not only good to look upon but we love her for herself. She is so talented we hardly know what to say in praise. You should see her play basket ball, for when she is on the floor, there is no hope for the other team.

ARVETTA SHIELDS. Falls Creek, Pa.

Primary Group.

Franklin Literary Society.  
Glee Club.  
Y. W. C. A.

"Bet" is the kind of a girl who can usually smile through everything. We do recall one time, however, when she lost a particular photo, which caused her smile to vanish. However, we shall forgive her that once, for we agree that he really was handsome.

VALLIE SHUMAKER

New Bethlehem, Pa.

Intermediate Group.

Secretary Bancroft Literary Society.  
Sequelle Staff.  
Y. W. C. A.  
Delegate to Eaglesmere.

Vallie left New Bethlehem last September to complete her Normal course. Since then she has distinguished herself as a good pal and a brilliant student. Her friends wonder why she never leaves her room during study hour. Ask Vallie. Her favorite saying, "you're happy tootin'" expresses Vallie's sentiments. Her greatest ambition is to become a business woman, but her friends know that her interests are settled in the medical profession.



# SEQUELLE 1923



MARTHA SMITH. Reynoldsville, Pa.

Primary Group.

Franklin Literary Society.  
Glee Club.  
Sequelle Staff.  
Y. W. C. A. Cabinet.

"Marty" is a girl we will never forget. With few cares or troubles to bother her she has a ready smile and cheery word for everyone. Her favorite saying is, "I've sworn off candy." Let that be the least of your worries, Marty, for we like you just as you are."

MARY SOWERS. . . Summerville, Pa.

Primary Group.

Bancroft Literary Society  
Glee Club.  
Y. W. C. A.

"Mary Mary quite contrary," won't apply to this little girl, who has the willingest of ways. Next to being happy, Mary's chief occupation is singing. We prophesy that third floor, Navarre, will be a dismal place next year without Mary's happy peals.

MARGARET SPACKMAN  
DuBois, Pa.

Intermediate Group.

Franklin Literary Society.  
Orchestra.  
Y. W. C. A.

"Spigotts" is a darling,  
"Spigotts" is full of fun.  
And she has a pair of eyes  
That smile on everyone.

The Class of '23 could not exist without her. She is quite studious, but never allows lessons to interfere with a good time. She is a true lover of music, having shown noteworthy talent in that respect. Here's to your success, Margaret, and always be "frank".

CAROLINE STROMQUIST  
Marienville, Pa.

Primary Group.

Bancroft Literary Society.  
Y. W. C. A. Cabinet.  
Class President '23.  
Vice President of Dramatic Club '22.

Caroline was chosen President of our class for good reasons. She knows how to do things and always gets them done in the most efficient manner possible. She knows a great deal more than most of us, but she is always ready to help anyone. Caroline is a jolly good sport. If you wish to know anything more about her, ask "Jim."

MAUDE SWEDENJHELM . . Kane, Pa.

Intermediate Group.

Franklin Literary Society.  
Y. W. C. A.

Maude is rather a mysterious person. She absolutely refuses to vouchsafe any information concerning certain exterior decorations. We sometimes wonder if she secretly practices pugilistic stunts in the privacy of her room. However, we are glad, Maude, that we have in our midst a girl who can keep a secret.

FLORENCE TAYLOR Marienville, Pa.

Primary Group.

Bancroft Literary Society.  
Dramatic Club.  
Y. W. C. A.

"Fimp" is a very charming, vivacious young lady, and so it's no wonder she receives so many mysterious-looking packages. Ask the girls in Navarre where you can always get a good piece of candy.





MONA TAYLOR. . . Marienville, Pa.

Primary Group.

Franklin Literary Society  
Y. W. C. A.

There are not enough words to express what  
we think  
About our Mona, who's as quick as a wink;  
But it causes the smiles, which are surely  
not few.

When anyone mentions the name of "Hugh,"  
She's quiet, sincere, earnest, and true,  
And in our affections she's rivaled by few.

HAROLD TRAISTER

New Bethlehem, Pa.

Junior High Group.

Pancroft Literary Society.  
President of Y. M. C. A.  
Sequelle Staff.

Yes, he surely can orate. He uses so many  
long words we have to carry a dictionary  
around with us to understand what the chief  
topic of conversation really is. We are told  
by some gossips that Traister likes the fair  
sex.

We know that a brilliant future is awaiting  
him, as superintendent of some large school  
system, or who knows but he is aiming for  
the President's chair.

KATHLEEN WILL

New Bethlehem, Pa.

Intermediate Group.

Franklin Literary Society.  
Y. W. C. A.

"Thy modesty's a candle to thy merit."

Kathleen is one of our number who does  
not make her presence felt by the noise she  
makes. She is the type of girl who will  
aspire to higher and higher aims. All suc-  
cess to you, Kathleen.

SEQUELLE 1923

HELEN WHITEHILL. . Brookville, Pa.

Junior High Group.

Bancroft Literary Society.  
Y. W. C. A.

This brown-eyed maiden came to us from Brookville High. She takes life seriously enough of the time to be mentioned as a very diligent student. We know she will succeed in whatever she undertakes to do.



ROBERT BOYER. . Reynoldsville, Pa.

Junior High Group

Bancroft Literary Society.  
Football Team.  
Vice President of Y. M. C. A.

Bob is a new comer to our class, having joined us last September. However, Bob was not long among us before we began to sit up and take notice because

"Bob can dance, Bob can sing;  
Fact is, Bob can do most anything"



CARMEN YOUNG. . . . . Clarion, Pa.

Intermediate Group.

Franklin Literary Society  
Y. W. C. A.

"Wait until tomorrow to do what you can put off today, for by so doing you may be able to avoid doing it." This is the motto of Carmen, who is now sailing through C. S. N. S., but soon expects to come to "Port".



# SEQUELLE 1923



ARTHUR DICKEY . Reynoldsville, Pa.

Junior High Group

Marshal of Franklin Literary Society  
Treasurer of Y. M. C. A.

Dickey's wavy raven locks are envied by many of the girls. He has been pronounced by one of the young ladies of Navarre as a "dapper young chap."

Arthur has distinguished himself as a brilliant student, and his work in the training school spells success as an educational worker. His popularity shows he will not travel life's rocky path alone very long.

MINNIE MORTON . . . East Brady, Pa.

Intermediate Group

Franklin Literary Society  
Y. W. C. A.  
Glee Club.

Minnie's bewitching dimples capture your friendship at first sight. A perfect lady, besides being a good sport, Minnie is one of our most popular members. Aside from being a school "marm", her chief occupation is writing letters.

PAUL McNEIL . . . . . Sigel, Pa.

Junior High Group.

Bancroft Literary Society.  
Y. M. C. A.

It was not till this last semester that we really got acquainted with this C. S. N. S. "Knight of the Ford," for Paul used to commute daily. Since he took up his abode in the dorm, we have found out that Paul is the kind to "get there," even though the Ford was a bit stubborn at times.



ALICE NELSON . . . Brockwayville, Pa.

Junior High Group.

Critic of Franklin Literary Society.  
Y. W. C. A.

Our blue-eyed Alice is one of our most industrious members, but her cares never keep her from enjoying a good time. If wishing to locate squeaky boards in second floor Navarre, inquire of Alice.

We are sure that success will come in whatever Alice undertakes. Our heartiest wishes go with her.

KATHERINE SHEFFER . . . Van, Pa.

Intermediate Group.

Franklin Literary Society.  
Y. W. C. A.

"Ruth, Ruth, where did you put my gym shoes? It's 7:30 now and that game begins at 8:00. I've gotta be there."

Immediately following this exclamation, we hear a wild scramble, a giggle, a yell and other noises, and once more we know that our Katy is preparing to lead the Senior Basket ball team to victory. Not only on the basket ball floor does Katy reign supreme, but in her classes also.

"In arguing too, Katy owns her skill.  
For e'en tho' vanquished she can argue still".

LOUISE MORRISON . . . . . Kane, Pa.

Intermediate Group

Bancroft Literary Society  
Y. W. C. A.

Meek, mild, and modest—yes, that's "Weesa". She came to Clarion after she had gathered up all the knowledge around Kane. She is always busy, and believes in improving her time even if it is by reading some romantic story. The story is more interesting if the hero's name is Barry.



# SEQUELLE 1923



ESTHER DREW . . . . . Bradford, Pa.

Primary Group.

Bancroft Literary Society  
Y. W. C. A. Cabinet.  
Eaglesmere Delegate  
Dramatic Club.

We just can't imagine Esther a failure in anything she might attempt. She has tried her hand at all sorts of tasks with success always following her. We know her best as a true friend; but we can see great things ahead of her.

GLADYS HANBY . . . . . Knox, Pa.

Junior High Group.

Y. W. C. A. Cabinet.  
Eaglesmere Delegate  
Bancroft Literary Society

One sunny day in spring Gladys stepped forth on the campus of C. S. N. S. and began her educational career. She was not here many hours before people began to sit up and take notice, for not only is Gladys a jolly good natured girl, but she is also studious and bright. Her motto seems to be:

"Work when you work,  
Play when you play,  
That's the way  
To be happy and gay."

GRACE KOPP . . . . . DuBois, Pa.

Junior High Group

Franklin Literary Society

Grace hasn't been with us our whole two years, taking some of her course in the summer; but we are mighty glad she decided to come back in time to graduate with us. Capable and efficient, Grace has already insured success for herself

Infantry



Kennedy



Christa Spier



Margaret Swanson



John Smith



Fidellia Mohney

Senior



Elizabeth

Maria B. Lewis



Elizabeth

Maria Campbell



## SEQUELLE 1923

### CLASS SONG '23.

(Tune—Lonesome, That's All.)

It seems but a day  
Since we came to stay  
'Neath banners of purple and gold;  
To pledge deep devotion of loyal-ty  
To the school that is known of old.  
As we dreamed of success in your halls of fame,  
Striving to ever uphold thy name,  
For thee, Alma Mater,  
We'll e'er retain  
The praises of '23.

With hearts of cheer  
And with love sincere  
We pledge the maroon and white.  
To God and our Nation  
We'll e'er be true,  
In our struggle for the right.  
Our hearts are united with friendly ties,  
The symbol of love that sanctifies.  
For thee, Alma Mater,  
Will e'er arise  
The praises of '23.

As from they portals to untried ways,  
We go with joys and tears,  
Old mem'ries shall wake of C. S. N. S.  
And help fill the coming years.  
And deep in our hearts there shall ever burn,  
An image so dear that for thee we'll yearn,  
To thee, Alma Mater,  
Will e'er return  
The praises of '23.

Rachel Anthony.  
Margaret Spackman.  
Golda McHenry.



JUNIORS—'23

# SEQUELLE 1923

## JUNIOR CLASS OFFICERS

MARY ELLEN BOYERSMITH .....	President
MABEL COLLMAN.....	Vice President
DOROTHY GREEN.....	Secretary and Treasurer

## CLASS COLORS.

Brown and Gold

## CLASS FLOWER.

Browneyed Susan.

## CLASS MOTTO.

"Through Difficulties, to the Stars."

## CLASS ROLL

ANDERSON, GERALDINE .....	"An open-hearted maiden."
ANDERSON, RUTH .....	"Quite talk she liketh best."
ANTHONY, HELEN .....	"O lassie, thy talents are innumerable."
ARNOLD, PHYLLIS.....	"She gets her lessons, Without one sigh, Nothing too hard for her to try."
BEERS, NANNIE .....	"Calm and quiet and ever content."
BOYERSMITH, MARY ELLEN.....	"Small but industrious."
BROWN, ALDINE .....	"Her hair is red, Her eyes are brown, You never catch her with a frown."
CAMPBELL, MARTHA .....	"Her friends—they are many."
CHADMAN, HERBERT .....	"Faint heart ne'er won fair lady."
CLARK, EDNA .....	"Good humor is always a success."
CLYDE, ARTHUR .....	"A still tongue maketh a wise head."
COLLMAN, MABEL .....	"And to her friends she's always true."
CONRAD, LORNA .....	"Giggles—nuf-ced."
COOPER, MARY .....	"She never dares to write as funny as she can."
DUSCH, CORA .....	"A new student whom everyone likes."
EBERSOLE, BELLE .....	"An all around good sport she is."
FEIT, GRACE .....	"The faithful pal of this gal—her giggle."
FOGGAN, LUCILLE .....	"One laugh is worth a hundred groans."
GAUL, EDITH .....	"Calm and quiet and e'er content—Her hours are never idly spent."
GAUL, FANNY .....	"I'll be merry, I'll be free, I'll be sad for nobody."
GLUNT, ALTA .....	"Quiet, good-natured, very kind."

## SEQUELLE 1923

- GLUNT, MABEL ..... "Her voice soft, gentle and low, An excellent thing  
in women."
- GREEN, DOROTHY ..... "Thus shines a good maid in a naughty world."
- GROSCH, EDNA ..... "She's very studious, and very sweet. As nice a  
girl as you'd want to meet."
- HARTMAN, FLORENCE ..... "Queen rose of the rose-bud garden of girls."
- HEPLER, ALICE ..... "Alice plays basket-ball. When she's on the floor,  
We're always sure to get the score."
- HOLDEN, LOUISE ..... "I find the earth not gay but rosy."
- HOLLOPETER, MARY ..... "Cheerfulness is her chief virtue."
- HOUGH, MARIE ..... "A heart as soft, a heart as kind, As in the whole  
world thou can'st find."
- HOWARD, CECELIA ..... "A maiden fair, a maiden jolly, opposed to all  
that's melancholy."
- HUGGLER, IVA ..... "She's very quiet, but awfully nice—you can't  
deny it."
- JACOBSON, ALICE ..... "Very quiet and demure, She knows her lessons—  
That's one thing sure."
- JOHNSON, EDITH ..... "'Silence gives consent."
- JOHNSTON, SARAH ..... "We wonder how one small head can carry all she  
knows."
- JONES, MILDRED ..... "Very gentle, very sweet, With a disposition that's  
hard to beat."
- KINLEY, GILBERTA ..... "To her friends she's always true."
- KLINE, MABELLE ..... "Mabelle is merry, bright, and cheery, Always  
full of pep; In the field of basket-ball, She  
has surely won a "rep."
- KNIGHT, HELEN ..... "We should in everything do our best."
- KNIGHT, WILMA ..... "She's busy as a bee."
- LACKEY, EVELYN ..... "The one who does things, and does them well."
- LOGUE, HAZEL ..... "Calm and deliberate."
- LYNN, MARGARET ..... "Lynn, who plays the violin."
- MASTER, EARL ..... "The essence of wit and humor."
- MILLS, RUSSELL ..... "We all like the color of your hair."
- MAWHINNEY, DOROTHY ..... "A pal, pure and simple."
- MORRISON, MARY ..... "She's a good man for Louise."
- MOYAR, JANE ..... "Always our leading man in plays."
- MURRAY, MARGARET ..... "What I say, I stick by."
- McCLAIN, HELEN ..... "The jolliest friend in all the bunch."
- McLAUGHLIN, MARIE ..... "Her eyes, her hair, No other compare."
- OLSON, MINNIE ..... "So unaffected, so complete a mind."
- PETERSON, FRANCES ..... "She's very witty and wise."



## SEQUELLE 1923

PICKENS, SARA RACHEL	"Short in stature, but long in common sense."
RUNNINGER, MABEL	"Silence is golden."
SECHRIST, RUTH	"Pleasantly plump and sweet."
SHAFFER, KATHLEEN	"A friend of many."
SHEA, IRENE	"She can't get rid of it—her blush."
SWARTZ, ALICE	"Good things are done up in small packages."
WERNER, MINNIE	"Her eyes speak for her."
WILLMAN, LUCILLE	"Smooth water runs deep."
WINGARD, MURIEL	"She's always the same happy girl."
WINSLOW, GRETCHEN	"Funny's her middle name."
WYANT, LOUISE	"She's a splendid Miss Carpenter."
YAINY, GERALDINE	"Devoted to all that's good."
O'NEILL, FRANCES	"Always speaks the kind word."
DODSON, MAXINE	"She's talented in Music."
SWEENEY, JAMES	"A politician, pure and simple."
BURDICK, CATHERINE	"It's the song ye sing and the smile ye wear."



# SEQUELLE 1923



Picnicing

Dunk

So Shy?

Dressed Up



Moore



Double Chins

# Organizations

CHRISTIAN  
ATHLETIC  
MUSICAL  
LITERARY  
DRAMATIC



Y. W. C. A. CABINET

# SEQUELLE 1923

## Y. W. C. A.

President .....	MYRTLE HEASLEY
Vice President.....	RUTH BARTLETT
Secretary.....	FLORENCE HORNER
Treasurer.....	KATHERINE NEELY

## CHAIRMEN OF COMMITTEES.

Devotional.....	ESTHER DREW
Music .....	KATHRYN KENNEDY
Bible Study .....	GLADYS HANBY
Missionary .....	VERA MOORE
U. F. R.....	JULIA MOORE
SOCIAL SERVICE.....	CAROLINE STROMQUIST
SOCIAL .....	MARTHA CAMPBELL
Publicity .....	MARTHA SMITH

This has been one of the most successful years of the Y. W. C. A. at Clarion Normal. The students' spiritual life has been greatly benefited by the Wednesday evening meetings, and the Sunday evening Vesper Services.

The Social Service Committee has been very active in caring for the poor and visiting the sick.

The Mission Study Class was under the supervision of Miss Labrida Hanby. The book studied was entitled "Our South American Neighbors".

The Bible Study Class was under the direction of Miss Elfreda Graham. In her lectures she took up the four Gospels. These lectures were very interesting and every one that attended them received rich instruction.

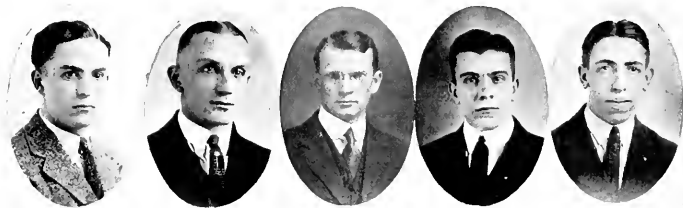
Three delegates were sent to Eagles Mere Conference last year. The delegates returned with new suggestions that have been useful in our Y. W. C. A. services this year.

The members of the organization have proved themselves to be a very active group. Their motto is:

"There is no quality of greater service to mankind than the heart that goes out in sympathy and good cheer."

—R. W. B.

# SEQUELLE 1923



## Y. M. C. A.

### OFFICERS

President.....	HAROLD W. TRAISTER
Vice President.....	ROBERT O. BOYER
Secretary.....	WALTER DOVERSPIKE
Treasurer .....	ARTHUR DICKEY
Faculty Adviser .....	Mr. WILSON

As with other Christian Associations, the Y. M. C. A. of this school was organized to promote true Christian living. Through various activities of this organization this purpose is being fulfilled.

At the Wednesday evening meetings topics which may help us live better lives are discussed. We try to make these meetings as informal as possible, so that each member may feel free to give his views. On Sunday evening the two Christian Associations hold a joint Vesper service, at which time some student, member of the faculty, or outside speaker gives an interesting as well as beneficial talk.

Although our "Y" is small as to membership, the benefit derived is great. Our hope is that our successors may carry on the good work to an even more marked degree.

—H.W.T.

# SEQUELLE 1923

## DRAMATIC CLUB

1922	1923
JAMES BEATTY . . . . . President . . . . .	JAMES BEATTY
CAROLINE STROMQUIST . Vice President . . . . .	KENNETH HESS
FLORENCE TAYLOR . . . . . Secretary . . . . .	ORVETTA BONER
JULIA MOORE . . . . . Treasurer . . . . .	RUTH BARTLETT
MISS CARPENTER . . . . Dramatic Leader . . . . .	MISS CARPENTER
. . . . . Parliamentary Critic . . . . .	ESTHER DREW
. . . . . Assistant Critic . . . . .	BELLE EBERSOLE

The year of 1920 at Clarion State Normal School was noted among other things for the organizing of the Dramatic Club, one of the school's live-wire organizations.

Last fall with the initiation of eight Juniors, the Club's membership was raised to twenty-five. Meetings are held once a week for the purpose of studying the history of the drama, stimulating interest in the best drama, and studying how to produce amateur plays.

"Enter the Hero", which was enacted at the Hallowe'en party, showed some of the fine talent, of which the club is composed. Although few plays have been given so far this year, big things are expected for the near future.  
—J. M.

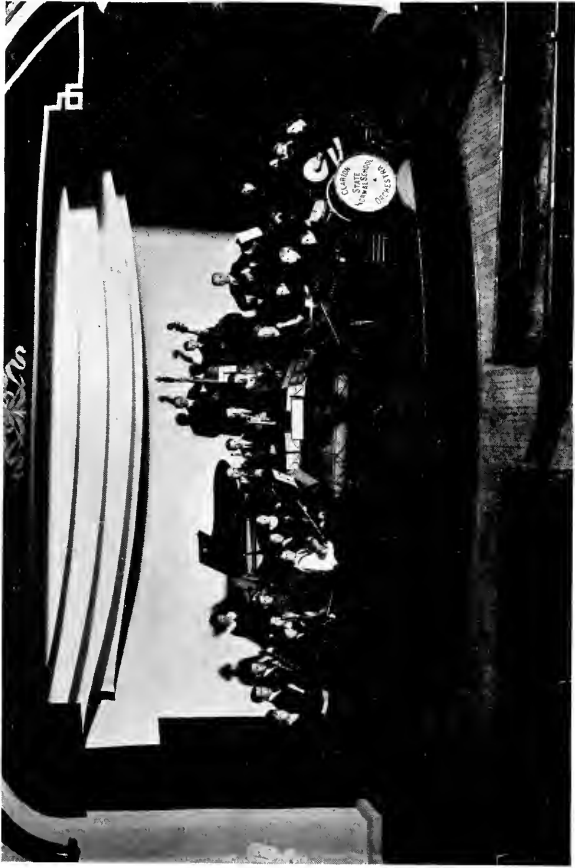
## HONORARY MEMBERS

Lida M. Carpenter, Claire P. Kaufman, Mary F. Smalley, Wilbur N. Miles.

## ACTIVE MEMBERS.

Alice C. Lemon, James Beatty, Florence Taylor, Helena Dovenspike, Kenneth Hess, Helen McClain, Margaret Murray, Esther Drew, Ruth Bartlett, Julia Moore, Florence Mitchell, Aldine Brown, Mable Collman, Mary Ellen Boyersmith, Virginia Collner, Mary Horton, Caroline Stromquist, Orvetta Boner, Belle Ebersole, Sara Rachel Pickens, Dorothy Green.

SEQUELLE 1923



Orchestra



## MUSIC

Music has recently become a very vital part of our Normal Curriculum. The department has developed through the efforts of the capable instructors, Professor Paul E. Beck and Miss Grace Lowashe.

The Public School has keenly felt the need of music. This need has been reached by the student teachers under the supervision of Professor Paul E. Beck.

## ORCHESTRA.

Every Tuesday evening, upon entering the chapel, you will find an organization known as the Clarion Normal Orchestra, busily engaged in earnest practice under the direction of its capable and experienced leader, Professor Paul E. Beck. This organization not only furnishes the music for chapel, but also aids the dramatic entertainers in presenting their dramas at different intervals during the school year.

The orchestra training develops efficiency and accuracy, and shows the talent found in the school.

—M. Spackman, '23.



**BANCROFT LITERARY SOCIETY.**

President .....	F. H. HETRICK
Vice President .....	CLAIRE PATTERSON
Secretary-Treasurer .....	VALLIE SCHUMAKER
Marshal .....	EARL MCGILL
Critic .....	GLADYS AGENS

The Bancroft Literary Society was organized December 22, 1923, under the direction of Miss Mary Smalley. This society meets every two weeks. Excellent programs are given on music and literature.

On February 16, 1923 the Bancroft gave a special program in the Chapel at which time the Franklins were invited.

One of the educational features of the program was a hike to the glass Plant, March 17, under the leadership of the President, who showed and explained to the members the use of the different machines in motion. Each one was given a half-pint bottle.

Many other interesting programs have been planned for the remainder of the year.

—H. W.



### FRANKLIN LITERARY SOCIETY

President .....	HELEN DUNKLE
Vice President .....	FLORENCE HORNER
Secretary .....	KATHRYN KENNEDY
Treasurer .....	ROSEMOND LUTHER
Marshal .....	ARTHUR DICKEY
Critic .....	PAULINE RAINEY
Critic .....	ALICE NELSON

The two Literary Societies were organized in 1905. The work of these societies was carried on each year until 1919, and for three years from 1919 to 1923 it was discontinued, but 1923 has seen the two societies reorganized and in working order.

The Franklin Society has renewed her vigor and has furnished entertainment and amusement to its members.

Meetings are held every Friday evening from seven to eight o'clock. The programs which are given at each meeting consist of readings, debates, recitations, orations, impromptu speeches, music and news items.

There is great rivalry between the Bancroft and Franklin societies in composing programs and in winning Basket Ball games played by the members of each society.

—F. H.



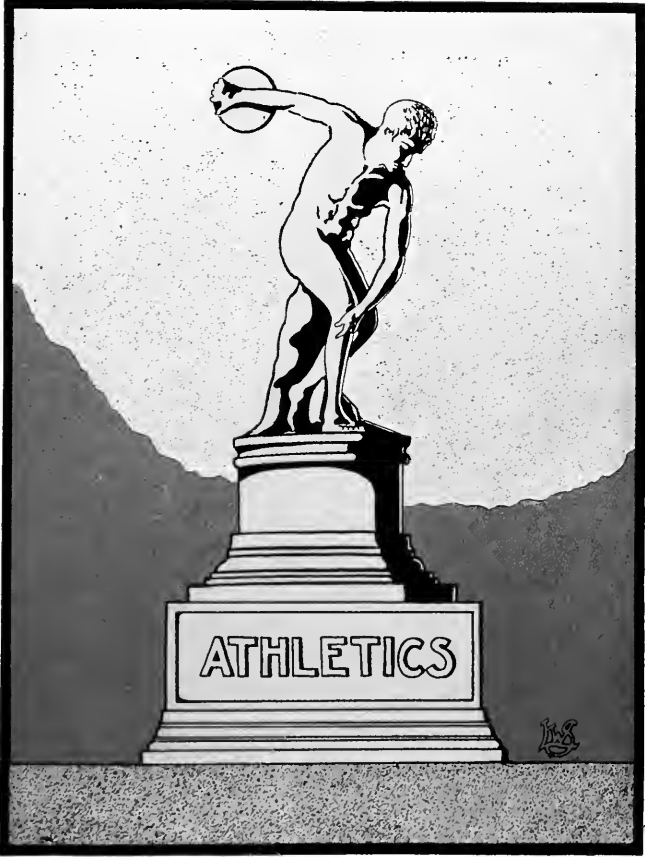
GLEE CLUB.

President ..... DOROTHY GREEN  
Secretary ..... MARY ELLEN BOYERSMITH

Another musical organization which is called to our attention is the Girls' Glee Club. This club has made rapid progress, showing marked ability. It has appeared many times before the student body in the chapel exercises, vesper services and concerts.

Not only the Clarion people enjoy the work of this organization, but other nearby towns, where the club has visited, have become acquainted with the talent of C. S. N. S.

—M Spackman.





# SEQUELLE 1923

## GIRLS' BASKET BALL.

A girls' team was organized shortly after Thanksgiving and began work immediately in order to have a winning team. Miss Winifred Peter, Director of Physical Education, coached the team and through her efforts such good team work was developed that the girls were able to win seven out of nine games.

Margaret Frampton and Louise Fenstamaker made the forward positions, the former scoring brilliantly throughout the season. Louise Fenstamaker was forced to leave the team in the middle of the season on account of illness. Her position was filled by Alice Hepler, who did creditable work. Wilma Arner, captain and side-center, was the fastest player on the Clarion team. Mabelle Kline, center, out-jumped her opponent in nearly every game and did splendid floor work. Florence Horner and Ethel Crooks, the two guards, showed speed and accuracy. Helen Sherman and Isabel Jones did very good substitute work.

### Lineup.

MARGARET FRAMPTON . . . . .	Left Forward
LOUISE FENSTAMAKER . . . . .	Right Forward
ALICE HEPLER . . . . .	Right Forward
MAYBELLE KLINE . . . . .	Center
WILMA ARNER, Captain . . . . .	Side Center
ETHEL CROOKS . . . . .	Right Guard
FLORENCE HORNER . . . . .	Left Guard

### The Schedule:

	Opponents	Clarion
December 16, California at California . . . . .	16	11
January 13, Edinboro at Clarion . . . . .	18	22
January 19, Indiana at Indiana . . . . .	15	19
January 23, Slippery Rock at Clarion . . . . .	16	19
February 22, Kane at Clarion . . . . .	26	27
February 10, California at Clarion . . . . .	17	31
February 24, Indiana at Clarion . . . . .	26	16
March 3, Kittanning at Clarion . . . . .	16	19
March 9, Oil City at Clarion . . . . .	8	20
Total . . . . .	158	184

# SEQUELLE 1923

Individual Scoring:	Fields	Fouls
FRAMPTON .....	31	30
FENSTAMAKER .....	20	20
HEPLER .....	16	0

Boys' Basket Ball Schedule and Results:	Opponents Clarion	
December 15, Clarion Legion .....	25	26
December 19, Reynoldsville .....	41	18
January 6, Slippery Rock .....	38	18
January 13, Indiana .....	34	18
January 20, California .....	30	28
January 26, California .....	32	29
February 2, Indiana .....	21	22
February 9, Slippery Rock .....	51	18

## TENNIS.

We all know by actual participation in this game that tennis is the game of all sports. Tennis is not a game that requires a score of players as in other games, but can be played with at least two players. It furnishes recreation not only for those with physical ability, but for the weakest as well.

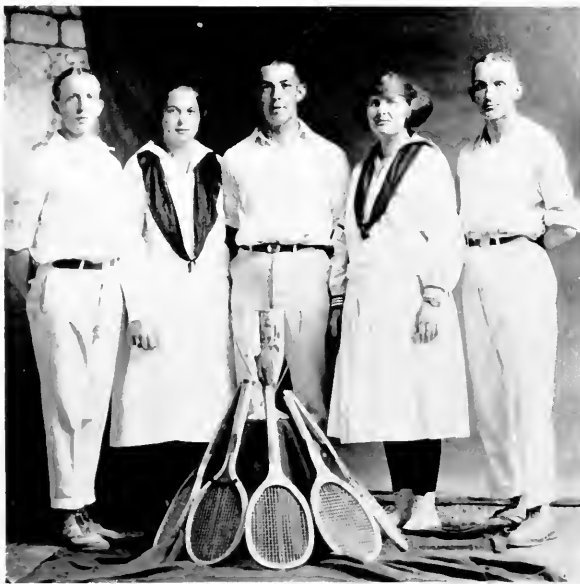
The annual tennis tournament which is held by those Normal Schools representing Northwestern Pennsylvania scholastics, was played at California Normal during the school year of 1922. The success of this tournament cannot be overestimated, due to the fine coaching of Mr. Reed and Miss Brown.

Early on May 25th, the Clarion players joyously boarded the "flyer" at Clarion for their trip to California. Upon reaching California, the team was greeted by the entire school. From the very beginning Clarion seemed to have a good chance "to bring home the bacon," and by winning all semi-finals and only losing one final, the loving cup was awarded to Clarion.

This year the tournament will be held on our home courts. We do not know who our players will be, but we do hope they will again win laurels for our Alma Mater.

—J. W. D. '23





Line-up of Players in the Tournament

Girls' Singles

Frampton

Girls' Doubles

Frampton

Newton

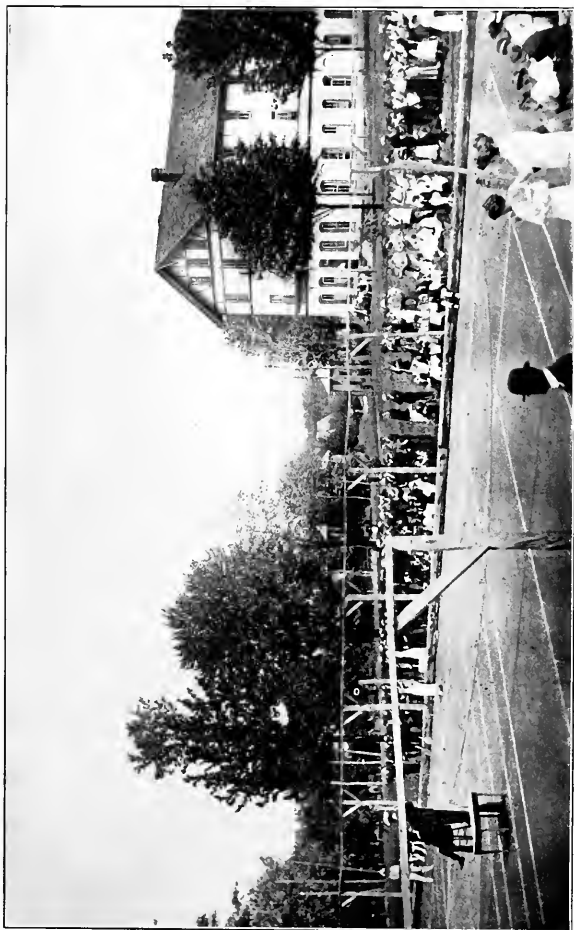
Boys' Singles

Doverspike

Boys' Doubles

Boggs

Scheid



*The Tennis Courts*



# SEQUELLE 1923

## CHUCKLES

Master (Upon his first day in Mr. Wilson's class)—"Gee, but that prof's talkative."

Chadman—"Oh, well, 'to air is human.'"

Caroline—"Do you have a hard role in the new play?"

Jim Beatty—"I much prefer soft roles. I'm a newly-wed in this one."

Dickey (rapping impatiently on the counter in a confectionery store)—  
"Who waits on the nuts?"

### Heard in Nail's Restaurant.

Student—"Is this chocolate pie you gave me?"

Waiter—"Can't you tell what kind it is by the taste?"

Student—"It didn't have any taste."

Waiter—"Then what's the difference what kind it is?"

Blauser—"Ever hear the one about the candle?"

Boyer—"Don't tell it, I'm off that light humor."

"They conquer who believe they can,"

Oh, Virgil, you're mistaken,

I tried that on a maid one time,

My belief was sadly shaken.

### Echoes From the Boys' Dorm.

Late to bed,

And early to rise,

Keeps the others

From wearing my ties.

Post at Seminary—"Why are you stamping your foot?"

Rachel—"So you'll have to take me with you."

Second Semester Teachers—"I wonder why you girls got such low grades in teaching?"

First Semester Teacher—"Everything is marked down after Christmas."

Who's that fellow with the long hair?"

"He is a Yale man."

"Oh! I've often heard of those Yale locks."

## SEQUELLE 1923

### Clear Science

Dad—"What is an icicle?"

Nettie—"A stiff piece of water."

"What three authors do you name when you burn your fingers?" "Dunno." "Dickens, Howitt, Burns!"

### Heard in Music Appreciation Class.

Mr. Beck—"Have you ever seen 'Carmen?'"

K. Neely—"Yes, they went on a strike down home the other week."

Mr. Wilkinson—"Did any of the problems in today's lesson bother you?"

H. McClain—"No, I didn't try any."

Mr. Kriner—"Walter, will you please name the Presidents of the United States?"

"Dovey"—"Sorry, sir, but their parents beat me to it."

Evelyn Lackey—"Tough luck, Dot, there's a cylinder missing"

Dot—"I'll get out and help you look for it."

Traister—"I spent last evening with the one I love best in the world."

Ditty—"Didn't you get tired of being alone?"

He—"Going to have dinner any place tonight?"

She (eagerly)—"Why, no, not that I know of"

He—"Gee, you'll be awfully hungry in the morning."

Mr. Wilson—"Doctor, my hair is coming out. Won't you give me something to keep it in?"

Doctor—"Sure, here's a paper bag."

Describing a fair bride the editor wrote, "Her dainty feet were encased in shoes that might have been taken for fairy boots."

It appeared in print—"Her dainty feet were encased in shoes that might have been taken for ferry boats."

Mr. Green, angrily in Chapel—"Not a student on the campus will be given liberties this afternoon!"

Voice—"Give me liberty or give me death."

Mr. Green—"Who said that?"

Voice—"Patrick Henry."

**Conveniences of Clarion Normal.**

1. Students who get hungry at night may take a roll in bed.
2. Students, upon arriving at Clarion, leave your money at the bursar's office—he will get it any way.
3. Any one wishing an evening wrap, leave your lights on after "lights out."
4. Anyone getting thirsty at night will find springs in the bed.
5. When you find the room too warm, open the window and see the fire escape.
6. If fond of athletics, lift up the mattress and see the bed spring.
7. Matrimonial advantages—pillow case.
8. To visit the zoo—look in the mirror.
9. If you wish to study after lights out, take a feather from your pillow—that is light enough for anyone.
10. If you want the nurse, "ring" the towel.
11. Persons desiring to practice base ball will find a pitcher on the table.
12. Students wishing their baggage transferred will find a Porter on the third floor.
13. When rapped on, blame the noise on the tennis "racket".
14. Persons desiring to smoke, use a pitch pipe.
15. Persons wishing to go driving will find hammer and nails in the office.

**Things to be Kept in the Dark.**

1. Lights after ten.
2. Midnight feeds.
3. Ghost Parades.
4. "Uke" Serenades.
5. Clarion Silverware.
6. Skipping parties.
7. Electric appliances; toasters, curlers, etc.
8. Girl's ears.
9. All secrets.
10. Young men's pictures.
11. Love letters.
12. Cards.
13. Down town engagements.



*The Conservatory*

DORMITORY ETIQUETTE.

(Note—If these rules are carefully carried out, you will undoubtedly win the affections of your teachers).

1. Only seniors shall have midnight feeds.
2. Should you room in the court, call to your friends frequently.
3. In dancing in the social room, be sure to hold your partner tightly as Someone might be rude enough to pass between you.
4. Observe study hour in one of the following ways:
  - (a)—Preparing for a feed.
  - (b)—Laboring energetically, so as not to have to do a half hour's study.
  - (c)—Visiting your friends with whom you discuss all C. S. N. S. cases, hits, and scandals.
5. Upon entering a room when occupants are elsewhere, please observe the "Rough House Process". Snatch the bed clothes and spread daintily over the floor, gently upset all chairs, place all ornaments on the floor, but do not leave a card. Such compliments are returned and woe be to him who is discovered.
6. Visitors will kindly make as much noise as possible as we like the faculty to call often.
7. Always keep you money in left hand corner of your dresser drawer when going out, behind the cold cream jar, as some of your friends may have an urgent need for it while you are out.
8. Do not attend classes regularly, as the faculty welcome all contributions with open arms.
9. Always swear as much as possible, as we like to increase our vocabulary.
10. Be sociable with your teachers.
11. Always wrestle on the bed as it is good for the springs.
12. Do not sweep your rooms more than once a semester, as it wears out the brooms.
13. Carry a compact to meals, church, classes, chapel, shopping, parties, dances, midnight feeds, and to bed.
14. Always run and scream in the halls, as it keeps your friends on the alert.
15. Play your "ukes" during study hour, as you have nothing else to do then.
16. Students on third floor front, be a little more hilarious in order to cheer the patients in the infirmary.

—Katherine Neely, '23.

—Fidelis Mohney, '23.

SEQUELLE 1923



*The Library*



### DINING ROOM ETIQUETTE.

1. Put both elbows on the table, never one at a time.
2. Never leave your spoon in the cup; be polite and ask it to be seated.
3. If you can not reach what you want, walk around and get it. Never be so rude as to ask your neighbor to pass it.
4. Seniors—Do not be so rude as to push in the dining room ahead of the Juniors. Consider your dignity and go in the faculty door.
5. It is always well to eat peas from a knife, as it furnishes amusement for the rest of the table.
6. Always talk loudly in the dining room, as those at the opposite end of the room may be interested in your conversation.
7. Laugh as much and as boisterously as possible, as mirth is an aid to digestion.
8. To show the waiters your co-operative spirit, always stack your dishes.
9. In order to make an impression on the faculty, always talk shop at the table.
10. When entering the dining room, do not hesitate to upset your friends, as in so doing you may lose your place at the table.
11. In order to keep alert between courses, always play with your silverware.
12. If you are musically inclined, do not hesitate to display your talents when eating soup.
13. Exercise great care in conveying food from the plate to the mouth, as nothing looks more out of place than bean soup on a black velvet suit.
14. Always share your napkin with your neighbors.

—Katherine Neely, '23.

—Fidelis Mohny, '23.

SEQUELLE 1923





SEQUELLE 1923

SONG OF THE SENIORS.

Dedicated to the Student Teachers of 1923.  
(With apologies to Henry W. Longfellow.)

Let me tell in mournful numbers  
Normal is an empty dream.  
Take this warning, unbelievers,  
Things are not just as they seem.  
School is real! School is earnest!  
And the grades are not its goal.  
But to learn, to cram, to study  
Is the rule of each poor soul.  
Not enjoyment, but submission  
Is our destined end and way,  
And to learn; but each tomorrow  
Finds us dumber than today.  
Art is long; and gym is longer  
And our heads though stout and strong,  
Critic teachers still are stronger  
We'll, alas, not linger long.  
Lives of others still remind us,  
Students, who have gone before,  
Among lesson plans you'll find us  
When you rap upon our door.  
Lesson plans, perhaps our teachers  
Craftily will ponder o'er  
Wondering, perhaps, if maybe  
She may add one red mark more.  
Let us then be up and teaching  
For to idle is a sin:  
Have the children all reciting  
For dear "Cemmy" may come in.

R. Luther, '23.

# SEQUELLE 1923

## ON AND ABOUT THE CAMPUS

Navarre Hall,  
Clarion, Pa.

Dear Mary Ann:

You say you would like to hear what's been happening at C. S. N. S. this year, so I'll go away back to September and tell you all about it.

Hark! The old bell rang again on September 2, 1922, proclaiming that once more Clarion had thrown open her doors to welcome us for the new year. The entire day of registration, cars, busses and trains loaded with thin girls, fat girls, tall girls, short girls, and girls of almost every type, came rolling into Clarion. A goodly number of boys likewise entered the halls of fame. This inrush did not cease till late in the evening, due to the fact that the old B. & O. was so overloaded, that it decided to take an eight hour rest within twenty-eight miles of Clarion. Just as the retiring bell proclaimed that the first day of the new term had passed, about fifteen weary lassies made their appearance at the office with their doleful tale of the B. & O.

After a rather quiet week of getting settled down to classes and arranging programs, the first social event of the season took place. This was the annual "Y" reception. A very pleasant evening was spent in playing games and getting acquainted.

Early in the term the organizing of the Senior and Junior classes took place.

Due respect to the Seniors was shown by the Juniors during "Senior Week." Although Messrs McGill and Mills did object, on the basis that the color scheme was too perfect, they joined their fellow-classmen in the following forms of respect, which were proclaimed from the chapel platform:

"Whereas, this being unanimously acclaimed "Senior Week" at this institution, the following rules will be observed by the Juniors:

Any violation of these rules may endanger the transgressor's liberty and pursuit of happiness.

I. Juniors shall not wear any of their class colors during "Senior Week."

II. Any Junior, when addressing a Senior shall use the proper title. Mr. or Miss, with the Senior's surname only.

III. Every Junior shall bow to the Senior colors when entering the Administration Building.

IV. Any Junior or Juniors, when in the company of a Senior or Seniors, upon entrance to any building or room, will let the Senior or Seniors enter first.

V. All Juniors, when walking in the company of a Senior or Seniors, shall walk at the left of said Seniors.

VI. No Juniors shall use the walk from the Administration Building to the mail box.

The following daily rules were prescribed:

**Tuesday:**

The President of the Junior Class shall now have the honor of decorating the pulpit with the Senior colors, under the instruction of all the Seniors while the Juniors stand at attention.

**Wednesday:**

All Junior girls shall plait the hair down the back and put on a large hair bow.

All Junior boys shall wear their collars backwards and roll one trouser leg to the height of at least eight inches.

**Thursday:**

All Juniors shall wear green caps donated to them by the Seniors, all day except at dinner. All Juniors shall wear different colored hose.

**Friday:**

Junior Coffin .....	Funeral services in Chapel
Chief mourners .....	No one
Grave diggers .....	Seniors
Pall bearers .....	Seniors

Executive Committee:

P. Rainey.  
F. H. Hetrick.  
R. E. Anthony.  
M. O. Frampton.

## SEQUELLE 1923

One fine day shortly before Christmas vacation, the Seniors were greatly surprised and delighted to receive an invitation to the Junior Christmas party. At the scheduled time we gathered in the social room, where we were royally entertained and even visited by Santa Claus, who left a lovely present for each of us. The remainder of the evening was spent in games, dancing, and we wouldn't dare forget to mention the delicious "eats", as a final "top off."

Time certainly was flying, for before we knew it, our Christmas vacation was over and it was time to take up our new duties for the second semester. At this time we were glad to welcome a number of new "knowledge seekers" to our halls of learning.

The Normal School was not the only one benefited by the opening of the new semester, as the Training School could now boast a new staff of student teachers. Those who joyously laid aside lesson plans for the remainder of the term, could sympathetically watch the progress of their worthy successors.

During the month of February, one might have heard such expressions as: "What's your gown to be like?" "Who's your man for the Prom?" "Save me a dance," or "Did your permit come?" Everybody was keyed up to the highest pitch. Surely, this could not be our stately Navarre! Yes, to be sure, the first Friday in March had arrived, bringing with it the excitement and pleasure of the annual Junior Prom. The music began at eight o'clock. At once the grand march formed. After several turns around the ball room, the orchestra struck up a lively fox trot and we found ourselves in the midst of the Junior Prom. At one o'clock many tired and footsore girls crawled wearily into bed, but before going to sleep, one might have heard the ecstatic sigh, "Wasn't that the BEST Prom?"

After the Juniors so royally entertained the Seniors, the latter decided to express their appreciation in the form of a St. Patrick's day party. This was held Saturday night, March 17. All present enjoyed themselves to the utmost.

In regard to entertainments furnished for us this year, I might say, one of the best Lyceum Courses ever presented in the Normal Chapel was given this year. It was greatly enjoyed by everyone. The entertainment was not the only feature of this course, for the girls enjoyed the early morning "bill peddling" excursions. Not only were they seeking pleasure in their morning trips, but were earnestly striving for the ten per cent. prize which Mr. Green offered for the sale of the tickets. This money was used as a filling for the Y. W. C. A. treasury.

Additional entertainment was afforded us by the Dramatic Club, after weeks of hard work, and an excellent display of dramatic genius was given in the clever one-act plays which were presented on March 15 and 22.

And of course, my dear, I must tell you about some improvements at Clarion. The old familiar cry, "Is the mail delivered?" has become extinct now. "Why?" you say. Just look into Seminary Hall and you'll find the answer. We have brand new, combination mail boxes. This is one of the many greatly appreciated improvements of C. S. N. S. during this term.

Oh, yes, and some very busy folks who were interested in spreading S. C. N. S. news far and wide, got their heads together and made arrangements to publish a monthly school paper. The name of this herald is "THE CLARION CALL." There's no excuse, now, for the Alumni to be in want of news of their dear old Alma Mater.

I have told you the main events of our last year at dear old C. S. N. S. I am sorry I cannot stop to relate the many "feeds, taffy pulls, fudge parties, stunts," etc., that we especially enjoyed.

If there are any more pointers you would like regarding Clarion life, just call on your

Loving friends at

C. S. N. S.

—Rachel E. Anthony, '23.

# SEQUELLE 1923

## DRAMATIC CLUB NOTES.

On the evening of March the fifteenth and the twenty-second two very interesting programs in the form of one-act plays were presented by members of the Dramatic Club. Each series of plays displayed a variety of roles, giving opportunity to show the fine talent of those composing the Club. The activities of the Dramatic Club are directed by Miss Carpenter. We feel great credit is due her for the successful year the Club has enjoyed.

### Program, March 15th.

#### THREE DEAR FRIENDS:

Mildred . . . . .	DOROTHY GREEN
Peggy . . . . .	BELLE EBERSOLE
Eva . . . . .	CAROLINE STROMQUIST
Mildred's Maid . . . . .	SARA PICKENS
Arthur Chisholm . . . . .	KENNETH HESS

Scene: Drawing-room in Mildred's home  
Time: 3:45 P. M. Mildred's day at home

#### THE FINGER OF GOD:

Strickland . . . . .	JAMES BEATTY
Benson . . . . .	KENNETH HESS
A Girl . . . . .	MABEL COLLMAN

Scene: Living-room of Strickland's apartment  
Time: 10:30 P. M. a bitterly cold winter night

#### MISS OLIVER'S DOLLARS:

Mrs. DeForest, supposedly rich . . . . .	MRS. CLAIRE KAUFMAN
Ellen DeForest, her marriageable daughter . . . . .	RUTH BARTLETT
Madge DeForest, an "enfant terrible" . . . . .	HELENA DOVENSPIKE
Mrs. Kirk, society leader . . . . .	ESTHER DREW
Miss Oliver, her eccentric millionaire aunt . . . . .	FLORENCE TAYLOR
Mrs. Beebe, a New England farmer's wife . . . . .	HELEN McCLAIN
Mary Beebe, her daughter, an actress . . . . .	SARA PICKENS
Mrs. Peppins, the parson's wife . . . . .	MARY HORTON

Scene: The "sitting-room" of Mrs. Beebe's farmhouse  
Time: Summer

# SEQUELLE 1923

Program, March 22d.

## THE CONFLICT

Emelie .....ALDINE BROWN  
Bess .....MARY SMALLEY  
Bob .....O. BONER  
Mother .....ALICE LEMON

Scene: An old-fashioned farmhouse

Time: Late afternoon of Spring day

## NEVERTHELESS

A Girl .....JULIA MOORE  
A Boy .....M. E. BOYERSMITH  
A Burglar .....M. MURRAY

Scene: A room upstairs

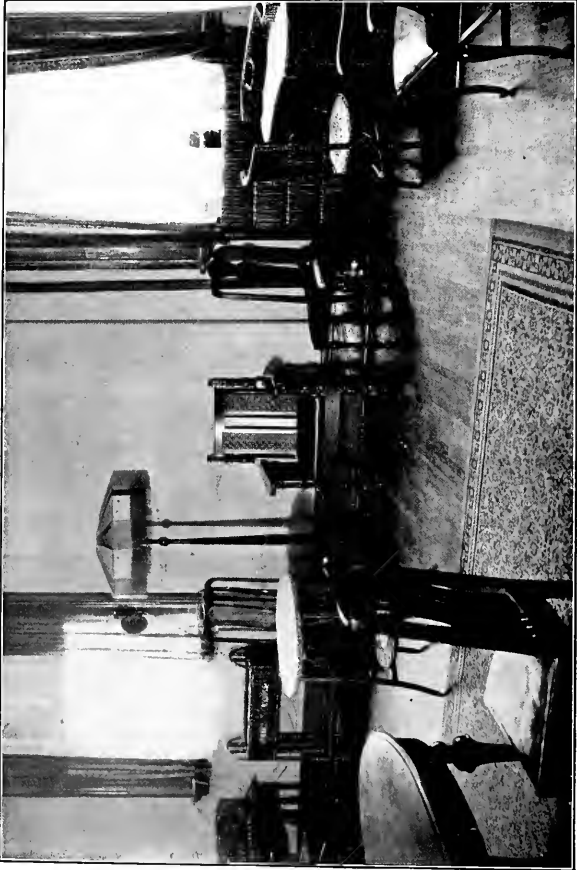
Time: Last night—or tonight

## THE MANDARIN COAT

John Mendon, a business man .....JAMES BEATTY  
Dorothy Mendon, his wife.....FLORENCE MITCHELL  
Robert Lennox, bachelor friend of Dorothy's.....KENNETH HESS  
Edith Chester, friend of Dorothy's .....VIRGINIA COLLNER  
Katy, maid at the Mendon's .....SARA PICKENS

Scene: Drawing-room in Mendon's home

SEQUELLE 1923



*The Dramatic Club*



A NOVEL ACROSTIC

Fonner  
MiddleswArth  
WelCh  
StUtzman  
WiLson  
PeTer  
MoodY

LeMon  
HeplEr  
Graham  
Beck  
CarpentEr  
PeRkins  
SowaSh

StroheCker  
ConneLl  
NAir  
McIntiRe  
KrIner  
WilkinsOn  
BeNtz

—K. SHEFFER '23

### FROM A BIRD'S VIEWPOINT.

Up in the sky, among the clouds, there flew a Lark. He was flying toward Western Pennsylvania, and as he flew his bright eye was fixed upon the scene beneath him. He sang joyously, for to him the day was matchlessly bright and fair. And as he flew farther westward, the landscape below grew more beautiful.

But suddenly as he was flying over a very delightful place, he heard clear, loud music, which echoed over hill and dale. Whence came such music? "I must investigate," thought he, and flew lower and lower. But when he neared the earth, directly over the place from which he thought the music issued, his attention was distracted by the sight of many figures running hither and thither over a large greensward. They were apparently in great haste as they were not wearing coats or hats, and the air had a wintry chill concealed beneath its sunniness.

"I must inquire into this," said the Lark, in deep curiosity. But even as he watched, the music ceased and the effect upon the hasty ones below was amazing. With loud shrieks of dismay they redoubled their efforts and succeeded in reaching the porch of a large red brick building. Then they tried to squeeze into one narrow door-way, four abreast, pell-mell, and this was so plainly impossible that the Lark laughed to himself.

He was now perched upon the limb of one of the young trees lining the path from a large buff-colored brick building to the red one. From this vantage point he could see better the meaning of these strange proceedings. Then he decided that the music must have something to do with the haste. "They must be trying to keep an appointment," soliloquized the Lark, pityingly. "In Larkland we do not have such things as appointments to worry us."

But as he watched the steadily increasing number of people thronging to the red building, he was impressed by the fact that they were all girls. Girls, big and little, girls with bobbed hair and without, but all with arms full of books.

Finally, as the last one scurried into the mysterious big building, the Lark heard voices from a neighboring tree. Two sparrows were twittering in bird language about this curious spectacle that had just passed. "I will ask them

what it means, I must know," decided the Lark. So to the next tree he flew and very courteously introduced himself. The sparrows at once began talking about the very thing that was troubling the Lark.

"Wasn't that a ridiculous spectacle?" laughed Miss Sparrow. "What did it mean?" asked the Lark. "Pardon my ignorance, but I do not live near here and am very curious to know what happened.

"Oh, that was just the Normal students going to an eight o'clock class," replied Mr. Sparrow loftily. "They do that every morning—except Sunday," he amended hastily.

"Well, what do you know about that?" ejaculated the Lark. "But what was the music?" he inquired further. "Why did they run faster when it stopped?" "Oh, that was the Normal bell," explained Miss Sparrow. "It calls the student to classes."

Now everything was clear. "Well, I guess I had better be going now that my curiosity is satisfied," thought the Lark. So he bade a courteous farewell to his new acquaintances and flew away from the place which had such queer things as beautiful music calling to eight o'clock classes, to Larkland, where one sang all day.

And the sparrows watched him as he spread his wings and flew to tell of his strange experience.

—Mabel Runniger, '24.

SEQUELLE 1923



*The Chapel*

THE PURPLE AND GOLD

Have you seen our banners waving  
 On the field or in the hall,  
 Where the students all assemble,  
 As they hear the old bell call?  
 These bright colors, gayly floating,  
 Speak alike to young and old  
 Of the joys of Clarion Normal  
 And the purple and the gold

Have you heard our students singing,  
 As they march along their way,  
 Whether duty sternly calls them  
 Or some pleasure points the way?  
 All together proudly singing,  
 They proclaim in accents bold  
 Their great praise of Clarion Normal  
 And the purple and the gold.

Have you heard our students cheering  
 As they meet from day to day;  
 Either seated in the chapel  
 Or engaged in contest gay?  
 All these voices loudly cheering,  
 Have to everybody told  
 A great love of Clarion Normal  
 And the purple and the gold.

If you've seen our banners waving,  
 If you've hear our singing, too,  
 And the voices of our cheering  
 Have brought any thought to you;  
 Then we know you've thrilled with pleasure  
 And you've felt a pride untold,  
 For the glory of our normal  
 And the purple and the gold.

—Bertha V. Nair.  
 —Nancy E. Canan.

SEQUELLE 1923



*Navarre Hall*



## AUTOGRAPHS

Our Names Are

Class of

We Hail From



## AUTOGRAPHS

Our Names Are

Class of

We Hail From





SEQUELLE 1925

AUTOGRAPHS

Our Names Are

Class of

We Hail From

*Our advertisers are successful merchants and men of affairs who will be found in the front ranks of all progressive movements. We owe much to them for the success of the "Sequelle."*

*Let them know, by your patronage, that we like to be in good company.*

*F. H. HETRICK,  
Business Manager.*

# A & R ICE CREAM

Made in DuBois

---

*SOLD EVERYWHERE*

---

*Special Orders Given Careful Attention*

---

Atherton & Rumberger, Inc.  
MANUFACTURERS

DUBOIS, - - - PENNA.

DUBOIS,  
PA.

**BROADBENT-MARTIN CO.**

DUBOIS,  
PA.

## *Women's and Misses' Apparel Specialists*

No matter what your particular requirement may be, it may be found here, meeting in every detail your particular style, size and color idea. We catalogue briefly a few of our school girl and misses' specialties:

Middy Blouses, Bloomers, Sports Coats, 3-piece Knicker Suits, Knickerbockers, Graduation Dresses, Class Room Dresses, Peter Pan Blouses, Sports Sweaters, Sports Hose and Socks, Campus Hats, Athletic Underwear, Rain Coats, Vanity Sets, Dress Accessories, Athletic Corsets, Girdles, Campus Capes, Bloomers, Camp and Outing Togs.

### *EFFICIENT MAIL AND TELEPHONE ORDER SERVICE*

Just a general idea of your style and size requirements is all we need. An expert shopper will select for your inspection sufficient assortments to assure you a pleasing choice.

**WE PAY  
THE  
POSTMAN**

# *There's Many a Slip*

*twix the cup and the lip*

**YOU**

*Can do as you please*

**IF**

*You are properly Insured*

---

NOW IS THE TIME TO SEE

**J. A. JOHNSTONE & BROTHER**

*Real Estate and General Insurance*

Room 40 Levi Bldg.

Phone 3057-X

OIL CITY, PA.

Vallie: Would you like to wear a rented bathing suit?

Clara: It depends on where the rent was.

## THOMPSON'S CONFECTIONERY

*SPECIALISTS IN DAINTY  
CONFECTIONS*

*We have the best candy in town*

*"SHRAFFES"*

*"NORRIS"*

*"JOHNSTON"*

*"MRS. LANE'S TRULY  
HOME MADE"*

*Do we Agree?*

*C. C. Thompson, Prop.*

## KUHN'S BAKERY

---

*Wholesale and Retail*

---

**M. R. Kuhns, Prop.**

Main St.

CLARION, PA.

# DUBOIS BUSINESS COLLEGE

*The Place to Take a Summer  
Course in Business Training*

*Excellent Teaching  
Experienced Faculty  
Modern Equipment*

OPEN THROUGHOUT THE YEAR

PRICES  
RIGHT

ENROLL  
EARLY

COMPLIMENTS  
HOTEL LOGAN  
DUBOIS, PA.

Kissing a girl is like opening a bottle of olives—if you get one the rest come easy.

# Smith Ice Cream Co.

DUBOIS, PENNSYLVANIA

BELL 207

SUMMERVILLE 110

When in DuBois call at our factory and let us  
show you that we make the best ICE CREAM  
that money can buy.

ALL ORDERS GIVEN PROMPT ATTENTION

“SMITHS”---The Cream of all Ice Cream

# Somers, Fidler & Todd Co.

*Machinery and Supplies*

*Complete Stocks*

*Prompt Delivery*

*PITTSBURGH, P.A.*

We wonder if the guy who paints those Holeproof Hosiery advertisements from life gets paid besides.

*PRINTERS*  
&  
*ENGRAVERS*

---

*THE AMERICAN  
SCHOOL SUPPLY CO.*

*1110 Sansom Street  
PHILADELPHIA, PENNA.*

The  
Redpath-Brockway  
Lyceum Bureau

---

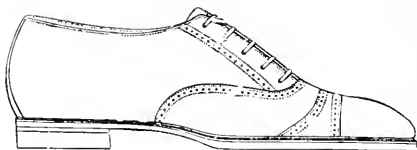
*GEO. S. BOYD, Mgr.*

*613 Wabash Bldg.  
PITTSBURGH, PENNA.*

The Clarion Dry  
Goods Company

—  
*Everything in  
Dry Goods.*  
—

Most Complete Lines of  
Ladies' Ready-to-Wear  
Suits, Capes and Skirts.



*“Walk-Overs”*

*Yes Sir! They Have  
the looks.*

*Your Walk-Overs hold their  
shape because they are made  
of the best leather.*

*OUR SHOES—The Sequel of  
over 25 years experience.*

**MAHEY'S SHOE STORE**

*Shoes That Satisfy*

“Oh, I can't ever be a pretty girl,” wailed little Martha Smith, “One of my knees is crooked.”

**CLARENDON  
STATE  
BANK**



**CLARENDON, PA.**

**Day by Day  
In Every Way  
This Store's  
Values are  
Getting Better  
and Better.**

**WEIN BROTHERS**

Clarion's Big Dept. Store

CLARION, PA.



CAPITAL \$135,000

# CITIZENS TRUST COMPANY

CLARION, PA.

---

JOHN GIBSON, President

C. W. AMSLER, Vice President

C. C. MOORE, Asst. Treasurer

W. A. GRAHAM, Treasurer

H. M. HUFNAGEL, Asst. Treasurer

---

*Largest Banking Institution  
in Clarion County*

---

Resources Banking Dept. over	\$2,600,000.00
Resources Trust Dept. over -	<u>\$2,100,000.00</u>
Total over - - -	\$4,700,000.00

---

*Young Enough to Be Progressive  
Old Enough to Be Conservative*

## Citizens Trust Company

CLARION, PA.

# CRUIKSHANK BROS. CO.

PITTSBURGH, PA.

Preservers of Nature's Lusciousness

*Preserves*                      *Tomato Ketchup*  
*Jellies*                         *Pickles*  
*Fruit Butters*                *Mustard*

Be Sure It's "CRUBO" Brand --- Ask Your Grocer For It

Traister is said to be the tightest man in school. He won't even take a shower because they soak you too much.

McNutt & Hays  
Dry Goods Co.  
CLARION, PA.

THE BEST PLACE IN CLARION  
TO BUY

*Dry Goods*

*Notions*

*Ladies Ready-to-Wear*

McNutt & Hays  
Dry Goods Co.  
CLARION, PA.

Arners Boot  
Shop

—  
*For Stylish  
Serviceable Shoes*

—  
*Cantilever-arch  
Shoe Agency*

—  
CLARION, - - PENN'A

# FIRST NATIONAL BANK *of* CLARION

FOUNDED 1865

*Oldest Bank in Clarion County*

---

CAPITAL - - - -	\$100,000.00
SURPLUS - - - -	\$100,000.00
TOTAL RESOURCES OVER \$2,100,000.00	

---

*Member Federal Reserve Bank*

---

*AN OLD BANK WITH MODERN METHODS  
YOUR ACCOUNT IS APPRECIATED  
FOUR PER CENT PAID ON SAVINGS*

---

## *Officers*

S. WIN WILSON, President      A. B. COLLNER, Cashier  
M. M. KAUFMAN, Vice Pres.    H. F. STRATTAN, Asst. Cashier  
BARR RIMER, Teller

# ***BUILD NOW***

Three Million Feet Rough and Dressed Lumber in Stock

Modern Electric Planing Mill

EVERYTHING IN BUILDING MATERIALS

## ***Own Your Home***

Rent Receipts Have No Value

LET US SUBMIT PLANS AND PRICES

### ***C. E. Andrews Lumber Co.***

Established 1856

Advice to next year senior girls—"Grin and bare it."

*Use Swearingen's Ink  
and Paste for your  
school use*

*Convenient sizes of the  
best quality*

*Ask Your Dealer*

***J. C.  
Swearingen  
Ink Co.***

*222 Wick St.  
Pittsburgh, Pennsylvania*

## **E. W. Hatch & Sons' Company**

(Incorporated)

MANUFACTURERS OF  
BROOMS and WHISKS

FINE CARPET BROOMS  
A SPECIALTY

UNION CITY, - - - PENN'A

# MILES & COMPANY

INCORPORATED

*Staple and Fancy  
Groceries*

*Fruits and Produce*



DUBOIS, - - - - PENNSYLVANIA

# BROOKVILLE ICE CREAM & DAIRY CO.

*Manufacturers of*

**BROOKVILLE SUPERIOR ICE CREAM**

*The Cream of Creams*

**GREEN MEADOW CREAMERY BUTTER**

*Bread's Best Friend*

**CRYSTAL ICE**

*A Great Necessity*

---

*P. S. We have changed our name from the "Brookville Ice Co." to the "Brookville Ice Cream and Dairy Co."*

Sam (outside, looking in)—"Look heah, Niggah, Is yo in fo life?"  
Rastus (inside looking out)—"Not me, I ain't, jus from now on."

**THE  
TAYLOR BROS.  
COMPANY**

---

RUBBER STAMPS

SEALS

STENCILS

CHECKS

---

706 W. Superior Ave.  
CLEVELAND, OHIO

*Paramount*

*Salad Dressing*

*Sweet Piccalette*

*Chila Sauce*

---

ASK YOUR GROCER

---

**HIRSCH BROS. &  
COMPANY**

PITTSBURGH, - PA.

**IN BROOKVILLE--**

*THINK OF*

**Brookville Title  
& Trust Company**

**IN TERMS OF COMPLETE  
FINANCIAL AND TRUST  
SERVICE.**

**Commercial Savings, Trust  
and Safe Deposit Department**

**Assets  
3½ Million Dollars**

It's not the pull you pull, or the bull you bull; but the sweat you sweat that marks  
your mark in the world.

**Union Iron  
Works**

ERIE, PA.



MANUFACTURERS OF  
**STEEL BOILERS**

ESTABLISHED 1847

**JOSEPH  
WOODWELL  
COMPANY**

Hardware

Automobile  
Accessories

WOOD ST. and SECOND AVE.  
PITTSBURGH  
Court 1060

# Geo. S. Daughtery & Co.

NEW YORK

PITTSBURGH

CHICAGO

---

*Specialists in Number Ten  
Quality Fruits and Vegetables*

---

FACTORIES WILSON, NEW YORK

STOREHOUSES THROUGHOUT THE COUNTRY

---

An intelligent representative will call with samples  
on receipt of your request

---

## *BRANDS:*

*DeLuxe*

*Alhambra*

*Lake Coma*

---

We will mail our booklet "About Quality Canned  
Goods" if you will simply write for it



# Desks, Tables, Chairs

GLOBE-WRENICKE COMPANY

Sectional Bookcases,  
Filing Cabinets and Safes,  
Rugs and Carpets

## Baker Office Furniture Co.

813 Liberty Avenue  
Pittsburgh, Pa.

Dallas: "I want to be a shiek. What is the best thing to do?"  
Arvetta: "Get a little sand."



Clothing for Men and Boys.  
The Largest Line of Men's and Boys'  
Furnishings in Clarion.

We Always Carry a Large and Complete Line of Trunks, Bags and Suitcases and Laundry Cases.

**ALEXANDER & MOORE, Clarion, Pa.**

We Go To

## DIEFFENBACHER'S NEWSROOM

For Candies, Stationery,  
Daily Papers, Magazines,  
Post Cards, Crepe Paper,  
Favors and Novelties.

Agents for Fine Pointer  
Pencils and Nurmally's  
Fine Candies.

Opposite Citizen's Trust Co.  
Clarion, Pa.

**Dr. Clyde C. Snyder**

*SURGEON DENTIST*

X-RAY

Citizen's Trust Building, Clarion, Pa.

**DRS. WILHELM**

**SURGEON DENTISTS**

Established for 50 Years.

CLARION, PENN'A.

"I'll bite, what is it?" said the mosquito to his mate, as they landed on the wax model.

## TEACHERS WANTED

For Schools and Colleges Every Day  
of the Year

**National Teachers Agency**

(INCORPORATED)

D. H. Cook, Gen. Mgr.

Home Office, Philadelphia, Pa.

Branch Offices, Pittsburgh, Pa., In-  
dianapolis, Ind., Syracuse, N. Y.,  
Northampton, Mass.

No charge to employers. No  
charge to candidates till elected. Po-  
sitions waiting. Correspondence con-  
fidential. We can place Clarion  
graduates.



*Play*

is no longer associated solely with child-  
hood pastimes. It is recognized as being  
just as necessary for the boy of sixty as  
for his grandchild—and Spalding's can  
equip them both equally well.

The Spalding trade mark on an athletic  
implement insures satisfaction and ser-  
vice.

*A. G. Spalding & Bros.*

608 Wood St., Pittsburgh and All Large  
Cities.

If a lady acquaintance of yours kept ding-donging would you call her a dumb bell?

**DR. G. W. MEGAHAN**

*Dental Surgeon*

*Bell Telephone 213-R-4*

513 Main St. CLARION, PA.

**LADIES  
HAT SHOP**

*Ella Corbett*

CLARION, - PENN'A

F. L. CROOKS & CO.



STETSON HATS \$7; OTHERS \$3 TO \$5  
Hart, Schallner & Marx Suits \$35 to \$60  
Other Good Makes \$20 to \$32 50  
F. L. CROOKS & CO.  
CLARION, PA

## Clarion Fruit Company

CHERICO BROS. Proprietors

Weaver House, Main St.

Bell Phone 187  
Leatherwood Phone 37

CLARION, P.A.

*Fresh Fruits and  
Vegetables In Season*

"Listen, Abe, you don't want to marry that girl, why everybody in town kisses her."  
"Vel, the town ain't so beeg."

## GROVE CITY COLLEGE

GROVE CITY, PA.

A Strong Christian, Coeducational Col-  
lege.

Its flexible four terms plan, its varied  
courses, its strong faculty, its beautiful  
campus, its complete equipment including  
a modern gymnasium and magnificent  
dormitories for men and women, its mod-  
erate charges, and its wholesome spirit  
appeal to ambitious young men and  
women.

For information and application blanks  
write President Weir C. Ketter, or Reg-  
istrar Harold C. White, Grove City, Pa.

Every Day In Every Way, Our  
Photographs are Getting  
Better and Better.

We Have Modern Equipment in  
The New Studio

Now located opposed Clarion Hotel

If it is anything Photographic try

## CASTERLINE'S STUDIO

CLARION, PA.



QUAYLE & SON, INC.  
ALBANY, N. Y.

STEEL ENGRAVERS TO  
AMERICAN UNIVERSITIES

GRADUATION INVITATIONS  
CLASS JEWELRY  
PERSONAL CARDS

IT IS A MARK OF DISTINCTION  
TO USE MERCHANDISE  
MARKED QUAYLE

SAMPLES OF WEDDING STATIONERY  
UPON REQUEST

WORKER STYLE: CORRECT FORMS - MODERATE COST

Miss Bentz—"The picture of the horse is good but where is the wagon?"  
Helena—"Oh, the horse will draw that."

Buy your Travelers Guaranteed Low-cost Life Insurance Policy early.

You will benefit in three distinct ways:

- (1) You will get your insurance at a much lower rate than if you wait.
- (2) You will insure yourself an income in case of permanent and total disability—a misfortune which may happen at any time.
- (3) You will save a considerable sum of money for your own use later on, or for the use of your family, which you otherwise would not save.

Protect yourself and your family: save money—buy your life insurance early.

**M. M. & LOUIS KAUFMAN**  
INSURANCE AND REAL ESTATE

Clarion, Pennsylvania

Established January 1, 1894.

Ask for  
**WILSON'S  
CERTIFIED  
BRAND**

A Money Back  
Guarantee if not  
Satisfied. . . .

# *OUR SERVICE DEPARTMENT*

---

Consumers of natural gas may be divided into three groups:

1. Those who use gas properly and efficiently.
2. Those who waste gas, but are able to get the results they desire in spite of this waste.
3. Those who waste gas and do not get satisfactory service.

OUR SERVICE DEPARTMENT congratulates those in group 1, if there be any such; desires to assist those in group 2 to get proper service with smaller bills; and is especially anxious to remedy the inadequate service of those in group 3.

None of our consumers should be classified in group 3, and it is the aim of OUR SERVICE DEPARTMENT to accomplish this result. Furthermore, OUR SERVICE DEPARTMENT looks forward to a shifting of consumers from group 2 to group 1, as the realization of the importance of the efficient use of gas is more widely felt.

If any consumer feels that his service is in any way unsatisfactory, he is urged to bring his troubles to OUR SERVICE DEPARTMENT where they will receive prompt and courteous attention.

*United Natural  
Gas Company*

# John A. Magee Company

Clarion, Penna.

Wholesalers and Retailers of Hardward, Mine, Mill and Oil Well Supplies,  
Wagons, Farm Machinery and Implements. Complete  
Line of Builders' Supplies.



## *Our Specialties*

Gainaday Electric Washing and Ironing Machines, Sweeper-Vac, Electric  
Sweepers, Kelly Duplex Feed Mills.

Voice (From dark parlor)—"My your nose is cold."  
Small brother—"Gee Pop, I'll bet Rover is in the parlor."

## Clarion Coal & Lumber Co.

Opposite Fair Grounds  
CLARION, PA.

Best place to buy  
all kinds of build-  
ing material. :- ::  
Fair treatment to all.  
Give us a call. :::

AMOS DOLBY, Mgr.

## A. G. Corbett Drug Co.

A good store filled with  
reliable merchandise  
where you will find it  
is a pleasure to shop.

DRUGS  
STATIONERY  
BOOKS

A complete department  
of school supplies.

532 Main St., Clarion, Pa.

# Do You Know—

—that West Penn Power Co. serves 61,687 consumers with Electric Light and Power?

---

—that this large public servant maintains 1400 miles of power lines to carry electric current to these users?

---

—that West Penn owns or controls its own coal mines, so that users of its Electric Service are assured of more dependable service?



## West Penn Power Co.

and **Affiliated Companies**

Serving the Public in Pennsylvania, West Virginia,  
Ohio and Maryland.

# Clarion State Normal School

Owned and Operated by the Commonwealth of Pennsylvania.

**Professional Courses** for the preparation of teachers are offered leading to

1. Normal School Certificate.
2. Standard Certificate.
3. Increased Scope of Present Certificate.
4. Issue and Renewal of Partial Certificate.

**Two Year Course** for teaching in the elementary schools, Kindergarten—  
Primary Curriculum, Intermediate Curriculum, Rural School Curriculum.

**Three Year Courses** for teaching in Junior High Schools.

**Special Courses** in Music, Art., Home Economics, Manual Training, etc.

**Extension Courses** for Teachers in Service.

*Tuition is Free. Reasonable Rates For Board and Lodging.*

For further information, address The Principal.

"You are concealing something from me," hissed the villain.  
"Certainly I am," replied the leading lady, "I ain't no Salome."

## PENNANTS BANNERS PILLOWS

Add dignity, color and spirit to your school work by the use of Felt Pennants, Banners and Emblems. No order too small to receive our attention.

Catalogue Free.

**Standard Pennant Co.**  
Big Run, Pa.

SCHOOL JEWELRY

WATCHES

DAVID A. KAUFMAN  
  
JEWELER  
CLARION, PA.

FOUNTAIN PENS

PENCILS



# Ford

*Lincoln*

*Fordson*

CARS TRUCKS TRACTORS

GENUINE FORD PARTS

ACCESSORIES

Ford products are low in price, economical in service  
and always dependable.

Common sense and dollars and cents reasoning has  
caused millions to purchase Ford products.

## CLARION MOTOR CO.

Clarion, Pa.

Rastus—"Sam, what would you do if you got a letter from de Ku Kluk Klan."  
Sam—"I'de read it on de train."

*Ray Printing Company, 17 Madison Street, Clarion, Penna.*

# RAY

*Quantity Producers of the Highest Class of Direct Advertising Printing*

## Printing Company

*Specializing in Fine Color Work and Process Printing of All Descriptions*

## Campbell's Drug Store

*Kodaks and  
Kodak Supplies*

Whitman's Chocolates  
Victrolas and Records  
Soda Water and Sundaes

The best in  
Drugs and Medicines

THE REXAL STORE

# PERFECTION ICE CREAM CO.

Both Phones

Clarion, Pa.

## INDIVIDUAL AND FANCY MOLDS BRICK ICE CREAM

Individual orders of any size packed in sanitary containers.

Telephone or mail your order and it will receive  
prompt attention.

Mfgrs. of HYGIENIC ICE and The Perfection of Ice Cream

Not the unlucky streak but the yellow streak is to be feared.

## The Loomis House

*IIAL. B. PORT, Prop.*

*"The Home of Good Eats"*

*Clarion, Pennsylvania*

*On the Lakes-to-Sea Highway*

## *Moore's Means More*

*Moore's for  
Dry Goods and  
Groceries*

*QUALITY GUARANTEED*

*More at Moore's*

H. H. PORTERFIELD, President  
WM. LOGAN FOX, Vice President  
LEWIS C. COLLNER, Vice President

FRANK L. HARVEY, Secretary  
M. R. MORGAN, Treasurer

## Foxburg Bank & Trust Co.

FOXBURG, PENNSYLVANIA

Capital - - - - - \$125,000.00

Surplus - - - - - \$ 35,000.00

### DIRECTORS

H. H. PORTERFIELD	M. R. MORGAN
WM. LOGAN FOX	E. O. JONES
LEWIS C. COLLNER	S. F. ASMSLER
FRANK L. HARVEY	J. E. HUGUS
A. W. NEELY	

*Successor to The Foxburg Bank. The same policy of Service, Courtesy to those of small as well as large means, and "Safety First" will be pursued. Your patronage is solicited.*

Mrs. Hetrick's favorite song—"He's the Shiek of Arable, the guy that married me."

## Dietz & Mooney Hardware Co.

---

EVERYTHING  
IN HARDWARE

---

Clarion, - - Pennsylvania

## *It Will Cost You Less To Own A Buick*

---

CLARION  
BUICK CO.

---

625 Main Street

CLARION, - - PENN'A

# Class of 1923

We wish to thank you for the patronage  
you have shown us during your course at  
Clarion Normal.

*“Remember if its Photographic we do it”*

---

## BURTON STUDIO

618 Main Street

CLARION,            .            .            .            .            PENNSYLVANIA

## The Home of CHEVROLET

Touring Car  
Runabout  
Coupe  
Sedan  
Chassis  
Truck

Genuine Ford Parts

L. A. LEATHERS CO.

400 Main St.            CLARION, PA.

## MILLINERY

Up to the minute  
styles the year around

*Hair Goods*

J. G. NEAR

402 Main St.

CLARION,            .            PENNA.

# STATE NORMAL SCHOOL STUDENTS

We'll Take The Bank To Your Door

---

A great many people who seldom see this bank use it with ease and profit.

Our primary object in creating a Banking by Mail Service was to enable our friends all over the country to get a profit on their idle money.

If you too will mail your surplus funds, for deposit in an interest bearing account, you'll have an investment free from any speculative feature, that will pay you a liberal rate of interest.

Whenever you're in town we want you to use this bank, not merely for banking purposes, but as a convenient place to rest and meet your friends.

---

## FIRST NATIONAL BANK

NEW BETHLEHEM, PA.

4 Per Cent Interest Paid On Savings

D. A. HENDERSON  
BROOKVILLE, PA.

D r y   G o o d s

*Ladies Ready-to-Wear Coats, Suits, Dresses*

WE SPECIALIZE IN LADIES READY-TO-WEAR GARMENTS

*The Store Where the Well Dressed Women Buy*

Prof: "Miss Kennedy, can you tell us what this passage is?"  
Kathryn (absently thinking of the Sequelle)—"Oh, yes, that goes in the jokes column."

Hotel  
Dimeling

Clearfield, Pa.

Under New  
Management

Refurnished  
Redecorated

House of Comfort  
Service and Courtesy

Personal Mgt., T. J. GARRY

Call at

JOE'S

*When hungry for*

*Doughnuts*

*Cakes*

*Candy and*

*Ice Cream*

*Reymers'* CANDIES  
PITTSBURGH

*Have Never Been Surpassed*

---

The smaller packages such as "By Heck", "Cream Carmel Almond Bar", "Butter Cream Patties", etc., are on sale at the school. The larger packages, "R. V. B.", "FRUIT & NUT", "VARIETY", "MILK", etc. may be secured from Local Dealers. :- :- :-

READING is to the mind what exercise is to the body. As by the one health is preserved, strengthened, and invigorated; by the other virtue, (which is the health of the mind) is kept alive, cherished and confirmed.—Sir R. Steele.

**The Baker &  
Taylor Co.**

Wholesale Dealers in the Books of  
All Publishers

354 Fourth Ave., NEW YORK at Twenty-Sixth Street

*"Say It With  
Flowers"*

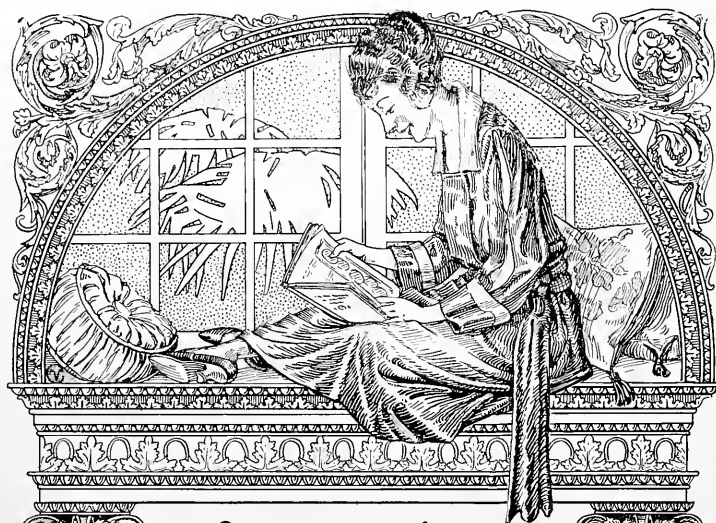


**C. W. ESPY & SONS**

Y. M. C. A. Building  
Brookville, Pa.

Bell 31-R

Summerville 79



*Engravings*

*in this book*

*by*

*The Canton Engraving  
& Electrotype Company*

*Canton, Ohio*





# PRINTING

*Bookbinding*

*Loose Leaf Devices*

*Ruling*



We manufacture record keeping devices for office, manufacturing plants and all kinds of business, oil and gas forms, catalogues, bulletins, embossing and engraving. Consultation invited; estimates furnished.



ELECTROTYPERS

ENGRAVERS

**DERRICK PUBLISHING CO.**

OIL CITY, PA.

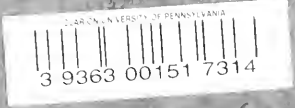
Bell Phone 9

Pet. Phone 222

*Publishers of*

The Daily Derrick, The Weekly Derrick, and the  
Oil City, Franklin and Venango County Directory

DERRICK PUBLISHING COMPANY  
PRINTERS  
OIL CITY, PENNSYLVANIA



Spec. Col.  
of  
1017  
.C3F  
1923

LIBRARY  
CLARION STATE COLLEGE  
CLARION, PA.

