

Spec. Col

qLD

1017

.C88

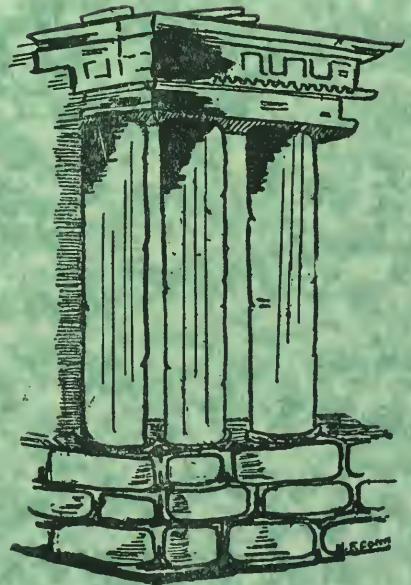
1931

*The*  
SEQUELLE

LIBRARY  
CLARION STATE COLLEGE  
CLARION, PA.



Carlson Library





**THE  
SEQUELLE**



PUBLISHED BY



**THE  
SOPHOMORE CLASS**

**1931**

PUBLISHED AT  
CARBON, PENNSYLVANIA  
MAY, 1931

PAUL F. WILHELM  
*Editor-in-Chief*

EDWARD SHANKLE  
*Business Manager*

ENGRAVINGS BY  
CANTON ENGRAVING & ELECTROTYPE CO.  
CANTON, OHIO

PRINTED AND BOUND BY  
THE ZIEGLER PRINTING CO., INC.  
BUTLER, PA



HELEN M. BARTON

*In recognition of the aid and friendship so freely proffered by her to everyone, and of the contributions which she has made to the college, particularly in the field of women's athletics, the Sophomore Class most sincerely dedicates this volume of the Sequelle to Helen M. Barton, Women's Director of Physical Education, and Sponsor of the Sophomore Class.*



## Foreword

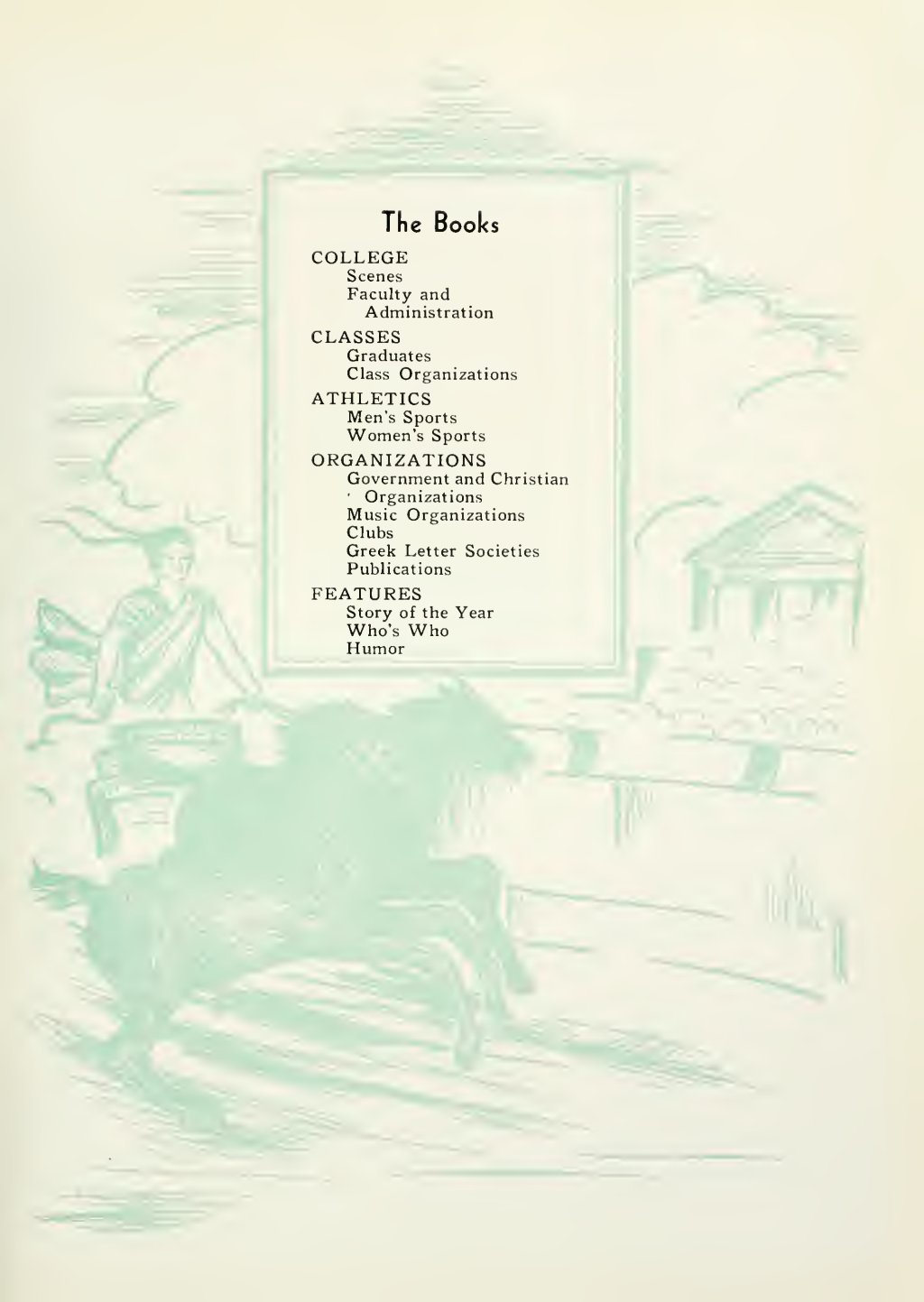
In this, the 1931 volume of the *Sequelle*, we have tried to record faithfully our college life, its friendships and interests, hopes and achievements.

May it be accepted in the spirit with which we place it in your hands—that of a work to which has been given our best.

Overlook its faults; seek out its merits. May it, in the future, ever serve to call up delightful memories.

*The Sequelle Staff*





## The Books

### COLLEGE

Scenes  
Faculty and  
Administration

### CLASSES

Graduates  
Class Organizations

### ATHLETICS

Men's Sports  
Women's Sports

### ORGANIZATIONS

Government and Christian  
Organizations  
Music Organizations  
Clubs  
Greek Letter Societies  
Publications

### FEATURES

Story of the Year  
Who's Who  
Humor





**COLLEGE**

Dedicated to the loyal students  
SCHOOL HYMN

H. L. BLAND

Moderato

Oh, Cla - ri - on, Our best we pledge to you, Tho

days that we have spent here, We al - ways will hold dear. Oh,

ried and true, staunch friends are we to you. For -

ev - er we'll be loy - al to our Clar - ion, Clar - ion,

Copyright © 1929 by H. L. Bland



# SCENES





*Summer's Faerie Touch —*



*Seminary Hall*



*The Chapel*





*Founders' Hall*



*J. George Becht Hall*



*Music Hall*



*Thaddeus Stevens Training School*



*— and Winter's*

## The Purple and the Gold

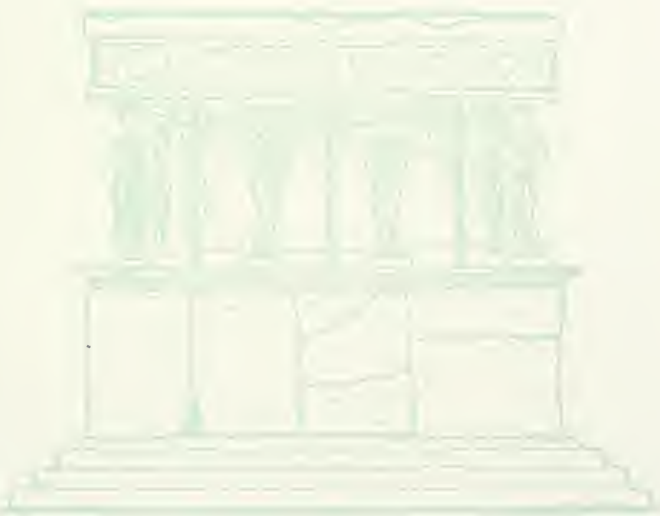
*Have you seen our banners waving  
On the fields or in the hall,  
Where the students all assemble,  
As they hear the old bell call?  
These bright colors, gaily floating,  
Speak alike to young and old  
Of the joys of Clarion College  
And the Purple and the Gold.*

*If you've seen our banners waving,  
If you've heard our singing, too,  
And the voices of our cheering  
Have brought any thought to you,  
Then we know you've thrilled with pleasure  
And you've felt a pride untold,  
For the glory of our College  
And the Purple and the Gold.*

BERTHA V. NAIR  
NANCY E. CANNAN



# **ADMINISTRATION AND FACULTY**



*The*  
**SEQUELLE**

1  
9  
3  
1

**COLLEGE  
PRESIDENT**



G. C. L. RIEMER, Ph. D., LL. D.

ADMINISTRATIVE  
OFFICERS

1  
9  
3  
1

The  
SEQUELLE



J. W. F. WILKINSON  
*Dean of Instruction*



HELEN D. SIMS  
*Dean of Women*



GILBERT A. HOYT  
*Dean of Men*



SARA SEYLER  
*Dietitian*



CHARLES F. BECKER  
*Director of Teacher  
Training*



MRS. FLORA MCKINNEY  
*Household Director*



FOSTER M. MOHNEY  
*Bursar and  
Revenue Agent*



LOIS E. GREEN  
*Secretary to President*



HOWARD W. CURLL  
*Grounds  
and Buildings*

The  
SEQUELLE

1  
9  
3  
1

FACULTY

TEACHING STAFF



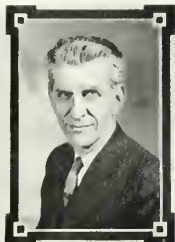
HELEN M. BARTON, A.M.  
*Physical Education*



CHARLES F. BECKER, A.M.  
*Education*



BURNICE SMITH BLAND  
*Piano, Violin, Brass*



HARRIE LEE BLAND, B.E.M.  
*Public School Music,  
Voice*



MARGARET A. BOYD, A.M.  
*English*



RENA M. CARLSON, A.B.  
*Librarian*



E. C. CLASS, Ph.D.  
*Education*



GILBERT A. HOYT, M.S.  
*Science*



JAMES R. HUSTON, A.B.  
*Social Studies*



JOHN O. JONES, B.S.  
*Health, Physical  
Education*



M. E. MACDONALD, A.M.  
*Education*



FACULTY

1  
9  
3  
1

The  
SEQUELLE

TEACHING STAFF—Continued



HARRY S. MANSON, A.M.  
*Science*



MARIE MARWICK, A.M.  
*Oral Expression, English*



BERTHA V. NAIR, A.M.  
*English*



HAZEL SANDFORD, A.M.  
*Art*



ESTELLE L. SHELDON, M.S.  
*Geography, Penmanship*



HELEN D. SIMS, A.M.  
*Foreign Languages*



J. W. F. WILKINSON, A.M.  
*Mathematics*

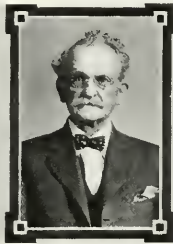


MARY B. WILLIAMSON, A.M.  
*Primary Education*

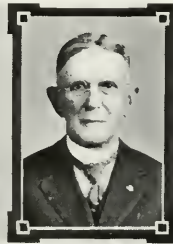
RETIRED MEMBERS OF FACULTY



JOHN BALLENTINE, Ph.D.  
*Latin*



WILLIS Y. WELCH,  
A.M., Sc.M.  
*Science*



JAMES PINKS  
*Bursar*

# The SEQUELLE

1  
9  
3  
1

# FACULTY

## COOPERATIVE TRAINING TEACHERS



LORETTA G. BROGAN, B.S.  
*Intermediate Grades*



MILDRED E. GAMBIT, A.B.  
*Intermediate Grades*



ANNA B. GRAHAM  
*J. H. S. Grades*



ELLA M. IDTSE, B.S. in Ed.  
*Primary Grades*



PEARL JACK, A.M.  
*Intermediate Grades*



M. E. MACDONALD, A.M.  
*Director J. H. S.*



MRS. PEARE N. MILLER,  
B.S. in Ed.  
*Primary Grades*



HELEN MOHNEY, B.S.  
*Intermediate Grades*



MRS. GLADYS B. LONG,  
B.S. in Ed.  
*Primary Education*



BESSIE M. RUNYAN, B.S.  
*J. H. S. Grades*



MARTHA V. TROUGHTON,  
A.M.  
*J. H. S. Grades*



HELEN WALTERS  
*Primary Grades*

**TRUSTEES—  
FORMER  
PRINCIPALS**

1  
9  
3  
1

*The*  
**SEQUELLE**

**THE BOARD OF TRUSTEES**

HONORABLE F. L. HARVEY, <i>President</i>	- - - -	Clarion
RAYMOND E. BROWN, <i>Vice-President</i>	- - - -	Brookville
H. M. RIMER, <i>Secretary</i>	- - - -	Clarion
P. C. ANDREWS	- - - -	New Bethlehem
N. C. BALL	- - - -	Clarion
MRS. A. C. BROWN	- - - -	Tionesta
F. P. HAZELTON	- - - -	Clarion
MRS. W. B. RANKIN	- - - -	Clarion
W. W. WINSLOW	- - - -	Punxsutawney

**Committee on Instruction**

HON. F. L. HARVEY	W. W. WINSLOW	H. M. RIMER
-------------------	---------------	-------------

**Committee on Finance**

P. C. ANDREWS	MRS. A. C. BROWN
RAYMOND E. BROWN	F. P. HAZELTON

**Committee on Household**

MRS. W. B. RANKIN	N. C. BALL	H. M. RIMER
-------------------	------------	-------------

**PRINCIPALS WITH PERIODS OF SERVICE**

A. J. DAVIS	- - - -	1887-1902
SAMUEL WEIR	- - - -	1902-1904
J. GEORGE BECHT	- - - -	1904-1912
H. M. SHAFFER	- - - -	Jan. 1, 1912-July 1, 1913
A. T. SMITH	- - - -	Jan. 1, 1914-July 1, 1914
A. P. REESE	- - - -	July 1, 1914-July 1, 1918
C. C. GREEN	- - - -	1918-1926
R. M. STEELE	- - - -	1926-1928
G. C. L. RIEMER	- - 1928-	President since June 15, 1929





# CLASSES

# RALLY SONG

H. L. BLAND

Moderato.

I'm going straight back, and  
stay back in that dear old school. The place we love best of all. Oh, can't you  
hear Char-son call, it's just a wee pace. But n'th' race for th' egg good and  
true. So I'm going back for much that I lack. That's Char-son, true blue.

Copyright 1926 by Hattie L. Bland

Printed by J. W. Wiley Co., Boston



## **GRADUATES**



The  
**SEQUELLE**

1931

**GRADUATES**

IDA MAE AMSLER

Summerville

INTERMEDIATE

Travel Club, '30; Hostess Club, '30;  
 Library Club, '31; Y.W.C.A., '31.



FRANCES ANDERSON

Vandergrift

INTERMEDIATE

Hostess Club, '30, '31; Manuscript Writing  
 Club, Secretary, '30; Vested Choir, '30,  
 '31; Student Council, '30, '31.

JOHN BARGER

West Monterey

JUNIOR HIGH

Alpha Phi Alpha; Men's Glee Club, '30,  
 '31; Y.M.C.A., '30, '31; Travel Club, '30;  
 Varsity "C" Club, '30, '31; Baseball, '29;  
 Football, '28, '29; Owl Club; Minstrel;  
 Operetta; Summer Sessions; College  
 Players Club, '31; Basketball Mgr., '29,  
 '30, '31; Sophomore Class Play, '30.



ZOE BASHLINE

Sligo

B. S. DEGREE IN SECONDARY EDUCATION

Y.W.C.A., '30, '31; Travel Club, '30; Art  
 Club, '31; Library Club, '31; Hostess  
 Club, '31; Senior Class Play, '31.

DOROTHY BEALS

Emlenton

PRIMARY

Hostess Club, '30; Outdoor Club, '31;  
 Y.W.C.A., '30, '31; Volley Ball, '30; Stu-  
 dent Council, Treas., '31; Student Gov-  
 ernment, Treas., '31.



HAZEL BEELS

Knox

INTERMEDIATE

Zeta Kappa Nu; Student Council, '30;  
 Hostess Club, '30, '31; Travel Club, '30;  
 Y.W.C.A. Cabinet, '31; Vested Choir, '31.



# GRADUATES

# 1931

# The SEQUELLE

HELLEN BOTTENHORN

Brookville

PRIMARY

Sigma Delta Phi; Vested Choir, '30;  
Y.W.C.A., '30, '31; Hostess Club, '30;  
Art Club, '30.

GWENETH CAMPBELL

Brookville

INTERMEDIATE

Vested Choir, '30, '31; Art Club, '30, '31;  
Journalism Club, '30; Volley Ball  
(Frosh), '30; Soccer (Soph.), '31.

HELEN CHILDS

Tionesta

INTERMEDIATE

Art Club, '31; Y.W.C.A., '31.



MARY BIGLIA

Ford City

PRIMARY

Student Council, '30, '31; Hostess Club,  
'30, '31; Sequelle Staff, '31; Art Club,  
Pres., '31; Y.W.C.A., '30, '31.



MARGARET BURNS

Clarion

INTERMEDIATE

Travel Club, '30, '31; Manuscript Writ-  
ing Club, '30; Y.W.C.A., '31.



ELSIE CHELGREN

Grampian

INTERMEDIATE

Sigma Delta Phi; Art Club, '30;  
Y.W.C.A., '30; Hostess Club, '30; Library  
Club, Pres., '31.



The  
SEQUELLE

1931

GRADUATES

IRENE COGLEY  
Rural Valley  
INTERMEDIATE

Zeta Kappa Nu, Hostess Club, '30, '31,  
Vested Choir, '30, '31; Y.W.C.A. Cabinet,  
'30, '31; Sequelle Staff, '31; Hockey, '31



MADELINE COLLNER  
Clarion  
INTERMEDIATE

Theta Alpha Lambda, Pres.; Varsity  
Soccer, '30; Varsity Basketball, '30;  
Hockey, '30, '31; Basketball, '31; Soccer,  
Captain, '30; Letter in Intra-Mural  
Sports, '30.



NOLA CONN  
Oil City  
INTERMEDIATE

Sigma Delta Phi; Sequelle Staff, Art  
Ed., '31; Hostess Club, '30; Y.W.C.A.,  
'30; Orchestra, '30; Vested Choir, '30;  
Art Club, Pres., '30.



MARY CROYLE  
Mayport  
INTERMEDIATE

College Players Club, '30, '31; Debating  
Team, '30, '31; Hostess Club, '30;  
Y.W.C.A., '30.



RUTH CYPHERI  
Summerville

STANDARD CERTIFICATE

Travel Club, '30; Outdoor Club, '31;  
Manuscript Writing Club, '30; Varsity  
Hockey, '30, '31; varsity Soccer, '30;  
Varsity Volley Ball, '30; Letter in Intra-  
Mural Sports, '30.



AGNES DANIELSON  
Sligo  
PRIMARY

Art Club, '30; Travel Club; Hostess  
Club, '31; Journalism Club, '31; Clarion  
Call Staff, '31.



# GRADUATES

# 1931

# The SEQUELLE

ARTHUR ELDER  
Strattanville  
JUNIOR HIGH

Sigma Phi Delta, Outdoor Club, '30, '31, Travel Club, '29, '30; Y.M.C.A., '30, '31, Sophomore Class Play, '30; Debating Club, '31.

HELEN ELKIN  
Mosgrove  
INTERMEDIATE

Hostess Club, '30, '31; Y.W.C.A., '30, '31; Varsity Hockey, '31; Varsity Soccer, '31.

LENA FERACIOLY  
Sagamore  
INTERMEDIATE

Art Club, '30; Hostess Club, '30, '31; Y.W.C.A., '30, '31; Attended Indiana State Teachers College.



MARY DAVIS  
Munderf  
INTERMEDIATE

Travel Club, '31; Y.W.C.A., '30, '31; Hostess Club, '31; Volley Ball, '30; Art Club, '30; Student Council, '31.



BLAINE ELDER  
Strattanville  
INTERMEDIATE

Alpha Phi Alpha; Men's Glee Club, '31; Outdoor Club, Pres., '31; Current Events Club, '31; Y.M.C.A., '31; Basketball, '30, '31.



CLAIRE ELLIOT  
Warren  
INTERMEDIATE

Hostess Club, '31; Women's Student Council, Vice-Pres., '31 (1st sem.); Y.W.C.A., '31.



# The SEQUELLE

## 1931

### GRADUATES

WILLIAM FLANAGAN

Clarion

B. S. DEGREE IN SECONDARY EDUCATION

Alpha Phi Alpha, Pres.; Phi Sigma Pi, Pres. (1st sem.); Pi Gamma Mu, Class President, '28, '30, '31; Editor-in-Chief of Sequelle, '29; Varsity Debating and Manager of Debating, '28, '29, '30, '31; Football, Mgr., '28; Senior Class Plays, '29, '31; Editor Clarion Call, '28, '30; College Players Club, '29, '30, '31; Men's Glee Club, '30, '31; College Players Plays, '29, '30, '31; Journalism Club, Pres., '29.

LUCILLE FROST

Youngsville

INTERMEDIATE

Y.W.C.A., Pres., '31; Hostess Club, Vice-Pres., '30; Sequelle Staff, '31; Library Council, Sec., '31; Varsity Volley Ball, '30; Journalism Club, '30; Basketball, '31.

RALPH FULTON

Clarion

INTERMEDIATE

Alpha Gamma Phi; College Players Club, '30, '31; Football Squad, '30; Sophomore Class Play, '29; Basketball, '29, '30, '31; Varsity "C" Club.



VIRGINIA FRILL

Leeper

PRIMARY

Sigma Delta Phi; College Players Club, Sec.; Hostess Club, '30; Sequelle Staff, '31; Student Government, Vice-Pres., '31; Varsity Hockey, '30; Women's Glee Club, '31; Basketball, '30; Soccer, '30; Vested Choir, '30; Orchestra, '30, '31; Y.W.C.A., '30; Letter in Intra-Mural Sports, '30.

FRANCES FULTON

Emlenton

PRIMARY

Theta Alpha Lambda; Hostess Club, '30; Y.W.C.A., '30; Art Club, '30.

DAISY GARDA

Falls Creek

INTERMEDIATE

Travel Club, '30; Hostess Club, '30; Volley Ball, '30; Soccer, '30; Hockey, '30; Basketball, '31.

# GRADUATES

# 1931

# The SEQUELLE

## AVANELL HANST

KNOX  
PRIMARY

Sigma Delta Phi; Hostess Club, '31;  
Y.W.C.A., '31; Art Club, '30; Travel  
Club, '30.

## NORVA HEETER

Clarion  
INTERMEDIATE

Lambda Chi Delta, Chaplain, '31; Sopho-  
more Class, Sec., '31; Women's Glee  
Club, '30, '31; Operetta, summer '29.

## FLORENCE HENDERSON

Summerville  
PRIMARY

Art Club, '31; Vested Choir, '30, '31;  
Y.W.C.A., Vice-Pres., '31; Hostess Club,  
'30, '31; Travel Club, '30.



HAROLD GUTHRIE  
Strattanville  
INTERMEDIATE

Dramatic Club, summer '29; Press Club,  
'31; Debating Club, '31; Clarion Call  
Staff, '31.



PAULINE HEASLEY  
Cranberry  
PRIMARY

Zeta Kappa Nu, Treas., '31; Treasurer of  
Freshman Class, '30; Student Council,  
Sec., '31; Y.W.C.A., '30, '31; College  
Players Club, Sec., '30; Vested Choir,  
Sec. and Treas., '30, '31.



MARGARET HEILBRUN  
Shippenville  
INTERMEDIATE

College Players Club, '30, '31; Plays, '30;  
Travel Club, '30; Hostess Club, '30;  
Y.W.C.A., '29, '30.



*The*  
**SEQUELLE**

1931

**GRADUATES**

ANNIE HILEMAN

Red Bank

B. S. DEGREE IN SECONDARY EDUCATION

Travel Club, '28; Glee Club, '28; Vested Choir, '31; Hostess Club, '31; Outdoor Club, '31; Y.W.C.A.; Debating Club, '31; Charter Member Press Club, '31; Clarion Call Staff, '31; Senior Class Play, '31.



EVELYN HOLTMAN

East Brady

INTERMEDIATE

Zeta Kappa Nu, Sec'y., '31; Student Council, '31; Journalism Club, '30; Y.W.C.A., '30, '31; Vested Choir, '30; Secretary of Freshman Class, '30; Varsity Basketball, '30; Orchestra, '30, '31; Women's Glee Club, '30, '31; Hockey, '31; Hostess Club, '30, '31.

VIVIAN HOHN

Butler

INTERMEDIATE

Sigma Delta Phi; Women's Glee Club, '30, '31; Hostess Club, '29, '30; Y.W.C.A., '31.



DOROTHY HORNER

Conifer

PRIMARY

Travel Club, '31; Y.W.C.A., '30, '31; Hostess Club, '30, '31.

RENA HORTON

Sheffield

INTERMEDIATE

Art Club, '30; Hostess Club, '31; Vested Choir, '30; Y.W.C.A., '31.



FRANCES HUMMER

Titusville

PRIMARY

Hostess Club, '30, '31; Y.W.C.A., '30, '31; Travel Club, '31; Manuscript Writing Club, '30.

# GRADUATES

# 1931

# The SEQUELLE



ELIZABETH HUNTER

Reynoldsville

PRIMARY

Women's Glee Club, '30, '31.



BALMA JOHNS

Brookville

INTERMEDIATE

Art Club, '31.



MARGARET KAPP

Kossuth

PRIMARY

Zeta Kappa Nu, Vice-Pres., '31; Student Council, '30; Hostess Club, Sec. and Treas., '30; Journalism Club, '31; Y.W.C.A., Treas., '31; Vested Choir, '30, '31; College Players Club, '31.



RUBY KELLOGG

Marienville

INTERMEDIATE

Y.W.C.A., '30, '31; Hostess Club, '30, '31; Library Club, '30, '31.



RALPH KELSO

Baxter

INTERMEDIATE

Art Club, '30; Current Events Club, '31; Y.M.C.A., '30, '31.



ROSETTA KINDEL

Clarion

INTERMEDIATE

Varsity Debating, '30; College Players Club, '30, '31; Plays, '30; Associate Editor of Sequelle, '31; Hockey; Senior Manager; Soccer; Basketball; Outdoor Club; Make-up Class.

*The*  
**SEQUELLE**

1931

**GRADUATES**

RUTH KING  
Summerville  
INTERMEDIATE

Travel Club, '30; Hostess Club, '30;  
Y.W.C.A., '30, '31; Outdoor Club, '31;  
Vested Choir, '31, Art Club, '31



MILDRED KNAPP  
Baxter  
PRIMARY

Travel Club, '29; Hostess Club, '29; Art  
Club, '29, Travel Club, '31.



AVANELL KOOMAN  
Knox  
PRIMARY

Journalism Club, '30.



FLORA KRAUSS  
Sligo  
INTERMEDIATE

Art Club, '30; Travel Club, '30;  
Y.W.C.A., '31



MARGARET KRAUSS  
Sligo

B. S. DEGREE IN ELEMENTARY EDUCATION  
Art Club, '30; Travel Club, '30;  
Y.W.C.A., '31; Manuscript Writing Club,  
'30; Senior Class Play, '31.



DOROTHY LAWLER  
Brockport  
INTERMEDIATE

Sigma Delta Phi; Vested Choir, '29, '30,  
College Players Club, '30, '31; College  
Players Club, V. Pres., '30; Hostess Club,  
'30; Y.W.C.A., '29, '30.





# GRADUATES

# 1931

# The SEQUELLE

ETHEL LIND  
Youngsville  
INTERMEDIATE

Y.W.C.A. Cabinet, '30, '31; Travel Club, Sec., '30, '31; Hostess Club, '30; Manuscript Writing Club, '30; Hockey, '30; Soccer, '30, '31; Basketball, '30, '31; Volley Ball, '30.

MILDRED LOGUE  
Parkers Landing  
INTERMEDIATE

Art Club, '30, '31; Hostess Club, '30, Y.W.C.A., '30; Student Council, '31.

HELEN MELAT  
Van  
INTERMEDIATE

Sigma Delta Phi; Hostess Club, '31; Y.W.C.A., '30, '31.



EMOGENE LAWRENCE  
Clarion  
INTERMEDIATE

Art Club, '30, '31; Orchestra, '31; Women's Glee Club, '31; Outdoor Club, '31; Y.W.C.A., '30; Travel Club, '30.

ROBERT LINDQUIST  
Fairmount City

B. S. DEGREE IN SECONDARY EDUCATION

Alpha Phi Alpha; Phi Sigma Pi; Vesper Committee, '30; Bus. Mgr. Sequelle, '30; Freshman Class Pres., '29; Dramatic Club Plays, '28, '29; College Players Club, Pres., '29; Football, '28, '29, '30; Student Gov't., Pres., Student Council, Sec., '29; Y.M.C.A., '30; Varsity "C" Club, Pres., '30, '31; Library Council, '31; Track, '29; Basketball, '29; Sophomore Play, '30; Senior Play, '31.

GRACE McANINCH  
Corsica  
INTERMEDIATE

*The*  
**SEQUELLE**

1931

**GRADUATES**

RUTH MOHNEY  
Clarion  
PRIMARY

Lambda Chi Delta: Women's Glee Club,  
'30, '31; College Players Club, '30.



ALFRED LELAND MOONEY  
Sligo

B. S. DEGREE IN SECONDARY EDUCATION  
Phi Sigma Pi; Pi Gamma Mu; Sigma  
Phi Delta; Demosthenian Society, '25,  
'26, '27; Men's Glee Club, '25; Journal-  
ism Club, '30, '31; College Players Club,  
'30, '31; Sequelle Staff, Asst. Ed., '26,  
Bus. Mgr., '27; Basketball, '25, '26, '27;  
Clarion Call Staff, '31; Y.M.C.A., '26, '27.



GLADYS MOONEY  
Sligo  
PRIMARY

Travel Club, '30; Hostess Club, '30;  
Journalism Club, '30; Art Club, '30;  
Y.W.C.A., '31; Basketball, '30; Clarion  
Call Staff, '30.



ARLENE MOTT  
Youngsville  
INTERMEDIATE

Travel Club, '30; Hostess Club, Pres.,  
'31; Manuscript Writing Club, '30, Art  
Club, Sec. and Treas., '31; Y.W.C.A., '31.



RUTH MOWRY  
Leechburg  
INTERMEDIATE

Vested Choir, '30, '31; Journalism  
Club, '30.



SARAH MURRAY  
Gilloyle  
INTERMEDIATE

Y.W.C.A. Cabinet, '31; Outdoor Club,  
'31; Travel Club, Pres., '31; Hostess  
Club, '30, '31; Art Club, '30; Basketball,  
'31; Hockey.



*GRADUATES*

1931

*The*  
**SEQUELLE**

BELVA McMANIGLE  
Brookville  
PRIMARY

Sigma Delta Phi, Pres.; Women's Glee Club, '30, '31; College Players Club, '30, '31; Hostess Club, '30; Y.W.C.A., '30; Sequelle Staff, '31.

IDA NELSON  
New Bethlehem  
PRIMARY

Y.W.C.A., '30, '31; Vested Choir, '28.

MAE PATTERSON  
Valier  
INTERMEDIATE

Travel Club, '30; Hostess Club, '30; Vested Choir, '31.



IDA McDOWELL  
Baxter  
INTERMEDIATE

Orchestra, '30, '31.



GRACE NEIL  
Sligo  
INTERMEDIATE

Travel Club, '30; Hostess Club, '30, '31; Y.W.C.A., '30, '31.



ELIZABETH NEWELL  
Sabula

INTERMEDIATE  
Y.W.C.A., '29, '30; Travel Club, '31; Hostess Club, '30.



The  
**SEQUELLE**

1931



ESTHER PEPPER

Butler

PRIMARY

College Players Club, '31; Sequelle Staff, '31; Hostess Club, '30; Art Club, '30; Library Council, '30; Clarion Call Staff, ASS'Y, 1st, '30; Press Club, Treas., '31; Clarion Call Staff, '31

EWILA REA

Clarion

INTERMEDIATE

Varsity Basketball, '30; Varsity Volley Ball, '30; Volley Ball, Mgr., '30; Vested Choir, '30; Head of Sports, Hockey, '31; Varsity Hockey, '31; Varsity Soccer, '31; Basketball Captain, '31.

MRS. MARTHA RENN

Clarion

B. S. DEGREE IN ELEMENTARY EDUCATION  
 Senior Class, Vice-Pres., '31.



EILLIAN PIETER

Bradford

INTERMEDIATE

Women's Glee Club, '30, '31.

SARA REID

Clarion

INTERMEDIATE

Lambda Chi Delta, Treas.; Women's Glee Club, '30, '31.

RUTH RIDDLE

Clarion

INTERMEDIATE

Basketball, '30, '31; Varsity Volleyball, '30; Y.W.C.A., '30; Intra-Mural Sports, Letter.



*GRADUATES*

1931

*The*  
**SEQUELLE**

MARY SAYLERS

Hawthorn

PRIMARY

Hostess Club, '30, '31; Travel Club, '30;  
Y.W.C.A., '30, '31

MABEL SEIGWORTH

Clarion

INTERMEDIATE

Travel Club, '30.

MILDRED SHORTS

Shippenville

INTERMEDIATE

Zeta Kappa Nu, '31; Women's Glee Club,  
'31; College Players Club, '31; Hostess  
Club, Vice-Pres., '31; Women's Student  
Gov't., '31; Orchestra, '30, '31; Vested  
Choir, '30; Y.W.C.A.



HAZEL ROSSMAN

Knox

INTERMEDIATE

Zeta Kappa Nu; Women's Student  
Gov't. Pres., '31; Council Member, '30,  
'31; Vested Choir, '30, '31; Y.W.C.A.  
Cabinet, '31; College Players Club, '30,  
'31; Hostess Club, '30, '31; Sequelle Staff,  
'31; Basketball, Mgr., '30; Soccer, Capt.,  
'31; Head of Sports, Volley Ball, '30;  
Library Council, Pres., '30.



MARCELLA SCHIERBERL

Clarion

INTERMEDIATE

Travel Club, '30, '31; Art Club, '30.



LUCILE SHAWREY

Sigel

PRIMARY

Y.W.C.A., '30, '31; Hostess Club, '31;  
Art Club; Operetta; Basketball, '30, '31;  
Volley Ball, '30.



# The SEQUELLE

1931

## GRADUATES

DOROTHY SHREFFLER

Kane

INTERMEDIATE

Current Events Club, '31; Hostess Club, '31; Y.W.C.A., '31; Travel Club, '31; Library Club, '31



OLIVE SLIKE

Clarion

INTERMEDIATE

Art Club, '30; Travel Club, '31; Hostess Club, '31



LOUISE SOUTHARD

Tionesta

PRIMARY

Y.W.C.A. Cabinet, '31; Hostess Club, '30, '31; Y.W.C.A., '30; Travel Club, Vice-Pres., '30



FLORENCE STARR

Reynoldsville

INTERMEDIATE

Y.W.C.A., '30, '31; Hostess Club, '30, '31



SUZANNE STEIN

Clarion

INTERMEDIATE

Travel Club, '29; Art Club, '28; Hostess Club, '30; Basketball, '28



RACHEL STEVENS

Oil City

INTERMEDIATE

Theta Alpha Lambda; Orchestra, '30, '31; Hostess Club, '30, '31; Y.W.C.A., '30, '31; Volley Ball, '30



## GRADUATES

# 1931

## The SEQUELLE

WINIFRED STITZINGER  
Newmansville  
PRIMARY

Hostess Club, '28, '29, '30; Art Club, '28, '29; Y.W.C.A., '30.

VIRGINIA STUTE  
Parker's Landing  
INTERMEDIATE

Sigma Delta Phi; Vested Choir, '31; Travel Club, '30; Y.W.C.A., '30, '31; Hostess Club, '31.

CLYDE VANTASSEL  
Sigel

INTERMEDIATE  
Sigma Phi Delta; Y.M.C.A., '31.



WILLIAM A. STEWART  
Sligo

INTERMEDIATE

Y.M.C.A., '30, '31; Current Events Club, '31; Debating Club, '31; Hi-Y, '31.



FLORENCE STRATTAN  
Strattanville

INTERMEDIATE

Y.W.C.A., '30; Travel Club, '30; Journalism Club, '30; Manuscript Writing Club, '30; Debating Club, '31.



ELSIE SWARTZFAGER  
Oil City

INTERMEDIATE

Sigma Delta Phi; Women's Glee Club, '31; Vested Choir, '30; Orchestra, '30, '31; Art Club, Pres., '30; Varsity Hockey, '31; Varsity Soccer, '31; Y.W.C.A., '30, '31; Hostess Club, '30, '31; Basketball, '30; Volleyball, '30.



*The*  
**SEQUELLE**

1931

**GRADUATES**

VICTOR VASSIA

Herminie

B. S. DEGREE IN SECONDARY EDUCATION  
Alpha Gamma Phi, Advisory Member,  
Men's Glee Club, '31; Student Council,  
'31, Ass't. Football Coach, '28, '30; Base-  
ball Coach, '29.



IDA VOROUS

Emblenton

INTERMEDIATE

Hostess Club, '31; Y.W.C.A., '31.



LOUISE WAITACE

Hallton

INTERMEDIATE

Lambda Chi Delta; Y.W.C.A., '30; Hos-  
tess Club, '30; Outdoor Club, '31; Volley  
Ball, '30; Hockey, '31.



ELVIN WEAVER

Timblin

INTERMEDIATE

Sigma Phi Delta; Men's Glee Club, '30,  
'31; Vested Choir, Y.M.C.A.



MRS. TWILA WEAVER

Clarion

B. S. DEGREE IN ELEMENTARY EDUCATION  
Pi Gamma Mu.



MARJORIE WHALEY

Brookville

INTERMEDIATE

Lambda Chi Delta; Y.W.C.A., '30; Hos-  
tess Club, '30; Outdoor Club, '30, '31;  
Hockey, '31; Volley Ball, '30.





# GRADUATES

# 1931

# The SEQUELLE

MARGARET WILLIAMS  
Sheffield  
INTERMEDIATE

Y.W.C.A., '31; Library Club, '31.

FLORENCE WYANI  
Tarentum  
PRIMARY

Hostess Club, '31; Sequelle Staff, '31;  
Y.W.C.A., '30, '31; Travel Club, '30.

RUTH CAMPBELL  
Clarion

B. S. DEGREE IN ELEMENTARY EDUCATION  
Sigma Delta Phi; Women's Glee Club,  
'28, '29, '30, '31; College Players Club,  
'28, '29, '30, '31; Junior Class Treas., '30;  
Senior Class Sec., '31; Senior Class Play,  
'31; Outdoor Club, '30, '31; Cheerleader,  
'28, '29; Varsity Hockey; Varsity Volley  
Ball; Varsity Soccer; Varsity Basket-  
ball; Varsity Mushball; Art Club, '28,  
'29; Travel Club, '28; Hostess Club, '28;  
Hiking Club, '28, '29; Operetta; Poetry  
Reading Contest.



ANNA WILLIAMS  
Oil City

INTERMEDIATE  
Travel Club, '30, '31; Hockey, '30.



BERNARD WOLBERT  
Leeper

B. S. DEGREE IN SECONDARY EDUCATION  
Pi Gamma Mu, Travel Club, '30, Cur-  
rent Events Club, '31; Track, '27;  
Demosthenian Lit. Club, '27; Senior  
Class Play, '31.



MARGARET ZIHAYER  
Clarion

INTERMEDIATE  
Theta Alpha Lambda, '31; Y.W.C.A.,  
'30, '31; Travel Club, Treas., '30; Hostess  
Club, '31; Vested Choir, '30, '31.



The  
**SEQUELLE**

1931

**GRADUATES**

LAURA CLARK  
 Clarion

B. S. DEGREE IN ELEMENTARY EDUCATION  
 Travel Club, '30, '31



RUTH LOVE  
 Summerville  
 STANDARD CERTIFICATE

VIRGINIA KIRKWOOD  
 Edinboro  
 PRIMARY

Journalism Club, '30.

JANE MAHEY  
 Clarion

B. S. DEGREE IN SECONDARY EDUCATION  
 Pi Gamma Mu; Lambda Chi Delta,  
 Vice-Pres., '31; Art Club, '28, '29; Travel  
 Club, '28, '29; Women's Glee Club, '28,  
 '29, '30; Journalism Club, '30; Senior  
 Class Play, '31; Sequelle Staff, '29, '30.

MABEL REED  
 Roulette

B. S. DEGREE IN SECONDARY EDUCATION  
 Travel Club, '30; Library Club, '30;  
 Press Club, '31.

PEARLE STEWART  
 Kane

INTERMEDIATE  
 Art Club, '30; Y.W.C.A., '30; Travel  
 Club, '31.

# GRADUATES

# 1931

# The SEQUELLE



WILBUR DUMARS

Meadville

JUNIOR HIGH

Alpha Phi Alpha; Men's Glee Club, '30, '31; College Players Club, '30, '31; Basketball, '29, '30, '31; Football, '29, '30; Track, '29, '30, '31; Journalism Club, '30; Sequelle Staff, '30.

## GRADUATES NOT PICTURED

MARGARET COCHRAN

Reynoldsville

INTERMEDIATE

King's School of Oratory, Summer '29; Press Club, '31.

LUCILLE MAHLEY

Clarion

B. S. DEGREE IN ELEMENTARY EDUCATION

Lambda Chi Delta; Fredonia Normal, N. Y., Three Years; Senior Class Play, '31; Art Club, '30, '31.

PHILLIP RAMSEY

Rimersburg

INTERMEDIATE

Journalism Club, '30; Track, '30, '31; College Players Club, '30, '31.

DOROTHY SIPE

Butler

INTERMEDIATE

TWILA SNYDER

Westville

INTERMEDIATE

Y.W.C.A., '31; Library Club, '31.

GERALDINE KAHLER

Leeper

JUNIOR HIGH

Journalism Club, '28; Art Club, '28; Travel Club, '28; Y.W.C.A., '27, '28, '31; Franklin Literary Society, '28.

RETHA MORGAN

Rimersburg

INTERMEDIATE

Travel Club, '30, '31.

SAM SCHEITNO

Reynoldsville

B. S. DEGREE IN SECONDARY EDUCATION

Alpha Gamma Phi; Men's Glee Club, '31; Captain, Football, '27; Captain, Basketball, '26, '27; Debating Club, '27.

MILDRED SMATHERS

New Bethlehem

INTERMEDIATE

MABEL WAMSLEY

Mt. Jewett

INTERMEDIATE

Y.W.C.A., '31; Library Club, '31.



ROOMMATES



CO-EDS FIVE



GINNY <sup>2</sup>/<sub>2</sub> DOT



HOLD THAT—VASE



BANDELLIROS



THE DU BOIS GANG



RACQUETEERS



Huddle



OH—MY JOHNNIE!



# **CLASS ORGANIZATIONS**



*The*  
**SEQUELLE**

1  
9  
3  
1

**SENIORS**

**CLASS HISTORY**

The degree courses have not been offered long enough for an organized class to come up through all four years, hence this year's Senior Class, like those before it, is rather cosmopolitan in nature, being made up of graduates from two and three year courses who have gone on with the subjects necessary to attain a degree, of experienced teachers who have come back to take the additional work, and of those who changed from some other course soon after Clarion was granted the power of conferring a degree.

Though the class as a group has not engaged in many activities, its members are prominent in the social, academic, and athletic sides of campus life. The class has sponsored one outstanding function this year, however, in the play "A Scrap of Paper" presented by an all Senior cast.

At this, the closing of our last year at Clarion, we Seniors feel keenly the bonds which tie us to the college, to its instructors, to the under-grads, and to one another. We leave, however, with a sense of accomplishment—with a feeling that we have benefitted ourselves and others by our stay at C. S. T. C.



THE SENIOR CLASS



1  
9  
3  
1



**CLASS OFFICERS**

President - - - - - WILLIAM FLANAGAN  
 Vice-President - - - - - MRS. MARTHA G. RENN  
 Secretary - - - - - RUTH CAMPBELL  
 Treasurer - - - - - JANE MAHEY

*Class Sponsor, MARGARET A. BOYD*

**CLASS ROLL**

**Recipients of Bachelor of Science Degree in  
Secondary Education**

ZOE BASHLINE .....	Sligo	ALFRED L. MOONEY ΣΦΔ ΦΣΠ ΠΠΜ .....	Sligo
<i>"Precisely correct."</i>		<i>"A mountain of memory."</i>	
WILLIAM FLANAGAN ΑΦΑ ΦΣΠ ΠΠΜ .....	Clarion	MABEL REED .....	Roulette
<i>"The Spirit of Speech."</i>		<i>"Most conscientious."</i>	
ANNIE HILEMAN .....	Red Bank	SAM SCHETTINO ΑΠΦ .....	Reynoldsville
<i>"Big Sister"</i>		<i>"I don't know what you want."</i>	
ROBERT INQUIST ΑΦΑ ΦΣΠ Fairmount City		VICTOR VASSIA ΑΠΦ .....	Hermie
<i>"Eleven o'clock fellows!"</i>		<i>"This is how you do it, fellows."</i>	
JANE MAHEY ΑΧΔ ΠΠΜ .....	Clarion	BERNARD WOLBERT ΠΠΜ .....	Leeper
<i>"School days....."</i>		<i>"Steadiest worker."</i>	

**Recipients of Bachelor of Science Degree in  
Elementary Education**

RUTH CAMPBELL ΣΔΦ .....	Clarion	LUCILLE MAHEY ΑΧΔ .....	Clarion
<i>"Most caretree"</i>		<i>"Red cheeks plus a pleasant smile."</i>	
MRS. LAURA CLARK .....	Clarion	MRS. MARTHA RENN .....	Clarion
<i>"Just one third."</i>		<i>"Most active worker."</i>	
MARGARET KRAUSS .....	Sligo	MRS. TWILA WEAVER .....	Clarion
<i>"Haste makes waste."</i>		<i>"Excelsior!"</i>	

**College Graduates**

ELIZABETH McCAULEY .....	Mosgrove	BEATRICE REDINGER .....	Hawthorn
<i>"A friend, indeed."</i>		<i>"Virtues untold are hers."</i>	



1  
9  
3  
1



### CLASS HISTORY

Three years ago, an enthusiastic freshman class entered our college. The class then numbered over one hundred twenty-five but so many were graduated last year from the two year courses that there are now only twenty-two.

Last year the members of this class were subjected to the Carnegie Tests, as were the sophomores from all other teachers colleges of the state, and the highest scores were attained by those in the group which is here this year. Needless to say, the college draws a great percentage of its leaders from this able group.

Mr. Manson is a favorite with our class, as may be seen from the fact that this is his second year as our sponsor. The Juniors, as a class organization, do not engage extensively in any activities other than in entertaining the Senior Class.



THE JUNIOR CLASS





1  
9  
3  
1



### CLASS OFFICERS

President - - - - - COLIN HILEMAN  
 Secretary - - - - - JOHN MOCHNICK  
 Treasurer - - - - - STANLEY LORE

Class Sponsor, HARRY S. MANSON

### CLASS ROLL

#### Graduates from Junior High Course

JOHN BARGER ΑΦΑ ..... West Monterey "A merry soul was he."	ARTHUR ELDER ΣΦΔ ..... Strattanville "So philosophical."
WILBUR DUMARS ΑΦΑ ..... Meadville "Has literary tastes."	GERALDINE KAHLE ..... Leeper "Let's go for a walk."

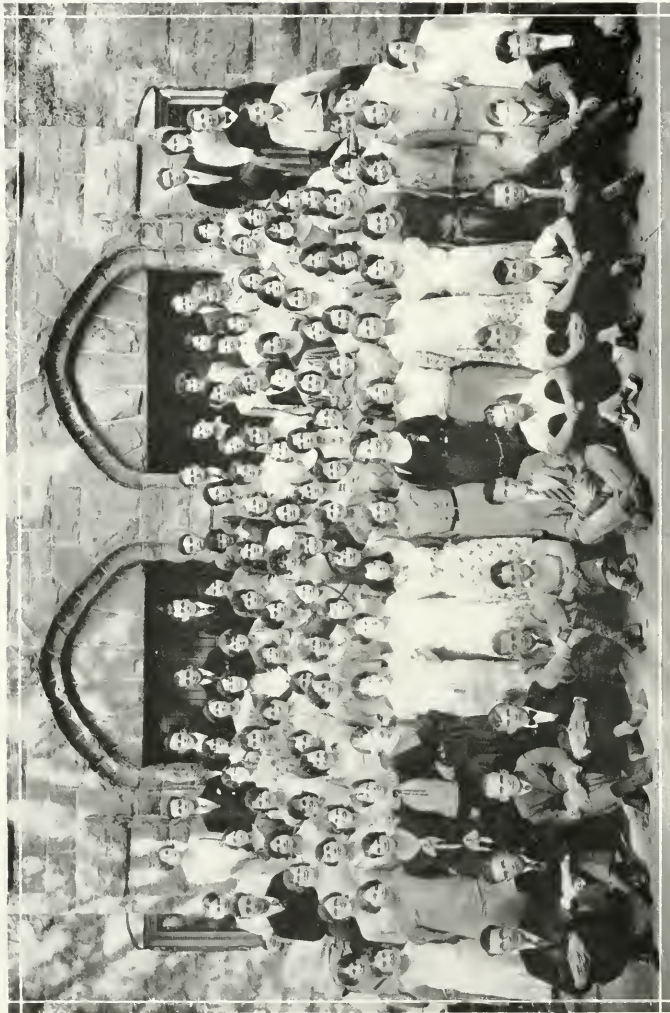
#### Juniors in Four Year Courses

VIVIAN BURNHAM ΔΧΔ ..... Corsica "The roads were so drifted!"	STANLEY LORE ΑΦΑ ΦΣΠ ..... De Young "Highest in the Carnegie Tests."
JOHN CALDWELL ΑΓΦ ..... Sheffield "The man with the double chest."	JOHN MOCHNICK ΑΓΦ ΦΣΠ ΠΓΜ ..... Claridge "Straight A, again."
KENNETH COGGOON ΣΦΔ ..... Kittanning "Eighty-five dates in one year."	FRANCES NEIL ΔΧΔ ..... Punxsutawney "Most talkative."
ORFEST DURSO ..... Uniontown "Oh, girls! He has a car."	ROBERT POWERS ΑΓΦ ..... Mosgrove "Steady."
JOHN FELZER ΑΦΑ ..... Sligo "Following in Bill Flanagan's steps."	JAMES SINCLAIR ΑΓΦ ..... Falls Creek "The bursar's prospective son-in-law."
CHARLES FOX ΑΦΑ ..... Clarion "Touchstone."	WESLEY TRAVIS ΑΦΑ ..... New Bethlehem "My golden-haired sweetheart."
COLIN HILEMAN ΑΦΑ ..... Red Bank "I'm going down town."	MRS. CORA WILLIAMS ..... Corsica "Married a Welshman."
JOSEPH KATA ΑΓΦ ΦΣΠ ΠΓΜ ..... Ambridge "Prefers blondes."	KENNETH WILLIAMS ΑΓΦ ..... Duquesne "Likes athletics well, but Hazel even better."
CLETUS KREMMEL ΑΦΑ ..... Ambridge "Isn't he the gay one?"	THOMAS WILSON ΑΓΦ ΠΓΜ ..... Sigel "The scientist."

*The*  
**SEQUELLE**

1  
9  
3  
1

**SOPHOMORES**



THE SOPHOMORE CLASS

# SOPHOMORES

1  
9  
3  
1

# The SEQUELLE

## CLASS OFFICERS

<i>President</i>	- - - - -	LEWIS WELLS
<i>Vice-President</i>	- - - - -	MILLITEEN KOPP
<i>Secretary</i>	- - - - -	NORVA HEETER
<i>Treasurer</i>	- - - - -	TILMAE GOSETTI

*Class Sponsor, HELEN M. BARTON*

## CLASS HISTORY

Two years ago, 120 young men and women came to a momentous point in their lives when they were admitted to Clarion State Teachers College. Little did they suspect that their group was to become one of the most outstanding classes the College has ever known.

Initiation was not much of a success, so as Freshmen the class had little to do save wear the customary green, and occasionally entertain the upper-classesmen. The need for class organization soon became apparent so under temporary officers the following permanent officers were elected: President, Robert Walker; Vice-President, Lewis Wells; Secretary, Pauline Heasley; Treasurer, Evelyn Hoffman. The main class function during this year was the Freshman Hop, on February 14, acclaimed the best in years.

As Sophomores, the spirit of the class has been fostered and increased, and its members have branched out into participation in all phases of campus life until now a great number of the leaders in sports, in activities, and in scholarship are Sophomores. The initiation this year culminated in a brief but exciting inter-class rush in which the Sophomores defeated the Frosh. The officers of the class during this year are: President, Lewis Wells; Vice-President, Milliteen Kopp; Secretary, Norva Heeter; Treasurer, Tilmae Gosetti.

Now approaches the time when the class shall be disrupted, the two year students leaving to enter the teaching profession, the four year people remaining to carry on the traditions of the class. Little more remains to be said. The future lies before us; behind us lies—tender memories.

## CLASS ROLL

### Graduates from Two Year Courses

IDA AMSLER ----- Summerville <i>"I'll never get home."</i>	MARGARET COCHRAN ----- Reynoldsville <i>"Perfect enunciation."</i>
FRANCES ANDERSON ----- Vandergrift <i>"A long second semester for her."</i>	IRENE COGLEY ZKN ----- Rural Valley <i>"Most advanced fashions."</i>
DOROTHY BEALS ----- Emmlenton <i>"Surprised us the second semester"</i>	MADELEINE COLLNER OAA ----- Clarion <i>"Must have her B—basketball"</i>
HAZEL BEETS ZKN ----- Knox <i>"I'm from Knox."</i>	NOLA CONN ΣΔΦ ----- Oil City <i>"The Sequelle's artist."</i>
MARY BIGLIA ----- Ford City <i>"What a chum."</i>	MARY CROYLE ----- Mayport <i>"So dramatic."</i>
HELEN BOTTENHORN ΣΔΦ ----- Brookville <i>"Why gentlemen prefer blondes."</i>	RUTH CYPHERT ----- Summerville <i>"Loves the out-of-doors."</i>
MARGARET BURNS ----- Clarion <i>"Silence is golden."</i>	AGNES DANIELSON ----- Sligo <i>"Where's 'Van'?"</i>
GWENETH CAMPBELL ----- Brookville <i>"Can sing well."</i>	MARY DAVIS ----- Mundert <i>"The Y. M. C. A. appreciated her help."</i>
LISIE CHELIGREN ΣΔΦ ----- Grampian <i>"Shakespeare would have written of her."</i>	BLAINE ELDER ΑΦΑ ----- Strattanville <i>"A most manly man, indeed."</i>
HELEN CHILDS ----- Tionesta <i>"Noia's chum."</i>	HELEN ELKIN ----- Mosgrove <i>"How readily she blushes."</i>

# The SEQUELLE

1  
9  
3  
1

# SOPHOMORES

CLAIRE LILLOTT .....Warren  
*"Who could ever forget her?"*

LUNA HERACIOLO ..... Sagamore  
*"At Indiana they did it this way!"*

VIRGINIA FRILL ΣΔΦ .....Leeper  
*"Know, how to guard."*

LUCILE FROST .....Youngsville  
*"Lucile! Really? We call her 'Chubby'."*

FRANCES FULTON ΩΔΔ .....Emlenton  
*"He teaches in DuBois."*

RAUPH FULTON ΑΠΦ .....Clarion  
*"Bashful."*

DAISY GARDA .....Falls Creek  
*"A sharp tongue, but a warm heart."*

HAROLD GUTHRIE .....Strattanville  
*"Funniest."*

AVANLIE HANST ΣΔΦ ..... Knox  
*"Oh, Cleo!"*

PAULINA HANSLY /KN .....Cranberry  
*"The charms of an angel."*

NORVA HELLER ΑΔΔ .....Clarion  
*"None I believe."*

MARGARET HELLBREN .....Shipperville  
*"The College Players are proud of her."*

FLORENCE HENDRISON .....Summerville  
*"She misses Sonny. (And so do we!)"*

EVELYN HOFFMAN /KN .....East Brady  
*"Sophistication plus."*

VIVIAN HOBN ΣΔΦ .....Butler  
*"Very aesthetic."*

DOROTHY HORNER .....Conifer  
*"Our Helen Kane."*

RENA HORTON .....Sheffield  
*"My receipt, please."*

FRANCES HUMMER .....Titusville  
*"Faithful to all her friends."*

ELIZABETH HUNTER .....Revnoldsville  
*"One of Mr. Bland's girls."*

BAI MA JOHNS .....Brookville  
*"Eighteen miles every morning."*

MARGARET KAPP /KN .....Kossuth  
*"Effectively affected."*

RUBY KILLOGG .....Marienville  
*"Rings yes—diamonds."*

RAUPH KELSO .....Baxter  
*"Van's chum."*

VIRGINIA KIRKWOOD .....Lindboro  
*"I like Clarion better."*

ROSETTA KINDEL .....Clarion  
*"Won't you come to practice on time?"*

RUTH KING .....Summerville  
*"A queen, despite her name."*

MILDRED KNAPP .....Baxter  
*"Dear Teacher!"*

AVANELL KOOMAN .....Knox  
*"Watch out, Ruth."*

ILGRA KRAUSS .....Sligo  
*"Nature study her specialty."*

DOROTHY LAWLER ΣΔΦ .....Brockport  
*"Is she Irish?"*

EMOGENE LAWRENCE .....Clarion  
*"Her best friends 'Skenny' and the piano."*

LTHEE LIND .....Youngsville  
*"The fellows say she's the best waitress."*

MILDRED LOGUE .....Parker's Landing  
*"What a blonde!"*

RUTH LOVE .....Summerville  
*"A 'love' in more ways than one."*

HELEN MUIAT ΣΔΦ .....Van  
*"A sweet china doll."*

RUTH MOHNEY ΑΔΔ .....Clarion  
*"Hold that pose!"*

GLADYS MOONLY .....Sligo  
*"The other half of the Moonneys."*

REIHA MORGAN .....Rimersburg  
*"Often late."*

ARLENE MOTT .....Youngsville  
*"Notice her picture."*

RUTH MOWRY .....Clarion  
*"We saw her walking with Coggon."*

SARAH MURRAY .....Galtville  
*"The tallest girl."*

GRACE MCANINCH .....Corsica  
*"Satisfied."*

IDA McDOWELL .....Baxter  
*"Overtime girl."*

BETVA MCANIGLE ΣΔΦ .....Brookville  
*"Hello, pal!"*

GRACE NEIL .....Sligo  
*"A willing helper."*

IDA NELSON .....New Bethlehem  
*"As quiet as a mouse."*

ELIZABETH NEWELL .....Clarion  
*"Always with Rena."*

MAE PATTERSON .....Valer  
*"Oh, Yeah!"*

ESTHER PEPPER .....Butler  
*"Poetical."*

LILLIAN PIFER .....Bradford  
*"Knows her keyboard."*

PHILIP RAMSLEY .....Rimersburg  
*"May I borrow \_\_\_\_\_?"*

TWILA REA .....Clarion  
*"'Twank' for short."*

SARA REED ΑΔΔ .....Clarion  
*"Has a pick on Corsica boys."*

RUTH RIDDLE .....Clarion  
*"Short but very sweet."*

HAZEL ROSSMAN /KN .....Knox  
*"Likes to serve on the Library Council."*

MARY SAYERS .....Hawthorn  
*"Zoe's chum."*

MARCELLA SCHERBERL .....Clarion  
*"There is no school but Clarion for me!"*

MRS. MABEL SEIGWORTH .....Clarion  
*"Those wedding bells . . . . ."*

LUCIE SHAWKEY .....Sligo  
*"Going out to be a 'schoolmarm'."*

MILDRED SHORTS /KN .....Shipperville  
*"Has Saxophobia."*

DOROTHY SHREFFLER .....Kane  
*"I don't care."*

# SOPHOMORES

1  
9  
3  
1

# The SEQUELLE

DOROTHY SIPE ..... Butler  
*"Burn my clothes."*  
 OLIVE SLIKE ..... Sigel  
*"Missed in the Dorm this semester"*  
 MILDRED SMATHERS ..... New Bethlehem  
*"The perfect marcel."*  
 TWILA SNYDER ..... Westville  
*"No relation to Merrill."*  
 LOUISE SOUTHARD ..... Tionesta  
*"Oh, Gee! Pat."*  
 FLORENCE STARR ..... Reynoldsville  
*"Likes to dance."*  
 SUZANNE STEIN ..... Clarion  
*"A sweet German maid."*  
 RACHEL STEVENS OAA ..... Oil City  
*"Campus photographer."*  
 PEARLE STEWART ..... Kane  
*"Don't take her too seriously."*  
 WILLIAM A STEWART ..... Sligo  
*"He's married."*  
 WINIFRED STITZINGER ..... Newmansville  
 FLORENCE STRATTAN ..... Strattanville  
*"Just in from Strattanville."*

VIRGINIA STUTE ΣΦΦ ..... Parker's Landing  
*"May I go for a walk with John?"*  
 ELSIE SWARTZFAGER ΣΦΦ ..... Oil City  
*"Distinctive curls."*  
 CLYDE VANTASSEL ΣΦΔ ..... Sigel  
*"As an artist he knows his lines."*  
 IDA VOROUS ..... Imlenton  
*"Red hair, and yet demure."*  
 LOUISE WALLACE ΔΧΔ ..... Hallton  
*"Where's Marjorie?"*  
 MABEL WAMSLEY ..... Mt. Jewett  
*"Oh, those curls!"*  
 LUVIN WEAVER ΣΦΔ ..... Timblin  
*"Pop's right hand man."*  
 MARJORIE WHALEY ΔΧΔ ..... Brookville  
*"Where's Louise?"*  
 ANNA WILLIAMS ..... Oil City  
*"I'm ready to help."*  
 MARGARET WILLIAMS ..... Sheffield  
*"Friendly."*  
 FLORENCE WYANT ..... Tarentum  
*"I'm a long way from home."*  
 MARGARET ZILHAVER OAA ..... Clarion  
*"An enviable pair of dimples."*

## Sophomores Enrolled in Four Year Courses

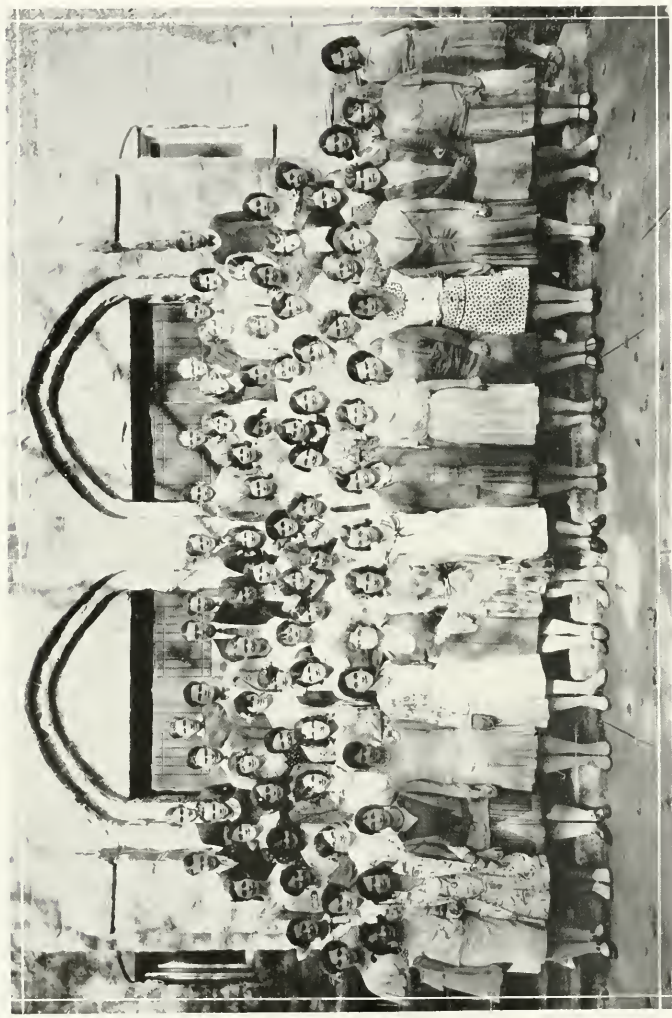
HARRY ASHBAUGH ΣΦΔ ..... Imlenton  
*"Men of few words are the best men."*  
 LESTER AVERY ..... Helen Furnace  
*"Sometimes serious, sometimes droll."*  
 EMERSON BEST ΣΦΔ ..... Imlenton  
*"A man of determination and level thought."*  
 GEORGE BOWSER ΣΦΔ ..... Kittanning  
*"Likes dissection periods in Advanced Biology"*  
 MARY CHEATHAM ..... Reno  
*"Belies her name; she's a good pal."*  
 DANIEL COLEMAN ΔΓΦ ..... Dayton  
*"Back to nature is my policy"*  
 ELIZABETH DEAN ..... Kane  
*"Gee, history is hard but I like it"*  
 RAY DOVERSPIKE ΣΦΔ ..... New Bethlehem  
*"Next to 'Shorty' he's the shortest."*  
 DON EDWARDS ..... Clarion  
*"News! News! News! Anything for news!"*  
 THOMAS GOSETTI ..... Clarion  
*"The exception to most every rule."*  
 LORRAINE JOHNSON OAA ..... Brockport  
*"They call her 'Ruiney' but 'Sunny' would suit her better"*  
 JAMES KASSEL ΔΦΑ ..... Clarion  
*"He is what he is because he's just himself."*  
 MRS. KATHRYN KECKRITTS ..... Brookville  
*"She knows how to study."*  
 MILITEN KOPP ZKN ..... Warren  
*"Loves her eyes and smile to the best advantage"*  
 CHARLES LOGAN ΔΦΑ ..... Miola  
*"When I was at Wooster!!"*  
 DONALD MAHAFFEY ΔΓΦ ..... Reynoldsville  
*"Blows! Blows! Blows!—his saxophone."*  
 ROBERT McALOOSE ΣΦΔ ..... Kittanning  
*"Oh, boy! How the ladies love 'm"*

ALFRED MURPHY ΔΦΑ ΗΓΗΜ ..... West Monterey  
*"We're all friends—political friends."*  
 FRANK NEAL ΣΦΔ ..... Dayton  
*"Funniest when serious."*  
 VIOLET PRESSLER ZKN ..... Greenville  
*"I'll frown on you."*  
 CLIFFORD REA ..... Clarion  
*"An industrious and efficient worker."*  
 WILLIAM RUSSELL ΔΓΦ ..... Clarion  
*"Maidens wote their kerebels, and old women weep for joy."*  
 EDWARD SHANKLE ΣΦΔ ..... DuBois  
*"He came from a windy city, and brought all the wind with him."*  
 MERRILL SYNDER ΣΦΔ ..... Clarion  
*"Hel—lo Mickey."*  
 WILLIAM T. STEWART ΣΦΔ ..... New Bethlehem  
*"He's our Charlie Hyatt."*  
 ORRIS STOVER ΔΦΑ ..... Knux  
*"Just a wee, wee bit of a man, but is popular."*  
 RUSSELL SWEITZER ΔΓΦ ΦΣΗ ..... Grove City  
*"Sigh no more, ladies, sigh no more."*  
 KENNETH TAYLOR ΔΓΦ ..... Clarion  
*"Vocation athletics, avocation: education"*  
 JOHN UPDEGRAFF ..... Clarion  
*"That adorable mustache."*  
 GUSTAVE WEIN ..... Clarion  
*"Destined to become famous as a violinist."*  
 LEWIS WELLS ..... Brockway  
*"Born with the gift of laughter, and with the thought that the whole world's mad"*  
 PAUL WHITEHILL ..... Shippenville  
*"Thank God that we have been given such a leader."*  
 MRS. EVA WOLFORD ..... Brookville  
*"Last in this list, but not in our esteem."*

The  
**SEQUELLE**

1  
9  
3  
1

**FRESHMEN**



THE FRESHMAN CLASS

# FRESHMEN

1  
9  
3  
1

# The SEQUELLE

## CLASS OFFICERS

<i>President</i>	- - - - -	JOHN RIEMER
<i>Vice-President</i>	- - - - -	WILLARD SIMPSON
<i>Secretary-Treasurer</i>	- - - - -	NELLIE WEAVER

*Class Sponsor,* GILBERT A. HOYT

## CLASS ROLL

Marguerite Baker OAA	Betty Hesley ΣΔΦ	Sylvia McKinley
Margaret Barnett ZKN	Jane Hohman	Lois McMahon
Marian Best ΣΔΦ	Reba Hosey	Alice Nagle ZKN
Wilma Best OAA	Miriam Humes	Gladys Naugle
Mary Borrone	Norris Hummel	Elsie Nelson ΣΔΦ
Carrie Boyle ΣΔΦ	Roxanna Irwin	Martha Peace
Louie Boyles	Chalmer Kenemuth	Sara Phillips
Mary Britton	Ruth Kirkpatrick ΣΔΦ	Eileen Rice
Mabel Bruce ΣΔΦ	Gertrude Knapp	John Riemer ΑΦΦ
Florence Campbell ZKN	Eleanor Kooman OAA	Genevieve Rossman
Leone Carson ΣΔΦ	Marcella Kurtzhals OAA	Mary L. Rumbaugh
James Cassel ΑΦΦ	Roger Lidstone	Francys Schwem
Allen Corbett	Florence Lindberg	Jean Shankle OAA
Helen Corbett	LaVerne Logan ΑΦΑ	Williard Shreffler ΑΦΦ
Ida Crawford	Paul Love	Lucille Silvis
Dale Cyphert	D. O. Lynn	Kenneth Simpson ΑΦΑ
Edna Davies ΑΧΔ	Ida Rebecca Mahle	Williard Simpson
Gladys Dickey	Mvin Marshall	John Smathers
Lawrence Dittman	Grace Marshall ΑΧΔ	Phyllis Smathers
Maxine Dressler	Norbert Master ΣΦΔ	Carl Smith ΑΦΑ
Louise Dwyer	Sara Milanovich	Tom Smith
Margaret Elliott ΣΔΦ	Joseph Miller ΣΦΔ	Winifred Smith
Geraldine Elliott	Maurice Moffatt	Kenneth Snyder ΑΦΑ
Irene Elwood ZKN	Verna Monks OAA	Sylvan Sowers
Anna Flick	Ethel Moore	Wayne Spence
Annie Foster	Iva Moore	Margaret Standley
Ethel Freedline	Gladys MacBlane	Ralph Stauffer ΣΦΔ
Ruth Fulton OAA	June McCall	Budd Stewart ΑΦΑ
Marie Gaghan	Laura McCall	Evelyn Swanson
Donald Galbreath	Olive McCall	Hilda Traister
Charles Grant	Madeline McCanna	Esther Truby ZKN
Floyd Greenawalt	Joe McCullough	Madelon Updegraff
Helen Hahn	Frances McDaniel ZKN	Nellie Weaver ZKN
Ruth Hahn	Russel McFaul	Thelma Welty OAA
Florence Harley ΣΔΦ	Russel McGaughey ΣΦΔ	Francis White
Evaline Hartge	Sara McGaughey	Pearl Wing
Eugene Hartman ΣΦΔ	Harriette McGraw	Mary Womer
	Aldean McKinley	







# ATHLETICS



THE FRESHMAN INSURRECTION



BACK (9) TO NATURE



ON THE FENCE



SHOULD I??



DANNY BOY



TRAINING SCHOOL



CHUBBY



BECHT



## **MEN'S SPORTS**





# FOOTBALL 1930

JOHN O. JONES

*Coach*

Coach Jones deserves much credit for his work with the football squad of this and past seasons. This makes his fourth successful season as football coach at C. S. T. C. He has, also, a formidable record from the University of Illinois, and as coach at Royal Oak High School, in Michigan. We sincerely hope that Coach Jones will be connected with C. S. T. C. for years to come.



CAPTAIN JOSEPH KATA

*Tackle*

Captain "Joe" Kata proved himself more than worthy of his position by his ability to think his way out in moments of close playing. Besides this he was one of the outstanding linemen of the team, mixing in all plays and at times being down the field under kicks with the same speed as his ends. Kata will be back next year to form a valuable part of what should be a successful team.



ROBERT LINDQUIST

*Center*

"Bob" was elected the most consistent Senior on this year's team. He takes his athletics seriously, never having missed a night of practice. He was a mainstay in the line and a natural leader who set a splendid example for his teammates. We are sorry that "Bob" is leaving us, but we are consoled by the thought that success will follow him wherever he goes.



JOHN CALDWELL

*Tackle*

John came to us this year with quite a successful record. He upheld his record in every way during this season. Johnny was one of the fastest starting men on the squad, and many times broke up plays when they should have been stopped by other men. He leaves us this year by graduation.



# FOOTBALL

ROBERT POWERS

*Guard*

"Bob" was shifted from his position at tackle on the '29 team to guard on this year's squad. At this position he has shown himself equally dependable, being very aggressive on both offense and defense. This makes his third year of football at C. S. T. C. leaving him another year with us. We look forward to his help in making the season of '31 a success.



RALPH STAUFER

*Guard*

This was Ralph's first year at football here. "Pop" came to us after playing a year with the Penn State Freshmen. He played an exceptionally good game throughout the year. He shows promise of even better work in the future and we hope that he will be back with us again next year.



WILLIAM RUSSELL

*End*

Bill in his old position as end completed his second successful season of college football. Russell was a very good offensive player; he had the second highest individual point score. Bill makes a greater improvement in his playing each year, and we know that he will have two more years on the Purple and Gold squad in which he will show to even better advantage.



JAMES SINCLAIR

*Halfback*

Jim was high point scorer for the season. He had what might be called an educated toe when it came to drop-kicking for extra points. He was one of Clarion's most dependable men, consistently hitting the line hard and executing his plays with precision and dispatch. He was an exceptional defensive player and will be of aid in securing success next year.



# 1930

## WESLEY TRAVIS

### *Quarterback*

Wesley in his position at quarterback played very well throughout the season. He used very smart generalship at all times. His ball-handling and encouraging voice were big factors in the general team-play. "Travy" has the qualities of a leader, and he handled the team very efficiently—at times brilliantly.



## WILLARD SIMPSON

Willard, playing his first year of football, has shown us that he has the qualities of a good player. His playing was uniformly good and at times was featured by exceptional brilliance. With a little more experience he should be playing a stellar game.



## GEORGE BOWSER

George Bowser, utility end and tackle, could play either position with a great deal of efficiency. George has a wonderful physique and was able to endure the hardest of bumps. This was his first year of college football, but one would never know it from his playing as he handles himself like a veteran.



## WILLARD SHREFFLER

### *Fullback*

Willard was the hardest line-smashing back that we had this year. "Wid" is a heavy man with piston-like legs and can run the 100 yard in 10 seconds—making him especially suited for his position. Only a Freshman, he played like a veteran. Great things are expected of "Wid" in the future, and we know that he'll come through.



# FOOTBALL



JAMES KASSEL

*End*

This was Jim's first year with our football team. He was bothered at times with a bad knee, but missed only one quarter during the entire season. He was a bulwark on defense and a dangerous man on the offense—in fact at any time he was a source of worry to the opposition. "Jimmy" has two more years of football at C. S. T. C. and he should make a record for himself during that time.



RALPH FULTON

Ralph in the backfield showed exceptional ability in running interference and blocking opposing players. He played snappy football throughout the season. This was "Posey's" first year in a football suit, and we must say that he handled himself exceptionally well.



KENNETH TAYLOR

Kenneth Taylor, utility center and linesman, has been for the second year on the football squad of Clarion State Teachers College. "Ken" gave a very creditable account of himself in all the games in which he played. Having two more years at C. S. T. C. we feel sure that he will be a regular next season.



RAY DOVERSPIKE

Ray, in the backfield, was the shortest and stockiest player we had. When "Dovey" was out on the field you could always expect to witness him playing a fine game. Because of injuries "Dovey" was seriously handicapped, but despite these he came through the season in great style. He shall be here two years yet.



# 1930

THOMAS WILSON

*Manager*

"Tommy" handled the business end of football very efficiently in this, his first experience as football manager. He was the answer to the need created by the graduation of our former capable manager, Paul Stewart. "Tommy" supplanted him very efficiently—a more willing and dependable manager would be hard to find. The fellows appreciate his services a great deal.



VICTOR VASSIA

*Student Assistant Coach*

"Vic", it was, who helped to get the squad in shape, his vigorous training doing much to keep the fellows toughened and fit for work. He at one time starred for Thiel, this background of experience making him a very capable man to superintend the squad's practice. The members of the football squad appreciate his work and wish him the success that he richly deserves.



ALVIN MARSHALL

*Quarterback*

Alvin had the honor of being chosen as the Freshman showing the most improvement during the season. This was "Big's" first year in a football suit, making even more striking the nerve and courage which he displayed when on the field. We could have written much more about this brainy little player, but only those who have seen him in action will realize the greatness he may some day attain.

DANIEL COLEMAN

Dan in the backfield was a very dangerous player. He is a triple threat man, being able to kick, pass, or run with the ball, and do all very well. It was in kicking, however, that he was especially outstanding. In one game Dan stood behind his own goal line and kicked the ball over the opposing team's goal line. No one who saw that kick will ever forget it or the man who made it.



THE INDIANA GAME

KENNETH LEES, PHILIP RAMSEY, JOHN RIEMER, RALPH THOMAS, and WAYNE SPENCE proved themselves football players of merit even though they did not get in enough games to receive the "C". These men were very loyal and deserve fully as much credit as those who won their letter. It is, in fact, much harder for a man to come out and take the bumps and then not get to play in many games than it is to get into every battle. These fellows deserve a rousing cheer for their sportsmanship and devotion to the game. With a little more experience they shall make some of the old players work hard for their positions.

#### SUMMARY OF THE 1930 SEASON

Oct. 4—Millersville .....	At Home
Oct. 11—Slippery Rock .....	Away
Oct. 18—Indiana .....	At Home
Oct. 25—Alliance .....	At Home
Nov. 1—Edinboro .....	Away
Nov. 8—California .....	At Home
Nov. 15—Lock Haven .....	At Home

**BASKETBALL**  
1930

1  
9  
3  
1

*The*  
**SEQUELLE**

*Coach*—J. O. JONES

*Captain*—KENNETH WILLIAMS

*Manager*—JOHN BARGER

*Forwards:*

KENNETH WILLIAMS  
DONALD MAHAFFEY  
RALPH FULTON  
NORBERT MASTER  
JAMES SINCLAIR  
CHARLES GRANT

*Centers:*

WILLIAM RUSSELL  
BLAINE ELDER  
GEORGE BOWSER  
WILBUR DUMARS

*Guards:*

ROGER LIDSTONE  
KENNETH SNYDER  
JOSEPH KATA  
ROBERT LINDQUIST  
JAMES KASSEL



1930 BASKETBALL SQUAD

*First Row*—Master, Sinclair, Mahaffey, Williams, Captain, Lidstone, Lindquist, Fulton.  
*Second Row*—Kassel, Russell, Bowser, B. Elder, Kata, Snyder.

# The SEQUELLE

1  
9  
3  
1

# BASKETBALL 1930



O. JONES  
Coach

Immediately after the close of the football season Coach Jones issued a call for basketball candidates. Twenty-five men, all aspiring to positions on the varsity, responded. After a week of light practice, conditioning, and fundamentals the squad was reduced to fifteen men. After this the hard work of preparing the varsity to meet its nine game schedule really began. Practice was made difficult by the fact that the gymnasium was torn up in the process of rewiring, it being necessary to go to the local high school gym. In spite of this and other difficulties the squad began to take on polish and quite an efficient machine was built up.

The first game of the season was played at Brookville with the well-known Senior Y. M. C. A. team. The game was a clean, hard-fought affair throughout, one in which almost the entire squad got a chance to play. Clarion emerged the victor, the final score being 35-21.

On January 24, the Clarion Yellow Jacket quintet journeyed to California to play the Teachers College at that place. The game was very exciting and closely played. Snyder, in college competition for the first time, played a capable game. Williams, Clarion captain, played in hard luck the greater part of the evening, yet managed to tie Mahaffey in scoring with a total of seven points. California finally won after the score had see-sawed back and forth many times. The score, 33-28, rather disappointed California—they had looked for an easy triumph in their fourteenth game of the season.

The high spot of our season was the defeat of Indiana in the local high school gym in the varsity's first home game. This game was a highly fascinating fracas, featured by a "dime novel" climax. During the last minute of play Lidstone sank a perfect charity throw, making the score 19-18 and with Clarion holding the lead until the final whistle. The locals led Indiana at the half by an eleven to nine score. Fast play and numerous fouls featured the second half, with Indiana outscoring Clarion nine to eight.

The fourth game of the season was played with Slippery Rock S. T. C. in Slippery Rock's new gymnasium. The "Rockets" were masters of the situation during the entire game, emerging on the long end of a 34-19 count. Clarion played a clean, hard-fought game, but did not seem to be a match for the State Teachers College Champions of Western Pennsylvania.

In the next game of the season Clarion was forced to take the short end of a 32-25 score at Indiana. After having taken Indiana into camp two weeks previously on the local floor, the Clarion boys had their hearts set on repeating the trick at Indiana, but in the first half they could not get started. Coming back in the last half with determination, the Jonesmen began closing the wide gap which Indiana's scoring had created during the first part of the game. Williams scored five times from the field during the last minutes of play, but the Clarionites found the task of overcoming the lead too great, the final whistle revealing a score of 32-25.

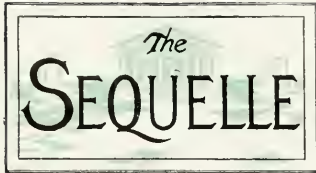
Clarion obtained sweet revenge on California in the local gym, when they sank the California ship to the tune of 26-22. There was no question as to the outcome once the Clarion men found their eyes in the second



KENNETH WILLIAMS  
Captain



1  
9  
3  
1



half of the game, but the first half left them trailing 15 to 12. The later part of the fray was featured by the defensive playing of Kata and Russell, who, time and again, broke up the visitors' attempts to get going. "Jock" again led Clarion in scoring.

In a combination football and basketball game, Edinboro set down the Purple and Gold passers 21-14 in the local high school gymnasium. Clarion held the lead until the last few minutes of play when Edinboro forged ahead, making the score 15-14 in their favor. It was then that Anderson of Edinboro, who had been checked closely during most of the game, broke through for three field goals in rapid succession, making the final score 21-14.

It was in the eighth game of the season, in which Clarion threw a scare into the Slippery Rock camp by forcing their quintet into an overtime period in the local gym, that the Purple and Gold passers displayed the best form they showed at any time in the season. The locals led 7-2 in the first part of the game, then Slippery Rock came back to take the lead at halftime, 15-8. In the second half a steady rally enabled Clarion to close the gap and forge ahead by one point with seconds to go. Then a Clarion man fouled and Slippery Rock converted, tying the score. In the overtime period Slippery Rock emerged the victor, 28-24.



JOHN BARGER  
*Manager*

The final game of the season was played at Edinboro on March 6. The game was a weird and ragged exhibition on the part of both teams. Little passing was done—whoever got the ball shot it. The game whistle found the score to be a most extraordinary one, 59-40, in favor of Edinboro.

This game and many of the previous ones were played over and over again on the bus when the Clarionites returned home from Edinboro. And so ended another Clarion basketball season.

SUMMARY OF THE SEASON

Clarion.....	35—Brookville Y.....	21.....	..Away
Clarion.....	29—California .....	32.....	..Away
Clarion.....	49—Indiana .....	18.....	..At Home
Clarion.....	19—Slippery Rock .....	34.....	..Away
Clarion.....	25—Indiana .....	32.....	..Away
Clarion.....	26—California .....	22.....	..At Home
Clarion.....	14—Edinboro .....	21.....	..At Home
Clarion.....	24—Slippery Rock .....	28.....	..At Home
Clarion.....	40—Edinboro .....	59.....	..Away

The  
SEQUELLE

1  
9  
3  
1

TRACK  
1930

Last spring C. S. T. C. established a new record in its athletic history with a clean-cut and decisive victory in track over the Indiana Teachers on May 20. C. S. T. C. showed a superiority in distance events, shot puts, and discus. The final score was Clarion 67, Indiana 47.

In the only other meet of the season Clarion journeyed to California and was beaten 59½ to 54½. The outcome of the meet was not decided until the final event of the day, the relay, which California won by a few yards.

Our record for the year was unusually good, Clarion scoring 121½ points to a total of 106½ points scored by her opponents. Since Clarion does not have the large number of candidates to pick from that other colleges of this section have, we are only the more proud of the superior team which she produced, a team able to beat Indiana, last year's champions.

"Ben" Rowley, captain of 1930 track, led the team very capably, indeed. At the close of the season Carl Smith was elected captain for 1931.



THE 1930 TRACK SQUAD

First Row Lindquist, Ramsey, DuMars, Kassel, Russell.

Second Row Coleman, Johnston, Rowley, Captain; Neal, Manager, Daum, Ruffner, Smith, Captain-Elect.

## TRACK 1930 OTHER SPORTS

1  
9  
3  
1

## The SEQUELLE

The men scoring points and the sum of the points scored in both meets by each are as follows: Coleman, 34; Smith, 20; Ruffner, 18; Rowley, 9; DuMars, 8½; Johnston, 5; Ramsey, 5; Daum, 4; Kremmel, 2; Russell, 2; Kassel, 2; Lindquist, 2; Relay Team, 10.

Letters were awarded to Captain Elwood Rowley, Captain-elect Carl Smith, Daniel Coleman, Paul Ruffner, Wilbur DuMars, Russell Daum, Phillip Ramsey, Joseph Johnston, and Manager Frank Neal. With most of these fellows back the prospects for another successful track team this year are very bright.

### OTHER SPORTS

This year several tennis tournaments were arranged for in conjunction with the men's physical education courses, but on account of the courts not being kept up in anticipation of their removal to a new location, they had to be called off. With new courts next year it is to be hoped that there will be increased interest in the sport.

A basketball tournament was also arranged for among the men, who were divided into groups coached by various members of the varsity squad, but after more than half the games had been played it had to be called off.

Many unorganized sports are to be found on the campus. Mushball and tumbling are engaged in as an adjunct to physical education classes. The nearby river attracts some for boating in the summer time and skating during the winter. A few skiing enthusiasts are to be found also.

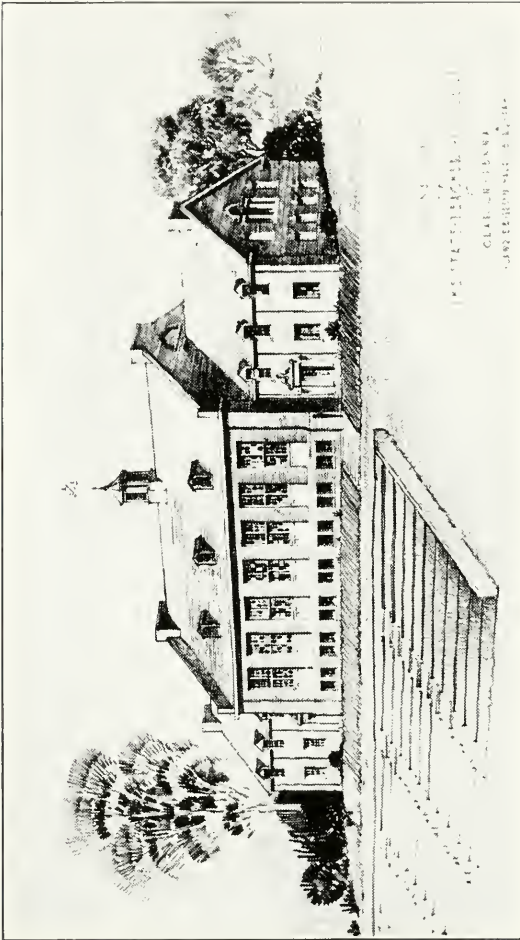
### OUR NEW GYMNASIUM

With the completion of our new gymnasium, now under process of construction, many new opportunities in indoor sports will be afforded the students of Clarion State Teachers College. This structure, pictured on the following page, will contain a playing floor 54 feet by 80 feet and a swimming pool 20 feet by 60 feet, besides dressing rooms, showers, and spacious bleachers. The building will cost upwards of \$100,000 and with its completion early this summer Clarion will have one of the finest gymnasiums of the state.

With the new playing floor many of the handicaps of the old gym, in the basement of the Chapel Building, should be eliminated, particularly the lack of seating capacity and convenient dressing rooms. The new swimming pool should be an especially welcome feature with its opportunity for indoor water sports of all kinds.

### CHEERLEADERS

The cheering was very efficiently handled this year by Lewis Wells, Edward Shankle, Kenneth Williams, and Donald Mahaffey. They know their "three Rah's" in cheerleading (we almost said three R's) and did not hesitate to show the fact to opposing schools. Many sore throats in the past may be attributed to their efforts, through pep meetings at chapel and elsewhere, to arouse that well-known "Clarion Spirit" to a pre-game pitch. Cheerleaders are very instrumental to the success of any athletic team and we are sure that these fellows deserve much more credit than has been given them.



THE NEW GYMNASIUM

Architect's drawing of the new gymnasium as it will look when completed. This building, now under process of construction and to be finished early this summer, is a structure 144½ feet long and 70 feet wide, containing a playing floor 54 feet by 80 feet and a swimming pool 20 feet by 60 feet, in addition to classrooms, offices, dressing rooms, and spacious bleachers. Its cost is to be upwards of \$100,000.





## **WOMEN'S SPORTS**



# *The* SEQUELLE

1  
9  
3  
1

# HOCKEY

Hard work, splendid sportsmanship, and a spirit of friendly rivalry marked the close of this year's hockey season in December.

Hockey has been a major sport in women's athletics this year, intra-mural hockey having been developed in our physical education classes. Helen Elkin's team carried away the honors there.

The Freshman and Sophomore teams played off a tournament of three games, two of which were won by the Freshmen. From these two teams the following varsity was chosen: Gosetti, Cheatham, Rea, Riddle, Swartzfager, Elkin, Hoffman, McCall, McKinley, Bruce, and Irwin.



Varsity Hockey Team  
First Row: McCall, Elkin, Riddle, Captain, Rea, Irwin.  
Second Row: Bruce, Gosetti, Hoffman, McKinley.  
Third Row: Swartzfager, Cheatham.



1  
9  
3  
1



Due to reverses in the weather, the soccer squad was at some disadvantage. Mud prevailed, but the energetic soccerites didn't "stick"—the girls showed their grit by playing two well contested games on the swampy fields. The winning of this soccer tournament by the Sophomores served to even the score between the two class teams. The following persons, picked from both teams, make up the varsity: Rossman, Freedline, Gosetti, McKinley, Best, Moore, Truby, Rea, Swartzfager, Campbell, and Elkin.



VARSITY SOCCER TEAM  
*First Row*—Elkin, Rossman, Captain, Rea.  
*Second Row*—Freedline, Best, Gosetti, Moore, McKinley.  
*Third Row*—Swartzfager, Campbell.

# The SEQUELLE

1  
9  
3  
1

# WOMEN'S COACH BASKETBALL



HELEN M. BARTON  
*Coach of Women's Athletics*

## MISS HELEN BARTON

Miss Barton is one of the outstanding personalities of Clarion State Teachers College. She is a musician of no mean ability as well as a specialist in the field of physical education. Her inspiring leadership has endeared her to all.

By placing women's athletics on the plane of intra-mural sports she has developed an interest which keeps both Sophomores and Freshmen eagerly working to win. Miss Barton is adept at keeping the spirit of competition above board. She has helped us to work not only that the best might win, but also that the best in athletics might be won.

## BASKETBALL

The basketball season closed with the same intense interest in which it opened. Though the "freshies" in their jumpers looked "pretty green", the Sophomores discovered that their basketball technique wasn't so bad. The three games of the basketball tournament were all won by the Freshmen.

The winning of the basketball championship by the Freshmen broke the tie in the intra-mural athletic tournament which had existed up to this time.

From the two teams, Freshman and Sophomore, the following varsity was picked: Rossman, Boyle, Rea, McCall, Nelson, and Hoffman.

## OTHER INTRA-MURAL SPORTS

At the time the Sequelle goes to press intra-mural contests have been played off in only hockey, soccer, and basketball. We expect soon to take up volleyball, mush ball, and perhaps tennis. These will be brought to a close at our Play Day, some time in May, when letters will be given to those girls having the greatest number of points in intra-mural sports.

## LETTER WINNERS

1  
9  
3  
1

## The SEQUELLE

Letters were awarded to twelve young women last year for their outstanding work in athletics. This included participation in hockey, soccer, basketball, and volley ball, and making varsity in at least two of these sports. The awards were made on the basis of individual ability, teamwork, and good sportsmanship. The following received letters in 1930:

RUTH CAMPBELL—Whose work as hockey and soccer fullback on the Sophomore team made the Freshmen despair of ever making a goal.

MARY CHEATHAM—The girl from Missouri who, we soon learned, was a full-fledged athlete. Her fine playing in every game made her one of the two women to tie for highest number of points toward a letter.

ALTA MONKS—Speed made her the indispensable wing of the Sophomore soccer and hockey teams. To her goes credit for often getting the ball dangerously near the Freshman goal.

MADELINE COLLIER—Another Freshman who has made athletics one of her chief interests. No basketball team would be complete without "Connie" for center.

VIRGINIA FRILL—Who knew how to "sock" a hockey ball as hard as any of the Sophs. "Ginny" also proved to be an excellent guard on the Freshman basketball team.

TILMA GOSSETT—The goal keeper who often saved the day for the Freshman team when all hopes seemed gone. Her cool, level-headed play when the ball approached the goal line made her an indispensable goal keeper.

GERALDINE LOOS—The little blonde who played fullback with Ruth Campbell and made complete a campus-famed team of hockey fullbacks. "Gerry" was also a very good volley ball player.

TWILA REA—As capable an all-around athlete as could be found on the campus. Particularly do we know "Twink" as the speedy side-center in basketball, and as a good volley ball and hockey player.

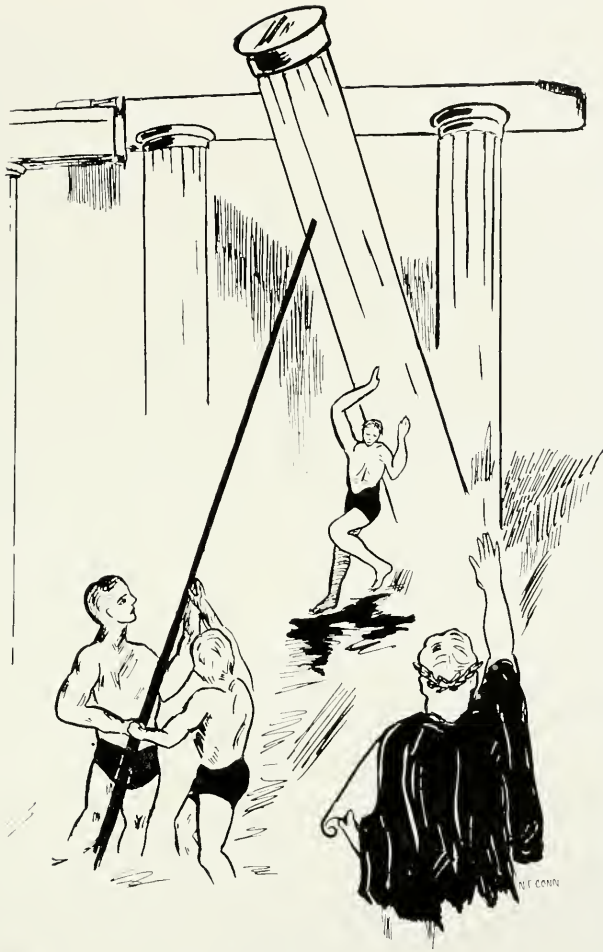
STELLA RHEA—Another Sophomore blonde who took part in all athletics. Center on the basketball team, and a member of the volley ball, soccer, and hockey teams, she was an excellent teammate and formidable opponent in all.

RUTH RHIDDLE—Small but powerful, Ruth tied with Mary Cheatham for highest number of points out of the eleven letter winners, having made three varsities and the basketball squad. Her powerful drive in hockey and volley ball greatly aided the Freshman team in conquering the Sophomores.

FLORENCE REAGHART—The most aggressive player on the Soph teams. Her fighting spirit spurred her teammates on and kept the Freshmen "on their toes" in any game in which she participated.

MARTHA KLINGLER—A girl who could keep calm under all the trying circumstances of a basketball game. She formed, furthermore, an excellent part of the other Sophomore teams matched against the Freshmen.





# ORGANIZATIONS



Mo(0)RE FROST



NIT AND WIT



EXCLUSIVE



SMILES



CHUMS



A SHINING LIGHT



CHICAGO?



VARDITY MEN



DRUNK AGAIN?





# GOVERNMENT AND CHRISTIAN ORGANIZATIONS



The  
**SEQUELLE**

1  
 9  
 3  
 1

**MEN'S  
 STUDENT  
 GOVERNMENT**

The Men's Student Government aims to develop the highest standard of honor in all matters of personal conduct. This representative body under the supervision of the Dean of Men, Mr. Hoyt, deserves commendation for the manner in which it maintained co-operation among the men of the dormitories.

OFFICERS

*President* - - - - - ROBERT LINDQUIST  
*Secretary* - - - - - JOSEPH KATA  
*Dean of Men*, G. A. HOYT

MEMBERS

VICTOR VASSIA                      ROBERT McMOOSE  
 COLIN HILLMAN                  STANLEY LORE  
 RUSSELL SWELTZER



MEN'S STUDENT COUNCIL

*First Row:* Kata, Secretary, Hoyt, Dean, Lindquist, President.  
*Second Row:* McMoose, Vassia, Lore, Hillman, Sweltzer.

**WOMEN'S  
STUDENT  
GOVERNMENT**

1  
9  
3  
1

*The*  
**SEQUELLE**

The purpose of the Women's Student Government is three-fold; to create and retain a high standard of honor among the student body, to develop self responsibility and group responsibility, and to furnish a student administrative body. This administrative body, known as the Student Council, is composed of fourteen members—eleven Sophomores and three Freshmen. A business meeting of the council is held once a week to discuss student problems and their betterment.

OFFICERS

<i>President</i>	- - - - -	HAZEL ROSSMAN
<i>Vice-President</i>	- - - - -	VIRGINIA FRILL
<i>Secretary</i>	- - - - -	MILDRED SHORTS
	<i>Dean of Women, HELEN D. SIMS</i>	

STUDENT COUNCIL

<i>President</i>	- - - - -	MILLIEEN KOPP
<i>Vice-President</i>	<i>First Semester</i> - - - - -	CLAIRE ELLIOTT
	<i>Second Semester</i> - - - - -	FRANCES ANDERSON
<i>Secretary</i>	- - - - -	PAULINE HEASLEY
<i>Treasurer</i>	- - - - -	DOROTHY BEALS

*Senior Members*

MARY BIGLIA            ARLENE MOTT  
EVELYN HOFFMAN    MARY DAVIS

*Junior Members*

MARIAN BEST            NELLIE WEAVER  
MARGUERITE BAKER



WOMEN'S STUDENT COUNCIL

*First Row*—Mott, Shorts, Rossman, Sims, Dean, Kopp, Hoffman, Heasley.  
*Second Row*—Frill, Biglia, Baker, Anderson, Elliott.  
*Third Row*—Weaver, Best, Beals.

The  
**SEQUELLE**

1  
 9  
 3  
 1

**LIBRARY  
 COUNCIL**

The Library Council was organized last year for the purpose of maintaining better study conditions in the library. The members include the presidents of the four classes, the presidents of the Y. W. C. A. and Y. M. C. A., and the presidents of the student government organizations. Miss Carlson is the faculty advisor.

The Council sponsored several mid-week Chapel programs during the year. The programs consisted of current events taken from various newspapers and magazines.

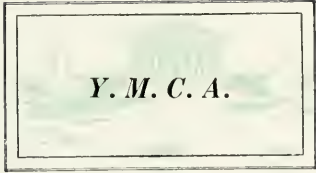
**OFFICERS**

*President* - - - - - JOHN MOCKNICK  
*Secretary* - - - - - LUCILE FROST  
*Faculty Advisor* - - - - - MISS CARLSON



**THE LIBRARY COUNCIL**

*First Row*—Rossman, Kopp, Lust,  
*Second Row*—Grogan, Mocknick, President, Thomas,  
*Third Row*—Hanagan, Lindquist.



1  
9  
3  
1



The Young Men's Christian Association of Clarion College welcomes all those who have an interest in the religious side of life.

OFFICERS

<i>President</i>	- - - - -	KENNETH COGON
<i>Vice-President</i>	- - - - -	LEWIS WELLS
<i>Secretary</i>	- - - - -	JOSEPH KATA
<i>Treasurer</i>	- - - - -	EDWARD SHANKLE

ROLL

HARRY ASHBAUGH  
JOHN BARGER  
JOHN CALDWELL  
KENNETH COGON  
RAY DOVERSPIKE  
ARTHUR ELDER  
BLAINE ELDER  
JOHN FEITZER  
CHARLES FOX  
EUGENE HARTMAN  
JOSEPH KATA  
RALPH KELSE

KENNETH LEES  
ROBERT LINDQUIST  
CHARLES LOGAN  
LA VERNE LOGAN  
STANLEY LORE  
PAUL LOVE  
JOSEPH MILLER  
ALFRED MOONEY  
RUSSELL MCFAIL  
RUSSELL MCGAUGHEY  
PHILLIP RAMSEY

EDWARD SHANKLE  
KENNETH SIMPSON  
WAYNE SPENCE  
BUDD STEWART  
WILLIAM STEWART  
CLYDE VANTASSEL  
VICTOR VASSIA  
EVLIN WEAVER  
LEWIS WELLS  
FRANCIS WHITE  
PAUL WHITEHILL  
THOMAS WILSON



Y. M. C. A. CABINET

*First Row* Mochnick, Wells, Coggon, President, Shankle  
*Second Row* Wilson, Kata, Vantassel, Ashbaugh.  
*Third Row* Lindquist, Weaver, Lore.

# The SEQUELLE

1  
9  
3  
1



The Young Women's Christian Association strives to establish the spirit of good will and friendship among the college women. It endeavors to give each girl an opportunity to take part in all "Y" programs. By means of "Y" greetings, receptions, teas, and "Big Sister Campaigns," the organization tends to aid the Freshmen women in adjusting themselves to life in the College.

During the year girls representing the "Y" Cabinet are sent to various conferences in the state. At Christmas time food and clothing are sent to needy families. The candle light services, held in the Chapel or out of doors, help us to maintain the spiritual life that is most needed in the College.

## Y. W. C. A. CABINET

<i>President</i>	- - -	LUCILE FROST	<i>Vice-President</i>	- - -	FLORENCE HENDERSON
<i>Secretary</i>	- - -	ARLENE MOTT	<i>Treasurer</i>	- - -	MARGARET KAPP
<i>Devotionals</i>	- - -	HAZEL BEES	<i>Misc.</i>	- - -	FRANCES ANDERSON
<i>Publicity</i>	- - -	LOUISE SOUTHARD	<i>Morning Watch</i>	- - -	IRENE COGLEY
<i>Social</i>	- - -	HAZEL ROSSMAN	<i>Foreign</i>	- - -	FRANCES HUMMER
<i>World Fellowship</i>	- - -	ETHEL LIND	<i>Home Missionary</i>	- - -	SARA MURRAY



THE CABINET

*First Row*—Cogley, Lind, Frost, President, Kapp, Anderson  
*Second Row*—Rossman, Henderson, Southard, Mott.  
*Third Row*—Bees, Murray, Hummer.



# **MUSIC ORGANIZATIONS**



The  
**SEQUELLE**

1  
 9  
 3  
 1

**WOMEN'S GLEE CLUB**

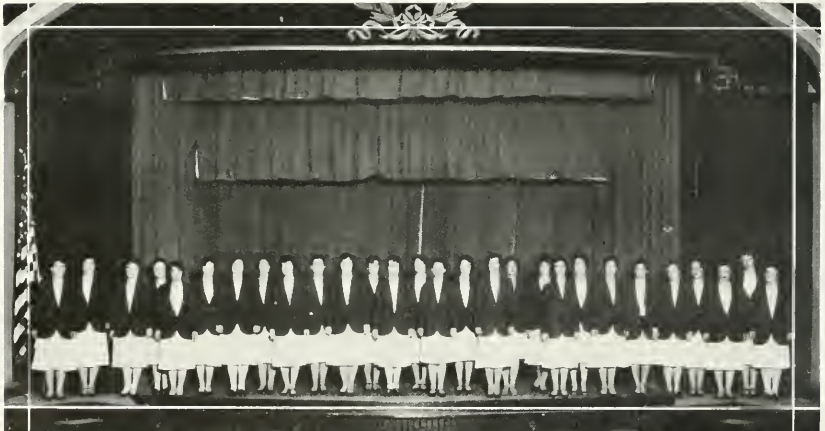
*"Music it was we brought from heaven  
 On an Angel's breath so pure,  
 And it alone may we carry back  
 As the thing which shall endure,  
 And thus, uplifted, do we mount  
 To realms of world forgotten joy—  
 On wings of living Song."*

The 1930-31 season of the Women's Glee Club was a most unusual one. The personnel of the club this year was of superior musical talent. The show was "bigger 'n better 'n ever." Two performances of our concert were staged in Clarion; out of town bookings were numerous. An experiment instigated by Mr. Bland in the exchange of Glee Clubs between Slippery Rock and Clarion proved to be a delightful innovation to both colleges. Clarion has undoubtedly set a precedent for glee clubs of other state teachers colleges to follow in the future.

Much credit is due "Pop" and "Mom" Bland, our able music instructors, and Miss Helen Barton, dance instructor and cellist. To them the success of the organization rightly belongs.

OFFICERS

<i>President</i>	- - -	MILITEN KOPP	<i>Vice-President</i>	- - -	NORVA HELTER
<i>Secretary-Treasurer</i>	- - -	VIRGINIA FRILL	<i>Manager</i>	- - -	MILDRED SHORTS



WOMEN'S GLEE CLUB

*Left to Right*-Shorts, Campbell, Monks, Kopp, Reed, Hoffman, Kirkpatrick, Crawford, Burnham, Pressler, Frill, Carson, Heeter, Mrs. Bland, Miss Barton, Davies, Mohrney, Nault, Swartzfager, Hunter, McManigle, Shankle, Puhn, Pifer, Mahy, Hessley, Lawrence, Riddle.



**MEN'S GLEE CLUB**

1  
9  
3  
1

*The*  
**SEQUELLE**

The Men's Glee Club, directed by Mr. and Mrs. Bland, is an organization for those men who enjoy singing. During the current year, the Glee Club sang at inter-college debates.

Every week the men meet for an hour's practice. Particular talent is not observed in admitting the members, the main criteria being a real interest in music. To Mr. and Mrs. Bland goes the credit for making the club a favorite with the fellows.

OFFICERS

*President* - - - - - STANLEY LORE  
*Secretary* - - - - - JOSEPH KATA



MEN'S GLEE CLUB

*Left to Right* Weaver, Barner, Sinclair, Flanagan, Shankle, Fox, Elder, Lore, Hileman, Mochnick, Bland—Instructor, Greenawalt, Coggon, Stauffer, Miller, Mahaffey, Sweitzer, Schettino, Kata, Bowser, Wein MacAfoose, Doverspike, Fetzter.

The  
**SEQUELLE**

1  
 9  
 3  
 1

**VESTED  
 CHOIR**

The Vested Choir, one of the largest musical organizations on the campus, is composed of thirty members. This group sings at Vespers every Sunday night; it also gave one program for chapel this year. On November 16, 1930 the choir sang in the Presbyterian church with Dr. Eisenberg of Slippery Rock State Teachers College as the speaker of the evening.

A picnic has been planned for the choir, to take place sometime during May.

OFFICERS

*President* - - - - - ELVIN WEAVER  
*Secretary and Treasurer* - - - PAULINE HEASLEY



THE VESTED CHOIR

*First Row* Welty, Horton, Gosetti, Baker, Henderson, Kapp, Heasley, Beels, Copley, Love, Moore, Gaghan  
*Second Row* Swanson, Schwem, Rossman, Anderson, Barrone, MacBlane, Patterson, King, Campbell, Stute, Lawlor, Best, Weaver, Zilhaver, Mowrey.  
*Third Row* Cogson, Lore, Shankle, Wells, Weaver.

**COLLEGE  
ORCHESTRA**

1  
9  
3  
1

*The*  
**SEQUELLE**

Although the College Orchestra did not make many public appearances this year, having confined itself chiefly to chapel programs and the like, it is nevertheless a very live organization. Under the direction of Mr. Bland the orchestra has become quite finished in its performance and many among its members have developed into capable musicians. Some of these shall no doubt become prominent in the field of music.



THE COLLEGE ORCHESTRA

*Standing* - Lawrence, Schwem, H. I. Bland  
*Seated* - McDowell, Barton, Shankle, Frill, Stevens, Mrs. Bland, Wein, Hoffman, Lynn, Swartzfager, Hoyt, Irwin,  
Kirkpatrick, Shorts, Fox, Elliott, Riddle, Sweitzer.



UP IN THE AIR



CAUGHT UNAWARE



AT ARMS LENGTH



LILLIES AT THE POND



UNIDENTIFIED



THREE FAIR MAIDS



POLLY'S QUINTET



NEO



TWINS?



## **CLUBS**



# The SEQUELLE

1  
9  
3  
1

# COLLEGE PLAYERS CLUB

The College Players Club has had a very successful year. The club acquired a new property room and many new properties during the past year, besides presenting a number of excellent plays.

During the first semester the members of the club made a trip to Pittsburgh to see "Dracula", a thrilling mystery play. On December 19, three one-act plays were presented by the club members. The plays were: "The Romancers", "The Bishop's Candelsticks", and "The Man in the Bowler Hat". The club, on May 6, presented its first three-act play, "Dulcy".

### OFFICERS

<i>First Semester</i>			<i>Second Semester</i>	
LEWIS WELLS	- - - - -	<i>President</i>	- - - - -	JAMES KASSL
MILHEEN KOPP	- - - - -	<i>Vice-President</i>	- - - - -	DOROTHY LAWLOR
PAULINE HEASLEY	- - - - -	<i>Secretary</i>	- - - - -	RUTH CAMPBELL
MILDRED SHORTS	- - - - -	<i>Treasurer</i>	- - - - -	VIRGINIA FRILL

*Faculty Advisor, Miss MARIE MARWICK*



COLLEGE PLAYERS CLUB

*First Row*—McManigle, Lawlor, Flanagan, Rossman, Sweitzer, Shorts, Wells, Mohney, Thomas, Campbell, Kopp, Kindel, Hehlbrun  
*Second Row*—E. Shankle, Davies, Mopks, J. Shankle, Welty, MacBlaine, McCall, Kurtzbars, Wing, Nelson, Croyle, Frill, Kapp, Heasley, Peffer  
*Third Row*—Mooney, Fox, Lore, Kassel, Britton, Elliott, Lindberg, McKinley, Riemer, Fetzer, Stover  
*Fourth Row*—Russell, Wein, Lindquist, C. Logan, L. Logan, Snyder, Ramsey

# HOSTESS CLUB

1  
9  
3  
1

# The SEQUELLE

The purpose of the Hostess Club is to help its members in all matters of social etiquette. The work of the club this year consisted of a study of the etiquette of the dining room, campus, and social gatherings. A fashion show was put on by a representative of one of the establishments of the town, illustrating the art of dress. The club also sponsored the Hallowe'en Party. The club was under the guidance of Miss Sims

### OFFICERS

*President* - - - - - ARLENE MOTT  
*Vice-President* - - - - - MILDRED SHORTS  
*Secretary-Treasurer* - - - - - MARGARET KAPP  
*Faculty Advisor*, MISS HELEN SIMS



THE HOSTESS CLUB

*First Row*—Vorous, Best, Shankle, Monks, Arderson, Lind, Kapp, Mott, Shorts, Hoffman, Love, Rossman, Paterson, Marshall, Henderson.  
*Second Row*—Cogley, Elkin, Barnett, Neil, Frost, Baker, Nagle, Welty, Britton, Kellogg, Rumbaugh, Starr, Foster, Wyant, Danielson, Mooney, Buglia, Heasley, Kopp, Beech.  
*Third Row*—Horton, Newell, Campbell, Cyphert, Johnson, Stevens, Rice, Knapp, Dressler, Silvis, Heilbrun, Hummer, Kerr, Dean.  
*Fourth Row*—Lindberg, Harley, McKinley, McDaniels, Standley, Garda, Moore, McCanna, Logue, Melat, Traister, Feracioly.  
*Fifth Row*—Hileman, Best, Ethliver, Weaver, Elhott, Murray, Chelgren, McGaughey, Truby, McCracken, Nelson, Barrone, Womer.

The  
**SEQUELLE**

1  
 9  
 3  
 1

**ART CLUB**

The Art Club, with Miss Sandford as the faculty leader, meets once a week. Two extra-curricular credits are received for this work. The purpose of the club is to interest its members in artistic work and provide a background for creative designing and original workmanship along various lines of art. The club sponsored a chapel program during the second semester. Several teas were given in the club at various times through the year in order that the club members and leader might become more intimately acquainted.

OFFICERS

*President* - - - - - ELIZABETH McAULLEY  
*Vice-President* - - - - - HILDA TRAEISER  
*Secretary-Treasurer* - - - - - HELEN HAHN  
*Faculty Advisor, MISS HAZEL SANDFORD*



THE ART CLUB

*First Row*—Schwem, Schierberl, Bottenhorn, Bigha, Campbell, Silvis, Feraciov  
*Second Row*—Sandford, Advisor, Mahey, Logue, Johnson, Henderson, Mott, Irwin, Wolford.  
*Third Row*—O. McCall, Flick, Rice, Lawrence, Chelgren, Keckritts, Bashline.



# TRAVEL CLUB

1  
9  
3  
1

# The SEQUELLE

This club, under the supervision of Miss Sheldon, has as its purpose the stimulation of interest in geography. At the programs, consisting of talks, pictures, and discussions, we learn about the customs, occupations, and surroundings of people of other lands. These programs help to build up an attitude of world-tolerance and aid in arriving at the realization that, after all, people the world over are possessed of desires similar to our own. The years work in this club has been very interesting and has awakened in many the desire to visit the places about which we have studied.

### OFFICERS

*President* - - - - - IDA CRAWFORD  
*Vice-President* - - - - - ANNA WILLIAMS  
*Secretary-Treasurer* - - - - - PEARL STEWART  
*Faculty Advisor, MISS ESTELLE SHELDON*



THE TRAVEL CLUB

*First Row*—Heilbrun, Newell, Morgan, Sheldon, Lind, Burns, Dickey  
*Second Row*—Horner, Davis, Southard, Williams, McKinley, Kirkpatrick, Knapp, Walters,  
*Third Row*—Stute, Crawford, Murray, Smathers, Naugle, Cheatham, McFall

The  
**SEQUELLE**

1  
9  
3  
1

**COLLEGE PRESS  
CLUB**

At the beginning of the second semester the new Press Club was organized. It is an outgrowth of the old Journalism Club and will carry on the work of publishing the Clarion Call. The charter members were chosen for their outstanding work in English. They were: Lewis Wells, Stanley Lore, John Mochnick, Frances Neil, Anne Hileman, Martha Pence, Esther Pepper, Alice Nagle, and Alfred Mooney.

New members were taken in on a competitive basis. Tests in composition resulted in the following being chosen: Elsie Nelson, Miriam Humes, Florence Lindberg, Louise Dwyer, Florence Campbell, Mabel Reed, Harold Guthrie, Paul Love, and Margaret Cochran.

OFFICERS

<i>First Semester</i>		<i>Second Semester</i>
ALFRED MOONEY	President	LEWIS WELLS
RUTH BALI	Vice-President	ANNIE HILEMAN
AVANELL KOOMAN	Secretary	ALICE NAGLE
PHILIP RAMSEY	Treasurer	MARGARET COCHRAN

*Faculty Advisor, BERTHA V. NAIR*



THE FORMER JOURNALISM CLUB

*First Row*—Pence, Best, Kooman, Mooney, Danielson.  
*Second Row*—Love, Nagle, Mowry, Kooman, Neil, Ramsey.  
*Third Row*—Whitehill, Snyder, Wells, Mooney, Vantassel, Galbreath.

# DEBATING CLUB

1  
9  
3  
1

# The SEQUELLE

In reality the debating group is not an organized club, but rather holds informal meetings for those people who are interested in forensic activities. The work centers around the main debate question. From this group are selected the persons who represent Clarion in the intercollegiate debates.

The schedule for 1931 included dual debates with sister teachers colleges at Bloomsburg, Mansfield, Slippery Rock, and Shippensburg.

The active members of this group are: John Fetzer, Alfred Mooney, Mae Patterson, William Flanagan, Anne Hileman, Mary Croyle, Paul Love, Charles Logan, Florence Strattan, Emerson Best, Arthur Elder, and Harold Guthrie. Dr. E. C. Class is the faculty sponsor.

## OFFICERS

<i>Manager</i>	- - - - -	WILLIAM FLANAGAN
<i>Secretary</i>	- - - - -	FLORENCE STRATTAN

*Faculty Advisor*, DR. E. C. CLASS



THE DEBATING TEAM

*First Row*—Hileman, Kindel, Strattan, Patterson.  
*Second Row*—Love, Kurtzhals, Neil, Croyle, Fetzer  
*Third Row*—Elder, Mooney, Stewart, Flanagan, Best, Logan.

# The SEQUELLE

1  
9  
3  
1

# OUTDOOR CLUB

The Outdoor Club was organized the second semester last year. As its name implies, the club aims to stimulate an interest in outdoor life and to create an appreciation for nature.

Membership in the club was originally limited to four year students, but so many two year students desired entrance to the club that this restriction was removed.

Up to the present time, under the capable supervision and direction of Mr. Manson, the members have enjoyed trips to various spots of interest in and about Clarion and to places somewhat farther away, as Cook's Forest, Camp Kaulfman, Honesta Fish Hatchery and so on.

## OFFICERS

<i>President</i>	- - - - -	BLAINE ELDER
<i>Vice-President</i>	- - - - -	FLOYD GREENAWALT
<i>Secretary</i>	<i>First Semester</i>	RUTH CYPHERT
	<i>Second Semester</i>	TILMAE GOSSETT
<i>Faculty Advisor, MR. HARRY S. MANSON</i>		



THE OUTDOOR CLUB

*First Row*—Gosetti, King, Wallace, Whaley, Manson, Cyphert, Kindel, Riddle, Campbell.  
*Second Row*—Simpson, Cheatham, Lawrence, Beals, Murray, Hileman, Neil, Fox.  
*Third Row*—Murphy, B. Elder, Greenawalt, L. Logan, C. Logan, Ashbaugh.  
*Fourth Row*—Fetzer, A. Elder, Lees, Whitehill, Wilson.

**VARSIY "C"  
CLUB**

1  
9  
3  
1

*The*  
**SEQUELLE**

Any man who has earned his letter in a major sport at Clarion State Teachers College is eligible for membership in the Varsity "C" Club.

This club aims to promote a better co-operative spirit in the College, to develop sportsmanship and loyalty in every undertaking, and to create a greater interest in the activities of C. S. T. C.

The officers for the past year were:

<i>President</i>	- - - - -	ROBERT LINDQUIST
<i>Vice-President</i>	- - - - -	RALPH FULTON
<i>Secretary</i>	- - - - -	WILLIAM RUSSELL
<i>Treasurer</i>	- - - - -	ROBERT POWERS

*Faculty Advisor, J. O. JONES*



VARSIY "C" CLUB

*First Row*—Ramsey, Fulton, Travis, Caldwell, Kremmel, Doverspike, Wilson.

*Second Row*—Lindquist, Neal, Powers, Barger, Williams, Stauffer, Taylor.

*Third Row*—Vassia, Russell, Bowser, Shreffler, Kassel, Kata, Jones.

The  
**SEQUELLE**

1  
 9  
 3  
 1

**LIBRARY  
 CLUB**

*Books are keys to wisdom's treasure;  
 Books are gates to lands of pleasure;  
 Books are paths that upward lead;  
 Books are friends, come let us read!*

The Library Club is one of the new organizations on the campus this year. One of the aims of this club is to acquaint its members with the good books of the past and present. Useful suggestions concerning the starting and maintaining of libraries are given at the meetings. Thus the members not only secure the advantages of having good reading lists at their disposal and of better acquaintance with the outstanding literature of all times but also are better equipped as prospective teachers in the building of school libraries.

**OFFICERS**

<i>First Semester</i>			<i>Second Semester</i>	
MARGARET ELLIOTT	- - - -	<i>President</i>	- - - -	ELSIE CHIEGREN
ZOE BASHLINE	- - - -	<i>Vice-President</i>	- - - -	GERALDINE ELLIOTT
ALICE NAGLE	- - - -	<i>Secretary-Treasurer</i>	- - - -	MARGARET STANDLEY

*Faculty Advisor, MISS RENA M. CARLSON*



**THE LIBRARY CLUB**  
*First Row—Diekey, M. Elliott, Carlson, McKinley, Bashline  
 Second Row—Womer, Nagle, G. Elliott, Traister,  
 Third Row—Reed, Mahle.*

**FACULTY  
CLUB**

1  
9  
3  
1

*The*  
**SEQUELLE**

The Faculty Club is the social organization of the teaching staff of Clarion State Teachers College. By means of this club the members of the faculty are brought together once a month for a bridge dinner and social diversion. Well-planned programs are a feature of these meetings which have always proved very interesting to the members.

OFFICERS

<i>President</i>	- - - - -	JAMES R. HUSTON
<i>Secretary</i>	- - - - -	BESSIE M. RUNYAN
<i>Treasurer</i>	- - - - -	MARGARET BOYD



THE FACULTY CLUB  
*First Row*—Jack, Mohney, Barton, Long, Gamble, Carlson, Nair.  
*Second Row*—B. Bland, Miller, Runyan, Froughton, Sandford, Walters, Sims, Iltse, Grah.m.  
*Third Row*—H. Bland, Riemer, MacDonald, Huston, Becker, Glass, Wilkinson.



ATTENTION —  
FELLOWS!



WILSON'S WOODS



THE TRAPPER



ZKNS AGAIN



SIGMA HELTA PHI



FOUNDERS HALL FROM SEMINARY



EVERGREEN —  
THE TREE





# GREEK-LETTER SOCIETIES





1  
9  
3  
1



Fraternities have but recently made their appearance on the campus, the first social fraternity Alpha Gamma Phi having been established March 8, 1930. The following month Alpha Phi Alpha was established. The third social fraternity, Sigma Phi Delta, appeared the next term during October, 1930.

The beginning of women's fraternities or sororities here was marked by the establishment of Zeta Kappa Nu during April, 1930. The following term three sororities appeared in quick succession—Sigma Delta Phi in November, 1930, and Lambda Chi Delta and Theta Alpha Lambda both in January of 1931.

Honorary fraternities are represented by Phi Sigma Pi and Pi Gamma Mu, the local chapters of both having been established in May, 1930.

The fraternities and sororities, with the exception of the honoraries, are all local in character but in time should expand or become associated with nationals. While each fraternity is largely interested in its own welfare as a social unit, they are united in the common interest of fostering fraternities in general. For this reason an Inter-fraternity Council, composed of three representatives from each social fraternity, has recently been organized. Through it rules concerning rushing and other matters of inter-fraternity conduct are being formulated. A similar function among the sororities is played by the Pan-Hellenic Council.

**SOCIAL FRATERNITIES**

*(In order of Establishment at C. S. T. C.)*

Alpha Gamma Phi	ΑΓΦ	-	-	-	-	-	-	March, 1930
Alpha Phi Alpha	ΑΦΑ	-	-	-	-	-	-	April, 1930
Sigma Phi Delta	ΣΦΔ	-	-	-	-	-	-	October, 1930

**WOMEN'S FRATERNITIES**

*(In order of Establishment at C. S. T. C.)*

Zeta Kappa Nu	ZKN	-	-	-	-	-	-	April, 1930
Sigma Delta Phi	ΣΔΦ	-	-	-	-	-	-	November, 1930
Lambda Chi Delta	ΛΧΔ	-	-	-	-	-	-	January, 1931
Theta Alpha Lambda	ΘΑΛ	-	-	-	-	-	-	January, 1931

ALPHA GAMMA  
PHI

1  
9  
3  
1

The  
SEQUELLE

Established ΑΓΦ March, 1930

FRATRES IN FACULTATE

JAMES R. HUSTON

GILBERT A. HOYT

FRATRES IN COLLEGIO

SAM SCETTINO  
VICTOR VASSIA  
THOMAS WILSON  
ROBERT POWERS  
RUSSEL SWEITZER  
JOHN MOCHNICK

JAMES SINCLAIR  
KENNETH WILLIAMS  
DONALD MAHAFFEY  
JOSEPH KATA  
JOHN CALDWELL  
RALPH FULTON

JAMES CASSEL  
DANIEL COLEMAN  
WILLIAM RUSSELL  
JOHN RIEMER  
WILLARD SHREFFLER  
KENNETH TAYLOR

PLEDGE

MAURICE MOFFAT



First Row—Huston, Mochnick, Thomas, Sweitzer, Kata, Hoyt  
Second Row—Wilson, Williams, Mahaffey, Russell, Caldwell, Fulton  
Third Row—Vassia, Sinclair, Scettino, Powers, Taylor, Riemer.

*The*  
**SEQUELLE**

1  
 9  
 3  
 1

**ALPHA PHI  
 ALPHA**

Established **AΦA** April, 1930

FRATRES IN FACULTATE

HARRY S. MANSON                      CHARLES F. BECKER

FRATRES IN COLLEGIO

WILLIAM FLANAGAN  
 ROBERT LINDQUIST  
 JAMES KASSEL  
 CLETUS KREMMEL  
 JOHN BARGER  
 COLIN HILEMAN

ORRIS STOVER  
 CHARLES LOGAN  
 LAVERNE LOGAN  
 KENNETH SNYDER  
 WILBUR DUMARS  
 STANLEY LORE

CHARLES FOX  
 WESLEY TRAVIS  
 ALFRED MURPHY  
 BLAINE ELDER  
 JOHN FETZER  
 PAUL WHITEHILL

PLEDGES

CARL SMITH

KENNETH SIMPSON

BUDD STEWART



*First Row*—Manson, Elder, Fox, Kassel, Becker  
*Second Row*—Murphy, Fetzer, Kremmel, C. Logan  
*Third Row*—Lore, L. Logan, Stover, Snyder, Whitehill.  
*Fourth Row*—Lindquist, Travis, Barger, Flanagan, Hileman.

*SIGMI PHI  
DELTA*

1  
9  
3  
1

*The*  
**SEQUELLE**

Established  $\Sigma\Phi\Delta$  October, 1930

FRATRES IN FACULTATE

H. L. BLAND

E. C. CLASS

FRATRES IN COLLEGIO

HARRY ASHBAUGH  
GEORGE BOWSER  
KENNETH COGON  
ARTHUR ELDER  
NORBERT MASTER  
ROBERT McALOOSE

RUSSELL MCGAUGHEY  
JOSEPH MILLER  
ALFRED MOONEY  
EDWARD SHANKLE  
MERRILL SNYDER  
ELVIN WEAVER

EMERSON BEST  
RAY DOVERSPIKE  
RALPH STAUFFER  
WILLIAM T. STEWART  
CLYDE VANTASSEL

PLEDGES

EUGENE HARTMAN

CHALMERS KENEMUTH

FRANK NEAL



*First Row—Bland, Snyder, Shankle, Coggon, Master, Class.  
Second Row—McAloose, Mooney, Miller, Weaver, Vantassel, Stauffer, Doverspike  
Third Row—Elder, Ashbaugh, McGaughey, Best, Stewart, Bowser.*



1  
9  
3  
1



Established ZKN April, 1930

SORORES IN COLLEGIO

MILDRED SHORTS  
MARGARET KAPP  
EVELYN HOFFMAN  
PAULINE HEASLEY  
ESTHER TRUBY  
IRENE COGLEY

FLORENCE CAMPBELL  
HAZEL BELLS  
FRANCIS McDANIELS  
NELLIE WEAVER  
HAZEL ROSSMAN

MARGARET BARNETT  
MILITEEN KOPP  
VIOLET PRESSLER  
IRENE ELWOOD  
ALICE NAGLE

ADVISOR

HELEN M. BARTON

PATRONESSES

MARY B. WILLIAMSON

MRS. MERRITT DAVIS

MRS. W. B. RANKIN



First Row—Kapp, Hoffman, Shorts, Heasley.  
Second Row—Kopp, Campbell, Truby, Rossman, McDaniels, Cogley, Weaver.  
Third Row—Nagle, Elwood, Pressler.

*SIGMA DELTA  
PHI*

1  
9  
3  
1

*The*  
**SEQUELLE**

Established  $\Sigma\Delta\Phi$  November, 1930

SORORES IN COLLEGIO

BELVA McMANIGLE  
MARGARET ELLIOTT  
HELEN F. MELAT  
BETTY M. HESSLEY  
VIVIAN A. HOHN  
ELSIE L. NELSON  
AVANELL M. HANST

A. VIRGINIA STUTE  
MABEL BRUCE  
CARRIE BOYLE  
RUTH CAMPBELL  
LEON CARSON  
DOROTHY LAWLER  
HELEN BOTTENHORN

MARIAN BEST  
FLORENCE HARLEY  
VIRGINIA FRILL  
ELSIE SWARTZFAGER  
ELSIE CHELGREN  
NOLA CONN  
RUTH KIRKPATRICK

ADVISOR

Mrs. HARRIE L. BLAND



*First Row*—Bottenhorn, Shreffler, McManigle, Bland, Elliott, Melat, Harley.  
*Second Row*—Lawler, Stute, Hanst, Swartzfager, Frill Hohn, Conn.  
*Third Row*—Campbell, Kirkpatrick, Carson, Hessley, Nelson, Bruce, Chelgren, Best, Boyle.



1  
9  
3  
1



Established  $\Lambda\chi\Delta$  January, 1931

SORORES IN COLLEGIO

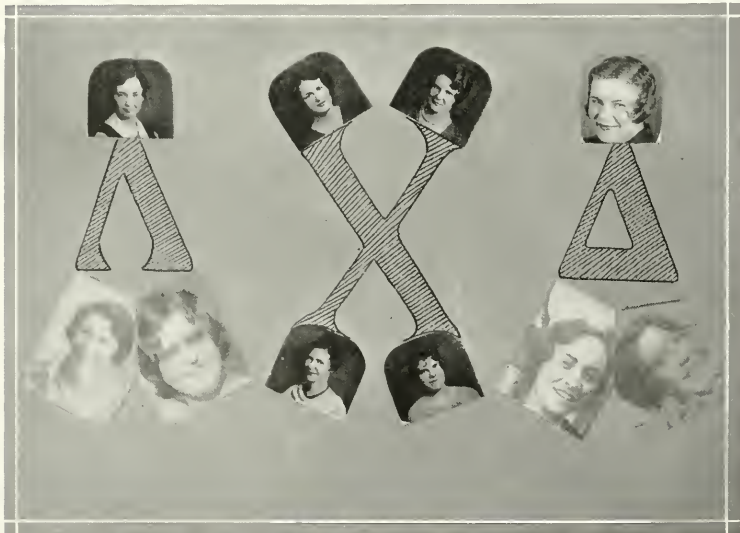
VIVIAN BURNHAM  
EDNA DAVIES  
NORVA HEETER  
JANE MAHEY

LUCILE MAHEY  
GRACE MARSHALL  
RUTH MOHNEY  
FRANCES NEIL

SARA REED  
LOUISE WHALEY  
MARJORIE WALLACE

ADVISOR

LOIS E. GREEN



Top - Mahey, Davies, Heeter, Neil.  
Bottom - Green, Marshall, Burnham, Reed, J. Mahey, Mohney.



THETA ALPHA  
LAMBDA

1  
9  
3  
1

The  
SEQUELLE

Established  $\Theta\Lambda\Lambda$  January, 1931

SORORES IN COLLEGIO

MADELEINE COLLNER  
MARCELLA KURTZHALS  
JEAN SHANKLE  
VERNA MONKS  
THELMA WELTY

MARGARET ZILHAVER  
WILMA BEST  
ELEANOR KOOMAN  
MARGUERITE BAKER

LORRAINE JOHNSON  
RACHEL STEVENS  
RUTH FULTON  
FRANCES FULTON

ADVISOR

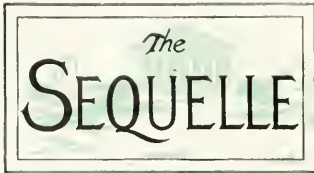
Mrs. H. R. RENN

PATRONESS

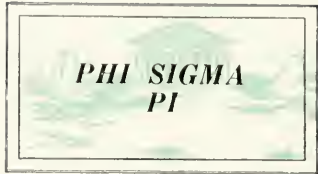
Mrs. J. R. HUSTON



First Row—Fulton, Renn, Shankle, Collner, Schwem, Huston, R. Fulton  
Second Row—Rossman, Stevens, Johnson, Zilhaver, Kooman, Best, Baker.



1  
9  
3  
1



National Honorary Educational Society

Founded at Warrensburg,  $\Phi\Sigma\Pi$  Missouri in 1916

Established **LAMBDA CHAPTER** May, 1930

OFFICERS

<i>First Semester</i>					<i>President</i>					<i>Second Semester</i>
WILLIAM FLANAGAN	-	-	-	-	-	-	-	-	-	JOSEPH KATA
JOSEPH KATA	-	-	-	-	<i>Treasurer</i>	-	-	-	-	WILLIAM FLANAGAN
JOHN MOCHNICK	-	-	-	-	<i>Corresponding Secretary</i>	-	-	-	-	JOHN MOCHNICK
					<i>Recording Secretary</i>	-	-	-	-	ALFRED L. MOONEY
STANLEY LORI	-	-	-	-	<i>Chaplain</i>	-	-	-	-	STANLEY LORI

FACULTY MEMBERS

DR. G. C. I. RIFMER

CHARLES F. BECKER  
M. E. MACDONALD

HARRY S. MANSON

PLEDGE:

DR. F. C. CLASS

ACTIVE MEMBERS

WILLIAM FLANAGAN  
JOSEPH KATA  
JOHN MOCHNICK

STANLEY LORI  
ALFRED L. MOONEY

ROBERT LINDQUIST  
RUSSELL SWETZER

PLEDGES

EMERSON BEST  
ALFRED MURPHY

LEWIS WELLS  
RALPH FULTON

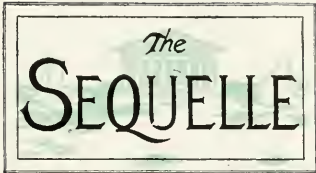
HARRY ASHBAUGH  
JAMES KASSEL



First Row—Kata, Manson, Becker, Mooney,  
Second Row—Flanagan, Swetzer, Mochnick,  
Third Row—Lore, Lindquist.



1  
9  
3  
1



National Honorary Social Science Society

Founded at Winfield, **ΠΓΜ** Kansas in 1924

Established **PENNSYLVANIA IOTA CHAPTER** May, 1930

OFFICERS

<i>President</i>	-	-	-	-	-	M. E. MacDonald
<i>Vice-President</i>	-	-	-	-	-	B. M. Davis
<i>Secretary</i>	-	-	-	-	-	Jane Mahey
<i>Treasurer</i>	-	-	-	-	-	Helen Mohney
<i>Chaplain</i>	-	-	-	-	-	James R. Huston

MEMBERS

EMMA CAULK  
AMY DAVIS  
B. M. DAVIS  
EDWARD DEVILDER  
WILLIAM FLANAGAN  
GEORGE GIFFORD  
ELIZABETH HEETER  
N. E. HEETER

SHERMAN HORN  
JANE MAHEY  
HELEN MOHNEY  
WALTER MOONEY  
CLYDE MOORE  
FLORENCE REAGHART  
RALPH SWEITZER  
MARTHA TROUGHTON

RALPH THOMAS  
JOHN MICHNICK  
ALFRED MURPHY  
BERNARD WOLBERT  
THOMAS WILSON  
JOSEPH KATA  
ALFRED MOONEY

PLEDGE

STANLEY LORE



First Row - Mahey, Troughton, Sims, Mohney, Davis.  
Second Row - Flanagan, Mooney, Huston, MacDonald, Kata, Thomas.

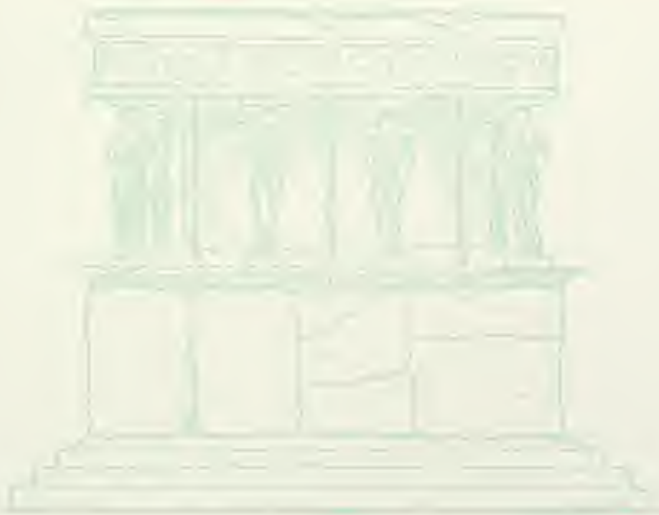
# AUTOGRAPHS

---





## **PUBLICATIONS**



# The SEQUELLE

1  
9  
3  
1

SEQUELLE

Emblematic of all that is intellectual and artistic, the Grecian theme as developed in this volume of the *Sequelle* is particularly in keeping with the standards of scholarship and beauty which have ever been Clarion's.

This year the *Sequelle* was made purely a Sophomore publication with the staff chosen entirely from that class. In following years, however, it would seem advisable to have the associate editors chosen from the Freshman Class that they might have the advantage of more training and experience when they become responsible for the annual's publication.

The 1931 *Sequelle* is in answer to the demand for an annual that will compare favorably with those of other colleges similar to our own, and hence varies greatly in form, treatment, and size from those which have been published heretofore. As will be seen, it has many innovations such as new and orderly arrangement into main sections and sub-sections, entirely new arrangement of group photographs, a section on fraternities and one on publications, a "who's who" section and new treatment of school songs. Other less striking though important changes are more snapshots, new arrangement of faculty and graduate panels, different treatment of individual athletic photographs, provision for autographs, and so on.

The staff is proud to be able to offer to the student body an annual of truly collegiate worth.



#### THE SEQUELLE STAFF

*First Row*—Frill, Shankle, Kindel, Whitehill, Rossman, Wells, Buglia.  
*Second Row*—Riddle, Frost, Gosetti, Conn, McManigle, Pifer, Cogley, Kopp.  
*Third Row*—Campbell, Wiant, Pepper, Pressler.  
*Fourth Row*—Vantassel, Edwards, Weaver, Kassel, Lore, Logan, Kutzhals.



1  
9  
3  
1



## THE SEQUELLE STAFF

### EDITORIAL

*Editor-in-Chief* - - - - - PAUL WHITEHILL

#### EDITORIAL DEPARTMENT

*Assistant Editors* - - - LEWIS WELLS, ROSETTA KINDL  
*Literary Editors*, ESTHER PEFFER, CHARLES LOGAN, MILLITEEN KOPP  
*Athletic Editors*, Men, JAMES KASSEL, WOMEN, RUTH RIDDLE  
*Joke Editors* - - - - - DON EDWARDS, BELVA McMANIGLE  
*Calendar* - - - - - IRENE COGLEY, MARY BIGLIA  
 Typists, LEWIS WELLS, FLORENCE WYANT, LILIAN PIER, LUCILE FROST  
*Class Representatives*, Senior, RUTH CAMPBELL; Junior, STANLEY LORE; Freshman, MARCELA KURTZHALS

#### ART DEPARTMENT

*Art Editor* - - - - - NOIA CONN  
*Assistant Art Editors* - - - CLYDE VANTASSEL, ESTHER PEFFER

#### PHOTOGRAPHY DEPARTMENT

*Photography Editor* - - - - - TILMAE GOSSETT  
*Assistant Photography Editor* - - - - - VIOLET PRESSLER  
*Snapshot Editors* - - - - - ELVIN WEAVER, VIRGINIA TRILL

### FINANCIAL

*Business Manager* - - - - - EDWARD SHANKLE

#### DEPARTMENT OF DUES AND CIRCULATION

*Manager of Circulation and Dues Collection* - - - HAZEL ROSSMAN  
*Assistant* - - - - - TILMAE GOSSETT

#### ADVERTISEMENTS DEPARTMENT

*Advertising Manager* - - - - - LEWIS WELLS  
*Assistants* - - - - - EDWARD SHANKLE, PAUL WHITEHILL

## THE CLARION CALL

The Clarion Call, published by the members of the Press Club, is the official organ of publication at Clarion State Teachers College. This paper is published monthly and records all student activities. Under Miss Nair's sponsorship, the Call has been compared with other college newspapers and it is found that our school paper ranks with the best. The staff responsible for the paper's publication during this year is as follows:

*Editor-in-Chief* - - - - - MARTHA PENCE  
*Associate Editor* - - - - - MIRIAM HUMES  
*News Editors* - - - - - LEWIS WELLS, ANNE HILMAN  
*Assistants* - - - - - FLORENCE LUNDBERG, MARGARET COCHRAN  
*Athletics Reporters*,  
 Men, JOHN MCCINICK, WOMEN, FLORENCE CAMPBELL  
*Organizations* - - - - - ALICE NAGLE  
*Assistant* - - - - - PAUL LOVI  
*Business and Exchange* - - - - - FRANCES NEIL  
*Assistant* - - - - - MABEL REED  
*Humor Editor* - - - - - ESTHER PEFFER  
*Assistant* - - - - - HAROLD GUTHRIE  
*Literary Editor* - - - - - STANLEY LORI  
*Assistant* - - - - - LOUISE DWYER  
*Typist* - - - - - ELSIE NILSON  
*Columnist* - - - - - ALFRED MOONLY







# FEATURES

# AUTOGRAPHS

---





## STORY OF THE YEAR



The  
**SEQUELLE**

1  
9  
3  
1

**CALENDAR**

**MARCH—1930**

- 5—The Y. W. C. A. holds a dinner in honor of Miss Sims.
- 9—Edinboro passers defeat locals.
- 10—Students enjoy open Forum.
- 20—New walnut study desks arrive for Becht Hall. The students are busily arranging their rooms for the new furniture.

**APRIL—1930**

- 6—Ask Evelyn Hoffman what the danger is in having a mouse visit your room in the middle of the night.
- 15—Kata with his love song, and Kenny with his dancing make the Alpha Gamma Phi initiation a big success.
- 28—Easter vacation begins.
- 29—The members of the 1930-31 Y. W. C. A. cabinet take office.

**MAY—1930**

- 9—Parent's Day—Students welcome their mothers and fathers. Most everyone happy.
- 10—Play Day. Oh, what fun! ! Everyone takes part. Freshmen win over Sophomores by big score. Girls receive varsity letters. For further information about Play Day ask Virginia State.
- 10—Spring Dance a big success.
- 11—Sophomores skip after the dance with Freshmen following closely behind.
- 16—Music Festival big event.
- 23—"As You Like It"—Commencement Play.
- 28—Commencement Exercises with many tears and sad hearts. So long until next September.

**SEPTEMBER—1930**

- 2—C. S. T. C. welcomes all the old students as well as the new.
- 4—Jury and Clover surprise everyone by tying the knot.
- 6—Dropping the handkerchief seems to be a popular game at the reception. Many new acquaintances formed.
- 10—Dog Court—Free exhibition on how Kata makes love. It's "to horrible for words, yea, yea, yea." This story of the Three Bears appears quite funny to Elsie Nelson.
- 12—The Sophs elect the following officers: Lewis Well, President; Millieen Kopp, Vice-President; Filmae Gosetti, Treasurer, and Norva Heeter, Secretary. Plans for initiation.
- 14—Sighs heard throughout the chapel when Ed Shankle walks to the front and reads the Freshman Initiation Rules. The girls cannot decide which is the worst—green hose or no cosmetics.
- 18—First Government Meeting. Freshmen look "kinda down in the mouth."
- 24—A Freshman instructed to read "Freshmen Girls"—Wonder what it's all about.
- 30—Marian Best caught snoring.

**OCTOBER—1930**

- 3—Freshman Class elects temporary officers.
- 3—Pep meeting. Snake Dance. Much excitement in preparation for next days game.
- 4—Football game goes over in a big way.
- 5—Did you see who Stauffer had with him at church? (Our light-haired Swedish waitress.)
- 6—To the regret of all the students, Mrs. Ralston resigns position as Dean of Women.
- 7—Frances Anderson seems to be delighted over her first date with Kenneth Lees.
- 8—Why the excitement in Seminary Hall? Grades are out.
- 8—New Sociology teacher, Dr. E. C. Class takes Miss Sims' position on teaching staff.
- 11—Clarion bows to Slippery Rock in football.
- 13—Interesting one act play, "Two Crooks and a Lady," given as program by the members of the College Players Club. How did you like Alired Moorey, the clever crook; Margaret Elliott, the invalid; Gladys MacBlaine, Pearle Wing, and Phil Ramsey? May we add that Margaret Heilbrun shed many tears over this play.

## CALENDAR

1  
9  
3  
1

## The SEQUELLE

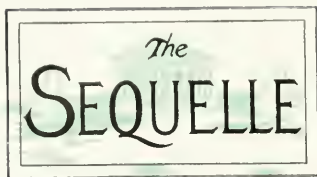
- 15—Freshmen Revolt makes head line material for the New York Times to-day. Who dares to say that the Soph's won't stick together? Just ask the Freshies about it.
- 16—Teddy: "You boys and girls must not propagate about the building after library hours."
- 17—Ask Rachel Stevens what happened to her skirt.
- 18—First Hockey Game of the season.
- 20—Old and familiar faces are seen during the week of institute.
- 22—Sigma Phi Delta organized.
- 25—The Annual Hallowe'en Party held with all the accompanying black cats, owls, fortune tellers, and appropriate spookiness.
- 26—Did you see Miss Nair at the Hallowe'en Party? Looked nice, didn't she? Miss Marwick made a nice looking Dutch maid. Miss Sandford very well dressed but was she a boy or girl?

### NOVEMBER—1930

- 2—"Y" Cabinet trying to plan for a Thanksgiving program: when asked her opinion Hazel Rossman brilliantly suggests a Thanksgiving program.
- 5—Doverspike takes on Caldwell in a wrestling match and throws him in less than four minutes.
- 10—Freshman initiation—Green, green, and more green.
- 12—Throwing cocoanuts does not prove to be such a successful game after all.
- 18—"Peb" Welty slyly takes Iva Moore's seat at the dinner table trying to discover the great attraction at one of the training tables.
- 19—Verna Monks, despite her lameness, shows great agility in tripping down the hall without her crutches when the fire bell sounds.
- 21—Victor Vassia had the boys of Seminary Hall believing that he actually flew to Irwin with Pennsylvania's greatest female stunt flier and returned in three hours.
- 22—Everybody happy. No wonder. Thanksgiving vacation begins.
- 22—Many protests from the faculty when lights are lowered for those moonlight waltzes at the Alpha Gamma Phi dance. What was the idea of the card tables ? ? ? ? ?

### DECEMBER—1930

- 3—Those folks wishing to know how to fall ask Kenneth Williams and Laura Love.
- 4—After having taken Teaching of Reading for over half semester, Sara Murray asks the librarian for "Wheat's" *Teaching of Reading!* ! !
- 7—Evelyn Hoffman kindly consents to tell a joke at the dinner table. After she finishes Mildred Shorts asks that it be told again as she didn't get the point.
- 9—Absent-minded Florence Campbell, after looking over the schedule for picture taking, begins to wonder what the name of the Sorority is to which she is pledged.
- 10—Individual pictures arrive—aren't they terrible?
- 12—Peg Kapp's favorite expression: "Oh John!"
- 14—Bill Russell, the new scientific geographer, had a very difficult time this evening trying to locate Simstown in the lounge.
- 17—Today is a day of great rejoicing for a certain person on the campus. Ed Shankle gave Marguerite Baker a chance to know how it feels to wear his frat pin.
- 18—Very pleasing duet rendered by John Caldwell and Donald Mahaffey. Wonder to whom they were opening their hearts?
- 19—The College Players Club presents three one act plays.
- 21—Everyone getting ready for Christmas Vacation.
- 23—Hurrah! It's here. We're all going home. See you next January.



1  
9  
1  
3



### JANUARY—1931

- 6—Everybody returns tired after Christmas vacation. Santa seems to have been good to all.
- 8—Halls seem rather noiseless due to semester tests tomorrow.
- 9—Sigma Delta Phi gives dinner in honor of its pledges. Very attractive pins presented to Mrs. Bland and the charter members.
- 10—Spring must be here.
- 12—Amid dustpans, straw hats and umbrellas plus various other implements, the pledges of Sigma Delta Phi, and Zeta Kappa Nu sororities afforded some laughter for the members of the institution.
- 14—Latest kind of test given in C. S. T. C. is the "Purity Test." Who all made a hundred percent? Only John Mochnick, Clyde Vantassel, Lewis Wells and Laura Love.
- 16—Master and the Snyder brothers give Wells a blackeye. The age of chivalry still lives.
- 17—All examinations are over. Everyone is going home.
- 18—"Grandma" Lawler sprains her ankle—and how!
- 23—Virginia Stute has her eyes slightly blackened. Hard luck. Oh, these roommates.
- 24—Freshman Hop discussed.
- 25—We get chicken for Sunday dinner. And did that chicken have legs?
- 26—Vantassel has his first date with Agnes Danielson. Nice work, Van.
- 31—Y. W. C. A. and Student Council give a delightful tea to the faculty.

### FEBRUARY—1931

- 4—Hot dog sales and "buckety-buck" go hand in hand.
- 5—Clarion students meet Mr. Kramer's Tumbling Team from Oil City at Alpha Phi Alpha program.
- 7—Students getting tired of New York Times and voicing the fact.
- 12—The Cathedral Trumpeters assisted by Francis White, Vantassel, Stauffer and some others present an evening of enjoyment.
- 13—The Annual Freshman Hop over for another year.
- 16—The Vested Choir takes charge of Chapel program to-day.
- 16—Stag Party—Everyone sleepy. Who wouldn't be?
- 18—Freshman girls defeat Sophomore girls in basketball.
- 23—Students see "Snow White" in person in College Chapel.
- 25—Senior Play, "A Scrap of Paper," is big success. Zoe surprises everyone.
- 28—The Lambda Chi Delta holds a Tea Danette for its pledges.

### MARCH—1931

- 5—Women's Glee Club goes to Slippery Rock. Girls and stage crew say they prefer Clarion.
- 11—Miss Nair entertains the members of the Press Club. This surely was a success.
- 13—What's all the noise in the Sequelle Office? Oh—that's only Paul Whitehill, Tilmie Gosetti, and Lewis Wells arguing over how the Sequelle should be arranged. Note the date. Not so lucky.
- 24—Slippery Rock again postpones concert.
- 24—Grades are out. It is easy to tell who got the satisfactory ones.
- 25—Y. M. C. A. officers elected for next year. Many plans made for "Y" Conference.
- 26—Plans for Spring vacation.
- 26—Miss Keithan visits us. Every student who knew of her arrival made a dash for Seminary Hall to say hello.
- 31—"Teeth of a Gift Horse" presented by Dramatic English Class.

## EVENTS

1  
9  
3  
1

## *The* SEQUELLE

### PARENTS' DAY—1930

"I would like to have you meet my mother." "This is my father." How many times these two phrases were heard on Parents' Day, May 9. During the afternoon the parents were entertained by many athletic contests which they appeared to enjoy. That night some of the members of the College Players Club presented "Spreading the News", a one-act comedy. The Men's and Women's Glee Clubs also presented programs, showing the parents present that we could be proficient in things other than school work if we desired. Special church services were held for the parents Sunday morning and that afternoon a fifty piece orchestra conducted by Harlan Mitchell furnished a music program that was greatly enjoyed. When the students bade their parents a fond goodbye, they did it with much satisfaction because they had really shown their parents a good time.

### PLAY DAY—1930

Who could forget this day, the most royal of the year? Who cared for sun-burned backs? No one, apparently, for every student of the College took an active part in the Play Day program. Athletic contests occupied the chief part of the day. Those girls who had participated in enough athletics during the year to earn a letter were presented the "C" at dinner that evening. Everyone was tired at the end of the day but did not show it for this was the night of the Spring Dance.

### SPRING DANCE—1930

This dance was attended with the usual success of Clarion dances. Everyone forgot their sun-burn after the dance had started. The only flaw to this dance was the unusual heat of the night, but everyone disregarded this and so made the Spring Dance one of the most delightful of the year.

### ALUMNI DAY—1930

Many old friendships were renewed on this day. Everyone appeared to be happy to be back amidst the old surroundings and friends of C. S. T. C. and to receive particular enjoyment from the dinner and dance. The Women's Glee Club made its final appearance at dinner on this night. It is hoped that the alumni will continue to return to Clarion on Alumni Day.



1  
9  
3  
1



#### FRESHMAN RECEPTION—1930

The Freshmen were guests at a reception on September 6. The reception, sponsored by the Y. W. C. A. and Y. M. C. A. is a means by which the Freshmen may get acquainted with the members of the faculty, upper classmen, and their own classmates.

#### HALLOWE'EN PARTY—1930

October 25, was a gala night at Clarion. It was a celebration not only of Hallowe'en but also of Clarion's only win during the football season. The dining room was fantastically decorated; ghosts appeared from every corner; gay costumes added their touch to the carefree play and talk. A most delicious dinner was served at six o'clock. Following this, an entertaining program was presented. Dancing until eleven, gave the party the last finished touch.

#### FRESHMAN HOP—1931

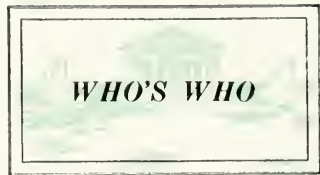
Low glimmering lights, soft alluring music, and the Freshman Hop will soon be started. Into the hall, the Grand March makes its way. The hall, decorated in futuristic designs attracts the attention of many eyes. Evening gowns of every color—tuxes—all these go to make up the Freshman Hop of 1931. Congratulations, Freshmen.





## WHO'S WHO





### RUTH CAMPBELL (Senior)

Ruth told us once that she would rather drive an automobile than eat a chicken dinner. Now we can hardly believe that, but we can believe this of her: she would rather entertain than study. We prophesy that Ruth will long be remembered in Clarion for her brilliant dramatic entertaining as a member of the College Players and Girls' Glee Clubs. But Ruth can study, too—she graduates this year with a degree and an enviable record. While in college Ruth has always been very active in all phases of student life. She has belonged to the Clarion Call and Sequelle staffs, and to the College Players, Art, Journalism, Travel, Outdoor, Hostess, and Girls' Glee Clubs; she has also starred in athletics and possesses two letters in basketball and one for general athletic participation and was head of hockey in 1930. And last, but not least, Ruth is well known as a prominent member of Sigma Delta Phi.

### WILLIAM FLANAGAN (Senior)

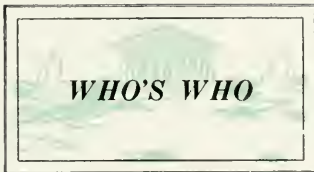
We know Bill best for his innate ability to speak. As an outstanding member of the Debating Club for four years, Bill has represented Clarion against a majority of the teachers colleges of the state, his splendid work being no small factor in winning recognition for Clarion as outstanding in such work. Bill is one of those Seniors who are very disgruntled if the grade sheets received do not show straight A's. Bill finds time, however, to also engage in extra curricular activities. He was editor of the 1929 Sequelle, and has belonged to College Players and Journalism Clubs. Bill is perhaps most famous as being a charter member of three fraternities of Clarion, the social Alpha Phi Alpha and the honoraries Pi Gamma Mu and Phi Sigma Pi. To top his record, Bill is president of the Senior Class of 1931.

### LUCILE FROST (Sophomore)

Lucile, with her whimsical nose and serious air of moments, is commonly known as "Chub" or "Chubby", and, as are most people with similar nicknames, she is very good natured and friendly and happy. So well is Lucile liked that her fellow students have made her president of the Y W C A., an honor which is one of the greatest on the campus. During her two years here, Lucile has belonged to the Sequelle Staff, the Journalism and Hostess Clubs, and the Library Council. Lucile likes athletics, takes part in all intra-mural sports, was a member of the varsity volley ball and basketball teams, and is thoroughly respected by all for her clean, hard playing and good sportsmanship.

### TILMAE GOSETTI (Sophomore)

Tilmae states that she would rather translate Latin than do anything else at school. But while we must admit that she does that brilliantly, we'll add that she also does many other things nearly as well. First of all, Tilmae makes people like her; she is always smiling and helpful. And she takes part in most student activities—she has been a member of the Sequelle Staff, the Vested Choir, and the Manuscript Writing, Travel, and Outdoor Clubs. She is the treasurer of the Sophomore Class and in all athletics Tilmae takes a leading part. She won the college letter in 1930 for general athletic participation, playing upon the varsity hockey and varsity soccer teams. This year she was head of sports in basketball.



1  
9  
3  
1



### **JAMES KASSELL (Sophomore)**

Jim is both serious and droll, hard-working and fun-loving, conscientious and persistent. When he starts to do anything, all about the college are certain that it will be well done, whether it be tackling an encircling end, or making a special report in class. Jim is well-liked by students and faculty alike, and with reason. He is outstanding in whatever he attempts. He plays basketball and takes part in track, and last season when he won his grid-iron letter, he was one of the most brilliant and steady players of the eleven. Jim carries his brilliance into dramatics where his work is remarkable for his vivid character interpretations. His portrayal of the convict in "The Bishop's Candelsticks" will long be remembered by all who saw the play. At present he is president of the College Players Club, Alpha Phi Alpha proudly claims him as its member, and he is also a member of the national honorary Phi Sigma Pi.

### **ROBERT LINDQUIST (Senior)**

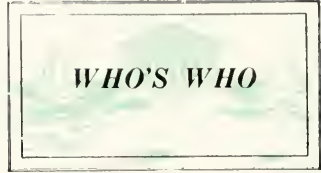
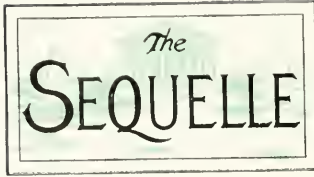
Bob's personality is such that he is doing a wonderful thing—he is acting as Dean of Men in Seminary Hall and yet holding the respect and liking of every man in the Hall. Not many of the fellows in school could do that. Yet when we think of Bob we do not usually think of him in any connection but athletics. For three years Bob has been the most steady and reliable center Clarion's elevens have ever had—he is the proud owner of the football award as the most consistent player upon the team. Bob also takes part in other games—he plays basketball and engages in track. His general achievements are such that he is president of the Varsity "C" Club. Bob is a prominent member of the College Players' Club and is business manager of the Sequelle in 1930. And last of all, Bob is a charter member of Alpha Phi Alpha, and also a member of the honorary fraternity Phi Sigma Pi.

### **STANLEY LORE (Junior)**

Smiling, genial, and friendly, Stan is one of the quieter but more popular members of Clarion's student body. He is always kind, thoughtful, and studious, a brilliant musician and actor, liked by everyone. As a hint to his student ability, we may mention that he is the holder of the State Scholarship of Warren County for the Class of 1928, and also took first place in the Carnegie Tests given in this school last spring. Stan is a past president of the College Players Club and Treasurer of the Y. M. C. A. He is at present, president of the Men's Glee Club, a member of the Sequelle Staff, Vested Choir, Y. M. C. A., and a charter member of the new Press Club. His social fraternity is Alpha Phi Alpha. He also belongs to the honoraries Phi Sigma Pi and Pi Gamma Mu.

### **JOHN MOCHNICK (Junior)**

Johnnie is a hard working student whose drive and push have made him outstanding in scholarship and in all activities of college life. He is dependability in itself—indeed, we are inclined to believe that he is so dependable that he is at times imposed upon by teachers or students who want something done and done well. John is a member of the Press Club, and most every other student activity sponsored by the college. Johnnie belongs to three fraternities: Alpha Gamma Phi, Phi Sigma Pi, and Pi Gamma Mu.

**ALFRED MOONEY (Senior)**

"Socrates", as he is termed by many upon the campus, doesn't seem to do much work (except to help others) yet always knows his history and mathematics. Indeed, his history reports for Mr. Huston's classes are said to be exemplary. Alfred is quite active extra-curricularly; during his four years at Clarion, he has been a member of Clarion Call and Sequelle staffs, and of the Debating, Press, and College Players Clubs, has taken part in three full-length plays, and possesses three basketball letters. Fraternally speaking Mooney is a charter member and was the first president of Sigma Phi Delta; he is also a member of the national honoraries Phi Sigma Pi and Pi Gamma Mu.

**VIOLET PRESSLER (Sophomore)**

"Pat" is the name which seems to be always given to this vivacious and charming student who is forever letting others know that her home is Greenville, Pennsylvania. But being loyal to her home town is what we would expect of "Pat"; she is loyal to all friends, teachers, and school. Indeed, "Pat" is so loyal to the Current Events Club of which she is the president that she contends it is the most interesting and best club on the campus—and perhaps it is: we never debate with a woman, especially one who is as loquacious as "Pat". She belongs to the Girls' Glee Club, and is on the Sequelle staff. And, finally, "Pat" concludes her list of activities with what we are sure she regards as an honor—charter membership in the sorority Zeta Kappa Nu.

**LEWIS WELLS (Sophomore)**

Lewis Wells is a name to conjure with about Clarion. "Lewie" is a very active and outstanding member of the Clarion student body, always sympathetic and smiling, generous and friendly, a genuine good fellow. He has many friends. Lewis ranks high in scholarship. But he does not put in all his time in study, as is evident by his being a past president of the College Players Club and the present president of the Press Club, Sophomore Class, and president-elect of the Y. M. C. A. He likes to act, and has been in several plays; he likes to write also, and has been a member of both Clarion Call and Squelle staffs. "Lew" was very noticeable last fall as cheer leader during the football season. And lastly, he is a member of the national honorary fraternity Phi Sigma Pi.

**PAUL WHITEHILL (Sophomore)**

Paul would by no means be placed at the end of this list were it not for the fact that his name is placed here alphabetically. For Paul is one of the brilliant students of the Sophomore Class, gifted with intellectuality and persistence, genial and smiling. If he were not, he would have sworn long ago, for he is editor of the 1931 Sequelle, and the work necessary to such a publication must have capable and willing shoulders to uphold it. In addition to being editor of the Sequelle, Paul belongs to the Outdoor Club and was a member of the old Journalism Club. His fraternity is Alpha Phi Alpha.



# HUMOR



*The*  
**SEQUELLE**

1  
9  
3  
1

**JOKES**

Mr. Huston—"What was the first thing James I did when he came to the throne?"  
Bowser—"Sat on it, I suppose."

K. Simpson—"How do you like bathing girls?"  
Greenawalt—"How should I know? I've never bathed one."

"Gosh," moaned Frances Neil in history class, "but some people are inquisitive."

P. Heasley—"Don't tell me you didn't have a date last night. I saw you with my own eyes."  
Travis—"Well, are you going to believe me, or your own eyes?"

C. Smith—"What's your line sister?"  
M. Kapp—"Line of least resistance, brother."

Mr. Manson—"When rain falls, does it ever rise again?"  
Hartman—"Yes, sir."  
Mr. Manson—"When?"  
Hartman—"In dew time, sir."

Stute—"Can you get me a job when I graduate?"  
Wilkinson—"Yes, if you'll start from the bottom and wake up."

Two students in the chemical lab:  
Bill Russell—"Say, what's that smell?"  
H. Ashbaugh—"Fresh air. Someone opened the window."

Shankle—"Who's that dame giving us the glad eye?"  
Williams—"Oh, just a school teacher who can't make her pupils behave."

Mr. Hoyt—"What do you know about nitrates?"  
Whitehill—"Well, night rates are cheaper than day rates."

Dr. Riemer—"Do you get here every morning at 8:00?"  
Miss Green—"If you got here yourself you could find out."

S. Phillips—"Let me give you a dozen orchids at a dollar each. Remember—say it with flowers."  
M. Snyder—"A half dozen will be plenty. I don't want to say too much."

Don't feel flattered when a woman makes advances. She may just want somebody to help kill her husband.

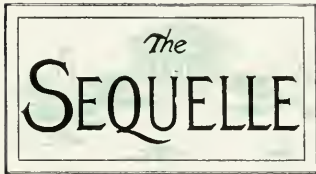
Betty Dean—"College boy?"  
Kremmel—"No. I couldn't get in where I wanted to go."  
Betty—"What did you try for?"  
Kremmel—"Vassar."

Coach—"You see, he's good on a muddy field."  
Assistant—"Yes, his girl has a muddy complexion."

Powers—"I wonder who this telegram is from?"  
Stover—"Western Union, I recognize the handwriting."

Wid Shefler—"Does this wind bother you?"  
Mabel Bruce—"No, talk as much as you please."

Miss Nair—"This essay on 'Our Dog' is word for word, the same as your brother's."  
C. Logan—"Yes, it's the same dog."



Murphy—"I believe this school is haunted."

Coggon—"Why?"

Murphy—"They are always talking about school spirit."

—  
The steak was a la carte so the Freshman told the waiter to wheel it in—*Kansas Sour Owl*.

—  
Coleman—"Say, Taylor, what's a Grecian urn?"

Taylor—"Oh, about twenty bucks a week, unless it's his own bootblack stand."

—  
Simpson—"I'm stuck on this question."

Huston—"Glad you like it."

—  
Incidentally, here's a good slogan for fraternity initiations, "Bottoms up."

—  
Most women are satisfied with a fifty-fifty break. Both parts of it

—  
Sir Sagamore—"I prithee, fair damsel, a sleeve to adorn my helmet through the jousts."

C. S. T. C. Maid—"Merely a sleeve? Take my, ah, dress."

—  
Senior—"What's your name?"

Frosh—"Tom Swift."

Senior—"You can't fool me. Where's your electric rille?"

—  
Dr. Riemer—"We plan to add five more courses next year."

Alumnus—"But won't that increase the number of flunks?"

Dr. Riemer—"Oh, no. These courses are specially designed for football players."

Mr. Bland—"Wells, run up that curtain."  
Wells—"Whaddya think I am, a squirrel?"

—  
C. Fox—"You should put your hand over your mouth when you yawn."

J. Fetzer—"What? and get bitten!"

—  
Miss Sandford—"Who was the most beloved girl in France?"

Vantassel—"Mademoiselle from Armentieres."

Miss Sandford—"No, Joan of Arc Clyde, you will remain for a few minutes after class."

—  
Miss Sheldon—"Name six wild animals found in Africa."

Wid. Shreffler—"Two lions and four tigers."

—  
Here's to the stuff that makes a man see double and feel single.

—  
Love may be blind but it knows when there's too much light in the room.

—  
This space reserved for a joke on President Riemer ? ? ? ? ?  
We feel safer if we leave it out.

—  
"What ho! Cassius, what means the word symmetry?"

"Begone, Fool. A symmetry is a place where the dead are buried."

—  
College is an institution of loaning.

—  
Prof.—"Now, class, give me your attention, please."

All the Scotchmen got up and walked out.

The  
SEQUELLE

1  
9  
3  
1

JOKES

Florence Campbell—"I don't like engineers, for they always leave blue prints on your neck."

Betty Dean—"Pearl, wake up! I feel there's a mouse in the room."

Pearl Stewart—"Well, feel there's a cat too, and go to sleep."

Some co-eds are so aloof and beautiful that they make you think of some delicately phrased poem.—Others remind you of free verse.

Bob—"What did you say when you were invited into the strip poker game?"

Mooney—"What I shed was plenty."

Miss Sims—"And do you have any bad habits?"

Jean (on carpet)—"Well, I drink a little; I go out with strange men in their roadsters; I attend fraternity dances occasionally; and I smoke every now and then."

Miss Sims—"What, you smoke. How dreadful."

Papoose—"Baw-w-w-w. I wanna drink."

Eskimo Mother—"Shut up, it's only six months till summer."

Have you heard of the Freshman who wanted to know what sort of things were grown in a beer garden.

Mr. MacDonald—"You had better watch your step in my classroom."

Hileman—"What's the matter? Flooring loose, sir?"

GEMS OF GOSSIP

We hear that Johnny Fetzer is expecting to spend his summer in the hardware business. He'll be surrounded by "spikes" and "nails" you know.

ADVICE TO MODERN MAIDENS

1. Keep away from track men, they are usually fast.
2. Never make dates with biology students; they enjoy cutting-up too much.
3. The football man is all right; he will tackle anything.
4. You can trust a tank man, he will dive in and do his best.
5. The tennis man is harmless but he enjoys a racket.
6. Watch out for the baseball man; he hits and runs.
7. Be careful of dramatic club members; they usually have several good lines.
8. Don't play cards with a civil engineer, he is a bridge specialist.
9. Don't let members of the band talk about themselves; they enjoy blowing their own horns.
10. Don't bother the bootlegger; their line is stout.

Why do the girls think that "Whitie" Guthrie would be so handy about the house?

"Aggie" Danielson seems to be delighted over Van's new car. She believes that he will soon be able to drive with one hand.

It is rumored that someone in Seminary Hall had the boldness to ask Johnny Caldwell why he was so enamoured by Jane Mahey, to which he only replied that "her charms strike the sight, but her merit wins the soul."

Where did Mary Croyle get such commanding ways?





Bill—"Well, what shall we do tonight?"  
Jim—"Well, let's think real hard——"  
Bill—"No, let's do something you can do too."

—  
The President of the College is going to stop all petting. Well, I hope he does; he's getting too old for such things.

—  
Long skirts are like prohibition—they make the joints harder to find.

—  
Madeleine believes that the only way to keep a hold on "Bob" is to use both arms.

—  
We wonder how Ruth Mohney has managed to keep her father and "Bob" from meeting "Jimmie".

—  
Why has "Jimmie" Kassel quit going "Schwemming".

— We hear that "Ken" Coggon claims to have gone with eighty different girls from this school at one time or another.

—  
Why can't "Phil" Ramsey find for himself a girl who isn't engaged?

—  
Where did Mary Biglia get "them therc eyes"?

—  
Does Merrill Snyder really believe that the earth is flat?

—  
We wonder which is the broader, Johnny Barger or his smile?

—  
Hazel Beels certainly respects her "elders".

—  
She was only a Spaniard's daughter, but she had a beautiful Pyrenees.

—  
Some college men have a knack of making friends, while others concentrate on women.



# AUTOGRAPHS

---





**Your Alma Mater**

*The  
State Teachers  
College*

AT CLARION, PENNSYLVANIA

Prides Itself In Distributing As Teachers Over  
The Commonwealth Men And Women Of Sterling  
Worth. Such Is Its History. It Is Confident That  
You Will Not Break The Tradition.



Capital \$135,000.00

# CITIZEN'S TRUST COMPANY

CLARION, PA.



H. M. HUFNAGEL, President

C. W. AMSLER, Vice President

C. C. MOORE, Assistant Treasurer

B. L. BOWMAN, Assistant Treasurer

---

Largest Banking Institution in Clarion  
RESOURCES OVER \$2,800,000.00

---

ACTS AS

Executor

Administrator

Guardian

Trustee

Young enough to be progressive

Old enough to be conservative



## Citizen's Trust Company

CLARION, PA.

ROLL OF HONOR BANK

# First National Bank

OF CLARION

*Founded in 1865*

*OLDEST BANK IN CLARION COUNTY*



An Old Bank with Modern Methods

Your Account is Appreciated



*MEMBER FEDERAL RESERVE BANK*



WE EXTEND AN INVITATION TO ALL  
TO CALL AND SEE OUR NEW BANK BUILDING



## Four Per Cent on Savings



OFFICERS

M. M. Kaufman, President  
Lewis Collner, Vice President  
H. F. Strattan, Asst. Cashier

DIRECTORS

M. M. Kaufman  
H. E. Rugh  
Lewis Collner  
C. F. Strattan  
Edw. A. Wilhelm  
John M. Myers

**W**E INVITE the students of C. S. T. C. to select their apparel for all occasions from our complete stocks. Authentic Style and Quality combined with moderate price and courteous service make this store your logical shopping center.

**Wein Bros.**  
WHERE QUALITY PREDOMINATES

**From**  
**A Friend**

CALL AT

## JOE'S

for

Home Made  
DOUGHNUTS  
AND ROLLS

FRUIT

CONFECTIONERY  
ICE CREAM

Chocolate Milk, Hot or Cold

Corner Wood and 8th Ave.

CLARION, PA.

ASK FOR AND BE SURE  
YOU GET

Brookville Superior Ice Cream,  
Green Meadow Butter, Milk,  
Cream, Cottage Cheese, Butter-  
milk.

*All Products Perfectly  
Pasteurized*

THE BEST BY ANY TEST

## Brookville Dairy Products

Phone 545

BROOKVILLE, PA.

## Campbell's Drug Store

*The Rexall Store*

CLARION,

PENNA.

Established 1852

## JOHN HENROTIN

EXPERT SHOE  
REPAIRING

*Service With A Smile*

630 Main St.

CLARION, PA.

Compliments of  
**Ganoe's Barber  
Shop**

**Class  
Sorority  
Fraternity  
Jewelry**  
**David A. Kaufman**  
CLARION, PA.



## METAL ARTS CO., Inc.



Craftsmen in  
Emblematic Jewelry  
and  
Commencement Stationery



ROCHESTER, NEW YORK

Charles E. McDonald, 3126 Landis Ave.

SHERADEN, PITTSBURGH, PA.

## Meet and Eat

at

**NAIL'S**  
BASEMENT  
RESTAURANT



CLARION, PA.

Everything in  
FINE GROCERIES, CANDY  
AND TOBACCO

**WM. W. PHERO**

36 8th. Avenue

CLARION, PA.

For Service Phone 19-J

**A. G. Corbett Drug Co.**  
(Fitzgerald's)

DRUGS—CANDY—TOBACCO

School Supplies

*The Student's Store*

PENNANTS  
BANNERS  
PILLOWS

Add dignity, color and spirit to your school work by the use of Felt Pennants, Banners, Pillows, Emblems, Caps, Tams and Chenille Letters. No order too small to receive our attention.

*Catalog Free*

**Standard Pennant Co.**  
BIG RUN, PENNA.

If you appreciate a good spread for your bread use

**"ELMO CREAMERY  
BUTTER"**

the kind they use at  
Clarion State Teachers College  
Made by

**Elmo Creamery Co.**  
Earl L. Black, Secretary  
KNOX, PA.

This Annual was  
Produced by

# The Ziegler Printing Co., Inc.

BUTLER, PENNSYLVANIA



*Leading School Annual Printers  
for Twenty Years*



Specialists in Good Printing and Binding



**Sportsmen-**  
*Whatever the Sport - you'll find*  
**Spalding Equipment**  
*Authentic*

**Golf -  
Tennis -  
Base Ball -  
Swimming -  
Track -**  
*and practically  
every game from*  
**Ping Pong to  
Foot Ball**

**A. S. Spalding & Bros.**

608 WOOD STREET  
PITTSBURGH

## THANKS

We wish to take this opportunity of expressing our appreciation for the interest and co-operation by the student body in the publication of this year's *Sequelle*.

We have tried in every way to make our annual a high quality publication. Originality and artisticness have been our aims. We feel that we have succeeded in attaining these. It is our hope that this will head a long chain of increasingly better *Sequelles*.

Paul E. Whitehill, *Editor*  
Edward Shankle, *Bus. Mgr.*



## PHOTOGRAPHY

*"The Language of Vision All May Read and Understand"*

### The Kepler Studio and Gift Shop

HIGH SCHOOL AND COLLEGE PHOTOGRAPHERS

127 E. MARKET ST.

LEWISTOWN, PA.

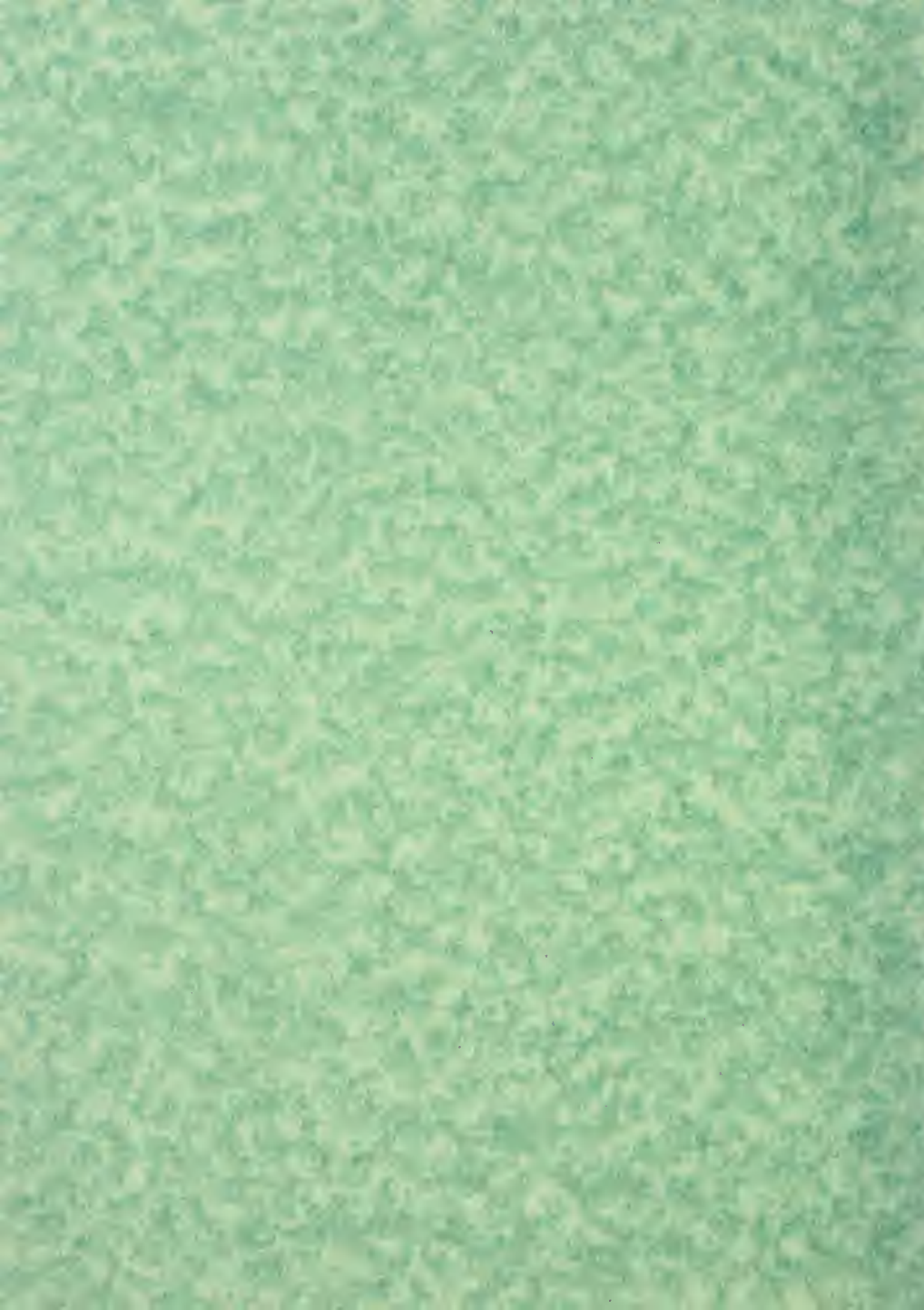
This book serves as a sample of our work.



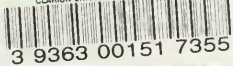
OVER two thousand Annuals in the past eleven years have selected Canton engravings coupled with the Canton plan of building a distinctive Annual within its budget. Ask any editor or manager about their experience with Canton Service. The Canton Engraving and Electrotype Company, Canton, Ohio.







CLARION UNIVERSITY OF PENNSYLVANIA



3 9363 00151 7355

Spec. Col.

qLD

1017

.C88

1931

