

Archives

qLD

1017

.C88

1932

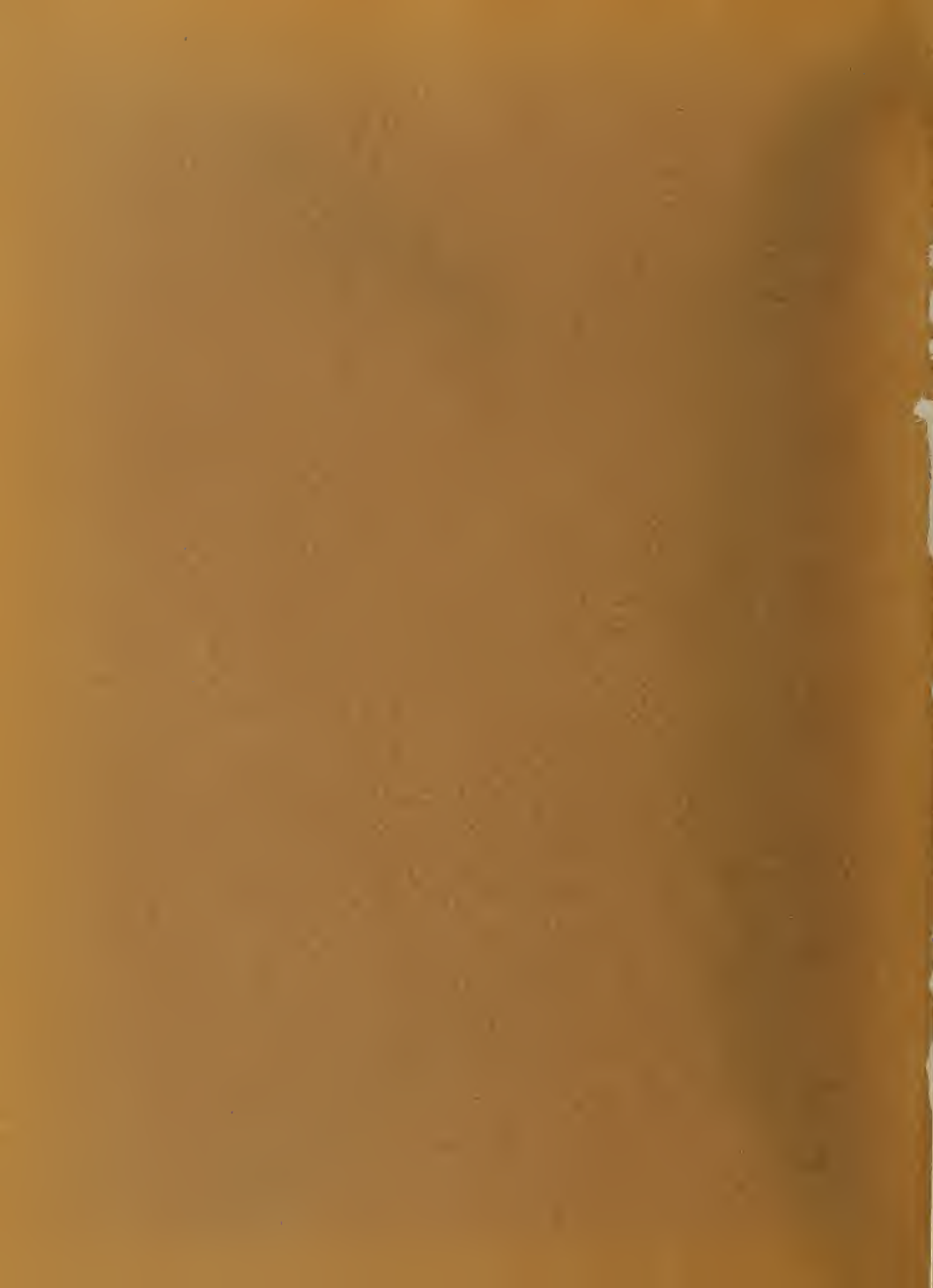
THE
SEQUELLE
1932

LIBRARY
CLARION STATE COLLEGE



Carlson Library

LIBRARY
STATE TEACHERS COLLEGE
CLANON, PA



LIBRARY
STATE TEACHERS COLLEGE
CLARION, PA.

EX
LIB
RIS



T. W. W. W.

COPYRIGHT, 1932

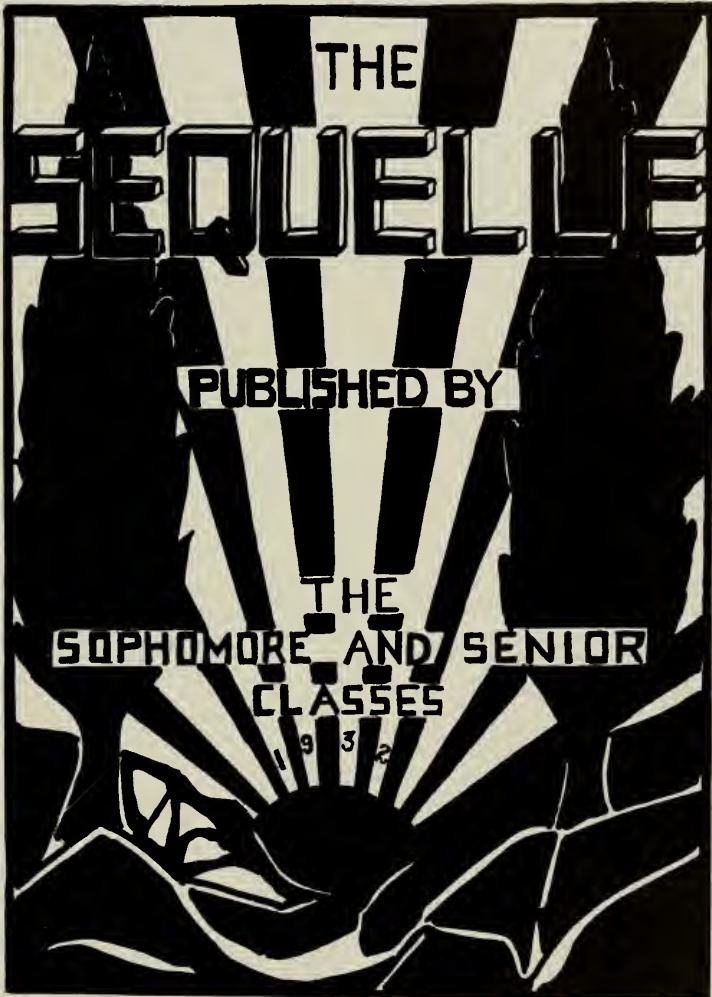
STANLEY LORE, *Editor*

Engravings by

THE NORTHERN ENGRAVING & ELECTROTYPE CO.,
Canton, Ohio

Printing and Binding by

THE ZIEGLER PRINTING CO., INC.,
Butler, Penna.



G. Marshall

1017
1932

Digitized by the Internet Archive
in 2010 with funding from
Lyrasis Members and Sloan Foundation

<http://www.archive.org/details/sequelle1932clar>



Dedication

To our loyal parents, ever willing and eager to sacrifice, ever eager to encourage and aid, we dedicate this *Sequelle* as a symbol of our own efforts to achieve the goal which has been set for us.



Foreword

Out of a world of elaborations, I, the Sequelle, have stepped into a new heritage. My pages are an attempt to express the simplicity and sincerity of a new generation. I am a success if I am symbolic of this thoughtful group of young men and women who have been responsible for my production, and I shall be satisfied if the future can guarantee that I shall be the gateway to cherished memories and the incentive to greater achievements.

Index

COLLEGE

Views.

Faculty and Trustees.

CLASSES

Senior and Sophomore Graduates.

Class Organizations.

ATHLETICS

Men's Athletics.

Women's Athletics.

ORGANIZATIONS

Government and Religious Organizations.

Musical Organizations.

Clubs.

Fraternities and Sororities.

Publications.

FEATURES

Calendar.

Humor.

CAMPUS



DEIGHT HALL & "TEDDY"

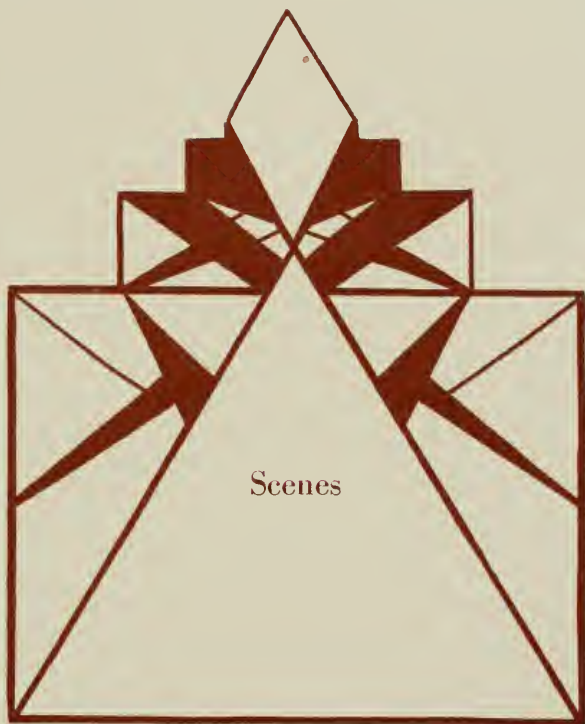


SCENES



COLLEGE





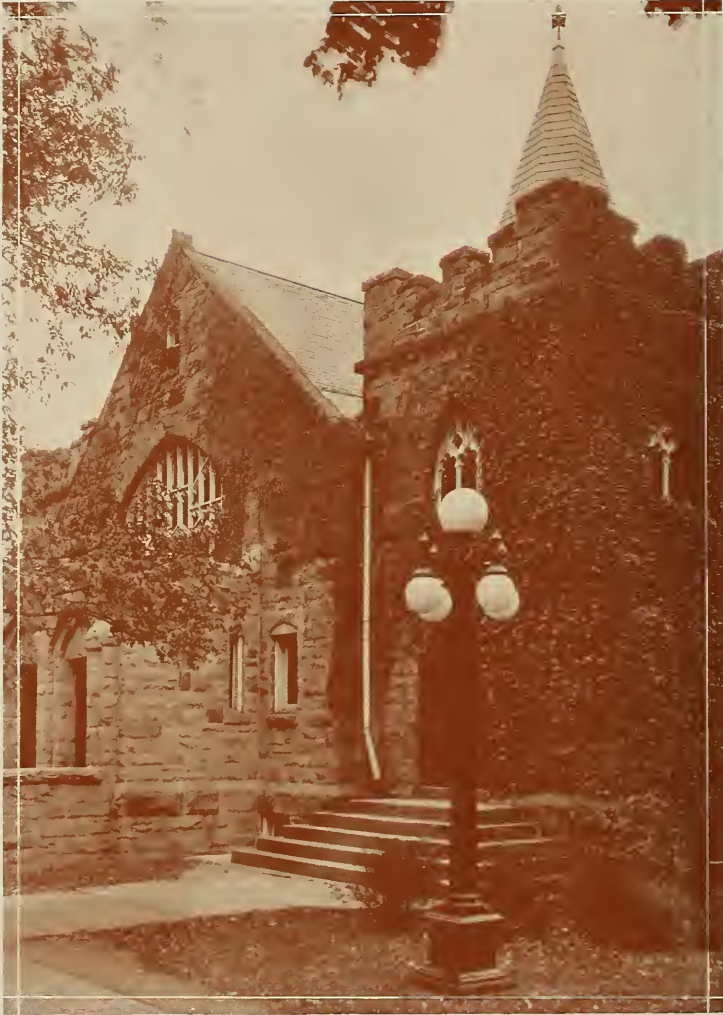
Scenes



Seminary Hall



Founder's Hall



Chapel



The New Gymnasium

The new physical education building dedicated at commencement is the newest addition of the college building program. It is serving magnificently its purpose of affording only the best facilities possible for instruction in physical education.

Ideally modern, structurally superior, and conveniently located, the new structure follows the Thaddeus Stevens Training School in what we hope will be another step in a great building program for C. S. T. C.



Becht Hall



Music Hall



Training School



Campus



Faculty
and Trustees



Dr. G. C. L. Riemer, Our President

THE SEQUELLE



Faculty

HELEN M. BARTON, A. M.
Physical Education

CHARLES F. BECKER, A. M.
Director of Teacher Training

BURNICE SMITH BLAND
Piano, Violin, Brass

HARRY LEE BLAND, B. E. M.
Public School Music, Voice

MARGARET A. BOYD, A. M.
English

LORETTA G. BROGAN, B. S.
Intermediate Grades

RENA M. CARLSON, A. B.
Librarian

MILDRED E. GAMBLE, A. M.
Intermediate Grades

ANNA B. GRAHAM
J. H. S. Grades

EFFIE BLANCHE HEPLER, A. B.
Primary Grades

THE SEQUELLE

GILBERT A. HOYT, M. S.
Science

JAMES R. HUSTON, A. B.
Social Studies

PEARL JACK, A. M.
Intermediate Grades

JOHN O. JONES, B. S.
Health, Physical Education
Dean of Men

ELIZABETH F. KEITHAN, B. S.
Geography

M. E. MACDONALD, A. M.
Director of J. H. S.

HARRY S. MANSON, A. M.
Science

MARIE MARWICK, A. M.
Oral Expression, Handwriting

PEARL NEWTON MILLER, B. S.
Primary Grades

HELEN MOHNEY, B. S.
Intermediate Grades

BERTHA V. NAIR, A. M.
English

MARTHA GEMBERLING RENN, B. S.
Primary Grades

THE SEQUELLE

G. C. L. RIEMER, PH. D., LL. D.
President

BESSIE M. RUNYAN, B. S.
J. H. S. Grades

HAZEL SANDFORD, A. M.
Art

SARA SEYLER
Dietitian

HELEN D. SIMS, A. M.
Dean of Women
Latin

MARTHA V. TROUGHTON, A. M.
J. H. S. Grades

HELEN WALTERS
Primary Grades

JOHN W. F. WILKINSON, A. M.
Dean of Instruction
Mathematics

MARY B. WILLIAMSON, A. M.
Primary Education

RETIRED MEMBERS OF FACULTY

JOHN BALLENTINE, PH. D.
Latin

JAMES PINKS
Bursar

WILLIS Y. WELCH, A. M., Sc. M.
Science

THE SEQUELLE

Board of Trustees

HON. JUDGE F. L. HARVEY, <i>President</i>	- - - - -	Clarion
H. M. RIMER, <i>Secretary</i>	- - - - -	Clarion
P. C. ANDREWS	- - - - -	New Bethlehem
MRS. W. B. RANKIN	- - - - -	Clarion
MRS. LILLIAN N. TRESIZE	- - - - -	DuBois
MR. J. E. HENRETTA	- - - - -	Kane
DR. EDWARD A. WILHELM	- - - - -	Clarion



T. Walty



MCMXXXII

THE SEQUELLE

OREST F. DURSO

Uniontown, Pa.
UNIONTOWN HIGH SCHOOL

B. S. in Secondary Education

Transferred from Indiana State Teachers College; Track, Travelers Club, English Club, Assistant Football Manager.

JOHN A. FETZER

A Φ A
Clarion, Pa.
SLIGO HIGH SCHOOL

B. S. in Secondary Education

Y. M. C. A., Men's Glee Club, College Players, Outdoor Club, Press Club, Debating, Varsity "C" Club, Track Manager, Owl Club.

CHARLES C. FOX

A Φ A
Clarion, Pa.
CLARION HIGH SCHOOL

B. S. in Secondary Education

College Players, Sophomore Class Play, Orchestra President, Men's Glee Club, Y. M. C. A., Outdoor Club.

COLIN HILEMAN

A Φ A
West Monterey, Pa.
EAST BRADY HIGH SCHOOL

B. S. in Secondary Education

Men's Glee Club, Travel Club, Current Events Club, Library Council, Class President '31, Y. M. C. A., Men's Student Council.



THE SEQUELLE



JOSEPH J. KATA

Α Γ Φ Φ Σ Π Π Γ Μ

Ambridge, Pa.

AMBRIDGE HIGH SCHOOL

B. S. in Secondary Education

Men's Glee Club, Y. M. C. A., Sophomore Class Play '30, Sequelle Staff, Student Government President, Football Captain, Basketball, Varsity "C" Club, Clarion Call Staff, Journalism Club, Baseball.

CLETUS J. KREMMEL

Α Φ Α

Ambridge, Pa.

AMBRIDGE HIGH SCHOOL

B. S. in Secondary Education

Football, Basketball, Varsity "C" Club President, Track, Sequelle Staff, Sophomore Class Play, Journalism Club, Owl Club, Baseball.

STANLEY W. LORE

Α Φ Α Φ Σ Π Π Γ Μ

DeYoung, Pa.

YOUNGVILLE HIGH SCHOOL

B. S. in Secondary Education

Men's Glee Club, Y. M. C. A., Art Club, College Players, Press Club, Vested Choir, Dance Orchestra, Sequelle Staff, Men's Student Council, Library Council, Chapel Committee, Vesper Committee, Class Vice President '32.

JOHN W. MOCHNICK

Α Γ Φ Φ Σ Π Π Γ Μ

Claridge, Pa.

JEANNETTE HIGH SCHOOL

B. S. in Secondary Education

Sequelle Staff, Class Vice President '28, Class Secretary '29, Class President '31, Chapel Committee, Vesper Committee, Y. M. C. A., Current Events Club, Travel Club President '30, Baseball, Men's Glee Club President '29, Class Play '30, Press Club President '31, Library Council President '30.

THE SEQUELLE

ALFRED MURPHY

Α Φ Α Φ Ξ Π Π Γ Μ

West Monterey, Pa.

EAST BRADY HIGH SCHOOL

B. S. in Secondary Education

Vesper Committee, Outdoor Club, Current Events Club, Y. M. C. A.

FRANCES L. NEIL

Δ Χ Δ

Punxsutawney, Pa.

PUNXSUTAWNEY HIGH SCHOOL

B. S. in Secondary Education

Senior Class Secretary, Press Club, Travel Club, Current Events Club, Debating Club, Outdoor Club, Hostess Club, Sophomore Class Play, Y. W. C. A., Journalism Club, Clarion Call.

HARRY ELLWOOD ROWLEY

Α Φ Α

Ambridge, Pa.

AMBRIDGE HIGH SCHOOL

B. S. in Secondary Education

Football Captain '31, Basketball, Track, Men's Student Council, Varsity "C" Club, Press Club, Class Treasurer '32.

EDWARD SHANKLE

Σ Φ Δ

DuBois, Pa.

DUBOIS HIGH SCHOOL

B. S. in Secondary Education

Men's Glee Club, Vested Choir, Y. M. C. A., College Players, Owl Club.



THE SEQUELLE



JAMES H. SINCLAIR

Α Γ Φ

Falls Creek, Pa.

FALLS CREEK HIGH SCHOOL

B. S. in Secondary Education

Transferred from Shippensburg State Teachers College; Men's Glee Club, Football, Basketball.

RUSSELL E. SWEITZER

Α Γ Φ Φ Ξ Π

Grove City, Pa.

GROVE CITY HIGH SCHOOL

B. S. in Secondary Education

College Players, Varsity "C" Club, Men's Glee Club, Orchestra, Track Manager, Basketball Manager, Men's Student Council, Owl Club.

WESLEY R. TRAVIS

Α Φ Α Π Γ Μ

New Bethlehem, Pa.

NEW BETHLEHEM HIGH SCHOOL

B. S. in Secondary Education

Football, Varsity "C" Club, Baseball, Owl Club President '29.

KENNETH WILLIAMS

Α Γ Φ

Duquesne, Pa.

DUQUESNE HIGH SCHOOL

B. S. in Secondary Education

Football, Basketball Captain, Dramatic Club, Varsity "C" Club, Y. M. C. A.

THE SEQUELLE

THOMAS WILSON

Α Γ Φ Π Γ Μ Φ Σ Π
Sigel, Pa.

BROOKVILLE HIGH SCHOOL

B. S. in Secondary Education

Travel Club President, Outdoor Club, Varsity "C" Club President, Football Manager, Y. M. C. A., Sophomore Class Play, Class Vice President.

LLEWELLYN L. ALCORN

Σ Φ Δ

Brookville, Pa.

BROOKVILLE HIGH SCHOOL

Intermediate

Transferred from Pennsylvania State College; Y. M. C. A.

MARGUERITE BAKER

Θ Α Α

Fryburg, Pa.

SHIPPENVILLE HIGH SCHOOL

Primary

Women's Student Council, Y. W. C. A., Hostess Club, Vested Choir.

MARTHA BARNES

Σ Δ Φ

Cherry Tree, Pa.

CHERRY TREE HIGH SCHOOL

Primary

Story Telling Club, Hostess Club, Y. W. C. A.



THE SEQUELLE



MARGARET BARNETT

Z K N

Greenville, Pa.

PENN HIGH SCHOOL

Intermediate

Hostess Club, Debating Club, Y. W. C. A.

WILMA E. BEST

Θ Δ Δ

Knox, Pa.

EDENBURG HIGH SCHOOL

Primary

Journalism Club, Soccer, Hockey, Y. W. C. A., Hostess Club.

MARIAN BEST

Σ Δ Φ

East Brady, Pa.

EAST BRADY HIGH SCHOOL

Primary

Women's Student Council, Vested Choir, Y. W. C. A., Hostess Club, Library Club.

MARY BORRONE

Σ Δ Φ

Crenshaw, Pa.

SNYDER TOWNSHIP HIGH SCHOOL

Intermediate

Vested Choir, Y. W. C. A., Hostess Club.

THE SEQUELLE

CARRIE BOYLE

Σ Δ Φ
Sykesville, Pa.
SYKESVILLE HIGH SCHOOL

Primary

Y. W. C. A., Library Club, Story Telling
Club President, Basketball Captain.

MARY BRITTON

Σ Δ Φ
Brockway, Pa.
SNYDER TOWNSHIP HIGH SCHOOL

Intermediate

Student Council, College Players Club, Press
Club, Clarion Call Staff, Hostess Club, Y.
W. C. A.

THELMA BROWN

Θ Α Δ
Knox, Pa.
EDENBURG HIGH SCHOOL

Primary

Transferred from Fairmount State Teachers
College,
Hostess Club, Y. W. C. A.

FLORENCE CAMPBELL

Z K N
Rochester, Pa.
ROCHESTER HIGH SCHOOL

Intermediate

Press Club, Art Club, Hostess Club, Basket-
ball, Soccer, Hockey.



THE SEQUELLE



1932

EUNICE YOUNT CARRIER (MRS.)

Richardsville, Pa.
BROOKVILLE HIGH SCHOOL
Intermediate

Transferred from Indiana State Normal School.

R. LEONE CARSON

Σ Δ Φ
Clarion, Pa.
CLARION HIGH SCHOOL
Intermediate

Girls' Glee Club, Hostess Club.

IDA M. CRAWFORD

Δ Π Ε
Clarion, Pa.
CLARION HIGH SCHOOL
Primary

Girls' Glee Club, Travel Club, Y. W. C. A.

DOROTHY CROOKS

Σ Δ Φ
Sykesville, Pa.
SYKESVILLE HIGH SCHOOL
Intermediate

Transferred from Indiana State Teachers College.
Hostess Club, Y. W. C. A.

THE SEQUELLE

EDNA M. DAVIES

Α Χ Δ

Clarion, Pa.

CLARION HIGH SCHOOL

Intermediate

College Players, Girls' Glee Club, Poetry Reading Contest.

GLADYS M. DICKEY

Baxter, Pa.

SUMMERVILLE HIGH SCHOOL

Intermediate

Library Club, Travel Club.

LOUISE A. DWYER

Δ Π Ε

DuBois, Pa.

DUBOIS HIGH SCHOOL

Intermediate

Y. W. C. A., Press Club, Art Club, Hostess Club.

MARIE EHLERS

Α Χ Δ

Sheffield, Pa.

KELLETTVILLE HIGH SCHOOL

Intermediate

Vested Choir, Hostess Club, Y. W. C. A.



1932

THE SEQUELLE



GERALDINE ELLIOT

Sligo, Pa.
SLIGO HIGH SCHOOL
Primary

Library Club, Orchestra, Girls' Glee Club,
Y. W. C. A.

JANE HOHMAN

Warren, Pa.
WARREN HIGH SCHOOL
Intermediate

Hostess Club, Y. W. C. A. Cabinet '32, Art
Club.

IRENE ELWOOD

Vandergrift, Pa.
VANDERGRIFT HIGH SCHOOL
Intermediate

Hostess Club, Y. W. C. A., Art Club, Library
Club.

MADELINE FERRAROTTI

Leechburg, Pa.
LEECHBURG HIGH SCHOOL
Intermediate

Transferred from Indiana State Teachers
College.
Varsity Hockey '31, Soccer Varsity '31,
Hostess Club, Y. W. C. A.

THE SEQUELLE

ANNA E. FLICK

Huey, Pa.

SLIGO HIGH SCHOOL

Intermediate

Art Club, Y. W. C. A. Travel Club.

ANNIE E. FOSTER

Kittanning, Pa.

KITTANNING HIGH SCHOOL

Intermediate

Y. W. C. A. Hostess Club, Outdoor Club

ETHEL FREEDLINE

Reynoldsville, Pa.

FALLS CREEK HIGH SCHOOL

Primary

Women's Intra-Mural Sports, Outdoor Club

HELEN RUTH FULTON

Ø A A

Pittsburgh, Pa.

DAVID B. OLIVER HIGH SCHOOL

Primary

Hostess Club, Y. W. C. A.



THE SEQUELLE



MARIE E. GAGHAN

Warren, Pa.

WARREN HIGH SCHOOL

Primary

Vested Choir, Hostess Club, Hockey Varsity
'32, Soccer Class Team '32.

FLOYD M. GREENAWALT

Sligo, Pa.

SLIGO HIGH SCHOOL

Intermediate

Men's Glee Club, Outdoor Club Vice Presi-
dent '31, '32, Y. M. C. A.

HELEN HAHN

Knox, Pa.

EDENBURG HIGH SCHOOL

Intermediate

Women's Student Council '32, Art Club Sec-
retary and Treasurer '31, Travel Club, Hos-
tess Club, Library Club, Y. W. C. A.

FLORENCE HARLEY

Σ Δ Φ

West Monterey, Pa.

EAST BRADY HIGH SCHOOL

Primary

College Players, Hostess Club, Vested Choir,
Y. W. C. A., Cabinet Treasurer '32.

THE SEQUELLE

G. KENNETH HARTMAN

Σ Φ Δ

Johnstown, Pa.

JOHNSTOWN HIGH SCHOOL

Intermediate

Transferred from Indiana State Teachers College.

Leonard Literary Society, Travelers Club.

BETTY HESLEY

Σ Δ Φ

Clarion, Pa.

CLARION HIGH SCHOOL

Intermediate

Girls' Glee Club, Pan-Hellenic Council President '31, Hostess Club President '31

LILLIAN CLARA HURLBERT

Δ Π Ε

St. Petersburg, Pa.

MONTPELIER, IND. HIGH SCHOOL

Primary

Transferred from Ball State Teachers College, Muncie, Ind.

Vested Choir, Hostess Club.

ROXANA IRWIN

Δ Π Ε

Franklin, Pa.

FRANKLIN HIGH SCHOOL

Intermediate

Art Club, Orchestra, Hockey, Volley Ball, Y. W. C. A.



1932

THE SEQUELLE



KATHERINE BRIGGS KECKRITTS
(MRS.)

Brookville, Pa.
SNYDER TOWNSHIP HIGH SCHOOL

Intermediate

Transferred from Mansfield State Teachers
College.
Art Club.

CHALMERS F. KENNEMUTH

Σ Φ Δ

Shippenville, Pa.
ASHLAND HIGH SCHOOL

Intermediate

Outdoor Club.

A. RUTH KIRKPATRICK

Clarion, Pa.

CLARION HIGH SCHOOL

Primary

Girls' Glee Club, Orchestra, Travel Club,
Y. W. C. A.

GERTRUDE M. KNAPP

Brookville, Pa.

SUMMERVILLE HIGH SCHOOL

Intermediate

Hockey Class Team '31, Soccer Class Team
'31, Hostess Club, Travel Club, Art Club,
Library Club.

THE SEQUELLE

ELEANOR M. KOOMAN

Θ Α Α
Knox, Pa.

EDENBURG HIGH SCHOOL

Primary

Y. W. C. A., Hostess Club, Journalism Club,
Girls' Glee Club Orchestra.

FLORENCE LINDBERG

Warren, Pa

WARREN HIGH SCHOOL

Intermediate

Y. W. C. A. Cabinet '32, College Players,
Vested Choir, Press Club, Clarion Call Staff,
Sequelle Staff, Hockey Varsity '32, Girls'
Glee Club.

GRACE MARSHALL

Α Χ Δ

Hawthorn, Pa.

HAWTHORN HIGH SCHOOL

Primary

Hostess Club, Girls' Glee Club, Art Club
Vice President '31 Sequelle Staff.

SARA MILANOVICH

Miola, Pa.

CLARION HIGH SCHOOL

Intermediate

Travel Club, Hostess Club.



THE SEQUELLE



JOSEPH MILLER

Σ Φ Δ

Curtlsville, Pa.

SLIGO HIGH SCHOOL

Intermediate

Y. M. C. A., Art Club, Men's Glee Club, Orchestra.

VERNA M. MONKS

Θ Α Δ

DuBois, Pa.

DUBOIS HIGH SCHOOL

Primary

Pan-Hellenic Council President '32, Girls' Glee Club, College Players, Make-Up Club, Y. W. C. A. cabinet '32, Hostess Club, Hockey.

ETHEL A. MOORE

Sigel, Pa.

SIGEL HIGH SCHOOL

Intermediate

Y. W. C. A., Library Club, Hostess Club, Intra-mural Sports.

IVA A. MOORE

Ramseytown, Pa.

BROOKVILLE HIGH SCHOOL

Intermediate

Hostess Club, Y. W. C. A. Cabinet '32, Vested Choir, Soccer Varsity '31, '32, Girls' Varsity "C" Club, Women's Athletic Council '32, Hockey, Volley Ball, Basketball.

THE SEQUELLE

GLADYS E. MacBLANE

Z K N

Smethport, Pa.

SMETHPORT HIGH SCHOOL

Intermediate

Vested Choir President '32, Library Club,
College Players, Y. W. C. A., Women's Student
Council '32, Women's Student Govern-
ment Secretary '32, Hostess Club.

LAURA ALICE McCALL

Δ II E

Rimersburg, Pa.

UNION VOCATIONAL SCHOOL

Intermediate

College Players, Women's Athletic Council,
Vested Choir, Girls' Glee Club, Art Club,
Hockey Varsity '31, Hockey Captain '31,
Volley Ball Varsity '31, Soccer Manager '31.

OLIVE E. McCALL

Curlsville, Pa.

SLIGO HIGH SCHOOL

Intermediate

Art Club, Travel Club, Y. W. C. A.

FRANCES McDANIEL

Z K N

Reno, Pa.

ROCKY GROVE HIGH SCHOOL

Intermediate

Hostess Club, Y. W. C. A., Hockey, Soccer.



THE SEQUELLE



WALTER MCGARVEY

North Washington, Pa.

HOOKER HIGH SCHOOL

Intermediate

Y. M. C. A., Football.

RUSSELL M. MCGAUGHEY

Σ Φ Δ

Brookville, Pa.

BROOKVILLE HIGH SCHOOL

Intermediate

Current Events Club, Y. M. C. A. Vice President '32.

SARA MCGAUGHEY

Brookville, Pa.

BROOKVILLE HIGH SCHOOL

Intermediate

Hostess Club, Y. W. C. A., Travel Club, Art Club.

HARRIETTE MCGRAW

Δ Π Ε

Tidioute, Pa.

TIDIOUTE HIGH SCHOOL

Intermediate

Hostess Club, Art Club.

THE SEQUELLE

SYLVIA L. MCKINLEY

Δ Π Ε

Clarion, Pa.

ASHLAND HIGH SCHOOL

Primary

College Players, Hostess Club.

GLADYS NAUGLE

Bedford, Pa.

BEDFORD HIGH SCHOOL

Intermediate

Travel Club, Art Club, Hostess Club,
Y. W. C. A.

ELSIE S. NELSON

Σ Δ Φ

Brockway, Pa.

BROCKWAY HIGH SCHOOL

Primary

College Players, Y. W. C. A., Vested Choir,
Press Club President '31, Women's Student
Council, Sequelle Staff, Women's Athletic
Council, Hockey Manager, Soccer Varsity
'31, Basketball Varsity '30, Volley Ball Varsity
'30, Head of Sports for Musbball '31
and Soccer '31, Hostess Club, Poetry Reading
Contest.

ELINOR JANE PATTON

Westville, Pa.

BEECHWOODS VOCATIONAL SCHOOL

Intermediate

Y. W. C. A., Hostess Club, Library Club.



THE SEQUELLE



EILEEN RICE

Δ Π Ε

Franklin, Pa.

FRANKLIN HIGH SCHOOL

Intermediate

Hostess Club, Art Club, Library Club, Y. W.
C. A. Cabinet '32, Vested Choir, Press Club.

GENEVIEVE ROSSMAN

Θ Α Α

Knox, Pa.

EDENBURG HIGH SCHOOL

Primary

Library Club President '32, Hostess Club,
Y. W. C. A.

CORRINE BELLE SERBIN

Pittsburgh, Pa.

TAYLOR ALDERDICE HIGH SCHOOL

Intermediate

Transferred from Fairmount (W. Va.) State
Teachers College.
College Players, Hostess Club, Girls' Glee
Club, Y. W. C. A.

JEAN C. SHANKLE

Θ Α Α

DuBois, Pa.

DuBois HIGH SCHOOL

Intermediate

Hostess Club, Girls' Glee Club, Orchestra
Secretary '32, Y. W. C. A., Sequelle Staff,
Pan-Hellenic Council, Inter-Sorority Basket-
ball '31.

THE SEQUELLE

FRANK SILZLE

Venus, Pa.
SHIPPENVILLE HIGH SCHOOL

Intermediate

Y. M. C. A., Debating Club, Owl Club.

LUCILLE SILVIS

Tidioute, Pa.
TIDIOUTE HIGH SCHOOL

Intermediate

Art Club, Hostess Club, Library Club,
Vested Choir, Y. W. C. A., Press Club.

KENNETH E. SIMPSON

A Φ Δ
Corsica, Pa.
CORSIKA HIGH SCHOOL

Intermediate

Outdoor Club, Y. M. C. A.

PHYLLIS L. SMATHERS

A X Δ
Clarion, Pa.
CLARION HIGH SCHOOL

Intermediate

Travel Club, Hostess Club, Y. W. C. A.



MCMXXXII

THE SEQUELLE



WINIFRED M. SMITH

Δ X Δ

Tidioute, Pa.

TIDIOUTE HIGH SCHOOL

Intermediate

Pan-Hellenic Council Secretary-Treasurer,
Art Club, Library Club, Hostess Club,
Y. W. C. A., Vested Choir.

WAYNE SPENCE

Sigel, Pa.

SIGEL HIGH SCHOOL

Intermediate

Football, Track, Y. M. C. A.

MARGARET STANDLEY

Δ II E

Van, Pa.

OIL CITY HIGH SCHOOL

Intermediate

Hostess Club, Y. W. C. A., Library Club
Secretary '31.

EVAH STANFORD

Tionesta, Pa.

ENDEAVOR HIGH SCHOOL

Intermediate

THE SEQUELLE

BUDD B. STEWART

A Φ A
Sligo, Pa.
SLIGO HIGH SCHOOL
Intermediate

Current Events Club, Y. M. C. A.

EVELYN M. SWANSON

Δ Π Ε
Warren, Pa.
WARREN HIGH SCHOOL
Primary

Vested Choir, Y. W. C. A. Cabinet '32,
Hockey Varsity '31, Soccer Class Team '31.

HILDA TRAISTER

Brookville, Pa.
BROOKVILLE HIGH SCHOOL
Intermediate

Art Club, Library Club, Y. W. C. A.

ESTHER LEE GRUBY

Z K N
Sigel, Pa.
SIGEL HIGH SCHOOL
Primary

Y. W. C. A., Soccer Varsity '31, Volley Ball
Varsity '31, Art Club, Hostess Club, Girl's
Varsity "C" Club, Women's Student Council,
Women's Student Government President
'32, Women's Athletic Council.



THE SEQUELLE



BARBARA WAGNER
Shippenville, Pa.
SHIPPENVILLE HIGH SCHOOL
Intermediate

NELLIE WEAVER
Z K N
Timblin, Pa.
BROOKVILLE HIGH SCHOOL
Intermediate

Pan-Hellenic Council, Vested Choir, Women's Student Council, Class Secretary-Treasurer '31, Y. W. C. A. Secretary '32, Hostess Club.

THELMA WELTY
Θ Δ Δ
DuBois, Pa.
DuBois HIGH SCHOOL
Primary

Vested Choir, College Players, Make-Up Club, Y. W. C. A. President '32, Class Secretary-Treasurer '32, Sequelle Staff, Hockey, Hostess Club.

FRANCIS L. WHITE
Summerville, Pa.
CLARION HIGH SCHOOL
Intermediate
Track, Varsity "C" Club, Y. M. C. A.

THE SEQUELLE

EVA HAGGERTY WOLFORD (MRS.)

Brookville, Pa.
SIGEL HIGH SCHOOL

Intermediate

Art Club.

MARY WOMER

Pittsburgh, Pa.
BROOKVILLE HIGH SCHOOL

Intermediate

Library Club, Hostess Club, Y. W. C. A.

ALTA M. YOAS

Δ X Δ

Punxsutawney, Pa.
PUNXSUTAWNEY HIGH SCHOOL

Intermediate

Transferred from Iowa State Teachers
College. Hostess Club, Y. W. C. A.

GEORGE ZAGST

Fisher, Pa.
CLARION HIGH SCHOOL

Intermediate

College Players, Travel Club, Y. M. C. A.
President '28, Senior Class Play '28, Waiters
Club.



THE SEQUELLE

Seniors Not Pictured

ROBERT POWERS

Α Γ Φ

Mosgrove, Pa.

DAYTON HIGH SCHOOL

B. S. in Secondary Education

Football, Varsity "C" Club, Y. M. C. A.

ALDEAN MCKINLEY

Corsica, Pa.

UNION VOCATIONAL SCHOOL

Intermediate

Varsity Hockey, Varsity Soccer, Outdoor Club.

WILLIAM SLATTERY

Δ Γ Φ

DuBois, Pa.

SANDY TOWNSHIP HIGH SCHOOL

B. S. in Secondary Education

MRS. CORA D. WILLIAMS

Corsica, Pa.

B. S. in Elementary Education

Attended:

Indiana State Teachers College.

University of Pennsylvania.

Pennsylvania State College.

Travel Club.

HELEN M. CORBETT

Δ Π Ε

Clarion, Pa.

CLARION HIGH SCHOOL

Intermediate

Art Club, Hostess Club, Y. W. C. A.

LOIS McMAHAN

Clarion Township, Pa.

CLARION HIGH SCHOOL

Primary

Travel Club, Hostess Club.

RUTH HAHN

Fairview Township, Pa.

KARNS CITY HIGH SCHOOL

Intermediate

Travel Club, Art Club, Hostess Club,
Y. W. C. A.

HELEN L. PHILLIPS

Butler, Pa.

BUTLER HIGH SCHOOL

Primary

Transferred from Lock Haven State Teachers College. Dramatic Club, Girls' Glee Club, Y. W. C. A. (Lock Haven).

VIVIAN HOHN

Butler, Pa.

BUTLER SENIOR HIGH SCHOOL

Intermediate

Girls' Glee Club, Orchestra, Y. W. C. A.,
Hostess Club.

In Memoriam

PAUL LOVE



Class
Organizations

THE SEQUELLE



“The Old Guard”

<i>President</i>	-	-	-	-	-	-	JOHN MOCHNICK
<i>Vice President</i>	-	-	-	-	-	-	STANLEY LORE
<i>Secretary</i>	-	-	-	-	-	-	FRANCES NEIL
<i>Treasurer</i>	-	-	-	-	-	-	ELLWOOD ROWLEY

In the fall of 1928, a group of young men and women who were to be the first regular class to be graduated from the college with degrees in secondary education, matriculated at Clarion. The class is justly proud of the fact that with them came Dr. Riemer, President of the College.

This small group has made sterling contributions to Clarion's scholastic achievements and its activities. Over the space of four years their diligent efforts have successfully created new clubs, sponsored fraternal organizations, formed the nucleus for scholastic societies, and led Clarion colors on the gridiron, on the basketball court, and on the cinder path.

THE SEQUELLE

Senior Class Roll

DURSO, OREST	POWERS, ROBERT
FETZER, JOHN	ROWLEY, HARRY E.
FOX, CHARLES	SHANKLE, EDWARD
HILEMAN, COLIN	SINCLAIR, JAMES
KATA, JOSEPH	SLATTERY, WILLIAM
KREMMEI, CLETUS	SWEITZER, RUSSELL
LORE, STANLEY	TRAVIS, WESLEY
MOCHNICK, JOHN	WILLIAMS, CORA (Mrs.)
MURPHY, ALFRED	WILLIAMS, KENNETH
NEIL, FRANCES	WILSON, THOMAS

THE SEQUELLE



Junior Class

<i>President</i>	- - - - -	-	LEWIS WELLS
<i>Vice-President</i>	- - - - -	-	TILMAE GOSETTI
<i>Secretary</i>	- - - - -	-	MILLITEEN KOPP
<i>Treasurer</i>	- - - - -	-	VIOLET PRESSLER

The Junior Class this year is composed of four year students, their two year classmates having graduated last year.

The Juniors as a class have not taken a very active part in campus affairs this year. They are looking forward, however, to publishing *The Sequelle* again next year. This will be the second time they have had charge of it, having published it during their Sophomore year.

THE SEQUELLE

Junior Class Roll

ASHBAUGH, HARRY	LOGAN, CHARLES
BEST, EMERSON	LOGUE, ALICE
CAMPBELL, HELEN	MOHNEY, RUTH
CHEATHAM, MARY	McHENRY, FLOYD
COLEMAN, DAN	PAINE, LILLIAN
COLLNER, MADELINE	PRESSLER, VIOLET
DEAN, ELIZABETH	RUSSELL, WILLIAM
DICKINSON, LYDIA	SMITH, CARL
EDWARDS, DON	SNYDER, MERRILL
ELLIOTT, MARGARET	STEWART, WILLIAM
GOSETTI, TILMAE	STOVER, ORRIS
HENRY, ALBERT	TAYLOR, KENNETH
JOHNSON, LORRAINE	UPDEGRAFF, JOHN
KOPP, MILLITEEN	WEIN, GUSTAVE
KASSEL, JAMES	WELLS, LEWIS
WHITEHILL, PAUL	

THE SEQUELLE



Sophomore Class

THE SEQUELLE

Sophomore Class Roll

ALCORN, LLEWELLYN	GREENAWALT, FLOYD	NAUGLE, GLADYS
BAKER, MARGUERITE	HAHN, HELEN	NELSON, ELSIE
BARNES, MARTHA	HAHN, RUTH	PATTON, ELINOR
BARNETT, MARGARET	HARLEY, FLORENCE	PENCE, MARTHA
BEST, MARIAN	HARTMAN, EUGENE	PHILLIPS, HELEN
BEST, WILMA	HARTMAN, KENNETH	PHILLIPS, SARA
BINNEY, CHARLES	HESLEY, BETTY	RICE, EILEEN
BINNEY, ELIZABETH	HOHMAN, JANE	RIEMER, HANS
BORRONE, MARY	HOHN, VIVIAN	RIEMER, ISABEL
BOYLE, CARRIE	HUMMEL, NORRIS	ROSSMAN, GENEVIEVE
BREAKEY, KINSEL	HURLBERT, LILLIAN	SERBIN, C. BELLE
BRITTON, MARY	IRWIN, ROXANNA	SHANKLE, JEAN
BROWN, DOROTHY	KENEMUTH, CHALMER	SHREFFLER, WILLARD
BROWN, THELMA	KIRKPATRICK, RUTH	SILVIS, LUCILE
CAMPBELL, FLORENCE	KLINE, HELEN	SILZLE, FRANK
CARRIER, EUNICE	KLINGENSMITH, BEATRICE	SIMPSON, KENNETH
CARRIER, ORAL	KNAPP, GERTRUDE	SIMPSON, WILLARD
CARSON, LEONE	KOOMAN, ELEANOR	SMATHERS, JOHN
CASSEL, JAMES	KURTZHALS, MARCELI A	SMATHERS, PHYLLIS
CAYLOR, MARY	LIDSTONE, ROGER	SMITH, TOM
CHAMBERLIN, EUNICE	LINDBERG, FLORENCE	SMITH, WINIFRED
CLARK, ESTHER	LOGAN, LEVERNE	SNYDER, KENNETH
COLLINS, MARGARET	MARSHALL, GRACE	SOWERS, SYLVAN
CORBETT, HELEN	MASTER, NORBERT	SPENCE, WAYNE
CRAWFORD, IDA	MILANOVICH, SARA	STANDLEY, MARGARET
CROOKS, DOROTHY	MILLER, JOSEPH	STANFORD, EVAH
DAVIES, EDNA	MACBLANE, GLADYS	STAUFFER, RALPH
DEPP, VERNICE	MCCALL, LAURA	STEWART, BUDD
DICKEY, GLADYS	MCCALL, OLIVE	SWANSON, EVELYN
DWYER, LOUISE	MCDANIEL, FRANCES	TRAISTER, HILDA
EHLERS, MARIE	MCGARVEY, WALTER	TRUBY, ESTHER
ELLIOTT, GERALDINE	MCGAUGHEY, RUSSELL	WAGNER, BARBARA
ELWOOD, IRENE	MCGAUGHEY, SARA	WEAVER, NELLIE
FERRAROTTI, MADELINE	MCGRAW, HARRIET	WELTY, THELMA
FLICK, ANNA	MCKINLEY, ALDEAN	WHITE, FRANCIS
FOSTER, ANNIE	MCKINLEY, SYLVIA	WILHELM, SAMUEL
FREEDLINE, ETHEL	McMAHAN, LOIS	WOLFORD, EVA
FULTON, RUTH	MOFFATT, MAURICE	WOMER, MARY
GAGHAN, MARIE	MONKS, VERNA	YOAS, ALTA
GALBREATH, DON	MOORE, ETHEL	ZAGST, GEORGE
GRADY, FLOYD	MOORE, IVA	

THE SEQUELLE



Freshman Class

MCMXXXII

THE SEQUELLE

Freshman Class Roll

AARON, HELENE
AARON, MARGARET
ALLSHOUSE, AMANDA
ASHBAUGH, BYRON
BALDWIN, ELIZABETH
BANNER, BEATRICE
BANNER, MARIE
BARRANCO, SAMUEL
BARTLEY, TYRUS
BARTOW, PERCY
BEST, DOROTHY
BETZ, CHARLES
BIGLEY, ROY
BILLHEIMER, BERNICE
BLACK, JOHN
BROWN, LEO
CALDWELL, KENNETH
CARPENTER, HELEN
CARR, NETTIE
CASTAFERO, RALPH
CLARK, RUTH
CLINTON, MARY
COOK, REA
CORBETT, ALLEN
CORNMAN, MAXINE
COULTER, RALPH
COVERT, HELEN
CRICK, BERNICE
CROOKS, LOUISE
CYPHERT, DALE
DAVIS, JEROME
DELONG, JESSIE
DOVENSPIKE, DARL
DOVENSPIKE, ALBERTA
EAKIN, HELEN
EDDINGER, LUCY
EMIG, DONALD
ERNEST, FRANCIS
FAIR, JOSEPHINE
FALES, HERBERT
FERRICK, THOMAS
FINCH, IRENE
FOWLER, LYNETTE
GALBREATH, RUTH
GALLAGHER, FRED
GEIST, ETHEL
GEORGE, THELMA
GOLDSMITH, WILLIAM
GRAY, HELEN
GRIFFITH, INEZ
GROVES, MARY EVELYN
HADDEN, EARL
HAHN, FRANCES
HAMILTON, HARRY
HAMMOND, VIRGINIA
HANNOLD, VIOLA
HARRIGER, GUY
HARVEY, RUTH
HAY, GRACE
HEETER, MADELINE
HEVERLY, ROBERT
HINCKEN, DONALD
HINDMAN, CHARLES
HOFF, MARY
HOWARTH, FRANK
HUMPHREY, RUTH
IRWIN, DONALD
JOHNSTON, ALTA
JOHNSTON, LOUISE
JORDAN, RUSSELL
KAPP, EDNA
KEEFER, EARL
KERR, IONA
KLINE, KATHRYN
KLINE, ROMA
KNIGHT, HAROLD
KRIBBS, JEANNETTE
LEHMAN, ETHEL
LIDSTONE, DCANE
LOGUE, BAYONNE
LONG, EMMA
LOVELL, LEROY
LYNN, D. O.
MAHLE, IDA REBECCA
MANSFIELD, ROBERT
MAY, MILDRED
MILLER, ETHEL
MILLER, HOMER
MOONEY, EDWARD
MOORE, CHARLES
MOORE, MARGARET
MOORE, LAVINA
MORRISON, GLADYS
MULL, HELEN
MURPHY, DONALD
MURPHY, GEORGE
McCULLOUGH, JOE
McDONALD, HELEN
McGiffin, LOUISE
McGREGOR, MARY
McKEE, JAY
McKINNEY, MORTON
McMILLAN, ELWOOD
NEELY, LOIS
McCALL, MARTHA
MOORE, VERNA
OAKS, ANDREW
Orr, Iva
PAINE, JOHN
PARK, MARY LUCILE
PAULEY, RUOLPH
PEARSALL, ELOISE
PEFFER, HELEN
PENCE, FRANCES
PERRY, DOROTHY
PETERSON, DANA
PHILLIPPI, WILLIAM
PIERCE, HOWARD
PIFER, EUGENE
RAUGHT, RUTH
RAY, RUTH
REA, LUCILE
REIGHARD, EDWARD
RHEA, BETTY
RHEA, JEAN
ROSENQUEST, ROY
ROSENZWEIG, EMIL
SANDROCK, JAMES
SAYERS, CHARLES
SCHUCKERS, BLAIR
SHADLE, EVELYN
SHAFFER, DONALD
SHAFFER, GERTRUDE
SHAWKEY, BYRON
SHELEY, DOROTHY
SHERRIEB, EDWARD
SHIELDS, MARGUERITE
SHREFFLER, DOROTHY
SLAUGENHAUPT, WALTER
SLIKE, ANNA
SMAIL, ERNEST
SNYDER, ELEANOR
SNYDER, WAYNE
SOMMERVILLE, EULA
STAHLMAN, GERALD
STAHLMAN, MADELINE
STARTZELL, GEORGE
SYPHRIT, JANE
THIER, FRED
THOMPSON, BIRD
THOMPSON, MARGARET
TOY, HELEN
TRUBY, JOHN
VANDYKE, PAUL
VANWORMER, ELGIE
VERBEKE, MARGARET
WAGNER, DOWE
WAITE, CAROLYN
WEBB, JOSEPH
WILSON, ELIZABETH
WINGARD, GEORGE
WORTS, JOE
ZILHAYER, LOUISE

THE SEQUELLE

The New Student Government

There has been organized on the Clarion Campus this year a new form of student government. This change was instigated by a need felt by both students and administration for a co-operative organization which would bring all departments of the College into a better understanding. The organization consists of representatives from the entire student body who are grouped into a Community Senate. The representation is as follows:

- Girls' dormitory government, one representative.
- Girls' dormitory council, two representatives.
- Men's dormitory, two representatives.
- Men's dormitory council, one representative.
- Commuting women students, one representative.
- Women town students, two representatives.
- Men's outside students, three representatives.

This makes a Senate of twelve members, an equal division of resident and transient students.

This Community Senate has for its purpose the better understanding between faculty and students. It will endeavor to gain the viewpoint of all parties, and work for a spirit of co-operation on the campus. Clarion should be a better College for the existence of such a government organization which is backed by Dr. Reimer.

The members and officers of the Senate are:

<i>President</i>	- - - - -	JAMES KASSEL
<i>Vice President</i>	- - - - -	LEWIS WELLS
<i>Secretary-Treasurer</i>	- - - - -	LEO BROWN

VIOLET PRESSLER	LOIS DICKINSON
ELIZABETH DEAN	JAMES CASSEL
ELIZABETH BALDWIN	WILLIAM RUSSEL
PHYLLIS SMATHERS	PAUL WHITEHILL
MADLINE STAHLMAN	



THE SEQUELLE



WHAT GAME GIRLS?

GAMES WE
PLAY AT
CLARION

SINK
THAT
PILL



A BIG LEAGUER
IN THE BUSHES!



WHAT
AM I?

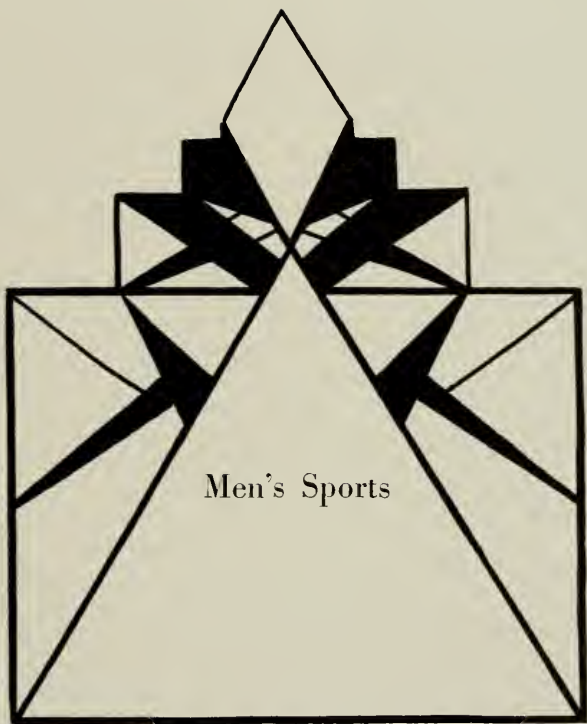


ROUND THE TURN



THE GAME
OF CYNICISM





Men's Sports

THE SEQUELLE



JOHN O. JONES
Coach

Coach Jones deserves much credit for the success of athletics in Clarion. During his five years with the Purple and Gold, Coach Jones has developed athletics to what they are today. A fine football and basketball season, with best prospects for a successful track team, made this perhaps the greatest athletic year in the history of the school. We can only wish Mr. Jones the best of luck for next year.



THOMAS WILSON
Manager

Tom has completed his second year as football manager for the Purple and Gold. Tom proved that he had ability in mathematics by handling the business end of his job very efficiently. Tom was liked by the whole squad and his absence from the field next year will be felt by all. For sheer ability and friendship, Tom was surely the right man!



THE SEQUELLE

ELLWOOD ROWLEY

Quarterback

"Ben" played outstanding ball for the Purple and Gold this year, and his selection as an honorary captain of this year's squad assures everybody of his ability. Being able to run back punts was a great factor in many of the games. His thinking ability carried him through countless tight places, and we hope that this same ability will serve him throughout his life.

JOSEPH KATA

Tackle

"Joe" completed his fourth year of varsity football with a record which would be difficult to match. His consistency and boundless vigor were a constant source of strength on the line, both offensively and defensively. Joe's uncanny ability to anticipate plays, and his gritty determination have often been the center of hope for the team. On losing Kata through graduation, the teams of the future will miss a man whose sportmanship is unchallenged.

CLETUS KREMMELE

Halfback

In losing "Clet" through graduation this year, we lose one of the outstanding broken-field runners of our backfield. "Clet" hails from Ambridge, and he has done much toward the development of fast ball in Clarion. He likes to back up the line, but never missed an opportunity to tackle an opposing player in the open. The Edinboro game will always stand out with "Clet", for it was he who scored the winning touchdown.

ROBERT POWERS

Guard

"Bob" was elected by the squad as the most consistent senior on the team. His play on the line has worried many an opponent, for he could adapt himself to any formation the opposing team would take. In losing "Bob" this year, Clarion has surely lost a real "old man of the mountain."



THE SEQUELLE



DANA PETERSON

End

"Pete", in his first year of varsity football, took over the left wing for Clarion. He is a smart and consistent player. At the kick-off or after a punt, "Pete" could be seen running and evading the would-be blocker to get the ball-carrier. His all-around play will be a great help to the teams of the future.

FRED THIER

Halfback

Freddie, better known as "Moon", was one of Clarion's most dependable men. Besides being a ball carrier of unusual ability "Moon" was the outstanding blocker on the team. Freddie still has three more years of football at Clarion, and with a little more experience, he should be a great asset to the football squads of the future.

TOM SMITH

Guard

"Kit" was shifted from his position in the backfield to guard on this year's team. His determination and fight was noticeable throughout the entire year. Clarion's football fans hope that "Kit" will be with us again next year, for he is potentially a fine lineman.

KENNETH TAYLOR

Center

One of the hardest workers on the squad was "Abie". This was "Abie's" third year and he played in enough games to qualify him for a "C". He has one more year to play, and if he continues to progress in playing ability, he will win for himself the center position on the varsity next year.

THE SEQUELLE

EMIL ROSENZWEIG

End

Emil came to us from the noted football school—Bellefonte Academy, bringing with him the football spirit. His past experience gave to him the ability to diagnose and smother the opponent's plays. He was immeasurably valuable on the line, for his height enabled him to reach far into the opposition's running plays to get his man.

WILLARD SHREFFLER

Tackle

"Wid" was changed from his line-smashing post in the backfield to one of the best linemen of the year. His speed and driving power he used to the best advantage in the line, utilizing his large hands, which resemble a dime's worth of bananas. "Wid" was a fast starting lineman, and at times went down under the punts with the same speed as the ends.

HARRY DAVIS

End

"Fish" was one of the smallest and brainiest fellows on the squad. His ability to break through the opposition's interference to tackle the ball was outstanding in his play. Although not a regular, "Fish" played in enough quarters to obtain for himself a "C".

FRANK QUATSE

Center

Frank came to Clarion two weeks late, and immediately proved his worth by winning the center position on the varsity. Frank came from Greensburg High School where he won for himself the center position on the all W. P. I. A. L. He was one of the best tacklers on the team and liked nothing better than to hit a man in the open.



THE SEQUELLE



JAMES SANDROCK

Fullback

Although not a big fellow, "Sandy" filled the full-back position like a veteran. "Sandy" was the hardest driving back on the squad. In many instances the necessary yardage was made by his ability to run hard and low. "Sandy", besides being an outstanding "ball-toter", was Clarion's most efficient punter.

HERBERT FALES

End

This was 'Herb's' first year with the Purple and Gold, and we will have to admit that he did very well. "Herb" was a steady worker, never missing a practice once. While on the field he gave his best. We all wish "Herb" success in his next three years of football.

RALPH STAUFFER

Tackle

"Pop" has finished his football career at Clarion with the marked distinction of being the hardest worker on the squad. He was always the first to report for practice, and his work at tackle was unflinching. Next year's squad will miss "Pop".

ROBERT HEVERLY

Halfback

"Bob" was one of our best utility backfield men. He hails from Bellefonte and during the past season has proved his worth as a future back. His ability to hit the line low has enabled him to play in many of the games this year. "Bob" will undoubtedly prove his worth in his remaining three years.

DON MURPHY

Tackle

Murphy proved his ability as a utility tackle by playing a bang-up game at Lock Haven. Time and again he would break through to smear the opposition's running plays. This was Murphy's first year with the team, and the future promises much from this man who is potentially a first-team man.

THE SEQUELLE



Varsity Basketball

KENNETH WILLIAMS (Captain)

Forward

"Ken", playing his fourth year with the Purple and Gold, proved himself a valuable man in the team's play. For the past four seasons Williams has proved his ability as a point-getter by heading the list of individual scorers. With "Ken's" graduation Clarion will lose a great leader and athlete.

FRED THIER

Forward

"Freddie", running mate of Williams, was one of the hardest workers on the squad. "Freddie" came to Clarion from a basketball town and this could easily be seen in his "all-around" play. Great things are expected of "Moon" in the future.

EMIL ROSENZWEIG

Center

"Rosy", playing his first year of basketball at Clarion took over the center position very efficiently. Emil was the tallest man on the squad. He used his height very efficiently in taking the ball off the banking board. "Rosy" still has three more years of basketball and we all wish him the best of success.

DANA PETERSON

Guard

"Pete", playing the back guard, was the most consistent man on the squad. When "Pete" was assigned a man to guard you were sure to see some close guarding. He was not only a good guard, but one of the best shots on the squad.

THE SEQUELLE

SAM WILHELM

Guard

Sam, in his second year of basketball at Clarion, developed into one of the best defensive and offensive guards on the squad. Sam handled the ball well and was a very steady floor man. Much is expected of "Sam" in the future.

JAMES KASSEL

"Jim," a fast and clever floorman, played his third year with Clarion. Jim's ability to pick up a ball in either hand made it possible for him to pass very accurately. Jim is a hard and willing worker which should win for him a position on next year's varsity.

WILLIAM RUSSELL

"Bill" has completed this third year of successful basketball at Clarion. Although not playing regularly "Bill" was in enough games to receive a letter. "Bill" is a good "shot" and with improvement should develop into one of the best "shots" on the squad.

HERBERT FALES

"Herb" in his first year with the Purple and Gold played in enough quarters to win for himself a letter. "Herb" came to practice regularly; during these sessions he worked with spirit and determination.

KENNETH SNYDER

"Ken" played his second season with the Purple and Gold, alternating with Wilhelm as guard. "Ken" was one of the best men on the squad in breaking up the opposing teams passes and plays. He still has two more years of basketball and should develop into a guard of distinction.

RUSSELL SWEITZER

Russell handled the business end of basketball very efficiently in his first year as basketball manager of the Purple and Gold. His work was done with the greatest care and efficiency. We wish "Rush" the best of success in the future.

Summary of Past Season

Clarion.....	16—Grove City	34
Clarion.....	44—Brookville Y. M. C. A.	31
Clarion.....	50—Jeannette Appel Club	32
Clarion.....	14—St. Vnicent	22
Clarion.....	15—California	31
Clarion.....	15—Indiana	17
Clarion.....	41—Sterling Oils	19
Clarion.....	31—Slippery Rock	20
Clarion.....	23—California	21
Clarion.....	21—Indiana	20
Clarion.....	12—Slippery Rock	28
Clarion.....	16—Edinboro	47
Clarion.....	19—Sterling Oils	10
Clarion.....	22—Edinboro	32

339

364

THE SEQUELLE



Track

The Purple and Gold track team of 1931 experienced the most successful season in the history of the school. Coach Jones in his first call for practice was welcomed with the best material the school has ever had. The wealth of good material brought about a competitive spirit that had been lacking in previous years. In a triangular meet held at Indiana, Clarion won a clear-cut and decisive victory. The final score was: Clarion, $52\frac{1}{2}$, Indiana, 28, California, $27\frac{1}{2}$. Clarion also came to the front in her dual meets with California and Carnegie Tech Freshmen.

SCORES OF THE 1931 SEASON

Triangular Meet: Indiana.
Clarion $52\frac{1}{2}$, Indiana 28, California $27\frac{1}{2}$.
Dual Meet: Clarion.
Clarion 68, California 29.
Dual Meet: Clarion.
Clarion 29, Carnegie Tech Freshmen 16.

LETTERMEN

CARL SMITH, *Captain*
WILLIARD SHREFFLER
NICK LIDSTONE
FRANCIS WHITE
DANIEL COLEMAN
ALVIN MARSHALL
CLIFFORD RAY

THE SEQUELLE



Young CHAIRMEN



WELCOME!



DAN

T
A
C
K



HIGH CORES OVER



RESOLVED THAT



FOR THE PURPLE & GOLD



FINIS



Women's
Athletics

THE SEQUELLE



Hockey

Hockey opened the intramural sports program, with a great deal of interest, enthusiasm, and good-natured rivalry being shown.

The Sophomores won the first two games, thus winning the three game tournament. The Freshmen played good hockey, and they certainly took the game seriously enough, but the Sophomores' former experience and technique surpassed that of the Freshmen. The honorary varsity was chosen in October by the Women's Athletic Council.

THE SEQUELLE



Soccer

The Soccer games were played in November on a field in good condition between almost equally matched teams and ended in favor of the Freshmen. The first two games ended with neither side scoring, but in the last game of the series the Freshmen scored one goal. The punting, blocking, passing, and dribbling plays were well executed by both teams. The Women's Athletic Council chose the honorary varsity at the close of the season in November.

THE SEQUELLE



Women's Athletic Council

<i>President</i>	- - - - -	TILMAE GOSETTI
<i>Secretary-Treasurer</i>	- - - - -	MARY CHEATHAM

It was a big step forward in women's intra-mural sports when the Women's Athletic Council was formed in September, 1931. This Council is composed of women who won their "C" last year by participating and excelling in athletics. The members themselves stand for the best in playing ability and sportsmanship on the campus; they have earned the right to wear the "C." Tilmæ Gosetti is president, and Mary Cheatham is secretary of the Council organization.

At the close of each intra-mural sport the members of the council chose by vote an honorary varsity team. In this selection the positions played are not considered; the criteria are general playing ability and sportsmanship. Other duties of the members are to act as coaches in practice games and as referees in the intra-mural games. Two council members were assigned each intra-mural sport.

THE SEQUELLE



MISS HELEN BARTON

For many of us the name Miss Barton is synonymous with our most prized memories of this year at Clarion State Teachers College. To her the women owe their splendid year in intra-mural sports. Her sympathy, her humor, and, above all else, her sportsmanship have proved an inspiration to all.

But we do not always think of Miss Barton in connection with athletics, since her musical ability has been so well shown by her work both in Glee Club and Orchestra. Her human side, too, has been felt by many women who have made her their confidant.

Basketball

The Freshman victory in the five-game tournament placed them in the lead in girls' intra-mural sports. The Sophomores won the first game, while the Freshmen won the other three games played.

In basketball, as in no other sport, stress was placed on sportsmanship. In playing ability, the two teams were quite evenly matched, but the Freshmen's was a perfectly working team—one which won games and was a pleasure to watch when playing.

Misses Kurtzhals, Bayonne, Logue, Crick, De Long, Rhea and Kline were chosen in January as members of the varsity basketball team.

THE SEQUELLE





THE SEQUELLE



SPRING
LES FLEURS?



OH, JOE!

AT
PLAY



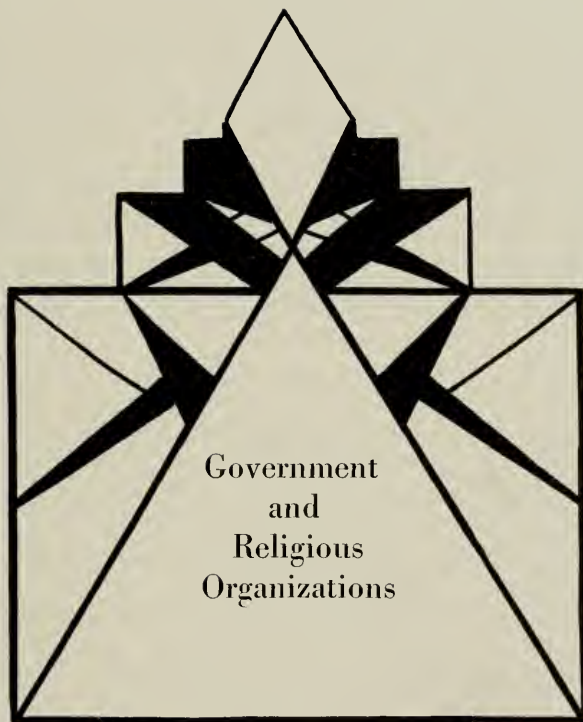
AM - THE SCENE



A GIRL AND A ROCK



AND THE BULLFROGS IN THE
POND.



Government
and
Religious
Organizations

THE SEQUELLE



Women's Student Government

<i>President</i>	- - - - -	ESTHER TRUBY
<i>Vice President</i>	- - - - -	MARGARET ELLIOTT
<i>Secretary</i>	- - - - -	GLADYS MACBLANE
<i>Treasurer</i>	- - - - -	MARY BRITTON
<i>Dean of Women,</i>		HELEN D. SIMS

COUNCIL MEMBERS

MILLITEEN KOPP	BETTY BALDWIN
ELSIE NELSON	LOUISE JOHNSTON
MARION BEST	IRENE FINCH
HELEN HAHN	LYDIA DICKINSON
VIOLET PRESSLER	LORRAINE JOHNSON
ESTHER CLARK	

The Student Government is composed of all the women students of the dormitory. The Student Council is the representative body of the Student Government. The purpose of this organization is to deal with and control such matters of student life as are entrusted to it; to develop among the women students greater individual responsibility; to see that a high standard of life and culture is maintained; and to develop a right spirit of cooperation with the president, parents, and faculty of the college.

THE SEQUELLE



Men's Student Government

President - - - - - JOSEPH KATA
Secretary - - - - - JAMES CASSEL
Dean of Men, J. O. JONES

MEMBERS

STANLEY LORE RUSSEL SWEITZER
COLIN HILEMAN ALFRED MURPHY
 ELLWOOD ROWLEY

Each member of the Men's Student Government is placed in this position of responsibility by the men on the college campus. Therefore, the organization is truly representative and able to carry out the purposes for which it is organized. Better cooperation among students, high standards of honor in matters of personal conduct, and the adoption and practice of a code of ethics second to none are among its achievements. Much of the success of the organization is due to the counsel of the Dean of Men.

THE SEQUELLE



Y. W. C. A.

<i>President</i>	- - - - -	THELMA WELTY
<i>Vice President</i>	- - - - -	MARY BORRONE
<i>Secretary</i>	- - - - -	NELLIE WEAVER
<i>Treasurer</i>	- - - - -	FLORENCE HARLEY
<i>Devotionals</i>	- - - - -	FLORENCE LINDBERG
<i>Music</i>	- - - - -	IVA MOORE
<i>Publicity</i>	- - - - -	VERNA MONKS
<i>Morning Watch</i>	- - - - -	CARRIE BOYLE
<i>Social</i>	- - - - -	JANE HOHMAN
<i>Foreign</i>	- - - - -	EILEEN RICE
<i>World Fellowship</i>	- - - - -	MARGUERITE BAKER
<i>Home Missionary</i>	- - - - -	EVELYN SWANSON

The aim of the Young Women's Christian Association is to create a spirit of good will and friendliness among the college girls. It aids the Freshmen women in becoming adjusted to life in the college by means of "Big Sister Movements," the Freshmen Reception and other social affairs. At Christmas time the women of this organization help those who are in need by providing food and clothing to poor families. It endeavors to give each girl an opportunity to participate in "Y" programs on Wednesday Nights.

The "Y" Cabinet takes charge of the work of this group. The organization upholds the spiritual side of our college life.

THE SEQUELLE



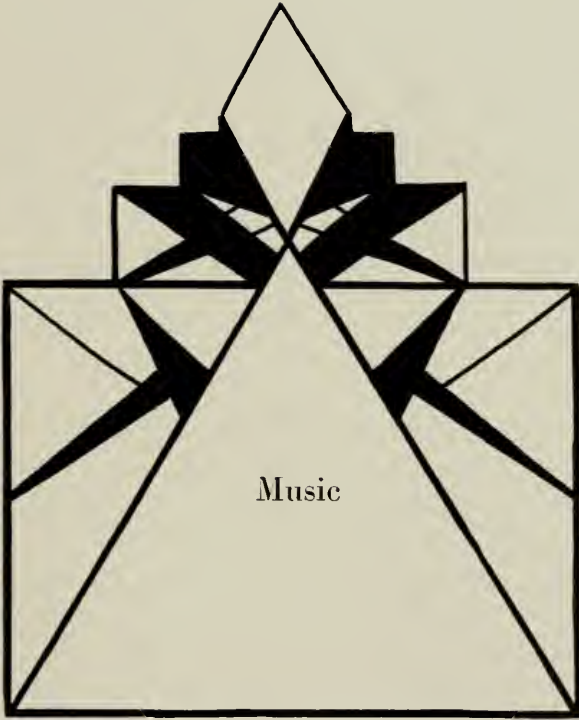
Y. M. C. A.

<i>President</i>	- - - - -	LEWIS WELLS
<i>Vice-President</i>	- - - - -	RUSSEL MCGAUGHEY
<i>Secretary</i>	- - - - -	HARRY ASHBAUGH
<i>Treasurer</i>	- - - - -	ALFRED MURPHY
<i>Programs and Devotionals</i>	- - - - -	JOHN FETZER
<i>Social</i>	- - - - -	JOHN MOCHNICK
<i>Music</i>	- - - - -	STANLEY LORE
<i>Membership</i>	- - FLOYD GREENAWALT, THOMAS WILSON	
<i>Advisor</i>	- - - - -	MR. C. F. BECKER

Y. M. C. A.—Christian Fellowship; on the Clarion campus the one suggests the other. This organization is a brotherhood; it is aware of the changing conditions of the age, and its constant effort is to adapt itself and be of concrete service to the modern world. With these objectives ever in mind, the Y. M. C. A. plans attractive programs to include devotional exercises, songs, speeches, both by faculty members and lecturers of recognized ability from the outside, and student discussions. The "Y" sends delegates to the Fall and Spring Y. M. C. A. Conferences; it assists in the promotion of programs for the Vesper service on Sunday evenings. By these means this sterling body meets and provides an outlet for the spiritual needs of the men on our campus.

THE SEQUELE





THE SEQUELLE



Mr. and Mrs. H. L. Bland

Mr. and Mrs. Bland are widely known throughout the Clarion State Teachers College territory, chiefly through their connections with the Girls' Glee Club and the annual music festival. Mrs. Bland is an accomplished performer on the piano, violin, trumpet and various other instruments. Most of her time is devoted to music lessons and accompanying.

Mr. Bland conducts the various musical organizations and arranges the annual music festival, in which thousands of high school pupils from Northwestern Pennsylvania participate. Mr. Bland also composes light ballads and songs for school children. It is his greatest delight that forty-five per cent of Clarion's students participate in some musical activity.

THE SEQUELLE



Girls' Glee Club

<i>President</i>	-	-	-	-	-	-	EMOGENE LAWRENCE
<i>Vice President</i>	-	-	-	-	-	-	VIVIAN HOHN
<i>Treasurer</i>	-	-	-	-	-	-	} RUTH KIRKPATRICK
<i>Secretary</i>	-	-	-	-	-	-	
<i>Manager</i>	-	-	-	-	-	-	LEONE CARSON

The Clarion State Teachers College presents the members of the College Girls' Glee Club. For the past few years these girls under the direction of "Pop" and "Mom" Bland have traveled to various towns and presented The Programme Beautiful. The expressions of enjoyment from their audiences proves the merit of the programme. This year "Pop" felt he had a show that was better than ever. This Glee Club was even "honored in its own country," being enthusiastically received by the members of the College. The aim of the Club is to represent Clarion and all that it means to the students here.

THE SEQUELLE



Men's Glee Club

<i>President</i>	-	-	-	-	-	-	WILLIAM RUSSELL
<i>Vice President</i>	-	-	-	-	-	-	JAMES SINCLAIR
<i>Secretary</i>	-	-	-	-	-	-	HERBERT FALES

The Men's Glee Club directed by Mr. and Mrs. Bland is an organization for those men who enjoy singing. Every week the men meet for an hour's practice. The club has sponsored two chapel programs. The success of the club is due to the capable leadership of Mr. and Mrs. Bland and to them the success of the organization rightly belongs.

THE SEQUELLE



The Vested Choir

President - - - - - GLADYS MACBLANE
Vice President - - - - - MARY BORRONE
Secretary } - - - - -
Treasurer } - - - - - STANLEY LORE

The Vested Choir is truly a feature of Clarion. This organization, one of the finest on the campus, furnishes music for the Vesper Service on Sunday evenings. It is composed of about thirty members under the direction of Professor Bland. A great deal of time and effort is expended by both the choir and Professor Bland to make these musical programmes on Sunday evenings a success. This is a purposeful organization which is growing yearly.

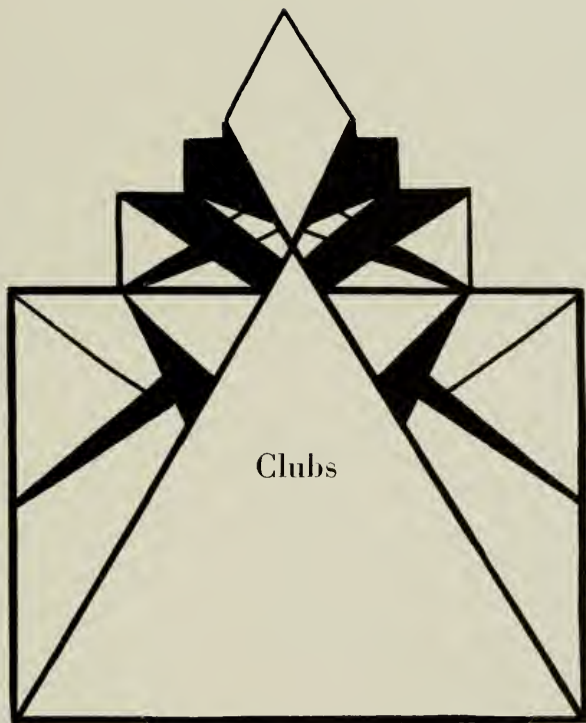
THE SEQUELLE



Orchestra

<i>President</i>	- - - - -	CHARLES FOX
<i>Vice President</i>	- - - - -	WILLIAM RUSSELL
<i>Treasurer</i>	- - - - -	} JEAN SHANKLE
<i>Secretary</i>	- - - - -	
<i>Librarian</i>	- - - - -	DONALD IRWIN

The College Orchestra, like the rest of the musical organizations on the campus is under the direction of Professor Bland and, like the others, it is growing and improving each year. This year the orchestra is composed of twenty-five members, many of whom are able musicians. Although the students did not hear a great deal of the orchestra the taste "tasted like more." Their public appearance is limited mainly to chapel programmes, but with the growth of the organization their concerts will be more numerous.



THE SEQUELLE



College Players Club

FIRST SEMESTER

<i>President</i>	- - - - -	KENNETH SNYDER
<i>Vice President</i>	- - - - -	MARGARET ELLIOTT
<i>Secretary</i>	- - - - -	ELSIE NELSON
<i>Treasurer</i>	- - - - -	ORRIS STOVER

SECOND SEMESTER

<i>President</i>	- - - - -	ORRIS STOVER
<i>Vice President</i>	- - - - -	ISABEL RIEMER
<i>Secretary</i>	- - - - -	STANLEY LORE
<i>Treasurer</i>	- - - - -	LEVERNE LOGAN
<i>Faculty Advisor</i>	- - - - -	MISS MARIE MARWICK

The College Players Club is progressing in another successful year. Because of the large number of applicants it has been necessary to limit the membership to forty-five and members determined by try-outs.

The Club is at the present time preparing to give a one-act play in chapel and are also scheduled to present a public three-act play during the month of April. Much of their success is due to their faculty advisor, Miss Marwick.

THE SEQUELLE



Hostess Club

FIRST SEMESTER

<i>President</i>	- - - - -	BETTY HESLEY
<i>Secretary</i>	- - - - -	CARRIE WAITE
<i>Treasurer</i>	- - - - -	MARIE EHLERS
<i>Programme Chairman</i>	- - - - -	ESTHER CLARK

SECOND SEMESTER

<i>President</i>	- - - - -	EVELYN SWANSON
<i>Vice President</i>	- - - - -	THELMA BROWN
<i>Secretary</i>	- - - - -	GRACE SHREFFLER
<i>Treasurer</i>	- - - - -	DOROTHY CROOKS
<i>Programme Chairman</i>	- - - - -	MARIE EHLERS

The Hostess Club probably has the honor of enrolling the largest number of students of any organization on the campus. It endeavors to raise the social standards of the school by instructing the girls in the proper ways of conducting themselves. In the meetings, which take place on Friday evening of every alternate week, various problems of etiquette are discussed. This year the Club had complete charge of the Hallowe'en party which enabled the girls to put into practice some of their newly acquired social knowledge. The Club is under the direction of Miss Sims who guides the studies of the Club into channels of proper dress, the "how and why of dancing," proper table setting and service, and all other topics which will enable the women of the college to be better fitted socially.

THE SEQUELLE



Art Club

<i>President</i>	- - - - -	LOIS DICKINSON
<i>Vice President</i>	- - - - -	GRACE MARSHALL
<i>Secretary-Treasurer</i>	- - - - -	JOHN BLACK
<i>Faculty Advisor</i>	- - - - -	MISS HAZEL SANDFORD

The Art Club was founded under the leadership of Miss Sandford. This club meets every week with the purpose of interesting its members in artistic work, designing, and workmanship of various kinds, and the work so far has been very successful.

THE SEQUELLE



The Press Club

FIRST SEMESTER

President - - - - - ELSIE NELSON
Vice President - - - - - JOHN MOCHNICK
Secretary and Treasurer - - - - - LYDIA DICKINSON

SECOND SEMESTER

President - - - - - ESTHER CLARK
Vice President - - - - - FLOYD GRADY
Secretary and Treasurer - - - - - MARY BRITTON

The Press Club is a representative organization. Its membership is built up on a competitive basis and membership is limited in number to insure the best results possible. The Press Club makes a study of the publication of a college newspaper, and considers other aspects of Journalism outside its own field in order that its vision may be broader and its service greater. With the able assistance of its faculty advisor, Miss Bertha V. Nair, the organization has applied its findings to the publication of *The Clarion Call*. Students desirous of feeling the pulse of the college, read "The Call."

THE SEQUELLE



Debating Club

<i>Manager</i>	- - - - -	EMERSON BEST
<i>Secretary</i>	- - - - -	JOHN FETZER
<i>Coach</i>	- - - - -	MR. MACDONALD

In the early part of the winter short debates were given in the chapel to arouse interest in debating. Topics for debates included the blond and brunette question, intra mural sports, and woman's place in the world—outside of the home.

The question for the formal debates is this: Resolved That Capitalism as a system of economic organization is unsound in principle. The question is to be debated with California, Slippery Rock, and Shippensburg State Teachers Colleges.

Members of the affirmative team include John Fetzer, Guy Harriger, Marcella Kurtzhals, Maurice Moffat, and John Riemer. Speakers for the negative side of the question are Emerson Best, Margaret Elliott, Albert Henry, and Charles Logan.

THE SEQUELLE



The Outdoor Club

President - - - - - JAMES KASSEL
Secretary-Treasurer - - - - - TILMAE GOSETTI

The Outdoor Club has become one of the outstanding and most attractive clubs on the campus. Since its initial organization two years ago, its membership list has been steadily growing.

However, in order that trips may be conveniently arranged and members, thereupon accommodated, the maximum number of active members has been limited to thirty.

Up to the present time, the club has enjoyed remarkable success under the leadership of Mr. Manson, capable club officers, and industrious and cooperating club members.

With its motto, "The Natural Way To A Better Life," as guide, the club is striving to foster a greater appreciation for both the beautiful and the useful in the outdoors.

Certainly, the Outdoor Club has before it a bright future, and its growing fame is steadily drawing to it a large number of the college students.

THE SEQUELLE



The Library Club

FIRST SEMESTER

<i>President</i>	- - - - -	GENEVIEVE ROSSMAN
<i>Vice President</i>	- - - - -	EMMA LONG
<i>Secretary-Treasurer</i>	- - - - -	CARRIE BOYLE

SECOND SEMESTER

<i>President</i>	- - - - -	MARIE EHLERS
<i>Vice President</i>	- - - - -	MARION BEST
<i>Secretary-Treasurer</i>	- - - - -	MARY WOMER
<i>Faculty Advisor</i>	- - - - -	MISS RENA M. CARLSON

Who hath a book
 Has friends at hand,
 And gold and gear
 At his command;
 And rich estates,
 If he but look,
 Are held by him
 Who hath a book.

Who hath a book
 Has but to read
 And he may be
 A king, indeed;
 His kingdom is
 His inglenook
 All this is his
 Who hath a book.
 —By Wilbur D. Nesbit

The Library Club combines the advantages of group discussion of books which the members have found interesting with the actual experience of working in a college library. One of the most important projects of the club the first semester was the celebration of Book Week, which took the form of a Round-the-World Fair, held in the library. The second semester the club members will become acquainted with some of Pennsylvania's authors. Each member of the club works one period a week in the college library. This is found to be of value not only in helping them to find material for their own work, but also in becoming familiar with the organization of a library.

THE SEQUELLE

Varsity "C" Club

<i>President</i>	-	-	-	-	-	-	-	THOMAS WILSON
<i>Vice President</i>	-	-	-	-	-	-	-	RUSSEL SWEITZER
<i>Secretary</i>	-	-	-	-	-	-	-	JAMES KASSEL
<i>Treasurer</i>	-	-	-	-	-	-	-	CARL SMITH

All men who have earned the letter "C" in any of the major sports in Clarion State Teachers College are eligible for membership in the Varsity "C" Club. The purpose of this club is to promote a better cooperative spirit in the college; to conduct all athletic activities on the college campus, to encourage young men to participate in some form of college athletics, to encourage sportsmanship, and loyalty in the individuals undertakings.

During the past year the club sponsored the annual football banquet, the buying of awards, and all athletic activities.

The New Plan for Athletics

Mr. Jones has drawn up a new plan for men's athletics which we hope can be successfully carried through for next year. The purpose of this plan is to provide facilities for greater participation in athletics on the part of the men students.

As many students as desire to join may belong to each activity. The football teams will each be allotted a number of players, as many teams as necessary being used. All players will be taught practically the same system and signals. For each of the teams a schedule will be arranged, whereby the football season will have a well-planned group of intra-mural games. From each team will be selected the best players, and these players will constitute the college team, which will play the games scheduled with other teachers colleges.

The plan as outlined will probably be used for every sport. Its advantage lies in the fact that the students will have an opportunity to receive some personal benefit from the money paid as a registration fee. In addition, a greater general interest will be created, more men will benefit from the physical exercise, and a higher ethical plane will be reached.

Mr. Jones is to be commended for this plan. He has the support of the student body, and we sincerely hope that his plan will be the starting point for a new era in athletics at Clarion State Teachers College.

THE SEQUELLE



DELTA PHI EPSILON



THETA GOES INTO A WHEEL



THETA

SOME
GIRLS



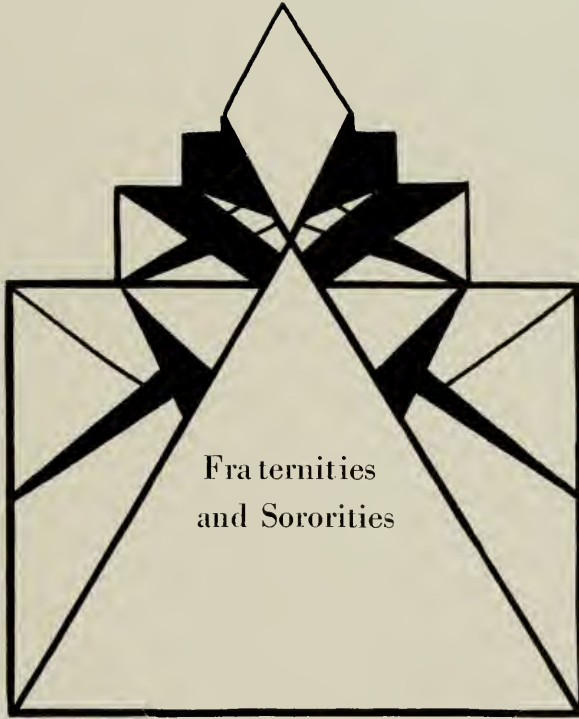
CHUMS



BETTY



MABEL



Fraternities
and Sororities

THE SEQUELLE



Α Γ Φ

Established March, 1930

FRATRES IN FACULTATE

JAMES R. HUSTON

GILBERT A. HOYT

FRATRES IN COLLEGIO

LEO BROWN

JAMES CASSEL

DANIEL COLEMAN

REGIS DUFFY

GEORGE GIFFORD

ROBERT HEVERLY

JOSEPH KATA

JOHN MOCHNICK

ROBERT POWERS

JOHN RIEMER

EMIL ROSENZWEIG

WILLIAM RUSSELL

JAMES SANDROCK

WILLIARD SHREFFLER

JAMES SINCLAIR

WILLIAM SLATTERY

GEORGE STARTZEL

RUSSELL SWEITZER

KENNETH TAYLOR

FRED THIER

JOHN TRUBY

KENNETH WILLIAMS

THOMAS WILSON

PLEDGES

TYRUS BARTLEY

RALPH COULTER

EUGENE PIFER

MCMXXXII

One hundred six

THE SEQUELLE



A Φ A

Established April, 1930

FRATRES IN FACULTATE

HARRY S. MANSON

CHARLES F. BECKER

FRATRES IN COLLEGIO

BETZ, CHARLES
FETZER, JOHN
FOX, CHARLES
GALLAGHER, FRED
HARRIGER, GUY
HILEMAN, COLIN
KASSEL, JAMES
KREMMELE, CLETUS

LOGAN, CHARLES
LOGAN, LE VERNE
LORE, STANLEY
MILLER, HOMER
MURPHEY, ALFRED
ROWLEY, ELLWOOD
SCHAEFFER, DONALD
SIMPSON, KENNETH
SLAUGENHAUPT, WALTER

SMITH, CARL
SNYDER, KENNETH
STEWART, BUDD
STOVER, ORRIS
TRAVIS, WESLEY
WELLS, LEWIS
WORTS, JOE
WHITEHILL, PAUL

PLEDGES

THOMPSON, BIRD
BREAKEY, KINSEL

HENRY, ALFRED
VAN DYKE, PAUL
LOVELL, LE ROY

McKINNEY, MORTON
SHERRIEB, EDWARD

THE SEQUELLE



$\Sigma \Phi \Delta$

Established October, 1930

FRATRES IN FACULTATE

H. L. BLAND

J. O. JONES

FRATRES IN COLLEGIO

ALCORN, LEWELLYN
ASHBAUGH, BYRON
ASHBAUGH, HARRY
BARRANCO, SAMUEL
HARTMAN, EUGENE

HARTMAN, KENNETH
KENNEMUTH, CHALMERS
MANSFIELD, ROBERT
MASTER, NORBERT
MCGAUGHEY, RUSSELL
MILLER, JOSEPH
MOORE, JEWELL

SHANKLE, EDWARD
SNYDER, MERRILL
SNYDER, WAYNE
STAUFFER, RALPH
STEWART, WILLIAM

THE SEQUELLE



Z K N

SORORES IN COLLEGIO

BARNETT, MARGARET
CAMPBELL, FLORENCE
DEAN, ELIZABETH
ELWOOD, IRENE
FINCH, IRENE

GEIST, ETHEL
GROVES, MARY EVELYN
KOPP, EDNA MAE
KOPP, MILLITEEN
LOGUE, BAYONNE
MACBLANE, GLADYS

McDANIEL, FRANCES
ORR, IVA
PRESSLER, VIOLET
SNYDER, ELEANOR
TRUBY, ESTHER

SPONSOR:

MISS HELEN BARTON

PATRONESSES:

MRS. MERRITT DAVIS MRS. W. B. RANKIN

THE SEQUELLE



Σ Δ Φ

SORES IN COLLEGIO

BALDWIN, BETTY
BARNES, MARTHA
BEST, MARION
BRUCE, MABEL
BINNEY, BETTY
BOYLE, CARRIE
CARR, NETTIE

CARSON, LEONE
CROOKS, DOROTHY
DICKINSON, LYDIA
ELLIOTT, MARGARET
FERROTTI, MADELINE
HARLEY, FLORENCE
HAY, GRACE
HESLEY, BETTY

HARVEY, RUTH
HOHN, VIVIAN
JOHNSTON, LOUISE
KRIBBS, JEANETTE
LEHMAN, ELIZABETH
LONG, EMMY LOU
NELSON, ELSIE

SPONSOR:

MRS. BLAND

PATRONESSES:

MRS. HARRY WILSON

MRS. AMABEL RALSTON

MISS BERTHA V. NAIR

MCMXXXII

One hundred ten

THE SEQUELLE



Λ Χ Δ

SORORES IN COLLEGIO

CHEATHAM, MARY
CLARK, ESTHER
DAVIES, EDNA
EHLERS, MARIE

KLINE, ROMA
MARSHALL, GRACE
MOHNEY, RUTH
NEIL, FRANCIS
RIEMER, ISABELLE

SMITH, WINIERED
SYPHRIT, JANE
SMATHERS, PHYLLIS
YOAS, ALTA

SPONSOR:

LOIS GREEN

PATRONESSES:

MRS. W. J. DAVIES

MISS ELIZABETH KEITHAN Mrs. N. E. HEETER
Mrs. HARRY MANSON

THE SEQUELLE



Θ Α Λ

SORORES IN COLLEGIO

BAKER, MARGUERITE
BEST, WILMA
BILLHEIMER, BERNICE
BROWN, THELMA
CARPENTER, HELEN

COLLNER, MADELINE
FULTON, RUTH
JOHNSON, LORRAINE
KOOMAN, ELEANOR
KURTZHALS, MARCELLA
MONKS, VERA
PERRY, DOROTHY

RHEA, BETTY
RHEA, JEAN
ROSSMAN, GENEVIEVE
SHANKLE, JEAN
WELTY, THELMA

PLEDGES

GALBREATH, RUTH

JOHNSTON, ALTA
MULL, HELEN

ZILHAVER, FRANCIS

SPONSOR:

Mrs. HARRY RENN

PATRONESSES:

Mrs. THOMAS ARNOLD

Mrs. JAMES R. HUSTON

Mrs. G. A. HOYT

THE SEQUELLE



Φ Σ Π

NATIONAL HONORARY EDUCATIONAL SOCIETY

Founded at Warrensburg, Missouri, in 1916

Established Lambda Chapter May, 1930

OFFICERS

<i>President</i>	- - - - -	JOSEPH KATA
<i>Vice President</i>	- - - - -	RUSSELL SWEITZER
<i>Recording Secretary</i>	- - - - -	JAMES KASSEL
<i>Treasurer</i>	- - - - -	ALFRED MURPHY
<i>Historian</i>	- - - - -	LEWIS WELLS

FACULTY MEMBERS

CHARLES F. BECKER	M. E. MACDONALD	DR. G. C. L. RIEMER
	HARRY S. MANSON	

ACTIVE MEMBERS

ASHBAUGH, HARRY	LOGAN, CHARLES
BEST, EMERSON	LORE, STANLEY
CASSEL, JAMES	MURPHEY, ALFRED
KASSEL, JAMES	SWEITZER, RUSSELL
KATA, JOSEPH	WELLS, LEWIS
	WILSON, THOMAS

THE SEQUELLE



Π Γ Μ

NATIONAL HONORARY SOCIAL SCIENCE SOCIETY

Founded at Winfield, Kansas, in 1924

PENNSYLVANIA IOTA CHAPTER

Established May, 1930

OFFICERS

President - - - - - JOHN MOCHNICK
Vice President - - - - - JOSEPH KATA

MEMBERS

BEST, EMERSON
GOSETTI, TILMAE
KATA, JOSEPH

LORE, STANLEY
MOCHNICK, JOHN

MURPHEY, ALFRED
TRAVIS, WESLEY
WILSON, THOMAS

MCMXXXII

One hundred fourteen

THE SEQUELLE



Pan-Hellenic

PAN-HELLENIC COUNCIL

First Semester

President - - - - - BETTY HESLEY
Secretary-Treasurer - - - - - WINIFRED SMITH

Second Semester

President - - - - - VERNA MONKS
Secretary-Treasurer - - - - - NELLIE WEAVER

MEMBERS

IDA CRAWFORD
ROMA KLINE

DOROTHY PERRY
AMANDA ALLSHOUSE

The Pan-Hellenic Council is the newest of the new organizations on the Clarion campus. With the founding of various Sororities among the women students it was found necessary to form a council which would serve as a regulating body. With this in mind the Pan-Hellenic Council was formed. It consists of two girls from each of the five sororities with Miss Margaret Boyd as advisor. Its main purpose is the regulation of "rushing" and the enforcement of rules necessary to the well-being and smooth-running of sorority life.

THE SEQUELLE



Δ Π Σ

SORORES IN COLLEGIO

ALLSHOUSE, AMANDA	McGraw, HARRIETTE
BANNER, BEATRICE	McKINLEY, SYLVIA
CRAWFORD, IDA	MORRISON, GLADYS
DWYER, LOUISE	RICE, EILEEN
FAIR, JOSEPHINE	STANDLEY, MARGARET
HEETER, MADELINE	SOMMERVILLE, EULA
HURLBERT, LILLIAN	SWANSON, EVELYN
IRWIN, ROXANNA	

Sponsor: Miss WILLIAMSON



Publications

THE SEQUELLE

Sequelle Staff

<i>Editors-in-Chief</i>	- - - -	STANLEY LORE, LEVERNE LOGAN
<i>Art Editors</i>	- - - -	THELMA WELTY, GRACE MARSHALL
<i>Literary Editors</i>	- - - -	JAMES CASSEL, ISABEL RIEMER
<i>Athletic Editors</i>	- - - -	JOSEPH KATA, FLORENCE LINDBERG
<i>Joke Editors</i>	- - - -	NORBERT MASTER, JEAN SHANKLE
<i>Editors of Organizations</i>	- - - -	ESTHER CLARK, KENNETH SNYDER
<i>Business Managers</i>	- - - -	JOHN MOCHNICK, MARTHA PENCE
<i>Typists</i>	- - - - -	ELSIE NELSON, CLETUS KREMMEL
<i>Photography</i>	- - - - -	MARCELLA KURTZHALS

THE SEQUELLE



The Sequelle Staff

The Sequelle Staff of 1932 has attempted to produce a book of which every graduate may feel proud. It is modernistic in theme, and its keynote is simplicity. The hundreds of hours of ungrumbling work are testimony of the cooperative staff. The staff, composed partly of sophomores, partly of seniors, is grateful for the help of Miss Nair, William Russell, Mary Britton, Mary Womer, Lewis Wells, and others who gave their help, although not belonging to the staff. We sincerely hope that this production is deserving of the praise we feel sure it will gain.

THE SEQUELLE STAFF

THE SEQUELLE



MISS BERTHA V. NAIR

To Miss Nair, the sponsor and advisor of the Press Club, the club owes whatever success it has had this year. However, if at any time the club has failed to live up to its standards or duties, it is due to the organization itself—not to its sponsor who has always offered the right suggestion at the right time. It would have saved Miss Nair many sleepless nights if the club had taken the responsibility for its publication as keenly as she did. Her willingness and sincerity have never been questioned. The Sequelle Staff is grateful to her for the many suggestions and corrections which have helped to uphold its standards.

Clarion Call

"The 'Calls' are out!" Such is the cry that goes up from our campus once a month when the paper is placed in the mail boxes for the students' perusal.

Since the Call is a monthly paper, the news in it tends to be old to some readers, yet by some of the students new facts are read. If all the issues for the entire year are kept, they make a satisfactory resume of the year's events.

THE CALL STAFF

Editor-in-Chief

MARTHA PENCE

News Editors

LEWIS WELLS, EMERSON BEST,
HELEN EAKIN, MARY BRITTON,
DONALD SHAFFER

Girls' Athletic Editor

FLORENCE LINDBERG

Boys' Athletic Editors

EDWARD MOONEY, JAY MCKEE

Clubs Editor

LYDIA DICKINSON

Music Editor

ESTHER CLARK

Humor Editors

ISABELLE RIEMER, HELEN PEPPER

Literary Editors

JAMES CASSEL, LUCILLE SILVIS,
EILEEN RICE

Faculty Advisor

MISS BERTHA V. NAIR



THE SEQUELLE



MCMXXXII

One hundred twenty-two

THE SEQUELE



THE SEQUELLE



MATH — OOH!



COMMUTERS

EDUCATIONAL FACTORS OF THE INSTITUTION



PSYCHE IS BUNK!



MUSIC AND
— ?



SCHOOL



THOSE LAWS
OF LEARNING!



ENGLISH AND

EVEN MID
LIT

THE SEQUELE



THE SEQUELLE

Calendar

SEPTEMBER

- 8—Registration.
- 9—Classes begin. A new start on the old grind.
- 10—Greetings from Dr. Riemer and Mr. Wilkinson.
- 11—Fellowship Weiner Roast—hot-dogs for all.
- 12—"Y" Reception. Best ever. We notice Bob and Jean.
- 13—Vespers begun by a talk by Rev. Stewart. Grapes at Francys'.
- 14—All settled as the second week begins.
- 15—The History Department discusses the Constitution in Chapel.
- 16—Promises for a successful year shown at both "Y" meetings.
- 17—College Players hold first meeting.
- 18—Who said that "Bill" Russell is getting fat?
- 19—Homesick Freshmen have gone home for the week-end.
- 20—Chicken.
- 21—Senator Davis spends the day with us.
- 22—Dr. Riemer spoke on Berlin in Chapel. He had pictures, too.
- 23—The "Y. W." had marshmallows. "Wid" and "Joe" built the fire.
- 24—College Players initiate new members at a dinner-dance.
- 25—A real "Pep" meeting. Beat Allegheny!
- 26—We didn't, but the team looked fine.
- 27—Dr. Platt at Vespers. Which is larger, audience or choir?
- 28—Girls' Glee Club have annual weiner roast for new members.
- 29—Freshman Week begins. The purple and gold dinks and arm-bands are becoming.
- 30—Freshmen walk in lock-step. Mary Evelyn would like to call "Boone", "sweetheart".
- 31—Allah! Allah! Sophomore! Press Club dinner. Sequelle Staff announced.

OCTOBER

- 1—Quality Point ratings come out.
- 2—"Herb" can certainly make the Freshmen sing.
- 3—Sophomores throw a party for the Freshmen.
- 4—Mr. MacDonald at Vespers.
- 5—Fraternities busy with pledge parties.
- 6—P. O. D. Statesmen in Chapel. Who was caught in Marguerite's room?
- 7—"Y. M." delegates go to Butler.
- 8—"Bob" Powers under the weather.
- 9—Should Wednesday and Friday Chapel be compulsory? Pan-Hellenic Tea.
- 10—Alliance falls. 32-0.
- 11—Louise McGiffen would love to cook in Logan's kitchen.
- 12—Food in Jean's room. They tell us that "Toot", "Peb", and Jean go to Sunday School.
- 13—"Fud" and Elsie come together. "Shavings" presented on Lyceum.
- 14—Clarion Call comes out.
- 15—"Wilkie" met Lord Cornwallis at Philadelphia.
- 16—"Pep" meeting for Indiana game.
- 17—1. S. T. C.—12. C. S. T. C.—0.
- 18—Dr. Murray speaks at Vespers.
- 19—"Bill" Slattery comes to Clarion.
- 20—Masons get a showering of apple cores.
- 21—We see familiar faces at Institute.
- 22—Some of the faculty attend Armstrong County Institute.
- 23—Sophomores win Intramural Hockey Tournament.
- 24—What happened when Slippery Rock went home with a score of 25 and we stayed here with 0?
- 25—Bishop Ward of Erie delivers inspiring address at Vespers.
- 26—Football team gets real work-out. Get ready for Edinboro.
- 27—"Pep" thinks she has to work too hard.
- 28—Ask Dan the difference between a "Yid" and a Jew.
- 29—"Teddy" comes in at 5:00.
- 30—We wanted to go to the "Firemen's Ball".
- 31—We beat Edinboro 16-0. "Wid" was acting captain. Hallowe'en Party.

NOVEMBER

- 1—Rev. Cowen from Oregon speaks in Vespers. The crowd is no larger.
- 2—Mr. Mohny is out hunting. How many wish they were too?
- 3—Something has happened to Duffy's shoulder.

THE SEQUELLE

- 4—"Maker of Dreams" presented by Dramatic English Class.
- 6—Get ready for California.
- 7—California comes out on top, 6-0.
- 8—Rev. Crawford, Ida's father, speaks at Vespers.
- 9—Education Week begun. Rushing.
- 10—Doctors meet here. Any apples?
- 11—Mid-Semester grades come out.
- 12—Final inspection of Gym.
- 13—Fetzer and Kassel in American Legion Show. Grady, too.
- 14—Lock Haven wins, 12-0.
- 15—We enjoy Mr. Becker and Mrs. Miller at Vespers.
- 16—We are now using the Gym.
- 17—Who is "Wid's" girl now?
- 18—Book Fair in Library. Fire(?) in Becht Hall.
- 19—Soccer Tournament goes to the Freshmen.
- 20—Z. K. N. have dinner.
- 21—Silence Week over at last.
- 22—Walks in Wilson's Woods still interesting.
- 23—Sororities pledge new members.
- 24—A Γ Φ hold pledge banquet in honor of Football Squad. "Ganzly" Benedict guest speaker
- 25—Home for Thanksgiving.
- 30—Back again. Faculty club party.

DECEMBER

- 1—J. H. S. faculty and student teachers have banquet at Methodist Church.
- 2—Joint meeting of "Y". Rev. Stewart speaker.
- 3—Basketball squad taking form.
- 4—Girls' Glee Club makes debut at St. Petersburg.
- 5—"Rosey" has a birthday.
- 6—Mr. Manson pleases congregation of Presbyterian Church.
- 7—15 more shopping days until Christmas.
- 8—Senior class of Corsica our guests.
- 9—Who told "Freddy" that there wasn't any Santa Claus?
- 10—No girls at Varsity "C" Banquet. Jesse Quatse and Ted Rosenzweig the guests of honor
- 11—Girls' Glee Club at Polk.
- 12—What do we do on Saturdays?
- 13—John, "Stan", and Colin blend their voices.
- 14—Z. K. N. sponsor "Merely Mary Ann".
- 15—Dr. and Mrs. Riemer entertain the Seniors at dinner. "Phil", "Dot", "Shad", "Pep", "Peffer", and "Marty" social privileged.
- 16—"Y" celebrates Christmas.
- 17—Brookville-31, Clarion-14 Kiwanis-17, Faculty-12.
- 18—"Herb" gives "Fifi" a bath. Dramatic English Class presents "The Travellers".
- 19—Christmas Party. Barkey's Sultans of Tempo.
- 20—Christmas celebrated at Vespers.
- 21—Spare moments spent shopping.
- 22—Home tomorrow.
- 23—Merry Christmas!

JANUARY

- 4—Happy New Year.
- 5—It's great to be back.
- 6—Health and Hygiene groups busy.
- 7—"J. O." enjoys dinner. A X Δ shower "Issy" with handkerchiefs.
- 8—Which is the better date, blonde or brunets?
- 9—C. S. T. C.-49, Jeannette A. C.-32.
- 10—Miss Nair the attraction at Vespers.
- 11—Car riding "pers" taken away.
- 12—Meeting of Board of Trustees. What do they do anyway?
- 13—Girls interested in "Girl Scout Leadership Training Course".
- 14—Exams.
- 15—More exams.
- 16—First Semester ends. Bridge Tea in Lounge for student teachers. St. Vincents win 22-14.
- 17—The vacation we had between semesters.
- 18—Beginning of Second Semester.
- 19—Some of us have left. We see some new faces.
- 20—Mr. Huston speaks on "Internationalism" at "Y".

THE SEQUELLE

- 21—Where is winter?
- 22—Inter-Collegiate Athletics debated. Glee Club at Brockway.
- 23—California wins 31-15.
- 24—Dr. Radcliff of Brookville at Vespers.
- 25—Does "Jock" really have to teach English?
- 26—Vespers put in hands of students. Put it over!
- 27—A thrilling basketball game. Clarion loses to Indiana 17-15.
- 28—Did Lois have a wreck in Washington?
- 29—Whisperings of the Inter-sorority Ball.
- 30—What shall we do with these week-ends?
- 31—Where has January gone?

FEBRUARY

- 1—Now we're going to start working in earnest.
- 2—Sterling Oils subdued 41-19.
- 3—Snow.
- 4—No snow.
- 5—Bring on Slippery Rock.
- 6—Clarion 31, Slippery Rock 20. A party after the game.
- 7—Still excited about last night's game.
- 8—Imperial Welch Singers. Could anything be finer?
- 9—Out-Door Club talks on Birds.
- 10—Rev. Rizer begins series of talks.
- 11—"Dad" Welch presents pictures to Training School.
- 12—Glee Club at Emlenton. "Chuck" Grant sends regards.
- 13—Jock shines in victory over California. Score 23-21.
- 14—Rev. Dickenson of Brookville at Vespers.
- 15—Girls' Intra-mural Basketball begins with a win for the Sophomores.
- 16—Rev. Bleakney of Pittsburgh gives splendid talk in Chapel.
- 17—We are sorry to hear that Miss Williamson is ill.
- 18—Dr. Riemer is off for Washington.
- 19—The Inter-Sorority Ball a huge success.
- 20—Don't ask what happened at Slippery Rock. The chicken dinner was lost.
- 21—Mr. Huston on "George Washington" at Vespers.
- 22—We'd like a holiday.
- 23—Washington program and Third Graders in Chapel.
- 24—Rev. Rizer still draws crowds to "Y".
- 25—We just couldn't get "Lupe" out last night.
- 26—A Columbus and Washington program in Miss Mohney's room.
- 27—What happened to "Herb" and "Issy"? "Wid" and "Lupe"? "Moon" and "Phill"?
- 28—"Wid" and Mable again. What about that fraternity key—it isn't "Wid's"?
- 29—Edinboro wins. Who's going in the "Lily Pond"?

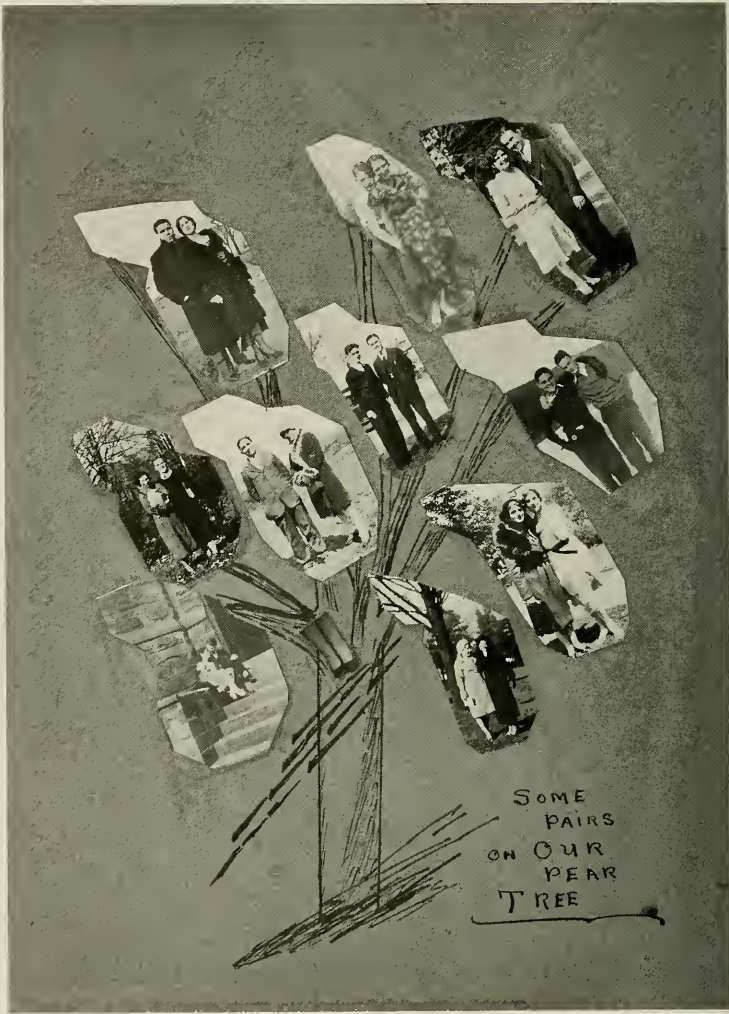
MARCH

- 1—Again the Sterling Oils lose, 19-10. Glee Club at Brookville.
- 2—"Pat" makes quite the Roman girl.
- 3—Miss Barton holds dancing class.
- 4—Freshmen busy with "Hop" arrangements.
- 5—"Zero" excited about the band he's getting.
- 6—Edinboro here. Dr. Crawford and family here for the game. They won 32-22.
- 7—"Stan" and "Johnny" terribly busy with "The Sequelle".
- 8—Student Government discussion in Chapel. We saw "Herb" and Isabel dancing.
- 9—"Wilkie" at Philadelphia.
- 10—A X Δ Tea for their patronesses at Riemer's apartment.
- 11—Glee Club trip to Titusville. Did we eat in Oil City?
- 12—Poor "Fud". Why did "Wid" Simpson leave Esther in the show?
- 13—We liked Mary Womer's father and his talk on the "Passion Play".
- 14—Z. K. N. sponsor "Dance Team".
- 15—C. S. T. C. adopts new system of Self Government.
- 16—Cat dissection. What does "Rosey" want with the tail?
- 17—Freshman Hop. Lew Platt and His Playboys. It was a great dance. We discover that "Lew" Wells is a good director.
- 18—Lew Sarrett thrills us all!
- 19—"Sequelle" material in. Home again!

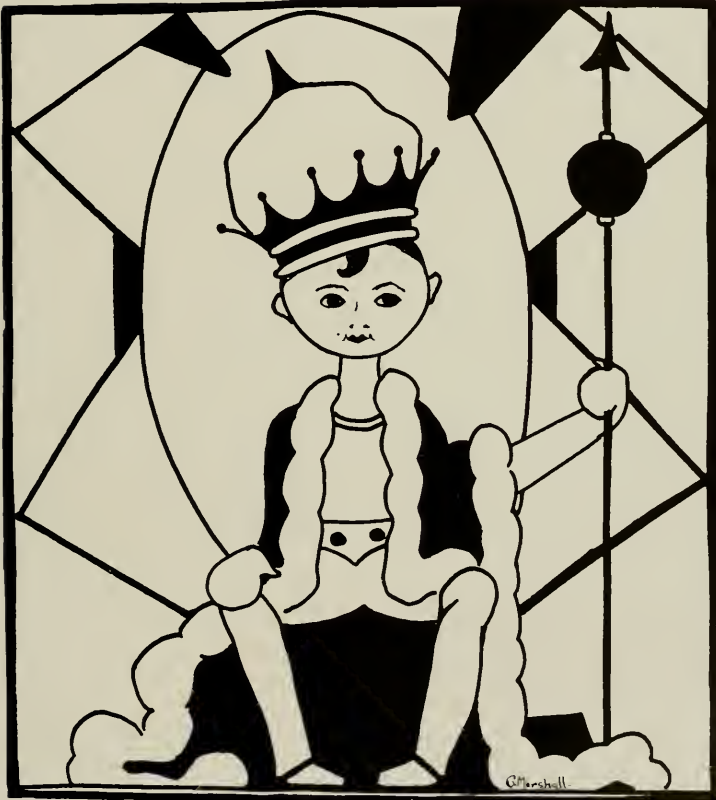
THE SEQUELLE



THE SEQUELLE



HUMOR



THE SEQUELLE

Mr. Huston: And the Britons still wore the same clothes their ancestors did.

Edwards: Oh, the dirty things!

Phil: Look, Moon, my hair is full of electricity.

Moon: Why not? It's connected to a dry cell.

Ruth: My dear, Jim was perfectly priceless last night

Grace: In what way?

Ruth: Oh, broke again!

Fud: Say Sandy, how did you get that red on your lip?

Sandy: That's my tag for parking too long on one place.

Wid: I fell for you when I first saw you.

Lupe: Yes, and you're still lying.

Bill Slattery: Do you do repairing here?

Garage owner: Yeah, but we don't do manufacturing.

High School principal: What does this B. S. degree from C. S. T. C. stand for?

Durso: Er—Bridge shark.

Moon: What are you doing in front of the mirror all this time?

Heverly: I'm counting my mustache.

Boone: As I was walking through the woods, suddenly an enormous black bear stood in my path. And in no more time than it takes to raise my trusty shotgun to my shoulder, he lay dead at my feet.

Gallagher: What did he die of?

Mr. Mohney: No sir, no checks. I couldn't cash a check for my own brother.

Travis: Well, of course, you know your own family better than I do.

Mr. Huston: Wasn't Andrew Jackson an orphan?

George Zagst: Not at first.

Russell: Well, doctor, how am I?

Doctor: Very well; your legs are still a bit swollen, but that doesn't disturb me.

Russell: Sure, doctor, if your legs were swollen, it wouldn't disturb me either.

MacGraw: I don't intend to be married until I am thirty.

MacBlane: I don't intend to be thirty until I am married.

With some of them looking like this () and some of them looking like this) (women had better keep the long skirts.

Getting the baby to sleep is hardest when she is about eighteen years old.

Slattery: She is a dangerous woman with a past.

Sweetzer: Well, let her bury it, poor creature.

Slattery: She can't. It's not dead yet.

Wid: This lever here controls the brake. It is put on very quickly in an emergency.

Lupe (learning to drive): I see, something like a negligee.

Jim, Jr.: Is it true about the ass disguising himself with a lion's skin?

J. R. H.: So the fable goes, but now the colleges do it with a sheepskin.

On being asked to define a self-made man, one of the co-eds made the following statement:

"A self-made man is like a self-made cigarette—a lot of Bull wrapped in a transparent cover."

Stan (writing a report): I don't know what to say about those two peroxide blondes who made such a fuss at the football game.

Johnnie: Oh, why not, say 'the bleachers went wild'.

Miss Nair: Can you give me a more elegant rendering of the sentence, 'the sap rises'?

Coulter: The boob gets out of bed.

THE SEQUELLE

The first mention of baseball is in the Bible.

Eve stole first, Adam stole second, Gideon rattled the pitchers, Goliath was put out by David, and the prodigal son made a home run.

Mail Order Query (from C. S. T. C.): I have a thick neck, prominent eyebrows, and a pug nose. What collar should I wear?

Reply: We recommend a leather one with brass studs and a buckle.

Fud: What did you use to open that can of peaches?

Ruth: A can opener, of course, why?

Fud: From the fragments of language I heard, I thought you were opening it with prayer.

When some big Prune,
The son of a Nut,
Marries a Lemon
And the Pear
Have a Peach of a daughter,
With Cherry lips
And the Rose in her cheeks,
How in the Devil
Can you believe in Heredity?

After listening to the co-ed tear off some of the very latest jazz on the piano, the clergyman interrupted, "Have you ever heard the Ten Commandments?"

To which co-ed Rea replied, "Whistle a few bars and I think I can follow you."

A flapper is a woman who does what an old maid would like to do and hasn't the constitution to stand it.

Peb: Where will we go tonight?

Bill: Let's go up on the belfry.

Peb: Nothing doing. I was there once with a fellow and the bell tolled on me.

Pifer: Do clever women make the best wives?

Gifford: Clever women don't marry.

Russ: My girl has been kissed by only two parties

Ben: Yes, Republicans and Democrats.

Pete: Honey, I'm knee deep in love with you.

Ruth: All right, I'll put you on my wading list.

Set the alarm for two, please.

You and who else?

Brownie: You remember you told me that if I put a piece of wedding cake under my pillow I would dream about my future husband?

Genny: Well, did you?

Brownie: That's what worries me: I dreamt about the Seventh Regiment.

Mary Evelyn: I asked him if he loved me, and he said 'Mon Dieu'.

Campbell: Oh, how wonderful. That's French for 'My dear'.

Is it true that statistics show that women live longer than men?

They ought to. Paint's a great preservative you know.

Dr. Riemer: What is democracy?

Anne Smalstig: Government of the people, by the people and for the people.

Dr. Riemer: Who said that?

Anne: I did.

Shankle (boarding bus): Well, Noah, is the ark full?

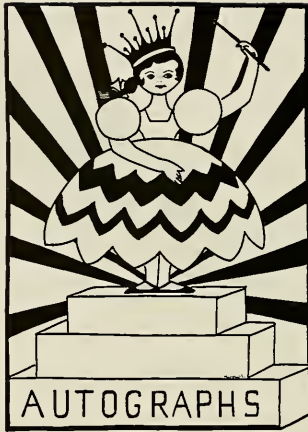
Driver: Nope. Only one jackass so far. Come on in.

Mr. Huston: What do you mean by saying that Benedict Arnold was a janitor?

Snyder: The book says that after exile he spent the rest of his life in a basement.

Hans: Aren't the stars numerous tonight?

Edna: Yes, and aren't there lots of them, too?





ADVERTISING

Your Alma Mater

The
State Teachers
College

AT CLARION, PENNSYLVANIA

Prides Itself In Distributing As Teachers Over
The Commonwealth Men and Women of Sterling
Worth. Such Is Its History. It Is Confident
That You Will Not Break The Tradition.

ROLL OF HONOR BANK

First National Bank

OF CLARION

Founded in 1865

OLDEST BANK IN CLARION COUNTY



An Old Bank with Modern Methods

Your Account is Appreciated



MEMBER FEDERAL RESERVE BANK



WE EXTEND AN INVITATION TO ALL
TO CALL AND SEE OUR NEW BANK BUILDING



Four Per Cent On Savings



OFFICERS

H. M. Kaufman, President
Lewis Collner, Vice President
H. F. Strattan, Asst. Cashier

DIRECTORS

M. M. Kaufman
H. E. Rugh
Lewis Collner
C. F. Strattan
Edw. A. Wilhelm
John M. Myers

Capital \$135,000.00

CITIZEN'S TRUST COMPANY

CLARION, PA.



H. M. HUFNAGEL, President
C. W. AMSLER, Vice President
C. C. MOORE, Assistant Treasurer
B. L. BOWMAN, Assistant Treasurer

Largest Banking Institution in Clarion
RESOURCES OVER \$2,800,000.00

ACTS AS

Executor
Administrator
Guardian
Trustee

Young enough to be progressive
Old enough to be conservative



CITIZEN'S TRUST COMPANY

CLARION, PA.

**PENNANTS
BANNERS
PILLOWS**

Add dignity, color and spirit to your school work by the use of Felt Pennants, Banners, Pillows, Emblems, Caps, Tams and Chenille Letters. No order too small to receive our attention.

Catalog Free
Standard Pennant Co.
BIG RUN, PENNA.

The Cover on this Book is the
Product of

**The David J. Molloy
Company**

2857 N. Western Avenue
CHICAGO, ILLINOIS

ATTENTION

The College band uniforms will consist of a cap and coat first, with the probable addition of trousers at a later date.

Bib—What's your roommate like?

Jane—Darned near everything I've got.

Simpson—Is this the mirror department?

Clerk—Yes, sir.

Simpson—Well, I'd like to see something odd in a mirror.

Clerk—Just take a look in this one.

Miss Nair—Mr. Rosenzweig, what are the two genders?

Rosy—Masculine and feminine. The masculines are divided into temperate and intemperate and the feminines into frigid and torrid.

Russ—Where'd you get that terrible black eye?

Clet—That's a birth mark.

Russ—That? A birth mark?

Clet—That's right. I tried to get into the wrong berth.

For Real Satisfaction

USE

**Earl's Golden Guernsey
Pasteurized Milk and Cream**

DELIVERIES DAILY—KNOX AND CLARION

Earls Sanitary Milk Company

Phone 60

KNOX, PA.

**LATONIA
THEATRE**

OIL CITY

Presenting the Finest in Screen
and Stage Attractions.

*Your Patronage will Be Greatly
Appreciated*

Special Rates to Theatre Parties

Compliments

of

EDDIE'S CAFE

A city and a chorus girl
Are much alike, 'tis true;
A city's built with outskirts,
A chorus girl is too!

Schuchers—What's the matter with you,
you look so warm?

Brown—I am. I just bought me one of
those two-pants suits.

Marie—Is there anything you can do
better than anyone else?

Jean—Yes, read my own writing.

Miss Boyd—In your story I notice you
make the owl hoot 'to whom' instead of
'to whoo'.

Cassel—Yes, this is a Boston owl.

Sweitzer—How are you, Sandrock?

Sandy—Nice.

Huston—Name a great time saver.

Heverly—Love at first sight.

Serbin—Men are all alike.

Rea—Then why do you want three or
four of them?



Compliments

of

Fred Jenkins



From

a

Friend

FLOWERS

PLANTS

**Phillips'
Greenhouse**

FLOWERS FOR ALL
OCCASIONS

Member Florist Telegraph
Delivery

Phone 209

After the Show
it's the

SWEETLAND

For Refreshments of
Distinction

Wilson—What were your grades last semester?

Sinclair—Jules Verne.

Wilson—How's that?

Sinclair—Twenty Thousand Leagues Under the C.

Ruth M.—Jimmie was priceless last night.

Grace—What! Broke again!

Kata—That boy has good stuff in him.

Clet—Ask him where he got it.

Rosy—You're so dumb I wouldn't even call you a ham.

Ty—Why not?

Rosy—A ham can be cured.

Ellwood—He says I'm the nicest girl in town. Shall I give him a date?

Campbell—No, let him keep on thinking it.

Fran—Why are you singing "Awake My Soul" now?

Nell—My foot's asleep.

**The New Physical
Education Building**



Is An

Example of the

Work of



**JOHN E. TRUNK
Construction Co.**

Call at

JOE'S

for

**Homemade
Doughnuts
and Rolls**

FRUIT

CONFECTIONERY

ICE CREAM

Chocolate Milk, Hot or Cold

Corner Wood and 8th Avenue

CLARION, PA.

J. M. CROOKS

Clothing

If you appreciate a good spread
for your bread use

ELMO CREAMERY BUTTER
the kind they use at Clarion
State Teachers College.

Made by

Elmo Creamery Co.

Earl L. Black, Secretary
KNOX, PA.

Ty—Where do you have the most dif-
ficulty in making a speech?

Moon—In my knees.

Logan—There was just one thing that
kept you from being a bare-faced liar.

Grady—What was that?

Logan—Your moustache.

Anyone (in meeting Fales)—Pleased to
meetcha.

Fales—Most people are.

Jean R.—I say, Betty, what is the Order
of the Bath?

Betty R.—Well as I have experienced it,
it's first the water's too hot; then it's too
cold, then you're short of a towel; then
you step on the soap, and finally the call
bell rings your number.

Jock—What did the prof say when you
told him you sat up all night with the
baby?

Bob—He asked me what her name was.

Compliments of

**Ganoe's Barber
Shop**

JOHN HENROTIN
**Expert Shoe
Repairing**

Service With a Smile

630 Main Street
CLARION, PA.

SAM AMATO
**Fresh Fruits
and
Vegetables**

**MAKE THIS STORE
YOUR STORE**
Watch Your Savings Grow

J.C.PENNEY CO.

609 Main Street
CLARION, PA.

CLARION'S LEADING
DEPARTMENT STORE

Wein Bros.
WHERE QUALITY PREDOMINATES

Campbell's Drug Store

THE REXALL STORE

Established 1852

CLARION, PENNA.

Truby—Do your shoes hurt?
Campbell—No, but my feet do.

Fred—Do you take English, too.
Pete—No, I'm still taking English 1.

Kline—I've changed my mind
Ed—Does it work any better?

Smitty—You are the only girl I have
ever loved.

Dot—Then begone! I'm not training
amateurs.

Novelettes are short novels, but—
Pantalettes are long pants.

Fud—There is a reason for everything.
Ruth—You forgot the men

FOUND IN THE VESPER PROGRAM:

Yes, that is true, and something more,
You'll find where'er you roam,
That marble floors and gilded walls
Can never make a house.

Metal Arts Co., Inc.

Craftsmen in
Emblematic Jewelry
and

Commencement
Stationery

Rochester, New York
Charles E. McDonald
3126 Landis Avenue

Sheraden, Pittsburgh, Pa.

Everything in

FINE GROCERIES,
CANDY AND TOBACCO

WM. W. PHERO

36 8th Avenue

CLARION, PA.

For Service Phone 19-J

COMPLIMENTS

NAIL'S

BASEMENT RESTAURANT

Meet, Eat, Treat
 at
The Chocolate Shoppe
 Toilet Preparations
 Candy Proprietaries
 Lunches, ARDEN Preparations
 Dick Boggs, Prop.

The Sequel
 to
 Every Party
 Meet and Eat
 at
Ronald Corbett Drug Store
 (Roosevelt Pharmacy)

Miss Sims: Pat, in what respect had the Romans a great advantage over us?

Pat Pressler: They didn't have to learn Latin.

Mr. Huston: Can any of you students translate this from Cicero?

Wid: But, Mr. Huston, we were speaking of Latin.

Zero (in Locker room): Which one of you guys changed the combination of my lock?

Lore: Pop, do you think I shall ever be able to do anything with my voice?

Pop: Well, it might come in handy in case of a shipwreck.

Sweitzer: I called on Mabel last night, and I wasn't any more than inside the door before her mother asked me my intentions.

Sinclair: That must have been embarrassing.

Sweitzer: Yes, but that's not the worst of it. Mabel called from upstairs, "That isn't the one, mother".

College Book Store

FITZGERALD'S

A. G. CORBETT DRUG CO.
 CLARION, PA.

**Ditz and Mooney
 Hardware Co.**

EVERYTHING IN
 HARDWARE

THE
Orpheum Theatre
 For
 High Class Shows

**ORCHID
 Beauty Shoppe**

617 Main Street
 CLARION, PA.

V. P. MUSI
 CLEANERS AND TAILORS

Compliments
 of
Edward A. Wilhelm
 CLARION, PA.

AN APPRECIATION

We have enjoyed keenly our work in producing this edition of the SEQUELLE.

The laudable ambition of Stanley Lore and the staff, to make the best SEQUELLE yet, was kept well in mind when we printed and bound the book. We wanted to do our part as best we could and hope we have pleased you.

For twenty years we have made modest claim to a position as leaders in production of School Annuals. That we have held this leadership in Pennsylvania, Ohio and West Virginia is attested by our success this year in turning out books for leading schools in this section.

The Ziegler Printing Co., Inc.

BUTLER, PENNSYLVANIA.

APPRECIATION

The Sequelle Staff of 1932 expresses sincere thanks and appreciation for your hearty cooperation and support of our efforts in this publication.

We hope that this 1932 Sequelle will ever serve to renew pleasant associations formed at Clarion State Teachers College.

Clarion Lumber Co.

For

Lumber
and

Builders' Supplies

PROMPT SERVICE

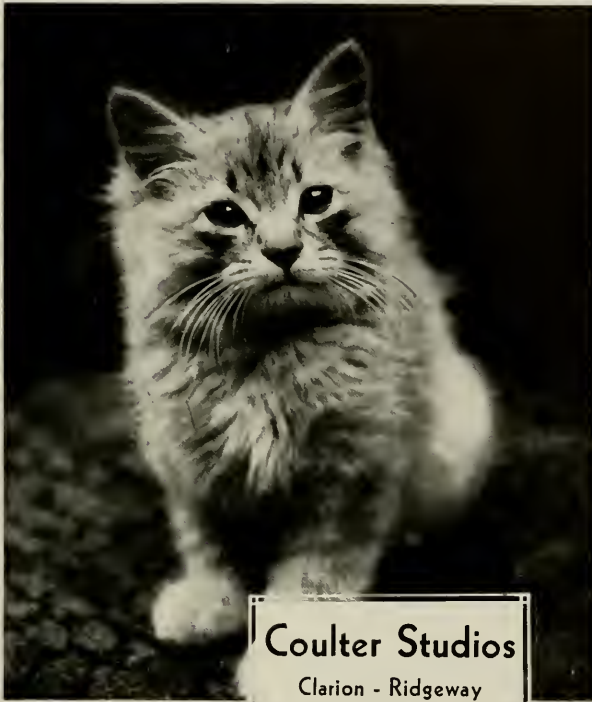
Phone 98

**THE
KOPPERT
COMPANY**

**ENGRAVING
AND
ELECTROTYPE
COMPANY**

Specialists in the de-
signing and exe-
cution of High
School and
College Pub-
lications

CANTON, OHIO



Coulter Studios

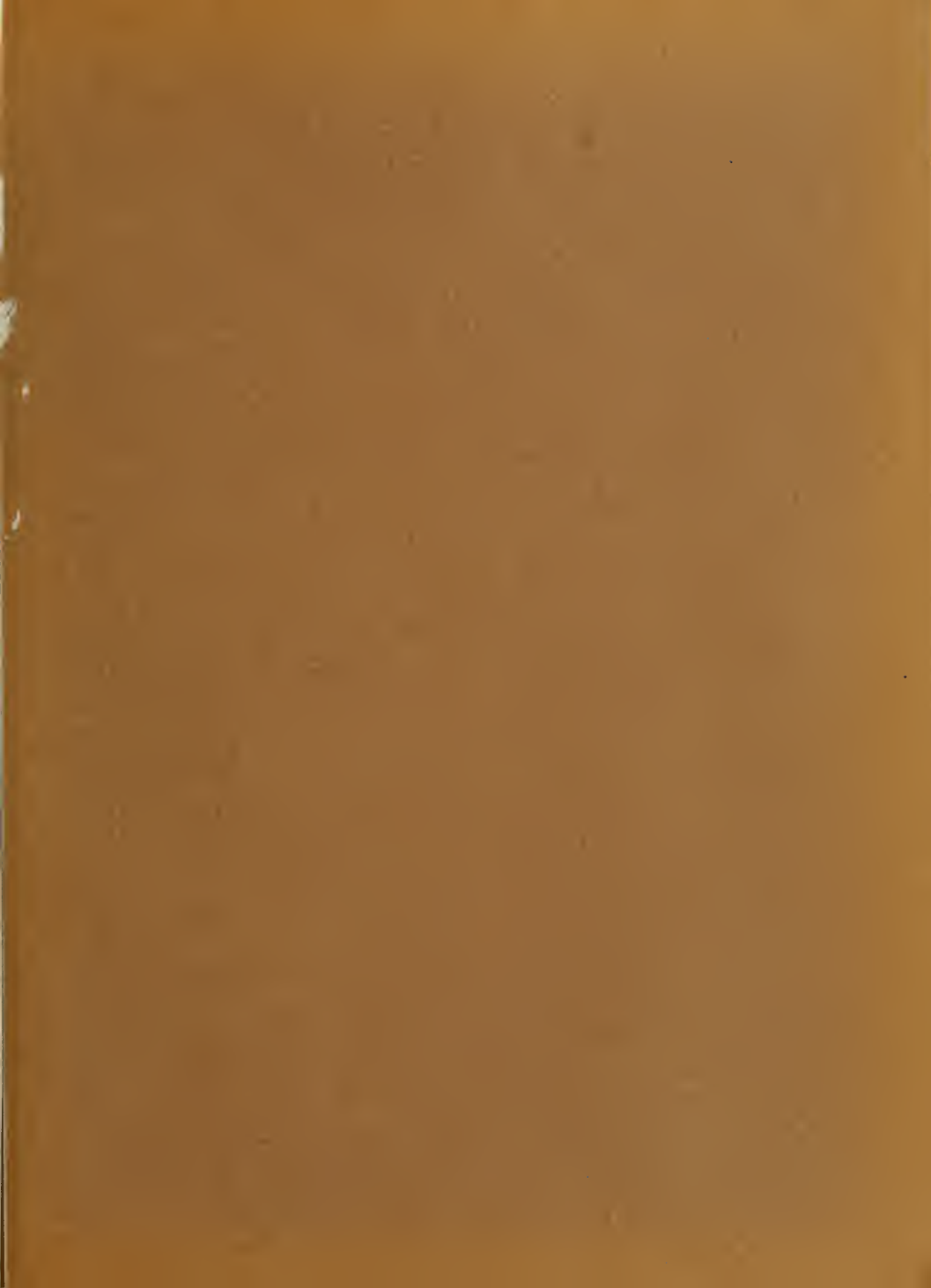
Clarion - Ridgeway
Penna.

No other group of friends will ever mean quite so much to you as the old classmates. Exchange photographs with them today.

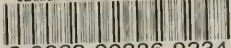
Your photographs will be priceless treasures among your souvenirs.

Do not forget that our kodak finishing department offers highest quality developing and printing at a very liberal discount to C. S. T. C. students.





CLARION UNIVERSITY OF PENNSYLVANIA



3 9363 00386 9234

Spec. Col.
qLD
1017 Sequelle
.C88
1932

Spec. Col.
qLD
1017
.C88
1932

