

Archives

qLD

1017

.C88

1932

THE  
SEQUELLE  
1932

LIBRARY  
CLARION STATE COLLEGE



Carlson Library

LIBRARY  
STATE TEACHERS COLLEGE  
CLARION, PA



LIBRARY  
STATE TEACHERS COLLEGE  
CLARION, PA.

EX  
LIBRIS



T. White

COPYRIGHT, 1932

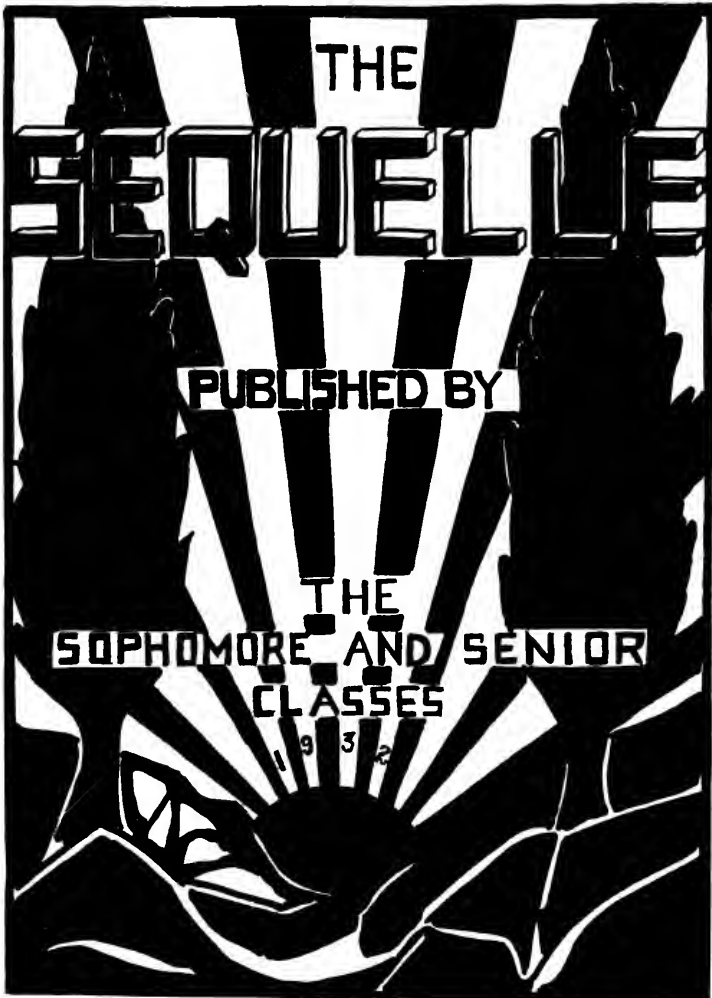
STANLEY LORE, *Editor*

*Engravings by*

THE NORTHERN ENGRAVING & ELECTROTYPE CO.,  
Canton, Ohio

*Printing and Binding by*

THE ZIEGLER PRINTING CO., INC.,  
Butler, Penna.



G. Marshall

Digitized by the Internet Archive  
in 2010 with funding from  
Lyrasis Members and Sloan Foundation

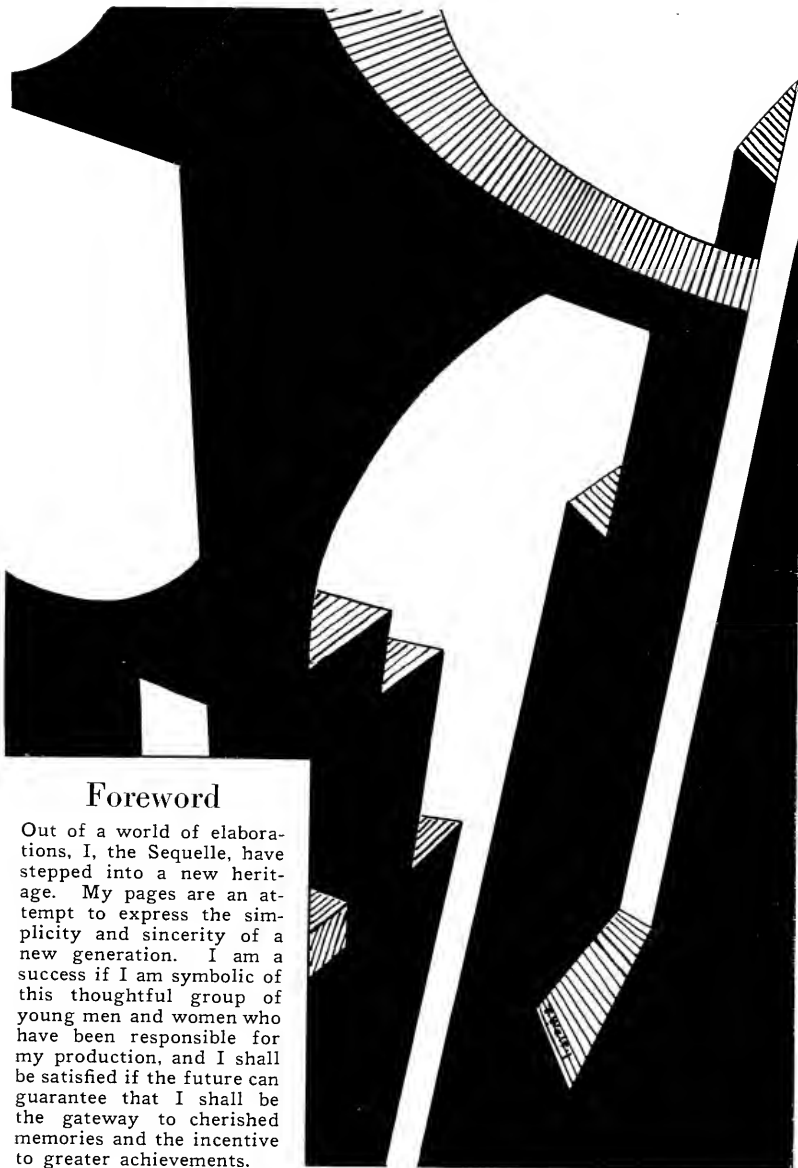
<http://www.archive.org/details/sequelle1932clar>





## Dedication

To our loyal parents, ever willing and eager to sacrifice, ever eager to encourage and aid, we dedicate this *Sequelle* as a symbol of our own efforts to achieve the goal which has been set for us.



## Foreword

Out of a world of elaborations, I, the Sequelle, have stepped into a new heritage. My pages are an attempt to express the simplicity and sincerity of a new generation. I am a success if I am symbolic of this thoughtful group of young men and women who have been responsible for my production, and I shall be satisfied if the future can guarantee that I shall be the gateway to cherished memories and the incentive to greater achievements.

# Index

## COLLEGE

Views.

Faculty and Trustees.

## CLASSES

Senior and Sophomore Graduates.

Class Organizations.

## ATHLETICS

Men's Athletics.

Women's Athletics.

## ORGANIZATIONS

Government and Religious Organizations.

Musical Organizations.

Clubs.

Fraternities and Sororities.

Publications.

## FEATURES

Calendar.

Humor.

CAMPUS



BRIGHT HALL, A "TODAY"

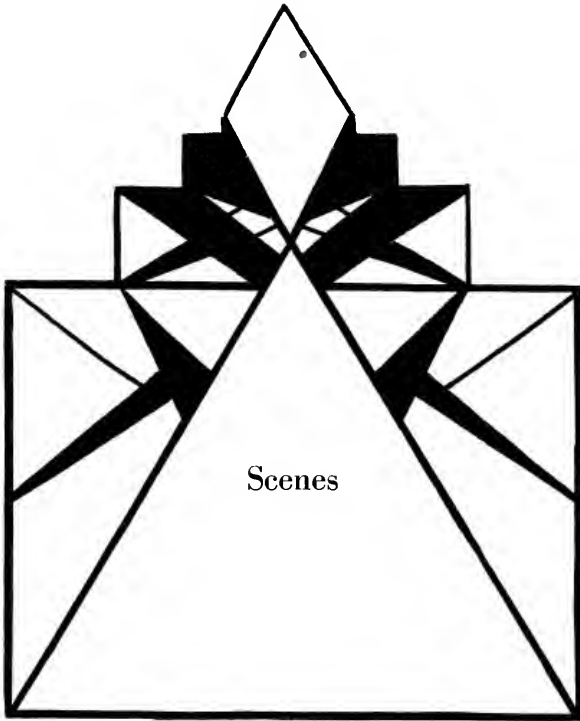


SCENES



**COLLEGE**





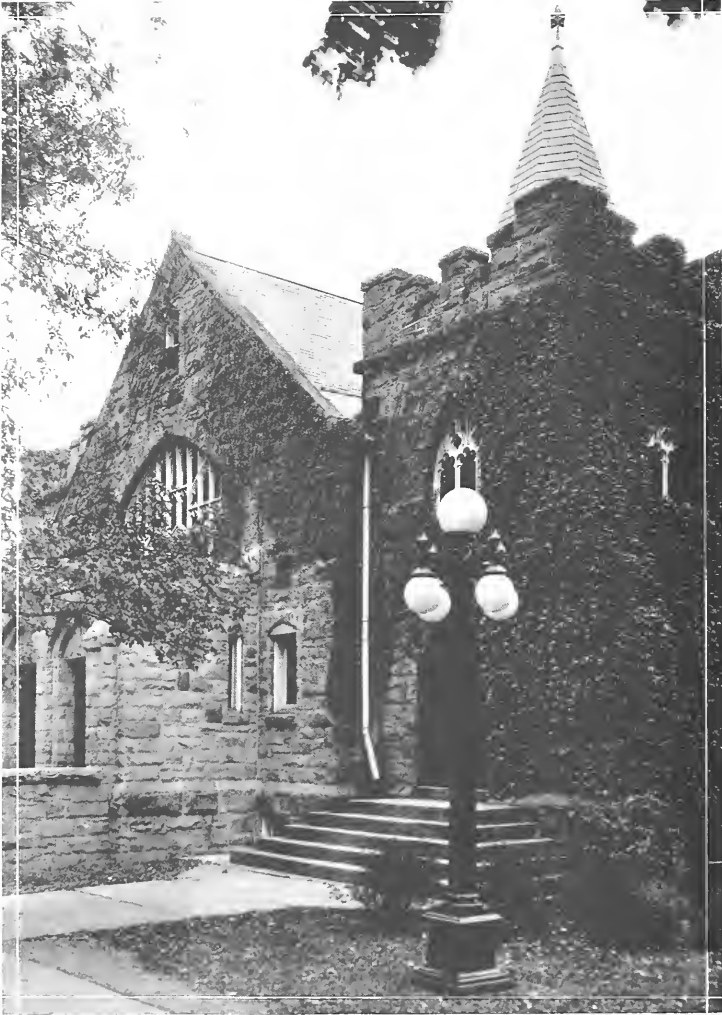


Seminary Hall





Founder's Hall



Chapel



## The New Gymnasium

The new physical education building dedicated at commencement is the newest addition of the college building program. It is serving magnificently its purpose of affording only the best facilities possible for instruction in physical education.

Ideally modern, structurally superior, and conveniently located, the new structure follows the Thaddeus Stevens Training School in what we hope will be another step in a great building program for C. S. T. C.



Becht Hall



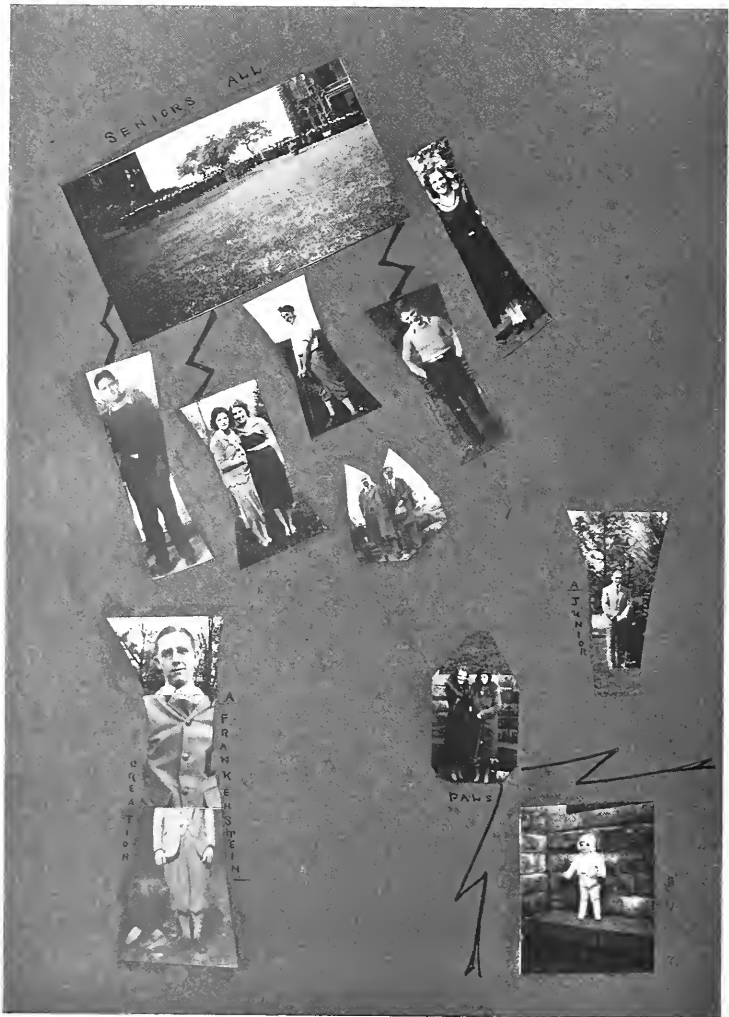
Music Hall



Training School



Campus



SENIORS ALL



A JUNIOR



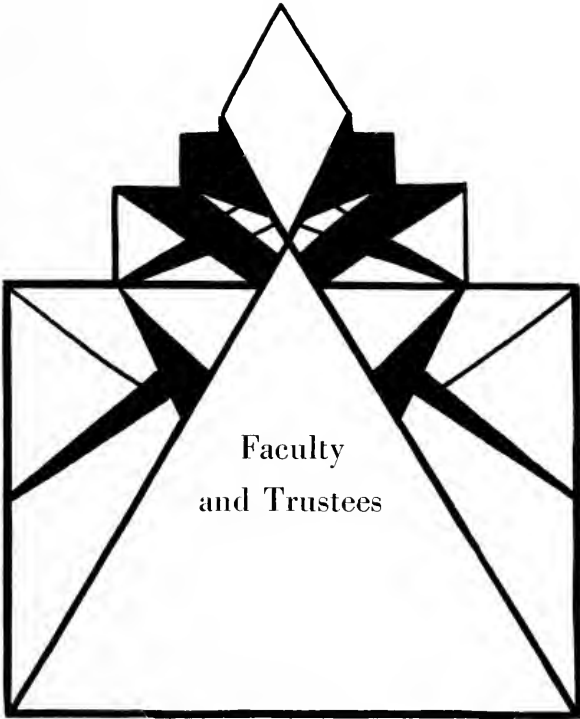
OCEAN TOWN

A FRANKERSTEIN



PAWS





Faculty  
and Trustees



Dr. G. C. L. Riemer, Our President



# THE SEQUELLE



## Faculty

HELEN M. BARTON, A. M.  
*Physical Education*

CHARLES F. BECKER, A. M.  
*Director of Teacher Training*

BURNICE SMITH BLAND  
*Piano, Violin, Brass*

HARRY LEE BLAND, B. E. M.  
*Public School Music, Voice*

MARGARET A. BOYD, A. M.  
*English*

LORETTA G. BROGAN, B. S.  
*Intermediate Grades*

RENA M. CARLSON, A. B.  
*Librarian*

MILDRED E. GAMBLE, A. M.  
*Intermediate Grades*

ANNA B. GRAHAM  
*J. H. S. Grades*

EFFIE BLANCHE HEPLER, A. B.  
*Primary Grades*

# THE SEQUELLE

GILBERT A. HOYT, M. S.  
*Science*

JAMES R. HUSTON, A. B.  
*Social Studies*

PEARL JACK, A. M.  
*Intermediate Grades*

JOHN O. JONES, B. S.  
*Health, Physical Education*  
*Dean of Men*

ELIZABETH F. KEITHAN, B. S.  
*Geography*

M. E. MACDONALD, A. M.  
*Director of J. H. S.*

HARRY S. MANSON, A. M.  
*Science*

MARIE MARWICK, A. M.  
*Oral Expression, Handwriting*

PEARL NEWTON MILLER, B. S.  
*Primary Grades*

HELEN MOHNEY, B. S.  
*Intermediate Grades*

BERTHA V. NAIR, A. M.  
*English*

MARTHA GEMBERLING RENN, B. S.  
*Primary Grades*

# THE SEQUELE

G. C. L. RIEMER, PH. D., LL. D.  
*President*

BESSIE M. RUNYAN, B. S.  
*J. H. S. Grades*

HAZEL SANDFORD, A. M.  
*Art*

SARA SEYLER  
*Dietitian*

HELEN D. SIMS, A. M.  
*Dean of Women*  
*Latin*

MARTHA V. TROUGHTON, A. M.  
*J. H. S. Grades*

HELEN WALTERS  
*Primary Grades*

JOHN W. F. WILKINSON, A. M.  
*Dean of Instruction*  
*Mathematics*

MARY B. WILLIAMSON, A. M.  
*Primary Education*

## RETIRED MEMBERS OF FACULTY

JOHN BALLENTINE, PH. D.  
*Latin*

JAMES PINKS  
*Bursar*

WILLIS Y. WELCH, A. M., SC. M.  
*Science*

# THE SEQUELLE

## Board of Trustees

HON. JUDGE F. L. HARVEY, <i>President</i>	- - - - -	Clarion
H. M. RIMER, <i>Secretary</i>	- - - - -	Clarion
P. C. ANDREWS	- - - - -	New Bethlehem
MRS. W. B. RANKIN	- - - - -	Clarion
MRS. LILLIAN N. TRESIZE	- - - - -	DuBois
MR. J. E. HENRETTA	- - - - -	Kane
DR. EDWARD A. WILHELM	- - - - -	Clarion

CLASSES

T. Walty



MCMXXXII

## THE SEQUELLE

### OREST F. DURSO

Uniontown, Pa.  
UNIONTOWN HIGH SCHOOL

*B. S. in Secondary Education*

Transferred from Indiana State Teachers  
College; Track, Travelers Club, English  
Club, Assistant Football Manager.

### JOHN A. FETZER

Α Φ Α  
Clarion, Pa.  
SLIGO HIGH SCHOOL

*B. S. in Secondary Education*

Y. M. C. A., Men's Glee Club, College Play-  
ers, Outdoor Club, Press Club, Debating,  
Varsity "C" Club, Track Manager, Owl  
Club.

### CHARLES C. FOX

Α Φ Α  
Clarion, Pa.  
CLARION HIGH SCHOOL

*B. S. in Secondary Education*

College Players, Sophomore Class Play,  
Orchestra President, Men's Glee Club, Y. M.  
C. A., Outdoor Club.

### COLIN HILEMAN

Α Φ Α  
West Monterey, Pa.  
EAST BRADY HIGH SCHOOL

*B. S. in Secondary Education*

Men's Glee Club, Travel Club, Current  
Events Club, Library Council, Class Presi-  
dent '31, Y. M. C. A., Men's Student Council.



# THE SEQUELLE



**JOSEPH J. KATA**

Α Γ Φ Φ Σ Π Π Γ Μ

Ambridge, Pa.

AMBRIDGE HIGH SCHOOL

*B. S. in Secondary Education*

Men's Glee Club, Y. M. C. A., Sophomore Class Play '30, Sequelle Staff, Student Government President, Football Captain, Basketball, Varsity "C" Club, Clarion Call Staff, Journalism Club, Baseball.

**CLETUS J. KREMMELE**

Α Φ Α

Ambridge, Pa.

AMBRIDGE HIGH SCHOOL

*B. S. in Secondary Education*

Football, Basketball, Varsity "C" Club President, Track, Sequelle Staff, Sophomore Class Play, Journalism Club, Owl Club, Baseball.

**STANLEY W. LORE**

Α Φ Α Φ Σ Π Π Γ Μ

DeYoung, Pa.

YOUNGVILLE HIGH SCHOOL

*B. S. in Secondary Education*

Men's Glee Club, Y. M. C. A., Art Club, College Players, Press Club, Vested Choir, Dance Orchestra, Sequelle Staff, Men's Student Council, Library Council, Chapel Committee, Vesper Committee, Class Vice President '32.

**JOHN W. MOCHNICK**

Α Γ Φ Φ Σ Π Π Γ Μ

Claridge, Pa.

JEANNETTE HIGH SCHOOL

*B. S. in Secondary Education*

Sequelle Staff, Class Vice President '28, Class Secretary '29, Class President '31, Chapel Committee, Vesper Committee, Y. M. C. A., Current Events Club, Travel Club President '30, Baseball, Men's Glee Club President '29, Class Play '30, Press Club President '31, Library Council President '30.



# THE SEQUELLE

## ALFRED MURPHY

Α Φ Α                      Φ Ξ Π Π Γ Μ

West Monterey, Pa.

EAST BRADY HIGH SCHOOL

*B. S. in Secondary Education*

Vesper Committee, Outdoor Club, Current Events Club, Y. M. C. A.

## FRANCES L. NEIL

Α Χ Δ

Punxsutawney, Pa.

PUNXSUTAWNEY HIGH SCHOOL

*B. S. in Secondary Education*

Senior Class Secretary, Press Club, Travel Club, Current Events Club, Debating Club, Outdoor Club, Hostess Club, Sophomore Class Play, Y. W. C. A., Journalism Club, Clarion Call.

## HARRY ELLWOOD ROWLEY

Α Φ Α

Ambridge, Pa.

AMBRIDGE HIGH SCHOOL

*B. S. in Secondary Education*

Football Captain '31, Basketball, Track, Men's Student Council, Varsity "C" Club, Press Club, Class Treasurer '32.

## EDWARD SHANKLE

Σ Φ Δ

DuBois, Pa.

DUBOIS HIGH SCHOOL

*B. S. in Secondary Education*

Men's Glee Club, Vested Choir, Y. M. C. A., College Players, Owl Club.



# THE SEQUELE



## JAMES H. SINCLAIR

Α Γ Φ

Falls Creek, Pa.

FALLS CREEK HIGH SCHOOL

*B. S. in Secondary Education*

Transferred from Shippensburg State Teachers College; Men's Glee Club, Football, Basketball.

## RUSSELL E. SWEITZER

Α Γ Φ Φ Σ Π

Grove City, Pa.

GROVE CITY HIGH SCHOOL

*B. S. in Secondary Education*

College Players, Varsity "C" Club, Men's Glee Club, Orchestra, Track Manager, Basketball Manager, Men's Student Council, Owl Club.

## WESLEY R. TRAVIS

Α Φ Α Π Γ Μ

New Bethlehem, Pa.

NEW BETHLEHEM HIGH SCHOOL

*B. S. in Secondary Education*

Football, Varsity "C" Club, Baseball, Owl Club President '29.

## KENNETH WILLIAMS

Α Γ Φ

Duquesne, Pa.

DUQUESNE HIGH SCHOOL

*B. S. in Secondary Education*

Football, Basketball Captain, Dramatic Club, Varsity "C" Club, Y. M. C. A.

# THE SEQUELLE

## THOMAS WILSON

Α Γ Φ Π Γ Μ Φ Σ Π

Sigel, Pa.

BROOKVILLE HIGH SCHOOL

*B. S. in Secondary Education*

Travel Club President, Outdoor Club, Varsity "C" Club President, Football Manager, Y. M. C. A., Sophomore Class Play, Class Vice President.

## LLEWELLYN L. ALCORN

Σ Φ Δ

Brookville, Pa.

BROOKVILLE HIGH SCHOOL

*Intermediate*

Transferred from Pennsylvania State College; Y. M. C. A.

## MARGUERITE BAKER

Θ Α Α

Fryburg, Pa.

SHIPPENVILLE HIGH SCHOOL

*Primary*

Women's Student Council, Y. W. C. A., Hostess Club, Vested Choir.

## MARTHA BARNES

Σ Δ Φ

Cherry Tree, Pa.

CHERRY TREE HIGH SCHOOL

*Primary*

Story Telling Club, Hostess Club, Y. W. C. A.



MCMXXXII

# THE SEQUELLE



## MARGARET BARNETT

Z K N

Greenville, Pa.

PENN HIGH SCHOOL

*Intermediate*

Hostess Club, Debating Club, Y. W. C. A.

## WILMA E. BEST

Θ Δ Δ

Knox, Pa.

EDENBURG HIGH SCHOOL

*Primary*

Journalism Club, Soccer, Hockey, Y. W. C. A., Hostess Club.

## MARIAN BEST

Σ Δ Φ

East Brady, Pa.

EAST BRADY HIGH SCHOOL

*Primary*

Women's Student Council, Vested Choir, Y. W. C. A., Hostess Club, Library Club.

## MARY BORRONE

Σ Δ Φ

Crenshaw, Pa.

SNYDER TOWNSHIP HIGH SCHOOL

*Intermediate*

Vested Choir, Y. W. C. A., Hostess Club.

# THE SEQUELLE

## CARRIE BOYLE

Σ Δ Φ  
Sykesville, Pa.  
SYKESVILLE HIGH SCHOOL

*Primary*

Y. W. C. A., Library Club, Story Telling  
Club President, Basketball Captain.

## MARY BRITTON

Σ Δ Φ  
Brockway, Pa.  
SNYDER TOWNSHIP HIGH SCHOOL

*Intermediate*

Student Council, College Players Club, Press  
Club, Clarion Call Staff, Hostess Club, Y.  
W. C. A.

## THELMA BROWN

Θ Α Α  
Knox, Pa.  
EDENBURG HIGH SCHOOL

*Primary*

Transferred from Fairmount State Teachers  
College.  
Hostess Club, Y. W. C. A.

## FLORENCE CAMPBELL

Z K N  
Rochester, Pa.  
ROCHESTER HIGH SCHOOL

*Intermediate*

Press Club, Art Club, Hostess Club, Basket-  
ball, Soccer, Hockey.



# THE SEQUELLE



**EUNICE YOUNT CARRIER (MRS.)**

Richardsville, Pa.  
BROOKVILLE HIGH SCHOOL  
*Intermediate*

Transferred from Indiana State Normal School.

**R. LEONE CARSON**

Σ Δ Φ  
Clarion, Pa.  
CLARION HIGH SCHOOL  
*Intermediate*

Girls' Glee Club, Hostess Club.

**IDA M. CRAWFORD**

Δ Π Ε  
Clarion, Pa.  
CLARION HIGH SCHOOL  
*Primary*

Girls' Glee Club, Travel Club, Y. W. C. A.

**DOROTHY CROOKS**

Σ Δ Φ  
Sykesville, Pa.  
SYKESVILLE HIGH SCHOOL  
*Intermediate*

Transferred from Indiana State Teachers College.  
Hostess Club, Y. W. C. A.

# THE SEQUELLE

**EDNA M. DAVIES**

Α Χ Δ  
Clarion, Pa.  
CLARION HIGH SCHOOL

*Intermediate*

College Players, Girls' Glee Club, Poetry Reading Contest.

**GLADYS M. DICKEY**

Baxter, Pa.  
SUMMERTON HIGH SCHOOL

*Intermediate*

Library Club, Travel Club.

**LOUISE A. DWYER**

Δ Π Ε  
DuBois, Pa.  
DuBois HIGH SCHOOL

*Intermediate*

Y. W. C. A., Press Club, Art Club, Hostess Club.

**MARIE EHLERS**

Α Χ Δ  
Sheffield, Pa.  
KELLETTVILLE HIGH SCHOOL

*Intermediate*

Vested Choir, Hostess Club, Y. W. C. A.



# THE SEQUELLE



## GERALDINE ELLIOT

Sligo, Pa.  
SLIGO HIGH SCHOOL

*Primary*

Library Club, Orchestra, Girls' Glee Club,  
Y. W. C. A.

## JANE HOHMAN

Warren, Pa.  
WARREN HIGH SCHOOL

*Intermediate*

Hostess Club, Y. W. C. A. Cabinet '32, Art  
Club.

## IRENE ELWOOD

Vandergrift, Pa.  
VANDERGRIFT HIGH SCHOOL

*Intermediate*

Hostess Club, Y. W. C. A., Art Club, Library  
Club.

## MADELINE FERRAROTTI

Leechburg, Pa.  
LEECHBURG HIGH SCHOOL

*Intermediate*

Transferred from Indiana State Teachers  
College.  
Varsity Hockey '31, Soccer Varsity '31,  
Hostess Club, Y. W. C. A.



# THE SEQUELLE

**ANNA E. FLICK**

Huey, Pa.  
Sligo High School  
*Intermediate*  
Art Club, Y. W. C. A. Travel Club.

**ANNIE E. FOSTER**

Kittanning, Pa.  
KITTANNING HIGH SCHOOL  
*Intermediate*  
Y. W. C. A., Hostess Club, Outdoor Club

**ETHEL FREEDLINE**

Reynoldsville, Pa.  
FALLS CREEK HIGH SCHOOL  
*Primary*  
Women's Intra-Mural Sports, Outdoor Club

**HELEN RUTH FULTON**

O. A. A.  
Pittsburgh, Pa.  
DAVID B. OLIVER HIGH SCHOOL  
*Primary*  
Hostess Club, Y. W. C. A.



## THE SEQUELLE



### MARIE E. GAGHAN

Warren, Pa.

WARREN HIGH SCHOOL

*Primary*

Vested Choir, Hostess Club, Hockey Varsity '32, Soccer Class Team '32.

### FLOYD M. GREENAWALT

Sligo, Pa.

SLIGO HIGH SCHOOL

*Intermediate*

Men's Glee Club, Outdoor Club Vice President '31, '32, Y. M. C. A.

### HELEN HAHN

Knox, Pa.

EDENBURG HIGH SCHOOL

*Intermediate*

Women's Student Council '32, Art Club Secretary and Treasurer '31, Travel Club, Hostess Club, Library Club, Y. W. C. A.

### FLORENCE HARLEY

Σ Δ Φ

West Monterey, Pa.

EAST BRADY HIGH SCHOOL

*Primary*

College Players, Hostess Club, Vested Choir, Y. W. C. A., Cabinet Treasurer '32.

# THE SEQUELLE

G. KENNETH HARTMAN

Σ Φ Δ

Johnstown, Pa.

JOHNSTOWN HIGH SCHOOL

*Intermediate*

Transferred from Indiana State Teachers College.

Leonard Literary Society, Travelers Club.

BETTY HESLEY

Σ Δ Φ

Clarion, Pa.

CLARION HIGH SCHOOL

*Intermediate*

Girls' Glee Club, Pan-Hellenic Council President '31, Hostess Club President '31

LILLIAN CLARA HURLBERT

Δ Π Ε

St. Petersburg, Pa.

MONTPELIER, IND. HIGH SCHOOL

*Primary*

Transferred from Ball State Teachers College, Muncie, Ind.

Vested Choir, Hostess Club.

ROXANA IRWIN

Δ Π Ε

Franklin, Pa.

FRANKLIN HIGH SCHOOL

*Intermediate*

Art Club, Orchestra, Hockey, Volley Ball, Y. W. C. A.

TEC



1932

## THE SEQUELLE



KATHERINE BRIGGS KECKRITTS  
(MRS.)

Brookville, Pa.  
SNYDER TOWNSHIP HIGH SCHOOL

*Intermediate*

Transferred from Mansfield State Teachers  
College.  
Art Club.

CHALMERS F. KENNEMUTH

Σ Φ Δ

Shippenville, Pa.  
ASHLAND HIGH SCHOOL

*Intermediate*

Outdoor Club.

A. RUTH KIRKPATRICK

Clarion, Pa.

CLARION HIGH SCHOOL

*Primary*

Girls' Glee Club, Orchestra, Travel Club,  
Y. W. C. A.

GERTRUDE M. KNAPP

Brookville, Pa.

SUMMERVILLE HIGH SCHOOL

*Intermediate*

Hockey Class Team '31, Soccer Class Team  
'31, Hostess Club, Travel Club, Art Club,  
Library Club.

# THE SEQUELLE

## ELEANOR M. KOOMAN

Θ Α Α  
Knox, Pa.

EDENBURG HIGH SCHOOL

*Primary*

Y. W. C. A., Hostess Club, Journalism Club,  
Girls' Glee Club Orchestra.

## FLORENCE LINDBERG

Warren, Pa.

WARREN HIGH SCHOOL

*Intermediate*

Y. W. C. A. Cabinet '32, College Players,  
Vested Choir, Press Club, Clarion Call Staff,  
Sequelle Staff, Hockey Varsity '32, Girls'  
Glee Club.

## GRACE MARSHALL

Α Χ Δ

Hawthorn, Pa.

HAWTHORN HIGH SCHOOL

*Primary*

Hostess Club, Girls' Glee Club, Art Club  
Vice President '31, Sequelle Staff.

## SARA MILANOVICH

Miola, Pa.

CLARION HIGH SCHOOL

*Intermediate*

Travel Club, Hostess Club.



# THE SEQUELLE



## JOSEPH MILLER

Σ Φ Δ

Curlsville, Pa.

SLIGO HIGH SCHOOL

*Intermediate*

Y. M. C. A., Art Club, Men's Glee Club, Orchestra.

## VERNA M. MONKS

Θ Α Α

DuBois, Pa.

DUBOIS HIGH SCHOOL

*Primary*

Pan-Hellenic Council President '32, Girls' Glee Club, College Players, Make-Up Club, Y. W. C. A. cabinet '32, Hostess Club, Hockey.

## ETHEL A. MOORE

Sigel, Pa.

SIGEL HIGH SCHOOL

*Intermediate*

Y. W. C. A., Library Club, Hostess Club, Intra-mural Sports.

## IVA A. MOORE

Ramseytown, Pa.

BROOKVILLE HIGH SCHOOL

*Intermediate*

Hostess Club, Y. W. C. A. Cabinet '32, Vested Choir, Soccer Varsity '31, '32, Girls' Varsity "C" Club, Women's Athletic Council '32, Hockey, Volley Ball, Basketball.

# THE SEQUELLE

**GLADYS E. MacBLANE**

Z K N

Smethport, Pa.

SMETHPORT HIGH SCHOOL

*Intermediate*

Vested Choir President '32, Library Club,  
College Players, Y. W. C. A., Women's Student  
Council '32, Women's Student Govern-  
ment Secretary '32, Hostess Club.

**LAURA ALICE McCALL**

Δ II E

Rimersburg, Pa.

UNION VOCATIONAL SCHOOL

*Intermediate*

College Players, Women's Athletic Council,  
Vested Choir, Girls' Glee Club, Art Club,  
Hockey Varsity '31, Hockey Captain '31,  
Volley Ball Varsity '31, Soccer Manager '31.

**OLIVE E. McCALL**

Curlsville, Pa.

SLIGO HIGH SCHOOL

*Intermediate*

Art Club, Travel Club, Y. W. C. A.

**FRANCES McDANIEL**

Z K N

Reno, Pa.

ROCKY GROVE HIGH SCHOOL

*Intermediate*

Hostess Club, Y. W. C. A., Hockey, Soccer.



# THE SEQUELE



## WALTER McGARVEY

North Washington, Pa.

HOOKER HIGH SCHOOL

*Intermediate*

Y. M. C. A., Football.

## RUSSELL M. McGAUGHEY

Σ Φ Δ

Brookville, Pa.

BROOKVILLE HIGH SCHOOL

*Intermediate*

Current Events Club, Y. M. C. A. Vice  
President '32.

## SARA McGAUGHEY

Brookville, Pa.

BROOKVILLE HIGH SCHOOL

*Intermediate*

Hostess Club, Y. W. C. A., Travel Club,  
Art Club.

## HARRIETTE McGRAW

Δ Π Ε

Tidioute, Pa.

TIDIOUTE HIGH SCHOOL

*Intermediate*

Hostess Club, Art Club.



# THE SEQUELLE

SYLVIA L. MCKINLEY

Δ Π Ε

Clarion, Pa.

ASHLAND HIGH SCHOOL

*Primary*

College Players, Hostess Club.

GLADYS NAUGLE

Bedford, Pa.

BEDFORD HIGH SCHOOL

*Intermediate*

Travel Club, Art Club, Hostess Club,  
Y. W. C. A.

ELSIE S. NELSON

Σ Δ Φ

Brockway, Pa.

BROCKWAY HIGH SCHOOL

*Primary*

College Players, Y. W. C. A., Vested Choir,  
Press Club President '31, Women's Student  
Council, Sequelle Staff, Women's Athletic  
Council, Hockey Manager, Soccer Varsity  
'31, Basketball Varsity '30, Volley Ball Varsity  
'30, Head of Sports for Mushball '31  
and Soccer '31, Hostess Club, Poetry Reading  
Contest.

ELINOR JANE PATTON

Westville, Pa.

BEECHWOODS VOCATIONAL SCHOOL

*Intermediate*

Y. W. C. A., Hostess Club, Library Club



# THE SEQUELLE



## EILEEN RICE

Δ Π Ε

Franklin, Pa.

FRANKLIN HIGH SCHOOL

*Intermediate*

Hostess Club, Art Club, Library Club, Y. W.  
C. A. Cabinet '32, Vested Choir, Press Club.

## GENEVIEVE ROSSMAN

Θ Α Α

KNOX, Pa.

EDENBURG HIGH SCHOOL

*Primary*

Library Club President '32, Hostess Club,  
Y. W. C. A.

## CORRINE BELLE SERBIN

Pittsburgh, Pa.

TAYLOR ALDERDICE HIGH SCHOOL

*Intermediate*

Transferred from Fairmount (W. Va.) State  
Teachers College.  
College Players, Hostess Club, Girls' Glee  
Club, Y. W. C. A.

## JEAN C. SHANKLE

Θ Α Α

DuBois, Pa.

DuBois HIGH SCHOOL

*Intermediate*

Hostess Club, Girls' Glee Club, Orchestra  
Secretary '32, Y. W. C. A., Sequelle Staff,  
Pan-Hellenic Council, Inter-Sorority Basket-  
ball '31.

# THE SEQUELLE

## FRANK SILZLE

Venus, Pa.  
SHIPPENVILLE HIGH SCHOOL

*Intermediate*

Y. M. C. A., Debating Club, Owl Club.

## LUCILLE SILVIS

Tidioute, Pa.  
TIDIOUTE HIGH SCHOOL

*Intermediate*

Art Club, Hostess Club, Library Club,  
Vested Choir, Y. W. C. A., Press Club.

## KENNETH E. SIMPSON

A Φ Δ  
Corsica, Pa.  
CORSIKA HIGH SCHOOL

*Intermediate*

Outdoor Club, Y. M. C. A.

## PHYLLIS L. SMATHERS

A X Δ  
Clarion, Pa.  
CLARION HIGH SCHOOL

*Intermediate*

Travel Club, Hostess Club, Y. W. C. A.



# THE SEQUELLE



**WINIFRED M. SMITH**

Δ X Δ

Tidioute, Pa.

TIDIOUTE HIGH SCHOOL

*Intermediate*

Pan-Hellenic Council Secretary-Treasurer,  
Art Club, Library Club, Hostess Club,  
Y. W. C. A., Vested Choir.

**WAYNE SPENCE**

Sigel, Pa.

SIGEL HIGH SCHOOL

*Intermediate*

Football, Track, Y. M. C. A.

**MARGARET STANDLEY**

Δ II E

Van, Pa.

OIL CITY HIGH SCHOOL

*Intermediate*

Hostess Club, Y. W. C. A., Library Club  
Secretary '31.

**EVAH STANFORD**

Tionesta, Pa.

ENDEAVOR HIGH SCHOOL

*Intermediate*

# THE SEQUELLE

**BUDD B. STEWART**

A Φ A  
Sligo, Pa.  
SLIGO HIGH SCHOOL  
*Intermediate*

Current Events Club, Y. M. C. A.

**EVELYN M. SWANSON**

Δ II E  
Warren, Pa.  
WARREN HIGH SCHOOL  
*Primary*

Vested Choir, Y. W. C. A. Cabinet '32.  
Hockey Varsity '31, Soccer Class Team '31.

**HILDA TRAISTER**

Brookville, Pa.  
BROOKVILLE HIGH SCHOOL  
*Intermediate*

Art Club, Library Club, Y. W. C. A.

**ESTHER LEE TRUBY**

Z K N  
Sigel, Pa.  
SIGEL HIGH SCHOOL  
*Primary*

Y. W. C. A., Soccer Varsity '31, Volley Ball Varsity '31, Art Club, Hostess Club, Girl's Varsity "C" Club, Women's Student Council, Women's Student Government President '32, Women's Athletic Council.



# THE SEQUELLE



**BARBARA WAGNER**  
Shippenville, Pa.  
SHIPPENVILLE HIGH SCHOOL  
*Intermediate*

**NELLIE WEAVER**  
Z K N  
Timblin, Pa.  
BROOKVILLE HIGH SCHOOL  
*Intermediate*

Pan-Hellenic Council, Vested Choir, Women's Student Council, Class Secretary-Treasurer '31, Y. W. C. A. Secretary '32, Hostess Club.

**THELMA WELTY**  
Θ Α Δ  
DuBois, Pa.  
DUBOIS HIGH SCHOOL  
*Primary*

Vested Choir, College Players, Make-Up Club, Y. W. C. A. President '32, Class Secretary-Treasurer '32, Sequelle Staff, Hockey, Hostess Club.

**FRANCIS L. WHITE**  
Summerville, Pa.  
CLARION HIGH SCHOOL  
*Intermediate*  
Track, Varsity "C" Club, Y. M. C. A.

# THE SEQUELLE

**EVA HAGGERTY WOLFORD (MRS.)**

Brookville, Pa.  
SIGEL HIGH SCHOOL

*Intermediate*

Art Club.

**MARY WOMER**

Pittsburgh, Pa.  
BROOKVILLE HIGH SCHOOL

*Intermediate*

Library Club, Hostess Club, Y. W. C. A.

**ALTA M. YOAS**

Α Χ Δ

Punxsutawney, Pa.  
PUNXSUTAWNEY HIGH SCHOOL

*Intermediate*

Transferred from Iowa State Teachers  
College. Hostess Club, Y. W. C. A.

**GEORGE ZAGST**

Fisher, Pa.  
CLARION HIGH SCHOOL

*Intermediate*

College Players, Travel Club, Y. M. C. A.  
President '28, Senior Class Play '28, Waiters  
Club.



# THE SEQUELLE

## Seniors Not Pictured

### ROBERT POWERS

Α Γ Φ

Mosgrove, Pa.

DAYTON HIGH SCHOOL

*B. S. in Secondary Education*

Football, Varsity "C" Club, Y. M. C. A.

### ALDEAN McKINLEY

Corsica, Pa.

UNION VOCATIONAL SCHOOL

*Intermediate*

Varsity Hockey, Varsity Soccer, Outdoor Club.

### WILLIAM SLATTERY

Α Γ Φ

DuBois, Pa.

SANDY TOWNSHIP HIGH SCHOOL

*B. S. in Secondary Education*

### MRS. CORA D. WILLIAMS

Corsica, Pa.

*B. S. in Elementary Education*

Attended:

Indiana State Teachers College.

University of Pennsylvania.

Pennsylvania State College.

Travel Club.

### HELEN M. CORBETT

Δ Π Ε

Clarion, Pa.

CLARION HIGH SCHOOL

*Intermediate*

Art Club, Hostess Club, Y. W. C. A.

### LOIS McMAHAN

Clarion Township, Pa.

CLARION HIGH SCHOOL

*Primary*

Travel Club, Hostess Club.

### RUTH HAHN

Fairview Township, Pa.

KARNS CITY HIGH SCHOOL

*Intermediate*

Travel Club, Art Club, Hostess Club,  
Y. W. C. A.

### HELEN L. PHILLIPS

Butler, Pa.

BUTLER HIGH SCHOOL

*Primary*

Transferred from Lock Haven State Teachers College. Dramatic Club, Girls' Glee Club, Y. W. C. A. (Lock Haven).

### VIVIAN HOHN

Butler, Pa.

BUTLER SENIOR HIGH SCHOOL

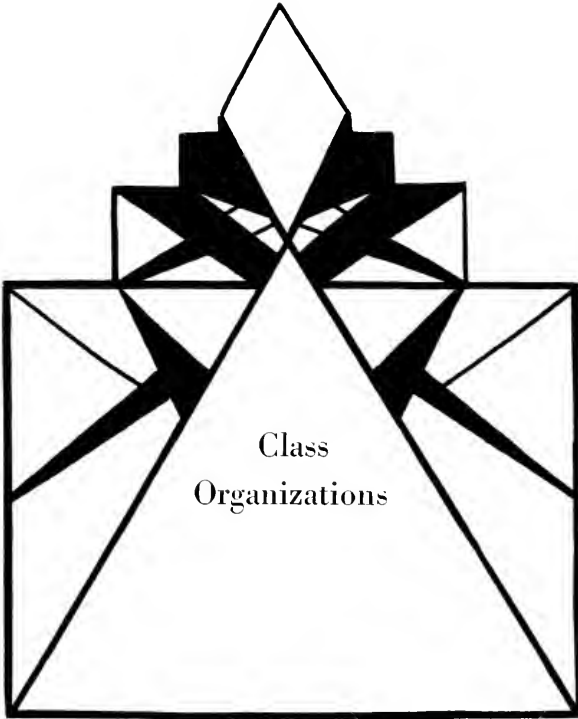
*Intermediate*

Girls' Glee Club, Orchestra, Y. W. C. A.,  
Hostess Club.

### *In Memoriam*

PAUL LOVE





Class  
Organizations

## THE SEQUELLE



### “The Old Guard”

<i>President</i>	-	-	-	-	-	-	JOHN MOCHNICK
<i>Vice President</i>	-	-	-	-	-	-	STANLEY LORE
<i>Secretary</i>	-	-	-	-	-	-	FRANCES NEIL
<i>Treasurer</i>	-	-	-	-	-	-	ELLWOOD ROWLEY

In the fall of 1928, a group of young men and women who were to be the first regular class to be graduated from the college with degrees in secondary education, matriculated at Clarion. The class is justly proud of the fact that with them came Dr. Riemer, President of the College.

This small group has made sterling contributions to Clarion's scholastic achievements and its activities. Over the space of four years their diligent efforts have successfully created new clubs, sponsored fraternal organizations, formed the nucleus for scholastic societies, and led Clarion colors on the gridiron, on the basketball court, and on the cinder path.

# THE SEQUELLE

## Senior Class Roll

DURSO, OREST	POWERS, ROBERT
FETZER, JOHN	ROWLEY, HARRY E.
FOX, CHARLES	SHANKLE, EDWARD
HILEMAN, COLIN	SINCLAIR, JAMES
KATA, JOSEPH	SLATTERY, WILLIAM
KREMMEI, CLETUS	SWEITZER, RUSSELL
LORE, STANLEY	TRAVIS, WESLEY
MOCHNICK, JOHN	WILLIAMS, CORA (Mrs.)
MURPHY, ALFRED	WILLIAMS, KENNETH
NEIL, FRANCES	WILSON, THOMAS

# THE SEQUELLE



## Junior Class

<i>President</i>	- - - - -	-	LEWIS WELLS
<i>Vice-President</i>	- - - - -	-	TILMAE GOSETTI
<i>Secretary</i>	- - - - -	-	MILLITEEN KOPP
<i>Treasurer</i>	- - - - -	-	VIOLET PRESSLER

The Junior Class this year is composed of four year students, their two year classmates having graduated last year.

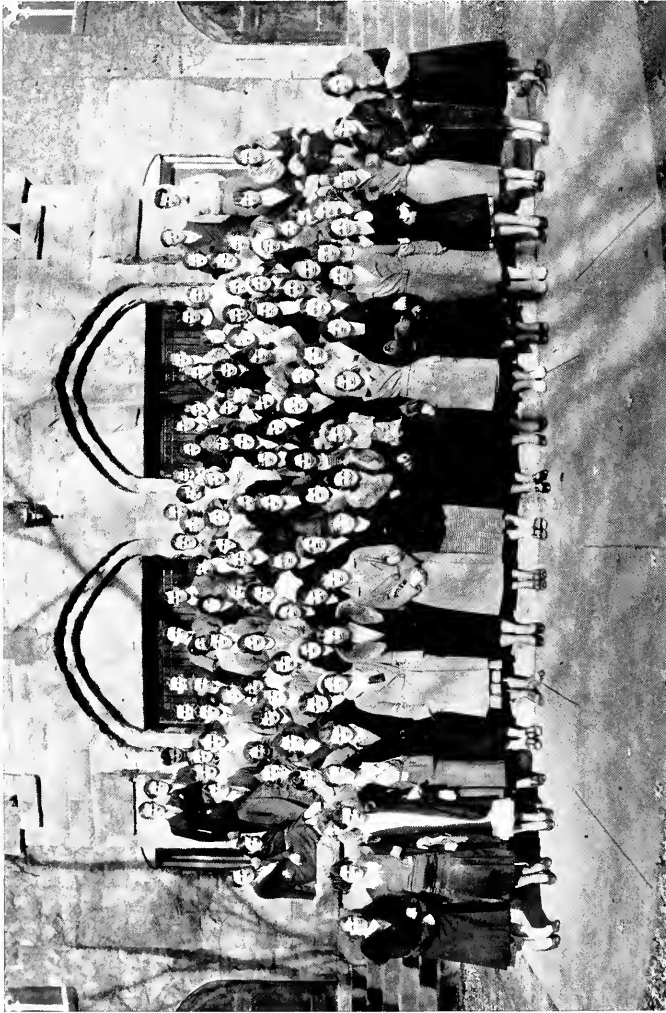
The Juniors as a class have not taken a very active part in campus affairs this year. They are looking forward, however, to publishing *The Sequelle* again next year. This will be the second time they have had charge of it, having published it during their Sophomore year.

# THE SEQUELLE

## Junior Class Roll

ASHBAUGH, HARRY	LOGAN, CHARLES
BEST, EMERSON	LOGUE, ALICE
CAMPBELL, HELEN	MOHNEY, RUTH
CHEATHAM, MARY	McHENRY, FLOYD
COLEMAN, DAN	PAINE, LILLIAN
COLLNER, MADELINE	PRESSLER, VIOLET
DEAN, ELIZABETH	RUSSELL, WILLIAM
DICKINSON, LYDIA	SMITH, CARL
EDWARDS, DON	SNYDER, MERRILL
ELLIOTT, MARGARET	STEWART, WILLIAM
GOSETTI, TILMAE	STOVER, ORRIS
HENRY, ALBERT	TAYLOR, KENNETH
JOHNSON, LORRAINE	UPDEGRAFF, JOHN
KOPP, MILLITEEN	WEIN, GUSTAVE
KASSEL, JAMES	WELLS, LEWIS
WHITEHILL, PAUL	

THE SEQUELLE



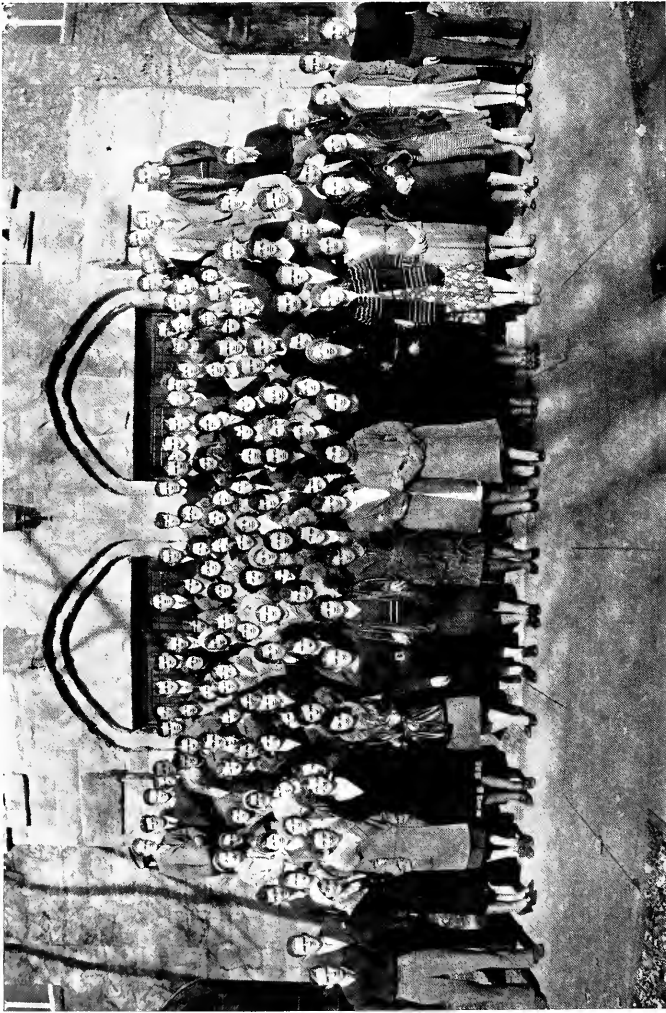
Sophomore Class

# THE SEQUELLE

## Sophomore Class Roll

ALCORN, LLEWELLYN	GREENAWALT, FLOYD	NAUGLE, GLADYS
BAKER, MARGUERITE	HAHN, HELEN	NELSON, ELSIE
BARNES, MARTHA	HAHN, RUTH	PATTON, ELINOR
BARNETT, MARGARET	HARLEY, FLORENCE	PENCE, MARTHA
BEST, MARIAN	HARTMAN, EUGENE	PHILLIPS, HELEN
BEST, WILMA	HARTMAN, KENNETH	PHILLIPS, SARA
BINNEY, CHARLES	HESLEY, BETTY	RICE, EILEEN
BINNEY, ELIZABETH	HOHMAN, JANE	RIEMER, HANS
BORRONE, MARY	HOHN, VIVIAN	RIEMER, ISABEL
BOYLE, CARRIE	HUMMEL, NORRIS	ROSSMAN, GENEVIEVE
BREAKEY, KINSEL	HURLBERT, LILLIAN	SERBIN, C. BELLE
BRITTON, MARY	IRWIN, ROXANNA	SHANKLE, JEAN
BROWN, DOROTHY	KENEMUTH, CHALMER	SHREFFLER, WILLARD
BROWN, THELMA	KIRKPATRICK, RUTH	SILVIS, LUCILE
CAMPBELL, FLORENCE	KLINE, HELEN	SILZLE, FRANK
CARRIER, EUNICE	KLINGENSMITH, BEATRICE	SIMPSON, KENNETH
CARRIER, ORAL	KNAPP, GERTRUDE	SIMPSON, WILLARD
CARSON, LEONE	KOOMAN, ELEANOR	SMATHERS, JOHN
CASSEL, JAMES	KURTZHALS, MARCELI A	SMATHERS, PHYLLIS
CAYLOR, MARY	LIDSTONE, ROGER	SMITH, TOM
CHAMBERLIN, EUNICE	LINDBERG, FLORENCE	SMITH, WINIFRED
CLARK, ESTHER	LOGAN, LEVERNE	SNYDER, KENNETH
COLLINS, MARGARET	MARSHALL, GRACE	SOWERS, SYLVAN
CORBETT, HELEN	MASTER, NORBERT	SPENCE, WAYNE
CRAWFORD, IDA	MILANOVICH, SARA	STANDLEY, MARGARET
CROOKS, DOROTHY	MILLER, JOSEPH	STANFORD, EVAH
DAVIES, EDNA	MacBLANE, GLADYS	STAUFFER, RALPH
DEPP, VERNICE	McCALL, LAURA	STEWART, BUDD
DICKEY, GLADYS	McCALL, OLIVE	SWANSON, EVELYN
DWYER, LOUISE	McDANIEL, FRANCES	TRAISTER, HILDA
EHLERS, MARIE	McGARVEY, WALTER	TRUBY, ESTHER
ELLIOTT, GERALDINE	McGAUGHEY, RUSSELL	WAGNER, BARBARA
ELWOOD, IRENE	McGAUGHEY, SARA	WEAVER, NELLIE
FERRAROTTI, MADELINE	McGRAW, HARRIET	WELTY, THELMA
FLICK, ANNA	McKINLEY, ALDEAN	WHITE, FRANCIS
FOSTER, ANNIE	McKINLEY, SYLVIA	WILHELM, SAMUEL
FREEDLINE, ETHEL	McMAHAN, LOIS	WOLFORD, EVA
FULTON, RUTH	MOFFATT, MAURICE	WOMER, MARY
GAGHAN, MARIE	MONKS, VERNA	YOAS, ALTA
GALBREATH, DON	MOORE, ETHEL	ZAGST, GEORGE
GRADY, FLOYD	MOORE, IVA	

THE SEQUELLE



Freshman Class



# THE SEQUELLE

## Freshman Class Roll

AARON, HELENE  
AARON, MARGARET  
ALLSHOUSE, AMANDA  
ASHBAUGH, BYRON  
BALDWIN, ELIZABETH  
BANNER, BEATRICE  
BANNER, MARIE  
BARRANCO, SAMUEL  
BARTLEY, TYRUS  
BARTOW, PERCY  
BEST, DOROTHY  
BETZ, CHARLES  
BIGLEY, ROY  
BILLHEIMER, BERNICE  
BLACK, JOHN  
BROWN, LEO  
CALDWELL, KENNETH  
CARPENTER, HELEN  
CARR, NETTIE  
CASTAFERO, RALPH  
CLARK, RUTH  
CLINTON, MARY  
COOK, REA  
CORBETT, ALLEN  
CORNMANN, MAXINE  
CULTER, RALPH  
COVERT, HELEN  
CRICK, BERNICE  
CROOKS, LOUISE  
CYPHERT, DALE  
DAVIS, JEROME  
DELONG, JESSIE  
DOVENSPIKE, DARL  
DOVENSPIKE, ALBERTA  
EAKIN, HELEN  
EDDINGER, LUCY  
EMIG, DONALD  
ERNEST, FRANCIS  
FAIR, JOSEPHINE  
FALES, HERBERT  
FERRICK, THOMAS  
FINCH, IRENE  
FOWLER, LYNETTE  
GALBREATH, RUTH  
GALLAGHER, FRED  
GEIST, ETHEL  
GEORGE, THELMA  
GOLDSMITH, WILLIAM  
GRAY, HELEN  
GRIFFITH, INEZ  
GROVES, MARY EVELYN  
HADDEN, EARL  
HAHN, FRANCES  
HAMILTON, HARRY

HAMMOND, VIRGINIA  
HANNOLD, VIOLA  
HARRIGER, GUY  
HARVEY, RUTH  
HAY, GRACE  
HEETER, MADELINE  
HEVERLY, ROBERT  
HINCKEN, DONALD  
HINDMAN, CHARLES  
HOFF, MARY  
HOWARTH, FRANK  
HUMPHREY, RUTH  
IRWIN, DONALD  
JOHNSTON, ALTA  
JOHNSTON, LOUISE  
JORDAN, RUSSELL  
KAPP, EDNA  
KEEFER, EARL  
KERR, IONA  
KLINE, KATHRYN  
KLINE, ROMA  
KNIGHT, HAROLD  
KRIBBS, JEANNETTE  
LEHMAN, ETHEL  
LIDSTONE, DEANE  
LOGUE, BAYONNE  
LONG, EMMA  
LOELL, LEROY  
LYNN, D. O.  
MAHLE, IDA REBECCA  
MANSFIELD, ROBERT  
MAY, MILDRED  
MILLER, ETHEL  
MILLER, HOMER  
MOONEY, EDWARD  
MOORE, CHARLES  
MOORE, MARGARET  
MOORE, LAVINA  
MORRISON, GLADYS  
MULL, HELEN  
MURPHY, DONALD  
MURPHY, GEORGE  
MCCULLOUGH, JOE  
MCDONALD, HELEN  
MCGIFFIN, LOUISE  
MCGREGOR, MARY  
MCKEE, JAY  
MCKINNEY, MORTON  
MCMILLAN, ELWOOD  
NEELY, LOIS  
MCCALL, MARTHA  
MOORE, VERNA  
OAKS, ANDREW  
ORR, IVA  
PAINE, JOHN

PARK, MARY LUCILE  
PAULEY, RUOLOPH  
PEARSALL, ELOISE  
PEPPER, HELEN  
PENCE, FRANCES  
PERRY, DOROTHY  
PETERSON, DANA  
PHILLIPPI, WILLIAM  
PIERCE, HOWARD  
PIFER, EUGENE  
RAUGHT, RUTH  
RAY, RUTH  
REA, LUCILE  
REIGHARD, EDWARD  
RHEA, BETTY  
RHEA, JEAN  
ROSENQUEST, ROY  
ROSENZWEIG, EMIL  
SANDROCK, JAMES  
SAYERS, CHARLES  
SCHUCKERS, BLAIR  
SHADLE, EVELYN  
SHAFFER, DONALD  
SHAFFER, GERTRUDE  
SHAWKEY, BYRON  
SHELLEY, DOROTHY  
SHERRIER, EDWARD  
SHIELDS, MARGUERITE  
SHREFFLER, DOROTHY  
SLAUGENHAUPT, WALTER  
SLIKE, ANNA  
SMAIL, ERNEST  
SNYDER, ELEANOR  
SNYDER, WAYNE  
SOMMERVILLE, EULA  
STAHLMAN, GERALD  
STAHLMAN, MADELINE  
STARTZELL, GEORGE  
SYPHRIT, JANE  
THIER, FRED  
THOMPSON, BIRD  
THOMPSON, MARGARET  
TOY, HELEN  
TRUBY, JOHN  
VANDYKE, PAUL  
VANWORMER, ELGIE  
VERBEKE, MARGARET  
WAGNER, DOWE  
WAITE, CAROLYN  
WEBB, JOSEPH  
WILSON, ELIZABETH  
WINGARD, GEORGE  
WORTS, JOE  
ZILHAVER, LOUISE

# THE SEQUELLE

## The New Student Government

There has been organized on the Clarion Campus this year a new form of student government. This change was instigated by a need felt by both students and administration for a co-operative organization which would bring all departments of the College into a better understanding. The organization consists of representatives from the entire student body who are grouped into a Community Senate. The representation is as follows:

- Girls' dormitory government, one representative.
- Girls' dormitory council, two representatives.
- Men's dormitory, two representatives.
- Men's dormitory council, one representative.
- Commuting women students, one representative.
- Women town students, two representatives.
- Men's outside students, three representatives.

This makes a Senate of twelve members, an equal division of resident and transient students.

This Community Senate has for its purpose the better understanding between faculty and students. It will endeavor to gain the viewpoint of all parties, and work for a spirit of co-operation on the campus. Clarion should be a better College for the existence of such a government organization which is backed by Dr. Reimer.

The members and officers of the Senate are:

<i>President</i>	- - - - -	JAMES KASSEL
<i>Vice President</i>	- - - - -	LEWIS WELLS
<i>Secretary-Treasurer</i>	- - - - -	LEO BROWN

VIOLET PRESSLER	LOIS DICKINSON
ELIZABETH DEAN	JAMES CASSEL
ELIZABETH BALDWIN	WILLIAM RUSSEL
PHYLLIS SMATHERS	PAUL WHITEHILL
MADLINE STAHLMAN	



7.46.14

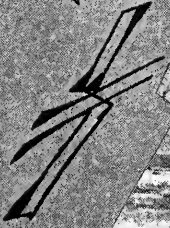
# THE SEQUELLE



WHAT GAME GIRLS?

GAMES WE  
PLAY AT  
CLARION

SING  
THAT  
PILL



A BIG LEAGUER  
IN THE BUSHES!



WHAT  
AM I?

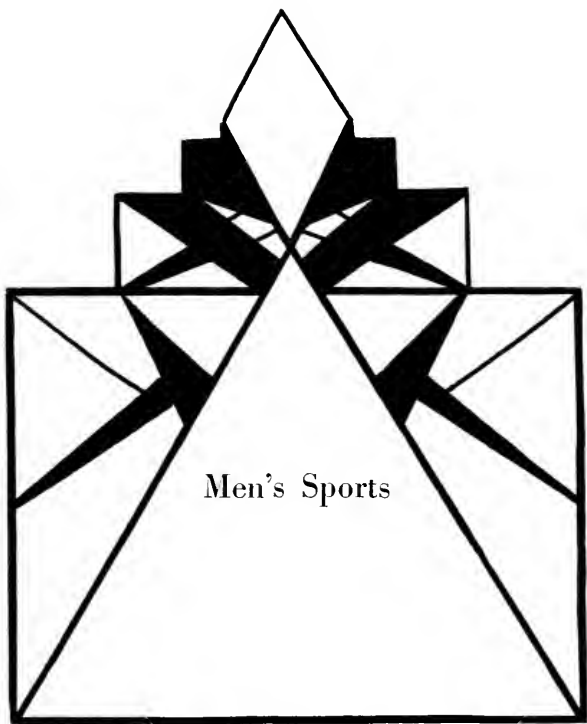


ROUND THE TURN



THE GAME  
OF CYNICISM





Men's Sports

## THE SEQUELLE



JOHN O. JONES  
*Coach*

Coach Jones deserves much credit for the success of athletics in Clarion. During his five years with the Purple and Gold, Coach Jones has developed athletics to what they are today. A fine football and basketball season, with best prospects for a successful track team, made this perhaps the greatest athletic year in the history of the school. We can only wish Mr. Jones the best of luck for next year.



THOMAS WILSON  
*Manager*

Tom has completed his second year as football manager for the Purple and Gold. Tom proved that he had ability in mathematics by handling the business end of his job very efficiently. Tom was liked by the whole squad and his absence from the field next year will be felt by all. For sheer ability and friendship, Tom was surely the right man!



# THE SEQUELLE

## ELLWOOD ROWLEY

### *Quarterback*

"Ben" played outstanding ball for the Purple and Gold this year, and his selection as an honorary captain of this year's squad assures everybody of his ability. Being able to run back punts was a great factor in many of the games. His thinking ability carried him through countless tight places, and we hope that this same ability will serve him throughout his life.

## JOSEPH KATA

### *Tackle*

"Joe" completed his fourth year of varsity football with a record which would be difficult to match. His consistency and boundless vigor were a constant source of strength on the line, both offensively and defensively. Joe's uncanny ability to anticipate plays, and his gritty determination have often been the center of hope for the team. On losing Kata through graduation, the teams of the future will miss a man whose sportmanship is unchallenged.

## CLETUS KREMMEI.

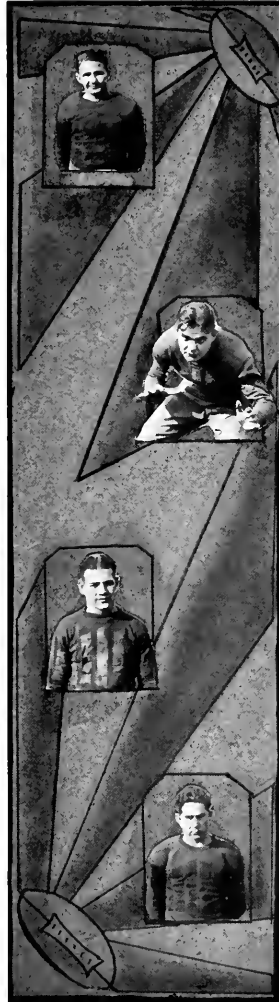
### *Halfback*

In losing "Clet" through graduation this year, we lose one of the outstanding broken-field runners of our backfield. "Clet" hails from Ambridge, and he has done much toward the development of fast ball in Clarion. He likes to back up the line, but never missed an opportunity to tackle an opposing player in the open. The Edinboro game will always stand out with "Clet", for it was he who scored the winning touch-down.

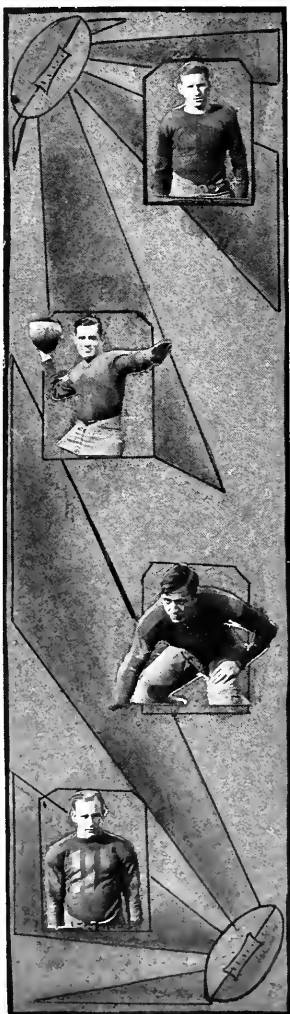
## ROBERT POWERS

### *Guard*

"Bob" was elected by the squad as the most consistent senior on the team. His play on the line has worried many an opponent, for he could adapt himself to any formation the opposing team would take. In losing "Bob" this year, Clarion has surely lost a real "old man of the mountain."



# THE SEQUELLE



## DANA PETERSON

*End*

"Pete", in his first year of varsity football, took over the left wing for Clarion. He is a smart and consistent player. At the kick-off or after a punt, "Pete" could be seen running and evading the would-be blocker to get the ball-carrier. His all-around play will be a great help to the teams of the future.

## FRED THIER

*Halfback*

Freddie, better known as "Moon", was one of Clarion's most dependable men. Besides being a ball carrier of unusual ability "Moon" was the outstanding blocker on the team. Freddie still has three more years of football at Clarion, and with a little more experience, he should be a great asset to the football squads of the future.

## TOM SMITH

*Guard*

"Kit" was shifted from his position in the backfield to guard on this year's team. His determination and fight was noticeable throughout the entire year. Clarion's football fans hope that "Kit" will be with us again next year, for he is potentially a fine lineman.

## KENNETH TAYLOR

*Center*

One of the hardest workers on the squad was "Abie". This was "Abie's" third year and he played in enough games to qualify him for a "C". He has one more year to play, and if he continues to progress in playing ability, he will win for himself the center position on the varsity next year.



# THE SEQUELLE

EMIL ROSENZWEIG

*End*

Emil came to us from the noted football school—Bellefonte Academy, bringing with him the football spirit. His past experience gave to him the ability to diagnose and smother the opponent's plays. He was immeasurably valuable on the line, for his height enabled him to reach far into the opposition's running plays to get his man.

WILLARD SHREFFLER

*Tackle*

"Wid" was changed from his line-smashing post in the backfield to one of the best linemen of the year. His speed and driving power he used to the best advantage in the line, utilizing his large hands, which resemble a dime's worth of bananas. "Wid" was a fast starting lineman, and at times went down under the punts with the same speed as the ends.

HARRY DAVIS

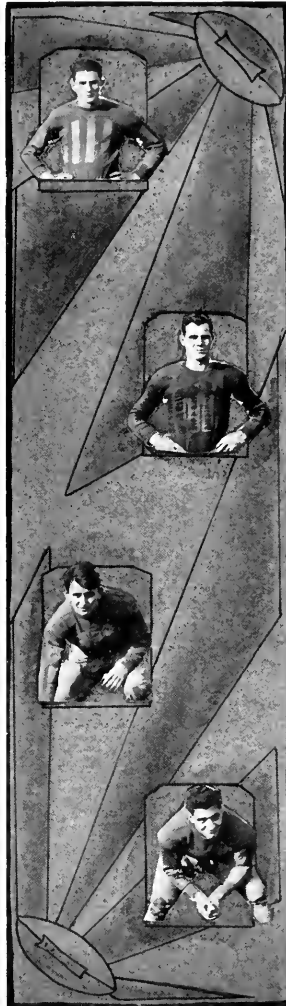
*End*

"Fish" was one of the smallest and brainiest fellows on the squad. His ability to break through the opposition's interference to tackle the ball was outstanding in his play. Although not a regular, "Fish" played in enough quarters to obtain for himself a "C".

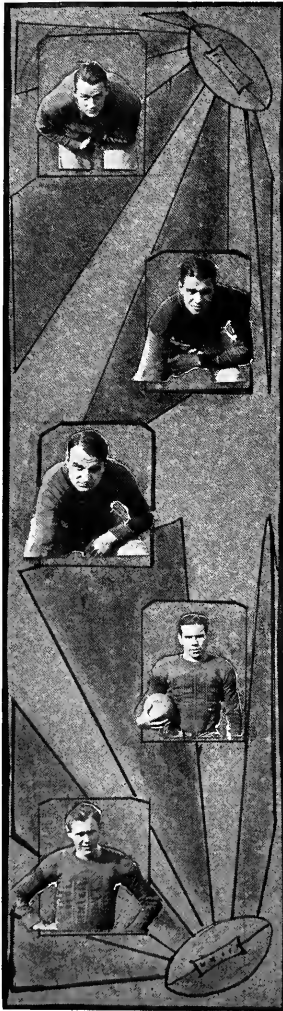
FRANK QUATSE

*Center*

Frank came to Clarion two weeks late, and immediately proved his worth by winning the center position on the varsity. Frank came from Greensburg High School where he won for himself the center position on the all W. P. I. A. L.. He was one of the best tacklers on the team and liked nothing better than to hit a man in the open.



## THE SEQUELLE



### JAMES SANDROCK

#### *Fullback*

Although not a big fellow, "Sandy" filled the fullback position like a veteran. "Sandy" was the hardest driving back on the squad. In many instances the necessary yardage was made by his ability to run hard and low. "Sandy", besides being an outstanding "ball-toter", was Clarion's most efficient punter.

### HERBERT FALES

#### *End*

This was 'Herb's' first year with the Purple and Gold, and we will have to admit that he did very well. "Herb" was a steady worker, never missing a practice once. While on the field he gave his best. We all wish "Herb" success in his next three years of football.

### RALPH STAUFFER

#### *Tackle*

"Pop" has finished his football career at Clarion with the marked distinction of being the hardest worker on the squad. He was always the first to report for practice, and his work at tackle was unflinching. Next year's squad will miss "Pop".

### ROBERT HEVERLY

#### *Halfback*

"Bob" was one of our best utility backfield men. He hails from Bellefonte and during the past season has proved his worth as a future back. His ability to hit the line low has enabled him to play in many of the games this year. "Bob" will undoubtedly prove his worth in his remaining three years.

### DON MURPHY

#### *Tackle*

Murphy proved his ability as a utility tackle by playing a bang-up game at Lock Haven. Time and again he would break through to smear the opposition's running plays. This was Murphy's first year with the team, and the future promises much from this man who is potentially a first-team man.

## THE SEQUELLE



### Varsity Basketball

KENNETH WILLIAMS (Captain)

*Forward*

"Ken", playing his fourth year with the Purple and Gold, proved himself a valuable man in the team's play. For the past four seasons Williams has proved his ability as a point-getter by heading the list of individual scorers. With "Ken's" graduation Clarion will lose a great leader and athlete.

FRED THIER

*Forward*

"Freddie", running mate of Williams, was one of the hardest workers on the squad. "Freddie" came to Clarion from a basketball town and this could easily be seen in his "all-around" play. Great things are expected of "Moon" in the future.

EMIL ROSENZWEIG

*Center*

"Rosy", playing his first year of basketball at Clarion took over the center position very efficiently. Emil was the tallest man on the squad. He used his height very efficiently in taking the ball off the banking board. "Rosy" still has three more years of basketball and we all wish him the best of success.

DANA PETERSON

*Guard*

"Pete," playing the back guard, was the most consistent man on the squad. When "Pete" was assigned a man to guard you were sure to see some close guarding. He was not only a good guard, but one of the best shots on the squad.

# THE SEQUELLE

SAM WILHELM

*Guard*

Sam, in his second year of basketball at Clarion, developed into one of the best defensive and offensive guards on the squad. Sam handled the ball well and was a very steady floor man. Much is expected of "Sam" in the future.

JAMES KASSEL

"Jim," a fast and clever floorman, played his third year with Clarion. Jim's ability to pick up a ball in either hand made it possible for him to pass very accurately. Jim is a hard and willing worker which should win for him a position on next year's varsity.

WILLIAM RUSSELL

"Bill" has completed this third year of successful basketball at Clarion. Although not playing regularly "Bill" was in enough games to receive a letter. "Bill" is a good "shot" and with improvement should develop into one of the best "shots" on the squad.

HERBERT FALES

"Herb" in his first year with the Purple and Gold played in enough quarters to win for himself a letter. "Herb" came to practice regularly; during these sessions he worked with spirit and determination.

KENNETH SNYDER

"Ken" played his second season with the Purple and Gold, alternating with Wilhelm as guard. "Ken" was one of the best men on the squad in breaking up the opposing teams passes and plays. He still has two more years of basketball and should develop into a guard of distinction.

RUSSELL SWEITZER

Russell handled the business end of basketball very efficiently in his first year as basketball manager of the Purple and Gold. His work was done with the greatest care and efficiency. We wish "Rush" the best of success in the future.

## Summary of Past Season

Clarion.....	16—Grove City .....	34
Clarion.....	44—Brookville Y. M. C. A. ....	31
Clarion.....	50—Jeannette Appel Club .....	32
Clarion.....	14—St. Vnicent .....	22
Clarion.....	15—California .....	31
Clarion.....	15—Indiana .....	17
Clarion.....	41—Sterling Oils .....	19
Clarion.....	31—Slippery Rock .....	20
Clarion.....	23—California .....	21
Clarion.....	21—Indiana .....	20
Clarion.....	12—Slippery Rock .....	28
Clarion.....	16—Edinboro .....	47
Clarion.....	19—Sterling Oils .....	10
Clarion.....	22—Edinboro .....	32

339

364

## THE SEQUELLE



### Track

The Purple and Gold track team of 1931 experienced the most successful season in the history of the school. Coach Jones in his first call for practice was welcomed with the best material the school has ever had. The wealth of good material brought about a competitive spirit that had been lacking in previous years. In a triangular meet held at Indiana, Clarion won a clear-cut and decisive victory. The final score was: Clarion,  $52\frac{1}{2}$ , Indiana, 28, California,  $27\frac{1}{2}$ . Clarion also came to the front in her dual meets with California and Carnegie Tech Freshmen.

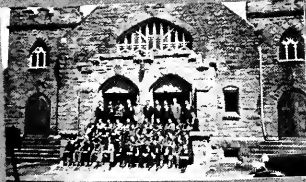
#### SCORES OF THE 1931 SEASON

*Triangular Meet:* Indiana,  
Clarion  $52\frac{1}{2}$ , Indiana 28, Cali-  
fornia  $27\frac{1}{2}$ .  
*Dual Meet:* Clarion,  
Clarion 68, California 29.  
*Dual Meet:* Clarion,  
Clarion 29, Carnegie Tech Fresh-  
men 16.

#### LETTERMEN

CARL SMITH, *Captain*  
WILLIARD SHREFFLER  
NICK LIDSTONE  
FRANCIS WHITE  
DANIEL COLEMAN  
ALVIN MARSHALL  
CLIFFORD RAY

# THE SEQUELE



YOUNG CHARTERS



WELCOME



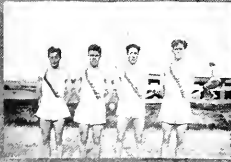
DANCE



HIGH COPS OVER



RESOLVED THAT



FOR THE PURPLE & GOLD



FINIS



## THE SEQUELLE



### Hockey

Hockey opened the intramural sports program, with a great deal of interest, enthusiasm, and good-natured rivalry being shown.

The Sophomores won the first two games, thus winning the three game tournament. The Freshmen played good hockey, and they certainly took the game seriously enough, but the Sophomores' former experience and technique surpassed that of the Freshmen. The honorary varsity was chosen in October by the Women's Athletic Council.



## THE SEQUELLE



### Soccer

The Soccer games were played in November on a field in good condition between almost equally matched teams and ended in favor of the Freshmen. The first two games ended with neither side scoring, but in the last game of the series the Freshmen scored one goal. The punting, blocking, passing, and dribbling plays were well executed by both teams. The Women's Athletic Council chose the honorary varsity at the close of the season in November.

## THE SEQUELLE



### Women's Athletic Council

*President* - - - - - TILMAE GOSETTI  
*Secretary-Treasurer* - - - - - MARY CHEATHAM

It was a big step forward in women's intra-mural sports when the Women's Athletic Council was formed in September, 1931. This Council is composed of women who won their "C" last year by participating and excelling in athletics. The members themselves stand for the best in playing ability and sportsmanship on the campus; they have earned the right to wear the "C." Tilmæ Gosetti is president, and Mary Cheatham is secretary of the Council organization.

At the close of each intra-mural sport the members of the council chose by vote an honorary varsity team. In this selection the positions played are not considered; the criteria are general playing ability and sportsmanship. Other duties of the members are to act as coaches in practice games and as referees in the intra-mural games. Two council members were assigned each intra-mural sport.

## THE SEQUELLE



MISS HELEN BARTON

For many of us the name Miss Barton is synonymous with our most prized memories of this year at Clarion State Teachers College. To her the women owe their splendid year in intra-mural sports. Her sympathy, her humor, and, above all else, her sportsmanship have proved an inspiration to all.

But we do not always think of Miss Barton in connection with athletics, since her musical ability has been so well shown by her work both in Glee Club and Orchestra. Her human side, too, has been felt by many women who have made her their confidant.

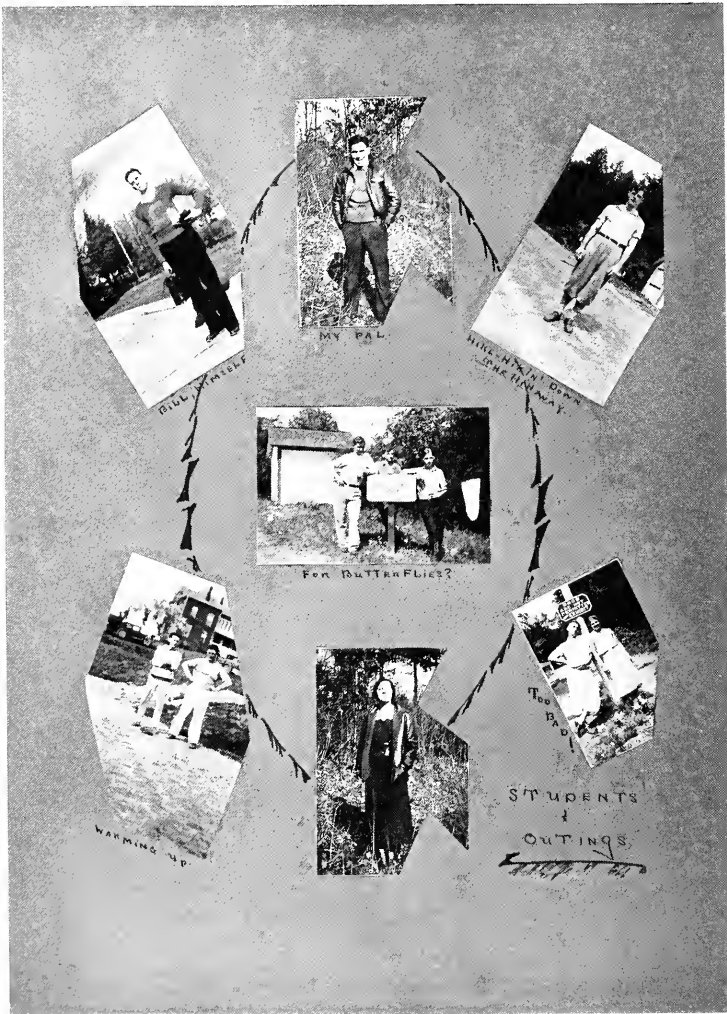
### Basketball

The Freshman victory in the five-game tournament placed them in the lead in girls' intra-mural sports. The Sophomores won the first game, while the Freshmen won the other three games played.

In basketball, as in no other sport, stress was placed on sportsmanship. In playing ability, the two teams were quite evenly matched, but the Freshmen's was a perfectly working team—one which won games and was a pleasure to watch when playing.

Misses Kurtzhals, Bayonne, Logue, Crick, De Long, Rhea and Kline were chosen in January as members of the varsity basketball team.

# THE SEQUELLE





# THE SEQUELLE



SPRING  
LES FLEURS?



OH, JOCK!

AT  
PLAY



AM - THE SCENE



A GIRL AND A ROCK



AND THE BULLFROG IN THE  
POND.



Government  
and  
Religious  
Organizations

# THE SEQUELLE



## Women's Student Government

<i>President</i>	- - - - -	ESTHER TRUBY
<i>Vice President</i>	- - - - -	MARGARET ELLIOTT
<i>Secretary</i>	- - - - -	GLADYS MACBLANE
<i>Treasurer</i>	- - - - -	MARY BRITTON

*Dean of Women*, HELEN D. SIMS

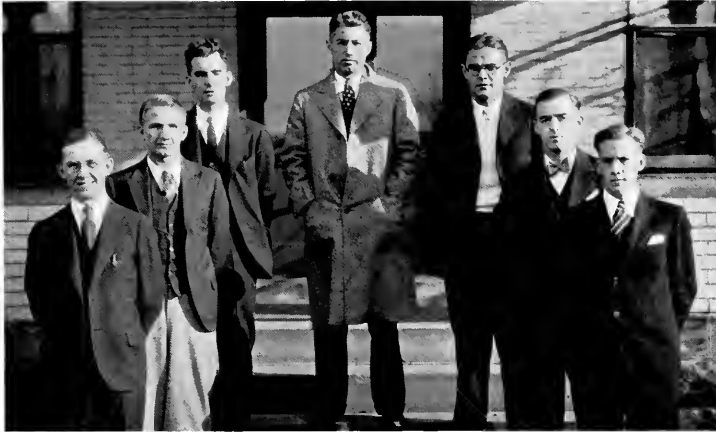
### COUNCIL MEMBERS

MILLITEEN KOPP	BETTY BALDWIN
ELSIE NELSON	LOUISE JOHNSTON
MARION BEST	IRENE FINCH
HELEN HAHN	LYDIA DICKINSON
VIOLET PRESSLER	LORRAINE JOHNSON
ESTHER CLARK	

The Student Government is composed of all the women students of the dormitory. The Student Council is the representative body of the Student Government. The purpose of this organization is to deal with and control such matters of student life as are entrusted to it; to develop among the women students greater individual responsibility; to see that a high standard of life and culture is maintained; and to develop a right spirit of cooperation with the president, parents, and faculty of the college.



# THE SEQUELLE



## Men's Student Government

*President* - - - - - JOSEPH KATA  
*Secretary* - - - - - JAMES CASSEL  
*Dean of Men*, J. O. JONES

### MEMBERS

STANLEY LORE                      RUSSEL SWEITZER  
COLIN HILEMAN                  ALFRED MURPHY  
   ELLWOOD ROWLEY

Each member of the Men's Student Government is placed in this position of responsibility by the men on the college campus. Therefore, the organization is truly representative and able to carry out the purposes for which it is organized. Better cooperation among students, high standards of honor in matters of personal conduct, and the adoption and practice of a code of ethics second to none are among its achievements. Much of the success of the organization is due to the counsel of the Dean of Men.

## THE SEQUELLE



### Y. W. C. A.

<i>President</i>	- - - - -	THELMA WELTY
<i>Vice President</i>	- - - - -	MARY BORRONE
<i>Secretary</i>	- - - - -	NELLIE WEAVER
<i>Treasurer</i>	- - - - -	FLORENCE HARLEY
<i>Devotionals</i>	- - - - -	FLORENCE LINDBERG
<i>Music</i>	- - - - -	IVA MOORE
<i>Publicity</i>	- - - - -	VERNA MONKS
<i>Morning Watch</i>	- - - - -	CARRIE BOYLE
<i>Social</i>	- - - - -	JANE HOHMAN
<i>Foreign</i>	- - - - -	EILEEN RICE
<i>World Fellowship</i>	- - - - -	MARGUERITE BAKER
<i>Home Missionary</i>	- - - - -	EVELYN SWANSON

The aim of the Young Women's Christian Association is to create a spirit of good will and friendliness among the college girls. It aids the Freshmen women in becoming adjusted to life in the college by means of "Big Sister Movements," the Freshmen Reception and other social affairs. At Christmas time the women of this organization help those who are in need by providing food and clothing to poor families. It endeavors to give each girl an opportunity to participate in "Y" programs on Wednesday Nights.

The "Y" Cabinet takes charge of the work of this group. The organization upholds the spiritual side of our college life.

## THE SEQUELLE



### Y. M. C. A.

<i>President</i>	- - - - -	LEWIS WELLS
<i>Vice-President</i>	- - - - -	RUSSEL MCGAUGHEY
<i>Secretary</i>	- - - - -	HARRY ASHBAUGH
<i>Treasurer</i>	- - - - -	ALFRED MURPHY
<i>Programs and Devotionals</i>	- - - - -	JOHN FETZER
<i>Social</i>	- - - - -	JOHN MOCHNICK
<i>Music</i>	- - - - -	STANLEY LORE
<i>Membership</i>	- -	FLOYD GREENAWALT, THOMAS WILSON
<i>Advisor</i>	- - - - -	MR. C. F. BECKER

Y. M. C. A.—Christian Fellowship; on the Clarion campus the one suggests the other. This organization is a brotherhood; it is aware of the changing conditions of the age, and its constant effort is to adapt itself and be of concrete service to the modern world. With these objectives ever in mind, the Y. M. C. A. plans attractive programs to include devotional exercises, songs, speeches, both by faculty members and lecturers of recognized ability from the outside, and student discussions. The "Y" sends delegates to the Fall and Spring Y. M. C. A. Conferences; it assists in the promotion of programs for the Vesper service on Sunday evenings. By these means this sterling body meets and provides an outlet for the spiritual needs of the men on our campus.

# THE SEQUELLE



THEY STAND!

Just  
BOYS  
HERE AND  
THERE



Brief Cases? YES.



D.O. and Murphy



WHAT SHALL I DO  
WITH THE BAG?



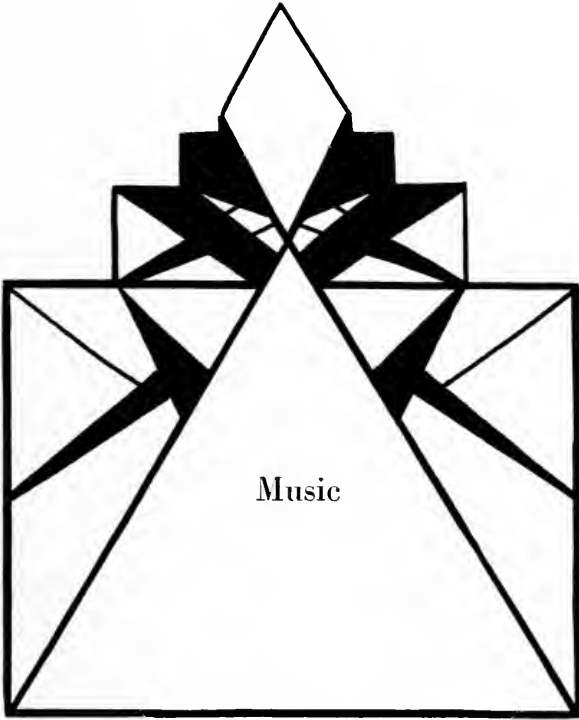
STATUARY



PARKED ON A NO  
PARKING SIGN!



Just a little  
FRAGILE



## THE SEQUELLE



### Mr. and Mrs. H. L. Bland

Mr. and Mrs. Bland are widely known throughout the Clarion State Teachers College territory, chiefly through their connections with the Girls' Glee Club and the annual music festival. Mrs. Bland is an accomplished performer on the piano, violin, trumpet and various other instruments. Most of her time is devoted to music lessons and accompanying.

Mr. Bland conducts the various musical organizations and arranges the annual music festival, in which thousands of high school pupils from Northwestern Pennsylvania participate. Mr. Bland also composes light ballads and songs for school children. It is his greatest delight that forty-five per cent of Clarion's students participate in some musical activity.

# THE SEQUELLE

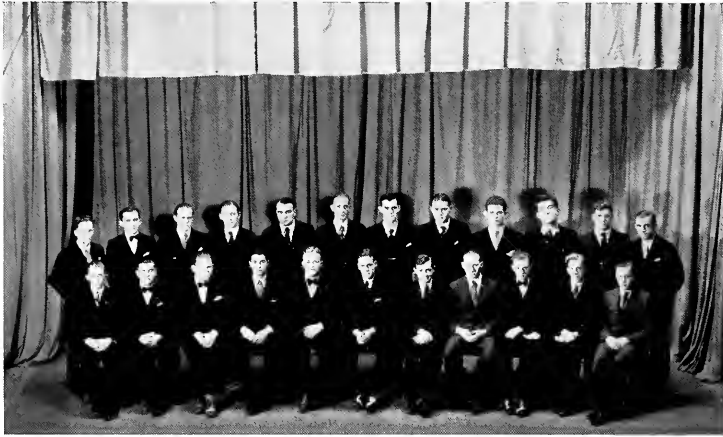


## Girls' Glee Club

<i>President</i>	- - - - -	EMOGENE LAWRENCE
<i>Vice President</i>	- - - - -	VIVIAN HOHN
<i>Treasurer</i>	- - - - -	} RUTH KIRKPATRICK
<i>Secretary</i>	- - - - -	
<i>Manager</i>	- - - - -	LEONE CARSON

The Clarion State Teachers College presents the members of the College Girls' Glee Club. For the past few years these girls under the direction of "Pop" and "Mom" Bland have traveled to various towns and presented The Programme Beautiful. The expressions of enjoyment from their audiences proves the merit of the programme. This year "Pop" felt he had a show that was better than ever. This Glee Club was even "honored in its own country," being enthusiastically received by the members of the College. The aim of the Club is to represent Clarion and all that it means to the students here.

# THE SEQUELLE



## Men's Glee Club

<i>President</i>	-	-	-	-	-	-	WILLIAM RUSSELL
<i>Vice President</i>	-	-	-	-	-	-	JAMES SINCLAIR
<i>Secretary</i>	-	-	-	-	-	-	HERBERT FALES

The Men's Glee Club directed by Mr. and Mrs. Bland is an organization for those men who enjoy singing. Every week the men meet for an hour's practice. The club has sponsored two chapel programs. The success of the club is due to the capable leadership of Mr. and Mrs. Bland and to them the success of the organization rightly belongs.



# THE SEQUELLE

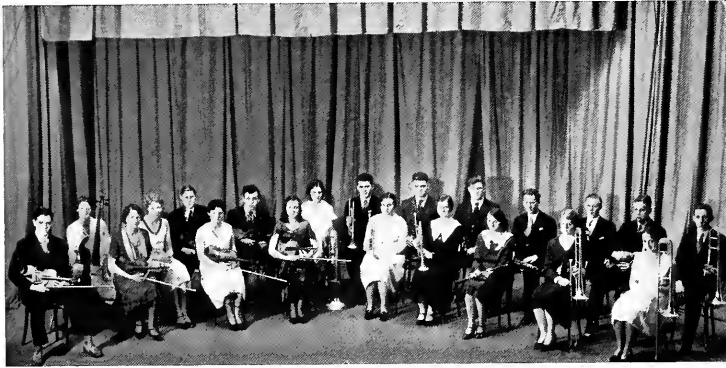


## The Vested Choir

*President* - - - - - GLADYS MACBLANE  
*Vice President* - - - - - MARY BORRONE  
*Secretary* } - - - - -  
*Treasurer* } - - - - - STANLEY LORE

The Vested Choir is truly a feature of Clarion. This organization, one of the finest on the campus, furnishes music for the Vesper Service on Sunday evenings. It is composed of about thirty members under the direction of Professor Bland. A great deal of time and effort is expended by both the choir and Professor Bland to make these musical programmes on Sunday evenings a success. This is a purposeful organization which is growing yearly.

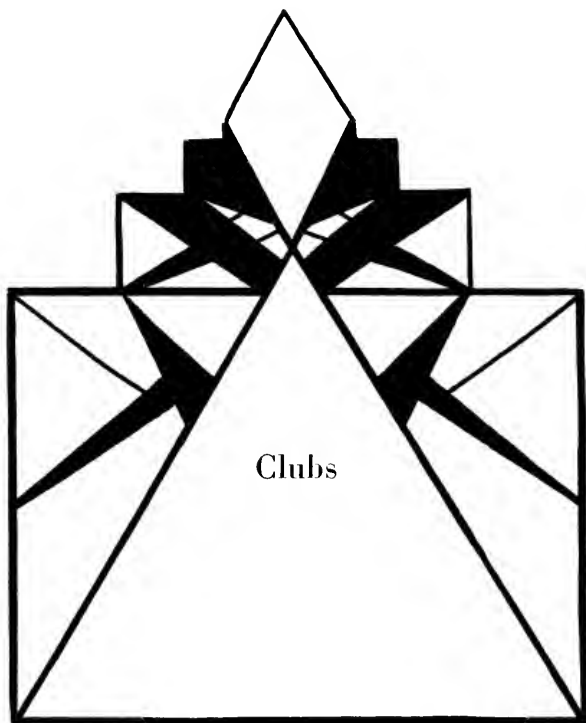
# THE SEQUELLE



## Orchestra

<i>President</i>	- - - - -	CHARLES FOX
<i>Vice President</i>	- - - - -	WILLIAM RUSSELL
<i>Treasurer</i>	- - - - -	} JEAN SHANKLE
<i>Secretary</i>	- - - - -	
<i>Librarian</i>	- - - - -	DONALD IRWIN

The College Orchestra, like the rest of the musical organizations on the campus is under the direction of Professor Bland and, like the others, it is growing and improving each year. This year the orchestra is composed of twenty-five members, many of whom are able musicians. Although the students did not hear a great deal of the orchestra the taste "tasted like more." Their public appearance is limited mainly to chapel programmes, but with the growth of the organization their concerts will be more numerous.



Clubs

# THE SEQUELLE



## College Players Club

### FIRST SEMESTER

<i>President</i>	- - - - -	KENNETH SNYDER
<i>Vice President</i>	- - - - -	MARGARET ELLIOTT
<i>Secretary</i>	- - - - -	ELSIE NELSON
<i>Treasurer</i>	- - - - -	ORRIS STOVER

### SECOND SEMESTER

<i>President</i>	- - - - -	ORRIS STOVER
<i>Vice President</i>	- - - - -	ISABEL RIEMER
<i>Secretary</i>	- - - - -	STANLEY LORE
<i>Treasurer</i>	- - - - -	LEVERNE LOGAN
<i>Faculty Advisor</i>	- - - - -	MISS MARIE MARWICK

The College Players Club is progressing in another successful year. Because of the large number of applicants it has been necessary to limit the membership to forty-five and members determined by try-outs.

The Club is at the present time preparing to give a one-act play in chapel and are also scheduled to present a public three-act play during the month of April. Much of their success is due to their faculty advisor, Miss Marwick.

# THE SEQUELLE



## Hostess Club

### FIRST SEMESTER

<i>President</i>	- - - - -	BETTY HESLEY
<i>Secretary</i>	- - - - -	CARRIE WAITE
<i>Treasurer</i>	- - - - -	MARIE EHLERS
<i>Programme Chairman</i>	- - - - -	ESTHER CLARK

### SECOND SEMESTER

<i>President</i>	- - - - -	EVELYN SWANSON
<i>Vice President</i>	- - - - -	THELMA BROWN
<i>Secretary</i>	- - - - -	GRACE SHREFFLER
<i>Treasurer</i>	- - - - -	DOROTHY CROOKS
<i>Programme Chairman</i>	- - - - -	MARIE EHLERS

The Hostess Club probably has the honor of enrolling the largest number of students of any organization on the campus. It endeavors to raise the social standards of the school by instructing the girls in the proper ways of conducting themselves. In the meetings, which take place on Friday evening of every alternate week, various problems of etiquette are discussed. This year the Club had complete charge of the Hallowe'en party which enabled the girls to put into practice some of their newly acquired social knowledge. The Club is under the direction of Miss Sims who guides the studies of the Club into channels of proper dress, the "how and why of dancing," proper table setting and service, and all other topics which will enable the women of the college to be better fitted socially.

# THE SEQUELLE



## Art Club

<i>President</i>	- - - - -	LOIS DICKINSON
<i>Vice President</i>	- - - - -	GRACE MARSHALL
<i>Secretary-Treasurer</i>	- - - - -	JOHN BLACK
<i>Faculty Advisor</i>	- - - - -	MISS HAZEL SANDFORD

The Art Club was founded under the leadership of Miss Sandford. This club meets every week with the purpose of interesting its members in artistic work, designing, and workmanship of various kinds, and the work so far has been very successful.

# THE SEQUELLE



## The Press Club

### FIRST SEMESTER

*President* - - - - - ELSIE NELSON  
*Vice President* - - - - - JOHN MOCHNICK  
*Secretary and Treasurer* - - - - - LYDIA DICKINSON

### SECOND SEMESTER

*President* - - - - - ESTHER CLARK  
*Vice President* - - - - - FLOYD GRADY  
*Secretary and Treasurer* - - - - - MARY BRITTON

The Press Club is a representative organization. Its membership is built up on a competitive basis and membership is limited in number to insure the best results possible. The Press Club makes a study of the publication of a college newspaper, and considers other aspects of Journalism outside its own field in order that its vision may be broader and its service greater. With the able assistance of its faculty advisor, Miss Bertha V. Nair, the organization has applied its findings to the publication of *The Clarion Call*. Students desirous of feeling the pulse of the college, read "The Call."

# THE SEQUELLE



## Debating Club

<i>Manager</i>	- - - - -	EMERSON BEST
<i>Secretary</i>	- - - - -	JOHN FETZER
<i>Coach</i>	- - - - -	MR. MACDONALD

In the early part of the winter short debates were given in the chapel to arouse interest in debating. Topics for debates included the blond and brunette question, intra mural sports, and woman's place in the world—outside of the home.

The question for the formal debates is this: Resolved That Capitalism as a system of economic organization is unsound in principle. The question is to be debated with California, Slippery Rock, and Shippensburg State Teachers Colleges.

Members of the affirmative team include John Fetzer, Guy Harriger, Marcella Kurtzhals, Maurice Moffat, and John Riemer. Speakers for the negative side of the question are Emerson Best, Margaret Elliott, Albert Henry, and Charles Logan.



## THE SEQUELLE



### The Outdoor Club

*President* - - - - - JAMES KASSEL  
*Secretary-Treasurer* - - - - - TILMAE GOSETTI

The Outdoor Club has become one of the outstanding and most attractive clubs on the campus. Since its initial organization two years ago, its membership list has been steadily growing.

However, in order that trips may be conveniently arranged and members, thereupon accommodated, the maximum number of active members has been limited to thirty.

Up to the present time, the club has enjoyed remarkable success under the leadership of Mr. Manson, capable club officers, and industrious and cooperating club members.

With its motto, "The Natural Way To A Better Life," as guide, the club is striving to foster a greater appreciation for both the beautiful and the useful in the outdoors.

Certainly, the Outdoor Club has before it a bright future, and its growing fame is steadily drawing to it a large number of the college students.

# THE SEQUELLE



## The Library Club

### FIRST SEMESTER

<i>President</i>	- - - - -	GENEVIEVE ROSSMAN
<i>Vice President</i>	- - - - -	EMMA LONG
<i>Secretary-Treasurer</i>	- - - - -	CARRIE BOYLE

### SECOND SEMESTER

<i>President</i>	- - - - -	MARIE EHLERS
<i>Vice President</i>	- - - - -	MARION BEST
<i>Secretary-Treasurer</i>	- - - - -	MARY WOMER
<i>Faculty Advisor</i>	- - - - -	MISS RENA M. CARLSON

Who hath a book  
 Has friends at hand,  
 And gold and gear  
 At his command;  
 And rich estates,  
 If he but look,  
 Are held by him  
 Who hath a book.

Who hath a book  
 Has but to read  
 And he may be  
 A king, indeed;  
 His kingdom is  
 His inglenook  
 All this is his  
 Who hath a book.  
 —By Wilbur D. Nesbit

The Library Club combines the advantages of group discussion of books which the members have found interesting with the actual experience of working in a college library. One of the most important projects of the club the first semester was the celebration of Book Week, which took the form of a Round-the-World Fair, held in the library. The second semester the club members will become acquainted with some of Pennsylvania's authors. Each member of the club works one period a week in the college library. This is found to be of value not only in helping them to find material for their own work, but also in becoming familiar with the organization of a library.

# THE SEQUELLE

## Varsity "C" Club

<i>President</i>	-	-	-	-	-	-	-	THOMAS WILSON
<i>Vice President</i>	-	-	-	-	-	-	-	RUSSEL SWEITZER
<i>Secretary</i>	-	-	-	-	-	-	-	JAMES KASSEL
<i>Treasurer</i>	-	-	-	-	-	-	-	CARL SMITH

All men who have earned the letter "C" in any of the major sports in Clarion State Teachers College are eligible for membership in the Varsity "C" Club. The purpose of this club is to promote a better cooperative spirit in the college; to conduct all athletic activities on the college campus, to encourage young men to participate in some form of college athletics, to encourage sportsmanship, and loyalty in the individuals undertakings.

During the past year the club sponsored the annual football banquet, the buying of awards, and all athletic activities.

## The New Plan for Athletics

Mr. Jones has drawn up a new plan for men's athletics which we hope can be successfully carried through for next year. The purpose of this plan is to provide facilities for greater participation in athletics on the part of the men students.

As many students as desire to join may belong to each activity. The football teams will each be allotted a number of players, as many teams as necessary being used. All players will be taught practically the same system and signals. For each of the teams a schedule will be arranged, whereby the football season will have a well-planned group of intra-mural games. From each team will be selected the best players, and these players will constitute the college team, which will play the games scheduled with other teachers colleges.

The plan as outlined will probably be used for every sport. Its advantage lies in the fact that the students will have an opportunity to receive some personal benefit from the money paid as a registration fee. In addition, a greater general interest will be created, more men will benefit from the physical exercise, and a higher ethical plane will be reached.

Mr. Jones is to be commended for this plan. He has the support of the student body, and we sincerely hope that his plan will be the starting point for a new era in athletics at Clarion State Teachers College.

# THE SEQUELE



DELTA PHI Epsilon.



PHETA Goes into a Nuddle



PHETA

SOME  
GIRLS



CHUMS.



B E T T Y

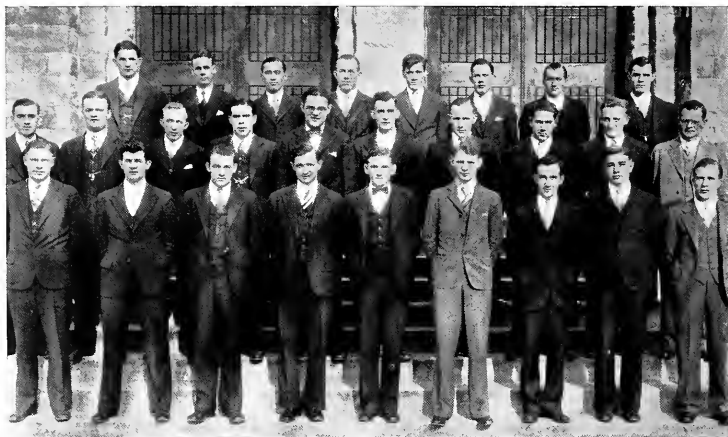


M A B E L L



Fraternities  
and Sororities

# THE SEQUELLE



## Α Γ Φ

*Established March, 1930*

### FRATRES IN FACULTATE

JAMES R. HUSTON

GILBERT A. HOYT

### FRATRES IN COLLEGIO

LEO BROWN

JAMES CASSEL

DANIEL COLEMAN

REGIS DUFFY

GEORGE GIFFORD

ROBERT HEVERLY

JOSEPH KATA

JOHN MOCHNICK

ROBERT POWERS

JOHN RIEMER

EMIL ROSENZWEIG

WILLIAM RUSSELL

JAMES SANDROCK

WILLIARD SHREFFLER

JAMES SINCLAIR

WILLIAM SLATTERY

GEORGE STARTZEL

RUSSELL SWEITZER

KENNETH TAYLOR

FRED THIER

JOHN TRUBY

KENNETH WILLIAMS

THOMAS WILSON

### PLEDGES

TYRUS BARTLEY

RALPH COULTER

EUGENE PIFER

MCMXXXII

One hundred six

# THE SEQUELLE



## Α Φ Α

*Established April, 1930*

### FRATRES IN FACULTATE

HARRY S. MANSON

CHARLES F. BECKER

### FRATRES IN COLLEGIO

BETZ, CHARLES  
FETZER, JOHN  
FOX, CHARLES  
GALLAGHER, FRED  
HARRIGER, GUY  
HILEMAN, COLIN  
KASSEL, JAMES  
KREMMELE, CLETUS

LOGAN, CHARLES  
LOGAN, LE VERNE  
LORE, STANLEY  
MILLER, HOMER  
MURPHEY, ALFRED  
ROWLEY, ELLWOOD  
SCHAEFFER, DONALD  
SIMPSON, KENNETH  
SLAUGENHAUPT, WALTER

SMITH, CARL  
SNYDER, KENNETH  
STEWART, BUDD  
STOVER, ORRIS  
TRAVIS, WESLEY  
WELLS, LEWIS  
WORTS, JOE  
WHITEHILL, PAUL

### PLEDGES

THOMPSON, BIRD  
BREAKEY, KINSEL

HENRY, ALFRED  
VAN DYKE, PAUL  
LOVELL, LE ROY

McKINNEY, MORTON  
SHERRIEB, EDWARD

# THE SEQUELLE



## $\Sigma \Phi \Delta$

*Established October, 1930*

### FRATRES IN FACULTATE

H. L. BLAND

J. O. JONES

### FRATRES IN COLLEGIO

ALCORN, LEWELLYN  
ASHBAUGH, BYRON  
ASHBAUGH, HARRY  
BARRANCO, SAMUEL  
HARTMAN, EUGENE

HARTMAN, KENNETH  
KENNEMUTH, CHALMERS  
MANSFIELD, ROBERT  
MASTER, NORBERT  
MCGAUGHEY, RUSSELL  
MILLER, JOSEPH  
MOORE, JEWELL

SHANKLE, EDWARD  
SNYDER, MERRILL  
SNYDER, WAYNE  
STAUFFER, RALPH  
STEWART, WILLIAM

MCMXXXII

One hundred eight



# THE SEQUELLE



## Z K N

### SORORES IN COLLEGIO

BARNETT, MARGARET  
CAMPBELL, FLORENCE  
DEAN, ELIZABETH  
ELWOOD, IRENE  
FINCH, IRENE

GEIST, ETHEL  
GROVES, MARY EVELYN  
KOPP, EDNA MAE  
KOPP, MILLITEEN  
LOGUE, BAYONNE  
MACBLANE, GLADYS

McDANIEL, FRANCES  
ORR, IVA  
PRESSLER, VIOLET  
SNYDER, ELEANOR  
TRUBY, ESTHER

### SPONSOR:

MISS HELEN BARTON

### PATRONESSES:

MRS. MERRITT DAVIS      MRS. W. B. RANKIN

## THE SEQUELLE



### Σ Δ Φ

#### SORES IN COLLEGIO

BALDWIN, BETTY  
BARNES, MARTHA  
BEST, MARION  
BRUCE, MABEL  
BINNEY, BETTY  
BOYLE, CARRIE  
CARR, NETTIE

CARSON, LEONE  
CROOKS, DOROTHY  
DICKINSON, LYDIA  
ELLIOTT, MARGARET  
FERROTTI, MADELINE  
HARLEY, FLORENCE  
HAY, GRACE  
HESLEY, BETTY

HARVEY, RUTH  
HOHN, VIVIAN  
JOHNSTON, LOUISE  
KRIBBS, JEANETTE  
LEHMAN, ELIZABETH  
LONG, EMMY LOU  
NELSON, ELSIE

#### SPONSOR:

Mrs. BLAND

#### PATRONESSES:

Mrs. HARRY WILSON

Mrs. AMABEL RALSTON

MISS BERTHA V. NAIR

MCMXXXII

One hundred ten

# THE SEQUELLE



## Λ Χ Δ

### SORORES IN COLLEGIO

CHEATHAM, MARY  
CLARK, ESTHER  
DAVIES, EDNA  
EHLERS, MARIE

KLINE, ROMA  
MARSHALL, GRACE  
MOHNEY, RUTH  
NEIL, FRANCIS  
RIEMER, ISABELLE

SMITH, WINIFRED  
SYPHRIT, JANE  
SMATHERS, PHYLLIS  
YOAS, ALTA

### SPONSOR:

LOIS GREEN

### PATRONESSES:

MRS. W. J. DAVIES

MISS ELIZABETH KEITHAN    MRS. N. E. HEETER  
MRS. HARRY MANSON

# THE SEQUELLE



## Θ Α Λ

### SORORES IN COLLEGIO

BAKER, MARGUERITE  
BEST, WILMA  
BILLHEIMER, BERNICE  
BROWN, THELMA  
CARPENTER, HELEN

COLLNER, MADELINE  
FULTON, RUTH  
JOHNSON, LORRAINE  
KOOMAN, ELEANOR  
KURTZHALS, MARCELLA  
MONKS, VERA  
PERRY, DOROTHY

RHEA, BETTY  
RHEA, JEAN  
ROSSMAN, GENEVIEVE  
SHANKLE, JEAN  
WELTY, THELMA

### PLEDGES

GALBREATH, RUTH

JOHNSTON, ALTA  
MULL, HELEN

ZILHAVER, FRANCIS

### SPONSOR:

Mrs. HARRY RENN

### PATRONESSES:

Mrs. THOMAS ARNOLD

Mrs. JAMES R. HUSTON

Mrs. G. A. HOYT

MCMXXXII

One hundred twelve

# THE SEQUELLE



## Φ Σ Π

NATIONAL HONORARY EDUCATIONAL SOCIETY

Founded at Warrensburg, Missouri, in 1916

*Established Lambda Chapter May, 1930*

### OFFICERS

<i>President</i>	- - - - -	JOSEPH KATA
<i>Vice President</i>	- - - - -	RUSSELL SWEITZER
<i>Recording Secretary</i>	- - - - -	JAMES CASSEL
<i>Treasurer</i>	- - - - -	ALFRED MURPHY
<i>Historian</i>	- - - - -	LEWIS WELLS

### FACULTY MEMBERS

CHARLES F. BECKER	M. E. MACDONALD	DR. G. C. L. RIEMER
	HARRY S. MANSON	

### ACTIVE MEMBERS

ASHBAUGH, HARRY	LOGAN, CHARLES
BEST, EMERSON	LORE, STANLEY
CASSEL, JAMES	MURPHEY, ALFRED
KASSEL, JAMES	SWEITZER, RUSSELL
KATA, JOSEPH	WELLS, LEWIS
	WILSON, THOMAS

# THE SEQUELLE



## Π Γ Μ

NATIONAL HONORARY SOCIAL SCIENCE SOCIETY

Founded at Winfield, Kansas, in 1924

PENNSYLVANIA IOTA CHAPTER

*Established May, 1930*

### OFFICERS

*President* - - - - - JOHN MOCHNICK

*Vice President* - - - - - JOSEPH KATA

### MEMBERS

BEST, EMERSON  
GOSETTI, TILMAE  
KATA, JOSEPH

LORE, STANLEY  
MOCHNICK, JOHN

MURPHEY, ALFRED  
TRAVIS, WESLEY  
WILSON, THOMAS

MCMXXXII

One hundred fourteen

# THE SEQUELLE



## Pan-Hellenic

### PAN-HELLENIC COUNCIL

#### *First Semester*

*President* - - - - - BETTY HESLEY  
*Secretary-Treasurer* - - - - - WINIFRED SMITH

#### *Second Semester*

*President* - - - - - VERNA MONKS  
*Secretary-Treasurer* - - - - - NELLIE WEAVER

#### MEMBERS

IDA CRAWFORD	DOROTHY PERRY
ROMA KLING	AMANDA ALLSHOUSE

The Pan-Hellenic Council is the newest of the new organizations on the Clarion campus. With the founding of various Sororities among the women students it was found necessary to form a council which would serve as a regulating body. With this in mind the Pan-Hellenic Council was formed. It consists of two girls from each of the five sororities with Miss Margaret Boyd as advisor. Its main purpose is the regulation of "rushing" and the enforcement of rules necessary to the well-being and smooth-running of sorority life.

# THE SEQUELLE



## Δ Π Σ

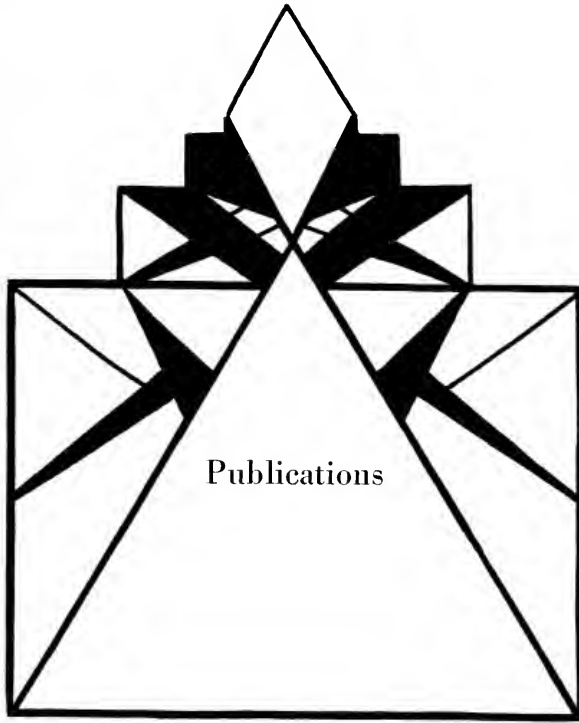
### SORORES IN COLLEGIO

ALLSHOUSE, AMANDA  
BANNER, BEATRICE  
CRAWFORD, IDA  
DwyER, LOUISE  
FAIR, JOSEPHINE  
HEETER, MADELINE  
HURLBERT, LILLIAN  
IRWIN, ROXANNA

McGraw, HARRIETTE  
McKINLEY, SYLVIA  
MORRISON, GLADYS  
RICE, EILEEN  
STANDLEY, MARGARET  
SOMMERVILLE, EULA  
SWANSON, EVELYN

*Sponsor:* Miss WILLIAMSON





Publications

# THE SEQUELLE

## Sequelle Staff

*Editors-in-Chief* - - - - STANLEY LORE, LEVERNE LOGAN  
*Art Editors* - - - - THELMA WELTY, GRACE MARSHALL  
*Literary Editors* - - - - JAMES CASSEL, ISABEL RIEMER  
*Athletic Editors* - - - - JOSEPH KATA, FLORENCE LINDBERG  
*Joke Editors* - - - - NORBERT MASTER, JEAN SHANKLE  
*Editors of Organizations* - ESTHER CLARK, KENNETH SNYDER  
*Business Managers* - - - - JOHN MOCHNICK, MARTHA PENCE  
*Typists* - - - - - - - - ELSIE NELSON, CLETUS KREMMEL  
*Photography* - - - - - - - - MARCELLA KURTZHALS

## THE SEQUELLE



### The Sequelle Staff

The Sequelle Staff of 1932 has attempted to produce a book of which every graduate may feel proud. It is modernistic in theme, and its keynote is simplicity. The hundreds of hours of ungrumbling work are testimony of the cooperative staff. The staff, composed partly of sophomores, partly of seniors, is grateful for the help of Miss Nair, William Russell, Mary Britton, Mary Womer, Lewis Wells, and others who gave their help, although not belonging to the staff. We sincerely hope that this production is deserving of the praise we feel sure it will gain.

THE SEQUELLE STAFF

# THE SEQUELLE



## MISS BERTHA V. NAIR

To Miss Nair, the sponsor and advisor of the Press Club, the club owes whatever success it has had this year. However, if at any time the club has failed to live up to its standards or duties, it is due to the organization itself—not to its sponsor who has always offered the right suggestion at the right time. It would have saved Miss Nair many sleepless nights if the club had taken the responsibility for its publication as keenly as she did. Her willingness and sincerity have never been questioned. The Sequelle Staff is grateful to her for the many suggestions and corrections which have helped to uphold its standards.

## Clarion Call

"The 'Calls' are out!" Such is the cry that goes up from our campus once a month when the paper is placed in the mail boxes for the students' perusal.

Since the Call is a monthly paper, the news in it tends to be old to some readers, yet by some of the students new facts are read. If all the issues for the entire year are kept, they make a satisfactory resume of the year's events.

## THE CALL STAFF

### *Editor-in-Chief*

MARTHA PENCE

### *News Editors*

LEWIS WELLS, EMERSON BEST,  
HELEN EAKIN, MARY BRITTON,  
DONALD SHAFFER

### *Girls' Athletic Editor*

FLORENCE LINDBERG

### *Boys' Athletic Editors*

EDWARD MOONEY, JAY MCKEE

### *Clubs Editor*

LYDIA DICKINSON

### *Music Editor*

ESTHER CLARK

### *Humor Editors*

ISABELLE RIEMER, HELEN PEPPER

### *Literary Editors*

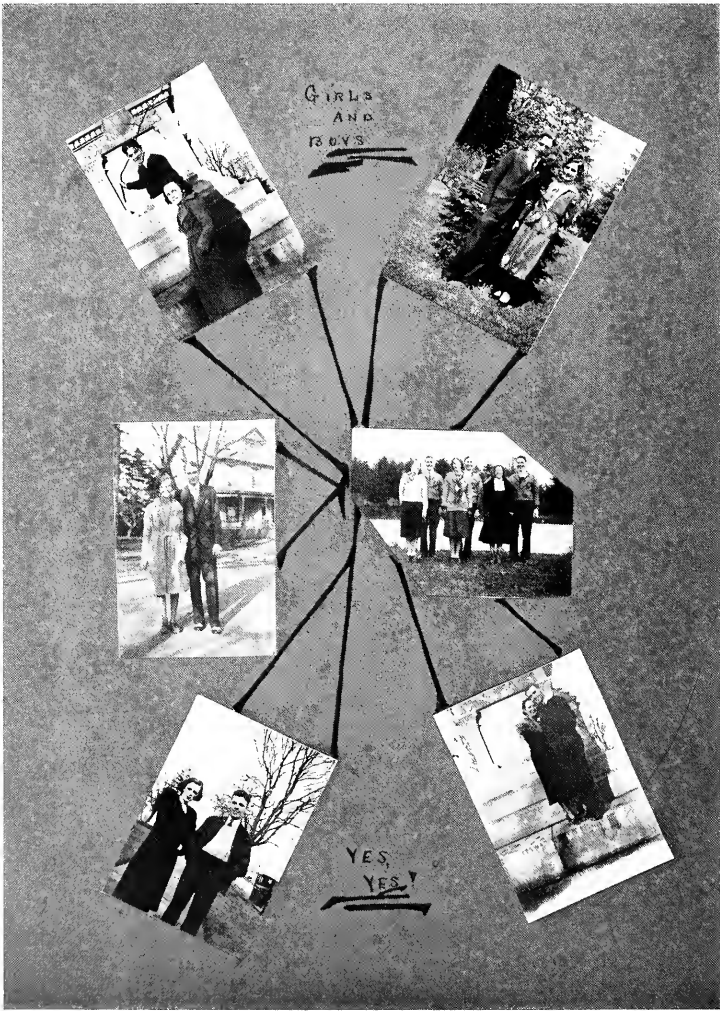
JAMES CASSEL, LUGILLE SILVIS,  
EILEEN RICE

### *Faculty Advisor*

MISS BERTHA V. NAIR



# THE SEQUELLE



# THE SEQUELLE



# THE SEQUELLE



MATH—OOH!



COMMUTERS

EDUCATIONAL  
FACTORS  
OF THE  
INSTITUTION



PSYCHE IS BUILT!



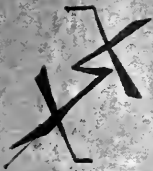
MUSIC AND  
— ?



SCHOOL



THOSE LAWS  
OF LEARNING!



ENGLISH  
AND



EVEN  
MID  
LIT





# THE SEQUELLE



# THE SEQUELLE

## Calendar

### SEPTEMBER

- 8—Registration.
- 9—Classes begin. A new start on the old grind.
- 10—Greetings from Dr. Riemer and Mr. Wilkinson.
- 11—Fellowship Weiner Roast—hot-dogs for all.
- 12—"Y" Reception. Best ever. We notice Bob and Jean.
- 13—Vespers begun by a talk by Rev. Stewart. Grapes at Francys'.
- 14—All settled as the second week begins.
- 15—The History Department discusses the Constitution in Chapel.
- 16—Promises for a successful year shown at both "Y" meetings.
- 17—College Players hold first meeting.
- 18—Who said that "Bill" Russell is getting fat?
- 19—Homesick Freshmen have gone home for the week-end.
- 20—Chicken.
- 21—Senator Davis spends the day with us.
- 22—Dr. Riemer spoke on Berlin in Chapel. He had pictures, too.
- 23—The "Y. W." had marshmallows. "Wid" and "Joe" built the fire.
- 24—College Players initiate new members at a dinner-dance.
- 25—A real "Pep" meeting. Beat Allegheny!
- 26—We didn't, but the team looked fine.
- 27—Dr. Platt at Vespers. Which is larger, audience or choir?
- 28—Girls' Glee Club have annual weiner roast for new members.
- 29—Freshman Week begins. The purple and gold dinks and arm-bands are becoming .
- 30—Freshmen walk in lock-step. Mary Evelyn would like to call "Boone", "sweetheart".
- 31—Allah! Allah! Sophomore! Press Club dinner. Sequelle Staff announced.

### OCTOBER

- 1—Quality Point ratings come out.
- 2—"Herb" can certainly make the Freshmen sing.
- 3—Sophomores throw a party for the Freshmen.
- 4—Mr. MacDonald at Vespers.
- 5—Fraternities busy with pledge parties.
- 6—P. O. D. Statesmen in Chapel. Who was caught in Marguerite's room?
- 7—"Y. M." delegates go to Butler.
- 8—"Bob" Powers under the weather.
- 9—Should Wednesday and Friday Chapel be compulsory? Pan-Hellenic Tea.
- 10—Alliance falls. 32-0.
- 11—Louise McGiffen would love to cook in Logan's kitchen.
- 12—Food in Jean's room. They tell us that "Toot", "Peb", and Jean go to Sunday School.
- 13—"Fud" and Elsie come together. "Shavings" presented on Lyceum.
- 14—Clarion Call comes out.
- 15—"Wilkie" met Lord Cornwallis at Philadelphia.
- 16—"Pep" meeting for Indiana game.
- 17—1. S. T. C.—12, C. S. T. C.—0.
- 18—Dr. Murray speaks at Vespers.
- 19—"Bill" Slattery comes to Clarion.
- 20—Masons get a showering of apple cores.
- 21—We see familiar faces at Institute.
- 22—Some of the faculty attend Armstrong County Institute.
- 23—Sophomores win Intramural Hockey Tournament.
- 24—What happened when Slippery Rock went home with a score of 25 and we stayed here with 0?
- 25—Bishop Ward of Erie delivers inspiring address at Vespers.
- 26—Football team gets real work-out. Get ready for Edinboro.
- 27—"Pep" thinks she has to work too hard.
- 28—Ask Dan the difference between a "Yid" and a Jew.
- 29—"Teddy" comes in at 5:00.
- 30—We wanted to go to the "Firemen's Ball".
- 31—We beat Edinboro 16-0. "Wid" was acting captain. Hallowe'en Party.

### NOVEMBER

- 1—Rev. Cowen from Oregon speaks in Vespers. The crowd is no larger.
- 2—Mr. Mohny is out hunting. How many wish they were too?
- 3—Something has happened to Duffy's shoulder.

# THE SEQUELLE

- 4—"Maker of Dreams" presented by Dramatic English Class.
- 6—Get ready for California.
- 7—California comes out on top, 6-0.
- 8—Rev. Crawford, Ida's father, speaks at Vespers.
- 9—Education Week begun. Rushing.
- 10—Doctors meet here. Any apples?
- 11—Mid-Semester grades come out.
- 12—Final inspection of Gym.
- 13—Fetzer and Kassel in American Legion Show. Grady, too.
- 14—Lock Haven wins, 12-0.
- 15—We enjoy Mr. Becker and Mrs. Miller at Vespers.
- 16—We are now using the Gym.
- 17—Who is "Wid's" girl now?
- 18—Book Fair in Library. Fire(?) in Becht Hall.
- 19—Soccer Tournament goes to the Freshmen.
- 20—Z. K. N. have dinner.
- 21—Silence Week over at last.
- 22—Walks in Wilson's Woods still interesting.
- 23—Sororities pledge new members.
- 24—A Γ Φ hold pledge banquet in honor of Football Squad. "Ganzy" Benedict guest speaker.
- 25—Home for Thanksgiving.
- 30—Back again. Faculty club party.

## DECEMBER

- 1—J. H. S. faculty and student teachers have banquet at Methodist Church.
- 2—Joint meeting of "Y". Rev. Stewart speaker.
- 3—Basketball squad taking form.
- 4—Girls' Glee Club makes debut at St. Petersburg.
- 5—"Rosey" has a birthday.
- 6—Mr. Manson pleases congregation of Presbyterian Church.
- 7—15 more shopping days until Christmas.
- 8—Senior class of Corsica our guests.
- 9—Who told "Freddy" that there wasn't any Santa Claus?
- 10—No girls at Varsity "C" Banquet. Jesse Quatse and Ted Rosenzweig the guests of honor.
- 11—Girls' Glee Club at Polk.
- 12—What do we do on Saturdays?
- 13—John, "Stan", and Colin blend their voices.
- 14—Z. K. N. sponsor "Merely Mary Ann".
- 15—Dr. and Mrs. Riemer entertain the Seniors at dinner. "Phil", "Dot", "Shad", "Pep", "Peffer", and "Marty" social privileged.
- 16—"Y" celebrates Christmas.
- 17—Brookville-31, Clarion-14, Kiwanis-17, Faculty-12.
- 18—"Herb" gives "Iffi" a bath. Dramatic English Class presents "The Travellers".
- 19—Christmas Party. Barkey's Sultans of Tempo.
- 20—Christmas celebrated at Vespers.
- 21—Spare moments spent shopping.
- 22—Home tomorrow.
- 23—Merry Christmas!

## JANUARY

- 4—Happy New Year.
- 5—It's great to be back.
- 6—Health and Hygiene groups busy.
- 7—"J. O." enjoys dinner. A X Δ shower "Issy" with handkerchiefs.
- 8—Which is the better date, blonde or brunets?
- 9—C. S. T. C.-49, Jeannette A. C.-32.
- 10—Miss Nair the attraction at Vespers.
- 11—Car riding "pers" taken away.
- 12—Meeting of Board of Trustees. What do they do anyway?
- 13—Girls interested in "Girl Scout Leadership Training Course".
- 14—Exams.
- 15—More exams.
- 16—First Semester ends. Bridge Tea in Lounge for student teachers. St. Vincents win 22-14.
- 17—The vacation we had between semesters.
- 18—Beginning of Second Semester.
- 19—Some of us have left. We see some new faces.
- 20—Mr. Huston speaks on "Internationalism" at "Y".

# THE SEQUELLE

- 21—Where is winter?
- 22—Inter-Collegiate Athletics debated. Glee Club at Brockway.
- 23—California wins 31-15.
- 24—Dr. Radcliff of Brookville at Vespers.
- 25—Does "Jock" really have to teach English?
- 26—Vespers put in hands of students. Put it over!
- 27—A thrilling basketball game. Clarion loses to Indiana 17-15.
- 28—Did Lois have a wreck in Washington?
- 29—Whisperings of the Inter-sorority Ball.
- 30—What shall we do with these week-ends?
- 31—Where has January gone?

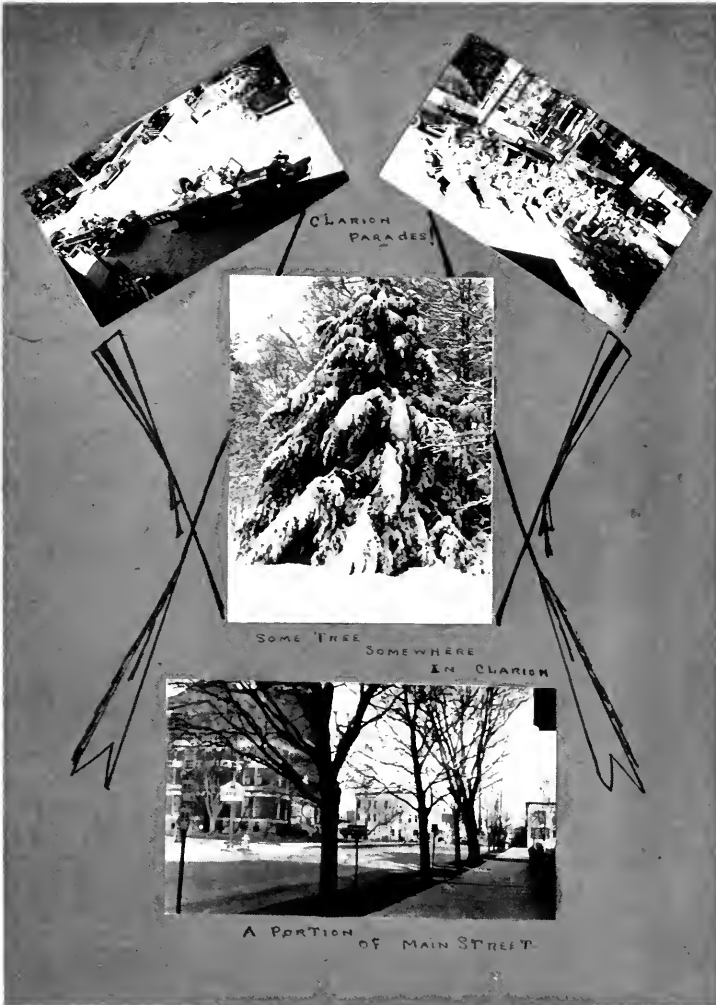
## FEBRUARY

- 1—Now we're going to start working in earnest.
- 2—Sterling Oils subdued 41-19.
- 3—Snow.
- 4—No snow.
- 5—Bring on Slippery Rock.
- 6—Clarion 31, Slippery Rock 20. A party after the game.
- 7—Still excited about last night's game.
- 8—Imperial Welch Singers. Could anything be finer?
- 9—Out-Door Club talks on Birds.
- 10—Rev. Rizer begins series of talks.
- 11—"Dad" Welch presents pictures to Training School.
- 12—Glee Club at Emlenton. "Chuck" Grant sends regards.
- 13—Jock shines in victory over California. Score 23-21.
- 14—Rev. Dickenson of Brookville at Vespers.
- 15—Girls' Intra-mural Basketball begins with a win for the Sophomores.
- 16—Rev. Bleakney of Pittsburgh gives splendid talk in Chapel.
- 17—We are sorry to hear that Miss Williamson is ill.
- 18—Dr. Riemer is off for Washington.
- 19—The Inter-Sorority Ball a huge success.
- 20—Don't ask what happened at Slippery Rock. The chicken dinner was lost.
- 21—Mr. Huston on "George Washington" at Vespers.
- 22—We'd like a holiday.
- 23—Washington program and Third Graders in Chapel.
- 24—Rev. Rizer still draws crowds to "Y".
- 25—We just couldn't get "Lupe" out last night.
- 26—A Columbus and Washington program in Miss Mohny's room.
- 27—What happened to "Herb" and "Issy"? "Wid" and "Lupe"?  
"Moon" and "Phill"?
- 28—"Wid" and Mable again. What about that fraternity key—it isn't "Wid's"?
- 29—Edinboro wins. Who's going in the "Lily Pond"?

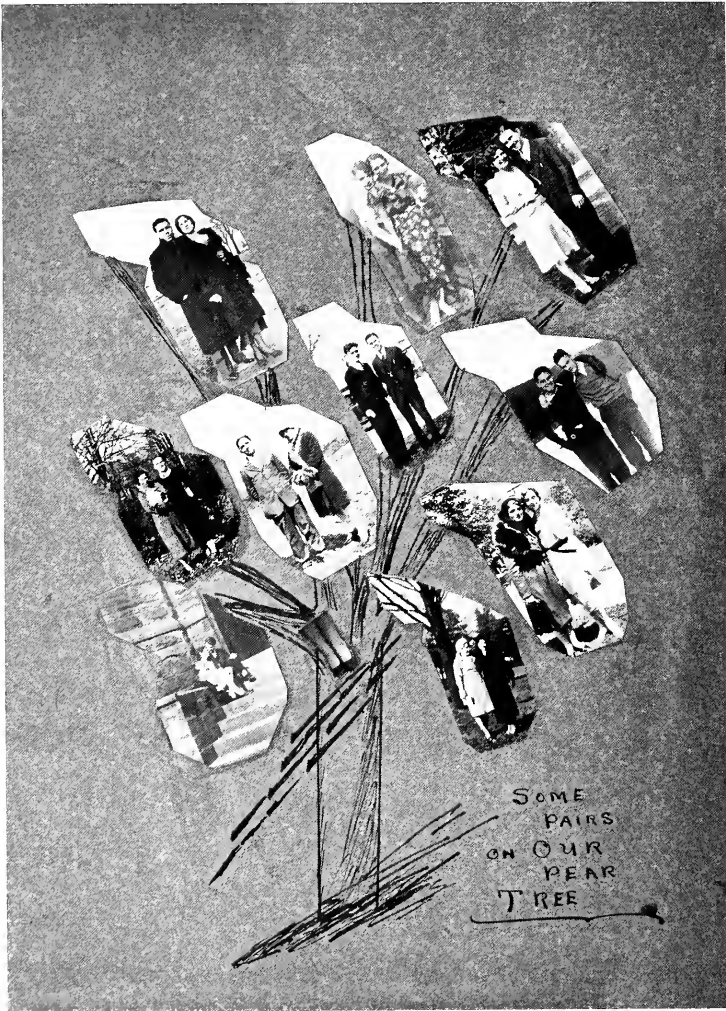
## MARCH

- 1—Again the Sterling Oils lose, 19-10. Glee Club at Brookville.
- 2—"Pat" makes quite the Roman girl.
- 3—Miss Barton holds dancing class.
- 4—Freshmen busy with "Hop" arrangements.
- 5—"Zero" excited about the band he's getting.
- 6—Edinboro here. Dr. Crawford and family here for the game. They won 32-22.
- 7—"Stan" and "Johnny" terribly busy with "The Sequelle".
- 8—Student Government discussion in Chapel. We saw "Herb" and Isabel dancing.
- 9—"Wilkie" at Philadelphia.
- 10—A X Δ Tea for their patronesses at Riemer's apartment.
- 11—Glee Club trip to Titusville. Did we eat in Oil City?
- 12—Poor "Fud". Why did "Wid" Simpson leave Esther in the show?
- 13—We liked Mary Womer's father and his talk on the "Passion Play".
- 14—Z. K. N. sponsor "Dance Team".
- 15—C. S. T. C. adopts new system of Self Government.
- 16—Cat dissection. What does "Rosey" want with the tail?
- 17—Freshman Hop. Lew Platt and His Playboys. It was a great dance. We discover that  
"Lew" Wells is a good director.
- 18—Lew Sarrett thrills us all!
- 19—"Sequelle" material in. Home again!

# THE SEQUELLE



THE SEQUELLE



# HUMOR



## THE SEQUELE

Mr. Huston: And the Britons still wore the same clothes their ancestors did.

Edwards: Oh, the dirty things!

Phil: Look, Moon, my hair is full of electricity.

Moon: Why not? It's connected to a dry cell.

Ruth: My dear, Jim was perfectly priceless last night

Grace: In what way?

Ruth: Oh, broke again!

Fud: Say Sandy, how did you get that red on your lip?

Sandy: That's my tag for parking too long on one place.

Wid: I fell for you when I first saw you.

Lupe: Yes, and you're still lying.

Bill Slattery: Do you do repairing here?

Garage owner: Yeah, but we don't do manufacturing.

High School principal: What does this B. S. degree from C. S. T. C. stand for?

Durso: Er—Bridge shark.

Moon: What are you doing in front of the mirror all this time?

Heverly: I'm counting my mustache.

Boone: As I was walking through the woods, suddenly an enormous black bear stood in my path. And in no more time than it takes to raise my trusty shotgun to my shoulder, he lay dead at my feet.

Gallagher: What did he die of?

Mr. Mohney: No sir, no checks. I couldn't cash a check for my own brother.

Travis: Well, of course, you know your own family better than I do.

Mr. Huston: Wasn't Andrew Jackson an orphan?

George Zagst: Not at first.

Russell: Well, doctor, how am I?

Doctor: Very well; your legs are still a bit swollen, but that doesn't disturb me.

Russell: Sure, doctor, if your legs were swollen, it wouldn't disturb me either.

MacGraw: I don't intend to be married until I am thirty.

MacBlane: I don't intend to be thirty until I am married.

With some of them looking like this ( ) and some of them looking like this ) ( women had better keep the long skirts.

Getting the baby to sleep is hardest when she is about eighteen years old.

Slattery: She is a dangerous woman with a past.

Sweetzer: Well, let her bury it, poor creature.

Slattery: She can't. It's not dead yet.

Wid: This lever here controls the brake. It is put on very quickly in an emergency.

Lupe (learning to drive): I see, something like a negligee.

Jim, Jr.: Is it true about the ass disguising himself with a lion's skin?

J. R. H.: So the fable goes, but now the colleges do it with a sheepskin.

On being asked to define a self-made man, one of the co-eds made the following statement:

"A self-made man is like a self-made cigarette—a lot of Bull wrapped in a transparent cover."

Stan (writing a report): I don't know what to say about those two peroxide blondes who made such a fuss at the football game.

Johannie: Oh, why not, say 'the bleachers went wild'.

Miss Nair: Can you give me a more elegant rendering of the sentence, 'the sap rises'?

Coulter: The boob gets out of bed.



## THE SEQUELLE

The first mention of baseball is in the Bible.

Eve stole first, Adam stole second, Gideon rattled the pitchers, Goliath was put out by David, and the prodigal son made a home run.

Mail Order Query (from C. S. T. C.): I have a thick neck, prominent eyebrows, and a pug nose. What collar should I wear?

Reply: We recommend a leather one with brass studs and a buckle.

Fud: What did you use to open that can of peaches?

Ruth: A can opener, of course, why?

Fud: From the fragments of language I heard, I thought you were opening it with prayer.

When some big Prune,  
The son of a Nut,  
Marries a Lemon  
And the Pear  
Have a Peach of a daughter,  
With Cherry lips  
And the Rose in her cheeks,  
How in the Devil  
Can you believe in Heredity?

After listening to the co-ed tear off some of the very latest jazz on the piano, the clergyman interrupted, "Have you ever heard the Ten Commandments?"

To which co-ed Rea replied, "Whistle a few bars and I think I can follow you."

A flapper is a woman who does what an old maid would like to do and hasn't the constitution to stand it.

Peb: Where will we go tonight?

Bill: Let's go up on the belfry.

Peb: Nothing doing. I was there once with a fellow and the bell tolled on me.

Pifer: Do clever women make the best wives?

Gifford: Clever women don't marry.

Russ: My girl has been kissed by only two parties

Ben: Yes. Republicans and Democrats.

Pete: Honey, I'm knee deep in love with you.

Ruth: All right, I'll put you on my wading list.

Set the alarm for two, please.

You and who else?

Brownie: You remember you told me that if I put a piece of wedding cake under my pillow I would dream about my future husband?

Genny: Well, did you?

Brownie: That's what worries me; I dreamt about the Seventh Regiment.

Mary Evelyn: I asked him if he loved me, and he said 'Mon Dieu'.

Campbell: Oh, how wonderful. That's French for 'My dear'.

Is it true that statistics show that women live longer than men?

They ought to. Paint's a great preservative you know.

Dr. Riemer: What is democracy?

Anne Smalstig: Government of the people, by the people and for the people.

Dr. Riemer: Who said that?

Anne: I did.

Shankle (boarding bus): Well, Noah, is the ark full?

Driver: Nope. Only one jackass so far. Come on in.

Mr. Huston: What do you mean by saying that Benedict Arnold was a janitor?

Snyder: The book says that after exile he spent the rest of his life in a basement.

Hans: Aren't the stars numerous tonight?

Edna: Yes, and aren't there lots of them, too?







# ADVERTISING

*Your Alma Mater*

The  
State Teachers  
College

AT CLARION, PENNSYLVANIA

Prides Itself In Distributing As Teachers Over  
The Commonwealth Men and Women of Sterling  
Worth. Such Is Its History. It Is Confident  
That You Will Not Break The Tradition.

ROLL OF HONOR BANK

# First National Bank

OF CLARION

*Founded in 1865*

*OLDEST BANK IN CLARION COUNTY*



An Old Bank with Modern Methods

Your Account is Appreciated



*MEMBER FEDERAL RESERVE BANK*



WE EXTEND AN INVITATION TO ALL  
TO CALL AND SEE OUR NEW BANK BUILDING



## Four Per Cent On Savings



**OFFICERS**

H. M. Kaufman, President  
Lewis Collner, Vice President  
H. F. Strattan, Asst. Cashier

**DIRECTORS**

M. M. Kaufman  
H. E. Rugh  
Lewis Collner  
C. F. Strattan  
Edw. A. Wilhelm  
John M. Myers

Capital \$135,000.00

# CITIZEN'S TRUST COMPANY

CLARION, PA.



H. M. HUFNAGEL, President  
C. W. AMSLER, Vice President  
C. C. MOORE, Assistant Treasurer  
B. L. BOWMAN, Assistant Treasurer

---

Largest Banking Institution in Clarion  
RESOURCES OVER \$2,800,000.00

---

ACTS AS

Executor  
Administrator  
Guardian  
Trustee

Young enough to be progressive  
Old enough to be conservative



# CITIZEN'S TRUST COMPANY

CLARION, PA.



**PENNANTS  
BANNERS  
PILLOWS**

Add dignity, color and spirit to your school work by the use of Felt Pennants, Banners, Pillows, Emblems, Caps, Tams and Chenille Letters. No order too small to receive our attention.

*Catalog Free*  
**Standard Pennant Co.**  
BIG RUN, PENNA.

The Cover on this Book is the  
Product of

**The David J. Molloy  
Company**

2857 N. Western Avenue  
CHICAGO, ILLINOIS

**ATTENTION**

The College band uniforms will consist of a cap and coat first, with the probable addition of trousers at a later date.

Bib—What's your roommate like?

Jane—Darned near everything I've got

Simpson—Is this the mirror department?

Clerk—Yes, sir.

Simpson—Well, I'd like to see something odd in a mirror.

Clerk—Just take a look in this one.

Miss Nair—Mr. Rosenzweig, what are the two genders?

Rosy—Masculine and feminine. The masculines are divided into temperate and intemperate and the feminines into frigid and torrid

Russ—Where'd you get that terrible black eye?

Clet—That's a birth mark.

Russ—That? A birth mark?

Clet—That's right. I tried to get into the wrong berth.

# For Real Satisfaction

USE

**Earl's Golden Guernsey  
Pasteurized Milk and Cream**

DELIVERIES DAILY—KNOX AND CLARION

**Earls Sanitary Milk Company**

Phone 60

KNOX, PA.

**LATONIA  
THEATRE**

OIL CITY

Presenting the Finest in Screen  
and Stage Attractions.

*Your Patronage will Be Greatly  
Appreciated*

Special Rates to Theatre Parties

Compliments

of

**EDDIE'S CAFE**

A city and a chorus girl  
Are much alike, 'tis true;  
A city's built with outskirts,  
A chorus girl is too!

Schuchers—What's the matter with you,  
you look so warm?

Brown—I am. I just bought me one of  
those two-pants suits.

Marie—Is there anything you can do  
better than anyone else?

Jean—Yes, read my own writing.

Miss Boyd—In your story I notice you  
make the owl hoot 'to whom' instead of  
'to whoo'.

Cassel—Yes, this is a Boston owl.

Sweitzer—How are you, Sandrock?

Sandy—Nice.

Huston—Name a great time saver.

Heverly—Love at first sight.

Serbin—Men are all alike.

Rea—Then why do you want three or  
four of them?



Compliments

of

**Fred Jenkins**



**From**

**a**

**Friend**

FLOWERS

PLANTS

**Phillips'  
Greenhouse**

FLOWERS FOR ALL  
OCCASIONS

Member Florist Telegraph  
Delivery

Phone 209

After the Show  
it's the

**SWEETLAND**

For Refreshments of  
Distinction

Wilson—What were your grades last semester?

Sinclair—Jules Verne.

Wilson—How's that?

Sinclair—Twenty Thousand Leagues Under the C.

Ruth M.—Jimmie was priceless last night.

Grace—What! Broke again!

Kata—That boy has good stuff in him.

Clet—Ask him where he got it.

Rosy—You're so dumb I wouldn't even call you a ham.

Ty—Why not?

Rosy—A ham can be cured.

Ellwood—He says I'm the nicest girl in town. Shall I give him a date?

Campbell—No, let him keep on thinking it.

Fran—Why are you singing "Awake My Soul" now?

Nell—My foot's asleep.

**The New Physical  
Education Building**



Is An

Example of the

Work of



**JOHN E. TRUNK  
Construction Co.**

Call at

**JOE'S**

for

**Homemade  
Doughnuts  
and Rolls**

FRUIT

CONFECTIONERY

ICE CREAM

Chocolate Milk, Hot or Cold

Corner Wood and 8th Avenue

CLARION, PA.

**J. M. CROOKS**

**Clothing**

If you appreciate a good spread  
for your bread use

**ELMO CREAMERY BUTTER**  
the kind they use at Clarion  
State Teachers College.

Made by

**Elmo Creamery Co.**

Earl L. Black, Secretary  
KNOX, PA.

Ty—Where do you have the most dif-  
ficulty in making a speech?

Moon—In my knees.

Logan—There was just one thing that  
kept you from being a bare-faced liar.

Grady—What was that?

Logan—Your moustache.

Anyone (in meeting Fales)—Pleased to  
meetcha.

Fales—Most people are.

Jean R.—I say, Betty, what is the Order  
of the Bath?

Betty R.—Well as I have experienced it,  
it's first the water's too hot; then it's too  
cold, then you're short of a towel; then  
you step on the soap, and finally the call  
bell rings your number.

Jock—What did the prof say when you  
told him you sat up all night with the  
baby?

Bob—He asked me what her name was.

Compliments of

**Ganoe's Barber  
Shop**

**JOHN HENROTIN**

**Expert Shoe  
Repairing**

*Service With a Smile*

630 Main Street  
CLARION, PA.

**SAM AMATO**

**Fresh Fruits  
and  
Vegetables**

**MAKE THIS STORE  
YOUR STORE**  
Watch Your Savings Grow

**J.C.PENNEY CO.**

609 Main Street  
CLARION, PA.

CLARION'S LEADING  
DEPARTMENT STORE

**Wein Bros.**  
WHERE QUALITY PREDOMINATES

## Campbell's Drug Store

THE REXALL STORE

Established 1852

CLARION, PENNA.

Truby—Do your shoes hurt?  
Campbell—No, but my feet do.

Fred—Do you take English, too.  
Pete—No, I'm still taking English 1.

Kline—I've changed my mind  
Ed—Does it work any better?

Smitty—You are the only girl I have  
ever loved.

Dot—Then begone! I'm not training  
amateurs.

Novelettes are short novels, but—  
Pantalettes are long pants.

Fud—There is a reason for everything.  
Ruth—You forgot the men

FOUND IN THE VESPER PROGRAM:

Yes, that is true, and something more.  
You'll find where'er you roam,  
That marble floors and gilded walls  
Can never make a house.

## Metal Arts Co., Inc.

Craftsmen in  
Emblematic Jewelry

and

Commencement  
Stationery

Rochester, New York  
Charles E. McDonald  
3126 Landis Avenue

Sheraden, Pittsburgh, Pa.

Everything in

FINE GROCERIES,  
CANDY AND TOBACCO

## WM. W. PHERO

36 8th Avenue

CLARION, PA.

For Service Phone 19-J

COMPLIMENTS

## NAIL'S

BASEMENT RESTAURANT

**Meet, Eat, Treat**  
 at  
**The Chocolate Shoppe**  
 Toilet Preparations  
 Candy Proprietaries  
 Lunches, ARDEN Preparations  
 Dick Boggs, Prop.

**The Sequel**  
 to  
 Every Party  
 Meet and Eat  
 at  
**Ronald Corbett Drug Store**  
 (Roosevelt Pharmacy)

Miss Sims: Pat, in what respect had the Romans a great advantage over us?

Pat Pressler: They didn't have to learn Latin.

Mr. Huston: Can any of you students translate this from Cicero?

Wid: But, Mr. Huston, we were speaking of Latin.

Zero (in Locker room): Which one of you guys changed the combination of my lock?

Lore: Pop, do you think I shall ever be able to do anything with my voice?

Pop: Well, it might come in handy in case of a shipwreck.

Sweitzer: I called on Mabel last night, and I wasn't any more than inside the door before her mother asked me my intentions.

Sinclair: That must have been embarrassing.

Sweitzer: Yes, but that's not the worst of it. Mabel called from upstairs, "That isn't the one, mother".

**College Book Store**  
**FITZGERALD'S**

A. G. CORBETT DRUG CO.  
 CLARION, PA.

**Ditz and Mooney**  
**Hardware Co.**

EVERYTHING IN  
 HARDWARE

THE  
**Orpheum Theatre**  
 For  
 High Class Shows

**ORCHID**  
**Beauty Shoppe**

617 Main Street  
 CLARION, PA.

**V. P. MUSI**  
 CLEANERS AND TAILORS

Compliments  
 of  
**Edward A. Wilhelm**  
 CLARION, PA.

# AN APPRECIATION

We have enjoyed keenly our work in producing this edition of the SEQUELLE.

The laudable ambition of Stanley Lore and the staff, to make the best SEQUELLE yet, was kept well in mind when we printed and bound the book. We wanted to do our part as best we could and hope we have pleased you.

For twenty years we have made modest claim to a position as leaders in production of School Annuals. That we have held this leadership in Pennsylvania, Ohio and West Virginia is attested by our success this year in turning out books for leading schools in this section.

**The Ziegler Printing Co., Inc.**

BUTLER, PENNSYLVANIA.

## APPRECIATION

The Sequelle Staff of 1932 expresses sincere thanks and appreciation for your hearty cooperation and support of our efforts in this publication.

We hope that this 1932 Sequelle will ever serve to renew pleasant associations formed at Clarion State Teachers College.

## Clarion Lumber Co.

For

Lumber  
and

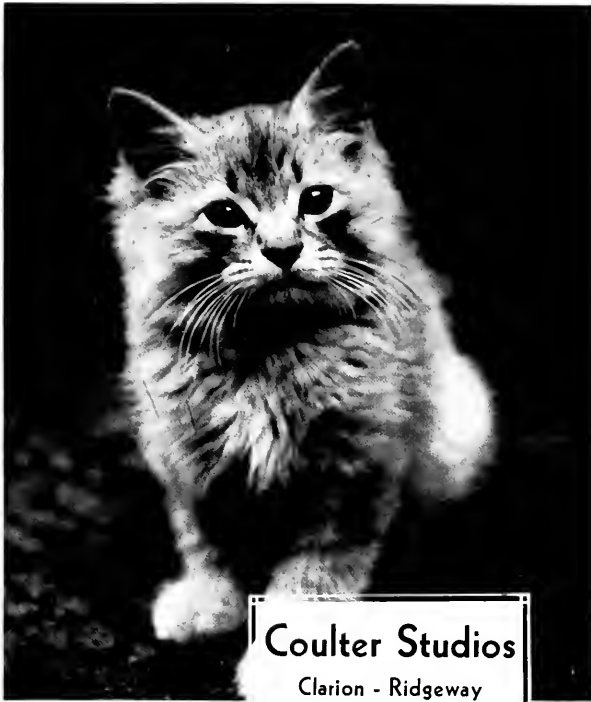
Builders' Supplies

PROMPT SERVICE

Phone 98

**THE WOODBURY**  
**ENGRAVING AND ELECTROTYPE COMPANY**  
Specialists in the designing and execution of High School and College Publications  
**CANTON, OHIO**





## Coulter Studios

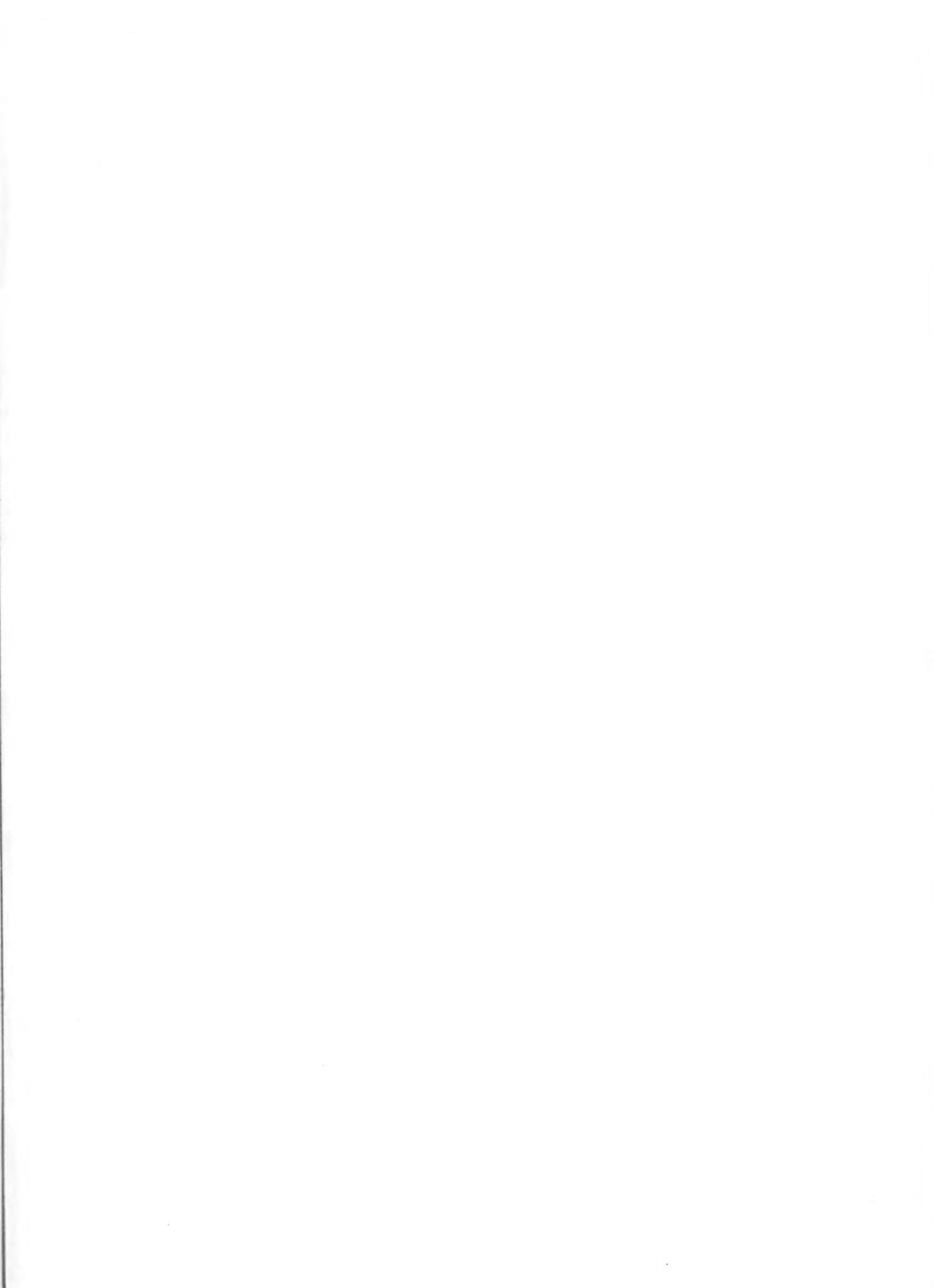
Clarion - Ridgeway  
Penna.

No other group of friends will ever mean quite so much to you as the old classmates. Exchange photographs with them today.

Your photographs will be priceless treasures among your souvenirs.

Do not forget that our kodak finishing department offers highest quality developing and printing at a very liberal discount to C. S. T. C. students.











CLARION UNIVERSITY OF PENNSYLVANIA

3 9363 00386 9234

Spec. Col.

qLD

1017 Sequelle

.C88

1932

Spec. Col.

qLD

1017

.C88

1932

