

Spec. Col
GLD
1017 /
.C88
1935
C.2



LIBRARY
ARION UNIVERSITY
CLARION PA

Digitized by the Internet Archive
in 2010 with funding from
Lyrasis Members and Sloan Foundation

<http://www.archive.org/details/sequelle1935clar>

RUTH KUHN EDITOR

HARRY HAMILTON BUSINESS MANAGER

THE
SEQUELLE



AN ANNUAL PUBLICATION
OF THE SENIOR CLASS OF
STATE TEACHERS COLLEGE

CLARION PENNSYLVANIA

IT is with pride that I, the "Sequelle," present myself to the world. My pages represent an endeavor to differentiate between the commonplace and the unusual, the product being, I hope, an exact and interesting account of school life during the past year. I am a success if I accurately picture the splendid and outstanding group of young men and women who have been responsible for my production.

My makers have chosen "The Doorway" for my pictorial theme. The selection of such a theme should prove interesting to you, my readers. It has been through these doorways that you

DUCTION

came as Freshmen, crude and unpolished. Daily, for four years you have passed beneath these same doors in an effort to acquaint yourself thoroughly with your chosen profession. Now the time has arrived at last when you are to pass outward through the doors, somewhat finished products, ready to take your places in the world, both as able teachers and citizens.

I, the "Sequelle," make but a single request of you. May I, in the years to come, live in your memory as a symbol of the days in which you lived and laughed and loved at Clarion.





JOHN O. JONES

THE Classes of 1935 take pleasure in dedicating their "Sequelle" to John O. Jones, Director of Physical Education for Men.

For seven years Mr. Jones has rendered excellent service to the Clarion State Teachers College in both academic and athletic work.

For seven years our congenial coach has contributed to the development of the physical prowess of the men matriculating at Clarion.

Should Mr. Jones determine to pursue medical study, the Classes of 1935, the College, and the community of Clarion wish him much success.



IN MEMORIAM



WILLIS YARDLEY WELCH A.M., Sc. M.

Clarion State Teachers College, a host of devoted alumni, and many Clarion friends note with much sorrow the passing of Willis Yardley Welch, head of the Science Department of the Clarion State Normal School for twenty-seven years, and retired the past nine years. His kindly virtues, his mellowed philosophy, his eminence as an educator, and his consistently humanitarian spirit made him loved by all. "Dad" Welch, as he was affectionately known, shall live long in the hearts of the many men and women whose lives have been enriched through contact with him. His many beneficences cannot be too much appreciated. The College and community respectfully salute a great and worthy man—"Dad" Welch.



IN MEMORIAM



JOHN BALLENTINE, Ph. D.

The Rev. Dr. John Ballentine, widely known gentleman, scholar and educator, has passed but the effects of his genial, sincere, wholehearted deeds shall ever be remembered. For forty-three years he made unstinted contributions to the Clarion State Normal School in the fields of Latin and Greek. His contributions were not merely academic; they were of inspirational, spiritual, moral, character-moulding nature. His scores of warm friends were made not by deliberate effort but as a result of his attractive personality and lovable nature. The good Dr. Ballentine has done in this world has not been interred with him. It lives vibrantly. Clarion State Teachers College cherishes the memory of an eminent scholar and educator. Friends recall his upright convictions, his tact, his generous spirit, his fine sensibilities, and his encompassing love for his fellow men.

JAMES PINKS

Clarion State Teachers College deeply regrets the passing of James Pinks who was associated for thirty-four years as bursar with the Clarion State Normal School. During the early periods of financial strife he rendered diligent and sagacious service to the Normal School. From 1887, the year of the birth of the Normal School, to 1921 Mr. Pinks was associated with the school. Excellent management characterized his long-time period of service.

OUR SCHOOL

Clarion is one of the most beautiful teachers colleges in Pennsylvania. The location is ideal and the campus is unsurpassed in beauty. The buildings are conveniently situated and well equipped with the best facilities for student use.



• COLLEGE •

TO THE CLASS OF 1935

As far as I can discover, the present senior class is the best class in more ways than one that the College has ever graduated. Fine classes have left the halls of our College. They are scattered throughout the land, serving their fellowmen in a variety of ways. At no time, however, did a class leave Old Seminary with as many young men and young women who had devoted themselves to their studies as diligently for four years beyond graduation from high school as the Class of 1935. Classes of the past were well equipped for their work according to the standards of their day; the Class of 1935, however, has enjoyed the use of much better facilities for the development of character, intellect, and personality. I am certain, too, that they have taken advantage of them. I cannot help feeling, then, that they will make excellent teachers or fill other positions of responsibility.

If I may judge by what they have done here as students, and by the way in which they have done it, many of them will continue their studies by themselves or at institutions of graduate level. At least one-half of them, I am sure, will secure the master's degree, three or four the doctor's degree. This is not a dream, although it may seem so now. Others have done so with no more money and with less promise. In time the members of the Class of 1935 will be expected to take the places of the graduates of former years and fill them even better than they were filled by their former incumbents. No one can tell what he can do until he tries. Of one thing he may be sure: to reach the goal I am setting here will require tenacity, persistence, and the sacrifice of some things that may seem at the time of great moment. The man of courage and determination will press on, however, in spite of all that may seem to stand in the way.

DR. G. C. L. RIEMER.



DR. G. C. L. RIEMER

BOARD OF TRUSTEES

H. M. RIMER, <i>Chairman</i>	Clarion
F. C. ANDREWS, <i>Vice-Chairman</i>	New Bethlehem
J. E. HENRETTA	Kane
MRS. W. B. RANKIN	Clarion
MRS. LILLIAN TREZISE	DuBois
E. A. WILHELM, <i>Secretary</i>	Clarion
MRS. RUTH BOVARD	Tionesta
R. LR. SNYDER	Shippenville
R. H. DUNTLY	Corydon

PAST PRINCIPALS

A. J. DAVIS	1887-1902
SAMUEL WEIR	1902-1904
J. GEORGE BECHT	1904-1912
H. M. SHAFER	Jan. 1, 1912-July 1, 1913
A. T. SMITH	Jan. 1, 1914-July 1, 1914
A. P. REESE	July 1, 1914-July 1, 1918
C. C. GREEN	1918-1926
R. M. STEELE	1926-1928
G. C. L. RIEMER	1928 - President since June 15, 1929

FACULTY

- HELEN J. ARMSTRONG, B.S.
Secretary to President
- EDNA J. BARNES, A.M.
Intermediate Grades
- HELEN M. BARTON, A.M.
Physical Education
- CHARLES F. BECKER, A.M.
Director of Teacher Training
- MARGARET A. BOYD, A.M.
English
- RENA CARLSON, A.B.
Librarian
- CLARENCE L. DOW, Ph.D.
Geography
- FRANCES J. EASLEY, A.M.
Primary Grades
- MARILLA EDMISTON, R.N.
Nurse
- MILDRED E. GAMBLE, A.M.
Intermediate Grades
- ANNA B. GRAHAM, B.S.
Junior High School
- RALPH E. HEIGES, Ph.D.
Social Studies
- EFFIE BLANCHE HEPLER, A.B.
Primary Grades
- GILBERT A. HOYT, M.S.
Junior High School
- JOHN O. JONES, B.S.
Physical Education
- MARY B. WILLIAMSON, A.M.
Education
- BERTHA J. LEIFESTE, A.M.
Primary Grades
- HARRY S. MANSON, A.M.
Biological Sciences
- MARIE MARWICK, A.M.
Speech
- FOSTER M. MOHNEY
Bursar
- HELEN MOHNEY, B.S.
Intermediate Grades
- BERTHA V. NAIR, A.M.
English
- DONALD D. PEIRCE, Ph.D.
Physical Science
- GLADYS RICH, A.M.
Public School Music
- G. C. L. RIEMER, Ph.D., LL.D.
President
- BESSIE M. RUNYAN, B.S.
Junior High School
- HAZEL SANDFORD, A.M.
Art
- SARA SEYLER
Dietitian
- HELEN D. SIMS, A.M.
Dean of Women, Latin
- HELEN WALTERS, B.S.
Primary Grades
- JOHN W. F. WILKINSON, A.M.
Mathematics



EQUIPOISE

All is not gathered from what we do or the
fame we have attained;

All is not counted from what we say or the
knowledge we have gained.

We are not judged by the shame we brought
upon another's head.

We are not cursed because we vowed, "We
would rather be dead!"

Our value is weighed on a larger scale and
all the difficulties we've overcome

Should balance the weight on the other side,
Tolled from kindnesses offered or friendships
won.

- DOROTHY WILSON.



• CLASSES •

SENIOR CLASS

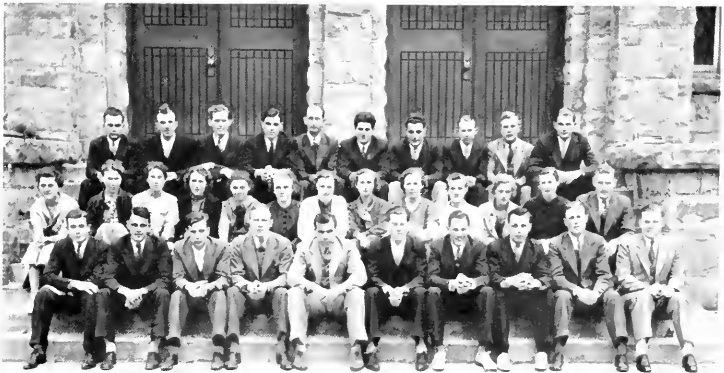
OFFICERS

<i>President</i>	HOMER MILLER
<i>Vice-President</i>	GUY HARRIGER
<i>Secretary-Treasurer</i>	LEROY LOVELL

Four years ago a verdant Freshman Class, numbering one hundred and sixty students, matriculated. The present Senior Class, consisting of thirty-seven of the original group, has enjoyed four years of the excellent educational opportunities offered by the college.

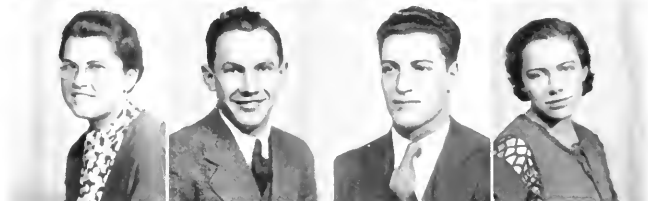
The Class of 1935 has been an active group in the academic and extra-curricular activities of the Clarion State Teachers College. During the past quadrennium it has been the core of the athletic organization, and has constantly supplied leaders for the dramatic, music and student government departments.

The Class of 1935 bids farewell to its Alma Mater with reluctance, and extends best wishes for continued consistent improvement.





S
E
N
I
O
R
S



BYRON L. ASHBUGH

Emlenton, Pa.

Emlenton High School

B. S. in Secondary Education

Y. M. C. A. 1-2-3-4, Men's Student Council 3-4, Forensics Club 2, Outdoor Club 1-2-3, Scout Master Training Course 2.

ELIZABETH BALDWIN

Σ A Φ

Greensburg, Pa.

Greensburg High School

B. S. in Secondary Education

Glee Club 1-2-3-4, Student Senate 2, Girls' Student Council 1-2-4, Sequelle Staff 3-4, Outdoor Club 3-4.

MARTHA BARNES

Σ A Φ

Cherry Tree, Pa.

Cherry Tree High School

B. S. in Elementary Education

Glee Club 3-4, N. A. C. E. 4, Primary Club 2-3-4, Hostess Club 2, Y. W. C. A. Cabinet 4.

TYRUS BARTLEY

Δ F Φ

West Monterey, Pa.

Parker High School

B. S. in Secondary Education

Football 2-3-4, Outdoor Club 3-4, International Relationships 2, Clarion Call Staff 3, Varsity "C" Club 2-3-4, Men's Student Council 3-4.

DOROTHY LOUISE BROWN

Θ A A

McKeesport, Pa.

McKeesport High School

B. S. in Primary Education

Y. W. C. A. Cabinet 4, Women's Student Council 4, N. A. C. E. 4, Sequelle Staff 4.

LEO BROWN

Δ F Φ

Marienville, Pa.

Marienville High School

B. S. in Secondary Education

Outdoor Club 2-3-4, Student Senate 2-3, Football 2-3-4, Basketball 2-3-4, Track 1-2, Athletic Council 3-4, Sequelle Staff 4, Varsity "C" Club 1-2-3-4.

RALPH CASTAFERO

Δ F Φ

Brockway, Pa.

Brockway High School

B. S. in Secondary Education

Football 1-2-3-4, Basketball 1-2-3, Track 1-2, Varsity "C" Club 2-3-4, Outdoor Club 4, Y. M. C. A. 1.

VIRGINIA CROOKS

Δ X A

Clarion, Pa.

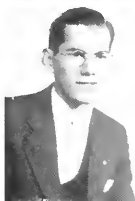
Clarion High School

B. S. in Secondary Education

Glee Club 1-2-3, Basketball Varsity 1, Hockey 1-2-3-4, Soccer 2-3-4, Press Club 2-3.



S
E
N
I
O
R
S



RALPH JAY FULTON

Α Γ Φ

Clarion, Pa.

Clarion High School

B. S. in Secondary Education

College Players 2-4, Football 2, Basketball 2,
Varsity "C" Club 2-4.

GUY N. HARRIGER

Α Φ Α Φ Σ Η

Kittanning, Pa.

Kittanning High School

B. S. in Secondary Education

Community Senate 3-4, Outdoor Club 3, For-
ensics Club 1, President of Men Day Student
Association 3, Industries Club 4, Y. M. C. A.
2, Glee Club 3.

FRED GALLAGHER

Α Φ Α

Dutch Hill, Pa.

East Brady High School

B. S. in Secondary Education

Football 2-3-4, Outdoor Club 3-4, Y. M. C. A.
1, Student Council 4, Varsity "C" Club 2-3-4.

MADELIN HEFTER

Α Η Ε Η Γ Μ

St. Petersburg, Pa.

St. Petersburg High School

B. S. in Secondary Education

Community Senate 3-4, Y. W. C. A. 4, Wom-
en's Student Council 2, Clarion Call Staff 4,
Pan Hellenic 4, Press Club 3-4, Outdoor Club
2, Hostess Club 1.

LOUISE A. GATES

Parkers Landing, Pa.

Parker City High School

B. S. in Elementary Education

Glee Club 3-4, N. A. C. E. 4, Sequelle Staff 4,
Art Club 3-4, Outdoor Club 1.

ROBERT J. HEVERLY

Α Γ Φ Η Γ Μ

Bellefonte, Pa.

Bellefonte High School

B. S. in Secondary Education

Football 1-2-3-4, Student Senate 3-4, Men's
Student Council 2-3-4, Basketball 1, Baseball
3-4, Varsity "C" Club 1-2-3-4, Men's Athletic
Council 3-4.

EARL C. HADDEN

Α Φ Α

New Bethlehem, Pa.

New Bethlehem High School

B. S. in Secondary Education

International Relations Club 2, Industries Club
4.

DONALD IRVIN HINCKEN

Clarion, Pa.

Clarion High School

B. S. in Secondary Education

Track 1-2-3, Varsity "C" Club 3-4, Industries
Club 4, Tumbling Team 2, Forensics Club 1-2-3,
Sequelle Staff 2-4, Men's Glee Club 2, Scout
Teachers Training 1-2-3.





S
E
N
I
O
R
S

KERMIT NORMAN KENEMUTH
Clarion, Pa.
Clarion High School
B. S. in Secondary Education
Y. M. C. A. 4.

HAROLD K. KNIGHT
A Φ A
Knox, Pa.
Edenburg High School
B. S. in Secondary Education
Outdoor Club 2-3-4, Industries Club 4, Y. M.
C. A. 2.

RUTH KUHN
Σ Δ Φ
Clarion, Pa.
Clarion High School
B. S. in Elementary Education
Glee Club 1-2-3-4, N. A. C. E. 4, Seaside
Staff 2-4, Primary Club 2-3-4, Hostess Club
1-2.

J. LEROY LOVELL
A Φ A
St. Petersburg, Pa.
St. Petersburg High School
B. S. in Secondary Education
Outdoor Club 1-2-3-4, Industries Club 4, Varsity
"C" Club 3-4, Manager Track Team 2,
Glee Club 3-4, Student Senate 4, Men's Day
Student Association 4.

BETTY MALLON
Σ Δ Φ
Curwensville, Pa.
Curwensville High School
Transfer Villa Maria College, Erie
B. S. in Secondary Education
Forensics 2-3, College Players 4, Inter Col-
legiate Debating Team 3, Pan Hellenic 3, Se-
quelle Staff 4.

FLOYD McHENRY
Clarion, Pa.
Clarion State Normal School
P. S. in Secondary Education
Industries Club 4.

JAY MCKEE
A Φ A Φ Σ Π
Sligo, Pa.
Sligo High School
P. S. in Secondary Education
Press Club 2, Y. M. C. A. 4, Student Senate 3,
Men's Student Council 4, Outdoor Club 4,
Sequelle Staff 2-4, Call Staff 1-2-3.

MORTON F. MCKINNEY
A Φ A Φ Σ Π
Clarion, Pa.
Clarion High School
P. S. in Secondary Education
Clarion Call Staff 2-3, Glee Club 1-2-3-4, Or-
chestra 1-2-3-4, A Cappella Choir 3-4, Track
1-2-3-4, Basketball 1, Industries Club 4, Wan-
derlustigen Club 3.



S
E
N
I
O
R
S



HOMER MILLER

A Φ A

Knox, Pa.

Edenburg High School

B. S. in Secondary Education

Class President 3-4, Class Vice President 1-2, Student Senate 4, College Players 4, Outdoor Club 1-2, Geography Club 3, Sequelle Staff 2.

VALJEAN RHEA

Θ A A

Knox, Pa.

Edenburg High School

B. S. in Secondary Education

Pan Hellenic 4, Art Club 4, Outdoor Club 2-3, Y. W. C. A. 4, Hostess Club 1, Primary Club 4

DANA R. PETERSON

Knox, Pa.

Edenburg High School

B. S. in Secondary Education

Basketball 1-2-3-4, Football 1-3-4, Track 1, Varsity "C" Club 1-2-3-4, International Relations Club 2.

EMIL ROSENZWEIG

A Γ Φ

McKeesport, Pa.

Norwin High School

Bellefonte Academy

B. S. in Secondary Education

Football 1-2-3-4, Basketball 1-2-3-4, Baseball 1-3, Varsity "C" Club 1-2-3-4, International Relations Club 2.

CLIFFORD I. REA

Reynoldsville, Pa.

Reynoldsville High School

B. S. in Secondary Education

A Cappella Choir 4, Men's Glee Club 4

HORACE GERALD STAHLMAN

Clarion, Pa.

Clarion High School

B. S. in Secondary Education

College Players 1-4, College Forensics 2, Men's Glee Club 2-4, Track 1-3, Press Club 2.

BETTY L. RHEA

Θ A A

Knox, Pa.

Edenburg High School

B. S. in Secondary Education

Women's Student Council 1, Community Senate 4, Women's Athletic Council 2-3-4, Outdoor Club 1, Varsity Soccer 1, Basketball 1, Hockey 1, Sequelle Staff 2-4.

BIRD W. THOMPSON

A Φ A

Clarion, Pa.

Clarion High School

B. S. in Secondary Education

Track 1-2-3, Basketball 1, A Cappella Choir 2-3, Varsity Review 3, International Relations Club 1-2, Varsity "C" Club 1-2-3.





S
E
N
I
O
R
S

SAMUEL A. WILHELM
Α Γ Φ
Clarion, Pa.
Clarion High School
B. S. in Secondary Education

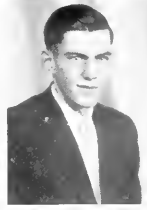
Basketball 1-2, 3-4, College Players 2, International Relations 2, Varsity "C" Club 3-4.

DOROTHY G. WILSON
Σ Α Φ
Clarion, Pa.
Clarion High School
B. S. in Secondary Education

Press Club 3, Pan Hellenic 4.



S
O
P
H
O
M
O
R
E
S



BETTY ISABELLE BERTRAM

Oil City, Pa.

Oil City High School

Primary

A Cappella Choir 1-2, Glee Club 1-2, Y.W.C.A. 1, Hiking Club 1, Primary Club 1.

BEULAH COPE

Knox, Pa.

Edenburg High School

Intermediate

Wanderlustigen Club 1, Hostess Club 1, Primary-Kindergarten Club 2.

DORA ANTOINETTE BOARIO

Δ Σ Ε

Leechburg, Pa.

Leechburg High School

Primary

Women's Student Council 2, Women's Glee Club 2, Hiking Club 1-2, Y.W.C.A. Cabinet 2, College Players 2.

BETTY ISABEL CORBETT

Θ Α Α

Clarion, Pa.

Clarion High School

Primary

Primary Club 1-2, Hostess Club 1, College Players Club 2.

EARL BONNETT

Α Γ Φ Φ Σ Η

Rimersburg, Pa.

Union High School

Intermediate

College Players 1-2, President Freshman Class 1, President Sophomore Class 2, Varsity "C" Club 1-2, Football 1-2, Track 1.

JUANITA E. DEAN

Warren, Pa.

Warren High School

Intermediate

Women's Glee Club 2, Y.W.C.A. 2, Hiking Club 2.

CLARENCE E. BROCIUS

Summerville, Pa.

Summerville High School

Intermediate

Travel Club 1, International Relations Club 1, Geography Club 2.

GLADYS D. DONALDSON

Tidioute, Pa.

Tidioute High School

Intermediate

Art Club 1, College Players 2.





S
O
P
H
O
M
O
R
E
S

GERALDINE DOVERSPIKE

Kittanning, Pa.

Kittanning High School

Intermediate

Geography Club 1, Primary Club 1-2, Hostess Club 2, N.A.C.E. 2.

BETTY DUNNE

A H E

Bradford, Pa.

Bradford High School

Intermediate

Community Senate 2, Women's Student Council 1-2, Press Club 2, Y.W.C.A. 2, Varsity Basketball 1, Primary Club 1.

THYRA E. FLYNN

Kersey, Pa.

Kersey High School

Intermediate

Hostess Club 1-2, Forensics 1-2, Y.W.C.A. 1.

VERNA FREEDLINE

Falls Creek, Pa.

Falls Creek High School

Intermediate

Hiking Club 1-2, Hostess Club 1, Art Club 2.

DOROTHY HARRIGER

A H E

Leeper, Pa.

Farmington High School

Primary

Hiking Club 1-2, Primary Club 1, Y.W.C.A. 1.

DOROTHY G. HARRISON

A H E

Clarion, Pa.

Clarion High School

Primary

Primary Club 2, Art Club 1-2.

LOIS LOUISE HARTZELL

Θ A A

Hawthorn, Pa.

Hawthorn High School

Primary

Y.W.C.A. 1-2, Primary Club 1-2, Outdoor Club 1-2.

HELEN LUCILLE HAYES

Brookville, Pa.

Brookville High School

Intermediate

Wanderlustigen Club 1, Hostess Club 1, Art Club 2.



S
O
P
H
O
M
O
R
E
S



REED B. HESS

Fern, Pa.

Ashland High School

Intermediate

Art Club 1-2, Glee Club 1, Press Club 2.

MAURICE E. KORB

Grampian, Pa.

Brady Township High School

Intermediate

Y.M.C.A. 1-2, Community Senate 2, Forensics 1.

MARY MARGARET HILLIARD

Θ Α Α

Hawthorn, Pa.

Hawthorn High School

Primary

Y.W.C.A. 2, Student Council 1-2, Hostess Club 1, Outdoor Club 2.

ZIGMUNT F. KUNCZEWSKI

Α Γ Φ

Claridge, Pa.

Norwin High School

Intermediate

Class Vice-President 1-2, Football 1-2, Track 1, Varsity "C" Club 1-2.

BETTY KIFER

Θ Α Α

Zelienople, Pa.

Zelienople High School

Primary

Primary Club 2, Outdoor Club 1, College Players 1-2, Press Club 1.

AUDREY LEHNER

Δ Π Ε

East Brady, Pa.

East Brady High School

Intermediate

Art Club 2, Primary Club 2, Hostess Club 1, Hiking Club 1.

DOROTHY KNIGHT

Knox, Pa.

Edenburg High School

Allegheny College, Meadville, Pa.

Primary

Art Club 2, Primary Club 2.

MARION LINHART

Δ Π Ε

Natrona Heights, Pa.

Har-Brack Union High School

Intermediate

Y.W.C.A. 1-2, Women's Athletic Council 2, Women's Student Council 1-2, Hiking Club 1, Primary Club 1.





S
O
P
H
O
M
O
R
E
S

M. LOUISE MOCK

Α Σ Ε

Kittanning, Pa.

Kittanning High School

Intermediate

Sequelle Staff 2, Glee Club 1-2, College Players 1-2, Class Treasurer 2, A Cappella Choir 2, Hostess Club 1, Varsity Soccer 1, Primary Club 1, Y.W.C.A. 1

GLADYS MOORE

Σ Α Φ

Mars, Pa.

Mars High School

Intermediate

A Cappella Choir 2, Glee Club 2, College Players 1-2, Outdoor Club 1-2, Orchestra 2, Y.W.C.A. 2

ALBERTA M. MOTT

Α Σ Ε

Youngsville, Pa.

Youngsville High School

Intermediate

Community Senate 1-2, Women's Student Council 1-2, Outdoor Club 1-2, Y.W.C.A. 1

TWILA MOTTER

Shippenville, Pa.

Shippenville High School

Intermediate

Art Club 2, Primary Club 2, Wanderlustigen Club 2

FRANKLIN MOWREY

Α Φ Α

Brookville, Pa.

Brookville High School

Intermediate

Glee Club 1, Wanderlustigen Club 1, Y.M.C.A. 1-2

GERTRUDE V. PHILLIPS

Leeper, Pa.

Farmington High School

Intermediate

W.A.C. 2, Hiking Club 1, Y.W.C.A. 1-2, Primary Club 1

GEORGIANA PRIESTER

Rimersburg, Pa.

Rimersburg High School

Primary

Primary Club 2, Art Club 1, Y.W.C.A. 2, N.A.C.E. 2

DOROTHY RUTH REIGHARD

Clarion, Pa.

Clarion High School

Intermediate

W.A.C. 2, Intramural Sports 1-2, Art Club 1-2, Hostess Club 1, Primary Club 2, Wanderlustigen Club 1



S
O
P
H
O
M
O
R
E
S



JOSEPH L. SHAFFER

ΑΦΑ

Brookville, Pa.

Punxsutawney High School

Intermediate

Sequelle Staff 2, College Players 1-2.

MARY JANE SHEW

ΣΔΦ

Miola, Pa.

Oil City High School

Primary

Outdoor Club 1-2, Kindergarten-Primary Club 2.

AUDREY SHREVE

ΣΔΦ

Oil City, Pa.

Oil City High School

Intermediate

N.A.C.E. 2, A Cappella Choir 2, College Players 1-2, Glee Club 2, Outdoor Club 1, Varsity Hockey 1, Varsity Soccer 1.

KATHERINE SMITH

ΘΑΑ

Kittanning, Pa.

Kittanning High School

Primary

N.A.C.E. 2, Art Club 1-2, Press Club 1.

K LOUISE SMITH

Du Bois, Pa.

Du Bois High School

Intermediate

College Players 1-2, Glee Club 1-2, Y.W.C.A. 2, Press Club 2, Hiking Club 2, Clarion Call Staff 2, N.A.C.E. 2.

LILLIE E. SWARM

Clarion, Pa.

Clarion High School

Intermediate

N.A.C.E. 2, Art Club 2, Geography Club 1.

KATHRYN M. THOMPSON

Brockway, Pa.

Brockway High School

Intermediate

W.A.C. 2, Glee Club 1, Wanderlustigen Club 1, Primary Club 1, Y.W.C.A. 2.

KATHRYN TIPPERY

ΔΠΕ

Knox, Pa.

Edenburg High School

Primary

Community Senate 2, W.A.C. 2, Kindergarten-Primary Club 2, Art Club 2, Wanderlustigen Club 1, N.A.C.E. 2.





SOPHOMORES

ALBERTA MAE AUCKROTH

Θ Α Α

Tionesta, Pa.

Tionesta High School

Primary

Art Club 2, Hostess Club 1, Y.W.C.A. 1,
Hiking Club 1.

MARGARET ROSS WILBERT

Oil City, Pa.

Oil City High School

Intermediate

Orchestra 1-2, Press Club 1-2, Art Club 2,
Glee Club 2, Y.W.C.A. 2, N.A.C.E. 2, Hiking
Club 1.

HENRY YERINA

Jeannette, Pa.

Jeannette High School

Intermediate

Football 1-2, Varsity "C" Club 1-2, All State
Teachers College Center 2, Track 1.



GRADUATES NOT PICTURED

RUSSELL W. DAUM

Newmansville, Pa.

Oil City High School

B.S. in Secondary Education

Men's Glee Club 2, Track 2, Varsity "C" Club 1-2, Travel Club 3, Y.M.C.A. 1-2-3-4, Scout Master Training Course 1-2-3.

HARRY G. HAMILTON

Franklin, Pa.

Franklin High School

B.S. in Secondary Education

Glee Club 1-2, College Players 1-2, Scouts 1-2-3-4, Sequelle Staff 2-4

WILLARD J. SIMPSON

Corsica, Pa.

Union High School

B.S. in Secondary Education

Football 1-2, Basketball 1, Glee Club 1-2-3, A Cappella Choir 3, Geography 2.

DAVID BOWSER

Reynoldsville, Pa.

Reynoldsville High School

Transfer from Allegheny

Rural

HAROLD RIMER

Rimersburg, Pa.

Union High School

Intermediate

Varsity "C" Club 1-2, Football 1-2.

MARIE EVALINE HARTGE

Tarentum, Pa.

Tarentum High School

Primary

Glee Club 1, Art Club 1, Y.W.C.A. 1.

ROBERT D. ROSENSTEEL

Elders Ridge, Pa.

Elders Ridge Vocational School

Intermediate

Glee Club 1-2, Y.M.C.A. 1-2.

MARGARET BARBARA KEYS

Falls Creek, Pa.

Intermediate

Falls Creek High School

Y.W.C.A. 1-2, Hiking Club 2, Hostess Club 2.

NOBERT C. SHEPHERD

Oak Ridge, Pa.

New Bethlehem High School

Intermediate

Geography Club 2, Art Club 1.

KATHLEEN McLAUGHLIN

Crown, Pa.

Farmington High School

Intermediate

Glee Club 1-2, Primary Club 1, Y.W.C.A. 1, Hostess Club 1.

LOIS ANN SINGER

Penfield, Pa.

Huston Township High School

Intermediate

Y.W.C.A. 1-2, Hostess Club 1-2, Hiking Club 2.



CONCLUSION

There has been a gradual maturing of the campus scene, a steady and cooperative union of sports and cultural pursuits among all. The aim of each individual has been to benefit himself, to improve on the teaching profession.



• JUNIORS •

JUNIOR CLASS ROLL

AUSTIN, CLYDE	KEFFER, EARL
BEST, WILMA	KEFFER, GERALD
BURNS, HENRY	KENEMUTH, WAYNE
BYERS, WILLIAM	KENNY, JOSEPH
CHITLISTER, RUTH	KUNSELMAN, JEAN
COWAN, EVA	LUCE, EILEEN
CRAWFORD, ISABEL	MAILL, BERNICE
DONHISER, JOHN	MOONEY, EDWARD
ELDER, DOROTHY	MOORE, ROBERT
FORD, WILLIS	PHILLIPS, RUTH
FOWKES, SARA	PORTER, NORMAN
GEIST, ROBERT	REA, WILLIAM
GILES, PHYLLIS	RICH, THEODORE
HALEY, DOROTHY	RITCHIE, HARRY
HANST, AIDA	RODGERS, ROSS
HESS, GEORGE	SHAVES, GERALD
HENDMAN, CHARLES	SMITH, PAULINE
HIWILLER, DON	TRUNK, MARIE
HUBSICK, SOPHIA	WALTER, ARTHUR
KANENGEISER, JAMES	WILHELM, CATHERINE
	YOUNG, FRANK

JUNIOR CLASS

OFFICERS

President JAMES KANENGEISER
Vice-President JOSEPH KENNY
Secretary-Treasurer DON HIWILLER

Although graduation last year depleted the ranks of the Junior Class, at present it numbers forty students. Some few graduates matriculated this fall in order to work for degrees in elementary education, but the majority of the class are students specializing in the field of secondary education.

Juniors, this past year, could be found engaged in many activities sponsored by the college. As the future Seniors, there is every reason to believe that they will be as successful as any other group to be graduated from Clarion.



SOPHOMORES

This year, at Clarion, there will be graduated one of the largest and finest of Sophomore classes. The years spent here by these students have been very happy ones and ones long to be remembered.



• SOPHOMORES •

SOPHOMORE CLASS ROLL

BERTRAM, BETTY
BOARIO, DORA
PONNETT, EARL
BOWSER, DAVID
BROCIOS, CLARENCE
CAMIOLA, EDWARD
CHAMBERLIN, HELEN
COPE, BEULAH
CORBETT, BETTY
CULBERTSON, ROBERT
DEAN, JAUNITA
DILLS, USTINO
DONALDSON, GLADYS
DOVERSPIKE, GERALDINE
DUNNE, BETTY
FLYNN, THYRA
FRIEDLIND, VERA
FULTON, JOHN
GUTHRIE, NEAL
HARMON, BETTY
HARRIGER, DOROTHY
HARRISON, DOROTHY
HARTGE, MARIE
HARTZELL, LOIS
HAYES, HELEN
HESS, REED
HESS, WOODROW
HETRICK, CHARLES
HILLIARD, MARY
IMIL, CHARLES
JOHNSTON, RUSSELL
KAUFMAN, VIRGINIA
KEYS, MARGARET
KIFER, BETTY
KNAPP, EVELYN
KNIGHT, DOROTHY
KORB, MAURICE
KUNCZEWSKI, ZEIGMUNT
LAUGHNER, CHARLES
LJUNER, AUDREY
LIDSTONE, RUTH
LINHART, MARION
MACDONALD, BARBARA
MCLAUGHLIN, KATHLEEN
MILLER, WILLARD
MOCK, LOUISE
MOORE, GLADYS
MOTT, ALBERTA
MOTTER, TWILA
MOWREY, FRANKLIN
PHILLIPS, GERTRUDE
PRIESTER, GEORGIANA
REGGIARD, D. RUTH
RIMER, HAROLD
ROSENSTEEL, ROBERT
SHAFFER, JOSEPH
SHERMAN, NOBERT
SHEW, MARY JANE
SHREVE, AUDREY
SLIKE, EDWARD
SINGER, LOIS
SMITH, KATHERINE
SMITH, LOUISE
SWARM, LILLIE
THOMPSON, KATHRYN
TIPTERY, KATHRYN
UBER, MARY
VOCKROTH, ALBERTA
WHITE, HARRIET
WILBERT, MARGARET
YERINA, HENRY

SOPHOMORE CLASS

OFFICERS

President EARL BONNETT
Vice-President ZIGMUNT KUNCZEWSKI
Secretary LOUISE MOCK
Treasurer WILLARD MILLER

On September 10, 1933, a small group of young men and women waited their turns to sign the papers that would make them Freshmen of Clarion State Teachers College. Work, fun, and more work—soon nine long months had passed, and it was time to take the responsibility of Sophomores.

With Earl Bonnett as "Head Man", this class has won its way into the history of C.S.T.C. Soon these young men and women will separate to take up their own duties.

Here's to the success of the class of '37! May she always show her worth!



FRESHMEN

Clarion has been fortunate in having this year such a large and outstanding group of Freshmen. The members of this class have already distinguished themselves in various phases of campus activity.



• FRESHMEN •

FRESHMAN ROLL

AMMERMAN, LETTISIA	JONES, ALTA	SERSHEN, JOHN
ANDREO, JOSEPH	JONES, MARY	SHAFFER, BERNARD
BANNER, GEORGE	JONES, MORGAN	SHUMAKER, HELENE
BEAN, CARL	KAUFMAN, DOROTHY	SLAGLE, FERN
BEDZYK, MIKE	KLEPPER, MARY HELEN	SMITH, BETTY
BEHRENS, RUTH	KLINE, RUTH	SMITH, FREDERICK
BENSON, GERTRUDE	KUHNS, DESSIE	SMOLAK, BRONIE
BIGLIA, LILLIAN	KUHNS, ARTHUR	SNYDER, DWIGHT
BRAENDLE, FREDERICK	LINDSEY, MARY	STAHLMAN, DONALD
BROGAN, JANE	LINN, AIMEE	STANLEY, MARGARET
BURNS, PAUL	MARSHALL, FREDERICK	STARTZELL, CALVIN
CARNS, ARTHUR	MARSHALL, JAMES	STERRETT, LUCILLE
CARRIER, ESTHER	MAURER, LORRAIN	STEWART, WILBUR
CORBETT, RUTH	MCQUEENEY, FRANCIS	STEWART, MAE
CRAIG, CATHERINE	MCQUEENEY, MARION	STRATTON, JEAN
DALE, MARGARET	MYERS, GEORGE	SUMMERVILLE, RICHARD
DAVIS, DOROTHY	MYERS, GRETCHEN	TERWILLIGER, LOIS
DENSMORE, MELVIN	MCCALL, ANNA	THORNE, GERALDINE
ELDER, LEOTA	MCCANNA, FRANCIS	TOY, ERDENE
ENSLER, MILLY	MC ELHATTEN, ALFARATA	WALLEY, ALBERT
ETZEL, CONRAD	MC FARLAND, HELEN	WALKER, ROBERT
FLINCHBAUGH, EDNA	MC FARLAND, RUTH	WALTER, WAYNE
FOX, MARGARET	MCINTYRE, VELMA	WATSON, LOIS
FRAZER, SARA	MCMASTER, ZELMA	WEAVER, ELIZABETH
FURLONG, LOUISE	NOLDER, JAMES	WEAVER, HELEN
GATHERS, FLORENCE	NOONAN, LEONA	WEIN, CELIA
GEIST, MAYNE	PENCE, IRA	WEIN, RUTH
GILFILLAN, BYRON	PLYLER, THOMAS	WHITEHILL, FRANK
GROVES, JEAN	PRUE, RUTH	WILKISON, MARION
HENRY, GENEVIEVE	RAUGHT, ROSE	WILLIAMSON, EVA
HESS, LAURA BELLE	REAGHART, RUTH	WOLBERT, GRACE
HORNER, HOMER	REED, JANET	WOZNIAK, HARRY
HUBLER, JAMES	ROSS, MARY	YOAS, ORPHA
JACOBS, EDWARD	SCHIERBERL, EDWARD	ZANOT, JOHN
	SCHIERBERL, JOSEPH	

FRESHMAN CLASS

OFFICERS

President MORGAN JONES
Vice-President DONALD STAHLMAN
Secretary-Treasurer JANET REED

The Freshman Class, recorded as the largest ever matriculated at Clarion State Teachers College, is enjoying the challenge that an unexplored field, college, offers. The third week of school the Freshmen took the customary hardships of Freshmen Week. In December the ingenuity of the class was well expressed in the annual Freshman Dance. Several members of the class have already made names for themselves in various activities.



ACTIVITIES

Extra-curricular activities have made steady advancement on the campus during the past year. Various new clubs and organizations have been formed, and the old ones have become increasingly popular. These clubs have been very beneficial to the social welfare of the school.



• ACTIVITIES •

GREEK LETTERS

The various fraternities and sororities on the campus have done much in the way of bettering social conditions among the students. These organizations have been outstanding factors in the formation of lasting friendships.

• GREEKS •

DELTA PI EPSILON

Founded 1931 at Clarion State Teachers College

OFFICERS

FIRST SEMESTER

President AUDREY LEHNER
Vice-President MARIE TRUNK
Secretary DOROTHY HARRIGER
Treasurer BETTY DUNNE

SECOND SEMESTER

President AUDREY LEHNER
Vice-President ERDENE TOY
Secretary DOROTHY HARRIGER
Treasurer DOROTHY HARRISON
Member in Faculty MARY B. WILLIAMSON

ACTIVE MEMBERS

JANE BROGAN	DOROTHY HARRISON	AUDREY LEHNER
BETTY DUNNE	DOROTHY HARRIGER	MARIE TRUNK
JEAN GROVES	MADELIN HEETER	ERDENE TOY
AIDA HANST	MARION LINHART	KATHRYN TIPPERY

PATRONESSES

MRS. BIRD RILEY MISS MILDRED GAMBLE MRS. C. L. LONG
MRS. JAMES FITZGERALD



DELTA SIGMA EPSILON

National Educational Sorority, Founded 1914, at Miami University; Thirty Chapters; Alpha Zeta Chapter Established 1932.

OFFICERS

President DOROTHY HALEY
Vice-President VIRGINIA KAUFMAN
Corresponding and Recording Secretary EILEEN LUCE
Treasurer LOUISE MOCK
Chaplain TILMAE GOSETTI
Sergant SOPHIA HUDSICK
Historian DORA BOARIO
Member in Faculty HELEN M. BARTON

ACTIVE MEMBERS

DORA BOARIO	SOPHIA HUDSICK	EILEEN LUCE
TILMAE GOSETTI	VIRGINIA KAUFMAN	LOUISE MOCK
DOROTHY HALEY	LUCILLE LINN	GRETCHEN MYERS

PLEDGES

GERTRUDE BENSON	LOUISE FURLONG	ALBERTA MOTT
LILLIAN BIGLIA	DOROTHY KAUFMAN	GERALDINE THORNE
CATHERINE CRAIG	MARY HELEN KLEPPER	LOIS WATSON

PATRONESSES

MRS. MERRITT DAVIS	MISS BERTHA LEIFESTE
MRS. W. B. RANKIN	



LAMBDA CHI DELTA

Founded 1931 at Clarion State Teachers College

OFFICERS

President CATHERINE WILHELM
Treasurer VIRGINIA CROOKS
Secretary SARA FOWKES
Treasurer VIRGINIA CROOKS
Chaplain SARA FOWKES
Member in Faculty HELEN ARMSTRONG

ACTIVE MEMBERS

CATHERINE WILHELM	MARION WILKISON
SARA FOWKES	SARA FRASER
VIRGINIA CROOKS	LOIS TERWILLIGER
MARY JONES	LETTISIA AMMERMAN

PATRONESSES

MRS. WILLIAM DAVIES	MRS. D. D. PEIRCE	MRS. N. E. HEETER
MRS. SAMUEL WILSON	MISS GLADYS RICH	
MRS. HARRY MANSON		



SIGMA DELTA PHI

Founded 1930 at Clarion State Teachers College

OFFICERS

FIRST SEMESTER

President BETTY BALDWIN
Vice-President AUDREY SHREVE
Secretary BETTY MALLON
Treasurer GLADYS MOORE
Sergcant RUTH KUHN
Chaplain MARTHA BARNES

SECOND SEMESTER

President BETTY MALLON
Vice-President GLADYS MOORE
Secretary RUTH LIDSTONE
Treasurer RUTH WEIN
Sergcant MOLLY SHEW
Chaplain LAURA BELLE HESS
Member in Faculty BERTHA V. NAIR

ACTIVE MEMBERS

BETTY BALDWIN	RUTH LIDSTONE	DOROTHY WILSON
MARTHA BARNES	BETTY MALLON	JANET REED
DOROTHY DAVIS	GLADYS MOORE	AUDREY SHREVE
LAURA BELLE HESS	RUTH WEIN	MOLLY SHEW
RUTH KUHN		HELEN WALTER

PATRONESSES

MRS. HARRY WILSON	MRS. C. L. DOW
MRS. AMABEL RALSTON	MRS. LLOYD F. WEAVER



THETA ALPHA LAMBDA

Founded 1931 at Clarion State Teachers College

OFFICERS

President RUTH PHILLIPS
Vice-President GENEVIEVE HENRY
Secretary BETTY SMITH
Treasurer HELEN SHUMAKER
Member in Faculty RENA CARLSON

ACTIVE MEMBERS

ALBERTA VOCKROTH	KATHERINE SMITH
PAULINE SMITH	RUTH PHILLIPS
BETTY KIFER	WILMA BEST
DOROTHY BROWN	BETTY SMITH
LOIS HARTZELL	HELEN SHUMAKER
MARY HILLIARD	RUTH PRUE
JEAN KUNSELMAN	BETTY CORBETT
BETTY RHEA	MILLY ENSLE
JEAN RHEA	FERN SLAGLE

GENEVIEVE HENRY

PATRONESSES

MRS. GILBERT A. HOYT MRS. CHARLES F. BECKER
MRS. HARRY RENN



ALPHA PHI ALPHA

OFFICERS

<i>President</i>	GUY HARRIGER
<i>Vice-President</i>	HAROLD KNIGHT
<i>Recording Secretary</i>	JAMES KANENGEISER
<i>Corresponding Secretary</i>	LEROY LOVELL
<i>Treasurer</i>	JAY MCKEE

MEMBERS IN FACULTY

HARRY S. MANSON	CHARLES F. BECKER	CLARENCE L. DOW
	RALPH E. HEIGES	

ACTIVE MEMBERS

HENRY BURNS	JAMES KANENGEISER	FRANKLIN MOWRY
ROBERT CULBERTSON	GERALD KEEFER	GEORGE MYERS
WILLIS FORD	HAROLD KNIGHT	NORMAN PORTER
FRED GALLAGHER	LEROY LOVELL	HARRY RITCHE
MAYNE GEIST	FREDERICK MARSHALL	ROSS RODGERS
NEAL GUTHRIE	JAMES MARSHALL	GERALD SILVES
EARL HADDEN	LORRAIN MAURER	DWIGHT SNYDER
GUY HARRIGER	JAY MCKEE	DONALD STAHLMAN
WOODROW HESS	MORTON MCKINNEY	WILBUR STEWART
DON HIWILLER	HOMER MILLER	BIRD THOMPSON
CHARLES IMEL	WILLARD MILLER	ARTHUR WALTER
MORGAN JONES	ROBERT MOORE	WAYNE WALTER

PLEDGES

ARTHUR KUHN	JOSEPH SCHERBERG	JOSEPH SHAEFFER
THOMAS PLYLER	JEAN STRATTON	HAROLD RIMER



PHI SIGMA PI

National Honorary Educational Society; Founded Warrensburg, Missouri, 1916; Established Lambda Chapter, 1930.

OFFICERS

President MORTON MCKINNEY
Vice-President JOSEPH KENNY
Recording Secretary GEORGE HESS
Corresponding Secretary JAY MCKEE
Treasurer WAYNE KENEMUTH
Historian GUY HARRIGER

MEMBERS IN FACULTY

CHARLES F. BECKER	CLARENCE L. DOW
G. C. L. RIEMER	HARRY S. MANSON
DONALD D. PEIRCE	JOHN W. F. WILKINSON

ACTIVE MEMBERS

EARL BONNETT	WAYNE KENEMUTH
ROBERT CULBERTSON	JOSEPH KENNY
ROBERT GEIST	NOBERT MASTER
HARRY HAMILTON	JAY MCKEE
GUY HARRIGER	MORTON MCKINNEY
GEORGE HESS	WILLARD MILLER



PI GAMMA MU

The National Social Science Honorary Society was founded at Southwestern College, Winfield, Kansas, in 1924 by Doctor Leroy Allen. In 1931 there were one hundred twenty-two chapters in the United States.

The purpose of the organization is to inculcate ideals of scholarship, scientific attitude and social service into the study of all social problems. Its specific aims are to send out from our colleges and universities young men and women imbued with social idealism, trained in scientific thought, and desirous of encouraging scientific thinking on the part of others. The organization also aims at better cooperation among the students of the various branches of the social science society.

The Pennsylvania Iota Chapter was founded at State Teachers College, Clarion, Pennsylvania, in May, 1930.

ACTIVE MEMBERS

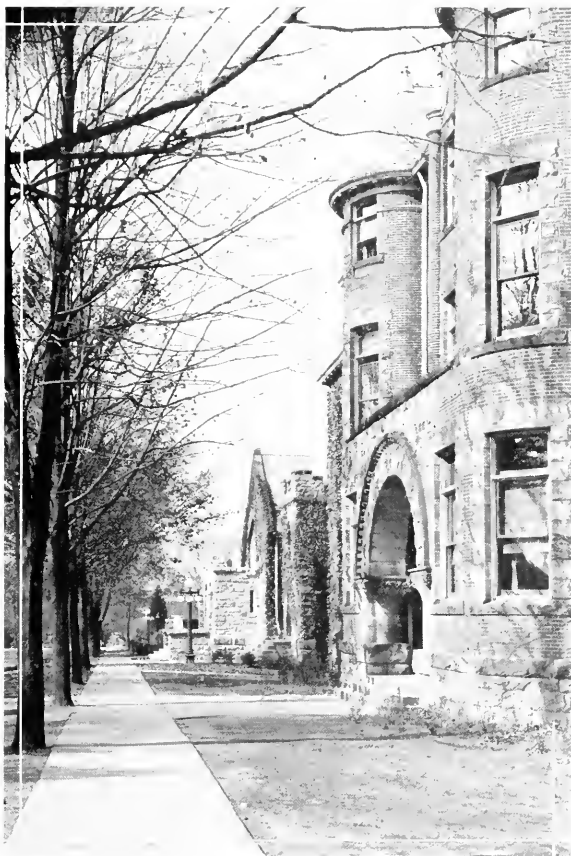
HELEN BARTON	G. C. L. RIEMER
HELEN MOHNEY	MADELIN HEETER
HELEN SIMS	ROBERT HEVERLY
BETTY RHEA	

NEWLY ELECTED MEMBERS

RALPH HEIGES	JEAN KUNSELMAN
RUTH CHITESTER	JOSEPH KENNY
EVA COWAN	CHARLES HINDMAN
DANA PETERSON	

ORGANIZATIONS

One of the purposes of the various organizations on the campus has been to prepare the students for worthy use of leisure time. Wholesome social contacts have been made and much valuable information has been gained.



• ORGANIZATIONS •

Y. W. C. A. CABINET

OFFICERS

<i>President</i>	MADELIN HEETER
<i>Vice-President</i>	LOIS HARTZELL
<i>Secretary</i>	BARBARA MACDONALD
<i>Treasurer</i>	GLADYS MOORE
<i>Devotionals</i>	ISABEL CRAWFORD
<i>Music</i>	LOUISE SMITH
<i>Publicity</i>	DOROTHY BROWN
<i>Morning Watch</i>	DORA BOARIO
<i>Social</i>	BETTY DUNNE
<i>World Fellowship</i>	MARY HILLIARD
<i>Home Missionary</i>	GERTRUDE PHILLIPS
<i>Foreign Missionary</i>	KATHRYN THOMPSON

The Y.W.C.A. Cabinet tries to meet the spiritual needs of all the women on the campus. It aims to create a spirit of sisterhood. In order to carry out these objectives, the organization holds morning watch and weekly meetings. By means of the "Big Sister" movement and the Freshman Reception the Cabinet assists the Freshmen women in their adjustment to college life.

The Y.W.C.A. carries out a social service program in the community during the year.



OFFICERS

<i>President</i>	JAY MCKEE
<i>Vice-President</i>	NORMAN PORTER
<i>Secretary</i>	MAURICE KORB
<i>Treasurer</i>	ARTHUR WALTER
<i>Membership Chairman</i>	FRANKLIN MOWRY
<i>Devotional Chairman</i>	FRANK YOUNG
<i>Program Chairman</i>	BYRON ASHBAUGH

The Y.M.C.A., on this campus, strives in every possible way to promote a feeling of friendship among the men of the college. It endeavors to foster the development of a personal philosophy of conduct and morality in the individual members. Especial effort is made to build up those characteristics necessary to a successful teacher. To bring these objectives to realization the organization employs numerous methods: well-known individuals are invited to speak, open forums for student discussion are held, and many other approaches are formulated and applied. The Y.M.C.A. gives to the prospective teacher an insight and an opportunity for growth in a phase of life more important than the acquisition of knowledge.



HOSTESS CLUB

OFFICERS

<i>President</i>	ERDENE TOY
<i>Vice-President</i>	DESSIE KULINS
<i>Secretary-Treasurer</i>	HARRIET WHITE
<i>Program Chairman</i>	JEAN GROVES

The purpose of the Hostess Club is to instruct its members in the correct way to invite and receive guests, to preside over the table, to dress for various occasions, and to enjoy the amenities of social life. As practical experience along these lines a tea was held for the women of the faculty during one of the club periods.

With the aid of Miss Helen D. Sims, the discussions and illustrations have been very successful.



PRIMARY CLUB

FIRST SEMESTER

President WILMA BEST
Secretary MARY HILLIARD
Treasurer LOIS HARTZELL
Chairman of Program Committee BETTY KIFER

SECOND SEMESTER

President MARGARET FOX
Secretary MOLLY SHEW
Treasurer TWILA MOTTER
Chairman of Program Committee BETTY KIFER

The Kindergarten-Primary Club is under the supervision of Miss Mary B. Williamson. As the name implies the membership consists of those who are interested in the primary field of education.

The aim of the club is to develop a scientific understanding of the child.

In addition to the regular club discussions of the child and his problems, many interesting and entertaining social meetings were held at Miss Williamson's apartment.



OUTDOOR CLUB

OFFICERS

FIRST SEMESTER

President DON HIWILLER
Vice-President TYRUS BARTLEY
Secretary-Treasurer GLADYS MOORE

SECOND SEMESTER

President GERALD SILVES
Vice-President HAROLD KNIGHT
Secretary-Treasurer LAURA HESS

The aim of the Outdoor Club is to aid the members in becoming acquainted with the beauties of nature. Its motto is "The natural way to a better life." Harry S. Manson, the club's adviser, has done much to make the organization a success. This year, the activities of the club included numerous trips to near-by places of natural beauty.



HIKING CLUB

OFFICERS

FIRST SEMESTER

President DORA BOARIO
Vice-President EVELYN KNAPP
Secretary ISABEL CRAWFORD

SECOND SEMESTER

President SOPHIA HUDSICK
Vice-President ELIZABETH WEAVER
Secretary ALTA JONES

The Hiking Club, under the capable supervision of Miss Rena Carlson, aims to foster an appreciation of the beauties of nature and of Clarion. The members of the club have hiked to various points of interest about Clarion. During the year, several outdoor suppers have been held. The club has engaged also in some of the winter sports, including sled-riding and skating.



INDUSTRIES CLUB

OFFICERS

President HAROLD KNIGHT
Vice-President ROSS RODGERS
Secretary-Treasurer HARRY RITCHIE

This club is new to the college extra-curricular program, having been organized the first semester of this year. Dr. D. D. Peirce is in charge of the club. Its purpose is to study the different industries found in this locality. It is hoped the club will progress and become more efficient in the future.



ART CLUB

OFFICERS

FIRST SEMESTER

President KATHERINE SMITH
Vice-President RUTH LIDSTONE
Secretary-Treasurer D. RUTH REIGHARD

SECOND SEMESTER

President DOROTHY KNIGHT
Vice-President D. RUTH REIGHARD
Secretary-Treasurer MARGARET WILBERT

The Art Club, under the able supervision of Miss Hazel Sandford, enjoyed a successful year. The activities of the club were of two kinds, creative and social. The former type included the making of wall hangings, Christmas cards, and oil paintings; while the later consisted of a number of teas held to help the members of the club in becoming better acquainted with one another.



ASSOCIATION FOR CHILDHOOD EDUCATION

<i>President</i>	LOUISE GATES
<i>Vice-President</i>	RUTH KUBEN
<i>Secretary</i>	DOROTHY HALEY
<i>Treasurer</i>	RUTH PHILLIPS
<i>Adviser</i>	BERTHA LEIFESTE

The purpose of the Association for Childhood Education is to gather and disseminate knowledge of the movement for the education of young children; to bring into active cooperation all childhood education interests, including parent education; to promote the progressive type of education in nursery school, kindergarten and primary grades; and to raise the standard of the professional training for teachers and leaders in this field.

The local branch has been established on the campus at Clarion this year largely through the interest and efforts of Miss Bertha Leifeste teacher in the second grade of the Thaddeus Stevens Training School. The Association includes twenty-seven charter members. Invitations to become members have been sent to faculty administrators and students on the campus.

New officers will be elected at the annual spring meeting when plans for the coming school year will be made.

THE WANDERLUSTIGEN CLUB

President NORMAN PORTER
Secretary ROBERT SHERMAN
Treasurer JOHN FULTON

The Wanderlustigen Club has completed two educational projects this year. The first consisted of the construction of a topographic map under the supervision of Dr. C. L. Dow. With reference to the latter project, the club was especially interested in knowing Pennsylvania better. In this connection trips were taken to many important places in the western part of the state.

FACULTY CLUB

President DR. D. D. PEIRCE
Vice President MISS MARY B. WILLIAMSON
Secretary MISS HELEN MOHNEY
Treasurer MRS. D. D. PEIRCE

The Faculty Club is a social organization which meets monthly. Through the efforts of various committees the following occasions were arranged and enjoyed this year:

September Picnic supper, Rankin's Grove
October Hallowe'en dinner, Bostonia Country Club
November Theater party, Drake Theater
December Christmas dinner, Becht Hall
January Hobo party, "Manhattan Shanty Town"
February Patriotic dinner, Becht Hall

MUSIC

The musical organizations, under the supervision of Miss Rich, have had a very successful year. Several excellent programs have been presented to the student body by the various musical groups.



• MUSIC •

WOMEN'S GLEE CLUB

FIRST SEMESTER

President DORA BOARIA
Secretary ISABEL CRAWFORD
Librarian LOUISE SMITH

SECOND SEMESTER

President AUDREY SHREVE
Secretary MARION WILKISON
Librarian RUTH CHITESTER

The Women's Glee Club, under the expert direction of Miss Gladys E. Rich, is one of the outstanding organizations on the campus. Its thirty-eight members have found it a source of very profitable recreation. The club aims to foster the appreciation of good music. Several chapel programs have been presented during the year.



MEN'S GLEE CLUB

OFFICERS

FIRST SEMESTER

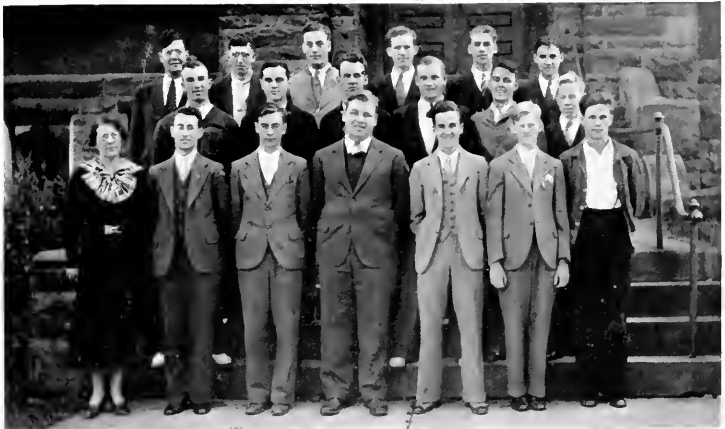
President ARTHUR WALTER
Vice-President MORTON MCKINNEY
Secretary-Treasurer JAMES KANENGEISER

SECOND SEMESTER

President CLIFFORD REA
Secretary-Treasurer JAMES KANENGEISER

The Men's Glee Club, directed by Miss Gladys Rich, has had an unusually successful season. Valuable additions to the club's musical library as well as an influx of new talent have contributed to the increased interest in and merit of the organization.

Entertainment was offered this year, not only to the student body, but also to various groups in Clarion.



ORCHESTRA

President MORTON MCKINNEY
Vice-President ARTHUR WALTER
Secretary-Treasurer MARGARET WILBERT

MEMBERS

LETTISIA AMMERMAN Violin
 GERTRUDE BENSON Violin
 MARGARET DALE Violin
 SARA FOWKES Violin
 MORTON MCKINNEY Violin
 MARGARET WILBERT Viola
 GLADYS MOORE Flute
 ERDENE TOY Clarinet
 NORMAN PORTER Clarinet
 DONALD STAHLMAN Cornet
 GERALD KEEFER Cornet
 DWIGHT SNYDER Cornet
 WILLARD MILLER Cornet
 ROSS RODGERS Trombone
 FRANK YOUNG French Horn
 JOHN DONHISER Baritone Horn
 ARTHUR WALTER Piano

The orchestra, under the capable direction of Miss Gladys Rich, was larger than usual this year.

Several new numbers, including "Londonderry Air", "Country Gardens", and "Light Cavalry", were practiced and presented to the student body.



A CAPPELLA CHOIR

MARION WILKISON	GLADYS MOORE	MORGAN JONES
SARA FOWKES	BETTY BERTRAM	MORTON MCKINNEY
LOUISE MOCK	ROSS RODGERS	DON STAHLMAN
EILEEN LUCE	TOM PLYLER	CLIFFORD REA
AUDREY SHREVE	GERALD KEEFER	NORMAN PORTER
MARY JONES		GERALD KEEFER

FIRST SEMESTER

THEODORE RICH	GERALD SILVUS	LUCILLE JONES
BETTY HARMON	ARTHUR WALTER	

Under the able direction of Miss Gladys Rich, the A Cappella Choir has done some excellent work this year. Besides appearing on a number of chapel programs, the choir has filled several engagements to sing for nearby high schools, and for local organizations. They also assisted the College Players in the Christmas production of "Why The Chimes Rang".

Among the compositions which have been studied with especial enjoyment are the following: "Adoramus Te" by Palestrina; "He's Gone Away", a South Mountain Folk Ballad arranged by Clokey; "Requiem", by Bantock; "The Nightingale", by Tschai-kowsky; "The Silver Swan", by Gibbons; "Hospodi Pomilui", a Russian church chant, and "O Morn of Beauty", by Sibelius.



DRAMATICS

Under the excellent supervision of Miss Marwick, the dramatic organization has become exceedingly popular. Several successful plays have been presented during the past year. Much energy has been expended, both on the part of the students and the director, in order that these productions might be really worthwhile.



• DRAMATICS •

COLLEGE PLAYERS

OFFICERS

FIRST SEMESTER

<i>President</i>	WILLARD MILLER
<i>Vice-President</i>	VIRGINIA KAUFMAN
<i>Secretary</i>	AUDREY SHREVE
<i>Treasurer</i>	EARL BONNETT

SECOND SEMESTER

<i>President</i>	HOMER MILLER
<i>Vice-President</i>	DOROTHY HALEY
<i>Secretary</i>	RUTH PRUE
<i>Treasurer</i>	THOMAS PLYLER

The College Players Club is the dramatic organization of the Clarion State Teachers College. Among its activities of the year were programs illustrating stage lighting, properties, make-up, and costuming; and the presentation of the following one-act plays: "Red Carnations", "The Turtle Dove", and "Two Crooks and a Lady". Three one-act plays were given before the student body: "The Turtle Dove", a fantasy; "Why the Chimes Rang", a Christmas play; and "Spreading the News", an Irish comedy.

On Parents' Day, May 11, the club presented the three act play, "The Perfect Alibi" by A. A. Milne.

The College Players held one social affair during the year, a dinner-dance, on February 15, in Becht Hall.



"WHY THE CHIMES RANG"



"Why The Chimes Rang", a Christmas play in one act, was given by the College Players at the regular Tuesday Assembly in the college chapel, December 18. The Players were assisted by members of the college A Cappella Choir.

This appealing little play, adapted by Elizabeth McFadden from the familiar Christmas story of the same name by Raymond McDonald Alden, has been presented more than one thousand times in the United States, Canada, England, Hawaii, and Japan. In some schools the play is presented every year at the Christmas season. The main theme is the divine beauty of charity.

Miss Sanford designed the colorful costumes and the setting for the chancel scene. The window of the Gothic cathedral, the altar and its appointments were executed by her and art students working under her direction. The A Cappella Choir, directed by Miss Rich, sang "The Sleep of the Child Jesus" by F. A. Gevaert and "Eight-fold Alleluia" by P. L. Atherton during the pantomimic action of the chancel scene. Preceding the play, Mr. Theodore Rich, assisted by the A Cappella Choir, sang "The Kings and The Star", by Peter Cornelius. Miss Boyd had charge of the make-up, always an important service; James Kanengeiser,

the lighting; Earl Bonnett, the stage and properties. The play was under the general direction of Miss Marwick. The cast of characters:

Holger, a peasant boy FRED MARSHALL
Steen, his younger brother..... NOBERT SHERMAN
Bertel, their uncle ARTHUR WALTER
An Old Woman VIRGINIA KAUFMAN
Priest HOMER MILLER
Rich Man WAYNE WALTER
Courtier RALPH FULTON
Proud Woman AUDREY SHREVE
Sage WAYNE KENEMUTH
Lovely Young Girl DOROTHY HALEY
King WILLARD MILLER
Angel GLADYS DONALDSON

Time: Mediaeval period.

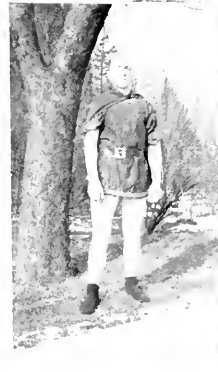
Scene: A peasant's hut on the edge of a forest near a cathedral town; a cathedral chancel.





THE
TURTLE
DOVE

WHY THE
CHIMES
RANG.



SCHOOL GOVERNMENT

During the past year, the student senate has been a very influential force in conducting student affairs. The students have abided faithfully by the rules and regulations established by this government. The organization has played an important part in the development of student responsibility.

• GOVERNMENT •

COMMUNITY SENATE

President GUY HARRIGER
Vice-President BETTY RHEA
Secretary GEORGE HESS

MEMBERS

MADELIN HEETER	KATHRYN TIPPERY
ALBERTA MOTT	BETTY RHEA
BETTY DUNNE	VIRGINIA KAUFMAN
MAURICE KORB	HOMER MILLER
ROBERT HEVERLY	GUY HARRIGER
GEORGE HESS	LEROY LOVELL

It is the purpose of the Community Senate to supervise the organization and direction of student affairs; to define and regulate the privileges of the students; to cooperate with the faculty and proper college authorities in matters of student concern; and constantly to seek to make the College a better agency for preparing teachers.

The Senate has enjoyed working toward the goals established by the purpose of this organization, and hopes that its efforts will make the path broader and smoother for its successors.



WOMEN'S STUDENT COUNCIL

OFFICERS

<i>President</i>	BETTY DUNNE
<i>Vice-President</i>	DORA BOARIO
<i>Secretary</i>	LOIS SINGER
<i>Treasurer</i>	ISABEL CRAWFORD

MEMBERS

DORA BOARIO	LOIS SINGER
PHYLLIS GILES	MARION LINHART
DOROTHY HALEY	DOROTHY BROWN
ALBERTA MOTT	LOIS WATSON
BETTY BALDWIN	FERN SLAGLE
MARY HILLIARD	MARY HELEN KLEPPER
BETTY DUNNE	ISABEL CRAWFORD

The Student Council is the governing body of the Women's Student Government. Its fourfold purpose is: to deal with problems concerning the women's dormitory; to aid in the development of individual responsibility; to develop cooperation between the students and faculty; and to maintain, within the house, high standards of life and culture.



MEN'S STUDENT GOVERNMENT

OFFICERS

President BYRON ASHBAUGH
Vice-President FRED GALLAGHER
Secretary JAY MCKEE

MEMBERS

BYRON ASHBAUGH FRED GALLAGHER JAY MCKEE
WILLIARD MILLER ROBERT HEVERLY TYRUS BARTLEY
DR. D. D. PEIRCE

The Men's Student Government is a representative group of the men living on the campus. This organization, under the supervision of Dr. D. D. Peirce, Dean of Men, strives to maintain cooperation among the men in the observation of the rules and regulations of dormitory life.



PUBLICATIONS

For several years, Miss Nair has been the faculty advisor of the *Sequelle* and other student publications. Her excellent supervision has been largely responsible for the success of our school publications.



• PUBLICATIONS •

PRESS CLUB

OFFICERS

<i>President</i>	PAULINE SMITH
<i>Vice-President</i>	MADELIN HEETER
<i>Secretary and Treasurer</i>	MARY JOYE JONES
<i>Faculty Adviser</i>	BERTHA V. NAIR

The Press Club, organized for the purpose of promoting a greater interest in journalism, is one of the most active clubs on the campus.

Its principal function is the by-monthly editing of the college newspaper, "The Clarion Call".

Besides this practical experience in the journalistic field, theoretical training is provided the members through interesting reports and discussions.

This year, for the second time in its history, the club has secured a membership in the Columbia Scholastic Press Association of Columbia University, New York City.



THE CLARION CALL

In the spring of 1934, the editor-in-chief and the associate editors were elected by popular vote of the student body for the following journalistic year, 1934-35. The other staff members were selected on a competitive basis at the beginning of this academic year.

THE STAFF

<i>Faculty Adviser</i>	BERTHA V. NAIR
<i>Editor-in-chief</i>	PAULINE SMITH
<i>Associate Editors</i>	{ RUTH CHITESTER MADELIN HEETER

DEPARTMENT EDITORS AND ASSOCIATES

<i>News</i>	AIDA HANST
	{ CATHERINE CRAIG HELEN CHAMBERLIN MILLY ENSELE JUAN KUNSELMAN MARY LINDSAY LOUISE SMITH RUTH WEIN MARGARET WILBERT
<i>Associates</i>	
<i>Humor</i>	PHYLLIS GILES
	{ ARTHUR WALTER DOROTHY HALEY GEORGE MYERS
<i>Associates</i>	
<i>Make-up</i>	LUCILLE STERRETT
<i>Extra-curricular</i>	MARY JONES
	{ BETTY DUNNE VERNE CALLIHAN DOROTHY KAUFMAN
<i>Associates</i>	
<i>Athletics</i>	WAYNE KENEMUTH
	{ VIRGINIA KAUFMAN CHARLES HETRICK
<i>Associates</i>	
<i>Features</i>	LUCILLE LINN
	{ RUTH PHILLIPS ALFARATA McELHATTAN
<i>Associates</i>	
<i>Exchange</i>	CLYDE AUSTIN

THE SEQUELLE STAFF

The "Sequelle" Staff, this year, was motivated by a strong sense of coöperation and responsibility. As usual, it met various obstacles which had to be overcome, but, for the most part its work was performed efficiently and with dispatch.

The Staff chose "The Doorway" as a central idea for the 1934-35 "Sequelle". Expression of this theme has led to a book whose publication has provided the Staff with much enjoyable as well as valuable experience.



THE SEQUELE STAFF

<i>Editor-in-chief</i>	RUTH KUHN
<i>Assistant Editor</i>	JOSEPH SHAEFFER
<i>Business Manager</i>	HARRY HAMILTON
<i>Literary Editor</i>	JAY MCKEE
<i>Organizations</i>	VIRGINIA KAUFMAN
<i>Women's Athletics</i>	BETTY RHEA
<i>Men's Athletics</i>	LEO BROWN
<i>Humor</i>	BETTY MALLON
<i>Art</i>	} LOUISE GATES { DOROTHY BROWN
<i>Typists</i>	} LOUISE MOCK { DONALD HENCKEN
<i>Photography</i>	BETTY BALDWIN
<i>Copy Reader</i>	MORTON MCKINNEY

ATHLETICS

Football, basketball, baseball and track have been the major athletic interests at Clarion. A profitable season was the result of much practice and thorough coaching. For many years clean sportsmanship has been one of the qualities stressed on our campus.



• ATHLETICS •

COACH JONES SAYS:

I have watched the development of athletics during the eight years I have been at Clarion. In that time many things have changed.

Eight or nine years ago competition was largely with the high schools of the district. These high schools were soon dropped and the schedules were made up only of college teams. During the first year or two Clarion was hopelessly out-classed. Clarion was merely the team to play for a warm-up game or for a mid-season let down. Improvement was apparent, however, to those who watched these teams closely. Gradually Clarion's opponents grew to have more respect for her teams. Today none expect anything but the hardest kind of game.

Some of Clarion's opponents have been kind enough to say that for the number of men enrolled, Clarion has done more in athletics than any Teachers College in the State. Any credit for this statement must go to those men who played on the past Clarion teams. It is my hope that what these men have done will have established a foundation for those who will follow to build athletic history for this school.



1934 FOOTBALL

The football season opened with eleven lettermen of previous years and a wealth of freshman material. The squad had high hopes for the 1934 season since so many lettermen were back. The veteran team immediately began a thorough and efficient practice. The team was comparatively light, not averaging more than one hundred sixty-five pounds, but every man had vowed to give all he had. The squad was strengthened greatly by four outstanding freshmen, Bedzyk, Braendle, Nolder and Andreo.

The season was not quite as successful as had been anticipated because of larger and heavier teams. Clarion, however had a hard working, fighting team with plenty of spirit.



Managers

Byers

Hetrick



First Row: Kenny, Rosenzweig, Peterson, Gallagher, Brown, Bartley, Castafero, Heverly, Hess, Rimer
Second Row: Hubler, Guthrie, Shaffer, Smith, Kuczewski, Andreo, Walker, Dinsmore, Braendle, Stewart, J. O. Jones.
Third Row: Bodzyk, Nulder, Verina, Rea, Schierberl, Bean, McHenry, Bonnett, Wozniak.



Bartley

Bodzyk

Bonnett

Braendle

Brown

Castafero

FOOTBALL LETTERMEN

TYRUS BARTLEY

Quarterback

"Ty" was the very efficient quarterback who called signals during the entire season. He was placed in charge of the backfield defense because of his consistency in backing up the line. He carried the ball very little but always filled blocking assignments.

MIKE BEDZYK

End

Mike was one of the most consistent players on our team. He blocked well and tackled hard. Mike was often called back from end position to do the punting. He averaged forty yards throughout the season.

EARL BONNETT

Quarterback

Bonnett played quarterback when Bartley was out of the game; at other times he played fullback. He was a little man who knew how to hit a line and was a tricky runner who gained considerable yardage.

FREDERICK BRAENDLE

Halfback

"Fred" was perhaps one of the best broken field runners on the team. He showed equal ability both on offense and defense plays. At times he was called back to do the punting.

LEO BROWN

Left End

"Brownie" held down the left end position. He blocked well and tackled hard. Not many plays succeeded in gaining much yardage around left end.

RALPH CASTAFERO

Halfback

"Casty" was again the leading scorer for our team. He was a speedy runner and a consistent ground gainer. "Casty" was especially noted for his activity and for his endurance.

FRED GALLAGHER

Guard

"Skeets", perhaps the best Teachers College guard in the state last year, proved his ability again during the 1934 season. Weighing but one hundred fifty pounds he was able to break through opposition much heavier than he. His blocking was efficient and he never lacked drive.

GEORGE HESS

Guard

"Duke", teaming up with Gallagher, completed the best guard combination Clarion has ever had. Yardage gained through them was little, and offensively they usually led the interference.



Gallagher



Hess



Heverly



Kenny



Kunezewski



Volder

ROBERT HEVERLY

Tackle

"Bob" was one of our best defensive men. He was a hard fighter and a very able player.

JOSEPH KENNY

Tackle

"Joe" was one of our most aggressive tackles. Very little ground was ever gained through his position on the line. He was a steady hard player whose defensive work was outstanding.

ZIGGIE KUNCZEWSKI

Fullback

Ziggie was one of the hardest hitting backs on the squad. He was a steady, efficient worker, one who could be depended upon. Authorities rated Ziggie's offensive work among the best.

JAMES NOLDER

Halfback

"Jim" was the smallest man on the squad but undoubtedly had more spirit and football brains than any other member. He was a tricky runner as well as a good defensive man.

DANA PETERSON

Halfback

"Pete" was selected captain for the 1934 football season. He was shifted from his end position of last year to the backfield. He was one of the fastest, most aggressive players on the squad. "Pete" made second string fullback on the All State Teachers College Eleven.

HAROLD RIMER

Tackle

Rimer was an aggressive and hard-working tackle. His defense was good and he proved himself a capable line man.

EMIL ROSENZWEIG

End

"Rosy" was a steady, consistent performer on the gridiron, and proved himself of great value to the team. His injury, during the Indiana game, removed a capable player from the squad.

HENRY YERINA

Center

"Moon" was the hardest tackling man on our squad. In backing up the line he was very successful. "Moon" also was elected to the All State Teachers College Eleven.

WILLIAM BYERS and CHARLES HETRICK

Managers

In the position of football managers, "Bill" and "Wasp" handled the affairs of the team in a characteristic business-like manner. Their willingness to assume responsibility and to cooperate made possible a well-managed team.



Peterson



Rimer



Rosenzweig



Yerina

SEASON SUMMARY

Our football season opened September 29 with Clarion playing Bloomsburg. Bloomsburg had a much heavier team than we, but they lacked determination and fight. The play shifted from one end of the field to the other without either team having any advantage. The brilliant defense of both teams made the contest very interesting. In the closing minutes of the game Clarion made a gallant rally. Bedzyk faded back from punt formation and heaved a low pass to Castafero, who with the whole line for interference swept down the field. Castafero, however, was forced out of bounds on the four yard line. During the next play the ball was passed from center back to the eighteen yard line untouched, but was downed, thus shattering Clarion's scoring opportunity. Final score: 0—0.

On October 6, Clarion met Allegheny College at Meadville. Again the brilliant defense of both teams was evident. With but a few minutes to play in the first half, Berger, Allegheny fullback, crashed through tackle from the thirteen yard line for a touchdown. Clarion came into the second half of the game playing much better ball than our opponents. Nolder, freshman halfback for Clarion, slipped through tackle on the weak side of the Allegheny line and raced forty yards before he was clipped out of bounds. Clarion again put on a steady drive for the Allegheny goal but found it impossible to score. The game closed, Allegheny—6, Clarion—0.

The least said about the next game the better. Clarion met St. Vincent College on St. Vincent's field. We were much out-classed as the final score indicated, St. Vincent—54, Clarion—7.

Homecoming day at Edinboro found Clarion there determined to win. During this game we really showed our ability by outplaying Edinboro in every respect. Clarion scored in the second and third quarters, during which times Castafero hit the weak side of our opponent's line for two touchdowns. At no time was the Clarion goal in danger because Edinboro never moved beyond our twenty yard line. Final score: Clarion—13, Edinboro—0.

The Indiana championship team was our next opponent. We were unable to break up the superior passing attack of Woodring and Fulton. Consequently, Indiana scored twice. Clarion, however, never gave up and in the closing minutes of the game had Indiana on their own goal line. We lost the ball on downs but succeeded in throwing Indiana for a loss over their own goal line, thereby, giving us a safety and two points. Final score: Indiana—15, Clarion—2.

Lockhaven's fast and heavy team next invaded Clarion but found a very stubborn foe. Both teams played good ball throughout the entire game, Lockhaven having the edge in the second quarter when Brown carried the ball over for a touchdown and extra point. The clever punting of Bedzyk kept the Lockhaven team in the shadows of their own goal posts for the greater part of the second half of the game. Final score: Lockhaven—7, Clarion—0.

The last game of the season was played in a sea of mud, California meeting Clarion at Clarion. Running plays were slow and kicking was difficult because of a slippery ball. Clarion, during the first half of the game, carried the ball to California's one yard line but was unable to put it over the goal line. California threatened in the fourth quarter but was held to downs and Clarion punted to safety. It was a hard fought game both teams tackling and clipping well. Final score: California—0, Clarion—0.

This was the last game of college ball for Peterson, Castafero, Gallagher, Bartley, Heverly, Rosenzweig, Brown, Rimer, Yerina, Bonnett, and Kunczewski.

RESULTS OF SEASON

Clarion	0	Bloomsburg	0
Clarion	0	Allegheny	6
Clarion	7	St. Vincent	54
Clarion	13	Edinboro	0
Clarion	2	Indiana	14
Clarion	0	Lockhaven	7
Clarion	0	California	0

BASKETBALL

The basketball season of 1934-35 was not very successful in so far as victories were concerned. However, the squad is to be commended for its outstanding ability, its clean sportsmanship and its constant effort. All of last year's team were back, strengthened by such reserves as Bedzyk, Smolak, and Shaffer. The men played good ball and were rarely, if ever, outclassed. Of eleven games, ten were unsuccessful. The final game of the season with Grove City resulted in an overwhelming victory for Clarion.

An offensive system devised by Coach Jones was employed throughout the season and proved its merit in the final game.

Those men receiving letters for basketball were:

DANA PETERSON	LEO BROWN
EMIL ROSENZWEIG	MIKI BEDZYK
CHARLES HETRICK	BRONIE SMOLAK
SAMUEL WILHELM	EDWARD CAMIOLA <i>Manager</i>

BASKETBALL LETTERMEN

DANA PETERSON

Guard

This was "Pete's" fourth year on the squad and he well deserved the privilege of being captain. He was an asset to the team both offensively and defensively. With "Pete's" graduation Clarion will lose an outstanding athlete.

SAMUEL WILHELM

Guard

This was "Sam's" last year of basketball and, as in previous years, he proved one of our most valuable players. His defensive playing was perhaps better than his offensive and his long shots oftentimes helped to improve our score.

EMIL ROSENZWEIG

Center

"Rosy" played four years of varsity ball and he will be a man hard to replace. His height enabled him to get the tip-off and to make good many of his shots. "Rosy" was high point man for the season.

LEO BROWN

Forward

"Brownie" was perhaps one of the coolest players on the team. He played an exceptionally good game of ball. This was "Brownie's" last year of college basketball, and he will be missed.

BASKETBALL LETTERMEN

CHARLES HETRICK

Forward

This was "Wasp's" first year on the varsity, and he made an excellent showing. He was a fast and clever floor man who passed accurately. He has two more years of basketball and should develop into a forward of distinction.

MIKE BEDZYK

Guard

This was Mike's first year of basketball and, since he is only a freshman, we can expect three more years of outstanding playing. Mike handled the ball well and was a steady floor man. Occasionally he was shifted to the position of forward.

BRONIE SMOLAK

Smolak, another freshman on the squad, displayed possibilities and should become a valuable player within the next three years. Sometimes he played center position and proved to be a fine pivot man.



TRACK 1934

The track season of 1934 consisted of but one meet with Allegheny College at Meadville. We were defeated 84—53. Those placing in the meet were:

100 yard dash	BYERS 1st, CHITTESTER 3rd
220 yard dash	CHITTESTER 3rd
440 yard run	HUCKEN 3rd
880 yard run	HENRY 4th
Mile run	BONNETT 2nd
Broad jump	BYERS 2nd
High jump	McKINNEY 1st, THOMPSON 2nd
Pole Vault	THOMPSON 1st, McKINNEY 3rd
Javelin throw	HENRY 3rd
Shot put	KUNCZEWSKI 3rd
Discus throw	VERINA 3rd

Earl Bonnett was an entry in the All Eastern College Track Meet held at Pittsburgh. He was entered in the Freshman Mile and placed second, thus earning the only letter issued in track.

BASEBALL

The college baseball team had no college opponents but played many independent teams in the vicinity. The team played very good ball and showed so much interest that a college schedule was arranged for next season.

The lettermen were:

PENDELTON	<i>Pitcher</i>
YATES	<i>Pitcher</i>
MOFFATT	<i>Pitcher</i>
ROSENZWEIG	<i>Center Field</i>
CHITESTER	<i>Catcher</i>
MASTERS	<i>Short Stop</i>
BROGAN	<i>First Base</i>
LOVELL	<i>Second Base</i>
HETRICK	<i>Third Base</i>
KENNY	<i>Right Field</i>
KENEMUTH	<i>Left Field</i>
HEVERLY	<i>Manager</i>

■ VARSITY "C" CLUB

OFFICERS

<i>President</i>	GEORGE HESS
<i>Vice-President</i>	RALPH CASTAFERO
<i>Secretary</i>	FRED GALLAGHER
<i>Treasurer</i>	DON HIWILLER

The purpose of the Varsity "C" Club is threefold: to promote sportsmanship, to create an interest in athletics among the men of the college, and to supervise all athletic activities.

Any man who has won a letter in a major sport is eligible for membership.

Special awards to letter-men are presented by the club.



ATHLETIC COUNCIL FOR MEN

OFFICERS

President DR. C. L. DOW
Secretary DR. D. D. PEIRCE

The Athletic Council for men was proposed by Dr. G. C. L. Riemer, December 18, 1933. He appointed Coach J. O. Jones, Dr. C. L. Dow, and Dr. D. D. Peirce as faculty members of the council. The Varsity "C" Club elected Leo Brown and the Student Senate elected Robert Heverly as student members of the council.

The Council has full charge of men's athletics, discharging such duties as the scheduling of games, the determination of qualifications for athletic awards, and the promotion of minor sports such as boxing, wrestling, hand ball and tumbling.

The Council's aim is the promotion and betterment of athletics in the college. Much has been accomplished in striving to attain this goal.

At the present time the Council is promoting the establishment of a Western Pennsylvania Athletic Conference. This Conference was at one time governed by the Board of Presidents, which has since ceased operating.



MISS HELEN M. BARTON

Miss Helen M. Barton, director of physical education, is chiefly responsible for the desirable spirit of cooperation and good sportsmanship as well as the skill and ability consistently exhibited by the women of the college. Her guidance and administration have at all times been controlling factors in maintaining amicable athletic relations. Never displaying bias or favoritism herself, Miss Barton sets an admirable example for those students with whom she comes in contact.



• WOMENS
ATHLETICS •

WOMEN'S ATHLETIC COUNCIL

OFFICERS

<i>President</i>	BETTY RHEA
<i>Vice-President</i>	KATHRYN TIPPERY
<i>Secretary</i>	MARION LINHART

MEMBERS

SOPHIA HUDSICK	RUTH PHILLIPS
MARION LINHART	D. RUTH REIGHARD
VIRGINIA KAUFMAN	BETTY RHEA
GERTRUDE PHILLIPS	KATHRYN THOMPSON
KATHRYN TIPPERY	

The purpose of the Women's Athletic Council is to administer athletics in such a way as to build rational sentiments, attitudes, habits, and traditions among the women students of the school; and to foster and encourage clean living, high standards of good sportsmanship, and purposeful service in all campus activities.

The Council picks a varsity team for each major sport. Eligibility is determined on the following bases:

1. Attendance at practices.
2. Playing ability.
3. Sportsmanship displayed in practices and games.

Varsity letters are awarded each year to the ten women having the highest number of points. These points are granted as follows: 100 points for each varsity, 50 points for each class team, and 25 points for each squad.

This year, as usual, the council sponsored intramural athletic contests. In addition, however, this organization had charge of the inter-collegiate volley-ball tournament held at Clarion on January 12, and also sent representatives to three other inter-collegiate tourneys.



HOCKEY

Hockey was the first sport arranged on the intramural program for girls. All classes were well represented in practices and enthusiasm reached a new peak.

The Soph team, with experience and training behind it was able to defeat the Frosh team in the tournament by winning two games successively.

On November 3, 1934, the Hockey season was successfully closed with a thrilling victory over an Indiana Teachers College team.

The following girls were selected on the Varsity team for their playing ability and fine spirit in intramural sports:

BETTY SMITH	LAURA B. HESS
GERALDINE THORNE	LETTISIA AMMERMAN
VIRGINIA CROOKS	AUDREY SHREVE
KATHERINE WILHELM	RUTH KLINE
MILLY ENSLE	VERNA FREEDLINE
LOIS TERWILLIGER	



SOCCER

Poor weather conditions handicapped the Soccer teams by preventing them from practicing. After much delay, the three game tournament was finally completed. The Sophomores were able to overcome the Frosh team by winning two of three games.

The girls on the Varsity were selected on a basis of good sportsmanship and general playing ability. Although the Freshman girls were defeated, they presented several outstanding players for the Varsity.

THE 1934 VARSITY

KATHERINE WILHELM	LAURA B. HESS
RUTH CHITESTER	FLORENCE GATHERS
VIRGINIA CROOKS	LETTISIA AMMERMAN
AUDREY SHREVE	BETTY SMITH
VERNA FREDLINE	HELEN WALTER
GERALDINE THORNE	



VOLLEY BALL

Volleyball was one of the most popular sports on the intramural program arranged for 1934-1935. Many girls from Freshman and Sophomore classes reported for all practices and tournament games.

A three game tournament was arranged by the Women's Athletic Council but it was necessary to play four games because of a tie in the third game. The Freshmen were finally declared winners, after a display of outstanding ability and technique.

On January 12, 1935, the Clarion teams entertained volleyball teams from Slippery Rock and Indiana State Teachers Colleges. The day was greatly enjoyed by everyone present.

The Women's Athletic Council selected the Varsity team at the completion of the tournament.

THE 1934 VARSITY

GRACE WOLBERT	MILLY ENSLE
VERNA FREEDLINE	LILLIAN BIGLIA
RUTH CHITESTER	LAURA B. HESS
RUTH KLINE	GERALDINE THORNE

BASKETBALL

After several weeks of hard and careful practice under the guidance of Council members, the Freshman and Sophomore basketball teams were ready for their annual tournament.

The girls of the Freshman class were eager for victory and worked hard to put forth a team which was strong in defense and speedy in attack. They succeeded in winning the tournament from a Soph team composed of experienced players.

The Varsity team was selected on a basis of general playing ability and good sportsmanship.

BEHRENS	SHREVE	THORNE
KLINE	B. SMITH	WILHELM

SPEED BALL

The girls of our college were quite fortunate in receiving an invitation to present an exhibition of speed ball for the American Physical Education Association, which met in Pittsburgh, April 26, 1935.

Speed ball is a comparatively new game and is played in very few of our colleges. This game is composed of a combination of plays taken from soccer, basketball and football. Two teams, consisting of eleven players each, were coached by Miss Barton for this exhibition.

We hope that in the future we shall receive more opportunities to do work of this kind.

LETTER WINNERS OF 1934

WINIFRED PHANCO

"Winnie" was one of our high point girls. She was equally skilled in all sports. She is particularly remembered for her fine work on the hockey field.

PEARL TERWILLIGER

Pearl, the tall girl who could out reach most of her mates, was a point winner in hockey and soccer.

ESTHER McELHATTEN

We shall always remember Esther in the role of a soccer player. When she once started a drive down the field there was no one who could stop her.

SOPHIA HUDSICK

Any time volleyball players are mentioned we are sure to hear the name of Hudsick. Sophia also was a hockey player of much ability.

LETTER WINNERS OF 1934

BONNIBEL KELLER

"Bonnie" and Sophia usually teamed up together on the field and hardwood court. "Bonnie" gave her support to the Varsity hockey, soccer, and volleyball teams.

MARIAN LINHART

Marian, once she got her eye on the basket, was hard to stop on the basketball floor. She won her place on the Varsity by playing forward.

GERTRUDE PHILLIPS

"Gert" was a strong player on the hockey team. Her punts and long dribbles on the soccer field will not soon be forgotten.

KATHERYN TIPPERY

"Tippie" won her letter by being selected for three Varsity teams. She was a steady player and very enthusiastic about intramural sports for girls.

KATHRYN THOMPSON

"Kay" won a fine reputation for herself by being an outstanding player on the basketball team.

VIRGINIA KAUFMAN

When Virginia swung into action on the basketball court things began to happen. She was one of the fast stepping members of the basketball team. Virginia was equally well trained as a hockey player.

RUTH REIGHLARD

Ruth was the girl who put fear into the hearts of all opposing hockey players. Her long drives down the field helped her team find victory quite often.

CAMPUS LIFE

The past school year has been a very worthwhile and successful one. Many valuable contributions have been made both by the faculty and the students. Everyone has cooperated exceptionally well, thereby making Clarion a better school.



• **CAMPUS LIFE** •

SCHOOL HYMN

Dedicated to the Loyal students

SCHOOL HYMN

H. L. BLAND

Moderato

Oh, Cla - ri - on, Our best we pledge to you, Tho
days that we have spent here, We al - ways will hold dear. Oh,
tr - d and true, staunch friends are we to you, For -
ev - er well be - liev - al to our Cla - ri - son, Cla - ri - on.

Copyright, 1928 by H. L. Bland

CALENDAR

SEPTEMBER

- Monday, 10 —Registration day. Regular schedule mix-up. "Y" pajama party. Upper classmen sit back and let the new Freshmen have their fun. Result: a broken fern.
- Tuesday, 11 —We attend a few classes. They never miss you the first few days.
- Wednesday, 12—At least we have a quantity of new Freshmen. Quality undecided.
- Thursday, 13 —Gone are the sweat shirts and sweaters. The young gentlemen are quite properly attired for the training school.
- Friday, 14 —Tryouts for the prospective thespians and warblers. "Muggsie" Moffat returns to pay his regards.
- Saturday, 15 —Freshmen reception. Upper classmen gallantly show their "little sisters and brothers" around.
- Sunday, 16 —Nothing to do but loiter about or recline on the benches and take inventory of the new stock.
- Monday, 17 —Library has already become the main scene of "attraction."
- Tuesday, 18 —Chapel in the afternoon. You'll have to get accustomed to it, Freshies.
- Wednesday, 19 —Sororities begin to issue a little propaganda.
- Thursday, 20 —Night classes begin.
- Friday, 21 —Same old campus cases are still hanging on. A few new ones begin to bloom.
- Saturday, 22 —McKeesport scores! Bronie Smolak is elected president and Laura Belle Hess vice-president of new frosh. J. O. moves in dorm.
- Sunday, 23 —Welcome back, Marty! Better late than never.
- Monday, 24 —Freshmen week begins. Green hair ribbons, pillow cases and hauteur very much in evidence.
- Tuesday, 25 —Upper classmen are entertained in chapel at the expense of the Freshmen. "Doc" Bean performs gallantly if not tunelessly. "Sweet Adeline" is rendered in the good old bar room style.
- Wednesday, 26—Joint meeting of "Y". Dr Riemer speaks.
- Thursday, 27 —Pan-Hellenic tea. Costume day for the Freshmen. Morgau Jones, after a severe punishment, condescends to play the roll of Mahatma Ghandi.

RALLY SONG

RALLY SONG

H. L. BLAND

Moderato

I'm going straight back, and
stay back in that dear old school. The place we love best of all. Oh, can't you
hear Char- on call, I got a wee y-law, that's the race for things good and
true. So I'm go- ing back, for much that I lack, That's Char- on, true blue.

Copyright 1922 by Hiram L. Bland

Printed by John W. Wiley & Sons

CALENDAR

Friday, 28 —Open house sponsored by sorority girls. Insignia, pins and smiles displayed.

Saturday, 29 —Clarion—Bloomsburg game ends in scoreless tie. Old familiar faces seen over the week-end.

Sunday, 30 —Red's place is initiated for the term 1934-35.

OCTOBER

Monday, 1 —Training school again.

Tuesday, 2 —First Clarion Call makes its appearance. Congratulations to editor Pauline Smith and her staff.

Wednesday, 3 —Rushing parties begin. Sigma Delta Phi entertains at New Bethlehem Country Club. Theta Alphas have a murder hunt—a gay, gory pastime.

Thursday, 4 —"Marmcin" delights us with her interpretive dancing.

Friday, 5 —More rush parties. Lambda Chis, Delta Sigs and Delta P's.

Saturday, 6 —Allegheny scores over Clarion 6-0. Few loyal supporters attend the game.

Sunday, 7 —Football game is replayed in the lounge Sunday afternoon.

Monday, 8 —Blue Monday—laundry, library fines and soup for lunch.

Tuesday, 9 —Mr. Becker speaks in Chapel on his recent trip through the West.

Wednesday, 10—Picnic at Cook's Forest. Football men neglect to return for practice. Enough said!

Thursday, 11 —Ban on dates for Casty. Mal Hilton visits us for the day.

Friday, 12 —Schreck comes back for a visit.

Saturday, 13 —St. Vincent triumphs over Clarion.

Sunday, 14 —Lois Singer gets her man.

Monday, 15 —Ruth Kuhn gives a non-stop, gasp-for-breath speech in chapel. Bonnett returns after a two week's absence.

Tuesday, 16 —Major Iuric speaks in Chapel. Alpha Gamma Phi has a roller skating party—all rolls.

Wednesday, 17—"Sequelle" pictures taken. Y.W.C.A. holds hill side service.

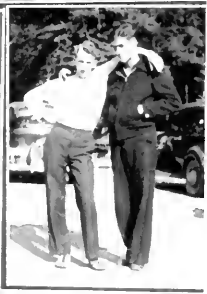


CALENDAR

- Thursday, 18 —New library notice —“Tread softly and let thy voice be low.”
- Friday, 19 —Miss Sims goes to Pittsburgh.
- Saturday, 20 —Minnesota beats Pitt. Peterson and his mother attend the clash.
- Sunday, 21 —Miss Sims returns from Pittsburgh. She attended the Pittsburgh banquet given for the Minnesota alumni.
- Monday, 22 —Classes again. Y.W.C.A. Cabinet meeting.
- Tuesday, 23 —Musical program in chapel. Increased attendance noted.
- Wednesday, 24 —Spoon throwing episode in the dining room. Childish? Well, perhaps, but mostly dangerous.
- Thursday, 25 —Extra-curricular activities.
- Friday, 26 —Pep meeting.
Beat Edinboro! !
- Saturday, 27 —We beat Edinboro 13—0.
Teachers attend convention while the students “tend” classes.
- Sunday, 28 —Snow!
Adieu, Wilson’s Woods!
- Monday, 29 —Sorority meetings.
- Tuesday, 30 —Chapel program in charge of the American Government class.
- Wednesday, 31 —Hallow’em dinner.
Most entertaining skits!
Miss Sims commends Bronie Smolak on his rhythm.
“Bo” Rodgers divested of his most precious possession.

NOVEMBER

- Thursday, 1 —Memoranda from the office reminding the negligent of the existence of chapel.
National Association for Childhood Education organized on the campus.
- Friday, 2 —Pep meeting and snake dance. Whole school goes Republican for the night.
- Saturday, 3 —We lose to Indiana 14—2.
Homecoming day.
Good dance and good music by Jimmie Wilson.
- Sunday, 4 —Day of rest for weary limbs and weary minds.



CALENDAR

- Monday, 5 — American Education Week.
- Tuesday, 6 — Dr. Englebrecht speaks in chapel on "munitions." Open forum follows.
- Wednesday, 7 — "Sliders" resort to "cramming" for the mid-semester exams.
- Thursday, 8 — Miss Rich attends the music conference at Mansfield.
- Friday, 9 — Clarion Calls out.
We liked the flashbacks from the Hallow'een party.
- Saturday, 10 — Lock Haven wins over Clarion eleven 7-0. Stellar performance on the air by "Rosy." Watch your laurels, Graham McNamie.
- Sunday, 11 — Final rites are bestowed upon Arthur Fish of second floor, Becht Hall. Much eulogizing is done over his salt water ideals.
- Monday, 12 — Lambda Chis hold their formal initiation.
- Tuesday, 13 — Training school presents program in chapel. Beginning of the "new deal" in Science Hall.
- Wednesday, 14 — Cells numbered and prisoners placed under strict regulations in Science Hall.
Louise Gates elected president of the N.A.C.E.
- Thursday, 15 — Apples for breakfast, lunch and dinner—winter supply must be in.
- Friday, 16 — Mr. Manson speaks at conference at West Chester.
- Saturday, 17 — California and Clarion game ends in a scoreless tie. Not even the referee is recognized in his blanket of mud.
- Sunday, 18 — Few have a severe case of loungeitis.
- Monday, 19 — Sororities have their formal initiations. Welcome, pledges!
- Tuesday, 20 — Siberian Singers.
- Wednesday, 21 — Comments out.
Unsatisfactory ones withheld. Many empty mail boxes noticed.
- Thursday, 22 — Hunting still takes precedence over classes.
- Friday, 23 — Four popular Clarionites indulge in a game dinner. (And, incidentally, also a flat tire.)
- Saturday, 24 — Zero finishes "Anthony Adverse."
- Sunday, 25 — Some attend church; others "sleep in"—all to one's own tastes.



CALENDAR

- Monday, 26 —Mr. Becker forgets his umbrella.
Tuesday, 27 —"The Turtle Dove"—A Chinese fantasy.
Wednesday, 28—Vacation begins.

DECEMBER

- Monday, 3 —We return just in time to miss a few classes.
Basketball practice starts. Rea and Watson en-
gagement is big headliner.
Tuesday, 4 —Classes vote to dedicate "Sequelle" to J.O. Stray
cats sought.
Wednesday, 5 —N.A.C.E. meeting. Mrs. Renn and Dr. Riemer
speak.
Thursday, 6 —Alpha Gamma Phi initiation.
Friday, 7 —Industries Club visits glass plant at Ford City.
Saturday, 8 —Freshmen Dance. Braendle is conspicuous by
his absence.
Sunday, 9 —The morning after the night before!
Basketball squad is minus two players.
Monday, 10 —"Dr. Monica."
Alpha Gamma Phi has party at Hetrick's.
Tuesday, 11 —John G. Bucher speaks on "Germany Today."
Wednesday, 12—Faculty Xmas party.
Mr. Curll presents Miss Marwick with an ideal
gift.
Thursday, 13 —Pitch pipes are indispensable—even at funerals.
Friday, 14 —Clarion Calls out.
We liked Sam Wilhelm's contribution on ath-
letics!
Saturday, 15 —Allegheny downs Clarion in the first game of the
season.
Sunday, 16 —Fortunate! Why, I even managed to get the
classified ad section of the Sunday paper.
Monday, 17 —Morgan Jones gives an instructive speech in
English Act!
Tuesday, 18 —"Why the Chimes Rang."
Cliff Rea donates a deer.
Stags have a venison dinner.
Thursday, 20 —Hostess Club entertains faculty at a tea.
Friday, 21 —Caroling??
Saturday, 22 —Christmas vacation begins.

CALENDAR

JANUARY

- Wednesday, 2 —We straggle back, tired but happy.
Hoyt's "blessed events."
- Thursday, 3 —"Brownie" denies nuptial reports.
- Friday, 4 —Dr. Dow talks on his trip to Philadelphia.
- Saturday, 5 —Well, New Year's resolutions are made to be broken.
- Sunday, 6 —Red's again.
- Monday, 7 —Dr. Riemer and Dr. Heiges exchange views!
- Tuesday, 8 —Mrs. Luchs is speaker in chapel.
Sophs taboo dance.
- Wednesday, 9 —Student Council prohibits loitering in Seminary and Science Halls and "love was just around the corner".
- Thursday, 10 —Richard Keen gives impersonations—lyceum number.
"Moon" is named on the "All State Teachers College Eleven".
- Friday, 11 —Sophs decide to have the dance. Hess and Hetrick solicit votes.
- Saturday, 12 —Girls intercollegiate volley ball tournament.
Clarion quintet goes down to defeat to Edinboro.
- Sunday, 13 —Post mortem on the basketball game.
- Monday, 14 —Just another day wasted away.
- Tuesday, 15 —Dr. Dow tells some "tall stories about the West."
- Wednesday, 16 —Freshmen girls victorious over Sophs in the volley ball tournament.
- Thursday, 17 —In midst of tests. Wid Best quotes President Roosevelt as author of the American Government text.
- Friday, 18 —Audrey Shreve, the temporary floor supervisor, officiating nicely.
More tests.
- Saturday, 19 —First semester ends.
Indiana beats Clarion 40—34.
Mid-semester celebration.
- Sunday, 20 —Faculty outnumbers students at breakfast.
Headaches, et cetera.
- Monday, 21 —School theatre party—"Anne of Green Gables."
Registration.
Betty Baldwin moves out of the dorm.

CALENDAR

- Tuesday, 22 — Grove City almost didn't win. Score: 22—21.
- Wednesday, 23—New songster on the campus—Dana Peterson.
Out-door Club has coasting party.
- Thursday, 24 —"Moon" tells those training school tots a thing or two.
- Friday, 25 —Have you learned the new Alma Mater?
- Saturday, 26 —Sophomore dance. Don Kiel furnishes the music.
- Sunday, 27 Duke Hess breaks the ice.
Usual scramble for the Sunday paper.
- Monday, 28 Can you do the "Continental"?
We miss our dinner to learn how.
- Tuesday, 29 —Faculty goes out on a "tear" in the form of a hobo party.
- Wednesday, 30—President's Ball.
Dorm girls just couldn't seem to make it.
- Thursday, 31 —Senior philosophy.
We like Sam Wilhelm's—"Be merry while ye may for the Republicans may stage a comeback."

FEBRUARY

- Friday, 1 —High expectations for the week-end.
- Saturday, 2 —Clarion and Slippery Rock battle.
Max Henry and Chet Brogan back.
Did the Ground-Hog? We did.
- Sunday, 3 —What do these students do down town all day?
All information gratefully received in the Dean's office.
- Monday, 4 —New table seating. We recommend heartily this type of assimilation.
- Tuesday, 5 Clarion at short end of the score again with Indiana. Winston O'Keefe presents a program on Cowboy life.
- Wednesday, 6 —Y.W.C.A.
No library.
- Thursday, 7 —Several are ejected from the library.
Night classes.
- Friday, 8 —Hygiene test.
Wonder how many met their fate?
- Saturday, 9 —Cause: a misplaced match box. Result: Skeets on crutches.

CALENDAR

- Sunday, 10 — 7:00 o'clock. 1-2-3 go !!!
- Monday, 11 — Lambda Chis have a shower for Mrs. Paul Gilmore, nee Anna Belle Wilson.
- Tuesday, 12 — Outdoor Club has pancakes and sausage. Phyllis Giles is recipient of many flattering valentines.
- Wednesday, 13— Fire drill.
- Thursday, 14 — Theta Alphas sell "hearts."
Alpha Phi Alpha has party at Fisher.
In memoriam—Dr. Ballentine.
- Friday, 15 — College Players have dinner dance. Some "do as their hearts prompt them."
- Saturday, 16 — Ruth Prue proves she is an authority on campus cases.
- Sunday, 17 — Hess dons britches and tramps thru the woods.
- Monday, 18 — Peanuts and a ten cent matinee.
- Tuesday, 19 — Betty and Gladys campused.
- Wednesday, 20—Miss Sims still at Atlantic City.
- Thursday, 21 — Another plea for "Sequelle" dues.
- Friday, 22 — Dot and Marty are "snowed out".
- Saturday, 23 — Pan-Hellenic dance.
Clarion-California game.
- Sunday, 24 — Sershen-Davis affair diverges.
- Monday, 25 — Varsity "C" sponsors high school tournament.
- Tuesday, 26 — Stubby Walters wins ping-pong tournament for Sigma Delta Phi.
- Wednesday, 27—Girls sign up for speed-ball.
- Thursday, 28 — Sigma Delta Phis have tea at Dot Wilson's.
Boys get their football jackets.

MARCH

- Friday, 1 — March comes in like a lamb.
First Robin.
- Saturday, 2 — Varsity "C" tournament closes. Yca Knox!
Edinboro downs Clarion.
- Sunday, 3 — Gene Kunselman in town.
- Monday, 4 — Miss Edminston gets five letters.
- Tuesday, 5 — Morgan trio.
Several take their lunch.

CALENDAR

- Wednesday, 6 —Campused girls are "out in the cold again".
Dramatic English class sees Eva La Galliene at Pittsburgh.
- Thursday, 7 —Kirby Page defaults.
No chapel.
- Friday, 8 —Clarion closes the season with a "bang," beating Grove City 44—24.
Yea team! We've been waiting for this.
A Cappella choir visits Franklin and Oil City.
- Saturday, 9 —Faculty goes to Pittsburgh to see Eva La Galliene.
- Sunday, 10 —Loving smiles and sweet glances.
- Monday, 11 —Sigma Delta Phi has taffy pull.
- Tuesday, 12 —Dr. Kiemer decides his philosophy students are clodhoppers.
Better shake the dust from your feet and get busy.
- Wednesday, 13 —Ice cream night.
- Thursday, 14 —Industries Club visits New Kensington.
- Friday, 15 —Pauline Smith elected House President.
- Saturday, 16 —Chuck Frederick and Fergie come back.
- Sunday, 17 —St. Patrick's Day—green everywhere.
Miss Seyler prepares a dinner to fit the occasion
- Monday, 18 —"Forsaking All Others".
- Tuesday, 19 —Faculty makes brilliant showing in tournament.
Stooges Heverly and Gallagher furnish reserve strength.
- Wednesday, 20 —Joe and Kay agree to disagree permanently.
- Thursday, 21 —Spring is here.
White shoes now tread the campus.
- Friday, 22 —Students unite to support Governor's tax program.
- Saturday, 23 —Happy birthday, Jean!
- Sunday, 24 —Record attendance at church.
- Monday, 25 —Mugwumps win intramural tournament.
"David Copperfield."
DuBois-Clearfield County Mummi Banquet.
- Tuesday, 26 —Sociology class presents program in chapel.

CALENDAR

- Wednesday, 27- Dr. and Mrs. Riemer entertain Seniors at dinner. Murder will out!
- Thursday, 28 — Another council victim.
- Friday, 29 — Clarion Calls out.
Since when does the faculty have to obey light regulations?
- Saturday, 30 — Frat dance.
Everyone has a "high" time.
We liked Jerry Chic and "White Heat".
- Sunday, 31 — Dan Coleman pays us a visit.

APRIL

- Monday, 1 — Were you fooled?
Who sewed the faculty napkins?
- Tuesday, 2 — "Buy a date and get a date".
Senate violates States Rights.
- Wednesday, 3 — Comments out.
Y.W.C.A. Banquet.
- Thursday, 4 — Dr. Riemer photographs Ruth Kuhn's mind on blackboard.
- Friday, 5 — Miss Marwick sits on pair of scissors.
Clarion-Clarion County Mummi Banquet.
- Saturday, 6 — Tryouts for "The Mikado."
Delta P's spend week-end at Cook's Forest.
- Sunday, 7 — Chicken! !
- Monday, 8 — Hang on, Hess! !
- Tuesday, 9 — Richard Finnie speaks on Northland at Chapel.
- Wednesday, 10— Future Wilson's Woods in the making.
- Thursday, 11 — "Gilded Lily".
- Friday, 12 — Founders Day.
Spring Concert.
Kittanning-Armstrong County Mummi Banquet.
- Saturday, 13 — Vacation! !
- Monday, 22 — Back again.
- Friday, 26 — Speed Ball exhibition at Pittsburgh.
- Saturday, 27 — Allegheny County Mummi Banquet.

CALENDAR

MAY

- Tuesday, 7 —Play day.
Friday, 10 —Musical Festival.
Y.M.C.A. conference at Indiana.
Saturday, 11 —Parents Day.
Tuesday, 14 —Installation of Senate.
Saturday, 18 —Field meet—W.P.L.A.L.
Saturday, 25 —Alumni Day.
Sunday, 26 —Baccalaureate Sunday.
Monday, 27 —Commencement.
Adios.

ALMA MATER

Oh Clarion, Dear Clarion,
Oh College on the hill,
To all the joys of student life,
Our hearts will ever thrill,
Your silent winding river,
It haunts me still.

Oh Clarion, Dear Clarion,
We pledge our faith to you,
With lasting love and loyalty
In everything we do,
To you, dear Alma Mater
We'll ever be true.

SENIOR PHILOSOPHY

BYRON ASHBAUGH

I do not accept the world as being ideal, but accept it as it is and I will do what I can to improve it.

BETTY BALDWIN

True friendship is a key to real happiness.

MARTHA BARNES

"Not enjoyment, and not sorrow,
Is our destined end or way;
But to act that each tomorrow,
Find us farther than today."

—*Longfellow.*

TYRUS BARTLEY

"An honest man will reap the result of his labors."

DOROTHY BROWN

"The most perfect and best of all characters, in my estimation, is his who is ready to pardon the errors of mankind as if he were every day guilty of some himself; and at the same time as cautious of committing a fault as if he never forgave one."—*Pliny the Younger.*

LEO BROWN

"You must contribute to things if you would draw from things."

—*Palmer.*

RALPH CASTAFERO

"To live in such a way as to make others happy."—*Irving.*

VIRGINIA CROOKS

"A man without mirth is like a wagon without springs."

—*Henry Ward Beecher.*

RALPH FULTON

"Blessed is the man, who, having nothing to say, abstains from giving wordy evidence of the fact."—*George Eliot.*

FRED GALLAGHER

"Know thyself."—*Socrates.*

LOUISE GATES

"Get your happiness out of your work or you will never know what happiness is."

EARL HADDEN

"The vocation of every man and woman is to serve other people."

—*Tolstoy.*

SENIOR PHILOSOPHY

HARRY HAMILTON

Life is a battle;
Life is a game,
Play, fool, play!
Win all, lose all,
'Tis just the same.

GUY HARRIGER

Today's happiness is the profit of yesterday's experience.

MADELIX HEETER

"Beauty is truth, truth beauty—that is all ye know on earth, and all ye need to know."—*John Keats.*

ROBERT HEVERLY

"The acts of this life are the destiny of the next."

—*An Eastern Proverb*

DONALD HINCKEN

"Learning maketh a man fit company for himself."

KERMIT KENEMUTH

"To work, to help, and to be helped, to learn faith by perplexity, to reach truth through wonder—Behold! This is what it is to prosper, this is what it is to live."—*Phillips Brooks.*

HAROLD KNIGHT

"Men's minds are as variant as their faces."—*George Washington.*

RUTH KUHN

"The world is so full of a number of things,
I'm sure we should all be as happy as kings."

—*R. L. Stevenson.*

LEROY LOVELL

"Life is just a dazzling farce."—*Dreiser.*

BETTY MALLON

"Ah, but a man's reach should exceed his grasp,
Or what's a heaven for?"—*Browning.*

FLOYD McHENRY

"For life is the morrow of king and slave,
'Tis just what you are and do;
Then give to the world the best you have
And the best will come back to you."

—*Madeline Bridge.*

JAY McKEE

Find out as much as I can about everything; accept what I can see and understand; doubt those things which I cannot see and understand. Be sincere in all things for sincerity is the basis of virtue. Do the best I can but do not expect too much.

SENIOR PHILOSOPHY

MORTON MCKINNEY

As another of Nature's imperfections, prone to folly and fallacy, to live my brief tenure as tolerantly as is wise and as wisely as is tolerant.

HOMER MILLER

I find glory in imperfection with perfection as my ideal.

DANA PETERSON

"The door to success is labeled—push."

CLIFFORD REA

"A little learning is a dangerous thing
Drink deep or taste not the Pierian spring."
—*Alexander Pope.*

BETTY RUEA

"Think naught a trifle, though it small appear:
Small sands the mountain, moments make the year,
And trifles life."

JEAN RUEA

"The secret of happiness is not in doing what one likes, but in liking what one has to do."—*Sir James Barrie.*

EMIL ROSENZWEIG

"Vice is a monster of such terrible mien
As to be hated needs to be seen,
But seen too oft, familiar with her face
We first endure, then pity, then embrace."

GERALD STAHLMAN

I believe in always striving to do one's best in all phases of life. Sincerity is one of the first goals to success. Be sincere as you journey life's path.

BERD THOMPSON

"Life is too short to be spent in nursing animosity or registering wrong."—*Charlotte Bronte.*

SAMUEL WILHELM

"I am a part of all that I have met."—*Tennyson.*

DOROTHY WILSON

"Hitch your wagon to a star."

AUTOGRAPHS

HUMOR

His car and her car met head-on. Both drivers got out and with that fine courtesy so characteristic of motorists nowadays, both began to apologize profusely.

"I'm so sorry," said the woman, "it was all my fault."

"No, at all, madam," said the man with a gallant gesture, "I saw you coming blocks away and I had ample opportunity to dart down a side street."

Mort McKinney: "Did the innocent bystander in the fight go home in the interim?"

Bird Thompson: "No, he went home in the ambulance."

Kermit Kenemth: "My wife has been nursing a grinch all week."

Floyd McHenry: "Been laid up, have you?"

"Iceland," said Dr. Dow, "is about as large as Siam."

"Iceland, writes Morgan Jones afterwards, "is about as large as Dr. Dow."

Pete: "When do you graduate?"

Sam: "End of this semester."

Pete: "Surprised?"

Sam: "No, I've been expecting it for years."

Fred Gallagher: "What makes you think you've been a success in college?"

Bob Heverly: "I always beat the reading time in Liberty magazines."

Dot Haley: "My aunt in Venice is sending me a gondola for my birthday. How am I going to play it?"

Wasp: "Such ignorance! You don't play a gondola, you throw it over your shoulder like a shawl."

"It's going to be a real battle of wits, I tell you," said a sophomore member of the debating team.

"How brave of you," said his room-mate, "to go marmed."

A London doctor touring in the provinces had difficulty in obtaining suitable lodgings in a small town.

One landlady, showing him a dingy bedroom, remarked persuasively, "As a whole, this is quite a nice room, isn't it?"

"Yes, madam," he agreed, "but as a bedroom it's no good."

Rusty Gates: "My husband must be a strong silent man, full of grit."

Jean Rhea: "What you want is a dumb dustman."

A photographer was taking a picture of a father and his college boy son. The photographer suggested that the boy stand with his hand on his father's shoulder.

"It would be more appropriate," said the long suffering parent, "if he stood with his hand in my pocket."

Stubby Walters: "Did you ever hear the joke about the Egyptian guide who showed a group of tourists two skulls of Tutankhamen, one when he was a boy and the other when he was a man?"

Ruth W.: "No, let's hear it."

Betty Rhea: "I haven't come to any ham in this sandwich yet."

Waiter: "Try another bite."

Betty: "Nope, none yet."

Waiter: "Dog-gone—you must have gone right past it."

"Dearest Betty," wrote Wasp, hopelessly in love, "I would swim the mighty ocean for one glance from your dear eyes. I would walk through a wall of flame for one touch of your little hand. I would leap the widest stream in the world for a word from your lovely lips."

As always,
Wasp.

P.S. I'll be over Saturday night if it doesn't rain.

Finals, finals, everywhere, with drops and drops of ink,
And never a teacher who'll leave the room,
And allow a guy to think.

Miss Runyan: "How did you come to mark this boy's paper 101 per cent? Don't you know that nothing can be more perfect than 100 per cent?"

Bob Heverly: "Yes, but this boy answered one question we didn't ask."

Diner, stepping into restaurant: "Do you serve crabs here?"

Waiter: "Sure, we serve anyone. Sit down."

Joshua Brush, a traveling man
Who sailed the briny main,
Was Mr. Brush in England,
And Senor Brush in Spain.
The Frenchmen called him Monsieur Brush,
But the Germans were his bane,
For they always called him Herr Brush,
Which filled his heart with pain.

Diner: "There's something wrong with these hot dogs."

Waiter: "Well, don't tell it to me; I'm only a waiter, not a veterinarian."

HUMOR

Miss Wainwright: "This again may be considered as the best way to treat a case that every kind of water alternate flow."

John: "I see the new paper are speaking about me again this morning?"

Ty: "I don't see in what connection?"

John: "An article says that there are two hundred *free* people in the United States and in one of our own States!"

Miss Lloyd: "Katie talks to me all day long and by away it is said that she is a little bit nearer to me."

Kermit Lockwood: "I guess it must mean something."

Miss Noy: "I don't understand the papers, I'm afraid."

John Goodwin: "I think you will like the papers that keeps going round in all the other and never is published."

Lawson: "There is a very large water pipe you have here?"

Manager: "Yes, it has a water capacity of one thousand."

Betty Dallas: "Correctly written, I believe any damage could be done, the fire was put out by the firemen in the department."

Mike DeLoe: "The fire was put out before any damage could be done by the firemen in the department."

Betty Baldwin: "Correctly, one can't trust anybody. The proper place is a building in the city."

Clarry Harris: "I don't know."

Betty: "I don't know, I don't know either."

Scott: "I have a young man of that age, the American who bought only one pair. He figured that if one side of the horse went the other way, sure he was."

Henry: "I don't know the day and he will be."

Henry: "I don't know the day and he will be."

Henry: "I don't know the day and he will be."

Henry: "I don't know the day and he will be."

Henry: "The only way you are treated, the best and prunish the most."

Conscience: "I don't know that were in something, I don't know."

Saxophone: "I don't know that were in something, I don't know."

Conscience: "I don't know that were in something, I don't know."

Henry: "I don't know that were in something, I don't know."

Henry: "I don't know that were in something, I don't know."

Henry: "I don't know that were in something, I don't know."

WEIN BROTHERS

CLAPION'S LEADING

DEPARTMENT
STORE

**CAMPBELL'S DRUG
STORE**

THE REXALL STORE

Established 1881

CLAPION

PA

COMPLIMENTS

OF

Mr. and Mrs.
FRED JENKINS

COMPLIMENTS

OF

KUHN'S BAKERY

JOHN HENROTIN

SHOE REPAIRING

Next to Hess Motor Co.

FITZGERALDS'

A. G. CORBETT DRUG CO.

CLAPION, PA

The Store that always
gives Service with a
Smile

WM. W. PHERO

Candy, Tobacco & Groceries

at the NEW

INTERWOVEN SOX

Alexander & Moore

CLAPION

Compliments

of

GREENAWALTS

Compliments

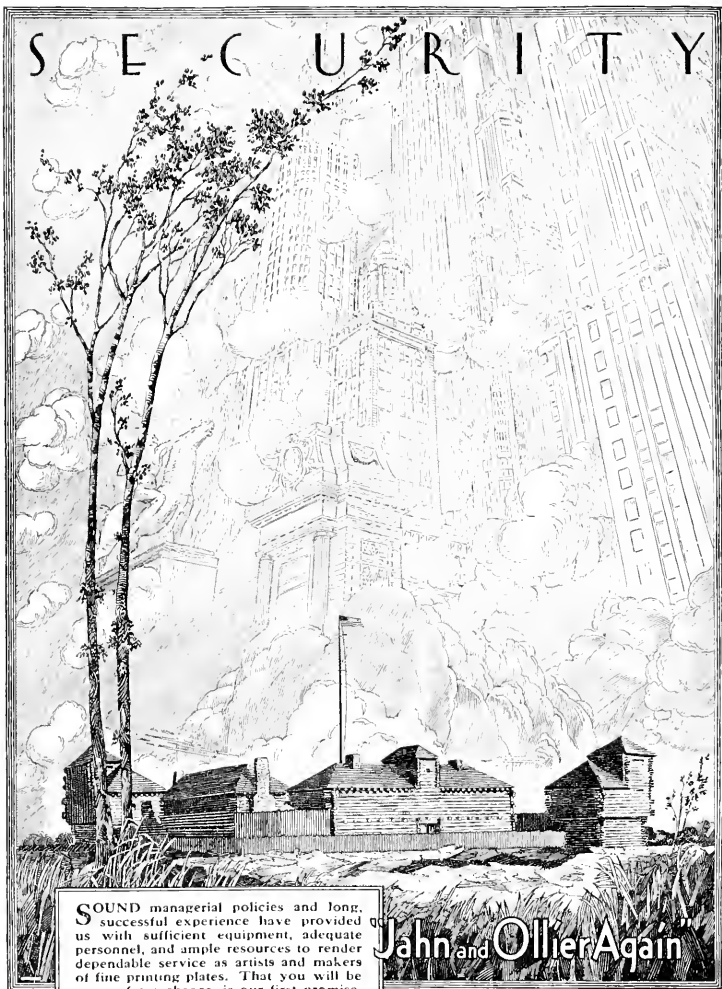
of

EDDIE'S CAFE

Compliments of

NAIL'S BASEMENT RESTAURANT

SECURITY



SOUND managerial policies and long, successful experience have provided us with sufficient equipment, adequate personnel, and ample resources to render dependable service as artists and makers of fine printing plates. That you will be secure from chance, is our first promise.

JAHN & OLLIER ENGRAVING CO.
817 West Washington Blvd., - Chicago, Illinois

Jahn and Ollier Again

In the foreground - Ft. Dearborn re-erected
in Grant Park on Chicago's lake front.
Illustration by Jahn & Ollier Art Studios.

CLARION UNIVERSITY OF PENNSYLVANIA



3 9363 00151 7405

Spec.Col.
qLD
1017
.C68
1935
c.2

