

Spec. Col.
qLD
1017
.C88
1942

Séquelle


1942

LIBRARY

CLARION COLLEGE



Carlson Library



Digitized by the Internet Archive
in 2010 with funding from
Lyrisis Members and Sloan Foundation

<http://www.archive.org/details/sequelle1942clar>



Through the

Year . . . AT CLARION

as seen by the senior class who present to you the 1942 SEQUELLE, hoping that you will overlook its shortcomings and enjoy its highlights. We desire it to be in future years a means of reminiscing and a tie binding us together because of mutual pleasant experiences.





A YEAR OF OUR LIFE

AT CLARION STATE TEACHERS COLLEGE

As Portrayed in the

1942 SEQUELLE

DEDICATION...



To the principles of American
democracy and to the boys of
the Clarion State Teachers
College in the service of
the United States
of America.



First days on the campus for freshmen meant getting established in dormitories, trudging up and down endless flights of stairs, touring the campus, taking tests and more tests, and discovering new friends. As soon as the upperclassmen arrived, they were busily engrossed in hunting roommates and old friends, hanging curtains, decorating walls, and getting acquainted with freshmen. After all the preliminary hustle and bustle was over, and after fond parents departed, prospective students hurried to Seminary Hall to the library which temporarily became the scene of registration. Timid freshmen wailed, "I'm sure I won't do it correctly," and upperclassmen laughingly joked, "We never register twice in the same way"; but helpful faculty members guided everyone through the intricate routines, straightened schedules, and recommended courses until all had filled out necessary cards and papers. After a visit to Mr. Bowman, the bursar, Clarionites "patiently" awaited their first class.



Helen M.
Barton
Ralph W.
Cordier

Charles F.
Becker
Charles R.
Flack

Margaret A.
Boyd
Mildred E.
Gamble

Frank M.
Campbell
Anna B.
Graham

Clair E.
Carey
Anna A.
Greenawalt

Rena M.
Carlson
Walter L.
Hart

HELEN M. BARTON, Ed. D.
Physical Education
University of Pittsburgh

RALPH W. CORDIER, Ph. D.
Social Studies
Ohio State University

CHARLES F. BECKER, M. A.
Education
Columbia University

CHARLES R. FLACK, M. A.
Library Science
University of Illinois

MARGARET A. BOYD, M. A.
English
University of Pittsburgh

MILDRED E. GAMBLE, M. A.
Intermediate Grades
Columbia University

FRANK CAMPBELL, M. A.
High School and French
Pennsylvania State College

ANNA B. GRAHAM, B. S.
Junior High School Grades
Clarion State Teachers College

CLAIR E. CAREY, M. A.
Mathematics
Harvard University

ANNA E. GREENAWALT, B. S.
Dietitian
Pennsylvania State College

RENA M. CARLSON, M. A.
Librarian
University of Michigan

WALTER I. HART, M. A.
Music
Carnegie Institute of Technology

Our President



PAUL G. CHANDLER

EFFIE B. HEPLER, B.S.
Primary Grades
 Geneva College

GILBERT A. HOYT, M. S.
Junior High School Grades
 Grove City College

CLARENCE A. KUHNER, M.S.
Geography
 University of Wisconsin

BERTHA V. LEIFESTE, Ph.D.
Kindergarten-Primary Education
 University of Pittsburgh

HARRY S. MANSON, M.A.
Science
 Grove City College

MARIE E. MARWICK, M.A.
English
 Columbia University

BERTHA V. NAIR, M.A.
English and Latin
 University of Pittsburgh

FANNIE C. OWENS, R.N.
Nurse
 Oil City Hospital

DONALD D. PEIRCE, Ph.D.
Science
 University of Illinois

ELLEN I. PETERSON, M.S.
Dean of Women
 Syracuse University

HAZEL N. SANDFORD, M.A.
Art
 New York University

WALDO S. TIPPIN, M.A.
Physical Education
 Columbia University

HELEN WALTERS, M.A.
Primary Grades
 Columbia University

SAMUEL WILHELM, Litt.M.
Junior High School Grades
 University of Pittsburgh

LOTTIE WINGARD
Registrar
 Hoff Business College



Effie B. Hepler
 Marie E. Marwick
 Hazel M. Sandford

Gilbert Hoyt
 Bertha V. Nair
 Waldo S. Tiffin

Clarence A. Kuhner
 Fannie C. Owens
 Helen Walters

Bertha V. Leifeste
 Donald D. Peirce
 Samuel Wilhelm

Harry S. Manson
 Ellen I. Peterson
 Lottie Wingard

After registering, meeting new faculty members, and renewing acquaintanceships with former instructors, we all felt a desire to see them behind their lecture stands. We knew that sooner or later we would become listless in class and anxious for vacations, and we knew it would be difficult for our instructors to keep us interested at these times; but we felt that deep in their hearts, our faculty knew that topping our ill-prepared assignments, late term papers, and stifled yawns in class, was a true appreciation of their interest in us as individuals, their willingness to devote time in solving our problems, their friendly smiles, and spirit of cooperation and comradeship.





The Freshmen! Initiation Week! . . . We upperclassmen never knew what we might find next—an Indian in war paint, a bride and groom, or a group of green freshmen who had forgotten what to wear for class.

After the freshmen had been on the campus a semester, they had some rather definite ideas which they expressed in the following letter:

Dear Upperclassmen:

That was not really an unknown plague that descended upon you and the college as a whole on September 24, 1941. It was only we insignificant freshmen—insignificant in name, but not in deed or action, as you soon found to your great regret.

One activity we nearly strained our brains in planning was the Freshman Carnival or Freshman Frolic. The event depended on the actions of the heavens; but as the committees and the week-end weather could not get together it was with regret that the idea was shelved for another year. The members of the freshman class are ingenious and have shown much talent. A small evidence of this is a fragment of a poem, entitled, "Ode to the Freshmen," written by Ruth Slater, one of our members:

Sometimes dull and very dry
Are histories of the classes
(Please, dear Reader, do not sigh;
Just let me don my glasses.)
And so you'll find, if you don't mind,
The history of the Freshmen:
Of pranks and jests, and Entrance Tests—
We all recall that session.

In '41 we entered here
As timid as a herd of deer.
Still "pea-green" we bore the pranks
Of those of higher class and ranks.
Of dances, teas, and games and stuff,
We Freshmen couldn't get enough!

This expresses more than could be written here in many more words, so until 1942 we remain,

Sincerely,

THE FRESHMEN



Barbara Betz	Marion Bish	Kathryn Black	Doris Bloomster	Dorothy Bloomster	Elizabeth Bovoird	DeForest Bowman	Ruth Brasuell
Richard Brossman	Doris Caskey	Kathryn Copeland	Geraldine Courson	Verne Cuthbert	Marie Filliph	A. G. Fleming	Lillian George
Arthur Gillotti	Alice Guseman	Betty Heasley	Sara Mae Hecathorn	Joy Helenbrook	Richard Helmintoller	Mary Alice Hess	Helen Hetrick
Alma Hahn	Joyce Hoovler	Bernadette Hugus	Grayce Hummell	Mary Grace Hutchison	Ernest Johnson	Connie Kanski	Pete Kupsek



Bernadine
Laughery

William
Laughlin

Myrno
Lewis

Marjorie
McClain

Mary Helen
McCandless

Donagene
McDowell

Nell
Motter

Rose Jean
Musl

Robert
Muth

James
Newell

Mary
Ochs

Barbara
Paddock

Patricia
Price

Mary
Reynolds

Evelyn
Rupert

Jane
Servey

Charles
Shaner

Morian
Shockey

Pauline
Shawers

Gordon
Sills

Marilyn
Simons

Ruth
Slater

Esther
Staab

Kathleen
Stewart

Lois
Stroupe

Ruth
Swarthout

Shirley
Terwilliger

Freda
Thompson

Phyllis
Womer

Helen
Work

William
Zimmerman



Standing—Henry, Strickler, Stinard, Snitzer, Snyder.
Sitting—Dressler, Stack, Mohney, Barnes, Kennedy.

The freshman reception, the first task undertaken by the Student Senate, proved a successful beginning for the year's activities. The Senate social committee and its assistants managed to provide an opportunity for freshmen, upperclassmen, and faculty to become acquainted in a very informal manner.

With the objective of creating a feeling of class cooperation the Senate planned a set of rules for freshman week.

The Student Senate is composed of twelve members elected annually by the students to represent their interests. Three of these members, Audrey Ruth Barnes, Jean Dressler, and Unithea Stack are representatives of the women resident students. Steve Kovalyak, Lawrence Snitzer, and Mervin Strickler represent the men resident students. Fay Henry, Teresa Kennedy, and Jane Stockdale were elected to represent the women day students. Frank Mohney, Wayne Snyder, and Gene Stinard are delegates from the men day students.

Among its functions are budgeting the Student Cooperative funds, publishing the student handbook, and planning for Parent's Week-end. Committees appointed from the Senate and faculty prepare the social calendar and select the chapel programs for the year.

It is the aim of the Student Senate to establish a well-rounded program of activities for the education, welfare, and entertainment of the students at Clarion.

The Officers of the Senate, elected by the popular vote of the entire student body, are:

<i>President</i>	FRANK MOHNEY
<i>Vice-President</i>	AUDREY RUTH BARNES
<i>Secretary-Treasurer</i>	JANE STOCKDALE

The Women's Student Council swung into action as soon as the members arrived on the campus. As the representative body of Becht Hall, they were assigned the special duty of acquainting the freshmen with dormitory regulations and reminding the upperclasswomen that "Lights Out" at 10:30, no ankle socks at dinner, and dancing until 7:15 only were rules still in effect.

A Halloween house party was given in honor of Mrs. McKinney, who for seventeen years had made the life of each dorm girl much more comfortable by the faithful execution of her tasks as housekeeper, and by such other services as hunting up rugs to match bedspreads and towels, or securing an extra desk for some hard-working senior.

In order to raise funds for such events as the Christmas tea given annually in honor of the women students outside the dormitory, faculty women, and faculty wives, the council took charge of the Coca Cola machine in the dining hall of Becht Hall, an added service to the thirsty girls residing there.

In October the freshmen members, Ruth Brasuell and Phyllis Womer, completed the council which already consisted of Jean Dressler, Jean Tait, Burdell Giles, Audrey Ruth Barnes, Ruth Kapp, Ruth Trescher and Marjorie Stewart.

The Council Officers are:

<i>House-President</i>	JEAN DRESSLER
<i>Vice-President</i>	AUDREY RUTH BARNES
<i>Secretary-Treasurer</i>	JEAN TAIT
<i>Dean of Women</i>	MISS ELLEN I. PETERSON



Back Row—Womer, Tait, Brasuell, Trescher.

Front Row—Kapp, Barnes, Dressler, Miss Peterson, Giles.



Cook's Forest Picnic—October 15—search for rides—who's going in the station wagon?—well, we're off at last—Cook's Forest in all its autumn glory—just time for a hike before lunch!—at last, ham sandwiches, salad, baked beans, ice cream, coffee—line up—no preference given to faculty—Mr. Hart with his camera—old and new couples—Miss Marwick and Miss Boyd have their dog—Seneca point—the fire tower—baseball—volleyball—time to go—well, we had a good time, did you?

About the middle of October, did you notice six students limping, groaning, and moaning around the campus? They weren't new members on the football team, although at times they acted as if they had been practicing with the grid squad; they were just our newly elected cheerleaders: Kay Cervone, Nathalie Neverla, Pete Kupsek, Belle Piper, and Dorothy Hillgartner. The first few practices found them stiff and unaccustomed to the type of muscular activity necessary for cheer leaders, but this minor difficulty soon was eliminated.

After much practice they made their debut in chapel one morning, leading several cheers, and teaching the student body a new rally cry. The response was gratifying.

On the night before the Edinboro game these cheer-jerkers conducted a pep meeting in the chapel. After Mr. Tippin and several members of the team had delivered short speeches, Eddie Edinboro was cut down from the gallows (ceiling to you) and carried to the big bonfire on the football field for cremating.

On through the season—rain, snow, or sunshine—the cheerleaders were out for each game, cheering our team on to victory.



Left to Right—Hillgartner, Neverla, Kupsek, Wilson, Cervone.



The golden autumn days turned the minds of the students almost immediately from freshman initiation to our football team.

During the season, Clarion State Teachers College's "Golden Eagles" turned in a record of three wins, two losses, and one tie for the 1941 football season. The three victories added to the ones registered in the four previous seasons ran the Tippinmen's record to twenty triumphs in five campaigns.

The first scheduled game with Grove City college was cancelled due to the polio epidemic that postponed the openings of all state teachers colleges.

On October 4 the Blue and Gold opened with Alliance College after but twelve pre-season practice sessions and defeated the up-staters handily by a score of 35-0 at Clarion with five players chalking up touchdowns.

The second game was with strong Thiel college in Greenville. The Teachers fell by a 26-0 score before the Jack Stoerber coached team that was undefeated in seven games. Clarion's line led by the brilliant Irwin Fall at left end outplayed the Thiel forward wall but the "Golden Eagle" backs were no match for the hard running Thiel backs.



Back Row—Mr. Tippin, Shaner, Cyphert, Snyder, Martin, Wilhelm.

Third Row—Johnson, Wiberg, Newell, Jewart, Stewart, Elder, Buzard, Sills, McKinley, McCandless.

Second Row—Mohney, Pence, Muth, Strickler, Weidt, Mulligan, Fichter, Hunter, McGinnis, Wortell.

Front Row—Fall, Wetzel, Sheridan, Sevok, Kovalyak, Bole, Wolfe, Solonchak, Siar, Wallace.



Homecoming day at Clarion was featured by the annual Clarion-Edinboro grid battle. The game was played in a steady downpour of rain and on a very soggy field. With these conditions prevailing, the teams battled to a scoreless tie. Clarion's Hat Wolfe punted 14 times and the Red Raiders kicked 15 to feature the game with long high kicks.

The fourth game on the Clarion schedule found the hilltoppers in Charleroi for a game with California Teachers College in which the Tippinmen rolled up a 28-0 score on an under-manned opponent. Freshmen scored the four touchdowns in the game with Turk Johnson going over twice and Gordon Sills and Chuck Shaner once each. Sills ran 70 yards for one six-pointer and threw a 35-yard pass to Shaner for another score to feature the one-sided game.

Clarion fell before Indiana's Indians by a 12-0 score at Indiana. Indiana with a big line held down Clarion's ball carriers but were able to score their two touchdowns only after long marches down the field.

The "Golden Eagles" closed their season by running up an all-time record score over Kutztown Teachers College here on November 8. The record score was 46-0 and eight players scored.

ALLIANCE	0	CLARION	35
THIEL	26	CLARION	0
EDINBORO	0	CLARION	0
CALIFORNIA	0	CLARION	28
INDIANA	12	CLARION	0
KUTZTOWN	0	CLARION	46

- CLAUDE BOLE—"Buck the line Bole" was the buckinest fullback ever to come out of Rimersburg High School and the most dependable ball carrier on the Golden Eagle squad.
- JAMES BUZARD—Buzz, the baseball outfielder from Strattonville won his first varsity letter as a junior. He should be a regular in the next campaign.
- IRWIN FALL—"Number one defensive end" was the classification given Fall by his mates. The 185-pounder from Fairview is set for a better season as a junior.
- JOHN HUNTER—This 160-pound Altoona lad went great guns for the Tippinmen in the last part of the season.
- JOSEPH JEWART—A New Bethlehem boy in his second letter winning year was this season's most versatile player.
- ERNEST JOHNSON—Johnsonburg's Turk was the number one backfield replacement who scored on several occasions. Freshman Johnson is a bright prospect.
- STEPHEN KOVALYAK—Steve, the popular singing guard, was always there with a bang-up game. We remember him as the extra-point kicking specialist of the Golden Eagles.
- FRANK MOHNEY—The Brookville boy who played four years of brilliant ball without sustaining an injury was always ready at the blocking back post last season.
- WALTER MULLIGAN—Scat back Mulligan was a hard man to bring down. He should be better as a sophomore although the armed services may annex him before then.
- ROBERT MUTH—"Tiny was 215 pounds of 1-A football player. What more need we say?"
- CLYDE PENCE—Senior Squadman Pence was 215 pounds of tough tackle, difficult to move during his four seasons on the Golden Eagle squad.
- ANDREW SEVOK—Andy, the backfield handy man, was a great offensive threat in his last campaign, and as an aviation cadet in the Army Air Corps, he will carry on as a handy man in the great offensive to keep the American way.
- CHARLES SHANER—Oil City's pride on the Clarion team is Shaner, 180 pounds of brilliant running back, probably the best prospect for next year.
- JAMES SIAR—In his second year of football, Jim made the starting lineup, giving to Clarion a great end.
- GORDON SILLS—One of the flashiest and fastest players on the team was Sills, who broke away for many long runs as a freshman and should repeat as a sophomore. (Tip hopes so.)
- WILLIAM SOLONCHAK—Starting as center, Solonchak of Stowe Township played a good steady game in every Clarion contest this season.
- MERVIN STRICKLER—Strick, the Sophomore trickster from York Haven, held down a reserve post at tackle after playing at center in his frosh season.
- PHILIP WALLACE—The pass catching end from Brookville proved valuable time after time in his freshman season as a Golden Eagle.
- JOHN WETZEL—Coach Waldo Tippin's own words, "You're a great tackle, boy," best describes Muggs, the New Bethlehem sensation, who in four seasons has won more all-State Teachers honors than any other player in Clarion's history.
- ROBERT WIBERG—Big Bob of Altoona was a varsity guard last season. Wiberg, a sophomore, is set for two more big seasons.
- HARRY WOLFE—A senior star in his fourth starring year was Hat Wolfe, the team's number one punter last campaign.
- WILLIAM WORRELL—Willie is a Clarion junior who served as guard for the Golden Eagles as they drubbed three opponents last season.
- MANAGERS—Wayne Snyder and Laird McCanna—They didn't run the ball through enemy territory for a first down, nor did they score a touchdown, but to them goes the appreciation of the team for the services of comfort and efficiency which they rendered on trips and for the encouragement which they freely gave at all times.



Homecoming—blue and gold pennants streaming from tree to tree and from building to building—inscriptions of “yea, team, beat Edinboro!” covering sidewalks—old grads, and more recent grads enthusiastically greeted by undergraduates—rain—football game, umbrellas, mud—Clarion 0, Edinboro 0, too bad—rush for showers—Homecoming banquet—flash! just Pinky taking another picture—intimate reunions in the lounge—at last, the big event of the day, the dance!—blue lights, forget-me-nots, welcoming mottoes, sweet strains of music, the soft swish of lovely gowns—well, it’s over—see you next year.



Standing—Baker, Chitester, Barnes, Moses, Seigworth, Burnham, Ablgrim, Kennedy, Barlett, Stack.

Sitting—DeWald, Singer.

Each fall as the boys' thoughts turn instinctively to football, the interests of the athletically-minded young women of the campus are in turn diverted to the intramural program which is planned and conducted by the Women's Athletic Council.

Seniors, juniors, sophomores or freshmen can be found at least three nights a week on the Women's Athletic field or in the gymnasium. Swinging their hockey sticks, kicking field goals, or shooting baskets they practice to perfect themselves before the class tournaments arrive—the climax of these hours of training.

Besides aiming for a victorious team, each participant has an individual goal—a position on the honorary varsity. To be eligible for this achievement a girl must be credited with a regular attendance at practice, good sportsmanship, outstanding playing ability, and co-operation with her team.

Letters are awarded at the close of the second semester to council members who have coached two sports and participated in one, coached one and participated in two, or simply participated on three teams. New members are selected by the point system.

Officers for this year were:

<i>President</i>	ROSADELL CHITESTER
<i>Vice-President</i>	UNITHEA STACK
<i>Secretary</i>	DELL SINGER
<i>Adviser</i>	DR. HELEN M. BARTON

The first sport for this year was speedball. Each group selected a captain and a manager who, with the assistance of the coaches, conducted practice on appointed afternoons.

The games were refereed by the following coaches:

Freshmen DORIS SEIGWORTH
Sophomores..... EDNA AHLGRIM

The first game, played between the sophomores and juniors, was won by the sophomores with a score of 3-0. The only score in this game was a sensational drop-kick by Kay Cervone. The next game brought together the seniors and freshmen. The freshmen came out victorious with a score of 6-0. Kathryn Copeland and Connie Kanski were the only scorers. In the final game, the sophomores defeated the freshmen by a score of 6-2.

At the conclusion of the tournament the following varsity was selected from the best players of each team: Kathryn Copeland, Kay Cervone, Lucy Beyer, Bernadette Hugus, Connie Kanski, Doris Caskey, Burdell Giles, Ruth Brasuell, Marjorie Stewart, Pauline Miles, and Phyllis Womer.



Kanski, Caskey, Beyer, Hugus, Womer, Brasuell, Miles, Copeland, Giles, Bartlett, Seigworth.



Standing—Wilson, Slike, M. Stewart, Miles, Price.
Kneeling—Kapp, Womer, Copeland, K. Stewart, Beyer.

The second sport of the year arranged by the council was hockey. Our hockey games were played during the latter part of the fall. As in speedball, each class was represented in the tournament.

The sophomores were again victorious in the second tournament. The first game, played between the freshmen and juniors, was won by the freshmen with a score of 4-2. The seniors seem to have lost their playing ability of former years. They were defeated by the sophomores, 3-0. In the final game the sophomores defeated the freshmen, 4-0.

The teams were coached and the games were refereed by the following Council members:

<i>Freshmen</i>	UNITHEA STACK
<i>Sophomores</i>	TERESA KENNEDY
<i>Juniors</i>	ELEANOR DeWALD

The hockey varsity, chosen by the Women's Athletic Council, consisted of the following: Patty Price, Marjorie Stewart, Kathleen Stewart, Kathleen Kapp, Phyllis Womer, Mary Slike, Jean Williams, Pauline Miles, Kathryn Copeland, Alice Lou Wilson, Lucy Beyer.



Sisterhood, tried and true—friends, pals, sisters—Tri Sig, Theta, Sigma Delt, Lambda Chi, Delta Sig—camping trips—parties—Pan Hellenic tea—bride—national inspections—Pan Hellenic banquet—regional meet—province meeting—rushing—silence week—pledging—sunrise initiation—sorority dance—candy sales on Thursday nights—Pan Hellenic scholarship cup—painting walls—making slip covers—alumnae, patronesses, advisors, actives, pledges—scrapbooks—bridal showers—birthday surprises—study meetings—work on committees—Monday evening meetings—cardigans—sorority pins—jockey caps—responsibility—leadership—cooperation—social poise—the well rounded co-ed: a sorority girl.



Front Row—Moses, Erickson, Cloud, Spillane.
Back Row—Dressler, Henry, Burns, Beyer, Kerr, Brenan.

This year's Officers for the first and second semester were:

First Semester	Second Semester
FAY HENRY.... ..President.	JOYCE ERICKSON
MIRIAM MOSES Secretary	ALICE RUTH CLOUD
BETTY BRENNAN Treasurer..	BETTY BRENNAN
Adviser	MISS MARGARET A. BOYD

On the afternoon of October 13, the lounge of Becht Hall was filled with small groups of dignified lassies, scarcely recognizable because of the lack of dirty saddle shoes, unpressed skirts, and sloppy cardigans. A rattle of tea cups and a steady humming could be heard as the young women of the five campus sororities became better acquainted with the non-sorority women. The Panhellenic Tea was once more ushering in the formal rushing season at Clarion.

For the next four weeks the sororities worked feverishly preparing their rooms for "Open House". When the eventful evening arrived the Greeks were ready. Some of the rooms had received fresh coats of paint; the effects of soap and water could be seen in all of them. Interesting information in the form of magazines and prized possessions gave each room a distinctive atmosphere.

Everywhere good hostesses were in evidence, as Greeks discovered prospective sisters and prospective sisters dazedly pondered the question, "Which sorority do I like best?" and finally concluded with "I can't even remember their names."

Panhellenic is the governing body of the three local and two national sororities on the campus. In the spring, it sponsors the Panhellenic banquet, a gala affair, and the Panhellenic dance, eagerly awaited each year by actives and alumnae.

The flickering light of the tall green candles cast soft shadows about the room, and the snowy white linen on the table sparkled with gleaming silver and glittering glassware as happy, smiling Delta Sigs assisted their guests in finding their places at the banquet table at their rush party in the Underwood Hotel at Knox. "Come in and let us greet you; we are all here to meet you" was appropriately the song of the evening (although after dinner the Delta Sigs proudly offered many other vocal selections of sorority songs).

Following a short program the Delta Sigs, and their guests attended the theater en masse to watch mirthfully the mystery of "The Smiling Ghost."

In December, Gladys Logan, Patricia Price, Marilyn Simmons, Barbara Paddock, Lois Stroupe, Mary Hamilton, and Alice Guseman were pledged to the sorority.

In recalling the highlights of the year it would be impossible to forget the hustle and bustle of preparations for the chapter inspection by the national president, Mrs. Robert S. Hill, in early October; the surprise party for Dr. Helen M. Barton and Dr. Bertha Lefeste, sponsor and patroness of whom the girls were exceedingly proud when they obtained their doctorates in February; the banquet on May 16 celebrating ten years of privileges, duties, and broadening influences of a national sorority; and the final efforts to get all books and reports in readiness for conclave, the national convention held in August.

The Alpha Zeta Chapter Officers for the year were:

<i>President</i>	MIRIAM MOSES
<i>Vice-President</i>	JEAN DRESSLER
<i>Corresponding Secretary</i>	JEAN WATSON
<i>Recording Secretary</i>	HELEN REA
<i>Treasurer</i>	BETTY McLAUGHLIN
<i>Historian</i>	MILDRED BAKER
<i>Chaplain</i>	ELOISE OGDEN
<i>Sergeant</i>	MARY K. HONECK
<i>Adviser</i>	DR. HELEN M. BARTON



Back Row—DeWald, Timlin, Gerber, Snyder.
Middle Row—Moses, Honeck, Dr. Barton, Baker, Hoovler, Rhodes, Watson, Dressler.
Front Row—Rea, Ogdén, Stewart, McLaughlin.



Front Row—Erickson, Spillane, Vail, Stewart, Verderose, MacMillan, Kapp, Fowkes, Harvey.
Back Row—Stack, Kissell, Hartle.

"Come into the Big Top and meet the Lambda Chis" expresses the theme of the Lambda Chi Delta Rush party which was held at the Anderson Hotel in Clarion. The room with balloons floating everywhere looked like a huge circus tent. Large gaudy posters advertised such current side show attractions as the Siamese Twins and the famed Fire-eater. Free peanuts could be had for the taking. The evening proved a gala affair not soon forgotten by the merry-makers.

The party resulted in the initiation of six new members: Kay Cervone, Verne Cuthbert, Ruth Brasuell, Jane Servey, Marian Shockey and Ruth Trescher.

In addition to the rush party, a Halloween party at the summer cabin of Mrs. Samuel Wilhelm, parties at the homes of Jane MacMillan and of Mrs. Charles Wilhelm, a week-end camping trip to Cook's Forest, and bridge party in honor of the patronesses were included on a full social calendar.

Plans were begun early for the annual reunion of alumnae and actives which will be held this summer at Eaglehurst Beach in Erie.

The officers for this year were:

<i>President</i>	HELEN KISSELL
<i>Vice-President</i>	RUTH KAPP
<i>Secretary</i>	ANNA MARIE VERDEROSE
<i>Treasurer</i>	JEANNE RHEA
<i>Adviser</i>	MISS ANNE GREENAWALT

The Sigma Delta Phi rushees traveled "down Argentine way" via the Hotel Underwood at Knox. The pulsing rhythm of tango and rumba music established a gay, festive mood for the occasion. Hostesses as well as guests discovered that their minute knowledge of Spanish was not enough for translating the menu; but everyone was able to recognize the delicious food served to her. As the evening swiftly passed, the pretty señoritas became conscious of a growing respect for the South American cactus, which replaced their corsages.

Of the rushees the following were initiated early in December: Adeline Campbell, Betty Heasley, Nell Matter, and Geraldine Courson.

Other events of the year were the Christmas party held in the Becht Hall social room, the Pledging Tea at the home of the sponsor, Miss Bertha Nair, a fall week-end party at Cook's Forest, and the annual party given by the patronesses in the spring. Among the charitable activities was a Christmas basket prepared for a needy family of the Clarion district.

The officers for the first semester were:

President.....	ELSIE DINGER
Vice-President.....	DOROTHY SHAFFER
Secretary.....	ELAINE McCALL
Treasurer.....	BETTY SIAR

For the second semester the following officers were elected:

President.....	FAY HENRY
Vice-President.....	HELYN WILLIAMS
Secretary.....	VELMA BURNS
Treasurer.....	ELAINE McCALL
Adviser.....	MISS BERTHA V. NAIR



Left to Right—Shaffer, Siar, Williams, Beals, Ellenberger, Henry, Burns, McCall, Dinger, Miss Nair.

Extreme Front—Miller.



Back Row—Barnes, Dias, Paisley, Kerr, Neal.
Second Row—Schell, Seigworth, Ahlgrim.
Front Row—Brenan, Burnham, Eisaman.

Rushes of Alpha Pi chapter of Sigma Sigma Sigma, a national educational sorority, were honor guests at the opening of the Swank Sigma Club. The glow of soft lights and the rattle of glassware across the bar created the proper background for the entertaining floor show provided.

Those pledged to the sorority after the rush party were Adele Behringer, Elizabeth Bovaird, Kathryn Copeland, Donagene McDowell, Ilene Ross, and Phyllis Womer. At the same time Audene Neal was repledged. Later Mary Elizabeth Dias became an initiated member.

For a long time before rush week the Tri Sigs labored persistently at redecorating their room. A lovely rug and a small radio—gifts of the alumnae—were added to their possessions.

On the week-end of November 1 and 2, this work was interrupted for a regional meet of Sigma Sigma Sigma in Philadelphia at which five delegates of Alpha Pi chapter were present.

As a social service project the Tri Sigmas made and dressed dolls for Bundles for Britain.

The officers were:

<i>President</i>	DORIS SEIGWORTH
<i>Vice-President</i>	EDNA AHLGRIM
<i>Recording Secretary</i>	ELEANOR SCHELL
<i>Corresponding Secretary</i>	ROBERTA PAISLEY
<i>Treasurer</i>	AUDREY RUTH BARNES
<i>Sentinel</i>	BETTY BRENNAN
<i>Adviser</i>	MISS MILDRED GAMBLE

Dim lights, beautifully gowned girls, gay laughter, and delicious food are the impressions that remain with us of the Theta Alpha Lambda rush party which was held at the Coffee Shoppe this year.

After silence week slowly had passed, Phyllis Fiddler, Charlotte Henderson, Grayce Hummell, and Rose Jean Musi were pledged to the sorority.

In spite of the unlucky number of thirteen active members, the sorority had an eventful year, much credit being due to the adviser, Miss Owens. Rolling picnics, merry hikes, gay parties and a bridal party for Priscilla Wolfe were included on the list of social functions.

The officers who served during this school year were:

<i>President</i>	MARY OGORCHOCK
<i>Vice-President</i>	MARGARET DeSANTIS
<i>Recording Secretary</i>	DOROTHY BROCIUS
<i>Corresponding Secretary</i>	LUCY ANN BEYER
<i>Treasurer</i>	HELEN HUMMELL
<i>Adviser</i>	MISS FAN OWENS



Back Row—McAnulty, Ogorchok, Brocius, Miss Owens, Williams.
Front Row—Hummell, Beyer, Cloud, DeSantis, Corbett.



Fraternities—comradeship—brotherhood—undefinable bonds binding us together in troubles and in fun—athlete and student—Alpha Phi, Zeta, Alpha Gam—rushing—hikes—paddles—costumes — initiation — stunts — camp — parties—fraternity dance—palms—crystal ball—favors—flowers—boutonnieres—programs—basketball tournament—loyalty—campus politics—faculty-student fellowship—fraternity banquets—bull sessions—reunions with alumni.

When wooden paddles of different hues began to blossom on the campus, Clarionites realized that the fraternity rush season had arrived.

"Fraternity rush season with no lead-piping," was the rule of the Inter-Fraternity Council, which has proved its worth during its short period of existence. As a conciliatory body and governing council for the inter-relation among the three social fraternities on the campus, its work has been outstanding. Special rules have been set up for fraternity pledging. In the spring the annual inter-fraternity dance, one of the largest dances of the year, is under the responsible direction of this group.

The council consists of six delegates, two from each fraternity, and a faculty adviser. The members this year were Frank Malloy and Paige Varner, Zeta Eta Phi; Stephen Kovalyak and Wesley Freeburg, Alpha Gamma Phi; Lawrence Snitzer and Stanley Klepfer, Alpha Phi Alpha. Professor Clarence Kuhner acts as adviser to the group.

Meetings are held irregularly. Business is dispatched as it arrives.

The officers were:

<i>President</i>	STEPHEN KOVALYAK
<i>Secretary</i>	STANLEY KLEPFER
<i>Adviser</i>	PROFESSOR C. A. KUHNER



Left to Right—Snitzer, Varner, Freeburg, Klepfer, Malloy, Professor Kuhner.



*Standing (left to right)—Freeburg, Dr. Peirce, Pence, Stewart, Bole, Fall, Kovalyak,
Wiberg, Worrell, Arner, Mr. Hart.
Sitting—Solonchak, Sevok, Buzard, Bixby, Tile, Mr. Hoyt, McCanna.*

The lower gym was decorated in red and black, with evergreens scattered about the room to make it look more attractive. Games directed by the master-of-ceremonies and his able assistants were in progress. No one seemed to mind the ear-rending din which echoed and re-echoed about the room. It was the Alpha Gamma Phi rush party, and hosts and guests alike were heartily enjoying themselves.

At the end of rush week the Gammas learned that they had gained eight new pledges: Robert Burgess, Jack McGinnis, Dick Helmtoller, Russell Fichter, James Newell, James McKinley, Walter Mulligan, and Gordon Sills.

During the holiday season the annual Christmas party was held at the home of Dr. Peirce. The Alpha Gams claimed that it was a highly successful party.

Immediately after the first semester examinations, the fraternity began making plans for the inter-fraternity dance and the fraternity banquet in the spring.

The advisers are Professor Walter Hart, Professor Gilbert Hoyt, and Dr. D. D. Peirce.

The officers for 1941-1942 were:

STEPHEN KOVALYAK	<i>President</i>	CLYDE PENCE
WES. FREEBURG	<i>V.-President</i>	WES. FREEBURG
CLYDE PENCE	<i>Secretary</i>	JAMES BUZARD
IRWIN FALL	<i>Treasurer</i>	IRWIN FALL

By November the freshmen considered themselves thoroughly acquainted with the Biology Lab, but the Alpha Phi Alpha rush party proved to be their first introduction to its social possibilities. A friendly informal atmosphere conducive to jolly companionship pervaded the room as the entertainment committee introduced the evening's diversions. Later a plentiful supply of refreshments proved to be a welcome climax to a successful evening.

As a result of the rush party the following men were pledged and later formally initiated: Charles Shaner, Ernest Johnson, Philip Wallace, William Laughlin, James Bowman, Richard Brossman, Joseph Capasso, William Zimmerman, Robert Rhodes, Dale Rhodes, Pete Kupsek, William Wilkins, Donald Detrie. The informal initiation consisted of a week-end stay at Camp Cofman. Many old members attended this annual affair, which in some respects took on the properties of a fraternity reunion.

During the year a series of constructive programs was conducted by different fraternity members. Some of the meetings were devoted to making plans for the inter-fraternity dance, the banquet in May, and the annual farewell party at Cook Forest for the senior members.

The Officers for the year were:

<i>President</i>	JOHN MOHNEY
<i>Vice-President</i>	JOHN WETZEL
<i>Recording Secretary</i>	LAWRENCE SNITZER
<i>Corresponding Secretary</i>	WAYNE SNYDER
<i>Treasurer</i>	FRANK MOHNEY
	DR. CORDIER
<i>Advisers</i>	PROFESSOR MANSON
	PROFESSOR KUHNER
	PROFESSOR BECKER



Back Row—Klepfer, Carroll, F. Mohney, Prof. Becker, Kapp, Slike, Wetzel, Elder, J. Mohny, Prof. Kuhner, S. Snyder, Prof. Manson.
Front Row—Hartman, Wagner, W. Snyder, Snitzer, Etzel, Wolcott, Hess, Maurer, Thompson.



*Standing (left to right)—Fulton, Smathers, Bracken, Stinard, Laughlin, Myers, Kerr.
Sitting—Malloy, Jewart, Siar, Wolfe, Varner, McKinley, Hunter.*

The Zeta Eta Phi carnival was held in the college chapel during rush week with the freshmen as honor guests. The sideshow attraction was a three act play, "Zeta Eta Phi Etiquette". Music was furnished by Perry Lewis, a Zeta alumnus.

After the show the hosts and their guests adjourned to the chapel gym which offered the customary carnival attractions—a dart game, a roulette wheel, and a bingo game. Potato chips, ice cream and other refreshments were in keeping with the carnival theme.

Following freshman balloting, William Allison, David Beightol, and Newton Reed were formally pledged in the newly decorated fraternity room in Science Hall.

Many social events were included in the year's program.

The following members served as officers:

First Semester	Second Semester
PAIGE VARNER <i>President</i>	HARRY WOLFE
WILSON BAUGHMAN..V.. <i>President</i>	HAROLD FULTON
JAMES SIAR <i>Treasurer</i>	JAMES SIAR
CHAS. LAUGHLIN <i>Secretary</i>	CHAS. LAUGHLIN
JOHN HUNTER <i>Sergt.-at-Arms</i>	JOHN HUNTER
Adviser.	PROFESSOR FRANK CAMPBELL



Although we have lost thirty of our members since last spring, we still think our sophomore class is a class to be proud of. You see, when all the other classes are too busy to offer us any compliments, we have to do a little boasting of our own.

We'll begin by challenging any other class with the statement, "Our class meeting was more entertaining than any you have ever held." We might give most of the credit to a wee little nail in the side of the blackboard chalk tray, and also to the fact that there was not quite enough space between this wee little nail and the desk for Mr. Fall to squeeze through. A loud r-r-rip let us know that the result was a large three-cornered hole in the trousers of Mr. Fall. However, in the roar of laughter, Mr. Thompson—"our minute man"—was soon to the rescue with a coat, and elections were continued.

Carrying on our boasting, we would like to ask you where our college basketball team would be without such members as Willis, Siar, Wiberg, and McCanna. And in football, we could add such members as Fall, Jewart, Strickler, and Stewart. And don't forget that the little manager, "Pepper" Martin, is a sophomore. Had you noticed, too, that three of the six cheer leaders are sophomores? Yes, Natalie Neverla, Kathryn Cervone, and Emmy Lou Spillane are all members of our class. We'll proudly refer you to the girls' intramural sports section to see our standing there. Please look!

Our biggest social event was the informal Sophomore Dance on February 27. We're sure that all who attended enjoyed dancing to the music of the Treymore Club.



William Allison

Ada Altemus

James Arner

Eloise Borlett

David Beightol

Velma Burns

Adeline Campbell

Eugene Carroll

Kathryn Cervone

Mabel Claypool

Alice Ruth Cloud

Mary Alice Conklin

Ada Connelly

Nancy Corbett

Donald Detrie

Mary E. Dias

Mary K. Dwyer

Delbert Elder

Irwin Fall

Phyllis Fiddler

Ruth Fowkes

Florence George

Lois George

Ann Gerber

Arlene Hoovler

Joseph Jewart

Paul Kopp

Teresa Kennedy

Charles Laughlin

Gladys Logan

Edward
Martin

Richard
McCandless

Laird
McConno

Pauline
Miles

Margaret
Moore

Audene
Neal

Evelyn
Reaghart

George
Reed

Jeanne
Rhea

Betty
Rhodes

Ilene
Ross

Marian
Shick

James
Siar

Dell
Singer

Joseph
Slake

Ben
Smith

Jack
Smith

Emma Lou
Spillane

Jahn
Stewart

Marjorie
Stewart

Mervin
Strickier

Jack
Thompson

Jahn
Tile

Phyllis
Timlin

Ruth
Trescher

Joseph
Trunk

Robert
Wiberg

Jean
Williams





Standing—Laughlin, Strickler, McCanna, Wiberg, Rhea, Bowman, Mr. Manson, Solonchak, Neverla, Manners, Bixby, Newell, Arner.
Sitting—Erickson, Miles, Verderose, Stewart, Miller, Hugas.

Throughout the fall the members of the Outdoor Club made many trips to Cook's Forest completely in accordance with their motto, "The natural way to a better life," and also with their purpose, "the stimulation of an appreciation of nature and good fellowship which may be found out-of-doors". How delightful are the memories of the pungent smell of wood smoke, the appetizing odor of boiling coffee, the groups of gayly laughing couples, and the pleasant companionship which these trips made possible!

The Outdoor Club was organized in 1930 and is sponsored by Professor Harry Manson. It is one of the most active clubs on the campus and has been in continuous existence since its organization.

The activities of the club have varied considerably over a period of years. During the last two years emphasis has been placed on tobogganing, archery, skating, marksmanship, and hiking. Other activities receiving some attention are swimming, boating, camping, fishing, bicycling, athletic games, horseshoe pitching, and lawn bowling.

The club now owns two rifles, two sets of lawn bowling equipment, two newly purchased toboggans, and three home-made toboggans. The organization also has a special room on the third floor of Science Hall equipped for its meetings.

The officers for the Outdoor Club for the first semester were:

<i>President</i>	JACK BIXBY
<i>Vice-President</i>	EMMA LOU SPILLANE
<i>Secretary-Treasurer</i>	JAMES MANNERS
<i>Adviser</i>	PROFESSOR H. S. MANSON

The entire Press Club membership was well aware when it was time for another *Clarion Call* to go to press. They would open their mailboxes, happy in the thought that today a letter was destroying the usual smooth layer of dust. Hurriedly dialing the combination and grasping the treasured paper they stared disillusioned at the smug print, "Please hand to me by Friday at 4:00 o'clock an article about . . .". Slipping the offending notice into a book as quickly as possible, each Press Club member did his best to forget the incident until he was finally reminded by bulletin board notices and by Miss Nair's pleas in the regular meetings, "Please hand your assignments to the editor, Miss Stack, or the assistant editor, Miss Rea, as soon as possible."

But even with articles to be written and deadlines to be met, Press Club members found time for interesting club discussions, a St. Patrick's Day party with the Art Club, and a tour of a noted Pittsburgh newspaper plant.

These activities were guided by the adviser, Miss Nair, and the club officers for the first and the second semester.

First Semester	Second Semester
ARLINE HOOVLER <i>President</i> ...	MERLE WOLCOTT
WM. ALLISON... <i>V.-President</i> ...	TERESA KENNEDY
TERESA KENNEDY... <i>Secretary</i>	PATRICIA PRICE
PAUL MCKINLEY... <i>Treasurer</i>	WILLIAM WILKINS



Standing—Allison, McKinley, Varner, Wilkins, Smith, Wolcott, Ertzel, Bracken, Malloy, Strickler, Detrie, Rea, Shaffer, Hoovler, Fall.
Second Row—Giles, Brasuell, Stewart, McLaughlin, Miss Nair.
Front Row—Moses, DeWald, Honeck, Williams, Reaghart, Stack, Copeland, Price, Kennedy.



Back Row (left to right)—Beyer, Altemus, Henry, J. Hoovler, Timlin, Kluck, Ross, Neal, Watson, Moses, George, Bovaird, Singer, George, Stewart, Rupert, Claypool, DeWald, Rimer.

Front Row—Simons, Connelly, L. Miller, B. Miller, Hamilton, Baker, Hillgartner, Kerr, Lewis, Tait, Work, Heasley, Edwards, Siar, Neverla, Miles, Wilson, McDowell, Myers, Gerber, A. Hoovler.

During the week before Thanksgiving vacation male guests seemed to have appeared suddenly in many of the rooms of Becht Hall. Upon investigation we learned that our Pilgrim Fathers and their wives had rented some of the rooms for a short visit to Clarion. It was a queer experience to see the men in their tall beaver hats (actually they looked like black art paper to us), their knee-length pants, and their long waistcoats; and most of us caught the spirit of Thanksgiving when we saw the women in their big white aprons, tiny white caps, and dust gathering skirts. Most of the men wore their hair in long curls. They even carried lanterns as if they couldn't see as well with electric lights.

On the evening of November 23, they appeared in a Thanksgiving pageant written and directed by members of the Young Women's Christian Association. After that they seemed to disappear with them.

Every Wednesday from seven to eight you could hear them singing our familiar hymns, and sometimes the sounds of heated discussions would creep up the stairs in Becht Hall. These meetings were interspersed with social events: a Little Sister-Big Sister party, a candlelight initiation service, a weiner roast in Wilson's Woods, and a Halloween party. Five active members attended a Y. W. C. A. regional conference at Grove City.



The club cabinet for this year consisted of:

<i>President</i>	JEAN TAIT
<i>Vice-President</i>	MILDRED BAKER
<i>Secretary</i>	MARY HAMILTON
<i>Treasurer</i>	ARLINE HOOVLER
<i>Others</i> —ELEANOR DeWALD, HELEN WORK, ANN GERBER, JEAN KERR	
<i>Adviser</i>	MISS ELLEN I. PETERSON

At Christmas time, the director of the choir, Mr. Walter L. Hart, supervised the production of Handel's oratorio, "The Messiah," by a community chorus composed of approximately one hundred-fifty voices. In this presentation the A Cappella Choir played a leading role.

Spring found the members of the A Cappella Choir interspersing academic pursuits with special practices and concert trips to schools of Northwestern Pennsylvania. Very few members will forget the initiatory trip to Otto Township, Smethport, and Kane. Alarms began to ring as early as five o'clock A. M., and after a feverish hustle of preparation, the bus left at seven o'clock with all members aboard. The long trip to Otto convinced most of the members that bus trips can be tiring but enjoyable providing one is surrounded by a troupe of agreeable companions. This conclusion was repeatedly manifested on other choir trips to Shippenville, Knox, Rimersburg, Brockway, Clarion-Limestone, and Johnsonburg. The repertoire of the Choir for these trips included both religious and secular numbers.

The choir does not elect officers. The section chairmen for this school year were: Betty Hartle, soprano chairman; Ruth Kapp, alto chairman; Jack Thompson, tenor chairman; and James Arner, bass chairman.



Back Row—Tile, Shaner, Wiberg, Burgess, Stewart, Bowman, Thompson, Kupsek, D. Hess, Klepfer.

Third Row—Spillane, Hutchison, Behringer, Wilson, Slater, Myers, Brossman, Sills, Arner, S. Snyder, Betz, Burnham, Kissell, MacMillan, H. Hummell.

Second Row—G. Hummell, Showers, Cervone, Womer, O'Neill, Beabes, Hugus, Miles, Dressler, Kapp, Heasley, Dwyer.

First Row—Guseman, M. A. Hess, Henry, Kanski, Caskey, Seigworth, Shockey, Hartle, Mr. Hart, Cutlibert, Rea, Barnes, Swarthout, Kerr, Motter, Erickson, Ogden.



BOYS' ENSEMBLE

Back—Thompson, Klepfer, Willis.

Front—Arner, Bowman, Shaner, Burgess, Sills.

GIRLS' ENSEMBLE

Back—Miles, Shockey, Ogden, Behringer, Hartle, MacMillan, Cervone.

Front—Barnes, Kapp, Kerr, Erickson, Hutchison.

Special features of the choir programs were Mary Grace Hutchison, alto soloist; the Boys' Quartet and Ensemble; and the Girls' Trio and Ensemble.



Winter in Clarion—Christmas—snow—fun—holidays—Christmas party in Becht Hall—individually decorated tables—a glittering white Christmas tree—a skating scene—chimney—evergreens—wreaths—Santa Frank—gifts for all—formal gowns—faculty members in tuxes—Christmas decoration and gifts in rooms—winter wears on—skating at the lily pond—a snowman on the front campus—tobogganing—Pan Hellenic banquet—food—music—readings—ski's—no winter carnival, too bad—wind—blizzard—breaking tracks through two feet of snow—high boots—snow suits—snow ball battles—a miniature Seminary Hall—snow, snow, and colder.



Standing (from left to right)— Paddock, Stroupe, Musi, Beyer, George, Ochs, Thompson, Terwilliger.
Sitting—Black, Henry, Ahlgrim, Hoover, Hetrick, McDowell, Lewis, Courson, Hahn, Slater, Miss Peterson, Laughery.

Immediately after the first semester vacation, attendants at chapel were delightfully entertained by the members of the Hostess Club who presented a playlet portraying useful highlights in etiquette.

Proper introductions were made by campus co-eds and an inexperienced freshman was tutored in answering invitations. The younger brother of a campus coed who was home for the week-end regaled an appreciative audience with his neglected table manners. When he announced to his unsuspecting family that he had asked a girl to go to the movies with him that evening, his shocked sister promptly took him in hand and instructed him in the fine points of dating.

The play was based on the topics discussed by the club at the various meetings. Among these topics were: Etiquette at Teas, Travel Etiquette, Table Manners, Flower Arrangement, and Social Dancing. Two of these discussions were ably led by outside speakers interested in the club activities.

The club officers were:

<i>President</i>	LUCY ANN BEYER
<i>Vice-President</i>	BARBARA PADDOCK
<i>Secretary</i>	MILDRED HENRY
<i>Treasurer</i>	LILLIAN GEORGE
<i>Adviser</i>	MISS ELLEN I. PETERSON

As the curtains closed amidst a burst of applause, weary College Players realized that they had scored again. "Suppressed Desires" and "Rehearsal," both one-act plays, would be added to a long list of dramatic productions which had been slowly but continuously accumulating since the club's organization in 1920. After a jubilant exchange of congratulations, tired stage hands began collecting properties and putting away props, necessary parts of every production.

Now that their contribution to the chapel calendar had become history, speculation began about the major production of the year, the three-act play scheduled as a part of the entertainment for Parents' Week-end. What would the play be? Who would have the leading roles? But until practice began in March, regular club activities again held the spotlight.

Throughout the year these club activities included various social events and the regular meetings on alternate Tuesdays. The club programs consisted of demonstrations of stage settings, sound effects, costuming, principles of acting, plays, and original skits in which all club members were given an opportunity to participate. The feature social event of the year, the annual banquet held during the holiday season, was a gay and enjoyable affair. Stunts, an original playlet, group singing of Christmas carols, and a visit from Saint Nicholas with a bag full of toys and gifts marked this joyous revel.

College Players' activities are supervised by Miss Marwick, who is assisted by Miss Boyd. The Officers of the club for the year were:

First Semester	Second Semester
Mildred Baker..... <i>President</i>	Mervin Strickler
Mervin Strickler..... <i>Vice-President</i>	Anna Marie Verderose
Alice Lou Wilson..... <i>Secretary</i>	Gladys Logan
Ruth Trescher..... <i>Treasurer</i>	Dell Singer



Standing—Price, Brossman, Rhea, Helenbrook.
Middle—Hoovler, Gerber, D. Hess, McKinley, Servey, Beightol, McCandless, Courson,
 Womer, Miss Marwick, Shockey, Kapp, Thompson, Kupsek, Singer,
 M. A. Hess, Trescher.
On Floor—Logan, Miller, Hinderer, Baker, Wilson, Miles, Strickler, Cervone, MacMil-
 lan, Erickson, Fiddler, Kennedy, Altemus.



Standing—Rosenberg, Rhodes, Hartman, Smith, Dr. Peirce, Mobney, Wagner, Fulton, Strickler, Snyder.
Seated—Handy, Baker, Kluck, Kerr, Reynolds, Watson.

The dark room breathing forth smells of developer hummed with activity during the second semester. Senior members spent endless hours developing possible Sequelle pictures and enlarging the best prints. Other members of the club undertook the responsibility of sponsoring the Camera Club contest which was conducted for the purpose of collecting a set of typical campus scenes.

Work periods alternated with special programs. One of the most interesting meetings was held at the home of Mr. Walter Smith, who related many of his experiences in photography. He accompanied his discussion with an exhibit of his photographs. Afterwards he explained to the club members how equipment could be made at home.

Each regular meeting during the second semester was planned around one theme, such as "Portraits", "At Work for National Defense", and "Our Campus".

A spring picnic provided a welcome change of activities.

Officers for the year were:

<i>President</i>	RICHARD HARTMAN
<i>Secretary</i>	HELEN MARIE HANDY
<i>Treasurer</i>	WAYNE SNYDER
<i>Adviser</i>	DR. D. D. PEIRCE



A short time after the beginning of the second semester, the juniors began to realize that soon they would be called upon to fill the places left vacant by the departing seniors. In order to prove to the faculty, seniors, and underclassmen that they were worthy of this honor, they decided to publish a record of their achievements during the last three years.

"We, an eager bunch of freshmen, with the highest of ideals, descended upon the campus of Clarion in September, 1939.

After the freshmen tests, which proved to us how little we really did know, we were again subjected to embarrassment by the upper-classmen during freshman week. However, we showed good sportsmanship and were accepted as full fledged members of the college.

Some of our number joined fraternities or sororities during our freshman year, while others joined one or another of the many clubs.

Under the capable management of Mr. Manson we were then ready to become sophomores.

As sophomores we became a little more dignified and settled down a little more seriously to our work, for we realized that our goal was still far in the future.

As our share of the social life of the college, our class contributed the Valentine dance.

Now, we are juniors. Although some of our old members are gone, a few new ones have been added, and we are still able to take our place in various student activities.

On November 8 we helped our victorious football team celebrate by sponsoring a skirt and sweater dance in their honor.

To the young men of our class who have offered their services to their country, and to those who will do so in the near future, we express our admiration and appreciation.

As to the rest of us, we look forward to our last year hoping that we shall be wiser for this year's experience."



Mildred
Baker

Betty
Brenan

Elsie
Dinger

Mary
Hamilton

Helen
Hummell

Mary K.
Beabes

Dorothy
Brocius

Jean
Dressler

Helen Marie
Handy

Ruth
Kapp

Harriet
Beals

Helen
Burnham

Ella
Edwards

Betty
Hortle

Jean
Kerr

Adele
Behringer

James
Buzard

Joyce
Erickson

Edna
Hedrick

Rita
Kluck

Lucy Ann
Beyer

Forest
Carlson

Harry
Etzel

Charlotte
Henderson

Elaine
McCall

Jack
Bixby

Margaret
DeSonts

Wesley
Freeburg

Dorothy
Hillgartner

Paul
McKinley

Jane
MacMillan

Frank
Malloy

James
Manners

Beatrice
Miller

Magdalen
Mocek

Betty
Myers

Charles
Myers

Jean
O'Neill

Mervin
Reed

Dale
Rhodes

Ruth
Rimer

Betty
Siar

William
Smathers

Lawrence
Snitzer

William
Solonchok

Eugene
Stinard

Jean
Tait

Jane
Vail

Anna Marie
Verderose

Jean
Watson

William
Wilkins

Marian
Williams

Merle
Wolcott

William
Worrell





Couch Tippin

During the wintry days of the middle of the year, all basketball fans hurried to the support of our team. Both at 4 o'clock and at night games, the gym resounded with shouts, whistles, and a general clamor as we students cheered our team onward.



*Back Row—Mr. Tippin, Wallace, McCanna, Helmintoller, Snyder.
Front Row—Manners, Shaner, Willis, Wetzel, Wiberg, Freeburg, Siar.*



The Clarion State Teachers College basketball team had a won and lost record of 6 and 10 in the 16 games played in 1941-42.

In the first five games Waldo Tippin's players gained wins over Fenn College of Cleveland and over the Alumni while losing to Grove City's Crimson and to the highly regarded Thiel and Alliance teams.

At the start of the second semester Ted Willis, high scorer and team leader, re-joined his teammates and sparked them in the last eleven games of the season.

The Tippin men were downed at Slippery Rock, 40 to 45, in their first second semester start. The Blue and Gold poured it on and downed California Teachers, 49-40, in their game here. Indiana nosed the Eagles at Indiana by a 41-38 margin. In their next three starts the Golden Eagles split with Edinboro and lost to California and Slippery Rock.

Thiel's Tomcats invaded Clarion and went away smarting from a 52-50 double overtime loss as Willis scored the winning field goal with 11 seconds remaining in the second overtime. It was Clarion's first victory over Thiel.

Grove City and Indiana, each ranking in the top ten in the state, blasted Coach Tippin's quintet by identical 44-29 scores. On March 3 in the season's final game, Alliance was beaten, 45-40.

WESLEY FREEBURG—Nurmi, the brilliant ball handler and play maker, racked up an even hundred points this season.

DICK HELMINTOLLER—A Clarion boy in his first year on the squad. Hammy is a dead shot from out beyond the double lines.

JIM MANNERS—Jim, the star guard from Brookville, has another varsity year ahead of him.

CHUCK SHANER—This hard working frosh ace led the scoring in a number of games this season.

JIM SIAR—The number one long range threat on the Tippin-coached team is Siar who can drop them in from any spot on the floor.

PHIL WALLACE—Phil, the freshman from Brookville, was a capable replacement this past season.

JOHN WETZEL—New Bethlehem's "Muggs" was the Golden Eagles scrappiest player. He played well and got the rebounds.

BOB WIBERG—This season was Big Bob's second letter winning year on the varsity.

TED WILLIS—Willis is a sharp-shooter from Millcreek High School, returning to the squad at semesters. He averaged better than 14 points a game.

SEASON SUMMARY

CLARION	26	GROVE CITY	19
CLARION	45	ALUMNI	35
CLARION	36	THIEL	46
CLARION	34	ALLIANCE	42
CLARION	41	FENN	37
CLARION	40	SLIPPERY ROCK	45
CLARION	49	CALIFORNIA	40
CLARION	38	INDIANA	41
CLARION	42	EDINBORO	28
CLARION	39	SLIPPERY ROCK	61
CLARION	36	EDINBORO	47
CLARION	52*	THIEL	50
CLARION	29	GROVE CITY	44
CLARION	29	INDIANA	44
CLARION	45	ALLIANCE	40

* Two overtime periods.

With the final game of basketball fading into the past, the Varsity C roll for 1942 became practically complete. Only those who earned their letters as members of the tennis team in the spring would be accepted into membership.

John Hunter, Gordon Sills, Laird McCanna, Charles Shaner, Ernest "Turk" Johnson, Robert Muth, Philip Wallace, and Walter Mulligan were admitted at the conclusion of Clarion's successful football season; Dick Helminroller, the only basketball letterman who was not already a Varsity C member, became the newest member.

To the Varsity C belong those men of the campus who are letter winners in any major sport. They can be recognized by their gold sweaters with the large "C".

The organization awards a gold football or basketball to those juniors and seniors who have earned two letters—each in a different sport.

This year the club sponsored the Alumni basketball game. They also sold the popular school jersey with the State Teachers College eagle on the front.

The Officers for 1941-42 were:

<i>President</i>	JOHN WETZEL
<i>Secretary-Treasurer</i>	HARRY WOLFE
<i>Corresponding Secretary</i>	CLAUDE BOLE



Back—McCandless, Sheridan, W. Snyder, Sevok, F. Mohney, Pence, Tile, Solonchak.
Middle Row—Elder, Bole, Jewart, Wiberg, Fall, Wolfe, Mannes, Wetzel.
Front—Worrell, Siar, Freeburg, Strickler, Kovalyak.



ACTIVES

Miller, Miss Boyd, Miss Marwick

Collecting hand-props, setting the stage, arranging curtains, fitting costumes, participating actively in College Players, and, last but not least, playing the leads in plays—success in these, brings pledging to Alpha Psi Omega, national honorary dramatic fraternity, the largest honorary in the world. In February Joyce Erickson, Ruth Hinderer, Ruth Kapp, Kathleen Snyder, Mervin Strickler and Jack Thompson met the requirements laid down by the national organization and were formally pledged to the fraternity.

A month later the Alpha Upsilon chapter of pledges and actives presented "Common Clay," a one-act play in syncopated rhythm, to College Players.

Having labored diligently to prepare the stage and costumes for the spring production, and having played successful roles in this major production, the pledges were rewarded by being formally initiated into Alpha Psi Omega.

The training of prospective Alpha Psi members is supervised by Miss Marie Marwick, faculty sponsor of College Players. Miss Boyd sponsors and advises the Clarion chapter of Alpha Psi Omega. Besides the two faculty members, this year the fraternity consisted of Lorraine Miller, an active member, and Frank Malloy, inactive.

PLEDGES

Left to Right — Hinderer, Snyder, Kapp, Thompson,
Erickson, Strickler.



"No girls unchaperoned in the boys' dormitory", three borrowed lecture stands, a little blue and white quilted flag, dill pickles and chocolate milk all spell initiation on February 25 to Pi Gamma Mu members. At eight o'clock this evening, after twelve members from Grove City Chapter had arrived, nine neophytes were initiated—Dorothy Hillgartner, Jane MacMillan, James Manners, Helen Rea, Dorothy Shaffer, William Smathers, Lawrence Snitzer, William Wilkins, Merle Wolcott. After the ceremony Mr. Merritt Davis addressed the group on "What Civilians Can Do to Aid National Defense". Group singing and refreshments rounded out the evening.

Earlier in the year, November 25, the active chapter took in Audrey Ruth Barnes, Stephen Kovalyak, John Mohny, Harold Fulton, and John Wetzel. Mr. Frank Campbell presented a talk on "The Relationship of the Languages to the Teaching of the Social Studies".

The organization attended a meeting at Grove City in December. In January Dr. Cordier entertained the combined Pi Gamma Mu and International Relations Club at his home when a Town Hall program, "Education for Democracy," served as the program. In the spring Miss Marwick and Miss Boyd opened their home to the fraternity. During the year several informal discussions were conducted on subjects relating to the teaching of the social studies and the problems connected with it.

The officers for the year were:

First Semester	Second Semester
Betty McLaughlin	<i>President</i> Betty McLaughlin
Miriam Moses	<i>V.-President</i> John Wetzel
Eleanor DeWald	<i>Secy.-Treas.</i> Audrey Ruth Barnes
<i>Adviser</i>	Dr. R. W. Cordier



Standing (left to right)—Moses, Kovalyak, Smathers, Mohny, Mr. Kuhner, Fulton, Wetzel, Wilkins, MacMillan.
Second Row—Manners, DeWald, Dr. Cordier, McLaughlin, Miss Carlson, Snitzer.
Front Row—Hillgartner, Rea, Stack, Barnes, Eisaman.



Standing (left to right)—D. Rhodes, Manners, Fulton, Hess, R. Rhodes, Snyder.
Sitting—Mr. Becker, Wolcott, Dr. Chandler, Hartman, Dr. Cordier.

About seven o'clock on February 11, nine young men on the campus of Clarion State Teachers College had begun to wonder what tests of mental proficiency they might have to pass before they could be initiated into Phi Sigma Pi that evening. Promptly at 8:40 the initiation began, and the curiosity of the initiates was satisfied when they found it was to be a formal ceremony.

The initiates were William Wilkins, John Mohney, Frank Mohney, Steve Kovalyak, James Arner, Lawrence Snitzer, Paul Kapp, William Allison, and Ben Smith.

After the initiation Mr. Clemenson, Superintendent of the Shippenville Schools, addressed the group.

Phi Sigma Pi is the national honorary educational fraternity for men with superior scholarship and qualities which promote the interests of education. Lambda Chapter of Clarion is one of the nineteen chapters which have been established.

The year's activities consisted of the formal initiation on February 11, and several professional meetings which featured prominent speakers in the educational field. In May the members celebrated Founder's Day with the annual banquet.

The officers for the year were:

<i>President</i>	RICHARD HARTMAN
<i>Vice-President</i>	ROBERT RHODES
<i>Recording Secretary</i>	JAMES MANNERS
<i>Corresponding Secretary</i>	DONALD HESS
<i>Treasurer</i>	WAYNE SNYDER

The geographers of the campus used the pleasant weather of fall and spring for trips of interest.

The first point of interest which they visited was a strip mining project near Clarion, where they observed the shoveling, grinding, crushing, and loading of coal as they are carried on in Clarion County.

Later they drove to Shippenville, where they made an interesting and valuable tour of the pottery plant.

During the months of bad weather students gave descriptions of real or imaginary trips to places of interest. Several films were shown on leading industries and interesting geographic scenes. Some time was devoted to geography games and puzzles. These were of interest to the members and will be of future value to them in motivating geography teaching.

The main social event of the year was the Christmas party held in Davis Hall.

The program committee consisted of Martha Haines, Eloise Barlett, and Joseph Slike.

The officers for the year were:

<i>President</i>	ELEANOR SCHELL
<i>Vice-President</i>	JOSEPH SLIKE
<i>Secretary-Treasurer</i>	RUTH HINDERER
<i>Sponsor</i>	PROFESSOR C. A. KUHNER



Standing (left to right)—Reed, Snyder, Dinger, Kapp, McClain, Schell, Professor C. A. Kuhner, Haines.

Sitting—Slike, Rosenberg, Hamilton, Vail, Brocius, Carroll, Neal, McAnulty, Moore, Conklin, Cloud, Heckathorn, Barlett, Hinderer, Bloomster, Bloomster.



Back Row—Hahn, Kupsek
 Second Row—Honeck, Kennedy, Staab, Bracken, B. Smith, Malloy.
 Front Row—DeSantis, Slike, J. Smith, Musi.

On our campus the Newman Club is conducted primarily as a discussion group where the various questions and problems of the Catholic Church today are reported on and talked over. The Reverend A. A. Fisher is the chaplain of the club, and Miss Banner is the adviser.

The purpose of the Newman Club is the development of the spiritual, intellectual, and social interests of Catholic students in colleges and universities. The club was founded in 1893 at the University of Pennsylvania by Timothy L. Harrington, M. D. Today a chapter of this club is found on almost every college campus in the country.

This organization meets twice monthly. Social events as well as business meetings are a part of the activities of the club. Local officers for the school year of 1941-1942 were:

- | | |
|----------------|---------------------|
| President | FRANK MALLOY |
| Vice-President | FRANCIS BRACKEN |
| Secretary | HARRIET KING |
| Treasurer | JOSEPH SLIKE |
| Adviser | MISS MARY K. BANNER |

Throughout the winter the boys' "Y" room with its piano (much envied, we fear, by the Young Women's Christian Association) was the scene of many hours of happy fellowship. The members could always be found there on Wednesday evenings listening attentively to a guest speaker, or actively engaging in a discussion of current problems vital to youth. These discussions were frequently replaced by Vesper services, candlelight services, or reports on recent religious books.

The members of the club are guided by the following objectives: To lead students to faith in God through Jesus Christ, to lead them into fellowship and service in the Christian Church, to promote their growth in Christian faith and in Christian character, especially through the study of the Bible and prayer, to influence them to devote themselves in united effort with all Christians to make the will of Christ effective in human society, and to extend the kingdom of God throughout the world.

The club officers for 1941-1942 were:

<i>President</i>	ROBERT RHODES
<i>Vice-President</i>	STANLEY KLEPFER
<i>Secretary-Treasurer</i>	DALE RHODES
<i>Adviser</i>	PROFESSOR C. F. BECKER



Standing (left to right)—Wilkins, Hess, Tile, Zimmerman.
Sitting—R. Rhodes, Wolcott, Capasso, D. Rhodes, Klepfer.

Basketball aroused more interest and excitement than any other sport in the girls' intramural program. The support of many spectators gave an added impetus to the enthusiasm of the players.

The freshmen and sophomores battled for the first victory, and although the teams were well matched, the final score read: Sophomores 28-Freshmen 16.

In the second game the sophomores again emerged victorious by drowning out the juniors, 24-3, in a game which showed the effective passwork which the sophomores had built.

The juniors received their second defeat, 24-12, at the hands of the seniors. In the fourth game they were on the short end of a 17-11 score which marked the first victory for the frosh "five".

The most exciting game of the tournament was the senior-sophomore game on St. Patrick's Day. The seniors, beginning with a six-point lead, were soon tied by the snappy sophomores. During the second and third quarters the score wavered back and forth between the teams. And, then, in the last period, the sophomores opened up a machine gun barrage which resulted in 26-12 victory and an undefeated record to their credit.

In the last game of the season the freshmen outdistanced the seniors by a score of 37-13.

The winning team, the team with the most points, proved to be the sophomores, who had accumulated a total of 78 points; the freshmen ranked second with 70; the seniors with 45 and the juniors with 26 ranked third and fourth respectively.

The basketball varsity chosen by the Women's Athletic Council consisted of the following girls: Kathryn Copeland, Bernadette Hugus, Patty Price, Pauline Miles, Phyllis Womer, and Charlotte Henderson.

Members of A. C. E. who were privileged to attend the Golden Jubilee Convention of the National Association of Childhood Education at Buffalo, New York, in April feel that this meeting was one of the most momentous events in their college life. Among the speakers was Dr. Arthur T. Jersild, Professor of Education, Teachers College, Columbia University, who wrote "Child Psychology", the book used by the students on this campus for two years.

A. C. E. membership is composed of teachers and students interested in kindergarten, primary, or intermediate work. It has been the desire of the club this year to enlist those who are interested in high school and library science work.

The purposes of this organization are to gather and disseminate knowledge of the education of young children; to bring into active co-operation all childhood education interests, including parent education; to promote the progressive type of education in the nursery schools, kindergarten and primary grades; and to raise the standards of the professional training for teachers and leaders in the field.

The theme throughout the year was "Democracy in Education," and in the meetings the members enlarged upon the topic in many interesting discussions. A debate, a book display, a moving picture, and an address by Mrs. Keating, the wife of the local tri-county psychologist, constituted some of the year's events.

Officers for the year were:

President	MARTHA HAINES
Vice-President	GERALDINE DETRIE
Recording Secretary	DORIS SEIGWORTH
Corresponding Secretary	MARGARET STEWART
Treasurer	JEAN TAIT
Adviser	DR. BERTHA V. LEIFESTE



Standing (from left to right)—Rhodes, Myers, Barlett, Seigworth, Miller, Detrie, Watson, Hamilton, Baker, Gerber, Tait.
Sitting—Neal, Dias, Brocius, Henry, Dr. Leifeste, McAnulty, Miss Hepler, Vail, Kluck, Haines, Slater.



Standing—Hillgartner, Stewart, Detrie, Smathers, Smith, Stack, MacMillan, Honeck, Rea.
Sitting—R. Rhodes, Moses, Eisöman, Miss Carlson, DeWald, Barnes, Guseman, Ahlgrim, D. Rhodes, Brennan, Mocck, McClain, McLaughlin.

The present unsettled conditions of the world at large have furnished an ample supply of topics for the International Relations Club meetings this year. Each first and third Tuesday evening chairs and couches of the Women's Day Student Room were filled to capacity. Following the presentation of the panel by four or five club members the remaining members discussed the subject. Just one slightly heated opinion usually was sufficient to incite the arguments of the others. "Madam Chairman" . . . "Mr. Chairman" . . . the battle to gain the floor was begun.

At 8:15, the favorite phrase of the presiding chairman became, "It's after time for adjournment now, and unless someone has something so important to say that he won't be able to sleep tonight, we'll have to close the meeting."

Among the topics presented at these meetings were: Prospects of the Present War, Arsenal of Democracy, The War at Sea, Africa, The Near East, Russia, and War in the Pacific.

The officers for 1941-1942 were:

<i>President</i>	MIRIAM MOSES
<i>Vice President and Program Chairman</i>	STEPHEN KOVALYAK
<i>Secretary-Treasurer</i>	ELEANOR DeWALD
<i>Adviser</i>	DR. R. W. CORDIER



Roman senators and matrons once again walked about as the Classical Club took its Roman Style Show on a tour of the various high schools of the district. Hurried last minute repairs and additions to the costumes added to the flurry till finally Miss Nair had her charges in order. Through the Style Show the club sought to give a concrete picture of the garments worn by the ancient Romans in their daily pursuits.

Working on these costumes was only a part of the club's activities. In meetings various ways of enlivening and enriching the Latin curriculum in the high school were discussed. Social events included teas at Miss Nair's home and a Roman banquet at the high school.

Officers for the year were:

President.....	HELEN REA
Vice-President	HELEN KISSELL
Secretary-Treasurer.....	ELEANOR DeWALD
Program Chairman	MARY ALICE HESS
Adviser	MISS BERTHA V. NAIR



Standing—Shankle, Hahn, Kissell, Rea, McLaughlin, Stockdale.
Sitting—Heckathorn, Miss Nair, Reaghart, Hess, Shick, DeWald.



Background (left to right)—Rhodes, Campbell, Slater, Henry, Siar, Stewart, Phillip, Smith, Brasuell.

Foreground (left to right)—Reynolds, Black, Heasley, Claypool, Handy, Miss Sandford, Reed, Rimer, Myers, Rhodes.

For two or three weeks before Parent's week-end, members of the Art Club worked industriously putting the finishing touches on their individual masterpieces which were to be exhibited during the eventful week-end for visiting parents. The time for debating the choice of a subject or moaning about a misguided paint brush had receded into the past and "action" had become the motto of each member. The art room buzzed with activity all day long, and, hourly, tired students emerged decorated with smudges of charcoal or daubs of paint; but their eyes were alight with a gleam of determination and the triumph of creation.

And then came the day when proud members and admiring classmates conducted even prouder parents on a tour of inspection to see the results of their efforts. Parents listened happily to their son's or daughter's long tale of how hard they had worked and how much fun they had had in Art Club this year. Social events hadn't been lacking either. If you wished to count them, you could begin with an informal dinner at Cook Forest and then name a jolly Christmas party, a Valentine tea, and as a climax the annual St. Patrick's Day party with the Press Club.

The officers certainly have guided the club through a successful year.

<i>President</i>	HELEN HANDY
<i>Vice-President</i>	BETTY MYERS
<i>Secretary-Treasurer</i>	BETTY RHODES
<i>Reporter</i>	RUTH BRASUELL
<i>Adviser</i>	MISS HAZEL SANDFORD

For the Sequelle Staff the fateful day had arrived. In a few hours they would know whether the past months of toil and effort had really been worthwhile. Mixed emotions of pride, humility, relief, and fear afflicted them as they viewed their edition of the Sequelle.

The doors were opened and the rush began. Students waited patiently and impatiently in line as the editor and the business manager hurriedly checked names and handed out Sequelle after Sequelle.

For the remainder of the day, happy owners studied the book diligently. Each picture was carefully inspected and cries of "Isn't that an awful picture of me?" seemed to be the appropriate thing to say when one found his image gazing at him from the book. Faculty members were heard to remark, "If only I could persuade them to study their lessons so industriously."

By ten o'clock the next morning the annual rush to fill all vacant space with "Good luck" autographs began. For a week the tireless writers blocked the steps to Seminary Hall and filled the surrounding benches as they wrestled with the problem of what to write in the one hundred and eighth book.

And then as the penmen gradually dwindled in number, the members of the Sequelle Staff came to the conclusion that they had done their best and although the result was not as perfect as they had wished, they hoped it would be acceptable and enjoyed now, and also in the future.

<i>Editor</i>	ELEANOR DeWALD
<i>Business Manager</i>	RICHARD HARTMAN
<i>Organizations</i>	
	BETTY McLAUGHLIN, LORAIN MAURER, DOROTHY SHAFFER, WILSON BAUGHMAN
<i>Features</i>	HELEN REA, FRANK MOHNEY
<i>Literary</i>	
	MIRIAM MOSES, EDNA AHLGRIM, HAROLD FULTON
<i>Photography</i>	JOHN MOHNEY, HANNA ROSENBERG
<i>Men's Athletics</i>	PAIGE VARNER
<i>Women's Athletics</i>	ROSADELL CHITESTER
<i>Business Manager's Staff</i>	
	LORRAINE MILLER, HARRY WOLFE
<i>Typist</i>	DORIS SEIGWORTH



Standing—Chitester, Ahlgrim, Wolfe, Rea, Hartman, McLaughlin, Shaffer, Seigworth.
Sitting—Moses, Rosenberg, F. Mohney, DeWald, J. Mohney, Miller.

SOME SENIOR



In Women's Athletics



On Student Senate



On Campus



Editing the Call

PERSONALITIES



On Stage



In Men's Athletics



Publishing the Sequelle



On Campus

GRADUATION



Message from the President:

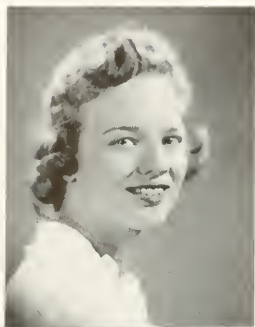
The time has come when you are leaving Clarion. During the four years you have been here, you have made many life-long friends, among them, teachers and administrative workers as well as schoolmates. When we live together in a college for four years planning and carrying out the work of preparing for teaching, making and enjoying social and recreational activities, between us are formed bonds of which we are often not conscious till we separate.

We shall all take a keen interest in your future. We shall labor to secure promotions for you and we shall all welcome a visit whenever you can come back. You now belong to the 3,000 alumni of Clarion whose loyalty and assistance have made your Alma Mater the College of which we are all proud.

The success of the College depends upon your success and upon the good name and public attitude which you build for it wherever you go.

PAUL G. CHANDLER





EDNA AHLGRIM

NORTH EAST

Library Science, Social Studies, English

Vice-President (4), Sigma Sigma Sigma; A Cappella Choir (3); Girls' Chorus (2, 3, 4); Hostess Club (2, 4); International Relations Club (3, 4); Sequelle Staff; W. A. C. and Intramurals (2, 3, 4); Y. W. C. A. (2).

"Eddie" came to Clarion in her Sophomore year from Mercyhurst College of Erie. Her interests include reading, sewing, traveling, and sports. Any spring day we can find her on a tennis court, expertly handling her racket from the port side.



AUDREY RUTH BARNES

434 FOREST AVENUE, BELLEVUE, PITTSBURGH

Library Science, English, Social Studies

Recording secretary (2), President (3), Treasurer (4), Sigma Sigma Sigma; A Cappella Choir (1, 2, 3, 4); Girls' Chorus (1, 2, 3, 4); Girls' Octette (1, 2, 3, 4); Intramurals (1, 2, 3, 4); President (3), International Relations Club (2, 3, 4); President (3), Pan Hellenic Council (2, 3); Vice President (4), Student Senate (4); Vice-President (4), Women's Student Council (4); Women's Athletic Council (2, 3, 4); Vice-President (1), Y. W. C. A. (1); Secretary-Treasurer (4), Pi Gamma Mu (4).

Ask Aud about her training school library. She is a girl with many interests. Singing or whistling as she goes, Audrey dashes around campus. She is a girl who is active in sports and who enjoys reading, too; Aud really prefers library work to teaching. You will agree that she has big eyes and a happy-go-lucky, likeable manner.



WILSON BAUGHMAN

NEW BETHLEHEM

Social Studies, English, Elementary

Zeta Eta Phi; Press Club (1, 2, 3, 4).

"Hoss" is one of the few seniors who has found sufficient time to enter the field of marriage. The day students will remember his jokes and daily three hour naps. He is interested in printing and publishing, but doesn't expect to enter this business until he has served his enlistment in the army.



LILLIAN BLOOMSTER

KENNARD

Elementary

A. C. E. (4); Geography Club (3); International Relations Club (2); Y. W. C. A. (1).

Lil has lived in about ten different towns. She would like to teach in a kindergarten next year. She does a lot of reading in her spare time, likes music and also plays the piano. Lillian is quiet and studious. Her two sisters are following in her footsteps.

CLAUDE BOLE

RIMERSBURG

Physical and Biological Science

President (3), Vice-President (3), Alpha Gamma Phi; Varsity C (1, 2, 3, 4).

Buck is a fine athlete, and well-known fellow on the campus. His major sport was football, in which he earned four letters as a bucking fullback on the Golden Eagles Eleven. He intends to teach several years and then enter the field of industrial chemistry. His major extra curricular activity is Kay Cervone.



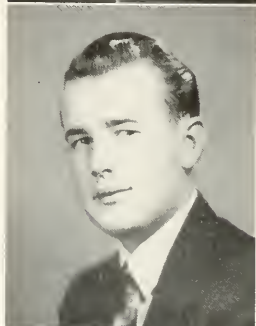
FRANCIS BRACKEN

REYNOLDSVILLE

Social Studies, English

Zeta Eta Phi; Secretary-Treasurer (3), Art Club (2, 3); Boy Scouts (1); Outdoor Club (1); Vice-President (4), Newman Club.

Although one of our least talkative members, Francis has proved a loyal friend to those who know him. He is interested in sports, especially baseball. Much of his spare time is spent in reading. After he serves his term in the army, he hopes to teach and continue his education until he obtains at least a master's degree.



ROSADELL CHITESTER

COCHRANTON

French, English, Social Studies

Class Treasurer (4); Secretary (1), French Club (1); Secretary (3), Geography Club (2, 3); International Relations Club (4); Sequelle Staff (4); President (4), W. A. C., (1, 2, 3, 4); Intramurals; Secretary-Treasurer (2), Y. W. C. A. (1, 2).

Quiet, smiling and efficient are only a few adjectives descriptive of "Posey". A daughter of a Methodist minister, she has lived in various western Pennsylvania towns. Her hobbies are reading and hiking. We are sure she acquired another with the acceptance of a ring last Christmas.



GERALDINE DETRIE

318 LIBERTY STREET, FRANKLIN

Elementary

Art Club (1, 2, 3); Secretary-Treasurer (3), Vice-President (4), A. C. E. (2, 3, 4); Geography Club (1); International Relations Club (2, 3, 4); Press Club (2, 3, 4).

A girl with a worthwhile ambition to get a degree from a large university, Gerry chooses reading, drawing, and painting along with scrapbook making as indoor pastimes. Gardening, especially flower culture, occupies her out-of-doors. If you are looking for a good correspondent, just try her; she likes to write letters.





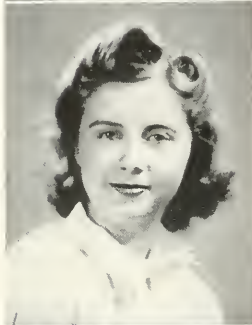
ELEANOR DeWALD

EMI ENTON

Library Science, Latin, Social Studies, English

President (3), Delta Sigma Epsilon: Vice-President (2, 3), Secretary-Treasurer (4), Classical Club: Vice-President (3), Secretary-Treasurer (4), International Relations Club (1, 2, 3, 4); President (3), Pan-Hellenic (2, 3); Secretary-Treasurer (4), Pi Gamma Mu (3, 4); President (3), Vice-President (2), Press Club (1, 2, 3, 4); Editor (4), Sequelle: Secretary-Treasurer (2), Student Senate: President (3), W. A. C. and intramurals (1, 2, 3, 4); President (3), Women's Student Council (2, 3); Y. W. C. A. (1, 2, 3, 4).

If a club wants an interested member or an efficient officer it always counts on Eleanor. Proof of her reliability was the fact that she held the presidency of five organizations in her Junior year. Sports, playing the piano, cooking, and sewing are her favorite interests.



RUTH ELEANOR EISAMAN

R. D. I. GIRARD

Social Studies, Library Science

Sigma Sigma Sorority; Pi Gamma Mu (3, 4); President (3), Hostess Club; International Relations Club (3, 4); Y. W. C. A. (3).

Ruth holds the record for attending different teachers' colleges, having attended Millersville, Indiana and Edinboro before transferring to Clarion as a junior. She is a small person who reads non-fiction and poetry and clips for her many scrap-books when "quiet". She dances or roller skates for exercise. If her wish comes true, Ruth will have an exchange professorship in Latin America.



RUBY ELLENBERGER

FOXBURG

Kindergarten, Primary

Vice-President (3), Sigma Delta Phi: A. C. E. (4); Geography Club. (2, 3); Intramurals. (2, 3, 4); Treasurer (3), Pan-Hellenic; Y. W. C. A.. (1, 2).

Ruby believes she will be able to apply for and hold down a library science position due to her association with her pal, Roberta. Reading, music, hiking, and outdoor sports, especially golf and tennis, are her main interests. Ruby's interest in children is sure to make her an ideal teacher.



HAROLD FULTON

KNOX

Mathematics, Social Studies, English

Zeta Eta Phi; Camera Club (4); Geography Club (2, 3); Pi Gamma Mu (4); Phi Sigma Pi (3, 4); Outdoor Club (1); Sequelle Staff.

Harold is a conscientious student and teacher, interested in sports and flying. He says his only future plans probably will be taken care of by Uncle Sam. On the campus or in the library you're sure to find Harold and his friend, Walter Wagner, together.

MARTHA HAINES

CLARION

Elementary

President (4), A. C. E. (3, 4); Art Club (3); College Players (1, 2); Geography Club (3, 4).

"And that ye study to be quiet, and to do your own business" is an apt quotation to describe Martha. We know that she is about, that she attends classes and chapel, but her voice is seldom heard; perhaps she prefers her hobby of drawing to speak for her.



RICHARD HARTMAN

SLIGO

Mathematics, Science

Alpha Phi Alpha; President (4), Phi Sigma Pi (2, 3, 4); President (2), Press Club (1, 2); Geography Club (3); President (4), Camera Club (3, 4); Business Manager, Sequelle.

Dick's friends know that underneath his studiousness and seriousness is a lot of fun, wit, and gaiety. They also know that Elsie occupies many spare minutes. Dick likes chemistry and printing, and enjoys playing the tuba and the piano. It will be the Naval Reserve, if Uncle Sam calls.



VIRGINIA HARVEY

PUNXSUTAWNEY

Elementary

Lambda Chi Delta; Geography Club (1); Outdoor Club (1, 2); Intramurals (1, 2, 4).

Ginny appears to be studious and serious, but we know she can and will indulge in tomfoolery at opportune moments. Swimming, horseback riding, and other sports are her hobbies. She is a blessing to the proctor calling lights, for she's sure to be in bed promptly.



MILDRED HENRY

NEW BETHLEHEM

Elementary

A. C. E. (4); Secretary (4), Hostess Club; Y. W. C. A. (4).

Mildred first came to Clarion in 1923, finishing the two year course in 1925. Last fall, after teaching fourteen years, she returned to finish her elementary work. Despite the years away from the campus she has readily become a worthy member of the Senior Class. Reading and fancy-work take up her spare time.





RUTH HINDERER

TIONESTA

Elementary

Alpha Psi Omega (4); Art Club (2); College Players Club (1, 2, 3, 4); Geography Club (2, 3, 4); Girls' Chorus (1); Plays (1, 2); Intramurals.

To get a job in a first class district—that's Ruth's ambition. She is an adept person. Her acting ability is to be applauded. She is not afraid of work—just ask her to help you out sometime. When you have the blues, Ruth will have a smile to cheer you.



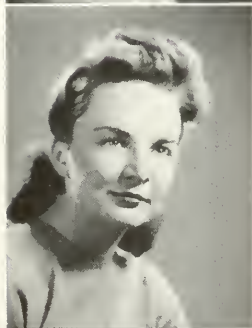
KATHLEEN KAPP

VENUS

Elementary

Art Club (1, 2, 3, 4); Geography Club (1, 2, 3, 4); International Relations Club (4); Intramural sports (1, 2, 3, 4).

Kathy lives on one of the sparsely populated planets—Venus. She is a good sport and would be a good match for anyone in hockey or baseball. She is also a roller-skating enthusiast. When she is not collecting books for children's enjoyment, Kathleen is reading good books for her own. She is ambitious and determined, a pleasant companion.



HARRIET KING

TIDIOUTE

Post-Graduate, Elementary

International Relations Club; Secretary, Newman Club.

Harriet came to us from Penn State. She was graduated from there with a degree in social studies and English. After one semester here she was hired to teach in the Warren Junior High School. With her it was "here today, gone tomorrow," but we liked her when she was at Clarion.



STANLEY KLEPFER

BAXTER

English, Social Studies, Geography

Alpha Phi Alpha; A Cappella Choir (1, 2, 3, 4); College Players (1, 2, 3, 4); International Relations Club (2, 3); Inter-Fraternity Council (3, 4); Y. M. C. A. (1, 2, 3, 4); Plays (2, 3).

Stan came to Clarion as a graduate of Brookville High School. He is interested in poetry and hopes to publish a book of his poems some time in the future. He has taken an active interest in music, being a member of the A Cappella Choir and boys' quartette. He is planning to spend the next several years under the tutelage of Uncle Sam.

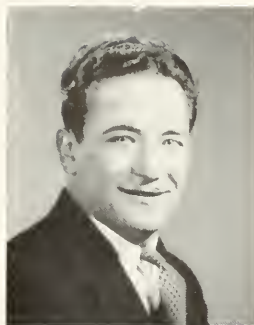
STEPHEN KOVALYAK

ANITA

English, Social Studies

Secretary (3). Alpha Gamma Phi; Phi Sigma Pi (4); Pi Gamma Mu (4). Athletic Council (3); College Players (3); Vice-President (4). International Relations Club (3, 4); President (4), Inter-Fraternity Council (4); Varsity C (1, 2, 3, 4); Plays (2).

Steve is one of the most popular boys on our campus. He won four letters in football, wrestled in the 155-pound class, and coached the championship 1941 wrestling team. He is also interested in singing which he often modestly demonstrates to the delight of his fellow students. He plans to join the Air Corps.



BETTY JANE McLAUGHLIN

ELDRED

Latin, English, Social Studies

Secretary (3). Treasurer (4), Delta Sigma Epsilon; Class Secretary (3, 4); Secretary (2), Classical Club (2, 3, 4), Hostess Club (2); Secretary (2, 3), International Relations Club (1, 2, 3, 4); President (4), Pi Gamma Mu (3, 4); Press Club (3, 4); Sequelle Staff (4); Student Senate (3); Women's Student Council (2, 3); Vice-President (3), Y. W. C. A. (1, 2, 3, 4).

In addition to studying the classics, collecting A's, reading, and making scrapbooks are a few of Betty Jane's interests. Always quiet, poised, a conscientious worker and a sincere pal, Betty ought to climb the ladder of success by leaps and bounds.



LORAIN MAURER

WORTHVILLE

Elementary

Alpha Phi Alpha; Y. M. C. A.; Sequelle Staff.

Lorain returned to Clarion the first semester, in order to complete his work in the elementary field. Previously he had been teaching at Ringgold. On the campus he was an active member of several clubs. He was inducted into the army in March.



LORRAINE MILLER

534 MARIE AVENUE, AVALON

Elementary

President (3), Sigma Delta Phi; A. C. E. (4); Alpha Psi Omega (3, 4); President (3), College Players (1, 2, 3, 4); Outdoor Club (1, 2, 3, 4); Sequelle Staff; Y. W. C. A. (1, 2, 3, 4); Plays (1, 2, 4); Intramurals.

Whenever there's a play to be presented you can always count on Lorraine to have a leading role or an important job back stage. She appeared in "The Night of January 16th," "Stage Door," and was property manager for "Room Service." Her interests are swimming, collecting post cards, and studying the beauties of farm life. Lorraine is a loyal and true friend.





FRANKLIN MOHNEY

BROOKVILLE

Mathematics, Science

Alpha Phi Alpha; Phi Sigma Pi (4); Football (1, 2, 3, 4); Varsity C (1, 2, 3, 4); President (4); Student Senate; Sequelle Staff.

Many of us found "Hank" a little hard to get acquainted with, but we soon discovered a friendly fellow with a cheerful smile and a keen sense of humor. Only the Alpha Phi's know how invaluable he and "Muggs" Wetzel are on fraternity outings. Everyone knows of his keen interest in sports. If called, Hank will join the Naval Reserve.



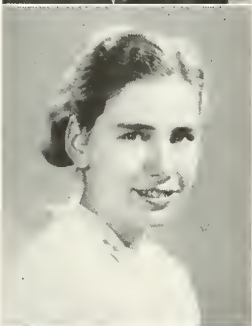
JOHN MOHNEY

BROOKVILLE

Geography, Social Studies

Secretary (2); Vice-President (3); President (4); Alpha Phi Alpha; Pi Gamma Mu (4); Phi Sigma Pi (4); Camera Club (3, 4); Press Club (1); Intramurals (1, 2, 3); Sequelle Staff (4); Vice-President (3); Senior Class.

With his genuine friendliness and his fine co-operative spirit, John has made many friends while attending Clarion. Besides Arline, his main interests are reading and dancing. He is aiming to become the "world's best school teacher" after his duty is paid to Uncle Sam.



MIRIAM MOSES

BESSEMER

Library Science, Social Studies, English

Vice-President (3); President (4); Delta Sigma Epsilon; Pi Gamma Mu (3, 4); President (4); International Relations Club (3, 4); Intramurals (1, 2, 3, 4); Secretary (4); Pan Hellenic Council (3, 4); Press Club (1, 2, 4); Women's Athletic Council (2, 3, 4); Women's Student Council (1, 2); President (2); Y. W. C. A. (1, 2, 3, 4); Sequelle Staff (4).

Ask her about the Navy, girls. Miriam has unique individuality. Her hobbies are extensive. Making scrapbooks, learning more about the Navy, and reading . . . Miriam is always busy. She's a good sport, too. Miriam believes in punctuality . . . and practices what she preaches. She likes dogs. She is an efficient, capable and energetic student.



ELOISE OGDEN

CLARION

Elementary

Delta Sigma Epsilon; A Cappella Choir (1, 2, 3, 4); A. C. E. (2); Girls' Chorus (2, 3, 4); Girls' Ensemble (1, 2, 3, 4).

Genial, smiling Eloise is one of the most musically minded girls on the campus, as her list of activities readily shows. In addition to music, her hobbies are reading, dancing, ice skating, and collecting maps.

ROBERTA PAISLEY

502 LOGAN AVENUE, SHARON

English, Library Science, Social Studies

Triangle Correspondent (3), Corresponding Secretary (4), Sigma Sigma Sigma: Geography Club (2, 3); Intramurals (2, 4); Press Club (1, 2, 3, 4); Women's Student Council (1); Y. W. C. A. (1, 2).

Roberta collects A's in library science classes. Ruby is her side-kick. She will make a capable and efficient teacher. Roberta is a conscientious student and an A-1 librarian. She plays a good game of tennis and also likes to read. Someday Roberta will spend her vacations traveling.



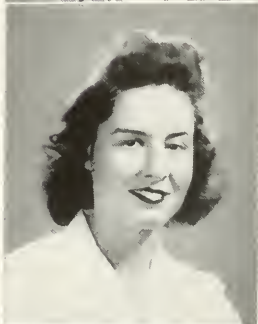
HELEN REA

210 SHILOH AVENUE, BELLEVUE

Library Science, English, Latin, Social Studies

Secretary (4), Delta Sigma Epsilon (2, 3, 4); A Cappella Choir (1, 2, 3, 4); President (4), Classical Club (2, 3, 4); Girls' Chorus (1, 2, 3, 4); International Relations Club (2, 3, 4); Pi Gamma Mu (4); Press Club (1, 2, 3, 4); Y. W. C. A. (1).

Experiences in a Pittsburgh summer day camp provide Helen with quantities of information with which to entertain her friends. Whenever an argument is started you can always count on her to contribute heartfelt pros or cons, especially in library science classes. Tennis, ice skating, reading, and music constitute her hobbies.



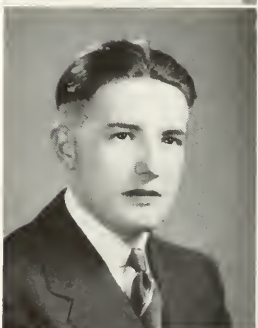
ROBERT RHODES

HALLTON

Science, Mathematics

Alpha Phi Alpha (3, 4); Phi Sigma Pi (3, 4); Art Club (4); Boy Scouts (1); Camera Club (3, 4); Geography Club (3); International Relations Club (2, 4); Intramurals (1, 2, 3, 4); Outdoor Club (1); President (4), Y. M. C. A. (1, 2, 3, 4).

Bob is a well known lad in the library. He is a very studious fellow and always willing to lend a helping hand. Bob hopes to secure a master's degree in physical science; and with the fine grades he is making at Clarion, he should be a great success.



HANNA ROSENBERG

1109 SOUTH MERCER STREET, NEW CASTLE

Library Science, English, Geography

President (3), Vice-President (4), Camera Club (2, 3, 4); Geography Club (1, 2, 3, 4); Sequelle Staff (4).

Hanna spent her first semester at Pitt, then transferred to Clarion, where she immediately became a friend to all. She has been an efficient member of committees and programs. Her interests are photography, driving, and archery. Her motto could easily be: "A friend in need is a friend indeed."





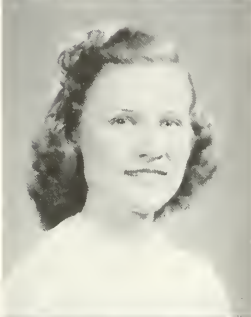
ELEANOR SCHELL

PLEASANTVILLE

Elementary

Recording Secretary (4); Sigma Sigma Sigma; A. C. E. (4); President (4); Geography Club (2, 3, 4); Outdoor Club (1).

"Percy" was a high school pal of Edna's. She is a likeable and jolly companion. Her summers are spent at Chautauqua. You will find her reading whenever she finds time on her hands. She enjoys poetry. Eleanor will tell you about her nieces and nephews if there is a lull in the conversation.



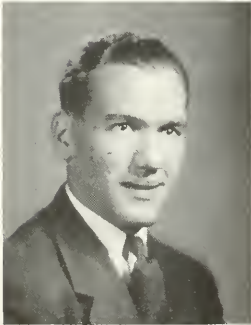
DORIS SEIGWORTH

STRATTONVILLE

Elementary

President (4); Sigma Sigma Sigma; Vice-President (3); Recording Secretary (4); A. C. E. (2, 3, 4); Vice-President (1); Art Club (1, 2); A Cappella Choir (3, 4); Secretary-Treasurer (3); Girls' Chorus (3, 4); Secretary-Treasurer (2); Press Club (1, 2); Sequelle Staff typist (4); Intramurals (1, 2, 3, 4); W. A. C. (2, 3, 4); Y. W. C. A. (1, 2, 3, 4).

Doris is active on campus—ambitious and studious. Her main interest is West Point. She would prefer to teach in a kindergarten, for she likes little children. She is tall and blond, making a pleasing appearance. She is an adept typist, and likes all kinds of sports. Doris is also musically inclined.



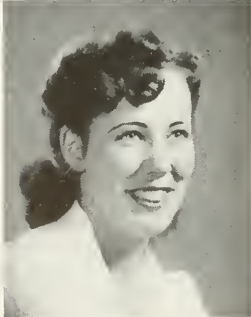
ANDREW SEVOK

YOUNGSVILLE

Social Studies, English

Alpha Gamma Phi; Varsity C.

Andy's stocky little figure was a familiar sight on the campus and gridiron. He is interested in athletics, especially football, in which he earned four college numerals. At mid-semester he enlisted in the aviation cadets and is now stationed at Maxwell Field, Alabama.



DOROTHY SHAFFER

BROOKVILLE

Library Science, Social Studies, English

Vice-President (4); Sigma Delta Phi; A Cappella Choir (2, 3); College Players (1, 2); Girls' Chorus (1, 2, 3); International Relations Club (3); Pi Gamma Mu (4); Press Club (1, 2, 3, 4); Sequelle Staff.

Dot's interests include Penn State, singing, and writing. She is determined in her beliefs and has formulated high ideals of her profession. She has a very commendable ambition, and that is to make some fellow a good wife.

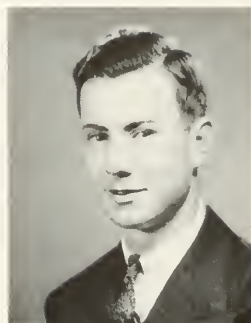
JOE SMITH

CLARION

Science, Mathematics

Camera Club (4); Geography Club (3); International Relations Club (2, 3, 4); Intramurals (1); Newman Club (2, 3, 4); Outdoor Club (1).

Joe, a Clarion lad, a graduate of the local high school, is very active as a student teacher and ever willing to help others. He is planning on joining the aviation cadets after graduation. With his sincerity and progressiveness he should be a success.



KATHLEEN SNYDER

LUCINDA

Elementary

Vice-President (3); Delta Sigma Epsilon; A Cappella Choir (1, 2, 3, 4); A. C. E. (2, 4); Alpha Psi Omega (4); Art Club (1); President (3); College Players (2, 3, 4); Girls' Chorus (3, 4); International Relations Club (3, 4); Plays (2, 3).

Kay returned to school this fall after teaching for a year. Besides a poetry collection, her hobbies include music, dramatics, dancing, sports, and cooking. We'll always remember Kay for her work in the campus music organizations.



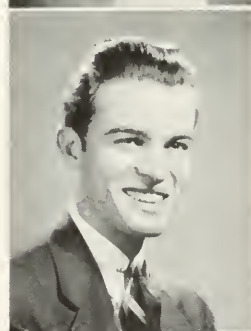
STEPHEN SNYDER

LUCINDA

Science, Mathematics

Alpha Phi Alpha.

Steve is mainly interested in athletics, especially baseball. His exploits on the college diamond are such as to cause the fans to remember his brilliant playing. He also likes music. Steve says that he isn't worried about securing a teaching position because he expects Uncle Sam to take care of any immediate future plans.



MARGARET STEWART

RIMERSBURG

Elementary

Chaplain (3, 4); Lambda Chi Delta; Corresponding Secretary (4); A. C. E. (3, 4); Secretary (2); Sophomore Class; French Club (2); Intramurals (1, 2, 4); Outdoor Club (3, 4); Student Senate (3).

Peggy plays all summer sports and likes volleyball and basketball for winter time diversion; she also enjoys watching football games. When Peg plays "house-plant" she will probably be reading or pasting photographs in her album. She wants to teach for three or four years and then ???





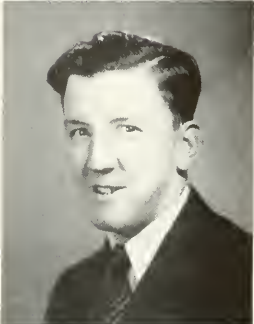
PAIGE VARNER

REIDSBURG

Social Studies, Geography

President (4); Zeta Eta Phi (1, 2, 3, 4); International Relations Club (2); Outdoor Club (1); Press Club (2, 3, 4); Sports Publicity (3, 4); Sequelle Staff (4).

Paige, another local boy, is interested in all forms of athletics. Football fans will remember his rapid fire, play-by-play accounts of the action on the Clarion gridiron. He is also interested in newspaper writing and politics, but intends to enter the Army Air Corps.



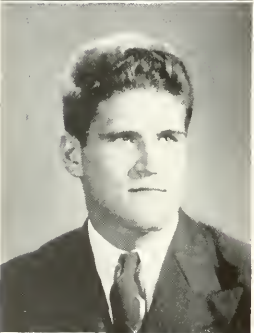
WALTER WAGNER

SHIPPENVILLE

Social Studies, Geography, English

Alpha Phi Alpha; Boy Scouts (1); Camera Club (1, 2); Geography Club (1, 2, 3, 4); Outdoor Club (1); Intramurals.

Walter has come to Clarion as a graduate of Shippenville High School. He has participated widely in intramurals and will be remembered for his ability in ping-pong and horse shoes. Walter intends to teach after he has served his term for Uncle Sam.



JOHN WETZEL

NEW BETHEHEM

Social Studies, Geography

Vice President (3); Alpha Phi Alpha; Vice-President (4); Pi Gamma Mu (4).

"Muggs" is a very well known figure on the campus. This good-natured, square-jawed, lad is a graduate of New Bethlehem High School. He has been active in athletics, being a letter man in football and basketball. He is planning to join the air corps after graduation.



HELEN WILLIAMS

SLIGO

Social Studies, English, Speech

Treasurer (2); Vice-President (4); Sigma Delta Phi; Art Club (1, 2); Press Club (1, 2, 3, 4); Intramurals.

Helen is a happy-go-lucky person. She believes as did the poet. "There is no treasure like the treasure of a faithful friend." She thinks her time could be profitably spent in reading or listening to or in making music. Her future plans are either marriage or working at the Philadelphia Navy Yard.

JACK ALLSHOUSE

BROOKVILLE

Science, Mathematics

Zeta Eta Phi; Art Club; College Players; Boy Scouts; Outdoor Club.

It seems that Jack's chief ambition is to support his wife after he's graduated from Clarion. During vacation and on Saturdays anyone having business in Penny's store is sure to find him smiling, waiting on a prospective customer.



BURDELL GILES

116 EUCLID AVENUE, NEW CASTLE

Library Science, Social Studies, and English

Lambda Chi Delta; Art Club (1, 2); Intramurals (1, 2, 3, 4); Press Club (2, 3, 4); Women's Student Council (4).

A curly brown coat, flashing brown heels, a smile, and a cheery word all spell Burdell. Being the elementary field expert in the senior library science class, she is often called upon to reveal the best means and methods of teaching children.



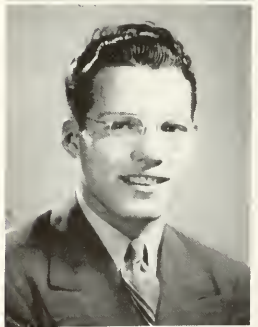
DONALD HESS

JAMES CITY

Science, Mathematics, English

Alpha Phi Alpha; Recording Secretary (3), Corresponding Secretary (4), Phi Sigma Pi; President (3), Y.M.C.A. (1, 2, 3, 4); A Capella Choir (3, 4); Geography Club (2); Art Club (1); International Relations Club (2, 3, 4).

Don, probably our youngest senior man, hopes to get a position teaching science and math some place convenient to Penn State, so he can attend summer school and finally obtain a master's degree. Don has a yen for the minor sports, especially ping pong and swimming.



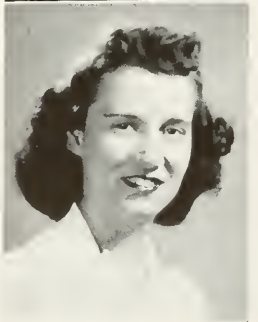
MARY CATHERINE HONECK

55 WOODROW COURT, SHARON

Library Science, English, and Social Studies

Delta Sigma Epsilon; Hostess Club (4); International Relations Club (4); New-man Club (1, 2, 3, 4); Outdoor Club (1); Press Club (1, 2, 3, 4).

Mary Kay is one of the dean's helpers. Her interest is divided between Sharon and Albion. She could easily be called the Pepsi-Cola champ. Her college chum is Edna. Mary Kay will take you on at tennis any time you say. She also enjoys music. She does not plan to teach or be a librarian forever.





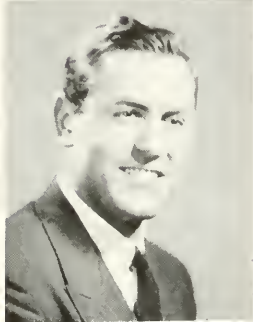
HELEN KISSELL

CLARION

English, French, Latin

President (4); Lambda Chi Delta: President (3), Vice-President (2), Classical Club (2, 3, 4); A Cappella Choir (1, 2, 3, 4); Girls' Chorus (2, 3, 4); Girls' Octette (2, 3, 4).

A hometown girl who has been active on campus. Helen is an alto songbird. In the summer she goes in for camping where she can go boating. Helen is fond of sports as a spectator, mainly football and baseball. Ask her to dance with you and hear what she says. Helen is a linguistic expert at the age of twenty.



CLYDE PENCE

CORSICA

Science and Mathematics

Alpha Gamma Phi: Camera Club (3); Intramurals (1, 2, 3); Outdoor Club (1); Varsity C (1, 2, 3, 4).

Clyde, a graduate of Clarion High School, is interested in industrial and mechanical engineering and some day hopes to study along these lines. If the army wants him, he plans to join the aviation cadets. He has been very active in athletics, being a four-year letter man in football, as well as participating in intramurals.



UNITHEA STACK

431 BOYLES AVENUE, NEW CASTLE

Library Science, Social Studies, English

Lambda Chi Delta; Editor (3, 4), Clarion Call; College Players (1, 2, 3); International Relations Club (2, 3, 4); Secretary (3), Newman Club (2, 3); Pi Gamma Mu (3, 4); Press Club (1, 2, 3, 4); Student Senate (4); W. A. C. and intramurals (2, 3, 4); Women's Student Council (1); Plays (2).

Uni, the individualist, is forever being assessed numerous library fines and even attempted to play five hundred in the reading room one night, with dire results. She and her roommate, Burdell, are waiters in the college dining room. She is highly versatile, but she candidly asserts that she is definitely not a stamp collector. She has been the successful editor of the Clarion Call.



JANE STOCKDALE

IROSBURG

Latin, French, English

Lambda Chi Delta: French Club (1); Hostess Club President (4), Hostess Club (3, 4); International Relations Club (4); Intramurals (2, 4); Secretary-Treasurer (3), Latin Club (2, 3, 4); Outdoor Club (1); Secretary-Treasurer (4), Student Senate (2, 4); Y. W. C. A. (4).

Jane wants to teach languages in high school. She is an outdoor girl participating in most of the active sports. Her favorites are horse-back riding and swimming. Jane is a good student and a willing worker. For an authority on languages, try Jane.

AS WE GO FORTH

And now we the Seniors of '42 have come to the end of this, our last year at Clarion State Teachers' College. Looking backwards fleeting memories flash rapidly in review: Our first glimpse of the campus in '38—dormitory rules—Freshmen initiation and eyebrows which refused to yield their lipstick—a whole day of vacation at Cook's Forest—the excitement of rush week—home for Thanksgiving and ninety-nine answers to the same question, "Do you like Clarion?—Xmas already!—lamps in closets—must be what is known as "burning the midnight oil"—It's all over. What?—Semesters—Pan-Hellenic Dance—tiny yellow slips—guess we relaxed too much—the Frats cooperate—Social Studies Conference—Student Senate politics—Parents' Week—End—packing, ooh, It's awful—Bye!—Have a nice vacation—Back again—upperclassmen? Yes, but just about the least important people on the campus. Have you met the freshmen?—football, five wins, one tie, one loss—Home Coming—etc.—etc.—etc.—Juniors 1940—Egbert Hall occupied by male members of student body—"teddy bear" haircuts—scheduled exams, at last—the decease of "Double Barrel"—"Room Service"—Is that in the play or is it original with the cast?—a snappy basketball team—We'll certainly miss the graduates—September 1941—Seniors, ourselves—training school—Sequelle deadlines—and what else?—leaf through your Sequelle—our first Alumni Day—Baccalaureate—Graduation—and another chapter in our lives ended as we go forth, prepared to write the chapter for which we have been trained—the chapter of "service".

CLASS OFFICERS

FRESHMAN

Vice-President PHILIP WALLACE
Secretary-Treasurer ALICE GUSEMAN
President CHARLES SHANER

SOPHOMORES

Vice-President JAMES ARNER
Secretary-Treasurer TERESA KENNEDY
President IRWIN FALL



JUNIOR

Secretary-Treasurer ELAINE McCALL
President MERLE WOLCOTT
Vice-President RUTH KAPP

SENIOR

Secretary BETTY McLAUGHLIN
Vice-President JOHN MOHNEY
President FOREST CARLSON
Treasurer ROSADELL CHITESTER

The Class Advisers Are:

Freshman PROFESSOR WALDO S. TIPPIN
Sophomore PROFESSOR CLAIR E. CAREY
Junior PROFESSOR HARRY S. MANSON
Senior DR. DONALD D. PEIRCE

RECAPITULATION

September

- 10—Vacation extended two more weeks.
- 21—First timid freshmen appear.
- 22—Well, how do they look?
- 27—Freshmen are introduced to the social side of college.
Freshman reception.

October

- 5—Delta Sigs entertain national officers.
- 13—Non-Greeks meet Greeks at Pan-Hellenic tea.
- 14—Freshmen must follow initiation regulations.
- 15—C. S. T. C. frolics at Cook Forest picnic.
- 18—Welcome alums.
- 26—Library science seniors have tea at Flacks.
- 30—Ghosts and goblins frolic at Becht Hall party.

November

- 1—Tri Sigs journey to Philadelphia for regional meet.
- 8—Who got that eagle?
- 10—Sororities hold open house.
- 11—Alpha Phis hold gala rush party.
- 12—Freshmen meet Alpha Gammis.
- 13—Zetas throw carnival down in the old gym.
- 17—Let's go down Argentine way with Sigma Delta Phi.
- 18—Delta Sigs have dinner-theater party.
- 19—Theta's dine in style.
- 20—Swank Sigma Club opens in Stevens Hall.
- 21—Did you go to the circus with the Lambda Chis?
- 25—Pi Gamma Mu initiation.
- 26—Thanksgiving vacation!

December

- 1—Back to the daily grind.
- 7—Remember Pearl Harbor.
- 14—Becht Hall tea for women students.
- 15—Messiah by choir and community chorus.
- 17—Readers read and dorms go carolling capably directed by Mr. Campbell.
- 19—Soft lights, pine, that's right—Seniors sponsor Christmas dance.
- 20—Christmas in the dormitory.
- 23—Here at last—vacation.
- 25—Merry Christmas.

RECAPITULATION

January

- 1—Happy New Year—1942.
- 5—School again.
- 12—Greek meets Greek—Pan-Hellenic banquet.
- 19—Exams start.
- 23—End of exam week.
- 31—Winter carnival—no snow, too bad!

February

- 6—First choir concert—Clarion High School.
- 10—Phi Sigma Pi initiation.
- 11—Choir on tour—Otto Township and points north.
- 16—Registration day.
- 25—Pi Gamma Mu initiation.
- 27—Sophomores swing and sway.

March

- 2—Record snow—oh, that walk to training school!
- 7—Elder and Snyder place at Lock Haven tournament.
- 14—Flowers, favors, tuxes—Fraternity dance.
- 18—Dorm girls give St. Pat's party.
- 24—Dorm students entertain faculty.
- 28—Science conference.

April

- 1—Home for new clothes and other reasons.
- 7—Classes again.
- 10—Music and forensic contests.
- 11—Sororities entertain—Pan-Hellenic dance.
- 13—Library science students start field work.
- 14—A. C. E. Banquet.
- 18—Zetas sponsor dance in old gym.
- 23—Tennis season opens.
- 24—Choir broadcasts from Butler.

May

- 2—Parents arrive—*Mr. and Mrs. North* in chapel.
- 3—Large crowd at dinner—parents leave.
- 8—Senior Tea.
- 16—Delta Sigs celebrate 10th anniversary.
- 23—Alumni Day—banquet—dance.
- 24—Baccalaureate.
- 26—Commencement—goodbyes and good luck.



A
C
L
I
C
K

O
F

T
H
E

C
A
M
E
R
A

Couples—training teachers—amateur programs—freshman initiation—laboratory period—campus scene at night—rushing to classes—room-mates—Sunday afternoon—dormitory casuals—fellows—girls—Clarion memories.

FORMER CLARION STUDENTS IN THE

LLOYD AARON—33016576

120th S. R. T.
A. P. O-803-B
Fort Read Trinidad
B. W. I.

ALBERT H. ANDREO

Hdg. A.W.S.T.C.
3rd Interceptor Command
5th School Company
Drew Field
Tampa, Florida

CORP. JAMES RAYMOND ABERCROMBIE

Company "A" 2nd Branch
Camp Wheeler, Georgia

WILLIAM BATES

421-T S.S.
Wichita, Kansas

WILLIAM BRATKOVITCH

Company "B", 2nd Bn. E.R.T.C.
Fort Belvoir, Virginia

DONALD DOUGLASS

C-2A M.D.P.
Army Medical Center
Washington, D. C.

WILBERT DALE GILBERT*

10 Margaret Avenue
Essex, Maryland

LIEUT. WALTER HASKELL, JR.

G-2-7, F.M.F.
New River, North Carolina

CADET HOMER L. HORNER

U.S.N. Air Service
Jacksonville, Florida
710-244

BERTRAND HOVER

36th Field Artillery, Battery "B"
Fort Bragg, North Carolina

JAMES IMEL

29th Engineers, Company "A"
Camp Blanding, Florida

WAYNE JOHNSON

Battery G (Slt) 50th P.F.C.
Camp Pendleton, Virginia

H. B. JONES*

Lord Manufacturing Company
Eric, Pennsylvania

TECH. SERGT. CHARLES KROH

Hdg. Co. 628
Tank Destroyer Battalion
Camp Livingston, Louisiana
A.P.O.—28

CORP. JAMES E. LOVELL

430 S. Court Street
Montgomery, Alabama

ENS. SHERWOOD H. McCORMACK

U.S.N.A.S.
Banana River
Cocoa, Florida

JAY McKEE

1st C.W.S. Training Battalion
Edgewood Arsenal, Maryland

MERTON McKENDREE

Edgewater Hotel
Santa Monica, California

JACK McCLAIN

U. S. Naval Academy
Annapolis, Maryland

ALLAN METZGAR

Maxwell Field
Montgomery, Alabama

SAMUEL B. MONTANA

104th Medical Regiment, Co. "C"
Fort Meade, Maryland

CHARLES MYERS

Co. "B", 13th Trg. Bn., 3rd Battery
Camp Wheeler, Georgia

JOSEPH H. O'BRIEN

416 Technical School Squadron
Keesler Field, Mississippi
Flight C

DANA PETERSON

Chief Boatsman Mate
Athletic Office, P-4
Naval Operating Base
Norfolk, Virginia

LIEUT. COL. A. F. REED

Carlisle Barracks
Carlisle, Pennsylvania

JACK REED

Cal-Aero Academy
Ontario, California
Class C-42G

NORMAN SAMPSON

Battery "C", 802nd Field Artillery, B.N.
Fort Benning, Georgia

SERVICE OF THE UNITED STATES

JOSEPH SCHIERBERL

36th Field Artillery, Battery "B"
Fort Bragg, North Carolina

ANDREW SEVOK

Squad H-2
Class 42 I
Maxwell Field, Alabama

WILLIAM SHERIDAN

U. S. Air Corps
Flying Cadet Detachment
Riddle Aeronautical Institute
Carlstrom and Dorr Fields
Arcadia, Florida

GEORGE SHOUP

Station Hospital
Spence Field
Moultrie, Georgia

MALCOLM SIAR*

105 Herkimer Street
Buffalo, New York

JAMES SIBLEY*

10 Margaret Avenue
Essex, Maryland

CHARLES SLATER

319th School Squadron
Barracks 665
Sheppard Field
Wichita Falls, Texas

HARRY A SLATER

Squadron "B", Group I
Barracks 806-4
Maxwell Field, Alabama

DeWAYNE SLAUGHENHAUPT

321 School Squadron, Bldg. 821
Sheppard Field
Wichita Falls, Texas

CARL SMITH

Athletic Office P-4
Naval Operating Base
Norfolk, Virginia

EARL SMITH

Now serving with
U. S. Army in Ireland

CORPORAL PAUL A. SPUDIC

Hq. Sq. 44th Air Base
McChord Field
Tacoma, Washington

ERNEST L. STEWART

Quartermaster (Q.M. 3/c)
U.S.S. Helena
c/o Fleet Postmaster
San Francisco, California

GENE STEWART

U. S. Air Corps
Flying Cadet Detachment
Riddle Aeronautical Institute
Carlstrom Field
Arcadia, Florida

MILTON STEWART

318th School Sqd., Barracks 620
Sheppard Field
Wichita Falls, Texas

DONALD G. STROUPE

Co. "I", 104th Medical Regiment
A.P.O. 29
Fort Meade, Maryland

MARSHALL TEETS

Maxwell Field
Montgomery, Alabama

JOSEPH H. TRUNK

50th Material Department
Savannah Air Base
Savannah, Georgia

PAUL E. TRUNK*

Lackawanna, New York

JOHN E. TRUNK, JR.

Royal Canadian Air Force
R-139216
G Flight No. 6G.T.L.
Church Street
Toronto, Ontario, Canada

THEODORE WILLIAMS

Headquarters Battery, 38th F. A.
Fort Sam Houston, Texas

MERLE WISER

Fort Stocum, New York

CLARENCE W. YEANY

Battery "B", 17th Field Artillery
Fort Bragg, North Carolina

*Engaged in defense work.

An Appreciation:

The Staff of the 1942 Sequelle, on behalf of the Student Body, takes this opportunity to express their appreciation to the merchants of Clarion and vicinity for their kind assistance and co-operation in making this year's Sequelle possible.

OUR BEST WISHES to every graduate and student of Clarion State Teachers College. Please keep us in mind—write us when you secure a position or a better one; when you are married; or receive distinctive recognition. We are glad to print good news about Clarion students.

THE CLARION REPUBLICAN

Printers of the "Clarion Call"

Compliments of

Mr. and Mrs. Fred Jenkins

Meals

Lunches

MODERN DINNER

ALWAYS OPEN

Next to Garby Theatre

J. M. CROOKS & SON

*Clarion's Store for
Young Men*

Since 1933

it has been our privilege to supply the students of
Clarion Teacher's College with GRUBER'S

Golden Guernsey Milk

Let us serve you with this high quality milk, outstanding
in color, vitamins, food elements, and flavor.



J. W. M. GRUBER & SON

Producers and Distributors of
GOLDEN GUERNSEY MILK

SHIPPENVILLE, PA.

Buy at Browns and Save

BROWN'S BOOT SHOP

Shoes and Hosiery

CLARION, PA.

Compliments

of

PHILLIPS'

GREENHOUSE

EXPERT HAIR STYLING . . .

We Handle *DERMETICS*
Exclusively

KATHRYN'S BEAUTY SHOP

Banner Building

Phone 310

THE RESS SHOP

Women's and Misses'

Ready to Wear

CLARION, PA.

THE REXALL STORE

Cut Rate Drugs

KING *Drug Store*

CLARION, PA.

DITZ & MOONEY HARDWARE

Stewart-Warner Electric Refrigerators

Lucas Paints

China and Glassware

Hunting and Sporting Equipment

Phone 218

CLARION, PA.

Not Only Good Food—But All You Want

Best Wishes for This Year

THE COFFEE SHOP

Moderate Prices

HAZEL MILLER

Corner Eighth and Main Streets

Clarion 72

*The Finest Store in
Clarion County*

WEIN BROTHERS

*“Where Quality
Predominates”*

First Rate Store
First Class Drugs

Nyal Service Store

FITZGERALD'S

A. G. CORBETT DRUG CO.

CLARION, PA.

**CORSO'S
STORES**

PARKER and CLARION

*For Men Who Want the Best
in Wearing Apparel*

DON'S MEN'S SHOP

Main Street

Clarion, Pa.

HAIL THE GRADUATION OF 1942

We join in a hearty commendation of your efforts and in a sincere wish that your future lives may be happy and successful.

G. C. MURPHY COMPANY

5 and 10 CENT STORE

Compliments of

MEANS & LAUF DRUG COMPANY

FRUITS

Phone 38

CLARION FRUIT CO.

Sam Cherico, *Prop.*

Modern Store - Self-Service
Groceries - Meats

606 Main Street

Clarion, Pa.

HALE'S NUT SHOP

Peanuts

Candy

Popcorn

Buy your "sweetie" some sweets
at the little shop on the corner
of Sixth and Main

*The Best of Luck and Success
From Your House of Hits*

Garby Theatre

CLARION, PA.

HERMAN BROTHERS

THE CORNER STORE

Fruits

Ice Cream

Confections

Corner Wood and Eighth Avenue
CLARION, PA.

Your Store

WELLER'S SWEETLAND

Sodas - Ice Cream - Meals

Main Street

Clarion, Pa.

JAHN & OLLIER AGAIN



LOYAL

always, to the
cause of better
Yearbooks

JAHN & OLLIER
ENGRAVING CO.

Makers of Fine Printing
Plates for Black and Color
Artists - Photographers

817 WASHINGTON BLVD
CHICAGO

The Stevenson & Foster Co.

PRINTERS - LITHOGRAPHERS - STATIONERS

421 Seventh Avenue - Pittsburgh, Penna.



COLLEGE ANNUALS
HIGH SCHOOL YEAR BOOKS
MONTHLY PUBLICATIONS



Our representative will be
pleased to assist you when
compiling your next Publication.

... Telephone GRant 1551 ...

PRINTERS SINCE 1812

CLARION UNIVERSITY OF PENNSYLVANIA



3 9363 00386 9317

Spec. Col.
qLD
1017 Sequelle
.C88
1942

Spec. Col.
qLD
1017
.C88
1942

