

Archives
qLD
1017
.C88
1948
c.2



Sequelle 1948

Steve Wach

Mary C. Salinger

Martha Mitchell
Dana J. Hooper

Ma Zouway

Jeanne Beatty

Paul Caruso

Raymond Nicolas

Thyl Caldwell

Ernie Larson

Grace Love

Harold & Larin

Earl Feingold

Tuila Bartelle
Mary Lou Johnston

Beggy Bish

David & Muriel

Helen M. Lath

Kathie Kearney
Carole Probst

Barbara Labaugh

Rose Jean Mucci
Irvin E. Henry

Jo Adams

Caroline Weiss

Pat Carr

Hazel Rogers

Ann Marie Shuck

Jenifer Messler

Betty Lopusson

George E. Kukal

Sarah Kelly

Bruce MacBeth
Charlotte & Margee
Edith

Tom Knapp
MICK ROSENBERG

Helen Dugan

Marie John

Edward R. Mickulich

Betty Ray

Jack H. Smith
Frank W. Badger

Charles M. Malke

Joline Hannald

John H. DeLong

John Banjal

TED CYPHERT.

STEVE WACH

Lita Mae Brown
Della Williams

William E. Lafranchi

Gladys Yeager

Matthew J. Lopinto

Michael J. Zarachy

Arnold
Aries
"1940"

2 piles Merrill

Haskell A. Shining
Robert M. Shultz

Bill Schott

& Anne Engman

Albert Hand

Boyd McKinley

James T. Shinko

Union Manville

Kathie Holbe

Shirley
Roda

Clyde E. Vantassel

Hester Myers

Arvid J. Larson

Phyllis Jones

Edward Girod

Shirley Johnson

Jean Miller

John Schulte

Bill Moore

Laurence Di Girolamo

Nance Tablin
Jane Willson

Robert Platt

Jack L. Eastman

John Mellow
Paul Snyder

Phyllis Stewart

Jack Lee

"KILBOY"

Ed V. Yelbacher

Ruth Hill

Loora Leding
(Sobe)

Homer Buzard

Bill Cooper

Lamar C. Craft

Dudley Marshall

Helen Lanie Borsall

Jeanne Stalder

Nike O. Lake

Fred Wise

Stuart Walter
Songer

Shirley
Dimpfler

Sherald G. Zel

Betty Morgan Violet Baker

Eva Ziegler

Martha Erickson

Eleanor Pak

Howard Bassart

Anna Lou Williams

Edward B. Turchick
Charles Taballa

John Corey

Ray Ard

Flora
Spel

Phyllis A. Yabun
Brindley


Jack E. Simms

Rice
Brinkley

CHARLES
THOMAS
KOMISEK

EDWARD
BRINKLEY

Clayton - 2210-10-10



Digitized by the Internet Archive
in 2010 with funding from
Lyrasis Members and Sloan Foundation

<http://www.archive.org/details/sequelle1948clar>

Sequelle



1948

Archie
Slick
1948



Dedication

To Dr. Sewell E. Slick, outstanding teacher and noted author, who has commanded our respect and friendship through his unusual leadership, we, the class of 1948, fondly dedicate this Sequelle.

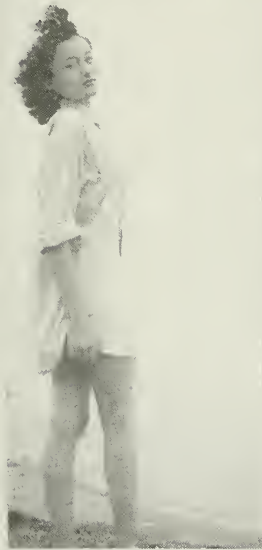
Memories















In Memory

Memories, oh memories! Memories of our college daze which we always want to keep with us. Let's go back through the years to our first here at Clarion. Remember how confused and befuddled we were those first few weeks? Freshmen exams loomed before us to make us thoroughly miserable, and convinced of our inadequacy for the first few days, but we emerged finally only to find ourselves with blackened noses and be-toweled heads caught in the clutches of Freshman Week! Ah, those were the days! There was hardly any male population, but still we had good times. Remember the party we put on for the school, the toboggan rides, 8 o'clocks (they stayed with us), and the wise smirks of the upperclassmen at our follies?



From mere freshmen we evolved into worldly sophomores. That year we laughed at the freshmen and tormented them as we had been tormented. We could smirk now. War was still uppermost in our minds that year. It was with unbelieving amazement we heard of the death of President Roosevelt in the spring. Shortly afterward we learned of the surrender of the Japanese which gave us cause for feelings of untold happiness and rejoicing. That year we welcomed the first veterans back. It was a year of great excitement and high hopes for the future!

As juniors we saw a great change in our college life. War was over and our enrollment had increased by great bounds. We met many new people and made many new friends. Football came into existence again as one of our college sports, as did wrestling. Remember the dances we went to that year? The Homecoming Dance and the Christmas Dance were great affairs which everyone enjoyed, as were the dances sponsored by the Pan-Hellenic Council and the Inter-Fraternity Council. We watched the seniors trembling in an agony of fear before their first day of student teaching and firmly decided we would never let ourselves fall into such a condition when it came to be our turn. Yes, our junior year was by far the most normal, enjoyable year so far.

And now comes the last chapter of our book. We are seniors now. It is with regret we say it. Oh, we have loudly stated how happy we would be to "get out" but now that it is time we are not so eager. This has been a wonderful year. Oh, how we dreaded that day when we would face those "uplifted faces shining with great eagerness to learn what we had to teach! In spite of ourselves we managed to get through that day and since then have slaved to become efficient and able at this job of teaching. This year we will take that long march from Seminary to the Chapel to graduate from dear old Alma Mater. We will take with us many high ideals and plans for our future years. Let us hope we will find a place for ourselves in this world where we will be as happy and successful as possible.

And now it is time to say farewell to all of you we leave behind. We want you to know how deeply we appreciate your friendship and the fine times we have all had here at college with you. To you, the faculty we wish to express our gratitude for your guidance and help. To you we owe a great deal for any success we may have.

Faculty



Dr. Chandler's Message



You, the class of 1948, are graduating at a most auspicious time. Never has there been a period when openings were so plentiful. Should one not secure the kind of teaching position desired, places in other fields are open at good salaries.

Your years in college have been exciting ones for the world in general. You matriculated during the greatest war in history, the issues of which have not yet been settled. You are facing a period that bids fair to continue this tempo. Atomic bombs are said to be a reality. Planes have flown at supersonic speed. We are witnessing the greatest industrial production any nation has ever achieved. Your graduation, an important event in your life, comes during the most stimulating time in the world's history.

I wish for each of you a happy and successful future. May you always regard Clarion as a source of inspiration in the challenging times ahead.



Deans of Women

MISS SPALLER

MISS SHAW

MISS STOKE

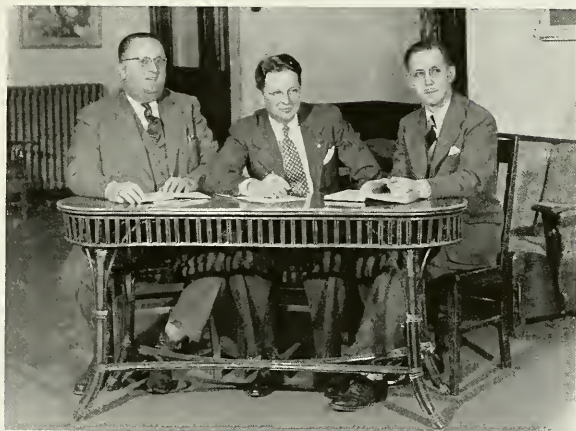
MISS SKAGGS

Deans of Men

MR. CAMPBELL

DR. SLICK

MR. LORE



Registrars

MISS WINGARD

MR. MOORE



Librarians

MR. FLACK
MISS CARLSON
MR. LIGON



Music

MR. HART

Language

MR. CAMPBELL



Education

First Row: DR. PREDMORE MISS STROHECKER MR. BECKER
Second Row: MR. LORE MISS STOKER MR. TIPPIN MR. MANSON



Geography

MR. KUHNER
MR. HARTMAN



Speech

MISS BOYD
MISS MARWICK



English

First Row: MISS NAIR, MISS BOYD, MISS MARWICK
Second Row: MISS SHAW, MR. HARTMAN, MISS SKAGGS.



*Secondary Critic
Teachers*

MR. WILHELM
DR. STEVENS
MR. SKINNER



Elementary Critic Teachers

First Row: MISS GAMBLE, MISS STROHECKER
Second Row: MRS. GRAFF, MISS CARLSON, MISS HEPLER

Mathematics

- MR. LEWIS
- MR. CARNAHAN
- MR. DINSMORE
- MR. MOORE



Health and Physical Education

- MR. DINSMORE, MR. MOORE, MISS OWENS, MISS SPALLER, MR. TIPPIN



*Chemistry and
Physics*

DR. PIERCE
MR. OBER
MR. SHANK
MR. G. OBER



Biological Science

First Row: MR. DINSMORE
DR. PREDMORE
Second Row: MR. MANSON



Social Sciences

MR. CAMPBELL
MR. LIGON
DR. SLICK
DR. TALLANT

Students



Seniors

As seniors we recall many vivid memories of four happy, unforgettable years, some spent joyously, some in sadness, which all go together to make our farewell one of gayety and tears.

In our freshmen year, men on campus were a scarce item, but still undaunted we had our fun and enjoyed new found college life to its fullest. The parties which we sponsored were the highlights of the year. At these parties we saw the faculty members kind, understanding, and full of fun.

The veterans took over the campus in '46; needless to say this contributed to our social life. Fraternities appeared again and "rushing" began with a bang! We thrilled to our first college formals.

Time does not erase the memory of our junior year. More students! Penn State freshmen moved in and our campus was teeming with activity—football, baseball, basketball, wrestling, and a gay whirl of dances.

Starting in '48 we wended our way to the various centers of student teaching. Oh, how we shook when we taught our first class! As time went by we became accustomed to our daily walk and we were nervous no longer when we faced the critic teachers and pupils.

Memories, memories, memories.

As minutes fleet and hours pass by,
Memory of all this shall never die.

Officers

President	-	-	-	-	-	-	-	Warren Crissman
Vice President	-	-	-	-	-	-	-	John Longnaker
Secretary	-	-	-	-	-	-	-	Mary C. Schierbrel



JANE BONSTALL
Troutville, Penna.



JOHN WHITE
Dayton, Penna.



LORNA BLOOM
Grampian, Penna.



HELEN BONSTALL
Grampian, Penna.



DeFOREST BOWMAN, JR.
Clarion, Penna.



JANE ARNER
Clarion, Penna.



WARREN CRISSMAN
Clarron, Penna.



JOAN BISH
New Bethlehem, Penna.



JOSEPH CAPASSO
Swissvale, Penna.



PAUL GARMONG
Rockland, Penna.



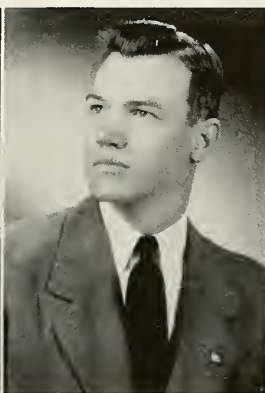
MARION DAVIS
Pittsburgh, Penna.



DOMINIC FEDERICI
Sykesville, Penna.



PHYLLIS GOBLE
Clarion, Penna.



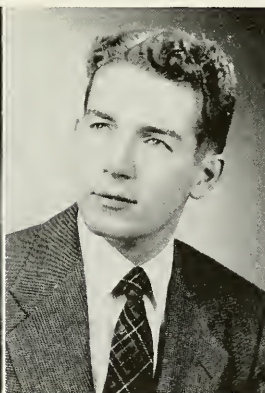
GOMER EDWARDS
Johnstown, Penna.



SARA HARNISH
Clarion, Penna.



JEAN FERGUSON
Knox, Penna.



CHARLES GREEN
Elderton, Penna.



MARTHA HELMINTOLLER
Clarion, Penna.



RUTH HILL
Franklin, Penna.



JAMES HELMINTOLLER
Clarion, Penna.



KATHLEEN HOBBS
Georgetown, Penna.



PHYLLIS HALE
Turkey City, Penna.



VERNICIE IRONS
Port Allegheny, Penna.



JANE HINDMAN
Clarion, Penna.



VIVIAN MAXWELL
New Kensington, Penna.



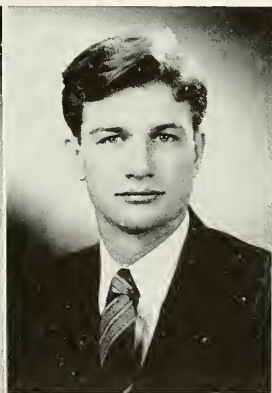
JOHN LONGNAKER
Lamartine, Penna.



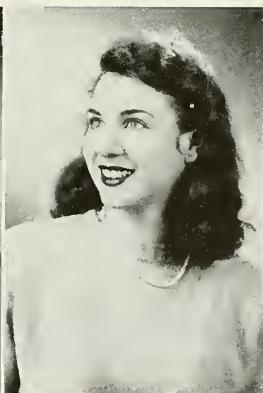
BETTY MCKINLEY
Brookville, Penna.



MARTHA MITCHELL
Kittanning, Pa.



BILL MOORE
Brookville, Penna.



MARY ALICE MILLER
Industry, Penna.



IRMA MESSLER
Northeast, Penna.



WILLIAM KARL
Shipperville, Penna.



VERENA LOLL
Lucinda, Penna.



EDWARD MARTIN
Clarion, Penna.



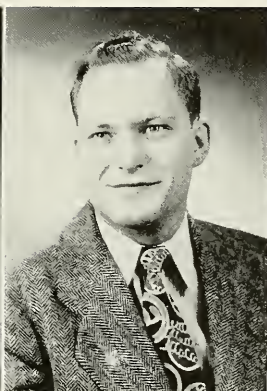
GRAYCE LORE
Clarion, Penna.



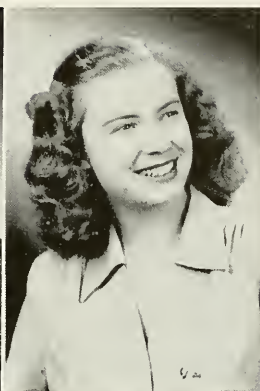
BENTON NULPH
Leeper, Penna.



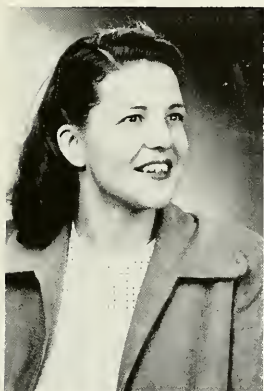
BERTHA THOMPSON
Kersey, Penna.



BLAINE STOVER
Knox, Penna.



LEATRICE SMITH
Bradford, Penna.



LOIS PONTIUS
Chicora, Penna.



GORDEN SILLS
Johnsonburg, Penna.



JOYCE SIMPSON
Leeper, Penna.



JAMES NEWELL
New Castle, Penna.



SHIRLEY ROBB
West Middlesex, Penna.



JAMES RUSSELL
Clarion, Penna.



MABEL SMITH
Tylersburg, Penna.



MARY STEWART
Punxsutawney, Penna.



MARY C. SCHIEBREL
Clarion, Penna.



NATALIE NEVERLA
Clarion, Penna.



ROBERT MUTH
New Cumberland, Penna.



JEAN MILLER
Grampian, Penna.



BETTY UNDERWOOD
Rimersburg, Penna.



ELAINE TRUITT
Mayport, Penna.



VIOLET VUKOSLAVICH
Cheswick, Penna.



BETTY WATSON
Tionesta, Penna.



DONALD WYNCOOP
Clarion, Penna.



MARION WEIGEL
Fairview, Penna.



MURIEL WRIGHT
Bradford, Penna.



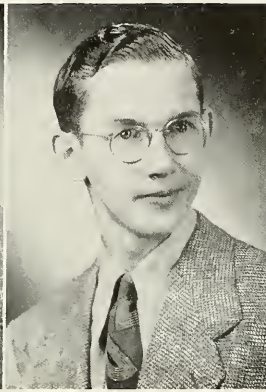
WILLIAM BEST
Kittanning, Penna.



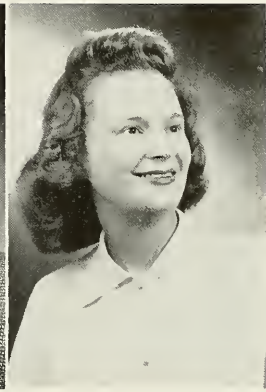
ALICE ZACHERL
Shippenville, Penna.



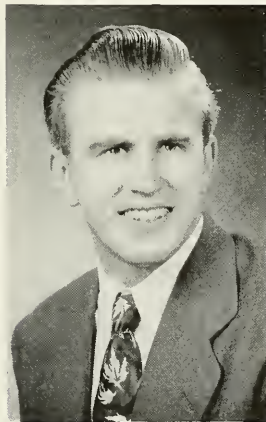
GAIL HORTON
Emlenton, Penna.



DONALD NULPH
Clarion, Penna.



MARY K. MIZE
Clarion, Penna.



ROBERT ZELECHOSKI
Johnsonburg, Penna.

Senior Index

ANDREWS, ELLEN

Secondary

Choir 1-2, Intermurals 1-2, Art Club 1, Camera Club 2, A.C.E. 3, Sigma Sigma Sigma 1-2-3.

ARNER, JANE

Elementary

Press Club 1-2, Choir 1-2-3-4, A.C.E. 3-4.

BEST, WILLIAM

Secondary

Science, English, Social Studies.

BISH, JOAN

Secondary

Library Science, English.
Choir-Secretary Treasurer 1, Pre-Flight Club Vice President 1, Hostess Club 1, Press Club 4, Delta Sigma Epsilon 1-2-3-4.

CAPASSO, JOSEPH

Secondary

Geography, Social Studies.
Football 1, Y. M. C. A. 1, Alpha Gamma Phi 3-4.

BONSALL, HELEN LOUISE

Secondary

Library Science, English.
Y.W.C.A. 1, Hostess Club 1, A.C.E. 1, Choir 1-2, College Players 1-2-3, I.R.C. 3, Intramurals 1-2-3, W.A.C. 2-3-4, Band 3, Delta Sigma Epsilon-Chaplain 2-3-4.

BONSALL, JANE

Elementary

Hostess Club 1, Y.W.C.A. 1-2, Choir 1-2, College Players 1-2-3, A.C.E. 1-2-3-4-Recording Secretary, Delta Sigma Epsilon 1-2-3-4-Vice President.

BOWMAN, DEFOREST JR.

Secondary

Social Studies, Geography.
Choir 1-2-3-4, Intermurals 1, Outdoor Club 1-2, College Players 2, Band 3, Quarter 1-2-3-4, Alpha Phi Alpha 1-2-3-4-President.

BLOOM, LORNA

Secondary

English, Social Studies, Geography.
Y.W.C.A. 1-2, Hostess Club 1, Choir 1-2-3, Band 3, F.T.A. 3, Who's Who 3.

CRISSMAN, WARREN

Secondary

Social Studies, English, Geography.

Alpha Gamma Phi 2-3-4, College Players 1, Intermurals 1-2, I.R.C. 3-4, F.T.A. 3, Senior Class President.

DAVIS, MARIAN

Elementary

Press Club 1, Outdoor Club 1-2-3-4, 4, Vice-President, Women's House Council 1, A.C.E. 1-2-3-4-President, F.T.A. 3-4-President, Art Club 1, Intermurals 3, Delta Sigma Epsilon 1-2-3-4-Chaplain-Corresponding Secretary.

EDWARDS, GOMER

Secondary

Social Studies, English, Geography.

Alpha Phi Alpha, Football 1, Intermurals 1-2, I.R.C. 1-2-3-4, College Players.

FEDERICI, DOMINIC

Secondary

Science, Mathematics.

College Players 1-2-3, Newman Club 1-4, Sequelle Staff-Advertising Manager 4, Alpha Gamma Phi 3-4.

FERGUSON, JEAN BLAKE

Secondary

Library Science, English.

Press Club 1-2-3, Art Club 1, I.R.C. 2, A.C.E. 1-2, W.A.C. 3, Intermurals 1-2-3, Choir 2, Sigma Sigma Sigma 1-2-3-4, Pan-Hellenic Council-Pdesident.

GARMONG, PAUL

Elementary

Football and Basketball '36 and '37, Alpha Gamma Phi '37.

GOBLES, PHYLLIS

Secondary

Social Studies, Geography, English.

Press Club 1, I.R.C. 1-2-3, Geography Club 1-2, F.T.A. 2, Band 2-3, Student Senate 3, Theta Alpha Lambda 2-3-4-Treasurer.

GREEN, CHARLES

Secondary

Social Studies, English, Geography.

Alpha Gamma Phi, I.R.C. 1-2, Press Club 1-2, Choir 1, Y.M.C.A. 1-2-3, President, Vice President, Outdoor Club, Secretary 2.

HALE, PHYLLIS

Elementary

Hostess Club 1, Y.W.C.A. 1, Choir 1-2, A.C.E. 1-2-3-4, Treasurer and Vice President, Delta Sigma Epsilon, Treasurer 1-2-3-4, Sequelle Staff.

HARNISH, SARAH

Elementary

College Players 1-2, Camera Club 3,
W.A.C. 3-4, A.C.E. 2-3-4, Geogra-
phy Club 3.

HELMINTOLLER, JAMES

Secondary

Social Studies, Geography.

Intermurals, 1-2, Basketball 1-2, Var-
sity "C" 2, Tennis 3, Outdoor Club
2, Alpha Gamma Phi 2-3-4.

HELMINTOLLER, MARTHA

Secondary

Geography, Social Studies, English.

Outdoor Club 1-2-3-4, Choir 1-2-3,
Band 3, W.A.C. 3, Intermurals 1-2-3,
Lambda Chi Delta 1-2-3-4.

HILL, RUTH

Elementary

Y.W.C.A. 1-2-3-4, A.C.E. 1-2-3-4,
Choir, 1-2-3, F.T.A. 1-2-3-4, Who's
Who 3-4.

HINDMAN, JANE SMATHERS

Secondary

Social Studies, English.

Press Club 1-2, College Players 1-2,
Student Senate 3, I.R.C. 2, Lambda
Chi Delta 1-2-3-4.

HOBBS, J. KATHLEEN

Secondary

Library Science, Social Studies, Eng-
lish.

College Players, Secretary 1-2-3, In-
termurals 1-2, W.A.C. 1-2-3-4, I.R.C.
2-3-4, Sequelle Staff, Delta Sigma
Epsilon 2-3-4, Corresponding Secre-
tary.

HORTON, GAIL

Secondary

Social Studies, English, Geography.

Y.W.C.A. 3, Camera Club 3, Theta
Alpha Lambda 3-4.

IRONS, VERNICE HARDES

Elementary

Y.W.C.A. 1-2, A.C.E. 1-2-3-4, Host-
ess Club 1, Lambda Chi Delta 1-2-
3-4.

KARL, WILLIAM

Secondary

Social Studies, English, Geography.

Geography Club 3-4, I.R.C. 4, Who's
Who 4, Michigan State College 1.

KIMPEL, HELEN

Elementary

Press Club 2, Theta Alpha Lambda.

LOLL, VERENA

Elementary

Hostess Club 1, Art Club 1-2, Stu-
dent Senate 4.

LONGNAKER, JOHN

Secondary

Science, Mathematics.

Camera Club 2, Geography Club 1,
Sigma Tau Gamma 3, Choir 1.

LORE, GRAYCE

Elementary

Y.M.C.A. President '29, '30, Student
Council, Press Club, College Players,
Geography Club, Choir, Orchestra.

MARTIN, EDWARD J.

Secondary

Intermurals 2-3.

MAXWELL, VIVIAN

Secondary

Library Science, Social Studies,
English.

Choir 1-2, Pre-Flight 2, Y.W.C.A. 1-2,
College Players 1-2-3-4, I.R.C. 1-2,
Call Staff 1-2, Sequelle Staff 4, Delta
Sigma Epsilon 2-3-4-Treasurer.

McKINLEY, BETTY

Secondary

Biological Science, English.

Hostess Club, Vice-President 1, I.R.C.
1, Camera Club, Treasurer 2, College
Players, Secretary 1, Choir 1-2,
Women's House Council, Secretary
2, F.T.A. 3, Pre-Flight Club, Secre-
tary 3, Sequelle Staff, Assistant
Editor.

MESSLER, IRMA

Elementary

Art Club 1-2, President, F.T.A. 3,
Press Club 3, Outdoor Club 3-4,
Women's House Council 1-2, Treas-
urer Choir 1-2, Sequelle Staff, Editor,
Junior Class Vice President, Pre-
Flight Club 3, I.R.C. 3, Delta Sigma
Epsilon 4.

MILLER, JEAN

Secondary

Social Studies, English.

Hostess Club 1, Choir 1-2, W.A.C.
4, Y.W.C.A. 1, College Players 1-2-
3, Who's Who 3-4, Intermurals 2-3-4,
Delta Sigma Epsilon 2-3-4, Corre-
sponding Secretary.

MILLER, MARY ALICE

Secondary

Library Science, Geography.

Hostess Club 1, College Players 1-2-
3, Vice President, Geography Club 2,
Sigma Sigma Sigma 1-2-3.

MITCHELL, MARTHA

Secondary

Library Science, Social Studies,
English.

Hostess Club, President 1, Girl's
Choir 1, Y.W.C.A. 1, I.R.C. 2-4,
Press Club 3, F.T.A. 3, Student Sen-
ate, Secretary-Treasurer, 2-4, Sequelle
Staff, 4, Delta Sigma Epsilon, Vice-
President 1-2-3-4.

MIZE, MARY K.

Elementary

Hostess Club 1, A.C.E. 3-4, Outdoor Club 4, Newman Club 1-2-4.

MOORE, WILLIAM

Secondary

Science, Mathematics.

Basketball 1-2, Choir 1-2-3, College Players 2-3, Intermurals 2-3, Outdoor Club 3, Alpha Gamma Phi 3-4.

MUTH, ROBERT

Secondary

Social Studies, Geography.

Varsity "C" 1, Football 2-3-4, Intermurals 3, Alpha Phi Alpha 2-3-4.

NEWELL, JAMES

Secondary

Social Studies, Geography.

Football 1-2, Outdoor Club 1-2-3-4, Intermurals 1-2-3, Basketball 1, Varsity "C" 2, Student Senate, President, 2-4, Pi Gamma Mu 4, Who's Who 4, Alpha Gamma Phi 3-4, President, Historian.

NEVERLA, NATALIE

Elementary

Hostess Club 1, Intermurals 1-2-3, Outdoor Club 2-3-4, Y.W.C.A. 2, A.C.E., Corresponding Secretary 3, W.A.C. 2-3.

NULPH, BENTON

Elementary

Geography Club 1-2-3-4, F.T.A. 3-4, I.R.C. 2.

NULPH, DONALD

Elementary

Art Club 1-2, Y.M.C.A. 3, F.T.A. 3-4.

OTTE, MARJORIE

Secondary

Social Studies, English.

Choir 1-2, Women's House Council 2, Hostess Club 1, Intermurals 2, Delta Sigma Epsilon 1-2-3.

PONTIUS, LOIS

Secondary

Library Science, English.

College Players 1, Press Club 1-2-3, Camera Club 2-3, Intermurals 1-2, Theta Alpha Lambda 1-2-3.

ROBB, SHIRLEY

Secondary

Library Science, English, Social Studies.

Who's Who 3-4, Press Club 3-4, I.R.C. 2-3, W.A.C. 2-3-4, Intermurals 1-2-3, Sequelle Staff 4, Class Treasurer 3, Pan-Hellenic 3, Delta Sigma Epsilon 2-3-4, Historian, President.

RUSSEL, JAMES

Secondary

Science, English

College Players 1, Choir 1-2, Alpha Phi Alpha 1-2-3-4, Vice President.

SCHIERBREL, MARY C.

Secondary

English, Social Studies

Press Club 1-2, Intermurals 1-2-3, W. A.C. 3-4, Lambda Chi Delta 1-2-3-4, President.

SILLS, GORDAN

Secondary

Social Studies, Geography, English.

Choir 1-2, Football 1, Baseball 1, Intermurals 1-2, Interfraternity Council 3, Alpha Gamma Phi.

SIMPSON, JOYCE

Secondary

Library Science, Geography, English.

Press Club 1, Art Club 1-2, Geography Club, Vice President 2-3, Sportsman Club 4, Camera Club, Treasurer, Vice-President 2-3-4, Sigma Sigma Sigma, Treasurer, 1-2-3.

SMITH, LEATRICE

Elementary

Hostess Club 1, Y.W.C.A. 1, Outdoor Club 1-2-3-4, A.C.E. 2, Delta Sigma Epsilon, Sergeant 2-3-4.

SMITH, MABLE

Elementary

A.C.E. 1-2-3-4, Y.W.C.A. 2, Camera Club 3, I.R.C. 3, F.T.A. 4, Pan-Hellenic Council 3, Sigma Delta Phi 1-2-3-4.

STEWART, MARY BELLE

Elementary

Hostess Club 1, Camera Club 2-4, Y.W.C.A. 1-2, A.C.E. 2-4.

STOVER, BLAINE

Secondary

Science, Mathematics.

Intermurals 1, College Players 1-2-3-4, Alpha Phi Alpha.

THOMPSON, BERTHA

Secondary

Social Studies, English.

Art Club 1-2, Hostess Club 1, I.R.C. 2-3, Intermurals 2-3, Pre-Flight 2, Sigma Sigma Sigma 1-2-3.

TRUITT, ELAINE

Elementary

Art Club 1, Hostess Club 1, Geography Club 1, Camera Club 2-3, I.R.C. 3, A.C.E. 4, Y.W.C.A. 1-2, Intermurals 2-3, Outdoor Club 4.

UNDERWOOD, BETTY

Secondary

Library Science, English, Social Studies.

College Players, Vice President 2-3, Press Club 1, Secretary, Sequelle Staff, Art Club 1, Intermurals 1-2-3, W.A.C. 2-3-4, Sigma Sigma, Sigma 1-2-3-4, Pan-Hellenic Council 3-4, Secretary.

VUKOSLAVICH, VIOLET

Elementary

Hostess Club 1, College Players 1-2, Girl's Chorus 1, A.C.E. 1-2, I.R.C. 1-2, Sigma Sigma Sigma 1-2-3.

WATSON, BETTY

Elementary

Hostess Club 1, Y.W.C.A. 1, Press Club 2, A.C.E. 1-2, Who's Who 4, College Players, Secretary 1-2-3, Alpha Psi Omega 2-3, Delta Sigma Epsilon, Vice President 2-3-4.

WEIGEL, MARION

Secondary

Library Science, Social Studies, English (Attended Maryville College, Maryville, Tennessee, for two years). College Players 3, Band 3-4, Who's Who 4, Sequelle Staff, Y.W.C.A. 3, Delta Sigma Epsilon, Corresponding Secretary 3-4.

WHITE, JOHN

Secondary

Social Studies, Geography, English.

WYNKOOP, DONALD

Secondary

Social Studies, Geography, English.

Sigma Tau Gamma 3-4, I.R.C.

WRIGHT, MURIEL

Elementary

Hostess Club 1, Y.W.C.A. 1, Outdoor Club 1-2-3-4, A.C.E. 1-2, F.T.A. 3, W.A.C. 3, Intermurals 1-2-3, Delta Sigma Epsilon 2-3-4.

ZACHERL, ALICE

Secondary

Library Science, English.

Pre-Flight 1, Art Club 1-2, President, I.R.C. 1-2-3, Geography Club 1-2-3, Secretary-Treasurer, Theta Alpha Lambda 2-3, Pi Gamma Mu, Who's Who.

ZELECHOSKI, ROBERT

Secondary

Science, Mathematics.

Varsity "C", Who's Who 4, Student Senate, Vice President 4, Newnan Club, Alpha Gamma Phi, Interfraternity Council.

Juniors

Three years have passed and now we juniors look into the crystal ball to see ourselves returning next fall as seniors.

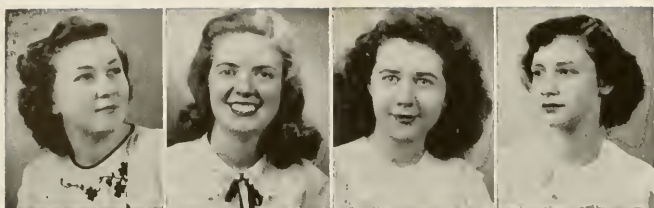
When we glance into the past we recall sixty-four freshmen who came to C.S.T.C. in 1945, green and scared stiff. Time has flown and now we see Clarion as our old tramping ground.

The highlight of our junior year was our sponsoring the Home Coming Day decoration on November first.

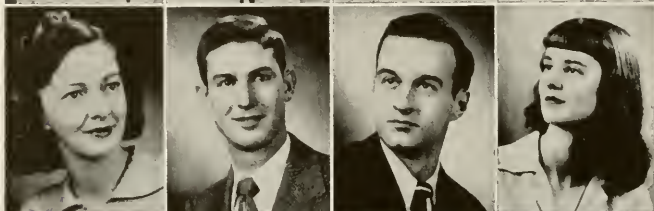
We've worked hard, played hard, and loved every minute of it!

Officers

President	- - - - -	Ernest Aharrah
Vice President	- - - - -	Chester Minich
Secretary	- - - - -	Eleanor Shaffer
Treasurer	- - - - -	Richard Wolf
Sponsor	- - - - -	Frank Campbell



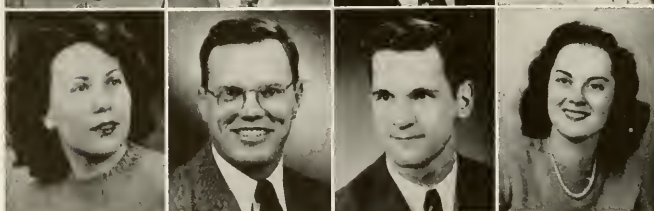
ELEANOR SHAFFER
BONNIE CARSON
RUTHIE KEARNEY
EMMA LOU SKINNER



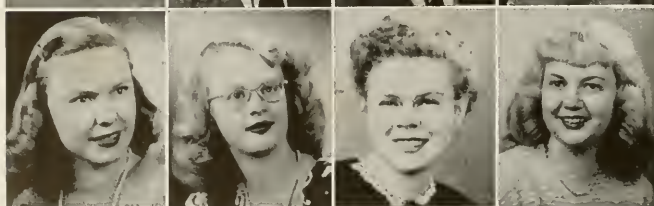
FRANCES HEETER
CHET MINICH
WALTER PRUSSIC
JOYCE FERGUSON



MARY LOU JOHNSTON
WILLIAM LaFRANCHIE
LLOYD DIBBS
EVELYN MEABON

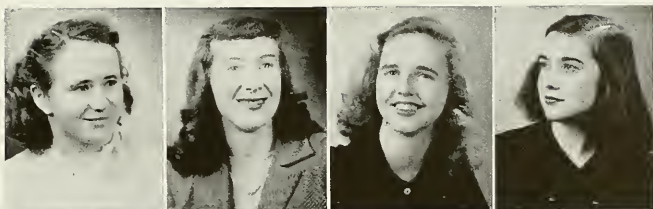


HAZEL ROGERS
LAIRD McCANNA
MICHAEL OSIPOV
MARY STRICKLER



MARILYN CURRY
LEILA GRUBE
MARY SALSGIVER
AUDREY WALLS

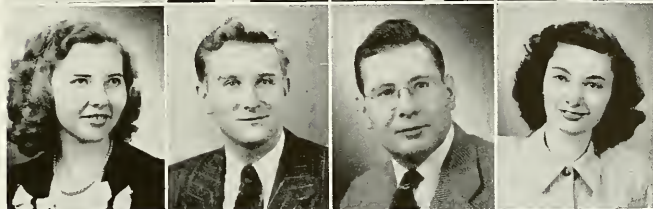
SARAH KELLY
BARBARA LOBOUGH
ELEANOR CLOVER
HELEN MAE NEVEL



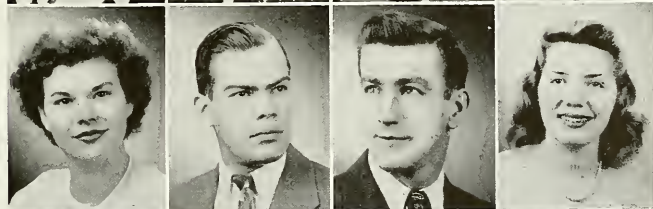
JEANNE BEATTY
ROBERT McCRAE
FRED KOVOLYAK
KADE KASE



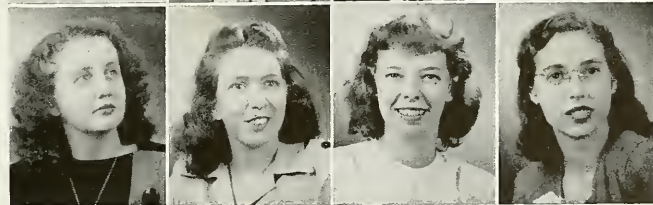
ELLEN ANDREWS
JOE SELKELSKI
DON SHOUP
PEGGY ANN BEHRINGER



CEORA GARDNER
LUTHER COBB
HARRY HARLACKER
MARY KAY O'NEIL



BETTY MORGAN
DELLA WILLIAMS
ERLA BROCK
TWILA BARTELLO



Juniors



Left to Right.

GUIDO VOLPE

RAY ROWAN

Poem

If we were seniors, we could be
Sentimental gracefully.
We'd shed sad tears for all that's past
And hope the memories would last.

We'd wave farewell to dear old Sem.,
To stupid jokes, and those of Clem;
We'd drink a toast to those who'll come—
Wish them well, and wish them fun.

But as it is, we must remain
And try to earn our way to fame.
Still we're e'r consoled by the thought:
That has been was not for nought.

Next year we'll shed that grateful tear—
And as the underclassmen leer;
Now we're juniors, "Next!" on the list
A fight hard won, with doubled fist.

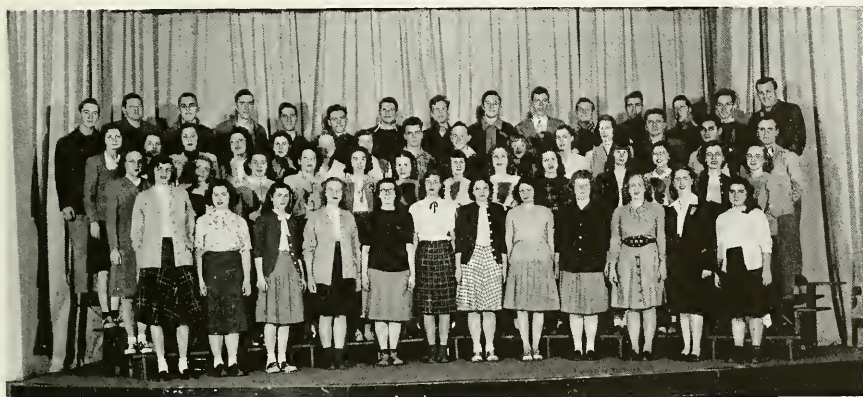
"Lead on MacDuff!" as Shakespeare said
And, in case that's all you've read,
To you below, we express gloat
Someone else is in our boat.

Farewell to that which is behind—
In Fall of '48 we find—
Confetti! Papers! We're almost out!

Frances Kosenow.



Sophomores



First Row—M. Kohn, N. Zimmerman, E. Ziegler, L. Kunselman, P. Slaugenhaupt, H. Pugar, H. Bell, M. Clark, G. Whisner, E. Brugh, A. Kelleher, M. Longiotti.

Second Row—C. Wilcox, P. Allison, H. Toth, S. Gibson, J. Hannold, S. Watson, B. Sherwood, M. Green, G. Harchick, J. Siefer, J. Nichols, P. Orcutt, M. Spleen.

Third Row—P. MacIntyre, N. Doverspike, P. Calvert, C. Mateer, F. Wilson, M. Glover, A. Fish, W. Knight, C. Himes, T. Jackson, K. Stewart, P. Mowell, H. Meisinger, F. Vassolotti, L. Bramhall.

Fourth Row—K. Brown, J. Wiber, W. Gettes, R. Moore, M. Smith, N. Coon, M. Zavecky, R. Robinson, E. Prussick, M. Sills, P. Weibel, H. Buzzard, F. Verstine, C. Kincead, R. Schultz.



First Row—N. Boyer, V. Baker, D. Hoovler, B. Ferguson, D. Eury, S. Nypaver, B. Grossman, R. Stefanic.

Second Row—M. Shiring, R. Larimer, H. Fesenmyer, J. Banjak, J. Lee, R. Smith, R. Pascuzzi, A. Larson, C. Schwarzwaelder, R. Bundy, H. Singer, W. McFadden.

Third Row—T. Fosnight, L. Olson, R. Stephens, B. White, H. Kissell, F. Jones, E. Brinkly, W. Carr, N. Luvison, D. Rusciollelli, H. Willison, E. Blockowitz, M. Surro.

Fourth Row—D. Knapp, F. Badger, C. Fegley, W. Krepp, H. Larimer, W. Snyder, D. King, C. Biddle, J. Rodgers, J. Murphy, R. Nicholas, W. Cook, D. Trehorne, W. Panciera, F. Lignelli.

Freshmen



First Row—D. Korb, C. Domino, E. Walley, G. Ramsey, F. Amos, J. Stalder, M. Smith, S. Johnson, L. Brown, J. Messler, N. Koib, K. Kennedy, J. Weigel.

Second Row—N. Miller, E. Rock, G. Marshall, P. Lane, N. Whitaker, N. Andre, R. Stewart, L. Maxwell, B. Mercer, J. Winston, D. Delozier.

Third Row—S. Murphy, M. Palo, S. Amer, N. Clark, H. Mertz, J. Retting, M. Robertson, B. Oldt, S. McKenzie, L. Elgin, L. Stribing.

Fourth Row—R. Mortimer, G. Moran, B. Topping, E. Michelie, B. Mays, E. McCall, J. Tomikel, A. Plopa, C. Tabarella, M. Petrusca, W. Stockwell, M. Petrusca, F. Boyer.



First Row—P. Starr, J. Prokop, C. Brown, J. Palaggio, J. Soence, R. Lafferty, D. Helbling, T. Helbling, J. Fehl, D. Serene, C. Snyder.

Second Row—W. Mader, J. Bove, J. Speicher, T. Kozek, J. Lehman, J. James, H. Krause, Mowris, J. Bittner, F. Vescio, J. Lash, J. Januzzi.

Third Row—R. Zakula, M. Cojeticanin, W. Jones, F. Santino, F. Prussick, J. Thompson, O. Stupka, R. Cooley, R. Collier, B. Whisner, W. Kerr, W. Carey, E. MacElroy, B. Calderone, W. Ventura.

Fourth Row—C. Best, K. Miller, D. Miller, B. Malloy, A. Lynn, T. Kuhns, B. Maloney, A. Brown, W. Jones, W. Mahoney, P. Bruner, R. Latimer, T. Nelson, E. Craven, P. Taylor.

Penn State Freshmen



First Row—R. Audino, G. Schuette, C. Denney, J. Lenchner, N. Rosenberg, W. Curtin, J. Speicher, R. Sennett, H. Lash.

Second Row—J. Binney, D. Kendall, J. Ferguson, T. Kowal, R. Mechling, H. Kinkead, F. Lance, D. Plunkett, D. Mays, E. Letke, G. Faust, J. Maust, R. Wyatt.

Third Row—T. Phillips, A. Walters, H. Bossart, L. McClarren, H. Wood, L. Myers, S. Aspinwald, J. Hileman, H. Fitting, D. Hess, L. Mironoff, J. Schulte, W. Taylor, B. Zakor.

Fourth Row—G. Harding, I. Hamme, C. Mehalko, W. Urash, C. Williams, A. Hand, W. Craig, W. Rush, V. Rogers, J. Conrad, J. Daniels, J. Hodgson, D. Balya, B. Wyatt.



First Row—M. Margolis, R. Nichols, F. Ohl, S. Godfrey, A. Stork, M. Erickson, K. Blomberg, N. McCormick, J. Dunlap, B. McGee, S. Sorenson, P. Sones, J. Buck, P. Veil.

Second Row—D. Aurand, W. Kornebe, H. Shipley, A. Wach, H. Graham, R. Schoenberger, C. Fazio, J. Shiffert, C. Daugherty, B. Malcolm, A. Bartoli, D. Smith, B. Vark, T. O'Toole.

Third Row—P. Rogers, T. Hetrick, D. Lash, C. Aumiller, J. Miller, S. Schwartz, J. Turner, G. Etzel, R. Pfaff, F. Malagari, L. Manino, J. Johnson, F. Wise, G. Frijcklund, L. DiGirolamo.

Fourth Row—W. Stover, F. Attinger, R. Ginn, D. Callen, W. Brady, D. Sloughfy, S. Nyholm, J. Jones, W. Lindquist, R. Ard, D. Jackel, E. Girod, A. Austin, S. Jedziewski, R. Evans.



Organizations





First Row—W. Martin, Dr. Chandler, J. Newell.
 Second Row—M. Zavacky, E. Brock, M. Mitchell, P. Goble, M. Helmintoller, J. Shovestull,
 P. Slaugenhaupt, M. Shirey.

Student Senate

The Student Senate is composed of representatives from the dormitory women, the women day students, the men day students, and the resident men students. Officers are elected by popular vote of the entire student body.

The aims of the Student Senate are three-fold: to represent the student body on campus, to increase cooperation between the faculty and student body, and to promote and maintain a full and enjoyable college life.

To carry out these aims there are three committees: the social committee, the chapel committee, and the financial committee.

Officers

President	-	-	-	-	-	James Newell
Vice President	-	-	-	-	-	Robert Zelechoski
Secretary-Treasurer	-	-	-	-	-	William Martin



First Row—J. Beatty, M. Salsgiver, M. Weigel, A. Zacherl, M. Johnston.

Second Row—J. Newell, R. Zelechowski, M. Osipov, W. Kark, W. Lafranchi.
Betty Watson not in picture.

Who's Who

"Who's Who Among Students in American Colleges and Universities" is a volume published each year to give recognition to outstanding students. It also serves as a placement agency through which members may be recommended for employment. Its members from Clarion were selected by a faculty committee on the basis of scholarship.

The twelve members for this year are: Mary Salsgiver, William Karl, Grayce Irene Lore, Mary Louise Johnston, Alice Zacherl, Marion Weigel, Michael Osipov, James Newell, Betty Watson, Robert Zelechowski, William Lafranchi, and Margaret Beatty.



First Row—A. Zacherl, Dr. Slick, Miss Skaggs.

Second Row—J. Newell, J. Sekelsky, Mr. Campbell, G. Edward, K. Muth.

Pi Gamma Mu

Pi Gamma Mu, a national honorary scholastic organization, has as its purpose the inculcation of the ideals of scholarship, scientific attitude and method and social service in the study of all social problems. It is located in various colleges and universities throughout the United States, and has now one hundred and forty-three chapters. The local chapter is the Iota chapter.

The members of this organization have distinguished themselves in the study of the social sciences and have achieved a high scholastic record.

Persons who are also members of this fraternity, but who are not pictured are: Miss Boyd, Dr. Tallant, Miss Carlson, Miss Marwick, Mr. Kuhner, Miss Gamble, Warren Crissman, William Karl, William LaFranchi, John Corey, A. G. Fleming, Arvid Larson, and William Best.



First Row—H. Nevel, P. Hale, H. Bell.

Second Row—P. Slausenhaupt, M. Smith, P. Orcutt, V. Vukoslavich, V. Irons, J. Bonsall, P. Behringer, E. Shaffer, E. Truitt, E. Meabon.

Third Row—V. Baker, E. Ziegler, R. Hill, F. Wilson, M. Glover, A. Fish, Miss Strohecker, S. Gibson, E. Andrews, M. Davis.

Fourth Row—J. Seifer, J. Hannold, D. Eury, B. Sherwood, P. Allison.

Association of Childhood Education

Members of the Association for Childhood Education have had a busy, profitable year. The membership of this Association is limited to students who are interested in elementary education. Our monthly meetings have been varied and professional. In October the old members entertained the new members at an informal party. For our November meeting Sarah Gibson discussed "Race Problems in the School". In the latter part of December this group enjoyed the privilege of entertaining the children of Kindergarten and first grade with a Christmas party.

Officers

President	-	-	-	-	Peggy Behringer
Vice President	-	-	-	-	Violet Vukoslavich
Treasurer	-	-	-	-	Vernice Hades
Sponsor	-	-	-	-	Miss Strohecker



First Row—A. Moran, R. Schoenberger, W. Schott, E. Antran.
 Second Row—E. Shaffer, G. Ramsey, E. Henry, L. Egin, M. King, B. Olat, P. Slaugenhaupt,
 C. Gardner, G. Harchick, N. McCormick, P. Jones.
 Third Row—B. Stover, K. Mays, L. DiGirolamo, D. Jackel, E. Girud, H. Meisinger.

College Players

Officers

President	-	-	-	-	-	John DeLong
Vice President	-	-	-	-	-	Ernest Aharrah
Secretary	-	-	-	-	-	Laverne Woodrow
Treasurer	-	-	-	-	-	Jack Simmers
Sponsor	-	-	-	-	-	Miss Marwick



First Row—L. Grube, J. Beatty, S. Sorenson, M. Johnson, F. Master, E. Clover, N. Whitaker, G. Marshall, L. Maxwell.

Second Row—J. Tomickel, D. Plunkett, M. Sills, J. De Long, C. Ramsden, L. Woodrow, J. Banjak.

College Players

The College Players started off the school year by an initiation and party for new members.

Activities during club periods throughout the year have included one-act plays, panel discussions, make-up demonstration and reviews of plays.

The highlight of the first semester was the presentation of "January Thaw", a three-act farce-comedy staged and directed by Miss Marwick. Miss Boyd was in charge of make-up. The cast included:

HERBERT GAGE
 FRIEDA
 SARA GAGE
 PAULA GAGE
 MARGE GAGE
 BARBARA GAGE
 GEORGE HUSTED
 JONATHAN ROCKWOOD
 MATHILDA ROCKWOOD
 MR. LOOMIS
 UNCLE WALTER
 MATT ROCKWOOD
 CARSON

JOHN DeLONG
 NANCY WHITAKER
 LOLA MAXWELL
 HELEN MAE NEVEL
 JENIFER MESSLER
 FLORENCE CREIGHTON
 JOHN BANJAK
 GUS MORAN
 PHYLLIS SLAUGENHAUPT
 JACK SIMMERS
 BLAINE STOVER
 HAROLD MEISINGER
 CHARLES RAMSDEN

Another colorful event was the revival of the College Players banquet, held in the college dining room December 9th.



First Row—R. Hill, M. Smith, B. Morgan.
 Second Row—D. Nulph, Miss Strohecker, M. Davis.

Future Teachers of America

The first Wednesday of each month you will find the Future Teachers of America in Miss Strohecker's room. At our evening meetings we have discussed many problems of interest to the future teacher. Some meetings have consisted of the purposes and activities of the F. T. A., teacher's salary increase, U.N.E.S.C.O., the stressing of professional growth, remedial reading and guidance for high school pupils.

Each month the members also receive a School Journal and an N.E.A. Journal which contains timely and worthwhile reading.

Officers

President	- - - - -	Marian Davis
Secretary-Treasurer	- - - - -	Mabel Smith
Advisor	- - - - -	Miss Strohecker



First Row—J. Bove, B. Mercer, R. Bolzer, N. Miller, N. Bover, R. Powell,
Second Row—C. Aumiller, I. Green

Art Club

The Art Club is capably sponsored by Miss Sanford of the Department of Art.

Our major club activities for the first semester were charcoal sketching and clay modeling.

Early in October several members accompanied by Miss Sanford drove to Foxburg where they inspected the large Fox estate and chapel.

Since the members voted to operate on a thoroughly democratic basis, no officers were elected for this club.



First Row—D. Korb, N. Korb, H. Shepard, C. Gardner.
 Second Row—I Henry, M. Johnston, J. Beatty, M. Robertson, G. Yeager, R. Wright,
 Third Row—W. Martin, L. Dibb, Mr. Kuhner.

Geography Club

The Geography Club has had an active, interesting and educational year.

On one trip the group visited a strip mining job and enjoyed the thrill of riding on a drag line. On an all day excursion the club members toured the Wilcox Tannery, the Johnsonburg Paper Mill, and the Ridgway power plant.

At regular club meetings our group has made maps of foreign countries and has studied arial maps of Pennsylvania.

Officers

President	-	-	-	-	-	William Martin
Vice President	-	-	-	-	-	Irving Henry
Secretary-Treasurer	-	-	-	-	-	Ceora Gardner



First Row—M. Spleen, W. Martin, P. Goble, M. Zavacky, V. Vukoslavich,
 Second Row—Dr. Slick, N. Coon, J. Sekelsky, J. Miller, S. McKenzie, M. Mitchell, K. Hobbs.
 Third Row—M. Osioov, W. Karl, G. Edwards, I. Henry, W. Lafranchi, J. Rogers.

International Relations Club

Every citizen in this country should be interested in current affairs of the world. This is especially true when it is a recognized fact that the United States of America is a leading world power, and a great influence on affairs in other countries. If you feel that you would like to know more about the important topics of the day, then the International Relations Club is the club that will be best for you. This semester the members discussed openly the pros and cons of the subjects which made the daily headlines. Some of these argument-provoking ideas were: The Marshall Plan, The Truman Doctrine, The Taft-Hartley Bill, Puerto Rican Immigration, and U. S. and Russian Relations.

We members have another side to our natures that can only be satisfied by such things as parties, weiner roasts, toboggan rides. Our main social event of this year was a weiner roast held at Rankin's Grove one crisp October evening. One of the highlights of the evening was the music furnished by Joe Cappelli.

Officers

President	-	-	-	-	Michael Zavacky
Vice President	-	-	-	-	William Martin
Secretary-Treasurer	-	-	-	-	Phyllis Goble



First Row—E. Walley, L. Maxwell, K. Kennedy, J. Weigel.
 Second Row—D. Delozier, J. Stalder, G. Ramsey, L. Sebring, E. Rock, G. Marshall, J. Winston.
 Third Row—F. Spak, M. Johnson, N. Whitaker, N. McCormick, J. Dunlap.

Hostess Club

The Hostess Club is composed of a group of freshman girls capably guided by Miss Stoke. Each year the club provides the decorations in the lounge of Becht Hall for the Homecoming and Christmas celebrations. This year at Christmas the girls also collected playing cards for the men at Deshon Hospital. At the club meetings the girls discuss points of etiquette and the qualifications of a good hostess.

Officers

President	-	-	-	-	-	Leora Sebring
Secretary	-	-	-	-	-	Mabel Johnson
Treasurer	-	-	-	-	-	Guelda Ramsey



First Row—J. Weigel, E. Brugh, M. Curry, I. Messler, M. Longiotti, S. Nypaver.
 Second Row—T. Jackson, J. Nichols, N. Andre, N. Zimmerman, M. Wright, M. Behringer, E. Meabon, E. Shaffer, J. Fay.
 Third Row—R. Evans, R. Veratto, E. Turchick, J. Schmitt, M. Sheffer, C. Minich, G. Calvert, J. Spence, B. Pascuzzi, J. Schweppe, C. Larson, Mr. Lore.
 Fourth Row—D. Serene, J. Tomikel, A. Plopa, R. Rowan, J. Stonis, W. Zaitler, M. Petruska, J. Spiker, J. Banjak, F. Malaqari.

Waiters Club

The Waiter's Club was organized this year. Its purpose being to establish higher standards of service, to unify the members resulting in better cooperation, and to bring about social experiences among the members.

The club has been fortunate in that as our faculty sponsor we have Mr. Stanley Lore. Mr. Lore has done much to make the club a success. His willingness to help and his enthusiasm for the club has given the members the spirit and will to live up to the standards set when the club was organized.

OFFICERS

	1st Semester		2nd Semester
President	-	-	-
Vice President	-	-	-
Secretary	-	-	-
Treasurer	-	-	-
	-	-	-
	-	-	-
	-	-	-
	-	-	-



Sitting—V. Maxwell, B. McKinley, Irma Messler, M. Curry, B. Underwood.
 Standing—D. Federici, M. Mitchell, J. Longnaker, M. Helmintoller, M. Weigel, K. Hobbs.

The Sequelle Staff

Ours has been the honor to compile and publish your yearbook. We began work in September and ever since that time we have been in a whirl of great plans, write ups, proofs and deadlines! It has made this, our last year, one of stimulating activity and creative effort.

We would like to express our gratitude to our advisor, Mr. Kuhner, who has given his help and advice whenever we needed it. This year we have stressed those memories which all of us will long cherish. We have tried to include them all for you and it is our hope that you will enjoy remembering your college days whenever you leaf through the 1948 Sequelle in the years to come.

Editor	Irma Messler
Assistant Editor	Betty McKinley
Business Manager	Dominic Federici
Assistant Business Manager	John Longnaker
Art Editor	Marilyn Curry
Organizations	Kathleen Hobbs Shirley Robb
Sports	Betty Underwood Gordon Sills
Copy Readers	Martha Mitchell Marion Weigel
Typist	Vivian Maxwell



R. Stephanic, M. Helmintoller, M. Scheiberl, J. Miller, H. Bonsall, D. Rischel, Miss Spaller.

Women's Athletic Council

W.A.C., supervised by Miss Spaller, is composed of the best women athletes on the campus. Preliminary membership requirements are: participation in three intermural activities each year, including one individual tournament; an average of "c" or better in academic work; and the officiation of various intermural sports. If girls meeting these requirements are judged by the council to be outstanding for leadership and sportsmanship, they are accepted as members of W.A.C.

The purpose of the W.A.C. is to stimulate the interest of the entire student body in athletics and recreational activities, and to encourage the spirit of good sportsmanship.

The Leaders Club, a new organization on the campus this year, provides excellent training—not compulsory—for prospective W.A.C. members.

New Members are: Nancy Doverspike, Thelma Jackson, Mary Longiotti, Dorothy Jean Rishell, and Rose Marie Stefanic.

Old members are: Martha Helmintoller, who has acted as chairman of the council for two years; Kathleen Hobbs, Jean Ferguson, Betty Underwood and Mary K. Schierberl.



First Row—R. Kearney, J. Messler, I. Messier, P. Veil, L. Smith, M. Wright, L. Grant.

Second Row—D. Schwab, L. Rhodes, J. Newell, G. Calvert, C. Minich, R. Moore, B. Moore, M. Sheffer, J. DeLong, G. Kuhn, R. Rowan, R. Wolf, J. Davidson.

Outdoor Club

One of the most outstanding activities of the club this year was a picnic supper at Cook's Forest. The newly admitted members were responsible for the refreshments. Their efforts were extremely successful as no one complained of not having enough to eat. Spontaneous entertainment was enjoyed by everyone.

The club was sorry to lose Mr. Manson as sponsor. We would like to express our gratitude here for his encouragement and ever willing help in the past. Our present sponsor is Dr. Predmore, whom we welcome with the hope that he will enjoy being associated with the club.

Officers

	1st Semester	2nd Semester
President - - - - -	Ray Rowan	George Kuhn
Vice President - - - - -	Dick Wolf	James Davidson
Secretary - - - - -	Galan Calvert	Pat Vale
Treasurer - - - - -	Leatrice Smith	Pat Vale



First Row—D. Hoovler, T. Bartello, Miss Nair, A. Larson, M. Salsgiver, C. Fegley.
 Second Row—E. Brugh, B. McGee, M. Reed, B. Wood, T. Cyphert, L. Cobb.
 Third Row—M. Weaver, B. Shields, T. Jackson, K. Kos, D. Slimak, P. Mowell.
 Fourth Row—C. Nelson, M. Caimi, M. Palo, J. Banjak, R. Pascuzzi, J. De Long, E. Patrick.
 Standing—P. King, J. Scifer, J. Learner, W. Godfrey, C. Fazio, C. Larson.

Press Club

Under the direction of our sponsor, Miss Nair, the Press Club publishes the college newspaper, "The Call".

Officers for the first semester were:

Co-Editors	-	Mary Salsgiver, Charles Fegley
President	-	Arvid Larsen
Vice President	-	John DeLong
Secretary	-	John Banjak
Treasurer	-	Dana Hoovler

During the latter part of November, energetic club members took orders for original Christmas cards depicting Clarion campus snow scenes. About fifteen hundred cards were sold.

New officers elected to serve during the second semester are:

President	-	Ted Cyphert
Vice President	-	Thomas Brinkley
Secretary	-	Dorothy Slimak
Treasurer	-	Barbara Wood

Plans for the new semester's activities include a spring party and a trip to a newspaper printing office.



First Row—C. F. Becker, J. Corey, C. Fegley, W. Elliott, Mr. S. Lore.

Second Row—R. Latimer, E. Craven, T. Nelson, L. Woodrow, I. Henry, A. Larson, N. Coon, W. Zeitler, W. McCrae, E. Turchik, R. Platt.

Y. M. C. A.

The purpose of the Y.M.C.A. on the college campus is to maintain and extend the principles of Christian Living throughout the student body. This group of young men meet every other Wednesday to promote Christian Fellowship, and to hear discussions on current topics by individual members. These programs are interspersed by outside speakers, illustrated talks, and special motion picture programs held in the chapel and opened to the entire student body. Each Christmas, in conjunction with the Y.W.C.A., this group sponsors the college carol service.

Officers

Faculty Advisors	-	-	-	Mr. Becker, Mr. Lore
President	-	-	-	Charles Fegley
Vice President	-	-	-	William Zeitler
Secretary-Treasurer	-	-	-	William Elliott



First Row—J. Weigel, Mrs. Lore, M. Johnston, J. Beatty, V. Baker, H. Bell, T. Bartello, G. Yeager.
 Second Row—E. Zeigler, B. Grossman, F. Wilson, R. Hill, M. Glover, K. Kennedy, E. Meabon,
 J. Stalder, M. Green, E. Shaffer, B. Sherwood, A. Fish, B. Magee, P. Slausenhaupt, A. Kelleher.

Y. W. C. A.

The Y.W.C.A. strives to meet the student's desire for the realization of a full and creative religious life. This organization is interested in the general promotion of friendliness and good fellowship among all students on our college campus.

The programs for the year cover the following range of activities: short bi-monthly song and worship service; joint meetings with the Y.M.-C.A.; carol singing at the Christmas season; and social affairs and parties of various types.

The Y.W.C.A.'s participation in the decorating of the campus for Homecoming Day was the wishing well located in front of Becht Hall.

Officers

President	-	-	-	-	Violet Baker
Vice President	-	-	-	-	Mary Lou Johnston
Secretary	-	-	-	-	Helen Bell
Treasurer	-	-	-	-	Jeanne Beatty
Sponsor	-	-	-	-	Miss Stoke



Ensemble

First Row—Mary Kay O'Neil, Louise Harvey, Barbara Faust.
Second Row—Joyce Ferguson, Sarah Gibson, Martha Helmstetter, Ruth Kearney.



Variety Group

Left to Right—La Monte Cleps, Don King, Frances Creighton, Evelyn Henry, Harry Flowers,
Joe Capella.



Choir

First Row—Kearney, Henry, Harvey, Johnson, Andre, Creighton, Rosenson, Arner, Grube, Doverspike, Blomberg, Kaiser, Carr, Zimmerman.

Second Row—Messler, O'Neil, Whisner, McKee, Ames, Means, Adams, Kopp, Lobaugh, Lane, Weaver, L. Elgin, Calvert, Port, Tobin, Willson, Behringer.

Third Row—Paft, Hess, O'Toole, Etzel, Smith, Helmintoller, Ferguson, Gibson, Arner, Sorenson, Bramhall, Bloom, McCrac.

Fourth Row—Turner, Crepe, Petruska, McBeth, Myers, Walters, Moore, Sills, Stockwell, Wolf, Irwin, Schultz, Himes.



Band

First Row—Kelleher, Sherwood, Whisner, Weigel, Johnson, Haskell, Kennedy, Rogers.

Second Row—Tobin, Bloom, Cope, Lozar, Sones, Goble, Means, Irwin, Stockwell, Hess, Brugh, Carr, Olson.

Third Row—Johnson, Zakor, Himes, Kuhns, Reed, Hart.



First Row—H. Mertz, S. Kelly, J. Hannold, J. Dolby, F. Oldt, M. Margolis, C. Matcer, L. Harvey, J. Rettig, L. Brown, M. Robertson, M. George, M. Klepfer, B. Hay, J. Fink.

Second Row—W. Kerr, W. Lafranchi, B. Morrison, J. Longnaker, H. Davis, P. Caruso, E. Chalfant, E. Prusick, G. Fryckund, R. Lafferty, F. Wise, D. Sloughfy, C. Kinkoad, Dr. Pierce, J. Prokop, S. Vassoletti.

Camera Club

The Camera Club opened the year 1947-1948 by the election of officers. Throughout the semester, demonstration talks concerning the development, enlargement, and printing of pictures were given by members of the club and by Dr. Pierce, the club advisor.

Each month, a photography contest was held, and the three best pictures turned in by the members of the club were selected by a group of judges. Cash prizes were awarded to the owners of the winning pictures.

Photographic supplies and the use of the dark room were made available to all members who cared to use them during their free time.

OFFICERS

1st Semester

Paul Caruso
 Eugene Rhodes
 Lila Brown
 Junni Longnaker

2nd Semester

William Lafranchi
 Edward Brinkley
 Joline Hannola
 Lila Brown

Women





B. Underwood B. Carson Miss Boyd, J. Nichols, M. Kohn, E. Brock E. Brugh, L. Pontius.

Pan Hellenic Council

Pan Hellenic, the governing body of all sororities, is composed of one silent and one active member from each sorority.

Early in the year an informal reception was held in Becht Hall to introduce the non-sorority girls to the girls belonging to the five sororities represented on our campus. Each sorority presented one or two selections for the entertainment.

Officers for this organization are not elected but rotate from one sorority to another each semester.



First Row—M. Smith, S. Kelly, M. Longiotti, C. Hawk.
 Second Row—G. Harchick, B. Morgan, E. Brugh, P. Mowell, Miss Nair, B. Grossman, J. Nichols.
 Third Row—D. Slimak, T. Jackson, V. Morgan, M. Lalsaver, D. Eury, B. Sherwood.

Sigma Delta Phi

The Sigma Delts started the ball rolling this fall for the eighteenth consecutive year. The first meeting of the year on September fifteenth was observed by the election of officers.

One memorable autumn event for the year was our October trip to the Clarion Recreational Park for a weiner roast and picnic. When rush party week arrived the "Sigma Delts" carried out their party in dude-ranch fashion.

Our new pledges are Nora Jean Miller, Shirley Murphy, and Marjorie Reed.

Chief among our plans for the second semester are a trio to the glass plant, and a spring week-end at Cook's Forest.

Officers

President	Pat Mowell
Vice President	Betty Grossman
Secretary	Catherine Hawk
Treasurer	Jane Seifer
Chaplain	Genevieve Harchick
Guard	Donna Eury

1st Semester

2nd Semester

Jeanne Nichols
Pat Mowell
Thelma Jackson
Donna Eury
Jane Seifer
Betty Grossman



First Row—N. Boyer, L. Kunselman.

Second Row—B. Lobaugh, J. Hindman, M. Schierberl, Mrs. Graff, M. O'Neill, H. Pugar.

Third Row—V. Harges, M. Helmtoller, M. Kohn.

Lambda Chi Delta

We, Lambda Chi's started our year's activities with the initiation of our new sponsor, Mrs. Graff.

Rush party week gained for us five excellent new members: Phyllis Calvert, Lee Grant, Eleanor Clover, Nancy Tobin, and Martha Erickson.

The highlights of the year have been: the Christmas formal, sorority week-end at Cool's Forest, pledge party at Mary Kay's and the occasion which changed Vernice Harges' name to Miss Milford Irons.

OFFICERS

President	Mary Kay Schierberl
Vice President	Mary Kay O'Neill
Secretary	Helen Pugar
Treasurer	Jane Hindman
Corresponding Secretary	Vernice Irons
Chaplain	Barbara Lobaugh
Guard	Martha Helmtoller
Advisor	Mrs. D. D. Graff



First Row—A. Zacherl, Miss Skaggs, L. Pontius.
 Second Row—P. Goble, N. Charles, W. Clark, G. Horton.

Theta Alpha Lambda

We have participated in several activities this year, the first being a shower for Nellie Nan Eschelman. Our Bride Party began in the Training School where games were played; then we went to Mrs. Hoyt's home for refreshments. Mrs. Hoyt is one of our patronesses...

Two of our members graduated at mid-term and are now holding positions. We want to express our pride in them and our respect for their accomplishment. The members are Lois Pontius, now a public librarian in Long Beach, New York, and Alice Zacherl, who is teaching in Smithport, Pa.

Welcome to Miss Skaggs, who has become our faculty sponsor. Mrs. Slick, our former sponsor, is now a patroness.

OFFICERS

President	- - - - -	Alice Zacherl
Vice President	- - - - -	Gail Horton
Secretary	- - - - -	Nellie Nan Eschelman
Corresponding Secretary	- - - - -	Jane Clark
Treasurer	- - - - -	Phyllis Goble
Pan-Hellenic—Active	- - - - -	Lois Pontius
Pan-Hellenic—Silent	- - - - -	Helen Kimpel



First Row—J. Bonsall, M. Weigel, M. Davis, P. Hale, A. Walls, M. Otte.

Second Row—B. Watson, L. Smith, I. Messler, H. Bonsall, M. Mitchell, E. Brock, S. Robb, K. Hobbs, J. Miller, J. Bish, H. Furlong.

Third Row—S. Watson, M. Wright, D. Rishell, F. Rosenson, Miss Spaller, B. Carson, V. Maxwell, N. Doverspike, L. George.

Delta Sigma Epsilon

The main event of our Delta Sigma year was our very successful rush party. Done in a pirate mood, with swords, and pirate chests, and skeletons, it netted us twenty-four of the nicest rushees imaginable. Audrey Walls, our rush chairman, and Erla Brock, in charge of decoration, did superlative jobs. The food committee headed by Marty Mitchell was equally efficient in the planning and serving of a delicious spaghetti and Italian bread dinner.

Important too, was our initiation of four town girls: Lois George, Dorothy Jean Rishell, Helen Furlong, and Nancy Doverspike, and one dormitory girl, Irma Messler. Miss Spaller, our charming and vivacious sponsor, was initiated earlier in the year.

Our plans for the year include many outside activities such as: toboggan parties, camping parties at Cook's Forest, and small sorority parties.

OFFICERS

President	Shirley Robb
Vice President	Bobby Watson
Chaplain	Helen Bonsall
Recording Secretary	Kathleen Hobbs
Corresponding Secretary	Marion Weigel
Treasurer	Vivian Maxwell
Assistant Treasurer	Shirley Watson
Historian	Bonnie Carson
Sergeant-at-Arms	Leatrice Smith
Pan-Hellenic Rep.	Erla Brock, Bonnie Carson



First Row—P. Slaugenhaupt, M. Miller, E. Shaffer, H. Nevel, B. Underwood.
 Second Row—H. Bell, R. Stefanie, M. Strickler, J. Zimmerman, Miss Gamble, J. Beatty, M. Lohnston, Miss Banner, Hazel Rogers.
 Third Row—H. Toth, P. Behringer, V. Vukoslavich, B. Thompson, W. Meabon, K. Stewart, T. Bartello, C. Gardner, S. Gibson, E. Andrews, J. Simpson, M. Glover, C. Battles.

Sigma Sigma Sigma

Fifty years of successful fraternity life as a social sorority is being celebrated by Sigma Sigma Sigma this year. From its beginning in 1898 the sorority has increased to forty-three chapters. Our anniversary convention, whose theme was "Going Home to Virginia", was held in the old colonial capital of Williamsburg in July. It was attended by over two hundred persons among whom were two Alpha Pi's, Jeanne Beatty and Mary Lou Johnston. Convention ideas and personalities have encouraged and inspired much of our work this year.

Shortly after school opened in September we initiated six girls: Martha Lou Glover, Phyllis Slaugenhaupt, Rose Marie Stefanie, Catherine Stewart, Helen Toth and Nancy Zimmerman.

In October our beloved past president, Mabel Lee Walton, visited us in the interest of Inter-Fraternity work. The highlight of her visit was a tea given by Mary Kay Banner. We are eagerly awaiting another promised visit from our president in May.

Some of our varied activities have been: decorating the balcony on the front of Becht Hall for Homecoming, sponsoring a Saturday night dance in the gym, selling Christmas seals in the dormitory, and entertaining two of our recently married members.

The theme of our rush party centered around the old west with its ranches, saloons, can-can dancers and holdups. The girls who chose Sigma Sigma Sigma were: Elinor Walley, Mary Jane Green, Jeanne Stalder, Shirley Johnson, Honore Bell, Fern Botzer, Joyce Kapp, Jean Fink, Margaret Weaver, Freda Wilson and Evelyn Henry. Pledging which was held the 26th of January was followed by a party given in honor of the new girls.

Spring activities include a week-end at Cook's Forest, the Pan-Hellenic Dance, a Founder's Day Banquet and a Farewell Party for the graduating girls who are: Violet Vukoslavich, Joyce Simpson, Mary Alice Miller, Betty Underwood, Ellen Andrews and Jean Ferguson.

OFFICERS

President	-	-	-	-	Jeanne Beatty
Vice President	-	-	-	-	Mary Lou Johnston
Corresponding Secretary	-	-	-	-	Violet Vukoslavich
Recording Secretary	-	-	-	-	Eleanor Shaffer
Treasurer	-	-	-	-	Twila Bartello



I think that I shall never see
A girl refuse a meal that's free;
A girl who doesn't ever wear
A mess of doodads in her hair;
A girl with crimson mouth unblest
By Lounge-Lizard Lipstick
(it stands the test);
A girl who thinks not of self all day,
And prefers to walk to matinee;
For girls are loved by fools like me
'Cause who in heck would kiss a tree?

Definition: Anatomy is the study of heavenly bodies.

Men





First Row—R. Platt, J. Lee, G. Rhodes, Mr. Lewis, J. Longaker, R. Rowan, C. Fegley, G. Calvert, C. Minich, E. Aharrah.

Second Row—K. McMillen, J. Schwab, L. Matchulet, J. McCready, J. Schweppe, L. Marinaccio, T. Nelson, J. Kuhns, G. Volpe, J. Cochran, B. Coleman, B. Lafferty.

Third Row—R. McElhattan, T. Kowal, W. Murray, J. Wiberg, L. Bramhall, B. Moore, J. Spence, W. Clouse, W. Zeitler, D. Knapp.

Sigma Tau Gamma

Sigma Tau Gamma, national social fraternity, is new at Clarion, the Alpha Zeta Chapter having been formed in May, 1946. The national fraternity was organized by a local fraternity, Zeta Eta Phi.

On January 7, 1948, twenty-six new members were initiated into the fraternity. The initiation ceremony was held following a banquet at the Underwood Hotel in Knox, Pa. The addition of these members brought the active membership to forty-two.

A new faculty member, Mr. Lewis of the mathematics department, was formally initiated into the fraternity during the first semester. Mr. Lewis hails from Maryland, but has spent much of his life in Pennsylvania. He did his undergraduate at East Stroudsburg S.T.C. His graduate work was done in mathematics at Bucknell and the University of Pittsburgh.

A Providence Conclave was held in Clarion this year. The meeting was presided over by the Province Archon, F.M. Campbell.

Representatives from Buffalo, N. Y., Clarion, Indiana S.T.C., Kent State University, Ohio, Fairmont, S.T.C., W. Va. were present to discuss province problems.

OFFICERS

President	John Longaker
Vice President	Boyd Coleman
Secretary	Charles Fegley
Treasurer	Ernest Aharrah
Advisors	Frank Campbell, George Lewis



First Row—D. Shoup, Moore, Pecora, Kelso, Zelechowski, Luvuson.

Second Row—M. English, B. Casper, A. Asckey, B. Moore, R. Robinson, K. Fleming, D. Federici, E. Stroupe, D. Wolfe, B. MacBeth, P. Marotti, F. Kuhn.

Third Row—J. Newell, D. Trehorne, Dirk, B. Lindholm, Penciera, L. Rhodes, F. Sharrow, B. Brochetti, F. Lignelli, R. Blewitt, F. M. Jones, E. Willison, R. Whitford.

Alpha Gamma Phi

The 1947-1948 term was a banner one for the Alpha Gamma Phi fraternity. The largest fraternity on campus last year, the Alpha Gamma's possessed a spirit that really started all the sorority and fraternity activity that is now in evidence.

The pledge's informal initiation was one of the most amusing ever held at Clarion. The entire student body enjoyed the pledge's singing in front of Beccht Hall at 10:00 o'clock one night. The other stunt chosen for each pledge drew the attention and interest of everyone.

The Alpha Gamma Phi's hed their annual banquet at Hotel Underwood in Knox on the nineteenth of November. Dr. P. G. Chandler gave the main address of the evening. Following the banquet eighteen pledges were initiated into the fraternity. The new fraternity pins arrived just in time for second semester rushing.

A formal spring dance will be held early in the spring for the members, and we also look forward to minor activities at Cook's Forest.

Officers	1st Semester	2nd Semester
President	Phil. Morotti	Kelly Fleming
Vice President	Dick Wolf	Frank Pecora
Secretary	Kelly Fleming	Dominic Federici
Treasurer	Pete Whisner	Pete Whisner
Historian	Jim Davidson	Jim Davidson



First Row—F. Vassolotti, J. Rodgers, L. Woodrow, J. Bowman, B. Stover, A. Larson, R. McCrae, J. DeLong.

Second Row—Mr. Lore, R. Muth, J. Russell, C. Biddle, K. Woodall, J. Corey, J. Simmers, J. Capasso, E. Lolzworth, H. Larimer.

Third Row—C. Kinhead, J. Prokop, D. Nogar, Beatty, T. Fosnight, G. Clark, Haskell, H. Shepard, P. Caruso.

Fourth Row—M. Zavacky, Mr. Becker, Dr. Predmore, M. Cheal, A. Rinker, M. Shiring, G. Wood, F. Badger, N. Singer, L. Olsen, P. Carr, H. Krausc, E. McFadden, Mr. Manson, N. Coon, Johnson, R. Tagg, J. Murphy, I. Henry, E. Craven, F. Christy, R. Larimer, G. Cope, F. McElroy.

Alpha Phi Alpha

The Alpha Phi's who came back this year were a grand bunch, but it was decided that more Alpha Phi's could be even more fun. With this end in mind the old members diligently applied themselves, and came forth with one of the most successful "rush" parties ever held at Clarion. This party resulted in the pledging of thirty-two new men to Alpha Phi Alpha. These men were then informally initiated at Camp Coffman. Both the old and new members will long remember this event.

As the second semester opened the Alpha Phi's enjoyed a fun-packed week-end at Cook's Forest. Plans were also laid for the big May "hop" which will include a banquet at the Underwood Hotel in Knox, followed by a "formal" at the Rsss Memorial Library.

OFFICERS

President	Jim Bowman
Vice President	Jim Russell
Secretary	Arvid Larson
Treasurer	John Corey
Ward	Blaine Stover

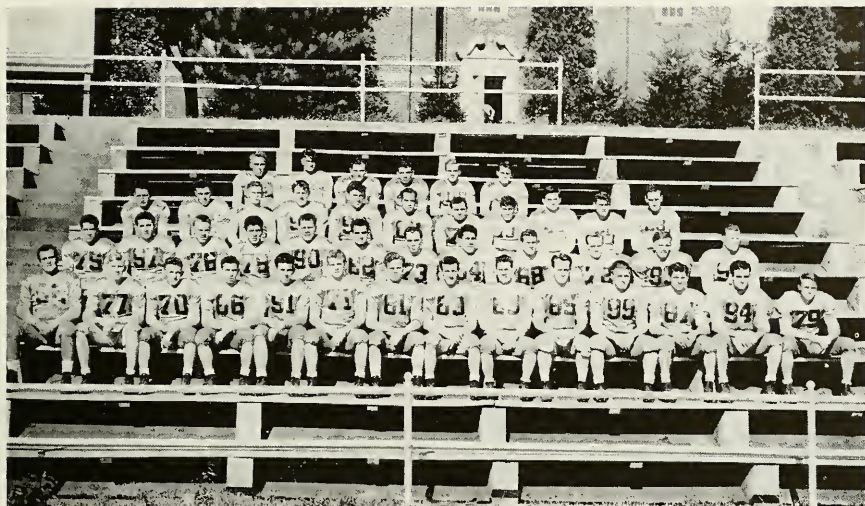
Sports



Football

Clarion 6	Edinboro 7
Clarion 7	Bloomsburg 11
Clarion 19	Thiel 6
Clarion 7	Calif. 25
Clarion 7	Indiana 38
Clarion 6	Bethany 0
Clarion 7	Alliance 12
—	—
TOTALS 59	99





First Row—Murray, Willoughby, Blockwitz, Rusceolli, Thompson, Mader, Robinson, Harlicher, Hypchen, Comosac, Whisner, Zacherl, Scarrantine, Thomas.

Second Row—Yescio, Mason, Delecki, Lignelli, Askey, Luvison, Carr, Delpero, Gergano, Fehl, Zelechowski, Muth.

Third Row—Pecora, Starr, Serene, Hoffman, Melacarne, Casper, Cojeticanin, Tucci, George, Johnson, Miller.

Fourth Row—Gettys, Marotti, Davidson, Bove, Letkovitz, Verbosky.

"The 1947 Football Season"

After some three odd weeks of training rituals, Clarion's "Golden Eagles" Football Squad opened the 1947 Campaign by journeying to Edinboro Saturday, October 4. The game was played on a beautiful, sunny day and the only "bone of contention" was a 7-6 loss to the "Red Raiders" from Edinboro. "Dame Fortune" seemed to laugh in the face of Clarion and the "Golden Avalanche" really never hit high gear.

With the first game under their belt, Coach Tippin's lads appeared a vastly improved club as they battled a powerful Bloomsburg eleven to a standstill, even though ending on the short side of a 11-7 count. The margin of victory hinged on two safeties garnered by the down-state congregation. Once again the Fates turned "thumbs down" on the Eagles, as what could have been a winning touchdown was nullified by an off-side penalty.

Thiel's cocky "Tom-Cat's" trundled into town the following Saturday and were promptly man-handled by our boys to the tune of 19-6.

Battisti, a one-man ball club the year previous, was kept bottled up throught the entire afternoon and Scarantine scored twice and Whisner once in leading the "Golden Eagles" to victory. Harlacher, Mason and Lignelli led the forward wall in out-charging Stoeber's charges.

Clarion next challenged the California "Vulcans" at California, on the 25th of October, but hampered by fumbles returned home with a 25-7 deficit. The Pittsburgh District team, smarting from two earlier lickings, "turned on the heat" at Clarion's expense. Poor ball handling led to the defeat and placed the Golden Eagles constantly in the hole. The "College on the Hill" scored its lone tally when Thomas carried a pass over the final chalk-stripe.

"Homecoming" and Indiana did not run true to form and the visitors, led by Russ Carlson and Company, definitely spoiled the event for the Students, Alumni and all concerned. Fielding a strong club, Indiana ran up a total of 38 points, the highest number recorded against the Eagles all season. Although the fighting spirit was at a high pitch, the scoring punch could not keep pace with the Indianians.

Bethany College of West Virginia, dark skies and a muddy field, was the setting for the next encounter and Al Askey's dash to pay dirt was the only one achieved all day long and the "Golden Avalanche" returned to the locker room with a well-observed 6-0 triumph.

The final game of the campaign was scheduled with Alliance under the lights at Erie' Academy Stadium, and the curtain was rung down with a heart-breaking 12-7 loss to the Polish from Cambridge Springs. Once again the Chips seemed stacked against us and several scoring opportunities vanished, ghost-like, in thin air.

The 1947 Season showed a total of 2 Wins as compared with 5 Defeats in 7 Games, but this is definitely a shrouded picture of the true facts, for with a few "breaks" when they were needed the most, the totals could have been practically reversed.

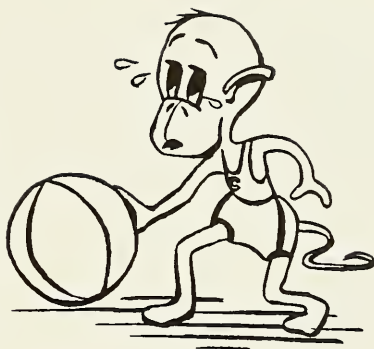
Each and every member of the Squad should be acclaimed for his part in playing the game, win, lose, or draw. But, in checking the various games, and choosing the outstanding performers throughout the Season, we would conclude that the brightest of the "shining lights" in the Back-field were Scarantine, Whisner, Askey, Thomas and Luvinson. The forward wall was led consistently by such stalwarts as Lignelli, Harlacher, Malacarne, Mason, Muth, Zelechowski and Robinson.

Jim Wiberg and Paul Caruso served as capable Team Managers and Jerry Moore, Tom Carnahan and Jim Moore lent valuable aid as Coach Tippin's Assistants and Scouts.

Basketball

SCORES

CLARION	- - -	59	SLIPPERY ROCK	- - -	51
CLARION	- - -	72	INDIANA	- - -	75
CLARION	- - -	40	ALLIANCE	- - -	43
CLARION	- - -	53	INDIANA	- - -	37
CLARION	- - -	57	FENN OF CLEVE.	- - -	58
CLARION	- - -	59	GROVE CITY	- - -	49
CLARION	- - -	61	EDINBORO	- - -	56
CLARION	- - -	58	THIEL	- - -	49
CLARION	- - -	46	CALIFORNIA	- - -	48
CLARION	- - -	42	ALLIANCE	- - -	58
CLARION	- - -	51	EDINBORO	- - -	48
CLARION	- - -	61	GROVE CITY	- - -	54
CLARION	- - -	60	CALIFORNIA	- - -	56
CLARION	- - -	67	THIEL	- - -	60
Total	- - -	786	Total	- - -	749

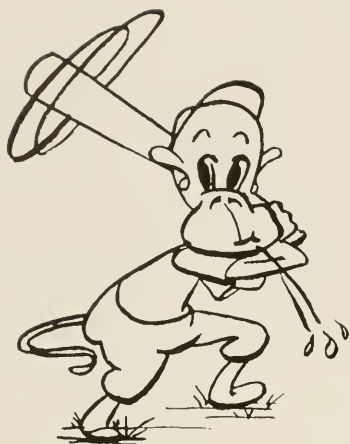


Clarion's "Golden Eagle" Basketeers compiled one of the outstanding records of the State Teacher's College ranks during the 1947-48 season. The Tippinmen won nine clear-cut victories, while dropping five, over a short season schedule. Two of these five defeats were by the slim margin of one bucket, while two more were of the three point variety. The Polish lads of Alliance pinned the only actual lambasting on our Cage troop.

The College "on the Hill" has right to be mighty proud of its smooth Court quintet, especially one Halley Willison. He attained a feat, never accomplished in College History before, by being chosen on the First-String All-State Teacher's College Team. Halley, definitely an outstanding and shining luminary, was ably supported up front by Cece Willoughby, one of the State's leading point producers. Bill Casper was constantly present when the "chips were down" and served as a steady play-maker. "Ole Miss" Burnsed gobbled up more than his share of those rebounds under the board and George Derk played an extremely aggressive floor game. Amos Bartoli, Bill Klaus and Russ Whitford served capably in relief roles for this usual strating Brigade.

First Row—Whitford, Dirk, Fallon, Clouse, Burnsed, Willison, Willoughby, Bartoli, Bayla,
Second Row—Garber, McCreadu, Kelley, Panis, Mason, Aharrah, Hand, Zackula, Ventura,
Cooley, Skaken.





Baseball

Scores			
Clarion	7	California	3
Clarion	6	Slippery Rock	2
Clarion	1	Indiana	4
Clarion	3	U. of Pitt.	5
Clarion	17	Geneva	4
Clarion	19	Allegheny	9
Clarion	12	Alliance	10
Clarion	9	Indiana	7
Clarion	6	Alliance	5
	<hr/>		<hr/>
Total	80	Total	49

Clarion's nine showed extraordinary power on offense at times with such clubbers as Currey, Kovalyak, "Turk" Johnson, Webster, and Malacarne propelling long balls. Fine defensive play was turned in by Hoffman, King, and Kelley. The bulk of the pitching chores rested on "Lefty" Rhodes and Eddie Wilson, with the big winner being Bob Zelechoski who served very efficiently in winning relief roles.

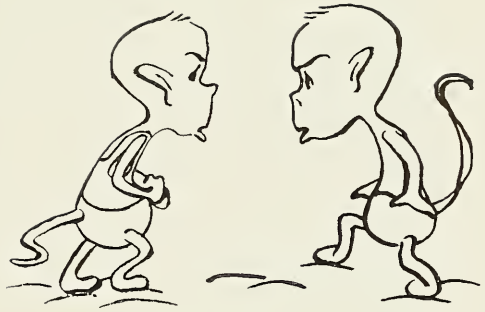
First Row—Wallace, Harlacher, Shoup, Kovalyak, Wilson, Volke.

Second Row—Wiberg, Rhodes, Whisner, Mason, Malacarne, Hoffman.

Third Row—Gilbert, Zelechoski, Kelley, King, Webster.



Wrestling



The 1947-1948 Wrestling Season, according to many observers, would be considered rather unsuccessful, but to those "in the know" it would be approached with an entirely opposite outlook. The number of matches on the winning side of the ledger were non-existent, but the experienced garnered therein was invaluable.

Upon the resignation of Coach Jerry Moore, at mid-semester, Frank Lignelli assumed the leadership of the matmen and proved outstanding both as a wrestler and as a coach. With a "green" and inexperienced team to work with, and a limited amount of time, he produced noticeable results and progress. Although meeting high calibre competition the members of the squad never lacked "spirit" and fight. Next season can be looked forward to with keen anticipation and a reversal of results.

Frank Lignelli was definitely the "shining light" of the group and in a total of seven matches was victorious on four occasions. The three matches he dropped were of the decision variety and of a doubtful nature at that. Nile Coon, Helbling, Verbosky and Miller showed true promise and Knepp Osipov, Pecora and the Serene boys should develop with experience.

The seven matches included two with the powerful Lock Havenites, two with the strong Edinboro squad and a pair with Indiana. Millersville was encountered but once and displayed an outstanding brand of wrestling.

First Row—Larimer, Lignelli, Flath, Coon, Verbosky.
Second Row—J. Moore, Martin, Helbling, Gargano, Pecora, Stonis, Knepp, Hamme.





Golf

SCORES

Clarion	1.5	Slippery Rock	19.5
Clarion	9.0	Thiel	12.0
Clarion	8.5	Thiel	12.5
Clarion	2.5	Slippery Rock	15.5
Clarion	5.0	Edinboro	13.0

The year 1947 marked Clarion's first entrance into the golfing world and although the season came to an end without a team victory after matches with Slippery Rock, Thiel, and Edinboro, they made their presence known on more than one occasion. The members of the team hope to do better in future years and are fortunate in having four of the original team members return.

First Row—P. Marutt, G. Adamson, T. Gilbert.
 Second Row—P. Gilbert, T. Hull, F. Osborne, J. Rogers.





Varsity "C" Men

First Row—F. Lignelli, G. Hoffman, R. Robinson, R. Wolf, G. Malacarne, J. Corey, E. Kelly, F. Kovalyak.

Second Row—J. Davidson, R. Zelechowski, W. Moore, L. Burnsed, A. Askey, H. Willison.

Third Row—R. Larimer, N. Coon, H. Harlacher, N. Luvison, E. Blockowicz.



Cheerleaders

Lois George, Nancy Doverspike, Peggy McKee, Bill Schott, Bill DeLuca, Jack Simmers, Pat Veil, Lila Brown, Marion Kisser.



LIGON LARNAHAN DINSMORE G. MOORE TIPPIN J. MOORE

Coaching Staff

With Coach Waldo S. Tippin at the head of our coaching staff for the past year, and with a number of able assistants, we can say that the resulting teams have racked up a number of welcome and hard earned wins in all sports.

Assisting Coach Tippin in football we had Gerald A. Moore, Thomas A. Carnahan, and James Moore.

Gerald A. Moore assisted in the backfield coaching of the Golden Eagles just as he did the previous year.

Thomas A. Carnahan was a large factor in determining the strength of our forward wall last season just as he did the preceding year.

James Moore, our acting dean of instruction, was valuable to Coach Tippin as a line coach and also by scouting the competition which came to us throughout the season.

This year we have with us a new member on our athletic coaching staff. Bruce H. Dinsmore who is handling the intra-mural program throughout the year. He comes to us from Indiana Teachers College. Additional duties are the teaching of Biological Science I and II, Hygiene and physical education, and Algebra. His schedule is one which, we feel sure, will keep him busy.

THE 1948 SEQUELLE
PRESENTS

LEMON PUNCH

EDITORIAL COMMENTS

Another year, another Sequelle. This year the task of its compilation has been ours. It has not only been an honor to be on the 1948 Sequelle Staff, but it has been an experience which we will long remember. We have enjoyed working together, planning together, and, yes, even worrying together.

As editor I would like to express my deep appreciation and gratitude for the never failing loyalty of my staff. Their willingness to put out the very best year-book possible under the circumstances and their truly sincere attitude in their work has made me extremely proud to work with them. I would also like to thank those not on the staff, but who have given their whole-hearted help whenever asked.

THE STAFF

Irma Messler
Betty McKinley
Marilyn Curry
Dominic Federici
Martha Helmlottler

Editor
Assistant Editor
Art Editor
Business Manager
Photography



COMPLIMENTS
OF
WAYNE R. WEAVER

●
OLDSMOBILE
G.M.C. TRUCKS

SALES SERVICE

●
Clarion, Pa.

Compliments of

MacBeths' Log Cabins

COOK FOREST PARK

Cooksburg, Pa.

NO OTHER PROCESS..

can produce finer
YEARBOOKS
than the
OLD RELIABLE

★
*Letterpress
Printing
and
Photo-Engraving*
★

the most others can boast after
all these years is "as good
as letterpress"

NONE CLAIM BETTER RESULTS!

NONE ACTUALLY ARE AS GOOD!!

*For the Finest in Yearbooks of Distinction, Always,
Consult Your Photo-Engraver and Letterpress Printer.*

ZIMMERMAN ENGRAVING CO.
SYKESVILLE, PENNA.

Clarion Heating
and
Appliances

Gas & Coal Furnaces
Complete Line of Appliances

PHONE 640

CLARION, PA.

A recession is a period in which you tighten your belt. A depression is a period of time when you have no belt to tighten. When you have no pants to hold up . . . it's a panic.

COMPLIMENTS
OF

Clarion Dry Cleaning
Company

Spindler & Starr

BUICK - CADILLAC
CHEVROLET

Clarion, Pa.

"Do you neck?"
"That's my business!"
"Oh a professional."

COMPLIMENTS
OF

L. and R.
Decorating Co., Inc.

COMPLIMENTS
OF

Liberty Studio

Clarion 195-M

"That girl is a lady, I'll have you know."
"How do you know she's a lady?"
"Look at the sign on the door she just went in."

Phero's Grocery

"We enjoy the distinction of being old-fashioned enough to believe that Service actually means Service."

CLARION, PA

PHONE 19



Compliments of
MR. and MRS. FRED JENKINS

NYAL SERVICE STORE

FITZGERALD'S

A. G. Corbett Drug Co.

Clarion, Pa.

ROSALIE SHOP



A Branch of
Morris Children Shop
Grove City, Pa.

INFANT'S and
CHILDREN'S WEAR
LADIE'S LINGERIE

603 MAIN ST.
PHONE 526

Old lady: Who is under my bed?

Robber: I'm Sir Galahad, Knight of
the Round Table, Ruler of All I
Survey, Errant in Quest of My Fair
Lady, an' you ain't it.

MODERN STORE

GROCERY - FRUITS
FRESH MEATS

SAM CHERICO, Proprietor

PHONE 38

CLARION, PA.

**J. F. Weaver Est.
Hardware Company**

Highest Quality Merchandise
at Lowest Possible Prices

PHONE 139

CLARION, PA.

COMPLIMENTS
OF

GARBY THEATRE

WHERE HITS ARE
A DAILY HABIT

MERWIN'S

Stationary - Magazines

Newspapers - Candy

Drug Sundries

Greeting Cards

FOUNTAIN SERVICE

MAIN STREET

CLARION, PA.

**HAIL TO THE GRADUATION
CLASS OF 1948**

We join in a hearty commendation of your efforts and in a sincere wish that your future lives may be happy and successful.

G. C. Murphy & Co.

5 AND 10 CENT STORE

CITIZEN'S TRUST COMPANY

CLARION, PA.

Resources over \$6,700,000.00

MEMBER FEDERAL DEPOSIT
INSURANCE CORPORATION



Kathryn's Beauty Shop

Have your hair
styled to suit your
personality

The Best in
Permanent Wave

PHONE 310

CLARION, PA.

Drunk, feeling way around tele-
phone pole several times: "S'no ushe.
Walled in."

THE DRESS SHOP



WOMEN'S and MISSES
READY TO WEAR

CLARION, PA.

EAT AT

BALDY'S MODERN DINER

MEALS - LUNCHEES

Next to Garby Theatre

Usher: How far down do you want
to sit, madam?

M. Helmtoller: Why, all the way,
of course.

★

Annabelle: Did you see those men
staring at that girl as she boarded
that train?

Gordy: What men?

A sheriff levied household furni-
ture as follows:

- One dining room table.
- One mahogany sideboard.
- Six dining room chairs.
- One decanter whiskey, full.

RAGLEY Maytag Store

Complete Line Of
Appliances

PHONE 93

750 MAIN STREET

CLARION, PA.

A few minutes later he struck out
the word "full" and added:
One revolving doormat.

"SAY IT WITH FLOWERS"

PHILLIPS
FLOWERS

PHONE 209

CLARION

PA.



MEANS - LAUF

Drug Store

522 MAIN ST.

CLARION, PA.

Cosmetics

Men's Toiletries

LUCIEN LELONG

OLD SPICE

LENTHRIC

SEAFORTH

REVLON

YARDLEY

CHEN YU

COURTLEY

FOUNTAIN SERVICE

"I guess I'll cut in on this dance",
said the surgeon as he chloroformed
the St. Vitus patient.

Zoo visitor: Where are the monkeys?
Keeper: They're in the back making
Love.

Visitor: Would they come out for
peanuts?

Keeper: Would you?

★

Curious fly,
Vinegar jug
Slippery edge,
Pickled bug.

★

Sam Hoffman went into the lab,
He thought he knew a lot.
Took a bottle, ignored the tab.
Funeral: 2 o'clock.

★

Frosh: Why are you eating with a
knife?

Tomikel: My fork leaks.

COMPLIMENTS

OF

COLLEGE GRILL

Zelechoski: Do you love me, Joan?

She: But my name is Carolyn.

Zelechoski: Isn't this Wednesday?

COMPLIMENTS

OF

Clarion Firestone
Dealer

COMPLIMENTS
OF

BROWN'S
Boot Shop

CLARION, PA.

Herman Brothers



THE CORNER STORE
Fruits - Ice Cream
Confections
Corner Wood & 8th Avenue
Clarion, Pa.

Dances are quite different today from what they were years ago. In the days of old when a woman had nothing to wear, she stayed at home.

★

Mr. Tippin: Who invented the first football huddle?

Tiny: Dunno.

Mr. Tippin: Eleven Scotchmen light-
ing their cigarettes on one match.

★

Mr. Kuhner: Mr. Kavolyak, how far were you from the correct answer?

"Honest" Fred: Only three seats, sir."

Sultan: Bring me a girl.
Stooge: Very good, sir.
Sultan: Not necessarily.

★

Many an alumnae has had a difficult time to remember all her clasp mates.

PENNEY'S

J. C. PENNEY CO., INC.

"It Pays To Shop At Penney's"

609 Main Street

Clarion, Pa.

COMPLIMENTS
of the
**ANDERSON
HOTEL**

Clarion Motor Co.

Wholesale

AUTO PARTS SUPPLIES

513 MAIN ST.

CLARION, PA.

COMPLIMENTS
OF
Nail's Restaurant

Compliments of
**WHITE'S
APPLIANCES**

Make Our
RECORD DEPARTMENT
Your Music Headquarters

COMPLIMENTS
OF
**MAUL'S
Dairy Store**

**THE
CLARION
REPUBLICAN**

The Paper With the Best
Want Ads

CLARION COUNTY'S
BEST NEWSPAPER

The Home of the Clarion Call

John Ditz Hardware

"Everything in Hardware"

"Frigidaire" Refrigerators and
Ranges

"Conlon" Washers and Ironers

"Magic Chef" Gas Ranges

China, Glassware, Pictures
Gifts

PHONE 218

CLARION, PA.

David F. Kaufman

JEWELER

PHONE 33-M

CLARION, PA.

COMPLIMENTS
OF

**D. and M.
CLEANERS**

Clarion, Pa.

"Did you miss your train, sir?"
"No, I didn't like its looks so I
chased it out of the station."

COMPLIMENTS OF
WEIN'S

CLARION'S
LEADING
STORE



Nation Wide Store

L. H. GARBARINO

Groceries - Vegetables

Quality Meats

Clarion, Pa.

He: Shall we sit in the parlor?

She: No, I'm too tired. Let's go out and play tennis.

★

(Excerpt from an examination paper) . . . About this time Henry went mad, and bore a son.

★

The winter of 1620 was a hard one for the settlers. Many people died, many babies were born. Captain John Smith was responsible for all this.



The Rexall Store

SODA FOUNTAIN
LUNCHEONETTE
SERVICE

Lowest Cut Prices
KING DRUG STORE

"Is that a bird dog?"

"Sure. Rover, come over here and give the lady the bird."

COMPLIMENTS
OF THE

LOOMIS HOUSE

Best

Wishes

. . . to Clarion's graduates of 1948. May your achievements and successes in the future match those of the past; and may all your undertakings in life terminate as you wish.

Good luck and smooth sailing . . . Clarion County's largest industry!

**Owens Illinois
Glass Co.**

CLARION, PA.

**A BANK OF STRENGTH
AND CHARACTER**

Banking Transactions are Strictly
Supervised by Banking
Authorities

OUR DIRECTORS

Merritt H. Davis	Herbert R. Lander
Perry Wile	B. M. Davis
W. M. Moore	

Member Federal Deposit Insurance Corp.

**First National Bank
in Clarion**

CLARION PENNSYLVANIA

FAirfax 3955

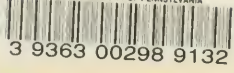
**JOHN and CRAWFORD PARK
JOB COMMERCIAL PRINTING**

*18-20 West Stockton Avenue, North Side
Pittsburgh 12, Pa.*

PRINTING THAT PLEASES



*Congratulations
to
The Graduating Class*



NOV 23 1999

Thomas M. Nelson, Jr.

Laurean Woodrow

Joan Buck

Evelyn Henry

Carrie Dennis

"Sissy" Clark

Martha Lou Glover

Lila Maxwell Cook

Mary Spleen

Alene D'ish

Braig Thines
Lara

Phyllis Arentt.

Robert Topping

Cecil Willoughby

Peggy Bush
Loe Fallon

Michael J.

Gail Norton
William W. Carpenter

Flourence C. H.

Betty Grassman

Samuel Anshel "P.S."

Jack Wilson "P.S."
George Bruce
Emil Lettk "P.S."

H.R. Fetting "P.S."

Gloria Thimer
Sarah Wilson
Freda Wilson

Shirley Ramden
Joanne Wendle

Don Stoughly

Bernice Sherwood

Maye Conis

Ellen Hill

Bob Kalfs

Leila Grube

Cora Dardner

Bob Jack

G. Gordon

D. Alt. Albin

Angela Coen

Bill Brady

Robert E. Pascuzzi

Larry Veil

Shirley Murphy

Bill Maloney

Marge Ote

"Suede" Johnson

Shirley Johnson

Della Williams

Joanne Winston

Rosalind Nichols

Ed Crower

Susan Goss

Tommy Bell

Blaine Stover

Johnnie Banjick
Chetie Mannick

Robert W. Moore

Nancy McConick

Young Huppchen

Joe Murphy

Red Lambert

J. L. M. Craig
George W. Lambach

Ida Mae Nevel

Daniel Bulyn

Edmond Pham
"comb"

Stacy

Ann Stirk

