

Spec. Col.  
qLD  
1017  
.C88  
1962  
c.2

CS2

SEQUELLE


LIBRARY

CLARION STATE COLLEGE  
CLARION, PA.



Carlson Library





Digitized by the Internet Archive  
in 2010 with funding from  
Lyrasis Members and Sloan Foundation

<http://www.archive.org/details/sequelle1962clar>

CLARION STATE COLLEGE

Presents

**THE SEQUELLE**

For

1961-1962



DR. JAMES GEMMELL

The educated man is by no means insensitive to the pleasures of the senses. But his greatest satisfaction is derived from the use of his mind. Life for him becomes a voyage of discovery—of himself, of others, and of the forces that shape the environment. The more he understands, the more fully he lives. The educated man also seeks to justify his existence by contributing in some constructive way to the operation of society as a whole.

The baccalaureate degree launches the educated man on his search for fulfillment. This is the search that unites him with the teachers, writers, and other discoverers all around him. This is his challenge; the imagination and effort he brings to bear on his work represent his personal search for fulfillment. May each graduate of 1962 find it.

Page  
1-2  
1-107  
1-114  
1942  
1-2

## Table of Contents

Student Life	4
Seniors	16
Staff	48
Underclassmen	60
Greeks	88
Activities	112
Music and Drama	130
Sports	144
Clarion Queens	158
Venango Campus	160
Faculty Directory	168
Student Directory	170



Frosh swing it out!



Clarion crashes through!



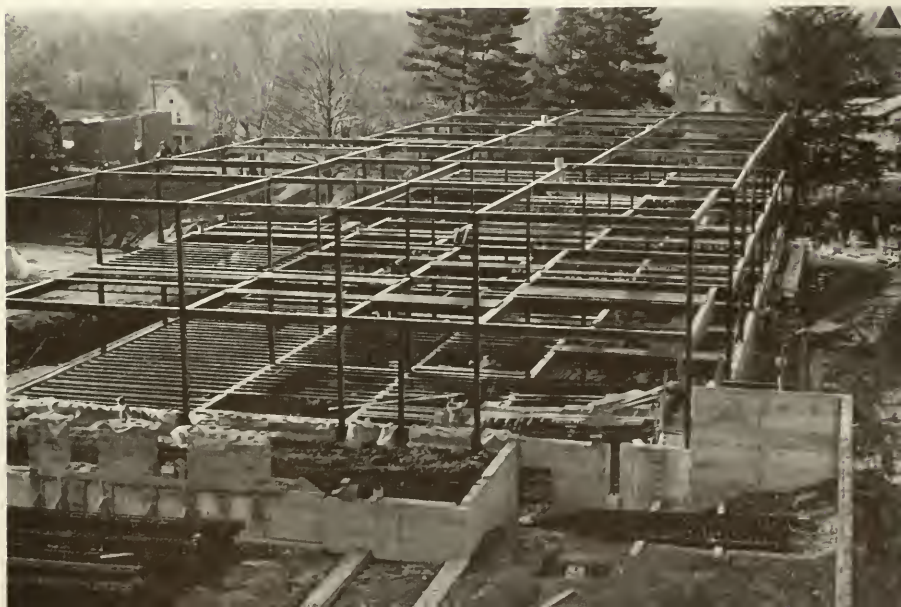


Seminary with lawn.



Jammed to capacity.

Progress in the making.





Dotty Lewis

Joanie Wayne

Gingie Linnan

Queen's Float. Homecoming 1961





One . . . Two . . . Three . . . One . . . Two . . .

Homecoming Queen and Court



Mrs. Gemmell crowns Queen Joan





Well, it's a start.



Just think, only thirty boxes to fold yet!



Progress is being made.

A finished product—at last!





Here comes Gulliver and the Lilliputians.



Then along came Dumbo.

Smile, kids. We're going by the judges stand.





The Twist?

Four Freshman and six usherettes.





"Time Was."



November in the Rain.



We're not exactly sure what it is, but we hope it will be nice.



Who controls the jump?

Sing it out, kids.







"It's beginning to look a lot like Christmas."



Dorm decorations.



The abominable snowman?











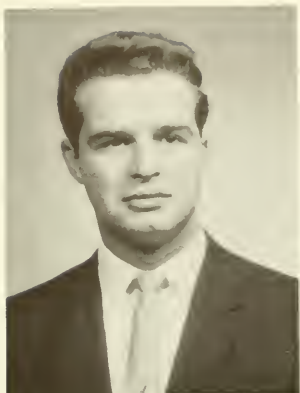








**SENIORS**



GLENN SPEEDY



TIM WELTY



NANCY LICHKO



DONNA BERTY



LARRY SCHRECKENGOST

#### SENIOR CLASS OFFICERS

Glenn Speedy	President
Tim Welty	Vice President
Donna Berty	Secretary
Larry Schreckengost	Treasurer
Nancy Lichko	Social Representative
Dr. D. G. Bardarik	Sponsor
Mr. J. R. Spence	Sponsor

## Eddie



EDWARD MICHEL

On May 27, 1962, we the Seniors of Clarion State will go on our way to a different life. The years may wipe out many things, but they will never erase the memories of those happy days when we were all together. The world changes from year to year and friends from day to day, but Eddie Michel, you will always remain one of our fondest memories of Clarion and our college years. His smile and his pleasant way, his helping hand to all he knew, will live in our memories.

When Eddie's days seemed brightest, just when his hopes seemed best, and he was ready to enter the world as a teacher, his life was taken. Time takes away the edge of grief, but memory turns back every leaf. Memory, however sad, is a link with this world and a better. Eddie, you will live forever in our memory.



ELAINE AARON  
Elementary



JAMES ASHBAUGH  
Mathematics  
Physical Science



RACHEL ASHBAUGH  
Elementary



DAVID ADELMAN  
Social Studies  
English



MARTHA AUGUST  
English  
Social Studies



FAITH BAKER  
Elementary



WILLIAM ALCORN  
Mathematics  
Physical Science



HAROLD BAKER  
Social Studies  
Geography



GARY ANDERSON  
Speech  
History





GERALD BENNETT  
Mathematics  
Physical Science



CAROL BASTKOWSKI  
Mathematics  
Speech



CAROL BERBERICH  
Social Studies  
English



LOIS DEAM  
English  
Social Studies



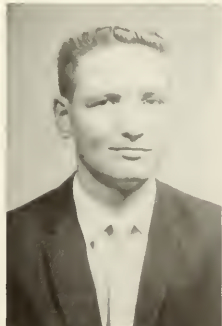
JAMES BECKER  
Social Studies  
Geography



DONNA BERTY  
Elementary



CHARLES BELAVIC  
Biology  
English



JOHN BENGEL  
Chemistry  
History



ELINOR BICKEL  
Social Studies  
English



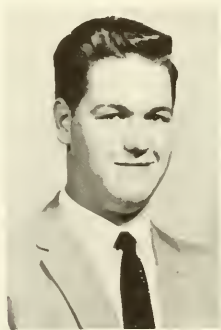
JAMES BOOR  
English  
Social Studies



JOHN BOOR  
Elementary



BETH BISHOP  
Elementary



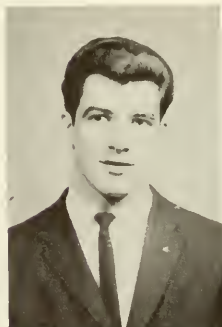
WILLIAM BLOSE  
Elementary



CAROLE BORIS  
English  
Social Studies



LARRY BOBBART  
Speech  
English



EARL BOLEY  
Biology  
English



WILLIAM BONO  
Elementary



NICK BORRELLI  
Elementary



RUTH BRINKLEY  
Elementary

SUSAN BROUGHAM  
Elementary

RAYMOND BROWN  
Mathematics  
Physics  
History



JAMES BOSIN  
Biology  
Geography



FRANK BRUNO  
Social Studies  
English



WILLIAM BUHITE  
Social Studies  
Geography



JOAN WAYNE BUKOSKY  
Biology  
English

ESTHER BUHITE  
Social Studies  
Geography



RAYMOND BUKOSKY  
Speech  
English





RALPH BURTON  
Social Studies  
Geography



RICHARD CHUBON  
Physical Science  
Mathematics



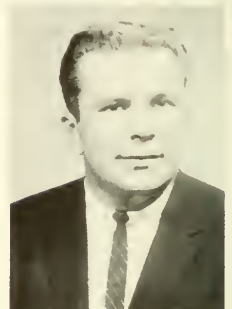
EMILIO CIPOLLONE  
Geography  
English



ROY BUTERBAUGH  
Physical Science  
Biology



JOHN CLIFF  
Mathematics  
Physics  
Chemistry



ROBERT CLOHERTY  
Social Studies  
Speech  
Safety Education



JUDITH CALLENBURG  
(GARDNER)  
Elementary



CLARENCE COFFMAN  
English  
Social Studies  
Speech



PAUL CHANTREY  
Biology  
Physical Science  
Social Studies



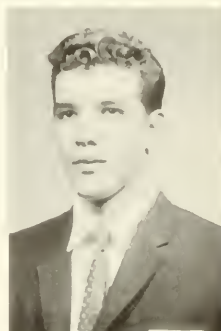




GEORGE COITRELL  
English  
History



SAMUEL CONDELUCI  
Social Studies  
English



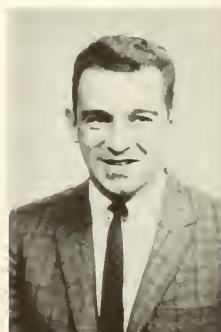
RODGER COWAN  
Biology  
Physical Science



DORIS COOPER  
English  
Speech



NEVA COPENHAYER  
Biology  
Physical Science



ANTHONY CRIMARKI  
English  
Social Studies



JESSE COPENHAYER  
Speech  
Social Studies  
Safety Education



PHYLLIS CORBETT  
Elementary



LUCY CURIO  
Science  
Mathematics



DONNA DEVENEY  
Library Science  
English



DONALD DININNY  
English  
Speech



ROBERT CURRIE  
English  
Social Studies



PATRICIA CYPHERT  
Biology  
English



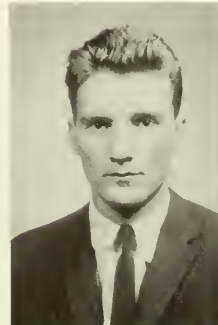
DONNA DITTMAN  
Elementary



EMILY DARDES  
Elementary



DONALD DAY  
Biology  
Social Studies



ALFONSO DeCAPITE  
Biology  
Geography



ROLAND DUBOS  
Social Studies  
Geography



THOMAS ESHELMAN  
Physical Science  
Mathematics

THOMAS FARLEY  
Elementary

THOMAS FIRNEKES  
English  
Social Studies



WILLIAM EDNER  
Physical Science  
Biology



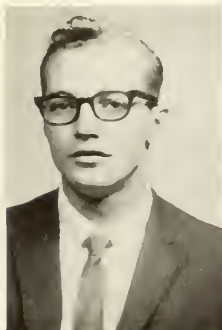
JOSEPH FORTIER  
Elementary



JANET FOX  
Elementary



DONALD FRANK  
Social Studies  
English



ARTHUR FRANKS  
Geography  
History





JUDITH FREEBURG  
Elementary



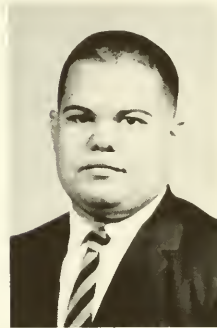
DORIS GLENN  
Elementary



EDWARD GOLLA  
Chemistry  
Physics



WAYNE FRIEDHOFF  
Mathematics  
English  
History



WILLIAM GOOCHEE  
Physical Science  
English



BARBARA GORR  
Elementary



DENNIE GAISER  
Mathematics  
Physical Science



RICHARD GRABIE  
Geography  
History  
Safety Education



HELEN GEARY  
History  
English





MARY ELLEN  
HAMROCK  
Library Science  
English



JEANETTE GRAHAM  
Elementary



BARBARA HARCHUCK  
Library Science  
English  
History



RICHARD GRECO  
Physical Science  
Mathematics



LeROY GRESEH  
Social Studies  
English



ETHEL HASLETT  
Elementary



SHIRLEY GUIDE  
English  
Speech



HAROLD D. GUTHRIE  
Elementary



ROBERT HESS  
Social Studies  
English



GEORGE IHNAT  
Speech  
English



EDWARD ITELL  
Chemistry  
Mathematics



MARY LOU HICKMAN  
English  
Social Studies



JANET HOPKINS  
Elementary



WILLIAM JACKSON  
Social Studies  
English



DONNA HERREBIN  
Social Studies  
English



RICHARD HOSEY  
Biology  
Social Studies  
Physical Science



DONALD HURLEY  
Biology  
History



ELEANOR JEAN JOHNS  
(BOYER)  
English  
Social Studies



JAMES KANE  
English  
Speech

JOANN KENEMUTH  
Elementary

RICHARD KILGORE  
Elementary



EUGENE KANAAN  
Physical Science  
Mathematics



THOMAS KING  
Social Studies  
Geography

HARRY KFLAKEWSKI  
Biology  
Chemistry

CAROLF KRESS  
Library Science  
Social Studies



CORINNE KRESS  
Library Science  
English



SUSANN KUNSELMAN  
Elementary





MARTHA LAUFFER  
English  
Speech



DOROTHY LEWIS  
Elementary



JOYCE LEWIS  
Elementary



JUDITH LAW  
Elementary



NANCY LICHKO  
Elementary



JOHN LINGENFELTER  
Elementary



MARY SUELLEN  
LEHNER  
Elementary



JULIA LINN  
Library Science  
English



JUDITH LEVENDUSKY  
Elementary







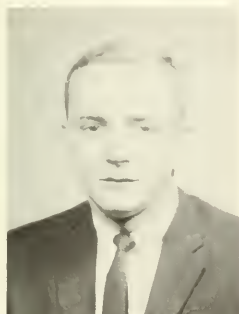
DONALD C. MAIN  
Speech  
Social Studies



GINGIE LINNAN  
Elementary



WILLIAM MANEER  
Mathematics  
Physical Science  
History



A. SCOTT LOGAN  
Speech  
English  
Safety Education



JACK LOYA  
Library Science  
Social Studies



JOHN MANGO  
Elementary



NOEL LUCAS  
Chemistry  
Mathematics



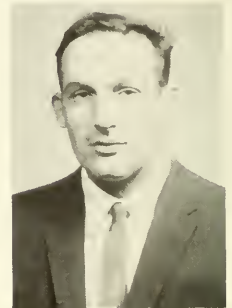
JOHN DAVID MAGARO  
Library Science  
Social Studies



CAROL MARTIN  
English  
Social Studies



WILLIAM MILLIRON  
English  
Social Studies



BARRY MOHNEY  
Social Studies  
Geography



FORRESY McQUOWN  
Mathematics  
History



SANDRA MELICK  
Social Studies  
English



RICHARD MORTIMER  
Physical Science  
English



FRANK MERCURI  
Biology  
Chemistry



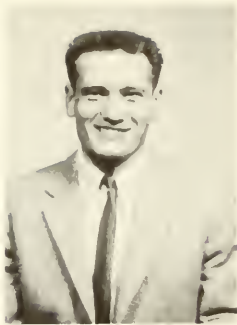
MARY JANE MILLER  
English  
Social Studies



SARAH MILLER  
Elementary



THOMAS NEGA  
Elementary



JAMES MATALIK  
Elementary

PAUL MATHIAS  
Elementary

RONALD McCOY  
Elementary



JOSEPH MASTER  
Mathematics  
Physical Science



MARTHA McCULLOUGH  
Elementary

JAMES McELWAIN  
Elementary

ELLEN McLAINE  
Elementary



THOMAS McMANIGLE  
Mathematics  
Biology



RONALD McMASTER  
Biology  
Geography





CONSTANCE NICELY  
Elementary



ROBERT GARY O'BRIEN  
English  
Social Studies



MICHAEL  
OELBERMANN  
Mathematics  
Social Studies



CECELIA NOCA  
Speech  
English



EDWARD OLLINGER  
Elementary



HOWARD O'NEIL  
Mathematics  
Physical Science



SHIRLEY NORDAHL  
Elementary



ELLERY PANAI  
Social Studies  
English



GLORIA NUTBROWN  
Elementary





ROBERT PEARSON  
Library Science  
Social Studies



ADOLPH POLI  
Elementary



JUDITH POPIELSKI  
English  
Social Studies



ALLAN PENCE  
Mathematics  
Physical Science



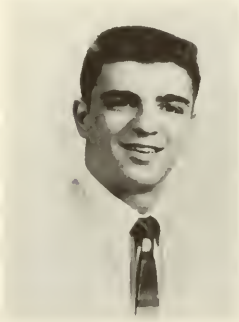
CAROL PHILLIPS  
Mathematics  
Physical Science



DENNIS PREISSER  
Mathematics  
Chemistry



JAMES PLITT  
Chemistry  
Biology



RICHARD PLUTTO  
Library Science  
History



PHILLIP PRESTON  
Physical Science  
Mathematics



JOAN REED  
Elementary



PATRICIA REED  
Elementary



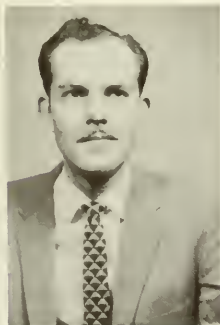
DUANE PRITCHARD  
Biology  
Mathematics



OLGA PURICH  
Library Science  
History



ELLIOTT REITZ  
Biology  
Geography



RALPH RALPH  
Social Studies  
Geography



WILLIAM RAY  
Biology  
Physical Science



JOHN REDDINGER  
English  
Social Studies



CHARLES RICE  
English  
Social Studies  
Speech



BEVERLY ROE  
Elementary

RICHARD ROGERS  
Speech  
History

RUTH ROSSEY  
English  
Speech



FRANK ROCCO  
Elementary



CAROLE SCHAEFER  
Social Studies  
English

JUDITH SCHIMP  
Elementary



LARRY SCHRECENGOST  
Social Studies  
Geography



DAVID SELWAY  
Geography  
Social Studies



FRANK SHAFFER  
Library Science  
English





GERALD SMITH  
Biology  
Social Studies



CHARLES SNELL  
Social Studies  
Speech



JUDY SNYDER  
English  
Social Studies



KAREN SMITH  
Elementary



ROSE MARY SOHO  
Elementary



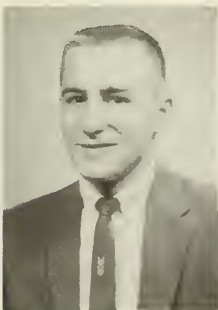
GLENN SPEEDY  
Biology  
Physical Science



LEONA SMITH  
Elementary



JANET SPENCER  
Elementary



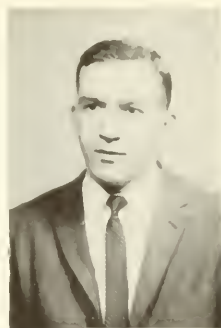
WILLIAM SMOKER  
Physical Science  
English







FRED SHOEMAKER  
Social Studies  
English



SALLY SHANER  
Biology  
Social Studies



JOHN SHOUP  
Mathematics  
Physics



JAMES SHEELY  
Mathematics  
Physical Science



BYRON LEE SHIELDS  
Mathematics  
History



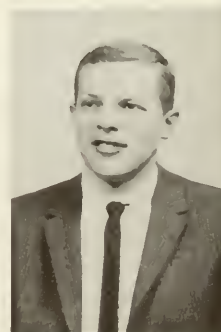
LARRY SHRECKENGOST  
Physical Science  
Social Studies



CLYDE SHIREY  
Social Studies  
Geography



NEIL SHIVELY  
Physical Science  
Mathematics



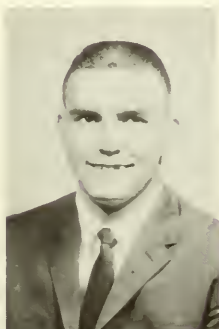
RONALD SHUMAKER  
English  
French  
Spanish



RAYMOND SUPAK  
Biology  
Geography



WILLIAM SUTLIFF  
Biology  
English



LEWIS STALEY  
Chemistry  
Biology



CAROL STRICKLAND  
Elementary

JOSEPH SWAB  
English  
History



STANLEY GORDON  
STRYCULA  
Social Studies  
Geography



HENRY SULLIVAN  
English  
Speech



MAX SUMMERVILLE  
Geography  
History  
Safety Ed.



RUTH SWARTZFAGER  
English  
Social Studies



BARBARA TERRILL  
English  
Speech

TODD THOMPSON  
Social Studies

GLORIA TORCHIO  
Mathematics  
Social Studies



MAXINE SZAFRAN  
Elementary



CAROLE TURNEY  
Elementary

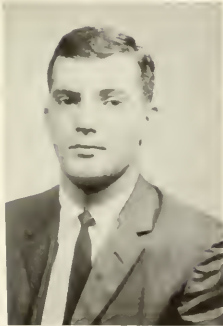


LOREEN UHRINE  
English  
French

LARRY TOSH  
Biology  
Geography



RUDY VENTRESCA  
Physical Science  
Mathematics



RONALD VESPA  
Social Studies  
English





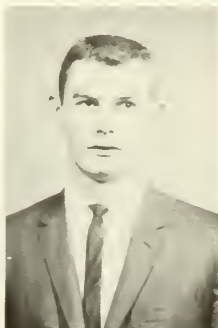
DANIEL WEIKAL  
English  
History



TIMOTHY WELTY  
Social Studies  
English



EUGENE WAITKUS  
Social Studies  
English



FRANKLIN WASYLUK  
Library Science  
Social Studies



JOHN WHITEHILL  
Social Studies  
Geography



RUTH WATERS  
Elementary



LEONARD WALKOWIAK  
Social Studies  
English



DAN WATSON  
Geography  
History



ERNEST WIDMAR  
Social Studies  
English  
Safety Ed.



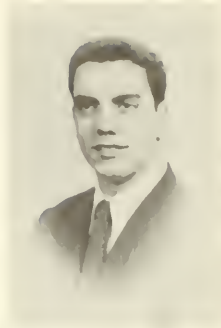
PAUL WISE  
Elementary



PATRICK WRIGHT  
Elementary



PATRICIA ZACHERL  
Elementary



SCIPIONE ALCIBIADE  
English  
Speech



HELEN BUDZINSKI  
Elementary

STUDENTS NOT  
PICTURED

DUANE BASHLINE  
ROY BERKEY  
JANICE BEVEVINO  
FRANK BIANCO  
HARRIET BLEAKLY  
DOROTHY CONNOR  
HEIDI CULBERTSON  
JOYCE CURRY  
MARTHA DUNN  
PATRICIA LEE  
NOONAN  
JOHN MAHONEY  
ERMA McCOOL  
PHYLLIS McGARRY  
ARTHUR MOVERLY  
JOHN MOLSKY  
WILLIAM MORROW  
BRUCE MURPHY  
CHARLES NOONAN  
VINCENT PASCARELLA  
ESQ.  
PATRICIA RICE  
EDNA MAY  
RICKENBACH  
DONALD ROBERTS  
JOHN ROCKEY  
CLUEY SANDY  
RUTH WYMER  
KEITH YOUNT





DEANS OF MEN AND WOMEN  
Dr. James King and Miss Grace Pryor



DEAN OF INSTRUCTION  
Dean James Moore and Registrar Mill Lottie Wingard



DEAN OF STUDENT AFFAIRS  
Dr. Darrell Rishel and Staff



DIRECTOR OF ADMISSIONS  
Walter L. Hart and Staff

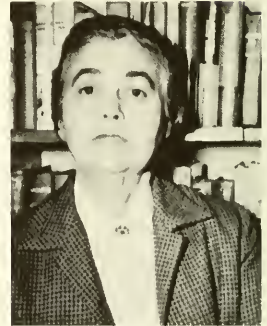
# FACULTY



DR. JAMES BRUNO  
Head of Music Department



FRANCIS BAPTIST  
Art Department



MARY BUTLER  
Librarian



STANLEY A. BELFORE  
Biology Department



CARL CALDWELL  
English Department



DR. DANIEL BARDARIK  
Biology Department



DR. ALPHA E. BERNARD  
Director of Elementary Curr.





FRANK CAMPBELL  
Social Studies



ROBERT COPELAND  
Speech Department



DR. BRUCE DINSMORE  
Biological Science



RENA CARLSON  
Head Librarians



EDYTHA E. CRAWFORD  
Elementary Education



JAMES DONACHY  
Biology Department



EDWARD DUFFY  
Social Studies



THOMAS CARNAHAN  
Mathematics Department



HARRY DENNIS  
Mathematics Department



CHARLES R. FLACK  
Head of Librarian Science



ROBERT GREENBERG  
English Department



ERNEST JOHNSON  
Education and Physical Ed.



EUGENE KAUCKI  
Social Studies



EDWARD GREJDA  
English Department



JOHN F. JOY  
Health and Physical Ed.



CLIFFORD M. KETH  
Physical Science



WALTER HART  
Director of Admissions



DR. JAMES KING  
Social Studies



NORMAN B. HUMPHREY  
Geography



WILLIAM KARL  
English



JOSEPH KNOWLES  
Health and Physical Ed.



DR. GEORGE LEWIS  
Head of Mathematics



FRANK LIGNELLI  
Asst. Dean of Students



DR. HELEN KNUTH  
Social Studies Head



ANTHONY LAZZARO  
Physical Science



WILLIAM McDONALD  
Music Department



NANCY S. McKEE  
Librarian



ROY KUIPERS  
Audio Visual Ed.



JEROME LIEBMAN  
Speech



STANLEY MICHALSKI  
Music



DR. LESTER MOODY  
English



MAX NEMMER  
English



DR. WILLIAM PAGE  
Director of Student Teachers



ELEANOR D. MOORE  
Librarian



LESTER OAKES  
Geography



DR. HUGH WINSTON PARK  
English



DEAN JAMES MOORE  
Dean of Instruction



CHARLES G. PEARCE  
Art



DR. ELBERT MOSES  
Head of Speech



GALEN OBER  
Physical Science



DR. DONALD PEARCE  
Head of Science Department



DR. D.R. PREDMORE  
Biological Science



JACK ROADMAN  
Physical Science



CHARLES ROBBEE  
Social Studies



DR. LAWRENCE PENNY  
Psychology



MISS GRACE PRYOR  
Dean of Women



EDWARD RONCONE  
Music



GLENN PHIPPS  
Speech



EUGENE RHOADS  
Mathematics



EUGENE SEELYE  
Art



DR. PAUL SHANK  
Physical Science



RICHARD SKINNER  
Education



DR. DANA STILL  
Head of English Dept.



DR. WILMA SHERWIN  
English



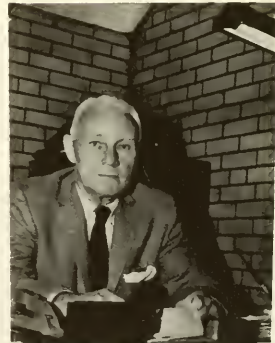
DR. ROBERT SMAIL  
Director of Training School



RICHARD SUMMERVILLE  
Mathematics



JAMES SHOFESTALL  
Physical Science



WALDO S. TIPPIN  
Head of Physical Ed.



BETTY SIMPSON  
Health and Physical Ed.



JOSEPH SPENCE  
Head of Art Department



MARGARET J. WIANT  
Geography



DR. SAMUEL WILHELM  
Social Studies

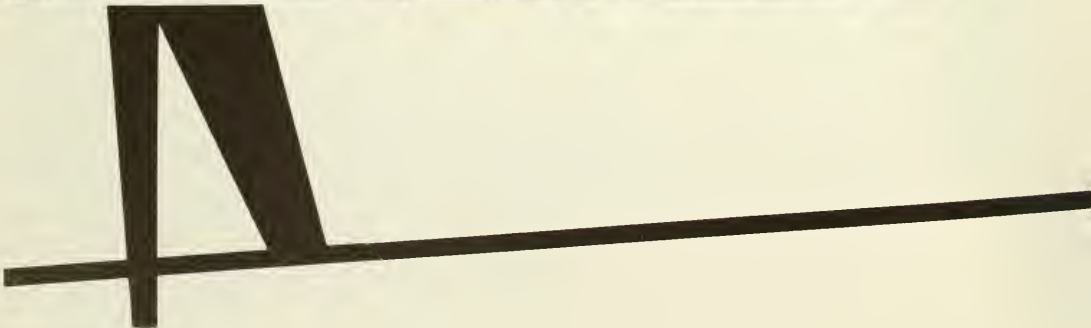


GLORIA YOUGH  
Health and Physical Ed.



*Seated:* E. Crawford, P. Wiberg, H. Becker (ret.), D. Johnson, M. Gamble (ret.). *Standing:*  
A. Bernard, L. Penny, R. Smail, R. Skinner, F. Fitch (ret.), D. Predmore, W. Tippin.

# under





# classmen





Adamchik, A.  
Adelman, D.  
Afton, E.  
Alter, N.  
Altman, D.



Anderson, W.  
Aston, A.  
Baker, F.  
Baker, L.  
Barnes, B.



Baughman, J.  
Beck, G.  
Beck, J.  
Becker, J.  
Beckman, D.



Beckman, R.  
Bednarczyk, E.  
Bengal, J.  
Benninghoff, C.  
Bish, J.

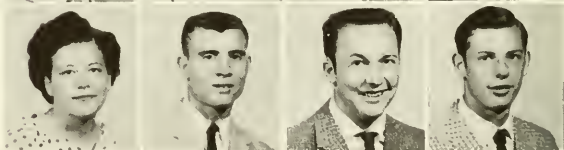
Blake, J.  
Blake, R.  
Bobin, L.  
Bonsall, D.



Boor, J.  
Brenneman, A.  
Brothers, J.  
Brothers, H.



Brown, C.  
Brucemi, V.  
Burns, J.  
Buffington, F.

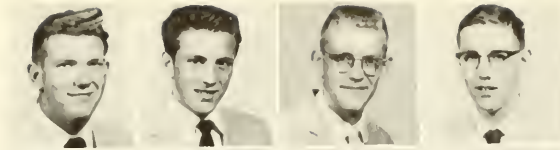


Burnett, D.  
Buterbaugh, R.  
Callen, H.  
Carnahan, L.



Case, R.  
Caughy, S.  
Chapman, S.  
Caylor, K.





Chew, L.  
Chubon, L.  
Clutter, P.  
Conners, J.



Copeland, N.  
Cravner, K.  
Crowell, S.  
Crosby, W.



Cvetner, L.  
Daily, J.  
DeMarte, P.  
Daugherty, S.



DeFelice, J.  
Dessey, T.  
Distefano, J.  
Donati, L.



Donelly, J.  
Doverspike, R.  
Dickey, D.  
Doughlas, T.

Dragovich, S.  
Drayner, S.  
Driehaup, G.  
Eaker, W.  
Faison, W.



Fiscus, C.  
Flannigan, K.  
Fleming, E.  
Fleming, J.  
Ellberg, G.



Elza, F.  
Elwinger, J.  
Follette, M.  
Franklin, J.  
Fryer, J.



Ferguson, H.  
Fulton, G.  
Fultz, M.  
Fye, K.  
Gallagher, D.





Gardner, R.  
Gearhart, A.  
Gerard, B.  
Gibbons, J.  
Gloz, P.

Golla, E.  
Grady, F.  
Green, D.  
Greenlee, M.  
Gwilliam, R.

Hach, J.  
Hallman, W.  
Halley, J.  
Harman, D.  
Hartle, J.

Healy, M.  
Homola, R.  
Hazlett, L.  
Heidenry, S.  
Heiweck, J.

Hesel, C.  
Heymens, W.  
Himes, W.  
Hoffman, H.

Hoffman, W.  
Hough, G.  
Howard, G.  
Hribik, L.

Hritz, W.  
Hubaur, D.  
Hughes, J.  
Hunter, G.

Hutchinson, J.  
Hymes, W.  
Ingelese, R.  
Ingelese, K.

Johnston, J.  
Johnston, A.  
Josephs, C.  
Karg, S.





Karpinski, J.  
Kaelas, T.  
Keller, R.  
Killian, E.

Kisio, B.  
Klingensmith, G.  
Klinzing, D.  
Koerber, W.

Kohan, M.  
Kosheba, J.  
Kovaly, M.  
Kurtzals, T.

Lamorella, R.  
Lash, R.  
Laughlin, R.  
Leckman, W.

Leids, J.  
Levendusky, J.  
Licky, R.  
Limonoff, J.

Lofink, L.  
Long, J.  
Loveless, P.  
Lunn, G.  
Luther, J.

Lynch, R.  
Maque, R.  
Mazza, C.  
McCoy, D.  
McCracken, L.

McCray, W.  
McElhose, L.  
McElrath, D.  
McFarlane, W.  
McKee, J.

McManamy, C.  
Meens, R.  
Melfi, W.  
Mesol, W.  
Meyer, D.





Mick, D.  
 Mile, K.  
 Miller, J.  
 Millirn, W.  
 Miller, N.

Minarcin, A.  
 Mindek, M.  
 Minnick, D.  
 Mitlow, F.  
 Monoco, L.

Mongo, W.  
 Moore, P.  
 Morelli, J.  
 Morgan, B.  
 Morgan, W.

Mori, M.  
 Mullins, R.  
 Murphy, M.  
 Nelson, M.  
 Nicely, C.

Nassiack, N.  
 Niro, A.  
 Nitzell, R.  
 Novack, R.



Nutbrown, G.  
 Obenrader, A.  
 Ochs, T.  
 Ogg, C.



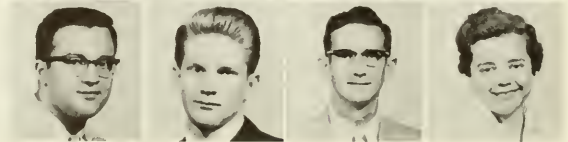
Painter, G.  
 Park, J.  
 Parks, M.  
 Pellegrini, V.



Petrunak, M.  
 Phillips, C.  
 Pletcher, H.  
 Poli, A.



Pollins, P.  
 Poth, R.  
 Powell, J.  
 Pyle, S.





Ramsey, P.  
Raught, W.  
Reese, J.  
Repko, J.

Rich, D.  
Richards, M.  
Rischel, J.  
Roudolphs, G.

Ryberg, R.  
Rydeikz, J.  
Sarko, J.  
Schall, J.

Schettler, M.  
Schmidt, C.  
Sell, B.  
Semmens, C.

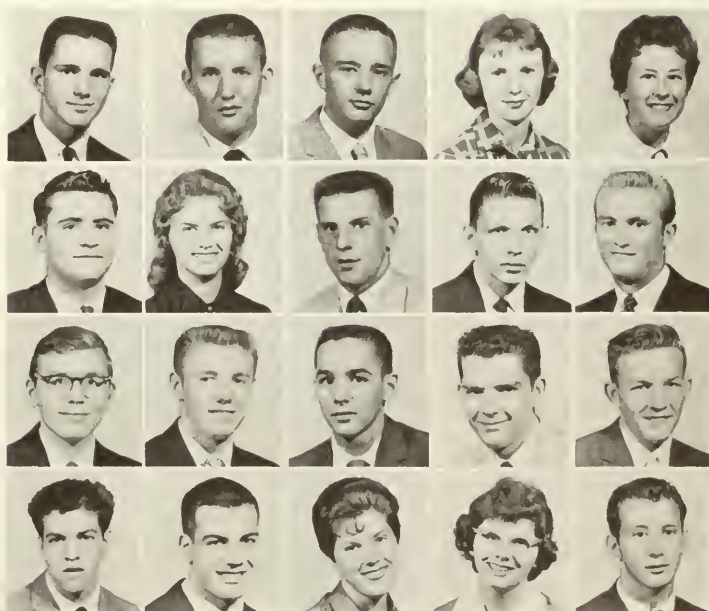
Shaw, K.  
Sherrieb, C.  
Shively, N.  
Seigel, R.

Siegel, P.  
Silk, A.  
Simmons, P.  
Slagle, C.  
Slattery, C.

Slora, J.  
Smail, J.  
Smail, W.  
Smalley, S.  
Snell, C.

Smetonich, R.  
Smith, R.  
Smoker, J.  
Smythe, T.  
Synder, K.

Solak, N.  
Solomon, F.  
Stitt, D.  
Stratiff, J.  
Stuchell, M.





Sutton, J.  
Swanson, H.  
Sneeringer, V.  
Switzer, J.  
Szymkowiak, A.

Szymkowiak, J.  
Tekeley, M.  
Tesla, E.  
Thompson, B.  
Tomer, A.

Truffa, M.  
Tutmaher, P.  
Wible, M.  
Vasey, N.  
Voyten, P.

Waldorf, D.  
Walter, D.  
Warden, S.  
Watson, J.  
Wayland, P.

Werner, E.  
Whitten, A.  
Johnson, C.









Aber, E.  
Allison, E.  
Andre, R.  
Angone, J.  
Arbuckle, R.  
Angrove, W.  
Ashbaugh, L.  
Atkins, E.  
Avery, R.  
Badger, S.  
Baker, R.  
Baldwin, T.  
Barbero, J.  
Barefoot, W.  
Barnhart, P.  
Battaglia, P.  
Baughman, T.  
Brakley, H.

Beam, D.  
Beck, V.  
Bennett, K.  
Best, B.  
Bevino, R.  
Bizzak, N.  
Black, P.  
Bleil, E.  
Blose, R.  
Bloss, K.  
Boback, P.  
Boddorf, M.  
Boor, J.  
Borden, J.  
Bordt, E.  
Boring, G.  
Bosen, M.  
Botzer, P.



Bowser, D.  
Bowser, D.  
Bowser, L.  
Bowser, S.  
Burlando, A.  
Brand, W.  
Branten, G.  
Braun, B.  
Brian, J.  
Bridges, R.  
Brinker, J.  
Britton, R.  
Broadhurst, K.  
Bucceri, J.  
Buljat, B.  
Burdett, V.  
Burg, J.  
Burkett, E.

Buzzard, E.  
 Cain, J.  
 Campbell, A.  
 Carlson, J.  
 Carson, J.  
 Caplowe, D.  
 Cascaro, J.  
 Cassels, B.  
 Catanese, P.  
 Caylor, M.  
 Cederquist, G.  
 Chalot, E.  
 Chappell, S.  
 Chericuzio, C.  
 Eiler, F.  
 Clark, G.  
 Clauges, J.  
 Coax, N.



Cochran, J.  
 Condelucie, A.  
 Conti, G.  
 Coonka, E.  
 Cooper, J.  
 Cope, C.  
 Copenhaver, R.  
 Cornman, J.  
 Carroll, P.  
 Costlow, K.  
 Cowen, J.  
 Cowden, D.  
 Crawford, D.  
 Crawford, T.  
 Crimarki, A.  
 Curenga, M.  
 Cutler, M.  
 Cyphert, H.

Dahl, C.  
 Dalzuffo, A.  
 Darr, J.  
 Davies, M.  
 Dawson, G.  
 Debiak, C.  
 Defilippi, E.  
 DeFelice, J.  
 Del Greco, R.  
 Deible, M.  
 Dillant, C.  
 Demko, M.  
 Denko, A.  
 De Santis, R.  
 Dickert, D.  
 Dingfelt, D.  
 Distler, J.  
 Dixon, M.





Duffy, J.  
 Dorrian, T.  
 Dudo, J.  
 Dygan, K.  
 Eakin, P.  
 Earley, J.  
 Edwards, J.  
 Elder, T.  
 Endries, W.  
 English, M.  
 English, T.  
 Fair, R.  
 Faller, B.  
 Fantuzzo, P.  
 Farshie, C.  
 Fedarko, J.  
 Ferraro, M.  
 Fisher, C.

Flick, N.  
 Foster, J.  
 Foster, M.  
 Fusca, J.  
 Fye, C.  
 Gaffney, W.  
 Gallo, A.  
 Ganoe, R.  
 Garbarino, J.  
 Gentile, C.  
 Geraci, L.  
 Gereluk, P.  
 Ellis, G.  
 Gibb, S.  
 Gibson, C.  
 Gillette, C.  
 Gilmore, M.  
 Gillingham, R.



Glenn, K.  
 Gluckie, M.  
 Good, J.  
 Gray, R.  
 Green, E.  
 Green, R.  
 Groce, P.  
 Grogan, J.  
 Gruda, G.  
 Gustowski, E.  
 Gutowski, J.  
 Haas, M.  
 Hall, A.  
 Hanhold, J.  
 Harriett, M.  
 Hartman, C.  
 Hass, D.  
 Hough, C.

Heasley, M.  
 Helfrick, L.  
 Heeler, G.  
 Helms, E.  
 Hereida, D.  
 Hetrick, J.  
 Hill, F.  
 Himes, C.  
 Himes, W.  
 Hogan, D.  
 Holodnik, J.  
 Hooks, J.  
 Hooley, E.  
 Horlick, N.  
 Horvath, C.  
 Howard, J.  
 Hubler, W.  
 Huefner, C.



Hughey, M.  
 Hurlings, M.  
 Huntington, M.  
 Hurley, M.  
 Hynes, L.  
 Ivill, M.  
 Jandrew, G.  
 Jefferies, J.  
 Jones, C.  
 Jones, S.  
 Jumbercotta, L.  
 Justham, J.  
 Kalup, R.  
 Kashawlic, M.  
 Keney, B.  
 Keklak, H.  
 Kellerman, R.  
 Keresgture, L.

Kidd, L.  
 King, K.  
 King, S.  
 Kiser, W.  
 Klingensmith, S.  
 Klingensmith, R.  
 Klinger, C.  
 Koch, J.  
 Koch, M.  
 Krieger, E.  
 Kuntz, C.  
 Kuzmac, L.  
 Le Bord, D.  
 Land, R.  
 Lapato, D.  
 Lauer, J.  
 Laughlin, J.  
 Lawrence, E.





Leona, W.  
 Lewelyn, L.  
 Leonard, D.  
 Leshock, P.  
 Liebiler, J.  
 Luzik, C.  
 McDunn, M.  
 McGrath, G.  
 McGraw, B.  
 McIntyre, R.  
 McKean, M.  
 McKenna, M.  
 McKenning, D.  
 McKinny, J.  
 McKillip, J.  
 McLaine, J.  
 McLaughlin, G.  
 Magness, I.

Maier, N.  
 Malecarne, R.  
 Mangini, E.  
 Mann, C.  
 Marinelli, A.  
 Marsh, J.  
 Maruski, J.  
 Mason, J.  
 Master, L.  
 Mathew, W.  
 Martinello, D.  
 Martin, N.  
 Marshinke, S.  
 Maruca, M.  
 Mazza, C.  
 Melfi, W.  
 Mercer, D.  
 Miller, J.



Miller, F.  
 Miller, R.  
 Miller, V.  
 Milligan, R.  
 Mock, C.  
 Mooney, J.  
 Moore, J.  
 Morandini, J.  
 Morgan, H.  
 Morton, G.  
 Neal, D.  
 Newcome, J.  
 Notzel, M.  
 Nold, J.  
 Nola, V.  
 Nolan, L.  
 Neuffer, F.  
 Oaks, J.

Och kay, M.  
 Ohejarz, R.  
 O'Kern, L.  
 O'Leary, J.  
 Pantell, J.  
 Passinger, A.

Pelesari, R.  
 Pence, R.  
 Pepperman, J.  
 Petrucci, E.  
 Pierotti, C.  
 Pifer, S.

Planz, A.  
 Plyler, G.  
 Port, D.  
 Porter, A.  
 Potter, S.  
 Predijina, S.



David, P.  
 Prytherck, M.  
 Querio, S.  
 Rafferty, B.  
 Ralston, R.  
 Reed, H.

Reese, J.  
 Reiter, P.  
 Rettman, J.  
 Rhodes, A.  
 Rhodes, L.  
 Richards, A.  
 Richards, D.  
 Rimer, D.  
 Rodosevich, N.  
 Rogers, D.  
 Roofner, B.  
 Rose, M.

Rumbaugh, D.  
 Sarbo, J.  
 Sailor, N.  
 Sayers, N.  
 Schiano, S.  
 Schall, W.  
 Schmid, M.  
 Scilango, P.  
 Seiquorth, F.  
 Seiquorth, K.  
 Shakly, C.  
 Shaw, J.  
 Shay, J.  
 Shick, P.  
 Shick, W.  
 Shingledecker, R.  
 Shoemaker, J.  
 Shofestall, J.





Sibley, E.  
 Simcik, J.  
 Simmers, C.  
 Skidmore, W.  
 Smith, C.  
 Smith, C.  
 Smith, C.  
 Sleigh, R.  
 Snyder, L.  
 Solomon, L.  
 Spinos, D.  
 Starr, S.  
 Stewart, S.  
 Stiffler, B.  
 Stiller, T.  
 Strain, D.  
 Strouse, P.  
 Sunseri, M.

Suty, J.  
 Tarapchak, S.  
 Tharan, N.  
 Thom, N.  
 Thomas, E.  
 Thomson, J.  
 Tingler, B.  
 Tommasone, L.  
 Trayner, J.  
 Troesr, C.  
 Truitt, R.  
 Tucker, D.  
 Tustin, K.  
 Uberbti, D.  
 Urban, J.  
 Valko, E.  
 Vallentine, W.  
 Vereb, T.



Waddell, J.  
 Waltenbaugh, R.  
 Watson, C.  
 Watson, G.  
 Wentzel, H.  
 Wesley, J.  
 Whelan, J.  
 Whipkey, L.  
 White, D.  
 White, G.  
 Whitehill, D.  
 Whiteshot, K.  
 Whitton, A.  
 Wilkinson, J.  
 Willoughby, S.  
 Winger, D.  
 Winger, J.  
 Winkler, K.



Wolfe, K.  
Wyant, J.  
Wylie, L.  
Yanshak, N.  
Yeager, C.  
Yeane, M.  
Zamberlan, K.  
Zaurich, J.  
Zatezalo, M.  
Zattiero, R.  
Zemarel, P.





Aaron, A.  
Acton, H.  
Addis, D.  
Alcorn, C.  
Allamon, P.  
Allen, R.  
Aloise, L.

Alvin, P.  
Amon, S.  
Andrews, M.  
Answine, F.  
Antalovick, V.  
Apple, B.  
Arnold, R.

Arnold, T.  
Ashbaugh, E.  
Ashime, G.  
Attamus, E.  
Atwell, A.  
Bantz, K.  
Bauer, B.

Batti, M.  
Basescu, V.  
Bartos, T.  
Barnett, M. K.  
Barnhart, M.  
Barnes, E.  
Barley, N.

Barber, J.  
Ballon, M. A.  
Bagardes, L.  
Babyak, J.  
Babel, B.  
Beach, K.  
Beaton, W.

Beers, B.  
Bellion, N.



Bengel, K.  
Benish, K.  
Bennet, P.  
Bennett, B.  
Bennett, J.  
Berlin, G.  
Bichsel, M.

Bienko, J.  
Bigley, L.  
Blackburn, B.  
Blanchard, G.  
Blanchard, D.  
Bloom, B.  
Blormquist, P.

Blose, C.  
Blose, J.  
Blose, J.  
Brunner, M.  
Bond, D.  
Boozer, C.  
Bostyanick, J.

Bovaird, F.  
Bowman, L.  
Boyle, M.  
Breday, R.  
Brewer, P.  
Brewster, M.  
Bright, J.





Chuttos, J.  
Christy, J.

Brocious, M.  
Brown, H.  
Brown, J.  
Brumberg, J.  
Bunce, W.  
Burian, R.  
Burrows, F.

Burtak, R.  
Buttenfield, P.  
Buzzard, J.  
Byers, C.  
Byers, J.  
Callen, M.  
Campell, J.

Caputo, C.  
Carberry, H.  
Cargo, D.  
Carpenter, L.  
Carson, J.  
Carver, P.  
Cassidy, B.

Charitan, B.  
Chatlos, J.  
Check, M.  
Cherefko, B.  
Cherry, L.  
Chioda, A.  
Chittester, K.

Clark, J.  
Clark, J.  
Claypoole, M.  
Clayton, R.  
Clemons, M.  
Cleven, R.  
Clymer, A.

Coble, J.  
Coffman, P.  
Cole, R.  
Concilla, D.  
Conjer, J.  
Conners, T.  
Cooper, C.

Cooney, M.  
Coppersmith, P.  
Corle, M.  
Cornali, B.  
Courage, J.  
Cox, M.  
Coxon, F.

Craig, L.  
Cramer, K.  
Cramer, R.  
Crawford, D.  
Cruse, V.  
Cummings, J.  
Collett, V.

Culver, L.  
Cusanto, R.  
Custer, S.  
Cyphert, G.  
Dabelko, P.  
Dalton, L.  
Daniels, E.





Danver, C.  
 D'Archangela, E.  
 Davis, J.  
 DeBlasio, M.  
 DeBubis, T.  
 DeCarria, M.  
 Decocare, A.

DeJoseph, L.  
 Delp, M.  
 DeLuca, L.  
 DeSanti, J.  
 Desch, E.  
 Desmore, A.  
 Desmore, N.

DiBenedette, D.  
 Diemer, M.  
 Digiacobb, A.  
 Dittman, H.  
 Dobos, M.  
 Dolechi, N.  
 Dollerer, N.

Dombreski, L.  
 Dominici, R.  
 Donabedion, C.  
 Doperak, R.  
 Doverspike, E.  
 Downs, P.  
 Downs, W.

Doyle, K.  
 Dunmire, J.  
 Durkee, V.  
 Dwyer, K.  
 Dyer, M.  
 Dzuiban, B.  
 Echart, T.

Eckelbanger, E.  
 Eisenhuth, F.



Ellenberger, K.  
 Elliott, J.  
 Ernest, W.  
 Espey, W.  
 Enzion, B.  
 Exley, N.  
 Fair, K.

Fagley, L.  
 Farrell, R.  
 Fehsenfeld, C.  
 Fendick, E.  
 Fenice, C.  
 Ferguson, H.  
 Fergeson, S.

Fisher, I.  
 Flanigan, C.  
 Fleming, R.  
 Flynn, J.  
 Forest, P.  
 Forsyth, D.  
 Foryt, P.

Foster, J.  
 Faulk, A.  
 Franklin, J.  
 Frantz, N.  
 Friedhaff, H.  
 Frey, G.  
 Friend, J.





Hagg, P.  
Hahn, A.

Frye, G.  
Fuchs, J.  
Galbreath, C.  
Gallmeyer, M.  
Gamble, J.  
Garland, D.  
Garvey, B.

Gaspersic, L.  
Gelling, M.  
George, J.  
Giesler, D.  
Gilchrist, S.  
Gill, R.  
Goisovich, S.

Goodrich, M.  
Graziano, J.  
Gregory, T.  
Grimes, J.  
Grundler, F.  
Gruver, J.  
Gudrners, P.

Gula, M.  
Gusherowski, R.  
Haag, C.  
Haas, M.  
Hale, J.  
Hall, L.  
Hall, S.

Hanby, E.  
Hancharick, J.  
Hanford, L.  
Harbison, R.  
Harlman, G.  
Harenski, M.  
Harned, A.

Harnish, D.  
Hartfield, S.  
Hartland, G.  
Hartleys, S.  
Hartman, J.  
Hartman, M.  
Harvey, P.

Haslet, J.  
Hawks, M.  
Hayt, L.  
Hecker, J.  
Heeter, B.  
Heghan, N.  
Heilman, T.

Heinucker, A.  
Hellwig, J.  
Henry, B.  
Hersperger, D.  
Herzberger, J.  
Hetrich, R.  
Hewey, L.

Hewitt, J.  
Hewitt, P.  
Hill, W.  
Hillis, R.  
Himes, C.  
Hinderliten, J.  
Hinkey, B.





Kurash, T.  
 Kyle, T.  
 Labov, T.  
 Ladley, M.  
 Lalov, T.  
 Lancy, A.  
 Lang, M.  
  
 Lashinsky, V.  
 Lefevre, A.  
 Lehman, J.  
 Lemish, A.  
 Lenczewski, L.  
 Leshock, D.  
 Lesneski, C.  
  
 Lewis, D.  
 Lilberum, G.  
 Linaberger, M.  
 Livingston, D.  
 Locker, G.  
 Lofink, L.  
 London, H.  
  
 Lousa, P.  
 Love, C.  
 Luca, L.  
 Lucas, F.  
 Luczka, S.  
 Ludley, M.  
 Luidsey, S.  
  
 Luke, B.  
 Lutz, W.  
 Lynch, A.  
 Madden, T.  
 Majersky, J.  
 Malobieky, L.  
 Maloney, W.

Manning, R.  
 Marcalarne, F.



Martland, J.  
 Martini, D.  
 Martinko, D.  
 Massick, C.  
 Master, R.  
 Matthews, T.  
 Maturky, R.  
  
 Matusky, R.  
 May, R.  
 Mays, J.  
 McClain, K.  
 McConnell, J.  
 McDonald, C.  
 McDowell, E.  
  
 McFall, C.  
 McGee, J.  
 McIntyre, R.  
 McIlvaine, B.  
 McKee, P.  
 McKee, M.  
 McKee, J.  
  
 McKelvey, J.  
 McNeill, C.  
 McNeil, M.  
 McCoy, T.  
 McCreary, L.  
 Meier, M.  
 Mehalick, P.





Hoover, W.  
 Hoyt, L.  
 Hrivnak, J.  
 Huffman, C.  
 Hughan, N.  
 Hultquist, J.  
 Humes, R.  
 Hunger, C.  
 Hunter, P.  
 Iadler, D.  
 Imel, M.  
 Imel, R.  
 Irwin, K.  
 Jackel, J.  
 Jackson, J.  
 Jackson, K.  
 Janovick, M.  
 Jones, D.  
 Jones, D.  
 Jones, J.  
 Jones, K.  
 Jones, M.  
 Johesdozrfer, L.  
 John, G.  
 Johnson, K.  
 Kaber, D.  
 Kammerdeine, C.  
 Kanouff, D.

Kart, R.  
 Kaufman, D.

Kautz, R.  
 Keener, L.  
 Kelly, K.  
 Kelly, P.  
 Kenemuth, L.  
 Kennedy, J.  
 Keva, E.

King, B.  
 King, S.  
 Kirpatrick, F.  
 Kiser, J.  
 Kiser, K.  
 Klamer, C.  
 Kleemann, K.

Klein, R.  
 Kleewann, K.  
 Kleine, C.  
 Kleister, D.  
 Kline, B.  
 Kloos, J.  
 Knepper, D.

Knapp, E.  
 Koch, S.  
 Kohl, L.  
 Koos, E.  
 Korb, K.  
 Kotocus, G.  
 Kovach, D.

Kovsky, M.  
 Kozur, E.  
 Kradel, A.  
 Kratoine, J.  
 Kuhns, J.  
 Kuhus, J.  
 Kuleck, R.





Melling, C.  
Mencic, G.  
Merkle, H.  
Micklow, M.  
Mills, M.  
Milliron, B.  
Miller, D.

Miller, P.  
Miller, S.  
Miller, S.  
Miller, J.  
Miller, I.  
Miller, R.  
Mitchell, S.

Mitchum, M.  
Mox, W.  
Motzer, D.  
Morres, J.  
Moore, E.  
Moore, C.  
Molsky, F.

Murray, T.  
Murray, M.  
Myers, R.  
Myers, W.  
Nabors, W.  
Naismuth, N.  
Natch, P.

Naughton, H.  
Nearhorf, E.  
Nelles, J.  
Nemeth, J.  
Newill, B.  
Nicholas, R.  
Noea, I.

Norris, W.  
Nugent, J.



Ochs, T.  
Oliva, J.  
Olwelt, R.  
Oliver, M.  
O'Neil, D.  
O'Neil, R.  
Orosz, P.

Palko, A.  
Palmer, L.  
Park, D.  
Parry, E.  
Parsons, M.  
Pascarella, G.  
Paulas, K.

Peles, P.  
Petri, A.  
Phanco, D.  
Phipps, R.  
Picadio, C.  
Pierapan, E.  
Pifer, J.

Pifer, R.  
Pisani, D.  
Pisegna, R.  
Platt, D.  
Platt, J.  
Plauny, F.  
Povloik, D.







Powell, J.  
Powell, W.  
Pugh, C.  
Querio, K.  
Quigley, R.  
Quinco, V.  
Rabold, J.  
  
Racchini, J.  
Rakovan, T.  
Rakvic, R.  
Ralls, E.  
Ramsey, C.  
Rasefske, M.  
Rarick, J.  
  
Rousseau, A.  
Ravena, G.  
Reading, R.  
Rebick, N.  
Rebick, N.  
Reefer, R.  
Reemer, W.  
  
Rees, S.  
Regis, G.  
Reigh, J.  
Reilly, J.  
Remalerg, P.  
Retts, J.  
Rezmerski, M.

Richard, P.  
Richards, R.

Richardson, B. J.  
Richey, J.  
Riddele, A.  
Rigley, K.  
Riltzman, A.  
Rhodes, G.  
Rowland, B.

Ruffo, A.  
Rugh, J.  
Ruley, M.  
Rumer, W.  
Sacco, R.  
Sandy, W.  
Santore, D.

Sawyer, R.  
Scharhoff, C.  
Schiffhaucer, J.  
Schmelty, R.  
Schneider, N.  
Schnoos, L.  
Scranko, E.

Schreckengost, J.  
Schrenkel, C.  
Schuster, D.  
Schuster, K.  
Schwab, R.  
Schwabebauer, B.  
Schwartz, M.

Scott, H.  
Sederich, A.  
Seigworth, C.  
Seman, R.  
Servey, D.  
Sexton, R.  
Sharkey, G.





Shekela, B.  
 Shepler, W.  
 Sherow, C.  
 Sheuchik, R.  
 Shoup, L.  
 Schreffler, T.  
 Shugarts, R.  
 Shumaker, L.  
 Sirko, L.  
 Sita, R.  
 Sketter, C.  
 Skiely, K.  
 Slagle, J.  
 Slater, P.  
 Sleighter, S.  
 Smith, G.  
 Smith, J.  
 Snyder, W.  
 Spencer, S.  
 Spoales, A.  
 Sullivan, M. J.  
 Susa, J.  
 Stahlman, D.  
 Stalkovich, S.  
 Stang, D.  
 Stankiewicz, W.  
 Stanley, K.  
 Stanley, J.  
 Stecik, M. A.  
 Steinberg, A.  
 Steis, J.  
 Stevens, D.  
 Steward, T.  
 Stewart, F.  
 Stewart, K.

Stiffler, C.  
 Stoehr, C.



Straithoff, W.  
 Strano, S.  
 Stroupe, H.  
 Struble, S.  
 Swab, E.  
 Symionof, J.  
 Tamiggi, P.  
 Tarshes, G.  
 Taylor, T.  
 Temple, W.  
 Thomas, L.  
 Thomas, R.  
 Thomason, T.  
 Thompson, R.  
 Thompson, R.  
 Thompson, S.  
 Tindell, R.  
 Tinerovich, R.  
 Tompkins, M.  
 Trehar, S.  
 Truitt, J.  
 Turner, M.  
 Tyrrell, D.  
 Ryan, J.  
 Ulatsky, A.  
 Vandervort, W.  
 Vargas, J.  
 Vedak, B.





Vensel, J.  
 Venture, J.  
 Verbena, M.  
 Veronuk, A.  
 Vistein, W.  
 Vossburg, F.  
 Wadding, E.  
 Wagner, B.  
 Wagner, H.  
 Walters, E.  
 Walter, M.  
 Waryer, M.  
 Washburn, D.  
 Way, M.  
 Weaver, D.  
 Weber, J.  
 Weigl, G.  
 Weilacher, M.  
 Weptiaz, J.  
 West, W.  
 Wetzell, E.  
 Whitesell, C.  
 Wilcox, D.  
 Wilk, B.  
 Wilker, D.  
 Wisner, W.  
 Witik, E.  
 Wolfgang, R.

Wood, R.  
 Woodward, M.

Woomer, M.  
 Woolton, F.  
 Yeaney, B.  
 Yeaney, M.  
 Yurkovich, M.  
 Zabec, M.  
 Zadakis, J.  
 Zagas, S.  
 Ziener, N.  
 Zimmer, M.  
 Zoelle, R.  
 Zook, D.  
 Zuccarelli, R.



The Defense rests.





**GREEK'S**





*First Row:* Kathleen Caylor, Diane Rich, Miss Pryor, Peggy Yale. *Second Row:* Alice Tomer, Patricia Reiter, Kathie Broadhurst, Sara Willoughby.

## Panhellenic Council

### OFFICERS

President  
 Vice President  
 Secretary  
 Treasurer  
 Social Secretary  
 Sponsor

Diane Rich  
 Carol Slattery  
 Peggy Yale  
 Alice Tomer  
 Cathy Caylor  
 Miss Pryor

The Panhellenic Council is comprised of an active and a silent member elected from each of the five sororities on campus. The council is under the sponsorship of Miss Grace Pryor with Diane Rich as president.

In addition to acting as a governing body for the five sororities, the council also regulates rushing and promotes various social activities. This year's social activities included the Panhellenic Halloween Party, Freshman meeting in the chapel, and the pre-Easter Formal.

## OFFICERS

President  
Vice President  
Secretary

Scott Logan  
Robert Schlemmer  
Frank Miller

The Interfraternity Council is made up of two members from each of the four fraternities on Clarion State College's campus. The Council's membership this year consists of: Theta Chi, Robert Schlemmer and Ron Gardner; Phi Sigma Epsilon, Roy Buterbaugh and Robert Lynch; Sigma Tau Gamma, Glenn Plyler and Carl McManamy; and Alpha Gamma Phi, William Jackson and Frank Muller.

The organization is under the guidance of Dr. Rishel, who is the Dean of students. The Council acts as a lawmaking and problem-solving body for the fraternities on campus. Under its constitution, the Council regulates the quality point average of pledges and the other pledging activities of the fraternities. It also handles fraternity violations and tries to solve any problems that the individual fraternities may have.

The Interfraternity Council also governs the establishment of new fraternities on Clarion's campus and controls the rules for formal rushing of new men. The Council also adds to the social life of the Clarion students by sponsoring a pre-Easter Dance. With the co-operation of member fraternities and the Panhellenic Council, the Interfraternity Council also has high hopes of holding other social events which will benefit the entire student body.

## Inter-Fraternity Council

*First Row:* Frank Miller, Scott Logan, Bob Schlemmer, Dean Rishel. *Second Row:* Roy Buterbaugh, Carl McManamy, Bob Lynch, Ron Gardner.





Donna Mick, Joanne Straitiff, Linda Henson, Judy Wilson.

## Beta Chi Upsilon

### OFFICERS

President	Joanne Straitiff
Vice President	Linda Henson
Recording Secretary	Judith Wilson
Corresponding Secretary	Donna Mick
Treasurer	Bonnie Stiffler
Sponsors	Miss Roxanna Irwin Mrs. Patricia Robinson

Beta Chi Upsilon, one of the two local sororities on Clarion's campus, celebrated its second anniversary in November, 1961.

The Betas, in their white blazers with rose piping, had a very active year. The first events of the year were Homecoming and fall rushing. At Christmas time were the annual Christmas party and the giving of a basket to a needy family. In the spring were the rush parties, the Miss C. S. C. contest, and the Mother's Day Tea.

The Betas have had a very successful and profitable year.





*First Row: Bonnie Stiffler, Linda Henson, JoAnn Straitiff, Judy Wilson, Donna Mick. Second Row: Joan Reed, Gloria Torchio, Pat Reiter, Peggy Yale, Joanne Connors, Sandra Starr, Elinor Bickel, Carolyn Hartman.*



Jeanne Distler, Jane Schall, Barbara Thompson, Cathy Caylor, Annabella Minarcin, Joan Wayne, Sandy Chapman, Diane McElrath, Jan Canterna, Karen Wolfe.

## Delta Zeta

### OFFICERS

President	Joanie Wayne
First Vice President	Jeanne Distler
Second Vice President	Sandy Chapman
Recording Secretary	Janie Schall
Corresponding Secretary	Diane McElrath
Treasurer	Jan Canterna
Parliamentarian	Barbara Thompson
Historian	Annabella Minarcin
Panhellenic Representatives	Kathy Caylor
	Karen Wolfe
Sponsors	Miss Delores Johnson
	Mrs. Mary Butler

The Epsilon Theta chapter on Clarion's campus represents one of the 130 chapters of Delta Zeta, which is the largest national social sorority in the United States.

The Delts strive to unite its members in bands of sincere and lasting friendship, to stimulate one another in the pursuit of knowledge, and to promote the moral and social culture of its membership by sponsoring various activities such as pledge parties, rush parties, Cook Forest weekend, Alumni Tea, Philanthropic projects and Mother's Day Tea.

The Delts can be seen on campus wearing white blazers with green piping.

We were quite honored in this year's Homecoming to have our president, Joanie Wayne, as Homecoming Queen, Gingie Linnan and Nancy Horlick as attendants, Charlene Benninghoff as Phi Sigma Epsilon Queen, Diane McElrath as Sigma Tau Gamma White Rose Queen, Janie Schall and Charlene Benninghoff as varsity cheerleaders and Barbara Thompson as majorette.

*First Row:* Jeanne Distler, Jane Shaw, Barb Thompson, Cathy Caylor, Annabella Minarcin, Joan Wayne, Sandy Chapman, Diane McElrath, Jan Canterna, Karen Wolfe, Mickey McDunn. *Second Row:* Peggy Buzzard, Lucy Curcio, Dottie Mercer, Connie Mock, Brenda Zanotti, Dene Garvin. *Third Row:* Jackie Wadell, Joyce Maruski, Nancy Horlick, Donna Spinos, Louise McCullough, Maxine Szafran, Charlene Benninghoff. *Fourth Row:* Toby Kisio, Cecelia Noca, Charity Dillant, Sue Jones, Jan Spencer, Marge Mindek.





*First Row: Janet Long, Leona Bobin, Nancy Alter, Florence Eiler. Second Row: Alice Tomer, Miriam English, Wilda Faison, Sara Willoughby, Leorrane Donati.*

## Sigma Delta Phi

### OFFICERS

President  
 Vice President  
 Treasurer  
 Recording Secretary  
 Corresponding Secretary  
 Sponsors

Leona Bobin  
 Nancy Alter  
 Wilda Faison  
 Arlene Johnstone  
 Lorraine Donati  
 Dr. Helen Knuth  
 Miss Martha Stewart

Sigma Delta Phi, a local sorority is the oldest sorority on Clarion's campus. It was founded November 5, 1930. Our sisters proudly wear the white blazer with blue piping and our Greek letters on the pocket. Our quadriangular pin we wear with pride; and its guard, the torch, reflects in us the warm bond of sisterhood.

The "Sig Delts" have had a variety of activities this year starting with the Homecoming parade. Other activities were rushing parties, a Christmas party, the giving of a basket to a needy family in Clarion, our annual Cook Forest weekend, and our Mother's Day Tea.

The purpose of Sigma Delta Phi is to promote a sisterly feeling among its members. We point with pride to our loyalty to one another as sisters, to our devotions to the college, and its tradition, and to our alumnae.

*First Row:* Donna Dittman, Beverly Cassels, Rose Lamorella, Judy Hetrick, Wilda Faison, Arlene Johnstone, Leona Bobin, Nancy Alter, Lorraine Donati, Margaret Yeaney, Janet Long, Carol Fiscus. *Second Row:* Carol Helsel, Eileen Werner, Sara Willoughby, Florence Eiler, Mariam English, Garnet Lunn, Kathy Whiteshot, Alice Tommer, Anita Passener, Grace Bailey, Rosemary Milligan. *Third Row:* Susan Chappell, Dandy Melick, Carol Watson, Carol Veitch, Marge Hughey, Dorethea Dickert, Barbara McGraw. *Fourth Row:* Grace McGrath, Carol Debiak, Darlene Cowden, Carol Phillyss, Joanne Sutej, Christine Swarm, Gayle Boring.





*First Row: Diane Rich, Nina Miller, Dale Stitt, Carol Baskowski, Marilyn Follette. Second Row: Judy Elwinger, Romanie Gwilliam.*

#### OFFICERS

President	Dale Stitt
Vice President	Romanie Gwilliam
Treasurer	Carol Bastkowski
Recording Secretary	Marilyn Follette
Corresponding Secretary	Nina Miller
Keeper of the Grades	Judy Elwinger
Sponsor	Miss Margaret Wiant

The Alpha Pi Chapter of Sigma Sigma Sigma, founded in 1935, is the oldest national social sorority on the Clarion campus. The sisters of Tri Sigma strive for high scholastic attainments, high morals, and a well-rounded social life.

To attain these aims the girls in the purple and white participate in numerous activities. These include our Homecoming Tea and float, Cook Forest Weekend in the spring, charm school, hay rides, Founder's Day Banquet, bake sale, parties with our brothers, Sigma Tau Gamma, Christmas caroling and party, Mother's Day Tea, Senior Send-On, and of course our rush parties.

Because "Sigma serves children" there is a polio research hospital in North Carolina, Robbie Page Memorial Hospital, which is maintained by Tri Sigma.

Purple violets go to Dee Green, who was chosen Miss C. S. C. and Sigma Tau Gamma's White Rose Queen. Also, congratulations to Diane Rich on being Panhellenic president this year.



## Sigma Sigma Sigma



*First Row:* Judy Elwinger, Nina Miller, Carol Bastkowski, Dale Stitt, Margaret J. Wiant, Romanie Geulliam, Marilyn Follette, Diane Rich. *Second Row:* Nada Jean Yanshak, Donna Martinelli, Marilyn Rose, Maggie Demko, Joann Brian, Darlene Dingfelt, Kathleen Costlow, Janet Rishel, Diane Gallagher, Joanne Morelli, Judith McLaine, Jeanie Heinick, Cindy Johnson. *Third Row:* Marian Schmid, Joan Wesley, Karen Dygan, Jan Rettman, Delores Green, Darlene Cochran.



Dixie Lee Seabright, Lois McCracken, Carole Semmons, Toni Niro, Jo-Anne Smail.

## Zeta Tau Alpha

### OFFICERS

President	Carol Semmens
Vice President	Vivian Sneeringer
Recording Secretary	Jo-Ann Smail
Treasurer	Toni Niro
Historian	Dixie Lee Seabright
Membership	Carole Slattery
Ritual Chairman	Lois McCracken
Sponsor	Mrs. Wiberg
Patronesses	Mrs. Dana Logue
	Mrs. Martha Rieley
General Advisor	Shirley Sushereba





*Seated:* Jo-Anne Smail, Carole Slattery, Lois McCracken, Carole Semmons, Viv Sneeringer, Toni Niro, Dixie Lee Seibrigh. *Second Row:* Marlene Maruca, Ruth Watters, Alice Campbell, Pat Eakin, Joan McKinney, Martha McCullough, Lorry Kidd, Judy Popielski, Sandra Pifer, Corrine Hough, Judy Cain, Jackie Shoemaker. *Third Row:* Janice Watson, Ruth Land, Dottie Lewis, Sally Aber, Jane Andre, Nancy Coax, Connie Nicely, May Koch, Mary Stein, Mary Jane Miller, Sally Gibb, Joyce Fusca, Beverly Roe, Ginnie Burdette, Joan Pefferman, Hazel Swanson, Joanne Koch, Jean Leibler, Suzie Kunselman.

The girls you see wearing turquoise and gray are the "Zetas," members of the Zeta Tau Alpha Fraternity. As a national social sorority we had a year filled with such events as the Homecoming Tea, and our annual spring weekend at Hess farm.

This year the Zeta's were very honored at Homecoming to have Lorry Kidd as Miss Clarion County, and this year's Autumn Festival Queen. Dotty Lewis represented the senior class as homecoming attendant.

Throughout the year many Zeta's will participate in drama and music. We, Zeta Tau Alpha's, are proud to take an active part in Clarion State College functions.





Frank Miller, James Distefano, Raymond Supak, Richard Kilgore, Bill Melfi, James Mazza, Edward Killian.

## ALPHA GAMMA PHI FRATERNITY

### OFFICERS

President  
 Vice President  
 Secretary  
 Treasurer  
 Judiciarian  
 Guard  
 Chaplain  
 Advisors

Richard Kilgore  
 Ray Supak  
 Bill Melfi  
 Jim Distefano  
 Ed Killian  
 Frank Miller  
 Jim Mazza  
 Dr. Donald Peirce  
 Dr. L. D. Moody

Alpha Gamma Phi, the oldest fraternity on campus, is founded on the ideals of fellowship, scholarship, and character. Founded March 3, 1930, the Gammas have continued their tradition of being one of the school's most active organizations.

Homecoming Day this year proved to be successful for the Gammas, as their float, "St. George and the Dragon," won first prize in the parade. Other activities of the year include the rushing of underclassmen and the annual Spring Banquet.

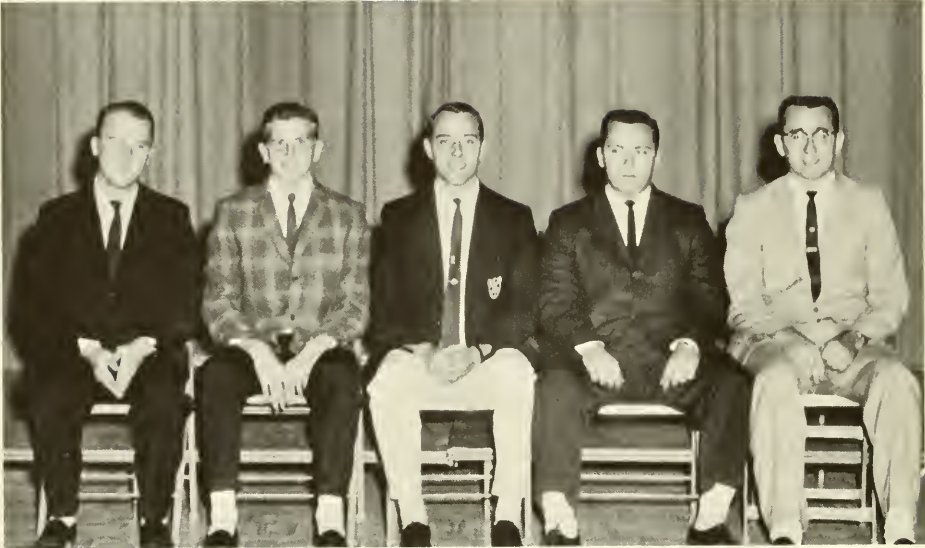
NO PICTURE AVAILABLE

John Dudo	Guy Conti	Vince Pellegrini
Ed Green	Ken Inglese	Chuch Snell
David Caslow	Pete Maleniak	Larry Zinchini
Carmen Mazza	Pete Catanese	Gary McLaughlin
Art Gallo	Joe DeFelice	Tony Condeluci
Paul Battaglia	James Morandini	Harry Hoffman
Joe Urban	Richard Pelisari	Ernie Helms
Ed Bednarczyk	Eddie Walsh	Larry Kuzma
Dick Inglese	Merle Stuchell	Dennis McNally
Ted Kurtzhals	Earle Petruce	Ron Kaulp



*First Row:* Bill McFarland, Bob Poth, Paul Siegal, Frank Bruno, Dave Selway, Bob Cloherly, Earl Boley, John Beck, Roland Dobos, Barry Mahoney. *Second Row:* Gerry Heller, Mike Eerraro, Al Silk, Bob Gray, Chuck Zerbe, John Whelan, Frank Mitold, Craig Aston, Phil

Smalley, Bob Montgomery, Phil Oratz, Alex Mernyak, Wayne Ventresca. *Third Row:* Mike Petrunak, James Wilkinson, Dick Baker, James Riley, Ken Burgen, Bob Cornalt.



Carl Hoadley, Richard Novack, Larry McElwain, Bob Ralston, Jim Dailey.

## Phi Sigma Epsilon

### OFFICERS

President  
Vice President  
Corresponding Secretary  
Recording Secretary  
Treasurer  
Sponsors

Larry McElwain  
Bob Ralston  
James Dailey  
Richard Novack  
Carl Hoadley  
Dr. Bruno  
Mr. Karl



Phi Sigma Epsilon is a national social fraternity and a member of the National Interfraternity Conference. This organization strives to promote a closer bond among male students in higher educational institutions so that they may enter into more intimate fellowship with those dedicated to education. Clarion's Phi Eta chapter was installed in January 31, 1959. First semester's social calendar included the Homecoming float "The Old Woman In the Shoe" which placed third in the parade, the election of Charlene Benninghoff as our Tea Rose Queen, and the semi-annual rush party. Our sponsors are Dr. Bruno and Mr. Karl. Highlighting the second semester were the rushing and pledging of new brothers and the Regional Conclave held at Clarion. The annual Tea Rose Dance ended a very successful year for the brothers of Phi Sigma Epsilon.

*First Row:* William Koerber, Harold Reed, Lee Chew, Carl Hoadley, Richard Novack, Larry McElwain, Robert Ralston, James Dailey, James Johnston, Larry Hazlett, *Second Row:* Dr. James Bruno, Clifford Ramsey, Wayne Vollandine, Jack Marsh, Dale Richards, Bill Tubbs, Richard Bevevino, Larry Hynes, Dave LaBorde, Tom Vizza, Mr. Karl. *Third Row:* Jim Luther, John Shofestall, Carl Pierce, Gary Clark, Richard Greco, John Mason, Carl Josephs, Terry Baughman, Ted Dorrior, David Rimer, Jack Himes.





Tom Smythe. Neil Shively. Jim Plitt, Ralph Montgomery.

## Sigma Tau Gamma

Since it was founded in 1920, Sigma Tau Gamma has as its objectives intellectual pursuit, cultural attainment, and social competency. Being primarily a social fraternity, we sponsor and participate actively in a number of social functions. In the fall we take best advantage of the weather by promoting several open-air parties. We are also active in inter-collegiate and inter-fraternity sports. With the coming of the Autumn Leaf Festival and our homecoming, we are busily engaged in parade float competition. In November we have our fall rush party and initiation of upperclassmen. Until warm weather returns, we sponsor a series of house parties. Winter finds Sigma Tau Gamma active in snow sculpturing for the Winter Capades, competition in which we took first place last year. Spring activities include Greek Night, Open House, Alumni Day, the spring rush party, initiation of freshmen, and a number of costume parties. As the high light of the spring semester, Sigma Tau Gamma holds its annual White Rose Ball.

OFFICERS

President	Jim Plitt
Vice President	Neil Shively
Secretary	Ralph Montgomery
Treasurer	Tom Smythe
Sponsors	Dr. Dana Still
	Mr. Ernest Aharrah



*First Row:* Glenn Speedy, Bob Pearson, Tom Smythe, Neil Shively, Jim Plitt, Ralph Montgomery, Thaddeus Julas, Pat Demarte, Chuck Gillette, Dick Mortimer. *Second Row:* Carl McManamy, John Donnelly, Sam Condeluci, Joe Szymkowiak, Glenn Plyler, Lou Cvetnic, Dave Lopato, Dennis Bowser, Bill Zemma, Jake Kosheba, Jerry Karpinski, Stan Slora. *Third Row:* Ed Chalot, Pat Wayland, Tony Szymkowiak, Bill Sutliff, Jess McKee, Noel Lucas, Scott Logan, Joe Burg, Len McElhose, Dick Mague, John Sarko, Oss Shirey. *Fourth Row:* Len Walkowiak, Tim Welty, Mel Tekely, Bob Avery, Al Porter, Paul Loveless, Ron Smetanick.



Dr. Donald Predmore, Thomas Murray, Todd Thompson, William Anderson, Roger Weclery,  
Richard Summerville.

## Theta Chi

### OFFICERS

President	Todd Thompson
Vice President	Robert Currie
Treasurer	Thomas Murray
Assistant Treasurer	Gary Dreihaup
Marshall	Roger Weckerly
Assistant Marshall	A. Monroe Nelson
Historian	Ronald Copenhaver
Secretary	William Anderson
Corresponding Secretary	James Baughman
First Guard	Jerry Drayer
Second Guard	Thomas Nega
Chaplain	Henry Sullivan
Librarian	Richard Harman
Sponsors	Dr. D. R. Predmore
	Mr. Richard Summerville



The men of Epsilon Xi Chapter of Theta Chi, the seventh largest national social fraternity in the United States, diligently strive to develop a high level of leadership and citizenship, to create a keen sense of responsibility, to foster high ideals, to encourage social and democratic living, to promote high standards of scholarship, to encourage high ethical and moral conduct among the brothers, and to work cooperatively and constructively with the administrative staffs of the college and community.

From the leadership workshop to all campus social and intellectual activities, the brothers manifest a dynamic spirit for achievement of the college events, thereby serving as an example to all their fellow students.

Theta Chi's festivities for the year were a Homecoming Parents' Tea, Halloween Dance, Red Carnation Dance, rush parties, pledge parties, and the regional Corral. For many years the men of the organization have been molding the lives of Clarion men.



*First Row:* William Mesol, Eddie Defilippi, William Hallman, Robert Yajko, Robert Schlemmer, Richard Harman, Gary Hunter, Jerry Drayer, James Baughman. *Second Row:* Ron Copenhaver, Jim Hutchinson, Joe Gutowski, Monroe Nelson, Ronald Gardner, Hank Sullivan, Gary Dreihaupt, Don Hurley, Sieve Tarapchak.



*First Row: Dave Simmons, Jan Van Dresar, Don Bishop, Bill Edner, Roy Buterbaugh. Second Row: J. R. Spence, Ralph Montgomery, Frank Rocco, Bill Sutliff, Phil Preston, Stan Slora.*

## Phi Sigma Pi

### OFFICERS

President	Don Bishop
Vice President	Bill Edner
Secretary	Jan Van Dresar
Treasurer	Dave Simmons
Historian	Roy Butterbaugh
Sponsors	Mr. Spence
	Dr. Peirce
	Dean Moore

Phi Sigma Pi is a professional education fraternity for men in teacher training institutions, founded upon a basis of superior scholarship and with the avowed purpose of advancing educational ideals. It exists to meet the needs of close fellowship and social intercourse among men of like ideals, interested in the same end and striving for a higher social expression. In doing this, it strives to inculcate and encourage the acquisition and dissemination of knowledge, to apply professional skill in promoting the welfare of the race, and to foster fraternal fellowship within its ranks.





# ACTIVITIES/





## Student Senate

*First Row:* Mary Jane Miller, Richard Harmon, Virginia Burdett. *Second Row:* Alice Tomer, James Plitt, Peggy Botzer.

### OFFICERS

President  
Vice President  
  
Secretary  
Sponsor

Richard Harman  
Mary Jane Miller  
Carol Strickland  
Virginia Burdett  
Dr. Rishel

The aim of the Student Senate is to represent the student body of Clarion State College in administrative matters. Its chief function is to serve these students in a number of ways. The Senate appropriates the funds of the Clarion Students' Association to the various campus organizations. Although this has been the chief function of the Senate in the past, the organization is in a process of reorganization and hopes to become a vital factor in student government. In doing this, the Senate asks for the active participation of all Clarion State College students.

# Circle "K" Club

## OFFICERS

President	Robert K. Avery
Vice President	William Mesol
Secretary	John Luskay
Assistant Secretary	David Rimer
Treasurer	Roger Davis
Sponsors	Mr. Charles G. Pearce Mr. Walter L. Hart

The Circle K Club is the most recent organization to be initiated to the roster of clubs on Clarion's campus. The Circle K was organized three years ago through close affiliation with the Kiwanis Club of Clarion. There is no doubt of the club's distinguished position on the campus which it has earnestly earned during these three years.

The club meets every Monday. Though basically a service organization, the Circle K holds many entertaining social events on campus. Entertainment included Winter Capades, Circle K Presents and several dances.

This year the Circle K has endeavored to perform many services off the campus. One of these many projects included the maintenance of the Nature Trail in Cook Forest. Also, the Circle K has ushered for several college-community affairs.

The club not only emphasizes service and entertainment for the campus, but encourages personal development of each member by promoting high standards of scholarship, ethical conduct, and campus leadership. For three years now, the Circle K has helped mold the lives of Clarion men.

Roger Davis, Bill Mesol, Bob Avery, John Luskay, Dave Rimer.





Sally Aber. Carol Baskowski. Miss Grace Pryor, and Lorry Kidd.

## Women's House Council

### OFFICERS

President	Carol Strickland
Vice President	Jeanne Gibbons
Secretary	Lorry Kidd
Members	Carol Bastkowski
	Sally Aber
Sponsor	Miss Grace Pryor

The Women's House Council is the governing body of the dormitory women at Clarion State College. It is the main purpose of this organization to make and to help enforce the rules to which dormitory women must abide. Two women from each class are chosen to represent their class on the council. As advisor, Miss Pryor guides and directs the group activities.

The Women's House Council takes an active part in the planning and carrying out of the freshmen orientation program. The Council also sponsors a Big-Sister-Little Sister Tea and an annual Christmas Party.



# Men's House Council

## OFFICERS

President  
Secretary

John Luskay  
Edward Parry

The Men's House council is the governing body of Ballentine Hall. It consists of two elected representatives from each floor and the four dormitory proctors.

The purposes of the Men's House Council are to make Ballentine Hall a better place in which to live and work and to promote dormitory leadership. The Men's House Council meets regularly to consider ways and means of achieving these goals. Also, the men's house council sponsors various parties and activities throughout the year.

Serving on the House Council this year are Harry Miller, Richard Fair, William Skidmore, Larry Whipkey, John Luskay, Rudy Vantresca, Edward Parry, Charles Maxwell, William Dummer, and Frank Rocco.



*First Row:* Harry Miller, Edward Parry, John Luskay, Frank Rocco, Larry Whipkey. *Second Row:* Charles Maxwell, Bill Dummer, Bill Skidmore, Dick Fair.



*First Row:* Adolph Poli, Grace Cederquist, Ruth Ann Land, John McGee. *Second Row:* Vic Quinio, Rick Reefer, Lana Carpenter, Linda Culver, Bonnie Buljat, Nancy Sailor, Shirley Badger, John Bielick, Arthur Franks. *Third Row:* Gary Rudolph, Joe Swab, Barry Mahney, Larry Ashbaugh, William Skidmore, Ben Schwabenbauer, Ralph Montgomery. *Fourth Row:* Jim Distefano, Jim Laughlin, Dave Deffenbaugh, Mike Ladley, Phil Orosz, Bill Monzo.

## International Relations Club

### OFFICERS

President  
 Vice President  
 Treasurer  
 Secretary  
 Sponsors

Adolph T. Poli  
 Ruth Ann Land  
 John McGree  
 Grace F. Cederquist  
 Dr. Knuth, Dr. Wilhelm  
 Mr. Duffy, Mr. Kaucki

The main objective of the International Relations Club is to stimulate and intensify the interest of all students in the scientific and unbiased study of world society and its problems. Political, social, and economic questions are discussed openly and freely. These educational and cultural aims are accomplished through club programs, panel discussions and lectures. Under the direction of Dr. King, two trips, open to all Clarion students, are planned each year. There is the November Trip to Washington, D. C. and the April Trip to New York City.

# The Association For Childhood Education International

## OFFICERS

President  
Secretary  
Advisor

Joan Reed  
Beverly Baer  
John Moorhouse

The Association for Childhood Education International, works for the education and well-being of children, promotes desirable practices in the elementary schools, and shows the public how the school program must be adjusted to fit the needs of children.

A.C.E.I. had a worthwhile and profitable year under the assistance and guidance of our sponsor, Dr. Penny.

*First Row:* Beverly Baer, John Moorhouse, Joan Reed. *Second Row:* Ruth Waters, Celeste Schrenkel. *Third Row:* Larry Malacarne, Jim Hecker, John McGee, Adolph Poli, Rick Reefer, Ken Rigby.





*First Row:* Rose Lamorella, Bob Gillingham, Adolph Poli, James Moore, Diane Hereda. *Second Row:* Sara Luczka, Barb Milliron, Maxine Goodrich, Joan Reed, Jane Bright, Georgianna Branton, Merrily Hurley, Gloria Ravera, Eileen Wagner, Judy Gamble, Rita Poperak. *Third Row:* Charles Cooper, Dorothy Pavlock, Nancy Sailor, Marsha Mills, Linda Culver, Patty Alvia, Bonnie Buljat, Kathy Whiteshot, Patty Melolick, Judie Disanti, Linda Luca, Ralph Montgomery. *Fourth Row:* Gerry Kamer, Vic Quinio, Barry Mohney, Rick Reefer, Lee Chew, Jim Fryer, Louis Hribik, Jim Luther, Tim Erhard, Gene Valko, Len Dombroski.

## Student P. S. E. A.

### OFFICERS

President	Adolph Poli
Vice President	James Moore
Secretary	Diane Hereda
Treasurer	Bob Gillingham
Membership Chairman	Rose Marie Lamorella
Sponsor	Dr. Robert Smail
	Dr. William Page

The student Pennsylvania State Education Association seeks to develop and cultivate such desirable professional qualities as leadership, character, and scholarship among prospective teachers engaged in their pre-service preparatory work. Its purpose is to afford its members a thorough knowledge of the teaching profession.

This year we are the largest organization on campus with a membership of over five hundred.

## Bios Club

The Bios Club's aim is that of affording the student a broader perspective in the field of Biological Science.

Programs for the monthly meetings range from the practical phase to the technological phases of new developments and research. Speakers for these programs are obtained from other colleges, high schools, communities, and our own Biology faculty.

This year the Bios Club is initiating an annual spring field trip in addition to its regular meetings.

*First Row:* Linda Carnahan, Toby Kisio, Pat Cyphert, Alice Tomer. *Second Row:* Wayne Crosby, Roy Buterbaugh, Larry Geraci, Alfonso DeCapite.





*First Row:* Carol Chiricuzio, Eileen Bleil, Paul Schick, Father David Moynihan, Andy Danko, Pat Black, Donna Spinos. *Second Row:* Jake Kosheba, Nancy Sailor, Sara Willoughby, Joanne O'Leary, Jackie Shoemaker, Donna Martinelli, Sandra Querio, Diane Leonard, Joanne Sutej, Maxine Cutler, Joann Brian, Ed Bednarczyk. *Third Row:* Vic Quinio, Adolph Poli, Tony Szymkowiak, Gene Valko, Ron Brozovich, Len Dombroski, Gerry Kamer, Bob Yajko, Louis Hribik, Jim Luther.

## Newman Club

### OFFICERS

President	Paul Shick
First Vice President	Andy Danko
Second Vice President	Patricia Black
Recording Secretary	Eileen Bleil
Corresponding Secretary	Donna Spinos
Treasurer	Carol Chiricuzio
Sponsors	Dr. A. Bernard
	Mary Kay Banner
Chaplain	Father David Moynihan

## Newman Club

The Newman Club was established at Clarion State College for the purpose of enlightening the minds of the Catholic students on a secular campus. The spiritual and social growth of all Catholics is increased through the various club activities.

Initiation of new members, in conjunction with the Halloween dance and social, was held on October 25.

Panel and group discussions, out-of-town speakers, lectures by the Chaplain, and motion pictures provide the programs for the regular Wednesday night meetings.

Other activities in which we participate during the course of the year are the Annual Communion Breakfast, Christmas caroling and the erecting of the Nativity scene, a choir, intramural sports and the observance of Cardinal Newman Day.

*First Row:* Jane Bright, Kathy Bebgel, Judy Olivio, Pat Tamiggi. *Second Row:* Frances Molsky, Judy Disanti, Phyllis Slater, Patty Aloiw, Karen Roll, Patty Meholic, Virginia Lashinsky. *Third Row:* Barry Newill, Mike Botti, Judy Gamble, Ed Witek, Peggy Hartman, Peggy Dabelko, Larry Malacarne, Ben Schwabenbauer.





*First Row:* Rick Reefer, Linda Addis, Janet Susa, Gloria Ellberg, John Luskay, Esther Behrens, Arnold Rhodes, Gayle Boring, Wayne Crosby, Janet Rabold, Bill Espey, Beverly Apple. *Second Row:* Nancy Bellian, Amy Riddell, Dayle Stang, Barbara Hantey, Judy Coble, Dana Zook, Joanne McKelvey, Jerrie Richey, Judy Hewitt, Linda Bigley, Lenore Hewwy, Bernadine Wilk, Deanne Rowland. *Third Row:* Lynne Bowman, Jan Llynn, Joyce Jackson, Nancy Schneider, Sandy Wootten, Joyce Brown, Jean McConnell, Mandy Woomer, Linda Craig, Dianne Martinko, Sally Miller, Diane Paulos, Lana Carpenter, Sara Luczka. *Fourth Row:* Jane Claypool, Caroly Pugh, Janet Rarick, Janice Rugh, Sharen Rees, Eloise Hanby, Sue Kradel, Bonnie McIlvaine, Nell Bailey. *Fifth Row:* Victor Beck, Dennis Kanouff, Bob Olivett.

## Student Christian Association

### OFFICERS

President  
 Vice President  
 Secretary  
 Corresponding Secretary  
 Treasurer  
 Sponsors

Arnold Rhodes  
 John Luskay  
 Esther Behrens  
 Gayle Boring  
 Wayne Crosby  
 Mr. Caldwell  
 Dr. Wilhelm



S. C. A., a non-denominational Christian organization, has made its goal that of reaching all students on campus and encouraging Christian fellowship.

The activities of S.C.A. have been numerous and varied. The first group affair was the Homecoming float. Its success was largely due to the enthusiasm of new members. On October 27, a hayride was held, and on November 3-5 representatives attended the Seneca Hills Conference sponsored by Inter-Varsity Christian Fellowship. In addition, weekly meetings have consisted of guest speakers, hymn sings, films, panel discussions and special worship services on holidays.

The Ministerial Association of Clarion has provided a chaplain each month to assist with the devotional guidance of the members.

*First Row:* Barbara Gerard, Carol Brown, Margaret Yeaney, Georgianna Branton, Leona Smith, Carolyn Shakley, Nancy Flick, Linda Carnahan, Shirley Badger, Florence Eiler. *Second Row:* Judy McKillip, Darlene Cowden, Dorothea Dickert, Liz Hill, Kathleen Cravener, Karen Johnson, Grace McGrath, Carol Ogg, Marge Hughey, Anita Passenger, Hazel Morgan, Grace Morton. *Third Row:* Carol Watson, Jean Carlson, Kathie Broadhurst, Doug Dickey, Jim Fryer, Dave Miller, Cleff Ramsey, Miriam English, Carol Keltz, Isabelle Magness.



# SEQUELLE STAFF



Richard Kilgore, Editor



Dottie Lewis, Literary Editor



Joyce Fusca, Co-Editor

## STAFF

Dick Kilgore	Editor
Joyce Fusca	Co-Editor
Dottie Lewis	Literary Editor
Barbara Keeney	Assistant Literary Editor
John Sarko	Sports Editor
Allen Richards	Assistant Sports Editor
Typists	Judie Good, Louise McCoullough,
	Carol Ogg, Bob Quigley
Advisors	Mr. Charles Pierce,
	Mr. James Shofestall, Mr. William Karl
Photographer	Dr. George Lewis



Barbara Keeney



Allen Richards

With a new publishing company, a new staff, and new ideas, the 1961-62 *Sequelle* staff began the chore of putting the Clarion yearbook. Many long nights were spent in laying out the future yearbook. Then came the nights of taking pictures, after a few schedulings. Finally, the yearbook began to take shape . . . the night before the first deadline. Much time was spent on the dummy, arranging of pictures, and the division pages, but finally in March the finished product was sent in.

We hope that the 1962 *Sequelle* is one you will remember for a long time as being a unique and representative depiction of the days at Clarion.

# THETA XI ALPHA FRATERNITY



The members of Theta Xi Alpha Fraternity.



The spring pledges of Theta Xi Alpha.

## DEBATE TEAM



Under the advising of Glenn B. Phipps, a debate team has been newly organized on Clarion State's campus. Due to the team's late organization, little can be explained about it, other than they are looking forward to their forthcoming debates this year and in the following years.

# ***MUSIC***





# DRAMA

---

## COLLEGE PLAYERS



*First Row:* Georgianna Branton, Treasurer; Joseph Swab, President; Eileen Mangini, Secretary. *Second Row:* Charles Belavic, Rosemary Milligan, Toby Kisio, Marilyn Ivill, Grace Morton, Kathy Tustin, Signora Hall, Joyce Holley, Cathy Jones, Sue Hartz, Merrily Hurley, Tony Szymkowiak. *Third Row:* Frank Buffington, Rita Doperak, Joan McKelvey, Jane Bright, Lana Carpenter, Darlene Kovach, Mary Ann Gallmeyer, Carol McDonald, Ruth Ann Land, Liz Sibley, Rose Marie Lamorella,

David Crawford. *Fourth Row:* Harold Pletcher, Judy Rodgers, Karen Johnson, Gwynn Frey, Clieste Cruse, Tom George, Mary Jones, Charles Cooper, Doris Cooper, Stacy Rousseau, Andy Symionof, Ronna Cusato, Eileen Wagner. *Fifth Row:* Marian Ochka, Melva Zatezalo, Carol Pierotti, Nancy Hughan. *Sixth Row:* Barbara Keeney, Joann Hrivnak, Kathie Broadhurst, Gene Valko, Bob Avery, Diane Leonard, Joyce McKee, B. J. Richardson.



## COLLEGE PLAYERS

President	Robert Avery
Vice President	Frank Buffington
Secretary	Georgianna Branton
Treasurer	Eileen Mangini
Property Manager	Mary Ann Kanaly
Historian	Carol Boris
Sponsor	Mr. Copeland

The aims of College Players is to stimulate dramatic and production talents through experience on stage, back stage, and out front; to broaden the cultural background and appreciation in our fellow students; and to provide that satisfaction, experience, and enjoyment that comes from participation in good theater.

Activities for the past year included four productions; "Charley's Aunt", "Macbeth", "Teahouse of the August Moon", and "Dream Girl". There was also the Ritual of Initiation last spring for new members with awards presented to outstanding students of the combined play productions.



Scene from "The Crucible."



## A CAPPELLA CHOIR

Conductor: William M. McDonald

The Clarion State College A Cappella Choir has completed a year of musical activity. The full choir numbers 70 voices and rehearses three evenings a week. About 20 voices from the choir formed the choral group which produced Stephen Vincent Benet's "John Brown's Body", a salute to the Civil War Centennial, and "Amahl and the Night Visitors." Both productions were in conjunction with the drama department. The busiest time of the year, spring, found the choir on its annual tour of area churches and high schools. In addition to the

large choir, twelve selected voices comprise a recently-formed ensemble, the Madrigal Singers, who had the honor of participating in the inaugural program of Dr. James Gemmell and furnishing the entertainment for the recognition dinner for Grace Sloan, newly-elected State Treasurer. Both of these programs took place in the spring of 1961.

Looking into the future, the music department plans to present at least one musical production each year. This production will be an all-college endeavor.



Scene from "Amahl And The Night Visitors."



*First Row:* Gladene John, Barbara Hankey, Linda Thomas, Beverly Beers, Kory Cramer, Linda Hoyt, Carol Messick, Joyce Walter, Janet Wyliáz, Carolyn Pugh, Linda Addis. *Second Row:* Linda Craig, Lee Tomkins, Sally Miller, Dorthea Dickert, Patricia Black, Joanne McKelvey, Carol Haag, Florence Eiler.

*Third Row:* Mervin Yeaney, Lana Carpenter, Pat Patch, Eloise Hanley, Joyce Grimes, Louis Rich, Bob Wood. *Fourth Row:* Martin Prytherch, Tom George, Jim Duffy, Ron Copenharur, Dan Miller. *Fifth Row:* David Knepper, Terry McCoy, Arnold Rhodes, Michael Ladley, Ben Schwabenbauer.

## COLLEGE CHOIR

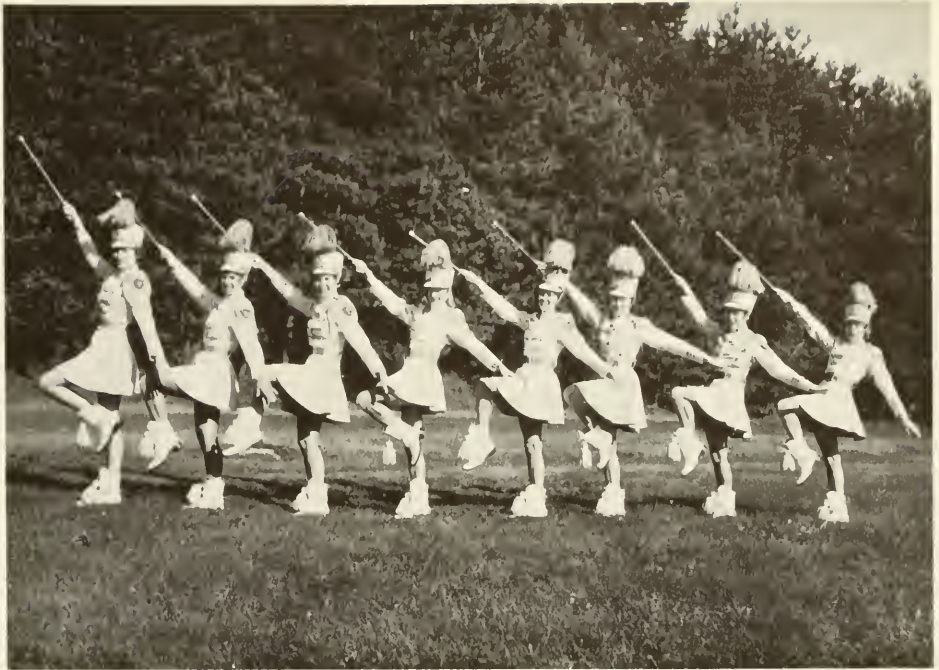
President  
 Vice President  
 Secretary-Treasurer  
 Sponsors

Rick Reffer  
 Jack McGee  
 Bloise Hanby  
 Mr. Roncone

The purpose of the College Choir is to provide broad vocal ensemble experiences for the students of Clarion State College. Participation in actual music-making is a type of training and a form of intellectual, esthetic, and spiritual development which contributes vitally to the purpose for which the school stands.

Membership is open to all on campus through audition.

# MAJORETTES



Diane Hereda, Cathy Caylor, Peggy Dabelko, Dixie Lee Seabright, Barb Thompson, Ginnie Collette, Joyce Hindehiter, Marilyn Maier.

During the first few weeks of the fall semester, eight Clarion State College students were selected for the Majorette Corps of the Marching Band. These girls performed twirling, marching, and dance routines at all home football games and parades. One of their outstanding performances, fire baton twirling by all eight members, was held for the Queen on Homecoming Day.

Dixie Lee Seabright and Barbara Thompson shared honors in captaining this group.





## CONCERT BAND

President  
Vice President  
Secretary  
Treasurer

Monroe Nelson  
William Anderson  
Sandy Pifer  
Donna Spinos

The Clarion State College Concert Band, under the direction of Mr. Stanley F. Michalski, Jr., is a select group of seventy musicians.

The Concert Band played several concerts of marches, overtures, and music from Broadway shows for the student body at various college functions and gave the annual Mother's Day Outdoor Concert at Harvey Stadium in the spring. The Band also performed at many high schools in its tours through Elk County and the Pittsburgh area.

A highlight of the Band's Concert season was the guest appearance of a famous trumpet soloist, Rafael Mendez. Mr. Mendez is a world-renowned performer and exhibited his talents at a concert played by the Concert Band in which he acted as soloist.

# COLLEGE MARCHING BAND

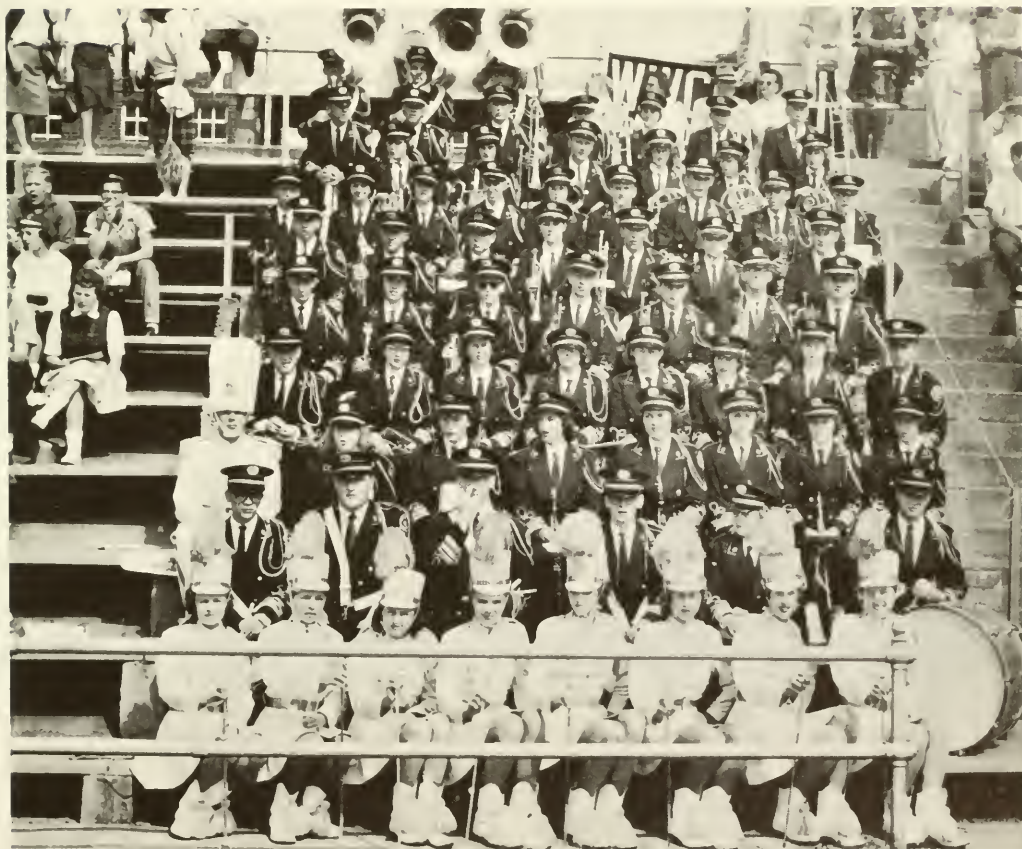
President  
Vice President  
Secretary  
Treasurer

Monroe Nelson  
William Anderson  
Sandy Pifer  
Donna Spinis

A sixty-five piece unit, under the direction of Mr. Stanley F. Michalski, Jr., comprised the College Marching Band this past fall. The Band performed at all home football games, at various college functions, and appeared in many community affairs. One of the important community appearances was leading the Autumn Leaf Festival Parade.

In their routines, the Marching Band introduced new ideas of marching and playing. One innovation was the new style of half-time performances at football games. This style which was used for the entire football season consisted of one main theme for each show. All music, narrations, and formations, which were all arranged by Mr. Michalski, were established around this theme.

Bob Avery served as the Drum Major of the Marching Band. Although this was his first year of captaining the College Band, he did a remarkable job.





## DANCE BAND

The Clarion State College Dance Band is a highly select group of fifteen players. The first activity of the year in which the Dance Band participated was providing dance music for the Homecoming Dance. Among other college social functions and community affairs throughout the year, these fifteen players performed numerous times. In addition, they also played for many high school proms in the area.





The Dance Band Swings it out!



Scene from "Amahl."

Scene from "The Crucible."





Theresa in action.

Dr. Moses on stage.

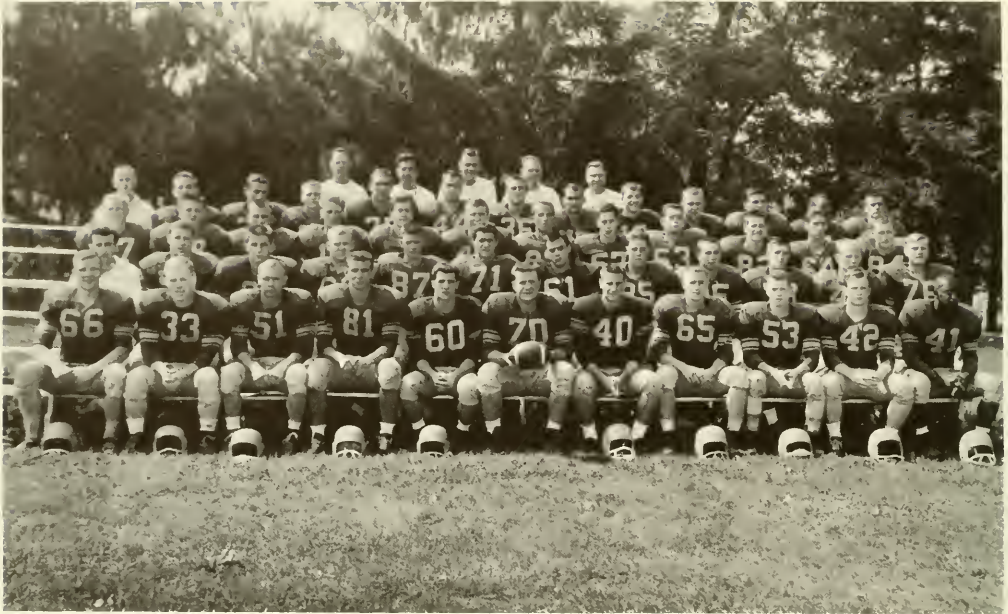






# ~~SPORTS~~

# Football



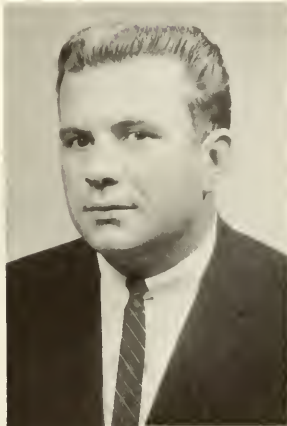
*First Row:* Ritzina, L. D. Schrecengost, L. B. Schrecengost, Loya, Boley, Cloherty, Condelucci, Smoker, R. Ventresca, Widmar, Jackson. *Second Row:* Melfi, Mgr.; Stiffler, Leshock, Lebda, Wentzel, Murnjack, Ferraro, McNally, Urban, Junbercotta, Predjana, Waitleverich. *Third Row:* Hill, Thompson,

Sedarich, Hancherich, Hall, Vistein, Washburn, Mitchum, Burg, Porter, DeRubis, Murphy. *Fourth Row:* Miller, Mgr., Rokita, Kelley, Callen, Helter, G. White, D. White, Majersky, LeFevre, Love, Malobicky, Hutcherson, Staley. *Fifth Row:* Coaches, J. Knowles, F. Lignelli, A. Corry, E. Johnson, J. Joy.

## FOOTBALL SCORES

	<i>Opponent</i>	<i>Clarion</i>
Indiana	6	17
Shippensburg	26	28
Edinboro	0	2
West Chester	51	20
Slippery Rock	20	13
Lock Haven	7	17
California	14	14
Grove City	0	20

# Senior Players



# Basketball



Coach Joy, C. Snell, E. Green, J. Duda, B. Quilkey, G. Rocco, J. Himes, D. Schuster, B. Cornali, B. Williams, T. Thompson, B. Leechmen, F. Wasylink.



CSC	SCORES	OPP.
82	California	70
59	Slippery Rock	69
65	Edinboro	60
65	Alliance	107
72	Grove City	77
102	Indiana	86
62	Lock Haven	66
76	Malone	61
62	Indiana	90
97	Fenn	86
68	Slippery Rock	86
73	Alliance	92
62	Edinboro	67
86	California	64
61	Grove City	90
80	Lock Haven	72
63	Malone	74
75	St. Vincent	57



# Wrestling



First Row: Ron Clayton, D. Caslow, R. Baker, J. Wilkinson, M. Stuchell, F. Srundles, P. Gereluk, E. Petrucci. Second Row: L. Chew, M. Ruley, B. Downs, P. Battaglia, W. Vollandine, V. Miller, J. Platt, A. Murnyak. Third Row: Mr. Legnelli, J. Bulick, K. Jones, R. McIntyre, E. Chalot.



## SCORES

CSC		OPP.
27	St. Vincent	3
17	Indiana	9
19	Grove City	11
17	Slippery Rock	13
18	Indiana	14
18	Edinboro	10
13	California	14
21	Grove City	11
13	Slippery Rock	18
	Won 8—Lost 2	

Congratulations are in order for our wrestling teams for their winning the Western Pennsylvania State College Tournament.



# Rifle Club



First Row: G. Ober, D. Mensel, C. Gibson, B. Kisy, J. Ellis, B. Breakey, R. Flack. Second Row: M. Maloney, D. Selway, J. Kiser, E. Attemus, B. Clevon, L. Blose, T. Conner. Third Row: J. Blake, V. Miller, J. Foster, S. Zogas.



SCORES		OPP.
CSC		
1261	Grove City	1393
1294	Allegheny	1332
1279	Indiana	1412
1320	Geneva	1354
1333	California	1305
1319	Geneva	1381
1325	Alliance	1242
1295	Indiana	1420
1324	Grove City	1377
1314	Alliance	1333
1287	Allegheny	1361
1283	California	1337

# Golf



J. Rydeski, B. Pearson, D. Gaiser, B. Lechman.

## SCORES

CSC		OPP.
0	Grove City	6
15	Slippery Rock	3
15½	Edinboro	2½
12	Indiana	3
	Alliance (Rain)	
12	California	3
9½	Indiana	5½
4	Youngstown	16
11	Edinboro	4
14	Alliance	1
15	Lock Haven	0
	Won 8—Lost 2	

Coach: W. S. Tippin

The Golf team is to be congratulated in their placing second in the State College Tournament at Caledonia Golf Course.

# Tennis



*First Row: J. Demarte, S. Babish, F. Shimp, G. Wagner. Second Row: Dr. Whilm, B. Jones, L. Geraci, Mr. Carnahan.*

CSC	SCORES	OPP.
	Grove City (Rain)	
0	Slippery Rock	9
4	Alliance	3
5	Alliance	2
0	Edinboro	9
	Edinboro (Rain)	
3	Indiana	6
3	Indiana	6
	Won 2—Lost 4	
	Coach: T. A. Carnahan	

# Baseball



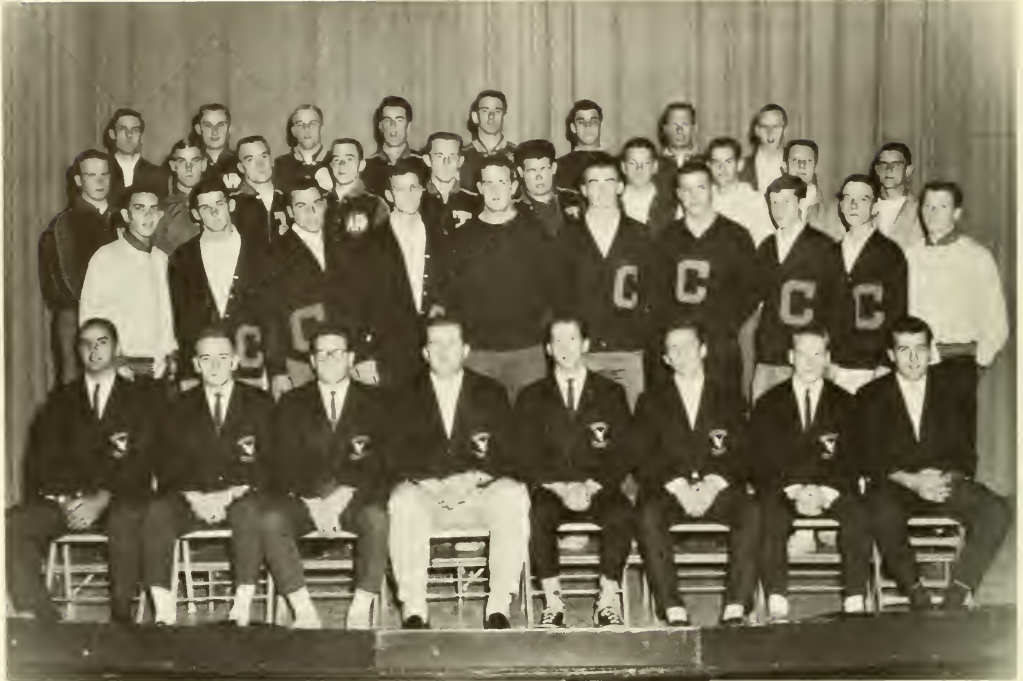
## SCORES

CSC		OPP.
10	Lock Haven	13*
5	Grove City	4
3	Youngstown	10
8	Youngstown	1
	St. Vincent (Rain)	
0	University of Pgh.	1
7	Indiana	10*
3	Alliance	10
8	Slippery Rock	7*
5	Slippery Rock	12*

Won 3—Lost 6

Coach: E. W. Johnson

# Varsity C



*First Row:* C. McManamy, S. Logan, S. Condeluci, R. Cloherty, M. Stuchell, D. Caslow, L. Chew, B. Melfi. *Second Row:* E. Bednarzyk, J. Wilkinson, M. Ferraro, D. Baker, D. McNally, B. Kiser, P. Gereluk, J. Ellis, C. Gibson, R. Ventresca. *Third*

*Row:* E. Widmar, H. Miller, G. Conti, B. Smoker, C. Zerbe, E. Petrucci, D. Dickey, D. Uberti, J. Blake, L. Staley. *Fourth Row:* J. Fedorko, A. Adamchik, E. Chalot, G. McLaughlin, J. Loya, A. Murnyack, L. B. Schrecengost, R. Miller.

## OFFICERS

President  
 Vice President  
 Treasurer  
 Secretary

Don Roberts  
 Merle Stuchell  
 David Caslow  
 Carl McManamy

# CLARION



## Cheerleaders



Patty Zimmerel, Jane Schall,  
Charline Benninghoff, Jean  
Heinick, Jan Watson.

Andrea Lancy, Kathy Benish,  
Sandra Spencer, Lorna Palmer.





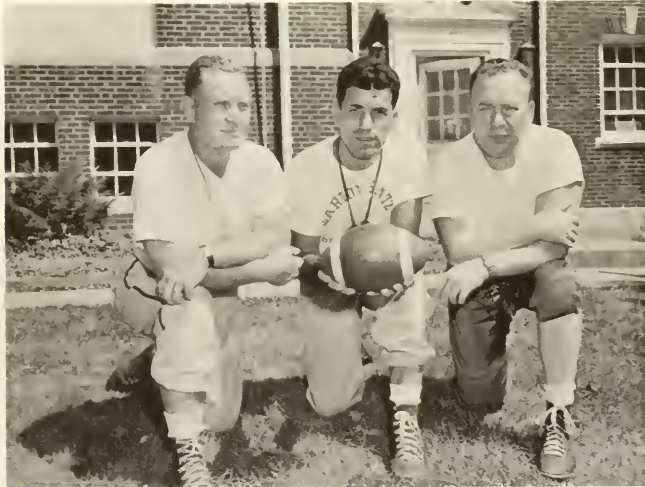
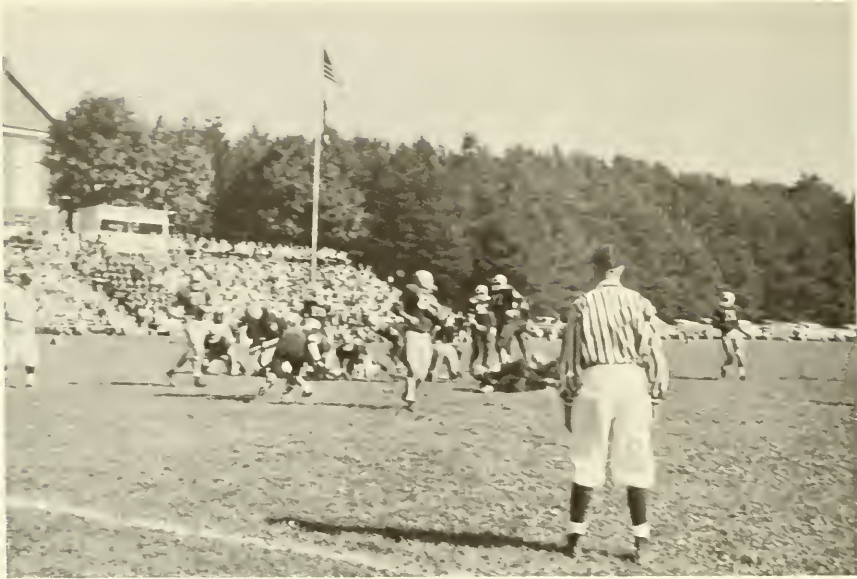
# Women's Athletic Association



## OFFICERS

President	Sandra Pifer
Secretary-Treasurer	Patricia Barnhart
Manager	Gail Jandrew
Assistant Manager	Joyce Fusca
Sponsors	Mrs. Betty Simpson
	Miss Gloria Yough

The basic aim of the Women's Athletic Association is to provide college woman with a sport's activity. Although most of our sports are competitive, we play just for fun. During the academic year, we have soft-ball, volley-ball, basketball, and ping-pong. For each of these sports, there is a possible 10 points given. After a girl receives 25 points, she is a member of W. A. A. Upon reaching 50 points, she is awarded a W. A. A. Pin; 100 points, entitles her to be awarded the W. A. A. jacket. It is also possible to accumulate points through the year by time-keeping, scoring, and referecing for basketball.





# VENANGO CAMPUS

SEPTEMBER



## DR. RUSSELL L. V. MORGAN

Students of Venango Campus:

All of us have had an unusual opportunity and an experience that will long be remembered—having been the “pioneering group” to open and to operate for its initial year the first Community College under the auspices of a state college in the Commonwealth of Pennsylvania. It has certainly been my pleasure to work with you in this new venture. You have been most cooperative and most pleasant in all of our mutual undertakings.

Venango Campus, I most certainly hope, has been truly “an open door to your future,” for through our planned experience we have tried to give purposeful direction to your maturing personalities. This is especially important in today’s complex and turbulent world, where values seem, at times, to shift and where oftentimes traditional concepts appear disturbed. In your first year of college education in both the professional program and the liberal arts program, Venango Campus has attempted to assist you to discover worthy goals and to develop critically and thoughtfully those ideals and attitudes which will maintain an equilibrium for you and be lifelong in nature. Your adjustment and adaptability will determine how much of this objective you have absorbed.



## JANUARY



## FACULTY



*Seated:* Miss Rupert, Mrs. Donachy, Miss Sumner. *Standing:* Dr. Morgan, Mr. Dennis, Mr. Wollaston, Mr. Shea. *Absent:* Mr. Cakes, Mr. Ritchie.

## STUDENT SENATE



*Seated:* Mary Helen Miller, Judy Blum, Betty Rae Wilson. *Standing:* Dave Krug, Walt Moran, Bill Brady, Jack Hackett. *Absent:* Ed VanAllen.



Dick Adams  
Ron Ames

Sylvia Anderton  
Ed Atts



Nancy Bark  
Barton Barnes

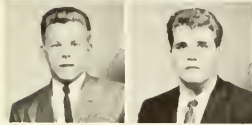
Kay Bechtel  
Bill Beightol



Judy Blum  
Eric Blumenstaadt

V.

Gale Boocks  
Clay Bouquin



Bill Brady  
Frank Brown

Jim Brown  
Mike Brown



Ron Burleigh  
Howard Campagna

C.

Marilyn Campbell  
Rosilyn Campbell



Patty Carrara



Roy Crouser

# FROSH

Art Cubbon  
Harry Curran



Jane Davenport

Donna Donahue  
Pat Dowling



Wanda DuPont

Bill Edwards  
Anthony Emanuele



Don Eppinger

Ken Etzel  
Jayne Fischer



Fran Fry

Frank Fultz  
Nancy Garmong



Ron Gealy



Jim Gilbert  
 Frank Gladowski  
 Jim Griffin  
 Sharon Grove

Jack Hackett  
 Sharon Hanton  
 Chuck Hoffman  
 Paul Hogue

Barb Hollenbeck  
 Mina Hyde  
 Barb Karns  
 Linda Kean

Sally Kinnear  
 Diane Kiser  
 John Kleck  
 Fred Kluck

Dave Krug  
 Steve Lilly  
 Bob Loveless  
 Jean Lowry

## FRESHMAN OF

Bill Maher  
 Linda Marshall  
 Joan McClelland  
 Cheryl McDowell

Dennis McFall  
 Paul McWilliams  
 Jack Miller  
 Mary Miller

Chuck Minnick  
 Walt Moran  
 Martha Newson  
 Dave Nichol

Ed O'Hare  
 Jacoba Olmes  
 Will O'Neil  
 Kay Orsega

Bob Parlaman  
 Dick Patterson  
 Paul Peterson  
 Dave Philips





Evaline Prather  
Loren Prichard  
Jennie Ranger  
Cecil Rankin



Don Rauschenberg  
Patti Rauschenberg  
Chuch Rea  
Marcia Reagle



Jim Riddle  
Jean Rumbaugh  
Pat Sarappo  
Bonnie Schantz



Lois Scouton  
Sara Shafer  
Dick Shaner  
Don Shreve



Dick Sims  
Martha Singleton  
Violetta Slye  
Ed Snyder



## VENANGO CAMPUS



Shirley Snyder  
Pat Spangler  
Elaine Speece  
Vince Straub



Tom Tansey  
Pat Tarr  
Jack Taylor  
Gary Tock



Florence Calastiak  
Ed Van Allen  
Bev Wahlin  
Diane Watson



Vern Weaver  
Larry Weldon  
Carol Wescoat  
Jack Williams



Linda Wilt  
Dan Winger  
John Yarger  
Judy Zuck

## COMMITTEES



STUDENT ORGANIZATION—*Seated:* Kay Orsega, Mr. Shea, Nancy Garmong. *Standing:* Don Eppinger, Jack Hackett, Jack Taylor, Denny McFall.



CULTURAL COMMITTEE—*Seated:* Jenny Lee Ranger, Jayne Fischer, Sylvia Anderton. *Standing:* Gale Books, Bev Wahlin, Bill Brady, Mr. Dennis.



SOCIAL COMMITTEE—*Seated:* Carol Wescoat, Bonnie Schantz, Minda Hyde. *Standing:* Dave Grug, Vince Straub, Jack Williams.



PUBLICITY COMMITTEE—*Seated:* Linda Marshall, Betty Rae Wilson, Patti Rauschenberg. *Standing:* Will O'Neil, Gary Tock.



WOMEN'S ATHLETIC COMMITTEE—*Seated:* Kay Bechtel, Jane Davenport. *Standing:* Marty Newson, Judy Blum, Cheryl McDowell.



MEN'S ATHLETIC COMMITTEE—Art Broge, Chuck Minnick.



BETTER LATE THAN NEVER—Ed Cavanaugh, Art Broge, Ruth Ann Hover, Tom Lamberton, Betty Rae Wilson, Chris Heydrick.

We, of the Publicity Committee at Venango Campus, extend our appreciation to the Oil City Derrick and Ed's Camera Shop of Franklin for their help in making our part of this yearbook possible.



The Gemmells talk with Vincent Price.

Vincent Price charms the group.





"He shook my hand!"

"Yes, but you should have seen him smile at me!"





Bob Avery, president of Circle K, crowns Jane Andre as queen of the Winter Capades.

Joanne Schnitski, Faye Answine, Jane Andre, Janet Wytez, and Donna Crawford.



## WINTER CAPADES QUEEN



Smiling Jane and her escort, Roe Nelson.

# FACULTY DIRECTORY

- DANIEL G. BARDARIK, *Biological Science*, University of Pittsburgh, B.S., M.S., Ph.D.
- FRANCIS BAPTIST, *Art*, Wisconsin State College, B.S., State University of Iowa, M.F.A., Graduate Study, Pennsylvania State University.
- HELEN M. BECKER, *Elementary Education*, Graduate, Clarion State Normal School, University of Pittsburgh, B.S., Columbia University, M.S.
- STANLEY A. BELFORE, *Biological Science*, Indiana State College, B.S., University of Pittsburgh, M.S.
- MARY M. BUTLER, *Library Science*, University of Pittsburgh, A.B., Carnegie Institute of Technology, M.L.S., Graduate Study, Columbia University.
- ALPHA E. BERNARD, Ed.D., *Head of Elementary Education Department*, Northern Michigan College of Education, B.S., Graduate Work, University of Michigan, Indiana University, M.S. in Ed., Ed.D.
- JAMES B. BRUNO, *Music*, Indiana State College, B.S., New York University, M.A., Columbia University, M.A., in Administration and Supervision, Cincinnati Conservatory of Music, Julliard School of Music, New York University, Ed.D.
- CARL E. CALDWELL, *English*, Hobart College, A.B., Middlebury College, M.A., Additional Graduate Work, McGill University, The Sorbonne, Middlebury College, University of Rochester.
- FRANK M. CAMPBELL, *Spanish, Social Studies, Assistant Dean of Men*, Grove City College, B.S., Pennsylvania State University, M.A.
- RENA M. CARLSON, *Head Librarian*, Greenville College, A.B., Carnegie Institute of Technology, B.S., Graduate Work at University of Southern California, University of Michigan, M.A.
- MARTHA CARNAHAN, *Library Science*, Goucher College, A.B.
- THOMAS A. CARNAHAN, *Mathematics, Safety Education*, Grove City College, B.S., Additional Graduate Work at University of Southern California, University of Pittsburgh.
- BOB H. COPELAND, University of Wichita, B.A., M.A., Additional Graduate Work at University of Denver, University of Mexico City, Directors Studio of New York City.
- HARRY A. DENNIS, *Mathematics*, University of Missouri, B.S. in Ed., University of Denver, M.A.
- BRUCE H. DINSMORE, *Biological Science*, Indiana State College, B.S., Columbia University, M.A., University of Pittsburgh, M.S., Ph.D.
- JAMES A. DONACHY, *Biological Science*, Clarion State College, B.S., University of Ohio, M.S.
- EDWARD G. DUFFY, *Social Studies*, Pennsylvania State University, B.A., M.A.
- CHARLES FLACK, *Library Science*, University of Alberta, B.A., University of Illinois, B.L.S., M.A.
- HENRY GISKIN, *Speech, English*, Central Connecticut State Teachers College, B.A.; Columbia Teachers College, M.A.; Graduate Work at Yale School of Drama.
- S. ROBERT GREENBURG, *English*, University of Connecticut, B.A.; Michigan State University, M.A.; Additional study, University of Vienna.
- EDWARD S. GREJDA, *English*, Clarion State College, B.A.; University of Pittsburgh, M.L.; Additional Graduate Work, University of Pittsburgh.
- WALTER L. HART, *Director of Admissions*, Grove City College, B.M.; Institute of Technology, M. of F.A.; Additional Graduate Work, St. Bonaventure College, University of Pittsburgh, New York University.
- NORMAN B. HUMPHERY, *Geography*, Slippery Rock State College, B.S.; Florida State University, M.S.; Additional Graduate Work, Pennsylvania State University.
- ERNEST W. JOHNSON, *Physical Education*, Assistant Dean of Men, Clarion State College, B.S.; University of Pittsburgh, M.Ed.
- BARBARA A. JOSEPH, *English*, Pennsylvania State University, B.A.; Western Reserve, M.A., Ph.D.



- WILLIAM J. KARL, *English*, Michigan State University, Clarion State College, B.S.; Teachers College of Columbia University, M.A.
- EUGENE KAUCKI, *Social Studies*, University of Toledo, B.A.; University of Michigan, M.A.; Graduate Work, University of Chicago.
- CLIFFORD M. KETH, *Physical Science*, Clarion State College, B.S.
- JAMES C. KING, *Social Studies, Dean of Men*, Northeastern (Oklahoma) State College, B.A.; University of Utah, Ph.D.
- JOSEPH J. KNOWLES, *Health Education*, Waynesburg College, B.S.; University of Pittsburgh, M.Ed.; Additional Graduate Work, Pennsylvania State University.
- HELEN KNUTH, *Social Studies*, University of Duquesne, B.A.; Northwestern University, M.A., Ph.D.
- RAY H. KUIPERS, *Speech*, Wayne University, B.S., M.Ed., Ed.D.
- ANTHONY LAZZARO, *Physical Science* California State College, B.S.; University of North Carolina, M.Ed.
- GEORGE R. LEWIS, *Mathematics*, East Stroudsburg State Teachers College, B.S.; University of Pittsburgh, M.Litt.; Graduate Work, Bucknell College, Pennsylvania State University, Ed.D.
- JEROME LIEBMAN, *Speech*, Brooklyn College, B.A., M.A.
- ROBERT B. LORENZ, *Audiovisual Ed.* Franklin and Marshall College, Millersville State College, B.S.; Syracuse University, M.S.
- WILLIAM M. McDONALD, *Music*, Indiana State College, B.S., New York University, M.A.
- NANCY S. MCKEE, *Librarian*, Wilson College, A.B.; Carnegie Institute of Technology, M.L.S.; Additional Graduate Work, University of Pittsburgh.
- STANLEY MICHALSKI, *Music*, Pennsylvania State University, B.S.; M.Ed.; Additional Graduate Work, Wyoming Seminary.
- LESTER D. MOODY, *English*, Washington State University, B.A.; University of Washington, M.A., Ph.D.
- ELEANOR D. DEWALD MOORE, *Librarian*, Clarion State College, B.S.; University of Pittsburgh, M.Ed.; Columbia University, M.S. in L.S.
- JAMES D. MOORE, *Dean of Instruction*, Muskingum College, A.B.; University of Pittsburgh, Ed.M.
- ELBERT R. MOSES, *English, Speech*, University of Pittsburgh, A.B.; University of Michigan, M.S., Ph.D.; Graduate Work, Northwestern University School of Speech, Wooster College, Pittsburgh School of Speech.
- MAX A. NEMMER, *English*, University of Pittsburgh, B.S., M.S., Ph.D.
- LESTER C. OAKES, *Geography*, Teachers College of Connecticut, B.Ed.; New York University, M.A.; Additional Graduate Work, Columbia University and Union College.
- GALEN L. OBER, *Physical Science*, Indiana State College, B.S.; University of Pittsburgh, M.Ed.; Additional Graduate Work, University of Wisconsin.
- HUGH WINSTON PARK, *English*, Hiram College, B.A.; Western Reserve University, M.A.; University of Utah, Ph.D.
- CHARLES G. PEARCE, *Art*, Indiana State College, B.S.; Pennsylvania State College, Ed.M.; Additional Graduate Work, Pennsylvania State College.
- DONALD D. PEIRCE, *Physical Science*, Oberlin College, A.B.; Graduate Work, University of Pittsburgh, Pennsylvania State University, University of Illinois, M.A., Ph.D.
- LAWRENCE L. PENNY, *Psychology*, Oklahoma State University, B.S., M.S.; University of Kansas, Ed.D.
- GLENN PHIPPS, *Speech*, College of Emporia, A.B.; University of Pittsburgh, M.Ed.; Additional Graduate Work, Drew University, University of Missouri, and Northeastern Missouri State College.

- DONALD R. PREDMORE, *Biological Science*, Education, Miami University, Undergraduate work, University of Pittsburgh, B.S., M.A., Ph.D.
- GRACE PRYOR, *Dean of Women*, Clarion State College, B.S.; University of Pittsburgh, M.Ed.; Additional Graduate Work, Duke University, University of Pittsburgh.
- EUGENE RHOADS, *Mathematics*, Clarion State College, B.S.; Graduate Work, Pennsylvania State University, Saint Bonaventure College, and the University of Chicago; University of Pennsylvania, M.S.
- ADAM B. RITCHIE, JR., *English*, University of Virginia, B.A., M.A.
- MARTHA T. RILEY, *Geography*, Farmville State Normal School, George Washington University, B.A.; Columbia University, M.A.; Additional Graduate Work, Cornell University, Harvard University, University of Virginia.
- JACK K. ROADMAN, *Physical Science*, California State College, B.S. in Ed.; University of Pittsburgh, M.Ed.; Additional Graduate Work, Northwestern University, Bloomsburg State Teachers College.
- CHARLES W. ROBBE, *Social Studies*, University of Iowa, University of Illinois, B.S.; University of Vermont, M.A.; Seminars-University of Birmingham, England; University of Leyden, Holland; University of Paris, France; Chateland School, Montreux, Switzerland; Additional Graduate Work, University of California, University of Texas, Harvard University.
- ELIZABETH RUPERT, Clarion State College, B.S.; Graduate Work, Syracuse University.
- EUGENE SEELYE, *Art*, Indiana State College, B.S.; Teachers College Columbia University, M.A.
- PAUL L. SHANK, *Physical Science, Education*, Bethany College, B.S.; Graduate Work, University of West Virginia; University of Pittsburgh, M.Ed., Ph.D.
- WILMA SHERWIN, *English*, Western State University, B.S., M.S.; University of Illinois, Ph.D.
- JAMES D. SHOFESTALL, *Physical Science*, Pennsylvania State University, Clarion State College, B.S. in Ed.; University of Pittsburgh, M.Ed.
- CHARLES J. SHONTZ, *Biological Science*, Indiana State College, B.S.; University of Pittsburgh, M.S.; Additional Graduate Work, University of Minnesota, University of Pittsburgh.
- BETTY SIMPSON, *Health and Physical Education*, West Chester State Teachers College, B.S. in Health and Physical Education.
- RICHARD C. SKINNER, *Director of Teacher Training, Education*, West Illinois State Teachers College, B.Ed.; Northwestern University, M.A.; University of Illinois, M.Ed.; Additional Graduate Work, University of Illinois.
- ROBERT W. SMAIL, *Education*, Northern State Teachers College, B.S. in Ed.; University of South Dakota, Ed.M., Ed.D.
- JOSEPH R. SPENCE, *Art*, Edinboro State Teachers College, B.S.; Pennsylvania State University, M.Ed.; Additional Graduate Work, Syracuse University.
- MARTHA STEWART, *Librarian*, Northwestern University, B.A.; Carnegie Institute of Technology, B.S. in L.S.; University of Pittsburgh, M.Ed.
- DANA S. STILL, *English*, Ohio State University, B.S., M.A.; University of Pittsburgh, Ph.D.
- RICHARD M. SUMMERVILLE, *Mathematics*, Clarion State College, B.S.; Graduate Work, Kent State University.
- IMOGENE SUMNER, *Social Studies*.
- WALDO S. TIPPIN, *Education*, Director of Athletics, Geneva College B.S.; Graduate Work, University of Michigan, Columbia University, M.A.; University of Pittsburgh.
- JAY VanBRUGGEN, *Political Science*.
- MARGARET J. WIANT, *Geography*, Clarion State College, B.S.; University of Pittsburgh, M.Litt.; Graduate Work, University of Washington, University of Colorado, Penn State University.
- GLORIA A. YOUGH, *Physical Education*, University of Michigan, B.S., M.A.



Leaders at work

"Tea or Coffee?"





idea man . . .  
the Keller yearbook  
representative



DONALD J. MESSINGER

To the casual reader a yearbook is often simply an "album" of pictures with accompanying identifications and enough written text to fill up the remaining holes on the pages. Merely ink on paper . . . though nice to own and enjoy.

But to the staff and the adviser the yearbook means much more. For yearbook work comprises a multitude of details: Layout, Art, Photography, Copy, Typography, Covers and Binding (not to mention the small detail of money-raising). Highly technical and often confusing, these details are at the very least time-consuming and a source of anxiety to a staff unless the publisher's representative is company-trained to give needed help and suggestions.

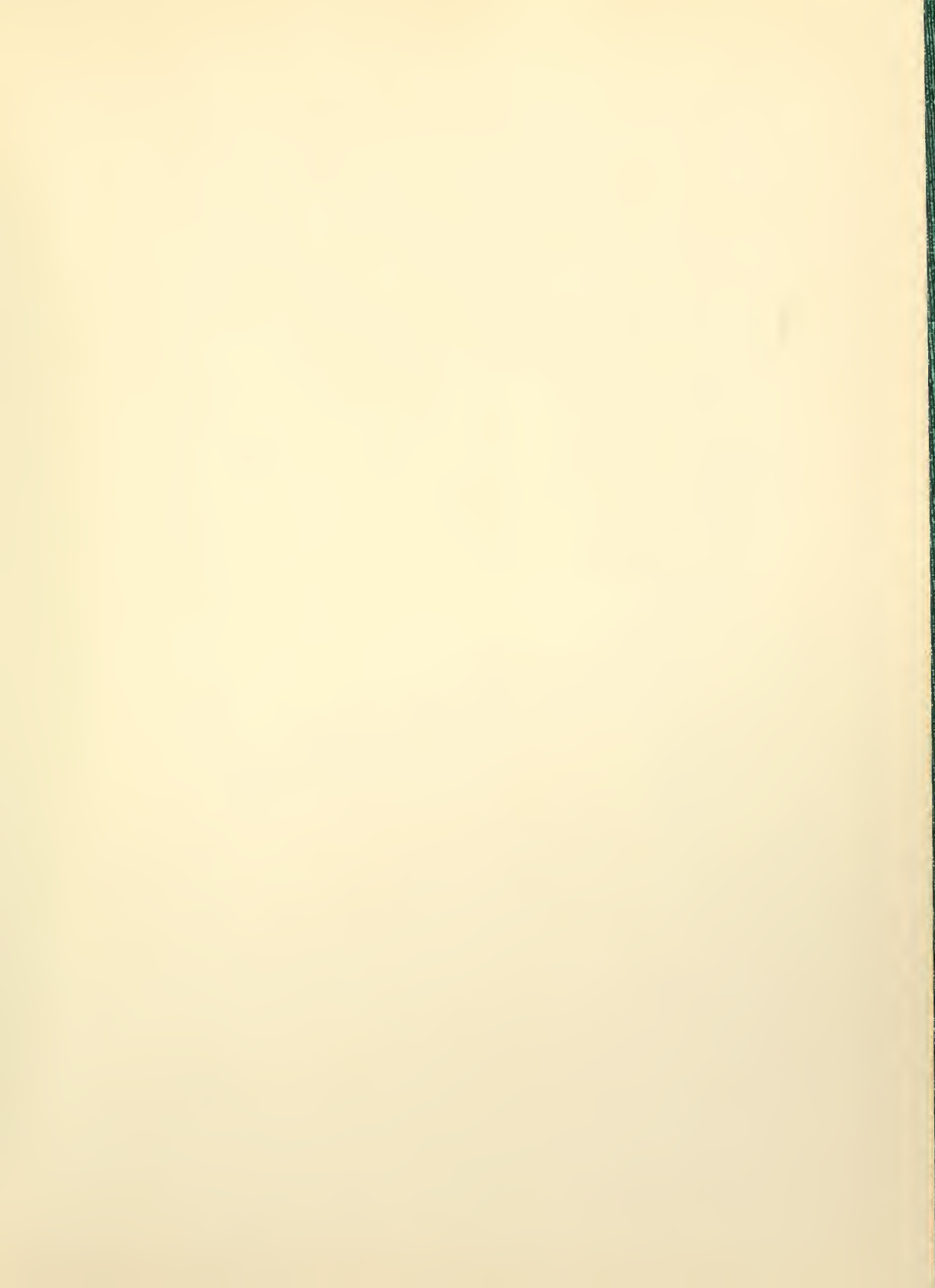
All representatives for Wm. J. Keller Inc. are skilled in the many facets of yearbook work, having at their finger-tips the answers to yearbook problems as well as a multitude of ideas for new graphic arts special effects, to enable the staff to produce a yearbook that is different and attractive. Your Keller salesman is more than a technical adviser, he is a "clearing-house" of yearbook ideas.



**Wm. J. Keller Inc.**

Publishers of Finer Yearbooks

Buffalo 15, New York







Spec. Col.  
qLD  
1017 Sequelle  
.C88  
1962  
c.2

Spec. Col.  
qLD  
1017  
.C88  
1962  
c.2

