

**SEQUELLE**





*sequelle*

*"70"*

Digitized by the Internet Archive  
in 2010 with funding from  
Lyrasis Members and Sloan Foundation

<http://www.archive.org/details/sequelle1970clar>

# SEQUELLE

ADVISORS: HENRY FUEG  
WILLIAM PROUDFIT

EDITORS: MARY LOU BEDNAR  
KATHY RODGERS

P  
E  
N  
N  
S  
Y  
L  
V  
A  
N  
I  
A  
C  
L  
A  
R  
I  
O  
N

CLARION STATE COLLEGE



**DR. DANA STILL**  
ACTING PRESIDENT  
OCTOBER 1969 — MARCH 1970

*This book is respectfully dedicated to Dr. Dana Still, Acting President, who has given freely of his time for the advancement of Clarion State College.*

*"One machine can do the work of fifty men. No machine can do the work of one extraordinary man."*

*— Elbert Hubbard*

# TABLE OF CONTENTS

THEME 3

VENANGO CAMPUS 67

SPORTS 95

FINE ARTS 109

BEAUTIES AND HONORS 125

GREEKS 135

ORGANIZATIONS 167

FACTLY 187

SENIORS

211

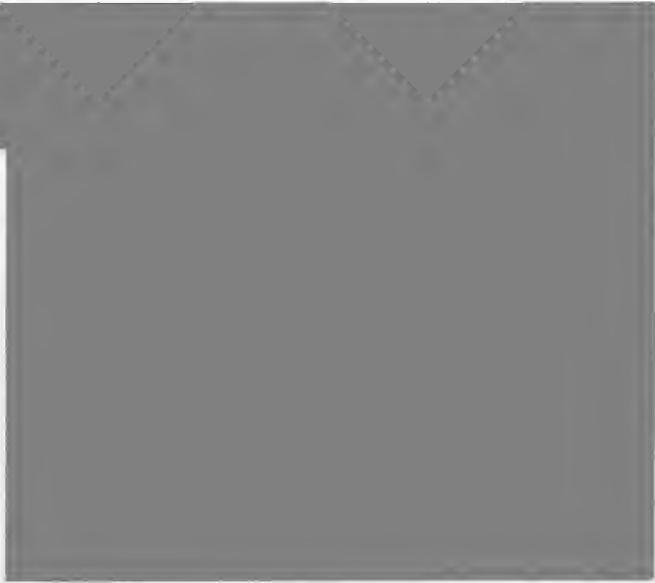


AND THE BEAT GOES ON AND THE BEAT GOES ON AND  
THE BEAT GOES ON AND THE BEAT GOES ON AND THE  
BEAT GOES ON AND THE BEAT GOES ON AND THE BEAT  
GOES ON AND THE BEAT GOES ON AND THE BEAT  
GOES ON AND THE BEAT GOES ON AND THE BEAT  
GOES ON AND THE BEAT GOES ON AND THE BEAT  
GOES ON AND THE BEAT GOES ON AND THE BEAT  
GOES ON AND THE BEAT GOES ON AND THE BEAT  
GOES ON AND THE BEAT GOES ON AND THE BEAT  
GOES ON AND THE BEAT GOES ON AND THE BEAT

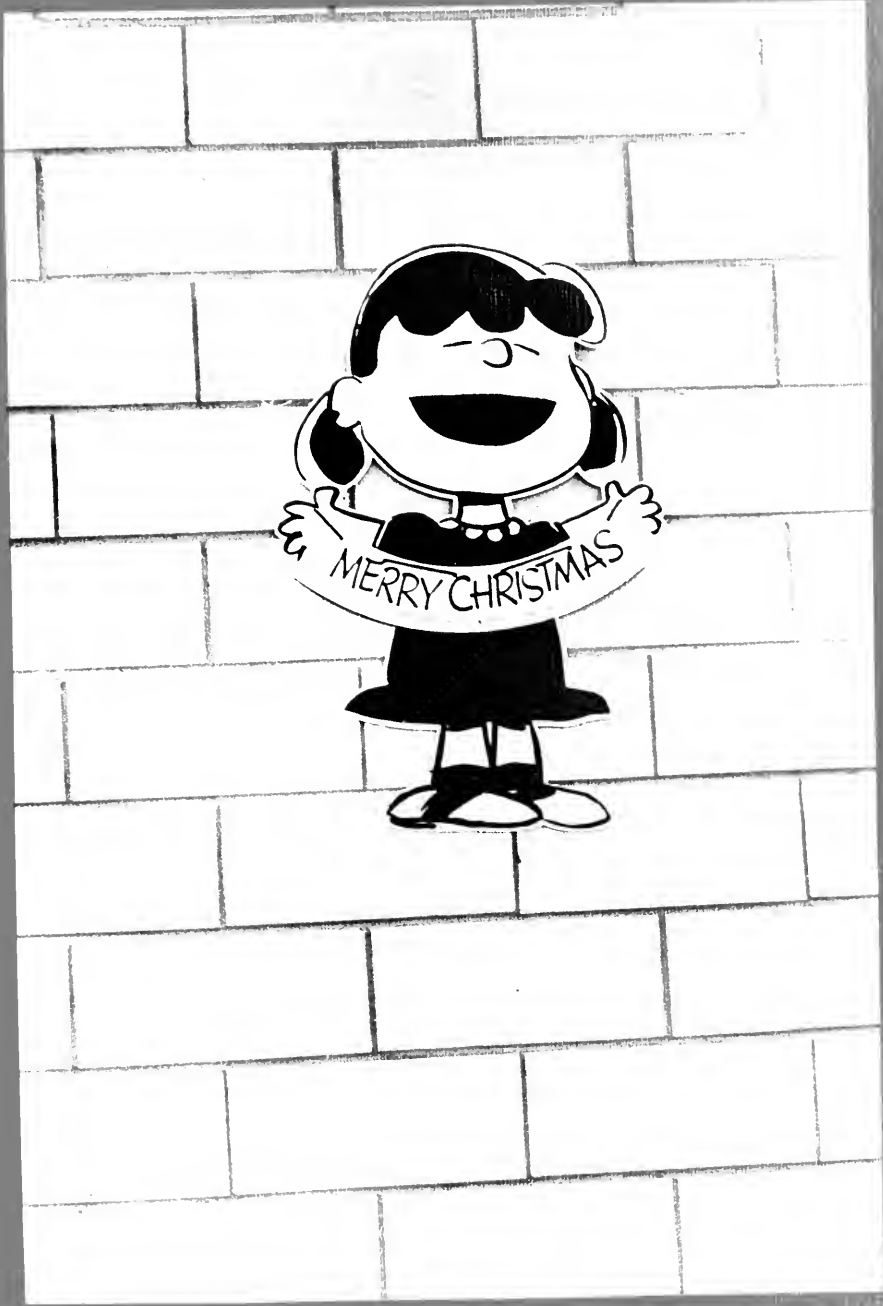
**AND THE BEAT GOES ON**

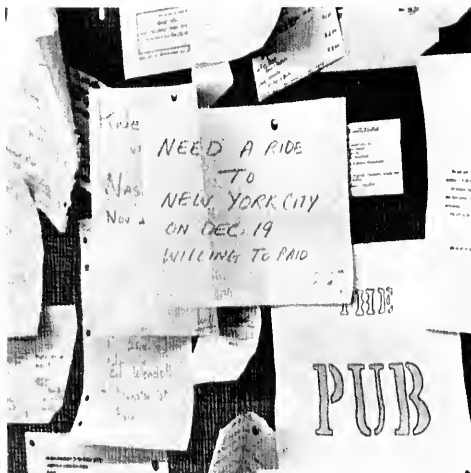
S ON AND THE BEAT GOES ON AND THE BEAT GOES ON  
AND THE BEAT GOES ON AND THE BEAT GOES ON AND  
THE BEAT GOES ON AND THE BEAT GOES ON AND THE  
BEAT GOES ON AND THE BEAT GOES ON AND THE BEAT  
GOES ON AND THE BEAT GOES ON AND THE BEAT  
GOES ON AND THE BEAT AND THE BEAT GOES ON AND  
THE BEAT GOES ON AND THE BEAT GOES ON AND THE  
BEAT GOES ON AND THE BEAT GOES ON AND THE BEAT  
GOES ON AND THE BEAT GOES ON AND THE BEAT  
GOES ON AND THE BEAT GOES ON AND THE BEAT  
GOES ON AND THE BEAT GOES ON AND THE BEAT

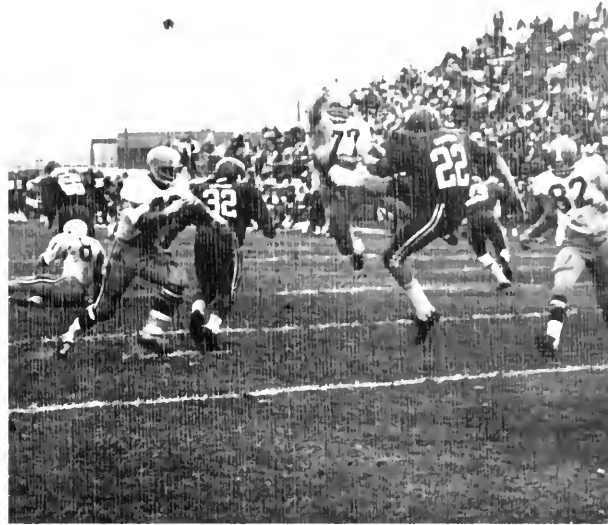












CLARION – what does it mean to you? Or does it mean anything at all? Is it just a group of buildings – or is it a place where people learn and think and grow . . .







During the four or more years a student attends Clarion, his opinions and attitudes change about the WORLD, about HIMSELF, about Clarion . . .

**THE GENERAL STATE AUTHORITY**  
**RAYMOND P. SHAFER** PRESIDENT  
**JAMES W. LOGAN** EXECUTIVE DIRECTOR

PROJECT NO. G.S.A. 404-24  
**ADDITION TO LIBRARY**  
**CLARION STATE COLLEGE**

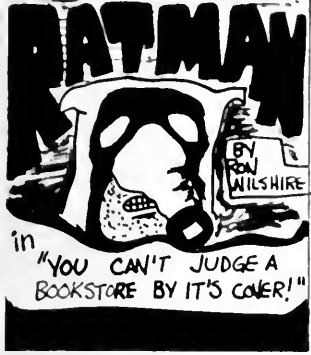
**W. G. ECKLES COMPANY ARCHITECTS**

CARCAISE CONSTR. CO.	GENERAL CONTRACTOR
MCCARL'S PLUMBING & HTG. CO.	HEATING CONTRACTOR
ECKERT PLUMBING COMPANY	PLUMBING CONTRACTOR
CHURCH - MURDOCK	ELECTRICAL CONTRACTOR

"THIS PROJECT IS ASSISTED BY FEDERAL FUNDS FROM THE U.S. DEPARTMENT OF HEALTH EDUCATION AND WELFARE OFFICE OF EDUCATION"



THE INCIDENTS PICTURED BELOW ARE FICTIONAL AND NO INSTITUTIONS SHOULD BE INFERRED. HOWEVER, IF IT WAS TRUE, IT WOULDN'T BE HARD TO BELIEVE.



EVEN RATMAN HAS TO STUDY AND SO WE FIND HIM IN HIS SECRET IDENTITY OF HERMAN TRUBLU AT WHAT SHOULD BE THE STUDENT BOOKSTORE BUT LOOKS LIKE THE STUDENT DEPARTMENT STORE!

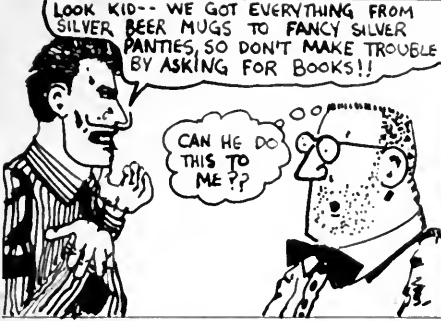


Holy Junk!! I thought this was a bookstore! I need a book on rats so I can study for a test! Can't see any books around-- guess I'll have to ask where the books are!

BOOKS?? NO WE GOT RID OF MOST OF THEM! THEY TOOK UP TOO MUCH VALUABLE SPACE! HOW ABOUT A LIFE SIZE PICTURE OF RAQUEL WELCH INSTEAD?



BOOKS??



Look kid-- we got everything from silver beer mugs to fancy silver panties, so don't make trouble by asking for books!!

CAN HE DO THIS TO ME??

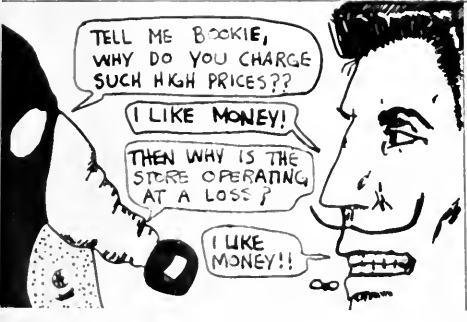
DOING WHAT ANY OTHER RED-BLOODED STUDENT WOULD DO, HERMAN LEAVES. IN HIS PLACE, THE AWE-INSPIRING RATMAN RETURNS!!!



Honest Ratman, sir! We'd have books here but there's more money in selling posters!

I thought this was a non-profit store??

We have to make up for what we lost on the silver panties!!



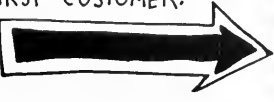
Tell me bookie, why do you charge such high prices??

I like money!

Then why is the store operating at a loss?

I like money!!

SENSING THE CORRUPTION THAT IS PRESENT, RATMAN CONTACTS THE LAW AND HAS BOOKIE ARRESTED! RATMAN THEN TAKES OVER RUNNING THE NEW BOOK, YES BOOK, STORE! WE NOW FIND RATMAN TALKING TO HIS FIRST CUSTOMER!



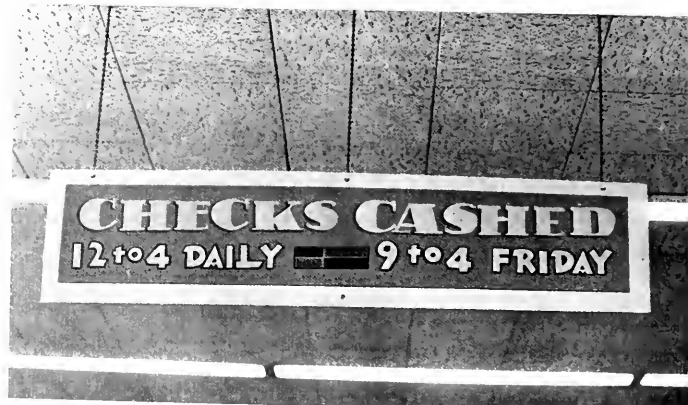
Can I help you find any special book, young lady?

No, but do you have any of those silver panties?

THE END?



For the students of Clarion, the year always starts with the visit to the Bookstore . . .



**CHECKS CASHED**  
**12 to 4 DAILY — 9 to 4 FRIDAY**

MARKETING MANAGEMENT

MARKETING MANAGEMENT

MARKETING MANAGEMENT

MARKETING MANAGEMENT



"Who enters here leaves hope behind"  
But leaves within his cash,  
For loaded down with books twice bought,  
He carries off the trash

Books writ by Profs and paper bound,  
And sold with smiles, you see.  
"For these," the genial bookman says,  
"We charge a trifle fee."

- 1914 *Sequelle*



FOOTBALL – probably the second most important element of the fall semester . . .





As in years past the Clarion "Golden Eagles" upheld the fine record of a winning team. The Eagles had a commendable record, losing only to Indiana and West Chester.

... and the beat goes on ...







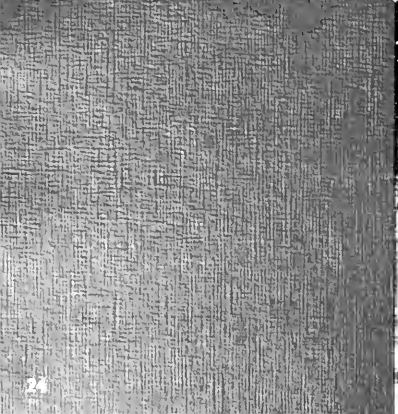
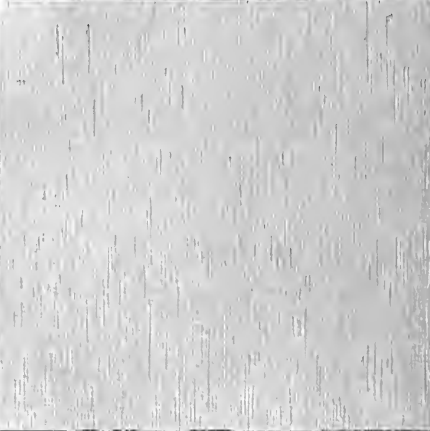


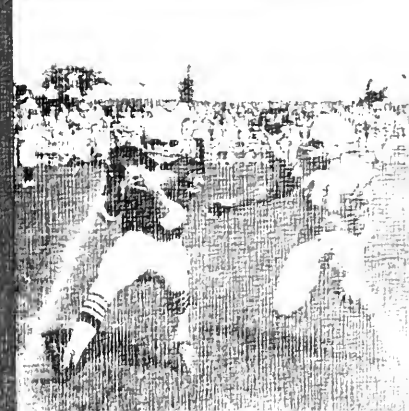
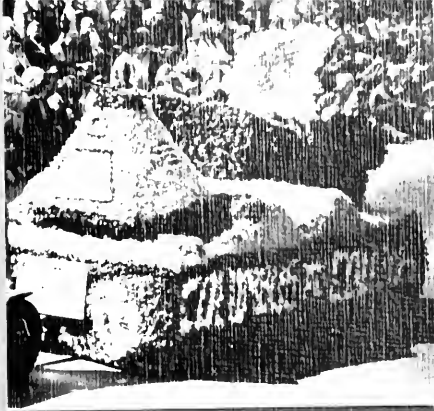




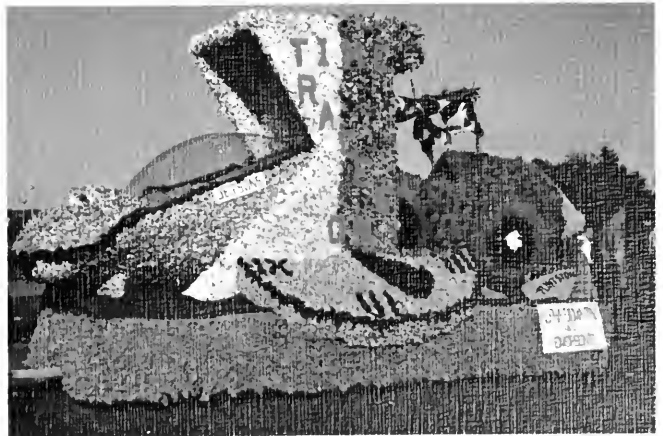


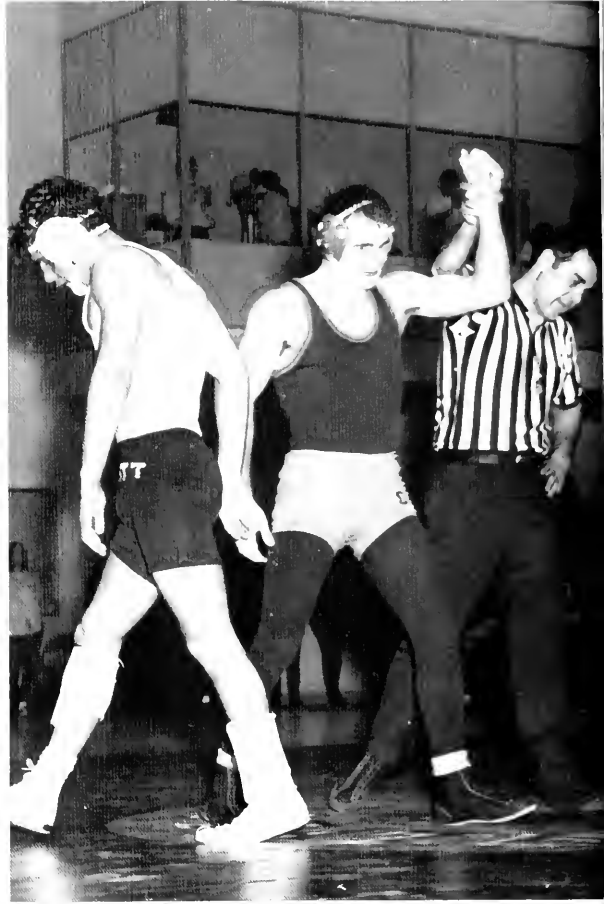
HOME COMING



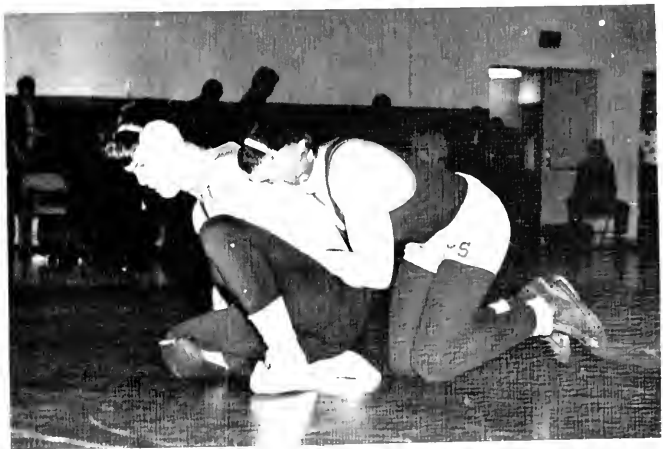
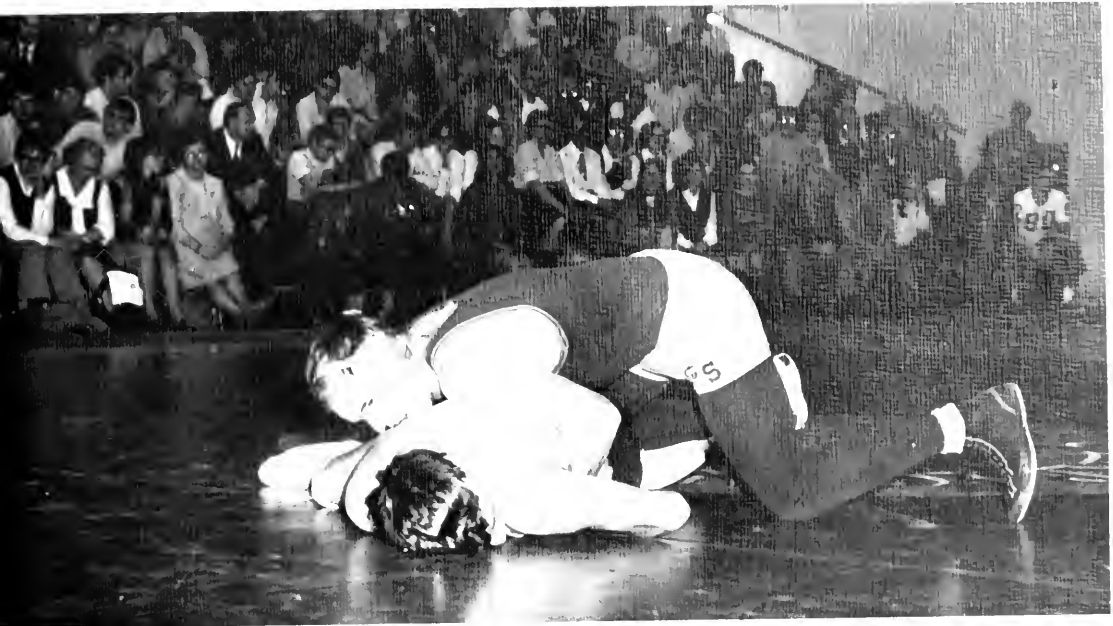


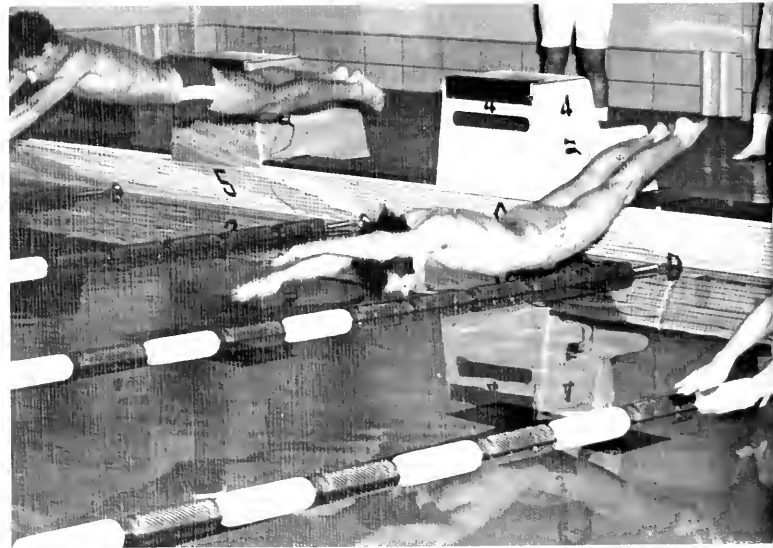
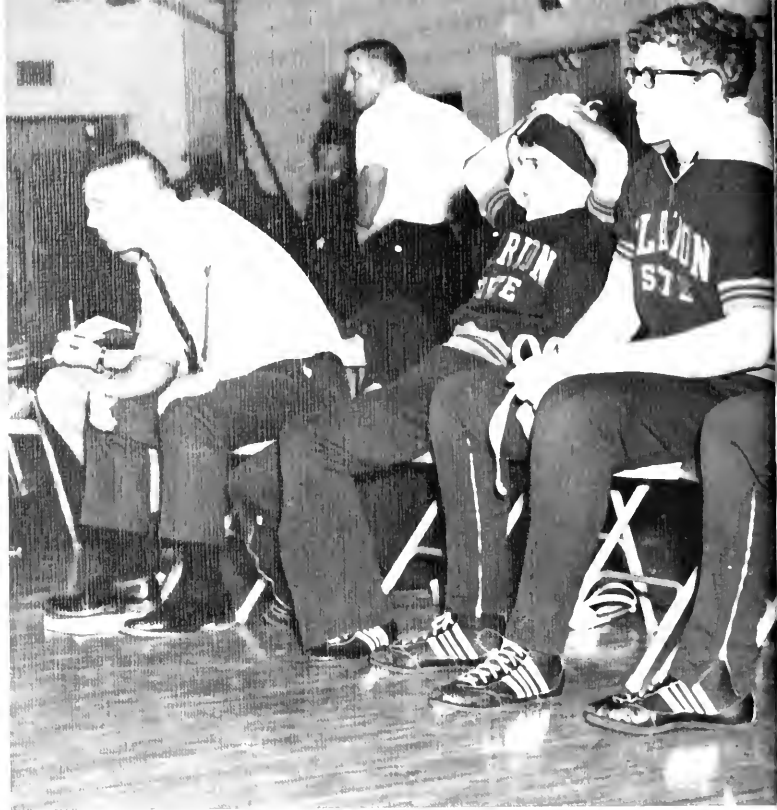
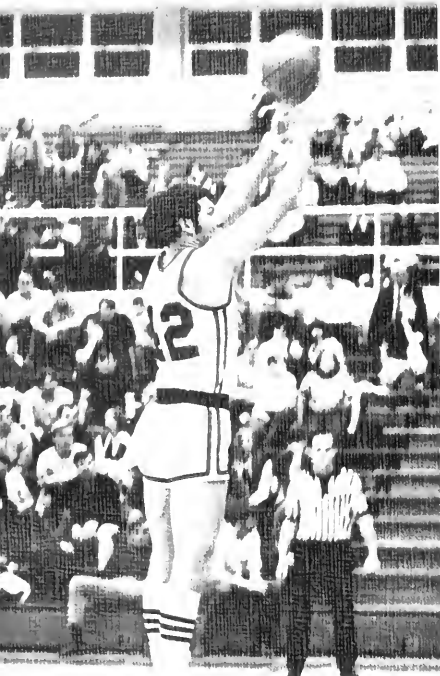








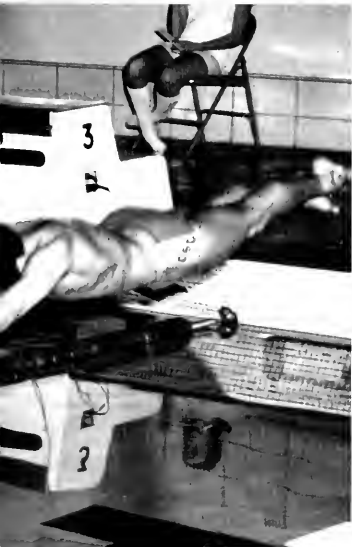






Sports are an integral part of Canyon  
and winning a tradition

and the beat goes on



Greeks – whether to “Go Greek” or stay an independent; Is it worth the aggravation? Over 500 students at Clarion think it is . . .





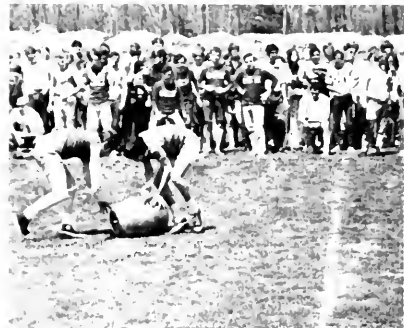
rush, and Rush, and RUSH!!















# RATMAN

PRESENTS:

Ratman goes to sleep!!  
or  
Ratman goes to a TV Course!!

by Paul WILSHIRE

MEET HUBERT NORMAL, MASTER OF THE MENACE OF TV COURSES!??!

ON  
OFF  
MUSIC  
JUNK

HI THERE!!  
WELCOME BACK! TODAY WE'LL LEARN WHY THERE IS AIR AND JUST FOOL AROUND FOR MOST OF THE CLASS!!

RATMAN JUST HAPPENS TO BE PASSING BY ONE OF HUBERT'S MANY CLASSES, WHEN A FRIGHTENED STUDENT RUNS OUT!!

I CAN'T TAKE IT ANYMORE!! EVERYDAY THE SAME BORING CLASS!!

TROUBLE??!

RATMAN YOU'RE MY LAST HOPE! YOU'RE GOING TO HAVE TO DO SOMETHING ABOUT THAT TV COURSE! I COULDN'T STAND TO HAVE TO WATCH SUMMER RERUNS!!!

WHAT CAN I SAY?

WEARING A DISGUISE, RATMAN ATTENDS ONE OF INFAMOUS TV COURSES!!

VERY UN-INTERESTING!! HOW COULD I EVER USE THIS IN MY CRIME-FIGHTING MAJOR???

HA HA HA HA HA HA HA HA HA HA

RATMAN FINDS THE CLASS VERY RELAYING, UNTIL ---

YOU'VE MISSING A LOT OF VALUABLE INFORMATION!!!

Z,Z,Z,Z,Z,Z,Z,Z,Z  
Z,Z,Z,Z,Z,Z,Z,Z,Z  
Z,Z,Z,Z,Z,Z,Z,Z,Z

REVEALING THAT HE IS RATMAN---

WHAT MANNER OF MAN ARE YOU, HUBERT NORMAL? TO TORTURE STUDENTS THE WAY YOU DO?? BOMANZA MUSIC AND ALL!!!

[GASP!!!] YOU MEAN THE STUDENTS DON'T LIKE IT??!

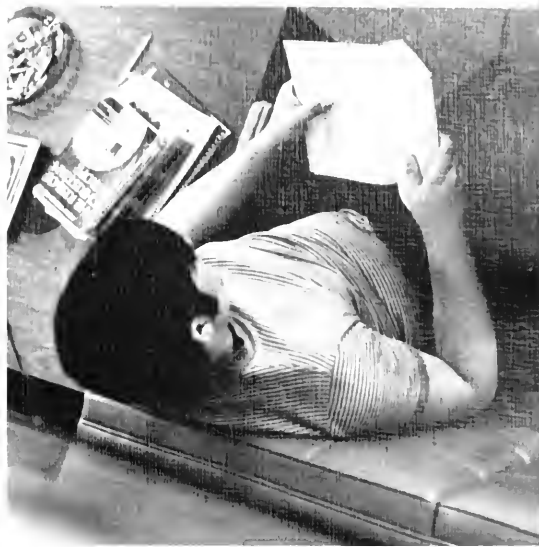
HONESTLY RATMAN--- I THOUGHT I WAS DOING A FINE JOB! I USE ALL THE COMMERCIAL TV DEVICES--- A SNAPPY THEME SONG AND LOTS OF PERSONAL JOKES!! I DON'T KNOW WHY EVERYBODY IS SO UPSET!!

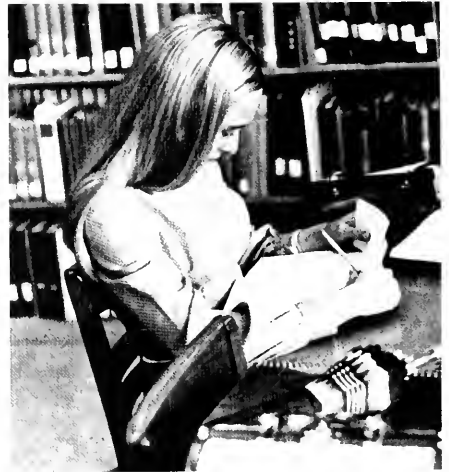
WHAT DID YOU EXPECT-- EDUCATIONAL TELEVISION??

AND THAT KIND PEOPLE IS THE END!

OH?

And some of us even try to study and learn . . .







HERE'S WHERE YOUR MONEY WENT:



THE VOGUES





# THE NEW HUDSON EXIT





THE  
DELLS



THE  
CORDELLS

# FRUIT PINK



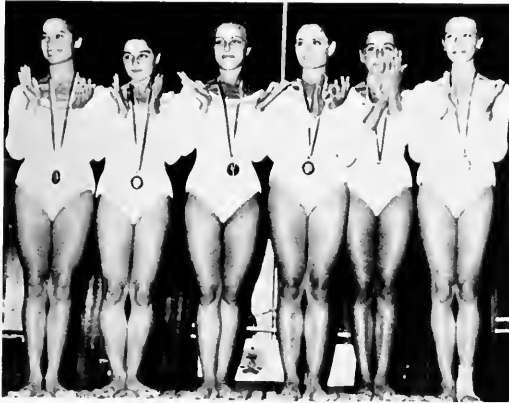
# THE IMPRESSIONS

# THE JAGGERZ



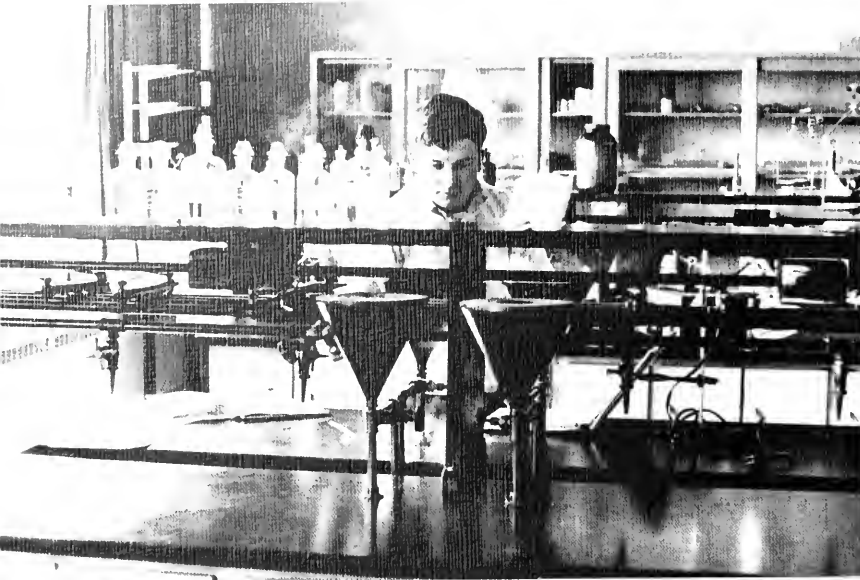
# THE EL-POOKS





## THE BULGARIAN GYMNASTIC TEAM

And don't forget about all the football games, basketball games, week-end dances, *Clarion Call*, the *Sequelle*, wrestling matches, organizations . . .





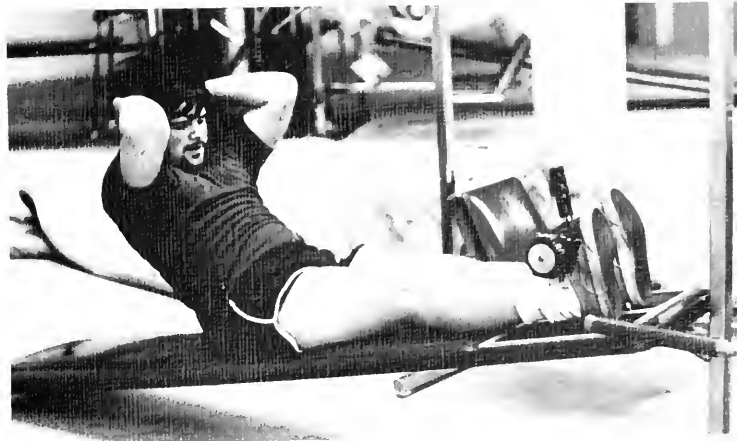
Behind the sports . . . behind the Greeks . . . behind the Classes –  
there are people at Clarion; people doing their own thing, listening to  
their own drums . . .

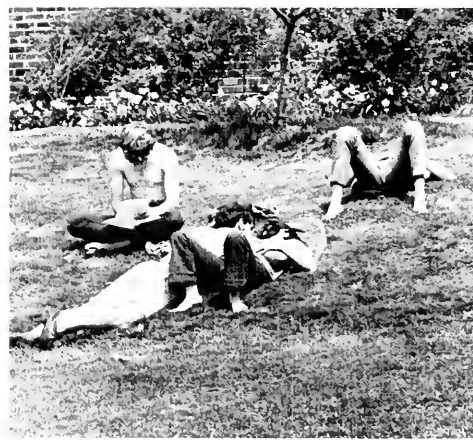
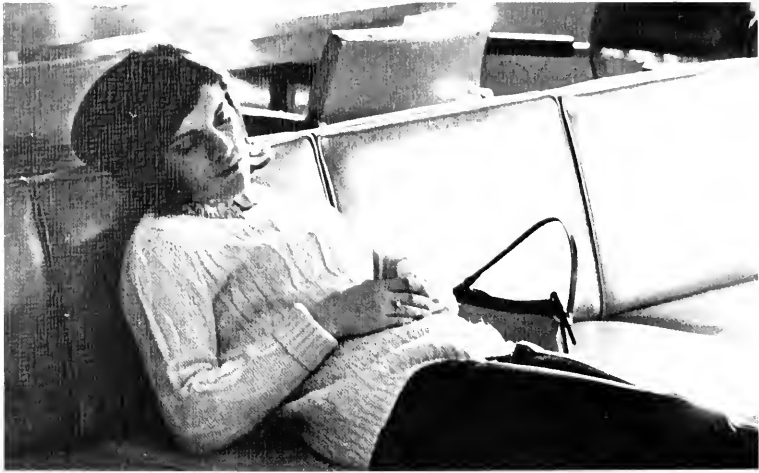


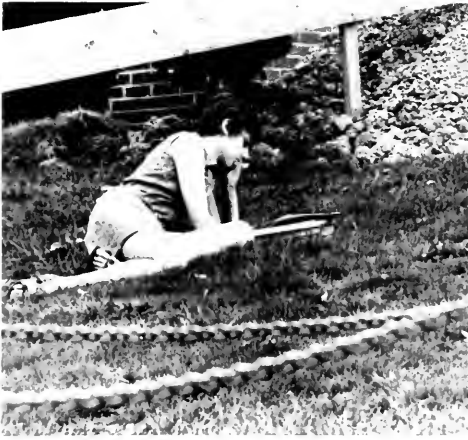


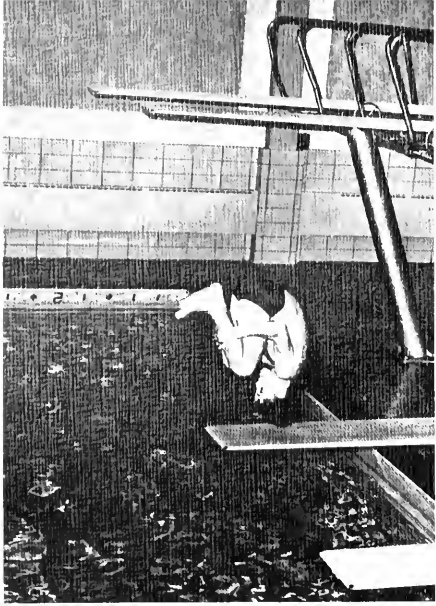




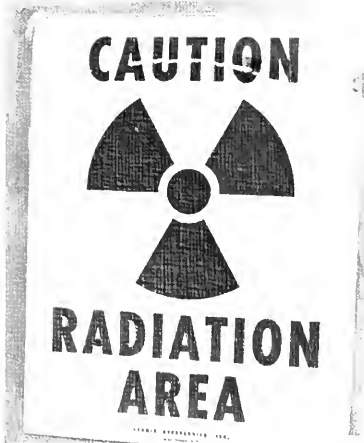
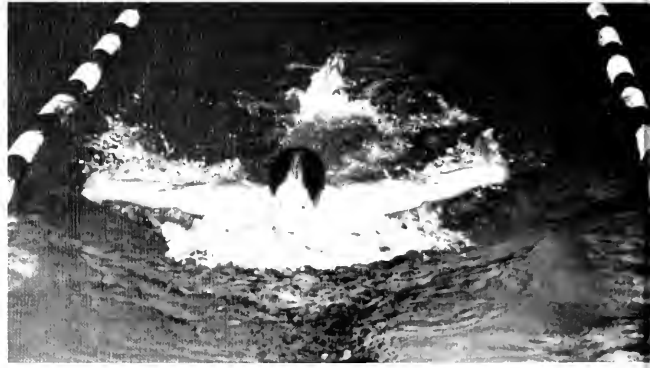




















Oh God what shall we do?  
The stench of death is with us  
And will not be removed

Can we blithely say "business as usual"?  
Shall we ignore the tragedy of our time?  
Shall we not feel anything?

How dare we pretend — pretend  
that  
there is no Vietnam — that there  
is only Clarion and West  
Chester  
How dare we continue —  
pretending?

Can we safely decide not to think  
about it?  
What happens to them and us?  
Not to decide is to decide.  
It is to decide for death, my  
friends (What happened to  
those names offered in the  
night not long ago?)



It is not Communism that we fight.  
We fight ourselves.  
In the knit of mankind there  
are no boundaries that  
Justly pit one man against another

We are killing ourselves  
And our leaders reassure us that it's o k  
That as soon as we can transfer  
the mantle, as soon as we  
can train them to kill  
themselves as well as we kill ourselves  
we shall withdraw.

And if we succeed only in getting someone  
else to take over the killing  
what have we accomplished?

Is this all there is?  
Can there be no end?  
Is the only way we can  
Stop killing, to make sure  
that someone else will continue it?

Oh God — save us from us.  
I confess I see no way out.  
For there is no confession from any source.  
There is only the dying and the suffering,  
the suffering and the dying, of men who  
happen to be American and Vietnamese,

and that is all —

Lincoln Hartford







*Almost any man worth his salt would fight to defend his home, but no one ever heard of a man going to war for his boarding house.*

*— Mark Twain*



*. . . and the beat*



*goes on . . .*

Ours is the Earth and everything in it . . .

— Rudyard Kipling  
"If"









GERGELY MARKOS  
Geography

## FACULTY



ALASTAIR CRAWFORD  
History



CHARLES DUGAN  
Art



GARRISON McCASLIN  
Physical Science



RUTH BENFIELD  
Nursing



MARY WILLIAMS  
Librarian



MELANIE EISWERTH  
Mathematics

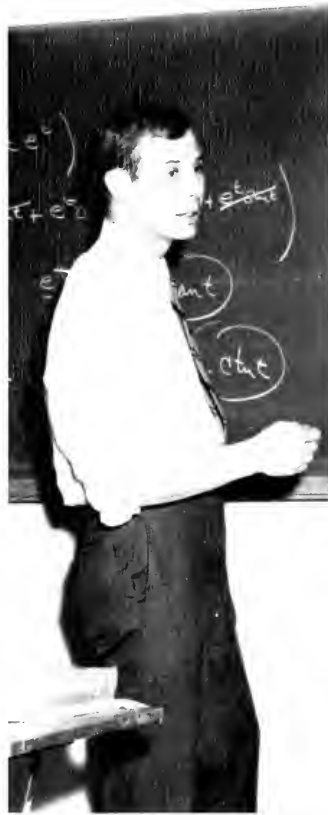
DR. RUSSEL L. V. MORGAN  
Administrative Head



SUSAN SECOR  
Librarian



FRANK CLARK  
Speech



JOHN CLIFF  
Mathematics



ARNOLD JESCHKE  
English





DALPH COOK  
Biology



ALLENE MASTERSON  
Languages



JOHN REINHARDT  
English



LEONARD ABATE  
History



LARRY LANDIS  
Music



SUSAN REINHARDT  
Psychology



GLENN  
M. HATTIAN  
Physical  
Science



LEF HEILMAN  
English



VINCENT CURRAN  
Health



AUDEAN STEWART  
Nursing



ATHLETIC COMMITTEE *Left to right* Gary Spoales, Tom Lapelo, Ted Pappas, Wayne Wood



CALL STAFF *Seated:* Terri Hruska *Standing:* Michele Maddock, Karin Kadar, Jane Novak

## ORGANIZATIONS

CHEERLEADERS *1st row:* Vicki Catzone, Sharon Stovich, Sue Kagle *2nd row:* Mary Navin, Betty MacDonald, Sue Peterson



CULTURAL COMMITTEE *1st row:* Joanne Durenleau, Carol Pearson *2nd row:* Diane Markert, Sue Kagle, Pat Muldoon



FRESHMAN CLASS OFFICERS Tim Hughes, President, Jan Stiltz, Secretary, James Hoofnagle, Vice President, Sherry Orr, Treasurer





HOUSE COUNCIL *Sated:* Debbie Anderson, Marvann Cunningham, Sandy Wass *Standing:* Tim Hughes, John Soprano, Al Shouey, Linda Lacney, Mary Navin



HOMECOMING REPRESENTATIVES Vicki Lockhart, Sophomore Class, Debbie Anderson, Freshman Class



P.S.E.A. *1st row:* Mary Lou Byers, Julu Dixon, Sharon Stovich, Maureen Magulick, Patty Gilligan *2nd row:* Delores Grondwalski, Pamela Green, Kathy Giblock, Karen Mowry, Becky Sheavly, Bea Schrock, Cindy Hunter, Vicki Lockhart. *3rd row:* Kathy De Maria, Helen Bradley, Jane Novak, Claire Shoemaker, Valery Fabac, Linda Lacney, Linda Koontz



PHILOSOPHIES *Left to right:* Richard Yongotski, Vicki Catzone, Chris Graeff, Mark Mileski



REFERRAL BOARD *Sated:* Barbara Cook, Raymond Pulcini, Janice Krawczyk *Standing:* John Inselmini, Karen Mauger, Carolyn Harpster, Mark Nassus.



SEQUELLE STAFF *Right to left:* Linda Geist, Katin Kadar, Diane Kish, Madge McDonough



SOPHOMORE CLASS OFFICERS Ted Pappas, Vice President, Vicki Lockhart, Secretary, Bob Smith, Treasurer, Chris Graeff, President.

SOCIAL COMMITTEE *Right to left:* Maryann Cunningham, Nikki Drobac, Vicki Lockhart, Gary Monick, Bill Smith

STUDENT SENATE *1st row:* Charlene Keyvinski, Mary Lou Byers, Nikki Drobac *2nd row:* Maryann Cunningham, Sue Kagle, Vicki Lockhart *3rd row:* Gary Spoales, Dan Martin, Bob Smith





NANCY SOWERS  
Book Store

SANDRA McENTIRE  
Secretary, Nursing Department

CHARLOTTE BOYLES  
Secretary to Dr  
Morgan



ZELDA YOUNG  
Secretary

# SECRETARIES

PAT HANCOX  
Secretary



CAMPUS  
PLAYERS





MAY  
FANTASY

MAY 9,  
1970



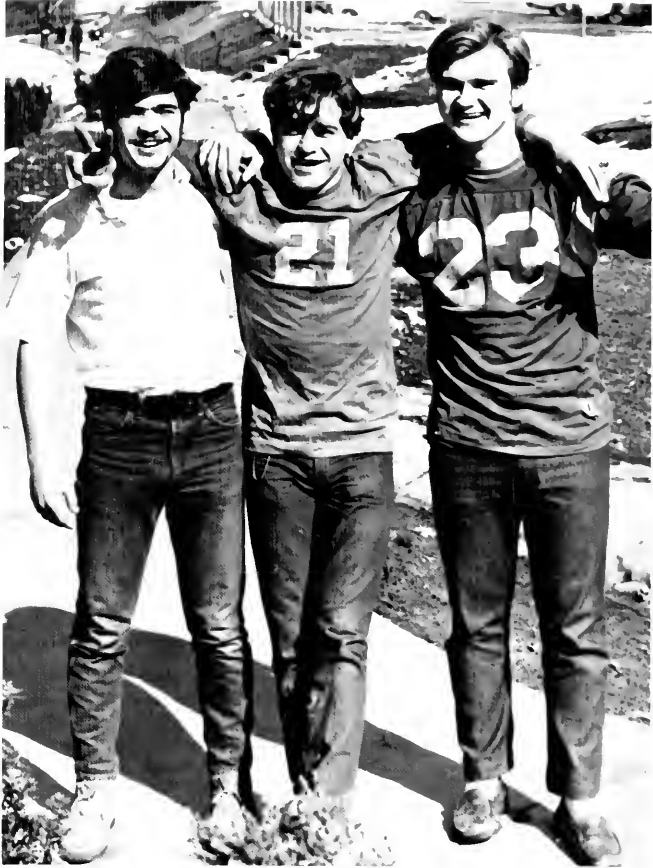
The 1970 Campus Queen – Miss Debbie Walker.



THE 1970 CAMPUS COURT Vicki Lockhart, Irwin, Sherry Orr, Turtle Creek, Dr. Russell L. V. Morgan, Miss Walker, Clarendon, Karen Mauger, Oaklyn, New Jersey, and Jane Novak Beverdale



STUDENT  
LIFE









Oh, those parking tickets!!!





AND  
ACTIVITIES





# SOPHOMORE CLASS



Dale Arner  
*Rouseville*



Jonathan Baker  
*Franklin*



Jeanne Beggs  
*Franklin*



Marsha Blair  
*Franklin*



Mary Louis Byers  
*Pittsburgh*



Myra Coffinbarger  
*Wilmerding*



Barbara Cook  
*Tidioute*



MaryAnn Cunningham  
*Connellsville*



Deborah Ehrhart  
*Oil City*



Lola Garvey  
*Meadville*



Chris Graett  
*Greenburg*



Carolyn Harpster  
*Burnham*



Cheryl Herzog  
*Smithport*



Beverly Hlawati  
*Oil City*



Cindy Hunter  
*Mt. Pleasant*



K. Sue Kagle  
*Seneca*



Jere Krallinger  
*Lamaster*



Linda Lacnev  
*Keating Summit*



Vicki Lockhart  
*Iruan*



Madge McDonough  
*Oil City*





Diana Marketer  
*Wilcox*



Joyce Masqueher  
*Oil City*



Karen Merglowski  
*Oak Lake*



Darv Myers  
*Van*



Theodore Pappas  
*Butler*



Carol Pearson  
*Pleasantville*



Kathryn Prince  
*Beaver*



Ronald Proper  
*Seneca*



Duane Ross  
*Apullo*



Rebecca Sheavly  
*Butler*



Carl Smith  
*Kennerdell*



Robert Smith  
*Tyrone*



rch & self-discovery





David Stacy  
*Pittsburg*



Sharon Vogan  
*Seneca*



Sandra Wass  
*Gilboa*



Richard Yonkofski  
*Byrnedall*



*Winning isn't everything, but wanting to win is.*

*— Vince Lombardi*

# 1969 FOOTBALL TEAM



<i>Clarion</i>	<i>Opponent</i>	
53	Mansfield	22
20	Delaware State	14
14	Geneva	0
21	Lock Haven	7
24	Edinboro	0
14	Indiana	38
17	California	12
31	Shippensburg	15
21	Slippery Rock	7
Nov. 15 – State Championship at W. Chester		
34		41

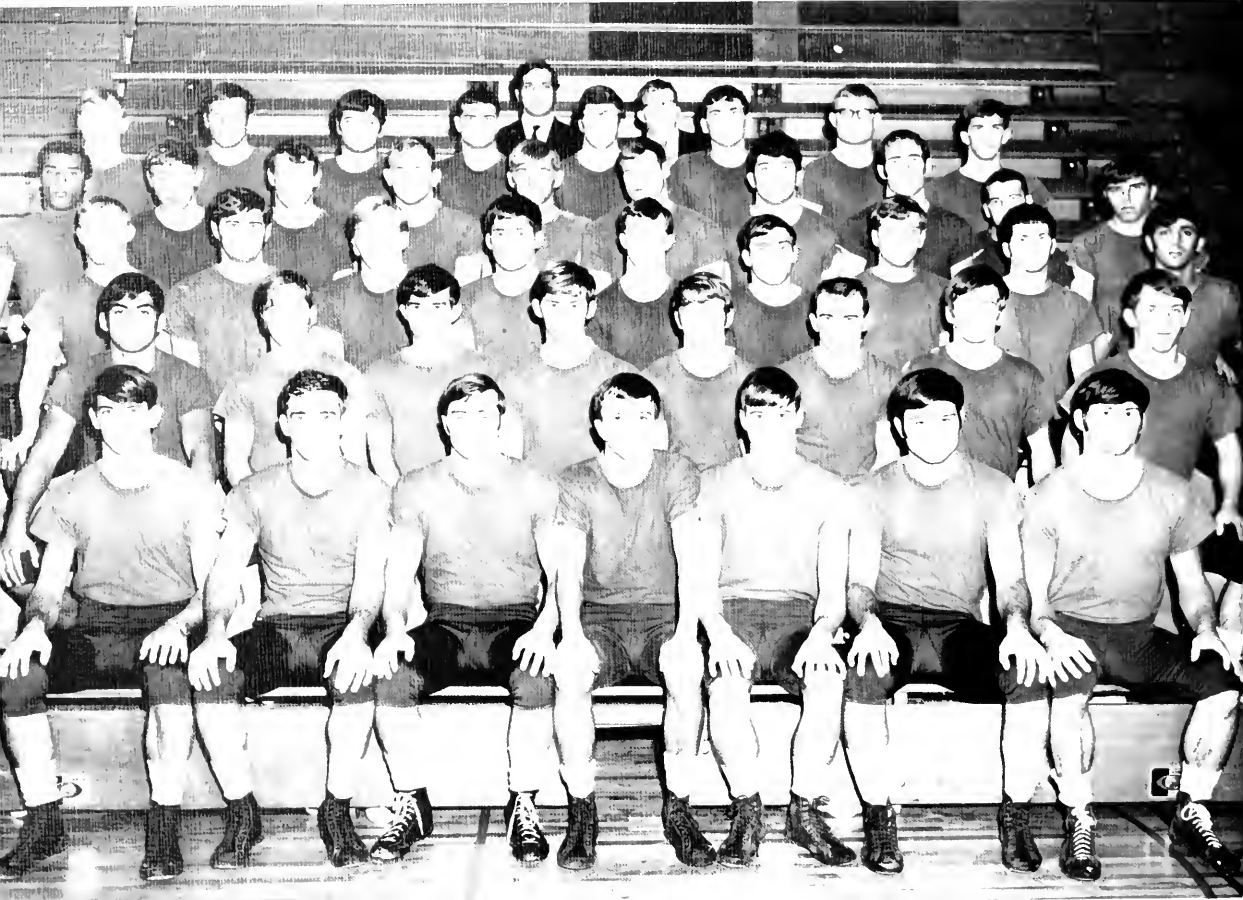


# 1970 BASKETBALL TEAM



CSC		Opponent
79	Walsh	85
77	Slippery Rock	97
85	Geneva	70
92	Alliance	81
75	Edinboro	72
79	Lock Haven	68
66	Indiana	77
70	California	82
53	Fredonia	58
81	Bloomsburg	106
67	Point Park	69
86	Slippery Rock	102
65	Mansfield	73
70	Indiana	86
79	Lock Haven	88
66	California	83
52	Edinboro	72
59	Grove City	92
83	Alliance	103
57	Walsh	65

# 1970 WRESTLING TEAM



# 1970 TRACK TEAM



# 1970 MEN'S SWIM TEAM



CSC	Opponent	
59	Millersville	45
69	Lock Haven	35
74	Indiana	39
60	Millersville	44
74	E. Stroudsburg	38
77	Carnegie-Mellon	27
67	California	46
73	Thiel	27
65	Westminster	36
Penn-Ohio Swim Meet - 4th - 224 pts.		
Penna. Championship - 2nd - 87 pts.		
NAIA Championships - 13th		





# 1970 GOLF TEAM



# 1969-70 RIFLE TEAM



# 1969-70 JUDO TEAM



# 1969 FRESHMAN FOOTBALL TEAM



# 1969-70 CHEERLEADER SQUAD





## FOOTBALL

## CENTENNIAL YEAR









When my cue comes, call me,  
and I will answer.

— William Shakespeare



## AMOROUS FLEA









CLARION STATE COLLEGE CONCERT BAND



INTERCOLLEGIATE  
BAND

THE PERSECUTION AND ASSASSINATION OF JEAN PAUL MARAT AS PERFORMED

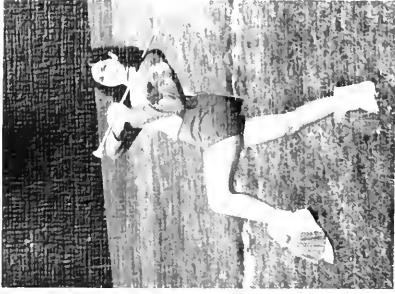


BY

THE INMATES OF CHARENTON UNDER THE DIRECTION

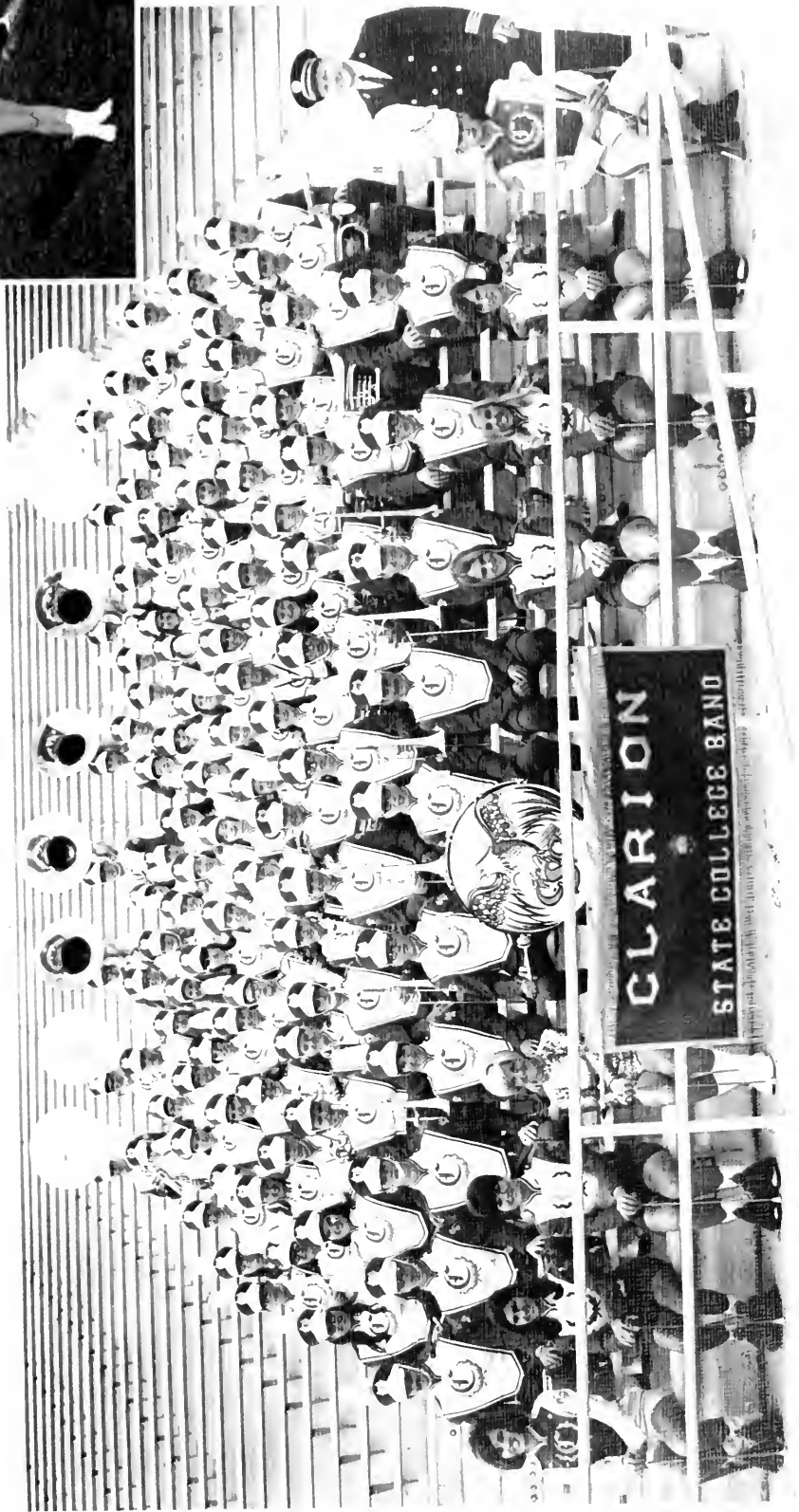


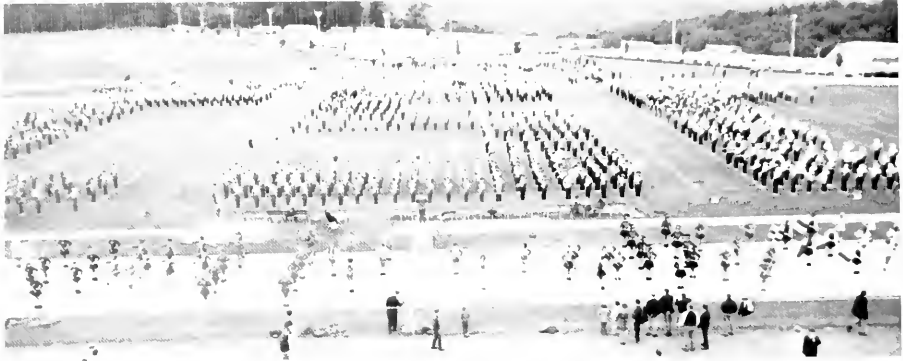
OF THE MARQUIS DE SADE



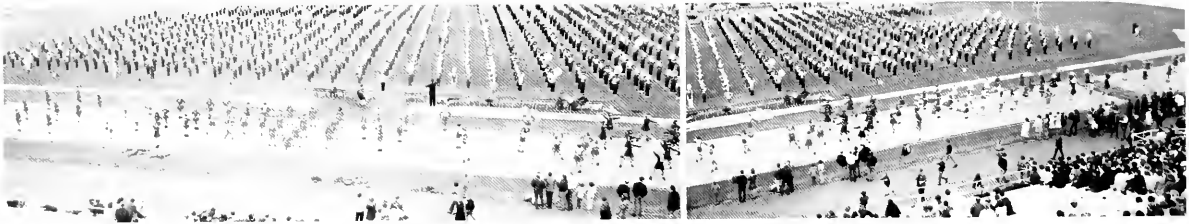


# GOLDEN EAGLE MARCHING BAND

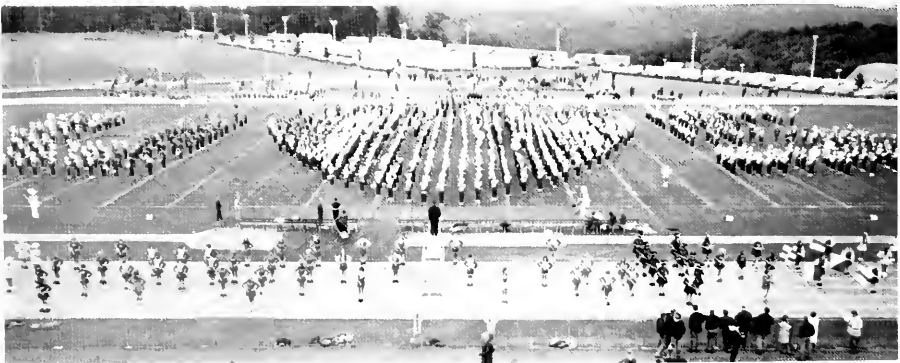




## BAND DAY



1969







HAMLET







CLARION STATE  
COLLEGE  
SYMPHONY  
ORCHESTRA



LAB BAND

MADRIGALS



# OPERA GALA





'The trouble with life  
is that there are so  
many beautiful women —  
and so little time.'

— John Barrymore

BEAUTIES AND HONORS

# WHO'S WHO



*Judith Bishop*



*Paul Armbruster*



*Virginia Apple*

## IN AMERICAN COLLEGES



*Virginia Elish*



*Pamela Grantham*



*Leslie Hudak*



*William Jackson, Jr.*



*Dorothy Lawry*



*Patricia Losik*

## AND UNIVERSITIES

*Mary McCauliff*



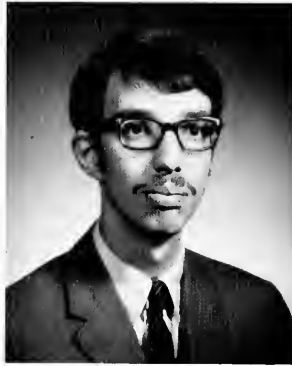
*Pamela Mattern*



*Anthony Mattern*



*Mary R. Ott*



*Kenneth Miller*



*Margaret McHenry*



*Mary Palmer*

*Thomas Paolino*



*Susan J. Riddle*





*Catherine Smith*



*Jeanne Struble*



*Carolyn Welesko*

*Margaret Wyncoop*



*Owen Winters*

*Raymond Yutzy*



*Not pictured:*  
Russell Benson  
Linda Mason  
Phyllis-Romano  
Willie Saunders  
Roland Sparrow



*Christine Kinsey*

MISS CLARION STATE COLLEGE

1970



# HOMECOMING QUEEN



*Miss Marty Jupinka*



THE QUEEN



Candi James ΔZ



Jan Johnston ΒΞΩ



Linda Gelsman ΑΞΔ



Beverly Jones ΑΞΤ



Jackie Tytko ΑΞΑ



Little Dicky Metcalf

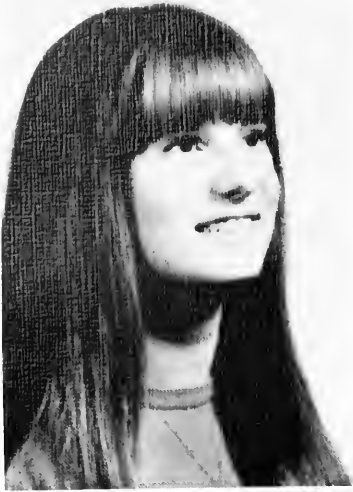


Cheri McClain ΣΞΣ

BEAUTIFUL  
LEGS



Cathy Foust ZTA



*Miss Susan Cherico  
Alpha Sigma Chi*



*Miss Carol Christie  
Tau Kappa Epsilon*

## *Fraternity Sweethearts*



*Miss Martha  
Jupinko  
Theta  
Chi*



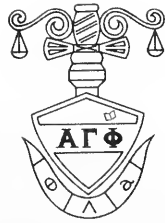
*Miss Jeanne  
Kurtzhals  
Phi Sigma  
Epsilon*



*Miss Suzie Wright  
Phi Sigma Kappa*

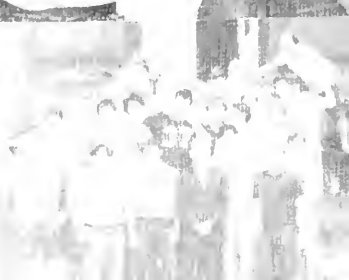
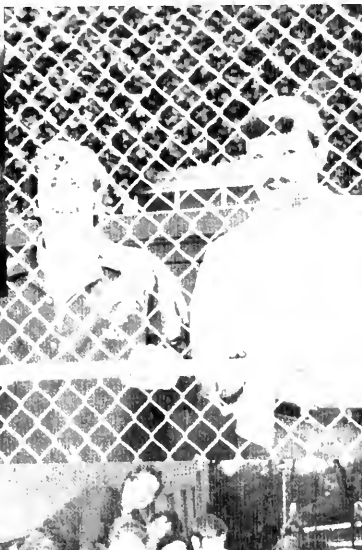
*When Greeks joined Greeks,  
then was the tug of war.*

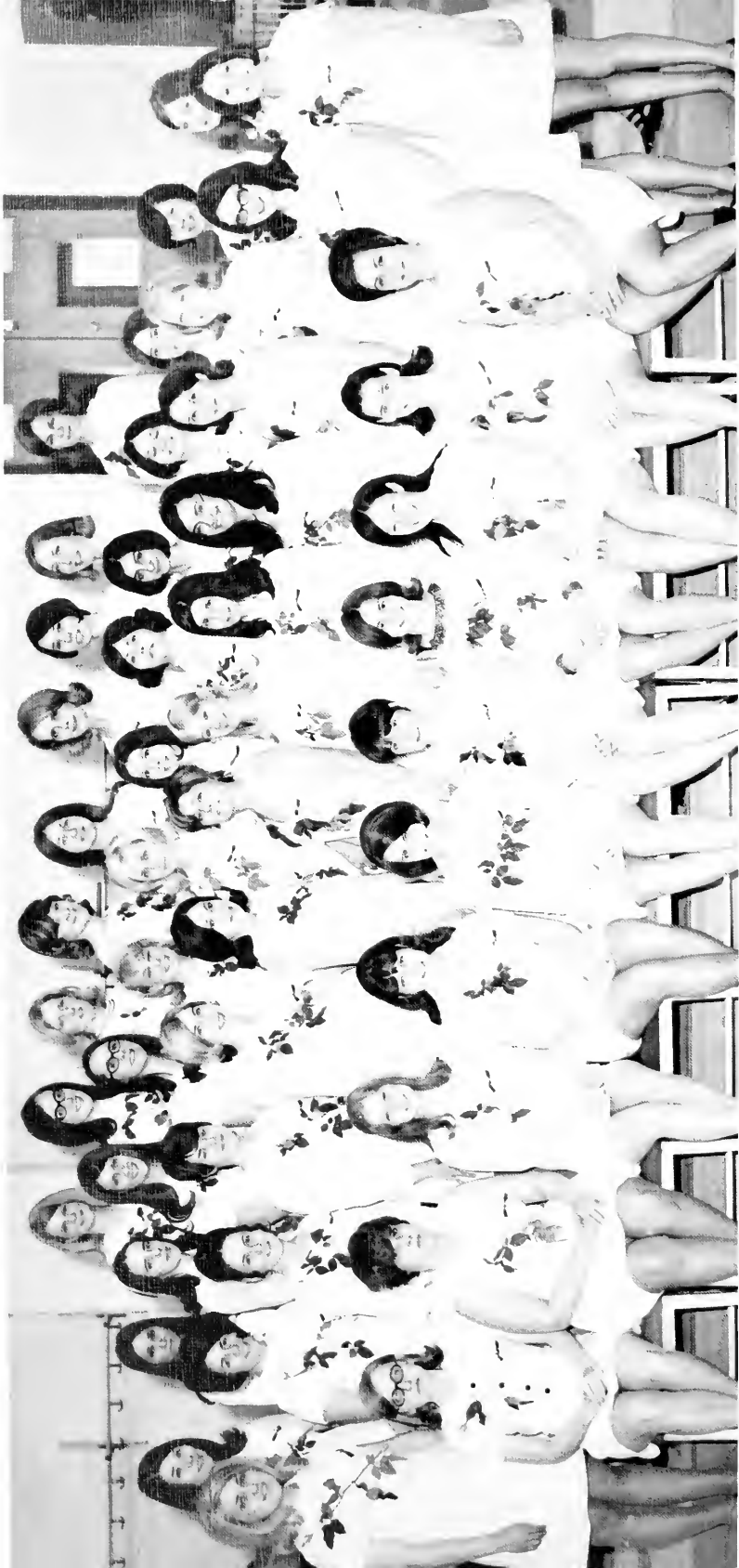
*— Nathaniel Lee*





# ALPHA GAMMA PHI







## ALPHA XI DELTA

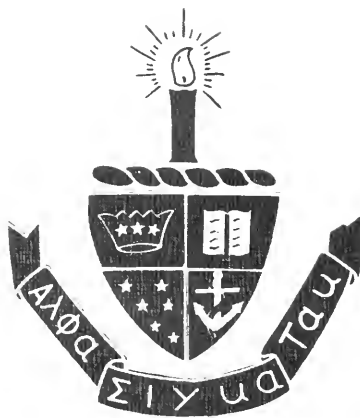




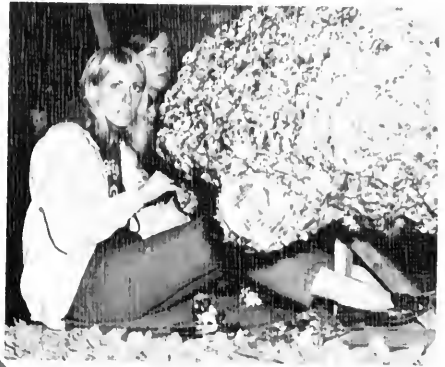


# APHA SIGMA ALPHA





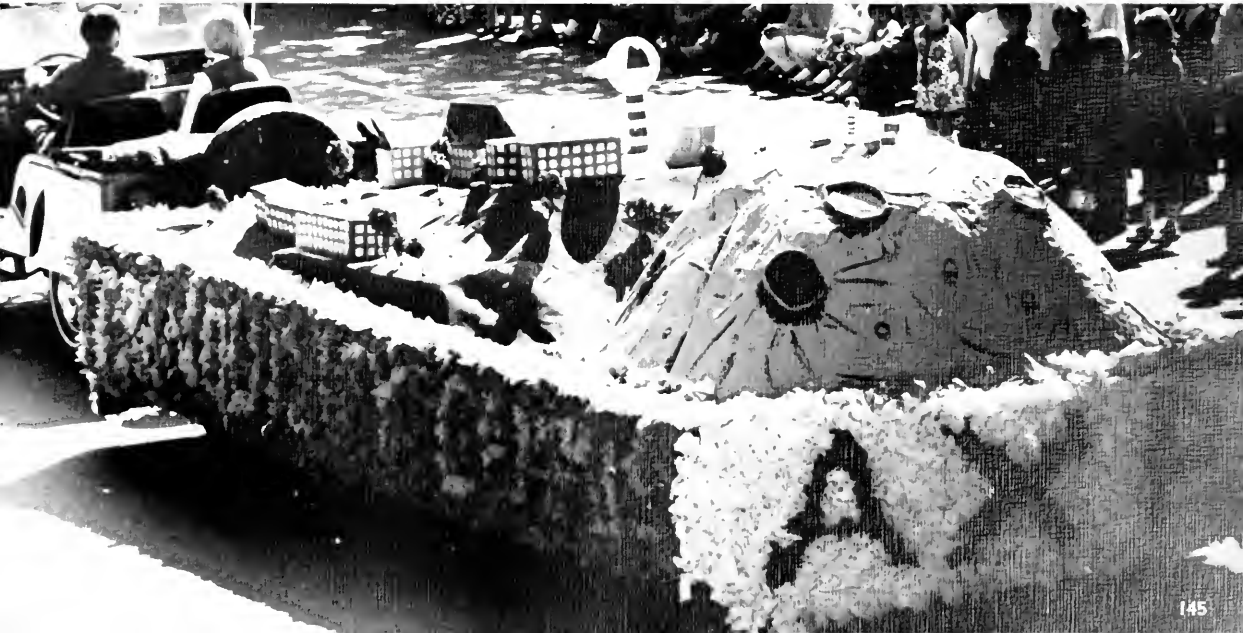
# ALPHA SIGMA TAU

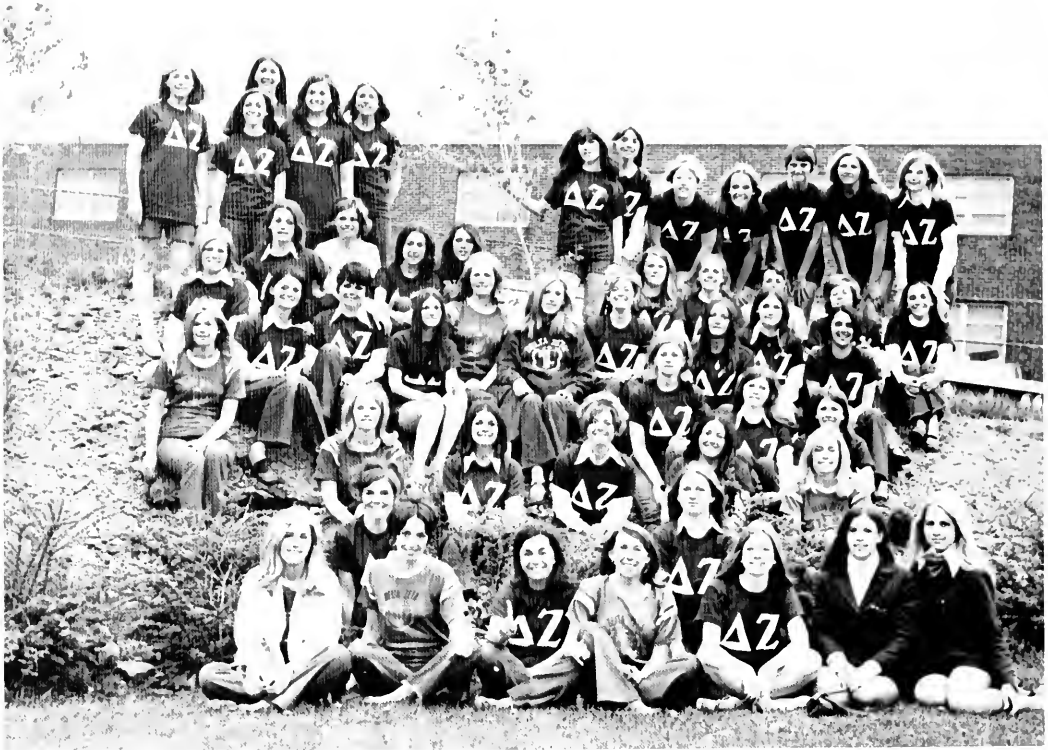






## ALPHA CHI RHO

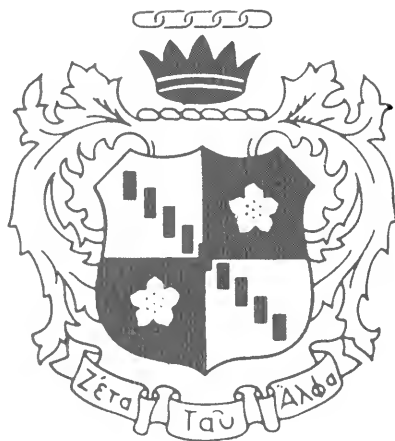






DELTA  
ZETA

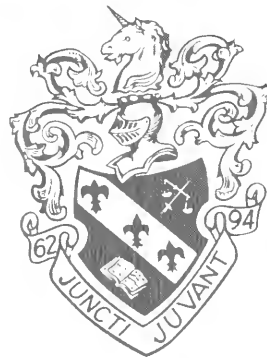
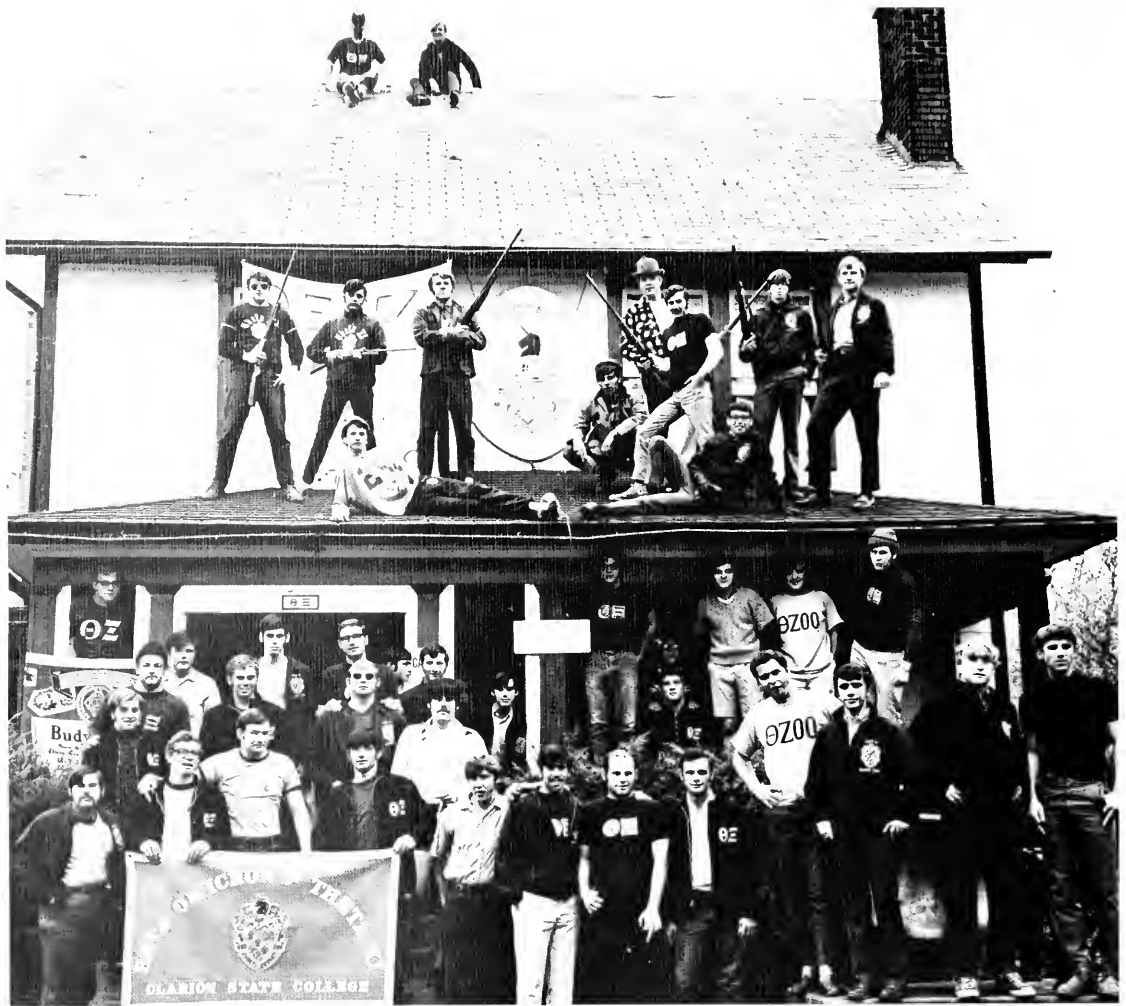






ZETA  
TAU  
ALPHA







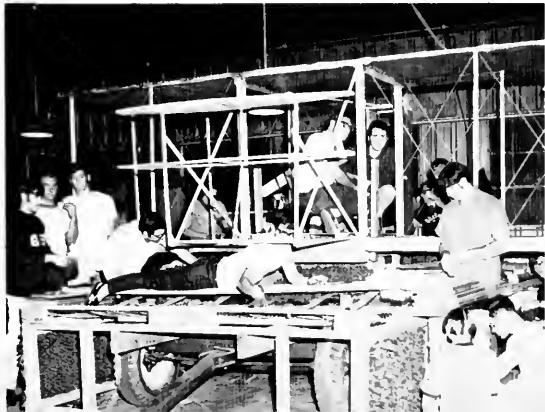
# THETA XI

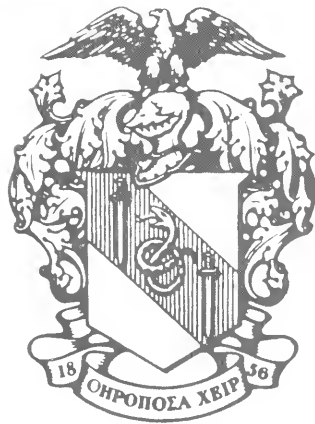
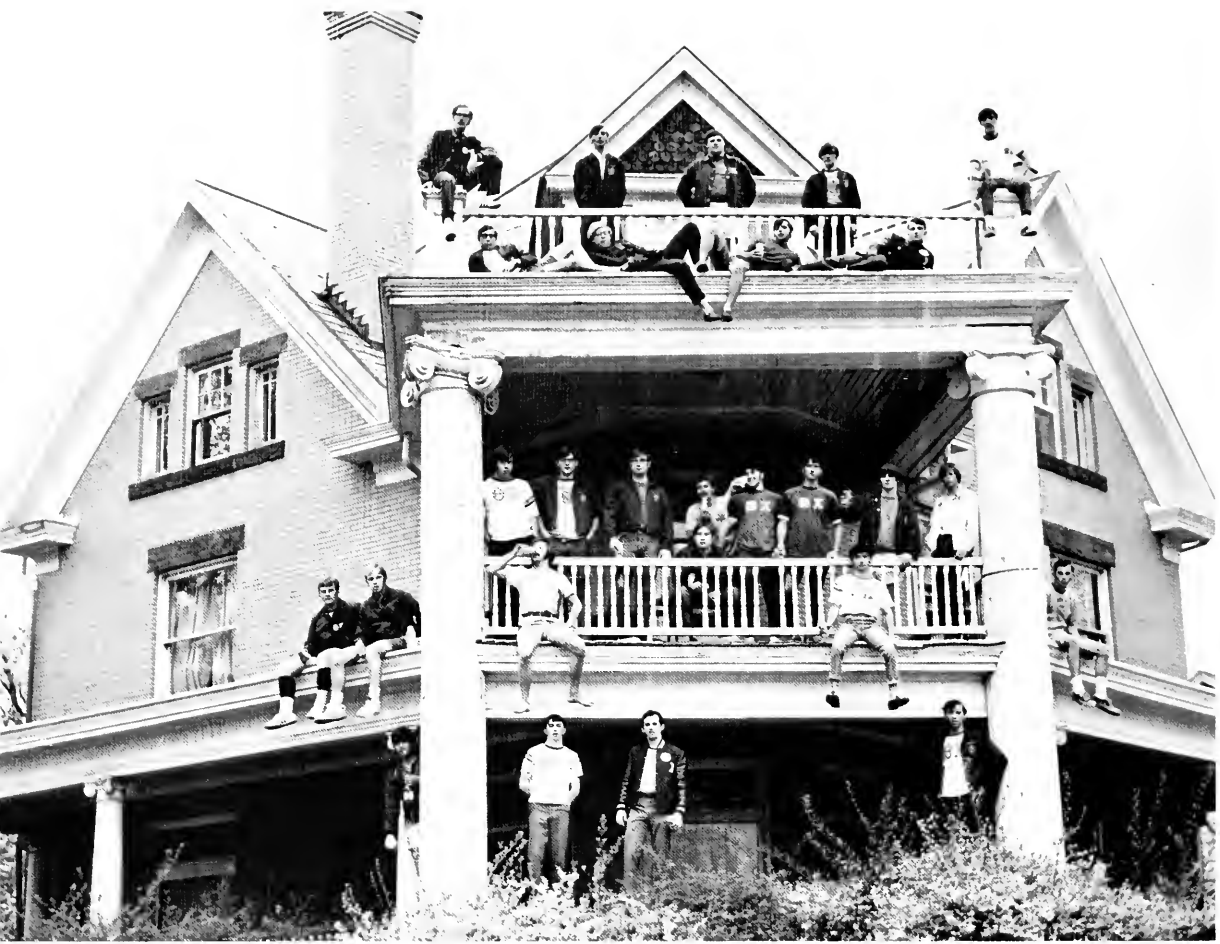
IN MEMORIAM



LEONARD MITCHELL

June 24, 1947 - February 2, 1970

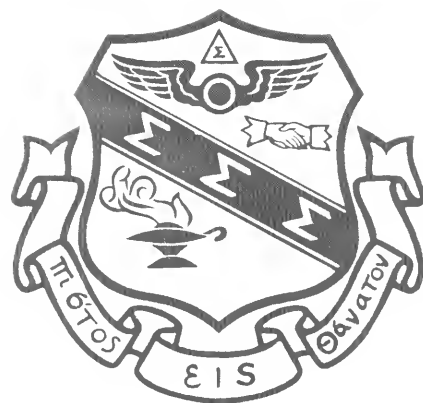






THETA  
CHI







SIGMA  
SIGMA  
SIGMA

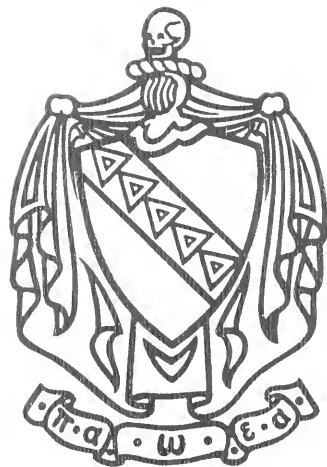






# SIGMA TAU GAMMA

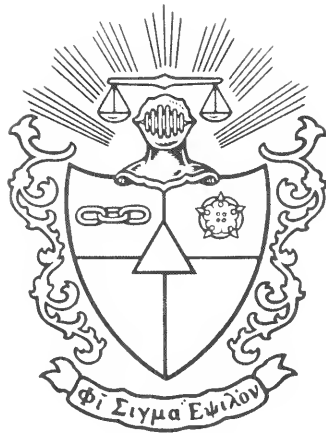






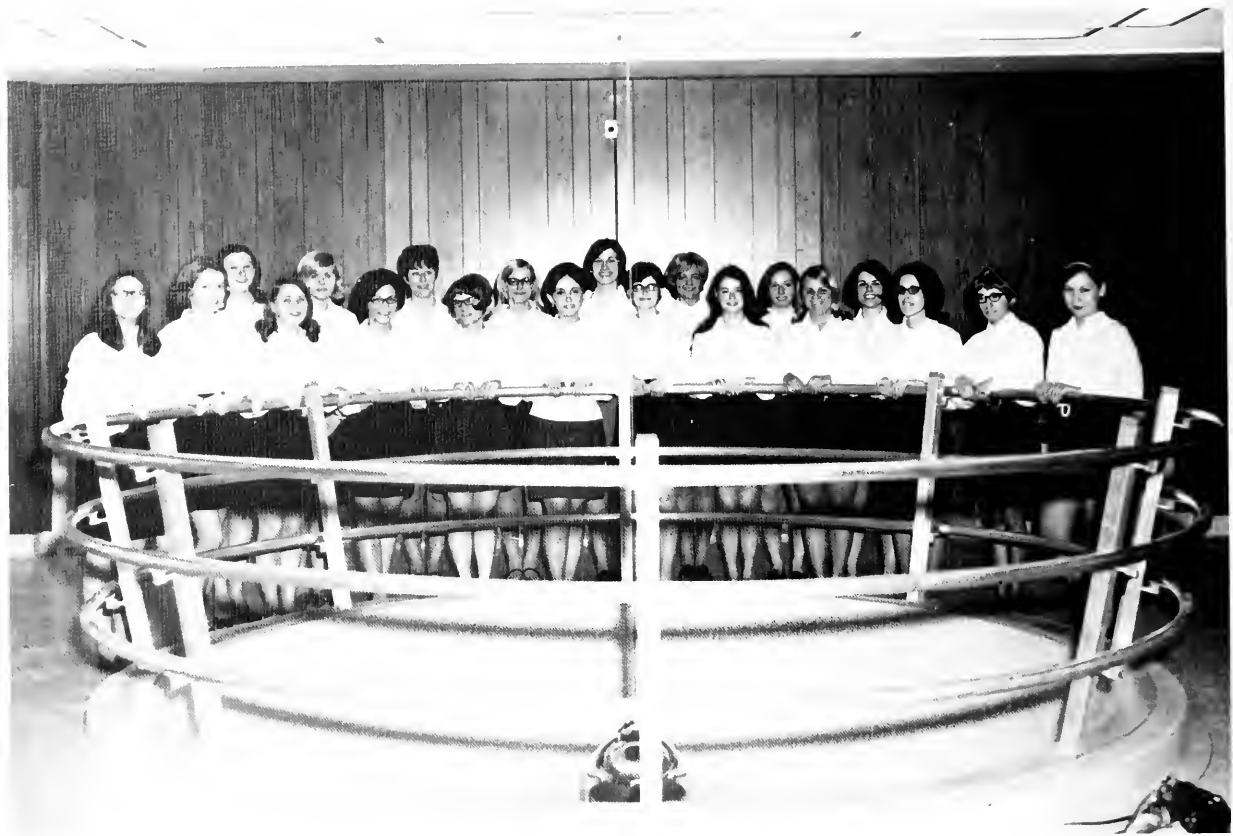
## TAU KAPPA EPSILON





# PHI SIGMA EPSILON







# PHI SIGMA SIGMA

PLEDGE COLONY







# PHI SIGMA KAPPA



## PAN-HELLENIC



Row 1: S. Douglas, J. Estep, N. Way, M. Daisley, C. Yeaman, J. Meckley, L. Blair Row 2: J. Satkovich, J. McEwen, L. David, S. Williams, K. Wildnur, D. Wilson, E. Blough, P. Angel

## INTER-FRATERNITY COUNCIL



R. Rykacheski, B. Reckner, J. Frontino, J. Inskip, G. Glies, T. Boots, J. Bordick, J. Dudzinsky, L. Hanna, J. Cassin, T. Mudger, T. Neyman, H. Zuber.

*An assembly of fellows,  
meeting under certain  
conditions . . .*



Bill, Marilyn, Kathy, Mary Lou, Donna and Ellen

## SEQUELLE

*Those who can, do; those who  
can't, criticize*

# CLARION CALL



Row 1: R. Wilshire, D. Klimek, L. Andre. Row 2: M. Dahl, J. Knox, B. Froelich. Row 3: Dr. Redfern, P. Urda, A. Rohrbaugh, M. May, J. Proud, B. Musselman, T. Boots, S. Lehman.

# CLASS OFFICERS

## SENIOR



Sue Riddle, Cookie Morgan, Sue Paul, Bill Weidler

## JUNIOR



Jack McGowan, Kathy Burgason, Linda Stright

## SOPHOMORE



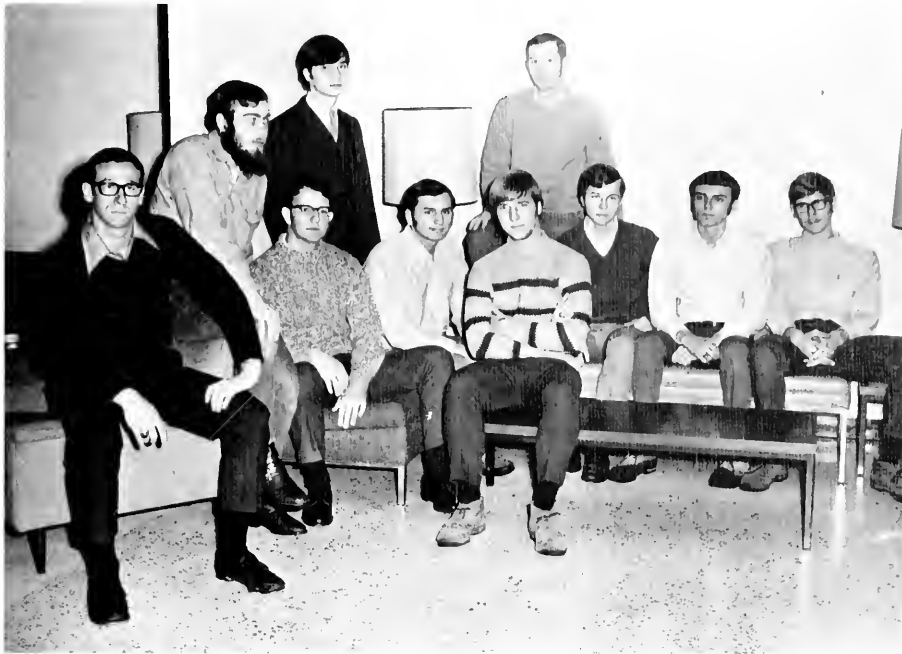
Helen Blair, Eileen McGinley, Elaine Ferrari

## FRESHMAN



Chris Montgomery, Ted Dicola, June Vanderslice, Mike May

# MEN'S INTERHALL COUNCIL



Row 1: R. Friedl, G. Davis, D. Dippold, D. Huitnagel, R. Cullen Row 2: D. Prince, B. Dubovsky, D. Young, W. Smith

# WOMEN'S INTERHALL COUNCIL



Emily Sangermano  
Janis Brooks  
Peggy Ward  
Carol Christie

## MATHEMATICS CLUB



J. Morasco, C. Minchoff, M. Policheski, N. Keel, F. Greveda, I. Campbell, K. Rodgers, F. Bloom, Mr. Engle, D. Moon, Mr. Henry, R. Basich, R. Negefa, C. Hardwick, H. Bushay, H. Putt, R. Dr. Gendler, D. Thompson, R. Helms, M. Jack, C. Rargi, Miss Ringland, D. McWalters, B. Cratt

## BIOLOGY CLUB



B. Froehlich, J. Gmüca, B. Brier, C. Hartner, S. Zacher, T. Wiggins, E. Gnegy, T. Metejko, E. Rosdall, M. Policheski, E. Zobenb, R. Hill, S. Jobb, J. Proud



# ARCHAEOLOGICAL ASSOCIATION



J. Luksik, S. Zacher, Dr. Konitzky, C. Fritz, J. GoMoca, E. King, C. Little, J. Mortermer, C. Thomas, M. Beatty, D. Kohler

# SIGMA ALPHA ETA



L. David, Karen Kapsen, Peggy Nelson, Gloria Lindell, L. DeCapua, L. Morrow, Mr. Hartlev, S. Allison, K. Quigley, B. Filhan, K. Sepos

# COLLEGE READERS



Row 1: P. Gaffney, C. Carter, J. Anderson, D. Summerville, D. Monango, J. Rosensteel Row 2: L. Kight, M. McHugh, T. Johnson, S. Busco, T. Halula

# COLLEGE PLAYERS

Row 1: B. McNutt, P. Gaffney, C. Carter, C. Alexis, S. Snyder Row 2: S. Busco, J. Weser, D. Summerville, J. Anderson, J. Rosensteel, K. Barron, A. Serff, T. Johnson, H. Manguis



# ALPHA PSI OMEGA



Row 1: J. Anderson, S. Snyder. Row 2: J. Rosensteel, J. Weser, T. Johnson. Row 3: P. Gaffney, C. Carter, K. Barron, C. Alexis, J. Sandrock, B. McNutt.

# INTERCOLLEGIATE CONFERENCE OF GOVERNMENT



*Row 1: T. Johnson, B. Ogden, C. Chinchok. Row 2: G. Ritter, B. Collins, A. Serff.*

## YOUNG REPUBLICANS



*Row 1: D. Barrett, W. Barrett, A. Serff. Row 2: A. Savory, G. Ritter, B. Ogden, D. Scholl, P. Keshaw, S. Grubbs, D. Schultess.*

# PI KAPPA DELTA



*Seated:* A Huntz, R Banks *Row 2:* E McGinley, J Gilligan, B Hufford, T Halula, L Pfaff *Row 3:* R Leeper, D Schell, Dr Hufford, C Juntsch

# DEBATE TEAM



*Seated:* A Huntz, R Banks, J Walter, G Davis, J Gilligan. *Standing:* J. Bowersox, R. Leeper, Dr. Hufford, D Schell, G Juntsch, L. Pfaff, B Hufford, T Halula, E. McGinley.

# HONORARY FRATERNITY LANGUAGES



*First row:* E. Choby, E. Fatratic, L. Kight, J. Daniels. *Second row:* P. Morris, C. Flick, A. Kerestes, S. Zumwalt, J. Meckley

## ALPHA MU GAMMA

# STUDENT PENNSYLVANIA



*Front: K. Rodgers, D. Gaido, I. Schlenter. Middle: P. Gillfert, E. Choby, N. Bonsall. Back: D. King.*

# STATE EDUCATION ASSOCIATION



## STUDENT SENATE





LYRIC OPERA



WORKSHOP





# CABARET



# WAA



*Seated:* J. Marasco, B. Smith. *Standing:* Miss Shope, D. Peterson, C. Masters, R. Faulkner, C. Hinton, C. Stewart.

# VARSITY "C"



*Seated:* J. Abel. *Standing:* R. Sparrow, C. Crist, G. Visnich, A. Emrick, R. Terza.

# ALPHA SIGMA CHI



Row 1: K. Yutzy, T. Ordons, F. Szoch, D. Jones, J. Konkle, J. Mariotti Row 2: H. Kuhns, D. King, T. Caufield, K. Bowman, T. Komis, J. Smith, J. Bowser, J. Bollman Row 3: R. Wilshire, D. Campbell, N. Speedy, D. Eshelman, J. Bologh, H. Foote Row 4: D. Musgrave, J. Peterman, D. Gaido, J. Wolfe, J. Butcher Row 5: D. Topper, G. Datt, B. Napierski, J. Arhrens, S. Kagle Row 6: C. Wilhelm, J. Pavolic, J. Rehrer, R. Wood Row 7: F. Lebeda, G. Wolbert, K. Frid, D. Sevin, B. Conti.



## KAPPA KAPPA PSI

*Row 1: C. Oglesby, G. Ozella, R. Dehner, D. Steiner Row 2: J. Schneider, Terry Jenkins, L. Hepler, B. Heinricher, P. Stallman Row 3: B. Stumpl, K. McNulty, D. Smvers, B. Balough, B. Severance, C. Doert Row 4: G. Murford, D. Karg, C. Holtman, J. McKelvey*

## TAU BETA SIGMA

*Row 1: M. Delp, B. Decon, L. Sherrieb, L. Schlentner. Row 2: B. Simibaldi, S. Andrews, J. Stefanik, G. Lindell, N. Richards. Row 3: M. Beckstein, E. Blough, M. Whiteshot, E. Ayres, L. Gifford, S. Valentine. Row 4: K. Grunder, M. Bigley, B. Squire, L. McGuire, S. Riddle, L. Linnamen, C. Yonker. Row 5: L. Whren, G. Kaplon, R. Herrod.*



# ASSOCIATION OF WOMEN STUDENTS



Seated: B Siepiela Standing: J. Brooks, S. Maskas, L. DeCapua, J. O'Hop, S. Hardwick

# COLLEGIATE RAINBOW



Row 1: S. Myers, K. Mathias, J. Laws, L. Andre Row 2: S. Bunting, Mrs. Wellaston, J. Lowe, B. Squire, C. Skinner, L. Yowan, L. King. Row 3: C. Yonkers, S. Schwartz, D. Cartwright, G. Motter, D. Leasher, L. Sherrieb, R. Lutz

Now owls are not really wise — they only look that way.

The owl is a sort of college professor



*President James Gemmell*

## BOARD OF TRUSTEES

*H. Ray Pope, Jr. — President*

*John E. Aikman  
Chester H. Byerly  
Edward J. Crowe  
Howard E. Gayley*

*Harriet S. Hearst  
Philip W. Silvis  
E. Clinton Still  
H. Carl Wasson*



## PRESIDENT'S MESSAGE

Nothing so delights our alumni, our trustees and friends as a new building on our campus. Nothing else presents such tangible evidence of growth, of progress, and of commitment to the future. But nothing else is as difficult to keep in balance as a construction program on the scale of the one now in progress at Clarion. And, unfortunately, nothing else presents so much inconvenience, noise, and confusion to you, our students.

Even as we concerned ourselves with your needs and your opportunities, we were planning and building for the students yet to come. The Class of 1970 has stepped over and around the clutter of the busiest construction period in our history and, with the rebuilding of the college and the emergence of a new decade, has seen the ending of an era. The old era of stability and tranquility is gone on our campus and elsewhere. The new decade, with its problems and its promise, is upon us.

As the college enters this new decade and this exciting new phase in its life, so do you now enter upon new responsibilities and new challenges in yours. Clarion is a better college for your having been here. Whether or not you are a better person for having been at Clarion, you, and all who feel your influence, will soon know. I feel certain that you are.

I salute the class of 1970 and wish you well in all that you may do.

# ADMINISTRATION



DR. GEORGE CURTIS



LEO GERBER



BRYCE GRAY



WALTER HART



DR. ROGER HUFFORD



MYRON KLINGENSMITH



DR. GEORGE LEWIS



DR. WILLIAM MCCAULEY



DR. JOHN MELLON



DR. JAMES MOORE



PETER NACHTWEY



DR. DONALD NAIR



DR. JOHN NANOVSKY



DR. WILLIAM PAGE



WILLIAM PROUDHIT



RICHARD SCHURICHT



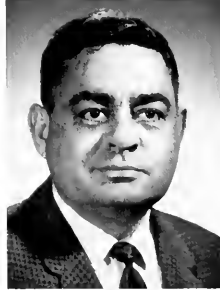
ROBERT SEGEBARTH



DR. RALPH SHERRIFF



DR. CHARLES SHONTZ



DR. HARROLD SIMMONS



RICHARD SKINNER



DR. DANA STILL



ETHEL VAIRO



PHILIP WALLACE

# ART



DR. JOSEPH SPENCE  
Head of Art Department



DR. FRANCIS BAPTIST



ALFRED CHARLEY



SUSAN COERR



WILLIAM EDWARDS



WILLIAM GROSCH



CHARLES PEARCE



ANDOR P-JOBB

# BIOLOGY



ERNEST AHARRAH



DR. BRUCE DINSMORE  
Head of Biology  
Department



STANLEY BELFORE



DR. WILLIAM  
CHAMBERLAIN



JAMES DONACHY



NADINE DONACHY



DR. GEORGE HARMON



DR. WILLIAM KODRICH



DR. KENNETH LINTON



KENNETH MECHLING



DR. J. ROBERT MOORE



DR. GILBERT TWIEST



DR. JOHN WILLIAMS

# BUSINESS ADMINISTRATION

DR. FOREST C. CARTER  
Dean of Business  
Administration



DR. SARJIT SINGH



# CHEMISTRY



DR. JOHN LASWICK  
Head of Chemistry



DR. PAUL E. BECK



DR. OLIVE BOWER



DR. WILLIAM HART



GLENN KELDSEN



GEORGE WOLLASTON



WILLIAM REDIN

# COMMUNICATIONS



INEZ BAKER



DAVID CAMPBELL



DR. JAMES COLE  
Dean, Division of  
Communication



RONALD DYAS



HENRY FUEG



DR. RICHARD METCALF

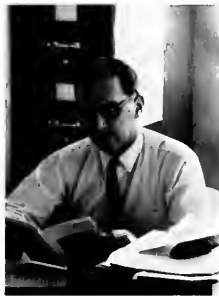


LEONARD PEAFF

# EDUCATION



DR. ALPHA BERNARD



DR. RICHARD BRADLEY



EARL CHALFANT



CHARLES EVANS



ERNEST JOHNSON



DAVID KLINDIENST



HENRIETTA KODRICH



WALTER KOUKAL



JOHN MOORHOUSE



DR. BETTY SLATER



DR. LAWRENCE SMITH



DR. PHYLLIS SMITH



DR. ROBERT YOHO



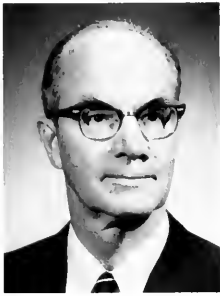
DR. ARNOLD ZAESKE  
Director of  
Elementary Education



# ENGLISH



DR. LESTER MOODY  
Head of English Department



DR. JOHN ARSCOTT



DORIS COOPER



FRANCIS GRECO



DR. EDWARD GREJDA



WILLIAM KARL



ELAINE KING



BRUCE MacBETH



DR GILBERT NEIMAN



HENRY NEWMAN



DR HUGH PARK



DR RICHARD REDFERN



RONALD SHUMAKER



DONALD WILSON



DR ROBIN WILSON

## FOREIGN LANGUAGES



CARL CALDWELL



DR. ROBERT BAYS  
Head of Foreign Language  
Department



RAFAEL DIAZ y DIAZ



JOSE G GARCIA



DR. ALFRED JUNOD



DR. CHRISTINE TOTTON



ANNE WEISS

# GEOGRAPHY



DR. TRACY BUCKWALTER



DR. MARY COLBY



ROBERT CRAWFORD



DR. DON TOTTON  
Head of Geography Department



NORMAN HUMPHREY



LESTER OAKES



GEORGE SHIREY



DR. DIETRICH ZIMMER

# LIBRARY SCIENCE



CHARLES ECONOMOU'S  
Dean of Library Science



DAN GRAVES  
Director of Libraries



KENNETH EMERICK



JANICE HORN



ROGER HORN



MARGERY JOHNSON



CHAI KIM



JOHN MAGER



MARIE MAZOURSKI



JAMES McDANIEL



NANCY MCKEE



ELEANOR MOORE



200 GLEN SITZMAN



J. KENNETH WYSE

# MATHEMATICS



DR. MICHEL OSNESIA  
Head of Mathematics  
Department



DR. EDGAR AVERILL



DR. NICHOLAS BEZAK



THOMAS CARNAHAN



ROGER ENGLE



DR. STEPHEN GENDLER



IRVING HENRY



RONALD KOPAS



DONALD LOWE



LOIS M'USHRUSH



ROBERT NORTHEY



EUGENE RHOADS



SALLY RINGLAND



NECDET UCOLUK

M  
U  
S  
I  
C

VAHE BERBERIAN



DR. PATRICIA CONNER



DR. BONG HI KIM



MILUTIN LAZICH



DR. STANLEY MICHALSKI



ANNETTE ROUSSEL-PESCHE



EDWARD RONCONE

OLIVER STEINER



RUTH VAN METER



# PHYSICS



JACK BLAINE



DR ALBERT EXTON



CLIFFORD KETH



GALEN OBER



DR MOHAMED SAID



JAMES SHOFESTALL



DEWAYNE SLAUGENHAUPT



DR WILLIAM SNEDEGAR  
Head of Physics Dept.

# PHYSICAL EDUCATION



THOMAS L. BECK



ROBERT G. BUBB



ALBERT JACKS, JR.



JOSEPH J. KNOWLES



FRANK LIGNELLI  
Director of Athletics



CHARLES NANZ



RICHARD PAE



DONALD LEAS  
Director of Health,  
Physical Education and  
Recreation



CHARLES RUSLAVAGE



FRANCES SHOPE



BETTY SIMPSON



NEIL TURNER



# SOCIAL SCIENCES



DR. JOEL HAINES  
Head of Social Studies Department



EMMETT GRAYBILL



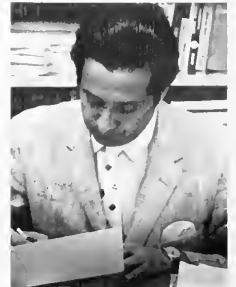
EUGENE KARASEK



DR. JACK BERTSCH



DR. HELEN KNUTH



DR. MOHAMMED KHAN



DR. GUSTAVE KONITZKY



DR. WALTER SNYDER



DR. ELDON SOMERS



CHARLES ROBBE



IMOGENE SUMNER



DR. NGO DINH TU



JAY VAN BRUGGEN



DR. SAMUEL WILHELM

## PSYCHOLOGY



DR. ALLAN ELLIOTT



DR. KATHERINE KOCHNO



DR. W. LEE MORRISON



DR. LAWRENCE PENNY

# SPECIAL EDUCATION



DR. ROY SCHREFFLER



HAROLD HARTLEY



DR. DANIEL SHIREY



EDWIN SIMPSON



JACK SMITH

# SPEECH



DR. DONALD DININNY



DR. MARY HARDWICK



DR. ELBERT MOSES  
Head of Speech Dept.



ROXANNE PLAPP



DR. CHARLES MARLIN

IN MEMORIAM  
DR. DAVID A. HILTON



*A man gives but little when he gives of his  
possessions.  
It is when he gives of himself that he truly gives.*

*(The Prophet On Giving)*

DR. DAVID A. HILTON

Born November 11, 1917

Died September 14, 1969

Received his Bachelor Degree from  
Ohio State University in 1940

Taught High School in  
Ohio from 1941-1942

Received his Master of Arts Degree from  
University of Cincinnati in 1947

His Doctoral Degree from Wayne State  
University in 1957

From 1946 to 1963 he taught in the Physical Science Departments  
of Park College, Michigan and Wayne State University

From 1963 to 1964 he taught as a Fulbright  
Scholarship Professor at Pashewar University  
in Pakistan

In September of 1964 he became a Clarion  
State College Faculty member as a Professor  
of Science Education and Assistant  
to the President

During the 1969-70 academic year  
Dr. Hilton was to be Acting President of  
Clarion State College, during the sabbatical leave  
of President James Gemmell

## ADMINISTRATION

Charles Blochberger  
Peter Mervosh

## ART

Norma St. Germain

## BUSINESS ADMINISTRATION

Thomas Bertsch  
Dr. Dempsey Dupree  
Matthew Marder

David Morewitz

Charles Townsend

Thomas Vernon

Dr. Arthur Wickmann

## CHEMISTRY

Dr. Philip Baldacchino

## COMMUNICATIONS

Dr. Robert Liao

Aatis Lillstrom

## EDUCATION

Dr. John McClain

Dr. Don Morgan

Paul Mosser

Frank Palaggo

Dr. Ernest Rice

Dr. Richard Romoser

Dr. Joseph Uzmack

## ENGLISH

Dr. Ned Allen

Dr. George Barber

Dr. Terry Caesar

Dr. Max Nemmer

## FOREIGN LANGUAGES

Dr. Gwendolyn Bays

Dr. Dilara Nikoulina

Dr. Christine Totten

## GEOGRAPHY

Margaret Kordecki

Dr. Govind Singh

## LIBRARY SCIENCE

Oliver Booth

Margaret Buckwalter

Mary Butler

Robert Elftmann

Rachel Glenn

Iola McCoy

Mary Williams

## MATHEMATICS

Frederick Bell

Melvin Mitchell

Donald Pagano

Thomas Wimer

## MUSIC

Christian Bohlen

William McDonald

Rex Mitchell

Dr. Robert Van Meter –

Head of the Music Department

## PHYSICS

Mary Bechtold

Dr. Paul Shank

## PHYSICAL EDUCATION

Ernestine Carter

William Hamacher

Ronald Galbreath

John Joy

Karen King

## SOCIAL SCIENCES

Dr. Prabhakar Akolekar

Frank Campbell

Edward Duffy

Dr. James King

Dr. Zoe Swiecker

Dr. Franklin Takei

Richard Zallys

## PSYCHOLOGY

Dr. William Combs

Dr. Irving Lilly

## SPECIAL EDUCATION

Richard Hetrick

Robert Keenan

Dr. Diana McColl

Mary Pannacker

Dr. Kenneth Vayda –

Head of Special Education

## SPEECH

Dr. Robert Copeland

Dr. Adam Weiss

Give me a lever long enough  
And a prop strong enough.  
I can single-handed move the world.

— Archimedes



Joyce Abel  
*English*  
New Castle

William Abbott  
*Social Studies*  
Clarton



Leona Acquavia  
*Elementary*  
Butler

Cathy Adams  
*Elementary*  
Aspinwall

Russell Alderton  
*Political Science*  
Corsica

Bonita Allwein  
*Special Education*  
Holidaysburg

Murray Alt  
*History*  
Johnstown

Colleen Ammon  
*Elementary*  
McKeesport

Gerald Anderson  
*Elementary*  
Rouseville

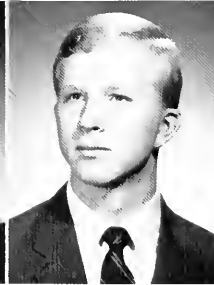
Ingrid Anderson  
*Elementary*  
Sharon

Nancy Anderson  
*Elementary*  
Monaca

Susan Andrews  
*Elementary*  
Reno

Ginger Apple  
*Special Education*  
Pittsburgh

Paul Armbruster  
*Speech*  
Pittsburgh







Sandra Artac  
*Elementary*  
Sharon

Sonia Ashcraft  
*Library Science*  
Johnstown



Lindsay Baird  
*Political Science*  
Pittsburgh

Beverly Baker  
*Elementary*  
Franklin



Patricia Backus  
*Elementary*  
Allentown



Sharon Baker  
*Elementary*  
Vineland, N. J.



Betty Bagley  
*History*  
Brunswick, N. J.



John Balko  
*Speech Pathology*  
Sharpsville



Karen Bauer  
*Elementary*  
Clanton



Craig Bates  
*Elementary*  
Latrobe

Lawrence Banner  
*Social Studies*  
Shipperville

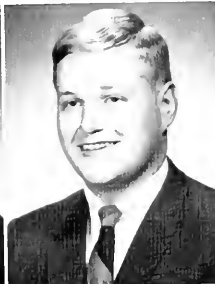
Katherine Bauer  
*Special Education*  
Clanton



Raymond Bastkowski  
*Special Education*  
Johnstown



Marc Bauer  
*Mental Retardation*  
Brookville



Franklin Becker  
*Biology*  
Bristol



Cheryl Bennett  
*Elementary*  
Sharpsville





Linda Beres  
*Elementary*  
Zehentople

Elizabeth Best  
*Special Education*  
Knox

Ellen Blough  
*Elementary*  
Jerome

Carolyn Bower  
*Elementary*  
Venus

Brenda Bergonzi  
*Elementary*  
Vineland, N. J.

Judith Bishop  
*Mathematics*  
Volant

Joyce Blough  
*Elementary*  
Boswell

R. Wayne Boyle  
*Business*  
McKeesport

Grant Berkebile  
*Mathematics*  
Johnstown

Jane Black  
*Elementary*  
Lewis Run

Donna Book  
*Elementary*  
New Castle

Peggy Britton  
*Elementary*  
Falls Creek

Kave Berkev  
*Speech*  
Jennerstown

Jane Blair  
*Library Science*  
Pittsburgh

Sandra Bordick  
*English*  
Ford City

Susan Brooks  
*Elementary*  
Youngsville

Marcia Berlin  
*Elementary*  
Philadelphia

Robert Blauvelt  
*Geography*  
Monroeville

Jean Borsh  
*Elementary*  
Leechburg

Frank Brown  
*Business*  
Oil City





Linda Brumagin  
*Secondary*  
Waterford



Naomi Buch  
*Mathematics*  
Beaver Falls



Patricia Bush  
*Elementary*  
Delmont



Patricia Bushvager  
*Elementary*  
Harrison City



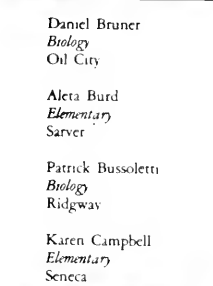
Rosalie Buzga  
*Spanish*  
Sharon



Daniel Bruner  
*Biology*  
Oil City



Aleta Burd  
*Elementary*  
Sarver



Patrick Bussoletti  
*Biology*  
Ridgway



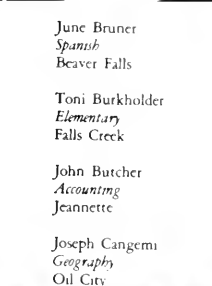
Karen Campbell  
*Elementary*  
Seneca



June Bruner  
*Spanish*  
Beaver Falls



Toni Burkholder  
*Elementary*  
Falls Creek



John Butcher  
*Accounting*  
Jeannette



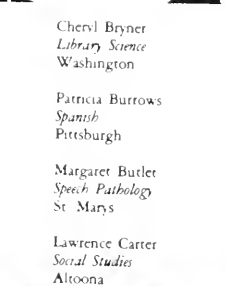
Joseph Cangemi  
*Geography*  
Oil City



Cheryl Bryner  
*Library Science*  
Washington



Patricia Burrows  
*Spanish*  
Pittsburgh



Margaret Butler  
*Speech Pathology*  
St. Marys



Lawrence Carter  
*Social Studies*  
Altoona





Linda Cassatt  
*Elementary*  
Summersville

Marshall Cassell  
*History*  
Hershey

James Cassin  
*Social Studies*  
McKeesport

Roseann Castellani  
*English*  
James City



Dianna Cherry  
*Secondary*  
Johnsburg

Michaline Chesons  
*Speech Pathology*  
Stump Creek

Anna Chirillo  
*Elementary*  
Johnsburg

Janet Coleman  
*Elementary*  
Friedens

Ronald Colland  
*History*  
Connellsville

Michael Connor  
*Biology*  
Pittsburgh

William Corbett  
*Social Studies*  
Clarion

Raymond Costello  
*Business*  
Penn Hills

Robert Covell  
*Accounting*  
Warren

Joyce Crable  
*Math*  
New Castle

Carol Craig  
*Spanish*  
Jennerstown

Emma Craig  
*Elementary*  
Greensburg

Charles Crist  
*Social Science*  
Munhall





Michael Czlonka  
*History*  
Oil City

Michele Dalverny  
*Elementary*  
Bridgeville

Christopher Daniels  
*Music*  
Bessemer

Terry Daum  
*Speech*  
Coraopolis

Diane Davis  
*Elementary*  
Penn Hills

Mary Davis  
*Elementary*  
Apollo

Linda Davison  
*Mathematics*  
Aliquippa

Richard DeMarte  
*Social Studies*  
Clarion

Carol DeMoss  
*Elementary*  
Pittsburgh

Donald Depp  
*Comprehensive Science*  
Pittsburgh



Sandra Diesel  
*English*  
Muse

Christine Dinsmore  
*Biology*  
Clarion

Marlene DePento  
*Elementary*  
Kaylor

Victor Dobies  
*Business*  
West Mifflin



Carolyn Doerr  
*History*  
Carnegie

Sheila Donaldson  
*Elementary*  
Emlenton



Robert Dornan  
*Psychology*  
Monongahela

Linda Douglass  
*Elementary*  
Oil City



Gary Edwards  
*Biology*  
Oil City

Ginny Elish  
*Political Science*  
Canonsburg



Albert Emerick  
*Mathematics*  
Rochester

Dorla Emery  
*Elementary*  
Brookville



Richard Flage  
*English*  
Pittsburgh

Denise Folmar  
*Library Science*  
Barnesboro

Raymond Ford  
*Business*  
Pittsburgh

David Forringer  
*History*  
Clarion



John Donato  
*Math*  
West Hickory

Anthony Donghia  
*Biology*  
Vandergrift



Virginia DuPont  
*French*  
Lower Burrell

Mary Lou Easley  
*Elementary*  
Chicora

Cynthia EnDean  
*English*  
Pittsburgh

Linda Ewing  
*Elementary*  
Bridgeville



James Frick  
*Political Science*  
Johnstown

Anne Friedrich  
*Elementary*  
Sharpsville

Carol Fry  
*Special Education*  
Altova



Regina Funaro  
*Elementary*  
Carnegie

Pauline Gagich  
*Elementary*  
Rea

Richard Garland  
*Biology*  
Mineral Point

Carol Garzotto  
*Elementary*  
Penn Hills

Janet Gates  
*Spanish*  
Corry

Teresa Gavazzi  
*English*  
Kersey

Andrew Gavlik  
*Mathematics*  
West Mifflin

Frances Gess  
*Elementary*  
Latrobe

Linda Giesmann  
*Library Science*  
Kennerdell

Ronald Glenn  
*Business*  
Corsica

Joyce Good  
*French*  
Davidsville

Pamela Grantham  
*German*  
Natrona Heights

Roxanne Grasso  
*Psychology*  
Rillton





Linda Green  
*Elementary*  
Clairton

Frances Grepda  
*Elementary*  
Pittsburgh



Patricia Gresh  
*Elementary*  
Ramey

Janie Hall  
*Library Science*  
Lake City



Sharon Hall  
*English*  
Ford City

Linda Hallman  
*Spanish*  
Vandergrift



Janet Harnish  
*Library Science*  
Clairton

Elaine Harshberger  
*Sociology*  
Curwensville

James Hartman  
*History*  
Trattord



Ronald Havranek  
*Elementary*  
Ambridge

Bryce Heasley  
*Math*  
Harrison City

Linda Heasley  
*French*  
DuBois

William Heckathorne  
*Elementary*  
Oil City





Deborah Hecker  
*Math*  
Arnold



Terry Henry  
*Biology*  
Clarion



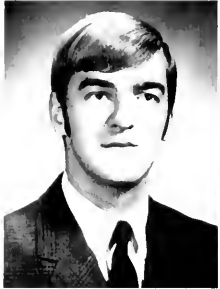
Thomas Hettle  
*Geography*  
Johnstown



Elizabeth Hincken  
*Elementary*  
Meadville



Barbara Hoegle  
*Elementary*  
Pittsburgh



Terry Hostetler  
*Elementary*  
Holsopple



Leslie Hudak  
*Elementary*  
Farrell



Richard Hulings  
*Geography*  
Clarion



Henry Hough  
*Chemistry*  
Mercer



Charles Hufman  
*Elementary*  
Marionville



Marcia Hunnell  
*Elementary*  
Washington

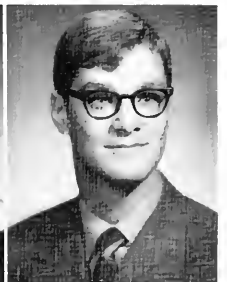
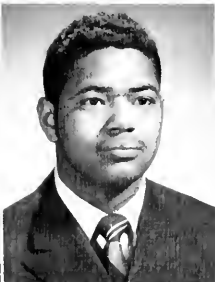
Samuel Itzoe  
*Music*  
New Freedom

James Jackson  
*Social Studies*  
Brockway

William Jackson  
*Business*  
Versailles

Linda James  
*Elementary*  
McKeesport

Francis Jancsar  
*German*  
Pittsburgh





Frank Janoss  
*Math*  
Pittsburgh

Carol Johnson  
*Elementary*  
Johnstown

Beverly Jones  
*Library Science*  
Turtle Creek

Jerrilyn Jones  
*Speech*  
Elizabeth

Kathryn Jordan  
*Library Science*  
Brun

Martha Jupinko  
*Psychology*  
Pittsburgh

Carol Kahle  
*Elementary*  
Knox

Willtam Kappel  
*German*  
Pittsburgh

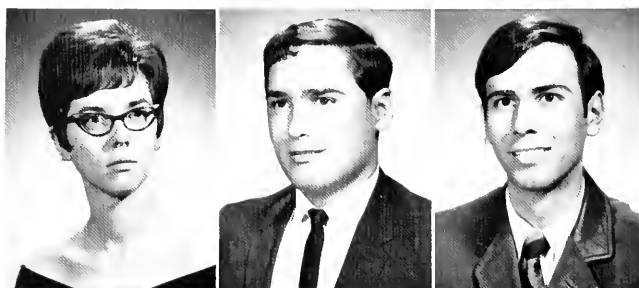
Emory Keith  
*Earth and Space*  
Brookway

Greg Kellick  
*Elementary*  
Barnesboro

Mary Kendall  
*Elementary*  
Verona

James Kenney  
*Mathematics*  
Crabtree

James Keough  
*Special Education*  
Farrell



Linda Kestner  
*Social Studies*  
Butler

John Kiesel  
*Business*  
North Versailles

Alberta Kilpatrick  
*Mathematics*  
Jeannette





Donald Kindel  
*Elementary*  
Clarion



Dolores King  
*Elementary*  
Kamersburg



Raymond Kirkpatrick  
*Spanish*  
Clarion



Karen Klotz  
*Elementary*  
Pittsburgh



Diana Knighton  
*Elementary*  
Coraopolis



Donald Knisely  
*Geography*  
DuBois



Karen Kotarski  
*Elementary*  
Pittsburgh



Ruth Kovac  
*Math*  
New Castle



Nancy Krachanko  
*Math*  
Factoryville



Marsha Kramarik  
*English*  
Natrona Heights



Mary K. aus  
*Elementary*  
Pittsburgh



Jane Krchnak  
*Elementary*  
Natrona Heights



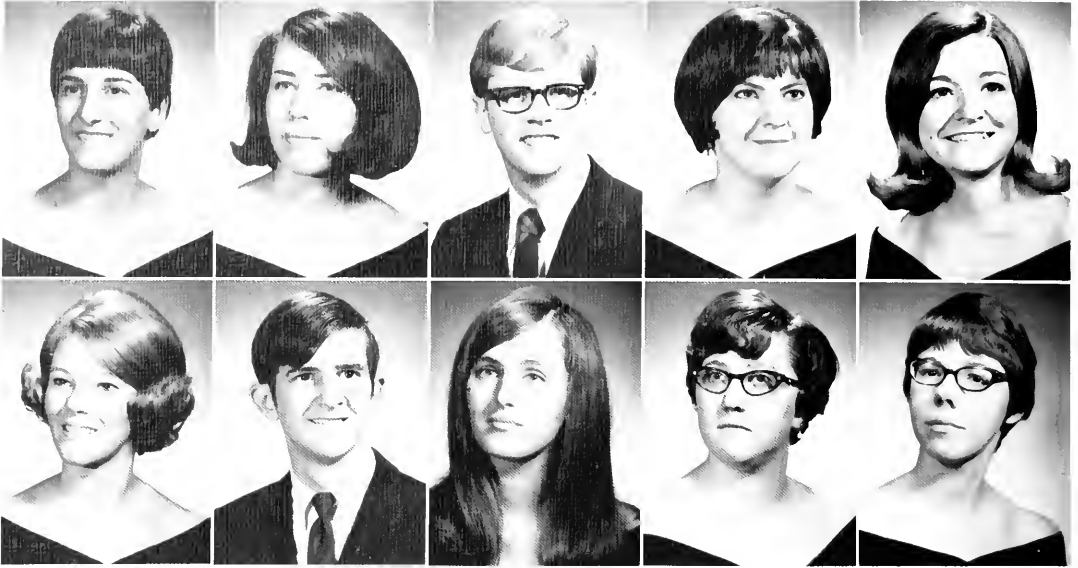
Ronald Kronk  
*Biology*  
Freedom



Daniel Kunkle  
*Chemistry*  
Brackenridge



Linda Lauer  
*Chemistry*  
Seneca



Rosemary Lavella  
*Elementary*  
Hermine

Dorothy Lawry  
*Speech Pathology*  
Pittsburgh

N Robert Laws  
*Biology*  
Washington

Marjorie Lecch  
*English*  
Lower Burrell

Linda Lehner  
*Elementary*  
Petroha

Deborah Lewis  
*Elementary*  
Emporium

Raymond Lichauer  
*French*  
Bellevue

Rose Ligashesky  
*Mathematics*  
Coraopolis

LaDonna Linamen  
*Elementary*  
Emlenton

Candace Little  
*Accounting*  
New Alexandria



Janet Little  
*French*  
Clinton

Geoffrey Litz  
*Music*  
Apollo

Patricia Losik  
*Library Science*  
Farell

Susan Loucks  
*Math*  
Scottdale



Trina Lorah  
*German*  
Irwin

Dennis Luce  
*Geography*  
Jeannette



Mary Madigan  
*Spanish*  
Pittsburgh

Sherry Massena  
*Elementary*  
Latrobe

Jeanne Maynard  
*Elementary*  
Erie

Patricia Majestic  
*Elementary*  
Pittsburgh

Linda Matta  
*Elementary*  
Pittsburgh

Nina McAdams  
*Spanish*  
New Castle

Barbara Marshall  
*Elementary*  
Clearfield

Anthony Mattern  
*Elementary*  
Clarion

Mary McCauliff  
*Speech*  
Johnstown

Phyllis Marshall  
*Math*  
Brockway

Pamela Mattern  
*Elementary*  
Clarion

Craig McClure  
*Biology*  
Waynesburg

Robert Martin  
*Psychology*  
Sharon

Lois Mayberry  
*Math*  
Wampum

Mary McDonald  
*Elementary*  
Franklin



Linda McEldowney  
*Math*  
Corry

Sally McElhany  
*Elementary*  
Harrisburg

Robert McFarland  
*Speech-Drama*  
Natrona Heights



Julie McKeirnan  
*Elementary*  
Crosby

Debbie McKelvey  
*Library Science*  
Reynoldsville



Dee Menozzi  
*English*  
Bethel Park

Pamela Meyer  
*Social Studies*  
Glenshaw



John McGinnis  
*History*  
Oakdale

Margaret McHenry  
*Special Education*  
Pittsburgh

Francis McLaughlin  
*Elementary*  
Oil City

Daniel McNeill  
*English*  
Kane



Kenneth Miller  
*English*  
Sharon

Larkey Miller  
*Chemistry*  
New Paris

Marcia Mitchell  
*Economics*  
Natrona Heights

Peggy Moeller  
*Elementary*  
Gibsonia



Judith Michaux  
*Spanish*  
Ford City

Barbara Miller  
*Mathematics*  
Oil City



Carol Minchoff  
*Mathematics*  
Munhall



Barbara Mitchell  
*Elementary*  
Altoona





James Mottatt  
*Political Science*  
Irwin

Karen Manborne  
*Elementary*  
Nanty Glo



Mary Ann Morrison  
*Elementary*  
Brockway

Patricia Mosticone  
*Elementary*  
Smith's Ferry



Louise Muzyka  
*Elementary*  
Baden

John Nakich  
*History*  
Farrell



Peggy Nemanic  
*Elementary*  
Murrysville

Christine Nevel  
*German*  
Kane



Debra Nobel  
*Elementary*  
Cabot

Cheryl Novak  
*Elementary*  
Pittsburgh



Lorna Morgan  
*Elementary*  
Arlington

Peggy Morgan  
*Social Studies*  
Upper St. Clair



Ten Nalepa  
*Biology*  
Wilmerding

Jane Naughton  
*English*  
Pittsburgh

Mary Lou Nowacki  
*Special Education*  
Pittsburgh

Kay Ohl  
*Elementary*  
Summerville





Peggy O'Rourke  
*Library Science*  
Wilcox

Richard Pasierb  
*Geography*  
Central City

Mary Ott  
*Speech Pathology*  
Irwin

Thomas Paolino  
*Elementary*  
Pittsburgh

Marlene Philips  
*Elementary*  
Imperial

Diane Pierce  
*Geography*  
Pottstown



Susan Packard  
*Mathematics*  
New Bethlehem

Mary Palmer  
*Elementary*  
Union City



Susan Paul  
*Elementary*  
North Braddock

Philip Payne  
*Liberal Arts*  
Tyrone



Kathy Pegnetter  
*Elementary*  
Pittsburgh

Carolyn Pearce  
*Elementary*  
Meadville



Susan Pelino  
*Elementary*  
Bridgeville

Sondra Perry  
*Elementary*  
Eldred



Linda Piper  
*Math*  
Pittsburgh

Madelina Pompa  
*Business*  
Sharpsville





Robert James Pratt  
*Mathematics*  
Jeannette



Marilyn D. Pyle  
*Elementary*  
Irwin



Deborah S. Rago  
*Sociology, Anthropology*  
Kenilworth, N. J.



Daniel Ranieri  
*Elementary*  
Greensburg



Jill Ann Reed  
*Elementary*  
Beaver



Robert L. Reighard  
*Library Science*  
Clearfield

Gail Relick  
*Elementary*  
Latrobe

Amy Richey  
*Elementary*  
Murrysville



David Rhea  
*Accounting*  
Clarion

Deborah Rhoades  
*Elementary*  
Limestone

Susan Riddle  
*Library Science*  
Butler



Pamela Rider  
*Elementary*  
Bellefonte

Marsha Ritchie  
*Elementary*  
Lecchburg

Linda Robinson  
*Speech Pathology*  
Natrona Heights

Joe Robosky  
*Chemistry*  
East Pittsburgh

Linda Rockhill  
*Elementary*  
Bristol





Christine Romanus  
*English*  
West Mifflin

Deborah Root  
*Library Science*  
Corry

Merlyn Roslanowick  
*Elementary*  
Meadville

Theophil Ross  
*Music*  
Knox

Jayne Rummel  
*Social Studies*  
Johnstown

Alexis Rutka  
*Mathematics*  
North Versailles

Renate Sachse  
*German*  
St. Marys

Edward Sadosky  
*Speech Pathology*  
Carnbrook

William Santee  
*English*  
Ambridge

Judith Schaberl  
*Library Science*  
St. Marys



Patricia Schaffer  
*Elementary*  
New Kensington

John Schmader  
*Physics*  
Lucinda

Barbara Schrecongost  
*Library Science*  
Eric

Elmer Schuetz  
*Social Studies*  
Pittsburgh

Dorothy Scott  
*Elementary*  
Smethport

Joseph Secka  
*Mathematics*  
Library

Raymond Sedwick  
*Biology*  
Parker



Delores Seigworth  
*Elementary*  
Seneca



Carl Shatter  
*Chemistry*  
Johnstown



Judith Selker  
*Speech Pathology*  
Shipperville



Alfred Serff  
*Political Science*  
North East



Linda Sherman  
*Elementary*  
Johnstown



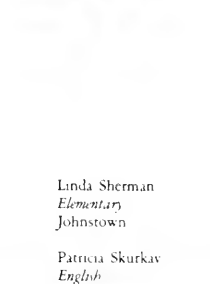
Christine Simpson  
*History*  
Freedom



Milton Shaulis  
*Mathematics*  
Spesville



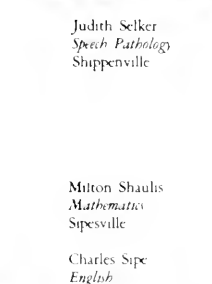
Martha Serran  
*Elementary*  
Windber



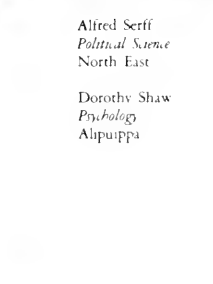
Patricia Skurkav  
*English*  
Belle Vernon



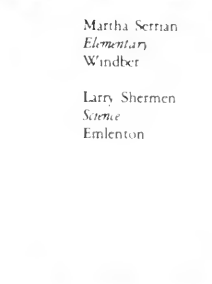
Cecilia Slavish  
*Library Science*  
Lewistown



Charles Sipe  
*English*  
Penn Hills



Dorothy Shaw  
*Psychology*  
Alipuzpa



Larry Shermen  
*Science*  
Emlenton



Sandra Sivy  
*Psychology*  
Pittsburgh



Barbara Smith  
*Science*  
Eric





Catherine Smith  
*Elementary*  
Pittsburgh



Veronica Smith  
*Speech and Theater*  
Butler



Carol Snyder  
*Elementary*  
Franklin



Larry Snyder  
*History*  
New Bethlehem

Rebecca Soules  
*Elementary*  
Eldred

Donna Sopko  
*Spanish*  
Turtle Creek

Sandra Stoka  
*Elementary*  
Pittsburgh

Andrea Stark  
*Library Science*  
Kane

Nancy Stevens  
*Spanish*  
Karns City



Freida Stewart  
*Biology*  
Johnstown

Chene Stover  
*Elementary*  
Oil City

Faye Stover  
*Elementary*  
Oil City

Jeanne Struble  
*Economics*  
Pittsburgh

Barbara Strutt  
*Psychology*  
Canonsburg





Mary Super  
*Elementary*  
Pittsburgh

Tony Sushereba  
*Elementary*  
Brookville

Mary Sweetzer  
*Elementary*  
Summerville

Mary Anne Svdlik  
*Biology*  
Brackentridge

Lynn Test  
*Social Studies*  
Philpsburg

Eugene Todeschini  
*Accounting*  
Coraopolis



Emily Sustak  
*Elementary*  
Franklin

Sheri Swartzfager  
*Elementary*  
Tionesta

Caroline Tabacheck  
*Special Education*  
Lower Burrell

Willis Taylor  
*Economics*  
Shipperville



Elizabeth Turner  
*Sociology*  
Marysville

Donna Truscott  
*Elementary*  
Oil City



Carmen Tylet  
*Biology*  
Washington, D. C.

Joanne Vance  
*Library Science*  
Mount Pleasant





Beverly Vantine  
*Elementary*  
Natrona Heights

Judy Venturilla  
*Elementary*  
Oil City



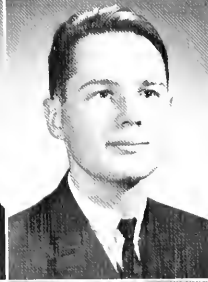
George Visnich  
*Business*  
Monongahela

Margaret Vock  
*Mathematics*  
Pittsburgh



Norma Wagner  
*Library Science*  
Harrisburg

Mary Lou Waid  
*Elementary*  
Saegertown



Jacqueline Watson  
*Elementary*  
Seneca

John Waugaman  
*Special Education*  
Franklin



Loraine Wedekind  
*Elementary*  
Shippenville

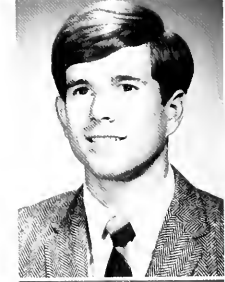
David Weible  
*Music*  
Falls Creek



David Vesels  
*Math*  
Pittsburgh



Ronald Vogel  
*Economics*  
Weyford



Raymond Warco  
*Business*  
Washington



Sally Weeter  
*Elementary*  
Knox



Catherine Weldon  
*Mathematics*  
Corry



Carolyn Welesko  
*English*  
Beaver Falls



Gary West  
*Chemistry*  
Pittsburgh



Rosalie Wiater  
*Elementary*  
Cambridge Springs



Pamela Williamson  
*French*  
Titusville



Owen Winters  
*Biology*  
Brookville

Mansel Wells  
*Mathematics*  
Smithport

Thomas Wenner  
*Geography*  
Clanton



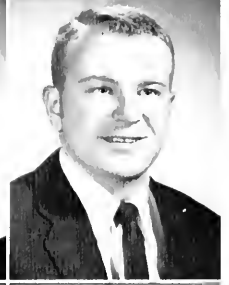
Linda Weston  
*Spanish*  
Elwood City

Arthur White  
*Accounting*  
Franklin



Karen Wiesenberger  
*Speech Pathology*  
Allentown

Alfred Williams  
*Social Studies*  
Pittsburgh



Peggy Willits  
*English*  
Franklin

Carol Winkleman  
*Elementary*  
Brockway



Bonnie Wishart  
*Elementary*  
Sligo

Diann Wolfe  
*Elementary*  
Bethel Park





Phyllis Wolfe  
*Library Science*  
Smethport

Daniel Wolovich  
*Business*  
Shaler

Cheryl Wood  
*Elementary*  
McKeesport

Howard Work  
*Biology*  
Strattanville

Margaret Yargar  
*Elementary*  
Oil City

Joseph Yasinsky  
*History*  
Pittsburgh

Nancy Yates  
*Elementary*  
Brookville

James Young  
*Social Studies*  
Jeannette

Raymond Yutzy  
*Economics*  
Meyersdale

Jerome Zary  
*Accounting*  
Pittsburgh

Ronald Zembrski  
*Accounting*  
Natrona

William Zener  
*Special Education*  
Wilkinsburg

Teri Zoffato  
*Library Science*  
Brookway

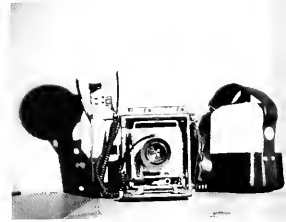
John Zolomj  
*History*  
Bridgeport





<i>ELEMENTARY</i>	Rooney, V.	Fleming, W.	Ronsburg, B.	Kuester, J.	Brooks, F.
Albanese, S.	Rougeaux, A.	Flood, S.	Ross, C.	Shaffer, J.	Burkart, W.
Barrett, C.	Rusdem, T.	Floyd, P.	Ross, R.		Cubbon, K.
Beale, B.	Shakely, B.	Forbes, T.	Ruane, R.	<i>MENTAL</i>	Deluco, P.
Beers, N.	Singleton, D.	Foulkrod, F.	Rutto, A.	<i>RELATION</i>	Dolecki, R.
Beichner, P.	Slotta, S.	Fry, P.	Rupert, J.	Benson, R.	Ende, R.
Black, M.	Smith, E.	Ganoe, D.	Sandroek, J.	Bower, M.	Hach, J.
Boggio, R.	Smover, S.	Griggs, C.	Sandy, R.	DeTilla, J.	Hefner, J.
Brinker, I.	Stewart, N.	Gronik, R.	Sayre, D.	Graham, S.	Johnston, J.
Brown, C.	Stoltenburg, R.	Gustatson, J.	Schneider, R.	Gunnell, K.	Knox, J.
Brown, G.	Summerville, R.	Hackett, G.	Shatter, D.	Matsko, C.	Koelsch, W.
Cooper, C.	Taylor, G.	Hamilton, T.	Shetter, M.	McCormick, M.	Layman, J.
Corte, E.	Taylor, L.	Haney, C.	Sheilds, A.	O'Neil, M.	McElravy, W.
Covel, S.	Tomasic, K.	Hanna, C.	Skehan, M.	Rankin, J.	Schman, K.
Cowher, L.	Weaver, B.	Hartman, G.	Slebodnik, R.	Rizzo, A.	Trent, R.
Craft, J.	Wildman, M.	Harwick, R.	Snowdowne, K.	Shaffer, H.	Ullrich, W.
Daugherty, E.	Wineland, B.	Holden, G.	Snyder, S.	Stepicla, B.	Barron, S.
Decarlo, G.	Wladyka, A.	Hubert, J.	Speal, D.	Stramiello, A.	Dorish, J.
Decmer, R.	Wood, W.	Huffman, D.	Sprester, G.	Wyncoop, S.	Horner, L.
Depalma, L.	Woods, S.	Hunter, K.	Stehler, R.		Jancsar, K.
DeRiggio, C.	Wrhen, L.	Hunter, R.	Stevenson, L.	<i>PUBLIC SCHOOL</i>	Mason, L.
DeRisco, R.		Hurni, S.	Stewart, D.	<i>NURSE</i>	Mohney, K.
Dixon, K.	<i>SECONDARY</i>	Johnson, K.	Stitzinger, L.	Brickner, L.	Myers, E.
Downing, C.	Aaron, V.	Jones, W.	Thomas, E.	Chalot, J.	Sanders, W.
Dubbs, R.	Adams, L.	Kalmer, K.	Tingue, L.		Shreffler, J.
Ekard, M.	Amos, R.	Kehew, W.	Tomeo, T.	<i>MUSIC</i>	Silvis, M.
Enos, K.	Angove, J.	Kocan, J.	Treskovich, J.	Allaman, R.	Smaila, J.
Fierst, L.	Baum, S.	Kolojchuck, J.	Triveri, A.	Baird, D.	Soloman, J.
Figa, M.	Beary, R.	Kurth, F.	Utz, L.	Karg, R.	Wissner, C.
Flick, A.	Bennett, R.	Laterla, T.	Valasek, L.	Kirby, M.	
Foley, M.	Berlin, N.	Leo, E.	Verrelli, T.	Martin, L.	<i>BUS ADMIN.</i>
Gallagher, P.	Bilinski, J.	Lepple, N.	Vescio, L.	Oless, M.	Bills, G.
Gallagher, P.	Black, N.	Marshall, T.	Vokish, P.	Seng, T.	Cianci, J.
Giacomuzzi, N.	Bolcar, T.	Mason, L.	Weaver, D.	Thompson, A.	Clark, K.
Gorka, T.	Bracken, M.	Massena, C.	Weaver, R.		Confer, F.
Gray, R.	Bressler, E.	Mattingly, L.	Weibel, D.	<i>LIBERAL ARTS</i>	Edwards, T.
Grinder, P.	Brindger, A.	McCloskey, T.	Wolbert, J.	Adams, D.	Elslager, T.
Grohoh, J.	Brzezinski, R.	McDowell, P.	Wozniak, E.	Altman, J.	Hartman, W.
Hazen, L.	Burkey, R.	McNulty, L.	Wright, W.	Conway, A.	Huber, J.
Herzog, D.	Carolus, J.	McQuaide, D.	Yoakum, G.	Franus, T.	Kagle, S.
Hoover, M.	Carroll, P.	McWherter, I.	Young, B.	Fry, R.	King, K.
Kosinski, D.	Carter, L.	Mersino, E.	Younkins, J.	Gorce, M.	Knepp, L.
Kronenwetter, M.	Clinger, C.	Minick, M.	Zahoran, J.	Hogrefe, M.	Lawry, G.
Lizik, M.	Cochrane, S.	Mitchell, J.	Zajackowski, K.	Jester, D.	Marshall, J.
Logan, R.	Culp, R.	Morris, R.		Jumper, K.	McCarren, R.
Logue, J.	Cunningham, R.	Myers, R.	<i>LIBRARY</i>	Konvolinka, D.	McCormick, C.
Ludwig, S.	Dalby, R.	Novak, J.	<i>SCIENCE</i>	Martin, R.	McNear, R.
Marasia, R.	Dapra, D.	Ogershok, D.	Barrett, D.	Mascellino, C.	Michalic, W.
McCauley, M.	Daurora, G.	Ohl, K.	Brest, N.	Muzyka, J.	Morris, L.
Meisenburg, R.	Degraw, M.	O'Keefe, D.	Conflenti, C.	Napolitan, D.	Myers, S.
Moore, P.	DeJulio, A.	Ondriezek, P.	Daley, J.	Ryland, J.	Pelchar, S.
Moran, F.	Detore, P.	O'Neill, L.	Fitzsimmons, K.	Scheidemantel, G.	Piacesi, G.
Mullen, J.	Devore, D.	Overacker, G.	Hannold, R.	Schwartz, C.	Pfeffer, R.
Nahi, N.	Douglas, E.	Palinkas, C.	Heydrich, M.	Talkington, G.	Prince, D.
Otto, J.	Dunnert, R.	Panichelle, J.	Laverick, M.	Wawrzyniak, J.	Quigley, R.
Paslowski, D.	Eisenman, W.	Parker, D.	McDowell, E.	Welch, R.	Shellgren, C.
Phillips, W.	Elverson, T.	Parsons, T.	Panza, P.	Wheaton, D.	Slotta, M.
Piacesi, K.	Eyberget, D.	Peavy, P.	Romano, P.	Wilson, J.	Somers, T.
Polski, B.	Fahs, R.	Perry, R.		Young, C.	Tappe, E.
Preston, L.	Fair, S.	Perry, T.	<i>SPEECH</i>	Zacher, S.	Tranior, D.
Rehrer, J.	Fantone, J.	Pitcher, L.	<i>PATHOLOGY</i>	Anderson, R.	
Reitz, B.	Faust, R.	Podolak, J.	DiGiulo, E.	Bauer, E.	
Roberts, E.	Firster, D.	Ricotta, S.	Kluck, F.	Boyer, J.	

# STAFF!





Putting out a yearbook is a tremendous job, and a lot of people put a great deal of time into it. I would like to thank our advisors, Mr. Henry Fueg and Mr. William Proudfit, and my staff – Bill Severance, Ellen Campion, Donna Reda, Dolan Smeak, and Kathy Rodgers – without them there would be no yearbook. I would especially like to thank Marilyn Zajac, who stuck with it until the last page was finished in the summer. I would also like to thank Mr. Myron Klingensmith and Mr. Howard Barger for all the “extra” assistance. A big thank-you goes to my sisters of Alpha Xi Delta who were always willing to pose for any pictures I wanted. And a special thank-you to Bill, who didn’t want me to take the job, but was very good about it after I took it anyway.

I’ve learned a lot about Clarion and about myself this past year. Was it worth it? Ask me next year.

Lou

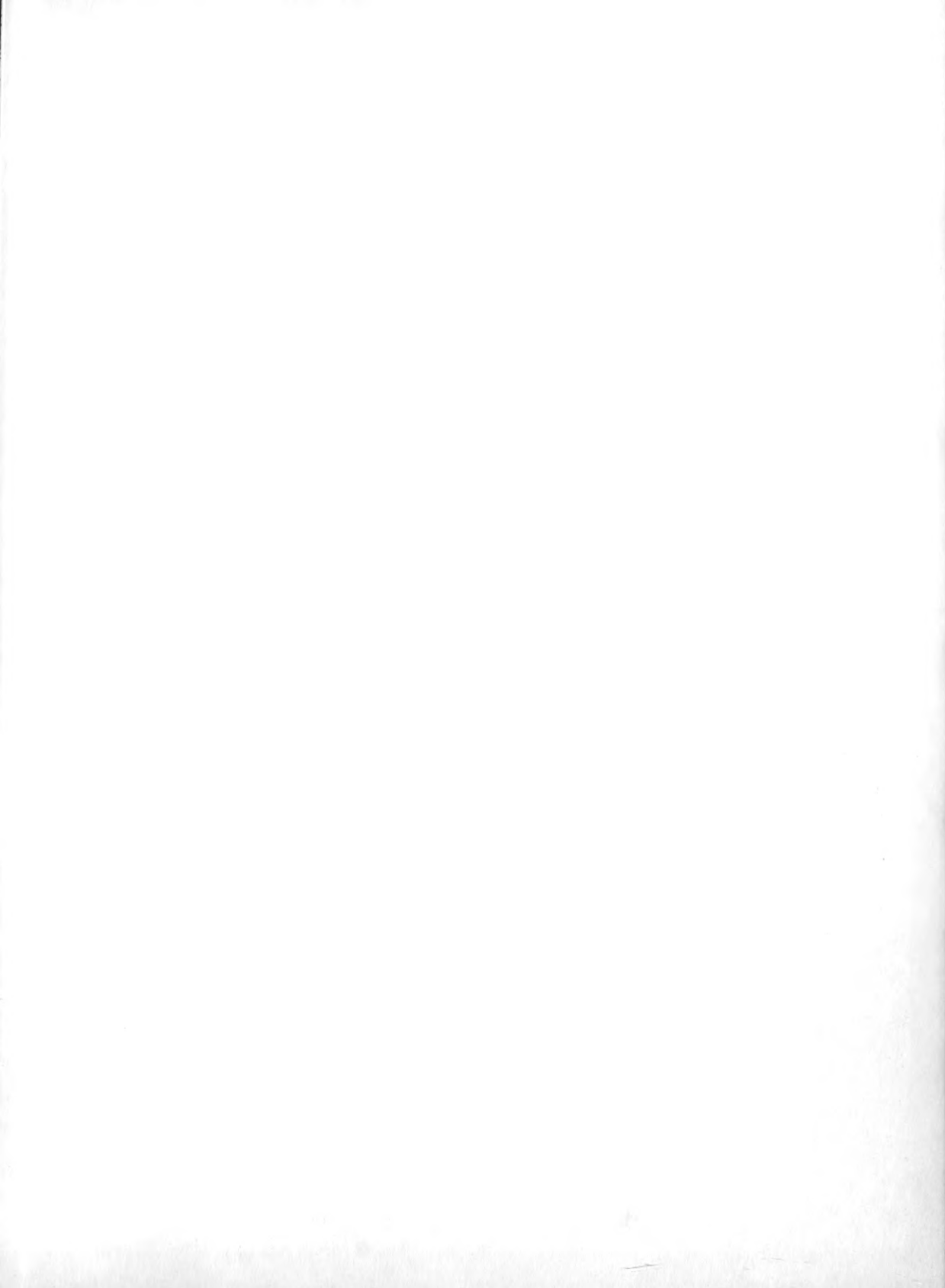
# EDITORS

Mary Lou Bednar .....	Editor-in-Chief
Kathy Rodgers .....	Co-editor
Dolan Smeak .....	Sports
Bill Severance .....	Fine Arts
Ellen Champion .....	Greeks
Donna Redo .....	Greeks
Marilyn Zajac .....	Photography
Al McLaughlin .....	Photography
Madge McDonough .....	Venango



**TAYLOR PUBLISHING COMPANY**

"The World's Best Yearbooks Are Taylor-made"







*sequelle*

*"70"*

