

Spec. Col  
qLD  
1017  
.C88  
1984

CLARION UNIVERSITY of PENNSYLVANIA

SEQUELLE





1000  
1000  
1000





Spring sprang a few months early in 1960 as Clarion Teacher's College blossomed into Clarion State College on January 8. Dr. James Gemmill, president of the new college, eagerly encouraged the growth of this budding institute. New curricula were added and former academics were improved and revised. Athletic programs were expanded and a greater number of students were drawn to this germinating college.

The end of the 60's were reminiscent of summer - hot, intense, and vibrant. The college, too, experienced a time of great prosperity as athletic teams and extracurricular organizations were sizzling and boiling. More students were attracted to the growing academics such as music, special education and business administration. Clarion State College was too hot to handle.

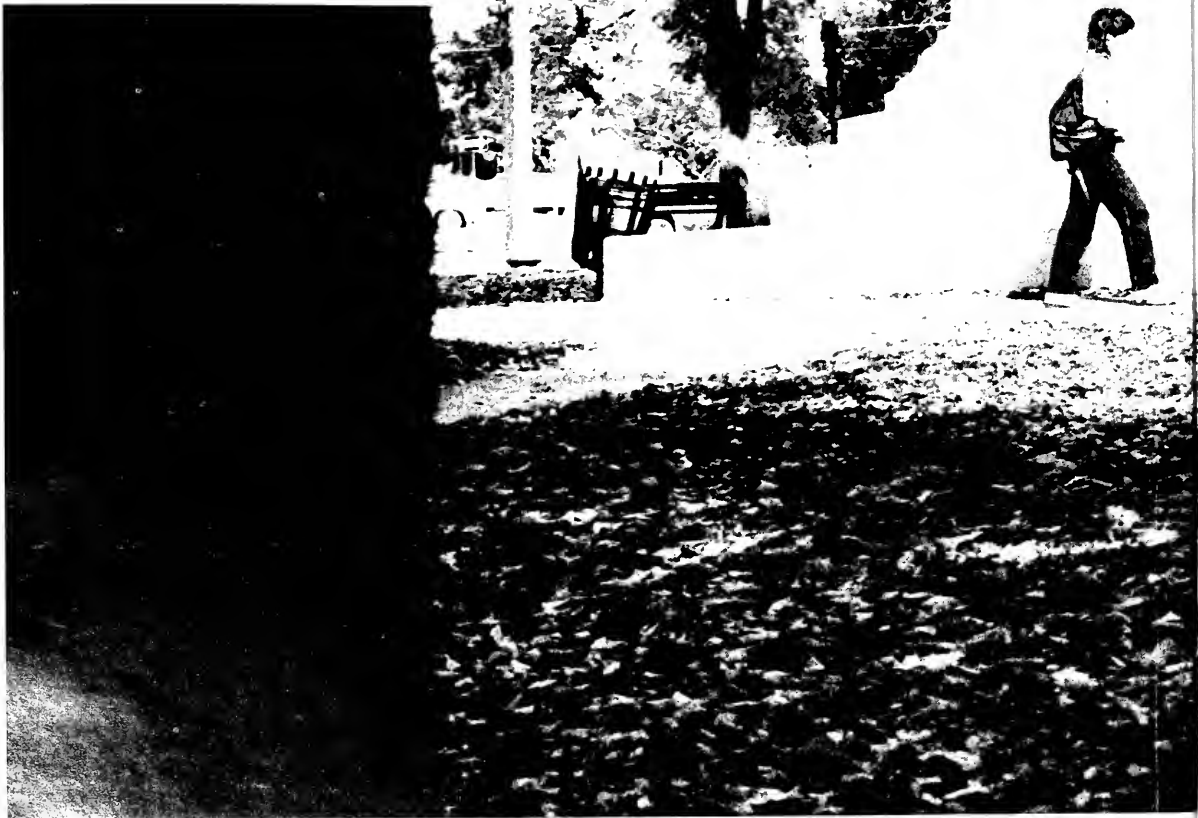
Into the 70's life at Clarion cooled down a few degrees. The interest in the school was flourishing, but the freshness of spring and the heat of summer had transformed into the coolness of fall. The leaves changed and so did the office of president as Clayton L. Sommers took over the position. The vitality of the college was present, but it seemed subdued and sedated.

Winter and apathy slithered their way into Clarion State College. Students and faculty continued in their respective roles, but these parts seemed overrehearsed and canned. Fortunately, this stagnated time was short as spring was right around the corner. President Thomas Bond encouraged the college to prosper and grow. In July 1983, Clarion State College, which had undergone a multitude of transformations, bloomed into Clarion University of Pennsylvania. The road was long and hard, but the future looms bright and clear.

Fall with its warm golds,  
leaves and oranges welcomes the  
freshman to college.

It is a season of vibrant  
moods, wild parties, exciting  
pursuits, cramped dorms, and mystery  
but every friendly face appears  
to greet. Smiles, laughs, corny  
jokes.

At home





The leaves have finished changing and Clarion isn't quite the adventure it was first semester. There's no more belief in the third floor pool or the incredible teaching flexibility of that "Staff" guy. Patterns begin to form, as the freshness fades with the turning leaves. It's a time to experience college at a more relaxed, casual pace. But, there's still time to marvel at three minute dashes to Dana Still or at the creative pickup lines at parties. Some things never change.











Cold, wet snow covers the campus and puts a damp blanket over the sophomore. Winter in Clarion is a phenomenon that must be suffered through to be fully understood. It is a time of mixed emotions toward everything and everyone. The monotony is broken only by a spontaneous snowball fight or an unexpected prank. Resembling advertisements for Anchorage, Alaska, students trudge to class and remember the freedom of freshman year.

The bitterness of winter begins to subside, as students start to accept this wicked time of year. The season is for warming cold hands around a mug of hot chocolate and spinning tales of past adventures. Everyone has finally decided on a major and a definite campus crush. Thoughts wander to future plans, places to reside and attire for the next toga party. It's a time of paradox as everything is important, yet nothing really matters.



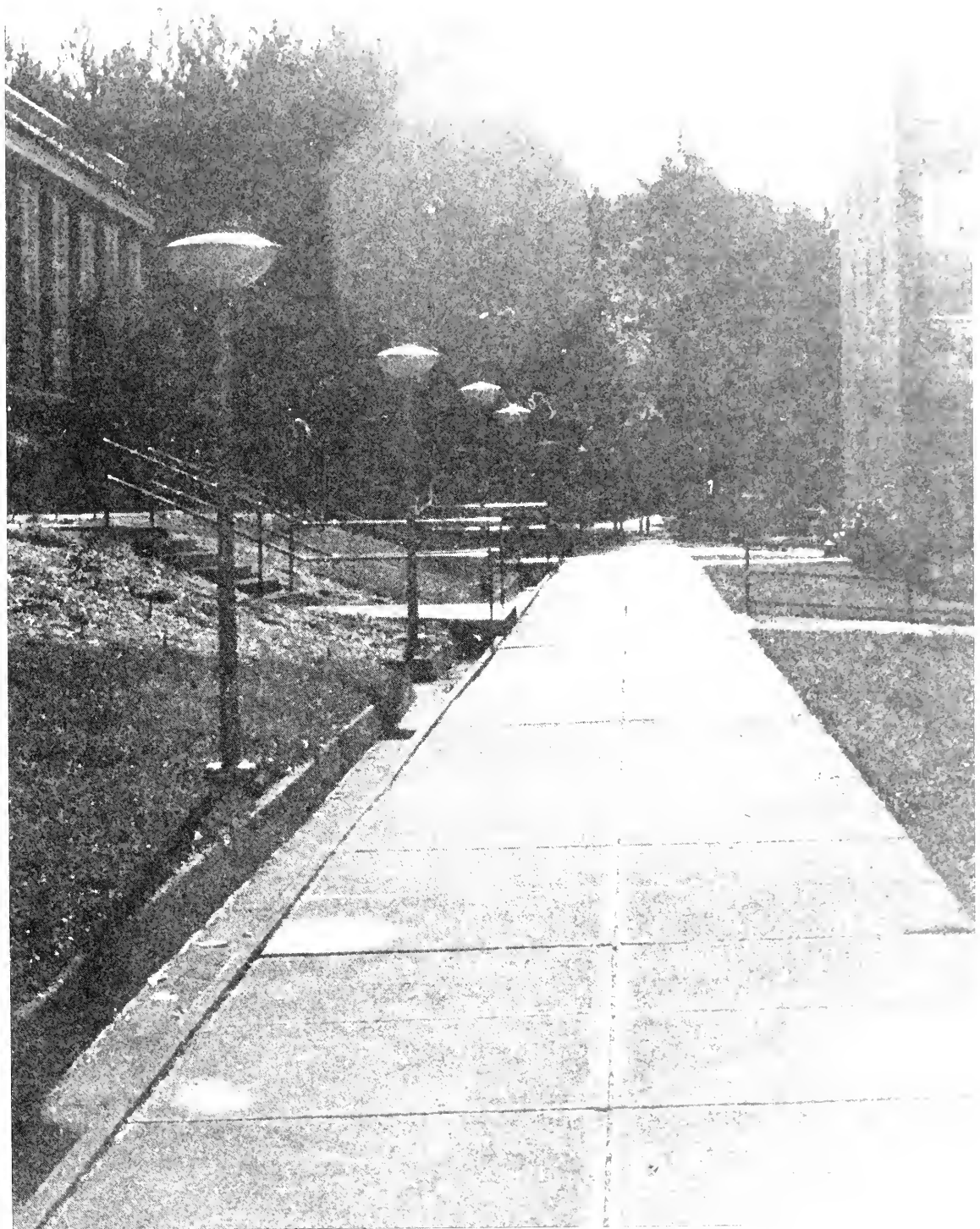




Photo by Keith Izydore

Multicolored, fragrant flowers open their petals to the warm sunshine of spring. Spring, like junior year, is unique and exhilarating. It's a season to attempt new things, to join different organizations and move off campus. This recently acquired freedom means developing recipes for mystery meat and discovering the meaning of the word "fungus". Everything is alive and vibrant.





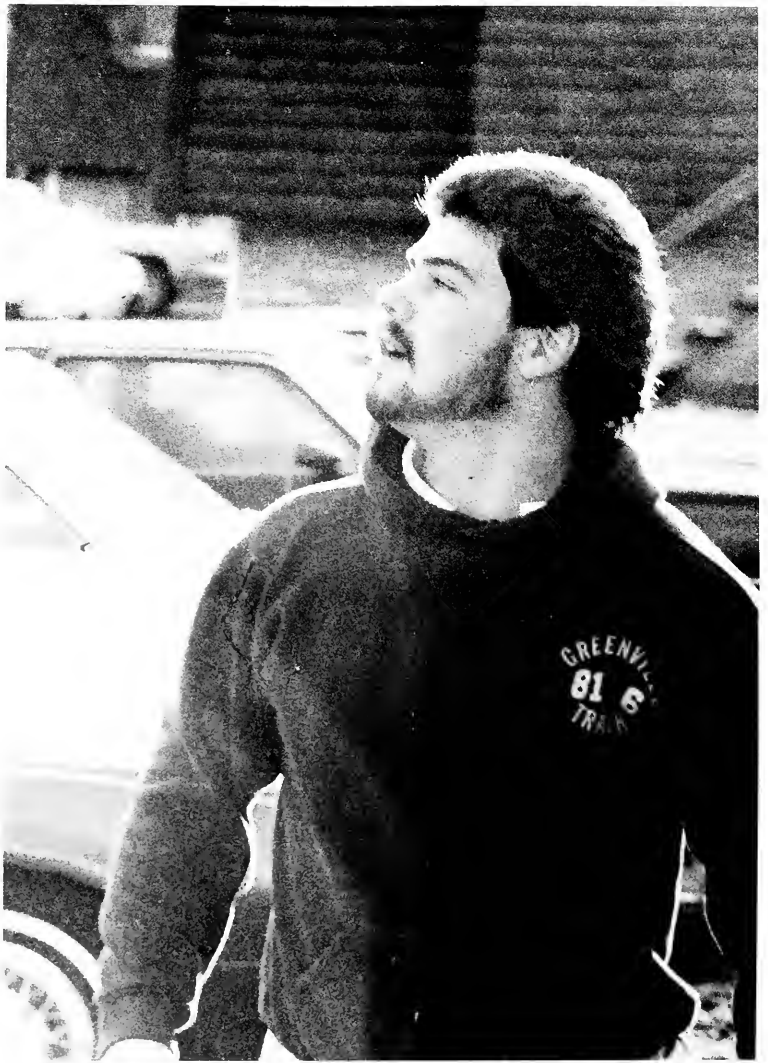


Spring continues and college is where it's at. Over half of school is completed and the memories are etched distinctly. This is a time for roadtrips on the weekends and intimate parties during the week. Everyone feels alive and raring to go. The achievement of the miraculous "A" seems to take a backseat to the cementing of friendships and relationships. There are reflections of the past and hopes for the future.

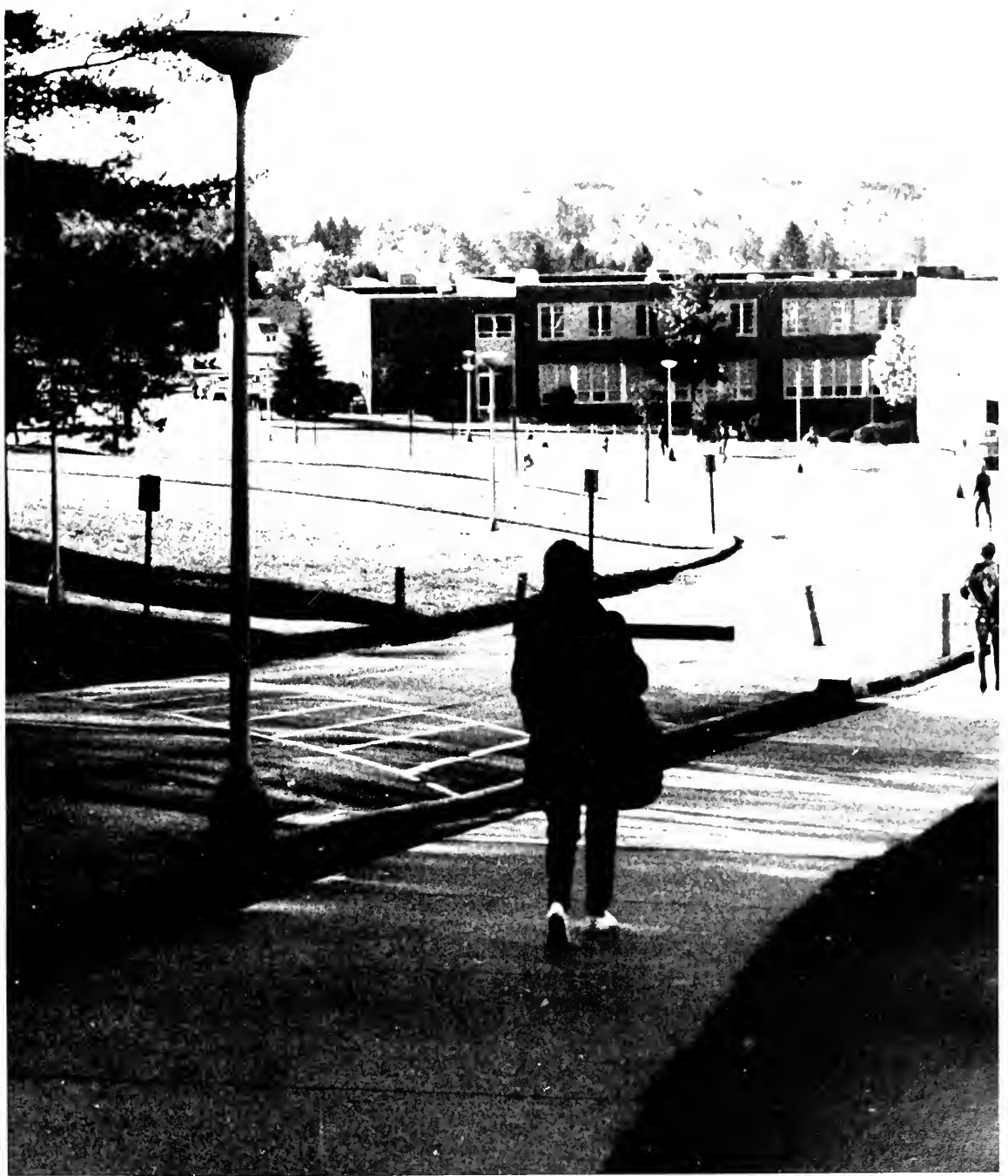


The culmination of four years and four varied seasons results in glances to the past and long stares toward the future. Suddenly, everything appears a little out of focus. The memories of baby powdering a freshman's dorm room, losing an I-D, forgetting to study for an Econ quiz, and partying until sunrise don't seem so important. Instead, there is a preoccupation with buying a new car, locating a good job and figuring out the future's path. Good-bye, Clarion. Hello, world!

Summer! To the college student, especially seniors, summer is the grand finale. The students - like the weather - are sunny, hot, and ready to go. Of course, there are last minute trips to the Holiday Inn and final touches to resumes. It's the ultimate time to party with friends, to view sports and to straighten out that disorganized check-sheet. Relief is felt as the end of the good ol' college days looms brightly ahead.







# F a i l







# Fall

Fall is an extremely beautiful season in Clarion. The leaves turn a rainbow of colors, from the vivid yellow to a crimson red. The wind blows the leaves into a whirlpool in the sky. The anticipation of winter is in the air, but the fall days are cool, windy, and wonderful. Although the rainy days seem endless, when the sun shines everyone has something to smile about.

Fall is the time of year for the infamous Autumn Leaf Festival. The only time of year when the small town of Clarion seems like a bustling city. The sidewalks are swelling with people and there are a million things to do. We invite back old friends to help us make new memories.

Soon after the excitement of ALF has worn off everyone is preparing for Halloween. It is a chance for mature, college students to act like little kids again. Everyone tries to create the most creative or bizarre costume.

In the fall, the campus is thriving with people. Everyone is running around trying to get their last minute assignments done. The workload really begins to pile up, and deadlines seem to bombard us. We begin marking off the days on the calendar until Thanksgiving, because we really need a vacation.

Before you know it we're registering for spring semester, and the worries we have now seem insignificant to all those to come. We plan and we pray for the years ahead of us.

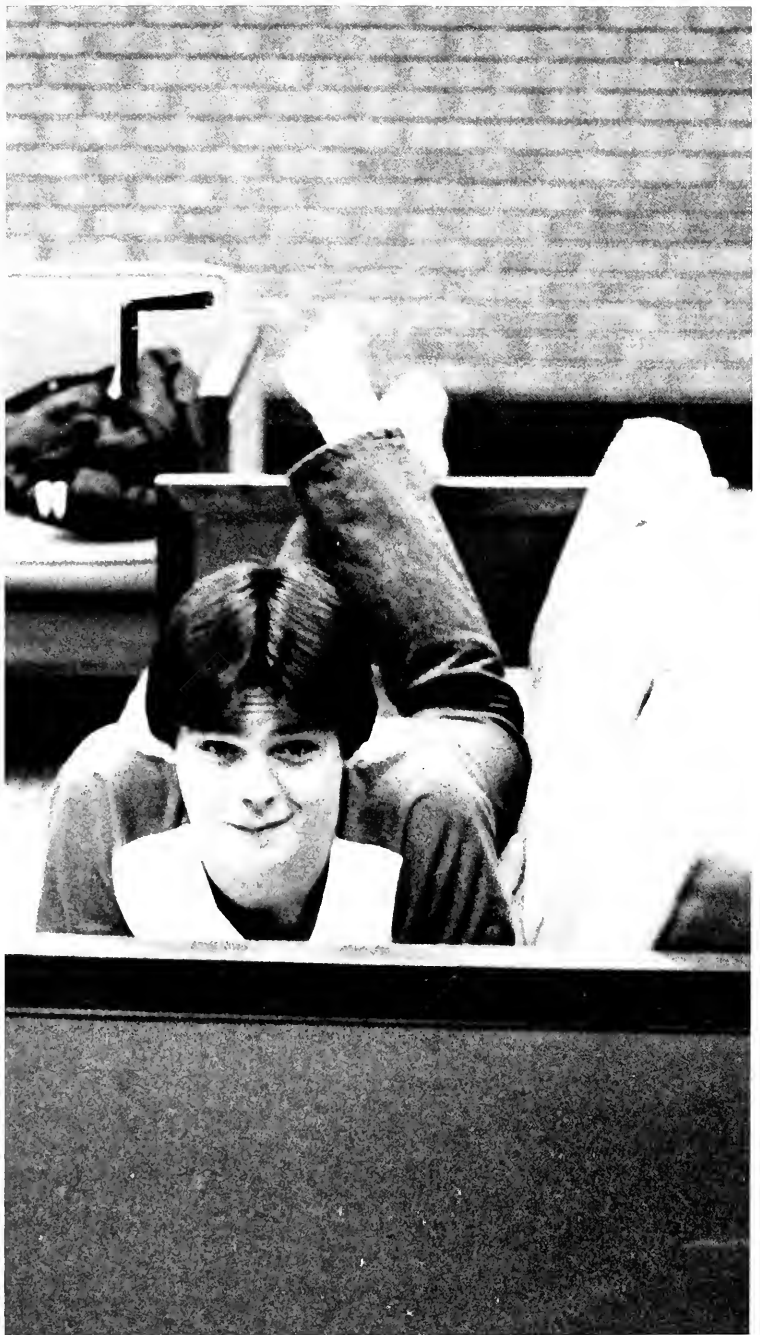




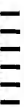




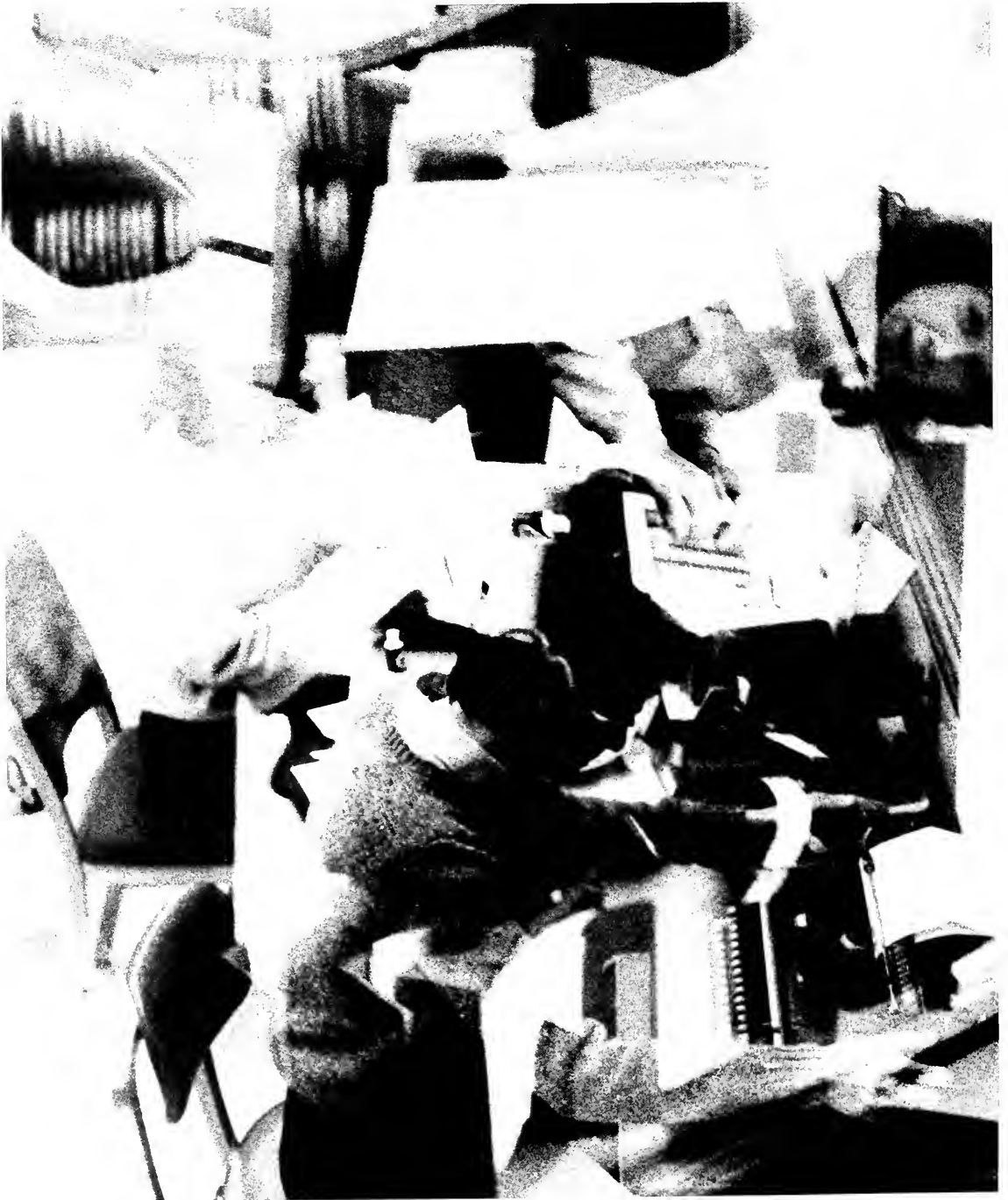
About midsemester classes tend to become quite monotonous. What can be done to alleviate the doldrums? Of course the simplest method is to skip class. However, there are more creative and interesting things to do to end boredom, including drawing up the week's grocery list or writing a lengthy letter. If writing is a specialty, then full and complete novels can be finished in a semester. Artistic ability can be expanded as the outer edges of notebooks make great drawing areas. Daydreaming is also a valuable way to overcome boredom. The escapes from ho-hum classes are limited only by your imagination. If your imagination isn't fantastic, then pay attention. Maybe you'll learn something.







I'm so confused









*Friday's  
just  
around  
the corner!*









Spectators lined the streets this year to watch the annual ALF parade. They also lined the streets to meet up with old friends back for the weekend. The Tavern has long been known as one of the areas where crowds gather Homecoming weekend, porches are also a favored spot, but if worse comes to worst grab a piece of the sidewalk.







**WEEKENDS**

**BEGINS**

**THURSDAY**



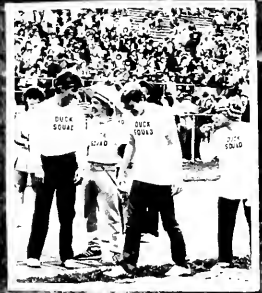
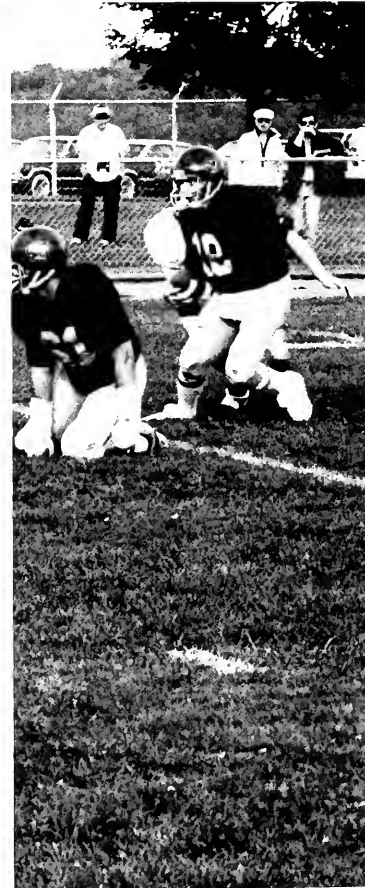
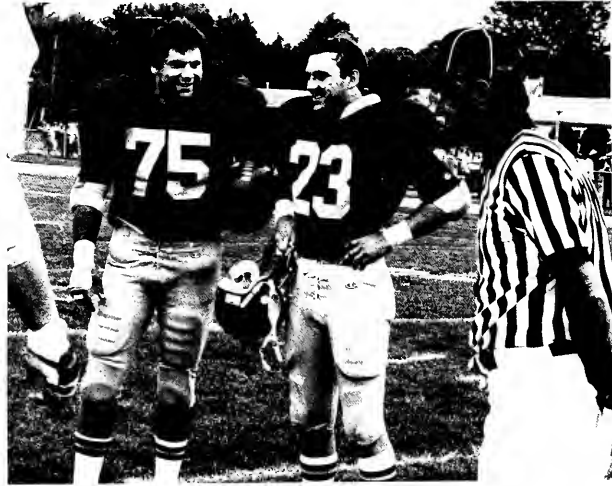
# An Outstanding Season

It was a season that saw Clarion ranked as high as third in the NCAA Division II polls. It was a season that saw Clarion continue its leadership of the NCAA Division II member institutions in consecutive winning and non-losing seasons. It was a season that saw Clarion win the Pennsylvania Athletic Conference Championship. It truly was an outstanding gridiron season.

Clarion's 1983 season opened against Fairmont State with a 21-17 win. The Eagles bolted to a 2-0 record with a 24-17 win against Kutztown and moved to 3-0 with a 38-10 win at Lock Haven. In the homecoming game, Clarion dominated Shippensburg 48-12. They continued to stay undefeated and were 5-0 after just getting by California 24-20. The winning continued with a 24-6 defeat over Slippery Rock. With a 6-0 slate, Clarion clinched the PSAC West with a 35-24 win at IUP and went to #3 in Division II ranking. After a disappointing loss to Edinboro, 8-28, Clarion dropped Westminster 24-13; they had their only other loss at the hands of Central State, Ohio, 14-48. Clarion ended the regular season at 8-2. Winning the PSAC Championship by downing East Stroudsburg 27-14.

It was a record-breaking year offensively, with standouts like: Elton Brown, Terry McPetridge, Pat Carbol, and Brad Fello leading the way. The defense always came through in the clutch in 1983, led by: Kevin Ewing, Tony Colecci, Jon Haslette, Mark Andrekovitch, Jerry Hassette, and Scott MacEwen.

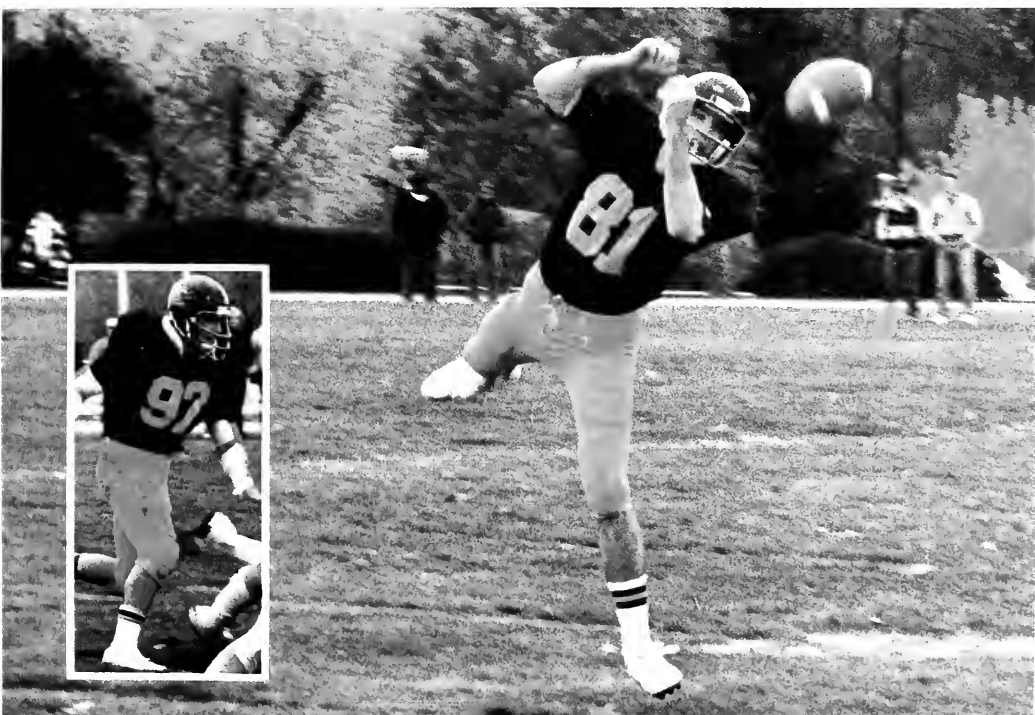
The Eagles have 9 starters back on defense and a total of 17 starters eligible to return to Blue and Gold in 1984 when Clarion will attempt to defend its titles and produce another outstanding season.





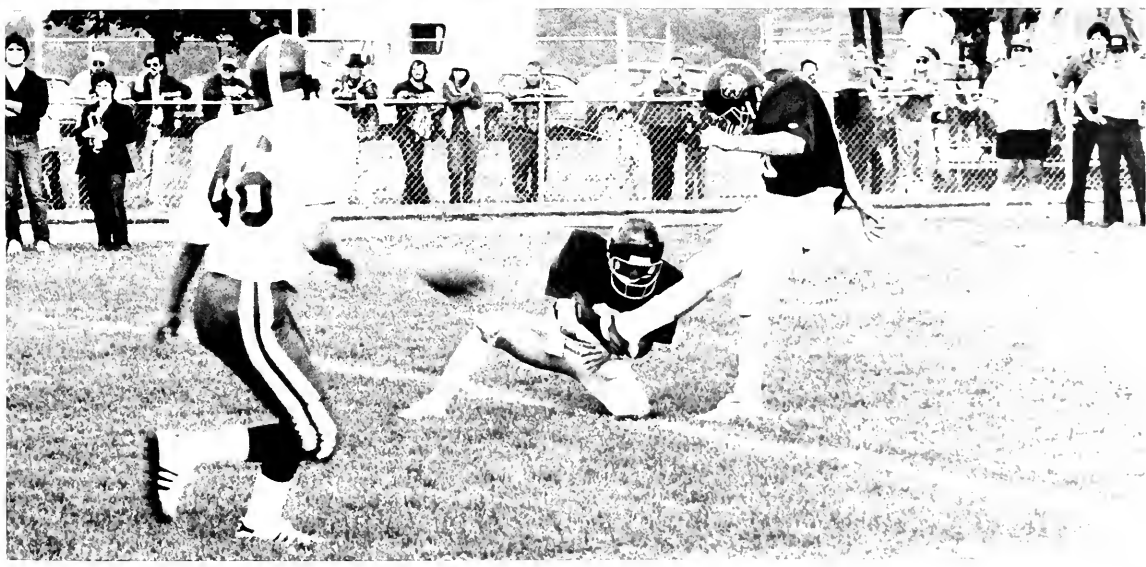
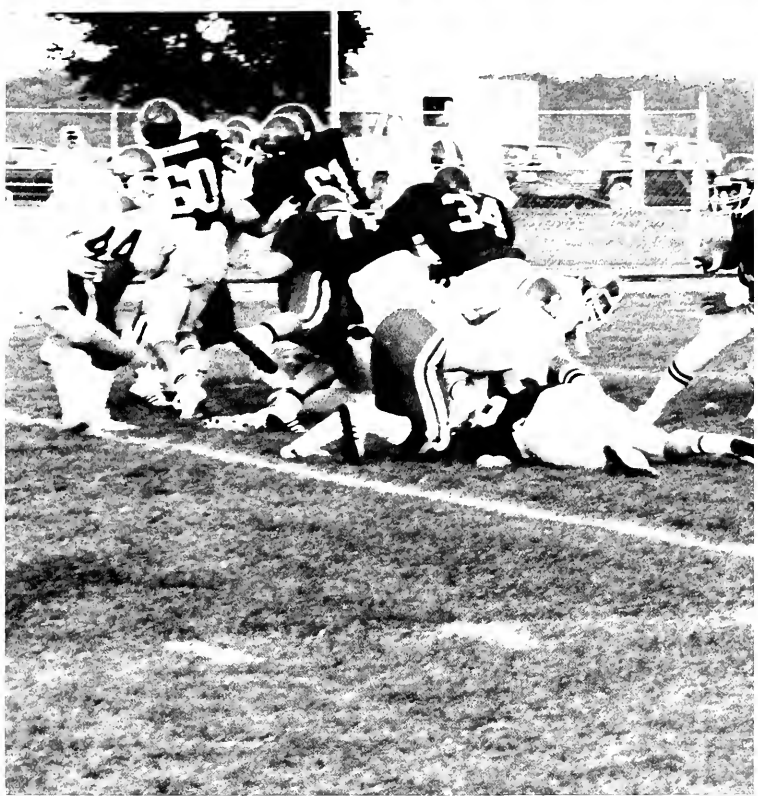


# CLARION STATE FOOTBALL





Row 1 Ken Ivy, Jeff Jaworski, Mark Andrekovich, Brad Fello, Greg Zborovancik, Charles Oakes, Tony Colecchi, Dave Lammers, John Rice, Sam Barbush, Dave Straub. Row 2 Bob Green, John McGoren, Craig Musser, Jim Trovato, Elton Brown, Scott MacEwen, Bill Frohlich, Jon Haslett, Kevin Ewing, Geoff Alexander, John Hanna, Terry McPetridge, Steve Turchik. Row 3 Scott Ickes, Archie Manuel, Jeff Chalovich, Eric Fairbanks, Tim Dietz, Kevin Bivins, Lorenzo Burrus, Dom Broglia, Mike Kuzilla, Rob Hranicky, Doug Ryan, Mark Lefever, John Patton. Row 4 Warren Carr, Kevin Hanlon, Bob Jarosinski, Pat Carbol, Ed Goth, Jerry Haslett, Ray Sanchez, John Besic, Mike Haky, Brian Cochran, Joel DeBaldo, Tim Jackson, Charles Lee. Row 5 Jerry Dickson, Mike Pope, Todd Deluiliis, Jeff Marshall, John Hughes, Steve Frank, Jim Hochendoner, Tom Gamber, Brian Tarczy. Row 6 Sean Gally, Ken Fair, Ken Edwards, Jeff Cornell, Dave Gray, Paul Bellis, Jim Hahn, Russ Ford, Jim Hummel, John Seaman, Dan Wallace. Row 7 Phil Bujakowski, Rodger McDaniel, Mike Millikin, Sid Campbell, Mike Crose, Phil Marella. Row 8 Bill Adams, Rod Stewart, Dave Katis.





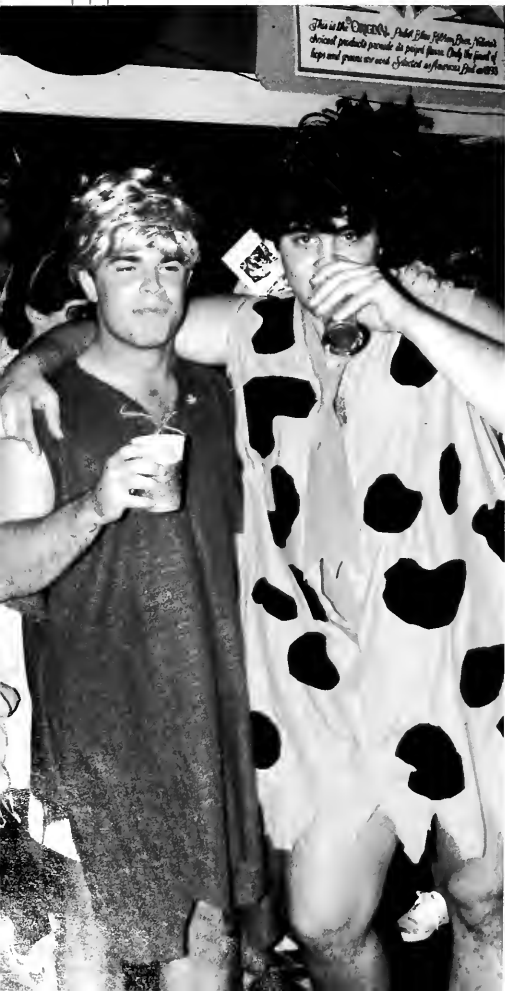








Trick ?  
or  
Treat

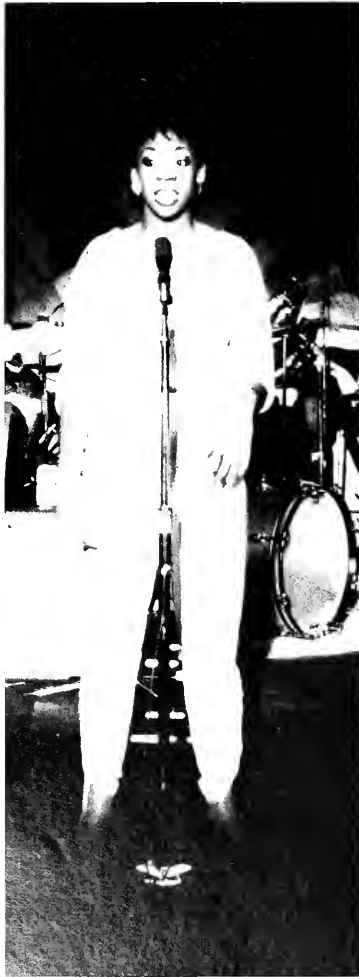


All  
Dressed-up  
and  
Someplace  
to Go!



## I'm Getting My Act Together and

The theatre's first production of the season received an enthusiastic response. A musical "I'm Getting My Act Together and Taking It on the Road," directed by Dr. Copeland featured Debra Jackson as the lead. The musical dealt with the issues of today's feminist movement. Debra portrayed a 39 year old singer/song-writer and her struggle to overcome the conflict of social expectations and personal goals. Randy Rocco portrayed her manager who attempted to keep her in more traditional material and format. The conflict provided entertainment as well as a thought provoking evening.



Taking it on the Road.



Cheap Trick

Sept. 29th







# CB Brings Laughter and Love to Clarion









# Tennis

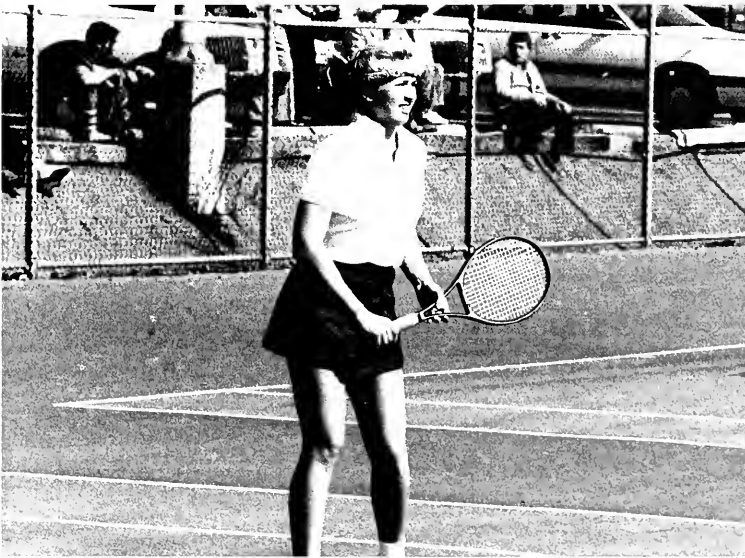
A young but talented squad volleyed its way on the court when the Clarion University Women's Tennis Team opened its 1983 campaign. Head coach Norbert Baschnagel entered his second season with the squad. "We were very young this year, but I think we will be more consistent next year," commented the CUP mentor.

This year's senior roster consisted of Ann Lund and Lynn Teets. The top players of '83 were three sophomores, Kim DeMaio, Julie Gress and Lisa Greco. Rounding out the team were sophomores Amy Brenner and Lynn Fye, Freshman Denise Chambers, Gina Chiodo, Melinda Grant and Cindy Greene, and manager Penny Auchmoody.



Coach Norbert Baschnagel, Gina Chiodo, Denise Chambers, Cindy Greene, Melinda Grant, Amy Brenner, Lisa Greco, Kim Demaio, Ann Lund, Julie Gress, Lynne Fye.



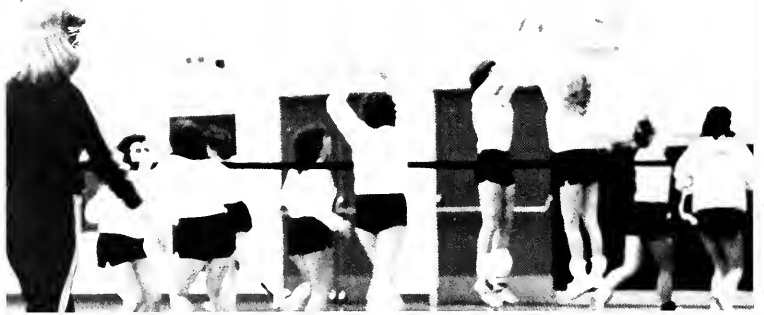


# Volleyball

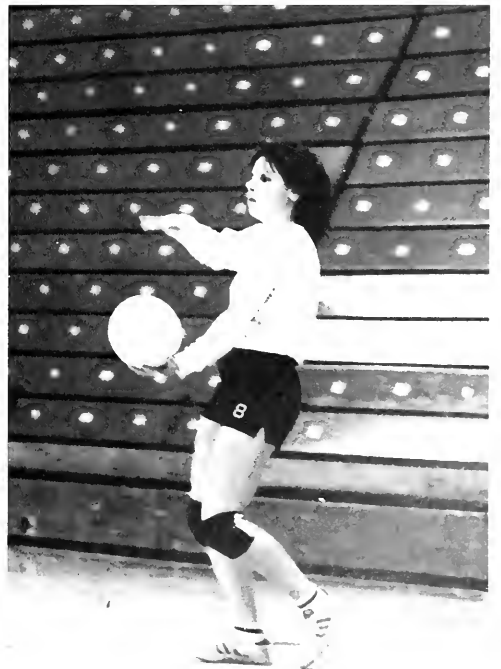
The 1983 Lady Spikers of Clarion University finished the season fourth in the state. Their overall record was 19-16 going into the PSAC Western Division Championships, held here at CUP. The Lady Eagles finished second in that tournament. They also finished fifth out of a five state region.

During the tournament Coach Sharon Daniels said she was pleased with the team's composure under the circumstances.

After a slow start the Lady Spikers gained momentum in the last month of the season to win ten out of their last fifteen starts.



Row 1 Maureen Huber, Joyce Kozusko, Linda Filipich, Suzann Seanok, Wendy Moeslein, Coach Sharon Daniels-Oleksak. Row 2 Ellen Borowy, Sue Anderton, Karen Banks, Kathy Marcolina, Janet Sobek.





One  
More  
Look  
At  
FALL.





# W i n t e r







# Loafing



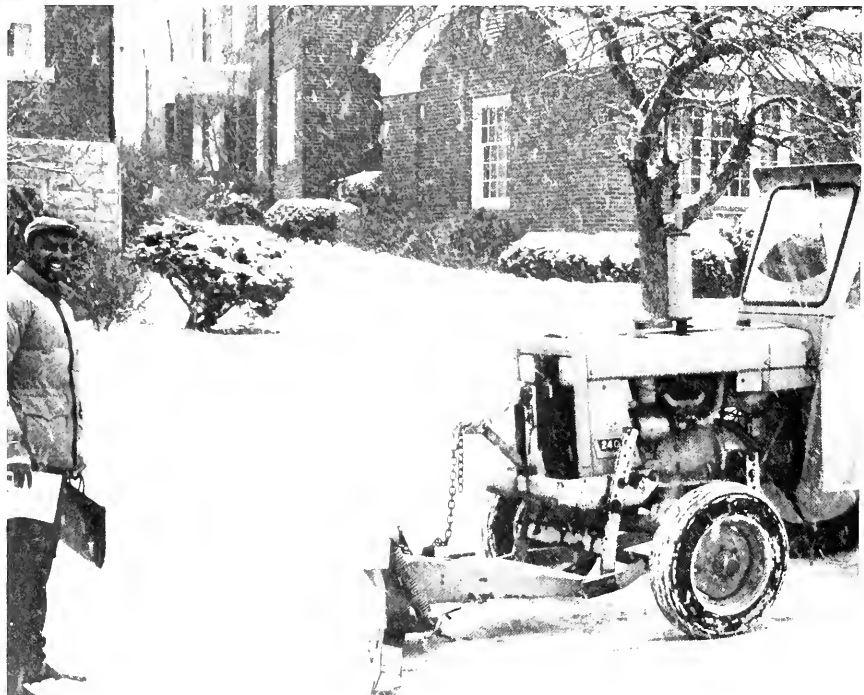


# Don't Forget Your Mittens!

*For anyone who has lived in another area than western Pennsylvania, the adjustment to Clarion weather may be more difficult than the acclimation to college. The most bizarre conditions occur during the winter months which, believe it or not, run from October until April. Dressing for class in the morning is more confusing than Econ. Should you wear a warm ski jacket, a lightweight vest or be really adventurous and don a few sweatshirts? Of course, no matter what you finally decide upon, you will regret your choice the whole day. If you dress for snow, the sun will cause heatstroke. If you dress for a sunny day, your new rabbit fur coat will be soaked. If you dress for rain the terrible events that might occur are unlimited. When thinking of the weather it is best to remember a famous quote by the late Queen Victoria, "We are not amused."*









*Winter in Clarion must be experienced to be fully appreciated. It is like an older brother who hides in the closet and then suddenly pounces upon you. One day it is warm and sunny and the next it appears that Anchorage has been relocated to Clarion. The winter is severe with a cold wind that bites through every layer of clothing. The snow piles up and students trudge to classes weighed down with hats, scarves, and boots. On warmer days the sun peeks out through the dreary gray sky. The appearance of the sun causes a riot as students flock outdoors, to participate in massive snowball fights, touch football games, and plastic bag sledding. It is a time to settle into the routine of college life with dreamy thoughts of warm weather to come.*







*The Nutcracker Suite*





© 1954  
L. B. Nichols







The  
T  
e  
m  
p  
e  
s  
t





*Student Concerts-  
Measures of Success*







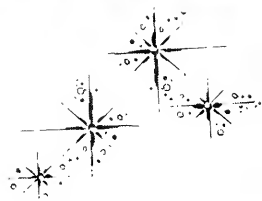
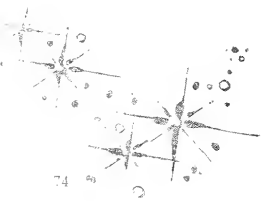
*Christmas  
1984  
Downtown  
Clarion Pa.*



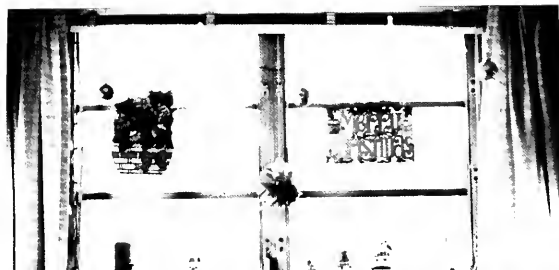
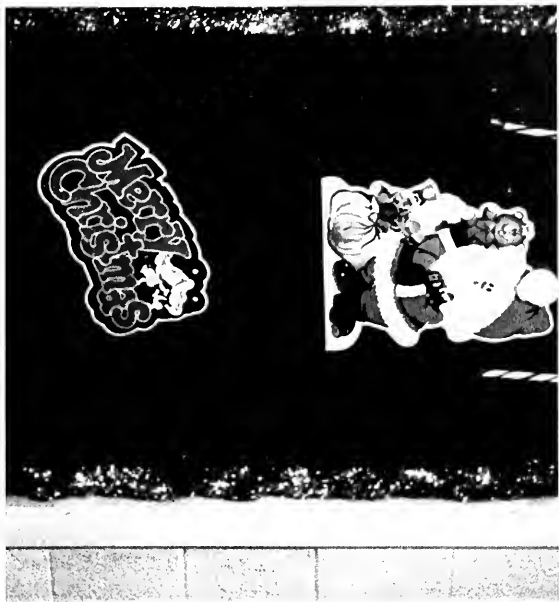




Clarion - A Winter Wonderland







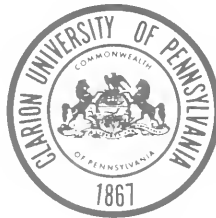




Δ Α Ε Δ  
Ε Δ Ε Α Ε  
Α Ε Δ Α  
Δ Α Ε Δ  
Ε Δ Α Ε  
Α Ε Δ Α  
Δ Α Ε Δ  
Ε Δ Α Ε  
Α Ε Δ Α  
Δ Α Ε Δ  
Ε Δ Α Ε

CLARION UNIVERSITY  
OF  
PENNSYLVANIA

WINTER  
COMMENCEMENT



DECEMBER 18, 1983

2:00 P.M.  
MARWICK-BOYD AUDITORIUM



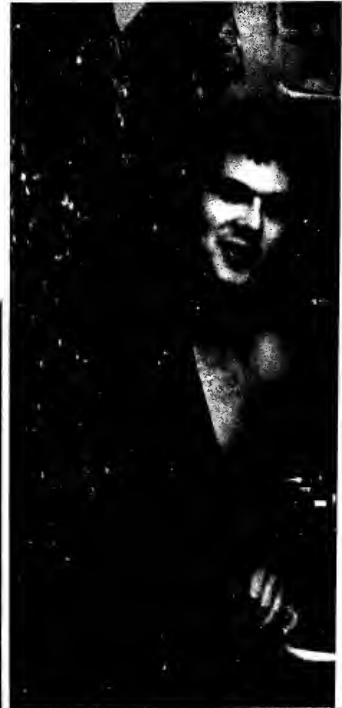
It all pays off ...







***Off-Campus Living —  
You Gotta  
Love It!***









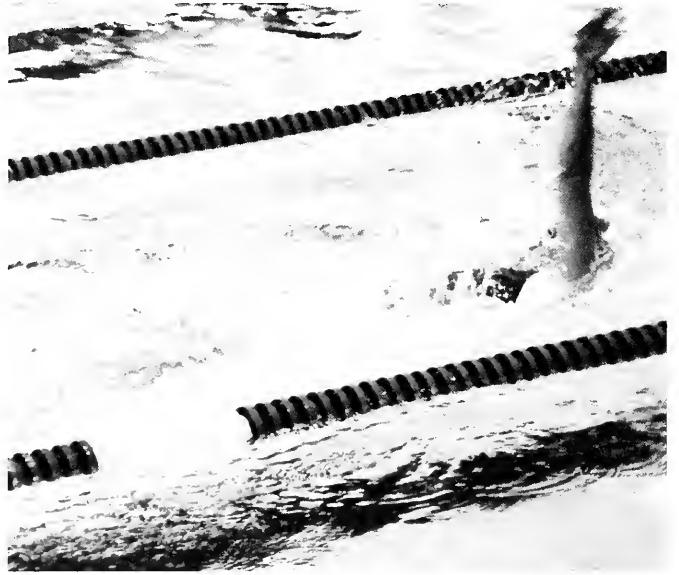
# Wrestler's Pinn A Good Season



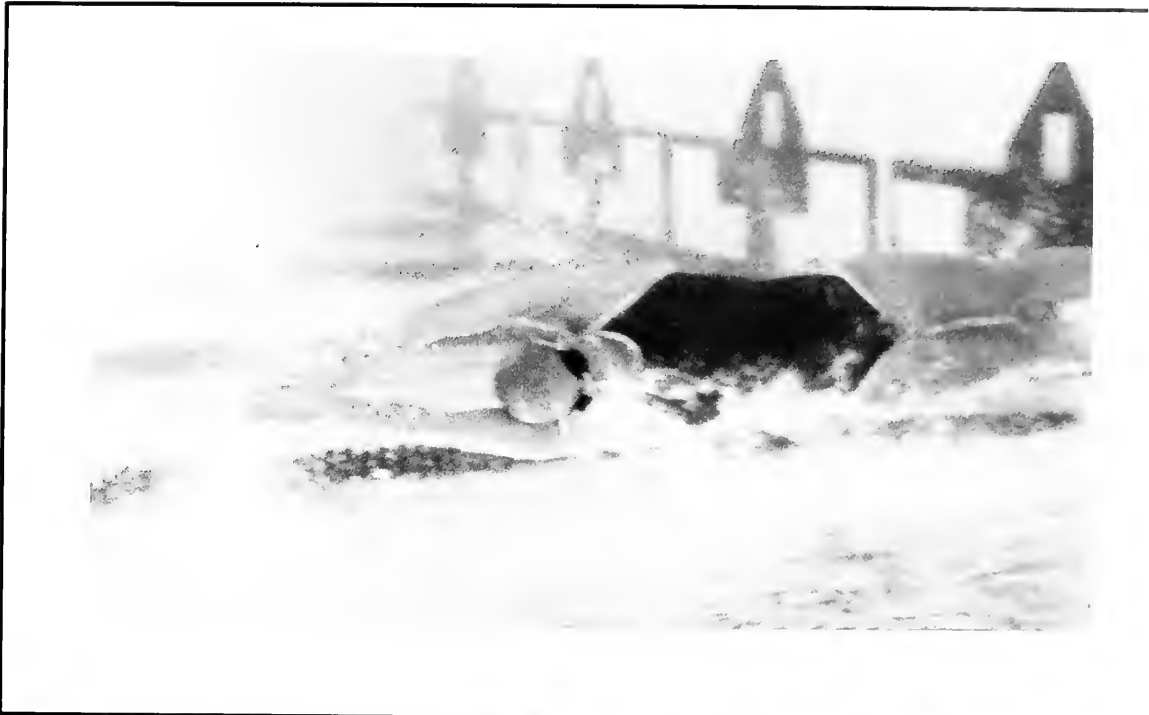




# Women Win 5th Straight Division II National Championship



Row 1 L-R; Coach Don Leas, Jeanne O'Conner, Joyce Skoog, Teri Peot, Coach Rutt Leas. Row 2 Mike Styer, Amy Zinkham, Betsy McClure, Jennifer Faust, Dana Maiello, Charlene Bromley, Tina Kiser, Alisa Woicicki, Susan Walbert. Row 3 Stephanie Davis, Charleen Carney, Tina Bair, Mary DeMarco, Kim Hayes, Suelynn Langdon, Karen Courtney, Pam Lawson. Row 4 Gwen Stockley, Beth Waldbaum, Megan Cunningham, Cheryl Sibiga, Linda Kruth, Susan Hollman, Susan Gallagher.



# Men Finish 3rd At Division II Nationals

Clarion University's Men's Swimming and Diving Team, coached by Bill Miller, ended its regular season dual meet record once again undefeated; a 7-0 record. Clarion is 16-0 in its last two years. Also, the Golden Eagles finished 3rd at the NCAA Division II Nationals. The Golden Eagles saw Kevin O'Neil win National titles on both the one and three meter boards. Diving Coach Don Leas was named men's "Coach Of The Year" in Division II, by coaches vote.

The swimmers were led by co-captain Rich Dobrzanski, Dave Holmes and Jim Hersh with outstanding efforts by Vic Ruberry, Tim Fahey, Tim Wojtaszek, Jack Gardner, Kirk Sanders, John Scherzler and Paul Fox. Holmes had the highest individual placing of any swimmer, he also was 8-time All American in two years. Hersh meanwhile was the team's only 5-time All American.

The divers, led by O'Neil's performance, also saw seniors Chuck LoCurto, Craig Harkins, and Keith Arnold, become 2-time All Americans, with Bill Kokinos also placing once.

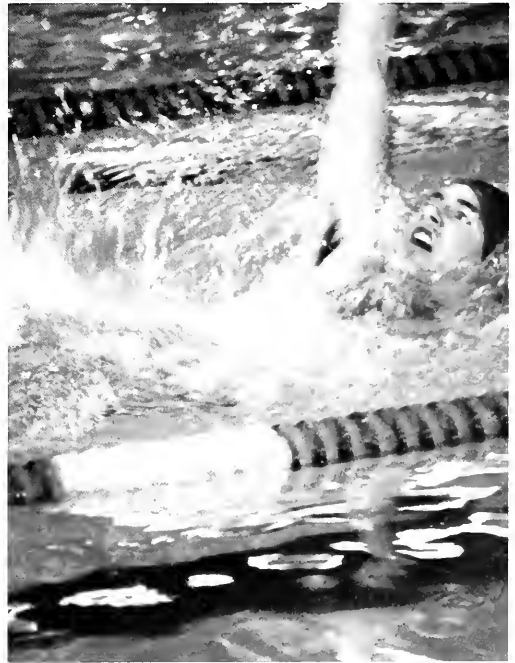
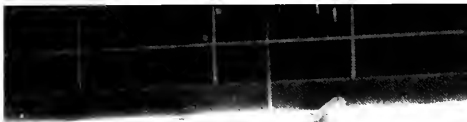


|             |  |         |  |                     |           |         |         |
|-------------|--|---------|--|---------------------|-----------|---------|---------|
| 400 MED REL | JANAK GOBRZANSKI<br>HOLMES & WOJTASZEK | 3:32.02 | JONES, JACKSON<br>RUBIN & PICK           | PUGET SOUND 3:28.32 | ES WINDOR | 3:32.50 | 3:37.00 |
| 400 FR REL  | SWANBERG, RAGNER<br>FERBERA & TERENA   | 3:07.45 | SMITH, THOMPSON<br>LAD, LE & CHRISTENSEN | NORTHERN CO 3:04.53 | CLARION   | 3:07.82 | 3:13.00 |
| 800 FR REL  | WOJTASZEK, LARSON<br>WEBER & FAHEY     | 6:55.54 | SMITH, THOMPSON<br>CHRISTENSEN & HANCOCK | NORTHERN CO 6:48.90 | CLARION   | 6:58.87 | 7:10.12 |

FOURTEEN FOR FUN. AGAIN NUMBER ONE.



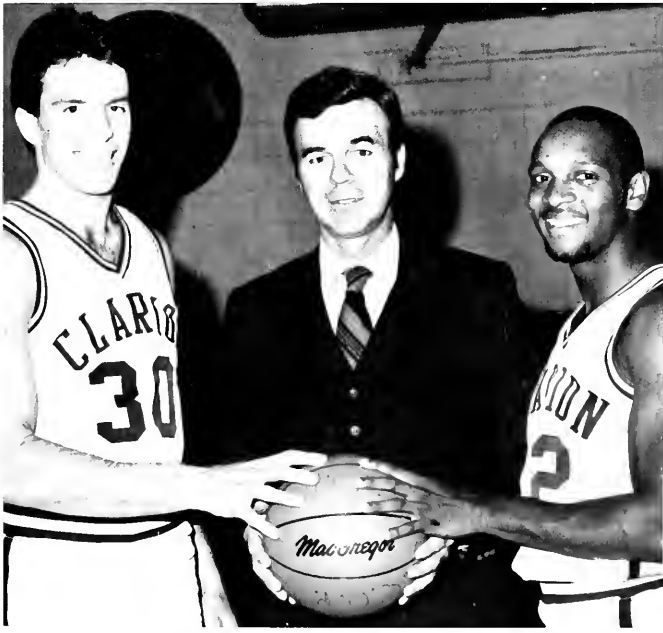
Row 1, L-R: Mike Kelley, Tony Justice, Chuck LoCurto, Kirk Sanders, Rich Dobrzanski, Vic Ruberry, Kevin O'Neil, Dave McFadden, John Smith, Coach Don Leas; Row 2: Maria Nebiolo, Bill Eaton, John Scherzler, Mike Barnes, Tim Fahey, Fred Kylander, Tim Wojtaszek, Mike Cherwenka, Tom Ramage, Jack Gardner, Ben Landfair, Karen Nurs; Row 3: Coach Bill Miller, Pam Johnson, Bob Mozzi, John Acus, T. J. Geier, Paul Raducha, Paul Fox, Dan Gray, Adam Stryker, Dave Holmes, Andy Fox, Lori Smith; Row 4: Bill Kokinos, Chris Doyle, Kevin Tunstall, Rich Peterson, Mark Paules, Dan Roberts, Jim Hersh, Allen Carr, Tom Merritt, Phil Mathew, Craig Harkins.



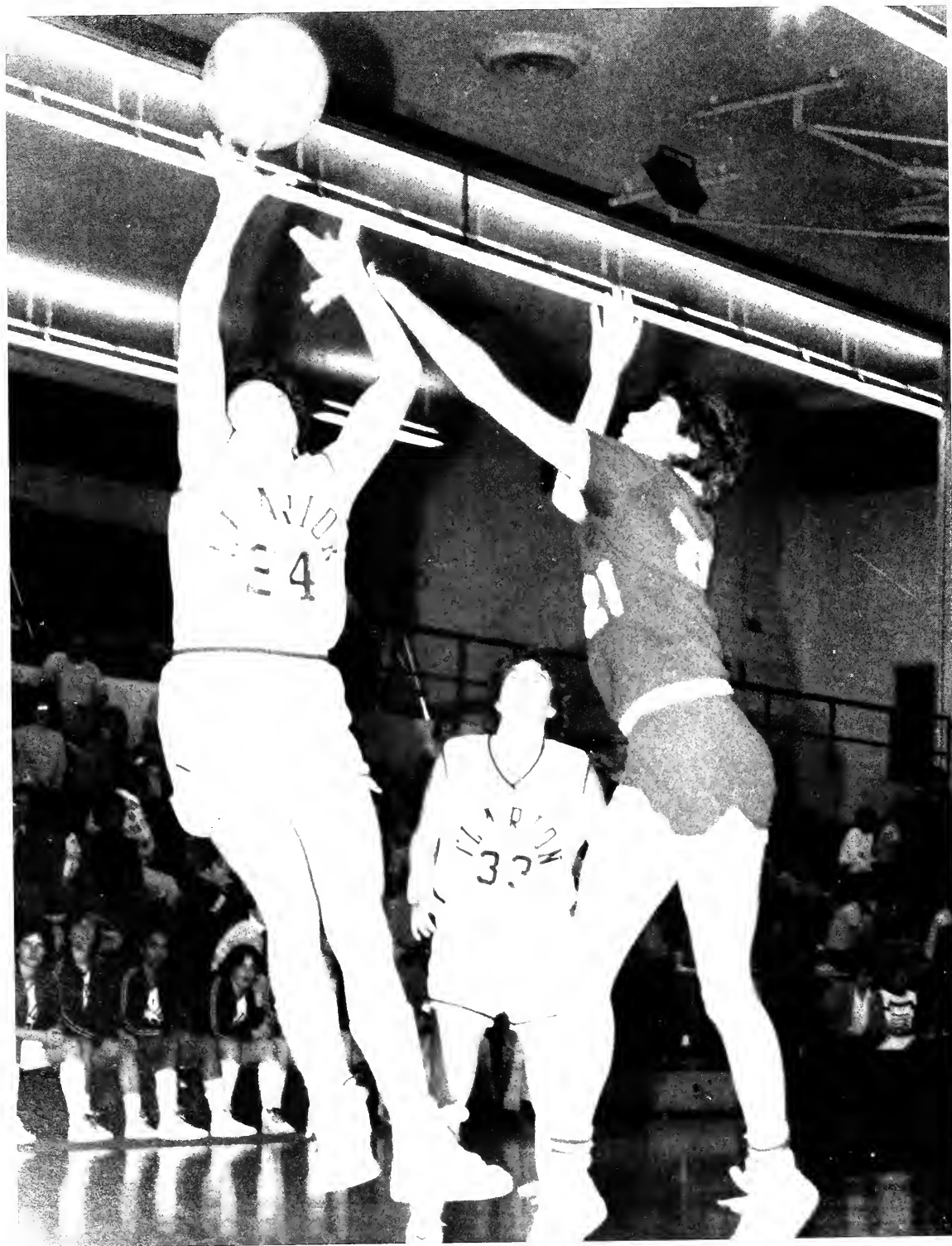
## Men's Hoop Team Wins PSAC-West

The Clarion Men's Basketball Team opened the year with a 2-7 record. But Coach Richard Taylor got his Golden Eagles going and they won 13 of their last 17 contests and won the PSAC-Western Division crown with an 8-2 record. Clarion finished its season with a 15-11 overall slate.

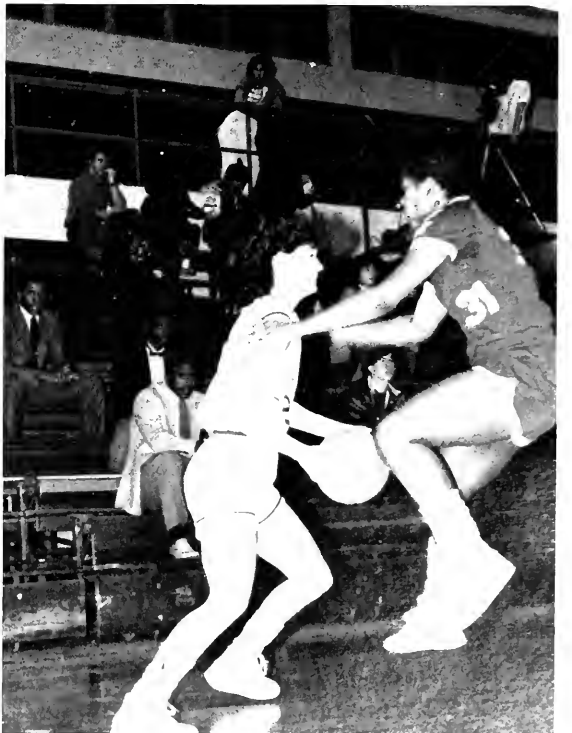












## Gymnasts End Season On A High Note

The Clarion University Gymnastic Team ended the 1983-84 with a second place finish in the PSAC Championships.

Senior Captain Carol Snyder finished her career with the solid performance, and the entire team contributed to the teams overall performance. "I thought we really ended our season on a positive note," sounded coach Gayle Truitt-Bean. "I think we gained confidence as a team and matured as individual performers those last weeks of the season and we'll definitely be a better team for that experience next year," remarked the Clarion coach.





*Black Awareness  
Month*







*Miss Clarion University 1984  
Melissa Rilling*











# Winter Workouts!



S  
p  
r  
i  
n  
g

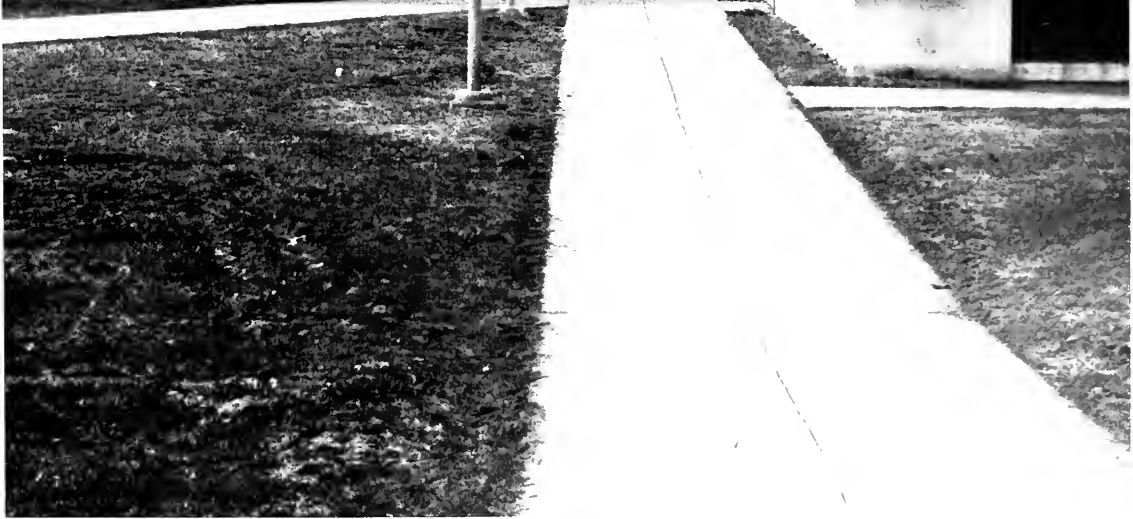












Weekend Jocks





# Men's Volleyball Gaining Exposure



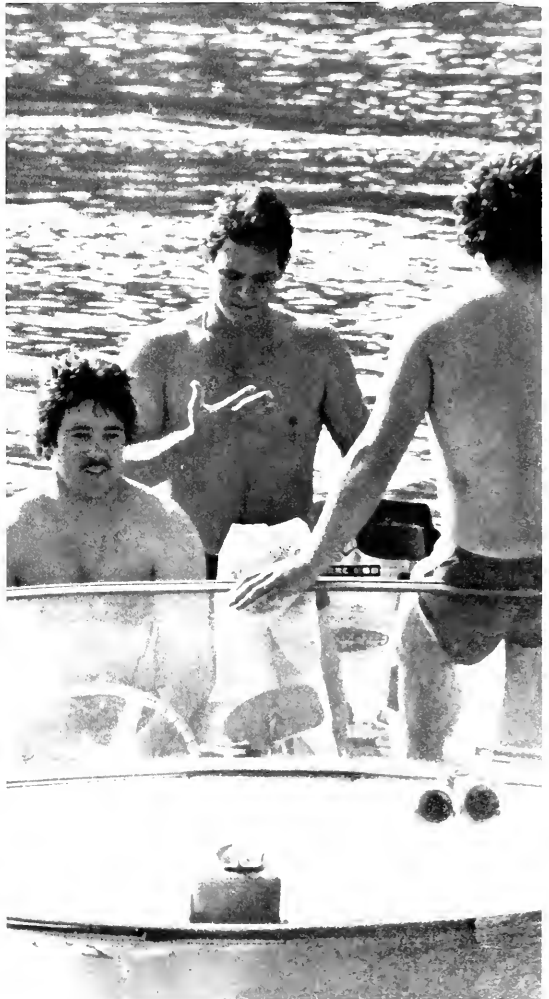
# Marksmen "eye" a Good Season



**Explore Clarion  
on the sunny,  
tropical  
shores of the  
Clarion River  
— All for the  
low, low price  
of a six-pack!**







3  
O  
n  
e  
A  
c  
t  
P  
l  
a  
y  
s  
.





*Center  
Board!*











# Baseball Team Swings Into Action













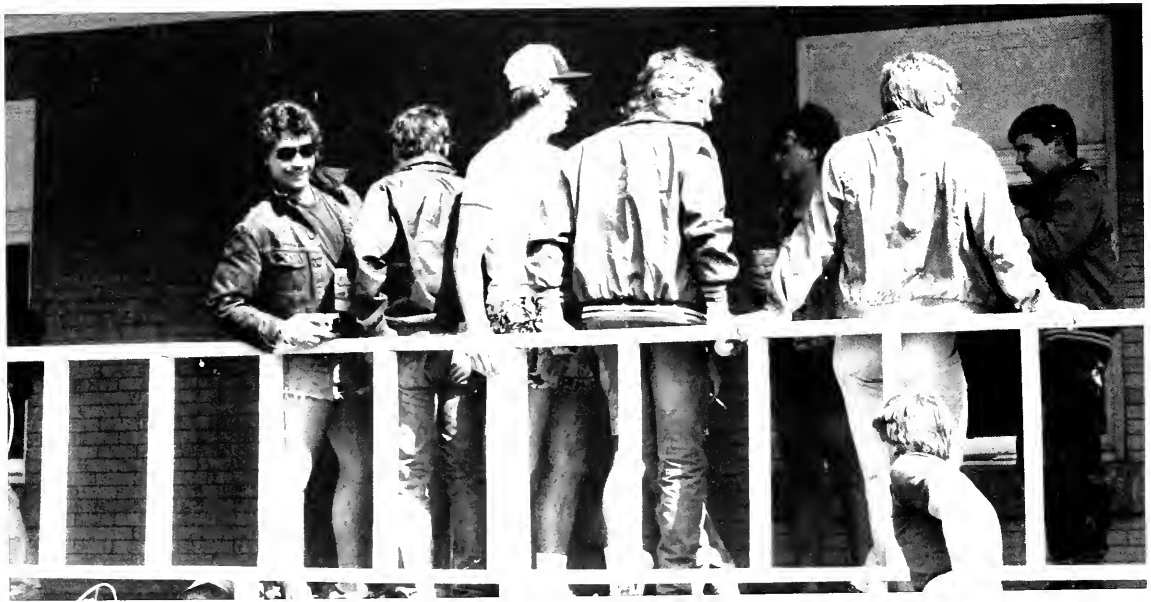




*Greek Week*

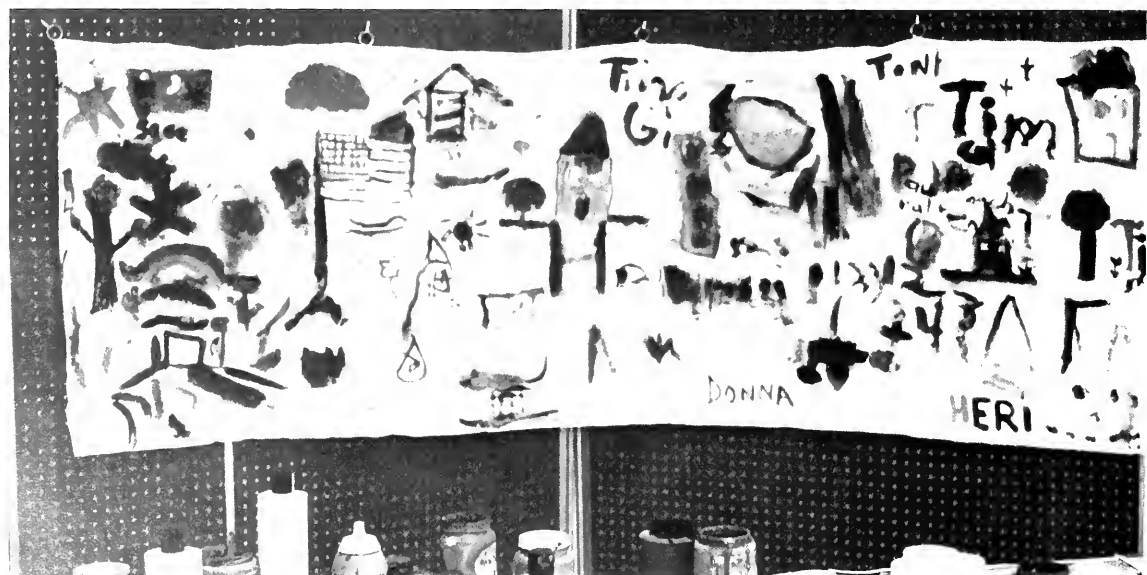








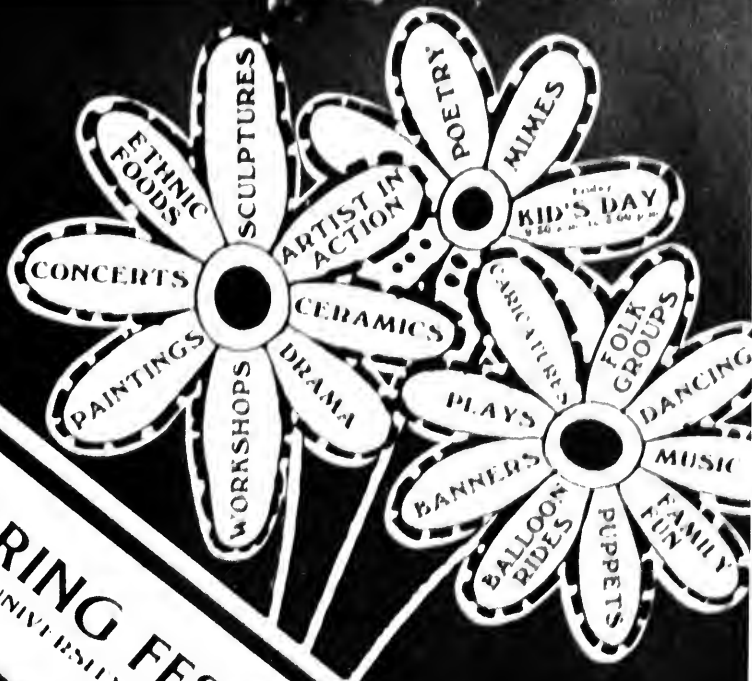












**SPRING FESTIVAL OF THE ARTS**  
CLAYTON UNIVERSITY OF PENNSYLVANIA  
MAY 2, 3, 4, 5, 6, 7, 8, 9, 10, 11, 12, 13, 14, 15, 16, 17, 18, 19, 20, 21, 22, 23, 24, 25, 26, 27, 28, 29, 30, 31, 1984









Clarion Un  
of Pennsylvania





iversity



▶ ADMISSIONS OFFICE  
▶ CARLSON LIBRARY  
▶ CHANDLER HALL

**NO PARKING  
SERVICE ZONE  
RESERVED**

# STUDENT



# AFFAIRS



*It takes All kinds!  
(of pictures)*







Home For The Summer . . .





37000  
00606

Liquor

30-21  
60 OFF

# S u m m e r





RITA AARON  
JANET ADAMS



TROY S. ADDIS  
ERIC ADHAM



SCOTT ADLER  
TIM AHANEKU  
JAMES AHERN  
JEFFERY ALARIO  
CHAUNDRALDERETTE



SHERRI ALEXANDER  
ROBERT R. AMEY  
GLENN ANDERSON  
MARVIN ANDERSON  
RONALD ANDERSON



CHERYL ANN ANDREWS  
LAURIE JANE ANGER  
E. KENNETH ARDELL  
NICK ATSA LIS  
ERIC AX



SUSAN AXELSON  
ERIC G. BAIRD  
LORI SUSAN BAIRD  
LISA BALL  
SHARON PATRICA BARNES





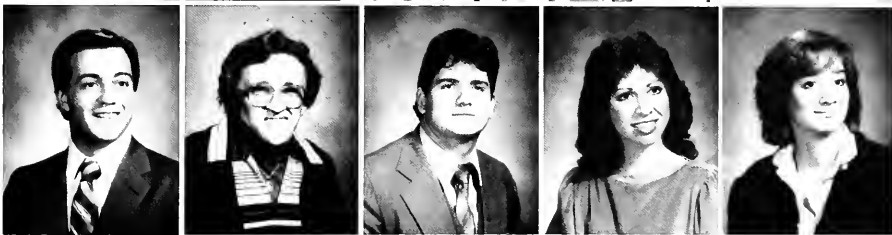
SARA BARRON  
 JEAN BARSOTTI  
 CATHY BARTOLOMUCCI  
 DIANE C. BAUM  
 DENISE BEAN



TODD BECK  
 JEAN BECKENBAUGH  
 BEVERLY BEGGS  
 WILLIAM BEISTLINE  
 BRENT BESONSON



KAREN BESS  
 DAVE L. BIRCKBICHLER  
 DAVID BLOZOWICH  
 JOSEPH BODISCH  
 SHIRLEY D. BOGGAN



DAVID BONGIVENGO  
 BEVERLY A. BOOKS  
 R. JOSEPH BORDINI JR.  
 CAROL BOSAK  
 DONNA LYNN BRADDOCK



MICHAEL BRADSHAW  
 ANDREA BRANTON  
 TIMOTHY BRIGHT  
 JAMES BIRTTON  
 JACQUELINE BROWN



JUDY BROWN  
 MARK BROWN



ROSALIND BRUCE  
 LISA BRUMBACK



LYDIA BUCHHEIT  
 RENIE BULLMAN



VERONICA BURCHFIELD  
 LISA BURKER  
 HOLLY BURT  
 CAROL BUSAK  
 KATHLEEN BUSH



DAVID BYRNE  
 BRUCE EDWARD CAFFAS  
 MICHAEL CAIMI  
 KAREN CALABRESE  
 CHERYL LYNN CAMPBELL







DAVID CAPO  
TIMOTHY CAPRA  
ANGELA J. CARRICO  
BETH CARRIER  
LORI CARRIG



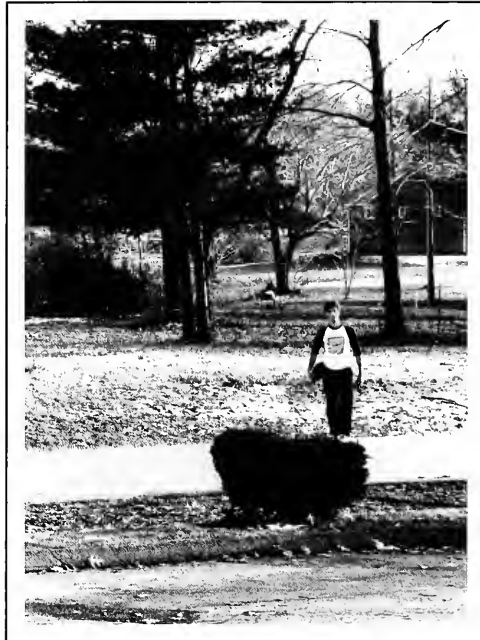
MARK CARSON  
LAURIE CARTER



PAMELA CARTER  
JAMIE CARVLIN



JACQUELINE L. CASHMERE  
AMY CASINO



KELLY JO CASSIDY  
RHONDA ANN CAYE  
EMILY CELENTO  
ANTHONY CENIMO  
MARK A. CENTI



ALVIN CHASE  
KIP LYNN CHERRY  
KATHLEEN CHETTLE  
GAIL ANNE CHISHOLM  
IRIS MAUREEN CHIZECK

THOMAS CHUBA  
RICHARD CIANCI



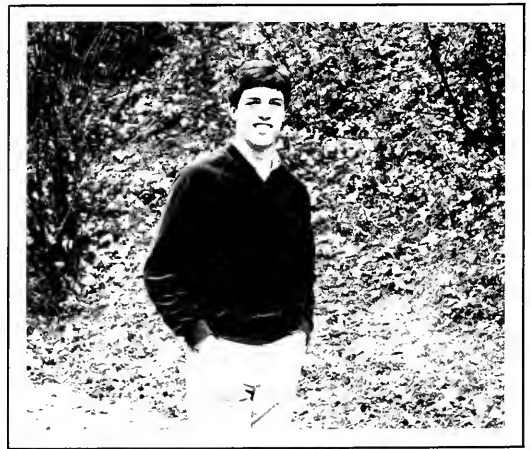
MARK CICCARELLO  
MARK CIFRANICK



DENISE CLAIR  
CAROL CLARK



SARA L. CLARKE  
JOHN CLELAND



CHRISTOPHER CLEWELL  
REBECCA CLINE  
JOHN COGNETTI  
CHAD COHRS  
ANTHONY COLECCHI



BRIAN J. COLLINS  
BARBARA ANN COLONNA  
BARBARA ANNE COOK  
ARTHUR COOK  
BELINDA COOK





JULIE COPEN  
 JANICE COSTANZO  
 WILLIAM COTTER  
 CHRISTINA COTTON  
 SALLIE COWAN



JEFFERY COX  
 ANGELE CRAIG  
 DAVID CRAMER  
 JENNIFER CRANFORD  
 MARY CROCK



MICHAEL CROSBY  
 KAREN CUGINI



JAMES CUNNINGHAM  
 JUDITH CSILLIK



WILLIAM CZAJKOSKI  
 ROBIN DACZKOWSKI



KIMBER LEE DALRYMPLE  
 NICOLA DAMASCENO

MARY DANIELS  
 SUSAN DAVID  
 DAWN DAY  
 DIANE DEBASTIANI  
 JEFFREY DEE



RALPH DEER  
 MARK DELAHUNTY  
 MARY DELEHUNT  
 LORI DEMETER  
 DEBORAH DICKSON



DARRYL DIETER  
 AMY DONALDSON  
 DOROTHY DONOVAN  
 TIMOTHY DORN  
 TAMI DOVERSPIKE



GEORGE DRUSHEL  
 DANIEL DUTTON  
 KATHLEEN ECK  
 OTIS EDWARDS  
 BETH ELDER



JOEL EMMETT  
 LORI EMMETT  
 JOHN ENGEL  
 JENNIFER ERNEY  
 TAMI FABIAN



KATHLEEN FARRELL  
 MICHELLE FARVER  
 JOETTE FEARN  
 ROBERT FEDORIS  
 JULIE FEES





MICHAEL FERLAZZO  
 SUSAN FERLIN  
 GINA FERRARA  
 CHRISTOPHER FETZER  
 LINDA FILIPICH



EDWARD C. FINNEGAN  
 AMY JO FISCHER  
 JOANN FISCHER  
 PATRICK FITZGERALD  
 LISA FITZSIMMONS



LINDA FORINGER  
 CHRISTOPHER FOSTER  
 KIMBERLY JO FOTIA  
 LYNN FRANKLIN  
 DENISE FRASER



STEPHEN M. FRAWLEY  
 THOMAS J. FUHRER  
 MICHAEL PAUL GABRIEL  
 JAMES GALBRAITH  
 LINDA E. GALLAGHER



MICHELE GAMBLE  
 CRAIG GARDNER  
 JOSEPH GAZDA  
 LORI GENSLINGER  
 TIMOTHY GERKEN



TODD GEORGE  
 LAURA GIAVEDONI  
 ROBERT GIERSZAL JR.  
 PAMELA GILLEN  
 CAROLYN GILLESPIE

KAREN GILPIN  
DENNIS GLOVER



KRISTY GOEPFERT  
JEFFERY GOLIAS



RYAN GORDON  
SANDRA M. GOSNELL  
LISA GOUGHLER  
DONALD GRAU  
ROBERT GRECCO



REGINA GRECO  
MARK GREENLEE  
GARY GREYHOSKY  
RANDALL GROMLICH  
ROBIN ANNE GROOMS



MONTY GROSS  
CINDY GUCKERT  
RABIAT IBRAHIM GUSAU  
ROBERT K. HAGG  
JANINE HABERER



ANGELA HACHERL  
KATHLEEN HALLER  
MARIAN HAMPTON  
MAUREEN HANEY  
JULIE HANNUM







TIMOTHY R. HANSELMAN  
 MELLISA A. HARDEN  
 JODY HARRAH  
 WILLIAM HART  
 COLLEEN HARVEY



ANN PATRICIA HEALEY  
 DONNA HEBRANK  
 NANCY HEINRICH  
 MARY HEINTZ  
 MAUREEN HEINZ



ROBIN HENRY  
 WILLIAM HESIDENCE  
 SALLY HETRICK  
 JOHN HICKEY  
 DOROTHY HICKMAN



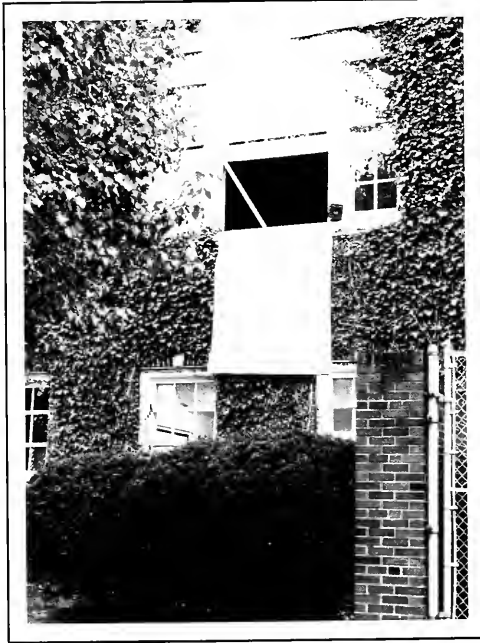
CYNTHIA HIGMAN  
 SUSAN HILDEBRANT  
 JOSEPH HILE  
 DAVID HIMES  
 PATRICK HIRSCH



CONSTANCE HOHMAN  
 KEVIN HOLLERAN  
 DAVID HOLZER  
 VICTOR HORDIES  
 KENNETH HOWELL



MARY SUZANNE HRIBIK  
 NANCY HROMYAK



JUDY HURLBERT  
 PATRICIA HUSS



JAMES HUTCHINSON  
 DENISE HUTCHERSON

KEITH ALLAN IZYDORE  
 NADINE JARGIELLO  
 JEFFREY JAWORSKI  
 THOMAS JEFFRIES  
 BETH JOHNS



KAREN JOHNS  
 WHITNEY JOHNS  
 MICHAEL JOHNSON  
 REBECCA JOHNSON  
 TRACEY JOHNSON





JUDY JOHNSTON  
 JOANNE JORDAN  
 SEAN HOYE JORDAN  
 KERRY JOYCE  
 CYNTHIA JUBACH



ANTHONY JUSTICE  
 NANCY KANE



MARY BETH KAPOSNIK  
 KRIS KAUFMANN



CAROLYN KEEGAN  
 MICHAEL KELLEY



VICTORIA KELLEY  
 CYNTHIA KENNEDY  
 TIMOTHY KERKEN  
 GEORGE MALON KERN  
 BRIAN JAY KESNECK



SUSAN KIRIMLI  
 PAULA KISER  
 TINA KISER  
 BRENDA KISNER  
 KERRY ANN KLINE

NICHOLEE KLINE  
ROBERT KOLLAR



ANN KOLLER  
JAMES KOSHAN



KERRY KOZAK  
JENNIFER KOZODY



TAMI LOUISE KOZUP  
CHRISTINE KREGER



MICHAEL KRETZ  
CLAYTON KROH  
ERIC KROUT  
DONNA KRUPITZER  
NANCY KRUTZ



SUSAN KUPFNER  
ADELLE KURTZ  
LORI ANN LAGNER  
MAUREN LAH  
CHRISTINE LAMBRINON

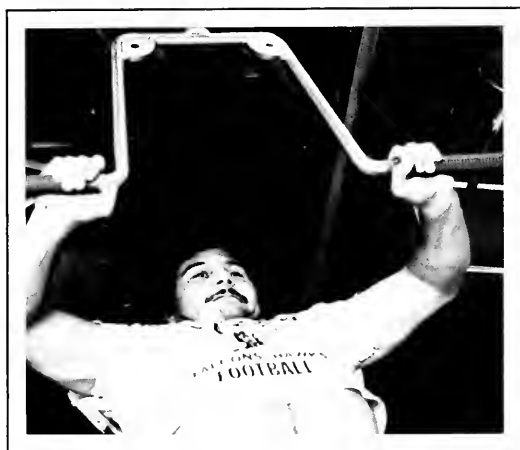




TAMMY SUE LANE  
SANDY LANSBERRY  
IRWIN LERO  
JEFFERY LEOPOLD  
LINDA LESHOWITZ



SHARON MAE LESSER  
MARLENE LIBERATORE  
JAMES LIEB  
LISA LINDE  
RAYMOND LINDER JR.



JULIE LINDGREN  
SHARIE LINERT



JOHN LINTON  
CAROL LYNN LISCIANDRO



EVELYN NAYOME LLOYD  
KIMBERLY LOCKE



CHARLES LOCURTO  
PATRICIA LOMAX

JEAN LUCAS  
 LUCILLE M. LUCCARELLI  
 ANN LUND  
 MICHELLE LUPACHINO  
 JOHN LYDON



ALICIA LYNAM  
 CAROLYN MAGGI  
 KOFI MAISON  
 VICTORIA MALEFSKI  
 FRANCIS I. MANCUSO



ROBERT MARASCO  
 JEFFERY L. MARKWELL  
 PAMELA MASI  
 LINDA ANN MASSUCCI  
 LAWRENCE MASTROVICH



CLAY McALLESTER  
 ERIN McCARTNEY  
 ERIC McCLEARY  
 MELANIA ANN  
 McCOLLOUGH  
 DAVID McCracken



LORI A. McCracken  
 JOHN McCULLOUGH  
 NORA L. McDANNIELS  
 KAREN McDERMOTT  
 TAMI McDONALD



DAVID McFADDEN  
 BRETT McGINNIS  
 VICTOR McGINNIS  
 SUSAN McINTYRE  
 MELISSA JANE McKENNA







KELLY McLAUGHLIN  
SCOTT McMICHAEL  
DEBORAH McMILLIN  
PAMELA McVAY  
EMMANUEL NWAB MEMBIS



PAULA MENDENHALL  
MARCY MENEELY  
SAMMY MENSAH  
BRIAN MENTZER  
NICHOLAS MERVOSH



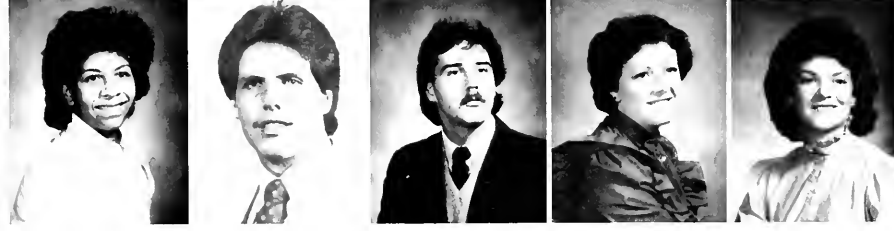
CHESTER K. MIENTUS  
ANNE MILLER  
CHRISTOPHER MILLER  
ERIN L. MILLER  
LINDA MILLER



LYNN ALLISON MILLER  
RAYMOND MILLER  
PAMALA MILLIKEN  
TRACI MILLS  
CRAIG MIRON

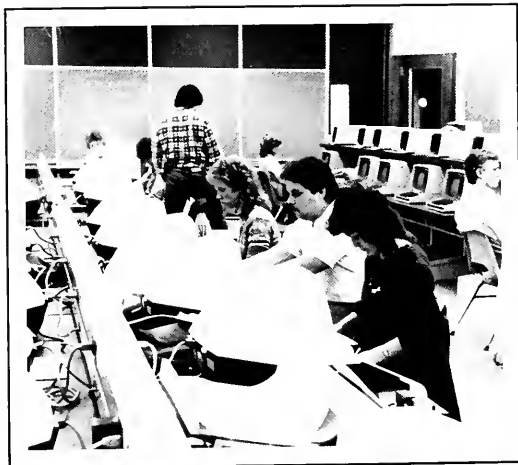


JAMIE MISIAK  
IRIS MOFFETT  
JESSICA MOORE  
MARIANNE MOORE  
ROBERT MOORE JR.



TANYA MOORE  
JAMES T. MOOREHEAD  
MICHAEL MORELLI  
DENISE MORGAN  
TERRI MORGAN

KARIN MOXLEY  
MARYANN MURPHY



TIMOTHY MURPHY  
ALLYSON A. MYERS



BRYAN MYERS  
SUSAN MYERS  
MARVA ELAINE NABORS  
KENNETH R. NANIA  
MARGIE L. NANZ



RALPH NAPLES JR.  
LORI NAPOLITANO  
RICHARD NEALER  
SUSAN NEELY  
DAVID NEMETH JR.



MARY NEUMAN  
JEFFREY NIDER  
FABIAN C. NJOKU  
CHIDE NWOSU  
JEFFREY NOCK



NICOLETE NUCCETELLI  
KAREN SUE NURSS  
CINDY OAKLEY  
JEANNE OCONNOR  
LINDA ODOSKI





EVELYN OJOMO  
 MARCIA OLSHANSKY  
 DOUGLAS ONEIL  
 JEFF ONEILL  
 PAULINUS A. ONUH



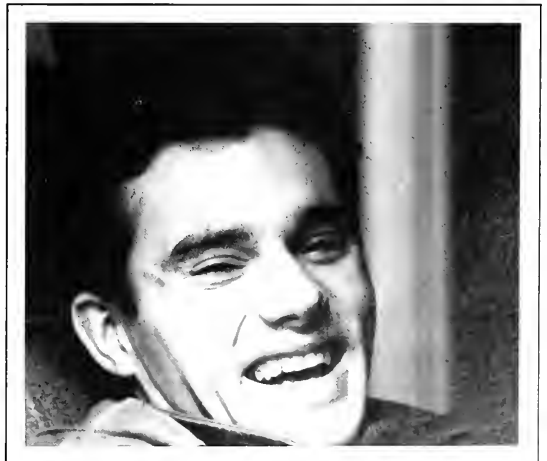
BEATRIZ GONZALEZ-PADILLA  
 JEAN MARIE PANKER  
 JEAN PATRICK  
 BARBARA PAUL  
 THERESA PEOT



ANNAMARIE PERRETTA  
 RICHARD PESAVENTO  
 DIANE SUE PETERS  
 KIMBERLY PEYTON  
 CAROL ANNE PHILLIPS



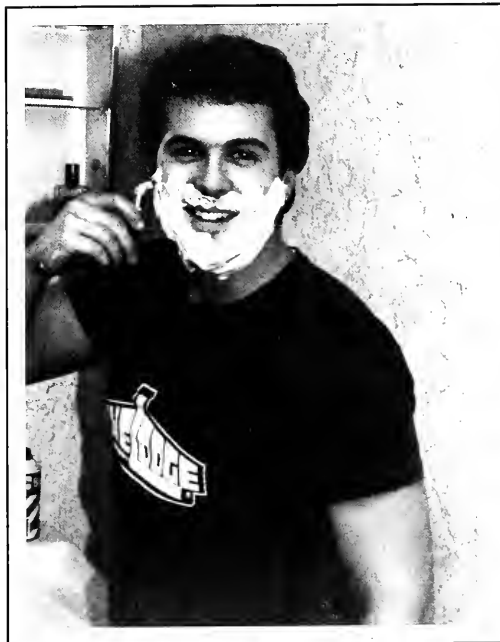
GREGORY PICKRELL  
 CARLA PIELMEIER  
 ANTHONY PITRONE  
 RUDOLPH PLANAVSKY  
 MICHELLE POERIO



FRED PORR JR.  
 KIMBERLY POTTMEYER  
 LISA POTTS  
 RUTH ELLEN POTTS  
 DANA POWELL



SANDRA H. PRATT  
 HOLLY PRICE



VINCENT PROVOST  
 NANCY PRUCY



CYNTHIA PUSATERI  
 CAROLYN PYNE



WILLIAM D. QUINN  
 WILLIAM QUINN JR.  
 MICHAEL C. RAFFERTY  
 LEIGH RASTATTER  
 SUSAN RECTENWALD



KENNETH REDDINGER  
 KAREN LEIGH REEDER  
 ROBERT REICHERT  
 ANDREW REID  
 MARK RENGERS





CYNTHIA RICKE  
 JODIE RIEGLE  
 JANI LEE RIGGS  
 RANDALL LEE RISCH  
 JULIE ANN ROBERTS



DEANNA ROBERTSON  
 MICHAEL L. RODGERS



JOYCE ROE  
 ALAN ROEHLICH



NANCY A. ROESSING  
 CHRISTINE A. ROSEBERRY



JOHN ROTH  
 LISA ROTH  
 BONNIE RUPERT  
 KIMBERLY J. RUTH  
 MICHAEL B. RYAN



MARY FRANCES SALVAMOSER  
 SUZANNE LEE SAUL  
 MARY SCANLON  
 DAVID SCHAUBLE  
 DIANNE SCHAUBLE

ELIZABETH ANN SCHELIEN  
MARK SCHETTTLER



SUSAN SCHMADER  
CYNTHIA SCHMIDT



DIANE SCHRECKER  
KURT SCHRICKER



MELISSA SCHUETZ  
CHARLES SCHWEITZER



KEVIN SCOTT  
MICHELE SCOTT  
PATRICK A. SCOTT  
DIANE SEDLAK  
LORRAINE SEDLMYER



JEFFREY SEIDEL  
MARK SEKEL  
DIAN SELWAY  
DEBORAH SEVERING  
BELINDA GAIL SHAFFER







SHARI SHETTLER  
LINDA SHINE  
SHELBY SHULICK  
TAMMI L. SHERMAN  
KIM SHULTS



MICHAEL EDWARD  
SHUSTER  
SANDRA SILKO  
KAREN M. SIMON  
MAUREEN SIMON  
JOHN SINCLAIR



TIMOTHY SIVERD  
JOYCE SKOOG



ANNE SLABINSKI  
TINA MARIE SMEDES

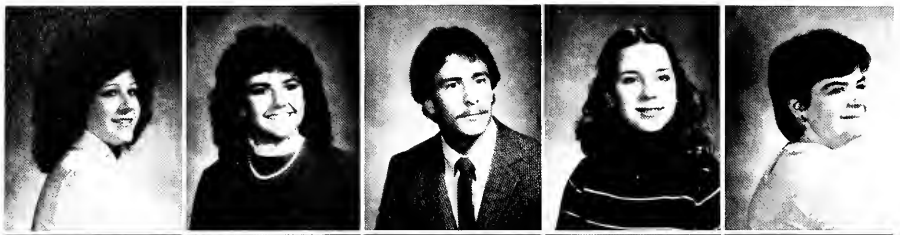


BEVERLY SMITH  
CHERYL SMITH



CRAIG SMITH  
DAVID SMITH

JACQUELYN DEE SMITH  
 JOANNA SMITH  
 JOHN SMITH  
 KAREN SMITH  
 VALERIE SMITH



MICHAEL SMOLEY  
 JOAN SMREK  
 DAVID SMYERS  
 KEVIN SNOW  
 AMY SNYDER



KENNETH SNYDER  
 SUSAN L. SNYDER  
 TAMMY JO SNYDER  
 KAREN SOBYAK  
 MICHELE SORENSEN



CLARKE R. SPENCE  
 DAVID A. SPINGARD  
 CAROLYN JEAN STARCHER  
 KELLY STAY  
 RUTH ANN STEAD



MILISSA STEINER  
 RODNEY STEINER  
 SUSAN STEIS  
 LISA STEVENS  
 RICHARD STEWART



DEBORAH STICKLE  
 JEFFREY STIRLING  
 LORI JEAN STORM  
 MICHAEL STORY  
 LINDA STRANG





COLLEEN STRAUB  
KEVIN R. STRICKLER  
RONALD STUVER  
SUSAN SUNIER  
W. SCOTT SWOISH



BRADLEY TEMPLETON  
KIMBERLY THEIN  
CAROL THIELE  
OGWUMA THEOPHILUS  
JENNIFER THOMAS



JILL SUSAN THOMAS  
TIMOTHY A. THOMPSON  
VICTORIA THOMPSON  
LEAH Y. THORNTON  
JAMES D. TOBAR



CAROLE TOBIN  
JANINE TOLLES  
MARTIN TOUGHER JR.  
DEBRA TRANTER  
CHRISTOPHER D. TRUDEAU



MARY PAT TURNER  
TAMMY UMSTEAD  
JUAN-CARLOS UNCLES  
MATTHEW VALARIK  
JACQUELINE VANDYKE



NANCY VERDERBER  
MARK VEREB  
DEBRA VERONESI  
JOHANNES G. VERWER III

JEAN VESONDER  
JEFFERY VINCE



MICHAEL STEWARD VLACK  
CHARLENE VOGAN



ROBERT VOGEL  
MARK VOLPONI  
DAVID VUCELICH  
STEVEN WAGLE  
SHARON L. WALDSCHMIDT



PAMELA WALLACE  
CAROL WASCAK  
LEE WEAVER  
LESLIE WEBER  
TAMARA WEBER



DANIEL WEBSTER  
KAY WEIS  
JANINE WEISER  
THOMAS W. WELLS  
RICHARD WELSH



LAUREL WESSELS  
EDWARD H. WETHLI  
MELANIE WEYMANN  
SHARON WHEATON  
LYNNE WHELAN





PAMELA WHITLING  
 BRYAN WIKER  
 TIMOTHY WILLIAMS  
 GEOFFREY WILSON  
 JOYCE WISNOSKI



GREGORY WOLFE  
 MARK WOLFE  
 NANCY WOLFE  
 BEVERLY WOYTKO  
 JANE YARACS



JULIA YODER  
 CHRYSTIE YOUNG  
 WANDA YOUNG  
 WILLIAM YOUNG  
 BARBARA A. YUTZLER



GREGORY ZBOROVANCIK  
 ROBYN ZEIGLER  
 MATTHEW ZEMA  
 THOMAS ZIACIK  
 DAVID ZIMMER



BRUCE ZIMMERMAN  
 ANN HEALEY



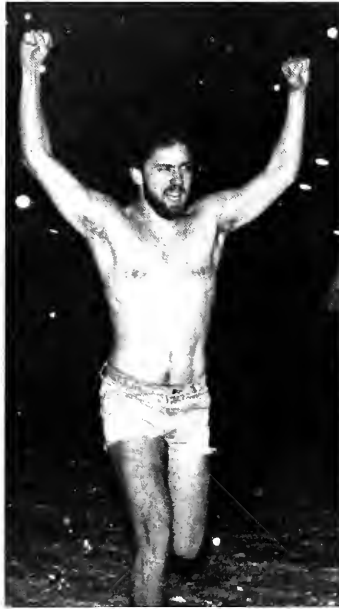
MARK S.  
 ANDREKOVICH











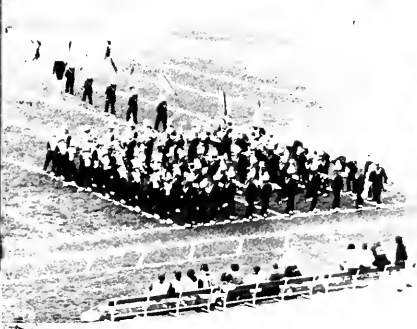


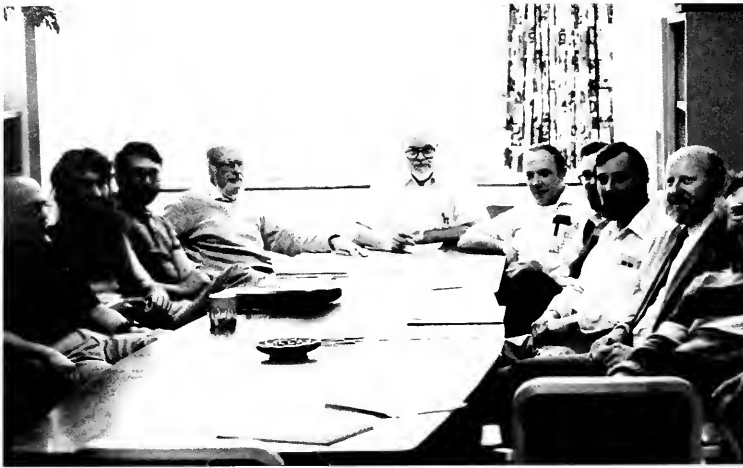












L to R: Dr. John Williams, Dr. William Belzer, Dr. Lerry Morrow, Mr. James Donachy, Dr. George Harmin, Dr. J. Robert Moore, Dr. Peter Dalby, Dr. Roger McPherson, Dr. Ken Mechling, Dr. Gil Twiest. Not Pictured: Mrs. Nadine Donacy, Dr. William Kodrich, Dr. Ernest Aharra, Dr. Wanda Jetkiewicz, Mr. Dalph Cook.

## Biology



## Geography



Dr. Don Totten, Ms. Margaret Kordecki, Dr. Tom Leavy, Dr. George Shirey, Dr. Craig Zamzow, Dr. John Ernissee.

# Finance

Seated: Richard Hawk, Dr. Marquente VanLandingham. Standing: Jeffery Eicher, William Henry, John Eichlen, Dr. Woodrow Yeaney (chairperson).



# Accounting

Seated: Dr. William Campbell, Dr. Demsey Dupree. Standing: Mr. John Brosnahan, Mrs. Mary Lou Pae, Mr. Mark Dawson, Dr. Charles Pineno (Chairperson), Ms Nancy Harding, Mr. Carl Farinacci, Dr. Theodore Hong. Not Pictured: Mr. Gregory Barnes, Mr. Randon Otte.





## Art

Row 1: Mr. Andor P-Jobb, Ms Catherine Joslyn, Dr. Francis Baptist. Row 2: Mr. Eugene Seelye, Mr. William Grosch, Dr. William Edwards, Dr. Robert Hobbs.



## Music

Row 1: Mr. Vahe Berberian, Miss Paula Amrod, Mrs. Judith Hughes, Miss Grace Urrico, Dr. Jarapolk Lassowsky. Row 2: Dr. J. Rex Mitchell (chairman), Dr. Jack Hall, Mr. Donald Black, Dr. John McLean, Mr. Milutin Lazich, Mr. Larry Wells, Dr. Stanley Michalski, Mr. Christian Bohlen. Not pictured Dr. Dean Farnham.



# Physical Education

Seated: Ms Fran Shope, Mrs. Becky Leas, Ms Doris Black, Ms Sharon Oleksak. Standing row 1: Mr. Bill English, Mr. Jack Davis, Mr. Don Leas, Mr. Bob Bubb, Mr. Dick Pae, Mr. Frank Lignelli. Row 2: Mr. Bob Leonard, Mr. Bill Miller, Mr. Dick Taylor, Mr. Gene Sobolewski, Mr. Al Jacks (Chairman), Mr. Charles Ruslavage.



# ROTC

L to R: Cpt. Fellows, MSG. Bell, SSG Dolsey, SSG Besaw, SM Corker, Maj Smith, Col. Moore, Maj Wylie, Cpt. Tate.



# English



Seated: Mrs. Darlynn Fink, Dr. Francis Greco (chairman), Ms. Tommie Jackson. Standing: Dr. James Knickerbocker, Dr. Hugh Park, Dr. Larry Dennis, Dr. Edward Grejda, Ms. Madelyn Jablon, Dr. Edward Rocklin, Mr. Bruce MacBeth. Not Pictured: Dr. George Barber, Mrs. Martha Campbell, Mr. Arnold Jeschke, Mr. William Karl, Dr. Henry Newman, Ms. Kathryn Asteholm, Dr. Darrel Sheraw, Dr. Ronald Shumaker, Dr. Donald Wilson.



# Library Science



L to R: Dr. John Head, Miss Rashelle Schlessinger, Dr. Bernard Vavrek, Dr. Ahmad Gamaluddin, Mr. Charles Economus, Ms. Patricia Payne, Dr. Elizabeth Rupert (Dean), Dr. Margaret Jetter.



# APPS



Dr. Jack Bertsch, Mrs. Marcy Leavy, Dr. Franklin Takei, Row 2: Mr. Jay VanBruggan, Dr. Robert Rath, Mr. Emmett Graybill, Row 3: Dr. Eldon Somers, Dr. Dean Straffin, Dr. Robert Girvan.



## Speech Pathology



Left to right: Dr. R. Dennis Hetrick, Mr. Robert A. Keenan, Dr. Donald H. Dininny, Mr. Jack H. Smith, Dr. Colleen A. McAleer, and Dr. Harold V. Hartley, Jr.



**UNIVERSITY OF**  
**MISSISSIPPI**  
**GRADUATE SCHOOL**  
**OF EDUCATION**  
**DEPARTMENT OF**  
**TEACHER EDUCATION**  
**2020-2021**



















Alpha Kappa Alpha Sorority, Inc. was founded in 1908 at Howard University, Washington, D.C. The purpose of Alpha Kappa Alpha is to encourage high scholastic and ethical standards, to promote unity and friendship among college women, to promote higher education, to study and help alleviate problems affecting girls and women, and to be of service to all mankind.

Since its founding upon the Clarion University campus in 1976, the Kappa Zeta Chapter has sponsored numerous service projects and programs of social, cultural, and educational relevance. Annual projects on campus include Black Heritage Week and Sister AKAdemic workshops.





ALPHA SIGMA ALPHA  
row 1 - Chris Kutskel (advisor),  
Jill Dale, Mary Beth Radkowski,  
Paulie Seleski (advisor), row 2 -  
Cheryl Campbell, Karla Maslaney,  
Melanie Campbell, Lori Wilken,  
row 3 - Sharon McKay, Katie  
Palmer, Beth Hundertmark,  
Tami Kozup, Michele Rudock,  
row 4 - Mindy Nave, Seana  
Brodhead, Sherri Alexander,  
Kathy Schiafone, Vonnie Boyd,  
row 5 - Karen Nurss, Karen  
Cugini, Pauline Bean, Robyn  
Zeigler, Deb McMillin.



The Zeta Beta Chapter of Alpha Xi Delta was nationally founded on April 17, 1893. We received our local chapter in March of 1970. The Alpha Xi's are very active on campus. Some of our activities include cheer-leading, intramurals, WCCB, marching band, Clarion's Call, University Square, and Greek Week. We took 1st place in Greek Week in 1981 and 1982 and placed 2nd in 1983. During homecoming, we participated in the Autumn Leaf Parade. The sisters and WCCB built a 2nd place winning float. A few of our service projects include caroling for Children's Hospital, organizing games for the Peace Festival to help the retarded citizens of the Clarion Area, and our National philanthropic project is for the American Lung Association.

The Alpha Xi's have a special sisterhood and are very proud of their fraternity. All interested women are encouraged to visit us on our suite located on the first floor of Nair Hall.



ALPHA XI DELTA - Row 1: Laurie Anger, Renie Bullman, Valerie Douds, Teresa Dyjack, Robin Grooms, Sandy Pratt, Sue Rectenwald, Melanie Scalpello, Laurie Wessels, Melanie Weyman Row 2: Georgia Alcorn, Mara Andrezjewski, Marcy Brickel, Amy Brown, Paula Conticello, Lisa Dobrynia, Sue Fitzgerald, Denise Murphy, Karen Nichols, Julie Quattro, Sue Reichard Row 3: Lisa Richardson, Tammie Twigg, Mary Vasko, Jackie Chisholm, Tecie Maher, Bobbie Pierce, Jill Rogers Back: Karen Badach, Kim





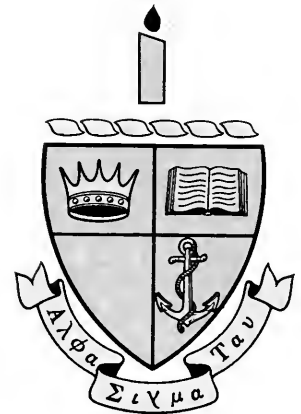


ALPHA SIGMA TAU

row 1 - Lisa Waltman, Kim Spencer, Becky Guy, Carla Pielneier, Kathy Spencer, row 2 - Heather White, Terry Stubert, Jona Kriebel, Norey Bollinger, Edie Kottner, Marlene Paserba, row 3 - Joyce Kokoski, Laura Musko, Joyce Wagner, Caren Eck, Pammy Finnerty, Lori Wolenski, row 4 - Leslie DeBlander, Marilyn Gulden, Holly Wharton, Barbi Baker, Jenny Hartman, Patty Gonula, Natalie Acker, row 5 - Sheryl Anderson, Debbi Tonini, Kerry Platco, Amy McKinney, Susan Quay, Lori Storm, row 6 - Mary Worksy, Eileen McShea, Dana Fuller, Kim Alfred, Cindy Freeman, row 7 - Maureen Larkins, Terry Grech, Hiedi Berryhill, Tiki Kahle, Dee Jones.



ALPHA SIGMA TAU  
 The Alpha Omicron Chapter of Alpha Sigma Tau was founded at Clarion State College on January 29, 1966. The sisterhood believes in attaining high scholastic standards, promoting the ideals of AST, and promising a lifetime friendship with the sisterhood. Each semester we take part in assisting the Red Cross Bloodmobile as our social service project. The Taus enthusiastically participate in Miss CU where we've held the crown for three years. We combined with the Sigma Phi Epsilon fraternity this year to take first place in the Homecoming float competition. The Taus lead an active social life including mixers, date parties, and our annual Yellow Rose formal in the Spring. The Alpha Sigma Tau suite is located on first floor Ralston and we welcome anyone to visit anytime.



**ΑΣΤ**

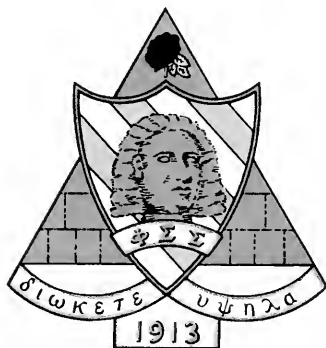
The Gamma Gamma Chapter of Phi Sigma Sigma was founded at Clarion University on May 8, 1971, which makes us the youngest national sorority on campus. The "Phi Sigs" are very active in campus organizations with our sisters participating in Alpha Phi Omega, band, the radio and T.V. stations, as well as various major-related organizations and honor societies. We are also quite active in Greek Life, participating in Greek Week, Pan-Hel, ALF parade, and of course the ever-popular mixers, date parties, and formals.

Our national philanthropic project is the National Kidney Foundation. We also have a group of dedicated "little brothers" who help us with our cause as well as campus and community philanthropic projects.

Our colors are king blue and gold and we are known for our red roses and teddy bears. Our suite is located on 5B Campbell Hall. Come visit us real soon!



PHI SIGMA SIGMA Row 1 - Sandy Gotlieb, Julie Holbrook, Karen Long, Mary Ann Cristini, Becky Snyder, Jodie Riegler, Robbin Frey, Row 2 - Tracy Ambrose, Tina Smedes, Andrea Branton, Ragan Jones, Row 3 - Sue Neely, Jilly Bensema, Robyn Martin, Row 4 - Jim Sedlak.





DELTA ZETA: Row 1 - Missy Harden, Rachael Swcab, Laura Wiester, Donna Shaffer, Tara Jeffers, Jennifer Bickel, Jennifer Hargus, Row 2 - Diane Joyce, Molly Zalenski, Leslie Brickner, Mary Pat McCarthy, Kelly McLaughlin, Kelly Zimmerman, Georgeann Kerekes. Row 3 - Yolanda Bastich, Linda Pedeira, Ailleen Davoren, Donna Peters, Traci Mills, Lauren Prokopchak. Row 4 - Lynn Taylor, Beth Stroup, Linda Chotta, Janet Fulton, Linda Miller, Beth Elder, Darla Manganero, Dana Cyulko. Row 5 - Tracy Scullion, Kathy Lee, Karen Smith, Sherry White, Tammy Loffredo, Teresa Nelson. Row 6 - Laurie Altomare, Renee DiBartola, Irene Knott, Michelle Shankel, Beth Gerwide, Lisa Brown, Kelli Sharie.



The Epsilon Theta chapter of Delta Zeta is proudly represented at Clarion University by a large variety of sisters. A few of the many activities we participate in include "University Square," Miss Clarion University, Cheerleaders, Homecoming float and court, and among all, Greek Week. Our national philanthropic endeavor is for speech and hearing. Our recently acquired suite is located on the fourth floor of Nair Hall, and any girl wanting to meet the sisters is welcome to stop up any time. We look forward to meeting you. You can find our sisters all around campus, proudly displaying our colors of rose and green.



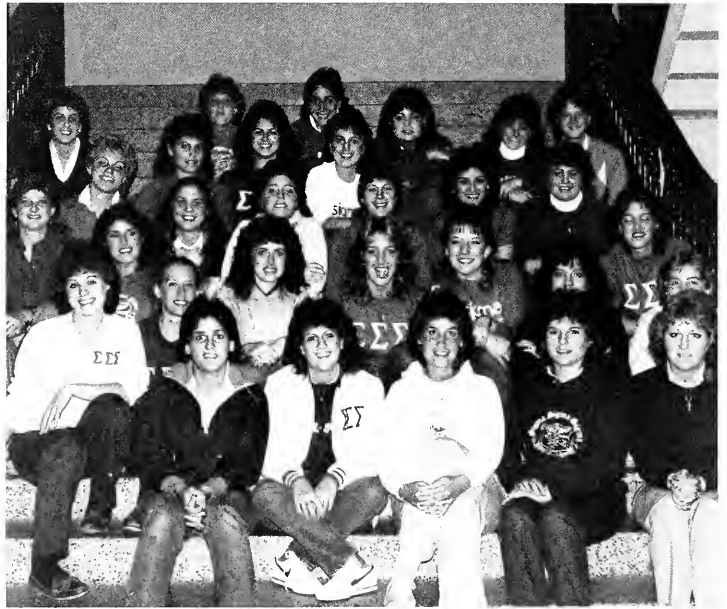
**ΔΖ**

The Alpha Pi Chapter of Sigma Sigma Sigma was founded at Clarion on April 27, 1935, becoming the first national sorority on campus.

The Tri Sigs are a friendly social sorority who participate in a wide array of activities. These include intramurals, womens athletics, Homecoming court, Miss CUP, cheerleading, formals, mixing with Clarion greeks, along with Greeks from neighboring colleges, service projects, fundraisers, and caroling in December for Children's Hospital.

A special function of our sorority is our National Philanthropic project — The Robbie Page Memorial. Each semester we hold raffles to help finance play therapy programs for children's hospitals throughout the country.

The Tri-Sigs are a unique collection of young women who are linked together in a sisterly bond of giving, loving, and sharing.

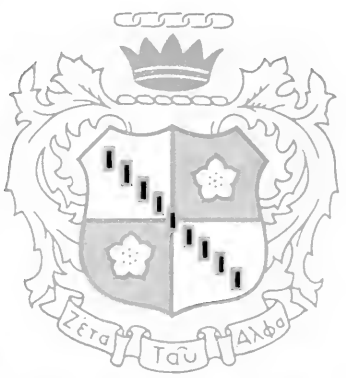


**SIGMA SIGMA SIGMA:** Officers - President - Jeanne Ivell, Rush - Sue McCanna, Treasurer - Sherry Geletko, Secretary - Dian Selway, Education - Ellen Walker, Vice-president - Karen Simon. Row 1 - Sue McCanna, Nikki Nuccetelli, Barbie Colonna (formal), Dian Selway, Karen Simon, Jackie Cashmere (float). Row 2: Ellen Walker, Jeanne Ivell, Lori Roderick, Megan Manning (public information), Helen Hopkins, Sharon Lesser (panhel vice-president). Row 3: Laura Ebel (alumni relations), Linda Howard (women's athletics), Mary Beth Wuenschel, Lynn Miller (parliamentarian), Brenda Stelika (sunshine), Lesslie Krache, Pam Hittle (parents' letter), Jill Roderick.





ZETA TAU ALPHA Row 1 - Helen Fimmel, Jen Cranford, Sue Kupfner, Cindy Jubach, Lynn Teets, Angie Carrico, Row 2 - Sara Heasley, MariAnn Delahun, Lauren Mallica, Jen Shaw, Sue Trobee, Colleen Conroy, Penny Auchmoody, Diane Burg, Row 3 - Michelle Andre, Sue Reese, Lori Fisher, Beth Rocco, Kristin Grine, Tina Shash, Jen Tafi, Michelle Koncilja, Jodi Anchors, Lisa Cianciotto, Nancy Burkhart, Row 4 - Gretchen Goodwin, Connie Hohman, Lori Demeter, Carol Phillips, Kris Alexander, Michelle Roseman, Mary Beth Phillips, Bobbi Jo Watson, Kim Lees, Carol Tobin, Joyce Wisnowski, Lynn Wheelan, Gail Peoples, Karen Marinak.



ZETA

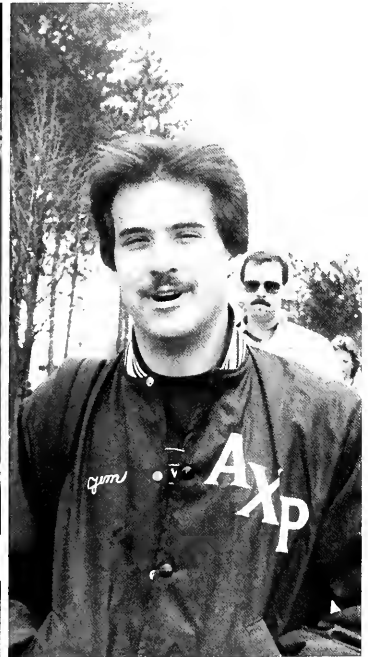




ALPHA CHI RHO: Row 1 - Mike Comini, Jeff Dey, Jim Sedlak Row 2 - Jim Ballow, Dave Williams, Bill Doane Row 3 - Jim Koshan, Rick Mohnkern Row 4 - Randy Duncan, Jim Bennington, Mark Williams, John Cibula Row 5 - Al Rendek, Jeff Schall, Phil Wain, Jack Ledgerwood, Bill Rankin, Ken Lance, Row 6 - Mike Hale, Dean Schreckengost



ALPHA CHI RHO







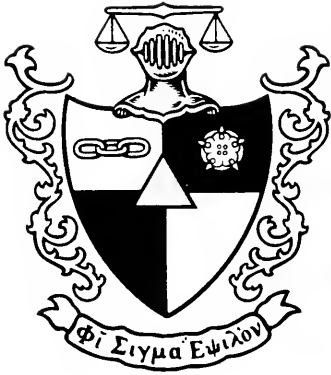
Ken Bryant, Austin Davis Amadi, Leslie D. Reed, Lionel D. Young, Ken Ivy, Robert Green

Alpha Phi Alpha was founded Dec. 4, 1906 at Cornell University in Ithica, NY. Alpha Phi Alpha stands for scholarship and leadership among quality young black men. The brothers of Alpha Phi Alpha are a contributing force to both the campus and town community, as well as a service on the college campuses which they occupy. They also have service projects on the national level, the million dollar fund drive is only one of the many done by Alpha Phi Alpha.





Bottom Row - (standing) Brian Scurpa, Dave Bongivengo, Dave Smyers, Mike Bendig, Dave Pomeroy, Dom Treccase, Bob Scala, John Besic, Mario Bellivia, Andy Noon, Elvis Costello, Don Grau (Top Row) Dick Black, Mike Anzenberger, (Carp) Mark Baker, (Duke) John Scott, Tim Dorn, Howie Sweeney, Todd Beck, Paul Kelly, Rich Stillings, Jeff Sweedish, Bill Thornton, Glen Anderson, missing: Jim Brezoza, Paul Casalo, Steve Bonivita, Dave Lammers, Carmen Bellivia, Brian Smith.



**ΦΣΕ**





PHI SIGMA KAPPA FRONT ROW: Lisa Puckanich, Bob Kollar, Bill Cotter, David Zimmer, Mike Myers, Mike Bradshaw, Swatter Johnson Row 2: Jennifer Higgins, David McCarty, Craig Herrold, Mike Hartberger, Andy Mahoney, Chris Lisac, Debbie Walker Row 3: Gina Hedglin, Scott Adler, Brian Wiker, Jeff Wensel, Carolyn Slater, Connie Kleber, Ellen Reber Row 4: Angie Frost, Darren Ayers, Chaz Brastow, David Souza, Rusty Burns, Linda Garrone, Julie Rankin Row 5: Lisa Cotter, Joanne Zawojski, Brian Peters, John Citro, Bill Koakiewicz, Karen Bruschetti, Chris Zawrotuk, Eileene Minich Row 6: Jenni Wilson, Maureen Fitzell, Tom Britton, Jason Bovey, Rich Bowler, Kevin Campanaro



## PHI SIGMA KAPPA

The Nu Penton chapter of Phi Sigma Kappa was founded at Clarion University in February of 1967. We live by our three Cardinal Principles: *Brotherhood*, by bonding together like true brothers; *Scholarship*, by striving to maintain high academic standards; and *Character*, by growing intellectually in many social situations. The National chapter of PSK was founded at Amherst, Mass. on March 15, 1873, where our three Cardinal Principles were created.

On campus you can see us virtually everywhere. We have a used book sale each semester in 15 Harvey Hall for the students, and for charity we sponsor a 24-hour dance marathon in the spring. Our fraternity boasts of having the finest little sister organization on campus. The little sisters assist us with many projects and they are a respected part of the organization.

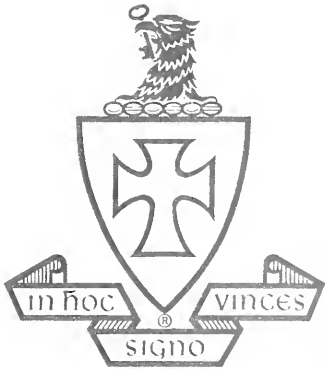
Our brothers and little sisters can be heard on WCUC-FM and WCCB-AM radio; or you may have read an article written by one of us in the Clarion's Call; or your computer programming assistant or accounting proctor may be one of us; or even your R.A. is involved with PSK. We are also heavily involved with intramural sports, the ski club, and C.U.P. football and gymnastics. The brothers offer information to interested students, male and female, concerning fraternity functions.



# ΦΣΚ



SIGMA CHI: Executive Board - row 1: Jeff Carr, Todd Berger, Brian Kelly, Marlin Rudolph Row 2 - Jack Enright, Bill Fornoff, Eric Kaldy, Bob Bergenstock. Row 1 - Doug Corner, Tony Roccograndi, Jack Enright, Eric Kaldy, Jeff Carr, Brian Kelly, Todd Berger, Nick Damasceno. Row 2 - Chick Schweitzer, Bob Gierszal, Bruce Anderson, Marlin Rudolph. Row 3 - Bill Rhirdan, Ron Sugar, Scott Shoemaker, Bill Fornoff, Bob Bergenstock Row 4 - Fred Sickert, Jon McCartney, Dave Limano, Dan Toboz, Jim Stanko, Chet Miles, Sam Neidigh, Row 5 - Tim Frankee, Jeff Cleland, Mike Allison, Paul Healy, Leo Petkavich, Dave Lempko.





TAU KAPPA EPSILON Row 1 - Phil Clay, Tom Fuhrer, Joe Marcine, Frank Mancuso Row 2 - Kathy Adams, Frank Stitley, Bruce Sheffel, Mike Vilello, Dan Buckley, Bill Chobanian, Row 3 - Betsy Schelien, Kevin Bauerle, Matt Baker, Craig Orris, Mike Lock, Row 4 - Tom Brown, Jim Kunkle, Gary Prince, Mike Gilhooly, Sergio Kyriakis, Mike Stumpo, Donna Braddock, Row 5 - Tim Schweiger, Roddy Vallejo, Anne Marie Perretta, Kelly McLaughlin, Judy Kranac, Sandy Demarest, Dave Harrigan, Colleen Harvey, Judy Tiskus, Sue Valanski, Row 6 - Tammy Taylor, Joan Keebler, Steve Skeba, Lisa Potts, Jenni Keebler, Row 7 - Laura Civettini, Colleen Deer, Shelly Eckenroth, Tracy Douglas, Sue Keale, Sandy Vargo, Jeff Calderwood, Steve Demay, Tom Larson, Jeff Steis.



**TKE**









## The Clarion Call



"The Clarion Call" is the student operated campus newspaper made up of approximately 75 students and advised by Mr. Art Barlow. Staff members receive communication co-curriculars for their hard work and quality writing.

The CALL has a circulation of 3,500, is distributed weekly and publishes 25 issues each academic year. It is funded by the Clarion Students Association and the money is administered by Student Senate.

Since 1923 THE CLARION CALL has served and informed the campus community.

Row 1: Karen Hale, Diane DeBasteani, Colleen Deer, Lisa Cotter, Scott Shewell, Sally Ann Teeronella Row 2: Mike Sownino, Joanne Jordan, Peter Fred, Joanne Sabalaska, Sue Boll, Staci Stuter Row 3: Chris Sturnick, Julie Quattro, Michelle LaTorre, Todd Beck, Bill Mushrush, Judy Johnston, Pam Park, Keith Izydore Row 4: John Magee, Nancy McCullough, Theresa Waida, Steve Rosen, Amy Casino, Hohn Gibble, David Smyers, Jeff Swedish, Michelle Michael, Clark Spence.



THE CLARION CALL - EXECUTIVE BOARD Row 1: Amy Casino, News Editor; Theresa Waida, Editor-In-Chief; Karen Hale, Features Editor; Scott Shewell, Sports Editor Row 2: David Smyers, Business Manager; Jeff Swedish, Circulation Manager; Keith Izydore, Photography Editor; Todd Beck, Advertising Sales Manager; and Bill Mushrush, Advertising Design Editor.

# WCCB-AM



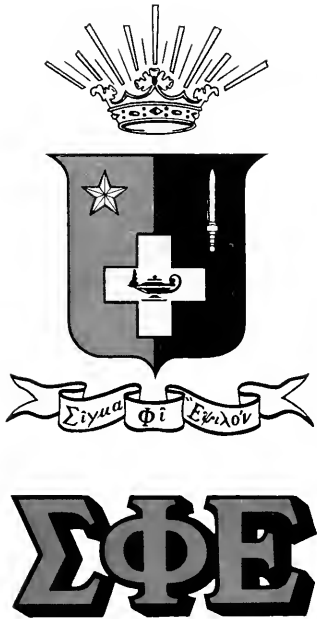
Row 1 - Calib James, Chris Lash, Jim Sedlak, Diane Sedlak, Yvonne Arroyo, Laurie Wessels, Colleen Straub, Janet Sobek, Regina DiCola, Linda DelGrosso, Louise Retzer Row 2 - Marc Sherman, Margot Callahan, Judy Johnston, Laura Myers, Chris Benigni, Jon Hartwell, Steve Rosen, Ulrich Matthis, Eric Culp, Nancy Segerdahl, Ken Howell, Barb Pelkington Row 3 - Joanne Alfieri, Jackie Root, Peg Pizer, Rob Brown, Mike Marcinkowski, Bob Danner, Kevin Smith, Dave Linoritti, Jeff Barron, Jeff Bennett, Mike Alfe, Nadine Potauvo, Laurie Rutkowski, Beth McGaffic, Row 4 - Scott Tanner, Dave Sneath, Chris Clewell, Ron Hickoff.



WCCB Executive Board - Jeff Perino: General Manager, Ken Howell: Public Relations Director, Chris Clewell: Production Manager, Mike Alfe: Sports Director, Marc Sherman: Program Director, Diane Sedlak: News Director, Dave Sneath: Chief Engineer, Calib James: Music Director.



SIGMA PHI EPSILON Row 1 - Ron Beal, Randy Rirsch, Larry Buchholz, Ken Grugel, Eric Baird, Vic Hordies, Jeff Alario, Rick Letterman, Scott McMichael, Larry Mastrovich, Row 2 - Clarke Spence, John Engel, Ed Kline, Curt Nelson, Rick Welsh, Al Crayne, Chuck Simeone, Row 3 - Bob Aney, Gary Reinert, Ray Linder, Dave Albert, John Runyon, Row 4 - Chuck Bridge, Dean Adkins, Brian Collins, Mike Kenemuth, Mark Greenlee, Denny Popichak, Mike Carpenter, Joe Boyer, Row 5 - Bob Addoms, Jim Smart, Tony Pitrone, Tim Murphy, Bob Heimbach.





SIGMA TAU: Row 1 - Brian LeFever, Del Hemphill, Pat Carbol, Kevin Ewing, Bruce Zimmerman, Doug Hess, Tom Wuysick. Row 2 - John Rice, John Seaman, Jay Saunders, John Williams, Keith Redfoot, Mark Andrekovich, Charlie Oakes, Jeff Wilson, Marcos Obermaier, Tony Colecchi.





## German Club

Row 1 - Linda Lahman, Tedi Philips, Diane Quinn, Becky Hoffman, Row 2 - David Cypher, Bill Tomashweski, Dr. Erike Kluesener (advisor), Karen Nurss, Darryl Duerr, Row 3 - Barbara Yutzler, Dr. Martha Emelity (advisor).

## CAS

Row 1: Mike Ca, Denise Clair, Sue Reed. Row 2: Karen Liebrum, Joan Smrek, Leigh Backa







## Lambde Sigma

Kathy Lentz, Alicia Wright, Lynn Miller

## PSI CHI

Row 1- Carol Bosak, Leslie Weber, Alsia Cambro, Row 2 - Janice Costanzo, Anne Slabinski, Chris Alwine.





## Music Mkt. Assoc.

Row 1: Kathy Shadle, Paula Harman, Jim Koshan, Julie Spencer, Patti Cesario. Row 2: Ms. Grace Urrico, Dan Kemer, Mary Ann Neuman, Jo Ann Compton, Vonnie Boyd.

## Madrigals





## Pershing Rifles

Row 1: Mark Tyson, John Schodel, Tony Gambone, Julie Landers, Mike Koehler, Pat Hesidinece. Row 2: Cpt. Bill Fellows, Dave Riley, Jim Sedlak, Shane Wall, Rob Bowman, Greg Fiscus, Barb Yutylar, Lt. John Yingling.

## Terra Club

Row 1: Kathy Leonard, Jay Rodgers, Bobb Hagg, Dave Lamb. Row 2: Colleen Chisman, Arny Caffas, Ruth Stead. Row 3: Chad Cohrs, Bruce Hodson, Melissa Schurtz. Row 4: Dr. Zamzow, Heidi Grosch, Gina Barner. Row 5: Janet Adams, Mike Niederreither



## Spanish Club



Row 1 - Wendi Scheib, Barbara Yutzler, Jaun Carlos Ucle's, Cynthia Moro Dorado, Row 2 - Luis Briceno, Beatriz Gonzalez-Padilla, Laurie Barr, Row 3 - Betsy Conrad, Mr. Rafael Diaz y Diaz (advisor), Mrs. Bridgette Callay.

## Association For Computing Machinery



Dawn Day, Karen Reader, Andy Greco, Scott Boring, Bill Frye, Barry Weaver, Eric Boring, Andy Reid, Ron Stuver, Janet Bailistreri, Paula Conticello, Linda Crowley, Craig Miron, Dave Himes, Tony Gambrell, Susan David.

## Library, Media and Info Science Society



Row 1 - Lori Herr, Jackie Schmitt, Lee Ann Jones, Carrie Hafer, Row 2, Lynn Miller, Andre Rahe, Alicia Wright, Tami Jasser, Pauline Bean

## PSEA



Row 1 - Sue Ray, Sue Young, Sheryl Kline, Sharon McKay, Kim Kight, Sharon Allen, Colleen Coin, Row 2 - Kyle Adams, Melanie Campbell, Lori Wilken, Diane Schrecker, Leslie De Blander, Row 3 - Mary Vasco, Sharon Supak, Amy Swartzlander, Marsha Spencer, Mary Workosky, Connie Hohman, Row 4 - Pam Gillen, Laura Malone, Janice Horvath, Becky Eagal, Jodi Anchors, Row 5 - Dr. Gail Kenenuth (advisor), Robin, Karen Moon, Lori Ann Miller, Ronnie Burdfield, Row 6 - Sherri Alexander, Karen Cugeni, Cheryl Campbell, Row 7 - Janet Adams, Al Chase, Jannie Tolles, Julie Rankin.







Row 1 - B. Quinn, M. Miller, D. Gallaher, C. Stohl, C. Hamilton, Mr. Happy, P. Donatelli, T. Bartoli. Row 2 - K. Daugherty, M. Petrina, D. Gossar, M. Nixon, R. Szitas, J. Pflugh, M. Kern, J. Meny, R. Sinclair, J. Johnson, R. Butka, S. Gustafson, L. Butka. Roof: E. Dunn, J. Reed, S. O'Grady, M. Lilja, M. Peck, R. Weeter.













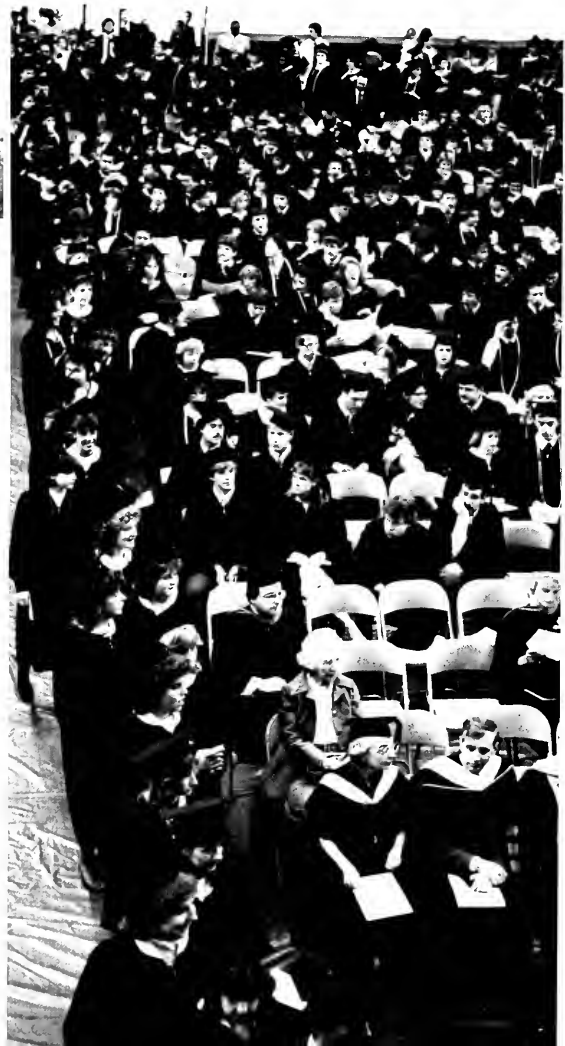






























*It has been a year of change for Clarion. A year that saw the end of one era and the promise of a bright future for itself. The yearbook saw changes too - a new advisor, a different way of presenting the book which was set up in a time frame rather than sectionally.*

*As an editor, I, personally have gone through many changes which have always brought me back to a place where friendships have been a stabilizing factor.*

*To those who continue to support the Sequelle - THANK YOU, especially to our advisor Pat Marini, Lee Krull, Abe Orlick and the staff.*

*To those who graduated you face the biggest changes of all. Good Luck, may the skills you gained here take you far and the friendships bring you home.*

Take Care,

Mary Ozechoski  
Editor-in-Chief

*Mar*







CLARION UNIVERSITY OF PENNSYLVANIA



3 9363 00386 9671

Spec.Col.  
qLD                      Sequelle  
1017  
.C88  
1984

Spec.Col.  
qLF  
1017  
.Cf8  
1984



WALSWORTH