





**LIBRARY**

**State Teachers College**  
West Chester, Pa.

Class...370.23.....yr. 1929

7

c.1

465.33











COPYRIGHT

1929

SERPENTINE



MICHAEL S. BALES  
*Editor-in-Chief*

H. CLARENCE COLLINS  
*Business Manager*





THE  
SERPENTINE  
VOLUME XVIII

1929

PUBLISHED BY THE SENIOR CLASS  
**STATE TEACHERS COLLEGE**  
WEST CHESTER, PENNSYLVANIA

## *Dedication*

**I**N 1908 Dr. Robert Franklin Anderson became head of the department of mathematics of the West Chester State Normal School, succeeding the late Dr. David M. Sensensig, who had long been head of the department. The new head was a graduate of the school in the Class of 1890. He had done further study at Villa Nova College where he received the degrees of A.B., A.M., and Sc.D. His able teaching in the department has played no small part in its fine achievements, and since he assumed the post of head, a fine tradition has been splendidly maintained.

Connected with a teacher-training institution, Dr. Anderson's mathematical interests turned naturally to text-books in mathematics for schools, and he has been joint-author and author of a conspicuously successful series of such texts.

If Dr. Anderson's service to this school had been limited to his work as teacher of mathematics and head of his department, it would be noteworthy; but through his long connection with the school he has contributed generously of his time and ability in many fields and on many occasions.

In recognition of his faithful, farsighted, and scholarly services to this institution throughout a long term of years, and as a mark of sincere respect and affection, the Class of 1929 dedicates this volume of *THE SERPENTINE* to Dr. Robert Franklin Anderson.

MISS GRACE D. MCCARTHY.



ROBERT F. ANDERSON, A.M.; Sc.D.

# FOREWORD



**T**O THE CLASS OF 1929:  
The road that you and your classmates have traveled, the obstacles that you have encountered in your progress, and the victories that you have won are here, within this great book, your SERPENTINE.

As you travel on in life, a cloud will perhaps, vanish, and you will again be at The State Teachers College at West Chester in these pages. Enter into the Spirit of its walls and live again the past, pleasant experiences.

EDITORS.



# CONTENTS

•

1. Campus
- 2 Faculty and Administration
3. B. S. Degree Seniors
4. Graduating Class
5. Junior Class
6. Sophomore Class
7. Freshman Class
8. Feature Section
9. Organizations
10. Athletics



WILLIAM R. BENNER  
Photo Ed.



KATHRYN PUSEY  
Art Ed.



LOUISE MUELLER  
Senior Class History



JOHN DALTON  
Ass't. Bus. Mgr.

# SERPENTINE STAFF



EDWARD M. HOPKINS  
Humor Ed.



MICHAEL S. BALES  
Editor



CLARENCE H. COLLINS  
Business Mgr.



HOWARD CRESSMAN  
Athletic Ed.



DANIEL RAMBO  
Asst. Bus. Mgr.



JESS ELLINGER  
Calendar



ALICE LEHECHA  
Special Ed.



BERNICE SUNDELL  
Asst. Ed.



MAXINE SWELEY  
Athletic Ed.



THOSAZINE THOMAS  
Art



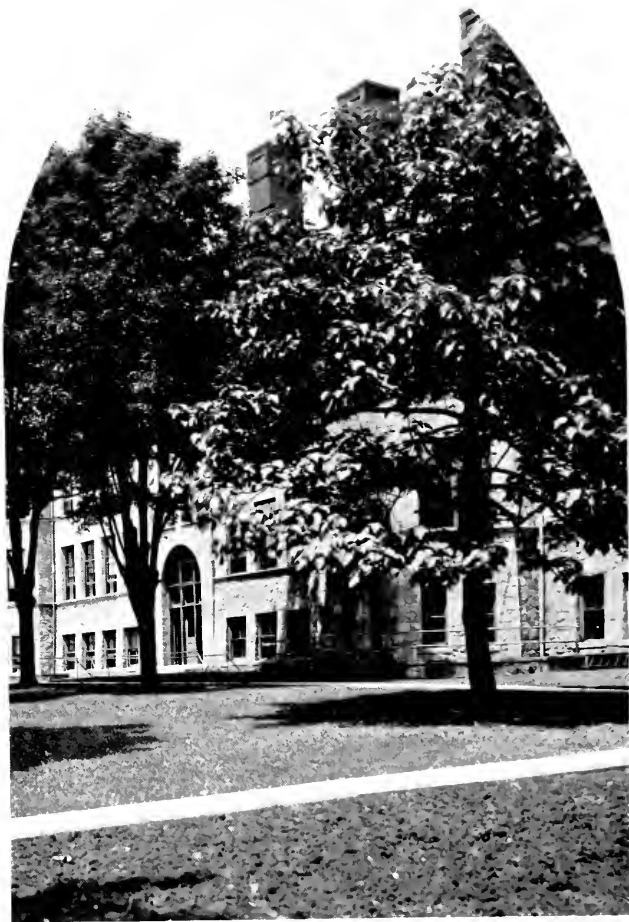
JOSEPHINE MORTON  
Asst. Bus. Mgr.



LOUISE MILLER  
Writ.



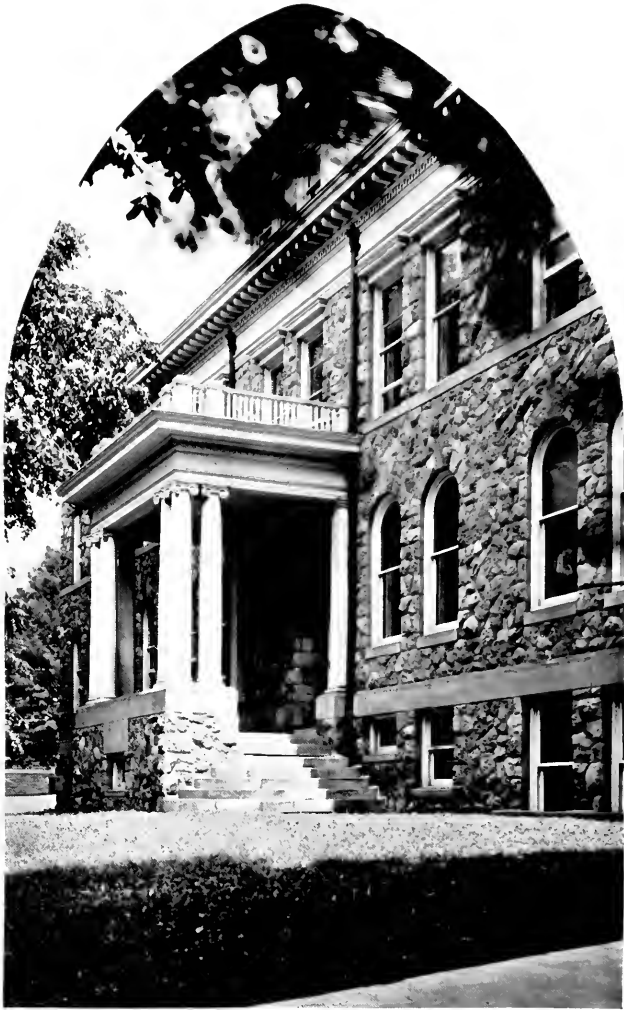
CAMPUS VIEWS



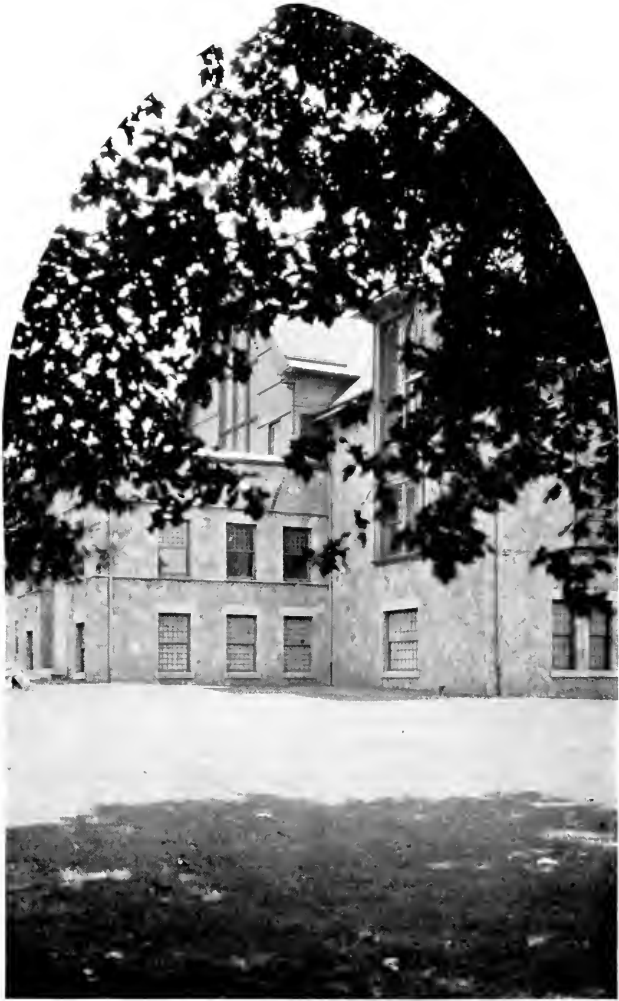
RECTITATION HALL



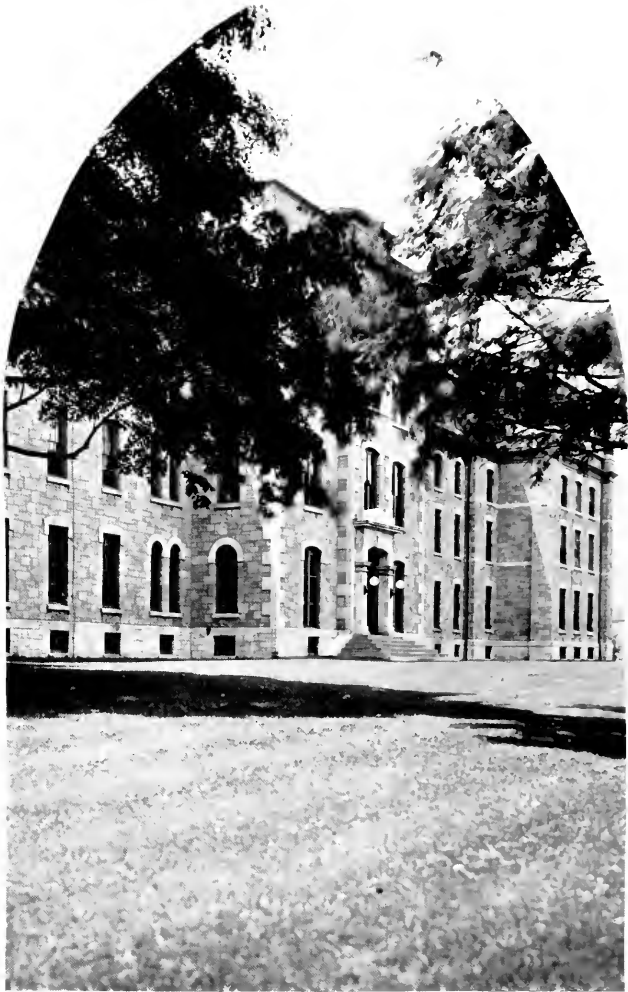
LIBRARY



DEMONSTRATION SCHOOL



GYMNASIUM

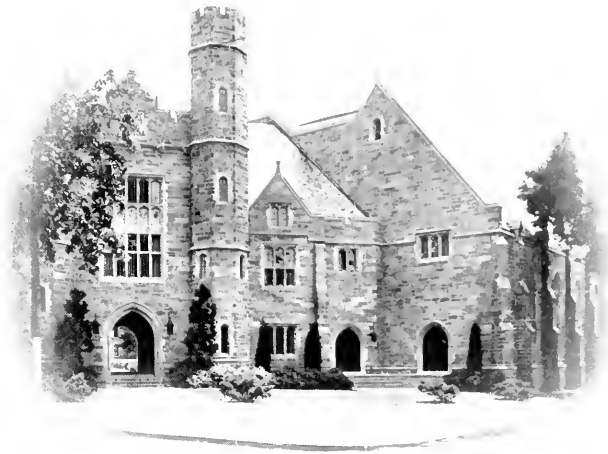


OLD MAIN





WAYNE HALL



PHILIPS MEMORIAL



FACULTY AND  
ADMINISTRATION

W.S.N.

DEAR FRIENDS OF THE GRADUATING  
CLASS:

First let me congratulate you on achieving the goal for which you have been striving during your College career. To complete satisfactorily a College curriculum is no small achievement. It gives to you a new mark of distinction. It raises you to a higher plane among your fellow-men, and places on you greater responsibilities.

The success with which you now meet the duties imposed upon you and your standing in the community you serve as teachers, will be the best evidence of the excellence of the training you have received from your Alma Mater.

The Faculty of the College will hope and expect that you will always represent it worthily in respect to high ideals of character, of civic righteousness, and of courageous endeavor. Such ideals when realized will bring to you unfailing success, and that will be ample reward for those who have helped to shape your career.

NORMAN W. CAMERON, PH.D.

*Principal.*



Norman W. Staserson



Clarence L. McKelvie



Anna E. Smith



James Andes



Eleanore E. Aldworth

CLARENCE LYON MCKELVIE  
*Acting Dean of Instruction*  
Education  
B.S., M.A., Univ. of Penn.

JAMES ANDES  
*Dean of Men, Social Studies*  
Social Sciences  
B.S., A.M., Univ. of Penna.

ANNA E. SMITH  
*Dean of Women*  
B.S., Univ. of Penn.

ELEANORE E. ALDWORTH  
*Health Education*  
B.S., Teachers College, Columbia Univ.



ROBERT F. ANDERSON  
*Mathematics (Head)*  
A.M., Sc.D., Villanova.

JAMES G. BLISS  
*Health Education (Director)*  
B.S., Ohio State Univ.  
A.M., Columbia Univ.  
Ph.D., New York Univ.

LUCY ARNER  
*Demonstration School*  
B.S., Ohio State Univ.

WILLIAM E. BRETZ  
*Music*  
A.B., Dickinson College



Robert F. Anderson



Lucy Arner



James G. Bliss



William E. Bretz



Leone E. Broadhead



Mary Browning



Elsie Oleita Bull



Margaret Burnet

LEONE E. BROADHEAD  
*Geography*  
B.A., Geneva College

ELSIE OLEITA BULL  
*Mathematics*  
A.B., Univ. of Michigan  
M.A., Columbia Univ.

MARY BROWNING  
*English*  
B.S., Peabody College  
M.A., Columbia Univ.

MARGARET BURNET  
*Training School*  
B.S., Columbia Univ.



MARY ELIZABETH CLARK  
*English*  
A.B., Wellesley College  
A.M., Columbia Univ.

ISADORE E. CROPSEY  
*Music*  
Mus. B., Syracuse Univ.

ARTHUR D. CROMWELL  
*Training School*  
M.Ph., Humboldt College

ALICE A. COCHRAN  
*Librarian*  
State Library School, Albany, N. Y.



Mary Elizabeth Clark



Arthur D. Cromwell



Isadore E. Cropsey



Alice A. Cochran



Mary Connell



Crichton Cox



Benjamin W. Daily



Harriet A. Elliott

MARY CONNELL

*Education*

B.S., Columbia Univ.

CRICHTON COX

*Demonstration School*

B. S., Univ. of Arkansas

BENJAMIN W. DAILY

*Training School*

A.B., Baker Univ.

M.A., Ph.D., Columbia Univ.

HARRIET A. ELLIOTT

*Geography*

B.S., Geneva College

A.M., Columbia Univ.



MARION FARNHAM

*Art*

A.B., Univ. of Porto Rico

M.A., Boston Univ.

LINCOLN FORREST FREE

*Music*

A.B., Lafayette College

LAURA B. FOREMAN

*Demonstration School*

A.B., Muhlenberg College

FLO GEYER

*English*

A.B., Dickinson College



Marion Farnham



Laura B. Foreman



Lincoln Forrest Free



Flo Geyer





Mary M. Glance



Thelma J. Greenwood



C. Edward Hausknecht



Charles W. Heathcote

MARY M. GLANCE  
*Nurse*  
R.N., P.E. Hospital

C. EDWARD HAUSKNECHT  
*Music (Director)*  
B.S., New York Univ.

THELMA J. GREENWOOD  
*Science*  
B.S., New York Univ.

CHARLES WILLIAM HEATHCOTE  
*Social Studies (Head)*  
A.B., Gettysburg College  
A.M., Univ. of Penn.  
Ph.D., George Washington Univ.



MARIE MARGARET HEINEMANN  
*Music*  
B.S., New York Univ.

MARY MORGAN HOLLAND  
*Mathematics*  
B.S., M.A., Columbia Univ.

FRANCIS HOBBS  
*Training School*  
B.S., Columbia Univ.

LOU E. HOSMER  
*Education*  
B.S., Columbia Univ.



Marie M. Heinemann



Francis Hobbs



Mary Morgan Holland



Lou E. Hosmer



LaVerne E. Irvine



John C. Johnson



M. Grace Knapp



Margaret A. Kriesher

LAVERNE E. IRVINE  
*Music*  
B.A., Syracuse Univ.

M. GRACE KNAPP  
*Demonstration School*  
B.S., Univ. of Pittsburgh

JOHN C. JOHNSON  
*Science (Head)*  
A.B., Colorado Teachers College  
M.S., Ph.D., Univ. of California  
Post Grad. at Chicago Univ., Columbia  
Univ., Harvard Univ.

MARGARET A. KRIESHER  
*Music*  
B.S., New York Univ.



HAZEL L. LAMBORN  
*Art*  
Penna. Museum & School of Industrial Art

JOHN ARTHUR LEWIS  
*Science*  
B.S., Macalester College  
M.A., Columbia Univ.

FLORENCE A. LEE  
*Music*  
B.S., New York Univ.

LIDA J. LOW  
*Music*



Hazel L. Lamborn



Florence A. Lee



John Arthur Lewis



Lida J. Low



James F. MacGovern



Grace D. McCarthy



Winfield W. Menhennett



Matilda Morlock

JAMES F. MACGOVERN  
*Health Education*  
Ph.B., Muhlenburg

WINFIELD W. MENHENNETT  
*Education*  
B.S., New York Univ.

GRACE DIETRICH MCCARTHY  
*English (Head)*  
A.B., Univ. of Michigan  
A.M., Univ. of Chicago

MATILDA MORLOCK  
*Music*  
B.S.M., North Carolina College  
M.A., Columbia Univ.



BERENICE L. MUELLER  
*Health Education*  
A.B., Univ. of Kansas

DOROTHY RAMSEY  
*English*  
B.S., M.A., Univ. of Penn.

MAUD B. NEWMAN  
*English*  
B.S., Univ. of Penna.

MARY G. REESE  
*Nurse*  
R.N., Moses T. Hospital



Berenice L. Mueller



Maud B. Newman



Dorothy Ramsey



Mary G. Reese



Sallye C. Rice



Ethel M. Sauer



Madeline Schiedt



Gertrude K. Schmidt

SALLYE C. RICE  
*Demonstration School*  
State Teachers College, Fredericksburg,  
Va.  
Columbia Univ.

MADELINE SCHIEDT  
*Librarian*  
Simmons College

ETHEL M. SAUER  
*Librarian*  
B.S., Univ. of Minnesota

GERTRUDE K. SCHMIDT  
*Music*  
B.S., New York Univ.



DOROTHY SCHMUCKER  
*Science*  
B.A., Wellesley College  
M.A., New York Univ.

KATHERINE SCOTT  
*Art*  
Chicago Art Institute  
Snow Froehlich School of Industrial Art

ALICE SCHRIVER  
*Health Education*  
B.S., New York Univ.

ELEANOR V. SEARING  
*Health Education*  
A.B., New Jersey College for Women



Dorothy Schmucker



Alice Schriver



Katherine Scott



Eleanor V. Searing



Charles A. Selzer



Hobart M. Sherman



Mary Gertrude Sipple



Wayne W. Soper

**CHARLES A. SELZER**

*Education*

A.B., Kingfisher College, Oklahoma

M.A., Oklahoma Univ.

Ed.M., Ed.D., Harvard Univ.

**MARY GERTRUDE SIPPLE**

*Education*

B.S., Columbia Univ.

**HOBART M. SHERMAN**

*Handwriting*

B.S., State Teachers College, Springfield,

Mo.

**WAYNE W. SOPER**

*Education*

A.B., York College, Nebraska

A.M., Nebraska State Univ.

Ph.D., Teachers College, Columbia Univ.



**MRS. IDA P. STABLER**

*Training School*

B.S., Columbia Univ.

**MRS. CHARLES S. SWOPE**

*Art*

B.F.A., Univ. of Penna.

**FOSTER HENRY STARKEY**

*Education*

A.B., Harvard Univ.

A.M., Univ. of Pennsylvania

**CHARLES S. SWOPE**

*Social Studies*

A.B., Dickinson College



Mrs. Ida P. Stabler



Foster Henry Starkey



Mrs. Charles S. Swope



Charles S. Swope



R. N. Thompson



S. Elizabeth Tyson



Besse E. VanDeusen



Myra I. Wade

R. N. THOMPSON  
*English and French*  
A.B., M.A., Lehigh Univ.

S. ELIZABETH TYSON  
*English*  
B.S., New York Univ.

BESSE E. VANDEUSEN  
*Training School*  
A.B., Nebraska State Teachers College  
M.A., Univ. of Nebraska

MYRA I. WADE  
*Health Education*  
B.A., Oberlin College  
M.A., Columbia Univ.



MRS. GLADYS R. WARNER  
*Demonstration School*  
B.S., Ohio Univ.

EARLE CONVERSE WATERS  
*Health Education*  
B.S., Syracuse Univ.

JOSEPHINE WILSON  
*English*  
A.B., Swarthmore College

EDWARD ZIMMER  
*Music*  
B.S., New York Univ.



Gladys R. Warner



Earle Converse Waters



Josephine Wilson



Edward Zimmer

# ADMINISTRATION



Andrew Wolfangle  
*Ass't Business Manager*



George Roberts  
*Registrar*



John R. Hollinger  
*Business Manager*



Jessica M. Dyer  
*Debitran*



Rebecca L. Dissinger  
*Matron*

# BOARD OF TRUSTEES

COL. A. M. HOLDING, *President*

MISS ISABEL DARLINGTON, *Secretary*

MR. HERBERT P. WORTH, *Vice-President*

MR. S. JONES PHILLIPS

MR. DORAN GREEN

MRS. RICHARD HAMILTON

MRS. HOWARD MELLOR

MR. IRVINE B. DICKEY

MR. A. M. KULP

J. COMLY HALL, *Treasurer*

NORMAN W. CAMERON, Ph.D., *Principal*

## Deans

CLARENCE LYON McKELVIE, A.M., *Acting Dean of Instruction*

ANNA E. SMITH, B.S.,  
*Dean of Women*

JAMES ANDES, A.M.  
*Dean of Men*

# FACULTY ROLL

## ART

MARGON FARNHAM, A.B., M.A.

HAZEL LAMBORN

KATHERINE SCOTT

HOBART M. SHERMAN, B.S.

Mrs. EDNA M. SWOPE, B.F.A.

## EDUCATION

CHARLES A. SELZER, A.B., A.M., Ed.D.

MARY CONSELL, B.S.

LOU E. HOSMER, B.S.

WYNFIELD W. MERRINNETT, B.S.

WAYNE W. SOPER, A.B., A.M., Ph.D.

FOSTER H. STURKEY, A.B., A.M.

## ENGLISH

GRACE D. MCCARTHY, A.B., A.M.

MARY BROWNING, B.S., M.A.

MARY ELIZABETH CLARK, A.B., A.M.

FLO GUYER, A.B.

MAUD B. NEWMAN, B.S.

DOROTHY RAMSAY, B.S., M.A.

RICHARD N. THOMPSON, A.B., M.A.

S. ELIZABETH TYSON, B.S.

JOSEPHINE E. WILSON, A.B.

## HEALTH EDUCATION

JAMES GORTFIELD BLISS, B.S., A.M., Ph.D.

ELEANOR E. ALDWORTH, B.A.

JAMES F. MCGOVERN, Ph.B.

BERNICE L. MUELLER, A.B.

ALICE C. SCHRIVER, B.S.

ELEANOR SEARING, A.B.

MYRA J. WADE, B.A., M.A.

EVILE CONVERSE WATERS, B.S.

## LIBRARIANS

ALICE A. COCHRAN

ETHEL M. SAUER, B.S.

Mrs. ELIZABETH SAYLOR

MADELAINE K. SCHIEDT

## MATHEMATICS

ROBERT F. ANDERSON, A.M., Sc.D.

ELSIE O. BULL, A.B., M.A.

MARY M. HOLLAND, B.S., M.A.

## MUSIC

C. EDWARD HAUSSNECHT, B.S.

WILLIAM E. BRETZ, A.B.

ISADORE E. CROSEY, Mus. B.

L. FOREST FLEE, A.B.

MARIE M. HEINEMANN, B.S.

LA VERNE E. IRVINE, B.A.

EMMA KIESS

MARGARET KIGESHER, B.S.

FLORENCE A. LEE, B.S.

LIDA J. LOW

MATILDA MORLOCK, B.S.M., M.A.

GERTRUDE K. SCHMIDT, B.S.

EDWARD ZIMMER, B.S.

## SCIENCE

JOHN C. JOHNSON, A.B., M.S., Ph.D.

LEONE E. BROADBENT, B.A.

HARRIET A. ELLIOTT, B.S., A.M.

THELMA J. GLEESWOOD, B.S.

JOHN A. LEWIS, B.S., M.A.

DOROTHY SCHMUCKER, B.A., M.A.

## SOCIAL STUDIES

CHARLES W. HEATHCOTE, A.B., A.M., Ph.D.

JAMES ANDES, A.M., B.S.

CHARLES S. SWOPE, A.B.

## TRAINING SCHOOL

BENJAMIN W. DAILEY, A.B., M.A., Ph.D.

*Director*

MARGARET BURNET, B.S.

ARTHUR D. CROMWELL, M.Ph.

FRANCIS HOBBS, B.S.

M. GERTRUDE SUPPLE, B.S.

Mrs. IDA P. STABLER, B.S.

BESS E. VAN DEUSEN, A.B., M.A.

## DEMONSTRATION SCHOOL

BENJAMIN W. DAILEY, A.B., M.A., Ph.D.

*Principal*

LUCY EDNA ARNER, B.S.

CRIKTON COX, B.S.

LAURA B. FOREMAN, A.B.

M. GRACE KNOPP, B.A.

SALLYE C. RICE

ANNE L. SMITH, B.A., M.A.

GLADYS R. WARNER, B.S.

## NURSES

MARY M. GLANCE, R.N.

MARY C. REEF, R.N.

## EMERITUS PROFESSORS

WALLACE P. DICK

*Emeritus Professor of Modern Languages*

SAMUEL C. SCHMUCKER

*Emeritus Professor of Biological Sciences*

ANNE M. GOSHEN, B.L., A.M.

*Emeritus Professor of Education*



B. S.  
DEGREE  
SENIORS





ALICE LEHECKA  
*Secretary*



MARION LEWIS  
*Treasurer*



EDWARD M. HOPKINS  
*President*



JOSEPH L. HANSELMAN  
*Vice President*

1929 CLASS OFFICERS



MICHAEL S. BALES  
*Editor in Chief*



CLARENCE H. COLLINS  
*Business Manager*

MICHAEL S. BALES

"Mickey"

126 W. COLUMBIA AVE., NESQUEHONG, PA.

HEALTH EDUCATION

ARYAN

Varsity Football, '25, '26, '27, '28; Assistant Head Waiter; Basketball, '26; Truck, '26, '27, '28, '29; Vice-President, Aryan Society; Vice-President, Y. M. C. A.; Boys' Glee Club; Little Theater Players; Xmas Play; Senior Play; Editor-in-Chief, SERPENTINE.



WILLIAM RAYMOND BENNER

"Bill"

605 E. BROAD ST., QUAKERTOWN, PA.

JUNIOR HIGH

ARYAN

President, Aryan Society; Manager of Soccer; Senior Play; Xmas Play; Aryan Play; Boys' Glee Club; Little Theater Players; Vice-President, Y. M. C. A.; SERPENTINE Staff.



ELEANOR MARGARET COAN

"EJ"

LARCHMONT, PA.

ADVANCED TWO YEAR

ARYAN

Book Club, Library Club.



CLARENCE H. COLLINS

"Scamp"

168 GERMANTOWN AVE., PHILADELPHIA, PA.

JUNIOR HIGH

ARYAN

Varsity Football; Varsity Baseball; Basketball; Vice-President, Aryan Society; Chairman, '29 Ring Committee; Chairman, Senior Prom Committee; Montgomery Co. Club; Business Manager, SERPENTINE.



HOWARD A. CRESSMAN

"Cres"

SALFORDVILLE, PA.

JUNIOR HIGH

ARYAN

President, Y. M. C. A.; SERPENTINE Staff; Chairman, Senior Class Play Committee; President, Debating Club, Montgomery Co. Club; Editor, *Purple and Gold*; Debating Team, Chairman, Program and Announcement Committee for Senior Class.



JOHN JOSEPH DALTON

"Johnny"

612 SPRUCE ST., ROSELLE PARK, N. J.

HEALTH EDUCATION

ARYAN

President, Aryan Society; Football, '25, '26, '27, '28; Basketball, Captain, '26, '27, '28, '29; Baseball, '26, '27; Christmas Play, Head Writer; SERPENTINE Staff, '28.





KATHRYN F. DAILY

"Kitty"

1862 RICHMOND AVE., BETHELEHEM, PA.

MUSIC SUPERVISION

MOORE

Y. W. C. A.; Vesper Choir; Lehigh Co. Club.



JESSIE ELIZABETH ELLINGER

"Jess"

413 BOYS ST., HARRISBURG, PA.

JUNIOR HIGH

ARYAN

Women's Student Government; SERPENTINE Staff.



JOSEPH L. HANSELMAN

"Joey"

306 E. MARSHALL ST., WEST CHESTER, PA.

MUSIC SUPERVISION

ARYAN

School Dance Band; Soccer; Dramatics; Boys' Glee Club; School Band; College Symphony Orchestra.



NORMAN HEINTZELMAN

"Heinie"

48 NORTH ST., SLATINGTON, PA.

MUSIC SUPERVISION

ARYAN

Manager of Athletics (Football, Basketball); President, Student Government; Vesper Choir; College Orchestra.



MARGARET A. HENNING

"Peg"

328 WASHINGTON AVE., E. DOWNSGOWN, PA.

HEALTH EDUCATION

ARYAN

Day Student's Club.



EDWARD M. HOPKINS

"Ned"

WHITEHALL PLANTATION, SAVANNAH, GA.

HEALTH EDUCATION

ARYAN

Varsity Football, '25, '26, '27, '28; Captain, Basketball, '26, '27, '28, '29; Track, '27; Baseball, '26, '27; Vice-President, Senior Class; SERPENTINE Staff.

SYBIL GRETCHEN HUNT

"Sgh"

FAYETTEVILLE, N. Y.

MUSIC SUPERVISION

MOORE

Y. W. C. A.; Vesper Choir; Science Club; Hostess Club.



M. EVELYN HURSH

"Hurshey"

1427 WASHINGTON AVE., SCRANTON, PA.

HEALTH EDUCATION

ARYAN

Y. W. C. A.; Fire-Brigade; Hockey, '27, '28; Basketball; Lackawanna Co. Club.



ELIZABETH HELEN JONES

"Jonesie"

15 WARD ST., LINWOOD, PA.

HEALTH EDUCATION

ARYAN

Hockey, '27, '28; Basketball, '28; Fire-Brigade, '27, '28, '29. Y. W. C. A.; Hostess Club; Constitution Committee.



JOSEPH KLECKNER

"Joe"

BERWICK, PA.

JUNIOR HIGH

ARYAN

Varsity Football, '26, '28.



RUTH E. KLINGER

"Ruthie"

TOWER CITY, PA.

MUSIC SUPERVISION

MOORE

Vesper Choir; Schuylkill Co. Club; Student Government; Hostess Club; Fire-Chief.



MARGERY T. LAUBACH

"Marge"

EASTON ROAD, RIDGELSVILLE, PA.

MUSIC SUPERVISION

ARYAN

Fire-Brigade; Councilor; Book Club; Vesper Choir; Y. W. C. A.; Swimming.





DAVID CLETIS LEWIS

"Dave"

514 E. MAIN ST., SUGAR NOTCH, PA.

HEALTH EDUCATION

MOORE

Vice-President and President, Moore Society; Chairman, Junior Class Jewelry Committee; Baseball, Football; Assistant Head Waiter; Editor-in-Chief, SERPENTINE, 1928.



ROBERTA FLORENCE LINTHICUM

"Bert"

MOUNT AIRY, MD.

MUSIC SUPERVISION

ARYAN

Hostess Club; Book Club; Hockey; Basketball, Captain; Vesper Choir; Y. W. C. A.; Herodotus Club; Secretary, Symphony Orchestra.



MILDRED PRINCE MACHENRY

"Mac"

6932 DITTMAN ST., PHILADELPHIA, PA.

MUSIC SUPERVISION

ARYAN

Girl Scouts; Fire-Brigade; Poster Club; Y. W. C. A.



RUTH CATHER MANLOVE

"Toodles"

340 W. STATE ST., MEDIA, PA.

MUSIC SUPERVISION

ARYAN

Y. W. C. A.; Delaware Co. Club; Hostess Club, Treasurer; College Symphony Orchestra; Vesper Choir; Girls' Dance Orchestra, '27.



JOSEPHINE FRENCH MORTON

"Jo"

HONEY BROOK, PA.

JUNIOR HIGH

ARYAN

Chairman, Y. W. C. A.; Conference Committee; Tradition Club; Glee Club; Herodotus Club; Recorder of Points; Hostess Club; SERPENTINE Staff.



LOUISE G. MULLER

111 E. MARSHART AVE., S. ARDMORE, PA.

MUSIC SUPERVISION

ARYAN

Secretary, Aryan Society; SERPENTINE Staff; Hostess Club; Vesper Choir.

DANIEL FRANK RAMBO

"Danny"

552 ELM ST., COATESVILLE, PA.

JUNIOR HIGH

ARYAN

Baseball, '26, '27; Soccer, '26, '27, '28; Band; President and Secretary, Travelers' Club; SERPENTINE Staff.



CHARLES T. RASBRIDGE

"Raz"

109 FOURTH ST., SLATINGTON, PA.

JUNIOR HIGH

ARYAN

Purple and Gold Dance Band; Little Theater Players, President; College Band; Y. M. C. A.; Aryan Play; Basketball, '28; Director of "Y" Play; Assistant Director, Christmas Play.



RACHEL W. RAY

"Sheets"

247 MATLACK ST., WEST CHESTER, PA.

Advanced Elementary, Day Students' Club.



CATHARINE E. RHODES

"Tommy"

132 N. 10TH ST., READING, PA.

HEALTH EDUCATION

ARYAN

Student Government; Baseball, Captain; Hockey '25, '26, '27; Basketball, '26, '27, '28; Track, '26; Fire-Brigade; SERPENTINE Assistant Typist.



BERENICE E. SUNDEL

"Sunny"

5428 MASCHER ST., OLNEY, PHILADELPHIA, PA.

HEALTH EDUCATION

ARYAN

Assistant Editor-in-Chief, SERPENTINE; Secretary, Student Government, Councilor; Fire-Lieutenant; Hostess Club; Hockey, '26, '27; Baseball, '27, '28; Manager, Basketball, '27, '28.



MAXINE R. SWEELEY

"Max"

1107 COURT ST., BONESDALE, PA.

MUSIC SUPERVISION

ARYAN

Student Government, Low Court; Secretary, Aryan Society; Band; Orchestra; SERPENTINE Staff; Herodotus Club; Vesper Choir; Minnet; Fire Lieutenant.





EDITH L. VALENTINE

WEST CHESTER, PA.

Junior High

Travelers' Club; Day Students' Club; Herodotus.



## UNPHOTOGRAPHED DEGREE SENIORS

ELIZABETH HARRISON  
155 E. Center Street  
Nesquehoning, Pa.  
*Junior High*

VIOLA AMY HOUSTON  
Lincoln, Delaware  
*Primary*

AMY R. JONES  
411 S. Matlack Street  
West Chester, Pa.  
*Primary*

ELIZABETH LEIDICH  
412 W. North Street  
Bethlehem, Pa.  
*Junior High*

WALTER S. LIGGETT  
25 Price Street  
West Chester, Pa.  
*Junior High*

WILLARD E. MARTZ  
Glyphant, Pa.  
*Junior High*

EMMA F. MYERS  
2233 S. 15th Street  
Philadelphia, Pa.  
*Junior High*

DORCAS R. SCOTT  
329 W. Miner Street  
West Chester, Pa.  
*Junior High*

(MRS.) CLARA E. SMITH  
Brandywine Meadow Farm  
West Chester, Pa.  
*Junior High*

HERMAN SPECTOR  
723 Daly Street  
Philadelphia, Pa.  
*Junior High*

HENRY SOLTYS  
241 Wunder Street  
Reading, Pa.  
*Music*

CATHERINE C. YAKE  
933 Chestnut Street  
Lebanon, Pa.  
*Junior High*





GRADUATING CLASS



FRIEDA ELAINE ADLER

"Free"

620 N. 2ND ST., ALLENTOWN, PA.

INTERMEDIATE

ARYAN

Science Club; Library Club; Y. W. C. A.; Book Club; Lehigh Co. Club; Publicity Editor; C. A. M. Club; Assistant Director, "Y's Leisure" Club.



EVELYN ALBRIGHT

"Ev"

628 TURNER ST., ALLENTOWN, PA.

INTERMEDIATE

ARYAN

Lehigh Co. Club; Y. W. C. A.



THELMA IRENE ALLEMAN

"Bea"

255 PINE ST., MILLERSBURG, PA.

INTERMEDIATE

ARYAN

Y. W. C. A.



RUTH BETTY ALPERT

"Pert"

521 COLFAX AVE., SCRANTON, PA.

PRIMARY

ARYAN

Chester Student Teachers' Club.



FLORENCE AMMON

"Bebe"

926 HESLEP AVE., DONORA, PA.

INTERMEDIATE

ARYAN

Poster Club; Y. W. C. A.; Herodotus Club; Tennis.



HAZEL R. ANDERSON

"Haz"

241 W. UNION ST., WEST CHESTER, PA.

RURAL

Rural Club; Day Students' Club; Y. W. C. A.; Swimming.

IRENE G. ANDERSON

"Rene"

1720 W. GIRARD AVE., PHILADELPHIA, PA.

INTERMEDIATE

Delaware Co. Club; Glee Club.



RUTH ELIZABETH ANDERSON

"Ruthie"

DELTA, PA.

INTERMEDIATE

ARYAN

Y. W. C. A.; York County Club; Christmas Play; Chester Student Teachers' Club.



MARY ASTHEIMER

"Polly"

ROYERSFORD, PA.

RURAL

ARYAN

Y. W. C. A.; Rural Club; Montgomery Co. Club; Hostess Club; Swimming; Campus-History Club.



ESTHER MARY BACKENSTO

"Eddie"

1351 LINDEN ST., ALLENTOWN, PA.

PRIMARY

MOORE

Lehigh Co. Club; Y. W. C. A.



LILA E. BALL

627 S. BOWMAN AVE., MERION, PA.

PRIMARY

ARYAN

Montgomery Co. Club; Hostess Club; Y. W. C. A.; Educational Society; Basketball.



EVELYN G. BALLANTINE

"Eric"

44 JARRETT AVE., ROCKLEDGE, PA.

RURAL

Rural Club; Secretary and Treasurer, Glee Club; Montgomery Co. Club, Secretary; Flower Committee; Swimming; Bowling; Book Club; Y. W. C. A.; Herodotus Club.





FLORENCE ADELE BANKER  
*"Fab"*

309 MAPLE AVE., LANSDOWNE, PA.

PRIMARY

Delaware Co. Club; Day Students' Club.



KATHRYN MARY BARBIERI  
*"Kap"*

7701 WOODLAWN AVE., MELROSE PARK, PA.

PRIMARY

ARYAN

Montgomery Co. Club; Travelers' Club; Basketball; Y. W. C. A.;  
 Educational Club; Swimming.



ELIZABETH ELSIE BARNARD  
*"Libby"*

330 W. LINCOLN HIGHWAY, COTESVILLE, PA.

PRIMARY

Day Students' Club; C. A. M. Club.



M. LUCILLE BARR  
*"Lou"*

104 MAIN ST., PINE GROVE, PA.

PRIMARY

ARYAN

Y. W. C. A.; Schuylkill Co. Club; Archery.



MARY ELLEN BARRY  
*"Blondy"*

120 WEST ST., WILLIAMSTOWN, PA.

INTERMEDIATE

ARYAN

Y. W. C. A.; Swimming; Chester Teachers' Club.



MILDRED ANN BEATTY  
*"Mil"*

500 SWARTHMORE AVE., RIDLEY PARK, PA.

PRIMARY

ARYAN

Delaware Co. Club; Rural Club; Y. W. C. A.

JOYCE EVELYN BEAVER

*"Joy"*

MILLERSTOWN, PA.

INTERMEDIATE

ARYAN

Y. W. C. A.; Volleyball; Bowling; Basketball; Archery.



LOUISE ESTELLA BECK

*"Beck"*

MANCHESTER ST., GLEN ROCK, PA.

PRIMARY

MOORE

York Co. Club; Y. W. C. A.; Travelers' Club; Christmas Play.



MARGARET HUNT BECKETT

*"Becky"*

10 SCOTT AVE., GLENOLDEN, PA.

INTERMEDIATE

ARYAN

Poster Club; Delaware Co. Club; Day Students' Club.



LOIS BEDDOW

*"Shrimp"*

125 NORTH ST., MINERSVILLE, PA.

INTERMEDIATE

ARYAN

Y. W. C. A.; Chester Student Teachers' Club; Schuylkill Co. Club; Book Club; Swimming; Travelers' Club; Scientific Club.



MADÉLINE MARY BELL

*"Madge"*

427 LOGAN ST., LEWISTOWN, PA.

PRIMARY

ARYAN

Y. W. C. A.; Swimming Club; Track; Travelers' Club.



MILDRED IMOGENE BELL

*"Mib"*

240 WALNUT ST., BRISTOL, PA.

PRIMARY

ARYAN

Glee Club; Y. W. C. A.; Bucks Co. Club.





MILDRED IRENE BENDER  
 "Mild"  
 317 CHESTNUT ST., POTTSTOWN, PA.

INTERMEDIATE  
 Glee Club; Science Club; Y. W. C. A. MOORE



HELEN STRICKLE BENNETCH  
 "Spinnich"  
 920 CHESTNUT ST., LEBANON, PA.

PRIMARY  
 Glee Club; Y. W. C. A.; Lutheran Student Council. ARYAN



LIBBY TAYLOR BENNETT  
 "Bibs"  
 2121 EDMONT AVE., CHESTER, PA.

INTERMEDIATE  
 Day Students' Club; Chester Student Teachers' Club; Book Club.



BERTHA ELLEN BERGER  
 "Bertie"  
 528 WALNUT ST., FREELAND, PA.

PRIMARY  
 Y. W. C. A.; Glee Club; Science Club; C. A. M. Club. MOORE



MARY STELLA BIAGIONI  
 "Mary S."  
 108 N. MAIN AVE., SCRANTON, PA.

INTERMEDIATE  
 Lackawanna Co. Club; Book Club. MOORE



DOROTHY BICKEL  
 "Dottie"  
 169 PENABAKER AVE., LEWISTOWN, PA.

INTERMEDIATE  
 Glee Club; C. A. M. Club; Book Club; Y. W. C. A.; Swimming. ARYAN

ETHEL MAE BOENS

"Eppie"

R. D. No. 2, ELVERSON, PA.

RURAL

Rural Club; Swimming; Y. W. C. A.; Travelers' Club.

ARYAN



ANNA CATHERINE BOLAND

"Ann"

2628 PERKIOMEN AVE., MT. PENN, READING, PA.

PRIMARY

Y. W. C. A.; Chester Student Teachers' Club.

MOORE



MARION DOROTHY BOND

"Bonny"

151 S. 4TH AVE., COATESVILLE, PA.

INTERMEDIATE

Day Students' Club; C. A. M. Club.



RUTH WICKHAM BONSALL

"Bonnie"

MEDIA, PA.

INTERMEDIATE

Delaware Co. Club.

ARYAN



MARGARET POWELL BOGAR

"Peggy"

NUTTS AVE. AND STARR ST., PHOENIXVILLE, PA.

INTERMEDIATE

Y. W. C. A.; Book Club.

MOORE



MADELINE BOUGHER

"Pat"

811 MAPLE AVE., BARNESBORO, PA.

PRIMARY

Campus History Club; Y. W. C. A.; Book Club; Swimming.

MOORE





HILDA M. BOWERS

"Bunky"

631 WILLIAMS ST., PEN ARGYL, PA.

PRIMARY

ARYAN

Y. W. C. A.; Girl Scouts.



JEAN ISABEL BOWMAN

"Jackie"

132 S. 14TH ST., ALLENTOWN, PA.

PRIMARY

MOORE

Y. W. C. A.; Lehigh Co. Club; C. A. M. Club.



CHARLOTTE ELLENOR BOYER

1024 E. PHILADELPHIA ST., YORK, PA.

INTERMEDIATE

ARYAN

York Co. Club; Christmas Play; Y. W. C. A.; Hostess Club; Poster Club; Girl Scouts; Archery.



MARY LOUISE BOYLE

"Mary Lou"

4525 SANSON ST., WEST PHILADELPHIA, PA.

RURAL

MOORE

Rural Club; Little Theater Players; Poster Club; Hockey; Tennis; Y. W. C. A.; Cabinet "Y"; Montgomery Co. Club.



CATHERINE REBECCA BRENNER

"Kitty"

348 E. SPRINGETTSBURY AVE., YORK, PA.

PRIMARY

ARYAN

York Co. Club; Christmas Play; Library Club; Glee Club; Hockey; Poster Club; Y. W. C. A.



HELEN ANNA BRIGHT

BERNVILLE, PA.

PRIMARY

MOORE

Y. W. C. A.; Hostess Club; Campus History Club; Science Club.



EVA JANICE BRIZER

*"Trey"*

417 N. WEBSTER AVE., SCRANTON, PA.

PRIMARY

Chester Student Teachers' Club; Hostess Club.

MOORE



M. DOROTHY BROWN

*"Dot"*

UNIONVILLE, PA.

INTERMEDIATE

Day Students' Club; Girl Scouts.



AMANDA BRUBACHER

*"Pat"*

226 CHESTNUT ST., LEBANON, PA.

PRIMARY

Hostess Club; Y. W. C. A.; Girl Scouts; Archery, '28, '29; Swimming, '27, '28; Hockey, '26, '27; Basketball, '26 '27.

ARYAN



MARIE CECILIA BUCHANAN

7763 WAYNE AVE., HIGHLAND PARK, PA.

INTERMEDIATE

Delaware Co. Club, Treasurer; Fire-Brigade, Captain; Delaware Co. Play.



HELEN BAXTER BURGNER

*"Helen"*

BOYS MAWR, PA.

INTERMEDIATE

Day Students' Club.



EDITH M. BERGEY

*"Sis"*

120 BALTIMORE ST., HAGERSTOWN, MD.

INTERMEDIATE

Rural Club; Poster Club; Chairman, Publicity Y. W. C. A.; Hockey; Glee Club; Science Club; Moore Play; Swimming, Award.

MOORE





HELEN AGNES BURKE

"Cons"

125 MOYALLEN ST., WILKES-BARRE, PA.

INTERMEDIATE

MOORE

Travelers' Club.



HAZEL MARY BURKHOLDER

"Barky"

CENTRE HALL, PA.

RURAL

ARYAN

Rural Club; Y. W. C. A.; Girl Scouts; Fire-Brigade, Captain.



MARGARET MARY BURNS

"Burnsie"

6119 ELLSWORTH ST., PHILADELPHIA, PA.

RURAL

MOORE

Rural Club; Hockey; Poster Club; Basketball; Y. W. C. A. Publicity Committee; Chairman, Publicity Rural Club.



EMILY A. CAIN

SECOND AND ORANGE ST., MEDIA, PA.

INTERMEDIATE

MOORE

Delaware Co. Club; Hostess Club, President; Y. W. C. A.



RACHEL MAE CAIOLA

"Ray"

842 SMITH ST., NORRISTOWN, PA.

INTERMEDIATE

MOORE

Baseball; Hockey; Science Club; Hostess Club; Y. W. C. A.



LOIS CALDWELL

"Loie"

122 ELMWOOD AVE., NARBERTH, PA.

RURAL

ARYAN

Rural Club; Montgomery Co. Club; Day Students' Club; Y. W. C. A.; Hockey; Track.

SARA DOLORES CANNON

"Sadie"

144 FRONT ST., SUMMIT HILL, PA.

PRIMARY

Travelers' Club; Library Club; Baseball; Track.

ARYAN



CHARLOTTE ELIZABETH CARR

"Sharley"

DALTON, PA.

PRIMARY

Y. W. C. A.; Lackawanna Co. Club; Day Students' Club.



MILDRED ARCHER CASTLE

"Mickey"

SELLERSVILLE, PA.

RURAL

President, Rural Club; Poster Club; Hostess Club; Herodotus Club; Bucks Co. Club; Y. W. C. A.; Fire-Lieutenant; World-Fellowship Committee; Hockey; Archery; Little Theater Players; Religious Meeting Committee

MOORE



LUCILE P. CATALDO

"Luc"

158 S. CEDAR ST., HAZELTON, PA.

INTERMEDIATE

Glee Club; Travelers' Club.

MOORE



MARGARET LYNETT CAWLEY

"Peg"

224 W. DRINKER ST., DUNMORE, PA.

PRIMARY

Y. W. C. A.; Lackawanna Co. Club; Glee Club; Swimming; Book Club; Moore Play.

MOORE



ELIZABETH JANE CHASE

"Libbie"

325 W. LOCUST ST., CLEARFIELD, PA.

PRIMARY

Poster Club; Library Club; Y. W. C. A.

ARYAN





ELLEN SARAH CHRISTMAN  
*"Christie"*  
 212 W. HIGH ST., WOMELSDORF, PA.

PRIMARY  
 Glee Club; Y. W. C. A.; Campus History Club. ARYAN



REGINA MARTINA CLAIR  
*"Jean"*  
 156 N. PENNA. AVE., WILKES-BARRE, PA.

PRIMARY  
 Book Club; Travelers' Club. MOORE



ALMEDA PARSONS COLE  
*"Dale"*  
 25 TIMPSON ST., ASHLEY, PA.

PRIMARY  
 Y. W. C. A.; C. A. M. Coatesville Club. ARYAN



MARY ROSE CONNORS  
*"Mary R."*  
 MAIN ST., MARIANOY PLAIN, PA.

PRIMARY  
 Y. W. C. A.; Secretary and Treasurer, Schuylkill Co. Club;  
 Educational Club; Library Club; Book Club. MOORE



EVELYN COOLEY  
*"Eric"*  
 126 N. MAIN ST., NAZARETH, PA.

PRIMARY  
 Swimming; Travelers' Club; Book Club; Y. W. C. A. MOORE



MARIANNE JOHNSON CORNELL  
 EUREKA, PA.

PRIMARY  
 Y. W. C. A.; Montgomery Co. Club ARYAN

ANNE B. COYLE

"Abie"

13 N. MAIN ST., SHAWT, PA.

PRIMARY

Schuylkill Co. Club; Tradition Club; Travelers' Club.

ARYAN



MARY HELEN CRAWFORD

119 S. CLIFTON AVE., ALDAN, PA.

INTERMEDIATE

Delaware Co. Club; Y. W. C. A.



ELIZABETH JEANETTE CURRAN

"Betty"

2 EDISON ST., WILKES-BARRE, PA.

INTERMEDIATE

Travelers' Club; Tradition Club.

MOORE



MABEL N. DAVIDHEISER

GILBERTSVILLE, PA.

PRIMARY

Montgomery Co. Club; Basketball; Y. W. C. A.; C. A. M. Club

MOORE



VERA MARIE DAVIS

"Dary"

253 STATE ST., NANTICORE, PA.

PRIMARY

Y. W. C. A.; Swimming Club; Chester Students Teachers' Club; Social Service.

ARYAN



GRACE ELIZABETH DENNIS

613 PEN ARGAL ST., PEN ARGAL, PA.

PRIMARY

Hostess Club; Girl Scouts; Y. W. C. A.

ARYAN





ELIZABETH MARY DEVENNEY

"Betty"

5128 WESTMINSTER AVE., PHILADELPHIA, PA.

RURAL MOORE

Rural Club; Delaware Co. Club, Treasurer; Little Theatre Players; Swimming; Track; Basketball.



MARTHA LITTLE DEWEES

"Patty"

BERWYN, PA.

INTERMEDIATE ARYAN

Library Club; Volleyball; Y. W. C. A., Committee Systematic Giving.



K. ELIZABETH DIEHM

"Betty"

262 BROAD ST., SPRING CITY, PA.

PRIMARY

Day Students' Club; Archery; Little Theatre Players.



MARY ELIZABETH DOLBY

106 WOODLAND AVE., COATESVILLE, PA.

INTERMEDIATE MOORE

Basketball; Y. W. C. A.; C. A. M. Club.



FLORENCE JOSEPHINE DONNELLY

"Jo"

110 WEST MORELAND AVE., HATBORO, PA.

PRIMARY ARYAN

Y. W. C. A.; Glee Club; Vice-President; Montgomery Co. Club; Book Club.



CATHLEEN JEAN DOUGLASS

448 S. YORK RD., WILLOW GROVE, PA.

INTERMEDIATE

Y. W. C. A.; Educational Club; Travelers' Club.

FRANCES MERCY DOWDEN

"Skeetic"

508 SINCLAIR ST., McKEESPORT, PA.

INTERMEDIATE

Y. W. C. A.; Tennis; Allegheny Co. Club.

ARYAN



SARA ANDERSON DOWNIE

"Sal"

602 UNION AVE., McKEESPORT, PA.

INTERMEDIATE

Herodotus Club; Y. W. C. A.; Poster Club; Tennis.

ARYAN



MARY B. DOYLE

"Doke"

PINE ST., BRANCH DALE, PA.

INTERMEDIATE

Y. W. C. A.; Hostess Club; Schuylkill Co. Club.

MOORE



MAE ESTELA DREIBELBIS

268 NORTH ST., MILLERSBURG, PA.

RURAL

Rural Club; Y. W. C. A.; Book Club; Volleyball; Archery; Baseball; Social Service.

MOORE



FLORENCE MAY DUFF

"Duff"

309 S. CHESTER ROAD, SWARTHMORE, PA.

PRIMARY

Day Students' Club; Delaware Co. Club; Swimming

ARYAN



ELEANOR WALLACE EAVENSON

"Nance"

CHRISTIANA, PA.

INTERMEDIATE

Hostess Club; Glee Club; Tennis.

ARYAN





JULIA ALICE EDWARDS

*"Jewel"*

CORNWALL, PA.

INTERMEDIATE

MOORE

Y. W. C. A.; Campus History Club; Book Club; Educational Club.



RUTH MAY EICHERLY

748 WALNUT ST., COLUMBIA, PA.

INTERMEDIATE

MOORE

Glee Club; Orchestra; Councilor; Music Committee; Y. W. C. A.



JEANNETTE MIRIAM ELLOWITZ

*"Jen"*

61 S. WASHINGTON ST., WILKES-BARRE, PA.

INTERMEDIATE

MOORE

Y. W. C. A.; Glee Club.



DORETTA IRENE ENGLER

*"Peg"*

1231 S. MARKET ST., NANTICOKE, PA.

INTERMEDIATE

ARYAN

Y. W. C. A.; Swimming Club.



RACHEL ESHLEMAN

*"Rae"*

MAIN ST., DENVER, PA.

PRIMARY

ARYAN

Book Club; Y. W. C. A.



ETHEL MAE EVANS

405 HAVERFORD PLACE, SWARTIMORE, PA.

INTERMEDIATE

Delaware Co. Club; Day Students' Club.



HAZEL MAY EVANS

"Erings"

1301 DELAWARE AVE., WYOMISSING, PA.

RURAL

Rural Club, Program Committee; Conceilor; Hostess Club; Book Club; Library Club; Glee Club; Herodotus Club; Y. W. C. A.; Swimming.

ARYAN



RUTH ELIZABETH EVANS

"Erans"

1371 CAPOUSE AVE., SCRANTON, PA.

PRIMARY

Treasurer, Lackawanna Co. Club; Conceilor; Vice-President, Little Theatre Players; Aryan Play; Senior Play Committee; Member Low Court.

ARYAN



MILDRED JULIA FASNACHT

"Mil"

455 MARKET ST., MILLERSBURG, PA.

RURAL

Rural Club; Y. W. C. A.; Moore Play; Swimming; Baseball; Archery; Social Service Club.

MOORE



GERTRUDE MONICA FERRY

"Trudy"

142 E. MINE ST., HAZELTON, PA.

INTERMEDIATE

Y. W. C. A.; Travelers' Club; Book Club; Swimming.

MOORE



EDITH ADELLE FISHER

"Eddie"

DELTA, PA.

PRIMARY

York Co. Club; Book Club; Y. W. C. A.; Chester Student Teachers' Club; Christmas Play.

ARYAN



BERTHA MATILDA FLAIL

"Bert"

261 FRONT ST., PATTSVILLE, PA.

INTERMEDIATE

Schuykill Co. Club; Poster Club; Y. W. C. A.

ARYAN





PERVILLA EVELYN FLINCHBAUGH

"Peg"

WINDSOR, PENNA.

PRIMARY

MOORE

Y. W. C. A.; Chester Student Teachers' Club; Christmas Play; York Co. Club; Campus History Club; Book Club.



MARY ELIZABETH FOREMAN

515 W. MAIN ST., WAYNESBORO, PA.

INTERMEDIATE

ARYAN

Glee Club; Hostess Club; Y. W. C. A.; Book Club.



MAE VIOLA FOX

"Mae"

R. D. 2, DOYLESTOWN, PENNA.

INTERMEDIATE

ARYAN

Y. W. C. A.; Travelers' Club.



MARY ELIZABETH FRANCIS

149 E. TAYLOR ST., TAYLOR, PA.

PRIMARY

ARYAN

Lackawanna Co. Club; Y. W. C. A.



HAZEL KOCH FRANTZ

709 AMERICAN ST., CATASAUQUA, PA.

PRIMARY

MOORE

Catasauqua Club; Y. W. C. A.; Lehigh Co. Club.



ESTHER RUTH FRENCH

"Es"

BELLAIRE AVE., AMBLER HIGHLANDS  
FORT WASHINGTON, PA.

RURAL

MOORE

Rural Club; Hostess Club; Y. W. C. A.; Montgomery Co. Club.

ALTHEA MARY FREY

"Thea"

R. F. D. 2, BETHLEHEM, PA.

PRIMARY

Glee Club; Hostess Club; Y.W.C.A.; Lutheran Student Council;  
Lehigh Co. Club.

ARYAN



MARY FURNESS

ERWINNA, PENNA.

INTERMEDIATE

Library Club; Day Students' Club.

ARYAN



CATHERINE IRMA GALLAGHER

"Kay"

713 MAIN ST., FREELAND, PA.

INTERMEDIATE

Library Club; Y. W. C. A.; Coatesville Club.

MOORE



LEAH ELEANOR GAUGHAN

"Del"

MAIN ST., MAHANOH PLANE, PA.

PRIMARY

Schuylkill Co. Club; Book Club; Herodotus Club; Y. W. C. A.;  
Educational Club; Swimming.

MOORE



ELLA MARGARET GEARY

"Pudger"

LOCUST GAP, PA.

PRIMARY

Y. W. C. A.; Coatesville Club; Basketball.

MOORE



HELEN CECELIA GEE

"G"

73 UNION AVE., LANSDOWNE, PA.

INTERMEDIATE

Day Students' Club; Delaware Co. Club.

ARYAN





MARIAN LOUISE GEIBEL  
202 LOGAN ST., LEWISTOWN, PA.

INTERMEDIATE

Chester Students' Club; Glee Club; Y. W. C. A.

ARYAN



RUTH CLARA GEISEL  
"Doc"

372 N. FIRST ST., LEHIGHTON, PA.

PRIMARY

Fire-Brigade; Hostess Club; Y. W. C. A.; Library Club.

MOORE



EMMA SUSAN GEORGE  
"Em"

340 SPRUCE ST., STEELTON, PA.

PRIMARY

Hostess Club; Herodotus Club; Y. W. C. A.; Tennis Club.

ARYAN



MARGARET LOUISE GERBER  
"Peg"

1152 EDSON AVE., JOHNSTOWN, PA.

RURAL

Rural Club; Library Club; Hostess Club; Y. W. C. A.

MOORE



JESSIE MARIE GERHART  
"Jess"

606 PARK AVE., PERKASIE, PA.

RURAL

Rural Club; Hockey, '27, '28; Science Club.

ARYAN



MARY VIRGINIA GLEASON  
"Min"

18 PROSPECT AVE., SCRANTON, PA.

PRIMARY

Glee Club; Councilor; Lackawanna Co. Club.

MOORE

ERNA J. P. GOLATZ

"Ernie"

326 $\frac{1}{2}$  RIDGE AVE., ALLENTOWN, PA.

INTERMEDIATE

Glee Club; Lehigh Co. Club,

ARYAN



MARGARET ADELINE GRAVER

"Sis"

318 STEADMAN AVE., LEHIGHTON, PA.

INTERMEDIATE

Y. W. C. A.; Poster Club; Library Club.

ARYAN



ALICE VIRGINIA GRAYBILL

604 SHOEMAKER AVE., JENKINTOWN, PA.

INTERMEDIATE

Library Club; Secretary; Hockey; Vice-President, Montgomery Co. Club; Councilor; Recorder Low Court; Aryan Play.

ARYAN



KATHRYN FRANCES GRIFFEE

"Katrina"

307 WALNUT ST., BRISTOL, PA.

PRIMARY

Y. W. C. A.; Day Students' Club.

ARYAN



DOROTHY SMITH GRIM

"Dottie"

140 S. 13TH ST., ALLENTOWN, PA.

PRIMARY

Vice-President, Lehigh Co. Club; "Y" Cabinet; Glee Club; Poster Club; Student Councilor; Poster Club; C. A. M. Club.

ARYAN



FLORENCE WENNER GROSS

"Floss"

206 N. 14TH ST., ALLENTOWN, PA.

PRIMARY

Y. W. C. A.; Councilor; Lehigh Co. Club; Travelers' Club.

ARYAN





PAULINE LYDIA GURZYNSKI  
*"Polly"*  
 118 LIBERTY ST., CATAWAC, PA.

INTERMEDIATE  
 Y. W. C. A.; Lehigh Co. Club.

ARYAN



GLADYS ANN HAAS  
*"Glad"*  
 16 W. FRONT ST., SUMMIT HILL, PA.

INTERMEDIATE  
 Library Club; Swimming Club; C. A. M. Club.

ARYAN



MILDRED ADELINE HANSON  
*"Mil"*  
 LUDLOW, PENNA.

INTERMEDIATE  
 Y. W. C. A.; Hostess Club; Book Club; Library Club; Campus  
 History Club.

ARYAN



ELIZABETH C. HARLEY  
*"Betty"*  
 605 E. 13TH ST., CHESTER, PA.

PRIMARY  
 Delaware Co. Club; Educational Club; Y. W. C. A.; Hostess  
 Club; Travelers' Club.

ARYAN



FLORENCE BELLE HARPER  
*"Flo"*  
 425 GEORGE ST., PEN ARGYL, PA.

PRIMARY

ARYAN



ANNE KATHLEEN HAUGHEY  
*"Anne Hoer"*  
 JEDDO, PENNA.

INTERMEDIATE  
 Y. W. C. A.; Book Club; Swimming; Chester Student Teachers'  
 Club.

MOORE

GRACE ELLEN HELLER  
321 LAUREL ST., MISERSVILLE, PA.

INTERMEDIATE

ARYAN

Y. W. C. A.; Book Club; Schuylkill Co. Club; Swimming Club;  
Tennis; Chester Student Teachers' Club.



CECELLA E. HEPBURN  
"Ced"  
2702 ANN ST., PHILADELPHIA, PA.

INTERMEDIATE

MOORE

Y. W. C. A.; Book Club.



RUTH ALDERTON HERVEY  
GLEN LOCH, PENNA.

INTERMEDIATE

Day Students' Club.



KATHRYN EILEEN HICKEY  
"Kit"  
22 W. MINER ST., WEST CHESTER, PA.

PRIMARY

ARYAN

Day Students' Club; Swimming; Tennis.



RUTH CICELY HICKS  
"Hickey"  
542 THIRTEENTH AVE., MOORE, PA.

PRIMARY

MOORE

Poster Club; Y. W. C. A.; Hostess Club; Educational Club.



VIRGINIA AGNES HOENES  
"Ginia"  
425 N. CENTER ST., CORRY, PA.

PRIMARY

MOORE

Poster Club; Basketball; Y. W. C. A.; C. A. M. Club.





EDITH BERTHA HOFFMAN

*"Edie"*

1122 LINCOLN WAY, McKEESPORT, PA.

INTERMEDIATE

Y. W. C. A.; Archery; Herodotus Club; Tennis; Bowling.



HELEN LEONA HOFFMAN

NORTH MAIN ST., FALLS CREEK, PA.

PRIMARY

MOORE

Travelers' Club; Hostess Club; Y. W. C. A.



RUTH HENRIETTA HOLLENBACH

*"Ruth"*

525 N. ELEVENTH ST., ALLENTOWN, PA.

INTERMEDIATE

ARYAN

Lehigh Co. Club, Secretary; Y. W. C. A.; Poster Club; C. A. M. Club.



DOROTHY MILDRED HOLMS

*"Dot"*

1728 CARNATION ST., HARRISBURG, PA.

PRIMARY

ARYAN

Herodotus Club; Y. W. C. A.; Hostess Club.



CECILIA MAY HOPKINS

*"Cele"*

435 FREEDOM ST., JENKINTOWN, PA.

PRIMARY

ARYAN

Library Club; Montgomery Co. Club; Campus History Club; Y. W. C. A.



MARY LOUISE HUDSON

*"Mary Lou"*

150 W. OSBORNE ST., JOHNSTOWN, PA.

INTERMEDIATE

ARYAN

Library Club; Book Club; Y. W. C. A.; Frosh Frolic Dance Committee; Swimming.



GRACE ELIZABETH HUGHES

"Gracious"

742 WHEELER AVE., SCRANTON, PA.

INTERMEDIATE

ARYAN

Book Club; Science Club; Y. W. C. A.; Lackawanna Co. Club;  
C. A. M. Club.



MARGARET HUGHES

"Peggy"

1816 CAPOUSE AVE., SCRANTON, PA.

INTERMEDIATE

ARYAN

Lackawanna Co. Club; Library Club; Swimming; Cortesville  
Club; Y. W. C. A.



MARGARET CATHARINE HUGHES

"Peggy"

343 CROWN ST., MORRISVILLE, PA.

PRIMARY

ARYAN

Y. W. C. A.; Chester Student Teachers' Club; Girl Scouts.



MARY C. HUGHES

"Murdy"

603 N. 64TH ST., PHILADELPHIA, PA.

PRIMARY

MOORE

Y. W. C. A.



ARVONIA H. HUMPHREYS

"Hump"

105 UNION ST., SHICKSHPINNY, PA.

PRIMARY

ARYAN

Secretary, Freshman Class; Frosh Frolic Committee; Councilor;  
Vice-President; Hostess Club; Swimming; Fall Formal Dance Com-  
mittee; Y. W. C. A.



MARGARET HUMPHREYS

"Peggy"

328 ACADEMY ST., WARRIOR RUN, PA.

PRIMARY

ARYAN

Y. W. C. A.; Cortesville Club.





CLARA JANE HUSTON  
WILLIAMSON SCHOOL, PA.

PRIMARY

Delaware Co. Club; Day Students' Club.



LOUISE HANNAH HUTTON  
*"Hanner"*

419 N. WALNUT ST., WEST CHESTER, PA.

PRIMARY

Day Students' Club.



LOUISE BROWN JACKSON  
*"Doc"*

410 CURTIS ST., OSCEOLA MILLS, PA.

PRIMARY

Y. W. C. A.; Glee Club.

MOORE



EMILY BARBARA JACKSON  
*"Em"*

ENONVILLE, PA.

INTERMEDIATE

Day Students' Club; C. A. M. Club.



LOUISE KATHRYN JEFFRIES  
*"Lou"*

35 E. BERTS ST., LANSDOWN, PA.

INTERMEDIATE

Glee Club; Poster Club; Y. W. C. A.; Travelers' Club.

ARYAN



MATILDA JENDRICKS  
*"Tillie"*

161 S. MAIN ST., NAZARETH, PA.

INTERMEDIATE

Y. W. C. A.; Swimming; Chester Student Teachers' Club.

MOORE

GWENDOLYN JENKINS

"Gwen"

1418 LAFAYETTE ST., SCRANTON, PA.

PRIMARY

ARYAN

Glee Club; Lackawanna Co. Club; Chairman of Committee; Hockey; Y. W. C. A.



MARY JEAN JENKINS

"Jinks"

1215 SWETLAND ST., SCRANTON, PA.

INTERMEDIATE

ARYAN

C. A. M. Club; Lackawanna Co. Club; Science Club; Y. W. C. A.



BEATRICE MAUD JONES

"Bet"

76 HARTFORD ST., ASHLEY, PA.

PRIMARY

ARYAN

Glee Club; C. A. M. Club; Y. W. C. A.



ELVA JONES

MAIN ST., TAYLOR, PA.

PRIMARY

ARYAN

Lackawanna Co. Club; Chester Student Teacher's Club.



M. ISABELLE JORDAN

"Bill"

STEWARTSTOWN, PA.

PRIMARY

MOORE

York Co. Club; Y. W. C. A.



MARGARET C. JOYCE

"Peggy"

3273 BIRNEY AVE., MINOOKA, PA.

INTERMEDIATE

MOORE

Y. W. C. A.; Secretary, Moore Literary Society; Little Theater Players; Debating Team and Society; Senior Class Play Committee; Moore Play; Hostess Club.





ANNA LOUISE KATZ  
 "Ann"  
 CHURCH ST., ROYERSFORD, PA.

RURAL ARYAN  
 Rural Club; Y. W. C. A.; Swimming; Montgomery Co. Club;  
 Campus History Club.



MARION HELEN KAUFFMAN  
 "Bunny"  
 1233 FAULKNER ST., PITTSBURGH, PA.

PRIMARY  
 Glee Club.



MARGARET MARY KAYS  
 "Peg"  
 234 BLOOM ST., DUNMORE, PA.

PRIMARY MOORE  
 Hostess Club; Secretary Lackawanna Co. Club; Y. W. C. A.;  
 Swimming; Book Club; Herodotus Club.



MARGARET MARY KEHOE  
 "Peg"  
 712 SEVENTH AVE., BETHLEHEM, PA.

PRIMARY MOORE  
 Y. W. C. A.; Herodotus Club; Lehigh Co. Club; Archery.



LUCY CLARE KELLEY  
 "Lou"  
 1022 SENECA ST., BETHLEHEM, PA.

PRIMARY ARYAN  
 Treasurer, Student Council; Lehigh Co. Club; Chairman, Fall  
 Formal Dance Committee; Frosh Frolic Dance Committee; Hostess  
 Club; Chairman Lobby Committee.



ELIZABETH MAE KELLY  
 "Lib"  
 503 SCHOOL ST., MINERSVILLE, PA.

INTERMEDIATE ARYAN  
 Y. W. C. A.; Travelers' Club; Tennis; Swimming; Fire-Brigade;  
 Schuylkill Co. Club.

CARRIE VIRGINIA KEMMERER  
"Carolyn"

NAZARETH PKE., BETHLEHEM, PA.

INTERMEDIATE

Glee Club; C. A. M. Club; Y. W. C. A.

ARYAN



HELEN MARIE KENNEDY  
"Kennedy"

134 N. JARDIN ST., SHENANDOAH, PA.

PRIMARY

Schuylkill Co. Club, Vice-President; Tradition Club; Travelers' Club.

MOORE



ALICE EVE KERSAVAGE  
".Al"

253 SUSQ. ST., FOREST CITY, PA.

INTERMEDIATE

Y. W. C. A.; Hiking Club; Basketball.

MOORE



ARLINE MARGUERITE KEYLOR  
"Dusty"

114 WALNUT AVE., ARDMORE, PA.

INTERMEDIATE

Y. W. C. A.; Montgomery Co. Club; Girl Scouts; Fire-Brigade.

ARYAN



MARY BOYER KILGALLEN  
"Mary"

400 CRESWELL ST., RIDLEY PARK, PA.

INTERMEDIATE

Swimming; Basketball.

MOORE



MARION MARGARET KILONSKY  
"Mac"

906 N. MAIN ST., FOREST CITY, PA.

INTERMEDIATE

Y. W. C. A.

MOORE





ELIZABETH M. KNEPPER  
*"Dot"*  
 509 HALCOMB AVE., CLAIRTON, PA.

PRIMARY  
 Y. W. C. A.; Travelers' Club; Archery; Science Club. ARYAN



ETHEL M. KNEPPER  
*"Dash"*  
 509 HALCOMB AVE., CLAIRTON, PA.

PRIMARY  
 Y. W. C. A.; Travelers' Club; Archery; Science Club. ARYAN



RUTH DREXEL KOCH  
 605 FERN AVE., DREXEL HILL, PA.

PRIMARY  
 Delaware Co. Club; Y. W. C. A.; Educational Club. ARYAN



FRANCES ADELAIDE KOCHER  
*"Fannie"*  
 30 N. 13TH ST., ALLENTOWN, PA.

PRIMARY  
 Y. W. C. A.; Lehigh Co. Club; Travelers' Club. ARYAN



ROSE LOIS KRAKUSIN  
*"Ro"*  
 49 N. PINE ST., HAZELTON, PA.

INTERMEDIATE  
 MOORE



RUTH ALMIRA KUNTZ  
 1234 CHURCH ST., READING, PA.

INTERMEDIATE  
 MOORE

MARGARET ISABEL LAMB

"Betty"

632 W. CHESTNUT ST., SHAMOKIN, PA.

PRIMARY

MOORE

Treasurer, Freshman Class; Glee Club; Frosh Frolic Committee;  
Y. W. C. A.; Travelers' Club; Tradition Club; Campus History Club.



RUTH BAKER LARKIN

DOWNINGTOWN, PA.

PRIMARY

MOORE

Poster Club; C. A. M. Club.



HELEN BETTY LARSON

"Dashie"

1322 Arch St., NORRISTOWN, PA.

INTERMEDIATE

ARYAN

Montgomery Co. Club; Y. W. C. A.; C. A. M. Club.



MARTHA E. LEE

"Marty"

616 NEW ST., ALLENTOWN, PA.

INTERMEDIATE

ARYAN

Lehigh Co. Club, Secretary; Educational Club; Y. W. C. A.  
Cabinet; Social Service Club; Fire-Brigade; Science Club.



ESTELLE ISABELE LEFFLER

"Stell"

ADAMSTOWN, PA.

PRIMARY

ARYAN

Y. W. C. A.; Library Club; Girl Scouts; Fire-Brigade Lieutenant



ALICE LOLA LEBECKA

"Allie"

44 CENTRE SQUARE, EASTON, PA.

PRIMARY

ARYAN

Secretary, Senior Class; Chairman, Adviser-Advisee Committee;  
Councilor; SERPENTINE Staff; Senior Prom Committee; Hockey; Fall  
Formal Committee.





MARION BLAKE LEWIS

"Minnie"

1048 MARKET ST., BANGOR, PA.

PRIMARY

ARYAN

Hostess Club; Glee Club; Treasurer, Senior Class; Y. W. C. A.; Basketball.



ESTHER E. LINDEMUTH

"Essie"

MOUNT JOY, PA.

PRIMARY

MOORE

Y. W. C. A.



ELIZABETH RAE LOVE

"Beth"

DALLAS, PA.

INTERMEDIATE

ARYAN

Councilor; Book Club; Travelers' Club; Y. W. C. A.



HELEN DOROTHY LOWRY

"Louie"

1826 CENTRE ST., ASHLAND, PA.

INTERMEDIATE

MOORE

Schuylkill Co. Club; Campus History Club; Library Club; Poster Club.



FLORENCE LUDWIG

"Flussie"

DOUGLASSVILLE, PA.

PRIMARY

MOORE

Y. W. C. A.; Travelers' Club.



GRACE M. LUDWIG

"Curly"

SINKING SPRING, PA.

PRIMARY

MOORE

Y. W. C. A.; Hostess Club; Campus History Club; Glee Club.



MARY VIRGINIA McANDREW

"Mac"

608 N. LINCOLN AVE., SCRANTON, PA.

PRIMARY

Lackawanna Co. Club.

ARYAN



MARY L. McCLELLAN

"Polly"

Elk View, Pa.

INTERMEDIATE

Book Club; Y. W. C. A.; Chester Student Teachers' Club.



MARY ELIZABETH McCLEAGHAN

"Molly"

921 BARTHAM AVE., COLLINGDALE, PA.

INTERMEDIATE

Y. W. C. A.; Delaware Co. Club

MOORE



MAGDALENE RITA McCLOSKEY

"Magge"

6 HARVIS RD., HIGHLAND PARK, PA.

INTERMEDIATE

Delaware Co. Club.



HELEN LOUISE McCOLLAM

309 N. PENN ST., YORK, PA.

INTERMEDIATE

York Co. Club; Glee Club; Christmas Play; Handbook Committee; Vice-President, C. A. M. Club; Fire-Lieutenant; Y. W. C. A.

ARYAN



RUTH ANNA McCONNELL

Bristol, Pa.

PRIMARY

Library Club; Y. W. C. A.; Hockey; Bucks Co. Club.

ARYAN





HELEN McCULLOUGH  
CHATWOOD, WEST CHESTER, PA.

PRIMARY  
Glee Club.



MARY LORETTA McDONOUGH  
"Mac"  
35 WORRAL ST., WILKES-BARRE, PA.

PRIMARY  
Travelers' Club; Hostess Club; Tradition Club. MOORE



ALICE GERTRUDE McFADDEN  
"Mac"  
636 EIGHTH AVE., BETHLEHEM, PA.

PRIMARY  
Lehigh Co. Club; Moore Committee; Moore Play; Herodotus Club. MOORE



ANN MCGEEHAN  
"Ann"  
74 CHURCH ST., JEDDO, PA.

PRIMARY  
Y. W. C. A. MOORE



GWENDOLYN C. McLAIN  
"Gwen"  
514 LEE ST., PORTAGE, PA.

PRIMARY  
Hostess Club; Library Club; Y. W. C. A. MOORE



LAURA McPHERSON  
R. D. No. 2, NORRISTOWN, PA.

PRIMARY  
Montgomery Co. Club; Y. W. C. A.; Baseball. ARYAN

MARGARET J. McQUAIDE

"Peggy"

125 E. PROVIDENCE RD., YEADON, PA.

INTERMEDIATE

Delaware Co. Club; Day Students' Club; Educational Club;  
Glee Club.



JEAN MacCRACKEN

"Popsy"

806 QUINCY AVE., SCRANTON, PA.

INTERMEDIATE

Lackawanna Co. Club; Y. W. C. A.; Hostess Club.

ARYAN



MARY MacLEOD

"Scotty"

WILMINGTON, DEL.

PRIMARY

Day Students' Club; Educational Club.



RUTH FERGUSON MacMILLAN

"Rufus"

1216 FOLSOM AVE., MOORE, PA.

PRIMARY

Day Students' Club.

MOORE



VIRGINIA ESTELLE MacNAMEE

"Ginny"

POCONO, PA.

INTERMEDIATE

Day Students' Club.

ARYAN



KATHRYN JEAN MADDEN

"Kitty"

37 DIVISION ST., WILKES-BARRE, PA.

INTERMEDIATE

Book Club; Science Club; Y. W. C. A.; Campus History Club.

MOORE





HOWARD MOYER

"Bob"

RAILROAD ST., CLEONA, PA.

HEALTH EDUCATION  
Track, '27, '28; Varsity Football, '27, '28; Varsity Basketball,  
'26, '27, '28; Varsity Baseball, '26, '27. ARYAN



GERTRUDE ELIZABETH MARSH

"Betty"

R. D. No. 2, WEST CHESTER, PA.

PRIMARY ARYAN  
Day Students' Club.



JANET ERNESTINE MATHER

"Janie"

335 MARKET ST., BERWICK, PA.

INTERMEDIATE MOORE  
Swimming; Y. W. C. A.; Travelers' Club; Book Club; Glee  
Club; C. A. M. Club.



CATHARINE EMMA MAYER

30 N. 10TH ST., READING, PA.

PRIMARY MOORE  
Swimming; Chester Student Teachers' Club.



VERA RUTH MEGARGEL

"Mame"

73 MINA ST., JEDDO, PA.

PRIMARY ARYAN  
Y. W. C. A.; Hostess Club; Poster Club.



MARCELLA JOYCE MELLOTT

"Sally"

138 HANSEN TERRACE, COLLINGDALE, PA.

INTERMEDIATE  
Day Students' Club; Chester Student Teachers' Club.

DOROTHY MAE MILLER

"Dot"

241 S. MAIN ST., RED HILL, PA.

INTERMEDIATE

Y. W. C. A.; Swimming; Montgomery Co. Club.

MOORE



GLADYS MAE MILLER

"Gludie"

BIGLERVILLE, PA.

PRIMARY

Y. W. C. A.; Travelers' Club; C. A. M. Club.

ARYAN



SARA LOUISE MILLER

646 W. PRINCESS ST., YORK, PA.

PRIMARY

Councilor; Y. W. C. A.; York Co. Club, Secretary; Christmas Play; Serpentine Staff.

ARYAN



LEZETTA ANNA MILLER

STATE ST., MILLERSBURG, PA.

RURAL

Rural Club; Book Club; Swimming; Y. W. C. A.; Social Service Club; Archery.

MOORE



LOUISE J. MILLER

"Lou"

1807 VINE ST., SCRANTON, PA.

PRIMARY

Book Club; Vice-President-elect; Debating Club; Swimming; Lackawanna Co. Club; Chester Student Teachers' Club.

ARYAN



EDNA ELIZABETH MIRTH

"Eddie"

646 N. FRONT ST., ALLENTOWN, PA.

INTERMEDIATE

Y. W. C. A.; Lehigh Co. Club; Baseball, Volleyball; Tennis.

ARYAN





GLADYS ELIZABETH MICHELL

"*Mitch*"

891 THIRD ST., FULLERTON, PA.

PRIMARY

Y. W. C. A.; Glee Club; Lehigh Co. Club.



HELEN DAVIS MOHR

"*Dimples*"

815 GREENWICH ST., READING, PA.

PRIMARY

Y. W. C. A.; Girl Scouts; Poster Club.

ARYAN



DOROTHY CAROLYN MOLL

"*Dot*"

631 NOBLE ST., NORRISTOWN, PA.

PRIMARY

Y. W. C. A.; Montgomery Co. Club.

ARYAN



GRACE ELIZABETH MONGAN

107 COLLINS ST., DENMORE, PA.

PRIMARY

C. A. M. Club; Y. W. C. A.; Lackawanna Co. Club.

MOORE



ANNA RUTH MOOD

"*Moody*"

PERKASIE, PA.

INTERMEDIATE

Y. W. C. A.; Swimming; Bucks Co. Club.

ARYAN



MARY CATHARINE MOODY

"*Mary K.*"

451 LINCOLN ST., YORK, PA.

INTERMEDIATE

York Co. Club; Rural Club; Library Club; Christmas Play.

MOORE

ALICE IRENE MOONEY

"Pat"

MARSHALL'S TERRACE, PALMERTON, PA.

PRIMARY

Y. W. C. A.; Day Students' Club; Hockey; Swimming.

MOORE



ELIZABETH MOORE

"Flirrer"

112 PRICE ST., WEST CHESTER, PA.

INTERMEDIATE

Day Students' Club.

MOORE



LUCY OLIVE MORAN

"Lou"

FIFTH ST., MINERSVILLE, PA.

PRIMARY

Y. W. C. A.; Travelers' Club; Schuylkill Co. Club.

MOORE



MARY ANN MORAN

"Ann"

209 MARKET ST., TAMAQUA, PA.

PRIMARY

Y. W. C. A.; Travelers' Club.

ARYAN



JOSEPHINE MARGARET MORRIS

"Jo"

312 VALLEY ROAD, COATESVILLE, PA.

INTERMEDIATE

Day Students' Club.

ARYAN



CHRISTINE MOODIE MOYER

"Chris"

193 W. RIVER ST., WILKES-BARRE, PA.

INTERMEDIATE

Poster Club; Hockey, '27; Y. W. C. A.; Science Club; C. A. M. Club.

ARYAN





HELEN DORA MOYER  
*"Dolly"*  
 388 SECOND AVE., PHOENIXVILLE, PA.

PRIMARY  
 Archery; Day Students' Club; Y. W. C. A. ARYAN



DOROTHY A. MULLEN  
*"Dol"*  
 508 FIRST AVE., PARKESBURG, PA.

PRIMARY  
 Glee Club; Y. W. C. A.; Hostess Club. ARYAN



DOROTHY E. MURRAY  
*"Dot"*  
 347 BRIDGE ST., SPRING CITY, PA.

PRIMARY  
 Archery; Day Student' Club; Y. W. C. A. ARYAN



ISABEL IRMA MURRAY  
*"Isie"*  
 242 W. MAIN ST., COATESVILLE, PA.

INTERMEDIATE ARYAN



RUTH ELIZABETH MUSCHILITZ  
*"Mushy"*  
 327 SUMMIT ST., BETHLEHEM, PA.

PRIMARY  
 C. A. M. Club. ARYAN



SARA M. MYERS  
 CHALFONT, PA.

INTERMEDIATE  
 Y. W. C. A. ARYAN



ESTHER A. NICHOLSON

"Esth"

1631 WYOMING AVE., SCRANTON, PA.

INTERMEDIATE

ARYAN

Lackawanna Co. Club; Fire-Lieutenant; Y. W. C. A.; Swimming,



MARGARET ROSE O'NEILL

"Peg"

3927 W. 10TH ST., CHESTER, PA.

PRIMARY

MOORE

Book Club; Delaware Co. Club; Chester Student Teachers' Club; Y. W. C. A.



VALERIE MARIE OSOLIN

"Val"

136 GRAND AVE., FOREST CITY, PA.

INTERMEDIATE

MOORE

Y. W. C. A.



HELEN BEATRICE PALMER

115 SCHANK AVE., PENN. ARGYLE, PA.

PRIMARY

ARYAN

Y. W. C. A.



LILIAN PARKER

"Lil"

901 SIXTH AVE., Mt. KEESPORT, PA.

PRIMARY

MOORE

Archery; Tennis; Swimming; Herodotus Club.



HELEN O. PARKS

1907 FAIRVIEW AVE., EASTON, PA.

PRIMARY

ARYAN

Y. W. C. A.; Poster Club; C. A. M. Club.





RUTH ANNABETH PARMER  
R. D. No. 2, COCHRANVILLE, PA.

RURAL  
Rural Club.

MOORE



ROBERTA DEWEEES PATON  
"Bert"

205 GREENWOOD AVE., AMBLER, PA.

INTERMEDIATE  
Montgomery Co. Club.

ARYAN



DOROTHY M. PATTERSON  
"Dot"

DALLAS, PA.

PRIMARY  
Glee Club; Travelers' Club; Y. W. C. A.; Swimming; Social Service Club.

ARYAN



HELEN ELIZABETH PAWLING  
218 CHARLES ST., GOATESVILLE, PA.

INTERMEDIATE  
Day Students' Club; C. A. M. Club.

ELIZABETH WILSCOMBE PEDLOW  
"Betty"

711 W. 7TH ST., CHESTER, PA.

ADVANCED PRIMARY 14  
Hostess Club; Y. W. C. A.; Student Government; Swimming; Secretary, Aryan Society.

ARYAN



JANE GRACE PEIRCE  
BIDDLE ROAD, PAOLI, PA.

PRIMARY  
Day Student' Club.

ARYAN



MARTHA MAE PENNYPACKER  
ELVERSON, PA.

RURAL

MOORE

Rural Club; Scientific Club; Hostess Club; Fire-Brigade.



DOROTHEA ELIZABETH PENROSE  
"Dottie"

120 S. HIGH ST., WEST CHESTER, PA.

PRIMARY

ARYAN

Day Students' Club; Tennis; Swimming.



DOROTHY ELLEN PENSYL  
"Dot"

ELYSBURG, PA.

RURAL

ARYAN

Library Club; Y. W. C. A.; Rural Club.



IDA MAE PHILLIPS  
"Phil"

356 GROVE ST., SCRANTON, PA.

INTERMEDIATE

ARYAN

Basketball, '27; Baseball, '27; Publicity Committee of New Year's Dance; Lackawanna Co. Club; C. A. M. Club.



RUTH BERGER PHILLIPS  
"Boots"

536 W. SECOND ST., HAZELTON, PA.

INTERMEDIATE

ARYAN

Y. W. C. A.; Glee Club; C. A. M. Club; Track.



BETTY PICKETT  
"Bet"

6117 COLUMBIA AVE., WEST PHILADELPHIA, PA.

PRIMARY

ARYAN

Travelers' Club; Y. W. C. A.; Swimming; Tennis.





ALEXANDRA BONNER POESHEY

"Bonnie"

ROSLYN HES., LONG ISLAND, N. Y.

PRIMARY

MOORE

Y. W. C. A.; Archery.



MARIE HARRIET POWELL

1405 LINDEN ST., SCRANTON, PA.

PRIMARY

ARYAN

Lackawanna Co. Club.



SARAH REBECCA PRICE

"Sally"

36 S. POTOMAC AVE., WAYNESBORO, PA.

INTERMEDIATE

ARYAN

Glee Club; C. A. M. Club; Y. W. C. A.; Miss Cherry Blossom; Hostess Club.



ZELDA J. PRINSKY

"Zee"

629 MAIN ST., AVOCA, PA.

PRIMARY

ARYAN

Swimming; Track; Lackawanna Co. Club; Chester Student Teachers' Club; Poster Club.



JEAN E. PUGH

"Jeanie"

925 N. SECOND ST., HARRISBURG, PA.

INTERMEDIATE

ARYAN

Glee Club; Y. W. C. A.



RUTH ELIZABETH PURDY

"Rufus"

DALTON, PA.

PRIMARY

ARYAN

Lackawanna Co. Club; Glee Club; Book Club; Y. W. C. A.

FLORENCE KATHARINE PUSEY

*"Kitten"*

1428 POWELL ST., NORRISTOWN, PA.

INTERMEDIATE

ARYAN

Montgomery Co. Club; Frosh Frolic Committee; Poster Club; President; SERPENTINE Staff; Fall Formal Committee; Student Council; Minnet.



PHILENA EDNA PUSEY

*"Phil"*

COATESVILLE, PA.

PRIMARY

ARYAN

Bowling; Basketball, '28; Volleyball, '27; Archery; Y. W. C. A.



CHARLOTTE E. PYLE

109 SO. SIXTH ST., DARBY, PA.

PRIMARY

MOORE

Y. W. C. A.; Basketball, '27; Delaware Co. Club; Hostess Club



MARY PAULINE RANK

*"Rankie"*

136 N. EAST ST., WILLIAMSTOWN, PA.

INTERMEDIATE

ARYAN

Swimming; Chester Student Teachers' Club.



ELEANOR ROSE RAUZI

*"El"*

36 So. WYOMING ST., HAZLETON, PA.

INTERMEDIATE

MOORE

Glee Club; Hostess Club; Swimming.



WINIFRED FRANCES REDINGTON

*"Winnie"*

14 STERLING AVE., WILKES-BARRE, PA.

PRIMARY

ARYAN

Track; Y. W. C. A.; Baseball; Poster Club; Fire Brigade.





MARGERITE GRACE REMALEY  
*"Peggy"*

1812 FAIRVIEW AVE., EASTON, PA.

INTERMEDIATE ARYAN  
 Campus History Club; Y. W. C. A.; Baseball, Captain; Girl  
 Scouts; Library Club.



CHARLOTTE AGNES REPERT  
*"Bunnie"*

1037 TILGHMAN ST., ALLENTOWN, PA.

PRIMARY ARYAN  
 Lehigh Co.; Y. W. C. A.; Glee Club.



ELIZABETH RICKABAUGH  
*"Betty"*

MAIN ST., MILLERSTOWN, PA.

PRIMARY ARYAN  
 Y. W. C. A.; C. A. M. Club; Basketball.



EDITH RICHWINE

445 W. MAIN ST., NEW HOLLAND, PA.

INTERMEDIATE ARYAN  
 Day Students' Club.



MIRIAM MAE HILDT  
*"Mim"*

44 N. SECOND ST., EMACUS, PA.

PRIMARY ARYAN  
 Y. W. C. A.; Lehigh Co. Club; Educational Club.



RUTH ANNA RINEHART

R. D. NO. 3, POTISTOWN, PA.

INTERMEDIATE MOORE  
 Y. W. C. A.; Travelers' Club; Science Club; Campus History  
 Club.

FRANCES ADELINE RINEHIMER  
647 CAREY AVE., WILKES-BARRE, PA.

INTERMEDIATE  
Y. W. C. A.

ARYAN



MILDRED ANNA RITTER  
"Sis"

1845 FERRY ST., EASTON, PA.

INTERMEDIATE  
Glee Club; Hostess Club; Y. W. C. A.

MOORE



LOUISE PERSON RITTERSBACH  
85 HANOVER ST., WILKES-BARRE, PA.

INTERMEDIATE  
Y. W. C. A.

ARYAN



EMMA CATHERINE ROBINHOLD  
PORT CLINTON, PA.

PRIMARY  
Campus History Club; Schuylkill Co. Club; Swimming; Y. W. C. A.

ARYAN



MARTHA CATHERINE ROBINHOLD  
"Martie"

MAIN ST., PORT CLINTON, PA.

INTERMEDIATE  
Schuylkill Co. Club; Campus History Club; Y. W. C. A.

ARYAN



MARGARET MAY ROBINSON  
"Peg"

HONEY BROOK, PA.

INTERMEDIATE  
Y. W. C. A.; Scientific Club; Hostess Club.

MOORE





EVELYN ALICIA RODGERS  
*"Buddy"*  
 QUAKERTOWN, LANCASTER CO., PA.

RURAL ARYAN  
 Rural Club; Y. W. C. A.; Girl Scouts.



GRACE E. ROHLFING  
*"Gracy"*  
 710 NORTH ST., EAST MAUCH CHUNK, PA.

PRIMARY MOORE  
 Campus History Club; Y. W. C. A.; Book Club; Educational Club; Library Club.



ROSELLA ROSENBERG  
*"Patsy"*  
 149 MAIN ST., RIDGWAY, PA.

PRIMARY MOORE  
 Archery; Volleyball; Book Club; Y. W. C. A.; Swimming; Baseball.



HELEN EVA ROTHENBERGER  
*"Tabby"*  
 R. F. D. No. 1, PROGETOWN RD., TEMPLE, PA.

INTERMEDIATE MOORE  
 Y. W. C. A.; Book Club; Campus History Club; Swimming.



MARGARET D. ROUNSLEY  
*"Peggy"*  
 MILLERSTOWN, PA.

INTERMEDIATE ARYAN  
 Basketball; Swimming; Y. W. C. A.; Hockey; C. A. M. Club.



MIRIAM REBER RUTH  
*"Mim"*  
 317 PENN AVE., SINKING SPRING, PA.

PRIMARY ARYAN  
 Basketball, '27; Track, '27; Y. W. C. A.; Baseball, '27



MARGARET MARY SANDERS

*"Peg"*

358 BUTLER ST., DUNMORE, PA.

PRIMARY

C. A. M. Club; Y. W. C. A.; Lackawanna Co. Club.

MOORE



NATALIE GEORGETTE SAYLOR

*"Nat"*

122 ALBEMARLE AVE., LANSDOWNE, PA.

PRIMARY

Delaware Co. Club; Day Students' Club.



RUTH SAYLOR

*"Saylor"*

29 PRICE ST., WEST CHESTER, PA.

PRIMARY

Glee Club; Montgomery Co. Club; Y. W. C. A.



MARY ELIZABETH SCANLAN

*"Scan"*

1139 W. CENTRE ST., SHENANDOAH, PA.

PRIMARY

Schuylkill Co. Club; Swimming.

MOORE



MARIE CORA SCHANLEY

101 S. WALNUT ST., BOBERTOWN, PA.

INTERMEDIATE

Y. W. C. A.; Travelers' Club.

MOORE



BETTY FAFF SCHICK

*"Betty"*

338 PEACE ST., HAZELTON, PA.

INTERMEDIATE

Glee Club; Social Service Committee; Y. W. C. A.

MOORE





RUTH EVELYN SCHOSER

"Ruthie"

337 RUTTER AVE., KINGSTON, PA.

INTERMEDIATE

ARYAN

Y. W. C. A.; Poster Club; Swimming.



CATHERINE VIOLA SCHROLL

"Kit"

1632 E. MARKET ST., YORK, PA.

INTERMEDIATE

ARYAN

York Co. Club; Christmas Play, '27; Girl Scouts; Y. W. C. A.



MARY LOUISE SEIBERT

"Syr"

371 E. SOUTH ST., WILKES-BARRE, PA.

PRIMARY

ARYAN

Swimming; Baseball, '28; Track, '27; Y. W. C. A.; Student Council; Dramatic Club; Poster Club; Library Club; Educational Club.



ANNE SELL

"Selly"

107 CONWAY AVE., NARBERTH, PA.

PRIMARY

ARYAN

Day Students' Club; Hockey; Track.



VALERIA CHARLOTTE SELLERS

"Val"

GOSHEN APTS., WEST CHESTER, PA.

PRIMARY

ARYAN

Day Students' Club.



BEATRICE M. TOLL

"Bee"

1129 CHESTNUT ST., DARBY, PA.

INTERMEDIATE

ARYAN

Y. W. C. A.; Delaware Co. Club.

DOROTHY ALETHEA SHARP  
"Dottie"

1023 LINCOLN HIGHWAY, COATESVILLE, PA.

INTERMEDIATE

Day Students' Club; C. A. M. Club.

ARYAN



ELEANOR MAE SHAWFIELD  
"Shawfie"

1619 DERRY ST., HARRISBURG, PA.

PRIMARY

Poster Club; Swimming; Y. W. C. A.

MOORE



ESTHER ISABELLA SHEAFFER  
"Est"

206 MARKET ST., HIGHSPIRE, PA.

PRIMARY

Y. W. C. A.; Hostess Club.

MOORE



DOROTHY STOVER SHELLY  
"Dottie"

71 HILLSIDE AVE., SOUTHERTON, PA.

INTERMEDIATE

Y. W. C. A.; Basketball, '28; Baseball, '29; Montgomery Co. Club.

ARYAN



FRANCES CONSTANCE SHEMA  
"Fay"

1015 N. MAIN ST., FOREST CITY, PA.

INTERMEDIATE

Hiking; Y. W. C. A.; Basketball; Swimming.

MOORE



EMMATINE SHERK  
"Emmy"

235 N. 14TH ST., HARRISBURG, PA.

PRIMARY

Glee Club; Book Club; Debating, '27; Y. W. C. A.

ARYAN





HANNAH MARY SHONTZ  
*"Hans"*  
 45 MARSHALL ST., SHAMOKIN, PA.

INTERMEDIATE MOORE  
 Y. W. C. A.: Swimming Club; Basketball.



MARJORIE RUTH SINGER  
*"Marlie"*  
 413 E. LANCASTER AVE., ST. DAVIDS, PA.

PRIMARY ARYAN  
 Delaware Co. Club; Day Students' Club; Y. W. C. A.: Book  
 Club; Educational Club; Tennis, Basketball.



MADÉLINE L. SITTLER  
*"Madgy"*  
 1917 GREEN ST., ALLENTOWN, PA.

INTERMEDIATE ARYAN  
 Glee Club; Lehigh Co. Club; Y. M. C. A.: Campus History  
 Club; Hostess Club.



MARIE TERESA SLAMON  
*"Slamon"*  
 318 N. WASHINGTON ST., WILKES-BARRE, PA.

PRIMARY ARYAN  
 Traditional Club; Travelers' Club.



ARLENE SARA SMITH  
*"Smitty"*  
 113 W. GOEPP ST., BETHELEHEM, PA.

INTERMEDIATE ARYAN  
 Glee Club; Basketball; Baseball; C. A. M. Club.



RUTH IRENE SMITH  
*"Smitty"*  
 600 SHARPLESS ST., WEST CHESTER, PA.

INTERMEDIATE  
 Day Students' Club; Bowling.

THELMA IRENE SMITH

*"Miff"*

1178 MURRAY ST., FORTY FORT, PA.

INTERMEDIATE

ARYAN

Chester Student Teachers' Club; Glee Club; Swimming.



VERA COOPER SMITH

*"Junie"*

8 W. DEWART ST., SHAMOKIN, PA.

INTERMEDIATE

ARYAN

Y. W. C. A.; Hostess Club; Swimming.



MIANA RUTH SOMERS

*"Miami"*

R. D. NO. 4, QUAKERTOWN, PA.

INTERMEDIATE

ARYAN

Day Students' Club; Y. W. C. A.



LELLIS SPEAKMAN

*"Spunky"*

OAKBORNE, PENNSYLVANIA

INTERMEDIATE

Hockey; Day Students' Club; Basketball; Baseball; Track.



CATHARINE McVEY SPENCER

*"Katy"*

615 WOODLAND AVE., CHELTENHAM, PA.

RURAL

ARYAN

Hockey; Rural Club; Y. W. C. A.



ANNA MAY SQUIRE

*"Squire"*

330 PROSPECT ST., PHOENIXVILLE, PA.

INTERMEDIATE

MOORE

Y. W. C. A.; Poster Club; Day Students' Club.





RAE ARCHER STEWART

*"Rae"*

715 OGDON AVE., DREXEL HILL, PA.

PRIMARY

Delaware Co. Club; Poster Club; Y. W. C. A.

ARYAN



MARGARET MARY STRAUSSER

*"Peggy"*

307 LAUREL ST., POTTSVILLE, PA.

INTERMEDIATE

Hostess Club; Schuylkill Co. Club; Y. W. C. A.

MOORE



MARY JANE STRAYER

*"Janey"*

139 LINDEN AVE., RUTLEDGE, PA.

INTERMEDIATE

Delaware Co. Club; Day Students' Club; Educational Club.



JUANITA ALICE STUBY

*"Stubby"*

117 WEAVER ST., CLEARFIELD, PA.

PRIMARY

Y. W. C. A.; Educational Club.

ARYAN



LILLIAN MARIE SULLIVAN

*"Big L"*

273 CUMBERLAND ST., HARRISBURG, PA.

PRIMARY

Student Council; Hostess Club; Educational Club; Swimming; Y. W. C. A.

ARYAN



MARY ELIZABETH SULLIVAN

*"Little L"*

273 CUMBERLAND ST., HARRISBURG, PA.

PRIMARY

Chester Student Teachers' Club; Swimming; Y. W. C. A.

ARYAN

ANNA SUPPLEE

"Ann"

CEDARS, PENNSYLVANIA

RURAL

Rural Club; Baseball; Archery; Bowling; Girl Scouts; Montgomery Co. Club; Y. W. C. A.



ETHEL LOUISE SWANSON

"Swance"

LUDLOW, PENNSYLVANIA

INTERMEDIATE

MOORE

Campus History Club; Y. W. C. A.; Book Club; Educational Club; Library Club.



ANN MAY THOMAS

"Tommy"

KIMBERTON, PENNSYLVANIA

INTERMEDIATE

ARYAN

Y. W. C. A.; Hockey; Book Club; Baseball; Poster Club.



MARTHA ESTHER THOMAS

"Marty"

247 MELROSE AVE., E. LANSDOWNE, PA.

INTERMEDIATE

Delaware Co. Club; Day Students' Club.



MARY LEARY THOMAS

WIND GAP, PENNSYLVANIA

PRIMARY

ARYAN

Y. W. C. A.; Girl Scouts.



M. THOMAZINE THOMAS

"Tommy"

WHITFORD, PENNSYLVANIA

PRIMARY

ARYAN

Hockey; Swimming; Bowling; Poster Club; (Curator) SERPENTINE Staff; Track; Social Service; "Y" Religious Committee; Y. W. C. A.





ALTA FRANC THOMPSON  
"Al"

RANSOM, PENNSYLVANIA

RURAL ARYAN  
Rural Club (Treasurer); Vice-President, Lackawanna Club;  
Hostess Club; Y. W. C. A.; Fire-Lieutenant.



MAMIE J. TIEMANN  
"Tiemie"

BOX 23, FRAZER, PA.

PRIMARY ARYAN  
Tennis; Swimming; Day Students' Club.



ETHEL ELIZABETH TOMLINSON  
"Tommy"

LANGHORNE, PENNSYLVANIA

PRIMARY ARYAN  
Y. W. C. A.; Bucks Co. Club.



DOROTHY TRIMMER  
"Dot"

LOGANVILLE, PENNSYLVANIA

INTERMEDIATE  
Day Students' Club; York Co. Club.



ANNA MARIE TROUT  
"Ann"

309 MAUCH CHUNK ST., POTTSVILLE, PA.

INTERMEDIATE MOORE  
Schuylkill Co. Club (Pres.); Y. W. C. A.; Library Club.



REGINA M. FICZAK  
"Jean"

430 S. 7TH ST., READING, PA.

PRIMARY MOORE  
Y. W. C. A.; Chester Student Teachers' Club.



MARY FAY VANCE

"Fannie"

155 BROAD ST., MONTGOMERY, PA.

PRIMARY

ARYAN

Frosh Frolic Committee; Chairman, Social Committee; Fall Formal Committee; Y. W. C. A.; Book Club.



WILMA ALICE VANNOY

"Billy"

LINCOLN UNIVERSITY, PA.

RURAL

ARYAN

Rural Club; Girl Scouts; Hostess Club; Athletics.



MILDRED M. VANDEVER

"Mild"

CHADDS FORD, PA.

PRIMARY

ARYAN

Day Students' Club; Y. W. C. A.; Chester Student Teachers' Club.



LOUISE MARTHA VEIT

276 CHURCH ST., EASTON, PA.

PRIMARY

ARYAN

Hockey, '28, '29; Track, '27, '28, '29; Y. W. C. A.



MARY ELIZABETH VOLTZ

"Dittie"

120 SHARPLESS ST., WEST CHESTER, PA.

INTERMEDIATE

MOORE

Day Students' Club; Y. W. C. A.



THERESA CECILIA WAGMAN

"Terry"

428 E. MAIN ST., DALLASTOWN, PA.

INTERMEDIATE

ARYAN

York Co. Club; Book Club; Little Theater Players.





FLORENCE HELEN WAGNER  
*"Floss"*

367 THIRD AVE., PHOENIXVILLE, PA.

INTERMEDIATE

Y. W. C. A.; Day Students' Club.



GERTRUDE MARIE WALKER  
*"Trudie"*

515 LUZERNE ST., SCRANTON, PA.

INTERMEDIATE

MOORE

Glee Club; Lackawanna Club; C. A. M. Club; Swimming.



GRACE M. WALKER  
*"Walker"*

NEWTOWN, PA.

RURAL

ARYAN

Rural Club; Bucks Co. Club; Y. W. C. A.; Swimming.



Z. FRANCES WALKER  
*"Fran"*

NEW CENTERVILLE, PA.

INTERMEDIATE

ARYAN

Library Club; Y. W. C. A.; Chairman, Systematic Giving Committee.



GLADYS K. WAMPOLE  
*"Glad"*

176 W. BROAD ST., TELFORD, PA.

INTERMEDIATE

ARYAN

Y. W. C. A.; Bowling; Montgomery Co. Club.



EVELYN F. J. WATSON  
*"Er"*

29 S. CHURCH ST., WEST CHESTER, PA.

RURAL

ARYAN

Day Students' Club; Y. W. C. A.; Rural Club; Swimming.

CLARE VIRGINIA WHITELEY  
"Al"

11 SHOEMAKER ST., FORTY FORT, PA.

INTERMEDIATE

ARYAN

Glee Club; Basketball; Chester Student Teachers' Club.



JOSEPHINE DUNN WHITTEN  
"Jo"

140 MONTOUR AVE., JOHNSTOWN, PA.

INTERMEDIATE

MOORE

Y. W. C. A.; Campus History Club; Herodotus Club.



M. GRACE WIBLE  
"Wibble"

THREE SPRINGS, PA.

INTERMEDIATE

ARYAN

Y. W. C. A. (Publicity Committee); Poster Club; Travelers' Club; Library Club; Debating Club.



MARY ELIZABETH WIEGNER  
505 TILGHMAN ST., ALLENTOWN, PA.

INTERMEDIATE

ARYAN

Glee Club; Orchestra; Y. W. C. A.; Lehigh Co. Club; Swimming.



ALICE FLORENCE WILLIAMS  
"Al"

403 CHESTNUT AVE., KINGSTON, PA.

INTERMEDIATE

ARYAN

Y. W. C. A.; Glee Club; Swimming.



AUDREY D. WILLIAMS  
"Oddly"

262 E. CHURCH ST., NANTICOKE, PA.

INTERMEDIATE

ARYAN

Y. W. C. A.; Swimming Club; Social Service; Chester Student Teachers' Club.





JESSIE E. WILLIAMS

"Jess"

304 HARRISON AVE., SCRANTON, PA.

PRIMARY

ARYAN

Lackawanna Co. Club; Basketball (Capt.); Hockey; Swimming; Fire-Brigade; Y. W. C. A.



KATHRYN F. WILLIAMSON

"Kitty"

1314 ASTOR AVE., NORRISTOWN, PA.

INTERMEDIATE

ARYAN

Hostess Club; Social Service Committee; Glee Club; Montgomery Co. Club, Secretary; Y. W. C. A.



RUTH D. WILLIS

"Willie"

723 N. LINCOLN AVE., SCRANTON, PA.

INTERMEDIATE

ARYAN

Basketball; Lackawanna Co. Club; Secretary and Treasurer C. A. M. Club; Science Club; Hockey; Y. W. C. A.



ESTHER MAE WILLITS

"Esther"

MOHRSVILLE, PA.

INTERMEDIATE

MOORE

Glee Club; Library Club; Y. W. C. A.; Educational Club.



JULIA MORT WILSON

"Jule"

R. D. No. 3, COATESVILLE, PA.

INTERMEDIATE

ARYAN

Y. W. C. A.; Hostess Club; Little Theatre Players.



MILDRED MAY WISE

"Mir"

17 SECOND ST., MINERSVILLE, PA.

INTERMEDIATE

ARYAN

Y. W. C. A.; Travelers' Club; Tennis; Swimming; Girl Scouts; Hostess Club; Schuylkill Co. Club.

MAE ELSIE WITMYER

"Matty"

29 GRANBY ST., MANHEIM, PA.

INTERMEDIATE

Hostess Club; Y. W. C. A.

ARYAN



CATHERINE CLAIRE WOODS

"Kitty"

LOCUST GAP, PA.

PRIMARY

Y. W. C. A.; Schuylkill Co. Club; Swimming Club; Travelers' Club; Herodotus Club.

MOORE



FLORENCE C. WOODWARD

"Flo"

MEXICO, PA.

PRIMARY

Glee Club; Y. W. C. A.; Cherry Blossom.

ARYAN



FLORENCE MARIE WOOLBERT

CHURCH ST., DALLAS, PA.

INTERMEDIATE

ARYAN



HELEN JEANNETTE WRIGHT

"Lefty"

30 LOOMIS PARK, WILKES-BARRE, PA.

INTERMEDIATE

Y. W. C. A.; Swimming Club; Social Service; Chester Student Teachers' Club.

ARYAN



FANNIE YAROWSKY

"Fay"

21 N. MAIN ST., SHENANDOAH, PA.

PRIMARY

Chester Student Teachers' Club; Schuylkill Co. Club.

ARYAN





SARA JANE ZEBLEY

*"Sally"*

BOOTHWYS, PA.

RURAL

ARYAN

Rural Club; Y. W. C. A.; Delaware Co. Club; Fire-Captain; Archery.



GRACE ROSEMARY ZECHMAN

*"Gracia"*

423 W. BROAD ST., TAMAQUA, PA.

PRIMARY

ARYAN

Y. W. C. A.; Schuylkill Co. Club; Poster Club.



MARION DONNA ZENDT

219 E. BROAD ST., SOUDERTON, PA.

INTERMEDIATE

ARYAN

Glee Club; Montgomery Co. Club; C. A. M. Club.



FLORENCE WEINMAN

*"Floss"*

816 BOULEVARD AVE., DICKSON CITY, PA.

INTERMEDIATE

ARYAN

Book Club; Y. W. C. A.





## SENIOR CLASS HISTORY

**I**N THE fall of 1925 a class entered the West Chester State Normal School. In June of 1927 a large number of that class were graduated. In 1928 a smaller number of that same class left the school, and now there are only a few of us left. Last year, however, we acquired some new recruits, the first-year people of the two-year course. There are about five hundred of us now who expect to be graduated in 1929.

Those of us who came four years ago have never been quite certain in our own minds as to what class we belonged. We came as Sophomores to discover two years later that we had been only Freshmen. Our third year we called ourselves Seniors because we had been here longer than anyone else. This year we really are Seniors and are organized as such with "Ned" Hopkins, president; "Joe" Hanselman, vice-president; Alice Lehecka, secretary, and Marian Lewis, treasurer.

In our four years we have seen many eventful happenings in the history of the school. Probably the two most important of these have been the erection of the Philips Memorial Chapel, with all that it has meant to the life of the school, and the great development of the West Chester State Normal School into the State Teachers College at West Chester. With this change came the power to grant the B.S. degree in Junior High School Education. The power to grant that degree is the reason that some of us came back for our fourth year. We have the honor of being the first group to receive this degree as a class.

Last year when we returned to find ourselves a college, we promptly celebrated by installing Freshman Regulations. These were abolished this year as an unnecessary part of college life.

The untimely illness and death of our principal, Doctor Andrew Thomas Smith, brought us all a period of grief and sorrow. The College continued under the leadership of an acting principal, Dean Lester Ade, until the inauguration of our new principal, Doctor Norman W. Cameron.

Football is one of the first activities that come to the minds of all students when they return to college in the fall. The two spectacular games of the 1927 season were the games with Shippensburg and with Stroudsburg. Stroudsburg beat us, but that leads me immediately to this year's season. A very successful one it was with a victory over Stroudsburg at the end. The attendance at that game broke all records.

Our grandstand was filled to overflowing. This was the first year that we did not play Shippensburg and so all our enthusiasm was centered on beating Stroudsburg. We had a parade through the town of West Chester the Monday following the game. The burning of the bonfire was to take place in the evening, but it was discovered that someone



had burned the wood for us. We simply postponed the bonfire again, this time until the night before Thanksgiving Vacation. After a huge bonfire, the cremation of the Captain of the Stroudsburg team, and many speeches(?) by the football men, everyone went to Recreation Hall and danced to "Russ" Shuttlesworth's Orchestra until eleven o'clock.

After Thanksgiving was over, we began to think of Christmas. An outstanding memory of our Junior Year is "Why the Chimes Rang," a Christmas Play sponsored by the York Country Club and participated in by members of almost every department in the College. This tradition is that a Christmas Play is to be given each year. This year's play "A Night in Bethlehem," was quite as successful as the preceding one.

Immediately following the Christmas Play was the Christmas Carol Service. It seems impossible to those of us who saw and heard the Carol Service this year that it can ever be much lovelier.

The Senior Prom this year came right after the Christmas Vacation on Saturday night, January 12. It was a clear, cold, night, the kind that gives every one "pep" for a good dance. When we entered Recreation Hall, we found that "Russ" Shuttlesworth's Orchestra was seated in the midst of a very attractive winter scene with a beautiful moon above them. The dance was a huge success as "Senior Proms" usually are. Although there were many many people there, everyone managed to find a place on the dance floor and a place to rest during intermission. The only trouble with Senior Proms is that they come only once a year.

The major part of our program for some time now will be studying. All our teachers have become very "Collegiate" in their assignments since we have been made into a college and they keep us well occupied.

It will seem strange not to come back next year. It has become a habit with us. Although we shall not be able to be here all together again, nevertheless, many of us will be back often to see how college life is progressing without our help.

LOUISE MUELLER.

## CLASS WILL

WE, THE Class of 1929, being of sound mind, well-disposed in spirit, and being cognizant of the propinquity of the final curtain of our glorious school career, feel impelled to endow the world in general, and the Class of 1930, West Chester State Teachers College, in particular, with the austere robe of seniority and the sable cloak of potential knowledge which we have worn, not discredibly, during our stay in this temple of culture. Therefore, we, the Class of '29, make the following bequests to the beneficiaries herein named:

1. To the coming athletes we contribute the "spirit of the gridiron," so nobly attained by "Ned" Hopkins, "Speed" Jones, and "Mickey" Bales.

2. "Jess" and "Suey's" public affection to "Sherry" and "Scottie."

3. The sole ownership of the famous "Flanzaeli Quartette," with its bows, mutes, and strings to "Uncle Ned".

4. Mary Vance, a cop in the halls, leaves her position to the "less quiet committee."

5. "Joe" Hanselman's, "gift to the women" we humbly bequeath to Charles Zambetti.

6. "Bob" Moyer's college store, with all rights reserved, to Wilmer Kunkle.

7. "Sonny" leaves her "sunny" disposition to "Migs" Terhune.

8. "Joe" Kleckner's supernatural strength to "Chick" Eggert.

9. Ruth Alpert leaves her belief in the policy that "dresses should be long enough to cover the subject and short enough to be interesting," to "Mitzie".

10. "All the world's a stage," but half of us are only stage hands. Rasbridge is a dandy one and he leaves his ability to "Mark" Ramaley.

11. "Madge" Bell leaves her library of two books, "How to Get Them," and "How to Keep Them," to "Becky".

12. "Danny" Rambo's "corrective waiter's technique" to "Fifi," alias "Jimmy" Akiens.

13. "Willie", "Jess", and "Mim" leave their basketball ability to "Mickey", "Roper", and Mary Oyster.

14. To the on-coming members of the *York Country Club* the privilege of serving the girls' dorms with Sunday morning breakfast so that they may avoid the rush in the dining room.

Lastly, we give, devise, and bequeath to those who are to relieve us of our command, all those inherent qualities of astute senility which have enabled us to round out our lives so copiously with deeds well done, with success achieved, and with a name established.

*Class of 1929.*

—S. LOUISE MILLER,

—NORMAN HEINTZELMAN.

# CLASS CALENDAR

## SEPTEMBER

*" . . . Creeping like snail unwillingly to school."*

*Monday, 10*—Registration for Freshmen assisted by faculty members and student councilors. Voice tests were in order with the resulting discovery that just as "all that glitters is not gold" so all that are Irish are not tenors.

*Tuesday, 11*—Welcome to the Freshmen.

The day was devoted to entertaining the newcomers. Dean Anna Smith was hostess at luncheon and members of the faculty presided at the separate tables. Later in the afternoon a band concert was given.

*Wednesday, 12*—Registration for Upperclassmen.

*Thursday, 13*—All classes began and with the beginning of more serious things "Freshman week", an innovation this term, ended.

*Friday, 14*—The adviser-advisee reception was held in Recreation Hall. Big sisters "escorted" little sisters. The Purple and Gold Dance Band made a rather unofficial debut.

At the same time the Y. M. C. A. sponsored a "get-together party" for the young men of the school in the gymnasium.

*Saturday, 15 and Sunday, 16*—A busy week concluded by the first week-end at school. The predominant feeling seemed to be "Oh, to be home again, home again, home again!" (Fields)

*Saturday, 22*—The Moore Literary Society presented its annual play, this year a comedy in three acts entitled "A Full House". We shall not soon forget Mary Louise Boyle's interpretation of "Susie", a maid from Sioux City.

*Saturday, 29*—The football team played its first game at home on a muddy field and a decidedly wet day. The opponent was the Elizabethtown College Team and the score 18-0 our favor.

In the evening the Aryan Literary Society gave its annual Play. It was a hair-raising mystery this year—"The Mystery of Third Gable".

## OCTOBER

*"October is the opal month of the year."—Beecher.*

*Tuesday, 2*—The first Open Forum of the year was held. Elizabeth Rauch presided.

*Thursday, 4*—Dr. and Mrs. Cameron gave a reception to members of the faculty and their wives. The receiving line formed in the beautiful library of the Philips Memorial building. Several women students assisted Mrs. Cameron by serving and the music was furnished by a student orchestra.

*Friday, 5*—A "pep meeting" was held in the auditorium in preparation for the first annual game of the football season.

*Saturday, 6*—The team went to Hill School to play. Although the day was too warm for football, such a small item seemed not to bother the boys, for they returned victorious with the score 12-7.

A "Victory dance" was held in Recreation Hall in the evening.

*Friday, 12*—The football team in company with Coach McGovern left for Bloomsburg after an unusually well attended pep meeting.

*Saturday, 13*—The football game at Bloomsburg took our interest some distance away from West Chester. Many of our students attended the game and returned to school with excellent reports of the way in which our team "beat Bloom" 13-0.

*Saturday, 20*—The victim of the football team was the Lafayette "Frosh" team, the score 12-7. Everyone was particularly proud of the boys after this victory because it is a well known fact that from the Freshman team next year's varsity is made.

The evening was the occasion of the Moore Anniversary. Mark Sullivan and Veronica Sweigart, two distinguished West Chester alumni, presented an interesting and worthwhile program. After the program there was dancing in Recreation Hall until twelve o'clock.

*Saturday, 27*—Villa Nova "Frosh" came out to go down to defeat, 7-6

*Wednesday, 31*—The annual Hallowe'en party was held in Recreation Hall. The "Purple and Gold Dance Band" played for the dancing. The many school clowns had an opportunity to dress the part, and in this particular case did not fail to "seize" that opportunity. Prizes were awarded to the persons making the "cutest" couple and for the most original costume.

## NOVEMBER

*"What moistens the lips and what brightens the eye?*

*What calls back the past like the rich pumpkin pie?"*

—Whittier.

*Saturday, 3*—More football! Beekley Business College traveled down from Harrisburg to play a losing game, 24-7.

*Saturday, 10*—The team played Millersville State Teachers College and was victorious again, 6-0.

In the evening Lowell Thomas, "romantic world traveler, adventurer and author" gave his illustrated lecture entitled "Into Forbidden Afghanistan". The narrative of his adventures was most fascinating.

*Monday, 12*—The school observed Armistice Day during the Chapel period, after which classes were dismissed until 1:30 P. M. so that students might witness the parade "uptown". Rain prevented many people from venturing away from the campus, however.

*Saturday, 17*—The concluding game of the season was played on Wayne Field against an old rival, Stroudsburg State Teachers College. The score, 13-0, determined that the State Teachers College Championship of Pennsylvania be awarded to West Chester.

The "Fall Formal", the first formal dance of the year, was held in the evening.

*Monday, 19*—All classes ended at 12:10 P. M. After a very peppy "pep" meeting the student body paraded through the town, which parade terminated on Wayne Field. Due to unfavorable weather, the lumber, which the Wayne Hall "frosh" had gathered, was left to be used next day.

There was dancing in Recreation Hall in the evening to cap the climax of an almost perfect celebration.

*Tuesday, 20*—1:30 A. M. (or thereabouts) all the "frosh's" efforts went up in smoke! Some unknown persons had a bonfire all their own which not only utilized our firewood but caused the town fire-force to come out with all speed.

*Friday, 23*—Our desire for a bonfire was finally gratified. At 6:30 P. M. students and faculty gathered on the north side of Wayne Field to see an effigy of "Stroud" thrown into a huge fire. The coach and members of the team made fitting speeches (?) amid much cheering and applause.

A farewell dance was held in Recreation Hall afterward.

*Saturday, 24*—Thanksgiving vacation began.

## DECEMBER

*"At Christmas play and make good cheer,  
For Christmas comes but once a year"*

—*Tusser.*

*Monday, 3*—Vacation ended at 4 P. M.

*Tuesday, 4*—Classes.

*Monday, 17*—Faculty Christmas party.

*Tuesday, 18*—Christmas activities began in earnest. The Christmas play, "A Night in Bethlehem", was presented by the Departments of Art, English, and Music and the York County Club. Such a play is given every year just before Christmas vacation as a memorial to Cora E. Everett, who was head of the Department of Oral English from 1896 to 1924.

*Wednesday, 19*—The students' Christmas party was held in Recreation Hall. "Speed" Jones as Santa Claus distributed appropriate gifts. There was dancing until 11:30.

*Thursday, 20*—The annual White Supper and Christmas Carol Service were held. The singing of the solo part of "O Holy Night" is always a senior honor and privilege and this year was done most beautifully by Annos Evans.

Christmas vacation began after a busy three weeks.

## JANUARY

*Wednesday, 2*—We came back to school to begin the New Year with many good intentions. Have those resolutions been kept?

*Thursday, 10*—All available fighting space was taken up by "crammers" about this time.

*Saturday, 12*—The first formal dance of 1929—the "New Year Dance".

*Saturday, 19*—The fall semester ended and was fittingly celebrated by going to bed early and rising late.

*Friday, 25*—The "English Singers" gave a program in the auditorium. No one seemed to be successful in discovering which of the six lovely voices was responsible for the giving of the pitch, but we all enjoyed the concert in spite of that. This was one of the outstanding musical events of the year.

## FEBRUARY

*Saturday, 16*—Charles Beckler from the Mask and Wig club of the University of Pennsylvania entertained us with ventriloquism, interpretations, and various wise statements concerning members of the student body.

*Saturday, 22*—Dr. Charles Payne gave an illustrated lecture on the "Wonders of the Great Northwest". His films were those of scenery not seen by the casual and average traveler.

## MARCH

*" 'Twas Easter-Sunday. The full-blossomed trees  
Filled all the air with fragrance and with joy."*

—*Longfellow.*

*Saturday, 2*—The Moore and Aryan societies debated the question: "A Department of Education should be established with a Secretary in the Presidents' cabinet according to the Curtis-Reed Bill. The Aryan society, which had the affirmative side, won the favorable decision.

*Friday, 8*—The Music Faculty gave a recital, which is an annual event. Everyone enjoys hearing our faculty members demonstrate their ability.

*Friday, 15*—The Health Education Majors gave a demonstration in the Philips Memorial auditorium. All the events showed skill and a large amount of practice and hard work. The Indian club drill was especially well done.

*Saturday, 16*—The Junior Class sponsored a St. Patrick's dance in Recreation Hall. The decorations and other details were more elaborate than ever before. The green lights were the cause of much "complexion" worry by the girls.

*Friday, 22*—Captain McMillan, the famous Arctic explorer, gave an illustrated lecture about the Far North and the work he and his helpers are attempting to do.

*Saturday, 23*—Easter vacation began with raids almost as violent on the family ice-box as on the family pocketbook.

## APRIL

*"April showers bring May flowers"*

*Friday, 5*—Representatives of the Philo-Mathean Society from Shippensburg State Teachers College debated with the Moore Society of our College the same question that the Aryans and the Moores had debated,—*Resolved,*

That a Department of Education Should be Established with a Secretary in the President's Cabinet according to the Curtis-Reed Bill. Our team was unanimously victorious.

*Saturday, 6*—The Aryan Society sponsored two one-act plays, "Tradition" and "Where But In America". Members of the Little Theatre Players directed the plays.

*Saturday, 20*—The Frosh Frolic was held in Recreation Hall.

*Friday, 26*—The students of the Music department presented their annual concert.

## MAY

*"As it fell upon a day  
In the merry month of May."*

*Saturday, 4*—The College Girls' Glee Club gave a concert.

*Saturday, 11*—Play Festival "all over the grounds".

*Thursday, 23*—The Senior Class Play, "Dear Brutus", by Sir James Barrie, was given for the benefit of the undergraduate students.

*Saturday, 25*—Alumni Day.

*Sunday, 26*—Baccalaureate.

*Monday, 27*—Class Day—Class Day Exercises were held in the afternoon. In the evening the Senior Play, "Dear Brutus", coached by Miss Tyson, was given for the seniors and their friends.

*Tuesday, 28*—The Commencement Exercises, the grand finale to two or four years of hard work, were held in the Philips Memorial Auditorium.



*First Row*—Michael Bales, William Benner, John Dalton, Joseph Hanselman,  
*Second Row*—Emmatine Sherk, Mary Vance, Margaret Joyce, Charles Rasbridge, Elizabeth  
 Pedlow, Helen McCollom, Louise Muller.

## SENIOR PLAY CAST

*From the Play "Dear Eratus"*

MARGARET . . . . .	<i>Elizabeth Pedlow</i>
ALICE DEARTH . . . . .	<i>Louise Muller</i>
JOANNA PURDIE . . . . .	<i>Margaret Joyce</i>
MABEL . . . . .	<i>Helen McCollom</i>
MRS. COADE . . . . .	<i>Mary Vance</i>
LADY CAROLINE LANEY . . . . .	<i>Emmatine Sherk</i>
DEARTH . . . . .	<i>Charles Rasbridge</i>
LOB . . . . .	<i>John Dalton</i>
MATEY . . . . .	<i>Joseph Hanselman</i>
PURDIE . . . . .	<i>Michael Bales</i>
COADE . . . . .	<i>William Benner</i>





XMAS PLAY "*A Night in Bethlehem*"



## WASHINGTON RECEPTION

LACES, frills, and memories were delightfully brought to the Students on the afternoon of Washington's Birthday. Recreation Hall was the scene of activities. Everyone was cordially received by the class officers who portrayed George and Martha Washington; John Adams and his wife. The other members of the receiving line were Mrs. Norman Cameron, Mrs. Robert Anderson, Miss Lida J. Low, Miss Dorothy Ramsey and Miss Margaret A. Kreisher. One of the lovely traditions of our college is to have the minuet danced at the Washington Reception. At exactly three, our ears caught the strains of Mozart's Minuet. Four young maidens bedecked in typical colonial costumes, escorted by four young men arrayed in silks and white wigs, created, by their picturesque dance, an atmosphere that was most delightful. As a fitting climax, tea was served by members of the Senior Class. These girls also wore costumes suitable for the occasion. Mrs. Norman, Miss Lida J. Low, and Mrs. La Verne Irvine poured tea. A most enjoyable musical program consisting of piano, violin, cello, and flute furnished the entertainment during the tea.

The curtains were again drawn aside at eight o'clock for the finale of this gala occasion. But instead of the quaint dress and music which characterized the activities of the afternoon, we were greeted by the blare of the saxophone, and by the colorful variety of modern dress.

One cannot overlook the work done by one of our faculty members. Much of the success of this annual event should be attributed to Miss Margaret A. Kreisher, a tireless worker, whose efficient and creditable work has made this social function one of the most outstanding events of the year.

IDA MAE PHILLIPS.



MINUET DANCERS

N. Heintzelman, M. Sweeley, W. Benner, K. Pusey, M. Bales, L. Sullivan, D. Rambo, B. Jones



WASHINGTON RECEPTION COMMITTEE

# SENIOR HONOR ROLL



## GROUP I

RUTH B. ALPERT  
MILDRED I. BELL  
CATHERINE R. BRENNER  
ELIZABETH J. CHASE  
DOROTHY S. GRIM  
LOUISE J. MILLER  
BETTY PICKETT  
NATALIE C. SAYLOR  
RUTH SAYLOR  
EMMATINE SIERK  
REGINA M. UPCZAK  
GRACE R. ZECHMAN

## GROUP II

FREDA E. ADLER  
MILDRED I. BENDER  
LIBBYE T. BENNETT  
DOROTHY BICKEL  
GLADYS L. DAUTLE  
ALICE V. GRAYBILL  
RUTH H. HOLLENBACH  
GRACE E. HUGHES  
MARGARET C. JOYCE  
CARRIE V. KEMMERER  
HELEN L. MCCOLLAM

MARGARET J. McQUAIDE  
ARLENE S. SMITH  
VERA C. SMITH  
CLARE V. WHITELY  
RUTH D. WILLIS

## GROUP III

HAZEL R. ANDERSON

## GROUP IV

HOWARD A. CRESSMAN  
ELIZABETH HARRISON  
HERMAN SPECTOR

## GROUP V

MICHAEL S. BALES  
DAVID C. LEWIS  
BERNICE E. SUNDEL

## GROUP VI

LOUISE G. MULLER  
MAXINE R. SWEETLEY





JUNIOR CLASS



*Top Row—Gwendolyn Webster, Frederick Orth  
Bottom Row—Lillian Reusch, Evelyn Oyler*

## JUNIOR CLASS

### OFFICERS

FREDERICK ORTH	<i>President</i>
LILLIAN REUSCH	<i>Vice-President</i>
GWENDOLYN WEBSTER	<i>Secretary</i>
EVELYN OYLER	<i>Treasurer</i>

*Faculty Adviser, CLARENCE L. MCKELVIE*

*Motto—"Vincit Omnia Veritas"*

*Colors—Red and White*

*Flower—Red Rose*

## JUNIOR CLASS HISTORY

*"Yesterday is but today's memory and Tomorrow is today's dream."*

IN THE dimness of that memorable past, the epochal fall of '26 assumes gross importance as marking the entrance into this institution of those who have attained the rank of juniors. Of that great group of timid, unsophisticated, incoming students, about six score or more elected the three-year course.

Having recognized the value of unification, this group organized itself as the Sophomore Class, and thus avoided the stigma of the usual entrance appellation. Although the class suffered a rather uncertain identification as a unit, class officers were elected. Under their capable direction, remarkable abilities began to be asserted. In every organization and extra-curricular activity, a large class representation predicted the commendable future which would be theirs.

At the end of this episodic first year, it was rumored that the class expectations of becoming Juniors were highly jeopardized. Although they had been registered in a three-year course, the faculty and administration recognized the advisability of retaining such a remarkable group within its portals. They, therefore, decreed that a four-year course should be instituted, which would automatically force the Sophomore Class to continue their affiliation a year longer than had been anticipated.

It was natural that such an announcement should meet with opposition from the students and from the homes represented. However, with the realization of the greater opportunity afforded, the class unanimously acquiesced, and felt recompensed in being honored as the second class upon which the degrees of Bachelor of Science should be conferred.

Having been rechristened Sophomores, the second-year Junior High, Music Supervision, and Health Education groups elected officers. These were: Leo Atkinson, president; Fred Orth, vice-president; Frances Garis, secretary, and Dorothy Diehl, treasurer. A ring committee was also appointed, but due to a new ruling, the class was unfortunately barred from purchasing the ring selected.

Certainly last year was marked by the transformation in the Alma Mater. The class has been fortunate in witnessing the change to a State Teachers College, and the inauguration of its new president, Dr. Cameron. Each one has left its marked impression upon the members of the class.

Finally, this year, the coveted distinction of Juniors has been attained. With Fred Orth, Lillian Reusch, Evelyn Oyler, and Gwyn Webster officiating, the class accomplishments have been unbounded. It can be boastfully claimed that many of the envied "Who's Who" on the campus identify themselves with the Class of 1930. In athletics, music, debating, dramatics, and in all club activities the career of the Junior class has been one of leadership.

Now on the eve of their "tomorrow", they stand anxiously but confidently awaiting the dawn of what promises to be their most profitable and successful year. "The day has ended. It is closing upon them, even as the water lily upon its own tomorrow."

RUTH JOHNSON.

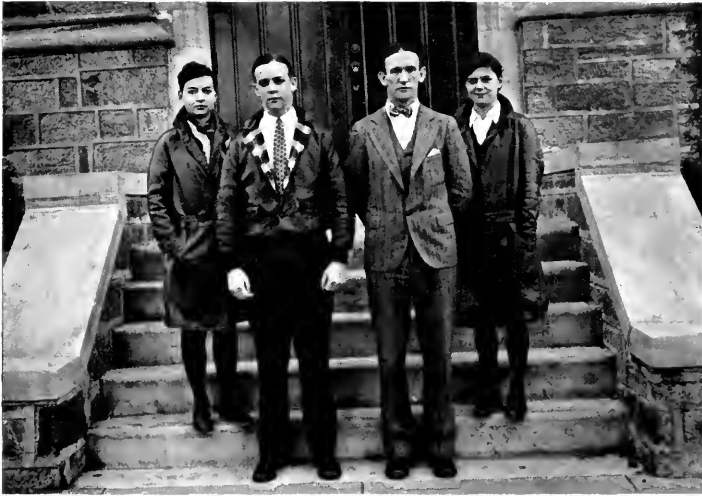


SOPHOMORES





SOPHOMORE CLASS



*Left to Right— Ethel Breitinger, R. Alexander, H. Pearl, D. Assip*

## SOPHOMORE CLASS

### OFFICERS

ROBERT ALEXANDER	<i>President</i>
HERBERT PEARL	<i>Vice-President</i>
ETHEL BREITINGER	<i>Secretary</i>
DOROTHY ASSIP	<i>Treasurer</i>

#### *Faculty Advisers*

JAMES F. MACGOVERN

CHARLES S. SWOPE

*Motto—"Docendo Discimus"*

*Colors—Blue and White*

*Flower—Sweet Pea*

## SOPHOMORE CLASS HISTORY

WE HAVE the honor of being the first and only class to have endured Freshman Regulations at the State Teachers College at West Chester. Soon after we arrived in the fall of 1927, our girls were forced to wear black lisle stockings and green head bands and were forbidden to wear cosmetics and hair pins. The boys wore stunning(?) dinks and black ties (didn't Tommy Clouser look cute in his artist's tie?) and they had to carry plenty of matches for the convenience of the mighty upper classmen.

All "Criminals" were severely punished. Therefore, many of the girls spent innumerable week-ends on the campus at the suggestion(?) of Dot Stevenson and her "wrecking crew" on the Enforcement Court.

The boys were caught breaking rules too.—wasn't it Charley Eggert who wore shoes on his hands one morning, and walked over to Chapel "ON ALL FOURS", for punishment?

But the Upper Classmen (God Bless Them!) soon broke down under the strain of seeing our campus so utterly marred by the "Wearing and Tearing of the Green," so at the end of October we were free again.

Immediately we cast aside our green bands ("Roper" still wears hers, though) and Sip Breiting'er's ears were once more free to flap in the breeze.

In the "Song-Yell Contest" for the Freshmen, Anne Coyle won the winning yell and Harry Haigh, the winning song, for which each received a prize.

We Freshmen soon showed our superiority in athletics by winning the Health Educational Hockey Tournament.

Our Class was organized and the following officers were elected:

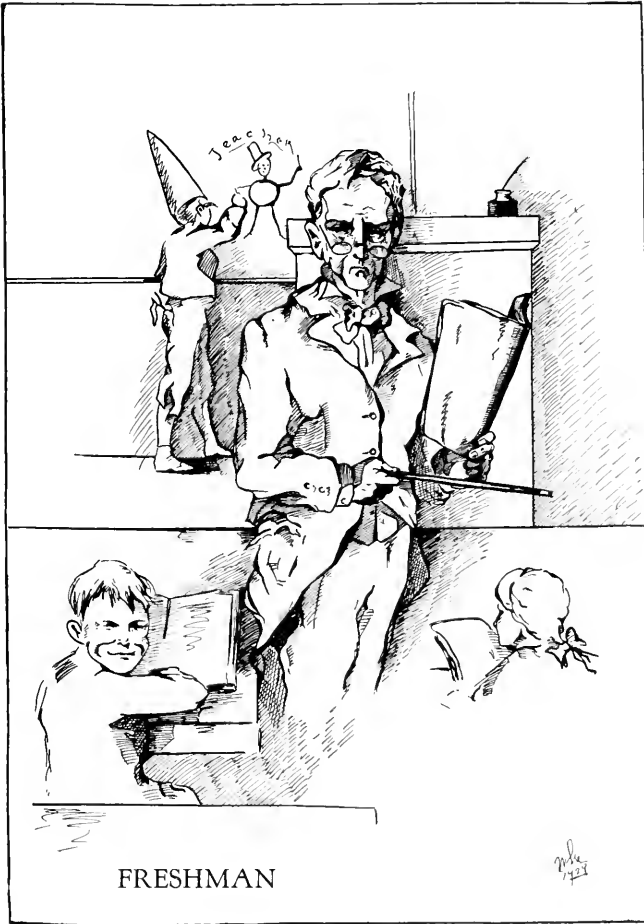
ROBERT ALEXANDER.....	<i>President</i>
HERBERT PEARL.....	<i>Vice-President</i>
ARVONIA HUMPHREYS.....	<i>Secretary</i>
BETTY LAMB.....	<i>Treasurer</i>

The climax of our Freshman year was in the form of our "Fresh Frolic," held on April 28. The dance was well attended and everyone had a "lingering" desire after the strains of the final number were played by Ted Brownagle and his Orchestra.

The enthusiasm of the dance soon subsided and before long we were afflicted with final exams. Those who recovered are Sophomores now.

We are a year older (and, needless to say, twelve months wiser), absolutely immune to home sickness, and we are delighted with the satisfaction of knowing that we are no longer the "Baby Class."

MARTHA COOPER.



FRESHMAN



FRESHMAN CLASS



*Bottom Row—R. Morrison, V. Wells, J. F. Kenny  
Top Row—J. R. Wagner*

## FRESHMAN CLASS

### OFFICERS

ROBERT WILLIAM MORRISON	President
JOHN FRANCIS KENNY	Vice-President
JOHN RUSSELL WAGNER	Treasurer
VIRGINIA WELLS	Secretary

*Motto—Let Deeds Prove*

*Colors—Steel and Blue*

*Flower—Lily of the Valley*

### *Faculty Advisers*

MISS HARRIET ELLIOTT

L. FORREST FREE

## FRESHMAN HISTORY

AS A representative of that "Sophisticated Freshman Class," I come before you to tell you from whence we spring and the goal that we expect to attain. One bright day, September 10, 1928, a group of white-faced and quivering young people, apparently lost in the new surroundings, stood before the yawning portals of W. C. S. T. C.

After the awesome task of registering, it wasn't so hard. That evening we were introduced to the school yells and songs.

*Tuesday, September 11, 1928:*

- 8:00 A. M.— 12:00—Achievement tests. How awful!
- 12:30—Faculty Luncheon to the Freshmen.  
Chicken!
- 2:00 P. M.— 2:45—Orientation Discussion.
- 2:45 P. M.— 3:30—Library Instruction Talk.—Now we know———.
- 8:00—Moving Pictures.

*Wednesday, September 12, 1928:*

- Falks all day—
- We know all about the school—.
- 7:00—Step singing and how we enjoyed it.

*Thursday, September 13, 1928:*

- Classes started, and we Freshmen wandered and strayed!

*Friday, September 14, 1928:*

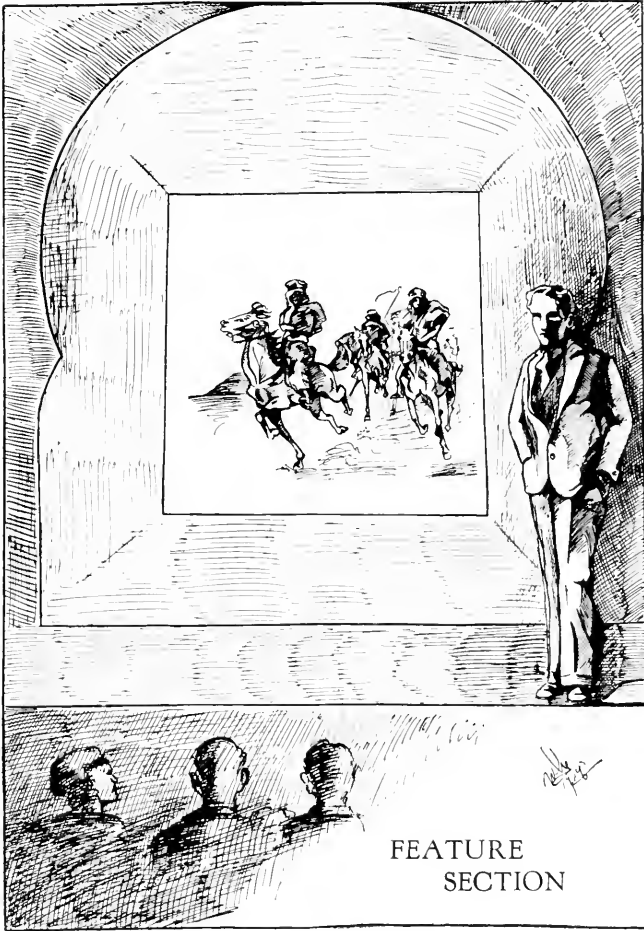
- Adviser-Advisee Reception. Wasn't it nice?

*Wednesday, January 6, 1929:*

- With the new year, our first class meeting. We are on our way, to a destination still strange to us.

ELIZABETH FRANCIS.





FEATURE  
SECTION



*Most Beautiful Girl*  
MISS M. LOUISE EMERSON



*Most Popular Boy*  
CHARLES WEIDNER



*Most Popular Girl*  
MISS MARY OYLER



ORGANIZATIONS



WOMEN'S STUDENT GOVERNMENT—FIRST SEMESTER

1st Row Left to Right—L. Sullivan, R. Eicherly, E. Maltby, E. Rauch, M. Lawbach, R. Walker, K. Pusey  
 2nd Row Left to Right—H. Evans, A. Graybill, M. Gleason, J. Ellinger, L. Emerson, E. Pedlow  
 3rd Row Left to Right—E. Davies, M. Seibert, R. Evans, E. Loree, A. Humphries, M. Vance, A. Lebecka

## WOMEN'S STUDENT GOVERNMENT

### SECOND SEMESTER

ELIZABETH RAUCH	.	.	.	.	.	.	.	.	.	President
MARY VANCE	.	.	.	.	.	.	.	.	.	Vice-President
DOROTHY PATTERSON	.	.	.	.	.	.	.	.	.	Secretary
MARIAN LEWIS	.	.	.	.	.	.	.	.	.	Treasurer

*Faculty Advisers*

MISS ANNE E. SMITH, Dean  
 MISS ALICE SCHRIVER

MISS MARGARET KREISHER  
 MISS ELSIE O. BULL

MISS BERNICE MUELLER

### COURTS AND COMMITTEES

ELIZABETH RAUCH, <i>Chairman</i>	LOIS HAUCK	LOUISE MUELLER, <i>Rec.</i>
DOROTHY PATTERSON	<i>High Court</i>	LOUISE CALDWELL
MARY VANCE, <i>Chairman</i>	<i>Low Court</i>	MARIAN LEWIS
JESSIE WILLIAMS, <i>Rec.</i>	DOROTHY ROPER	ELIZABETH LAMB
MARY VANCE, <i>Chairman</i>	<i>Quiet Committee</i>	EMMATINE SHERK
MARTHA COOPER	MARJORIE SINGER	
ANITA GALICO, <i>Chairman</i>	<i>Lobby Committee</i>	
	KATHERINE BRENNER, <i>Chairman</i>	ELIZABETH ALLEN
	<i>Social Committee</i>	
	DOROTHY NASH	LOUISE KAUFFMAN
	<i>Repairs Committee, ESTELLA GOTTSCHALL</i>	
	<i>Specials, RUTH WILLIS</i>	
	<i>Card-Filing</i>	
EVA TRUNK	MARY JENKINS	
"J" Room, LILLIAN REUSCH		



WOMEN'S STUDENT GOVERNMENT—SECOND SEMESTER

1st Row Left to Right—M. Cooper, H. Hart, K. Bremner, E. Rauch, E. Allen, E. Gottshall, A. Guadelo

2nd Row Left to Right—L. Kauffman, E. Trunk, M. Lewis, M. Vance, D. Roper, E. Lamb

3rd Row Left to Right—L. Reusch, M. Wilson, M. Singer, L. Hauck, D. Nash

4th Row Left to Right—L. Caldwell, L. Mueller

## WOMEN'S STUDENT GOVERNMENT

### FIRST SEMESTER

ELIZABETH RAUCH  
EDITH MALTBY  
MARGORY LAUBACH  
LUCY KELLY

*Family Advisers*

*President*  
*Vice-President*  
*Secretary*  
*Treasurer*

MISS ANNE E. SMITH, *Dean*  
MISS ALICE SCHRIVER

MISS THELMA GREENWOOD  
MISS MARION FARNHAM

MISS ELEANOR SEARING

### COURTS AND COMMITTEES

*High Court*

ELIZABETH RAUCH  
MILDRED TERHUNE

MARY VANCE  
*Low Court*

RUTH WALKER, *Rec.*  
KATHRYN POSEY

ISABEL BRAY  
ALICE GRAYBILL, *Rec.*

JESSIE ELLINGER  
*Quart Committee*

ELEANOR DAVIES  
RUTH EVANS

ISABEL BRAY

EDITH MALTBY  
*Lobby Committee*  
MARY SEIBERT  
*Social Committee*  
MARY GLEASON  
*Repairs Committee*

MARY WILLIAMS

LUCY KELLY

ELIZABETH PEDLOW

MARY VANCE

MARGORIE LAUBACH

ELIZABETH LOVE

LILLIAN SULLIVAN

*Specials, ARYONIA HUMPHRIES*  
*Card-Filing, RUTH EICHERLY*  
*"T" Room, ALICE LEIBERKA*



MEN'S STUDENT GOVERNMENT

*Top Row Left to Right—H. Pearl, E. Hopkins, F. Orth*

*Bottom Row Left to Right—W. Ashburn, W. Thompson, N. Heintzelman, R. Richards, P. Oberholtzer*

# MEN'S STUDENT GOVERNMENT

## OFFICERS

NORMAN HEINTZELMAN . . . . .	<i>President</i>
WINFIELD THOMPSON . . . . .	<i>Vice-President</i>
RALPH RICHARDS . . . . .	<i>Secretary</i>
EDWARD M. HOPKINS . . . . .	<i>Senior Adviser</i>
PAUL OBERHOLTZER . . . . .	<i>Junior Councilor</i>
HERBERT PEARL . . . . .	<i>Sophomore Adviser</i>
FRED ORTH . . . . .	<i>Sophomore Councilor</i>
WILLIAM ASHBURN . . . . .	<i>Sophomore Councilor</i>





W. Longacre, D. Lewis, S. Morrison, D. Ramsey, H. Cressman, M. Sober, J. Mach, E. Maltbie,  
M. Unruh

## “THE PURPLE AND GOLD”

### STAFF

HOWARD CRESSMAN	.....	<i>Editor</i>
NILA BATES	.....	<i>Literary Editor</i>
SAMUEL MORRISON	.....	<i>Managing Editor</i>
HERMAN SPECTOR	.....	<i>Business Manager</i>
MARGARET SORBER	.....	
DAVID C. LEWIS	.....	
WILLARD CAMPBELL	} .....	<i>Assistant Business Managers</i>
ANITA QUALCO		
PAUL OBERHOLTZER		

*Faculty Adviser*

MISS DOROTHY RAMSEY



*Center to Right—C. Kraybill, E. Trunk, E. Oberender, M. Lee, L. Rensch, E. Berg, E. Reiff, M. Terhune, F. Walker, M. L. Boyle, B. Woolman, A. Roddy, F. Etter, M. Durak*

## Y. W. C. A.

CHARLOTTE KRAYBILL . . . . .	<i>President</i>
MILDRED UNRUH . . . . .	<i>Vice-President</i>
EVA TRUNK . . . . .	<i>Secretary</i>
EMILY REIFF . . . . .	<i>Treasurer</i>
ESTHER OBERENDER . . . . .	<i>Undergraduate Representative</i>



*First Row*—Paul Oberholtzer, Russel Shuttlesworth, Howard Cressman, Prof. Charles Swope,  
John Gerskey  
*Second Row*—Charles Cox, Herbert Pearl, William R. Benner, Roy Bergey

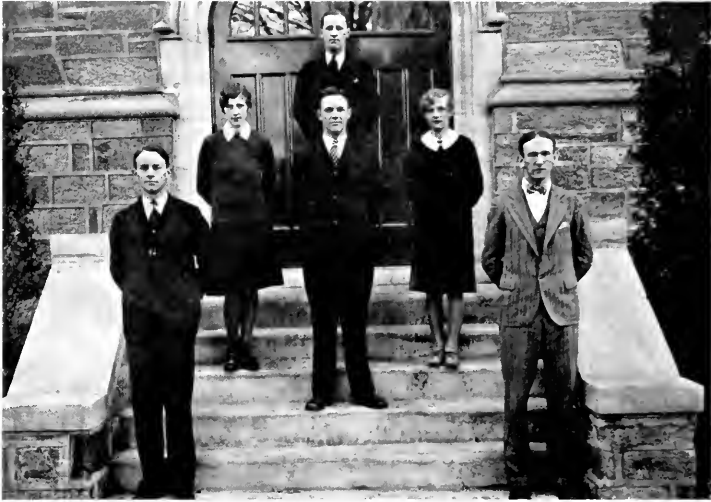
## Y. M. C. A.

HOWARD CRESSMAN .  
WILLIAM R. BENNER .  
ROY BERGEY .  
CHARLES F. COX .  
RUSSEL SHUTTLESWORTH .  
PAUL OBERHOLTZER .  
JOHN GURSKY .  
HERBERT PEARL .

*President*  
*Vice-President*  
*Secretary*  
*Treasurer*  
*Social Secretary*  
*Membership*  
*Music*  
*Publicity*

MR. CHARLES S. SWOPE, *Faculty Adviser*

*Aim*—To lead to a belief in God and promote Christian Fellowship  
which tend to a fuller enjoyment and realization of student life



*First Row—Andrew Bowdle, Herbert Pearl  
 Second Row—Louise Mueller, Charles Kennard, Elizabeth Pedlow  
 Third Row—John Dalton*

## ARYAN OFFICERS

### FIRST SEMESTER

JOHN DALTON . . . . .	<i>President</i>
HERBERT PEARL . . . . .	<i>Vice-President</i>
LOUISE MUELLER. . . . .	<i>Secretary</i>

### SECOND SEMESTER

CHARLES KENNARD . . . . .	<i>President</i>
ANDREW BOWDLE . . . . .	<i>Vice-President</i>
ELIZABETH PEDLOW . . . . .	<i>Secretary</i>

### *Faculty Advisers*

MISS E. O. BULL      MR. C. L. MCKELVIE      MR. CHARLES S. SWOPE

*Purpose—To improve the minds of the students by literary culture and to foster debate in the College*



ARYAN RUSH COMMITTEE

*First Row*—Elizabeth Pedlow, Andrew Bowdler, Ruth Johnson, Charles Kennard,  
Dorothy Stevenson

*Second Row*—William Benner, Marjorie Laubach, Leo Atkinson

*Third Row*—Russel Shuttlesworth



ARYAN DEBATERS

Howard Cressman, Helen Bear, Elizabeth Russell, Samuel Morrison





MOORE RUSH COMMITTEE

*First Row—* Gwendolyn Webster, David Lewis, Eugene Drakins, Lucille Fish  
*Second Row—* V. Gilbert, Charles Cox, Charles Weidner, Herbert McCollum, Margaret Joyce.



MOORE DEBATERS

Mabel McCord, Charlotte Kraybill, Margaret Joyce, Frank Henton



*Left to Right—Margaret Joyce, Margaret Sorber, Howard A. Cressman, Elizabeth Harrison*

## THE COLLEGE DEBATING TEAM

HOWARD CRESSMAN, *Captain*

MARGARET JOYCE

MARGARET SORBER

ELIZABETH HARRISON, *Alternate*

### DEBATING SCHEDULE

*Resolved*—That a National Department of Education be established, with a Secretary in the President's Cabinet, according to the Provisions of the Curtis-Reed Bill

March 2	. . . . .	Aryan Society vs. Moore Society
		<i>Decision</i> —Aryan Society—2, Moore Society—1
April 5	. . . . .	Moore Society vs. Shippensburg
		<i>Decision</i> —Moore Society—3, Shippensburg—0
April 13	. . . . .	Aryan Society vs. Millersville
April 19	. . . . .	College Team vs. Stroudsburg





## BOOK CLUB

### FIRST SEMESTER

NILA BATES	.....	<i>President</i>
RUTH JOHNSON	.....	<i>Vice-President</i>
ANNA GRAFF	.....	<i>Secretary</i>

### SECOND SEMESTER

KATHRYN YAKE	.....	<i>President</i>
RUTH JOHNSON	.....	<i>Vice-President</i>
ELIZABETH LOVE	.....	<i>Secretary</i>

#### *Faculty Advisers*

MISS MCCARTHY	.....	MISS GEYER
MRS. NEWMAN	.....	MISS CLARK

*Purpose*—To acquaint students with modern authors and their works



## DELAWARE COUNTY CLUB

### FIRST SEMESTER

EMILY CALN . . . . .	<i>President</i>
WANDA LONGACRE . . . . .	<i>Vice-President</i>
VIRGINIA McCracken . . . . .	<i>Secretary</i>
MARIE BUCHANAN . . . . .	<i>Treasurer</i>

### SECOND SEMESTER

MARGORIE SINGER . . . . .	<i>President</i>
MARGARET McILWAIN . . . . .	<i>Vice-President</i>
MARY PATTON . . . . .	<i>Secretary</i>
MAGDELEINE McCloskey . . . . .	<i>Treasurer</i>

*Faculty Adviser, MISS MARY E. CLARK*

*Aim*—To furnish a pleasant room in which a restricted number of commuters may eat their lunch, study, or rest, as they wish



## DAY STUDENTS' CLUB

### FIRST SEMESTER

CLARK ALLISON	<i>President</i>
ROBERT H. AX	<i>Vice-President</i>
BETTY McCORD	<i>Secretary</i>
BETTY DEVENNEY	<i>Treasurer</i>

### SECOND SEMESTER

ROBERT H. AX	<i>President</i>
ELIZABETH TERRELLS	<i>Vice-President</i>
ANNE SHERMAN	<i>Secretary</i>
BETTY SHAW	<i>Treasurer</i>

*Purpose*—To look after the interests of the Day Students



## FIRE BRIGADE

*Chief* . . . . . LOIS HAUCK  
*Assistant Chief* . . . . . ANITA GUALCO

### *Captains*

E. Leidick, M. MacHenry, M. Cooper, M. Unruh, G. Webster, E. Breitingner, H. Burkeholder, D. Roper, M. Buchanan, R. Laubach, R. White, V. Brian, W. Longacre, S. Zebley, A. Groff, E. Evans, F. Wilson, M. Miller, V. McCracken, D. Diehl, H. Airey, D. Asnip, F. Garis, R. Klinger, W. Redington

### *Lieutenants*

L. Leidich, E. Cullis, M. Castle, A. Decker, M. Hughes, L. Fisch, J. Keller, S. Kennedy, E. Nicholson, R. Koehler, E. Oyler, M. Lee, B. Schick, J. Williams, E. Shawfield, R. Parmer, B. Sundel, E. Leffler, M. Francis, R. Geisel, A. Thompson, D. Hungerford, L. Lynch, R. Smith, E. Dutton, B. Klausman, A. Shook

### *Patrol*

E. Reiff, M. Ransom, H. Jones, E. Eby, M. Curran, M. Davison, A. Keylar, M. Snyder, V. Smith, D. Renner, M. Oyler, M. Pennypacker, J. Landis, M. Ivry, C. Rhodes, E. Hursh, C. Koch, E. Swope, E. Oberrender, E. Gottschall, R. Hurst, K. Brenner, L. Miller

*Faculty Adviser*, MISS ANNA E. SMITH



## HOSTESS CLUB

### FIRST SEMESTER

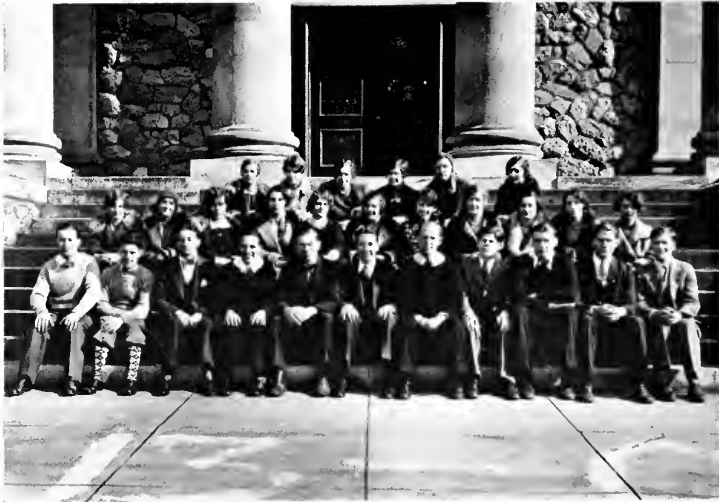
MARGARET EICHERLY	<i>President</i>
ARVONICA HUMPHREYS	<i>Vice-President</i>
ALTHEA FREY	<i>Secretary</i>

### SECOND SEMESTER

WANDA LONGACRE	<i>President</i>
DOROTHY ROPER	<i>Vice-President</i>
MARGARET GRAVES	<i>Secretary</i>

*Faculty Adviser, MISS ANNE E. SMITH*

*Purpose*—To make the dining room a cheerful place in which to eat  
and to promote proper table decorum



## HERODOTUS CLUB

### FIRST SEMESTER

MILDRED UNRUH	.....	<i>President</i>
WANDA LONGACRE	.....	<i>Vice-President</i>
PAULA SNYDER	.....	<i>Secretary</i>
BETTY McCORD	.....	<i>Treasurer</i>

### SECOND SEMESTER

JOSEPH THORNTON	.....	<i>President</i>
IRENE BEILMAN	.....	<i>Vice-President</i>
BETTY McCORD	.....	<i>Secretary</i>
JANE CATTERALL	.....	<i>Treasurer</i>

*Faculty Adviser, DR. CHARLES W. HEATHCOTE*

*Purpose*—To broaden its members' general knowledge and to develop greater interest in history



## LIBRARY CLUB

### FIRST SEMESTER

EMMA MYERS	.....	<i>President</i>
KATHRYN BRENNER	.....	<i>Vice-President</i>
ELIZABETH KEEN	.....	<i>Secretary</i>

### SECOND SEMESTER

MARCELLE IVORY	.....	<i>President</i>
ANNE DUTCHMAN	.....	<i>Vice-President</i>
ESTELLA LEFFLER	.....	<i>Secretary</i>

*Faculty Adviser, MISS ALICE A. COCKRAN*

*Purpose*—To furnish those who wish, further knowledge of the library



## LEHIGH COUNTY CLUB

### FIRST SEMESTER

ANITA GUALCO . . . . .	<i>President</i>
MARTHA HENRY . . . . .	<i>Vice-President</i>
MARTHA LEE . . . . .	<i>Secretary and Treasurer</i>

### SECOND SEMESTER

ANITA GUALCO . . . . .	<i>President</i>
MARTHA HENRY . . . . .	<i>Vice-President</i>
MARTHA LEE . . . . .	<i>Secretary</i>
RUTH HOLLENBACH . . . . .	<i>Treasurer</i>

*Faculty Adviser, MISS ALICE SCRIVER*

*Purpose—To aid in Americanization of foreign children in the West Chester High School*





## LACKAWANA COUNTY CLUB

### FIRST SEMESTER

MARY FRANCIS	President
ALTA THOMPSON	Vice-President
MARGARET KAYS	Secretary
RUTH EVANS	Treasurer

### SECOND SEMESTER

RUTH WILLIS	President
ALTA THOMPSON	Vice-President
ZELDA PRINSKY	Secretary
MARY SENKINS	Treasurer

*Faculty Adviser, MISS JOSEPHINE E. WILSON*

*Aim*—To foster the work of the Needlework Guild in the College



## THE LITTLE THEATRE PLAYERS

CHARLES RASBRIDGE, *President*

RUTH EVANS, *Vice-President*

RUTH WALKER, *Secretary*

EUGENE DEAKINS, *Treasurer*

### ADDITIONAL MEMBERS OF THE GOVERNING BODY

EVA TRUNK

MARGARET JOYCE

JOHN MACH

HOWARD SILLER

*Faculty Adviser, Miss DOROTHY RAMSAY*

*Purpose*—To bring to the student body of the college a higher type  
of dramatic art



## MONTGOMERY COUNTY CLUB

### FIRST SEMESTER

VIRGINIA BRIEN . . . . .	<i>President</i>
ALICE GRAYBILL . . . . .	<i>Vice-President</i>
KATHARINE WILLIAMSON . . . . .	<i>Secretary</i>
DOROTHY ASSIP . . . . .	<i>Treasurer</i>

### SECOND SEMESTER

ALICE GRAYBILL . . . . .	<i>President</i>
HARRY HAIGH . . . . .	<i>Vice-President</i>
MARION ZENDT . . . . .	<i>Secretary</i>
RALPH RICHARDS . . . . .	<i>Treasurer</i>

*Faculty Adviser, MISS THELMA J. GREENWOOD*

*Purpose*—To keep flowers in the infirmary; to take charge of Red Cross drive; and to take charge of sale of Christmas Seals



## POSTER CLUB

### FIRST SEMESTER

KATHARINE PUSEY . . . . .	<i>President</i>
MILDRED TERHUNE . . . . .	<i>Secretary</i>

### SECOND SEMESTER

MARGARET BURNS . . . . .	<i>President</i>
MILDRED McHENRY . . . . .	<i>Secretary</i>

*Faculty Adviser, Miss MARION FARNHAM*

*Purpose—To supply the College with posters*



## RURAL CLUB

### FIRST SEMESTER

MILDRED CASTLE	President
GESSIE GERHART	Vice-President
EVELYN BALLANTINE	Secretary
ALTA THOMPSON	Treasurer

### SECOND SEMESTER

LOIS CALDWELL	President
JESSIE GERHART	Vice-President
WILMA VANNOT	Secretary
MAE DREBLIS	Treasurer

#### *Faculty Advisers*

MR. ARTHUR CROMWELL                      MISS MARION FARNHAM

*Purpose*—To welcome back old members of the Rural Club



## SCIENCE CLUB

### FIRST SEMESTER

JOHN SULLIVAN . . . . .	<i>President</i>
EVERETT MORRIS . . . . .	<i>Vice-President</i>
ETHELENE SWOPE . . . . .	<i>Secretary</i>
DOROTHY ROPER . . . . .	<i>Treasurer</i>

### SECOND SEMESTER

JOHN SULLIVAN . . . . .	<i>President</i>
EVERETT MORRIS . . . . .	<i>Vice-President</i>
ETHELENE SWOPE . . . . .	<i>Secretary</i>
DOROTHY ROPER . . . . .	<i>Treasurer</i>

### *Faculty Advisers*

DR. JOHN C. JOHNSON                      MISS DOROTHY SCHMUCKER

*Purpose*—To keep in touch with and to discuss the important scientific movements of the day



## TRAVELERS' CLUB

### FIRST SEMESTER

JOSEPH THORNTON  
VINCENT RUSTIC  
HATTIE MASON

*President*  
*Vice-President*  
*Secretary*

### SECOND SEMESTER

RALPH DELUCCO  
MILDRED FURCH  
LILLIAN RUEUSCH

*President*  
*Vice-President*  
*Secretary*

#### *Faculty Advisers*

MISS H. A. ELLIOTT  
MISS LEONE E. BROADHEAD

*Aim*—To increase our knowledge and to promote the interest of Geography



## VALKYRIE CLUB

JULIA S. LANDIS . . . . . *President*  
MILDRED REAGAN . . . . . *Vice-President*  
MARDETTE WALTEP . . . . . *Manager*  
MARTHA COOPER . . . . . *Class Representative*

*Faculty Adviser*  
MISS BERNICE MUELLER





## WOMEN'S GLEE CLUB

VIRGINIA BRIAN . . . . . *President*  
MARTHA COOPER . . . . . *Vice-President*  
ELEANOR RUGH . . . . . *Secretary-Treasurer*

*Members of Executive Board*

MARY CHURCHILL . . . . . JOSEPHINE KELLY

*"Purple and Gold" Reporters*

ELIZABETH CHASE . . . . . JEAN CONNELLY

*Director, MISS MARIE HEINEMAN*

*Purpose*—To give the Academic students an opportunity for organized chorus work



## YORK COUNTY CLUB

### FIRST SEMESTER

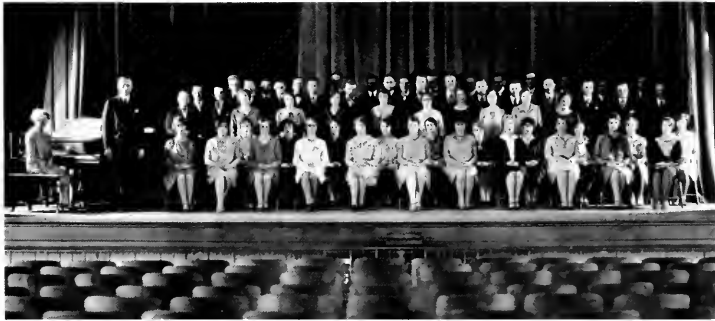
CATHERINE BRENNER . . . . .	<i>President</i>
S. LOUISE MILLER . . . . .	<i>Secretary</i>
LOUISE BECK . . . . .	<i>Treasurer</i>

### SECOND SEMESTER

THERESA WAGMAN . . . . .	<i>President</i>
S. LOUISE MILLER . . . . .	<i>Vice-President</i>
CHARLOTTE BOYER . . . . .	<i>Secretary</i>
KATHERINE SCHROLL . . . . .	<i>Treasurer</i>

*Faculty Adviser.* MISS ELSIE O. BULL

*Purpose*—To sponsor the annual Christmas play, to supervise and improve the property closet and to foster College spirit in the York County branch of the Alumni Association



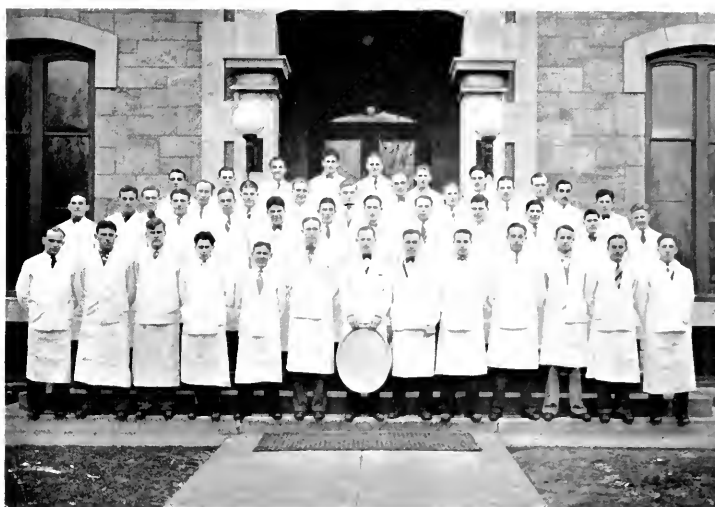
VESPER CHOIR

*Director, C. EDWARD HAUSKNECHT*



JUNIOR CHOIR

*Director, GERTIE DE K. SCHMIDT*



## WAITERS

*Head Waiter*

JOHN J. DALTON

*Assistant Head Waiters*

DAVID C. LEWIS

HERBERT PEARL

James Aikens  
 Robert Alexander  
 William Ashburn  
 Leo Atkinson  
 Andrew Bowdle  
 Burnell Buohi  
 John Callahan  
 Thomas Clouser  
 Charles Cox  
 James Crawford  
 Charles Cunningham  
 Eugene Deakins  
 LeRoy Dimm  
 Harry Donald  
 William Donnelly

Joseph George  
 Michael Gnido  
 Carl Hanky  
 William Henninger  
 George Hohenzelt  
 Edward Hopkins  
 William Jones  
 Irvin Kepner  
 John Mullarkey  
 Patrick Mazza  
 Monroe MacLean  
 Howard Moyer  
 Nathan Nichols  
 Frederick Orth  
 George Ramaley

Walter Ryan  
 Lindley Seltzer  
 Isaac Scott  
 Morris Singer  
 Harry Singer  
 William Smith  
 Winfield Thompson  
 Paul Trostle  
 Francis Tweed  
 Albin Yaskewicz  
 Clyde Yetter  
 William Ynevitch  
 Charles Zambetti  
 Dennis Zevney  
 George Zaengle



ATHLETICS



COACH MACGOVERN

**T**O UPHOLD the cherished athletic traditions and records is an important factor in the success of any college. It requires men to play on teams and a good coach. The latter is by far the more important. In this our college is fortunate. For the last five years James MacGovern, Ph.B., Muhlenberg, has been our athletic mentor.

To him may be ascribed many notable athletic victories. His athletic teams have always been a credit to our institution. He was successful in bringing the State Teachers College Basketball Championship to our campus in the 1928 season. This year his football team won the Eastern State Championship among the Teachers Colleges.

But the athletic victories, though numerous, are by no means the least of Coach MacGovern's achievements. His spirit of good fellowship and high sense of honor on the campus and field of battle have been instilled into the hearts and minds of all who have come in contact with him.

To you, maker of men, we extend our gratitude, unmeasured; our appreciation, deserved; and our wishes for the finest that life has to offer.

#### FACULTY COMMITTEE ON ATHLETICS

JAMES G. BLISS, Ph.D., *Chairman*

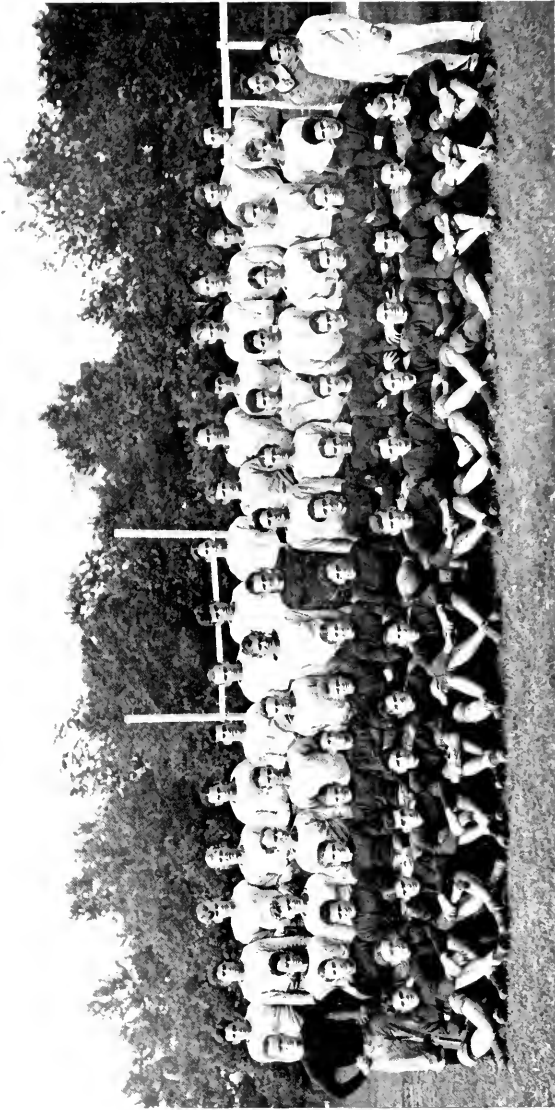
JAMES F. MACGOVERN, *Vice-Chairman* ALICE C. SCHRIVER, *Secretary*

JOHN R. HOLLINGER CHARLES SWOPE, A.B. MARY CONNELL, B.S.



LETTER MEN





FOOTBALL MEN

*1st Row Left to Right*—W. Rieff, H. Pearl, C. Hanks, A. Malloy, C. Cunningham, J. Kleckner, E. Deakins, W. Ryan, J. Doyle, V. Rustie, M. Singer,  
 R. Miazza, G. Ramaley, L. Dinn  
*2nd Row Left to Right*—J. MacGovern, *Coach*, M. Bales, M. Guido, G. Zaengle, A. Yaskewycz, F. Tweed, L. Atkinson, F. Orth, E. Hopkins, *Captain*,  
 C. Collins, H. Donald, H. Moyer, J. George, W. Thompson, J. Dalton, M. MacLellan, J. Akers, *Assistant Manager*  
*3rd Row Left to Right*—R. Kelly, T. Clonser, J. Mullerky, W. Suidh, R. Williams, C. Jones, S. Nichols, C. Cox, W. Ymcevitelli, P. Tristle, D. Lewis,  
 P. Boyd, M. Minsk, D. White, N. Pentzeldman, *Trainer*  
*4th Row Left to Right*—J. Crawford, B. Booth, C. Yetter, M. Dierick, W. Henry, H. Bondaman, W. Jones, H. Singer, A. Bogus, D. Zevney, W. Kunkle,  
 W. Conard, M. Free, W. Frumhle, V. Graham, H. Marvyl, C. Zambetti





"NED" HOPKINS, *Quarterback*  
*Captain*



# FOOTBALL

1929

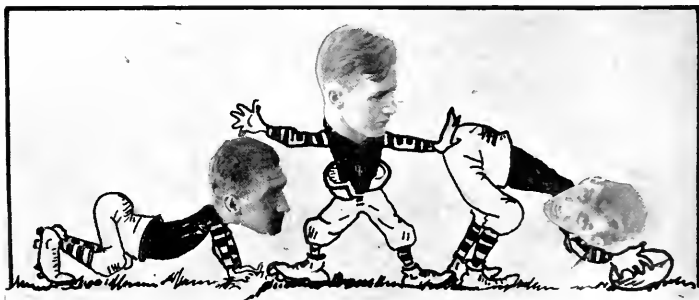
## ELIZABETHTOWN



"MICKEY" BALES  
*Right End*

ON SEPTEMBER 29, at 2:45 P. M., our Football Squad opened the 1928 Season on our own gridiron. A veritable sea of juicy mud and small lagoons of water, six to eight inches deep, greeted our boys and their worthy opponents from Elizabethtown College. It was very difficult to get an accurate estimate of our team. All of the players covered themselves with mud—and many with glory. A grandstand, packed to capacity, showed that not even a terrific rainstorm could dampen the spirit of a loyal Student body and it did much to gladden the hearts of the boys.

Captain Hopkins, Orth, Zangle and Bales were the boys who caused Coach MacGovern's face to beam with smiles and made him see visions of a glorious season. The final score was 18-0.





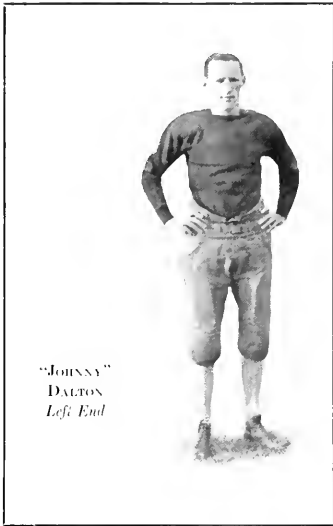
"SCOOP" COLLINS  
*Left Tackle*

## HILL SCHOOL

**S**ATURDAY, October 6, was real football weather. Coach MacGovern's protégés traveled to Pottstown for their first real test of the season. At the end of the first half the score was 7-6 in favor of Hill. It was in the second quarter of this game that Orth, receiving the kick-off after Hill had scored a touchdown, made one of the most beautiful and spectacular runs of the season. Behind perfect interference he carried that ball down the middle of the field for 75 yards and planted it on Hill's 5-yard line. From here it was easily pushed over for a touchdown.

Zangle and Dimm conspired in the last quarter for the final score. The game showed that West Chester had much good material, but that teamwork was necessary to develop a winning machine. Score 12-7, West Chester's second victory.





"JOHNNY"  
DALTON  
*Left End*

## BLOOMSBURG

**W**ITH two victories to their credit, with the College Band, and a hundred loyal rooters, our boys journeyed to Bloomsburg on Saturday, October 13, to give an exhibition of their football prowess.

It was decidedly an off day for both teams. Fumbles, intercepted passes, and poor punts coupled with a lack of smoothness resulted in a low score.

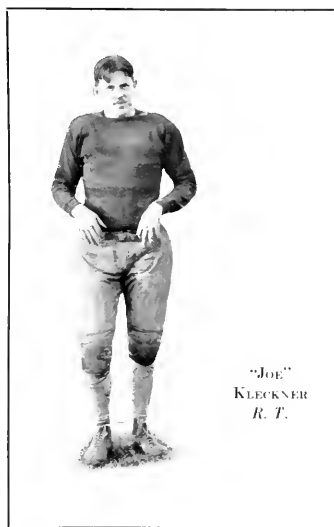
Two touchdowns for a total of 13 points were all that West Chester could put over; but it kept Bloomsburg from crossing its goal line even though the varsity team did rush the ball to the 12-yard line. Things looked rather menacing for the moment. Pearl's dependable toe booted the pigskin out of danger many times. In this game he proved conclusively that a good punter is a necessary cog in every backfield. Final score, 13-0.



LAFAYETTE COLLEGE  
FRESHMEN

WHEN the Lafayette College Freshman team invaded Wayne Field, the football fans were treated to some real football. Few games have been more stubbornly contested on a home field.

The Freshmen scored early in the first quarter, thus causing West Chester Squad to trail a seven-point lead. From then on until the beginning of the second half, our boys played a defensive game, again resorting to fine punting to keep the ball in the enemy's territory. When the second half began, a rejuvenated eleven took its stand against a battling, fighting, determined team. The results of faithful practice soon showed themselves, and before the end of the fray, West Chester had scored two touchdowns to win by the score of 12-7. This victory showed the mettle of Coach MacGovern's lads.



"Joe"  
KLECKNER  
R. T.





"DACE"  
Lewis  
L. H. B.

## VILLANOVA FRESHMEN

**V**ILLANOVA Fresh, a week after Lafayette—not such an easy schedule. After watching the two teams fight through the first three periods without a score, one was convinced that two stellar squads were having

a battle. Captain Hopkins gave an excellent exhibition of football that won the acclaim of all present, including the Villanova squad and coach. Zangle, after doing heroic work suffered a painful injury to his hip. Bales, Dimm, and Jones evoked continual cheers. Unfortunately, "Hoppie" fumbled a bad boulder that eventually permitted the visitors to score a touchdown. But the ever alert and mighty MacClean nabbed a blocked punt and planted it safely for a six-pointer. Orth came through and kicked the extra point. Great was the joy in West Chester's camp. Score, West Chester, 7; Villanova, 6.

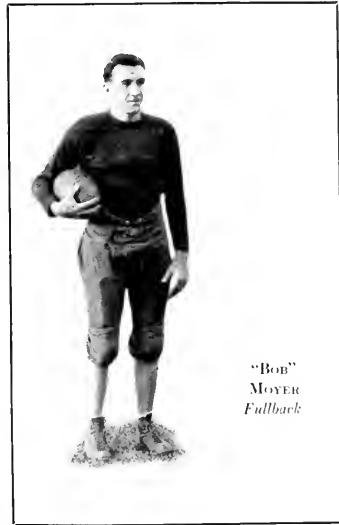


## BECKLEY COLLEGE

**B**ECKLEY College from Harrisburg was the next school to feel the sting of defeat at the hands of the mighty West Chester warriors.

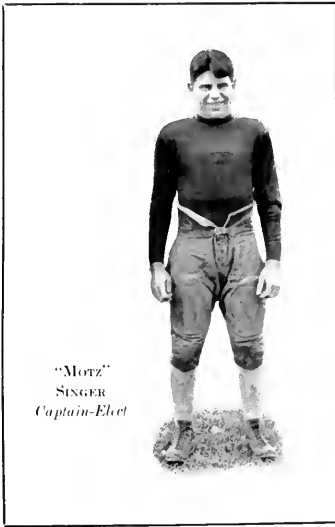
It was in this game that we saw "Speed" Jones in the backfield for the first time. Three successive first downs through the Beckley line tell their own story.

The Beckley boys had not been taught the clean sportsmanship with which Coach MacGovern impresses his boys. When Zambetti was "laid out" by a terrific kick on the chest, our boys decided to put an end to such tactics. A baby riot was about to start. Hankey and Mazza gave an exhibition of fist swinging, but quiet was soon restored. The final score of 24-7 showed that West Chester rode roughshod over the poorly conditioned lads from Beckley.



"Bob"  
MOYER  
Fullback





"Motz"  
SINGER  
*Captain-Elect*

## MILLERSVILLE

**W**EST CHESTER journeyed to Millersville on Saturday, November 10. This game was considered to be an easy victory and West Chester was confident of winning by an overwhelming score. How-

ever, Millersville proved to be the dark horse of the season and held us scoreless for the first three quarters of the game.

The fourth quarter was half over and a scoreless game was all that we hoped to achieve. But then things began to happen. MacLean threw a pass from his own thirty-yard line. It was accepted by Trostle on Millersville's thirty-yard line. "Speed" Jones was called into the backfield and began to smash his way through at will. On the fifth try he carried the ball over for the only score of the game. The remainder of the game was spent in breaking up an aerial attack launched by Millersville. Score, West Chester, 6; Millersville, 0.



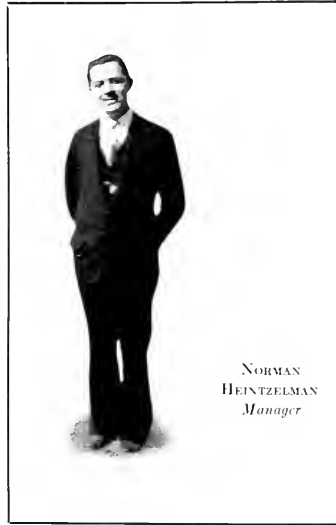


## THE STROUDSBURG GAME

WHEN West Chester played Stroudsburg State Teachers College in the final game of the season, Wayne Field football fans witnessed one of the very finest contests ever played on that gridiron.

The day was ideal, the band perfect, the cheering squad never better. Our boys were at their best. They battled a splendid team and acquitted themselves nobly. The game abounded with thrills with a goodly portion of the glamour surrounding Zangle, Dimm, and Jones.

After Bales had played a stellar game at end, his berth was given to a substitute. Probably no man ever served West Chester's football cause so well. For him it was the final game for his Alma Mater. It was also the last time for Captain Hopkins to don a Purple and Gold uniform. The final score was 12-0.



NORMAN  
HEINTZELMAN  
*Manager*



CHEER LEADERS

ANITA GUALCO

"DOT" ROPER

"SKID" GORDEN

"SAMMY" MORRISON

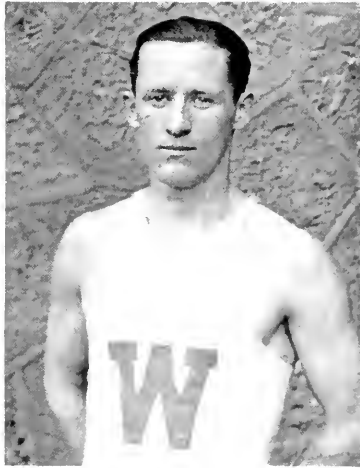
## 1928 FOOTBALL SCHEDULE

		W. C.	OPP.
September 29	Elizabethtown College—Home	18	0
October 6	Hill School—Away	12	7
October 13	Bloomsburg S. T. C.—Away	13	0
October 20	Lafayette Freshmen—Home	12	7
October 27	Villa Nova Freshmen—Home	7	6
November 3	Beckley College—Home	24	7
November 10	Millersville S. T. C.—Away	6	0
November 17	Stroudsburg S. T. C.—Home	13	0

-----

## 1929 FOOTBALL SCHEDULE

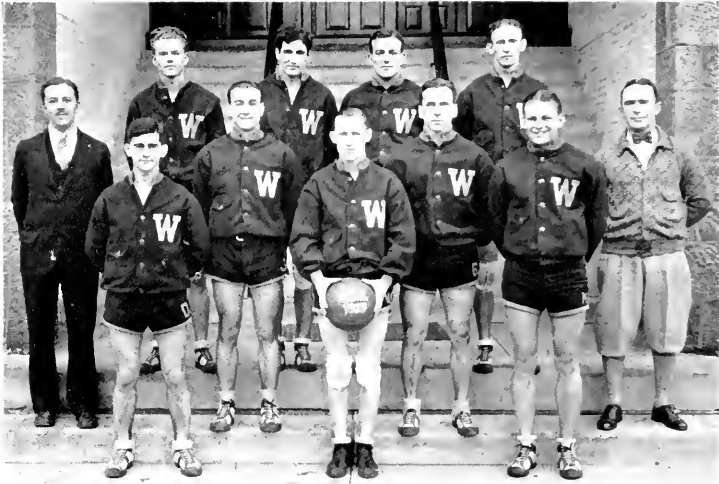
September 21	Drexel		AWAY
September 28	Elizabethtown College		HOME
October 5	Trenton, N. J. Teachers College		HOME
October 12	Bloomsburg State Teachers College		HOME
October 19	St. Josephs College		AWAY
October 26	Open		
November 3	Stroudsburg State Teachers College		AWAY
November 10	Millersville State Teachers College		HOME
November 16	Slippery Rock State Teachers College		HOME



DALTON, *Captain*



B  
A  
S  
K  
E  
T  
B  
A  
L  
L



#### VARSITY BASKETBALL

*Top Row—Minch, Forward; MacLean, Center; Hohenselt, Guard; Pearl, Forward  
Bottom Row—Heintzelman, Manager; Conrad, Forward; Moyer, Guard; Dalton, Guard, Captain;  
Hopkins, Forward; Yaskewicz, Center; MacGovern, Coach*

## BASKETBALL

When Coach MacGovern issued the call for basketball candidates to practice, a young army responded. There were so many aspirants for a berth on the "Orange Flashes" that it was not an easy task to pick a varsity squad. Consequently a lot of good material was forced to warm the bench. The absence of Stott and Heller of last season's team was keenly felt.

After patient drilling and practice the time came for the opening game. The boys traveled to the University of Pennsylvania on January 12, to meet the Penn. J. V.'s. They acquitted themselves in a fine manner. When they returned, they had tucked their first victory under their belts to the tune of 25-16. Hopkins looked good in the opener. Hopes ran high.

On the sixteenth of January the Penn J. V.'s came to West Chester to avenge the defeat of the previous week. They succeeded. Score 20-13. The crowd watched this listless fray with but little enthusiasm. No one was thrilled. Before this battle the West Chester J. V.'s bowed to the Temple J. V.'s in a one-sided contest. Score 40-15.



#### SENIOR VARSITY BASKETBALL

*Top Row—James Akiens, Manager; Yetter, Center; Donnelly, Guard; Trostle, Center; J. F. MacGovern, Coach*

*Bottom Row—Williams, Forward; Scott, Forward, Captain; Schopf, Guard; Graham, Forward*

Keystone visited West Chester on January 19. The individual members of our squad played good basketball but smooth teamwork was lacking. The "Orange Flashes" fell before the good floorwork of their worthy opponents. Score 31-26.

As a prelude to the varsity game at Millersville the following week our J. V.'s were content to come in second best. Scott and Weigle made valiant efforts but to no avail. Score 18-9. The varsity game proved exciting and interesting but again our boys bit the dust. McLean, who had been playing an ordinary game at center showed that he possessed a great deal of natural ability. He scored fifteen points. The final score of the game was 34-29.

Mount Alto was the next team to invade our gym. The game was slow. Our boys were well guarded and were satisfied with a 26-24 victory.

With Pearl and McLean in good shape the "Orange Flashes" looked good against Bloomsburg. The game abounded in beautiful plays and was a battle until the whistle blew. The sting of defeat was felt again. This time by one point. Score 40-39.

If a successful season depends on the number of victories that the team wins, ours surely was not successful; but the boys played their

best. More no one can do. Much credit is due Captain Dalton. He proved a splendid leader. His brilliant floor playing and his cool head-work did much to steady his teammates. He and Hopkins graduate in June. That means that two new guards will find places on next season's varsity. The reserves no doubt will furnish them.

At Stroudsburg on the twenty-third of January our boys met a real team. Somehow West Chester couldn't hit a winning stride. It was only McLean's consistent scoring that kept the boys within striking distance of victory. During the second half the "Flashes" put up a brilliant fight but it was too late to overcome Stroud's lead. Score 42-27.

When Lock Haven came to West Chester on March 1, everyone was on edge. We expected to see a real good game. However Lock Haven was weak and the home boys had little difficulty to score at will. The coach used quite a few reserves and they made a commendable showing. Score 43-12.

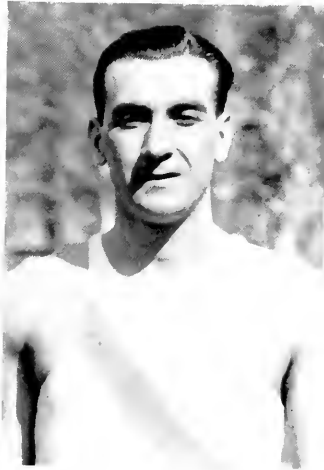
Beyond any doubt Coach McGovern's boys made their very best showing against Millersville. The visitors brought a splendid team of well trained and scientifically coached boys. They presented the smoothest team that came to our campus. Hopkins at guard played as he had never played before. He guarded his man well and shot three baskets for good measure. McLean again was high scorer. The second half was a spirited contest. West Chester showed determination but they were denied victory by one point. Even the flashy work of Harry Simber as substitute forward could not turn the tide. Score 22-21.

The last Conference game was played on the home floor on March 9. Keystone brought their aggregation to West Chester and took us into camp by the score of 43-29. Teamwork would probably have evened the score but our boys lacked it. Again Hopkins, though playing guard, located the basket more frequently than any of his teammates.

The season was brought to a close with Elizabethtown coming to West Chester. The game was slow and lacked the thrills that make spectators happy. The first half ended with our boys leading at 13-7. Elizabethtown came back strong in the final stanza; but not strong enough to defeat the "Orange Flashes." Final Score 30-28.

#### SCHEDULE FOR 1930

January 11	West Liberty S. T. C.	Home
January 18	Keystone S. T. C.	Away
January 25	Millersville S. T. C.	Home
January 31	Edinboro S. T. C.	Away
February 1	Slippery Rock S. T. C.	Away
February 8	Trenton S. T. C.	Home
February 14	Elizabethtown	Away
February 15	Millersville S. T. C.	Away
February 21	Stroudsburg S. T. C.	Home
February 22	Mount Alto	Home
February 28	Lock Haven S. T. C.	Away
March 1	Mansfield S. T. C.	Away
March 8	Keystone S. T. C.	Home
March 14	Trenton S. T. C.	Away
March 15	Montclair S. T. C.	Away



"Bob" Moyer  
*Captain*

T  
R  
A  
C  
K



1929



## TRACK SQUAD

### *Pole Vault*

Bales  
Conard  
Bergey  
Guido

### *Shot Put*

Hohenshelt  
George  
Ayars  
Hankey  
Jones

### *100 Yards*

Morrison  
Pacovsky  
Mularky

### *880 Yards*

Seltzer  
Donaldson  
Noe  
King  
Cooper

### *Hurdles, 220 Yards*

Cunningham  
Cox  
Yetter  
Slaughter

### *High Jump*

Hontz  
Yaskewicz

### *Discus*

Hohenshelt  
George  
Ayars  
Jones

### *220*

Moyer  
Clouser  
Wilson

### *Mile*

Mazza  
MacLean  
Crawford  
Troastle

### *Broad Jump*

Dimm  
Hopkins  
Wilson  
Yaskewicz

### *Javelin*

Camp  
Noe

### *440 Yards*

Kunkle  
Jones, L.  
Langhammer  
Hughes  
Donaldson  
Noe

### *Two Mile*

Schopf





## TRACK SCHEDULE FOR 1929

INTERCLASS MEET . . . . .	April 29	WAYNE FIELD
PENN RELAYS . . . . .	April 26-27	FRANKLIN FIELD
ST. JOSEPH'S AND DREXEL . . . . .	May 8. . . . .	DREXEL
STROUDSBURG . . . . .	May 4.	STROUDSBURG
JUNIATA . . . . .	May 10.	WAYNE FIELD
PENNA. INTER COLLEGIATES . . . . .	May 18.	SHIPPENSBURG

## ON THE CINDER PATH

THE Interclass Track and Field Meet held on Wayne Field on Saturday, April 20, filled everyone with hope for a very successful track season. Jupiter Pluvius smiled, and contestants were in splendid condition. Former records held by the athletes of yesteryear were not respected. Coach Waters' sturdy lads of the cinder path showed their ability by smashing four long established marks.

George Wilson, the former "Coatesville Flash", lowered the school's record for the 100-yard dash one-tenth of a second when he was clocked in at 10.03. Wilson duplicated his record-breaking feat when he broke the school record for the quarter-mile run. Time 51.4. Schopf was not content to see all this record smashing without doing his part. He circled the oval with a vengeance to lower the former mile record by 5<sup>1</sup>/<sub>2</sub> seconds. Time, 51<sup>1</sup>/<sub>2</sub>. Even the mighty Stott of last year's team was forced to surrender one of his records when Joe George hurled the discus to a new record of 121 feet.

The freshmen have a wealth of good material. This is attested by the fact that they won the meet by scoring 38 points. Their outstanding stars are, Wilson, MacLean, Conrad, Pacovsky, and Hughes.

In the track events there is little doubt that we will give our opponents keen competition, and the field events will be ably taken care of by George, Hughes, Hontz, and Hopkins. Bales, who holds the present school record in pole-vaulting, is out to beat his mark. At present he holds the record at the University of Delaware and at Perkiomen School. At the Penn Relays last year he vaulted 12 feet. More power to "Mickey" at the Relays this year.

The team is all set for an interesting race at Penn on April 27. The relay team is as follows: MacLean, Seltzer, Moyer, and Wilson. The boys are conditioning faithfully and no doubt will be rewarded. Last year's record must be lowered.

Captain Moyer and Coach Waters are greatly pleased with the larger number of candidates out this year despite the new tradition of spring football. They feel that their men will not only score many points in the meets to come, but that they will greatly add to West Chester's Athletic prestige. They are meeting stellar teams and they will do their utmost to make it uncomfortable for all opponents. Drexel, St. Joseph, Stroudsburg, and Juniata are doomed to bow to the determined sprinters of this year's team. Victory is just ahead.



## WITH THE SOCCERITES

ON DECEMBER 8th, amid a driving sleet and snow storm, the Purple and Gold dribblers terminated a successful season by soundly trouncing Beacom College to the score of 2-0. The victory was the culmination of a revengeful desire, compensating for our only defeat of the season, administered by Beacom in our first game.

The efforts of the local soccerites resulted in three victories, one defeat, and one tie.

Possibly the highest peak of the season was attained when West Chester, fatigued and cramped by a long journey to Stroudsburg, battled the up-staters to a scoreless tie until the game was finally called on account of darkness. Even so, one period of the game was played in the moonlight.

Great credit is due to Mr. Waters and Captain Schopf for building up a successful machine with only three veterans as a nucleus.

Next year, with the entire team back and new material coming in, Coach Waters and Captain-elect Bowdle hope to emulate and surpass this year's record.

# LETTER GIRLS

MARY CURRAN

RUTH WHITE

RUTH LAUBACH

ELIZABETH EVANS

MABEL MOSTELLER

ELIZABETH TERRELLS

DOROTHY STEVENSON

SUE YEAGER

HARRIET AIREY

LOIS DIFFENBACHER

MARCELLE IVORY

ELIZABETH SWARTZ

LOIS HAUCK

PAULINE BAUER

RUTH WALKER

VIRGINIA MEHRING

HELEN WILL

MARGARET KELLER

ELIZABETH RAUCH

MYRA WILSON

VIRGINIA WELLS



"Jim" SCHRIVER



GIRLS'  
ATHLETICS



*First Row, Left to Right—D. Artley, D. Roper, J. Gerhart, A. Mooney, H. Bennetch, L. Snyder  
 Second Row, Left to Right—A. Reynolds, L. Veit, L. Caldwell, A. Sell, Miss Searing, Coach,  
 M. Terhune, M. Burns, M. L. Boyle, E. Gray*

## UPPER CLASS ACADEMIC HOCKEY TEAM

*THELMA ALLEMEN, Right Wing  
 DOROTHY ARTLEY, Right Wing  
 RUTH McCONNELL, Left Wing  
 JESSIE GERHART, Left Wing  
 HELEN BENNETCH, Right Inside  
 LOIS CALDWELL, Right Inside  
 MILDRED CASTLE, Right Inside  
 DOROTHY ROPER, Left Inside  
 THOMAZINE THOMAS, Left Inside  
 ALICE MOONEY, Right Halfback  
 ANNE REYNOLDS, Right Halfback  
 LELLIS SPEAKMAN, Left Halfback*

*CATHERINE SPENCER, Captain II, Left  
 Halfback  
 LOUISE VEIT, Left Halfback  
 MARGARET BURNS, Center Halfback  
 ANN SELL, Center Halfback  
 ELIZABETH GRAY, Fullback  
 LEONORF SNYDER, Fullback  
 MILDRED TERHUNE, Captain, Center  
 Forward  
 EDITH BERGY, Center Forward  
 MARY LOUISE BOYLE, Goal  
 MISS ELEANOR SEARING, Coach*

Received Numerals



*Left to Right—S. Baird, B. Nicholas, M. Waldron, E. Crosby, C. Anderson, H. Lawton, M. MacLwain, M. Tucker, H. Lemon, L. Young, F. Heissler, M. Tapper, Miss Mueller, Coach*

## FRESHMAN ACADEMIC HOCKEY TEAM

DORA PATTERSON, *Manager, Right Wing*  
 MARION CROSBY, *Wing*  
 CEOLA ANDERSON, *Left Wing*  
 SALLY BIRD, *Captain, Center Forward*  
 CHARLOTTE TUCKER, *Center Forward*  
 LORRAINE YOUNG, *Right Inside*  
 MURIEL WALDRON, *Left Inside*  
 ELIZABETH LONG, *Right Halfback*  
 EMMA LAWTON, *Left Halfback*  
 MARIE TOPPER, *Center Halfback*

MARGARET MACLWAIN, *Center Halfback*  
 ELIZABETH NICHOLS, *Manager, Fullback*  
 ELEANOR RUGH, *Captain II, Fullback*  
 GEORGINE KANTNOR, *Fullback*  
 HELEN LEMMON, *Fullback*  
 FLORENCE HEISLER, *Fullback*  
 HELENE HART, *Goal*  
 MISS MUELLER, *Coach*

Received Numerals—32







First Row, Left to Right—E. Eby, L. Leidich, R. Lincoln, D. Assip, M. Reagan  
 Second Row, Left to Right—M. Cooper, B. Shaw, E. Breiting, Manager; J. Landis, Captain;  
 M. Miller, D. Hickey, Miss Schriver, Coach

## SOPHOMORE HEALTH EDUCATION HOCKEY TEAM

MILDRED REGAN	Right Wing
ETHEL BREITINGER, <i>Manager</i>	Right Inside
BETTY SHAW	Center Forward
LOIS LEIDICH	Left Inside
DOROTHY ASSIP	Left Wing
MARY MULLER	Right Halfback
RUTH LINCOLN	Center Halfback
DOROTHY HICKEY	Left Halfback
MARTHA COOPER	Right Fullback
JULIA LANDIS, <i>Captain</i>	Left Fullback
ELIZABETH EBY	Goal
MISS ALICE SCHRIVER	Coach



*Left to Right*—R. Bonney, P. Bower, A. Leithaler, V. Wells, *Captain*; K. Gustafson, M. Wilson, Miss Schriver, *Coach*; S. Yeager, L. Reider, *Manager*; H. Gordon, E. Kressley, M. Keller, M. DeVito

## FRESHMAN HEALTH EDUCATION HOCKEY TEAM

HELEN GORDON	<i>Right Wing</i>
VIRGINIA WELLS, <i>Captain</i>	<i>Right Inside</i>
PAULINE BAUER	<i>Center Forward</i>
KATHERINE GUSTALSON	<i>Left Inside</i>
MYRA WILSON	<i>Left Wing</i>
RUTH BONNEY	<i>Right Halfback</i>
MARGARET KELLER	<i>Center Halfback</i>
MARY DEVITO	<i>Left Halfback</i>
ELEANOR KRESSLEY	<i>Right Fullback</i>
SUE YEAGER	<i>Left Fullback</i>
LAURA REIDER, <i>Manager</i>	<i>Goal</i>
ADONIA LEITHALER	<i>Right Halfback</i>
VIRGINIA MEHRING	<i>Left Halfback</i>
MISS ALICE SCHRIVER	<i>Coach</i>



## UPPER CLASS ACADEMIC BASKETBALL TEAM

MARY OYLER, '30	<i>Center</i>
DOROTHY ROPER, '29	<i>Forward</i>
MIRIAM RUTH, '29	<i>Side Center</i>
ARLENE SMITH, '29	<i>Guard</i>
LOUISE VEIT, '29	<i>Guard</i>
JESSIE WILLIAMS, '29	<i>Forward</i>
RUTH WILLIS, '29, <i>Captain</i>	<i>Guard</i>
MISS BERNICE MUELLER	<i>Coach</i>

Received Numerals



## FRESHMAN ACADEMIC BASKETBALL TEAMS

### TEAM (A)

HELEN ULRIC, *Captain, Center*  
 MARGARET HAAS, *Forward*  
 ROMAGNE ERB, *Side Center*  
 LOUISE OBERHOLTZER, *Guard*  
 MIRIAM BOYER, *Guard*  
 DOROTHY HAUCK, *Guard*  
 INA BELL, *Forward*  
 GENEVIEVE RAMSEY, *Side Center*

### TEAM (B)

MARIE TAPPER, *Captain, Center*  
 HELEN TRANSUE, *Forward*  
 NANCY SLOAD, *Manager, Forward*  
 NAOMIE HOFFMAN, *Side Center*  
 MILDRED MCGUIRE, *Side Center*  
 EDITH DURBORAW, *Guard*  
 GRACE KILMER, *Guard*  
 KATHRYN WILLIAMS, *Guard*

### TEAM (C)

ALBERTA WILLIAMSON, *Captain, Center*  
 SALLY BAIRD, *Forward*  
 LOUISE BELL, *Forward*  
 HELEN BRINTON, *Forward*  
 ELIZABETH EBY, *Assistant Coach*  
 JO HENDRICKSON, *Guard*  
 JANE GARRETT, *Side Center*  
 MARION WEISS, *Guard*  
 MISS BERNICE MUELLER, *Coach*

NOTE: All these teams participated in the tournament.

Received Numerals



## JUNIOR HEALTH EDUCATION BASKETBALL TEAM

LOIS HAUCK, <i>Captain</i>	. . . . .	<i>Forward</i>
ANITA GUALCO, <i>Manager</i>	. . . . .	<i>Side Center</i>
HELEN WILL	. . . . .	<i>Forward</i>
JUNE KELLER	. . . . .	<i>Forward</i>
RUTH WHITE	. . . . .	<i>Center</i>
MARCELLE IVORY	. . . . .	<i>Guard</i>
DOROTHY STEVENSON	. . . . .	<i>Guard</i>
MABEL MOSTELLER	. . . . .	<i>Side Center</i>
MISS ALICE SCHRIVER	. . . . .	<i>Coach</i>

Received Numerals



## SOPHOMORE HEALTH EDUCATION BASKETBALL TEAM

VERNA DOTTER, <i>Captain</i>	<i>Forward</i>
LOIS LEIDICH, <i>Manager</i>	<i>Side Center</i>
MILDRED REAGAN	<i>Forward</i>
ETHEL BREITINGER	<i>Forward</i>
MYRTLE POTTEIGER	<i>Center</i>
MARTHA COOPER	<i>Side Center</i>
LOVENIA MILLER	<i>Guard</i>
MILDRED MILLER	<i>Guard</i>
MISS ALICE SCHRIVER	<i>Coach</i>

Received Numerals



# FRESHMAN HEALTH EDUCATION BASKETBALL TEAM

WINNERS OF TOURNAMENT

SUE YEAGER, <i>Captain</i>	Center
LOIS DIFFENBACHER, <i>Manager</i>	Side Center
ELIZABETH SWARTZ	Forward
PAULINE BAUER	Forward
VIRGINIA MEHRING	Center
MARGARET KELLER	Side Center
MYRA WILSON	Guard
VIRGINIA WELLS	Guard
MISS ALICE SCHRIVER	Couch

Received the Old English (W)

Tournament Champions

## ACKNOWLEDGMENT

WE wish to express our appreciation to friends who have aided us in many ways in compiling the 1929 SERPENTINE. We wish to thank the following for the effort they have expended towards the success of our annual:

MISS MARY ELIZABETH CLARK

*Faculty Adviser*

MR. W. S. NORCROSS, Philadelphia

*Drawings*

MR. H. H. MATLACK, Engraver

*Advice in planning the book*

MR. D. H. BARNES, Printer

*Efficiency*

MR. SCHIERER, Photographer

*Cooperation with Photo-Editor*

MISS CATHARINE RHODES

*Typing*

EDITORS.





DR. R. TATE MCKENZIE, SCULPTOR

TROPHIES  
MEDALS  
EMBLEMS

KEYS  
CHARMS  
PRIZES



Designs of Individuality submitted  
upon request

*Makers of Senior Rings, Class 1929*

**JENNINGS HOOD**

*Jeweler—Medallic Stationer*  
S. E. COR. CHESTNUT AND 15TH  
PHILADELPHIA

*Representing Medallie Art Company*



*To the Graduating Class*

BEST WISHES FOR SUCCESS  
AND MANY THANKS  
FOR YOUR PAST  
PATRONAGE

*and for those whom we will meet  
again next year, we thank you also  
and will endeavor as in the past  
to provide only the best and  
earliest showing of all the big  
pictures.*

**RIALTO AND OPERA HOUSE**

*Stanley Company Theatres*

*Compliments*

*of*

THE BANKS OF WEST CHESTER, PA.

THE FIRST NATIONAL BANK OF WEST CHESTER

CHESTER COUNTY TRUST COMPANY

FARMERS & MECHANICS TRUST COMPANY

DIME SAVINGS BANK

THE NATIONAL BANK OF CHESTER COUNTY

Compliments of  
**W. A. Pierce**  
DRUGGIST  
23 NORTH HIGH STREET  
WEST CHESTER, PENNA.  
Drugs, Soda, Cigars, Candy  
Stationery, Toilet Articles  
Rubber Goods, Sundries  
THE REXALL STORE  
*Pierce Has It*

WOOD'S CUT RATE  
*"Original"*  
56 W. GAY STREET, WEST CHESTER, PA.  
*Patent Medicines*      *Toilet Articles*  
*Rubber Goods*      *Bristle Goods*  
*Imported Perfumes*

Compliments  
of  
THE ORIOLE TEA ROOM

Dalton (reaching for a cigarette on Scoop's bureau)—"What am I taking one of these for when I have some?"

Aekie—"Just a habit."

-----

Suey—"The doctor says I must stop smoking. I am poisoning myself to death."

Jess—"Oh, Suey dear, can't you hold out long enough to get coupons for that new camera?"

-----

Benner—"You're all wet—where's your umbrella?"

Bales—"I forgot it."

Benner—"When did you find that out?"

Bales—"When the rain was over and I went to close it."

Compliments  
of  
COLLEGE INN

SCOOP

ACRUE

# The Apartment

212-214 WAYNE HALL.

*Stop in Any Time*

C. H. C., L. F. A., C. T. C.,  
A. E. M.

*Honorary Roomies E. M. H., J. W. D.*

## Bryant Teachers' Bureau, Inc.

711-714 WITHERSPOON BUILDING  
PHILADELPHIA, PENNA.

*Teachers Wanted Every Day of the Year*

## GLICK'S SHOE SHOP

*In Appreciation of Your Patronage*

32 WEST GAY STREET  
WEST CHESTER, PA.



Here's Siller, of equine fame; after two years' experience on the mushroom company plough horses, "Chippie" admits that all he needs for a tryout with Barnum and Bailey is a little hair tonic on his riding breeches and a couple of coeds to proclaim his horsemanship.

First Music Sup.—"Will you have a toasted marshmallow?"

Second Numb Brain—"Naw! I'll eat mine raw."

First M. S.—"Gosh! ain't you tough."

A Boston paper prints a puzzle showing a young man (Seltzer) playing a cornet with the end plugged up, and the caption is, "What is wrong with this picture?"

We think it's all right.

ICE CREAM

SUNDAES

SODA WATER

## PREFTAKES

CANDIES MADE DAILY

LUNCHEONETTE

HIGH AND GAY STREETS

WEST CHESTER, PENNA.



est



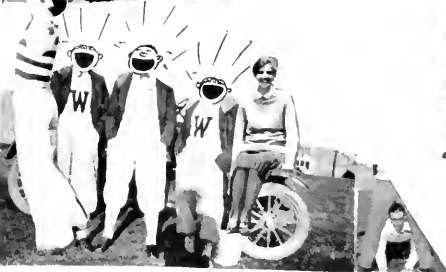
hester



tate



eachers



ollege

Let Us Fill Your  
Prescriptions

Roll Films Developed  
FREE

## DEHAVEN DRUG STORES

106 WEST GAY STREET  
HIGH AND DEAN STREETS

Breyer Ice Cream

Whitman Chocolates

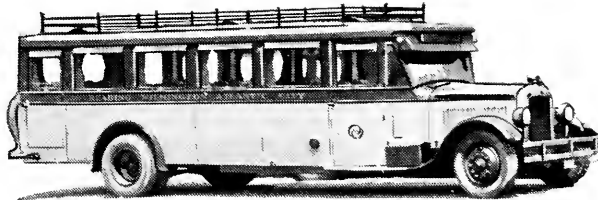
His Girl—"I suppose that this talk about a college man's life being all wine women, and song is a bit exaggerated."

Cunningham—"It certainly is; you very seldom hear any singing in Wayne Hall."

## BUS SERVICE

SAFE, FREQUENT, AND COURTEOUS BUS SERVICE  
FROM WEST CHESTER TO

Pottstown, Reading, Wilmington, Del., Chester, Kennett Square, Avondale, West Grove, Oxford, Media, Valley Forge, Norristown, Rehoboth Beach, Del., and Other Points



Chartered Bus Service—Parlor Car and Service Type Buses can be chartered for any occasion. Call our Chartered Bus Department (Phone 170) for information and rates.

"The Bus Way the Best Way"

## CHESTER VALLEY BUS LINES, Inc.

Waiting Room—Phone 973  
20 S. HIGH ST. WEST CHESTER, PA.  
(Information and Schedules)

Main Office—Phone 170  
212 W. MARKET ST.  
WEST CHESTER, PA.



Compliments  
of  
WHITCRAFT & GROFF

GET IT AT FATH'S  
*Stationery, Books, Pictures, Fountain Pens,  
Eversharp Pencils, Gifts for all Occasions*  
P. F. FATH, Prop. WEST CHESTER

PERCY H. McCORMICK  
*Insurance*  
17 NORTH WALNUT STREET  
WEST CHESTER, PA.

*Art Needlework Hosiery and Ribbons*  
MARY G. VANDEVER  
29 NORTH CHURCH STREET  
WEST CHESTER, PA.



HOPKINS still seems very cheerful in spite of the fact that, after four years of faithful study his Health Education work operates entirely along the lines of civic pride.

FOUR-ACT PLAY

Act I—Dalton with a check from home.  
Act II—Dalton with a check from home and a girl.  
Act III—Dalton with a girl.  
Act IV—Dalton.

Maloy (hammering on the door of 212)—“Got a pair of scissors, Scoop?”

Scoop—“Yeh, here’s a pair. What do you want to cut?”

Maloy—“Guess I’ll have to take the moustache down, the coach told me that he doesn’t care for it.”

Group of Seniors looking at SERPENTINE proofs:

Dumbfrosh Dcyle—“My roommate just had some taken, but I don’t care for them because I don’t like those red pictures.”

LUNCHEONETTE

CANDIES

Green Tree Store

*Kodaks, Films, Developing Free*

HIGH AND GAY STREETS

WEST CHESTER, PA.





WHIPPING CREAM      TABLE CREAM  
 FRESH BUTTER  
 SWEET COTTAGE CHEESE

**WEST CHESTER  
 DAIRY**

CHURCH AND WASHINGTON STREETS  
 WEST CHESTER      PENNSYLVANIA

*Where the Well Dressed College Man  
 Gets His Hair Nipped*

**THE ROYAL BARBERS**  
 UNDER THE OPFRA HOUSE

T. E. SMITH AND SON  
*Baggage Transfer and Storage*  
 OFFICE AND WAREHOUSE  
 207-209 EAST MARKET STREET  
*Baggage checked direct from house to destination*  
 Phone 229      WEST CHESTER, PENNA.



Snapshot of Joe Hauselman, our own Ba! Da! Da! boy, at work at the Opera House. Since they've installed the "talkies" up town, Joe keeps the actors on pitch from "back screen"—'way back!

That joke about the girl being lost in dormitory, and every search failing, and the general conclusion that the radi ate her, was going over great just on its own idioey until Mary Oyler asked who the girl was.

Benner to Bales—"What are you talking out loud to yourself for?"  
 Bales—"I want to hear what I have to say."

*Plants and Cut Flowers*

ALL WINTER LONG AND ESPECIALLY AT XMAS AND  
 EASTER HOLIDAY SEASONS

**KIFT'S GREENHOUSES**

316 SOUTH HIGH STREET      WEST CHESTER, PENNA.

*Compliments*

*of*

**West Chester  
Laundry**

YOUR BOSOM FRIEND

G. G. GEIKLER      D. G. GEIKLER  
A. K. GEIKLER

**Geikler Bros.**

*Established 1850*

MEATS  
PRODUCE

*Bell Phone, Market 4612  
Keystone, Main 7647*

405-407 NORTH SECOND STREET  
PHILADELPHIA, PA.

By the looks of this flock of girls on their way up to the Opera House, you'd think there was a basketball game at school.



Picture of Miss Mueller on the New York flyer bound for Philadelphia, trying to confirm her very own little idea that the Philadelphia Reading Terminal is a station stop on the Pennsy, just before the arrival at Broad Street Station.

We wonder how long it will be before the girls are forbidden to walk from Main Building to the Chapel without Special Permission, a note from home and a faculty escort.

SHOES MADE TO ORDER      SHOE REPAIRING

*Work Done While You Wait*

A. P. MATTERA

28 WEST MARKET STREET      WEST CHESTER, PENNA.



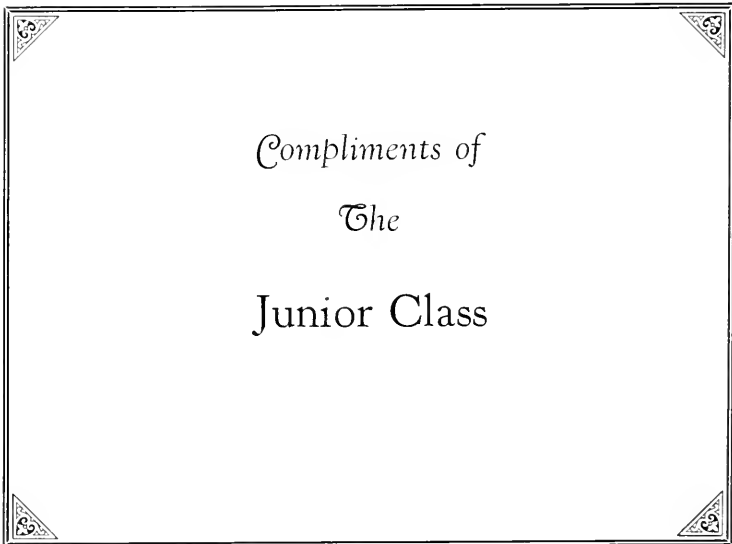
Tom Conard "Sunshine" about to enter the Collegiate Hall of Fame, in his opinion.

If he only knew how popular he is,—with Hollinger's pork squad.

Does the coach have the team under control?  
Does he? Say, every time he gets a headache every one on the varsity takes a Bromo-Seltzer.



Him—"Ain't we got fun?"  
Her—"I don't know, did you bring any?"



AN ASSOCIATION OF SKILLED CRAFTSMEN - DESIGNERS & PHOTO  
ENGRAVERS - RENDERING SUPERIOR PHOTO - ENGRAVING SERVICE

PHILADELPHIA

PHOTO-ENGRAVING COMPANY, INC.

BENJAMIN FRANKLIN JAMES  
PRESIDENT

29 NORTH SIXTH STREET  
PHILADELPHIA



### ENGRAVERS FOR THIS BOOK

A service—unique in its scope . . . a responsibility—  
tremendous in its varying detail . . . an accomplish-  
ment—great in the satisfaction it has given to others and  
to ourselves.

This year we are again privileged to design, engrave  
and supervise the publishing of the yearbooks of many  
of our leading colleges and schools, and we acknowledge  
with pride this service to the great Government school  
at West Point, THE UNITED STATES MILITARY  
ACADEMY.



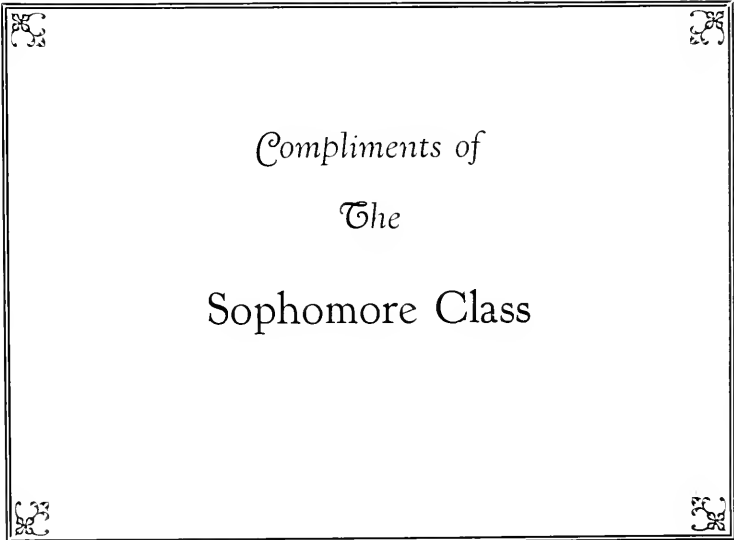
The Girl—"You certainly have a pile of cheek."  
Jimmie Doyle—"Well, make use of it, baby."

---

St. Peter—"Who's there?"  
Voice without—"I am out here."  
St. Peter—"Get out of here, we don't want any more  
school teachers."

---

Dinn to McCollum—"Well, well, I understand you are in business for yourself"  
McCollum—"Yes, I have twenty offices in that building."  
Dinn—"Gee, don't you find that a lot of work, I knew a janitor once who nearly  
went crazy with twelve."





BUCK CUNNINGHAM

HARD AT HIS

HOME-WORK

---

Scoop—"I'll see you over there."

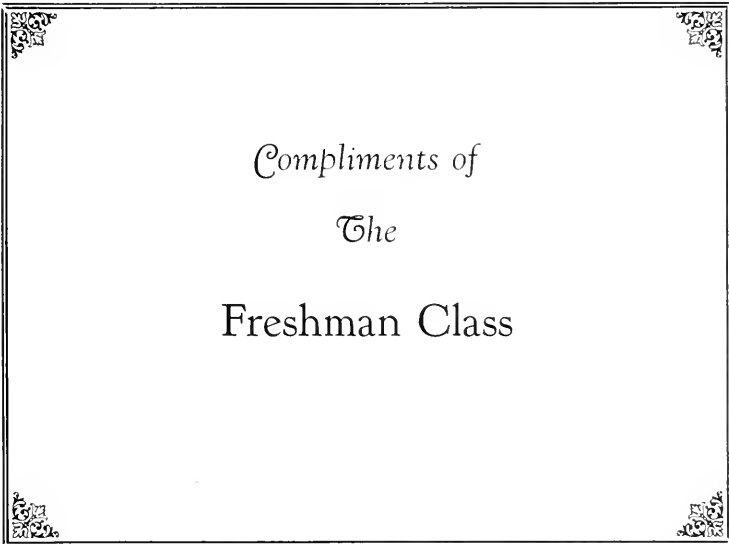
Hop—"Where?"

Scoop—"All right."

---

Doc Johnson—"You know I wouldn't ask you to do anything that I can't do myself."

Charlie Cox—"Well, try sleeping while you're talking, I can do it."



*Compliments of*  
*The*  
Freshman Class

## HORACE T. WEBB

*Successor to Jesse E. Webb*

*Jeweler*

27 WEST GAY STREET, WEST CHESTER, PA.

I'd like to be a could-be  
If I could not be an are,  
For a could-be is a may-be  
With a chance of touching par.  
I'd rather be a has-been  
Than a might-have-been by far,  
For a might-have-been has never been,  
But a has-been was an are.

*"Say it with Flowers"*

*through*

## LORGUS FLOWER SHOP

*Everything in Flowers*

---

FLOWER PHONE, 81

---

*West Chester's Telegraph Florist*







GILBERT & BACON

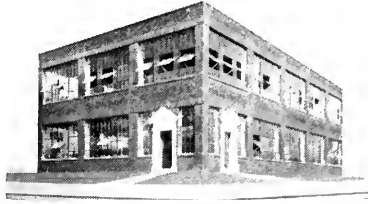
PHOTOGRAPHERS

[ *Official Photographers* ]  
1929 Serpentine ]

1624 Chestnut Street  
Philadelphia

DUPLICATE PHOTOGRAPHS MAY BE HAD AT ANY FUTURE DATE





WESTBROOK PUBLISHING COMPANY  
5800 North Mervine Street, Philadelphia, Pa.  
(Terminus Broad Street Subway)

## *The Serpentine*

IS ANOTHER YEARBOOK  
PRINTED BY

# Westbrook Publishing Company

DELIVERED ON SCHEDULED DATE  
BILLED WITH NO UNANTICIPATED EXTRA CHARGES

☞ On books of this nature we quote a flat price and assume full responsibility for everything connected with the job except photography. ☞ All of your business is transacted with one established and reputable firm, thus effecting obvious economies of time and money.





1917





