

GT  
734  
.S46x  
1892



Digitized by the Internet Archive  
in 2011 with funding from  
Brigham Young University

<http://www.archive.org/details/shakespeariancos00lond>





# SHAKSPEARIAN COSTUMES

No. 4

THE MERRY WIVES OF WINDSOR

SAMUEL MILLER.

Publisher of HISTORICAL,  
FANCY AND MODERN COSTUME DESIGNS.

142. Long Acre,

LONDON, w.c.

# “LIBERTY”

# ART FABRICS AND SPECIALTIES FOR ALL SEASONS.



*Patterns of Materials Post Free.*

Ladies' and Children's Artistic, Fashionable, Æsthetic  
and Historic Costumes and Millinery.

Messrs. LIBERTY & Co. forward special (coloured  
Sketches with Estimates in any design or  
period on receipt of detailed particulars.

## “LIBERTY” SILKS.

For Art Dresses and Drapery.  
Prices, 15/6, 19/6, and 25/ per piece of  
about 7 yards. 34 inches wide.  
*Patterns post free.*

## CHINESE WASHING SILK.

In white and a variety of artistic colours,  
suitable for Dress or Under-Garments,  
tough and light.  
Price, 3/3 per yard. About 30 inches wide.  
*Patterns post free.*

## CHINESE DAMASK SILK.

A soft Brocaded Silk, suitable for Tea  
Gowns, &c., in Art Colours, also in white  
and cream.  
Price, 35/ per piece of about 7 yards.  
34 inches wide.  
*Patterns post free.*

## “TINTORETTO” SILK.

In “Liberty” Colours, and all shades, of  
Artistic and Durable Dresses.  
Price, 5/11 per yard. 22 inches wide.  
*Patterns post free.*

IN “LIBERTY” CLOTH, ROM 32/-  
*Price List Post Free.*

## “LIBERTY” VALLEY CASHMERE.

A new make of soft Cloth, very durable  
47 inches wide.  
Price, 3/3 per yard. In colours and black  
*Patterns post free.*

## “LIBERTY” CASHMERE.

In “Liberty” Colours and all shades, soft  
light, and durable.  
Price, 21/ & 25/ per piece of 9 yards  
26 inches wide.  
*Patterns post free.*

## “LIBERTY” CLOTH.

In “Liberty” Colours and all shades,  
light and warm dress material.  
Price, 1/8 per yard. 25 inches wide.  
*Patterns post free.*

## “ZARIF” CRAPE.

In various “Liberty” Art Shades, for  
Evening Dresses.  
Price, 16/9 per piece of 15 yards, 30 inch  
wide; half pieces, 8/6  
*Patterns post free.*

Messrs. LIBERTY & CO. invite inspection of their numerous Show Rooms, where  
will be found New, Original, Exclusive, and Artistic Specialties not to be  
seen elsewhere in the Metropolis. Catalogues Post Free.

## LIBERTY & CO.,

CHESHAM HOUSE—For Carpets, Curtains, and Furniture.

EAST INDIA HOUSE—For Dresses, Shawls, and Jewellery.

REGENT STREET  
LONDON, W.

ESTABLISHED 1840.

# J. A. HARRISON

## Theatrical and

## Fancy Costumier

31, BOW STREET, COVENT GARDEN, LONDON, W.C.



### Fancy Ball or Masquerade Costumes

LENT ON HIRE

And made to Order or Design.

Swords, Wigs, Hats, Tights, Boots, or any single article lent.

Theatres, Tours, and Amateur Theatrical Performances supplied with Costumes, Wigs, Scenery and every requisite.

### CORRECT COSTUMES ON HIRE FOR EVERY PLAY,

Also for Living Chess, Tableaux Vivants, and Wax-Works.

*Costumes have been supplied for the following recent productions:—*

As you Like It ... ..	<i>Shaftesbury Theatre.</i>	Monte Christo (Gaiety Theatre Co.)	<i>American Tour.</i>
Babes in the Wood (Pantomime),	<i>Drury Lane Theatre.</i>	Mr. Barnes of New York ..	<i>Olympic Theatre.</i>
Cinderella (Pantomime) ...	<i>Crystal Palace.</i>	Robert Macaire ... ..	<i>Empire Palace.</i>
David Garrick... ..	<i>Criterion Theatre.</i>	Richelieu (Lawrance Barrett)	<i>Lyceum Theatre.</i>
Faust up to Date ... ..	<i>Gaiety Theatre.</i>	She ... ..	<i>Gaiety Theatre.</i>
Gipsy Gabriel ... ..	<i>Hogarth &amp; Barry's Tour.</i>	The Don ... ..	<i>Toole's Theatre.</i>
Hands across the Sea ...	<i>Princess's Theatre.</i>	The Love that Kills ... ..	<i>Prince of Wales's Theatre</i>
Harbour Lights ... ..	<i>Adelphi Theatre.</i>	The Noble Vagabond ... ..	<i>Princess's Theatre.</i>
Held by the Enemy ... ..	<i>Olympic Theatre.</i>	The Hunchback (Miss Mary	
Little Lord Fauntleroy ...	<i>Prince of Wales's Theatre.</i>	Anderson) ... ..	<i>Lyceum Theatre.</i>
Marina ... ..	<i>Gaiety Theatre.</i>	The Armada ... ..	<i>Drury Lane Theatre.</i>
Masks and Faces ... ..	<i>Ben Greet's Tour.</i>	Wild Oats ... ..	<i>Criterion Theatre.</i>

&c.

&c.

&c.

LISTS OF FANCY COSTUMES POST FREE ON APPLICATION.

B. BURNET & CO.,

Theatrical Drapers,

SUPPLY



EVERY DESCRIPTION  
of Material  
SUITABLE FOR  
Fancy Costumes  
and  
Amateur  
Theatricals

Hosiery, Boots and Shoes, and Ornaments

MADE TO ORDER IN A FEW DAYS

FOR ANY STYLE OF COSTUME.



41 & 42, King Street, Covent Garden, London.



371.0942  
Sh 15

No. 4.

# SHAKESPEARIAN



# COSTUMES.

ILLUSTRATIONS OF THE

Whole of the Characters in each Play,

*IN CORRECT COSTUME,*

COMPILED FROM AUTHENTIC SOURCES,

AS GIVEN BY

MONTFAUCON, ROYAL MSS., HOLBEIN, ZUCCARO,

STRUTT, &c.

Drawn by ROBERT L. BÖÖCKE.

178846

London:  
SAMUEL MILLER.

1892.



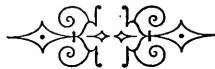


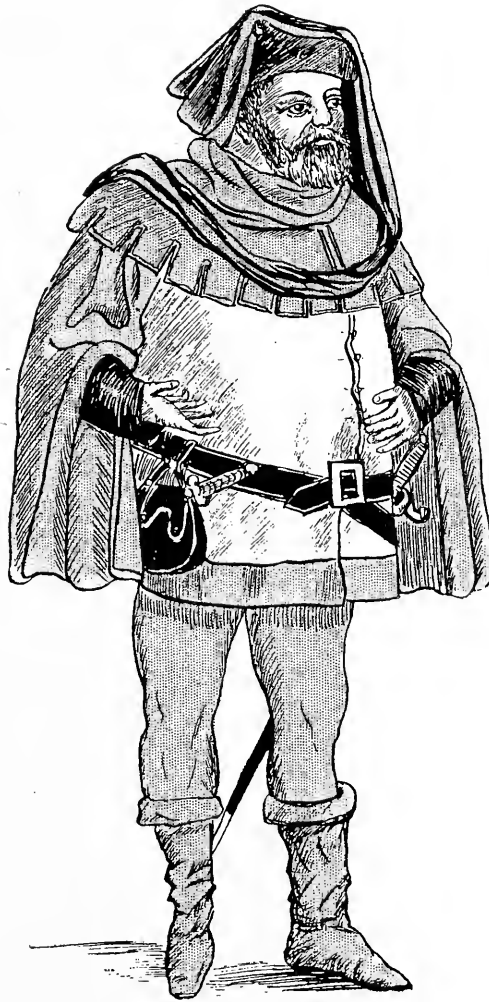
# Merry Wives of Windsor.



## PERSONS REPRESENTED.

PAGE	
1	SIR JOHN FALSTAFF.
2	” ” ” (the Forest Disguise).
3	FENTON, a Gentleman.
4	SHALLOW, a Country Justice.
5	SLENDER.
6	FORD, } Gentlemen dwelling in Windsor.
7	PAGE, }
8	WILLIAM PAGE, Son of Page.
9	SIR HUGH EVANS, a Welsh Parson
10	DOCTOR CAIUS, a French Physician.
11	HOST OF THE “GARTER” INN.
12	BARDOLPH, } Followers of Falstaff.
13	PISTOL, }
14	NYM, }
15	ROBIN, Page to Falstaff.
16	SIMPLE, Servant to Slender.
17	RUGBY, Servant to Dr. Caius.
18	MISTRESS FORD.
19	MISTRESS PAGE.
20	ANNE PAGE.
21	” ”
22	” ” (disguised as a Fairy Queen).
23	DAME QUICKLY.
24	SERVANT TO PAGE.
25	SERVANT TO FORD.
26	PISTOL (as a Demon).
27	A GOBLIN.
28	A FAIRY.
29	”
30	A SATYR.





### SIR JOHN FALSTAFF

Tunic of buff cloth, made with full hanging sleeves cut open in the front seam to the bend of the arm, showing a close-fitting under-sleeve; trimmed with a cape cut round in turrets, and made with a hood. Close-fitting cap, trimmed with folds of red silk forming long ends wound round the neck. Round the waist is a leather belt, carrying a sword and purse. Grey worsted hose. Half-high leather boots.







SIR JOHN FALSTAFF (the Forest Disguise).

Tunic of grey cloth, ornamented with deep cape, both cut round in tabs. Leather belt, carrying a hunting knife, horn, and a purse. Brown worsted hose. High leather boots. Over all, is worn a long cloak. Stag's head, with antlers.



FENTON, a Gentleman.

Tunic of brocaded cloth, made with wide hanging sleeves falling over a close under-sleeve of crimson cloth. The tunic is ornamented with a deep cape, cut in tabs, and trimmed with a hood. Belt, with a sword and purse. Brown worsted hose. Low pointed shoes









SHALLOW, a Country Justice.

Long full robe, made in brown cloth, ornamented with a cape and hood, and faced down the front with revers of a lighter colour. Full sleeves to the elbow, gathered into a deep cuff of black. This would be worn over a tunic and worsted hose of a similar character to that worn by Fenton, but with tight sleeves. Low pointed shoes.



## SLENDER.

Tunic of gold brocaded green cloth, made with sleeves slashed up the back and filled in with white silk. Short full cape of red velvet, lined puce, slung round over the left shoulder, leaving the right arm free. Amber silk hose. Half boots with long pointed toes. Velvet hat with peak in front, with two feathers.







FORD, a Gentleman dwelling in Windsor.

Tunic in blue velvet, made with full sleeves of light blue silk gathered into a deep cuff of velvet. Over tunic of amber cloth nearly reaching the feet, and trimmed with bands of crimson cloth, embroidered with gold. Loose hanging sleeves, slit open in front and lined crimson. Cloth cap with crimson scarf.



PAGE, a Gentleman dwelling in Windsor.

Tunic reaching to the knees, made in green cloth edged with fur and gold braid, fastened round the waist by a belt, from which is suspended a short sword and a purse. Full loose cloak of brown cloth lined blue, cut short in front, and hanging full and long at the back. Green worsted hose. Low pointed shoes. Cloth cap embroidered with gold.









WILLIAM PAGE.

Tunic of puce cloth fastened round the waist by a belt, from which a purse is suspended. Blue cloth cape with a hood, trimmed with silver. Blue worsted hose Low pointed shoes.



SIR HUGH EVANS, a Welsh Parson. .

Tunic of black cloth, over which is worn a surplice, also made in black cloth, cut with a yoke and with full sleeves gathered into it. Black worsted hose. Low pointed shoes.







DOCTOR CAIUS, a French Physician.

Black velvet tunic and worsted hose, over which is worn a full loose surtout, made in black velvet, trimmed with brown fur. Loose hanging sleeves, made with an opening in front to allow for passing the arms. Black velvet cap, trimmed with crimson.



#### HOST OF THE "GARTER" INN.

Tunic in grey cloth, made with full sleeves gathered into a deep cuff, fastened round the waist by a belt, from which is suspended a dagger and purse, and trimmed with brown fur. Grey worsted hose. Half boots. White linen apron.









BARDOLPH, a Follower of Falstaff.

Tunic of grey cloth, turned back in front to show the shirt, and faced with scarlet. Leather belt round the waist, with a dagger and purse. Cape, with hood of amber cloth. Puce worsted hose, darned. Low pointed shoes.





NYM, a Follower of Falstaff.

Jerkin of leather much the worse for wear, fastened at the waist by a leather belt, trimmed with full sleeves of cloth, gathered into a cuff, and tied round the arm with a band. Blue worsted hose. High boots. Sword and purse. Cloth cap.



PISTOL, a Follower of Falstaff.

Tunic of crimson cloth, fastened round the waist by a leather belt, supporting a dagger and purse; made with full sleeves, slashed blue. Brown worsted hose, patched at the knees. Low pointed shoes.





ROBIN, Page to Falstaff.

Tunic of amber cloth braided with gold, cut open in the front and filled in with a pleated plastron of blue cloth. The sleeves are made puffed and slashed on the shoulder. Leather belt round the waist, from which is suspended a dagger and purse. Parti-colour hose. Low pointed shoes. Cloth cap, trimmed with two feathers.









SIMPLE, Servant to Slender.

Tunic made of green cloth cut low at the neck, showing a pleated cambric shirt, fastened round the waist with a leather belt, supporting a purse. The sleeves are puffed and slashed at the shoulder. Parti-colour hose. Shoes.



RUGBY, Servant to Dr. Caius.

Tunic of cloth, ornamented with a cape, and fastened round waist by a leather belt. Brown worsted hose, latticed. Low shoes. Dagger and purse.







MISTRESS FORD.

Full petticoat of red cloth, hemmed with a band of blue, and embroidered gold. Upper skirt of puce silk, made full and gathered into a band, draped across the front in a half apron, and carried round the right side to the back, there falling in a full square train. Round bodice, cut low at the neck, ornamented with Zouave fronts embroidered with gold, and trimmed with a wide linen collar. Full linen sleeves, slashed at the shoulder, and pleated into a deep cuff of silk. Fine linen head-dress.



MISTRESS PAGE.

Petticoat of rose cashmere. Full skirt, made in grey cashmere, bunched round the hips by a girdle, from which is suspended a bag purse. Round body, cut square at the neck, and trimmed with gold braid. Sleeves puffed at the elbow. Head-dress of linen, forming a small wimple, ornamented with a band over the head.









ANNE PAGE.

Petticoat of brocaded cloth. Full skirt of blue cashmere, pleated round the waist, and looped up with a girdle. Round waisted body made in brown cloth, made with a plastron of black cloth embroidered gold, cut low at the neck in front, and ornamented with a narrow turned-down collar at the back. The sleeves are cut short, extending half-way down the upper arm, to which a loose sleeve of linen is attached. Head-dress of white linen, shaped into horns, and fastened round the head by a narrow fillet of gold embroidery.



ANNE PAGE.

Demi-train skirt of white cloth embroidered with silver, let in, on the left side, with a panel of broché velvet. Jacket bodice, open at the neck, and filled in with a plastron of ermine, and edged round with a narrow band of the same. Coat sleeves, ornamented by a cuff of ermine. Valois cap. Purse bag, suspended from the right side.







ANNE PAGE (disguised as a Fairy Queen).

Corsage bodice of white satin, cut low at the neck, partly filled in with a pleating of crepon, forming sleeves, and ornamented with a berthe of silver fringe. Accordion-pleated skirt of white nun's veiling, sewn on to the bodice, and ornamented with a heading of silver filagree. A loose scarf of tulle is thrown over the right shoulder, and carried round under the left arm to the front. An aigrette is worn in the hair. Wings and harp.



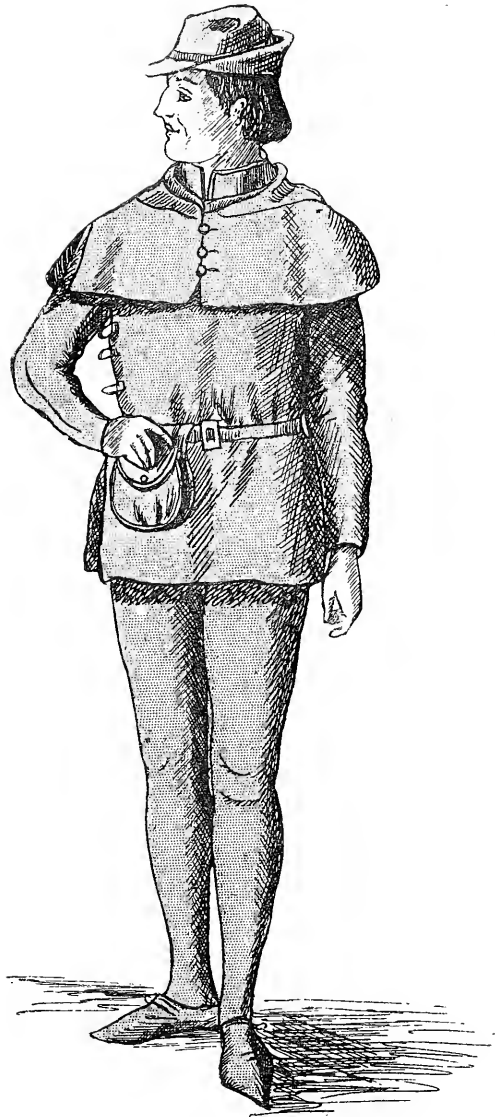
#### DAME QUICKLY.

Full skirt of brown serge, trimmed round the hem with a band of velvet, looped up on the right side by a girdle, supporting a bag and chatelaine. Round bodice, ornamented with a deep collar of black velvet. Velvet sleeves, trimmed with a narrow puff on the shoulder. Linen cap, with long ends carried under the chin.



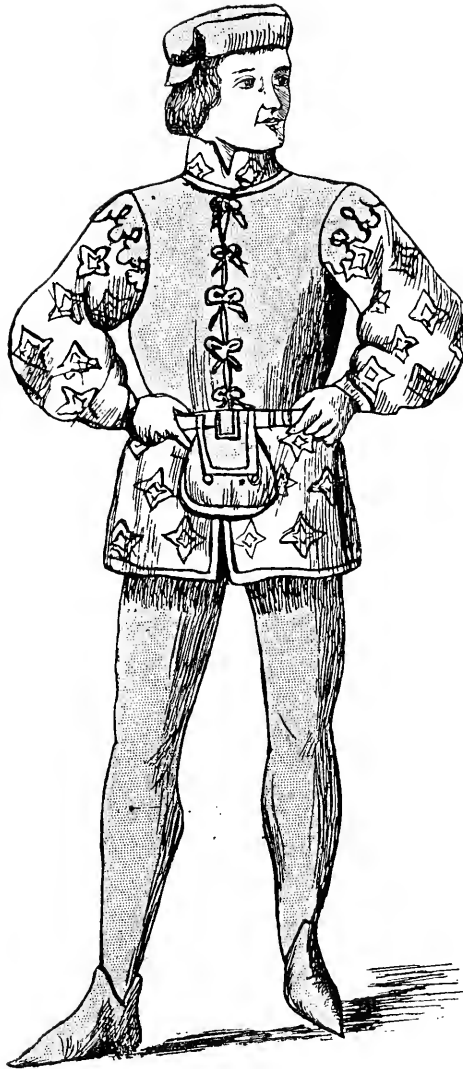






## SERVANT TO PAGE.

Leathern jerkin, fastened at the sides by straps and buckles, made with tight sleeves, and ornamented with a cape and hood. Peaked cap, turned up at the back and sides. Waist belt, with a money pouch. Parti-colour hose. Low shoes with pointed toes.



## SERVANT TO FORD.

Tunic of white linen, embroidered red. Short leathern jerkin, made without sleeves, terminating at the waist. Waist belt of leather, supporting a money pouch. Cloth cap. Parti-colour hose. Low shoes with pointed toes.







PISTOL (as a Demon).

This dress would require to be made specially for the wearer, and would be made of material known as stockinette, the joins being hidden by bands of silk.



A GOBLIN.

Red worsted tights and singlet, over which is worn a short combination garment of a deeper colour. Wings.









#### A FAIRY.

Short skirt of silver-spangled green tulle, made in accordion pleats. Tunic and bodice cut in one, forming a short tablier in front, tied in a bow and ends on the right side. The bodice is cut low at the neck, and edged and trimmed with silver braid and fringe. Silver star in the hair. Small wings at the back.



#### A FAIRY.

Accordion-pleated skirt, made in silver tulle. Bodice and tunic of white satin, cut in one, the tunic being draped in loose folds across the front, looped up at the sides, and vandyked, each point being ornamented with a little bell in the shape of a lily; the upper part of the tunic being trimmed with a garniture of lilies and foliage. The bodice is quite plain, cut low at the neck, is without sleeves, save for small shoulder straps imitating a lily. Star in the hair. Fairy wings.







A SATYR.

This is a property costume, made in goat skins. The legs in imitation of a goat; the upper part of the body being covered with goat skin, leaving the right arm and shoulder bare. The head is crowned with vine leaves. Large ears, pan pipe, and water gourd.

# To GILD!

—• REFINED GOLD. —•

# To PAINT!

**S**TAGE EFFECTS are often very difficult to produce, and **STAGE PROPERTIES** are not always to be found when wanted. In **Amateur and Private Theatricals** the Scenery and Properties are often very crude or unsuited to the piece played, either through reluctance to go to the expense of hiring, or the fact of being at too great a distance from town, thereby marring what might otherwise have proved an effective performance. Yet, did one only know it, the means for producing capital stage effects are easily obtainable: a little ingenuity and a box of **JUDSON'S HOUSEHOLD REQUISITES** is all that is needed. The harmony of colour can be ensured by the use of **JUDSON'S DYES**. Old Frames can be made new with **JUDSON'S GOLD PAINT**. Real Family Plate can be counterfeited with **JUDSON'S SILVER PAINT**.

**JUDSON'S ART ENAMEL PAINTS** will produce wonderful changes on Furniture, Woodwork, and Pottery; and with a coating of **HOUSEHOLD VARNISH**, faded Scenery may be made to look fresh and new. **BRUNSWICK BLACK** or **BERLIN BLACK** can also be used to produce either a dull or glossy Black, as necessity may require; while **JUDSON'S WOOD STAINS** will convert Deal Chairs or Tables into Mahogany Suites in a very short space of time. For Prosceniums, and where a brilliant effect is required, the "**GLITTERINE**" **ENAMELS** produce a splendid spangled appearance; and Rich Brocades can be simulated by painting Plain Velvet, Silk, or Cashmere, with "**GLITTERINE**" **PAINTS** (not Enamels). The difficulties of Parti-colour Hose can be overcome with a sixpenny bottle of **JUDSON'S DYE**. A rich Suit of Armour can be made out of cardboard, varnished and damascened with Silver or Gold Paint.

In equal measure for Domestic and Economical Purposes must we recommend **JUDSON'S SPECIALTIES**, which, judiciously used, make the home comfortable and life pleasant.

	PER BOTTLE.
Judson's Dyes (all Colours, Powder or Liquid)...	6d.
Judson's Gold (and Silver) Paint 1/6 3/6 & 10/6	
Judson's Art Enamel Paints ... ..	6d. & 1/-
Judson's Household Varnish ... ..	6d. & 1/-

	PER BOTTLE.
Judson's "Glitterine" Enamels ...	6d. & 1/-
Judson's "Glitterine" Paints, per box	5/- to 21/-
Judson's Brunswick & Berlin Black ...	6d. & 1/-

Post Free on receipt of Stamps or Postal Order.

**JUDSON'S PREPARATIONS** are sold by Chemists, Grocers, Stores, and Stationers. List of Colours in Dyes and Enamels, and Pamphlet free on application.

**DANIEL JUDSON & SON, Limited, 77, SOUTHWARK STREET. LONDON. S.E.**

# S. MILLER'S Publications.

MONTHLY

## Fashion Books

EDITED BY

→\* MARIE SCHILD. \*←

### LE JOURNAL DES MODES.

SIX COLOURED PLATES.

Thirty-two pages of Illustrations and Descriptions.

Price 1s. 6d. Post Free, 1s. 8d.

SCHILD'S

### MONTHLY JOURNAL.

#### FASHIONS & NEEDLEWORK.

A COLOURED PLATE.

Twenty-Four pages of Illustrations and Descriptions.

A CUT PATTERN GRATIS.

Price 4d. Post free, 5d.

### MOTHERS' HELP.

#### A JOURNAL OF CHILDREN'S DRESSES.

Twenty-four pages of Illustrations and Descriptions.

A CUT PATTERN GRATIS.

Price 1d. Post free, 2d.

SCHILD'S

### ILLUSTRATED MAGAZINE.

FASHIONS & WORK.

Twenty-four pages of Illustrations and Descriptions.

A CUT PATTERN GRATIS.

Price 1d. Post free, 2d.

### SCHILD'S PARISIAN DRESS PATTERNS.

6d., 9d., 1s., and 1s. 6d. each.

*A Thousand Designs to select from*

CATALOGUE, 6d. POST FREE, 9d.

AGENTS WANTED IN EVERY TOWN.

FANCY

## Costume Books

EDITED BY

→\* MARIE SCHILD. \*←

### 1,000 IDEAS FOR COSTUMES.

Arranged in alphabetical order; 150 Illustrations.

Paper Cover, 2s. 6d., Postage, 4d.; or Cloth Cover, 3s. 6d.,  
Postage, 6d.

### FISHWIFE AND FISHERGIRL COSTUMES.

Picturesque Costumes of Fisherfolk Costumes from various parts of the world; 5 Coloured Plates; 30 full-page Illustrations.

Paper Cover, 2s. 6d., Postage, 4d.; or Cloth Cover, 3s. 6d.,  
Postage, 6d.

### OLD ENGLISH COSTUMES.

An Epitome of English Costumes from Boadicea to the present Century; 40 full-page Illustrations; 5 Coloured Plates.

Paper Cover, 2s. 6d., Postage, 4d.; or Cloth Cover, 3s. 6d.,  
Postage, 6d.

### MALE CHARACTER COSTUMES.

An alphabetical arrangement of nearly 1,000 Characters; 150 Illustrations.

Paper Cover, 2s. 6d., Postage, 4d.; or Cloth Cover, 2s. 6d.,  
Postage, 6d.

### CHILDREN'S FANCY COSTUMES.

400 Illustrations of Costumes for Boys and Girls; each Illustration with a full description underneath.

Paper Cover, 2s. 6d., Postage, 4d.; or Cloth Cover, 3s. 6d.,  
Postage, 6d.

### MINUETS AND GAVOTTES.

A Musical Album of Original Compositions, with Easy Pianoforte Accompaniments. Illustrated by 6 full-page Etchings showing Male and Female Costumes of the reigns of Charles I. and II., Queen Anne, George II., III., and IV.

80 pages, in Coloured Wrapper, 2s. 6d.; Cloth, 2s. 6d.;  
Postage, 3d.

### SHAKESPEARIAN COSTUMES.

No. I.—"AS YOU LIKE IT."

II.—"ALL'S WELL THAT ENDS WELL."

III.—"TAMING THE SHREW."

IV.—"THE MERRY WIVES OF WINDSOR."

Illustrations of the whole of the Costumes required for the Characters of these Plays.

Price 1s. 6d. each. Postage, 2d.

S. MILLER, 10, SOUTHAMPTON ST., STRAND, W.C.



# ROWLANDS' ODONTO

A PURE, FRAGRANT, AND NON-GRITTY TOOTH POWDER.



Whitens the Teeth.  
Prevents Decay.  
Gives delightful  
Fragrance to the  
**BREATH.**  
2s. 9d. per Box.

Ask for ROWLANDS' ODONTO, of  
20, Hatton Garden, London, and  
AVOID IMITATIONS.



## ROWLANDS' KALYDOR.

This unique Botanical preparation allays all irritation and tenderness of the skin caused by exposure to the heat and dust of summer, cold winds or damp atmosphere, removes sunburn, roughness, redness, freckles, and tan, and imparts a healthy and blooming appearance to the complexion, and a delicacy and softness to the neck, hands, and arms. Its purifying and refreshing properties have obtained its selection by Royalty and the several Courts throughout Europe, together with the *élite* of the Aristocracy.

Bottles, 4/6. Half-Bottles, 2/3.



## ROWLANDS' MACASSAR OIL

Produces Luxuriant Glossy Hair, and eradicates Scurf and Dandriff.

*It is specially recommended for stimulating the growth of Children's Hair.*

SOLD IN  
**ROWLANDS' MACASSARA GOLDEN COLOUR**  
For Fair-headed Children.

**BOTTLES,**  
3/6, 7/6, and 10/6.

## Rowlands' Euplysia

Is a botanical wash for cleansing the hair and skin of the head from all impurities, Scurf, or Dandriff; the application of the Euplysia (which is perfectly innocent in its nature) should be made on retiring to rest at night, a practice that will render the morning use of Rowlands' Macassar Oil increasingly effective both as to health and beauty of the hair. 2/6 per bottle.

## Rowlands' Eukonia

Is a beautifully pure, delicate, and fragrant toilet powder. Each book has inside the lid a certificate of purity from Dr. Reilwood, Ph.D., F.C.S., &c. Sold in three tints White, Rose, and Cream, 2/6 per Box; small Boxes, 1/-.

All these Articles can be had for 3d. extra to

**A. ROWLAND & SONS, 20, Hatton Garden, LONDON.**  
SOLD ALSO BY CHEMISTS & PERFUMERS.

# PAPER MODELS OF FANCY COSTUME DRESSES.

LADIES requiring Paper Models of any of the Costumes Described or Illustrated in this Book, should forward measurements as under:—

	Inches.		Inches.
Size of Waist ... ..		Length of Back ... ..	
Length from Neck to Waist...		Size across Back ... ..	
Size across Chest ... ..		Length of Shoulders ... ..	
Length of Arm ... ..		Length under Arm ... ..	
Length of Skirt in Front ...			

Made-up Model, with Flat Pattern to cut by, 6/6; Flat Pattern only, 3.3. P.O.O. to accompany Order, and made payable to MARIE SCHILD, at the King Street Office, Covent Garden.

# TEACH YOUR CHILDREN TO MAKE THEIR OWN DOLL'S CLOTHING.

A BEAUTIFUL DOLL, 18 inches high, made with a kid body. Price 3s. 6d.; carriage free, 4s. The following Paper Patterns are cut to fit the Doll, and include both the Dress and Under-linen complete. Each article of Dress is cut in a different coloured paper, and enclosed in an envelope, illustrating the following costumes:—

DOLLY AS A BABY.  
DOLLY AS A GIRL.  
DOLLY AS A YOUNG LADY.  
DOLLY AS A LADY.  
DOLLY AS A FRENCH PEASANT.

DOLLY AS A GERMAN PEASANT.  
DOLLY AS A SPANISH PEASANT.  
DOLLY AS A NORWEGIAN PEASANT.  
DOLLY AS A SWISS PEASANT.  
DOLLY AS A RUSSIAN PEASANT.

DOLLY AS AN ITALIAN PEASANT.  
DOLLY AS A DUTCH PEASANT.  
DOLLY AS A NEWHAVEN FISHWIFE.  
DOLLY AS A WELSH WOMAN.  
DOLLY AS GOLLEEN BAWN.

*Each Costume Set, 6d.; post free, 7d.  
Or the Doll and the Set of Fifteen Costumes, post free, 10s.*

**S. MILLER, 142, LONG ACRE, LONDON, W.C.**



# Fancy Dress Balls.

## W. CLARKSON,

Court Costumier, Perruquier and Hairdresser.

SPECIAL APPOINTMENT TO HER MAJESTY.

### COSTUMES, WIGS AND EVERY REQUISITE ON HIRE OR PURCHASE.

*Special Care given to Accuracy and Originality.*

**Nett Cash Prices Charged.**

Clarkson's Lillie Powder, 1/6 per box. Rouge, 1/-

### MASKS OF ALL DESCRIPTIONS.

→\* **DOMINOS.** \*←

Competent Assistants sent with COSTUMES, SCENERY, LIME-LIGHT, FIT-UPS, and every requisite for effectively mounting Amateur Performances, Tableaux-Vivants, Living Chess, &c.

**CATALOGUES FREE. ESTIMATES GIVEN.**

## 45 & 44, WELLINGTON STREET, STRAND, LONDON.

Telegraphic Address—"WIGGERY, LONDON."





**D**

**BENHAM**



AND

**F**

**REBODY**



Wigmore Street, **LONDON,**  
W.

PICTURES  
BY  
Eminent Painters  
CONSULTED FOR  
Artistic  
DRESSES  
Historical,  
Theatrical, and  
Fancy  
COSTUMES  
FOR  
Ladies and Children only,  
produced with careful attention  
to details, at  
Moderate Prices.

Specialties  
\* \* \* \* \* IN \* \* \* \* \*  
FANCY  
\* \* \* \* \*  
Costumes



ORIGINAL WATER COLOUR SKETCHES, with Descriptions and Estimates. POST FREE ON APPLICATION.



## DATE DUE

MAY 17 1987			
MAY 27 1987			
FEB 21 1987			
JAN 14 1987			
DEC 8 1999			
APR 20 2001			
FEB 15 2003			
MAY 02 2003			
MAY 02 2005			
APR 19 2005			
APR 18 2007			
MAR 27 2007			

BRIGHAM YOUNG UNIVERSITY



3 1197 00700 8144

