

# A College With a Cause



Carl McIntire, President  
Shelton College

# Shelton College

A COLLEGE WITH A CAUSE

## 1. IS THERE NOT A CAUSE?

Yes, and Shelton champions that cause. The motto of Shelton College is "Training Christian Warriors." The theme text is, "The fear of the Lord is the beginning of knowledge" (Prov. 1:7). Students must be prepared to meet the issues of our day. The College is loyal to the Holy Scripture as the Word of God, and a part of the Twentieth Century Reformation movement. It is truly a leadership college.

## 2. IS THE COLLEGE ACCREDITED?

Yes, it is accredited by the State of New Jersey Division of Higher Education. Its credits have been accepted for advanced degrees by such graduate schools as Columbia University, the University of Pennsylvania and other similar institutions. It is a four-year Christian liberal arts college offering the Bachelor of Arts degree. All courses, whether history, English, science, theology, literature, philosophy, or cultural arts are approached and studied on the basis of the whole counsel of God.

## 3. WHO MAY COME TO SHELTON?

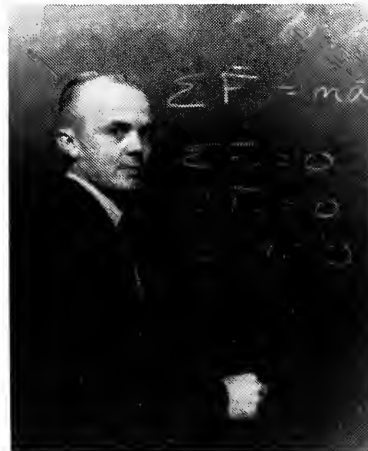
The College is co-educational. There is a welcome for everyone at Shelton who meets the entrance requirements. Students may apply up until the first day of the semester, especially in the case of transfer students, whom the College welcomes. Early application is desired. Students may select their own rooms depending upon the sequence of application.

## 4. DOES SHELTON HAVE A STRONG FACULTY?

Yes. The faculty makes the College. Its members are among the very best. God has given to the College talented, trained and consecrated Christian leaders to be teachers, counsellors, and friends. All are specially prepared in their respective fields. High standards of scholarship are maintained. The faculty numbers thirty.

## 5. WHAT COURSE MAJORS DOES SHELTON OFFER?

Shelton offers the B.A. degree in: Christian Education, Biblical Literature, Philosophy and Religion, English, Speech, History and Political



Science, Elementary Education, Music Education, Applied Music, Mathematics and Science, Business Administration — Business Management or Executive Assistant.

## 6. DOES SHELTON PREPARE STUDENTS FOR THE PROFESSIONS?

Yes. Courses are especially designed to equip students for professional graduate work. The history and political science major is preparation for the law profession, the mathematics and science major for the medical and dental professions, and the Bible and Christian education majors for the Christian ministry.

## 7. DOES THE ELEMENTARY EDUCATION MAJOR LEAD TO CERTIFICATION?

Yes. In fact, the largest enrollment in any major at Shelton is in the field of elementary education. Teachers are prepared for Christian schools and State schools.

## 8. DOES SHELTON HAVE A SUMMER SCHOOL?

The summer of 1970 will feature a full schedule. Special courses for teachers will be available. Write for special bulletin.

## 9. WHAT ARE THE FINANCIAL REQUIREMENTS?

The total yearly cost for everything except books and incidentals is \$1600 to \$1800. The cost includes tuition, room, board, linen and student fees. Nonresident students pay \$350 tuition cost for each of the two semesters.

Financial aid programs, academic and athletic scholarships, and loans are available. Inquiry should be made specifically.

Students may work up to 18 hours a week in the library, cafeteria and snack shop, or as assistants to the faculty and administration. Jobs are available in surrounding areas.

## 10. WHAT KIND OF ATHLETIC PROGRAM DOES THE COLLEGE HAVE?

Its program is both intramural and intercollegiate. The College is a member of the North Atlantic Christian Conference and competes in soccer, basketball, and baseball. Volleyball, softball, table tennis, and bowling are included in the intramural program. (Some students bring their fishing poles and surf boards.) The Col-



lege won the 1968 soccer championship and is Junior Varsity Conference co-champion in basketball for 1969.

#### 11. WHAT ABOUT THE CO-CURRICULAR PROGRAM?

Co-curricular activities at Shelton are considered an essential part of the total educational program. They include the Student Senate, the student newspaper, the Christian Philosophic Society, the Foreign Missions Fellowship, the Varsity-S club, International Christian Youth, and the college choir. The formation of new groups is encouraged to meet new interests and needs.

Cultural events also include concerts, recitals, debates, forums, and an annual artist series. The cultural program is open to the greater college community and is well attended by both South Jersey residents and visiting friends of the College.

Banquets, parties, Valentine Banquet, "Sadie Hawkins Day," and other informal activities contribute to the College's monthly social calendar.

#### 12. WHAT FACILITIES DOES THE COLLEGE HAVE?

The historic Congress Hall is a men's residence. Here six Presidents have visited. The Christian Admiral is the girl's residence. A million-dollar library-classroom building will be ready for occupancy September, 1969

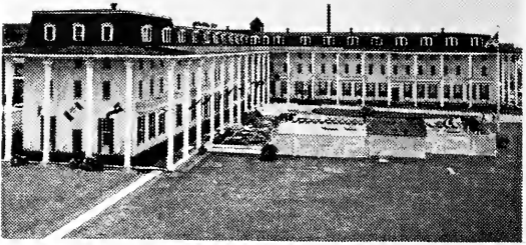
#### 13. WHERE IS CAPE MAY, NEW JERSEY?

Cape May is one of the most historic spots along the Atlantic coast. It is America's oldest seashore resort with the largest accumulation of Victorian architecture in the country, headquarters of America's Audubon Society, right on the Atlantic Ocean with the sun and the moon rising out of the sea and setting across the Delaware Bay. Six large city blocks at the north end of Cape May have been zoned by the city for the College and its future development. The College is within a radius of New York, Philadelphia, Baltimore, Washington, Richmond, and the historic points of early America. It is a quiet, restful, ideal place for study and for students. The College is free of hippies, yuppies, and the spirit of disobedience and riot which characterizes so many of the institutions of the day.



Residence for Women and Swimming Pool





Residence for Men

#### 14. WHAT ARE THE ADVANTAGES OF SHELTON?

Many indeed.

Friendships established with classmates from across the country and around the world will never be severed, but will add to the depth and outreach of Christian fellowship throughout all of life.

Prayer times, both scheduled and unscheduled, bring new assurances of God's faithfulness, strength, and wisdom, and dynamically challenge the student's faith to seek first the face of God before looking to the wisdom and strength of man.

College teams composed of preachers, musicians, and testimonials, along with other weekend teaching and service ministries, give opportunity to witness for Christ and share with others that which has been obtained in study and in the total college experience.

And the challenge, burden, or vision received from a class lecture, a personal conversation, a chapel service, or the total impact of life at Shelton, might be that particular thing that God would use by the Holy Spirit to take hold of a student's heart radically, resulting in mighty power and blessing both to the student, the church, and the world through our Lord Jesus Christ.

Write me today.

DR. CARL McINTIRE, PRESIDENT  
SHELTON COLLEGE  
CAPE MAY, NEW JERSEY 08204