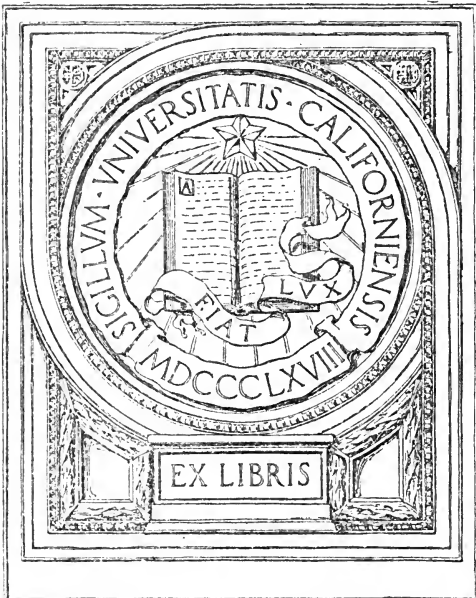


UC-NRLF

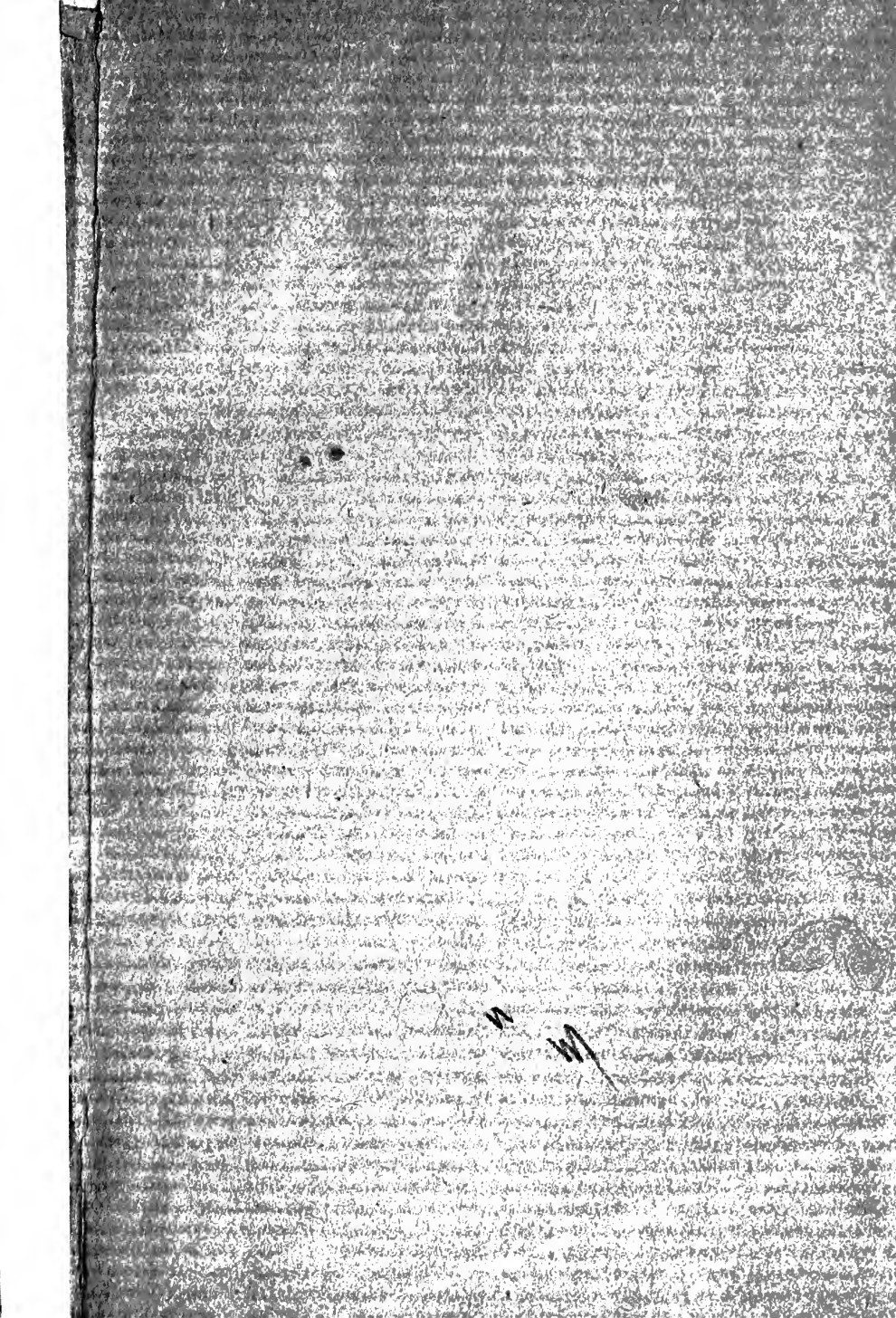


QB 529 285

IN MEMORIAM
Irving Stringham



EX LIBRIS



MATHEMATICAL TEXT-BOOKS.

For Lower Grades.

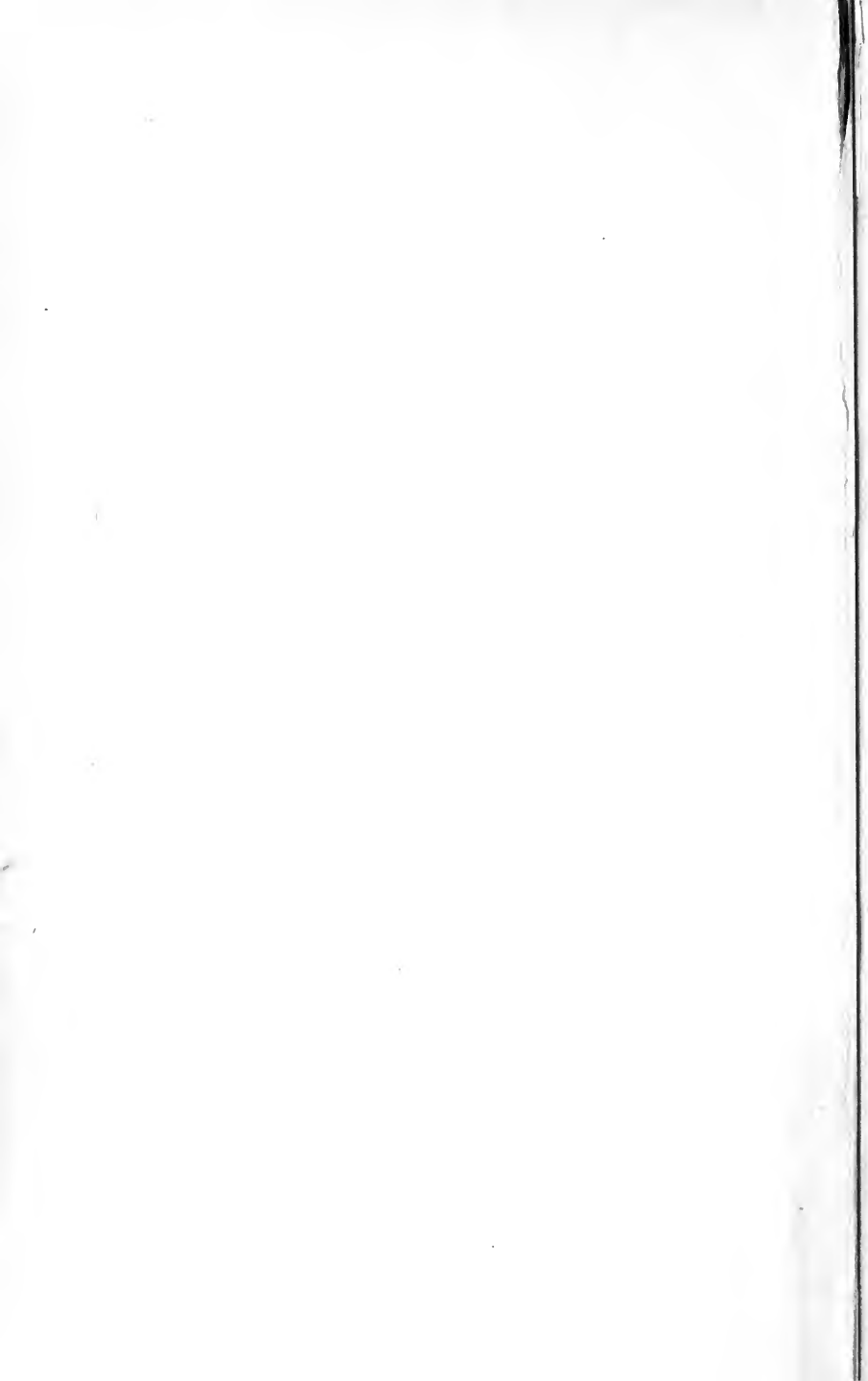
Bacon :	Four Years in Number	\$0.40
Baldwin :	Industrial Primary Arithmetic45
Gay :	Business Book-keeping :	
	Single Entry66
	Double Entry	1.12
	Complete Edition	1.40
Ginn and Coady :	Combined Number and Language Lessons :	
	Teachers' Manual50
	Tablets for Seat Work. Blocks I, II, III, IV.....Each	.08
Page :	Fractions :	
	Teachers' Manual30
	Pupils' Edition30
Prince :	Arithmetic by Grades :	
	Books I to VIII.....Each	.20
	Teachers' Manual :	
	Teachers' Manual, Part I.....	.35
	Teachers' Manual, Part II.....	.50
	Complete Edition80
Shove :	Primary Number Cards.....	.25
Speer :	Arithmetics :	
	Part I. Primary. For teachers35
	Part II. Elementary. For pupils.....	.45
	Part III. Advanced.....	
Wentworth :	Elementary Arithmetic.....	.30
	Practical Arithmetic.....	.65
	Mental Arithmetic.....	.30
	Primary Arithmetic.....	.30
	Grammar School Arithmetic.....	.65
	First Steps in Algebra.....	.60
Wentworth and Hill :	Exercises in Arithmetic :	
	Exercise Manual.....	.50
	Examination Manual.....	.35
	Complete in one volume.....	.80
Wentworth and Reed :	First Steps in Number :	
	Pupils' Edition.....	.30
	Teachers' Edition.....	.90
	Part I. First Year.....	.30
	Part II. Second Year.....	.30
	Part III. Third Year30

Descriptive Circulars of the above books sent, postpaid, on application.

GINN & COMPANY, Publishers,

Boston. New York. Chicago. Atlanta. Dallas.

lg.



See Appendix to Vol. I. Calculus of Variations

lg.

A

SHORT TABLE OF INTEGRALS



COMPILED BY

B. O. PEIRCE

HOLLIS PROFESSOR OF MATHEMATICS AND NATURAL PHILOSOPHY
IN HARVARD UNIVERSITY



BOSTON, U.S.A.
GINN & COMPANY, PUBLISHERS

The Athenæum Press

1903.

QA
305
B85.



*The compiler will be grateful to any person who may send
notice of errors in these formulas to*

B. O. PEIRCE,

Harvard College, Cambridge.

IN MEMORIAM

having written...

I. FUNDAMENTAL FORMS.

1. $\int a \, dx = ax.$

2. $\int a f(x) \, dx = a \int f(x) \, dx.$

3. $\int \frac{dx}{x} = \log x.$

4. $\int x^m \, dx = \frac{x^{m+1}}{m+1}$, when m is different from -1 .

5. $\int e^x \, dx = e^x.$

6. $\int a^x \log a \, dx = a^x.$

7. $\int \frac{dx}{1+x^2} = \tan^{-1} x.$

$\int \frac{dx}{1-x^2} = \tanh^{-1} x.$

8. $\int \frac{dx}{\sqrt{1-x^2}} = \sin^{-1} x.$

$\int \frac{dx}{\sqrt{x^2+1}} = \sinh^{-1} x. \quad \int \frac{dx}{\sqrt{x^2-1}} = \cosh^{-1} x.$

9. $\int \frac{dx}{x\sqrt{x^2-1}} = \sec^{-1} x.$

$\int \frac{dx}{x\sqrt{1-x^2}} = -\operatorname{sech}^{-1} x.$

10. $\int \frac{dx}{\sqrt{2x-x^2}} = \operatorname{versin}^{-1} x.$

$\int \frac{dx}{x\sqrt{1+x^2}} = -\operatorname{csch}^{-1} x.$

11. $\int \cos x \, dx = \sin x.$

12. $\int \sin x \, dx = -\cos x.$

FUNDAMENTAL FORMS.

13. $\int \csc x dx = \log \sin x.$

$\int \coth x dx = \ln \sinh x.$

14. $\int \tan x dx = -\log \cos x.$

$\int \tanh x dx = \ln \cosh x$

15. $\int \tan x \sec x dx = \sec x.$

16. $\int \sec^2 x dx = \tan x.$

$\int \operatorname{sech}^2 x dx = \tanh x$

17. $\int \csc^2 x dx = -\cot x.$

$\int \operatorname{csch}^2 x dx = -\coth x$

In the following formulas, $u, v, w,$ and y represent any functions of x :

18. $\int (u + v + w + \text{etc.}) dx = \int u dx + \int v dx + \int w dx + \text{etc.}$

19a. $\int u dv = uv - \int v du.$

19b. $\int u \frac{dv}{dx} dx = uv - \int v \frac{du}{dx} dx.$

20. $\int f(y) dx = \int \frac{f(y) dy}{\frac{dy}{dx}}.$

$\int \sec x dx = \tanh^{-1}(\sin x).$

$\int \operatorname{sech} x dx = \tanh^{-1}(\sinh x)$

$\int \csc x dx = -\tanh^{-1}(\cos x).$

$\int \operatorname{csch} x dx = -\tanh^{-1}(\cosh x)$

II. RATIONAL ALGEBRAIC FUNCTIONS.

A. — EXPRESSIONS INVOLVING $(a + bx)$.

The substitution of y or z for x , where $y = xz = a + bx$, gives

$$21. \int (a + bx)^m dx = \frac{1}{b} \int y^m dy.$$

$$22. \int x(a + bx)^m dx = \frac{1}{b^2} \int y^m (y - a) dy.$$

$$23. \int x^n (a + bx)^m dx = \frac{1}{b^{n+1}} \int y^m (y - a)^n dy.$$

$$24. \int \frac{x^n dx}{(a + bx)^m} = \frac{1}{b^{n+1}} \int \frac{(y - a)^n dy}{y^m}.$$

$$25. \int \frac{dx}{x^n (a + bx)^m} = -\frac{1}{a^{m+n-1}} \int \frac{(z - b)^{m+n-2} dz}{z^m}.$$

Whence

$$26. \int \frac{dx}{a + bx} = \frac{1}{b} \log(a + bx).$$

$$27. \int \frac{dx}{(a + bx)^2} = -\frac{1}{b(a + bx)}.$$

$$28. \int \frac{dx}{(a + bx)^3} = -\frac{1}{2b(a + bx)^2}.$$

$$29. \int \frac{x dx}{a + bx} = \frac{1}{b^2} [a + bx - a \log(a + bx)].$$

$$30. \int \frac{x dx}{(a + bx)^2} = \frac{1}{b^2} \left[\log(a + bx) + \frac{a}{a + bx} \right].$$

$$31. \int \frac{x dx}{(a+bx)^3} = \frac{1}{b^2} \left[-\frac{1}{a+bx} + \frac{a}{2(a+bx)^2} \right].$$

$$32. \int \frac{x^2 dx}{a+bx} = \frac{1}{b^2} \left[\frac{1}{2}(a+bx)^2 - 2a(a+bx) + a^2 \log(a+bx) \right].$$

$$33. \int \frac{x^2 dx}{(a+bx)^2} = \frac{1}{b^3} \left[a+bx - 2a \log(a+bx) - \frac{a^2}{a+bx} \right].$$

$$34. \int \frac{dx}{x(a+bx)} = -\frac{1}{a} \log \frac{a+bx}{x}.$$

$$35. \int \frac{dx}{x(a+bx)^2} = \frac{1}{a(a+bx)} - \frac{1}{a^2} \log \frac{a+bx}{x}.$$

$$36. \int \frac{dx}{x^2(a+bx)} = -\frac{1}{ax} + \frac{b}{a^2} \log \frac{a+bx}{x}.$$

B. — EXPRESSIONS INVOLVING $(a+bx^2)$.

$$37. \int \frac{dx}{c^2+x^2} = \frac{1}{c} \tan^{-1} \frac{x}{c}.$$

$$38. \int \frac{dx}{c^2-x^2} = \frac{1}{2c} \log \frac{c+x}{c-x}.$$

$$39. \int \frac{dx}{a+bx^2} = \frac{1}{\sqrt{ab}} \tan^{-1} x \sqrt{\frac{b}{a}}, \text{ if } a > 0, b > 0.$$

$$40. \int \frac{dx}{a+bx^2} = \frac{1}{2\sqrt{-ab}} \log \frac{\sqrt{a}+x\sqrt{-b}}{\sqrt{a}-x\sqrt{-b}}, \text{ if } a > 0, b < 0.$$

$$41. \int \frac{dx}{(a+bx^2)^2} = \frac{x}{2a(a+bx^2)} + \frac{1}{2a} \int \frac{dx}{a+bx^2}.$$

$$42. \int \frac{dx}{(a+bx^2)^{m+1}} = \frac{1}{2ma} \frac{x}{(a+bx^2)^m} + \frac{2m-1}{2ma} \int \frac{dx}{(a+bx^2)^m}.$$

$$43. \int \frac{x dx}{a+bx^2} = \frac{1}{2b} \log \left(x^2 + \frac{a}{b} \right).$$

$$44. \int \frac{x dx}{(a + bx^2)^{m+1}} = \frac{1}{2} \int \frac{dz}{(a + bz)^{m+1}}, \text{ where } z = x^2.$$

$$45. \int \frac{dx}{x(a + bx^2)} = \frac{1}{2a} \log \frac{x^2}{a + bx^2}.$$

$$46. \int \frac{x^2 dx}{a + bx^2} = \frac{x}{b} - \frac{a}{b} \int \frac{dx}{a + bx^2}.$$

$$47. \int \frac{dx}{x^2(a + bx^2)} = -\frac{1}{ax} - \frac{b}{a} \int \frac{dx}{a + bx^2}.$$

$$48. \int \frac{x^2 dx}{(a + bx^2)^{m+1}} = \frac{-x}{2mb(a + bx^2)^m} + \frac{1}{2mb} \int \frac{dx}{(a + bx^2)^m}.$$

$$49. \int \frac{dx}{x^2(a + bx^2)^{m+1}} = \frac{1}{a} \int \frac{dx}{x^2(a + bx^2)^m} - \frac{b}{a} \int \frac{dx}{(a + bx^2)^{m+1}}.$$

$$50. \int \frac{dx}{a + bx^3} = \frac{k}{3a} \left[\frac{1}{2} \log \left(\frac{(k+x)^2}{k^2 - kx + x^2} \right) + \sqrt{3} \tan^{-1} \frac{2x - k}{k\sqrt{3}} \right],$$

where $bk^3 = a$.

$$51. \int \frac{x dx}{a + bx^3} = \frac{1}{3bk} \left[\frac{1}{2} \log \left(\frac{k^2 - kx + x^2}{(k+x)^2} \right) + \sqrt{3} \tan^{-1} \frac{2x - k}{k\sqrt{3}} \right],$$

where $bk^3 = a$.

$$52. \int \frac{dx}{x(a + bx^n)} = \frac{1}{an} \log \frac{x^n}{a + bx^n}.$$

$$53. \int \frac{dx}{(a + bx^n)^{m+1}} = \frac{1}{a} \int \frac{dx}{(a + bx^n)^m} - \frac{b}{a} \int \frac{x^n dx}{(a + bx^n)^{m+1}}.$$

$$54. \int \frac{x^m dx}{(a + bx^n)^{p+1}} = \frac{1}{b} \int \frac{x^{m-n}}{(a + bx^n)^p} - \frac{a}{b} \int \frac{x^{m-n} dx}{(a + bx^n)^{p+1}}.$$

$$55. \int \frac{dx}{x^m(a + bx^n)^{p+1}} = \frac{1}{a} \int \frac{dx}{x^m(a + bx^n)^p} - \frac{b}{a} \int \frac{dx}{x^{m-n}(a + bx^n)^{p+1}}.$$

$$56. \int x^{m-1}(a+bx^n)^p dx = \left\{ \begin{array}{l} \frac{1}{b(m+np)} \left[x^{m-n}(a+bx^n)^{p+1} - (m-n)a \int x^{m-n-1}(a+bx^n)^p dx \right]. \\ \frac{1}{m+np} \left[x^m(a+bx^n)^p + npa \int x^{m-1}(a+bx^n)^{p-1} dx \right]. \\ \frac{1}{ma} \left[x^m(a+bx^n)^{p+1} - (m+np+n)b \int x^{m+n-1}(a+bx^n)^p dx \right]. \\ \frac{1}{an(p+1)} \left[-x^m(a+bx^n)^{p+1} + (m+np+n) \int x^{m-1}(a+bx^n)^{p+1} dx \right]. \end{array} \right.$$

C. — EXPRESSIONS INVOLVING $(a+bx+cx^2)$.

Let $X = a + bx + cx^2$ and $q = 4ac - b^2$, then

$$57. \int \frac{dx}{X} = \frac{2}{\sqrt{q}} \tan^{-1} \frac{2cx+b}{\sqrt{q}}, \text{ when } q > 0. \quad 60. \int \frac{dx}{X^3} = \frac{2cx+b}{q} \left(\frac{1}{2X^2} + \frac{3c}{qX} \right) + \frac{6c^2}{q^2} \int \frac{dx}{X}.$$

$$58. \int \frac{dx}{X} = \frac{1}{\sqrt{-q}} \log \frac{2cx+b-\sqrt{-q}}{2cx+b+\sqrt{-q}}, \text{ when } q < 0. \quad 61. \int \frac{dx}{X^{n+1}} = \frac{2cx+b}{nqX^n} + \frac{2(2n-1)c}{qn} \int \frac{dx}{X^n}.$$

$$59. \int \frac{dx}{X^2} = \frac{2cx+b}{qX} + \frac{2c}{q} \int \frac{dx}{X}. \quad 62. \int \frac{x dx}{X} = \frac{1}{2c} \log X - \frac{b}{2c} \int \frac{dx}{X}.$$

$$63. \int \frac{x dx}{X^2} = -\frac{bx + 2a}{qX} - \frac{b}{q} \int \frac{dx}{X}.$$

$$64. \int \frac{x dx}{X^{n+1}} = -\frac{2a + bx}{nqX^n} - \frac{b(2n-1)}{nq} \int \frac{dx}{X^n}.$$

$$65. \int \frac{x^2 dx}{X} = \frac{x}{c} - \frac{b}{2c^2} \log X + \frac{b^2 - 2ac}{2c^2} \int \frac{dx}{X}.$$

$$66. \int \frac{x^2 dx}{X^2} = \frac{(b^2 - 2ac)x + ab}{cqX} + \frac{2a}{q} \int \frac{dx}{X}.$$

$$67. \int \frac{x^m dx}{X^{n+1}} = -\frac{x^{m-1}}{(2n-m+1)cX^n} - \frac{n-m+1}{2n-m+1} \cdot \frac{b}{c} \int \frac{x^{m-1} dx}{X^{n+1}} \\ + \frac{m-1}{2n-m+1} \cdot \frac{a}{c} \int \frac{x^{m-2} dx}{X^{n+1}}.$$

$$68. \int \frac{dx}{xX} = \frac{1}{2a} \log \frac{x^2}{X} - \frac{b}{2a} \int \frac{dx}{X}.$$

$$69. \int \frac{dx}{x^2 X} = \frac{b}{2a^2} \log \frac{X}{x^2} - \frac{1}{ax} + \left(\frac{b^2}{2a^2} - \frac{c}{a} \right) \int \frac{dx}{X}.$$

$$70. \int \frac{dx}{x^n X^{n+1}} = -\frac{1}{(m-1)ax^{n-1}X^n} - \frac{n+m-1}{m-1} \cdot \frac{b}{a} \int \frac{dx}{x^{m-1}X^{n+1}} \\ - \frac{2n+m-1}{m-1} \cdot \frac{c}{a} \int \frac{dx}{x^{m-2}X^{n+1}}.$$

D. — RATIONAL FRACTIONS.

Every proper fraction can be represented by the general form :

$$\frac{f(x)}{F(x)} = \frac{g_1 x^{n-1} + g_2 x^{n-2} + g_3 x^{n-3} + \dots + g_n}{x^n + k_1 x^{n-1} + k_2 x^{n-2} + \dots + k_n}.$$

a, b, c , etc., are the roots of the equation $F(x) = 0$, so that

$$F(x) = (x-a)^p (x-b)^q (x-c)^r \dots,$$

$$\begin{aligned} \text{then } \frac{f(x)}{F(x)} &= \frac{A_1}{(x-a)^p} + \frac{A_2}{(x-a)^{p-1}} + \frac{A_3}{(x-a)^{p-2}} + \dots + \frac{A_p}{x-a} \\ &+ \frac{B_1}{(x-b)^q} + \frac{B_2}{(x-b)^{q-1}} + \frac{B_3}{(x-b)^{q-2}} + \dots + \frac{B_q}{x-b} \\ &+ \frac{C_1}{(x-c)^r} + \frac{C_2}{(x-c)^{r-1}} + \frac{C_3}{(x-c)^{r-2}} + \dots + \frac{C_r}{x-c} \\ &+ \dots \quad \dots \quad \dots \quad \dots \quad \dots \quad \dots \end{aligned}$$

Where the numerators of the separate fractions may be determined by the equations

$$A_m = \frac{\phi_1^{[m-1]}(a)}{(m-1)!}, \quad B_m = \frac{\phi_2^{[m-1]}(b)}{(m-1)!}, \quad \text{etc., etc.}$$

$$\phi_1(x) = \frac{f(x)(x-a)^p}{F(x)}, \quad \phi_2(x) = \frac{f(x)(x-b)^q}{F(x)}, \quad \text{etc., etc.}$$

If a, b, c, \dots , are single roots, then $p = q = r = \dots = 1$, and

$$\frac{f(x)}{F(x)} = \frac{A}{x-a} + \frac{B}{x-b} + \frac{C}{x-c} \dots$$

where $A = \frac{f(a)}{F'(a)}, B = \frac{f(b)}{F'(b)}, \text{ etc.}$

The simpler fractions, into which the original fraction is thus divided, may be integrated by means of the following formulas:

$$71. \int \frac{h dx}{(mx+n)^t} = \int \frac{h d(mx+n)}{m(mx+n)^t} = \frac{h}{m(1-t)(mx+n)^{t-1}}.$$

$$72. \int \frac{h dx}{mx+n} = \frac{h}{m} \log(mx+n).$$

If any of the roots of the equation $f(x) = 0$ are imaginary, the parts of the integral which arise from conjugate roots can be combined together and the integral brought into a real form. The following formula, in which $i = \sqrt{-1}$, is often useful in combining logarithms of conjugate complex quantities:

$$73. \log(x \pm yi) = \frac{1}{2} \log(x^2 + y^2) \pm i \tan^{-1} \frac{y}{x}.$$

III. IRRATIONAL ALGEBRAIC FUNCTIONS.

A.—EXPRESSIONS INVOLVING $\sqrt{a+bx}$.

The substitution of a new variable of integration, $y = \sqrt{a+bx}$, gives

$$74. \int \sqrt{a+bx} dx = \frac{2}{3b} \sqrt{(a+bx)^3}.$$

$$75. \int x \sqrt{a+bx} dx = -\frac{2(2a-3bx)\sqrt{(a+bx)^3}}{15b^2}.$$

$$76. \int x^2 \sqrt{a+bx} dx = \frac{2(8a^2-12abx+15b^2x^2)\sqrt{(a+bx)^3}}{105b^3}.$$

$$77. \int \frac{\sqrt{a+bx}}{x} dx = 2\sqrt{a+bx} + a \int \frac{dx}{x\sqrt{a+bx}}.$$

$$78. \int \frac{dx}{\sqrt{a+bx}} = \frac{2\sqrt{a+bx}}{b}.$$

$$79. \int \frac{x dx}{\sqrt{a+bx}} = -\frac{2(2a-bx)\sqrt{a+bx}}{3b^2}.$$

$$80. \int \frac{x^2 dx}{\sqrt{a+bx}} = \frac{2(8a^2-4abx+3b^2x^2)\sqrt{a+bx}}{15b^3}.$$

$$81. \int \frac{dx}{x\sqrt{a+bx}} = \frac{1}{\sqrt{a}} \log \left(\frac{\sqrt{a+bx} - \sqrt{a}}{\sqrt{a+bx} + \sqrt{a}} \right), \text{ for } a > 0.$$

$$82. \int \frac{dx}{x\sqrt{a+bx}} = \frac{2}{\sqrt{-a}} \tan^{-1} \sqrt{\frac{a+bx}{-a}}, \text{ for } a < 0.$$

$$83. \int \frac{dx}{x^2\sqrt{a+bx}} = -\frac{\sqrt{a+bx}}{ax} - \frac{b}{2a} \int \frac{dx}{x\sqrt{a+bx}}.$$

$$84. \int (a+bx)^{\pm \frac{n}{2}} dx = \frac{2}{b} \int y^{1 \pm n} dy = \frac{2(a+bx)^{\frac{2 \pm n}{2}}}{b(2 \pm n)}.$$

$$85. \int x(a+bx)^{\pm \frac{n}{2}} dx = \frac{2}{b^2} \left[\frac{(a+bx)^{\frac{4 \pm n}{2}}}{4 \pm n} - \frac{a(a+bx)^{\frac{2 \pm n}{2}}}{2 \pm n} \right].$$

$$86. \int \frac{x^m dx}{\sqrt{a+bx}} = \frac{2x^m \sqrt{a+bx}}{(2m+1)b} - \frac{2ma}{(2m+1)b} \int \frac{x^{m-1} dx}{\sqrt{a+bx}}.$$

$$87. \int \frac{dx}{x^n \sqrt{a+bx}} = -\frac{\sqrt{a+bx}}{(n-1)ax^{n-1}} - \frac{(2n-3)b}{(2n-2)a} \int \frac{dx}{x^{n-1} \sqrt{a+bx}}.$$

$$88. \int \frac{(a+bx)^{\frac{n}{2}} dx}{x} = b \int (a+bx)^{\frac{n-2}{2}} dx + a \int \frac{(a+bx)^{\frac{n-2}{2}} dx}{x}.$$

$$89. \int \frac{dx}{x(a+bx)^{\frac{m}{2}}} = \frac{1}{a} \int \frac{dx}{x(a+bx)^{\frac{m-2}{2}}} - \frac{b}{a} \int \frac{dx}{(a+bx)^{\frac{m}{2}}}.$$

B. — EXPRESSIONS* INVOLVING $\sqrt{x^2 \pm a^2}$ AND $\sqrt{a^2 - x^2}$.

$$90. \int \sqrt{x^2 \pm a^2} dx = \frac{1}{2} [x \sqrt{x^2 \pm a^2} \pm a^2 \log(x + \sqrt{x^2 \pm a^2})].$$

$$91. \int \sqrt{a^2 - x^2} dx = \frac{1}{2} \left(x \sqrt{a^2 - x^2} + a^2 \sin^{-1} \frac{x}{a} \right).$$

$$92. \int \frac{dx}{\sqrt{x^2 \pm a^2}} = \log(x + \sqrt{x^2 \pm a^2}). \quad \int \frac{dx}{\sqrt{x^2 - a^2}} = \cosh^{-1} \frac{x}{a}. \quad \int \frac{dx}{\sqrt{x^2 + a^2}} = \sinh^{-1} \frac{x}{a}.$$

$$93. \int \frac{dx}{\sqrt{a^2 - x^2}} = \sin^{-1} \frac{x}{a}.$$

$$94. \int \frac{dx}{x \sqrt{x^2 - a^2}} = \frac{1}{a} \cos^{-1} \frac{a}{x} = \frac{1}{a} \sec^{-1} \frac{x}{a}.$$

$$95. \int \frac{dx}{x \sqrt{a^2 \pm x^2}} = -\frac{1}{a} \log \left(\frac{a + \sqrt{a^2 \pm x^2}}{x} \right). \quad \int \frac{dx}{x \sqrt{a^2 - x^2}} = -\frac{1}{a} \operatorname{sech}^{-1} \frac{x}{a}.$$

$$96. \int \frac{\sqrt{a^2 \pm x^2}}{x} dx = \sqrt{a^2 \pm x^2} - a \log \frac{a + \sqrt{a^2 \pm x^2}}{x}. \quad \int \frac{dx}{x \sqrt{a^2 + x^2}} = -\frac{1}{a} \operatorname{csch}^{-1} \frac{x}{a}.$$

*These equations are all special cases of more general equations given in the next section.

$$97. \int \frac{\sqrt{x^2 - a^2}}{x} dx = \sqrt{x^2 - a^2} - a \cos^{-1} \frac{a}{x}.$$

$$98. \int \frac{x dx}{\sqrt{a^2 \pm x^2}} = \pm \sqrt{a^2 \pm x^2}.$$

$$99. \int \frac{x dx}{\sqrt{x^2 - a^2}} = \sqrt{x^2 - a^2}.$$

$$100. \int x \sqrt{x^2 \pm a^2} dx = \frac{1}{3} \sqrt{(x^2 \pm a^2)^3}.$$

$$101. \int x \sqrt{a^2 - x^2} dx = -\frac{1}{3} \sqrt{(a^2 - x^2)^3}.$$

$$102. \int \sqrt{(x^2 \pm a^2)^3} dx \\ = \frac{1}{4} \left[x \sqrt{(x^2 \pm a^2)^3} \pm \frac{3a^2 x}{2} \sqrt{x^2 \pm a^2} + \frac{3a^4}{2} \log(x + \sqrt{x^2 \pm a^2}) \right].$$

$$103. \int \sqrt{(a^2 - x^2)^3} dx \\ = \frac{1}{4} \left[x \sqrt{(a^2 - x^2)^3} + \frac{3a^2 x}{2} \sqrt{a^2 - x^2} + \frac{3a^4}{2} \sin^{-1} \frac{x}{a} \right].$$

$$104. \int \frac{dx}{\sqrt{(x^2 \pm a^2)^3}} = \frac{\pm x}{a^2 \sqrt{x^2 \pm a^2}}.$$

$$105. \int \frac{dx}{\sqrt{(a^2 - x^2)^3}} = \frac{x}{a^2 \sqrt{a^2 - x^2}}.$$

$$106. \int \frac{x dx}{\sqrt{(x^2 \pm a^2)^3}} = \frac{-1}{\sqrt{x^2 \pm a^2}}.$$

$$107. \int \frac{x dx}{\sqrt{(a^2 - x^2)^3}} = \frac{1}{\sqrt{a^2 - x^2}}.$$

$$108. \int x \sqrt{(x^2 \pm a^2)^3} dx = \frac{1}{5} \sqrt{(x^2 \pm a^2)^5}.$$

$$109. \int x \sqrt{(a^2 - x^2)^3} dx = -\frac{1}{5} \sqrt{(a^2 - x^2)^5}.$$

$$110. \int x^2 \sqrt{x^2 \pm a^2} dx \\ = \frac{x}{4} \sqrt{(x^2 \pm a^2)^3} \mp \frac{a^2}{8} (x \sqrt{x^2 \pm a^2} \pm a^2 \log(x + \sqrt{x^2 \pm a^2})).$$

$$111. \int x^2 \sqrt{a^2 - x^2} dx \\ = -\frac{x}{4} \sqrt{(a^2 - x^2)^3} + \frac{a^2}{8} \left(x \sqrt{a^2 - x^2} + a^2 \sin^{-1} \frac{x}{a} \right).$$

$$112. \int \frac{x^2 dx}{\sqrt{x^2 \pm a^2}} = \frac{x}{2} \sqrt{x^2 \pm a^2} \mp \frac{a^2}{2} \log(x + \sqrt{x^2 \pm a^2}).$$

$$113. \int \frac{x^2 dx}{\sqrt{a^2 - x^2}} = -\frac{x}{2} \sqrt{a^2 - x^2} + \frac{a^2}{2} \sin^{-1} \frac{x}{a}.$$

$$114. \int \frac{dx}{x^2 \sqrt{x^2 \pm a^2}} = \pm \frac{\sqrt{x^2 \pm a^2}}{a^2 x}.$$

$$115. \int \frac{dx}{x^2 \sqrt{a^2 - x^2}} = -\frac{\sqrt{a^2 - x^2}}{a^2 x}.$$

$$116. \int \frac{\sqrt{x^2 \pm a^2} dx}{x^2} = -\frac{\sqrt{x^2 \pm a^2}}{x} + \log(x + \sqrt{x^2 \pm a^2}).$$

$$117. \int \frac{\sqrt{a^2 - x^2} dx}{x^2} = -\frac{\sqrt{a^2 - x^2}}{x} - \sin^{-1} \frac{x}{a}.$$

$$118. \int \frac{x^2 dx}{\sqrt{(x^2 \pm a^2)^3}} = \frac{-x}{\sqrt{x^2 \pm a^2}} + \log(x + \sqrt{x^2 \pm a^2}).$$

$$119. \int \frac{x^2 dx}{\sqrt{(a^2 - x^2)^3}} = \frac{x}{\sqrt{a^2 - x^2}} - \sin^{-1} \frac{x}{a}.$$

C. — EXPRESSIONS INVOLVING $\sqrt{a + bx + cx^2}$.

Let $X = a + bx + cx^2$, $q = 4ac - b^2$, and $k = \frac{4c}{q}$. In order to rationalize the function $f(x, \sqrt{a + bx + cx^2})$ we may put $\sqrt{a + bx + cx^2} = \sqrt{\pm c} \sqrt{A + Bx \pm x^2}$, according as c is positive or negative, and then substitute for x a new variable z , such that

$$z = \sqrt{A + Bx + x^2} - x, \text{ if } c > 0.$$

$$z = \frac{\sqrt{A + Bx - x^2} - \sqrt{A}}{x}, \text{ if } c < 0 \text{ and } \frac{a}{-c} > 0.$$

$$z = \sqrt{\frac{x - \beta}{a - x}}, \text{ where } a \text{ and } \beta \text{ are the roots of the equation}$$

$$A + Bx - x^2 = 0, \text{ if } c < 0 \text{ and } \frac{a}{-c} < 0.$$

By rationalization, or by the aid of reduction formulas, may be obtained the values of the following integrals :

$$120. \int \frac{dx}{\sqrt{X}} = \frac{1}{\sqrt{c}} \log \left(\sqrt{X} + x \sqrt{c} + \frac{b}{2\sqrt{c}} \right), \text{ if } c > 0.$$

$$121. \int \frac{dx}{\sqrt{X}} = \frac{1}{\sqrt{-c}} \sin^{-1} \left(\frac{-2cx - b}{\sqrt{b^2 - 4ac}} \right), \text{ if } c < 0.$$

$$122. \int \frac{dx}{X\sqrt{X}} = \frac{2(2cx + b)}{q\sqrt{X}}.$$

$$123. \int \frac{dx}{X^2\sqrt{X}} = \frac{2(2cx + b)}{3q\sqrt{X}} \left(\frac{1}{X} + 2k \right).$$

$$124. \int \frac{dx}{X^n\sqrt{X}} = \frac{2(2cx + b\sqrt{X})}{(2n-1)qX^n} + \frac{2k(n-1)}{2n-1} \int \frac{dx}{X^{n-1}\sqrt{X}}.$$

$$125. \int \sqrt{X} dx = \frac{(2cx + b)\sqrt{X}}{4c} + \frac{1}{2k} \int \frac{dx}{\sqrt{X}}.$$

$$126. \int X\sqrt{X} dx = \frac{(2cx + b)\sqrt{X}}{8c} \left(X + \frac{3}{2k} \right) + \frac{3}{8k^2} \int \frac{dx}{\sqrt{X}}.$$

$$127. \int X^2\sqrt{X} dx = \frac{(2cx + b)\sqrt{X}}{12c} \left(X^2 + \frac{5X}{4k} + \frac{15}{8k^2} \right) + \frac{5}{16k^3} \int \frac{dx}{\sqrt{X}}.$$

$$128. \int X^n\sqrt{X} dx = \frac{(2cx + b)X^n\sqrt{X}}{4(n+1)c} + \frac{2n+1}{2(n+1)k} \int \frac{X^n dx}{\sqrt{X}}.$$

$$129. \int \frac{x dx}{\sqrt{X}} = \frac{\sqrt{X}}{c} - \frac{b}{2c} \int \frac{dx}{\sqrt{X}}.$$

$$130. \int \frac{x dx}{X\sqrt{X}} = -\frac{2(bx + 2a)}{q\sqrt{X}}.$$

$$131. \int \frac{x dx}{X^n\sqrt{X}} = -\frac{\sqrt{X}}{(2n-1)cX^n} - \frac{b}{2c} \int \frac{dx}{X^n\sqrt{X}}.$$

$$132. \int \frac{x^2 dx}{\sqrt{X}} = \left(\frac{x}{2c} - \frac{3b}{4c^2}\right)\sqrt{X} + \frac{3b^2 - 4ac}{8c^2} \int \frac{dx}{\sqrt{X}}.$$

$$133. \int \frac{x^2 dx}{X\sqrt{X}} = \frac{(2b^2 - 4ac)x + 2ab}{cq\sqrt{X}} + \frac{1}{c} \int \frac{dx}{\sqrt{X}}.$$

$$134. \int \frac{x^2 dx}{X^n\sqrt{X}} = \frac{(2b^2 - 4ac)x + 2ab}{(2n-1)cqX^{n-1}\sqrt{X}} + \frac{4ac + (2n-3)b^2}{(2n-1)cq} \int \frac{dx}{X^{n-1}\sqrt{X}}.$$

$$135. \int \frac{x^3 dx}{\sqrt{X}} = \left(\frac{x^2}{3c} - \frac{5bx}{12c^2} + \frac{5b^2}{8c^3} - \frac{2a}{3c^2}\right)\sqrt{X} + \left(\frac{3ab}{4c^2} - \frac{5b^3}{16c^3}\right) \int \frac{dx}{\sqrt{X}}.$$

$$136. \int x\sqrt{X} dx = \frac{X\sqrt{X}}{3c} - \frac{b}{2c} \int \sqrt{X} dx.$$

$$137. \int xX\sqrt{X} dx = \frac{X^2\sqrt{X}}{5c} - \frac{b}{2c} \int X\sqrt{X} dx.$$

$$138. \int \frac{xX^n dx}{\sqrt{X}} = \frac{X^n\sqrt{X}}{(2n+1)c} - \frac{b}{2c} \int \frac{X^n dx}{\sqrt{X}}.$$

$$139. \int x^2\sqrt{X} dx = \left(x - \frac{5b}{6c}\right)\frac{X\sqrt{X}}{4c} + \frac{5b^2 - 4ac}{16c^2} \int \sqrt{X} dx.$$

$$140. \int \frac{x^2X^n dx}{\sqrt{X}} = \frac{xX^n\sqrt{X}}{2(n+1)c} - \frac{(2n+3)b}{4(n+1)c} \int \frac{xX^n dx}{\sqrt{X}} \\ - \frac{a}{2(n+1)c} \int \frac{X^n dx}{\sqrt{X}}.$$

$$141. \int x^3\sqrt{X} dx = \left(x^2 - \frac{7bx}{8c} + \frac{35b^2}{48c^2} - \frac{2a}{3c}\right)\frac{X\sqrt{X}}{5c} \\ + \left(\frac{3ab}{8c^2} - \frac{7b^3}{32c^3}\right) \int \sqrt{X} dx.$$

$$142. \int \frac{dx}{x\sqrt{X}} = -\frac{1}{\sqrt{a}} \log \left(\frac{\sqrt{X} + \sqrt{a}}{x} + \frac{b}{2\sqrt{a}} \right), \text{ if } a > 0.$$

$$143. \int \frac{dx}{x\sqrt{X}} = \frac{1}{\sqrt{-a}} \sin^{-1} \left(\frac{bx + 2a}{x\sqrt{b^2 - 4ac}} \right), \text{ if } a < 0.$$

$$144. \int \frac{dx}{x\sqrt{X}} = -\frac{2\sqrt{X}}{bx}, \text{ if } a = 0.$$

$$145. \int \frac{dx}{xX^n\sqrt{X}} = \frac{\sqrt{X}}{(2n-1)aX^n} + \frac{1}{a} \int \frac{dx}{xX^{n-1}\sqrt{X}} - \frac{b}{2a} \int \frac{dx}{X^n\sqrt{X}}$$

$$146. \int \frac{dx}{x^2\sqrt{X}} = -\frac{\sqrt{X}}{ax} - \frac{b}{2a} \int \frac{dx}{x\sqrt{X}}.$$

$$147. \int \frac{\sqrt{X} dx}{x} = \sqrt{X} + \frac{b}{2} \int \frac{dx}{\sqrt{X}} + a \int \frac{dx}{x\sqrt{X}}.$$

$$148. \int \frac{X^n dx}{x\sqrt{X}} = \frac{X^n}{(2n-1)\sqrt{X}} + a \int \frac{X^{n-1} dx}{x\sqrt{X}} + \frac{b}{2} \int \frac{X^{n-1} dx}{\sqrt{X}}.$$

$$149. \int \frac{\sqrt{X} dx}{x^2} = -\frac{\sqrt{X}}{x} + \frac{b}{2} \int \frac{dx}{x\sqrt{X}} + c \int \frac{dx}{\sqrt{X}}.$$

$$150. \int \frac{x^m dx}{X^n\sqrt{X}} = \frac{1}{c} \int \frac{x^{m-2} dx}{X^{n-1}\sqrt{X}} - \frac{b}{c} \int \frac{x^{m-1} dx}{X^n\sqrt{X}} - \frac{a}{c} \int \frac{x^{m-2} dx}{X^n\sqrt{X}}.$$

$$151. \int \frac{x^m X^n dx}{\sqrt{X}} = \frac{x^{m-1} X^n \sqrt{X}}{(2n+m)c} - \frac{(2n+2m-1)b}{2c(2n+m)} \int \frac{x^{m-1} X^n dx}{\sqrt{X}} \\ - \frac{(m-1)a}{(2n+m)c} \int \frac{x^{m-2} X^n dx}{\sqrt{X}}.$$

$$152. \int \frac{dx}{x^m X^n \sqrt{X}} = -\frac{\sqrt{X}}{(m-1)ax^{m-1}X^n} \\ - \frac{(2n+2m-3)b}{2a(m-1)} \int \frac{dx}{x^{m-1}X^n\sqrt{X}} - \frac{(2n+m-2)c}{(m-1)a} \int \frac{dx}{x^{m-2}X^n\sqrt{X}}$$

$$153. \int \frac{X^n dx}{x^m \sqrt{X}} = -\frac{X^{n-1} \sqrt{X}}{(m-1)x^{m-1}} + \frac{(2n-1)b}{2(m-1)} \int \frac{X^{n-1} dx}{x^{m-1} \sqrt{X}} \\ + \frac{(2n-1)c}{m-1} \int \frac{X^{n-1} dx}{x^{m-2} \sqrt{X}}.$$

D. — MISCELLANEOUS EXPRESSIONS.

$$154. \int \sqrt{2ax - x^2} dx = \frac{x-a}{2} \sqrt{2ax - x^2} + \frac{a^2}{2} \sin^{-1} \frac{x-a}{a}.$$

$$155. \int \frac{dx}{\sqrt{2ax - x^2}} = \operatorname{versin}^{-1} \frac{x}{a}.$$

$$156. \int \frac{dx}{(x+1)\sqrt{x^2-1}} = +\sqrt{\frac{x-1}{x+1}}.$$

$$157. \int \frac{dx}{(x-1)\sqrt{x^2-1}} = -\sqrt{\frac{x+1}{x-1}}.$$

$$158. \int \sqrt{\frac{1+x}{1-x}} dx = \sin^{-1} x - \sqrt{1-x^2}.$$

$$159. \int \sqrt{\frac{x+a}{x+b}} dx = \sqrt{(x+a)(x+b)} \\ + (a-b) \log(\sqrt{x+a} + \sqrt{x+b}).$$

$$160. \int \frac{dx}{\sqrt{(x-a)(\beta-x)}} = 2 \sin^{-1} \sqrt{\frac{x-a}{\beta-a}}.$$

$$161. \int \frac{dx}{\sqrt{(a+bx)(a-\beta x)}} = \frac{2}{\sqrt{b\beta}} \sin^{-1} \sqrt{\frac{\beta(a+bx)}{a\beta+ba}}.$$

$$162. \int \sqrt[3]{a+bx} dx = \frac{3}{4b} \sqrt[3]{(a+bx)^4}.$$

$$163. \int \frac{dx}{\sqrt[3]{a+bx}} = \frac{3}{2b} \sqrt[3]{(a+bx)^2}.$$

$$164. \int \frac{x dx}{\sqrt[3]{a+bx}} = -\frac{3(3a-2bx)}{10b^2} \sqrt[3]{(a+bx)^2}.$$

$$165. \int \frac{dx}{x\sqrt{x^n-a^2}} = \frac{2}{an} \sec^{-1}\left(\frac{x^{\frac{n}{2}}}{a}\right).$$

$$166. \int \frac{dx}{x\sqrt{x^n+a^2}} = \frac{1}{an} \log \frac{\sqrt{a^2+x^n}-a}{\sqrt{a^2+x^n}+a}.$$

IV. TRANSCENDENTAL FUNCTIONS.

$$167. \int \sin x dx = -\cos x.$$

$$168. \int \sin^2 x dx = -\frac{1}{2} \cos x \sin x + \frac{1}{2} x.$$

$$169. \int \sin^3 x dx = -\frac{1}{3} \cos x (\sin^2 x + 2).$$

$$170. \int \sin^n x dx = -\frac{\sin^{n-1} x \cos x}{n} + \frac{n-1}{n} \int \sin^{n-2} x dx.$$

$$171. \int \cos x dx = \sin x.$$

$$172. \int \cos^2 x dx = \frac{1}{2} \sin x \cos x + \frac{1}{2} x.$$

$$173. \int \cos^3 x dx = \frac{1}{3} \sin x (\cos^2 x + 2).$$

$$174. \int \cos^n x dx = \frac{1}{n} \cos^{n-1} x \sin x + \frac{n-1}{n} \int \cos^{n-2} x dx.$$

$$175. \int \sin x \cos x dx = \frac{1}{2} \sin^2 x.$$

$$176. \int \sin^2 x \cos^2 x dx = -\frac{1}{8} (\frac{1}{4} \sin 4x - x).$$

$$177. \int \sin x \cos^m x dx = -\frac{\cos^{m+1} x}{m+1}.$$

$$178. \int \sin^m x \cos x dx = \frac{\sin^{m+1} x}{m+1}.$$

$$179. \int \cos^m x \sin^n x dx = \frac{\cos^{m-1} x \sin^{n+1} x}{m+n} \\ + \frac{m-1}{m+n} \int \cos^{m-2} x \sin^n x dx.$$

$$180. \int \cos^m x \sin^n x dx = -\frac{\sin^{n-1} x \cos^{m+1} x}{m+n} \\ + \frac{n-1}{m+n} \int \cos^m x \sin^{n-2} x dx$$

$$181. \int \frac{\cos^m x dx}{\sin^n x} = -\frac{\cos^{m+1} x}{(n-1)\sin^{n-1} x} - \frac{m-n+2}{n-1} \int \frac{\cos^m x dx}{\sin^{n-2} x}.$$

$$182. \int \frac{\cos^m x dx}{\sin^n x} = \frac{\cos^{m-1} x}{(m-n)\sin^{n-1} x} + \frac{m-1}{m-n} \int \frac{\cos^{m-2} x dx}{\sin^n x}.$$

$$183. \int \frac{\sin^m x dx}{\cos^n x} = -\int \frac{\cos^m \left(\frac{\pi}{2} - x\right) d\left(\frac{\pi}{2} - x\right)}{\sin^n \left(\frac{\pi}{2} - x\right)}.$$

$$\begin{aligned} 184. \int \frac{dx}{\sin^m x \cos^n x} &= \frac{1}{n-1} \cdot \frac{1}{\sin^{n-1} x \cdot \cos^{n-1} x} + \frac{m+n-2}{n-1} \int \frac{dx}{\sin^m x \cdot \cos^{n-2} x} \\ &= -\frac{1}{m-1} \cdot \frac{1}{\sin^{m-1} x \cdot \cos^{n-1} x} + \frac{m+n-2}{m-1} \int \frac{dx}{\sin^{m-2} x \cdot \cos^n x}. \end{aligned}$$

$$185. \int \frac{dx}{\sin^m x} = -\frac{1}{m-1} \cdot \frac{\cos x}{\sin^{m-1} x} + \frac{m-2}{m-1} \int \frac{dx}{\sin^{m-2} x}.$$

$$186. \int \frac{dx}{\cos^n x} = \frac{1}{n-1} \cdot \frac{\sin x}{\cos^{n-1} x} + \frac{n-2}{n-1} \int \frac{dx}{\cos^{n-2} x}.$$

$$187. \int \tan x dx = -\log \cos x.$$

$$188. \int \tan^2 x dx = \tan x - x.$$

$$189. \int \tan^n x dx = \frac{\tan^{n-1} x}{n-1} - \int \tan^{n-2} x dx.$$

$$190. \int \operatorname{ctn} x dx = \log \sin x.$$

$$191. \int \operatorname{ctn}^2 x dx = -\operatorname{ctn} x - x.$$

$$192. \int \operatorname{ctn}^n x dx = -\frac{\operatorname{ctn}^{n-1} x}{n-1} - \int \operatorname{ctn}^{n-2} x dx.$$

$$193. \int \sec x dx = \log \tan \left(\frac{\pi}{4} + \frac{x}{2}\right).$$

$$194. \int \sec^2 x dx = \tan x.$$

$$195. \int \sec^n x dx = \int \frac{dx}{\cos^n x}.$$

$$196. \int \csc x dx = \log \tan \frac{1}{2}x.$$

$$197. \int \csc^2 x dx = -\operatorname{ctn} x.$$

$$198. \int \csc^n x dx = \int \frac{dx}{\sin^n x}.$$

$$199. \int \frac{dx}{a + b \cos x} = \frac{-1}{\sqrt{a^2 - b^2}} \cdot \sin^{-1} \left[\frac{b + a \cos x}{a + b \cos x} \right], \quad \int \frac{dx}{1 + \cos x} = \int \frac{d\frac{x}{2}}{\cos^2 \frac{x}{2}} = \tan \frac{x}{2}$$

or $\frac{1}{\sqrt{b^2 - a^2}} \log \left[\frac{b + a \cos x + \sqrt{b^2 - a^2} \cdot \sin x}{a + b \cos x} \right].$

$$200. \int \frac{dx}{a + b \cos x + c \sin x}$$

$$= \frac{-1}{\sqrt{a^2 - b^2 - c^2}} \cdot \sin^{-1} \left[\frac{b^2 + c^2 + a(b \cos x + c \sin x)}{\sqrt{b^2 + c^2}(a + b \cos x + c \sin x)} \right]$$

$$= \frac{1}{\sqrt{b^2 + c^2 - a^2}} \cdot \log \left[\frac{b^2 + c^2 + a(b \cos x + c \sin x) + \sqrt{b^2 + c^2 - a^2}(b \sin x - c \cos x)}{\sqrt{b^2 + c^2}(a + b \cos x + c \sin x)} \right].$$

$$201. \int x \sin x dx = \sin x - x \cos x.$$

$$202. \int x^2 \sin x dx = 2x \sin x - (x^2 - 2) \cos x.$$

$$203. \int x^3 \sin x dx = (3x^2 - 6) \sin x - (x^3 - 6x) \cos x.$$

$$204. \int x^m \sin x dx = -x^m \cos x + m \int x^{m-1} \cos x dx.$$

$$205. \int x \cos x dx = \cos x + x \sin x.$$

$$206. \int x^2 \cos x dx = 2x \cos x + (x^2 - 2) \sin x.$$

$$207. \int x^3 \cos x dx = (3x^2 - 6) \cos x + (x^3 - 6x) \sin x.$$

208. $\int x^m \cos x dx = x^m \sin x - m \int x^{m-1} \sin x dx.$
209. $\int \frac{\sin x}{x^m} dx = -\frac{1}{m-1} \cdot \frac{\sin x}{x^{m-1}} + \frac{1}{m-1} \int \frac{\cos x}{x^{m-1}} dx.$
210. $\int \frac{\cos x}{x^m} dx = -\frac{1}{m-1} \cdot \frac{\cos x}{x^{m-1}} - \frac{1}{m-1} \int \frac{\sin x}{x^{m-1}} dx.$
211. $\int \frac{\sin x}{x} dx = x - \frac{x^3}{3 \cdot 3!} + \frac{x^5}{5 \cdot 5!} - \frac{x^7}{7 \cdot 7!} + \frac{x^9}{9 \cdot 9!} \dots$
212. $\int \frac{\cos x}{x} dx = \log x - \frac{x^2}{2 \cdot 2!} + \frac{x^4}{4 \cdot 4!} - \frac{x^6}{6 \cdot 6!} + \frac{x^8}{8 \cdot 8!} \dots$
213. $\int \sin mx \sin nx dx = \frac{\sin(m-n)x}{2(m-n)} - \frac{\sin(m+n)x}{2(m+n)}.$
214. $\int \cos mx \cos nx dx = \frac{\sin(m-n)x}{2(m-n)} + \frac{\sin(m+n)x}{2(m+n)}.$
215. $\int \sin^{-1} x dx = x \sin^{-1} x + \sqrt{1-x^2}.$
216. $\int \cos^{-1} x dx = x \cos^{-1} x - \sqrt{1-x^2}.$
217. $\int \tan^{-1} x dx = x \tan^{-1} x - \frac{1}{2} \log(1+x^2).$
218. $\int \text{ctn}^{-1} x dx = x \text{ctn}^{-1} x + \frac{1}{2} \log(1+x^2).$
219. $\int \text{versin}^{-1} x dx = (x-1) \text{versin}^{-1} x + \sqrt{2x-x^2}.$
220. $\int (\sin^{-1} x)^2 dx = x (\sin^{-1} x)^2 - 2x + 2\sqrt{1-x^2} \sin^{-1} x.$
221. $\int x \cdot \sin^{-1} x dx = \frac{1}{4} [(2x^2-1) \sin^{-1} x + x\sqrt{1-x^2}].$
222. $\int x^n \sin^{-1} x dx = \frac{x^{n+1} \sin^{-1} x}{n+1} - \frac{1}{n+1} \int \frac{x^{n+1} dx}{\sqrt{1-x^2}}.$
223. $\int x^n \cos^{-1} x dx = \frac{x^{n+1} \cos^{-1} x}{n+1} + \frac{1}{n+1} \int \frac{x^{n+1} dx}{\sqrt{1-x^2}}.$
224. $\int x^n \tan^{-1} x dx = \frac{x^{n+1} \tan^{-1} x}{n+1} - \frac{1}{n+1} \int \frac{x^{n+1} dx}{1+x^2}.$

$$225. \int \log x \, dx = x \log x - x.$$

$$226. \int \frac{(\log x)^n}{x} \, dx = \frac{1}{n+1} (\log x)^{n+1}.$$

$$227. \int \frac{dx}{x \log x} = \log \log x.$$

$$228. \int \frac{dx}{x (\log x)^n} = -\frac{1}{(n-1) (\log x)^{n-1}}.$$

$$229. \int x^m \log x \, dx = x^{m+1} \left[\frac{\log x}{m+1} - \frac{1}{(m+1)^2} \right].$$

$$\int x^m \ln(x-a) = \frac{x^{m+1}}{m+1} \ln(x-a) - \frac{1}{m+1} \int \frac{x^m}{x-a} dx$$

$$230. \int e^{ax} \, dx = \frac{e^{ax}}{a}.$$

$$231. \int x e^{ax} \, dx = \frac{e^{ax}}{a^2} (ax - 1).$$

$$232. \int x^m e^{ax} \, dx = \frac{x^m e^{ax}}{a} - \frac{m}{a} \int x^{m-1} e^{ax} \, dx.$$

$$233. \int \frac{e^{ax}}{x^m} \, dx = -\frac{1}{m-1} \frac{e^{ax}}{x^{m-1}} + \frac{a}{m-1} \int \frac{e^{ax}}{x^{m-1}} \, dx.$$

$$234. \int e^{ax} \log x \, dx = \frac{e^{ax} \log x}{a} - \frac{1}{a} \int \frac{e^{ax}}{x} \, dx.$$

$$235. \int e^{ax} \sin x \, dx = \frac{e^{ax} (a \sin x - \cos x)}{a^2 + 1}.$$

$$236. \int e^{ax} \cos x \, dx = \frac{e^{ax} (a \cos x + \sin x)}{a^2 + 1}.$$

DEFINITE INTEGRALS.

$$237. \int_0^{\infty} \frac{a dx}{a^2 + x^2} = \frac{\pi}{2}, \text{ if } a > 0; 0, \text{ if } a = 0; -\frac{\pi}{2}, \text{ if } a < 0.$$

$$238. \int_0^{\infty} x^{n-1} e^{-x} dx = \int_0^1 \left[\log \frac{1}{x} \right]^{n-1} dx = \Gamma(n).$$

$$\Gamma(n+1) = n \cdot \Gamma(n). \quad \Gamma(2) = \Gamma(1) = 1.$$

$$\Gamma(n+1) = n!, \text{ if } n \text{ is an integer} \quad \Gamma\left(\frac{1}{2}\right) = \sqrt{\pi}.$$

$$239. \int_0^1 x^{m-1} (1-x)^{n-1} dx = \int_0^{\infty} \frac{x^{m-1} dx}{(1+x)^{m+n}} = \frac{\Gamma(m) \Gamma(n)}{\Gamma(m+n)}.$$

$$240. \int_0^{\frac{\pi}{2}} \sin^n x dx = \int_0^{\frac{\pi}{2}} \cos^n x dx$$

$$= \frac{1.3.5 \dots (n-1)}{2.4.6 \dots (n)} \cdot \frac{\pi}{2}, \text{ if } n \text{ is an even integer.}$$

$$= \frac{2.4.6 \dots (n-1)}{1.3.5.7 \dots n}, \text{ if } n \text{ is an odd integer.}$$

$$= \frac{1}{2} \sqrt{\pi} \frac{\Gamma\left(\frac{n+1}{2}\right)}{\Gamma\left(\frac{n}{2} + 1\right)}, \text{ for any value of } n.$$

$$241. \int_0^{\infty} \frac{\sin mx dx}{x} = \frac{\pi}{2}, \text{ if } m > 0; 0, \text{ if } m = 0; -\frac{\pi}{2}, \text{ if } m < 0.$$

$$242. \int_0^{\infty} \frac{\sin x \cdot \cos mx dx}{x} = 0, \text{ if } m < -1 \text{ or } m > 1;$$

$$\frac{\pi}{4}, \text{ if } m = -1 \text{ or } m = 1; \frac{\pi}{2}, \text{ if } -1 < m < 1.$$

$$243. \int_0^{\infty} \frac{\sin^2 x dx}{x^2} = \frac{\pi}{2}.$$

$$244. \int_0^{\infty} \cos(x^2) dx = \int_0^{\infty} \sin(x^2) dx = \frac{1}{2} \sqrt{\frac{\pi}{2}}.$$

$$245. \int_0^{\infty} \frac{\cos mx \, dx}{1+x^2} = \frac{\pi}{2} \cdot e^{-m}.$$

$$246. \int_0^{\infty} \frac{\cos x \, dx}{\sqrt{x}} = \int_0^{\infty} \frac{\sin x \, dx}{\sqrt{x}} = \sqrt{\frac{\pi}{2}}.$$

$$247. \int_0^{\frac{\pi}{2}} \frac{dx}{\sqrt{1-k^2 \sin^2 x}}$$

$$= \frac{\pi}{2} \left[1 + \left(\frac{1}{2}\right)^2 k^2 + \left(\frac{1 \cdot 3}{2 \cdot 4}\right)^2 k^4 + \left(\frac{1 \cdot 3 \cdot 5}{2 \cdot 4 \cdot 6}\right)^2 k^6 + \dots \right], \text{ if } k^2 < 1$$

$$= K.$$

$$248. \int_0^{\frac{\pi}{2}} \sqrt{1-k^2 \sin^2 x} \, dx$$

$$= \frac{\pi}{2} \left[1 - \left(\frac{1}{2}\right)^2 k^2 - \left(\frac{1 \cdot 3}{2 \cdot 4}\right)^2 \frac{k^4}{3} - \left(\frac{1 \cdot 3 \cdot 5}{2 \cdot 4 \cdot 6}\right)^2 \frac{k^6}{5} - \dots \right], \text{ if } k^2 < 1.$$

$$= E.$$

$$249. \int_0^{\infty} e^{-a^2 x^2} \, dx = \frac{1}{2a} \sqrt{\pi} = \frac{1}{2a} \Gamma\left(\frac{1}{2}\right).$$

$$250. \int_0^{\infty} x^n e^{-ax} \, dx = \frac{\Gamma(n+1)}{a^{n+1}} = \frac{n!}{a^{n+1}}.$$

$$251. \int_0^{\infty} x^{2n} e^{-ax^2} \, dx = \frac{1 \cdot 3 \cdot 5 \dots (2n-1)}{2^{n+1} a^n} \sqrt{\frac{\pi}{a}}.$$

$$252. \int_0^{\infty} e^{-x^2 - \frac{a^2}{x^2}} \, dx = \frac{e^{-2a} \sqrt{\pi}}{2}.$$

$$253. \int_0^{\infty} e^{-ax} \cos mx \, dx = \frac{a}{a^2 + m^2}, \text{ if } a > 0.$$

$$254. \int_0^{\infty} e^{-ax} \sin mx \, dx = \frac{m}{a^2 + m^2}, \text{ if } a > 0.$$

$$255. \int_0^{\infty} e^{-a^2 x^2} \cos bx \, dx = \frac{\sqrt{\pi} \cdot e^{-\frac{b^2}{4a^2}}}{2a}.$$

$$256. \int_0^1 \frac{\log x}{1-x} \, dx = -\frac{\pi^2}{6}.$$

$$257. \int_0^1 \frac{\log x}{1+x} \, dx = -\frac{\pi^2}{12}.$$

$$258. \int_0^1 \frac{\log x}{1-x^2} dx = -\frac{\pi^2}{8}.$$

$$259. \int_0^1 \log\left(\frac{1+x}{1-x}\right) \cdot \frac{dx}{x} = \frac{\pi^2}{4}.$$

$$260. \int_0^\infty \log\left(\frac{e^x+1}{e^x-1}\right) dx = \frac{\pi^2}{4} = \int_0^\infty \ln \coth \frac{x}{2} dx$$

$$261. \int_0^1 \frac{dx}{\sqrt{\log\left(\frac{1}{x}\right)}} = \sqrt{\pi}.$$

$$262. \int_0^1 x^m \log\left(\frac{1}{x}\right)^n dx = \frac{\Gamma(n+1)}{(m+1)^{n+1}}.$$

$$263. \int_0^{\frac{\pi}{2}} \log \sin x dx = \int_0^{\frac{\pi}{2}} \log \cos x dx = -\frac{\pi}{2} \cdot \log 2.$$

$$264. \int_0^\pi x \cdot \log \sin x dx = -\frac{\pi^2}{2} \log 2.$$

AUXILIARY FORMULAS.

The following formulas are sometimes useful in the reduction of integrals:

$$265. \quad \log u = \log cu + \text{a constant.}$$

$$266. \quad \log(-u) = \log u + \text{a constant.}$$

$$267. \quad \sin^{-1} u = \begin{cases} -\sin^{-1} \sqrt{1-u^2} & + \text{a constant.} \\ -\frac{1}{2} \sin^{-1} (2u^2-1) & + \text{a constant.} \\ \frac{1}{2} \sin^{-1} 2u \sqrt{1-u^2} & + \text{a constant.} \end{cases}$$

$$268. \quad \tan^{-1} u = \begin{cases} -\tan^{-1} \frac{1}{u} & + \text{a constant.} \\ \tan^{-1} \frac{u+c}{1-cu} & + \text{a constant.} \end{cases}$$

$$269. \quad \log(x \pm yi) = \frac{1}{2} \log(x^2 + y^2) \pm i \tan^{-1} \frac{y}{x}.$$

$$270. \quad \sin^{-1} u = \cos^{-1} \sqrt{1-u^2} = \tan^{-1} \frac{u}{\sqrt{1-u^2}} = \csc^{-1} \frac{1}{u}.$$

$$271. \quad \cos^{-1} u = \sin^{-1} \sqrt{1-u^2} = \tan^{-1} \sqrt{\frac{1}{u^2}-1} = \sec^{-1} \frac{1}{u}.$$

$$272. \quad \tan^{-1} x \pm \tan^{-1} y = \tan^{-1} \left(\frac{x \pm y}{1 \mp xy} \right).$$

$$273. \quad \sin^{-1} x \pm \sin^{-1} y = \sin^{-1} (x \sqrt{1-y^2} \pm y \sqrt{1-x^2}).$$

$$274. \quad \cos^{-1} x \pm \cos^{-1} y = \cos^{-1} (xy \mp \sqrt{(1-x^2)(1-y^2)}).$$

$$275. \quad \sin x = \frac{e^{xi} - e^{-xi}}{2i}.$$

$$276. \quad \cos x = \frac{e^{xi} + e^{-xi}}{2}.$$

$$277. \quad \sin xi = \frac{1}{2} i (e^x - e^{-x}) = i \sinh x.$$

$$278. \quad \cos xi = \frac{1}{2} (e^x + e^{-x}) = \cosh x.$$

$$279. \quad \log_e x = (2.3025851) \log_{10} x.$$

The Natural Logarithms of Numbers between 1.0 and 9.9.

N.	0	1	2	3	4	5	6	7	8	9
1.	0.000	0.095	0.182	0.262	0.336	0.405	0.470	0.531	0.588	0.642
2.	0.693	0.742	0.788	0.833	0.875	0.916	0.956	0.993	1.030	1.065
3.	1.099	1.131	1.163	1.194	1.224	1.253	1.281	1.308	1.335	1.361
4.	1.386	1.411	1.435	1.459	1.482	1.504	1.526	1.548	1.569	1.589
5.	1.609	1.629	1.649	1.668	1.686	1.705	1.723	1.740	1.758	1.775
6.	1.792	1.808	1.825	1.841	1.856	1.872	1.887	1.902	1.917	1.932
7.	1.946	1.960	1.974	1.988	2.001	2.015	2.028	2.041	2.054	2.067
8.	2.079	2.092	2.104	2.116	2.128	2.140	2.152	2.163	2.175	2.186
9.	2.197	2.208	2.219	2.230	2.241	2.251	2.262	2.272	2.282	2.293

The Natural Logarithms of Whole Numbers from 10 to 109.

N.	0	1	2	3	4	5	6	7	8	9
1	2.303	2.398	2.485	2.565	2.639	2.708	2.773	2.833	2.890	2.944
2	2.996	3.045	3.091	3.135	3.178	3.219	3.258	3.296	3.332	3.367
3	3.401	3.434	3.466	3.497	3.526	3.555	3.584	3.611	3.638	3.664
4	3.689	3.714	3.738	3.761	3.784	3.807	3.829	3.850	3.871	3.892
5	3.912	3.932	3.951	3.970	3.989	4.007	4.025	4.043	4.060	4.078
6	4.094	4.111	4.127	4.143	4.159	4.174	4.190	4.205	4.220	4.234
7	4.248	4.263	4.277	4.290	4.304	4.317	4.331	4.344	4.357	4.369
8	4.382	4.394	4.407	4.419	4.431	4.443	4.454	4.466	4.477	4.489
9	4.500	4.511	4.522	4.533	4.543	4.554	4.564	4.575	4.585	4.595
10	4.605	4.615	4.625	4.635	4.644	4.654	4.663	4.673	4.682	4.691

The Values in Circular Measure of Angles which are given in Degrees and Minutes.

1'	0.0003	9'	0.0026	3°	0.0524	20°	0.3491	100°	1.7453
2'	0.0006	10'	0.0029	4°	0.0698	30°	0.5236	110°	1.9199
3'	0.0009	20'	0.0058	5°	0.0873	40°	0.6981	120°	2.0944
4'	0.0012	30'	0.0087	6°	0.1047	50°	0.8727	130°	2.2689
5'	0.0015	40'	0.0116	7°	0.1222	60°	1.0472	140°	2.4435
6'	0.0017	50'	0.0145	8°	0.1396	70°	1.2217	150°	2.6180
7'	0.0020	1°	0.0175	9°	0.1571	80°	1.3963	160°	2.7925
8'	0.0023	2°	0.0349	10°	0.1745	90°	1.5708	170°	2.9671

NATURAL TRIGONOMETRIC FUNCTIONS.

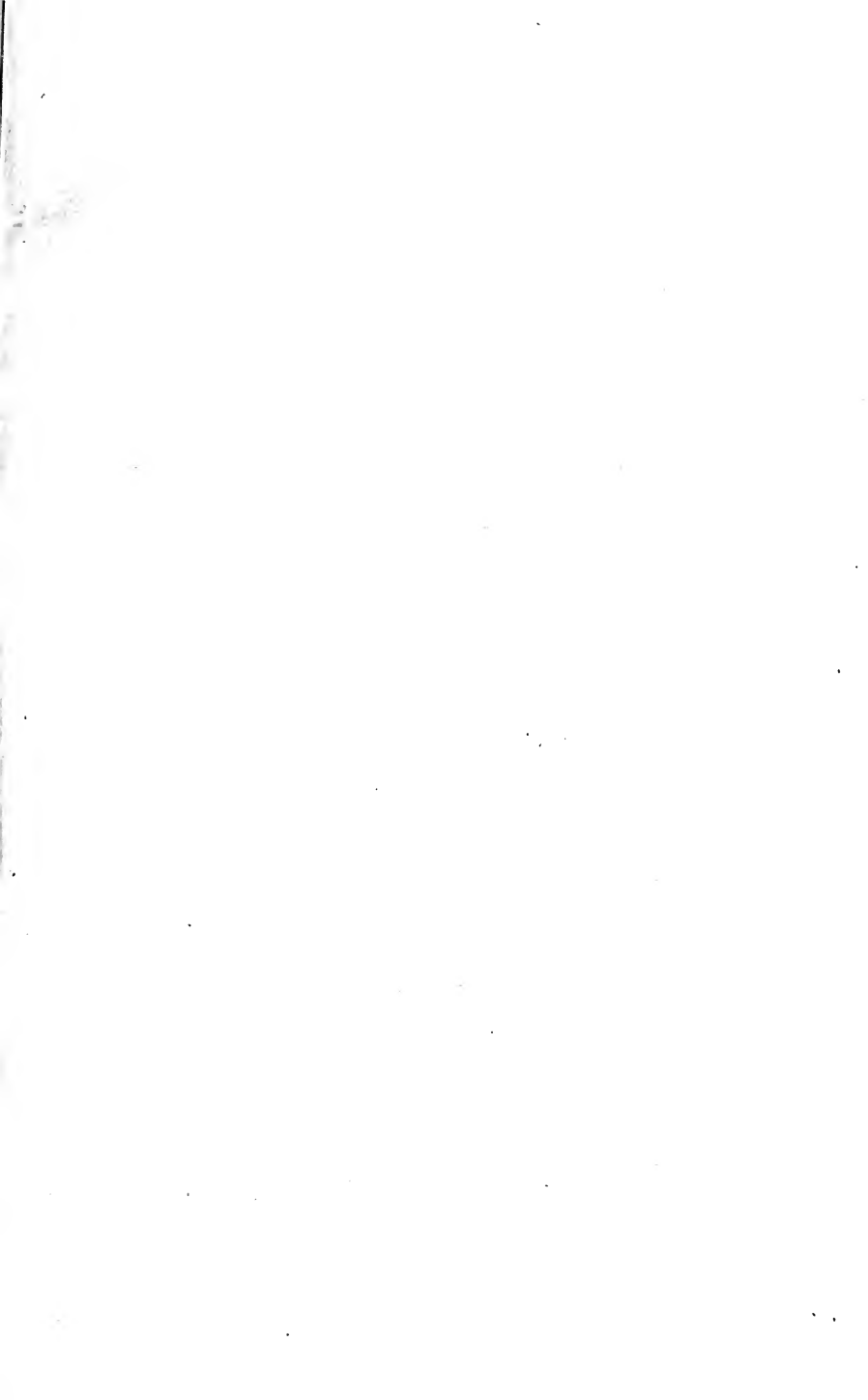
Angle.	Sin.	Csc.	Tan.	Ctn.	Sec.	Cos.	
0°	0.000	∞	0.000	∞	1.000	1.000	90°
1	0.017	57.30	0.017	57.29	1.000	1.000	89
2	0.035	28.65	0.035	28.64	1.001	0.999	88
3	0.052	19.11	0.052	19.08	1.001	0.999	87
4	0.070	14.34	0.070	14.30	1.002	0.998	86
5°	0.087	11.47	0.087	11.43	1.004	0.996	85°
6	0.105	9.567	0.105	9.514	1.006	0.995	84
7	0.122	8.206	0.123	8.144	1.008	0.993	83
8	0.139	7.185	0.141	7.115	1.010	0.990	82
9	0.156	6.392	0.158	6.314	1.012	0.988	81
10°	0.174	5.759	0.176	5.671	1.015	0.985	80°
11	0.191	5.241	0.194	5.145	1.019	0.982	79
12	0.208	4.810	0.213	4.705	1.022	0.978	78
13	0.225	4.445	0.231	4.331	1.026	0.974	77
14	0.242	4.134	0.249	4.011	1.031	0.970	76
15°	0.259	3.864	0.268	3.732	1.035	0.966	75°
16	0.276	3.628	0.287	3.487	1.040	0.961	74
17	0.292	3.420	0.306	3.271	1.046	0.956	73
18	0.309	3.236	0.325	3.078	1.051	0.951	72
19	0.326	3.072	0.344	2.904	1.058	0.946	71
20°	0.342	2.924	0.364	2.747	1.064	0.940	70°
21	0.358	2.790	0.384	2.605	1.071	0.934	69
22	0.375	2.669	0.404	2.475	1.079	0.927	68
23	0.391	2.559	0.424	2.356	1.086	0.921	67
24	0.407	2.459	0.445	2.246	1.095	0.914	66
25°	0.423	2.366	0.466	2.145	1.103	0.906	65°
26	0.438	2.281	0.488	2.050	1.113	0.899	64
27	0.454	2.203	0.510	1.963	1.122	0.891	63
28	0.469	2.130	0.532	1.881	1.133	0.883	62
29	0.485	2.063	0.554	1.804	1.143	0.875	61
30°	0.500	2.000	0.577	1.732	1.155	0.866	60°
31	0.515	1.942	0.601	1.664	1.167	0.857	59
32	0.530	1.887	0.625	1.600	1.179	0.848	58
33	0.545	1.836	0.649	1.540	1.192	0.839	57
34	0.559	1.788	0.675	1.483	1.206	0.829	56
35°	0.574	1.743	0.700	1.428	1.221	0.819	55°
36	0.588	1.701	0.727	1.376	1.236	0.809	54
37	0.602	1.662	0.754	1.327	1.252	0.799	53
38	0.616	1.624	0.781	1.280	1.269	0.788	52
39	0.629	1.589	0.810	1.235	1.287	0.777	51
40°	0.643	1.556	0.839	1.192	1.305	0.766	50°
41	0.656	1.524	0.869	1.150	1.325	0.755	49
42	0.669	1.494	0.900	1.111	1.346	0.743	48
43	0.682	1.466	0.933	1.072	1.367	0.731	47
44	0.695	1.440	0.966	1.036	1.390	0.719	46
45°	0.707	1.414	1.000	1.000	1.414	0.707	45°
	Cos.	Sec.	Ctn.	Tan.	Csc.	Sin.	Angle.

Values of the Complete Elliptic Integrals, K and E , for Different Values of the Modulus, k .

$\sin^{-1}k$	K	E	$\sin^{-1}k$	K	E	$\sin^{-1}k$	K	E
0°	1.5708	1.5708	30°	1.6858	1.4675	60°	2.1565	1.2111
1°	1.5709	1.5707	31°	1.6941	1.4608	61°	2.1842	1.2015
2°	1.5713	1.5703	32°	1.7028	1.4539	62°	2.2132	1.1920
3°	1.5719	1.5697	33°	1.7119	1.4469	63°	2.2435	1.1826
4°	1.5727	1.5689	34°	1.7214	1.4397	64°	2.2754	1.1732
5°	1.5738	1.5678	35°	1.7312	1.4223	65°	2.3088	1.1638
6°	1.5711	1.5665	36°	1.7415	1.4248	66°	2.3439	1.1545
7°	1.5767	1.5649	37°	1.7522	1.4171	67°	2.3809	1.1453
8°	1.5785	1.5632	38°	1.7633	1.4092	68°	2.4198	1.1362
9°	1.5805	1.5611	39°	1.7748	1.4013	69°	2.4610	1.1272
10°	1.5828	1.5589	40°	1.7868	1.3931	70°	2.5046	1.1184
11°	1.5854	1.5564	41°	1.7992	1.3849	71°	2.5507	1.1096
12°	1.5882	1.5537	42°	1.8122	1.3765	72°	2.5998	1.1011
13°	1.5913	1.5507	43°	1.8256	1.3680	73°	2.6521	1.0927
14°	1.5946	1.5476	44°	1.8396	1.3594	74°	2.7081	1.0844
15°	1.5981	1.5442	45°	1.8541	1.3506	75°	2.7681	1.0764
16°	1.6020	1.5405	46°	1.8691	1.3418	76°	2.8327	1.0686
17°	1.6061	1.5367	47°	1.8848	1.3329	77°	2.9026	1.0611
18°	1.6105	1.5326	48°	1.9011	1.3238	78°	2.9786	1.0538
19°	1.6151	1.5283	49°	1.9180	1.3147	79°	3.0617	1.0468
20°	1.6200	1.5238	50°	1.9356	1.3055	80°	3.1534	1.0401
21°	1.6252	1.5191	51°	1.9539	1.2963	81°	3.2553	1.0338
22°	1.6307	1.5141	52°	1.9729	1.2870	82°	3.3699	1.0278
23°	1.6365	1.5090	53°	1.9927	1.2776	83°	3.5004	1.0223
24°	1.6426	1.5037	54°	2.0133	1.2681	84°	3.6519	1.0172
25°	1.6490	1.4981	55°	2.0347	1.2587	85°	3.8317	1.0127
26°	1.6557	1.4924	56°	2.0571	1.2492	86°	4.0528	1.0086
27°	1.6627	1.4864	57°	2.0804	1.2397	87°	4.3387	1.0053
28°	1.6701	1.4803	58°	2.1047	1.2301	88°	4.7427	1.0026
29°	1.6777	1.4740	59°	2.1300	1.2206	89°	5.4349	1.0008

The Common Logarithms of $\Gamma(n)$ for Values of n between 1 and 2.

n	$\log_{10} \Gamma(n)$	n	$\log_{10} \Gamma(n)$	n	$\log_{10} \Gamma(n)$	n	$\log_{10} \Gamma(n)$	n	$\log_{10} \Gamma(n)$
1.01	1.9975	1.21	1.9617	1.41	1.9478	1.61	1.9517	1.81	1.9704
1.02	1.9951	1.22	1.9605	1.42	1.9476	1.62	1.9523	1.82	1.9717
1.03	1.9928	1.23	1.9594	1.43	1.9475	1.63	1.9529	1.83	1.9730
1.04	1.9905	1.24	1.9583	1.44	1.9473	1.64	1.9536	1.84	1.9743
1.05	1.9883	1.25	1.9573	1.45	1.9473	1.65	1.9543	1.85	1.9757
1.06	1.9862	1.26	1.9564	1.46	1.9472	1.66	1.9550	1.86	1.9771
1.07	1.9841	1.27	1.9554	1.47	1.9473	1.67	1.9558	1.87	1.9786
1.08	1.9821	1.28	1.9546	1.48	1.9473	1.68	1.9566	1.88	1.9800
1.09	1.9802	1.29	1.9538	1.49	1.9474	1.69	1.9575	1.89	1.9815
1.10	1.9783	1.30	1.9530	1.50	1.9475	1.70	1.9584	1.90	1.9831
1.11	1.9765	1.31	1.9523	1.51	1.9477	1.71	1.9593	1.91	1.9846
1.12	1.9748	1.32	1.9516	1.52	1.9479	1.72	1.9603	1.92	1.9862
1.13	1.9731	1.33	1.9510	1.53	1.9482	1.73	1.9613	1.93	1.9878
1.14	1.9715	1.34	1.9505	1.54	1.9485	1.74	1.9623	1.94	1.9895
1.15	1.9699	1.35	1.9500	1.55	1.9488	1.75	1.9633	1.95	1.9912
1.16	1.9684	1.36	1.9495	1.56	1.9492	1.76	1.9644	1.96	1.9929
1.17	1.9669	1.37	1.9491	1.57	1.9496	1.77	1.9656	1.97	1.9946
1.18	1.9655	1.38	1.9487	1.58	1.9501	1.78	1.9667	1.98	1.9964
1.19	1.9642	1.39	1.9483	1.59	1.9506	1.79	1.9679	1.99	1.9982
1.20	1.9629	1.40	1.9481	1.60	1.9511	1.80	1.9691	2.00	0.0000



14 DAY USE
RETURN TO DESK FROM WHICH BORROWED

LOAN DEPT.

This book is due on the last date stamped below,
or on the date to which renewed. Renewals only:
Tel. No. 642-3405
Renewals may be made 4 days prior to date due.
Renewed books are subject to immediate recall.

REC'D LD JUN 7 71-8 PM 1941

JAN 20 1997
RECEIVED

OCT 25 1996

CIRCULATION DEPT.

LD21A-50m-2,'71
(P2001s10)476-A-32

General Library
University of California
Berkeley

3 8

VII 03

75 + 15

Jg

U. C. BERKELEY LIBRARIES



C057920820

866425

THE UNIVERSITY OF CALIFORNIA LIBRARY

