

# SIGHTS AND INSIGHTS

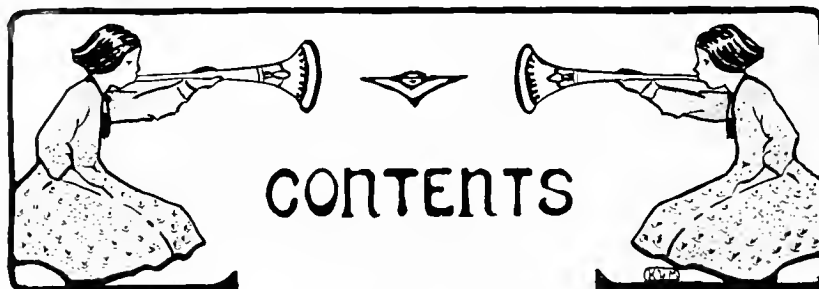


Volume Twelve

Published by the Class of 1916

Salem College

Winston-Salem, North Carolina



	PAGE
Dedication .....	6
Foreword .....	9
Board of Editors.....	10
The College Faculty.....	13-19
The Academy Faculty.....	19-21
Senior Class.....	23
Officers .....	24
Statistics .....	25-40
History .....	41-44
Marshals .....	45
Prophecy .....	46-50
Junior Class.....	51
Officers and Roll.....	52
Sophomore Class.....	54
Officers and Roll.....	55
Freshman Class.....	57
Officers and Roll.....	58
Sub-Freshman Class.....	60
Officers, Roll, and Group.....	61
Special Graduates in Household Arts.....	62
Certificates .....	63
Statistics .....	64-67
Miss Christine Henkel—Recital.....	68
Student Self-Government Association.....	70-72
Y. W. C. A.....	73-74
My Staff.....	76



## CONTENTS—Continued

	PAGE
Euterpean Literary Society.....	78-79
Hesperian Literary Society.....	81-82
Athletic Association.....	83-84
Scenes from "The Romancers".....	85-91
Commencement, May, 1915.....	92
Clubs .....	93
Red Ribbon Gossipers.....	94
Bandana Gang.....	95
Eat-a-Bit-a-Pies .....	96
Freshman Cooking Class.....	97
Fraternity Club.....	98
Bureau of Information.....	99
Cotillion Club.....	100-101
Delta Sigma Delta.....	102-103
Beta Beta Phi.....	104
Athletics .....	105
Thanksgiving Day Teams.....	105
Senior Basket-Ball Team.....	107
Junior Basket-Ball Team.....	108
Sophomore Basket-Ball Team.....	109
Freshman Basket-Ball Team.....	110
The Trophy Room.....	111
Senior Red-Letter Days.....	112
Jokes .....	113-115
Commencement Program.....	116



## Dedication

To express a very small part of our appreciation  
for his true, unselfish friendship and his  
untiring efforts in promoting  
Salem spirit, this  
volume of  
Sights and Insights  
is heartily dedicated  
to  
Mr. Robert H. Rice  
by the  
Class of Nineteen Sixteen



MR. ROBERT H. RICE

## SIGHTS AND INSIGHTS

*To the Seniors of Nineteen Sixteen:*

Along with the delightful privilege which has come to me of serving you in various ways during your undergraduate career has gone the desire to pay tribute to the memory of a Salem Senior whom I knew in the long ago, one who for many years has slept "under the whispering pines,"—whose memory is still a very precious heritage.

May you be filled with the same spirit of love and devotion toward your Alma Mater that was hers during her earthly career, and may the ties of friendship existing between us be strengthened during the coming years.

With all good wishes for Nineteen Sixteen,

Sincerely your friend,

Robert H. Rice

## *Foreword*

*The aim of the editors, in presenting this, the twelfth volume of SIGHTS AND INSIGHTS, is to place in the hands of the students a book which will be, in the years to come, a cherished memoir of their college days. If this be accomplished, we, the staff, will feel amply rewarded for our many tedious hours spent in its publication.*





## Board of Editors

LESSIE HELMS LEMONS.....	EDITOR-IN-CHIEF
LILLIAN CHESSON, '15.....	ASSISTANT EDITOR-IN-CHIEF
LUCILE SPEARS.....	BUSINESS MANAGER
LOUISA SHELTON.....	ART EDITOR
THEO TERRELL /	CLUB EDITORS
HARRIET GLOVER \	
ESTHER BAIN /	ADVERTISING EDITORS
RUBIE RAY \	
HELLEN SHORE /	LITERARY EDITORS
LAURA DE VANE \	



BOARD OF EDITORS



PRESIDENT HOWARD E. RONDTHALER





## Salem College

### Administration

#### BOARD OF TRUSTEES

RT. REV. EDWARD RONDTHALER, D. D.

**PRESIDENT**

REV. JAMES E. HALL

MR. CHARLES SIEWERS

REV. J. KENNETH PFOHL

MR. H. E. FRIES

MR. JOHN W. FRIES

MR. W. A. BLAIR

MR. FRANK H. FRIES

and

MR. W. F. SILAFFNER

the President of the College

MR. FRED FOGLE

(*ex officio*)

HOWARD E. RONDTHALER, Ph. B., B. D., M. A., D. D.

**PRESIDENT**

EDWIN J. HEATH, B. A., B. D.

**SECRETARY TO THE ADMINISTRATION**

WATSON KASEY, B. A.

**SECRETARY TO THE FACULTY**

OTELIA BARROW

**PRIVATE SECRETARY**

ROBERT H. RICE, Ph. B.

**BUSINESS MANAGER**

MARTHA LOUISE ERWIN

**LIBRARIAN**

MARY E. MEINUNG

**LIBRARY CUSTODIAN**

ANNA PERRYMAN, B. A.

**ACTING TREASURER**

CARRIE VEST

**BURSAR**

# Sights and Insights



H. T. BAHNSON, M. D.  
MEDICAL ADVISER

PEARL W. TURNER, R. N.  
NURSE

## REGISTRARS 1915-16

ERNEST L. STARR, B. A.  
COLLEGE

MARGARET WHITTEMORE, B. S.  
HOUSEHOLD ARTS

HELENA KEES, B. A.  
PHYSICAL EDUCATION

H. A. SHIRLEY, DEAN  
MUSIC

MINNA McLEOD BECK, B. S.  
FINE ARTS

OTELIA BARROW  
BUSINESS DEPARTMENT

ANNA KIGER                      MARIE BRIETZ  
OFFICE ASSISTANTS

## The College Faculty 1915-16

(In order of appointment)

LOUISA C. SHAFFNER  
Salem Female Academy; Student Chautauqua, N. Y.;  
University of Tennessee  
(Appointed 1866)  
MATHEMATICS

SARAH E. SHAFFNER  
Salem Female Academy; Student Chautauqua, N. Y.;  
University of Tennessee  
(Appointed 1867)  
MATHEMATICS



## Sights and Insights

RT. REV. EDWARD RONDTHALER, D. D.  
(President 1884-1888)

**BIBLICAL LITERATURE**

MARGARET BENNETT HORSFIELD, A. B.  
North Carolina State Normal; University of North Carolina; Student  
University of Tennessee; Guilde Internationale, Paris  
(Appointed 1911)

**MODERN LANGUAGES**

ERNEST L. STARR, B. A.  
Randolph-Macon College; Student Johns Hopkins University  
(Appointed 1912)

**ENGLISH**

WATSON KASEY, B. A.  
University of North Carolina; Student Summer Session  
University of Virginia  
(Appointed 1913)

**LATIN AND MATHEMATICS**

EDMUND SCHWARZE, B. D., M. A.  
Moravian College and Theological Seminary  
(Appointed 1913)

**GERMAN**

EDWIN J. HEATH, B. A., B. D.  
Moravian College and Theological Seminary; Student  
University of Chicago  
(Appointed 1914)

**HISTORY AND PEDAGOGY**

MARY L. SIENKNECHT, B. A., M. A.  
Randolph-Macon College; Columbia University  
(Appointed 1915)

**ENGLISH**

HELEN BARTON, B. A.  
Goucher College; Student Johns Hopkins University  
(Appointed 1915)

**PHYSICS AND CHEMISTRY**



HELENA KEES, B. A.

Wellesley College

(Appointed 1915)

**PHYSICAL DIRECTOR**

HAZEL YOUNG, B. S.

Colby College; Graduate School Yale University

(Appointed 1915)

**BIOLOGY**

## Faculty of Department Schools

### SCHOOL OF MUSIC

#### PIANO

H. A. SHIRLEY, DEAN

Graduate New England Conservatory of Music; Pupil of the late

Edward MacDowell

(Appointed 1896)

SARAH L. VEST

Salem Female Academy

(Appointed 1880)

**PIANO**

RUTH E. GROSCH

Graduate in Organ, Salem College; Student New England Conservatory;

Student Columbia University

(Appointed 1905)

**PIANO, ORGAN, THEORY, AND HISTORY OF MUSIC**

CAROLINE E. LEINBACH

Salem Female Academy; Student New England Conservatory;

Certificate Virgil School Piano, New York

(Appointed 1909)

**PIANO**

CELESTE HUNTLEY, A. B.

Salem College

(Appointed 1912)

**PIANO**



## Sights and Insights

ZETA COLLINS, L. T. C. M.  
Toronto Conservatory of Music  
(Appointed 1913)

**PIANO**

ANNIE SORSBY  
Salem College  
(Appointed 1913)

**PIANO AND ORGAN**

GRACE STARBUCK, A. B.  
Salem College  
(Appointed 1913)

**PIANO AND ELEMENTARY THEORY**

LOUISE SILER, A. B.  
Salem College  
(Appointed 1914)

**PIANO AND ELEMENTARY THEORY**

LAURIE JONES, A. B.  
Salem College  
(Appointed 1915)

**PIANO**

RACHEL R. ROYALL, A. B.  
Salem College  
(Appointed 1915)

**PIANO**

EDITH AYLESWORTH SHAW  
Graduate New England Conservatory  
(Appointed 1916)

**PIANO**

HARRIET GREIDER  
Salem College  
(Appointed 1916)

**PIANO**

**VIOLIN**

ROBERT L. ROY  
Diploma Royal Conservatory, Dresden, Saxony; Certificate Concert  
Meister Ludwig Gentz  
(Appointed 1907)

**VIOLIN**

# Sights and Insights



## VOICE

ALLENE BAKER

Pupil of Stella K. Haines; Giacomo Minkowski, Berlin and Dresden;  
Oscar Saenger, New York  
(Appointed 1915)

## VOICE

ELSA MAUDE HAURY, A. B.

Salem College; Pupil of Clifford Lott, Los Angeles, Cal.; George  
Fergusson, Berlin; Carl Eppert, Berlin  
(Appointed 1914)

## VOICE AND SIGHT SINGING

---

## SECRETARIES

ISABELLE CHRISTINE RICE

Salem College  
(Appointed 1903)

MRS. CHAS. E. STEVENSON

Salem Female Academy  
(Appointed 1911)

---

## SCHOOL OF HOUSEHOLD ARTS

MARGARET WHITTEMORE, B. S.

Mt. Holyoke; Teachers' College, Columbia University  
(Appointed 1914)

## DOMESTIC SCIENCE

ELIZABETH O. MEINUNG

Salem College  
(Appointed 1915)

## SEWING

ELIZABETH NORWOOD MICKLE

Student Salem College; Teachers' College, Columbia University  
(Appointed 1911)

## SEWING



## Sights and Insights

BESSIE V. NOLES, B. A., B. S.

Bessie Tift College; Teachers' College, Columbia University  
(Appointed 1915)

**DOMESTIC SCIENCE**

ANNA ERWIN

Bethlehem Parochial School  
(Appointed 1915)

**ASSISTANT IN DOMESTIC SCIENCE**

### **SCHOOL OF FINE ARTS**

MINNA McLEOD BECK, B. S.

Teachers' College, Columbia University  
(Appointed 1914)

**FINE ARTS**

A. EVALYN NORTON, B. S.

Teachers' College, Columbia University  
(Appointed 1916)

**ASSISTANT IN FINE ARTS**

### **Faculty of Salem Academy**

EMMA L. CHITTY

Salem Female Academy; Student University of North Carolina  
(Appointed 1870)

**LATIN**

CLAUDIA A. WINKLER

Salem Female Academy; Student Teachers' College, Columbia University;  
University of North Carolina  
(Appointed 1888)

**LATIN**

BESSIE F. IVEY, A. B.

Salem College; Student University of North Carolina  
(Appointed 1911)

**MATHEMATICS**

MARGARET BENNETT HORSFIELD, A. B.

North Carolina State Normal; University of North Carolina; Student  
University of Tennessee; Guilde Internationale, Paris  
(Appointed 1911)

**MODERN LANGUAGES**

# Sights and Insights



LULA STIPE, A. B.

Salem College; Student University of North Carolina  
(Appointed 1911)

**ENGLISH**

RUTH MEINUNG, A. B.

Salem College; Student University of North Carolina  
(Appointed 1912)

**SCIENCE**

EDMUND SCHWARZE, B. D., M. A.

Moravian College and Theological Seminary  
(Appointed 1913)

**GERMAN**

MARY LOUISE STROWD, A. B.

Salem College  
(Appointed 1914)

**ENGLISH**

MINNIE ALLEN

Salem Academy and College  
(Appointed 1914)

**DUTY KEEPING**

FANNIE BLOW WITT, B. A.

Salem College  
(Appointed 1915)

**ENGLISH**

MARY L. SIENKNECHT, B. A., M. A.

Randolph-Macon; Columbia University  
(Appointed 1915)

**ENGLISH**

HAZEL YOUNG, B. S.

Colby College; Student Yale University  
(Appointed 1915)

**SCIENCE**

HELENA KEES, B. A.

Wellesley College  
(Appointed 1915)

**GERMAN**





## Sights and Insights

ELLINOR RAMSAY, A. B.

Salem College  
(Appointed 1915)

**MATHEMATICS**

ANNA ERWIN

Bethlehem Parochial School  
(Appointed 1915)

**DUTY KEEPING AND DOMESTIC SCIENCE**

MARIE BRIETZ, A. B.

Salem College  
(Appointed 1915)

**TUTOR**

A. EVALYN NORTON, B. S.

Teachers' College, Columbia University  
(Appointed 1916)

**ENGLISH AND GERMAN**

### Preparatory Department

#### FACULTY OF PREPARATORY (GRADE SCHOOL) DEPARTMENT

SARAH A. VOGLER

Salem Female Academy  
(Appointed 1866)

PAULINE PETERSON, A. B.

Salem College  
(Appointed 1913)

LUCRETIA WILSON

North Carolina State Normal  
(Appointed 1914)

MINNIE MORRISON, B. S.

Statesville College  
(Appointed 1914)

LUCY HADLEY, A. B.

Salem College  
(Appointed 1916)



MISS E. A. LEHMAN

# SENIOR



# ZΦH

## Senior Class

COLORS: Red and White

FLOWER: Red and White Roses

MOTTO: " 'Tis sweet to live for one's friends"

### OFFICERS

HELLEN SHORE.....	PRESIDENT
ESTHER BAIN.....	FIRST VICE-PRESIDENT
HARRIET GLOVER.....	SECOND VICE-PRESIDENT
LOLA DOUB.....	SECRETARY
KATHLEEN HEILIG.....	TREASURER
OLIVIA MILLER.....	HISTORIAN
THEO TERRELL.....	PROPHET
LESSIE LEMONS.....	POET



## Sights and Insights

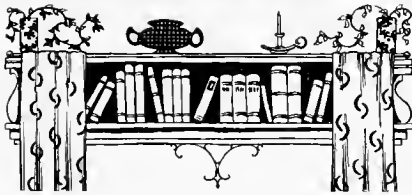
ESTHER LYELL BAIN

CHARLOTTE, N. C.

*"The mildest manners with the bravest mind."*

Secretary Class, 1913-14; Vice-President Class, 1915-16; Vice-President E. L. S (Second Semester), 1916; Advertising Editor SIGHTS AND INSIGHTS; Senior Club.

Good-hearted "Bain" is always ready to stop her own work to help some one else. It was not until the Senior year that she joined us as a "boarder," and perhaps not until then did we realize what we had missed before she came.



# Sights and Insights



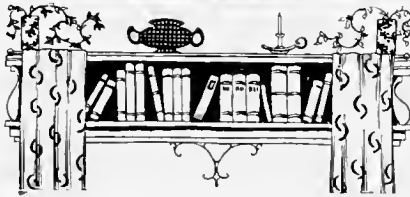
BERTHA COX

ASHEBORO, N. C.

1914: Vice-President E. L. S., Second Vice-President Class, 1913-14; Orchestra.

1916: Secretary E. L. S. (Second Semester), Exchange Editor *Ivy*, North Carolina State Club, Y. W. C. A., Orchestra, Red Ribbon Gossipers, Frat Club, Senior Club.

Bertha's always "the first aid to the injured"—unselfish and sympathetic. The Class of 1914 claim her, but so do we. The girl who couldn't stay away, and we're glad that she couldn't.





## Sights and Insights

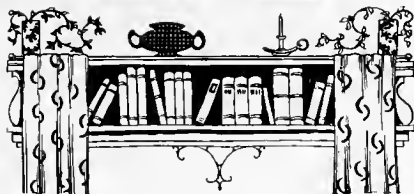
LAURA DE VANE

YUMA, ARIZ.

*"Far may we search before we find  
A heart so gentle and so kind."*

Glee Club, 1912-13; Athletic Association; Treasurer E. L. S., 1915-16; Vice-President Y. W. C. A., 1915-16; Class President, 1913-14; Class Poet, 1914-15; Class Basket-Ball Team, 1913-14-15-16; E. L. S. Basket-Ball Team, 1914-15-16; Captain, 1916; Editor-in-Chief *Icy*; President Arizona - Kansas - Alabama-Louisiana Club, 1915-16; Literary Editor SIGHTS AND INSIGHTS; Senior Club.

Laura possesses the happy faculty of combining work with pleasure. She makes friends easily, and by her sincerity is able to retain them. All through our college life we have found in her a genial classmate. "The Girl of the Golden West"—"Arizona."



# Sights and Insights



AGNES VIRGINIA DODSON  
WINSTON-SALEM, N. C.

*"Thy modesty's a candle to thy merit."*

Vice-President Class, 1914.

Faithfully "Dodson" has "trudged" along with us during our four college years, and now finds herself with all dignity leading the Senior procession.







## Sights and Insights

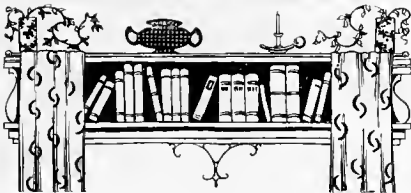
FRANCES DOUB

WINSTON-SALEM, N. C.

*"No beauty is like the beauty of the mind."*

Secretary Class, 1915.

Few "day pupils" have ever shown more class loyalty than "The Doubs." "Pete" is very studious, and despite the "Rainey" days we could always "Bank" on her being right here.



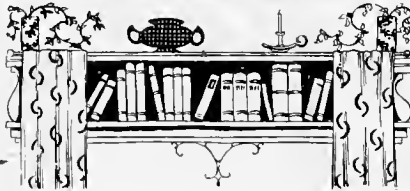


LOLA IRENE DOUB  
WINSTON-SALEM, N. C.

*"Her eyes as stars of twilight fair;  
Like twilight, too, her dusky hair."*

Vice-President Class, 1915; Secretary Class, 1916.

Mild and gentle little "Duck" is not very talkative, but yet she's full of fun. Just the girl who is always ready to do her part.





## Sights and Insights

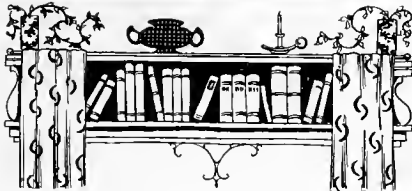
HARRIET GLOVER, Δ Σ Δ

ELIZABETH CITY, N. C.

*"Bright gem instinct with music,  
vocal spark."*

Basket-Ball, 1912; Team, 1914-15;  
Captain, 1913-16; Glee Club, 1912-13;  
President H. L. S. (Second Semester);  
Second Vice-President Class, 1916;  
President Athletic Association, 1916;  
Y. W. C. A.; Advertising Editor *Ivy*;  
Club Editor SIGHTS AND INSIGHTS;  
Cotillion Club; Bandana Gang; Senior  
Club.

The "Pink Tassel" of 1916—in other  
words, our one vocal graduate—either  
bursting into song with ecstasy or down  
in the depths of despair. "Glover" is  
full of new and original ideas, despite  
her peculiar interest in the patriarch of  
old (?).





MARY HEGE  
CLEMMONS, N. C.

*"For solitude is sometimes best society."*

Mary was adopted by the Class of 1916 from that of 1915; so knowing her as little as we do we are unable to put our finger on any definite information concerning her. However, we do know that she's always in a good humor, and has a smile for every one.





## Sights and Insights

KATHLEEN HEILIG

SALISBURY, N. C.

*"Attempt the end and never stand in  
doubt;  
Nothing's so hard but search will find  
it out."*

Treasurer Class 1916; Secretary  
E. L. S. (First Semester), 1916; Stu-  
dent Government Council, 1916; Class  
Basket-Ball, 1916; Y. W. C. A.; Senior  
Club.

The ever-studious "Tig"—a peculiar  
combination. For six days out of the  
week she may be found in some  
secluded corner of Annex cramming  
knowledge into her fertile brain. Yet  
Sunday finds her just as laboriously  
pouring over her correspondence with  
the sterner sex, always with the same  
neatness and accuracy.





LESSIE HELMS LEMONS, B B Φ  
SAN ANGELO, TEXAS

*"She's pretty to walk with, witty to talk with, and pleasant, too, to think on."*

Senior Marshal, 1915; Class Treasurer, 1914-15; President H. L. S. (First Semester), 1915-16; Class Poet, 1915-16; Senior Club; Y. W. C. A.; Joke Editor *ivy*; Editor-in-Chief SIGHTS AND INSIGHTS; Cotillion Club; Bandana Gang.

And so Texas sends us "Lemons." Sour? Well, not often. "Little Bitsy Lessie P" possesses a brilliant mind and a lovable disposition, which we hope will not be injured by her faithful attempts to send SIGHTS AND INSIGHTS to press. So far, we have noticed no fatal results. "Lemons" thoroughly enjoys life.





## Sights and Insights

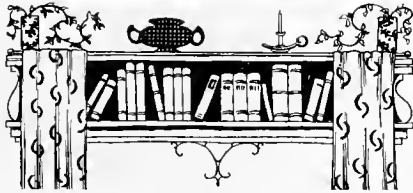
OLIVIA ISADORE MILLER

ROCKY POINT, N. C.

*"In virtues nothing earthly could surpass her."*

Basket-Ball Team, 1912-13-14-15-16; Captain, 1914-15; Y. W. C. A. Cabinet, 1913-15; Pianist Y. W. C. A., 1915-16; Historian Class, 1915-16; Athletic Association; Vice-President H. L. S. (Second Semester), 1916; Senior Club.

The Salem landmark. A bureau of information for all Salem news dating from the year 1908. In the practice room, on the basket-ball field, and in the study parlor the same conscientious "Queenie" is found.



# Sights and Insights



RUBIE RAY

MARTEL, FLA.

*"A simple maiden in her flower is worth a hundred coats of arms."*

Class President, 1912-13; Class Basket-Ball Team, 1912-13; Captain, 1913-14-15-16; E. L. S. Basket-Ball Team, 1914-15-16; Varsity, 1912-13; Senior Marshal, 1912-13; Business Manager Athletic Association, 1913-14; Y. W. C. A. Cabinet, 1914-15; Class Historian, 1914-15; President Florida Club, 1915-16; President Y. W. C. A., 1915-16; First Vice-President Student Government Association, 1915-16; Censor E. L. S. (First Semester), Critic (Second Semester), 1915-16; Business Manager *Ivy*; Advertising Editor SIGHTS AND INSIGHTS; Senior Club.

Mention a room company that Rubie hasn't been in at some time during the seven years which she has spent at "Salem." The same kind-hearted and sympathetic girl through all the years has rooted herself deep into the heart of her Alma Mater.







## Sights and Insights

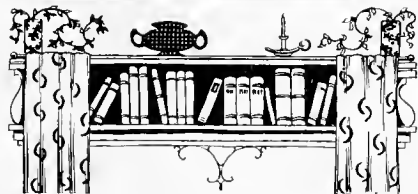
LOUISA SHELTON

WINSTON-SALEM, N. C.

*"My eyes make pictures when they are shut."*

Senior Marshal, 1912-13; Art Editor  
SIGHTS AND INSIGHTS.

Louisa is "wrapped up" in her art. From early morning until late in the evening she's to be found in the studio. Not overly enthusiastic over the "brown tassel," but a real art graduate. She's quiet and unassuming, full of "dry" wit.



# Sights and Insights



HELLEN GAZELLE SHORE

KERNERSVILLE, N. C.

*"Her ways are ways of pleasantness,  
and all her paths are peace."*

Glee Club, 1912-13; President Class, 1915-16; President E. L. S. (First and Second Semesters), 1915-16; Y. W. C. A. Cabinet, 1915-16; Athletic Association; Senior Club; Student Government Council, 1915-16; Literary Editor SIGHTS AND INSIGHTS; Frat Club.

The "Lucky Dog" of our class—the only boarder who can spend the weekend at home. Hellen has a splendid and regular income of—Huyler's. She also has a voice, and a good one; gets along with everybody most of the time, but sometimes she's inclined to "Buck."





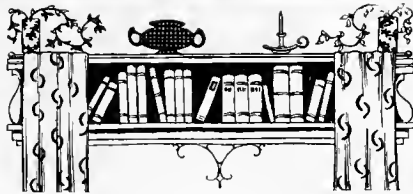
## Sights and Insights

LUCILE SPEARS  
LILLINGTON, N. C.

*"Good sense, which only is a gift of heaven."*

President Class, 1914-15; Class Basket-Ball, 1914-15-16; E. L. S. Team, 1914-15; Athletic Association; Secretary Y. W. C. A., 1915-16; Vice-President E. L. S. (First Semester), Censor E. L. S. (Second Semester), 1915-16; Senior Club; Business Manager SIGHTS AND INSIGHTS; President Student Self-Government Association, 1915-16.

More or less tactful; always ready with a logical argument. "Lucinda" has a splendid vocabulary and uses it to an advantage, expressing herself at all times with perfect ease. Through her capability many honors have come to her.





THEO TERRELL  
COOLEEMEE, N. C.

*"As prone to mischief as able to perform it."*

Class Secretary, 1915-16; Class Prophet, 1915-16; Class Basket-Ball Team (Sub.), 1915-16; Advertising Editor *Joy*; Club Editor SIGHTS AND INSIGHTS; Censor H. L. S. (First Semester), 1915-16; Y. W. C. A.; Senior Marshal, 1914-15; Senior Club; Cotillion Club; Bandana Gang.

In "Het" we have all that is frivolous, combined with a quick mind, and that saving sense of humor, all of which endears this "bright-haired" girl to us. Theo possesses individuality, frankness, and a peculiar "knack" of "getting along." Her chief characteristic is cheerfulness, and that smile which never wears off.





### History of the Class of 1916



VEN those of us who belong to ancient history sometimes weary of its annals. We will not risk the loss of your goodwill by trying to bring up such long past memories. But about the time that Peary was causing so much excitement in the far North, we were budding into a life the blossom of which you see is so perfect.

Probably the first thing which made our heart thrill was the choosing of our pennant. That was a wonderful experience—"to get out of class" and discuss the kinds of pennants. And when Thanksgiving came and when they were displayed in bright array, what more beautiful could have caused us to lose the game. But we could never have broken a custom which had been established by so many Freshman classes, and, with this in mind, we allowed nothing to detract from the day.

Then the old custom of putting the players' Thanksgiving dinner on cold storage till night was used, and many of us enjoyed frozen mince pie on the "dormitory" around a big stove. Even studies were thrilling then, because they were college studies. And who of us doesn't remember when Mrs. Rondthaler found some of us studying at four o'clock in the morning? Then we were green young Freshmen, weren't we?

But with the dawn of Sophomore dignities there also came a graver air and sturdier purpose. We had hoped to get to ourselves, but in came those green Freshmen to live with us. And what could have been more humiliating and yet more opportune, for we thought that this school was ours, which we soon saw was equally divided between us and the Freshmen. Here were beating and batting, which we must admit bound the two classes more strongly together.

Athletics was our long suit then. We were more than anxious to redeem ourselves of the awful score in the Freshman year; and found to our dismay that our gym teacher didn't even like basket-ball. Of course then we began to pull harder, and finally she came over, and such a game as we had! We lost the game by only one point.

## Sights and Insights



On that Thanksgiving the college gave its first big banquet. The teams came marching in to the music of an orchestra, and everybody applauded, and then you know what followed.

Another distinctive feature was Easter. There were only five of us left to stay here. We did not know what to do with ourselves on a whole big dormitory. We would have even been glad for the Freshmen for the first day or two, but we soon found enough to do: sleep late in the morning; go anywhere we pleased; go to church if we wanted to; and, in fact, do nothing we didn't want to. It was just like a holiday, and if you think it was a holiday just ask Dr. Rondthaler about it.

When we came back as Juniors there was in truth nothing in Salem sufficient to hold us down. No doubt on the very first day some one of us said something about the banquet and pass cards, which seemed to be our goal.

Again kind Fate gave us interest and enthusiasm enough to spur us on with books a little farther, and blinded our eyes to the rough and rugged path ahead. Physics, the giant of all giants, was yet to be killed. We mustered army after army to send out against him, but one day we all plunged on him, while he slept under an unheard-of exam paper.

I am sure Miss Lou will forgive us now if we tell her that, in the midst of our troubles, we found time for one or two midnight feasts, which really were not very feasty. But we had one after mid-term exams. Of course we decided to have it at the last minute, but, thanks to Mr. Rice, that wasn't too late. And you all remember that "Tig" had gone home; but she left a whole chicken which we couldn't forget, although there was no earthly hope of finding it. We ransacked every approachable place, but, alas, no chicken. Later on we missed two more girls. They were not gone long, and might as well have come in gnawing chicken bones, for the good their efforts to fool us did.

The interesting class meetings which soon followed exams would fill a book. Out of them all, the biggest thing which came was our Senior breakfast. We wanted to do something new, and finally decided on a breakfast, which is for most people the newest thing of the day. And we did not forget that the Seniors had very seldom eaten a hearty breakfast during the year, but they controlled themselves well.

And then, soon after, the wonderful day for pass cards came. The hour for the ceremony was set at eleven o'clock. There probably never was so



## Sights and Insights

much primping done in two hours, for even then we had "some style," and kept the dignitaries waiting about fifteen minutes. After we had our cards and the Seniors' caps and gowns, we went for the first time on a walk to Winston alone, and came back to experience some of the joys for which Seniors were weeping.

If anybody had told us that Seniors could be so happy we would not have believed it. Our Y. W. C. A. work in the fall started us off right. With the help of the other Y. W. C. A. girls, we got every new girl to a resting place, which might have been on the roof it seemed to us. Then we settled down for business.

First of all we had our Y. W. C. A. reception, then everybody met everybody else as informally as they could. And for the first time in several years, the societies held their receptions together. This was a final rise before a big fall, for soon they were made secret organizations.

Then we began to look forward to the caps and gowns. Poor Miss Erwin was constantly harrassed by, "Have you heard anything from the caps and gowns?" But that wasn't all we thought of. Down in our President's home was dear little Jane Katherine, whom we wanted for our mascot, but could not think how to get her. But one day we made a bold attempt to write a note asking for her, and in a few days we were delighted with the answer that she could be ours. Then wonderful plans were made for her decoration on Thanksgiving, but it was too cold to have her out.

It was not very long before the caps and gowns came. We heard that they were in town Saturday night, and it was an anxious week-end that we spent. Bright and early Monday morning they were sent down, and Mr. Rondthaler had them put on Bishop's back porch. That was one time that Beebees and Grandmas climbed fences and jumped hedges. You might have taken us for Ku Klux. We were so afraid some one would see them before we could wear them, that company was not really welcomed. It was an awful mental strain.

Then hat burning! We had a long funeral procession from the gym to the basket-ball court. There a court scene followed, which condemned hats to be burned. And it was a happy war dance, around the burning hats, which we gave our audience. Then we went off to Dodson's for a "grand old time" until twelve o'clock.

## Sights and Insights



But we had no class ring. It was an awful task to choose one, for the man who brought the samples had a case full. Of course no one could agree for a long time, but after a while we decided on something, which was ordered with great relief.

The last Thanksgiving was greatly anticipated, and more so because of its meager and still hopeful prospects. We made up our minds to try to enjoy the games, come what may. And when we got on the field we could do no less, because of the splendid sportsmanship which met us on all sides. Thanks to kind fate we won over the Juniors. But then out came our sister class, and, "most unkindest of all," wiped our beautiful score away! But we did not weep. We could hardly dress quickly enough for the banquet which was to follow. To think of the wonderful turkey—waiting! An additional feature of this banquet was the recognition which the school gave the Alma Mater of Miss Kees. None of us can forget her patience and personal interest in us.

Soon after the banquet we were smuggled in bed to dream of what next Thanksgiving could possibly be.

And then it was not many weeks before Christmas. Such a glorious thing to go home as a Senior! There had been many a hope and dream of that; and now—realized. All the good times which we had are too great to count.

Our Senior dinner which Dr. and Mrs. Rondthaler gave us meant more than they know. In the midst of Annual, *Ity*, and essays, it was a real refreshment to have a whole evening given to jollity; and especially to meet our faculty on a level plane, not sitting on a teacher's platform.

And now, Alma Mater, may you ever enter the life of your girls as you have ours, and make them love and cherish your memory.

O. I. M., '16





*R. Long Hearne Brower*

## Senior Marshals

GLADYS RICHARD  
MARJORIE DAVIS  
SALLIE DYSON  
HELEN LONG  
ROSEBUD HEARNE  
ANNIE LOUISE BROWER



## Class Prophecy

SPECIAL ALUMNÆ ISSUE OF THE ACADEMY

FOR THE  
CLASS OF 1916

TO THE DEAR OLD CLASS, FACULTY, AND OUR ALMA MATER. GREETINGS:

From the fifteen letters, or the complete list of living graduates, myself not included, I have received thirteen replies this year. I shall take this opportunity for thanking you, dear classmates, for your prompt attention to my letters, and for the letters you have sent me in return, which I shall take great pleasure in publishing in this issue of the *Academy*, for I feel sure each will be of interest to each other member of our class.

HARRIET GLOVER (Mrs. W. M. Mosely), Barbers Junction, N. C. She writes:

"It's lots of fun to be alive! Am so interested in my husband's work, and am an active member of different organizations of Hay Street Methodist Church of which he is pastor. We have lived in several places where he has had ministerial charges, but in no place have we had the advantages that we find here.

"Will be so glad to sing in Memorial Hall at our reunion if I can find some one who will care for the twins, Loyd and Celluloid, during my absence."

KATHLEEN HEILIG, Sisters' House, Salem College, Winston-Salem, N. C., says:

"Your letter called for an immediate answer so I shall not delay writing one minute, although I have never been so busy before.

"The Latin classes have shown marked improvement since I took hold of things. But why should they persist in using the *so-called* classics when my magazine, *Twentieth Century Latin*, is in much greater demand? My editorials far exceed Cicero at his most eloquent moment, and Virgil seems discordant and doggerel when compared to my lofty lyric strains.



## Sights and Insights

"In longing for a truly Latin atmosphere I named all the flowers in my plot of the Sisters' House garden beautiful Latin names. Am sitting where I can see them as I write, and the exquisite perfume of my blooming Tarquinius comes to me even now.

"Romulus and Remus, my beautiful cats, are my constant companions, and will help me welcome you back for our first reunion."

RUBIE RAY (Mrs. O. C. Turnipseed), Peachtree St., Atlanta, Ga., replies:

"Of course I can't expect many of my unsophisticated classmates to understand or sympathize with me in regard to the divorce I was forced to sue for. But, my dear, life with that Bishop was unbearable, and church work! Oh, I detest it!

"Every one seems to pity 'the dear little children,' but really the brats are such a nuisance, as well as a great hindrance to my social duties, that I feel I did the expedient thing when I willingly left them with their father.

"Likely you have heard it rumored (and, oh, how true are some reports!) that I am to wed Count Martini. Kindly refrain from mentioning this, but you see this marriage is my only available means of realizing my life-long ambition to be a Sensational Society Leader.

"If you are writing to any of the girls please give them my regards."

LOUISA SHELTON, Winston-Salem, N. C.

I did not receive a reply from Louisa, but lately I read in the *Winston-Salem Journal* of the sensational address she made at Salem on "The Art of Public Speaking." We all remember how she sought publicity during her college course, and we congratulate her on her success.

OLIVIA MILLER, Little Theater, Winston-Salem, N. C., writes:

"Since the theatrical life has always appealed to me I feel sure none of the girls will be surprised to hear that I am now on the stage. At present I am taking the leading part in the clever little play 'The Highland Lassie.'

"Although I have made a great success on the stage this has not been the only means of my enormous income. I have a 'perfectly wonderful' apple orchard in Western North Carolina, and my only objection to this is that it is entirely too far from Carolina Beach, where you know I always pass such gay and happy summers."

## Sights and Insights



MARY HEGE, Route 2, Charlotte, N. C. Mary's account of herself:

"When I chose my life's work—Sunday-school teaching—I was sure I could make a howling success of it, but I overestimated my strength. My health gave way under the terrific strain, and since, as a means of livelihood, I have been raising poultry.

"Would love to hear from the girls. What do you think of a 'chain letter'?"

BERTHA COX, Sing Sing Prison, N. Y. Girls, I know you will all be glad to read the following hopeful letter from poor Bertha:

"Was so glad to get your card telling me that the reunion has been postponed until 1924, for you know my sentence doesn't expire until the fall of 1923, and I couldn't bear to miss our first reunion.

"In a way I am humiliated to think of the disgrace I brought on the class, still all criticisms of my crime, trial, etc., were made by people entirely ignorant of the circumstances. And it helps me to feel that you girls understand and sympathize when I say that the cause of it was the exorbitant expenses of the Senior year."

LOLA DOUB, lawyer, New York State, reports:

"Am one of the great army of wage-earning women, and am very happy in my work. Have only been in the professional world four years, and I consider the greatest work of these years the noble assistance I was able to render my classmate, Cox, in shortening her sentence at Sing Sing by my eloquent pleading."

LESSIE LEMONS (Mrs. R. J. Blum), R. F. D. 7, Cuero, Texas. She writes us:

"When I married Mr. Blum I had no idea that I would ever be satisfied with country life, but when his health gave way and the doctors advised 'perfect quiet,' we immediately purchased a ranch miles from civilization. At first I thought I would be lonesome, but with the care of my seven dear children I find little time for lonesomeness.

"Do you remember my voice lessons at Salem? Well, they have certainly been of wonderful assistance to me in the art of calling the cows and pigs, and I do not regret one minute of the time and money I spent on them. Jennie V. begs every day to go to Salem, and I think I shall bring her to our reunion."



## Sights and Insights

LAURA DE VANE, Los Angeles, Cal., writes:

"At first I settled down quietly on the ranch, but I grew restless—the life did not satisfy me—I felt that I must get out into the world in order to be of service to humanity. And, of course, you have read of the startling sensations I have produced with my innovations in the Salvation Army Circles. Just think, *my* ukulele has replaced the time-honored tambourine! And with my smiles, assisted by my dimples, I cast many rays of sunshine into gloomy hearts.

"Am in favor of the reunion if I can possibly leave my work."

ESTHER BAIN, Chief of Fire Department, Winston-Salem, N. C., states:

"Am leading a very useful life. Have been in the Winston-Salem Fire Department for three years, and it was during last year's service that I was made chief of this department, due to a rescue in which particular skill and bravery was shown. The home of our classmate, Mayor Agnes Dodson, was in flames, the inmates were asleep, and it was only by risking my own life that I saved every member of that family.

"Have planned a straw ride in my fire truck for the class when we have our reunion."

It is only from Esther's letter that we have news of Agnes Dodson. She must be too busy to write, for I imagine her duties as mayor are overwhelming.

At school she was inclined to be a great leader, and so I believe that none of you will be surprised that others, too, appreciate her competence.

FRANCES DOUB, California. She sends us this message:

"Yes, yes, of course you have seen me on the screen; the publicity of acting is the only part I dislike. Motion pictures are so exciting and each day brings novel experiences. Of course expenses are getting rather heavy, but you know I never let a 'bill' worry me.

"It will be grand to get together once more, for I know I shall enjoy seeing all you girls."

LUCILE SPEARS, Winkler's Bakery, Winston-Salem, N. C. Lucile announces:

"Your letter was forwarded to me from Lillington, and I trust the following account of myself will suffice every need. Fate decreed it that I should be a working woman, so I am at present engaged as cashier for the

---

## Sights and Insights

---



famous Winkler's Bakery. It is with difficulty that I hold this position, for constantly the temptation to partake of the delicious buns overpowers me.

"Do let's reunite, and we will feast at Winkler's expense."

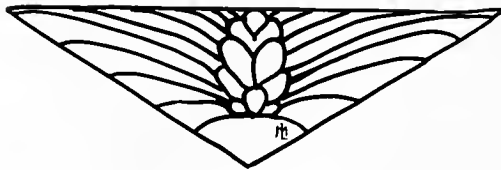
HELLEN SHORE, Salem College, Winston-Salem, N. C. She writes:

"So you heard that I was at Salem, and 'doing what'? Thought, of course, you would have heard that. Well, you know when the elevator was finally put in and when Dr. R. said, "Let 'er go," no one could be found to run it successfully, so I immediately went to Columbia University and took a special course in the manipulation of elevators, graduating '*Cum magna laude.*' Since my return I have been in constant *elevating* service for this college.

"Am still spending my week-ends at home, and, in order that I may get off on time, the Saturday practice turns have been eliminated.

"Will be glad to welcome you all!"

T. L. T.



# JUNIOR



# ΔΑΣ

## Junior Class

COLORS Black and Red FLOWER American Beauty  
MOTTO: "Let us pursue the things that are noble and true"

### OFFICERS

ELIZABETH FELTON.....	PRESIDENT
IDA WILKINSON.....	VICE-PRESIDENT
KATHRINE GRAHAM.....	SECRETARY
VIRGINIA ROSS.....	TREASURER

### CLASS ROLL

HALLIE ALLEN	ROSEBUD HEARNE
ANNIE LOUISE BROWER	CHRISTINE HENKEL
BETSY BAILEY	IZMA JENNETTE
LUCY BOOE	NANNIE JONES
ALMA BIZZELL	RUTH KAPP
ELIZABETH BUTNER	RACHEL LUCKENEACH
ELLA BRYANT	MARY MOORE
LILLIAN CHESSON	NITA MORGAN
PAULINE COBLE	THELMA NEAL
LILLIAN CORNISH	CLIO OGEURN
MARY DENNY	MARY PHILLIPS
EMILEE DICKEY	VIRGINIA ROSS
EUNICE FLYNT	BLANCHE STRICKLAND
ELIZABETH FELTON	MABEL STRICKLAND
KATHRINE GRAHAM	CLYDE SHORE
MARY GREY	LAURA THORPE
HARRIETTE HAMMER	LOUISE WILKINSON
MELISSA HANKINS	IDA WILKINSON
EUDORA HATCH	HELEN WOOD





JUNIOR CLASS

# SOPHOMORE



# T A Δ

## Sophomore Class

COLORS: Purple and White

FLOWER: Parma Violet

MOTTO: While we live, let us live

### OFFICERS

ADA SISKE.....	PRESIDENT
KATHRINE DAVIS.....	VICE-PRESIDENT
MARY ENTWISTLE.....	SECRETARY
HELEN LONG.....	TREASURER

### CLASS ROLL

EVELYN ALLEN	NITA HIGSMITH
THEODORA BENNETT	LUCY IRWIN
LILLIAN BLUE	ANNIE JOHNSTON
EDITH BRYSON	VERA KIRKWOOD
SUE CAMPBELL	HELEN LONG
MARY CASH	ROSLYN LUMPRIN
RUBY CREDLE	MARTHA McQUEEN
MARIE CRIST	SALLIE McWHORTER
KATHRINE DAVIS	LOUISE POAG
SALLIE DYSON	NANNETTE RAMSEUR
REBECCA ELLIOT	FLORENCE RENNECKER
MARY ENTWISTLE	KATHRINE ROSS
HELEN EVERETT	CARMEL ROTHROCK
MARY FEIMSTER	LUCILE SANDIDGE
ANNIE FOWLE	ADA SISKE
ELEANOR GATES	LOIS SPOTTS
ADELE GEIER	MARY SUMNER
VERNA GRIFFIN	EVELYN THOM
NETTIE HARRIS	OLIVE THOMAS
LUCILE HENNING	EULA DELL WALL
MARY CARROW HERRING	HENRIETTA WILSON
BELLE WOOTTEN	



SOPHOMORE CLASS



**FRESHMAN**

# AΦE

## Freshman Class

COLORS: Black and Gold

FLOWER: Black-eyed Susan

MOTTO: "To strive, to seek, to find, and not to yield"

### OFFICERS

MAUDE GILLMORE.....	PRESIDENT
EMILY VAUGHN.....	VICE-PRESIDENT
CHARLOTTE CRITZ.....	SECRETARY
DOROTHY SHAFFNER.....	TREASURER

### CLASS ROLL

EVELYN ARMBRUST	MARY HARDING	MARY MOSELY
MARGARET BRIETZ	ISABEL HARRIS	MARGARET McDOWELL NEWLAND
MABEL CLAIRE BROWN	MARJORIE HASTINGS	GRIZELLE NORFLEET
ANNIE BURWELL	MARION HINES	NAN NORFLEET
MARGARET BYNUM	OCTAVIA HINE	HARTIE OLIVER
ELIZABETH CONRAD	LEORA HOOKER	EVELYN POWELL
LOUISE CON	MARY HOOKER	MARY ROPER
CHARLOTTE CRITZ	ETHEL HUFF	GLADYS RICHARD
LOUISE CROSLAND	HELEN HUNT	FRANCES RIDENHOUR
EDNA CUMMINGS	FAY HUNTLEY	DOROTHY YVONNE SHAFFNER
MARGUERITE DAVIS	ANNA INGRAM	MAGGIE SCOTT
MARJORIE DAVIS	JULIA JERMAN	BERTHA SHELTON
MARY HUNTER DEANS	LEONA LAMBERTSON	RUTH SHORE
SARA LILY DOCKERY	MARY LANCASTER	ALICE SIMMONS
DELLA DODSON	INA MAE LEE	MARGARET MAE THOMPSON
IRENE DONNELLY	MAURINE LIGON	ROSINA VANCE
MARY EDWARDS	EVA LOGAN	EMILY VAUGHN
MARY EFIRD	LELIA GRAHAM MARSH	MAINA VUGLER
CLARITE ELLIOTT	MARY McCORKLE	GLADYS WALKER
PEARL FRAZIER	MARTHA McKELLAR	CLAUDIA WALL
MAUDE GILLMORE	RUTH MILLS	KATHRINE WATSON
CAROLYN HACKNEY		MARY WHITE
LUCE HARDEE		MARGARET WOMACK



FRESHMAN CLASS

SUB



FRESHMAN





## Sub-Freshman Class

### OFFICERS

MARGUERITE WILLIAMS.....	PRESIDENT
RUBY TEAGUE.....	VICE-PRESIDENT
NANCY HANKINS.....	SECRETARY
DOROTHY FOLKS.....	TREASURER

### CLASS ROLL

ELIZABETH BYNUM	DOROTHY PFOHL
ESTHER COBLE	KATHRYN RENALDS
ELLEN FARRAR	MYRA RICHARDSON
DOROTHY FOLKS	RUTH SMITH
MARY HANES	PEARLE SMITH
NANCY HANKINS	RUBY TEAGUE
MAMIE HINE	KATE THOMAS
MARGRETTA NANCE	SALLIE THOMPSON
RUTH PHAFF	MABEL WILLIAMS

MARGUERITE WILLIAMS



Diplomas in Household Arts

CLYDE SHORE.....	Domestic Art	HELEN VOGLER.....	Domestic Science
	SOPHIE HOLLISTER.....		Domestic Art
THELMA NEAL.....	Domestic Science	ELIZABETH CORNELIUS.....	Domestic Science



## Sights and Insights



### Certificates

LETHA BRUTEN.....Sewing  
NETTIE HARRIS.....Sewing

REBECCA ELLIOT.....Sewing  
VERNA GRIFFITH.....Sewing

## Statistics



BELLE WOOTTEN, *Prettiest*

LESSIE LEMONS, *Handsomest*



LAURA THORPE, *Most Popular—Most Striking*

BETSY BAILEY, *Most Attractive*



## Sights and Insights



JULIA JERMAN, *Best Dancer*



MARJORIE DAVIS, *Cutest*



MARGARET MAE THOMPSON, *Most Gifted*



DOROTHY SHAFFNER, *Most Stylish*

# Sights and Insights



CAROLINE ROBINSON, *Most Dignified*



ELIZABETH FELTON, *Most Original*



CLYDE SHORE, *Most Athletic*



SALLIE THOMPSON, *Funniest*



## Sights and Insights



RUBIE RAY, *Typical Senior*



EMILEE DICKEY, *Typical Junior*



ELEANOR GATES, *Typical Sophomore*



MARY LANCASTER, *Typical Freshman*



## Miss Christine Henkel—Recital

ASSISTED BY

MISS LOUISE MERLIN COX

Un certo non so che.....*Banck*      Chanson de Neige.....*Chaminade*  
 Leiti Signor.....*Meyerbeer*      Nymphes et Sylvains.....*Bcmberg*

MISS HENKEL

Etude de concert.....*Chaminade*

MISS COX

Er ist gekommen.....*Franz*      The Lass with the Delicate Air.....*Arne*  
 April Morn.....*Batten*      A Spring Morning.....*Wilson*

MISS HENKEL

Egeria.....*Kröger*

MISS COX

Three Chestnuts.....*Inon*      Flower Rain.....*Schneider*

MISS HENKEL

MISS ZETA COLLINS, *Accompanist*



# ORGANIZATIONS

Y.W.C.A.

STUDENT  
GOVERNMENT  
EUERPEAN  
AND  
HESPERIAN  
SOCIETIES  
ATHLETIC  
ASSOCIATION  
IVY



## Student Self-Government Association

of SALEM COLLEGE

### OFFICERS OF THE ASSOCIATION

LUCILE SPEARS, '16..... PRESIDENT  
RUBIE RAY, '16.....FIRST VICE-PRESIDENT  
LOUISE WILKINSON, '17.....SECOND VICE-PRESIDENT  
ELIZABETH BAILEY, '17.....SECRETARY  
LOIS SPOTTS, '18.....TREASURER

### STUDENT COUNCIL

#### SENIOR REPRESENTATIVES

KATHLEEN HEILIG                      HELEN SHORE

#### JUNIOR REPRESENTATIVES

ELIZABETH FELTON                      KATHRINE GRAHAM

#### SOPHOMORE REPRESENTATIVES

LUCY IRWIN                              ADA SISKE

#### FRESHMAN REPRESENTATIVES

MARION HINES                      MARGARET MAE THOMPSON



THE STUDENT COUNCIL.



## Student Self-Government Association



HE spring of 1915 marked a notable era in the history of "Salem," for then it was that we laid the foundations for Student Self-Government in our college.

The plan of adopting Self-Government was first considered by Dr. Rondthaler and the faculty; and was later discussed in a called meeting of representative students. Then followed a number of meetings in which enthusiasts and non-enthusiasts discussed the advisability and problems involved in instituting Self-Government here. Most of our questions were finally answered, however; and student committees were chosen who should investigate and suggest regulations covering the phases of student life outside the room companies. These regulations, upon acceptance by the student body, were to become rules of the Self-Government Association.

At a student meeting held April, 1915, officers of the Self-Government Association, and two representatives from each of the incoming Sophomore, Junior, and Senior classes, were chosen. Then we felt that we had only the opening of the fall term to wait for, as it was then that Self-Government would go into effect.

And now as we draw near the close of the first year of Student Government in this institution, we feel that it has been a success. The girls have entered admirably into the spirit of self-responsibility; and we feel that we owe much of the success of the 1915-16 term to the deep root the ideals of Self-Government have taken in the hearts of our students. Thus, basing our hopes on the evident improvements of this year, and believing that Self-Government is one of the best means of developing character, we feel safe in predicting that, in the future growth and development of our college, a great part will be played by the Student Self-Government Association.

L. C. S., '16.

## The Y. W. C. A. Cabinet



### OFFICERS

RUBIE RAY, PRESIDENT  
LAURA DE VANE, VICE-PRESIDENT

LUCILE SPEARS, SECRETARY  
NANNETTE RAMSEUR, TREASURER

### CHAIRMEN OF COMMITTEES

OLIVIA MILLER, MUSIC  
HELLEN SHORE, SOCIAL  
MARGARET HAGAN, SOCIAL SERVICE

MARY DENNY, ASSOCIATION NEWS  
LOIS SPOTTS, RELIGIOUS MEETINGS  
LAURA DE VANE, MEMBERSHIP



## The Y. W. C. A.



THIS, the fourth year of the Y. W. C. A. of Salem College, has been one of growth, not only in members, but for many in the Christian life. The members of the Association realize more fully that the Y. W. C. A. should be aggressive, and stand as an active force in all things that are noble and uplifting in college life. The Association has endeavored to make the religious life of vital importance, and at the same time to show that earnest, active Christian life is not incompatible with the best physical, social, and intellectual development. It has worked hand in hand with the Student Government Association, encouraged the work of the literary societies, and taken an active part in athletics. Every member of the Cabinet is a member of a basket-ball team, with one exception. Is this not developing a stronger type of Christian student at Salem?

The president and secretary of our Association attended the Blue Ridge Conference last summer. They gained much valuable instruction and inspiration from the singleness of purpose displayed by the students of our Southern colleges. This year a Blue Ridge Fund has been started, and it is hoped that this may grow and enable this Association to send a large delegation to the Conference.

All committees have done good work during the year. A great need has been met in the Academy, that of forming a Junior Y. W. C. A. These younger girls have entered into this with an earnestness of purpose and a resolve to brighten the lives of others by their work.

The earnest prayer of the officers of 1916, who have enjoyed and are grateful for this opportunity of service, is, that the ability to perceive and interpret the Kingdom of God on earth may be strengthened in every Association member, and that the Y. W. C. A. of Salem College may send forth well-rounded women—whose lives as well as their hearts will bless and praise their Alma Mater—to bless and enrich the world.

R. R., '16, *President.*



# Sights and Insights



IVY STAFF



## “The Ivy”

### STAFF

LAURA DE VANE, '16.....	EDITOR-IN-CHIEF
MARGARET HAGAN, '17.....	ASSISTANT EDITOR-IN-CHIEF
RUBIE RAY, '16.....	BUSINESS MANAGER
ADA SISKE, '18.....	ASSISTANT BUSINESS MANAGER
THEO TERRELL, '16.....	ADVERTISING EDITOR
HARRIET GLOVER, '16.....	ADVERTISING EDITOR
BERTHA COX, '16.....	EXCHANGE EDITOR
HELEN LONG, '18.....	EXCHANGE EDITOR
LESSIE LEMONS, '16.....	JOKE EDITOR
MAUD GILLMORE, '19.....	LITERARY EDITOR
LUCILE SANDIDGE, '18.....	LITERARY EDITOR
MARGARET HAGAN, '17.....	LITERARY EDITOR



HIS year has been one of signal growth for *The Ivy*. Previously this, our college magazine, has been issued quarterly by the two literary societies. Realizing the need of a magazine gotten out by the students, as a whole, a new plan was suggested by the Staff of 1914-15, and was carried into effect in the year 1915-16.

Now the staff is composed of twelve members, elected by the different classes. This assures equal representation, and also provides for the expression of student thought. *The Ivy* is being issued monthly, entirely independent of the literary societies. The exchange department is alive, and it is felt that its criticisms, suggestions, and well-organized work have done a great deal towards keeping us in close touch with the other colleges, whose student publications, always in some convenient place for reading, have done much in stimulating our own work.

The Staff of 1915-16 believes that *The Ivy* has not yet lived up to its full possibilities as an organ of student thought and expression, but looks forward to the incoming staff for the continuance of its plans during the coming year.





EUTERPEAN HALL



## Euterpean Literary Society

COLORS: Blue and White

FLOWER: Violet

MOTTO: *Ad astra per aspera*

### OFFICERS

HELLEN SHORE.....	PRESIDENT
LUCILE SPEARS.....	VICE-PRESIDENT
KATHLEEN HEILIG.....	SECRETARY
LAURA DE VANE.....	TREASURER
LOIS SPOTTS.....	CRITIC
RUBIE RAY.....	CENSOR
EUNICE FLYNT.....	REPORTER

### MEMBERS

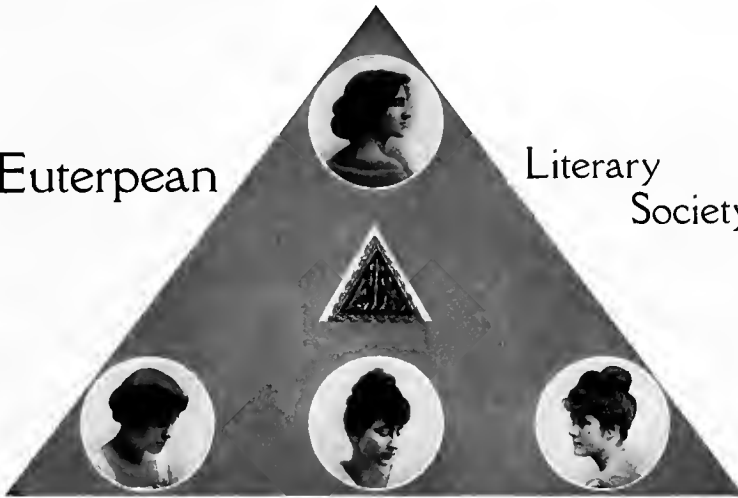
ESTHER BAIN	CHRISTINE HENKLE
ALMA BIZZELL	VERA KIRKWOOD
LILLIAN BLUE	MARY LANCASTER
LUCY BOOE	MAURINE LIGON
PAULINE COBLE	LEILA GRAHAM MARSH
BERTHA COX	MARTHA MCKELLAR
MARJORIE DAVIS	LOUISE POAG
MARY HUNTER DEANS	NANNETTE RAMSEUR
MARY DENNY	FRANCES RIDENHOUR
ELIZABETH FELTON	CAROLINE ROBINSON
MARY GREY	DOROTHY SHAFFNER
MAUD GILLMORE	ADA SISKE
MYRTLE GLENN	ALICE SIMMONS
ADELE GEIER	MILDRED STEPHENS
VERNA GRIFFIN	EUNICE THOMPSON
ROSEBUD HEARNE	MARGARET MAE THOMPSON
MARY CARROW HERRING	KATHERINE WATSON
MARION HINES	THELMA WINESKIE
	MARGUERITE WILLIAMS

### HONORARY FACULTY MEMBERS

MISS BAKER	MISS HORSFIELD
MISS BARTON	MISS HUNTLEY
MISS HAURY	MISS KASEY
	MISS KEES

Euterpean

Literary  
Society



HIS the twenty-ninth year of the Euterpean Literary Society may well be considered one of the most successful in its history.

We were late in getting our new members, but that did not prove to be the least hindrance to our success, for when the time for initiation came we found that our enrollment had been greatly increased, not only by many of the new girls, including the four class presidents, but by eight new members from the faculty.

Early in the fall we were delighted to have with us two representatives from the Cornelian and Adelpian Literary Societies of the State Normal College. Their societies are among the strongest in the State, and they brought to us many new and wonderful ideas by which we hope to improve our society. This meeting was held in the library, so that members of both societies might have the privilege of hearing the interesting things they had to tell us.

On December the thirteenth, about a month after our initiation, an elaborate banquet was given in the lunch room. This proved a great success in many ways, and seemed to renew the interest of every one.

Since Christmas our programs have varied with each meeting. Different girls have had charge of these, and at each meeting something new and original has been brought to us.

Quite an interest has been taken in basket-ball, and great enthusiasm was shown in the intersociety games, even though we were defeated.

This year has indeed meant a great deal in every way for the societies in the college, and we truly hope that the foundations laid may be the surest upon which it has ever tried to build.

Let us not forget our motto, "*Ad astra per aspera*" ("To the stars through difficulties"), but may we keep it constantly in mind, so that we can always feel safe in trying, still harder, to reach that goal for which we have so long striven.

B. M. C., '16.



HESPERIAN HALL.



# Sights and Insights

## Hesperian Literary Society

COLORS: Purple and Gold

FLOWER: Pansy

MOTTO: *Nitamus*

### OFFICERS

LESSIE HELMS LEMONS.....	PRESIDENT
BETSY BAILEY.....	VICE-PRESIDENT
IZMA JENNETTE.....	SECRETARY
EMILEE DICKEY.....	TREASURER
THEO TERRELL.....	CENSOR
MARGARET HAGAN.....	CRITIC
HARRIET GLOVER.....	REPORTER

### MEMBERS

RUBY CREDLE  
MARY ENTWISTLE  
HELEN EVERETTE  
HARRIET GLOVER  
NETTIE HARRIS  
LUCY IRWIN  
IZMA JENNETTE  
LESSIE LEMONS  
HELEN LONG  
LILLIAN STACK  
HELEN WOOD  
NANNIE JONES  
HALLIE ALLEN  
LAURA THORPE  
MARY EDWARDS  
EDITH BRYSON  
ANNIE LOU BROWER  
ANNIE FOWLE  
LILLIAN CHESSON  
SALLIE DYSON  
MARTHA McQUEEN  
OLIVIA MILLER  
SALLIE McWHORTER  
THELMA NEAL  
INA PHILLIPS

LUCILE SANDIDGE  
LOUISA SHELTON  
THEO TERRELL  
MARGARET HAGAN  
CARMEL ROTHROCK  
BETSY BAILEY  
MARGARET NEWLAND  
ANNIE BURWELL  
MABEL C. BROWN  
EMILEE DICKEY  
SARA LILY DOCKERY  
NITA HIGHSMITH  
INA MAE LEE  
MARY MOORE  
ANNIE L. MAYO  
EVELYN THOM  
GLADYS RICHARD  
MARY SUMNER  
CLARITE ELLIOT  
CAROLYN HACKNEY  
ROSELYN LUMPKIN  
MARY PHILLIPS  
MARY RAPER  
HENRIETTA WILSON  
ANNIE JOHNSTON



## Hesperian Literary Society



HE Hesperian Literary Society during the first term held a very interesting series of lectures on various practical subjects, which proved to be a great success. These lectures were given by men who were specialists in their line of work, and both the officers and the society, as a whole, feel that great benefit was derived from these addresses.

Quite a number of new members were initiated during the first term, and became at once much interested in the welfare of the society.

The work for the second term has been centered chiefly around Shakespeare. The society shows both growth and progress, as the grade of work done has been excellent, the interest on the part of the members sincere, and their cooperation perfect. The officers feel that they have every reason to be encouraged about the society, and look to the incoming officers for the continuance of its plans during the coming term.



# Sights and Insights



## Athletic Association

### MEMBERS

HARRIET GLOVER.....	PRESIDENT
MARY HUNTER DEANS.....	VICE-PRESIDENT
MARY DENNY.....	SECRETARY-TREASURER

### HEADS OF SPORTS

CAROLINE ROBINSON.....	TENNIS
CLYDE SHORE.....	BASKET-BALL





## Athletic Association



HELD in October an enthusiastic mass meeting was held in the new Trophy Room, and the Salem College Athletic Association was reorganized. Quite a large number attended, all classes being well represented. The constitution was read and adopted, then followed the election of officers. Aside from the officers there are on the executive committee a head of basket-ball and a head of tennis. The duty of the head of *each* sport is to consult with the physical director in reference to the "call outs"; and to be responsible for their teams at official "call outs."

This year there are two associations, the College Association and the Academy Association. These have worked together very successfully to promote interest in athletics in school, for more enthusiasm has been shown in both College and Academy athletics. This year for the first time the Academy basket-ball teams have contended for the Academy championship.

Previously the basket-ball season has closed with the games played at Thanksgiving, but this year the season has lasted until March, a second series of games being played since the New Year. Thus interest and enthusiasm in athletics have lasted throughout the year. At the last game of the College championship series, the Athletic Association presented the members of each team with their class numerals and basket-ball monograms.

The hope of having a Trophy Room at Salem has at last been realized. The Y. W. C. A. Cabinet very generously agreed to let us share their room. The room has been made very attractive with green burlap seats extending all around the room, and a large mission table in the center. The Championship Banners and Cups have been moved from Main Hall to the Trophy Room. The walls are covered with enlarged kodak pictures of the basket-ball games, the teams, and "snaps" from Field Day stunts. These pictures are of great value, for they tell the story of athletics at Salem for the past four or five years, and they add greatly to the appearance of the Trophy Room.

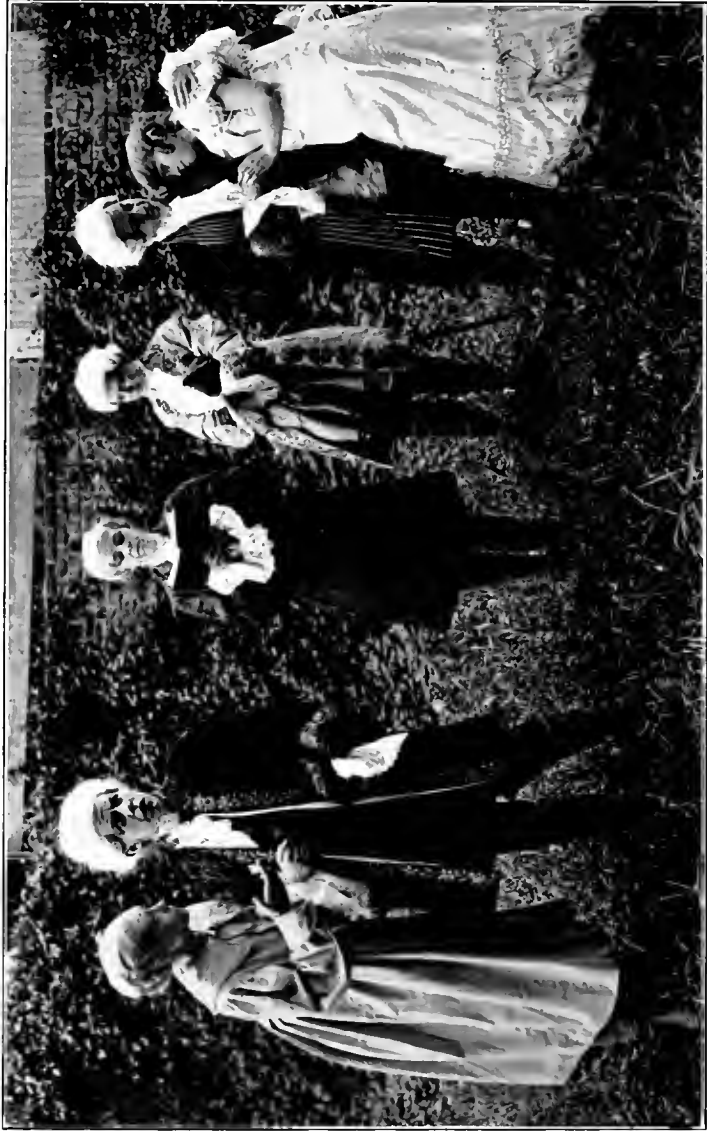
The best spirit and most enthusiastic interest in athletics has been shown this year than ever before, and we feel much of it is due to the physical director, who has shown so much interest in our athletics, and has given so freely of her time to all phases of college sports.

M. D., '17, *Secretary.*





SCENE FROM "THE ROMANCERS"



SCENE FROM "THE ROMANCERS"



### “The Romancers”

A COMEDY IN THREE ACTS BY

EDMOND ROSTAND

Produced by the English Department of Salem College  
under the direction of Mr. E. L. Starr  
May 22, 1915

#### The Cast

Percinet, a lover.....	MAUD GILLMORE
Straforel, a bravo.....	ELIZABETH FELTON
Bergamin, father of Percinet.....	BETSY BAILEY
Pasquimot, father of Sylvette.....	ELLA REA CARROLL
Blaise, a gardener.....	KATHERINE GRAHAM
Notary.....	ELIZABETH DAVIS
Sylvette, loved of Percinet.....	HARRIET GLOVER

### Concerning “The Romancers”

“The Romancers” was M. Rostand’s first work for the stage. He had already won for himself an assured position in the current literature of his country through his verse and his criticisms of literature. In “The Romancers” he presented himself, as a French critic put it, “completely where he is at his best.”

Yet if one were to protest against the fullness of this praise, and say that “The Romancers” is not what might be expected from the author of “Cyrano de Bergerac,” the objection would have to be based on the fact that “The Romancers” is a delicate satire on the entire company of romancers in general. Rostand’s great triumph was in the field of romance, yet in this play he is very frankly making fun of the identical principle which led him on to his great success in literature. It makes us feel like asking, “Can a man achieve greatness through a work in which he makes fun of what is actually very close to his heart?”

## Sights and Insights



Men do not often make light of what they consider great; but they do jest at the world's upside-down views of what they consider great. Rostand believes in romance with all his heart. Most of us do, down inside us. Who could help clapping his hands when Peter Pan asks every one believing in fairies to help Tinker-bell live again, by applauding? Nevertheless Rostand must have his laugh at those who romance too widely; and in this, again, he expresses a view which most of us hold. Moreover, he does something in addition to this.

*Percinet* and *Sylvette*, two young people who live on estates separated by a high wall, are full of longing for beauty, love, and romance. They will have nothing to do with the commonplaces of every-day life. Their fathers recognize their disposition, and, not unwilling to pose a bit themselves, they pretend to be bitter enemies. The lovers are delighted, and at once become, in their own opinion, a second Romeo and Juliet, kept apart by the feud between their families.

How can they be united? They consider many romantic and delightfully impossible plans. Then the fathers inaugurate a scheme of their own, one which will bring them together while still humoring their romantic ideas. The lovers are deceived, and they consider it charming as long as they believe it to be genuine. However, when they find they have been tricked, they are enraged. *Sylvette* refuses to be married, and *Percinet* goes forth to seek adventure in the world. But true love and true life can not end so, therefore the author devises a crisp and deliciously amusing conclusion which gives not only clear sight but contentment to them both.

The fathers, too, think that they will be satisfied with what they have not. Compared with the lovers, they are very practical and straight-along old gentlemen, yet they too long for the unpossessed. When they get it, they are bored to the point of pain. They can no longer endure each other. Youth and age may differ, may even be in conflict with each other; but both, when they substitute dreams for reality, amuse and entertain the world.

*Straforcl*, with all his bravado the most level-headed person in the play, adds the final caution that a fair amount of reservation is necessary to life, in preventing disillusionment, which is the same thing as the contempt bred by familiarity.

Such, then, is Rostand's reason for laughing at what he loves. Yet his laughter is so genial, the play of his imagination so sprightly, the satire so delicate, that we can not but join him in his laughter and his jesting.



SCENE FROM "THE ROMANCERS"



SCENE FROM "THE ROMANCERS"



SCENE FROM "THE ROMANCERS"



1915 MEMORIAL STEPS



COMMENCEMENT, MAY, 1915





(CLUBS)



## Red Ribbon Gossipers

### MEMBERS

MARJORIE DAVIS  
SOPHIE HOLLISTER  
ELLEN FARRAR  
LILLIAN BLUE  
ALICE SIMMONS  
LILLIAN STACK  
PAULINE COBLE  
MARY HUNTER DEANS  
ELEANOR GATES  
MARGUERITE WILLIAMS

ANNIE BURWELL  
KATHRINE RENALDS  
HELEN LONG  
BERTHA COX  
MARY GREY  
MARY LANCASTER  
DOROTHY FOLKS  
LELIA GRAHAM MARSH  
MARGARET ASTON  
LEORA HOOKER

INA MAE LEE



## Bandana Gang

### MEMBERS

LEONA LAMBERTSON  
MARGARET RAWLINS  
BELLE WOOTEN  
ROSEBUD HEARNE  
BETSY BAILEY  
CLARITE ELLIOTT  
HARRIET GLOVER  
MARION HINES  
DOROTHY SHAFFNER

ANNIE FOWLE  
HELEN WOOD  
GRACE MUNGER  
LESSIE LEMONS  
LUCY BOOE  
SING THORPE  
THEO TERRELL  
CAROLINE ROBINSON  
SARA LILY DOCKERY



## Eat-a-Bit-a-Pies

MOTTO: I wouldn't kiss just anybody  
Coming through the rye;  
But you bet I'd take a chance  
On the girls that Eat-a-bit-a-pie!

FAVORITE MEETING PLACE: Mary Garden Camp

FAVORITE SONG: "Coming Through the Rye"

### MEMBERS

"Mac" McCORKLE  
"PATSY" SUSONG  
"POKY" RICHARDSON  
"SNOOKUMS" COOPER  
"DOT" FOLKS  
"KACKIE" LAMBDIN  
"HAL" HALL

"KID" BOSWELL  
"BARNIE" BARNES  
"T. W." WINESKIE  
"PEGGY" WILLIAMS  
"BABY" NANCE  
"SMITTY" SMITH  
"KITTY" RENALDS



## Freshman Cooking Class

### MEMBERS

MARY RAPER  
CAROLYN HACKNEY  
LOUISE POWELL  
MARY EDWARDS  
LUCY HARDIE  
KATHERINE WATKINS

MISS NOLES

PEARLE SMITH  
MARY EDWARDS  
GLADYS RICHARD  
ROSINA VANCE  
AGNES ELLIOT  
JOYCE HENLEY

# FRATERNITY CLUB

## MEMBERS

LUCILE SPEARS, K A  
BERTHA COX, K Σ  
HELLEN SHORE, Σ Φ E  
JULIA JERMAN, Φ Δ O  
DOROTHY SHAFFNER, A T H  
SALLIE MCWHORTER, X Ψ  
MARY EDWARDS, B Θ H  
HELEN LONG, Σ X  
IDA WILKINSON, Φ Δ O  
GLADYS GEORGE, B Θ H  
MINERVA ARRINGTON, K A  
GRACE MUNGER, Σ X  
LEONA LAMBERTSON, Φ Δ O  
MARION HINES, Δ K E  
KATHRINE GRAHAM, Φ Δ O  
LOUISE POWELL, K A  
MAE COAN, H Γ Φ



## Bureau of Information

	NICKNAME	WHERE FOUND	FAVORITE OCCUPATION (?)
ESTHER BAIN	"Bain"	Advertising	Staying at school
LOUISA SHELTON	"Skinny"	Studio	Coming to chapel
KATHLEEN HEILIG	"Tig"	Latin room	Loading
BERTHA COX	"Bert"	South Hall	"Long"ing
FRANCES DOUB	"Pete"	Coming	"Bill"ing
LOLA DOUB	"Duck"	Going	Being lonesome
LUCIE SPEARS	"Cindy"	Student Gov. meeting	Gushing
THEO TERRELL	"Het"	Everywhere	"Sing"ing
LAURA DE VANE	"D. V."	Anywhere	Boning
RUBIE RAY	"Rube"	Cabinet meeting	Flirting
LESSIE LEMONS	"Jude"	Post-office	Being meek
HARRIET GLOVER	"Glover"	Faculty Flats	Putting things in order
MARY HEGE	"Heg"	Going home	Gasing
HELLEN SHORE	"Pig"	Senior Class meeting	Being frivolous
OLIVIA MILLER	"Queenie"	Practicing	Wasting time
AGNES DODSON	"Dodson"	The library	Slushing



## Cotillion Club

MISS MARGARET RAWLINS.....	E. FARRAR
MISS KATHRINE GRAHAM.....	J. JERMAN
MISS ALICE SIMMONS.....	M. ASTON
MISS MAE COAN.....	L. THORPE
MISS LUCY IRWIN.....	N. HIGSMITH
MISS ANNIE FOWLE.....	L. LAMBERSON
MISS ANNIE BURWELL.....	I. WILKINSON
MISS LUCY BOOE.....	C. ROBINSON
MISS MARION HINES.....	M. GREY
MISS SOPHIE HOLLISTER.....	L. POWELL
MISS MARGARET NEWLAND.....	L. LEMONS
MISS HELEN WOOD.....	B. WOOTTEN
MISS MARGARET THOMPSON.....	B. BAILEY
MISS DOROTHY SHAFFNER.....	E. GATES

### STAGS

D. FOLKS      H. GLOVER      T. TERRELL      G. MUNGER





COTILLION CLUB



FOUNDED 1913

**MEMBERS IN COLLEGIO**

MARGARET RAWLINS  
ELLEN FARRAR  
ANNIE FOWLE  
ANNIE BURWELL  
BELLE WOOTEN

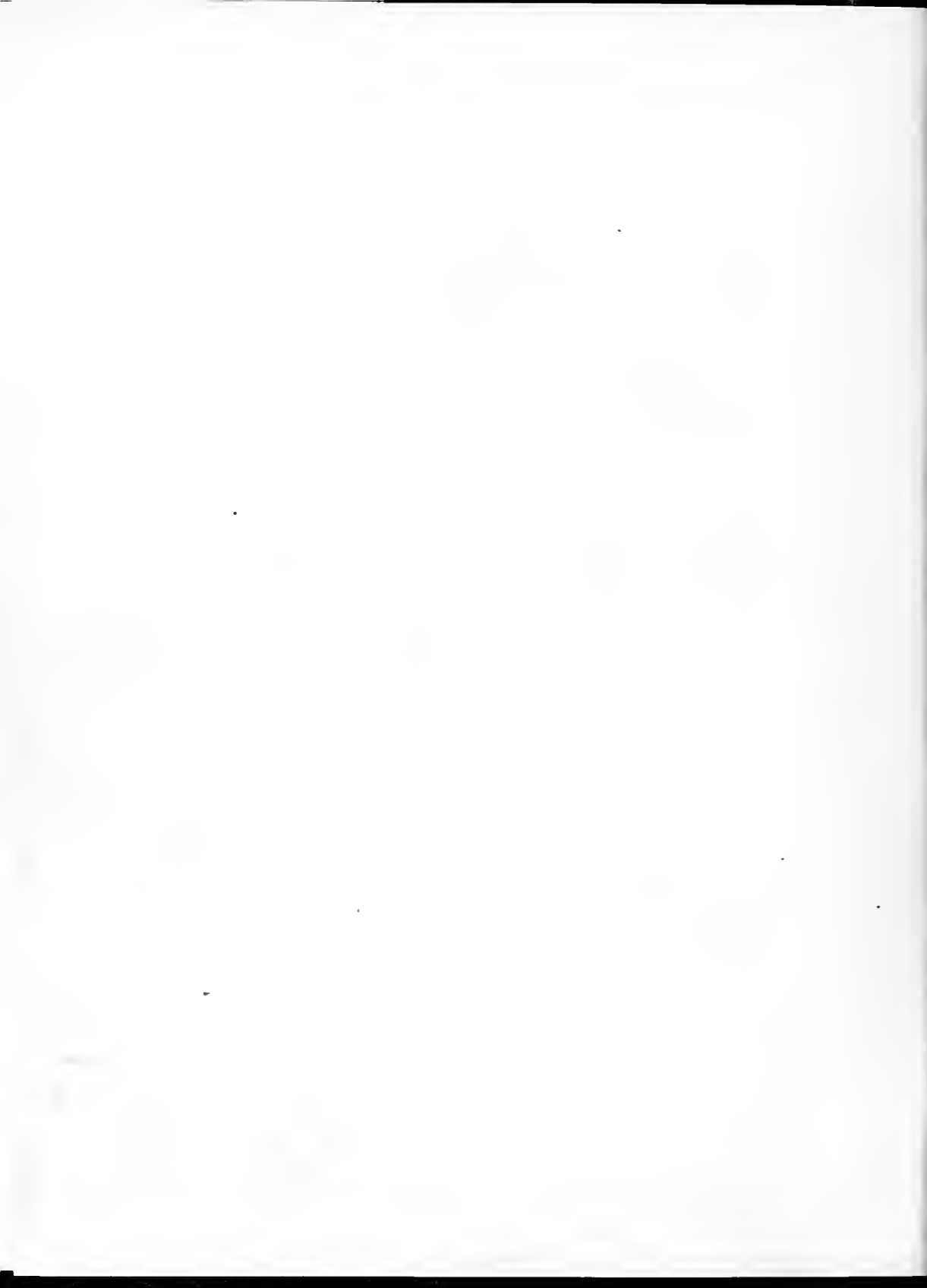
HELEN WOOD  
IDA WILKINSON  
LUCY IRWIN  
LEONA LAMBERTSON  
JULIA JERMAN

HARRIET GLOVER

**MEMBER IN FACULTATE**

ELLINOR RAMSEY







LEMONS, '16



BAILEY, '17



HALLISTER, '17



HINES, '19



THORPE, '17

# B B Φ

COAN, '17



ROBINSON, '15

MUNGER, '17



ASTON



DEANS, '19

BOOE, '17

GATES, '18

DAVIS, '19



NEWLAND, '19



THOMPSON, '19



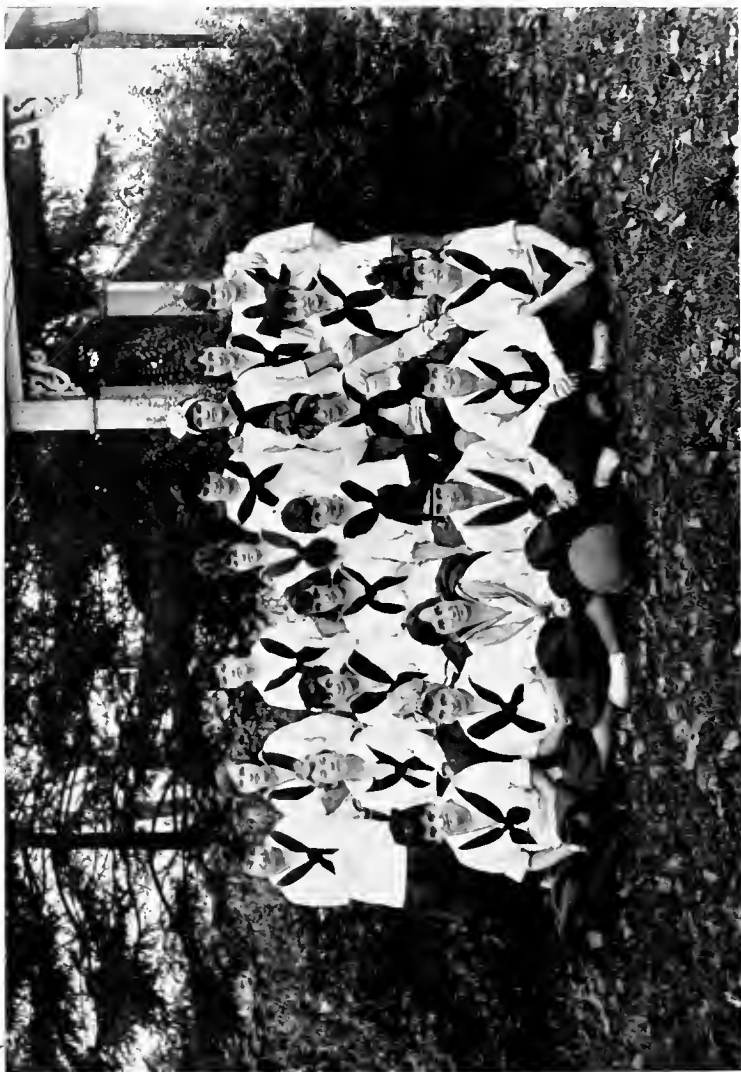
SHAFFNER, '19

GREY, '17



# ATHLETICS

The word "ATHLETICS" is rendered in a large, bold, outlined font. Each letter contains a small illustration of a person in athletic attire. The 'A' shows a person standing. The first 'H' shows a person with arms raised. The first 'L' shows a person sitting. The 'E' shows a person in a dynamic pose. The second 'L' shows a person holding a ball. The 'I' shows a person standing. The 'C' shows a person holding a ball. The 'S' shows a person in a dynamic pose.



THANKSGIVING DAY TEAMS





## Senior-Basket Ball Team

### MEMBERS

HARRIET GLOVER, *Captain*  
RUBIE RAY, *Center*  
LAURA DE VANE, *Left Forward*  
HARRIET GLOVER, *Right Forward*  
OLIVIA MILLER, *Left Guard*  
LUCILE SPEARS, *Right Guard*

### SUBSTITUTES

THEO TERRELL      KATHLEEN HEILIG      LESSIE LEMONS



## Junior Basket-Ball Team

### MEMBERS

KATHRINE GRAHAM, *Captain*  
CLYDE SHORE, *Right Forward*  
MARY GREY, *Left Forward*  
MARY DENNY, *Right Guard*  
VIRGINIA ROSS, *Left Guard*

### SUBSTITUTE

MARGARET HAGAN



## Sophomore Basket-Ball Team

### MEMBERS

MARY ENTWISTLE, *Captain*  
RUBY CREBLE, *Left Forward*  
SALLIE McWHORTER, *Right Forward*  
LOIS SPOTTS, *Left Guard*  
MARY SUMNER, *Right Guard*  
MARY ENTWISTLE, *Center*

### SUBSTITUTES

HELEN LONG      NANNETTE RAMSEUR



## Freshman Basket-Ball Team

### MEMBERS

MARY HUNTER DEANS, *Captain*  
MARJORIE DAVIS, *Right Forward*  
MARY LANCASTER, *Left Forward*

EVELYN ARMBURST, *Right Guard*  
LELIA GRAHAM MARSH, *Left Guard*  
MARY HUNTER DEANS, *Center*

### SUBSTITUTE

INA MAE LEE



The Trophy Room



## Senior Red Letter Days

- SEPT. 22 —Class 1916 in Procession.
- OCT. 9 —Caps and gowns arrive.
- OCT. 12 —Hat burning.
- OCT. 23 —Contract for SIGHTS AND INSIGHTS signed.
- OCT. 25 —Was it a "jot" or a "tittle" that "Tig" omitted in Dob's letter?
- OCT. 29 —"Uncle John"!
- NOV. 12 —Jane Kathrine's "At Home."
- NOV. 13 —Carolina-Davidson game.
- NOV. 20 —Ham feast at Annex—Miss Erwin, chaperon.
- NOV. 25 —Thanksgiving Games and Banquet.
- NOV. 26 —Trinity Glee Club. (Hits scored.)
- DEC. 10 —Carolina Glee Club. (Nothing doing.)
- DEC. 17 —Exeunt.  
(In the meantime, enter Leap Year.)
- JAN. 4 —That "gone" feeling.
- JAN. 7 —Louisa marches in Processional.
- JAN. 24-29 —Five days of question marks!
- JAN. 29 —Junior Cabaret.
- FEB. 3 —Barbara and suit-case visit "Ped" Class.
- FEB. 12 —Senior Tacky Party.
- FEB. 15 —Miss Turner gets "Lemons" when apples are gone.
- FEB. 21 —Mr. Abbe seen on Salem campus.
- FEB. 23 —Laura attends Bible lecture.
- FEB. 25 —Born—A Nation.
- MAR. 10 —Annual goes to press.  
(The staff goes to bed.)

# JOKES





## CHINESE VERSION OF A SCHOOL-TEACHER

Teachee, teachee,  
All day teachee;  
Night markee papers,  
Nervy all creejy,  
No one kissee,  
No one huggee,  
Poor old maidee,  
No one lovee!

—Copied *Edelweiss*.

BETSY B.: "I'm so sorry I didn't see Forbes Roberson when he was in town."

SING T.: "Does he go to Carolina?"

Found on lab blackboard:

$KI + S_2 \rightarrow KISS$

Proceeds more favorably in the dark, and is often accompanied by slight explosions.

"She was so fresh that full-grown blades of grass  
Turned pale with envy as she chanced to pass."

—*Freshman "Spug."*

4:44 A. M.—(A dream.)

### BREAKFAST MENU

	Grapefruit		
	Cereal with Pure Cream		
Hot Rolls	Ham	Eggs (any style)	
Tea	Coffee	Chocolate	Milk

7:45 A. M.—(Sad reality.)

	Chipped Beef		
Bread (stale)		Rolls (burnt)	
	Coffee (pale and shivering)		





## Sights and Insights

LADY (to new maid): "Bridget, did the butcher have frog legs?"

BRIDGET: "Sure Oi dunno. He had on pants."

For information on the art of poultry raising apply to C. P. Robinson, Annex. C. P. R. is an expert on this subject, having had long experience in the slums of New York City, and can answer your questions pertaining to the barnyard inhabitants.

NEW JUNIOR (poring over catalog in the registrar's office): "How is your English IV?"

MR. S— (absently): "Very well, thank you."

FOR SALE—One slightly worn toothbrush; a dainty little pair of tan walking shoes; one nice shiny throat spray; an artistic collection of photographs (masculine gender); one hot-water bottle (thrice punctured), and various other accessories. Just what you need for your boudoir. Reason for selling: dead broke. Auction at 10:30 every night until disposed of. Come early and avoid the rush.

H. E. GLOVER, Annex.

The whole civilized world will be startled soon when the beautiful lyric-ballad of Miss Theo Terrell, entitled "In the Dark on the Dormitory," shall be published. It has been dedicated to the Class of 1916.

WANTED AT ANNEX—

Something to eat.—All of us.  
To get a-Long.—B. C.  
A little more sleep.—L. De V.  
Nothing to do but "Dob."—K. H.  
A new kind of complexion cream.—H. G.  
A Freshman to walk with,  
A Freshman to talk with.—R. R.  
Some new "cuss" words.—T. T.  
Saturday to come.—H. S.  
A new lemons-queezer.—L. L.  
To keep a "secret."—E. B.  
Authority.—L. S.  
More patent medicines.—O. M.  
QUIET!—Miss Erwin

WANTED—A new joke that will stand printing.—Joke Editor.



## Official Program of Commencement

### SUNDAY, MAY TWENTY-FIRST

Morning: The Baccalaureate Sermon. Memorial Hall.

Afternoon: Vesper Services with Seniors. Memorial Hall.

### MONDAY, MAY TWENTY-SECOND

Morning: Class Reunions.

General Alumnae Association Meeting.

Afternoon: Class Day Exercises. Upper Campus.

Night: Gounod's Grand Opera in Concert Form—"Romeo and Juliet."  
Memorial Hall.

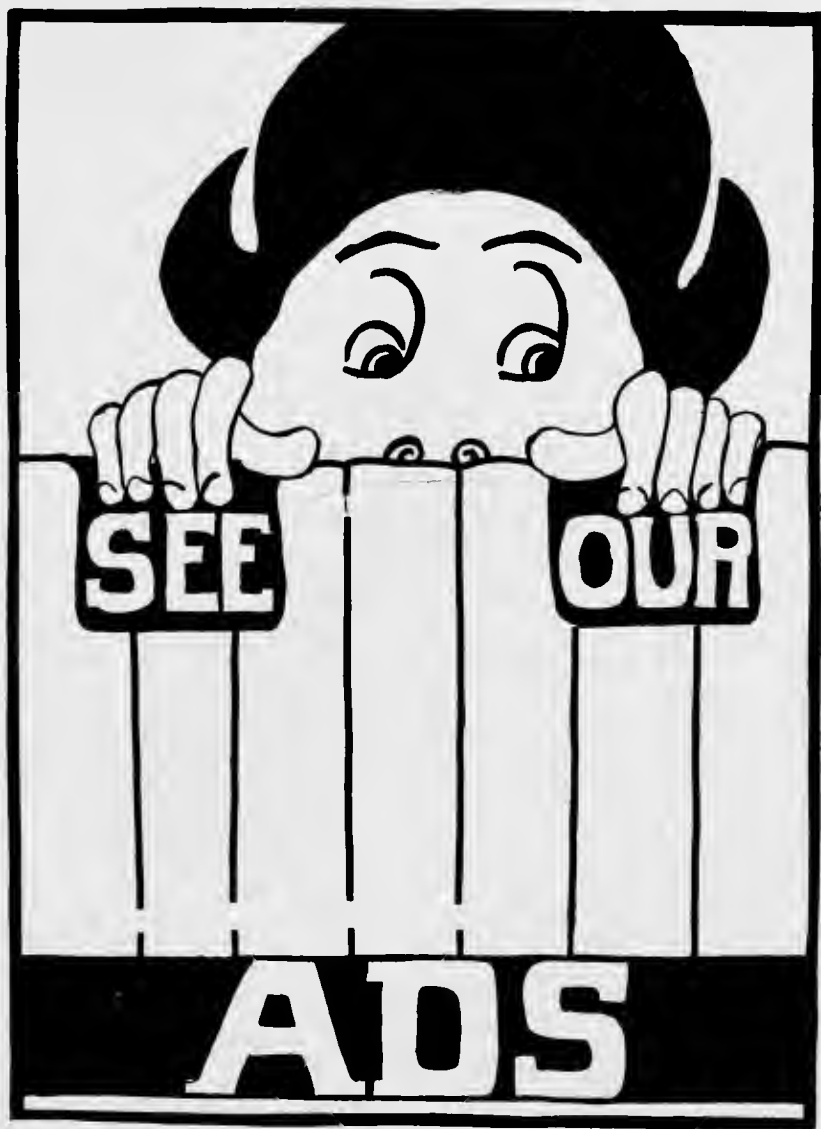
### TUESDAY, MAY TWENTY-THIRD

Morning: Graduation Exercises and Literary Address. Memorial Hall.

Afternoon: Shakespearian Pageant. Upper Campus  
Shakespearian Play: "A Winter's Tale"

Night: Shakespearian Pageant. Upper Campus.  
Shakespearian Play: "A Winter's Tale" Lower Pleasure Grounds

- Sunday, May 21 - Tuesday May 23rd.



**SEE**

**OUR**

**ADS**

# Salem Academy and College

---

---

Not bounded by the traditions of a century, but taught by  
a hundred years' experience.

*SALEM ACADEMY AND COLLEGE*

A truly democratic school whose method of life recognizes  
no distinction founded upon wealth.

*SALEM ACADEMY AND COLLEGE*

The woman useful as well as the woman accomplished.

*SALEM ACADEMY AND COLLEGE*

Twenty-four hours of teachers' care and responsibility out  
of each day.

*SALEM ACADEMY AND COLLEGE*

A gentle woman, not the hoyden imitation of a man.

*SALEM ACADEMY AND COLLEGE*

My grandmother's school, my mother's school, and the  
school for my daughter.

*SALEM ACADEMY AND COLLEGE*

A thousand feet above sea-level, near the mountains, free  
from the rigors of the North and the enervation of the  
far South.

*SALEM ACADEMY AND COLLEGE*

It means something to have educated 1,300 Southern women.

*SALEM ACADEMY AND COLLEGE*

Not to know Salem argues you a newcomer into the South.

*SALEM ACADEMY AND COLLEGE*

That our daughters may be as corner-stones hewn after  
the fashion of a palace.

*SALEM ACADEMY AND COLLEGE*

Not too old to learn, not so young as to lack experience.

*SALEM ACADEMY AND COLLEGE*

---

---

# Salem Academy and College

Salem College Girls



are WELCOME at  
**WELFARE'S**  
DRUG STORE  
ANYTIME FOR ANYTHING  
(JUST AROUND THE CORNER)



AGENTS FOR  
Whitman's and Lowney's Candies

FARRELL



Artistic Photography

Winston-Salem :: North Carolina

Opposite Zinzendorf

Phone 1016

---

---

Use ELECTRICITY

---

IT IS CLEANEST, QUICKEST, BEST

---

ARRANGE YOUR HOME SO YOU WILL  
BE RELIEVED OF TOIL BY ITS USE



Southern Public Utilities Company

**THE GIFT SHOP**  
*Lineback & Walker*  
 Jewelers & Optometrists

428 NORTH LIBERTY STREET

THE HOME OF GIFT GOODS OF QUALITY—We cordially invite you in to inspect our wares, and compare quality and prices.

THE EYES OF A COLLEGE STUDENT are more or less affected with EYE-STRAIN. A thorough examination for eyestrain awaits you, and your condition stated. Glasses fitted when indicated.

**R. N. WALKER**  
**OPTOMETRIST**  
**EYE STRAIN SPECIALIST**



Honorary Life Member of Scientific Section of  
 American Optical Association

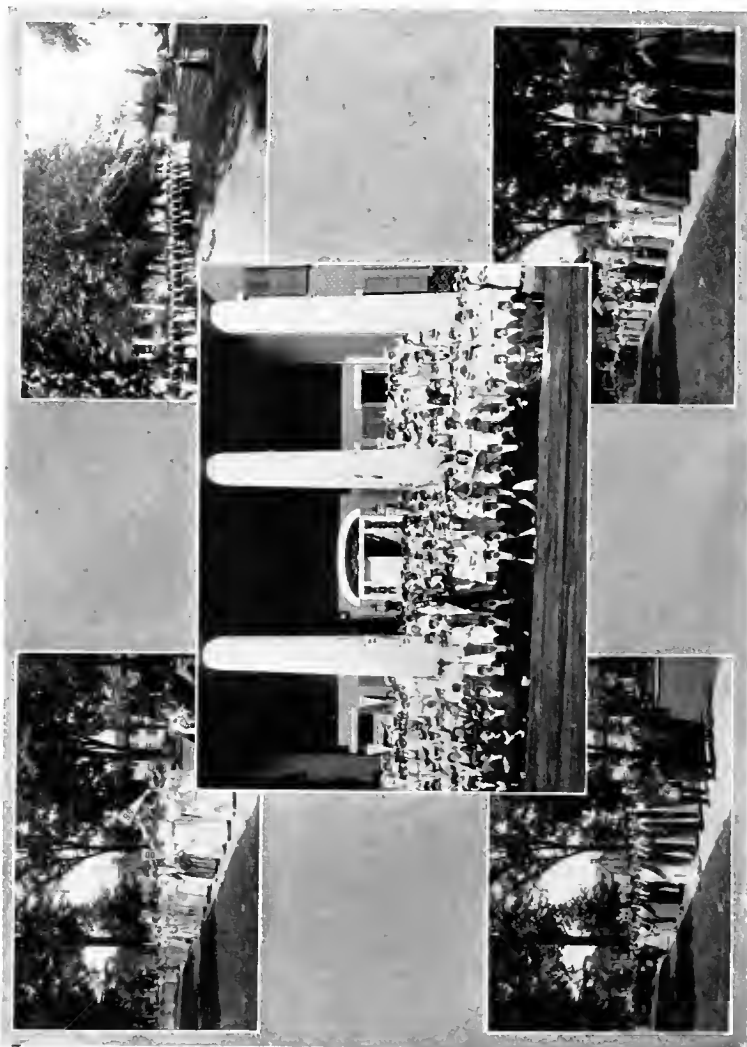
HAVE YOU TRIED



GOOD FOR  
 COLDS AND COUGHS



AIDS  
 DIGESTION





# Cut Flowers for Commencement

AND ALL OCCASIONS

Telegraph connections with a Florist in every city in the U.S.A.  
Mail orders receive our prompt attention. Visit our store and  
see the beautiful display of Cut Flowers we have to offer.



## Westbrook's

The Floral Shop

Write Us---Box 566

Phone Us---842-843

Come In to See Us  
OPPOSITE POSTOFFICE

Winston-Salem, N. C.

### L. B. Brickenstein

PLUMBER  
TINNER  
AND  
CORNICE  
WORKER



Liberty Street

Winston-Salem North Carolina

**A**MONG the few really great pianos of the world, one that stands out prominently and fearlessly before the musical public, is the VOSE. Its popularity is based on actual merit, and its position is impregnable. Over 85,000 now in use. Other pianos from \$175 up. Send for catalogue.



### R. J. Bowen & Bros.

Winston-Salem, North Carolina

ROYAL TYPEWRITERS  
DeLuxe Loose Leaf  
Y & E WOOD AND STEEL FILING SYSTEMS

**BARBER**  
PRINTING AND  
STATIONERY  
COMPANY  

---

*P R I N T E R S*

*Book Dealers and Office Outfitters*

10 AND 12 WEST THIRD STREET  
WINSTON-SALEM :: NORTH CAROLINA

**WHEN YOU  
ARE MARRIED**

You will eventually use Gas  
in your kitchen; consequently,  
why not take advantage of  
the course the college offers  
and learn how to use it now

?

*Phone 52*

**WINSTON-SALEM  
GAS COMPANY**

**WHEN** in the market for  
a high-grade Piano,  
make it a CHASE BROS. or  
a HACKNEY Piano.



SOLD BY

**J. W. MELTON**  
MUSIC HOUSE

COR. WEST FOURTH AND ELM STREETS  
WINSTON-SALEM :: NORTH CAROLINA

**O**N the broad Highway  
of Life you can ac-  
cumulate either Debts  
or Dollars. The one means  
future misery—the other  
future joy.



**WACHOVIA  
BANK AND TRUST  
COMPANY**

CAPITAL - - - \$1,250,000



¶ This book is a fair sample of our work in printing, binding and caring for the engravings. ¶ Into all of our products, whether college publications or general commercial work, we put the infinite pains necessary to insure our patrons receiving the highest quality printing.

**J. P. BELL COMPANY, INCORPORATED**

PRINTERS, DESIGNERS, ENGRAVERS  
LYNCHBURG, VIRGINIA



Popular With the College Girl for  
Over Thirty-Five Years

## ROSENBACHER AND BROTHER

Winston-Salem's Best  
Department Store

SPECIALIZES IN READY-TO-WEAR  
SUITS, WRAPS, CORSETS, LINGERIE,  
MILLINERY, FOOTWEAR, HOSIERY,  
NECKWEAR, NOVELTIES,  
GLOVES, PADS

Trade Street

Winston-Salem North Carolina

Largest and Most Complete  
SHOE STORE in  
North Carolina

## HINE'S



West Fourth Street

Winston-Salem North Carolina

## The Winston-Salem Southbound Railway

THROUGH PULLMAN CAR  
SERVICE

Between

Winston-Salem, N. C., and  
Jacksonville, Fla.

In connection with the Atlantic Coast Line  
Railroad via Florence, Charleston  
and Savannah.

CONVENIENT SCHEDULES  
FIRST-CLASS SERVICE

S. P. COLLIER, Jr., Traffic Manager  
Winston-Salem, N. C.

## J. D. MURPHY & COMPANY

DEALERS IN

### FRESH MEATS

OF ALL KINDS



Phone 101

WINSTON-SALEM  
NORTH CAROLINA



## W. T. VOGLER & SON

Jewelers  
and  
Silversmiths

We Furnish All School, Class and  
Society Pins

---

SEND US YOUR ORDER

---

Winston-Salem North Carolina

---

Phoenix Cafe On the Square

Ideal Surroundings  
Courteous and Efficient Service  
Reasonable Prices

THE SERVING OF BANQUETS IS  
OUR SPECIALTY

---

YOURS TO PLEASE

---

## Phoenix Cafe

T. E. DEMETRELIS & COMPANY  
Proprietors

OUR PRIVATE COLD STORAGE  
SYSTEM IS YOUR GUARANTEE

## Huntley-Hill- Stockton Co.

FURNITURE  
UNDERTAKERS  
AMBULANCE

Phone 144



---

PEOPLE OF SERVICE

---

## C. D. KENNY COMPANY

Teas  
Coffees  
Sugars



S. E. Corner  
Liberty and Third Streets  
WINSTON-SALEM, N. C.

## The IDEAL

Feminine Fixings  
Our Specialty

---

WHAT WE HAVE IS  
WHAT YOU WANT

---

Phone 380



Store Located Around Masonic Temple  
TRADE STREET : : FOURTH STREET

---

FOR GOOD THINGS  
TO EAT

---

Phone 98 or 99

The White Star  
Company

FANCY GROCERIES



WHERE QUALITY PREVAILS

RACY'S FAMOUS  
KNOXVILLE CREA



## Hutchin's

DRUG STORE

Phones, 141 and 668

Next to Elks' Auditorium

---

C. D. REESE CO.  
INCORPORATED

Manufacturing  
Jewelers

College, School and Class  
PINS and RINGS

Athletic Medals and Trophies

---

CUPS, SOUVENIRS FOR BANQUETS,  
SOCIETY EMBLEMS, ETC.



57 Warren Street New York



COTRELL AND  
LEONARD NEW YORK  
ALBANY



*Caps, Gowns  
and Hoods*

TO THE  
AMERICAN COLLEGES  
AND  
UNIVERSITIES  
FROM THE  
ATLANTIC  
TO THE  
PACIFIC

CLASS CONTRACTS A SPECIALTY

BROWN - ROGERS  
COMPANY

JEFFERSON STREET

SPORTING GOODS  
BASKET BALL  
AND  
TENNIS SUPPLIES

"THE VOGUE"

SUCCESSORS TO  
J. M. WOODRUFF & COMPANY

*Club Bags, Suit Cases, Steamer,  
Wardrobe and Hat Trunks*

All Sizes :: Largest Stock

OPPOSITE ZINZENDORF HOTEL

BASTIAN BROS.  
COMPANY

MANUFACTURERS  
OF

CLASS EMBLEMS, RINGS, FOBS, ATHLETIC  
MEDALS, WEDDING AND COMMENCE-  
MENT INVITATIONS AND ANNOUNCE-  
MENTS, DANCE ORDERS, PROGRAMS,  
MENUS, VISITING CARDS, ETC.

=====  
*Samples and Estimates Furnished  
Upon Request*  
=====

989 BASTIAN BUILDING

ROCHESTER

NEW YORK

GO TO  
POLITES' CANDY  
KITCHEN

FOR

"GOOD EATS"

J. W. STRICKLAND

LIVERY

*Boarding and Trade Stables*

WINSTON-SALEM NORTH CAROLINA



MRS. T. W. HANCOCK

Up-to-Date Dressmaker

CARRIES A FULL LINE OF  
DRESS GOODS, TRIMMINGS, COR-  
SETS AND MILLINERY

PIEDMONT PRODUCE  
COMPANY

J. E. BRITTON, Manager

WHOLESALE  
COMMISSION  
MERCHANTS

Early Truck a Specialty

GREENSBORO NORTH CAROLINA

COOL PRIVATE SEATS

Princess Cafe

First-Class Dining Room

"RATHSKELLER"

NEXT TO ZINZENDORF

Winston-Salem North Carolina

ELECTRIC SERVICE  
COMPANY

EVERYTHING  
ELECTRICAL

Phone 217

118 West Fourth Street

WINSTON SALEM NORTH CAROLINA

1885

1916

STEWART'S  
PRINTING HOUSE

215 West Fourth Street  
WINSTON SALEM, N. C.

OLDEST BUT MOST PROGRESSIVE

W. MORGENROTH

Corsages  
and  
Graduation Flowers  
a Specialty

118 West Fourth Street

WINSTON SALEM NORTH CAROLINA

D. G. CRAVEN CO.

17 Hours From Broadway

LADIES' AND MISSES'  
READY-TO-WEAR  
CASH STORE

Winston-Salem North Carolina

IDEAL  
PHOTO COMPANY

Winston-Salem, N. C.

WE DEVELOP AND PRINT  
YOUR SNAP SHOTS

1915-16—A year of Perfect Service to  
Salem College Girls

SEE OUR AGENT

Orinoco Supply  
Company

BUILDING  
MATERIALS  
OF ALL KINDS

*Mantels, Grates, Tiling*



Winston-Salem, North Carolina

ANYTHING  
IN WOOD



Fogle Brothers  
Company

*Phone 85*



CABINET WORK  
A SPECIALTY



In order to answer the questions which have already been asked the Annual staff about the cost of our 1916 book, and anticipating further inquiries of this nature, we publish the following exact account of our finances:

*Expenditures*

J. P. Bell Co. (publishers) . . . . .	\$1,000.00	
Farrell (photographer) . . . . .	743.09	
Stationery . . . . .	.68	
Jokes . . . . .	.10	\$1,743.87
		<hr/>

*Receipts*

Senior "write-ups" @ \$50 . . . . .	\$900.00	
Advertisements . . . . .	.48	
Senior Class Prophecy . . . . .	94.13	
Senior Class History . . . . .	81.07	
"Romancers'" pictures . . . . .	101.01	
Want ads . . . . .	567.19	\$1,743.88
		<hr/>
*Balance . . . . .		\$0.01

\*The proceeds from the Annual shall be spent in providing a linen shower for the Class Bride.

(Signed) THE ANNUAL STAFF.









SALEM ACADEMY AND COLLEGE



0 2960 0231828 9

**HECKMAN**  
BINDERY INC.



**DEC 96**

Bound - To - Please N. MANCHESTER,  
INDIANA 46962

