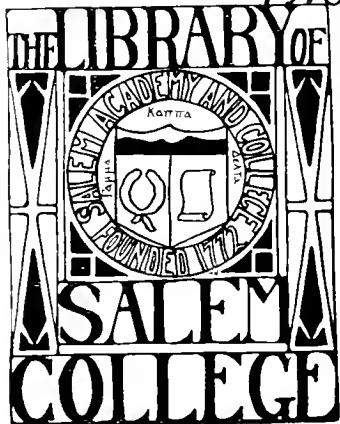




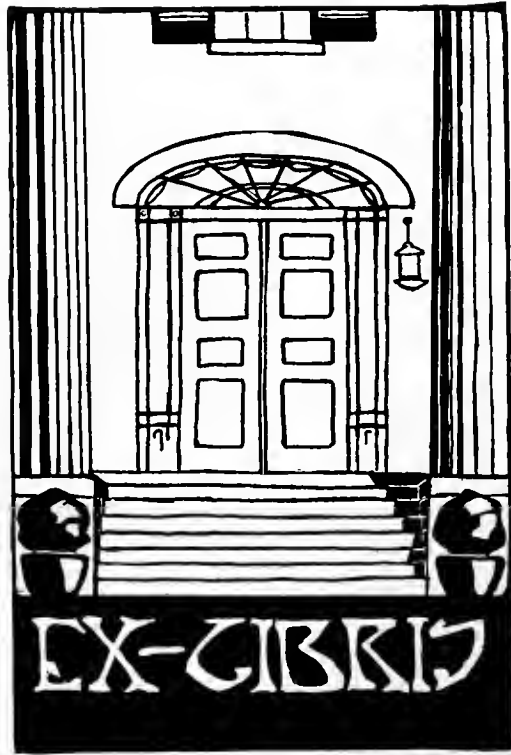
376.756  
Cl. **376.8** Bk. **Sa 32 P.**  
1918



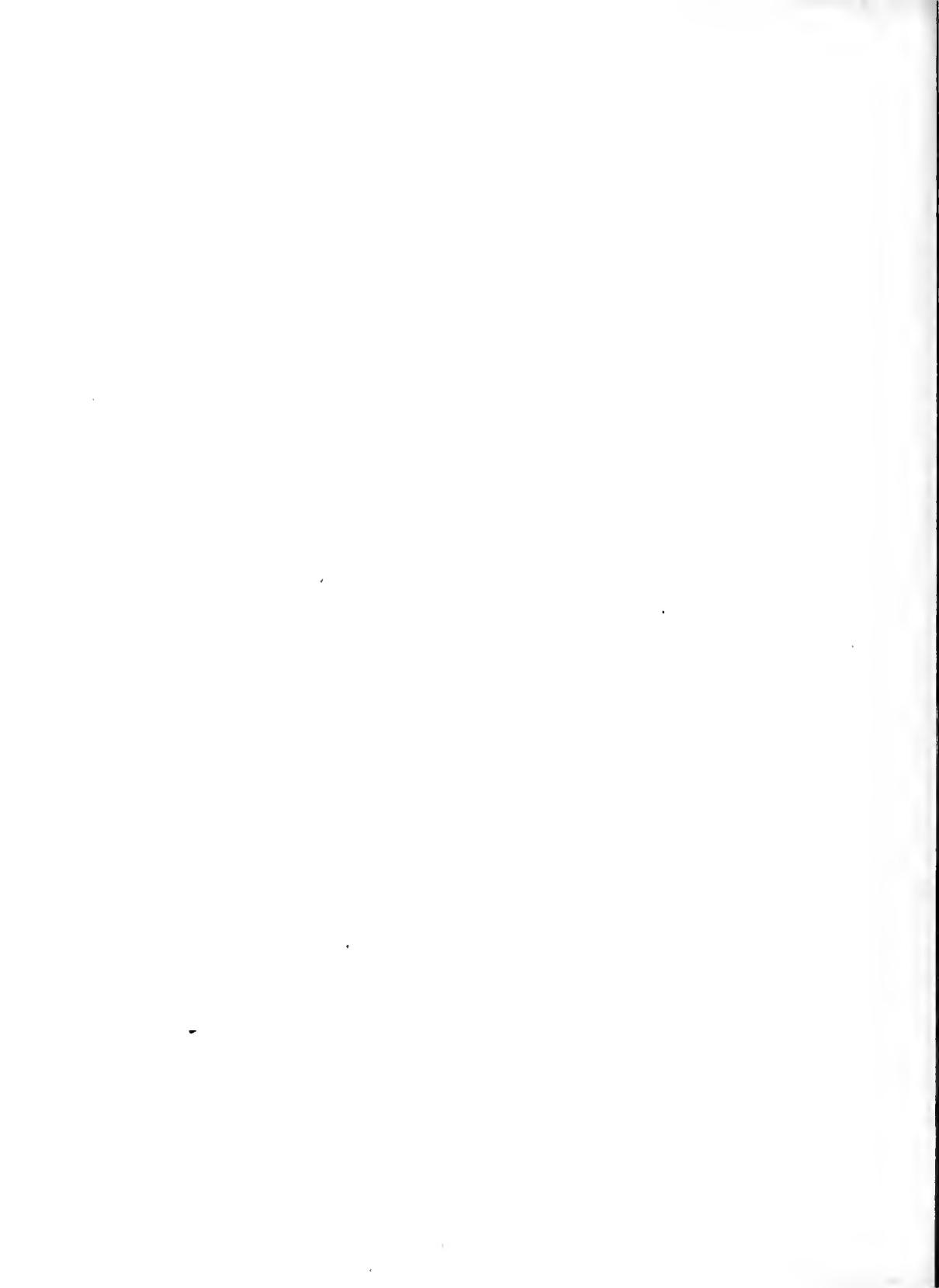
Accession No. 1710-----

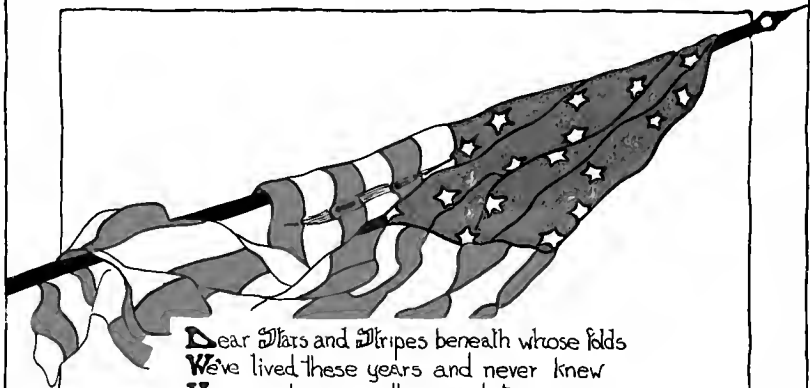






21710



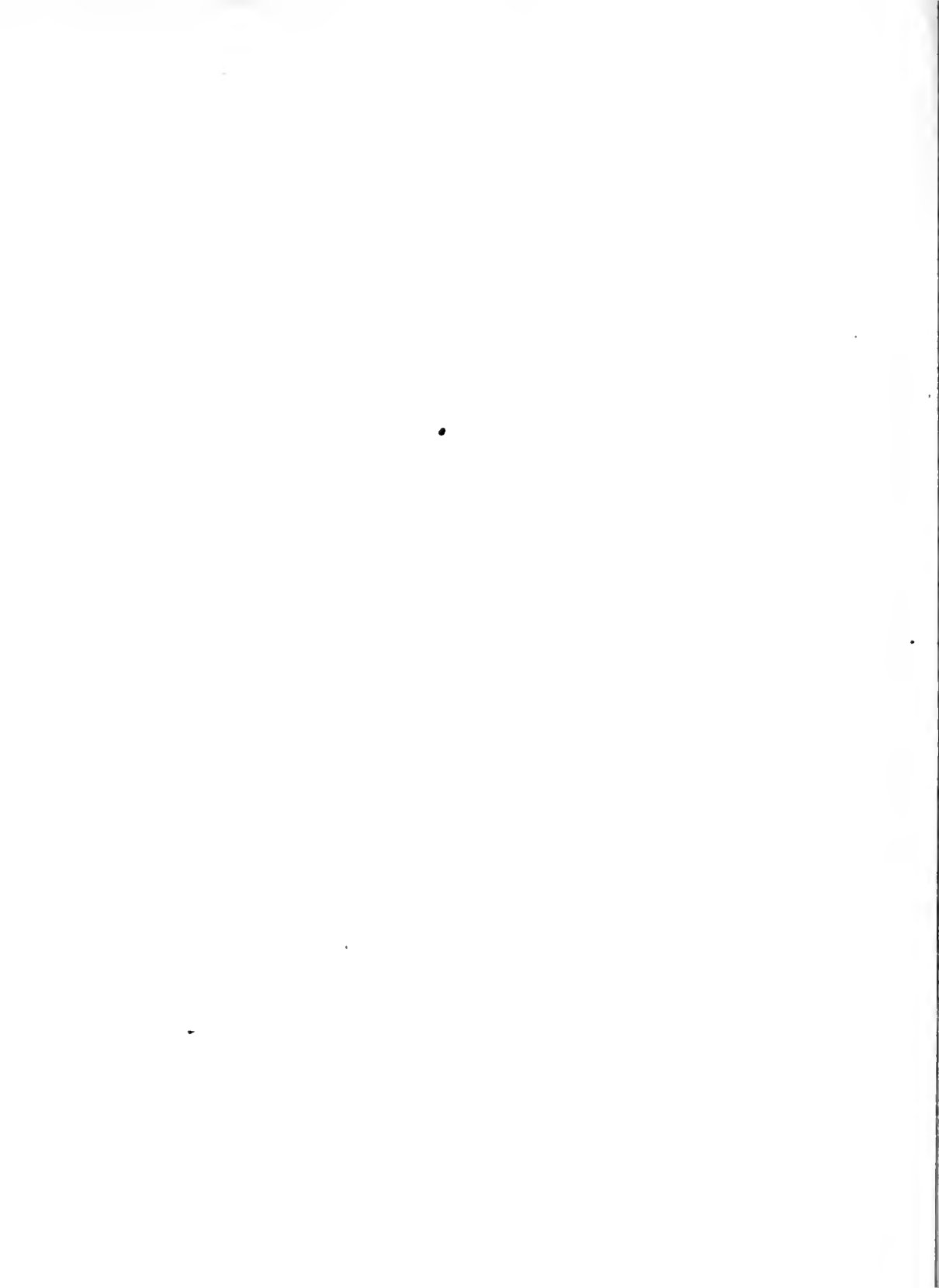


Dear Stars and Stripes beneath whose folds  
We've lived these years and never knew  
How much you really meant to us,  
We pledge allegiance to you.

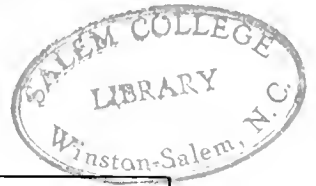
Today we love and reverence you,  
And our love has truer meanings.  
All our heart's dearest hopes and prayers  
Are woven in your colors streaming.

In your red we see the heart's blood  
The white, those white souls over there  
Fighting 'neath the blue sky of France  
Dying to make the world more fair

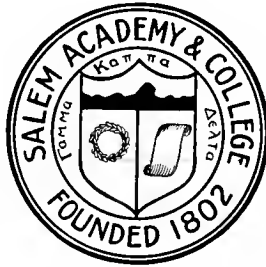
Dear classmates, these are our noble brothers  
To them shall come the palm after pain,  
Oh may we be worthy to share it  
When, victorious, they come home again







# SIGHTS AND INSIGHTS



Volume Thirteen

Published by the Class of 1918

Salem College

Winston-Salem, North Carolina



	PAGE
Dedication .....	8
The Annual Staff .....	10-11
Foreword .....	9
Glances .....	13-28
Sunset at Salem (Poem) .....	29
The Faculty .....	30-42
Senior Class .....	43
Officers .....	43
Members .....	44-70
History .....	71-73
Marshals .....	74
Poem .....	75
Prophecy .....	76-80
Former Members .....	81
Snap-Shots .....	82
Certificate Class .....	83
Junior Class .....	84
Officers and Roll .....	85-86
Snap-Shots .....	87
Sophomore Class .....	88
Officers and Roll .....	89-90
Snap-Shots .....	91
Freshman Class .....	92
Officers and Roll .....	93-94
Academy Seniors .....	95
Officers and Roll .....	96-97
Music Department .....	98

# RIGHTS AND INJUSTICE

## CONTENTS—Continued

	PAGE
Graduating Recitals	99
Miss Mary Frances Cash	100
Miss Margaret Lillian Blue	101
Glee Club	102-103
Fine Arts Department	105-106
Student Government Association	107-109
Y. W. C. A.	110-111
The Ivy	112-113
Hesperian Literary Society	114-115
Enterpean Literary Society	116
Academy Y. W. C. A.	117
Athletics	118-119
Athletic Association	120
Varsity Team	121
Senior Team	122
Junior Team	123
Sophomore Team	124
Freshman Team	125-126
Academy Athletic Association	127
Varsity Team	128
Academy Teams	129-137
Statistics	138
Clubs	139
Senior Tar Heels	140
Red Ribbon Gossipers	141
Eastern North Carolina Club	142
Western North Carolina Club	143
X. Y. Z. Club	144-145
The Ne'er-do-Well Family	146
Tormentors	147
Beta Beta Phi	148
Delta Sigma Delta	149-150
Cotillion Club	151-152
Our Red, White and Blue Days	153-154
Songs and Yells	155
Salem Stand-bys	156
Commencement Program	157-173
Ads and Jokes	174
The End	

## Dedication

---

### Mother o' Mine

"If I were hanged on the highest hill,  
Mother o' mine,

I know whose love would follow me still,  
Mother o' mine.

"If I were drowned in the deepest sea,  
Mother o' mine,

I know whose tears would come down to me,  
Mother o' mine.

"If I were damned of body and soul,  
Mother o' mine,

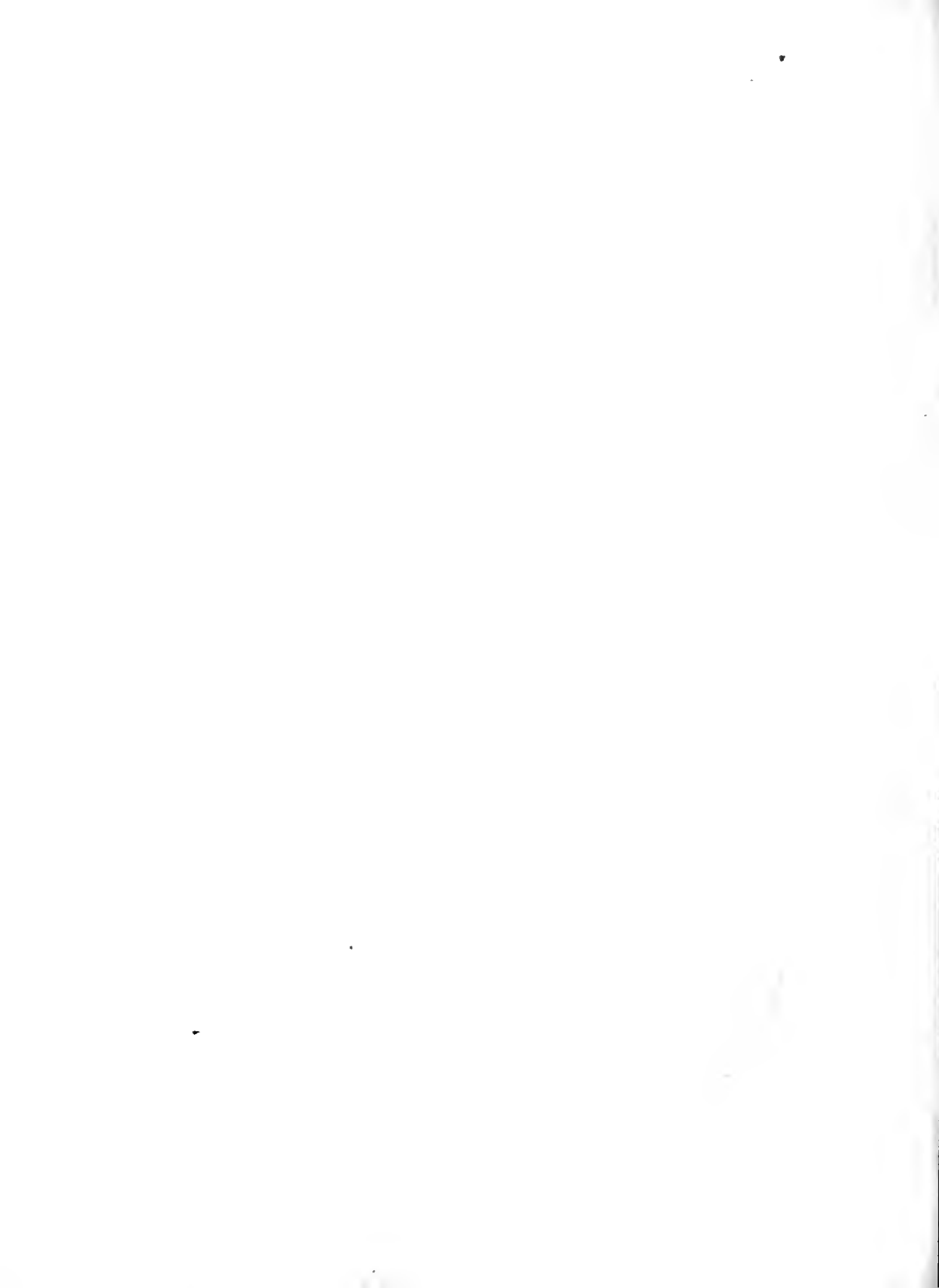
I know whose prayers would make me whole,  
Mother o' mine."

—Kipling.



MADONNA DEL GRAN DUCA

*From a Medici Print, by Permission of the Medici Society, Boston*



# foreword

"Whoever thinks a faultless annual to see,  
Thinks what ne'er was nor e'er shall be."

In the publication of this our 1918 issue, we present with mingled uneasiness and pleasure the thirteenth volume of SIGHTS AND INSIGHTS. It is hardly probable that the casual reader will understand the vastness of the undertaking it has been our delectation and duty to perform. We hope 1918 will fulfill the traditional aims. For this aim to be realized this annual must be a pleasant and lasting memento or souvenir of the year 1918 in Salem life—both to undergraduates and graduates. We have striven to make the book a faithful and impartial presentation of Salem life in all its phases and activities. Over our work we have spent many long but interesting hours, and we present you the results of our labors.

THE EDITORS.



1918

## The Annual Staff

HELEN LONG, '18..... EDITOR-IN-CHIEF  
 KATHARINE ROSS, '18..... BUSINESS MANAGER  
 DORIS COZART, '19..... ASSISTANT EDITOR

### LITERARY EDITORS

ADA SISKE

EDITH BRYSON

EULA DELL WALL

### CLUB EDITORS

MARY SUMNER

NITA HIGHSMITH

### ADVERTISING EDITORS

ELEANOR GATES

EVELYN ALLEN

MARY CASH

HELEN HUNT

### ART EDITOR

BELLE LEWTER

### JOKE EDITOR

MARY ENTWISTLE

1918



WIGHTZ AND WIGHTS

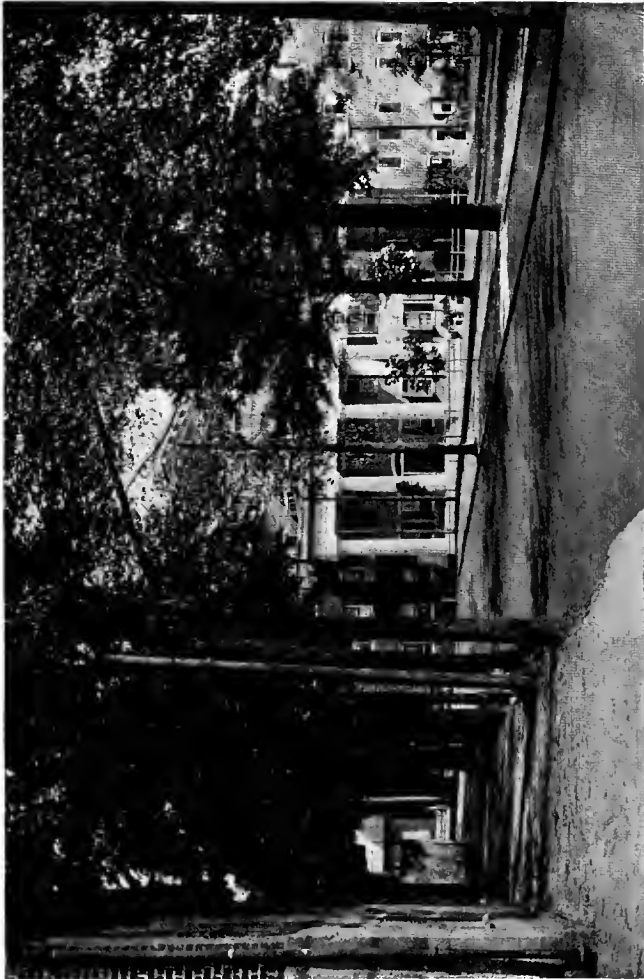




# GLANCES



DIGHTS AND TRIGHTS



MAIN HALL

1918

FIGHTS AND INSIGHTS



MAIN BUILDING

1918

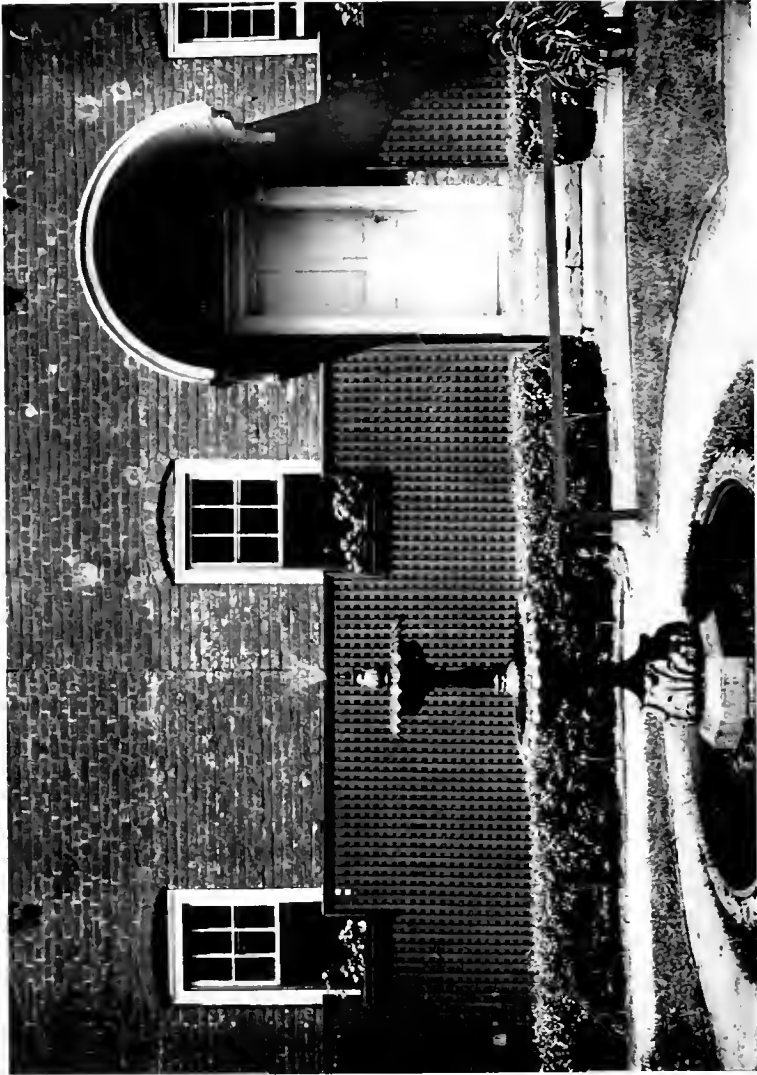


SOUTH HALL



INTERIOR OF MEMORIAL HALL

1918

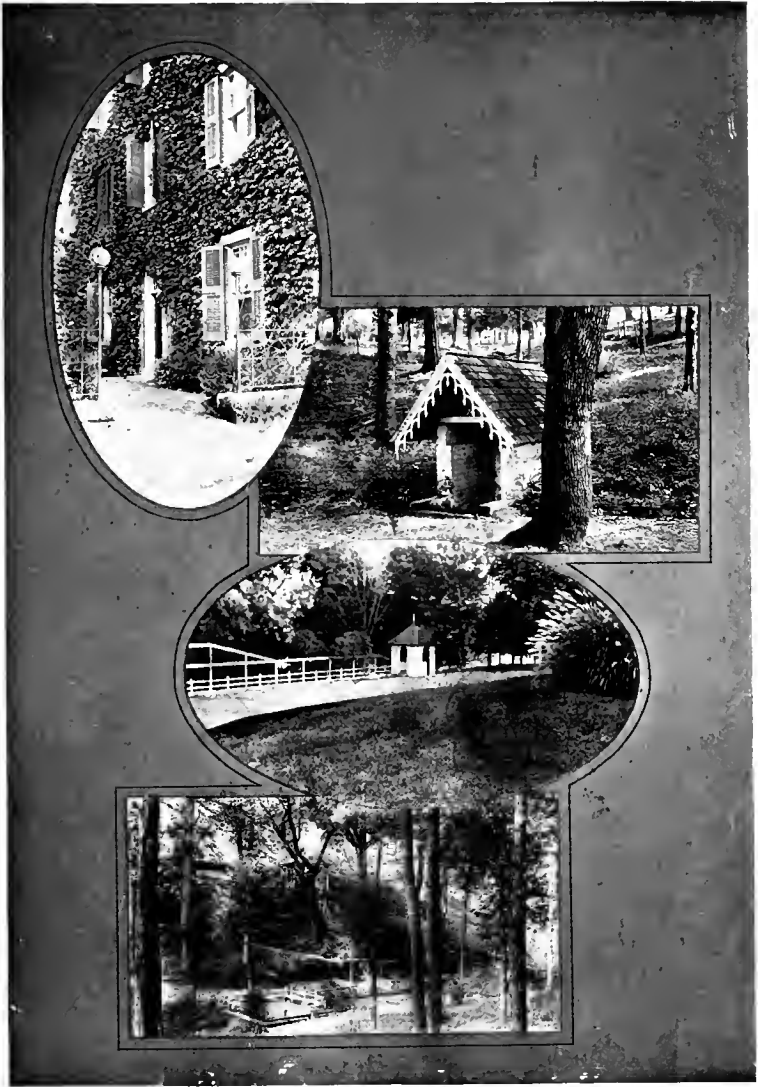


THE COURT

1913



LIBRARY OF THE UNIVERSITY OF MICHIGAN



CAMPUS SCENE

1918



FOUNTAIN AND UPPER CAMPUS



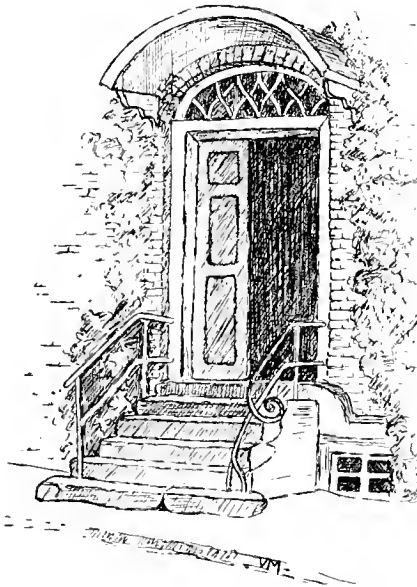
THE FOUNTAIN



UPPER CAMPUS



LOVER'S LEAP



SOUTH HALL DOOR



LOWER CAMPUS

SIGHTS AND INSIGHTS



CEDAR AVENUE



LOWER CAMPUS

1973





SENIOR ANNEX

1918

STREET AND HOUSES



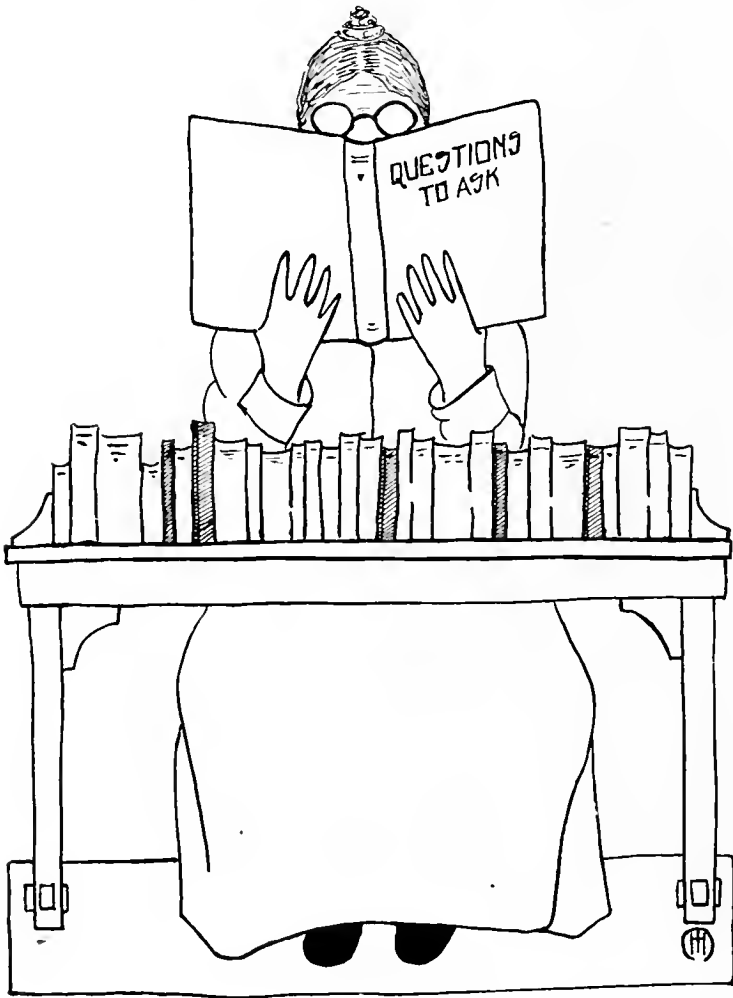
1918

## Sunset at Salem

Sunset at Salem—splendor of the west  
That hovers near with golden rays and bends  
So low, until it seemeth pleased to rest  
Upon the ivy-mantled walls, then lends  
A sweet abundance of its streaming rays  
To play upon the tiny little brook  
Whose glistening water never stays  
But ripples, ripples, over stone and crook.  
Our own life's fragrance, may it wildly go  
Till far it reach, where'er the sun may gleam,  
Inspiring many a downcast heart to glow  
With hope, courage, faith in greater things  
Of blended beauties known to us so well  
Witnessing Salem's sunset over field and dell.

SUE CAMPBELL, '18.

# FACULTY



RIGHTS AND BENEFITS



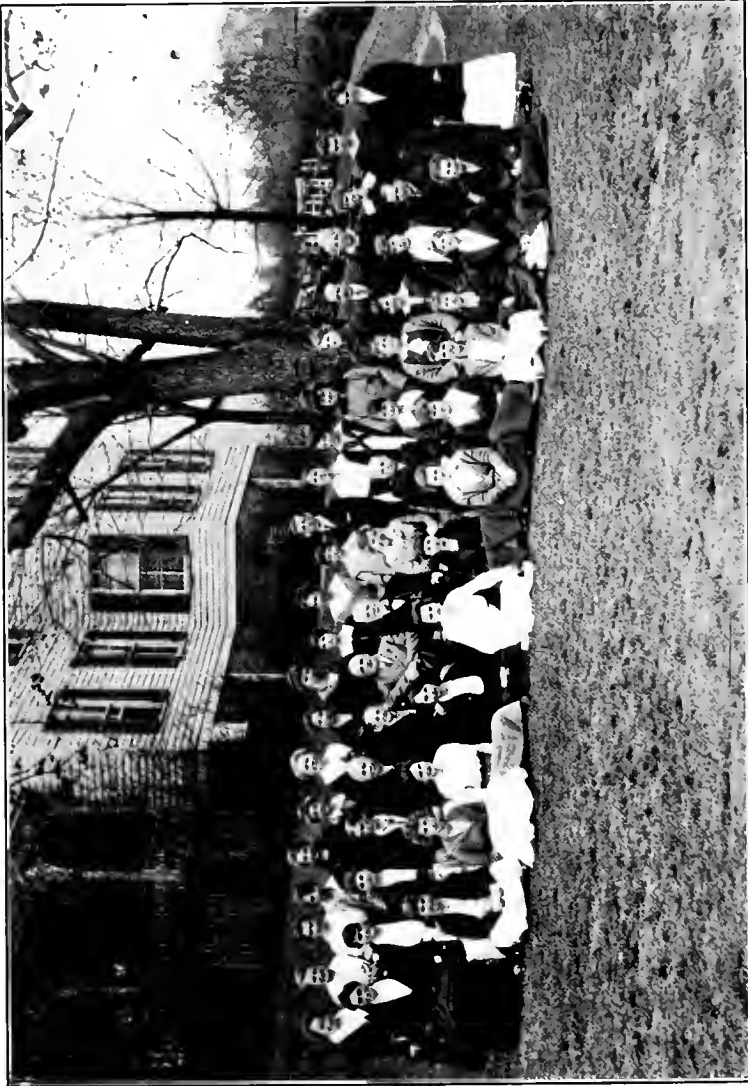
HOWARD E. RONDTHALER  
PRESIDENT

1913

FIGHT AND THOUGHT



*Edward Rondthaler.*



THE FACULTY

1918

# Salem College

## Administration

### BOARD OF TRUSTEES

RT. REV. EDWARD RONDTHALER, D. D.

PRESIDENT

REV. JAMES E. HALL  
REV. J. KENNETH PFOHL  
MR. JOHN W. FRIES  
MR. FRANK H. FRIES  
MR. W. F. SHAFFNER  
MR. FRED FOGLE

MR. CHARLES SIEWERS  
MR. H. E. FRIES  
MR. W. A. BLAIR  
and  
the president of the college  
(*ex officio*)

---

### OFFICERS OF ADMINISTRATION

HOWARD E. RONDTHALER, Ph. B., B. D., M. A., D. D.

PRESIDENT

EDWIN J. HEATH, B. A., B. D., M. A.

SECRETARY TO THE ADMINISTRATION

OTELIA BARROW

PRIVATE SECRETARY

ROSANNAH G. BLAIR, A. B.

LIBRARIAN

ANNA PERRYMAN, A. B.

ACTING TREASURER

S. T. PFOHL, M. D.

MEDICAL ADVISER

CARRIE MADDREY, A. B.

DIETITIAN

WATSON KASEY, B. A.

SECRETARY TO THE FACULTY



DIGITS AND IDENTIFIERS

ROBERT H. RICE, Ph. B.  
BUSINESS MANAGER

MARY E. MEINUNG  
LIBRARY CUSTODIAN

RUTH WELCH  
CURSAR

PEARL W. TURNER, R. N.  
NURSE

LULA M. STIPE, A. B.  
HOUSE MOTHER

**REGISTRARS**

DR. RONDHALER  
COLLEGE

OTELIA BARROW  
BUSINESS DEPARTMENT

ELMA A. HALL  
FINE ARTS

MARGARET WHITTEMORE, B. S.  
HOME ECONOMICS

HELEN M. HAINES, A. B.  
HYGIENE

H. A. SHIRLEY, DEAN  
MUSIC

CHARLTON JOHN  
LELIA GRAHAM MARSH

MARIE BRIETZ  
ESTELLA WOLFF

OFFICE ASSISTANTS

## The College Faculty 1917-18

(In order of appointment)

HOWARD E. RÖNDTHALER, Ph. B., B. D., M. A., D. D.  
SOCIOLOGY AND PSYCHOLOGY

RT. REV. EDWARD RÖNDTHALER, D. D.  
(President 1884-1888)  
BIBLICAL LITERATURE

WATSON KASEY, B. A.  
University of North Carolina: Student Summer Session  
University of Virginia  
(Appointed 1913)  
LATIN, MATHEMATICS

EDWIN J. HEATH, B. A., B. D., M. A.  
Moravian College and Seminary: Student University of Chicago  
(Appointed 1914)  
PEDAGOGY

HELEN BARTON, B. A.  
Goucher College: Student Johns Hopkins University  
(Appointed 1915)  
SCIENCE

HELEN M. HAINES, A. B.  
Wellesley College  
(Appointed 1917)  
HYGIENE

BEULAH SINGER, A. B.  
Goucher College: Johns Hopkins University Summer School  
(Appointed 1917)  
SPANISH

ETHEL MAY STALEY, A. B.  
Goucher College: Graduate Student Johns Hopkins University: Student  
in Caen, Coloados, France  
(Appointed 1917)  
FRENCH, GERMAN

HELEN SARGENT ÖRDWAY, A. B.  
Wellesley College: Student New York University and Columbia  
(Appointed 1917)  
ENGLISH

ELEANOR BLAIR, A. B.  
Wellesley College  
(Appointed 1917)  
ENGLISH

## School of Music

### PIANO

H. A. SHIRLEY, DEAN

Graduate New England Conservatory of Music; Pupil of the late  
Edward MacDowell  
(Appointed 1895)

ORGAN, HISTORY OF MUSIC, MUSICAL APPRECIATION

SARAH L. VEST

Salem Female Academy  
(Appointed 1880)

PIANO

CAROLINE E. LEINBACH

Salem Female Academy; Student New England Conservatory; Certificate  
Virgil School Piano, New York; Pupil of Wm. H.  
Sherwood and Rudolph Ganz  
(Appointed 1909)

PIANO

ZETA COLLINS

Toronto Conservatory of Music  
(Appointed 1913)

PIANO

GRACE STARBUCK, A. B.

Salem College; Student Mrs. Crosby Adams' Summer School  
(Appointed 1913)

PIANO AND ELEMENTARY THEORY

LOUISE SILER, A. B.

Salem College; Student Mrs. Crosby Adams' Summer School  
(Appointed 1914)

PIANO, HARMONY, COUNTERPOINT, AND ELEMENTARY THEORY

LAURIE JONES, A. B.

Salem College; Student Mrs. Crosby Adams' Summer School  
(Appointed 1915)

PIANO

EDITH AYLESWORTH SHAW

Graduate New England Conservatory  
(Appointed 1916)

PIANO

ELLEN YERRINGTON

Pupil of C. L. Capen, Boston; Carl Baerman, Boston; Teresa Careño,  
Berlin, Germany  
(Appointed 1916)

PIANO

MARIE BRIETZ, A. B.  
Salem College  
(Appointed 1916)  
PIANO

HARRIET GREIDER  
Graduate in Music Department, Salem College  
(Appointed 1917)  
PIANO

LOUISE MERLIN COX  
Graduate in Music Department, Salem College; Student Southern  
Conservatory of Music, Durham, N. C.  
(Appointed 1917)  
PIANO

**VIOLIN**

ROBERT L. ROY  
Diploma Royal Conservatory, Dresden, Saxony; Certificate Concert  
Meister Ludwig Gentz  
(Appointed 1907)  
VIOLIN

**VOICE**

ALLENE BAKER  
Pupil of Stella K. Haines, Giacomo University, Berlin and Dresden;  
Oscar Saenger, New York  
(Appointed 1915)  
VOICE

LOUISE WOODBURY, B. L.  
Smith College; Pupil of William L. Whitney, Boston  
(Appointed 1916)  
VOICE, SIGHT SINGING

**SECRETARIES**

CARRIE VEST  
Salem College  
(Appointed 1890)

MRS. CHARLES E. STEVENSON  
Salem Female Academy  
(Appointed 1911)

## School of Home Economics

MARGARET WHITTEMORE, B. S.  
Mt. Holyoke; Teachers' College, Columbia University  
(Appointed 1914)  
DOMESTIC SCIENCE

ELIZABETH NORWOOD MICKLE  
Salem College; Teachers' College, Columbia University  
(Appointed 1911)  
SEWING

ELIZABETH O. MEINUNG  
Salem College  
(Appointed 1915)  
SEWING, DOMESTIC SCIENCE

MARY ELIZABETH BATNER, A. B.  
Salem College; Graduate in Household Arts Department, Salem College  
(Appointed 1917)  
DOMESTIC SCIENCE

## School of Fine Arts

ELMA A. HALL  
Syracuse University; Robinson Summer School of Ceramic Art  
(Appointed 1917)  
FINE ARTS

ADA ALLEN  
Salem College; Teachers' College, Columbia University  
(Appointed 1912)  
ASSISTANT IN FINE ARTS

## Faculty of Salem Academy

LOUISE C. SHAFFNER, A. M., CAUSA HONORIS  
Salem Female Academy; Student Chautauqua, New York;  
University of Tennessee  
(Appointed 1866)

SARAH E. SHAFFNER  
Salem Female Academy; Student Chautauqua, New York;  
University of Tennessee  
(Appointed 1867)  
HISTORY

EMMA L. CHITTY

Salem Female Academy; Student University of North Carolina  
(Appointed 1870)

LATIN

CLAUDIA A. WINKLER

Salem Female Academy; Student Teachers' College, Columbia University;  
University of North Carolina  
(Appointed 1888)

LATIN

ADA ALLEN

Salem College; Teachers' College, Columbia University  
(Appointed 1912)

FINE ARTS

EDITH ELIZABETH CARROLL, A. B.

Salem College; Student University of North Carolina Summer School;  
Student Cornell University Summer School  
(Appointed 1916)

ENGLISH

MARGARET WOOD HAGAN

Salem College; Harrisonburg Normal Academy  
(Appointed 1917)

HISTORY

SARAH A. TILGHMAN, A. B.

Goucher College; Student Woods Hole, Massachusetts  
(Appointed 1917)

SCIENCE

BEULAH SINGER, A. B.

Goucher College; Johns Hopkins University Summer School  
(Appointed 1917)

FRENCH, GERMAN

ELEANOR BLAIR, A. B.

Wellesley College  
(Appointed 1917)

ENGLISH

RACHEL LUCKENBACH, A. B.

Salem College  
(Appointed 1917)

TUTOR

HARRIET S. LANE

Cambridge High School  
(Appointed 1918)

DUTY KEEPING

## Faculty of Preparatory (Grade School) Department

SARAH A. VOGLER  
Salem Female Academy  
(Appointed 1866)

ELIZABETH M. HEISLER  
Salem Female Academy  
(Appointed 1884)

PAULINE PETERSON, A. B.  
Salem College  
(Appointed 1913)

EMMA CARTER SMITH  
Salem College; University of Tennessee Summer School  
(Appointed 1903)

MINNIE MORRISON, B. S.  
Statesville College; Student University of North Carolina Summer School  
(Appointed 1914)

ELLINOR RAMSAY, A. B.  
Salem College; State Normal Summer School  
(Appointed 1915)

RUTH O. HART  
Oberlin College; Peabody College for Teachers  
(Appointed 1917)

RACHEL LUCKENBACH, A. B.  
Salem College  
(Appointed 1917)

RIGHTS AND INDIGNITY



MISS EMMA A. LEHMAN





# T A Δ

## Senior Class

MOTTO. "We aim for the noblest"

COLORS Purple and White

FLOWER Parma Violet

### OFFICERS

MARY SUMNER.....	PRESIDENT
BELLE LEWTER.....	FIRST VICE-PRESIDENT
KATHARINE ROSS.....	TREASURER
LUCILE HENNING.....	SECRETARY
EULA DELL WALL.....	POET
EDITH BRYSON.....	HISTORIAN
MARY EFIRD.....	PROPHET

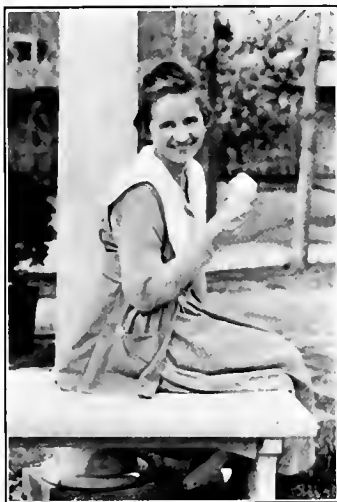
EVELYN ALLEN  
REIDSVILLE, N. C.

*"That caressing and exquisite grace—never bold,  
Ever present—which only few women possess."*

Y. W. C. A., 1914-18; H. L. S., 1914-18; President of Junior Class, 1916-17; Exchange Editor *Try*, 1917-18; Advertising Editor *SIGHTS AND INSIGHTS*, 1917-18; Y. W. C. A. Cabinet, 1917-18; Critic H. L. S., 1917-18; Cotillion Club; Red Ribbon Gossipers; Senior Tar Heel.

Evelyn has a great big heart, and she finds a place in everybody else's whom she meets. She never gets out of humor, but is always the same loving, loyal, and sympathetic classmate, and wise, too! She can quote more proverbs than Solomon ever wrote.

*"Hoodman, spare that hair."*





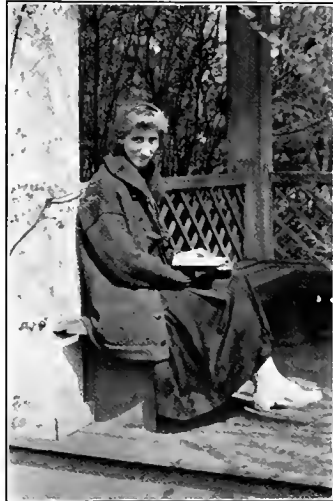
ELLA BRYANT  
WINSTON-SALEM, N. C.

*"Far may we search before we find  
A heart so gentle or so kind."*

Senior Tar Heel.

Ella is quiet and reserved, but an earnest worker. We never see her wasting time on the campus with the other ease-loving day pupils. She has gained favor with the English Department by the excellent poetry she writes and the persistence with which she defends herself in an argument.

*"Well, I didn't even know we had a class meeting."*



ALMA BRIDGERS BIZZELL

"Biz"

GOLDSBORO, N. C.

*"The spell is thine that reaches,  
And there's one rare, strange virtue in thy  
speeches  
The secret of thy mastery—they are  
short."*

Y. W. C. A., 1913-18; E. L. S., 1913-18;  
Treasurer E. L. S., 1916-17; Basket-Ball  
Team, 1913-16; Athletic Association;  
Secretary and Treasurer Athletic Association,  
1916-17; Senior Tar Heel.

"Biz" is the jolliest member of the class. She is always on the alert, hurrying about the campus at such a pace that one begins to suspect a fire in the neighboring vicinity. She has many admirable traits, but her spirit of comradeship and free-heartedness impress even the most casual observer at once. No doubt the door of success is waiting to be opened by "Biz" when she goes out into the world.

*"I'm too busy to pay heed to your foolish  
chatter."*





EDITH GRAHAM BRYSON  
"E. G. B."

BRYSON CITY, N. C.

*"And many a dart too has been sent  
From out those eyes—love's firmament."*

Y. W. C. A., 1914-18; H. L. S., 1914-18; Treasurer Junior Class, 1916-17; Secretary H. L. S., 1917-18; Representative Student Government Association, 1917-18; Literary Editor *Ivy*, 1916-17; Business Manager *Ivy*, 1917-18; Literary Editor *SIGHTS AND INSIGHTS*, 1917-18; Class Historian, 1917-18; Basket-Ball Team, 1917-18; Athletic Association; Western North Carolina Club; Senior Tar Heel.

Edith is proud of the fact that she is a "mountain lass," and well she should! For she is the unusual combination of beauty and brains. Though she enters into all college activities and pursues her studies with marvelous success, she still has time for the sterner sex, and reserves her sweetest smiles for them.

*"Gee whiz! I'm glad I'm an old mountain boomer."*



FLORENCE SUE CAMPBELL

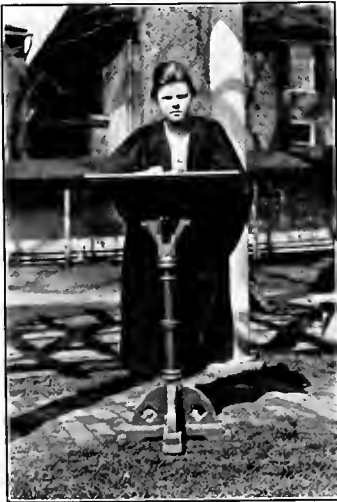
"Susan"

TAYLORSVILLE, N. C.

*"Nothing is so strong as gentleness,  
Nothing so gentle as real strength."*

Y. W. C. A., 1915-18; E. L. S., 1916-18;  
Critic E. L. S., 1916-17; Y. W. C. A.  
Cabinet, 1916-17; President Y. W. C. A.,  
1917-18; Western North Carolina Club;  
Senior Tar Heel.

Sue is a thoroughly capable and dependable girl. She is imbued with the "Salem" spirit and has plenty of class loyalty besides. Her efforts are untiring in whatever she undertakes, and good results always follow.





MARY FRANCES CASH  
"Mary Cash"  
WINSTON-SALEM, N. C.

*"As sweet and musical as was Apollo's lute."*

Vice-President Junior Class, 1916-17;  
Advertising Editor SIGHTS AND INSIGHTS,  
1917-18; N. Y. Z. Club; Senior Tar Heel.

When other people get on a tear, Mary is always as calm and serene as a cloudless sky. Perhaps she has a temper, but we haven't discovered it. While the rest of us have been laboring with the classics and sciences, Mary has mastered the art which "soothes the savage breast," and we are proud of the musician in our midst.

*"Oh, I'm just so tired!"*





# DIGHTY AND INSIGHTY

MARGARET MARIE CRIST  
WINSTON-SALEM, N. C.

*"She that was ever fair and never proud,  
Had tongue at will and yet was never  
loud."*

Secretary Freshman Class, 1914-15;  
Senior Tar Heel.

They say the Seniors can not sing, but Marie is one of us who can. Besides she has an amiable disposition, and for four years we've found in her a congenial classmate. She never quarrels, but expresses her own opinion with frankness and good judgment.

*"Well, I don't think so."*





KATHARINE DAVIS

"Kitty"

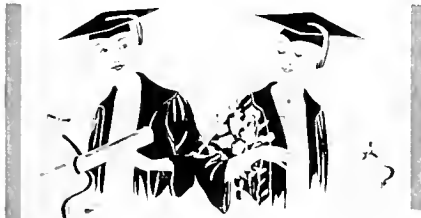
WINSTON-SALEM, N. C.

*"The surest pledge of a deathless name  
Is the silent homage of thoughts un-  
spoken."*

Vice-President Sophomore Class, 1915-16; Second Vice-President Senior Class; Senior Tar Heel.

Katharine rounding the curve from Memorial Hall with her robe dangling from the left shoulder, with stacks of music under one arm and encyclopedias under the other, is a familiar sight. Katharine has "hitched her wagon to a star," and, truly, she has broken the speed limit more times than one in her thirst for knowledge. She has always stood for the best things throughout her college years, and we predict that some day the world will make a path to her door to lay trophies at her feet.

*"Land sakes! I must catch that car."*



# DIGITS AND THOUGHTS

MARY EFIRD

"Bill"

WINSTON-SALEM, N. C.

*"Bid me discourse, I will enchant thine ear."*

Treasurer of Gymnasium Fund; Class Prophet, 1917-18; Vice-President Class of 1919, 1916-17; 1919 Basket-Ball Team, 1916-17; Dramatic Club; Vice-President N. Y. Z. Club; Senior Tar Heel.

Mary is one of our brainy girls. She is our adopted sister, having once belonged to the Class of '19, but, at the cost of ceaseless toil and midnight oil, she became one of us. At first she didn't love us much, but we at last converted her into a loyal-hearted Senior.

*"Well, look who's here!"*



# SIGHTS AND INSIGHTS



MARY COVINGTON ENTWISTLE

*"Mary Twis"—"Twistle"*

ROCKINGHAM, N. C.

*"With a smile whose divinely deep  
sweetness  
Disclosed some depth in her nature."*

Y. W. C. A., 1915-18; H. L. S., 1914-18; Basket-Ball Team, 1915-18; Captain Basket-Ball Team, 1915-16; Varsity Team, 1915-18; Secretary Sophomore Class, 1915-16; Secretary H. L. S., 1916-17; Vice-President H. L. S., 1917-18; Head of Basket-Ball, 1916-18; Editor-in-Chief *Ivy*, 1917-18; Joke Editor SIGHTS AND INSIGHTS, 1917-18; Treasurer Student Government Association, 1917-18; Athletic Association; Cotillion Club; Red Ribbon Gossip; Senior Tar Heel.

Some one of our distinguished English teachers used to tell us that the finest sort of a girl was the "all-round" girl. And that's just what Mary is. She's athletic, she's literary, and, above all, she's lovable! As classmates we unanimously vote her "thoroughbred."



MARY FEIMSTER

"Mistress Mary"

TAYLORSVILLE, N. C.

*"All my ambition is, I own,  
To profit and to please, unknown."*

Y. W. C. A., 1916-18; Enterpean Literary Society, 1916-18; Y. W. C. A. Cabinet, 1917-18; President E. L. S., 1917-18; Senior Tar Heel.

Mary passed through her college days with a smoothness and serenity that would make the Dead Sea blush for shame. She never worried about the trifles that seem to perplex her fellow-comrades, but she always seemed to gain the strategic point in due time. We usually see Mary in a white apron returning from the Domestic Science Department, rejoicing in the fact that she has added another dainty to that list of things that "he" likes. May all her hopes and aspirations have their fulfillment.

*"I hope I get that letter to-day."*





ELEANOR JOSEPHINE GATES

"Nig"—"Ellie"

TAMPA, FLA.

"Bright as the sun, her eyes that gazers strike,  
And, like the sun, they shine on all alike."

Y. W. C. A., 1916-18; E. L. S.; Senior Marshal, 1914-15; President Freshman Class, 1914-15; Second Leader Cotillion Club, 1916-17; First Leader Cotillion Club, 1917-18; Vice-President Glee Club, 1917-18; Basket-Ball Team, 1916-18; Joke Editor *Ivy*, 1917-18; Advertising Editor SIGHTS AND INSIGHTS, 1917-18; Athletic Association; Red Ribbon Gossiper; Dramatic Club; B B Φ.

Eleanor is pointed out to visitors as one of the historic features of Salem. *Veni, vidi* was her motto on entering, and, after six years' sojourn, she may truthfully say, *Veni*. Eleanor is that happy-go-lucky sort that gains an ear for her voice wherever she goes. Her hosts of admirers and followers may be numbered throughout every state in the Union. Her knack of charming audiences is marvelous, and, if she should decide to become a suffragette speaker, we predict the "Solid South" for woman's suffrage in the next election.

"I wonder where that girl o' mine can be."



RUBY LUCILE HENNING

"Ciel"

WINSTON-SALEM, N. C.

*"From her own gracious nature she bestows,  
Nor stoops to ask reward."*

Secretary Senior Class; Senior Tar Heel.

Lucile would make the winners of the laurel crowns at the Olympian foot races pant for breath. She never stops to consider the creatures around her, all her energies seem to be concentrated on making it from Senior House to English class in sixty seconds—and she does it too. Lucile left us during our Junior year, and, like the proverbial cat, she "came back." Lucile possesses many likable traits and is a girl well worth seeking out and knowing.

*"I'm afraid I will get zero for being late."*





NITA HIGHSMITH  
*"Neta"*

FAYETTEVILLE, N. C.

*"A sweet, heart-lifting cheerfulness,  
 Like springtime of the year, seemed ever  
 in her steps to wait."*

Y. W. C. A., 1914-18; H. L. S., 1914-18;  
 Treasurer Freshman Class, 1914-15; Senior  
 Marshal, 1914-15; House and Room Com-  
 mittee Y. W. C. A., 1917-18; Advertising  
 Editor *Ivy*, 1917-18; Club Editor SIGHTS  
 AND INSIGHTS, 1917-18; Basket-Ball Team,  
 1914-18; Athletic Association; Red Ribbon  
 Gossiper; Cotillion Club; Senior Tar Heel.

In her cheerful, easy-going way, Nita  
 has won more friends while in college than  
 she will ever know. Her friendliness em-  
 braces everybody, and wherever Nita goes  
 there is fun and frolic also. She possesses  
 one hobby—domestic science. She dis-  
 courses at length on the model kitchen,  
 invalid cookery, the art of conserving food,  
 and, best of all, she is able to cope with  
 such subjects. We predict that "Uncle  
 Sam" will one day claim Nita as his own.

*"I'll vow most solemnly, she's darling."*





HELEN HUNT  
GLENS FALLS, N. Y.

*"She was like  
A dream of poetry that may not be,  
Written or told—exceedingly lovely."*

Y. W. C. A., 1916-18; Y. W. C. A. Cabinet, 1916-18; First Vice-President Student Government Association, 1917-18; H. L. S., 1916-18; President H. L. S., 1917-18; Advertising Editor SIGHTS AND INSIGHTS, 1917-18; Yankee Club; Δ Σ Δ; Athletic Association; Cotillion Club; Dramatic Club.

Helen joined us in our Sophomore year, and has since been wondering how she existed before. She flits in and out among us like a lovely butterfly, and possesses many of the attributes not expected of the butterfly, for she's serious and earnest-minded of purpose. She is always eager to apply the golden rule, and always seeking for an opportunity to do good. Helen's sweetness is her distinguishing characteristic, and will always remain one of the brightest spots in our memory of her.

*"I just love the way you say that."*





ETTA BELLE LEWTER

"Belshazzar"

DURHAM, N. C.

*"Such harmony in motion, speech, and air,  
That, without fairness, she was more than  
fair."*

Y. W. C. A., 1916-18; Euterpean Literary Society, 1916-18; Reporter E. L. S., 1917-18; Art Editor *Ivy*; Art Editor SIGHTS AND INSIGHTS; First Vice-President Senior Class; Senior Tar Heel.

Belle is generally too busy to bother herself with the little things around her, unless, perchance, they awake some response in her artistic soul. When she scrutinizes you closely, involuntarily you wish that your nose was a little straighter and that mole on the left ear not so noticeable, but she is kind enough not to mention such defects. Belle brooks no opposition, has decided opinions of her own, and is always on the alert for new ideas. The Class of '18 will yet be made famous by this artist member.

*"Oh, I just love the lines of that!"*



HELEN MARSHALL LONG

"Nuncle"—"H."

ROCKINGHAM, N. C.

*"Devoted, anxious, generous, void of guile,  
And with her whole heart's welcome in  
her smile."*

Y. W. C. A., 1914-18; H. L. S., 1914-18;  
Senior Marshal, 1915-16; Exchange Editor  
*Ivy*, 1915-16; Treasurer Sophomore Class,  
1915-16; Treasurer Student Government  
Association, 1916-17; Treasurer H. L. S.,  
1916-17; Assistant Business Manager *Ivy*,  
1916-17; Basket-Ball Team, 1915-18;  
Captain Senior Basket-Ball Team, 1917-18;  
Varsity Basket-Ball Team, 1915-18; Ath-  
letic Association; Dramatic Club; Red  
Ribbon Gossiper; Cotillion Club; Senior  
Tar Heel; Editor-in-Chief SIGHTS AND  
INSIGHTS.

Helen always "comes up smiling." Sad to  
say, her merriment sometimes extends to the  
classroom, much to the discomfiture of every-  
body concerned. She has fully demonstrated  
her abilities in more ways than one. Her  
prowess in athletics would have caused  
Hercules to quake and open his eyes in  
astonishment. Helen has a way that's all her  
own and that way has gained for her a  
charmed circle of friends while in college.  
Wherever she should decide to place her talent  
we predict that success and happiness will  
follow in her wake.

*"I simply must go to Main Hall."*





KATHARINE ELIZABETH ROSS  
"K."

BETHLEHEM, PA.

*"She loves, but knows not whom she loves."*

H. L. S., 1917-18; Y. W. C. A.; Treasurer of Class, 1917-18; Basket-Ball Team, 1917-18; Representative on Student Council, 1917-18; Business Manager SIGHTS AND INSIGHTS.

Our Pennsylvania girl is verily a "Yankee of the deepest dye," although she proclaims her extreme fondness for Dixie—both the land and the song—with great zest, and has privately whispered her regrets about leaving the "land of cotton" so many times that we have concluded she would be content to settle down with us permanently. A curious, likable mixture of temper, seriousness, and mirth is "K.," and she has been called a coquette in the dim and distant past.

*"Shall it be a Buick or an Oldsmobile to-night?"*



CARMEL ELIZABETH ROTHROCK

"Mule"

ELLER, N. C.

*"Happy am I, from care I'm free,  
Why aren't they all contented like me?"*

H. L. S., 1914-18; Advertising Editor  
*Egy.*, 1917-18; Athletic Association; Y. W.  
C. A.; Western North Carolina Club;  
Senior Tar Heel.

"Mule" is by far our most optimistic member, and is a sure cure for the blues. Whenever and wherever you chance to meet her, there's a smile and a joke all ready for you. Every Saturday she boards the southbound and wends her way toward Eller and the old farm, returning at twelve o'clock Monday night with a host of adventures to bestow upon our eager ears.

*"Oh, come on, kid!"*





ADA BLENDON SISKE

"Blen"—"Nuncle"

TROY, N. C.

*"Her voice sounds like a prophet's."*

President Sophomore Class, 1915-16; Representative on Student Council, 1915-16; Assistant Business Manager *Ivy*, 1915-16; Vice-President E. L. S., 1915-17; Assistant Editor *Ivy*, 1916-17; Literary Editor SIGHTS AND INSIGHTS, 1917-18; President Student Government Association, 1917-18; Euterpean Literary Society, 1914-18; Y. W. C. A.; Athletic Association; Senior Tar Heel; Senior Basket-Ball Team; Dramatic Club.

Between the ardent labors of holding the reins of Student Government Association, playing the "vic," conjuring up witticisms, and sitting on Annex steps, "Blen" can hardly be called a lady of leisure this year. But our fair Trojan was ever noted for her working capacity, her unusual intellect, and, incidentally, her love of fun; besides, she holds the reputation of being "a good old sport." These combined qualities have endeared her to us all, and her true worth is appreciated by every one.

*"Council meeting at five o'clock, and by the livin's you'd better be there too."*



LOIS AUGUSTA SPOTTS  
"Spotts"  
DUBLIN, VA.

*"Her words are trusty heralds of her mind."*

Y. W. C. A., 1914-18; Y. W. C. A. Cabinet, 1915-16; Secretary Y. W. C. A., 1916-17; Treasurer Student Government Association, 1915-16; Representative on Student Council, 1916-17; Critic E. L. S., 1914-15; Reporter E. L. S., 1915-16; E. L. S., 1914-16; Basket-Ball Team, 1914-17; Captain Basket-Ball Team, 1916-17; Athletic Association; Cotillion Club; Assistant Exchange Editor *Joy*, 1916-17.

After being with us for three years "Spotts" nearly decided to desert entirely the fourth, but on second thought came "dashing in" after Christmas, attacked an inconceivable amount of work with a vim, and conquered it to such an extent that she stands well in her class. Her chief characteristics are her loquaciousness and her tender feeling for "Aggie."

*"That's simply atrocious! I'm so infuriated."*



# SIGHTS AND INSIGHTS



MARY CATHARINE SUMNER

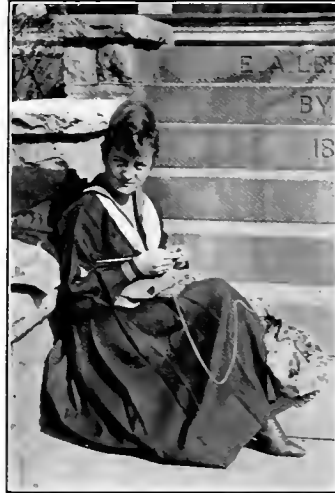
"Mary C."

ASHEVILLE, N. C.

*"She that was ever fair and never proud,  
Had tongue at will, but yet was never  
loud."*

H. L. S., 1914-18; Y. W. C. A.; House and Room Committee Y. W. C. A., 1917-18; Senior Marshal, 1916-17; Basket-Ball Team, 1915-18; President of Senior Class; Athletic Association; Club Editor SIGHTS AND INSIGHTS; Cotillion Club; Senior Tar Heel.

'18's opinion of Mary is shown by the fact that we made her president of our class in Senior year. Possessed with a bright mind, a winsomeness which appeals to all those who come in contact with her, and a peculiar knack of making friends with every one, she is apt to "get along" anywhere and everywhere. Her wonderful powers of guarding have classed her among the "famous five" who have made us champions in basket-ball for three successive years, and her cool-headedness has done much toward winning the victories.





# DIGITS AND INDIGITS

OLIVE MARGARET THOMAS

"Oiz"

WINSTON-SALEM, N. C.

*"She moves a goddess,  
And she looks a queen."*

Secretary of Class, 1916-17; H. L. S., 1915-18; Y. W. C. A.; Athletic Association; Western North Carolina Club; Glee Club; Red Ribbon Gossiper; Senior Tar Heel.

Olive possesses the harmonious combination of good looks and common sense, which is rather infrequent. While hers is an extremely modest nature we appreciate the fact that "To know her is to love her." Astronomy attracts Olive in a peculiar way, and her especial pet is the "Dog Star."

*"Did I get a letter?"*



# SIGHTS AND INSIGHTS



EULA DELL WALL

*"Eula Dell*

WINSTON-SALEM, N. C.

*"One who, to all the heights of learning  
bred,  
Read books and men and practiced what  
she read."*

Vice-President of Class, 1914-15; Day Pupil Representative on Student Council, 1917-18; Literary Editor SIGHTS AND INSIGHTS, 1917-18; Class Poet, 1917-18; Senior Tar Heel.

For four years we have known and esteemed Eula Dell as one of our brightest and most willing day pupils. Always ready for anything which will promote the interests of her class, she has never failed us. While Rousseau interests her immensely in his "back-to-nature" theory, Latin is her hobby and her heart is given over to Ovid.

*"I translated it this way: 'Her marvel-  
ously beautiful "palla" enhanced her loveli-  
ness.'"*



1918

HENRIETTA WILSON

"Hen"

RURAL HALL, N. C.

*"Music—her soft, persuasive voice applied."*

H. L. S., 1915-18; Advertising Editor  
*Try*, 1917-18; Cheer Leader of Class, 1917-  
18; Athletic Association; Western North  
Carolina Club; Senior Tar Heel; Y. W.  
C. A.

"Just Hen" is the term which best characterizes her, as she chances to be one of these people who is always the same; not a monotonous or tiresome "same," but a quiet, dignified, attractive girl. She divides her time equally between Salem and Rural Hall, and a frequent sight is "Hen" and her suit-case on the way home or "out in town." She was once heard to say, "I always did adore Biblical names, and Abraham is so appealing."

*"Oh, if I could just see somebody."*





SENIOR CLASS

## History of 1918

AS TOLD BY "AUNT ROXIE"



YES'M, dis heah Salem sho' am a purty place! Hev yo' bin all over de pleasure groun's, down dere on de back campus, an' seed dem big trees a-standin' up so tall an' straight, an' de little squirrels jes' a-trippin' aroun', an' de flowers an' fountains an' all? Hit sho' am powerful beautiful!

An' a heap o' young ladies done come heah to school, an' done finished an' gone away agin. Yes'm, a heap sight; an' dey wuz all fine an' clever, too, an' dese what's heah now am' jes' as gran'.

But, missis, hev yo' ever hearn tell ob dem dat called dereselves "de Class o' 1918"? Yaas, ma'am, dey wuz a great class. I done watched 'em from de time dey come heah to de time dey lef—from de day way back yonder in 1914 to dey graduatin' day in 1918. Dem wuz good ole days. Did yo' say, missis, yo'd like fer me to tell yo' 'bout 'em? I 'clare, I most forgot, but I 'lows I kin remember some o' dere doin's. Jes' set down, ma'am.

Well, missis, yo' know I gits a 'mense inount o' satisfaction a-stayin' heah, an' de day in de fall what dey calls de "openin' day" am one o' de bes' I has in de whole year. When dis heah 1918 done come in, I wuz jes' down-right sorry fer 'em. Dey seemed jes' as sad an' lonesome, an' dey acted as if dey didn't know fer sho' where to turn de nex' minute—dey wuz jes' plain green. But, man! I seed dey wuzn't gwine to stay dat way long, an' dey never! Dey jes' begins to sorter organize dey forces an' ter take a-holt o' things. An' purty soon folks 'gin to say, "Dat Freshman Class"—dat wuz what dey called 'em—"dat Freshman Class is a-comin' to de front." Dey wuz put inter Miss Sallie Shaffner's Room Company, in what dey called East Room, an' dere dey stayed actin' as nice an' ladylike as dey orter. 'Twuz den dat folks 'gin to call 'em "1918."

Well, dey'd done hearn tell from de res' all 'bout de big basket-ball games what's played on Thanksgiving Day, an' how everybody jes' looks fer hit, an' de whole thing is all 'citement a-plannin' on who's goin' to win de big honor o' gittin' dat silver cup an' er bein' champions. When de day done come roun' dey's all ready fer hit, wid dere big purple an' white pennants—dem wuz dere class colors—an' dere basket-ball team. Dem Sophomores

done beat 'em, but dey jes' sot dere heads an' say, "Shucks! We'll whoop 'em nex' year," an' went on. All dis heah fust year dey wuz gittin' stronger an' stronger an' a-studyin' mo' an' mo', an' when de time come fer 'em to go home de others say, "Dat 1918 is a purty peart class."

Den de nex' fall dey all comes back agin, an' dey tells me how dey jes' couldn't stay way, an' how dey sho' is glad to git back, an' dat dey's gwine ter do big things dis year. An' dey did!! Dey seem to be powerful happy 'bout some kind o' somethin' what dey calls "Student Government," but I ain't never foun' out fer sho' what dat wuz. Anyway dey wuz mighty proud. Den dey wuz glad 'cause dey wuz in South Hall with dat sweet Miss Stipe, an' dey used to tell me 'bout dere good times an' how happy dey wuz. All dis heah time dey wuz practicin' fer de big basket-ball game agin. Dey ain't said nuttin' to anybody, but dey's sho' dey got a good team. Thanksgivin' Day gits nigher an' nigher an' folks 'gin to whisper 'mong demselves, "Dem Sophomores got a classy team, wonder who's goin' ter win?" An', ma'am, who do yo' reckon did git dat cup? Why, dat 1918, o' course, an' dey earned hit, too, man! Dey wuz so proud, dey wuz jes' in dere seventh heaven. Dey used to talk 'bout hit to me. Dis heah year jes' went off elegant fer 'em. Hain't yo' gittin' tired, ma'am? No? Well, den, I'll discontinue.

Soon in de month o' September dey come back fer dey Junior year. Dey's done got to thinkin' dey wuz purty fur along den, an', to tell de truth, dey wuz. Everything went smooth fer 'em, an', ma'am, dat 1918 done 'stinguished dereselves agin by a-winnin' dat championship in basket-ball dis time! Dem what seed de game says hit wuz purty playin' sho'. Dey wuz doin' demselves proud, 'cause dis wuz de second time dey done grab dat cup, an' dat's out o' de ordinary.

Den dey 'gin to fool roun' an' projeck aroun' 'bout dat thing what dey calls de Junior-Senior banquet, an' dey plans an' plans. So way long attar Christmas dey decides to hev hit in April. Dey goes erhead an' sends dey invites to de Faculty an' de Seniors fer to make ready fer a big time. An' dey has everything—de music an' de decorations, an' all—like dis heah Japanese, an' folks tells 'em hit were mighty fine.

De nex' thing dey do is at de Commencement time, an' den dey gits dem Senior caps an' gowns an' dey puts 'em on an' walks aroun' wid dere heads in de air, 'cause dey sho'-nuff Seniors now.

An' den hit wuz dere big year, an' dey comes back a-lookin' mighty serious, fer dey knows dey time's 'bout ended. Dey seems de mos' excited dat fust time when dey marches inter chapel in de Senior processional, an' 'bout livin' at Senior Annex. Den dey own caps an' gowns come an' dey has dere "Hat Burnin'," an' dey sings an' burns dey ole straw hats an' puts

on dere Seniors caps fer good. De class dey's done elected Mary Summer fer dey president, an' she sho' do officiate well. Well, ma'am, all dis time hit's a-gittin' nigher an' nigher to Thanksgivin' an' dat basket-ball bizness agin, an' dey sho' is some surmisin' 'bout who's a-goin' to git de championship. Dey wonders an' wonders. Some say de Seniors is a-goin' to win, but dey already had hit twice before. Some say dat de Juniors is a-goin' to have hit, but dey jes' don' know. Well, dis heah 1918 jes' went on in an' surprises every one by a-winnin' agin. Yes, ma'am, fer de third time, an' dat's de fust time any one class has ever had it three years on de straight.

'Long in February Dr. and Mrs. Rondthaler sends dem invites to a "Progressive Party," an' dey waits fer de day wid great longin'. Well, finally de time comes an' dey goes. When hit's all over an' dey comes back an' folks asks dem, "Did yo' hab a good time?" dey answers, "Jes' de' bes' we ever had."

Dey haïn't never been able to decide which time dey enjoyed de mos'—at de party or at de lovely picnic what Dr. and Mrs. Rondthaler give 'em later. Dey jes' don' know, hit wuz all so gran'.

When dem Juniors entertains 'em dey's jes' excited to death. Dey gits dere invites to a "camouflage reception," an' dey wonders an' wonders. Den dey decides fer to be "camouflages" dereselves. So dey makes 'em paper dresses, all frilly an' purty an' every color of de rainbow, pink an' green an' blue an' red an' yaller, an' dey sho' do surprise every one. De Juniors does dereselves proud an' has de whole reception jes' marvelous. De music hit's made by sailors an' de Red Cross nurses serves, an' dat gym sho' do look like a dream. But de crownin' glory wuz when dey presented de Seniors wid a sho'-nuff Liberty Bond. Dem Seniors—well, dey jes' never can 'spress how dey feels 'bout hit, but dey thinks de Juniors am de bes' ever.

In de spring o' de year dey plants dere ivy an' 'dopts dere tree—I'll show 'em to yo', ma'am—an' dis heah sho' am a powerful purty occasion.

Den dey done had dey Commencement, an' befo' I knowed hit dey wuz gone! Dey Class Day, dey Graduation Day, wid all de Senior line a-carryin' a big white daisy chain, an' dey'd done got dere diplomas an' finished. Yaas, ma'am, dat's de end. De las' time I seed 'em all togedder wuz when dey wuz a-standin' on de steps at Senior Annex an' a-singin' dere song—

"In de midst ob rollin' woodlands,  
'Neath fair skies o' blue,  
Stands our noble Alma Mater,  
Glorious to de view."

Who am I, missis? Why I's jes' Aunt Roxie, an' I stays at Senior Annex an' takes care o' de girls. Dey couldn't git 'long widout me.

EDITH BRYSON, '18.



## Senior Marshals

MARY RAVER

DORIS COZART

LILLIAN BLUE

PANSY WIMBISH

ALIMAE TEMPLE

NANCY LEE PATTERSON

DOROTHY GREGORY

RUTH COX



## Senior Class Poem

Ave, O, Salem et vale,  
Greeting and farewell.  
We, thy Senior daughters,  
Hear a low, sad knell.  
Hail, O Salem beautiful! Farewell, Alma Mater!  
Farewell,  
Farewell.

Ave, O, Salem et vale,  
Four years ago we came  
To thy hills and fields and shadowy dells  
To this land of thine honored name.  
Hail, O Salem beautiful! Farewell, Alma Mater!  
Farewell,  
Farewell.

Ave, O, Salem et vale,  
To thy sympathetic heart  
Timid, afraid we were taken  
From imaginary terrors and dark.  
Hail, O Salem beautiful! Farewell, Alma Mater!  
Farewell,  
Farewell.

Ave, O, Salem et vale,  
To us strong courage you gave  
To brave the tests of our college days  
With a spirit that is never afraid.  
Hail, O Salem beautiful! Farewell, Alma Mater!  
Farewell,  
Farewell.

Ave, O, Salem et vale,  
As regretfully we go from thy care,  
In our memories ever will linger  
Thy love and ideals rare.  
Hail, O Salem beautiful! Farewell, Alma Mater!  
Farewell,  
Farewell.

EDITH BRYSON, '18.

## A "Just So Story"



MILES and miles out into the country I had walked, enjoying the soft fragrance of the cool, spring evening. The shadows were lengthening on the near-by hills. All around was peace and quiet. The bustle of the city, the busy throngs of people seemed far away, and I was left alone in the stillness which precedes the approach of night.

All at once I was startled out of my reverie by a brilliant light, which flashed across the heavens, and a huge body crashing to the earth some distance in front of me. Partially blinded by the light, yet impelled by a strong curiosity, I approached as near as the heat emanating from the body would permit. The great mass had been broken into halves by the impact of its fall, and each section was alive with shifting colors and kaleidoscopic views. As I continued to look, the colors assumed a more definite form, and here and there I seemed to discern a familiar scene or figure. Some of them were so vivid and natural that I imagined I could hear what the people seemed to be saying. To my astonishment and great delight I recognized a portion of them as my classmates.

Concentrating my attention on one section of the sphere, I made out the outlines of an aeroplane flying swiftly to and fro. After performing several perilous feats high up in the air it descended, and the skillful aviator alighted to receive the applause of thousands of admiring spectators. As this cool, young person, who was so deliberately courting danger, removed her goggles and cap I saw that it was the intrepid and unexcitable Eleanor Gates.

Following this, I saw an immense amphitheater filled with children dancing, near the banks of an artificial lake. Glancing around the scattered groups, I recognized one of the instructors as Evelyn Allen. My first impression was of great surprise. Then I remembered the nights at Salem, when we played the Victrola, how Evelyn would begin to sway rhythmically with the music and to flit gracefully out across the campus.

Broadway next presented its long line of theaters with their flaming electric signs. Conspicuous among these was:

THE GREAT SHAKESPEAREAN ACTRESS

NITA HIGSMITH

APPEARING IN

"THE MERCHANT OF VENICE"

Gazing intently into the shining mass before me, I saw a long, green hill dotted with cattle. Soon a figure in overalls began to move among them, giving each Guernsey an affectionate pat on the nose as she passed. As the figure drew nearer, with the sturdy bearing and freedom of movement which only life in the open country can produce, I recognized it as none other than Lucile Henning.

In contrast to this peaceful scene a great tent rose before me crowded to overflowing. I saw that it was an evangelistic meeting, and my first thought was of Billy Sunday. However, the impassioned orator who was holding this great audience spellbound was Eula Wall, who long since had formulated most definite ideas on religion. As the meeting came to a close, I noticed a young lady distributing tracts and pamphlets at one corner of the platform. From the pride with which she displayed them I surmised that they were her own productions and of great literary value. The author I soon perceived was Katherine Davis, who was thus making the most of her talents.

A western prairie with its great expanse of grassy plain extended before me in the midst of which a lonely ranch house stood forth. A speck appeared on the horizon and a galloping horseman approached. He gave some brief but emphatic directions to a group of cowboys lounging near the corral and passed on to the house. Something about the bearing of the rider and the decided tilt of the head as he approached seemed familiar, and, upon closer inspection, I discovered that it was not a man at all, but one of my classmates, Edith Bryson.

Turning toward the other half of the broken mass I saw many foreign scenes, and soon learned that many of my friends had been attracted by the opportunities offered by France after the war. Observing one of the houses which was being rebuilt in that devastated country, I noticed a young woman showing an inexperienced workman how to nail the rafters on the roof. His stupidity brought forth a burst of anger from the lady in charge, which assured me that it could be none other than our artistic Belle. She had turned her abilities to account in supplying the need of France for carpenters and architects.

As I watched this busy scene of reconstruction a train loaded with building materials came to a stop near-by. The conductor alighted to superintend the removal of the freight. To my utter astonishment I perceived that it was the most feminine member of the Class of 1918, Olive Thomas. I could not but wonder at the changes the war had wrought.

A splendidly equipped hospital loomed into view with its long white wards and numerous rooms. In one of them Bizzell's familiar figure was seen pounding mercilessly on a poor, defenceless Frenchman, trying out her

new osteopathic treatment. In the operating room I could see Dr. Hunt skillfully dissecting an unsuspecting male to see if his heart was on the right side, because he had failed to succumb to her charms. Remembering her absent-mindedness I earnestly hoped that she would not forget to close the incision.

A scene in Belgium revealed Katharine Ross endeavoring to teach the little Belgian children "how we do over in America." She seemed thoroughly delighted with her work except for one serious drawback, there was no one available with whom she could argue to her heart's content.

In South Africa I saw a great auditorium, equal to those in our own large cities, filled with native women, who were gazing intently into the face of a young American speaker. From the eagerness with which she addressed them and the numerous banners about the hall, I concluded that she was urging her darker sisters to stand up for their political rights. The speaker I perceived was our demure young Susan.

Following this a court-room scene was presented evidently in the same vicinity as the preceding one, judging by the color and attire of the jury. Looking toward the bar, I distinguished a light-haired woman making an earnest plea in behalf of a terrified-looking young boy. Our president had seen great possibilities in establishing the first Juvenile Court of Africa, and thus reclaiming the wayward youths for a more efficient citizenship.

Another foreign country made its appearance where kimonos and cherry blossoms ran riot. In the midst of them I saw a strange-looking vehicle, a jinrikisha-ford, apparently, and seated in it my classmate Henrietta Wilson. It seemed that her Jap had finally prevailed upon her to return with him to old Japan.

Turning back toward the other section of the sphere I saw a great summer resort in America. The scenes were shifting more rapidly now, and the brightness as well as the heat of the meteor was diminishing. Looking more closely I beheld a crowd gathered around the beach where an expert diver was giving an exhibition. Turning a somersault in air she went straight into the water. As she came up later I could not restrain an exclamation of surprise. It was no other than Ella Bryant.

Edging her way through the crowd was a tall red-haired young lady in a policeman's uniform. The face seemed familiar, but something about the figure was entirely strange. At length I became convinced that it was Mary Cash, who by some miraculous means had achieved her ambition of growing tall. In order to make the most of her height and masculine appearance she had become a firm upholder of the law.

A day nursery next revealed its interior to my eager gaze. Here one young lady in particular attracted my attention. Bending over one of the smallest occupants she was trying to teach him to warble by imitation of her own clear tones. At any rate the infant was enjoying himself whether or not he succeeded in learning the elements of music. Marie Crist (for it was she) seemed to be trying her new educational theories in regard to the importance and early introduction of music into the schools.

In the midst of a peaceful country scene I observed a tall young lady feeding a flock of hens. From the expression on her face one could easily see that she was fascinated by the charms of rural life. Her frequent glances toward the field, where a stalwart young man was ploughing, revealed the eagerness with which she awaited the completion of his day's work. Who would have believed that our dignified president of Student Council would have chosen such a lot?

The White House next appeared before me and I wondered which of our number had risen to such heights of fame. Not till the splendidly equipped kitchen was shown did I recognize a well-known figure. Here the competent "chef," Mary Feimster, was directing the preparation of a dinner for the guests invited to the inauguration.

I caught a glimpse of the old Salem campus and a dignified young person walking hastily toward Society Hall. From the books which she carried and the terrifying angle of her spectacles I concluded that Carmel had at last settled down as assistant professor of history and pedagogy.

The scene of domestic felicity which next met my eyes was truly delightful. A blazing fire at one end of the room lighted up the faces of three little black-haired boys, all of the same age, who were playing near the hearth. Turning from the window where she had been anxiously awaiting the arrival of her belated spouse I recognized Mary Entwistle.

The busy thoroughfares of the city again attracted my attention. On one of the great office buildings shone forth the following sign:

LOIS SPOTTS, *Attorney*

LOVERS' QUARRELS AND DOMESTIC TROUBLES A SPECIALTY

So Lois had also found her niche.

A baseball diamond extended over the surface before me and posted in a conspicuous place over the bleachers was an enormous placard:

THE NATIONAL WOMAN'S LEAGUE VS. THE GIANTS OF AMERICA

Even in sports women were determined not to be outstripped by the men. On the pitcher's base I saw an agile young woman send the ball swiftly and unerringly over the home plate. A second glance convinced me that Helen Long was still distinguishing herself in athletics.

The brightness of the meteor was gradually fading away. I went up closer and gazed steadfastly into the flickering lights, hoping to learn something of my own future. Faintly I perceived a figure like my own now in one place now in another, seemingly with no definite purpose or occupation.

The smoldering fires in the meteor after a few more fitful gleams died completely away, leaving only a hardened mass of metal. With this scant knowledge I was forced to be content and wait for future years to verify the things which the burning meteor had revealed.

MARY EFIRD, '18.



1918

## Class of 1918

### FORMER MEMBERS

Bennett, Theodora.....	Chicago, Ill.
Blue, Lillian.....	Raeford, N. C.
Credle, Ruby M.....	Lake Landing, N. C.
De Long, Boucher.....	Sumter, S. C.
Dyson, Sallie.....	Washington, Ga.
Efird, Nell.....	Polkton, N. C.
Elliot, Rebecca.....	Dillon, S. C.
Everett, Helen.....	Knoxville, Tenn.
Fowle, Annie.....	Washington, N. C.
Gardner, Virginia (Mrs. James White).....	Greensboro, N. C.
Geier, Adele.....	Canton, N. C.
Griffin, Verna.....	Goldshoro, N. C.
Harris, Nettie.....	Reidsville, N. C.
Herring, Mary Carrow.....	Wilson, N. C.
Hollister, Sophie.....	New Bern, N. C.
Holton, Irene.....	Jamestown, N. C.
Howard, Elizabeth (Mrs. M. Glenn Corduff).....	Floyd, Va.
Howard, Kate (Mrs. H. S. Shores).....	City Point, Va.
Hudgins, Mary Sue.....	Sweetwater, Tenn.
Irvin, Lucy.....	Reidsville, N. C.
Johnston, Annie.....	Yanceyville, N. C.
Kirkwood, Vera.....	Bennettsville, S. C.
Lumpkin, Roslyn.....	Cartersville, Ga.
Mayo, Annie Lou.....	Tarboro, N. C.
McQueen, Martha.....	Sweetwater, Tenn.
McWhorter, Sallie.....	Athens, Ga.
Poag, Louise.....	Lancaster, S. C.
Ramseur, Nannette.....	China Grove, N. C.
Renneker, Florence (Mrs. John W. Perdew).....	Wilmington, N. C.
Sandidge, Lucile.....	Bryson City, N. C.
Shore, Beulah.....	Rocky Mount, N. C.
Thom, Evelyn.....	China Grove, N. C.
Wootten, Belle.....	Savannah, Ga.
Womack, Estelle.....	Reidsville, N. C.

1918

CLASS OF 1918



1918



# WIGHTS AND TWIGITS



## CERTIFICATE IN SHORTHAND AND TYPEWRITING

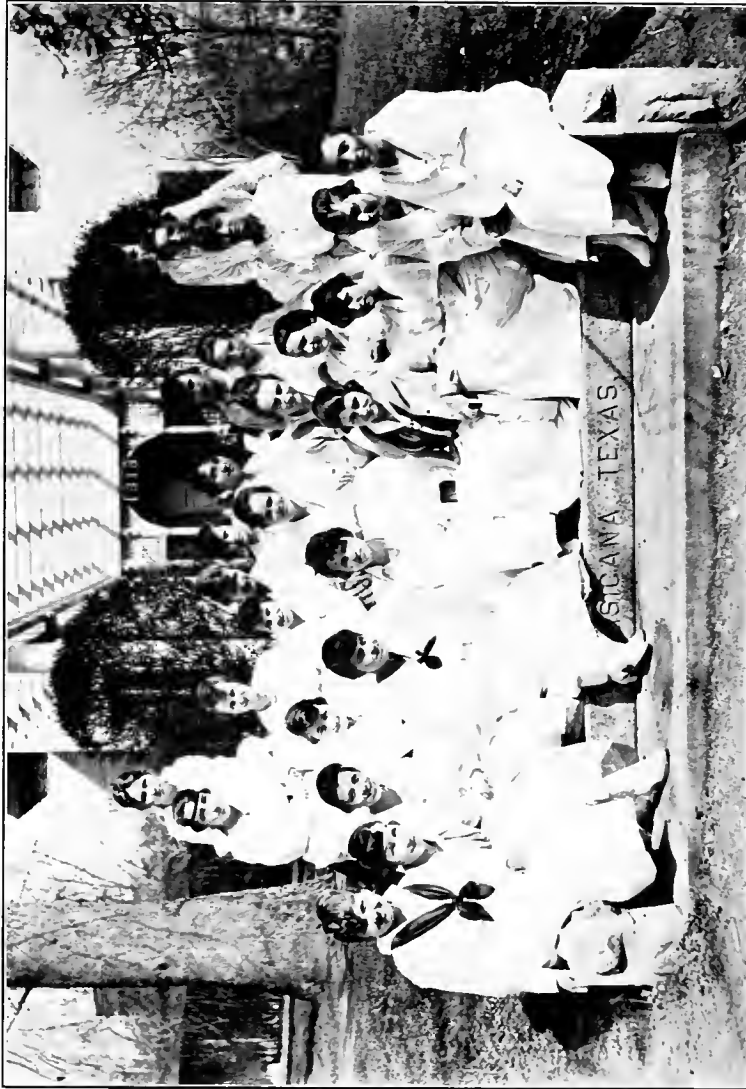
GRACE EOLING	DALLAS HARDY
VIVIAN MILLER	GAITHER PEARSON
MARGUERITE PRATT	VIRGINIA SELF
RUTH TRANSOU	



# JUNIOR







JUNIOR CLASS



1913

# SOPHOMORE



# Α Β Φ

## Sophomore Class

Colors: Red and White                      Flower: Red and White Roses  
Motto: Faithfulness, fidelity, and unity

### OFFICERS

MILDRED STARK.....PRESIDENT  
DOROTHY HARRIS.....VICE-PRESIDENT  
FRANCES ROBERTSON.....SECRETARY  
MARY HADLEY CONNOR.....TREASURER

### CLASS ROLL

ELIZABETH BYNUM	DOROTHY PROHL
MARGARET BRAWLEY	MARY POLLARD
GENA CHURCH	NANNIE RAPER
MARY HADLEY CONNOR	KATHRYN RENALDS
ALICE DAVID	FRANCES ROBERTSON
RUBY DAVIS	CATHERINE RULFS
LUCY ESTES	ELSIE SCOGGINS
LALLA ROOKH FLEMING	GLADYS SHERRILL
MARY HANES	MIRIAM SPOON
NANCY HANKINS	ETHEL SPRINKLE
DOROTHY HARRIS	MILDRED STARK
ELIZABETH HARRIS	RUBY TEAGUE
MARJORIE HEDRICK	ALMAE TEMPLE
VIRGINIA HOLMES	ELVA TEMPLETON
VIVIAN MILLER	KATE THOMAS
BERTHA MOORE	NANNIE LOY TUCKER
DELL NORFLEET	WINIFRED VALE
GRACE PARLIER	MABEL WILLIAMS
NANCY LEE PATTERSON	ISABEL WILLIAMS
IRENE PIERSON	PANSY WIMBISH
MILDRED PENNINGTON	DOROTHY WITT
RUTH PEAFF	OLIVE WOOD



SOPHOMORE CLASS

1935



STUDENT AND FACULTY



1918

# FRESHMAN



# AKΦ

## Freshman Class

COLORS: Red and Black

FLOWER: American Beauty Rose

MOTTO: Truth and light

### OFFICERS

LOUISE BOSWELL.....	PRESIDENT
ELIZABETH CHUMBLEY.....	VICE-PRESIDENT
EVA BOREN.....	SECRETARY
NANNIE McCRAW.....	TREASURER

### CLASS ROLL

CLARISSA ABBEY  
MARY S. BARNES  
AVIS BASSETT  
HETTIE BETHEA  
EVA BOREN  
LOUISE BOREN  
LOUISE BOSWELL  
ELIZABETH BROOKS  
FRANCES BUCKNER  
GRACE BOLING  
LOIS CASH  
ELIZABETH CHUMBLEY  
GERTRUDE COBLE  
GENNETTE COLE  
RUTH COX  
CATHRYNE CROSS  
MARY DARDEN  
MARETA DUKES  
OLIVE EBORN  
RUTH EBORN  
DOROTHY GREGORY  
ELSIE GREGORY  
EFFIE LEE HARDING  
LEE HENRY

DALLAS HARDY  
VIOLET HOLT  
DOLLY HYMAN  
CHARLTON JOHN  
JULIA BRYAN JONES  
ANNE JARRETT  
FLORENCE LEWIS  
LOUISE LUCKENBACH  
EMILY LITTLE  
GEORGIA LITZ  
NANNIE McCRAW  
LETTIE McCUiston  
RACHEL McNAMARA  
EUVA MANGUM  
ARDENA MORGAN  
LUCILE MORRISON  
MARTHA MICHAL  
WILLIE MOORE  
MARTHA MUNGER  
MARY PARRISH  
GAITHER PEARSON  
EDITH POINDEXTER

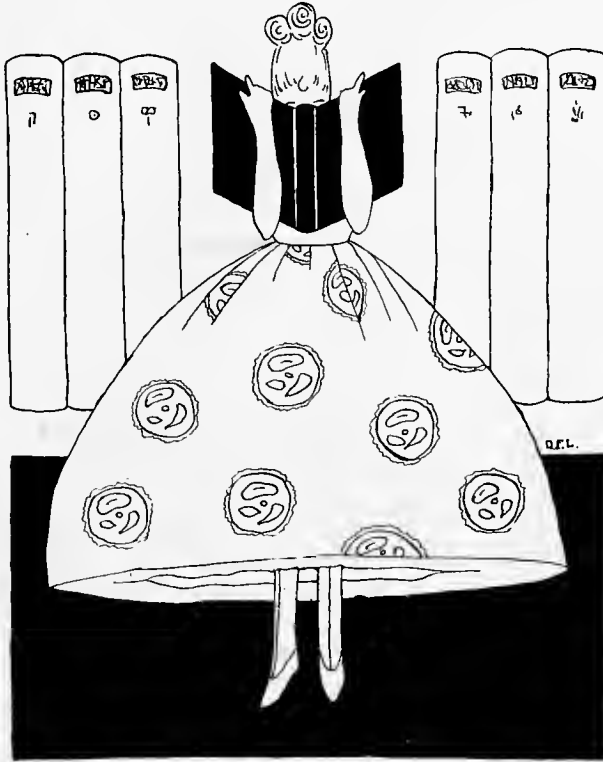
LOUISE POWERS  
MARGUERITE PRATT  
PEARL RAY  
ALICE ROBINSON  
HALLIE ROSS  
DOROTHY RICHARD  
GLADYS REICH  
ETHEL ROWE  
VIRGINIA SELF  
KATE SINK  
ROSA SNOWDEN  
LILLIAN SMALL  
ELEANOR SMITH  
EVELYN SMITH  
PRISCILLA STRETT  
HELEN STRETT  
MILDRED STEMILE  
MARY THIGPEN  
SARAH WATT  
MATTIE WEATHERLY  
ELIZABETH WHITEHEAD  
BESSIE WHITAKER  
ESTELLA WOLFF  
ROSA YOKELY



FRESHMAN CLASS

1918

# ACADEMY JUNIORS



# Σ Κ Φ

## Academy Seniors

MOTTO Strength and friendship

### OFFICERS

RITA WARREN	PRESIDENT
LUCILLE YOUNG	VICE-PRESIDENT
MILDRED PARRISH	SECRETARY
DOROTHY FOLTZ	TREASURER
EVELYN HARRIS	PROPHET
GERTRUDE EVERETT	LAST WILL AND TESTAMENT
LUCILLE YOUNG	POET
DOROTHY FOLTZ	HISTORIAN

### CLASS ROLL

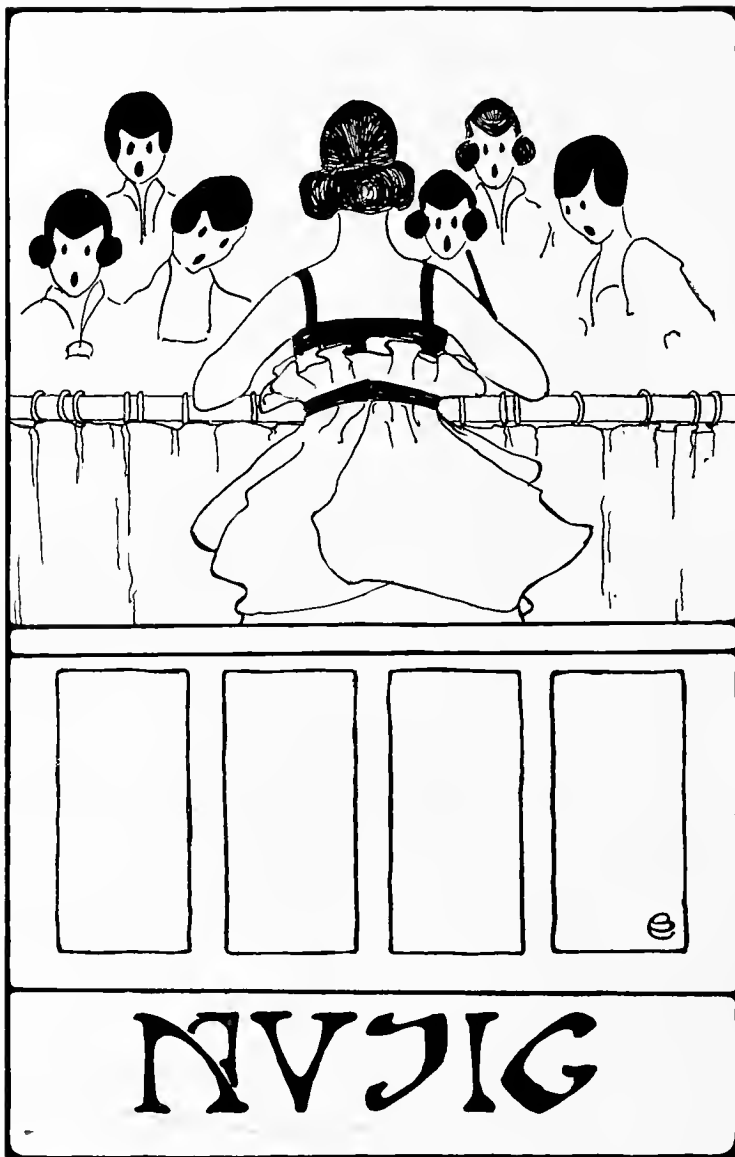
CASSIE ANGEL	KATHRYN HYDE
WINIFRED MENAMER	WILLIE JENNETTE
ELEANOR BARRY	TREVA KNOTT
MATTIE BERRYMAN	FRANCES KENNEDY
SARAH FOKEN	ALICE LEAK
LOUISE COOKE	MAHALAH MEEKINS
LETHA CROUCH	MABEL PETERSON
NELL CHAMBERS	RUTH RAUB
GERTRUDE DUNN	MARION STONE
ESTELLE EFIRD	EUNICE SINK
LOIS EFIRD	DOROTHY SAWYER
NANNIE FINCH	RUTH TRANSOU
ANNIE S. GARRETT	EDITH TRANSOU
CLARICE HENING	RUTH VOGLER

RIGHTS AND INDEPENDENCE



ACADEMY SENIORS

1918



NYJIG





GRADUATING RECITAL

OF

**Miss Mary Frances Cash**

ASSISTED BY

MISS ELEANOR BLAIR, *Contralto*

Sonata, Opus 2, No. 2.....	MISS CASH	..... <i>Beethoven</i>
I Heard a Soldier Sing.....	MISS BLAIR	..... <i>Jessie L. Pease</i>
Concerto, E Minor.....	MISS CASH	..... <i>Chopin</i>
Larghetto		
The Monotone.....	MISS BLAIR	..... <i>Cornelius</i>
Es hat die Rose siet beklagt.....		..... <i>Franz</i>
Florian's Song.....		..... <i>Godard</i>
Ich grolle nicht.....	MISS CASH	..... <i>Schumann</i>
Doctor Gradus ad Parnassum.....		..... <i>Debussy</i>
Romance.....		..... <i>Sibelius</i>
Hark! Hark! the Lark.....		..... <i>Schubert-Liszt</i>
Polonaise.....	MISS CASH	..... <i>MacDowell</i>



PIANO CERTIFICATE RECITAL

OF

Miss Margaret Lillian Blue

ASSISTED BY

MISS NAXXA JOHNSON, *Soprano*

AND

DEAN SHIRLEY

Andante in F.....	MISS BLUE	..... <i>Beethoven</i>
Song.	MISS JOHNSON	
The Eagle } Rigaudon } Idylle } Wilde Jagd }	MISS BLUE	..... <i>MacDowell</i>
Song.	MISS JOHNSON	
Fantasia .....	MISS BLUE	..... <i>Mozart</i>



## The Glee Club

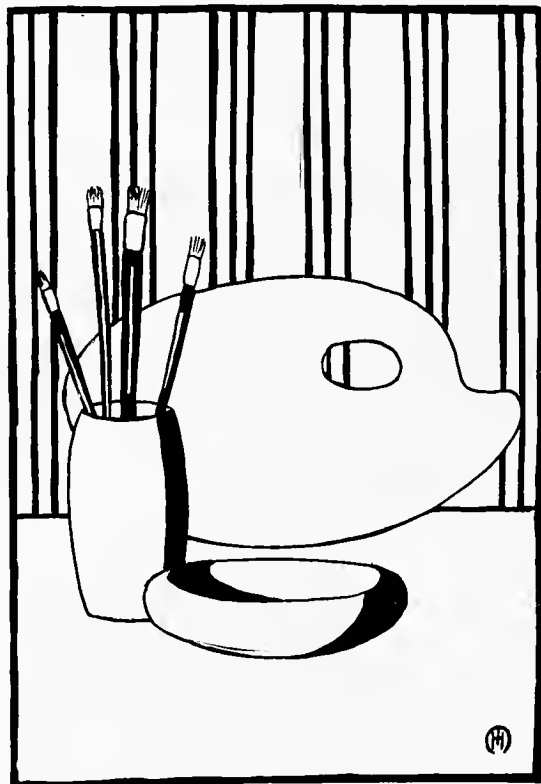
### OFFICERS

LILLIAN BLUE.....	PRESIDENT
ELEANOR GATES.....	VICE-PRESIDENT
ROOKH FLEMING.....	SECRETARY
DORIS COZART.....	TREASURER
MARGARET MAE THOMPSON.....	ACCOMPANIST
MISS ALLENE BAKER.....	DIRECTOR

### MEMBERS

THERESA BROWN	CHARLTON JOHN	EDNA SMITH
LILLIAN BLUE	JULIA BRYAN JONES	MIRIAM SPOON
ELIZABETH BROOKS	WILLIE JENNETTE	GLADYS SHERRILL
DORIS COZART	FRANCES KENNEDY	MARION STONE
RUTH COX	MARTHA MCKELLAR	ROSE SNOWDEN
ELIZABETH CHUMBLEY	MARTHA MUNGER	ALIMAE TEMPLE
ALICE DAVID	WILLIE MOORE	MARGARET M. THOMPSON
ESTELLE EFIRD	RACHEL MCNAMARA	WINIFRED VALE
ELEANOR GATES	MILDRED PARRISH	SARAH WATT
DOROTHY GREGORY	NANCY LEE PATTERSON	MATTIE WEATHERLY
ELSIE GREGORY	ELIZABETH RILEY	ELIZABETH WHITEHEAD
LEE HENRY		KATHERINE WATSON
EUNICE HUNT		ISABEL WILLIAMS

# FINE ARTS





## Art Class

### MEMBERS

AVIS BASSETT  
 DOROTHY GREGORY  
 MELISSA HANKINS  
 LEE HENRY

BELLE LEWTER  
 EMILY LITTLE  
 DOROTHY LUCKENBACH  
 MAHALAH MEEKINS

NAN NORFLEET  
 KATHRYN RENALDS  
 ELSIE SCOGGINS  
 ELEANOR SMITH

VIRGINIA STEMPLER  
 MATTIE WEATHERLY  
 SARAH WATT

# ORGANIZATIONS



KR



1915



STUDENT COUNCIL

1915



## Y. W. C. A. of 1917 and 1918

### MEMBERS

CLARISSA ABBEY	MARY HARDING
EVELYN ALLEN	MARJORIE HEDRICK
EDITH BRYSON	DOROTHY HARRIS
ALMA BIZZELL	ELIZABETH HARRIS
LILLIAN BLUE	DALLAS HARDY
MARGARET BRAWLEY	LEE HENRY
ELIZABETH BROOKS	DOLLY HYMAN
FRANCES BUCKNER	VIOLET HOLT
LOUISE BOREN	EFFIE LEE HARDING
MARY S. BARNES	CHARLTON JOHN
GRACE BOLING	JULIA BRYAN JONES
AVIS BASSETT	ERMA KAPP
HETTIE BETHEA	BELLE LEWTER
LOUISE BOSWELL	EMILY LITTLE
SUE CAMPBELL	FLORENCE LEWIS
DORIS COZART	MARY LANCASTER
MARY HADLEY CONNOR	HELEN LONG
GENA CHURCH	MARTHA MCKELLAR
RUTH COX	RUTH MILLS
ELIZABETH CHUMBLEY	LELIA GRAHAM MARSH
CATHRYNE CROSS	WILLIE MOORE
GERTRUDE CORLE	EUVA MANGUM
GENNETTE COLE	MARTHA MICHAL
MARJORIE DAVIS	MARTHA MUNGER
MARY HUNTER DEANS	LUCILLE MORRISON
ALICE DAVID	RACHEL MCNAMARA
MARY DARDEN	NELL MORRIS
MARETA DUKES	MARGARET NEWLAND
MARY ENTWISTLE	GAITHER PEARSON
LUCY ESTES	LOUISE POWERS
RUTH EBORN	MARGUERITE PRATT
OLIVE EBORN	IRENE PIERSON
MARY FEIMSTER	NANCY LEE PATTERSON
ROOKH FLEMING	MILDRED PENNINGTON
ELEANOR GATES	GRACE PARLIER
DOROTHY GREGORY	CARMEL ROTHROCK
ELSIE GREGORY	KATHARINE ROSS
NITA HIGHSMITH	HALLIE ROSS
MARION HINES	PEARL RAY
HELEN HUNT	ALICE ROBINSON
EUNICE HUNT	MARY RAPER

## Y. W. C. A.—Continued

FRANCES KIDENHOUR  
CATHERINE RULFS  
NANNIE RAPER  
DOROTHY RICHARD  
GLADYS REICH  
ETHEL ROWE  
ADA SISKE  
MARY SUMNER  
EDNA SMITH  
MIRIAM SPOON  
ELSIE SCOGGINS  
MILDRED STARK  
ROSA SNOWDEN  
MILDRED STEPHIE  
EVELYN SMITH  
PRISCILLA STREETT

HELEN STREETT  
SARAH HYDE  
LILLIAN SMALL  
VIRGINIA SELF  
GLADYS SHERKILL  
ALIMAE TEMPLE  
OLIVE THOMAS  
MARY THIGPEN  
DOROTHY WITT  
OLIVE WOOD  
ISABEL WILLIAMS  
SARAH WATT  
JESSIE WHITAKER  
MATTIE WEATHERLY  
ELIZABETH WHITEHEAD  
HENRIETTA WILSON

### FACULTY MEMBERS

ELEANOR BLAIR  
ROSANNAH BLAIR  
HELEN BARTON  
ELMA HALL  
MARGARET HAGAN  
LAURIE JONES  
WATSON KASEY  
HARRIET LANE

HELEN ORDWAY  
ROBERT H. RICE  
MRS. RONDTHALER  
LOUISE SILER  
LULA MAY STIPE  
SARAH TILGHMAN  
RUTH WELCH  
MARGARET WHITTEMORE

ELLEN YERRINGTON



Y. W. C. A. CABINET



Y. W. C. A. CABINET

1913

# "The Ivy"

## STAFF

MARY ENTWISTLE, '18.....	EDITOR-IN-CHIEF
LELLA GRAHAM MARSH, '19.....	ASSISTANT EDITOR-IN-CHIEF
EDITH BRYSON, '18.....	BUSINESS MANAGER
DOROTHY HARRIS, '20.....	ASSISTANT BUSINESS MANAGER
MARION HINES, '19.....	LITERARY EDITOR
NANCY LEE PATTERSON, '20.....	LITERARY EDITOR
RUTH COX, '21.....	LITERARY EDITOR
EVELYN ALLEN, '18.....	EXCHANGE EDITOR
SARAH WATT, '21.....	ASSISTANT EXCHANGE EDITOR
CARMEL ROTHROCK, '18.....	ADVERTISING EDITOR
HENRIETTA WILSON, '18.....	ADVERTISING EDITOR
NITA HIGHSMITH, '18.....	ADVERTISING EDITOR
ELEANOR GATES, '18.....	JOKE EDITOR
BELLE LEWTER, '18.....	ART EDITOR



STUDENT AND FACULTY



THE IVY STAFF

1918

# Hesperian Literary Society

COLORS: Purple and Gold

FLOWER: Pansy

MOTTO: *Nitamus*

## OFFICERS FOR 1917-18

HELEN HUNT, '18. ....	PRESIDENT	DOROTHY HARRIS, '20.....	TREASURER
MARY ENTWISTLE, '18.	VICE-PRESIDENT	EVELYN ALLEN, '18.....	CRITIC
EDITH BRYSON, '18.....	SECRETARY	HENRIETTA WILSON, '18.....	REPORTER

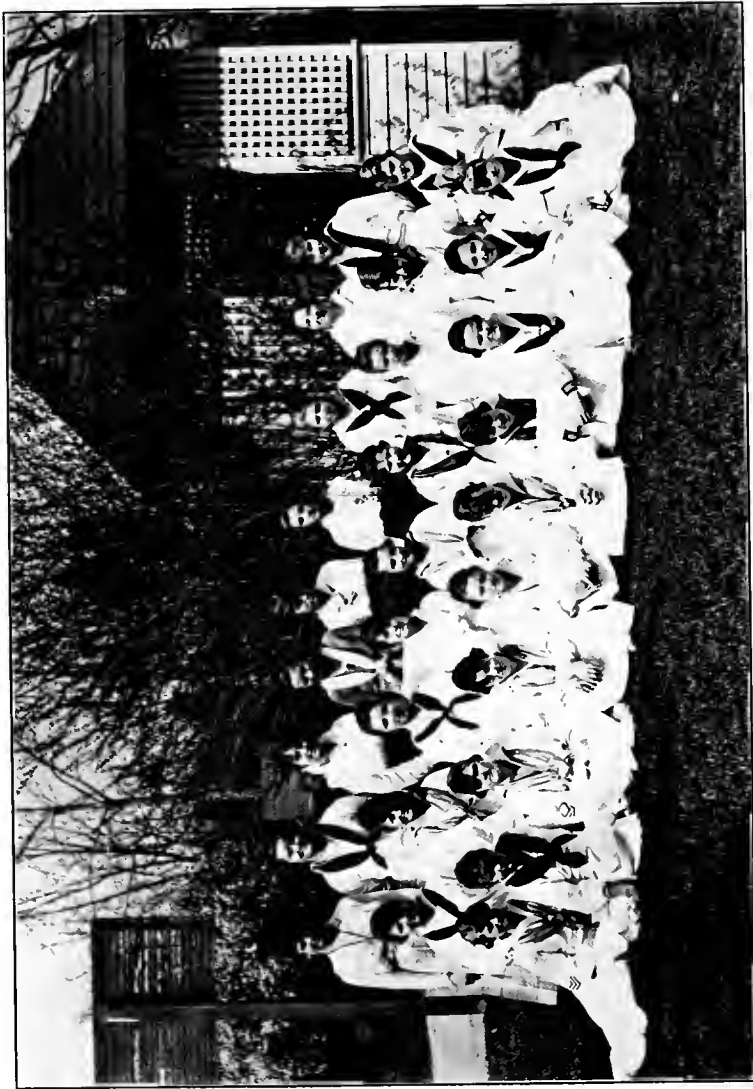
## MEMBERS

CLARISSA ABBEY	HELEN LONG
EVELYN ALLEN	IRENE PIERSON
EDITH BRYSON	MARY RAPER
MARGARET BRAWLEY	CATHERINE RULFS
ELIZABETH CHUMBLEY	CARMEL ROTHROCK
MARY ENTWISTLE	FRANCES ROBERTSON
DOROTHY GREGORY	KATHARINE ROSS
ELSIE GREGORY	PRISCILLA STRETT
MARJORIE HEDRICK	HELEN STRETT
NITA HIGHSMITH	MARY SUMNER
HELEN HUNT	GLADYS SHERRILL
EUNICE HUNT	EDNA SMITH
DOROTHY HARRIS	OLIVE THOMAS
MARGARET HAGAN	HENRIETTA WILSON
GEORGIA LITZ	MATTIE WEATHERLY

OLIVE WOOD

## HONORARY MEMBERS

MISS HALL	MR. RICE
MISS ORDWAY	MISS SHAW



MEMBERS OF HESPERIAN LITERARY SOCIETY

# Euterpean Literary Society

COLORS: Blue and White

FLOWER: Violet

MOTTO: *Ad astra per aspera*

## OFFICERS FOR 1917-18

MARY FEIMSTER, '18.....	PRESIDENT	FRANCES RIDENHOUR, '19.	TREASURER
LELLA GRAHAM MARSH, '19.		DORIS COZART, '19.....	CRITIC
	VICE-PRESIDENT	GENA CHURCH, '20.....	CENSOR
MARJORIE DAVIS, '19.....	SECRETARY	BELLE LEWTER, '18.....	REPORTER

## MEMBERS

ALMA BIZZELL	FLORENCE LEWIS
HETTIE BETHEA	EMILY LITTLE
ELIZABETH BROOKS	NANNIE McCRAW
AVIS BASSETT	RACHEL McNAMARA
LOUISE BOSWELL	NANCY LEE PATTERSON
MARY S. BARNES	MARGUERITE PRATT
SUE CAMPBELL	NANNIE RAPER
MARY H. CONNOR	KATHRYN RENALDS
GENNETTE COLE	PEARL RAY
GEKTRUDE COBLE	HALLIE ROSS
MARY HUNTER DEANS	MILDRED STARK
ALICE DAVID	ELSIE SCOGGINS
MARETA DUKES	ADA SISKE
OLIVE EBORN	EVELYN SMITH
RUTH EGORN	MILDRED STEMILE
LUCY ESTES	MARGARET M. THOMPSON
MARION HINES	NANNIE L. TUCKER
LEE HENRY	MARY THIGPEN
SARAH HYDE	BESSIE WHITAKER
	ELIZABETH WHITEHEAD

## HONORARY FACULTY MEMBERS

MISS BARTON	MISS HAINES
MISS BAKER	MISS KASEY





MEMBERS OF EUTERPEAN LITERARY SOCIETY



## Academy Y. W. C. A.

### OFFICERS

ESTELLE EFIRD, .....	SECRETARY	RUTH A. RAUB, .....	PRESIDENT
CAROLEEN LAMBETH, .....	TREASURER	MAHALAH MEEKINS, .....	VICE-PRESIDENT

### COMMITTEES

SOCIAL		PROGRAM	
CAROLEEN LAMBETH	CLARICE HENING	ESTELLE EFIRD	DOROTHY SAWYER
GERALDINE FLESHMAN	ANNA LOUISE JOHNSTON	SARAH WILLIAMS	RITA WARREN

### MEMBERS

WINIFRED ALEXANDER	KATHARINE DENNY	LOUISE C. JOHNSTON	MABEL F. PETERSON
ANNIE ALSAUGH	GERTRUDE DUNN	ELSIE JONES	MABEL POWELL
ANNIE ATWOOD	ESTELLE EFIRD	FRANCES KENNEDY	MARY E. RANDOLPH
MARY BAILEY	REBECCA EAGLES	CAROLEEN LAMBETH	SARAH RATHBUN
DOROTHY BARGER	NANNIE FINCH	ALICE LEAK	RUTH RAUB
CLARA BECTON	GERALDINE FLESHMAN	ANNIE LITZ	ELIZABETH RILEY
SARAH BOREN	ANNIE SHARPE GARRETT	LASH LITZ	DOROTHY SAWYER
MACE BRISCOE	JULIA HAIRSTON	CASSY MARTIN	DOROTHY SESSOMS
THERESA BROWN	EDGENIA HARRIS	LUCY MAYO	JUANITA SPRINKLE
CARETA CAMP	CLARICE HENING	MAHALAH MEEKINS	MARION STONE
RUTH CARTER	MYRTLE HOWARD	MARY OGDUN	MAZIE VERNON
MILDRED COLLACOTT	EMMA MERVANE HUNT	MILDRED PARRISH	RITA WARREN
LOUISE COOKE	ANNA LOUISE JOHNSTON	DOROTHY PEPE	SARAH WILLIAMS

# ATHLETICS



# Athletic Association

## OFFICERS

MARY HUNTER DEANS.....	PRESIDENT
MARJORIE DAVIS.....	VICE-PRESIDENT
MARY LANCASTER.....	SECRETARY AND TREASURER
MARY ENTWISTLE.....	HEAD OF BASKET-BALL
ALICE ROBINSON.....	HEAD OF TENNIS

## MEMBERS

CLARISSA ABBEY HETTIE BETHEA EDITH BRYSON LOUISE BOSWELL MARY S. BARNES ELIZABETH BROOKS ALMA BIZZELL DORIS COZART MARY H. CONNOR ELIZABETH CHUMBLEY GENA CHURCH RUTH COX GERTRUDE COBLE MARJORIE DAVIS MARY HUNTER DEANS LUCY ESTES MARY ENTWISTLE ROOKH FLEMING ELEANOR GATES DOROTHY GREGORY NANCY HANKINS DOROTHY HARRIS HELEN HUNT EUNICE HUNT NITA HIGHSMITH DOLLY HYMAN MARGARET HAGAN LEE HENRY MISS HAINES JULIA BRYAN JONES	CHARLTON JOHN EMILY LITTLE HELEN LONG FLORENCE LEWIS MARY LANCASTER RUTH MILLS NANNIE McCRAW MARTHA MUNGER LELIA GRAHAM MARSH MARGARET NEWLAND FRANCES RIDENHOUR NANNIE RAPER CATHERINE RULES FRANCES ROBERTSON ALICE ROBINSON KATHARINE ROSS CARMEL ROTHROCK MR. RICE HELEN STREET LILLIAN SMALL MILDRED STARK MARY SUMNER ADA SISKE ELSIE SCGGINS ALIMAE TEMPLE OLIVE THOMAS MARGARET M. THOMPSON ELVA TEMPLETON KATE THOMAS MATTIE WEATHERLY
--	--

ELIZABETH WHITEHEAD

ATHLETIC ASSOCIATION



ATHLETIC ASSOCIATION

[918]



## Varsity Team

LUCY ESTES

MARY ENTWISTLE

MARY McPHAIL DAVIS

MARY HUNTER DEANS

HELEN LONG

LELIA GRAHAM MARSH

MARJORIE DAVIS

MARY LANCASTER



## Senior Basket-Ball Team

ELEANOR GATES, *Forward*

MARY SUMNER, *Guard*

MARY ENTWISTLE, *Center*

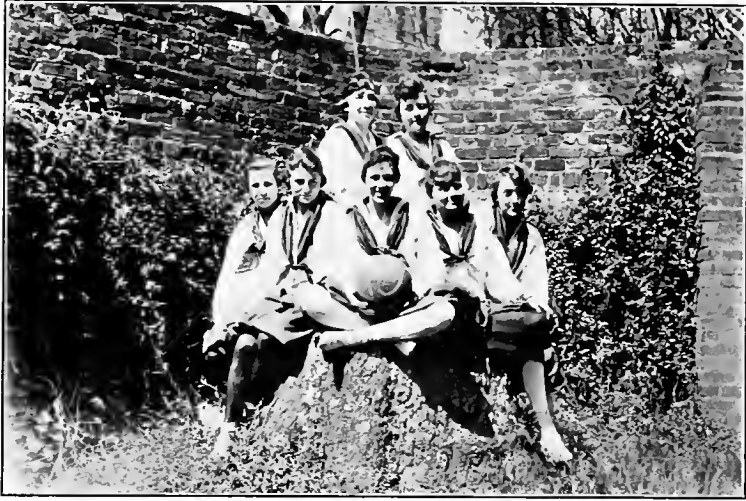
ADA SISKE, *Substitute*

HELEN LONG, *Captain and Forward*

KATHARINE ROSS, *Guard*

NITA HIGHSMITH, *Substitute*

EDITH BRYSON, *Substitute*



## Junior Basket-Ball Team

MARJORIE DAVIS, *Forward*

MARY LANCASTER, *Forward*

LELIA GRAHAM MARSH, *Guard*

MARY HUNTER DEANS, *Center*

ROSINA VANCE, *Substitute*

MARGIE HASTINGS, *Substitute*

MARY MCPHAIL DAVIS, *Captain and Guard*





## Sophomore Basket-Ball Team

MARY HADLEY CONNOR, *Forward*

MILDRED STARK, *Guard*

ALIMAE TEMPLE, *Substitute*

NANCY HANKINS, *Forward*

KATE THOMAS, *Center*

GENA CHURCH, *Substitute*

LUCY ESTES, *Captain and Guard*



## Freshman Basket-Ball Team

*ALICE ROBINSON, Forward*

*HELEN STREET, Guard*

*MATTIE WEATHERLY, Center*

*CHARLTON JOHN, Substitute*

*MARY DARDEN, Captain and Forward*

*DOROTHY GREGORY, Guard*

*RUTH COX, Substitute*

*MARY S. BARNES, Substitute*

# Academy Athletic Association

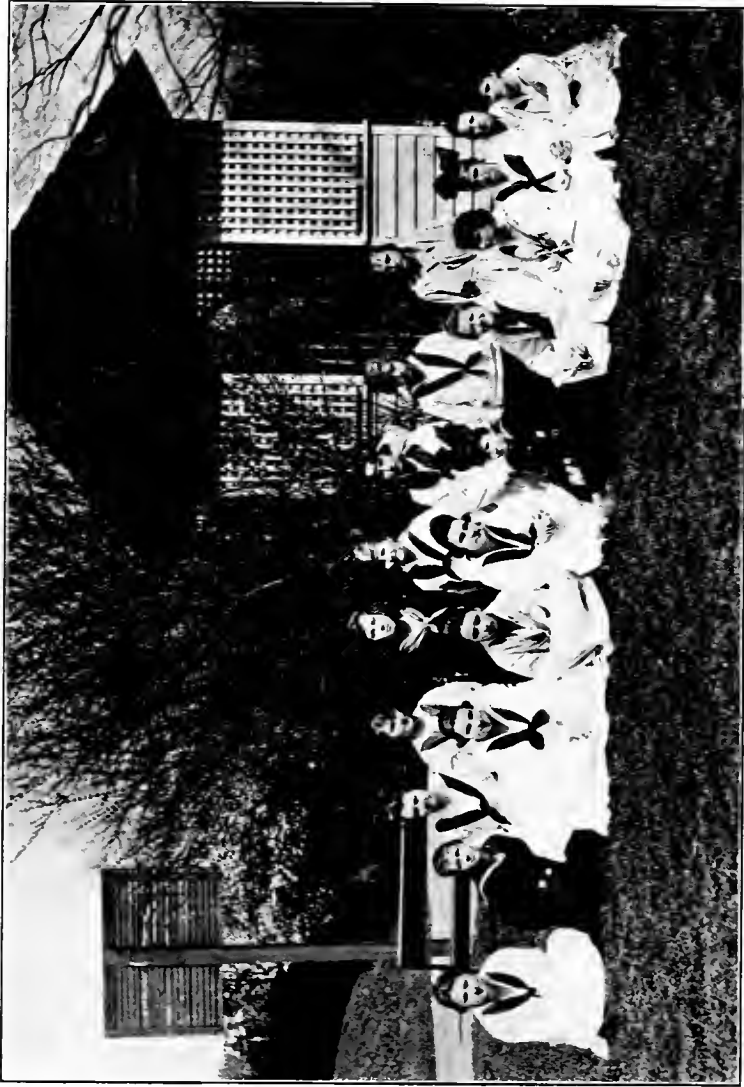
## OFFICERS

ANNIE SHARPE GARRETT.....PRESIDENT  
CAROLEEN LAMBETH.....VICE-PRESIDENT  
JOSEPHINE SHAFFNER.....SECRETARY AND TREASURER  
ELSIE JONES.....HEAD OF BASKET-BALL  
MAHALAH MEEKINS.....HEAD OF TENNIS

## MEMBERS

WINIFRED ALEXANDER  
ANNA ATWOOD  
DOROTHY BARGER  
SARAH BOREN  
MACE BRISCOE  
LILLIE CARTER  
LOUISE COOKE  
KATHERINE DENNY  
BIRDIE DRYE  
ANNIE SHARPE GARRETT  
VIRGINIA GRAHAM  
JULIA HAIRSTON  
EUGENIA HARRIS  
ESTELLE HEGE  
DAISY HOLT  
ELSIE JONES  
CAROLEEN LAMBETH

MAHALAH MEEKINS  
MILDRED PARRISH  
AGNES PETERSON  
MABEL PETERSON  
AGNES PFOHL  
MARIETTA RANDOLPH  
ELEANOR SHAFFNER  
JOSEPHINE SHAFFNER  
HAZEL SMITH  
ELIZABETH SPAUGH  
JANET SPAUGH  
JUANITA SPRINKLE  
KATHERINE TAVIS  
MAZIE VERNON  
BLANCHE MAY VOGLER  
RITA WARREN  
SARAH WILLIAMS



ACADEMY ATHLETIC ASSOCIATION



## Academy Varsity Team

MILDRED PARRISH

RITA WARREN

VIRGINIA GRAHAM

ANNIE SHARPE GARRETT

JOSEPHINE SHAFFNER

ELEANOR SHAFFNER

CAROLEEN LAMBETH



TENTH GRADE



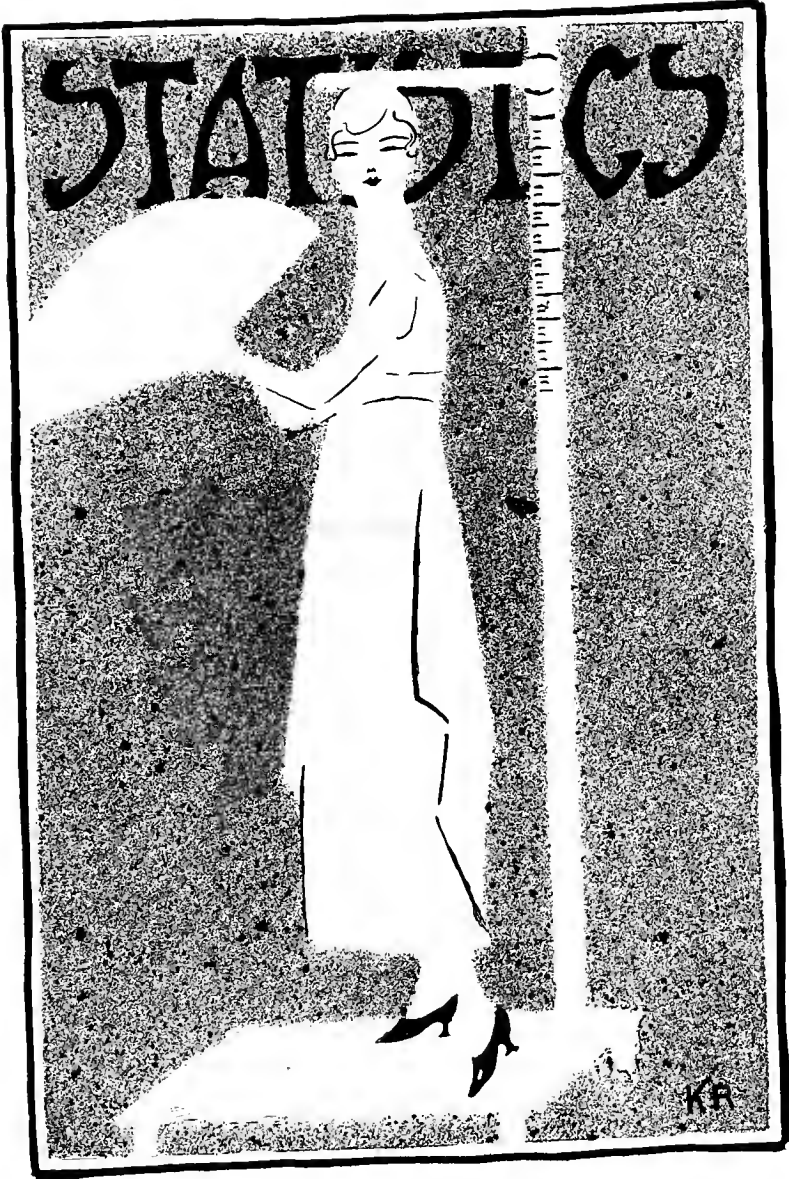
EIGHTH GRADE



ELEVENTH GRADE



NINTH GRADE



CREATED BY THE STUDENTS



SARAH WATT  
MOST WINDSOME



ELEANOR GATES  
MOST ATTRACTIVE



DOLLY HYMAN  
MOST STRIKING



CHARLTON JOHN  
BEST DANCER



KATHRYN RENALDS  
CUTEST



210571 10071210712



DOROTHY GREGORY  
PRETTIEST



MILDRED STARK  
BEST-ALL-ROUND



OLIVE THOMAS  
MOST DIGNIFIED



RUTH COX  
MOST POPULAR



EVELYN SMITH  
MOST STUDIOUS



JULIA BRYAN JONES  
BEST DRESSED



ADA SISKE  
MOST ORIGINAL



HELEN HUNT  
DAINTIEST



DORIS COZART  
MOST CAPABLE



MARY HUNTER DEANS  
MOST ATHLETIC

1915



EVELYN ALLEN  
TYPICAL SENIOR



MARJORIE DAVIS  
TYPICAL JR.



DOROTHY HARRIS  
TYPICAL SOPH.



MARY DARDEN  
TYPICAL FRESHMAN

ACADEMY



STATISTICS

WIGGITS AND WIGGITS



WILLIE JENNETTE  
MOST ATTRACTIVE



FRANCES KENNEDY  
MOST STRIKING



GERALDINE FLESHMAN  
HANDSOMEST



MOSELEY HARDIE  
BEST DRESSED



WINIFRED ALEXANDER  
BEST DANCER

ACTIVITIES AND INTERESTS



ADONIS POWELL  
CUTEST



ELSIE JONES  
MOST POPULAR



MAHALAH MEEKINS  
MOST ORIGINAL



MARION STONE  
MOST WHISOME



RITA WARREN  
LIVELIEST

RIGHTS AND INRIGHTS



MABEL POWELL  
MOST GIFTED



CAROLEEN LAMBETH  
BEST ALL-ROUND



DOROTHY SESSOMS  
PRETTIEST

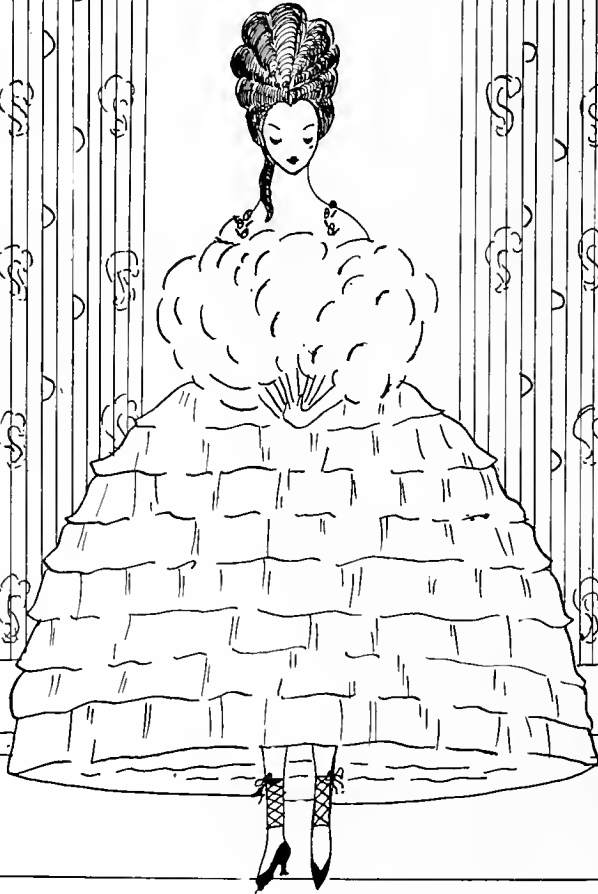


MILDRED PARRISH  
MOST ATHLETIC



JULIA HAIRSTON  
MOST STUDIOUS

# CLUBS

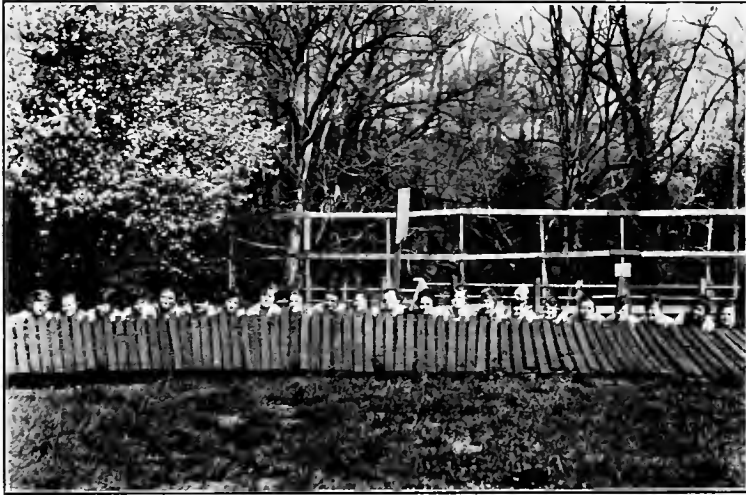






SENIOR TAR HEELS

1918



## Red Ribbon Gossipers

EVELYN ALLEN  
LILLIAN BLUE  
MARGARET BRAWLEY  
MARY HADLEY CONNOR  
DORIS COZART  
MARY HUNTER DEANS  
MARY ENTWISTLE  
LALLAH ROOKH FLEMING  
DOROTHY GREGORY  
ELEANOR GATES  
DOROTHY HARRIS

NITA HIGSMITH  
JULIA BRYAN JONES  
HELEN LONG  
IRENE PIERSON  
FRANCES ROBERTSON  
NANNIE RAPER  
KATHRYN RENALDS  
MILDRED STARK  
GLADYS SHERRILL  
ALIMAE TEMPLE  
OLIVE THOMAS

DOROTHY WITT



## Eastern North Carolina Club

ALMA BUZZELL  
GERTRUDE COBLE  
MARY HADLEY CONNOR  
LOUISE COOKE  
DORIS COZART  
MARY HUNTER DEANS  
REBECCA EAGLES  
OLIVE EBORN  
RUTH EBORN  
ROOKH FLEMING  
DOROTHY GREGORY  
DOROTHY HARRIS  
CLARICE HENING  
NITA HIGSMITH  
LANIE HOLMES  
WILLIE JENNETTE  
JULIA BRYAN JONES

BELLE LEWTER  
CASSIE MARTIN  
NANNIE McCRAW  
RACHEL McNAMARA  
MILDRED PARRISH  
IRENE PIERSON  
NANNIE RAPER  
KATHRYN RENALDS  
ELSIE SCOGGINS  
MIRIAM SPOON  
MILDRED STARK  
MARY LOUISE STOVER  
ELVA TEMPLETON  
MARY THIGPEN  
NANNIE LOY TUCKER  
RITA WARREN  
MATTIE WEATHERLY

OLIVE WOOD



## Western North Carolina Club

CLARISSA ABBEY  
EVELYN ALLEN  
EVA BOREN  
SARA BOREN  
MARGARET BRAWLEY  
ELIZABETH BROOKS  
EDITH BRYSON  
SUE CAMPBELL  
GENA CHURCH  
MARY FEIMSTER  
LEE HENRY  
VIRGINIA HOLMES

ANNE JARRETT  
VIVIAN MILLER  
MARTHA MICHAL  
MILDRED PENNINGTON  
MARGUERITE PRATT  
CARMEL ROTHROCK  
PEARL RAY  
GLADYS REICH  
GLADYS SHERRILL  
JUANITA SPRINKLE  
OLIVE THOMAS  
HENRIETTA WILSON



## X. Y. Z. Club

MOTTO: "Non ministrati sed ministrare"

### OFFICERS

DORIS COZART.....	PRESIDENT
MARY EFIRD.....	VICE-PRESIDENT
LALLAH ROOKH FLEMING.....	SECRETARY
ALICE ROBINSON .....	TREASURER

### MEMBERS

EVELYN ALIEN	MARGUERITE DAVIS	ELIZABETH HARRIS	DOROTHY PFOHL
HETTIE BETHEA	MARY McPHAIL DAVIS	NANCY HANKINS	MARY POLLARD
AVIS BASSETT	MARETA DUKES	MARJORIE HEDRICK	KATHRYN RENALDS
LOUISE BOREN	MARY EFIRD	MARY HARDING	ALICE ROBINSON
MARGARET BRIETZ	OLIVE EBORN	EUNICE HUNT	ELEANOR SMITH
ELIZABETH BROOKS	ROOKH FLEMING	VIRGINIA HOLMES	MIRIAM SPOON
ELIZABETH BYNUM	ELEANOR GATES	MARTHA MICHAL	VIRGINIA SELF
MARY CASH	DOROTHY GREGORY	ARDENA MORGAN	MARY SUMNER
GENA CHURCH	LEE HENRY	LELIA GRAHAM MARSH	RUBY TEAGUE
DORIS COZART	MARGIE HASTINGS	MARTHA MUNGER	ROSINA VANCE
MARY HADLEY CONNOR	MARION HINES	EDITH POINDEXTER	EMILY VAUGHN
ELIZABETH CHUMBLEY	DOROTHY HARRIS	GAITHER PEARSON	MABEL WILLIAMS
RUBY DAVIS			

## The Ne'er-do-Well Family

Pa Ne'er-do-Well.....	MARY ENTWISTLE
Ma Ne'er-do-Well.....	OLIVE THOMAS
Baby Ne'er-do-Well.....	HELEN HUNT
Grandpa Ne'er-do-Well.....	MARY FEIMSTER
Grandma Ne'er-do-Well.....	SUE CAMPBELL
Débutante Ne'er-do-Well.....	KATHARINE ROSS
Dude Ne'er-do-Well.....	EVELYN ALLEN
Old Maid Ne'er-do-Well.....	ADA SISKE
Busy Ne'er-do-Well.....	ALMA BIZZELL
Farmer Ne'er-do-Well.....	ELEANOR GATES
Ne'er-do-Well Twins.....	HELEN LONG AND BELLE LEWTER
Ne'er-do-Well Sailor.....	CARMEL ROTHROCK
Ne'er-do-Well Soldier.....	EDITH BRYSON
Ne'er-do-Wells' Maid.....	HENRIETTA WILSON
Ne'er-do-Wells' Butler.....	NITA HIGHSMITH
Ne'er-do-Wells' Housekeeper.....	LOIS SPOTTS
Ne'er-do-Wells' Red Cross Nurse.....	MARY SUMNER



# RIGHTS AND INRIGHTS



SENIOR FAMILY GROUP

1918



## Tormentors

EVELYN ALLEN  
MARGARET BRAWLEY  
LILLIAN BLUE  
EDITH BRYSON  
DORIS COZART  
RUTH COX  
MARY HADLEY CONNOR  
MARY ENTWISTLE  
ROOKH FLEMING  
ELEANOR GATES  
DOROTHY HARRIS

NITA HIGSMITH  
ANNE JARRETT  
JULIA BRYAN JONES  
HELEN LONG  
MARTHA MUNGER  
KATHRYN RENALDS  
NANNIE RAPER  
FRANCES ROBERTSON  
MILDRED STARK  
GLADYS SHERRILL  
ALIMAE TEMPLE

DOROTHY WITT





GATES, '18



COZART, '19



DEANS, '19



THOMPSON, '19



DAVIS, '19



NEWLAND, '19



HINES, '19



RENALDI, '20



FLEMING, '20

# BBΦ



CONNOR, '20



ESTES, '20



COX, '21



JONES, '21



HYMAN, '21



MUNGER, '21

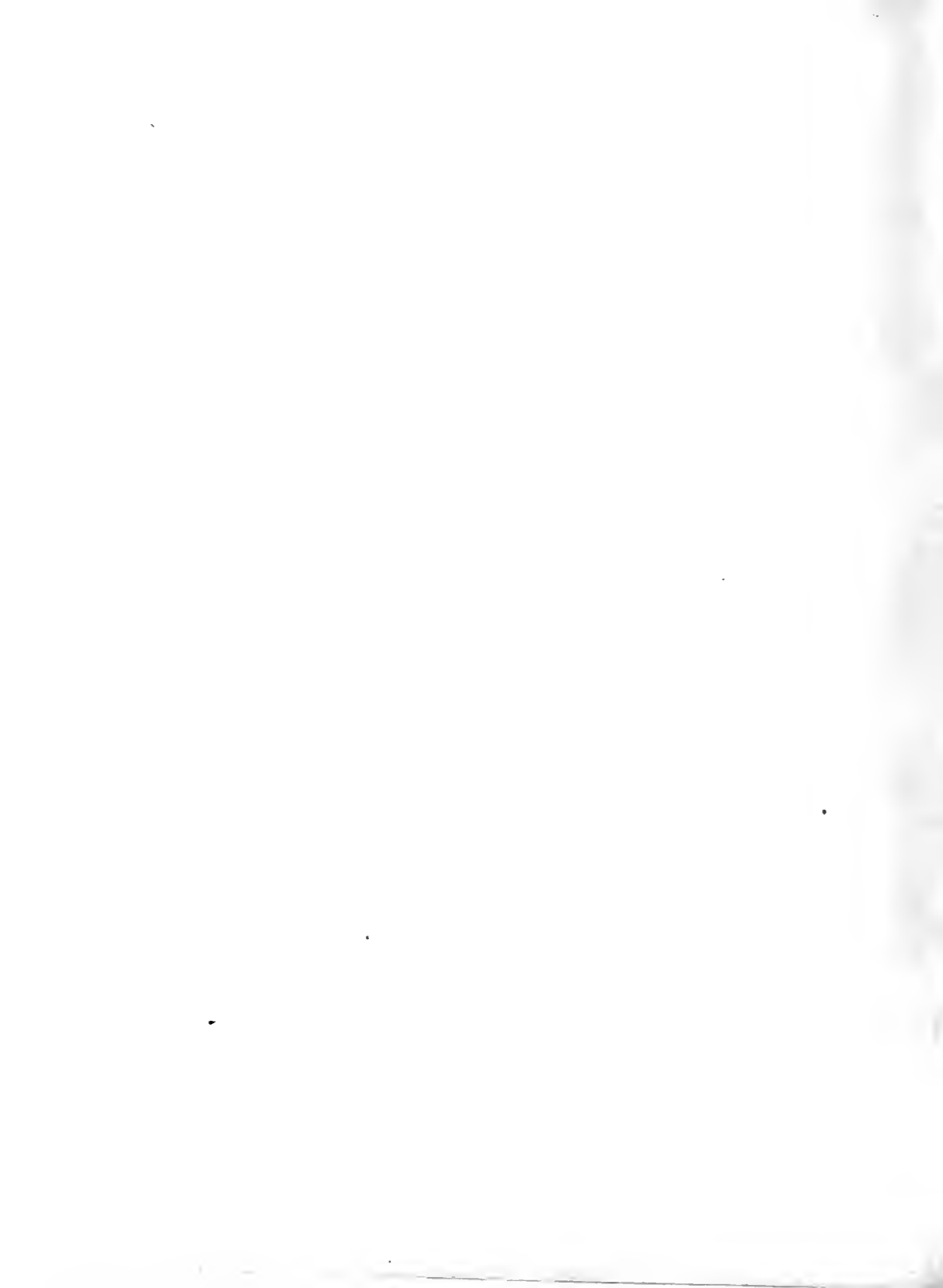


ROBINSON, '21



MCCRAW

\*Pledged.



# RIGHTS AND INRIGHTS



## Delta Sigma Delta

### MEMBERS

HELEN HUNT  
FRANCES RIDENHOUR  
LELIA GRAHAM MARSH  
MARY RAPER  
NANCY LEE PATTERSON  
OLIVE WOOD

SARAH WATT  
LOUISE BOSWELL  
DOROTHY GREGORY  
ELSIE GREGORY  
GAITHER PEARSON  
GLADYS GEORGE

### HONORARY MEMBER

MISS WATSON KASEY

## Cotillion Club

ELEANOR GATES, *First Leader*

DOLLY HYMAN, *Second Leader*

MARGARET NEWLAND, *Third Leader*

### MEMBERS

EVELYN ALLEN	MARY LANCASTER
ELIZABETH BYNUM	MARTHA MUNGER
LILLIAN BLUE	LELIA GRAHAM MARSH
LOUISE BOSWELL	NANNIE McCRAW
HETTIE BETHEA	NANCY LEE PATTERSON
MARGARET BRAWLEY	IRENE PIERSON
RUTH COX	MARY POLLARD
MARY HADLEY CONNOR	FRANCES ROBERTSON
DORIS COZART	ALICE ROBINSON
MARY HUNTER DEANS	FRANCES RIDENHOUR
MARJORIE DAVIS	KATHRYN RENALDS
MARY ENTWISTLE	ROSA SNOWDEN
LUCY ESTES	MARY SUMNER
LALLAH ROOKH FLEMING	GLADYS SHERRILL
DOROTHY GREGORY	PRISCILLA STRETT
ELSIE GREGORY	HELEN STRETT
ELEANOR GATES	LOIS SPOTTS
MARION HINES	MILDRED STARK
HELEN HUNT	ALIMAE TEMPLE
DOROTHY HARRIS	MARGARET M. THOMPSON
NITA HIGSMITH	KATHARINE WATSON
DOLLY HYMAN	SARAH WATT
CHARLTON JOHN	MATTIE WEATHERLY
JULIA BRYAN JONES	PANSY WUMRISH
HELEN LONG	OLIVE WOOD



Cotillion Club

OUP

Red Days



White Days



Blue Days



## SIGHTS AND INSIGHTS

September 19. First Chapel Service.  
September 28. "Get-Together" Meeting.  
October 3. Contract for SIGHTS AND INSIGHTS signed.  
November 3. Main Building entertained the Seniors and Faculty.  
November 5. Olive Thomas entertained the Seniors.  
December 1. The Basket-Ball Games—Seniors victorious.  
December 17. Rings arrived.  
December 20. We go away for the holidays.  
February 23. Senior-Sophomore Banquet.  
February 25. Arrival of "Aggie."  
March 5. "Aggie" runs off the burglar.  
March 20. George, Bob, and Arphew arrive.  
April 1. "A pebble on the Beach."  
April 7. Part of Annex visit Eller.  
April 23. Junior-Senior Camouflage Reception.

September 17. Seniors arrived.  
October 13. Arrival of caps and gowns.  
October 25. Hat Burning.  
November 1. Rings ordered.  
February 22. Dr. and Mrs. Rondthaler entertain Seniors.  
April 23. George and Bob come again.  
April 29. Dr. and Mrs. Rondthaler take Seniors on a picnic.  
May 1. Ivy planting.  
May 6. Carmel's picnic.

October 23. Hat Burning was to have been.  
November 29. Thanksgiving Day—Rain.  
January 15. Returned from holidays.  
January 28. Examinations begin.  
April 18. ?  
April 25. Death of "Aggie."

## Greeting Song

Freshmen, O missy Freshmen,  
You're our prize young Freshman Class.  
Freshmen, O missy Freshmen,  
We admire every pretty lass.  
Freshmen, O missy Freshmen,  
Keep your scutcheon clear and bright,  
Playing, but always paying,  
O missy Freshman, Freshman Class

Sophomores, O sister Sophomores,  
You're our sweetest college class.  
Sophomores, O sister Sophomores,  
We love your fun, your pep, your dash.  
Sophomores, O sister Sophomores,  
In you we take our greatest pride,  
Smiling in ways beguiling,  
O little Sophomore, Sophomore Class.

Juniors, O tune-ful Juniors,  
You're our gayest college class.  
Juniors, O tune-ful Juniors,  
We have to hand you one at last.  
Juniors, O tune-ful Juniors,  
Salem's daughters fair ye be,  
Dancing in ways entrancing,  
O mighty Junior, Junior Class.

Salem, O our own Salem,  
You're our college, college dear.  
Salem, O our own Salem,  
We love you more each passing year.  
Salem, O our own Salem,  
Let your light shine ever bright,  
Changing in ways amazing,  
Every phantasm of night.

## Marching Song

Honored in song and story,  
Fairest of queens to thee,  
Higher, far higher glory,  
And nobler praise shall be.  
Thine be the cheerful chorus  
Which rises through the sky,  
Ringing while still before us  
The conquered foeman flies,  
Hurrah!

### CHORUS:

Then be the honor ever  
To Salem dear, alone.  
She reigns supreme, and never  
Shall leave her ancient throne.

Clearer, as seasons vanish,  
Glitters her spotless fame;  
Years pass and never vanish  
The memory of her name,  
And as of old we've crowned her  
With wreaths of woven bay,  
Cast we once more around her  
The laurels won to-day,  
Hurrah!—Cho.

## Bells

Nigger, nigger, hoe potato,  
Half-past alligator!  
Ram, Bam, Bulligator!  
Sis, Boom, Bah!  
Seniors—Seniors!  
Rah! Rah! Rah!

S-S-Sen-n-nior!  
Senior! Senior!  
Rah! Rah! Rah!

1918, purple and white,  
1918, we're all right,  
1918, sure we are,  
1918, Rah! Rah! Rah!

Hit 'em high, hit 'em low,  
Seniors, Seniors, let's go!

Well-er who are, well-er who are,  
Well-er who are, who are they?  
Well-er they are, well-er they are,  
Well-er they are, they are the  
S-E-N-I-O-R-S,  
Seniors!



## Alma Mater

In the midst of rolling woodlands,  
'Neath fair skies of blue,  
Stands our noble Alma Mater,  
Glorious to view.

### CHORUS:

Lift the chorus, speed it onward  
Over vale and hill.  
Hail to thee, our Alma Mater,  
Hail, all hail, to thee.

Let the chorus swell its anthem,  
Far and loud and long;  
Salem College and her glory  
Ever be our song.—CHO.

Though from her our paths may sever,  
And we distant roam,  
Still abides the memory ever  
Of our college home.—CHO.

## The Purple and White

Although Salem's sometimes favored  
The rose's crimson hue—  
And the daughters of the Southland  
To the purple and white are true—  
We will own the violet modest,  
Its honor shall be bright,  
And our class shall be defender  
Of the purple and the white.

Through the four long years of college,  
'Mid scenes we know so well,  
As the mystic stream of knowledge  
We vainly seek to spell;  
Or we win athletic victories  
In basket-ball, all right,  
Still we'll work for dear old Salem  
And the purple and the white.

## 1918's Class Song

'18's shouts are ringing;  
To Salem tribute bringing.  
As the days go swiftly by  
Love stronger grows.  
In hearts a warm spot's burning  
Toward this school of learning,  
Though our steps may drift apart  
We are one—always.

'18's girls are *loyal*;  
'18's girls are faithful,  
Though our number may be small  
Our hearts ring true—  
There's a great love beating  
To Alma Mater greeting.  
We'll raise our voices to the sky  
With a glad hurrah!

## Senior's Farewell Song

Campus, so dear, thy hills and fairy dells;  
Campus, so dear, we bid thee fond farewell,  
Good-bye, good-bye, we can not linger now.

Steps, steps, so dear, our last game we  
have played;  
Steps, steps, so dear, our colors on thee  
laid,  
Good-bye, good-bye, we can not linger now.

## Salem College Song

Salem College, thee we cherish,  
Sing thy praises loud and long.  
Still defend thee, still protect thee,  
Ever raise the victory song.

### CHORUS:

Ring the bell on old main building,  
Let the choral anthem rise.  
Hail to Salem, hail to Salem,  
Shout her glory to the skies.



SALEM STAND-BYS

1916

## Commencement Program

MAY, 1918

May 23-25—Graduating Recitals.

May 26—Sunday—Baccalaureate Sermon.  
Senior Vespers.

May 27—Monday—Alumnæ Meeting.  
Class Day Exercises.  
Grand Concert.

May 28—Tuesday—Graduating Exercises Class of  
1918.

# ADS AND JOKEYS



## Jokes

K. R. was dressing after going in the swimming-pool. She saw a box of pink powder and a chamois on a near-by shelf, and after using all that she needed to beautify her complexion she said, "I don't know whose powder this is, but I've used it anyway."

"It's mine, but help yourself," said the negress that rents the suits.

Mr. H.: "Miss Connor, who was the next King of England after John I?"

Miss C. (hurriedly): "Mary Queen of Scots."

Miss Singer (in chapel, the second week of school, observing the Senior processional): "I wonder why they don't have more in the choir?"

Mr. H.: "Miss Stemile, tell us something about the character of King Ethelred."

M. S.: "Oh, well, he married a woman and it just changed everything."

C. R. (studying aloud): "'Dick' Wagner, 'Ludie' Beethoven, 'Charlie' Gounod, and 'Fred' Handel."

Mary E.: "What do you mean by speaking of them in that manner?"

C. R.: "Dean Shirley told me to get familiar with the great composers."

"What's going to keep me from kissin' you?"

"My goodness!"

Mr. H.: "Where is Ceylon, Miss Gates?"

E. G.: "Off the coast of Italy."

Can anybody tell Mary S. what state Michigan is in?

"How did you get home when your machine broke down?"

"A la carte."

Miss Barton: "Mary, can you tell me the difference between a chemical and a physical change?"

Mary: "Well, Miss Barton, wouldn't washing your face be one?"

Miss Barton (disgustedly): "Doubtless it would be for some of us."

"Gee! I always thought you were too lazy to run like this for a car."

"That's all right. Laziness runs in our family."

"May I call to-night?"

"Yes, on the telephone."

Evelyn Allen (pondering deeply): "If Sir Walter Scott was lame, how could he lay down his coat and step aside to allow Queen Elizabeth to walk upon it?"

"To be or not to be, that is the question."—Nita.

H.: "I thought that quotation was from Shakespeare and you said it was from 'Hamlet'."

"DEAREST MOTHER: They are persecuting me here at camp, and all because of my size. It is not my fault that I am small enough to sleep on my watch."

"Fine floor isn't it?"

"How do you know? You've been on my feet all along."

Mr. H. (to Miss Sumner on pedagogy): "What are you doing?"

"Thinking," replied Miss Sumner.

"Don't think so loud," replied Mr. Heath.

Miss Staley: "Ruth, what is that mark of punctuation at the end of that sentence?"

Ruth: "An explanation point."

Miss Ordway (to the Freshmen): "Girls, be sure to use both doors when you come in in the morning."

"Pa, what do five boys and six girls make?"

"Noise, son, noise."

Mr. Heath (in history class): "Now, Miss Stark, will you please tell me when America was discovered?"

M. S.: "1472."

Teacher (to Freshman): "Why don't you take notes in my course?"

Freshman: "My mother took the same course and I have her notes."

# *Salem Academy and College*

---

Not bounded by the traditions of a century, but taught by  
a hundred years' experience.

*SALEM ACADEMY AND COLLEGE*

A truly democratic school whose method of life recognizes  
no distinction founded upon wealth.

*SALEM ACADEMY AND COLLEGE*

The woman useful as well as the woman accomplished.

*SALEM ACADEMY AND COLLEGE*

Twenty-four hours of teachers' care and responsibility out  
of each day.

*SALEM ACADEMY AND COLLEGE*

A gentle woman, not the hoyden imitation of a man.

*SALEM ACADEMY AND COLLEGE*

My grandmother's school, my mother's school, and the  
school for my daughter.

*SALEM ACADEMY AND COLLEGE*

A thousand feet above sea-level, near the mountains, free  
from the rigors of the North and the enervation of the  
far South.

*SALEM ACADEMY AND COLLEGE*

It means something to have educated 1,300 Southern women.

*SALEM ACADEMY AND COLLEGE*

Not to know Salem argues you a newcomer into the South.

*SALEM ACADEMY AND COLLEGE*

That our daughters may be as corner-stones hewn after the  
fashion of a palace.

*SALEM ACADEMY AND COLLEGE*

Not too old to learn, not so young as to lack experience.

*SALEM ACADEMY AND COLLEGE*

---

# *Salem Academy and College*



*Winston-Salem's  
Newest Department Store*

# ANCHOR STORES CO.

WEST FOURTH STREET

EVERYTHING NEW AND UP-TO-DATE IN  
*Coat Suits, Coats, Dresses, Shirt Waists and  
Skirts, Silks, Woolen, Linen, and Cotton  
Piece Goods, Hosiery, Neckwear  
and Notions*

YOUR VISITS TO OUR STORE WILL BE PROFITABLE  
AND APPRECIATED

---

*We Aim to Serve the People Best  
We Sell for Cash and Save You Money*

---

STORES:

WINSTON-SALEM      HENDERSON      ROCKY MOUNT  
NORTH CAROLINA



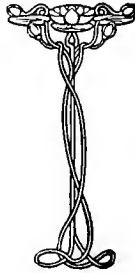
THE DRUG STORE  
WITH THE SERVICE

---

---

# WELFARE'S

*Within a Stone's Throw of the  
South's Best and Most Favor-  
ably Known Educational In-  
stitution for Women*



A COMPLETE DRUG STORE

**THE GIFT SHOP**  
Linckebach & Walker  
Jewelers & Optometrists



428 NORTH LIBERTY STREET

THE

*Home of Gift Goods of Quality*

We cordially invite you in to inspect our wares  
and compare quality and prices

*The Eyes of a College Student*

are more or less affected with eyestrain. A thorough exam-  
ination for eyestrain awaits you, and your condition stated.

Glasses fitted when indicated.

**R. N. WALKER**  
**OPTOMETRIST**  
**EYE STRAIN SPECIALIST**



Honorary Life Member of Scientific Section of  
American Optical Association



*"Music is a moral law. It gives soul to the Universe, wings to the mind, flight to the imagination, a charm of sadness, gaiety and life to everything."* —PLATO.

## THE VOSE FIVE-FOOT GRAND

Fulfills the highest ideals of the musician, and adds a distinctive culture to the home it adorns.

*\$600.00*

Divided into payments if you wish.

## The Bowen Piano Co.

PHONE 346

ONE PRICE TO ALL

WINSTON-SALEM, N. C.

---

## Hopkins-Landquist Co.

DRUGGISTS



*Ice Cream*  
*"The Velvet Kind"*

*Stationery*  
*Toilet Articles*

COME IN OFTEN

WINSTON-SALEM

NORTH CAROLINA

415  
TRADE STREET

# KANN'S

WINSTON-SALEM  
N. C.

"A FIFTH AVENUE SHOP AT YOUR DOOR"

Truly a "Fashion Shop" Featuring the Entire Year  
The Smartest Fifth Avenue Styles

*Special Attention Given College Girls*

## Coat Suits, Coats, Dresses, Blouses, Etc.

The Better Kind in Exclusive Models—Marks of Distinction Not  
To Be Found in the Ordinary Garments

### Parisian Millinery      French Gowns

ALWAYS THE VERY LATEST CREATIONS

Our manager, Mr. N. C. Overstreet, has the interests of the College Girls at heart,  
and he stands ready and willing to render any service possible.

*The Quality Furniture Store*

## Huntley-Hill-Stockton Co.

FIFTH AND TRADE STS.

Let your personality  
and sense of refine-  
ment be expressed in  
your surroundings—  
whether they be in the  
home or in the busi-  
ness world.

*Furniture  
Office Equipment  
Talking Machines*

*Jontel Face Cream  
Jontel Talcum Powder  
Jontel Face Powder  
Jontel Extracts*



FOUR WONDER FACE ARTICLES  
FOR THE TOILET—SOLD ONLY IN  
WINSTON-SALEM AT

## O'Hanlon's

THE SOUTH'S GREATEST DRUG STORE

# Camel Cigarettes



Leave no unpleasant  
cigaretty after-taste!

win smokers because the *blend* of choice Turkish and choice Domestic tobacco is so refreshing. They appreciate Camel's freedom from tongue-bite, throat-parch and any unpleasant cigaretty after-taste! In fact, quality is so apparent smokers do not look for or expect coupons or premiums.

Quick as you compare Camels with *any* cigarette at *any* price, you'll realize their superior flavor and mellowness!

R. J. REYNOLDS TOBACCO CO., Winston-Salem, N. C

# 30,500 DEPOSITORS

WHY? Efficiency  
Courtesy  
Service

RESOURCES \$17,000,000

*The Leading Bank in North Carolina*

CAPITAL \$1,250,000

## Wachovia Bank & Trust Co.

HOME OFFICE: WINSTON-SALEM, N. C.

ASHEVILLE

SALISBURY

HIGH POINT



### *For the Sweet Girl* **GRADUATE**

We are showing an assortment of the very latest authentic styles in "PUMPS" suitable and appropriate for the Graduating Frock.

#### *Our Spring and Summer Oxford Ties*

have been the admiration of all who have seen them. We are showing a wide and varied assortment of the most desired styles in both black and colored Oxfords for dress or street wear.

*Quality considered, Prices are Most Moderate*

## DOBSON - SILLS

*"Every Inch a Shoe Store"*

S. E. SHUPING, MANAGER

PHONE 1311

# CRYSTAL ICE COMPANY

*Coke  
and  
Coal*



*Cement  
Crushed Stone  
and  
Terra Cotta  
Pipe*

FLOWERS OF GUARANTEED FRESHNESS

## WESTBROOK'S

*The College Girl's Drug and Floral Shop*

### CUT FLOWERS

FOR ALL OCCASIONS

Corsages, Design Work, Decorations our Specialty. Orders Telegraphed to all parts of the United States

Exclusive Agents: Velatis Caramels (made in Washington)  
Mary Elizabeth Chocolates  
Wiley's Candies

Drink at our store 'neath the Palms. Everything served at Fountain is the best. Our *ICE CREAM* is of the Highest Quality, *The Velvet Kind* made in Richmond

WESTBROOK DRUG AND FLORAL CO.

PHONES 842 AND 843

432 LIBERTY STREET

HEADQUARTERS

*Martha Washington and  
Nunnally's Candies  
Fine Perfumes*

OWEN DRUG CO.  
THE REAL DRUGGISTS

*Let Us Do Your Work*

We Always Give Satisfaction

*The Latest News*  
At the Earliest Date

JOURNAL PUBLISHING  
COMPANY

# OGGONEECHEE FARM

DURHAM, N. C.

HOME OF THE BEST

PURE-BRED REGISTERED

**Berkshire**  
and  
**Tamworth Swine**

IN SEASON

Day-Old Chicks, Eggs for Hatching

Pigs 8 to 10 weeks old sold on the installment plan. Write for particulars.

ADDRESS

OGGONEECHEE FARM, Durham, N. C.

## Belk-Stevens Co.

DEPARTMENT  
STORE

One of the Sixteen Belk Stores  
that sell it for less

Queen Quality Shoes  
Gordon Hosiery  
Ladies' Ready-to-Wear  
and  
Millinery

Carolina's Largest Distributors of  
Reliable Merchandise

On the Square, West of Court House

## Walk-Over Boot Shop

HEADQUARTERS

For that which is best and most stylish in

Footwear



We appreciate the College Girls'  
Trade

Shoes for Everybody

West Fourth Street

WM. WRIGHT, JR., Manager



# Barber Photo Supply Co.

W. W. STROUD, Manager

*Commercial Photographs  
and Photograph Supplies*

KODAK FINISHING

PHONE 235

108 WEST FIFTH STREET

---

“Forsyth Line—Nothing Better”

Manufacturers of All Kinds of Medium  
and Better Grade

*Chairs and Rockers*

When buying insist on seeing the FORSYTH LINE,  
*Blue Label* under the seat

**FORSYTH CHAIR CO.**

WINSTON-SALEM, N. C.

---

**PILOT THEATRE**

Picture Show

A TREAT FOR YOUR MONEY

*Show Paramount Pictures*

# ORINOCO SUPPLY CO.

Building Materials

OF ALL KINDS

*Mantels*

*Grates*

*Tiling*

WINSTON-SALEM, N. C.

---

## FARRELL



*Artistic Photography*

PHONE 1016

OPPOSITE ZINZENDORF

WINSTON-SALEM, N. C.

---

*A treat in store,  
Many often go,  
U can't afford to miss it—  
Zero, ice or snow.  
Utilize spare time at*

**The Amuzu Picture Show**

THE PLACE YOU KNOW FOR GOOD, CLEAN, SOLID AMUSEMENT

WEST FOURTH STREET

THE STORE OF  
*Twenty-Five Departments*  
Catering to Women and Growing Girls. Exclusive Styles  
shown the year round

MYERS BROS. & CO.

---

# The Motor Co.

DISTRIBUTORS OF  
*High-Grade Automobiles*  
*and Accessories*



WINSTON-SALEM, NORTH CAROLINA

---

PHONE 380

PHONE 380

**THE IDEAL**  
WINSTON-SALEM'S BEST STORE FOR  
*Everything to Wear*  
FOR WOMEN, MISSES AND CHILDREN  
EXCEPT SHOES

It isn't the Price Alone that makes our store so popular—the Quality and Style are things also, and the combination is just what you want.

**Southern Photo Studio**

524 LIBERTY STREET

**Post Cards**

Pictures made and finished in  
thirty minutes

50 CENTS FOR SIX

**J. G. SHELTON, Mgr.**

**Gilmer Bros. Co.**

MILL AGENTS

**Cotton Piece Goods**

**Hosiery, Etc.**

WINSTON-SALEM

NORTH CAROLINA

**L. B. BRICKENSTEIN**

**Plumber. Tinner**

AND

**Cornice Worker**

LIBERTY STREET

WINSTON-SALEM, NORTH CAROLINA

**D. J. Craven Co.**

17 HOURS FROM  
BROADWAY

**Ladies' and Misses'  
Ready-to-Wear  
Cash Store**

WINSTON-SALEM

NORTH CAROLINA

**Salem Iron Works**

WINSTON-SALEM, N. C.

MANUFACTURERS OF

**Hustler Saw Mills**

AND

**Hustler Peanut Pickers**

**PHOENIX CAFE**

ON THE SQUARE

Ideal Surroundings, Courteous and Efficient  
Service. Reasonable Prices. The  
Serving of Banquets is  
our specialty

YOURS TO PLEASE

**PHOENIX CAFE**

T. E. DEMETRELIS & CO., Proprietors

Our Private Cold Storage System Is Your Guarantee

**Mrs. T. W. Hancock**

Dry Goods  
Dress Making  
Millinery

FOURTH AND ELM STREETS

VISIT OUR STORE OFTEN AND SEE THE  
MANY NEW THINGS IN

**Suits, Wraps, Blouses, Dresses,  
Footwear and Millinery**

WE CATER TO YOUR WANTS, LET US SERVE  
YOU OFTEN

**ROSENBACHER & BRO.**

TRADE STREET

**La France Shoes**

FOR LADIES

The Best in the World

**Wimbish & Walker**

**W. T. Vogler & Son**

Jewelers and  
Silversmiths

WINSTON-SALEM, NORTH CAROLINA

THE  
**WIN-SAL**  
LUNCH ROOM  
*Home of Good Eats*

120 W. FOURTH ST.      PHONE 1524

The Win-Sal is the place to go.  
Whether your purse is high or low  
To please you is our highest aim.  
And in this way we gain new fame.

*Gold Names*

STAMPED ON ANY KIND OF  
LEATHER GOODS AT

**Stewart Printing  
House**

215 WEST FOURTH STREET

**USE ELECTRICITY**

IT IS *Cleanest*  
*Quickest*  
*Best*



Arrange your home so you will be relieved  
of toil by its use



**Southern Public Utilities Company**

**The Misses Martin**

DEALERS EXCLUSIVELY IN

Ladies' Ready-to-Wear



*Dresses for College Girls*

A SPECIALTY

**Cromer Bro. & Co.**

*Wholesale  
Grocers*



225-230 SOUTH LIBERTY STREET



¶ This book is a fair sample of our work in printing, binding and caring for the engravings. ¶ Into all of our products, whether college publications or general commercial work, we put the infinite pains necessary to insure our patrons receiving the highest quality printing.

**J. P. BELL COMPANY, INCORPORATED**  
PRINTERS, DESIGNERS, ENGRAVERS  
LYNCHBURG, VIRGINIA

Shoes  
Hosiery  
Shoe Repairing  
Trunks  
Bags  
Foot Remedies



**HINE'S**

West Fourth Street  
WINSTON-SALEM, NORTH CAROLINA

**COME**

See for yourself. We offer  
the greatest values, all  
articles considered

**WILSON-GENTRY DRUG  
COMPANY**

*Prescription Druggists*

424 Trade Street  
Winston-Salem, North Carolina

WE APPRECIATE YOUR BUSINESS

**H. A. Nading**

WHOLESALE

*Dry Goods  
and  
Notions*



WINSTON-SALEM, N. C.

**Piedmont Produce Co.**

WHOLESALE

*Produce Commission  
Merchants*

Special Attention to Colleges, Hotels  
and Hospitals

J. E. BRITTON, Mgr. GREENSBORO, N. C.

Who did it?

We!

We set out with determi-  
nation and return with  
the "goods"—

Ad-ing, our specialty.

**ALLEN & GATES, HUNT, CASH**





The End





SALEM ACADEMY & COLLEGE



0 2960 0208402 2

378.756  
S5P

Ac.1710  
1918

This book must not be taken  
from the library.

