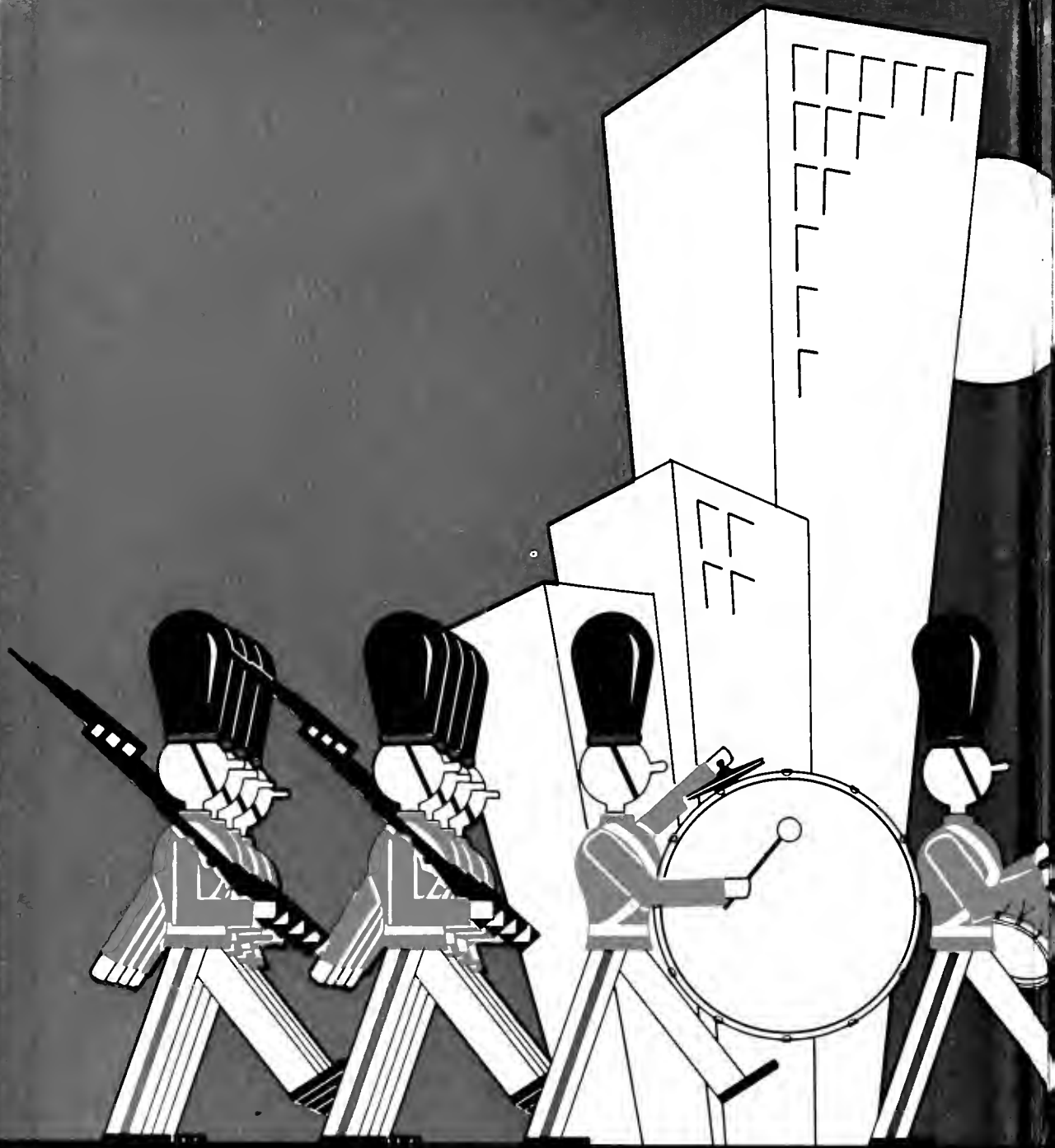
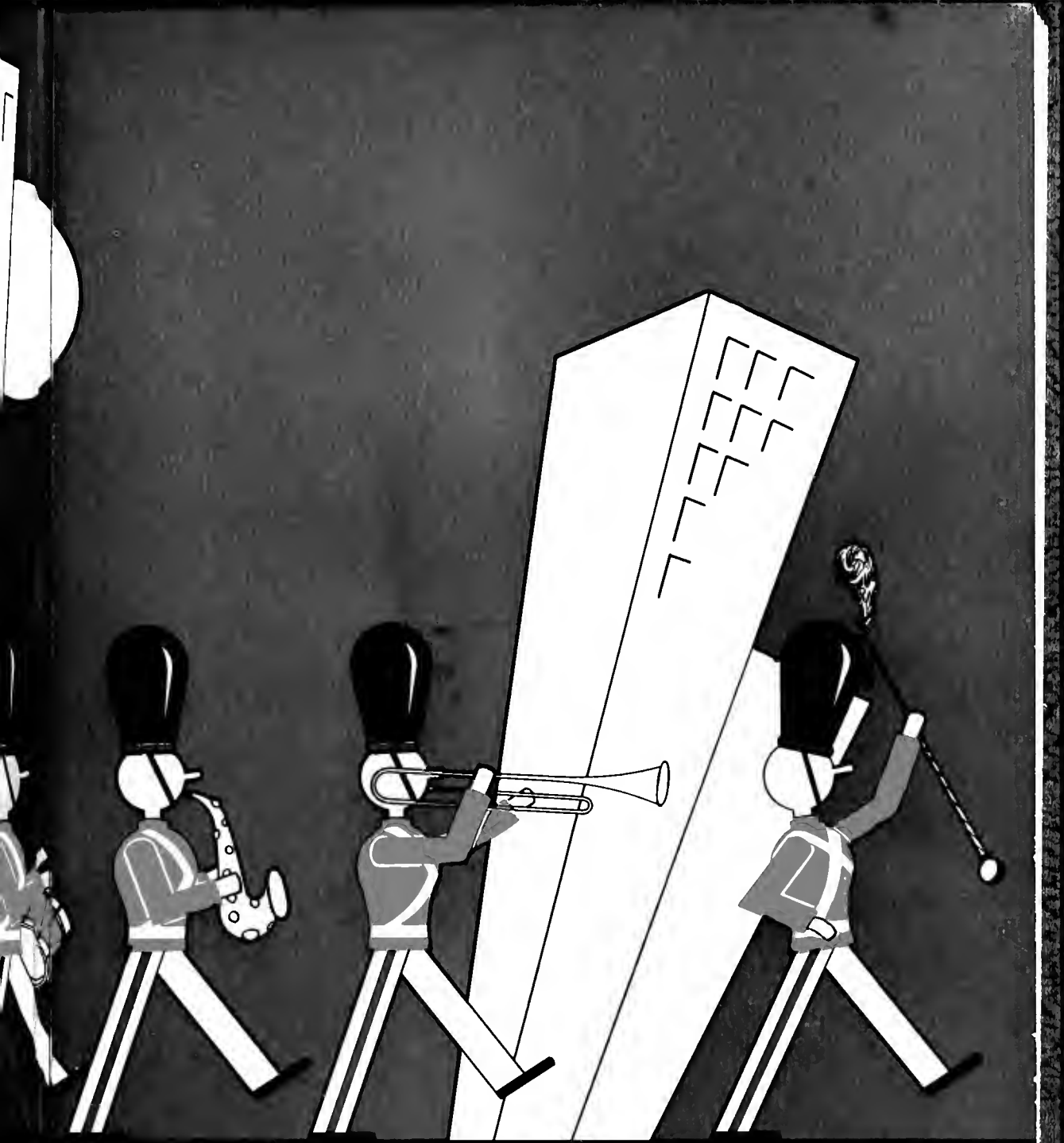




SIGHTS
AND
INSIGHTS
1931

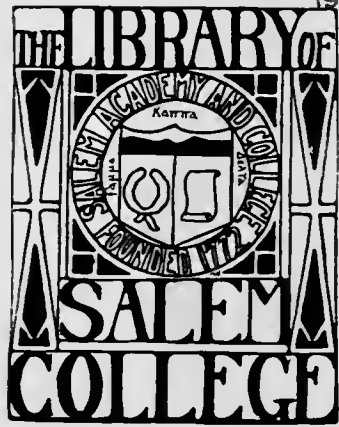


THE PARADE OF THE



THE WOODEN LIERS
SODS

378.756 55P
Cl. ~~376.8~~ Bk. ~~Sa 32-P~~
1931



Accession No. 10420



Gramley Library
Salem Academy and College
Winston-Salem, N.C. 27108

Sights
and
lost sights

INCORPORATED



COPYRIGHT 1931

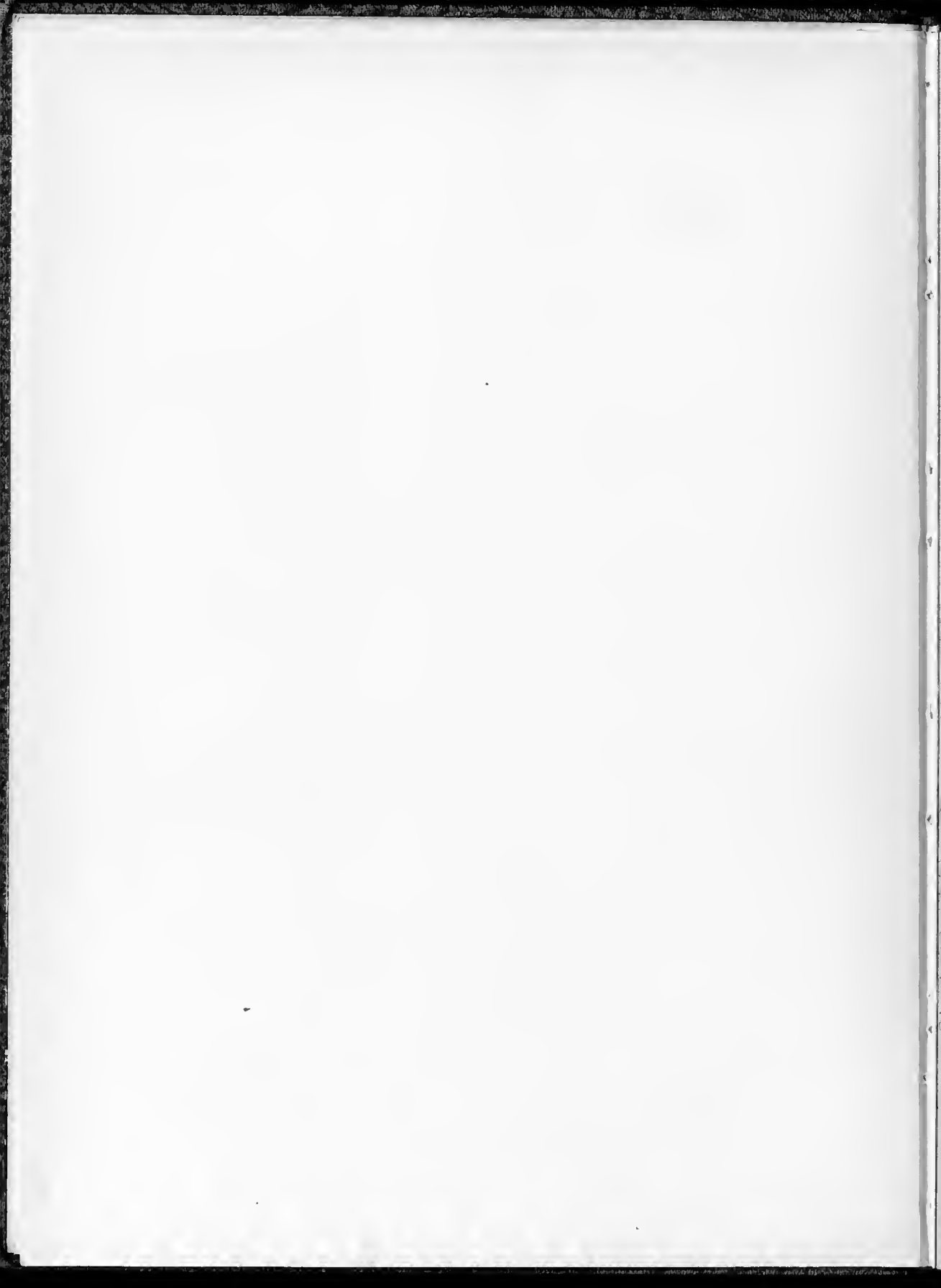


Sights
↑ and ↓
Insights

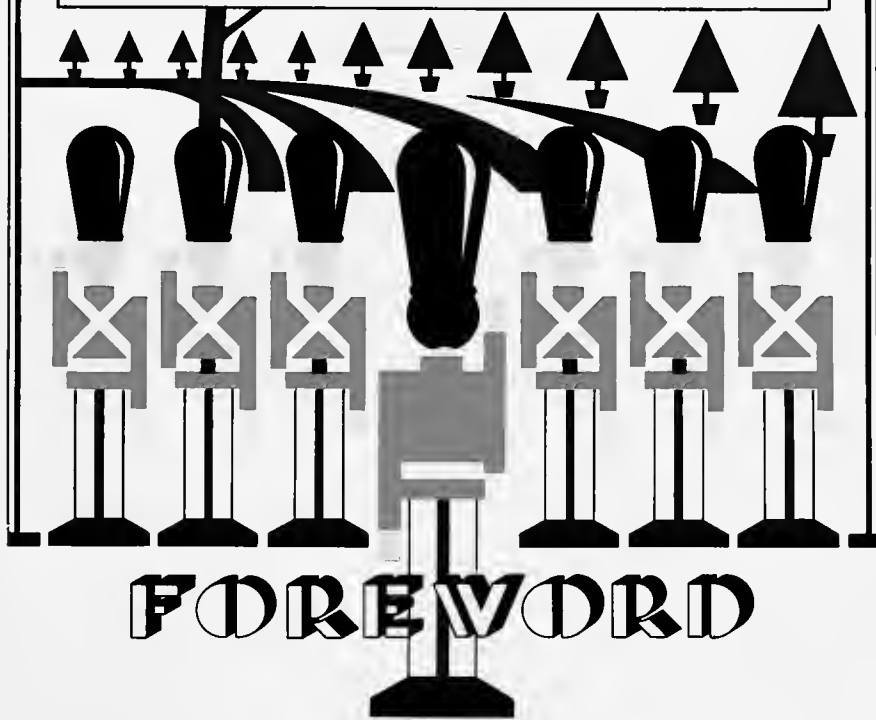


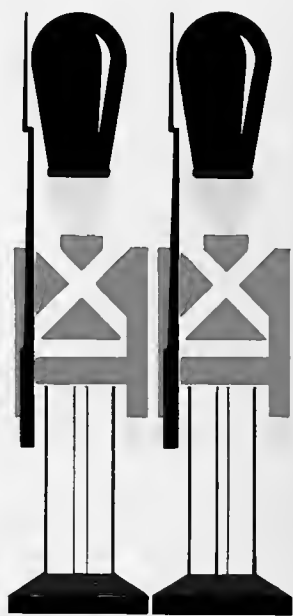
1931





Salem on her work days,
Salem on her play days,
Passes before you in dress parade,
May you salute her in a spirit of
praise, love and reverence.





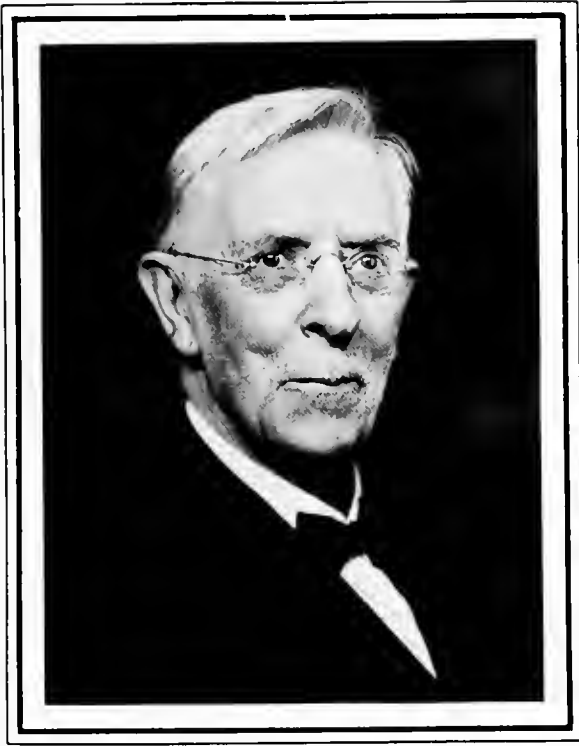
Dedication

Bishop Edward Rondthaler

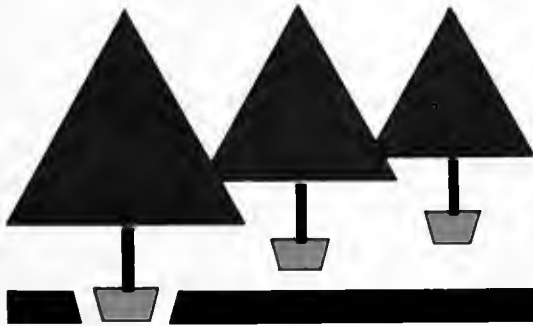
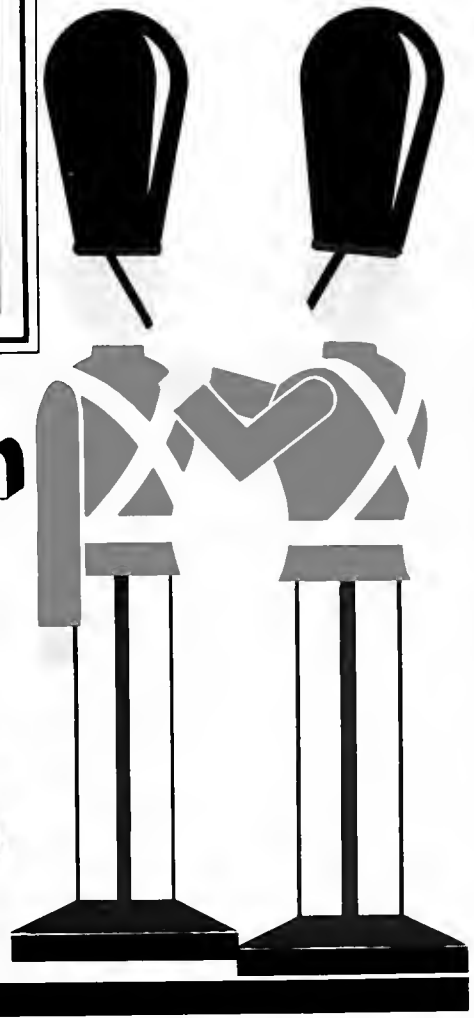
Born July 14, 1842

Died Jan. 31, 1931

To the memory of the dear Bishop, who, as a true Soldier of Life, ever marched forward inspiring us to seek higher and nobler ideals, we, the class of 1931, gratefully dedicate this volume of Sights and Insights.



Dedication



Book I The College

Campus

Organizations

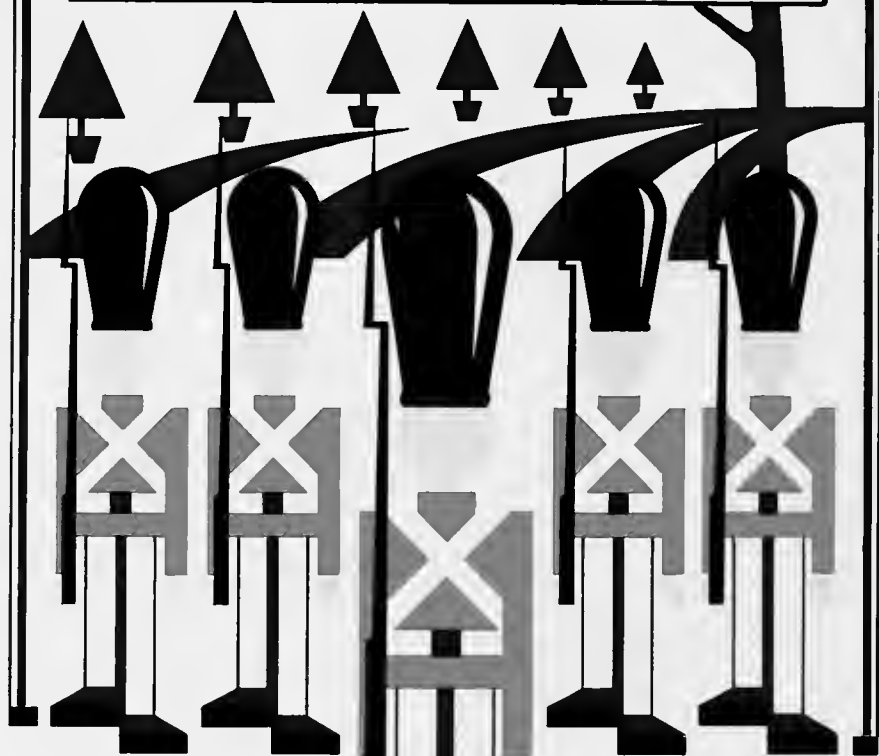
Faculty

Athletics

Classes

Statistics

Book II Jokes and Ads

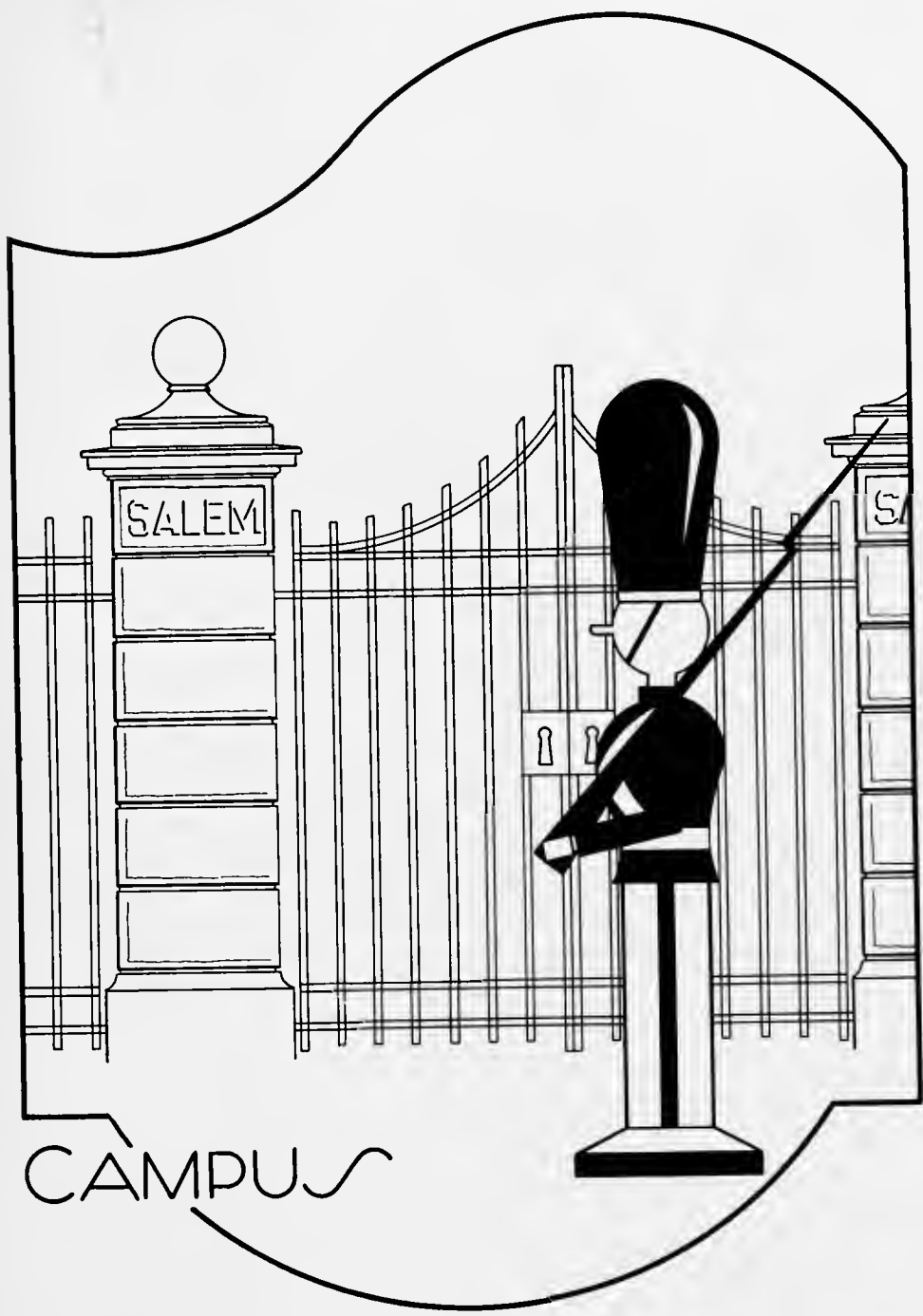


CONTENTS



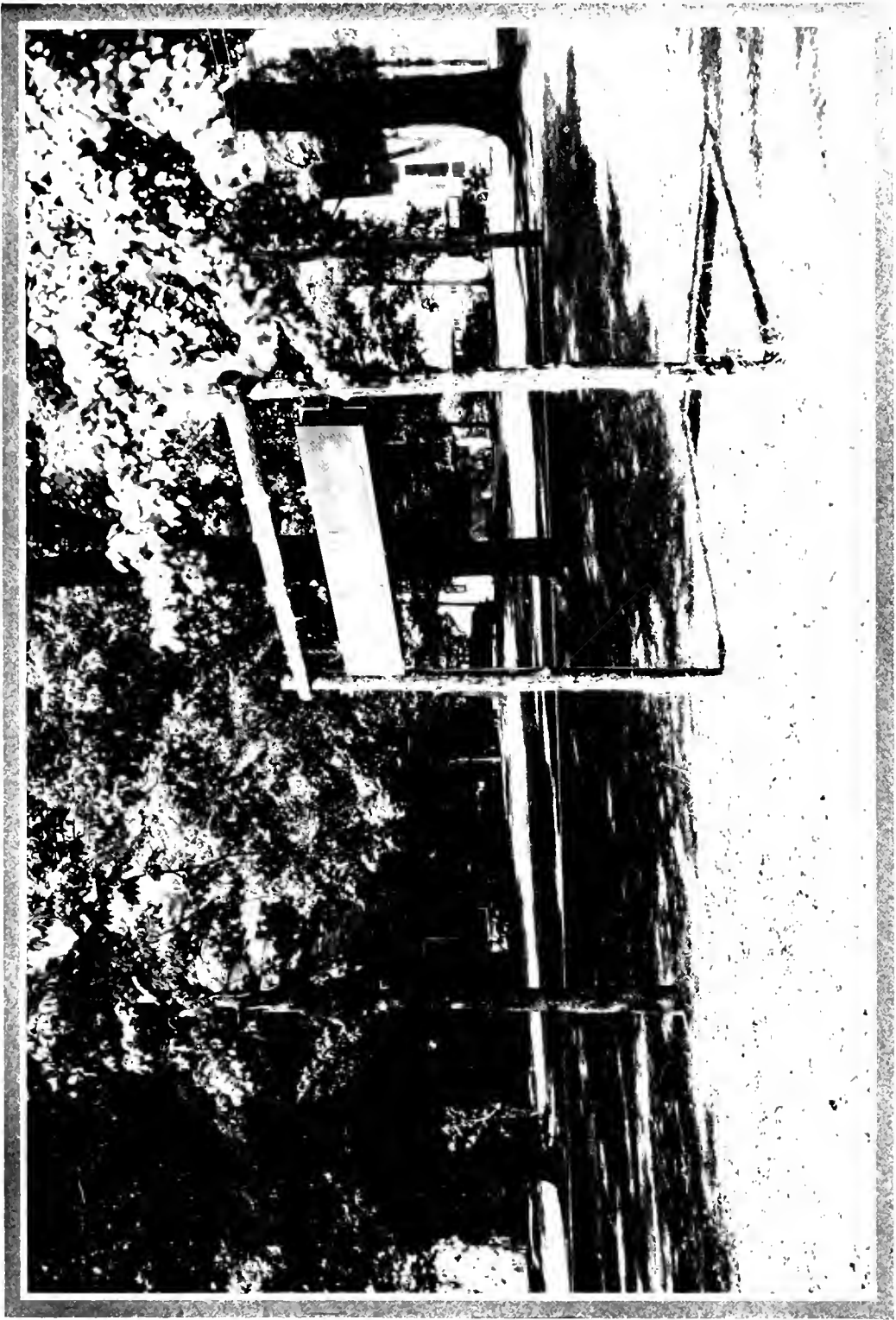
BOOK ONE





CAMPUS

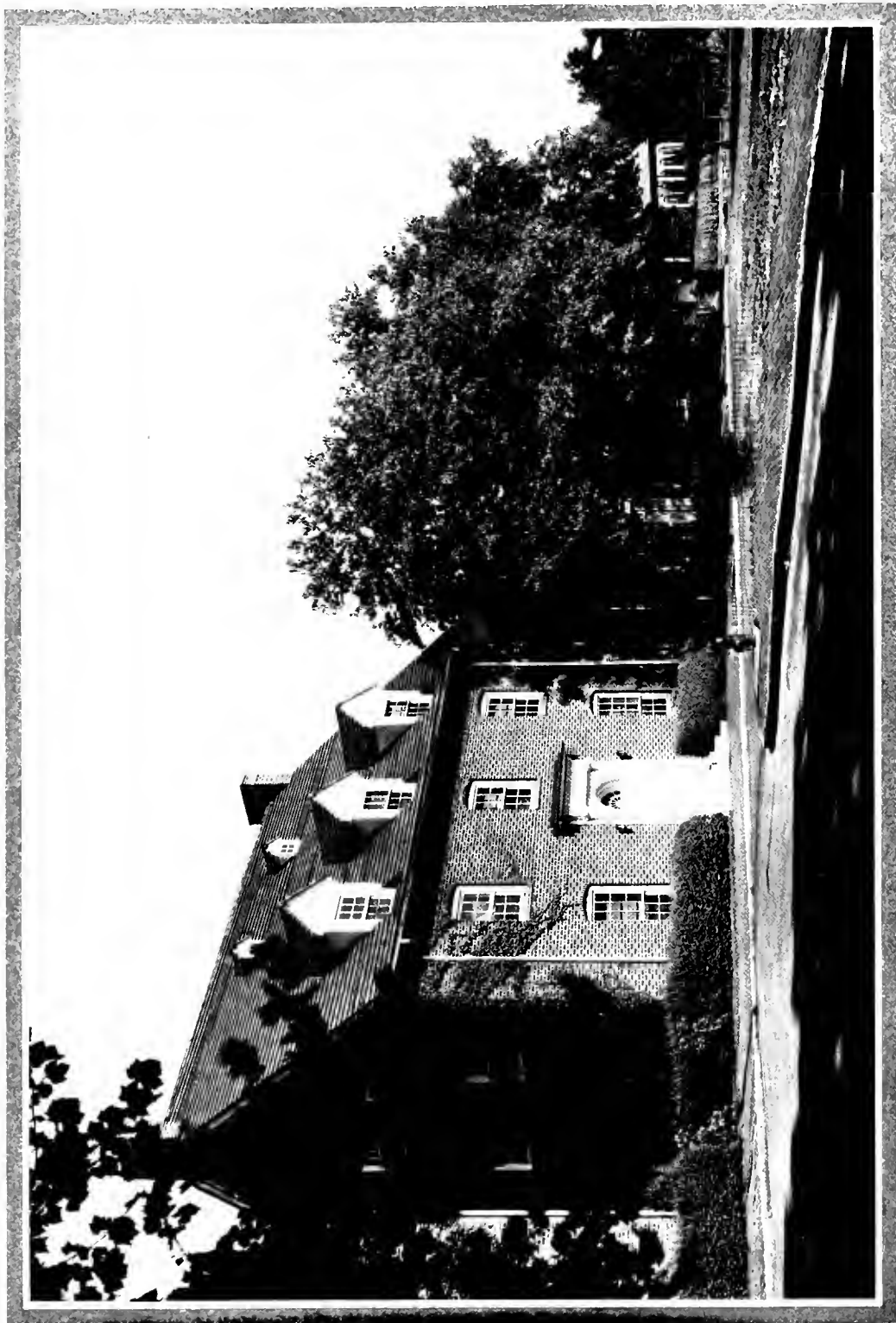




The College Sign



Front Campus Looking North



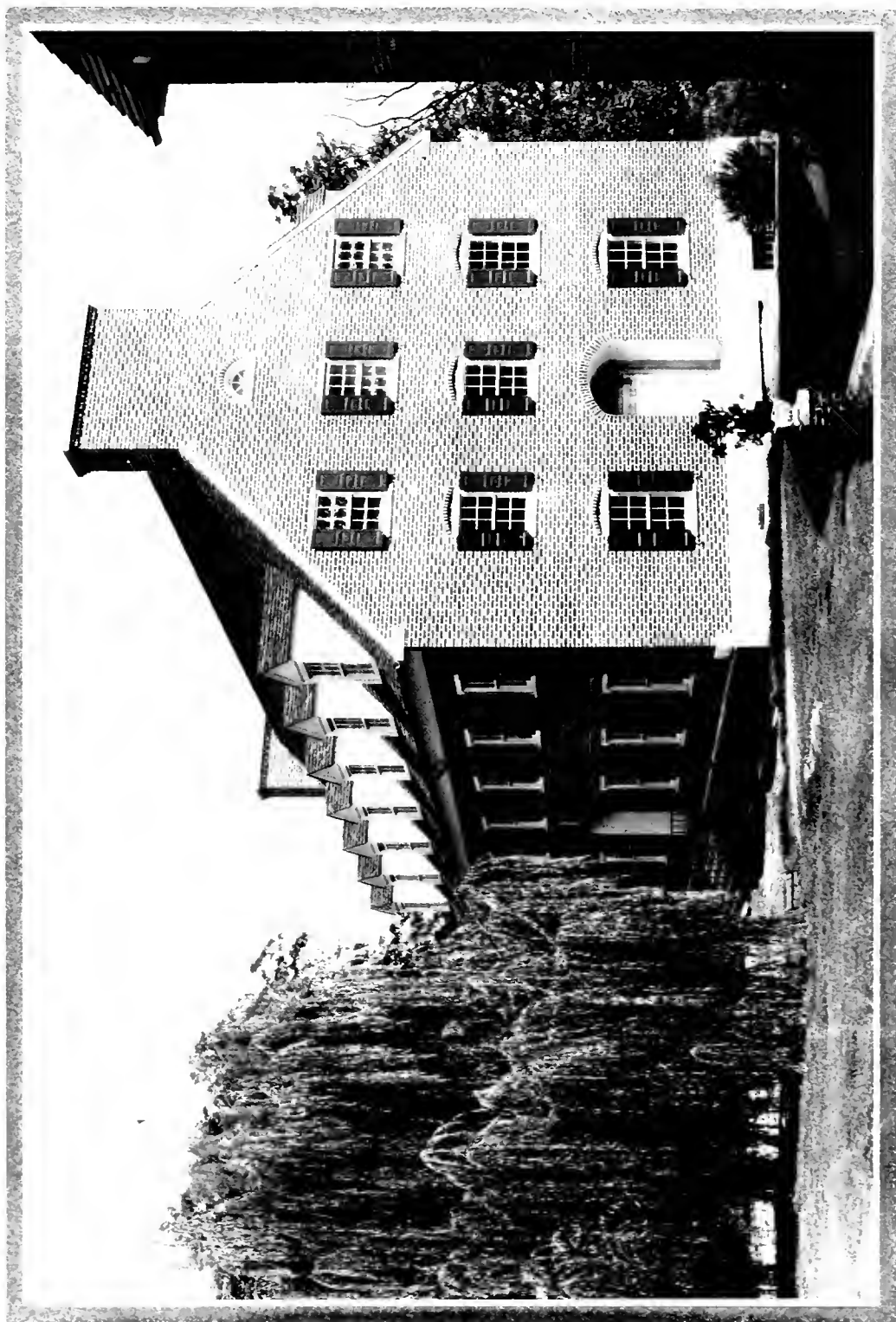
Front Campus Looking South



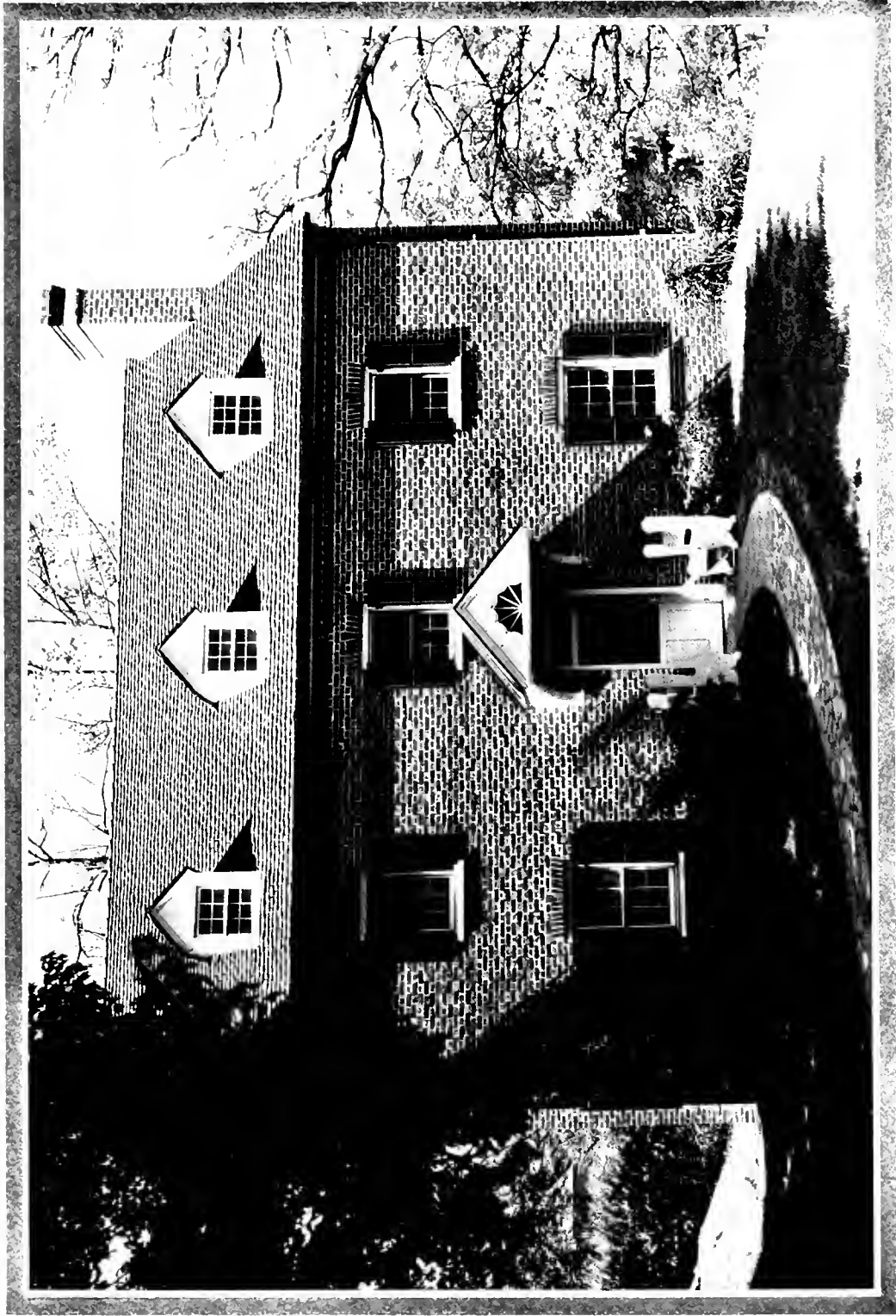
Path to Lower Campus



1930 Class Memorial Bridge



Louisa Wilson Biting Dormitory



Mary Fortune Hanes Practice House



Salem Academy Looking From Upper Campus



FACULTY



Sights and Insights



DR. HOWARD E. RONDTHALER

President

Ph.B., University of North Carolina; B.D., M.A., D.D., Moravian Theological Seminary.

N. C. College Conference; National Education Association; Elisha Mitchell Scientific Society; North Carolina Historical Society; Honorary Member American Guild of Organists.





Faculty



*BISHOP EDWARD RONDTHALER, D.D., LL.D.
Professor of Biblical Literature

FRANCIS C. ANSCOMBE, B.A., M.A., Ph.D., LL.B.
Head of Department of History
Professor of History and Philosophy

MINNIE ATKINSON, B.A.
Head of Department of Physical Education
Professor of Physical Education

OTELIA BARROW
Instructor in Business Subjects

MARIAN BLAIR, B.A., M.A.
Instructor in English

SUSAN BROWN, B.A., M.A.
Instructor in French

ROY J. CAMPBELL, B.A., C.P.H.
Professor of Biology

MARY FRANCES CASH
Instructor in Piano, Theory, Harmony, Counterpoint

*—Died January 31, 1931.





Faculty

EVABELLE S. COVINGTON, B.A., M.A.
Head of Department of Sociology and Economics
Professor of Sociology and Economics

ARLEE THEODORE CURLEE, B.A., M.A.
Head of Department of Mathematics
Professor of Mathematics

MARY KATHRYN EMMART, B.A.
Instructor in Science

ISABELLE FERGUSON, B.A., M.A.
Instructor in History

ELEANOR BRYNBURG FORMAN, B.S., M.A.
Associate Professor of Education and Psychology

HELEN HART FULLER, B.M.Ed.
Instructor in Public School Methods, Ear Training
History of Music, Appreciation of Music

DOROTHY FRAZIER GLENN, B.A.
Instructor in Spanish

MARGIE HASTINGS, B.A., M.A.
Instructor in Mathematics





Faculty

CHARLES H. HIGGINS, B.S., M.A.

*Head of Department of Science
Professor of Chemistry and Physics*

LAURIE JONES

Instructor in Piano

MARY V. JONES

Instructor in Organ

BESSIE CHAMBERS LEFTWICH, B.S., M.A.

*Head of Department of Household Arts
Professor of Home Economics*

AUDRY CLORE LEGRAND

Instructor in Voice

ELIZABETH LILLY, B.A.

Instructor in English

ELIZABETH O. MEINUNG, B.S.

Instructor in Home Economics

MARY DUNCAN McANALLY, B.S.

Instructor in Home Economics





Faculty

RALPH W. McDONALD, B.A., M.A.
*Head of Department of Education
 Professor of Education and Psychology*

LESSIE BROWN PHILLIPS, B.A.
Instructor in English and Latin

HAZEL HORTON READ
Instructor in Violin, Violoncello, Orchestra

KATHERINE J. RIGGAN, B.A.
Assistant to the Dean of Residence

ERNEST LESLIE SCHOFIELD
Instructor in Voice, Methods of Voice, Glee Club

ELEANOR C. SHAFFNER, B.A.
Instructor in Harp

GRACE SIEWERS, B.A.
Librarian

KATHERINE B. SMITH, B.A.
Instructor in English





Faculty

MINNIE J. SMITH, B.A., M.A.
Head of Department of Classical Languages
Professor of Latin and Greek

LULA MAE STIPE, B.A.
Dean of Residence

VIOLA TUCKER
Instructor in Piano

CHARLES G. VARDELL, JR., B.A.
Dean of School of Music
Professor of Piano, Organ, Composition, Methods in Piano Teaching

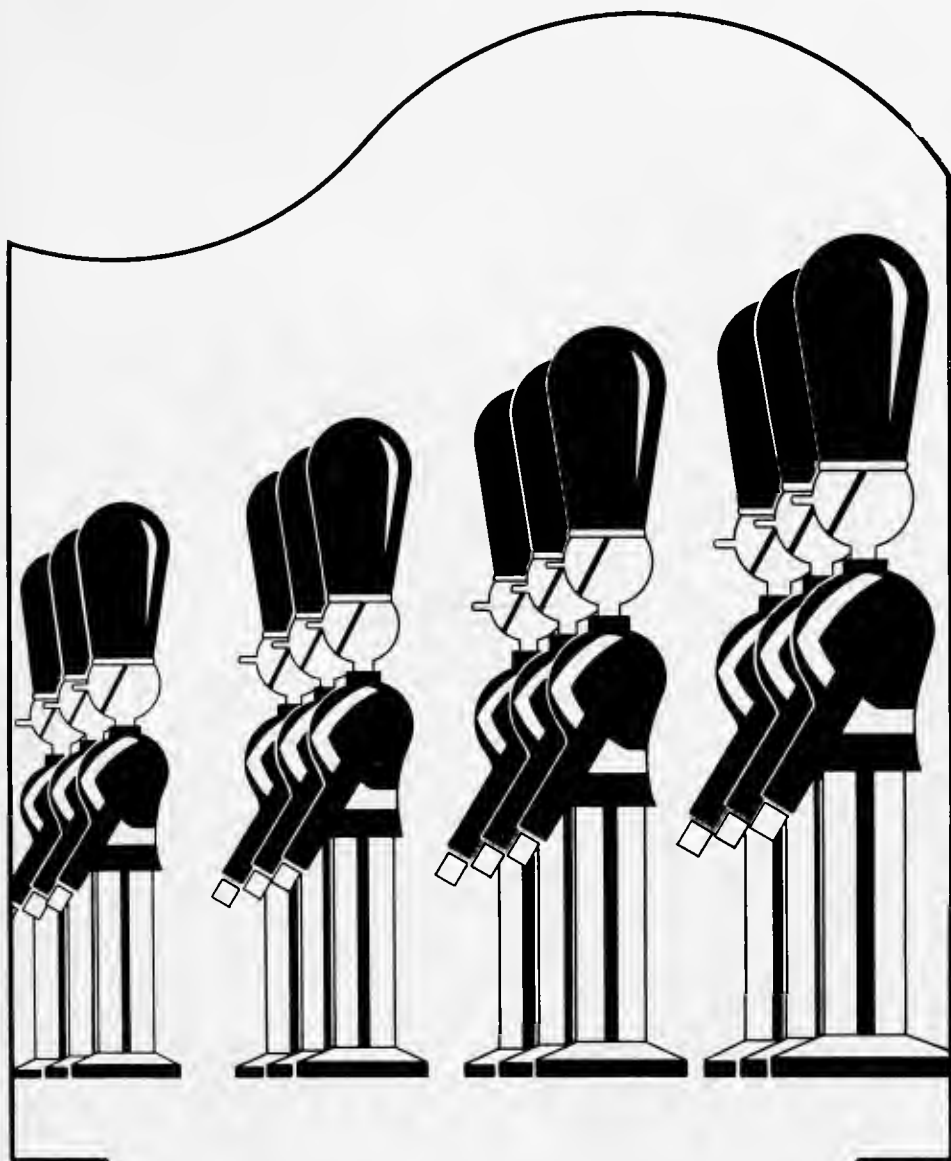
ELOISE VAUGHN, B.A.
Instructor in German and French

LUCY L. WENHOLD, B.A., Ph.D.
Head of Department of Modern Languages
Professor of Modern Languages

PEARL V. WILLOUGHBY, B.A., M.A., Ph.D.
Head of Department of English
Professor of English

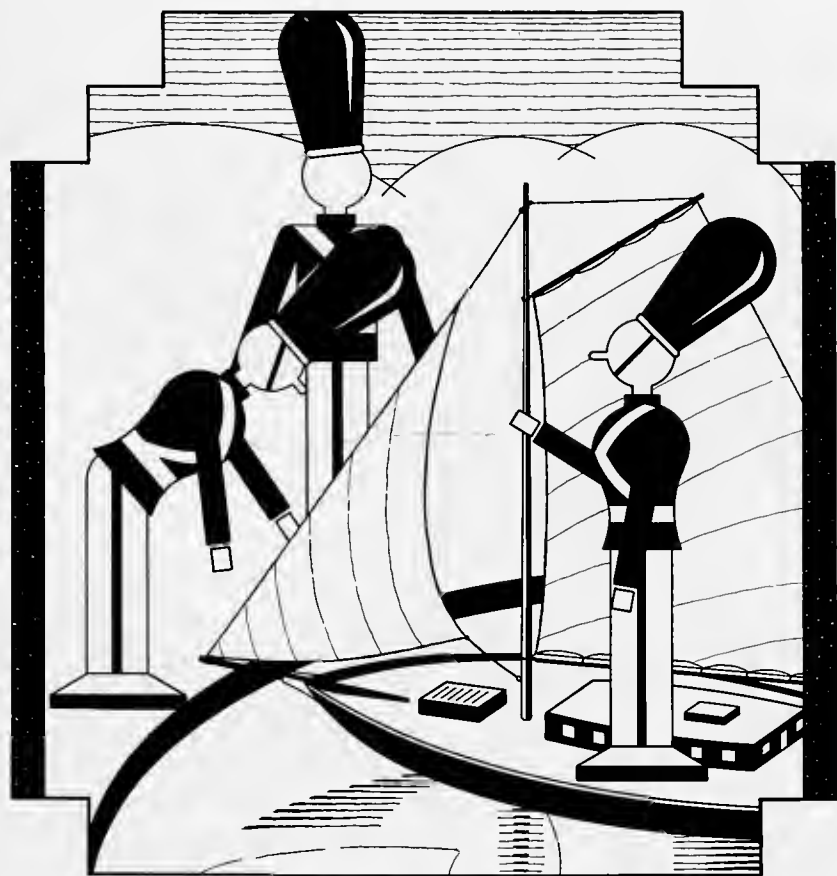
EVELYN WILSON, B.A., M.A.
Assistant Professor of French





CLASSES





S E N I O R



"BOBBY" SHORE, *Senior Mascot*

Senior Class

Σ A Ψ

Colors: *Black and Gold*

Flower: *Black-eyed Susan*

Motto: *"True Knowledge Leads to Love and Service"*

OFFICERS

FRANCES FLETCHER	<i>President</i>
EVA HACKNEY	<i>Vice-President</i>
LOUISE STEVENSON	<i>Secretary</i>
MARGARET RICHARDSON	<i>Treasurer</i>
MILLICENT WARD	<i>Song Leader</i>
SARA EFIRD	<i>Historian</i>
DAISY LEE CARSON	<i>Prophet</i>
GRACE MARTIN	<i>Testator</i>
LOUISE STEVENSON	<i>Poet</i>
ELIZABETH WARD	<i>Cheer Leader</i>
MISS MINNIE J. SMITH	<i>Class Adviser</i>





FRANCES JOSEPHINE FLETCHER

WINSTON-SALEM, NORTH CAROLINA

Candidate for Bachelor of Arts

Vice-President of Class (3), President (4); Order of the Scorpion; Freshman Week Committee (4); Athletic Association Council (3); Basketball Class Team (2, 3), Varsity (3); Hockey Class Team (4); Presidents' Forum (4); History Club (1, 3, 4); Mathematics Club (1); Le Cercle Francais (3); Assistant Advertising Manager of "Sights and Insights" (3); I. R. S. Representative (4); May Court (4).

Tiffany's . . . garden party . . . roadsters . . . "Anchors aweight" . . . diplomacy . . . Hark, ye Seniors.

MISS MINNIE J. SMITH

Class Adviser

The color of deep, clear, unfading blue . . . the steady, sonorous beat of winter rain . . . an understanding smile . . .

χαίρες ὀτρεπαί





ELIZABETH DREWRY ALLEN

WELDON, NORTH CAROLINA

Candidate for Bachelor of Arts

Secretary of Class (1); President of Class (3); Freshman Week Committee (3); Presidents' Forum (3); Chief Senior Marshal (3); Theta Delta Pi; History Club (4); Mathematics Club (1); Assistant Advertising Manager of "Salemite" (1, 2); I. R. S. Representative (1, 2, 3, 4); Representative Student Self-Government Association (4); May Court (1, 2, 3, 4); May Queen (4); Pan-Hellenic Representative (3); Secretary and Treasurer of Pan-Hellenic (4).

Soft, misty moonlight . . . languor and
the arms of Morpheus . . . chiffons,
pale and flowing . . . and a look of far
horizons in her eye.



FLORENCE ELLIS BOWERS

WASHINGTON, NORTH CAROLINA

Candidate for Bachelor of Arts

Delta Sigma Delta; History Club (4).

Brown velvet . . . furs . . . the
cheerful, friendly jabber of a gay wood-
pecker . . . Sherry's.



ALICE MACRAE CALDWELL

HIGH POINT, NORTH CAROLINA

Candidate for Bachelor of Arts

Secretary of Class (3); Freshman Week Committee (2); Basketball Class Team (1, 2, 3, 4); Soccer Squad (3); Volley Ball Squad (1, 2, 3, 4); Swimming Team (1, 2, 3); Presidents' Forum (4); Delta Sigma Delta; MacDowell Club Board (1); History Club (3, 4); Mathematics Club (1); Le Cercle Francais (1, 2, 3, 4); Literary Editor "Sights and Insights" (4); Freshman Representative, Sophomore Representative, Club Editor (3); May Court (1, 2, 3, 4); Pan-Hellenic Representative (3, 4); Class Honors (1, 2, 3); President of Sigma Omicron Alpha (4), Member (3).

A carved figure by Rodin . . . a pillow with organdie ruffles . . . rhinestone heels winking in rhythm to a jazz orchestra.

DAISY LEE CARSON

BETHEL, NORTH CAROLINA

Candidate for Bachelor of Arts

Class Prophet (4); Chairman of Program Committee of History Club (4), Member (3); Le Cercle Francais (3, 4); Managing Editor of "Salemite" (4), Reporter (3); Sigma Omicron Alpha (4).

Annette Kellerman—one, two, three, four . . . slamming doors . . . Weary Willie . . . shuffling feet.



NANCY RUTH CARTER

WINSTON-SALEM, NORTH CAROLINA

Candidate for Bachelor of Arts

Class Historian (2); Order of the Scorpion; Athletic Association Council (2, 3, 4); Basketball Class Team (1, 2, 3, 4), Captain (3, 4), Varsity (1, 2, 3, 4), Manager (4); Soccer Squad (1, 2, 3, 4), Manager (3), Captain (4), Varsity (1, 2, 3, 4); Volley Ball Squad (1, 2, 3, 4), Manager (2), Varsity (1, 2, 3, 4); Track Team (2, 3, 4); Baseball Class Team (1, 2, 3, 4), Varsity (1, 2, 3, 4); Hockey Squad (3, 4), Varsity (3, 4); Winner of "S" (1); Winner of College Sweater (2); Winner of College Blanket (1); Le Cercle Francais (1, 2, 3, 4); Assistant Editor-in-Chief of "Sights and Insights" (3), Assistant Advertising Manager (2); Representative Student Self-Government Association (1, 2, 3); Class Honors (1, 2, 3); Vice-President of I. R. S. (4), Representative (3).
Crackling post toasts . . . a glint of quicksilver . . . chuckles . . . the burst of a fierce gale.

LOUISA BRIDGMAN COLEMAN

KENLY, NORTH CAROLINA

Candidate for Bachelor of Science

Societas Scientiarum Salemensis (2); Mathematics Club (1).

The wavering shadows of a laboratory . . . note-books, questioning, compiling . . . a happy laugh.



LUCY MARTIN CURRIE

DAVIDSON, NORTH CAROLINA

Candidate for Bachelor of Arts

President of Class (1), Historian (2); Order of the Scorpion; Freshman Week Committee (2); Basketball Class Team (1); Soccer Squad (1-4), Varsity (2); Volley Ball Squad (1, 2); Baseball Class Team (1, 2); Hiking Squad (1); Winner of "S" (1); Winner of Sweater (2); Presidents' Forum (1, 4); Senior Marshal (1); Alpha Phi Kappa; Home Economics Club (1); Stage Manager of Pierrette Players (2); Member (1, 4); Mathematics Club (1); Le Cercle Francals (1, 2); Fire Department Captain (4); Local Editor of "Salemite" (4); Athletic Editor of "Sights and Insights" (2); Vice-President of Y. W. C. A. (4); President of I. R. S. (4); Representative Student Self-Government Association (2); Treasurer of Pan-Hellenic (4); Class Honors (1, 2); Alpha Chi Alpha (4).

A smoothly flowing stream, with a bubble underneath . . . pewter cups . . . a horsehair sofa . . . a needlepoint stool before an open fire.



MARY VIRGINIA DUNN

RALEIGH, NORTH CAROLINA

Candidate for Bachelor of Arts

History Club (3, 4).

Pocahontas . . . black tulips . . . crisp air . . . sparkling sunlight.



SARA HINE EFIRD

WINSTON-SALEM, NORTH CAROLINA

Candidate for Bachelor of Arts

Vice-President of Class (1); Historian of Class (4); Basketball Class Team (1, 2, 3); Varsity (3); Soccer Class Team (1); Volley Ball Class Team (2); Tennis Class Team (1, 2); Baseball Class Team (1, 2, 3), Varsity (3); Hockey Class Team (4); Senior Marshal (2); Le Cercle Francais (1, 2, 3, 4); Sport Editor of "Salemite" (2); L. R. S. Representative (4); Secretary of Off-Campus Student Self-Government Association (2); Class Honors (1, 2, 3).

A starched Dutch cap . . . and wooden shoes . . . tulips against skyblue . . . elves in the forest . . . hiding behind a work-a-day veil of calmness.

RUTH ELLEN FOGLEMAN

WINSTON-SALEM, NORTH CAROLINA

Candidate for Bachelor of Arts

History Club (4); Vice-President of Mathematics Club (4); Member (2, 3); Le Cercle Francais (3); Representative Student Self-Government Association (4).

Heath . . . a rolling moor . . . brown leaves . . . apple cider . . . a thrush.



HELEN ELIZABETH FOWLER

WINSTON-SALEM, NORTH CAROLINA

Candidate for Bachelor of Music

Glee Club (1, 2, 4).

The soft melody of Shubert's "Serenade"
 . . . the gentle purr of a Persian cat.

EVA HASSELL HACKNEY

WASHINGTON, NORTH CAROLINA

Candidate for Bachelor of Arts

Vice-President of Class (4), Treasurer (2);
 Athl. Council (4); Basketball Varsity (2),
 Class Team (2, 3); Le Cercle Francais (3,
 4); Fire Chief (3); Assistant Advertising
 Manager "Salcmite" (2, 3); May Court (2,
 3, 4); Presidents' Forum (3); Theta Delta
 Pi; President of Pan-Hellenic Association
 (3), Representative (4).

Pansies in a garden of tomatoes . . .
 the click of heels . . . ting-a-ling . . .
 "Ham."



VIOLET MAE HAMPTON

DANVILLE, KENTUCKY

Candidate for Bachelor of Science

Home Economics Club (3, 4); Societas
Scientiarum Salemensis (3, 4).

Heavy oaken cupboard . . . the first
steamboat . . . bronze doorknocker . . .

Good Housekeeping.

SALLIE ELIZABETH HEGGIE

WINSTON-SALEM, NORTH CAROLINA

Candidate for Bachelor of Arts

History Club (4); Mathematics Club (2, 3,
4); Le Cercle Francais (3); Class Honors
(3).

"Sara Crewe" . . . trees at night . . .
low long hills . . . a welcoming smile.



KATHERINE BELLE HELM

MORRISTOWN, TENNESSEE

Candidate for Bachelor of Science

Hiking Squad (1); Home Economics Club (1, 2, 3, 4); History Club (1); Societas Scientiarum Salemensis (3, 4); Sigma Omicron Alpha (4).

Soft-furred kittens . . . amber light
flecked with brown . . . a chaise-loung—
—and a telephone!

ESSIE JESSUP HENDRICKS

STUART, VIRGINIA

Candidate for Bachelor of Arts

History Club (2, 3, 4); Pierrette Players (3, 4); Sigma Omicron Alpha (2, 3, 4).

Faint scent of pine . . . steadfast, true
. . . a gust of cold wind . . . Polly-
anna . . . chestnuts roasting over a
campfire.



MARY GWYN HICKERSON

LENOIR, NORTH CAROLINA

Candidate for Bachelor of Arts

Secretary of Class (2); Freshman Week Committee (2); Senior Marshal (2); Alpha Phi Kappa; Secretary of MacDowell Club (3); History Club (4); Mathematics Club (1); I. R. S. Representative (1); May Court (2); Glee Club (1); Pan-Hellenic Representative (3).

A water-fall in May . . . daffodils . . .
patent leather . . . and a coquettish tilt
of curls.

ANNA STAMPS HOLDERNESS

TARBORO, NORTH CAROLINA

Candidate for Bachelor of Arts

Theta Delta Pi; History Club (2, 3, 4).

Sweet potato pie . . . distant thud of
bare feet . . . hazy distraction . . .
Chevrolets.



VELLEDA ELIZABETH JAMES

WINSTON-SALEM, NORTH CAROLINA

Candidate for Bachelor of Arts

Mathematics Club (1, 2, 3).

Peppermint candy . . . crisp dotted
Swiss curtains . . . a rag doll . . .
cinnamon toast and the glow of an open
fire . . . laughter.

JULIA BROWN JENNINGS

THOMASVILLE, NORTH CAROLINA

Candidate for Bachelor of Arts

Freshman Week Committee (2); Delta Sigma Delta; Le Cercle Francais (3, 4); I. R. S. Representative (4); House President of Student Self-Government Association (3); Glee Club (4).

A soft wool coverlet . . . painted furniture . . . sunlit waves . . . kites sailing merrily by in the spring.



EDITH ANN KIRKLAND

DURHAM, NORTH CAROLINA

Candidate for Bachelor of Arts

Assistant College Cheer Leader (1); Order of the Scorpion; Athletic Association Council, (2, 3); Basketball Class Team (1, 2, 3), Captain (2), Varsity (1, 2, 3); Soccer Class Team (2, 3, 4), Manager (2), Varsity (2, 3, 4); Volley Ball Class Team (1, 2, 3), Varsity (2, 3); Tennis Team (1); Track Team (1, 2, 3); Swimming Team (1, 2, 3); Baseball Class Team (1, 2, 3), Manager (3), Varsity (1, 2, 3), Captain (2); Hockey Squad (3, 4); Winner of "S" (2); Winner of College Sweater (2); Winner of College Blanket (2); Elding Club (2, 3); Presidents' Forum (3, 4); Alpha Phi Kappa; MacDowell Club Board (1); President of Pierrette Players (3), Vice-President (2, 4), Member (1); Mathematics Club (1); Fire Department (1); Editor-in-Chief of "Salemite" (4), Associate Editor (3), Local Editor (2); Representative Student Self-Government Association (1); Treasurer of Pan-Hellenic (3), Representative (4); Treasurer of Alpha Chi Alpha (4), Member (3).

The faint scent of Camay soap . . .
horse races . . . Hart Schaffner and
Marx . . . and the yellow and wine red
of Scotch plaids.

KATHARYN ELIZABETH LYERLY

HICKORY, NORTH CAROLINA

Candidate for Bachelor of Arts

History Club (3); Beta Beta Phi; Mathematics Club (3, 4); Senior Representative "Sights and Insights"; House President (4); Pan-Hellenic Representative (3, 4).

Eyes that speak pages with one searching
look . . . bright embroidery . . . dawn
breaking through a sky of heavy clouds
. . . an ebony cream pitcher.



MARTHA INEZ MCKAY

BUIES CREEK, NORTH CAROLINA

Candidate for Bachelor of Music

Glee Club (1, 2, 3, 4).

Trees that are still, yet whisper gently
in the breeze . . . a mellow light . . .
with an unexpected sparkle here and
there . . . Chopin.

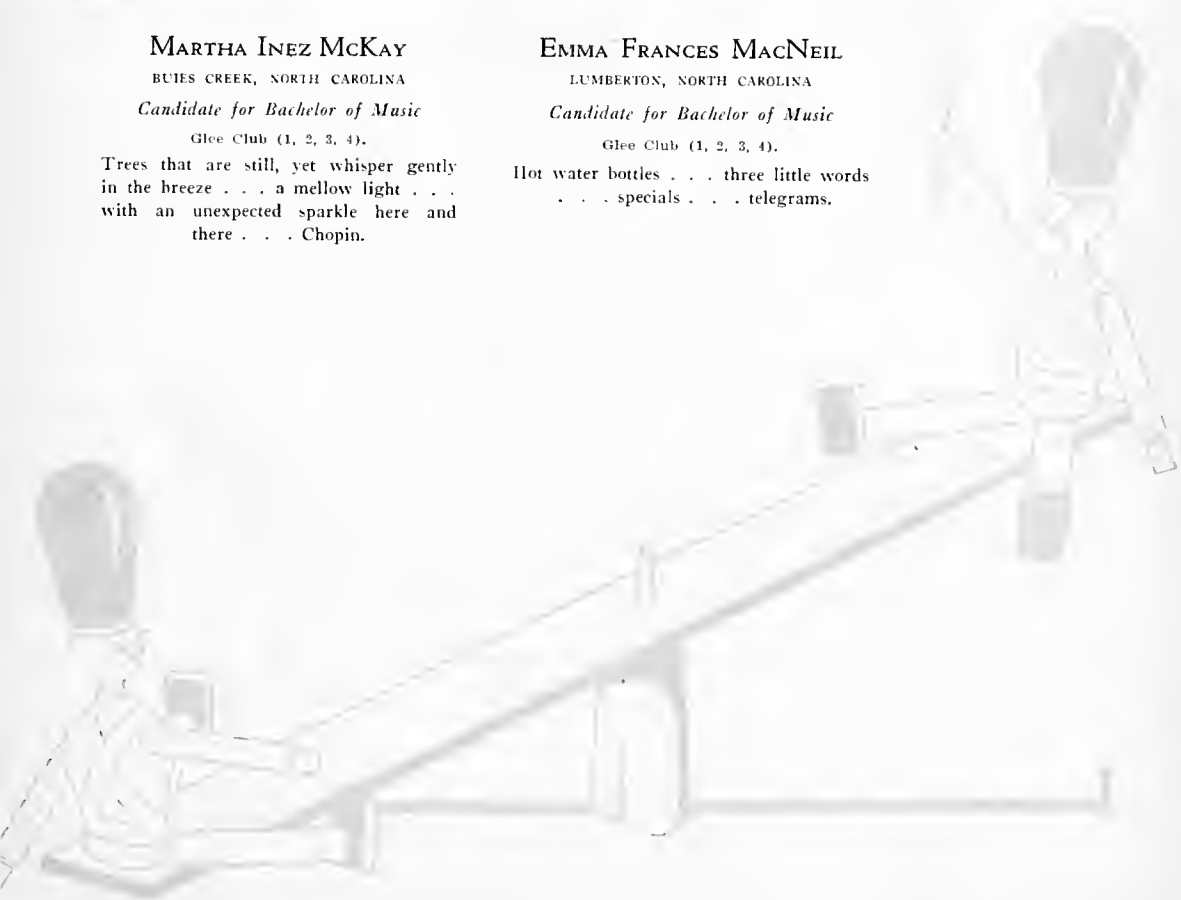
EMMA FRANCES MACNEIL

LUMBERTON, NORTH CAROLINA

Candidate for Bachelor of Music

Glee Club (1, 2, 3, 4).

Hot water bottles . . . three little words
. . . specials . . . telegrams.





GRACE AUGELINE MARTIN

MACUNGIE, PENNSYLVANIA

Candidate for Bachelor of Arts

Treasurer of Class (1), Testator (4); Captain of Basketball Class Team (1); Soccer Squad (1, 4); Hockey Squad (1); Hiking Squad (1, 2, 3, 4); Presidents' Forum (2, 3, 4); Pierrette Players, Stage Manager (3); Member (1, 2, 4); President of Le Cercle Francais (4); Member (1, 2, 3); Reporter "Salomite" Staff (1); Representative Student Self-Government Association (1, 4); Class Honors (1, 2, 3); President of Sigma Omicron Alpha (2, 3); Member (4); Alpha Chi Alpha (4).

A winding snowy road . . . the flash of a red toboggan outlining a happy, twinkling face . . . a squirrel cracking nuts . . . Mais oui, "Inkie, diukie parlez-vous?"

ELIZABETH LYDIA MARX

NAZARETH, PENNSYLVANIA

Candidate for Bachelor of Arts

Class Historian (1); Order of the Scorpion; Freshman Week Committee (4); Soccer Squad (1, 2, 3, 4); Varsity (2); Volley Ball Squad (2); Tennis Team (1); Hockey Squad (2, 4); Presidents' Forum (4); Mathematics Club (1); Le Cercle Francais (1, 2, 3, 4); Fire Department, Captain (2, 4); Assistant Editor of "Sights and Insights" (3); Copy Editor (2); Y. W. C. A. Cabinet (1, 3); Treasurer (2); President (4); Honorary Member I. R. S. (4); Honorary Member Student Self-Government Association (4); Class Honors (1, 2, 3); Sigma Omicron Alpha (2, 3, 4); Secretary of Alpha Chi Alpha (4); Member (3); Blue Ridge Delegation (4).

Deep blue—the color of truth and sincerity . . . steadfastness of Gibraltar . . . a little white church nestled in the hills.



SUE JANE MAUNEY

LINCOLNTON, NORTH CAROLINA

Candidate for Bachelor of Music

Class Cheer Leader (4); Athletic Council (3, 4); Basketball Class Team (1, 2, 3, 4), Varsity (1, 2, 3, 4), Captain (1); Soccer Squad (1, 2, 3, 4), Varsity (1, 2, 3); Volley Ball Class Team (1, 2, 3, 4), Varsity (1, 2, 3, 4), Captain (1); Track Team (1, 2, 3, 4), Manager (3); Director of Salem Syncopating Serenaders (3, 4); Baseball Class Team (1, 2, 3, 4); Hockey Squad (2, 3, 4), Varsity (4); Winner of "S" (1), Winner of College Sweater (2); Delta, Sigma Delta; Home Economics Club (1); Assistant Advertising Manager "Salemite" (3); May Court (4); Glee Club (1, 2, 3, 4).

Bright-eyed caprice . . . a long motor on a smooth pavement, a sudden flash— then gone.

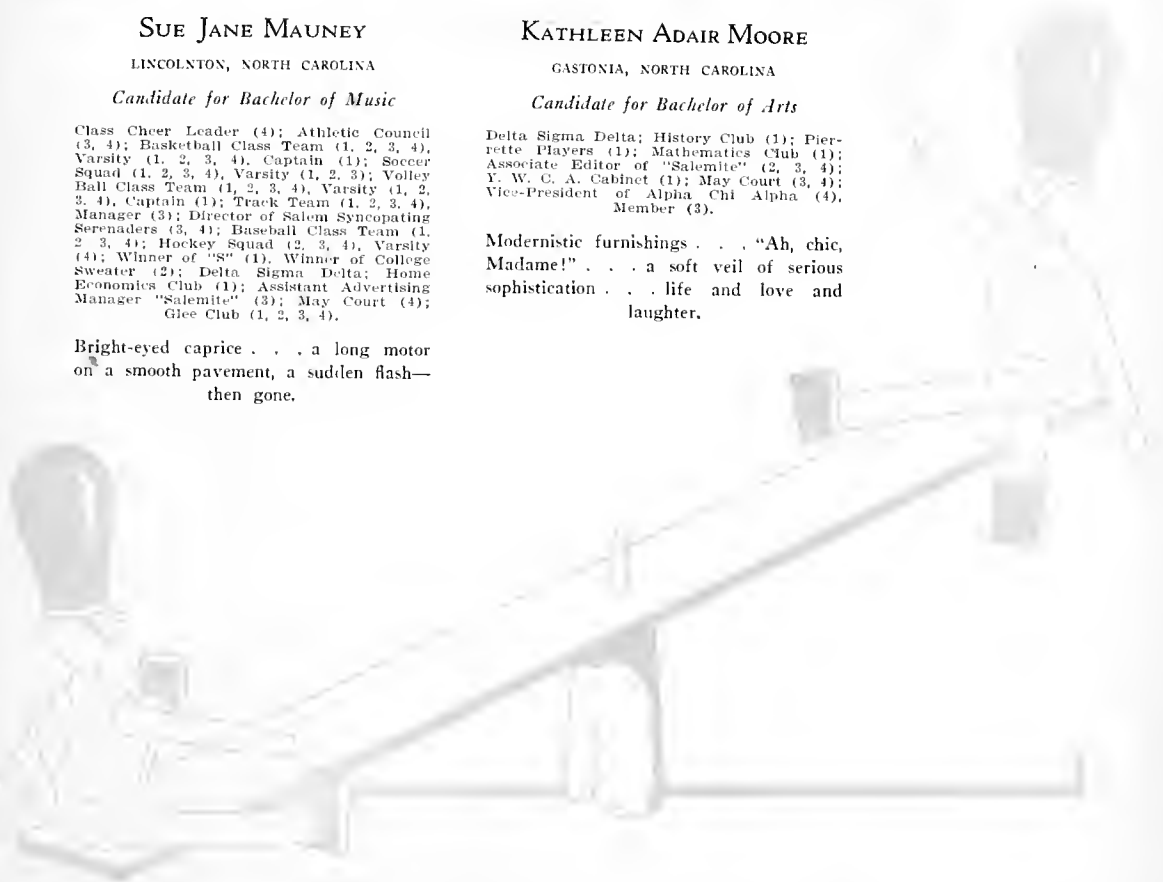
KATHLEEN ADAIR MOORE

GASTONIA, NORTH CAROLINA

Candidate for Bachelor of Arts

Delta Sigma Delta; History Club (1); Pierrette Players (1); Mathematics Club (1); Associate Editor of "Salemite" (2, 3, 4); Y. W. C. A. Cabinet (1); May Court (3, 4); Vice-President of Alpha Chi Alpha (4), Member (3).

Modernistic furnishings . . . "Ah, chic, Madame!" . . . a soft veil of serious sophistication . . . life and love and laughter.





MARY HERSILIA NORRIS

DURHAM, NORTH CAROLINA

Candidate for Bachelor of Arts

Athletic Association Council (3); Basketball Class Team (1); Soccer Squad (1, 2, 3, 4); Varsity (2); Volley Ball Squad (1, 2, 3, 4); Varsity (2, 3); Manager (3); Tennis Team (1, 2); Baseball Class Team (1); Hiking Squad (1); Winner of "S" (2); Beta Beta Phi; Mathematics Club (1); Le Cercle Francais (3, 4); Business Manager of "Salemite" (4); Assistant Circulation Manager (2); Circulation Manager (3); Secretary of Y. W. C. A. (2); Cabinet (3); I. R. S. Representative (1, 3); Pan-Hellenic Vice-President (4); Latin Club (3).

Quiet road patterned with shadows from
overhanging trees . . . rain . . .
greyed violet and old gold . . . hazel-
nuts.



MARY AYERS PAYNE

TAYLORSVILLE, NORTH CAROLINA

Candidate for Bachelor of Science

MacDowell Club Board (4); Home Economics Club (1, 2, 3, 4); Societas Scientiarum Salemensis (2, 3, 4); Business Manager of "Fights and Insights" (4); Assistant Business Manager (3); Class Honors (3); Sigma Omicron Alpha (3, 4).

Red and white checkers . . . Pepsodent
. . . a cheery smile . . . shining
aluminum pans . . . and the sharp snip,
snip of scissors.



AGNES PATON POLLOCK

NEW BERN, NORTH CAROLINA

Candidate for Bachelor of Music

Class Cheer Leader (4); Business Manager of Pierrette Players (4), Member (3); Local Editor of "Salemite" (3, 4); Glee Club (1, 2, 3, 4); Delta Sigma Delta; Secretary of Pan-Hellenic (3).

Sun-flecked poplar . . . cinnamon . . .
 a flung down hook . . . happy-go-lucky
 . . . the hurdy-gurdy man.

MARGARET H. RICHARDSON

WILSON, NORTH CAROLINA

Candidate for Bachelor of Arts

Historian of Class (3), Treasurer (4); Order of the Scorpion; Athletic Association Council (3); Basketball Class Team (3); Soccer Squad (1, 2, 3, 4), Captain (2), Varsity (3); Volley Ball Squad (1, 2, 3), Captain (2), Manager (3), Varsity (2, 3); Tennis Team (1, 2, 3); Baseball Class Team (1, 2, 3), Manager (3), Varsity (1, 2, 3); Hockey Squad (2, 3), Captain (3), Varsity (3); Hiking Squad (1, 3); Winner of "S" (2); Winner of College Sweater (3); Presidents' Forum (4); Treasurer of MacDowell Club (3), Board (3); History Club (1, 2, 3, 4); Mathematics Club (1); Poetry Editor of "Salemite" (4); Literary Editor (3); First Vice-President of Student Self-Government Association (4), Treasurer (3); Glee Club (3); President of Alpha Chi Alpha (4), Member (3); Blue Ridge Representative (3).

Unscented talcum . . . a poet retired on
 a pension . . . English inn-keeper . . .
 checker boards.



LENORA O. RIGGAN

SOUTHERN PINES, NORTH CAROLINA

Candidate for Bachelor of Arts

Order of the Scorpion; Freshman Week Committee (4); Secretary of Athletic Association (3), Council (2); Soccer Squad (3); Volley Ball Squad (3); Tennis Team (1, 2, 3, 4), Manager (2); Hockey Squad (1, 2, 3); Winner of "S" (3); Presidents' Forum (4); Senior Marshal (1); Alpha Phi Kappa; Pierreite Players (3); Mathematics Club (1); Honorary Member of Y. W. C. A. (4); President of Student Self-Government Association (4), Secretary (3), Representative (1, 2); Blue Ridge Representative (2).

A flash of speed across a court, a slashing blow . . . carefree efficiency . . . dopes 'n' nabs.



KATHARINE E. SCHLEGEL

NAZARETH, PENNSYLVANIA

Candidate for Bachelor of Arts

Soccer Squad (1, 3, 4); Hockey Squad (3, 4); Presidents' Forum (4); Hiking Squad (1, 2, 3, 4); President of Mathematics Club (4), Secretary (2), Treasurer (3), Member (1); Y. W. C. A. Cabinet (4); Sigma Omicron Alpha (2, 3, 4); Le Cercle Francais (1, 2, 3).

November afternoon . . . a swift stream . . . brown and orange leaves . . . stick candy . . . red apples.



MARGARET GERTRUDE SIEWERS

WINSTON-SALEM, NORTH CAROLINA

Candidate for Bachelor of Arts

Vice-President of Le Cercle Francais (3), Member (1, 2, 4); I. R. S. Representative (3, 4); Representative Student Self-Government Association (2); Glee Club (4); Class Honors (1).

Willing hands, outstretched . . . eyes
that plead . . . and laughter, like a
child's ecstasy over a new toy . . . gar-
dens of pink roses and box-woods.

MARJORIE VANCE SIEWERS

WINSTON-SALEM, NORTH CAROLINA

Candidate for Bachelor of Arts

Order of the Scorpion; Senior Marshal (3);
Vice-President of Pierrette Players (4), Sec-
retary and Treasurer (2), Member (1, 3);
Mathematics Club (1); Secretary and Treas-
urer of Le Cercle Francais (4), Member
(2); Reporter of "Salemite" (2); Literary
Editor of "Sights and Insights" (4), Rep-
resentative (3); I. R. S. Representative (1);
Second Vice-President of Student Self-Gov-
ernment Association (4), Treasurer Off-
Campus Council (2), Representative (1);
Class Honors (1).

Dull red tiles and whitish blue . . .
willows in spring . . . *The Golden Book*
. . . fragile tea set of Haviland.



DALLAS EVELYN SINK

WINSTON-SALEM, NORTH CAROLINA

Candidate for Bachelor of Arts

Basketball Class Team (1, 2); Volley Ball Squad (1); Track Team (1); Baseball Class Team (1, 2); History Club (2); Mathematics Club (1); Sigma Omicron Alpha (4).

An orderly schoolroom with the faint scratch of chalk on a blackboard . . . a pause . . . then, "¿Comprende usted?"

LOUISE TILLOTSON STEVENSON

NEW YORK, NEW YORK

Candidate for Bachelor of Arts

Secretary of Class (4); Soccer Squad (4); Poet of Class (4); Hockey Squad (3, 4); Pierrette Players (3, 4); Le Cercle Francais (3, 4); Secretary and Treasurer of Sigma Omicron Alpha (4); Member (3).

Red beads . . . a gypsy caravan . . . breathless silence of the desert broken by the night call of a lone coyote.



ANNIE KOONCE SUTTON

RICHLANDS, NORTH CAROLINA

Candidate for Bachelor of Science

Treasurer of Class (3); Presidents' Forum (4); Delta Sigma Delta, President (4); President of Home Economics Club (4); Member (1), Secretary (2), Vice-President (3); Societas Scientiarum Salemensis (2, 3, 4); Fire Department, Lieutenant (3); Representative Student Self-Government Association (1, 3); May Court (3, 4); Pan-Hellenic Representative (3, 4).

Black-eyed Susans . . . the faint chirp
of a lettuce bird heralding spring . . .
tea tables gleaming with a glow of lighted
candles . . . lemon drops.

GERTRUDE B. TEMPLEMAN

WINSTON-SALEM, NORTH CAROLINA

Candidate for Bachelor of Arts

History Club (3, 4).

"A violet half-hidden from the eye" . . .
children's fairy stories . . . an old cherry
wood spinet.



ERNESTINE CLAIRE THIES

CHARLOTTE, NORTH CAROLINA

Candidate for Bachelor of Arts

Presidents' Forum (4); Le Cercle Francais (3); Editor-in-Chief of "Sights and Insights" (4); Humor Editor (3); May Day Court (2, 3).

Delft-blue china . . . Fairy soap . . .
canopied four posters . . . a bedside
lamp . . . the shadow of a book.

DOROTHY L. THOMPSON

CHERAW, SOUTH CAROLINA

Candidate for Bachelor of Music

Athletic Association Council (2, 3, 4); Basketball Class Team (1, 2, 3, 4); Manager (2, 3); Varsity (2, 3, 4); Soccer Squad (1, 2, 3, 4); Manager (4); Tennis Team (3); Track Team (1, 2, 3, 4); Baseball Class Team (1, 2, 3, 4); Hockey Squad (1, 2, 3, 4); Winner of "S" (1); Winner of College Sweater (2); Presidents' Forum (3); Alpha Phi Kappa; Y. W. C. A. Cabinet (2); President of Glee Club (3); Vice-President (2); Member (1, 4); Blue Ridge Representative (2).

Cotton candy . . . pink lemonade . . .
the swing in the old apple tree . . .
pigtales.



ELIZABETH MERCER WARD

ROCKY MOUNT, NORTH CAROLINA

Candidate for Bachelor of Arts

Class Cheer Leader (2, 3); Freshman Week Committee (4); President of Athletic Association (4); Council (3); Basketball Class Team (1); Soccer Squad (1, 2, 3, 4); Volley Ball Squad (1, 2, 3, 4); Tennis Team (1, 2, 3, 4); Baseball Class Team (1, 2, 3, 4); Varsity (2, 3, 4); Captain Class Team (2); Hockey Squad (3, 4); Captain (4); Winner of "S" (3); Presidents' Forum (4); Delta Sigma Delta; History Club (3); Mathematics Club (1); Fire Department, Lieutenant (2); Captain (4); Advertising Manager of "Salemite" (3); Assistant Circulation Manager (2); Representative Student Self-Government Association (3); Secretary and Treasurer of Sigma Omicron Alpha (3); Blue Ridge Representative.

English tweed . . . college pennants
 . . . a brass doorknocker . . . a
 book bound in brown leather . . . popcorn.



MILLICENT VIRGINIA WARD

CONCORD, NORTH CAROLINA

Candidate for Bachelor of Music

Class Song Leader (4); Order of the Scorpion; Freshman Week Committee (3, 4); Tennis Team (2); Baseball Class Team (2, 3); Presidents' Forum (4); Senior Marshal (3); Alpha Phi Kappa; Secretary of Pierrette Players (2); Member (1, 3); Music Editor of "Salemite" (3, 4); Reporter (2); Y. W. C. A. Cabinet (3); I. R. S. Representative (2); Representative Student Self-Government Association (2, 4); May Court (3); Maid of Honor (4); President of Glee Club (4); Vice-President (3); Secretary (2); Member (1); Pan-Hellenic Representative (3, 4); Representative at Blue Ridge Conference (1).

Bridge tables and champagne glasses
 . . . rows of pearls set among rubies
 and sapphires . . . the song of a distant nightingale.



LEONORA WILDER

GALVESTON, TEXAS

Candidate for Bachelor of Science

Athletic Association Council (3); President of Riding Club (2, 3); Beta Beta Phi; Fire Department, Captain (1), Lieutenant (2); Humor Editor of "Sights and Insights" (1), Assistant Art Editor (2); Alpha Chi Alpha (3, 4); Societas Scientiarum Salemensis (2).

Texas sombrero . . . "Norie" . . . the stately pacing of a sleek black horse with head held high.



ADELAIDE CAROLINE WINSTON

BIG STONE GAP, VIRGINIA

Candidate for Bachelor of Science

Order of the Scorpion; Vice-President of Athletic Association (4), Council (3, 4); Basketball Class Team (3, 4), Varsity (3); Soccer Class Team (1, 2, 3, 4), Varsity (1, 2, 3); Volley Ball Squad (3, 4); Tennis Team (1, 2, 3, 4); Swimming Team (1, 2, 3, 4); Baseball Class Team (3, 4); Hockey Squad (3, 4), Manager (3), Varsity (3); Winner of "S" (3); Riding Club (1, 2, 3, 4); Presidents' Forum (3, 4); Alpha Phi Kappa; Home Economics Club (1, 2, 3, 4); President of Pierrette Players (4), Vice-President (3), Business Manager (2), Member (1); Societas Scientiarum Salemensis (2, 3, 4); Fire Department (1, 4); Assistant Business Manager of "Sights and Insights" (3), Advertising Manager (2).

Elephants . . . black velvet and white
jasmin . . . a haughty languor.

Nights and Insights



DAISY CHAIN





SENIOR MARSHALS

SARAH GRAVES, *Chief Marshal*

SARA SUTTON
BEATRICE HYDE

ELIZABETH COXE
MARY LILLIAN WHITE

MARY E. HOLCOMB
MARY CATHERINE SIEWERS

MILDRED HANES
MARGARET DAVIS





CLASS PRESIDENTS

LUCY CURRIE
Freshman

JANE HARRIS
Sophomore

ELIZABETH ALLEN
Junior

FRANCES FLETCHER
Senior

Senior Class History

UNDoubtedly each Senior will cherish certain impressions and fond remembrances of her four years at Salem; but lest in time to come, old age ravages our store house of memories, let us cite here and now in black and white the high lights of the college career of our class, '31.

Lest we forget, O, who could forget September 14, 1927—arrival at Salem—visit to the registrar—deposition of all our worldly goods upon Miss Perryman—being led by the halter, no, not halter, Freshman Reception Committee, to our respective rooms—discovery of roommates—and other startling surprises. Remember Freshman Week—Y. W. C. A. lawn party—sight-seeing tour of Winston (on my right the Reynolds buildings, on my left—what had we)—haunting memories of initiation, green hair ribbons (reminders of the verdant air we exhumed)—Sophomore Court, the Rhadamanthine judge, the facetious smiles on the faces of the jury, the relief of acquittal. Recall how, fearing we might miss some important meeting, we hung around the bulletin board in Main Hall like Grant around Richmond. Then how did “tempus fugit” (with due respects to Miss Minnie Smith)—came Thanksgiving, and as concomitant to the turkey—victory, laurels, and other tokens of supremacy—we won the basketball championship. These laurels rested on our expanded foreheads the rest of the year; nor did we change them for new ones. Then came Christmas holidays—examinations—flunk slips (have you forgotten?), honor roll (of course you remember!)—and general acclimation to Salem atmosphere and college life—Easter—and Commencement.

Fall of 1928—Intrepid Sophomores! With the falling of the yellow leaves, so fell our Freshman cloak of timidity and cowardice—fearless—dauntless—kind, but





stern persecutors of the Freshmen. Remember our introduction to Science—our first experiment to repeat, our first worm to dissect. Gallant Sophomores, pages to our sisters, the mighty Seniors, in Hat Burning, in Senior Vespers! Happy Sophomores, tasting the joys of Sophomore privileges—how few, but how sweet! Let us skip Thanksgiving—turkey goes not half so well with defeat. On to spring—basketball and new laurels, composed of bats, mits, gloves and balls—Sophomores victorious over a team selected from all three of the other classes—fitting close to an elegant year!

Year of 1929-1930—Juniors—purging of all sophomoreic vanities—adoption of big sister attitudes—welcoming the Freshmen—offering them gratuitous "Dorothy Dixey" advice. Remember slaving for the Seniors—parsimonious saving of pennies, earning of money by sandwich making, ticket selling, and such remunerative means, in order to entertain the honored Seniors—and finally the Junior-Senior dinner dance we gave them at the Robert E. Lee Hotel. Remember ushering in chapel—receiving rings—and the receiving of caps and gowns from the Seniors, and that inchoate feeling of awe caused by first experiences with the mortar board.

Seniors at last—the proverbial dignified Seniors! Year of 1930-1931—thousands of festivities, social, ceremonial and otherwise—Hat Burning—Senior Vespers (which almost turned out to be another Hat Burning, when one Senior caught the tassel of her cap on fire)—practice teaching, associated with desires for suicide—Christmas carolling, accompanied by gobs of food—Christmas holidays—and then examinations—mooted question, to be or not to be Seniors. Having decided to be Seniors after all, we settled down to the enjoyment of Senior life, amid the luxury of our new building, Louisa Bitting Dormitory. It would be impossible for any one of us to forget any one of our Senior parties, ceremonies, or festivities, as impossible as to forget Commencement Day itself. So let us conclude this sketchy, incomplete history—but what member of the Class of '31 cannot read between the lines into the true history of our four years at Salem.





Senior Class Prophecy

PLANET NEWS

PLANETVILLE, MARS, JANUARY 14, 3007

Amazing Discoveries Made by Archeologists

FLYING ARCHEOLOGISTS DISCOVER TABLETS REVEALING LIFE
ON THE NEAREST PLANET TO MARS

News of very great interest has arrived here by Inter-Planet Cable to the effect that flying archeologists have made more noted discoveries on the adjacent planet. The discoveries were made in the part of the planet which, according to previously found tablets, was called United States of America. The exact section, made known by the recently discovered information, was Winston-Salem, North Carolina.

The collection of manuscripts and other legends excavated by the scientists were in a peculiar script, but when translated gave interesting side lights into the life of the people who once inhabited this planet. The excavations included: Annual publications by the name of *Sights and Insights*, newspaper publications called *Salemites* and some alumnae records. All of these publications, as well as the scientists can tell, seemed to belong to a noted institution, Salem College.

One of the alumnae records of particular interest was published in the year 1938 and contains interesting information about the graduating class of 1931.

ALUMNAE NOTES

Florence Bowers is the founder of a new educational movement and is a noted lecturer on the subject of "How to Get Through College Without Opening a Book."

Ruth Ellen Fogleman and Sallie Heggie are doing extensive research work on the history of Siamese Twins.

Gertrude Templeman is teaching elocution in Marjorie Webster School, Washington, D. C.

Katherine Belle Helm is a noted radio broadcaster. Her advice to the love lorn has made her a great rival of the famous Dorothy Dix.

Mary Norris, following her own desire for a life's work, has a stunning Cosmetic Shop in her home town of Durham.





Forsaking her musical career, Millicent Ward has entered the realm of politics where she has been most successful. She is chairman of the Democratic Nominating Committee.

Elizabeth Marx is one of the most promising dancers in George White's Scandals.

Julia Brown Jennings' art of hair-dressing has carried her far and wide throughout the world. She is hair-dresser for the Empress of Japan at present.

Martha McKay and Dallas Sink are hostesses for one of the most notorious night clubs in New York.

Essie Hendricks is operating a hospital for nervous aviators.

Louise Stevenson is a rival of Annette Kellerman. Her course of reduction may be secured for \$12.00 and is said to be very effective.

Frances Fletcher, now serving Winston-Salem as mayor for the second term, is considered one of the most autocratic, yet one of the most efficient, mayors Winston has ever had.

Who's Who lists Louisa Coleman as one of the most famous scientists. Her treatise on "How the Monkey Degenerated to the State of Man" has caused much comment.

Edith Kirkland is foreign correspondent to the *New York Times*. In her leisure time Miss Kirkland has written many famous articles, among which "Promptness, an Asset to Newspaper Work" is the most famous.

Sara Eford spends most of her time lecturing to college students on the value of prompt chapel and class attendance.

The noted financier, Katharyn Lyerly, has been elected vice-president of the Federal Reserve Banking System.

Mary Virginia Dunn has established a nursery school in Raleigh, her home town.

Sue Jane Mauney married a missionary and is now living in the jungles of South Africa.

Velleda James is one of the most efficient critic teachers at the Reynolds High School in Winston-Salem.

Her success in melodrama has caused Adelaide Winston, famous Pierrette Player, to be one of the most famous actresses of the present age.

Ernestine Thies is the leader of a movement to abolish all forms of Annual publications.

Annie Koonce Sutton is teaching physical education and architecture at the Horace Mann School in New York.

Katherine Schlegel is a "Blues" singer in a New Orleans Night Club.

News from Canada and Iceland tells us that Kitty Moore is doing most excellent social service work in these places.





Dorothy Thompson, expert on the economical use of time, has been elected president of a National Budgeting Committee.

Elizabeth Ward is a designer for one of Boston's most exclusive lingerie shops.

Margaret Siewers is head librarian at the Congressional Library in Washington.

Traffic problems no longer arise in Louisville, Ky., since Violet Hampton has been elected Traffic Cop.

Elizabeth Allen, wife of a prominent politician, has dazzled Washington society with her beauty.

Anna Holderness is an All-American fullback on the co-ed football team at the University of North Carolina.

Lucy Martin Currie is the first woman president of Davidson College. Miss Currie prefers to deliver all her chapel addresses in Latin.

Frances MacNeil, one of Hollywood's most "Up and Coming" actresses, will be starred in a great movie-tone production, "Tempest and the Temptress."

Grace Martin has the record of having been arrested for speeding more times than any other taxi driver in Pennsylvania.

Helen Fowler is chief of Winston-Salem's Fire Department.

Mary Ayers Payne is an expert lawyer. She is especially good in securing support for deserted husbands.

The owner of all the No-Knox Filling Stations in North Carolina, namely, Agnes Pollock, has decided to buy several branches of the car industry also.

Marjorie Siewers, one of Chicago's most elusive gangsters, has last been heard of in Paris, France.

Ruth Carter, rival of Amelia Earhart, has decided to make her next flight to Siam.

Margaret Richardson, a short story writer of fame, has given up her work for a while to follow one of her hobbies, that of being a life guard.

Daisy "Bud" Carson is president of the United Baby Orphanages in North Carolina.

Eva Hackney is married, however she has not let marriage interfere with her career and is still one of North Carolina's best sales ladies for Green Chrysler Roadsters. Miss Hackney's slogan is: "I know—*He* drives one."

Lenora Riggan, a buyer for Reynolds Tobacco Company, is considered the best tobacco sampler in the company.

Mary Gwyn Hickerson has a summer camp, "Cool Off," in the Adirondacks.

Alice Caldwell, a great benefactor of mankind, has recently donated a great sum of money to find the causes of insomnia.





Class Poem

*Peaceful 'mong trees and quiet hills
Our Salem stands—
A work of ceaseless toil.
Since in the days so long ago,
They labored with the clay
To make each hand-wrought brick
Part of a perfect whole.*

*And ever since that time
Their work goes on.
Not wood nor bricks alone
Have been their craft:
But through the years have gone
Fair groups of girls—
Part of a perfect whole.*

*And now as we go out
To make our pathway through the world
To carry out the hopes that we learn here,
We hope that we
May take unblemished from these gates
Salem's ideals, and make of them
A perfect whole.*





"LOVE SICK"

JUNIOR



Junior Class

Φ A K

Colors: *Red and White*

Flower: *Red Rose*

Motto: "*Friendly and True*"

OFFICERS

SARAH GRAVES	<i>President</i>
NANCY FULTON	<i>Vice-President</i>
ELEANOR IDOL	<i>Secretary</i>
BEATRICE HYDE	<i>Treasurer</i>
MARTHA DAVIS	<i>Historian</i>
HARRIET HOLDERNESSE	<i>Cheer Leader</i>
MR. ROY CAMPBELL	<i>Class Adviser</i>

Junior Class Song

*The Junior Class are we—
 Colors red and white.
 Always on the top we'll be;
 We'll never cease to fight, fight, fight,
 We'll work hard and reach our goal
 And prove as in the past—
 That with our might and main
 We'll whip another, whip another class.*





Junior Class

SARAH GRAVES
MOUNT AIRY, N. C.

MR. ROY J. CAMPBELL
Class Adviser

MARY ALICE BEAMAN
FARMVILLE, N. C.

MILDRED RILES
WINSTON-SALEM, N. C.

MARGARET BLACKBURN
HICKORY, N. C.

MARIA BOWEN
TAZEWELL, VA.

HAZEL BRADFORD
WINSTON-SALEM, N. C.

CAROLYN BRAXTON
KINSTON, N. C.





Junior Class

GRACE BROWN
KINSTON, N. C.

KATHERINE BROWN
CLAYTON, DEL.

FRANCES CALDWELL
WILMINGTON, N. C.

NELL COOKE
WINSTON-SALEM, N. C.

ELOISE CREWS
WINSTON-SALEM, N. C.

MARTHA DAVIS
GOLDSBORO, N. C.

BELLE DENEMARK
WINSTON-SALEM, N. C.





Junior Class

WINIFRED FISHER
WILMINGTON, N. C.

EDITH FULP
WINSTON-SALEM, N. C.

MARY BANNER FULTON
GATE CITY, VA.

NANCY FULTON
WINSTON-SALEM, N. C.

MINNIE HICKS
BISCOE, N. C.

HARRIET HOLDERNESS
TARBORO, N. C.

NINA HOFFMAN
MOUNT AIRY, N. C.





Junior Class

MAUDE HUTCHERSON
WINSTON-SALEM, N. C.

BEATRICE HYDE
BUCHANAN, VA.

ELEANOR, IDOL
HIGH POINT, N. C.

CORINNE JONES
NASHVILLE, N. C.

DORIS KIMEL
WINSTON-SALEM, N. C.

MAE KREEGER
WINSTON-SALEM, N. C.

VIRGINIA LANGLEY
WINSTON-SALEM, N. C.





Junior Class

EDITH CLAIRE LEAKE
MOUNT AIRY, N. C.

DAISY LITZ
TAZEWELL, VA.

ELIZABETH McCLAUGHERTY
BLUEFIELD, W. VA.

RUTH MAIER
MARIETTE, OHIO

MARGARET MAXWELL
ROANOKE, VA.

JULIA MEARES
CLARKTON, N. C.

ELEANOR MEINUNG
WINSTON-SALEM, N. C.





Junior Class

ANN MEISTER
WILMINGTON, N. C.

MARY MILLER
WINSTON-SALEM, N. C.

REBECCA MILLER
WINSTON-SALEM, N. C.

MARY MITCHELL NORMAN
MOORESVILLE, N. C.

MARY VIRGINIA PENDERGRAPH
MOUNT AIRY, N. C.

REBECCA PIATT
DURHAM, N. C.

ANNA PRESTON
CHARLOTTE, N. C.





Junior Class

MARTHA THOMAS
 WINSTON-SALEM, N. C.

ELIZABETH SIMPSON
 WINSTON-SALEM, N. C.

BRONA SMOTHERS
 WINSTON-SALEM, N. C.

SARA SUTTON
 RICHLANDS, N. C.

VIRGINIA TOMLINSON
 NORTH WILKESBORO, N. C.

ELIZABETH WILLIS
 SALISBURY, N. C.

BEULAH MAY ZACHARY
 BREVARD, N. C.





The Nonsensical History of the Junior Class

(WE HOPE NOT A HISTORY OF A NONSENSICAL CLASS)

*The tenth of September in twenty-eight—
We'll never forget this memorable date—
We started to college
In search of much knowledge
Not knowing what would be our fate.*

*Only for fun and for spite,
And also the Sophomore's delight,
We were called up to court,
Made artist or poet,
And marked with green ribbons so bright.*

*With the help of our president, Preston,
With results that were certainly destined,
We sponsored a Fair
And the treat was so rare
That the power of the Freshmen was ques-
tioned.*

*We had shown by the end of the year
What we meant for our college dear.
With vengeance for all
We played basketball
And left other teams in the rear.*

*The second year, the Norman Conquest,
We proved to the Freshmen, pests,
During Sophomore week
These creatures so meek,
Saw Sophomores not at their best.*

*For the hockey cup next we vied,
And with "Shorty" as our guide
We won the game
Our name and fame
And great became our pride.*

*At Hat Burning we were the pages
Of the wise and dignified "sages"
Whose hats we helped burn
The best we could learn
The custom was traditional through ages.*

*And then we were Juniors at last!
A jolly and hard-working class.
Our desire to make money
Was really quite funny—
Our ambitions truly were vast.*

*As Juniors usually do
We had "little sisters," too;
And according to form
Our Senior Prom
Was enjoyed by more than a few.*

*And since we had Graves at our head,
Enough just cannot be said,
But just as expected
Things that were effected
Were by her most capably led.*

*So here let us stop this nonsense
And let it be taken hence,
And allow for a time
That this bothersome rhyme
Be ended, better never commenced.*





SOPHOMORE



Sophomore Class

M E Φ

Colors: *Red and Black*

Flower: *Poppy*

Motto: "*Generous, Sincere and Friendly*"

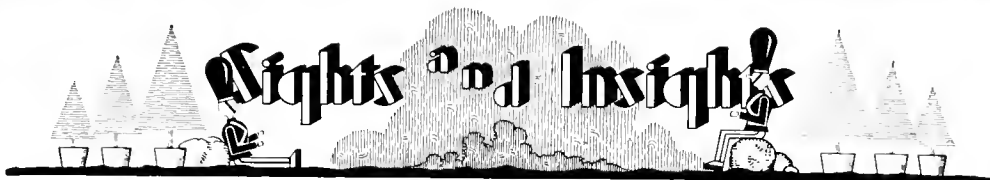
OFFICERS

VIRGINIA HARRIS	<i>President</i>
THELMA STORTZ	<i>Vice-President</i>
MARY ELIZABETH HOLCOMB	<i>Secretary</i>
IRENE MCANALLY	<i>Treasurer</i>
MARGARET JOHNSON	<i>Historian</i>
MARY ELIZABETH HOLCOMB	<i>Cheer Leader</i>
MRS. CHALMERS GLENN	<i>Class Adviser</i>

Sophomore Class Song

*Day by day—every way—
 We get better as we play.
 As the Sophomores go fighting along
 We begin—then to win
 Everything that we are in.
 Yes, the Sophomores go fighting along,
 So don't be blue—but be square and true.
 Keep up your courage. You'll come through.
 When things go wrong, we always sing this song
 That the Sophomores go fighting along.
 Keep on fighting
 As the Sophomores go fighting along.*





Sophomore Class

VIRGINIA HARRIS
GREENVILLE, S. C.

MRS. GLENN
Class Adviser

FLORENCE AITCHISON
WINSTON-SALEM, N. C.

MALVINE ASBURY
CHARLOTTE, N. C.

ETHELYN BARGER
MOORESVILLE, N. C.

ROSE BEST
WINSTON-SALEM, N. C.

JOSEPHINE BLANTON
MARION, N. C.

LOUISE BRINKLEY
PLYMOUTH, N. C.





Sophomore Class

KATHERINE BROOKES
WINSTON-SALEM, N. C.

HORTENSE CARSON
HOUSTON, TEXAS

MARY LEGRAND CLARK
ELIZABETHTOWN, N. C.

IRENE CLAY
WINSTON-SALEM, N. C.

MILDRED COLEMAN
WINSTON-SALEM, N. C.

ELIZABETH CORRELL
WINSTON-SALEM, N. C.

ELIZABETH COXE
WADESBORO, N. C.

NINA WAY CREDLE
WASHINGTON, N. C.





Sophomore Class

RUTH CROUSE
WINSTON-SALEM, N. C.

VIRGINIA DAVIS
WINSTON-SALEM, N. C.

FRANCES DOUGLAS
HIGH POINT, N. C.

MARY ADA DOUTHIT
ADVANCE, N. C.

ANNE FINLEY
NORTH WILKESBORO, N. C.

TOMMYE FRYE
PILOT MOUNTAIN, N. C.

AMELIA GOOCH
CHAPEL HILL, N. C.

VIRGINIA GOODMAN
RONCEVERT, W. VA.





Sophomore Class

GILAN HALL
BURLINGTON, N. C.

NANCY HARRIS
WINSTON-SALEM, N. C.

ELMINA HEARSE
ALBEMARLE, N. C.

DOROTHY HEIDENREICH
DURBIN, N. D.

HORTENSE HERRING
WINSTON-SALEM, N. C.

MARY ELIZABETH HOLCOMB
WINSTON-SALEM, N. C.

WANNA MARY HUGGINS
LEAKSVILLE, N. C.

EUGENIA JOHNSON
WINSTON-SALEM, N. C.





Sophomore Class

MARGARET JOHNSON
RALEIGH, N. C.

LUOLA KIRBY
WILMINGTON, N. C.

IRENE McANALLY
HIGH POINT, N. C.

EMMA KAPP
BETHANIA, N. C.

MARGARET KIRK
SALISBURY, N. C.

HILDRED McDONALD
PARAGOULD, ARK.

REBECCA KIME
LIBERTY, N. C.

DELL LANDRETH
WINSTON-SALEM, N. C.

MATILDA MANN
WHITAKERS, N. C.





Sophomore Class

FRANCES MENDENHALL
WINSTON-SALEM, N. C.

CAROLYN MILLER
WINSTON-SALEM, N. C.

LULA MAE MOTSINGER
WINSTON-SALEM, N. C.

EMILY MICKEY
WINSTON-SALEM, N. C.

ELIZABETH MILLER
KINSTON, N. C.

CHARLOTTE O'BRIEN
WINSTON-SALEM, N. C.

MARY LOUISE MICKEY
WINSTON-SALEM, N. C.

LOUISE MOCK
WINSTON-SALEM, N. C.

ELIZABETH PEAFF
WINSTON-SALEM, N. C.





Sophomore Class

ELINOR PHILLIPS
WINSTON-SALEM, N. C.

ELIZABETH PRICE
CHARLOTTE, N. C.

PAULINE SETZER
WINSTON-SALEM, N. C.

ALICE PHILPOTT
ROCKY MOUNT, VA.

ALYNE REICH
WINSTON-SALEM, N. C.

LOUISE SIDES
WINSTON-SALEM, N. C.

MARY PRICE
CHARLOTTE, N. C.

LEONORA SCHWARZE
BETHLEHEM, PENN.

MARY CATHERINE SIEWERS
WINSTON-SALEM, N. C.





Sophomore Class

ADELAIDE SILVERSTEEN
BREVARD, N. C.

MARY STOCKTON
WINSTON-SALEM, N. C.

DOROTHY TAYLOR
ROCKY MOUNT, N. C.

DOROTHY SIMS
WINSTON-SALEM, N. C.

THELMA STORTZ
EMALS, PENN.

MADELINE THOMPSON
CHAPEL HILL, N. C.

ROSALIE SMITH
NEW BERN, N. C.

ELLA LEE TALLEY
WASHINGTON, N. C.

MARY K. THORPE
FRIES, VA.





Sophomore Class

AMANDA TUCKER
WHITEVILLE, N. C.

BLANCHE WALTER
KANNAPOLIS, N. C.

MARY B. WILLIAMS
WILMINGTON, N. C.

JOSEPHINE WALKER
WINSTON-SALEM, N. C.

MARY LILLIAN WHITE
WINSTON-SALEM, N. C.

IDA BAKER WILLIAMSON
BURLINGTON, N. C.

BEULAH WALL
WINSTON-SALEM, N. C.

RACHEL WHITLEY
WENDELL, N. C.

EUDINE ZIMMERMAN
ADVANCE, N. C.





Sophomore Class History

HEAR ye, hear ye—we stand before you as Sophomores. Down there, nit wit, and remember you're Fresh!" Thus some sixty-five members of our class came triumphantly to Salem, ready for "new world's to conquer" which were promptly pointed out to us in the form of *A Syllabus Work Book in Elementary Psychology* (ugh!).

Behind us lies a year of achievement and comradeship of which we are rightfully proud. Look it over for yourselves—a fine group of officers, plenty of hard work on academic subjects, a large representation among the participants in extra curricular activities, winning of the Efficiency Cup (oh! what a scramble), Soccer Championship, Basketball Championship—but why go on. We will prove our natural modesty by omitting further enumeration.

Suffice it to say that we felt like old soldiers when we started back this year. "Jinks" Harris, as commander-in-chief, has been marshalling troops with gratifying results. Sophomore Court was literally a scream when one considers the very unmusical warbling of the Frosh. Such tuneless voices were found to be greatly improved by the early morning drills given beside Alice Clewell Building.

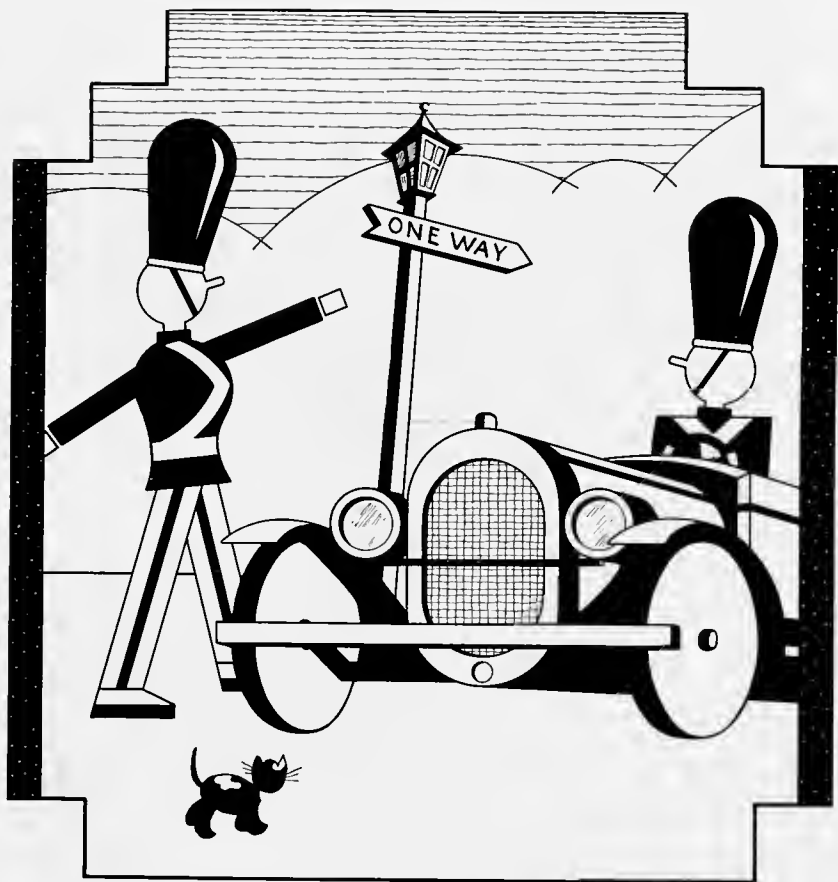
From improving the younger generation we turned to rally some members of our own class into a soccer team that won the championship for a second time. The battle for the Efficiency Cup is on again and only time will tell who wins it, but—well, here's hoping.

Stunt night, a new feature this year, brought us ten shiny silver dollars to jingle in the treasurer's pocket until time to entertain our Senior big sisters, whom we have already assisted in assuming their new dignity at hat burning.

New privileges are not to be overlooked, for they have helped make history. Think of the home fires (did someone say masculine flames?) that have been kept burning by the use of four week-ends a semester! Sundays in town aren't to be sneezed at, either.

Frankly, we think it's a great old world and that Salem is a fine place to come to as Sophomores. All who agree please make it known by saying, "Yes!" Oppose, "No!" Be still, you sassy Freshman!





FRESHMAN



Freshman Class

Φ A Π

Colors: *Purple and White*

Flower: *Parma Violet*

Motto: "*Honor, Unity, Fidelity*"

OFFICERS

KATHERINE LASATER	<i>President</i>
SARA DAVIS	<i>Vice-President</i>
GEORGIA HUNTINGTON	<i>Secretary</i>
HELEN MARIE GEORGE	<i>Treasurer</i>
MILDRED WOLFE	<i>Historian</i>
FRANCES MAUNY	<i>Cheer Leader</i>
MISS ELOISE VAUGHN	<i>Class Adviser</i>

Freshman Class Song

*Here's to the class we belong to,
 We're willing to serve
 Our dear Alma Mater,
 Her fame to preserve.
 We're loyal to Salem;
 We give her our best;
 We rally our forces and sing, sing, sing!
 So here's to the Freshmen,
 The Class of 'Thirty-four.
 We'll honor, uphold them
 Adored forevermore.
 We're true to the ideals
 That Salem holds so high—
 It's the Spirit of 'Thirty-four.*





Freshman Class

KATHERINE LASATER
ERWIN, N. C.

MISS ELOISE VAUGHN
Class Adviser

DOROTHY ABERNETHY
HICKORY, N. C.

MARY ABSER
BALTIMORE, MD.

KATHLEEN ADKINS
WALNUT GROVE, N. C.

OPAL ALEXANDER
WINSTON-SALEM, N. C.

VIRGINIA ALLEN
WINSTON-SALEM, N. C.

JANE ARMSTRONG
STONEY POINT, N. C.

CELESTE AVENT
BENNETTSVILLE, S. C.

ANNIE MAY BAITY
WINSTON-SALEM, N. C.

ALDA BARBER
MOUNT ULLA, N. C.





Freshman Class

MARY OLLIE BILES
WINSTON-SALEM, N. C.

AVIS BILLINGHAM
TRENTON, N. J.

DOROTHY BLAIR
ALBEMARLE, N. C.

THELMA BLISS
PINEHURST, N. C.

LEILA BLOOR
TRENTON, N. J.

EMILY BOGER
ALBEMARLE, N. C.

ELIZABETH BOONE
JACKSON, N. C.

NELL BRANDON
CHATTANOOGA, TENN.

RACHEL BRAY
MOUNT AIRY, N. C.

INEZ BRINKLEY
WINSTON-SALEM, N. C.

MARGUERITE BUTNER
ADVANCE, N. C.





Freshman Class

ELEANOR CAIN
WINSTON-SALEM, N. C.

SUSAN CALDER
CHARLOTTE, N. C.

MARION CALDWELL
CHARLOTTE, N. C.

MARY CANADA
WINSTON-SALEM, N. C.

SARA CLENDENIN
BLUEFIELD, W. VA.

RUTH CLEWELL
SWARTHMORE, PA.

KATHLEEN COWAN
JEFFERSON CITY, TENN.

THELMA CREWS
WINSTON-SALEM, N. C.

MARGARET DAVIS
FARMVILLE, N. C.

SARA DAVIS
WINSTON-SALEM, N. C.

EDWINA DEWEY
WILMINGTON, N. C.





Freshman Class

- | | | |
|---|--|---|
| <p>MARY KATE DIXSON
WINSTON-SALEM, N. C.</p> <p>ELIZABETH DURHAM
CHAPEL HILL, N. C.</p> <p>ROBIN FRALEY
STATESVILLE, N. C.</p> <p>HELEN MARIA GEORGE
COMFORT, N. C.</p> | <p>DOROTHY DODSON
CHARLESTON, W. VA.</p> <p>HELEN ELDRIDGE
WINSTON-SALEM, N. C.</p> <p>CATHERINE FRANKS
FRANKLIN, N. C.</p> <p>NELLIE GORDON
PILOT MOUNTAIN, N. C.</p> | <p>DORA ELLIOTT
TUOWAY SPRING, N. C.</p> <p>MARY CELESTE FRONTIS
MOORESVILLE, N. C.</p> <p>DORABELLE GRAVES
MOUNT AIRY, N. C.</p> |
|---|--|---|





Freshman Class

GERALDINE GRIFFITH
WINSTON-SALEM, N. C.

JOSEPHINE GRIMES
WINSTON-SALEM, N. C.

MARION HADLEY
CHARLOTTE, N. C.
KATHLEEN HARRISON
ROGERSVILLE, TENN.

DOROTHY HAMMOND
LAURINBURG, N. C.
MARY LOUISE HARRISON
GREENSBORO, N. C.

MILDRED HANES
PINE HALL, N. C.

ETHEL HATFIELD
YUKON, W. VA.

JUANITA HAUK
KINGSFORT, TENN.

EARSLEY HEGE
LEXINGTON, N. C.

SENNIE HENGEVELD
BELLEVUE, PENN.





Freshman Class

ADELF HICKS
HIGH POINT, N. C.

FRANCES HILL
ROANOKE, VA.

DOROTHY HOLCOMB
WINSTON-SALEM, N. C.

MAGGIE HOLLEMAN
WINSTON-SALEM, N. C.

SARA HORTON
MONROE, N. C.

NINA HOWELL
SEABOARD, N. C.

EVELYN HUGHES
WINSTON-SALEM, N. C.

HAZEL HUNTER
WINSTON-SALEM, N. C.

GEORGIA HUNTINGTON
WILMINGTON, N. C.

MARY WALL JAMES
LAURINBURG, N. C.

HELEN JOHNSON
WINSTON-SALEM, N. C.





Freshman Class

MAE JOHNSON
WINSTON-SALEM, N. C.

LOUISE KEARNS
HIGH POINT, N. C.

MARY LOU KERR
WINSTON-SALEM, N. C.

ALMA BOONE KYLE
ROGERSVILLE, TENN.

ANN ELIZABETH LEAKE
GREENSBORO, N. C.

SARA LINDSAY
LILESVILLE, N. C.

ANNE MCKINNON
MAXTON, N. C.

ELLIOTT MCLEAN
LAURINBURG, N. C.

RUTH MCLEOD
MAXTON, N. C.

ETHEL McMINN
BREVARD, N. C.

PATRICIA McMULLEN
WASHINGTON, N. C.





Freshman Class

GERTRUDE McNAIR
LAURINBURG, N. C.

MARTHA MANN
CHESTER, S. C.

MARY ANN MATHEWSON
RICHMOND, VA.

JOSEPHINE MAXWELL
ROANOKE, VA.

NANCY MILLER
OLD FORT, N. C.

EMMA HILTON MOORE
WINSTON-SALEM, N. C.

ELIZABETH MOSS
OXFORD, N. C.

ESTHER NOFF
WINSTON-SALEM, N. C.

KATHRYN NUTTING
WINSTON-SALEM, N. C.

MARTHA OWEN
WINSTON-SALEM, N. C.

JEAN PATTERSON
RUSSELVILLE, TENN.





Freshman Class

ADELAIDE PETREE
RURAL HALL, N. C.

MARGUERITE PIERCE
AYDEN, N. C.

MARJORIE PLEASANTS
WINSTON-SALEM, N. C.

ISABEL POLLOCK
BLUEFIELD, W. VA.

GRACE POLLOCK
GRANGE, N. C.

RUTH GREY PRICE
MOUNT OLIVE, N. C.

MARY SAMPLE
FORT PIERCE, FLA.

MARY SCHLEGEL
NAZARETH, PA.

FRANCES SETTLEMIRE
GRANITE FALLS, N. C.

BESSIE SHOUSE
PFAFFTOWN, N. C.

ANNIE SHUFORD
CONOVER, N. C.





Freshman Class

MARGARET SKIDMORE
BUCHANAN, VA.

MILDRED SMALL
GERMANTOWN, N. C.

JANE SMITH
KINGS MOUNTAIN, N. C.

MARGARET SMITH
LEAKSVILLE, N. C.

EDWINA SNYDER
WINSTON-SALEM, N. C.

KATHRYN SPACH
WINSTON-SALEM, N. C.

MIRIAM STEVENSON
SALISBURY, N. C.

GERTRUDE STOCKTON
WINSTON-SALEM, N. C.

ALICE STOUGH
CHARLOTTE, N. C.

ELIZABETH STOUGH
CHARLOTTE, N. C.

MARIAN STOVALL
WINSTON-SALEM, N. C.





Freshman Class

- | | | |
|---|--|---|
| <p>MADFLINE THOMPSON
LEXINGTON, N. C.</p> | <p>NANCY THOMPSON
WINSTON-SALEM, N. C.</p> | |
| <p>RUTH THOMPSON
SPARTA, N. C.</p> | <p>CAROLYN THORNTON
WINSTON-SALEM, N. C.</p> | <p>ANNIE RUTH TOMLINSON
NORTH WILKESBORO, N. C.</p> |
| <p>JINAIDA VOLOGODSKY
HARBIN, CHINA</p> | <p>MARGARET WESSELL
WILMINGTON, N. C.</p> | <p>MILDRED WOLFE
MT. AIRY, N. C.</p> |
| <p>RUTH WOLFE
WINSTON-SALEM, N. C.</p> | <p>ALLENE WOOSLEY
WINSTON-SALEM, N. C.</p> | <p>GRACE WRIGHT
WINSTON-SALEM, N. C.</p> |





Freshman Class History

*The day and the month I well remember,
The day the tenth, the month September.*

*Alone to Salem, so wonderful so strange!
From home to college, how great a change!*

*Our Junior sisters so kind and good
Came to help us when alone we stood.*

*The Y. W. soon answered a silent plea
And invited us all to a lovely tea.*

*Thanks are extended to dear Miss Vaughn
Who helped us till the newness was gone.*

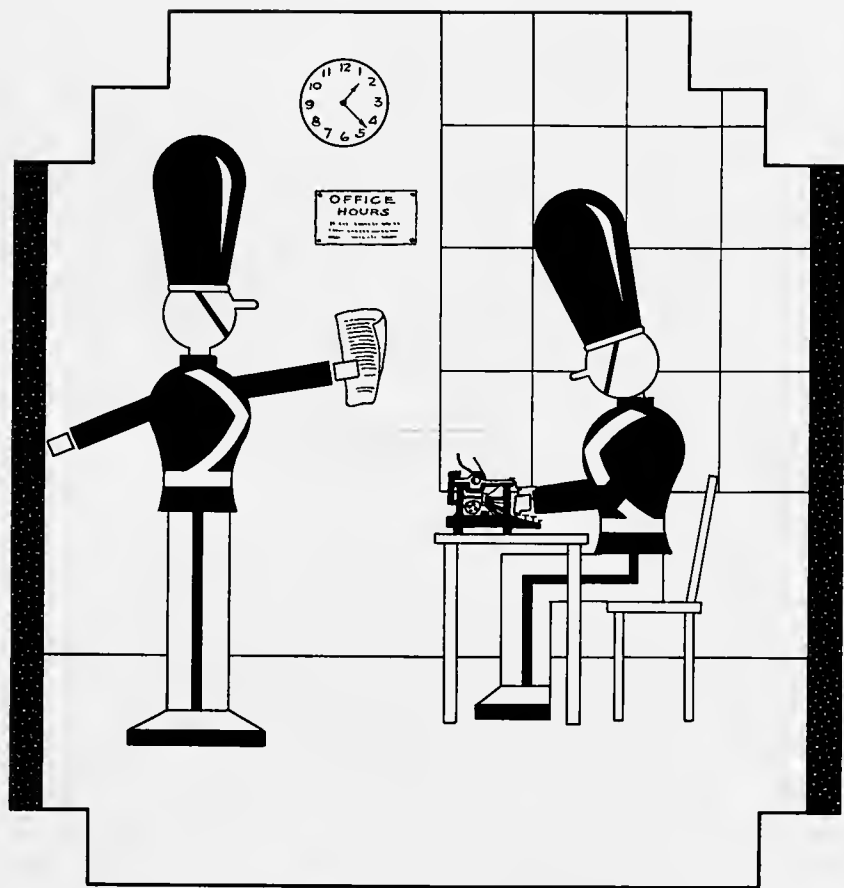
*Each Freshman proved to be a sport
By her response to Sophomore Court.*

*In soccer we accomplished quite a feat,
Juniors and Seniors we did defeat.*

*We ably avoided any disaster
By choosing as president Katherine Lasater.*

*We came to work and not to loiter,
We hope to bring glory to our Alma Mater.*





BUSINESS



Business Students

ANNIE LEE BYNUM
GOLDSBORO, N. C.

ADELAIDE FOIL
CONCORD, N. C.

MARY LOOPER
GREENVILLE, S. C.

MARY CARSTARPHEN
WILLIAMSTON, N. C.

LINDA GORRELL
GREENSBORO, N. C.

LILY MARSHALL
SPRAY, N. C.

ELSIE CHANDLER
SOUTHERN PINES, N. C.

KATHERINE HARDISON
WILLIAMSTON, N. C.

KATHRYN MATTHEWS
STONEVILLE, N. C.

BLANCHE DUVALL
CHERAW, N. C.

HELEN HEATH
MARTINSVILLE, VA.

FRANCES MAUNEY
LINCOLNTON, N. C.



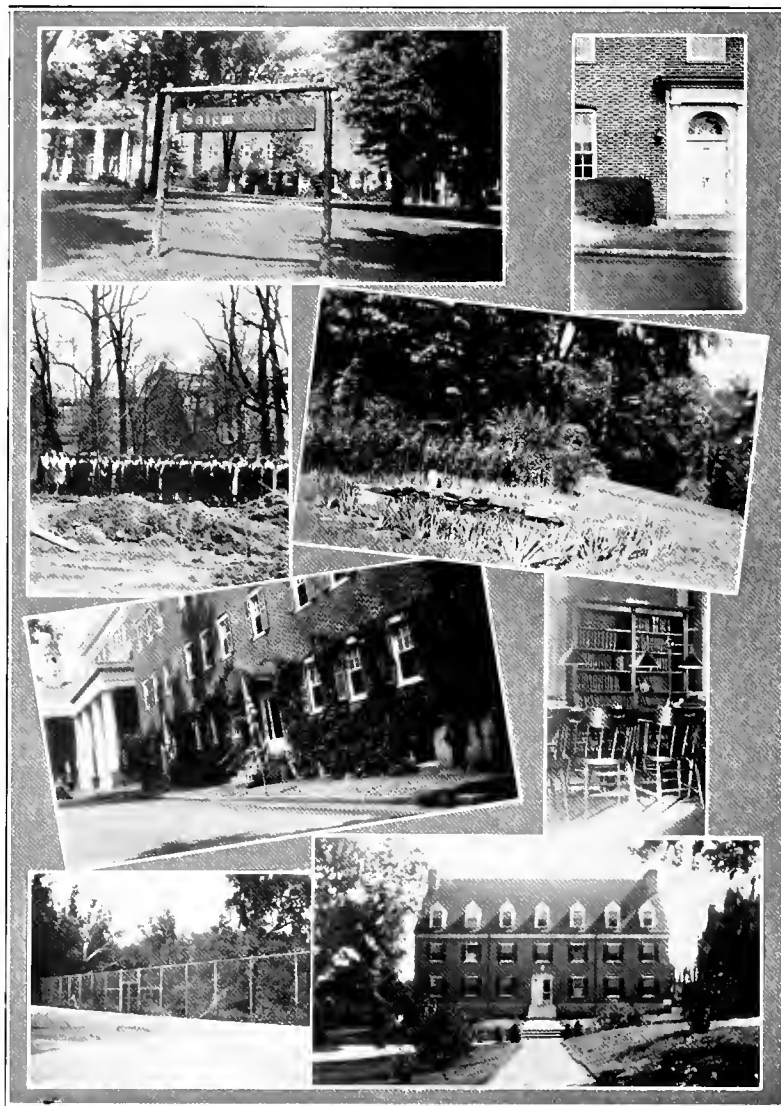


Business Students

- | | | | |
|--|---|---|--|
| VIRDA PARKS
KERNERSVILLE, N. C. | RENA PENDLETON
MOUNT AIRY, N. C. | IRENE PRITCHETT
COLUMBIA, N. C. | MARY HARVEY RAWLINGS
MOUNT KISCO, N. Y. |
| BURDETTE SCALES
MONROE, N. C. | MARY HALL SMITH
WINSTON-SALEM, N. C. | BILLIE STOCKS
REDSVILLE, N. C. | MARY THOMAS
WINSTON-SALEM, N. C. |
| FRANCES TUCKER
WINSTON-SALEM, N. C. | JULIA WIGGINS
TARBORO, N. C. | WILHELMINA WOHLFORD
CHARLOTTE, N. C. | ELIZABETH STEWART
MONROE, N. C. |



Sights and Insights



SNAPS OF SALEM





ORGANIZATIONS





Presidents' Forum

- | | |
|-------------------------------|-------------------------------------|
| DR. H. E. RONDHALER | Salem College |
| LENORA RIGGAN | Student Self-Government Association |
| ELIZABETH MARX | Y. W. C. A. |
| ELIZABETH WARD | Athletic Association |
| LUCY CURRIE | I. R. S. |
| ERNESTINE THIES | Sights and Insights |
| EDITH KIRKLAND | Salemite |
| FRANCES FLETCHER | Senior Class |
| SARAH GRAVES | Junior Class |
| VIRGINIA HARRIS | Sophomore Class |
| KATHERINE LASATER | Freshman Class |
| DAISY LITZ | History Club |
| GRACE MARTIN | Le Cercle Francais |
| KATHERINE BROWN | Societas Scientiarum Salemensis |
| ANNIE KOONCE SUTTON | Home Economics Club |
| ADELAIDE WINSTON | Pierrette Players |
| DAISY LITZ | Fire Chief |
| KATHERINE SCHLEGEL | Mathematics Club |
| ALICE CALDWELL | Sigma Omicron Alpha |
| MARGARET RICHARDSON | Alpha Chi Alpha |
| MISS HELEN FULLER | MacDowell Club |





Student Self-Government Association

- LENDRA RIGGAN *President*
 MARGARET RICHARDSON *Vice-President*
 BEULAH MAY ZACHARY *Secretary*
 ANNA PRESTON *Treasurer*
 ELIZABETH ALLEN *Senior Representative*
 MILLICENT WARD *Senior Representative*
 GRACE MARTIN *Senior Representative*
 RUTH ELLEN FOGLEMAN *Senior Representative*
 KATHERINE BROWN *Junior Representative*
 CORINNE JONES *Junior Representative*
 MILDRED BILES *Junior Representative*
 DOROTHY HEIDENREICH *Sophomore Representative*
 LEONORA SCHWARZE *Sophomore Representative*
 MARY CATHERINE SIEWERS *Sophomore Representative*
 DORABELLE GRAVES *Freshman Representative*
 EDWINA DEWEY *Freshman Representative*
 MARY OLLIE BILES *Freshman Representative*
 DAISY LITZ *House President*
 MARIA BOWEN *House President*
 EDITH LEAKE *House President*
 KATHARYN LYERLY *House President*
 ELIZABETH MARX *Honorary Member*



Sights and Insights



STUDENT COUNCIL





Y. W. C. A.

ELIZABETH MARX	<i>President</i>
LUCY CURRIE	<i>Vice-President</i>
MATILDA MANN	<i>Secretary</i>
MARTHA DAVIS	<i>Treasurer</i>
ELEANOR IDOL	<i>Chairman Program Committee</i>
MARY B. WILLIAMS	<i>Chairman Social Committee</i>
IDA BAKER WILLIAMSON	<i>Chairman Finance Committee</i>
WANNA MARY HUGGINS	<i>Chairman Music Committee</i>
MARGARET JOHNSON	<i>Chairman Evening Watch Committee</i>
THELMA STORTZ	<i>Chairman Room Committee</i>
IRENE McANALLY	<i>Chairman Publicity Committee</i>
FRANCES CALDWELL	<i>Chairman Social Service Committee</i>
WILHELMINA WOHLFORD	<i>Chairman World Fellowship Committee</i>
KATHERINE SCHLEGEL	<i>Chairman Christian Service Committee</i>
ZINAIDA VOLOGODSKY	<i>Freshman Representative</i>
MARGARET SKIOMORE	<i>Freshman Representative</i>
LENORA RIGGAN	<i>Honorary Member</i>



Sights and Insights



Y. W. C. A. CABINET

101





Sights and Insights Staff

CHARLES HENRY HIGGINS
Faculty Adviser

ERNESTINE THIES
Editor-in-Chief

EDITORIAL STAFF

BEULAH MAY ZACHARY *Assistant Editor-in-Chief*
 MARY VIRGINIA PENDERGRAPH *Assistant Editor-in-Chief*
 ALICE CALDWELL *Literary Editor*
 MARJORIE SIEWERS *Literary Editor*
 KATHARYN LYERLY *Senior Representative*
 ELEANOR MEINUNG *Junior Representative*
 MARY LOUISE MICKEY *Sophomore Representative*
 MINNIE HICKS *Photographic Editor*
 LEONORA SCHWARZE *Club Editor*
 MARY CATHERINE THORPE *Athletic Editor*
 KATHERINE BROWN *Humor Editor*
 MARTHA THOMAS *Assistant Art Editor*
 MAE KREEGER *Copy Editor*

BUSINESS STAFF

MARY AYERS PAYNE *Business Manager*
 NINA HOFFMAN *Assistant Business Manager*
 DORIS KIMEL *Assistant Business Manager*
 HARRIET HOLDERNESS *Assistant Advertising Manager*
 HORTENSE HERRING *Assistant Advertising Manager*
 MARY STOCKTON *Assistant Advertising Manager*
 RUTH CROUSE *Assistant Advertising Manager*
 FRANCES DOUGLAS *Assistant Advertising Manager*

OTHERS WHO HAVE HELPED

THELMA STORTZ

ETHEL McMINN

ELMINA HEARNE



Sights and Insights



SIGHTS AND INSIGHTS STAFF





Salemite Staff

EDITORIAL STAFF

EDITH KIRKLAND	<i>Editor-in-Chief</i>
DAISY LEE CARSON	<i>Managing Editor</i>
SARAH GRAVES	<i>Associate Editor</i>
KATHLEEN MOORE	<i>Associate Editor</i>
ANNA PRESTON	<i>Feature Editor</i>
LUCY CURRIE	<i>Local Editor</i>
AGNES POLLOCK	<i>Local Editor</i>
ELEANOR IDDL	<i>Local Editor</i>
MILLICENT WARD	<i>Music Editor</i>
MARGARET RICHARDSON	<i>Poetry Editor</i>
MARY ELIZABETH HOLCOMB	<i>Cartoon Editor</i>
MARIAN CALDWELL	<i>Reporter</i>

BUSINESS STAFF

MARY NORRIS	<i>Business Manager</i>
MARY ALICE BEAMAN	<i>Advertising Manager</i>
EDITH LEAKE	<i>Assistant Advertising Manager</i>
FRANCES CALDWELL	<i>Assistant Advertising Manager</i>
EMILY MICKEY	<i>Assistant Advertising Manager</i>
NANCY FULTON	<i>Assistant Advertising Manager</i>
ANN MEISTER	<i>Assistant Advertising Manager</i>
ELIZABETH M'CLAUGHERTY,	<i>Assistant Advertising Manager</i>
LOUISE BRINKLEY	<i>Assistant Advertising Manager</i>
DAISY LITZ	<i>Assistant Advertising Manager</i>
MARTHA DAVIS	<i>Circulation Manager</i>
MARGARET JOHNSON	<i>Assistant Circulation Manager</i>
GRACE BROWN	<i>Assistant Circulation Manager</i>



Sights and Insights



SALEMITE STAFF





I. R. S.

MISS LULA MAE STIPE	<i>Adviser</i>
LUCY CURRIE	<i>President</i>
RUTH CARTER	<i>Vice-President</i>
FRANCES FLETCHER	<i>Senior President</i>
SARAH GRAVES	<i>Junior President</i>
VIRGINIA HARRIS	<i>Sophomore President</i>
KATHERINE LASATER	<i>Freshman President</i>
ELIZABETH MARX	<i>Honorary Member</i>
LENORA RIGGAN	<i>Honorary Member</i>

REPRESENTATIVES

Senior

JULIA BROWN JENNINGS
 ELIZABETH ALLEN
 MARGARET SIEWERS
 SARA EFIRD

Junior

BEATRICE HYDE
 ELIZABETH MCCLAUGHERTY
 NANCY FULTON
 ELEANOR MEINUNG

Sophomore

ELIZABETH PRICE
 MARY KATHERINE THORPE
 RUTH CROUSE
 CHARLOTTE O'BRIEN

Freshman

MARY ANN MATHEWSON
 ELLIOT MCLEAN
 MARJORIE PLEASANTS
 MILDRED WOLFE





MacDowell Club

- MISS HELEN FULLER *President*
 CORINNE JONES *Secretary-Treasurer*
 MARY AYERS PAYNE *Senior Representative*
 MARTHA DAVIS *Junior Representative*
 IRENE McANALLY *Sophomore Representative*
 AVIS BILLINGHAM *Freshman Representative*
 MISS MURRAY *Academy Representative*
 MARGARET McLEAN *Academy Representative*

The MacDowell Club was founded by the late Dean Shirley for the entertainment of the Salem students. Every student who buys a ticket automatically becomes a member for the year and is privileged to attend all entertainments sponsored by the club.





Home Economics Club

- ANNIE KOONCE SUTTON *President*
 GRACE BROWN *Vice-President*
 THELMA STORTZ *Secretary*
 IRENE McANALLY *Treasurer*

The Home Economics Club was established in 1921. It is therefore next to the oldest club organization on the campus. The aim of the club is to arouse more interest in the study of Home Economics and to contribute to the minor furnishings of the Practice House.





Le Cercle Francais

- GRACE MARTIN *President*
 MINNIE HICKS *Vice-President*
 MARJORIE SIEWERS *Secretary-Treasurer*

Le Cercle Francais was organized to stimulate enthusiasm for modern French affairs, to improve the pronunciation and vocabulary of the French majors, and to supplement the work of the Modern Language Department by mingling scholastic achievement with social life.





History Club

DAISY LITZ *President*
 CORINNE JONES *Vice-President*
 CARRYE BRAXTON *Secretary*
 DAISY LEE CARSON *Chairman Program Committee*

The History Club was organized as an extension and discussion forum of the majors and interested students of history. It meets once a month to talk over current topics, aided by Dr. Anscombe, who lectures informally on subjects of historical value.





Societas Scientiarum Salemensis

- KATHERINE BROWN *President*
 ELEANOR MEINUNG *Secretary*
 MARY AYERS PAYNE *Chairman Executive Committee*

Societas Scientiarum Salemensis, or the Science Club, is composed of a group of students interested in modern scientific achievement. Those girls who have had two years of science, or are taking their second year, are eligible as members if they are making passing grades in all their subjects.

III





Pierrette Players

- ADELAIDE WINSTON *President*
- MARJORIE SIEWERS *Vice-President*
- MINNIE HICKS *Secretary*
- MARY LOUISE MICKEY *Treasurer*
- ANNE FINLEY *Stage Manager*
- MARY KATHERINE THORPE *Assistant Stage Manager*
- ELIZABETH STOUGH *Assistant Stage Manager*
- AGNES POLLOCK *Business Manager*

The Pierrette Players are a group of girls whose purpose is to study dramatic art and to produce plays for public entertainment. The number of members is limited to twenty-five, and eligibility is determined by try-outs.





Mathematics Club

- KATHERINE SCHLEGEL *President*
 RUTH ELLEN FOGLEMAN *Vice-President*
 MARGARET MAXWELL *Secretary*
 ELMINA HEARNE *Treasurer*
 LEONORA SCHWARZE *Salemite Reporter*

The Mathematics Club is composed of all girls at Salem who have studied, or are studying, mathematics and are interested in becoming members. Its aim is to learn the practical application and background of mathematics and to keep in close contact all Salem girls interested in the subject.





Sigma Omicron Alpha

- ALICE CALDWELL *President*
- DORIS KIMEL *Vice-President*
- LOUISE STEVENSON *Secretary-Treasurer*
- MARY AYERS PAYNE *Chairman Program Committee*
- ANNE FINLEY *Parliamentarian*
- DALLAS SINK *Argumentative Critic*

Sigma Omicron Alpha, the debating club, is one of the most active organizations at Salem. Its purpose is to further an interest at Salem in debating and the art of public speaking. Membership is open to all Salem students. Current affairs and topics of scholastic importance are the principle subjects for discussion.



Glee Club

MILLICENT WARD *President*
 TOMMY FRYE *Secretary*

The Glee Club was instituted at Salem to further the art of choral singing, and to assist music students in their work by teaching them the harmony of blended voices. Although membership in it is required of all music majors, it is open to all other interested students.





Orchestra

MISS HAZEL HORTON READ Director

First Violin

GEORGE DICKIESON
 ALBERT BLUMENTHAL
 ELIZABETH McCLAUGHERTY
 MARIA BOWEN
 DAISY LITZ
 MARGARET SCHWARZE

Second Violin

JUANITA HAUK
 MAURINE PERRYMAN
 LOUISE KEARNS
 REBECCA BAYNES
 DONALD PFOHL
 REBECCA THOMAS

Viola

LAURA PRICE
 MARTHA MANN

Cello

CARL PLASTER
 SUE JANE MAUNEY
 RUTH DICKIESON

Bass

JAMES PFOHL

Accompanist

ELIZABETH WILLIS

The Salem College Stringed Orchestra is required of all violin majors and is open to other students of stringed instruments who are sufficiently advanced.





Alpha Chi Alpha

National Honorary Journalistic Sorority

Founded at the University of Tennessee, 1919

LAMBDA CHAPTER FOUNDED AT SALEM COLLEGE IN 1927

Colors: *Gold and White*

Flower: *Yellow Rose*

OFFICERS

MARGARET RICHARDSON	<i>President</i>
KATHLEEN MOORE	<i>Vice-President</i>
ELIZABETH MARX	<i>Secretary</i>
EDITH KIRKLAND	<i>Treasurer</i>
MISS ELIZABETH LILLY	<i>Faculty Adviser</i>

SORES IN COLLEGIO

LUCY MARTIN CURRIE	MARY LOUISE MICKEY
FRANCES DOUGLAS	KATHLEEN MOORE
SARAH GRAVES	MARY VIRGINIA PENDERGRAPH
EDITH KIRKLAND	ANNA PRESTON
GRACE MARTIN	MARGARET RICHARDSON
ELIZABETH MARX	LOUISE STEVENSON

SORES IN FACULTATE

MISS ELIZABETH LILLY	MISS LESSIE BROWN PHILLIPS
----------------------	----------------------------

SOROR IN URBE

VIRGINIA PFOHL





Alpha Phi Kappa

Established at Salem, 1919

Colors: *Black and Gold*

Flower: *Marguerite*

Class of 1931

- MARY GWYN HICKERSON
- EDITH KIRKLAND
- LENORA RIGGAN
- DOROTHY THOMPSON
- MILLCENT WARD
- ADELAIDE WINSTON
- LUCY MARTIN CURRIE



Class of 1932

- MARY ALICE BEAMAN
- FRANCES CALDWELL
- MARTHA DAVIS

Class of 1933

- LOUISE BRINKLEY
- WANNA MARY HUGGINS
- IRENE McANALLY
- MARY B. WILLIAMS

PAN-HELLENIC REPRESENTATIVES

MILLCENT WARD

LUCY MARTIN CURRIE

EDITH KIRKLAND





Beta Beta Phi

Established at Salem, 1911

Colors: *Red and Black*

Flower: *Red Rose*

Class of 1931

KATHRYN LYERLY
MARY NORRIS
LEONORA WILDER

Class of 1932

WINIFRED FISHER
SARAH GRAVES
MINNIE HICKS
NINA HOFFMAN



BEATRICE HYDE
ELEANOR IDOL
EDITH LEAKE
MARY VIRGINIA PENDERGRAPH
ANNA PRESTON

Class of 1933

IDA BAKER WILLIAMSON
MARGARET JOHNSON

PAN-HELLENIC REPRESENTATIVES

BEATRICE HYDE

KATHRYN LYERLY

MARY NORRIS

ANNA PRESTON





Delta Sigma Delta

Established at Salem, 1913

Colors: *Purple and White*

Flower: *Parma Violet*

Class of 1931

Class of 1932

FLORENCE BOWERS
 ALICE CALDWELL
 JULIA BROWN JENNINGS
 SUE JANE MAUNEY
 KATHLEEN MOORE
 AGNES POLLOCK
 ANNIE KOONCE SUTTON
 ELIZABETH WARD

RUTH MAIER
 MARY MITCHELL NORMAN
 SARA SUTTON

Class of 1933

NINA WAY CREDLE
 MATHILDA MANN
 MARY PRICE
 ELIZABETH PRICE
 MADELINE THOMPSON



PAN-HELLENIC REPRESENTATIVES

MARY MITCHELL NORMAN

ANNIE KOONCE SUTTON

KATHLEEN MOORE





Theta Delta Pi

Colors: *Green and White*

Established at Salem, 1918

Flower: *White Rose*

Class of 1931
 ELIZABETH ALLEN
 EVA HACKNEY
 ANNA HOLDERNESS



Class of 1932
 HARRIET HOLDERNESS
Class of 1933
 VIRGINIA HARRIS
 MARY CLARK

PAN-HELLENIC REPRESENTATIVES
 ELIZABETH ALLEN HARRIET HOLDERNESS





May Court

ELIZABETH ALLEN *May Queen*
MILICENT WARD *Maid of Honor*

MEMBERS

BEATRICE HYCE
ALICE CALDWELL
KATHLEEN MOCKE
MILDRED HANES
SARA SUTTON
EVA HACKNEY
MARGARET DAVIS
ANNIE KOONCE SUTTS
FRANCES FLETCHER
MARY LOU KERR
SUE JANE MAULNEY
VIRGINIA GOODMAN
IRENE McANALLY
ELIZABETH SIMPSON



Nights and Insights



ELIZABETH ALLEN
May Queen

123

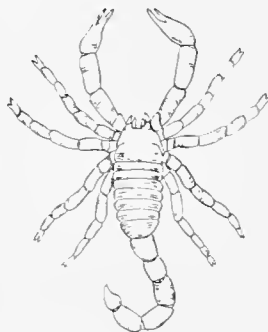




Order of the Scorpion

RUTH CARTER
LUCY CURRIE
FRANCES FLETCHER

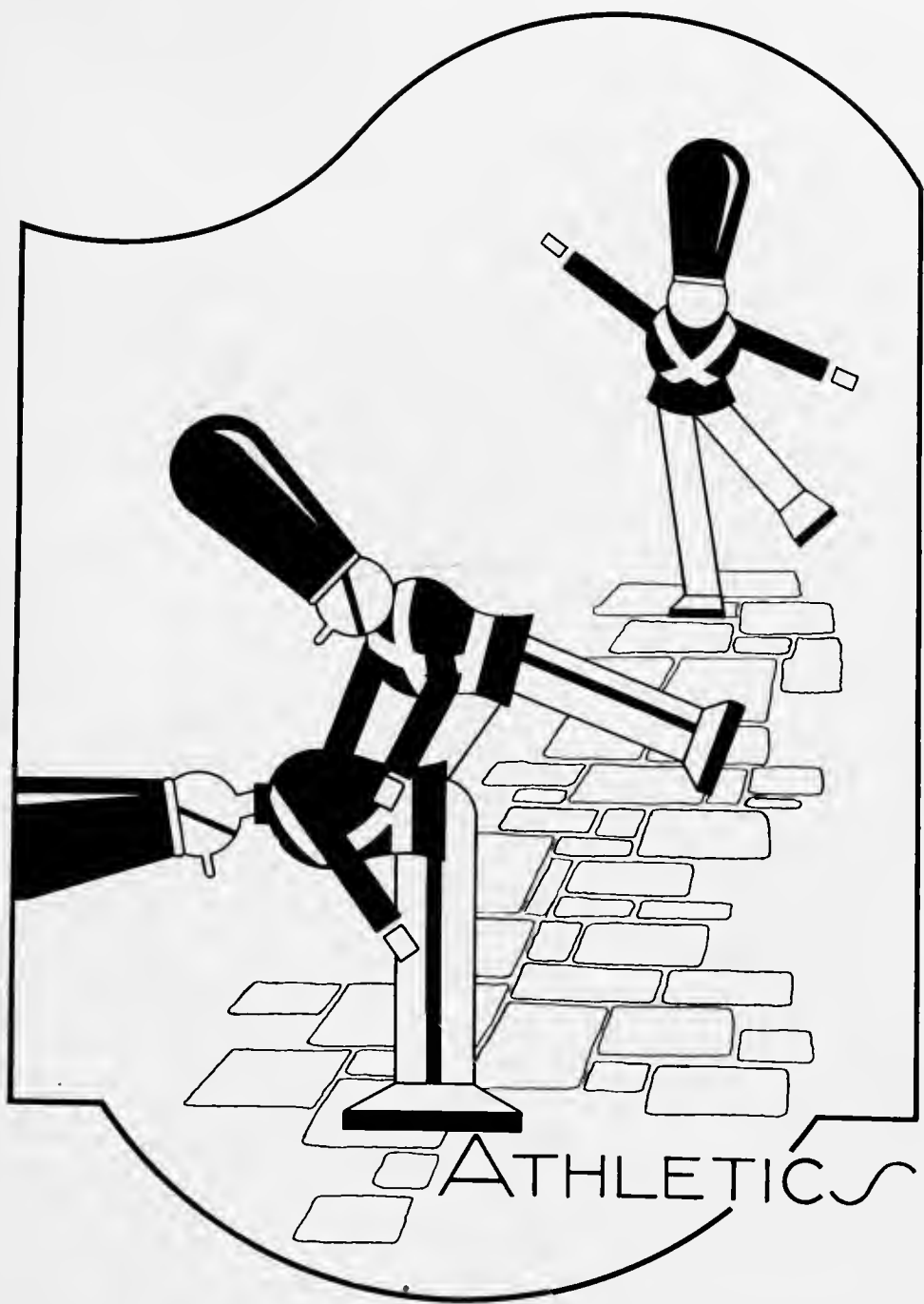
SARAH GRAVES
EDITH KIRKLAND
ELIZABETH MARX



ANNA PRESTON
MARGARET RICHARDSON
LENORA RIGGAN

MARJORIE SIEWERS
MILLCENT WARD
ADELAIDE WINSTON





ATHLETICS





Athletic Association

ELIZABETH WARD	<i>President</i>
ADLAIDE WINSTON	<i>Vice-President</i>
ANNA PRESTON	<i>Secretary</i>
ANNE FINLEY	<i>Treasurer</i>
MISS MINNIE ATKINSON	<i>Coach</i>





Athletic Council

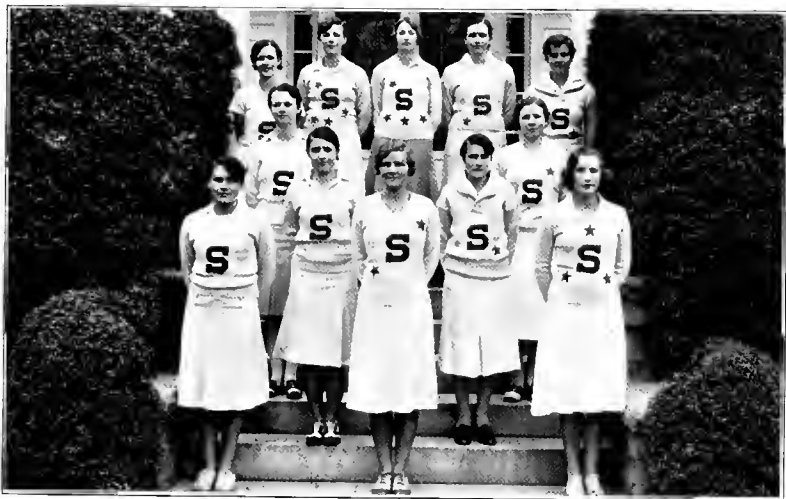
- DOROTHY THOMPSON *Manager of Soccer*
- MILDRED BILES *Manager of Hockey*
- HAZEL BRADFORD *Manager of Volley Ball*
- RUTH CARTER *Manager of Basketball*
- MARY HARVEY RAWLINGS *Manager of Track*
- JOSEPHINE WALKER *Manager of Swimming*
- AMELIA GOOCH *Manager of Tennis*
- ANN MEISTER *Manager of Riding*
- VIRGINIA HARRIS *Manager of Baseball*
- MARGARET JOHNSON *Manager of Hiking*
- MARY LOUISE MICKEY *Manager of Golf*
- SUE JANE MAUNEY *Manager of Orchestra*
- EVA HACKNEY *Manager of Efficiency System*



Nights and Insights



DAISY LUTZ, *Cheerleader*, and MARY ELIZABETH HOLCOMB, *Assistant Cheerleader*



MONOGRAM CLUB

L. RIGGAN, E. KIRKLAND, R. CARLIER, L. CURRIE, J. WALKER, M. RICHARDSON, D. THOMPSON,
A. GOOCH, E. WARD, A. PRESTON, M. BILES, S. J. MAUNEY.



SOCCER



DOROTHY THOMPSON, *Manager of Soccer*



SOCCER SQUAD

S. GRAVES, D. HEIDENREICH, M. RICHARDSON, N. MILLER, A. FINLEY, B. KYLE, E. CREWS, J. WALKER, M. HOLCOMB, R. CROUSE, M. HOLLEMAN, C. HUNTINGTON, K. SCHLEGEL, M. THORPE, I. ARMSTRONG, E. MICKEY, A. BILLINGHAM, A. PHILPOTT, R. THOMPSON, A. STOUGH, E. CHANDLER, V. HARRIS, E. IDOL, M. WHITE, M. HADLEY, A. GOOCH, H. BRADFORD, E. WARD, E. McMINN, B. SMOTHERS, D. THOMPSON, M. BILES, F. AITCHISON.

HOCKEY



MILDRED EILES, *Manager of Hockey*



HOCKEY VARSITY

A. GOOCH, F. MAUNEY, H. BRADFORD, F. AITCHISON, E. CHANDLER, A. PRESTON, M. E. HOLCOMB,
J. WALKER, V. LANGLEY, R. CARTER, M. BILES.



SENIOR HOCKEY SQUAD

D. SINK, M. NORRIS, K. SCHLEGEL, I. STEVENSON, E. MARK, L. CURRIE, G. MARTIN, A. CALDWELL,
R. CARTER, D. THOMPSON, E. KIRKLAND, L. RIGGAN, M. RICHARDSON, E. WARD.



JUNIOR HOCKEY SQUAD

V. LANGLEY, A. PRESTON, S. GRAVES, E. CREWS, D. KIMEL, E. IDOL, H. BRADFORD, A. MEISTER,
B. HYDE, B. ZACHARY, M. BILES.

HOCKEY




SOPHOMORE HOCKEY SQUAD

E. CORRELL, J. WALKER, M. E. HOLCOMB, D. HEIDENREICH, M. K. THORPE, A. GOOCH, R. CROUSE, M. L. WHITE, M. L. MICKEY, A. FINLEY, M. JOHNSON, C. O'BRIEN, E. MICKEY, F. AITCHISON.



FRESHMAN HOCKEY SQUAD

J. ARMSTRONG, D. GRAVES, B. KYLE, G. HUNTINGDON, S. CALDER, A. WOOSLEY, E. CHANDLER, F. MAUNEY, K. NUTTING, M. HOLLEMAN, R. THOMPSON, A. STOUGH, A. BILLINGHAM, G. POLLOCK.



VOLLEYBALL



HAZEL BRADFORD, *Manager of Volley Ball*



VOLLEY BALL SQUAD

D. HEIDENREICH, J. WALKER, E. KIRKLAND, E. HACKNEY, D. THOMPSON, M. K. THORPE, H. BRADFORD, E. WARD, B. PHILPOTT, V. LANGLEY, R. CARTER, M. RICHARDSDN, A. FINLEY.

BASKETBALL



RUTH CARTER, *Manager of Basketball*



BASKETBALL VARSITY

E. KIRKLAND, C. O'BRIEN, F. FLETCHER, A. WINSTON, D. THOMPSON, A. GOOCH, R. CARTER,
E. MICKEY, S. J. MAUNEY.

BASKETBALL



SENIOR BASKETBALL SQUAD

E. WARD, S. EFIRD, D. THOMPSON, R. CARTER, E. KIRELAND, E. HACKNEY, A. CALDWELL.



JUNIOR BASKETBALL SQUAD

C. JONES, A. MEISTER, V. LANGLEY, S. GRAVES, H. BRADFORD, E. IDOL, A. PRESTON, E. LEAKE,
B. HYDE, D. KIMEL, B. ZACHARY, G. BROWN, H. HOLDERNESS.

BASKETBALL



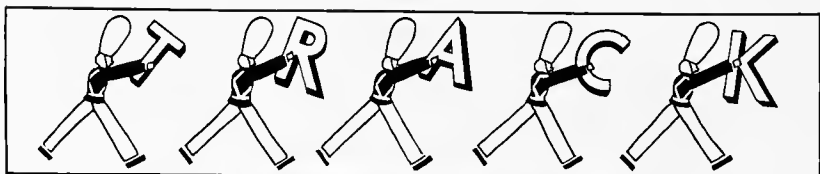
SOPHOMORE BASKETBALL SQUAD

D. HEIDENREICH, M. K. THORPE, J. WALKER, B. PHILPOTT, V. HARRIS, A. GOOCH.



FRESHMAN BASKETBALL SQUAD

J. ARMSTRONG, D. GRAVES, B. KYLE, G. HUNTINGTON, S. CALDER, A. WOOSLEY, E. CHANDLER,
F. MAUNEY, K. NUTTING, M. HOLLEMAN, R. THOMPSON, A. STOUGH, A. BILLINGHAM, G. POLLOCK.

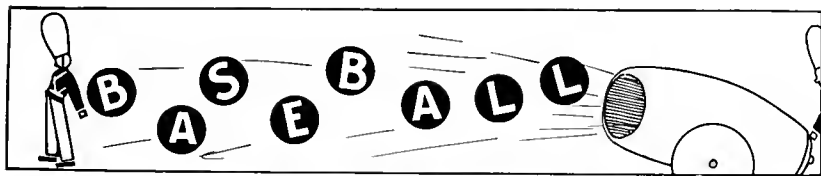


MARY HARVEY RAWLINGS, *Manager of Track*



TRACK SQUAD

A. PRESTON, H. BRADFORD, B. HYDE, S. J. MAUNEY, V. LANGLEY, E. IDOL, S. GRAVES, D. KIMEL,
G. HUNTINGTON, M. H. RAWLINGS, H. HOLDERNESS, G. BROWN.



VIRGINIA HARRIS. *Manager of Baseball*



BASEBALL SQUAD

E. MICKEY, J. WALKER, A. PHILPOTT, A. FINLEY, M. THORPE, A. GOOCH, M. RICHARDSON, D. HEIDENREICH, R. THOMPSON, A. BILLINGHAM, D. THOMPSON, V. HARRIS, L. MOTSINGER, M. BILES.

TENNIS



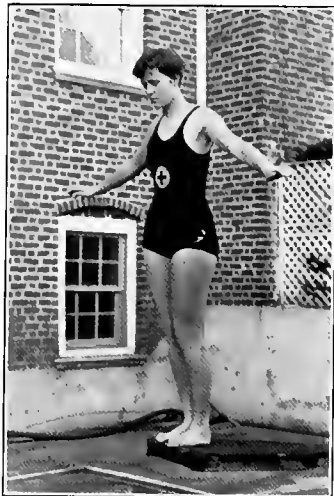
AMELIA GOOCH, *Manager of Tennis*



TENNIS SQUAD

B. HYDE, G. HUNTINGTON, J. WALKER, M. RICHARDSON, R. FRALEY, E. WARD, E. CHANDLER,
L. RIGGAN, A. GOOCH.

S W I M M I N G

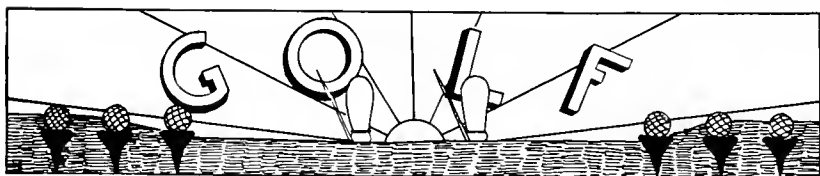


JOSEPHINE WALKER, *Manager of Swimming*



SWIMMING SQUAD

G. HUNTINGTON, M. WESSELL, S. CALDER, N. MILLER, J. WALKER, A. PRESTON.

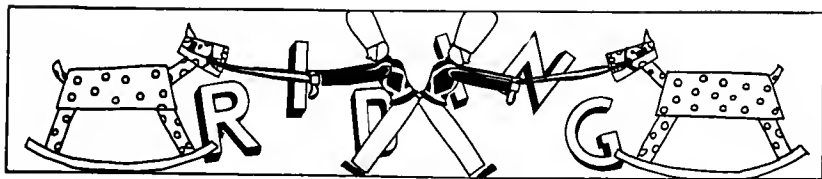


MARY LOUISE MICKEY, *Manager of Golf*



GOLF SQUAD

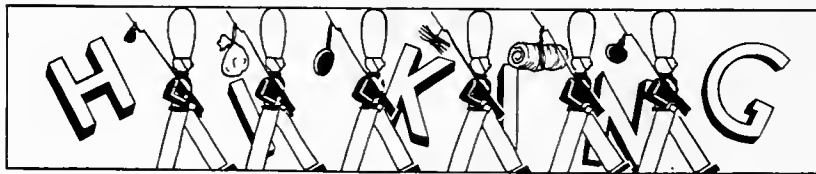
E. WARD, N. HOFFMAN, M. SKIDMORE, M. CALDWELL, S. CALDER, R. PENDLETON, M. MICKEY,
A. WINSTON, E. CHANDLER, L. RIGGAN, D. THOMPSON, A. MEISTER.



ANN MEISTER, *Manager of Riding*



RIDING SQUAD

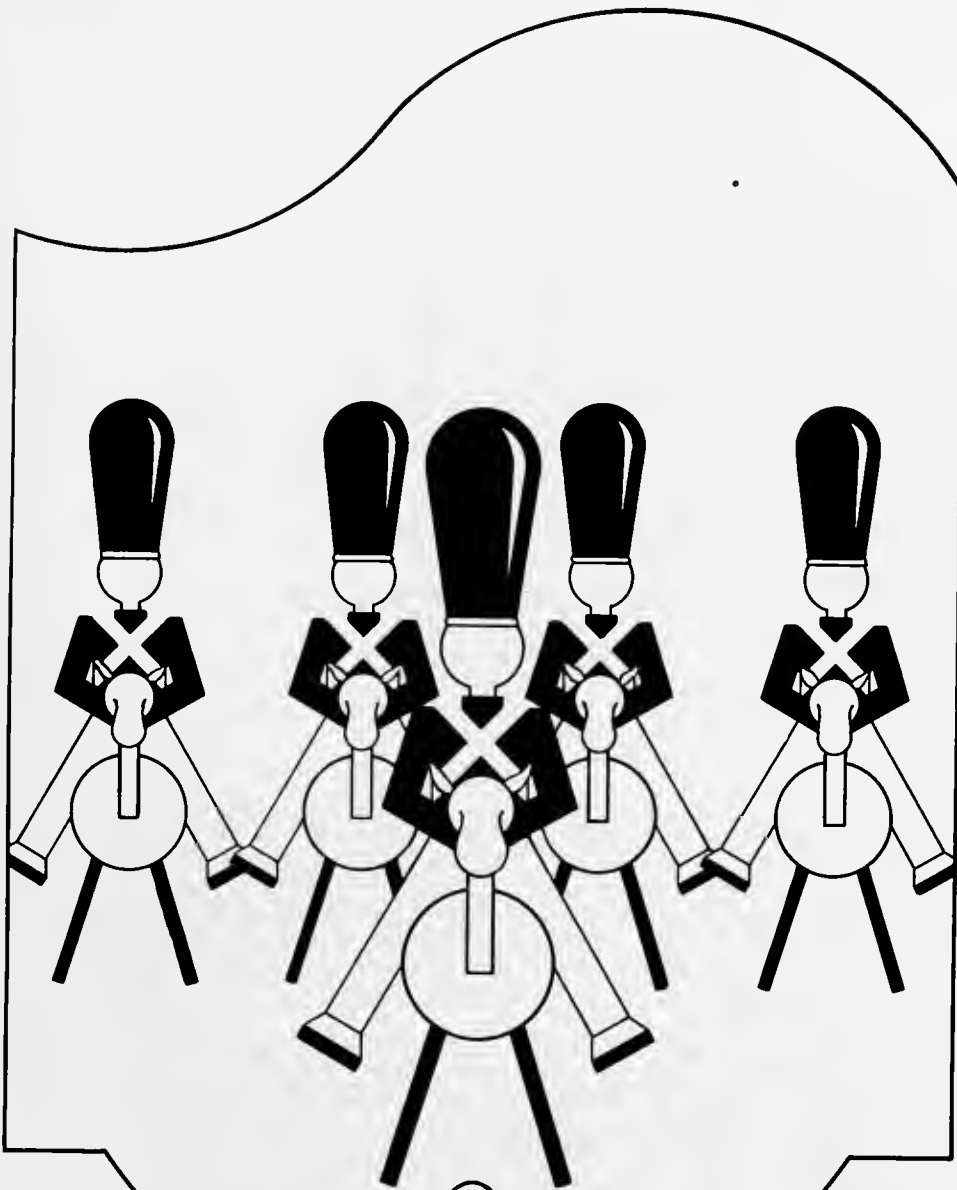


MARGARET JOHNSON
Manager of Hiking



HIKING SQUAD

M. ABSHER, J. VOLOGODSKY, K. SCHLEGEL, L. PETREE, L. SETTLEMYRE, D. HEIDENREICH, A. BARBER,
E. KAPP, M. FULTON, M. JOHNSON.



STATISTICS

Statistics

1

The following representative out-of-door girls, two from each class, were selected by vote of the four classes:

<i>The Airplane Girl</i>	EDITH KIRKLAND, '31
<i>The Archery Girl</i>	EVA HACKNEY, '31
<i>The Automobile Girl</i>	ELIZABETH COXE, '33
<i>The Tennis Girl</i>	ELSIE CHANDLER, '34
<i>The Polo Girl</i>	ANNA PRESTON, '32
<i>The Spirit of Out-of-Doors</i>	MARY LOU KERR, '34
<i>The Golf Girl</i>	HARRIET HOLDERNESS, '32
<i>The Canoe Girl</i>	JOSEPHINE WALKER, '33

Costumes furnished by Sosnik



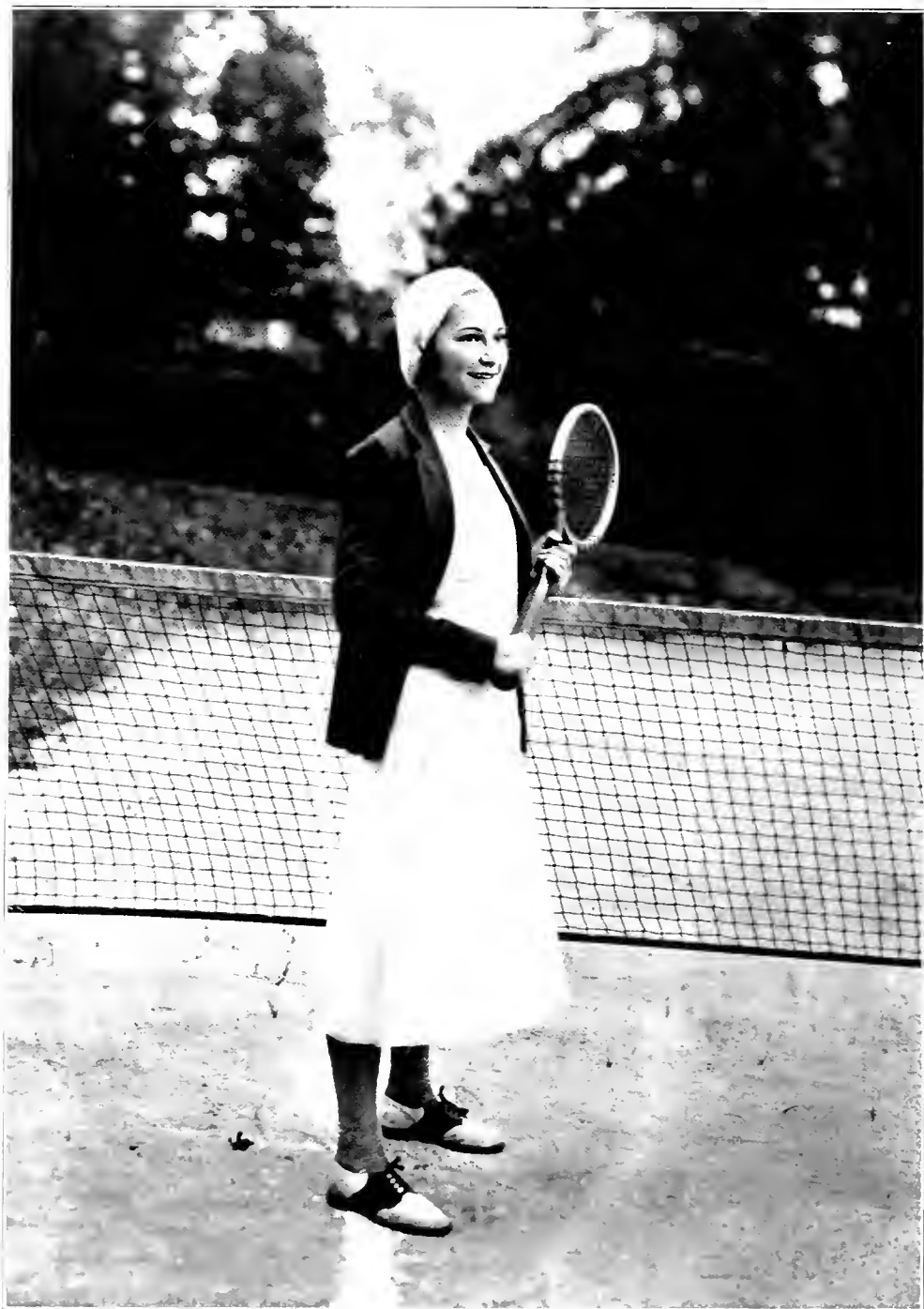
EDITH KIRKLAND



EVA HACKNEY



ELIZABETH COXE



ELSIE CHANDLER



ANNA PRESTON



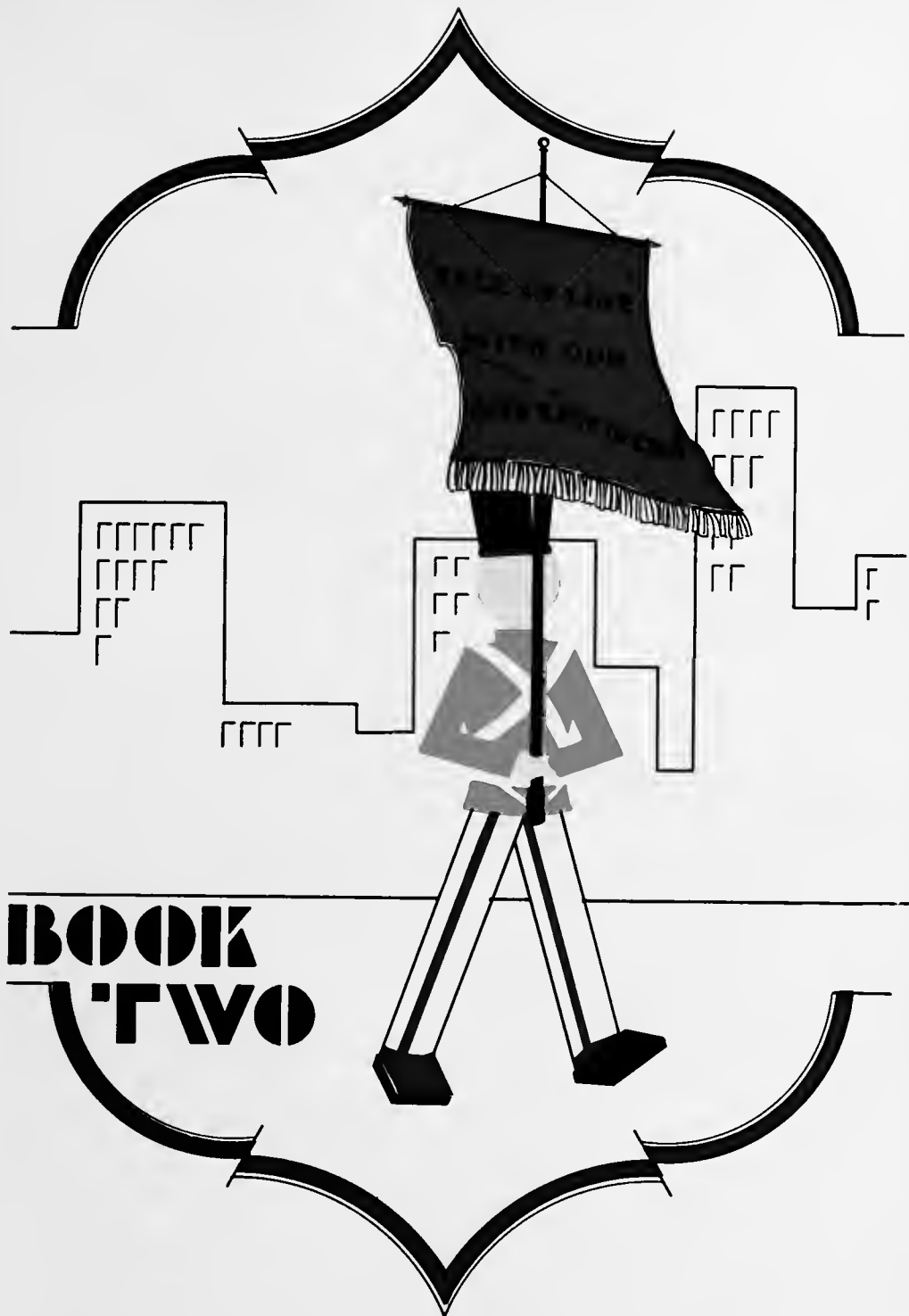
MARY LOU KERR



HARRIET HOLDERNESS



JOSEPHINE WALKER



**BOOK
'TWO**





BEN V. MATTHEWS

PHOTOGRAPHS
OF
QUALITY

2

STUDIO

317 W. FOURTH STREET Opposite Nissen Bldg.





NOLAND CO.

Incorporated

Wholesale

Plumbing, Heating
AND
Mill Supplies

FOGLE FURNITURE CO.

MAKERS

of the

Most Up-to-Date
Furniture

Vargrave and Fayetteville Streets

Patsy M.: "What date is today?"
Boonie: "I don't know. Look at the news-
paper on the desk."

Patsy: "That won't do. It's yesterday's pa-
per."

Mr. Piatt: "But, daughter, he only earns
\$10 a week."

Becky: "I know, Dad, but a week is so
short when you're in love."

Bennett's Dairy Lunch

ROLAND L. BENNETT

"He Eats in H's Own Restaurant"

210 N. Main St.

WINSTON-SALEM, N. C.

COMMERCIAL PRINTING CO.

Printing That Pleases

Phone 1130

212 N. Main Street

WINSTON-SALEM, N. C.

Kaufman's, Inc.

430 N. TRADE ST.

Ready-to-Wear, Millinery, Hosiery,
Gloves, Underwear, Footwear, Etc.

Agency for Co-Ed Dresses

Nettie Stephens' Corset Shop

FOUNDATION GARMENTS

For the Moderns

624 WEST FOURTH ST.

Phone 4761





YOU ARE MISSING

Many
"Sights and Insights"

If You Fail to Visit
THE IDEAL

"The College Girls' Favorite
DEPARTMENT STORE
For Over Eighteen Years"

THE IDEAL
209 W. Fourth St.
WINSTON-SALEM, N. C.

Morris Service
Incorporated

One Store Devoted to Your
Comfort and Pleasure

Have a Morris Made-to-Order

**SODA AND
SANDWICH**

Then Check the Difference

*Next Door to the Carolina
Theatre*

Wooden Soldier: "What is the shape of a
kiss?"

Raggedy Anne: "You give me one, I'll give
you one, and we'll call it square."



You Can Keep in Step

If You Wear Shoes Bought at

**SIMMON'S SHOE
STORE**

Trade Street

D. G. Craven Co.

*Evening Dresses
for
The College Girls*

Most Youthful Styles

HAVE YOUR PRINTING

Done at

**PENRY-AITCHISON
PRINTING CO.**

Fifth Street
WINSTON-SALEM, N. C.





COME AND LOOK
INTO OUR
Mirror of Present
Fashions

BELK-STEVENSON
COMPANY

Leading Department Store

J. D. Murphy
& Co.

Fresh Meats and
Poultry



Phone 101

City Market

A danca, a data,
Perchance out lata,
A classa, a quizza,
A funka, gee whizza!

Dr. Anscombe: "What does LXXX stand
for?"

Poky: "Love and kisses."

J. ROBY THOMAS

DEALER IN

ICE AND COAL

120 Academy Street

"Blue Gem Coal"

PHONES 75 and 168

Gray and Creech
Incorporated

Wholesale

SCHOOL SUPPLIES
AND STATIONERY



WINSTON-SALEM, N. C.





WELFARE'S DRUG STORE

*Always Ready to Serve the
College Girl*

Sandwiches
Cold Drinks, Candy, Magazines
Toilet Articles



*We Appreciate Your Patronage
and
We Try to Please*

Phones 391, 392

534 S. Main St.





Call Us For Complete
Service

Day or Night

**FIRESTONE TIRES
AMOCO GAS**

**Firestone Tire
Stores**

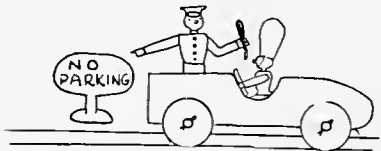
Corner of Fifth and Cherry Sts.
Opposite Robert E. Lee Hotel
PHONE 5316

Salem Girls!

THESE DRUG STORES
ARE YOURS

Bobbitt's Pharmacy
Pobbitt's Drug
Company
Nissen Drug
Company

WINSTON-SALEM, N. C.



Policeman: "Can't you read that 'No Park-
ing' sign?"
Pat: "No, sir, I went to night school and
I can't read in the day time."

**The
Pilot Company**

*Real Estate
Insurance*

PILOT BUILDING
Phone 5060

W. F. Peddycord

*Painter and
Decorator*

P. O. Box 51, Salem Station
Phone 4872 Winston-Salem

**GIFTS
THAT ENDURE**

SHEPHERD'S

506 West Fourth Street





ATTENTION!

While You Are in Winston-Salem, Make Your Home

At the

Robert E. Lee Hotel

Corner of Fifth and Cherry Streets

Thorpe: "Elmina, here's a hairpin; get me a pack like it down town."
 Hearne (a few hours later): "Here's your note-book paper."
 (She's not a freshman.)

Lasater: "Why do you wear your hose wrong side out?"
 Helen: "There's a hole on the other side."

COMPLIMENTS
 OF
**HUNTLEY-HILL
 STOCKTON CO.**

/

**FURNITURE
 RADIOS**

Cadillac, LaSalle

AND

Oldsmobile

SALES AND SERVICE

**CENTRAL CADILLAC-
 LASALLE CO.**

200-226 N. MARSHALL ST.
 Phone 4121





For Quality Ice Cream and Ices

RANKIN ICE CREAM CO.

445 WEST END BOULEVARD

PHONE 351

**HAVERTY
FURNITURE Co.**

521
North
Liberty
Street

Looper: "Look at the pack of chewing gum I just found."

Clark: "Are you sure it was lost?"

Looper: "Sure it was. Sennie was looking everywhere for it about an hour ago."

Litz: "It's a letter from my sweetheart,"

Bet: "G'wan, it's a blank sheet of paper."

Litz: "Well, we aren't speaking now."

LADY ANNE COFFEE

The Favorite of the South

Roasted and Packed by

Vaughn Coffee Mills

Winston-Salem, N. C.

HARDWARE

SPORTING GOODS
RADIO, CHINA, GLASSWARE

**BROWN-ROGERS
DIXON**

"The Best Place to Get It"

**Piedmont-Mutual
Building & Loan**

16 W. THIRD STREET




Sights and Insights



- when
a 'Miss'
is as good
as a mile








**THE
REYNOLDS' GRILL**

FOR THE VERY
BEST IN FOOD

*We Cater to Banquets and
Dinner Parties*



Miss Forman: "Tell me all about the Israelites."

Small: "They're the red and the green lights on the corner."

Mr. Campbell: "Why don't you get a larger note book? You could take twice as many notes."

Jo: "I don't have twice as many notes to take."

Froeber--Norfleet
Incorporated

Wholesale

**FRUITS. PRODUCE
PROVISIONS**

"The House of Friendliness"

MORRISETT CO.

"THE LIVE WIRE
STORE"

**DRY GOODS, NOTIONS
AND MILLINERY**

GOWNS—HOODS—CAPS

For All Degrees
QUALITY AND SERVICE
At a Low Price

Cotrell and Leonard
Albany, N. Y. *Established 1832*





DOSNIK'S
W. 4TH AT SPRUCE

The New French Fashions Skilfully Reproduced or Cleverly Adapted are Found in Our Collection of Frocks and Coats for the College Girl.

Thomas: "I can read your thoughts."
Marion: "Then what makes you sit so far away?"



As Soon As
You Taste Them You Know
That

C. L. SHARP'S

Apples, Oranges, Lemons
and Bananas Are
the Best!

C. L. SHARP CO.

Wholesale Fruits

Footwear for Every
Occasion

MODERATELY PRICED

KINNEY'S

406 N. Liberty St.

Valeria Hat Shop

Millinery and Accessories

TEAGUE'S

Women's Smart Apparel

416 W. Fourth Street
Opposite Carolina Theater





FOGLE BROTHERS COMPANY

GENERAL CONTRACTORS

ALSO MANUFACTURERS
AND DEALERS IN

MILL WORK AND BUILDING MATERIALS

We Would Be Pleased to Serve You

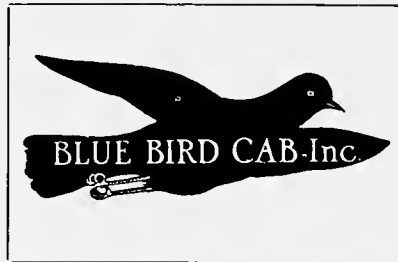
PHONE 85

Miss Emmart: "How many ribs have you, Miss Riggan?"

Nony: "I don't know. I'm so awfully ticklish I never could count them."

Miss Blair: "What does scrutiny mean?"

Gooch: "To close your eyes and look at something carefully."



FRANK-A-STILTH CO.
Exclusive Manufacturer of
Society Brand Clothes

MEN'S AND BOYS' WEAR

LET THIS SHIELD BE YOUR PROTECTION

HOME REAL ESTATE LOAN & INSURANCE CO.

DEED POLICY

DOLLARS FOR A SHIRT DOLLARS FOR A SHIRT

ALL THAT THE NAME IMPLIES

PHONE 121 511 LIBERTY ST.

N. P. Stone & Co.
WINSTON-SALEM, N. C.

WHOLESALE GROCERS

We Have Served the Institution Trade
SUCCESSFULLY
For a Quarter of a Century



Nights and Insights



Recognized--

Van Dyke's, the Carolina's Finest Department Store, is recognized as the Style Center of the "Old North State."

Here you will find the very latest fashion ideas—not fancies or fads—but the proven and authentic styles that the smartest women are wearing.

And the students at "Old Salem" have recognized our leadership by making this great store their shopping center, for here everything can be purchased at one time.

~

Van Dyke's

INCORPORATED

The Carolina's Finest Department Store





Compliments of

P. H. HANES KNITTING CO.

"Our Nobby Shirts and Shorts Are Made for Men—But
the Girls Wear 'Em."



WINSTON-SALEM, NORTH CAROLINA



IN CHAPEL LINE

Jinks: "Stop pushing, can't you?"

Babe: "I didn't push. I only sighed."

Indera
FIGUREFIT

The Garment Used
for Sport Wear

**COMFORT ALL
THE TIME**

*A Winter Item for Golf
and All Outdoor
Activities*

*Sold by All Leading
Dry Goods and De-
partment Stores
Everywhere*

Made by
Indera Mills
Winston-Salem, N. C.

VOGLERS
Established 1865

Headquarters for

QUALITY JEWELRY

Emblem Goods
Fraternity and All Kinds of
School Rings and Pins

*Special Attention Given to
Repair Work*

VOGLERS
JEWELERS
FOURTH AND CHERRY





ELECTRICITY—

YOUR SERVANT

Electricity has revolutionized industry. In industry it has multiplied our man-power and tremendously increased the efficiency and output of our mills, factories, and shops.

The use of electrical appliances makes possible the same revolution in the home. The energy of the housewife can be conserved and housework done much more efficiently as well as more easily through the use of these appliances.

Every housewife owes it to herself to investigate these appliances and make her home modern and comfortable by installing these essentials to good housekeeping as rapidly as possible.

"ELECTRICITY—

The Servant in the Home"

SOUTHERN PUBLIC UTILITIES
COMPANY





THE GREATEST OF ALL JOYS

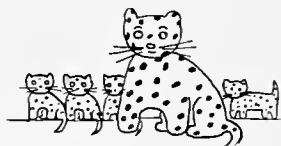
Is Creating the Possibility of Having Things

LEARNING how to save dollars is the foundation of possibility.
WHEN you save as much as you can;
WHEN you educate yourself for greater things;
WHEN you keep track of the small things and have a bank
account to do it with, you will accomplish whatever you set out to
do.
USE our bank for that purpose.

Farmers National Bank and Trust Co.

WINSTON-SALEM, N. C.

CAPITAL AND SURPLUS, \$600,000.00



Millicent: "Love is like a dear little kitten."
Dot: "But it takes a kitten only nine days
to open its eyes."

Fletcher Bros. Co.

MANUFACTURERS OF

BIG
WINSTON
OVERALLS

Wholesale

Dry Goods and Notions

436-440 S. LIBERTY ST.

Ladies' Ready-to-Wear Reasonably Priced

FAN TAN HOSE

For Service

Mangel's, Inc.

7 West Fourth St. Phone 4485

The Green Quill Shop

Smart Stationery and
Attractive Gifts

ROBERT PARNELL, *Mgr.*

Phone 4543 618 W. Fourth St.





Fixtures for Use and Beauty

HOMES, OFFICES
CLUBS

"Visit Our Gift Shop"

ELECTRIC SERVICE COMPANY

"Everything Electrical"

Ham: "Eva, would you love me just as much if I told you I was broke?"

Eva Hack: "You aren't, are you?"

Ham: "No."

Eva: "Sure, I would."

Prexy: "I see you're studying history. Is it United States, Ancient, or Modern?"

Aggie: "I don't know yet. We've only been at it three months, and my book hasn't any cover on it."

Northup & O'Brien

Architects

Starbuck Building
WINSTON-SALEM, N. C.

Keep Step With the Times

BUY FROM

THE MENGEL CO.

FORWARD MARCH
to
COHEN'S
READY-TO-WEAR

QUALITY AND STYLE
West Fourth St.

EFIRD'S

DEPARTMENT
STORE

Quality With Price





Use Camel City Coaches for Special Trips
ANY TIME—ANYWHERE

And Regular Schedules All the Time

CAMEL CITY COACH COMPANY

PHONES 29 AND 4733

WINSTON-SALEM, N. C.

PACKARD

PIEDMONT MOTOR COMPANY

SOUTH MAIN STREET

PHONE 338



Grace Brown: "I heard something nice about you today."

Minnie: "What was it?"

Grace: "Someone said that you looked like me."

Small Savings Make

LARGE FORTUNES

Start An Account

**WACHOVIA BANK AND TRUST
COMPANY**

ASHEVILLE
HIGH POINT

WINSTON-SALEM

RALEIGH
SALISBURY





Salem College

FOR

One Hundred and Fifty-eight Successive
Years

An Educational Center

ACCREDITED COURSES

ARTS
MUSIC
SCIENCES
TEACHER TRAINING

MEMBER
SOUTHERN ASSOCIATION OF COLLEGES AND
SECONDARY SCHOOLS





MORRIS-EARLY & CO.

Furniture—Draperies

WINSTON-SALEM'S FINEST

DRINK

Coca-Cola

TRADE MARK
REGISTERED

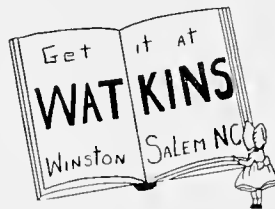
IN BOTTLES

Mr. Higgins: "Is sulphur heavier than water?"

Boone: "No, it sinks in water."

Miss Emmart: "Is arsenic in itself poisonous?"

Clendenin: "No, only when you take it."



The Best Place to Get

BOOKS—STATIONERY—PARTY FAVORS—OFFICE
SUPPLIES

IS

WATKINS' BOOKSTORE





Women everywhere in America purchase more than twice as many **BUICKS** as any other car priced above \$1200

**STAPLETON
BUICK
COMPANY**

Sales—Service

135 N. Main St.
WINSTON-SALEM,
N. C.

Kirby: "Something is wrong with this dictionary."

Carson: "Why?"

Kirby: "There's no index to the words."

Huggins: "Listz was a great composer. Don't you love his works?"

Thorpe: "Yes, especially Schubert's Serenade."

SALEM GIRLS

Like Our Tasty
Breads

SO WILL YOU

**WILSON'S
BAKERY**

WINSTON-SALEM, N. C.

Fraternity, College

AND

Class Jewelry

Commencement Announcements
and Invitations

Jeweler of the Senior Class
of Salem College

L. G. Balfour Co.

*Manufacturing Jewelers
and Stationers*

ATTLEBORO, MASS.





In Salem College this city has an institution of learning of which we are proud, and it is with pleasure that we enter into the support of such of its activities as we may.



THE LAUNDRIES
OF
WINSTON-SALEM



Nights of Insights



No Joking—We Thank You!

SALEM GIRLS

BUY THE LATEST ATHLETIC
GOODS FROM

Bocock-Stroud Co.

JUST THREE LITTLE WORDS

GO TO

GOOCH'S

On the Corner Main and Academy

Friendly Cafeteria

*"Every Meal a Pleasant
Memory"*

Winston-Salem High Point
Greensboro Durham
Chapel Hill

Dixton
INC

420 N. Liberty St.

THE SORORITY SHOP
OF WINSTON-SALEM

Lingerie—Gloves—Millinery
Ready-to-Wear

THE HOME OF SPUNTEX HOSE





**Flake's
Sandwich Service**

CITY MARKET

You Can Get Your Party Salads and
Sandwiches Here, Easily Served,
Without Fuss or Bother

Phone 3968

Anchor Store

*Winston-Salem's
Shopping Center*

QUALITY MERCHANDISE AT
MODERATE PRICES

Sue Jane: "Something is preying on the
minds of the freshmen."

Kitty Moore: "That's all right; it'll soon
die of starvation."

✓ ✓

Mr. McDonald: "Miss Miller, you start
the discussion by telling us about the Industrial
Revolution."

Mary Miller (to Belle): "Who were the
generals?"

✓ ✓

Miss Covington: "Miss Allen, were you
talking?"

Liz: "Yes, ma'am, we were talking, but we
didn't say anything."

During exams a certain freshman stayed up
all night so she wouldn't forget what she
had learned.

CROMER BROS.

WHOLESALE GROCERS

FOR RICHER—FOR POORER

ALWAYS SATISFYING

Mrs. T. W. Hancock

Modiste

Work Done on Short Notice

963 W. END BOULEVARD

KEEP IN STEP WITH STYLE

HINE'S BEAUTIFUL SHOES

Eight-fifty to Eighteen Dollars

WINSTON-SALEM, **HINE'S** NORTH CAROLINA





SOUTHERN DAIRIES

HEALTH BUILDERS OF THE SOUTH

We Strive to Merit the College
Girls' Approval

Manufacturers of

SOUTHERN DAIRIES' ICE CREAM

A National Dairy Product

Dr. Rondthaler and Virginia sitting on the love-seat in the Home Economics Practice House.

Dr. Rondthaler: "If this sofa were fifteen feet long, you would be further off, wouldn't you?"

Virginia (quickly): "No, I wouldn't be, either."

Dot Taylor (at the beach): "What I don't understand is why the tide doesn't cover these floats when it comes in."

Salem Girls

ALWAYS MEET THEIR FRIENDS

AT

O'HANLON'S

WINSTON-SALEM, N. C.

"O'Hanlon's is the Place"





The State and Carolina Theatres

Here in Winston-Salem, are a part of the Publix-Saenger Theatres of North Carolina. With the resources of the Publix Theatres Corporation, comprising over 1600 theatres all over the world, we are able to bring to you the efforts of the best artists in the country.

At all times we endeavor to present the utmost in screen and stage entertainment, and it is not by accident we can do so, but by the efforts of men who are specialists in pleasing the theatre-going public.

Carolina Theatre—State Theatre

PUBLIX-SAENGER THEATRES OF N. C.

Litz (announcing fire drill): "Don't run, but don't just walk."



FALL IN LINE FOR THE GIFT SHOP

SUITABLE GIFTS
FOR EVERY OCCASION

WEST FOURTH ST.

Gateways Paint Store

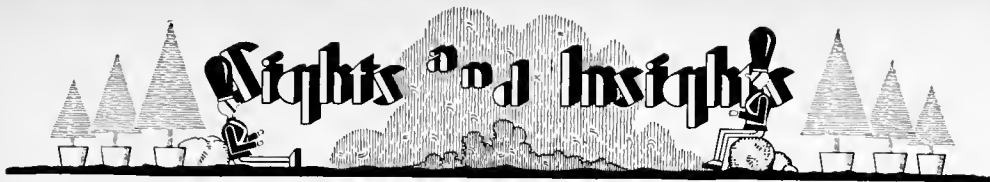
OF NORTH CAROLINA

Paint, Wall Paper,
Brushes, Glass, Artist
Supplies

*"You Can Always Do Better
at Gateways"*

219 West Fifth St. Phone 183
Winston-Salem, N. C.





ATTENTION!

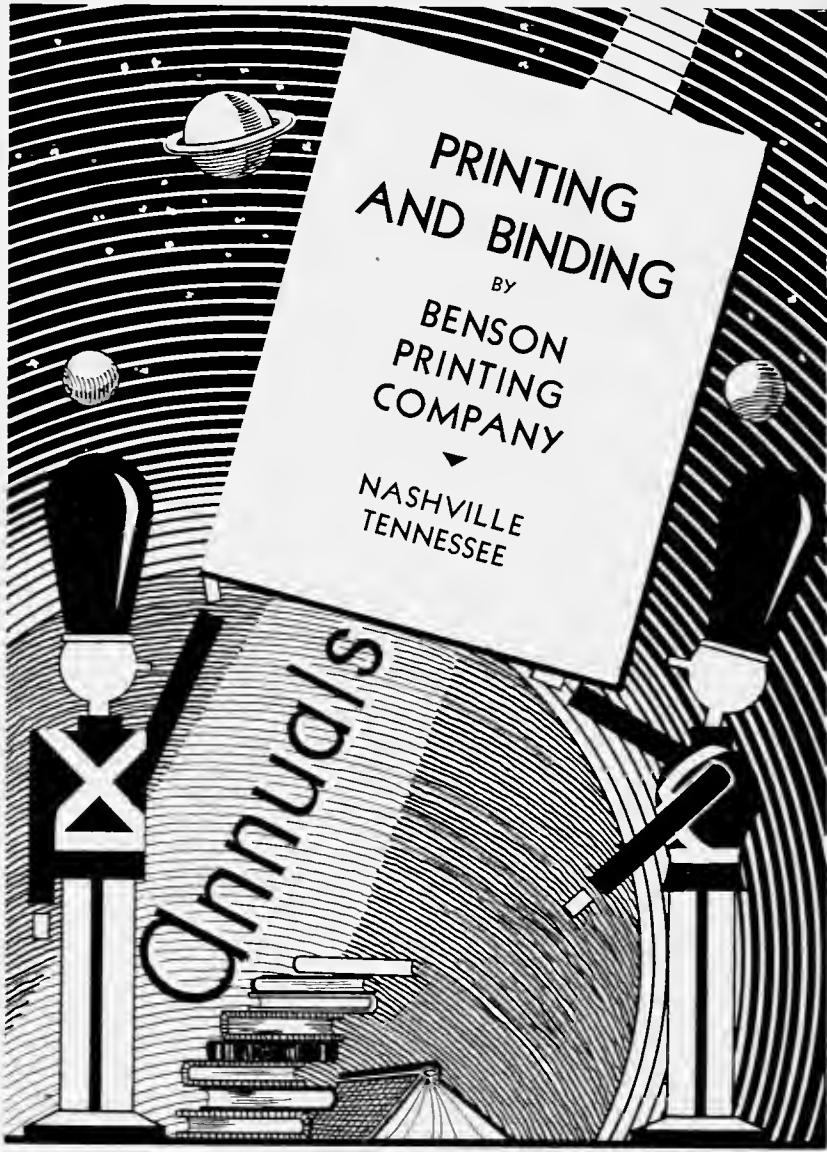
YEAR BOOKS
receive the
careful
ATTENTION
of our expert
**PLATE
MAKERS
and
ARTISTS**

**PIEDMONT ENGRAVING
C O M P A N Y**

PHONE 2916

WINSTON-SALEM, N.C.







AUTOGRAPHS





Gramley Library
Salem Academy and College
Winston-Salem, N.C. 27108

378.756
S5P
main Desk

Ac.10420
1931

This book must not be taken
from the library.

