



SALEM

in silhouette.



SIGHTS &

N I N E T E E N

EDITOR • ELIZABETH GUDGER

W I N S T O N - S A L E M

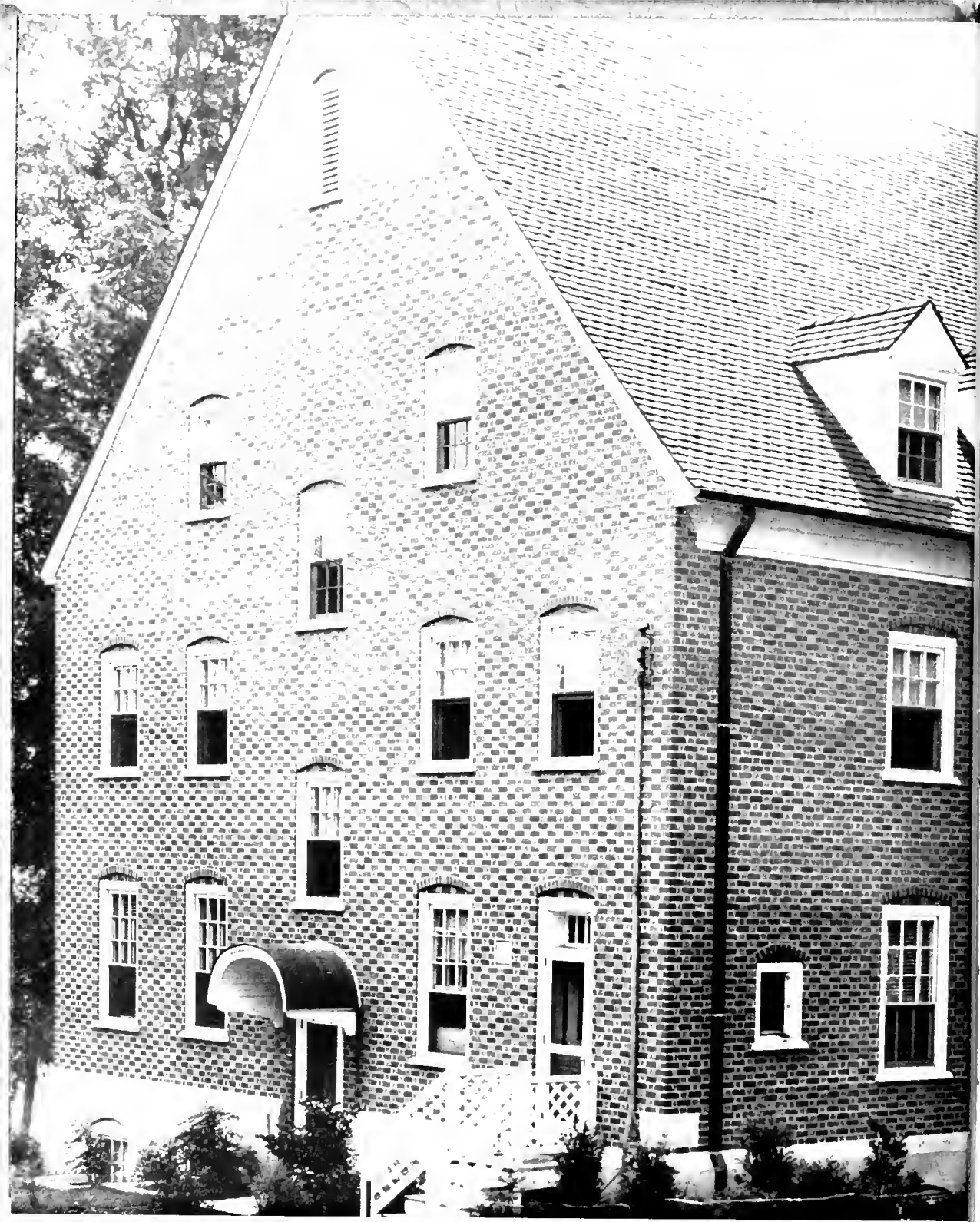


INSIGHTS

F O R T Y — F I V E

BUS. MGR. • FRANCES CROWELL

N O R T H C A R O L I N A



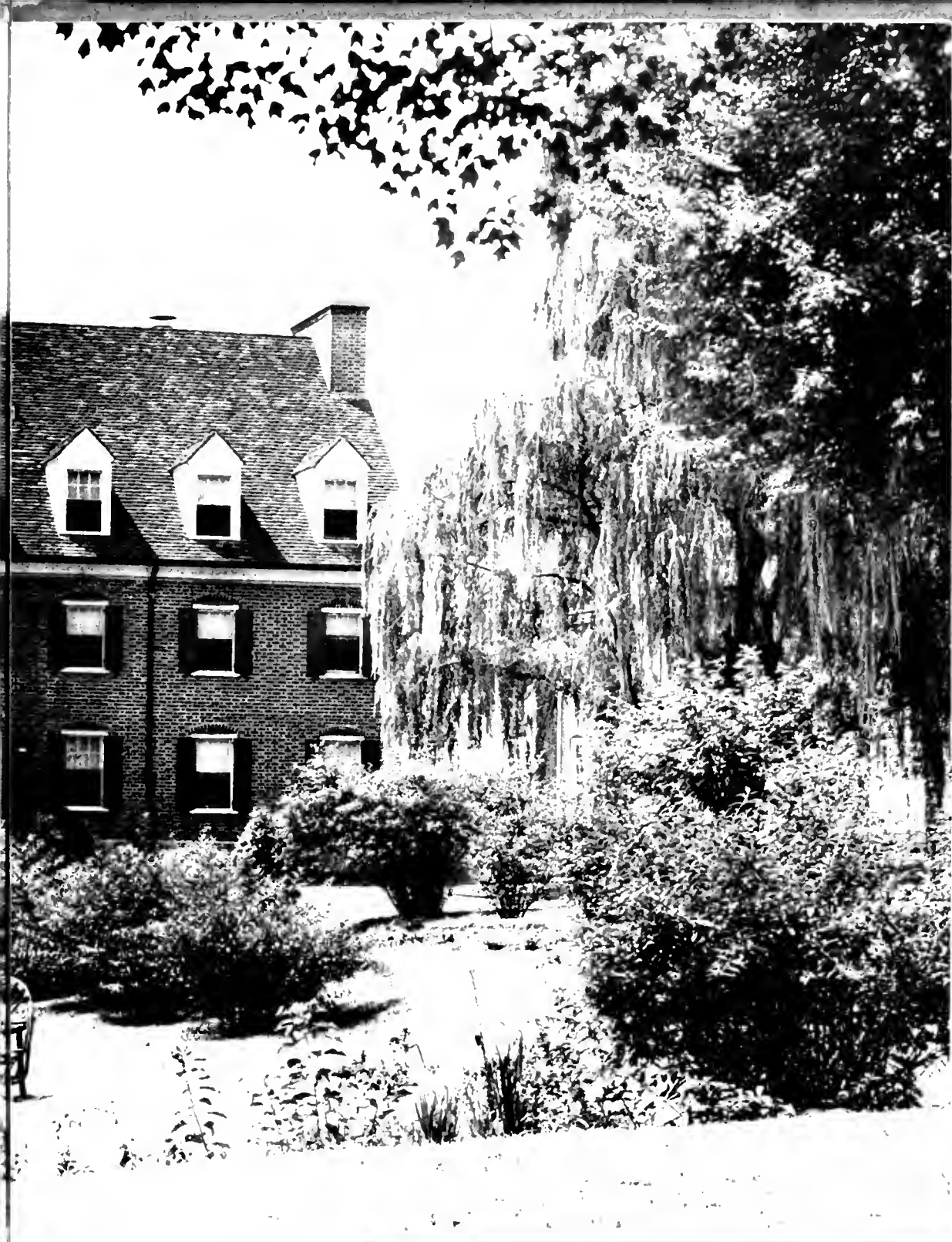
Strong are thy walls,



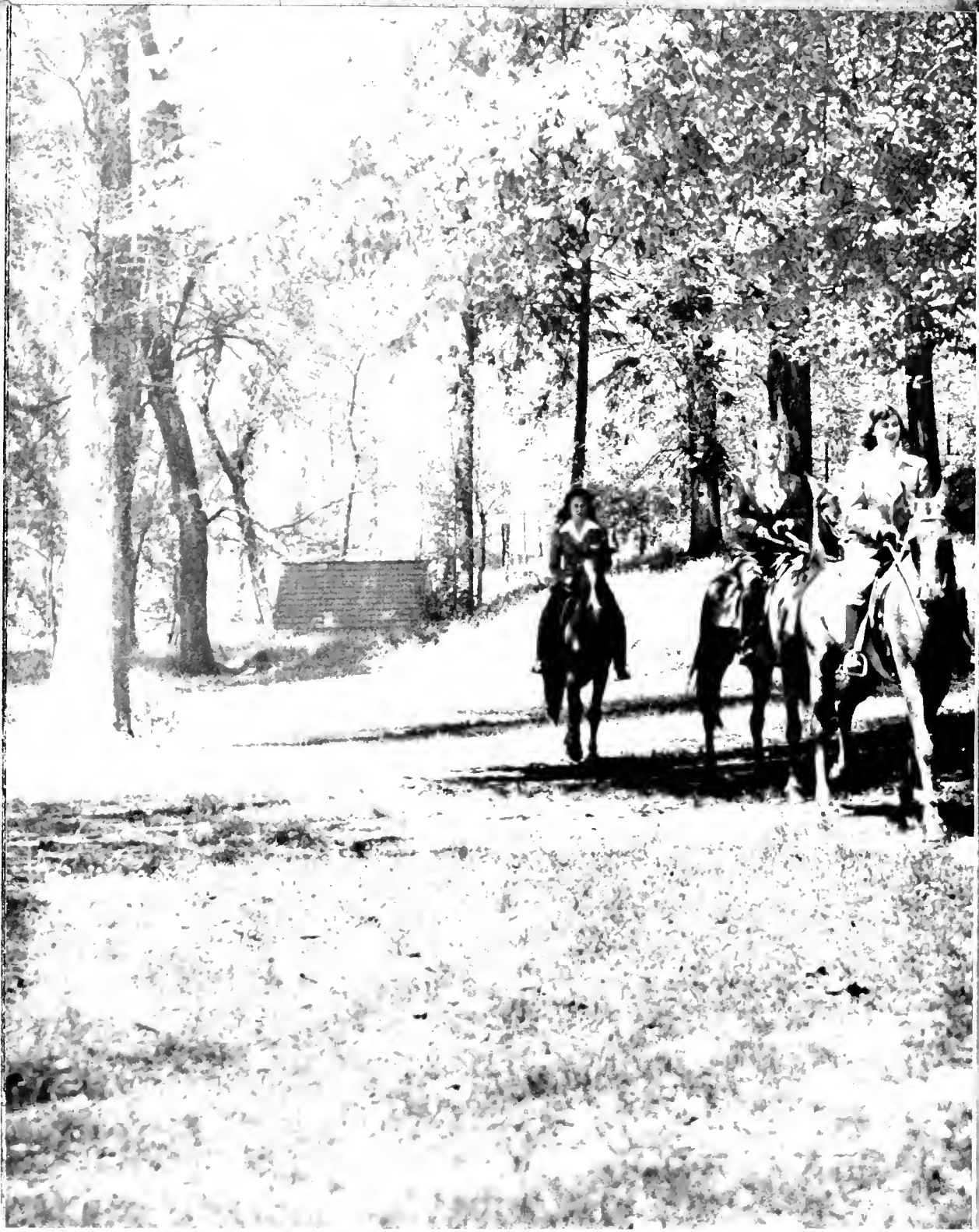
Oh Salem,



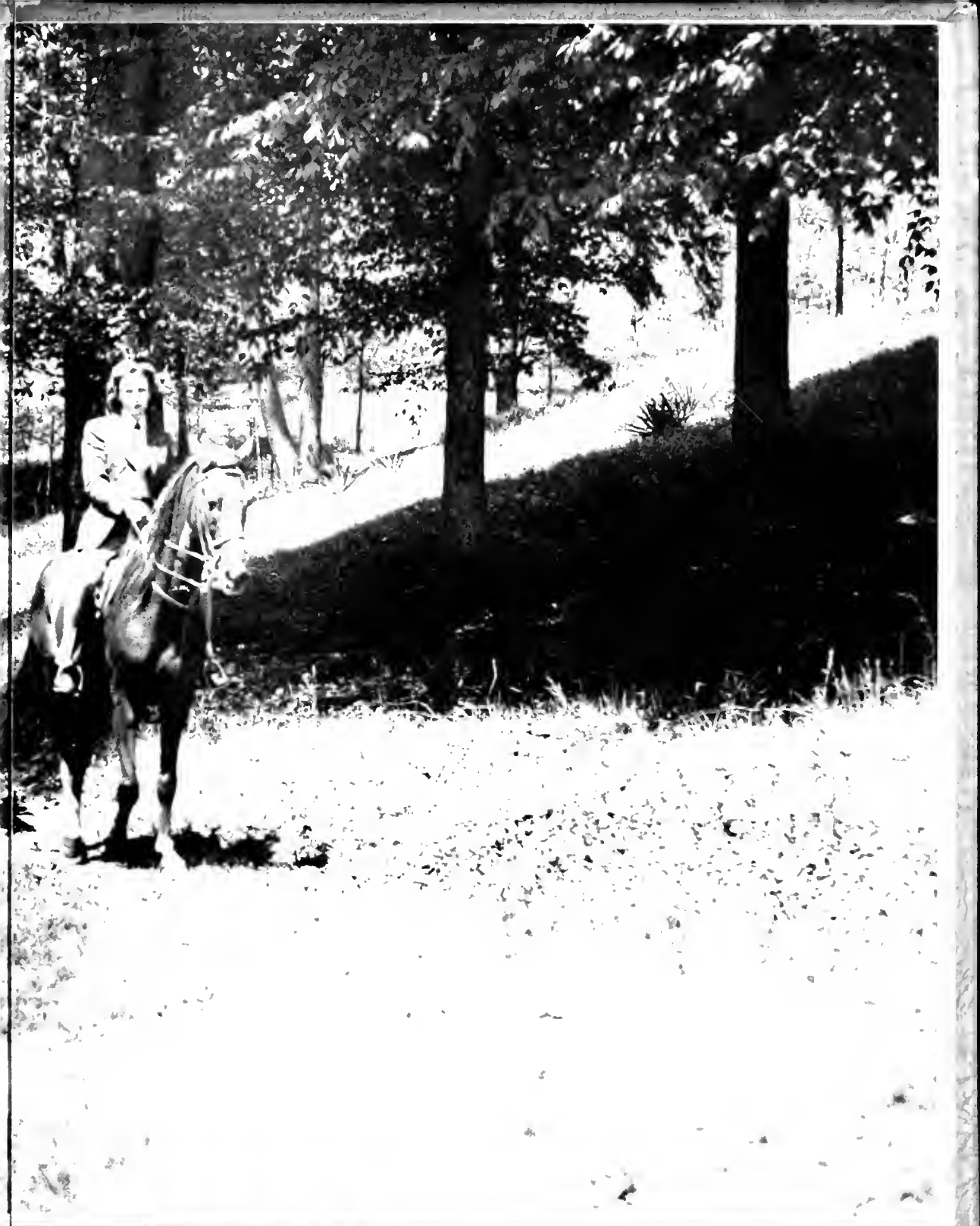
Thy virgin trees



stand tall,



And far athwart the



sunlit hills



Their stately




shadows fall

FOR

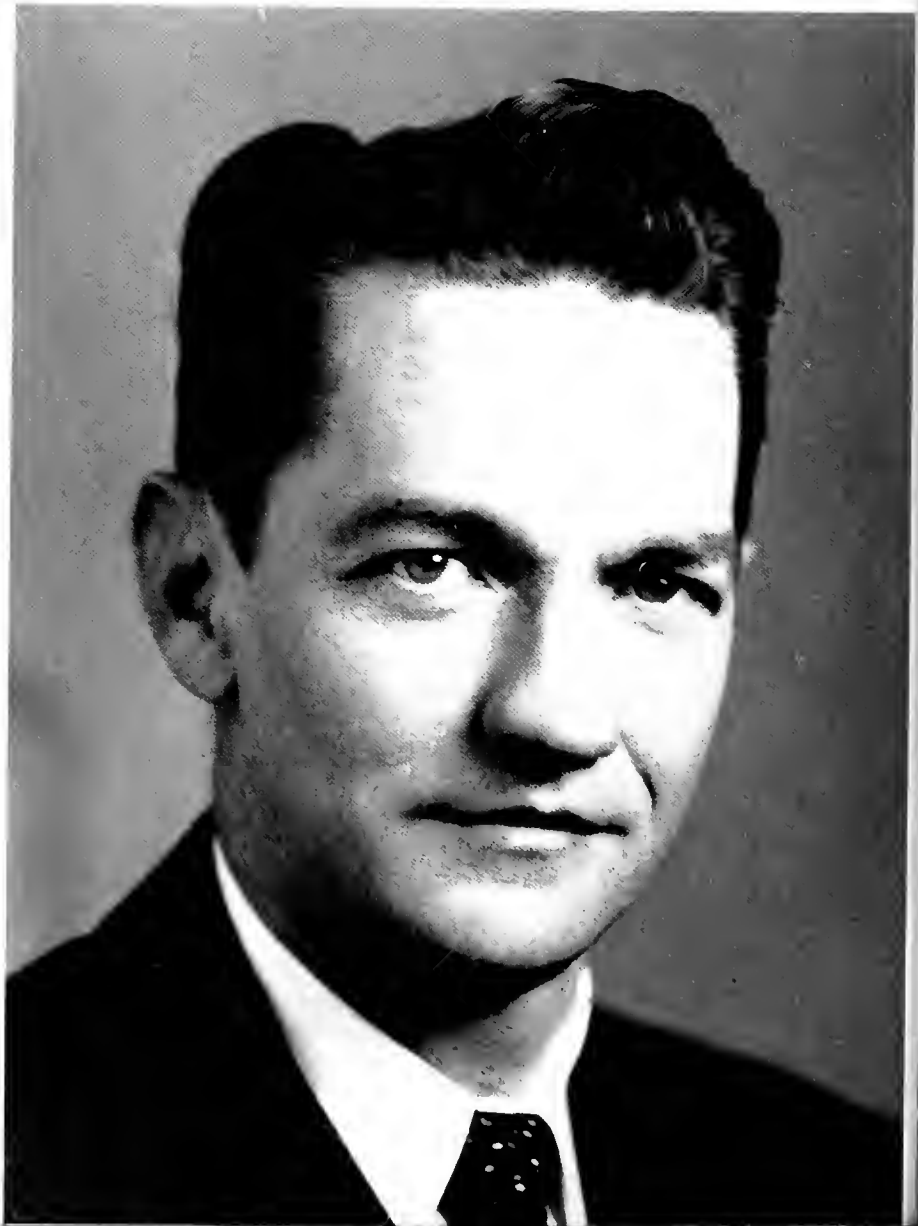


E W O R D . . .



A freshman enters Salem . . . four years spent in study, in play, in making friends, in learning to live with a group . . . four years spent in preparing for life, in forming a philosophy, in building a religion. A senior graduates from Salem . . . with memories of Christmas Vespers, of May Day, of Commencement, she "stands at the portals" of a new life . . . but she carries away with her memories which will help keep alive in her heart the spirit of Salem.

D E D I C A T



I O N

In Memoriam

EDWARD MAXWELL HOLDER

1904-1944

Edward Maxwell Holder, a descendant of the original Moravian settlers of Bethania, graduated from Guilford College where he was an outstanding student. Later he received the degree of Master of Arts at the University of North Carolina, and at the time of his death was working on his doctoral dissertation.

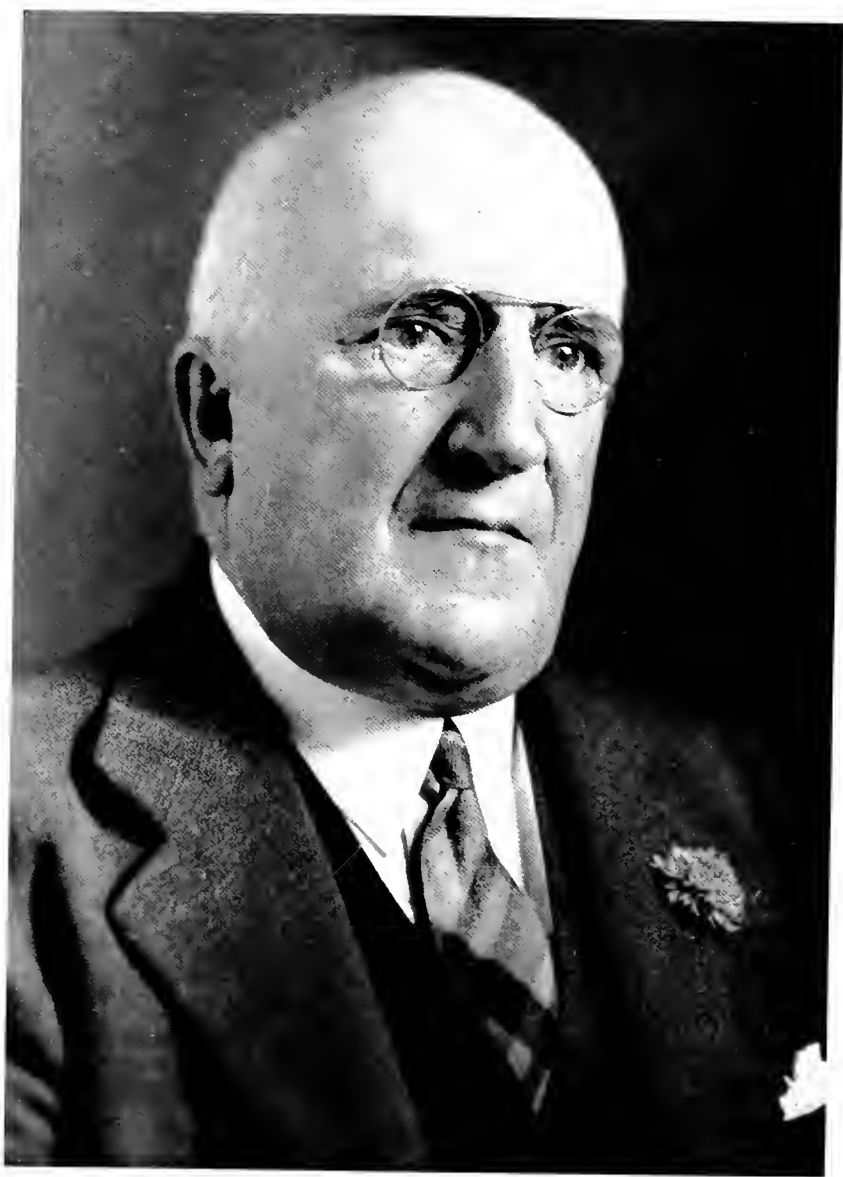
In 1936 he became a member of the faculty of Salem College, first as Assistant and later as Associate Professor of History. His students regarded him as an inspiring teacher and an understanding friend. In a spirit of cooperation and friendliness he assisted in many student activities.

Mr. Holder's character was one worthy of emulation. In politics he was for progress and reform. He was devoted to the church. It was his concept of Christianity and patriotism that one should not live unto himself, but by public service make some contribution to his age.

On June 14, 1944, he was drowned at the Boy Scout Camp, where he was a director, when he went to the assistance of a camper. For this act he was awarded the Carnegie bronze medal for heroism.

That he should lose his life in rescuing a young boy was fully in keeping with his ideals of religion and patriotism. In a year, when men everywhere are killing on the battlefield, it is fitting that we honor in this dedication the memory of a great teacher who gave his life that another might live.

Not by might, nor by power, but by my spirit, saith the Lord of hosts.



HOWARD E. RONDTHALER

Ph.B., B.D., M.A., D.D., LL.D.

PRESIDENT OF SALEM COLLEGE



BOARD OF TRUSTEES

DAVID WEINLAND

B.A., B.D.

Associate to the President

THE RIGHT REVEREND J. KENNETH PFOHL *Chairman*

DR. WALSER H. ALLEN

DR. AGNEW H. BAHNSON

MRS. AGNEW H. BAHNSON

MR. FREDERIC F. BAHNSON, JR.

DR. S. DOUGLAS CRAIG

MRS. JOHN R. CUNNINGHAM

MRS. JAMES N. EARLY

MR. RALPH P. HANES

MRS. T. HOLT HAYWOOD

DR. R. FREDERICK LEINBACH

MR. JOHN W. MOORE

MR. RALPH B. OGBURN

MR. LOUIS F. OWEN

MRS. ROBERT D. SHORE

MR. CHARLES N. SIEWERS

MRS. RONALD S. SLYE

MR. R. ARTHUR SPAUGH

REV. R. GORDON SPAUGH

CAPTAIN RALPH E. SPAUGH

MR. CLARKSON S. STARBUCK

MRS. HENRY ALVAH STRONG

MISS NETTIE ALLEN THOMAS

DR. CHARLES G. VARDELL, JR.

MR. WILLIAM N. VOGLER

REV. JOHN R. WEINLICK

MRS. RICHARD F. WILLINGHAM

PRESIDENT RONDTHALER, *ex officio*

REV. DAVID E. WEINLAND, *ex officio*



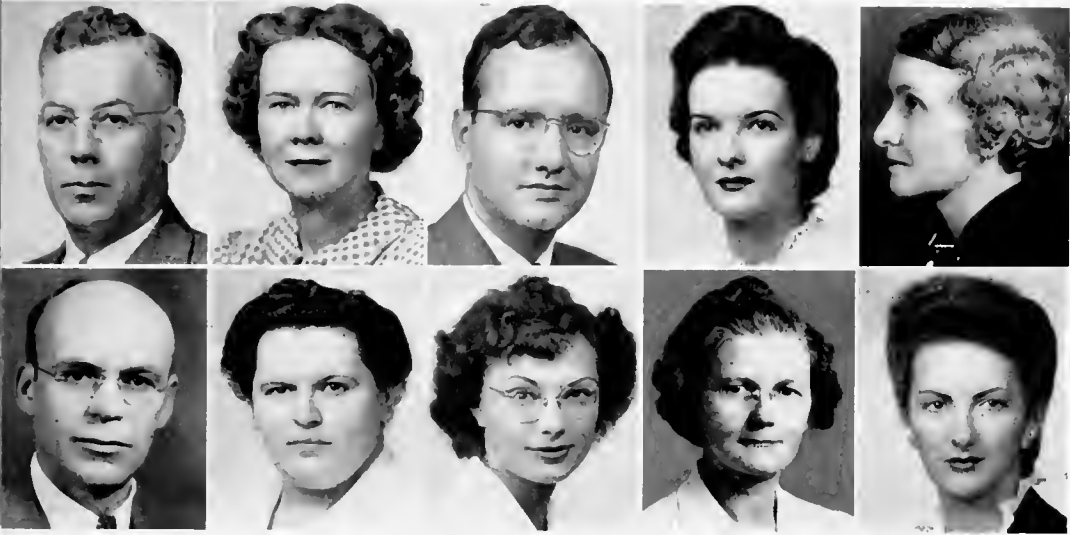
THE FACULTY

First Row

- CADELLE ABLE *Professor in Mathematics*
 A.B., M.A.
- FRANCIS CHARLES ANSCOMBE *Professor of History*
 B.A., M.A., Ph.D., LL.B.
- VIOLA TUCKER ANSCOMBE *Piano*
- REBECCA GORDON AVRILL *Director of Physical Education*
 B.S., M.A.
- CLIFFORD EDWIN BAIR *Professor of Voice*
 B. Mus.

Second Row

- GERALDINE BAYNES *Library Assistant*
 B.A.
- KATHERINE A. BONNEY *Dean of Residence*
 B.A., M.A., B.D.
- LUCY COX BOWEN *Piano*
- SARAH K. BURRELL *Assistant Dean of Residence*
 B.A.
- JESS LUCILLE BYRD *Instructor in English*
 B.A., M.A.



THE FACULTY

First Row

- ROY JONES CAMPBELL Associate Professor of Biology and Physics
 B.A., C.P.H.
- MARY FRANCES CASH Instructor in Theory and Counterpoint
 B. Mus., A.A.G.O.
- CARL VINCENT CONFER Associate Professor of History
 B.A., M.A., Ph.D.
- JOAN I. CONRAD Secretary to the Academic Dean
- EVABELLE SIMMONS COVINGTON Professor of Sociology and Economics
 B.A., M.A.

Second Row

- ARLEY THEODORE CURLEE Professor of Mathematics
 B.A., M.A.
- VENUS FAIRCLOTH Nurse
 R.N.
- MARION V. HADLEY Nurse
 R.N.
- ANNA KIGER HANES Business Manager
- ANNA RUE HAUSER Instructor in Secretarial Studies
 B.S.S.A.



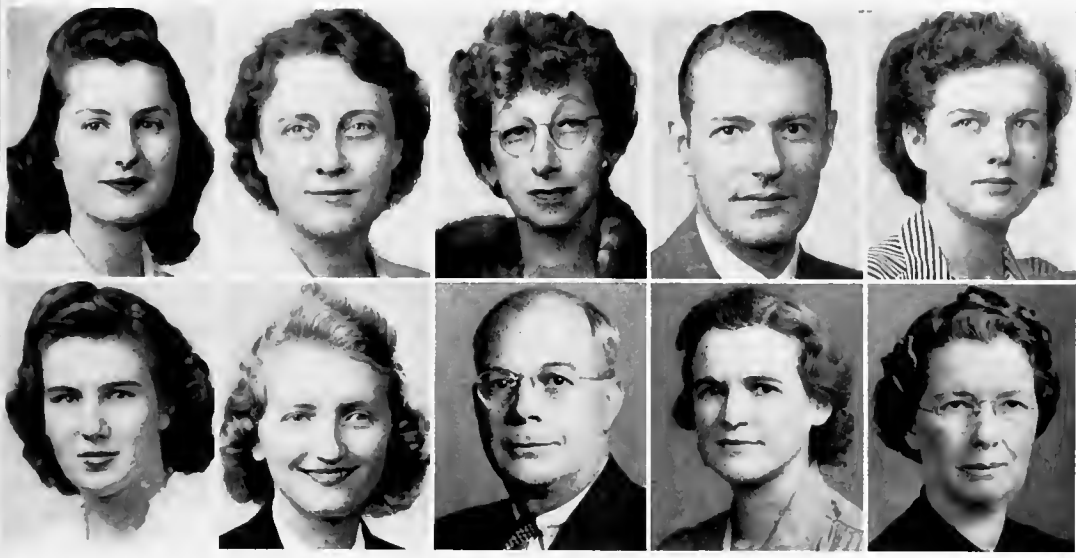
THE FACULTY

First Row

- CHARLES HENRY HIGGINS *Professor of Chemistry*
 B.S., M.A.
- IVY MAY HIXSON *Academic Dean*
 B.A., M.A.
- VIRGINIA WIGGINS HORTON *Secretary in the School of Music*
- ELIZABETH JOHNSTON *Instructor in Piano*
 B. Mus.
- LAURIE ROGERS JONES *Instructor in Piano*
 B.A.

Second Row

- MARY VIRVINA JONES *Instructor in Organ*
- HOWARD S. JORDAN
Professor of Modern Languages and Acting Head of the Department of Modern Languages
 A.B., M.A., Ph.D.
- NAOMI KARK *Assistant Professor of Art*
- EDITH KIRKLANO *Director of Public Relations*
 B.A.
- VERA LACHMANN *Instructor in Modern Foreign Relations*
 Ph.D., Berlin



THE FACULTY

First Row

- GARNETTE LYNCH *Secretary to the Director of Public Relations*
- LELIA GRAHAM MARSH *Alumnae Secretary*
B.A.
- ELIZABETH ORMSTRY MEINUNG *Professor of Home Economics*
B.S., M.A.
- NOBLE RALPH MCEWEN *Professor of Education and Psychology*
B.A., M.A., PhD
- ANNETTE MCNEELY LEIGHT *Registrar*
B.A.

Second Row

- FLORENCE E. NEELY *Instructor in Science*
B.A., M.S.
- BRONA NIFONG *Secretary to the President*
- HENRY GRADY OWEN *Professor of Education*
B.A., M.A.
- KATHERINE SMITH PYRON *Assistant Librarian*
B.A., M.A., B.S. in Library Science
- ANNA PERRYMAN *Treasurer*
B.A.



THE FACULTY

MARIE VAN HOY *Secretary to the Treasurer*
 B.A.

CHARLES GILDERSLEEVE VARDELL, JR. *Dean of School of Music*
 B.A., M.A., Ph.D., A.A.G.O.

LUCILLE VEST *Assistant Professor of Spanish*
 B.A., M.A.

LUCY LEINBACH WENHOLD *Professor of Modern Foreign Languages and Emeritus Head of the Department of Modern Languages*
 A.B., Ph.D.

PEARL VIVIAN WILLOUGHBY *Professor of English*
 B.A., M.A., Ph.D.





CLASSES

P R E S E N T I N G



THE
Senior
CLASS





THE CLASS OFFICERS

JOSEPHINE McLAUHLIN *President*

MARY COONS *Vice-president*

LUANNE DAVIS *Secretary*

GENEVIEVE FRASIER *Treasurer*



MARY ELLEN BAYLEY



MARY LUCY BAYNES



KATHERINE E. BECKWITH



PEGGY BOLLIN

Seniors

MARY ELLEN BAYLEY

SPRINGFIELD, OHIO

A.B. in Sociology and Economics

Pierettes, 3; El Club Espanol, 1-2; War Activities Council, 4, Treasurer, 4; Finance Board, 4, Secretary, 4.



MARY LUCY BAYNES

WINSTON-SALEM, N. C.

B.S. in Home Economics

Athletic Association, 2-3-4, Treasurer, 2, President, 4; Student Government, 2-3, Treasurer, 3; Class Vice-President, 2; Class Hockey, 1-2-3; Varsity, 3; Class Basketball, 2-3; Sub-Varsity, 2; I. R. S., 1; Alpha Iota Pi, 1; El Club Espanol, 1; Senior Marshal, 3; Home Economics Club, 3-4, Program Committee, 4; Staff of *Salemite*, 3-4; Honor Society, 3-4; Who's Who; Order of the Scorpion, 3-4.



KATHERINE E. BECKWITH

PRINCETON, W. VA.

A.B. in English and History

Hiking Club, 1; El Club Espanol, 1-2-3; International Relations Club, 1-2-3-4; Alpha Iota Pi, 2-3-4; House President of Sister's House, 2; Student Government, 2, 3; War Activities Council, 3.



PEGGY BOLLIN

MAYODAN, N. C.

A.B. in Education and Psychology

El Club Espanol, 1; Riding, 1-2; International Relations, 1-2-3-4; Assistant Business Manager, SIGHTS AND INSIGHTS, 4.



MOLLY ELIZABETH BOSEMAN



MARY ELLEN BYRD



ADELE CHASE



MARY COONS

Seniors

MOLLY ELIZABETH BOSEMAN

ROCKY MOUNT, N. C.

A.B. in Economics and Sociology

Class Secretary, 1; Home Economics Club, 1-2; Class President, 2; Student Government, 3-4, Secretary, 3, Vice-President, 4; International Relations Club, 1-4; El Club Espanol, 1-4; Alpha Iota Pi, 3; I.R.S., 2-3; Red Cross Supervisor, 4; Nominating Committee, 2-3; Order of the Sorption, 2-3-4.



MARY ELLEN BYRD

MORGANTON, N. C.

A.B. in English

Salemite, 3-4, Assistant Editor, 3, Editor, 4; SIGHTS AND INSIGHTS, 1-3, Freshman Class Editor, 1, Photographic Editor, 3; Student Government, 3-4; House President of Alice Clewell, 3; Nominating Committee, 4; Senior Advisor, 4; El Club Espanol, 1-2-3-4; Alpha Iota Pi, 1-2-3-4; Honor Society, 3-4; Dean's List, 3; Class Honors, 2-3; Who's Who, 4.



ADELE CHASE

NEW YORK, N. Y.

A.B. in Sociology and Economics

Salemite, 1-2-3-4; Freshman Dramatic Club, 1; Pierettes, 2-3-4; Home Economics Club, 1; International Relations Club, 1-2-3-4; Le Circle Francais, 1; Chapel Committee, 3; Fire Chief and Air Raid Warden, 3; Chairman, War Activities Council, 4; Feature Editor of SIGHTS AND INSIGHTS, 4; Student Government, 2-3.



MARY COONS

WINSTON-SALEM, N. C.

B.M. in Piano

Saint Mary's, 1-2; Class Honors, 3; Chapel Committee, 3; Staff of *Salemite*, 3; Chorale Ensemble, 3-4; Der Deutsche Verein, 3-4, President, 4; Y.W.C.A. Cabinet, 4; Student Government, 4; Off-campus, Vice-President, 4; Vice-President of Class, 4; I. R. S., 4.



FRANCES CROWELL

LUANNE EMBRY DAVIS



NELL EFIRD DENNING

GENEVIEVE CAMPEN FRASIER

Seniors

FRANCES CROWELL

HICKORY, N. C.

A.B. in Education and Psychology

Freshman Dramatic Club, 1; Pierettes, 2-3-4; Le Circle Francais, 1; International Relations Club, 1-2-3-4, Secretary 3; Y.W.C.A. Cabinet, 2-3-4; Student Government, 3; May Day Committee, 3; Business Staff of SIGHTS AND INSIGHTS, 3, Business Manager, 4; Red Cross Supervisor, 3-4.



LUANNE EMBRY DAVIS

MORGANTON, N. C.

A.B. in Psychology, Education, Spanish

Freshman Dramatic Club, 1; El Club Espanol, 1-2-3-4, Secretary, 3, President, 4; Student Government, 2-3; Class Basketball, 2-3-4; Pierettes, 2-3-4, Class Honors, 3, Business Staff of SIGHTS AND INSIGHTS, 3; Class Secretary, 4; Assistant Editor of SIGHTS AND INSIGHTS, 4; Chairman of May Day Finance, 4; International Relations Club, 4.



NELL EFIRD DENNING

ALBEMARLE, N. C.

A.B. in English and History

El Club Espanol, 1-2; Home Economics Club, 1; Athletic Association, 2; Staff of *Salemite*, 3; Student Government, 3-4, President, 4; Class President, 3; Senior Advisor, 4; I. R. S., 3, Nominating Committee, 3-4, Chairman, 4; Class Basketball, 2-3-4; Class Hockey, 1-2-3-4; Class Softball, 1-2-3-4, Sub Varsity, 3; Who's Who, 4; Order of the Scorpion, 3-4.



GENEVIEVE CAMPEN FRASIER

SANTORD, N. C.

A.B. in Economics and Sociology

Freshman Dramatic Club, 1; Pierettes, 2-3; El Club Espanol, 2; Y.W.C.A. Cabinet, 3; *Salemite* Staff, 3, 4, Business Staff of SIGHTS AND INSIGHTS, 4; War Activities Council, 4; Red Cross Supervisor, 4; Class Treasurer, 4.



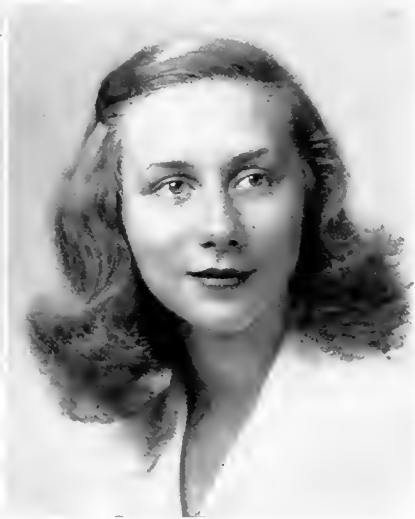
JANE FRAZIER



MILDRED GARRISON



BETTY GRANTHAM



MARIE GRIFFIN

Seniors

JANE FRAZIER

WINSTON SALEM, N. C.

B.M. in Voice

Class Vice-President, 1; Student Government, 3; Freshman Dramatics Club, 1; Pierettes, 2-3-4; Y.W.C.A. Cabinet, 3; Day Student House Committee, 1-2-3; Choral Ensemble, 1-2-3-4, President, 4; I. R. S., 3-4; Senior Marshal, 3; May Day Committee, 4; Class Honors, 1-2-3; Dean's List, 3; Who's Who, 4; Feature Girl, 2; Honor Society, 3-4; Order of the Scorpion, 3-4.



MILDRED GARRISON

GLEN ALPINE, N. C.

A.B. in Education

Freshman Dramatics Club, 1; Pierettes, 2-3; El Club Espanol, 1-2; International Relations Club, 2; Staff of *Salemite*, 3, Circulation Manager, 4; Athletic Association, 3, Vice-President, 4.



BETTY GRANTHAM

FAIRMONT, N. C.

A.B. in Education and Psychology

Freshman Dramatics Club, 1; Secretary, Y.W.C.A. Cabinet, 1; El Club Espanol, 2; Chief Senior Marshal, 3; Nominating Committee, 3-4; Student Government, 3-4; I. R. S. President, 4.



MARIE GRIFFIN

MARION, N. C.

A.B. in Primary Education

Alpha Iota Pi, 2-3-4, Le Cercle Francais, 2; Glee Club, 2; International Relations Club, 2-3; Staff of SIGHTS AND INSIGHTS, 4.



ELIZABETH GUDGER

EMILY WHITTEMORE HARRIS



NANCY JANE HELSABECK

MAMIE HERRING

Seniors

ELIZABETH GUDGER

ASHFORTH, N. C.

A.B. in English and Spanish

Freshman Dramatics Club, 1, Treasurer, 1; I. R. S., 1; Pierettes, 2-3; Alpha Iota Pi, 1-2-3-4, Reporter, 3; Class Secretary, 2-3; El Club Espanol, 1-2-3-4, Vice-President, 3; International Relations Club, 3-4; Glee Club, 2; *Salemite* Editorial Staff, 3; Y.W.C.A. Cabinet, 3-4, Treasurer, 3; SIGHTS AND INSIGHTS Assistant Editor, 3, Editor, 4; Student Government, 4; Senior Marshal, 3; Red Cross Supervisor, 3-4; Feature Girl, 3, Nominating Committee, 4; Maid of Honor, 4; Order of the Scorpion, 3-4.



EMILY WHITTEMORE HARRIS

LEAKSVILLE, N. C.

A.B. in English and Education

El Club Espanol, 1-2; The Stirrup Club, 3; Y.W.C.A. Cabinet, 2; House President, Sister's House, 3; Student Government, 3-4; Chairman of May Day Dances, 4; Advertising Manager of *Salemite*, 3, Business Manager of *Salemite*, 4, Charter Member of Honor Society; Chapel Committee, 4; Senior Advisor, 4; Who's Who, 4.



NANCY JANE HELSABECK

WALNUT COVE, N. C.

B.S. in Biology

Mars Hill, 1-2; Der Deutsche Verein, 3-4; Staff of *Salemite*, 3, Class Reporter, 4; Vice-President of Lablings, 4.



MAMIE HERRING

OXFORD, N. C.

B. of Music

Choral Ensemble, 1-2-3-4; Der Deutsche Verein, 1-2-3-4; Red Cross Supervisor, 4.



LAURA ESTELLE HINE

BETTY JEAN JONES



FRANCES HARDY JONES

DOROTHY KISER

Seniors

LAURA ESTELLE HINE

WINSTON-SALEM, N. C.

B.S. in Home Economics

Home Economics Club, 1-2-3-4.



BETTY JEAN JONES

WINSTON-SALEM, N. C.

B.S. in Home Economics

W. C. U. N. C., 1; Home Economics Club, 2-3-4. Social Chairman, 3; President, 4; Senior Marshal, 3; May Day Committee, 2-3; Assistant Business Manager of SIGHTS AND INSIGHTS, 3; Senior Class Editor of SIGHTS AND INSIGHTS, 4; Sub House President, Clewell, 3; Red Cross Supervisor, 4; Lab. Assistant in Home Economics, 4; Senior Advisor, 4.



FRANCES HARDY JONES

KINSTON, N. C.

A.B. in Sociology and Economics

Y.W.C.A., 1-2-3-4, Secretary, 3; President, 4; El Club Espanol, 1-2; I. R. S., 2; Staff of *Salemite*, 2; Pierettes, 3; Secretary-Treasurer, 3; International Relations Club, 3; Athletic Association, 3; Hockey Varsity, 3; Senior Marshal, 3; Feature Girl, 3; Student Government, 4; Order of the Scorpion, 2-3-4.



DOROTHY KISER

TOBACCOVILLE, N. C.

A.B. in Psychology and Education

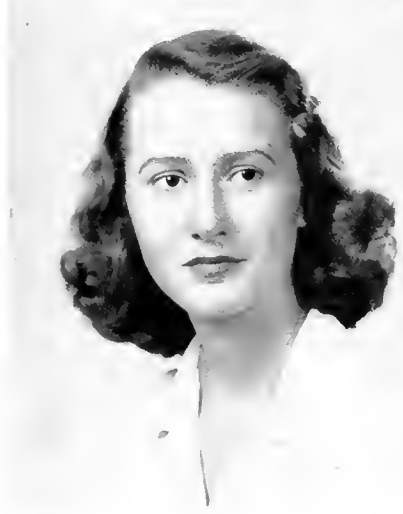
Pierettes, 2; Alpha Iota Pi, 2-3-4; Treasurer, 3; President, 4; Business Staff of SIGHTS AND INSIGHTS, 4; Riding Club, 4.



JOSEPHINE HALL McLAUCHLIN



MARY FRANCES McNEELY



NANCY MOSS



MARGUERITE MULLIN

Seniors

JOSEPHINE HALL McLAUCHLIN

RAFTORD, N. C.

B.M. in Organ

Der Deutsche Verein, 1-2-3-4; Choral Ensemble, 1-2-3-4, Secretary and Treasurer, 3; Y.W.C.A., 2; Class Treasurer, 3, Class President, 4; Student Government, 4; I. R. S., 4; Senior Advisor, 4; International Relations Club, 2-4, Nominating Committee, 4; Class Basketball Team, 3; Order of the Scorpion, 4.



MARY FRANCES McNEELY

MOORESVILLE, N. C.

A.B. in Economics and Sociology

El Club Espanol, 2; I. R. S., 2-3-4; Treasurer of A. A., 3; Senior Marshal, 3; International Relations Club, 3-4; Staff of *Salemite*, 4; Red Cross Supervisor, 3-4; May Queen, 4.



NANCY MOSS

WILSON, N. C.

A.B. in Primary Education

International Relations Club, 1-2-3-4; Red Cross Supervisor, 3-4; Riding Club, 3; Copy Editor of *SIGHTS AND INSIGHTS*, 4; Y.W.C.A. Cabinet, 4; El Club Espanol, 1-2.



MARGUERITE MULLIN

TAZEWELL, VA.

A.B. in English

El Club Espanol, 1-2; Hiking Club, 1; Glee Club, 1-2; Stirrup Club, 3-4; Staff of *Salemite*, 3-4, Feature Editor, 4; Photographic Editor of *SIGHTS AND INSIGHTS*, 4.



LUCILE NEWMAN



PEGGY NIMOCKS



HELEN LUCINDA PHILLIPS



KATHLEEN PHILLIPS

Seniors

LUCILE NEWMAN

WINSTON-SALEM, N. C.

A.B. in English

Freshman Dramatics Club, 1; Class Treasurer, 2; Day Student House Committee, 3-4; *Salemite* Staff, 2-3-4, Associate Editor, 3; Pierettes, 2-3-4, Publicity Manager, 2-3; El Club Espanol, 1-2-3, Publicity Manager, 2; SIGHTS AND INSIGHTS, 3, Art Editor, 3; Student Government, 4; Nominating Committee, 4; May Day Committee, 1-2-3, Chairman, 4; Alpha Iota Pi, 3-4; Class Hockey, 3-4; Athletic Association, 3; War Activities Council, 3; Order of the Scorpion, 4.



PEGGY NIMOCKS

FAYETTEVILLE, N. C.

A.B. in Spanish and English

El Club Espanol, 1-2-3-4; A. A. Council, 2; Hockey Varsity, 3; Class Basketball, 2-3-4; House President of Lehman, 3; Student Government, 3; Monogram Club, 3; Chapel Committee, 3; Feature Girl, 2; *Salemite* Staff, 1-2; Nominating Committee, 2; May Court, 4.



HELEN LUCINDA PHILLIPS

NORTH WILKESBORO, N. C.

A.B. in History

W. C. U. N. C., 1-2; I. R. S., 3, Secretary and Treasurer, 3; Class Honors, 3; Y.W.C.A. Cabinet, 4; Senior Advisor 4; International Relations Club, 4; Art Editor of SIGHTS AND INSIGHTS, 4.



KATHLEEN PHILLIPS

LUMBERTON, N. C.

B.S. in Home Economics

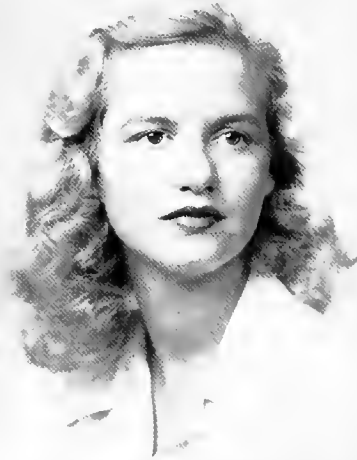
Le Cerele Francais, 1-2-3, Home Economics Club, 1-2-3-4; *Salemite* Business Staff, 2-3-4; Stirrup Club, 1-2-3-4; Athletic Council, 4; International Relations Club, 2-3.



RACHEL ELIZABETH PINKSTON



NORMA MARIE RHOADES



ANN SAULS



ALYCE PAT STEVENS

Seniors

RACHEL ELIZABETH PINKSTON

FAYETTEVILLE, N. C.

A.B. in Economics and Sociology

Student Government, 1-4; Y.W.C.A., 3-4, Vice-President, 4; Chapel Committee, 2; Athletic Association, 4; Red Cross Supervisor, 4; Senior Advisor, 4; Softball Varsity, 3; Who's Who, 4.



NORMA MARIE RHOADES

WINSTON-SALEM, N. C.

B.M. in Voice

Greensboro College, 1; Choral Ensemble, 2-3-4; Der Deutsche Verein, 2-3-4; Business Staff of *Salemite*, 3-4; Day Student House Committee, 4; I. R. S., 4, Vice-President, 4; May Court, 4.



ANN SAULS

CHARLOTTE, N. C.

A.B. in Spanish

Freshman Dramatics Club, 1; Glee Club, 2; El Club Espanol, 1-2-3-4, Vice-President, 4; May Day Chairman of Dresses, 4; International Relations Club, 4.



ALYCE PAT STEVENS

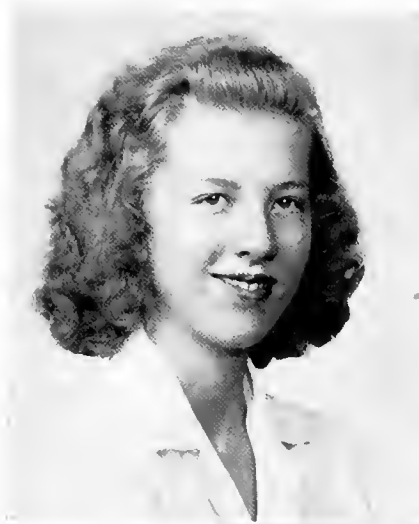
BROOKLYN, N. Y.

B.S. in Home Economics

Home Economics Club, 1-2-4, Treasurer, 2; Le Cercle Francais, 1; International Relations Club, 1-4; May Day Committee, 2; The Stirrup Club, 4; New York University, 3; Lablings, 4.



EDITH MAE STOVALL



ANGELA SPOTSWOOD TAYLOR



HAZEL SUSAN WATTS

Seniors

EDITH MAE STOVALL

WINSTON-SALEM, N. C.

A.B. in Mathematics

Athletic Association, 2-3-4; Softball Varsity, 2-3;
Softball Manager, 2-3-4; Hockey Varsity, 3;
Class Basketball Team, 2-3; Monogram Club,
3-4.



ANGELA SPOTSWOOD TAYLOR

HANBURY, N. C.

B.S. in Home Economics

El Club Espanol, 1; Home Economics Club,
2-3-4; Stirrup Club, 3; International Relations
Club, 4; Staff of SIGHTS AND INSIGHTS, 4;
Lablings, 4.



HAZEL SUSAN WATTS

TAYLORSVILLE, N. C.

A.B. in Social Studies

El Club Espanol, 1-2-3-4; International Relations
Club, 1-2-3-4; Glee Club, 2; Finance
Chairman of Class, 2; House President of Strong,
3; Student Government, 3-4; Class Honors, 3;
Dean's List, 3; House President of Bitting, 4;
Y.W.C.A. Cabinet, 4; Associate Editor of
Salemite; Copy Editor of SIGHTS AND INSIGHTS,
4; Senior Advisor, 4; Who's Who, 4; Order of
the Scorpion, 3-4.





Miss Mary Lou Stack

Chief Marshal

S E N I O R



HELEN McMILLAN

NANCY SNYDER

PEGGY WITHERINGTON

NELL JANE GRIFFIN

WINIFRED WALL

JULIA GARRETT

M A R S H A L L S

P R E S E N T I N G



THE

Junior

CLASS





THE CLASS OFFICERS

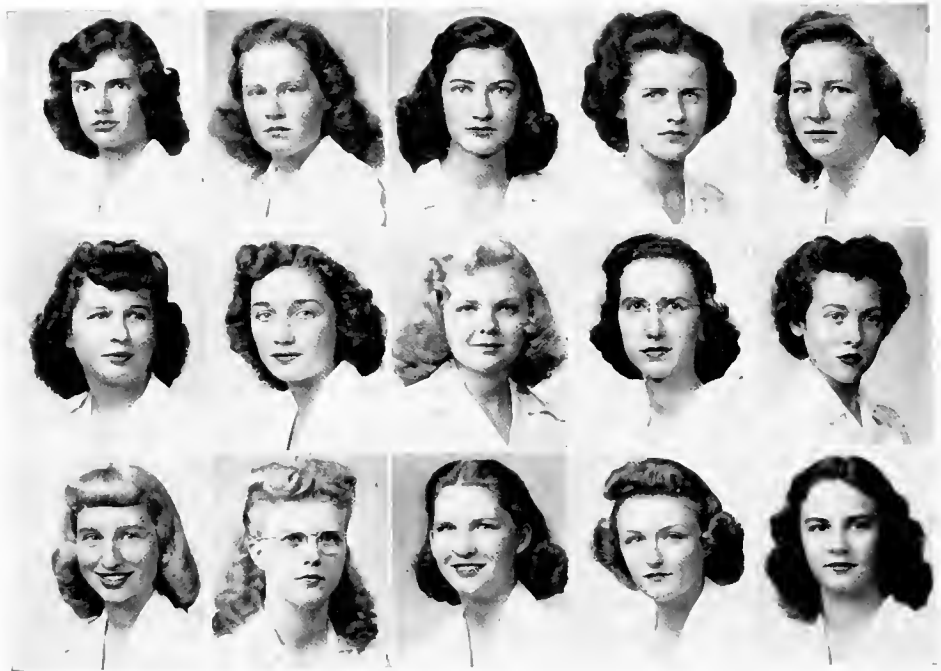
DORIS LITTLE *President*

SARA HEGE *Vice-president*

ELIZABETH WILLIS *Secretary*

NANCY SNYDER *Treasurer*





First Row:

JANE ANGUS	Front Royal, Va.
MARGARET ARDREY	Greensboro, N. C.
JANE BELL	Raleigh, N. C.
MEREDITH SUE BOAZE	Lexington, N. C.
CATHERINE BUNN	Henderson, N. C.

Second Row:

MOLLIE CAMERON	Raeford, N. C.
MARY LILLIAN CAMPBELL	Plymouth, N. C.
ANNE CARTER	Morganton, N. C.
FRANCES CARTNER	Winston-Salem, N. C.
BETSY CASTEEN	Leaksville, N. C.

Third Row:

ROSALIND CLARK	Marion, N. C.
MARJORIE CONRAD	Winston-Salem, N. C.
NANCY HILLS DAVIS	Morganton, N. C.
ANN DOUTHIT	Washington, N. C.
ANNE DYSART	Greenville, S. C.

THE JUNIOR CLASS

THE JUNIOR CLASS

First Row:

FRANCES ELAM	Winston-Salem, N. C.
JULIA GARRETT	Knoxville, Tenn.
MARY FRANCES GARROU	Valdese, N. C.
NELL JANE GRIFFIN	Winston-Salem, N. C.
MARY RUTH HAND	Rural Hall, N. C.

Second Row:

BETTY HARRIS	Hickory, N. C.
MARTHA MOORE HAYES	Charlotte, N. C.
ELOISE HEGE	Winston-Salem, N. C.
SARA HEGE	Winston-Salem, N. C.
MARY HILLSMAN	Richmond, Va.

Third Row:

JOSEPHINE HOLLER	Sanford, N. C.
SENORA LINDSEY	Tarboro, N. C.
DORIS LITTLE	Robersonville, N. C.
EDITH LONGEST	Rocky Mount, N. C.
JANE LOVEACE	Henrietta, N. C.





JANE CALKINS
Special Student

First Row:

- VIRGINIA McIVER Sanford, N. C.
- HELEN McMILLAN Knoxville, N. C.
- RUTH MAXWELL Goldsboro, N. C.
- JULIA MAXWELL New Bern, N. C.
- MARY HODGES PERSON Stantonsburg, N. C.

Second Row:

- JUNE REID Winston-Salem, N. C.
- NANCY RIDENHOUR Concord, N. C.
- HELEN ROBBINS Rocky Mount, N. C.
- MARTHA SHERROD Winston-Salem, N. C.
- EUGENIA SHORE Winston-Salem, N. C.

Third Row:

- RUTH SHORE Winston-Salem, N. C.
- HAZEL NEWMAN SLAVIER Winston-Salem, N. C.
- HELEN SLYE Charlotte, N. C.
- NANCY SNYDER Roanoke, Va.
- MARY LOU STACK Fayetteville, N. C.

THE JUNIOR CLASS

THE JUNIOR CLASS

First Row:

EDNA STAFFORD Winston-Salem, N. C.
 POLLY STARBUCK Searsdale, N. Y.
 NANCY PAIGE SWIFT Goldsboro, N. C.
 BEISSY THOMAS Wilson, N. C.
 HELEN THOMAS Alexandria, Va.

Second Row:

EDITH TRIVETTE Winston-Salem, N. C.
 MARY JANE VIEIRA Charlotte, N. C.
 WINIFRED WALL High Point, N. C.
 MARION WATERS Bluefield, W. Va.
 AVIS WEAVER Bassett, Va.

MARY LOU LANGHORNE
Special Student

Third Row:

MARIHA BERCH WILLARD Winston-Salem, N. C.
 BETTY LYNN WILLIARD Jamestown, N. C.
 ELIZABETH ANN WILLIS Monroe, N. C.
 PEGGY WITHERINGTON Mount Olive, N. C.
 LOIS WOOTEN Kinston, N. C.



P R E S E N T I N G



THE *Sophomore* CLASS





THE CLASS OFFICERS

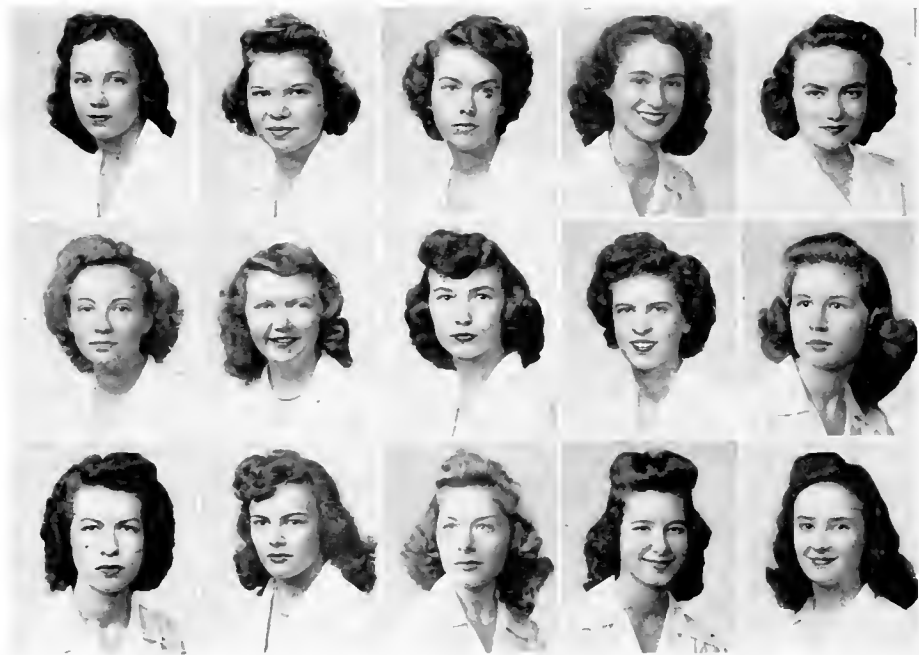
EVA MARTIN BULLOCK *President*

ANNE BARBER *Vice-president*

JANET JOHNSTON *Secretary*

AGNES QUINERLY *Treasurer*





First Row:

ANNABEL ALLEN Wadesboro, N. C.
 BETTY JANE BAGBY Winston-Salem, N. C.
 ANNE BARBER Winston-Salem, N. C.
 BILLIE ROSE BECKERDITE Concord, N. C.
 CAROL BECKWITH Princeton, W. Va.

Second Row:

CAROLYN BILLINGS Winston-Salem, N. C.
 MARTHA BOATWRIGHT Reidsville, N. C.
 SALLY BOSWELL Roanoke, Va.
 MARY FARMER BRANTLEY Rocky Mount, N. C.
 LESLEY BULLARD Lumberton, N. C.

Third Row:

EVA MARTIN BULLOCK Charlotte, N. C.
 BERNICE BUNN Tarboro, N. C.
 ALICE CARMICHAEL Knoxville, Tenn.
 FRANCES SPRUNT CARR Durham, N. C.
 SARAH ELIZABETH CHEATHAM Franklinton, N. C.

THE SOPHOMORE CLASS

THE SOPHOMORE CLASS

First Row:

REBECCA CLAPP Siler City, N. C.
 ROSMARY CLEVELAND Swannanoa, N. C.
 TEAU COUNCIL Wananish, N. C.
 PATRICE CROMMELIN Park Ridge, Ill.
 HELEN MARGARET DUFFY New Bern, N. C.

Second Row:

MARY FRANCIS ERNEST Winston-Salem, N. C.
 GRIZZELLE ETHERIDGE Whitakers, N. C.
 MARIANNE EVERETT Fayetteville, N. C.
 ANNE FOLGER South Orange, N. J.
 CAROLYN FURR Salisbury, N. C.

Third Row:

GRETA GARTH Hickory, N. C.
 VIRGINIA GATTIS Winston-Salem, N. C.
 CAROL GREGORY Lancaster, S. C.
 MARY HUNTER HACKNEY Wilson, N. C.
 HARRIETT HALE Russellville, Tenn.





First Row:

MARIAN LEE HALL Waynesboro, Va.
 SARA HALTIWANGER Winston-Salem, N. C.
 MARTHA LOU HEITMAN Salisbury, N. C.
 MARIA HICKS Wilson, N. C.
 CAROLINE HILL Wadesboro, N. C.

Second Row:

DAPHNE HOUCHINS Martinsville, Va.
 EMMIE LOU JAMES Winston-Salem, N. C.
 PHYLLIS JOHNSON Greensboro, N. C.
 JANET JOHNSON Mooresville, N. C.
 BETTE CROUSE JONES Winston-Salem, N. C.

Third Row:

LIGHT JOSLIN Baltimore, Md.
 FRANCES LAW Kinston, N. C.
 SHEFFIELD LILES Wadesboro, N. C.
 MARY ANNE LINN Salisbury, N. C.
 BEISY LONG Winston-Salem, N. C.

THE SOPHOMORE CLASS

THE SOPHOMORE CLASS

First Row:

ANNE MCGEE	Germanton, N. C.
HALLIE MCLFAN	Lenoir, N. C.
KATHERINE JEAN MCNEW	Cleveland, Tenn.
BEISY MIKLEJOHN	Pawtucket, R. I.
GWEN MENDENHALL	Winston-Salem, N. C.

Second Row:

EMMA MITCHELL	Wilmington, N. C.
JANE MCHOLLEM	St. Petersburg, Fla.
BEVERLY NEWMAN	Winston-Salem, N. C.
MAE NOBLE	Charlotte, N. C.
JEAN NORWOOD	Raleigh, N. C.

Third Row:

GERALDINE PURCELL	Winston-Salem, N. C.
ROSAMOND PUTZEL	Salisbury, N. C.
AGNES QUINERY	Farmville, N. C.
HELEN COIT REDFERN	Wadesboro, N. C.
HELEN REYNOLDS	Bluefield, W. Va.





First Row:

FRANCES RIVES	Bethel, N. C.
ELEANOR RODD	St. Petersburg, Fla.
CONSTANCE SCOGGINS	Reidsville, N. C.

Second Row:

RUTH SCOTT	Statesville, N. C.
LUCY SCOTT	Winston-Salem, N. C.
TICKA SENIER	Albemarle, N. C.

Third Row:

EVELYN BYRD SHIELD	Ridgewood, N. J.
PEGGY PAGE SMITH	Easley, S. C.
MARGARET LUCILLE STYERS	Winston-Salem, N. C.

THE SOPHOMORE CLASS

THE SOPHOMORE CLASS

First Row:

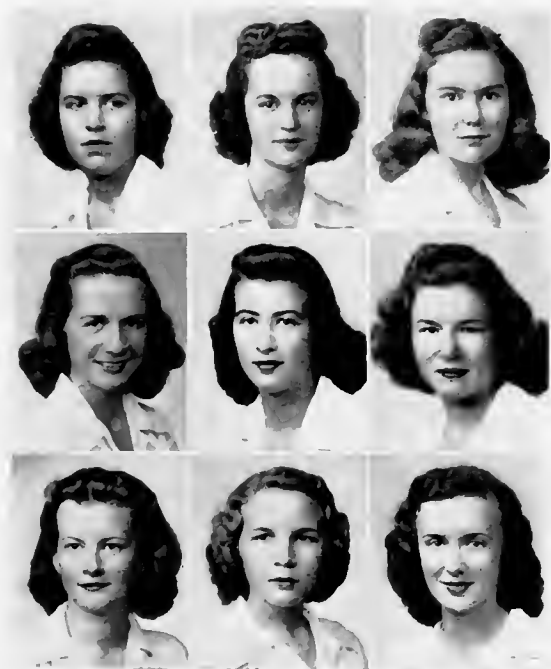
LOUISE TAYLOR	Danbury, N. C.
HENRIETTA WALTON	Morganton, N. C.
MARTHA WALTON	Morganton, N. C.

Second Row:

BARBARA WALKINS	Shaker Heights, Ohio
MARGARET WEST	Kinston, N. C.
MARGARET WILLIAMS	McConnellsville, S. C.

Third Row:

BETTY WITHERS	Winston-Salem, N. C.
MARTHA JEAN YOUNGBLOOD	Concord, N. C.
LOUISE ZIGLAR	Lawsonville, N. C.



P R E S E N T I N G



THE

Freshman

CLASS





THE CLASS OFFICERS

PEGGY DAVIS *President*

JEAN FEUCHTENBERGER *Vice-president*

ANNE CAROTHERS *Secretary*

ELIZABETH PEDEN *Treasurer*





First Row:

BETTY JANE ADAMS	Winston-Salem, N. C.
MARY ELLA ALEXANDER	Spartanburg, S. C.
BETTY LOU BALL	Winston-Salem, N. C.
KATHRYN BALLEW	Marion, N. C.
BETTY BARNWELL	Burlington, N. C.

Second Row:

NANCY BARRETT	Rocky Mount, N. C.
JEANNE BASNIGHT	Chapel Hill, N. C.
GENEVRA BEAVER	Salisbury, N. C.
BETTYE BELL	Towson, Md.
MARY MARTHA BINGHAM	Sugar Grove, N. C.

Third Row:

PEGGY JANE BLUM	Winston-Salem, N. C.
EDITH LUCILLE BOGGS	Charlotte, N. C.
PATRICIA MARGARET BOLLING	Winston-Salem, N. C.
BETTIE LOU BONEY	Kinston, N. C.
MARILYN THOMAS BOOTH	Winston-Salem, N. C.

THE FRESHMAN CLASS

THE FRESHMAN CLASS

First Row:

SOPHIA BOWEN	Winston-Salem, N. C.
AGNES BOWERS	Morganton, N. C.
MOLLY BRIETZ	Winston-Salem, N. C.
PEGGY BROADBUSH	Richmond, Va.
MARGARET BROWN	Charlotte, N. C.

Second Row:

MARY LEILA BRYANT	Gastonia, N. C.
MARY WELLS BUNTING	Bethel, N. C.
MARTHA READE BURTON	Rocky Mount, N. C.
NANCY CARLTON	Raleigh, N. C.
ANN CAROTHERS	Rock Hill, S. C.

Third Row:

MARGARET CARTER	Rocky Mount, N. C.
VIRGINIA MAE CARTER	Thomasville, N. C.
FAY CHAMBERS	Marion, N. C.
ALICE CHILES	Houston, Texas
JANE CHURCH	Winston-Salem, N. C.





First Row:

SARAH CLARK Reidsville, N. C.
 MARY LENA COLYARD North Wilkesboro, N. C.
 PHYLLIS COOPER Raleigh, N. C.
 VIRGINIA CONNOR Spartanburg, S. C.
 ANN COX Franklinton, N. C.
 MARY CRALIDIS Winston-Salem, N. C.

Second Row:

CAROLYN CRANFORD Asheboro, N. C.
 HAZEL CRENSHAW Belmont, N. C.
 ANN CRITCHER Rocky Mount, N. C.
 JAHALA CROTTIS Albemarle, N. C.
 PAGE DANIEL New Bern, N. C.
 MOLLY DARR Winston-Salem, N. C.

Third Row:

PEGGY DAVIS Raleigh, N. C.
 IRENE DIXON Rocky Mount, N. C.
 SARA JANE DRESSER Raleigh, N. C.
 ANNE DUNGAN Salisbury, N. C.
 MARIE DWIGGINS Winston-Salem, N. C.
 LOUISE EFIRD Albemarle, N. C.

THE FRESHMAN CLASS

THE FRESHMAN CLASS

First Row:

ROSE WELL FIELD Larchmont, N. Y.
 MARY ELMORE FINLEY North Wilkesboro, N. C.
 MARGARET FISHER Concord, N. C.
 BARBARA FOLGER Mount Airy, N. C.
 MARION GAITHER Newton, N. C.
 JEANNE FEUCHTENBERGER Bluefield, W. Va.

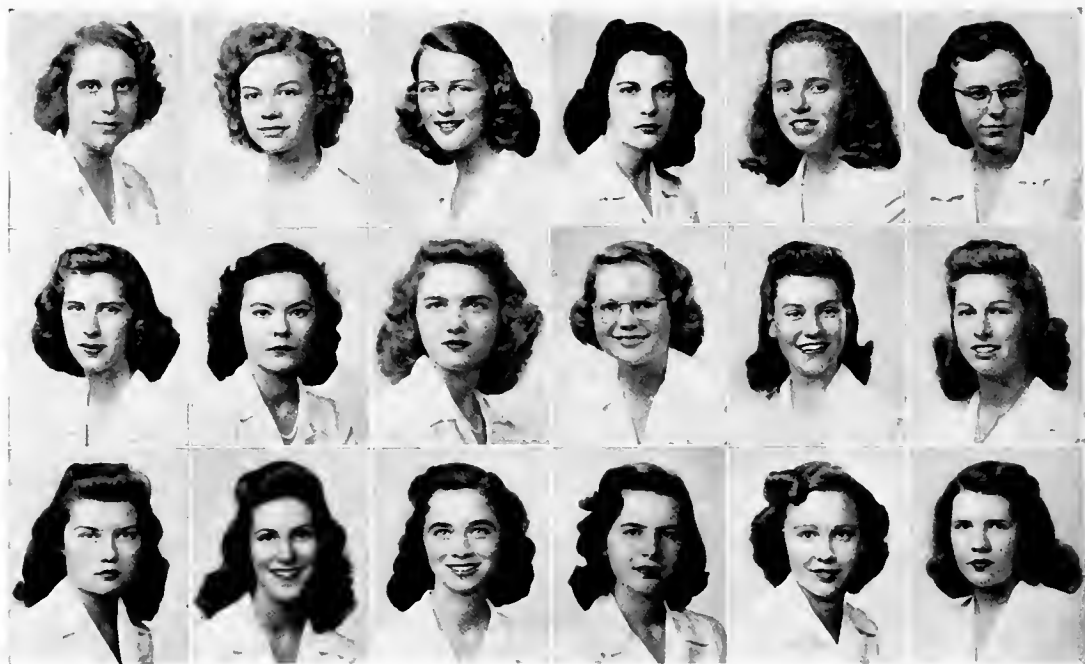
Second Row:

PEGGY LOU GRAY Robersonville, N. C.
 JANE GREENWALD New York, N. Y.
 CATHERINE GREGORY Spartanburg, S. C.
 JEAN GRIFFIN Rocky Mount, N. C.
 SALLIE JOE GURGANUS Bethel, N. C.
 ANNE HARISTON Leaksville, N. C.

Third Row:

SALLY HAMILTON Charlotte, N. C.
 MARTHA LILLIAN HARRISON Charlotte, N. C.
 BETTYE HATLEY Albemarle, N. C.
 BLANCHE HICKS Greensboro, N. C.
 MARY HOLT HILL Long Island, N. Y.
 BETTY JEAN HOLLEMAN Winston-Salem, N. C.





First Row:

SARAH HOLTON	Winston-Salem, N. C.
ALDA JACKSON	Winston-Salem, N. C.
ELIZABETH JEFFREYS	Goldsboro, N. C.
JANE JETER	Raleigh, N. C.
SUE LONDON	N. Wilkesboro, N. C.
PATSY LAW	Winston-Salem, N. C.

Second Row:

BETTY LEEPER	Gastonia, N. C.
ELAINE LOVING	Washington, D. C.
NANCY LUTZ	Shelby, N. C.
NANCY MCCOLL	Bennettsville, S. C.
ABIGAIL McCORMICK	Princeton, W. Va.
JANE McEIROY	Glencoe, Ill.

Third Row:

MARY JANE MCGEE	Charlotte, N. C.
CATHERINE McLEOD	Charlotte, N. C.
ELAINE McNEELY	Mooresville, N. C.
ANNE MILLIKAN	Greensboro, N. C.
ANNIE COLLINS MILLS	Morehead City, N. C.
LOMIE LOU MILLS	Wadesboro, N. C.

THE FRESHMAN CLASS

THE FRESHMAN CLASS

First Row:

SARAH MONTAGUE	Goldshoro, N. C.
JANE MORRIS	Mocksville, N. C.
MARY MOISINGER	Winston-Salem, N. C.
RUBY MOYE	Maury, N. C.
MARY LOWRIE NORWOOD	Bethesda, Md.
EVELYN PAGE	Winston-Salem, N. C.

Second Row:

ELOISE PARIS	Winston-Salem, N. C.
MARY LOUISE PARRISH	Georgetown, S. C.
ELIZABETH PEDEN	Canton, N. C.
JEAN PIERCE	Rocky Mount, N. C.
MARTHA ELIZABETH PRICE	Monroe, N. C.
MARY PRICE	Chattaroy, W. Va.

Thrd Row:

MARGARET RAYNAL	Statesville, N. C.
BETTY DEAN REGAN	Winston-Salem, N. C.
MARY ELIZABETH REIMERS	New York, N. Y.
MARGARET RHUDY	Greensboro, N. C.
JANE RUSSELL	High Point, N. C.
NELLIE FRANCIS SCOTT	Winston-Salem, N. C.





First Row:

BETTY DEAN SHUGART	Winston-Salem, N. C.
VIRGINIA HUNTER SMITH	Dillon, S. C.
ELIZA REAMEY SMITH	Martinsville, Va.
DOROTHY ANN SMITH	Benson, N. C.
EVELYN SOUTHERLAND	Smithfield, N. C.
ANNE SOUTHERN	Winston-Salem, N. C.

Second Row:

FRANCES SOWERS	Winston-Salem, N. C.
MARGARET SPILLMAN	Wilmington, N. C.
HELEN SPRUILL	Lexington, N. C.
MARY STEVENS	Winston-Salem, N. C.
BARBARA ANN STONE	Salem, Va.
IRIS STONESTREET	Winston-Salem, N. C.

Third Row:

VIRTIE SIRROUP	New Orleans, La.
VIRGINIA SUMMER	Kings Mountain, N. C.
JOANNE SWASEY	Alexandria, Va.
ALLENE TAYLOR	Townesville, N. C.
PEGGY SUE TAYLOR	Newton, N. C.

THE FRESHMAN CLASS

THE FRESHMAN CLASS

First Row:

WANDA TEAGUE	Winston-Salem, N. C.
HAZEL THOMAS	Winston-Salem, N. C.
MARY TONISF	Jacksonville, Fla.
KATHRYN TRANSDU	Winston-Salem, N. C.
MARY DARRELL TURNER	Statesville, N. C.
KATHRYN WAGONER	Salisbury, N. C.

Second Row:

BARBARA WARD	Salisbury, N. C.
MARILYN WATSON	Washington, D. C.
PAT WATSON	Winston-Salem, N. C.
NANCY WEBBER	Winston-Salem, N. C.
MARY HARRIET WHITE	Rock Hill, S. C.
WYNONA WILSON	Kernersville, N. C.

Third Row:

EVELYN WHITLOCK	Winston-Salem, N. C.
JANE WINDSOR	Winston-Salem, N. C.
FRANCES WINSLOW	Plymouth, N. C.
DOROTHY WOOLEN	Winston-Salem, N. C.
BARBARA YELVERTON	Goldsboro, N. C.



The OFFICERS

ALICE KINCAID
President

BETTY HENNESSEE
Vice-President

LUCY SHFFIELD
Secretary-Treasurer

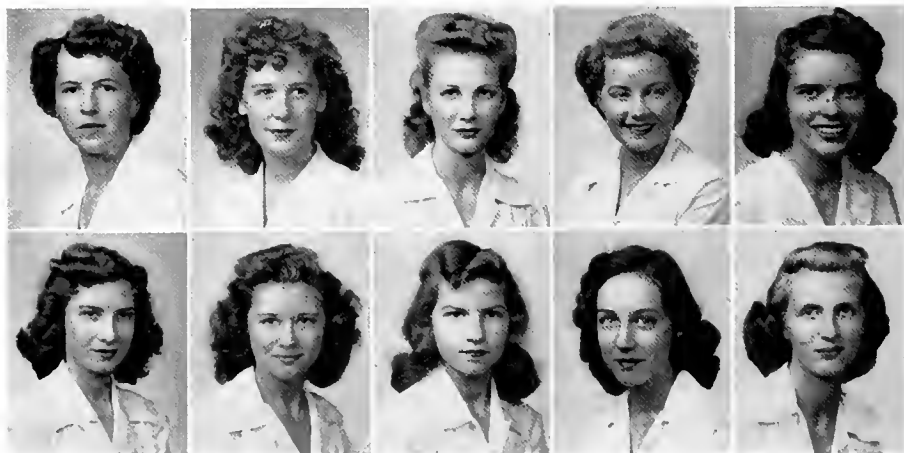


First Row:

VERN DELL BRENDELE Boonville, N. C.
FRANCES BURGESS Winston-Salem, N. C.
BETTE LOU CRAWFORD Wadesboro, N. C.
JEAN FERRELL Winston-Salem, N. C.
FRANCES HAND Rural Hall, N. C.

Second Row:

KATHERINE HAICHER Lilesville, N. C.
BETTY HENNESSEE Salisbury, N. C.
BILLIE MARIE HENNIS Mount Airy, N. C.
GRACE LANE Greensboro, N. C.
DORIS ELIZABETH LINEBACK, Winston-Salem, N. C.



SECRETARIAL STUDENTS

First Row:

ANNE LOVE Raleigh, N. C.
ELIZABETH LFE MILLER Concord, N. C.
FAIR MILLER Salisbury, N. C.
MARGARET NICHOLS Winston-Salem, N. C.

Second Row:

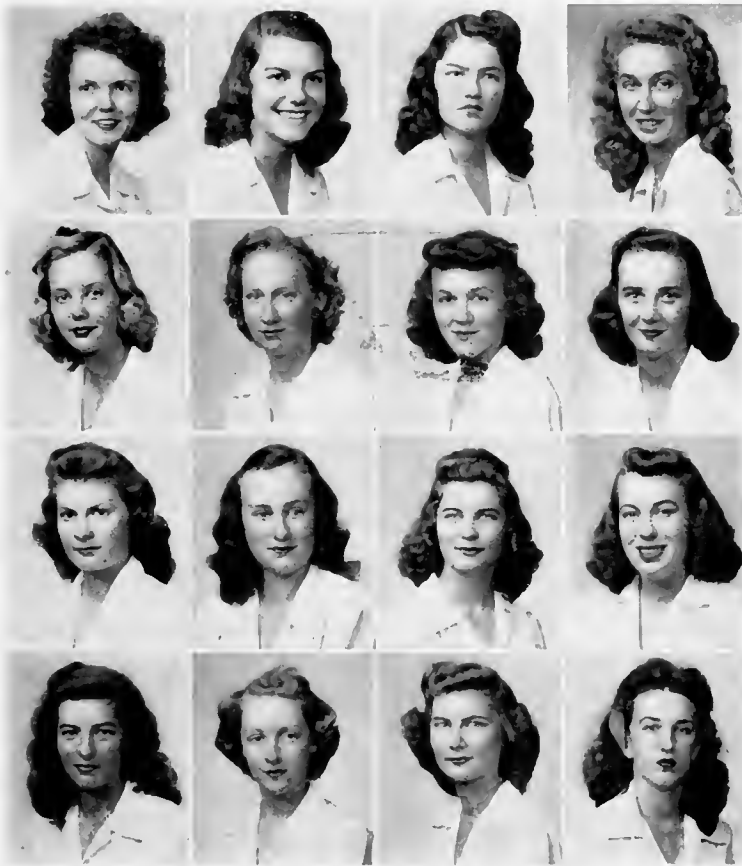
DOROTHEA D. NICHOLSON, Winston-Salem, N. C.
DORIS OATES Gerton, N. C.
LAVELLE PHELPS Winston-Salem, N. C.
WINIFRED ROPER Winston-Salem, N. C.

Third Row:

LUCY SHEFFIELD Wilmington, N. C.
ANNE SIMMONS Mount Airy, N. C.
SARA ANN SMITHMAN, Winston-Salem, N. C.
EDITH MARIE THOMAS Winston-Salem, N. C.

Fourth Row:

CAROLYN TURNER Martinsville, Va.
KATHRYN WHITTLE Concord, N. C.
ELIZABETH YOUNG Rocky Mount, N. C.
ALICE KINCAID Lincolnton, N. C.



SECRETARIAL STUDENTS





ACTIVITIES

STUDENT GOVERNMENT ASSOCIATION



NELL DENNING *President*
 MOLLY BOSEMAN *Vice-President*
 MARY COONS *Off-Campus Vice-President*
 PEGGY WITHERINGTON *Secretary*
 NELL JANE GRIFFIN *Treasurer*



First Row

MOLLY BOSEMAN
 MARY COONS
 PEGGY WITHERINGTON
 NELL JANE GRIFFIN
 SENORA LINDSEY
 HAZEL WATTS
 BETSY MEIKLEJOHN

Second Row

ROSEMARY CLEVELAND
 JOANNE SWASEY
 EVA MARTIN BULLOCK
 PEGGY DAVIS
 ANNABEL ALLEN
 JOSEPHINE McLAUCHLIN
 DORIS LITTLE

Third Row

SARA HEGE
 ANN BARBER
 JEAN FEUCHTENBERGER
 RACHEL PINKSTON
 VIRGINIA McIVER
 PHYLLIS JOHNSON
 ANN CAROTHERS

EXECUTIVE
DEPARTMENT

SENORA LINDSEY
HAZEL WATTS
BETSY MEIKLEJOHN
ROSEMARY CLEVELAND
JOANNE SWASEY
EVA MARTIN BULLOCK
PEGGY DAVIS
ANNABEL ALLEN

JUDICIAL
DEPARTMENT

JOSEPHINE McLAUGHLIN
DORIS LITTLE
SARA HEGE
ANN BARBER
JEAN FEUCHTENBERGER
RACHEL PINKSTON
VIRGINIA McIVER
PHYLLIS JOHNSON
ANN CAROTHERS

LEGISLATIVE
DEPARTMENT

EMILY HARRIS
EDITH STOVALL
WINIFRED WALL
EDITH TRIVETTE
CAROL BECKWITH
EMMA LOU JAMES
BETTY GRANTHAM
FRANCES JONES
MARY LUCY BAYNES
LUCILLE NEWMAN
MARY ELLEN BYRD
ELIZABETH GUDGER
ADELE CHASE
ELIZABETH BECKWITH
PEGGY PAGE SMITH
BARBARA FOLGER
EFFIE RUTH MAXWELL
BETSY LONG
BEVERLY NEWMAN
PEGGY SUE TAYLOR
HELEN SPRULL
ANN DUNGAN



LEGISLATIVE DEPARTMENT

First Row

EMILY HARRIS
EDITH STOVALL
WINIFRED WALL
EDITH TRIVETTE
CAROL BECKWITH
EMMA LOU JAMES
BETTY GRANTHAM
PEGGY BLQM

Second Row

FRANCES JONES
MARY LUCY BAYNES
LUCILLE NEWMAN
MARY ELLEN BYRD
ELIZABETH GUDGER
ADELE CHASE
ELIZABETH BECKWITH
BETTY HARRIS

Third Row

PEGGY PAGE SMITH
BARBARA FOLGER
EFFIE RUTH MAXWELL
BETSY LONG
BEVERLY NEWMAN
PEGGY SUE TAYLOR
HELEN SPRULL
ANN DUNGAN

Y. W. C. A.

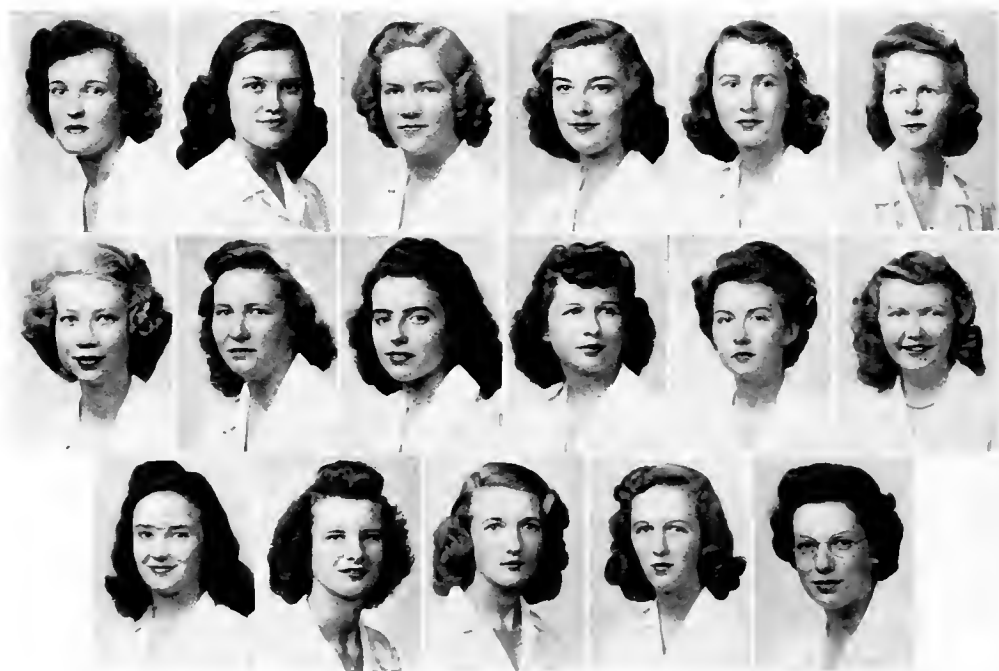
OFFICERS

FRANCES JONES *President*
RACHEL PINKSTON *Vice-President*
JANE LOVELACE *Secretary*
ELIZABETH MEIKLEJOHN *Treasurer*



CABINET

HELEN PHILLIPS	JUNE REID
NANCY MOSS	MARTHA BOAIWRIGHT
HAZEL WATTS	BETTY CHEATHAM
FRANCES CROWELL	VIRGINIA McIVER
CATHERINE BUNN	HELEN ROBBINS
ELIZABETH WILLIS	JANET JOHNSTON
MOLLY CAMERON	JOANNE SWASEY





I. R. S.

OFFICERS

- BETTY GRANTHAM *President*
 NORMA RHOADES *Vice-President*
 POLLY STARBUCK *Secretary-Treasurer*



REPRESENTATIVES

- | | |
|----------------------|------------------|
| JOSEPHINE McLAUCHLIN | MARY F. BRANTLEY |
| DORIS LITTLE | HAZEL N. SLAWTER |
| EVA MARTIN BULLOCK | TEAU COUNCIL |
| PEGGY DAVIS | MARY ANN LINN |
| MARY COONS | BETTY J. BAGBY |
| JANE FRAZIER | JEAN GRIFFIN |
| MARY F. McNEELY | MARY BRYANT |
| EDITH LONGEST | FRANCES SOWERS |



SIGHTS



ELIZABETH GUDGER
Editor-in-Chief



FRANCES CROWELL
Business Manager

EDITORIAL STAFF

LUANNE DAVIS	Assistant Editor
SENORA LINDSAY	Associate Editor
JANE LOVELACE	Literary Editor
BETTY JEAN JONES	Senior Class Editor
HELEN McMILLAN	Junior Class Editor
COIT REDFEARN	Sophomore Class Editor
MARGUERITE MULLIN	Photographic Editor
HELEN PHILLIPS	Art Editor
NANCY MOSS	Copy Editor
HAZEL WATTS	Copy Editor
ADELE CHASE	Feature Editor
NANCY HILLS DAVIS	Typist

BUSINESS STAFF

PEGGY BOLLIN
MARIE GRIFFIN
ALICE KINCIAD

JENNY FRASIER
RUTH SHORE
ANGELA TAYLOR
DOROTHY KISER

BETSY THOMAS
MARY HUNTER HACKNEY
MARIAN WATERS

AND INSIGHTS



T H E



MARY ELLEN BYRD
Editor-in-Chief



EMILY HARRIS
Business Manager

EDITORIAL STAFF

HAZEL WAITS	Associate Editor
EFFIE RUTH MAZWELL	Assistant Editor
HELEN McMILLAN	Copy Editor
VIRTIE STROUP	Make-up Editor
MARY LUCY BAYNES	Sports Editor
JUNE REID	Music Editor

BUSINESS STAFF

ELIZABETH BECKWITH	Assistant Business Manager
BETSY THOMAS	Advertising Manager
MILORED GARRISON	Circulation Manager

BETSY LONG
DORIS LITTLE
MARIANNE EVERETT
KATHLEEN PHILLIPS
SHEFFIELD LILES

MARY F. BRANTLEY
NORMA RHOADES
SALLY BOSWELL
GRETA GARTH

CAROL BECKWITH
MARY ELLEN BAYLEY
CATHERINE BUNN
BETTIE BELL
MARION WATERS

S A L E M I T E



MAY DAY COMMITTEE



LUCILE NEWMAN
Chairman

HELEN ROBINS	<i>Vice-Chairman</i>	BETTY HARRIS	<i>Properties</i>
COIT REDFEARN	<i>Nominating Chairman</i>	JANIE MULHOLLEM	<i>Publicity</i>
SNOOKIE WILLIS	<i>Costumes</i>	JANE FRAZIER	<i>Music</i>
LUANNE DAVIS	<i>Finance Chairman</i>	PEGGY WITHERINGTON	<i>Tea Room</i>
ANN SAULS	<i>Dresses</i>	EMILY HARRIS	<i>Dances</i>
BETTYE BELL	<i>Flowers</i>	VIRTIE STROUP	<i>Programs</i>





OFFICER

- MARY LUCY BAYNES *President*
 MILDRED GARRISON *Vice-President*
 MARIHA LOU HEITMAN *Secretary*
 POLLY STARBUCK *Treasurer*

COUNCIL

- PEGGY WITHERINGTON *Basketball Manager*
 NELL GRIFFIN *Hockey Manager*
 EDITH STOVALL *Softball Manager*
 HELEN ROBBINS *Golf Manager*
 SARA HALTIWANGER *Tennis Manager*
 KATHLEEN PHILLIPS *Archery Manager*
 RACHEL PINKSTON *Badminton Manager*
 LOU STACK *Riding Manager*
 VIRTIE SIROUP *Hiking Manager*



ATHLETIC ASSOCIATION

WAR ACTIVITIES COUNCIL



ADELE CHASE
Chairman

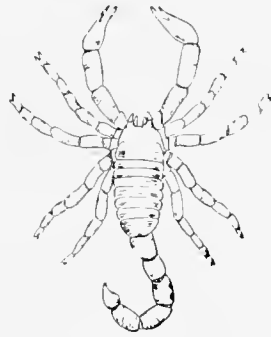
MRS. HOWARD RONOTHALER *Adviser*
 MISS JESS BYRD *Faculty Adviser*
 MISS BRONA NIFONG *Staff Assistant*
 GENEVIEVE FRAZIER *Senior Class Representative*
 MARTHA MOORE HAYES, *Junior Class Representative*
 POLLY STARBUCK *Fire Chief*

SALLY BOSWELL *Sophomore Class Representative*
 BETTY LOU BALL, *Freshman Class Representative*
 MARY ELLEN BAYLEY, *Chairman of War Stamps*
 MARGARET RAYNAL *Publicity*
 NANCY MOSS *Assistant*



ORDER OF THE SCORPION

HAZEL SUSAN WAITS
JANE FRAZIER
MARY LUCY BAYNES



MOLLY BOSEMAN
NELL EFIRD DENNING

FRANCES HARDY JONES
ELIZABETH GUDGER

JOSEPHINE HALL MCLAUCHLIN
LUCILLE NEWMAN
MARY ALICE NELSON
MARY ELLEN BYRD

H O N O R S O C I E T Y

DR. WILLOUGHBY

MISS E. TUBBS

MR. C. HIGGINS

MISS HIXSON

MISS NEELY

SARA HEGE
VIRGINIA McIVER
SENORA LINDSEY
LYNN WILLIARD



EMILY HARRIS
MARY LUCY BAYNES
MARY ELLEN BYRD
JANE FRAZIER

DR. CONFER
MRS. THEODORE RONDTHALFR
MISS LUCILE VEST
MRS. F. JARIATT HARRIS
MISS GERALDINE BAYNES
MISS SARAH BURRELL

ALPHA IOTA PI

DOROTHY KISER, *President*

EL CLUB ESPANOL

LUANNE DAVIS, *President*





CHORAL ENSEMBLE

JANE FRAZIER, *President*

ORCHESTRA

ELOISE HEGE, *President*

FRESHMAN DRAMATICS CLUB

HELEN SPRUILL, *President*

PIERETTE PLAYERS

HELEN ROBBINS, *President*





THE STIRRUP CLUB

FRANCES RIVES, *President*

MONOGRAM CLUB

PEGGY WITHERINGTON, *President*

HOME ECONOMICS CLUB

BETTY JEAN JONES, *President*

L A B L I N G S

MARY JANE VIEIRA, *President*





WHO'S WHO AMONG STUDENTS IN
AMERICAN UNIVERSITIES AND COLLEGES
RED CROSS SUPERVISORS

INTERNATIONAL RELATIONS CLUB

ELIZABETH WILLIS, *President*

DAY STUDENTS HOUSE COMMITTEE

MARY COONS, *President*





LE CERCLE FRANCAIS

BILLIE ROSE BECKERDITE, *President*

DER DEUTSCHE VEREIN

MARY COONS, *President*







FEATURES

MAY QUEEN

Miss Mary Frances McNeely





Miss Elizabeth Gudger
MAID OF HONOR

M A Y C O U R T



TEAU COUNCIL, TICKA SENIER, ELIZABETH MILLER, MARY LOU SLACK, JULIA GARRETT,
ELIZABETH YOUNG





NORMA RHODIS, MARY ANN LINN, MEREDITH BOAZE, HELEN McMILLAN, HENRIETTA WALTON,
BARBARA FOLGER



PERSONALITIES

Each year the two staffs of the "Sights and Insights" choose eight girls—two from each of the four classes—to be featured in this section of the annual. These are the girls selected for their personality, their pulchritude, their versatility, and as representative Salemites. These are the Feature Girls of 1945 . . .



Miss Luanne Davis

Miss Betty Jean Jones





Miss Effie Ruth Maxwell

Miss Nancy Snyder





Miss Bernice Bunn

Miss Patrice Crommelin



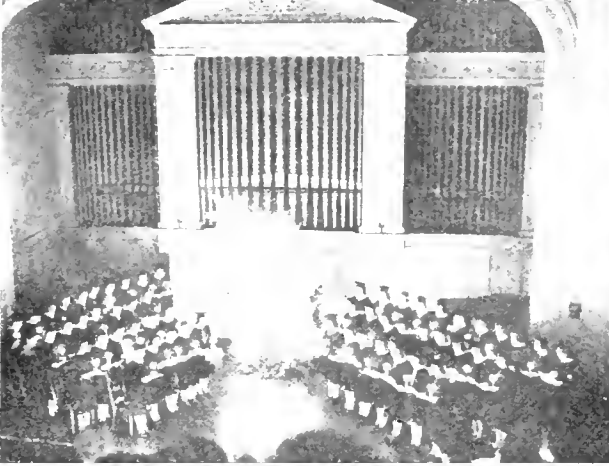


Miss Jean Griffin

Miss Elizabeth Jeffreys







S
H
A
D
O
W
S





Buy

UNITED STATES
WAR BONDS

AND

STAMPS



ADVERTISEMENTS

1889

1945

SAVINGS AND LOANS

Continuously
FOR 56 YEARS



WINSTON-SALEM BUILDING & LOAN ASSOCIATION

249 N. MAIN STREET
WINSTON-SALEM, N. C.

1889

1945

SOSNIK'S

Third Floor
For College Fashion of Sound Investment
and Lasting Quality

BEST WISHES
FROM

RAYLASS DEPARTMENT STORE

"Headquarters in Winston-Salem for
Ladies Sportswear"

DRUGS SUNDRIES, SODAS

BEST SANDWICHES
IN TOWN

We Appreciate Your
Patronage

GOOCH'S

COMPLIMENTS
OF

JACARD'S

Nissen Building

SUMMIT STREET PHARMACY

"Foot Summit—overlooking Hanes Park"

A GOOD DRUG STORE
IN A GOOD TOWN

SEE OR CALL US FOR COMPLETE DRUG
STORE SERVICE

Dial 2-1144

THE IDEAL

WINSTON-SALEM'S
LEADING DEPARTMENT STORE
FOR
SALEM GIRLS

COMPLIMENTS
OF

YOUTH CENTER

CLOTHES FOR THE
JUNIOR MISS

**THE SALESKI
GALESKI**

OPTICAL Co.

Prescription Opticians
Kodaks—Supplies

221 W. Fourth St.

Winston-Salem

ELECTRIC SERVICE CO.

EVERYTHING ELECTRICAL

Fixtures—Wiring Supplies

"GIFTS FOR ALL OCCASIONS"

China and Glassware

Dial 2-3743

116 W. 4th St.

Winston-Salem, N. C.

COMPLIMENTS

OF

REYNOLD'S GRILL

AND

CAFETERIA

1865

1945

Headquarters for

FINE DIAMONDS
JEWELRY
SILVERWARE OR
NOVELTIES

REPAIRING A SPECIALTY

VOGLERS JEWELERS

WEST FOURTH STREET

Dial 2-0347

THE
SUN PRINTING CO.

Printing and Publishing

Dial 8235

219 N. Trade St.

WINSTON-SALEM, N. C.

FOR GREATER NUTRITIONAL
VALUE

BUY BREAD

AT

DOBY'S BAKERY

640 W. Fourth St., Winston-Salem, N. C.

Casual yet flowing in swirling lines . . .
youthful yet definitely wearing an air of
dignity . . . your next permanent will be
soft and alluring, and entirely lacking in
harsh ends and stiffness.

SALEM BEAUTY SHOP

525 I-2 S. MAIN

**O'HANLON'S
DRUG STORE**



For Over Forty Years Winston-Salem's
Best Known Drug Store



PEPSI-COLA

BOTTLING COMPANY

Winston-Salem, N. C.

TEAGUE'S

WOMEN'S SMART APPAREL

"We Specialize in Sports Wear"

Telephone 6232

319 W. Fourth St.

Winston-Salem, N. C.

THE MORRISSETT CO.

Winston-Salem, N. C.

"LIVE WIRE STORE"

The Best Popular Price Shoes
in North Carolina

GIRLS COME AND SEE

\$2.98, \$3.98, \$4.98, \$6.00

Let Our Expert Fitter Remove All Your Foot
Troubles

Work Will be a Pleasure

WALGREEN DRUG STORES

Drugs with a Reputation

Phone 7054

201 W. Fourth St. Winston-Salem

PARENTS AND ALUMNAE

LET THE

ROBERT E. LEE HOTEL

(Winston-Salem's Finest)

And Its

ROBERT E. LEE COFFEE SHOP

Be your gracious hosts while visiting Winston-Salem

Corner of Fifth and Cherry Streets

Dial 6161

THE K & W RESTAURANT

Home of Good Food

Reasonable Prices

Located between Robert E. Lee and Bus Terminal

422 NORTH CHERRY STREET

SHOES

BY

HINES



NEW ADDITIONS TO THE SALEM WEDGWOOD CHINA

Now you are able to secure Wedgwood cups and saucers, cream pitchers, sugar bowl, and tea pot to match your Salem plates. Available in five colors—blue, pink, mulberry, green, and sepia. The plates are furnished in eight different Salem scenes in the five colors.

SALEM BOOKSTORE

Winston-Salem, North Carolina

ANCHOR CO. INC.

CONGRATULATIONS

The Anchor Co. Wishes You Much
Success and Happiness.

We Cater to the "College Miss" with
Nationally Known Merchandise

ANCHOR COMPANY
OF WINSTON-SALEM
Fourth at Trade Street

We Manufacture

Face Brick, Common Brick, Flu Lining,
Sewer Pipe, Drain Tile

Small or Large Jobs Supplied

**PINE HALL
BRICK & PIPE COMPANY**

Dial 4002

Winston-Salem, N. C.

DAIRY PRODUCTS

FARMERS
Co-operative

DAIRY

1012 South Marshal Street



CONGRATULATIONS!

Electric service within your lifetime has greatly modified industry, commerce, farming, and home life here in the Carolinas. Business initiative and scientific progress is opening doors to even greater opportunities.

May you find a worthy place in the enterprising world of tomorrow!

DUKE POWER COMPANY

Alumnae, Parents, and Friends

When You Visit Salem,
Stay at the

ZINZENDORF HOTEL

Single Rates, \$1.75 up

Southern
Dairies

Sealtest **ICE CREAM** *and* **MILK**

Telephone 4161

111-117 W. Second St. Winston-Salem, N. C.

WALKER'S—FLORIST

FLOWERS FOR ALL OCCASIONS

CORSAGES A SPECIALTY

We Telegraph Flowers Anywhere

115 N. Poplar St.

Dial 3-3621

WINSTON-SALEM, N. C.

COMPLIMENTS

OF

**PATTERSON DRUG
COMPANY**

COHEN'S READY-TO-WEAR

QUALITY AND
STYLE

WEST FOURTH STREET

Congratulations! Graduates and under-graduates. May your future be happy and successful. We here wish you the best of everything.



KRISPY KREME DOUGHNUT CO.

534 S. Main Street

Different—Tasty—Satisfying

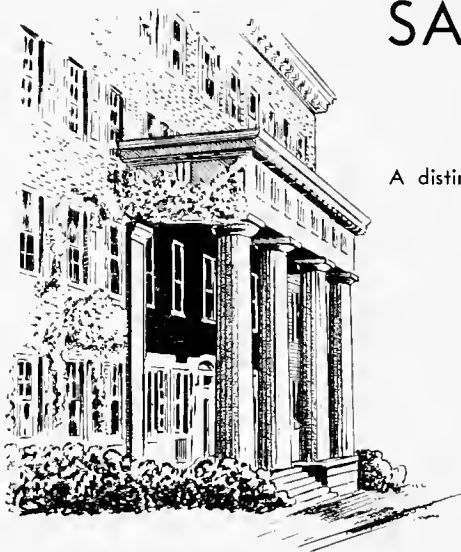
Phone 9227

Davis Inc.

QUALITY MERCHANDISE REASONABLY PRICED

West Fourth at Trade

WINSTON-SALEM, N. C.



SALEM COLLEGE

WINSTON-SALEM, NORTH CAROLINA

1772—1945

A distinctive Southern College widely recognized
for its

- academic standards
- spiritual emphasis
- friendly student body
- modern equipment
- diversified extracurricular program

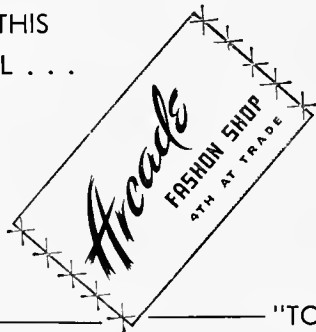
DEGREES OFFERED IN

The Liberal Arts

Science

Music

PIN
YOUR FAITH
ON THIS
LABEL . . .



"TOPS
EVERYTHING
FOR
ORIGINALITY"

MOTHER DAUGHTER STORE

(On the Square)

NEWEST FEMININE
FASHIONS

IT'S SMART TO
BUY THE BEST

•
D. G. CRAVEN
COMPANY

“I’d walk a mile for a
CAMEL”



*the cigarette of
Costlier Tobaccos*





UNDERWEAR

WEIGHTS, STYLES AND COLORS TO SUIT EVERY TASTE

UNION SUITS AND
SHIRTS AND SHORTS

MEN AND BOYS—EVERY SEASON



P. H. HANES KNITTING COMPANY

WINSTON-SALEM, N. C.

TWIN CITY
DRY CLEANING CO.

Phone Dial 7106

612 West 4th St.

THE CITY'S MOST
MODERN CLEANERS

BARBER

PHOTO SUPPLY CO.

Kodak Headquarters

WINSTON-SALEM, N. C.

COMPLIMENTS

OF

FLAKE'S SANDWICH SHOP

CITY MARKET



DIAL 7121

"The House of Friendliness"

FROEBER PRODUCE
COMPANY

Wholesale Only

FRUITS—PRODUCE—PROVISIONS

COMPLIMENTS

OF

SARTIN'S DRY
CLEANERS

NOLAND
COMPANY

Incorporated



SHOWROOMS
336 West Fourth Street



Telephones
3-1631, 3-1632, 3-1633

MONTALDO'S, INC.

SUMMER TIME

PLAY TIME

AN ALL AROUND GOOD TIME



Whether you are concentrating on fun only or your summer life has a serious purpose, you want to be well dressed.

For work or play we have your favorite clothes.

COMPLIMENTS
OF
COLONIAL • STATE
FORSYTH
AND
CAROLINA THEATRES

IN WINSTON-SALEM
IT'S
THE PICCADILLY
FOR
GOOD FOODS

VOGLER SERVICE

FUNERAL DIRECTORS
AMBULANCE

Dependable for More than 86 Years

Dial 6101

ENGRAVERS TO SOCIETY
H. T. HEARN
ENGRAVING COMPANY

WINSTON-SALEM, N. C.

ARDEN FARM STORE

GIFT SPECIALISTS

Delicious Home Made Jellies

Jams, Preserves, and Marmalades
In Exquisite Hand-Decorated Gift Packages
Lovely Gifts Suitable for Every Occasion

"Opposite Salem Square"

SALEMITES!

Decorate your rooms artistically
yet inexpensively

From

SEARS, ROEBUCK & COMPANY

420 N. Trade Winston-Salem, N. C.

MORRIS SERVICE

NO BEER OR WINE SOLD
Right Next to the Carolina Theatre

LUNCHEONETTE AND
FOUNTAIN SPECIALS

EXCLUSIVE BUT NOT
EXPENSIVE

AIR CONDITIONED

MIMEOGRAPHS AND MIMEOGRAPH SUPPLIES

Products of
A. B. DICK COMPANY

Distributed by
GRAY & CREECH
Incorporated
WINSTON-SALEM

CHARLOTTE

RALEIGH

WINSTON COCA-COLA BOTTLING COMPANY

Winston-Salem, N. C.



ICE

ICE

J. R. THOMAS

ICE
AND
COAL

—
CALL 7158
—

COAL

COAL

**NORTHUP AND
O'BRIEN**

ARCHITECTS AND
ENGINEERS

WINSTON-SALEM

COMPLIMENTS

OF THE

**20TH CENTURY
BOWLING ALLEY**

Telephone 6108

QUALITY CLEANERS

"Service a Pleasure"

"Nowadays Successful Men Dress the Part"

118 Burke Street

DOWNTOWN GARAGE

GEO. L. IRVIN, JR., Mgr.

Auto Parking—Storage by the Hour or
Month

Washing, Simonizing, Lubricating

U. S. Tires and Tire Service

Batteries and Battery Service

COMPLIMENTS

OF

**HUNTLEY HILL
STOCKTON CO.**

DEWEY'S

THE BAKER

11420 4th St. and City Market

2-2645

Dial

2-3592

COMPLIMENTS
OF
**THE CAMPUS
CLEANERS**

COMPLIMENTS
OF
**TOM'S TOASTED
PEANUTS**

COMPLIMENTS
OF
**THE VALERIA HAT
SHOP**
NISSEN BUILDING

COMPLIMENTS
OF
**BOCOCK-STROUD
COMPANY**

A TRADITION
OF
FINE FOOTWEAR
SPORT PLAY DRESS
BELCHER'S, INC.
Always the Best Nissen Bldg.

COMPLIMENTS
OF
**MORRIS EARLY
COMPANY**

**BELK STEVENS
COMPANY**

DEPARTMENT STORE

•
The Home of Better Values
•

448 Fifth and Trade Streets



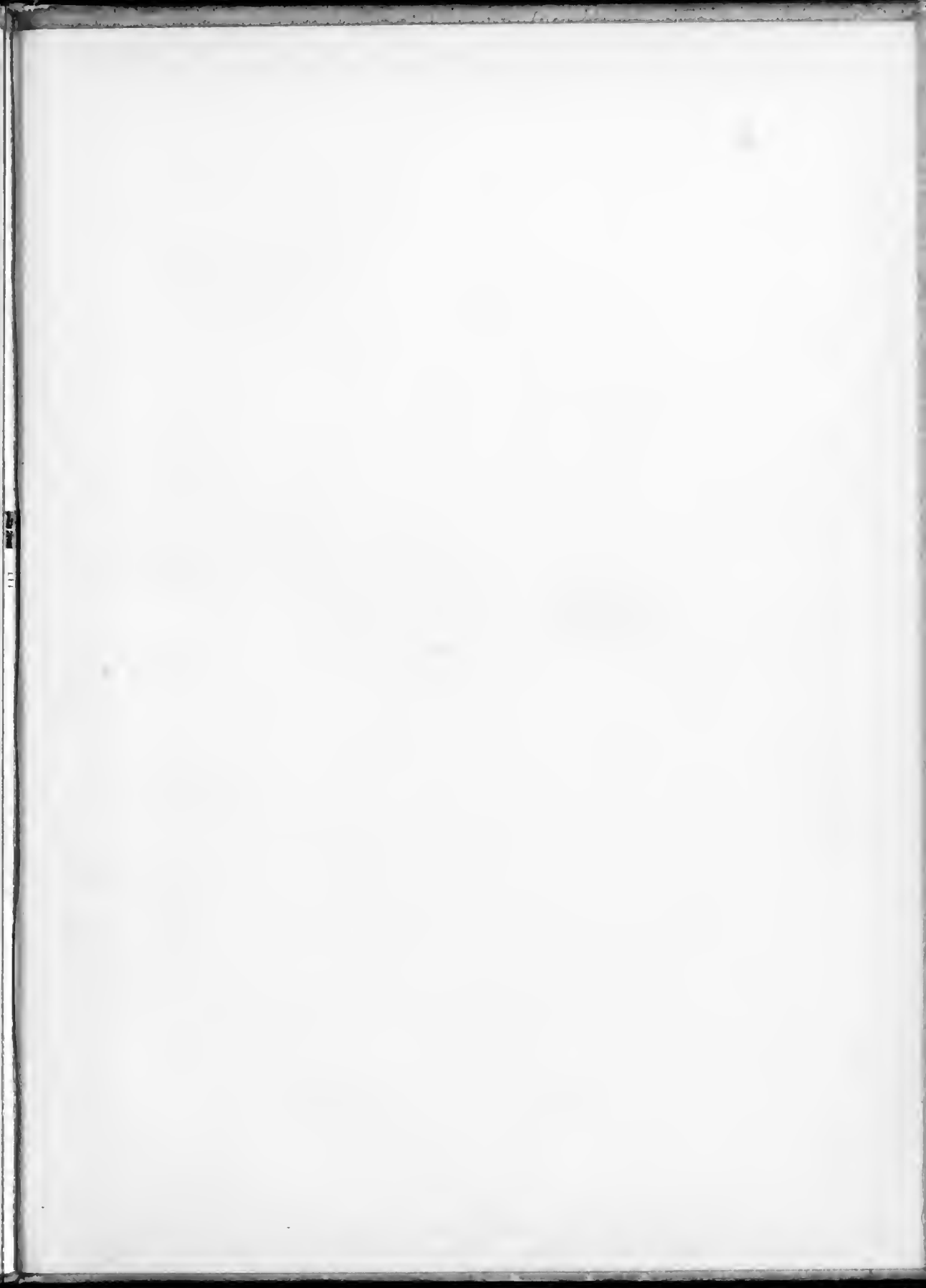
PHOTOGRAPHY

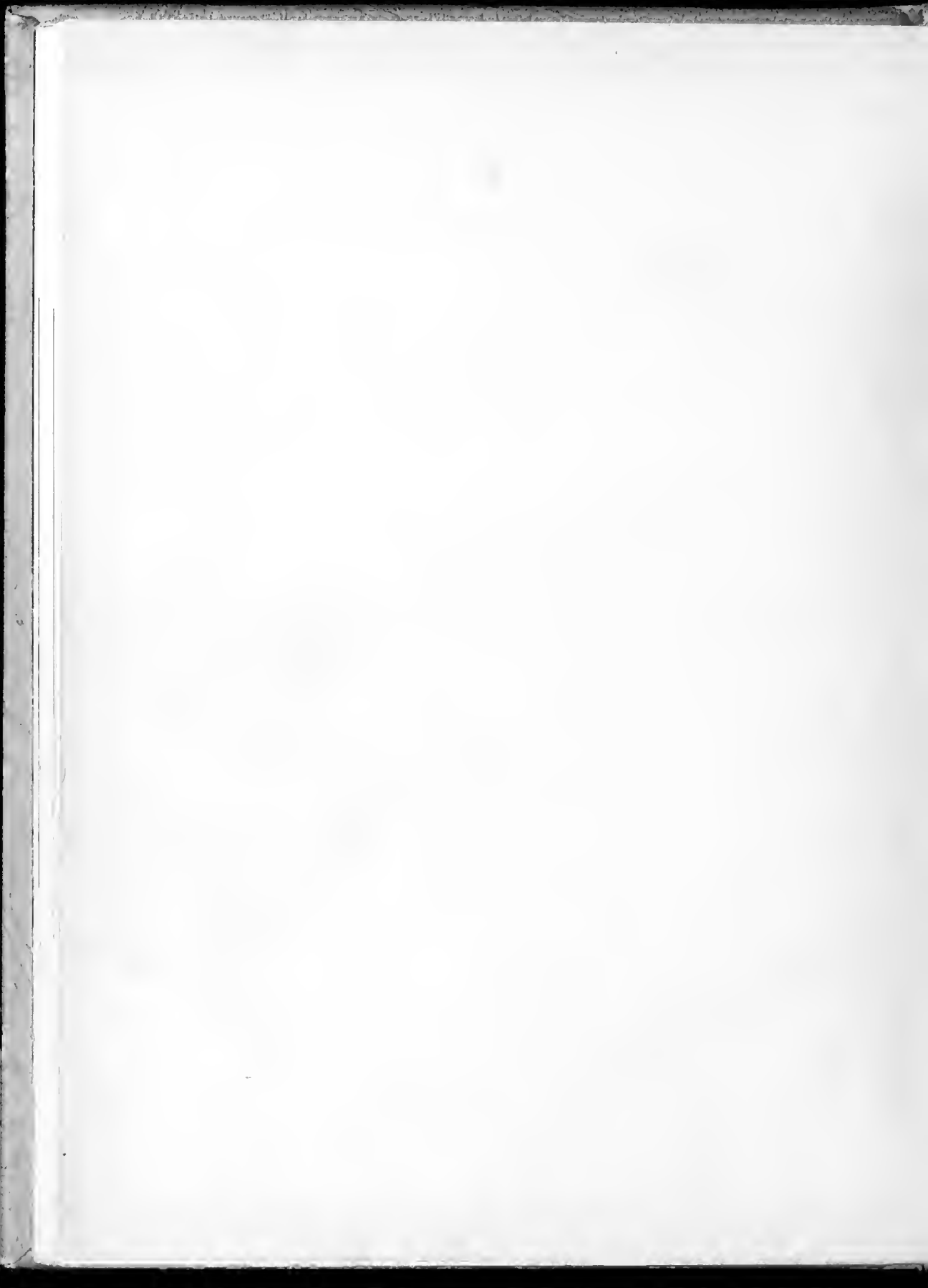
RAY GOODRICH

WINSTON-SALEM

NORTH CAROLINA







SALEM ACADEMY & COLLEGE



0 2960 0208376 8

