



To Dr Lewis

With many thanks

And best wishes,

Ann

May 1962





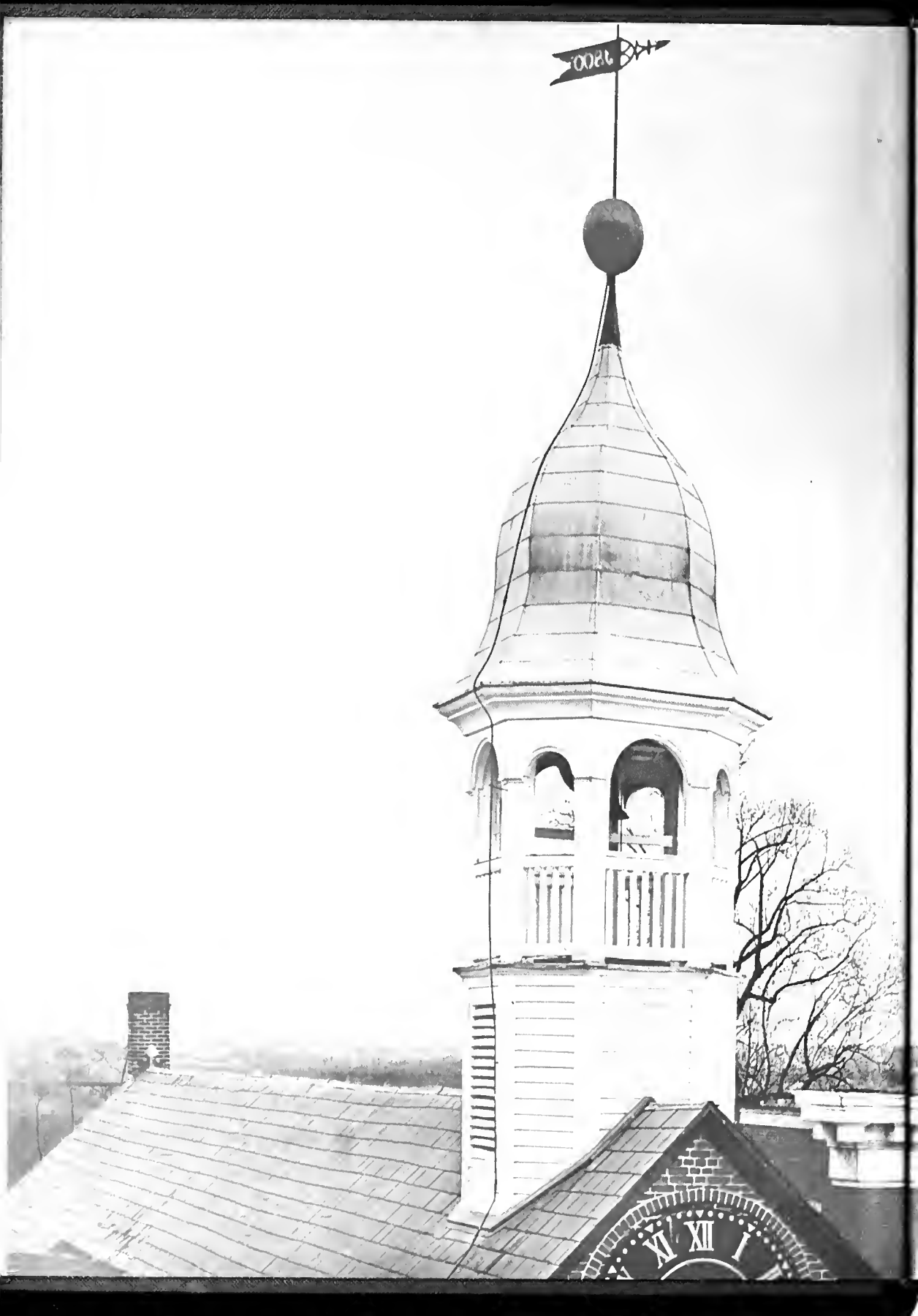
EDITOR—ANN SELLARS  
BUSINESS MANAGER—PAT HOWELL  
SIXTIETH EDITION  
SALEM COLLEGE  
WINSTON-SALEM  
NORTH CAROLINA

1962

*SIGHTS*  
*and INSIGHTS*

Staff: Betsy Hicks, Beverly Heward, Mary  
Lawrence Pond, Kay Kearns, Joan Thrower, Diana  
Wells, Gay Austin, Ella Raymond, Betty  
Black, Anna Transou, Betty Pope, Donna  
Raper, Carol Threatt, Mary Jane Crowell, Caro-  
line McClain, Fallie Ann Lohr, Nan Berry,  
Bonnie Bean, Lana McAfee, Virginia Anderson,  
Colquitt Meacham, Ava Camp.

Special photography by Irvin Grigg. Advisor, Ralph Hill.



Foreword  
The Leaders Behind the Square  
The Movers of Mind  
The Face in the Crowd  
The Organization Woman  
The Order of Appearance

SALEM:

“ . . . the Pursuit of Truth  
Wherever and By  
Whatever  
Methods It May Be Found . . . ”



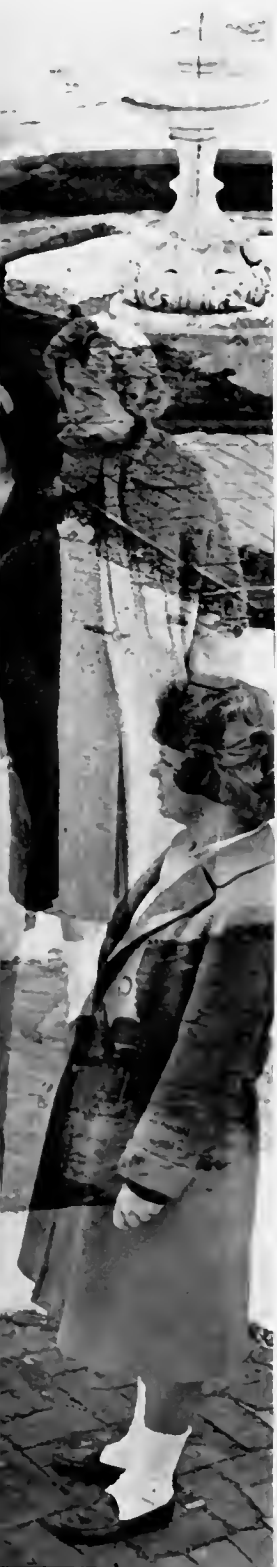


**MARGARET SIMPSON**

We recognize her as a behind-the-scene force, stabilizing, organizing, smoothing out wrinkles in our academic experience. There is a quietness about her smile, an alertness in her eyes, a firmness in her voice. Everyday we are in and out of her office with questions, schedule cards, absence slips. She greets us with a faintly questioning lift of eyebrow. The information we seek is at her fingertips, quickly retrieved from her filing cabinet, her desk top, or her inexhaustible store of common sense. During registration she checks our schedules and re-checks them, making certain that we have fulfilled all requirements, are able to graduate in time. She keeps all academic records up to date, records class and chapel cuts, averages and sends out all grades. Efficiency and pleasant helpfulness are qualities we admire and respect in her. We, the Senior Class, acknowledge our gratitude to Miss Margaret Simpson.

#### DEDICATION





**FOREWORD** In the first rush of learning to live and work in close proximity to each other, in the breathless hurry over old brick walks to places where we were expected, in the early-arising, late-studying tension, in the self-discipline with which we conformed to exteriorly imposed standards—we lost ourselves for a time, in preparation for finding ourselves again. We became solidly enclosed by the demands of group living, deeply immersed in the traditions of Old Salem—founded in 1772 and fighting to retain its 18th century flavor in a world of change—and just as we began to seem a comfortable part of the group, a significant link in tradition, we paused for a moment—in the middle of a page of history, a lab experiment—stopped and saw our inner selves apart from their surroundings.

We came into a small new world . . . into  
a constant state of activity - tension,  
rush . . . ran in fast circles to meet its  
demands . . .



We moved in the same setting . . . felt  
the old within the new . . . We were one  
with a long and historic tradition . . .

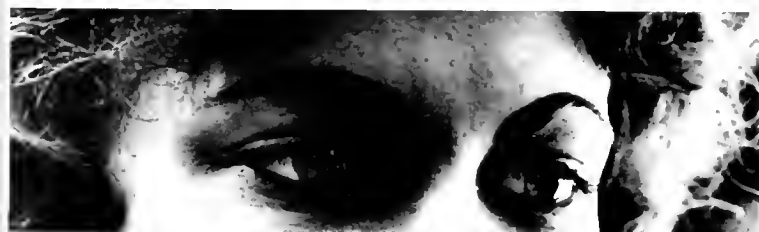




Until one day we stopped, in the midst of activity and tradition . . .  
and paused to look inward . . .



We look deeply into the eyes of classmates for the first time, and see reflections of our own moods. We hear our own feelings expressed in other voices, see in other nervous hands, indications of common frustrations.



We see taut faces and clenched hands, and self consciously relax and unclench our own. We do not know, anymore than our classmates, how to relieve inner tensions - it is not enough that our feelings, moods, tensions are common ones.



Daily, we face the same decisions . . . whether to work or to play—It is not a simple decision, for we must decide anew in each new moment . . . How much do we like him? We are not sure; we need time to think, to discuss . . . What will we do with our lives? We have prepared, but have we prepared enough—and for what? We know suddenly that we are not capable of all that we had hoped to be . . . our image fades and blurs in our mind's eye . . . We see that we have not really known ourselves . . . have become strangers even to ourselves.



... and in this moment of self-observation, we seem to stand out in stark contrast against our background of traditional and varied activity. As we see ourselves, for the first time separate and uninvolved, a strange feeling of loneliness encloses us. We see in the moment of overwhelming clarity that we must stand alone and apart. We are silent, estranged in this minute which seems to be eternity ...



At the moment of insight, time, like the lens of a camera, catches us and defines us as we are. We who stood alone, blurred, difficult to focus, have become, in the split second in which we find ourselves, clearly defined—standing deep in new knowledge and in newly seen ignorance, changed. All that we can be, that we have been is stamped indelibly on our minds, and the split second has flashed and faded.







Out of our ideals we have chosen our leaders. We  
expect them to be loyal to the Honor Tradition,  
to us, and to themselves at the same time. We  
give them more tedious work than power,  
more criticism than praise—because we have  
chosen them to represent the highest in ourselves.

## LEGISLATIVE BOARD

They meet to discuss, and through their discussion the Honor Tradition continuously deepens and broadens. As our representatives, they work closely with the Faculty, the Board of Trustees, our organizations, and individual student opinion to encompass changes in practice and in theory. They are open-minded at their best, imaginative and diligent. They find sometimes that our opinions are opposite from what they consider right, but they never fail to consider our opinions, to state their policies and their reasons for them. They stand spotlighted in chapel, in on-campus and off-campus activities — aware of their responsibility to us, to Salem, to themselves. We expect excellence from them, examine their actions in their public and private lives minutely, not always realizing that as much is expected of us.

*President of Student Government,  
Sallie Paxton.*







*Officers of Legislative Board, left to right: Dean Mapor, Secretary, Judy Summerell, Treasurer, Betty Cox, Vice-President.*



*Marty Richmond, N.S.A. Coordinator*

*Other Legislative Board Members, Budget Organization Presidents, and Editors, Ann Cunningham, Louisa Freeman, Marguerite Harris, Ellen Rankin, Ann Saunders, Ann Sellers, Agnes Smith, Elizabeth Smith, Susan Wannwright, Janet Wales, Trisha Weathers.*



*Julia Carr, President of Day Students.*

*Legislative Board, left to right, first row: Sally Bacon, Evelyn Brown, Marty Paisley, Anne Morrison, second row: Dale Wall, Martha Ann Cooper, Karen Kelly, Lucy Lane, Annetta Jennette.*





*Chairman of Judicial Board, Nancy Peter.*



*House Presidents, left to right: Heather Peebles, South Dorm; Eleanor Workman, Babcock Dorm; Betsy Hicks, Lehman Dorm.*

## JUDICIAL

*Secretary of Judicial Board, Jacquelyn Baker.*



*House Presidents, left to right, Johanna Johnson, Pfohl House; Edith Harrison, Strong Dorm; Sara Wills, Sisters Dorm.*



## BOARD

Their task is to interpret individual circumstances in the light of the goals of the Honor Tradition.



*Anne Simons, Cleveell Dorm.*



*Judicial Board, left to right: Carol Monroe, Margaret Duvall, Tish Johnson, Anne West, Sandra Morgan.*



*Helen John, Bitting Dorm.*

It is not an easy task, but because they represent a cross-section, discussion serves to balance their decisions somewhere between personal opinion, individual understanding, the spirit of Honor and the letter of the law. They successfully make our ideals practical.

## FACULTY

From the beginning their knowledge impresses us, but they teach us that knowledge is only the basis for a broader outlook. At first they are campus characters who amaze us, but when we come to know them, we know them as people, and that amazes us most of all.



When we have forgotten Salem's scenery, forgotten the details of class routine and dormitory life, when even the faces of our classmates blur in our memories, we will recall their witicisms in every situation, their willingness to talk things over, their idiosyncrasies, their helpful advice, their coffee madness . . . and even the least of us will have deepened because of the excellence our faculty has demanded of us.





They are dignified behind speaker's stands, scholarly behind their desks, sophisticated at lectures, and fanatical in the faculty lounge. They join us in the Barn, the Post Office, committee meetings, lectures, symphonies, basketball games, and at the Christmas banquet. We confer with them on everything from golf to quality points. They attend our plays, sponsor our organizations, plan our schedules—but they make their greatest effort to teach us.









*Dr. Dale H. Gramley, President.*

Administration requires a sense of humor, attention to both the individual and the whole. Their broad perspective, their high standards, their firmness in times of crisis provide a steady guidance for our social and academic development. They are distant symbols to us, and yet have time to discuss changes in majors or roommates, personal and academic problems—time to inspire us and—time to comfort our parents.



## ADMINISTRATION



*Ivy M. Hixson, Academic Dean.*

*Amy R. Heidbreder, Dean of Students.*





*Clemens Sandresky, Dean of the School of Music.*

*Jack White, Assistant to the President.*



*Margaret Simpson, Recorder.*



*Ralph Hill, Comptroller.*





*Dr. Mary Stewart Hill, Head of Religion Department.*



*Left to right: Dr. Lucy Austin, Head of Classical Languages Department, Dr. Michael Lewis, Head of Modern Languages Department, Jess Byrd, Head of English Department.*

## DEPARTMENT HEADS

*Left to right, first row: Carson French, Head of Chemistry Department, Margaret Snow, Head of Home Economics Department, Arley Curlee, Head of Mathematics Department. Second row: Roy Campbell, Head of Biology Department.*



*Left to right: Dr. Alfred Denton, Jr., Head of Sociology-Economics Department, Dr. Phillip Atrua, Head of History Department.*





*Anne Woodward, Head of Physical Education Department.*



*Edwin Sheumals, Head of Art Department.*

## DEPARTMENT HEADS

*Left to right: Raymond Carrier, Head of Dramatics Department and Paul Peterson, Head of Voice Department.*

*Dr. Elizabeth Welch, Head of Education and Psychology Departments.*



## ART

Lena A. Albright, B.A.; William G. Mangum, B.A., M.A.; Edwin F. Shewmake, B.S., M.A.;  
Anne Kesler Shields, A.B., M.F.A.; Arthur Smith, Jr., B.S., M.A.

## ECONOMICS AND SOCIOLOGY

Evabelle Simmons Covington, B.A., M.A.; Alfred M. Denton, Jr., B.S., M.A., Ph.D.; Robert Louis  
Wendt, B.A., M.A.

## EDUCATION AND PSYCHOLOGY

James L. Bray, A.B., Ed.M.; Lucia R. Karnes, B.S., M.A.; Barbara B. Hills, B.A., M.A., Ph.D.;  
Sadie Elizabeth Welch, B.A., M.A., Ph.D.

## ENGLISH AND DRAMA

Jess Lucille Byrd, B.A., M.A.; John Archer Carter, A.B., A.M., Ph.D.; Raymond E.  
Carver, B.A., M.A.; James M. Jordan, B.A., M.A.; Stephen C. Paine, B.A., M.A., Ph.D.;  
R. Lamarr Smith, A.B., M.A.; William B. White, B.A., B.S., M.A., Ph.D.

## HISTORY

Philip Africa, B.A., Ph.D.; Francis C. Ansonbie, Emeritus, B.A., M.A., Ph.D., LL.B.;  
Mildred Inzer Byers, A.B., A.M., Ph.D.; Baikrishna G. Gokhale, A.B., M.A., Ph.D.;  
A. Hewson Michie, Jr., B.A., M.A.

## HOME ECONOMICS

Fay C. Honeycutt, B.S., M.S.; Margaret P. Snow, B.S., M.Ed.

## MATHEMATICS

Arley Theodore Curlee, B.S., M.A.; Lloyd B. Smith, B.S., M.S.

## CLASSICAL LANGUAGE

Lucy E. Austin, A.B., M.A., Ph.D.; Ivy M. Hixson, B.A., M.A., Ph.D.; Minnie Jameson Smith,  
Emeritus, B.A., M.A., Ph.D.

## MODERN LANGUAGE

H. Michael Lewis, B.A., Docteur de l'Université de Poitiers; Mary L. Melvin, B.A., M.A.;  
June C. Parker, B.A.; Wilmer D. Sanders, B.A., M.A.; Lucille V. Scott, B.A., M.A.

## MUSIC

Frances Horne Avera, B.M., M.M.; Ralph Robert Bell, B.A., B.M.E.; Richard J. Bluesch,  
B.A., B.D., M.S.M.; Louise Cox Bowen, Piano Diploma, Private Study; Mary Frances Cash, B.M.;  
Harriet Mariel Greider, Emeritus, Piano Diploma, Professional and Private Study,  
Certificate American Institute of Applied Music; Eleanor Shaffner Guthrie, B.A., Private Study;  
Linda Reck Head, B.M., M.M.; Hans Heidemann, B.M., Piano Diploma, Private Study,  
Professional Study; Eugene M. Jacobowsky, B.S., M.A.; Joan E. Jacobowsky, B.S., M.A.;  
Charles R. Medlin, Professional Study; Donald M. McCorkle, B.M., M.M.;  
John S. Mueller, B.M., M.M.; Margaret S. Mueller, B.M., M.M.; Paul W. Peterson,  
B.M., M.M.; June Louise Samson, B.A., M.A., Professional Study; Clemens Sandresky, B.A., M.A.,  
Professional and Private Study; Margaret Vardell Sandresky, B.M., M.M., Professional Study;  
Helen Smith, A.B., M.A., Professional Study; Nell Brushingham Starr, Emeritus, Artist's  
and Teacher's Diploma, Professional Study, Private Study; Walter Wolfman, B.M., M.M.,  
Professional Study, Private Study.

## SCIENCE

Matti Al-Aish, B.S., M.A., Ph.D.; Thomas E. Austin, B.S., M.A.; Roy Jones Campbell, B.A., M.P.H.;  
Bertran O. Cosby, B.S., M.S.; B. Carson French, B.S., M.A., M.S., Ph.D.

## RELIGION AND PHILOSOPHY

Walser H. Allen, Jr., B.A., B.D., M.A.; Deidre D. Hanner, B.S., M.R.E.;  
Mary Stewart Hill, B.A., M.A., Ph.D.

## PHYSICAL EDUCATION

Carolyn Cox, B.S.; Anne Woodward, A.B., M.A.

F  
A  
C  
U  
L  
T  
Y

IN MEMORIAL Louis Edwin Harvie, 1930-December 2, 1961.



We like the books, travel posters, paintings and creaking leather chairs in their offices. They don't seem to mind when we come just to talk, and when we have problems they listen thoughtfully. The mechanical skills they have taught us in classes and labs are not enough—we want somehow to connect them, to make them relevant to ourselves and our lives. They understand and listen, and they suggest—because they are searching for relevance, too.



A face emerges from the crowd that is  
representative of all our faces, and yet stands  
apart from the rest through the achievement  
and excellence in some phase of our life at Salem.









*Left to right, first row: Sally Glenn, Martha Still, Sallie Paxton. Second row: Peggy Brown, Liz Smith, Linda Wall, Jacquelyn Baker. Third row: Libbie Hatley, Nancy Peter, Judy Summerell, Ann Sellars, Dean Major, Sue Parham. Not pictured: Louisa Freeman, Lynn DeVent.*

## HONOR SOCIETY

Established to recognize and to encourage scholarship, the Honor Society is purely honorary, having no defined activity. Its standards of admission are comparable with those of Phi Beta Kappa. Membership is limited to students of superior academic achievement after five semesters.

Chosen and organized to benefit Salem in the spirit of its ideals, they seek to serve with no desire for reward or recognition. Their projects are vital, though often small and intangible. We know them by their induction in chapel, by the small painted scorpion that appears in out-of-the-way places.

## THE ORDER OF THE SCORPION

*Left to right, first row: Trisha Weathers, Judy Summerville. Second row: Dean Major, Linda Leard, Nancy Peter, Beverly Howard, Sallie Paxton. Third row: Betty Cox, Nina Ann Stokes, Anne West.*





## WHO'S WHO

National recognition to those who have excelled academically, have contributed talent and work to the making of a well-rounded college atmosphere. They are characterized by personal involvement, diversified interests, the ability to do a job thoroughly. They are arguments for the liberal arts education; they have their equivalent in the best student leadership on college campuses all over America.

*Who's Who in American Universities and Colleges, left to right, first row: Trisha Wathers. Second row: Nancy Peter, Betty Coy. Third row: Libba Hatley, Linda Leaird, Sallie Paxton.*

## DELTA LAMBDA CHAPTER OF PHI ALPHA THETA

*Delta Lambda Chapter of Phi Alpha Theta, left to right, first row: Marsha Ray, Libba Hatley. Second row: Dr. Inzer Batts, Amy R. Healdbrater, Lynn Robertson DeWent, Houson Madio, Dr. Phillip Africa, Kay Kearns, Jane Thompson, Nancy Peter, Eug. Smith. Not pictured: Dr. Lucy Easton, Miss Eubelle Covington, Steve Leshor, Dr. Donald McCorkle, Dr. Minnie Smith.*



## FOREIGN STUDENTS

*Foreign Students, Lis Bahl Jensen and Herminia Martinez.*



## OSLO SCHOLARS

*Oslo Scholars, left to right - Sallie Paxton and Dean Major.*

## PHI ALPHA THETA

A tribute to excellence in the field of history. They induct new members in a traditionally formal ceremony, and then gather informally over dinner and coffee. Composed of permanent members who demand high standards of scholarship—of new members who have strived and met the standards.





*Left to right: Marsha Ray and Lucy Lane.*



*Left to right: Bonnie Bean and Ann West.*



*Left to right: Jane Raynor and Carroll Roberts.*

**MARSHALS** . . . Juniors chosen to preside in white over chapel procedure, serve as ushers at concerts, symphonies and lectures . . . concerned with our politeness to guests speakers . . . characterized by poise, a high standing in their class.



*Chief Marshal, Gay Austin.*



She is never a type, always an individual chosen for the distinctive quality that makes her herself - and at the same time makes her representative of the spirit of her class.

*Senior Feature Girl  
Trisha Weathers*



*Junior Feature Girl, Louisa Freeman.*



*Junior Feature Girl, Heather Peebles*

## FEATURE GIRLS

*Senior Feature Girl,  
Ignes Smith*





*Sophomore Feature Girl,  
Marguerite Harris.*

Two chosen by each class and kept a closely-guarded secret, they stand for the abstract quality that knits together the individuals in a loosely connected group. Our Freshmen and Sophomore feature girls are characterized by a personal friendliness and charm; our Junior and Senior feature girls by their individual contributions, dignity and spirit.



*Freshman Feature Girl, Janet Wales.*

*Freshman Feature Girl, Sally Bacon.*



*Sophomore Feature Girl,  
Anne Simons.*

## FEATURE GIRLS



The beauty of a rose lies in the regularity of its petal formation and in the uniformity of its coloring. But human beauty often lies in certain deviations from the normal and regular, rather than in the normal itself. We look around us every day and recognize beauty in the upward tilt of an eyebrow, a scattering of freckles, the curve of a throat, a cheek. Beauty is originality in a smile, genuineness of light in the pupil of an eye.



MAY  
QUEEN

AGNES SMITH

Richmond, Virginia





MAID  
OF  
HONOR

ANNA TRANSOU  
Greensboro, North Carolina





*Left to right Ann Cunningham, Spartanburg, S. C., Clarissa Joyce, Raleigh, N. C., Pam Tinette, Albemarle, N. C., Anita Hatcher, Fayetteville, N. C.*



*Ann Cunningham, Senior.*

# COURT



*Pam Truette, Sophomore.*



*Anita Hatcher, Junior*



*Clarissa Joyce, Junior.*



*Anne Griffith, Sophomore.*



*Jane Webster, Freshman.*

*Susan Evans, Lookout Mountain, Tenn.*

## COURT

*Susan Evans, Freshman.*





*Craig White, Sevier.*

*Jane Griffiths, Denton, N. C. — Jane Webster, Lexington, N. C. — Craig White, New Bern, N. C.*



# COURT



*Martha Tallman, Junior.*



*Mason Kent, Sophomore.*



*Dot Grayson, Senior.*

*Sally Bacon, Freshman.*







*Left to right, first row: Mason Kent, Danville, Va.; Sally Bacon, Chattanooga, Tenn. Second row: Martha Tallman, Augusta, Ga.; Dot Grayson, Charlotte, N. C.*

RESUME

Day Student Center  
Tuesday, Sept 19  
1:20

Attention all  
House & Hall Presidents  
Turn in unsold  
Blotters to  
Martha Still 106 South  
by  
Thursday at lunch  
be given to Trish Johnson

WE  
-TING  
AY

Sights  
Meeting  
at 5:15-  
The follo  
ATTEND:



Opened  
regular schedule  
Friday

SENIOR CLASS MEETING  
WED. AT 1:20  
VERY IMPORTANT... CALL DOWNS!  
BITTING LIVING ROOM

The Organization... derives her spare  
time, her talent and energy to the development  
of new ideas within the traditional channels  
of creativity—and to the development of new  
intellectual interests. . . . She is necessary to the  
organizations she participates in, and she derives  
a satisfaction from her contribution.

DANSA:

TRY:

6:30 W.  
IN DR:

EVERYONE  
WELCOME!

Insight  
WEDNESDAY  
MAN OFFIC.  
& MUST

6:30  
1:05  
following

30 (no 30)

In her spare time the Salem girl finds outlets for her creativity and energy. Whether she participates in Salem's organizations for pleasure or with a product in mind, she is interested and vital. Whether her outside activities include the publication of a weekly newspaper, or the mastery of a dance movement, she finds that her individual talent is both valued and needed.





*President of W. R. A.: Susan Wunnright.*



## W. R. A.

An organization planned to give interested students the opportunity to perfect physical skills, to develop their ideals of health, enjoyment, and sportsmanship, to encourage a spirit of teamwork.

*W. R. A. members, left to right: Susan Harrison, Susan Purdie, Alice Reid, Jody McDorman, Beth Norman, Ethel Perry, Frances Holton, Susan Ray Kuykendall, Mary Liz Buckingham, Susan Ellison, Bonnie Bean, Miss Anne Woodward, advisor.*





I Represent Salem - an organization to encourage interest in developing personal  
R poise, grace, charm, and a concern for higher standards of manner and appearance  
S and to broaden the social life of the campus. Their example is the greatest  
step toward the achievement of their purpose.

A traditional May Day pageant, with maximum student participation, on the first Saturday of May transforms Salem's May Dell into a world of natural and artificial beauty. The committee conducts May Court elections early in the year and plans Salem's spring pageant around the beauties of the May Dell and of the May Court.







*L.R.S. members, first row, left to right: Frances Speas, Mary Laurence Pond, Judy Childress, Heather Peebles, Mary Jane Crowell, Annetta Jeanette, Jane Kelly. Second row: Susie Rablen, Jane Webster, Anne Jewell, Dot Grayson, Sandra Smith, Pat Robinson, Tinka Lee.*



*President of L.R.S., Ann Saunders.*

## MAY DAY COMMITTEE



*May Day Committee, left to right: Gail Ogburn, Nancy Umberger, Clarissa Joyce, Jane Thompson, Betsy Davis, Ann Jewell, Sandra Sheets.*

*May Day Chairman, Ann Cunningham.*



The Pierrette Players, Council, and Production Staff create an interest on campus in drama as a fine art and encourage students to participate actively in theatrical productions. Pierrette productions during 1961-1962 were as varied as Shakespeare's *Taming of the Shrew* and director Raymond Carver's *Crisis*. New acting talent, innovations in staging and costuming rewarded time and effort spent in both productions.



Shakespeare's "The Taming of the Shrew."

## PIERRETTES

President of Pierrettes, Nina Ann Stokes.







## COUNCIL MEMBERS

*Pierrettes Council Members, left to right: Johanna Johnson, Annah Leigh Thornton, Mary Liz Buckingham, Winnie Davidson, Frances Bailey, Virginia Anderson, Kay Kearns, Louisa Freeman, Harriet Haywood, Mr. Carver, advisor: Lucy Lane.*



## PRODUCTION STAFF

*Pierrettes Production Staff, left to right: Kathy Lanier, Beverly Heard, Dottie Pooser, Lis Bahl Jensen, Lucy Lane, Ann Jencell, Betsy Davis, Mary Liz Buckingham, Harriet Haywood, Jackie Zappetti, Becky Newsome.*

D  
A  
N  
S  
A  
L  
E  
M  
S



*Dansalems: left to right, Cathy Chalk, Jeanne Boyer, Nancy Umberger, Vice-president; June Hedgpeth.*



*Kaye Pennington, President of Dansalems.*

Salem's modern dance organization seeks to develop an appreciation of contemporary dance, to develop skilled techniques and creative ability—They create, choreograph, and present recitals throughout the year. Their participation in the May Day Pageant, chapel programs, and dramatic presentations bring the art of the dance to campus attention.

*Dansalems, left to right, first row: Alice Wilson, Lynne McClement, Pam Truette, Anita Hatcher, Secretary. Second row: Lynn Hall, Dawn Fuller, Bonnie Hanch, Alice Reid, Sandy Kumbrell, Treasurer.*



## CHORAL ENSEMBLE



*President of Choral Ensemble,  
Judy Newman*



*Salem College Choral Ensemble - Abernethy, Beck, Berry, Billita, Bodine, Boyer, Bryant, Carr, Chalk, Cooper, Corbett, Crouch, Cunningham, Davis, Dull, Dunbar, Ezzell, Farrow, Fordham, Fuller, Harris, Haywood, Higgins, Hodges, Hughes, Jackson, Johnston, Hutchins, Kirk, Lannard, Lee, Landon, Morrison, Mount, Newman, Randolph, Richmond, Robinson, Shugart, Simons, Smith, Spous, Steere, Strub, Taylor, Thornton, Troy, Ward, Walburn, Wilson, Wright, Yager, Mc Arter, Bell, Harrell, Dalton.*

Both a course in voice and an organization for the fostering of talent in programs given on and off campus . . . stimulation of interest in the vocal art is its masterfully attained purpose.

An opportunity for the music student to broaden her knowledge and her interest in her field, to create an outlet for aesthetic talent by listening and participation.

*Left to right - Alex Mount, Susan Steere, Carole Wright, Ann Cunningham, Sandra Landon, Sara Kirk, Kaye Shugart, Harriet Haywood, Pat Bryant, Nancy Hughes, Pat Robinson, Judy Corbett, Jo Dunbar, Mattie Gay Lee.*



*Music Club President, Tina Throver*

## MUSIC CLUB



## PUBLICATIONS

Publications are the cumulative result of literary, editorial, and photographic talents, long hours and illuminating talks with printers. Their staffs acquire harmony in working together to meet endless deadlines . . . pushed by the knowledge that only their best will be acceptable in print.



# ARCHWAY

Salem's newest publication is a student magazine organized to stimulate originality in the student body and to create more interest in the literary arts . . . to provide a means of publication for the work of students who write, paint and draw.



*Elizabeth Smith, Editor.*

*Archway Staff, left to right: Beverly Henard, Diana Wells, Elizabeth Hatley, Diane Fuller, Susan Ray Kuykendall, Linda Wall, Jo Ann Garrard.*





*Editor of the Salomite, Ellen Rankin.*



*Associate Editor, Becky Boswell.*



*Top to bottom:  
Ginger Ward, Copy  
Editor; Alice Reid,  
Advertising Man-  
ager.*

A weekly newspaper which reports on and off campus events, attempts to reflect undercurrents of stimulating thought around the square and to direct attention to world issues beyond the square.

*Sally Glenn, Assistant Business Man-  
ager; Sue Parham, Business Manager.*



*Left to right, Kay Long, Future Editor, Ann Romig, News Editor,  
Linda Wall, Jane Raynor, Rewriters.*







Left to right: Marguerite Harris, Tish Johnston, Susan Kuykendall, *Headline Editors*; Laz Smith, *Reewriter*; Mary Alice Teague, *Photography Editor*. Not pictured: Betsy McFate, *first semester Photography Editor*.

*Proofreaders and typists, left to right, first row: Betty Lou Creech, Nancy Griflin. Second row: Jo Pflüter, Joan Lukens, Connie Rucker, Lyn Hall, Patty Nush. Not pictured: Mary Jane Crowell, GaeGae Sapp, Anne Gore, Suzanne Harrell, Lyn Ball, Sue Humphreys.*



Left to right: Sandra Smith, *Circulation Manager*; Jean Pflüter, *Managing Staff*; Sheila Smith, *Circulation Manager*; Wanda Cervarich, *Managing Staff*.

S  
A  
L  
E  
M  
I  
T  
E





*Ann Sellars, Editor.*

A year-long effort produces an annual which captures the spirit of each year at Salem. The staff use their capabilities and talents to stamp an era vivid and memorable on the pages of the book. Their spirit of unity incorporates individual ideas into a general concept of Salem 1961-1962.

*Left to right: Dianna Wells, Assistant Photographer, Joan Throuer, Photographer.*



*Left to right, first row: Mary Lawrence Poud, Assistant Copy Editor; Ella Raymond, Head Typist. Second row: Guy Austin, Technical Advisor; Betty Pope, Assistant to the Photographer. Not pictured: Aya Camp, Club Editor; Colquitt Meacham, Assistant.*



S  
I  
G  
H  
T  
S  
  
A  
N  
D  
  
I  
N  
S  
I  
G  
H  
T  
S



*Class Editors, top to bottom: Caroline McClain, Senior Class; Mary Jane Crowell, Junior Class; Donna Ruper, Sophomore Class; Ann Berry, Freshman Class.*





*Class Advertising Managers, top to bottom: Anna Transon, Senior Class; Virginia Anderson, Junior Class; Follie Lohr, Sophomore Class; Lana Mc Atee, Freshman Class.*



*Pat Howell, Business Manager.*



*Left to right, Kay Kearns, Assistant Editor; Betsy Hicks, Copy Editor; Beverly Heward, Art Editor.*

*Left to right: Bonnie Boon, Assistant Business Manager; Carol Threath, Advertising Manager; Betty Black, Assistant Advertising Manager.*





The student seeks deeper involvement than her classroom work affords, a deeper investigation into the fields which interest her most. She participates to learn and to share—by observing, discussing, and experimenting.

Y  
W  
C  
A



*Y.W.C.A. President: Trisha Weathers.*

A fellowship of students, capably welcoming guests and guest speakers, meeting to discuss problems in religion. Projects include civic activities both in the community and on the college campus. Because every Salem girl is a member of Y. W. C. A., its executive nucleus plans projects designed for maximum student participation.

*Y.W.C.A. Cabinet Members, left to right, first row: Anne B. Austin, Gail Ogburn, Joy Robinson, Jo Dunbar, Cynthia Randolph, Dr. Byers, advisor; Johanna Johnson, Caroline McClain, Judy Coston, Jean Snyder, Daphne Dukate, Linda Laird. Second row: Mason Kent, Susan Ellison, Irene Rose, Kay Keurns, Tish Johnston.*





*Humanities, left to right, back row: Diane Fuller, Marty Richmond, Ann Sellars, Mary Anne Stallings, Marsha Ray, Judy Summerell, Frances Bailey. Front row: Em Houll, Mary Laurence Pond.*

## HUMANITIES

Humanities, a loosely organized campus group which meets informally over coffee to discuss the contemporary arts and their relationship to new movements in the cultural world. Both students and faculty members lead and participate in discussions characterized by a free exchange of ideas.

*President of Humanities, Marsha Ray.*





*President of I.R.C. — Jane Thompson.*

## I. R. C.

The International Relations Club meets to better acquaint its members with current world events. It exists on the opinion that democracy in America depends upon a well-educated public. A variety of well-informed lecturers serve to arouse members into their awareness of I.R.C.'s goal.

*I.R.C., left to right: Sue Sample, Susan Ray Kuykendall, Marty Richmond, Judy Summerell, Frances Bailey, Marsha Ray, Mary Ann Stallings, Betsy McFute, Mary Alice Teague, Susie Johnson.*





The Home Economics Club provides a means of further practice and discussion for majors or those interested in the field. It encourages interested students to continue in the field professionally. Bazaars, teas, lectures and demonstrations are outlets for skills acquired in the Science Building and Home Management House.

An opportunity for students of the sciences to informally learn the most recent developments and career opportunities. Guest lecturers and films are a part of the planned programs. Lablings link their knowledge to that of our expanding universe through demonstration, discussion, and exploration.







*Home Economics Club, left to right, first row: Irene Rose, Anita Hatcher, Joan Thrower, Robin Rhodes, Frances Stuart, Edith Storey, Becky Gaddy. Second row: Judy Shannon, Rachel Parker, Barbara Ann Harrington, Eleanor Quick, Mary Jane Harrell, Aia Ann Camp.*

## HOME ECONOMICS CLUB



*Home Economics Club President: Molly Scarborough.*

## LABLINGS



*Lablings, left to right: Ann Fowler, Margaret Fonda, Clarissa Joyce, Dr. French, Alice Reid, Paula MacPherson, Mr. Austin, Mr. Harvey, Mr. Cosby, Nina Ann Stokes, Pat Lee, Sheila Smith, Anne Hutaff, Beth Prevost, Kay Long.*

*President of Lablings: Sue Parham.*





*President of S.N.E.A. and "Miss Student Teacher": Elizabeth Hatley.*

## S. N. E. A.

The Johann Comenius Chapter of the Student National Education Association prepares its members to become active in the teaching profession. A student must pass a faculty screening committee's requirements before she becomes a member. Discussion and demonstrations of new methods are an important part of the S.N.E.A. program—and the selection of a "Miss Student Teacher" in chapel is a high point of the association's activity.

*S.N.E.A. members, left to right, first row: Ann Saunders, Jane Thompson, Linda Leaird, Betsy Davis, Sis Gillum, Mary Jane Dunn, Judy Moore, Judy Shannon, Elizabeth Smith, Mary Ann Stallings. Second row: Caroline McClain, Kaye Pennington, Craig White, Winnie Bath, Ann Jewell, Sue Sample, Sally Glenn, Linda Wall, Fran Bell, Betty Lou Creech, Jackie Barker, Mary Jane Crowell.*







*Lesley Frost, poetess.*



*Edgar Snow, journalist.*



*Alan Mowbray, actor.*

## LECTURE SERIES

The Salem College Lecture Series, guided by chairman Dr. Inzer Byers; faculty members, Lucy Austin, James Bray, Bertram Cosby, and Edwin Shewmake; and student members, Betsy Hicks, Jackie Barker, Anne B. Austin, and Robin Causey, selected three outstanding lecturers for the 1961-62 year. Edgar Snow, an eminent journalist, spoke in February on Red China. Lesley Frost, poetess daughter of Robert Frost, entitled her March lecture, "Modern Poetry Looks at the Modern World." and Alan Mowbray, veteran actor, also appeared in March to entertain with "Alan Mowbray's Almanac of Humor."



Four classifications chart our progress in time,  
but we make our own charts of development  
from the first new friends and memorization of



facts, to the moments of insight and reflection, and finally to the realization of what all this has to do with ourselves as individuals in a world of chaos.

S  
E  
N  
I  
O  
R  
C  
L  
A  
S  
S



*Senior Class Officers: Left to right: Helen John, Treasurer; Anna Transon, Secretary; Margaret Duvall, Vice-President.*

We begin unconsciously to imprint details on our minds for remembering. We know one-way streets . . . bus, train, plane schedules . . . have our favorites among gas-station attendants . . . but we want to remember how the square looks with its leaves turning, with spotlighted snow on its fences, with sunlight in patterns on its floor.

*Senior Class President—Agnes Smith.*





The busiest year of four, when we become "campus leaders" . . . when we begin to compile our knowledge in our majors, and find it far too general or far too particular, but not both . . . when Dr. Gramley and Sophomores invite us to dinner on special nights, and the Steak House invites us every other night . . . when some of us find unexpected pleasure in practice teaching . . . when old friends come back to visit.

## SENIORS



When we become a closer and a smaller group . . . when some of us graduate at mid-semester . . . when our perspective turns outward, and we take longer trips, and make future plans . . . when our wardrobes become more adaptable . . . when we criticize most of all . . . when we want independence but not separation . . . when we have afternoon classes and sleep late . . . when "surprise" birthday parties last longer than noisy hour, and we serve hors d'oeuvres instead of cake from Dewey's.



We have time to sunbathe in the swimming pool spring semester, while planning last trips just-for-fun. We dramatize and say that out in the world we'll never be able to wear loafers again. We knit, embroider, and thumb through bride's magazines. We write letters of application saying things about ourselves which aren't altogether true, and which we've never wished were true until now.

We realize that we haven't done and can never do all that we have believed we could. Professors remember our names and even look at us with nostalgia.





WINNIE MURRELL BATH  
B.A.: mathematics  
Florence, S. C.



FRANCES BELL  
B.A.: history  
Beaufort, N. C.

## SENIORS

FRANCES TAYLOR BOONE  
B.A.: sociology-economics  
Greensboro, N. C.

MARGARET KETIRAH BROWN  
B.A.: French  
Easton, Pa.





JULIA HANNAH CARR  
B.A.: French, Latin  
Winston-Salem, N. C.



JUDY ELOISE COSTON  
B.A.: sociology-economics  
Asheville, N. C.

## SENIORS

BETTY TAYLOR COX  
B.A.: Spanish  
Laurinburg, N. C.

ANN ROSALIE CUNNINGHAM  
B.M.: public school music  
Spartanburg, S. C.







VALERIE DALTON  
B.A.: piano  
Pulaski, Va.



ELIZABETH HUNTER DAVIS  
B.A.: art  
Williamston, N. C.

## SENIORS

LYNN ROBERTSON DEMENT  
B.A.: sociology-economics  
Knightdale, N. C.

MARY JANE DUNN  
B.A.: religion  
Ahoskie, N. C.





MARGARET MCINNES DUVALL  
B.A.: religion  
Cheraw. S. C.



SHANNON SMITH FARRELL  
B.A.: history  
Winston-Salem. N. C.

## SENIORS

BRENDA GAIL FLYNT  
B.A.: English, history  
Rural Hall. N. C.

DOROTHY ANNE GRAYSON  
B.A.: English  
Charlotte. N. C.





SARA LUTRELLE GRIFFIN  
B.A.: biology, chemistry  
Raleigh, N. C.



MARY ANN HARRIS  
B.A.: piano  
Winston-Salem, N. C.

## SENIORS

BUENA ELIZABETH HATLEY  
B.A.: English, history  
Albemarle, N. C.

BEVERLY ANNE HEWARD  
B.A.: art  
Tenafly, N. J.





MARY ELIZABETH HICKS  
B.A.: English  
Henderson, N. C.



PATRICIA ANN HOWELL  
B.A.: sociology-economics  
Norfolk, Va.

## SENIORS

BARBARA ANNE JEWELL  
B.A.: art, religion  
Concord, N. C.

HELEN WILLIAMS JOHN  
B.A.: mathematics  
Laurinburg, N. C.





JOHANNA FAY JOHNSON  
B.A.: sociology-economics  
Raleigh, N. C.



JULIA RANDOLPH JONES  
B.A.: history, religion  
Durham, N. C.

## SENIORS

FLORENCE JENNINGS JORDON  
B.A.: biology, history  
Charlotte, N. C.

SUSAN RAY KUYKENDALL  
B.A.: history  
Winchester, Va.





CATHERINE DEAN LANIER  
B.A.: French  
Urbana, Ill.



LINDA ANNE LEAIRD  
B.A.: Spanish, history  
Fort Lauderdale, Fla.

## SENIORS

STEPHAN LESHIER  
B.A.: history  
Winston-Salem, N. C.

CAROLINE HARRISON McCLAIN  
B.A.: history  
Charlotte, N. C.





COLQUITT LOUISE MEACHAM  
B.A.: history  
Atlanta, Ga.



JUDITH MEADE MOORE  
B.A.: biology  
Beaufort, N. C.

## SENIORS

MELINDA ANNE MORRISON  
B.A.: history  
Charlotte, N. C.

CAROL ANNE MUNROE  
B.A.: English  
Winston-Salem, N. C.





JUDY NEWMAN  
B.M.: public school music  
Winston-Salem, N. C.



EVELYN GAIL OGBURN  
B.M.: public school music  
Smithfield, N. C.

## SENIORS

GWENDOLYN SUE PARHAM  
B.S.: chemistry, mathematics  
Morganton, N. C.

EVELYN RACHEL PARKER  
B.S.: home economics  
Kinston, N. C.







SALLIE BATTLE PANTON  
B.A.: religion  
Rocky Mount, N. C.



MILDRED KAYE PENNINGTON  
B.A.: history  
Hartsville, S. C.

## SENIORS

NANCY LYNNE PETER  
B.A.: mathematics  
Kingsport, Tenn.

ELEANOR ANN QUICK  
B.S.: home economics  
Wilson, N. C.





CYNTHIA ANN RANDOLPH  
B.M.: church music  
Burnsville, N. C.



ELLEN CALDER RANKIN  
B.A.: mathematics  
Greensboro, N. C.

## SENIORS

NANCY MCCOY RICE  
B.S.: home economics  
Winston-Salem, N. C.

JOY ELAINE ROBINSON  
B.A.: religion  
Charlotte, N. C.





IDA PATRICIA ROBINSON  
B.A.: violin  
Mars Hill, N. C.



SUELLEN HORNER SAMPLE  
B.A.: history  
Statesville, N. C.

## SENIORS

ANN HICKMAN SAUNDERS  
B.A.: biology  
Jacksonville, Fla.

MARY McAULAY SCARBOROUGH  
B.S.: home economics  
Lumberton, N. C.





ANN DUPREE SELLARS  
B.A.; French  
Greensboro, N. C.



JUDITH ANN SHANNON  
B.S.; home economics  
Lakeland, Fla.

## SENIORS

SANDRA LOU SHEETS  
B.A.; sociology-economics  
Winston-Salem, N. C.

AGNES ROSA SMITH  
B.A.; art, sociology-economics  
Richmond, Va.





ELIZABETH HOLT SMITH  
B.A.: mathematics  
Birmingham, Ala.



LINDA SNOW SMITH  
B.A.: history  
Westfield, N. J.

## SENIORS

MARY ANN STALLINGS  
B.A.: history, English  
Smithfield, N. C.

NINA ANN STOKES  
B.S.: chemistry  
Winston-Salem, N. C.





EDITH ELLEN STOREY  
B.S.: home economics  
Charlotte, N. C.



FRANCES ELIZABETH STUART  
B.S.: home economics  
Badin, N. C.

## SENIORS

LUDA JANE THOMPSON  
B.A.: history  
Statesville, N. C.

MARGARET CAROL THREATT  
B.A.: French  
Rocky Mount, N. C.





MARTHA TINA THROWER  
B.M.: public school music  
Belmont, N. C.



ANNA STAMPS TRANSOU  
B.A.: sociology-economics  
Greensboro, N. C.

## SENIORS

ELOISE HOYL UPCHURCH  
B.A.: art  
Raeford, N. C.

SUSAN HEMPHILL WAINWRIGHT  
B.A.: Spanish  
Wilson, N. C.





PATRICIA WEATHERS  
B.A.: sociology-economics  
Augusta, Ga.



MARTHA CRAIG WHITE  
B.A.: history  
New Bern, N. C.

## SENIORS

DOROTHY LASSITER WYMAN  
B.S.: home economics  
Greensboro, N. C.









*Junior Class officers. left to right: Marsha Ray, Secretary; Martha Still, Treasurer; Anne West, Vice-President.*

Our first year in a small dorm, when we discover each other in all-night talks, and at the same time lose the privacy which movement in larger numbers had provided.

We have become serious: about courses, about rules, about ourselves, and sometimes even about boys. Somehow we have lost the exuberance that helped us through weekends and exam cramming—and some of us have attained a more subtle grace.

*Junior Class President: Louisa Freeman.*



## JUNIORS



Our first semester of advanced classes: our footing is surer, our interests more defined. We are upperclassmen. We know our professors, and our respect for them grows. We do not know many of the freshmen. We develop a genuine class spirit, petitioning for changes, discussing, arguing.

We have time for extra-curriculars, time to discover that producing a weekly paper, an annual, a play, serving on committees doesn't take superhuman ability, just hard work and time. We go out on week nights, and sometimes even in the afternoon. We ask for a car after Easter. We don't always go home for vacations.





With our new seriousness our grades improve; we spend less time memorizing, more time thinking and organizing. And somewhere we find time to look inward. Somewhere in the midst of television programs, meetings, classes, and serving on committees, sometime around mid-semester exams, we find a moment to stop and look inside ourselves—our first deep look since we were eighteen.





*First row, left to right:* Normie Abererombie, Greenwood, S. C.; Kitty Anderson, Spartanburg, S. C.; Virginia Anderson, Charlotte; Gay Austin, Ocala, Fla.



*Second row:* Jackie Baker, Charlotte; Jackie Barker, Falls Church, Va.; Anne Barksdale, Leaksville; Bonnie Bean, Jaffrey, N.H.



*Third row:* June Beck, Winston-Salem; Anne Benson, Statesville; Betty Black, Wilmington; Becky Boswell, Charlotte.



*Fourth row:* Evelyn Brown, Davidson; Kitty Bundy, Mountain City, Tenn.; Ava Ann Camp, Fort Lauderdale, Fla.; Candy Chew, Annapolis, Md.



*Fifth row:* Judy Childress, Winston-Salem; Sue Cook, Huntington, W. Va.; Martha Ann Cooper, Winston-Salem; Betty Lou Creech, Ahsokie.

*First row, left to right:*  
 Mary Jane Crowell, Lin-  
 colnton; Jane Dull, Wins-  
 ton-Salem; Patsy Eskew,  
 Spartanburg, S. C.; Anne  
 Evans, Greenville.



*Second row:* Kay Ezzell,  
 Winston-Salem; Peggy  
 Farrow, Wilmington;  
 Beth Fordham, Winston-  
 Salem; Virginia Kay  
 Fortson, Jacksonville, Fla.



*Third row:* Louisa Free-  
 man, Columbia, S. C.;  
 Edith Geitner, Hickory;  
 Elizabeth Gillam, Wind-  
 sor; Sally Glenn, Wins-  
 ton-Salem.



*Fourth row:* Suzanne Har-  
 rell, Newton; Barbara  
 Ann Harrington, Wash-  
 ington; Edith Harrison,  
 Charlotte; Anita Hatcher,  
 Fayetteville.



*Fifth row:* Dougie Hein-  
 rich, Richmond, Va.;  
 Mary Dalney Henderson,  
 Richmond, Va.; Faye  
 Herring, Snow Hill; Jo  
 Hiergesell, Valdese.





*First row, left to right:* Margaret Higgins, Winston-Salem; Carolyn Hummel, Winston-Salem; Leslie Huntley, Wadesboro; Anne Hutaff, Fayetteville.



*Second row:* Julie Johns, Asheboro; Clarissa Joyce, Raleigh; Nancy Joyner, Asheboro; Kay Kearns, High Point.



*Third row:* Jane Kelly, Durham; Nancy Kizer, Asheboro; Lucy Lane, Durham; Mary Nell Lee, Smithfield.



*Fourth row:* Mattie Gay Lee, Dillon, S. C.; Jean Lippels, Winston-Salem; Kay Long, Elkin; Anne McArver, Gastonia.



*Fifth row:* Kenny McArver, Charlotte; Dean Major, Columbia, S. C.; Nancy Martin, Winston-Salem; Betty Gail Morrisey, Clinton.

*First row, left to right:*  
 Beth Norman, Zanesville,  
 Ohio; Peggy Odom, Winst-  
 on-Salem; Heather  
 Peebles, Arlington, Va.;  
 Martha Jo Phifer, Hamlet.



*Second row:* Dotty Poos-  
 er, Marion; Marsha Ray,  
 Oxford; Jane Raynor,  
 Vancouver, B.C., Canada;  
 Robin Rhodes, Jackson-  
 ville, Fla.



*Third row:* Carroll Rob-  
 erts, Durham; C. G. Saun-  
 ders, Winston-Salem;  
 Lucinda Smith, Alexan-  
 dria, Va.; Sue Smith,  
 Mount Airy.



*Fourth row:* Martha Still,  
 Raleigh; Judy Summerell,  
 Gastonia; Nancy Sustare,  
 Nashville; Jan Sweum,  
 Whiteville.



*Fifth row:* Martha Tall-  
 man, Augusta, Ga.; Joan  
 Thrower, Sedgefield;  
 Carol Turner, Winston-  
 Salem; Jeannie Turner,  
 Greensboro.







*First row, left to right:*  
Nancy Umberger, Kings-  
port, Tenn.; Elise Vitale,  
Nassau, Delaware; Linda  
Wall, Winston-Salem.



*Second row:* Ginger  
Ward, Sereo, Colorado,  
Aruba, Netherlands Antil-  
les; Pat Ward, Clem-  
mons; Sheena Warren,  
Charlotte.



*Third row:* Barbara Wat-  
son, Winston-Salem;  
Diana Wells, New Canaan,  
Conn.; Anne West,  
Greensboro.



*Fourth row:* Kitty Whitty,  
New Bern; Alice Wilson,  
Raleigh; Elizabeth Wil-  
son, Cascade, Va.

# S O P H O M O R E S



*Sophomore Class Officers, left to right:  
Tish Johnston, Vice-President; Irene  
Rose, Secretary; Frances Holton, Treas-  
urer.*

We return, finding that there is someone younger than ourselves, and we look her over carefully. We have left our high school annuals, scrapbooks and old clothes at home, and we know when the mails come in. We have become social-minded. Classes are 50-minute pauses that interrupt our week-long planning for the coming weekend. We finally feel at home here, but we refuse to allow familiarity to breed contempt. We can recognize our kind on any college campus in America—by their dress. We belong.

*President of  
Sophomore Class:  
Marguerite Harris.*







We change our majors, and change them back again. We discover the Barn, the television sets in Clewell and Babcock, and we struggle to keep our grades up in spite of them, for we are competitive. We begin to branch out . . . join organizations . . . plan the Christmas banquet and FITS Day for the Freshmen. We decide to transfer, and we decide to stay. We plan beach parties and trips to the Caribbean in the spring. We'd rather go home than not use our allotted overnights. We know important people and things. Above all, we are secure.



*First row, left to right:* Patricia Ashby, Winston-Salem; Carolyn Aushon, Tarboro; Ann P. Austin, Hixson, Tenn.; Anne B. Austin, Lookout Mountain Tenn.



*Second row:* Frances Bailey, Millthian, Va.; Lyn Ball, Portland, Oreg.; Anne Best, Columbia, S. C.; Rhett Blake, Charlotte.



*Third row:* May Brawley, Salisbury; Eileen Brown, Tampa, Fla.; Mary Elizabeth Buckingham, Flint, Mich.; Wanda Cervarich, Bon Air, Va.



*Fourth row:* Kathy Chalk, Morehead City; Claudia Crawford, Salisbury; Winifred Davidson, Wilmington; Anne Dudley, Lookout Mountain, Tenn.



*Fifth row:* Jo Dunbar, High Point; Cliffie Elder, Burlington; Susan Ellison, Jaffrey, N.H.; Susan Feagin, Memphis, Tenn.



*Sixth row:* Anne Mason Field, Richmond, Va.; Jenny Fields, Rocky Mount; Margaret Fonda, Alexandria, Va.; Ann Fowler, Jacksonville, Fla.

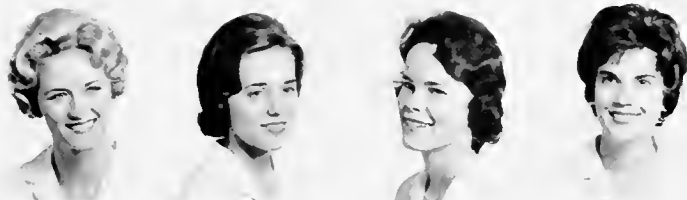




*First row, left to right:* Diane Fuller, Kinston; Jerrine Fuller, Atlanta, Ga.; Rebecca Gaston, Statesville; Hannah Gilliam, Tarboro.



*Second row:* Barbara Gottschalk, Savannah, Ga.; Virginia Gray, Whiteville; Anne Griffis, Denton; Margaret Hagaman, Boone.



*Third row:* Lynn Hall, Hickory; Jane Hanling, Greensboro; Mary Jane Harrell, Jacksonville, Fla.; Marguerite Harris, Roxboro.



*Fourth row:* Bonnie Hauch, Fort Lauderdale, Fla.; Didi Headley, Tallahassee, Fla.; Anne Heath, Charlotte; Sandy Heath, Augusta, Ga.



*Fifth row:* Jane Hedgpeth, Chapel Hill; Libby Hodges, New Bern; Frances Holton, Edenton; Jan Horner, Bristol, Va.



*Sixth row:* Em Howell, Tarboro; Sharon Howell, Concord; Brandy Hughes, Richmond, Va.; Susan Humphreys, Cheraw, S. C.

*First row, left to right:* Mary Elizabeth Hunt, Winston-Salem; Mrs. Nancy Hutebins, Winston-Salem; Anne Ingram, Florence, S. C.; Elizabeth Irwin, Spartanburg, S. C.



*Second row:* Mary Jackson, Winston-Salem; Annetta Jennette, Washington; Betsy Johnson, Dunn; Rae Johnson, Greenville, S. C.



*Third row:* Susie Johnson, Knoxville, Tenn.; Tish Johnston, Davidson; Mason Kent, Danville, Va.; Sandi Kimbrell, Waynesville.



*Fourth row:* Kit King, Raleigh; Sarah Kirk, Martinsville, Va.; Nancy Knott, Winston-Salem; Frankie Kugler, Washington.



*Fifth row:* Jackie Lamond, Alexandria, Va.; Pat Lee, Kinston; Fallie Ann Lohr, Lexington; Sandra Lundin, Laurinburg.



*Sixth row:* Paula MacPherson, Mobile, Ala.; Frances McClain, Charlotte; Betsy McFate, Hanover, N.H.; Marilyn McGrath, Lumberton.





*First row, left to right:* Carol Manning, Chapel Hill; Ann Marie Martin, Liberty; Susan Martin, Chattanooga, Tenn.; Virginia Matthews, Lynchburg, Va.



*Second row:* Helen Miller, Chattanooga, Tenn.; Landis Miller, Albemarle; Janice Mitchell, Kingsport, Tenn.; G. G. Monk, Wendell.



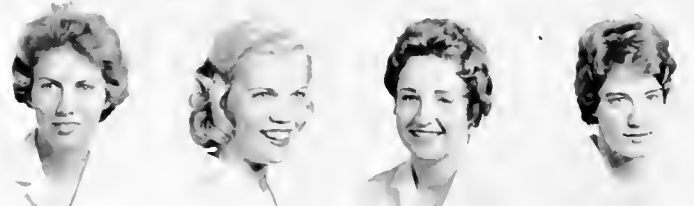
*Third row:* Anne Morrison, Kingsport, Tenn.; Lynn Morrison, Bolivar, N. Y.; Alex Mount, Bethlehem, Penn.; Gay Myers, Charlotte.



*Fourth row:* Becky Newsome, Winston-Salem; Virginia Padgett, Marion; Barry Padrick, Fort Pierce, Fla.; Marty Paisley, Morganton.



*Fifth row:* Peggy Parrish, Winston-Salem; Pene Pendino, Tampa, Fla.; Jean Poe, Raleigh; Mary Lawrence Pond, Suffolk, Va.



*Sixth row:* Betty Pope, Bowling Green, Ky.; Susan Purdie, Dunn; Ann Quarrier, Wheeling, W. Va.; Donna Raper, Burlington.



*First row, left to right:* Ella Raymond, Raleigh; Martha Reed, Manhasset, L. I., N. Y.; Alice Reid, Hartsville, S. C.; Marty Richmond, Charlottesville, Va.



*Second row:* Aurelia Robertson, Danville, Va.; Susie Robinson, Winchester, Va.; Anne Romig, Alexandria, Va.; Irene Rose, Fayetteville.



*Third row:* Mary Stewart Rosenblatt, Charlotte; Connie Rucker, Richmond, Va.; Bunny Salsbury, Morganton; Trudy Schmidt, Pottstown, Penn.



*Fourth row:* Kaye Shugart, Yadkinville; Anne Simons, Wilson; Bartlette Smith, Charlotte; Sandra Smith, Mullins, S. C.



*Fifth row:* Sheila Smith, Mullins, S. C.; Frances Speas, Winston-Salem; Ann Stafford, Charlotte; Tillie Strickland, Nashville.



*Sixth row:* Zena Strub, Winston-Salem; Sara Switzer, Kingsport, Tenn.; Elizabeth Sykes, Mount Airy; Elaine Tayloe, Aulander.





*First row, left to right:* Mary Alice Teague, Reidsville; Mary TenEyck, Charleston, W. Va.; Ann Scott Thompson, Fayetteville; Annah Leigh Thornton, Elizabethtown.



*Second row:* Frances Trapnell, Nashville, Tenn.; Beth Troy, Wilmington; Pam Truette, Albemarle; Carolyn Tyson, High Point.



*Third row:* Jody Vance, Winston-Salem; Leslie Wadsworth, Penlynn, Penn.; Patty Warren, Charlotte; Barbara White, Shelby.



*Fourth row:* Martha Ann Williams, Washington; Sarah Wills, Roanoke Rapids; Linda Wilson, Pitman, N. J.; Wookie Workman, Davidson.



*Fifth row:* Bunny Wright, Roanoke, Va.; Anna Zimmerman, Winston-Salem; Jackie Zipperer, Greenville, Tenn.



*Freshman Class President: Janet Wales.*

There is too much movement, too much confinement, too little time to be alone or still.

The faces in the photographs on our dressers, once familiar and distinct, look to us now like every other photograph on every other dresser on the hall. The handbook, first textbooks, and blind-dates are a challenge to us. We are in such a hurry that we can't decide whether we like it here or not.

F  
R  
E  
S  
H  
M  
E  
N

*Freshman Class Officers, left to right: Ellen Heflin, Treasurer; Diane Shull, Secretary; Sandra Morgan, Vice-President.*





During Orientation Week we learn a standard, and in the next weeks we learn where things are, so that we feel as if we personally have worn paths where paths already existed . . . to our own small rooms from the Refectory, from the post office, from Main Hall and the Science Building, from the gym. We like any interruption in our schedule, but we are afraid. Getting to know each other is a strain; we want to belong. We discover the study rooms in Babcock and Clewell.





We learn to take care of ourselves, to make beds,  
to wash and iron. We count days until vacations,  
for we think we have forgotten how home looks.  
At home our friends have changed, and we  
have changed. We are finally glad to  
come back.





*First row, left to right:* Jane Allen, Richmond, Va.; Kay Ascough, Martinsville, Va.; Vicky Auman, Hillsboro; Sarah Alice Bacon, Chattanooga, Tenn.; Patricia Barber, Mooresville.



*Second row:* Nan Berry, Orangeburg, S. C.; Myrtie Moon Bilbro, Greenville; Barbara Bleakly, Haddonfield, N. J.; Babs Bodine, Southern Pines; Susanne Boone, Durham.



*Third row:* Carolyn Bridgers, Chattanooga, Tenn.; Gaye Brown, Boonville; Almira Bruton, Wilson; Pat Bryant, Wilmington; Lady Bugg, Durham.



*Fourth row:* Betty Bullard, Belmont; Beverly Butler, Clinton; Helen Butt, Dunn; Mary Cannon, Raleigh; Charlotte Carter, Winston-Salem.



*Fifth row:* Robbin Causey, Greensboro; Donald Everett Clark, Winston-Salem; Doris Cooper, Durham; Mary Cooper, Kingstree, S. C.; Judy Corbett, Tabor City.



*Sixth row:* Sandra Corbett, Wilmington; Maxine Crim, Clemmons; Carolyn Crouch, Norfolk, Va.; Cammy Crowell, Lincolnton; Pat Culpepper, Richmond, Va.

*First row, left to right:* Dottie Davis, Belmont; Page Day, Richmond, Va.; Aline Dearing, Jacksonville, Fla.; Valerie Deming, Port Washington, N. Y.; Ann Dixon, Lancaster, S. C.



*Second row:* Debby Douglas, Mount Airy; Daphne Dukate, Panama City, Fla.; Sue Eagles, Ahooskie; Margaret Edwards, Kinston; Carolyn Egerton, Baltimore, Md.



*Third row:* Mary Ellen Emory, Durham; Susan Evans, Lookout Mountain, Tenn.; Lynn Everett, Macon, Georgia; Janie Fleenor, Winston-Salem; Marsha Forrester, Greenville, S. C.



*Fourth row:* Barbara Gardner, Winston-Salem; Nancy Gardner, Winston-Salem; Jo Ann Garrard, Baltimore, Md.; Mrs. Anita Bryan Gilley, Winston-Salem; Anne Gore, Rockingham.



*Fifth row:* Mary Graves, Wilson; Betty Gray, Richmond, Va.; Nancy Griffin, Chattanooga, Tenn.; Rita Griffith, Greenville; Linda Gunn, Yanceyville.



*Sixth row:* Susan Harrison, Charlottesville, Va.; Sally Harshaw, Grove City, Penn.; Betsy Hatton, Tampa, Fla.; Harriet Haywood, Rockingham; Ellen Heflin, Richmond, Va.

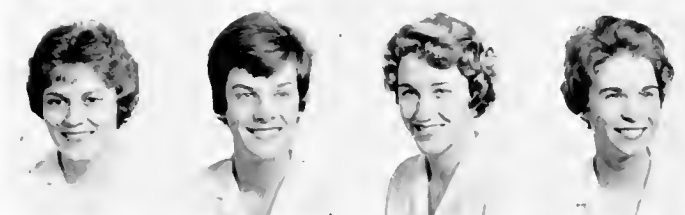




*First row, left to right:* Bonnie Hemrick, Winston-Salem; Linda Hodges, Fairmont; Ferne Houser, Pittsboro; Cacky Hubbard, Clinton.



*Second row:* Nancy Hughes, Raleigh; Sue Humphreys, Aruba, Netherlands Antilles; Frankie Lou James, Mount Airy; Jerry Johnson, Varina.



*Third row:* Barbara Johnson, Roanoke, Va.; Kay Kell, Bristol, Va.; Karen Kelly, Jacksonville, Fla.; Anne Kendrick, Charlotte.



*Fourth row:* Betsy King, Spartanburg, S. C.; Karen Kropp, Berwyn, Pa.; Stuart Lamber, Orange, Va.; Arlette Lambert, Mount Airy.



*Fifth row:* Parma Lane, Spartanburg, S. C.; Zan La Roque, Winston-Salem; Linda Lechner, Jacksonville, Fla.; Tinka Lee, Charlotte.



*Sixth row:* Susan Leigh, Gastonia; Ellen Lineback, Atlanta, Ga.; Deborah Ann Linton, Rydal, Pa.; Joan Lukens, Bethlehem, Pa.



*First row, left to right:* Linda Lyon, Durham; Lana McAfee, Old Fort; Lynne McClement, Spartanburg, S. C.; Jodi McDorman, Baltimore, Md.



*Second row:* Wendy McGlim, Haverford, Pa.; Marianna McLean, Lumberton; Susan Maier, Hope, N. J.; Sandra Marsh, Greensboro.



*Third row:* Diana Marshall, Elkins Park, Pa.; Becky Matthews, Houston, Texas; Evy Meek, Huntington, W. Va.; Julia Miley, Benson.



*Fourth row:* Katie Minnick, Bristol, Va.; Elizabeth Moore, Tarboro; Sandra Morgan, Sanford; Gretchen Morgan, Mooresville.



*Fifth row:* Mae Murchison, Fayetteville; Patty Nash, Lowell; Dale Neese, Greensboro; Betsy Patterson, Halifax, Va.



*Sixth row:* Brandon Patterson, Jacksonville, Fla.; Billie Peele, Williamston; Ethel Perry, Fayetteville; Jean Pfeifer, Fort Lauderdale, Fla.





*First row, left to right:* Allison Pollard, Galax, Va.; Beth Prevost, Wilmington; Louise Price, Greensboro; Susie Rablen, Fort Lauderdale, Fla.



*Second row:* Lisa Rankin, Tampa, Fla.; Millie Ravenel, Martinsville, Va.; Pat Redfern, Monroe; Bitsy Richheimer, Jacksonville, Fla.



*Third row:* Robin Roberson, Washington; Cookie Rockafellow, Columbia, S. C.; Marti Ross, Charlotte; Nancy Rouzer, Charlotte.



*Fourth row:* Sarah Rupprecht, Charlotte; Gee Gee Sapp, Salisbury; Ann Self, Winston-Salem; Julie Shell, Fort McPherson, Ga.



*Fifth row:* Diane Shull, Kingsport, Tenn.; Sally Smartt, Lookout Mountain, Tenn.; Joanne Smith, Greenville; Susan Smith, West Palm Beach, Fla.



*Sixth row:* Jean Snyder, Lexington; Susan Steere, Winston-Salem; Roddy Stout, Greensboro; Beth Sullivan, Clinton.

*First row, left to right:* Mary Talley, Winston-Salem; Hume Taylor, Roanoke, Va.; Sara Thomasson, Martinsville, Va.; Pat Thompson, High Point.



*Second row:* Kim Thornhill, Lynchburg, Va.; Kitty Trask, Beaufort, S. C.; Jo Turney, McLean, Va.; Frances Tynes, Greensboro.



*Third row:* Janet Wales, Jacksonville, Fla.; Dade Wall, Rocky Mount; Penny Ward, Malvern, Penn.; Jane Webster, Lexington.



*Fourth row:* Carol Weidner, Fort Lauderdale, Fla.; Floride Williams, Spartanburg, S. C.; Jean Williams, Roanoke, Va.; Marianne Wilson, Raleigh.



*Fifth row:* Patricia Wilson, Durham; Gray Wiltshire, Richmond, Va.; Nancy Wrenn, Winter Park, Fla.; Carole Wright, Elkin.





The firms advertising on the following pages have shown a special interest in Salem students over a period of years. It is our pleasure and duty to patronize them whenever possible.

## ADS and DIRECTORY

*Miss Jean Lippels*

*of*

SALEM COLLEGE

*Coppedge*

PHOTOGRAPHY

118 West Third St.

PA 2-8137



BEST WISHES TO  
OUR MANY FRIENDS  
AT SALEM COLLEGE

**THE DAIRY BARN**

Mr. and Mrs. W. G. Stanford

*Compliments of*  
**PETER W. BLUM & SON**  
SHEET METAL CONTRACTORS

305 North Trade Street  
WINSTON-SALEM 1, N. C.

*"We Specialize in  
Evening Dresses"*  
**HOME LAUNDRY  
AND DRY CLEANING CO.**

1422 S. Main Street  
PHONES PA 2-4212 : PA 2-5512

**THE IDEAL**

West Fourth Street

*"The Best Place to Shop After All"*

Home Owned—Home Operated

**Carmichael Printing Co., Inc.**

1309 Hawthorne Road. S.W.

WINSTON-SALEM, N. C.

Telephone 722-4137

Box 5294

*Le Chateau Restaurant*  
*Flame-Kissed Charcoal Steaks*

ST. 8-6072  
3300 STARLIGHT DRIVE  
WINSTON-SALEM, N. C.



SHIRTS FOR THE GIRL  
*and*  
GIFTS FOR THE BOYS  
**NORMAN STOCKTON**

**Murph's**

Dial  
723-0739

**CAMERA  
SHOP**

FILM - CAMERAS  
MOVIE EQUIPMENT  
DARK ROOM SUPPLIES  
COLOR FILM  
DEVELOPING

*Photo*

*Supplies*

24 Hour  
Film  
Developing  
Black &  
White

236 S. STRATFORD RD.



*Compliments*

*of*

**H. B. SELF**

**Insurance Agency**

**D. D. Bean & Sons Co.**

Manufacturers of

**BOOK MATCHES**

Winston-Salem, North Carolina

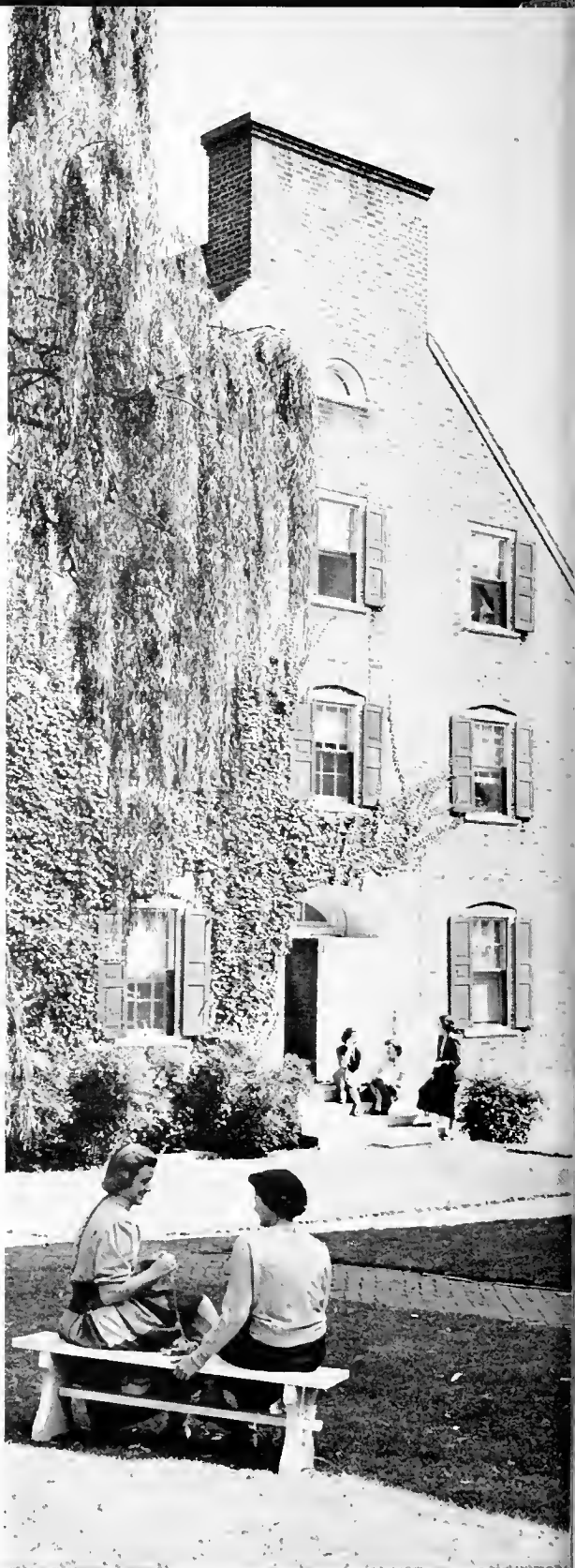
P. H. Hanes Knitting Co.

pays tribute to  
the schools and  
colleges of  
North Carolina and  
to the people who  
study there to  
prepare themselves  
for a fuller life  
and greater service  
to mankind

HANES

**P. H. HANES KNITTING CO.**

WINSTON-SALEM, N. C.







1772-1962

DEGREES OFFERED IN  
THE LIBERAL ARTS  
SCIENCES  
MUSIC

# SALEM COLLEGE

WINSTON-SALEM, NORTH CAROLINA

*Bahnson*  *Company*  
ENGINEERS AND MANUFACTURERS

WINSTON-SALEM, N. C.

COMPLETE INDUSTRIAL AIR-CONDITIONING



*Agnes Smith, class of 1962, in white silk organza with print of blue roses*

**MONTALDO'S**  
*Winston-Salem, North Carolina*

EXQUISITE  
FOOTWEAR



**Lamp Post**

422 West Fourth Street

**THE  
SUN PRINTING CO.**

*Printing and Publishing*

Dial PA 5-0606      414 Bank Street, S.W.  
WINSTON-SALEM, N. C.

*Huntley's*

505 NORTH LIBERTY STREET  
DOWNTOWN HEADQUARTERS FOR

**FRIGIDAIRE  
KROEHLER  
and  
SIMMONS**

PHONE PARK 2-5107

**BOWLING**  
*at its best*

**MAJOR LEAGUE LANES**

151 S. Stratford Rd.

30 MODERN LANES

*Salem College Students Welcomed*  
At Special Rates of 3 Games \$1.00

9-6 Daily

9-3 Saturday



**Salem Paper Company**  
(Incorporated)

Quality Paper • Wholesale

P. O. Box 5155      1025 Canal Drive  
WINSTON-SALEM, NORTH CAROLINA

*Cohen Robin's*

DOWNTOWN

NORTHSIDE

*Everything to  
Outfit the  
Style Conscious  
Junior Miss*

**BEST WISHES**

TO THE

**CLASS OF 1962**

*Compliments of*

**JOHN E. PFAFF AND SONS**

**Plumbing & Heating Contractors**

819 S. Marshall Street

WINSTON-SALEM, NORTH CAROLINA

Alton F. Pfaff, Owner

A STORE FAITHFULLY SERVING THE  
HOME TOWN OF WINSTON-SALEM

**Haverty's**  
  
"THERE'S NO PLACE LIKE HOME"

550 N. Liberty Street  
PHONE PA 2-5118

**TRIANGLE  
Restaurant & Drive-In**

*Stratford Shopping Center  
Stratford Rd. at Expressway*

full course dinner  
Pizza Spaghetti—Our Specialty  
723-7114  
TAKE OUT ORDERS

*Compliments*

*of*

**PATTERSON DRUG CO.**

YOUR REXALL STORES



4th and Cherry Streets

*Smart Fashions for Men and Boys*

*Compliments of*

***Bocock-Stroud  
Co.***

501 West Fourth St.  
Winston-Salem, N. C.

**VOGLER SERVICE**

*Funeral Directors*

*Ambulance Service*

Dependable Service Since 1858

DIAL PA 2-6101

**The Winston-Salem  
Chamber of Commerce**



*Invites you to  
call on us  
when we can  
be of help.*

Chamber Headquarters:  
Cherry St. and Coliseum Dr.  
(James Gordon Hanes  
Community Center Bldg.)

Tel.  
PArk 5-2361

*Compliments  
of*

**MORRIS SERVICE**

**HOTEL  
ROBERT E. LEE**

DOUGLAS BOYLE  
*General Manager*

**CONGRATULATIONS  
SENIORS!**



**Piedmont Federal  
Savings  
and  
Loan Association**

Winston-Salem,  
North Carolina

**COLORACTION**

*in your*

**JOURNAL and SENTINEL**

COLOR—the dynamic ingredient in the solid, dependable newspaper medium that provides that something extra in newspaper readability. Today *Journal* and *Sentinel* COLORACTION in uniform quality is recognized as being among the nation's best.

Editorially and in our advertising columns, you can depend on the finest newspaper color reproduction available—another effort by the *Journal* and *Sentinel* to capitalize on the newspaper's great productive capacity to bring you the news in *complete* detail.

**WINSTON-SALEM**  
**JOURNAL**  
*(morning)*

**AND**  
*(Sunday)*

**TWIN CITY**  
**SENTINEL**  
*(evening)*

TELECAST AFFILIATE  
**WSJS-TV**  
Channel 12

BROADCAST AFFILIATE  
**WSJS-AM:FM**  
600 kc — 104.1 mc

*NBC for Winston-Salem, Greensboro, High Point*



*Take a puff... it's Springtime!*

**Salem** refreshes your taste  
—“air-softens” every puff

• menthol fresh • rich tobacco taste • modern filter, too

Created by R. J. Reynolds Tobacco Company

*Compliments of*

## SEALTEST FOODS

Division of National Dairies Product, Inc.

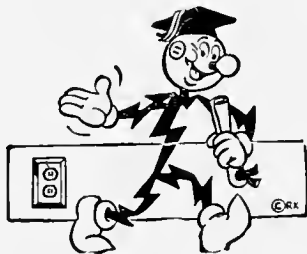
Milk & Ice Cream

---

PA 3-0311

WINSTON-SALEM, N. C.

## POWER TO THE CLASS OF '62!



We're proud of you... proud, too, of the chance to serve a new generation of young Piedmont citizens.

Our best to you as you move forward, in a free and responsible community... where your own will and effort are the measure of achievement.

## DUKE POWER COMPANY

*Serving the Piedmont Carolinas*





*Cliffie Elder, Frannie McClain, Mary Lawrence Pond select shoes at the Guild House*

## Guild House

OF WINSTON-SALEM, N. C.

STALEY'S  
*Charcoal*  
STEAK HOUSE

2000 REYNOLDA ROAD  
*Winston-Salem, N. C.*

Phone PA 3-8631

*Compliments of the*



Downtown  
West Fourth at Trade  
Parkway Plaza  
WINSTON-SALEM, NORTH CAROLINA



# SARTINS

CLEANERS

LAUNDERERS

PA 2-7101

*Compliments*

*of*

**S. H. KRESS**

**K & W CAFETERIAS**

2 LOCATIONS

Parkway Plaza

PA 4-8703

422 N. Cherry Street

PA 2-6022

**REGISTERED ANGUS CATTLE**

**HILLSIDE FARM**

**GUILFORD COLLEGE, N. C.**



**T**  
**own**  
**STEAK**  
**HOUSE**

**Thru-Way Shopping Center**

S. Stratford Road

Winston-Salem

North Carolina



Anne West models a Villager dress for . . .

*Thalhimer's*  
Winston-Salem, North Carolina

**Now any woman  
can be financially  
independent**



Security's new Women's Optional Income Plan, available only to women, guarantees life income to supplement Social Security benefits. Its cost is specially in line with the working girl's paycheck, the housewife's pin money.

*Security*—something for *EVERY WOMAN* to think about

**GORRELL & SIEWERS AGENCY**

420 North Spruce Street

WINSTON-SALEM, NORTH CAROLINA

Phone: PArk 2-2578

Charles N. Siewers, C.L.U.  
Spencer C. Waggoner  
Wade H. Moser  
Conrod M. West

Robert W. Gorrell  
R. Ray Holder  
Vernie R. Snider  
Randal Shelton

**SECURITY LIFE  
AND TRUST COMPANY**

*Compliments*  
*of*  
**GALLINS VENDING CO.**

1865

1962

*Headquarters for  
Fine Diamonds  
Jewelry  
Silverware or Novelties*

REPAIRING A SPECIALTY

**VOGLER'S JEWELERS**

West Fourth Street  
Dial PA 2-0347

*Compliments of*  
**PFAFF'S, INC.**  
PAINTS, GLASS, WALLPAPER

*"As Old As Winston-Salem"*

Phone PA 3-7365      219 N. Main St.  
WINSTON-SALEM, N. C.

Complete Auto Service and Parking  
U. S. TIRES

**DOWNTOWN GARAGE**

Next to Reynolds Building

LENWOOD AMMONS      A. C. MOTSINGER, JR.

**AMMONS ESSO  
SERVICENTER**

ROAD SERVICE

TIRES - ACCESSORIES - BATTERIES

1200 Reynolda Rd.  
N.W. Corner Robin Hood Rd.  
Phone PA 5-2681

**PILOT FREIGHT  
CARRIERS, INC.**

*"Service is our frame of mind"*

Executive Offices

WINSTON-SALEM, N. C.

EARTH MOVING      GARDEN STORES  
ASPHALT PAVING      LANDSCAPING

**L. A. Reynolds Company**

Telephone PA 5-3523 - 1100 W. First  
WINSTON-SALEM, N. C.

Phones: PA 2-1196 - PA 2-1197 - PA 5-1209

**Hanes Produce Co., Inc.**

637 N. Cherry Street  
WINSTON-SALEM, N. C.

*The Portraits in this  
Yearbook Were Made By*

# **SMITH STUDIO**

## **PHOTOGRAPHERS**

Official Portrait Photographers  
for the  
"1962 SIGHTS AND INSIGHTS"

"PORTRAITS AND APPLICATION PICTURES  
MAY BE ORDERED FROM US FROM YOUR  
SCHOOL ANNUAL NEGATIVES"

14 East Hargett Street  
RALEIGH, NORTH CAROLINA

## SALEMITES

MEET AT THE

# PETER PAN

STEAKS                      SALADS  
SEAFOOD

825 S. Marshall              Phone PA 5-3181

## WILLIAM McCALL

*invites you to see the  
excellent selections of  
fine linen, lingerie and  
novelties*

408 N. Spruce

*Congratulations and Best  
Wishes for Success and  
Happiness during the  
years to come*

## MOTHER AND DAUGHTER FASHIONS

Corner Liberty and Third Streets  
in Winston-Salem

SCHOOL NEEDS  
GIFTS                      GREETING CARDS  
FOUNTAIN PENS

## HINKLE'S BOOK STORE

425 N. Trade Street  
*and*  
Parkway Plaza Shopping Center  
Phone PA 5-0213

Phone PA 3-1813              City Market Building

## TWIN CITY PACKING COMPANY, INC.

*Native and Western Beef - Veal - Pork  
Wholesale Provisions*

*Manufacturers of*  
HIGH GRADE SAUSAGES  
WINSTON-SALEM, N. C.

Phone PA 5-1305              P. O. Box 5231

## **Kembly Inn**

*An 82 Room Quality Motor Hotel*

RADIANT HEAT - AIR CONDITIONED - TELEVISION

TILE TUB SHOWER - TELEPHONES

*Swimming Pool    Free Continental Breakfast*

U.S. 158 EXPRESSWAY WEST AT  
CLOVERDALE EXIT—IN CITY  
WINSTON-SALEM, N. C.

*George B. Kempton, Jr., Manager*

## FOWLER-JONES CONSTRUCTION COMPANY

Telephone PA 3-0336  
WINSTON-SALEM, N. C.

## TENNY'S SPORTS *and* CASUAL CLOTHES

●  
319 W. 4th St.





NO SEAMS TO WORRY ABOUT!

SEAMLESS STOCKINGS BY

*Hanes*

HANES Hosiery, Inc. • 888 FIFTH AVE., NEW YORK • \$1.99 TO \$1.95 AT LEADING STORES

# *Bobbitts*

COLLEGE PHARMACY

COR. HAWTHORNE & LOCKLAND

Phone PA 3-1867

WINSTON-SALEM, N. C.

PRESCRIPTIONS

COSMETICS

## *Bobbitts Downstairs Store*

INVITATIONS

CENTER PIECES

FAVORS

PARTY NAPKINS

COMPLETE ENSEMBLES

GIFTS AND TOYS

BRIDGE ACCESSORIES

MONOGRAMMING



**Fallie Ann Lohr**

Says "beautiful  
shoes *can* be  
comfortable when  
fitted"

by *Hines*

WINSTON • SALEM

WINSTON-SALEM, N. C.

## The Salem Book Store

SALEM COLLEGE



Salem Wedgewood

Salem Wedgewood China — a complete stock of all scenes in pink and blue. Write for prices and illustrated circular.

# FRANK L. BLUM CONSTRUCTION CO.

860 WEST 4½ STREET

WINSTON-SALEM, N. C.

TELEPHONE PA 2-1544

## THRUWAY SHOE SHOP

The Best in Shoe  
Repairing & Dyeing

*One Day Service*

THRUWAY SHOPPING CENTER  
Also 348 West Fourth Street

*Compliments of*

## Colonial Furniture Shops, Inc.

2840 Waightown Street

WINSTON-SALEM, NORTH CAROLINA

*The Home of Quality Furniture*

## TAXI BLUE BIRD CAB, INC. DIAL 7121

*5 Passengers for the Price of 1*

225 N. Trade Street  
WINSTON-SALEM, N. C.

BAGGAGE TRANSFER

FOR NICE THINGS TO WEAR AND  
RELAXED SUBURBAN SHOPPING VISIT

*Buena Vista*

HOME OF LANZ DRESSES AND  
SMART SPORTSWEAR COORDINATES

LOCATED IN THE THRUWAY SHOPPING  
CENTER. PHONE PA 5-8519  
OPEN EVERY NITE 'TIL 9 - Mon. Thru Fri.

## SUMMIT STREET PHARMACY, INC.

Foot of Summit Street  
Overlooking Hanes Park

*Your Prescription  
Our First Consideration*

DIAL PA 2-1144

REGISTERED PHARMACISTS  
TO SERVE YOU

## TUTTLE LUMBER COMPANY

Dependable Building Materials

1721 Stadium Drive

Phone PARK 3-4318 - P. O. Box 4595

WINSTON-SALEM 6. N. C.

*THE S.*  
**GALESKI**  
OPTICAL CO.

*Prescription Opticians  
Opera and Sport Glasses*

CONTACT LENSES

207 West Fourth Street  
WINSTON-SALEM, N. C.

*Fred Koury's*  
**PLANTATION SUPPER CLUB**  
*Greensboro, N. C.*

Phone CYpress 2-5010

For a *real thirst-*  
*quencher...*

Nothing does it  
like  
Seven-Up!



*Sales Representative*  
ROYAL TYPEWRITERS

*Sales - Service - Rentals - Supplies*

**KELLY TYPEWRITER  
COMPANY**

618 West Fourth Street  
Phone: PA 3-7373

*Shop with Confidence*  
at  
**BELK-STEVENSON CO.**

COMPLETE DEPARTMENT  
STORE

**HARVEL'S, INC.**

Stratford at Westview

PA 2-6143

**WINSTON POULTRY CO.**

*Live and Dressed Poultry*

DELIVERY SERVICE

PHONE PA 2-7089 or PA 2-6827



EFFICIENCY  
APTS.  
AIR  
CONDITIONED  
WALL TO WALL  
CARPETS  
PHONE IN  
EVERY ROOM  
TELEVISION  
ELECTRIC HEAT

ON U.S. 158 and  
U.S. 421

Just East of City  
Hospital, Winston-  
Salem, N. C.

PHONE:  
PA 5-9731



*Grigg Studio*

ON THE CAMPUS  
WAKE FOREST COLLEGE

*she came—  
she saw—  
she conquered,  
in her new  
clothes from—*

*Davis*

*Congratulations to the  
Seniors*

**McPhail's**

CHINA SILVER, CRYSTAL  
*and*  
FINE JEWELRY

410 Spruce Street  
Thruway Shopping Center

**E. G. FOREST CO.**  
INSTITUTIONAL FOODS

---

Park 2-1129  
1030 N. Chestnut Street  
WINSTON-SALEM, N. C.

**PINE HALL BRICK  
AND PIPE CO., INC.**



WINSTON-SALEM, N. C.

SINCERE BEST WISHES  
TO SALEM COLLEGE . . .  
OVER THE YEARS—A GREAT INSTITUTION

FROM

MAYO  
**SPRUCE**  
UNDERWEAR • SPORTSWEAR • SLEEPWEAR

*Products of* WASHINGTON MILLS CO., WINSTON-SALEM, N. C.



PEPSI-COLA BOTTLING COMPANY  
of Winston-Salem, Inc.

1664 Stadium Drive Phone PA 3-1892



WINSTON-SALEM'S FINEST  
SUPER MARKETS

*Compliments of*

# L. Roberts

WINSTON-SALEM

CONTRACTORS—EXCAVATING



DIAL PA 3-2500

# R. J. BENNETT



# **CHARLOTTE ENGRAVING CO.**

**Charlotte, North Carolina**



***“The South’s Finest Annual  
Engravers Since 1915”***



**Boar  
and  
Castle**

*Greensboro's Most Popular  
Sandwich Shop*

CURB SERVICE : GREENSBORO, N. C.

*Oldest • Largest • Best*

*Compliments of*

**ROMINGER  
FURNITURE CO.**

423 North Liberty Street

Phone PA 4-7411

*Home Furnishers for 61 Years*

*Compliments of*

**SANITARY  
CONTAINER  
SERVICE  
CORP.**

900 LINDEN AVE.

*When you  
need a little lift—  
depend on Coke*



"COKE" IS A REGISTERED TRADE-MARK



... are produced at Edwards & Broughton. Since 1902 we have had quality as our first concern in the production of letterpress and lithographed annuals. Our new large plant and our recently acquired equipment enables us to do an even better job without losing our personal touch. You can be truly proud of your annual ... if it was produced by Edwards & Broughton.



*We invite your inquiries*



EDWARDS & BROUGHTON COMPANY  
*Printers, lithographers, engravers*  
 1821 N. Boulevard, Raleigh, North Carolina

# CLASS DIRECTORY

## SENIOR CLASS

- Bath, Winnie, 1720 Cherokee Rd., Florence, S. C.  
Bell, Frances, Box 210, Beaufort, N. C.  
Boone, Frances, 924 Hill St., Greensboro, N. C.  
Brown, Peggy, 916 Fairfield Ave., Easton, Penn.  
Carr, Julia, 2421 Maplewood Ave., Winston-Salem, N. C.  
Coston, Judy, 164 Kimberly Ave., Asheville, N. C.  
Cox, Betty, 318 McRae St., Laurinburg, N. C.  
Cunningham, Ann, 645 Crystal Dr., Spartanburg, S. C.  
Dalton, Valerie, 106 10th St., Pulaski, Va.  
Davis, Betsy, 118 Academy St., Williamston, N. C.  
DeMent, Lynn, 1710 Lynwood Ave., Winston-Salem, N. C.  
Dunn, Mary Jane, 212 East Church St., Ahoskie, N. C.  
Duvall, Margaret, 405 Greene St., Cheraw, S. C.  
Farrell, Shannon, 1433 Chelsea St., Winston-Salem, N. C.  
Flynt, Brenda, Box 235, Rural Hall, N. C.  
Grayson, Dorothy, 2312 Cloister Drive, Charlotte, N. C.  
Griffin, Sara, 301 West Whitaker Mill Rd., Raleigh, N. C.  
Harris, Mary Ann, 238 3B Ardmore Terrace, Winston-Salem, N. C.  
Hatley, Elizabeth, Box 926, Albemarle, N. C.  
Heward, Beverly, 53 Sussex Rd., Tenafly, N. J.  
Hicks, Betsy, 411 Burwell Ave., Henderson, N. C.  
Howell, Patricia, 7316 Midfield, Apt. B, Norfolk, Va.  
Jensen, Lis, 90 Vester Voldgade, Copenhagen, Denmark  
Jewell, Anne, 315 Virginia Ave., Concord, N. C.  
John, Helen, 415 West Boulevard, Laurinburg, N. C.  
Johnson, Johanna, 2717 Cambridge Rd., Raleigh, N. C.  
Jones, Julia, 2621 Stuart Dr., Durham, N. C.  
Jordan, Jennie, 1300 Queens Rd., Charlotte, N. C.  
Kuykendall, Susan, 300 South Washington St., Winchester, Va.  
Lanier, Catherine, 709 West Michigan Ave., Urbana, Ill.  
Leaird, Linda, 1343 Ponce de Leon Dr., Fort Lauderdale, Fla.  
Leshner, Stephan, 4239 Cavalier Dr., Winston-Salem, N. C.  
McClain, Caroline, 2018 Pinewood Cir., Charlotte, N. C.  
Meacham, Colquitt, 442 Allison Dr., N.W., Atlanta, Ga.  
Moore, Judith, 1107 Front St., Beaufort, N. C.  
Morrison, Anne, 1959 Harris Rd., Charlotte, N. C.  
Munroe, Carol, 2080 Craig St., Winston-Salem, N. C.  
Newman, Judy, 1161 Waughtown St., Winston-Salem, N. C.  
Ogburn, Gail, 308 North 2nd St., Smithfield, N. C.  
Parham, Sue, 215 South Greene St., Morganton, N. C.  
Parker, Rachel, 1302 Perry Park Dr., Kinston, N. C.  
Paxton, Sallie, 1516 Lafayette Ave., Rocky Mount, N. C.  
Pennington, Kaye, 1902 Home Ave., Hartsville, S. C.  
Peter, Nancy, 1504 Bightridge Dr., Kingsport, Tenn.  
Quick, Eleanor, 601 Webster Dr., Wilson, N. C.  
Randolph, Cynthia, East Main St., Burnsville, N. C.  
Rankin, Ellen, 117 Kensington Rd., Greensboro, N. C.  
Rice, Nancy, 514 South Main St., Winston-Salem, N. C.  
Robin, Esther, 2618 Cherokee Lane, Winston-Salem, N. C.  
Robinson, Joy, 1437 Sterling Rd., Charlotte, N. C.  
Robinson, Patricia, Box 325-T, Mars Hill, N. C.  
Sample, Sue, 320 Oakwood Dr., Statesville, N. C.  
Saunders, Ann, 4560 Ortega Blvd., Jacksonville, Fla.  
Scarborough, Molly, 1902 Walnut St., Lumberton, N. C.  
Sellars, Ann, 204 Elmwood Dr., Greensboro, N. C.  
Shannon, Judy, 2213 Eden Parkway, Lakeland, Fla.  
Sheets, Sandra, 224 Roslyn Rd., Winston-Salem, N. C.  
Smith, Agnes, 8905 Tolman Rd., Richmond, Va.  
Smith, Elizabeth, 1315 Woodcrest Rd., Birmingham 9, Ala.  
Smith, Linda, 17 Stoneleigh Park, Westfield, N. J.  
Stallings, Mary Ann, 412 North 3rd St., Smithfield, N. C.  
Stokes, Nina, 1607 Lancelot Lane, Winston-Salem, N. C.  
Storey, Edith, 7110 Benita Dr., Charlotte, N. C.  
Stuart, Frances, 22 Boyden St., Badin, N. C.  
Thompson, Jane, 465 Sullivan Rd., Statesville, N. C.  
Threatt, Carol, 1352 Wilson Rd., Rocky Mount, N. C.  
Thrower, Tina, 410 Gaston Ave., Belmont, N. C.  
Transou, Anna, 310 Wentworth Dr., Greensboro, N. C.  
Upchurch, Eloise, 101 Magnolia St., Raeford, N. C.  
Wainwright, Susan, 606 Trinity Dr., Wilson, N. C.  
Weathers, Patricia, 935 Heard Ave., Augusta, Ga.  
White, Craig, 4603 Tenella Rd., New Bern, N. C.  
Wyman, Dottie, 1231 Pamlico Dr., Greensboro, N. C.

## JUNIOR CLASS

- Abercrombie, Normie, 203 Melrose Terrace, Greenwood, S. C.  
Anderson, Kitty, 510 Connecticut Ave., Spartanburg, S. C.  
Anderson, Virginia, 237 Cherokee Rd., Charlotte, N. C.  
Austin, Gay, 1814 East 5th Ave., Ocala, Fla.  
Baker, Jackie, 2025 Matheson Ave., Charlotte, N. C.  
Barker, Jackie, 6716 Lake St., Falls Church, Va.  
Barksdale, Anne, 618 Highland Drive, Leaksville, N. C.  
Bean, Bonnie, Jaffrey, N. H.  
Beck, June, 1230 West 1st St., Winston-Salem, N. C.  
Benson, Anne, 820 Armstrong St., Statesville, N. C.  
Black, Betty, 1309 Hawthorne Rd., Wilmington, N. C.  
Boswell, Becky, 3025 Virginia Ave., Charlotte, N. C.  
Boyer, Jeannie, 918 Armstrong, Statesville, N. C.  
Brown, Evelyn, Box 56, Davidson, N. C.  
Bundy, Kitty, Box 144, Mountain City, Tenn.  
Camp, Ava Ann, 303 S.E. 11th St., Fort Lauderdale, Fla.

Chew, Candy, 433 Dillingham Blvd., Norfolk, Va.  
Childress, Judy, 3835 West First St., Winston-Salem, N. C.  
Cook, Sue, 160 Woodland Dr., Huntington, W. Va.  
Cooper, Martha Ann, 1911 West First St., Winston-Salem, N. C.  
Creech, Betty Lou, 217 West Church St., Ahoskie, N. C.  
Crowell, Mary Jane, 305 South Aspen St., Lincolnton, N. C.  
Dull, Jane, 3700 Robin Hood Rd., Winston-Salem, N. C.  
E-kew, Patsy, 132 Eastwood Cir., Spartanburg, S. C.  
Evans, Ann, 1501 East Fifth St., Greenville, N. C.  
Ezzell, Kay, 302 Holland St., Winston-Salem, N. C.  
Farrow, Peggy, Rt. 2, Box 383, Wilmington, N. C.  
Fordham, Beth, 4301 Lansing Dr., Winston-Salem, N. C.  
Fortson, Virginia Kay, 3535 Fitch St., Jacksonville 5, Fla.  
Freeman, Louisa, 3910 Kenilworth Rd., Columbia, S. C.  
Geimer, Edith, 520 Fifth St., N.W., Hickory, N. C.  
Gillam, Elizabeth, 306 King St., Windsor, N. C.  
Glenn, Sally, 2403 Reynolds Dr., Winston-Salem, N. C.  
Harrell, Suzanne, Box 390, Newton, N. C.  
Harrington, Barbara Ann, 1941 River Rd., Washington, N. C.  
Harrison, Edith, 2400 Cloister Dr., Charlotte, N. C.  
Hatcher, Anita, 1111 Clarendon St., Fayetteville, N. C.  
Heinrich, Dougie, 3203 West Grace St., Richmond 25, Va.  
Henderson, Mary Dabney, 3617 E. Weyburn Rd., Richmond 25, Va.  
Herring, Faye, Snow Hill, N. C.  
Hieresell, Jo, Box 1016, Valdese, N. C.  
Higgins, Margaret, 455 South Church St., Winston-Salem, N. C.  
Hummel, Carolyn, 2731 Tudor Rd., Winston-Salem, N. C.  
Huntley, Leslie, 515 Leak Ave., Wadesboro, N. C.  
Hutaff, Anne, 215 Woodcrest Rd., Fayetteville, N. C.  
Johns, Julie, Box 666, Asheboro, N. C.  
Joyce, Clarissa, 3312 Coleridge Rd., Raleigh, N. C.  
Joyner, Nancy, 1535 West Salisbury St., Asheboro, N. C.  
Kearns, Kay, 907 Rockford Rd., High Point, N. C.  
Kelly, Jane, 1501 Oakland Ave., Durham, N. C.  
Kizer, Nancy, Edgewood Rd., Asheboro, N. C.  
Lane, Lucy, No. 17 Alastair Court Apts., Durham, N. C.  
Lee, Mary Nell, 1004 South Third St., Smithfield, N. C.  
Lee, Mattie Gay, Box 207, Dillon, S. C.  
Lippels, Jean, 965 Avon Rd., Winston-Salem, N. C.  
Long, Kay, Box 288, Elkin, N. C.  
McArver, Anne, 304 West Tenth St., Gastonia, N. C.  
McArver, Kenny, 3235 Willow Oak Rd., Charlotte, N. C.  
Major, Dean, 6526 Crosfield Rd., Columbia, S. C.  
Martin, Nancy Mason, 1606-A Balcony Court Apts., Winston-Salem, N. C.  
Morisey, Betty Gail, 102 Chestnut St., Clinton, N. C.

Norman, Beth, 1915 Normandy Dr., Zanesville, Ohio  
Odom, Peggy, 1309 Virginia Rd., Winston-Salem, N. C.  
Peebles, Heather, 1519 31st St., Arlington, Va.  
Phifer, Martha Jo, 301 Hylan Ave., Hamlet, N. C.  
Pooser, Doty, 437 South Garden St., Marion, N. C.  
Ray, Marsha, College St. Extension, Oxford, N. C.  
Raynor, Jane, 1563 Matthews Ave., Vancouver, B. C.  
Canada  
Rhodes, Robin, 2959 Riverside Ave., Jacksonville, Fla.  
Roberts, Carroll, 3950 Plymouth Rd., Hope Valley, Durham, N. C.  
Saunders, G. G., 2518 Reynolds Dr., Winston-Salem, N. C.  
Smith, Lucinda, 3600 Seminary Rd., Alexandria, Va.  
Smith, Sue, 415 Old Springs Rd., Mount Airy, N. C.  
Still, Martha, 2126 East Lake Dr., Raleigh, N. C.  
Summerell, Judy, 411 Collier St., Gastonia, N. C.  
Sustare, Nancy, 417 Virginia Ave., Nashville, N. C.  
Swum, Jan, Smyrna Rd., Whiteville, N. C.  
Tallman, Martha, 2723 Walton Way, Augusta, Ga.  
Thrower, Joan, 3219 Forsyth Dr., Greensboro, N. C.  
Turner, Carol, 814 Roslyn Rd., Winston-Salem, N. C.  
Turner, Jeannie, Rt. 2, Box 473, Greensboro, N. C.  
Umberger, Nancy, 270 Hammond Ave., Kingsport, Tenn.  
Vitale, Elise, Benson St., Rehobeth Beach, Delaware  
Wall, Linda, 20 Fenner Rd., Winston-Salem, N. C.  
Ward, Ginger, Box 375, Sereo, Colorado, Aruba, Netherlands Antilles  
Ward, Pat, Styers Ferry Rd., Rt. 1, Clemmons, N. C.  
Warren, Sheena, 1300 Mecklenburg Ave., Charlotte, N. C.  
Watson, Barbara, 1300 Polo Rd., Winston-Salem, N. C.  
Wells, Diana, Old Norwalk Rd., New Canaan, Conn.  
West, Anne, 3704 Starmount Dr., Greensboro, N. C.  
Whitty, Kitty, 1512 Rhem Ave., New Bern, N. C.  
Wilson, Alice, 2317 Hathaway Rd., Raleigh, N. C.  
Wilson, Elizabeth, Windsor Farm, Cascade, Va.

#### SOPHIOMORE CLASS

Ashby, Patricia, 2911 Glenm Ave., Winston-Salem, N. C.  
Aushon, Carolyn, 1107 St. David St., Tarboro, N. C.  
Austin, Ann Price, Merry Meadows, Hixson, Tenn.  
Austin, Anne Baylor, 302 Fleetwood Dr., Lookout Mountain, Tenn.  
Bailey, Frances, "Lower Norwood," Midlothian, Va.  
Ball, Lyn, 12867 S.W., Iron Mountain Blvd., Portland 10, Oregon  
Best, Anne, 302 Hilltop Place, Columbia, S. C.  
Blakeney, Rhetta, 3515 Sharon Rd., Charlotte, N. C.  
Brawley, May, 221 West Fisher St., Salisbury, N. C.  
Brown, Eileen, 910 South Himes St., Tampa 9, Fla.  
Buckingham, Mary Elizabeth, 2550 Parkside Dr., Flint 3, Mich.  
Cervarich, Wanda, Box 3094, Ron Air, Va.  
Chalk, Kathy, 2406 Evans St., Morehead City, N. C.  
Crawford, Claudia, 207 South Ellis St., Salisbury, N. C.  
Davidson, Winifred, 919 Country Club Rd., Wilmington, N. C.  
Dudley, Anne, Robinwood, Lookout Mountain, Tenn.

- Dunbar, Jo. 307 East Farris Ave., High Point, N. C.  
 Eckard, Frances. 403 E. K St., Newton, N. C.  
 Elder, Clifflie, 1007 West Davis St., Burlington, N. C.  
 Ellison, Susan, Jaffrey, New Hampshire  
 Feagin, Susan, 3995 Chippewa Rd., Memphis 18, Tenn.  
 Field, Anne Mason, 4320 Wakefield Rd., Richmond 25, Va.  
 Fields, Jenny, 1617 Riviera Dr., Rocky Mount, N. C.  
 Foard, Kit, 171 Woodland, Asheville, N. C.  
 Fonda, Margaret, 2504 Central Ave., Alexandria, Va.  
 Fowler, Ann, 7010 Madrid Ave., Jacksonville 7, Fla.  
 Fuller, Diane, 1302 Walker Dr., Kinston, N. C.  
 Fuller, Jerine, 2340 Highview Rd., S.W., Atlanta 11, Ga.  
 Gaddy, Rebecca, 3919 Ridge Rd., Raleigh, N. C.  
 Gaston, Rebecca, 1100 East Broad St., Statesville, N. C.  
 Gillam, Hannah, 302 Church St., Tarboro, N. C.  
 Gottschalk, Barbara, 437 Columbus St., Savannah, Ga.  
 Gray, Virginia, 110 West Lewis St., Whiteville, N. C.  
 Griffiths, Anne, P. O. Box 248, Denton, N. C.  
 Hagaman, Margaret, 301 Cherry Dr., Boone, N. C.  
 Hall, Lynn, 517 4th St., N.W., Hickory, N. C.  
 Hanling, Jane, 211 Homewood Dr., Greensboro, N. C.  
 Harrell, Mary Jane, 2217 Laurel Rd., Jacksonville 7, Fla.  
 Harris, Marguerite, Westover Dr., Roxboro, N. C.  
 Hauch, Bonnie, 2317 N.E. 8th St., Fort Lauderdale, Fla.  
 Headley, Didi, 304 DeSoto Dr., Tallahassee, Fla.  
 Heath, Anne, Sharon Rd., Rt. No. 2, Charlotte, N. C.  
 Heath, Sandra, 2719 Walton Way, Augusta, Ga.  
 Hedgpath, Jane, Box 87, Chapel Hill, N. C.  
 Hodges, Libby, P. O. Box 365, New Bern, N. C.  
 Holton, Frances, 207 South Granville St., Edenton, N. C.  
 Horner, Jan, 721 Arlington Ave., Bristol, Va.  
 Howell, Em, 1405 St. Andrews St., Tarboro, N. C.  
 Howell, Sharon, 116 Eastover Ave., Concord, N. C.  
 Hughes, Brandy, 2100 Buckingham Ave., Richmond 28, Va.  
 Humphreys, Susan, 112 Lake Drive, Cheraw, S. C.  
 Hunt, Mary Elizabeth, 133 Rosedale Ave., Winston-Salem, N. C.  
 Hutchins, Mrs. Nancy Lytle, South Main St., Winston-Salem, N. C.  
 Ingram, Anne, 611 Spruce St., Florence, S. C.  
 Irwin, Elizabeth, 400 Parkdale Ave., Spartanburg, S. C.  
 Jackson, Mary, 2214 Elizabeth Ave., Winston-Salem, N. C.  
 Jennette, Annetta, 705 Short Dr., Washington, N. C.  
 Johnson, Betsy, 800 North General Lee Ave., Dunn, N. C.  
 Johnson, Rae, 108 Riverside Dr., Greenville, N. C.  
 Johnson, Susie, 5102 Holston Dr., Knoxville 14, Tenn.  
 Johnston, Tish, Box 217, Davidson, N. C.  
 Kent, Mason, 243 Mountain View Ave., Danville, Va.  
 Kimbrell, Sandi, Brezemont Dr., Waynesville, N. C.  
 King, Kit, 2408 Fairview Rd., Raleigh, N. C.  
 Kirk, Sarah, 318 Brown St., Martinsville, Va.  
 Knott, Nancy, 113 Turner St., Winston-Salem, N. C.  
 Kugler, Frankie, 120 South Bonner St., Washington, N. C.  
 Lamond, Jackie, 1280 Fort Hunt Rd., Alexandria, Va.  
 Lee, Pat, 701 Roundtree Ave., Kinston, N. C.  
 Lohr, Fallie Ann, Rt. No. 6, Lexington, N. C.  
 Lundin, Sandra, 325 McRae St., Laurinburg, N. C.  
 Luter, Nancy Grimsley, Ye Old Barn Apts., Powers Dr., Winston-Salem, N. C.  
 MacPherson, Paula, 151 Government St., Mobile, Ala.  
 McClain, Frances, 2018 Pinewood Circle, Charlotte, N. C.  
 McFate, Betsy, Hanover Inn, Hanover, N. H.  
 McGrath, Marilyn, 212 East 17th St., Lumberton, N. C.  
 Manning, Carol, Mint Springs Lane, Chapel Hill, N. C.  
 Mantz, Lynn, No. 7 Observatory, Charleston, W. Va.  
 Martin, Ann Marie, Box 322, Liberty, N. C.  
 Matthews, Virginia, 308 Boston Ave., Lynchburg, Va.  
 Miller, Helen, 1602 Shady Circle, Chattanooga 5, Tenn.  
 Miller, Landis, 1111 Pee Dee Ave., Alhempale, N. C.  
 Mitchell, Janice, 1561 East Sevier Ave., Kingsport, Tenn.  
 Monk, G. G., P. O. Box 627, Wendell, N. C.  
 Morrison, Anne, 4507 Mitchell Rd., Kingsport, Tenn.  
 Morrison, Lynn, 144 Wellsville St., Bolivar, N. Y.  
 Mount, Alex, 1318 Prospect Ave., Bethlehem, Penn.  
 Myers, Gay, 1601 Queens Rd., West, Charlotte, N. C.  
 Newsome, Becky, 624 North Stratford Rd., Winston-Salem, N. C.  
 Padgett, Virginia, 708 North Garden St., Marion, N. C.  
 Padrick, Barry, 1800 South Indian River Dr., Fort Pierce, Fla.  
 Paisley, Marty, Riverside Drive, Morganton, N. C.  
 Parrish, Peggy, 506 South Church St., Winston-Salem, N. C.  
 Pendino, Pene, Route No. 1, Box 319, Tampa 4, Fla.  
 Perkins, Peggy, P. O. Box 1098, Marion, N. C.  
 Poe, Jean, 1604 Craig St., Raleigh, N. C.  
 Pond, Mary Lawrence, 721 Riverview Dr., Suffolk, Va.  
 Pope, Betty, 1415 College St., Bowling Green, Ky.  
 Prusa, Penny, Third St., S.W., Taylorsville, N. C.  
 Purdie, Susan, 603 West Pearsall St., Dunn, N. C.  
 Quarrier, Ann, 1358 National Rd., Wheeling, W. Va.  
 Raper, Donna, 606 West Willowbrook Dr., Burlington, N. C.  
 Raymond, Ella, 4718 Edward's Mill Rd., Raleigh, N. C.  
 Reed, Martha, 155 Nassau Ave., Manhasset, Long Island, N. Y.  
 Reid, Alice, 1308 Prestwood Dr., Hartsville, S. C.  
 Richmond, Marty, 1903 Edgewood Lane, Charlottesville, Va.  
 Robertson, Aurelia, 231 Hawthorne Dr., Danville, Va.  
 Robinson, Susie, 214 West Cork St., Winchester, Va.  
 Romig, Anne, 2910 Cameron Mills Rd., Alexandria, Va.  
 Rose, Irene, 215 Hillside Ave., Fayetteville, N. C.  
 Rosenblatt, Mary Stewart, 3209 Pinehurst Place, Charlotte, N. C.  
 Rucker, Connie, 3114 Monument Ave., Richmond 21, Va.  
 Salsbury, Bunnie, Box 509, Morganton, N. C.  
 Schmidt, Trudy, 417 Highland Rd., Pottstown, Pa.

Shugart, Kaye, Box 45, Yadkinville, N. C.  
 Simons, Anne, 614 Raleigh Rd., Wilson, N. C.  
 Smith, Barlette, 1511 Wendover Rd., Charlotte, N. C.  
 Smith, Sandra, 117 East Wine St., Mullins, S. C.  
 Smith, Sheila, 117 East Wine St., Mullins, S. C.  
 Speas, Frances, 2000 Faculty Dr., Winston-Salem, N. C.  
 Stafford, Ann, 1242 Townes Rd., Charlotte, N. C.  
 Strickland, Tillie, 105 East Green St., Nashville, N. C.  
 Strub, Zena, 816 Sylvan Rd., Winston-Salem, N. C.  
 Switzer, Sara, 1620 Fairidge Rd., Kingsport, Tenn.  
 Sykes, Elizabeth, 305 Marion St., Mount Airy, N. C.  
 Tayloe, Elaine, Commerce St., Aulander, N. C.  
 Teague, Mary Alice, 641 Parkway Blvd., Reidsville, N. C.  
 TenEyck, Mary, 601 North Belmont Dr., Charleston, W. Va.  
 Thompson, Ann Scott, 2035 Raeford Rd., Fayetteville, N. C.  
 Thornton, Annah Leigh, Box 308, Elizabethtown, N. C.  
 Trapnell, Frances, 6205 Jocelyn Hollow Rd., Nashville, Tenn.  
 Troy, Beth, 4010 Westover Rd., Wilmington, N. C.  
 Truette, Pam, 737 East Oakwood Ave., Albemarle, N. C.  
 Tyson, Carolyn, 1020 Wellington Rd., High Point, N. C.  
 Vance, Jody, 2417 Buena Vista Rd., Winston-Salem, N. C.  
 Wadsworth, Leslie, Idletime, Penllyn, Pa.  
 Warren, Patty, 1800 Mecklenburg Ave., Charlotte, N. C.  
 White, Barbara, 411 Leander St., Shelby, N. C.  
 Williams, Martha Ann, Rt. No. 4, Box 545, Washington, N. C.  
 Wills, Sarah, Box 645, Roanoke Rapids, N. C.  
 Wilson, Linda, 72 Cyrus Ave., Pitman, N. J.  
 Workman, Wookie, Box 686, Davidson, N. C.  
 Wright, Bunny, 1802 Grandin Rd., S.W., Roanoke, Va.  
 Zimmerman, Anna, 611 Hunter Ave., Winston-Salem, N. C.  
 Zipperer, Jackie, Rt. No. 4, Greenville, Tenn.

#### FRESHMAN CLASS

Allen, Jane, 1507 Sauer Ave., Richmond 21, Va.  
 Ascough, Kay, 1403 Mulberry Rd., Martinsville, Va.  
 Auman, Vicky, Route 3, Hillsboro, N. C.  
 Bacon, Sally, 396 Shallowford Rd., Chattanooga, Tenn.  
 Barber, Patricia, 777 Pinewood Circle, Mooresville, N. C.  
 Berry, Nan, 1250 Broughton, N.E., Orangeburg, S. C.  
 Bilbro, Myrtie Moon, 1004 East Third St., Greenville, N. C.  
 Bleakly, Barbara, 148 Heritage Rd., Haddonfield, N. J.  
 Bodine, Barbara, 267 Illinois Ave., Southern Pines, N. C.  
 Boone, Suzanne, 504 Compton Place, Durham, N. C.  
 Bridgers, Carolyn Lee, 311 Amhurst Place, Chattanooga, Tenn.

Brown, Wanda Gave, Rt. 2, Box 219, Boonville, N. C.  
 Bruton, Almira, P. O. Box 301, Wilson, N. C.  
 Bryant, Pat, 207 Borden Ave., Wilmington, N. C.  
 Bugg, Lady, 1514 Hermitage Court, Durham, N. C.  
 Bullard, Betty, 106 Glenway Ave., Belmont, N. C.  
 Butler, Beverly, 401 Butler Dr., Clinton, N. C.  
 Butt, Helen, 703 West Pope St., Dunn, N. C.  
 Cannon, Mary, 814 Cowper Drive, Raleigh, N. C.  
 Carter, Charlotte, Lazy Lane, Reynolda, Winston-Salem, N. C.  
 Causey, Robin, 2012 St. Andrews Rd., Greensboro, N. C.  
 Clark, Donald, 302 S. Church St., Winston-Salem, N. C.  
 Cooper, Doris Louise, 1006 Dacian Ave., Durham, N. C.  
 Cooper, Mary, Rt. 3, Box 65, Kingstree, S. C.  
 Corbett, Judy, 101 Pireway Rd., Box 467, Tabor City, N. C.  
 Corbett, Sandra, 2509 Market St., Wilmington, N. C.  
 Crim, Frances, Route 1, Clemmons, N. C.  
 Crouch, Carolyn, 1619 West 51st St., Norfolk, Va.  
 Crowell, Cammy, 805 South Aspen St., Lincolnton, N. C.  
 Culpepper, Pat, Mooreland Rd., Richmond 29, Va.  
 Davis, Dorothy, 203 North Main St., Belmont, N. C.  
 Day, Page, 1109 West Ave., Richmond, Va.  
 Dearing, Aline, 1912 Greenwood Ave., Jacksonville 5, Fla.  
 Denning, Valerie, No. 1 Hillside Ave., Port Washington, N. Y.  
 Dixon, Anne, 142 Forest Dr., Lancaster, S. C.  
 Douglas, Debby, 342 W. Pine St., Mount Airy, N. C.  
 Duke, Daphne, 316 South Bonita Ave., Panama City, Fla.  
 Eagles, Roberta Sue, 913 Pembroke Ave., Ahsoskie, N. C.  
 Edwards, Margaret, 901 Rountree Ave., Kinston, N. C.  
 Egerton, Carolyn, Pratt & Montrose Avenues, Baltimore 12, Md.  
 Emory, Mary Ellen, 1014 West Markham Ave., Durham, N. C.  
 Evans, Susan, 414 North Hermitage, Lookout Mountain, Tenn.  
 Everett, Lynn, 2637 Ingleside Ave., Macon, Ga.  
 Fleenor, Janie, 1365 Reynolda Rd., Winston-Salem, N. C.  
 Forrester, Marsha Hunt, 356 Riverside Drive, Greenville, S. C.  
 Gardner, Barbara, 619 Irving St., Winston-Salem, N. C.  
 Gardner, Nancy, 619 Irving St., Winston-Salem, N. C.  
 Garrard Jo Ann, 109 West Lake Ave., Baltimore 10, Md.  
 Gilley, Mrs. Anita Bryan, 3845 Kernersville Road, Winston-Salem, N. C.  
 Gore, Anne Walker, Stanley Ave., Rockingham, N. C.  
 Graves, Virginia, 1213 Watson Drive, Wilson, N. C.  
 Gray, Betty, 2006 Monument Ave., Richmond 26, Va.  
 Griffin, Nancy, 3421 Glendon Ave., Chattanooga, Tenn.  
 Griffith, Rita, 405 East 8th St., Greenville, N. C.

Gunn, Linda, Box 87, Yanceyville, N. C.  
Harrison, Susan, 5 Wood Lane, Farmington, Charlottesville, Va.  
Harshaw, Sally, 434 East Washington Blvd., Grove City, Pa.  
Hatton, Betsy, 314 South Edison, Tampa 6, Fla.  
Haywood, Harriet, 1118 Ann St., Rockingham, N. C.  
Hefflin, Elleu, 600 Henri Rd., Richmond 26, Va.  
Hemrick, Bonnie, 4553 Shattalon Dr., Winston-Salem, N. C.  
Hodges, Linda, Box 433, Fairmont, N. C.  
Houser, Ferne, Box 451, Pittsboro, N. C.  
Hnbbard, Cacky, 103 Fiocn St., Clinton, N. C.  
Hughes, Nancy, 2814 Anderson Dr., Raleigh, N. C.  
Humphreys, Sue, Box 20, Seroc, Colorado, Aruba, Netherlands Antilles  
James, Frankie Lou, 240 South Main St., Mount Airy, N. C.  
Johnson, Barbara, 3432 West Ridge Rd., S.W., Roanoke, Va.  
Johnson, Jerry, Route No. 1, Sunset Rd., Varina, N. C.  
Kell, Kay, 16 Long Crescent Dr., Bristol, Va.  
Kelley, Karen, 1530 Geraldine Dr., Jacksonville, Fla.  
Kendrick, Anne, 2030 Radcliffe Ave., Charlotte, N. C.  
King, Betsy, 1230 Maryland Ave., Spartanburg, S. C.  
Kropp, Karen, 425 Old Lancaster Rd., Berwyn, Pa.  
Lambeer, Stuart, 44-24 Lajes Lane, McGuire Air Force Base, N. J.  
Lambert, Arlette, Springs Rd., Mount Airy, N. C.  
Lane, Parma, 776 Palmetto St., Spartanburg, S. C.  
La Roque, Suzanne, 447 Carolina Circle, Winston-Salem, N. C.  
Lechoer, Linda, 605 Appian Way, Jacksonville 8, Fla.  
Lee, Tinka, 2327 Overhill Rd., Charlotte, N. C.  
Leigh, Susan, 924 South York St., Gastonia, N. C.  
Lineback, Ellen, 757 Button Rd., N.E., Atlanta, Ga.  
Linton, Debbie, 1166 Sewell Lane, Rydal, Pa.  
Lukens, Joan, 1911 Main St., Bethlehem, Pa.  
Lyon, Linda, 3616 Hathaway Rd., Durham, N. C.  
McAfee, Lana, Box 337, Old Fort, N. C.  
McClement, Lynne, 101 Lansdale Dr., Spartanburg, S. C.  
McDorman, Jodi, 5209 Springlake Way, Baltimore 12, Md.  
McGlimm, Wendy, 729 Millbrook Lane, Haverford, Pa.  
McLeao, Mariaona, 201 East 20th St., Lumberton, N. C.  
Maier, Susan, Box 16, Hope, N. J.  
Marsh, Sandra, 1358 Seminole Dr., Greensboro, N. C.  
Marshall, Diana, 958 Wellington Rd., Elkins Park, Pa.  
Martinez, Herminia, 2500 Q St., N.W., Apt. 439, Washington, D. C.  
Matthews, Becky, 4423 Firestone Dr., Houston, Texas  
Meeck, Evelyn, 1115 12th Ave., Huntington, W. Va.  
Miley, Julia, Box 86, Beuson, N. C.  
Minnick, Katie, 427 Arlington, Ave., Bristol, Va.  
Moore, Beth, 1306 Main St., Tarboro, N. C.  
Morgau, Sandra, 217 Hillcrest Drive, Sanford, N. C.  
Morgan, Gretchen, 116 Cedar Rd., Mooresville, N. C.  
Murchison, Mae, 704 Rush Rd., Fayetteville, N. C.  
Nash, Patty, Box 205, Lowell, N. C.  
Neese, Dale, 3905 Friendly Rd., Greensboro, N. C.  
Patterson, Betsy, P. O. Box 145, Halifax, Va.  
Patterson, Brandon, 4641 Iroquois Ave., Jacksonville 10, Fla.  
Peele, Billie, 107 Woodlawn Dr., Williamston, N. C.  
Perry, Ethel, 209 Woodside Ave., Fayetteville, N. C.  
Pfeifer, Jean, 401 Royal Plaza, Fort Lauderdale, Fla.  
Pollard, Allison, 205 Country Club Lane, Galax, Va.  
Prevost, Beth, 1905 Princess St., Wilmington, N. C.  
Price, Louise, 1301 Carlisle Rd., Greensboro, N. C.  
Rablen, Susan, 1420 Seabreeze Blvd., Fort Lauderdale, Fla.  
Rankin, Lisa, 5324 Interbay Blvd., Tampa, Fla.  
Ravenel, Millie, 1020 Mulberry Rd., Martinsville, Va.  
Redfern, Pat, 405 Hayne St., Monroe, N. C.  
Richheimer, Bitsy, 3694 Hedrick St., Jacksonville, Fla.  
Roberson, Robin, Washington Park, Washington, N. C.  
Rockafellow, Cookie, 1730 East Buchanan Dr., Columbia, S. C.  
Ross, Martha, 2015 Queens Rd, West, Charlotte, N. C.  
Rozer, Nancy, 610 Hermitage Court, Charlotte, N. C.  
Rupprecht, Sarah, 2908 Park Rd., Charlotte, N. C.  
Sapp, Gee Gee, 314 West Marsh St., Salisbury, N. C.  
Self, Ann Clair, 3420 Kernersville Rd., Winston-Salem, N. C.  
Sharpe, Charlotte, 1004 West Davis St., Burlington, N. C.  
Sheets, Carole, 224 Roslyn Rd., Winston-Salem, N. C.  
Shell, Juliette, Quarters 17-W, Fort McPherson, Ga.  
Shull, Diane, 1616 Fairidge Place, Kingsport, Tenn.  
Smarrt, Sally, Elfin Rd., Lookout Mountain, Tenn.  
Smith, Joanne, 705 East Fourth St., Greenville, N. C.  
Smith, Susan, 3110 Washington Rd., West Palm Beach, Fla.  
Snyder, Jean, 402 Park St., Lexington, N. C.  
Steere, Susan, 1012 South Hawthorne Rd., Winston-Salem, N. C.  
Stout, Roddy, 301 North Ridgeway Dr., Greensboro, N. C.  
Sullivan, Beth, 204 Warsaw Rd., Clinton, N. C.  
Talley, Mary, 733 South Green St., Winston-Salem, N. C.  
Taylor, Hume, 3044 Carolina Ave., S.W., Roanoke, Va.  
Thomasson, Sara, 616 Mulberry, Martinsville, Va.  
Thompson, Pat, 1321 Heathcliffe, High Point, N. C.  
Thornhill, Kim, 3614 Manton Dr., Lynchburg, Va.  
Trask, Kitty, S. Hermitage Rd., Beaufort, S. C.  
Turney, Jo, South Langley Lane, McLean, Va.  
Tynes, Frances, 1009 Carolina St., Greensboro, N. C.  
Wales, Janet, 3305 Harbor Dr., Jacksonville, Fla.  
Wall, Dade, 1649 Pinecrest Rd., Rocky Mount, N. C.  
Ward, Penny, 857 West King Rd., Malvern, Pa.  
Webster, Jane, Route No. 6, Lexington, N. C.  
Weidner, Carol, 5292 N.E. 18th Terrace, Fort Lauderdale, Fla.  
Williams, Floride, 1201 Schuyler Bldg., Spartanburg, S. C.  
Williams, Jean, 2723 Rosalind Ave., Roanoke, Va.  
Wilson, Marianne, 2703 Anderson Dr., Raleigh, N. C.  
Wilson, Pat, 1501 Washington St., Durham, N. C.  
Wiltshire, Gray, 8916 Tolman Rd., Richmond, Va.  
Wrend, Nancy, 610 Palmer Ave., Winter Park, Fla.  
Wright, Nancy, 104 Westwood Lane, Elkin, N. C.





Gramley Library  
Salem Academy and College  
Winston-Salem, N.C. 27108



