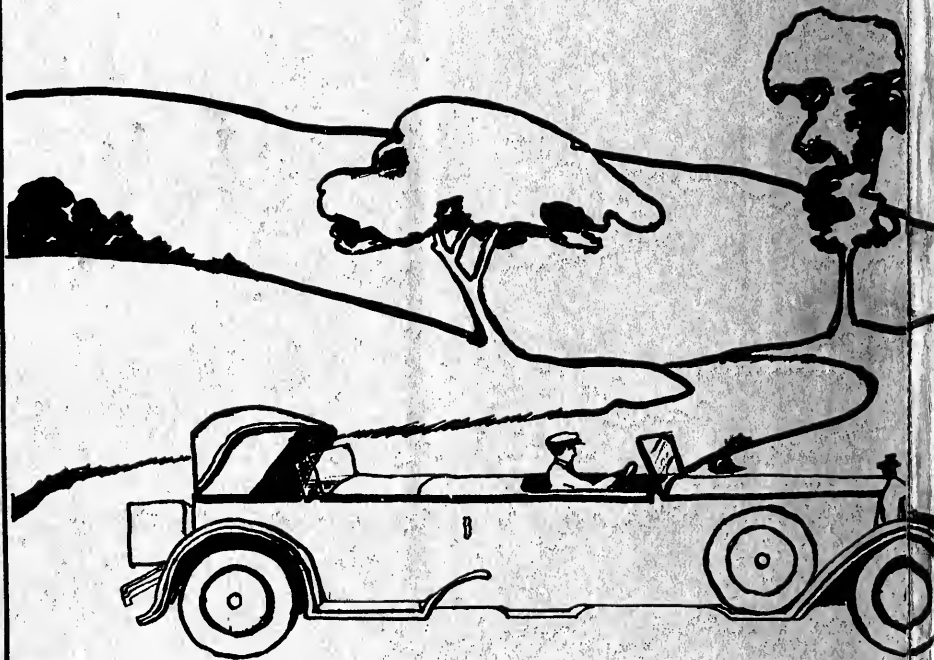




1926

SIMON & SCHUSTER

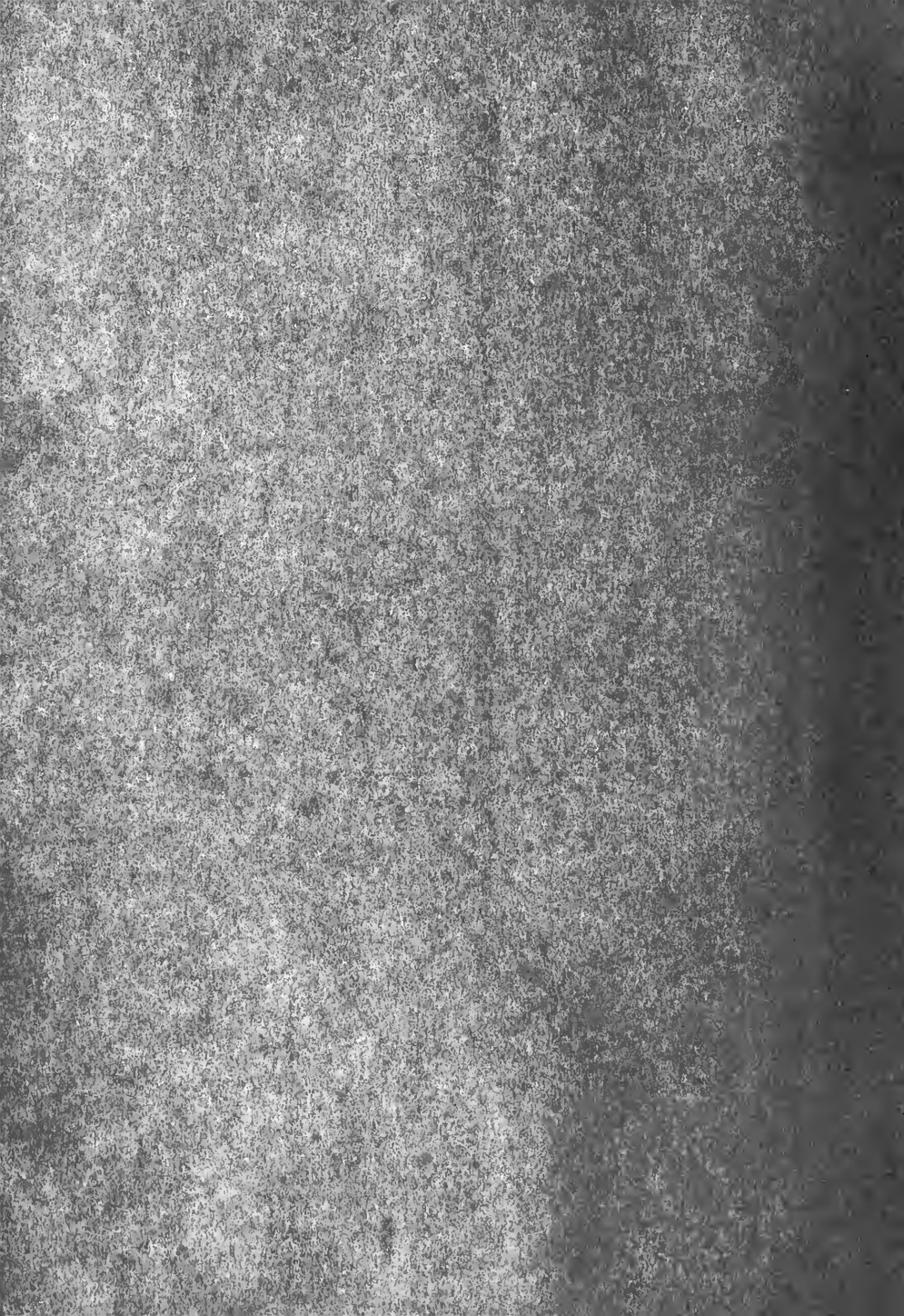




SHOP AT
DAME WISDOMS
STORE

Bowers

A decorative flourish consisting of two symmetrical, curved lines that meet at a central point, similar to the one above. The name 'Bowers' is printed in a small, sans-serif font across the middle of the flourish.





COPYRIGHT, 1926
BY
NAN LINGLE, *Editor*
CATHERINE MITCHELL, *Manager*



The Silhouette

— 1 9 2 6 —

Volume 23

Published Annually by the Students
of
Agnes Scott College
Atlanta, Georgia



To

Mr. Robert B. Holt

who, by his sympathetic understanding of the student's viewpoint, has been a wise counselor, and a source of inspiration to us all, we affectionately dedicate

The 1926 Silhouette



Foreword

"Let others tell of storms and showers,
I'll only mark your sunny hours."

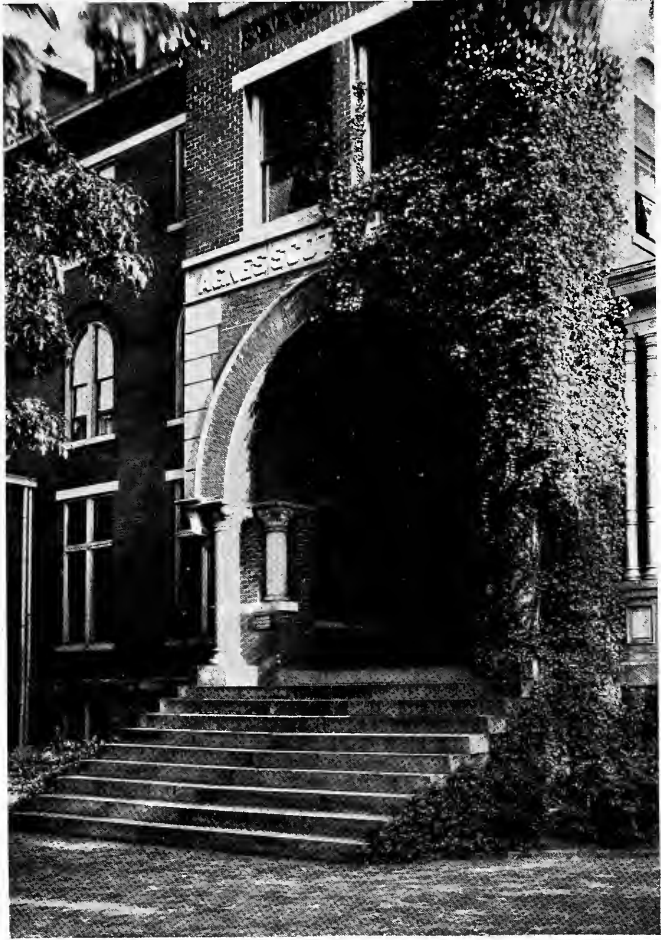
Because the sundial on our campus could mark the sunny hours of our life here together in only a transient way, we have tried to catch a permanent reminder of those happy days and bring them together in the 1925-26 Annual.

Table of Contents

Book One	The College Campus Faculty
Book Two	The Classes Senior Junior Sophomore Freshman
Book Three	College Activities Organizations Events
Book Four	Features
Book Five	Athletics
Book Six	Jokes

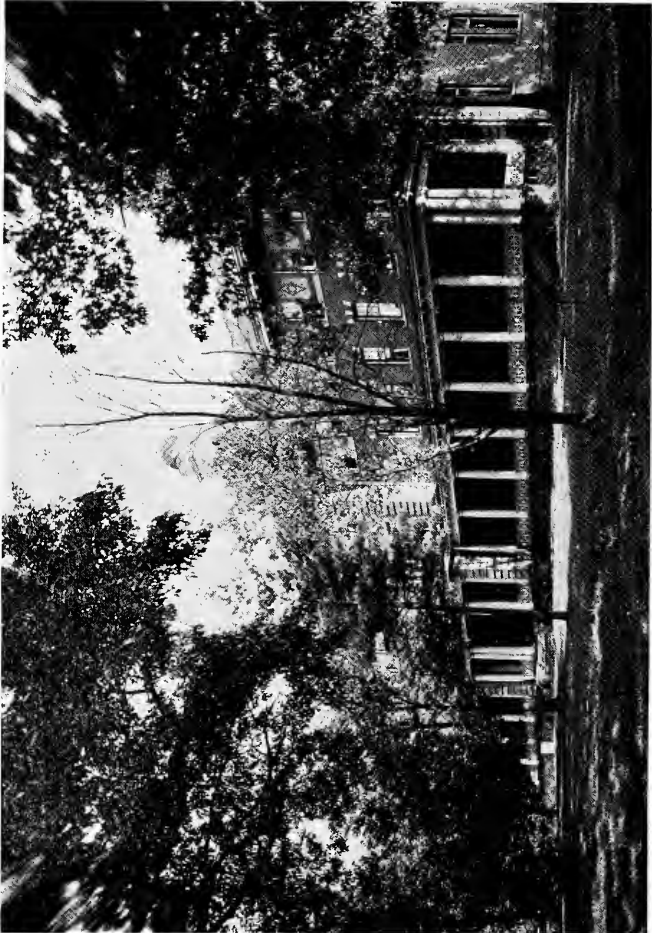


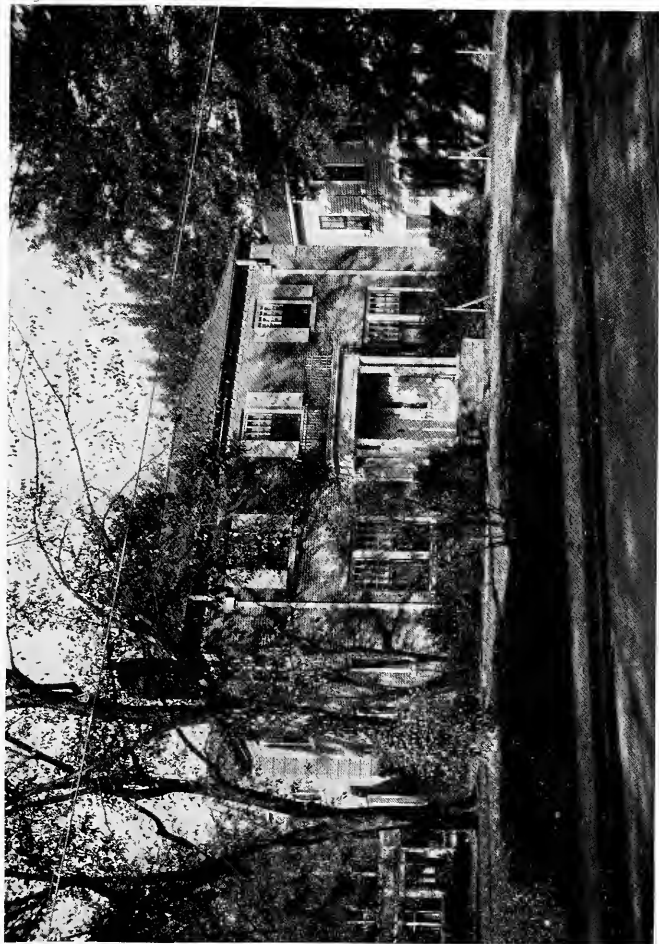
The College



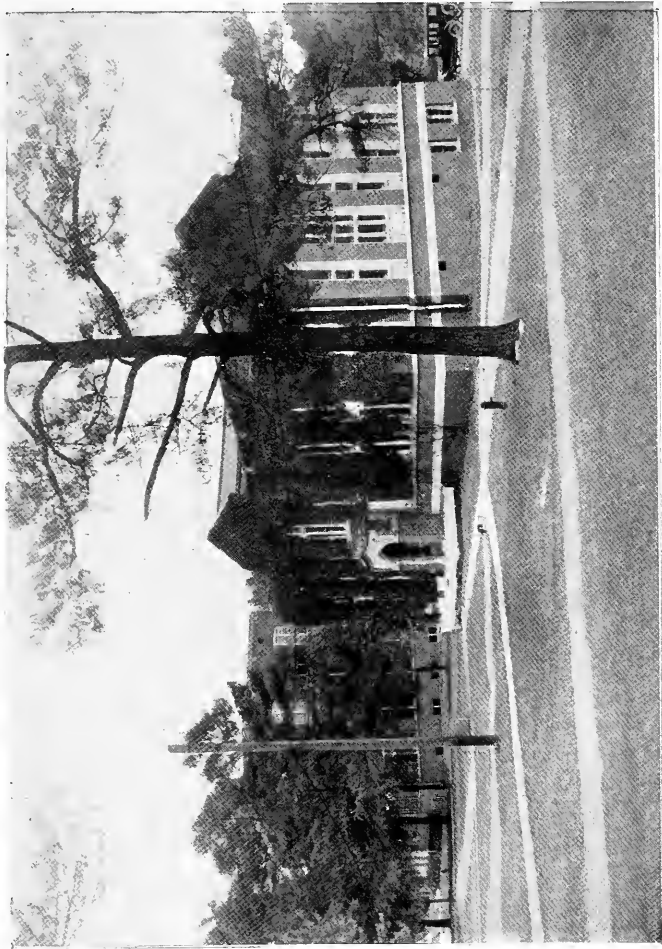




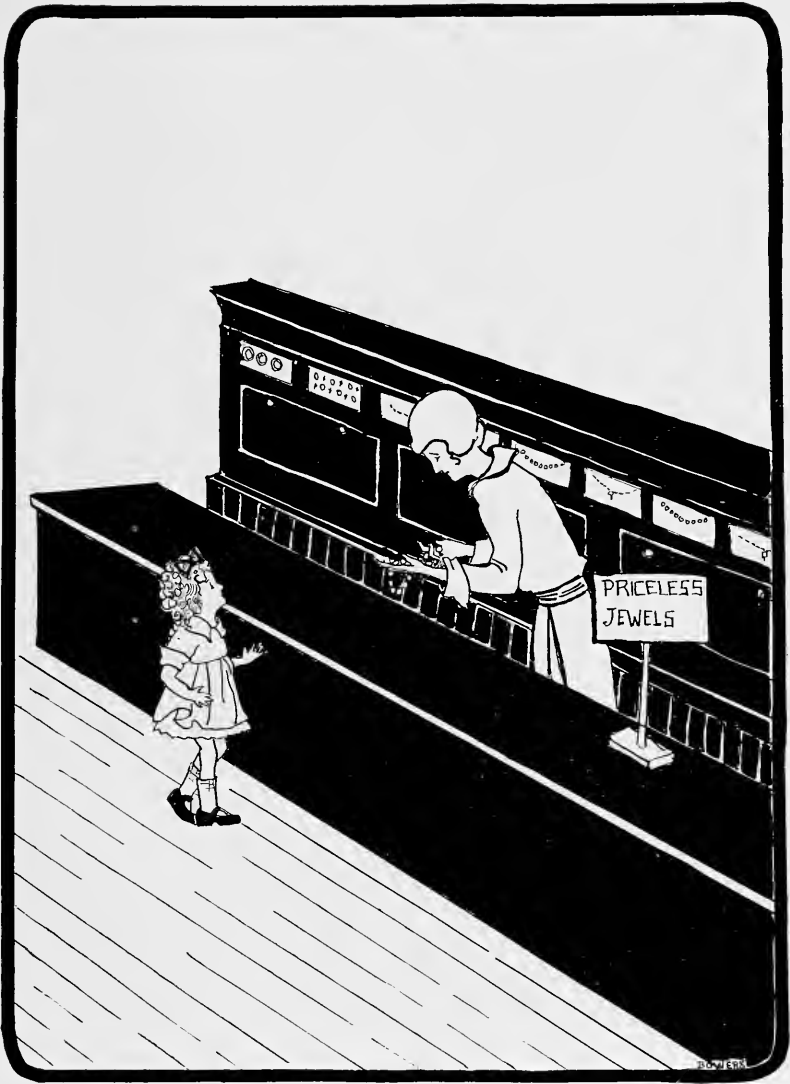












Faculty



DR. J. R. MCCAIN, PH.D.
President



MISS NANNETTE HOPKINS, Ph.D.
Dean

Board of Trustees

J. K. ORR, <i>Chairman</i>	Atlanta, Ga.
C. M. CANDLER	Decatur, Ga.
L. C. MANDEVILLE	Carrollton, Ga.
J. T. LUPTON	Chattanooga, Tenn.
W. C. VEREEN	Moultrie, Ga.
J. S. LYONS	Atlanta, Ga.
F. M. INMAN	Atlanta, Ga.
MRS. SAMUEL M. INMAN	Atlanta, Ga.
MRS. C. E. HARMAN	Atlanta, Ga.
MISS MARY WALLACE KIRK	Tuscumbia, Ala.
GEO. E. KING	Atlanta, Ga.
D. P. McGEACHY	Decatur, Ga.
R. O. FLINN	Atlanta, Ga.
B. R. LACY, JR.	Atlanta, Ga.
H. T. McINTOSH	Albany, Ga.
J. R. McCAIN	Decatur, Ga.
J. J. SCOTT	Decatur, Ga.
W. A. BELLINGRATH	Montgomery, Ala.
D. H. OGDEN	Mobile, Ala.
W. R. DOBYNS	Birmingham, Ala.
NEAL L. ANDERSON	Savannah, Ga.
MRS. HAROLD B. WEY	Atlanta, Ga.
G. SCOTT CANDLER	Decatur, Ga.
P. T. SHANKS	Selma, Ala.

Officers of Administration

J. R. McCAIN, A.M., Ph.D.
President

NANNETTE HOPKINS, Ph.D.
Dean

MARY FRANCES SWEET, M.D.
Resident Physician

R. B. CUNNINGHAM
Business Manager

J. C. TART
Treasurer

JENNIE E. SMITH
Secretary to the President

CARRIE SCANDRETT
Secretary to the Dean

S. GUERRY STUKES, B.D., A.M.
Registrar

JENNIE DUNBAR FINNELL
LENA DAVIES
Housekeepers

EMMA E. MILLER
FRANCES M. CALHOUN
Matrons

HARRIET V. DAUGHERTY
Resident Nurse

Officers of Instruction and Government

JAMES ROSS McCAIN, A.M., Ph.D.
University of Chicago, Columbia University
President

NANNETTE HOPKINS, Ph.D.
Dean

M. LOUISE MCKINNEY
Professor of English

LILLIAN S. SMITH, A.M., Ph.D.
Syracuse University, Cornell University
Professor of Latin and Greek

MARY FRANCES SWEET, M.D.
Syracuse University, New England Hospital, Boston
Professor of Hygiene

SAMUEL GUERRY STUKES, B.A., A.M., B.D.
Davidson College, Princeton University, Princeton Seminary
Professor of Philosophy and Education

ALMA SYDENSTRICKER, Ph.D.
Wooster University
Professor of English Bible

CLEO HEARON, Ph.D.
University of Chicago
Professor of History

ROBERT B. HOLT, A.B., M.S.
University of Wisconsin, University of Chicago
Professor of Chemistry

CHRISTIAN W. DIECKMANN, F.A.G.O.
Fellow of the American Guild of Organists
Professor of Music

MARY STUART MACDOUGALL, B.A., M.S., Ph.D.
Randolph-Macon Woman's College, University of Chicago, Columbia University
Professor of Biology

EMILY E. HOWSON, A.B., A.M.
Bryn Mawr College
Professor of Physics and Astronomy

ALICE LUCILE ALEXANDER, B.A., M.A.
Agnes Scott College, Columbia University
Professor of Romance Languages

WILLIAM WALTER RANKIN, JR., B.E., M.A.
A. and E. College of N. C., University of N. C.

JEAN SCOBIE DAVIS, B.A., M.A.
Bryn Mawr College, University of Wisconsin
Professor of Economics and Sociology

JOHN W. GOOD, A.B., PH.D.
Erskine College, University of Illinois
Professor of English

CATHERINE TORRANCE, M.A.
University of Chicago
Associate Professor of Latin and Greek

FRANCES K. GOOCH, PH.B., A.M.
University of Chicago, Boston School of Expression
Associate Professor of English

EMMA MAY LANEY, M.A.
Columbia University
Associate Professor of English

ISABEL F. RANDOLPH, B.A., B.S.
Barnard College, Teachers' College
Associate Professor of Physical Education

EDITH MURIEL HARN, PH.D.
Johns Hopkins University
Associate Professor of Romance Languages

LOUISE HALE, A.B., A.M.
Smith College, University of Chicago
Associate Professor of French

ELIZABETH F. JACKSON, A.B., PH.D.
Wellesley College, University of Pennsylvania
Associate Professor of History

EMILY S. DEXTER, B.A., PH.D.
Ripon College, University of Wisconsin
Associate Professor of Psychology and Education

AUGUSTA SKEEN, B.A., M.A.
Agnes Scott College, Emory University
Assistant Professor of Chemistry

MARY E. CAMPBELL, B.A., M.A.
Barnard College, Columbia University
Assistant Professor of Latin and Greek

MARGARET PHYTHIAN, B.A., M.A.
Agnes Scott College, University of Cincinnati
Assistant Professor of Romance Languages

*LESLIE J. GAYLORD, B.A., M.S.
Lake Erie College, University of Chicago
Assistant Professor of Mathematics

ANNIE MAY CHRISTIE, M.A.
Columbia University
Assistant Professor of English

NAN B. STEPHENS
Lecturer in Play Writing

GENEVIEVE C. WHITE, B.A.
Wesleyan College, Graduate Atlanta Library School
Librarian

MARGARET BLAND, B.A.
Agnes Scott College
Instructor in Romance Languages

LADY COMA COLE, B.A., M.A.
Duke University, University of Pennsylvania
Instructor in History

MARTHA STANSFIELD, B.A., M.A.
Agnes Scott College, University of Chicago
Instructor in Latin

*HARRIETTE HAYNES, B.A.
Randolph-Macon Woman's College
Instructor in Physical Education

RUTH JANETTE PIRKLE, B.A.
Agnes Scott College
Instructor in Biology

CATHERINE GAULT, Ph.B.
University of Chicago
Instructor in Spanish

HELEN EAGLESON, M.S., Ph.D.
University of Washington, Johns Hopkins University
Instructor in Psychology

* Absent on leave, 1925-1926.

RUTH LINEBERRY, B.A., M.A.
Meredith College, Columbia University
Acting Instructor in Mathematics

ADA S. WOOLFOLK
Secretary of Family Welfare Society, Atlanta
Acting Instructor in Sociology

ALICE GOODPASTURE
Graduate of Boston School of Gymnastics
Acting Instructor in Physical Education

PHILIPPA GILCHRIST, B.A.
Agnes Scott College
Assistant in Chemistry

CORA FRAZER MORTON, B.A.
Agnes Scott College
Assistant in Mathematics and Physics

ALICE E. BROWN, B.A.
Goucher College
Assistant in Biology

DAISY FRANCES SMITH, B.A.
Agnes Scott College
Assistant in English

CARRIE CURLE SINCLAIR
Graduate Virginia Intermont, Student Teachers' College
Assistant in Physical Education

LOUISE GARLAND LEWIS
University of Chicago, University of Paris, Art Institute, Chicago,
Academie Julian, Ecole Delacluse
Art and Art History

LEWIS H. JOHNSON
Graduate Pomona College of Music
New York Institute Musical Art
Student of William Nelson Burritt, New York
Student of Alexander Heinneman, Berlin
Student of Arthur J. Hubbard, Boston
Voice Culture

EDA ELIZABETH BARTHOLOMEW
Graduate Royal Conservatory of Leipsic
Piano

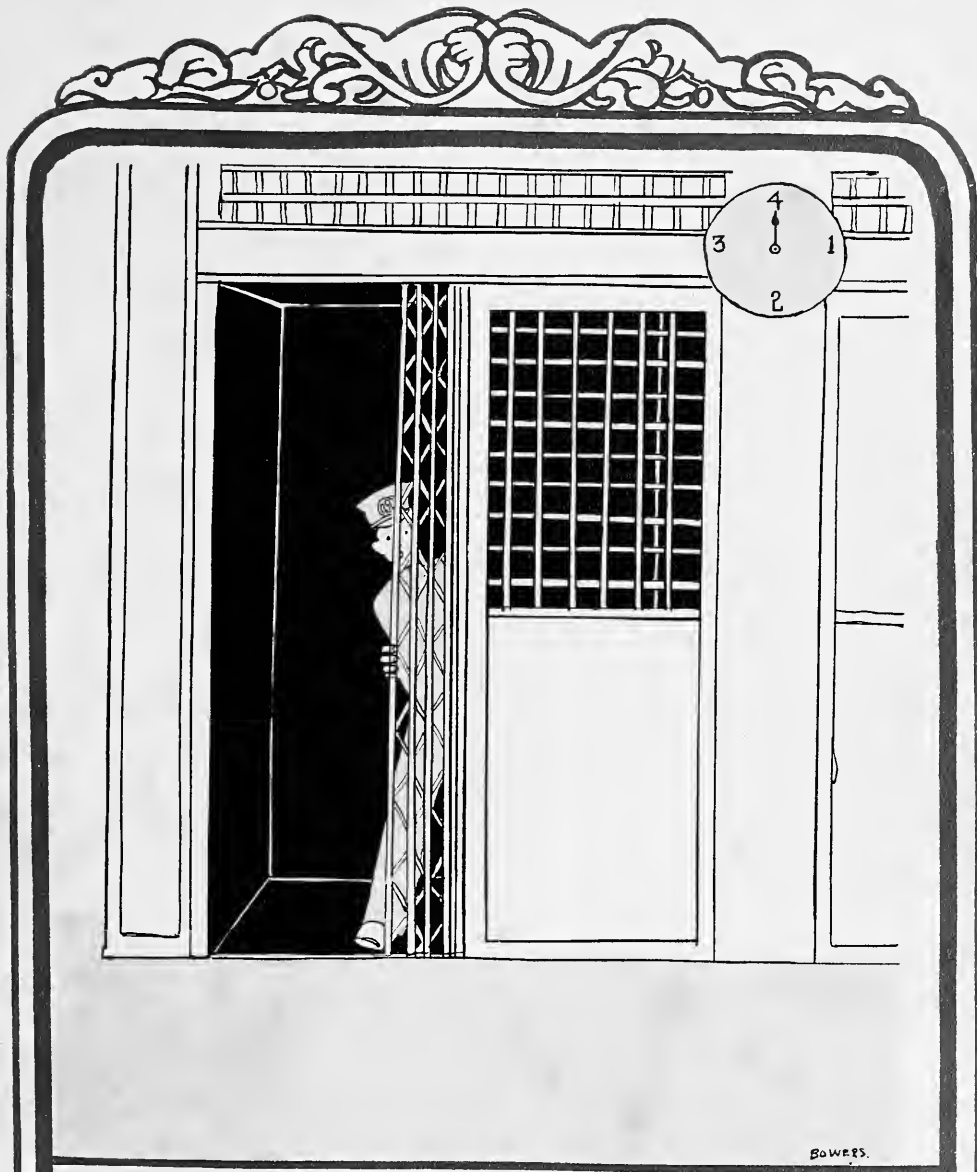
MARY OGLIVIE DOUGLAS
Graduate Mueller Violin School
Violin

Alma Mater

*When far from the reach of thy sheltering arms,
The band of thy daughters shall roam,
Still their hearts shall enshrine thee,
Thou crown of the South,
With the memory of youth that has flown.
Dear guide of our youth,
Whose spirit is truth,
The love of our girlhood is thine.
Alma Mater, whose name we revere and adore,
May thy strength and thy power ne'er decline.*

*Agnes Scott, when thy campus and halls rise to mind,
With the bright college scenes from our past,
Our regret is that those years can ne'er return more,
And we sigh that such joys can not last.
Wherever they are,
Thy daughters afar,
Shall bow at the sound of thy name,
And with reverence give thanks
For the standard that's thine,
And the noble ideal that's thine aim.*

*And when others beside us thy portals shall throng,
Think of us who have gone on before,
And the lesson that's graven deep into our hearts,
Thou shall grave on ten thousand and more.
Fair symbol of light,
The purple and white,
Which in purity adds to thy fame,
Knowledge shall be thy shield—
And thy fair coat-of-arms,
A record without blot or shame.*



The Classes



Senior



Senior Class

COLORS: *Red and White*

OFFICERS

- SARAH SMITH *President*
- MARY DUDLEY BROWN *Vice-President*
- EDYTHE CARPENTER *Secretary-Treasurer*

AGNES SCOTT COLLEGE
 DECATUR, GEORGIA
 IN ACCOUNT WITH



HELEN BATES
Atlanta, Georgia

Glee Club: Member, '22-'26; Bus. Mgr., '23-'24; Pres., '25-'26. Choral Society, '22-'26; Bible Club, '25-'26; French Club, '22-'24; Biology Club: '24-'26; Pres., '25-'26.

ELEANOR BERGER
Atlanta, Georgia

Agnesi Club, '23-'26; Bible Club, '24-'26; French Club, '25-'27.



VERA KAMPER

HERMENIA WEILL

AGNES SCOTT COLLEGE
DECATUR, GEORGIA
IN ACCOUNT WITH



LOUISE BENNETT
Atlanta, Georgia

Agnesi Club, '22-'24; French Club, '23-'24; Biology Club, '25-'26; Bible Club, '24-'26.



LOIS BOLLES
Atlanta, Georgia

Poetry Club, '25-'26; Bible Club, '23-'24; French Club, '22-'26; Biology Club, '25-'26.



CAROLYN ESSIG



ANNA KNIGHT

AGNES SCOTT COLLEGE
 DECATUR, GEORGIA
 IN ACCOUNT WITH



GRACE BOONE
Newnan, Georgia

Bible Club, '24-'26; Classical Club, '22-'26; Cotillion Club, '22-'26; Advertising Mgr. SILHOUETTE, '25-'26.



LEONE BOWERS
Birmingham, Alabama

SILHOUETTE Staff: Asst. Art Editor, '24-'25, Art Editor, '25-'26; Lecture Association, '23-'26; Orchestra, '23-'24; May Day Poster Com., '22-'25; Hockey: Class Team, '22-'26, Varsity Team, '24-'25; Basket-ball: Class Team, '22-'26; Baseball: Class Team, '22-'26, Class Mgr., '24-'25; Athletic Board, '26; Hoasc.



JANE SMALL

JACK McLELLON

AGNES SCOTT COLLEGE
 DECATUR, GEORGIA
 IN ACCOUNT WITH



MARY DUDLEY BROWN
Salisbury, North Carolina

Asst. Bus. Mgr. SILHOUETTE, '23-'24; Cotillion Club, '25-'26; Biology Club, '25-'26; Y. W. C. A.; Sec'y, '24-'25; Chairman Social Com., '25-'26; Senior Rep. Lecture Assoc., '26; Vice Pres. Class, '25-'26; Poetry Club, '25-'26.

VIRGINIA BROWNING
Wytheville, Virginia

Sec. and Treas. of Class '22-'23; International Relations Club, '24-'25; Hikers Club, '24-'26; Orchestra: Sec. and Treas., '24; Student Gov't Exec. Com.: Class Rep., '22-'25, Pres., '25-'26; Lecture Assoc., '25-'26; Sec'y College Council, '25-'26; Hoase.



BAYLISS McSHANE

LEONORA WEEMS

AGNES SCOTT COLLEGE
DECATUR, GEORGIA
IN ACCOUNT WITH



MARGARET BULL
Kunsan, Korea

Folio, '22-'23; Poetry Club: Member, '23-'26, Sec'y, '24-'25; Bible Club; Classical Club; Class Poet, '25-'26; Hockey: Class Team, '22-'26; Varsity Team, '23-'24.



ELIZABETH CALLEN
Selma, Alabama

Hikers Club, '22-'26; Bible Club; Agnesi Club; Cabinet Commission, '24-'25; Basketball: Sub. Class Team, '24-'26; Chairman Auditing Com., '25-'26.



NANNIE G. SANDERS

ELLEN STEVENS

AGNES SCOTT COLLEGE
 DECATUR, GEORGIA
 IN ACCOUNT WITH



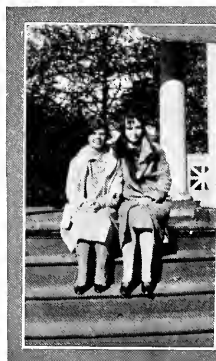
EDYTHE CARPENTER
Atlanta, Georgia

Class Sec. & Treas., '25-'26; Student Gov't Exec. Com.: Class Rep., '23-'24; Sec., '24-'25; Blackfriars, '23-'26; Cotillion Club, '22-'26; Pi Alpha Phi, '25-'26; Sec. and Treas. Lecture Assoc., '25-'26; Hockey: Captain Class Team, '23-'25; Varsity Team, '23-'24; Basket-Ball: Class Team, '25-'26; Baseball: Varsity, '22-'23; Athletic Board, '24-'25.



ELIZABETH CHAPMAN
Atlanta, Georgia

Pi Alpha Phi, '24-'26; K. U. B., '24-'26; Biology Club, '25-'26; Day Student Rep. of Student Gov't Exec. Com., '25-'26; Day Student Rep. College Council, '25-'26; Baseball: Team, '22-'26, Class Mgr., '25-'26, Varsity Team, '25-'26.



JULIA MULLIS



MARTHA RILEY

AGNES SCOTT COLLEGE
 DECATUR, GEORGIA
 IN ACCOUNT WITH



MRS. PILLAI CHAI

Bible Club, '24-'26; International Relations Club, '25-'26.

ISABELLE CLARKE
Atlanta, Georgia

Athletic Board; Orchestra Leader, '23-'24; Blackfriars, '23-'26; French Club; Pres. Day Students, '24-'25; Swimming Team, '25-'26; Class Historian, '25-'26; Phi Beta Kappa.



GRACE CHAY

K. & H. KALMON

AGNES SCOTT COLLEGE
 DECATUR, GEORGIA
 IN ACCOUNT WITH



VERNA CLARK
Arkadelphia, Arkansas

Glee Club, '22-'26; Bible Club, '24-'26;
 Hikers Club, '22-'23; Biology Club, '25-'26;
 Track Team, '23-'24.

LILLIAN CLEMENT
Decatur, Georgia

Glee Club, '22-'26; Orchestra, '22-'24;
 Classical Club; French Club.



GRACE BALL

DELLA STONE

AGNES SCOTT COLLEGE
DECATUR, GEORGIA
IN ACCOUNT WITH



EDYTHE COLEMAN
Atlanta, Georgia

Lecture Assoc. Class Rep., '22-'23; Pres.
Class, '23; Vice Pres. Class, '22-'24; Cotil-
lion Club, '22-'26; Bible Club.



MARY ELLEN COLYER
Jacksonville, Florida

Bible Club, '23-'25; Agnesi Club, '22-'26;
Biology Club, '25-'26.



GEORGIA WATSON



LILA PORCHER

AGNES SCOTT COLLEGE
DECATUR, GEORGIA
IN ACCOUNT WITH



FRANCES COOPER
Atlanta, Georgia

Bible Club; French Club, '22-'24; Cotillion Club, '25-'26; Pi Alpha Phi, '25-'26; Biology Club, '25-'26; Swimming Team, '25-'26; Class Testator, '25-'26.

CLARKIE DAVIS
Columbus, Georgia

Y. W. C. A. Cabinet Commission, '24-'25; Agonistic: Joke Editor, '24-'25; Cotillion Club, '25-'26; Classical Club: Vice Pres., '25-'26; Class Hockey Team, '22-'23; Class Baseball Team, '22-'23; Swimming Team, '25-'26.



EMILY COPE

GILBERTA KNIGHT

AGNES SCOTT COLLEGE
 DECATUR, GEORGIA
 IN ACCOUNT WITH



MARGARET DEBELE
Savannah, Georgia

Bible Club; International Relations Club,
 '25-'26; Lower House of Student Gov't,
 '24-'25; Fire Chief, '25-'26.

LOUISA DULS
Charlotte, North Carolina

Lower House, '25-'26; Agonistic: Re-
 porter, '22-'24, Alumnae Editor, '24-'25,
 Editor, '25-'26; K. U. B., '24-'25; Black-
 friars, '23-'26; Folio, '22-'23; Poetry Club,
 '22-'23; Lecture Assoc., '25-'26; Class
 Prophet, '25-'26; Hoasc.



MIRIAM ARRINGTON

MARY SHEPHERD

AGNES SCOTT COLLEGE
 DECATUR, GEORGIA
 IN ACCOUNT WITH



ELLEN FAIN

Hendersonville, North Carolina

Class: Sec. and Treas., '22-'23, President, '24; Student Gov't: Treas., '24-'25, 1st Vice Pres., '25-'26; SILHOUETTE Staff: Athletic Editor, '23-'24; Athletic Board, '23-'26; Hockey: Class Mgr., '23-'24, Varsity, '24-'25; Basket-ball: Class Capt., '24; Baseball; Class Team; Hoasc.

DORA FERRELL

LaGrange, Georgia

Aurora Staff: Advertising Mgr., '24-'25; Cotillion Club, '24-'26; International Relations Club, '25-'26; Bible Club, '24-'25; Classical Club, '23-'24; French Club, '23-'24.



MARY M. HOUGH

SARAH WHITE

AGNES SCOTT COLLEGE
 DECATUR, GEORGIA
 IN ACCOUNT WITH



MARY FREEMAN
College Park, Georgia

Agonistic Reporter; K. U. B.: Vice Pres., '24-'25; Glee Club, '23-'26, Stage Director, '25-'26; Cabinet Commission, '22-'23; Hikers Club; Classical Club, '23-'24; Blackfriars: Property Mgr., '23-'24, Vice Pres., '24-'26.

ELISE GAY
San Antonio, Texas

Bible Club, '24-'26; Sub Hockey Team, '22-'23; Swimming Team: Mgr., '25-'26; Fire Captain, '25-'26.



VIRGINIA SKEEN

EDITH BROWN

AGNES SCOTT COLLEGE
 DECATUR, GEORGIA
 IN ACCOUNT WITH



EDITH GILCHRIST
Courtland, Alabama

Cabinet Commission, '22-'24; Classical Club; Bible Club, '24-'25; Agnesi Club, '22-'26.

CATHERINE GRAEBER
Yazoo City, Mississippi

Student Gov't: Class Rep., '23; Blackfriars, '24-'26; Cotillion Club, '25-'26; Class Pres., '24-'25; Lecture Assoc.: Class Rep., '25, President, '25-'26; Pi Alpha Phi: Sec., '24-'25, Pres., '25-'26; Intercollegiate Debater, '24-'26; Hoasc: Sec. and Treas.



ELIZABETH COLE

ELOISE GAINES

AGNES SCOTT COLLEGE
DECATUR, GEORGIA
IN ACCOUNT WITH

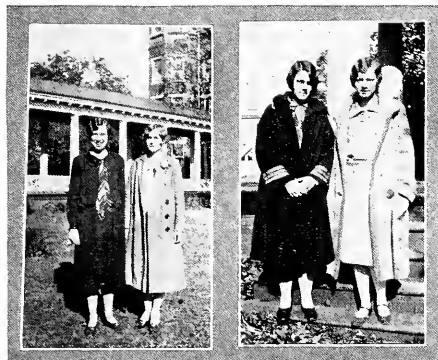


CARRIE GRAHAM
Norfolk, Virginia

Bible Club, '23-'25; French Club, '23-'25;
Poetry Club, '24-'26.

ELIZABETH GREGORY
Vienna, Georgia

Bible Club, '23-'26; International Relations Club, '24-'25.



MILDRED MORROW JOSEPHINE HOUSTON

AGNES SCOTT COLLEGE
 DECATUR, GEORGIA
 IN ACCOUNT WITH



GERTRUDE GREEN
Bradenton, Florida

Cotillion Club, '22-'26; Agnesi Club, '23-'25; Bible Club, '22-'24; Fire Captain, '24-'25; Hikers Club, '23-'24.

JUANITA GREER
Atlanta, Georgia

Day Student Treas., '24-'26; Glee Club, '25-'26; Agnesi Club, '24-'26; Bible Club, '25-'26; Biology Club, '25-'26; Phi Beta Kappa.



CAROLINA McCALL

CARA HINMAN

AGNES SCOTT COLLEGE
 DECATUR, GEORGIA
 IN ACCOUNT WITH



ELEANOR GRESHAM
Russellville, Alabama

Y. W. C. A. Cabinet Commission, '23-'24;
 Bible Club, '22-'25; Classical Club, '22-'25;
 Agnesi Club, '23-'26.



VIRGINIA GRIMES
Statesboro, Georgia

Bible Club, '23-'25; Classical Club, '23-'
 '26; French Club, '23-'24; Lower House of
 Student Gov't, '25-'26.



JEAN LEMONT



NELL HILLHOUSE

AGNES SCOTT COLLEGE
 DECATUR, GEORGIA
 IN ACCOUNT WITH



MARY ELLA HAMMOND
Griffin, Georgia

Orchestra, '22-'24; Bible Club; Agnesi Club; Vice Pres., '21-'25, Pres., '25-'26; Student Gov't: Class Rep., '25-'26.

GLADYS HARBAUGH
Winter Haven, Florida

International Relations Club, '24-'25; Classical Club, '22-'26; Agnesi Club, '23-'24; Biology Club, '24-'25; Bible Club, '24-'25; Fire Captain, '25-'26.



ELIZA RAMEY

VIRGINIA MILLER

AGNES SCOTT COLLEGE
 DECATUR, GEORGIA
 IN ACCOUNT WITH



ELOISE HARRIS
Ensley, Alabama

Agonistic Alumnae Editor, '24-'25; Bus. Mgr., '25-'26; K. U. B., '24-'25; Blackfriars, '24-'26; May Day Committee, '24-'25; Cotillion Club, '24-'26; Pi Alpha Phi; Member Debating Council, '25-'26, Intercollegiate Debater, '24-'26; French Club; Sec. and Treas., '26; Hikers Club, '24-'25; Hoase.



HELENA HERMANCE
Toronto, Ontario, Canada

Class Cheer Leader, '22-'26; Class Treasurer, '23-'24; Athletic Board, '23-'25; College Cheer Leader, '24-'25; Blackfriars, '22-'26; International Relations Club, '25; Student Gov't; Class Rep., '24-'25, and Vice Pres., '25-'26; Class Hockey Team, '22-'26; Hoase.



MARION HENRY

JOSEPHINE HUNTLEY

AGNES SCOTT COLLEGE
 DECATUR, GEORGIA
 IN ACCOUNT WITH



BLANCHE HASLAM
Piedmont, Alabama

Y. W. C. A. Cabinet Commission, '22-'24;
 Bible Club, '24-'25; French Club, '23-'24;
 Hikers Club, '23-'24; Class Baseball Team,
 '23-'24.



CHARLOTTE HIGGS
Charlestown, West Virginia

Agnesi Club, '22-'26; Bible Club; Classical Club; Hockey; Class Team, '22-'26,
 Varsity, '24.



ELEANOR BENNETT

HUDA DEMENT

AGNES SCOTT COLLEGE
 DECATUR, GEORGIA
 IN ACCOUNT WITH



VIRGINIA HOLLINGSWORTH
Dawson, Georgia

Folio, '23-'24; Associate Editor SILHOUETTE, '23-'25; Associate Editor *Aurora*, '25-'26; B. O. Z., '24-'26; Y. W. C. A. Cabinet; Day Student Rep., '25-'26.



HAZEL HUFF
Atlanta, Georgia

Glee Club, '23-'26; Bible Club, '24-'26; Agnesi Club, '23-'26.



EVELYN BARNETT



W. M. COLEMAN
 PATRICIA COLLINS

AGNES SCOTT COLLEGE
 DECATUR, GEORGIA
 IN ACCOUNT WITH



STERLING JOHNSON
Atlanta, Georgia

Y. W. C. A. Cabinet Commission, '24-'25; International Relations Club, '24-'25; Classical Club: Vice Pres., '24-'25; Vice Pres. Athletic Assoc., '25-'26; Hockey: Class Team, '22-'26, Varsity Team, '24-'25; Basket-ball: Class Team, '22-'26, Varsity Team, '25-'26.

EMILY JONES
Crescent City, Florida

Pi Alpha Phi, '23-'26; *Agonistic* Athletic Ed., '24-'25, Circulation Mgr., '25-'26; Bible Club, '23-'26; Classical Club, '25-'26; Hockey: Class Team, '22-'25; Class Track Team, '22-'24.



RUTH THOMAS

EMILY JONES

AGNES SCOTT COLLEGE
DECATUR, GEORGIA
IN ACCOUNT WITH



EVELYN KENNEDY
Statesboro, Georgia

Bible Club, '23-'25; Agnesi Club, '21-'26;
French Club, '23-'24; Sec'y Granddaughter's
Club, '25-'26.

MARY KNOX
Atlanta, Georgia

Agnesi Club, '23-'24; Day Student Pres.,
'25-'26; Bible Club, '25-'26; Biology Club,
'25-'26.



LOUISE SHERFESEE

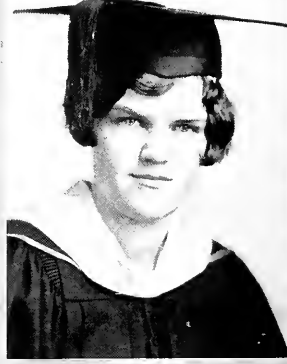
LOUISE GIRADEAU

AGNES SCOTT COLLEGE
 DECATUR, GEORGIA
 IN ACCOUNT WITH



RUTH LIGIN
Decatur, Georgia

K. U. B., '24-'26; Bible Club, '23-'25;
 International Relations Club, '24-'25; Pi
 Alpha Phi, '22-'26.



NAN LINGLE
Richmond, Virginia

Class Pres., '22-'23; Blackfriars, '23-'24;
 Pi Alpha Phi, '24-'26; Cotillion Club, '25-
 '26; Fire Captain, '24-'25; Editor of SIL-
 HOUETTE, '25-'26; Basket-ball: Class Team,
 '23-'26, Capt., '25-'26; Phi Beta Kappa.



ELIZABETH ROARK

ADAH KNIGHT

AGNES SCOTT COLLEGE
 DECATUR, GEORGIA
 IN ACCOUNT WITH



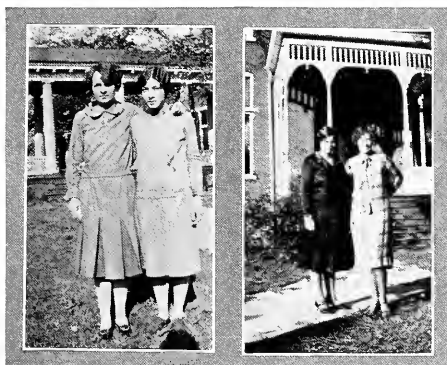
ELIZABETH LITTLE
Atlanta, Georgia

Cotillion Club: '22-'26, Pres., '24-'25;
 Bible Club, '24-'26; French Club, '23-'24;
 Ass't Bus. Mgt. *Aurora*, '23-'24; Fire Cap-
 tain, '25-'26; Hikers Club, '22-'23.



HELEN CLARK MARTIN
Charleston, South Carolina

Agnesi Club, '23-'24; Biology Club, '25-
 '26; Bible Club: Auditing Committee, '25-
 '26; Lower House Student Gov't, '25-'26;
 Circulation Mgr. *Aurora*, '25-'26; Recorder
 of Points, '25-'26.



AN AIS JONES

MARGARET RICE

AGNES SCOTT COLLEGE
DECATUR, GEORGIA
IN ACCOUNT WITH



CATHERINE MOCK
Thomasville, North Carolina

Agnesi Club, '22-'24; French Club, '23-'24; Bible Club, '24-'26.

ELIZABETH MOORE
Decatur, Georgia

French Club, '23-'24; Bible Club, '22-'26;
Hikers Club: Sec. and Treas., '24-'25;
Poetry Club, '25-'26; Blackfriars: '23-'26,
Property Mgr., '25-'26.



LOUISE THOMAS



EMILY KINGSBERY

AGNES SCOTT COLLEGE
 DECATUR, GEORGIA
 IN ACCOUNT WITH



FRANCES McCOLGAN
Norton, Virginia

Glee Club, '24-'26; Agnesi Club, '23-'24;
 Bible Club, '23-'25; Biology Club, '25-'26.



JOSEPHINE NORTH
Yazoo City, Mississippi

Lower House Student Gov't, '22-'23; Stu-
 dent Gov't; Class Rep., '25-'26; Interna-
 tional Relations Club, '24-'25; Bible Club,
 '24-'25; Member College Council, '25-'26.



NANCY CROWTHER



SARAH GLENN

AGNES SCOTT COLLEGE
 DECATUR, GEORGIA
 IN ACCOUNT WITH



GRACE AUGUSTA OGDEN
Mobile, Alabama

Sec'y Folio, '22-'23; B. O. Z., '23-'25,
 Pres., '25-'26; Lower House Student Gov't,
 '23-'24; *Aurora* Staff: Exchange Ed., '23-
 '24, Asst. Ed., '24-'25, Editor, '25-'26; Poetry
 Club: Vice Pres., '23-'24, Pres., '25-'26; Phi
 Beta Kappa.



DOROTHY OWEN
Springfield, Massachusetts

Y. W. C. A. Cabinet Commission, '22-
 '24; French Club, '23-'25; Classical Club,
 '23-'25; Hikers Club, '22-'26; Biology Club,
 '25-'26; Hockey: Class Team, '22-'26, Var-
 sity, '24-'25; Class Swimming Team, '25-'26.



MARY B. MCCONKEY GWENDOLYN MCKINNON

AGNES SCOTT COLLEGE
 DECATUR, GEORGIA
 IN ACCOUNT WITH



VIRGINIA OWEN
Springfield, Massachusetts

Y. W. C. A. Cabinet Commission, '22-'23; Glee Club, '23-'24; Agnesi Club, '23-'24; International Relations Club, '24-'25; Biology Club, '25-'26; Class Hockey Team, '22-'23.



VIRGINIA PEELER
Huntsville, Alabama

Y. W. C. A.: Ch'm Social Service Dep't, '24-'25, Pres., '25-'26; Lecture Assoc., '25-'26; Poetry Club, '25-'26; Cotillion Club, '23-'26; Biology Club, '25-'26; Hoase.



LUCY GRIER



JOSEPHINE WALKER

AGNES SCOTT COLLEGE
 DECATUR, GEORGIA
 IN ACCOUNT WITH



FLORENCE PERKINS
Atlanta, Georgia

Y. W. C. A. Cabinet Commission, '24-'26; Blackfriars; Property Mgr., '24-'25; Treas., '25-'26; May Day Committee, '25-'26; Bible Club, '24-'26; Biology Club, '25-'26; Hoasc.



LOUISE PFEIFFER
Brunswick, Georgia

Orchestra, '23-'24; French Club, '23-'24; Hikers Club, '22-'26; Bible Club; Agnesi Club, '22-'26.



ANNA M. MCCOLLUM



RUTH EPSTEIN

AGNES SCOTT COLLEGE
 DECATUR, GEORGIA
 IN ACCOUNT WITH



ADDIE PHARR
Decatur, Georgia

Bible Club, '24-'26; French Club, '22-'25;
 Hikers Club, '22-'26.

KATHRINE PITMAN
Huntsville, Alabama

Photographic Editor of SILHOUETTE, '25-'26;
 Agnesi Club, '23-'26; Bible Club, '24-'26;
 Classical Club, '23-'24; Y. W. C. A. Cabinet Commission, '22-'24.



LEILA MAY JONES MARY CUNNINGHAM

AGNES SCOTT COLLEGE
 DECATUR, GEORGIA
 IN ACCOUNT WITH



ALLENE RAMAGE
Mobile, Alabama

Classical Club, '22-'26; French Club, '23-'24; Bible Club, '23-'26; Ass't. Librarian, '25-'26; Sub Basket-ball Team, '24-'25.

ETHEL REDDING
Biloxi, Mississippi

Classical Club, '23-'25; Biology Club, '25-'26; Fire Captain, '25-'26; Class Hockey Team, '22-'26; Class Basket-ball Team, '22-'26, Capt., '24-'25, Mgr., '25-'26, Varsity Team, '22; Class Baseball Team, '22-'26; Track Team, '22-'24.



HORTENSE KING

HELEN DANIEL

AGNES SCOTT COLLEGE
 DECATUR, GEORGIA
 IN ACCOUNT WITH



NELLIE RICHARDSON
Hawkinsville, Georgia

Y. W. C. A. Cabinet Commission, '23-'24;
Agonistic Reporter, '24-'26; K. U. B., '24-
 '26; Bible Club, '23-'26; Hikers Club, '24-
 '25; French Club, '22-'23.

SUSAN SHADBURN
Decatur, Georgia

Granddaughters Club: President, '25-'26;
 Bible Club, '23-'25; Agnesi Club, '22-'26.



MABEL ROBSON

JULIA NAPIER

AGNES SCOTT COLLEGE
 DECATUR, GEORGIA
 IN ACCOUNT WITH



SARAH QUINN SLAUGHTER
Atlanta, Georgia

Poetry Club, '22-'23; Vice Pres. Class, '24-'25; Athletic Assoc. Lost and Found Store, '23-'24, Treas., '24-'25; Pres., '25-'26; Blackfriars, '23-'26; May Day Committee, '24-'25; Lecture Assoc., '25-'26; Class Hockey Team, '23-'26; Class Basket-ball Team, '23-'26, Mgr., '24-'25; Hoasc: Pres.



SARAH SMITH
Atlanta, Georgia

Classical Club, '22-'26; French Club, '22-'24; Bible Club: '22-'26, Sec. and Treas., '24-'26; Cotillion Club, '22-'26, Sec. and Treas., '23-'24; Asst. Bus. Mgr. *Agonistic*, '24-'25; Class President, '25-'26.



JACK ANDERSON



LOUISE SYDNOR

AGNES SCOTT COLLEGE
DECATUR, GEORGIA
IN ACCOUNT WITH



KATHERINE SPEIGHTS
Decatur, Georgia

Bible Club, '23-'25; Biology Club, '24-'26.



FRANCES SPRATLING
Atlanta, Georgia

Classical Club, '23-'26; Bible Club, '24-'26.



MARY SAYWOOD



DOROTHY SPRATT

AGNES SCOTT COLLEGE
 DECATUR, GEORGIA
 IN ACCOUNT WITH



EVELYN SPRINKLE
Marion, Virginia

Student Gov't: Lower House, '23-'24; 3d Vice Pres., '25-'26; International Relations Club, '24-'25; Bible Club, '23-'26; College Council, '25-'26; Pres. Virginia Club, '25-'26.



FANNIE SWANN
Ensley, Alabama

Agnesi Club, '25-'26; French Club, '22-'23; Bible Club; Class Hockey Team.



MARY PERKINSON

JEAN GARRETT

AGNES SCOTT COLLEGE
 DECATUR, GEORGIA
 IN ACCOUNT WITH



OLIVIA SWANN
Ensley, Alabama

Agonistic Staff: Y. W. Editor, '23-'24; K. U. B., '23-'25; Poetry Club, '23-'26; Class Sec'y and Treas., '24-'25; International Relations Club; Sec. and Treas., '24-'25; Pi Alpha Phi; Vice Pres., '24-'25, Debating Council, '25-'26; Student Treas., '25-'26; Class Hockey Team, '24-'26; Hikers Club, '24-'25.

MARGARET TUFTS
Banner Elk, North Carolina

Agonistic Reporter, '23-'25; K. U. B., '23-'25; Poetry Club, '22-'26; B. O. Z., '23-'26; Y. W. C. A. Treas., '24-'25, Vice Pres., '25-'26; Hoasc.



MARGARET KEITH

MARY JUNKIN

AGNES SCOTT COLLEGE
 DECATUR, GEORGIA
 IN ACCOUNT WITH



LADIE SUE WALLACE
Rutledge, Georgia

Bible Club, '23-'25; Hikers Club; Agnesi Club; '23-'26, Vice Pres., '25-'26; Auditing Committee, '25-'26; Sub Basket-ball Team, '24-'26; Track Team, '23-'24.

MARGARET WHITTINGTON
Atlanta, Georgia

Bible Club, '25-'26; Biology Club, '25-'26, Pres. Chemistry Club; Phi Beta Kappa.



LILLIAN WHITE

EDNA VOLBERG

AGNES SCOTT COLLEGE
 DECATUR, GEORGIA
 IN ACCOUNT WITH



VIRGINIA WING
Atlanta, Georgia

Y. W. C. A. Cabinet Commission, '22-'23;
 Bible Club, '23-'24; French Club, '23-'26;
 Hikers Club, '22-'24; Poetry Club, '25-'26;
 Class Baseball Team, '23-'24.

ROSALIE WOOTEN
Atlanta, Georgia

Glee Club, '24-'26; Agnesi Club, '25-'26;
 Bible Club, '25-'26.



MARY CRENSHAW

ELIZABETH WILLIAMS

AGNES SCOTT COLLEGE
DECATUR, GEORGIA
IN ACCOUNT WITH



MARY ELLA ZELLARS
Grantville, Georgia

Cabinet Commission, '23-'24; Agnesi Club,
'23-'26; Bible Club, '24-'26; Class Hockey
Team, '22-'26; Class Baseball, '22-'24;
Hikers Club, '22-'23.



LILLIAN LECONTE



ELIZABETH LAMBETH RANKIN *Class Mascot*
MISS ISABEL RANDOLPH } *Faculty Members*
MISS LOUISE HAILE }

Senior Class History

ONCE upon a time there assembled at the Castle of Agnes Scott two hundred and two lovely young princesses. Their mothers and fathers sent them to this far-away kingdom in order that they might learn to improve their own realms.

Now at first the poor little princesses were rather disheartened, for in the palace were some naughty little Sprites, the Sophomores, who were so jealous of the princesses' lovely hair that they braided it in tight little pigtailed and tied each one with a horrid shade of green ribbon. And, moreover, they spitefully tinted the clear ivory of the princesses' noses a bright scarlet. Soon, however, the guardians of the castle graciously said to all the newcomers: "We will give you four bunches of keys—one for each year that you will stay with us. Around you there are many doors and for each one there is a key. One day, perhaps, you will open the best door of all, and then a wonderful thing will happen. Until then, use the keys wisely, for each unlocks a precious secret."

Happily the princesses scampered away. They drew forth the first bunch of keys and opened a door. To the excited princesses was revealed a "Brainy Discovery," and it was, in truth, a remarkable sight, for after watching curiously all that passes within a Freshman's mind, they closed the door, but not before a Big, Black Cat which had been watching the proceedings leaped into their arms and purred, "I'm yours, and I'm glad your Discovery was so fine, for you are lots jollier than those dwarfs, the Sophomores."

The next year was filled with adventures for the princesses. One key brought to them the delights of another stunt night. Through this open door they beheld some of their own classmates peering at them from behind prison walls. Since they sang quite merrily although they were "Sitting on the Inside, Looking on the Outside," and presented such a mirthful sketch, the Big Black Cat purred quite contentedly in their midst and refused to leave them for another whole year! Another door was unlocked and the Land of Sophomore Sisters lay before them with many hours of parties, teas and happy hours of companionship. There were so many delights here that many of the princesses refused to leave until the next year brought still other keys to lure them on.

There were now two bunches of keys that were quite unused, so early the next fall, the princesses began a new tour of the Castle. Once, hearing the far-off splash of water, they eagerly opened a door that led to the new, partly-finished tower of the Castle. The tower had a beautiful name, Gymnasium, and the princesses were delighted to find that their key was the first which procured entrance to this mysterious place. Once inside they had a glimpse of a wonderful pool of crystal clear water gleaming white in the sunlight. They clapped their hands gleefully and tried to reach the pool, but a transparent, yet impassable partition held them back. Quite disappointed, they decided that the pool was only a mirage, but just then a shower of small bits of paper descended upon them. They picked them up eagerly and saw that they were marked "Pledges." After gathering them up by the handful, they took them to the guardians of the Castle who, having shown them how to fill them out, took the small slips and put them carefully away. As a reward for finding the magic Pledges, they gave the princesses a wonderful holiday and promised them that they would soon see the beautiful pool. The princesses were very happy.

Some months later, in the Spring, another gleaming key turned in a lock and the princesses found themselves in the "Land of Heart's Desire" for one beautiful evening. They were quite sad when the banquet was over and they had to leave the moonlit terrace, for soon after their older companions bade them farewell and left the Castle forever.

At last there was only one bunch of keys left—the largest of them all. Before the maidens had had an opportunity to explore further the Castle, the guardians came to them and said, "We have two keys to add to your last bunch. The first is this Phi Beta Kappa key. You must search diligently for the door it unlocks, for only a few may enter where it leads. The princesses took the key with great reverence, and throughout the year sought for the Door of Scholastic Achievement. The other key presented by the guardians delighted the princesses for it led them to the long-dreamed of shining pool in the new tower. How they rejoiced! They felt as though this key had really worked magic.

There was also a very small key which was found to open a small door that no one had noticed. Inside the princesses found all the little dresses and toys that they had not seen for many, many years. Joyously they put the dresses on and for a whole day they played just as little girls behind this door of Little Girl Land. The next morning they awoke early and quietly unlocked a dark, paneled door that seemed to protect traditions of years past. Beyond the worn sill was the Land of Investiture from which the princesses returned wearing long, black robes and small caps with rhythmically swaying tassels. And a few hours later each princess found a lovely ring on one of her fingers. The other maidens who had just come to the Castle thought the princesses very impressive on that day.

In February the princesses walked in a charming old-fashioned door and reappeared completely disguised as colonial dames and gentlemen. With the stately minuet they celebrated the birthday of the illustrious founder of the Castle and also that of the famous warrior who had long ago driven the enemy out of their country.

At last, with a feeling in which delight and regret were mingled, the princesses realized that only one key remained. It was the largest and most beautiful of all. They had a great deal of difficulty in finding the door to which it belonged, but finally, when the haze caused by Final Exams had disappeared, they opened the Portal of Graduation. Within they found many pleasant by-paths: one led to the Junior-Senior Banquet, one to breakfasts and teas. All were inviting enough to cause the Princesses to want to linger, but the central walk could not be longer ignored, so eagerly, yet somewhat sadly they made their way down the long aisle. There were fewer princesses now, for some had found keys on the bunches unnoticed by the others and had opened the doors of Matrimony, Business, or Other Activities. But seventy-nine princesses came to the end of the walk, and to these the guardians of the Castle said, "So faithfully have you used your keys that all the doors of the Castle have responded to your touch. We would not have you go forth empty-handed. Therefore we give you this, the last key of all." Then each princess received a long, white key, cylindrical in shape, and hiding the Castle farewell, opened the door of Life.

And they lived happily ever after.

ISABELLE CLARKE, *Class Historian*.

Last Will and Testament
of the
Senior Class

DECATUR, GEORGIA,
DEKALB COUNTY.

WE, the graduating class of Agnes Scott College, of the year nineteen hundred and twenty-six, of said county, being of sound and disposing mind and memory, do make, declare and publish this as our last will and testament, hereby revoking and annulling any and all other or former wills or testaments that may have been heretofore made by us.

Item I. We, the Senior class, do bequeath to our beloved sister class the custom of having Fashion Shows, with the request that the counters of the votes shall use discretion in addition, in order to avoid serious complications.

Item II. I, Helen Bates, do leave my collection of A. T. O. ornaments to Mary Martha Lybrook and Louisa Kockitzky to be worn in their roles of Daisy Meadows and Rose Gardner until they shall acquire others of their own.

Item III. I, Eleanor Berger, do bequeath my trustful brown eyes to Peggy E. Neel, with the reminder that they are patent and should be used sparingly.

Item IV. I, Louise Bennett, do will my stentorian voice to Ruth McDonald.

Item V. I, Lois Bolles, do will my extremely attractive smile to Ethel Littlefield, empowering her to use same as often as desired.

Item VI. I, Grace Boone, do bequeath my regular attendance at Grant Field during football season to Ruth McMillan—having heard that she has never seen a football game.

Item VII. I, Leone Bowers, do leave my place on the poster committee to Katharine Pasco, in order that she may develop her genius thereby.

Item VIII. I, Mary Dudley Brown, do will my delight in my reputation of indifference to Emily Kingsbery.

Item IX. I, Virginia Browning, do bequeath my position in Exec to the student body to dispose of as they see fit. I am reluctant to force it upon any one girl.

Item X. I, Margaret Bull, do leave my poetic nature to Bayliss McShane, to be expressed in a rhyming dictionary.

Item XI. I, Elizabeth Callen, do will to Sarah Robinson my violent temper and my business-like air.

Item XII. I, Edythe Carpenter, do will, bequeath and give my study jacket to

Middy Morrow, feeling confident that in the future I shall not be called upon to do such strenuous mental work as to need it, and feeling equally confident that she will treat gently the dainty garment.

Item XIII. I, Isabelle Clarke, do will my masculine roles in Blackfriars to Mary Primm.

Item XIV. I, Lillian Clement, do will my silvery giggle to Holly Smith.

Item XV. I, Edythe Coleman, do will my six Buicks to Cara Hinman, with the one request that she shall not paint them all blue.

Item XVI. I, Mary Ellen Colyer, do will my finesse in bluffing my way through all courses and my fund of indefinite answers to Ewin Baldwin.

Item XVII. I, Frances Cooper, do will my active interest in Agnes Scott Y. W. work, which was willed to me by Mary P. Brown, to Cephise Cartwright.

Item XVIII. I, Clarkie Davis, do bequeath my sublime enthusiasm and my two favorite epithets "shug" and "hon" to Charlotte Bell.

Item XIX. We, Margaret Debele, and Edith Gilchrist, do bequeath our care of the Senior iron to Virginia Sevier and Louise Leonard.

Item XX. I, Louisa Duls, do leave my cluster of back curls to Mary Ray Dobbys, with the admonition to guard it well. My mental strength like Sampson's physical prowess, lies in my looks.

Item XXI. I, Ellen Fain, do bequeath my first place in the favor of Miss Hopkins, with the title bestowed on me as "Little Captain" to Mary Mackey Hough.

Item XXII. I, Dora Ferrell, do will my unprecedented popularity at summer school to Adah Knight, hoping she will derive much pleasure therefrom.

Item XXIII. I, Mary Freeman, do leave my interpretative dancing to Emily Cope.

Item XXIV. I, Elise Gay, of aquatic fame, do will my position as manager of the Senior swimming team to Catherine Mitchell.

Item XXV. I, Catherine Graeber, do bequeath my sarcasm and rapid flow of language to Cha Hei, who needs them both.

Item XXVI. I, Carrie Graham, do hand down to all the literary students of Agnes Scott my special brand of hand-writing with the guarantee that the publishers, not being able to read it, will print it as modern thought.

Item XXVII. I, Elizabeth Gregory, do bequeath my frivolity to Olive Spencer—"all work and no play makes Jill a dull Girl."

Item XXVIII. I, Elizabeth Chapman, do will my six curls to Miss McDougal, feeling sure that they will be attractive for a Raggedy Anne bob.

Item XXIX. I, Gertrude Green, do hand down to Georgia Watson my pull with the gym department. This is an heirloom, having been cherished before me by Dell Bernhart and Margaret Rogers.

Item XXX. I, Juanita Greer, do will the bed I have occupied so continually in the infirmary to Louisa White. It is very comfortable.

Item XXXI. I, Eleanor Gresham, do bequeath my position as Captain of Senior baseball team to Evalyn Powell. I have labored long; do thou likewise.

Item XXXII. I, Virginia Grimes, do will my place as apple of Miss Lillian Smith's eye to Lamar Lowe, together with my seat in the Latin room.

Item XXXIII. I, Mary Ella Hammond, do will my brother to the underclassmen, to be entertained and protected by them in my absence for the next two years.

Item XXXIV. I, Eloise Harris, do bequeath my all-roundness to Helen Lewis; my debating cards to Virginia Carrier.

Item XXXV. I, Helena Hermance, do will my one blond curl to Leila Bell, to match the one she wears in the back.

Item XXXVI. I, Blanche Haslam, do bequeath my Spanish blonde type of beauty to Lib Clarke, hoping that it will get her elected Fashion Queen next year.

Item XXXVII. I, Charlotte Higgs, do will my red flannel dress to Kitty Martin, hoping it will make as good college material of her as it has of me.

Item XXXVIII. I, Florence Perkins, do leave to Marcia Green my neat trash-basket. My assinine properties in "Midsummer Night's Dream" I bequeath to Frances Freeborn, to be used when it doesn't rain.

Item XXXIX. I, Louise Pfeiffer, do hand down my front seat in every Psychology class to Mary Weems. It carries a great drag with it.

Item XL. I, Kathrine Pitman, do leave a fund to Helen Clarke Martin to buy a quart of milk every day to drink before retiring.

Item XLI. I, Alleen Ramage, do hand down to my beloved friend, Lila Porcher, my gold watch clasp to be worn nearest the heart.

Item XLII. I, Ethel Redding, do will my position as jumping center to Alice Weichelbaum.

Item XLIII. I, Nellie Richardson, do bequeath my green eyeshade to Ellen Douglass Leyburn, that she may see clearly her way to justice.

Item XLIV. I, Sarah Slaughter, do hand down to Dade Warfield my rosy faculty glow complexion during basket-ball games.

Item XLV. I, Sarah Smith, do bequeath my place in the receiving line at Mrs. Sydenstricker's functions to Mae Erskine Irvine.

Item XLVI. I, Susan Shadburn, do will my ability to cut my own hair in Raggedy Anne fashion to Janet McDonald. The business could be easily commercialized, and I will pose as a model.

Item XLVII. I, Katherine Speights, will my overbearing personality to Anna Mae McCollum.

Item XLVIII. I, Frances Spratling do will a fund for weiners in Decatur at lunch time to Anne Todd. "A weiner a day keeps starvation away."

Item XLIX. I, Evelyn Sprinkle, do leave my eager interest in all campus activities and my willing helpfulness to Elsa Jacobsen.

Item L. I, Olivia Swann, do will my pearls, meshbag and barpin to Dorothy Coleman. They have nothing more than sentimental value to me, and she might be able to derive other value from them.

Item LI. I, Margaret Tufts, do hand down a cargo supply of original ideas for stories and poems to Caroline McKinney to provide subjects in required English courses.

Item LII. I, Ladie Sue Wallace, do leave to Catherine Mitchell my large supply of Florida clothes in case she should make another trip there next year.

Item LIII. I, Margaret Whittington, do leave my artistic combination of colors to Jane Gray. Pink cheeks and orange hair are the latest cry from Paris.

Item LIV. I, Virginia Wing, do desire to leave to Mary Riviere my pearl earrings. They are in excellent condition, not having been worn for two years.

Item LV. I, Little Wooten, do leave my old-fashioned roles and my costumes of Betsy Ross to Lucile Seay. I have found no other girl so suited to them.

Item LVI. I, Mellie Zellars, do will to Roberta Winter my rapid, clipt speech, my military carriage and business-like air. They are to fool the public.

Item LVII. I, Gladys Harbough, do will my Florida passion for subdivisions to Helen Fox, who has never seen one.

Item LVIII. I, Hazel Huff, do bequeath my correct back, and face-submerged floating position to Willie May Coleman.

Item LIX. I, Sterling Johnson, do leave my weak constitution to Eleanore Albright. My double major I desire to be destroyed—no girl should have one.

Item LX. I, Evelyn Kennedy, do will my parking space on "Lovers Lane" to Lelia Joiner, with a minimum budget for living in Washington.

Item LXI. I, Mary Knox, do leave the teaching of evolution to someone who will teach in a more civilized state than Georgia.

Item LXII. I, Nan Lingle, do bequeath to Hortense Elton all my original steps of the Charleston—my sense of humor and Phi Beta Kappa mind to Ruth De-Wandalaer.

Item LXIII. I, Elizabeth Little, do will to Lib Norfleet a fund to keep the faculty supplied with flowers. It's a great weight off of the mind during exams.

Item LXIV. I, Catherine Mock, do will my plaid sport coat to Ida Landau.

Item LXV. I, Elizabeth Moore, do bequeath to Georgia Field my space on the date pad. It is very convenient if one spends much time on the campus.

Item LXVI. I, Frances McColgan, do pass down my ability to take every course in college to Bee Keith, and my love of scandal to Nancy Crowther.

Item LXXVII. I, Josephine North, do will my legal mind to Eliza Ramey—truly Portia did no more than I empower you to do.

Item LXXVIII. I, Grace Augusta Ogden, do will my lover in China to Sarah Shields. He's far away but she will enjoy having him, especially in the total absence of nearer admirers.

Item LXXIX. I, Dorothy Owen, do will to Eloise Gaines the left front chair in the French room, with the earnest desire that she start an endowment fund for a cushion to soften it.

Item LXXX. I, Virginia Peeler, do cheerfully will my Y. W. work to Lesa Holifield.

Item LXXXI. I, Mrs. Pilly Chai, do bequeath my soft oriental voice to all the students so they will not disturb the residents of Candler Street.

Item LXXXII. I, Addie Pharr, do will my variety of facial expressions to Caroline McCall. She will never have wrinkles.

Item LXXXIII. I, Ruth Liggin, do leave my refreshing sense of humor to Frances Buchanan, to give her a chance to use her captivating smile.

Item LXXXIV. I, Emily Jones, do will my perfect swan dive to Sarah Southerland. May she reach the heights that I have.

Item LXXXV. I, Virginia Hollingsworth, do bequeath to Mary Davis all the knowledge I have gained in my various English courses. I find that French would have been more valuable.

Item LXXXVI. I, Virginia Owen, do hand down my thriving business in second-hand books to the Ramage sisters, suggesting that if the income become too large it be used to restock the campus with squirrels.

Item LXXXVII. I, Fannie Swann, do bequeath my role as Benjamin Franklin to Rachael Henderlite, hoping that she will fill the role as well.

We hereby constitute and appoint Eleanor Lambeth Rankin executor of this last will and testament. I hereby expressly relieve her of necessity of giving hand or making any returns to the court of ordinary or any other court.

Signed, sealed and published by the Senior class as and for its last will and testament in the presence of us, the subscribing witnesses who sign the same at his instance and request and in his presence and in the presence of each other, he signing in our presence and we signing in his presence.

FRANCES COOPER, *Testator.*

WITNESSES:

SARAH FALCONER SMITH,
MARY RUTH McMILLAN.

Senior Class Prophecy

“**F**ORTY-EIGHT HOURS,” the editor of the Sunday American said to me. “In that time you must find all the sensational news there is among women—in America and abroad. I must have a large public, and the only way to get one is by sensationalism. Go; if you fail, you’re fired; if you succeed, you are raised.”

I walked out of the office in a trance. “All the sensational news about women.” How in the world could I find it. Then suddenly a bright idea flashed on my mind: if there was anything sensational going on, in the very heart of it would be those dear old Agnes Scott girls of the class of 1926, with whom I had graduated just ten years before. Of course I’d go straight to Dr. McCain, and ask him what they were doing. Without any further delay, I boarded a Decatur street car. The conductor was a young girl, and I thought her face looked slightly familiar. Who should it turn out to be but Grace Boone. She explained that she had been to town on that old car so many times during her college days that she had become quite fond of it, and hadn’t been able to leave it. Of course Gertrude Green was running the trailer for the same reason.

On arriving at Agnes Scott, I was warmly greeted by Dr. McCain. But his face fell when I told him my mission. He explained that most of our class had led such erratic, hectic lives, and had changed careers so often that he really hadn’t been able to keep up with their doings. A small number of them, however, had remained at the college or in Atlanta. Of those he could tell me, and of the others he could at least give me the addresses. In the course of a few minutes conversation, I learned that Fannie Swann and Mellie Zellars were sacrificing their lives to bringing more social life to their Alma Mater. Every Wednesday evening they gave a vaudeville performance on the gymnasium stage.

Nan Lingle was still living in her room on third floor Rebekah, and whoever listened at her keyhole might hear her say now and then, “Not gonna have my picture taken; not gonna.” It seems that on the day of her graduation, a representative from the Journal had come out to take a picture of the Senior Class. True to her modest nature, Nan refused to have her picture taken, and shut herself in her room. The Journal man still insists, and therefore Nan leaves her room seldom, and then furtively and by night.

Gladys Harbaugh was taking the part of Infirmary nurse while Miss Daugherty was away on leave. Gladys would not have anybody in the Infirmary unless the applicant proved herself sick by fainting.

Edythe Coleman was still living in Atlanta. Ever since her graduation ten years before, she had been busily occupied in typing refusals to the proposals of the young men who had offered their hands in one continual stream since Edythe had made public her belief that a couple truly in love could live on fifty dollars a month.

Charlotte Higgs was clerking in a music store of Atlanta. Music had won her

soul back in college days when a certain victrola on third floor Main was never quiet.

The only woman player on Atlanta's baseball team, known over the South was Elizabeth Chapman.

It fell to Carrie Graham's lot, poor thing, to choose a husband, a wealthy Atlanta banker. Carrie, it was said, talked to her husband unceasingly in her efforts to persuade him that women are not loquacious.

As Dr. McCain could tell me no more, I, at once continued my journey in search of the girls whose addresses he had given me. As I must go all the way from Georgia to New England, it was necessary to hire an aeroplane. I did. Our first stop was in Washington, D. C. There I found Sarah Smith, Chairman of the Senate. Just as I walked into the Congressional Hall, Chairman Smith was proposing a gay cabaret for the Senators, just to break the monotony of things. I could hear her familiar voice, "Do you want to vote?" (characteristically trilling the vote.) When the affirmative had carried, Sarah appealed to the Senators to bring many friends from Washington or outside of Washington, in fact, people from anywhere.

Frisky Cooper was getting a high salary from the Supreme Court. Whenever the jury, though forbidden to have emotions, was, in spite of itself, reduced to tears at sad predicaments, the judge called Frisky in to cheer the old fellows up with her witty remarks.

The Dexterian Psychological Association, with headquarters in the capital city, had been founded by Miss Isabel Clarke. The scientists of this group were very liberal, most of their pamphlets beginning with some such concessory expression as, "It doesn't make any difference," or "On the whole," or "It isn't certain, but probably," etc.

It happened that a large circus was performing in town at that time. What was my surprise to see Peg Debele and Verna Clark in adorable pink tights, bare-back riding. From them I learned that Ethel Redding was also a bare-back rider in that circus, but a day or so before, while practicing, she had completely lost her temper because Peg's and Verna's horses were prettier than her own, and consequently, had fallen off her horse. She was in the hospital with a broken arm.

On the streets of Washington, the most stylish conveyance was a car, named the "Cloud," which never went more than five miles an hour, was covered inside and out with grayish white fur, and gave the appearance of a young mist floating down the street. It was invented by a certain Elizabeth Little, who noticing a cloud lazily float across a summer sky, had thought how unique it would be to reproduce on earth the movement and appearance of a cloud.

One other of my old classmates, Mary Dudley Brown, had taken her abode in Washington. Dud, unfortunately, had long ago lost her mind in trying to reconcile Carlyle's theory of action with that of reflection. Her room in the asylum was furnished entirely in blue. The keepers had done so to satisfy a whim of hers. There

was a little poem on her wall "Everything that Blue Is," signed with the initials "M. D. B."

On my way from Washington to New York, I stopped at quite a few towns where '26 girls lived, and added materially to my store of sensational news. Jinks Peeler's, Olivia Swann's and Margaret Tufts' hearts had been filled with sympathy for the laboring classes; so they had given a two-weeks vacation to all the laborers in a medium-sized coal mine, and were undertaking to do all the work themselves. "My, what a splendid news article that would make."

Scarcely had I left the coal mines, when I saw Elizabeth Moore dressed in a white riding costume, gallop up. Lib had been a master of horsemanship ever since she learned to "come a-lopin' down the road," in a Blackfriar play. She reined in her horse, and had much news to tell me about our girls. Joe North and Evelyn Sprinkle, professional strike leaders, had just arrived in a nearby town, where they were to instigate a strike of the stenographers against the prohibition of chewing gum. The woman responsible for the movement against chewing gum was Miss Dorothy Owen, teacher of the art of makeup in the Ramage-Richardson select school for morons.

As our plane was about to ascend for a last stretch to New York, I noticed the tent of a Red Path Chataqua. "Somebody interesting might be there," so in I went.

Sure enough, Catherine Graeber and Eloise Harris were on the program for lectures, the former for a talk on "Great Speakers I Have Met"; the latter, for one called "It Pays to Advertise." I stayed, and enjoyed the speeches immensely, but I noticed one peculiar thing: both speakers ended with the somewhat irrelevant conclusion: "This is conclusive proof that China should have compulsory jurisdiction."

Of course most of my classmates, dramatic souls that they were, had been lured to New York or the vicinity. Mary Freeman had long been the most popular actor on Broadway. But one night at the climax of a play, just as Mary was declaring her love for the hero, her eye caught that of an infatuatingly handsome young man in the audience. Mary jumped from the stage into his arms—gracefully, too. They eloped.

The MacMillan Company was publishing two books by people I knew well: one called "The Horrors of Mathematics" by Wing and Haslam (a group of tales more gruesome than Poe's worst); another called "Famous Portrait Sonnets" by Margaret Bull. (The model for the portraits was, I am sure, that pretty blue-eyed girl, Lois Bolles.)

From a scientific point of view, by far the most important invention of the decade was a medicine with properties making Freshmen's brains susceptible to Latin prose. Thousands of bottles were being sold to college students. The inventors—Eleanor Gresham, Edith Gilchrist, Louise Pieffer—had already world renown.

I was sorry to find that Helen Bates, while singing on the Grand Opera stage, had reached a note, the vibration of which was the same as that of the building in which she was singing. Of course the roof collapsed, and thousands of people were injured. Helen herself was rescued by the boy to whom she was almost engaged back in '26.

The most colossal mental efforts were being exerted by Juanita Greer and Margaret Whittington in memorizing Webster's Unabridged Dictionary to prove that the American mind is equal to the Chinese.

Red Bowers had won fame as cartoonist for the *Literary Digest*.

Edythe Carpenter, Sarah Slaughter, and Sterling Johnson were touring the country as piano concertists, the chief piece being a *Basket-ball Melody*—a tri-et, the greatest virtue of which was that the piano players went through all the motions of a basket-ball player possible to people playing a piano.

All the rage among the fashionable set in New York was the Holt-ite affectation of speech, in which every sentence was introduced with "Tut, tut, tut," and no word was repeated less than three times. The vogue was introduced by Mary Knox, Hazel Huff, and Addie Pharr.

At Chataqua, N. Y., I found Virginia Browning and disciples in a heated battle with Ladie Sue Wallace and disciples, over the question as to whether or not the man in the intelligence test who put in his check for \$100 and took out \$80 cash was a fraud. Emily Jones and Elizabeth Callen are roaming New England, with the title of promoters—of what nobody knows.

Kathrine Pitman married a New England manufacturer. The walls of her chicue little bungalow are not papered, but literally covered with photographs, of people, of places, of everything. In fact, the poor child is almost fanatical on the subject of pictures.

The last place visited in New England was the Hermance fowl farm. It seemed that Helena made a specialty of raising chickens and geese. Beaming with pride, she conducted me to her fowl yard, and pointed out the nest of her prize goose. There in the nest lay—a golden egg.

By this time I was fairly well satisfied with the sensational news I had found in America. But the boss had said it must come from all over the world. Scarcely enough time was left for me to go around the world, even in an aeroplane, so I returned to New York, accosted an Associated Press agent, and received much data on the melodramatic activities of women abroad. As I had expected, the heroines of all the stories were members of the class of '26.

Clarkie Davis had been with a party of Americans visiting the Nile, but Clarkie absentmindedly strayed off into the Sahara, and as far as her friends then knew, was still crossing the desert, without having discovered that she had left the banks of the Nile. Dora Ferrell, on camel-back, had started in pursuit of Clarkie.

Rosalie Wooten, Katherine Speights, and Frances Spratling were owners of a neat little style shop in Paris. There every week the styles were demonstrated which should rule the world. The latest fad was for a young woman to smoke on the streets, and exhale smoke the color of which should match the color of her costume, or

harmonize with it in some other way. The result was something of a spotlight effect.

Eleanor Berger directed a lullaby orchestra, which flew over the houses of London at twilight, in muffled aeroplanes, and sang to sleep the children of its customers.

In a little snow, but on the top of the Matterhorn dwelt Mary Ella Hammond, Elise Gay, and Evelyn Kennedy—hermits, embittered with the world because they could not understand how the atoms making up a table nailed to the floor should move continually, and yet the table not move.

Virginia Grimes and Susan Shadburn were entrancing midnight audiences with their sprite-like interpretative dancing done on gondolas moored in the canals of Venice. It was said that they kept themselves fit by jumping from top to top of a row of olive trees nearby.

But the most delightful career of all was being spent by Helen Clark Martin and her friends, affectionately known as "the family." Helen Clark owned a beautiful yacht, and on it she and her friends cruised the Oriental seas perpetually. It seemed that Grace Augusta Ogden, a member of the party was sane only on the ocean (she got that craze in the playwriting class long ago), and therefore the ship could never land. Just then it was in the Yellow Sea, and people on the shore could hear Florence Perkins on board dancing and singing a ditty to her broken arm; see Ellen Fain walking around and gracefully knocking people—a peculiar habit she acquired at college; and hear the strains of a portable victrola, to which Catherine Mock, Louise Bennett, and Elizabeth Gregory were tending, as it played a triumphant song, "Latin Is Passed. What Do I Care?" Above it all could be heard Helen Clark's delicious care-free "Ha—ha—ha."

You can well imagine that a very small part of the forty-eight hours remained. I hastened back to Atlanta in my trusty aeroplane, and arrived at the editor's office at the last minute. I grinned as I handed to him the batch of news articles, 'cause I knew they were sensational all right.

The next morning I got a raise.

Because

*Because we've dreamt high dreams within your walls,
And felt, with quickened breath, the kindling glow
Of kindred minds, we've loved within your halls
The poignancy you gave for us to know.*

*Because our years marked off by work and play
Have learnt the graciousness of little things
Well done, beauty has touched our day
With light swift beat of quick ascending wings.*

*Because we've watched the seasons' loveliness
Upon this campus change from fall to spring,
And known the sudden warmth of friendship press
Upon us, joy has swept us, dazzling.*

*Of your memory, wrought with smiles and tears,
We weave a radiance down through the years.*

—MARGARET BULL, *Class Poet.*



Junior



Junior Class

COLORS: *Orange and Black.*

OFFICERS

MARTHA CROWE	<i>President</i>
CATHERINE MITCHELL	<i>Vice-President</i>
LOUISE LEONARD	<i>Secretary-Treasurer</i>

SALLIE ABERNATHY
Winter Haven, Florida

*Pongee; soft restful cushions; an easy
choir.*

ELEANORE ALBRIGHT
Richmond, Virginia

Indian campfire; social service.

EVELYN ALBRIGHT
Atlanta, Georgia

Shattered scarf; a crimson scarf.

ERWIN BALDWIN
Montgomery, Alabama

Pale pink cliffon; odds and ends.

LOUISE BANSLEY
Atlanta, Georgia

*Girl Scouts; odors of wood violets and pine
needles.*

REBA BAYLESS
Athens, Tennessee

Georgia peaches; fire light.





LEILA BELL
Dawson, Georgia

*Lavender organdy; lady from a daguerreo-
type.*

BLANCHE CARSON BERRY
Lexington, Virginia

*Orange candles; modern poetry; latest
fiction.*

MAURINE BLEDSOE
Asheville, North Carolina

The wisdom of Solomon; bunny fur.

JOSEPHINE BRIDGEMAN
Newport News, Virginia

Pine trees; the Pilgrim Fathers.

FRANCES BUCHANAN
Macon, Georgia

A giggle; a waterfall; Broncho.

GEORGIA MAY BURNS
Bay Minette, Alabama

*Bedroom slippers; soft winds; a Dickens
novel.*

LOUISE CAPEN
Jacksonville, Florida

*A bad little boy on horseback; wind of
curly morning.*

GRACE CARR
Bainbridge, Georgia

Telephone pad; red poppies.

CEPHISE CARTWRIGHT
Savannah, Georgia

Vaudeville, dates; "the Charleston."

RUTH COLLIER CASEY
Atlanta, Georgia

Curly feathers; little gray kittens.

DOROTHY CHAMBERLAIN
East Orange, New Jersey

Scotch plaid; silhouettes.

FRANCES CHAMBERS
Dunwoody, Georgia

Gingerbread; friendship bracelets.





MARTHA ROSE CHILDRESS

Athens, Tennessee

Wild roses; an easel.

ELIZABETH CLARK

West Point, Mississippi

Crinoline; yellow tea roses; opera boxes.

SUSAN CLAYTON

Atlanta, Georgia

*The Rubiyat in lavender and old gold;
buttercups.*

MILDRED COWAN

Doraville, Alabama

Alpine guides; four-leaf clovers.

MARTHA CROWE

Atlanta, Georgia

Open fires; cordial; rompers.

MARION DANIEL

Charlottesville, Virginia

Summer camps; a row boat.

EMILY DAUGHTRY

Jackson, Georgia

Golden russet apples; "Giddy Gossip."

LOUISE DAVIS

Decatur, Georgia

Tinkling bells; "the old home place."

MARY LOYD DAVIS

LaGrange, Georgia

Brown velvet; lace half-mits; red roses.

RUTH DEWANDELAER

Port Plains, New York

Copenhagen blue; a patent leather hat box.

EUGENIE DOZIER

Atlanta, Georgia

*Flashing scarfs in the whirl of dance;
Jeanne d'Arc.*

MABEL DUMAS

Atlanta, Georgia

*A bandeau of brilliants; black satin; high
heeled slippers.*





MARGARET EDMONDSON
LaGrange, Georgia

*White chrysanthemums; a Jane Austin
character sketch.*

EMILE EHRLICH
Savannah, Georgia

Garnets; an orange evening dress.

HELEN FARMER
Thomson, Georgia

*Water waves; yellow taffeta; black-eyed
susans.*

MARY FERGUSON
Athens, Georgia

A side show; Sunday School picnics.

FRANCES FREEBORN
Decatur, Georgia

Little Jack Horner; all-day suckers.

KATHERINE GILLILAND
Atlanta, Georgia

*Mellow candle-light; blue cups; the Milky
Way.*

VENIE BELL GRANT
Atlanta, Georgia

Tennyson's "Lynette"; daisies in a city square.

MARCIA GREEN
Corinth, Mississippi

The Interior of a Church; statuary.

MARY HEATH
Augusta, Georgia

"Trio"; student volunteers.

MARY HEDRICK
Bristol, Tennessee

A teddy bear.

RACHEL HENDERLITE
Gastonia, North Carolina

Choir boy; a mountain stream.

ELIZABETH HENDERSON
Hawkinsville, Georgia

Pansies; a leather-bound volume of selected poems and stories.





ANN HEYS
Americus, Georgia

*A tall basket of flowers—snapdragons,
daisies, holly hocks, and half-opened
lilies.*

KATHERINE HOUSTON
Fairfield, Virginia
Sunbeams, kindergarten work.

MAE ERSKINE IRVINE
Florence, Alabama
Burnt Orange; The Saturday Evening Post.

ANNA GEORGE IRWIN
Fort Gaines, Georgia
Crocheted antimacassars.

MAUDE JACKSON
Lawrenceville, Georgia
Forget-me-nots; flowered muslin.

ELSA JACOBSEN
Decatur, Georgia
*Rock of Gibraltar; collie dog; a red bath-
ing cap.*

MILDRED JENNINGS
Augusta, Georgia

Dark brown eyes; a clown; red sweaters.

MARTHA JOHNSTON
Greensboro, Georgia

The song of birds; old lace; hoop skirts.

LEILIA JOINER
Albany, Georgia
Kid curlers; Annapolis.

PEARL KUNNES
Thomson, Georgia
Patent leather pumps; magenta.

IDA LANDAU
Atlanta, Georgia
Smouldering fires; a fortune-teller.

LOUISE LEONARD
Spartanburg, South Carolina
A marcel; a prism.





HELEN LEWIS

Maxwelton, West Virginia

Santa Claus; informal calls; classics.

ELLEN DOUGLASS LEYBURN

Rome, Georgia

A black coat suit and sailor hat; an executive.

ELIZABETH LILLY

Winston-Salem, North Carolina

Phlox; a light essay; poetry.

ETHEL LITTLEFIELD

Blackshear, Georgia

Indian pipes; white mice.

LOUISE LOVEJOY

Decatur, Georgia

Great open spaces; crackling camp-fire.

LAMAR LOWE

Atlanta, Georgia

The stillness of the forests.

ELIZABETH LYNN
Clinton, South Carolina

Field day; west winds; heights.

CAROLINA McCALL
Opelika, Alabama

Terra cotta blue; sunset clouds.

ELIZABETH McCALLIE
Atlanta, Georgia

Inscrutable Isis; pussy willows.

RUTH McDONALD
Atlanta, Georgia

Moonstones; "Jack-in-the-box."

VIRGINIA MacDONALD
Decatur, Georgia

*Gypsy trails; emeralds; Grecian choral
maidens.*

CAROLINE McKINNEY
Decatur, Georgia

Fairy tales; popcorn; the king's jester.





PAULINE MCLEOD
Bay Minette, Alabama
Jazz music; The Sphinx.

HULDA MCNEEL
Birmingham, Alabama
A baseball diamond; Old King Cole.

KENNETH MANER
Atlanta, Georgia
A dim-lit book-corner with open Milton.

MARGARET MARTIN
Greenville, South Carolina
A manicure set; black and white.

RUTH EVANS MASENGILL
Bristol, Tennessee
*New "Adventures in Friendship"; a bad
little girl grown up.*

CATHERINE MITCHELL
LaGrange, Georgia
*House parties; piquancy; "Innocence
Abroad."*

MITCHELL MOORE
Moultrie, Georgia

Phosphorus at night; tennis.

MILDRED MORROW
Springfield, Tennessee

Silver filigree; a minuet; touch-me-not.

MARGARET NEEL
Huntington, West Virginia

High School parties; weiner roasts; negro minstrels.

EMILY NELSON
Atlanta, Georgia

Damask; a saucy sport hat.

LUCIA NIMMONS
Seneca, South Carolina

*Straw rides; shopping trips; "The House
by the Side of the Road."*

ELIZABETH NORFLEET
Winston-Salem, North Carolina

*Dew on spider webs; waltzes in the moon-
light.*





GLADYS PATZ
Elberton, Georgia

Muffins; flowered cretonne.

STELLA PITTMAN
Atlanta, Georgia

Four-in-hand ties; Spanish guitars.

LOUISE PLUMB
Augusta, Georgia

Cosmetics; a New Year dance.

EVALYN POWELL
Little Rock, Arkansas

"Collegiate"; a banjo.

MIRIAM PRESTON
Soonchun, Korea

Korean wicker; morning hikes.

FRANCES RAINEY
Norcross, Georgia

Violets; a heart locket.

DOUGLASS RANKIN
 Fayetteville, North Carolina
*Brown and gold butterflies; a small garden
 of dahlias.*

MARGUERITE RUSSELL
 Washington, District Columbia
Wooden soldiers; a mirror.

EVELYN SATTERWHITE
 Decatur, Georgia
Baby-blue rosettes; lacy white aprons.

VIRGINIA SEVIER
 Hendersonville, North Carolina
Tan tweed knickers; a mountain trail.

MAMIE SHAW
 Gainesville, Florida
*Autumn leaves; Peter Pan; the gold of
 the sun.*

SARAH SHIELDS
 Dawson, Georgia
Buster Brown; phone calls.





WILLIE WHITE SMITH
Thomson, Georgia
Mid-night feasts.

SARAH STILLMAN
College Park, Georgia
Gnomes and brownies; Peck's Bad Boy.

EDITH STRICKLAND
Atlanta, Georgia
Scooters; weeping willows.

ELIZABETH VARY
Atlanta, Georgia
Etude. Deep water.

MARGIE WAKEFIELD
Banner Elk, North Carolina
Deep snow; college spirit; an apple orchard.

MARY WEEMS
McDonough, Georgia
Spanish shawls in red and orange; summer sunsets.

ALICE WEICHELBAUM
Savannah, Georgia
Bronzies.

LOUISA WHITE
Decatur, Georgia
Ionic pillars; marble stairways.

COURTNEY WILKINSON
Lynchburg, Virginia
A locked door; still waters.

JUDITH WILSON
Prattville, Alabama
Cocoanut candy; heart-shaped Valentines.

ROBERTA WINTER
Leland, Mississippi
The sparkle of old wine; a sequined evening gown; a receiving line at an afternoon tea.

GRACE ZACHRY
Atlanta, Georgia
Spice; the eleventh hour; dickey-birds.



The Purple and White

*Home of virtue, faith, and knowledge,
Love and praise we bring to thee,
May our hearts be ever loyal,
And beat true to A. S. C.
Greetings to the winsome violet,
Cherished flower of heart's delight:
Hail to the royal banner
Of the purple and the white.*

REFRAIN

*May the white be ever stainless
And the purple ever bright,
Hail to the royal banner
Of the purple and the white.*

*'Mid the cotton fields of Georgia,
Where the flowers bloom fair and sweet,
And the soft and gentle breezes
Bend low the golden wheat:
Let us blend in loving chorus,
Voices ringing with delight,
Praise the banner floating o'er us
The purple and the white.*



Sophomore



Sophomore Class

COLORS: *Blue and White*

OFFICERS

- | | |
|----------------|---------------------|
| JANET McDONALD | President |
| SARAH WHITE | Vice-President |
| GEORGIA WATSON | Secretary-Treasurer |



28

ELIZ. ALLGOOD
 LEILA ANDERSON
 M. ANDERSON
 M. ARRINGTON
 EUNICE BALL
 GRACE BALL
 RUTH BARNETT
 CHARLOTTE BELL
 E. BENNETT
 EDITH BROWN
 FRANCES BRYAN
 ESTELLE BRYAN
 C. BUCKLAND
 DELLA CARLISLE
 D. COLEMAN
 PATRICIA COLLINS
 VIRGINIA CARRIER
 ELIZABETH COLE
 N. CROWTHER
 M. CUNNINGHAM
 LUCY MAI COOK
 EMILY COPE
 M. CRENSHAW
 JARAH CURRIE
 HELEN DANER



28

HELEN DANIEL
B. DAVIDSON
ELSIE DAVIS
HUBA DEMENT
ANNA F. DOBES
MARY J. DOYAL
RUTH EPSTEIN
CAROLYN ESSEK
DOROTHY FERRE
ELIZ. FISHER
VALERIE FOLTZ
ELIZ. FULLER
ELOISE GAINES
MARY A. GILL
LOUISE GRADEAU
IRENE GARRETSON
H. GERSHCOW
ELIZABETH GRIER
LUCY GRIER
SARAH GLENN
EUGENIA GÖBERE
OLIVE GRAVES
DOROTHY HARPER
NELL HILLHOUSE



28

- CARA HINMAN
- MARION HENRY
- MARY M. HOUGH
- J. HOUSTON
- ELIZ. HUDSON
- ALICE HUNTER
- MARY JERVIS
- ANNAIS JONES
- LELIA M. JONES
- MARY JUNKIN
- HILDA KALMON
- VERA KAMBER
- MARGARET KEITH
- HORTENSE KING
- ANNA KNIGHT
- NANCY L. KNIGHT
- E. KINGSBRY
- ADAH KNIGHT
- M. L. MCALLEY
- A. M. MCCOLLOM
- I. J. LAMONT
- V. M. LOVE
- I. LOWRANCE
- M. B. MCCONKEY
- H. MCCORKLE



28

- M. J. MCCOY
- J. MACDONALD
- ELIZ. MCENTHIE
- S. MCFAYEN
- G. MCKINNON
- K. MCKINNON
- C. MCCLAURINE
- E. M. MCLELLON
- B. MCHANE
- V. MILLER
- M. MINSON
- JULIA NAPIER
- FRANCES NEW
- V. NORRIS
- M. OVERTON
- E. PAFAGEORGE
- L. PATTERSON
- M. PERKERSON
- MARGARET RICE
- MARTHA RILEY
- RUTH PERRINE
- M. PHIPPEN
- LILA PORCHER
- MARY RIVIERE
- ELIZ. ROARK



28

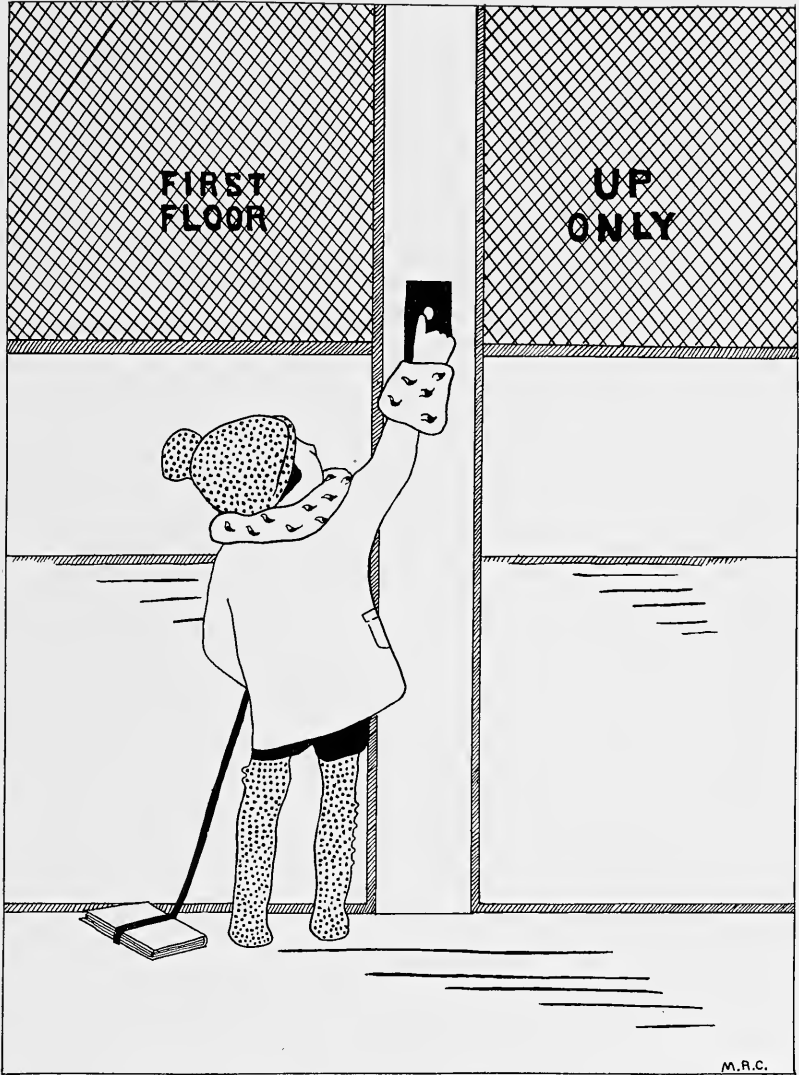
- MAEEL ROISON
- ELIZABETH RUFF
- R. ROUNETTE
- N. G. SANDERS
- MARIE SAYWARD
- MARY SHEPHARD
- L. SHERFESLE
- VIRGINIA SKEEN
- JANE SMALL
- F. SMITH
- ELLEN STEVENS
- EMMA STEAD
- DELLA STONE
- LOUISE SYDOR
- ANN TODD
- EDNA VOLBERG
- LOUISE THOMAS
- RUTH THOMAS
- LILLIAN WHITE
- HERMENA WEILL
- J. WALKER
- ELIZ. WALLACE
- GEORGIA WATSON
- ELIZ. WILLIAMS
- SARAH WHITE

In Memoriam

Hermione Jaudon

March 14, 1906

September 29, 1925



Freshman

Hottentot

*I'm a Hottentot from Agnes Scott,
A player of basket-ball.
I jump so high I touch the sky,
And never, never fall.
When once I get that ball,
I toss it above them all;
I'll get it in, my side shall win—
My foes shan't score at all.*

*And so, you see, at A. S. C.
There's something every minute,
You surely have to hustle here,
Or else you won't be in it.
We're crazy 'bout the gym,
The hockey and the swim,
So now three cheers for A. S. C.
We'll raise it with a vim—*

*Hi, rockety, whoopety, he!
What's the matter with A. S. C.?
She's all right!
Who's all right?
A!
S!!
C!!!*



Freshman Class

COLORS: *Yellow and White*

EVELYN WOOD	<i>President</i>
CHARLOTTE HUNTER	<i>Vice-President</i>
SARAH ROBINSON	<i>Secretary</i>
ALICE GLENN	<i>Treasurer</i>



Freshman Class

PERNETTE ADAMS
ELLEN D. AGEE
HARRIET ALEXANDER
SARA FRANCES ANDERSON
MARGARET ANDRESE
GLADYS R. AUSTIN
JOSEPHINE BARRY
MIRIAM BATTLE
LILLIE BELLINGRATH
LARUE BERRY
MARTHA BRADFORD
VIRGINIA BRANCH
LUCILE BRIDGMAN
LEONORA BRIGGS
MIRIAM BROACH
MARTHA BROADHURST
HAZEL BROWN
HELOE BROWN
PAULINE BROWN
VIRGINIA CAMERON
ELLEN CANNON
CORRIE CARTER
SARA CARTER
GRACE CHAY
DOROTHY CHEEK
SALLY COHRAN
MARY DONNA CRAWFORD
SARA DARRINGTON
JEANETTE DAVIS
EUGENIA DODD
SARA DOUGLASS
JULIA EFIRD
MARY R. ELLIS
HORTENSE ELTON
JULIA EVE
MILDRED FARRIS
BERDIE FERGUSON
MARY FICKLEN
GEORGIA FIELD
NANCY FITZGERALD
ELIZABETH FLEIDNER
LOUISE FOWLER
HELEN FOX
ETHEL FREELAND
SARA FROST
LENORE GARDNER
MARGARET GARRETSON
BETTY GASH
MARY GAUSE
ELISE GIBSON
ALICE GLENN
FRANCES GLENN
MARION GREEN
MILDRED GREENLEAF
JANE GREY
KATHERINE GRIFFITH
AMANDA GROVES
CATHERINE GULLER
ELEANOR HARDING
PEARL HASTINGS

ELIZABETH HATCHETT
INEIL HEARD
RUBY HENDRIX
LUCY HENRY
ISABELLE HERRIG
WINNIE HERRING
ERNESTINE HIRSCH
MARIAN HODGES
JESSIE HOFFMAN
GRACE HOLDING
LESA HOLIFIELD
ELLA HOLLINGSWORTH
BLANDE HOLMES
HAZEL HOOD
CHARLOTTE HUNTER
KATHERINE HUNTER
MARY HUTCHINSON
DOROTHY HUTTON
ELAINE JACOBSEN
SARA JOHNSTON
EVELYN JOSEPHS
MARY JUBAN
LOUISE KELLY
EUGENIA KIRK
CATHERINE KIRKLAND
GENEVIEVE KNIGHT
GILBERTA KNIGHT
RAY KNIGHT
MARY LANIER
LILLIAN LeCONTE
GERALDINE LeMAY
ISABELLE LEONARD
MARY LEWIS
SALLIE LINDSAY
MARY NELSON LOGAN
KATHERINE LOTT
MARY LOU McCALL
EMILY McCLELLAND
MYRA McCURRY
ALICE McDONALD
EDITH McGRANAHAN
GRACE McLAURIN
JULIA McLENDON
ELSIE McNAIR
RUTH MALLORY
ETHEL MARSHALL
MABEL MARSHALL
M. KATHERINE MARTIN
GLADYS MEADOR
ELIZABETH MERRITT
REBECCA MITCHELL
AILEEN MOORE
ELINORE MORGAN
LUCRETIA MORGAN
MAE BROOKS MORRIS
MILDRED MORRIS
ELIZABETH MOSS
MARGARET NEAL
ESTHER NISBET
ELEANOR NORRIS

KATHERINE PASCO
LORETTA PATTERSON
RACHEL PANON
SUSAN PIERCE
LETTY POPE
JOSEPHINE POU
MARY PRIM
VIRGINIA RAINE
EMILY RAMAGE
MARY RAMAGE
ELIZA RAMEY
CATHERINE RICE
ESTHER RICE
FLORIDA RICHARD
HELEN RIDLEY
SARAH MAE RICHARD
AUGUSTA ROBERTS
LOUISE ROBERTSON
SARAH ROBINSON
KATHERINE ROGERS
ALDEN ROWLAND
HARRIET RYLANDER
FLOYD SCHOOLFIELD
MARTHA SELMAN
MARJORIE SHEALY
HELEN SISON
LENA SLEMP
HOLLY SMITH
LOIS SMITH
VIRGINIA SMITH
SARAH SOUTHERLAND
OLIVE SPENCER
MARY G. STEFFNER
GULIE STEPHENSON
CLARA STONE
SUSANNE STONE
MIRIAM STRICKLAND
MYRTLE SWINDELL
HELEN THOMPSON
CATHERINE TORBRANCE
DOROTHY TURNER
ELIZABETH TYSON
JOSEPHINE WACHTEL
LYLE WALTERS
ELLEN WARFIELD
MARY WARREN
JULIA WAYNE
VIOLET WEEKS
FRANCES WELSH
ROSA WHITE
LORINE WILLIAMS
ELEANOR WILLIAMSON
ISABEL WILSON
FRANCES WIMBISH
HAZEL WOLFE
EVELYN WOOD
RUTH WORTH
LOUISE YEATMAN



Irregulars

FOURTH YEAR IRREGULAR

LOUISA KOCHTITZKY *Mount Airy, North Carolina*

THIRD YEAR IRREGULAR

MARY MARTHA LYBROOK *Advance, North Carolina*

SECOND YEAR IRREGULARS

CHRISTINE WOFLE *Decatur, Georgia*

DOROTHY BROWN *St. Petersburg, Florida*



BOYERS

Activities

List of Organizations

EXECUTIVE COMMITTEE OF STUDENT GOVERNMENT
YOUNG WOMEN'S CHRISTIAN ASSOCIATION
ATHLETIC BOARD

SILHOUETTE STAFF
AURORA STAFF
AGONISTIC STAFF

LECTURE ASSOCIATION
MAY DAY COMMITTEE

BLACKFRIARS
PI ALPHA PHI
K. U. B.
POETRY CLUB
GLEE CLUB
ORCHESTRA
B. O. Z.
FOLIO
COTILLION CLUB

AGNESI CLUB
BIBLE CLUB
CLASSICAL CLUB

GRANDDAUGHTERS' CLUB
BOOKKEEPING COMMITTEE

HOASC
PHI BETA KAPPA



Executive Committee of Student Government

VIRGINIA BROWNING	President
ELLEN FAIN	First Vice-President
HELENA HERMANCE	Second Vice-President
EVELYN SPRINKLE	Third Vice-President
MAURINE BLEDSOE	Secretary
ELLEN DOUGLASS LEYBURN	Treasurer
JOSEPHINE NORTH	Senior Representative
MARY ELLA HAMMOND	Senior Representative
EVALYN POWELL	Junior Representative
JOSEPHINE BRIDGEMAN	Junior Representative
NELL HILHOUSE	Sophomore Representative
MARY BELL MCCONKEY	Sophomore Representative
EUGENIA KIRK	Freshman Representative
JULIA MCLENDON	Freshman Representative

LOWER HOUSE ADVISORY BOARD

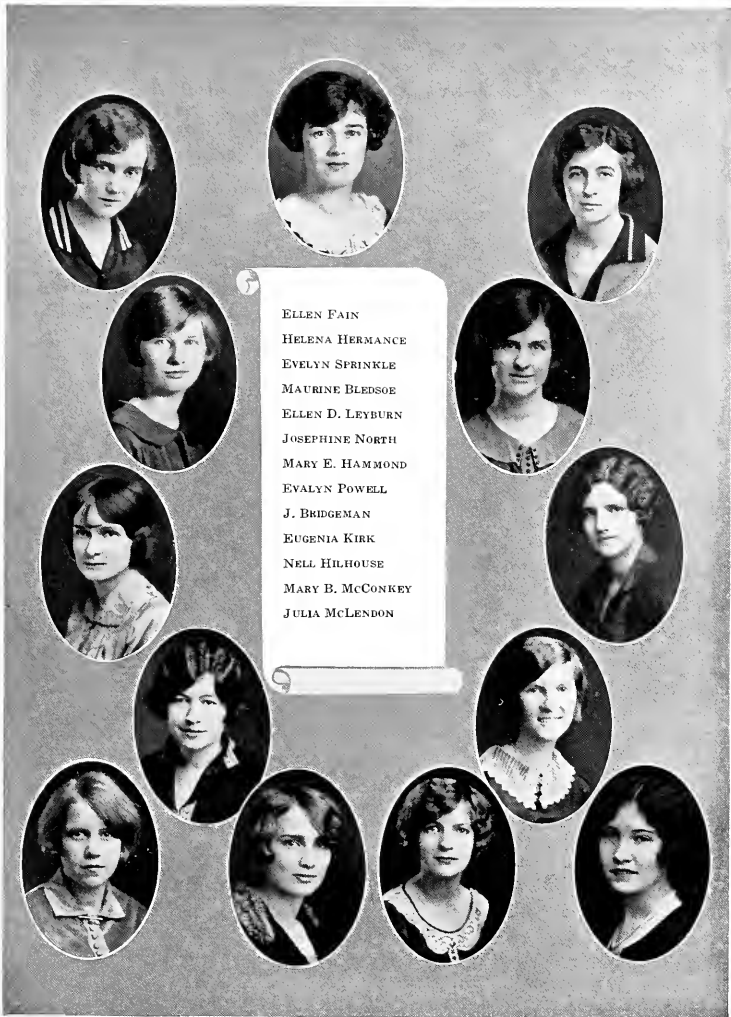
JOSEPHINE NORTH
SARAH SLAUGHTER

MARGARET DEBELE
LOUISA DULS

MEMBERS

HELEN CLARK MARTIN
VIRGINIA GRIMES
ELIZABETH LILLY
VIRGINIA SEVIER

LELIA ANDERSON
LILLIAN WHITE
JANE GRAY
GENEVIEVE KNIGHT



ELLEN FAIN
HELENA HERMANCE
EVELYN SPRINKLE
MAURINE BLEDSOE
ELLEN D. LEYBURN
JOSEPHINE NORTH
MARY E. HAMMOND
EVALYN POWELL
J. BRIDGEMAN
EUGENIA KIRK
NELL HILHOUSE
MARY B. MCCONKEY
JULIA McLENDON



Y. W. C. A.

VIRGINIA PEELER	<i>President</i>
MARGARET TUFTS	<i>Vice-President</i>
MARCIA GREEN	<i>Secretary</i>
VIRGINIA SEVIER	<i>Treasurer</i>
ELSA JACOBSEN	<i>Undergraduate Representative</i>
MARY DUDLEY BROWN	<i>Chairman of Social Committee</i>
ELIZABETH LILLY	<i>Chairman Social Service Committee</i>
CAROLINA McCALL	<i>Chairman Program Committee</i>
LEILA ANDERSON	<i>Chairman World Fellowship Committee</i>
VIRGINIA HOLLINGSWORTH	<i>Day Student Representative</i>



MARCIA GREEN
MARGARET TUFTS
VIRGINIA SEVIER
ELSA JACOBSEN
V. HOLLINGSWORTH
MARY D. BROWN
LEILA ANDERSON
ELIZABETH LILLY
CAROLINA McCALL



Athletic Association

OFFICERS

SARAH SLAUGHTER	<i>President</i>
STERLING JOHNSON	<i>Vice-President</i>
MARY CUNNINGHAM	<i>Secretary</i>
ELIZABETH LYNN	<i>Treasurer</i>

MANAGERS

EVALYN POWELL	<i>Song Leader</i>
MARY RAY DOBYNS	<i>Orchestra Leader</i>
LILLIAN WHITE	<i>Lost and Found Store</i>
GWENDOLYN MCKINNON	<i>Hike Manager</i>
RUTH THOMAS	<i>Basket-ball Manager</i>
LEONE BOWERS	<i>Baseball Manager</i>
ELLEN FAIN	<i>Hockey Manager</i>
ELIZABETH NORFLEET	<i>Track Manager</i>
ELEANOR ALBRIGHT	<i>Swimming Manager</i>
MIRIAM PRESTON	<i>Camp Manager</i>
STERLING JOHNSON	<i>Tennis Manager</i>

COACHES

MISS RANDOLPH

MISS SINCLAIR



M. CUNNINGHAM
S. JOHNSON
ELIZ. LYNN
EVALYN POWELL
MARY R. DOBYNS
LILLIAN WHITE
G. MCKINNON
RUTH THOMAS
LEONE BOWERS
ELIZ. NORFLEET
ELLEN FAIN
E. ALBRIGHT
MIRIAM PRESTON



The Silhouette Staff

NAN LINGLE	<i>Editor-in-Chief</i>
RACHEL HENDERLITE	<i>Assistant Editor</i>
CAROLINE MCKINNEY }	<i>Associate Editors</i>
MAE ERSKINE IRVINE }	
MARY BELL McCONKEY }	
CATHERINE PITMAN	<i>Photographic Editor</i>
ELIZABETH CLARK	<i>Assistant Photographic Editor</i>
LEONE BOWERS	<i>Art Editor</i>
MARTHA ROSE CHILDRESS	<i>Assistant Art Editor</i>
LILA PORCHER	<i>Assistant Art Editor</i>
LOUISE SYDNOR	<i>Feature Editor</i>

MANAGEMENT

CATHERINE MITCHELL	<i>Business Manager</i>
ELOISE GAINES	<i>Assistant Business Manager</i>
GRACE BOONE }	<i>Advertising Managers</i>
ELIZABETH NORFLEET }	
BAYLISS McSHANE }	



C. MCKINNEY
R. HENDERLITE
M. E. IRVINE
M. B. MCCONKEY
K. PITMAN
ELIZ. CLARKE
LEONE BOWERS
M. CHILDRRESS
LOUISE SYDNOR
ELOISE GAINES
GRACE BOONE
ELIZ. NORFLEET
B. McSHANE



The Aurora Staff

GRACE AUGUSTA OGDEN	<i>Editor-in-Chief</i>
ROBERTA WINTER	<i>Assistant Editor</i>
VIRGINIA HOLLINGSWORTH	<i>Associate Editor</i>
SUSAN CLAYTON	<i>Associate Editor</i>
MYRTLE BLEDSOE	<i>Exchange Editor</i>

MANAGEMENT

SARAH SHIELDS	<i>Business Manager</i>
GEORGIA WATSON	<i>Assistant Business Manager</i>
HELEN CLARK MARTIN	<i>Circulation Manager</i>
ELIZABETH COLE	<i>Advertising Manager</i>
LILLIAN LeCONTE	<i>Advertising Manager</i>



ROBERTA WINTER
GEORGIA WATSON
V. HOLLINGSWORTH
SUSAN CLAYTON
ELIZABETH COLE
HELEN CLARK MARTIN
LILLIAN LECONTE





The Agonistic Staff

LOUISA DULS	<i>Editor-in-Chief</i>
FRANCES BUCHANAN	<i>Assistant Editor</i>
CAROLYN ESSIG	<i>Exchange Editor</i>
MIRIAM PRESTON	<i>Alumnae Editor</i>
GRACE ZACHRY	<i>Day Student Editor</i>
GWENDOLYN MCKINNON	<i>Athletic Editor</i>
EMILY DAUGHTRY	<i>Society Editor</i>
LOUISE SHERFESEE	<i>Joke Editor</i>

MANAGEMENT

ELOISE HARRIS	<i>Business Manager</i>
ELIZABETH CLARKE	<i>Assistant Business Manager</i>
EMILY JONES	<i>Circulation Manager</i>
MARY McALILEY }	<i>Assistant Circulation Managers</i>
MABEL ROBESON }	
RUTH BARNETT }	

REPORTERS

BLANCHE BERRY	RACHEL HENDERLITE	MILDRED PHILIPS
FRANCES BROWN	SARA JOHNSTON	HELEN RIDLEY
CEPHISE CARTWRIGHT	GILBERTA KNIGHT	NELLIE RICHARDSON
MARY FREEMAN	EMILY KINGSBERY	ANNA MAE MCCOLLUM
MARION GREEN	IRENE LOWRANCE	NANNIE GRAHAM SANDERS
DOROTHY HUTTON	JANET McDONALD	EMILIE EHRLICH
	EVELYN WOOD	



F. BUCHANAN
ELIZ. CLARKE
CAROLYN ESSIG
MIRIAM PRESTON
GRACE ZACHRY
G. MCKINNON
E. DAUGTRY
LOUISE SHERFESEE
EMILY JONES
MARY McALILEY
MABEL ROBESON
RUTH BARNETT



Lecture Association

OFFICERS

CATHERINE GRAEBER	President
EDYTHE CARPENTER	Secretary-Treasurer
LEONE BOWERS	Chairman of Poster Committee
MISS CLEO HEARON	Faculty Chairman
MARY DUDLEY BROWN	Senior Representative
MARY LLOYD DAVIS	Junior Representative
ELOISE GAINES	Sophomore Representative
PERNETTE ADAMS	Freshman Representative

LECTURERS BROUGHT TO A. S. C.

John Drinkwater: "A Dramatist's View of Lincoln."

Professor Edward P. Cheney: { "Thus Was England Born"
"Patriotism in Peace Times."

Count Byron Khun De Prorok: "Recent Excavations of Carthage and the Dead Cities of the Sahara."

Alfred and Dorothy Kreymborg: "A Recital of his own Poems, Plays and Music (on the Mandolite), and with his Puppets of the Mushroom Theatre."



May Day Committee

EUGENIE DOZIER	<i>Chairman</i>
VIRGINIA SEVIER	<i>Treasurer</i>
FLORENCE PERKINS	<i>Property Manager</i>
ANNA MAY McCOLLUM	<i>Publicity Manager</i>
MILDRED MORROW	<i>Costume Manager</i>
LILA PORCHER }	<i>Members of Costume Committee</i>
CHRISTINE WOFLE }	
MISS ISABEL RANDOLPH	<i>Faculty Chairman</i>



Blackfriars

OFFICERS

ELLEN DOUGLAS LEYBURN	<i>President</i>
MARY FREEMAN	<i>Vice-President</i>
ROBERTA WINTER	<i>Secretary</i>
FLORENCE PERKINS	<i>Treasurer</i>
FRANCES FREEBORN	<i>Stage Manager</i>
ELIZABETH MOORE	<i>Property Manager</i>
MISS FRANCES GOOCH	<i>Coach</i>

FULL MEMBERS

ISABEL CLARKE	CATHERINE GRAEBER	MARY SAYWOON
MARTHA CROWE	ELOISE HARRIS	EMILY STEAD
LOUISA DULS	HELENA HERMANC	JOSEPHINE WALKER
MARY FREEMAN	ELLEN DOUGLAS LEYBURN	MARY WEEMS
FRANCES FREEBORN	ELIZABETH MOORE	ROBERTA WINTER
	FLORENCE PERKINS	

ASSOCIATE MEMBERS

GEORGIA MAE BURNS	MARIÓN HENRY	MARGARET NEEL
EDYTHE CARPENTER	MARTHA JOHNSTON	MARY RIVIERE
FRANCES CHAMBERS	JANET McDONALD	LOUISA WHITE
MARY CUNNINGHAM	CAROLINE MCKINNEY	SARA WHITE
FRANCES HARGIS		CHRISTINE WOFLE



Pi Alpha Phi

OFFICERS

CATHERINE GRAEBER	<i>President</i>
ELSA JACOBSEN	<i>Vice-President</i>
ELIZABETH HENDERSON	<i>Secretary</i>
ELOISE HARRIS	<i>Member of Debating Council</i>
OLIVIA SWANN	<i>Member of Debating Council</i>

MEMBERS

EDYTHE CARPENTER	NAN LINGLE
ELIZBETH CHAPMAN	JANET McDONALD
FRANCES COOPER	EVALYN POWELL
MARY DAVIS	MARY RIVIERE
CAROLYN ESSIG	ROWENA ROUNETTE
LOUISE HARRISON	EDITH STRICKLAND
RACHEL HENDERLITE	LOUISA WHITE
EMILY JONES	COURTNEY WILKINSON
HELEN LEWIS	ROBERTA WINTER
RUTH LIGGIN	GRACE ZACHRY



K. U. B.

REPORTERS' CLUB

OFFICERS

ELIZABETH HENDERSON	President
MARY FREEMAN	Vice-President
CAROLYN ESSIG	Secretary-Treasurer

MEMBERS

BLANCHE BERRY
 ELIZABETH CHAPMAN
 MARY RAY DOBYNS
 MARGARET EDMUNDSON
 MARY ELLIS
 MARY HEATH
 EMILY KINGSBERY
 GILBERTA KNIGHT

RUTH LIGGIN
 SALLY LINDSAY
 LOUISE LOVEJOY
 ANNA MAE MCCOLLUM
 MARY PERKINSON
 MIRIAM PRESTON
 NELLIE RICHARDSON
 SARAH SHIELDS

EVELYN WOOD



Poetry Club

OFFICERS

GRACE AUGUSTA OGDEN *President*
 MARGARET BULL *Secretary*

FACULTY MEMBERS

MISS LANEY MISS BLAND MISS MCKINNEY

MEMBERS

BLANCHE BERRY	ELIZABETH LILLY
MYRTLE BLEDSOE	ELIZABETH MOORE
MARY DUDLEY BROWN	CAROLINA MCCALL
LOIS BOLLES	STELLA PITTMAN,
SUSAN CLAYTON	MARY RIVIERE
LILLIAN CLEMENT	MAMIE SHAW
CARRIE GRAHAM	JANE SMALL
MAE ERSKINE IRVINE	HELEN THOMPSON
EMILY KINGSBERY	VIRGINIA WING



Glee Club

OFFICERS

HELEN BATES		President
VIRGINIA MILLER		Vice-President
MARTHA JOHNSTON		Business Manager
MARY FREEMAN		Stage Director
MARY CUNNINGHAM		Property Manager

SPECIAL CHORUS

<i>Soprano</i>		
HELEN BATES		VIRGINIA MILLER
LILLIAN CLEMENT		MARTHA JOHNSTON
<i>Alto</i>		
FRANCES STUKES		RUTH THOMAS
MARY CUNNINGHAM	RUTH PIRKLE	MABEL DUMAS

MEMBERS

PERNETTE ADAMS MIRIAM ARRINGTON BLANCHE BERRY LEONORA BRIGGS EDITH BROWN HELON BROWN VERNA CLARK MARY CRENSHAW SARAH CURRY HORTENSE ELTON	INEIL HEARD MARY HEATH HAZEL HUFF CHARLOTTE HUNTER JEAN LAMONT LILLIAN LeCONTE KATHERINE LOTT CAROLINA McCALL ELISE McCAIN	MARGARET MARTIN AILEEN MOORE MARGARET NEEL RACHEL PAXON EVELYN SATTERWHITE MAMIE SHAW EDITH STRICKLAND DOROTHY TURNER EVELYN WOOD ROSALIE WOOTEN
--	--	---



Orchestra

MARY RAY DOBYNS, *Leader*

Violins

SARAH CURRIE
 HUDA DEMENT
 EMILIE EHRLICH
 CLARA STONE
 ROSA WHITE

Saxophone

MARY RIVIERE

Banjo-Mandolin

MABEL ROBESON

Mandolins

CHARLOTTE BUCKLAND
 MARY JEWETT DOYAL
 LOUISE FOWLER
 CHARLOTTE HUNTER
 EMILY KINGSBERY
 RACHEL PAXON
 KATHERINE ROGERS

Piano

MARY RAY DOBYNS

Drum

EVALYN POWELL



B. O. Z.

OFFICERS

GRACE AUGUSTA OGDEN	<i>President</i>
VIRGINIA HOLLINGSWORTH	<i>Vice-President</i>
MARGARET TUFTS	<i>Treasurer</i>

MEMBERS

SUSAN CLAYTON
 MIRIAM PRESTON
 CAROLYN ESSIG



Folio Club

OFFICERS

JANET McDONALD	<i>President</i>
CAROLYN ESSIG	<i>Secretary</i>

MEMBERS

DOROTHY HARPER
VIRGINIA NORRIS

JOSEPHINE WALKER
EMILY KINGSBERY



Cotillion Club

OFFICERS

MILDRED MORROW	<i>President</i>
CATHERINE MITCHELL	<i>Vice-President</i>
ROBERTA WINTER	<i>Secretary-Treasurer</i>

MEMBERS

JOSEPHINE BARRY	ELOISE HARRIS	SARAH ROBINSON
GRACE BOONE	LESA HOLIFIELD	LUCILE SEAY
MARY DUDLEY BROWN	MARY MACKAY HOUGH	LOUISE SHERFESEE
EDYTHE CARPENTER	NAN LINGLE	SARAH SHIELDS
EDYTHE COLEMAN	ELIZABETH LITTLE	VIRGINIA SKEEN
FRANCES COOPER	LILLIAN LeCONTE	HOLLY SMITH
EMILY COPE	MARY MARTHA LYBROOK	SARAH SMITH
MARY CUNNINGHAM	RUTH McMILLAN	OLIVE SPENSER
HORTENSE ELTON	BAYLISS McSHANE	LOUISE SYDNOR
JULIA EVE	MARGARET NEEL	JOSEPHINE WALKER
DORA FERRELL	ELIZABETH NORFLEET	GEORGIA WATSON
GEORGIA FIELD	VIRGINIA PEELER	MARY WEEMS
ALICE GLENN	EVALYN POWELL	CHRISTINE WOFLE
CATHERINE GRAEBER	MARY PRIM	EVELYN WOOD
	ELIZA RAMEY	



Agnesi-Mathematics Club

OFFICERS

MARY ELLA HAMMOND	<i>President</i>
LADIE SUE WALLACE	<i>Vice-President</i>
ELIZABETH LYNN	<i>Secretary-Treasurer</i>

MEMBERS

GRACE BALL	MARY ELLA HAMMOND	EMILY RAMAGE
EUNICE BALL	LOUISE HARRISON	MARY RAMAGE
RUTH BARNETT	ELIZABETH HATCHETT	MARGARET RICE
MAURINE BLEDSOE	LESA HOLIFIELD	ELIZABETH ROARK
GEORGIA MAE BURNS	HAZEL HUFF	MARGUERITE RUSSELL
ELIZABETH CALLEN	MAE ERSKINE IRVINE	SUSAN SHADBURN
DELLA CARLISLE	EMILY JONES	FANNY SWANN
ELSIE DAVIS	EVELYN KENNEDY	LADIE SUE WALLACE
HUDA DEMENT	ISABEL JEAN LAMONT	LOUISA WHITE
MABEL DUMAS	ELIZABETH LYNN	ELIZABETH WILLIAMS
HELEN FOX	ELLIOTT MAY McLELLON	ROBERTA WINTER
IRENE GARRETSON	MARY JANE McCOY	ROSALIE WOOTEN
VENIE BELLE GRANT	MARGARET NEEL	MISS HOWSON
OLIVE GRAVES	MARGARET MIXSON	MISS LINEBERRY
ELEANOR GRESHAM	LUCIA NIMMONS	MISS MORTON
EDITH GILCHRIST	LILLIAN PATTERSON	MR. RANKIN
	KATHERINE PITMAN	



Bible Club

OFFICERS

ELEANOR ALBRIGHT *President* SARAH SMITH
 MARY HEATH *Secretary-Treasurer* MARY HEATH

- | | | |
|---|--|---|
| HARRIET ALEXANDER
ELEANOR ALBRIGHT
MIRIAM ANDERSON
CLARA ASKEW
EWIN BALDWIN
LOUISE BANSLEY
JOSEPHINE BARRY
LELA BELL
LOUISE BENNETT
ELEANOR BERGER
EMMA BERNHART
MATRINE ELDSBOR
LOIS BOLLES
LEONE BOWERS
ESTELLE BRYON
DOROTHY BROWN
MARGARET BULL
ANNETTE CALDWELL
CEPHEISE CARTWRIGHT
RUTH CASEY
GRACE CHAY
ELIZABETH CLARKE
ISABEL CLARKE
SUSAN CLAYTON
LILLIAN CLEMENT
W. M. COLEMAN
MARGARET COWAN
MARY CRENSHAW
MARTHA CROWE
MARION DANTEL
ELSIE DAVIS
JEANNETTE DAVIS
LOUISE DAVIS
MARY DAVIS
EMILY DARTGHTERY
MARGARET DEBBLE
RUTH DEWANDELAER | M. R. DOBYNS
GERNE DOZIER
CAROLYN ESSIG
E. FAILLER
DOROTHY FERREE
VALERIE FOLTS
HELEN FOX
FRANCES FREEBORN
S. K. FROST
ELSIE GAY
M. A. GILL
KATHERINE GILLILAND
SARAH GLENN
KATHERINE GRAY
MARCIA GREEN
ELIZABETH GRIER
LUCY GRIER
ELIZABETH GREGORY
MURIEL GRIFFIN
VIRGINIA GRIMES
LOUISE HARRISON
MARY HEATH
MARY HEDRICK
RACHEL HENDERLITE
ELIZABETH HENDERSON
ANN HAYS
JESSIE HOFFMAN
C. F. HOLDING
VA. HOLLINGSWORTH
KATHERINE HOUSTON
MAE IRSKIN IRVINE
MAUDE JACKSON
MARY JERVIS
MARTHA JOHNSTON
LELIA JOYNER
EMILY KINGSBERY
MARY KNOX | PEARL KUNNEN
LOUISE LEONARD
HELEN LEWIS
ELIZABETH LILLY
LAMAR LOWE
VA. MAX LOWE
LOUISE LOVELLOY
MARY MCALILY
CAROLINA MCCALL
ELIZABETH MCCALLIE
A. M. MCCOLLUM
JANET McDONALD
RUTH McDONALD
CLEO McLATRIN
GRACE McLATRIN
PAULINE McLEOD
CATHERINE MITCHELL
ELIZABETH MOORE
MAE MORRIS
MILDRED MORROW
MARGARET NEEL
EMILY NELSON
LUCIA NIMMONS
DOROTHY OWEN
GLADYS PATZ
MARY PERKINSON
LOUISE PFEIFFER
ADDIE PHARR
MILDRED PHIPPEN
SHELLA PITTMAN
MIRIAM PRESTON
MARY PRIM
FRANCES RAINY
ALENE RAMAGE
DWIGLAS RANKIN
ETHEL REDDING
NELLIE RICHARDSON |
| MARTHA RILEY
MARY RIVIERE
ELIZABETH ROARK
N. G. SANDERS
ROSALTA SANDERS
EVELYN SATTERWHITE
VA. SEVIER
MAMIE SHAW
MARY SHEPHERD
MARY SMITH
W. M. SMITH
HELEN SPIEGHTS
FRANCES SPATLING
ELLEN STEVENS
SARAH STILLMAN
EDITH STRICKLAND
FANNIE SWANN
OLIVIA SWANN
LOUISE SVNDOR
LOUISE THOMAS
ANN TODD
MARGARET TUFTS
ELIZABETH VARY
MARGIE WAKEFIELD
E. B. WALLACE
MARY WEEMS
ALICE WEICHSBAUM
HERMENA WEILL
LILLIAN WHITE
LOUISE WHITE
MARGARET WHITTINGHAM
COURTNEY WILKINSON
JUDITH WILSON
VIRGINIA WING
ROSALIE WOOTEN
GRACE ZACRY
MELLIE ZELARS | | |



Classical Club

SARAH SHIELDS	<i>President</i>
CLARKIE DAVIS	<i>Vice-President</i>
CEPHISE CARTWRIGHT	<i>Secretary-Treasurer</i>

PROGRAM COMMITTEE

LAMAR LOWE	FRANCES BUCHANAN <i>Chairman</i>	EVELYN ALBRIGHT
------------	-------------------------------------	-----------------

MEMBERS

LEILA ANDERSON	KATHERINE GILLILAND	MARY PERKINSON
EWEN BALDWIN	VIRGINIA GRIMES	ALLENE RAMAGE
BLANCHE CARSON BERRY	ALICE HUNTER	ELIZABETH ROARK
GRACE BOONE	MARTHA JOHNSTON	MARY SAYWARD
SUSAN CLAYTON	MARGARET KEITH	FLORENCE SMITH
LUCY MAE COOK	IRENE LOWRANCE	SARAH SMITH
MARY CRENSHAW	RUTH EVANS MASENGILL	FRANCES SPRATLING
MARY CUNNINGHAM	ANNA MAE MCCOLLUM	LOUISE SYDNOR
BETSY DAVIDSON	MARY BELL MCCONKEY	BETSY TATE
EMILIE EHRLICH	CAROLINE MCKINNEY	ALICE WEICHLBAUM
HATTIE GERSHCOW	JULIA NAPIER	LILLIAN WHITE



Granddaughters' Club

SUSAN SHADBURN *President*
 EVELYN KENNEDY *Secretary-Treasurer*
 MRS. ALMA SYDENSTRICKER *Faculty Member*

MEMBERS

SARAH SMITH	ANAIS JONES
EMILY JONES	VERA KAMPER
CAROLINE MCKINNEY	ELOISE GAINES
MIRIAM PRESTON	LILLIAN LeCONTE
DELLA STONE	HOLLY SMITH

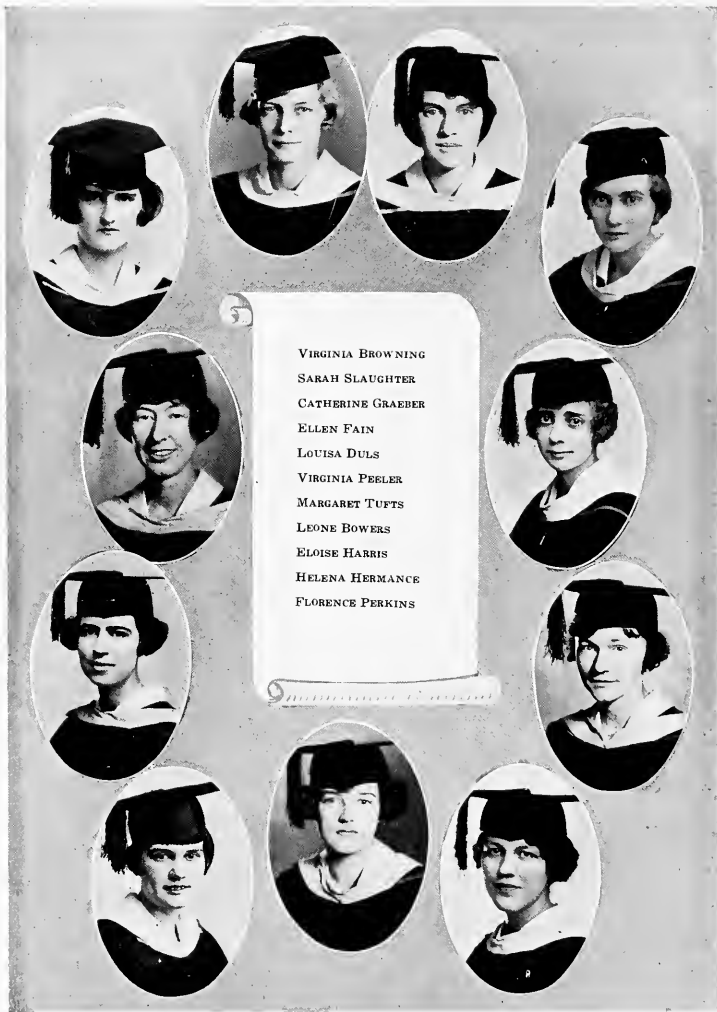
SALLY COTHRAN





Bookkeeping Committee

OLIVIA SWANN *Student Treasurer*
ELIZABETH CALLEN *Chairman of Auditing Committee*
JOSEPHINE NORTH *Member of College Council*
HELEN CLARK MARTIN *Recorder of Points*



VIRGINIA BROWNING
SARAH SLAUGHTER
CATHERINE GRAEBER
ELLEN FAIN
LOUISA DULS
VIRGINIA PEELER
MARGARET TUFTS
LEONE BOWERS
ELOISE HARRIS
HELENA HERMANCE
FLORENCE PERKINS

Hoasc

Class of 1916—

JEANNETTE VICTOR
ORA GLENN
MARTHA ROSS
MARVELLEN HARVEY
LOUISE WILSON
ELOISE GAY
ALICE WEATHERLEY
EVELYN GOODE
RAY HARVISON
NELL FRYE

Class of 1917—

GERTRUDE AMUNDSEN
INDIA HUNT
SCOTT PAYNE
LAURIE CALDWELL
LOUISE WARE
ANNE KYLE
REGINA PINKSTON
JANET NEWTON
A. S. DONALDSON
GEORGIANA WHITE
RUTH NISBET
V. Y. WHITE

Class of 1918—

MARGARET LEYBURN
SAMILE LOWE
R. L. ESTES
EMMA JONES
HALLIE ALEXANDER
RUTH ANDERSON
KATHERINE SEAY
OLIVE HARDWICK
LOIS EVE

Class of 1919—

LUCY DURR
FRANCES GLASCOW
MARY BROCK MALLARD
CLAIRE ELLIOT
AMELIA HUTCHESON
JULIA LAKE SKINNER
MARGARET ROWE
DOROTHY THIGPEN
GOLDIE HAM
LLEWELLYN WILBURN
ELIZABETH WATKINS
LULU SMITH

ELSA JACOBSEN
EILEEN DOUGLASS LEYBURN
CAROLINA McCALL

Class of 1920—

ELIZABETH ALLEN
MARGARET BLAND
LOIS MACINTYRE
JULIA HAGOOD
LOUISE SLACK
LAURA S. MOLLOY
VIRGINIA McLAUGHLIN
MARION McCAMEY
ANNE HOUSTON
MARY BURNETT

Class of 1921—

CHARLOTTE BELL
MARGARET BELL
AIMEE D. GLOVER
ELLEN WILSON
RACHEL RUSHTON
ANNA MARIE LANDRESS
ALICE JONES
FRANCES C. MARKLEY
JANEF PRESTON
MARGARET McLAUGHLIN
JEAN McALLISTER
FANNY McCAA
CHARLOTTE NEWTON
DOROTHY ALLEN

Class of 1922—

NELL BUCHANAN
CAMA BURGESS
RUTH HALL
LAURA OLIVER
LILBURNE IVEY
RUTH SCANDRETT
MARY McCLELLAN
ALTHEA STEPHENS
RUTH VIRDEN
ETHEL WARE
ROBERTA LOVE
SARAH TILL
ELIZABETH WILSON

Class of 1923—

QUENELLE HARROLD
ELEANOR HYDE
ELOISE KNIGHT
ELIZABETH McCLURE
HILDA McCONNELL
ALICE VIRDEN
NANNIE CAMPBELL

Class of 1927—

ELIZABETH NORFLEET
EVALYN POWELL
ROBERTA WINTER

MARY GOODRICH
EMILY GUILLE
ELIZABETH HOKE
LUCILE LITTLE
VALERIA POSEY
ELIZABETH RANSOM

Class of 1924—

BEULAH DAVIDSON
MARY GREENE
VICTORIA HOWIE
CARRIE SCANDRETT
D. F. SMITH
POLLY STONE
FRANCIS AMIS
JANICE BROWN
NANCY EVANS
EMMIE FICKLEN
FRANCES GILLILAND
BARRON HYATT
WENONA PECK

Class of 1925—

FRANCES BITZER
LOUISE BUCHANAN
ISABEL FERGUSON
DOROTHY KEITH
FRANCES LINCOLN
MARY ANN McKINNEY
EMILY SPIVEY
ELIZABETH CHEATHAM
MARGARET HYATT
MARY KEESLER
MARTHA LIN MANLY
MARGERY SPEAKE
ELLEN WALKER
EUGENIA THOMPSON
POCAHONTAS WIGHT

Class of 1926—

VIRGINIA BROWNING
LOUISA DULS
ELLEN FAIN
CATHERINE GRAEBER
VIRGINIA PEELER
SARA SLAUGHTER
MARGARET TUFTS
LEONE BOWERS
ELOISE HARRIS
HELENA HERMANCE
FLORENCE PERKINS



Phi Beta Kappa

CHARTER MEMBERS

LILLIAN SCORESBY SMITH, Ph.D., Syracuse, 1904
 SAMUEL GUERRY STUKES, A.B., A.M., B.D., Davidson, 1923
 CLEO HEARON, Ph.D., Chicago, 1914
 ROBERT BENTON HOLT, B.A., M.S., Wisconsin, 1901
 EDITH MURIEL HARN, Ph.D., Goucher, 1915
 LADY COMA COLE, A.M., Duke University, 1922

FOUNDATION MEMBER

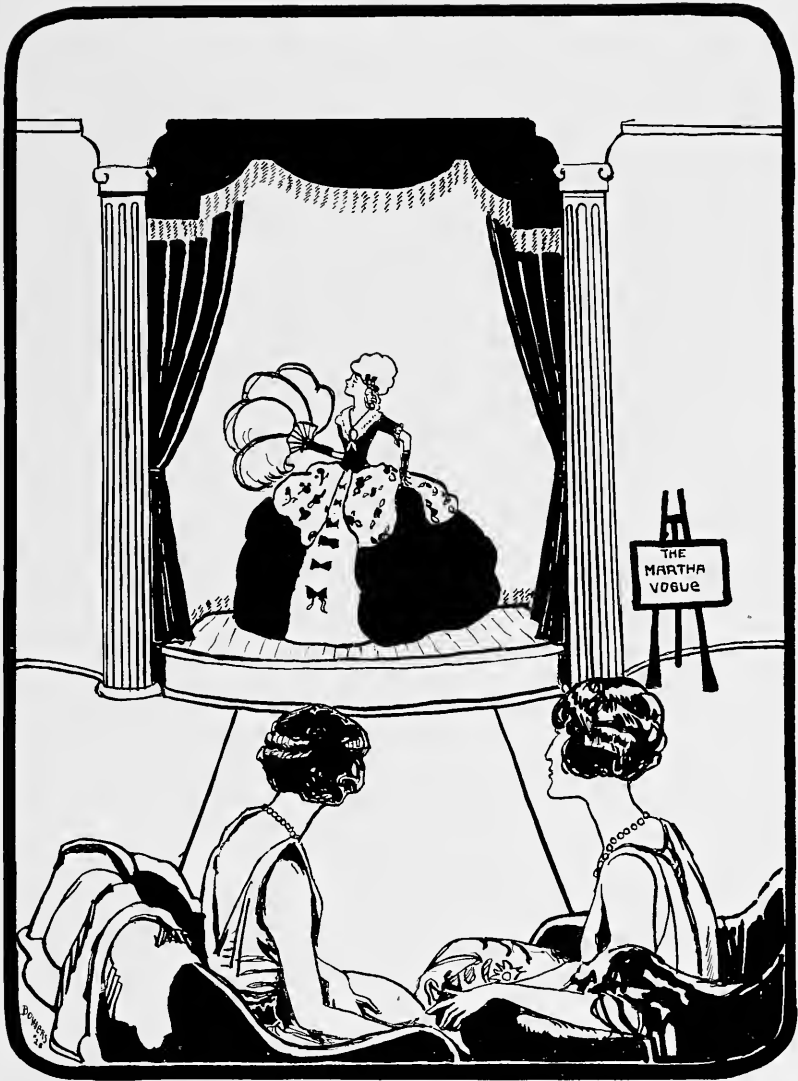
JAMES ROSS MCCAIN, A.M., Ph.D., LL.D.

ALUMNAE MEMBERS

IDA LEE HILL IRWIN, '06	MARGARET MCCALLIE, '09
LIZZABEL SAXON, '08	LUCILE ALEXANDER, '11
RUTH MARION WISDOM, '09	MARY WALLACE KIRK, '11

STUDENT MEMBERS

ISABELLE CLARKE	NAN LINGLE
JUANITA GREER	GRACE AUGUSTA OGDEN
LOUISA DULS	CATHERINE GRAEBER
MARGARET WHITTINGTON	



Events



Sophomore Week

ORDERS

1. All Freshmen will wear light colored, full skirted dresses, the skirts of said dresses to be not more than 8 inches from the floor and showing below said skirts ruffled pantalettes. On their feet Freshmen will wear tennis shoes.
2. The hair of said Freshmen must be brushed up from forehead and ears and screwed into a knot on top of their heads. This includes bobbed-haired girls. In front of said ears, said Freshmen shall have spit curls. On said heads will be worn green poke bonnets.
3. Said Freshmen will wear around their necks and on their left wrists bows of green cheese cloth 8 inches across.
4. No make-up of any kind whatsoever may be worn.
5. Said Freshmen will carry their books in book-straps over their left shoulders.
6. At all times, Freshmen must walk with their eyes modestly downcast.
7. On no account must Freshmen run or even walk rapidly.
8. Said Freshmen must never speak unless spoken to except in library and classes.
9. Said Freshmen must not leave the dining room until all Sophomores have left. They must stand when all Seniors enter said dining room.
10. None of said Freshmen may leave the campus without permission from the Sophomores.
11. All said Freshmen are subject to the slightest wish of any Sophomore.
12. Whenever said Freshmen meet members of the Faculty or members of the Sophomore Class on the campus, they will curtsy profoundly.



The Freshman's Kismet

Enacted at the
AGNESI SCOTTUM HARUM SCARUM

By The
SOPHOMORE CLASS

"THE OUTCASTS"

(In the order of their disappearance)

Khayam's Khorus of Freshmen Sisters

LOUISE SYDNOR	ELOISE GAINES
JOSEPHINE HUNTLEY	EDITH BROWN
EMILY COPE	AN AIS JONES
MARY MACKEY HOUGH	LOUISE SHERFESSEE
<i>Fatima Freshman Hanoum</i>	HILDA KALMAN
<i>El Sophomore Bluebeard Pasha</i>	MARY RIVIERE
<i>Anitra Houri</i>	EMILY COPE
<i>Miss Campbell's Persian Pussies:</i>	
<i>Felix</i>	LILA PORCHER
<i>Felicia</i>	NANCY CROWTHER
<i>Sister Anne Hanoum</i>	JOSEPHINE WALKER
<i>Martha Stan</i>	BAYLISS MCSHANE
<i>Brother Cunningham Effendi</i>	CAROLYN ESSIG
<i>Brother Holt Bey</i>	MARY SAYWARD
<i>Miller Houri</i>	ELIZABETH GRIER
<i>Calhoun Houri</i>	LUCY GRIER
<i>Mary Cox Houri</i>	ADAH KNIGHT



Adventurous Annie

FRESHMAN STUNT

Cast:

<i>Annie</i>	EDITH McGRANAHAN
<i>Sallie</i>	MARGARET NEAL
<i>Um Kwee</i>	JOSEPHINE WACHTEL
<i>Oracle</i>	ALDEN ROWLAND
<i>Mosquito</i>	LOUISE ROBERTSON
<i>Citranella</i>	HOLLY SMITH
<i>English Teacher</i>	MAE BROOKS MORRIS
<i>Math. Teacher</i>	JULIA NELSON
<i>Biology Teacher</i>	SARAH ROBINSON
<i>Fearsome Faultless Physician</i>	PERNETTE ADAMS

BLUE DEVILS

<i>Kwolly</i>	MARY PRIM
<i>Wolly</i>	OLIVE SPENCER
<i>Dolly</i>	FLORIDA RICHARD
<i>Wolly</i>	ELEANOR HARDING
<i>Dosnic</i>	HORTENSE ELTON



THE GRANDMOTHERS' PARTY



INVESTITURE



Blackfriars

Presents

"DADDY LONGLEGS"

<i>Jervis Pendleton</i> , a bachelor of wealth and position	ROBERTA WINTER
<i>James McBride</i> , a product of Yale	ISABELLE CLARKE
<i>Cyrus W'ycoff</i> , a Trustee of the John Grier Home	FLORENCE PERKINS
<i>Abner Parsons</i> , another Trustee	ELLEN DOUGLASS LEYBURN
<i>Joseph Codman</i> , another Trustee	GEORGIA MAE BURNS
<i>Miss Pritchard</i> , a friend of Mr. Pendleton	JANET McDONALD
<i>Judy Abbott</i> , a bright and promising orphan	MARY FREEMAN
<i>Gladiola</i>)	(MARTHA CROWE
<i>Loretta</i>)	(LOUISA DULS
<i>Sadie Kate</i>)	(ELIZABETH MCCALLIE
<i>Susie</i>)	(CHRISTINE WOFLE
<i>Mamie</i>)	(ANNE JETER
<i>Belle</i>)	(ISABEL MCCAIN
<i>Tommie</i>)	(CATHERINE CUNNINGHAM
<i>Freddie</i>)	(FRANCES FREEBORN
Orphan Children at the	
John Grier Home	
<i>Mrs. Lippett</i> , matron of the John Grier Home	CATHERINE GRAEBER
<i>Mrs. Pendleton</i> , who has much family pride	MARY WEEMS
<i>Julia Pendleton</i> , who is more democratic	ELOISE HARRIS
<i>Sallie McBride</i> , a typical college girl	MARY SAYWARD
<i>Mrs. Lizzie Semple</i> , of Lock Willow Farm	HELENA HERMANCE
<i>Carrie</i> , her maid of all work	FRANCES FREEBORN
<i>Griggs</i> , Mr. Pendleton's Secretary	FLORENCE PERKINS
<i>Walters</i> , his butler	GEORGIA MAE BURNS
<i>Mary</i> , his maid	LOUISA DULS
<i>The Maid</i> at college	ELLEN DOUGLASS LEYBURN



Founder's Day, February 22

CHARACTERS

Rebekah Scott
 CATHERINE GRAEBER
 ELOISE HARRIS
 FRANCES COOPER
 VIRGINIA BROWNING
 GRACE BOONE
 OLIVIA SWANN
 HELEN CLARK MARTIN
 LOUISA DULS

George Washington
Martha Washington
LaFayette
Thomas Jefferson
Betsy Ross
Patrick Henry
Benjamin Franklin
Daniel Boone

White House
 SARAH SLAUGHTER
 EVELYN SPRINKLE
 ISABELLE CLARKE
 STERLING JOHNSON
 ROSALIE WOOTEN
 MARGARET WHITTINGTON
 HAZEL HUFF
 RUTH LIGGIN

The Minuet Was Danced by

GENTLEMEN

VIRGINIA BROWNING
 FRANCES COOPER

CATHERINE GRABER
 SARAH SLAUGHTER

LADIES

KATHERINE PITMAN
 GERTRUDE GREEN

ELOISE HARRIS
 GRACE BOONE

Blackfriars Presents

Productions of Agnes Scott Playwriters

"THE CHARM OF THE HAWTHORNE"

By ELIZABETH MCCALLIE, '27

<i>Susan</i>	MARY FREEMAN
<i>Katie</i>	MARTHA CROWE
<i>Choir Boys</i>	{ ELLEN DOUGLASS LEYBURN MARIAN DENNY MARGARET NEAL MARY CUNNINGHAM

* * * * *

"THE DARNED DRESS"

By MISS MARGARET BLAND, '20

<i>Texie</i>	ELIZABETH MCCALLIE
<i>Rexie</i>	FRANCES FREEBORN
<i>Ma</i>	LOUISA DULS
<i>Mrs. Allen</i>	ELIZABETH MOORE

* * * * *

"AUNT TEENIE"

By GRACE AUGUSTA OGDEN, '26

<i>Fannie</i>	MARY FREEMAN
<i>Miss Blake</i>	EDYTHE CARPENTER
<i>Aunt Teenie</i>	EMILY STEAD

* * * * *

"VALUES"

By POLLY STONE, '24

<i>Mrs. Allen</i>	MARTHA JOHNSTON
<i>Harriet</i>	FRANCES CHAMBERS
<i>Nancy</i>	SARAH WHITE
<i>Dorothea</i>	CAROLINE MCKINNEY



The Triangular Intercollegiate Debate

ELOISE HARRIS	CATHERINE GRAEBER	MARY DAVIS
JANET McDONALD	ELSA JACOBSEN	LOUISA WHITE

THE SUBJECT: *Resolved*: That China should at the present time be granted complete control over her customs, tariffs and foreigners within her boundaries.

THE DEBATERS

<i>At Agnes Scott</i> A. S. C.		<i>At Sophie Newcomb</i> Newcomb
ELSA JACOBSEN JANET McDONALD LOUISA WHITE, <i>Alt.</i>	} <i>Affirmative</i>	{ ETHEL BOWER { CARMELITA GONZALEY { RUBY FOSTER, <i>Alt.</i>
Randolph-Macon		A. S. C.
LAURA LOVING SUSIE COBBS MADELEINE BERLIN, <i>Alt.</i>	} <i>Negative</i>	{ CATHERINE GRAEBER { ELOISE HARRIS { MARY DAVIS, <i>Alt.</i>

Agnes Scott gained a victory over both Randolph-Macon and Sophie Newcomb.



VARIOUS SENIOR FUNCTIONS



WEEK-ENDS AT PINE LODGE CAMP

May Day

The Triumph of Spring

By CAROLYN ESSIG

PART I

The God of Winter rules all the earth. Flowers are concealed in long white robes, and bow before the hoary diety who dances boastfully with his attendants.

In due time, Spring enters the earth, attended by breezes, soft rains, and warmth. They wage war with winter, tossing buds against the snow balls hurled by Winter's attendants. Spring wins the day. The flowers awake and hold up their heads as Spring's attendants joyfully pursue saddened Winter.

Attracted by the beautiful flowers, an elf comes to the dell to play. He carries in his hands a golden apple which, he tells the flowers, was dropped by Winter when he fled from the Garden of Hesperides after he had seized the apple from the Tree of Youth. Winter was then so cursed that he could never try for Youth again, nor have any power over the holder of the apple.

At this all the flowers beg for the apple, and the bewildered elf proposes that he fetch the most beautiful of mortals to judge who shall receive the gift of youth and thus be freed from the power of Winter. The flowers dance approval.

PART II

The Queen and her maids have entered. Each flower then summons a representative festive group from her country, who shall compete in the dance in order that its National Flower should receive freedom from Winter's power.

The Cherokee Rose invokes the Indian Prince, Herald of the Dawn, who invokes Good Hunting. His subjects call upon the sun for a happy corn planting, and worship the sun at its approach.

The Violet calls upon the classical countries.

The Cherry Blossom is aided by Japanese Maidens.

The Corn Flower summons village folk of Central Europe.

The Tulip brings in girls and boys of Holland.

The Bluette leads the celebration of Northern Europe, representing the scattering of Winter's dark clouds, by Spring's pale clouds and golden sunbeams.

The Chrysanthemum summons a Chinese Procession of Lights.

The Pomegranate calls upon Spanish youths and maidens.

The Rose invokes English Villagers, led by Hobby Horse, and followed by a goodly company of gentlemen, including Little John and Robin Hood. Robin Hood singles out Maid Marion as his partner for a dance. After dancing about the May Pole, all pay homage to the Queen.

PART III

Now the time has come for the awarding of the Golden Apple. The gracious Queen rises, and tells her court that the offering of each flower was so perfect that no one flower could be granted Eternal Youth before the others. And as it was the pervading spirit of each celebration that made it lovely, and as that spirit was the spirit of Spring, she declares that Spring should be granted the golden apple.

The Elf is sent to summon Spring. But alas, as the Queen picks up the apple, she sees that half of it is gone. The court is amazed. The elf from a far corner laughs and capers about, rubbing his stomach. They would go after him, but he is off into the grove.

Nevertheless, the remaining half of the apple is presented to Spring, who receives it, happy in the gift of youth for even a part of every year.

Spring gives a bit of the golden apple to each flower, and beckoning to her attendants dances away, followed by the queen and her maids, who are in turn followed by the merry court.



May Queen EDYTH COLEMAN

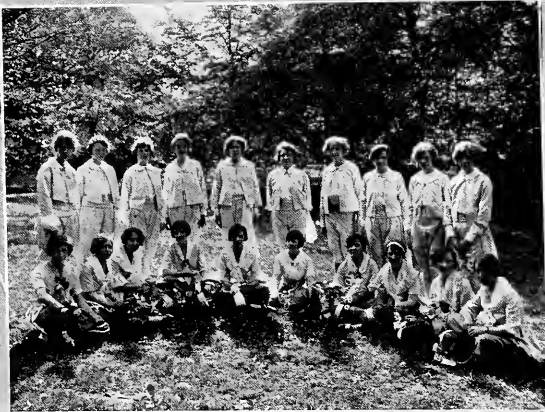
MAIDS

PERNETTE ADAMS
 GRACE BOONE
 MARY DUDLEY BROWN
 SARAH CARTER
 MARTHA CHILDRESS
 ELIZABETH CLARKE
 VIRGINIA GRIMES

MARY ELLA HAMMOND
 RUTH McMILLAN
 CATHERINE MITCHELL
 SARAH ROBINSON
 SARAH SLAUGHTER
 JOSEPHINE WALKER
 MARY WEEMS









Senior Opera Company

Presents

READ — A — LETTER

SHREIKS AND SHREIKESSES

Innocentia Ivorie—99 44/100 Pure	False-Etta
	<i>Eloise Harris</i>
Sophisticata Rusticana—Dodge Brothers	Messy Soprano
	<i>Frances Cooper</i>
Lotsa Braggadoccia—"What's Wrong With This Picture?"	Base
	<i>Florence Perkins</i>
Liebe Amour Blanc—"He Satisfies"	Bury-Tone
	<i>Isabelle Clarke</i>
Red Capus—"Time Will Tell"	Tinner
	<i>Edythe Carpenter</i>
Maid—For Young Men and Men Who Stay Young	Cholera-Too-Rah
	<i>Mary Freeman</i>

Cake-Eaters et Femmes.

Incidental Trances by Corpse de Ballet.

SYNOPSIS OF SCENES

Act I. Masquerade Ball at Country Club. Night—*Love.*

Act II. Salon of Innocentia's Home. Morning—*Jealousy.*

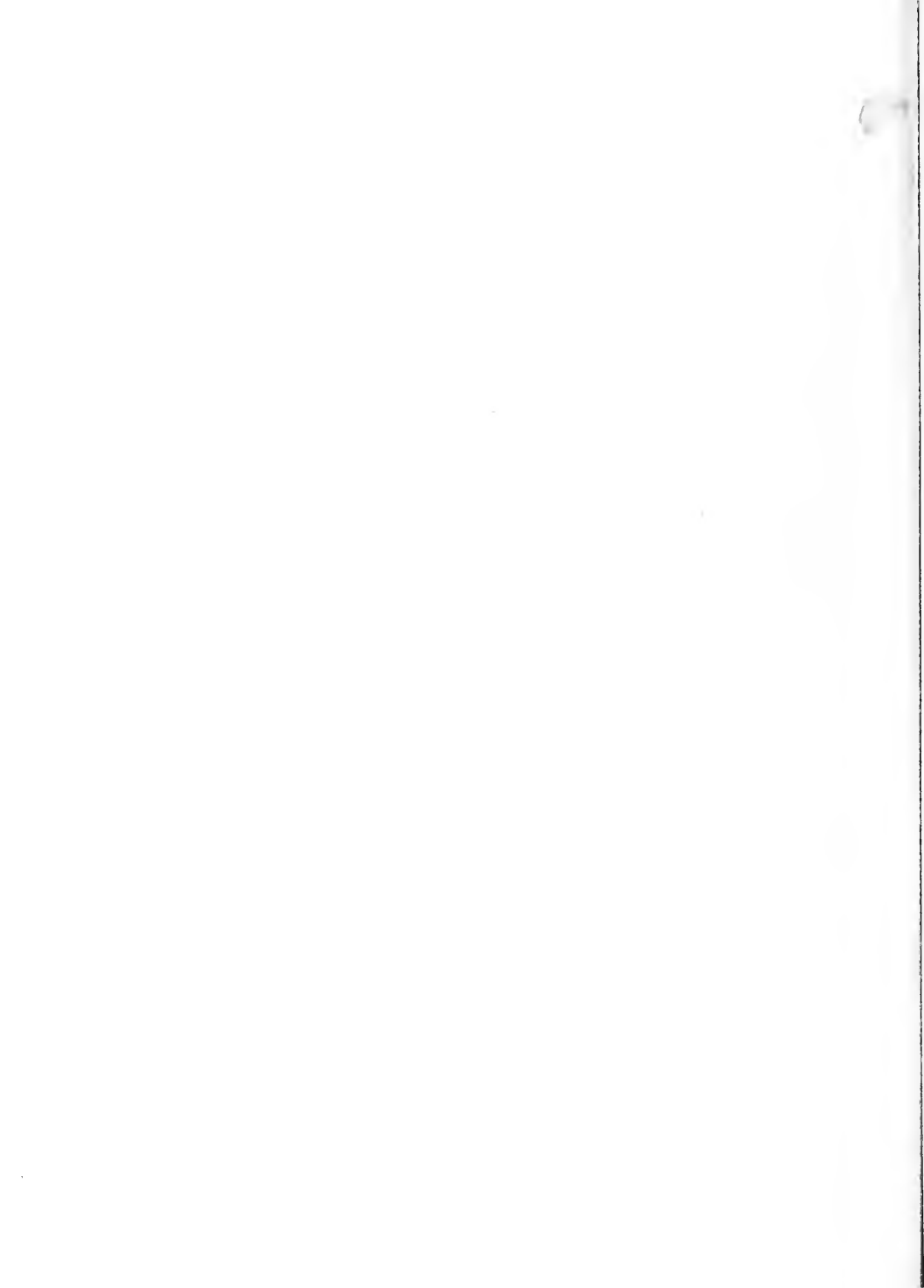
Act III. Garden of Innocentia's Home. Afternoon—*Death.*

Place: A dense fog surrounds the place of action.

Time: Double Quick.



Features





Helena Hermance

MOST ATTRACTIVE



Christine Worle
MOST BEAUTIFUL



Sarah Smith
MOST POPULAR.



Mary Cunningham
BEST ATHLETE



Mildred Morrow
BEST DRESSED



Louisa Duls

BEST STUDENT



Frances Cooper
WITTIEST

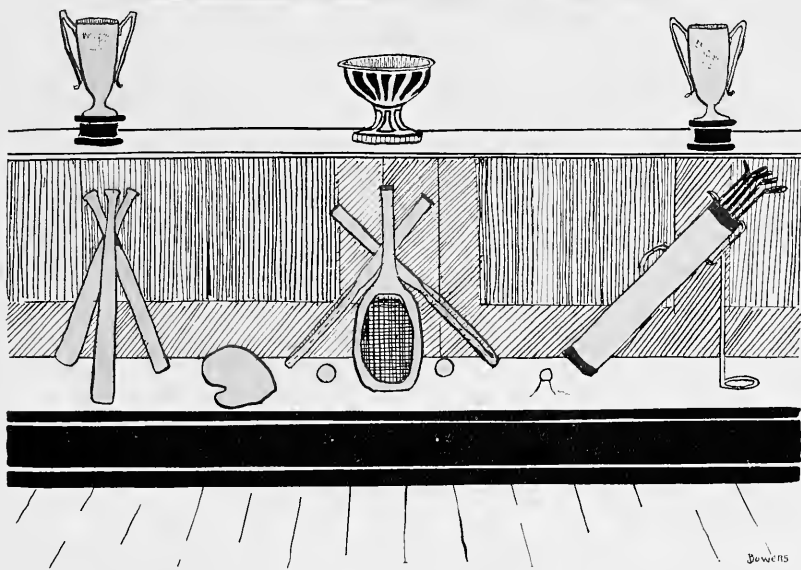


Eloise Harris

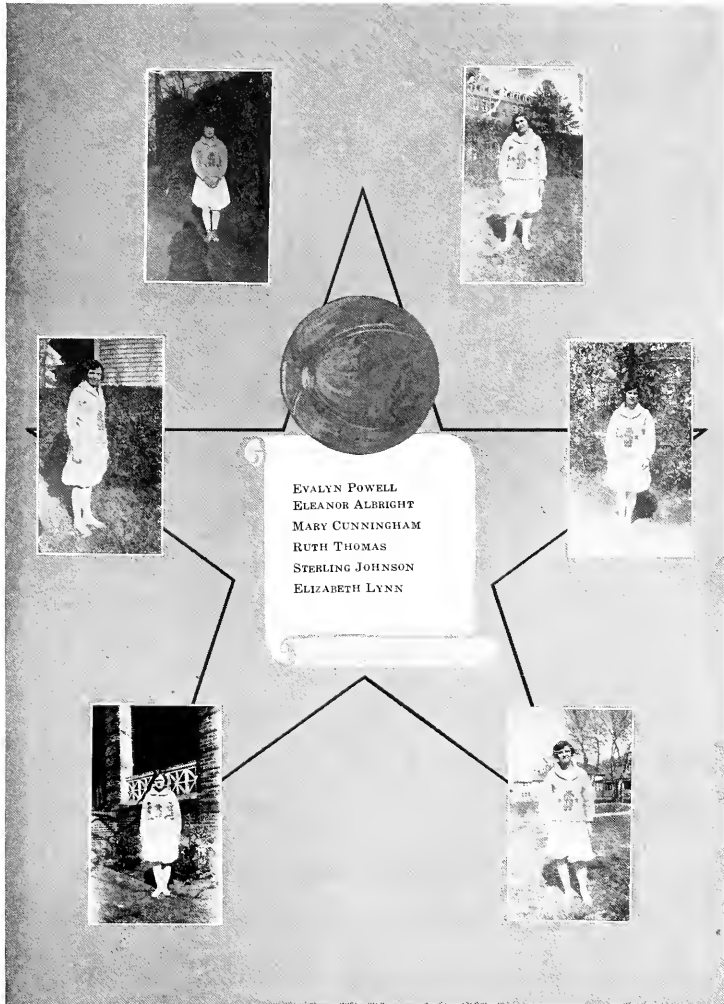
BEST - ALL - ROUND



CHAMPIONSHIP
BANNER



Athletics



EVALYN POWELL
ELEANOR ALBRIGHT
MARY CUNNINGHAM
RUTH THOMAS
STERLING JOHNSON
ELIZABETH LYNN

All-Star Basket-Ball Team



SENIOR BASKET-BALL TEAM

ETHEL REDDING, Manager *NAN LINGLE, Captain*
ETHEL REDDING, Center; ELLEN FAIN, Side Center; LEONE BOWERS, STERLING JOHNSON,
Guards; EDYTHE CARPENTER, NAN LINGLE, SARAH SLAUGHTER, Forwards.



JUNIOR BASKET-BALL TEAM

MARY WEEMS, Manager *ELEANOR ALBRIGHT, Captain*
EVALYN POWELL, Center; ELEANOR ALBRIGHT, Side Center; MARION DANIEL, ELIZABETH
LYNN, Guards; ELSA JACOBSEN, MARY WEEMS, Forwards.



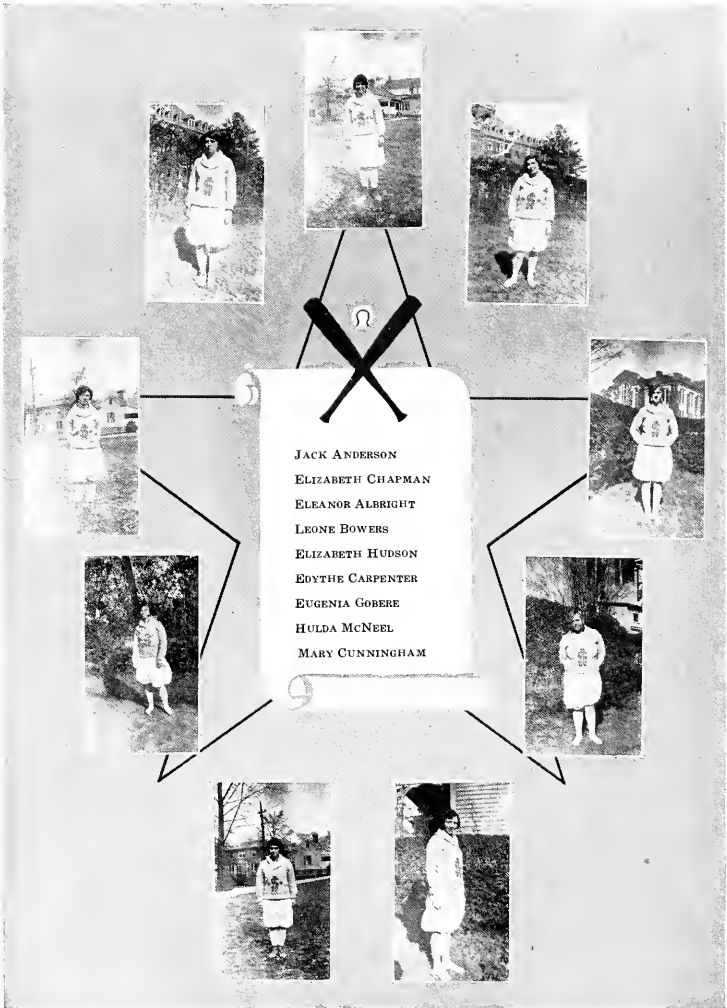
SOPHOMORE BASKET-BALL TEAM

MIRIAM ANDERSON, *Manager* JACK ANDERSON, *Captain*
 DELLA STONE, *Center*; MIRIAM ANDERSON, *Side Center*; JACK ANDERSON, ADAH KNIGHT,
 GWENDOLYN MCKINNON, *Guards*; MARY CUNNINGHAM, RUTH THOMAS, *Forwards*.



FRESHMAN BASKET-BALL TEAM

GEORGIA FIELD, *Captain and Manager*
 HELEN RIDLEY, *Center*; KATHRYN PASCO, *Side Center*; GEORGIA FIELD, GENEVIEVE KNIGHT,
 ISABELLE WILSON, *Forwards*; LUCILE BRIDGEMAN, SARAH ROBINSON, ELLEN WARFIELD,
Guards.



JACK ANDERSON
ELIZABETH CHAPMAN
ELEANOR ALBRIGHT
LEONE BOWERS
ELIZABETH HUDSON
EDYTHE CARPENTER
EUGENIA GOBERE
HULDA McNEEL
MARY CUNNINGHAM

All-Star Baseball Team



SENIOR BASEBALL TEAM

ELIZABETH CHAPMAN, *Manager* ELEANOR GRESHAM, *Captain*
 LEONE BOWERS, LADIE SUE WALLACE, *Pitchers*; ELIZABETH CHAPMAN, *Catcher*; EDYTHE
 CARPENTER, *First Base*; SARAH SLAUGHTER, *Second Base*; ETHEL REDDING, *Third Base*;
 ELLEN FAIN, *Shortstop*; ELIZABETH MOORE, *Left Field*; ELEANOR GRESHAM, *Right*
Field, MARGARET BULL *Center Field*; SARAH SMITH, *Substitute*.



JUNIOR BASEBALL TEAM

HULDA McNEEL, *Manager* ELIZABETH LYNN, *Captain*
 ELIZABETH LYNN, *Pitcher*; ELEANOR ALBRIGHT, *Catcher*; ELSA JACOBSEN, *First Base*; VIR-
 GINIA SEVIER, *Second Base*; EVALYN POWELL, *Thurd Base*; HULDA McNEEL, *Shortstop*;
 EVELYN ALBRIGHT *Left Field* LOUISE BANSLEY, *Right Field*; MILDRED COWAN, *Center*
Field.



SOPHOMORE BASEBALL TEAM

VIRGINIA CARRIER, *Manager* EUGENIA GOBERE, *Captain*
 JACK ANDERSON, *Pitcher*; M. CUNNINGHAM, *Catcher*; MARY M. HOUGH, *First Base*; SARAH
 GLENN, *Second Base*; ELIZABETH HUDSON, *Third Base*; HILDA KALMON, *Shortstop*;
 MABEL ROBESON, *Left Field*; FRANCES HARGIS, *Right Field*; EUGENIA GOBERE, *Center*
 Field; MARY PERKINSON, DELLA STONE, GWENDELYN MCKINNON, *Substitutes*.



FRESHMAN BASEBALL TEAM

RUTH WORTH, *Manager*
 RUTH PAXON, GEORGIA FIELD, *Pitchers*; M. D. CRAWFORD, *Catcher*; CATHERINE TORRENCE,
First Base; E. MORGAN, *Second Base*; HELEN RIDLEY, *Third Base*; RUTH WORTH,
Shortstop; ELLEN WARFIELD, *Left Field*; ESTHER RICE, *Right Field*; SARA JOHNSON,
Center Field; KATHERINE PASCOE, LUCILE BRIDGEMAN, *Substitutes*.



SENIOR SWIMMING TEAM

ELISE GAY, *Manager*

FRANCES COOPER, ISABELLE CLARKE, CLARKIE DAVIS, ELSIE GAY, ELEANOR GRESHAM, ELOISE HARRIS, EMILY JONES, DOROTHY OWEN, SARAH SLAUGHTER, VIRGINIA WING



JUNIOR SWIMMING TEAM

CATHERINE MITCHELL, *Manager*

ELEANOR ALBRIGHT, BLANCHE BEKRY, LOUISE BANSLEY, ELSA JACOBSEN, CATHERINE MITCHELL, RUTH McMILLAN, HULDA McNEEL, EVALYN POWELL, VIRGINIA SEVIER, MAMIE SHAW



SOPHOMORE SWIMMING TEAM

MARY RIVIERE, *Manager*

JACK ANDERSON, EMILY COPE, MARY CUNNINGHAM, E. DAVIS, MARY M. HOUGH, HILDA KALMON, KATHERINE KALMON, ADAH KNIGHT, GWENDOLYN MCKINNON, MARY RIVIERE, DOROTHY SPRATT



FRESHMAN SWIMMING TEAM

KATHERINE PASCO, *Manager*

CORRIE CARTER, GEORGLA FIELD, PEARL HASTINGS, ELAINE JACOBSEN, KATHERINE PASCO, HELEN RIDLEY, SARAH ROBINSON, SARAH SOUTHERLAND, F. WELSH, ELLEN WARFIELD



BOWEN.

Jokes

From Station STYX

(A Radio Program With an All-Star Cast of Artists.)

- 10:00 A. M.—Violin Solo, Roman Fire Dance, by Nero.
10:30 A. M.—Chafing-Dish Recipes for the Unwelcome Guest. Lucrezia Borgia.
11:15 A. M.—How to Make a Fountain of Youth in Your Back Yard. Ponce de Leon.
12:00 Noon—Those Waterloo-loo-loo Blues. Napoleon's Old Guard Band.
1:00 P. M.—Educational Series. Easy Lessons in Beginners Latin. Julius Cæsar.
1:30 P. M.—How Ten Can Live As Cheaply As One. Brigham Young.
2:15 P. M.—First-Aid Talk. What to Do When Hit By An Apple. Sir Isaac Newton.
3:00 P. M.—Tenor Solo. Starboard Watch, Ahoy. Admiral Christopher Columbus.
3:15 P. M.—Address to the Gladiators. Spartacus (by request.)
3:45 P. M.—Old English Folk Song. O, Come With Me and Be My Love. Henry the Eighth and chorus of wives.
4:30 P. M.—Joshua's Trumpeters in a medley of airs such as "brought down the house" at Jericho.
5:15 P. M.—Bread Versus Cake; a domestic science talk by Marie Antoinette.
6:00 P. M.—Weather Reports. Noah.
7:30 P. M.—London Tower Bedtime Stories, by Richard the Third.
8:30 P. M.—Joymakers' Jazz Quartet, Beethoven, Bach, Brahms, and Wagner, in popular dance music.

* * * * *

"Say, Diogenes, why the lantern?"

"I never trust these Greek women in the dark."

* * * * *

IN TROY

Hector Cuff: Wilt thou?

Helen Collar: I wilt.

* * * * *

EVE'S APPETITE

"One day," said a story teller, "at the close of a hot day, Adam was returning with his hoe on his shoulder from a hard day's labor to his humble cottage. Maybe it was a cave. That don't matter, for it was an humble abode. Young Cain was running ahead, boylike, throwing rocks at the birds. Suddenly they came upon a beautiful garden.

"O father," said Cain, "look at that beautiful garden. I wish we could live there."

"We did live in that garden," said Adam, regretfully, "until your mother ate us out of house and home."

* * * * *

WHEN GRANDMA DOES THE CHARLESTON

Some people grow old gracefully; others attempt the new dances.

What's Wrong With These Pictures?

<p>The Serenade - A.S.C.</p>	<p>The Date - Colonnade.</p>
<p>Sunday night Special!</p>	<p>Go. R.R. & Power Co.</p>
<p>The Sat. night Dance.</p>	<p>Typical Sat. Afternoon.</p>

CROSS-WORD NURSERY RHYMES

Jack and Jill went up the elevated ground
To fetch a pail of common liquid;
Jack fell down and broke his occipital dome,
And Jill came tumbling subsequent to.

Mary, Mary, quite opposed to,
How does your garden increase, flourish?
With silver bells and the coverings of marine bivalves,
And fair maids all in exact alinement.

Tom, Tom, the piper's male offspring,
Stole a pig and away he moved rapidly.
The pig was eat and Tom was severely chastised,
Tom, Tom, the piper's male offspring.

Old Mother Hubbard went to the receptacle for nourishment
To get her poor dog an osseous tidbit.
When she got there the cupboard was entirely denuded of its contents,
And so the poor doggie got the opposite of any.


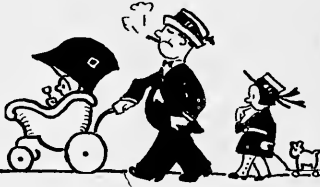


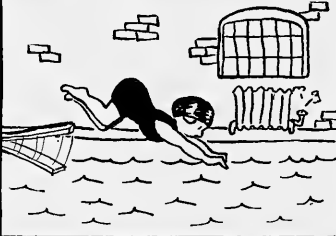
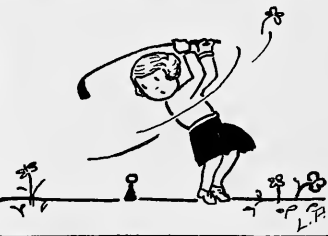


SHOOT!

PHONETIC LOVE
O, MLE, what XTC
I always feel when UIC,
I used to rave of LN'S eyes,
4 LC I gave countless sighs,
4 KT, 2, and LNR?
I was a keen competitor.
But each now's a non-NTT,
4 UNL them all UC.
* * * * *

*"I have a pain in my tummy, dear,"
Said the cannibal to his mate,
"I know, I know," his wife replied;
Tis that sweet girl grad-u-ate."*

The Faculty's Daily Dozen.

 A woman wearing a hat and a long dress is using a shovel to dig in a garden. A small black cat is sitting to her left, and there are some flowers and plants in the garden.	 A man in a suit and hat is pushing a baby carriage. A woman in a dress is walking behind him, and a small dog is on the right.
Miss Campbell	Mr. Rankin.
 A man wearing glasses and a bow tie is lifting a dumbbell. There are other dumbbells on the floor next to him.	 Two women are playing tennis. One is swinging a racket to hit a ball, and the other is standing near the net.
Mr. Stakes	Miss Laney & Miss Hale
 A woman is swimming in a pool. There are some blocks and a building in the background.	 A woman is swinging a golf club. There are some flowers and a small object on the ground.
Miss Brown	Miss Hearon.

ADVERTISEMENTS
MUSIC LOVERS!

Come to the Registrar's office. We keep all records.

* * * * *

MALE ORDERS

Miss Hopkins is in charge of our Male Order Department. She has had a number of years experience in ordering males—usually out.



Four out of Five have it

* * * * *

WEAK END SALE

We specialize in everything for the weak end—mental ability tests to memory courses.—Psychology Department.

* * * * *

We have just installed our new improved double acting flunking machine—changes A's to E's in one-fourth former time.

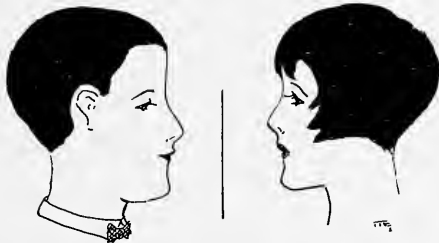
Demonstrations Daily.
Mathematics Department.

* * * * *

99 44/100% PURE





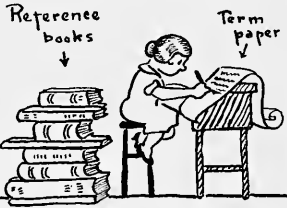

Help Agnes Scott to purity by ablutions after gym classes.
I. Randolph.

* * * * *



THE DANGER LINE

Subjects Not To Major In! Warning!

	<p>Do you get a reaction?</p> 
<p>Biology.</p>	<p>Psychology.</p>
	<p>Monsieur R Blanc Professeur</p> 
<p>Chemistry.</p>	<p>Français</p>
<p>Reference books</p> <p>Term paper</p> 	<p>Federal Prison</p>  <p>Parche's</p>
<p>English or History.</p>	<p>Sociology.</p>

FAMOUS SAYINGS OF FAMOUS PEOPLE

Eve: "An apple a day keeps the doctor away."

Plutarch: "I'm sorry I have no more lives to give to my country."

Samson: "I'm strong for you kid."

Delilah: "To bob or not to bob."

Cleopatra: "Great snakes!"

Nero: "Keep the home fires burning."

Noah: "It floats."

Methuselah: "The first hundred years are the hardest."

William Tell: "I aim to please."

* * * * *

TO MY GREEK BOOK

If you loved me as I love you,

We'd fill the air with curses blue.

* * * * *

Speaking of infant prodigies, at the age of three months, the child Paderewski played on the linoleum.

* * * * *

A magazine writer tells us that a dog fills an empty space in a man's life. We would like to say that this is especially true of the hot dog.

* * * * *

One: I see by the paper that Angie left town after a short stop.

T'other: No wonder, she always was crazy about athletes.

* * * * *

The fraction leaned over and touched the whole number on the shoulder, "Say," she whispered nervously, "Is my numerator on straight?"

* * * * *

Jinx: George burned a hole in his pants.

Winx: Did he carry any insurance?

Jinx: No! His coat tail covered the loss.

* * * * *

Flip: My uncle has addressed half the people in the United States.

Flap: He must be a wonderful orator.

Flip: O no, he mails catalogues for Sears-Roebuck.

* * * * *

Sweet Young Thing: "Will you be a stag at our formal next week?"

Freshman (not so sweet): "Sure, I love masquerade parties."

* * * * *

There once was a fellow, Miles Standish,

Who remarked in a manner offhandish,

"John," my faithful old pal,

"Go propose to my gal."

Now wasn't his conduct outlandish?

Feb 15

Reasoning: a process of mental exploration culminating in an inference. Exploration raises a question "why?"

John Dexter - did not study but was naturally bright
JOHN DEXTER
John Dexter

Just one more week till the 22nd!!!!
George

Little Doc



Dreams

I. Causes

- 1- Suppressed desires.
- 2- Suppressed fears.
- 3- Sensory Stimulus.



Dreaming \rightarrow Deep Sleep

- 3 classes of stimuli produce emotion
- 1- Objects of objective situations
 - 2- Perception of emotional excitement in others

3- Subjection of excitement of emotion thru ideas

Have you seen Powell's bob (Paddy Ann)?



Kathink Pitman - LOVE
Wbb Bkwd - LOVE

James-Lange Theory of Emotions



Want to get the research sat. No, you broke



The Circulation

next chapter for next time

A page from a Psyc. I notebook

A NOTE FROM ME TO YOU

*I think about you often,
And I'd write you every day
But there's so very little
That it seems worth while to say;
It either rains, or doesn't rain,
It's either hot, or cold.
The news is all uninteresting,
Or else it's all been told.
The only thing that matters
Is the fact that you are there,
And I am here without you
And its lonely everywhere.
I think about the way you smile,
And I recall your touch,
And distance lends enchantment
And—I miss you very much.*

* * * * *

Carolina: "Say, Lib, did you hear those measly roosters crowing real early this morning?"

Lib: "Uh-huh,"

Carolina: "I wonder why they wanted to do that."

Lib: "Well, don't you remember you got up one morning early and you crowed about it for a week."

* * * * *

Rachel Henderlite: "What makes the Tower of Pisa lean?"

Helen Lewis: "I wish I knew, I sure would try some of it."

* * * * *

Grace: I hear you and Committee had a little trouble.

Gertrude: It was only me that had trouble.

* * * * *

*We editors may dig and toil
Till our finger tips are sore;
But some poor fish is sure to say
"I've heard that joke before."*

* * * * *

*The editors used this
In a pinch.
They needed exactly
Another inch.*



AGNES SCOTT COLLEGE

Decatur, Georgia

A COLLEGE FOR WOMEN



WEAR—
RED SEAL SHOES

*We will appreciate
your asking for them.
Your feet will appreciate
the result.*

J. K. ORR SHOE CO.

Atlanta, Ga.

Thurston Hatcher

*FINE
PHOTOGRAPHER*

STUDIO

58 Whitehall Street

Atlanta

FROHSIN'S has been setting the fashion for College Girls for nearly forty years.

Of course, there have been many changes in styles in all these years, but the principles of high quality, fine workmanship and moderate prices, on which Frohsin's has won its reputation, have never gone out of fashion.

Exclusive Modes at Moderate Prices

Frohsin's
Correct Dress for Women
50 WHITEHALL

Refresh
yourself

5¢
Drink

Coca-Cola

Delicious and Refreshing

The Coca-Cola Company, Atlanta, Ga.

104-C



To Allen's---

When you want to wear the prettiest frock at the whole reception.

When you want the smartest bathing suit on the beach.

When you desire to own something that's startlingly new.

When you seek the cleverest of all the clever accessories in vogue.

When you want a ravishing coat.

When you must have the trickiest of all trick sports outfits.

J. P. Allen & Co.

SEND MAIL ORDERS

—TO—

JACOBS'



Jacobs' Pharmacy Co.

ATLANTA

Prompt Service Correct Prices

DUNLAP'S POINT LACE,

BEST, AND

BRIDE ROSE

FLOUR

*Also a full line of high grade
Canned Fruits and
Vegetables*

**ALBRIGHT-
ENGLAND
COMPANY**

Wholesale Grocers

No. 1 Washington St. Viaduct

*Little Clippings From
Poor Richard's Almanac*

If at first you don't succeed, give
up.

A penny saved is a penny good
as lost.

A word to the wise is out of
place.

People who live in glass houses
should keep the covers on at
night.

A stitch in time saves a girl much
trouble at a dance.

Fine feathers make fine dust
brushes.

That's where my money goes

It keeps me on my toes,

To pay the bills I owes,

—AT—

THE SILHOUETTE TEA ROOM

I buys their tomatoes,

Doughnuts by two's and fo's

Say girls, that's where my money goes.

Decatur Bank and Trust Company

COMMERCIAL BANKING AND TRUST DEPARTMENT

We Issue Travelers Cheques.

4% INTEREST PAID ON SAVINGS DEPOSITS, COMPOUNDED
SEMI-ANNUALLY.

The Blanche Marie Shoppe

*HATS THAT ARE
DELIGHTFULLY
DIFFERENT*

157 Peachtree
Grand Theatre Building

*“Wonderful Shoes
for
Wonderful Girls”*

Fred S. Stewart Co.
25 Whitehall St.

J. S. McCauley Company

Incorporated

*GENERAL
CONTRACTORS*

Atlanta,

Georgia

For Cute and Nifty Looking Hats

—SEE—

T I P P ' S

109 Peachtree Street
130-132 Peachtree Arcade

A discount of 10% to college
girls and teachers

Atlantic Ice and Coal Company

ICE, COAL AND COLD
STORAGE

ATLANTA:

Phone Main: 1900

DECATUR

Phone: Dearborn 0096

THE BEST TASTE IN GIFTS

Nunnally's
THE CANDY OF THE SOUTH



“Dear Teacher:

Kindly excuse Johnnie's absence yesterday. He fell in the mud.
By doing the same you will greatly oblige his mother.”

New York Waist House

30 Whitehall Street

Atlanta, Georgia

Beautiful Spring and Summer COATS DRESSES

66 Stores in all the leading cities in the country. Visit us while in the city.



Sole Distributors
Fan Tan
Hosiery
In Thirty
Shades
Guaranteed

Super-Quality
Silk
Underwear
and Brassieres
All Sizes

LADIES' — BOBS — CHILDREN'S

From comments and remarks of your friends, you will know whether your HAIR CUT IS BECOMING

THE ARTISTIC BOB SHOP

With MR. RICH and its Eight (8) Bobbers offers Correct Bobs only.
JACOBS' MAIN STORE

Open 7:30 A. M. 5 POINTS—BALCONY Close 7 P. M.

ALL KINDS OF BEAUTY WORK

Exclusive Millinery



C & C Rosenbaum
ELEVEN WEST ALABAMA

Phone: Walnut 5776

BAME'S, Inc.

"Atlanta's Exclusive Talking
Machine Shop"

VICTROLAS, SONORAS
RECORDS

107 Peachtree Street
(Opposite Piedmont Hotel)



"JAHN & OLLIER AGAIN"

FINE annuals, like brilliant victories, are brought about by the co-ordination of skillful generalship and trained effort. The Jahn & Ollier Engraving Co. is America's foremost school annual designing and engraving specialist, because in its organization are mobilized America's leading creative minds and mechanical craftsmen.

THE JAHN & OLLIER ENGRAVING CO.

Photographers, Artists and Makers of Fine Printing Plates for Black and Colors
817 W. WASHINGTON BLVD., CHICAGO





College Catalogs
College Annuals
College Diplomas
Commencement
Invitations

We are Printers of College Annuals

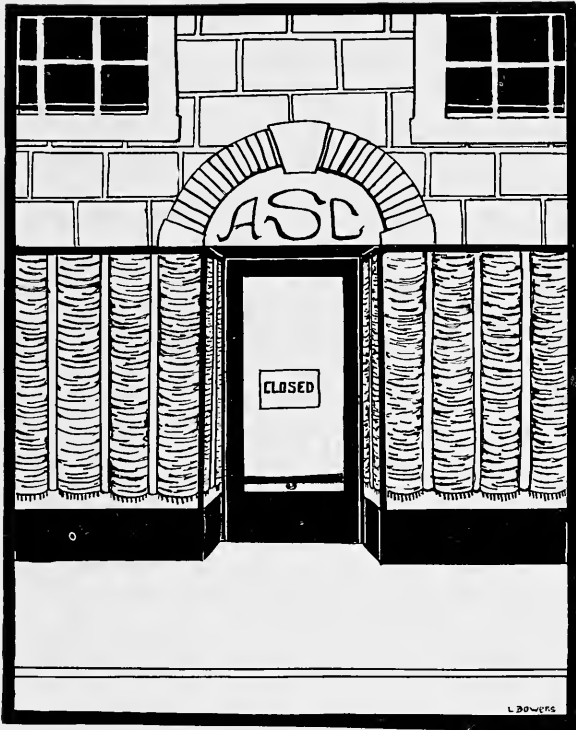
This annual is a product of our plant.

Our lithographed and copper engraved diplomas are a delightful memento of work well done.

Invitations bearing the Foote & Davies imprint are a fitting announcement of a distinctive party. We design and engrave or print unusual invitations and programs—engrave commencement invitations, monogrammed and fraternity stationery.

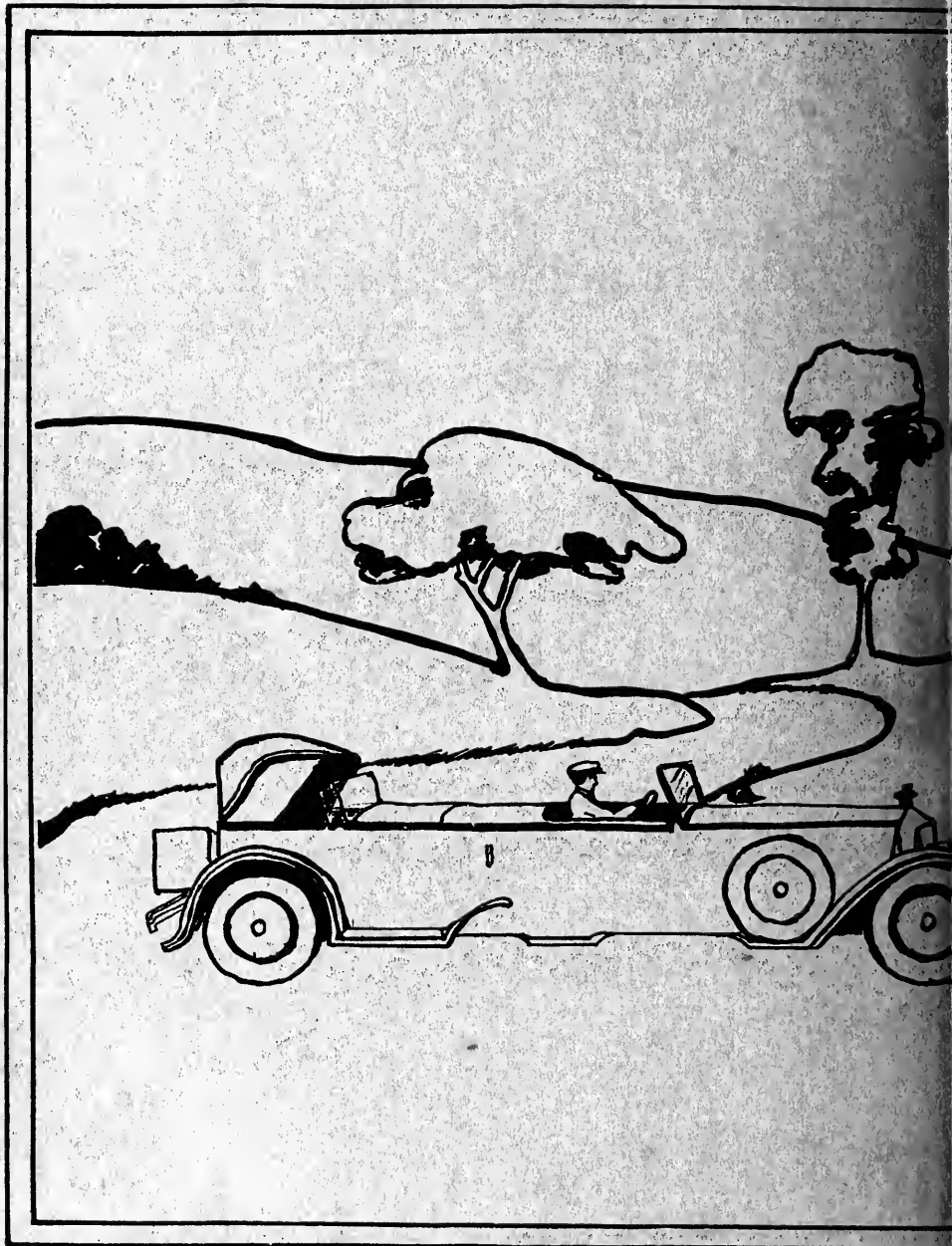
Wedding Invitations of the aristocratic Southerner are engraved by us.

Foote & Davies Co.
Atlanta, Ga.











SHOP AT
DAME WISDOMS
STORE

A decorative flourish consisting of two symmetrical, curved lines that meet at the top and bottom, framing the text 'BOWERS' in the center.

BOWERS

