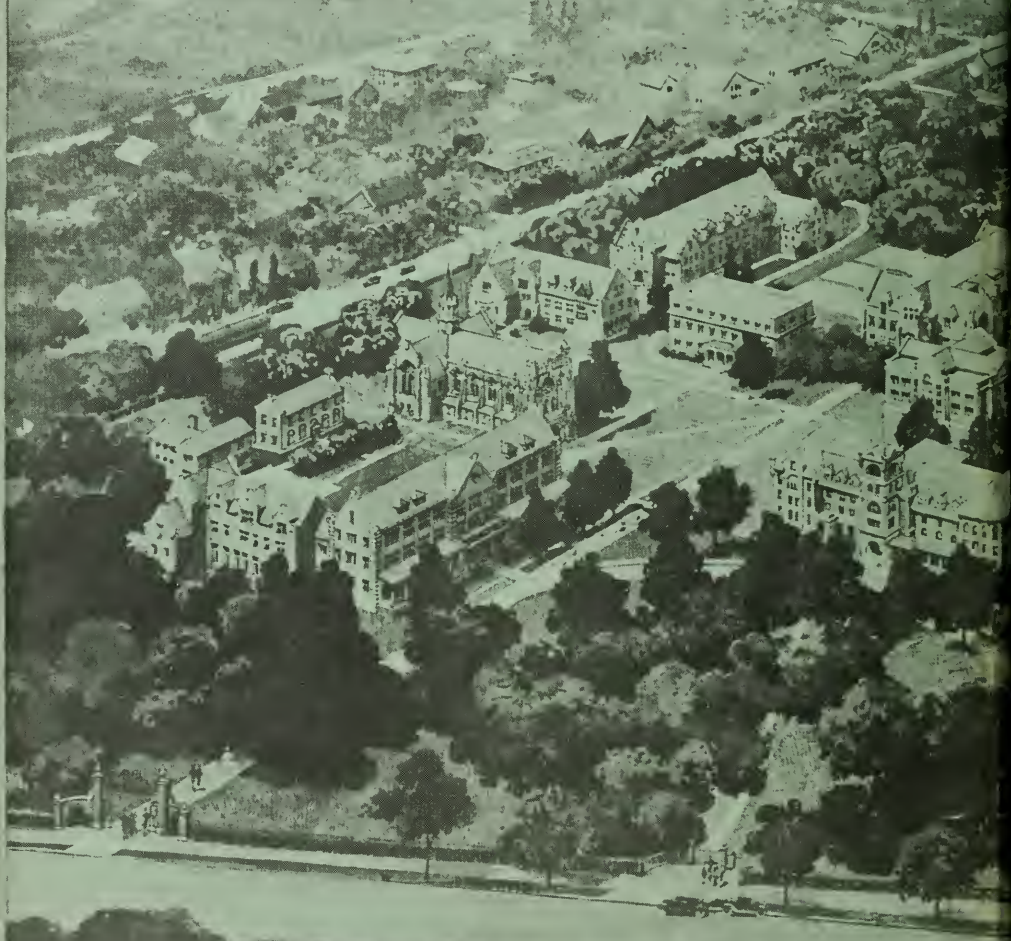




FACULTY HOUSE      CHAPEL      HOME DEPARTMENT BUILDING      PRESIDENT'S OFFICE  
ALUMNAE HALL      INMAN HALL      INFIRMARY      SCIENCE HALL      GYMNASIUM  
EXTENSION OF INMAN HALL      LIBRARY  
AGNES SCOTT HALL



DEVELOPMENT OF AGNES SCOTT COLLEGE





ARBORETUM

THEATRE

RE-BUILDING

ATHLETIC FIELD

BUTTRICK HALL

REBEKAH SCOTT HALL

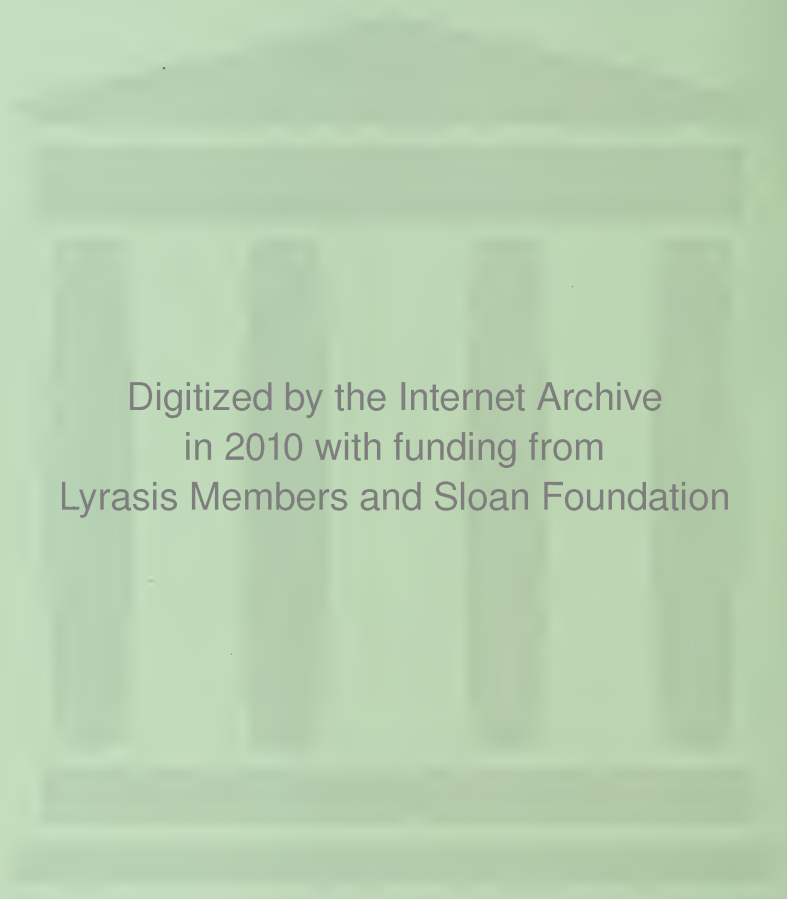
BOILER HOUSE LAUNDRY

DORMITORY GROUP

TENNIS COURT

MUSIC BUILDING

COLLEGE DECHMUR GEORGIA



Digitized by the Internet Archive  
in 2010 with funding from  
Lyrasis Members and Sloan Foundation

<http://www.archive.org/details/silhouette193733agne>



*The*  
**SILHOUETTE**  
1937



*The* S I L H O

*Copyright*

BARTON JACKSON  
Editor



MARY GILLESPIE  
Business Manager



J E T T E 1937

*Published by the Students of*

AGNES SCOTT COLLEGE  
DECATUR, GEORGIA





# T H E M E


*The* state of Georgia as the background of Agnes Scott has been taken as the theme for the 1937 SILHOUETTE. On the main division pages we have endeavored to picture for you the main sections of the state showing their beauty and their importance to the country. Georgia is a land of many resources, of great fertility, and of rare beauty. It is a mosaic of never ending progress which offers to more than three million people the essentials and pleasures of life.



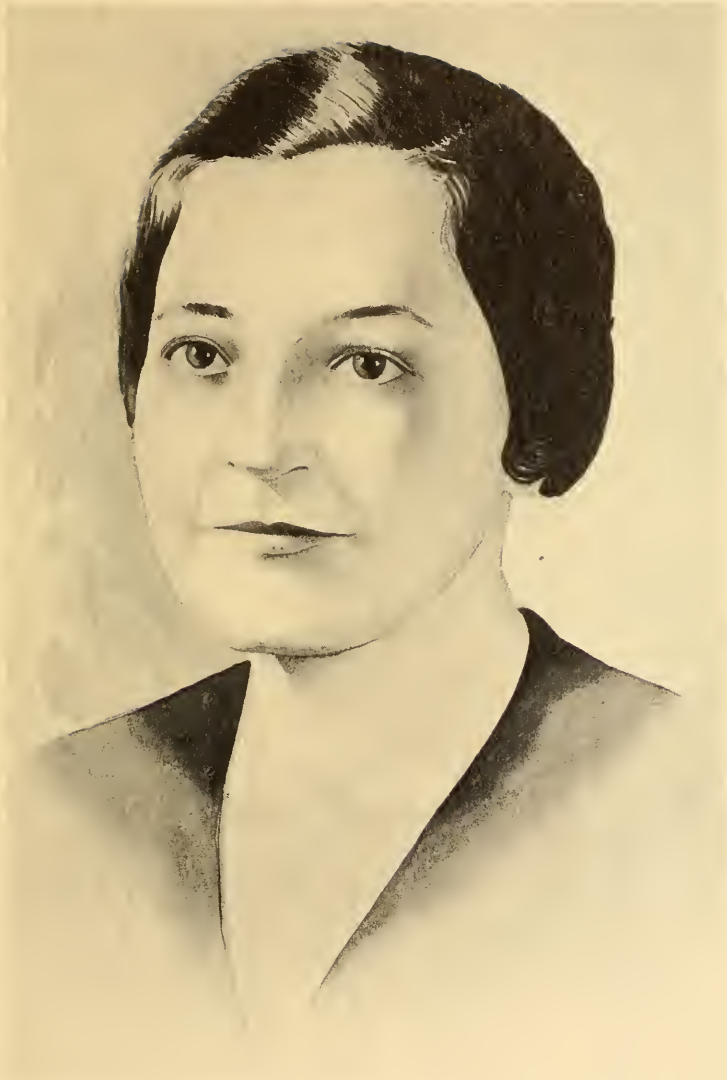
# DEDICATION



To MISS CARRIE SCANDRETT who, after completing five years as assistant dean and as assistant registrar, has been, through her untiring cheerfulness and sincerity, a prime inspiration to the students and an outstanding asset to the college. To her, from whom we have received instruction, courage, and high ideals, the senior class respectfully dedicates this, the thirty-third volume of the SILHOUETTE.







*Miss Carrie Scandrett*

# CONTENTS

•  
BOOK ONE

*College*

•  
BOOK TWO

*Classes*

•  
BOOK THREE

*Organizations*

•  
BOOK FOUR

*Athletics*

•  
BOOK FIVE

*Features*

BOOK ONE

College...

---



## *Coast*

Georgia's great ports with their facilities for transportation are today busy scenes with ships of all kinds pouring in and out, opening a gateway to the world. Negroes humming as they load the cotton and unload the imported products give a picture of thriving progress. Scattered up and down Georgia's one hundred miles of coast are resorts and beaches, popular and beautiful throughout the year.





ZW



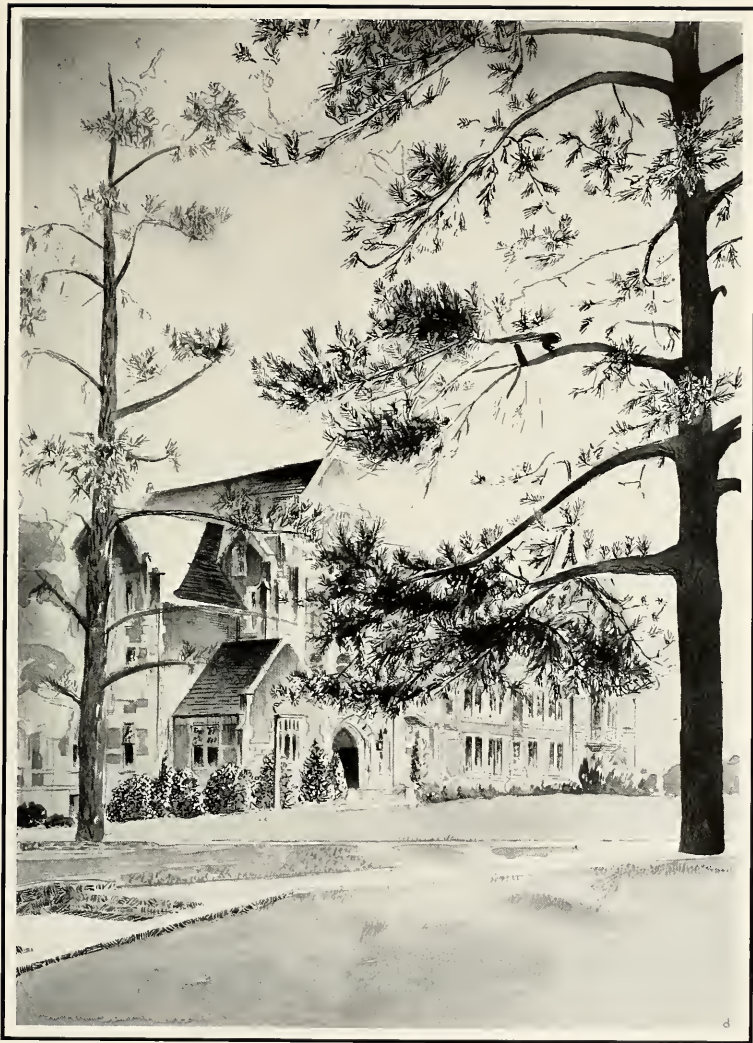




*Views*



*Buttrick Hall*





*The Carnegie Library*

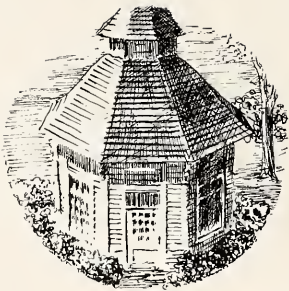




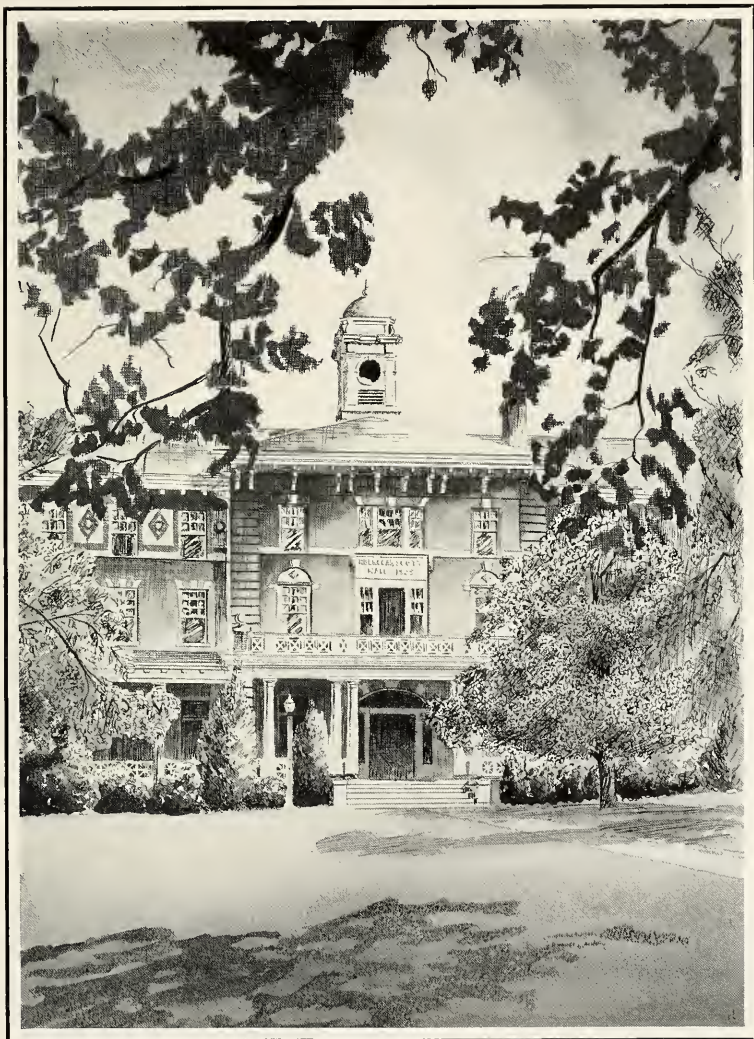


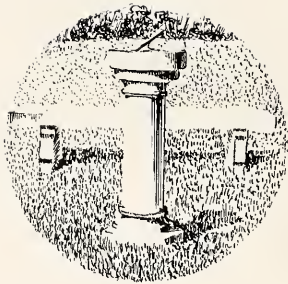
*Agnes Scott Hall*





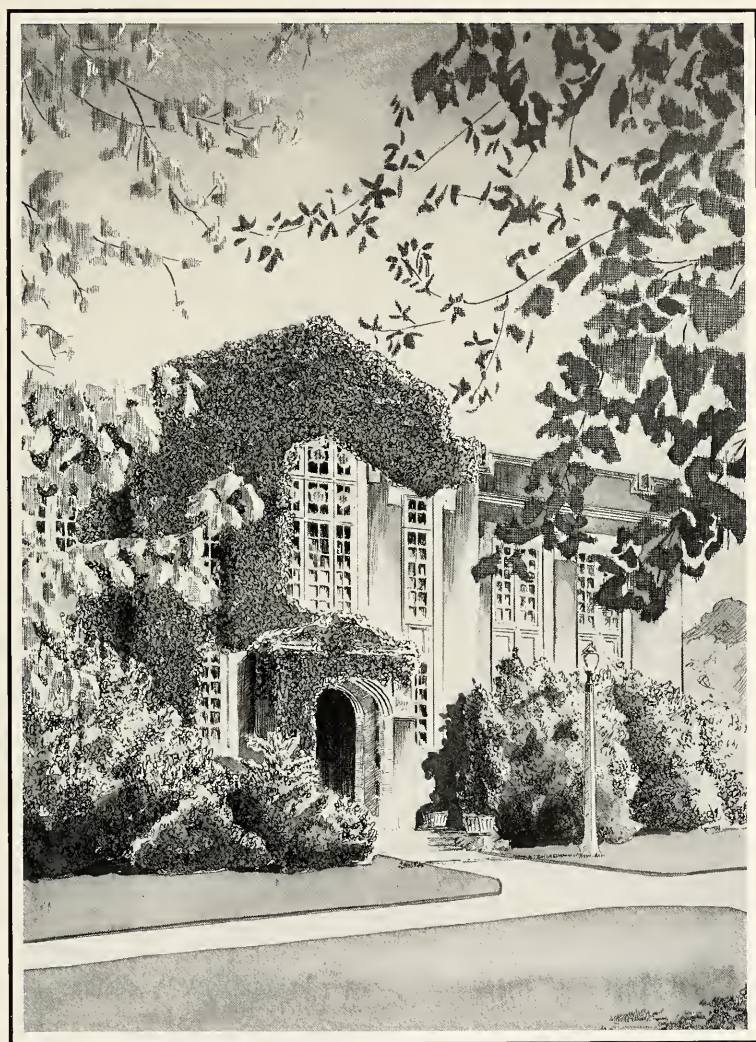
*Rebekah Scott Hall*

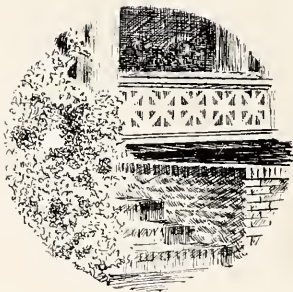




*Murphy Candler  
Student Building*

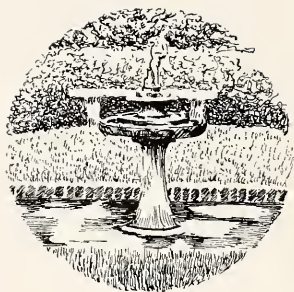






*The Colonnade and  
Rebekah Scott*



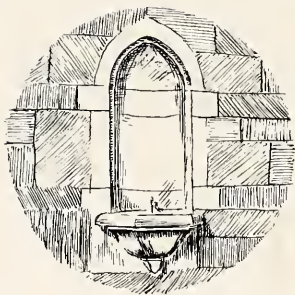


*Lowry Science Hall*

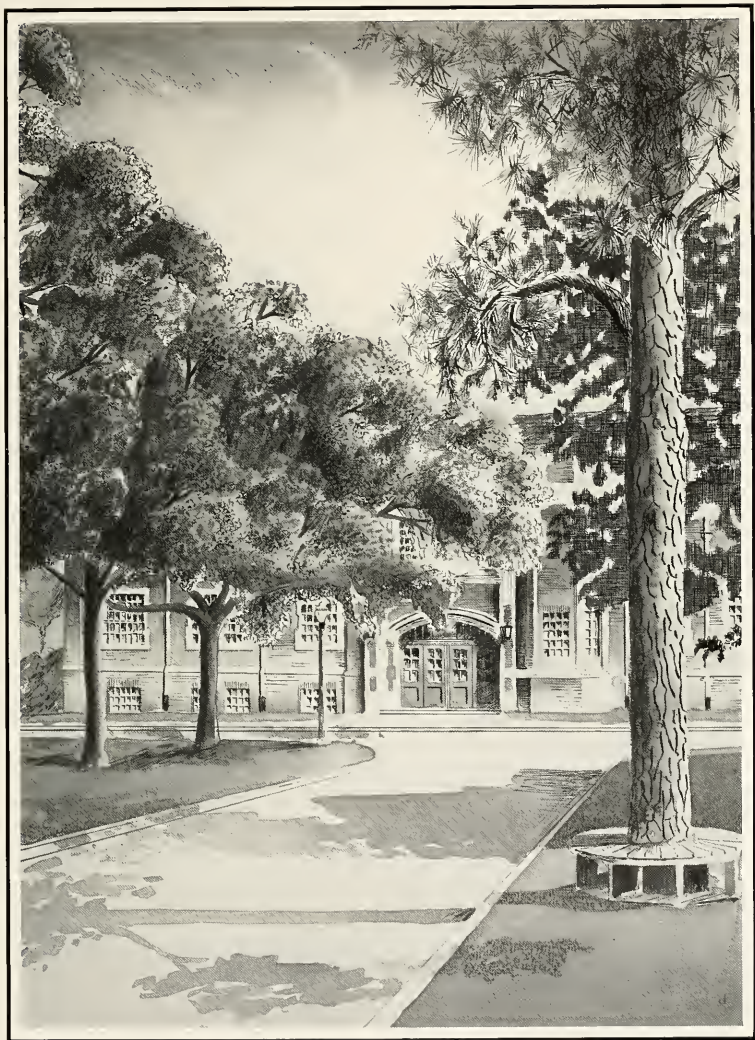








*Bucher Scott Gymnasium*



## BOARD OF TRUSTEES

J. K. ORR, Chairman . . . . .	Atlanta
W. C. VEREEN . . . . .	Moultrie, Ga.
J. S. LYONS . . . . .	Atlanta
F. M. INMAN . . . . .	Atlanta
MRS. SAMUEL M. INMAN . . . . .	Atlanta
MISS MARY WALLACE KIRK . . . . .	Tuscumbia, Ala.
D. P. McGEACHY . . . . .	Decatur
R. O. FLINN . . . . .	Atlanta
H. T. McINTOSH . . . . .	Albany, Ga.
J. R. McCAIN . . . . .	Decatur
J. J. SCOTT . . . . .	Decatur
G. SCOTT CANDLER . . . . .	Decatur
E. D. BROWNLEE . . . . .	Sanford, Fla.
J. BULOW CAMPBELL . . . . .	Atlanta
MISS NANNETTE HOPKINS . . . . .	Decatur
JOHN McMILLAN . . . . .	Stockton, Ala.
W. J. RUSHTON . . . . .	Birmingham, Ala.
GEORGE WINSHIP . . . . .	Atlanta
WARNER H. DuBOSE . . . . .	Mobile, Ala.
FRANCIS M. HOLT . . . . .	Jacksonville, Fla.
JOHN A. SIBLEY . . . . .	Atlanta
T. GUY WOOLFORD . . . . .	Atlanta
J. A. McCLURE . . . . .	St. Petersburg, Fla.
MRS. FRANCIS DWYER . . . . .	Atlanta



*Faculty*

## *President*



*Dr. James Ross McCain*

Dr. McCain's intelligent efforts to carry out the high ideals and aims of Agnes Scott have succeeded in bringing to the college scholastic recognition of the highest order and well-deserved honor to himself.

This past year he has been president of the Association of American Colleges. In this capacity he has led meetings of educators in every part of the country; he has made many speeches on various phases and features of modern education. All his activity has been marked by that sincerity, simplicity, and intellectual integrity which have brought him the real respect and admiration of every Agnes Scott student.

---

---

THE SIL



## Dean



*Miss Nannette Hopkins*

Miss Hopkins came as a teacher to Agnes Scott soon after its founding; when the Institute became a college she was made Dean; a few years ago she became a member of the Board of Trustees. As an important official, a sympathetic advisor, and a gracious and cultured individual, Miss Hopkins has been known and loved by all Agnes Scott girls. On students and alumnae she has exerted a great influence; she is largely responsible for the development of that Agnes Scott spirit which holds students to the college even after graduation.

QUETTE

---

---



## ADMINISTRATION

Cunningham, Hopkins, McCain, Tart, Stukes, Scandrett

Officers of the Administration have many varied interests besides their routine duties which they perform most efficiently. Seniors all seek the advice and aid of Mr. Stukes, registrar, in getting jobs. Miss Scandrett, assistant dean, made several trips this winter with Miss Palmour, alumnae secretary, visiting and speaking to alumnae groups throughout the South. President McCain, Dean Hopkins, Mr. Cunningham, business manager, and Mr. Tart, treasurer, complete the list of administration officials.

## HISTORY, ECONOMICS, AND SOCIOLOGY



Smith, Raper, Wright, Davidson, Jackson

The three history professors act as advisors to the Current History Forum and work up most interesting programs. In November Miss Smith helped Citizenship Club stage their highly successful presidential election. Dr. Davidson has served this year as president of the campus chapter of Phi Beta Kappa. At the convention of the American Association of University Women in March Miss Jackson was re-elected their director for the South Atlantic section. The department of economics and sociology is headed by Dr. Wright. Dr. Raper, who is secretary of Atlanta's Inter-Racial Commission, teaches sociology. His latest book, "Preface to Peasantry," was published last fall.

# F A C

Sydenstricker, Gillespie



Mrs. Sydenstricker and Dr. Gillespie are noted for their great enthusiasm and interest in their subject both in class and out. The Bible Club is sponsored by this department. Dr. Gillespie preaches regularly in North Carolina and is a frequent conductor of chapel exercises. Mrs. Sydenstricker visits Chautauqua each summer to study and has made several trips to the Holy Land to add to her knowledge of the background of her courses.

## BIBLE

## ENGLISH



Christie, Laney, McKinney, Hayes, Gooch, Leyburn

English is the most popular major subject, and the eight members of that department's faculty take a leading part in all the college activity. Mr. Hayes heads the department and is faculty advisor and coach of Pi Alpha Phi. Miss Laney is chairman of the Lecture Association and is largely responsible for the Association's high reputation. This year Miss Christie served as one of the judges in the Agonistic class contest; she is the sponsor of K. U. B. Miss Gooch is prominent in the Association of Teachers of Speech, and Agnes Scott students under her direction presented two plays at the Southern convention in Nashville in April. Others in the department are Miss McKinney, Miss Preston, Miss Leyburn, and Miss Prettyman.

## MODERN LANGUAGES

# LTY



Carlson, Hale, Alexander, Crowe, Harn, Cilley

The modern language faculty sponsor the three language clubs which greatly increase the interest in foreign languages on the campus. The French faculty includes Miss Alexander, Miss Carlson, Miss Crowe, and Miss Hale, a sponsor for the class of 1937. Miss Harn is head of the German and Spanish department and Miss Cilley is assistant professor of Spanish. She has published several articles this year in language magazines.

Nelson, Stansfield, Smith, Torrance



Though Latin and Greek are two separate departments with Miss Smith and Miss Torrance as head professors, respectively, Miss Stansfield and Miss Nelson teach in both. The departments cooperate with each other on many occasions, including having a picture together, and jointly sponsoring Eta Sigma Phi, the honorary classical society at Agnes Scott.

## ANCIENT LANGUAGES

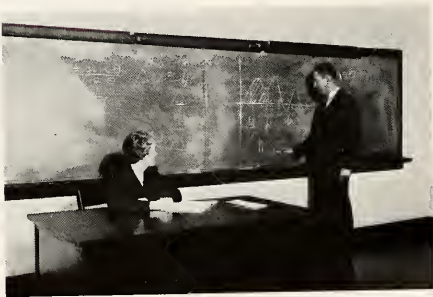
## SCIENCES



BACK ROW: Holt, MacDougall, Runyan, Christian  
FRONT ROW: Gilchrist, Vardell, Miller

Combining the departments of biology, chemistry, and physics makes a very prominent faculty group. Heading the biology department is Miss MacDougall who is known here and abroad for her research work on the protozoa. She and Dr. Runyan, botany professor, were among the speakers at the annual meeting of the Georgia Academy of Science this spring. Miss Miller and Miss Vardell discussed some of his research in biology. Dr. Christian who is professor of physics work at the American Physical Society convention in North Carolina in February. Mr. Holt is professor of chemistry, and Miss Gilchrist is assistant professor.

## MATHEMATICS



Gaylord, Robinson

Dr. Robinson heads the mathematics department and willingly assists many campus organizations with their financial problems. For the past two years he has been secretary and treasurer of the Southeastern Section of the Mathematical Association of America; at the 1937 convention he presented a paper at one of the sessions. Miss Gaylord, assistant professor, is much in demand to advise and assist in college activities. She is a sponsor for the class of 1937.

When the new quarter system called for a change in the psychology courses, Miss Dexter and Miss Omwake wrote a textbook to fit their plans for the altered general psychology classes and put it to use this year. This department which combines psychology, education, and philosophy is headed by Mr. Stukes and offers a wide variety of courses from the practical and experimental to the highly theoretical.

## PSYCHOLOGY



Omwake, Dexter, Stukes

F A C



## MUSIC



Dieckmann, Bartholomew, Johnson, Stokes

The music faculty is responsible for many entertainments enjoyed by the community. The faculty recital given each fall with two piano selections by Mr. Dieckmann and Miss Bartholomew and violin solos by Mrs. Stokes is one. Others include the programs presented by the special chorus and the glee club directed by Mr. Johnson, and the glee club's annual Gilbert and Sullivan opera in the spring. In addition to writing the arrangements for the string ensemble which he directs, Mr. Dieckmann has written and published several anthems this year.

## LIBRARY



Nunnally, Colvin, Hanley

Built to grow with Agnes Scott for many years to come, the new library is the pride and joy of the entire college. Miss Hanley has done an outstanding job in supervising the building and selecting the new equipment. Studying there in the modern manner is proving more popular than the old way. With Miss Nunnally and Miss Greenfield, newcomers this year, Miss Hanley and Miss Colvin make up the trained library staff.

Sweet, Dozier, Haynes, Mitchell, Wilburn



Miss Wilburn, associate professor of physical education was elected head of the Physical Directors Association in the South at their meeting this spring. Besides teaching some of the regular team and individual sports Miss Wilburn and Miss Haynes assist Miss Dozier in directing the annual May Day program of the college. Dr. Sweet, the college physician, heads this department, and Miss Mitchell is another of the teachers.

## PHYSICAL EDUCATION



# INFORMAL FACULTY SNAPS



TOP ROW: Mr. Johnson; Miss Gooch; Miss Hale confers with the electrician; Dr. Raper's smiling face. SECOND ROW: Miss Lewis is camera shy; Dr. Davidson and Dr. Christian seem to be harmonizing; Dr. Davidson, again, with the new Botany professor, Dr. Kuryan; how did this snow scene get in? THIRD ROW: Miss Crowe; Miss Nelson and Mrs. Ansley return from lunch. FOURTH ROW: Mrs. Sydenstricker with her jar of cream; Miss Hopkins; Rebekah's "house mother"; Miss Haynes ready for riding class.

BOOK TWO

Classes . . .

---







## *Marshes*

The "Wonderland of Nature" is found in the southern part of Georgia. The dusky moss-covered trees reflecting into the still cypress-stained water in which grow lilies and verdant moss and grasses is a vision too beautiful for any paint brush except Nature's. Okefenokee Swamp is the center of "the pulp and paper forests," being a natural resource—as well as The "Fragment of Paradise" which it has been so fittingly termed.







*Senior Class*

S  
S  
E  
M  
P  
O  
N  
S  
O  
R  
S  
S



Gaylord, Runyan, Hale

MISS LESLIE GAYLORD  
MISS LOUISE HALE  
RUTH RUNYAN

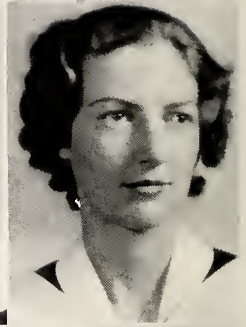
Sponsor  
Sponsor  
Mascot



# SENIORS



ELOISA BAXER ALEXANDER  
ATLANTA, GA.  
English



CECILIA KATHERINE BAIRD  
ATLANTA, GA.  
English

FRANCES LUCILE BARNETT  
SUMTER, S. C.  
Economics and Sociology



FRANCES CROSWELL BELFORD  
SAVANNAH, GA.  
History



MARTHA SUMMERS . . . Martha has been class president both her Junior and her Senior years. She is also president of Chi Beta Phi Sigma.

---

---

THE SI

## SENIORS



EDITH BELSER  
SUMTER, S. C.  
English

FAYE LOUISE BROWN  
ATLANTA, GA.  
Spanish

MARY BUCHHOLZ  
GAINESVILLE, FLA.  
English

DOROTHY CABANISS  
COLUMBUS, GA.  
Psychology

ISABEL McCAIN . . . Isabel is a campus leader. She is president of Y. W. C. A., member of Mortar Board, and a Phi Beta Kappa. Since her work on the Freshman stunt in 1933, she has been an outstanding member of her class.



QUETTE



## SENIORS



LUCILLE CAROLYN CAIRNS

GAINESVILLE, FLA.

History



VIRGINIA A. CALDWELL

DANVILLE, KY.

History

FRANCES CARY

GREENVILLE, S. C.

Bible, Economics, Sociology



CORNELIA CHRISTIE

DECATUR, GA.

History, Spanish



BETTY WILLIS . . . Betty made a grand house-president of Rebekah—not once did her red hair get the best of her, and the dormitory was comparatively quiet. Her quiet and steady nerves will be an asset in her future career as a doctor.

---

---

# THE SI

## SENIORS



ETHEL ANN COX  
ATLANTA, GA.  
Chemistry

KATHLEEN LAURA DANIEL  
DECATUR, GA.  
English

LUCILE DENNISON  
ATLANTA, GA.  
History

MARIAN ELIZABETH ESPY  
DOTHAN, ALA.  
English

MARY ALICE NEWTON . . . Being house-president of Inman Mary Alice has had her hands full of Freshman quarrels and homesickness but not to be daunted by it. She has a good voice and had a lead in the operetta this year.



QUETTE

# SENIORS



NANCY JANE ESTES  
GAY, GA.  
Chemistry, Mathematics

CHARLINE FOX FLEECE  
ATLANTA, GA.  
English, History

MICHELLE TICKNOR FURLOW  
ALBANY, GA.  
Psychology

ANNIE LAURA GALLOWAY  
ATLANTA, GA.  
Mathematics



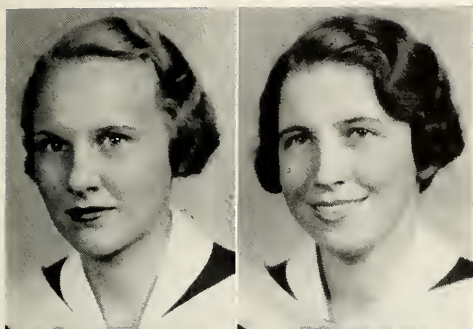
MARIE STALKER . . . Marie has made a name for herself in athletics and for playing men's parts in skits and stunts on the campus. She is secretary of Mortar Board and an all-around good gal.

---

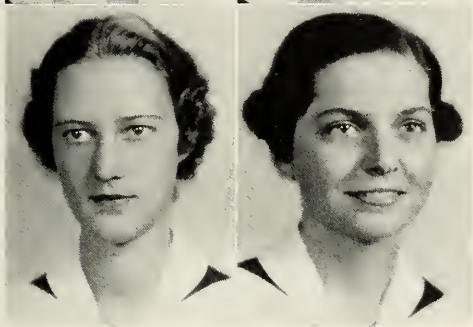
---

# THE SI

## SENIORS



MARY CAROLYN GILLESPIE  
ATLANTA, GA.  
Economics, Sociology



NELLIE MARGARET GILROY  
ATLANTA, GA.  
English

JUDITH GRACEY  
AUGUSTA, GA.  
Psychology

ALICE HANNAH  
CASS, W. VA.  
Botany

ALICE HANNAH . . . As a president of student body they make them no better than Hannah. Active in all campus affairs, member of the majority of organizations, in numerous conferences with faculty members—she has had her hands full this year and has been a success in everything.



# QUETTE

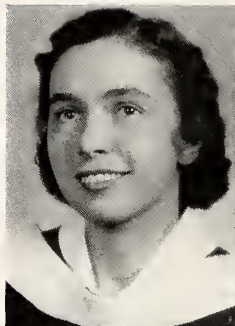
# SENIORS



MARGARET HANSELL

ATLANTA, GA.

French



FANNIE BACHMAN HARRIS

ROME, GA.

English



MARTHA LEE HEAD

DECATUR, GA.

History

ELIZABETH HOLLIS

SAUTEE, GA.

Economics, Sociology



MARY GILLESPIE . . . Capable business manager of the SILHOUETTE—she worked hard and got results.

---

---

# THE SI

1934



## SENIORS



BARTON JACKSON  
CHARLOTTE, N. C.  
Psychology

DOROTHY JESTER  
LYNCHBURG, VA.  
Mathematics

ELLENDER JOHNSON  
ATLANTA, GA.  
History

MARTHA JOSEPHINE JOHNSON  
LITHONIA, GA.  
Botany

BETTY HOLLIS . . . Betty has been on Y. W. Cabinet only two years, but this year she was vice-president. She was a splendid worker among the Freshmen with her charming and understanding ways.



QUETTE

65905

## SENIORS

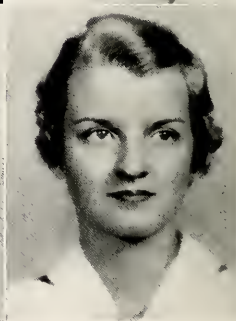


MARY LANDRUM JOHNSON  
ATLANTA, GA.  
French, Spanish



SARAH DuBOSE JOHNSON  
WASHINGTON, GA.  
Latin

CATHARINE E. JONES  
BALL GROUND, GA.  
History



MOLLY LaFON JONES  
DECATUR, GA.  
Bible



NELLIE MARGARET GILROY . . . If anyone ever needed a "cute" or "clever" article to be written, Nellie Margaret was always the first person asked. She had ideas that stood out. She is president of Pi Alpha Phi and made a good team with Brooks Spivey.

---

---

# THE SI

## SENIORS



RACHEL ELIZABETH KENNEDY

NEWBERRY, S. C.

Latin

MARY KING

DECATUR, GA.

Latin

JEAN FRANCES KIRKPATRICK

ANDERSON, S. C.

French

MARY ELIZABETH KNEALE

ATLANTA, GA.

German

ELIZABETH ESPY . . . "Punkin" is one of those literary-minded girls and one whom the Freshmen idealize. Her work as editor of the AURORA deserves honorable mention.



QUETTE

# SENIORS



FLORENCE LASSETER  
FITZGERALD, GA.  
English



DOROTHY CLARA LEE  
LITHONIA, GA.  
English



LUCRETIA WAYVE LEWIS  
CLEARWATER, FLA.  
Chemistry

FLORENCE LITTLE  
ATLANTA, GA.  
History, Mathematics



JULIA THING . . . Tennis, basketball, hockey, and all other sports are Julia's hobbies. Last year she was treasurer and this year president of A. A. Her laugh is a campus "call."

---

---

# THE SI

## SENIORS



VIVIENNE LANDERS LONG

DECATUR, GA.

Chemistry

MARY MALONE

ATLANTA, GA.

History

JUNE MATTHEWS

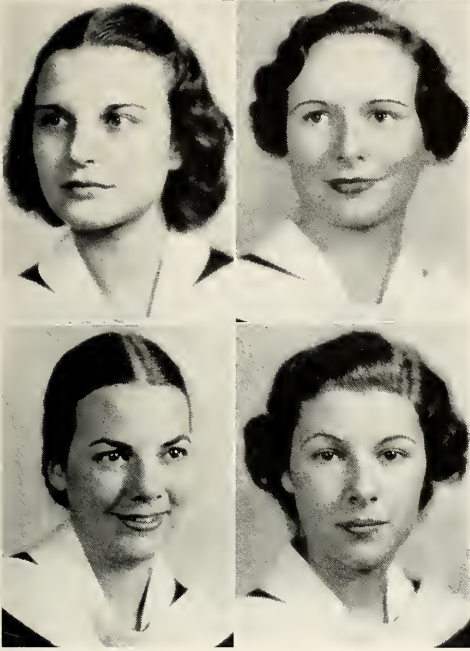
SMYRNA, GA.

English, History

MARY CATHERINE MATTHEWS

KEYSVILLE, GA.

History



LAURA STEELE . . . Laura's work as editor of the AGGIE meant she had to live on the campus this year. Maybe Mortar Board had something to do with this, too. Anyway, the boarders were glad to have her.



# QUETTE



# SENIORS



KATHERINE LOUISE MAXWELL

ATLANTA, GA.

History

ISABEL McCAIN

DECATUR, GA.

English

FRANCES McDONALD

ATLANTA, GA.

Zoology

ENID MIDDLETON

BIRMINGHAM, ALA.

English, Latin



FRANCES CARY . . . No one knows how Dr. Raper could have gotten along without Frances' help in correcting papers. She mustn't be forgotten for her goal-guarding in hockey either!

---

---

# THE SI

## SENIORS



MARY ELIZABETH MORROW

ALBEMARLE, N. C.

History

PAULINE MOSS

ROYSTON, GA.

Psychology

ORA MACDONALD MUSE

DECATUR, GA.

English

MARY ALICE NEWTON

DOTHAN, ALA.

Economics, Sociology

ELOISA ALEXANDER . . . For two years she has done a fine job as May Day Chairman, besides adding to the beauty of the court herself. Note the feature section of this annual for some more of her good work.



QUETTE

# SENIORS



ROSE EVERETT NORTHROSS

TUPELO, MISS.

English

ELLEN ANNE O'DONNELL

ATLANTA, GA.

English

MARY ERNESTE PERRY

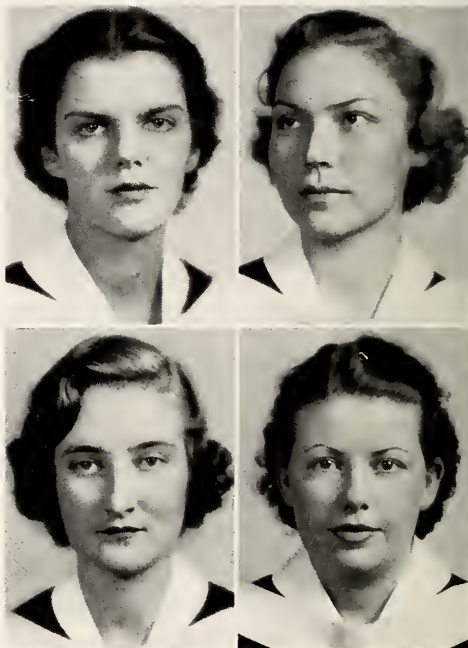
NASHVILLE, GA.

Psychology

VIRGINIA RUSTELLE POPLIN

DECATUR, GA.

Psychology



MARGARET WATSON . . . College publicity woman is Margaret's job. She kept Atlanta informed through her weekly articles in the Journal. Hats off to Margaret, too, for her work as faculty editor of this annual.

# THE SI

## SENIORS



KATHRYN MARGARET PRINTUP

ATLANTA, GA.

French

ISABEL RICHARDSON

WASHINGTON, GA.

Economics, Sociology

MARJORIE MOATE SCOTT

MILLEDGEVILLE, GA.

Biology

NELL DOUGLAS SCOTT

ATLANTA, GA.

History

LUCILLE CAIRNS . . . Good ole Lucille, she will do the labor. You can tell by the many working offices she holds, among which are secretary of Blackfriars, vice-president of Citizenship Club and of K. U. B., and secretary for the SILHOUETTE.



# OUETTE

# SENIORS



RACHEL SHAMOS  
ATLANTA, GA.  
Chemistry, Mathematics

BROOKS SPIVEY  
ATLANTA, GA.  
English

MARIE STALKER  
ATLANTA, GA.  
History

FRANCES CORNELIA STEELE  
ANNISTON, ALA.  
Economics, Sociology



SARAH JOHNSON . . . "Have you paid your budget?"—  
"Last call before black-list goes up" are Sarah's only phrases.  
But everyone must hand it to her for her good work as stu-  
dent treasurer this year.

---

---

# THE SI



## SENIORS



LAURA STEELE  
ATLANTA, GA.  
History

VIRGINIA STEPHENS  
AUGUSTA, GA.  
Biology

MARY FAIRFAX STEVENS  
HUNTSVILLE, ALA.  
History

MARTHA MORRIS SUMMERS  
ATLANTA, GA.  
Biology

MARY JANE TIGERT . . . Mary Jane is vice-president of Student Government, vice-president of Mortar Board, and social chairman of Lecture Association. Her work at the first of the year, instructing the sponsors and initiating the Freshmen to Agnes Scott, was only the beginning of her work, and she has been steadily at it all year.



# QUETTE

## SENIORS



LENA SWEET  
ATLANTA, GA.  
Chemistry

ALICE E. TAYLOR  
ATLANTA, GA.  
History

JULIA LIBBY THING  
ASHEVILLE, N. C.  
English, French

MARY JANE TIGERT  
GAINESVILLE, FLA.  
English, History



LUCILE DENNISON . . . Beauty and brains are the adjectives belonging to May Queen and Phi Beta Kappa Dennison. She has always been in May Court and always on Honor Roll. President of Day Students is to her credit, also.

---

---

# THE SI

## SENIORS



MILDRED TILLY  
DECATUR, GA.  
Chemistry, Mathematics

EULA TURNER  
ATLANTA, GA.  
History, Mathematics

EVELYN WALL  
ATLANTA, GA.  
French

FLORENCE LASSETER . . . Florence had her first dose of being an "exec" member this year because she was Student Recorder and Senior representative combined. Very frequently you see her going to or coming from the swimming pool, too.

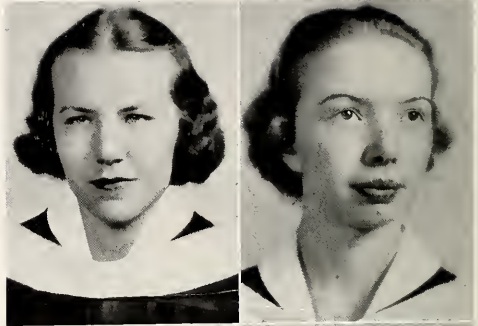


QUETTE

# SENIORS



KATHRYN BOWEN WALL  
ATLANTA, GA.  
Latin



MARGARET JOSEPHINE WATSON  
GREENWOOD, S. C.  
Mathematics



JESSIE ELIZABETH WILLIAMS  
ATLANTA, GA.  
History, Mathematics



CHARLINE FLEECE . . . Charline received her A. S. letter her Junior year, regardless of the fact that she was a Converse girl her Freshman year. In addition she is president of Lecture Association and still has time for—Jimmy!

---

---

# THE SI

## SENIORS



BETTY GORDON WILLIS

CULPEPER, VA.

Chemistry

MARY WILLIS

AUGUSTA, GA.

English

FRANCES WILSON

ROCKFORD, ILL.

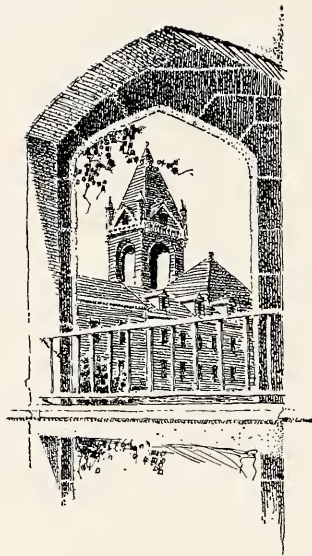
History

FANNIE B. HARRIS . . . Fannie B. is president of Mortar Board and house-president of Main. Her willingness to work and her pleasing manner have made her liked by all.



# QUETTE







*Junior Class*

J  
U  
N  
I  
O  
R



O  
F  
F  
I  
C  
E  
R  
S

King, Davis, Turner

ELIZA KING  
President

JANE TURNER  
Vice-President

MILDRED DAVIS  
Secretary-Treasurer

---

---

THE SI



JEAN BARRY ADAMS  
Charlotte, N. C.

JEAN AUSTIN  
Chattanooga, Tenn.

TOMMY RUTH BLACKMON  
Gainesville, Fla.

NELL ALLISON  
Ellisville, Miss.

GENEVIEVE BAIRD  
Atlanta, Ga.

ELIZABETH BLACKSHEAR  
Atlanta, Ga.

KATHERINE BRITTINGHAM  
Portsmouth, Va.

ELEANOR BURNS  
Charles Town, W. Va.

ELSIE BLACKSTONE  
East Point, Ga.

MARTHA PECK BROWN  
Cartersville, Ga.

QUETTE

---

---

# JUNIORS



ALICE CALDWELL  
Bristol, Tenn.

MYRL CHAFIN  
McDonough, Ga.

LAURA COIT  
Richmond, Va.

FRANCES CASTLEBERRY  
Atlanta, Ga.

JEAN CHALMERS  
Atlanta, Ga.

SARA CORBITT  
Scottsdale, Ga.

MILDRED DAVIS  
Orlando, Fla.

DORIS DUNN  
Decatur, Ga.

ELIZABETH COUSINS  
Decatur, Ga.

MARGARET DOUGLAS  
Davidson, N. C.

---

---

# THE SI





NELLE SCOTT EARTHMAN  
Decatur, Ga.

ELOISE ESTES  
Decatur, Ga.

ANNA KATHERINE FULTON  
Eutaw, Ala.

GOUDYLOCH ERWIN  
Davidson, N. C.

MARY LILLIAN FAIRLEY  
Richmond, Va.

MARY E. GALLOWAY  
Atlanta, Ga.

JANE GUTHRIE  
Louisville, Ky.

HIBERNIA HASSELL  
McAllen, Tex.

MARTHA ALICE GREEN  
Harlem, Ga.

CAROL HALE  
Atlanta, Ga.

QUETTE

---

---

# JUNIORS



NELL HEMPHILL  
Petersburg, Va.

MARY McCANN HUDSON  
Greenville, S. C.

ANN WORTHY JOHNSON  
Rome, Ga.

RUTH HERTZKA  
Atlanta, Ga.

REGINA DORIS HURWITZ  
Atlanta, Ga.

HORTENSE JONES  
Atlanta, Ga.

OLA KELLY  
Monticello, Ga.

ELIZA LYDIA KING  
Columbia, S. C.

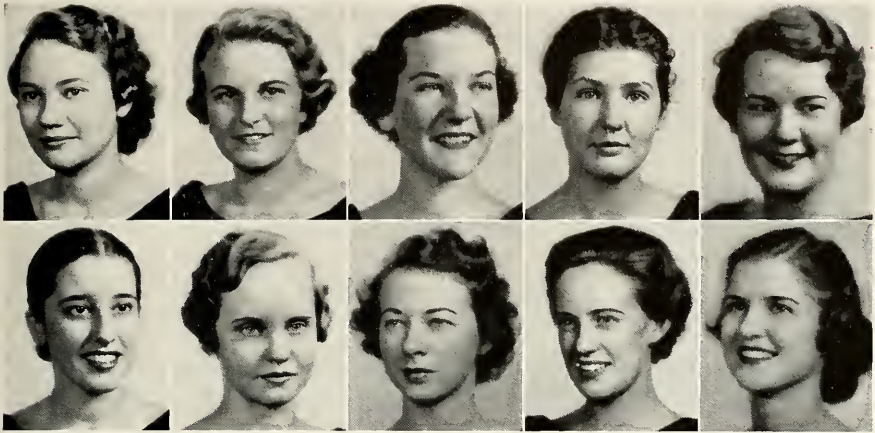
WINIFRED KELLERSBERGER  
Belgian Congo, Africa

MARY ANNE KERNAN  
Atlanta, Ga.

---

---

# THE SI



FRANCES LEE  
Atlanta, Ga.

ELLEN LITTLE  
Louisville, Ga.

JEANNE MATTHEWS  
Atlanta, Ga.

MARGARET LIPSCOMB  
Clio, S. C.

DOROTHY MARTHA LONG  
Toledo, Ohio

MARGARET MORRISON  
Atlanta, Ga.

JACQUELYN McWHITE  
Atlanta, Ga.

NANCY MOORER  
Walterboro, S. C.

LETTIE WARREN McKAY  
Union Springs, Ala.

BERTHA MOORE MERRILL  
Eufaula, Ala.

QUETTE

---

---

# JUNIORS



MARY PRIMROSE NOBLE  
Smithfield, N. C.

MARJORIE RAINEY  
Decatur, Ga.

ALICE BACON REINS  
College Park, Ga.

MARY ELIZABETH PAST  
Chattanooga, Tenn.

HELEN RAMSEY  
Darlington, S. C.

FRANCES ROBINSON  
Dayton, Tenn.

SAMILLE SAYE  
Augusta, Ga.

BEATRICE SEXTON  
Bessemer City, N. C.

JOYCE ROPER  
Spartanburg, S. C.

ELISE SEAY  
Macon, Ga.

---

---

# THE SI



ELIZABETH SKINNER  
Augusta, Ga.

MARY VENETIA SMITH  
Columbia, S. C.

GRACE TAZEWELL  
Norfolk, Va.

SARA BEATY SLOAN  
Belmont, N. C.

VIRGINIA SUTTENFIELD  
Atlanta, Ga.

JULIA TELFORD  
Abbeville, S. C.

MARY NELL TRIBBLE  
Hot Springs, Ark.

JANE TURNER  
Atlanta, Ga.

ANNE THOMPSON  
Richmond, Va.

VIRGINIA DORIS TUCKER  
Decatur, Ga.

QUETTE

---

---



# JUNIORS



ELIZABETH READING WARDEN

Decatur, Ga.

ELLA VIRGINIA WATSON

Greenwood, S. C.

ELSIE WEST

Newport News, Va.

EDNA WARE

Greenville, S. C.

ZOE WELLS

Decatur, Ga.

DIXIE WOODFORD

Toccoa, Ga.

JANE COBB WYATT

Easley, S. C.



*Sophomore Class*

S  
O  
P  
H  
O  
M  
O  
R  
E



O  
F  
F  
I  
C  
E  
R  
S

Crowell, Lyle, Hamilton

ANNIE LEE CROWELL  
President

DOUGLAS LYLE  
Vice-President

JANE MOORE HAMILTON  
Secretary-Treasurer

---

---

THE SI

# SOPHOMORES



ALICE EMELYN ADAMS

Elberton, Ga.

CAROLINE ARMISTEAD

Rockingham, N. C.

BETTY AYCOCK

Atlanta, Ga.

SARAH BASKIN

Culverton, Ga.

HENRIETTA BLACKWELL

Laurens, S. C.

RUTH HOLT ANDERSON

Burlington, N. C.

BETTY AUBERRY

Jacksonville, Fla.

JEAN BAILEY

Atlanta, Ga.

ADELAIDE BENSON

Jacksonville, Fla.

SUSAN BRYAN

Reynolds, Ga.

CATHERINE M. CALDWELL

Winnboro, S. C.

CAROLINE CARMICHAEL

McDonough, Ga.

SARA CARTER

Bamberg, S. C.

MILDRED WOODS COIT

Richmond, Va.

ESTHER BYRNES

Atlanta, Ga.

JANE CARITHERS

Winder, Ga.

LELIA CARSON

Rogersville, Tenn.

ALICE CHEESEMAN

Decatur, Ga.

# QUETTE

# SOPHOMORES



ANNIE LEE CROWELL

Nashville, Tenn.

SARAH J. CUNNINGHAM

Atlanta, Ga.

JANE DRYFOOS

New York, N. Y.

CATHERINE A. FARRAR

Avondale Estates, Ga.

JEANNE FLYNT

Decatur, Ga.

ESTELLE WYSE CUDDY

Mt. Holly, N. C.

LUCY HILL DOTY

Winnsboro, S. C.

GRACE DUGGAN

Hawkinsville, Ga.

MARY VIRGINIA FARRAR

Manchester, Tenn.

CHARLOTTE FRENCH

Decatur, Ga.

ELIZABETH FURLOW

Atlanta, Ga.

MARY E. GARNER

Lawrenceville, Ga.

DOROTHY GRAHAM

Bluefield, W. Va.

ELEANOR TRACY HALL

Bluefield, W. Va.

HELEN JOAN FRIEDLANDER

Winder, Ga.

ELIZABETH GALBREATH

Frankfort, Ky.

SUSAN BROOKS GOODWYN

Newnan, Ga.

MARY FRANCES GUTHRIE

Louisville, Ky.

---



---

# THE SI



# SOPHOMORES



JANE MOORE HAMILTON

Dalton, Ga.

JUNE HARVEY

Atlanta, Ga.

VIRGINIA U. HILL

Atlanta, Ga.

ANNE HOWELL

Thomson, Ga.

CATHERINE IVIE

Greenville, S. C.

EMILY CAROLYN HARRIS

Atlanta, Ga.

LOUISE JACQUELINE HAWKS

Petersburg, Va.

MARY WILLS HOLLINGSWORTH

Florence, Ala.

CORA KAY HUTCHINS

Atlanta, Ga.

PHYLLIS JOHNSON

Elberton, Ga.

KATHERINE F. JONES

Winder, Ga.

ELIZABETH J. KENNY

Hammond, La.

HELEN M. KIRKPATRICK

Decatur, Ga.

VIRGINIA BELLE KYLE

Charleston, W. Va.

VIRGINIA GLORIA JOHNSON

Turin, Ga.

KATHLEEN KENNEDY

Fort Bragg, N. C.

FRANCES ESTELLE KING

Woodland, Ga.

EUNICE ELIZABETH KNOX

Pickens, S. C.

# QUETTE

# SOPHOMORES



MARY JOSEPHINE LARKINS

Mobile, Ala.

MARY LOCKSLEY LONG

Rutherfordton, N. C.

DOUGLAS LYLE

College Park, Ga.

MARTHA HUNTER MARSHALL

Americus, Ga.

HELEN ELAINE LICHTEN

Atlanta, Ga.

REBECCA LEE LOVE

LaFayette, Ga.

ELLA HUNTER MALLARD

Greenville, S. C.

FLORA MacGUIRE

Montgomery, Ala.

EMILY HALL MacMORELAND

Atlanta, Ga.

MARY WELLS McNEILL

Florence, S. C.

VIRGINIA B. MORRIS

Decatur, Ga.

MARY ELIZABETH MOSS

Nashville, Tenn.

EMMA MOFFETT McMULLIN

New York, N. Y.

MARIE MERRITT

Clarksdale, Miss.

HELEN LUCILE MOSES

Sumter, S. C.

MARY RUTH MURPHY

Hot Springs, Ark.

---



---

# THE SI

# SOPHOMORES



CAROLYN MYERS

Avondale Estates, Ga.

AMELIA TODD NICKELS

Decatur, Ga.

NELLE WELBORN O'DELL

Atlanta, Ga.

MARGARET OLSEN

Atlanta, Ga.

ANNIE HOUSTON NEWTON

Dothan, Ala.

MARY HILL OATLEY

Atlanta, Ga.

ESTHÈRE JONTÉ OGDEN

New Orleans, La.

LOU PATE

Newbern, Ga.

KATHRYN PEACOCK

Decatur, Ga.

JULIA ANTOINETTE PORTER

Covington, Ga.

ANNE PURNELL

Charlotte, N. C.

JEANNE REDWINE

Fayetteville, Ga.

MARY ANN PITTARD

Decatur, Ga.

MARJORIE WATT PRESSLY

Belmont, N. C.

MAMIE LEE RATLIFF

Sherard, Miss.

OLIVE RIVES

Atlanta, Ga.

# QUETTE

# SOPHOMORES



HELEN RODGERS

Atlanta, Ga.

ADELAIDE HAYDEN SANFORD

Mocksville, N. C.

JULIA PATTERSON SEWELL

Atlanta, Ga.

MARY PENNEL SIMONTON

Covington, Tenn.

MIRIAM ANTOINETTE SANDERS

Greenville, S. C.

EVELYN SEARS

St. Louis, Mo.

AILEEN SHORTLEY

Columbia, Tenn.

HELEN NERINE SIMPSON

Atlanta, Ga.

ELIZABETH JORDAN SMITH

Atlanta, Ga.

BERYL FOLMAR SPOONER

Donalsonville, Ga.

SELMA STEINBACH

Carrallton, Ga.

RUTH CUMMINGS TATE

Banner Elk, N. C.

JANE KATHERINE SMOLLEN

Atlanta, Ga.

MARY ELEANOR STEELE

Statesville, N. C.

BETTY ANN STEWART

Winchester, Tenn.

MARY FRANCES THOMPSON

Decatur, Ga.

---



---

# THE SI

# SOPHOMORES



KATHRYN PROUT TOOLE

Hegins, Penn.

VIRGINIA ELIZABETH TUMLIN

Cave Spring, Ga.

ELINOR RUTH TYLER

Florence, S. C.

FLORENCE FANNON WADE

Cornelia, Ga.

MARLISE TORRANCE

Sanford, Fla.

EMMY LOU TURCK

Philadelphia, Penn.

HARRIETTE vonGREMP

Decatur, Ga.

LOIS ANN WALTON

Palatka, Fla.

ANNE DUPUY WATKINS

Culpeper, Va.

CARY ROGERS WHEELER

LaFayette, Ala.

ELINOR WILKINSON

Atlanta, Ga.

MARGARET EVANS WILLIS

Roanoke, Va.

ELIZABETH H. WHEATLEY

Greenwood, Miss.

MARY ELLEN WHETSELL

Columbia, S. C.

ELIZABETH M. WILLIAMS

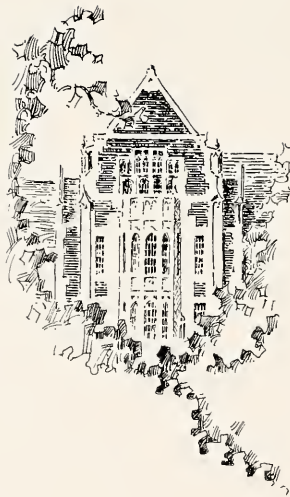
Hickory, N. C.

LOUISE YOUNG

Souchow, Ku, China

# QUETTE







*Freshman Class*

F  
R  
E  
S  
H  
M  
A  
N



O  
F  
F  
I  
C  
E  
R  
S

Crisp, Forman, Slack

RUTH SLACK  
President

RUTH CRISP  
Vice-President

CAROLYN FORMAN  
Secretary-Treasurer

---

---

THE SI

# FRESHMEN



FRANCES ABBOTT  
Louisville, Ga.

JOSEPHINE ELIZABETH ALLEN  
West Point, Ga.

ANNE ELIZABETH ANSLEY  
Atlanta, Ga.

MARY E. ARNOLD  
Atlanta, Ga.

ELIZABETH ALDERMAN  
Atlanta, Ga.

CAROLYN ALLEY  
Dalton, Ga.

SHIRLEY F. ARMENTROUT  
Goldsboro, N. C.

CARRIE GENE ASHLEY  
Ellenton, S. C.

MARY OLIVE AUGER  
Decatur, Ga.

MARGARET BARNES  
Ivy Depot, Va.

MARGARET BENNETT  
Sanford, Fla.

ANNA MARGARET BOND  
Atlanta, Ga.

BETSY BANKS  
Winchester, Tenn.

EVELYN BATY  
Birmingham, Ala.

MARJORIE BOGGS  
Shreveport, La.

REBECCA BOORSTEIN  
Atlanta, Ga.

MARGARET BRIDGES  
Atlanta, Ga.

BARBARA LOUISE BROWN  
Charleston, W. Va.

MARY KATE BURRUSS  
Atlanta, Ga.

EMILY JEANETTE CARROLL  
East Point, Ga.

JOAN FOUCHAUX BRINTON  
Bryn Mawr, Penn.

MARY VIRGINIA BROWN  
Winter Garden, Fla.

INEZ CALCUTT  
Fayetteville, N. C.

RACHEL CAMPBELL  
Mansfield, Ga.

# QUETTE

# FRESHMEN



HELEN CARSON  
Harriman, Tenn.

MARGARET CHRISTIE  
Decatur, Ga.

CORNELIA COOK  
College Park, Ga.

ADA NATION CORDES  
Atlanta, Ga.

ERNESTINE CASS  
Tifton, Ga.

VIRGINIA COFER  
Decatur, Ga.

EVA GARY COPELAND  
Columbia, S. C.

RUTH CRISP  
Lenoir, N. C.

MARY WINSTON CROCKETT  
University, Va.

ELIZABETH DAVIS  
Atlanta, Ga.

MARY LOUISE DOBBS  
Atlanta, Ga.

LILLIE BELLE DRAKE  
Union City, Ga.

MARGARET CURRIE  
Mullens, W. Va.

MARY ELIZABETH DIXON  
Columbia, S. C.

ELOISE DONKLE  
Greenville, S. C.

REBECCA DRUCKER  
McCormick, S. C.

CAROLYN DuPRE  
Gadsden, Ala.

ANNE ENLOE  
Dillsboro, N. C.

RUTH EYLES  
Atlanta, Ga.

MARTHA FITE  
Dalton, Ga.

NELL ECHOLS  
Atlanta, Ga.

MARGARET EVERHART  
Bedford, England

JOAN FAYSSOUX  
Winnsboro, S. C.

CAROLYN FORMAN  
Birmingham, Ala.

---



---

# THE SI



# FRESHMEN



MARY EVELYN FRANCIS  
Clearwater, Fla.

MARION FRANKLIN  
Swainsboro, Ga.

RENÉE GÉRARD  
Mexico, Districte-Fed.

SARAH ALICE GRAY  
Columbus, Ga.

ANNETTE FRANKLIN  
Statesboro, Ga.

HARRIET FULLER  
Atlanta, Ga.

MARY LANG GILL  
Salisbury, N. C.

NETTIE GREER  
Atlanta, Ga.

SAM OLIVE GRIFFIN  
Decatur, Ga.

SARAH FRANCES GROVES  
Byromville, Ga.

PENN HAMMOND  
Atlanta, Ga.

POLLY HEASLETT  
Birmingham, Ala.

WILMA GRIFFITH  
Atlanta, Ga.

LORRAINE GUINN  
Ducktown, Tenn.

FRANCES HAMPTON  
Clearwater, Fla.

MARY REED HENDRICKS  
Athens, Ala.

JANE HERZFELD  
New York, N. Y.

BARBARA HOLLAND  
Newnan, Ga.

MARGARET JANE HOPKINS  
Gainesville, Fla.

ANITA HOWARD  
Nashville, Ga.

HAZEL HIRSCH  
Atlanta, Ga.

BRYANT L. HOLSENBECK  
Atlanta, Ga.

ELIZABETH HORNE  
St. George, S. C.

BETTY ANN HUBBARD  
Marion, S. C.

# QUETTE

# FRESHMEN



LOUISE HUGHSTON  
Spartanburg, S. C.

ELEANOR HUTCHENS  
Huntsville, Ala.

MILDRED JOSEPH  
Jacksonville, Fla.

JANE KNAPP  
Atlanta, Ga.

GEORGIA HUNT  
Atlanta, Ga.

GERTRUDE BETTY JONES  
Bryonville, Ga.

RUTH KAPLAN  
Savannah, Ga.

SOPHIE LaBORDE  
Columbia, S. C.

MARY ELIZABETH LEAVITT  
Atlanta, Ga.

MARTHA LEIPOLD  
Jacksonville, Fla.

EDNA MOORE LEWIS  
Atlanta, Ga.

JANE LUTHY  
Americus, Ga.

SARA LEE  
Live Oak, Fla.

ELOISE LENNARD  
Alexander City, Ala.

SARA ELEANOR LEWIS  
Orange, Fla.

VERA MARSH  
Jacksonville, Fla.

MARY A. MATTHEWS  
Smyrna, Ga.

SARA McCAIN  
Sanatorium, N. C.

ELEANOR McCANTS  
Winnboro, S. C.

REBECCA McREE  
Trenton, Tenn.

SARA BOND MATTHEWS  
Lithonia, Ga.

ELOISE McCALL  
Marion, S. C.

MARY VIRGINIA McPHAU  
Doerun, Ga.

VIRGINIA MILNER  
Atlanta, Ga.

---



---

# THE SI

# FRESHMEN



EMMA JEAN MITCHELL  
Tullahoma, Tenn.

MARTHA MOFFETT  
Kiangyin, China

LUTIE MOORE  
Barnesville, Ga.

FRANCES MORGAN  
Gadsden, Ala.

MARY MOCQUOT  
Paducah, Ky.

SOPHIE MONTGOMERY  
Hawaian, China

MARY FRANCES MOORE  
Monroe, La.

JULIA MOSELEY  
Limona, Fla.

JANE MOSES  
Chattanooga, Tenn.

BARBARA LEE MURLIN  
Atlanta, Ga.

KATHERINE PATTON  
Abingdon, Va.

EVA ANN PIRKLE  
Atlanta, Ga.

NELL MOSS  
Decatur, Ga.

CHARLOTTE NEWMAN  
Spartanburg, S. C.

NELL PINNER  
Suffolk, Va.

MARY CLAY PRICE  
Decatur, Ala.

MARY REINS  
College Park, Ga.

JANE SALTERS  
Florence, S. C.

RUTH SLACK  
Decatur, Ga.

HAZEL SOLOMON  
Macon, Ga.

ISABELLA ROBERTSON  
Concord, N. C.

LUCILLE SCOTT  
Dallas, Tex.

MARTHA STRATTON SLOAN  
Columbia, Tenn.

SHIRLEY WARDLAW STEELE  
Ripley, Tenn.

# QUETTE

# FRESHMEN



LAURA WINSTON STEELE  
Ripley, Tenn.

CELESTE STOCKDALE  
Decatur, Ga.

ELLEN VEREEN STUART  
St. Petersburg, Fla.

MARY NELL TAYLOR  
Atlanta, Ga.

HARRIET STIMSON  
Chattanooga, Tenn.

EDITH STOVER  
Atlanta, Ga.

LOUISE SULLIVAN  
Decatur, Ga.

MARY Mc. TEMPLETON  
Moorocsville, N. C.

JULIA THIEMONGE  
Birmingham, Ala.

EMILY NANCY UNDERWOOD  
Decatur, Ga.

MARY ELLEN WARE  
Greenville, S. C.

VIOLET JANE WATKINS  
Nashville, Tenn.

HENRIETTA THOMPSON  
Atlanta, Ga.

GRACE WARD  
Selma, Ala.

ELIZABETH WARREN  
Monroe, N. C.

EVELYN WEINKLE  
Atlanta, Ga.

ANNETTE WILLIAMS  
Lawrenceville, Ga.

JEAN WILLIAMS  
Hickory, N. C.

JANE WITMAN  
Asheville, N. C.

MARJORIE ANNE YOUNG  
Haines City, Fla.

EUGENIA WILLIAMS  
Washington, Ga.

WILLOMETTE WILLIAMSON  
Miami, Fla.

FLORENCE WYNN  
Live Oak, Fla.

MARTHA MARIE ZELLNER  
Jacksonville, Fla.

---



---

# THE S I

IRREGULARS



Audrain

Bannister  
Rogers

Baum  
Sexton

Haggart  
Siler

Okamura

FIRST YEAR IRREGULARS

- MARY JANE BANNISTER . . . . . Charleston, W. Va.  
 MARGUERITE BAUM . . . . . Atlanta, Ga.  
 ELEANOR MCBRIDE ROGERS . . . . . Fort Smith, Ark.  
 LOIS SEXTON . . . . . Bessemer City, N. C.

UNCLASSIFIED

- SUSIE GEANNE AUDRAIN . . . . . Paris, France  
 TAMIKO OKAMURA . . . . . Tokyo, Japan

SECOND YEAR IRREGULARS

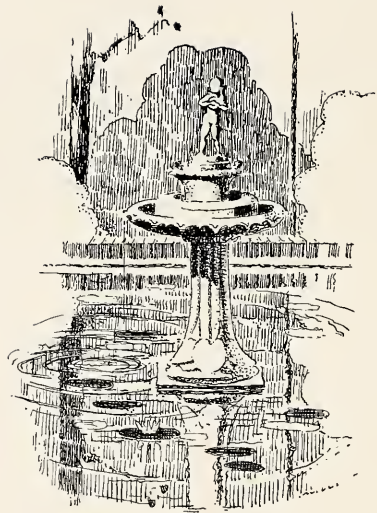
- DOROTHY SILER . . . . . Decatur, Ga.

SPECIALS

- ADELE HAGGART . . . . . Atlanta, Ga.

QUETTE





BOOK THREE

*Organizations . . .*

## *Cotton*

Georgia is one of the pioneers in the production of cotton, and today it ranks second among the states. A field of white, dotted here and there with a spot of darkness and a dash of red indicating the negro with his red bandana—this against a background of blue has been a typical scene in the state since the colonial days.













*Publications*

Alexander

Wells

Fleece

M. Watson

King

V. Watson



Smith

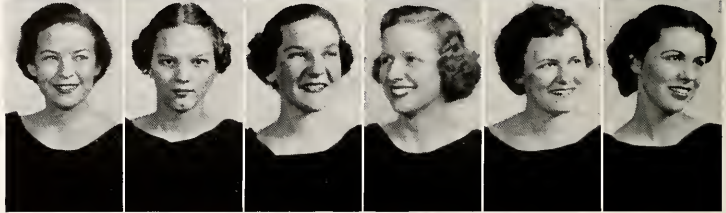
West

Little

Hamilton

Johnson

Shortley



## EDITORIAL STAFF

BARTON JACKSON . . . . . Editor-in-Chief  
 ELOISA ALEXANDER . . . . . Feature Editor  
 ZOE WELLS . . . . . Art Editor  
 CHARLINE FLEECE . . . . . Photographic Editor  
 MARGARET WATSON . . . . . Faculty Editor  
 ELIZA KING . . . . . Organization Editor  
 VIRGINIA WATSON . . . . . Club Editor  
 MARY SMITH . . . . . Athletic Editor  
 ELISE WEST . . . . . Kodak Editor  
 ELLEN LITTLE . . . . . Assistant Kodak Editor  
 JANE MOORE HAMILTON . . . . . Class Editor  
 ANN WORTHY JOHNSON . . . . . Assistant Feature Editor  
 AILEEN SHORTLEY . . . . . Assistant Feature Editor

# SILH

The aim of the SILHOUETTE is to give an informal picture of all sides of a girl's life at Agnes Scott. Everyone, including the faculty, has given splendid cooperation to the staff in carrying out our policy.

The National Scholastic Press Association convention, which some of the staff were fortunate enough to attend, offered many new and interesting ideas, some of which have been used in this annual. We hope they meet with the school's approval.



JACKSON





Roper  
Bryan  
Brown  
Cairns  
Merrill

Hansell  
Scott  
Turck  
Watkins  
Hammond

## BUSINESS STAFF

MARY GILLESPIE . . . . .	Business Manager
SUSAN BRYAN . . . . .	Assistant Business Manager
JOYCE ROPER . . . . .	Assistant Business Manager
MARTHA PEEK BROWN . . . . .	Business Assistant
MARGARET HANSELL . . . . .	Business Assistant
PENN HAMMOND . . . . .	Business Assistant
BEE MERRILL . . . . .	Business Assistant
MARJORIE SCOTT . . . . .	Business Assistant
EMMY LOU TURCK . . . . .	Business Assistant
ANN WATKINS . . . . .	Business Assistant
LUCILE CAIRNS . . . . .	Secretary

# ETTE

The dedication of the annual this year was voted on by the entire senior class, as we believed it was fairer to the school and a greater honor to the individual.

The success of the SILHOUETTE is due to the full cooperation and interest of the staff. Each editor was responsible for her section of the book and deserves due credit. The staff as a whole acknowledges the service and help of Mr. Thornton Deas of the Journal Engravers, Mr. Charlie Young of Foote and Davies, and Mr. Elliott of Elliott's Studio.

GILLESPIE



# T C O L L E G E

Matthews  
Allison  
Hale



Sewell  
Lyle

## EDITORIAL STAFF

ELIZABETH ESPY . . . . . Editor-in-Chief  
 NELL ALLISON . . . . . Assistant Editor  
 JUNE MATTHEWS . . . . . Assistant Editor  
 CAROL HALE . . . . . Assistant Editor  
 DOUGLAS LYLE . . . . . Exchange Editor  
 JULIA SEWELL . . . . . Book Editor

## THE A

THE AURORA gives the whole student body a chance to enjoy and appreciate the work of its talented members. It is the only purely literary student publication and as such, has a very definite place on the campus. Our flowering dramatists, short-story writers, essayists, critics, and poets find there a place for their talents and a place where they can get used to seeing their names and thoughts in print.



ESPY

A G N E S S C



Kelly  
Carmichael  
Wells  
Buchholz

Blackmon  
Tazewell

# O R A

Artists, too, contribute to THE AURORA, through the annual cover contest. This year it was won by Jane Guthrie, whose black and white design of the sun rising over a small village was awarded first place.

"Salmagundi," begun last year as a section for contributions from the freshmen, has been continued, and many a weary hour spent on a "freshman English" theme has been rewarded by having the masterpiece appear in THE AURORA.

This publication, with THE AGONISTIC, returned to the old system of election of editor and business manager on the regular student ballot, this year.

## BUSINESS STAFF

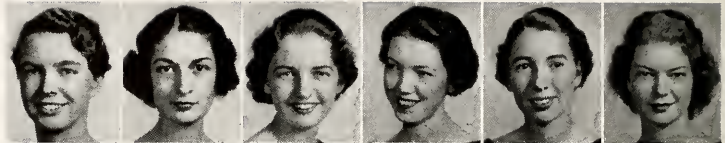
- CATHARINE JONES . . . . . Business Manager
- OLA KELLY . . . . . Business Assistant
- CAROLINE CARMICHAEL . . . . . Business Assistant
- GRACE TAZEWELL . . . . . Business Assistant
- ZOE WELLS . . . . . Business Assistant
- MARY BUCHHOLZ . . . . . Circulation Manager
- TOMMY RUTH BLACKMON . Assistant Circulation Manager

JONES





Cary  
 J. Guthrie  
 Hudson  
 Jones  
 King  
 Middleton



Gilroy  
 Davis  
 Matthews  
 Hertzka  
 Wilson  
 M. F. Guthrie



Chalmers  
 Christie  
 Moss  
 Warden



## EDITORIAL STAFF

Laura Steele . . . . .	Editor-in-Chief
Frances Cary . . . . .	Associate Editor
Jane Guthrie . . . . .	Assistant Editor
Mary McCain Hudson . . . . .	Assistant Editor
Hortense Jones . . . . .	Assistant Editor
Mary Jane King . . . . .	Editorial Council
Enid Middleton . . . . .	Editorial Council
Nellie Margaret Gilroy . . . . .	Feature Editor
Mildred Davis . . . . .	Book Editor
June Matthews . . . . .	Make-up Editor
Ruth Hertzka . . . . .	Assistant Make-up Editor
Frances Wilson . . . . .	Current History Editor
Mary Frances Guthrie . . . . .	Exchange Editor
Jean Chalmers . . . . .	Sports Editor
Cornelia Christie . . . . .	Club Editor
Pauline Moss . . . . .	Society Editor
Elizabeth Warden . . . . .	Alumnae Editor

## THE AGG

The "Aggie" is a real part of Agnes Scott life—on those occasional Wednesdays during exams when the paper doesn't come out, the week doesn't seem quite right.

"Look in the Aggie" for news about any campus activity—elections, lectures, club meetings and all other activities. Students can express their ideas about campus problems frankly and freely in the "We Think" column. Features keep us up on all the classroom witticisms, and if the library paper is too popular for everybody to get to, the current history column solves the problem.



STEELE

A G N E S S C



Blackshear

Belford

Hemphill

Morrow

## BUSINESS STAFF

KATHRYN B. WALL . . . . . Business Manager

ELIZABETH BLACKSHEAR . . . . . Advertising Manager

FRANCES BELFORD . . . . . Circulation Manager

NELL HEMPHILL . . . . . Circulation Manager

MARY LIB MORROW . . . . . Circulation Manager

# I S T I C

The editors this year decided that the policy of the paper was too great a responsibility for one or two people and so they appointed an editorial council, to formulate opinion about campus activities.

At the suggestion of the editor, students voted to go back to the popular election of editor and business manager, on the regular student ballot, instead of by an editorial board.

WALL



# T C O L L E G E



Junior Edition

# Agonistic

Don't Be Black-Listed

DECATUR, GA., WEDNESDAY, FEBRUARY 10, 1937 NO. 13

Queen of May Day Juniors Issue Invitations For Class Banquet Feb. 13

Announce Names of Escorts, Board Plans

Senior Edition

# Agonistic

May Day Queen

DECATUR, GA., WEDNESDAY, FEBRUARY 3, 1937

to Kappa Sester

Sophomore Edition

# The Agonistic

Sign Up For May Day

Do Your Own "Spring Dance"

AGNES SCOTT COLLEGE, DECATUR, GA., WEDNESDAY, FEBRUARY 17, 1937 NO. 14

Form Week MAID-OF-HONOR Wilson Wins Second Place

Freshman Edition

# The Agonistic

Exam-Cram Holiday-Hooray

VDL XXII AGNES SCOTT COLLEGE, DECATUR, GA., WEDNESDAY, FEBRUARY 24, 1937 NO. 15

**Eight Players Make Varsity In Basketball**

Four Sophomores Make Team: Two Freshmen, One Junior, Senior

To Meet Sub-Varsity Mar. 2

Receiving recognition for outstanding

**Future Attractions and Distractions**

**Glee Club Will Give Operetta On March 26**

Nickels, Lutessees Take Leads in Lively Veteran Drama On March 4-6

Atlanta Soloists Have Roles

A duke and a duchess, two romantic Victorian grandees, and a new

## AGONISTIC CONTEST

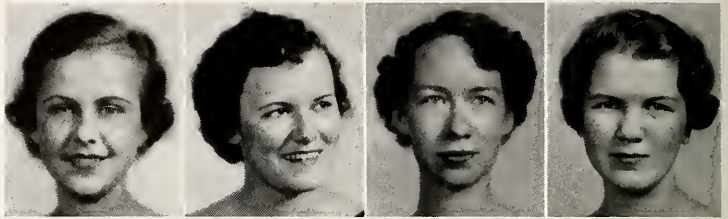
This year the annual AGONISTIC contest was won by the Junior class. Carol Hale was the class editor, and Joyce Roper was the business manager. Last year also this class as Sophomores won the loving cup for the best paper. The Senior paper was rewarded second place and the Sophomore edition third place.

The judges were: W. T. Wynn, English professor at G. S. C. W., Professor J. E. Drewry, head of the University of Georgia Journalism School, Professor Raymond Nixon of the Emory University Journalism School, Professor J. D. Allen of the English department of Mercer, and Miss Annie May Christie of the English department of Agnes Scott. They selected the winners on the basis of such points as: editorials, features, news stories, make-up, and originality.



*Associations*

L. Coit  
 Johnson  
 Willis  
 Harris



Newton  
 Lasseter



## EXECUTIVE COMMITTEE

- ALICE HANNAH . . . . . President  
 MARY JANE TIGERT . . . . . Vice-President  
 LAURA COIT . . . . . Secretary  
 ANN WORTHY JOHNSON . . . . . Treasurer  
 BETTY WILLIS . . . . . House President of Rebekeh  
 FANNIE B. HARRIS . . . . . House President of Main  
 MARY ALICE NEWTON . . . . . House President of Inman

## STUDENT ASSOCIATION

The officers of Student Government this year have emphasized the fact that the Association is composed of the entire student body and that "Exec" is just the Executive Committee, a small group to carry out the wishes of the student body. Such a policy has met with the co-operation of all the students.

Two main projects for this year were a handbook editor and a cut system, and we got both. The handbook editor was put on the regular student ballot, and after all these years, we succeeded in convincing the faculty of the desirability of cuts.



HANNAH

A G N E S S C





Fairly  
Kernan  
Bailey  
McMullen

Dennison  
McCain

# GOVERNMENT TION

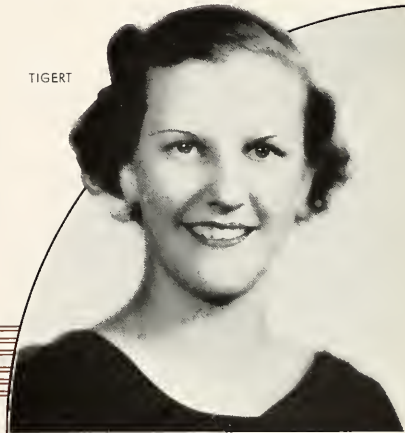
The quarter system mixed up the time of elections, and this and other changes were taken up in Open Forum, efficiently presided over by the vice-president. Her policy of preparedness—of being warned about matters to be brought up, so she could answer the questions or have someone there who could—made these meetings really worthwhile.

The N. S. F. A. Discussion Group, led by Fannie B. Harris this year, offered another opportunity for student discussions. The Agnes Scott delegates to the National Congress of the Federation, held this year in New York, were Alice Hannah and Ann Worthy Johnson. They both came back full of enthusiastic ideas about how to rouse Agnes Scott out of itself and make it a place more wonderful than ever before.

## EXECUTIVE COMMITTEE

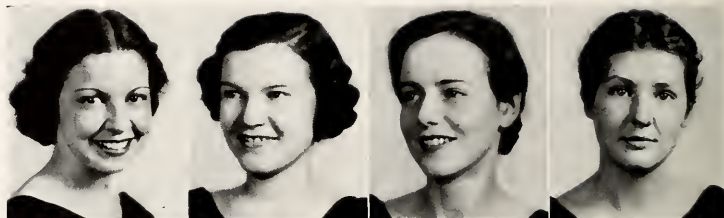
- FLORENCE LASSETER . . . . . Student Recorder
- MARY LILLIAN FAIRLY . . . . . Junior Representative
- MARY ANNE KERNAN . . . . . Junior Representative
- JEAN BAILEY . . . . . Sophomore Representative
- EMMA McMULLEN . . . . . Sophomore Representative
- LUCILE DENNISON . . . . . Day Student Representative
- ISABEL McCAIN . . . . . Ex-Officio

TIGERT



T C O L L E G E

Adams  
Young  
Wilson  
Long



Gilroy  
M. Coit  
Kellersberger



## CABINET

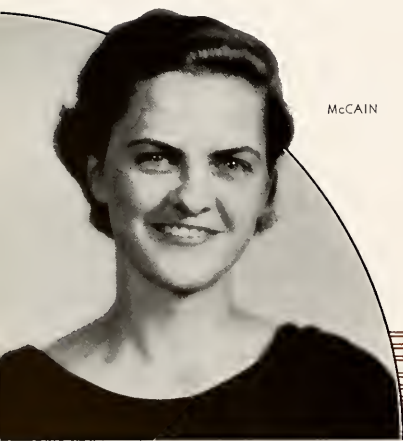
- ISABEL McCAIN . . . . . President  
 BETTY HOLLIS . . . . . Vice-President  
 LOUISE YOUNG . . . . . Secretary  
 JEAN BARRY ADAMS . . . . . Treasurer  
 FRANCES WILSON . . . . . Program Chairman  
 NELLIE MARGARET GILROY . . . . Social Service Chairman  
 MARTHA LONG . . . . . Industrial Chairman  
 MILDRED COIT . . . . . World Fellowship Chairman

Y. W.

The Y. W. C. A. sponsors varied activities on the campus, such as vespers during the week and on Sunday nights, chapel programs, and Open House in the Murphey Candler Building every Sunday afternoon.

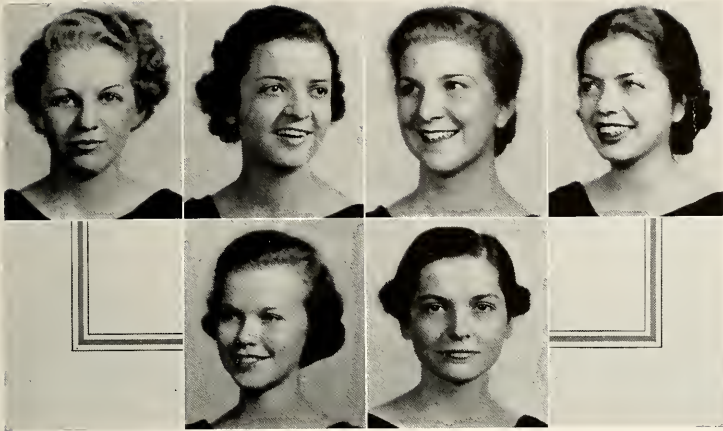
This year Y. W. adopted the policy of having more student speakers, as well as interesting outside speakers. A Y. W. Open Forum gave the entire student body an opportunity to make suggestions about the various groups in the organization. The Sophomore Council, with members elected by that class, was organized to give those girls an opportunity to take a more active part in Y. W.

One of the major projects of Y. W. this year was to bring to the campus for a week of conferences and lectures Miss Elizabeth Osborne, of New York, Consultant on Appearance.



McCain

A G N E S S C



Hassell  
Wheeler  
Noble  
Lyle

Abbott  
Hannah

## CABINET

### A.

The individual groups have been very active too. The Social Service group, in addition to giving the Christmas party for the underprivileged children of the county, made Red Cross flags to send to the flood areas, and the Industrial group visited the girls at the Atlanta Y. W. C. A. and took trips through the Uneeda Biscuit Co. plant and other such places. Other groups, too, had special projects, in addition to their regular programs.

"Christ—A Challenge" has been the topic of an interesting series presented by the Program Committee. Dr. Ben Lacy, president of the Union Theological Seminary, conducted the week of religious services.

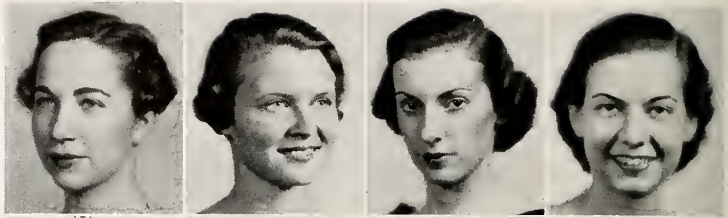
Agnes Scott had several representatives at the spring meeting of the state Y. W. and Y. M. C. A.'s, of which Isabel McCain was president.

- WINIFRED KELLERSBERGER . . . . . Spiritual Life Chairman
- HIBERNIA HASSELL . . . . . Mission Interest Chairman
- CARY WHEELER . . . . . Social Chairman
- PRIMROSE NOBLE . . . . . Music Chairman
- DOUGLAS LYLE . . . . . Publicity Chairman
- FRANCES ABBOTT . . . . . Freshman Representative
- ALICE HANNAH . . . . . Ex-Officio

HOLLIS



Robinson  
Thompson  
Kneale  
Chalmers



Turck  
Carmichael



## BOARD MEMBERS

- JULIA THING . . . . . President  
 MARIE STALKER . . . . . Vice-President  
 FRANCES ROBINSON . . . . . Secretary  
 ANNE THOMPSON . . . . . Treasurer  
 MARY KNEALE . . . . . Social Chairman  
 JEAN CHALMERS . . . . . Publicity Chairman  
 EMMY LOU TURCK . . . . . Publicity Chairman

## ATHLETIC

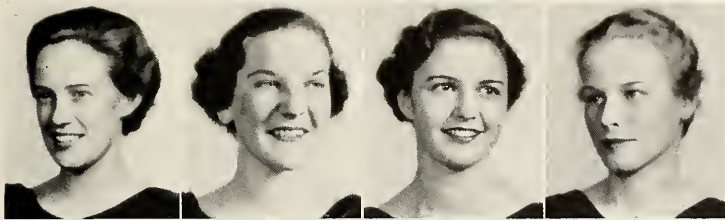
Athletic Association has been very successful this year in carrying out its theme of Recreation, in addition to the regular programs of seasonal sports.

The ping-pong tournament in the fall was most exciting, and a volleyball tournament helped chase away cares and worries during exam week. There have been long and short hikes, and the breakfast hike into Atlanta, by the Hiking Squad; and besides these, the Outing Club sponsored a supper hike for anybody who wanted to go. Of course it rained, but eating hot dogs in the Athletic Board room and toasting marshmallows over a fire behind the gym was just as much fun as going to the woods.

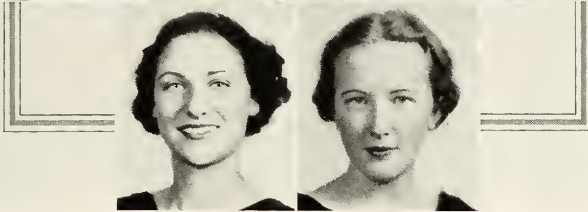


THING

A G N E S S C



Merrill  
Little  
Cuddy  
Taylor



Dryfoos  
V. Watson

## SOCIATION

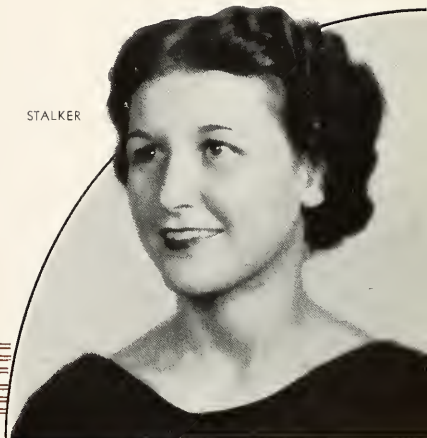
Another part of the Recreation program was A. A. Open House and candy pulls in the Murphey Candler Building. Apples, peanuts, popcorn, and taffy was the general menu for these entertainments, and everybody has enjoyed the radio and new victrola records A. A. gave to the building.

A Japanese wedding celebration was the theme of the unusually colorful water pageant, "A Feast of Lanterns."

Anne Thompson and Jane Dryfoos represented Agnes Scott at the annual meeting of the Georgia Athletic Federation of College Women, of which Mary Kneale was president. Anne was elected secretary-treasurer for next year.

## BOARD MEMBERS

- CAROLINE CARMICHAEL . . . . . Song Leader  
 BEE MERRILL . . . . . Swimming Manager  
 ELLEN LITTLE . . . . . Tennis Manager  
 ESTELLE CUDDY . . . . . Archery Manager  
 ALICE TAYLOR . . . . . Hockey Manager  
 JANE DRYFOOS . . . . . Hiking Manager  
 VIRGINIA WATSON . . . . . Camp Manager



STALKER



Stalker  
Cary  
Alexander



OFFICERS

- FANNIE B. HARRIS . . . . . President
- MARY JANE TIGERT . . . . . Vice-President
- MARIE STALKER . . . . . Secretary
- FRANCES CARY . . . . . Treasurer
- ELOISA ALEXANDER . . . . . Quarterly Editor

MORTAR BOARD

Members of Mortar Board, the national senior honorary society of campus leaders, are elected on the basis of service, leadership, and scholarship.

Most of the activities of the organization have, until this year, been secret, but the present chapter decided to announce to the entire student body the major parts of its program in order to secure the greatest cooperation from the whole group.

The major activity of Mortar Board this year was to take charge of the Murphy Candler Building. It has supervised the furnishings and decorations of the lobby, and it assigned the rooms to the various organizations and clubs and arranged the schedule of activities in the building.



HARRIS

A G N E S S C



Hannah  
McCain  
Steele  
Thing

## BOARD

This organization is responsible for many of the social activities on the campus. Parties for the freshmen and sophomores, to which men are invited, were given this year in the Murphey Candler Building. As usual, Mortar Board entertained the juniors and their dates at the Junior Banquet, where there were flowers and music and new dresses. Besides giving these annual events, the chapter this year entertained the college community and all the guests at a tea after the dedication of the new library.

They also invited the juniors to a tea to meet one of their national officers who visited Agnes Scott this fall.

## MEMBERS

ALICE HANNAH

ISABEL McCAIN

LAURA STEELE

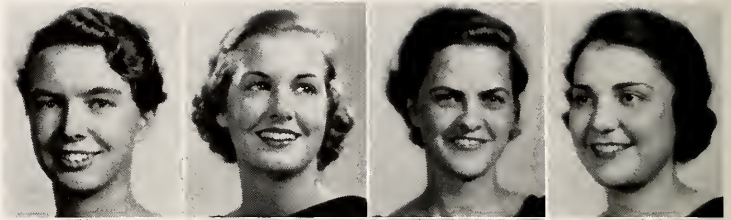
JULIA THING

TIGERT

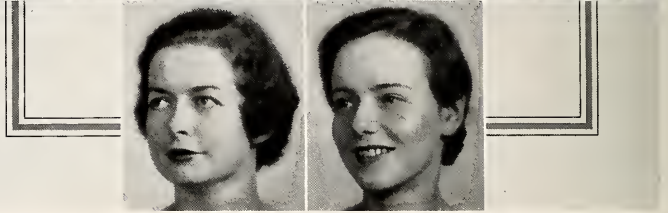


T C O L L E G E

Cary  
Dennison  
McCain  
Shamos



Tilly  
Wilson



## CLASS OF 1937

- |                 |                |
|-----------------|----------------|
| FRANCES CARY    | RACHEL SHAMOS  |
| LUCILE DENNISON | MILDRED TILLY  |
| ISABEL McCAIN   | FRANCES WILSON |

## CLASS OF 1936

- |                   |                |
|-------------------|----------------|
| LENA ARMSTRONG    | AUGUSTA KING   |
| SHIRLEY CHRISTIAN | AGNES J. McKOY |
| ELIZABETH FORMAN  | EDITH MERLIN   |
| LITA GOSS         | SARAH NICHOLS  |
| JANET GRAY        | MARY SNOW      |
| ETHELYN JOHNSON   | MARIE TOWNSEND |

## PHI BETA KAPPA

Phi Beta Kappa announcements are among THE events of the year, and the academic procession of the local chapter, to the tune of "Ancient of Days," with brilliantly colored hoods and robes, adds to the dignity and excitement of the program. The speaker for the program this year was Mr. Jackson Davis, president of the Phi Beta Kappa chapter of William and Mary University, which is the original chapter of the organization.

An unusually large percentage of the senior class was elected this year, into the Agnes Scott chapter, which is the Beta of Georgia chapter, installed ten years ago. Elections are made on the basis of scholarship, combined with campus activities.

A G N E S S C



Cary  
Dennison  
Espy  
Gilroy  
Matthews  
McCain  
Middleton  
Moss  
Printup  
Stevens  
Wall  
Tilly  
Wilson  
Blackshear  
Blackstone  
Coit  
Davis  
Hertzka  
Kernan  
King  
Seay  
Thompson  
Turner  
Wells  
Young  
M. F. Guthrie  
Hutchins  
Kenny  
Lyle  
Merritt  
Murphy  
Ratliff  
Shortley  
Whetsell

## HONOR ROLL

Announcement of the Honor Roll is the occasion of the first academic procession of the year, a sight which thrills old girls as well as freshmen, and there is a tense silence while Dr. McCain reads the names of those who made the highest scholastic averages for the past year. A "B" average is the minimum requirement.

The list this year, for 1935-36, was unusually long—a fact which Dr. McCain said he didn't know whether to attribute to the faculty's leniency or the increasing "brilliance" of the students. Well, we know!

### CLASS OF 1937

FRANCES CARY	ENID MIDDLETON
LUCILE DENNISON	PAULINE MOSS
ELIZABETH ESPY	KATHRYN PRINTUP
NELLIE MARGARET GILROY	FAXIE STEVENS
JUNE MATTHEWS	MILDRED TILLY
ISABEL McCAIN	KATHRYN B. WALL
FRANCES WILSON	

### CLASS OF 1938

ELIZABETH BLACKSHEAR	ELIZA KING
ELSIE BLACKSTONE	ELISE SEAY
LAURA COIT	ANNE THOMPSON
MILDRED DAVIS	JANE TURNER
RUTH HERTZKA	ZOE WELLS
MARY ANNE KERNAN	LOUISE YOUNG

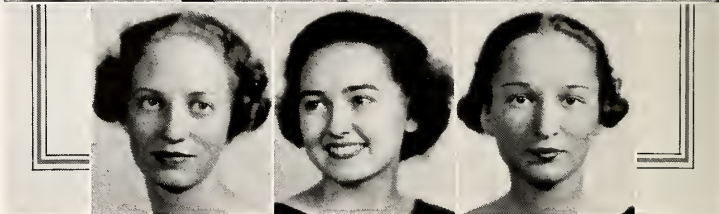
### CLASS OF 1939

MARY FRANCES GUTHRIE	MARIE MERRITT
CORA KAY HUTCHINS	MARY RUTH MURPHY
ELIZABETH JOAN KENNY	MAMIE LEE RATLIFF
DOUGLAS LYLE	AILEEN SHORTLEY
MARY ELLEN WHETSELL	

Wilson  
Tigert  
M. Watson  
Malone



Hemphill  
Purnell  
Turner



## MEMBERS

- CHARLINE FLEECE . . . . . President  
FRANCES WILSON . . . . . Treasurer  
MARY JANE TIGERT . . . . . Social Chairman  
MARGARET WATSON . . . . . Publicity Chairman  
MARY MALONE . . . . . Senior Representative  
NELL HEMPHILL . . . . . Junior Representative  
ANNE PURNELL . . . . . Sophomore Representative  
JANE TURNER . . . . . Day Student Representative

## LECTURE ASSOCIATION

Lecture Association is one of those things that make Agnes Scott what it is and puts it above most other colleges.

This organization gives the college community and visitors the opportunity of hearing the most outstanding figures in the fields of literature, history, science, and world affairs, and also the privilege of meeting the famous visitors personally at informal receptions. Louis Untermeyer, Arthur Compton, Robert Frost, Thornton Wilder, and Edna St. Vincent Millay are some of the recent lecturers.

This fall Stuart Chase, the noted economist, writer, and lecturer, spoke on "The End of an Epoch." Carl Sandburg, famous poet, was another of the speakers presented on the series this year.



FLEECE

A G N E S S C O T T





Thompson  
Sewell  
Daniel  
Hassell  
Rainey  
Steele  
Turner

Baird  
Earthman  
MacGuire  
Matthews  
Moses  
Tate  
Blackmon

Kirkpatrick  
Sanford  
Fleece  
Marsh  
Wyatt

# MAY DAY COMMITTEE

May Day is one of the most beautiful and most popular traditions of Agnes Scott, and the May Day Committee is the group that works all year to present a colorful celebration the first part of May. The scenario contest is held early in the fall, and from then until May, the committee is hard at work perfecting the scenario, designing costumes, working out dances and music, making properties—which include everything from a silver cobweb to a brick bungalow, putting up posters, and—selecting a May Queen and a May Court.

The scenario chosen for this year's pageant was an adaptation of Milton's famous masque, "Comus."

## MEMBERS

ELOISA ALEXANDER . . . . .	Chairman
ANNE THOMPSON . . . . .	Business Manager
JULIA SEWELL . . . . .	Scenario
KATHLEEN DANIEL . . . . .	Costumes
HIBERNIA HASSELL . . . . .	Costumes
MARJORIE RAINEY . . . . .	Costumes
FRANCES STEELE . . . . .	Costumes
JANE TURNER . . . . .	Costumes
CECILIA BAIRD . . . . .	Properties
NELLE SCOTT EARTHMAN . . . . .	Properties
FLORA MacGUIRE . . . . .	Properties
JUNE MATTHEWS . . . . .	Dances
HELEN MOSES . . . . .	Dances
RUTH TATE . . . . .	Dances
TOMMY RUTH BLACKMON . . . . .	Music
JEAN KIRKPATRICK . . . . .	Music
HADYN SANFORD . . . . .	Music
CHARLINE FLEECE . . . . .	Publicity
VERA IRBY MARSH . . . . .	Publicity
JANE WYATT . . . . .	Posters

ALEXANDER





## SPONSORS

Sponsors are chosen from the Junior and Senior classes, for orientation of the new students and to act as their advisors throughout the year. The work of this group is under the supervision of the vice-president of Student Government.

EDITH BELSER  
 ELIZABETH BLACKSHEAR  
 KATHERINE BRITTINGHAM  
 MARTHA PECK BROWN  
 LUCILLE CAIRNS  
 FRANCES CASTLEBERRY  
 JEAN CHALMERS  
 CORNELIA CHRISTIE  
 ELIZABETH COUSINS  
 MILDRED DAVIS  
 GOUDYLOCH ERWIN  
 JANE ESTES  
 MARY LILLIAN FAIRLY  
 ANNA KATHERINE FULTON  
 MICHELLE FURLOW  
 JUDITH GRACEY  
 MARTHA ALICE GREEN  
 MARGARET HANSELL  
 HIBERNIA HASSELL  
 NELL HEMPHILL  
 RUTH HERTZKA  
 DOROTHY JESTER  
 MARY JOHNSON  
 MARTHA JOHNSON  
 SARAH JOHNSON  
 MOLLY JONES  
 WINIFRED KELLERSBERGER  
 OLA KELLY  
 RACHEL KENNEDY  
 MARY ANNE KERNAN

ELLEN LITTLE  
 FLORENCE LITTLE  
 MARTHA LONG  
 JEANNE MATTHEWS  
 FRANCES McDONALD  
 LETTIE MCKAY  
 BERTHA MERRILL  
 ENID MIDDLETON  
 MARGARET MORRISON  
 MARY LIB MORROW  
 FRIMROSE NOBLE  
 ROSE NORTHCROSS  
 VIRGINIA POPLIN  
 ALICE REINS  
 ELISE SEAY  
 SARA BEATY SLOAN  
 MARY SMITH  
 FRANCES STEELE  
 VIRGINIA SUTTENFIELD  
 RUTH TATE  
 JULIA TELFORD  
 MILDRED TILLY  
 MARY NELL TRIBBLE  
 JANE TURNER  
 ELIZABETH WARDEN  
 VIRGINIA WATSON  
 ELISIE WEST  
 MARY WILLIS  
 FRANCES WILSON  
 DIXIE WOODFORD

JANE WYATT



TIGERT

A G N E S S C



S. Johnson  
Chalmers  
Gracey  
Dennison

Wells  
M. Johnson

## STUDENT OFFICIALS

The Senior Student Treasurer and her Junior Assistant have a real job, and an important one, for without their ceaseless efforts to collect the student budget, probably half the students would forget about it and get on the Black List, which means exclusion from those student activities which receive money from the budget. They also apportion the money to the campus organizations according to the student budget, which was revised this year.

Fire drills and flashlights for her dormitory lieutenants are the chief worries of the Fire Chief, who can make or break friendships by the time of night she chooses for a fire drill.

This year the office of President of Day Students was put on the regular election ballot, and the girl was elected by the entire student body, instead of just by day students. Since she is automatically a member of Exec, it was felt that the office concerned boarding as well as day students. The other day student officials are elected by that group.

SARAH JOHNSON . . . . . Student Treasurer

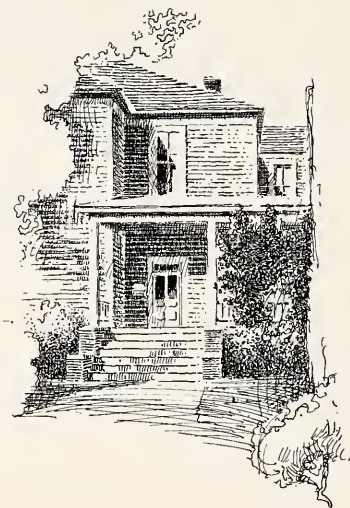
JEAN CHALMERS . . . Assistant Student Treasurer

JUDITH GRACEY . . . . . Fire Chief

LUCILE DENNISON . . . President of Day Students

ZOE WELLS . . . Vice-President of Day Students

MARY JOHNSON  
Secretary-Treasurer of Day Students





*Clubs*



# CHI BETA PHI SIGMA

## OFFICERS

MARTHA SUMMERS . . . . . President  
 PAULINE MOSS . . . . . Vice-President  
 MILDRED TILLY . . . . . Corresponding Secretary  
 FRANCES McDONALD . . . . . Recording Secretary  
 NELL SCOTT . . . . . Treasurer



Summers  
Tilly  
McDonald  
Moss  
Scott

## MEMBERS

JEAN AUSTIN	KATHERINE MAXWELL
ANN COX	FRANCES NORMAN
JANE ESTES	MARJORIE SCOTT
PHILIPPA GILCHRIST	RACHEL SHAMOS
REGINA HERWITZ	AILEEN SHORTLEY
MRS. HENRY HERBERT	ELIZABETH SKINNER
ANN WORTHY JOHNSON	VIRGINIA STEPHENS
OLA KELLY	VIRGINIA SUTTENFIELD
ELIZABETH KENNY	LENA SWEET
WAYVE LEWIS	MARGARET WATSON
JEANNE MATTHEWS	BETTY WILLIS

JESSIE WILLIAMS

Chi Beta Phi Sigma is the Alpha chapter of the woman's branch of this national honorary society, whose members are elected on a basis of high scholarship. Meetings with noted speakers are open to the college community so that we all may tap the wires broadcasting the latest findings in the scientific world.



# ETA SIGMA PHI

## OFFICERS

- FRANCES CARY . . . . . President  
 MILDRED DAVIS . . . . . Vice-President  
 NELL ALLISON . . . . . Corresponding Secretary  
 MARY JANE KING . . . . . Recording Secretary  
 MOLLY JONES . . . . . Treasurer  
 GWENDOLYN McKEE . . . . . Pyloras



Cary  
King Allison  
Davis  
Jones

## MEMBERS

- |                      |                      |
|----------------------|----------------------|
| ELSIE BLACKSTONE     | MARIE MERRITT        |
| MARY VIRGINIA FARRAR | ISABEL McCAIN        |
| ALICE HANNAH         | ENID MIDDLETON       |
| SARAH JOHNSON        | LAURA STEELE         |
| RACHEL KENNEDY       | MARY JANE TIGERT     |
| FRANCES LEE          | KATHERINE BOWEN WALL |
| REBECCA LOVE         | ZOE WELLS            |

Interest in the classics is furthered through the efforts of Eta Sigma Phi which is a national honorary society for undergraduate students of Latin and Greek with high averages. The members increase their knowledge of the languages in their regular meetings and have an annual banquet.





Watson                      Roper  
Hertzka                  Cairns                  Middleton

# K . U . B .

## OFFICERS

- MARGARET WATSON . . . . . President  
 JOYCE ROPER . . . . . First Vice-President  
 LUCILLE CAIRNS . . . . . Second Vice-President  
 RUTH HERTZKA . . . . . Secretary  
 ENID MIDDLETON . . . . . Treasurer

## MEMBERS

- |                      |                  |
|----------------------|------------------|
| JEAN BARRY ADAMS     | BARTON JACKSON   |
| EVELYN BATY          | CATHARINE JONES  |
| ELIZABETH BLACKSHEAR | ELIZA KING       |
| MARY BUCHHOLZ        | ELLEN LITTLE     |
| CATHERINE CALDWELL   | MARIE MERRITT    |
| FRANCES CARY         | ORA MUSE         |
| CORNELIA COOK        | ANNE PURNELL     |
| KATHLEEN DANIEL      | HAYDEN SANFORD   |
| MILDRED DAVIS        | SARA BEATY SLOAN |
| MARY DIXON           | ANN WATKINS      |
| GOUDYLOCH ERWIN      | ELSIE WEST       |
| MARY LILLIAN FAIRLY  | MARY WILLIS      |

Seeing your friends' names and your own in print is more of a thrill when you've helped in the news writing! K. U. B. members keep the girls' home town papers informed as to their activities, and handle the college publicity for The Atlanta Journal and The DeKalb New Era. The monthly meetings feature speakers who are in the know about the newspaper world.







# BLACKFRIARS

## OFFICERS

- KATHRYN PRINTUP . . . . . President  
 MYRL CHAFIN . . . . . Vice-President  
 LUCILLE CAIRNS . . . . . Secretary  
 JOYCE ROPER . . . . . Treasurer



Printup  
 Cairns

Chafin  
 Roper

## MEMBERS

- |                       |                       |
|-----------------------|-----------------------|
| JEAN BAILEY           | DOROTHY LEE           |
| FRANCES BELFORD       | LETTIE MCKAY          |
| CAROLINE CARMICHAEL   | BERTHA MERRILL        |
| JEAN CHALMERS         | HELEN MOSES           |
| CORNELIA CHRISTIE     | PRIMROSE NOBLE        |
| ESTELLE CUDDY         | MARY PAST             |
| ELIZABETH COUSINS     | ANNE PURNELL          |
| LUCILE DENNISON       | JEANNE REDWINE        |
| JEANNE FLYNT          | MARY PENNELL SIMONTON |
| ANNA KATHERINE FULTON | BERYL SPOONER         |
| MARY GILLESPIE        | MARIE STALKER         |
| SUSAN GOODWYN         | FRANCES STEELE        |
| MARTHA HEAD           | KATHRYN TOOLE         |
| OLA KELLY             | JANE TURNER           |
| KATHLEEN KENNEDY      | KATHERINE BOWEN WALL  |
| MARY ANNE KERNAN      | DIXIE WOODFORD        |

Backstage drama is carried on by the Blackfriars as well as the presentation of several big plays behind the footlights during the year. The girls learn the essentials of make up, stage management, lighting, the making of scenery, as well as the principles of acting under the guidance of Miss Gooch and Miss Latimer. The members also give one-act plays before the club twice a month.

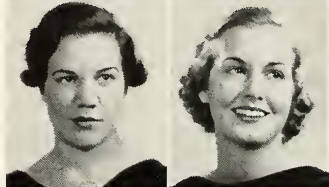




# PI ALPHA PHI

## OFFICERS

- NELLIE MARGARET GILROY . . . . . President  
 MARY LILLIAN FAIRLY . . . . . Vice-President  
 BROOKS SPIVEY . . . . . Secretary  
 LUCILE DENNISON . . . . . Treasurer



Gilroy                      Fairly  
 Spivey                     Dennison

## MEMBERS

- |                      |                  |
|----------------------|------------------|
| JEAN BARRY ADAMS     | FANNIE B. HARRIS |
| JEAN AUSTIN          | NELL HEMPHILL    |
| FRANCES BELFORD      | DOROTHY LEE      |
| ESTHER BYRNES        | FRANCES LEE      |
| JANE CARITHERS       | ELLEN LITTLE     |
| LAURA COIT           | FLORENCE LITTLE  |
| MARGARET DOUGLAS     | FLORA MacGUIRE   |
| GOUDYLOCH ERWIN      | HELEN MOSES      |
| MARY FRANCES GUTHRIE | FRANCES NORMAN   |
| HIBERNIA HASSELL     | SARA BEATY SLOAN |

JANE TURNER

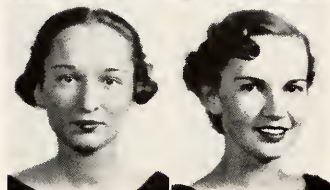
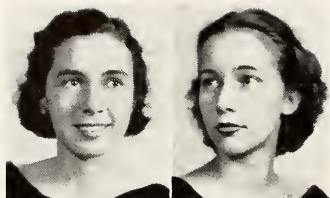
Pi Alpha Phi, the debating club, helps to keep the campus in touch with other campuses by sponsoring intercollegiate debates on current affairs and gives experience in debating and speaking in public. This year the poetic rebuttals of the girls in the traditional debate with the English students, who seemed to be record limerick makers, further proved the versatility of Pi Alpha Phi members.



# FRENCH CLUB

## OFFICERS

- MARGARET HANSELL . . . . . President  
 ELISE SEAY . . . . . Vice-President  
 JANE TURNER . . . . . Secretary  
 ADELAIDE BENSON . . . . . Treasurer



Hansell  
Turner

Seay  
Benson

"Parlez-vous francais, Mademoiselle? Venez au cercle francais" which is the place to perfect your French to impress your friends, besides being in a club with a purpose—which is to give students a knowledge of the history, arts, and literature of the French people, particularly this year, of the provinces. The programs have included provincial songs, dances, and skits in peasant costumes, and a movie of the provincial life in Brittany.

## MEMBERS

- |                     |                        |
|---------------------|------------------------|
| BETTY ALDERMAN      | SARAH JOHNSON          |
| NELL ALLISON        | HORTENSE JONES         |
| SUZANNE AUDRAIN     | WINIFRED KELLERSBERGER |
| CECILIA BAIRD       | JEAN KIRKPATRICK       |
| JOSEPHINE BERTOLLI  | MARY ELIZABETH LEAVITT |
| TOMMY RUTH BLACKMON | ELLEN LITTLE           |
| HENRIETTA BLACKWELL | JACQUELYN McWHITE      |
| MARY KATE BURRUSS   | ENID MIDDLETON         |
| FRANCES CARY        | MARY RUTH MURPHEY      |
| CATHERINE CALDWELL  | AMELIA NICKELS         |
| JEAN CHALMERS       | PRIMROSE NOBLE         |
| SARA CORBITT        | KATHRYN PRINTUP        |
| MILDRED DAVIS       | NELL SCOTT             |
| LUCY HILL DOTY      | MARTHA SUMMERS         |
| RUTH EYLES          | JULIA TELFORD          |
| RENÉE GÉRARD        | JULIA THING            |
| MARTHA ALICE GREEN  | FLORENCE WADE          |
| MARY McCANN HUDSON  | EVELYN WALL            |
| REGINA HERWITZ      | EVELYN WEINKLE         |
| MARY JOHNSON        | LOUISE YOUNG           |



# GERMAN CLUB

## OFFICERS

- MARY KNEALE . . . . . President  
 ANNE THOMPSON . . . . . Vice-President  
 JEAN AUSTIN . . . . . Secretary  
 JANE DRYFOOS . . . . . Treasurer



Kneale Thompson  
 Austin Dryfoos

## MEMBERS

- |                       |                   |
|-----------------------|-------------------|
| ELIZABETH BLACKSHEAR  | WAYVE LEWIS       |
| FRANCES CASTLEBERRY   | MARTHA LONG       |
| JEAN CHALMERS         | JEANNE MATTHEWS   |
| CORNELIA CHRISTIE     | JUNE MATTHEWS     |
| MILDRED DAVIS         | JACQUELYN McWHITE |
| ANNA KATHERINE FULTON | FRANCES NORMAN    |
| EMILY HARRIS          | EUSE SEAY         |
| RUTH HERTZKA          | RACHEL SHAMOS     |
| ANN WORTHY JOHNSON    | JANE TURNER       |
- KATHRYN BOWEN WALL

Every four weeks the AGONISTIC club column records the meetings of the German Club in Lupton Cottage, and we know there has been another delightful combination of nice guttural sounds and Miss Harn's hospitality. Besides these pleasant gatherings the club presents a "Weinachtspiel" (Christmas play) annually and sings carols the night before Christmas holidays.



# SPANISH CLUB

## OFFICERS

LOUISE BROWN . . . . . President

HIBERNIA HASSELL . . . . . Vice-President

ELSIE BLACKSTONE . . . . . Secretary-Treasurer



Brown                      Blackstone                      Hassell

## MEMBERS

- |                    |                 |
|--------------------|-----------------|
| SUZANNE AUDRAIN    | MARTHA HEAD     |
| LOUISE BAILEY      | MARY JOHNSON    |
| JOSEPHINE BERTOLLI | DOROTHY LEE     |
| MARTHA PEEK BROWN  | VERA IRBY MARSH |
| CORNELIA CHRISTIE  | EMILY McMORLAND |
| MARTHA ALICE GREEN | MARGARET OLSEN  |
| MARGARET HANSELL   | ELLEN O'DONNELL |

VIRGINIA TUMLIN

Spanish Club members have endeavored this year to further interest in Spanish culture, chiefly music and literature. This year they gave a Spanish tea for Professor Seris, the Spanish lecturer, and presented a Christmas play, "Tocino del Cielo," with the Emory Spanish Club. The carol singers were lighted on their way around the campus the night before Christmas holidays with lanterns Miss Cilley brought back from Spain last summer.

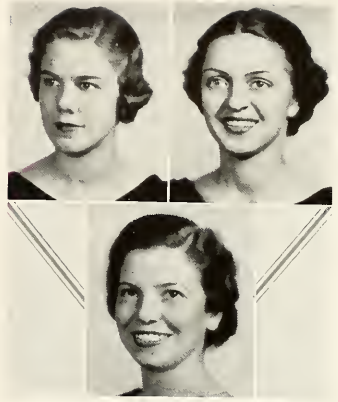




# GRANDDAUGHTERS' CLUB

## OFFICERS

- KATHLEEN DANIEL . . . . . President  
 BARTON JACKSON . . . . . Vice-President  
 CAROLINE ARMISTEAD . . . . . Secretary-Treasurer



Daniel                      Armistead                      Jackson

## MEMBERS

- |                        |                   |
|------------------------|-------------------|
| LUCILLE CAIRNS         | DOROTHY LEE       |
| CORNELIA COLEMAN       | MARTHA MARSHALL   |
| ELIZABETH COUSINS      | SARAH B. MATTHEWS |
| MARGARET DOUGLAS       | MARY McPAUL       |
| NELLE SCOTT EARTHMAN   | JANE MOSES        |
| CAROLYN FORMAN         | ORA MUSE          |
| SUSAN GOODWYN          | ELLEN O'DONNELL   |
| PENN HAMMOND           | BETTY SAMS        |
| FANNIE B. HARRIS       | JULIA SEWELL      |
| BETTY HOLLIS           | RUTH SLACK        |
| KATHLEEN JONES         | VIRGINIA STEPHENS |
| LENORA JONES           | ELLEN STUART      |
| WINIFRED KELLERSBERGER | MARY NELL TRIBBLE |

Granddaughters' Club is for those girls who have had Agnes Scott in their families for years—since mother was a girl. The activities are social, and conclude with a banquet in the spring for members and their dates.





# CITIZENSHIP CLUB

## OFFICERS

FRANCES BELFORD . . . . . President

LUCILLE CAIRNS . . . . . Vice-President

FLORENCE LITTLE . . . . . Secretary-Treasurer



Belford                      Little                      Cairns

Not every college campus can boast of having three national political party conventions the same year, the same day, in the same auditorium, but this do women revolutionize politics! The results of the model election sponsored by the Citizenship Club were the same as those in the national election, which proves something—perhaps that we all learned how to vote in the most citizen like manner.

## MEMBERS

- |                      |                      |
|----------------------|----------------------|
| VIRGINIA CALDWELL    | KATHERINE MAXWELL    |
| FRANCES CASTLEBERRY  | MARJORIE RAINEY      |
| JEAN CHALMERS        | NELL SCOTT           |
| LUCILE DENNISON      | MARY FAIRFAX STEVENS |
| NELLE SCOTT EARTHMAN | ALICE TAYLOR         |
| MICHELLE FURLOW      | MARY JANE TIGERT     |
| MARTHA JOHNSON       | EULA TURNER          |
| CATHARINE JONES      | JESSIE WILLIAMS      |
| DOROTHY LEE          | PEGGY WILLIS         |
| ORA MUSE             | MARGARET WATSON      |



# INTERNATIONAL RELATIONS CLUB

## OFFICERS

- MARGARET WATSON . . . . . President  
 MARY FAIRFAX STEVENS . . . . . Vice-President  
 JEAN CHALMERS . . . . . Secretary-Treasurer



Watson Chalmers Stevens

## MEMBERS

- |                      |                       |
|----------------------|-----------------------|
| RUTH ANDERSON        | JEAN KIRKPATRICK      |
| CECILIA BAIRD        | DOROTHY LEE           |
| FRANCES BELFORD      | FLORENCE LITTLE       |
| MARY BUCHHOLZ        | KATHERINE MAXWELL     |
| ALICE CALDWELL       | LETTIE McKAY          |
| CATHERINE CALDWELL   | MARY WELLS McNEIL     |
| FRANCES CASTLEBERRY  | NANCY MOORER          |
| KATHLEEN DANIEL      | MARY ELIZABETH MORROW |
| NELLE SCOTT EARTHMAN | ORA MUSE              |
| ELIZABETH ESPY       | CAROLINE MYERS        |
| MARY LILLIAN FAIRLY  | ALICE REINS           |
| ADELE HAGGART        | NELL SCOTT            |
| CAROL HALE           | MARY PENNEL SIMONTON  |
| BARTON JACKSON       | MARIE STALKER         |
| CATHARINE JONES      | ALICE TAYLOR          |
| HORTENSE JONES       | EULA TURNER           |
| MARTHA JOHNSON       | PEGGY WARE            |
| MARY KENNEDY         | VIRGINIA WATSON       |
| MARY ANNE KERNAN     | JESSIE WILLIAMS       |

BETTY WILLIS

International Relations Club is sponsored by the Carnegie Foundation for International Peace and is up to the minute in news of foreign affairs, this year bringing Professor Homero Seris to the campus to talk on the war in Spain only two months after he left the fighting zone of Madrid.



# PEN AND BRUSH

## OFFICERS

- ZOE WELLS . . . . . President  
 EMMY LOUISE TURCK . . . . . Vice-President  
 JANE WYATT . . . . . Secretary-Treasurer



Wells                      Wyatt                      Turck

The Pen and Brushers instigated a back to Nature movement this year, and have done some interesting outdoor sketches on hikes. In addition they help advertise coming attractions (lectures, plays, etc.) by making posters which illustrate their good natures as well as their talent.

## MEMBERS

- |                     |                    |
|---------------------|--------------------|
| LUCILE BARNETT      | MARTHA JOHNSON     |
| LUCY HILL DOTY      | MILDRED JOSEPH     |
| JANE DRYFOOS        | MARY MALONE        |
| CAROLYN FORMAN      | CAROLYN MYERS      |
| ELIZABETH GALBREATH | ISABEL RICHARDSON  |
| JANE GUTHRIE        | MARJORIE SCOTT     |
| ADELE HAGGART       | HARRIET STIMSON    |
| ELEANOR HALL        | HENRIETTA THOMPSON |

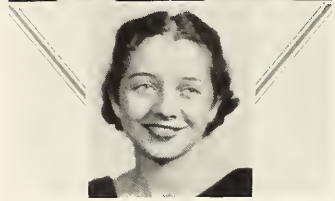
PEGGY WILLIS



# COTILLION CLUB

## OFFICERS

- ALICE TAYLOR . . . . . President  
 ELOISE ESTES . . . . . Vice-President  
 MARY ELLEN WHETSELL . . . . . Secretary-Treasurer



Taylor Whetsell Estes

## MEMBERS

- |                     |                         |
|---------------------|-------------------------|
| FRANCES ABBOTT      | MARY KNEALE             |
| BETTY AYCOCK        | MARTHA MARSHALL         |
| MARTHA PEEK BROWN   | MARY CATHERINE MATTHEWS |
| SUSAN BRYAN         | REBECCA McREE           |
| DOROTHY CABANISS    | BERTHA MERRILL          |
| JEAN CHALMERS       | NANCY MOORER            |
| JANE DRYFOOS        | MARY ELIZABETH MORROW   |
| CHARLOTTE GOLDEN    | HELEN MOSES             |
| JANE MOORE HAMILTON | ANNIE HOUSTON NEWTON    |
| NELL HEMPHILL       | ROSE EVERETT NORTHROSS  |
| CATHERINE IVIE      | FRANCES ROBINSON        |
| DOROTHY JESTER      | MIRIAM SANDERS          |
| ELLENDER JOHNSON    | MARY VENETIA SMITH      |
| KATHLEEN KENNEDY    | MARIE STALKER           |
| HELEN KIRKPATRICK   | GRACE TAZEWELL          |

ELIZABETH WARREN

Cotillion Club claims those girls who can combine good dancing, good posture, and good appearance. They entertain each other at bi-monthly tea-dances and the college community at large at several annual dances.



# POETRY CLUB

## OFFICERS

HORTENSE JONES . . . . . President

WINIFRED KELLERSBERGER . . . . . Secretary-Treasurer



Jones

Kellersberger

## MEMBERS

SHIRLEY ARMENTROUT

VIRGINIA HILL

MYRL CHAFIN

JUNE MATTHEWS

ELIZABETH ESPY

KATHRYN PRINTUP

JANE GUTHRIE

EVELYN SEARS

CAROL HALE

EISE SEAY

JANE TURNER

Poetic expression has a place of its own on the campus, for the Poetry Club encourages this sort of writing. After some of their verse has been accepted in tryouts, the members keep up their writing. It is often printed in the AURORA where the visits of the Muse to the campus are made public.





# B . O . Z .

## OFFICERS

JUNE MATTHEWS . . . . . President

JANE GUTHRIE . . . . . Secretary-Treasurer

## MEMBERS

- |                        |                   |
|------------------------|-------------------|
| NELL ALLISON           | NELL HEMPHILL     |
| JEAN BAILEY            | VIRGINIA HILL     |
| HENRIETTA BLACKWELL    | ELIZABETH HOLLIS  |
| GOUDYLOCH ERWIN        | HORTENSE JONES    |
| ELIZABETH ESPY         | MARY ANNE KERNAN  |
| NELLIE MARGARET GILROY | DOUGLAS LYLE      |
| CAROL HALE             | JACQUELYN McWHITE |
| HIBERNIA HASSELL       | BROOKS SPIVEY     |



Guthrie

Matthews

Twenty years ago B. O. Z. members engaged in press writing, now they produce short stories and essays which are read and discussed at informal evening sessions. An unusual feature of this year's program was the January meeting to which several alumnae members came for a reunion with the club.



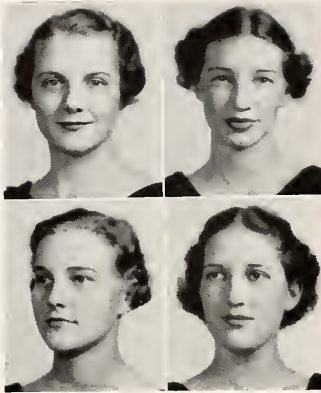
# GLEE CLUB

## OFFICERS

- FRANCES STEELE . . . . . President  
 RUTH TATE . . . . . Vice-President  
 AMELIA NICKLES . . . . . Secretary-Treasurer  
 MARY ALICE NEWTON . . . . . Publicity Chairman

## MEMBERS

- |                     |                      |
|---------------------|----------------------|
| JEAN BARRY ADAMS    | FRANCES MORGAN       |
| CAROLINE ARMISTEAD  | JANE MOSES           |
| LUCILLE CAIRNS      | ANNIE HOUSTON NEWTON |
| MILDRED DAVIS       | PRIMROSE NOBLE       |
| GRACE DUGGAN        | ROSE NORTHROSS       |
| JANE ESTES          | ESTHERE OGDEN        |
| JANE MOORE HAMILTON | MARY PAST            |
| ALICE HANNAH        | MARY EARNEST PERRY   |
| MARGARET HANSELL    | MARY CLAY PRICE      |
| FANNIE B. HARRIS    | MIRIAM SANDERS       |
| NELL HEMPHILL       | SARAH BEATY SLOAN    |
| PHYLLIS JOHNSON     | MARIE STALKER        |
| SARAH JOHNSON       | EMILY UNDERWOOD      |
| RACHEL KENNEDY      | EVELYN WALL          |
| VIRGINIA KYLE       | ELIZABETH WARREN     |
| FLORENCE LASSETER   | FRANCES WILSON       |
| MARY MALONE         | VIRGINIA WOOD        |
| LETTIE MCKAY        | MARTHA ZELLNER       |



Steele  
Nickles

Tate  
Newton

Preparations for Christmas holidays are never complete without the Christmas Carol Service given by the choir, and it is "only the beginning" of the varied program of the Glee Club, Choir, and Special Chorus. The climax is the presentation of a light opera in the spring, such as Gilbert's and Sullivan's "The Gondoliers" given this year.



# COLLEGE CHOIR

## FIRST SOPRANOS

JEAN BARRY ADAMS  
 CAROLINE ARMISTEAD  
 MILDRED DAVIS  
 GRACE DUGGAN  
 FLORENCE LASSETER  
 ROSE NORTHGROSS  
 MARY EARNEST PERRY  
 FRANCES STEELE  
 RUTH TATE  
 FRANCES WILSON  
 VIRGINIA WOOD

## SECOND SOPRANOS

SARAH BASKIN  
 TOMMY RUTH BLACKMON  
 HENRIETTA BLACKWELL  
 ALICE CHEESEMAN  
 ESTELLE CUDDY  
 NELL ECHOLS  
 ELIZABETH FURLOW  
 CAROLYN FORMAN  
 ANNIE LAURA GALLOWAY  
 SAM OLIVE GRIFFIN  
 MARGARET HANSELL  
 ALICE HANNAH  
 ELIZABETH HOLLIS  
 MARTHA LEIPOLD  
 WAYVE LEWIS  
 ELOISE LENNARD  
 SARAH MATTHEWS  
 EMILY McMORLAND  
 REBECCA McREE  
 FRANCES MORGAN  
 ANNIE HOUSTON NEWTON  
 ESTHERE OGDEN  
 MARY REINS  
 EVELYN SEARS  
 LUCILLE SCOTT  
 HELEN SIMPSON  
 ELIZABETH SKINNER  
 RUTH SLACK  
 HARRIET STIMSON  
 VIRGINIA TUMLIN



## CONTRALTOS

LUCILLE CAIRNS  
 NELL CHAMLEE  
 JANE ESTES  
 NELL HEMPHILL  
 PHYLLIS JOHNSON  
 RACHEL KENNEDY  
 VIRGINIA KYLE  
 MARTHA LONG  
 LETTIE McKAY  
 JANE MOSES  
 MARY ALICE NEWTON  
 AMELIA NICKELS  
 MARY PRIMROSE NOBLE  
 MARY PAST  
 FRANCES ROBINSON  
 MIRIAM SANDERS  
 SARAH BEATY SLOAN  
 MARIE STALKER  
 MARY ELEANOR STEELE  
 EVELYN WALL  
 EMILY UNDERWOOD

## SPECIAL CHORUS

CAROLINE ARMISTEAD  
 NELL CHAMLEE  
 JANE MOORE HAMILTON  
 RACHEL KENNEDY  
 VIRGINIA KYLE  
 FLORENCE LASSETER  
 MARY MALONE  
 FRANCES MORGAN  
 JANE MOSES  
 ANNIE HOUSTON NEWTON  
 MARY ALICE NEWTON  
 AMELIA NICKELS  
 MARY EARNEST PERRY  
 RUTH TATE  
 EMILY UNDERWOOD  
 EVELYN WALL  
 VIRGINIA WOOD



# STRING ENSEMBLE



## STRING ENSEMBLE MEMBERS

### FIRST VIOLINS

MRS. HENRY ROBINSON  
ALICE REINS  
MISS FLORENCE SMITH

### VIOLINCELLO

MARYBELLE CRUGER

### SECOND VIOLINS

MR. SCHUYLER CHRISTIAN  
BETTY JONES  
MARJORIE PRESSLEY  
MARY REINS  
ISABELLA ROBERTSON

### THIRD VIOLINS

BETSY BANKS  
MARGARET WATSON

### VIOLA

MR. HENRY ROBINSON

### PIANIST

JEAN KIRKPATRICK

### ORGANIST

TOMMY RUTH BLACKMON

CHRISTIAN W. DIECKMANN, Director

The arrangements for the String Ensemble are made by Mr. Dieckmann himself, and their programs are always favorites on the campus. They have combined several times with students in the piano department to present some concertos for piano with string accompaniment. This year they gave a concert during Alumnae Week-end, and have added their harmony to the chapel programs on various occasions.

BOOK FOUR

*Athletics . . .*

---







## *Mountains*

One of the most important features of Northeast Georgia is the Blue Ridge chain of mountains which Nature generously provides with forests surpassing any other in the United States, water power, minerals, and magnificence. A large part of the state's wealth and importance can be attributed to this section because of the wide variety of resources and intangible beauty.





# WEARERS OF THE A. S.



FRONT: Johnson, Cary. BACK: Kneale, Stalker, Taylor

FRANCES CARY  
MARY JOHNSON

ALICE TAYLOR

MARY KNEALE  
MARIE STALKER

Wearers of the school letters "A. S." are those girls who have made 1600 points in participation in the sports on the campus. Only a few girls who are the most outstanding in the various fields of athletics win the letters.

# CHEER LEADERS



FRONT: Warren, Echols, Kennedy, Smith. BACK: Merrill, Cheeseman, Stalker, Carmichael

**SENIORS**  
RACHEL KENNEDY  
MARIE STALKER

**JUNIORS**  
BERTHA MERRILL  
MARY SMITH

**SOPHOMORES**  
CAROLINE CARMICHAEL  
ALICE CHEESEMAN

**FRESHMEN**  
NELL ECHOLS  
ELIZABETH WARREN





FRONT: Blackshear, Fleece, Cary, Dryfoos, Crowell. BACK: Forman, Lasseter, McMullen, Taylor, Brinton, Kneale, L. Coit.

## HOCKEY VARSITY

ELIZABETH BLACKSHEAR  
 JOAN BRINTON  
 FRANCES CARY  
 LAURA COIT  
 ANNIE LEE CROWELL  
 JANE DRYFOOS

CHARLINE FLEECE  
 CAROLYN FORMAN  
 MARY KNEALE  
 FLORENCE LASSETER  
 EMMA McMULLEN  
 ALICE TAYLOR

Judging from the crowds of excited on-lookers at all the games this year, hockey has become the most popular out-door sport on the campus. This is probably due to the grand old feeling of autumn in the air and the joy of striking out down the field to make that winning goal or die in the attempt. The Senior team, victorious this year in spite of the rallied forces of the under-classes, featured the star dribbling of Charline Fleece. Jane Dryfoos, Sophomore, Carolyn Forman, and "Fouch" Brinton, Freshmen, brought yells of glee from the stands and a gleam into the eyes of Miss Wilburn. Enthusiasm was also contributed by the delegation who attended Play Day at the University of Georgia and participated in a regular Southeastern Hockey Tournament.







J. Williams, Steele, Garner, Blackshear, Cuddy, E. Williams, Stalker

## BASKETBALL VARSITY

ELIZABETH BLACKSHEAR  
ESTELLE CUDDY  
MARY EVELYN GARNER  
JANE MOSES

MARIE STALKER  
MARY ELEANOR STEELE  
ELIZABETH WILLIAMS  
JEAN WILLIAMS

The climax of the basketball season was the brilliant battle between the varsity and sub-varsity teams when crowds turned out to see the spectacular Williams sisters play together. Jean, the younger sister, is a member of the banner-bearing Freshman team which defeated the upper classes in the school tournament. The Senior team, refusing to suffer from wounded dignity, proceeded to transform their guards into excellent forwards or vice-versa, to suit the occasion. Mary Kneale, the most versatile of these, Elizabeth Blackshear for the Juniors, and Meg Garner for the Sophomores exhibited some fine playing. The Brown Jug Contest, a burlesqued but bitter battle at the end of the season, when a team from each dormitory, and the faculty, face each other across the court, was won this year by "the cottages."





Cary, Jester, Little, Belser, Fleece, Taylor, Thing, McCain, Lassetter, Wilson, Jackson

## SENIOR TEAM

FRANCES CARY  
 Captain  
 LUCILE BARNETT  
 EDITH BELSER  
 CHARLINE FLEECE  
 BARTON JACKSON  
 DOROTHY JESTER  
 MARY JOHNSON  
 MARY KNEALE  
 FLORENCE LASSETER  
 FLORENCE LITTLE  
 ISABEL McCAIN  
 ALICE TAYLOR  
 JULIA THING  
 KATHRYN B. WALL  
 FRANCES WILSON



H O C

## JUNIOR TEAM

FRANCES ROBINSON  
 Captain  
 NELL ALLISON  
 ELIZABETH BLACKSHEAR  
 SUSAN BRYAN  
 LAURA COIT  
 ANN WORTHY JOHNSON  
 ELIZA KING  
 BERTHA MERRILL  
 PRIMROSE NOBLE  
 MARY VENETIA SMITH  
 ANNE THOMPSON  
 MARY NELL TRIBBLE  
 LOUISE YOUNG



BACK: Noble, Bryan, King, L. Coit, Thompson, Tribble, Johnson, Smith. FRONT: Robinson, M

## SOPHOMORE TEAM

EMMA McMULLEN  
 Captain  
 ADELAIDE BENSON  
 MILDRED COIT  
 ANNIE LEE CROWELL  
 JANE DRYFOOS  
 CATHERINE FARRAR  
 JEANNE FLYNT  
 JANE MOORE HAMILTON  
 CATHERINE IVIE  
 ELIZABETH KENNEY  
 MARTHA MARSHALL  
 MARIE MERRITT  
 MARY RUTH MURPHEY  
 HELEN MOSES  
 FLORA MacGUIRE  
 ANNE PURNELL  
 MARY ELLEN WHETSELL



BACK: Farrar, Hamilton, Ivie, Benson, Kenney, Marshall, Dryfoos, Moses. FRONT: Whetsell, McMullen, M. Coit, Flynt, MacGuire, Crowell

K E Y



## FRESHMAN TEAM

JOAN BRINTON  
 Captain  
 FRANCES ABBOTT  
 HELEN CARSON  
 ERNESTINE CASS  
 RUTH CRISP  
 NELL ECHOLS  
 CAROLYN FORMAN  
 PENN HAMMOND  
 POLLY HEASLETT  
 ELEANOR LEWIS  
 VIRGINIA MILNER  
 MARTHA MOFFETT  
 JULIA MOSELEY  
 HENRIETTA THOMPSON  
 METTE WILLIAMSON

an, Lewis, Moffett, Moseley, Brinton, Heaslett, Hammond, Thompson, Echols, Crisp, Milner, Carson





BACK: Stalker, MacDonald, Thing, McCain. FRONT: Cary, Taylor, Kneale.

### SENIOR TEAM

ALICE TAYLOR  
 Captain  
 FRANCES CARY  
 MARY KNEALE  
 ISABEL McCAIN  
 FRANCES MacDONALD  
 MARIE STALKER  
 JULIA THING



# BASKE

### JUNIOR TEAM

ELIZABETH BLACKSHEAR  
 Captain  
 LAURA COIT  
 OLA KELLY  
 ELIZA KING  
 BERTHA MERRILL  
 PRIMROSE NOBLE  
 FRANCES ROBINSON  
 ANNE THOMPSON



BACK: Noble, King, Merrill, Thompson, Robinson. FRONT: Blackshear, Kelly, Coit.

## SOPHOMORE TEAM

JANE MOORE HAMILTON  
Captain

CAROLINE CARMICHAEL  
ESTELLE CUDDY  
MARY EVELYN GARNER  
ANNE PURNELL  
MARY ELEANOR STEELE  
ELIZABETH WILLIAMS



Hamilton, Carmichael, Garner, Purnell, Steele, Williams, Cuddy

# BALL

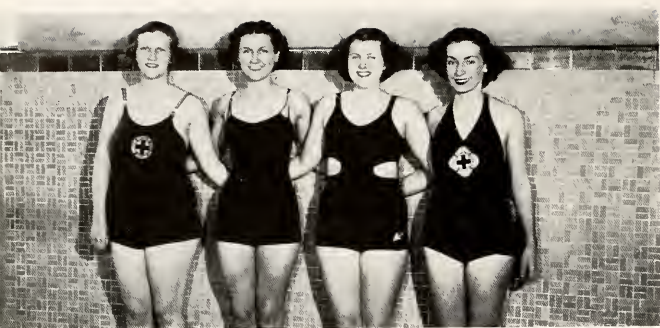


## FRESHMAN TEAM

JANE MOSES  
Captain  
HELEN CARSON  
VIRGINIA MILNER  
MARTHA MOFFETT  
MARY REINS  
RUTH SLACK  
POLLY WARE  
JEAN WILLIAMS

BACK: Reins, Slack. FRONT: Ware, Carson, Moffett, Williams, Moses, Milner.





## SENIOR TEAM

MARY JOHNSON  
 MARY KNEALE  
 FLORENCE LASSETER  
 MARIE STALKER  
 MARY JANE TIGERT

Tigert, Stalker, Lasseter, Kneale.



LIFE SAVING

# S W I M

The Freshmen splashed their way to victory again in the first swimming meet of the year with Juniors coming up to a close second place. Virginia Milner, Freshman speed demon, challenged Peek Brown, a Junior, in the second meet of the year to clinch the title of "water flash."

## JUNIOR TEAM

MARTHA PECK BROWN  
 JEAN CHALMERS  
 BERTHA MERRILL  
 ANNE THOMPSON



Thompson, Merrill, Chalmers, M. P. Brown.

## SOPHOMORE TEAM

EMMA McMULLEN  
LOIS WALTON  
CARY WHEELER



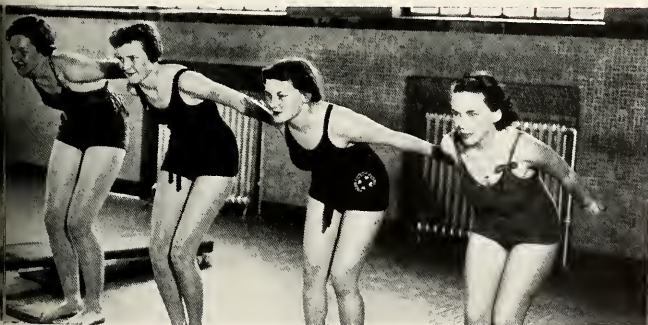
McMullen, Wheeler, Walton.

# SWIMMING

The annual water pageant this year, managed by Merrill and starred in by the Swimming Club, was "The Feast of the Lanterns." Expert divers with sparklers in their hands cut lovely figures into the water before the Japanese princess, Tami Okamura, while bright lanterns flickered on the banks of the pool and spectators applauded enthusiastically.



LIFE SAVING



Milner, Holland, S. Matthews, Echols.

## FRESHMAN TEAM

NELL ECHOLS  
CAROLYN FORMAN  
BARBARA HOLLAND  
SARA B. MATTHEWS  
VIRGINIA MILNER



SWIMMING CLUB  
DANCE CLUB

TENNIS CLUB  
OUTING CLUB

## ATHLETIC CLUBS

Membership in Swimming Club is determined by difficult try-outs, calling for perfection of strokes, expert surface diving, knowledge of life-saving, diving, and long endurance. Besides sponsoring the water pageant, the club sent Bee Merrill and Anne Thompson to the University of Alabama to a Southeastern Swimming Conference.

Tennis Club faced the faculty racketeers over the net during the fall and teams from Emory and Tech in the spring. Besides exhibiting their own skill, they asked distinguished players out from Atlanta to demonstrate the way the game should be played.

This imitation method also appealed to the Dance Club who attempted to imitate peasants, temperamental dancers, and their chief inspiration, Miss Haynes. The club sought to interpret the music of "Valse Triste," "Leibestraum," and Chopin's "Nocturnes."

To those who grow restless from too much indoors, the Outing Club offers diversions. Supper hikes throughout the year called out the nature lovers, and the climax came in the spring when the club went on the annual "Appalachian Trip" to Neil's Gap in North Georgia and climbed Blood Mountain.







GOLF CHAMPIONS  
ARCHERY GROUP

TENNIS CHAMPIONS  
RIDING GROUP

## MINOR SPORTS

Interest in golf is picking up. The number of entries in the fall tournament with the Emory team was twice as large as usual, and a big sensation was caused by Champion Judith Gracey's coming in with low score, followed by Elsie West and Martha Fite.

The school tennis tournament this year saw an exciting finish. The doubles honors went to Frances Steele and Julia Thing who showed their superior skill in handling a racket by beating Mary Kneale and Frances MacDonald after three sets.

An archery tournament, held in the spring, is always the climax for the girls who enjoy target-shooting, just as the spring means horse shows to those who take riding. Among the archery experts are Eloise Estes, winner of the tournament last year; Aileen Shortley and Winifred Kellersberger. Lucille Barnett and Marjorie Scott, on the riding team, led the class in jumping.





BADMINTON

HOCKEY STICK

HIKING SQUAD

## MINOR SPORTS

Badminton was a new sport for the winter quarter, and was heartily entered into by the class in Recreational Games. The big event was the tournament in which Frances Cary and Mickey McKee won a hard fought battle.

To get out-of-doors and really enjoy it is the purpose of the hiking squad. Ten-mile hikes, lots of short hikes, and supper hikes must be entered into before membership is given. Jane Dryfoos, Manager of the Hiking Squad, was also the winner this year of the hockey stick presented by the Senior Hockey team to the Sophomore most skilled and co-operative with her team.





# Asquiere

1937

• THE WOMAN'S MAGAZINE

## BEAUTY SECTION

SELECTED BY  
PETTY

## ARTISTS

ELIZABETH GALBREATH  
LUCILLE BARNETT  
EMMY LOU TURCK

## CARTOONIST

JANE GUTHRIE

## FICTION

LETTER FROM AGNES  
"THE HEART BREAKER"

## POETRY

THE ENGLISH MUSE  
THE OTHER ENGLISH MUSE  
A SENIOR

## FASHIONS

IDEAS FROM SPECIMENS  
FOUND ON CAMPUS

## COVER DESIGN

BY ALICE CHEESEMAN



FICTION • ART • CARTOONS

FASHIONS • POETRY • BEAUTIES

NOT FOR SALE



PETTY 109 COYLE AVENUE CHICAGO

January 16, 1937.

Miss Eloisa Alexander,  
Feature Editor 1937 Silhouette,  
Agnes Scott College,  
Decatur, Georgia.

Dear Miss Alexander:

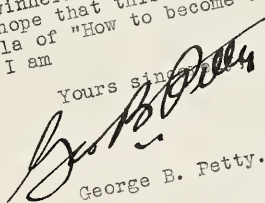
Enclosed are our selection in nun  
order:

- First, Miss Nancy Moorer,
- Second, Miss Zoe Wells,
- Third, Miss Rachel Kennedy
- Fourth, Miss Mary Reins,
- Fifth, Miss Anne Purnell,
- Sixth, Miss Lucile Dennison,
- Seventh, Miss Jane Moore Hamilton,
- Eighth, Miss Frances Wilson,

There were so many good looking girls in  
the group from old Scott that we could have  
easily had two groups of eight almost equally  
beautiful.

It was only after judgment by an eleven-point  
beauty test that the winners could be determined,  
and with the sincere hope that this judgment is  
not the perfect formula of "How to become un-  
popular over night", I am

Yours sincerely,



George B. Petty.



GBP  
J

Enclosure

*Nancy Moore*





*Joe Wells*



*Rachael Kennedy*



*Mary Reins*





*Anne Purnell*



*Lucile Dennison*



d



*Jane Moore Hamilton*



*Frances Wilson*



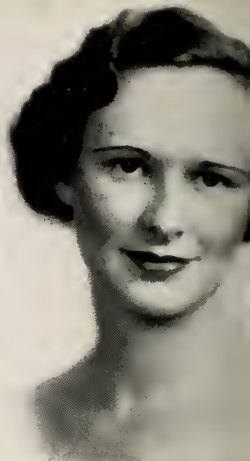
d



*Eloisa Alexander*



*Mary Gillespie*



*Mary Malone*



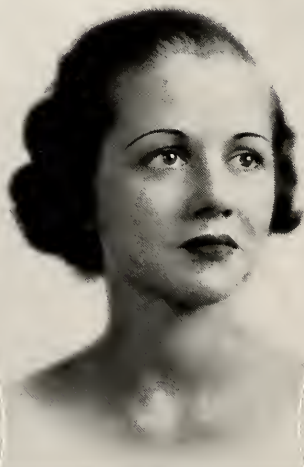
*Frances Steele*



*Jean Barry*



*Myrtle Chafin*



*Grace Jazewell*

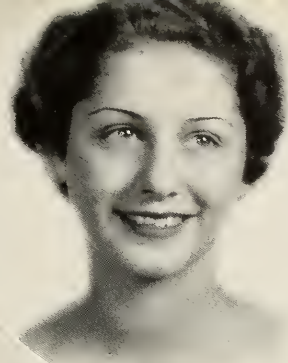


*Susan Bryan*





*Martha Marshall*



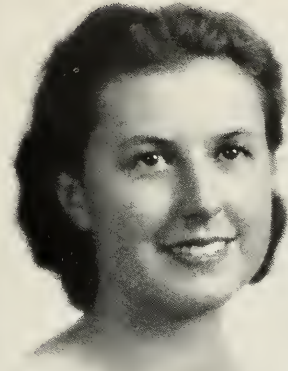
*Helen Moses*



*Amelia Nichols*



*Helen Shortley*



*Kay Toole*



*Gretchen Bubenzer*



*Ruth Crisp*



*Martha Moffett*



*Charlotte Golden*

# QUADRANGLE FASHIONS



La robe rouge, straight from France, sets the pace for academic processions.

**WANTED:**  
Combination cat-and-ant exterminator. See any boarder on A. S. C. campus.



Gone With the Wind



Lose yourself in your clothes—join the Smucker's Union for bigger and brighter flowers.

# QUADRANGLE FASHIONS



The Boy Scout motto dominates Faculty Fashions.



Before the "Backward Swing" Era we could tell each other apart.



Another illusion of Beauty kept fresh in Cellophane.

## WANTED:

One all-enveloping scarf—apply Alice Hannah.

# POETRY

## *Or Attempts*

### The English Muse

Picture this unfortunate English debater,  
Who has to oppose this young girl from  
Decatur,  
Whose grasp of the facts  
About national pacts  
Would entice a debator not to oppose but  
to date her.



### Senior Trials

To Edward VII from Adam  
Almost every man has had 'em,  
But no wife is so fine  
As this Martha of mine.  
Folks, I present the Madam!

WANTED:  
One Lunch without  
Potatoes.

### The Other English Muse

Now this young Decatur debater,  
A slick and easy prevaricator.  
But the peaceful relations  
Of dozens of nations  
Demand that the debaters should  
mate her.



# FICTION

Agnes Scott College  
Decatur, Ga.  
Saturday (I think)

Dearest—

At last I am forced to face my great problem. You know Agnes Scott teaches you to think and face problems squarely, so I am not afraid. Even all our chapel speakers talk about the problems that Youth faces today. Did you know that we are Youth?

I am now going to be frank—I have made my decision—I can't marry you this summer. You see, that are so many Important Things here. Agnes Scott now has a Cut System! This may seem unimportant to you, darling, but—to yearn and strive for something for three years and then just as our goal is reached, not to be here to enjoy it—why, it's simply unthinkable.

And I am in the process of becoming a new woman. There was a Charm Lady here who helps the girls with their problems—this letter is all problems, but that is how Life is, dear. She (the Lady, not Life) renovated us, and some things she said would help you. I've tried them all, so I know—darling, promise me that since you are the Gypsy Type, definitely, you will concentrate on brighter colors in your clothes—and throw away that horrible brown suit. And I'd better tell you that when we are married—doesn't that sound just too, too,—I shall have carrots, raw, every day, for the Charm Lady says they give you a Lift that nothing else does. It's all part of our new Hollywood Diet—darling, we can't possibly be married next year, 'cause the diet is no good unless continued for two years, so you wouldn't mind if I continued it, would you?

Don't think this is my sole reason—you see, it's a matter of unfinished business. I learned in Psych that when you leave something unfinished, it keeps jumping back into your mind—called perseverance—because your mind is like a sieve I guess. You see there's a course I particularly wanted to take—Comparative Government, so I can talk to you about your work. And I've only the back of your sweater to finish, and I can surely do it by next year. And, darling, with four years of college I'll be so well-rounded. All the girls here are developing Attitudes toward Life, and Appreciation of Art and Music and History and Economics and Things you would want me to have. After all, that is What College is For. You may not like what you call my Radical Friends here, but these girls have Ideas, and I need another year to get some. Oh, darling, it's not that I don't want you at our Dance, it's simply that we don't Dance, and that is another problem that we girls want to face next year.

I feel so relieved now that we have this understanding. You know I am always, whenever we get married,

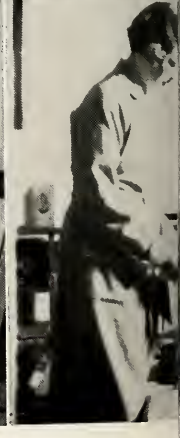
Your

Agnes.

P. S. Anyway, Mother says I can't marry till I finish school.

**WANTED**  
**one tooth-brush for**  
**Alberta Palmour**





# Freshman Life

Autograph hounds during freshman initiation.

Whose your roommate? Where're you from?—and all that sort of thing—

Upper classmen give the freshmen the "keys" to the campus.

Baggage arrives—two weeks late!

Sponsor Kellersberger explains that little purple handbook.

Freshmen register in the front of Main.

Freshie makes her debut—at the Mortar Board Party.

Lutie and Frances interior decorate with curtains.

The parties again—this game was a drawing card.

Going or coming, Margaret?

"Back" to Inman—but we've got your number!





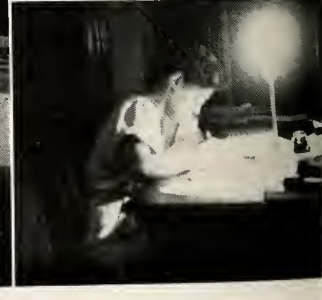


# Freshman-Sophomore Stunt

THE ANNUAL "CATFIGHT" between the Freshmen and the Sophomores was won this year for the second time by the Class of 1939. In their "Sophy Seemphony" they brought to life all the well-known animated cartoon characters with the big strong Soph Eye in the role of innocent little Fresh Pea's protector. On the other hand, the Freshies directed by Marjorie Boggs went classical and gave the story of "Golden Appleplexy," in which the Rats (aided by Miss Diana Scandrett and the Junior Spinach Chorus) defeat the Sophisto-cats and win the Golden Apple. But evidently the Black Cat doesn't like apples, for he went the other way—in fact, straight into the hands of Jane Dryfoos, the Sophomore Chairman.









# Dormitory Life

Mary relaxes in a "comfortably equipped, lighted and heated residence hall."\* (See footnote.)

Bet your laundry is on the bottom, Caroline!

Getting up laundry—a traditional drudgery—

What luck—early to bed, food, and a magazine!!

This is just propaganda—but don't we love to study??

Modernize your room with checker-board linoleum.

Sue Bry-ann—phone on 3rd (time limit: 1 hr. 45 min.)

"This is the way we wash our clothes."

Grace "smooths things over" for her date. She even rolled up her hair.

Freshmen Moffett and Barnes hard at work.

Who's this absorbed in the home town scandal sheet?

Burning the midnight oil—guess that theme is due tomorrow.

A "typical" college room as shown at the Fair.

Drinking water—a la Miss Osborne—

\**Agnes Scott Bulletin* for 1937-38, page 131.







# Campus Life

Grace is keeping Miss Hanley's library in order.

Breakfast—with eggs and no grits—

Dr. Lacy, Laura, and Samille chat after chapel.

Boyd Cottage goes to town!

"Concentrating" on the library terrace.

Infirmary, B.C. (Before Cuts)

\$1.80 to the Terminal—but it's worth it, Santa Claus!

The Murphy Candler is a good place to spend free periods.

Say, Ola, is that YOUR letter?

What, another holiday—  
or just the same one?

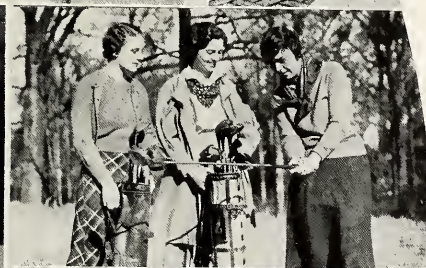
Wait a minute, girls,  
did you get those  
stamps you owe me??

She has a heavy date,  
I can tell!

Marie, don't tell me  
you are going to play  
off the ping-pong  
tournament—

Miss Wilburn showing  
that Bob Jones' grip.

"Rooty - toot - toot -  
we're the girls of the  
institute!"







# Social Life

Marjorie knows A. S. girls don't smoke.

Tech and Agnes Scott freshmen get together.

And men are just all over the place!

Elsie: "And this is Stone Mountain."

Meet me at Miner and Carter's.

Wednesday night coffee in the  
Murphy Candler.

The thrill that comes once in a life-  
time—The Junior Banquet!

I guess Bob is signing in for  
one of his sisters (???)

It looks like the Alps, but  
it's just Stone Mountain  
again—

A sure 'nough birthday  
party with cake and  
candles.

The reception after the  
Stuart Chase lecture—  
thought you said we'd  
have cookies—

More corsages and  
tux at the Junior Ban-  
quet.







# Academic Side-Lights

Seniors acting their age for a change on Little Girl's Day.

Tea for two!

But soon all the kids came to the tea party!

Everybody makes merry during Chapel time.

Hannah shows what the well-dressed youngster in Cass wears—

Let's jump rope just one more time.

At the traditional Investiture—assuming Senior dignity.

Sisters and sister classes greet.

Friends and relations give congratulations.

More facilitations!

The sister class led—

and close behind were the seniors.

Every one's family came, too.

The procession from Inman to the Chapel.

The marshals — Miss "Alex" and Mr. Stukes.

Ruth Runyan, class mascot.

Two new angles on the college campus!

The principals at the dedication of the new library.







# Blackfriars' Plays

BLACKFRIARS PRESENTS two plays annually under the competent direction of Miss Frances K. Gooch.

SPRING DANCE by Philip Barry was presented Feb. 13, the night of the traditional Junior Banquet. The scene was laid in a Sorority house at a girls' school in New England. Kitty Printup, as Alex, furnished the "heart trouble," playing opposite John Tillman, otherwise known as Sam Thatcher. Jeanne Flynt as "Scatterbrain" Sally and Sue Goodwyn, beautiful but dumb, Lib Cousins, and Lucille Cairns were the other schoolgirls.

DOUBLE DOOR by Elizabeth McFadden was given Nov. 25th. In contrast to the other production, it was a dramatic characterplay. Kathryn Wall, as the contemptible Victoria Van Brett, found her powers over the household broken when Anne Darrow (Kay Toole) married into the family. The action was intensely gripping, and each member of the cast was a distinctive and forceful personality.









# Founder's Day and the Operetta

Founder's Day, February 22nd, is the time when the Seniors become ladies and gentlemen of colonial America for a night. Daniel Boone (Alice Hannah), Patrick Henry (Nellie M. Gilroy), and other celebrities gathered after the banquet to witness the traditional minuet. This year Martha Summers and Isabel McCain impersonated the honor guests, Martha and George Washington.

In the spring the Glee Club, under the direction of Mr. Lewis Johnson, presented the operetta, "The Gondoliers," a delightful comedy by Gilbert and Sullivan. It was given on two nights so that a larger number of students would be able to participate. Ruth Tate and Betty Lou Smith doubled in the role of Giannetta, while Mary Alice Newton and Virginia Kyle were Tessa. Paul Overby, of Atlanta, played the male lead both nights.



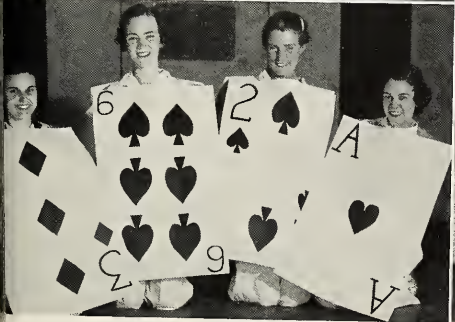
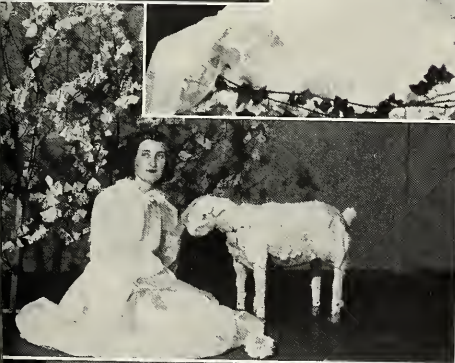




# Mardi Gras and Senior Opera

MARDI GRAS, presented by the Junior Class on February 6th, was tops in fun, with the Freshman Class walking off with all the honors. Their float representing "The Gold Diggers of 1937" was selected as the most beautiful, and their King Jean Williams and Queen Rebecca McRee ruled over the festivities. Other prize-winning floats representing movie titles were "The Good Earth" and "Smilin' Through."

LA TRAGIC ARDOR, OR T. B. OR NOT T. B., presented by the Senioropolitan Opera Company, was the heart-rending love tragedy of l'mille (Mary Perry), thus named because she ain't what she used to be, and Ah! Men (Alice Hannah). The hero and heroine are daffy about each other, but their gay life is interrupted by Ah! Men's family, Papa (Marie Stalker), Aunt E. Fulla Bull (Mary Jane Tigert), and Aunt Misselaney (Mary Jane King). It is not until the end that the two ardent but ill-fated lovers are again reunited, but only for a few minutes for l'mille dies and her soul dertightly but derteterminedly ascends.







# May Day

One of the most colorful events of the school calendar is the annual May Day Festival. With stately beauty, Lucile Dennison and her maid-of-honor, Frances Wilson, ruled with the court. Their loveliness was enhanced by dresses of pastel shades and sprays of mixed garden flowers tied with contrasting ribbons. The members of the court are: Front Row: Frances Steele, Mary Reins, Grace Tazwell, Frances Wilson, maid - of - honor, Lucile Dennison, queen, Jane Moore Hamilton, Aileen Shortley, Eloisa Alexander. Back Row: Rachael Kennedy, Nancy Moorer, Myrl Chafin, Alice Taylor, Sue Bryan, Martha Marshall, Mary Malone, Kay Toole.

The presentation was the story of John Milton's **Comus**, bringing all the beauty and splendor of the 17th century to our own campus. Charline Fleece, as the wicked magician Comus, entices unsuspecting mortals with his fatal cup. But, protected by the Attendant Spirit, the lady of rank (June Matthews) escapes his intrigue.

The brilliant costuming, gay music, and dancing combined to make a delightful spectacle.





## LIST OF ADVERTISERS

AGNES SCOTT COLLEGE  
BOWEN PRESS  
HOTEL CANDLER  
HOUSE OPTICAL CO.  
ROBERTS MARBLE CO.  
THE TAVERN  
MUSE'S  
J. P. STEVENS  
JAS. M. ALSOBROOK  
McCONNELL'S 5 & 10c STORE  
E. L. KIDD

MRS. COOPER  
THE HOME FOLKS' GRILL  
THE S & W  
EASTMAN KODAK STORES, INC.  
ORIGINAL WAFFLE SHOP  
W. Z. TURNER LUGGAGE CO.  
J. P. ALLEN & CO.  
L. CHAJAGE  
EAGER AND SIMPSON  
DeKALB THEATRE  
WALTER BALLARD OPTICAL CO.  
BRUCE TERMINIX CO.  
MORNINGSIDE BEAUTY SOLON  
HARRY F. DOBBS, INC.  
SILHOUETTE TEA ROOM  
THE CROWN CANDY CO.  
KAMPER'S  
EDWARDS & SAYWARD  
HARRISON'S  
THE DRAUGHON SCHOOL OF COMMERCE  
VERA BEAUTY SHOP  
ELLIOTTS' PEACHTREE STUDIO  
THE SELIG CO.  
THE COCA-COLA CO.  
COMPLIMENTS OF AN ALUMNA  
ADOLPHE'S

AGNES SCOTT  
COLLEGE



A College for Women



DECATUR, GEORGIA

## BOWEN PRESS

PRINTERS *and* PUBLISHERS

421 Church Street

DECATUR                      ✓                      GEORGIA

## HOTEL CANDLER

*The Pride of Decatur*

NO BETTER HOTEL IN GEORGIA

## House Optical Company

34 Walton Street, N. W.  
Grant Building

Better Glasses by Oculists'  
(M. D.) Prescriptions

WAlnut 5227                      Atlanta, Ga.

You Are Invited to Visit the Display  
*Rooms of the*

## Roberts Marble Company

*Manufacturers of Fine Memorials*

at 108 Ponce de Leon Ave., N. E.

Near Peachtree St.  
WAlnut 6163

You will see the most Modern Memorials . . .  
Something entirely new in Stone and Finish  
See your Monument before it is erected

## THE TAVERN

*The South's Most Unique and  
Charming Tea Room*

625 Peachtree St., N. E.

For Him . . .

. . . for Her  
the Clothes You Prefer

## MUSE'S

*The Style Center of the South*



ENGRAVED  
Wedding Announcements  
Invitations  
At Homes  
*Visiting Cards*

*Monogrammed*  
STATIONERY

*The* NAME  
J. P. STEVENS  
*Engraving Co.*

IS A TRADITION  
*for* QUALITY

103 PEACHTREE STREET, ATLANTA

*Compliments of . . .*

**JAS. M. ALSOBROOK**  
DENTIST

202 Masonic Temple Bldg.  
DECATUR ✓ GEORGIA

•  
**McCONNELL'S 5 AND 10c**  
**STORE**

DECATUR ✓ GEORGIA  
•

**E. L. KIDD**

•  
*Radio and Electric Shop*

•  
105 E. Court Square  
DECATUR ✓ GEORGIA

*Compliments of . . .*

*an Alumna*

◆◆  
**MRS. COOPER**

Decatur Woman's Exchange  
132 E. Ponce de Leon

◆◆



**GOOD FOOD**

. . . is . . .

**GOOD HEALTH**

**THE HOME FOLKS'**  
**GRILL**

◆  
DECATUR ✓ GEORGIA

**S & W**  
**CAFETERIA**

189-191 Peachtree Street





Bring Us Your Kodak Film  
for Expert Finishing

*Correct Developing Means  
Better Pictures*

**Eastman Kodak Stores, Inc.**  
EVERYTHING PHOTOGRAPHIC

183 Peachtree ATLANTA

**ORIGINAL WAFFLE SHOP**  
RESTAURANT

**STEAKS and CHOPS**  
*Famous for Fine Foods*

62 Pryor, N. E. Just Below Candler Bldg.

J. D. CHOTAS, Manager

**W. Z. Turner Luggage Co.**

•  
Ladies' Purses  
Modern Luggage

•  
219 PEACHTREE STREET  
WALnut 6914

**L. CHAJAGE**

•  
Dixie's Leading Furrier  
Expert Restyling

•  
220 PEACHTREE STREET

For the College Girl . . .

Carter, Formfit, MisSimplicity and  
Lily of France Girdles

*Her Secret and Maiden Form  
Brassieres*

**EAGER AND SIMPSON**

24 Cain Street, N. E.



Compliments

... of ...

**J. P. ALLEN & CO.**  
"The Store All Women Know"



**DEKALB  
THEATRE**



**BALLARD'S  
THREE STORES**

●  
It is essential that your optician is  
competent to fill your oculist  
prescription correctly

●  
**WALTER BALLARD  
OPTICAL COMPANY**

THREE STORES:

105 Peachtree Street, N. E.

MEDICAL ARTS BLDG.  
382 Peachtree Street, N. E.

DOCTORS' BLDG.  
408 Peachtree Street, N. E.

ATLANTA      ✓      GEORGIA

**TERMITES**

*For Free Inspections of Your  
Property—Call*

**BRUCE TERMINIX CO.**

109 Ponce de Leon Ave., N. E.

Phone Walnut 3131

**Morningside Beauty Salon**

1590 Piedmont Road

MR. SMITH and MR. FREEMAN  
*Proprietors*

For Appointments call  
HEmlock 4818

*Only Expert Operators*

**HARRY F. DOBBS, INC.**

●  
Hotel and Restaurant  
Supplies

●  
285 PEACHTREE STREET, N. E.

*Compliments of . . .*

**SILHOUETTE TEA ROOM**

Mrs. Kerrison

*"On the Campus"*

Compliments

of



**THE CROWN  
CANDY CO.**

# KAMPER'S

PURE FOOD STORES



57 Years of  
Quality and Service



THREE STORES IN ATLANTA



"When Buying Foods Insist On Having the Best"

## EDWARDS & SAYWARD

ROBERT LOGAN, Assistant

•  
ARCHITECTS

•  
Atlanta

Georgia

"THE CHOICE OF THE  
COLLEGE GIRL"

•  
Meet Your Friends at  
**HARRISON'S**

## THE DRAUGHON SCHOOL of COMMERCE

High School Graduation and Character  
References ✓ Entrance Requirements

Better Than 60 Positions  
Filled per Month

ATLANTA



GEORGIA

## VERA BEAUTY SHOP

*Special Prices for A. S. Girls*

East Ponce de Leon

DECATUR



GEORGIA

ELLIOTTS'  
PEACHTREE  
STUDIO

*"Better  
Photographs"*

•  
PHOTOGRAPHERS

TO THE  
**1937**  
**Gilhouette**

•  
PARAMOUNT  
THEATRE  
BUILDING  
ATLANTA

USE...

**SE-FLY-GO**

Does not Stain.  
Has Pleasant Odor.

REALLY KILLS INSECTS

Don't be worried and bothered  
by flies and mosquitoes—Start  
Now!

USE! SE-FLY-GO

*Made by*

**THE SELIG CO.**

MANUFACTURERS  
ATLANTA

EST. 1896



Miss Ruth Crisp Has Her Beauty Work  
Done at Adolphe's

Charm and good grooming go hand in hand. Many of Atlanta's loveliest ladies depend on the artistry of Adolphe and his capable staff for smart and becoming hair cutting and arrangement, manicures, scalp treatments, permanent waves, facials, etc.

**ADOLPHE'S**

HEmlock 2110

Peachtree at Ponce de Leon



Pure  
refreshment

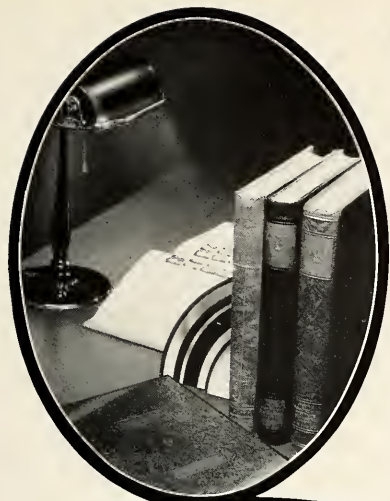
Patronize Our Advertisers

*THE BUSINESS STAFF*

wishes to express its appreciation to the advertisers  
and other friends who, by their support, have  
made possible this issue of the

SILHOUETTE





# QUALITY

... a word that can be applied to engravings only when produced by highly skilled craftsmen supplied with modern facilities.

The growth of our Annual business is ample proof of the quality of our plates.

JOURNAL ENGRAVING CO.

JOURNAL BLDG.

ATLANTA GA.

# In Printing

THERE ARE MANY REASONS WHY  
SUCCESSFUL ANNUALS REQUIRE  
THE SERVICES OF EXPERIENCED  
AND EXPERT CRAFTSMEN

## FOOTE & DAVIES CO.

HAVE THESE SERVICES . . . and  
*the most necessary components of*  
*all really fine books including*  
A SPECIAL ANNUAL SALES  
AND SERVICE ORGANIZATION  
CREATIVE DESIGNERS AND  
LAYOUT ARTISTS • ABUNDANT  
EQUIPMENT • MODERN AND  
COMPLETE • PRICES REPRESENTING  
MAXIMUM IN VALUE



ATLANTA  
GEORGIA

11







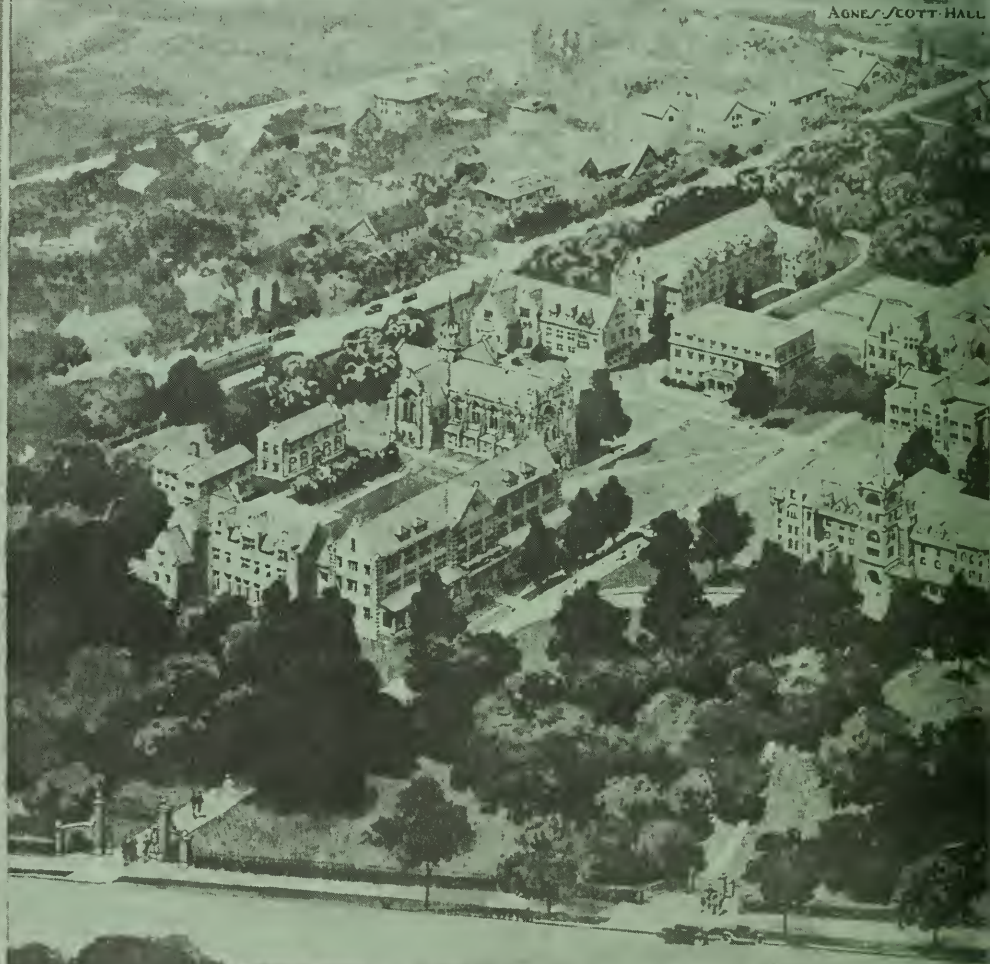


FACULTY-HOUSE  
ALUMNAE HALL  
EXTENSION-OF-INMAN-HALL

CHAPEL  
INMAN-HALL  
INFIRMARY

HOME-DEPARTMENT-BUILDING  
SCIENCE-HALL

PRESTON  
GYMNASIUM  
LIBRARY  
AGNES-SCOTT-HALL



DEVELOPMENT-OF-AGNES-S

OLIVE ARBORETUM

THEATRE

CULTURE BUILDING

ATHLETIC FIELD

BUTTRICK HALL

REBEKAH SCOTT HALL

BOILER HOUSE LAUNDRY

DORMITORY GROUP

TENNIS COURT

MUSIC BUILDING

WESLEYAN COLLEGE - DECATUR - GEORGIA

