

SILHOUETTE

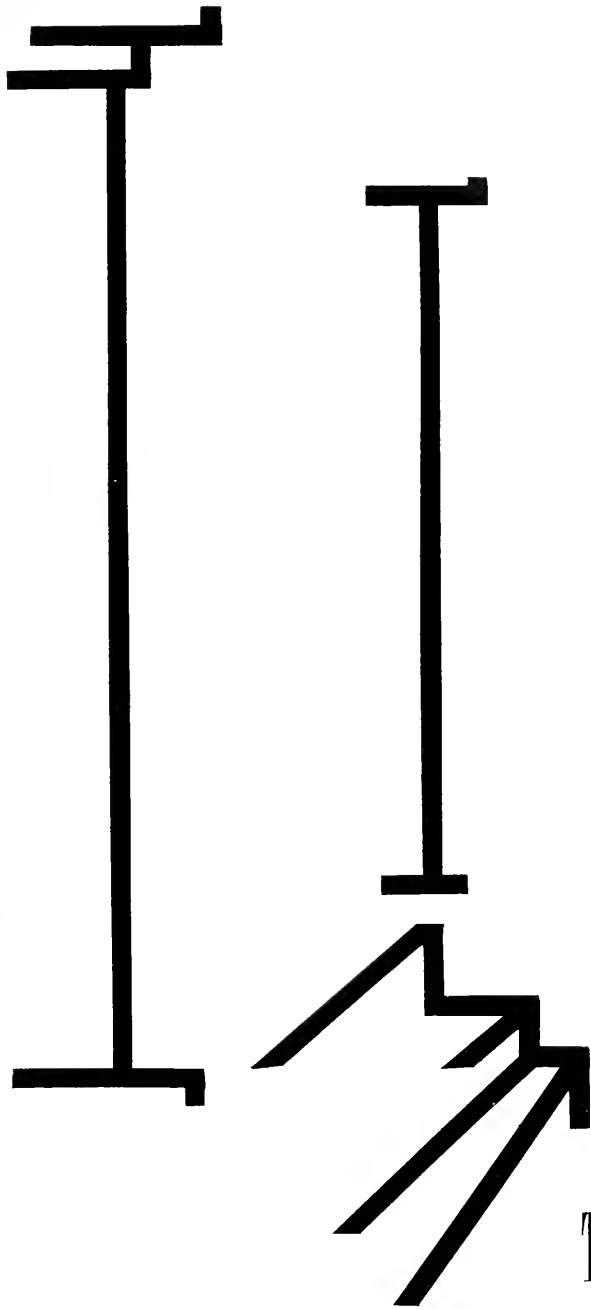
1960





Digitized by the Internet Archive
in 2010 with funding from
Lyrasis Members and Sloan Foundation

<http://www.archive.org/details/silhouette196000agne>



THE 1960 SILHOUETTE

Presented by
The Student Body
of Agnes Scott College
Decatur, Georgia

The
Face
of
the
Campus

Editor CAROLYN YVONNE WEST
Managing Editor MARGARET GOODRICH
Business Manager NAIN STIEGLITZ





The 1960 Silhouette

TABLE OF

Introduction 1-7

FALL

Features	18-32
Spirit	33-38
Classes	39-77



Advertisements	182-204
Annual Staff	205
Editor's Last Word	206

CONTENTS



WINTER

Features	78-98
Spirit	99-104
Academics	105-131

SPRING

Features	132-146
Spirit	147-154
Organizations	155-181





MISS MELL'S WISE JUDGMENT IS VALUED BY PARENTS WEEKEND STEERING COMMITTEE.

1960 Silhouette Is Proudly Dedicated to Miss Mell

DR. ALSTON RECOGNIZES MISS MELL FOR UNTIRING SERVICE.



The embodiment of intellectual achievement
and dignity

Discerning direction of Lecture Association

Presenting social and economic theories

Challenging advanced students to continue
work in new wide open fields

Leaving Agnes Scott a tradition and heritage
of a meaningful search for knowledge—

With admiration and sincere appreciation

We dedicate the *1960 Silhouette*

To Miss Mildred Rutherford Mell.

MISS MELL APTLY ARRANGES MEETINGS OF STUDENTS AND LECTURERS.







*BLACK CAT . . . picnic spirit on a rainy day . . . echoing chants . . .
fried chicken and fruit punch . . . lines of class colors . . . joyfully now
our voices we raise . . . capricious kittens in an art gallery . . . introduc-
tions under the elms . . . the feeling of accomplishment and warmth.*



ADMINISTRATIVE WARMTH . . . a hearty laugh with those who care . . . morning coffee breaks when the line between professor and student is erased . . . the flow of ideas . . . the realization that perhaps we too have something to give . . . the door that's always open.



DORMITORY LIFE . . . echoing alarm clocks . . . the tooth brush brigade . . . the ravenous way a box of food from home is devoured . . . neverending noisy hours . . . surprise birthday parties . . . a rasping fire alarm . . . conversation into the night with roommates.



DAY STUDENTS . . . the laughter of each one . . . cluttered shelves . . . coke bottles and cards on the desk . . . constant phone messages . . . exodus to the Grill for 11 o'clock lunch . . . long afternoons . . . a circle of chairs to be occupied again . . . "Bye, Nancy—see you tomorrow."



MADAME PANDIT . . . "the gracious and beautiful lady" . . . exotic rationalism and sari-clad dignity . . . explosive issues treated with diplomatic awareness . . . the link of understanding where two worlds meet . . . "and there will be no war" . . . a hand outstretched.



BLACKFRIARS . . . moment of intensity, anguish . . . actors living their parts . . . lights glaring on stage, but setting mood for audience . . . period costumes designed and made by members . . . elaborate set—no trace of frantic assembling . . . whispers backstage in another world.



TENNIS . . . informality of classes ("How in the world are you griping that racket?") . . . practice and more practice . . . a set played in late afternoon . . . aces, foot-faults, lobs . . . a pause at the water fountain . . . another game or two . . . a refreshing shower in the gym.



THE GRILL . . . a short walk across the autumn campus, across the road and the railroad track . . . ten o'clock coffee breaks and unwritten papers . . . the warm smell of frying steaks . . . a haven for rainy campus dates . . . bubble gum.

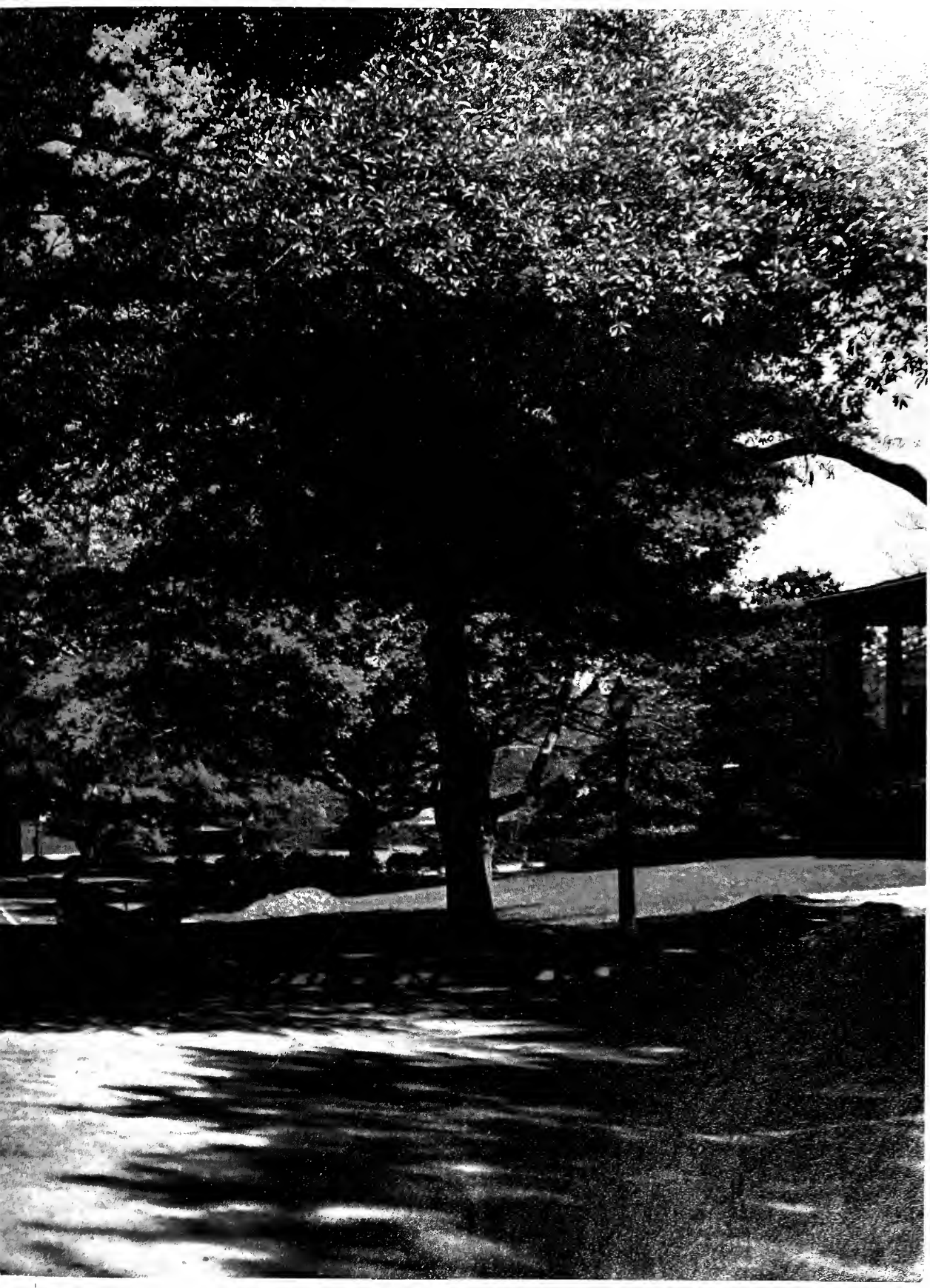


THE DAY exams began . . . that first early-morning look over the still, white face of the campus . . . the crunch of boots on unblemished snow . . . wonder melting into child-like delight . . . the black slash of a tree trunk against the white ground . . . the soft plopping as it began to melt.



ATLANTA AT NIGHT . . . towering building silhouetted against the pink haze . . . bright lights . . . a good movie . . . a tasty pizza on a red checkered table cloth . . . Brahms at the Tower and Dixieland at Hank and Jerry's . . . forgotten lessons.





Fall

License plates from out of town
Wondering eyes, uncertain smiles
Luggage on the steps and walks.
Another autumn.

Blazers, scarfs; cold, pink faces
Men raking leaves:
The bluest skies; then endless rain
And days creep by.

Another fall, another year;
Habits formed: the bad, the good
Each to her own yet each has known
The force of them;
These restless days;
This fleeting fall.

Contents

FEATURES: Orientation . . . Black Cat . . .
Investiture . . . Lectures . . . Fall Frolics
. . . Blackfriars

SPIRIT: Hockey Spirit . . . Pep Rallies . . .
Swimming Meet . . . Exams . . . Vacation

CLASSES: Seniors . . . Juniors . . . Sophomores
. . . Freshmen . . . Mortar Board





EVANS DR

ONE WAY

Featuring 11

Freshman moves in with the eager assistance of mother, dad, friend.



IDEAS ON HONOR CLIMAX BUSY RETREAT.

Orientation Introduces the

THE WORK OF MANY minds . . . the effort of many months . . . preparation, planning . . . and then the faces . . . once-brave parents peeping from behind clothes bags . . . poised assured upperclassmen—people in a hurry . . . faces, name tags, lines . . . hours of waiting for schedule committee, then the year's work planned in a few short minutes . . . getting acquainted with Dr. Alston . . . a friendly moment alone with Miss Scandrett . . . high ceilings, long halls . . . rooms piled high with suitcases and boxes . . . a roommate . . . a moment's privacy, a few tears . . . motion . . . screams of returning upperclassmen . . . sunlight on a new world,



PARENTS MEET ROOMMATE'S FAMILY AND SHARE FIRST DAY'S EXCITEMENT

SMILES OF ANTICIPATION PREVAIL AS ROOMMATES MEET.





LEADING THE FIRST VESPERS, DR. ALSTON QUOTES SOME TRADITIONAL BIBLE PASSAGES.

Wonders of College Life to Freshmen Scotties

juniors and seniors bubbling with enthusiasm over plans and decisions from the retreat . . . faculty and staff with smiles of warmth and anticipation for everyone . . . calendars, books, welcomes . . . dressing up for teas to meet alumnae, ministers . . . hours of searching for and making costumes for varied rush parties . . . freshmen's first taste of whirl of college rush . . . the waiting for that promised phone call . . . campus organizations presenting their purpose to new students through parties, chapel programs . . . the first vespers . . . classes . . . motion . . . the work of many minds: Culmination for some, Orientation for many.

TO REGISTER, SOPHOMORES CAMP OUT IN BUTTRICK FROM 4:30 TO 9:00.



FRESHMEN ENCOUNTER TEACHERS—AND COOKIES—AT TEA



AN ELOQUENT CAT ANNOUNCES THE CLASS SKITS.



MRS. MILLER RECALLS GOOD OLD DAYS AT AGNES SCOTT FOR HER CHERUB.

Black Cat Songs, Spirit

STRANGE WORDS: BLACK CAT . . . mystery . . . anticipation . . . pieces of a puzzle falling slowly into place . . . rush, posters, tryouts . . . last-minute song practices, instructions, script revisions . . . the plunk of a ukelele . . . solemn presentation of class songs; applause . . . lights from the stage seering darkness . . . Black Cat chorus: amateurs with touches of professional . . . white faces, black suits, gestures of a pantomime . . . Agnes Scott Gothic . . . Valley Forge revisited, new variations on an old theme: talent show . . . curtain calls and roses . . . a special announcement; exhilarated seniors . . . transfer of Black Cat spirit to new custodians of tradition . . . belonging to the mystery.



FRESHMAN TRIO ENTRANCES CROWD WITH THROBBING JAZZ.

"I was not meant to suffer like this," asserts sophomores' Washington.





THIS ROW OF DANCING BRIGHT-EYED EGGHEADS ARE REALLY EAGER FRESHMEN.



BLACK CAT MEANS WE LOVE SCOTT AND THAT MEANS YOU.

Unite Campus Community



SILENT MOVIE OF THE SENIOR CLASS REVEALS MOANING LISA'S SECRET.

SMILING, BAREFOOT, AND HAPPY, ANNEKE LENDS AN EXOTIC AIR.





ALL THE EDUCATED KNOW THERE ARE BUT TWO WORDS TO SUM IT ALL UP: GOOD GRIEF!

Today "Little Girls" Put Away Thoughts of

LITTLE GIRLS' DAY . . . squeals of delight on the pre-dawn campus . . . roller skates and slippery floors . . . hop-scotch before class . . . drop-the-hanky after chapel . . . knee socks and hair ribbons . . . a broken leg . . . the end of a playful day . . . a sophisticated senior asleep with her arm around her teddy bear . . . perhaps for the last time.

INVESTITURE . . . a chilly golden morning . . . white columns and black robes . . . cameras clicking . . . a solemn march across the quadrangle . . . Dr. Kline's talk to us . . . Miss Scandrett's smile . . . a moment of tradition blending smiles and tears.



"BUT SIR, I'M NOT ALLOWED TO TALK TO STRANGERS!"



"WELL, WE GIRLS DO HAVE A LITTLE BIT OF ENTERTAINMENT PLANNED."



HANDSHAKING PAPAS SHARE PRIDE IN THEIR "LITTLE GIRLS" AT THE TEA.



MR. KLINE CHALLENGES SENIORS TO LIVE RESPONSIBLY.

Responsibility to Come

NUMB SENIORS SWISH AMIDST PEERING FAMILIES AND SOPHS.



FINALLY "THE BIG MOMENT" IS SHARED BY EVERY SCOTT SENIOR.



Mme. Pandit, Miss Pepperdene, friend enjoy moment of informal humor during reception.

India's Position, Arts Criticism, Economics



Hub talks gave an opportunity for the exchange of ideas between Dr. Greene and Suellen.

CARL SWISHER ANSWERS QUESTIONS FOR BUDDING POLITICAL SCIENTISTS.



DR. GREENE ENJOYS A WARM MOMENT WITH STUDENT.

Brief moment to organize his vast material is welcomed by Dr. Carlson, economy expert.



Today—Fall Lectures Span the World

FALL LECTURES . . . the cool gentleness of a fall night . . . hushed voices in Gaines . . . "Lecture Association is happy to bring you—" . . . fading horizons in world politics, the humanities, economics . . . charm of Madame Pandit, her awareness of her country and its role in the changing world, a fresh look at United States foreign policy through Asian eyes . . . Dr. Greene's ability to reach every student's searching mind, philosophy from friendship to eternity . . . Dr. Reynold Carlson's guiding words that showed the importance of world-wide economic development . . . Carl B. Swisher on the Supreme Court . . . Dr. Downey on Byzantine art . . . questions, informality in Rebekah.

FAITH, HOPE, AND CHARITY ARE POWERFULLY SYMBOLIZED BY THESE THREE.



CLASSICAL SCHOLAR DOWNEY DISCUSSES ART FORMS.

WHITE GLOVES, TAFFETA ADD ELEGANCE TO GYM.



GUESS WHO TOLD THE JOKE. AND WHO DRANK COFFEE DURING THE PUNCH LINE.

Fall Frolics High Spots Are Jazz, Dance, and Breakfast

FALL FROLICS . . . posters and tickets on sale in the mailroom . . . swaying ladders and campus scenes in the gym . . . a cloudy day's grayness lifting with Hurricane Jackson's jazz combo in the Hub . . . dark suits and bright taffeta blending under an ivy-covered archway . . . introductions . . . snappy rock and roll, dreamy favorites . . . weary toes wiggling free of heels . . . the last dance . . . Agnes Scott's first midnight breakfast.



WE HAD COKES AND DONUTS A LA AGNES SCOTT FOR BREAKFAST.



HURRICANE JACKSON BLOWS VIOLENT STORM WITH SAXOPHONE.



COSTUMING, STAGING CONTRIBUTE TO TOTAL EFFECT OF BLACKFRIAR'S PLAY, "THE HEIRESS."

Blackfriars' First Drama of 59-60 is "The Heiress."

BLACKFRIARS fall production "The Heiress" . . . the culmination of weeks of intensive rehearsal, study and polishing by inspired actors and actresses . . . sweat, late hours for stage crew and committees . . . a shouting stage manager . . . a frantic costume seamstress . . . quiet instruction and illustration from Miss Winter . . . new hints each day from Miss Green . . . efforts climaxed by Friday night performance in Gaines chapel . . . a "house" filled with amused, enraptured students and college guests . . . the pathetic drama of a naive heiress disillusioned by a fortune-hunting suitor . . . executed with precision and feeling.



SUSPENSE BUILDS IN CATHERINE'S INDECISIVE PAUSE.



With characteristic coyness, Mrs. Penniman talks to her niece, just returned from Europe.



ANN BROAD AND OTHER DANCERS GIVE THEIR OWN INTERPRETATION OF THE NATIVITY DURING CHAPEL.

Music, Dance, Santa Highlight Campus Yule Spirit

THE REAL MEANING of Christmas portrayed in song and dance . . . the Christmas story told by graceful, swaying bodies . . . angels arrayed in red and yellow, the shepherds . . . the magi in their splendor falling at Mary's feet in adoration . . . light over strife . . . peace over fear . . . a brilliant stained glass window . . . "Gloria in Excelsis Deo" . . . a joyous proclamation of the birth of the Savior . . . Santa Claus comes to community party . . . dark suits, foreign carols, coffee.



CHRISTMAS "ANGELS" PAUSE BEFORE SINGING GLAD TIDINGS.

Dr. Posey becomes twinkly-eyed Santa to captivate many exam-weary Scotties at campus party.





Spirit



SOPHOMORES INTRODUCE FRESHMEN TO THE JOYS OF RELAXATION AND A GAME OF BRIDGE IN THE HUB—FUN.



SPEED AND DEFT STICK PLAY ARE ESSENTIALS FOR HOCKEY PLAYERS.

Fall Finds Campus Voicing Pep in Dorms, Hub and Field

LUSTY, PINK-CHEEKED . . . spirit of fall . . . leaves crunching and lungs aching with cold . . . cheers ringing in the quadrangle or Hub . . . a swaying circle in the dim light . . . class songs, school songs . . . "Nineteen-sixty, here we come!" . . . jazz marathons in the Hub . . . sister classes exchanging serenades . . . restlessness of house meetings . . . bright colors on the hockey field . . . halls gathered for prayers and hymns before bed.



PEP SONGS INSPIRIT CAMPUS ON EVE OF FIRST HOCKEY GAME.



KNITTING, STUDY, AND DAY DREAMS PREVAIL AT DORM GET-TOGETHER.



FOUR CLASSES ARE FIGHTING HARD, THOUGH THE RACE IS ALL WET. DON'T STOP NOW, SUZANNE! THE SENIORS COULD USE SOME POINTS.

Sophs Win Swim Meet with Brilliant Style and Speed

SWIMMING MEET . . . the gym clouded with humidity . . . the benches jammed with students . . . class spirit at a peak . . . swimmers waiting by the pool . . . competition in speed and form . . . every girl straining to the last stroke for her class . . . shouts echoing . . . water churning . . . a hush for the curve of a dive . . . teamwork of relays . . . relaxed hilarity of comic relay . . . proud sophomore victorious over panting, hard-fighting freshmen . . . 22-year old plaque to be engraved and kept by class of '62 for at least a year . . . stringy hair . . . dry hands on wet backs . . . blast of night air.



JOYCE McQUILKIN LEADS THE SOPHOMORE SPLASH TOWARD VICTORY. FORTUNATELY THE DIVE, NOT THE TANK SUIT, IS BEING JUDGED.



SENIOR CLASS TEAM: Row 1, J. Norman, B. Specht, J. Bowman, C. Jones, B. Florance, J. Imray; Row 2, N. Duvall, P. Baber, S. Saxon, R. Leroy, W. Muse.



JUNIOR CLASS TEAM: Row 1, N. Barr, A. Cochrane, G. Rowe, N. Hall, B. Henry; Row 2, A. Boykin, B. Dalton, S. Hosterman, T. Walker; Row 3, P. Wilson, N. Stone.



LELAND, MARCI, INA CLOSE IN AT A CRUCIAL POINT IN THE GAME.

Peppy Class Teams Battle

THE SOUNDS OF HOCKEY . . . rasping breath of the players . . . the sharp crack of stick on ball . . . wind in the autumn trees across the field . . . shouts of children . . . clicking knitting needles and rustling letter pages . . . songs from the Peanut Gallery and Alfred E.'s kids . . . then a chorus of excited, hoarse yells . . . kaleidoscopic shifts . . . battling red and yellow or blue around the white ball . . . a streak across the green grass . . . multi-colored coats of the crowd surging on the field after the game . . . juniors winning the championship over the sophomores by one point . . . the excitement . . . the sweat . . . the winning or losing . . . the field silent and blank at six o'clock.



SOPHOMORE CLASS TEAM: P. Flythe, C. Askew, M. Reitz, P. Mitchell, H. Glover, S. Amidon, A. Hershberger, C. Bowen, K. Gilliland, S. Alexander, B. Kneale, V. Allen, J. McQuilkin, G. McLemore, B. Hendee.



FRESHMAN CLASS TEAM: Row 1, A. Freeman, I. Jones, K. Robertson, G. Ellis, A. Debele, B. Webb, D. Brown, S. Creech, B. Schenck; Row 2, L. Draper, W. Barnwell, F. Anderson, B. Faucette, N. Sheriff, B. Loving, K. Younger, M. Collier, L. Cole, B. Barnett. Not pictured: K. Mobley.



Boo Florance



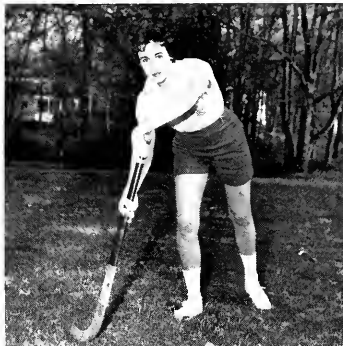
Ruth Leroy



Caroline Askew

Ten Top Players Comprise Varsity

November 6			
Juniors	3		
Seniors	1	Sophomores	3
		Freshmen	0



Meade Boswell



Nancy Barr

November 13			
Sophomores	3		
Seniors	0	Juniors	3
		Freshmen	0



Betsy Dalton



Nancy Stone

November 20			
Freshmen	1		
Seniors	0	Juniors	1
		Sophomores	0



Alice Cochrane



Marci Tobey



Nancy Hall



"Did you say that? I couldn't even remember who wrote it!"



"I'M DREAMING OF A WHITE CHRISTMAS . . ." AND THE END OF EXAMS.

Weary Students Still Smile While Plowing Through Exams

ALMOST VACATION TIME . . . the crowded reading room . . . "Do you have a copy of Anderson?" . . . the long lunch lines . . . a few bright spots like fraternity roses . . . bleary eyes at dawn oblivious of the sunrise . . . last minute panic when you've forgotten even Aristotle's name . . . the noisy teas where you remember all the things you didn't write . . . the exhilarating, light feeling after the last exam . . . the hurried packing . . . the taxi . . . the train that will take you home where at last you can sleep 'til noon.



DEVOTIONS CLOSE A GRUELING DAY SPENT REVIEWING FOR EXAMS.



COULD THERE BE A MORE THRILLING MORALE BOOSTER FOR EXAMS?





Lisa Ambrose, V-Pres.; Myra Glasure, President; Peggy Edney, Sec.-Treas.

SENIOR CLASS

SENIOR YEAR . . . the class of '60 and Snoopy plunging ahead . . . joyful reunion of roommates . . . strangeness of "looking on" during orientation . . . long-awaited thrill of winning first place in Black Cat song contest . . . letting down hair for Little Girls' Day, pinning it up to fit under Mortar Boards Investiture morning.

. . . deserving members honored by election to Who's Who . . . gingerly serving for Sophomore parents luncheon . . . Saturdays given to Graduate Records . . . Marriage Class (very little cutting) . . . big moment of taking major professors to dinner . . . united but each one looking beyond June.

ACREE, ELIZABETH HARGREAVES
DeLand, Florida
Mathematics

ALFORD, MARTHA ANGELYN
Columbus, Georgia
Mathematics





LISA VERNON
AMBROSE
Knoxville, Tennessee
English

PATRICIA ANN
ANDERSON
Charlotte, North Carolina
Psychology



PETER SWART
Senior Class Mascot



NELL WILHEIT
ARCHER
Charlotte, North Carolina
*History and Political
Science*

JAMIS KAY
ARMITAGE
Kingsport, Tennessee
Mathematics

PEYTON WINFREE
BABER
Lynchburg, Virginia
Mathematics



HYTHO BAGIATIS
Atlanta, Georgia
English

MARION ANN BARRY
Jackson, Mississippi
English

DOROTHY CLAVE
BATES
Miami, Florida
English

SENIOR



NANCY DUVALL
WHO'S WHO

SUELLEN KAY
BEVERLY
Charlotte, North Carolina
English

ALICE EMILY
BIVENS
Monroe, North Carolina
Mathematics



WENDY BOATWRIGHT
Columbia, South Carolina
French

JANICE ANN
BOWMAN
Lynchburg, Virginia
English

MILDRED JANE
BRASWELL
Decatur, Georgia
Psychology



DIAN SMITH
BREWTON
Statesboro, Georgia
*History and Political
Science*
Honor Roll, 1958-1959

CYNTHIA ADAIR
BUTTS
Salem, Virginia
Psychology

SARA ANN CAREY
Charlotte, North Carolina
*History and Political
Science*
Honor Roll, 1958-1959



CLASS



CHOON HI CHOI
Seoul, Korea
Psychology

FRANCES LINDA CLARK
Macon, Georgia
Psychology



CORKY FEAGIN
WHO'S WHO



ANN DELISLE COBB
Asheville, North Carolina
English

MARGARET WEEKS COLLINS
Montgomery, Alabama
Bible

PHYLLIS JEAN COX
Galax, Virginia
Philosophy



MARY CROOK
Atlanta, Georgia
Mathematics

ANNE SHANNON CUMMING
Nashville, Tennessee
Biology

NANCY BEVERLY DELK
Bethune, South Carolina
Mathematics

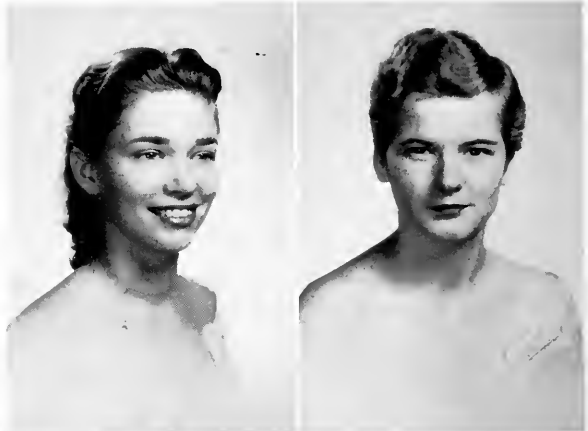
SENIOR



BOO FLORENCE
WHO'S WHO

DORRETH DOAN
Columbia, South Carolina
Biology

NANCY DUVALL
Decatur, Georgia
*History and Political
Science*



LYDIA DOROTHEA
DWEN
Avondale Estates,
Georgia
Sociology

MARGARET BOWEN
EDNEY
Montgomery, Alabama
English

REBECCA LYNN
EVANS
Harriman, Tennessee
Biology



ANNE ELIZABETH
EYLER
Cookeville, Tennessee
Music

LOUISE CRAWFORD
FEAGIN
Falls Church, Virginia
English

GLADYS FERGUSON
Thomasville, Georgia
Psychology



CLASS



**LOUISE BOOTH
FLORENCE**
Richmond, Virginia
Mathematics



JOANNA FLOWERS
Kinston, North Carolina
English
Honor Roll, 1958-1959



**MYRA GLASURE
WHO'S WHO**



LUCY COLE FONTS
Decatur, Georgia
Mathematics



KAY FULLER
Ramstein, Germany
French



**PRISCILLA WILLIS
GAINER**
Lakeland, Florida
Psychology
Honor Roll, 1958-1959



**BONNIE LEE
GERSHEN**
Lynchburg, Virginia
History



MYRA JEAN GLASURE
St. Petersburg, Florida
Biology



**MARGARET PENN
GOODRICH**
Winston-Salem,
North Carolina
Psychology

SENIOR



JANE LAW
WHO'S WHO

ELIZABETH
GZECKOWICZ
Rutherfordton,
North Carolina
*History and Political
Science*

ELIZABETH ANNE
HALL
Campbellsville, Kentucky
English



JUNE TULLY HALL
Ingrandes, France
French

LILLIAN BLAKE
HART
Joanna, South Carolina
English

MARGARET JANE
HAVRON
Nashville, Tennessee
Philosophy



SARAH KATHERINE
HAWKINS
Clarksville, Tennessee
Sociology

CHARLOTTE CROSBY
HENDERSON
Morristown, Tennessee
Music

ELEANOR MANSFIELD
HILL
Bowling Green, Kentucky
History



CLASS



MARY ROSE SPEER
HOMES
Atlanta, Georgia
Art

RAE CAROLE
HOSACK
Miami, Florida
Mathematics



BETTY LEWIS
WHO'S WHO



CAROLYN ANNE
HOSKINS
Bluefield, West Virginia
*History and Political
Science*
Honor Roll. 1958-1959

SUZANNE HOSKINS
Charlottesville, Virginia
English

JANE MONTEITH
IMRAY
Longview, Texas
*History and Political
Science*



KATHRYN JOHN
Wilmington,
North Carolina
Chemistry

FRANCES ELIZABETH
JOHNS
Farmville, Virginia
English

MARGARET EILEENE
JOHNSON
Lake Worth, Florida
Bible

SENIOR



HELEN MABRY
WHO'S WHO

CAROLINE MIKELL
JONES
Wichita, Kansas
Biology

LINDA MANGUM
JONES
Albany, Georgia
Mathematics



JULIA PHOEBE
KENNEDY
Tampa, Florida
Mathematics

CHARLOTTE ELNORA
KING
Charlottesville, Virginia
Biology

KATHLEEN LOUISE
KIRK
Marietta, Georgia
French



LAURA ANN KNAKE
Lynchburg, Virginia
English

HARRIETTE SPRAGUE
LAMB
Lakeland, Florida
Psychology

JANE ADGER LAW
Spartenburg,
South Carolina
Psychology



CLASS



LOUISE RUTH LEROY
Pikesville, Maryland
English



CATHERINE
ELIZABETH LEWIS
Birmingham, Michigan
Mathematics
Honor Roll, 1958-1959



CAROLYN MASON
WHO'S WHO



LAURA PARKER
LOWNDES
Atlanta, Georgia
English



ELISABETH LUNZ
Charleston,
South Carolina
English
Honor Roll, 1958-1959



HELEN MARION
MABREY
Birmingham, Alabama
English
Honor Roll, 1958-1959



GRACE STRAUSS
MANGUM
Angusta, Georgia
Mathematics



CAROLYN MASON
Charlotte,
North Carolina
English



MARTHA KATHRYN
MASSEY
Fredericksburg, Virginia
German

SENIOR



EVE PURDOM
WHO'S WHO

JANIE MATTHEWS
Orlando, Florida
Sociology

CAROLYN SMITH
McCURDY
Stone Mountain, Georgia
Mathematics



MARGARET
McKELWAY
Richmond, Virginia
English

JULIA ANNE
McNAIRY
Greensboro,
North Carolina
Psychology

MARY EVANS
BRISTOW MILHOUS
Atlanta, Georgia
Psychology



HELEN McCALL
MILLEDGE
Decatur, Georgia
Mathematics

ELIZABETH ANN
MITCHELL
San Francisco, California
*History and Political
Science*

CARY ASHLIN
MORRIS
Covington, Virginia
English



CLASS



ANNE WENTWORTH
MORRISON
Asheville, North Carolina
English

ANITA GAIL MOSES
Anniston, Alabama
English



MARY HART RICHARDSON
WHO'S WHO



BESSIE SRONCE
MURPHY
Wilmington,
North Carolina
Psychology

WILMA TUCKER
MUSE
Albany, Georgia
Mathematics

LOUISA WARNELL
NEAL
Moultrie, Georgia
Chemistry
Honor Roll, 1958-1959



LINDA KATHRYN
NICHOLS
Macon, Georgia
Psychology

EVERDINA BARTHA
NIEUWENHUIS
Mount Airy,
North Carolina
Mathematics

JANE WARREN
NORMAN
Parcellville, Virginia
Psychology



SYBIL STRUPE
WHO'S WHO

SENIOR

MARY GRACE
PALMOUR
College Park, Georgia
Psychology

ANN ELIZABETH
PARKER
Brooksville, Florida
English



EMILY DORROH
PARKER
Aiken, South Carolina
English

NANCY CAROLYN
PATTERSON
Kingsport, Tennessee
Chemistry

HELEN PETKAS
Atlanta, Georgia
Philosophy



MARY JANE PFAFF
Winston-Salem,
North Carolina
Psychology

MARY JANE PICKENS
Tuscaloosa, Alabama
*History and Political
Science*

JANICE ELEANOR
POWELL
Atlanta, Georgia
Bible



CLASS



CAROLYN DAVIES
PREISCHE
Atlanta, Georgia
Psychology



JANE SEYMOUR
PREVOST
Greenville,
South Carolina
*History and Political
Science*



EVE KIRKLAND
PURDOM
Guilford College,
North Carolina
English
Honor Roll, 1958-1959



KATHLEEN
McCASKILL
RICHARDS
Florence, South Carolina
Art



MARY HART
RICHARDSON
Roanoke, Virginia
English
Honor Roll, 1958-1959



KATHERINE LAMB
RUARK
Vidalia, Georgia
Philosophy
Honor Roll, 1958-1959



SYLVIA SAXON
Greenville,
South Carolina
Psychology



EVELYN ST. CROIX
SCOFIELD
Lanham, Maryland
Mathematics

SENIOR

AGNES LYNNE
SHANKLAND
Newport News, Virginia
*History and Political
Science*

HOLLIS LEE SMITH
New Orleans, Louisiana
Psychology



DIANNE BAILEY
SNEAD
Gainesville, Florida
Sociology

BARBARA ELLEN
SPECHT
South Orange, New Jersey
*History and Political
Science*
Honor Roll, 1958-1959

MARTHA ELIZABETH
STARRETT
Atlanta, Georgia
English



NAIN ELIZABETH
STIEGLITZ
Avondale Estates, Georgia
Mathematics

JO ANNE STOKES
Atlanta, Georgia
Spanish

RITA CAMILE
STRICKLAND
Waycross, Georgia
Sociology



CLASS



SYBIL CRITZ
STRUPE
Winston-Salem,
North Carolina
English
Honor Roll, 1958-1959

MARY RIVERS
STUBBINS
Tallahassee, Florida
Philosophy



MARTHA GILRETH
THOMAS
Asheville, North Carolina
Latin
Honor Roll, 1958-1959

MARCIA LOUISE
TOBEY
Arlington, Virginia
*History and Political
Science*

EDITH JERVIS
TOWERS
Rome, Georgia
Spanish



GRACE WOODS
WALDEN
Newnan, Georgia
*History and Political
Science*

RAINES WAKEFORD
WATKINS
Atlanta, Georgia
English

JOANNA WEBB
Donalsonville, Georgia
History

JULIANNA WEBB
Donalsonville, Georgia
*History and Political
Science*

**CAROLYN YVONNE
WEST**
Jackson, Tennessee
History
Honor Roll, 1958-1959

**DOROTHY ANNE
WHISNANT**
Charlotte, North Carolina
French
Honor Roll, 1958-1959



**MARTHA ANN
WILLIAMSON**
Dalton, Georgia
Sociology

BECKY WILSON
Augusta, Georgia
English

MARTY YOUNG
Rockmart, Georgia
Chemistry



SENIORS FEEL A SPECIAL UNITY ON INVESTITURE MORNING.

Not pictured in Who's Who: Sally Smith Howard.



Sara Ann Carey



Shannon Cumming



Joanna Flowers



Charlotte King



Carolyn Hoskins

Elizabeth Lunz

Helen Mabry



Fifteen Senior Phi Beta Kappas Have Set Top Academic Standards

PHI BETA KAPPA . . . the highest academic recognition a college can bestow . . . a standing ovation . . . their classmates' pride and hugs . . . fifteen—the largest number ever to earn the honor at Agnes Scott . . . mainstays of their "scholarship cup class" . . . each elected individually . . . character and intellectual interest considered along with grades . . . three Fullbright scholars in the group . . . Jo Flowers going to Germany's University of Tuebingen . . . Mary Hart Richardson and modern literature in Wales . . . Anne Whisnant continuing French at Lille . . . May 10th dinner and formal initiation . . . Beta of Georgia, Agnes Scott's chapter, founded in 1926 . . . first women's college invited to apply for a chapter . . . first women's college south of Virginia with a chapter . . . second chapter in Georgia . . . continuing recognition of intellectual capacities well employed, especially in the acquiring of an education in the liberal arts and sciences.

Anne Morrison



Warnell Neal

Eve Purdom



Mary Hart Richardson



Katherine Ruark



Sybil Strupe



Martha Thomas



Anne Whisnant



Pete Brown, Pres.; Nancy Hall, V. Pres.; Flossie Gaines, Sec.-Treas.

JUNIOR CLASS

JUNIOR YEAR . . . joyous reunion of "those who didn't transfer," braced for the long pull . . . the sobering role of junior sponsor, laden with baggage and questions . . . serenading freshmen "sisters" . . . settling down in majors (for better or worse) . . . closeness and homey atmosphere of the cottages . . . winning the hockey

championship and Scholarship Trophy . . . ushering for Investiture weekend . . . everybody working together to realize a long-hoped-for midwinter night's dream . . . Junior dinner dance highlighting spring quarter . . . a party for the freshmen . . . mounting class pride as 1961 leaders are chosen . . . the big year in sight.



Susan Abernathy



Mary Ann McSwain



Antley Ann Ashford



Ann Avant



Ana Maria Aviles

Barbara Baldauf
Elizabeth Barber
Nancy Jane Barker
Nancy Barr



Nancy Batson
Lauretta Baumgardner
Elizabeth Bellhne
Jane Bennet



Pamela Bevier
*Honor Roll, 1958-1959
Michael Booth
Alice Boykin
Judith Clark Brandeis



Jean Brennan
Anne Broad
*Honor Roll, 1958-1959
Donna Brock
Cornelia Brown



Sally Bryan
Margaret Bullock
*Honor Roll, 1958-1959
Joan Byrd
Kathryn Chambers



Faith Chao
Willie Byrd Childress
Anne Christensen
Mary Jim Clark

JUNIOR

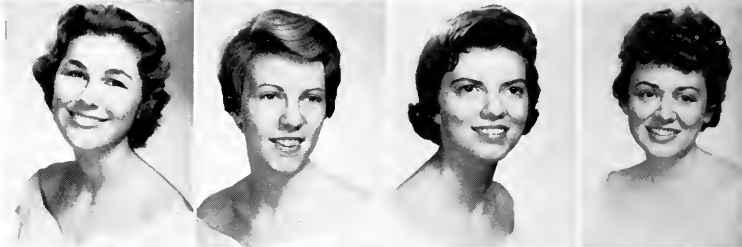


Alice Cochrane
Alice Coffin
Carroll Connor
Edith Conwell



Jane Cooper
Jean Corbett
Mary Park Cross
Mary Wayne Crymes

Mary Culpepper
Betsy Dalton
Lucy Maud Davis
Sandra Davis



Marlin Day
Marguerite Dickert
Renni Dillard
Harriett Elder



Mary Beth Elkins
Patricia Ervin
Helen Everett
Dianne Foster



Rachel Fowler
Elizabeth Fuller
Florence Gaines
Nancy Glass



CLASS

Caroline Goodwin
Linda Grant
Gayle Green
Marion Greene



Alva Hope Gregg
Katherine Gwaltney
Christy Hages
Nancy Hall



Martha Brock Hanna
Jane Henderson
*Honor Roll 1958-1959
Janice Henry
Harriet Higgins



Nancy Boothe Higgins
Sarah Helen High
Mary Elizabeth Hill
Ellen Hines

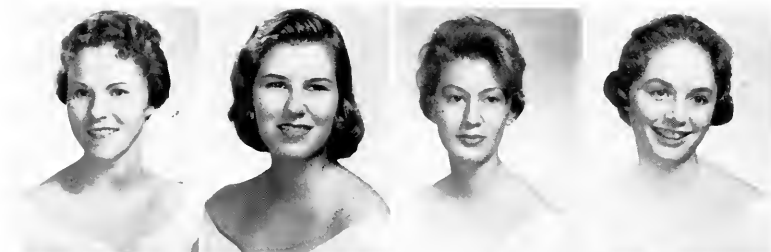


Patricia Holmes
*Honor Roll 1958-1959
Judith Houchins
Linda Ingram
Lorna Jo Jarrell



Marian Zimmerman
Jenkins (Mrs.)
Virginia Johnson
Juanita Juarez
*Honor Roll 1958-1959
Jane Kelly

JUNIOR



Sarah Kelso
Katherine Kemp
Rosemary Kittrell
Martha Lambeth



Marsha Lear
Guthrie Lemmond
Joan Lewis
Nancy Hughes.

Mildred Love
Honor Roll 1958-1959
Julia Maddox
Nina Marable
Honor Roll 1958-1959
Anna Eugenia Marks



Ann McBride
Mildred McCravey
Edna McLain
Dinah McMillan



Anne Modlin
Mary Jane Moore
Nancy Moore
Prudence Moore



Barbara Mordecai
Letitia Moye
Anne Newsome
Marion North

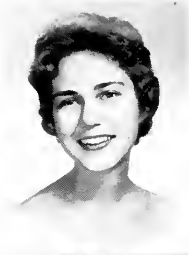


CLASS

Emily Pancake
Elizabeth Paterson
Anne Peagler
Virginia Philip



Carol Pickens
Anne Pollard
Charme Robinson
*Honor Roll, 1958-1959
Joanna Roden



Patricia Rogers
Anne Marie Russell
Lucy Scales
Molly Schwab



Joyce Seay
Betsy Shepley
Caroline Simmons
Page Smith
*Honor Roll, 1958-1959



Harriet Smith
*Honor Roll, 1958-1959
Sue Ann Smith
Virginia Sperling
Nancy Stillman



Nancy Stone
Pamela Sylvester
Caroline Thomas
*Honor Roll, 1958-1959
Esther Thomas

JUNIOR CLASS



Virginia Thomas
Patricia Walker
Mary Ware

Peggy Wells
Jane Welch
Penny Williams
Paula Wilson



Florence Winn
Ann Womeldorf
Betty Sue Wyatt
Lafon Zimmerman



MARY HART TRANSFERS MORTAR BOARD LEADERSHIP
TO TRISH.

NOT PICTURED: Dorothy Burns, Margaret A. Lipham
Mary Taylor Lipscomb.





Marjorie Reitz, Pres.; Ann Lee, V. Pres.; Carey Bowen, Sec.-Treas.

SOPHOMORE CLASS

SOPHOMORE YEAR, flown . . . a year for new courses, new friends, mattresses with backbone . . . catching up with English, getting behind in Math . . . maturation and learning . . . a year for active participation in orientation . . . fireside chats . . . parents' weekend . . . the excitement and sophistication of Walters and Hop-

kins . . . losing the hockey championship by one point and winning the swimming meet hands down . . . a year with the sister class: at Investiture, class day picnic, and graduation . . . a year for "transferitis" . . . the weekly change of heart, mind, and boyfriend . . . snowy spring . . . year of self-confidence, a place in the sun.



Nelia Adams

Sarah Adams

Susan
Alexander

Martha Lee
Allen

Vicky Allen

Suzanne
Amidon

Caroline Askew
*Honor Roll.
1958-1959

Mary Ellen
Barnes

SOPHOMORE



Nancy Barrett
Doris Behrman
Carolyn Benbow

Rosemary Clark
Vivian Conner
Carol Cowan



Lucille Benton
Sally Blomquist
Elizabeth Boatwright
Honor Roll 1958-1959

Harriet Cox
Cynthia Craig
Beth Crawford



Sallie Boineau
Nancy Bond
Meade Boswell

Suzanne Crosby
Mary Culclasure
Mary Holman Card



Carey Bowen
Clara Jane Buchanan
Germaine Calhoun

Sue Czarnitzki
Jacquelyn Day
Ellen DeLaney



Martha W. Campbell
Gail Carter
Betty Challen

Molly Dotson
Diane Duke
Judy Duncan



Jo Claridy

Betty Evans



CLASS



Emily Ann Evans
 Madelyn Eve
 Patricia Flythe
 Betty Jean Harper
 Mary Agnes Harris
 Elizabeth Harshbarger



Marian Fortson
 Dawneda Fowler
 Peggy Frederick
 Janice Heard
 Judith Heinz
 Beth Hendee



Livingston Gilbert
 Betty Gillespie
 Kay Gilliland
 Honor Roll 1958-1959
 Helen Hereford
 Ann Hershberger
 Cynthia Hind



Ethel Gilmour
 Harriett Glover
 Sally Gordy
 Margaret Holley
 Judith Holloway
 Betty Hopkins



Susan Grey
 Honor Roll 1958-1959
 Jacqueline Hagler
 Adrienne Haire
 Lynda Horn
 Mary Beth Howell
 Ann Hutchinson



Edith Hanna



Nancy Inch

SOPHOMORE



Carole Sue Jackson
Betsy Jefferson
Thelma Jenkins

Elizabeth Kneale
Lynne Lambert
Sally LeBron



Caroline Johnson
Norris Johnston
Penny Johnston

Laura Ann Lee
Linda Lentz
Mary Anne Leslie



Knox Jones
Isabel Kallman
Jane Marie Kelley

Helen Linton
Bonnie Lockhart
Patsy Luther



India Kemp
Martha Kendrick
Beverley Kenton

Peggy Mathis
Lota Sue Maxwell
Margaret McGeachy



Linda Kerley
Louise Kemsey
Milling Kinard

Jan McGehee
Genie McLemore
Mary Ann McLeod



Sara Kipka



Joyce McQuilkin



CLASS



Jean Medearis
 Ellen Middlebrooks
 Ann Middlemas

Suzanne Pirkens
 Dorothy Porcher
 Joanna Praytor



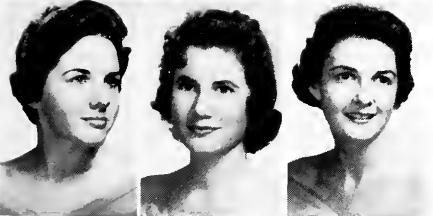
Peggy Mitchell
 Susan Mustoe
 Jane Nabors

Sylvia Ann Pruitt
 Marjorie Reitz
 Carol E. Rogers



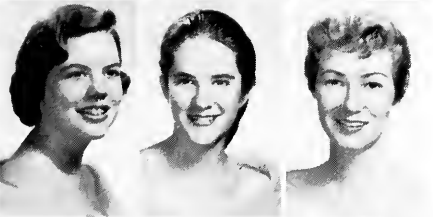
Nancy Nelms
 Sara Ann Nelms
 Jacqueline Nicholson

E. Carroll Rogers
 Honor Roll 1958-1959
 Lebbv Rogers
 Robin Rudolph



Catharine Norfleet
 Nancy Northcutt
 Ethel Oglesby

Joanna Russell
 Doris Sanders
 Elaine Sayers



Pauline Page
 Elizabeth Pancake
 Katherine Patrick

Lucy Schow
 Joanne Scruggs
 Ruth Seagle



Jane Patterson



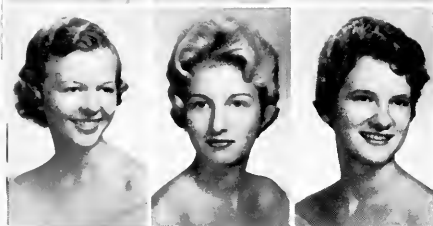
Betty Shannon



SOPHOMORE CLASS



Ruth Shepherd
 Margaret Ann Shugart
 Annette Smith
 Anne Thomas
 Honor Roll 1958-1959
 Ann Thompson
 Rose Traeger



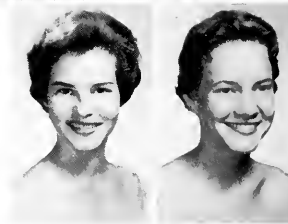
Elaine Smith
 Jo Allison Smith
 Lillian Smith
 Peggy Venable
 Bertha B. Walker
 Katherine White



Joyce Spivey
 Sandra Still
 Angelyn Stokes
 Jan Whitfield
 Anne Williams
 Carol Williams



Mary Stokes
 Ann Lee Sullivan
 Elizabeth Withers
 Ann Dudley Wood



NOT PICTURED: Sharon Atkins, Susan Hoagland, Bonnie Meyer, Lana Rae Mueller, Joyce Ann Townsend.



Bryce Burgess, Pres.; Sally Rodwell, V. Pres.; Kay Younger, Sec.-Treas.

FRESHMAN CLASS

THE TOWER OF MAIN seen from a distance . . . strange faces, suitcases and relief at being found by junior sponsor and sophomore helpers . . . registration and welcome parties . . . classes so far removed from high school . . . "In our hearts forever sheltered" . . . and second place in our first Black Cat song contest . . .

those first never-to-be-forgotten grades . . . '63 club . . . the Christmas caroling party . . . wintry rain and "King Lear" . . . and spring at last . . . the teas for faculty advisors, sponsors and helpers . . . a record dance and hot dog sale for campaign . . . fast round of picnics, exams, dates, and temporary goodbyes.



Mary Knox Abernethy
Nancy Abernethy
Sally Addison
Virginia Allen
Patricia Allen
Frances Anderson

Janice Anderson
Mary Mead Andrew
Jane Ayres
Angelina Bagiatis
Frances Bailey
Beth Barnett

FRESHMAN



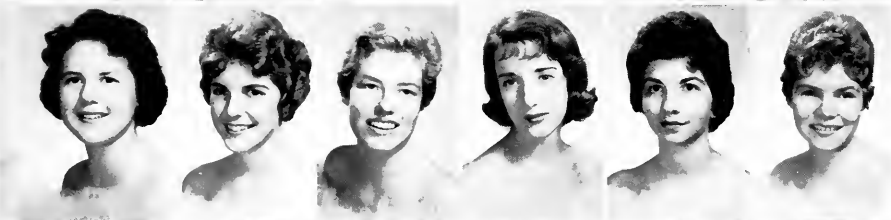
Willette Barnwell
Leewood Bates
Sally Bergstrom
Jacquelyn Binkley
Judith Brantley
Doris Bray



Barbara Brown
D'Etta Brown
Becky Bruce
Patricia Anne Bruening
Canty Bryan
Cornelia Anne Bryant



Bryce Burgess
Nancy Butcher
Lucie Callaway
Teresa Carrigan
Sandra Chandler
Martha Chew



Carolyn Coble
Lynne Cole
Mason Collier
Patricia Conrad
Rebecca Craig
Sandra Anne Creech



Lylla Crum
Judith Cruthirds
Sarah Stokes Cumming
Linda Davis
Patricia Davis
Ann Debele



Lynn Denton
Jane Dills
Dorothy Mary Doherty
Martha Leland Draper
Nancy Lee DuPuy
Nancy Malloy Duvall

CLASS

Jo Ann Eckardt
Susan Elam
Gloria Ellis
Kennette Farlowe
Leitia Faucette
Susan Favor



Mary Jane Fincher
Anna Belle Freeman
Carole Frye
Nancy Fulcher
Betty Ann Gatewood
Linda Gearreald



Nancy Ghesling
Jane Gilbertson
Sally Glenn
Lucy Gordon
Mary Ann Gregory
Christine Griffith



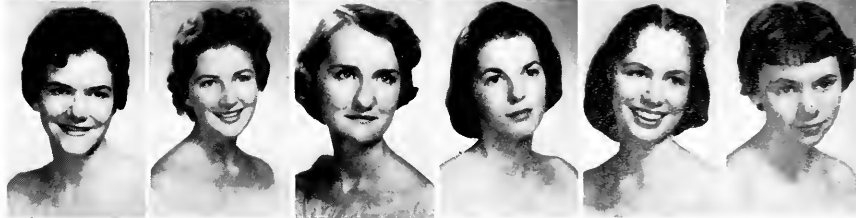
Jane Hancock
Sigrid Hanson
Karen Haralson
Ann Hardesty
Margaret Harms
Edith Harrison



Carolyn Hattox
Judith Hawley
Sue Heinrich
Carol Hickey
Jo Ann Hoyt
Lynn Hormell



Althea Hudson
Julie Ewing Hunt (Mrs.)
Mary Hunt
Jean Hunter
Elizabeth Hutcheson
Mary Ann Jennings



FRESHMAN



Sandra Ann Johnson
Ina Jones
Lelia Jones
Donna Kelleher
Shari Anne Kelly
Mary Jean Kinghorn



Margaret Kirby
Jane Lancaster
Irene Lavinder
Elizabeth Lee
Elizabeth Libby
Virginia Emeline Lindskog



Connie Judith Little
Ruth Georgina Loving
Patsy Lowe
Carolyn Lown
D'Nena Lowrance
Mary Hampton Lowry



Mary Ann Lusk
Leigh Maddox
Deal McArthur
Nancy McCoy
Page McGavock
Sue McKenzie



Margaret McKinley
Martha McKinnon
Valerie McLanahan
Patricia McLaurin
Betty McMullen
Gloria Mendenhall



Anne Miller
Dudley Milward
Kathryn Louise Mobley
Laura Ann Mobley
Lucy Morcock
Lynn Morley

CLASS

Merle Morrow
Martha Mossman
Julia Moye
Patty Omera Nickel
Susan Novotny
Patricia O'Brian



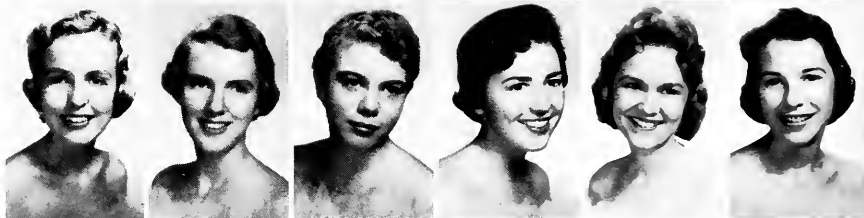
Katharine Almira Ogburn
Elizabeth Parsons
Nona Evans Pendleton
Linda Plemons
Doris Poliakoff
Carolyn Pollard



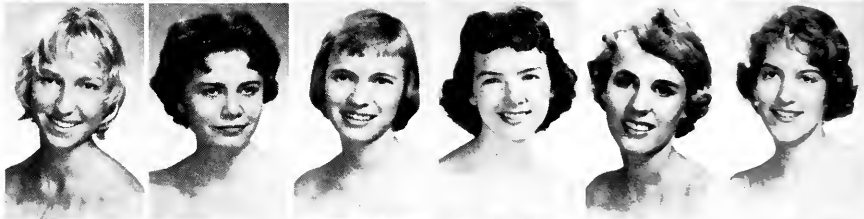
Ida Pound
Julia Lynn Prather
Mary Lucile Ranck
Rebecca Rau
Ann Risher
Katherine Robertson



Sally Rodwell
Nancy Rose
Miriam St. Clair
Aileen Samford
Ann Saylor
Betsy Schenck



Anneke Schepman
Colby Scott
Susan Sevier
Jane Rutledge Sharp
Lee Shepherd
Nancy Sheriff



Nancy Sibley
Ruth Simmons
Cottie Slade
Nancy Vann Smith
Suzanne Smith
Susan Smith



FRESHMAN CLASS



Sue Stacy
Kaye Stapleton
Coralee Ethel Still
Eugenia Stovall
Maxime Stubbs
Lydia Sudbury



Nell Tabor
Caroline Teague
Elizabeth Thomas
Mary Beth Thomas
Judith Thompson
Rosslyn Troth



Mary Troup
Cecilia Turnage
Margaret Vandeman
Edna Vass
Eloise Bronson Wade
Linda Wallace



Mary Ruth Walters
Louisa Walton
Lydia Wamnock
Mable Elizabeth Webb
Lucile Wehman
Nancy Kate Wilkins



Ann Williams
Julianne Williams
Lyne Williams
Linda Wilson
Miriam Wilson
Susan Winbigler



Cheryl Winegar
Elizabeth Withers
Jill Wolford
Jane Womack
Nancy Wren
Billie Wright

Not Pictured: Dorothy Laird



Mariane Wurst
Kay Younger
Louise Zimmerman

SPECIAL STUDENTS



Jerre Jones



Beth Rosshem

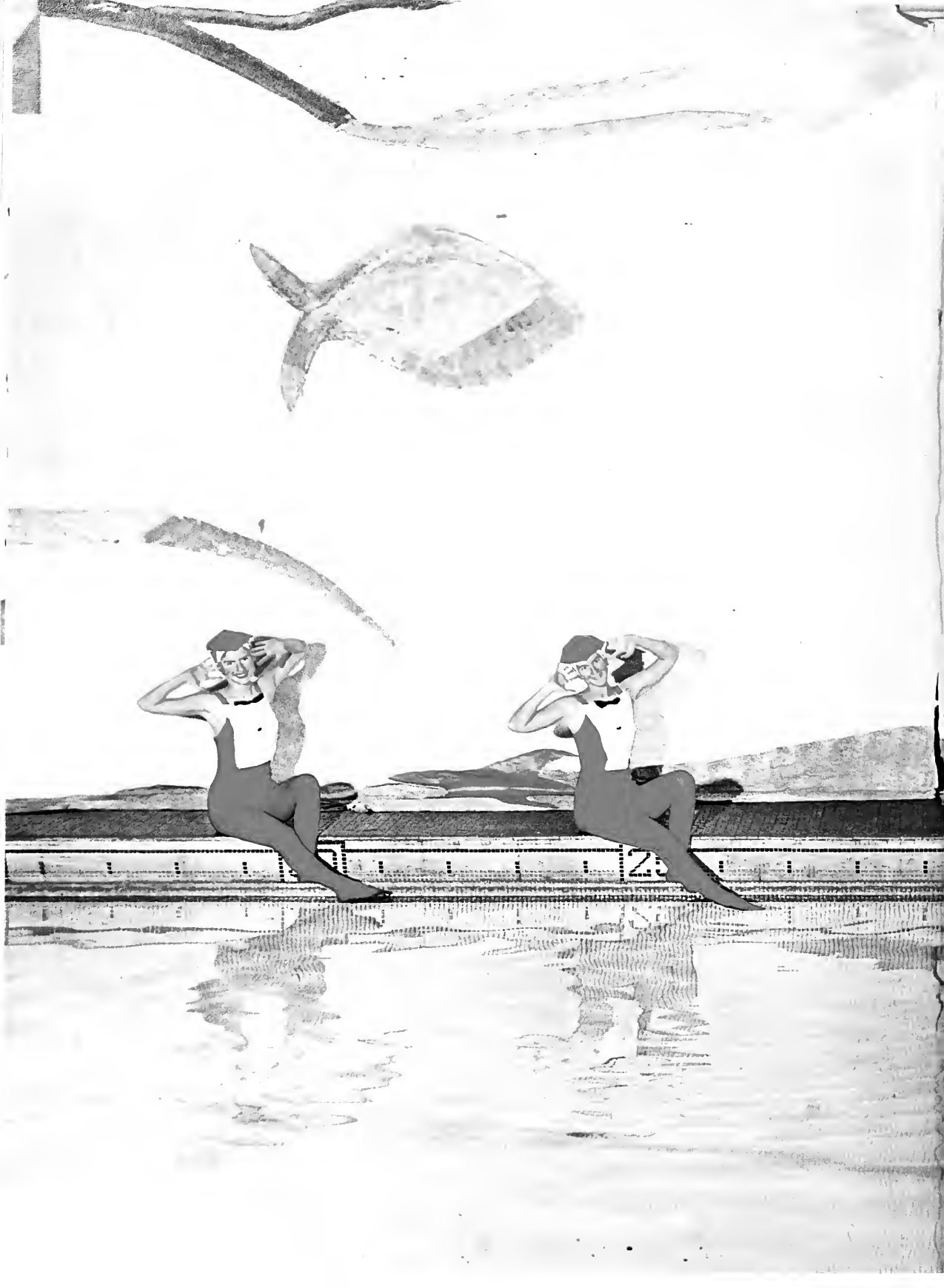


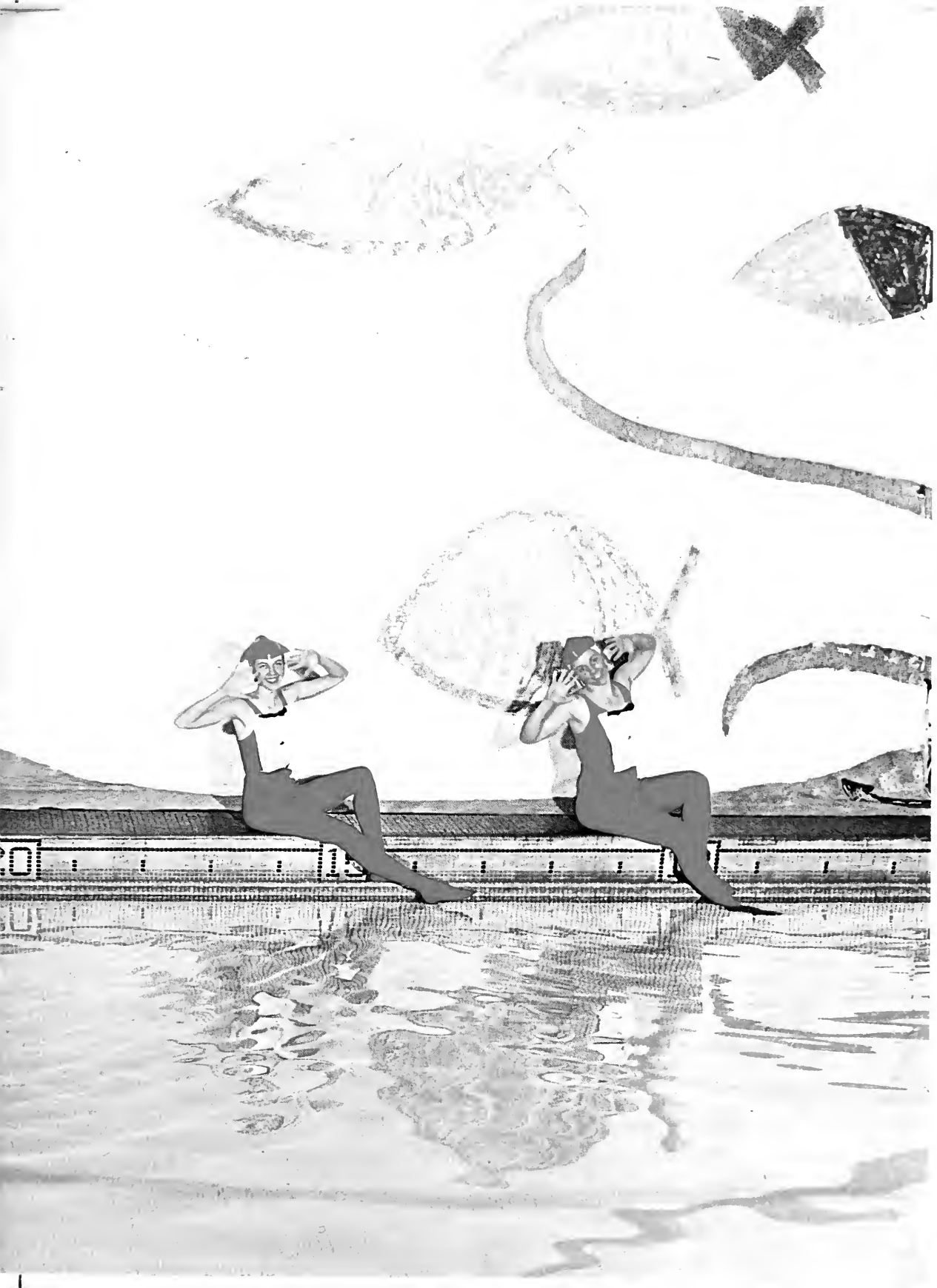
Lucy Yang

JUNIOR ABROAD



Alice Frazer





WINTER

The after-midnight hours we keep,
The rain, the tests, the papers due,
The way we look from lack of sleep,
And Jennie's due.

"Jack" and Robert Frost drop by;
Rain boots skid on icy walks,
Then biting air and steel gray sky
And snowballs fly.

Whispers, shuffling feet, and gong,
And lights and mist at ten o'clock
The Hub is filled with smoke and song
And bleary eyes.
But spirits soar
And dream of spring.

Contents

- Features:** Junior Jaunt . . . Sophomore
Parents Weekend . . . Winter
Lecturers . . . Beauties
- Organizations:** Four Boards . . . Publications
. . . Service Groups . . . Interest
Groups . . . Mortar Board
- Spirit:** Basketball Season . . Varsity
. . . Badminton . . . Fencing
. . . Tumbling







Undaunted, we braved the rain for our first off-campus dance at the Dinkler Plaza.



The Junior Class

Deal, Sue, Gloria and Mary Meade thought the joke quite amusing even if their dates didn't.

The faculty chaperones liven up the wee hours with a snappy bridge game.





SILVER BALLS, WHITE GLOVES AND SWIRLING CHIFFON MAKE THIS A REAL MIDWINTER NIGHT'S DREAM.

Sponsors Big Weekend with an Off-campus Dance

JUNIOR JAUNT . . . impressions of a midwinter night's dream: last minute preparations all day Saturday . . . double-dating to the Dinkler . . . rain and a new feeling . . . all the wonders of Atlanta at night . . . escorts with umbrellas . . . freedom, maybe . . . guardian angel at the door . . . lavender blue: tux and taffeta . . . satin, chiffon, chantilly . . . music and memories for tomorrow . . . cheesecake at Leb's . . . more rain . . . bridge-playing chaperones . . . Danish pastry at two . . . a sleepy ride home . . . lights on campus at three . . . dorm talk and pin-curls . . . a midwinter night's dream.

Each couple, like a snowflake, is perfect in itself, unlike any other, and yet somehow part of a whole.





CONVERSATIONS FLOURISH AS PARENTS MEET TEACHERS.



THE TRUE SCOTT SPIRIT, "JUST ONE MORE HAND," FILLS ANY FREE TIME.

Sophs Welcome Parents

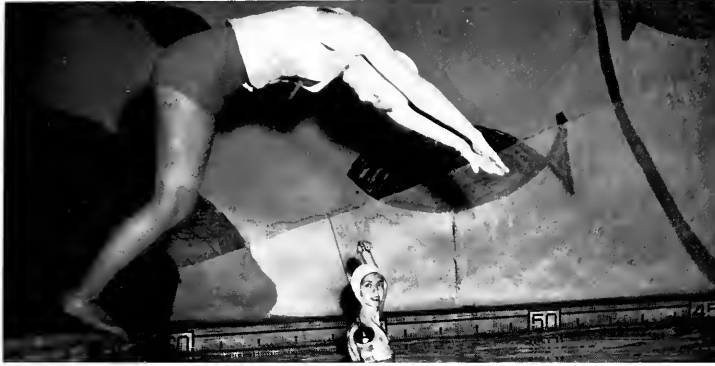
Eating and chatting form the major activities of the faculty reception before a campus sing.



SUE GREY, WITH HER PARENTS, VISITS THE ALSTON'S "AT HOME."



FATHERS LISTENED, QUESTIONED, AND SOMETIMES NAPPED IN CLASS!



Swordfish with gleaming foils fence in Dolphin Club's Symphony in Sea.

Back to College Life

SOPHOMORE PARENTS' WEEKEND . . . steering committee meetings . . . formal invitations . . . excited anticipation . . . cheery faces undampened by rainy Friday . . . coffee and name tags . . . dark suits and bright hats filling Buttrick . . . "Lost in the Stars" . . . the open door of faculty offices . . . friendly informality . . . whispered admiration of Robert Frost collection . . . the splash and glamorous precision of water ballet . . . daddys waiting patiently in reception room . . . introductions, art display, reception in Walters . . . a traditional thanksgiving service . . . college luncheon . . . dorm open houses, neat rooms and tired feet . . . then tea at the Alstons' home . . . trips to Lenox Square and dinner in Atlanta . . . proud parents and prouder daughters.



SOPHOMORE PARENTS FIND A "REAL" MERMAID IN ASC POOL.

An octopus surveys his kingdom inhabited by graceful fishes.





BELOVED ROBERT FROST RETURNS FOR HIS SEVENTEENTH "EVENING."



LOPEZ AND HISTORY MAJORS MIX TUNA FISH AND WORLD PROGRESS.

Religion, Art, Drama

WINTER LECTURERS . . . variety ranging through art, literature and poetry . . . LAMAR DODD . . . showing slides only an artist could take . . . dazzling colors and forms catching the spirit of Russia and the Far East . . . ROBERT LOPEZ . . . leading a seminar on "Medieval Change versus Modern Progress" . . . ROBERT FROST . . . quoting his own poetry . . . leaning across the podium to drop a sly bit of wit or wisdom . . . EVELYN DUVALL . . . family life consultant, considering problems with never-failing cheerfulness . . . B. DAVIE NAPIER . . . making Religious Emphasis Week a time of challenge . . . searching deeply in Hub discussions . . . THE CANADIAN PLAYERS . . . swinging with vigor through "The Taming of the Shrew" . . . conducting the Blackfriars' workshop on Shakespearean drama . . . PAUL ENGLE . . . considering modern poetry . . . criticizing poems from our campus . . . Mlle. GERMAINE BREE . . . describing with the insight of a friend "The Fictional World of Albert Camus."



Lamar Dodd and Mr. Warren share art criticism and concepts on a professional level.



HUB DISCUSSIONS OF RELIGIOUS EMPHASIS WEEK PROVE A REAL GIVE AND TAKE AFFAIR BETWEEN DR. NAPIER AND STUDENTS.

and Marriage Covered by Winter Lecture Program



EVELYN DUVALL GIVES CORKY A FEW POINTERS ABOUT MARRIAGE.



PAUL ENGLE TALKS TO NANCY BEFORE CRITICIZING POETRY.



A CANADIAN PLAYER EXPLAINS THE SET TO DRAMA ENTHUSIASTS FROM ATLANTA'S COLLEGES.



THE WORKSHOP AUDIENCE DIRECTS QUESTIONS TO A PANEL MEMBER.

Blackfriars Members Hold Drama Workshop for Campus

BLACKFRIARS WORKSHOP . . . the day the Canadian players came . . . an influx of bearded Sewanee men and Emory students . . . the films on the Globe Theatre and Shakespearean production . . . the explanation and tour of the set . . . rummaging through props and costumes . . . an informal reception where students met actors . . . a spontaneous panel discussion of audience questions . . . and finally, the climax—*The Taming of the Shrew*.

Anita Moses and June Hall are very inquisitive; Miss Cilley smiles her approval of the question.





SEVERAL BEAUTIES CHATTER AMONG THEMSELVES BEFORE THE TEA BEGINS.

Beauties Chosen by Class Vote and Atlanta Judges

AGNES SCOTT BEAUTIES carefully selected on basis of both class and expert opinion . . . nominations and elections in January of four candidates from each class . . . tea on February 13th . . . each girl judged in group and personal interviews by Mrs. Grace Smith, fashion coordinator for Regenstein's and Mr. Ivan Tucker, chairman of the Miss Atlanta contest . . . final eight beauties emerging as representative.



MRS. ALSTON GIVES SUELLEN A SMILE AND A CUP OF TEA.



BECKY WILSON IS BEING INTERVIEWED BY TWO JUDGES WHO MUST MAKE A DIFFICULT DECISION.



Silhouette Presents Jane Hancock, Beauty of 1960

JANE HANCOCK . . . freshman selected for beauty, personality, and unusual poise . . . coming, at eighteen, from Fort Worth, Texas . . . interests ranging from the piano and English to domestic hobbies of sewing and cooking . . . vice-president of '63 Club . . . modeling for Social Council's fashion show . . . a "Best Dressed" nominee . . . planning to teach in elementary school . . . schoolday or weekend, neat and dainty . . . and smiling.



THE FIRST OF AGNES SCOTT'S BEAUTIES POSES AT WINDOW OF DRUID HILLS COUNTRY CLUB.



Betty Hutcherson





Becky Wilson



Mary Ellen Barnes



Millie Mc Cravey





Beverly Kenton

Ana Maria Aviles





Becky Bruce







Basketball provides fun and competition.



OPEN HOUSE AT ALSTONS BRIGHTENS WINTRY SUNDAY NIGHTS.

With Winter Quarter Come Snow, Good Times, Honor

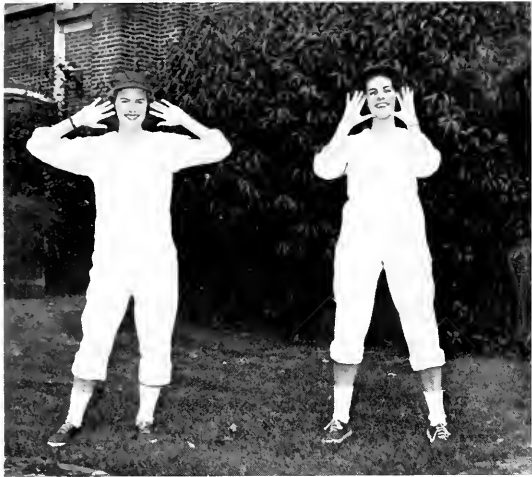
THE SPIRIT OF WINTER . . . rain, sleet, ice, and snow putting galoshes and umbrella to a real test . . . ice cream and new songs at the inter-dorm sing . . . dreamy music and lovely dresses found in a "Mid-winter Night's Dream" . . . a delightful evening with Robert Frost . . . *Tom Jones* and a crowded Walter's Basement . . . good food and good times at the Alstons' . . . Sophomore Parents Weekend . . . then a singing procession of Mortar Board members and their "surprise party in the library" . . . lots to do and so little time.



STUDENTS WATCH AS ANN AND PAULA SKILLFULLY TURN SNOW INTO A STATELY HORSE.



TRICIA IS TAPPED NEW MORTAR BOARD PRESIDENT.



SENIORS: Suzanne Hoskins and Mary Jane Pfaff



SOPHOMORES: Betsy Boatwright and Ann Lee

Class Cheerleaders Bring Out the Pep and Lung Power

CHEERLEADERS . . . perky yellow skirts . . . red and white casuals . . . ivy-league grey . . . navy . . . pompoms, parades, pennants, pepsongs . . . all the pep, all the spirit, all the love of Agnes Scott . . . clapping in time to class songs . . . leading Black Cat processions . . . supplying pins, favors, and cheers . . . helping to launch the campus campaign . . . throughout the year . . . supporting class activities . . . industry and versatility personified . . . always adding that extra bit for success.



Bewildered, Sylvia accepts sportsmanship cup for seniors.



FRESHMEN: Cheryl Winegar and Pat O'Brian



JUNIORS: Kay Gwaltney and Ann Broad



SENIORS—FIRST ROW: J. Law, S. Saxon, W. Muse. SECOND ROW: M. Goodrich, R. Leroy, B. Evans, B. Florance, N. Duvall.



JUNIORS—FIRST ROW: P. Sylvester, A. Boykin, N. Barr, K. Gwaltney. SECOND ROW: M. B. Elkins, S. H. High, N. Stone.



In games such as this some passes catch a "fella" off guard.

Class Spirit Abounds in Pep of Basketball Teams

BASKETBALL—Late afternoon grayness shattered by shouts and bouncing balls . . . repeated drills . . . balls bombarding the goal . . . exhaustion and red faces at the end of long practices . . . a sharp whistle . . . the toss from the center of the ring . . . teamwork and precision . . . up for the basket, a rebound, across the center-line, a basket.

A SPLIT SEASON . . . dorm teams integrating classes . . . Walters victorious . . . shifting of allegiance, class competition . . . unbeaten team, the seniors' pride . . . spirit trophy awarded for freshmen enthusiasm.



SOPHOMORES—FIRST ROW: L. Schow, V. Conner, G. McLemore. SECOND ROW: E. A. Evans, J. Nickelson, A. G. Hershberger, H. Glover.



FRESHMEN—FIRST ROW: N. Abernethy, A. B. Freeman. SECOND ROW: K. Mobley, W. Barnwell, N. Duvall.



BECKY EVANS



NANCY DUVAL



WILMA MUSE

Ten Top Players Make Up Varsity

February 12			
Seniors	23	Juniors	33
Sophomores	11	Freshmen	26

February 19			
Seniors	26	Freshmen	42
Juniors	14	Sophomores	31

February 26			
Seniors	41	Juniors	41
Freshmen	31	Sophomores	40



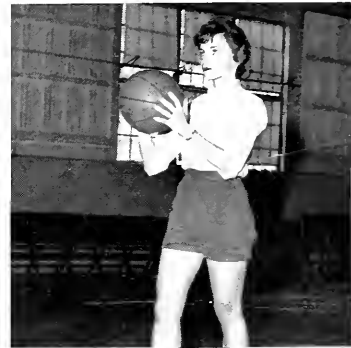
JANE NORMAN



ANN PEAGLER



BETSY DALTON



GENIE McLEMORE



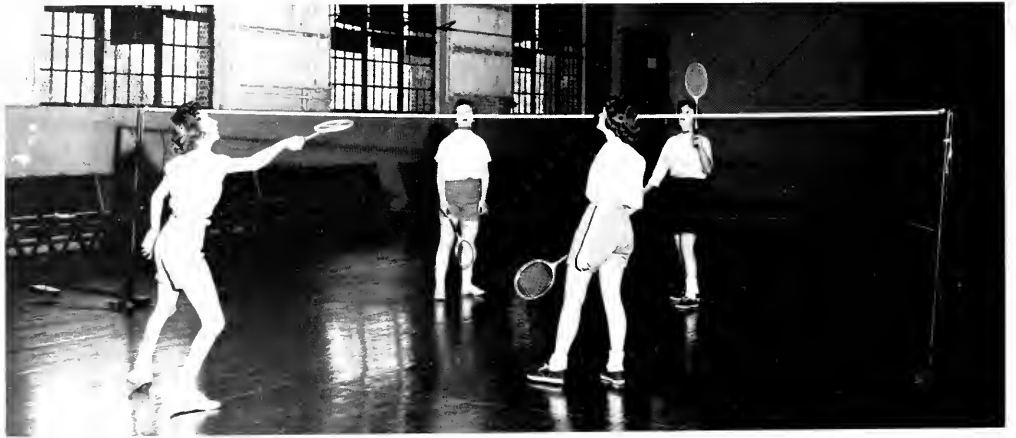
EMILY ANN EVANS



KAYE STAPLETON



NANCY ABERNETHY



FALLING BIRDIE CAPTURES ALL EYES AND TENSION MOUNTS DURING BADMINTON CLASS PLAY-OFF, A WINTER QUARTER ATTRACTION.



CAGED AND PADDED FOR SAFETY, KAKI AND BETTY FENCE IN EARNEST.

Winter Indoor Sports Keep Each Scottie on Her Toes

INDOOR SPORTS flourishing during winter months . . . taking refuge in the toasty gym on raw, windy afternoons . . . white shirts, tucked in . . . the squeaking of tennis shoes on a polished floor . . . the swish of badminton birdies . . . craning necks . . . fencing—a new experience for most students . . . “thrust, lunge, recover” . . . opportunities in tumbling to develop flexibility, balance, teamwork, and nerve . . . pyramids, somersaults . . . locker doors hanging . . . aching muscles.



Balance and strength mean “you’ve got it!”



Academics



WALLACE M. ALSTON
President

Dean Kline Integrates the Campus Academic Program

DEAN KLINE . . . the sudden grin . . . conferences about problems . . . the Kleenex box in his desk drawer . . . concern, insight, and comfort . . . the closeness of the philosophy majors . . . students gathered at his home for music, food, and talk . . . working out any student-faculty difficulties . . . attacking pile-up of sophomore work . . . producing apt illustrations in class . . . Beatrice, live-oak trees, and the "purple wall."

C. BENTON KLINE
Dean of Faculty



SOPHOMORE NELIA ADAMS CONSULTS DEAN KLINE, AT HIS PAPER-PILED DESK, ABOUT HER JUNIOR YEAR AT THE UNIVERSITY OF MUNICH.



CARRIE SCANDRETT
Dean of Students

PAPERS WAIT WHILE MISS SCANDRETT LISTENS TO A TALE OF WOE.





IONE MURPHY
Assistant Dean of Students



CHRISTINE C. DUNLAP
Assistant to the Dean of Students

Dean's Office Staff Aids Students In Regulating Social Activities



ELA B. CURRY
Assistant to the Dean of Students



MOLLIE MERRICK
Assistant to the Dean of Students



HARRIET H. TALMADGE
Assistant to the Dean
of Students



ANN RIVERS PAYNE
Assistant to the Dean
of Students



LILLIAN S. McCRACKEN
Assistant to the Dean
of Students

LAURA STEELE
Registrar and Director of Admissions



LOUISE HARLEY
*Assistant Registrar and Assistant
Director of Admissions*



Registrar and Admissions Staff Review Applications



ANNETTE TEAGUE
*Secretary to the Registrar
and Director of Admissions*



SALLIE L. GREENFIELD
Assistant in Admissions



EDNA G. BYERS
College Librarian



Anne M. Butler, Assistant to the Librarian; Ethelyn J. Roberts, Assistant to the Librarian; Katherine M. Swint, Catalog Librarian; Mary Carter, Assistant to the Librarian; Barbara Ann Oglesby, Assistant to the Librarian.



LILLIAN NEWMAN
Assistant Librarian



With sophomore papers comes solitary confinement.

Library and Alumnae Office Serve in Making Information Available



ANN W. JOHNSON
Director of Alumnae
Affairs



DOROTHY WEAKLEY
Assistant Director of
Alumnae Affairs



NANCY C. EDWARDS
Assistant Director of Public
Relations and Development



P. J. ROGERS
Business Manager

A Cheerful, Efficient Staff Keeps Administrative



J. C. TART
Treasurer



W. E. McNAIR
*Director of Public Relations
and Development*



HELEN R. TURNER
Secretary to the President



ANNE STAPLETON
*Secretary to the Dean of the Faculty
and the Director of Development*



MARIE S. LEWIS
Secretary to the Treasurer

Offices Running Smoothly



SUSANNE P. ESSAM
*Secretary in the Offices of the Registrar
and the President*



RUNITA M. GOODE
Manager of the Bookstore



MARY LOUISE DODSON
Secretary to the Business Manager



DR. ROSEMONDE S. PELTZ
College Physician



NANCY R. IVEY, ALICE B. BRAY, CYNTHIA M. PONDER
Resident Nurses

The Infirmary and Dining Hall Staffs Promote Campus Health



ETHEL J. HATFIELD
College Dietician



JOHANNA GERKE
Assistant to the Dietician



ANNE S. JOHNSON
Assistant Dietician



RUBY N. LANIER
Assistant to the Dietician



R. M. JONES, J. W. FOWLER, C. B. CLIFTON and A. G. MAYNARD, Campus Police

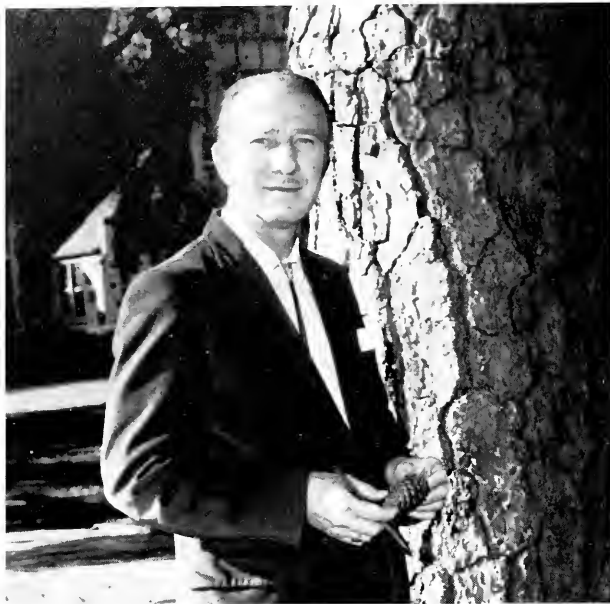
Maintenance Staff Keeps Order Around the Clock



ANNIE MAE SMITH, Supervisor of Dormitories
DOROTHY H. TURNER, Assistant to the Supervisor of Dormitories



C. DEXTER WHITE, College Engineer
W. B. WILKINSON, College Carpenter



FERDINAND WARREN
Professor of Art

ART . . . slide lectures on the historical development of art giving students genuine firsthand knowledge and appreciation of the works of the masters . . . Art 199 students sketching on the grass in the fall . . . tablets and charcoal . . . modern art and architecture, and interior design . . . "pot shop" lights burning way into the night . . . bowls, vases, and clay fingers . . . creation of the campaign mural.

Students Create and

PAULA ADDS FINAL TOUCHES TO HER "POT SHOP" CREATION.



ROBERT F. WESTERVELT
Assistant Professor



MARIE HUPER
Associate Professor

Appreciate Art and Music

Music . . . appreciation and practice . . . the history of opera to music education . . . opportunities for mastering organ technique . . . soprano scales and piano exercises drifting from Presser in the late afternoons . . . theory, harmony and counterpoint . . . courses in directing and playing church music . . . recitals given through the year by music faculty and majors.



MICHAEL McDOWELL
Professor of Music



JOHN L. ADAMS
Assistant Professor



TIMOTHY MILLER
Assistant Professor



RAYMOND MARTIN
Associate Professor



IRENE L. HARRIS
Instructor

LILLIAN R. GILBREATH
Instructor



ROXIE HAGOPIAN
Associate Professor

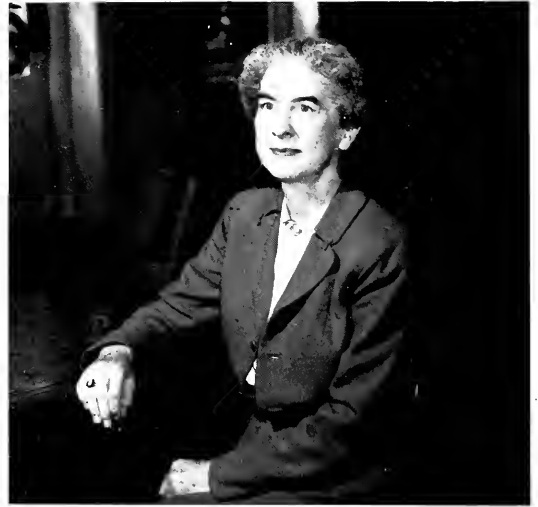


J. C. FULLER
Instructor





GEORGE P. HAYES
Professor of English



ELLEN DOUGLAS LEYBURN
Professor of English

English and Speech



ANNIE MAY CHRISTIE
Associate Professor

MARGARET G. TROTTER
Associate Professor



DR. HAYES FINDS ROOM FOR ANXIOUS SOPHOMORE IN BLACK BOOK.



JANEF N. PRESTON
Assistant Professor



MARY L. RION
Assistant Professor



MARGARET W. PEPPERDENE
Associate Professor



MERLE G. WALKER
Assistant Professor

Emphasize Clear Expression of Ideas



ROBERTA WINTER
Associate Professor of Speech and Dramatic Art



ELVENA M. GREEN
Assistant Professor

W. EDWARD McNAIR
Assistant Professor





MARGARET T. PHYTHIAN
Professor of French



MARY V. ALLEN
Associate Professor

French Classes Survey Literature of Varied Ages



MARGARET B. SEWELL
Instructor

FRENCH . . . irregular verbs and devilish adjectives that we always forget must agree . . . unpronounceable "R's" . . . Monsieur Thomas' drawings to illustrate the stories . . . also found shovelling snow off the sidewalk behind the library—"la neige . . . pouah!" . . . seminars on Camus by Miss Allen and Miss Clark . . . from Balzac to Proust with Chloe Steel . . . *Le Petit Prince* sparkling in Mrs. Sewell's eyes . . . a cozy French novel by the fireside at Miss Phythian's.



PIERRE THOMAS
Assistant Professor



FRANCES CLARK
Assistant Professor



CHLOE STEEL
Assistant Professor



FLORENE J. DUNSTAN
Associate Professor



MURIEL HARN
Professor of German and Spanish

German and Spanish Reveal New Cultural Patterns

GERMAN . . . excitement of learning new style of script and mastering strange sounds . . . dictation . . . compositions . . . tenderness of *Bambi* in the original.

SPANISH . . . bright, staccato speech . . . developing fluency and understanding power . . . great literary works revealing much about Spanish people and culture.



MARIA C. KANE
Instructor



ELOISE HERBERT
Assistant Professor



MELISSA A. CILLEY
Assistant Professor



WALLACE M. ALSTON
Professor of Philosophy



PAUL L. GARBER
Professor of Bible

In Bible and Philosophy, Students Search for Nature of God and Man

BIBLE . . . treading reverently through the lives of the Hebrews . . . maps and identification questions . . . applying teachings of Jesus to problems of mankind. PHILOSOPHY . . . students frowning, sighing hopelessly . . . thinking, from Plato to Whitehead . . . the nature of reality . . . essence and existence . . . cosmologies . . . ?



MARTHA JANE CAUVEL
Assistant Professor

KWAI SING CHANG
Associate Professor



C. BENTON KLINE
Assistant Professor



MARY L. BONEY
Associate Professor



M. KATHRYN GLICK
Professor of Classical Languages



AFTER THEIR STUDY, JUNIORS MAY FEEL AS OLD AS THESE RELICS.



Classics Delves into World of Greece and Rome

CLASSICS . . . investigation and insight into all areas of ancient life . . . stressing our heritage from the Greeks and Romans . . . dusty pottery, massive sculpture and architecture . . . literature that became the model for subsequent ages . . . hours whirled away in the reserve room reading from primary sources . . . and the scholars of Greek held in awe by all.



ELIZABETH G. ZENN
Associate Professor



MYRNA G. YOUNG
Assistant Professor



WALTER B. POSEY
Professor of History and Political Science



FLORENCE SMITH
Associate Professor



WILLIAM G. CORNELIUS
Associate Professor

History Lends Insight into the Problems of Complex World

HISTORY AND POLITICAL SCIENCE . . . different personalities revealing many phases of history . . . Mr. Swart presenting Russia from Peter to Mr. K. . . . Mr. Posey knowing *all* about American History . . . and Miss Smith outlining the French Revolution and Napoleon . . . Mr. Cornelius "democratically" teaching Political Parties . . .

diplomatic and gracious Mrs. Sims presenting International Relations . . . those Biographies quizzes . . . Walters Basement packed the night before 215 . . . Mr. Posey walking two miles through the snow to get to class on time . . . Mr. Swart panting "I reeked my life to get here" . . . that indomitable pioneer spirit.



Mrs. Sims makes her typical gracious response at A.A.U.W. tea in her honor.



CATHERINE S. SIMS
Professor of History and Political Science



KOENRAAD W. SWART
Associate Professor



PSYCHOLOGICAL TESTS REVEAL ALL KINDS OF SECRETS.

Psychology Students Learn Principles behind Behavior

PSYCHOLOGY . . . an introduction to principles of human behavior . . . maturation and development . . . socialization of the child . . . laboratory work with calculator and animals to illustrate and test theories . . . observation of child behavior . . . trip to the state mental hospital for students of abnormal reactions . . . hours spent poring through abstracts . . . opportunity to hear work of Southeastern Convention each spring.



GEORGE E. RICE
Professor of Psychology



KATHARINE T. OMWAKE
Associate Professor



MIRIAM K. DRUCKER
Associate Professor



JOSEPHINE BRIDGMAN
Professor of Biology



NANCY P. GROSECLOSE
Assistant Professor

Biology and Chemistry



MR. DOERP AND NANCY NELMS OBSERVE PROGRESS OF CORN.

BIOLOGY . . . Frogs and fruit flies . . . dicots and algae . . . evolution with Miss Bridgman . . . field trips to Grant Park and even Florida . . . Mr. Doerp spicing his lectures with jokes . . . Miss Salyerds' hamsters . . . colored beads in genetics lab . . . freshmen panicked over Mrs. Gray's lab practicals . . . or spending thirty minutes drawing air hubbles on their microscope slides . . . the apple pies Miss Groseclose bakes.



S. LEONARD DOERPINGHAUS
Assistant Professor



ANNE SALYERDS
Instructor



NETTA E. GRAY
Instructor



ELIZABETH A. CRIGLER
Associate Professor



MARY W. FOX
Instructor

Explore the Secrets of Life

CHEMISTRY . . . test tubes and nose-tingling aromas . . . cramming in Convocation . . . Dr. Frierson's dramatic tales of phosphorous . . . Bunsen burner attached to a water faucet . . . helpful hints from Mrs. Fox . . . red acid and blue base . . . true . . . false . . . those eternal "problems" of Quan . . . organic tests encompassing past, future, and unknown.



CHEMISTS NINA AND DOTTIE CREATE NEW DYES.



JULIA T. GARY
Assistant Professor



W. J. FRIERSON
Professor of Chemistry



MILDRED AND MISS RIPPY TACKLE DIFFERENTIAL EQUATION RIDDLE.

HENRY A. ROBINSON
Professor of Mathematics

Mathematics Gives Key to All Scientific Study

MATHEMATICS . . . exploring the concepts of Euclid and Descartes . . . a new course for advanced freshmen . . . the rigor of five-hour courses, a march through endless problems . . . blackboards covered with numbers . . . graphs and charts . . . the application of theories . . . "I've got it, I've got it!"

Dr. Rob's apt interpretations of love through mathematical equations, his service rendered to campus organizations by auditing their books . . . discussion questions faced by algebra students on Miss Ripy's tests . . . patient explanations by Miss Gaylord, her direction of student course selection.



SARA L. RIPPY
Assistant Professor



LESLIE J. GAYLORD
Assistant Professor

WEIGHTS AND BALANCES OFFER DELICATE PROBLEM TO JANE AND VALERIE.



WILLIAM A. CALDER
Professor of Physics and Astronomy

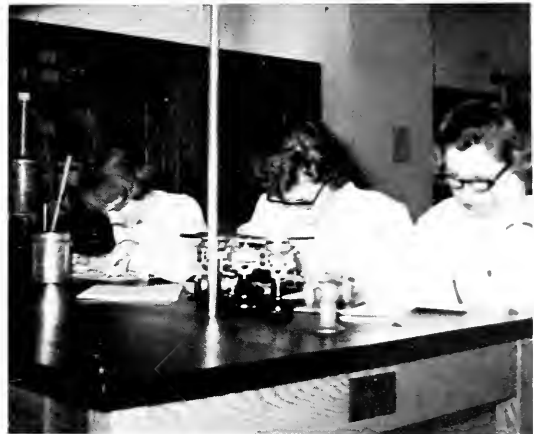
Physics and Astronomy Explore Physical World

PHYSICS AND ASTRONOMY . . . courses covering sound, light, and heat . . . electricity and magnetism . . . more advanced students even delving into the mysterious realm of atomic physics . . . the labs livened up by all sorts of strange and shocking experiments . . . weights and measures teaching students accuracy, sometimes the hard way . . .

mathematical calculations and infinitum . . . Dr. Calder grading tests with accompaniment of classical music . . . Stormy's soft padding through the halls . . . motorcycle and harp—illustrating principles of mechanics and sound? . . . eclipse party at 2 a.m. . . . Mr. Hudson's contagious enthusiasm for *work!*



HENDRIK R. HUDSON
Assistant Professor



I WONDER IF A SLIDE RULE WOULD HELP AT A TIME LIKE THIS.



HARRIETTE H. LAPP
Assistant Professor



LLEWELLYN WILBURN
Associate Professor of Physical Education

Physical Education Encourages Spirited Teamwork

PHYSICAL EDUCATION . . . lost locker keys and forgotten bathing caps . . . Miss Lapp's tunic and sandals and dancing eyes . . . beating feet on the gym floor . . . Mrs. Campbell to modern dance class. "Now lift up your bodies and show that they are beautiful" . . . and Miss McKemie's

convertible . . . shouts on the tennis court . . . "Now watch. The frog kick goes like this!" . . . Miss Manuel's hair never wet . . . Miss Wilburn's brilliant performance in Run, Rabbit, Run . . . swishing golf clubs and arrows . . . sunlight on the hockey field.



KATE MCKEMIE
Assistant Professor



NANCY M. CAMPBELL
Instructor



KATHRYN A. MANUEL
Assistant Professor



ELIZABETH C. STACK
Assistant Professor



MIRIAM HOWELL
Assistant Professor

Sociology and Education Confront Needs of Society

Not Pictured: Edward T. Ladd, Associate Professor
Richard L. Henderson, Professor of Education

EDUCATION . . . Dewey and James . . . teaching of reading . . . a thrill of being on the other side of the desk and grading papers—the practice teachers . . . sharing of experiences and ideas in afternoon seminars.

SOCIOLOGY . . . the structure of society . . . primary and secondary groups . . . race and regional problems . . . visits to federal penitentiary . . . films on India.



ANNA G. SMITH
Associate Professor

MILDRED MELL
Professor of Economics and Sociology



ECONOMICS STUDENTS HEAR DR. CARLSON'S SPECIALIZED VIEWS.







SPRING

It's spring—crushed wild onions tell
The news above a mower's roar,
And heavy sways the scented bell
Of apple tree.

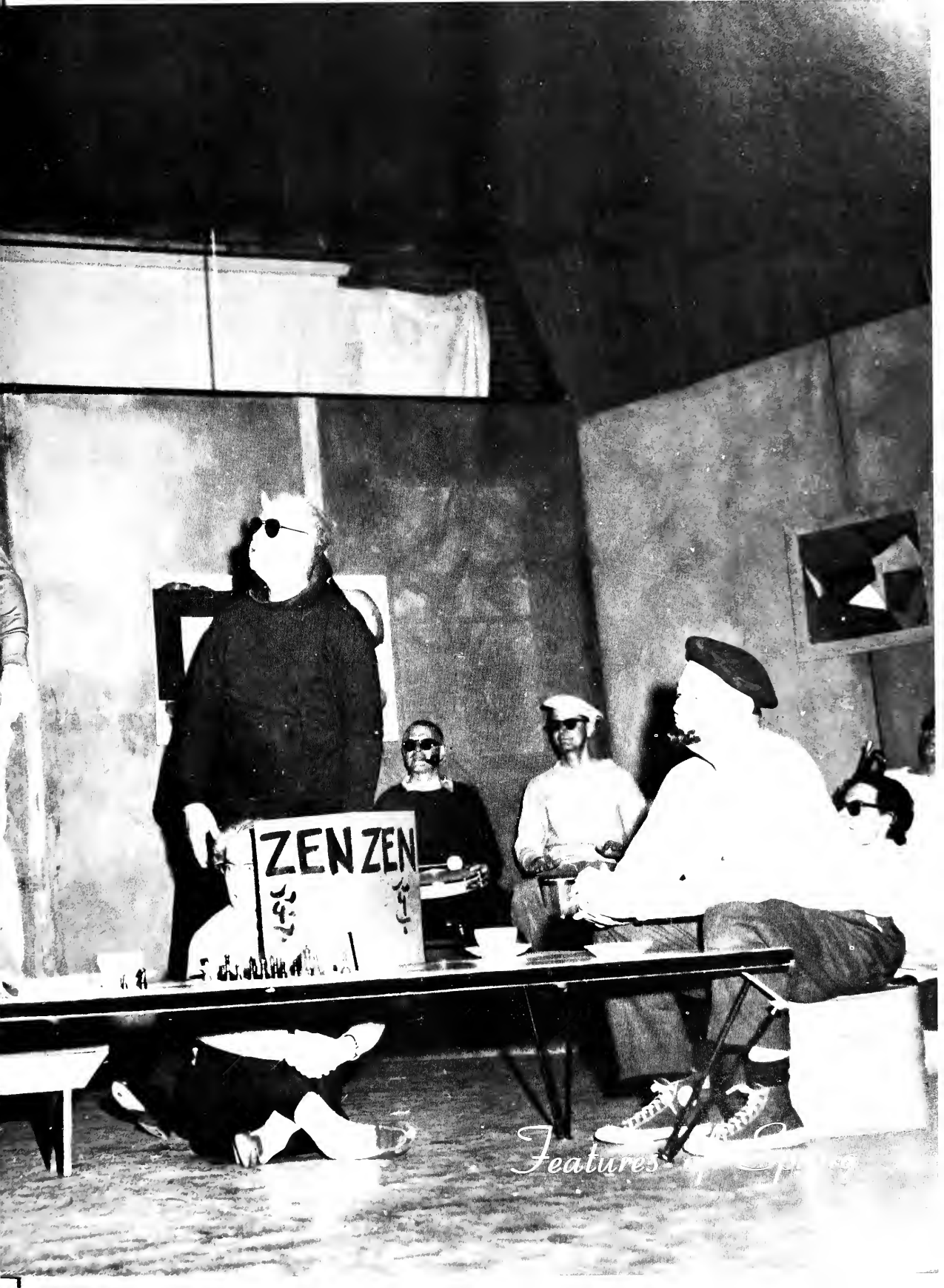
Come hail the sun on Inman's beach,
Or gaze into a dandelion:
Study fades beyond all reach
In golden glow.

A vesper world lies hushed in beauty;
Trailing gowns of a Grecian court
To Presser lead; and summer slowly
Comes from spring.
A daisy chain,
Black robes.

Contents

- Features: Faculty Revue . . . Glee Clubs
Concerts . . . Lecturers . . .
May Day Court and Production . . . Graduation . . . Vacations
- Spirit: Volleyball . . . Softball . . .
Golf . . . Riding . . . Archery
. . . Tennis
- Organizations: Four Boards . . . Publications
. . . Honoraries . . . Departmentals . . . Music Clubs





ZEN ZEN
ZEN ZEN

Features of Spring



EX-BIBLE TEACHER BUYS SOUL OF HARASSED ASC PROFESSOR.



GALLANT SWORD BEARERS AND "MAYBE" COURT PRESENT "MAYBE" QUEEN.

When Faculty Perform

WHAT THE DEVIL . . . Committees on writing . . . committees on casting . . . committees on staging . . . committees on committees . . . finally the fantabulous production . . . Cecil B. McNair . . . Mephistophanes, alias Garber . . . Mr. Foster's hectic, "typical" faculty household . . . touring Scotties on the moon with chaperone Gaylord . . . hula dancers from the D. O.'s sunny shores . . . Beatniks Alston and Hayes in dance exhibition . . . Zen devotee Leyburn proclaims "Ripeness is all" . . . \$850 for the campaign . . . The Devil to Pay!



Devil takes innocent professor for a ride to find the Sea of Tranquillity.



STRANGELY FAMILIAR FACES ARE ENTICING DISTRACTIONS AT EFFICIENT NAVAL BASE IN THE SOUTH PACIFIC.

There's the Devil to Pay in ASC Campaign



"WE LOVE OUR KITTENS. WE IMPORE YOU TO LET US KEEP THEM."



SAN FRANCISCO'S 660 AND A FIFTH CLUB IS HOPPING WAY OUT.

Dr. Waddington successfully competes with spring outside for attention of his audience.



SCIENCE FICTION COLORS PHILOSOPHIC TIME ANALYSIS.

Students and visiting lecturers find time after seminars for additional question and discussion.



British, Scotch and "Ivy" Scholars Conduct Seminars

SPRING LECTURERS . . . ranging from dramatics and music to biology and philosophy . . . Glynne Wyckham, quest of Blackfriars, thrilling drama enthusiasts with his knowledge and accent from Britain . . . the principles and application of the electron microscope to embryology explained by C. W. Waddington, noted Scottish zoologist . . . Donald Williams from the philosophy department at Harvard with fascinating topic, "Are you too late to attend the battle at Waterloo?" . . . "Augmented Seven" from Yale presenting popular music on a professional level . . . their records selling madly in the hub . . . syncopated bongos and guitars.



The boys sing passionately; the girls look on, thrilled.

Beautiful Song of Destiny Presented in April Concert

GLEE CLUB CONCERT with Brown University . . . directed by Miss Hagopian and Erich Kunzel . . . dinner dates beforehand for several lucky Scotties . . . tuxedos and white organdy on a lighted stage . . . serious music given by the whole ensemble to the accompaniment of brass quartet . . . religious music of Schubert and a Brahms folk song . . . "Go tell it on the mountain" and "Set down, servant" coming alive through resonant male voices . . . touch of humor with selections from "Porgy and Bess" . . . ensemble rocking with "Dem Bones" . . . an informal party for both groups and dates in Walters . . . relaxation . . . clusters around the piano . . . all the old favorites.



ANNE AND THE GROUP GATHER AT OLD PIANO AND NEW FACE.



The work and anticipation of many weeks is culminated in a lovely spring concert.



MAY COURT: Janice Bowman, Suellen Beverly, Hollis Smith, Millie McCravey, first attendant Becky Wilson, May Queen Mary Jane Pickens, Lucy Cole Fonts, Christy Hages, Ana Maria Aviles, Judy Houchins.



MARY JANE PICKENS REIGNS AS HIGH PRIESTESS OF DIONYSUS.

Grecian Festival to the Gods Presents May Court

PROLOGUE . . . a representation of the religious ceremonies which preceded the great drama festivals of ancient Greece . . . the lighting of a flaming altar to Dionysus in the May Day Dell . . . the appearance of Peter Swart clad in purple and gold . . . the queen's grape offering . . . eight priestesses with garlands . . . pastel gowns standing out in the twilight . . . worshipers in Grecian dress . . . interpretive dance . . . torchlight procession to the theatre.



BECKY WILSON ATTENDS QUEEN IN CEREMONIES OF PROLOGUE.



TWO JOLLY MEMBERS OF THE STAGE CREW DISPLAY TALENT.



SALLY LIVES AT SEWING MACHINE AS DEADLINE DRAWS NEAR.

Performers and Backstage Crew Begin Work Weeks Ahead

BEHIND THE SCENES of a production . . . the satisfying ring of hammer on hard wood . . . shaking legs on creaking, swaying ladders . . . a stream of directions from Miss Green and Page, mostly calm, occasionally frantic . . . hours spent at costume fittings . . . actors scattering to the four corners of Presser to work on lines . . . hands covered with make-up . . . directors, weary stage crew and half the cast prying up tacks and ripping canvas late Saturday night.



DANCERS ROLLICK ON THE GRASS WHILE PRACTICING FOR "ELECTRA."



Bedlam is the order of the day at one of first percussionist rehearsals.



Aegisthus attempts in vain to postpone his death at the hands of the enraged Orestes.

Blackfriars and Dancers Join to Stage "Electra"

SOPHOCLES "ELECTRA" . . . ancient Greece revived with percussion music, regal costumes, and dance . . . tragedy in triumph . . . the curse of the house of Atreus finding its end in devastation . . . Orestes, the exile returned, sword unsheathed to avenge his father's death . . . the tutor bearing a false tale of Orestes' death . . . Clytaemnestra, murderess yet mother still . . . Chrysothemis, the golden one, with reason her shield for fear . . . Aegisthus, the tyrant . . . the chorus of women of Mycenae fragmented . . . and Electra, alone, a hull of vengeance . . . staggering . . . nowhere to go except the cursed house . . . only the shadow of Apollo remaining, falling across on empty stage.

CHRYSOTHEMIS ENTERS WITH LIBATIONS.



CHORUS OF MYCENAEAN WOMEN GATHER AROUND TO CONSOLE STRICKEN ELECTRA





ELECTRA, BACKED UP BY THE CHORUS, VOWS HER LOYALTY TO DEAD FATHER.

ELECTRA RECEIVES BLESSING FROM FAITHFUL OLD TUTOR



SISTER FALLS AT BROTHER'S FEET IN HAPPY WORSHIP.



AEGISTHUS DRAWS BACK IN HORROR AS HE UNCOVERS CORPSE OF CLYTEMNESTRA.



A long line of anxious black-clad seniors are led by Miss Leyburn across quadrangle.



Rewards of Four Years' Effort and Service Are



"Fire burn and cauldron bubble"—majors gather around to commit four years' class notes and books to flames.

SENIORS TRIP AHEAD CAUTIOUSLY TO THE FAMILIAR STRAINS.



PROUD CLASS OF '62 BEARS HANDIWORK TO SATURDAY CLASS DAY.





LUMPS RISE IN THROATS AS DR. ALSTON ADDRESSES 1960 SENIORS FOR THE LAST TIME.



EACH GIRL'S JOY IS REFLECTED IN SPIRIT OF ALL.

Received by Class of 1960

GRADUATION WEEKEND . . . final togetherness and unity too precious . . . reviewing key moments of seniors' four years and the sharing of songs in the May Day Dell . . . sophomore sisters with daisy chain—product of 6 AM breakfast at the Grill and a morning in the country . . . an "S" on the grass . . . triumphant grins over books going up in smoke, awe-filled juniors kneeling to be capped . . . Baccalaureate service—worship, seeking guidance, depth . . . families reunited in love and pride . . . a tea . . . a late vigil in the Hub, slow singing, slow smiles . . . Graduation morning, a sline, a song, a challenge . . . uncertain chins, a mob, clusters . . . lasting ties, closing trunks, the beginning.

SENIORS CARRY TRADITIONAL DAISY CHAIN, GIFT FROM SOPHOMORE CLASS.



HOOD AND DIPLOMA SYMBOLIZE ACHIEVEMENTS.



HERE LIE THE REMAINS OF A THIRTY-MINUTE SPREE OF PACKING.



GINGER DOES LAST MINUTE MENDING ON CAMP CLOTHES.

Summer Fever Spreads to Every Corner on Campus



PEAGLER, PETE, AND NANCY MAKE GLORIOUS VACATION PLANS.

JUNE . . . that last exam . . . suitcases and trunks . . . the smell of mothballs . . . "But what can we do with the curtains?" . . . dreams coming true . . . white and lace, a summer wedding . . . ship's horn at Le Havre . . . campfires and young voices . . . lazy days at home, bridge, the swimming pool . . . seniors and their parents sharing cars with books and clothes . . . tears and good-bye's at the end of four years . . . a freshman's "See you in the fall" . . . vacations before new responsibilities.

THERE ARE OTHERS WHO SIT IN THE SUN MAKING OTHER PLANS.







Franie combines studies with the sun.



IT IS FOR THIS MOMENT THAT WE LIVE THROUGH THE WEEK.

Sun, Fun, and the Campaign Make Spirit Soar in the Spring

SPRING SPIRIT . . . dandelions, then the first green buds on the trees, and finally dogwood blossoms . . . Thursday chapels held on the sunny quadrangle . . . a real show of spirit in the packed hub on "slave sale" night . . . money sailing into cardboard boxes . . . books and blankets spread over the grass . . . a student under every tree . . . those Sunday afternoon rides through the country in a convertible . . . "Inman beach" covered with beauties, a portable radio playing softly . . . tans from Ida Cason's . . . sun glasses in the Hub and walks in the warm wind at sundown.



SLAVE PEPPERDENE AND AUCTIONEER MABRY SPICE CAMPAIGN SPIRIT.



REFRESHMENTS AND SINGING SPARK OUTDOOR STUDENT MEETINGS.



DECATUR'S WINDING STREETS AND A SUNNY DAY CALL FORTH CAREFREE SCOTTIES ENJOYING "TESTLESS," FIRST WEEK OF SPRING QUARTER.

Scotties Strive for the Spirit Cup and A.A. Sports Letters

CLASS SPIRIT CHAIRMEN . . . boosting class participation in intramural games . . . counting noses during Thursday chapel . . . pasting articles in scrapbooks and drawing huge banners enlivened by the smiling faces of Snoopy, Eloise, Flowers, and Alfred E . . . eagerly tabulating points for Spirit Cup . . . enthusiasm personified.

WEARERS OF LETTER . . . loyal members of class teams . . . archery and bike riding . . . graying tennis shoes and white socks . . . posting activities on chart in the gym . . . recognition for skill and interest.



WEARERS OF LETTER: First row: P. Sylvester, P. Walker, B. Dalton, N. Barr, N. Duvall. Second Row: L. Florance, S. Kelso, W. Muse, J. Norman, S. Saxon.



CLASS SPIRIT CHAIRMEN: Freshman, L. Callaway; Junior, N. Stone; Sophomore, B. Gillespie; Senior, W. Boatwright.



Juniors Capture Volleyball Crown; Frosh Place Second

GENIE DRILLS ON HIGH SET-UPS DURING A PRACTICE SESSION.



COORDINATION IS THE ANSWER FOR PEGGY AND THE FIRED-UP SOPHS.



"TIRED OLE SENIOR" CAN STILL FACE UP TO A HARD SERVE

Classes Unite in a Final Athletic Effort—Softball

VOLLEYBALL . . . spring and sprained fingers . . . eight girls functioning as one . . . set-ups for the front row . . . "rotate!" . . . watching base lines . . . serves aiming for the wide open spaces . . . balls in the rafters . . . fierce spikes surprising the opposition . . . safety warnings from Mrs. Lapp . . . fast-moving fluctuating score soon decided by the buzzer.

SOFTBALL . . . sunny days at four . . . mass practice the first day . . . bats and gloves . . . homers for everyone . . . getting into the swing . . . sore limbs, awkward plays . . . class practices . . . the meager makings of a team . . . third baseman playing short and second . . . improvised umpires . . . enthusiasm of class managers . . . growing optimism . . . the big games.



PEAGLER BEATS ALICE OFF THE BAT FOR HER TEAM AT JUNIOR PRACTICE.



Balance and strength mean "you've got it!"



MARCI LEADS THIS IMPRESSIVE PARADE OF SCOTT EQUESTRIENNES AROUND PRACTICE RING AT VOGT'S.

Spring Sun Calls Campus

RIDING . . . jodpher clad Scotties gathered each day in front of the gym . . . long hours of bouncing in barns before learning to post . . . Teresa's familiar shout, "Terrorrot!" . . . thrill of jumping for the very experienced . . . sunlight on beautiful trails . . . proud performers at a climaxing Horse Show.

"GREAT FORM, MARY JANE. WHERE'S THE HOLE IN ONE?"



GOLF . . . instruction one day a week by expert from a local country club . . . from practice balls to real ones, from hockey field to golf course with increasing skill.



RIDER PUTS EVERY MUSCLE AND HEARTBEAT IN "BIG MOMENT"—HER FIRST JUMP.



FRESHMAN BRYCE BURGESS DEMONSTRATES SERVING FORM.



BETSY DALTON WATCHES HER DOUBLES PARTNER RETURN THE BALL.

Out to Field and Court

TENNIS . . . the satisfaction behind a solid serve . . . and a well-placed return . . . the feel of hot asphalt under the tennis shoes . . . the sight of a ball sailing blithely over the fence . . .

ARCHERY . . . left eye closed . . . elbow up . . . Arthur's wheelbarrow and Mrs. Lapp's hat . . . the distant thud of an arrow that found its mark, the endless search for the one that didn't.



ARCHERY IS FOR ROBIN HOOD, WILLIAM TELL, AND MANY SCOTTIES.



AN ADVANCED ARCHER AIMS 'IN PREPARATION FOR A BULL'S EYE.



Campus invades gym for picnic kick-off.



SENIORS COME OUT OF FOG AND DON COAT HANGERS AT LUNCHEON.

Entire Campus Echoes "Give Me that Ole Campaign Spirit"

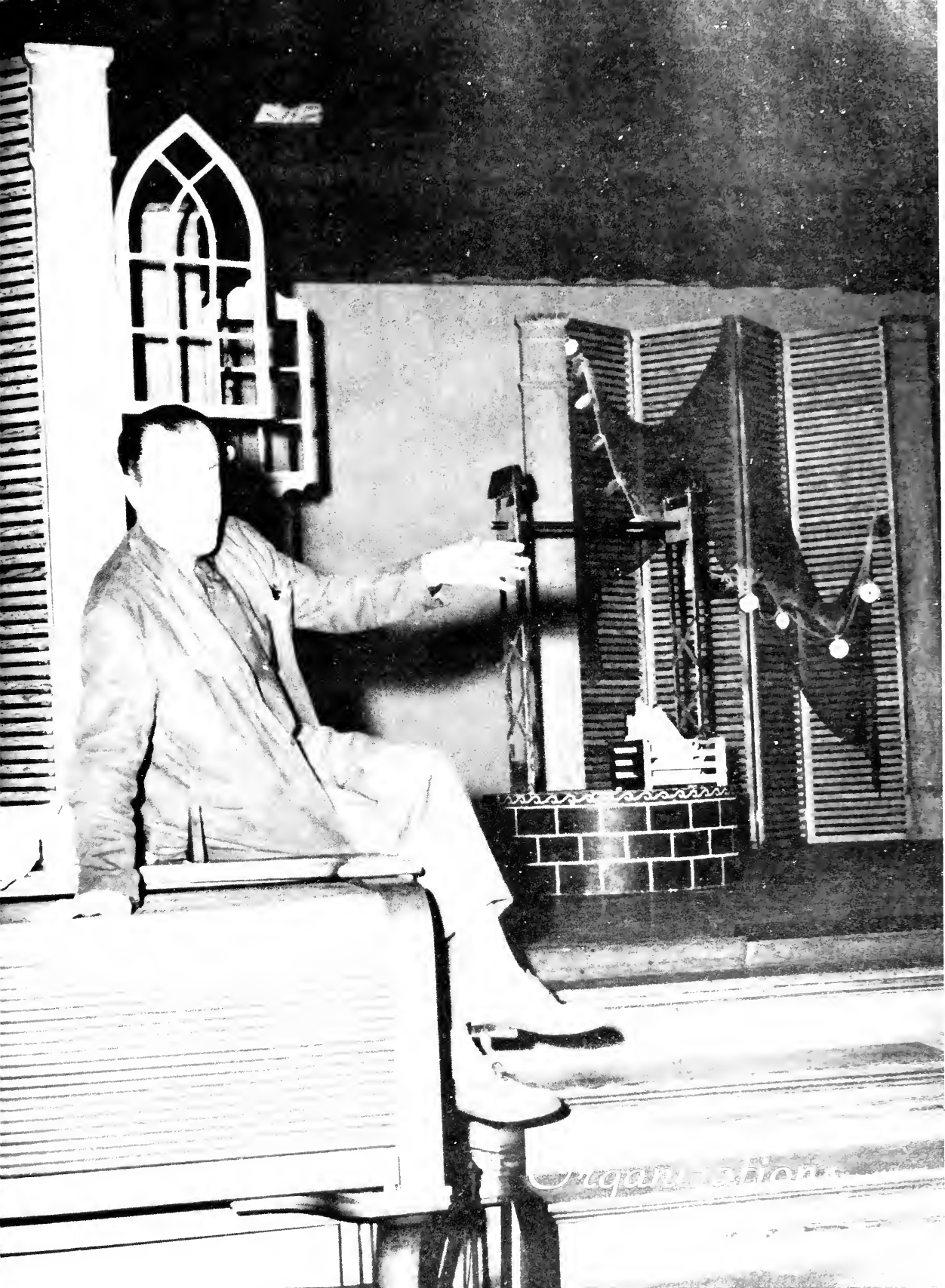
1960 CAMPUS CAMPAIGN . . . weeks of planning meetings . . . preliminary excitement among committee chairmen and solicitors . . . kick-off luncheon . . . the gym transformed by festive picnic spirit . . . faculty cutting capers with gusto . . . colored balloons . . . bent coat-hanger and peanut hats . . . the sophomores capped with newspapers . . . more balloons on the ceiling . . . a host of new songs . . . rocket food and fuel . . . the hush of expectancy as mixture of campus loyalty ignites the rocket . . . Suppressed Desires Day . . . smart, new sports clothes . . . singing everywhere . . . victory convocation for campus and sops . . . a genuine Holiday.



TWO GLEEFUL SCOTTIES TIE UP THE FACULTY ELEVATOR ON "S.D." DAY.



BRAVE STUDENTS PRESENT FACULTY QUIRKS IN CHAPEL.





FIRST ROW: V. Allen, A. McBride, P. Walker, E. Purdom, C. Mason, L. Scales, M. Moore, L. Morcock. SECOND ROW: H. Mabry, L. Jones, M. McCravey, J. Law, B. Dalton, D. Bates, D. Burns. THIRD ROW: S. H. High, J. Holloway, A. M. Aviles, H. Bagiatris, R. C. Hosack, P. Cox, S. Strupe.

Student Government Embodies Real Freedom and

STUDENT GOVERNMENT . . . freedom through responsibility . . . the strength that depends on each student and her own individual sense of honor . . . Honor Emphasis Week presenting our system to the new students . . . a time of re-evaluation and rededication for the old timers . . . flaws and weaknesses faced . . . stimulation of deep thought, hall discussions, and questioning . . . freedom of speech, debate, and assembly embodied in Thursday stu-

dent meetings . . . encouragement of student expression by means of open forum chapel or the newspaper . . . dissenting opinions welcome . . . radicals admired . . . Exec meetings always open to student body . . . special invitation to one hall each Monday night . . . new late time limit . . . earlier single-dating privilege for freshmen than ever before . . . white, typed envelopes in the mail box Tuesday morning.



A FRESHMAN MAKES HER HONOR PLEDGE IN CHAPEL.

OFFICERS: Seated: Eve Purdom, Pres.; Patricia Walker, Treas.; Carolyn Mason, V. Pres.; Standing: Ann McBride, Recorder; Lucy Scales, Sec.



REPRESENTATIVE COUNCIL:
 FIRST ROW: N. Duvall, C. Mason, E. Purdom, M. J. Pickens, C. West. SECOND ROW: M. Reitz, D. Burns, M. H. Richardson, J. Law, M. Glasure, P. Walker, C. Brown. THIRD ROW: C. Feagin, M. P. Cross, L. Scales, H. Bagtiris, B. Lewis, B. Burgess.



Responsibility for All



STUDENT MEETING ON ELECTION PROSPECTS IS PAINLESS LEARNING.

Solemnity and awe are the predominant emotions during installation of Exec.



FIRST ROW: S. Johnson, F. Anderson, A. Rose, J. Welch, D. Burns, Chm.; M. Culclasure, J. Seay, M. Forston, J. Powell. SECOND ROW: L. Grant, B. Hopkins, M. Crook, K. Kemp, E. McLain, P. Nichel, C. Goodwin, M. B. Elkins, B. Kenton, A. Williams. THIRD ROW: S. Bergstrom, B. A. Gatewood, M. Eve, M. A. Shugart, G. McLemore, E. Whithers, B. Schenck, T. Carrigan, C. Pickens.





'63 Cub Officers: J. Hancock, V.-Pres.; F. Baily, Pres.; A. Freeman, Project Chm.; A. Miller, Pub. Chm.; B. Hutchenson, Treas.; M. A. Gregory, Sec.

Cabinet—SEATED: J. Flowers, M. J. Pickens, L. Hart, J. Bowman, STANDING: N. Marable, C. Bowen, M. Culpepper, J. Medearis, F. Bailey, J. Day, A. Russell, N. Batson, S. Amidon, K. Gwaltney.



C. A. Officers: M. J. Pickens, Pres.; L. Hart, V.-Pres.; N. Marable, Treas. Not pictured: J. Bowman, Fr. Adviser; Nancy Batson, Sec.

C. A. Serves Spiritual

CHRISTIAN ASSOCIATION . . . "believing that Christianity is vital to all phases of life" . . . students of all denominations working together . . . "to understand the will of God for our lives through worship, study, and action" . . . examining Biblical Faith and Human Existence with B. Davie Napier during Religious Emphasis Week . . . questioning in Hub discussions . . . singing at vespers . . . praying together in hall devotions.





SEATED:
 C. A. SERVICE COUNCIL:
 P. Gainer, L. Hart, F. Gaines,
 R. Leroy. STANDING: J. Nabors, H. Cox,
 A. Pollard, E. Marks, A. Cochrane,
 C. Benbow, S. Pruitt, D. Sanders,
 J. Jarrell. Not pictured:
 K. Chambers, A. Stckes.

Needs of Whole Campus

VESPERS IN THE BEAUTY OF NATURE CLOSE A DAY ON FALL RETREAT.



KAY READS TO CHILDREN AT THE METHODIST CHILDREN'S HOME.



LYDIA CHATS WITH DR. PHILLIPS AT THE "MEET THE MINISTERS TEA."





A. A. BOARD, FIRST ROW: L. Florence, N. Duvall, A. Broad. SECOND ROW: A. Hutchinson, B. Boatright, C. Askew, P. Sylvester, J. Imray, P. Mitchell, N. Hall. THIRD ROW: S. Kelso, E. Withers, J. Norman, S. Saxon, J. McQuilkin, L. Jones. Not pictured: H. Petkas, N. Stone.



A Scottie recaptures a touch of summer fun as she practices strokes and prepares for class competition in swimming meet.

Athletic Association Promotes

ATHLETIC ASSOCIATION . . . throughout the changing seasons . . . unchanging results: recreational opportunities . . . for friendship, for fun . . . for a change of pace . . . fall projects . . . orientating freshmen . . . going rustic at the cabin . . . cider and doughnuts . . . our own Dr. Posey's guide to greater Atlanta . . . blazers and bonfires . . . rained-out hockey games . . . jazz filling the air around the Hub on certain Saturdays . . . Duvy, Boo, Ann, and Pam at the helm . . . Hutch's posters all over campus . . . the smell of new sweat shirts . . . so the score goes up another notch . . . a welcome oasis in dreary winter schedules . . . class and dorm basketball . . . the gym at

OFFICERS: Pamela Sylvester, Treas.; Louise Florence, V. Pres.; Nancy Duvall, Pres.; Anne Broad, Sec.





AFTER MEETING AT THE CABIN, A. A. BOARD MEMBERS GET DOWN TO BUSINESS.



FREE SWIM HOURS PROVIDE TIME TO PERFECT SKILLS.

Spirit and Sportsmanship

five . . . a plate of oranges . . . sun through the windows . . . rain through the roof . . . from ice skating at Belvedere to ice skating on the walks . . . Dolphins in a symphony at sea . . . badminton tournament . . . And spring . . . spend-the-night parties at the cabin . . . instant coffee, instant bridge, instant papers . . . bicycling through Decatur . . . Slave sale for the campaign . . . volleyball, softball . . . Thursday afternoon archery . . . tennis practices and matches . . . teeing off at Avondale . . . and a community picnic . . . riding show at Vogt's . . . a certain warmth, a certain way . . . "A rooty tooty-tooty, A.A. is all right—"



"When the leaves turn red in the fall," A. A. sponsors a pep rally to herald the hockey season and boost campus spirit.

THE HOCKEY SEASON KEEPS A. A. BUSY KINDLING STUDENT PARTICIPATION AND SPORTSMANSHIP.





COUNCIL: Row 1: D. Snead, J. Duncan, S. Abernathy, B. Gershen, P. Holmes. Row 2: B. Lewis, M. Wilson, J. Heard. Not pictured: A. Hall, V. Thomas, B. Wilson.

OFFICERS: from left to right: Mary Wayne Crymes, Treas.; Susan Abernathy, Sec.; Betty Lewis, Pres.; Bonnie Gershen, V. Pres.



Social Council Stresses

SOCIAL COUNCIL . . . the newest, fastest growing of the four major organizations . . . with the ever present goal of social development . . . coordinating campus social activities . . . providing for social needs . . . a retreat in the fall to plan for the year's events . . . a fashion show for freshmen during orientation . . . faculty reception . . . the Dek-day contest encouraging early, tasteful shopping . . . Monday night meetings of officers and class representatives . . . planning and carrying out duties concerning the Hub, publicity, dances, and social standards and calendar events

"S. E." WEEK FINDS BOO AND BETTY EYEING INVITATIONS EAGERLY.





JOANNA, WITH LUNCH BASKET BAG, HAS THE PLAID CASUAL LOOK.

More Well-Rounded Living

committees . . . Saturday night movies . . . presentation with A.A. of Fall Frolics Weekend . . . responsibility for campus dress policy . . . choosing of Glamour Best Dressed candidate . . . something new, "Social Emphasis Week!" . . . Good Grooming Day with male faculty members discussing Agnes Scott dress and behavior . . . Etiquette and Personal Relations Day . . . Hostess Day with tips on entertaining and the choice of silver and china . . . all to develop "the gracious woman."



KAY ROBERTSON AND DATE MAKE MOST OF FALL FROLICS RHYTHM.

GERMAINE SHOWS OFF HER BLACK TAFFETA PARTY WEAR STUNNINGLY.



WISTFUL LOOKS ARE IN ORDER AS LINDA MODELS OPERA FINERY.





LAYOUT STAFF: Row 1: M. J. Pfaff, E. McLain, L. Nichols, J. Maddox, N. Barr, J. Hall, Row 2: J. A. Smith, M. Barry, P. Holmes, A. Alford, L. Gilbert, M. Bullock, B. Mordecai, S. Grey, S. Alexander, A. Stokes, F. Winn, A. Modlin, K. Gilliland. Not pictured: N. Nelms, J. Whitfield, S. Blomquist, M. Roberts, M. Lipham, J. Heinz, B. Ford, M. Collins, M. Thomas, P. Baber, J. Roden, B. Hanna, B. Murphy, M. Boswell, A. Hershberger.

Carolyn West, Editor



Silhouette Staff Works

SILHOUETTE . . . ideas conceived in the spring that crystallize during the summer months . . . editor and managing editor presenting plans at the fall retreat . . . special excitement over theme, dedication, and beauties . . . Monday night staff meetings . . . those creaking black rocking chairs, smoke, overflowing ash trays, boxes of curled up pictures, and carbon paper . . . paper, pencil, and thesaurus of the copy writers . . . a patient and

Edith Towers, Class Editor; Becky Evans, Sports Editor.





BUSINESS STAFF: Martha Lambeth, Lucy Benton, Lillian Smith, Betty Sue Wyatt. Not pictured: Patsy Luther.



Page Smith, Feature Editor; Janie Matthews, Organizations Editor.

To Capture Essence of 1960

persistent photographer . . . pictures and rulers, the layout staff . . . long afternoons spent selling ads . . . twenty-five "no's" to one "yes" . . . striving to equal last year's All-American book . . . deadlines, a futile ideal . . . that last page of typing . . . exchanging ideas and books with other colleges . . . N.C.P.A. convention in New York . . . heavy boxes, a little gasp, the 1960 *Silhouette* . . . the story of Agnes Scott College.

Nain Stieglitz, Business Manager; Martha Starrett, Copy Editor; Caroline Goodwin, Photography Editor.



Mary Crook, Productions Staff; Margaret Goodrich, Managing Editor.

Kay Richards, Art Editor; Grace Mangum, Faculty Editor.





STAFF: S. LeBron, N. Barr, F. Johns, L. Lambert, M. Campbell, A. M. Aviles, N. Barrett, P. Rogers, E. Oglesby, M. Love, E. Middlebrooks, H. Everett, S. Mustoe, L. Schow, L. Lentz, N. Archer. Not pictured: G. Carter, C. Conner, S. Blomquist, P. Williams, N. Hughes, A. Avant.



Corky Feagin, Editor

News Staff Keeps Campus

AGNES SCOTT NEWS STAFF . . . dedicated to keeping the campus informed, expressing student opinions, gripes, and questions, and hair-pulling . . . journalism by hook or crook but always with amazingly accurate and thought-provoking results . . . twenty-eight issues put out by thirty "Trojan" staff members . . . special campaign issue to spark campus effort with full-page drawings of new buildings . . . Corky's regular Tuesday meeting with Dr. Alston before planning assignment list . . . reporters given four days to do the stories . . . copy baskets crammed at noon Saturday . . . Sunday afternoon and night given over to "scrabble" as Lisa

EDITORS: Florence Gaines, Asst. Ed.; Mary Jane Moore, Asst. Ed.; Sara Anne Carey, Managing Ed.; Jackie Day, Asst.; Lisa Ambrose, Copy Ed.; Ann Parker, Entertainment; Sylvia Saxon, Sports Ed.; Marci Tobey, Internat'l Ed.; Margaret Havron. Not pictured: Esther Thomas.





SARA ANNE AND CORKY LOOK BEYOND FRENZY OF DEADLINES TO THEIR "LAST" ISSUE.



WALKING THESAURUS, LISA, IS STILL SMILING.

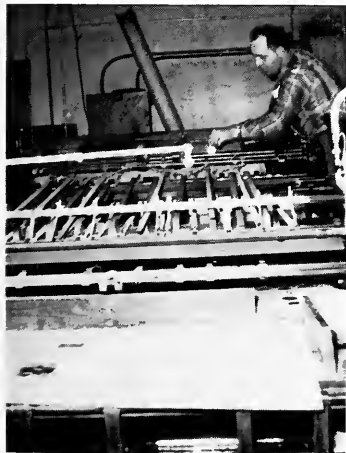
REPORTERS' STORIES GIVEN "THIRD DEGREE" BY ASSOCIATE EDITORS.



Informed and Concerned

and Corky check facts, write sub-heads, and throw together last minute stories . . . sometimes resorting to the motto "all the news that fits we print" . . . Corky's brisk sunrise walk to the printers' Monday morning . . . 5 p.m. to ? spent checking galleys and writing headlines . . . agony for Nell and Ann of chasing down subjects for pictures to fill those holes . . . hours on the phone getting ads . . . end result transferred from the press roll to mail boxes . . . sending delegates to New York journalism conferences . . . the smell of news print, complete coverage of campus life, world affairs, pins and rings . . . frenzy.

WHILE THE STAFF RESTS AN ELF IS BUSY.



THE EXCHANGE "INDUSTRY" TAKES OVER.



"WE COULD MAKE ANY MENIAL TASK FUN!"





OFFICERS: Nain Stieglitz, Pres.; Hope Gregg, V. Pres.; Helen Linton, Librarian; Annette Smith, Librarian; Cornelia Brown, Sec.; Jane Nabors, Treas.; Emily Pancake, Chapel Sec.; Nancy Barr, Librarian. Not pictured: Jackie Day, Thelma Jenkins, Sylvia Pruitt.

Glee Club Gives Christmas and Spring Concerts

GLEE CLUB . . . late suppers on Monday and Thursday . . . a long room in the basement of Presser . . . librarians busily filling chairs with music . . . achieving proper balance between parts . . . a sock being knitted on the back row . . . joyous voices blending in Christmas rehearsals . . .

robes and hymns followed by annual campus community party . . . prayerful responses in chapel . . . Sophomore members singing at thanksgiving service for their parents . . . preparing for April visit of Brown University . . . dark suits and pastel dresses.

MEMBERS: Miss Hageopian, N. Stieglitz, A. Thomas, S. Hanson, H. Gregg, J. Day, N. Johnston, J. McNairy, P. Cox, H. Cox, J. Nabors, C. Turnage, R. Troth, A. Eyer, D. Brown, J. Fincher, B. Lockhart, H. Linton, D. Sanders, N. Barr, M. Ware, H. Glover, L. Schow, A. Pollard, J. Medearis, L. Lentz, M. Campbell, E. Smith, T. Jenkins, C. Brown, E. Pancake, V. Johnson, B. Meyer, M. Boswell, S. Rodwell, J. Lewis, A. Cobb, M. J. Clerk, F. Bailey, M. E. Barnes, A. Samford, W. Barnwell, C. J. Buchanan, E. Vass, M. Braswell, C. Hickey, M. St. Clair, M. J. Pickens, L. Benton, P. Page, J. Ayers, D. McMillan, N. Tabor, S. Smith, T. E. Thomas, D. Bray, L. Lindskog, M. J. Kinghorn. Not pictured: K. Harelson, N. DuPuy, J. A. Smith, Pianist, P. Bruning.





SALLY HOWARD VISITS MME. PANDIT WALTERS "SUITE."



DR. ALSTON GIVES HIS "WARM-ASC-WELCOME-TO-THE-VISITING-LECTURERS."

Lecture Association Presents Stimulating Series

LECTURE ASSOCIATION . . . bringing outstanding speakers to the campus . . . presenting Robert Frost's traditional delightful visit . . . sponsoring Madame Pandit's poignant analysis of East and West . . . bringing the Canadian Players with *Taming of the Shrew* . . . student and faculty committees working together . . . led for eight

years by Miss Mell . . . respecting the voice of the student body . . . guided by the regular opinion poll . . . supported through the student budget . . . publicizing events . . . ushering and planning receptions for contact between students and visitors . . . contributing stimulating entertainment to the community.

MEMBERS: Seated: N. Tabor, M. P. Cross, Chmn.; B. Lutz. Standing: M. Love, S. Blomquist, S. Pruitt, A. Morris, Treas.; M. Van Deman, M. Lambeth.





MEMBERS: FIRST ROW: N. Adams, E. Middlebrooks, L. Benton, G. Lemmond, M. Fortson, E. McLain, A. L. Sullivan, C. Brown. SECOND ROW: M. E. Barnes, J. Scruggs, A. Wood, R. Shepherd, M. J. Moore, B. S. Wyatt, V. Johnson, S. LeBron, L. Lentz, J. Praytor, L. Scales. THIRD ROW: L. Smith, H. Linton, C. Bowen, D. Foster, C. Johnson, A. Ashford, J. A. Smith, W. Boatwright, M. Dotson, J. Maddox.



SEATED: Suellen Beverly, V. Pres.; Diane Snead, Pres.; Janice Powell, Treas.;
STANDING: Brock Hanna, Sec.

Blackfriars Presents

BLACKFRIARS . . . long practices, tired voices drifting across empty seats . . . make-up, costumes, and scenery . . . spotlights and dress rehearsal . . . new technical director, Miss Green . . . new ideas and a helping hand . . . "The Heiress" . . . a falling curtain and burst of applause . . . members ushering for plays at the Tower theatre in Atlanta . . . a showing of the "Oresteia" . . . special winter quarter projects . . . revision of the constitution . . . taking inventory among dusty boxes, piled up platforms, step units, flats.



EXECUTIVE STAFF: P. Smith, B. Hanna, D. Snead, S. Beverly, J. Powell, S. Cuning, M. Havron, M. McCravey, A. Parker, C. Hind, M. Starrett, B. Mitchell, L. Dwen, A. Boykin, P. Sylvester, C. Goodwin.



SHAKESPEAREAN WORKSHOP DRAWS CROWD OF EAGER ONLOOKERS.



A TOUCH OF SADNESS ADDS TO THE SUSPENSE OF "THE HEIRESS."

Play, Sponsors Workshop

nineteenth century mirrors, and fading canvases . . . opportunity provided for members to attend Bishops' Company plays at Atlanta churches . . . sponsoring the Shakespearean workshop with Lecture Association . . . talking with bearded cast, inspecting Elizabethan stage . . . films on the history of Shakespearean production . . . "Taming of the Shrew" . . . spring performance with Dance Group . . . good experience for new leaders . . . hoping for a sunny afternoon . . . "Electra."



CANADIAN PLAYER GIVES HIS IDEAS ON SHAKESPEARE SETS.



Becky Wilson
 Molly Schwab
 Doris Sanders
 Alice Coffin
 Kay Richards, art editor
 Page Smith
 Jean Dillard
 Susan Abernathy
 Mary Park Cross
 Ann Parker, literary editor
 Not pictured: Linda Grant,
 Katherine Kemp, Betsy Patter-
 son, Esther Thomas, Kay Gilli-
 land, Joanna Praytor, Sandra
 Still, Nancy Glass, Betty Bar-
 ber, Jo Stokes, Paula Wilson,
 Rosemary Clark.

Students Find Outlet in Arts Magazine, Aurora

Frances Johns, Carolyn Hoskins, business manager, Marci Toby, Ana Maria Aviles, Polly Page. Not pictured: Barbara Baldauf, Dawneda Fowler, Ann Whisnant, Harriet Higgins, Jean Medearis, Lebbby Rogers, Jacquelyn Nicholson, Marion North, Kay Fuller, copy editor.



AURORA . . . seeking expression for student creativity . . . challenging through criticism . . . encouraging originality . . . sharing poetry, prose, and pictures from the campus . . . unfolding plot and characterizations . . . emotion of drawings or block-prints conveyed . . . quarterly tension of evaluating work submitted . . . preparing the magazine for publication . . . eager reading of glossy new copies . . . continuing purpose—to form an outlet for the art of pen and brush.

Mary Grace Palmour, editor.





B.O.Z.: S. Strupe, J. Hall, B. Crawford



B. Wilson, M. Schwab, Pres.; R. Dillard

Folio and B. O. Z. Members Create and Criticize

B. O. Z. . . . development in literary expression . . . brisk nocturnal walks to faculty advisor Miss Jauef Preston's home . . . the open fire . . . coffee, cookies, and constructive criticism . . . bi-annual tryouts . . . the mysterious meaning of B. O. Z. . . . informal discussions of each member's own poetry and prose . . . suggestions . . . frankness . . . the writers of tomorrow.

FOLIO . . . freshman literary organization . . . organized by Miss Margaret Trotter in 1944 . . . original short stories, plays, poetry, sketches and essays written and criticized by freshmen . . . sharing of ideas and of a common interest . . . tryouts in the fall and winter quarters . . . annual publication of FOLIO, anthology composed of selected works of members.

FOLIO: L. Cole, B. Barnett, A. Schepman, M. McKinnon, Sec.-Treas.; N. Sibley, B. Schenck, E. Withers, B. Rau, M. Chew, C. Teague. Not pictured: N. Gheesling, Pres.





A GIANT OILCLOTH OCTOPUS INVADES AGNES SCOTT POOL AND CAPTURES EIGHT AQUATIC LOVELIES AS PREY DURING WATER PAGEANT.

Dolphin Club Swimmers Compose A "Symphony in Sea"

DOLPHIN CLUB . . . Agnes Scott's swimming club . . . advised by Miss Kay Manuel . . . to encourage, develop, and perfect the art of synchronized swimming . . . the presentation of water pageant "Symphony in the Sea" for Sophomore Parents Weekend . . . performing community

service in the spring by teaching swimming to crippled children at the Emory pool . . . providing spring quarter try-outs for "Seal Club," little sister organization . . . membership to Dolphin Club if the requirements are met in the fall . . . splashes and legs.



MEMBERS: Row 1: S. Baumgardner, Sec.-Treas.; N. Northcutt, B. Shannon, A. Hershberger, J. Whitfield, J. McQuilkin, N. Green, K. Chambers, V. Pres.; A. McBride, M. Fortson, S. Abernathy, M. Goodrich, Pres. Row 2: M. Young, H. Milledge, N. Batson, S. Hoskins, S. Grey, B. Evans, P. Walker, P. Flythe, J. Henderson, J. Roden, M. W. Crymes, B. Hendee, S. LeBron, R. Shepherd, A. Parker.

DANCE GROUP: L. Hormell, A. Broad, Chairman; B. Hanna, K. Kallman, W. B. Childress, P. Nickel, J. Cooper, J. Nicholson, N. Northcutt, B. Fuller. Not pictured: J. Corbett, M. Booth, S. Novotny.



Dance Group Teaches the Art of Expressive Movement

CONTEMPORARY DANCE GROUP . . . modern dance taught as an art form from the standpoint of technique, composition and performance . . . an opportunity to create beauty from rhythmic movement . . . the presentation of the "Christmas Story in Dance" . . . *Electra* at May Day . . . spring tryouts . . . expression through movement.

GRANDDAUGHTERS: H. Gregg, L. Moye, M. St. Clair, M. G. Palmour, B. Mitchell, C. Lown, J. Binkley, J. Webb, M. Young, E. Scafield, M. Fortson, M. Holley, Sec.-Treas.; A. Rose, B. Hendee, E. Vass, D. McMillan, N. Sibley, J. Moye, L. Sudbury, D. Poliakoff, M. Wilson, J. Nicholson, M. Collins, Pres.; S. Cumming, N. Duvall, P. Frederick.

Daughters of Scott Grads Uphold Sense of Tradition

GRANDDAUGHTERS CLUB . . . common bond of students whose mothers are alumnae . . . speakers on early traditions of Agnes Scott . . . quarterly meetings . . . Dr. McCain . . . serving the campus with a coffee in the Hub the Sunday of Fall Frolics weekend . . . the last year as an organization . . . mothers keeping in touch.





DEBATE TOURNAMENT VICTORS, WITH TROPHIES, BEAM PROUDLY.



PETE BROWN LIVENS UP THE REGISTRATION FOR THE S.E. TOURNAMENT.

Pi Alpha Phi Helps Debaters to Perfect Technique

PI ALPHA PHI . . . campus debating group devoted to perfection of debating techniques and practice with both humorous and important topics . . . invaluable help in speaking to a group and in quick thinking . . . that argumentative spirit . . . All Southern Intercollegiate Debating Tournament in January . . . time-keepers and teas in the

Hub . . . intra-club debates held through the year . . . Resolved: This house prefers Woolworths to Wordsworth . . . Resolved: Licensed medical doctors should reserve right to perform mercy killings . . . followed by constructive criticism with Dr. Hayes advising . . . spring championship debate and picnic.



MEMBERS: Row 1: L. A. Knake, Pres.; A. Coffin, Sec.; E. Hines, M. P. Cross, Treas. Row 2: B. Hendee, J. Kelley, L. Benton, D. Sanders, M. Boswell. Not pictured: S. Howard, F. Chao, Debate Manager; B. Barber, Historian.



International Relations Club Stimulates World Awareness

IRC . . . development of world awareness through study and discussions of other countries and of problems of international concern . . . displays in library to save an otherwise "behind-the-times" campus . . . exhibition showing varied world cultures . . . chapels on the U.N. and U. S. election prospects . . . participation in conference on world affairs at Emory and C.C.U.N. . . . outstanding speakers . . . UNICEF Christmas cards.

Eta Sigma Phi Delves into Classical Arts and Culture

ETA SIGMA PHI . . . study group to promote and stimulate interest in the history, art, and literature of ancient Greece and Rome . . . club's current theme centered around archaeological findings in ancient world . . . student-prepared programs often illustrated with slides . . . membership based on 200 level course and grade standard . . . helping to sponsor *Orestea* film . . . refreshments in homes of classics faculty.

IRC: 1st row: L. Zimmerman, Treas.; S. A. Carey, K. Kirk, Pres. 2nd row: M. Tobey, K. Hawkins, V.-Pres.; D. Nieuwenhuis, J. Norman. 3rd row: M. Havron, Pub. Chm.; A. Alford. 4th row: J. Kennedy, A. Avant, C. Hoskins. 5th row: J. Hall, L. Dwen, B. Pancake. Not pictured: A. Newsome, Sec.



ETA SIGMA PHI: SEATED: M. Day, Pres.; P. Smith, V.-Pres.; M. Thomas. STANDING: C. Craig, L. Moye, K. Kirk, J. Day, L. Kerley. Not pictured: M. Collins, Sec.; P. Anderson, Treas.; J. Kelley, L. Lowndes.



PSYCHOLOGY CLUB: SEATED: L. Nichols, J. Norman, V.-Pres.; L. Clark, Pres.; J. Seay, Treas.; J. Juarez, Sec.; J. Law. SECOND ROW: M. J. Pfaff, E. Marks, P. Gainer, B. Murphy, P. Rogers, D. Foster, C. Butts. THIRD ROW: J. Jarrell, B. Fuller, C. Preische, W. B. Childress, L. Dwen.

Psychology Club Interests Members in Applied Fields

PSYCHOLOGY CLUB . . . to promote an interest in psychology, its application and importance in modern life . . . primarily for majors and interested Sociology students . . . talks by industrial and clinical psychologists and a public mental health expert . . . making octopi at Christmas time for children at a mental school . . . sharing of independent study . . . spring party.

Students Perfect Language Through the Spanish Club

SPANISH CLUB . . . to engender a familiarity with the culture of Spanish speaking peoples . . . to strive toward perfection in the spoken language . . . a recent emphasis on understanding and evaluating Latin American problems . . . joint meetings with the Atlanta and Georgia Tech Pan-American Clubs . . . meetings in advisors' homes . . . songs, games, talks by professors and critics.



SPANISH CLUB: SEATED: A. Thomas, Treas.; J. Stokes, Pres.; A. M. Aviles, Sec.; STANDING: P. Brooks, J. Hall, B. Crawford, M. G. Palmour, E. Towers. Not pictured: P. Bevier, V.-Pres.



MEMBERS: Row 1: F. Johns, F. Winn, L. Lambert. Row 2: A. Hershberger, A. Whisnant, M. Moore, M. Lambeth, N. Batson, W. Boatwright, V. Pres.; H. Glover, L. Kimsey. Row 3: E. Middlebrooks, P. McGeachy, K. Kirk, K. Fuller, Pres.; J. Hall. Not pictured: L. Zimmerman, Pub. Chmn.; J. C. Brandeis, Sec.

Touch of the Continent Is Discovered by French Club

FRENCH CLUB . . . a touch of France . . . the language, the songs and occasional French films . . . meetings in the homes of faculty advisers . . . halting 101 students, mostly listening . . . involving experience for majors . . . dinner at Emile's . . . a hilarious comedy given at Emory by a Parisian acting troupe . . . la table francaise each Thursday . . . Camus study groups.

MEMBERS: Row 1: J. Medearis, D. McMillan, S. Pruitt, A. Smith, A. McBride. Row 2: C. Henderson, C. J. Buchanan, P. Cox, Sec.; F. Gaines, Pres.; M. Dickert, Treas.; M. Collins, C. Robinson, S. H. High, B. Delk.

Meetings of Organ Guild Young Musicians Gather at

ORGAN GUILD . . . campus organists meeting weekly to study playing techniques, registration, and types of organs and church architecture . . . sharing problems met in individual lessons . . . participation in master classes . . . playing for Thursday chapels . . . all members learning Bach pieces for Spring entertainment of Atlanta chapter . . . dinner at the Martins'.





MEMBERS (L. to R.): Sarah Helen High, V. Pres.; Nain Stieglitz, Treas.; Phillis Cox, Recording Sec.; Charlotte Henderson, Pres. Not pictured: Bonnie Meyer, Chaplain.

Musical "Scotties" Share Style in Sigma Alpha Iota

SIGMA ALPHA IOTA . . . Agnes Scott chapter of national music fraternity . . . meetings devoted both to study of various styles and forms of music and to performance by members . . . majors and interested non-majors sharing their talent . . . advised and often instructed by Miss Hagopian . . . working on project of compiling song books to be ready for campus use in the Fall.

Chi Beta Phi Recognizes the Top Science Students

CHI BETA PHI . . . honorary science fraternity for biology, chemistry, physics, math, and psychology majors . . . to promote interest in all new areas of development . . . Dr. Calder on the Universe . . . radio isotopes lab . . . visit to the crime lab . . . Caroline Mikell's seminar on Darwin . . . key award presented to most outstanding member at special convocation.

MEMBERS: SEATED: B. Florence, S. Cumming, V. Pres.; H. Milledge, M. Young, Pres.; E. Scofield, L. Acree, J. Flowers. STANDING: M. Love, B. Evans, Corresponding Sec.; P. Smith, C. King, Treas.; J. Kennedy, M. Glasure, P. Gainer, A. Broad, N. Marable, W. Neal, J. Henderson. Not pictured: C. Thomas, Recording Sec.; K. Armitage.





JANICE BOWMAN



CRAWFORD FEAGIN



LOUISE FLORANCE



JOANNA FLOWERS



LILLIAN BLAKE HART



CAROLINE MICKELL JONES

Senior Leaders Serve the Campus on Mortar Board

MORTAR BOARD . . . outstanding seniors dedicated to service, leadership, and scholarship . . . standing for wholeness, well-roundedness, and student body loyalty to the college . . . providing interpretation between administration and students . . . sponsoring campus campaign, Marriage Class, Saturday chapels, and leadership training conference . . . procession of candles in restless library . . . Trish Walker chosen to lead in '61.



BETTY LEWIS



BETSY LUNZ



HELEN MABRY



CAROLYN MASON



EVE PURDOM



MARY HART RICHARDSON



SYBIL STRUPE



On the following pages are our . . .

Advertisers

The Independent College

The independent college belongs to those who believe in it. It can have no other ownership.

It has flourished through the centuries because every generation raises up people who understand its power for good.

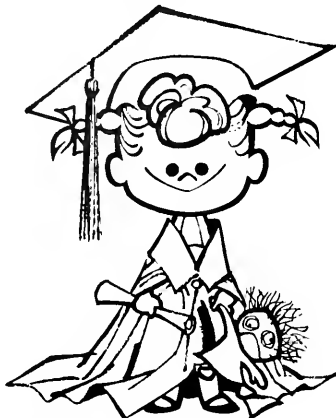
Rooted in this faith, steadfast, humane, the independent college abides as a citadel of the unfettered mind and spirit.

AGNES SCOTT COLLEGE

DECATUR, GEORGIA

FOUNDED 1889





KATy

*SERVICE MARK

**SAVE WHERE
KATY SAVES**

4%
current rate

**THERE'S ALWAYS
A SPECIAL WELCOME
AT DECATUR FEDERAL SAVINGS
FOR STUDENTS, FACULTY,
ALUMNI AND FRIENDS OF
AGNES SCOTT**

**DECATUR
FEDERAL
SAVINGS**

and Loan Association

Main Office: 103 Sycamore St.
Decatur, Georgia
Branch Office: 1807 Candler Rd.
Phone: DRake 8-8821



MINNIE QUARTS SAYS:

Be sure to get your daily Vitamins.
Drink Irvindale Multi-Vitamin milk
Fortified with all the Vitamins you need every day.
Call TRinity 2-7703 for Home Delivery.

IRVINDALE FARMS DAIRY

484 Plaster Avenue
Atlanta, Georgia

PEPSI-COLA[®]

Your Statewide

INTERNATIONAL HARVESTER

Construction Equipment
Distributor

TRI-STATE TRACTOR CO.

Atlanta—Macon

Albany—Augusta—Savannah

Back Better Roads

CATERPILLAR

WILL HELP BUILD THEM

Yancey Bros.
CO.

ATLANTA

1540 Northside Drive, N.W. — Phone TR 6-3741

AUGUSTA

1781 Fifteenth Street
Phone RE 3-2241



MACON

4660 Broadway
Phone SH 5-9261

MAUD BAKER FLOWER SHOPPE

252 W. Ponce de Leon Avenue

Deliveries throughout greater Atlanta

DR 7-3818

Tempo-Geha Mimeograph Equipment & Supplies
Printing . . . Office Supplies . . . Service

RAY SMITH COMPANY

2588 Cascade Road, S.W.
Atlanta 11, Ga.

PLaza 8-1352
PLaza 3-4478

Compliments of

SHARIAN, INC.

Rug and Carpet Cleaning

DR 7-6488

Compliments of

ROY D. WARREN INSURANCE, INC.

418 Healey Building

Phone: JA 3-6262

For
Homes
Rentals
Insurance
Investments

In Decatur or DeKalb County

See or call us

WHEAT WILLIAMS REALTY

"Realtors"

119 E. Ponce de Leon

DR 7-2606

Decatur, Georgia

DR 7-2607

BELVEDERE MOTEL

3480 Memorial Drive, S.E., Atlanta, Georgia

Telephone—BUtler 9-6633

Highway 154 Spur of 78-12, located 1½ miles from Atlanta

A DINKLER MOTOR INN

Completely air-conditioned, the rooms are spacious and beautifully decorated with wall to wall carpeting, king size beds, air-foam mattresses, tile baths and other conveniences with free TV and Radio. Excellent restaurant, with tables and counter service. Children's playground, swimming pool and ice skating rink. Free morning coffee and newspaper. New shopping center directly across. Baby sitters available.

COX RECORD SHOP

161 Peachtree Street

TRI-STATE CULVERT & MFG. DIV.

FLORIDA STEEL CORPORATION

151 DEKALB INDUSTRIAL WAY

DRake 8-1744

Post Office Box 117

DECATUR, GEORGIA

FABRICATORS AND DISTRIBUTORS OF . . .

Corrugated Metal Pipe and Pipe Arch
Asphalt Coated C. M. Pipe and Pipe Arch
Asphalt Coated and Pvd. C. M. Pipe and Pipe Arch
Perforated Corrugated Metal Pipe
Structural Plate Pipe, Pipe-Arch and Arches
Headgates and Auto. Flap Gates
Deep-Beam Guard Rail Highway Signs and Posts

Special Fabrication for Drainage and Water Control

Installations for Industry and Agriculture

A new Home

See The Beautiful

**Dial Heights and Dunaire
Sub-Divisions**

1 Mile Northeast Avondale on Memorial Drive

Dunn and Son

DR 8-0596

Established 1910

F. GRAHAM WILLIAMS CO.

INCORPORATED

"Beautiful and Permanent Building Materials"

ATLANTA 9, GA.

1690 Monroe Dr., N.E.

Phone TRinity 6-1084

Montag's

World's Finest Steel Die Engraved Collegiate Stationery
and Fashionable Writing Papers

ATLANTA, GEORGIA

Best Wishes to
Agnes Scott College
from

CALLAWAY MOTORS, INC.

231 W. Ponce de Leon Ave.

Decatur, Georgia

Oldsmobile
by
General Motors

Lark
by
Studebaker

COMPLIMENTS OF

**GLENWOOD
NATIONAL BANK**

Member F.D.I.C.

**GLENWOOD
PAINT CENTER**

3182 Glenwood Rd.

DR 7-6256

ARMOUR AND COMPANY

944 Brady Avenue

BEST WISHES TO THE CLASS OF 1960

THE DEKALB NEW ERA

124 Atlanta Avenue

Decatur, Georgia

TENNESSEE EGG COMPANY

448 Georgia Avenue, S.W.

**SOUTHEASTERN
ELEVATOR COMPANY**

DESIGNERS AND MANUFACTURERS

441 Memorial Drive, S.E.

Atlanta, Ga.

Compliments of

F. W. WOOLWORTH COMPANY

1740 Peachtree St., N.E.

Atlanta, Georgia

BEST WISHES

WATSON PHARMACY

309 E. College Ave.

DR 3-1665

DECATUR, GEORGIA

Compliments of

**LUTHER CONSTRUCTION
COMPANY**

Grading Contractors

4485 Memorial Dr.

Decatur, Ga.

BU 9-3122

D
E
C
A
T
U
R
C
O
-
O
P
C
A
B
S

J & J SHOES

(Formerly Newsome's Shoes)

117 CLAIRMONT AVENUE

DRake 8-1411

DECATUR

GEORGIA

Compliments of

CAGLE'S INC.

2000 Hills Ave., N.W.

LOVABLE BRASSIERE CO.

845 Spring St.

Atlanta, Ga.

Compliments of

WILLOW SPRINGS MOTEL

4844 Memorial Drive

Stone Mountain, Georgia

CONNECTICUT MUTUAL LIFE

522 Fulton Federal Building

Atlanta, Georgia

"The Flavor you like
The Name You Know"

CANADA DRY CORP.

1910 Murphy Ave.

PL 3-2183

MELTON-McKINNY, INC.

PLUMBING

Repairs a Specialty

432 E. Howard Ave.

DR 3-4622

Southeastern Bakers Supply Company

316 Peters Street, S.W.

Atlanta 3, Georgia

LEWIS SEED STORE

406 E. Howard Ave.

Don't settle for less

Get the best

at

DECATUR LUMBER & SUPPLY CO.

245 Trinity Place

Decatur, Ga.

SERVICE—QUALITY—SATISFACTION



**SIMPLY
WONDERFUL
SPORTSWEAR**

133 Sycamore St.

Decatur, Ga.

"On the Square"

Avoid Atlanta Traffic—Stop at

HOTEL CANDLER

DECATUR, GEORGIA

105 Modern Rooms

AIR CONDITIONED

Excellent Coffee Shoppe

Headquarters for All Civic Clubs

PLENTY OF PARKING SPACE

L. L. TUCKER, JR., Lessee and Manager



**traditional
for fine
quality and
service**

Since 1882, Miller's Book Store has the traditional reputation for fine quality and service with a complete line of supplies for all college needs. From the famous volumes of the world to notebook paper and art supplies . . . from personal gifts of distinction to a complete line of office supplies. No wonder students all over the Southeast look to Miller's Book Store. Mom and Dad did . . . and now this same reputation is as modern as tomorrow. Make Miller's Book Store your home for all college needs.

if it is for office, school, or
home . . . for birthdays,
anniversaries, graduation . . .
for Christmas, Valentine
Day, or Easter . . .
You can get it at—



ATLANTA 231 Peachtree Street
64 Broad Street

DECATUR 113 Clairmont Ave.

BUCKHEAD 250 E. Paces Ferry Rd.
3087 Peachtree Rd.

"THE NEWEST WAY TO GIVE
YOURSELF A TREAT"

WAFFLE HOUSE

JUST GOOD FOOD

OPEN 24 HOURS A DAY

#1 2719 E. College Avenue

#2 972 Peachtree St., N.E.

#3 3198 Candler Plaza

#4 1244 Clairmont Rd.

**A
FRIEND**

TWELVE OAKS RESTAURANT

1895 Piedmont Road, N.E.

Atlanta, Georgia

Compliments of

BURFORD, HALL, AND SMITH

769 Hemphill Ave.

Atlanta, Georgia

**The Zep
Manufacturing Corp.**

"Where To Buy It"

SY 9-5671

1310 Seaboard Industrial Blvd.

ATLANTA, GA.

BROWN-WRIGHT HOTEL SUPPLY

512 W. Peachtree, N.W.

Atlanta, Georgia

Coca-Cola
Bottling Co.

SHIP A-HOY RESTAURANT

95 Luckie Street, N.W.

ATLANTA, GEORGIA

THE SHERWIN-WILLIAMS CO.
OF GEORGIA

Paints—Varnishes—Lacquers—Leads—Oils—Enamels

Brushes and Painters' Supplies

DR 7-1751

217 Trinity Place

Decatur, Georgia

Congratulations to the class of 1960

CLOUDT'S FOOD SHOP

1933 Peachtree Road, N.E.

Atlanta, Georgia



**RUTLAND'S
HOUSE
OF
MUSIC**

BUILDING FROM STRENGTH

President
S. Russell Bridges, Jr. CLU

Atlanta General Agents

J. T. Embrey
William C. Griscom
Earl E. Vick

Virginia M. Carter '40

Home Office—Atlanta, Georgia

ARISTOCRAT ICE CREAM

"All the Name Implies"

Quality Ice Cream for All Occasions

Congratulations

from

CAMPUS GRILL

Two Locations:

1250 South Oxford Road—Emory

106 North McDonough Street—Agnes Scott

COMPLIMENTS

OF

A

FRIEND

HEARN'S JEWELRY COMPANY

131 Sycamore

Decatur, Georgia



Compliments
of

BARGE-THOMPSON, INCORPORATED

ENGINEERS AND CONTRACTORS

136 Ellis Street, N.E., Atlanta, Georgia

Compliments of

Waldorf Motel

J. P. STEVENS ENGRAVING CO.

Established 1874

Society Stationers

110 Peachtree N.W.

JA 2-6870



You never outgrow
your need for milk.

JACKSON 5-4645

Atlanta, Georgia

FULTON SUPPLY COMPANY

INDUSTRIAL, TEXTILE CONTRACTORS

SUPPLIES & MACHINERY

ATLANTA

GEORGIA

**PATRONIZE
YOUR
ADVERTISERS**



Specialist in Bridal Photography

ANNOUNCEMENTS

FORMALS

CANDIDS



Dale Roberts

Photographer for 1960 Silhouette



INE PRINTING SINCE 1887—

That's the story of Foote & Davies, Inc.

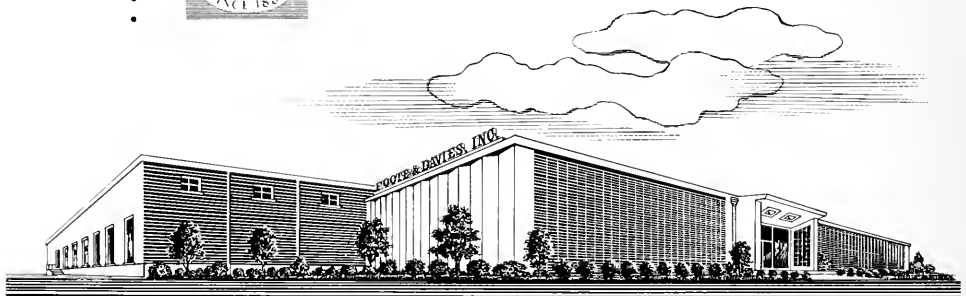
Today we have one of the most modern and best equipped plants in the country. And fine Yearbooks have always been an important part of our business. Our craftsmen believe in quality and strive to produce the "best in the Industry." Our excellent printing doesn't just happen—it's a combination of production research, craftsmanship, and painstaking supervision.

FOOTE & DAVIES, INC.

764 MIAMI CIRCLE, N. E.

Printers • Lithographers • Book Manufacturers

ATLANTA 24, GEORGIA





Annual Staff

- Editor . . . Carolyn Yvonne West
Managing Editor . . . Margaret Goodrich
Business Manager . . . Nain Stieglitz
Art . . . Kay Richards
Classes . . . Edith Towers
 Susan Alexander, Pat Holmes, Mary Jane Pfaff, Florence
 Winn
Copy . . . Martha Starrett
 Kay Gilliland, June Hall, Judy Heinz, Ann Modlin,
 Angelyn Stokes
Faculty . . . Grace Mangum
 Brock Hanna, Linda Nichols, Josie Roden
Features . . . Page Smith
 Marian Barry, Sally Boineau, Sue Gray, Jo Allison Smith
Photography . . . Carol Goodwin
 Nancy Barr, Sally Blomquist, Judy Maddox, Edna
 McLain
Production . . . Mary Crook
 Angelyn Alford, Kay Gilliland, Angelyn Stokes
Spirit . . . Becky Evans
 Carey Bowen, Margaret Bullock, Rae Carole Hosack,
 Barbara Mordecai
Business . . . Nain Stieglitz
 Carolyn Benbow, Lucille Benton, Martha Lambeth, Patsy
 Luther, Carol Rogers, Lillian Smith, Joyce Townsend,
 Betty Sue Wyatt

Editor Ends Work of the Year on Note of Thanks

It seems almost impossible to sum up in an editor's last word the slightest idea of what has taken place behind the scenes in order to put this 1960 *Silhouette* into your hands. These few words can only express in brief the feeling of the people who have worked on the book, and the great appreciation of the editor for those who, in giving their time, talent, and energy, made the publication possible.

The year has been filled with fun, friendship, worry, and work. The idea for the theme took place in the mind of the editor and managing editor last summer, and was thought through between hours of summer school and work for an insurance company. The staff took hold of the idea and it grew at the retreat at Camp Daniel Morgan before school. When school started the work began. It seemed as if there was an amazing number of pictures to be taken, events to be covered, pages to lay out, copy to write, people to identify, and words to type. The cover was designed, thanks to Kay, and we discovered we might be putting together an annual amidst all the hustle. Thanks to Mr. Roberts and Jim the pictures were made, and Mr. Young patiently waited on the pages which were slowly completed. The Monday night meetings got to be a habit and the staff progressed as a team. Toward the end, nerves were on edge, papers and tests were neglected, and one practice teacher did not have her lessons prepared at times.

My special thanks go to Margaret who was indispensable not only to me but to the entire staff. She held the staff together with a calm, reassuring word, when the editor was not completely reassured. She was always there when I needed her, and she told me things about photography which I don't yet understand. It would be impossible to express to her my gratitude, and the pleasure I found in working with her. Martha did a job which I consider superb, and when the deadlines got closer she got even more cheerful. Mary typed, and found mistakes that I had overlooked, and Nain kept us on our feet financially with a record-breaking sale of ads. All of these people plus many more made this book a reality.

The book's theme tries to express the real mood of the campus and its changing face throughout the seasons. Each quarter brings a special beauty to the campus and new experiences to the girls who live there. We hope you catch a glimpse of it in the 1960 *Silhouette*.

CAROLYN YVONNE WEST.

A

Abernathy, Susan	51, 162, 174
Abernathy, Mary-Knox	71
Abernathy, Nancy	71, 103, 102
Acree, Elizabeth	40, 180
Adams, John L.	117
Adams, Nelie	65, 107, 170
Adams, Sarah	65
Addison, Sally	71
Alexander, Susan	36, 65, 164
Alford, Angelyn	40, 164, 177
Allen, Martha Lee	65
Allen, Virginia	8, 36, 71
Allen, Mary V.	120, 137
Allen, Patricia	71
Allen, Vicky	65, 156
Alston, Wallace	6, 23, 106, 122
Ambrose, Lisa	40, 41, 166
Amidon, Sue	36, 65
Anderson, Frances	36, 71, 156, 157
Anderson, Janice	71
Anderson, Pat	41
Andrew, Mary Mead	71
Antley, Mary Ann	58
Archer, Nell	41, 166
Armitage, Kay	41, 180
Ashford, Ann	58, 170
Askew, Caroline	36, 160
Avant, Ann	58, 177
Aviles, Ana Maria	58, 156, 166
Ayres, Jane	71, 168

B

Baber, Peyton	17, 27, 36, 41
Bagiatis, Angelina	71
Bagiatis, Hytho	41, 156, 157
Bailey, Frances	71, 148, 168
Baldauf, Barbara	59
Barber, Elizabeth	59
Barker, Nancy Jane	59
Barnes, Mary Ellen	168, 170
Barnett, Beth	36, 71, 173
Barnwell, Willette	36, 72, 102, 168
Barr, Nancy	36, 59, 102, 149, 164, 166, 168
Barrett, Nancy	66, 166
Barry, Marion	41, 164
Bates, Dolly	41, 156
Bates, Leewood	72
Batson, Nancy	59, 174, 179
Baumgardner, Lauletta	59, 174
Behrman, Doris	66
Bellune, Elizabeth	59
Benbow, Carolyn	66, 159
Bennet, Jane	59
Benton, Lucille	32, 66, 146, 165, 168, 170
Bergstrom, Sally	72, 157
Beverly, Suellen	26, 28, 42, 89, 170
Bevier, Pam	59
Binkley, Jacquelyn	72, 175
Bivens, Emily	15, 42
Bloomquist, Sally	66, 169
Boatwright, Betsy	42, 160
Boatwright, Wendy	66, 101, 170, 179
Boineau, Sallie	66
Bond, Nancy	66, 156
Boney, Mary L.	122
Booth, Mike	32, 59
Boswell, Meade	66, 168, 176
Bowen, Carey	31, 36, 65, 66, 170
Bowman, Janice	36, 42
Boykin, Alice	36, 59, 102, 151, 170
Brandeis, Judith Clark	59
Brantley, Judy	72
Braswell, Mildred	11, 42, 168
Bray, Alice B.	114
Bray, Doris	72, 168
Brennan, Jean	59
Brewton, Dian Smith	42
Bridgman, Josephine	126
Broad, Anne	32, 35, 59, 101, 160, 175, 180
Brock, Donna	59
Brown, Barbara	72
Brown, Pete	25, 59, 146, 157, 168, 170
Brown, D'Etta	36, 72, 168
Bruce, Becky	72
Bruening, Patricia	72, 168
Bryan, Sally	59
Bryan, Cantey	72
Bryant, Cornelia	72
Buchanan, Clara Jane	66, 168, 179
Bullock, Margaret	59, 164
Burgess, Bryce	25, 72, 153, 157
Bruns, Doty	127, 157
Butcher, Nancy	72
Butler, Anne M.	111
Butts, Cynthia	42, 178
Byers, Edna G.	111
Byrd, Joan	59

C

Calder, William A.	129
Calhoun, Germaine	66
Callaway, Lucie	22, 72, 149
Campbell, Martha	66, 166, 168
Carey, Sara Anne	42, 57, 166, 177
Carrigan, Teresa	72, 157
Carter, Gail	66
Carter, Mary	111
Cauvel, Martha Jane	122
Chambers, Kathryn	59, 174
Chandler, Sandra	72
Chang, Kwai Sing	122
Chao, Faith	59
Chew, Martha	72, 173
Childress, Willie Byrd	32, 59, 175, 178
Choi, Choon Hi	43
Christensen, Anne	59
Christie, Annie May	118
Cilley, Melissa	88, 121
Claridy, Jo	66
Clark, Frances	120
Clark, Linda	43, 178
Clark, Mary Jim	59, 144, 168
Clark, Rosemary	66
Clifton, C. B.	115
Cobb, Ann	43, 168
Coble, Carolyn	72
Cochrane, Alice	28, 36, 60, 159
Coffin, Alice	60, 176
Cole, Lynne	36, 72, 173
Collier, Mason	36, 72
Collins, Margaret	43, 175, 179
Conner, Vivian	66, 102
Connor, Carroll	60
Conrad, Patricia	72
Conwell, Edith	60
Cooper, Jane	60, 175
Corbett, Jean	60
Cornelius, William G.	124, 136
Cowan, Carol	66
Cox, Harriet	66, 159, 168
Cox, Phyllis	43, 156, 168, 179, 180
Craig, Cynthia	66, 177
Craig, Rebecca	72
Crawford, Beth	66, 173
Creech, Sandra	36, 72
Crigler, Elizabeth A.	127
Crook, Mary	43, 157, 165, 205
Crosby, Suzanne	66
Cross, Mary Park	24, 60, 157, 169, 176
Crum, Lylla	72
Cruthirds, Judith	72
Crymes, Mary Wayne	60, 162, 174
Culclasure, Mary	66
Cumming, Shannon	31, 43, 57, 154, 170, 175, 180
Curd, Mary Holman	66
Curry, Ela B.	109
Czarnitzki, Sue	66

D

Dalton, Betsy	36, 60, 103, 149, 153, 156
Davis, Sandra	60
Davis, Linda	72
Davis, Lucy Maud	60
Davis, Patricia	72
Day, Marlin	60, 177
Day, Jackie	66, 166, 168, 177
Debelle, Ann	36, 72
DeLaney, Ellen	66
Delk, Beverly	43, 179
Denton, Lynn	8, 72
Dickert, Marguerite	60, 179
Dillard, Renni	28, 60, 173
Dills, Jane	72
Doan, Dorreth	44
Dodson, Mary Louise	113
Doerpinghaus, S. Leonard	6, 126
Doherty, Tina	72
Dotson, Molly	66, 170
Draper, Leland	22, 36, 72
Drucker, Miriam K.	125
Duke, Diane	66
Duncan, Julia	66, 162
Dunlap, Christine C.	109
Dunstan, Florence J.	121
DuPuy, Nancy	72, 168
Duvall, Nancy	36, 42, 44, 102, 103, 149, 157, 160, 175
Duvall, Nancy	72, 102
Dwen, Lydia	44, 157, 159, 170, 177, 178

E

Eckardt, Jo Ann	73
Edney, Peggy	40, 44
Edwards, Nancy C.	111
Elam, Susan	73
Elder, Harriett	60
Elkins, Mary Beth	36, 73
Ellis, Gloria	36, 73
Ervin, Pat	60
Evans, Betty	66, 174
Evans, Emily Ann	67, 102, 103
Evans, Becky	44, 102, 103, 164, 180, 205
Eve, Madelyn	63, 157
Everett, Helen	22, 60, 166
Eyler, Anne	44, 139, 168, 180

F

Farlowe, Kennette	73
Faucette, Letitia	36, 73
Favor, Susan	73
Feagin, Corly	43, 44, 157, 166, 181
Ferguson, Gladys	44
Fincher, Mary Jane	73, 168
Florance, Boo	36, 44, 45, 149, 160, 181
Flowers, Jo	45, 57, 180, 181
Flythe, Pat	36, 67, 174
Fonts, Lucy Cole	45
Fortson, Marian	31, 67, 157, 170, 174, 175
Foster, Dianne	31, 60, 170, 178
Fowler, J. W.	115
Fowler, Dawneda	67
Fowler, Rachel	127
Fox, Mary W.	77
Frazer, Alice	67, 175
Frederick, Peggy	36, 73, 102
Freeman, Anna Belle	127
Frierson, W. J.	73
Frye, Carole	73
Fulcher, Nancy	73
Fuller, Beth	32, 60, 175, 178
Fuller, J. C.	117
Fuller, Kay	45, 179

G

Gainer, Priscilla	45, 159, 178, 180
Gaines, Florence	58, 60, 159, 166, 179
Garber, Paul L.	122, 136
Gary, Julia T.	127
Gatewood, Betty Ann	73, 157
Gaylord, Leslie J.	128
Gearreald, Linda	73
Gerke, Johanna	114
Gersten, Bonnie	45, 162
Ghesling, Nancy	73
Gilbert, Livingston	67, 164
Gilbartson, Jane	73
Gilbreath, Lillian R.	117
Gillespie, Betty	8, 15, 24, 67, 149
Gilliland, Kay	36, 67, 159, 164
Gilmour, Ethel	67
Glass, Nancy	60
Glasure, Myra	40, 45, 138, 157, 180
Glann, Sally	73
Glick, M. Kathryn	123
Glover, Harriett	36, 67, 102, 168, 179
Goode, Runita M.	113
Goodrich, Margaret	45, 102, 144, 165, 174, 205
Goodwin, Caroline	61, 157, 165, 170, 205
Gordon, Lucy	73
Gordy, Sally	67
Gray, Natta E.	126
Green, Elvena M.	119
Green, Gayle	61
Greene, Marion	61
Greenfield, Sallie	110
Gregg, Alva Hope	61, 168, 175
Gregory, Mary Ann	73
Grey, Susan	67, 164, 174
Griffith, Christine	73
Grosclose, Nancy	126
Gwaltney, Kay	61, 101, 102
Gzcekowicz, Betty	15, 25, 46

H

Hages, Christy	61
Hagler, Jackie	67
Hagopian, Roxie	117
Haire, Adrienne	67
Hall, Anne	46
Hall, June	46, 88, 164, 173, 177, 179
Hall, Nancy	36, 58, 61, 160
Hancock, Jane	73, 91
Hanna, Edie	67
Hanna, Brock	24, 61, 170, 175
Hanson, Sigrid	73, 168
Haralson, Karen	73, 168
Hardesty, Ann	73
Harley, Louise	110
Harms, Maggy	73
Harn, Muriel	121
Harper, Betty Jean	67
Harris, Irene L.	117
Harris, Cissie	67
Harrison, Edith	73
Harshbarger, Libby	67
Hart, Lillian	46, 159, 181
Hatfield, Ethel J.	114
Hattox, Carolyn	73
Havron, Margaret	46, 166, 170, 177
Hawkins, Katherine	25, 46, 177
Hawley, Judith	73
Hayes, George P.	118, 137
Heard, Jan	67, 162
Heinrich, Sue	24, 73
Heinz, Judy	67
Hendee, Beth	36, 67, 174, 175, 176
Henderson, Charlotte	46, 179, 180
Henderson, Jane	61, 174, 180
Henry, Bunny	61
Herbert, Eloise	121
Herefore, Helen	67
Hershberger, Ann	36, 67, 102, 174, 179
Hickey, Carol	73, 168
Higgins, Harriet	61
Higgins, Nancy	61
High, Sarah Helen	61, 102, 156, 179, 180
Hill, Eleanor	46
Hill, Mary	61
Hind, Cynthia	67, 170
Hines, Ellen	61, 176
Hoit, Jo Ann	73
Holley, Margaret	67, 175
Holloway, Judy	67, 175
Holmes, Mary Rose	47
Holmes, Pat	61, 162, 164
Hopkins, Betty	67, 157
Hormell, Lynn	73, 175
Horn, Lynda	67
Hosack, Rae Carole	47, 156
Hoskins, Carolyn	47, 57, 177
Hoskins, Suzanne	26, 35, 47, 101, 174
Houchins, Judy	61
Howell, Mary Beth	67
Howell, Miriam	131
Hudson, Alethea	73
Hudson, Hendrik R.	129
Hunt, Mary	73
Hunter, Jean	73
Huper, Marie	116
Hutcheson, Betty	73
Hutchinson, Ann	67, 160

I

Imray, Jill	36, 47, 160
Inch, Nancy	67
Ingram, Linda	61
Ivey, Nancy R.	114

J

Jackson, Carole	68
Jarrell, Jo	61, 159, 178
Jefferson, Betsy	68
Jenkins, Penny	61
Jenkins, Thelma	68, 168
Jennings, Mary Ann	73
John, Kathryn	47
Johns, Frances	47, 166, 179
Johnson, Anne S.	114
Johnson, Ann W.	111
Johnson, Caroline	68, 170
Johnson, Eileene	47
Johnson, Sandra	74, 157
Johnson, Virginia	61, 168, 170
Johnston, Norris	68, 168
Johnston, Penny	12, 68
Jones, Caroline	36, 48, 181
Jones, Ina	36, 74
Jones, Jerre	77
Jones, Knox	68
Jones, Lelia	74, 160
Jones, Linda	48, 156
Juarez, Juanita	61, 178
Jones, R. M.	115

K

Kallman, Kit	68, 175
Kane, Maria C.	121
Kelleher, Donna	74
Kelley, Jane	68, 176
Kelly, Jane	61
Kelly, Shari Anne	74
Kelso, Sarah	62, 149, 160
Kemp, India	68
Kemp, Kathy	62, 157
Kendrick, Martha	68
Kennedy, Julia	48, 177, 180
Kenton, Beverly	68, 157
Kerley, Linda	68, 177
Kimsey, Louise	68, 179
Kinard, Milling	68
King, Charlotte	48, 57, 180
Kinghorn, Mary Jean	74, 168
Kipka, Sara	68
Kirby, Margaret	74
Kirk, Kathleen	48, 177, 179
Kittrell, Rosemary	62
Kline, C. Benton	27, 107, 122, 136
Knake, Laura Ann	48, 176
Kneale, Elizabeth	36, 68

L

Lamb, Harriette	48
Lambert, Lynne	8, 68, 166, 179
Lambeth, Martha	62, 165, 169
Lancaster, Jane	74
Lanier, Rubye N.	114
Lapp, Harriette H.	130
Lavinder, Irene	74
Law, Jane	46, 48, 102, 156, 157, 178
Lear, Marsha	62
LeBron, Sally	68, 166, 170, 174
Lee, Elizabeth	74
Lee, Ann	65, 68, 101, 146
Lemmond, Guthrie	62, 170
Lentz, Linda	68, 166, 168, 170
Leroy, Ruth	36, 49, 102, 159
Leslie, Mary Ann	68
Lewis, Betty	47, 49, 157, 181, 162
Lewis, Joan	62, 168
Lewis, Marie S.	113
Leyburn, Ellen Douglas	118
Libby, Betty	74
Lindskog, Lyn	74, 168
Linton, Helen	6, 68, 168, 170
Lipham, Margaret Anne	62
Little, Judy	74
Lockhart, Bonnie	68, 168
Love, Mildred	62, 128, 166, 169, 180
Loving, Bonnie	36, 74
Lowe, Pat	74
Lown, Carolyn	74, 175
Lowndes, Laura	49
Lowrance, D'Nena	74
Lowry, Mary Hampton	74
Lunz, Betsy	49, 57, 164, 181
Lusk, Mary Ann	74
Luther, Patsy	68, 165

M

Mabry, Helen	49, 57, 148, 157, 181
Maddox, Leigh	74
Maddox, Judy	62, 164, 170
Mangum, Grace	26, 49, 164
Manuel, Kathryn A.	130, 137
Marable, Nina	62, 127, 180
Marks, Ginger	62, 146, 159, 176
Martin, Raymond	117
Mason, Carolyn	22, 49, 156, 157, 181
Massey, Martha	49, 152
Mathis, Peggy	68
Matthews, Janie	50, 165, 205
Maxwell, Lota Sue	68
Maynard, A. G.	115
McArthur, Deal	74
McBride, Ann	62, 156, 174, 179
McCoy, Nancy	74
McCracken, Lillian J.	109
McCravey, Mildred	62, 95, 156, 170
McCurdy, Carolyn	50
McDowell, Michael	117
McGavock, Page	74
McGeachy, Peggy	68, 150, 179
McGehee, Jan	8
McKelway, Margaret	50
McKemie, Kate	130
McKenzie, Sue	74
McKinley, Margaret	74
McKinnon, Martha	74, 173
McLain, Edna	62, 157, 164, 170
McLanahan, Valerie	74
McLaurin, Pat	74
McLemore, Genie	36, 68, 102, 103, 157
McLeod, Ann	68
McMillan, Dinah	62, 168, 175, 179
McMullen, Betty	74, 104
McNair, W. E.	112, 119, 136
McNairy, Julia	50, 168
McQuilkin, Joyce	35, 36, 68, 160, 174
Medearis, Jean	69, 168, 174
Mell, Mildred	6, 7, 131
Mendenhall, Gloria	74
Merrick, Mollie	109
Meyer, Bonnie	168, 180
Middlebrooks, Ellen	69, 166, 170, 179
Middlemas, Ann	69
Milhaus, Mary Evans	50
Milledge, Helen	50, 174, 180
Miller, Anne	74
Miller, Timothy	117
Milward, Dudley	74
Mitchell, Betty	50, 146, 170, 175
Mitchell, Peggy	36, 69, 160, 170
Mobley, Kathryn Louise	74, 102
Mobley, Laura Ann	74
Modlin, Anne	62, 162, 164
Moore, Mary Jane	62, 145, 170
Moore, Missie	62, 156, 166, 179
Moore, Prudence	62
Morcock, Lucy	74, 156
Mordecai, Barbara	62, 164
Morley, Lynn	74
Morris, Ashlin	50
Morrison, Anne	51, 57, 169
Morrow, Merle	75
Moses, Anita	51, 88
Mossman, Martha	75
Moye, Julia	75, 175
Moye, Tish	62, 175, 177
Murphy, Bessie	51, 178
Murphy, Ione	109
Muse, Wilma	36, 51, 102, 103, 149
Mustoe, Sue	69, 166

N

Nabors, Jane	69, 159, 168
Neal, Warnell	51, 57
Nelms, Nancy	69, 126
Nelms, Sara Ann	69
Newman, Lillian	111
Newsome, Anne	62, 144
Nichols, Linda	51, 164, 178
Nicholson, Jackie	69, 102, 175
Nickel, Patty	75, 157, 175
Nieuwenhuis, Dieneke	51, 177
Norfleet, Cathy	69
Norman, Jane	36, 51, 101, 103, 149, 160, 177, 178
North, Mickie	62
Northcutt, Nancy	69, 174, 175
Novotny, Susan	75

O	
O'Brien, Pat	75, 101
Ogburn, Kaylynn	75
Oglesby, Barbara Ann	111
Oblesby, Ethel	69, 166
Omwake, Katharine T.	125

P	
Page, Pauline	69, 168
Palmour, Mary Grace	52, 175
Pancake, Betty	69, 177
Pancake, Emily	63, 168
Parker, Ann	52, 166, 170, 174
Parker, Emily	52
Parsons, Bette	75
Peterson, Elizabeth	63
Patrick, Katharine	69
Patterson, Jane	69
Patterson, Nancy	52
Payne, Ann Rivers	109
Peagler, Ann	63, 103, 146, 151
Peltz, Dr. Rosemonde S.	114
Pendleton, Nana	75
Pepperdene, Margaret W.	28, 119, 148
Petkas, Helen	52
Pfaff, Mary Jane	14, 17, 52, 101, 152, 164, 178
Philip, Virginia	63
Phythian, Margaret T.	120
Pickens, Carol	63, 157
Pickens, Mary Jane	52, 150, 157, 168
Pickens, Suzanne	15, 69
Plemons, Linda	75
Poliakoff, Doris	75, 175
Pollard, Anne	63, 159, 168
Pollard, Carolyn	75
Ponder, Cynthia M.	114
Porcher, Dot	30, 69
Posey, Walter B.	32, 124
Pound, Ida	75
Powell, Janice	11, 13, 31, 52, 157, 170
Prather, Julia	75
Praytor, Joanna	69, 170
Preische, Carolyn	53, 178
Preston, Jane	118
Prevost, Jane	26, 53
Pruitt, Sylvia	30, 69, 159, 169, 179
Purdum, Eve	25, 50, 53, 57, 156, 157, 181

R	
Ranck, Lucy	75
Rau, Rebecca	75, 173
Reitz, Marjorie	25, 36, 65, 69, 156, 157
Rice, George E.	125
Richards, Kay	15, 53, 165, 205
Richardson, Mary Hart	51, 53, 57, 64, 100, 157, 181
Rion, Mary L.	119, 137
Ripy, Sara L.	128
Risher, Ann	75
Roberts, Ethelyn J.	111
Robertson, Kay	36, 75
Robinson, Charme	63, 145, 179
Robinson, Henry A.	128, 136
Roden, Joanna	63, 174
Rodwell, Sally	71, 75, 168
Rogers, Carol	69
Rogers, Carroll	69
Rogers, Pat	63, 166, 178
Rogers, Lebbly	69
Rogers, P. J.	112
Rose, Nancy	75, 157, 175
Rosshim, Beth	77
Ruark, Kay Lamb	53, 57
Rudolph, Robin	69
Russell, Joanna	24, 69
Russell, Anne Marie	63, 100

S	
St. Clair, Miriam	75, 168, 175
Salyerds, Anne	126
Samford, Aileen	75, 168
Sanders, Doris	24, 69, 159, 168, 176
Saxon, Sylvia	26, 36, 53, 101, 102, 144, 149, 160
Sayers, Elaine	69
Saylor, Ann	75
Scales, Lucy	63, 156, 157, 170
Scandrett, Carrie	108, 136
Schenck, Betsy	36, 75, 157, 173
Schepman, Anneke	75, 173
Schow, Lucy	69, 102, 16, 168
Schwab, Molly	24, 63, 173
Scotfield, Evelyn	53, 175, 180
Scott, Colby	75
Scruggs, Joanne	69, 170
Seagle, Ruth	69, 100
Seay, Joyce	63, 157, 178
Sevier, Susan	23, 75
Sewell, Margaret B.	120
Shankland, Lynne	26, 54
Shannon, Betty	69, 174
Sharp, Jane	75
Shepherd, Lee	75
Shepherd, Ruth	70, 170, 174
Shepley, Betsy	63
Sheriff, Nancy	36, 75
Shugart, Margaret Ann	70, 157
Sibley, Nancy	75, 173, 175
Simmons, Caroline	63
Simmons, Ruth	75
Sims, Catherine S.	124
Smith, Anna G.	131
Smith, Annie Mae	115
Smith, Florence	124
Smith, Hollis	54
Smith, Jo Allison	70, 164, 170
Smith, Lillian	70, 165, 170
Smith, Annette	70, 168, 179
Smith, Harriet	63
Smith, Page	63, 165, 170, 177, 180, 205
Smith, Nancy Vann	75
Smith, Sue	63
Smith, Suzanne	75
Smith, T. Susan	75, 168
Snead, Dianne	54, 108, 162, 170
Specht, Barbara	36, 54, 157
Sperling, Virginia	63
Spivey, Joyce	70
Stack, Elizabeth C.	131
Stacy, Sue	76
Stapleton, Anne	112
Stapleton, Kaye	24, 76, 103
Starrett, Martha	54, 165, 170, 205
Steel, Chloe	110, 136
Steele, Laura	54, 165, 168, 180
Strieglitz, Nain	75
Still, Cokey	70, 100
Still, Sandra	63, 146
Stillman, Nancy	70, 118
Stokes, Angelyn	54
Stokes, Jo Anne	70, 18, 164
Stokes, Mary	36, 63, 102, 149
Stone, Nancy	76
Stovall, Eugenia	54
Strickland, Camille	52, 55, 57, 156, 173, 181
Strupe, Sybil	55
Stubbins, Mary Rivers	76
Stubbs, Maxime	76, 175
Sudbury, Lydia	70, 170
Sullivan, Ann Lee	124
Swart, Koenraad W.	111
Swint, Katherine N.	63, 102, 149, 160, 170
Sylvester, Pam	111

T

Talmadge, Harriet	109
Tart, J. C.	112
Teague, Annetta	110
Teague, Caroline	76, 173
Teasley, Linda Grant	61, 157
Thomas, Anne	70, 168
Thomas, Esther	63, 168
Thomas, Elizabeth	76
Thomas, Martha	55, 57, 177
Thomas, Mary Beth	76, 102
Thomas, Pierre	120
Thomas, Caroline	63, 180
Thomas, Virginia	64
Thompson, Ann	70, 162
Thompson, Judith	76
Tobey, Marcia	55, 152, 166, 177
Towers, Edith	55, 164, 205
Traeger, Rose Marie	70
Troth, Rosslyn	76, 168
Trotter, Margaret G.	118
Troup, Mary	76
Turnage, Cecilia	76, 168
Turner, Dorothy H.	115
Turner, Helen R.	113

V

VanDeman, Margaret	76, 169
Vass, Edna	76, 168, 175
Venable, Peggy	70, 148

W

Wade, Sissy	76
Walden, Grace	55
Walker, Bebe	70
Walker, Merle G.	119
Walker, Patricia	36, 64, 100, 149, 156, 157, 174
Wallace, Linda	76
Walters, Mary Ruth	76
Walton, Louisa	157
Wammock, Lydia	22, 76
Ware, Mary	64, 168
Warren, Ferdinand	116
Watkins, Raines Wakeford	55
Weakley, Dorothy	111
Webb, Joanna	55, 175
Webb, Judy	56, 175
Wehman, Lucile	76
Wells, Peggy Jo	23, 64
Weltch, Jane	64, 157
West, Carolyn	56, 157, 164, 205
Westervelt, Robert F.	116
Whisnant, Anne	56, 57, 179
White, C. Dexter	115
White, Kake	70, 104
Whitfield, Jan	70, 174
Wilburn, Llewellyn	130
Wilkins, Nancy	76
Wilkinson, W. B.	115
Williams, Anne	70
Williams, Ann	76, 157
Williams, Carol	70
Williams, Julianne	76
Williams, Lyne	76
Williams, Penny	64
Williamson, Martha Ann	56
Wilson, Becky	14, 56, 93, 89, 173
Wilson, Linda	7
Wilson, Miriam	8, 76, 162, 175
Wilson, Paula	36, 64, 100, 116
Winbigler, Susan	76
Winegar, Cheryl	76, 101
Winn, Florence	64, 164, 179
Winter, Roberta	119
Withers, Elizabeth	76, 160
Withers, Elizabeth	70
Wolfford, Jill	76
Womack, Jane	76
Womeldorf, Ann	64
Wood, Ann	70, 170
Wren, Nancy	76
Wright, Billie	76
Wurst, Mariane	77
Wyatt, Betty Sue	64, 165, 170

Y

Yang, Lucy	77
Young, Marty	56, 174, 175, 180
Young, Myrna G.	123
Younger, Kay	36, 77

Z

Zenn, Elizabeth G.	123
Zimmerman, Louise	77
Zimmermann, Lafon	64, 177



