

Stack
Annex
CJ
5057
D283
1922

A
0
0
0
1
7
8
0
3
5
2



UC SOUTHERN REGIONAL LIBRARY FACILITY

of California
Regional
Facility

U



THE LIBRARY
OF
THE UNIVERSITY
OF CALIFORNIA
LOS ANGELES

Price, 21s. Net

THE
SILVER
TOKEN-COINAGE

MAINLY ISSUED BETWEEN

1811 and 1812

DESCRIBED AND ILLUSTRATED

BY

R. DALTON

WITH INTRODUCTION

1922

THE
SILVER
TOKEN-COINAGE

MAINLY ISSUED BETWEEN

1811 and 1812

DESCRIBED AND ILLUSTRATED

BY

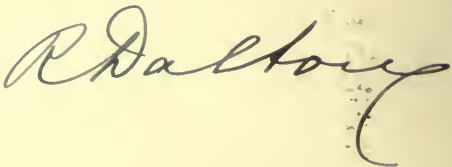
R. DALTON

WITH INTRODUCTION

LEAMINGTON SPA :
A. W. WATERS, 64, BATH STREET

1922

ONLY 200 COPIES WERE PRINTED,
THIS BEING No. 6

Signed 



IN the publication of this work, we have selected what we take to form the genuine portion of the 19th Century Silver Tokens—that is, those issued mainly in 1811 and 1812. We have been obliged to exclude the very extensive series of Bank Tokens of England and Ireland, also the Countermarked Dollars, mainly because of the expense that would have been incurred had we included them.

There are one or two exceptions to this rule where the tokens are of earlier date. Likewise the two Penzance Tickets (page 3, Nos. 8 and 9); these were probably used as shop tickets of a later period.

The Welbeck 3/- piece (page 25, No. 9) is almost certainly a truck ticket for the payment of wages.

The Shrewsbury Ticket, on the same page, probably had nothing to do with that city, and was doubtless struck before 1800, as the copper impression is upon an 18th Century Token flan, which already had an inscribed edge upon it.

The Ripley Sixpence (page 36, No. 3) may have been struck before 1800.

In the Not Local series (page 57, No. 6) this piece was included by an error; it is a Gambling Ticket for 2/6, struck for R. Simpson and used at Suffolk Street, Pall Mall. (*See Davis and Waters' "Tickets and Passes, 1922," page 314, No. 63.*)

We think present day collectors of these Silver Tokens may be interested in knowing how the general public of the first and second decades of the nineteenth century regarded them. We have therefore reprinted some contemporary newspaper articles, etc.

The first is taken from "Bell's Weekly Messenger," July 11th, 1812:—

LOCAL TOKENS.

"There are some principles as well in political economy as in private prudence, which appear to be as universally violated as they are universally acknowledged. One of these respects the national currency. It is a principle universally admitted, that nothing is more conducive to the interest of commerce than a general and permanent standard of weights and measures; and more particularly that the representative of value, and measures of relative worth, should be fixed, known, and unchangeable. Yet this principle so duly acknowledged, is hourly violated before our eyes. Instead of a fixed and permanent coin—each denomination of which represents a certain fixed value, so that everyone should know how many and how much of it to demand, in order to have a value corresponding to what he knows to be the worth of his commodity—instead of an eighteenpenny coin at London being of the value of eighteen pence at York, and vice versa, i.e., the same denomination being everywhere of the same value—instead of this kind of coin, we say, having a fixed, general, and known value, the present money of the kingdom is as various as some years since were the provincial weights and measures; and the consequences are as mischievous. The seller will in some way or other have the value for his goods; and if a coin of a certain denomination does not contain the value at which it is so denominated, he will have more of it to make up the deficiency. An eighteenpenny piece, for example, according to the relative value of silver, ought to contain so

many grains of silver—say for example, 60. These 60 grains are therefore its just value. Now, say that a yard of cloth is worth 60 grains, then this eighteenpenny piece will correspond with its value, and purchase it. But suppose, by the tricks or frauds of the provincial coiners (for such they may be called), a piece denominated an eighteenpenny piece contains only 40 grains of pure silver, such piece, it is evident, is no longer representative value of a yard of cloth, which, being worth 60 grains, is worth this adulterated piece, and half another. The yard of cloth therefore rises in this proportion—that is to say, from eighteen pence becomes twenty-seven pence.

“Such is the injury which is produced by adulterated or imperfect coin. Prices, which follow real value and not denomination, rise in proportion to the adulteration. The effect of which is briefly this—that all who have really good coin must pay it as if it was bad; and all who have fixed incomes, and therefore receive their money according to its denomination, whilst they can only pay it according to its actual currency, are losers to the full amount of all the difference between such denomination and the degradation in current value to which the adulteration has sunk it.

“Such therefore are the present evils of the tokens which are current in every part of the Kingdom, and the actual inherent value of which (i.e., the number of pure grains) is not equal to its money denomination—i.e., that for which it purports to be paid. They occasion, as we have said, a rise of price until the number of grains represent the actual value of the commodity; and as this price unhappily follows the commodity where there is not the same reason for it—that is to say, where there is not the difference between the denominated and the actual value—a yard of calico may be truly worth an eighteenpenny piece and a half of the adulterated coin of Manchester and Birmingham, because a yard of calico is worth 60 grains of pure silver, and because it takes an eighteenpenny piece and a half of Manchester coin to give the 60 grains. But why should a yard of calico be worth an eighteenpenny piece and a half in London, where there are 60 grains in the eighteen pence alone?

“Yet this will still happen, because the nominal price will follow it. The adulteration of part of the coin, therefore, injures the currency of the whole, because it occasions a degradation in its accepted value in one place, which follows it (by being attached to its name) to another.

“In Coin, properly so called—that is to say, Money stamped and assayed by the Public Authority—there are two most useful commercial qualities. In the first place, that each coin contains a certain number of grains, and secondly, that these grains are of a certain purity. This composition of a certain number and of a certain purity, constitutes a certain fixed value; the mint mark gives the public faith that it contains this value, and under this faith it becomes current for it. It is thus rendered a scale measure, or rule of value, and everywhere represents the same thing.

“Now the Local Tokens want both these qualities. There is no control upon these coiners, either in respect to the quantity of the silver or to the assay of it. And as nothing is more difficult than this assay—in other words as it is impossible to be made by general buyers and sellers—so in nothing is there a greater opening for fraud. Some of the tokens, therefore, are said to be worth about one-third part of that for which they have been issued, and yet the fraud is not discoverable unless the coin be reduced to its grains, or be chemically decomposed.

“We have heard it argued, that these tokens are to be considered as Silver Bank Notes, and therefore they need be of no value at all—and therefore it is demanded, what injury is it whether their intrinsic value be less or more? The notion of a Bank Note is, that it will be paid upon demand in good coin of the denomination that it bears.

“Now will this apply to these provincial tokens? Will one tenth part of them ever be paid in legal shillings, or legal money or value of any kind? No one takes a Note without a knowledge of the firm. Everyone will take a Token upon its *prima facie* appearance of honesty.

The difference between a Bank Note and a Token is this : a Bank Note is a promissory note of a good and known trade ; a Token is a promissory note of A. B. at Birmingham, or C. D. at York—or anybody, or nobody—whom nobody knows, but everyone is taken upon trust. A Bank Note may be enforced by legal process ; it is worth the law, and worth the carriage to the firm ; but if a labourer at the extreme of Yorkshire has a York Token, or perhaps a Birmingham or Manchester Token, will it pay him to send it by post or travel with it to the place from which it was issued ?

“The simple mischief of all these tokens is this : they are bad money, an adulterated coin. They are made as matter of merchandise and profit, and of course the makers must have something beyond their intrinsic value.”

It is quite clear that the writer of the above article looked upon these tokens as being simply a fraudulent business. But no doubt the coins did perform some benefit to the community by supplying small change.

It must be remembered that the silver currency until the great re-coinage of 1816 was in a very deplorable condition. From 1760 to 1816 the entire government issue of silver coinage was only to the value of £68,609. The rest of the amount in circulation was made up of the various issues of the monarchs from the reign of Charles II., when the milled money was first introduced ; which currency was no doubt largely worn flat by constant circulation, at the time when the Silver Token-Coinage was first introduced in the early years of the nineteenth century.

ROYAL LICENCE.

To the present day collectors of these Silver Tokens an explanation of this term “Royal Licence” may be of interest. The following is taken from “Bell’s Weekly Messenger,” for Nov. 24th, 1811 :—

“SILVER TOKENS.—As we have understood that large quantities of shilling and sixpenny silver tokens have of late been issued by private individuals in different counties, and particularly in the City of Bristol and its neighbourhood, purporting to be issued by Royal Licence, we have thought it desirable to inquire into the circumstances, and we are enabled to authoritatively state that there has been no Royal Licence nor permission whatever granted or given for the issue of any such tokens. We are further enabled to state that an inquiry having been made at one of the places from which some of these tokens were issued, ‘what was meant by the Royal Licence?’ the answer given was—that it only meant the Licence which all manufacturers of silver are obliged by law to take out. Persons therefore to whom such tokens are offered should be upon their guard and aware that they have no security whatever for the return of the difference between their nominal and real value.”

In the House of Commons on July 9th, 1812, Mr. Huskisson made some remarks upon the Local Tokens respecting a Bill being introduced to suppress them. He stated that he was hostile to the Token System. The private token he considered as bearing the same proportion to that issued by the Bank as the latter did to the legal coin of the realm. When Bank Tokens became a legal tender the coin of the realm disappeared entirely ; and, in the same manner, wherever Local Tokens were issued, which contained less value than those of the Bank, the latter in their turn vanished. In Birmingham and all the neighbouring country the silver coin of the realm had completely disappeared ; in consequence, bits of leather and pieces of pasteboard were issued for small sums as low as 6d. or 1s. This was a great inconvenience and abuse, and he had suggested the necessity of putting an immediate stop to it. Representations were then made to him by persons from the neighbourhood, that there was a total absence of small currency, and if a stop were not put to the system they knew not what would become of them.

His answer was—"if these articles were put down, the regular silver currency will find its way to Birmingham."

Great evils had arisen from the facility of disseminating private coin throughout the Kingdom. Every person who had it in his power immediately set to work, and individuals advertised in the newspapers that they could make money, and invited the people to purchase it. He could state that many of those persons paid ten per cent. to agents to distribute their coin through the country, and to get Bank Tokens into their possession. And here it should be recollected that these private tokens were not issued under a promise to be paid on demand in legal coin, but they absolutely purported to be coin and money for which no person was accountable. He then expressed his disapprobation of some of the clauses of the Bill. By one of these it was enacted that if any person after the 25th of March, 1813, should be the utterer of any Local Token, he should forfeit for such offence not less than £5 or more than £20. This he thought would apply to an innocent bona fide holder, who if he presented a Local Token to the person who had issued it, and who ought in justice to return the nominal value, would be considered as liable to this penalty.

Mr. W. J. Davis in his "Token Coinage of Warwickshire" reproduced some of the original copper plates of small value paper money issued by the Birmingham Workhouse. The leather notes mentioned by Mr. Huskisson seem to have entirely disappeared; at least none are now known to collectors, as we are aware of. We likewise reproduce some of the advertisements *re* tokens mentioned in the same speech.

The "Evening Star," London, January 9th, 1812 :—

"THE SILVER TOKENS, which have afforded so much convenience to the Public, and have been so generally patronised, continue to be manufactured by H. Morgan, Die Cutter (the original LICENCED Silver Token Manufacturer), No. 12, Rathbone Place, Oxford Street London. No letters admitted unless post paid. Tokens kept ready made."

An earlier one from the same Newspaper of November 16th, 1811, reads :—

"SILVER TOKENS, for the convenience of Change, continue to be made of Genuine Dollar Silver by Morgan and Co., and may be had at their Licenced Manufactory, 12, Rathbone Place, Oxford Street, LONDON. M. & Co. extensively circulate Bristol and other Tokens suited to general circulation; are always kept finished in large quantities ready to send by coach in return for a remittance. Dies engraved to order. All unpaid letters will be refused admission."

That of October 12th, 1811, reads :—

"TOKENS OF SILVER for the convenience of Change, of an elegant and highly approved design, suited to general circulation, are made and sold by ROYAL LICENCE and AUTHORITY, and Dies for Tokens, engraved according to any wished for Design, by directing to H. M., Die Cutter and Medallist, No. 12, Rathbone Place, London. N.B.—Tokens will be sent free of every expence, in return for a remittance, and all letters must be prepaid, or will be returned unopened to the General Post Office."

The advertisement of July 28th, 1811, is interesting, as Morgan does not give his own address :—

"SILVER TOKENS AND SMALL CHANGE, supplied to Regimental Paymasters, Manufacturers, Farmers, Shop and Innkeepers, Clerks of Public Works, and all other Persons who require Change for their Business or to pay Workmen, &c. Country Residents may be accommodated, per coach with from Five Pounds worth to a large amount, weekly by directing, with real Name, Occupation and abode to M. & Co., care of Mr. Heath, No. 27, Clement's

Lane, Strand, London, enclosing remittance in Notes or Good Bills. No letters admitted unless post free."

Another of a later date, Thursday, June 24th, 1813, reads:—

"LOCAL TOKENS of Gold and Silver, invented and first made for Public convenience in March 1811, by Messrs. Morgan and Co., Die Sinkers and Medallists, at their Licensed Token Manufactory, No. 12, Rathbone Place, Oxford Street, London, having been honoured with Legislative sanction and patronage by Three successive Acts of Parliament, continue to be made to any design for Companies and individuals, at a short notice, in that superior style of execution which has obtained for M. & Co. during the last two years, numerous and extensive orders for Bankers, Manufacturers and Shopkeepers, in almost every city and town throughout the United Kingdom. N.B.—Unpaid letters will not be admitted. Dies of numerous Patterns ready Engraved."

This man H. Morgan seems to have done a very large business in supplying these Silver Tokens. Most, if not all the tokens without any names of issuers upon them, were made by him for sale to anyone who cared to buy and circulate them, as his advertisements constantly state. It will be noticed in the last advertisement he mentions that he started in the business in March 1811; and the "Three Acts of Parliament" there mentioned is a good example of bounce, in the face of the comment upon the "Royal Licence" given on page v, from "Bell's Weekly Messenger," of November 24th, 1811.

The writer of some articles upon the Silver Tokens in the "Numismatic Magazine" of some 25 years ago, stated that the Rate Books of the Parish where he is supposed to have carried on business, do not contain his name, and we ourselves have never discovered his name in any London Directory. Is it possible this London address was only used to receive his letters and sell his tokens, and in reality he carried on his real manufacturing business at Birmingham or elsewhere? In the final advertisement he boasts of having supplied tokens throughout the United Kingdom. This was quite true as regards England, for there are but few counties where his dies are not represented. It will also be noticed in almost every case where he manufactured a token it hardly ever made any promise to pay in Bank Notes, as many of the genuine issuers did, when their tokens were presented. That of Lynn (page 21, No. 8) is one of the few exceptions. Take, for instance, the Middlesex issues, which he must have been largely concerned with; this promise to pay only occurs upon Nos. 19, 20 and 41, and these three pieces are all rare, so they could not have been struck in large quantities.

In Davis's "19th Century Token Coinage" is reproduced an extract as under, and this shows what kind of business Morgan carried on:—

["Bath Chronicle," February 27th, 1812.]

BRISTOL, 17th February, 1812.

We the undersigned hereby caution the public against a spurious Imitation of our Twelve penny and Sixpenny Tokens, differing, however, in the names on the reverse, which in the Base Tokens are all erroneously spelt, as will be perceived in the specimens subjoined—

ORIGINAL TOKEN.

PAYABLE
BY MESSRS
FRAS. GARRATT
WM. TERRELL
EDWD. BIRD
LANT. BECK &
FRANS. H
GRIGG

RATHBONE PLACE TOKEN.

PAYABLE
BY MESSRS
FRANS GARRETT
WR. TERRAIL
EDMD BIRD
LAMT. BECK &
FRANN. H
GREGG

Considering it an imperious duty which we owe to the public and ourselves to trace the authors of this infamous deception, we have succeeded in ascertaining that it has been carried into effect by the well known Mr. H. Morgan, No. 12, Rathbone Place, and A. B., No. 35, Cock Lane, Snow Hill, London, and that the new coinage he has produced is of inferior value to his former tokens, said to be issued by Royal License, and which fortunately for the community have been long since detected, and the circulation stopped.

We have with equal certainty ascertained Mr. Morgan's Resident Agent in Bristol, whose name we for the present forbear announcing, in the hope that this public notice will so effectually put the public and the parties on their guard, as to render further measures unnecessary.

FRANCIS GARRATT
EDWARD BIRD
FRANCIS H. GRIGG

WM. TERRELL
LAUNCELOT BECK

By some other items printed by Mr. Davis, it is shown that the genuine Garratt tokens were made at Birmingham, so it appears that as Morgan did not get the order himself he issued a forgery of it.

Morgan seems to have done his token business mainly in Mid and South England. Most of the tokens in the North were probably made by Younge & Deakin of Sheffield.

A. W. WATERS,
LEAMINGTON SPA.

The following pieces have not yet been traced, but are included on the authority of Davis's work on Tokens, and also from notes that have been supplied by various collectors.

CORNWALL.—No. 6.

DEVON.—No. 20.

DORSET.—Nos. 20, 24, 31.

DUBLIN.—Nos. 2 *Bis*, 3.

HAMPSHIRE.—Nos. 8, 14, 17, 22, 23.

ISLE OF MAN.—Nos. 3, 5.

LEICESTERSHIRE.—Nos. 4, 5.

MIDDLESEX.—Nos. 4, 7, 13, 16, 22, 32, 39.

NORTHUMBERLAND.—No. 3.

NOT LOCAL.—Nos. 3, 5, 21.

SOMERSET.—Nos. 6, 8.

YORKSHIRE.—No. 62.

Collectors who have any of these pieces, or meet with them at a later date, will greatly oblige by kindly communicating with me.

RARITY.

I have given the rarity of the silver pieces based on the numbers traced. The proofs in copper or metal other than silver are all very rare.

In concluding this work, I wish to record my indebtedness and thanks to the Officials of the British Museum and the Bristol Museum; to Mr. A. H. Baldwin, Mr. J. H. Daniels, Messrs. W. S. Lincoln & Son, and Messrs. Spink & Son, Ltd.; also to Mr. F. W. Bowman, Mr. F. S. Cokayne, Mr. L. L. Fletcher, Mr. S. H. Hamer, Mr. A. K. Maples, Mr. W. Waite Sanderson, Mr. W. Sykes and Mr. Thornton for checking off my lists of pieces and for the loan of specimens for illustration.

R. DALTON,
PARK HOUSE, BRISTOL.

READING.

FORTY SHILLINGS.

1. O: Bust of King. ALFRED 1812 PIGNORA
CERTA PETIS DO PIGNORA CERTA
R: 40 SHILLINGS BERKS TOKEN STAND^D
DWTS. GR.
GOLD 6 - 18 READING PAYABLE IN
B^K NOTES AT 6^S THE DWT. BY I. B.
MONCK ESQ^{RE}. D. 1
2. The same in silver. D. 2

HALF-CROWN.

3. O: The arms of Reading. LABIMUR IN
PEJUS DONEC MELIORA REVERTANT .
1811 .
R: HALF CROWN TOKEN SPAN . DOLL . SILVER
6 DWTS PAYABLE IN BANK NOTES
BY I. B. MONCK ESQ^{RE} READING . + .
D. 3

EIGHTEEN PENCE.

4. O: Similar to last. The line on which
the left bust rests points to foot of p.
R: 18 PENCE TOKEN SPAN : DOLL . SILVER
4 DWTS The left top sprig points
to the centre of τ, and the 8 is
under the γ. D. 4
5. O: As last.
R: No period after DOLL The 8 is under
I, and left hand sprig to the space
between PENCE and TOKEN.
6. O: Similar. The line on which the left
bust rests points below the p.
R: As last. D. 5
7. O: As last.
R: Similar; this has a period after DOLL .
and the sprig points to τ. D. 6

Buckinghamshire.

HIGH WYCOMBE.

1. O: Arms; HIGH WYCOMBE & BUCKINGHAM-
SHIRE TOKEN XII PENCE
R: View of Town Hall; JAMES GOMME
MDCCCXI D. 1

Cambridgeshire.

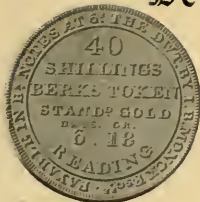
MARCH.

1. O: The golden fleece. ✧ PAYABLE BY
MESS^{RS} ✧ S. RATCLIFFE E. ELAM
& J. THURBON
R: MARCH SILVER TOKEN ONE SHILLING
✧ TO FACILITATE TRADE ✧ ISSUED
NOV^R 1 1811 D. 1

Rarity—Berkshire, Nos. 1, 2, RR; 5, 6, 7, R.



1



3



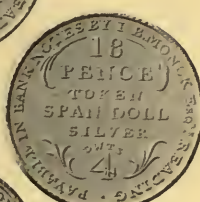
4



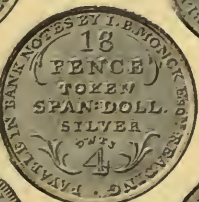
5



6



6



7



1



1



Cheshire.



NANTWICH.

SHILLING.

1. O: ARMS. NANTWICH TOKEN VALUE ONE SHILLING
R: AT THE OLD BANK PAYABLE 1811
ONE POUND NOTE FOR 20 TOKENS D. 1
2. O: As last.
R: Similar, but PAYABLE 1811 is incuse. D. 2
3. O: VALUE ONE SHILL. BROUGHTON, SPROUT. GARNETT. & SUTTON *
R: AT NANTWICH BANK ONE POUND BANK. NOTE FOR 20 TOKENS * D. 3

STOCKPORT.

4. O: Beehive and sixteen bees. T. CARTWRIGHT & G & R. FERNS ... STOCKPORT ...
R: Female seated. Y & D under the hilt of sword. H on bale. ONE SHILLING SILVER TOKEN 1812 D. 4
5. O: Similar, but with fifteen bees. G & R. FERNS & T. CARTWRIGHT .. STOCKPORT ..
R: As last. D. 5
6. O: As last.
R: Similar. Y & D under the sword to right. D. 6
7. O: Similar, with seventeen bees; STOCKPORT ... CHESHIRE ...
R: As last. D. 7

SIXPENCE.

8. O: Beehive and fifteen bees; T. CARTWRIGHT ... STOCKPORT ...
R: Female seated. No sword, Y & D partly under bale. SIX-PENCE SILVER TOKEN . 1812 D. 8
9. As last, in copper.

Cornwall.
COUNTY.

1. O: ARMS. NORTH CORNWALL . 1811
R: ONE SHILLING VALUE D. 1
2. O: As last, but in copper. D. 2
3. O: As last.
R: DEVON & CORNWALL * BARNSTAPLE * STRATTON D. 10
4. O: As last.
R: * SILVER * TWELVE PENNY TOKEN * SOLD BY * MORGAN * 12 RATHBONE PLACE * LONDON * D. 3

Rarity—Cheshire, Nos. 2, 3, RRR; 5, R.
Cornwall, No. 3, RR; 4, R.



5



7



8



9



10



10



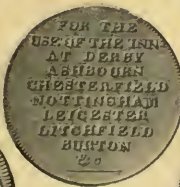
11



1



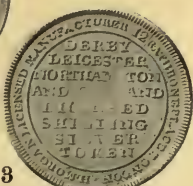
1



2



3



3

COUNTY.

5. O: Arms. CORNWALL 1811
R: A TOKEN FOR ONE SHILLING D. 4
6. O: As last, but in copper. D. 5

LAUNCESTON.

7. O: A castle. LAUNCESTON TOKEN. ONE SHILLING. 1811
R: W. & G. PEARSE T. CHING H. NICOLS & J. PROCKTER ISSUED TO FACILITATE TRADE D. 7

PENZANCE.

TWO SHILLINGS.

8. O: A wheatsheaf; TWO SHILLINGS + TOKEN +
R: TEA DEALER AND GROCER SAMUEL HIGGS + PENZANCE + D. 27
9. O: Similar. ONE TOKEN + TWO SHILLINGS +
R: Similar. W. F. ROWE, GROCER. PENZANCE. D. 28

These were struck in tin.

STRATTON.

10. O: Arms, &c. As No. 1.
R: 12 within a wreath; . SHEPHERD. WATTS & CO. STRATTON D. 8
11. O: Arms, with H.M. under. DEVONSHIRE SILVER TOKEN.
R: As last. D. 9

Derbyshire.

DERBY.

1. O: Crest and coronet; . ONE SHILLING TOKEN. STERLING SILVER
R: FOR THE USE OF THE INN^s AT DERBY ASHBOURN CHESTERFIELD NOTTINGHAM LEICESTER LITCHFIELD BURTON &c
2. O: As last.
R: Similar.

There are several slight varieties in the lettering between Nos. 1 and 2: In No. 1 the R and N of ASHBOURN do not touch, and s in LEICESTER is above the line; in No. 2 the R and N touch, and s is on the line.

3. O: View of Peterborough Cathedral.
SILVER XII TOKEN
R: DERBY LEICESTER NORTHAMPTON AND RUTLAND LICENSED SHILLING SILVER TOKEN H. MORGAN LICENSED MANUFACTURER 12 RATHBONE PLACE LONDON.

Rarity—Cornwall, Nos. 5, 10, 11, R.
Derby, Nos. 1, 2, RRR; 3, RR.

Devonshire.

COUNTY.



1. *O*: View of Eddystone Lighthouse.
VALUE ONE SHILLING . H.M on rock.
R: DEVON SILVER TOKEN . H—M. D. 1
2. *O*: Arms, H M SILVER TOKEN
R: As last. D. 2
3. *O*: As No. 1.
R: ONE SHILLING TOKEN SOLD BY ROYAL .
LICENCE AT . MORGAN'S * 12 . RATH-
BONE PLACE LONDON D. 3
4. *O*: Arms. H M DEVONSHIRE SILVER TOKEN.
R: As last. D. 4
5. *O*: As last.
R: ONE SHILLING VALUE D. 5
6. As last, in copper. D. 7
7. *O*: Arms as last, but shield is tinted.
R: ONE SHILLING VALUE . H . M under. D. 6
8. *O*: As last.
R: The same as obverse of No. 1. D. 8.
9. *O*: Arms. ONE SHILLING DEVONSHIRE
R: DEVONSHIRE SOMERSETSHIRE AND
CORNWALL SILVER TOKEN D. 9
10. As last, in copper. D. 10

BARNSTAPLE.

11. *O*: BARNSTAPLE TOKEN ONE SHILLING
. 1811 . The G lines to centre of E.
R: Arms between branches. D. 11
12. *O*: Similar. The G lines to the first limb
of E.
R: As last. D. 12
13. *O*: ISSUED AT BARNSTAPLE 14 NOVEMBER
1811 * BY MESS^{RS} JOS. EVANS JOHN
BOWHAY MICH^L NOTT & R. GRIBBLE
R: Plumes of Prince of Wales. FOR
CONVENIENCE OF CHANGE . DEVON-
SHIRE SILVER TOKEN FOR XII PENCE *
D. 13

Rarity—Nos. 8, 9, RRR; 3, RR; 2, 11, 12, R.



14



15



BARNSTAPLE.

SIXPENCE.

14. Similar to No. 11, but BARNSTAPLE
TOKEN SIX PENCE. 1811. D. 14
15. Similar to No. 13, but DEVONSHIRE
SILVER TOKEN FOR VI PENCE *
D. 15

EXETER.



16



16. O: View of Lighthouse similar to No. 1,
but the G is above the pennon on
mast.

R: ARMS. EXETER AND DEVON SILVER
TOKEN D. 16



17



17. O: JOSEPH HICKS. * EXETER * ONE
SHILLING TOKEN

R: Similar to the obverse. D. 17

PLYMOUTH.



18



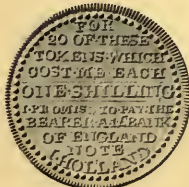
18. O: ONE SHILLING TOKEN within a garter
marked DOLLAR SILVER. PAYABLE
AT THE BULLION OFFICE 69 HIGH
STREET 1811.

R: PLYMOUTH TOKEN PAYABLE BY C^R LOYD.

TEIGNMOUTH.



19



19. O: Crest. H. under the chaplet. PAYABLE.
AT . THE BANK . ISSU'D . AT . TEIGN-
MOUTH . FOR . PUBLIC . ACCOMODATION
1811

R: FOR 20 OF . THESE TOKENS . WHICH
COST . ME . EACH ONE . SHILLING I .
PROMISE . TO . PAY . THE BEARER .
A . 1 . £ BANK OF ENGLAND NOTE
I . HOLLAND D. 18



20



20. O: Similar, but with ID under the
chaplet, and annulets on the
garter as periods.

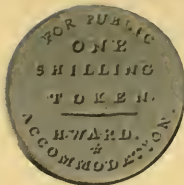
R: Similar, but stars after one and
before and after NOTE. D. 19

21. As last in copper, plated on obverse.
D. 20

Dorsetshire.



1



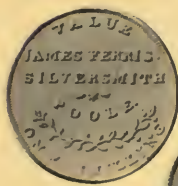
2



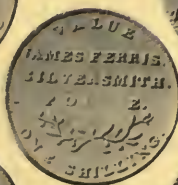
3



4



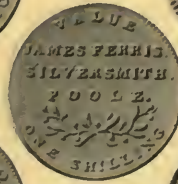
5



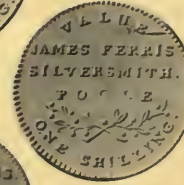
5



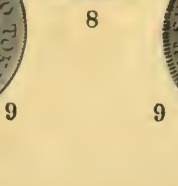
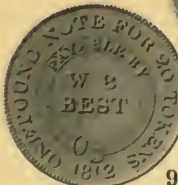
7



6



7



8



9

BLANDFORD.

1. *O*: ARMS. BLAND FORD. 1811
R: ONE SHILLING TOKEN. H. WARD. * FOR PUBLIC ACCOMMODATION. D. 1
2. *O*: ARMS. PAYABLE BY H. WARD BLANDFORD.
R: ONE SHILLING TOKEN FOR PUBLIC ACCOMMODATION 1811. D. 2

DORCHESTER.

3. *O*: COX, MERLE & PATTISON, DORCHESTER. BANK ONE SHILLING TOKEN PURE SILVER
R: St. Dunstan leading the Devil by the Nose. KNOW THYSELF On the ground i. d D. 3
4. *O*: Similar. The dots in right ornament larger and end closer to n.
R: Similar. At the bottom the ends of sprigs further from the leaves.

POOLE.

5. *O*: ARMS OF POOLE. TOWN AND COUNTY OF POOLE TOKEN. 1811.
R: JAMES FERRIS. SILVERSMITH. POOLE. VALUE ONE SHILLING. An ornament above POOLE. D. 4
 6. *O*: As last.
R: No ornament above POOLE, which is in a straight line, four leaves and berries on right hand sprig and one in the centre. D. 5
 7. *O*: Similar to last.
R: There are five leaves and berries on right hand sprig, the two last berries are nearly side by side. D. 6
 8. *O*: As last.
R: Similar, the two last berries at the right are over each other. D. 7
 9. *O*: PAYABLE BY W. B. BEST ONE POUND NOTE FOR 20 TOKENS. 1812.
R: Female seated. k & s under the figure. ONE SHILLING SILVER TOKEN. POOLE. D. 8
- A specimen of this is known struck upon a Walsall Church Penny. D. 27
- Rarity—Nos. 3, 4, RRR; 1, RR; 7, 8, R.

POOLE.

SIXPENCE.

10. *O*: Similar, but 40 TOKENS.
R: Similar, but SIX PENCE SILVER TOKEN
. POOLE . D. 9
11. *O*: As last.
R: As rev. of Somerset, No. 65.
12. As last, in copper.

SHAFTESBURY.

13. *O*: Arms of Shaftesbury. DORSETSHIRE
WILTSHIRE . & SHAFTESBURY . BANK
TOKEN
R: ONE SHILLING AT SHAFTESBURY OR S.
LLOYDS BUCKLESBURY LONDON FOR
THE ACCOMMODATION OF THE PUBLIC
1811 D. 10
14. *O*: As last.
R: Military bust to left. COMMERCIAL
TOKEN I . B.X.R 1811 D. 11
This was struck in brass on large and
small flans.
15. *O*: Naval bust to left. As reverse of last.
R: ONE SHILLING VALUE. D. 12
16. As last, but in brass. D. 13
17. *O*: As last.
R: Figure seated. LET COMMERCE
FLOURISH * ENGLAND . IRELAND .
SCOTLAND & WALES .
Struck in brass.
18. *O*: As last.
R: Blank. In brass.
19. *O*: Arms. . SHAFTESBURY BANK TOKEN .
HENDERSON & C^o D. 14
20. As last, but in copper. D. 15
21. *O*: Arms. . SHAFTESBURY BANK . LICENSED
14 MARCH 1811 The 14 same size
as figures in date; the point of
shield is under the y. Centre bar
of shield to left is above a leaf.
R: DORSETSHIRE WILTSHIRE AND SHAFTES-
BURY BANK TOKEN VALUE ONE
SHILLING The f exactly over k.
D. 16
22. *O*: The centre bar is opposite a leaf.
R: Similar, but the word AND is in
italics f to left of k. D. 18
23. As last, in copper on a large flan.
D. 17
24. *O*: The figures 14 almost as small as
the letters in MARCH.
R: The f to left of k. D. 19

Rarity—Nos. 11, 17, 24, RRR ;
14, 15, 19, RR ; 13, R.

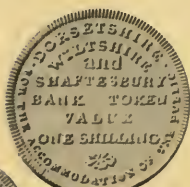
Dorsetshire.



25



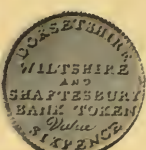
26



28



27



28



29



30



30

SHAFTESBURY.

25. *O*: Similar.
R: Similar, but the Staffordshire Knot is omitted. D. 20
26. *O*: Similar. The point of shield is under *R*.
R: DORSETSHIRE . WILTSHIRE and SHAFTESBURY BANK TOKEN VALUE ONE SHILLING FOR THE ACCOMMODATION OF THE PUBLIC D. 21
27. *O*: As last.
R: MAY TRADE THE PLOUGH & THE FLEECE FLOURISH IN ALL THE BRITISH ISLES SUCCESS TO AGRICULTURE & NAVIGATION. D. 22

SIXPENCE.

28. *O*: Arms. . SHAFTESBURY BANK . LICENSED 14 MARCH 1811 The 14 same size as figures in date.
R: DORSETSHIRE WILTSHIRE AND SHAFTESBURY BANK TOKEN VALUE SIXPENCE D. 23
29. *O*: The 14 same size as letters in MARCH.
R: Very similar. D. 24
30. *O*: Similar, but with FOR THE ACCOMMODATION OF THE PUBLIC added.
R: Similar, but VALUE in roman capitals. D. 25

THREEPENCE.

31. *O*: HENDERSON & CO SHASTON BANK . . TOKEN . .
R: A large 3 within a wreath. D. 26

Durham.

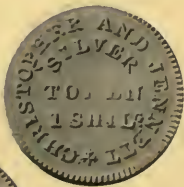
STOCKTON.



1



2



1

1. *O*: Arms. STOCKTON . 1812.
R: SILVER TOKEN 1 SHIL^d CHRISTOPHER AND JENNETT + D. 1
2. *O*: Similar, but the cable loops are larger and the letters of STOCKTON further apart.
R: As last. D. 2
3. As last, but in tin.

Rarity—Dorsetshire, Nos. 25, 27, 31, RRR; 30, RR. Durham, No. 2, R.



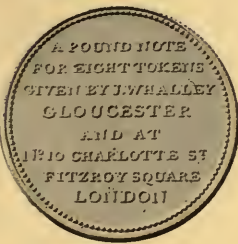
1



3



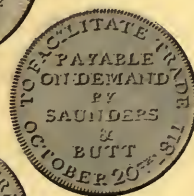
4



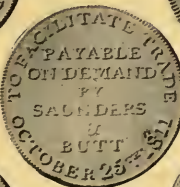
5



6



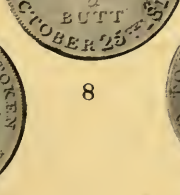
7



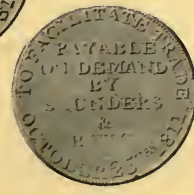
7



9



8



9

CHELTENHAM.

1. *O*: View of St. Mary's Church. VALUE ONE SHILLING
R: A POUND NOTE FOR 20 TOKENS GIVEN BY WILL^M BASTIN CHELTENHAM. 1811 D. 1
2. As last, but in tin. D. 2
3. *O*: PAYABLE BY MESS^{RS} J & S, GRIFFITH CHELTENHAM OR AT N^O 2 RIVER S^T BATH PAYABLE BY A ONE POUND NOTE FOR 20 OF THESE TOKENS.
R: Arms of Bristol. DOLLAR. SILVER .. SILVER TOKEN FOR XII PENCE D. 3

GLOUCESTER.

HALF-CROWN.

4. *O*: Arms of Gloucester. GLOUCESTER TOKEN TWO SHILLINGS & SIX PENCE
R: A POUND NOTE FOR EIGHT TOKENS GIVEN BY J. WHALLEY GLOUCESTER AND AT N^O 10 CHARLOTTE S^T FITZROY SQUARE LONDON D. 4

SHILLING.

5. *O*: Arms of Gloucester, with crest. FOR XII PENCE No period in the legend, and the tassel is between the r's of value.
R: View of Cathedral. GLOUCESTER . COUNTY & . CITY TOKEN . MDCCCXI . D. 5
6. *O*: Similar. A period after each word, and the tassel is under the last r of value.
R: As last. D. 6

Without Crest.

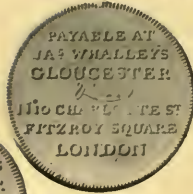
7. *O*: ARMS. GLOUCESTER CITY TOKEN ONE SHILLING There are thirteen leaves in the branch at the right.
R: PAYABLE ON DEMAND BY SAUNDERS & BUTT TO FACILITATE TRADE OCTOBER 20TH 1811 D. 7
8. *O*: As last.
R: Similar, but dated OCTOBER 25TH D. 8
9. *O*: Similar to last, but with twelve leaves in the branch to right.
R: Very similar. D. 9

Rarity—Nos. 3, 9, RR; 7, R.

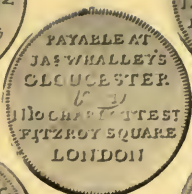
Gloucestershire.



10



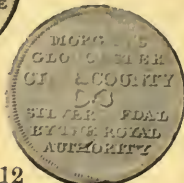
10



11



12



12



1



2



3



4



5



5



6



6 Bis

GLOUCESTER.

10. *O*: Similar. GLOUCESTER TOKEN ONE SHILLING
R: PAYABLE AT JA^S WHALLEY'S GLOUCESTER & AT N^O 10 CHARLOTTE S^T FITZROY SQUARE LONDON ^S in JA^S is under the centre of A. D. 10
11. *O*: As last.
R: Similar, but the ^S is under the first limb of A. D. 11
12. *O*: ARMS. GLOUCESTER CITY AND COUNTY.
R: MORGAN'S GLOUCESTER CITY & COUNTY SILVER MEDAL BY THE ROYAL AUTHORITY D. 12
13. As last. In copper, on small flan, size of sixpence. D. 13

Hampshire.

1. *O*: Ships at sea. HAMPSHIRE TOKEN H.M. at the left of ship, and P on the waves to right.
R: ISLE OF WIGHT PORTSMOUTH SOUTHAMPTON AND GOSPORT SHILLING SILVER TOKEN . H. MORGAN LICENSED MANUFACTURER 12 RATHBONE PLACE LONDON. D. 1
2. *O*: ARMS. HAMPSHIRE SILVER TOKEN 1811 The 1 in date is over the first limb of R. Point of shield between 8 and 1.
R: A stoop sailing. VALUE ONE SHILLING TO FACILITATE TRADE The mast touching the first limb of E. D. 2
3. *O*: Line of shield to centre of A and tail of R, first 1 on date over E.
R: The sea different to last, and lines between A and D. D. 3
 Struck in copper.
4. *O*: As last.
R: Similar. The mast under the extreme left of E. The water line to R. D. 4
5. *O*: Similar to No. 2. The point of shield is over the 8.
R: The mast similar to No. 2, but slightly more to the right. Water line to R. D. 5
6. *O*: Similar to No. 2. The lines on the shield are broken and project nearly touching the 1's of date.
R: As last.
- 6 Bis. *O*: Lines on shield very coarse. 1 of date over centre of R.
R: As last.
- Rarity—Gloucester, No. 12, RR.
 Hampshire, Nos. 1, 6 Bis, RR; 6, R.



SIXPENCE.

7. *O*: Similar. The point of shield between 8 and 1. The figures of date all of the same size.
R: Sloop sailing. * VALUE SIXPENCE * TO FACILITATE TRADE. D. 6
8. As last, in copper D. 7
9. *O*: No stars before and after HAMPSHIRE.
R: No stars before and after SIXPENCE.
10. *O*: Similar to No. 7. The point of shield over the first 1. The 1's of date smaller than the 8.
R: As No. 7. D. 8

ANDOVER.

1811.

11. *O*: Arms. ANDOVER TOKEN FOR XII PENCE Point of shield to first limb of κ.
R: PAYABLE BY W. S. & I. WAKEFORD 1811 Six acorns inside of wreath to right. D. 9
12. *O*: As last.
R: Similar. Seven acorns to right.
13. *O*: Similar.
R: No period after 1 Seven acorns to right. D. 10
14. As last, in copper. D. 11
15. *O*: Similar.
R: Similar. A leaf over first A. D. 12
16. *O*: As last.
R: Eight acorns to right. D. 13
17. *O*: Similar.
R: A period after 1. Nine acorns to right. D. 14
18. *O*: Point of shield to centre of κ.
R: No period after & Top of 1's are flat. Four acorns to right. D. 15
19. As last, in copper. D. 16

Rarity—Nos. 9, 17, RRR; 10, 11, 12, 13, 16, R.



20



ANDOVER.

1812.

20. *O*: Similar. Point of shield to first limb of κ .
R: No period after 1. Seven acorns to right. Dated 1812. D. 17
21. As last, in copper. D. 18
22. *O*:
R: Six acorns to right. D. 19
23. *O*:
R: Similar, with a period after 1. D. 20



24



25



25



26



26



28



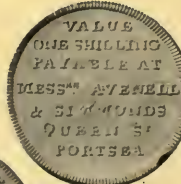
27



28



31



31



32

NEWPORT.

24. *O*: An antique ship. NEWPORT ISLE OF WIGHT 1811. The anchor touches the waves. Flat tops to the 1's in date.
R: ONE SHILLING SILVER TOKEN MAY PLENTY CROWN OUR HAPPY ISLE * The σ lines to the first p. D. 21
25. *O*: Similar. The anchor does not touch the water.
R: The σ lines to last limb of λ . D. 22
26. *O*: The anchor touches the water. The tops of 1's slope.
R: The σ lines to space between p p. D. 23
27. *O*: As last.
R: The word TOKEN closer to the circle.

SIXPENCE.

28. *O*: Similar.
R: Beehive and bees. UNION TOKEN SIXPENCE D. 24
29. As last, in copper. D. 25
30. As last, in tin. D. 26

PORTSEA.

31. *O*: A crescent and star. ACCOMMODATION OF TRADE 1811 PORTSEA SILVER. TOKEN The 8 under first limb of κ .
R: VALUE ONE SHILLING PAYABLE AT MESSRS AVENELL & SIMMONDS QUEEN ST PORTSEA D. 27
32. *O*: The 8 under space between e and r.
R: As last.

Rarity—Nos. 22, 23, 27, 31, 32, RRR;
 26, RR.

PORTSMOUTH.



33. *O*: A crescent and star. PORTSMOUTH ACCOMMODATION . CHANGE
R: ONE SHILLING TOKEN DOLLAR SILVER PAYABLE AT THE BULLION OFFICE 69 HIGH STREET 1811 D. 28
34. *O*: As last.
R: ISLE OF WIGHT &c. As No. 1. D. 29
35. *O*: A crescent and star with an eye in the centre. PORTSMOUTH 1811 PAYABLE AT I. DUDLEYS
R: XII PENCE SILVER TOKEN Eleven berries in the wreath. D. 30
36. *O*: Similar. No period between i DUDLEYS The t of PORTSMOUTH directly under the p of PAYABLE and at the same angle.
R: As last. D. 31
37. *O*: The tongue of garter does not touch the d.
R: The wreath has seventeen berries. D. 32
38. *O*: A ship. LET COMMERCE FLOURISH ISSUED BY I M STEPHENS 1811
R: VALUE XII PENCE PORTSMOUTH SILVER TOKEN D. 33

ROMSEY.

39. *O*: Arms. HM under the shield. .ROMSEY TOKEN . VALUE ONE SHILLING
R: PAYABLE BY W. ADAMS 1812 H.M below the wreath. D. 34
40. *O*: As last.
R: Ships at sea. HAMPSHIRE TOKEN D. 35
41. *O*: Similar. ROMSEY TOKEN. VALUE + ONE SHILLING
R: Ships at sea. WILLIAM LINTOTT & SONS. p on the waves to left. D. 36

SOUTHAMPTON.

42. *O*: Arms. SOUTHAMPTON TOKEN VALUE - ONE SHILLING .
R: A ship. WILLIAM LOMER & SON D. 37
- Rarity—Nos. 33, 40, 42, RR;
34, 35, 36, R.

Herefordshire.



1. *O*: ARMS. HEREFORD COUNTY AND CITY TOKEN 1811 The lion without a sword. Five acorns in oak sprig. The branch to right above the shield.

R: PAYABLE IN CASH NOTES BY WAINWRIGHT & CO AND CARLESS & CO ONE SHILLING TOKEN D. 1

2. *O*: Similar. With sword, three acorns in wreath. The branch below the shield.

R: As last. D. 2

Kent.

FOLKESTONE.

1. *O*: ARMS. CINQ. PORT. TOKEN JOHN BOXER FOLKESTONE 1811

R: ONE SHILLING VALUE D. 1

Lancashire.

LIVERPOOL.

HALF-A-GUINEA.

1. *O*: A phoenix. THO^S WILSON & CO. LIVERPOOL

R: LANCASHIRE TOKEN 1812 STANDARD 10.6^S D^D GOLD D. 1

This was struck in copper only.

SHILLING.

2. *O*: ARMS. THO^S WILSON & CO LIVERPOOL

R: Female seated. LANCASHIRE ONE SHILLING TOKEN 1812 D. 2

MANCHESTER.

3. *O*: ARMS. MANCHESTER TOKEN. VALUE ONE SHILLING

R: View of building. W. BALLANS TEA-DEALER MARKET-PLACE + D. 3

4. As last. In brass.

5. *O*: As last.

R: Similar, but x and d on the base of building. Date 1812 added. D. 4

6. *O*: As last.

R: Similar. FOR PUBLIC ACCOMODATION. 1812 D. 5

POULTON.

7. *O*: POULTON TOKEN VALUE ONE SHILLING

R: PAYABLE AT R. D HALLS ONE POUND NOTE FOR 20 TOKENS D. 6



1. *O*: Arms. ONE SHILLING SILVER TOKEN
Stem of branch to t.
R: DERBY LEICESTER NORTHAMPTON AND
RUTLAND LICENSED SHILLING SILVER
TOKEN H. MORGAN LICENSED
MANUFACTURER 12 RATHBONE
PLACE LONDON. D. 1
2. *O*: Similar. Stem of branch to o.
R: NOTTS DERBY LEICESTER NORTHAMPTON
AND RUTLAND SHILLING SILVER
TOKEN MORGAN LICENSED MANU-
FACTURER 12 RATHBONE PLACE
LONDON. D. 2
3. *O*: As last.
R: Similar to No. 1. Top of n in
NORTHAMPTON lines with m.
4. *O*: The rev. of No. 1.
R: The rev. of No. 2. D. 3
5. *O*: The rev. of No. 2.
R: ONE SHILLING TOKEN H. M
6. *O*: As No. 1.
R: LEICESTER SILVER SHILLING TOKEN
ISSUED BY ROYAL LICENCE A. ONE
POUND. NOTE. WILL. BE. PAID. FOR
20 OF. THESE. AT. I. W. & I. RAWSON'S
1811 D. 4

SIXPENCE.

7. *O*: Arms. SIX PENNY SILVER TOKEN
R: DERBY LEICESTER AND RUTLAND SIX-
PENNY TOKEN 1811 MORGAN
LICENSED MAKER 12 RATHBONE
PLACE LONDON. D. 5
8. *O*: As last.
R: LEICESTER SIX-PENNY LICENSED TOKEN
1811 ONE POUND NOTE WILL BE
PAID FOR 40 OF THESE AT I W &
I RAWSON'S D. 6

Lincolnshire. COUNTY.

1. *O*: A fleece. .. + .. LINCOLNSHIRE .. + ..
SILVER TOKEN
R: 12 PENCE 1811 D. 1
2. *O*: Similar. LINCOLNSHIRE SILVER TOKEN
1812
R: TWELVE PENCE FOR USE AND ACCOMO-
DATION D. 2

ALFORD.

3. *O*: ALFORD SILVER TOKEN 12 PENCE
PAYABLE AT ELIZTH EMERSON &
SONS .. + ..
R: A beehive. 1811 INDUSTRY HAS ITS
REWARD D. 3

Rarity—Leicestershire, Nos. 4, 5, 8, RRR; 3, RR; 2, R. Lincolnshire, Nos. 2, 3, R.



4



4



5



6



7



6



8



8



9



9



10



11



11

EPWORTH.

4. *O*: PAYABLE IN GOODS OR NOTES 1812.
 . EPWORTH ISLE TOKEN . T. & W. READ
R: View of building. ONE SHILLING .
 CURRENT VALUE D. 4

GAINSBOROUGH.

5. *O*: Star, garter, &c. . JOHN GAMSON .
 GAINSBRO
R: Female seated. *y* and *d* under the
 figure. ONE SHILLING SILVER TOKEN
 1811 D. 5
6. *O*: A ship. . WILLIAM JERREMS . GAINSBRO
R: A windmill. ONE SHILLING SILVER
 TOKEN 1811 Top of window
 straight and reaching to last bar
 of sail, six lines of brickwork on
 the building. The ground points
 to first limb of *n*. D. 6
7. *O*: As last.
R: Similar. The window is arched and
 reaching between fourth and fifth
 bar of sail, five lines of brickwork.
 The ground lines to second limb
 of *n*. D. 7
8. *O*: A ship. GAINSBRO TOKEN 1811
R: A bridge. *s*. SANDARS FOR TWELVE
 PENCE. D. 8
9. *O*: Similar. The sea different.
R: A distant view of bridge. FOR TWELVE
 PENCE D. 9

SIXPENCE.

10. *O*: SILVER TOKEN ISSUED BY MBRUMBY
 GAINSBURGH FOR VI PENCE
R: A wheat sheaf. 1812 TO ACCOMMODATE
 THE PUBLIC WITH SMALL CHANGE.
 D. 10

HOLBEACH.

11. *O*: 1811 HOLBEACH AND LINCOLNSHIRE
 SILVER TOKEN H.M. A ONE POUND
 NOTE WILL BE PAID FOR 20 OF THESE
 BY R. B. HOFF +
R: ONE SHILLING VALUE H.M. ISSUED BY
 ROYAL LICENCE D. 11



12



13



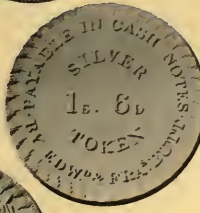
14



15



16



16



17



1



3



LINCOLN.

12. O: Arms. LINCOLN SILVER TOKEN 1812
R: MILLSON AND PRESTON DOLLAR SILVER
A ONE POUND NOTE WILL BE GIVEN
FOR 20 OF THESE = D. 12
13. O: Similar, but without sprigs of oak.
R: Similar, but reads WILL BE PAID AND
H.M. under PRESTON. D. 13
14. O: Arms. LINCOLN SILVER TOKEN
R: ONE SHILLING TOKEN TO FACILITATE
TRADE D. 14

LOUTH.

15. O: LOUTH SHILLING TOKEN 1811 C. STOVIN
& H. CHAPMAN . . . + . . .
R: A fleece. PAYABLE IN CASH NOTES. + .
D. 15

STAMFORD.

EIGHTEEN PENCE.

16. O: A lion, &c. STAMFORD 1811
R: SILVER 1s. 6d. TOKEN. PAYABLE IN CASH
NOTES. BY EDW^d & FRA^s BUTT
D. 16
17. O: Similar, but the crown smaller and
radiated.
R: As last. D. 17

Middlesex.

LONDON.

EIGHTEEN PENCE.

1. O: A statue. CHARING CROSS 1s. 6d. The
top of 1 points downward.
R: 18 within a wreath. LONDON SILVER
TOKEN Eight leaves and a long
tendrill to spray. D. 1
2. As last, in copper.
3. O: Similar. The top of 1 points upward.
R: Nine leaves to spray. D. 2
4. As last, in copper. D. 3

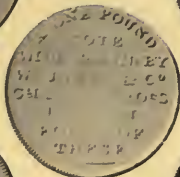
Rarity—Lincolnshire, No. 14, RRR;
15, RR; 16, 17, R.
Middlesex, Nos. 1, 3, R.



5.



6



8



6



9



11



9



12



14



15



17



17



18

LONDON.

EIGHTEEN PENCE.

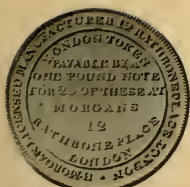
5. O: LONDON SILVER TOKEN 1s. 6d. MORGAN
MAKER 12 RATHBONE PLACE LONDON
R: DOLLAR SILVER TOKEN 1s. 6d. H.M.
under wreath. D. 4

SHILLING.

6. O: A statue, with lamps to railings.
CHARING CROSS
R: Arms. Top of shield curved. ONE
SHILLING SILVER TOKEN D. 5
7. As last, in copper. D. 6
8. O: As last.
R: A ONE POUND NOTE WILL BE PAID BY
W^R JONES & C^O CHARING CROSS
LONDON FOR 20 OF THESE D. 7
9. O: A statue, without lamps on railings.
CHARING CROSS
R: Similar to last, but the top of shield
straight. D. 8
10. As last, in copper. D. 9
11. O: As last.
R: ONE SHILLING VALUE D. 10
12. O: As last.
R: KNAPP & C^O ONE SHILLING HM D. 11
13. As last, in copper. D. 12
14. O: As last.
R: * SILVER * TWELVE PENNY TOKEN SOLD
BY * MORGAN * 12 RATHBONE PLACE
* LONDON * D. 13
15. O: A female seated. ENGLAND. IRELAND.
SCOTLAND & WALES. * LET COMMERCE
FLOURISH
R: LONDON TOKEN ONE SHILLING PAYABLE
AT S. LLOYD'S BUCKLESBURY 1811
The 1's are flat topped. D. 14
16. As last, in copper. D. 15
17. O: Female standing. ENGLAND. IRELAND.
SCOTLAND. AND. WALES * LET
COMMERCE FLOURISH
R: Similar, but the top of 1's slope. D. 16
18. O: Similar, with period after LET.
COMMERCE.
R: As last.

In copper.

Rarity—Nos. 8, 12, RR; 9, 11, 14, 17, R.



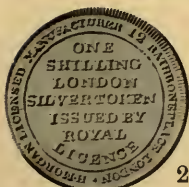
19



19



20



21



22



23



24



26



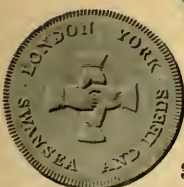
28



28



29



30



30

LONDON.

SHILLING.

19. O: LONDON TOKEN PAYABLE BY A ONE POUND NOTE FOR 20 OF THESE AT MORGAN'S 12 RATHBONE PLACE LONDON H. MORGAN LICENSED MANUFACTURER 12 RATHBONE PLACE LONDON.

R: ONE SHILLING TOKEN — H.M. D. 17

20. O: As last.

R: Arms of Bristol. DOLLAR SILVER SILVER TOKEN FOR XII PENCE. D. 18

21. O: ONE SHILLING LONDON SILVER TOKEN ISSUED BY ROYAL LICENCE H. MORGAN LICENSED MANUFACTURER 12 RATHBONE PLACE LONDON.

R: As No. 19. D. 19

22. O: Arms. SILVER TOKEN H.M.

R: ONE SHILLING TOKEN SOLD BY ROYAL LICENCE AT MORGAN'S 12 RATHBONE PLACE LONDON. D. 20

23. O: As last.

R: Similar, but a * after MORGAN'S. D. 21

24. O: As last.

R: ONE SHILLING VALUE D. 22

25. O: As last.

R: SILVER * TWELVE PENNY TOKEN SOLD * BY MORGAN * 12 RATHBONE PLACE * LONDON * D. 23

26. O: As last.

R: KNAPP & CO ONE SHILLING H.M. D. 24

27. As last, in copper.

D. 25

28. O: A bottle inscribed N° 14 ST MARTIN'S LANE LONDON, with R.W. on the cork. PAYABLE AT R. WARREN'S LIQUID BLACKING.. + ..MANUFACTORY.. + ..

R: ONE SHILLING TOKEN 1811 ISSUED BY ROBERT WARREN LONDON D. 26

29. O: As last.

R: Similar, but without date and ornament. D. 27

30. O: Four hands joined. LONDON YORK SWANSEA AND LEEDS

R: ONE SHILLING TOKEN TO FACILITATE TRADE D. 28

Rarity—Nos. 20, 22, 25, RRR; 19, 24, 26, 28, 30, RR; 23, R.

LONDON.

SIXPENCE.



31. *O*: A statue. CHARING CROSS The top of pedestal lines to s.
R: ARMS OF LONDON. SIX - PENNY SILVER TOKEN D. 29
32. As last, in copper. D. 30
33. *O*: Similar. Top of pedestal lines with o.
R: Similar, but with curved line at top of shield. D. 31
34. As last, in copper. D. 32
35. *O*: As last.
R: SIXPENNY TOKEN SOLD BY ROYAL LICENCE AT MORGAN'S . 12 . RATHBONE PLACE LONDON D. 33
36. *O*: LONDON TOKEN FOR SIXPENCE PAYABLE AT S. LLOYD'S BUCKLESBURY 1811
R: Female seated. ENGLAND . IRELAND . SCOTLAND & WALES . * D. 34
37. *O*: Similar, without for before SIXPENCE.
R: Female standing. ENGLAND IRELAND SCOTLAND AND WALES D. 35
38. *O*: LONDON SIX - PENNY LICENSED SILVER TOKEN MORGAN MAKER . 12 RATHBONE PLACE LONDON +
R: SIX PENNY TOKEN H.M., with a dot under the tie. D. 36
39. As last, in copper. D. 37
40. *O*: Similar. No dot after MAKER.
R: Similar, no dot under tie.
41. *O*: PAYABLE BY A 1 £ NOTE FOR 40 OF THESE AT MORGANS TOKEN MANUFACTORY 12 RATHBONE PLACE LONDON
R: As last. D. 38
42. *O*: As rev. of No. 31.
R: As No. 38, with a dot. D. 39
43. As last, in copper, on large flan. D. 40
44. *O*: A ONE POUND NOTE WILL BE PAID BY WHALLEY . & CO THAMES STREET LONDON FOR 40 OF THESE
R: As No. 38, with a dot. D. 41
45. *O*: As last.
R: As No. 40, without a dot.

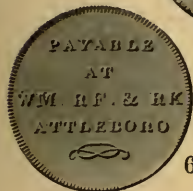
Norfolk.

1. *O*: NORFOLK SUFFOLK AND ESSEX SILVER TOKEN FOR ONE SHILLING.
R: View of lighthouse. VALUE ONE SHILLING. D. 1
2. *O*: As last.
R: ONE SHILLING TOKEN H.M D. 2
3. *O*: As last.
R: ARMS. SILVER TOKEN H.M D. 3

Rarity—Middlesex, Nos. 37, 45, RR; 31, 38, 40, 42, 44, R. Norfolk, No. 2, RRR; 3, RR; 1, R.



4



5



6

6



7



8



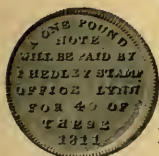
10



10



11



12



12

ATTLEBOROUGH.

TWO SHILLINGS.

4. O: Arms. . ATTLEBOROUGH TOKEN . TWO SHILLINGS H on the ground.
R: A female standing. WILLIAM PARSON & SON OCT^R 11 . 1811 H on the ground. D. 4
5. O: Arms. . ATTLEBOROUGH TOKEN . TWO SHILLINGS H on first palm blade.
R: As last. D. 5
6. O: PAYABLE AT WM . RF . & RK ATTLEBORO
R: 1 SHILLING FOR THE USE OF TRADE 1811 D. 6

DISS.

7. O: Arms. PAYABLE AT * MUSKETT & SON'S *
R: 12 PENCE DISS TOKEN MDCCCXI D. 7

LYNN.

EIGHTEEN PENCE.

8. O: Arms. A 1 £ NOTE AND 1^S WILL BE PAID FOR 14 OF THESE BY I HEDLEY LYNN + OR AT H. MORGAN'S TOKEN AND BULLION OFFICE LONDON
R: DOLLAR SILVER TOKEN 1s. 6d. - H.M. under wreath. D. 8
9. As last, in copper, plated obv. or rev. D. 9
10. O: SILVER TOKEN STAMP OFFICE KINGS LYNN 1811 FOR THE ACCOMMODATION OF TRADE +
R: ONE SHILLING VALUE H.M. in wreath. ISSUED BY ROYAL LICENCE. D. 10
11. O: Similar. The s of STAMP lines above the e
R: As last.

SIXPENCE.

12. O: A ONE POUND NOTE WILL BE PAID BY I HEDLEY STAMP OFFICE LYNN FOR 40 OF THESE 1811
R: SIX PENNY TOKEN H.M. in a wreath. D. 11

Rarity—Nos. 4, 5, 7, 8, 10, 11, RR.



13



14



15



16



16



17



1



3



5



NORTH LOPHAM.

13. O: Arms. PAYABLE AT * S. PORTER'S NORTH LOPHAM *
R: 1 SHILLING FOR THE USE OF TRADE D. 12

YARMOUTH.

14. O: Arms. NORFOLK AND SUFFOLK TOKEN ONE * SHILLING * One acorn at the left corner of shield.
R: Arms. 1811 PAYABLE AT J. HUNTON'S YARMOUTH & AT BLYTH & CO BURY. The top outside leaf is under u. D. 13
15. O: Similar. Two acorns at left hand corner of shield.
R: Similar. The leaf points to foot of u. D. 14
16. O: Arms. PAYABLE BY F. R. REYNOLDS. YARMOUTH.
R: Arms. NORFOLK TOKEN FOR XII PENCE. 1811 D. 15
17. O: As last.
R: A castle. 1811 NORFOLK TOKEN FOR XII PENCE. D. 16

Northamptonshire.

PETERBOROUGH.

TWO SHILLINGS.

1. O: Arms. PETERBOROUGH TOKEN PAYABLE BY GEORGE GRIFFIN
R: SILVER TOKEN 2 SHILL 1812 H.M. D. 1
2. As last, in copper. D. 2

EIGHTEEN PENCE.

3. O: Cathedral. SILVER TOKEN 1811
R: FOR EIGHTEEN PENCE PETERBOROUGH BANK TOKEN COLE & CO D. 3
4. As last, in copper. D. 4

SHILLING.

5. O: Similar to last.
R: FOR XII PENCE PETERBOROUGH BANK TOKEN COLE & CO D. 5
6. As last, silver gilt.
7. As last, in copper. D. 6

Rarity—Norfolk, No. 13, R.
Northamptonshire, Nos. 1, 6, RR.

NEWCASTLE-ON-TYNE.

HALF - CROWN.

1. *O*: Arms. . PAYABLE BY JOHN ROBERTSON .
NEWCASTLE ON TYNE

R: Female seated. NORTHUMBERLAND &
DURHAM XXX PENCE 1811 P. WYON F.
D. 1

EIGHTEEN PENCE.

2. *O*: Similar to last.
R: Similar. Reads 18^d TOKEN. D. 2
3. As last. In copper. D. 3

SHILLING.

4. *O*: A ship, &c. BEWICK MAIN COLLIERY
+ 1811 +

R: ONE SHILLING PAYABLE AT NEWCASTLE
ON TYNE AND LONDON. + . D. 4

5. *O*: Similar, but name spelt BEWICKE.
R: As last. D. 5

6. *O*: Arms. NORTHUMBERLAND AND DUR-
HAM 1812.

R: Britannia seated. BRITISH ONE
SHILLING TOKEN MDCCCXII D. 6

7. As last. In copper. D. 7

8. *O*: Arms. PAYABLE BY ALEX^R KELTY
NEWCASTLE ON TYNE

R: View of colliery. NORTHUMBERLAND
& DURHAM 12^d TOKEN 1812 D. 8

9. As last. In copper. D. 9

10. *O*: Arms. PAYABLE BY JOHN ROBERTSON .
NEWCASTLE ON TYNE .

R: Female seated. NORTHUMBERLAND &
DURHAM 12^d TOKEN 1811 The
spear is under n. A small w on
ground above the last 1 of date.
D. 10

Rarity—No. 2, RRR; 10, RR.

Northumberland.



NEWCASTLE-ON-TYNE.

11. *O*: Similar, but *JOHN* instead of *JOHN*.
R: Similar. The spear points between *n* and *d*. *w* above the first *l*. D. 11
12. *O*: As last.
R: Similar. The spear is under *n*. The *w* omitted, and without the hyphen under *d*. D. 12
13. *O*: Similar. The tail of left hand supporter nearly to the legend.
R: The *w* on the ground, and the hyphen under *d*. D. 13

SIXPENCE.

14. *O*: Arms. PAYABLE BY JOHN ROBERTSON NEWCASTLE ON TYNE
R: Female seated. NORTHUMBERLAND & DURHAM 6^d TOKEN 1811 D. 14
15. As last. In copper, on a large flan.

Nottinghamshire.

MANSFIELD.

1. *O*: PAYABLE BY E. DAWSON MANSFIELD W. JERREMS GAINSBOROUGH I. HEDLEY LYNN NORFOLK & H. MORGAN LONDON 1812 A POUND NOTE WILL BE PAID FOR 20 OF THESE. + .
R: Arms of Bristol. SILVER TOKEN FOR XII PENCE D. 1
2. *O*: Beehive. c & G. STANTON. HANCOCK. WAKEFIELD & C^o & W^m ELLIS. MANSFIELD
R: Female seated. ONE SHILLING SILVER TOKEN 1812 *y* & *d* under hilt of sword. *h* on bale. D. 2
3. *O*: As last.
R: Similar. *y* & *d* near the end of sword. *h* on bale omitted. D. 3

NEWARK.

4. *O*: A building. TOWN HALL NEWARK SILVER TOKEN FOR ONE SHILLING 1811
R: T. STANSALL CHA^s MOOR RICH^d FISHER W^m FILLINGHAM W^m READETT AND T. WILSON. THE CURRENT VALUE. PAYABLE IN CASH NOTES. D. 1

Rarity—Northumberland, No. 15, RRR; 12, 13, R. Nottinghamshire, No. 1, RRR; 3, R.

NEWARK.

5. *O*: As last.
R: Similar. No period after *t* nor between *THE* and *PAYABLE*. D. 5
6. *O*: As last.
R: Similar. No period between *VALUE* and *NOTES*. The line *wth* *FILLINGHAM* is above the *s* in *NOTES*. D. 6
7. *O*: Similar. Head of figure points between *k* and *e*.
R: Similar to No. 5, but the *t* of first line intersects the *c* of *CURRENT*. D. 8
8. *O*: As last.
R: Similar, but reads *T STANZAIL CHA^N MOORE RICH^N FISHER Wth FILLINGHAM Wth READETT and F WILSON*. D. 7

WELBECK.

THREE SHILLINGS.

9. *O*: 1804 SCOTT . TITCHFIELD WELBECK NOTTS.
R: *VALUE 3 . SHILLINGS WEIGHING HALF AN OUNCE*
This is in copper.

Shropshire.

DAWLEY.

1. *O*: SELLS CHAINS FOR PITS CRANES &C. OF BEST HORSE-NAIL IRON AT 5D. PER LB. GILBERT GILPIN DAWLEY SHROPSHIRE.
R: A wild boar. *PAYS THE BEARER A SHILLING 1811* D. 1

SHREWSBURY.

2. *O*: A shield with caduceus. *THO VENABLES*
R: Hand and eye.
3. As last, in copper.
E: *PAYABLE AT SHREWSBURY*

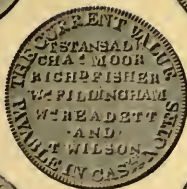
Rarity—Nottinghamshire, Nos. 7, 8, RRR;
6, R. Shropshire, No. 2, RRR; 1, RR.



5



5



6



7



8



9



1



2



Somersetshire.

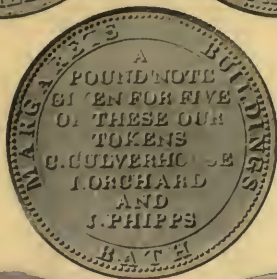
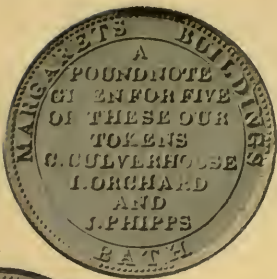
BATH.

FOUR SHILLINGS.

1. *O*: Arms. BATH TOKEN FOUR SHILLINGS
The right foot of Justice points between *r* and *r*, left foot over *a*.
R: A POUND NOTE GIVEN FOR FIVE OF THESE OUR TOKENS C. CULVERHOUSE I. ORCHARD AND J. PHIPPS MARGARETS BUILDINGS BATH D. 1
2. As last, in copper. D. 2
3. *O*: As No. 1.
R: Similar, but ORCHARD in line with *s* of BUILDINGS. D. 3
4. *O*: Similar to last. Point of shield over *a*.
R: A POUND NOTE GIVEN FOR FIVE TOKENS BY C. CULVERHOUSE I. ORCHARD AND J. PHIPPS D. 4
5. *O*: Similar. The right foot of Justice is over *r*, left foot between *a* and *d*.
R: As last. D. 4
6. *O*: As last.
R: Similar, but *i*. instead of J. PHIPPS. D. 5
7. *O*: As last.
R: A fleece suspended. SHIPS COLONIES & COMMERCE 1811. D. 6
8. As last, in copper. D. 7
9. *O*: Arms + BATH TOKEN + FOUR SHILLINGS 1811 The left hand cuff lines with first limb of *h*.
R: A POUND NOTE FOR 5 TOKENS GIVEN BY S. WHITCHURCH AND W^M DORE A Staffordshire knot below, commencing at *w* and terminating at *o*. D. 8



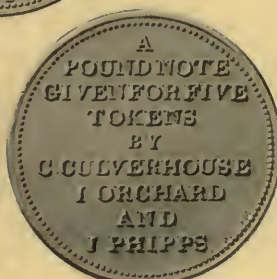
1



3



4



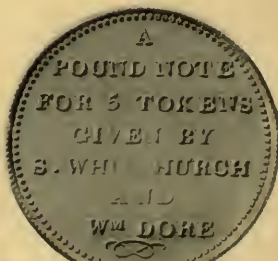
5



7



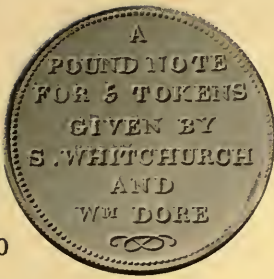
9



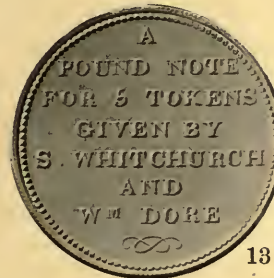
Rarity—Nos. 4, 6, 7, 9, RRR; 1, 3, 5, RR.



10



11



13



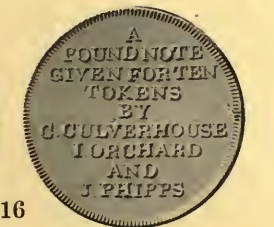
14



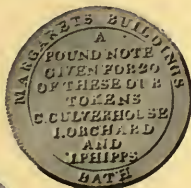
15



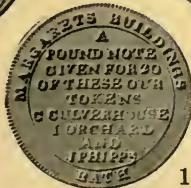
16



17



17



18

BATH.

FOUR SHILLINGS.

10. *O*: Very similar.
R: Similar. The knot commences at *m* and terminates at *r*. D. 9
11. *O*: Head clear of *B*, left cuff lines slightly to the left of first limb of *n*, tops of *l*'s slope, a dot under the *n* of SHILLINGS.
R: As last. D. 10
12. *O*: As last, in copper. D. 12
13. *O*: As last.
R: Similar. The knot smaller and commences at the last limb of *m* and terminates under space between *o* and *r*. D. 11
14. *O*: The left cuff to centre of *h*, top of the *l*'s are flat.
R: As last. D. 13
15. *O*: BATH TOKEN 1811 FOUR SHILLINGS
R: As last. D. 14

TWO SHILLINGS.

16. *O*: ARMS. BATH TOKEN TWO SHILLINGS
R: A POUND NOTE GIVEN FOR TEN TOKENS BY C. CULVERHOUSE I. ORCHARD AND J. PHIPPS D. 15

SHILLING.

17. *O*: ARMS. BATH TOKEN ONE SHILLING 1812
R: A POUND NOTE GIVEN FOR 20 OF THESE OUR TOKENS C. CULVERHOUSE I. ORCHARD AND J. PHIPPS MARGARETS BUILDINGS BATH D. 16
18. *O*: As last.
R: Similar, but without the periods after *c*, *i*, and *j*. D. 17

Rarity—Nos. 13, 15, 18, RR; 10, 11, 14, R.



19



21



22



23



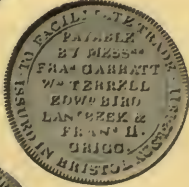
24



24



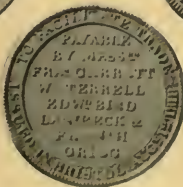
25



26



26



27

BRISTOL. SHILLING.

19. O: Arms without supporters.
R: BRISTOL SILVER TOKEN . 12 FOR NECESSARY CHANGE. 1811 D. 18
20. As last, in copper. D. 19
21. O: Arms with supporters. ONE SHILLING TOKEN GENUINE DOLLAR SILVER 3DWT NOV^R 1. 1811
R: ISSUED BY E. BRYAN BRISTOL SOMERSET WILTS DEVON. GLOUCESTERSHIRE. NORTH AND SOUTH WALES AND BRISTOL TOKEN. D. 20
22. O: Similar. Date closer together. Period after 1811.
R: Similar. E. BRYAN in a shorter line.

Bristol Commercial Token Bank Company, August 12.

Tail of the snake touches N.

23. O: Arms and crest within a garter, inscribed VIRTUTE ET INDUSTRIA BRISTOL TOKEN FOR XII PENCE The flag on mainmast to centre of the flag on left tower, a portion of the flagstaff and a corner of flag seen on the tower to right.
R: PAYABLE BY MESS^{RS} FRA^S GARRATT W^M TERRELL EDW^D BIRD LAN^T BECK & FRAN^S H. GRIGG ISSUED IN BRISTOL AUG^T 12. 1811. TO FACILITATE TRADE. The F in FRA^S lines to the foot of T, and T in GARRATT points between D and E. D. 21
24. O: Similar, no portcullis in doorway.
R: Similar. No line under S in FRA^S.
25. O: Similar to No. 23. The flag on tower is above flag on mast. The right tower cuts into the garter, no flagstaff.
R: As last. D. 26
- Tail of snake does not touch N.
26. O: Similar. Tail does not touch N.
R: The F lines between T and O, and T points to first limb of E. D. 22
In some specimens the corner of the flag scarcely shows or not at all.
27. O: As No. 26.
R: No period after GRIGG. F lines to space before TO. T to first limb of E. The border frosted. D. 24

Rarity—Nos. 24, 25, R.



28



28



29



30



30



32



33



33



36



37



37



38



BRISTOL.

28. *O*: Similar. No flag or staff on tower.
R: Similar. τ points between *d* and *e*. D. 23
29. *O*: Tail closer to *n*. The flag on tower floats above the flag on mainmast.
R: As last. D. 25
30. *O*: Similar. Flag on mast to centre of flag on tower.
R: Similar, but reads PAYABLE BY MESS^{RS} FRA^N GARRATT W^R FERRELL EDW^D BIRD LAM^T BECK & FRAN^N H. GRIGG. The *f* lines between *t* and *o*, and τ points between *d* and *e*. D. 27
31. As last, but in brass. D. 28

August 22.

32. *O*: Similar. The tail does not touch *n*. Flag on mainmast to centre of flag on tower.
R: PAYABLE BY MESS^{RS} FRA^N GARRATT W^R TERRELL EDW^D BIRD LAM^T BECK & FRAN^N H. GRIGG. TO FACILITATE TRADE. ISSUED IN BRISTOL AUG^T 22 1811 The *f* lines to foot of *t*. D. 29
33. *O*: Similar. The tail nearly touches *n*. Flag on tower above the one on mast.
R: PAYABLE BY MESS^{RS} FRA^N GARRATT W^R TERRELL EDW^D BIRD LAM^T BECK & FRAN^N H. GREGG. Legend as last. D. 30
34. As last, but in copper. The reverse silver plated. D. 31
35. As last, in copper on a larger flan, not plated. D. 32
36. *O*: Similar. Tail touches *n*. The flagstaff under *t*.
R: As last.

Nos. 30—36, 57 and 58 are contemporary forgeries of the genuine tokens Nos. 29 and 55.

No Date.

37. *O*: Similar.
R: PAYABLE BY A ONE POUND-NOTE FOR 20 OF THESE AT P. ROSE'S STATIONER BRISTOL. H. MORGAN LICENSED MANUFACTURER 12 RATHBONE PLACE LONDON. D. 33
38. *O*: Similar. Tail touches *n*. The flagstaff under *t*. As No. 36.
R: BRISTOL SHILLING SILVER TOKEN ISSUED BY ROYAL LICENCE Legend as last, H. MORGAN & C. D. 34

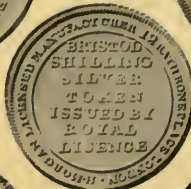
Rarity—Nos. 30, 32, 33, 36, 37, RRR; 29. RR.



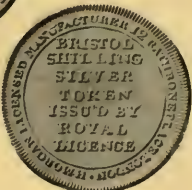
39



39



40



41



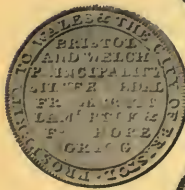
42



42



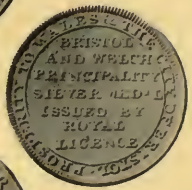
43



44



45



46



47



48



BRISTOL.

39. *O*: Tail does not touch N. PENCE in legend reads PENSE. The flagstaff under space between T and I.

R: As last. D. 35

40. *O*: As last.

R: Similar, but ISSUED instead of ISSU'D. D. 36

41. *O*: Prince of Wales' Plumes and Motto, &c.

R: BRISTOL SHILLING TOKEN &c. As No. 38. D. 37

July 12.

42. *O*: Arms and crest within a garter. BRISTOL MEDAL THE XII OF JULY

R: BRISTOL AND WELCH PRINCIPALITY SILVER MEDAL F GARRATT & F^S HORE GRIGG PROSPERITY TO WALES & THE CITY OF BRISTOL. D. 38

43. *O*: As last.

R: As last, with the addition of the words ISSUED BY D. 39

44. *O*: As last.

R: Similar, but reads BRISTOL AND WELCH PRINCIPALITY SILVER MEDAL FR GARRATT LAM^T BECK & F^S HORE GRIGG D. 40

45. *O*: As last.

R: BRISTOL AND WELCH PRINCIPALITY SILVER MEDAL ISSUED BY ROYAL LICENCE. Legend as No. 42. D. 41

46. *O*: As last.

R: WALES AND BRISTOL * MERTHYR * 5TH SEP 1811 D. 42

BRISTOL BRIDGE.

47. *O*: A bridge. BRISTOL & WILTSHIRE TOKEN 1811 Tops of the 1's are flat.

R: VALUE 12 PENCE PAYABLE BY NIBLOCK & LATHAM. AT THEIR WAREHOUSE BRIDGE ST & TROWBRIDGE The point of star lines with the terminal of E in WAREHOUSE. D. 43

48. *O*: Similar. Tops of 1's slope.

R: Similar. The point of star to first limb of E. D. 44

Rarity—Nos. 43, 44, 46, RRR; 41, 42, 45, RR; 39, 40, 48, R.



49



50



51



51



52



53



54



55



57



58

Rarity—Nos. 50, 57, R.

BRISTOL.

49. O: ARMS. . LET TRADE & COMMERCE
FLOURISH. BRISTOL ISSUED BY W.
SHEPPARD. EXCHANGE SEP^T 6 1811
The tops of 1's are flat.

R: VALUE 12 PENCE SOMERSETSHIRE WILT-
SHIRE GLOUCESTERSHIRE SOUTH
WALES AND BRISTOL TOKEN Two
acorns at the intersection of the
wreath. D. 45

50. O: Similar to last, but SHEPPARD instead
of SHEPPARD. Tops of 1's slope.

R: Similar to last. WALES closer to
wreath. Two acorns as last.

D. 46

BRISTOL QUAY.

51. O: A three-masted ship. VALUE ONE
SHILLING FOR THE ARMY & CO. *

R: N^o 37 QUAY BRISTOL PAYABLE AT
GOVERNMENT STORES R TRIPP & CO
1811 D. 47

52. O: As last.

R: As last, but R TRIPP & CO 1811 omitted.
D. 48

SIXPENCE.

Arms and Supporters.

53. O: ARMS. . BRISTOL SIXPENNY TOKEN .
TO FACILITATE TRADE 1811

R: 6^D. GENUINE DOLLAR SILVER. ISSUED
BY E BRYAN D. 49

54. O: As last.

R: Similar, but with a period after
E. in E. BRYAN D. 50

Arms within a Garter.

August 12.

55. O: ARMS. BRISTOL TOKEN FOR VI PENCE

R: PAYABLE BY MESS^{RS} FRA^S GARRATT W^M
TERRELL EDW^D BIRD LAN^T BECK &
FRAN^S H. GRIGG . TO FACILITATE
TRADE . ISSUED IN BRISTOL AUG^T
12 . 1811. D. 51

56. As last. In copper plated.

August 22.

57. O: Similar to last.

R: Similar, but reads PAYABLE BY MESS^{RS}
FRA^N GARRATT W^R TERRELL EDW^N
BIRD LAN^T BECK & FRA^N H. GRIGG
AUG^T 22 1811 D. 52

58. O: As last.

R: Similar, but reads PAYABLE BY MESS^{RS}
FRA^N GARRETT W^R TERRAIL EDM^D
BIRD LAN^T BECK & FRA^N H. GREGG.
D. 53

Somersetshire.



Rarity—Nos. 61, 62, RRR; 68, RR;
60, 63, 67, R.

BRISTOL.

No Date.

59. O: As last.
R: BRISTOL SILVER SIX-PENNY TOKEN
ISSUED BY ROYAL LICENCE MORGAN
LICENSED MAKER 12 RATHBONE
PLACE LONDON. D. 54
60. O: As last.
R: PAYABLE AT MORGANS WAREHOUSE FOR
BUCK & DOE SKINS CASTLE ST
BRISTOL A 1 £ NOTE WILL BE PAID
FOR 40 OF THESE. D. 55
61. O: BRISTOL MEDAL THE VI OF JULY.
R: BRISTOL & SOUTH WALES SILVER
MEDAL ISSUED BY F GARRATT & F
HORE GRIGG. PROSPERITY TO WALES
& THE CITY OF BRISTOL D. 56

July 12.

62. O: BRISTOL MEDAL THE XII OF JULY
R: BRISTOL & WELCH PRINCIPALITY SILVER
MEDAL ISSUED BY ROYAL LICENCE
PROSPERITY TO WALES & THE CITY
OF BRISTOL + D. 57

BRISTOL BRIDGE.

63. O: A bridge. BRISTOL & WILTSHIRE
TOKEN 1811
R: VALUE 6 PENCE PAYABLE BY . NIBLOCK &
LATHAM . AT THEIR WAREHOUSE
BRIDGES & TROWBRIDGE D. 58
64. O: As last.
R: Similar, but reads BRIDGE S^T D. 59

Arms with Supporters.

65. O: ARMS. SEP^T 6 1811 BRISTOL PAY-
ABLE BY W. SHEPPARD. EXCHANGE
R: 6 PENCE SOMERSETSHIRE WILTSHIRE
GLOUCESTERSHIRE SOUTH WALES
AND BRISTOL TOKEN D. 60

Star.

66. O: 6 PENCE in a star. R TRIPP & C^O
BRISTOL 1811
R: PAYABLE BY ONE DOLLAR FOR 10
TOKENS & 2^d OR 20 TOKENS FOR
2 DOLLARS & 4^d AND 40 FOR A
ONE POUND NOTE D. 61

CHARD.

SHILLING.

67. O: CHARD SOMERSET 1811
R: 1 within a garter inscribed SHILLING
. ISSUED . FOR . THE . BENEFIT +
OF . TRADE + D. 62
68. O: Similar, but reads CHARD SOMERSET
SEP^T 1811
R: As last. D. 63
69. As last, but in copper. D. 64



70



71



72



1



2



3



4



FROME SELWOOD.

TWO SHILLINGS.

70. O: Full-faced bust. FROME SELWOOD
TOKEN FOR 2 SHILLINGS

R: AT MESS^{RS} WILLOUGHBY & SONS A
ONE POUND NOTE GIVEN FOR 10
TOKENS 1812 D. 65

ONE SHILLING.

71. O: Similar, but TOKEN FOR 12 PENCE

R: AT MESS^{RS} WILLOUGHBY & M^{RS} SINKINS
H. RYALL W. SPARKS W. GERARD
GRIFFITH & GOUGH. A ONE POUND
NOTE GIVEN FOR 20 TOKENS 1811
D. 66

TAUNTON.

SHILLING.

72. O: A shield. PAYABLE AT JOHN BLUETTS
1811.

R: VALUE XII PENCE TAUNTON TOKEN.
D. 67

Staffordshire.

BILSTON.

1. O: Arms. BILSTON SILVER TOKEN ONE
SHILLING A circular line above
the castle.

R: PAYABLE BY RUSHBURY AND WOOLLEY
1811 ONE POUND NOTE FOR 20
TOKENS D. 1

2. O: Similar, but without the circular
line.

R: Similar. COMMERCIAL CHANGE 1811
D. 2

SIXPENCE.

3. O: Similar to last. SIX PENCE

R: Similar, but ONE POUND NOTE FOR 40
TOKENS D. 3

FAZELEY.

HALF-CROWN.

4. O: Arms. FAZELEY SILVER TOKEN MDCCCXXII

R: HALF CROWN TOKEN PAYABLE BY PEELS
HARDING & COMP^Y. . . . D. 4

Rarity—Somersetshire, No. 72, RRR; 70, R.
Staffordshire, Nos. 1, 4, RR.

Staffordshire.



5



6



6



7



8



10



11



12



13



FAZELEY.

SHILLING.

5. *O*: ARMS. FAZELEY SILVER TOKEN 1ST OCTOBER 1811

R: ONE SHILLING

D. 5

In copper.

ELEVEN ACORNS.

6. *O*: Similar to last, but with fine toothed border.

R: ONE SHILLING. Letter H is on the fourth centre leaf to left, eleven acorns in wreath to the left. D. 6

7. *O*: Similar. PAYABLE BY P. H & C^O FAZELEY SILVER TOKEN 1ST OCTOBER 1811 The left corner of shield between B and L.

R: As last.

D. 7

TEN ACORNS.

8. *O*: The left corner of shield is under the bow of B.

R: Similar. With ten acorns in wreath. Figure 5 on fifth leaf at the right, also H on fourth leaf on the left. D. 8

9. As last, in copper. D. 9

10. *O*: Similar. Corner of shield to top of B.

R: Similar, without 5 on leaf to right.

11. *O*: ARMS. FAZELEY SILVER TOKEN 1811 PAYABLE BY PEEL^S HARDING & C^O

R: As No. 8.

D. 10

SIXPENCE.

12. *O*: ARMS. FAZELEY SILVER TOKEN 1811 PAYABLE BY PEEL^S HARDING & C^O

R: 6 PENCE. The centre limb of first E in PENCE is clear of the top and bottom limbs of that letter. D. 11

13. *O*: As last.

R: The centre limb touches the top and bottom limbs of E. D. 12

Rarity—Nos. 7, 10, RR ; 6, R.

STAFFORD.

14. *O*: A building. STAFFORD TOKEN FOR TWELVE PENCE 1811. The eaves of the building line at the right between *e* and *l*.
R: Arms. *IC* The right hand corner of tower lines between the paws of the lion. D. 13
15. *O*: Similar. The eaves line with the foot of *l*.
R: The lion's paw nearly touches the tower. D. 14
16. *O*: As last.
R: Similar. The doorway filled in with lines to the bottom.

Suffolk.

IPSWICH.

1. *O*: The Prince of Wales's plume, &c.
R: 1811 IPSWICH SHILLING SILVER TOKEN
H.M. A ONE POUND NOTE WILL BE PAID
FOR 20 OF THESE BY W ADAMS. The
s of SHILLING lines with *e*. D. 1
2. *O*: As last.
R: Similar. The line under *TOKEN* extends from *t* to end of *e*.
3. *O*: As last.
R: Similar. The *s* of SHILLING lines with *o* and *a* + after ADAMS + D. 2
4. *O*: As last.
R: SILVER TOKEN TO CONVENIENCE THE ARMY AND THE PUBLIC VALUE ONE SHILLING D. 3
5. *O*: Arms. IPSWICH TOKEN FOR XII PENCE
R: PAYABLE BY W. ADAMS 1812 H.M. D. 4
6. As last, in copper. D. 5
7. *O*: As last.
R: PAYABLE AT CLAYTON AND HIDE'S ACCOMMODATION CHANGE 1811 D. 6

Rarity—Staffordshire, No. 16, RRR.
Suffolk, No. 3, RRR; 1, 2, 5, 7, RR; 4, R.



Suffolk.



8



9



11



1



2



3



4



NEEDHAM MARKET.

8. O: SILVER TOKEN STAMP OFFICE NEEDHAM
1811 H.M. A ONE POUND NOTE
WILL BE PAID FOR 20 OF THESE BY
. J. STEWARD +

R: ONE SHILLING VALUE H.M. ISSUED BY
ROYAL LICENCE D. 7

WOODBRIDGE.

EIGHTEEN PENCE.

9. O: Justice standing. FOR THE ACCOMMODATION OF TRADE 1811

R: SILVER TOKEN VALUE 1s. 6d. H.M.
PAYABLE AT STUDD AND MATHEWS'S
WOODBRIDGE. + . D. 8

10. As last, in copper. D. 9

SHILLING.

11. O: VALUE ONE SHILLING PAYABLE AT W
SIZERS WOODBRIDGE

R: WOODBRIDGE SILVER TOKEN 1811 FOR
THE ACCOMMODATION OF TRADE.
D. 11

Surrey.

GODALMING.

1. O: XII GODALMING * TOKEN. *

R: A woolsack. 1811 PRO BONO PUBLICO *
D. 1

SIXPENCE.

2. O: Similar, except in size. VI.

R: Similar to last. D. 2

RIPLEY.

SIXPENCE.

3. O: *TC S* in script. RIPLEY SIXPENCE.

R: 6. This is in tin. D. 3

WEYBRIDGE.

4. O: A barrel. I BUNN & CO. WEYBRIDGE
IRON WORKS.

R: ONE SHILLING TOKEN DOWGATE WHARF
LICENSED D. 4

Rarity—Suffolk, Nos. 8, 9, 11, RR.
Surrey, Nos. 1, 2, RRR: 4, R.



1



BRIGHTON.

1. O: SILVER TOKEN J.B PHILLIPSON CHEMIST
BRIGHTON

R: ONE SHILLING PAYABLE BY R. PHILLIPSON . DRUGGIST CHICHESTER D. 1



2



CHICHESTER.

CROWN.

2. O: Two hands clasped. UNION
TOKEN FIVE SHILLING'S MDCCCXI

R: PAYABLE AT H_y COMPER'S OR
B CHARGE'S CHICHESTER Top
of h and y level. An acorn
opposite s of COMPER'S. D. 2



3. O: As last.

R: Similar. No apostrophe in COMPER'S
or CHARGES and no acorn opposite
s. D. 3.

HALF-CROWN.



3



4. O: Similar, but value 2 SHILL & 6^d

R: Similar. PAYABLE AT H_y COMPER'S
OR B. CHARGE'S CHICHESTER. The
top of small y in h_y is above the
final limb of h. D. 4



5



6

5. O: As last.

R: Similar. The y is level with the
final limb of h. D. 5

6. O: As last.

R: Similar. An acorn over the e in
PAYABLE. This is the only acorn
protruding from inside of wreath.

ONE SHILLING.

7. O: Similar. ONE SHILLING.

R: PAYABLE AT H_y COMPER'S OR B
CHARGE'S CHICHESTER h_y level at
top. D. 6



7



Rarity—Nos. 3, 6, RRR; 2, 4, 5, RR;
1, 7, R.



8



9



10



10



11



12



12



13



14



15



16



CHICHESTER.

8. *O*: Market Cross. CHICHESTER ACCOMMODATION XII PENCE The base line of building commences at x.
R: PAYABLE AT B & J. CAFFIN'S J. REDMAN'S W. HALSTED'S AND C. SHIPHAM'S 1811 D. 7
9. *O*: Similar. The base line commences near c.
R: As last. D. 8
10. *O*: Arms. CHICHESTER SILVER TOKEN. 1811
R: PAYABLE BY T. DALLY & CO. 1 1/2% COMMERCIAL * CHANGE * D. 9
11. *O*: As last.
R: XII PENCE COMMERCIAL CHANGE. D. 10

SIXPENCE.

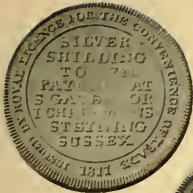
12. *O*: Hands in grip. Similar to No. 7. SIX PENCE
R: Similar to No. 7. D. 11
13. *O*: A castle. Similar to No. 10.
R: Similar, but 6^d D. 12

ROWFANT.

14. *O*: A farmer ploughing. HENRY HUNT ROWFANT HOUSE SUSSEX Y & D ON ground.
R: ONE SHILLING 1811. TOKEN IN EXCHANGE. FOR LABOUR D. 13

SHOREHAM.

15. *O*: A church. SHOREHAM. TOKEN XII. PENCE
R: PAYABLE AT CLAYTON AND HIDE'S ACCOMMODATION CHANGE 1811 D. 14
16. *O*: Similar, with an inner circle added. PENCE reads PENSE
R: As last. D. 15
- Rarity—Nos. 9, 14, 15, 16, RR; 10, 11, 12, 13, R.



17



17



18



1



2



3



4



5

STEYNING.

17. *O*: SILVER SHILLING TOKEN PAYABLE AT S GATE'S OR I CHEESMANS STEYNING SUSSEX ISSUED BY ROYAL LICENCE FOR THE CONVENIENCE OF TRADE 1811

R: A beehive and bees. H.M under hive. D. 16

18. *O*: Similar. The first name spelt GATES's instead of GATE'S.

R: As last. D. 17

Warwickshire.

COUNTY.

1. *O*: Prince of Wales's plume. . WAR-WICKSHIRE . AND NORTH WALES
R: ONE SHILLING SILVER TOKEN 1811.

BEDWORTH.

2. *O*: A crest. .FOR THE CONVENIENCE OF CHANGE .ISSUED OCT^R 25. 1811
R: ONE SHILLING TOKEN PAYABLE AT BEDWORTH-MILL * D. 1

BIRMINGHAM.

HALF - CROWN.

3. *O*: A building. BIRMINGHAM TOKEN 2s 6d MDCCLXI
R: Arms. ONE POUND NOTE FOR 8 TOKENS PAYABLE AT THE WORKHOUSE D. 2

WRIGHT'S.

4. *O*: A Chinaman. TWO SHILLINGS AND SIXPENCE . PAYABLE BY EDWARD WRIGHT BIRMINGHAM
R: Arms. WARWICKSHIRE SILVER TOKEN POUND NOTE FOR EIGHT 1811 D. 3
5. *O*: As last.
R: The P in POUNDS between the limbs of R. D. 4

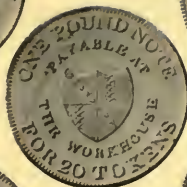
Rarity—Sussex, Nos. 17, 18, RR.
Warwickshire, Nos. 1, 3, 4, 5, RRR; 2, R.



6



6



7



8



8



9



10



10



11



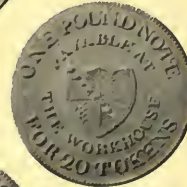
12



12



13



14



14



15



16

**BIRMINGHAM.****SHILLING, 1811.**

6. *O*: View of a building. BIRMINGHAM
TOKEN ONE SHILLING 1811. The
eaves of building at the left line
between B and I. 1 in date over S.
R: Arms of Birmingham. ONE POUND
NOTE FOR 20 TOKENS PAYABLE AT
THE WORKHOUSE The centre bar
of shield lines to first limb of E. D. 5
7. *O*: As last.
R: The bar to centre of E. D. 6
8. *O*: The eaves line to I. The 1 in date
over S and H.
R: The bar lines over E. D. 7
9. *O*: As last.
R: The bar to centre of E. D. 8
10. *O*: The eaves line to the bow of B. 1 in
date to left of S.
R: The bar lines to centre of first limb
of E. D. 9
11. *O*: As last.
R: The bar lines to last limb of E. D. 10
12. *O*: The eaves line to I. The upright
rabbits in windows omitted.
R: The bar lines to centre of E. D. 11
13. *O*: As last.
R: The bar lines to last limb of E. D. 12
14. *O*: The eaves line between B and I.
R: The bar lines to the centre of E.
Struck in copper and plated.
15. *O*: As last.
R: Bar lines beyond the centre of E.
The arms with ten lozenges. D. 13
- Struck in copper and plated.
16. *O*: The eaves line with I.
R: Shield without the bar. D. 14
Struck in copper.

Rarity—No. 16, R; 14, 15, RR.

BIRMINGHAM.

1812.

17. *O*: Similar, but dated 1812 and without the wicket to left. The pavement longer than the wall.
R: The bar lines to first limb of E. D. 15
18. *O*: As last.
R: Very similar to last. The dots in shield to left different.
19. *O*: As last.
R: The bar lines slightly above first limb of E. D. 16
20. *O*: The pavement shorter than the wall.
R: The bar lines to first limb of E. D. 17

SIXPENCE, 1811.

21. *O*: Similar, but dated 1811. The wicket is at the left.
R: Similar. ONE POUND NOTE FOR 40 TOKENS. The bar lines with first limb of E. D. 18

1812.

22. *O*: Similar, but dated 1812 and the wicket omitted.
R: As last. D. 19
23. *O*: As last.
R: The bar lines to centre of E. D. 20

Wiltshire.

MARLBOROUGH.

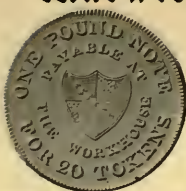
1. *O*: ONE SHILLING 1811 MARLBOROUGH OLD BANK TOKEN
R: KING GOSLING TANNER & GRIFFITHS FOR NECESSARY CHANGE D. 1
2. *O*: Four hands joined. KING . GOSLING . TANNER & GRIFFITHS + Centre of cuff lines to o.
R: ONE SHILLING TOKEN 1811 MARLBOROUGH + OLD . BANK + D. 2
3. *O*: The centre of cuff lines to s.
R: As last. D. 3
4. *O*: As last.
R: Similar, with a circular inscription ONE . SHILLING + TOKEN + without date. D. 4

Rarity—Warwickshire, No. 18, RRR ;
17, 19, 20, 21, R.

Wiltshire, Nos. 1, 4, RR: 2, 3, R.



17



18



19



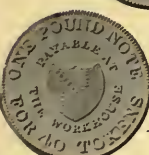
20



20



21



22



23



1



2



3



4

Wiltshire.



5



6



MARLBOROUGH.

SIXPENCE.

5. O: Similar, excepting size.

R: SIXPENCE TOKEN 1811 MARLBOROUGH
OLD . BANK D. 5

STAUGHTON.

HALF - CROWN.

6. O: View of Mills. . STAUGHTON FACTORY.
NEAR BRADFORD . WILTSHIRE .

R: 2 6 1811 PROSPERITY TO THE WOOL-
LEN MANUFACTORY D. 6

Worcestershire.
COUNTY AND CITY.

1. O: ARMS. WORCESTER COUNTY AND CITY
TOKEN *

R: VALUE ONE SHILL : TO FACILITATE
TRADE 1811 D. 1



1



1

Yorkshire.
COUNTY.

1. O: A fleece suspended. FOR PUBLIC
ACCOMMODATION

R: VALUE ONE SHILLING YORKSHIRE WEST
RIDING TOKEN 1811 D. 1



2



BARNESLEY.

2. O: Arms of Leeds. . WILLIAM HORSFALL .
BARNESLEY

R: Female seated on a bale. ONE
SHILLING SILVER TOKEN 1812. D. 2

BRADFORD.

3. O: Arms and crest. . JAMES LAYCOCK .
BRADFORD

R: Justice standing. ONE SHILLING
SILVER TOKEN 1812 D. 3



3



BRIDLINGTON.

4. O: BBB BRIDLINGTON 1811.

R: ONE SHILLING SILVER TOKEN COOK &
HARWOOD D. 4



4



Rarity—Wiltshire, No. 6, RRR; 5, R.
Yorkshire, No. 2, RR.



BRIDLINGTON.

5. *O*: ^{BB}_B on a shield. COOK & HARWOOD 1812
R: TWELVE PENNY incused on large figures 12. BRIDLINGTON SILVER TOKEN D. 5
6. *O*: Arms, a ship between, BBB BRIDLINGTON QUAY 1811
R: ONE SHILLING SILVER TOKEN. JAMES STEPHENSON. +.+. D. 6

DONCASTER.

7. *O*: The cross of Otho de Tilli. BIRKINSHAW. DONCASTER.
R: Justice standing. ONE SHILLING SILVER TOKEN 1812 D. 7
8. *O*: A lion holding a standard. MIRFIN & PARKER. DONCASTER.
R: Female seated on a bale with y & d under. The d is over first 1 in date. h on bale. ONE SHILLING SILVER TOKEN 1812 D. 8
9. *O*: As last.
R: Similar. The d is over the second 1 in date, and the h on bale omitted. D. 9
10. *O*: As last.
R: Similar. The d is over space between 1 and 2 in date. D. 10

SIXPENCE.

11. *O*: Similar to the last.
R: Similar, but without the sword. SIXPENCE SILVER TOKEN. 1812. D. 11

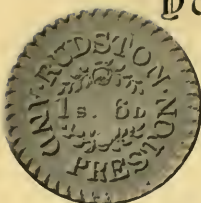
HULL.

EIGHTEEN PENCE.

12. *O*: Arms. HULL 1811 Six berries in the right and four in the left wreath. The tooth of border does not touch the second limb of u.
R: 1^s 6^d within sprays of rose leaves. RUDSTON. AND PRESTON. D. 12
13. *O*: Similar, but a tooth of the border touches the second limb of u. The first berry to right clear of leaf.
R: Similar to last. D. 13
- Rarity—No. 12, RR; 9, 10, 13, R.



14



15



16



17



18



18



19



20



21



22

HULL.

14. *O*: Five berries on each side.
R: Similar. D. 14
15. *O*: Five berries to right and four to left.
R: Similar. D. 15
16. *O*: Six berries to right and five to left.
R: Similar. D. 16

SIXPENCE.

17. *O*: Similar except in size.
R: 6^d RUDSTON AND PRESTON. D. 17

LEEDS.**SHILLING, 1811.**

Nose and legs of fleece nearly on one line.

18. *O*: ARMS: JOHN SMALPAGE & S. LUMB . LEEDS .
R: A female seated. A sword on the ground with *Y* & *D* above it. ONE SHILLING SILVER TOKEN 1811 The point of sword between *Y* and *&*. Hilt touches and reaches end of bale. D. 20
19. *O*: As last.
R: The point of sword under *&*. Hilt touches but does not reach end of bale. D. 28
- Two rows of dots under stars.
20. *O*: Similar. Two rows of dots under stars.
R: *D* nearly touches sword. Hilt below the bale, with grass over. D. 23
21. *O*: As last.
R: *D* nearly touches sword. Hilt touches end of bale.
22. *O*: As last.
R: *D* between dress and sword. Hilt touches end of bale. D. 24

Rarity—Nos. 18, 19, 20, 21, RRR; 22, RR.

LEEDS.

Hind legs on line below nose and forelegs.

One row of dots under stars.

23. *O*: The point of centre star close to top of shield.
R: Line of sea above *ε*. D. 18
24. *O*: Point of star further from top of shield.
R: Line of sea to *ε*. *δ* nearly touches sword. Hilt does not reach end of bale. D. 19
25. *O*: As last.
R: *γ* & *δ* closer to dress. *γ* double *γγ*.
 Point of sword under *γ*. D. 25

Two rows of dots under stars.

26. *O*: Double row of dots under stars.
R: *δ* nearly touches sword. Hilt below the bale, with grass over. D. 22

Nose on line, fore legs line below, and hind legs on line under fore legs.

27. *O*: Nose on line, hind legs two lines below.
R: Point of sword between *γ* and *ε*.
 Hilt touches end of bale D. 21
28. *O*: As last.
R: Point of sword under *γ*. Hilt does not reach end of bale.
29. *O*: As last.
R: *δ* nearly touches sword. Point under *γ*. Hilt not to end of bale. D. 26
30. *O*: As last.
R: *δ* nearly touches sword. Point beyond *γ*. Hilt not to end of bale. D. 27

1812.

31. *O*: Similar to No. 18.
R: Similar, but dated 1812. D. 29
32. *O*: Arms. No legend.
R: ONE SHILLING SILVER TOKEN PAYABLE AT THE LEEDS WORKHOUSE. 1812. D. 30

SIXPENCE.

33. *O*: Similar, except size and value.
R: SIX-PENCE SILVER TOKEN 1812 D. 31

Rarity--Nos. 28, 29, RRR; 25, RR; 26, 27, R.



25



26



27



27



29

28



30



31



32



33



Yorkshire.



84



35



36



37



38



40



42



43



42

SCARBOROUGH.

SHILLING.

34. O: Arms of Scarborough.
R: ONE SHILLING SILVER TOKEN 1811
LORD & MARSHALL * SCARBOROUGH *
D. 32
35. O: Similar arms, but within a garter.
THE CURRENT VALUE IN CASH NOTES.
R: Similar to last, dated 1812. D. 33

SIXPENCE.

36. O: Similar to last.
R: Similar, but SIX PENCE. D. 34
- 36 Bis. As last, in copper.

SHEFFIELD.

HALF-A-GUINEA.

37. O: A Phoenix. YOUNGE, WILSONS &
YOUNGE. SHEFFIELD.
R: STANDARD GOLD 10.6 YORKSHIRE
TOKEN 1812 D. 35

HALF-CROWN.

38. O: Arms of Sheffield. YOUNGE & DEAKIN.
SHEFFIELD.
R: Female seated. TWO SHILLINGS &
SIX PENCE SILVER TOKEN 1812
D. 36
39. As last, but in copper.

EIGHTEEN PENCE.

40. O: Similar. s & c. YOUNGE & CO.
SHEFFIELD.
R: Similar. ONE SHILLING & SIXPENCE
TOKEN 1812. D. 37
41. As last, but in copper. D. 38

SHILLING, 1811.

Flat tops to 1's in date.

42. O: Similar, but without the wreath.
YOUNGE & DEAKIN. SHEFFIELD.
The first arrow points to inner
edge of second limb of h. Top
point of arrow to right lines
beyond the wing.
R: Hilt of sword below the bale, with
grass over. D. 39
43. O: As last.
R: Hilt of sword touches end of bale.
- Rarity—No. 40, RRR; 37, RR;
38, 42, 43, R.

SHEFFIELD.

44. *O*: The & has a flat top.
R: Point of sword under *y*. D. 40
45. *O*: As last.
R: Point of sword beyond *y*. The hilt touches end of bale.
46. *O*: As last.
R: *y* double *yy*. Point of sword under *y*.
47. *O*: As last.
R: Point of sword beyond *y*. The hilt below the bale, with grass over.
48. *O*: The & as usual. Top point of arrow to right lines within the wing.
R: Point of sword to edge of ground. Hilt touches end of bale. D. 41
49. *O*: As last.
R: Point of sword under *y*.
50. *O*: As last.
R: The *y* closer to edge of sword. Hilt below bale, but no grass over.
51. *O*: The top of & broken. Sixth arrow to centre of first limb of *e*.
R: *y* double *yy*. Point of sword under *y*.
52. *O*: As last.
R: Point of sword under &.
53. *O*: The first arrow points to centre of second limb of *n*.
R: As last.
54. *O*: As last.
R: Point of sword between *y* and &.
55. *O*: As last.
R: Point of sword beyond the *y*. Pointed tops to 1's in date.
56. *O*: As last.
R: The date with pointed tops to 1's. *n* nearly touches sword. D. 42
57. *O*: As last.
R: Point of sword under *y*. Hilt below bale, with grass over.

Rarity—Nos. 46, 47, 55, 57, RRR; 45, 50, 51, 54, RR; 44, 48, 49, 52, 53, 56, R.



44



45



46



47



48



49



50



51



52



53



54



55



56



57



SHEFFIELD.

58. *O*: The second arrow points to outer edge of first limb of *E*.
R: *D* close to sword. *H* on the ground to right. D. 43
59. *O*: As last.
R: Similar. The *u* nearly touches hilt of sword.
60. *O*: The first arrow points to inner edge of second limb of *H*.
R: Point of sword under *v*. Hilt below bale, with grass over. D. 44
61. *O*: The sixth arrow points to centre of *E*. Top of right arrow inside the line of wing.
R: As last. D. 45
62. *O*:
R: Point of sword between *v* and *&*. No grass over hilt. D. 46

1812.

63. *O*: Similar.
R: Similar. but dated 1812. Tops of *l*'s are flat. D. 47
64. *O*: Arms in a wreath. *s* & *c*. YOUNG & *c*^o. SHEFFIELD.
R: Female seated. Four blades of grass at end of sword. D. 48
65. *O*: As last.
R: Similar. Three blades of grass at end of sword. D. 49
66. *O*: As last.
R: As No. 64, but letters scalloped. D. 50
- This I think is the same as No. 64.

Overseers of the Poor.

67. *O*: Arms as before, but without the wreath. SHEFFIELD 1811
R: ONE SHILLING TOKEN OVERSEERS OF THE POOR. D. 51
68. *O*: Similar. Wider space in centre between the fourth and fifth arrow heads.
R: As last.

Rarity—Nos. 62, 63, RRR; 59, RR;
 61, 64, 66, 68, R.



SHEFFIELD.

69. *O*: The third arrow points in front of 1.
R: The top of *g* lines with the inside of the first limb of *p*. D. 52
70. *O*: The third arrow points to 1.
R: The top of *g* lines with outer edge of *p*.
71. *O*: Similar to last. The fourth and fifth arrow heads closer together.
R: As last.
72. *O*: Similar, but without the pellet between the arrow heads.
R: As No. 69. D. 53

SIXPENCE.

73. *O*: Arms. YOUNGE & DEAKIN. SHEFFIELD.
R: Figure seated. SIX-PENCE SILVER TOKEN 1811 D. 54

THIRSK.

SHILLING.

74. *O*: Arms. THIRSK 1812
R: SILVER TOKEN THIRSK ASSOCIATION ONE SHILLING D. 55
 This also occurs countermarked SCURR THIRSK D. 49

WHITBY.

75. *O*: Arms of Whitby Abbey. WHITBY ASSOCIATION. 1811.
R: SILVER TOKEN ONE SHILLING A quatrefoil inscribed *y* and *d* under SHILLING. D. 56

YORK.

Y on second leaf. Third berry no stem.

76. *O*: Arms. YORK 1811 *y* on second leaf, and the third berry is without a stem.
R: CATTLE AND BARBER ONE SHILLING SILVER TOKEN Top of *b* lines to the top of *s*. D. 57
77. *O*: As last.
R: The *b* lines with the bottom of *s*. Centre of rose under last limb of *h*. D. 64
78. *O*: Similar to last.
R: *b* lines between *s* and *i*. The centre of rose between *h* and *i*. D. 66
 Struck in copper.

Rarity—No. 70, RRR; 71, RR; 69, 74, R.



69



70



71



73



72



74



75



76



76



77



78



YORK.

The third berry with a stem.

79. *O*: Similar. The third berry has a stem.
R: As No. 76. D. 58
80. *O*: As last.
R: As No. 77. D. 65
81. *O*: The date closer to branches. *y* further to right of *l*.
R: *h* lines between *s* and *l*. The centre of rose between *h* and *l*. D. 63

Y on second leaf. Three berries on branch.

82. *O*: Olive branch has only three berries.
R: *h* lines with bottom of *s*. D. 67

Y on first leaf.

83. *O*: *y* on first leaf and to the right of *l*.
R: *h* lines to top of *s*. D. 60
84. *O*: The *y* is over *l*.
R: Very similar to last. D. 62

Y omitted from branch.

85. *O*: The 8 in date not joined in the centre.
R: *h* lines to top of *s*. D. 59
 Struck in copper.
86. *O*: The line of cross between the second and third berry.
R: *h* lines to the top of *s*. D. 61

Rarity—Nos. 79, 81, 82, *R*.



79



79



80



81



82



83



84



85



86



YORK.

With ornaments at sides of shield.

87. *O*: With cross tinted. Eight berries in wreath.
R: The bottom of *b* lines to the terminal of *s*. The centre of rose under first limb of *n*. D. 68

Cross not tinted.

88. *O*: A period after YORK. Nine berries in wreath. D. 69
R: As last.
 89. *O*: As last.
R: Rose under space between *n* and *i*.
 90. *O*: As last.
R: Period after *e* further from *g*. Period after *n* close to the lower edge.
 91. *O*: As last.
R: The *b* lines to *i*. The centre of rose to space between *n* and *i*. D. 70
 92. *O*: As last.
R: Similar to last, but the rose in ornament same shape as No. 90.

SIXPENCE.

93. *O*: Similar to the shillings. The stem of palm is over the 1 of date.
R: SIX PENCE SILVER TOKEN The top of *b* lines to centre of *s*. D. 71
 94. *O*: As last.
R: The top of *b* lines to bottom of *s*. D. 72
 95. *O*: The stem between 1 and 8 of date.
R: As last. D. 73
 96. *O*: As last.
R: The top of *b* lines to centre of *s*. D. 74

Rarity—No. 90, RRR; 89, 92, RR;
 88, 91, 93, 95, R.



87



87



88



89



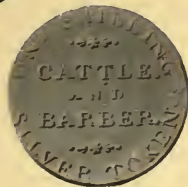
90



91



92



93



94



95



96



WALES — Brecknockshire.



2



1



1



2



3



1



2



4



3

BRECKNOCK.

1. *O*: Arms. BRECKNOCK SILVER TOKEN FOR XII PENCE The *t* is over the centre of the robe.

R: FOR ALL PARTS OF THE UNITED KINGDOM PAYABLE AT GEORGE NORTH'S GENERAL WAGON WAREHOUSE The *s* lines below the *a* in WAGGON D. 1

2. *O*: Similar. The *t* and *o* are over the centre of robe.

R: The *s* touches the *a* in WAGGON D. 2

Carmarthenshire.

CARMARTHEN.

1. *O*: Crest. MORRIS & SONS There are three berries in the branch to right.

R: CARMARTHEN TOKEN XII PENCE 1811 D. 1

2. *O*: Similar. With four berries. The *m* of MORRIS further from spray.

R: The spray closer to *p* and *e*. D. 2

3. *O*: CARMARTHEN BANK 1811.

R: XII FOR TWELVE PENCE ROBERT WATERS & ROBERT WATERS . + . D. 3

Flintshire.

1. *O*: Arms. FLINTSHIRE BANK AUGUST 12. 1811

R: BANK TOKEN 10S & 0 FLINTSHIRE ONE SHILLING The top of *l* does not extend beyond the *k* in BANK. D. 1

2. *O*: As last.

R: The *g* closer to *n*.

3. *O*: As last.

R: The top of *l* beyond the *k*. D. 2

4. *O*: As last.

R: Similar, but the 10S & 0 omitted. The end of lower knot lines with centre of *g*. D. 3

Rarity—Brecknock, No. 2, RRR.
Carmarthen, No. 2, RRR; 3, R.
Flintshire, Nos. 1, 2, RR; 4, R.

Flintshire.



5



6



7



1



2



4



5



6



7



5. *O*: As last.

R: The end of knot lines between *g* and *n*. D. 4

SIXPENCE.

6. *O*: Arms and a similar legend as shilling.

R: Similar, but value SIXPENCE D. 5

7. *O*: Similar to No. 4.

R: Similar, but value SIXPENCE. D. 6

Glamorganshire.

MERTHYR TYDVIL.

1. *O*: A foundry with six windows. Corner of elevator cut off by circle.

R: ONE SHILLING TOKEN MERTHYR 5TH SEP. 1811 The top of 1's slope. D. 1

2. *O*: Similar. Corner of elevator not cut off.

R: *r* and *n* closer to circle.

3. As last, in copper. D. 2

4. *O*: Similar.

R: Similar, the top of 1's in date are flat. D. 3

5. *O*: The laurel wreath omitted.

R: As No. 1. D. 4

6. *O*: As No. 2.

R: WALES AND BRISTOL MERTHYR 5TH SEP. 1811 D. 5

7. *O*: Similar. The smoke from centre chimney meets the smoke from the one on the left.

R: The letters of legend larger. The *w* below *m*. D. 6

Rarity—Flintshire, No. 6, R.

Merthyr, Nos. 2, 5, 7, RRR; 4, 6, RR;
1, R.

Glamorganshire.



8



9



10



11



12



13



13



14



15



MERTHYR TYDVIL.

8. *O*: The Prince of Wales' plumes.

MERTHYR SILVER TOKEN FOR 12 PENCE TO FACILITATE TRADE CHANGE BEING SCARCE 1811 The top of 1's are flat.

R: BY MORG^N LEWIS MORG^N MORGAN DAVID WILLIAMS W^M WILLIAMS. MERTHYR TYDVIL A POUND NOTE GIVEN FOR 20 OF THESE SILVER TOKENS... BY under 20. D. 7

9. *O*: The tops of 1's slope.

R: The y is under 0 of 20, and seven blades in the palm instead of eight. D. 8

NEATH.

10. *O*: A tower; flag-posts at the sides; H H on the ground. PAYABLE AT H. REES'S & D. MORGAN'S The first flag-post at the left has two stays.

R: 12 PENCE 1811 NEATH SILVER TOKEN The tops of 1's pointed. D. 9

11. *O*: Similar, but no H H on the ground.

R: The tops of 1's in date flat.

12. *O*: One stay at the flag-post to the left and right; H H on the ground.

R: Similar to No. 10. 1 of date directly under first limb of E. D. 10

13. *O*: Similar.

R: Without the inner circle. D. 11

14. *O*: The roof of building lines between L and E.

R: As last. D. 12

15. *O*: With flag-posts and H H on the ground. SO WALES & NEATH. SILVER MEDAL *

R: 12 MARCH 1811 NEATH SILVER MEDAL. D. 13

Rarity — Merthyr, No. 9, RRR; 8, R. Neath, Nos. 11, 15, RRR; 12, 13, RR; 10, 14, R.

NEATH.

SIXPENCE.

16. *O*: Similar to No. 10. PAYABLE AT H REES'S & D. MORGAN'S III ON the ground.
R: SIX PENCE NEATH SILVER TOKEN D. 14
17. *O*: As No. 15.
R: 12 MARCH 1811 D. 15
 Struck on small flan in brass from same dies as No. 15.

SWANSEA.

18. *O*: Swansea castle. A flagstaff on each tower, and houses at the sides.
R: PAYABLE AT S. PADLEYS & I. ANDREWS'S SWANSEA SILVER TOKEN FOR XII PENCE D. 16
19. *O*: Similar. The tall tower has a weather vane, and is without the houses at the sides. SWANSEA TOKEN FOR XII PENCE. MDCCCXI.
R: A key. PAYABLE BY . JOHN VOSS DRAPER & C^o D. 17

Montgomeryshire.

WELSHPOOL.

1. *O*: 1813 MONTGOMERYSHIRE ONE SHILLING
R: R. GRIFFITHS CORNER SHOP W. POOL
 ONE POUND NOTE FOR 20 TOKENS D. 1

Pembrokeshire.

HAVERFORDWEST.

1. *O*: A castle. HAVERFORD WEST SILVER TOKEN FOR 12 PENCE 181100....
R: PAYABLE AT MESS^{rs} THOMAS & PHILLIPS DAVID JARDINE JOHN LLOYD & W & J. PHILLIPS ONE POUND NOTE FOR 20 TOKENS D. 1

IRELAND.

Co. Dublin.

DUBLIN.

1. *O*: A female seated. *Ex*: The countermark, a harp crowned.
R: FOR ONE BRITISH SHILLING 1804
 SOLD BY CLARK WEST AND C^o A countermark above for D. 1
2. *O*: and *R*: As last, but without the countermarks. D. 2
- 2 *Bis*. As last, in copper.

Rarity—Swansea, Nos. 18, 19, *R*. Welshpool, No. 1, *RR*. Haverfordwest, No. 1, *R*. Dublin. No. 2, *RRR*; 1, *RR*.



16



17



18



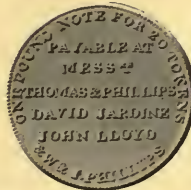
19



1



1



1



2



DUBLIN.



4



5



6



8



9



1



8. *O*: Similar. Word *COMMERCE* above the seated figure.

R: With date omitted. D. 3

4. *O*: A figure seated. *CONFIDENCE AUGMENTS THE VALUE IB Co*

R: FOR ONE BRITISH SHILLING D 2.16 G^s
SOLD BY THE IRISH BULLION CO
Hall marks on either side. The
o lines with B. D. 4

5. Without the hall marks. D. 5

6. *O*: As last.

R: Similar, but the *D* and *G*^s omitted.
The o lines to space between *B* *Y*
D. 6

7. As last, in copper.

8. *O*: An altar, &c. *PUBLIC HAPPINESS 1804*

R: A female figure. *HEALTH TO THE
KING PROBONO PUBLICO* D. 7

9. *O*: As last.

R: Similar. Word *KING* in larger letters.
PRO BONO PUBLICO D. 8

Not Local.

THREE SHILLINGS & FOURPENCE.

1. *O*: A beehive.

R: THREE SHILLINGS & FOUR + PENCE. D. 1

Rarity—No. 3, RRR; 4, 5, 6, RR.

Not Local, No. 1, RRR.



2



4



6



7



8



8



9



10



THREE SHILLINGS.

2. O: A fleece suspended. SHIPS COLONIES & COMMERCE 1811
R: Prince of Wales' feathers. THREE SHILLING TOKEN D. 2
3. As last, in copper. D. 3
4. O: Prince of Wales' feathers. LONG LIVE THE PRINCE
R: The star and garter. REGENCY TOKEN D. 4
5. As last, in copper. D. 5

HALF - CROWN.

6. O: Prince of Wales' feathers.
R: R S

EIGHTEEN PENCE.

7. O: Similar to No. 2.
R: ONE SHILLING & SIXPENCE D. 6

SHILLING.

8. O: A beehive. FOR USE AND ACCOMMODATION 12 PENNY TOKEN D. 7
R: A female seated. BRITANNIA
9. O: As last.
R: The olive branch different, also ground under shield.
10. O: ONE SHILLING SILVER TOKEN 1811 w
R: Female seated. BRITANNIA. D. 8

Rarity—Nos. 2, 4, 7, 8, 9, RR; 10, R.

Not Local.



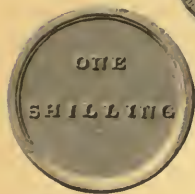
11



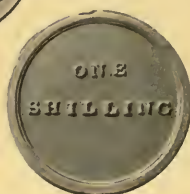
11



12



13



14



15



17



18



18



19



20



11. *O*: Female seated. BRITANNIA
R: ONE SHILLING SILVER TOKEN 1811
12. *O*: As last.
R: Similar. *G* of SHILLING nearer the acorn.
13. *O*: ONE SHILLING
R: ONE SHILLING

SIXPENCE.

14. *O*: Head. COMMERCIAL . T.O.K.E.N
R: The rose and shamrock. *I B* SIX-PENCE 1811 D. 9
15. *O*: A fleece suspended. 1811 FOR PUBLIC ACCOMMODATION *
R: SILVER TOKEN SIX PENCE D. 10
16. As last, in copper. D. 11
17. *O*: A beehive. 1812 FOR USE & ACCOMMODATION 6 PENNY TOKEN
R: Female seated, as No. 10, but without a period after BRITANNIA D. 12
18. *O*: A large 6 inscribed. SIX PENNY TOKEN
R: As last. D. 13
19. *O*: As last.
R: The top leaves of branch are between the *i* and *t*. D. 14
20. *O*: A crescent and stars. PRO BONO PUBLICO . 1812.
R: SIX PENCE . SILVER TOKEN . D. 15
21. As last, in copper. D. 16

Rarity—Nos. 11, 12, 13, RRR.



1



GUERNSEY.

FIVE SHILLINGS.

1. *O*: Arms of Jersey. BISHOP DE JERSEY & CO
R: BANK OF GUERNSEY 1809
 TOKEN OF FIVE SHILLINGS.
 D. 1

The States of Jersey.

THREE SHILLINGS.

2. *O*: Arms as last. STATES OF JERSEY.
 1813
R: THREE SHILLINGS TOKEN D. 2

EIGHTEEN PENCE.

3. *O*: As last, except size.
R: EIGHTEEN PENCE TOKEN D. 3

The Isle of Man.

DOUGLAS.

FIVE SHILLINGS.

1. *O*: View of castle. PEEL CASTLE ISLE OF MAN
R: THE DOUGLAS BANK CO * AT THEIR BANK, DOUGLAS * PROMISE TO PAY THE BEARER ON DEMAND 5 SHILLINGS BRITISH 1811 D. 1

TWO SHILLINGS AND SIXPENCE.

2. *O*: As last, except size.
R: THE DOUGLAS BANK CO * AT THEIR BANK, DOUGLAS * PROMISE TO PAY THE BEARER ON DEMAND 2^s 6^d BRITISH 1811 The first 1 in date over space between B and A. D. 2
 3. As last, in copper. D. 3
 4. *O*: As last.
R: Similar. The 1 is over the first limb of b. D. 4
 5. As last, in copper. D. 5
 6. *O*: View of castle.
R: DOUGLAS BANK TOKEN ONE SHILLING BRITISH 1811 D. 6
 7. *O*: As last.
R: S. ASH D. 7

Struck in copper.

These are all of great rarity.



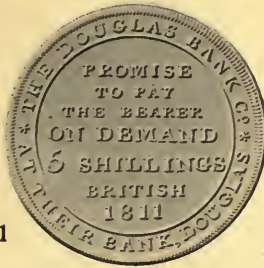
2



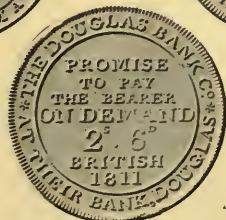
3



1



2



4



6



7

INDEX.

All places and names are recorded. The figures refer to the page.

Alford	15
Andover	11, 12
Attleborough	21

Barnsley	42
Barnstaple	4, 5
Bath	26, 27
Bedworth	39
Bilston	33
Birmingham	39, 40, 41
Blandford	6
Bradford	42
Brecknock	52
Bridlington	42, 43
Brighton	37
Bristol	28, 29, 30, 31, 32

Carmarthen	52
Chard	32
Cheltenham	9
Chichester	37, 38
Cornwall	2, 3

Dawley	25
Derby	3
Devon	4
Diss	21
Doncaster	43
Dorchester	6
Douglas	59
Dublin	55, 56

Epworth	16
Exeter	5

Fazeley	33, 34
Flintshire	52, 53
Folkestone	14
Frome Selwood	33

Gainsborough	16
Gloucester	9, 10
Godalming	36
Guernsey	59

Hampshire	10, 11
Haverfordwest	55
Hereford	14
High Wycombe	1
Holbeach	16
Hull	43, 44

Ipswich	35
---------	-----	-----	----

Jersey	59
--------	-----	-----	----

Launceston	3
Leeds	44, 45
Leicester	15
Lincoln	17
Lincolnshire	15
Liverpool	14
London	17, 18, 19, 20
Louth	17
Lynn	21

Manchester	14
Mansfield	24
March	1
Marlborough	41, 42
Merthyr Tydvil	53, 54

INDEX—Continued

Nantwich	2	Shoreham	35
Neath	54, 55	Shrewsbury	25
Needham Market	36	Southampton	13
Newark	24, 25	Stafford	35
Newcastle-on-Tyne	23, 24	Stamford	17
Newport, I. of W.	12	Staverton	42
Norfolk	20	Steyning	39
North Lopham	22	Stockport	2
Not Local	56, 57, 58	Stockton	8
		Stratton	3
		Swansea	55
Penzance	3		
Peterborough	22	Taunton	33
Plymouth	5	Teignmouth	5
Poole	6, 7	Thirsk	49
Portsea	12		
Portsmouth	13	Warwickshire	39
Poulton	14	Welbeck	25
		Welshpool	55
Reading	1	Weybridge	36
Ripley	36	Whitby	49
Romsey	13	Woodbridge	36
Rowfant	38	Worcester	42
Scarborough	46	Yarmouth	22
Shaftesbury	7, 8	York	49, 50, 51
Shaston Bank	8	Yorkshire	42
Sheffield	46, 47, 48, 49		

NAMES.

Adams, W.	13, 35	Bowhay, J.	4, 5
Andrews, I.	55	Boxer, I.	14
Ash, S.	59	Broughton, Sprout, Garnett & Sutton	2
Avenell & Simmonds	12	Brumby, M.	16
		Bryan, E.	28, 31
		Bunn & Co., I.	36
		Butt, E. & F.	17
Ballans, W.	14	Caffin, B. & J.	38
Bastin, W.	9	Carless & Co.	14
Beck, L.	28, 29, 31	Cartwright, T.	2
Best, W. B.	6, 7	Cattle & Barber	49, 50, 51
Bewick Colliery	23	Chapman, H.	17
Bird, E.	28, 29, 31	Charge, B.	37, 38
Birkinshaw	43	Cheesman, I.	39
Bishop de Jersey & Co.	59		
Bluett, J.	33		
Blyth & Co.	22		

INDEX—Continued.

Ching, T.	3	Hedley, I.	21, 24
Christopher & Jennett	8	Henderson & Co.	7
Clark West & Co.	55	Hicks, J.	5
Clayton & Hide	35, 38	Higgs, S.	3
Cole & Co.	22	Hoff, R. B.	16
Comper, H.	37, 38	Holland, I.	5
Cook & Harwood	42, 43	Horsfall, W.	42
Cox, Merle & Pattison	6	Hunt, H.	38
Culverhouse, C.	26	Hunton, J.	22
Dally & Co., T.	38	I. B.	58
Dawson, E.	24	I. B. Co.	56
Dore, W.	26, 27	I. C.	35
Douglas Bank Co.	59	I. C. S.	36
Dudley, I.	13	I. O. S. & O.	52, 53
Elam, E.	1	Irish Bullion Co.	56
Ellis, W.	24	Jardine, D.	55
Emerson & Sons, E.	15	Jerrems, W.	16, 24
Evans, J.	4, 5	Jones & Co., W.	18
Ferns, G. & R.	2	Kelty, A.	23
Ferns & Cartwright	2	King, Gosling, Tanner & Griffiths	41, 42
Ferris, J.	6	Knapp & Co.	18, 19
Fillingham, W.	24, 25	Laycock, J.	42
Fisher, R.	24, 25	Lewis, M.	54
Gatson, J.	16	Lintott & Sons, W.	13
Garratt, F.	28, 29, 30, 31, 32	Lloyd, J.	55
Garrett, F.	29, 31	Lloyd, S.	7, 18, 20
Gateis, S.	39	Loyd, C.	5
Gates, S.	39	Lomer & Son, W.	13
Gerard, W.	33	Lord & Marshall	46
Gilpin, G.	25	Lumb, S.	44, 45
Gomme, J.	1	Millson & Preston	17
Gregg, F. H.	29, 31	Mirfin & Parker	43
Gribble, R.	4, 5	Monck, I. B.	1
Griffin, G.	22	Moor, C.	24, 25
Griffith, J. & S.	9	Moore, C.	25
Griffith & Gough	33	Morgan, D.	54, 55
Griffiths, R.	55	Morgan, H.	2, 3, 4, 10, 13, 15, 18, 19, 20, 21, 24, 29, 30, 32
Grigg, F. H.	28, 29, 30, 32	Morgan, M.	54
Halls, R. D.	14	Morris & Sons	52
Halsted, W.	38	Muskett & Son	21
Hancock	24		

INDEX—Continued.

Niblock & Latham	30, 32	Sizer, W.	36
Nicols, H.	3	Smalpage, J.	41
North, G.	52	Sparks, W.	33
Nott, M.	4, 5	Stansall, T.	24, 25
				Stanton, C. & G.	24
Orchard, I.	26, 27	Stanzail, T.	25
				Stephens, I. M.	13
P. H. & Co.	34	Studd & Mathews	36
Padley, S.	55	Stephenson, J.	43
Parson & Son, W.	21	Steward, J.	36
Pearse, W. & G.	3	Stovin, C.	17
Peels, Harding & Co.	33, 34				
Phillips, W. & J.	55	Terrail, W.	29, 31
Phillipson, J. B.	37	Terrell, W.	28, 29, 31
Phipps, J.	26, 27	Thomas & Phillips	55
Porter, S.	22	Thurbon, J.	1
Prockter, J.	3	Tripp & Co., R.	31, 32
Ratcliffe, S.	1	Venables, T.	25
Rawson, I. W. & I.	15	Voss, J.	55
Read, T. & W.	16				
Readett, W.	24, 25	Wainwright & Co.	14
Redman, J.	38	Wakefield & Co.	24
Rees, H.	54, 55	Wakeford, W. S. & I.	11, 12
Reynolds, F. R.	22	Ward, H.	6
Robertson, J.	23, 24	Warren, R.	19
Rose, P.	29	Waters, R. & R.	52
Rowe, W. F.	3	Whalley, J.	9, 10
Rudston & Preston	43, 44	Whalley & Co.	20
Rushbury & Woolley	33	Whitchurch, S.	26, 27
Ryall, W.	33	Williams, D.	54
				Williams, W.	54
Sandars, S.	16	Willoughby & Sons	33
Saunders & Butt	9	Wilson, F.	25
Scott-Titchfield	25	Wilson, T.	24, 25
Scurr	49	Wilson & Co., T.	14
Shephard, Watts & Co.	3	Wright, E.	39
Sheppard, W.	31, 32				
Shipham, C.	38	Younge & Co., S. & C.	46, 48
Sinkins, Mrs.	33	Younge & Deakin	46, 47, 48, 49
				Younge, Wilsons & Younge	46



UNIVERSITY OF CALIFORNIA LIBRARY

Los Angeles

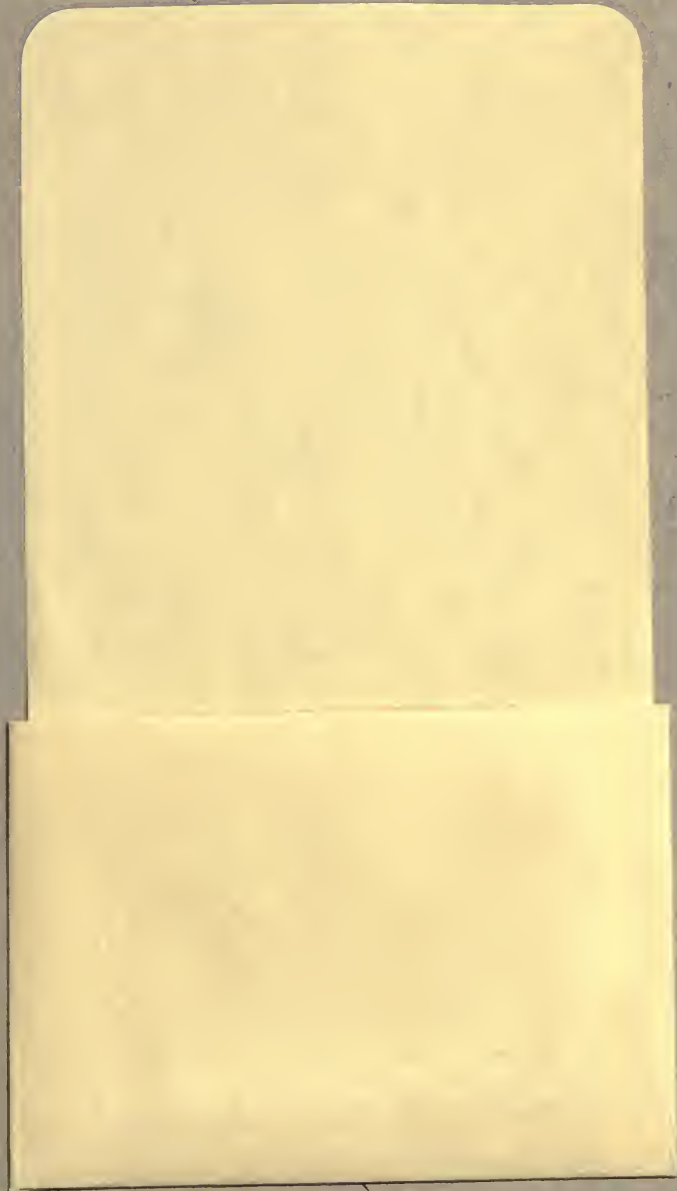
This book is DUE on the last date stamped below.

Form L9-Series 4939

UC SOUTHERN REGIONAL LIBRARY FACILITY



A 000 178 035 2



California
Regional
Facility