

SOME FEATURES OF A MODERN
OVERHEAD DISTRIBUTING SYSTEM

BY

A. R. REDMAN

ARMOUR INSTITUTE OF TECHNOLOGY

1 9 1 6

537.84
R 24



**Illinois Institute
of Technology
UNIVERSITY LIBRARIES**

AT 426
Redman, A. R.
Some features of a modern
overhead distributing

For Use In Library Only

SOME FEATURES of a MODERN OVERHEAD DISTRIBUTING SYSTEM

A THESIS
presented to the
TRUSTEES AND FACULTY
of the
ARMOUR INSTITUTE OF TECHNOLOGY

together with
A RECORD of COMMERCIAL WORK
for a degree of

ELECTRICAL ENGINEER

ILLINOIS INSTITUTE OF TECHNOLOGY
PAUL V. GALVIN LIBRARY
35 WEST 33RD STREET
CHICAGO, IL 60616

A. R. Redman

1916..

Approved by 1916
A. R. Redman
H. M. Raymond

THE UNIVERSITY OF CHICAGO

PHILOSOPHY DEPARTMENT

MEMORANDUM

TO: THE FACULTY

FROM: THE DEPARTMENT

DATE:

RE: [Illegible]

[Illegible]

[Illegible]

[Illegible]

[Illegible]

-

[Illegible]

[Illegible]

2

SOME FEATURES of a MODERN DISTRIBUTING SYSTEM

An exhaustive study of the modern distributing system as it is now in use would entail a much more comprehensive study than is intended to be covered by this article and the problems that arise are so complex and are possible of so many variations and combinations that it is impossible to cover in any but a general way these problems in the scope of this paper, and in this connection it will be understood that any statements, except the fundamental laws, may fit a particular case and not be generally applicable.

With this in mind it will be sufficient to state that in this paper it is not intended to introduce anything new into the theoretical considerations involved, but to make free use of existing literature for all theory and to devote the bulk of the matter to the consideration of some of the practical conditions which have come under the personal observation of the writer and to indicate their solution, which may not mean the only possible solution or even the best, but in any event a good and practical solution under the existing conditions. And it may be well to note that these local conditions may and do include national, state and municipal laws; the aesthetic taste of property owners expressed in their reluctance to have a line of poles injected into their outlook or to have some special pet tree cut down or disfigured; and many such things not encountered in the theoretical consideration of the problem. These conditions make the use of such expressions as "in some cases",



"possibly", et cetera imperative.

The inspection of a distributing system offers none of the sensational features of the high voltage transmission line with its heavy construction and long distances, regulating features et cetera, nor any of the bustle and activity of the main hydro-electric generating station with its water ways and large machines with their regulators, or the immense facilities of the steam plant, and the observer who spends hours and days studying the operation of a device at the generating station which is intended to cut the cost of production a fraction of a cent per K.W.H. loses interest when shown the hole in the floor or wall where the low voltage cables leave for either the underground or overhead distributing systems. However the fact that this distributing system may represent from 30 to 70% of the total investment makes it a very important item and it is imperative that special attention should be given to the seemingly unimportant details of distribution where any inattentiveness will result in a loss per K.W.H. far greater than what can be saved by the installation of special machines at the power house.

To conform to good practice the distributing system must embody the following essentials;

1. Reliability
2. Efficient operation
3. Good regulation

It is not to be understood that this is the order of importance of these features for it is hard to say that any one is of more importance than the others. In addition these features are to be obtained with a minimum expenditure.

.....

→

—

.....

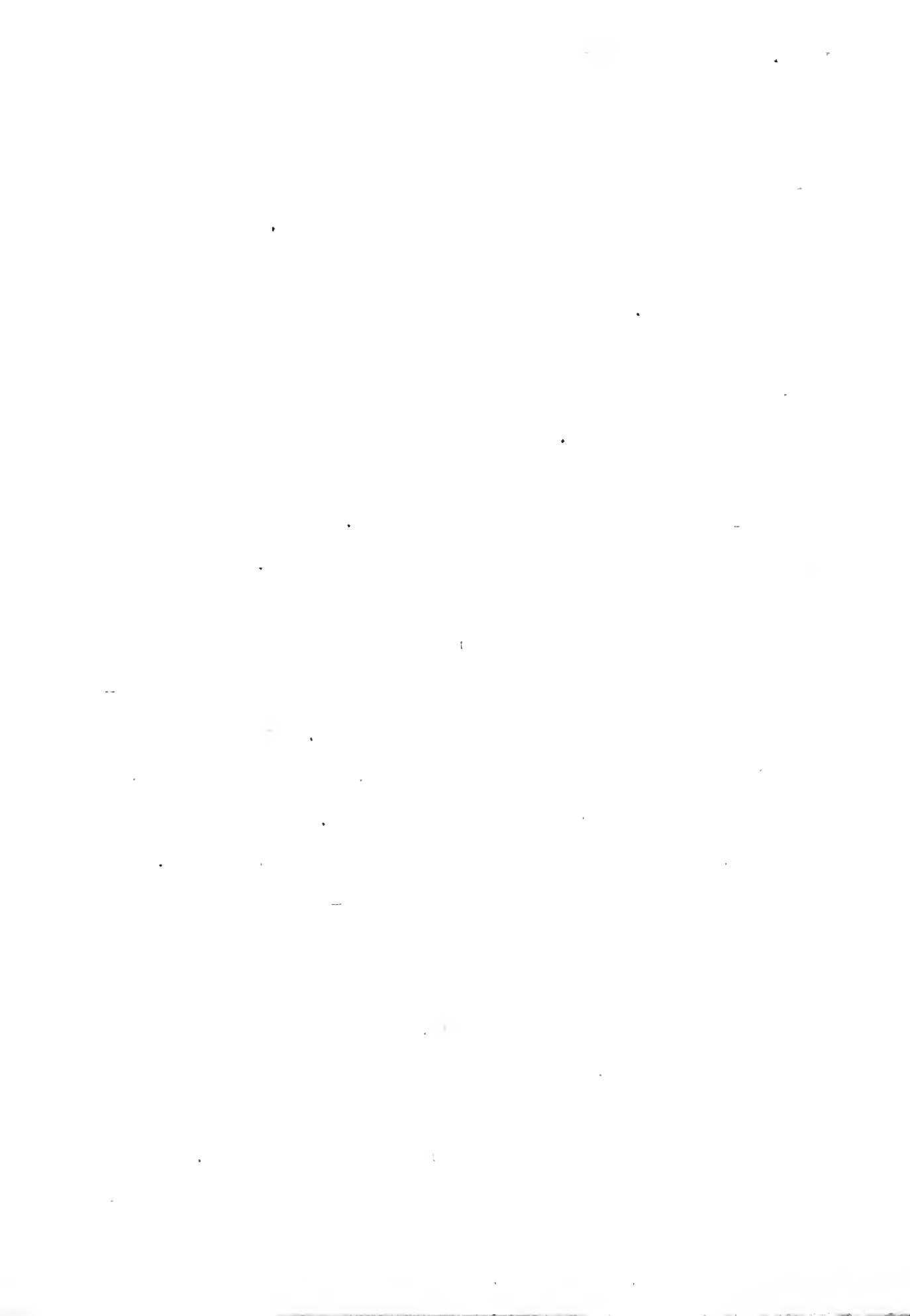
•
•
•

iture. This necessitates that the engineer who may be laying out a new system or planning extensions to an old system use a great deal of judgement as to which item shall be given the preference in view of the rather uncertain conditions which the future may bring up, and the entire design is a compromise between the relative importance of these details.

Reliability must include the factor of safe construction - both for the general public and for the employee who must work on the lines. In addition the system must be so laid out that the chance of interruption to service in case of trouble will be reduced to a minimum. Some methods of securing this condition will be taken up later.

The efficiency of the system is the ratio of the total energy registered by customers' meters (provided all energy sold is metered) plus that used in the street lighting system to the energy delivered to the bus bar. The losses are divided into several kinds - line loss, transformer loss, converter loss, error and unaccounted for. This latter may be stolen, due to leakage through tree grounds, et cetera. These losses are divided into two parts - that part which is fixed, independent of the load, including core loss of transformers, copper loss in the constant current circuits, loss in the shunt coils of meters, friction and windage in converter apparatus, and a variable loss varying as a function of the current including copper loss in constant potential circuits, transformers and converter apparatus.

One of the largest factors in the cost of a distributing system is the cost of conductors and it is important to see that these are of the proper size compatible with an



allowance for growth and good regulation. According to Lord Kelvin the most economical size of conductor is that in which the interest on the investment is equal to the cost of the lost power.

In applying this rule the item of regulation must be borne in mind in selecting a size of conductor, for it is quite possible to comply with Kelvin's law and not have the regulation of the circuit within the limits of good practice. By regulation is meant the variation of voltage above or below a certain point and is usually expressed in per cent of this standard which is usually the nominal rated voltage or the average delivered voltage.

Ordinarily the regulation of a lighting system should be within 5% or $2\frac{1}{2}\%$ above or below the rated voltage, and is usually kept well within these limits. For power work the limit is usually 10% but may exceed this without giving serious trouble.

1. The first part of the document discusses the importance of maintaining accurate records of all transactions. It emphasizes that this is crucial for the company's financial health and for providing reliable information to stakeholders.

2. The second part outlines the specific procedures for recording transactions. It details the steps from initial receipt to final entry in the accounting system, ensuring that all necessary information is captured and verified.

3. The third part addresses the role of the accounting department in monitoring and controlling the company's resources. It highlights the need for regular audits and reviews to identify any discrepancies or inefficiencies.

4. The fourth part discusses the impact of these procedures on the company's overall performance. It notes that consistent and accurate record-keeping leads to better decision-making and improved financial stability.

5. The fifth part provides a summary of the key points and reiterates the commitment to high standards of accuracy and transparency in all financial reporting.

Preliminary considerations

1. Selection of voltages
2. Selection of routes
3. Selection of type

D.C. or A.C. - frequency

Division of circuits for light and power

Feeder and main or tree system

4. Design of system

Calculations

Graphic solution

1. The voltage of the secondary lines is determined by the type of appliances that are to be served and the distributing apparatus (transformers et cetera) which are manufactured for this use, e.g;

100 to 120 volts for lamps and small power uses

200 " 240 " " power - medium

400 " 480 " " " - large

500 " 600 " " street railway power and some commercial

Most of the standard voltages on the primary side are derived from the lamp voltages of 50 or 100 volts in the ratio of multiples of 10:1 increased by 5, 10 or 20 % for various reasons, principally to compensate for line loss.

In addition there are voltages on the primary side which arise from the use of a star - delta connection of transformers in a three phase system and are related to the

above voltages by the $\sqrt{3}$ used either as a divisor or as a multiplier. The early type of transformers were made in

ratios of 1000-2000 / 100-200 volts or 1040-2080 / 52-104-

but in as much as motors on these circuits did not operate well on account of voltage drop in transformers and secondary leads " power transformers " were introduced with a ratio of 9:1 or 1040-2080 / 115-230, but this brought trouble by having transformers of two ratios where lighting and power were taken off of the same secondaries so that the manufacturers soon discontinued the making of two types and standardized on the 10:1 ratio because it allows the higher voltage on the primary side and agrees with the general principles according to which the voltages are standardized.

In direct current work the standard voltages are as given above and owing to their low value the distance from the power house over which the D.C. net work extends is not very great and is usually confined to the crowded business districts of a city except in the case of the 500 volt D.C. for the railway system which is supplemented by feeders, and in the case of interurban or large city system, by transmission as A.C. with suitably located transforming stations.

The most common voltages for primary distribution are;

2000	to	2400	volts	for	lighting	and	power
4000	"	5000	}	"	"	large	power
6000	"	7200		for	intermediate	distribution	
10000	"	15000	"	"	"	"	"

2. In the newer cities, where it is probable that the contents of this paper would apply, the streets are laid out along a well defined system in which the blocks are uniform in shape and size and usually rectangular and under these conditions the pole lines should have the following characteristics:



The pole line should be on the same side of the street throughout its entire length and on corresponding sides of parallel streets.

The spacing of poles should be an exact divisor of the length of a block to secure uniformity.

Where a line crosses a street on ^{which} there is or may be an intersecting line there should be a pole set on the proper corner to form a junction.

The system should be laid out to ultimately cover every building site with a view also to possible growth and the building of extensions with a minimum of changes in existing lines.

Where the location of the power house is fixed by the price of land or by ordinance or by natural or railroad facilities the trunk lines must be laid out from this point, and if this be a central location there should be a trunk line in each of the four principal directions and they should follow the back streets or alleys where the heavy construction and guying will be most inconspicuous, and so that interruptions due to fire in adjacent buildings will be infrequent and on streets where there are few trees and as few jogs as possible which necessitate guying and a weakening of the line and on streets which lead directly to the center of distribution of the district which they are to serve. Even under the best of conditions due to a good selection of power house site these conditions will have to be compromised to a large extent.

The pole line performs two functions - that of carrying feeders from the power house to the centers of distribution and of carrying the mains fed by these feeders to the



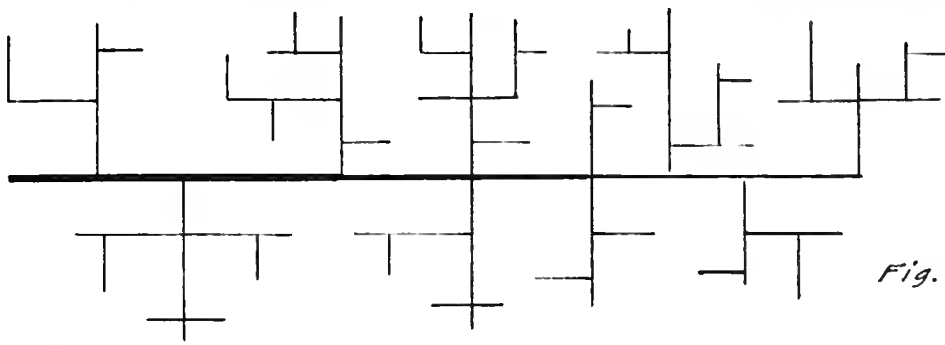


Fig. 1.

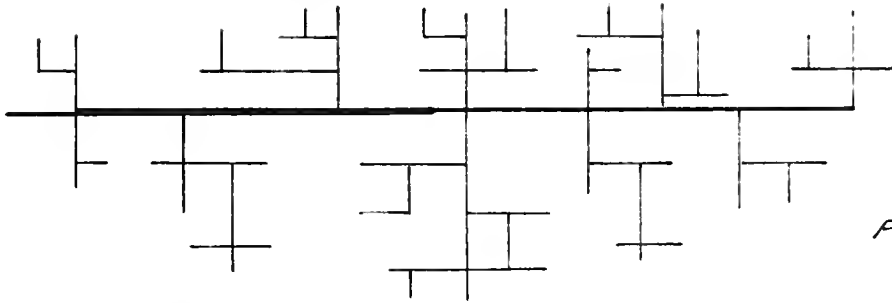


Fig. 2.

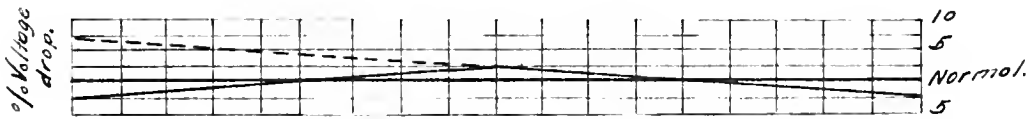


Diagram of Feeder and Tree Systems Showing Voltage Drop.

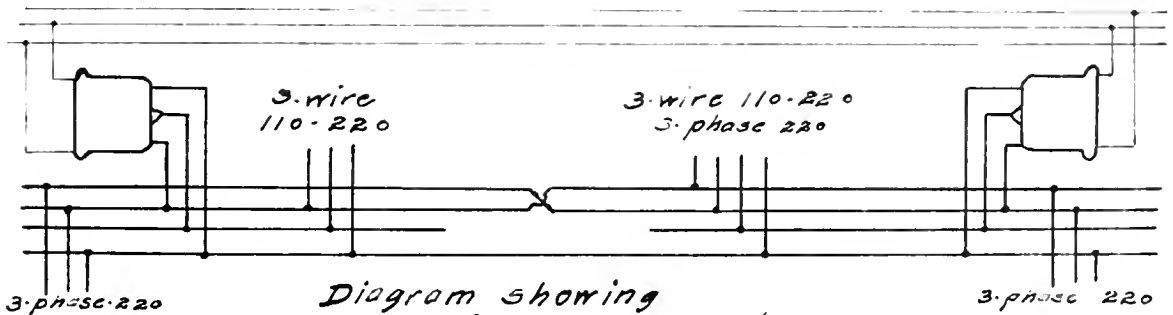
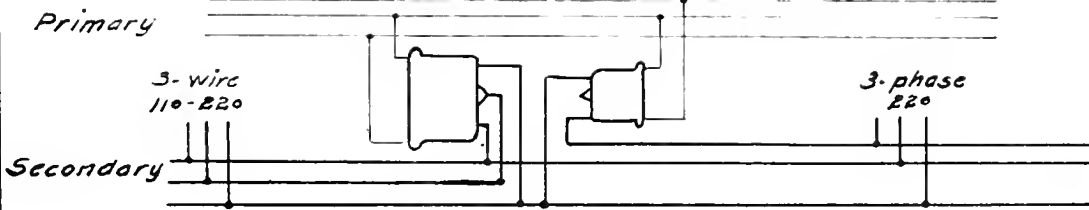
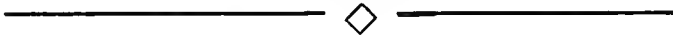


Diagram showing various transformer connections giving Edison 3-wire and 3-phase open Δ

Fig. 3.



8

points adjacent to where the power is to be used, thence by service wires to the building or power site.

The feeders may be arranged in what is known as the "tree system" or in the "feeder and main" system. In the former (Fig. 1) a tapered conductor may be used and run through the district to be served, taps being taken off where necessary. In the latter (Fig. 2) a feeder is run to the center of distribution of the district to be served and from this point mains are branched out to reach the customer.

3. For certain purposes, mainly those using the electric current for heating purposes such as cooking, heating, lighting of carbon and tungsten lamps, either A.C. or D.C. current may be used. For other purposes such as charging storage batteries and electro-plating D.C. current is essential - for operating arc lamps and tantalum lamps it is preferable and for some other classes of work such as Nernst lamps the A.C. current is better. For motive power in certain classes of work, notably where variable speed is necessary, D.C. current is advisable and where constant speed motors are the rule A.C. is desirable. These fields overlap to such an extent that it is usual in the larger cities to find both and it is usual to find all the power originally generated as A.C. and the part necessary as D.C. is converted to this form at a point near its application.

For the usual type of load consisting of both lighting and motors in a medium or sparsely settled district it is customary to use A.C. and services may be taken from the same set of secondaries which are supplied from a single primary main because the motor load is apt to come at a



9

time when it will not interfere with the lighting load. Under conditions where the loads overlap it may be advisable to supply power and light from separate secondary mains and where the conditions are severe to separate them on the primary side as well. See sketch of transformer connections Fig. 3

As mentioned before the D.C. is confined to the close in sections on account of the low voltages involved, and hence it is usually carried underground because of the congestion of poles in a business district should it be overhead. It lends itself well to this type of construction since it can be carried in single conductor cables of a size that can be conveniently pulled into the ducts.

The most expensive part of the A.C. underground system is the getting the current from the mains to the customers' premises which includes the secondary mains, transformers, services and man holes. This leads to a type of construction known as the composite type where the primary feeders are run under ground through the streets and taken up a pole in the rear of buildings and from here the consumers in this particular block are served. A main is taken up in each block under this system and the secondaries extend only a span or two in each block. The objection to this is the fact that in nearly every case where poles are set on private property in the rear of buildings they are not permanent but are subject to the changing plans of owners of the property and in thickly built up blocks there is a mass of over head wires and services that constitute a fire menace and the construction is mostly used as the inter-

1. The first part of the document discusses the importance of maintaining accurate records of all transactions. It emphasizes that every entry should be supported by a valid receipt or invoice to ensure transparency and accountability.

2. The second section outlines the procedures for handling discrepancies between the recorded amounts and the actual cash flow. It suggests a systematic approach to identify the source of the error and correct it promptly to avoid any financial misstatements.

3. The third part of the document provides a detailed breakdown of the budgetary constraints and the expected outcomes for the current fiscal year. It includes a comparison of the actual performance against the budgeted figures to assess the overall financial health.

4. The final section concludes with a summary of the key findings and recommendations for the future. It highlights the need for continuous monitoring and reporting to ensure that the organization remains on track with its financial goals.

mediate step between underground and over head distribution.

The various systems of distribution are as follows:

D.C. The simplest form is the two wire system, in which all devices are connected in multiple across the leads and is used for light and power from isolated plants, and for 500 volt power, commercial and railway.

The Edison 3-wire system (Fig. 4) consists of two two wire systems combining one wire of each system to form the neutral, and is used extensively, with the lighting load connected from neutral to either outside wire, and power connected between the two outside wires. With a balanced load the saving of copper is $62 \frac{1}{2}$ % over the use of a two wire system to carry the same load with the same regulation. This is the usual type of under-around system used, and consists of an inter-connected 3-wire network fed by two wire feeders from the power house and the neutrals all tied together outside the power house. Where there is a great difference in the length of feeders they are sometimes fed from two sets of busses known as the "high bus" and the "low bus" (from the corresponding voltages) which are operated in parallel when the load is light and separated for the heavy load.

A.C. The simplest form of this is the single phase system which is used just as the D.C. system given above. It is usually used in connection with a polyphase system to take care of the lighting and small power, either as a part of the poly-phase system or as a separate system (outside of the power house, - though of course the two systems come from the same generator.) Where the lighting is taken from the poly-phase system it is usually attempted to bal-

ance it over all phases to avoid generator troubles, and where a separate circuit is run from the power house for lighting, the districts are usually divided among the various phases for the same reason.

The two- phase system consists of two single-phase systems set at 180 electrical degrees apart and, distributed on either the 3-wire, 4-wire or 5-wire systems, of which the 4-wire is most extensively used.

The most widely used is the 3-phase system which is a composition of three single-phase currents set 120 electrical degrees apart and may be distributed on a three, four, or six-wire system, of which the 3-wire is the most used.

The six-phase system is only in use in the power house or sub-station and is never used for distribution.

Only the systems which are standard should be considered and the choice is governed by local conditions. In the case of a new system the problem is based on existing conditions and the probable growth along any particular line.

The frequency should be chosen the same as that of other operating companies in the same neighborhood, to provide for an interchange of power should the occasion require. It is also dependent on the proportion of the total power that is to be used for motors. There are only two frequencies considered standard at present e.g. 25 and 60 cycles; 25 cycles being used for power purposes and 60 cycles for lighting and a system may include both if the load warrants it, either generated separately or generated as 25 cycles and changed by means of frequency changers to 60 cycles for the lighting load, though by far the most general use is of one or the other and not a combination.



4. Calculations of the various items entering into the distributing circuit will be taken up very briefly here - reference being made to "Electric Central Station Distributing Systems" by Gear & Williams: "Electrical Conductors" by Perrine: articles in the Proceedings A.I.E.E. by Rhodes, Stillwell and others over a period of the past five or six years in case more detailed information is required.

If the % power loss = Q

$$Q = 100 \frac{\text{total power lost in line}}{\text{total power delivered at load end}} \quad (1)$$

and % voltage drop = D

$$D = 100 \frac{(\text{voltage at generator end}) - (\text{voltage at load end})}{\text{voltage at load end}} \quad (2)$$

The problem may be either:-

1. With a line of known constants to calculate power loss and voltage drop for a given load or;
2. With a given distance to transmit a given amount of power with a given loss and voltage drop.

In a 2-wire line with load concentrated at the far end in a D.C. circuit:-

Let E = volts between wires at load end

$$P = \frac{EI}{1000} \quad \text{load in K.W.}$$

$$I = \frac{1000 P}{E} \quad \text{load in amperes}$$

l = length of each wire in feet

r = ohms per 1000 ft. of conductor (see wire tables)

$$R = \frac{rl}{500} \quad \text{resistance of line}$$

Then

1. The first part of the document discusses the importance of maintaining accurate records of all transactions and activities. It emphasizes that this is essential for ensuring transparency and accountability in the organization's operations.

2. The second part of the document outlines the various methods and tools used to collect and analyze data. It highlights the need for consistent and reliable data collection processes to ensure the validity of the results.

3. The third part of the document describes the different types of data that are collected and analyzed. It includes information on both quantitative and qualitative data, as well as the specific variables being measured.

4. The fourth part of the document discusses the various statistical techniques used to analyze the data. It covers both descriptive and inferential statistics, as well as the use of regression analysis and other advanced methods.

5. The fifth part of the document describes the different ways in which the results of the analysis are presented and communicated. It includes information on the use of tables, graphs, and other visual aids to make the data more accessible and understandable.

6. The sixth part of the document discusses the various challenges and limitations associated with data collection and analysis. It highlights the need for careful planning and execution to ensure the quality and reliability of the results.

7. The seventh part of the document describes the different ways in which the results of the analysis are used to inform decision-making and policy development. It includes information on the use of data to identify trends, assess risks, and evaluate the effectiveness of various programs and initiatives.

8. The eighth part of the document discusses the various ethical considerations that must be taken into account when collecting and analyzing data. It highlights the need for transparency, informed consent, and the protection of individual privacy and confidentiality.

9. The ninth part of the document describes the different ways in which the results of the analysis are used to inform the public and other stakeholders. It includes information on the use of data to develop reports, presentations, and other communication materials.

10. The tenth part of the document discusses the various future directions and opportunities for research in this field. It highlights the need for continued innovation and development in data collection and analysis methods, as well as the importance of addressing the challenges and limitations identified in the document.

$$\text{Loss in K.W.} = p = \frac{RI^2}{1000} = \frac{rII^2}{500} = \frac{2rIP^2}{E^2} \quad (3)$$

$$\text{Loss in volts} = v = RI = \frac{rII}{500} = \frac{2rIP}{E} \quad (4)$$

$$\% \text{ power loss} = Q = \frac{100p}{P} = \frac{rII^2}{5000P} = \frac{200rIP}{E^2} \quad (5)$$

$$\% \text{ voltage loss} = D = \frac{100v}{E} = \frac{rII}{5E} = \frac{200rIP}{E^2} \quad (6)$$

resistance per 1000 ft. of conductor

$$r = \frac{500v}{II} = \frac{QE^2}{200IP} = \frac{DE^2}{200IP} \quad (7)$$

From any of the relations in (7) the resistance may be obtained and by reference to wire tables the corresponding guage noted. Usually take the next larger wire, though in practice it is not usual to find any thing under #6 B & S used in over head work and not all gauges larger than this are kept in stock, usually only the even numbers 6 - 4 - 2 - 0 - 00 - 0000.

To obtain the weight of wire "w" in pounds:

Let w = weight of wire per 1000 ft. from wire tables

$$w = \frac{wl}{500} \quad (8)$$

$$\text{or } w = \frac{KP}{Q} \left(\frac{l}{E} \right)^2 \quad (9)$$

where values of K are given in the following table:

Material	K	
	E in volts l in feet P in K.W.	E in kilo-volts l in miles P in K.W.
Copper 98% conductivity	13.5	380
Aluminum 61% " "	6.5	185

1. The first part of the document discusses the importance of maintaining accurate records of all transactions and activities. It emphasizes that proper record-keeping is essential for transparency and accountability, particularly in the context of public administration and government operations. The text notes that such records serve as a critical tool for monitoring performance, identifying inefficiencies, and ensuring that resources are used effectively and ethically.

2. Furthermore, the document highlights the role of these records in facilitating communication and collaboration between different departments and stakeholders. By providing a clear and consistent source of information, well-maintained records help to reduce misunderstandings, streamline decision-making processes, and foster a more cohesive organizational culture. The text also mentions that accurate records are vital for conducting audits and investigations, as they provide the necessary evidence to support findings and recommendations.

3. In addition, the document addresses the challenges associated with record-keeping, such as the volume of data generated, the risk of data loss or corruption, and the need for secure storage and access controls. It suggests that organizations should invest in robust information management systems and implement strict protocols to ensure the integrity and confidentiality of their records. The text also notes that regular training and education for staff are essential to ensure that everyone understands the importance of proper record-keeping practices and is equipped with the necessary skills to manage records effectively.

4. Finally, the document concludes by reiterating the significance of records in supporting the overall mission and goals of the organization. It states that by prioritizing record-keeping, organizations can enhance their operational efficiency, improve their service delivery, and build a strong foundation of trust and credibility with their stakeholders. The text encourages organizations to view record-keeping not as a mere administrative task, but as a strategic imperative that is integral to their long-term success and sustainability.

Note: These values are about 5% higher than theoretical to allow for practical working conditions.

These weights apply only to bare wire but corrections can be made from the wire tables for insulated wire, -that insulation for over head work being single, double, and triple braid; referring to the number of layers of braid covering the wire. Above 10 000 volts bare wire is used though at the lower voltages its use is to alleviate rather than prevent arcs due to accidental whipping together of wires. For under-ground work the insulation is usually rubber, paper or cambric with a lead sheath and where necessary to protect against mechanical injury this is covered with a jute wrapping and a steel armor laid over all.

All the above values may be obtained in terms of the generated voltage by noting that if E_g = generator voltage

$$\text{then } E = \frac{E_g}{2} \left[1 + \sqrt{1 - \frac{4000 FP}{E_g^2}} \right] \tag{10}$$

and applying the value of E so calculated in equations (3) to (9).

Calculation of a D.C. 2-wire line with a distributed load:

When the line supplies a number of power consuming devices at various distances from the generator the voltage loss is the same as that of a line of a length equal to that of the given line from the generator to the center of distribution, assuming both lines of equal cross sectional area for the full distance. The center of distribution is found as follows;

Let A, B, C, et cet be connected loads

and $I_a, I_b, I_c, et cet$ be current respectively



at distances $l_a, l_b, l_c,$ from the generator end
 and $R_a, R_b, R_c,$ be total line resistances from the genera-
 tor to the respective loads;

then $I = I_a + I_b + I_c + I_{...}$ ---- (11)

and resistance from center of distribution to generator
 (both wires) is

$$R_g = \frac{R_a I_a + R_b I_b + R_c I_c + \dots}{I}$$
 (12)

and the distance l_g to the center of distribution from
 the generator is

$$l_g = \frac{l_a I_a + l_b I_b + l_c I_c + \dots}{I}$$
 (13)

The voltage loss to the end of the line is then

from (4) $v = R_g I = \frac{r l_g I}{500}$ (14)

and loss in K.W. in the line is

$$p = \frac{1}{1000} \left[R_a I_a^2 + R_b I_b^2 + R_c I_c^2 + \dots \right]$$
 (15)

where I_a current to load A

and I_{ab} " between load A and B = $I_a + I_b + \dots$

or $p = \frac{r}{500 \times 1000} \left[l_a I_a^2 + l_{ab} I_{ab}^2 + \dots \right]$ (15a)

where $l_a, l_{ab}, l_{ac},$ are in feet and r is resistance of
 line conductor per 1000 ft.

from (7) $r = \frac{500 v}{l_g I}$ (16)

from which the gauge of wire can be found from wire tables.

Under some conditions - notably when the bulk of the
 load is near the station, it may be advisable to use a
 tapered conductor then for a given voltage loss in the en-

ture line the minimum weight of conductor is obtained when the volts lost per unit length of conductor in each section of the line is proportional to the square root of the current in this section. Then in the case of the conductor between A and B (Fig. 5)

$$r_{ab} = \frac{1}{\sqrt{I_{ab} l_a (I + l_{ab}) I_{al} + l_{bc} I_{lc} + \dots}} \times \frac{500 \text{ v}}{\dots} \tag{17}$$

and similarly for each section whence the weight per section from wire tables. The line proportioned from (17) will not have a minimum power loss for the weight of conductor used. For a given total weight of conductor the power loss will be a minimum when the power loss per unit length of conductor in each section is proportional to the current in this section or when the weight per 1000 ft. of line in section A - B is

$$w_{ab} = I_{al} \times \frac{500 \text{ W}}{\sqrt{l_a I_{lc} + l_{bc} I_{cb} + l_{lc} I_{lc} + \dots}} \tag{18}$$

and similarly for the other sections
 where W = total weight of conductor.

Where the values for sizes of wire differ greatly between (17) and (18) the engineer must compromise, being guided by which of the two considerations is of the most importance - to keep down voltage loss or to keep down power loss.

In calculating size and weight of copper for the 3-wire D.C. line it is assumed that the load is balanced because every effort is made in practice to keep it so by the use of various balancing devices and the formulas given above apply directly where E is the voltage between the outside wires and W becomes the weight of the two outside

wires. The neutral - or middle wire - is usually made the same size as the outside wires to allow for the extreme case of unbalanced load in which case the total weight of copper is 1.5 W. The exact calculation of voltage and power loss in the case of an unbalanced load can be effected by an application of Kirchoff's law, but is seldom necessary.

A.C. calculations.

Size and weight of conductors.

The preliminary considerations to be noted are:

1. A power loss of 10 % is usually allowed.
2. A line voltage of approximately 1000 volts per mile is good practice, with 2200 volts as the standard for city work - that being low enough for comparative safety and high enough for economical distribution.

At unity power factor, with the above assumptions and copper at 15 cents per lb., the conductors for a three phase line will cost \$4.00 and a single phase or 4-wire two phase line will cost \$5.33 per K.W. delivered per mile of line.

In as much as this article is not a theoretical consideration of the problems involved, no attempt is made at a great refinement of formulas because the assumptions made in regard to the practical application - load factor, power factor, diversity factor et cet - are subject to such variation that they outweigh the fine corrections made in the formulas. Hence these formulas are based on the assumption that the charging current is negligible in comparison with the load current, which is true except in long transmission lines.



Let E = voltage between wires at load end.

P = total power delivered

$\cos \phi$ = power factor of load expressed in a decimal

l = length of line length of each conductor

Q = power loss in per cent of delivered power

Then the weight of all conductors is:

$$W = \frac{KP}{Q} \left[\frac{l}{E \cos \phi} \right]^2 \text{ in pounds} \quad (19)$$

where K depends on the number of phases, material of the conductors and the units in which various quantities are expressed and is given below:

Material and units	K	
	single phase or balanced 4-wire two phase	balanced 3-wire 3-phase
Copper 98% conductivity		
E in volts, l in feet, } P in K.W.	13.5	10
E in K.V., l in miles, } P in K.W.	380	285
Aluminum 61% conductivity		
E in volts, l in feet, } P in K.W.	6.5	4.9
E in K.V., l in miles, } P in K.W.	185	140

(These values are about 5 % higher than theoretical to allow for working conditions.)

The value of W in (19) does not take into account commercial sizes of wire so that it is necessary to calculate the resistance per unit of length of conductor (r) and from wire tables obtain the commercial size and weight per unit length (w)

$$\text{where } r = \frac{K, Q [E \cos \phi]^2}{lP} \text{ in ohms} \quad (20)$$

where K_1 is of value given below and depends on the same factors as K .



$$\text{then } W = K_2 w l \quad \text{in pounds} \quad (21)$$

where K is given below:

	Single phase	Balanced 4-wire 2-phase	Balanced 3-wire 3-phase
in volts, l in feet, P in K.w. in ohms per 1000 ft, " lbs " " "	$K_1 = .005$ $K_2 = .002$	$K_1 = .01$ $K_2 = .004$	$K_1 = .01$ $K_2 = .003$
in K.V., l in miles, P in K.w. in ohms per mile, " lbs " "	$K_1 = 5$ $K_2 = 2$	$K_1 = 10$ $K_2 = 4$	$K_1 = 10$ $K_2 = 3$

The current per conductor may be calculated from the following-

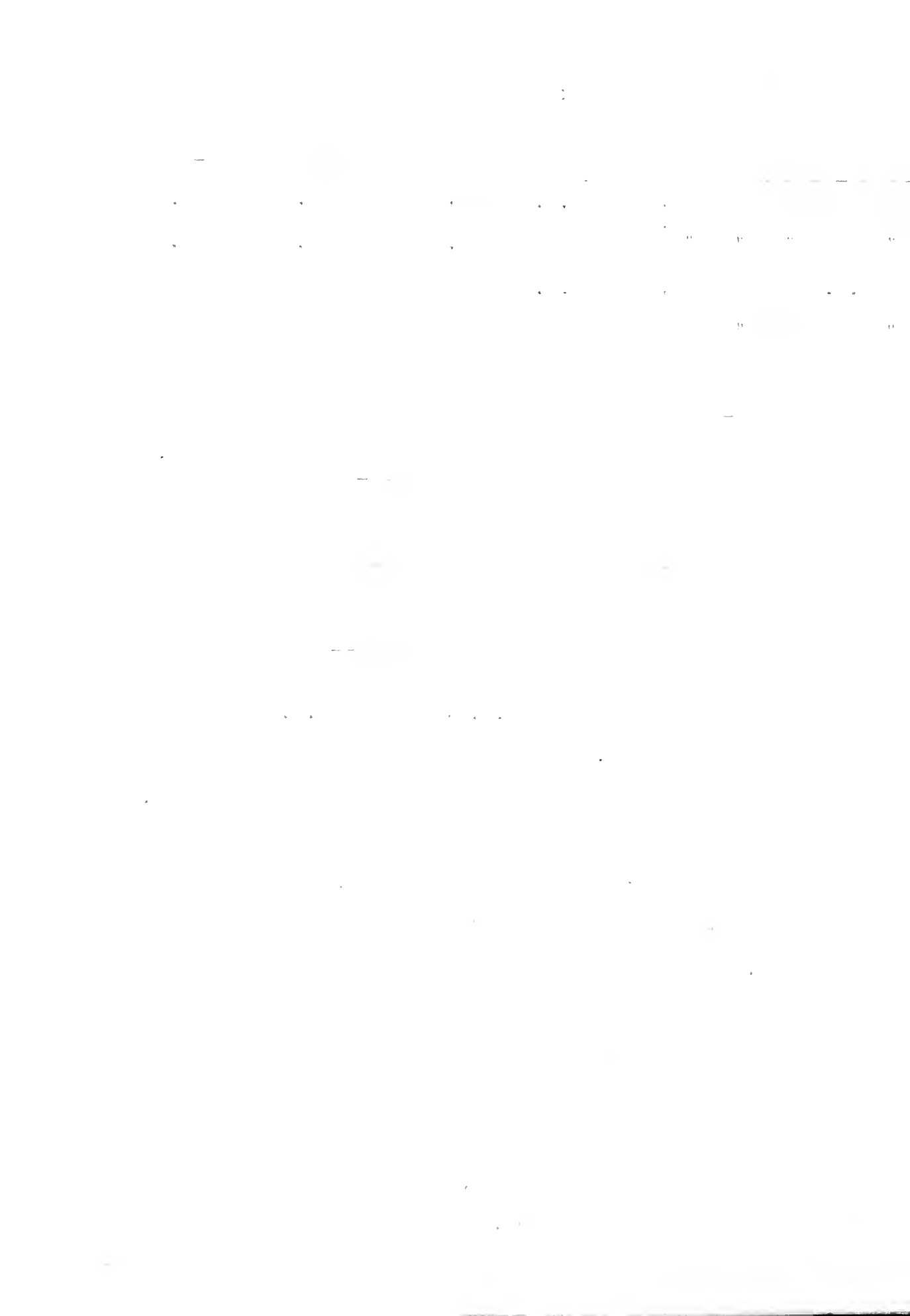
$$\begin{aligned}
 \text{Single phase} & \quad I = \frac{P}{E \cos \phi} \\
 \text{2-phase 4-wire} & \quad I = \frac{P}{2E \cos \phi} \\
 \text{3-phase 3-wire} & \quad I = \frac{P}{\sqrt{3} E \cos \phi}
 \end{aligned} \quad (22)$$

where E is in kilo-volts (K.V.), P is in K.w. (total) and $\cos \phi$ is a fraction.

Calculation of conductors for a given voltage loss.

The voltage loss depends not only on the resistance of the circuit but also on the reactance, and in the case of long lines, upon the capacity; this latter will not be considered.

The most practical method of making these calculations is to assume that the ϕ power loss is equal to the given ϕ voltage loss and obtain the size of conductors from (20), then using this size of wire in formulas given below to calculate the voltage loss and if, after solving it is found that there is a discrepancy, take the next higher - or lower-size of wire, as the case may be, and again solve for voltage loss



The line constants entering into these calculations are:

r = resistance per unit length of conductor
 L = inductance " " " " "
 C = capacity " " " " "

From the inductance and capacity per unit length (see wire tables) the reactance $x=2\pi fL$, and the capacity susceptance $b=2\pi fC$ per unit length of conductor at a frequency f .

The skin effect is negligible for copper conductors up to 1 000 000 c.m. at 25 cycles and up to 450 000 c.m. at 60 cycles. The corresponding values for aluminum are about 30 % higher. Also the leakage current is negligible in the scope of this article.

The various methods of calculating A.C. lines in the order of their simplicity are;

1. The simple impedance method
2. The single end condenser method
3. The middle condenser or T method
4. The split condenser or π method

In short distributing lines the first method is accurate for all practical purposes and this will be the only method discussed, the others applying to higher voltages and longer lines such as are found in transmission work.

The calculations are based on the assumption of a sine wave in currents and voltages and a balanced load. The voltage value used is that between wires and the neutral, instead of that between conductors, in order that the formulas may have a wider application, applying directly to single phase, 2-phase 4-wire, and to 3-phase 3-wire systems.

Simple impedance method.

In this the capacity of the line is neglected

11 11 11 11 11
11 11 11 11 11

and the impedance of the line is simply a resistance equal to the total resistance of the line conductor, and a reactance equal to the total inductive reactance of the line conductor.

Fig. (6a) is a diagram of such a line and Fig. (6b) is the vector diagram of the relations between current and voltage.

$$\begin{array}{lll}
 AH = I & BC = V \sin \phi & CF = z l I \\
 AC = V & CD = r l I & AF = V_g \\
 AB = V \cos \phi & DE = x l I & FE = V_g - V
 \end{array}$$

Let

V = volts to neutral at no load

= " between wires 2 for single phase line

= " " " 3 " three " "

V_g = " to neutral at generator end of line

I = amperes per wire from (22)

l = length of each conductor in miles

$Z = \frac{V}{lI}$ equivalent impedance of the load per mile of line

$\cos \phi$ = power factor at load end

$\sin \phi = \sqrt{1 - \cos^2 \phi}$ = reactive factor of the load and is positive for a lagging and negative for a leading current

r = conductor resistance per mile in ohms (from wire tables)

x = " reactance " " " " " "

$z = \sqrt{r^2 + x^2}$ " impedance " " " "

Q = % power loss in terms of delivered power

D = % voltage " " " " " voltage

From Fig. (6b) it is seen that

$$V_g = \sqrt{(V \cos \phi + r l I)^2 + (V \sin \phi + x l I)^2} \quad (23)$$

$$= V \sqrt{\left(\cos \phi + \frac{r}{Z}\right)^2 + \left(\sin \phi + \frac{x}{Z}\right)^2} \quad (24)$$

since the current at load end is the same as at generator end

the % power loss is:

$$Q = \frac{100 \text{ rII}}{V \cos \phi} = \frac{100 \text{ r}}{Z \cos \phi} \quad (25)$$

and the % voltage loss is:

$$D = \frac{100(V_g - V)}{V} = 100 \left[\sqrt{\left(\cos \phi + \frac{r}{Z}\right)^2 + \left(\sin \phi + \frac{x}{Z}\right)^2} \right] \quad (26)$$

the power factor at generator end is:

$$\cos \phi_g = \frac{100 + Q}{100 + D} \cos \phi \quad (27)$$

the % impedance drop is:

$$100 \frac{\sqrt{r^2 + x^2}}{Z} \quad (28)$$

Care should be taken to differentiate between voltage drop ($V_g - V$) and the impedance drop ($z\text{II}$). For a given impedance drop the generator voltage may be any thing from A % greater to A % less than that at the receiving end depending on whether the current be leading or lagging.

A graphical method of obtaining the voltage loss is from a chart devised by Mershon and known as Mershon's Diagram. To use the chart calculate;

the per cent resistance drop

$$= r \left(\frac{100 \text{ I I}}{V} \right) \quad (29)$$

the per cent reactance drop

$$= x \left(\frac{100 \text{ I I}}{V} \right) \quad (30)$$

and from a point on the curve marked 0 corresponding to the power factor of the load lay off in a horizontal direction

1. The first part of the document discusses the importance of maintaining accurate records of all transactions and activities. It emphasizes that this is essential for ensuring transparency and accountability in the organization's operations.

2. The second part of the document outlines the various methods and tools used to collect and analyze data. It highlights the need for consistent and reliable data collection processes to support effective decision-making.

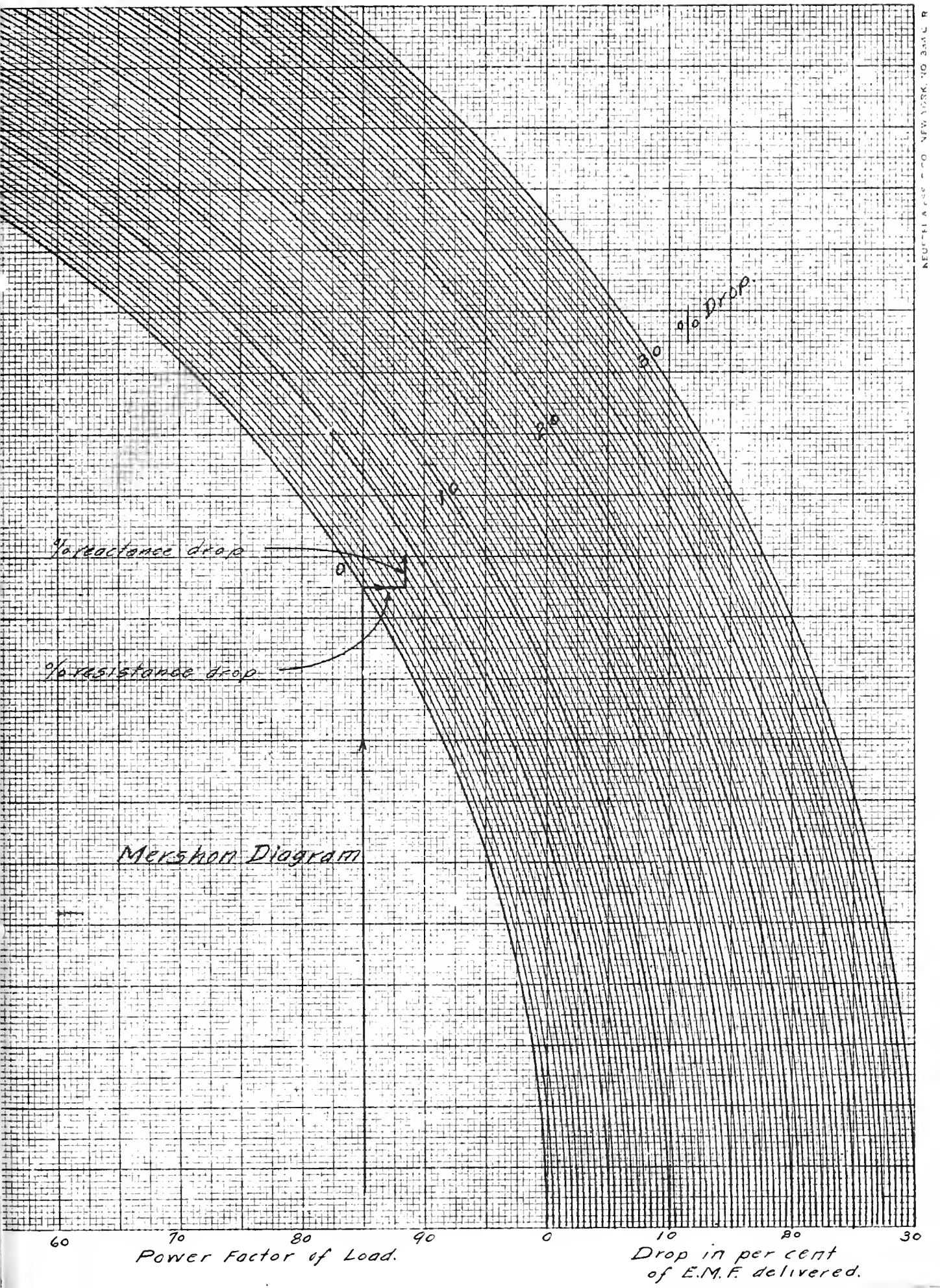
3. The third part of the document focuses on the role of technology in modern data management. It discusses how advanced software solutions can streamline data collection, storage, and analysis, thereby improving efficiency and accuracy.

4. The fourth part of the document addresses the challenges associated with data security and privacy. It stresses the importance of implementing robust security measures to protect sensitive information from unauthorized access and breaches.

5. The fifth part of the document explores the ethical implications of data collection and analysis. It discusses the need for transparency in data handling practices and the importance of obtaining informed consent from individuals whose data is being collected.

6. The sixth part of the document provides a summary of the key findings and recommendations. It reiterates the importance of a data-driven approach to organizational management and the need for continuous improvement in data management practices.

7. The final part of the document includes a list of references and a glossary of key terms. This section is intended to provide additional context and resources for readers interested in the topics discussed in the document.



Merston Diagram

60 70 80 90 0 10 20 30
Power Factor of Load. Drop in per cent of E.M.F. delivered.



the per cent resistance drop (29) and from the end of this line in a vertical direction lay off the per cent reactance drop (30). The per cent voltage loss is then given by the curve passing through the end of this line.

To express these values in terms of the generated voltage we have:

$$V = A \sqrt{1 \pm \sqrt{1 - \frac{(R^2 + X^2) P^2 \times 10^6}{A^2 \cos^2 \phi}}} \quad (31)$$

where

$$A = V_g \sqrt{\frac{1}{2} - \frac{1000 P (R \cos \phi + X \sin \phi)}{V_g^2 \cos \phi}} \quad (32)$$

and

V_g = volts to neutral at generator end

R = ohms resistance per wire

X = " reactance " "

P = K.W. load " "

= $\frac{1}{2}$ total K.W. delivered in a single phase line

= $\frac{1}{3}$ " " " " " 3 - " "

= $\frac{1}{4}$ " " " " " 2 - " 4-wire line

1. The first part of the document discusses the importance of maintaining accurate records of all transactions and activities. It emphasizes that this is crucial for ensuring transparency and accountability in the organization's operations.

2. The second part of the document outlines the various methods and tools used to collect and analyze data. It highlights the need for consistent and reliable data collection processes to support informed decision-making.

3. The third part of the document focuses on the role of technology in modern data management. It discusses how advanced software solutions can streamline data collection, storage, and analysis, leading to more efficient and effective operations.

4. The fourth part of the document addresses the challenges associated with data security and privacy. It provides guidance on implementing robust security measures to protect sensitive information and ensure compliance with relevant regulations.

5. The fifth part of the document concludes by summarizing the key findings and recommendations. It stresses the importance of ongoing monitoring and evaluation to ensure that data management practices remain up-to-date and effective in the face of changing organizational needs and external environments.

Practical considerations.

Perhaps the first requisite of a distributing system is that it shall be reliable under all conditions that may arise except those entailed in a wide spread fire or flood. This presupposes good construction which means good material and workmanship in the first place and the following out of some definite plan for extensions to the system already constructed, together with a well balanced scheme as a groundwork. In this connection it is well to bear in mind the tendency of all municipalities toward an elimination of unnecessary poles and it is well for the various companies, - telephone, light and street railroad - operating in any one district to make their plans toward this end before being forced into it at a greater expense. This is accomplished by a system of joint pole ownership where the various companies having lines on the same street, combine their systems on the same pole line e.g., the poles supporting trolley spans being used for supporting street lighting fixtures, and the main or auxiliary feeder of the light company's or the light and telephone companies combine on one lead of poles etc.

Troubles from the existence of two sets of poles on one street may arise from objections by the property owners to the congestion of poles, and should the two lines be on the same side of the street it is sometimes found that the services taken from the poles of one line may tend to pull them over until the wires of the other company come into contact with a pole, and either burning the pole off if the lines be high voltage or of making trouble if they carry telephone lines..

Routes^e should be selected that are practicable for all

perhaps the first requisite of a distributing system is that it shall be reliable under all conditions that may arise except those entailed in a wide spread fire or flood. This presupposes good construction which means good material and workmanship in the first place and the following out of some definite plan for extensions to the system already constructed, together with a well balanced scheme as a ground-

work. In this connection it is well to bear in mind the tendency of all municipalities toward an elimination of unnecessary poles and it is well for the various companies, telephone, light and street railway - operating in any one district to make their plans toward a common scheme. It is forced into it at a greater expense. This is accomplished by a system of joint pole ownership when the various companies having lines on the same street, joining their systems on the same pole line e.g., the power supporting trolley spans being used for supporting street lighting fixtures and the main or auxiliary cables of the light company's or the light and telephone company as joining on the lead of poles, etc.

Troubles from the existence of two sets of poles on one street may arise from objection by the property owners to the congestion of poles, and another one two lines on the same side of the street it is sometimes found that the wires taken from the poles of one line may tend to pull them over until the wires of the other company come into contact with a pole, and either burning the pole off if the lines be high voltage or of making trouble if they carry telephone lines.

routes should be selected that are practicable for all

parties using them and care must be taken to select streets that are free, or nearly so free from trees, for all lines carrying primary lines. This tree problem is one of the worst which confronts the operating company and must be handled with tact on account of the property owners who are always beautifying the streets by setting out trees which constitute a continual menace to continuous operation by the electric company..

The arrangement of wires on the pole is governed mainly in the distributing system by mechanical and practical considerations among which are the following:

That the largest wires be on the lowest possible cross arm in order to reduce the bending stress on the pole to a minimum..

That the largest wires be on the pins nearest the pole in order to reduce the bending on the cross arm to a minimum.

That the wires be arranged symmetrically on either side of the pole, especially where they are dead-ended, in order to reduce the twisting stress on the pole to a minimum..

That the highest voltage wires be on the upper cross arms with the lower voltages, the secondary, and the telephone wires arranged down the pole in the order named.

That the arrangement be systematic throughout.

It is customary to allow 1000 volts per mile of line, with the minimum for primary distribution at 2300 volts..

(The use of 1100 volts is not now considered good practice and is practically obsolete.) Due to an increase of load on a system and a desire to take care of it without increasing the copper may lead to the standard of 2300 volts growing, by the use of the "Y" connection of transformers, to approximately 4500 volts and then by use of the standard 6600 volt

... the standard of 100 volts and then by use of the standard 5000 volt
by the use of the "Y" connection of transformers, so approx-
the copper may lead to the standard of 100 volts growing
and is practically obsolete.) The use of a transformer of lead in
(The use of 100 volts is not now so common as it once was)
with the minimum to permit of a standard of 100 volts.
It is stated by the author that the standard of 100 volts
that the arrangement of wires of the pole is, several mainly
phone wires arranged down a pole in the order of
arms with the lower telephone wires at the top and the tele-
graph wires at the bottom. This arrangement is on the poles
due to the fact that the telegraph wires are the heaviest and
the poles, especially where the wires are strung in order to
that the wires are arranged vertically in the order of
in order to reduce the weight on the poles and to a minimum
That the largest wires are on the pole nearest to the pole
minimum.
arm in order to reduce the weight on the pole to a
that the largest wires are on the pole nearest to the pole
positions among wires in the order of
in the distributing system by mechanical and practical con-
the arrangement of wires of the pole is, several mainly
rio company.

transformers connected in Y a voltage of approximately 10,000 volts is obtained. Thus 10,000 volts has become standard and a regular line of transformers for this voltage has been developed. The transformers now manufactured include 3-phase and single phase of types and voltages suitable for distribution work. Many operating companies standardize on the three-phase transformers for power work on account of the ease and safety of installation. Where power and lighting are taken off of the same mains the practice is to use two transformers connected in open delta. For large amounts of power such as would be required in an industrial district it is well to run separate feeders for light and power but where the power is only incidental to the lighting, or vice versa, both may be taken off of the same main and, in cases where the motors do not interfere with the lighting load, from the same transformers. Where such banks of transformers are in service from the same primary main it is well to keep the secondary circuits of each transformer bank separate, for should the secondaries be inter-connected and the transformers be loaded to capacity, the blowing of a fuse on one transformer would overload the others so that they would go out in succession and it would be necessary to kill the primary feeding them until all fuses had been replaced or to wait until such a time of day as the load could be carried on one, to replace the fuses.

Over-head distribution transformers are usually hung as pole top transformers in one of two ways: either near the top of the pole where the primary leads are short, being connected to the transformer thru fuse boxes or other suitable disconnecting and protecting device, or they may be

transformers connected in Y a voltage of approximately 10,000
volts is obtained. Thus 10,000 volts has become standard and
a regular line of transformers for this voltage has been devel-
oped. The transformers now manufactured include 3-phase and
single phase of types and voltages suitable for distribution
work. Many operating companies standardize on the three-phase
transformers for power work on account of the ease and safety
of installation. Where power and lighting are taken off of
the same main the practice is to use two transformers con-
nected in open delta. For large amounts of power such as
would be required in an industrial plant it is well to
run separate feeders for light and power but where the power
is only incidental to the lighting, or vice versa, both may
be taken off of the same main. In such cases the transformers
do not interfere with the lighting load, and the same trans-
formers. Where such pairs of transformers are in service
from the same primary line it is well to have the secondary
circuits of each transformer in separate feeders. The
secondaries be inter-connected and the transformers be loaded
to capacity. The flowing of a load on one transformer would
overload the others so that they would be out of commission
and it would be necessary to kill the primary feeding them
until all three had been repaired. It is well to have a
time of day as the load could be carried over to the
the buses.

Over-head distribution lines are usually hung
as poles for transformers. One of the poles is short, being
the top of the pole where the primary leads are short, being
connected to the transformer through boxes or other inter-
able disconnecting and protecting device, or they may be

hung below the secondary leads where the primary leads are brought down the pole either in conduit or open. This latter method makes for a more accessible installation and is easier to install tho the objection of course lies in bringing the primary leads down the pole which introduces a source of danger to the linemen.

There is a great deal of discussion regarding the relative merits of the use of two single phase transformers connected in open delta and three single phase or one three-phase forming the closed delta.. A selection of either scheme is based on local conditions. A comparison of the two schemes is as follows::

The total transformer capacity required for an open delta bank to carry a given load is 15% greater than for a closed delta.. This total capacity is in two units instead of three - or its equivalent , one three-phase transformer.

The voltage drop in the open delta bank is unsym^mmetrical which causes a slight unbalance in the three full load voltages, which is however negligible in most cases..

When one transformer in the closed delta bank is injured the two remaining will carry 58 % of the load with the same heating but with slightly p^oorer regulation on two phases.. Should the closed delta be in one unit, that circuit is at once shut down..

When transformers are chosen for a given load the above objections to the open delta bank partially disappear on account of the larger units used. In addition transformers of different sizes may be used on a mixed power and light load -- one to carry the lighting and in open delta with the other , the power load.

In efficiency and weight the open delta bank is on a par

... method makes for a more accessible installation and is
brought down the pole either in conduit or open. This lat-
ter method makes for a more accessible installation and is
easier to install into the objection of course lies in bring-
ing the primary leads down the pole which introduces a source
of danger to the linemen.

There is a great deal of discussion regarding the rela-
tive merits of the use of two air in phase transformer con-
nected in open delta and three single phase or in three-
phase forming the closed delta. A selection of either system
is based on local conditions. The selection of the two phase
is as follows:

The total transformer capacity available in an open
delta bank to carry a given load is 57.7% of the sum of the
closed delta. The total capacity in the closed delta is
of three - or 100% equivalent, one transformer. The total
the voltage drop in the open delta bank is approximately
which causes a slight unbalance in the line to full load volt-
ages, which is however negligible in most cases.

When one transformer in the closed delta bank is repaired
the two remaining will supply the load with the same
heating but with slightly different distribution of load.
Should the closed delta bank be repaired it is not
once shut down.

When transformers are repaired in the above
objections to the open delta bank are usually negligible on
account of the larger capacity of the closed delta bank.
of different sizes may be used on a mixed bank and in fact
load -- one to carry the lighting and the other with the
other, the power load.

In efficiency and we get the open delta bank as on a

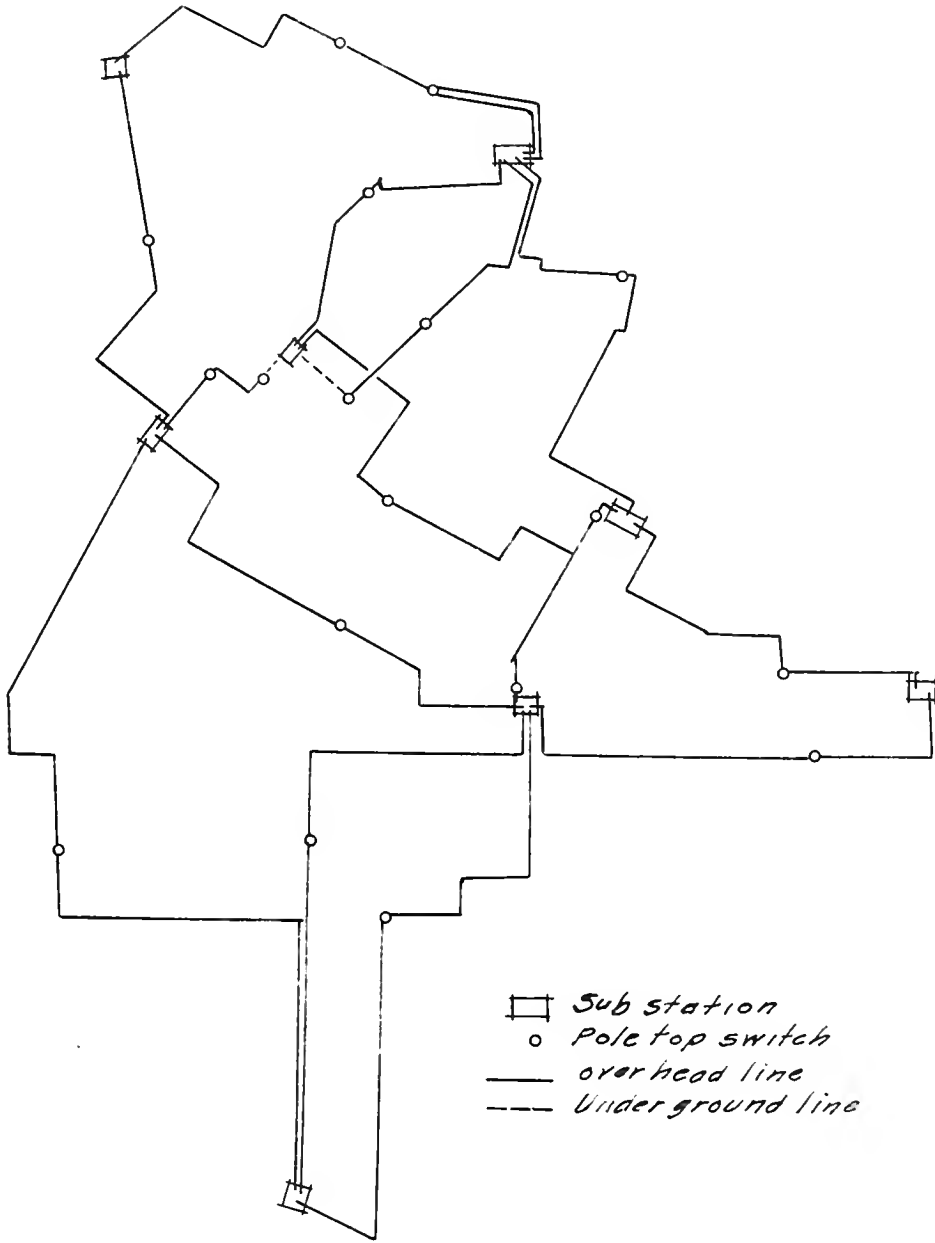


Fig. 7.

Diagram showing a particular case of the arrangement of feeder circuits.



with the closed delta, while in cost it shows a slight advantage over three transformers in closed delta but is inferior on both counts to the single three phase transformer..

The open delta is made up of two units and hangs on the pole better than three, though not so readily or cheaply as one three phase transformer..

The tendency is that the use of three phase transformers will become more general and ultimately gain the popularity they enjoy in European practice - tho at present there are so many minor advantages to be claimed for each that any one of them may become the ruling factor in a given case and throw the decision..

Assuming then that the lines have been constructed in a sturdy and safe manner we can take up the arrangement of circuits to best accomplish the result of continuous operation. A method in general use is to so arrange circuits between substations that with the operation of a tie switch located approximately midway between stations the lines which ordinarily are used as main feeder circuits are used to tie the two districts together and any station may be cut out to allow for changes in transformers or wiring or to make repairs in case of trouble.. (See Fig. (1) for such a system.) The high voltage lines supplying the stations should be brought in over separate routes in so far as possible to minimize the danger of a general shut down from trouble on any one of them. For the tie switches used on these circuits a 2200 volt three pole oil break switch may be used and on the 10,000 or 15,000 volt lines a type of switch similar to the Baum #413 may be used which is an air break switch, either disconnecting or fused with the three poles operated by a lever extending

with the closed delta, while in case of a fault in one of the
age over three transformers in closed delta but in inferior
on both counts to the single three phase transformer.
The open delta is made up of two units and works on the
pole better than three, though not so readily or cheaply as
one three phase transformer.
The tendency is that the use of three phase transformers
will become more general and ultimately gain the popularity
they enjoy in European practice - and it is probable that in
many minor advantages to be obtained for each that any one of
them may become the ruling factor in a given case and throw
the decision.

Assuming that the lines have been established in a
story and that a number we can take up the treatment of air-
cuts to best advantage the result of continuous operation.
A method in the case of a fault in a circuit between
substations that with the operation of a circuit breaker
approximately always between stations the lines which are in-
ally are used to maintain better circuit conditions to the
two districts together and any station may be cut out to allow
for changes in transformers or wiring or to make repairs in
case of trouble. (See also "The Air Switch")
high voltage lines supplying the stations should be brought
in over separate routes in order to be possible to isolate the
danger of a fault in one of the lines on a part of them.
For the stations used in the circuit a 10,000 or 15,000
pole oil break switch is to be used and on the 10,000 or 15,000
volt lines a type of switch similar to the one #413 may be
used which is an air break switch, either disconnecting or
fused with the three poles operated by a lever extending

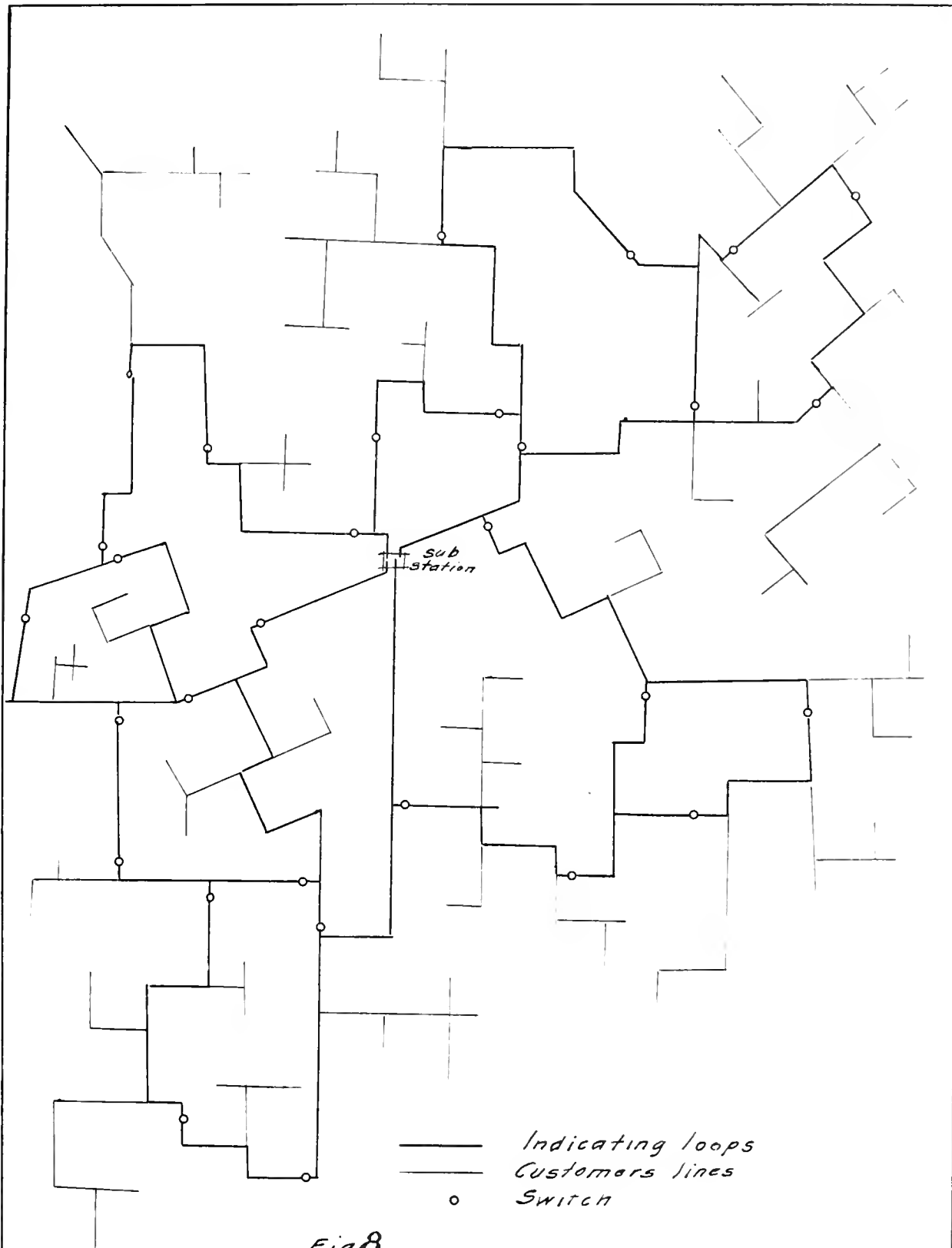


Fig. 8.

Sketch showing arrangement of Loop System for Feeders.



down the pole which may be locked in either open or closed position..

In cases where there is but one supply station - sub-station or generating plant - in the district, this scheme is applied to the feeder circuits and tie points are arranged so that sections of the feeder may be cut out in case of need or emergency. *Fig. 8.*

Due to the usual system of Y-delta connected transformers trouble may arise when paralleling feeders from the so called "right and left connection" on the Y side which produces a reversed polarity in the delta which will not parallel. See Fig. (9) It is necessary to phase out and change connections where necessary. This trouble developed in the earlier three phase transformers put out by some of the manufacturers and caused some trouble before being located..

Another precaution found very useful is a portable sub-station of a convenient size mounted - in the case of a rotary converter station for street railway work - on a flat or box car, or if for lighting or power work on a truck which can be drawn by horses or automobile, and fitted with proper high tension switch, meters, regulator, et. cet. It is well to note that all high tension apparatus is being perfected for use on out door installations so that it is becoming more and more general that buildings for sub-stations are being replaced, particularly for small installations, by out door sub-stations, and it is not uncommon to see out door installation as large as 50,000 k.v.a. and operating at as high as 150,000 volts..

In the early stages of the electrical industry no particular attention was paid to the regulation of the system but

but of late as the bad effects of poor regulation are being better understood and the public is more critical this is receiving much more attention and it is becoming the aim of an operating company to make "service first" their slogan. Some of the bad effects of poor regulation are, for too high a voltage;

- decreased life of electric lamps,
- excessive speed of D.C. motors,
- excessive field current of A.C. motors resulting in burnouts or over heating.

Some of the bad effects of low voltage are;

- decreased efficiency and life of electric lamps,
- decreased power out put of motors and a corresponding increase of current, resulting in heating.

These effects of poor regulation are much more noticeable on lighting than on power circuits so that special devices are in use on the former which are omitted on the latter. Where the voltage varies from a higher to a lower level than normal these effects are cumulative on lamp service, since when the voltage is high the lamps are blackened and their life shortened and when the voltage drops below normal the lamps appear to be very much further from their normal candle power than before. Part of this is psychological but the effect on the power company is just as bad as tho it were all real. For a variation of 5 % above or below normal the following gives an idea of the effects produced:

- Each % decrease in voltage decreases the candle power of carbon lamps _____ 5 %
- Decreases torque of induction motors -----2 %

but of late as the bad effects of poor regulation are being better understood and the public is more critical this is receiving much more attention and it is becoming the aim of an operating company to make "service first" their slogan. Some of the bad effects of poor regulation are: for the high

a voltage;

decreased life of lamps

excessive sparking

excessive heating of lamps

Some of the bad effects of low voltage are:

decreased efficiency of lamps

decreased efficiency of lamps

decreased efficiency of lamps

decreased efficiency of lamps

These effects of poor regulation are not confined to lamps on lighting circuits but also to power circuits and industrial circuits in use on the same system. The latter, however, are not so serious as the voltage effects. The latter, however, are not so serious as the voltage effects.

When the voltage is low the lamps will not glow and the lamps will appear to be out. This is not a serious matter as the lamps will glow again when the voltage is restored.

When the voltage is high the lamps will glow and the lamps will appear to be out. This is not a serious matter as the lamps will glow again when the voltage is restored.

When the voltage is low the lamps will not glow and the lamps will appear to be out. This is not a serious matter as the lamps will glow again when the voltage is restored.

When the voltage is high the lamps will glow and the lamps will appear to be out. This is not a serious matter as the lamps will glow again when the voltage is restored.

When the voltage is low the lamps will not glow and the lamps will appear to be out. This is not a serious matter as the lamps will glow again when the voltage is restored.

When the voltage is high the lamps will glow and the lamps will appear to be out. This is not a serious matter as the lamps will glow again when the voltage is restored.

When the voltage is low the lamps will not glow and the lamps will appear to be out. This is not a serious matter as the lamps will glow again when the voltage is restored.

When the voltage is high the lamps will glow and the lamps will appear to be out. This is not a serious matter as the lamps will glow again when the voltage is restored.

When the voltage is low the lamps will not glow and the lamps will appear to be out. This is not a serious matter as the lamps will glow again when the voltage is restored.

When the voltage is high the lamps will glow and the lamps will appear to be out. This is not a serious matter as the lamps will glow again when the voltage is restored.

When the voltage is low the lamps will not glow and the lamps will appear to be out. This is not a serious matter as the lamps will glow again when the voltage is restored.

When the voltage is high the lamps will glow and the lamps will appear to be out. This is not a serious matter as the lamps will glow again when the voltage is restored.

When the voltage is low the lamps will not glow and the lamps will appear to be out. This is not a serious matter as the lamps will glow again when the voltage is restored.

When the voltage is high the lamps will glow and the lamps will appear to be out. This is not a serious matter as the lamps will glow again when the voltage is restored.

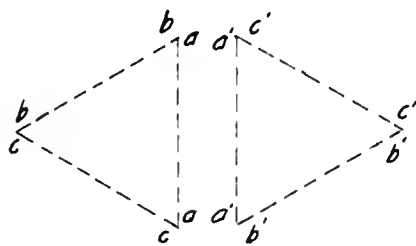
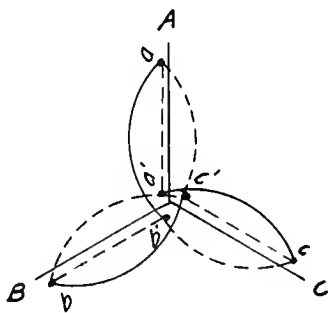
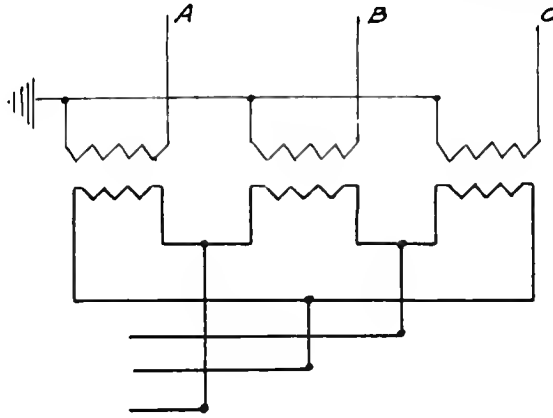
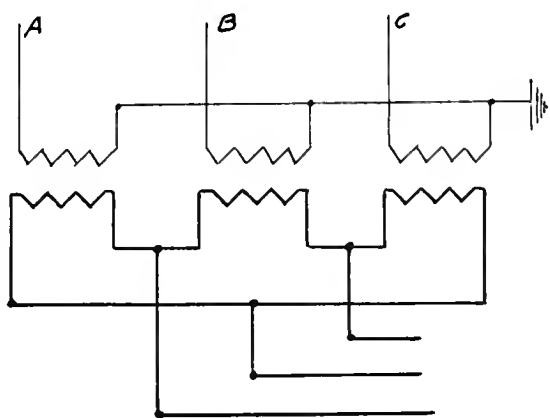
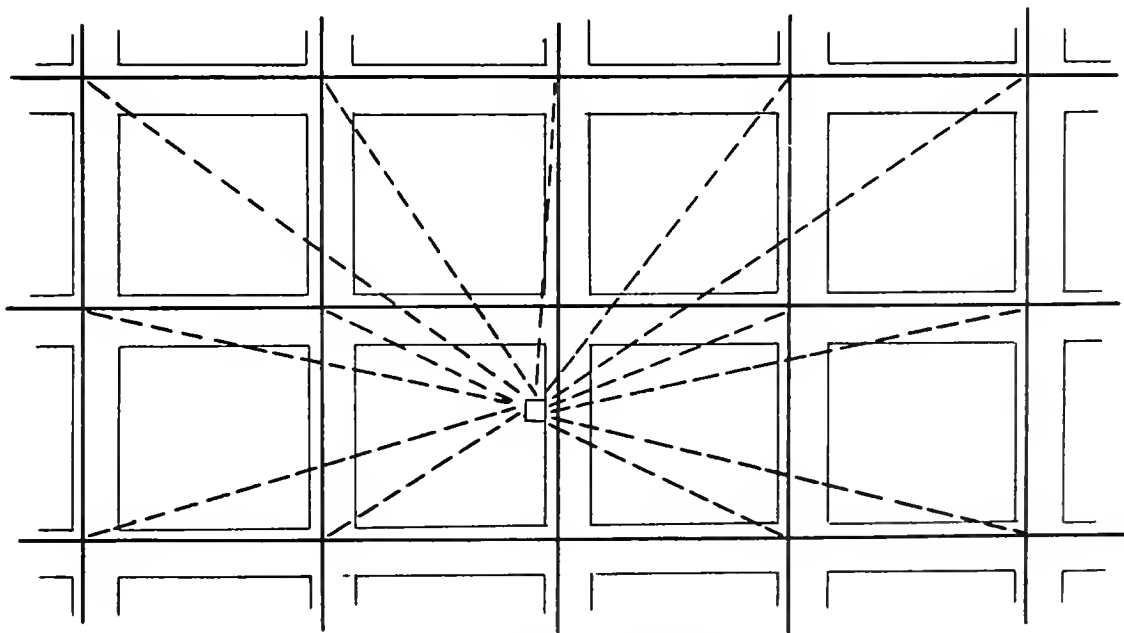


Fig. 9.

*Paralleling two banks of transformers
Y-D connection.*



*Diagram of Feeder System
for an underground network.*

Fig. 10.



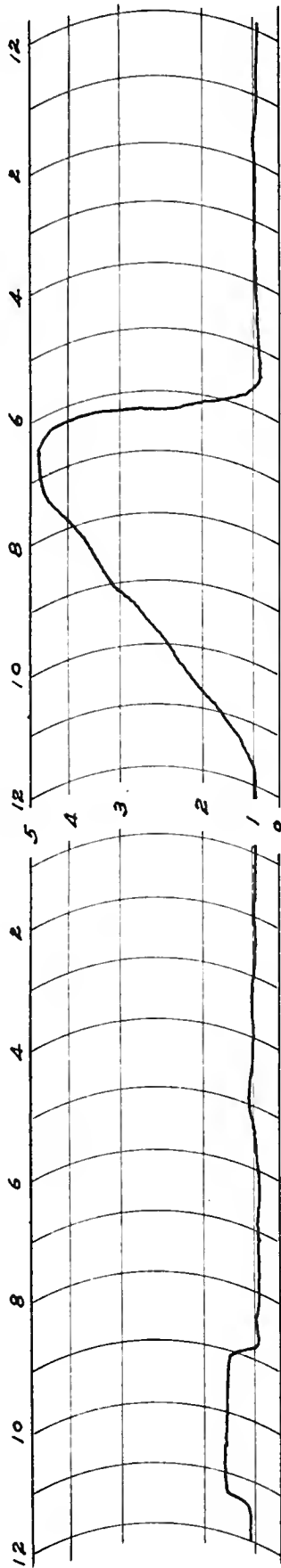
Each % increase in voltage decreases the life of carbon lamps 13%

(This is an average.. The variation of 5 % giving for the first % a decrease of 18 % and for the fifth 8 %)

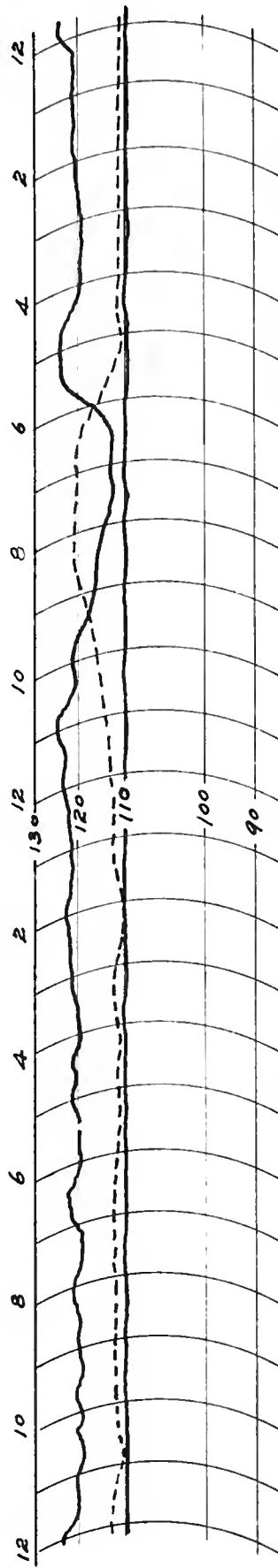
Increases the magnetizing current in induction motors-----2 %

The first attempts at regulation were made by hand from either the single bus or in connection with the "end cells" on a battery kept floating on the line for D.C. distribution.. Then was developed the multiple bus which fed long feeders from the "high" bus and short feeders from the "low" bus, both being operated in parallel for light loads and separated on heavy loads.. One system developed a scheme shown in Fig.(10) for their under-ground D.C. system when confronted with the problem of more than two sets of busses, which consists of using a single bus and pulling out or throwing in feeders as the load increases or decreases so as to maintain uniform voltage on the network. Pressure wires are run to the station from each center of distribution so that the operator is at all times in touch with the conditions of voltage at each center..

With the circuits of a system arranged on the tree system Fig.(1) regulation can only be accomplished for the average condition and wide variations will be found on the various branches. With the use however of the feeder system Fig.(2) the voltage can be kept well within any prescribed limit on practically the entire network.. On A.C. circuits use is made of the automatic induction type of regulator which serves every requirement of voltage regulation admirably.. This is usually a station type of apparatus, tho there is now on the market a pole type A.C. voltage regulator suitable for small single phase circuits that is good. With these



Load Curve
Ratio 20:1



Voltage Curves.

- Incoming Station Voltage
- - - Regulated " "
- · · Voltage delivered at Consumers premises.

Fig. 11.
Chart Showing
Voltage Regulation.

regulators it is possible to maintain a regulation that is much better than could possibly be obtained by the hand method. See voltage chart Fig. (//). These charts were obtained from the ^{simultaneous} ~~simultaneous~~ readings of recording instruments showing the load in amperes on this feeder, the incoming station voltage, regulated station voltage, and voltage at the consumers premises..

Assuming that these conditions of successful operation have been fulfilled we must take into account the fact that investors will not be attracted to the securities of the company unless the returns seem adequate.. This means efficiency in every department and it can be obtained in the distributing end the same as in all others by a careful attention to details.

Reference has been made to Kelvin's Law applied to the selection of size of conductor and it may be noted that applying it to the case of the circuit from which the above charts were taken that the loss of power in this case was \$124.00 per year and the interest on the investment at 6 % was \$150. These items are sufficiently close so that allowing for a reasonable increase in the power to be distributed over this ^{ie} circuit, it complas with the law.

In addition to the copper losses in the line there are the losses in the line transformers and the line losses due to the exciting current of the line transformers. These may be minimized by the careful selection of transformers with regard to the load carried, diversity factor, distribution of the load, and by exercising care in the location and proportion of load carried by each transformer, it be-

resistors at a possible amount of resistance to the
much better than could possibly be obtained by the
method. See voltage chart (fig. 1). Those curves were
taken from the experimental readings of resistor
meter showing the load in amperes on the inner
ring station voltage, a similar ratio with the
at the secondary.

Assuming that the ratio of the secondary
has been utilized to the extent of the
inverter, all of the secondary voltage is
primary with the ratio of the secondary
in every respect. The secondary voltage
ing and the secondary voltage is the
details.

out of the secondary voltage is
selected and the secondary voltage is
ing it to the secondary voltage of the
were taken that the secondary voltage
per year of the secondary voltage
These data are the secondary voltage
resistor in the secondary voltage

critical. It is a fact that the
or by the secondary voltage of the
the losses in the secondary voltage
to the secondary voltage of the
any of the secondary voltage of the
with regard to the secondary voltage
portion of the load, and the secondary
and proportion of load carried by each transformer.

ing advisable at times to arrange the transformers for large consumers so that they can be disconnected from the line by the customer during periods of inactivity.

This means that all extensions to a system must be carefully planned and be forwarded under some definite plan which looks to the ultimate betterment of the system, tho it may appear at the time that the income from a particular extension does not warrant such heavy construction. If it is in the general scheme of betterment that the more expensive type be used, it will be found cheaper than to use the alternative and then later rebuild. It is well to remember that cheap construction at any point on the distributing system where the constant effort is for continuity of service, does not pay - either in the so called "temporary job" which may be left for years before getting back to put in permanently, or in the case that the business to be taken on does not warrant the expense of standard construction. Either do it right or not at all, for either an accident may occur or business may develop on the line so as to make it necessary to strengthen the line and the cost of changes more than equals the interest on the investment saved by the cheaper construction.

34

Street illumination is a science in itself and deserves more than the brief reference which it is possible to accord it here. It is well to go over the ground and outline the requirements and the most common methods of meeting them.

An idea of the increasing importance of street lighting may be gathered by noting the greater amount of space given to it in the engineering publications during the past few years as compared to that given it ten years ago.

The determination of the intensity of illumination required and the best method of producing it with a minimum cost forms the fundamental problem of street lighting. The area to be lighted is a long narrow strip with an approximately uniform illumination its full length except at street intersections where a higher intensity is desirable. The cost involves the energy expended, maintenance of lamps, interest and depreciation on the lamps, plant and auxiliary equipment.

The intensity of illumination at any point is proportional to the light intensity of the unit used and inversely proportional to the square of the distance from the light source - where this may be considered as a point, which is true of the arc lamp or the incandescent as used in street lighting. It is evident that to secure a given illumination the energy to be supplied will vary directly with the separation of the lamps, i.e., if the distance between lamps be doubled, each lamp must have four times the light flux and the energy per unit of length of street will be doubled. If the problem could be solved on the basis of energy alone, it would be advisable to use a maximum number of lamps with a corresponding reduction in their light flux and energy consumption. Increasing the number of light units however increases the in-

Street illumination is a science in itself and requires more than the brief reference which it is possible to accord it here. It is well to go over the ground and outline the requirements and the most common methods of meeting them.

An idea of the increasing importance of street lighting may be gathered by noting the greater amount of space given to it in the engineering publications during the past few years as compared to that given it ten years ago.

The determination of the intensity of illumination required and the selection of the proper type of lamp and the method of mounting it are the most important factors in the design of a street lighting system. The cost forms the third and fourth of the most important factors to be considered in the design of a street lighting system.

It is well to bear in mind that the cost of a street lighting system is not a fixed quantity but varies with the intensity of illumination required and the method of mounting the lamps. The cost of a street lighting system is also affected by the interest and depreciation of the lamps and the method of mounting them.

The intensity of illumination required for a street is proportional to the square of the distance from the lamp to the point where the light is required. It is also proportional to the square of the height of the lamp above the ground. Where this may be varied, it is a factor of great importance.

The arc lamp or the incandescent lamp are the most common types of street lighting. It is evident that to secure a given illumination and energy to be supplied will vary directly with the intensity of the lamps. i.e., if the distance between lamps is doubled, each lamp must have four times the light flux to give the same illumination.

The width of a street will be a factor in the design of a street lighting system. It could be solved on the basis of a given number of lamps, it would be advisable to use a maximum number of lamps to give a corresponding reduction in their light flux and energy consumption. In increasing the number of lamps the power increases the

35

e

stallation and maintenance costs, and a spacing must be selected where the saving of energy is balanced by the cost of the increased number of lamps. A general solution is impossible on account of the numerous variables involved such as difference in intensity requirements, obstacles such as trees which prevent the proper locating and spacing of poles and lamps, energy costs, et/ cet. When considered from the standpoint of economy only, if the cost of energy is low large units spaced at larger intervals are advisable, and if the energy cost is high smaller units more frequently spaced are advisable.

It should be noted that this only applies to the lighting of long narrow areas where the area lighted varies with the distance between units. It does not apply to the illumination of large areas, parks et/ cet. where the lights are placed on the square as the unit, since here the area lighted by each unit varies with the square of the distance between units and the light efficiency is independent of the spacing of the units used.

The requirements for good street illumination may be considered from the following standpoints:-

Uniform intensity distribution; diffusion; intrinsic brilliancy of the lamp used; and shadows.

Experience has shown that good street lighting attracts traffic and stimulates trade which accounts for the more general lighting of the business districts - tho from the standpoint of design the problem is complicated by the lighting effects from the stores and building fronts which are lighted with a view toward decoration. This idea of attracting trade to these districts calls for a higher intensity

... and ...
... where the ...
... the increased number of lamps.

... on account of ...
... differences in ...

... which ...
... lamps, energy ...

... point of ...
... units ...

... by cost ...
... visible.

... It ...
... ing of ...

... the distance ...
... location of ...

... placed on ...
... by ...

... of the ...
... of the ...

... the ...
... side ...

... which ...
... ...

... ...
... ...

... General ...
... standpoint ...

... lighted with ...
... these ...

than is necessary for the residence or more sparsely settled districts where the need is for sufficient light to clearly reveal persons, vehicles, obstructions, inequalities in the pavement and to allow the reading of addresses and watches. The primary reason for street lighting is safety for the public and illumination that is sufficient for the above purposes is sufficient for protection.

The development of the "white ways" is almost entirely dependent on their value as an advertisement. The average annual cost per front foot of the store frontage for these white ways is about \$.90 or \$45.00 per year for a 50 foot store front. The displaced system cost from \$.10 to \$.40 per foot, say an average of \$.25 or \$12.50 for the 50 foot store front. Assuming that the profits on the business done in this store are 10 % of the total business, the merchant must expect an increase of more than \$325.00 in his sales due directly to the increased lighting effects.

From this intense illumination the gradations proceed down thru the stages of separated lights with the attendant multiplicity of types of units from which to choose and the varying degrees of illumination sought, - parks, boulevards, residential districts, wholesale districts et/ cet. all of which makes the problems each one to be solved by itself and each a problem for a specialist on illuminating engineering. There is no definite system which will apply to different cities or to different streets in any one city.

In the business districts if arcs are to be used they should be hung above the middle of the street and not less than 25 feet above it. In residential districts the most serious

There is no necessity for the road ends or more sparsely settled

districts where the need is for sufficient light to clearly

reveal persons, vehicles, obstructions, irregularities in the

pavement and to allow the reading of addresses and watches.

The primary reason for street lighting is safety for the pub-

lic and illumination that is sufficient for the above purposes.

as is sufficient for protection.

The development of the "sidewalk" is also entirely

dependent on their value as an investment. The average

annual cost per foot of the street frontage for these

white ways is about \$1.00 or less. The cost for the foot

store front. The district of the street front \$1.00 to \$1.40

per foot, say an average of \$1.20. The average cost of the

store front. Assuming that the price of the sidewalk is one

in this store the 10% of the total business. The sidewalk

must expect an increase in business from the sidewalk. The

due directly to the increased lighting. The sidewalk

from the sidewalk. The sidewalk. The sidewalk.

down from the sidewalk. The sidewalk. The sidewalk.

multiplicity of types of units from the sidewalk. The sidewalk.

varying degrees of sidewalk. The sidewalk. The sidewalk.

essential. The sidewalk. The sidewalk. The sidewalk.

which makes the sidewalk. The sidewalk. The sidewalk.

each a problem. The sidewalk. The sidewalk. The sidewalk.

There is no sidewalk. The sidewalk. The sidewalk.

cities or to different sidewalk. The sidewalk. The sidewalk.

In the business districts if there are to be seen they

should be hung above the middle of the sidewalk not less than

25 feet above it. In residential districts the most serious

(37)
37

problem is the trees. For the majority of cases the use of low candle power units along the curb line will give satisfactory illumination. It is necessary to hang the lamps low in order to clear the trees which results in spots and an objectionable glare in the eyes making the darker areas even more pronounced, due to the contraction of the pupil of the eye. If the lamps can be hung near the middle of the street they may be hung higher and still the light will not be obstructed by the trees. A further handicap in parks, boulevards and residential streets is found in the selection of ornamental standards which are not always of a design to help in the distribution of the light, and whose cost is too often a large part of the appropriation leaving too little to be expended in getting light.

A consideration of the units from which to select is confined ^{to} either arcs or incandescent lamps with a wide range in either type, both as regards the lamp itself but its mounting type of reflector, or diffusing glassware et/ cet.

Arc lamps are divided into the following general classes:

Multiple - 110 and 220 volt D.C. and A.C.

Series - both D.C. and A.C.

Multiple - series.

This latter is for use in such cases as where it is desired to use five or six lamps in series over the 550 volt railway service the lamp being provided with an auxiliary compensating resistance that is cut in automatically if the lamp is put out of service. It is not in extensive use for street lighting.

The multiple lamp for either D.C. or A.C. is available

problem is the trees. For the majority of cases the use of low candle power units along the curb line will give satisfactory illumination. It is necessary to hang the lamps low in order to clear the trees which results in spots and in objectionable glare in the eyes causing the darker areas even more pronounced, due to the contraction of the pupil of the eye. If the lamps can be hung near the middle of the street they may be hung higher and still the light will not be obstructed by the trees. A further handicap in parks, boulevards and residential streets is found in the selection of ornamental standard which are not always of a design to help in the distribution of the light. The worst case is too often a large part of the upper portion leaving too little to be expended in getting light.

A consideration of the lamp type which to select is considered either as an individual lamp or as a group in either type, both as regards the lamp itself and its mounting type of resistor, or utilizing glow-wire etc.

Art lamps are divided into the following general classes:

- 1. Single - 110 or 220 volt A.C.
- 2. Series - both 110 and 220 volt.
- 3. Multiple - a rise.

This latter is for use in such cases where it is desired to use five or six lamps in series over the street with a service the lamp being provided with a variable component and resistances that is not automatically if the lamp is put out of service. It is not in extensive use for street lighting.

The multiple lamp for either E.C. or A.C. is available

(38)

for industrial plants and local street or yard work, but is unreliable in outdoor installations where a slight film of oxide on the contact clips due to exposure to the weather will render the lamp inoperative because the low 110 voltage will not jump over it. It is built with a resistance in series with the arc to cut down the voltage over the arc to the proper value..

The series arc in both D.C. and A.C. in one of its many forms is better suited to street lighting than either of the former.. The D.C. lamp is more efficient than the A.C. lamp but has its disadvantages in that it requires a special machine at the plant to energize it - either a D.C. arc generator or mercury arc rectifier outfit - either of which is a source of trouble and operates at a comparatively low efficiency. The use of the constant current regulating transformer to be connected across the constant potential mains of the A.C. station makes possible a much more general use of the A.C. series arc lamp.

The carbon flame arc lamp gives off a yellow light with a high efficiency but due to this yellow light, special expensive carbons which are cored with calcium, and the fact that quantities of gas are given off when burning, this lamp is restricted in its use and is generally used for advertising purposes.

The metallic flame arc lamp overcomes some of these objections.. It gives a white light at an extremely high efficiency and is excellent for street lighting purposes. It operates on D.C. and with a mercury rectifier set is a very desirable solution of the street lighting problem.. The outfit

for industrial plants and local street or yard work but is not
reliable in outdoor installations where a slight film of ox-
ide on the contact clips due to exposure to the weather will
render the lamp inoperative because the low life voltage will
not jump over it. It is built with a resistance in series
with the arc to cut down the voltage over the arc to the prop-
er value.

The series arc in both D.C. and A.C. in one of its many
forms is better suited to street lighting than either of the
former. The D.C. lamp has one efficiency about 10% less than
but has its disadvantages in that it requires a special
chime at the plant to energize it - either a D.C. or A.C. -
motor or mercury arc rectifier - and is not so efficient in
a source of trouble and operates at a comparatively low ef-
ficiency. The use of the low current in making trans-
former to be connected across the contact potential lines of
the A.C. station is a disadvantage in general use of
the A.C. series arc lamp.

The carbon filament arc lamp gives off a yellow light with
a high efficiency but due to the yellow light, especially at
negative carbon which has a high efficiency, and the fact
that quantities of gas are given off in operation, the
lamp is restricted in its use to a small number of
ventilating purposes.

The metallic filament arc lamp is more efficient than the
carbon filament. It gives a white light of an extremely high ef-
ficiency and is excellent for street lighting purposes. It op-
erates on D.C. and with a mercury rectifier set is a very de-
sirable solution of the street lighting problem. The outfit

(59)
37

for supplying the D.C. from the constant potential A.C. bus consists of a constant current regulator (which can be wound for any voltage up to 13000 volts) a rectifier bulb and tank, together with a switchboard and instruments, switches et/ cet. The regulator is similar to the repulsion automatic regulator in use for constant current A.C. series carbon lamps. The current is rectified between the secondaries of the regulator and the lamps. In the mercury rectifier, it is necessary to maintain the vapor in a conducting condition and to reduce the fluctuations of current in the arc to such an extent that flickering of the light is prevented. This is accomplished by constructing the regulator so that it receives energy from the primary circuit and gives it out during the period of zero value of the current in the primary. In addition then to providing a constant current in the circuit it stores up sufficient energy to maintain a current flow over the zero point of the A.C. wave. The use of a choke coil or other inductance in either lead is thus made unnecessary. The regulator and bulb are enclosed in an iron tank filled with oil which affords good insulation and a more even temperature of each. The efficiency of this outfit at full load is in the neighborhood of 90 % and the power factor on 60 cycle current is about 70 %. The average life of the bulb is 1500 hours.

If it is desired to furnish an arc circuit from the 60 cycle A.C. bus bars the energy consumption for various types of arc lamps at the bus bars - neglecting line losses - will be as follows:-

Assuming the arc machine supplying the 6.6 amp. D.C. open arcs and the 6.6 amp. D.C. enclosed arcs to be driven by an

for supplying the A.C. from the constant potential A.C. line consists of a constant current regulator (which can be wound for any voltage up to 13000 volts) a rectifier bulb and tank, together with a switchboard and instruments, switches etc. etc. The regulator is similar to the regulation automatic regulator in use for constant current A.C. series carbon lamps. The

current is rectified by means of the rectifier of the regulator and the lamps. In the mercury rectifier, it is necessary to maintain the vapor in a condensed condition and to remove

the fluctuations of current in order to avoid the flickering of the light is provided. This is accomplished by connecting the regulator so that it receives energy from

the primary circuit and gives it out with the order of zero value of the current in the primary. In addition when the providing a constant current in the circuit it saves up sufficient energy to maintain a current flow even at the point of

the A.C. wave. The use of a second coil on other hand in series in either lead in this case is necessary. The regulator and

bulb are enclosed in an iron tank filled with oil. This is for the good insulation and to avoid the possibility of short-circuit. The efficiency of this circuit is about 70% in the neighborhood of 90% and the power factor on 0.95. Current is

about 70%. The average life of a bulb is 1500 hours. It is desirable to provide an emergency light in case of a failure of the A.C. line for the use of a battery of four various types

of arc lamps at the cost of the battery - this is the case - will be as follows:-

Assuming the arc machine supplying the 1.5 amp. 100.0 open arcs and the c.d. amp. 100.0. enclosed arc to be driven by an

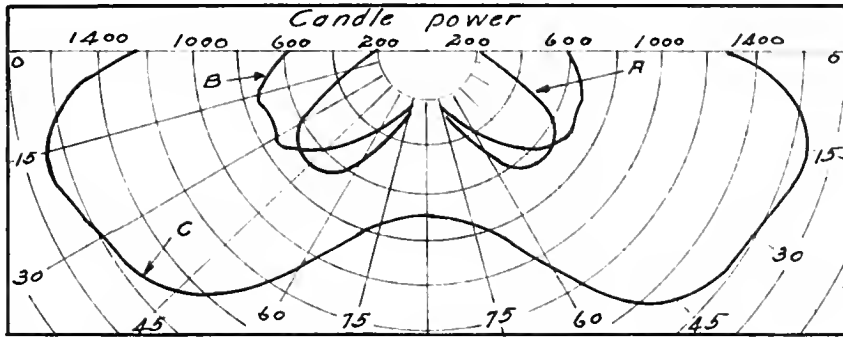


Fig. 12. Light distribution for various arc lamps.
 A- Series D.C. 6.6 amp enclosed. C- Series D.C. 6.6 amp metallic flame.
 B- Series A.C. 6.6 amp enclosed.

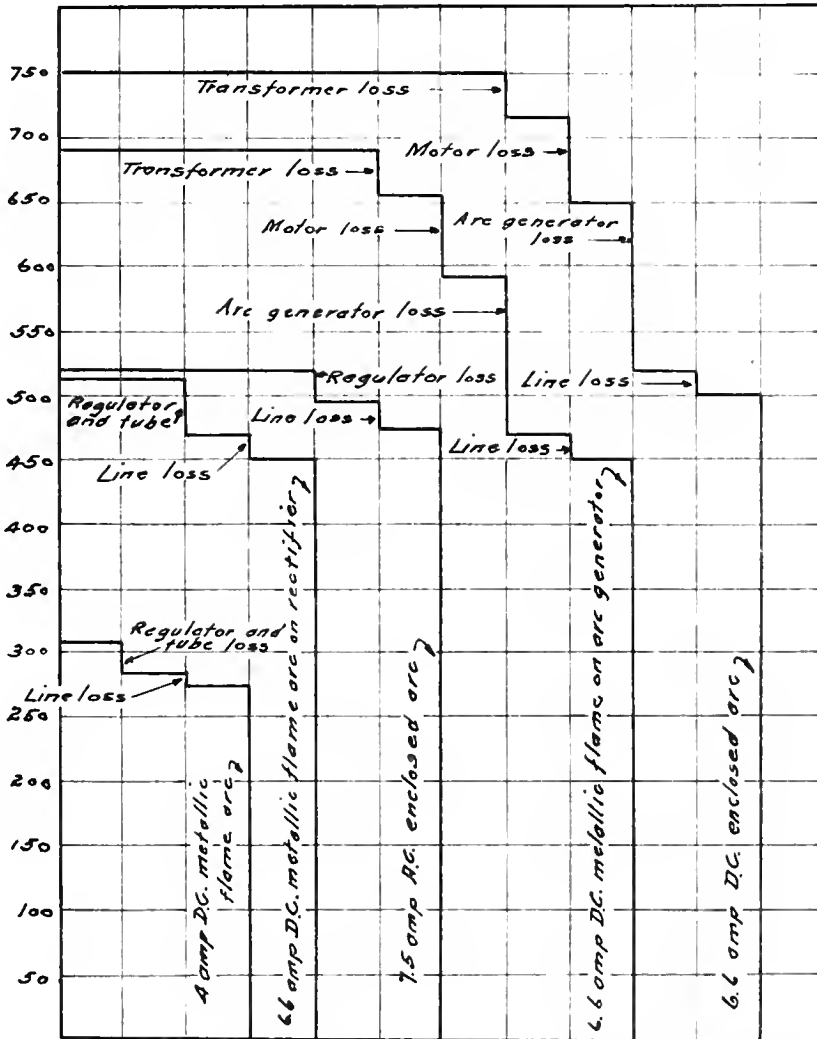


Fig. 13. Analysis of distribution losses for various types of series arc light systems.

induction motor, the efficiency of the set will be 70 %.

The efficiency of an A.C. constant current regulating transformer and mercury rectifier is 90 %.

The energy required at the lamp terminals is;

for the 6.6amp. D.C.	open arc	-----	480	watts
" " 6.6 "	" enclosed arc	-----	480	"
" " 7.5 "	A.C. " "	-----	475	"
" " 4 "	D.C. metallic flame arc	---	275	"

and the energy per lamp at the A.C. bus will be;

for the 6.6 amp. D.C.	open arc	-----	685	watts
" " 6.6 "	" enclosed "	-----	685	"
" " 7.5 "	A.C. " "	-----	495	"
" " 4 "	D.C. metallic flame arc	--	301	"

If the metallic flame arc is compared to the 7.5 amp. A.C. enclosed arc it will be found that the increased cost of the metallic flame electrodes is offset by their longer life over that of the carbons. The life of a trim of the metallic flame arcs is 165 - 170 hours and can be increased by sacrificing efficiency - depending on the proportion of the light giving materials used in the electrodes.

Other considerations in the problem of street lighting besides the source of light are the light intensity, distribution of light flux, et/ cet. Fig.(12) gives a comparison of the values of light intensities and their distribution showing a marked superiority in the metallic flame arc thru the useful angle. This remarkable light distribution of the metallic flame arc is only eclipsed by the high efficiency of the entire system. An analysis of the losses in a system employing various types of lamps is given in Fig. (13).

induction motor, the efficiency of the set will be 70%.
The efficiency of an A.C. constant current regulating

transformer and mercury rectifier is 90%.

The energy required at the lamp terminals is:

Power (watts)	Open circuit voltage (V)	Current (A)	Efficiency (%)	Notes
480	110	4.4	6.5	enclosed arc
475	110	4.3	7.5	"
275	110	2.5	4	arc in metallic flame

and the energy per lamp at the A.C. bus will be:

Power (watts)	Open circuit voltage (V)	Current (A)	Efficiency (%)	Notes
485	110	4.4	6.5	enclosed arc
490	110	4.5	7.5	"
291	110	2.6	4	arc in metallic flame

If the metallic flame is compared to the V.C. and A.C.

enclosed arc it will be found that the increased cost of the
metallic flame electrodes is offset by their longer life over
that of the carbons. The life of a set of the metallic flame
arc is 100 - 150 hours and can be increased by acidifying
efficiency - depending on the composition of the light giving

materials used in the electrode.

Other considerations in the problem of street lighting

besides the source of light and the light intensity, distribution
of light flux, etc. etc. gives a comparison of
the values of light intensity and the distribution showing
a marked superiority in the metallic flame arc lamp for use
full angle. This remarkable light distribution of the metallic
flame arc is only eclipsed by the high efficiency of the
entire system. An analysis of the losses in a system employing
the various types of lamps is given in Fig. ().

Great improvements in the manufacture of all types of arc lamps together with the care of design of all parts has led to ruggedness and dependability of the mechanical and electrical parts and increased their usefulness and application. Special care has been expended in perfecting the ventilation of the type of lamp such as the metallic flame arc where much gas and heat are evolved.

It may be useful to review the units in use in reference to lighting calculations. The unit universally used in expressing light intensity is the candle. From recent researches it has been determined that the mechanical equivalent of white light is approximately .07 watts per candle. Light intensity usually varies in different directions from the source and it is therefore customary to refer to distribution curves similar to fig. (12) and in some cases to the mean spherical candle power. The use of the candle power for expressing the value of the light intensity at any angle characterizes the value of the distribution of the light flux for a particular purpose but does not indicate the total flux from the source. This distribution may be varied in innumerable ways - by variations in the design of the lamp, location of the carbons, type of reflector or globe used, et/ cet.

Flux density is expressed in lumens and is the flux of light in a beam of one unit solid angle (one square meter at a radius of one meter) in which the intensity is .88 of a standard British candle. The light flux is often expressed in foot candles, as this is a function of the intensity and distance in feet.

In as much as the result desired in street lighting is

Great improvements in the manufacture of all types of lamps together with the care of design of all parts has led to ruggedness and dependability of the mechanical and electrical parts and increased their usefulness and application. Special care has been expended in perfecting the ventilation of the type of lamp such as the metallic flame and where much gas and heat are evolved.

It may be useful to review the units in use in reference to lighting calculations. The unit usually used in expressing light intensity is the candle. The recent researches it has been determined that the practical equivalent of white light is approximately 70 watts per candle. Light intensity usually varies in different directions from the source and it is therefore customary to refer to distribution curves similar to fig. (a) and in some cases to the mean spherical candle power. The use of the candle power for expressing the value of the light intensity at any angle involves the value of the distribution of the light flux for a particular purpose but does not indicate the total flux from the source. This distribution may be varied in different ways - by variations in the design of the lamp, location of the candle, type of reflector or globe used, etc. Flux density is expressed in lumens and is the flux of light in a beam of one unit solid angle (one square meter at a radius of one meter) in which the intensity is 1. In the standard candle, the light flux is often expressed in foot candles, as this is a function of the intensity and distance in feet.

In as much as the result desired in street lighting is

a uniform illumination of low intensity the light flux should be distributed in a particular manner. When the height of the lamp and the distance between units is considered, that source of light is preferred which gives the most of the light flux between the horizontal and 25 degrees below. For the sake of economy it is of course desirable to select a lamp whose initial distribution of light flux is as near the desired value as possible, thus making it unnecessary to use reflectors.

A correct theoretical arrangement of reflectors does not necessarily mean a satisfactory illumination since the results are judged by the effects produced. It is necessary to so place the lamps that the eye of the observer will not be exposed to their direct rays. It is thus advisable to decrease the brilliancy of the source of light and place it as high as possible but this ordinarily means more frequent spacing of lamps and an additional initial expense, and unfortunately it is often the case that first cost is of more importance than effective lighting.

A source of light giving best results for street lighting is one producing no light in the upper hemisphere and whose maximum candle power is at an angle of approximately 15 degrees below the horizontal and whose minimum candle power is directly beneath the lamp. Such a distribution makes it possible to hang the lamp high above the direct line of vision, thus eliminating the glare in the eyes of the observer at the street level and at the same time maintain a more nearly uniform illumination. In addition, the lamp being hung high, shortens the shadows, the illumination directly under the lamp is decreased and eye fatigue elimin-

a uniform illumination of low intensity the light flux should be distributed in particular manner. When the height of the lamp and the distance between units is considered, that source

of light is preferred which gives the most of the light flux between the horizontal and 25 degrees below. For the sake of economy it is of course desirable to select a lamp whose initial distribution of light flux is as near as desired value as possible, thus making it unnecessary to use reflectors.

A correct theoretical arrangement of reflectors does not necessarily mean a satisfactory illumination since the results

are judged by the effects produced. It is necessary to be placed the lamps that the eye of the observer will not be exposed to their direct rays. It is thus advisable to decrease the brilliancy of the source of light and place it as high as possible but this ordinarily means more frequent spacing of lamps and an additional initial expense, and unfortunately it is often the case that first cost is of more importance than effective lighting.

A source of light giving best results for street lighting is one producing no light in the upper hemisphere and whose maximum candle power is at an angle of approximately 15 degrees below the horizontal and whose minimum candle power is directly beneath the lamp. Such a distribution makes it possible to hang the lamp high above the direct line of vision, thus eliminating the glare in the eyes of the observer at the street level and at the same time maintain a more nearly uniform illumination. In addition, the lamp being hung high, shortens the shadows, the illumination directly under the lamp is decreased and eye fatigue elimin-

ated in that it then becomes unnecessary for it to adjust itself to alternate light and dark spots.

In comparing the various types of light sources for street illumination they should be judged by the effective illumination produced at a point midway between adjacent lamps i.e., at a point where the intensity is at its lowest value.

An examination of incandescent lamps available for street lighting shows a marked increase in the number available types with efficiencies that compare with those of arc lamps when maintenance costs are considered. This lamp has progressed thru the stages of carbon filament, specially fired carbon, tantalum, tungsten and nitrogen filled tungsten;- these two latter, due to the refinements in their manufacture and the scientific design of reflectors, have solved many of the problems of street lighting. The tungsten lamp has been improved until it is now given ratings as follows:

110 volt type	25 - 40 watts	1.31 watts per mean horizontal candle power.
	60 - 150 "	1.18 " " "
	250 - 500 "	1.13 " " "

and the nitrogen filled lamp in the larger sizes is rated at approximately .6 watt per mean horizontal candle power.

Incandescent lamps are used for street lighting on both series and multiple circuits - being in the latter case adaptable to the ornamental type of cluster standard, when they may be fed from the commercial low voltage mains eliminating trouble in having the high tension wires of the series circuit in the metal standards.

The principal defect in street illumination is improper

ated in that it then becomes unnecessary for it to adjust

itself to alternate light and dark spots.

In comparing the various types of light sources for

street illumination they should be judged by the effective

illumination produced at a point midway between adjacent

lamps i.e. at a point where the intensity is at its lowest

value.

An examination of incandescent lamps available for street

lighting shows a marked increase in the number available types

with efficiencies that compare with those of arc lamps when

maintenance costs are considered. The lamp has progressed

from the stages of carbon filament, especially the carbon

tantalum, tungsten and nitrogen filled types - these two

latter, are to the refinements in their manufacture in the

scientific design of reflectors, and solved many of the prob-

lems of street lighting. The tungsten lamp has been improved

until it is now given ratings as follows:

110 volt type 25 - 40 watts 1.51 watts per mean candle

100 watt candle power.

" " " 1.14 " 25 - 40

" " " 1.13 " 25 - 40

and the nitrogen filled lamp in the latter class is rated at

approximately 0.6 watt per mean horizontal candle power.

Incandescent lamps are used for street lighting on both

series and multiple circuits - being in the latter case

adaptable to the ornamental type of cluster standard when they

may be fed from the commercial low voltage mains eliminating

trouble in having the high tension wires of the series cir-

cuit in the metal standards.

The principal defect in street illumination is improper

diffusion of light and the use of units with a high intrinsic brilliancy so placed that they violate the physiological requirements. The introduction of the series tungsten lamp has made available a highly efficient light source which is to a large extent free from these defects. Suitable reflectors are available to deflect the light into the useful angle, thereby increasing the effective candle power and further reducing the cost for a given intensity. Furthermore the tungsten lamp has the proper color value for use with low intensities of illumination, and a large list of sizes is available for use under varying conditions, and by the use of lamps of a moderate candle power equipped with suitable reflectors the lamps may be so spaced and hung at such an angle that there will be no interference with trees and at the same time will not produce a glare even approximating that of the arc lamp.

Incand^scent series lamps can be used very successfully in cases where the results to be obtained are to be at a minimum expense, and where the conditions will not permit the use of high candle power units of the arc lamp type.

The requirements of a series system of incand^scent lamps is as follows:

- An efficient series lamp.
- An efficient and reliable device for automatically regulating the current.
- An automatic device for cutting out a lamp when the filament breaks.

The recent developments of the series tungsten lamp has provided the first in sizes ranging from 25 to 80 candle power with a life of from 1500 to 2000 hours. They show but little reduction in candle power during normal life and the quality

diffusion of light and the use of units with a high intrinsic
brilliance so placed that they violate the physiological re-
quirements. The introduction of the series tungsten lamp has
made available a highly efficient light source which is to a
large extent free from these defects. Suitable reflectors
are available to direct the light into the useful angle,
thereby increasing the effective candle power and further re-
ducing the cost for a given intensity. Furthermore the tung-
sten lamp has the proper color value for use with low inten-
sities of illumination, and a large list of sizes is avail-
able for use under varying conditions, and by the use of lamps
of a moderate candle power equipped with suitable reflectors
the lamps may be so spaced and hung at such an angle that there
will be no interference with trees and at the same time will
not produce a glare even approximating that of the arc lamp.
Incandescent series lamps can be used very successfully
in cases where the results to be obtained are to be at a mini-
mum expense, and where the conditions will not permit the use
of high candle power units of the arc lamp type.

The requirements of a series system of incandescent lamps
is as follows:

- 1. An efficient series lamp.
- 2. An efficient and reliable device for automatically
regulating the current.
- 3. An automatic device for cutting out a lamp when the
filament breaks.

The recent developments of the series tungsten lamp has pro-
vided the first in sizes ranging from 25 to 80 candle power
with a life of from 1500 to 2000 hours. They show but little
reduction in candle power during normal life and the quality

of the light remains excellent.

There are two systems of series tungsten lighting in general use known as the "adjuster socket" and the "regulator" systems - the ^{choice} ~~choice~~ depending on local conditions and to some extent on the number of lamps installed.

The adjuster socket system consists of a series of lamps connected across the high tension mains with an impedance coil in shunt with each lamp for maintaining the continuity of the circuit if a lamp burns out. The ampere capacity of each lamp in series must be the same and the sum of the voltages of the lamps must be equal to the voltage across the mains to which they are connected.

The regulator system differs from this in that the current in the series of lamps is controlled by a constant current regulating transformer acting automatically. In this system each socket is insulated between the clips with an insulation of such strength that it withstands the pressure due to the normal voltage across the lamp but should the filament burn out the entire voltage of the system would be thrown across these clips and puncture the insulating film. Since the tungsten lamp circuit is practically an ohmic resistance load, the ordinary series arc regulator is not satisfactory as it does not regulate sufficiently close to prevent flickering of the lamps. There has been developed a regulator for use on these circuits of the repulsion coil type which are made very sensitive by the use of two coils suspended in such a way that they just balance each other under normal current conditions. This type will keep the lamp current within one per cent of normal under most conditions.

of the light remains excellent.

There are two systems of series tungsten lighting in use -

one is known as the "adjuster socket" and the "regulator" systems - the latter depending on local conditions and to some extent on the number of lamps installed.

The adjuster socket system consists of a series of lamps connected across the high tension mains with an inductor coil in shunt with each lamp for maintaining the continuity of the circuit in a lamp burn out. The lamps are of equal voltage in series and the sum of the voltages of the lamps must be equal to the voltage across the mains to which they are connected.

The regulator system differs from the adjuster socket system in the series of lamps is controlled by a constant current

regulating transformer adding extra turns to the series socket is inserted in the lamps with an inductor coil of such strength that it stands the pressure due to the normal voltage across the lamps and when the filament burns out the entire voltage of the system would be thrown across these coils and fuses the filament. Since the tungsten lamp circuit is practically constant resistance, the ordinary series arc regulator is not satisfactory. It does not regulate sufficiently close to prevent the burning of the lamps. There has been a proposal to regulate the use of these circuits of the regulator coil with a very sensitive by the use of two coils connected in such a way that they just balance each other when the current does not vary. This type will keep the lamp current within one per cent of normal under most conditions.

The series incandesc^sent lamp does not come into direct competition with the arc lamp - its field being in outlying districts, parks and districts where the tree problem is a serious one. It is replacing to a large extent gas lighting and is found superior to it on nearly all counts.

In conclusion it is well to call attention to the fact that the author is well aware that it is in no sense a complete review of a distributing system but it is hoped that enough has been said to show the interest that this portion of the field should command and that its proper design will call for as high a degree of engineering skill as the plant or transmission system and that its importance in the system entitles it to as much consideration as the other departments.



The series in this report have not come into direct competition with the one being - its field being in outlining districts, parks and districts where the tree problem is serious one. It is replacing to a large extent the lighting and is found superior to it on nearly all counts. In conclusion it is well to call attention to the fact that the author is well aware that it is in no sense a complete review of a distributing system but it is hoped that enough has been said to show the interest that the portion of the field should command and that the problem itself will call for as high a degree of engineering skill as the plant or transmission system and that its importance in the system entitles it to as much consideration as the other systems.



