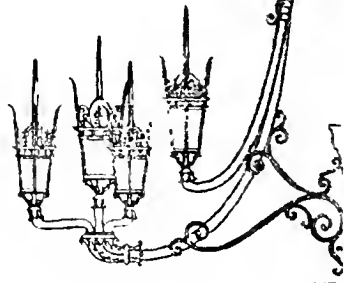


BOSTON  
PUBLIC  
LIBRARY







# SOUTH END URBAN RENEWAL AREA

## HAYES PARK

Boston, Massachusetts

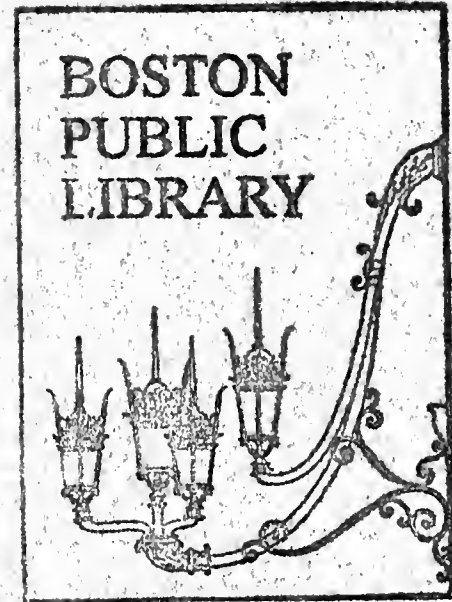
gov. 99-720

BRA  
2018

### Proposal for Design Services

Prepared for:

**BOSTON REDEVELOPMENT AUTHORITY**



December, 1988

The Halvorson Company, Inc.  
Landscape Architects and Site Planning Consultants  
161 Massachusetts Avenue  
Boston, Massachusetts 02115



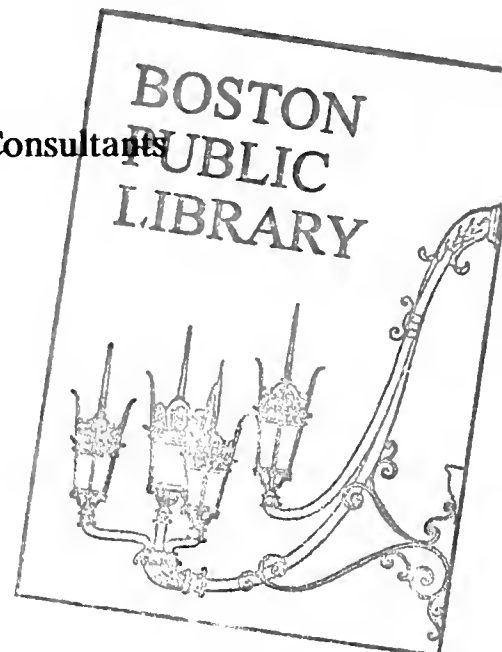
**SOUTH END URBAN RENEWAL AREA  
HAYES PARK  
Boston, Massachusetts**

**Proposal for Design Services**

Prepared for:  
**BOSTON REDEVELOPMENT AUTHORITY**

**December, 1988**

**The Halvorson Company, Inc.  
Landscape Architects and Site Planning Consultants  
161 Massachusetts Avenue  
Boston, Massachusetts 02115**







COVER  
WEST CANTON STREET CHILD  
by KAHLIL GIBRAN



December 15, 1988

Mr. David A. Carlson  
Acting Deputy Director  
Engineering and Design Services  
Boston Redevelopment Authority  
One City Hall Plaza  
Boston, Massachusetts

Reference: SOUTH END RENEWAL AREA  
HAYES PARK  
Boston, Massachusetts

Dear Mr. Carlson:

The Halvorson Company, Inc. is pleased to submit the enclosed Proposal for Engineering and Design services for repairs and improvements to Hayes Park, Boston, Massachusetts. Hayes Park has particular significance for The Halvorson Company and for me personally. A 12 year resident on West Canton Street, I knew Mr. James Hayes to whom the park was dedicated. In addition, our office was located on West Canton Street for four years. The Halvorson Company would be very honored to participate in the renovation of this park, affording us the opportunity to pay homage to a gentleman for whom we have the greatest respect and to confirm our commitment to the provision of quality open space in the City of Boston.

The team that we have assembled for this project is exceptionally well qualified to undertake a project of this nature. Our combined years of experience in park design and construction, park renovation and park maintenance and management, give us a thorough understanding of the needs and issues to be faced in park renovation and the skills to tackle it creatively. Team members include: The Halvorson Company, Inc. as landscape architects and prime consultants; Fay, Spofford & Thorndike, Inc. as consulting engineers; and Schoenfeld Associates, Inc. as surveying consultants.

We believe there are several factors which contribute to the strength of our team's qualifications:

- \* Each firm has worked with agencies of the City of Boston and is familiar with Boston's open space system. We bring to our work a wealth of knowledge about the concerns and procedures of the public sector.



- \* The Halvorson Company, for the Mayor's Office of Capital Planning, completed a comprehensive survey and evaluation of Boston's parks, squares and urban wilds, documented as Volume II of Boston's Open Space Plan. From this we gained a unique insight into the recurrent design and maintenance issues facing the whole park system.
- \* The Halvorson Company has developed an appreciation of community needs and concerns from our long-term focus on urban park design. We are well known for clear, concise public communication and for establishing credibility with community groups.
- \* The Halvorson Company has an intimate knowledge of the park and the surrounding community. Mr. Halvorson lived on West Canton Street for over a decade and the company had its offices on West Canton Street.
- \* The Halvorson Company's project schedule is such that we can easily accommodate the work required for Hayes Park. We have assigned a sufficient number of staff members with the skills needed to complete this project, and have carefully coordinated their work loads to ensure that Hayes Park will get the full attention it deserves.
- \* Each team member is dedicated to observing schedules and has a reputation for performing quality work on time and within budget.

We look forward to your review of our qualifications, and are excited by the potential to work with both the City and the community in the revitalization of Hayes Park.

Sincerely,

THE HALVORSON COMPANY, INC.



Craig C. Halvorson  
President

CCH/cg  
\\prop 9\covltr.Hay



## TABLE OF CONTENTS

1. TEAM MEMBERS
  - 1A. TEAM DESCRIPTION
  - 1B. PROJECT MANAGEMENT
  - 1C. FIRM QUALIFICATIONS
2. RELEVANT PROJECTS AND REFERENCES
3. FEDERAL FORM 254
4. FEDERAL FORM 255
5. FEE FOR SERVICES
  - 5A. FEES AND EXPENSES
  - 5B. STAFF AND BILLING RATES
6. AFFIRMATIVE ACTION POLICY STATEMENTS





# **1 TEAM MEMBERS**



## 1. TEAM MEMBERS

---

### 1A. TEAM DESCRIPTION

The consultant team described in this proposal for Hayes Park renovation is as follows:

**THE HALVORSON COMPANY, INC. - Prime Consultant**  
Landscape Architects and Site Planning Consultants  
161 Massachusetts Avenue  
Boston, Massachusetts 02115

**FAY, SPOFFORD & THORNDIKE, INC. - Subconsultant**  
Engineers  
191 Spring Street, P.O. Box 802  
Lexington, Massachusetts 02173

**SCHOENFELD ASSOCIATES, INC. - Subconsultant**  
12 Farnsworth Street  
Boston, Massachusetts 02115

### 1B. PROJECT MANAGEMENT

The Halvorson Company, Inc., as prime consultant, will manage all aspects of this project. Craig C. Halvorson will serve as Principal-In-Charge, Cynthia W. Smith will be Project Landscape Architect and Michael Basil will be staff Landscape Architect.

Fay, Spofford & Thorndike, Inc. will provide all civil, structural, geotechnical and other necessary engineering services.

Schoenfeld Associates, Inc. will provide necessary survey services.

### 1C. FIRM QUALIFICATIONS

#### THE HALVORSON COMPANY, INC.

The Halvorson Company has been providing professional landscape design, urban design and site planning services since 1980. The firm has grown to a professional staff of 17 led by three principals who collectively have over 50 years of experience. The company believes that the high quality urban design and planning for which it enjoys an excellent reputation is the result of understanding the unique character of each individual site as well as its context within the larger urban fabric. The principals of the firm have many years of experience particularly in the design and renovation of urban parks, both for The Halvorson Company and for Carol R. Johnson and Associates prior to the establishment of their own firm. The Halvorson Company's successful record in urban park design and renovation testifies to the firm's commitment to the process of working with the public as well as with those agencies that represent it in a collaborative effort to enhance the quality of urban life.



## **FAY, SPOFFORD & THORNDIKE, INC.**

Fay, Spofford & Thorndike, Inc., (FST) organized as a partnership in 1914 and incorporated in 1956, is a multidisciplinary consulting engineering firm with a staff of more than 270 skilled individuals. The firm offers a wide range of engineering services including civil, structural, transportation, electrical, mechanical, environmental, and sanitary engineering. The firm provides the full range of engineering services necessary to undertake and complete a project, from planning, preliminary and final design to cost estimating and construction supervision. FST is composed of a number of divisions, of which Urban Design has been responsible for the development and renewal of urban recreational areas for many years.

Many of the Urban Design Division's clients are longstanding, communities which repeatedly select FST to perform their feasibility studies, engineering design, environmental documentation and services during construction. Among these continuing commitments and contracts have been many projects which have involved the design or redesign of urban park and recreational facilities. The firm has performed many of these projects as the prime consultant and in other instances, has served as subconsultant to the finest landscape architectural firms in the country.

## **SCHOENFELD ASSOCIATES, INC.**

Schoenfeld Associates is a multi-disciplinary firm of engineers, architects, landscape architects, planners and environmental consultants offering a comprehensive range of services in the fields of Civil, Structural, Hydraulic, Sanitary, Traffic and Transportation Engineering and Field Survey and Construction Inspection.

The firm has performed numerous topographic and property line surveys for public and private clients throughout the region; established ground-control for and coordinated ties to state coordinate systems; and determined tidal flooding contours and flood encroachment lines. As part of Schoenfeld Associate's work for various roadway improvement projects we have the required in-house experience in the preparation of property and right-of-way acquisition plans. Responsibilities have included the research of property date; the plotting and development of property line plans; determination of necessary right-of-way acquisition and the preparation of all necessary calculations, taking plans and order of taking descriptions.



## **2 RELEVANT PROJECTS AND REFERENCES**





## 2. RELEVANT PROJECTS AND REFERENCES

### THE HALVORSON COMPANY, INC.

The Halvorson Company, Inc. provides comprehensive professional services in site planning, landscape architecture and site engineering.

The services that The Halvorson Company, Inc. can provide include:

- Site inventory, condition assessment and mapping
- Site analysis, programming and feasibility studies
- Master planning
- Conceptual design and schematic design
- Detail design development and cost estimating
- Contract and bid document preparation
- Construction observation and post-installation evaluation

Clients for these and related services include city and municipal governments and agencies, institutions, architects and engineers, and private development corporations. The following is a representative list of projects and clients:

- POST OFFICE SQUARE PARK  
Boston, Massachusetts

Site analysis, programming, site design, and construction document preparation for 1.7 acre park in the heart of Boston's financial district.

Mr. Robert Anthonyson  
Vice President, Friends of Post Office Square  
50 Federal Street  
Boston, Massachusetts 02110  
(617) 423-1500

- FRONT PARK  
Cambridge, Massachusetts

Design of a one-acre park that connects the developing residential and commercial East Cambridge district to the Charles Riverfront. Park development marks partial restoration of original Charles Eliot plan for the area.



Ms. Betty Flemings  
Cambridge Community Development Department  
57 Inman Street  
Cambridge, Massachusetts 02139  
(617) 498-9034

- **CHARLES PARK**  
**Cambridge, Massachusetts**

Design of a one-acre park continuing the open space network in East Cambridge, connecting the Lechmere Canal area with Front Park and the Charles River Waterfront.

Ms. Eileen Woodford  
Cambridge Community Development Department  
57 Inman Street  
Cambridge, Massachusetts 02139  
(617) 498-9034

- **BOSTON PARKS AND RECREATION LANDS:**  
**INVENTORY AND CONDITION ASSESSMENT Boston, Massachusetts**

A comprehensive inventory and analysis of Boston's parks, squares and urban wilds for The Mayor's Office of Capital Planning. The Inventory provides the basis for Boston's new Open Space plan.

Ms. Mary Nee, Director  
Mayor's Office of Capital Planning  
Boston City Hall, Room 959  
One City Hall Plaza  
Boston, Massachusetts 02201  
(617) 725-3494

- **CORBETT PARK**  
**BOSTON, MASSACHUSETTS**

Site evaluation, landscape design and construction document preparation for renovations to one-acre Corbett Park including playground design, sitting areas and streetscape design.



Mr. Stanley Ivan, Chief Engineer  
Boston Parks and Recreation Department  
294 Washington Street  
Boston, Massachusetts 02108  
(617) 542-3071

- **PUBLIC FACILITIES DEPARTMENT**

Urban design and streetscape development including street furniture lighting and planning in a variety of Boston neighborhoods.

West Broadway Street Improvements  
Hyde Square Improvements Project Roslindale Square Improvements Project  
Dorchester Lower Mills Phase I Improvements Project  
Dorchester Lower Mills Phase II Improvements Project  
Grove Hall Vest Pocket Park Design Study  
Cleary Square Streetscape Improvements  
Hyde Square Improvements

Ms. Stephanie Bothwell  
Development Division  
Public Facilities Department  
City of Boston  
15 Beacon Street, 10th Floor  
Boston, Massachusetts 02108  
(617) 720-4300 ext. 345

- **KENDALL SQUARE**  
**Cambridge, Massachusetts**

Site Preparation Contract #12  
Site Preparation Contract #13  
Site Preparation Contract #14  
Site Preparation Contract #15  
Property Management Contract #8  
Property Management Contract #9

Mr. Thad Tercyak, Deputy Director  
Cambridge Redevelopment Authority  
336 Main Street  
Cambridge, Massachusetts 02142  
(617) 492-6800



## **FAY, SPOFFORD & THORNDIKE, INC.**

- **WASHINGTON COMMUNITY PARK**  
**Boston, Massachusetts**

Continuing engineering services in connection with The Washington Park Urban Renewal Project for a period of 20 years. Engineering design and construction services for 15 miles of streets as well as for playgrounds, athletic fields and courts, irrigation systems and retaining walls.

Mr. Wallace B. Orpin  
Director of Engineering  
Boston Redevelopment Authority  
Charlestown Navy Yard  
Charlestown, Massachusetts 02129  
(617) 242-7182

- **SOUTHWEST CORRIDOR SECTION ONE PARKLAND**  
**Boston, Massachusetts**

Engineering designer for Section One of this 4.3 mile linear parkland from Back Bay Station to Forest Hills, and coordinating consultant for the entire project. Work involved complex structural, drainage and ventilation issues, as well as careful planning for landscape maintenance and security.

Mr. Walter Siemataska  
Project Manager  
Massachusetts Bay Transit Authority  
10 Park Plaza  
Boston, Massachusetts  
(617) 722-5910

**SHIPYARD PARK**  
**Boston, Massachusetts**

Engineering subconsultant for Phase I of the redevelopment of this portion of the Charlestown Navy Yard. Engineering services included soils engineering, structural engineering for reinforced concrete walls, building rehabilitation and pavement base slabs, water supply, lighting, drainage and site grading.





- **WASHINGTON STREET RECONSTRUCTION**  
**Boston, Massachusetts**

Engineering designer for a 1.7 mile upgrade of the roadway from Dedham North to the West Roxbury Parkway. Work included full depth reconstruction on the main roadway and 26 intersections, as well as all traffic signalization and lighting.

Mr. Gordon Barnes  
Division Engineer City of Boston  
Public Works Department  
One City Hall Plaza  
Boston, Massachusetts 02201  
(617) 725-4968



## **SCHOENFELD ASSOCIATES, INC.**

### **Construction and Railroad Survey and Consulting Services, Chelsea-Salem, MA**

Schoenfeld Associates, Inc. is providing Perini Construction with construction survey and staking and survey consultation for their \$13 million dollar contract with the MBTA for the upgrading of the track and envelope for the Amtrack Commuter Rail from Chelsea - Everett - Revere - Lynn - Salem line. Schoenfeld Associates, Inc. is providing J. F. White with construction and railroad survey for the \$40 million dollar contract with the MBTA for the Lynn Station and Parking Garage. For both of these jobs, plans and drawings are being prepared on our in-house CADD equipment and the survey team is using electronic total station instruments with data collectors.

Mr. Ted Kirk  
Project Manager  
Perini Corporation  
73 Mt. Wate Street  
Framingham, MA 01701  
(508) 593-9787

### **Sheila's Way Subdivision, Lynn, MA**

Schoenfeld Associates performed all field and office engineering necessary for the design of a residential subdivision in accordance with the rules and regulations of the City of Lynn Planning Board and its Water and Sewer Commission.

Field work included a topographical and boundary survey, ground layout of individual lots and house foundations, and field verification of the as-built foundations in order to prepare plot plans. This included researching the property (registry of deeds, assessor's office, etc.), obtaining existing plans for streets and utilities, developing and calculating lots, design of roadways with water mains, storm drains, sanitary sewers and retention basins, mitigated wetland areas, and the drafting of all necessary plans for filing with local agencies. We also prepared all required permits and attended public meetings with the Planning Board and conservation commissions.

### **Engineering Survey Services for State and Federal Highway Projects in Massachusetts**

Schoenfeld Associates furnished a 4-member survey team to the Massachusetts Department of Public Works for assignment within the Commonwealth for all types of survey on construction projects and preliminary engineering and design. We also maintained the state survey grid system. All work conformed to the Department's standards and practices as specified in its Survey Manual and the Standard Specification for Highways and Bridges.

Mr. Carl Kote  
Assistant Bridge & Railroad Engineer  
Commonwealth of Massachusetts  
Department of Public Works  
10 Park Plaza  
Boston, MA  
(617) 973-7875



**Peters Park and Rotch Playground, Boston, MA**

Topographical survey in conjunction with Schoenfeld Associates' rehabilitation of two South End sites for the Boston Parks and Recreation Department.

Mr. Stanley Ivan  
Chief Engineer  
City of Boston  
Park and Recreation Department  
294 Washington Street  
Boston, MA 02108  
(617) 542-3071

**McNally and Royall House Parks, and Mystic Promenade, Medford, MA**

Schoenfeld Associates provided services for the design of a new waterfront park in Medford, as well as the upgrading of several existing parks. All involved topographical and detail surveys.

Ms. Lauren DiLoranzo  
Director  
Office of Community Development  
City of Medford  
Medford City Hall  
Medford, MA 02155  
(617) 396-5500

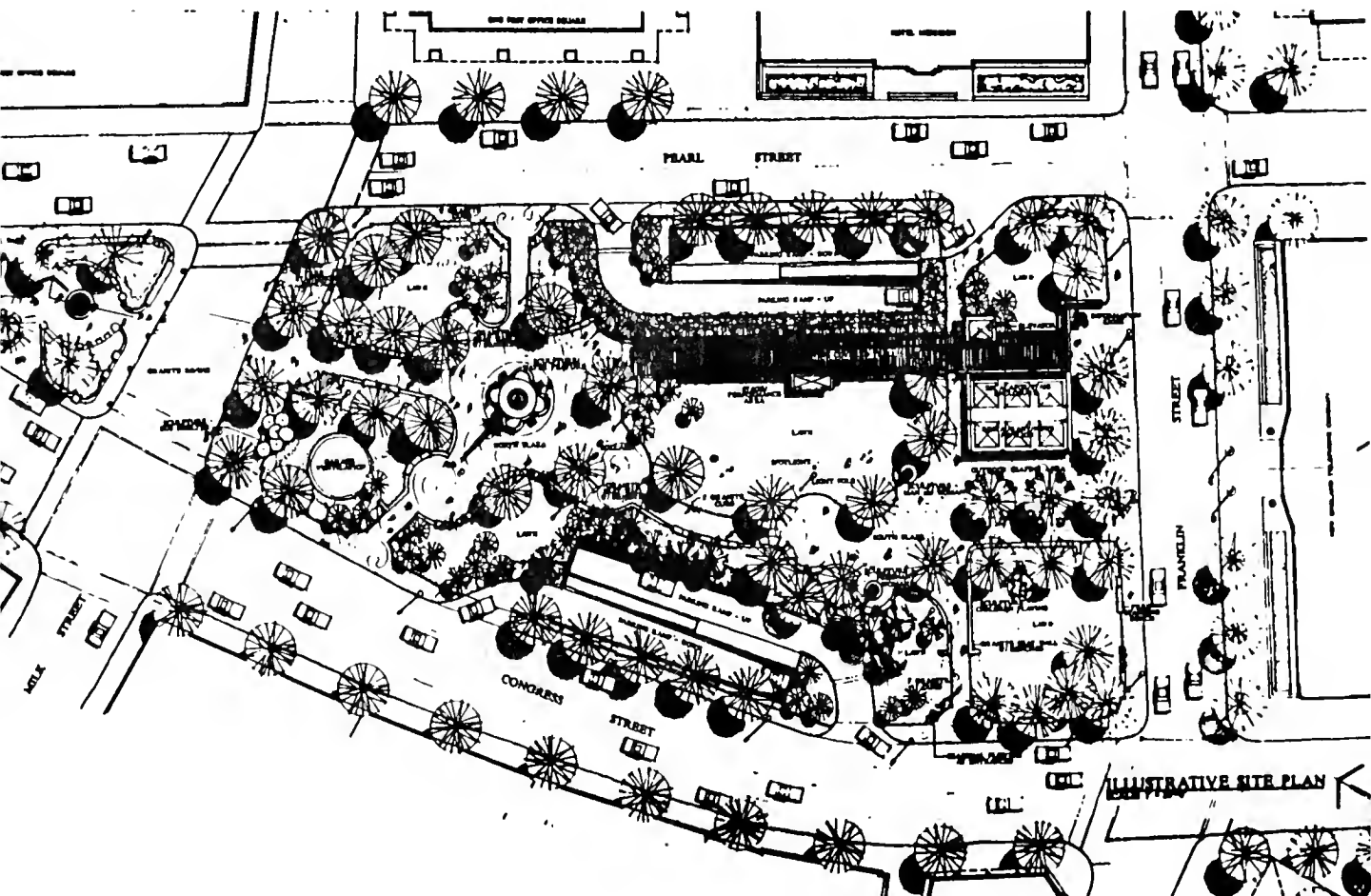


## POST OFFICE SQUARE PARK

Boston, Massachusetts

The Halvorson Company, Inc. has been selected, by national competition, as the designer of this 1.7 acre park in the heart of Boston's financial district. This new downtown open space will be at street level over a 7 story below-grade parking garage.

The Halvorson Company design combines, in delicate balance, the intense and festive urban character of the downtown with tranquility and refuge. The park is designed to be rich in detail and visual interest, recognizing and reflecting the area's architectural heritage. The predominance of lawns and vegetation provides welcome relief and contrast to the dense urban fabric surrounding the park. A plaza at each end of the park provides the settings for major park focal elements of a fountain and sculpture which will draw people into the space. A garden pavilion overlooking the South Plaza incorporates pedestrian access to the underground garage, a cafe, and a newsstand.



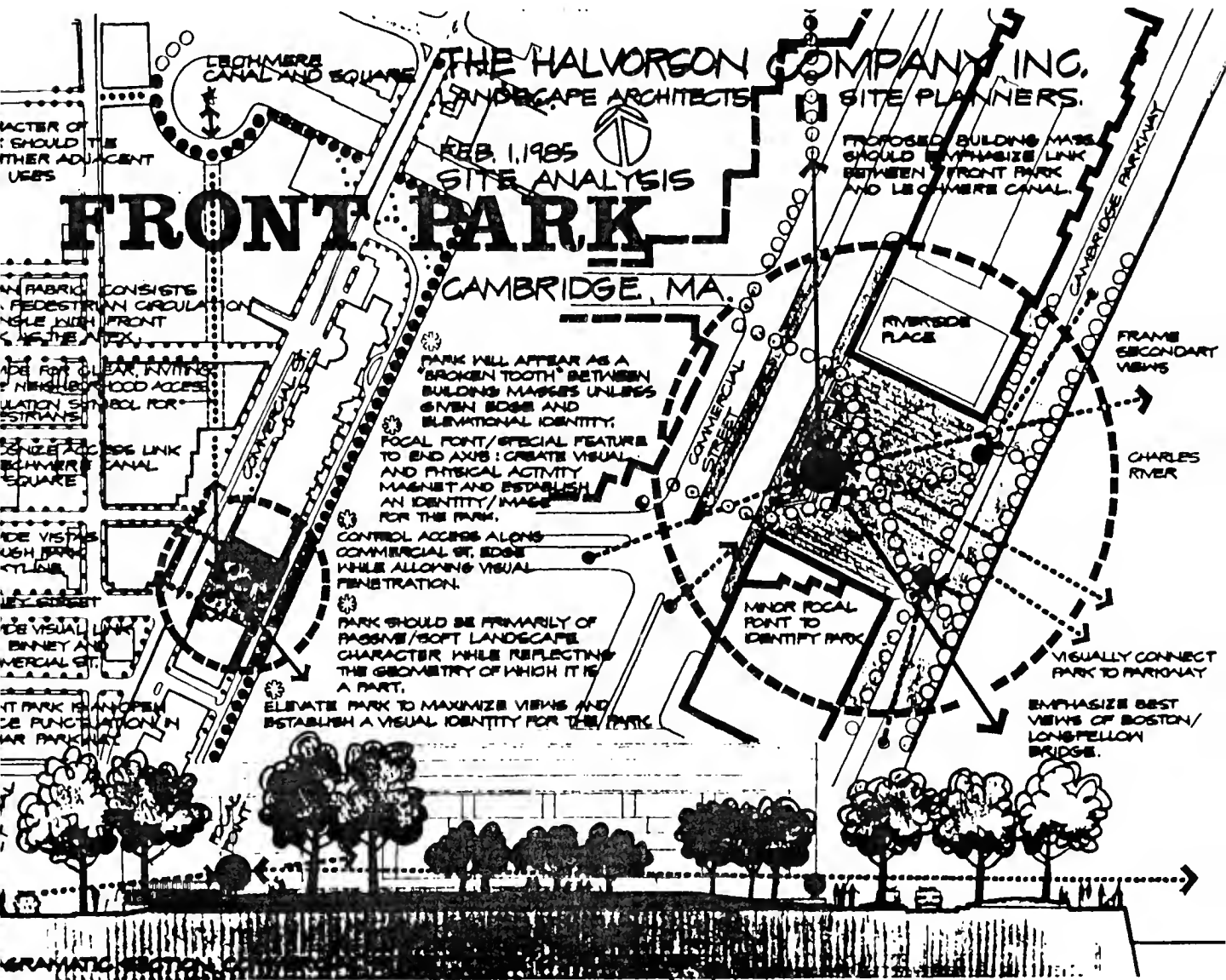




**FRONT PARK**  
Cambridge, Massachusetts

"The Front" along the Charles River was originally conceived by Charles Eliot as an important element within his East Cambridge Waterfront Plan. Although never implemented, Eliot's park concept was reborn, in part, as Front Park in the City of Cambridge's East Cambridge Riverfront Plan of 1978.

The park has become a pivotal element in the open space network of the East Cambridge Riverfront. Front Park is designed to be a simple, yet elegant gateway from the emerging technical and commercial districts and the existing residential neighborhoods, to the Charles River. With its completion in 1987, it has provided an important public open space for a revitalizing East Cambridge.

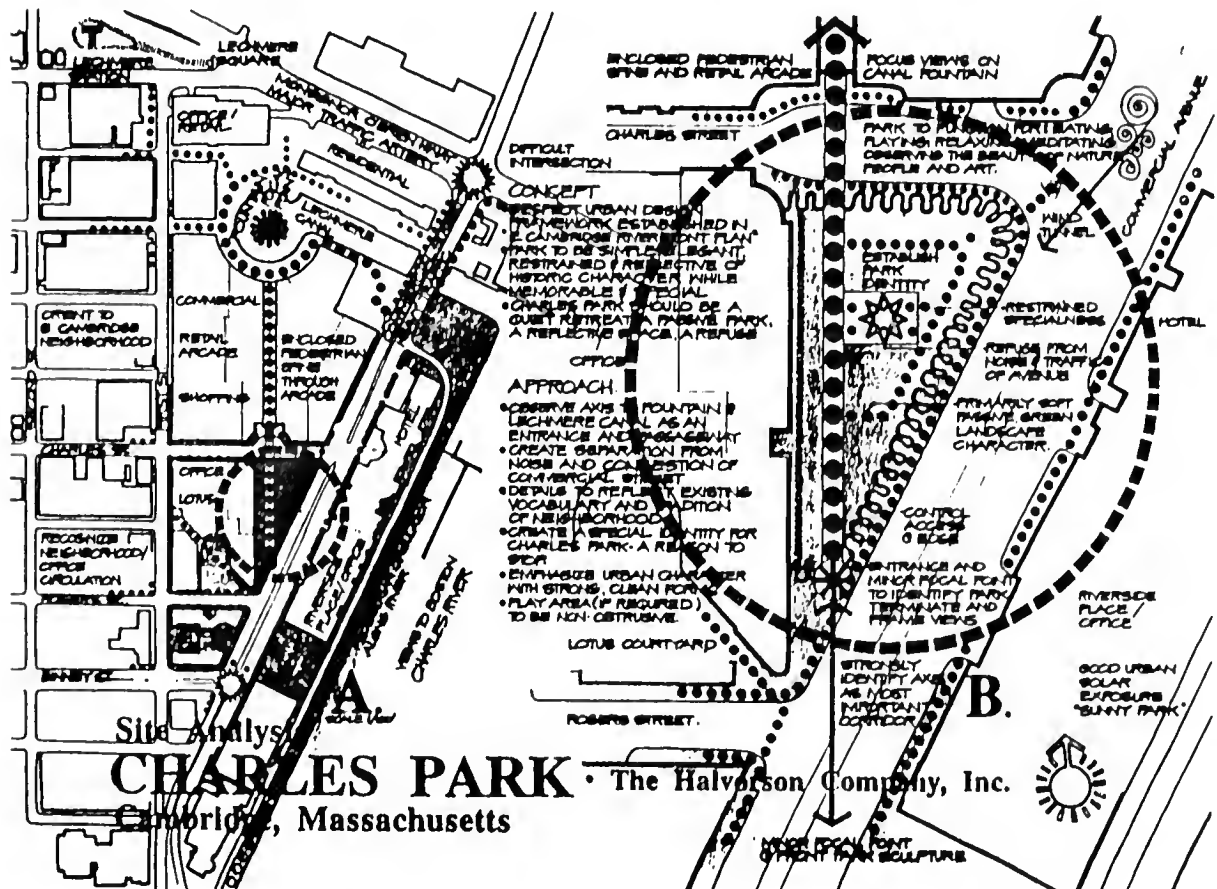




**CHARLES PARK**  
Cambridge, Massachusetts

The neighborhood of East Cambridge has experienced a re-awakening over the last decade, anticipated and guided by the East Cambridge Riverfront Plan of 1978 and marked by a resurgence of commercial and residential development. The Riverfront area, in particular, has seen enormous growth, and has appropriately been targeted as the priority area for guidance of such growth.

Essential to the positive evolution of the neighborhood will be the strengthening of its rich historic character as well as the further development of its open space network, already invigorating East Cambridge and re-connecting it to the Charles River. Charles Park will form an essential link in this system, greeting residents, employees and visitors as they move along Commercial Avenue and east to the Charles River, and connecting Lechmere Canal with Front Park by establishing a strong visual link to the Lechmere Canal fountain.





## **CITY OF BOSTON OPEN SPACE PLAN: INVENTORY AND CONDITION ASSESSMENT**

Boston, Massachusetts

Mayor's Office of Capital Planning

The Halvorson Company, Inc. conducted, for the Mayor's Office of Capital Planning, a comprehensive survey and evaluation of 240 City of Boston parks, squares, malls and urban wilds which comprises Volume II of Boston's Open Space Plan. This work represents the first time Boston's parklands have been studied and evaluated, system-wide, in such depth and detail. The plan has been heralded as a model urban plan and will be an invaluable tool as Boston continues to restore, maintain and design new open spaces.

The firm developed a survey matrix that permitted the efficient collection of information pertaining to physical site conditions and to design and maintenance considerations. Evaluations were written for each site, and open space summaries written for each of Boston's 16 neighborhoods and for the system as a whole.

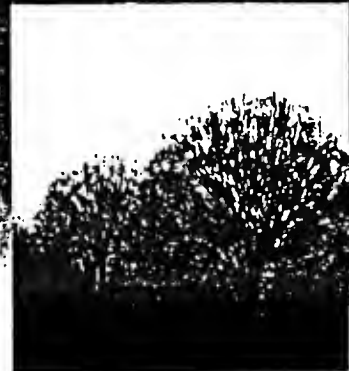
**Boston's  
Open  
Space**



**Volume One:  
The Plan**

Raymond L. Flynn, Mayor

**Boston's  
Open  
Space**



**Volume Two:  
The Inventory**

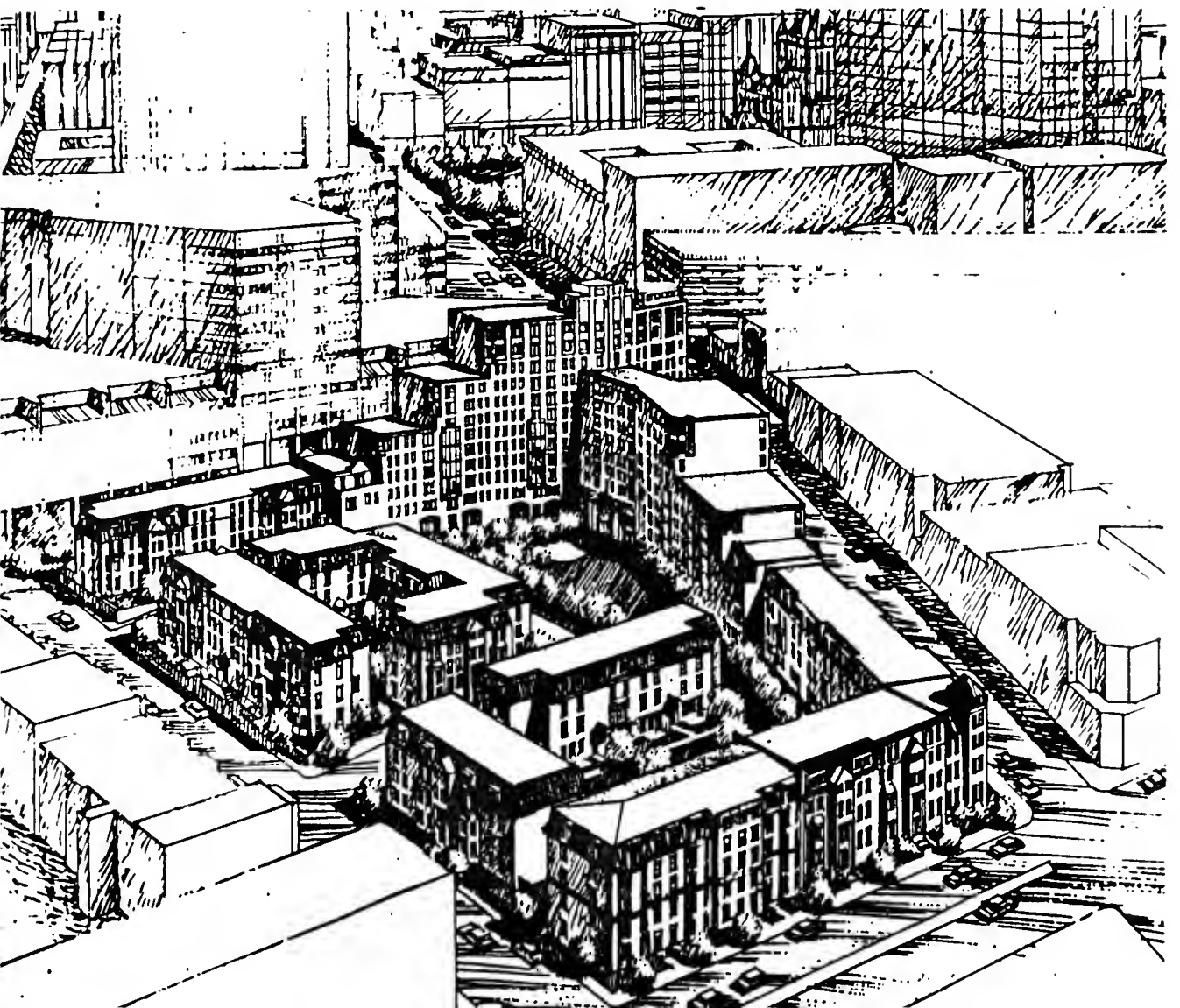
Raymond L. Flynn, Mayor



**TENT CITY**  
Boston, Massachusetts

Culminating twenty years of planning and community involvement, Tent City is being developed as one of Boston's largest mixed-income housing developments centrally located next to the Southwest Corridor and the downtown commercial development in Copley Square.

The Halvorson Company, Inc., in collaboration with architects Goody, Clancy and Associates developed a series of pedestrian courtyards all of which are built over a parking garage. The design succeeds in providing residential scale and quality spaces within the context of a public housing development. The design of the complex evolved through the cooperation of numerous Commonwealth of Massachusetts and City of Boston agencies.







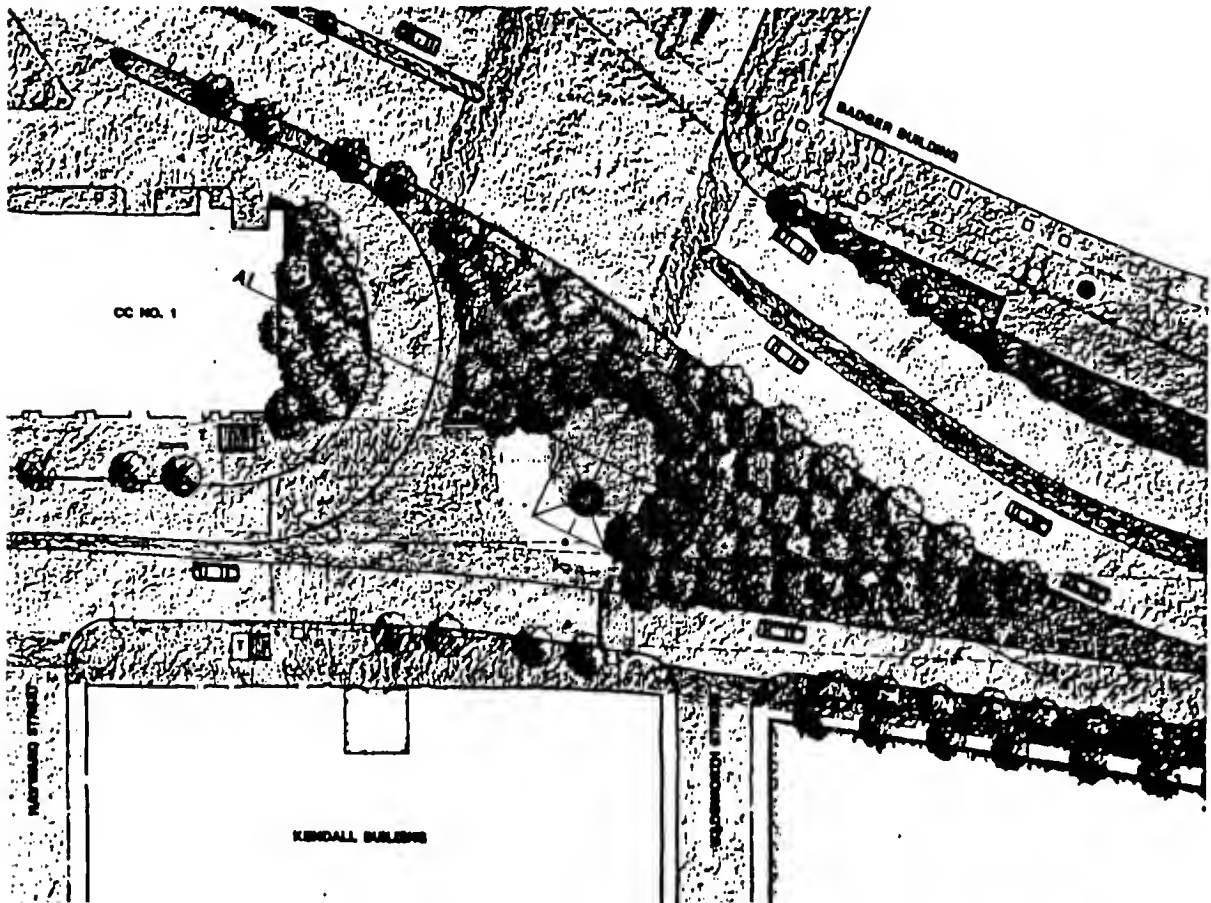
## KENDALL SQUARE - SITE PREPARATION CONTRACT 15 POINT PARK

Cambridge, Massachusetts

Point Park constitutes the final phase of the major Main Street development for Kendall Square in Cambridge. Working with the architecture and urban design firm of Monacelli Associates, The Halvorson Company, Inc. is developing the landscape design for this park which will serve both as a gateway into Cambridge from Boston and as a crossroads between the academic community of the Massachusetts Institute of Technology and the rapidly developing high-technology research and development community of Kendall Square.

A primary unifying element of the park's design is a sculpture intended to strengthen these two primary park functions: the park as gateway and the park as the center of an important and expanding high-technology community.

As one of the area's major public open spaces, the park will be a welcome pedestrian amenity amidst major commuter and service traffic routes.





# CROSTOWN STREET/MELNEA CASS BOULEVARD

Boston Redevelopment Authority  
Boston, MA



*During Construction*

Crosstown Street, a mile-long urban facility, was designed by FAY, SPOFFORD & THORNDIKE, INC. (FST). The roadway plan improved traffic flows by removing through traffic from the South End residential streets and provided access to new industrial development parcels.



*Completed Roadway*



*Street View*

The design required major relocation of utilities in the area and included street lighting, water and sewer lines, extensive landscaping, an irrigation system, a bikeway throughout most of its length, and 15 fully-actuated, signalized intersections.

Planning incorporated significant participation by local residents. The design reflects neighborhood recommendations and was funded under the Urban Systems program. This required extensive coordination among the Federal Highway Administration, the Massachusetts Department of Public Works, and FST. FST prepared all preliminary and final plans, specifications, and construction estimates. Construction services included shop drawing review and consultation, where required. The roadway was opened to traffic in 1981.







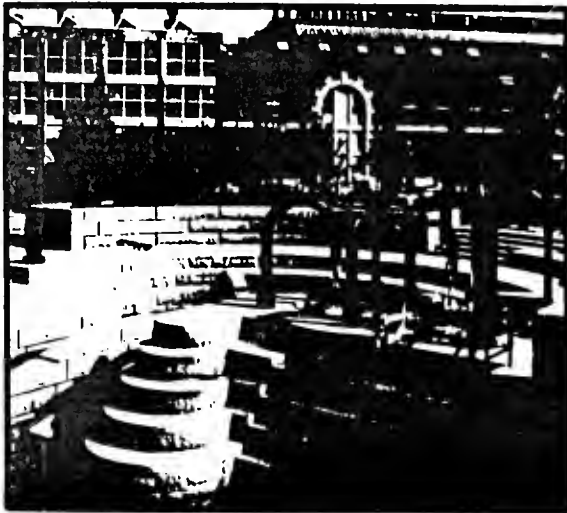
# SHIPYARD PARK

Boston Redevelopment Authority  
Charlestown, MA

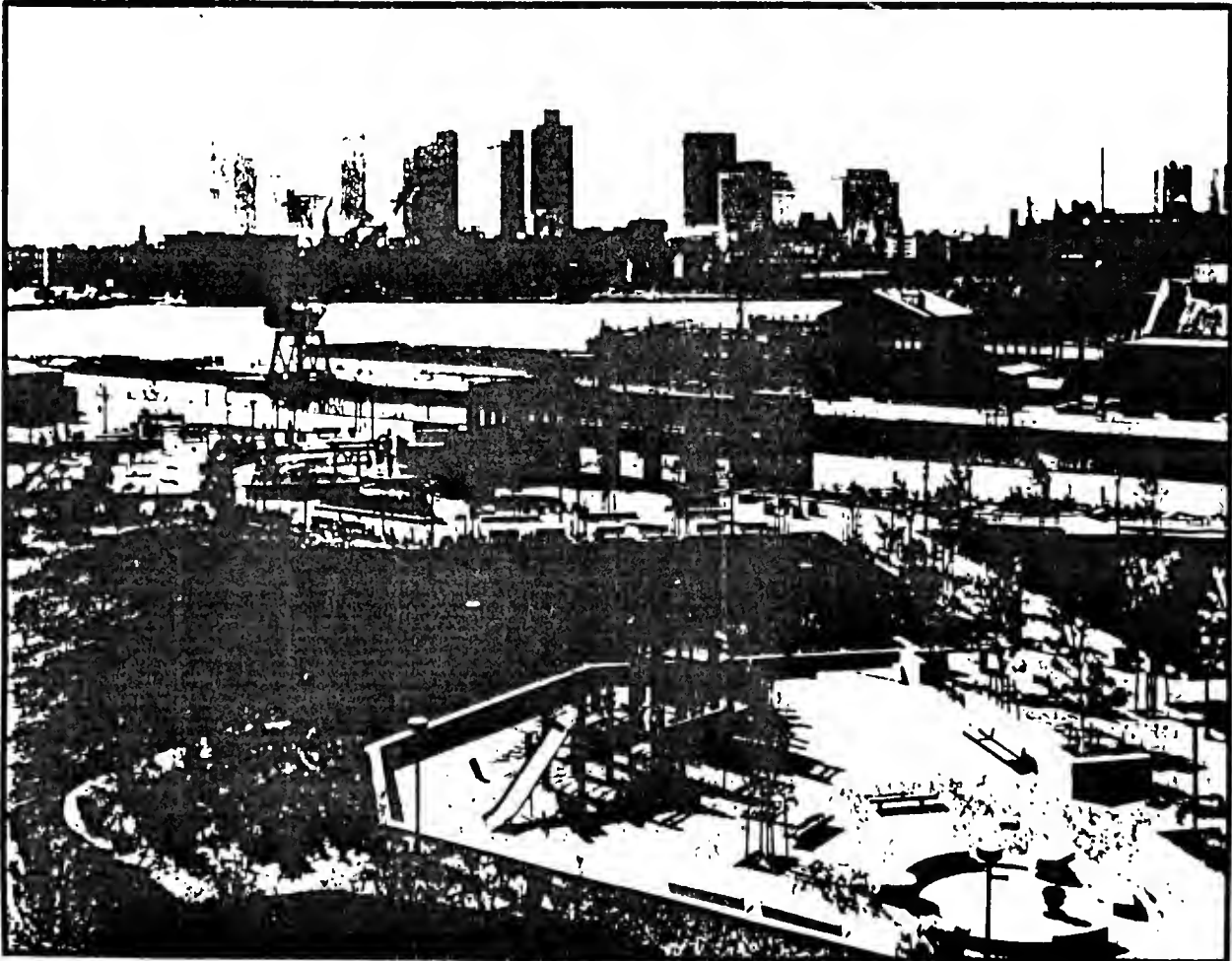


FAY, SPOFFORD & THORNDIKE, INC. (FST) provided multidisciplinary engineering services for Phase I of the redevelopment of a portion of the Charlestown Navy Yard by the Boston Redevelopment Authority. Major structures in this urban park include a rehabilitated Pavilion Building and an amphitheater. In addition, there are such other amenities as a multi-level fountain, an overlook which affords views of Boston Harbor, a play area, and landscaped areas.

FST was responsible for the soils engineering and structural engineering services for reinforced concrete walls, building rehabilitation, and pavement basement slabs. In addition, FST provided engineering services associated with water supply, lighting, drainage, and site grading.



*Fountain*



*Park View*



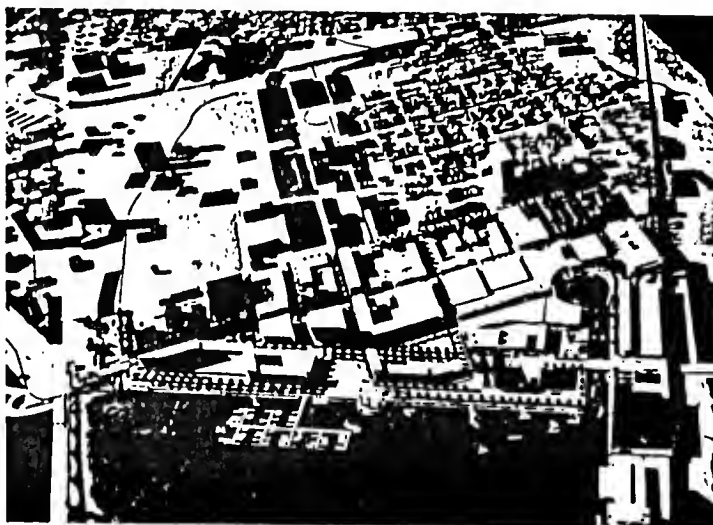


LECHMERE CANAL AND TRIANGLE AREA DEVELOPMENT PROJECT  
CAMBRIDGE COMMUNITY DEVELOPMENT DEPARTMENT  
EAST CAMBRIDGE, MA



FST performed the environmental and preliminary engineering studies for the Cambridge Community Development Department for the Lechmere Canal and Triangle Area Development Project, including the roadways within the project area. In addition to the project challenges described below, the Environmental Impact Report had to be completed within a strict time schedule to enable the City of Cambridge to secure the necessary \$6.8 million in UDAG funds. The funding agency, the U.S. Department of Housing and Urban Development, termed this project as one of the most ambitious undertakings under the federal grant program. The project includes both public and private improvements to establish the area as a major housing, retail, and office center. The thrust of the public improvements is open-space development with a water orientation towards the abutting Lechmere Canal and Charles River, and include: restoration of the Canal and establishment of a bordering park; conversion of the Cambridge Parkway area to a park along the Charles River; and open-space walkways from the development and neighborhood areas to the new parks. Plans also include restoration of the Bulfinch Courthouse Building Courthouse Building. Transportation improvements include relocation of the Lechmere Square MBTA Station, widening of several arterial roadways (channelization, signalization) including a new bridge over the Canal, and construction of public parking garages. The private development includes establishment of major retail center south and west of the Canal; market-rate housing north of the Canal and along the River; expansion of the Sonesta Hotel; and interspaced retail, office, and housing in the remaining area between First Street and Commercial Avenue. Private parking facilities to accommodate the private development are also planned.

The City has been implementing this plan over the past few years. In addition to completion of the Lechmere Canal Park (for which FST participated in the design), roadways have been reconstructed and new private development is underway.





**3 FEDERAL  
FORM 254**



4. Type of Ownership: Corporation  
4a. Minority Owned  yes  no

1a. Submittal is for  Parent Company  Branch Office

5a. Former Firm Name(s), if any, and Year(s) Established:  
The Halvorson Company 1980  
139 West Canton Street  
Boston, Massachusetts 02118

5. Name of Parent Company, if any:

6. Names of not more than Two Principals to Contact: Title / Telephone

- 1) Craig C. Halvorson, President (617) 536-0380
- 2) Peter C. Welanetz, Vice President (617) 536-0380

7. Present Offices: City / State / Telephone / No. Personnel Each Office

The Halvorson Company, Inc.  
161 Massachusetts Avenue  
Boston, Massachusetts 02115-3050  
(617) 536-0380

7a. Total Personnel 20

8. Personnel by Discipline:

- 3 Administrative
- Architects
- Chemical Engineers
- Civil Engineers
- Construction Inspectors
- Draftsmen
- Ecologists
- Economists
- Electrical Engineers
- Estimators
- Geologists
- Hydrologists
- Interior Designers
- 17 Landscape Architects
- Mechanical Engineers
- Mining Engineers
- Oceanographers
- Planners: Urban/Regional
- Sanitary Engineers
- Soils Engineers
- Specification Writers
- Structural Engineers
- Surveyors
- Transportation Engineers

9. Summary of Professional Services Fees Received: (insert index number)

	Last 5 Years (most recent year first)		
Direct Federal contract work, including overseas	19 87	19 86	19 85
All other domestic work	-	-	-
All other foreign work*	4	3	3
*Firms interested in foreign work, but without such experience, check here: <input type="checkbox"/>	-	-	-
	19 84	19 84	19 83
	-	-	-
	2	2	1
	-	-	-
	-	-	-

Ranges of Professional Services Fees

1. Less than \$100,000
2. \$100,000 to \$250,000
3. \$250,000 to \$500,000
4. \$500,000 to \$1 million
5. \$1 million to \$2 million
6. \$2 million to \$5 million
7. \$5 million to \$10 million
8. \$10 million or greater



Profile Code	"P", "C", "JV", or "IE"	Project Name and Location	Project Number	Cost (in thousands)	Project Number	Cost (in thousands)	Project Number	Cost (in thousands)	Project Number	Cost (in thousands)
1) 006	C	1 Pavilions at Buckland Hills Manchester, Connecticut	11) 050	4.2	8.4	835.0	21)	8.4	835.0	21)
2) 010	C	2 Boston College: Campion Hall Newton, Massachusetts	12) 052	46.0	4	60.0	22)	4	60.0	22)
3) 014	C	3 Boston College: New Science Bldg. Newton, Massachusetts	13) 059	0.4	18	375.0	23)	18	375.0	23)
4) 017	C	4 Sandwich Schools: Ridge School Forestdale Sandwich, Massachusetts	14) 060	65.0	3	65.0	24)	3	65.0	24)
5) 018	C	5 Highland Park Historic Restoration Master Plan Roxbury, Massachusetts	15) 072	2.3	7	63.0	25)	7	63.0	25)
6) 019	C	6 Embassy Suites Hotel Cambridge, Massachusetts	16) 079	12.0	9	165.0	26)	9	165.0	26)
7) 029	C	7 Bradford Country Club Residential Community Bradford, Massachusetts	17) 088	2745.0	16	535.0	27)	16	535.0	27)
8) 047	C		18) 089	305.0	2	27.0	28)	2	27.0	28)
9) 048	C		19) 110	135.0	28	345.0	29)	28	345.0	29)
10)			20)				30)			30)

11. Project Examples, Last 5 Years


Profile Code	"P", "C", "JV", or "IE"	Project Name and Location	Owner Name and Address	Cost of Work (In thousands)	Completion Date (Actual or Estimated)
017	C	1 Pavilions at Buckland Hills Manchester, Connecticut	The Mall at Buckland Hills Partnership By: Homart Manchester Investment Co. c/o Homart Development Company 55 West Monroe, Chicago, IL 60603	\$ 800	1989
029	C	2 Boston College: Campion Hall Newton, Massachusetts	Ellenzweig Associates 1280 Massachusetts Ave. Cambridge, MA 02138	\$ 810	1989
029	C	3 Boston College: New Science Bldg. Newton, Massachusetts	Ellenzweig Associates 1280 Massachusetts Ave. Cambridge, MA 02138	\$1890	1989
029	C	4 Sandwich Schools: Ridge School Forestdale Sandwich, Massachusetts	HMFH Architects, Inc. 543 Green Street Cambridge, MA 02139	\$1400 (R.S.) \$1100 (P.S.)	1989
047	P	5 Highland Park Historic Restoration Master Plan Roxbury, Massachusetts	Boston Parks & Recreation Department Planning & Development 294 Washington St., Suite 430 Boston, Massachusetts	\$ 20 (Fee)	1988
049	C	6 Embassy Suites Hotel Cambridge, Massachusetts	The Beacon Companies 50 Rowes Wharf Boston, MA 02110	\$ 500	1986
050	P	7 Bradford Country Club Residential Community Bradford, Massachusetts	Bradford Towne Trust Country Club Professional Bldg. 304 Cambridge Street Woburn, MA 01801	\$ 125 (Phase 1)	1988





050	C	9 Jug End Housing Development South Egremont, Massachusetts	Reef, Watchmaker and Company 183 State Street Boston, Massachusetts 02109	\$ 150 (MP) \$10,000 (PH #1)	1986 1988
058	C	10 Eisai Pharmaceutical Company, Inc. Andover, Massachusetts	Ellenzweig Associates 1280 Massachusetts Avenue Cambridge, MA 02138	\$ 600	1989
059	C	11 Boston Parks and Recreation Land Assessment and Survey Boston, Massachusetts	Mayor's Office of Capital Planning City of Boston Boston, Massachusetts	\$ 125	1987
059	P	12 Colby College Planting Master Plan Waterville, Maine	Colby College Department of Physical Plant Waterville, Maine	\$ 50 (PH #1)	1987
059	C	13 Colonial Williamsburg Visitors Additions & Renovations Ctr. Williamsburg, Virginia	Colonial Williamsburg Foundation Post Box C Williamsburg, Virginia	\$ 500	1984
060	C	14 Calvert Marine Museum Solomons, Maryland	Calvert Marine Museum Solomons, Maryland	\$ 350	1986
060	C	15 Museum of Fine Arts: North Yard Garden Boston, Massachusetts	Nakane Garden Research Corporation c/o Meservy Associates 48 Peter Parley Road Boston, MA 02138	\$1250	1988
079	P	16 Mystic Center Medford, Massachusetts	Cabot, Cabot & Forbes 60 State Street Boston, MA 02110	\$ 500	1990
079	P	17 Wellesley Office Park, Master Plan Wellesley, Massachusetts	Beacon Management Company 3 Center Plaza Boston, MA 02108	\$ 30 (Fee)	1989
088	P	18 Charles Park Cambridge, Massachusetts	City of Cambridge Community Development Dept. City Hall Annex Imman and Broadway Cambridge, MA 02139	\$ 950	1990
088	C	19 Children's Zoo Franklin Park Boston, Massachusetts	Boston Zoological Society 121 Mt. Vernon Street Boston, Massachusetts	\$ 500	1984



088	P	21 Front Park Cambridge, Massachusetts	Community Development Department City of Cambridge Cambridge, Massachusetts	\$ 550	1986
088	P	22 Hernandez School Park Boston, Massachusetts	Public Facilities Department City of Boston 15 Beacon Street Boston, Massachusetts	\$ 200	1988
088	C	23 Market Landing Park Newburyport, Massachusetts	Office of Community Development City of Newburyport City Hall Newburyport, Massachusetts 01950	\$1200	1983
088	C	24 Tent City Boston, Massachusetts	Tent City Development Corporation Boston, Massachusetts	\$ 800	1987
110	C	25 Beaver Brook Reservation Rehabilitation Belmont/Waltham, Massachusetts	Metropolitan District Commission 20 Somerset Street Boston, Massachusetts 02108	\$1200	1989
110	C	26 Boylston Street Sidewalk Improvements Boston, Massachusetts	Fay, Spofford & Thorndike 191 Spring Street P.O. Box 802 Lexington, MA 02173	\$5000	1991
110	P	27 Cleary Square Street Improvements Hyde Park, Massachusetts	City of Boston Public Facilities Department 15 Beacon Street Boston, Massachusetts	\$ 950	1988
110	P	28 Dorchester Lower Mills Business District - Phase 2 Dorchester, Massachusetts	City of Boston Public Facilities Department 15 Beacon Street Boston, Massachusetts	\$ 550	1986
110	C	29 Kendall Square Site Preparation Contract No. 12, Cambridge, Massachusetts 13,14	Cambridge Redevelopment Authority Cambridge, Massachusetts	\$3000	1987
110	P	30 Kendall Square, Site Preparation Contract 15, Point Park Cambridge, Massachusetts	Cambridge Redevelopment Authority Cambridge, Massachusetts	\$1000	1989
12. The foregoing is a statement of facts Signature: 			Date: October 6, 1988		
			Typed Name and Title: Peter C. Welanetz, Vice President		







255

Architect-Engineer  
Related Services  
for Specific  
Project

Hayes Park  
Boston, Massachusetts

3. Firm (or Joint-Venture) Name & Address

The Halvorson Company  
161 Massachusetts Avenue  
Boston, Massachusetts 02115

3a. Name, Title & Telephone Number of Principal to Contact

Mr. Craig C. Halvorson  
(617) 536-0380

3b. Address of office to perform work, if different from item 3

4. Personnel by Discipline:

- 3 Administrative
- Architects
- Chemical Engineers
- Civil Engineers
- Construction Inspectors
- Draftsmen
- Ecologists
- Economists
- Electrical Engineers
- Estimators
- Geologists
- Hydrologists
- Interior Designers
- 17 Landscape Architects
- Mechanical Engineers
- Mining Engineers

- Oceanographers
- Planners: Urban/Regional
- Sanitary Engineers
- Soils Engineers
- Specification Writers
- Structural Engineers
- Surveyors
- Transportation Engineers

20 Total Personnel

5. If submittal is by Joint-Venture list participating firms and outline specific areas of responsibility (including administrative, technical and financial) for each firm: (Attach SF 254 for each if not on file with Procuring Office.)

5a. Has this Joint-Venture previously worked together?  yes  no





Name & Address	Specialty	Worked with Prime before (Yes or No)
1) Fay, Spofford & Thorndike, Inc. 191 Spring Street, P.O. Box 802 Lexington, Massachusetts 02173	Engineering	Yes
2) Schoenfeld Associates, Inc. 12 Farnsworth Street Boston, Massachusetts 02115	Surveying	Yes
3)		
4)		
5)		
6)		
7)		
8)		



<p><b>a. Name &amp; Title:</b> Craig C. Halvorson Principal</p>	
<p><b>b. Project Assignment:</b> Principal-in-Charge</p>	
<p><b>c. Name of Firm with which associated:</b> The Halvorson Company, Inc.</p>	
<p><b>d. Years experience: With This Firm</b> <u>8</u> <b>With Other Firms</b> <u>12</u></p>	
<p><b>e. Education: Degree(s) / Year / Specialization</b> B.L.A. - 1966 Landscape Architecture M.L.A. - 1970 Landscape Architecture</p>	
<p><b>f. Active Registration: Year First Registered/Discipline</b> 1977 Registered Landscape Architecture, No. 576/ Massachusetts 1979 CLARB Certificate No. 151</p>	
<p><b>g. Other Experience and Qualifications relevant to the Proposed project</b></p> <p>1) <u>Post Office Square Park</u>, Boston, Massachusetts Site Design through Contract Documents and Construction Administration for 1.7 acre passive urban park in downtown financial district. Principal-in-Charge.</p> <p>2) <u>Front Park</u>, Cambridge, Massachusetts Design, Contract Document preparation and Construction Observation of a major park linking the East Cambridge residents and office/research development to the Charles River waterfront. Principal-in-Charge.</p> <p>3) <u>Charles Park</u>, Cambridge, Massachusetts Design, Contract Document preparation and Construction Administration for major park in East Cambridge Open Space Network. Principal-in-Charge.</p> <p>4) <u>Market Landing</u>, Newburyport, Massachusetts - Design, Contract Document preparation and Construction Observation of major civic park connecting downtown to waterfront. Principal-in-Charge.</p>	



<p><b>a. Name &amp; Title:</b> Cynthia W. Smith, Senior Associate</p>	
<p><b>b. Project Assignment:</b> Project Landscape Architect</p>	
<p><b>c. Name of Firm with which associated:</b> The Halvorson Company, Inc.</p>	

<p><b>d. Years experience: With This Firm</b> <u>11.</u> <b>With Other Firms</b> <u>11.</u></p>	
<p><b>e. Education: Degree(s) / Year / Specialization</b> BLA - 1976 University of Oregon (Bachelor of Landscape Architecture) MLAUD - 1984 Harvard University (Masters of Landscape Architecture in Urban Design)</p>	
<p><b>f. Active Registration: Year First Registered/Discipline</b> 1979 - Registered Landscape Architect, Massachusetts, No. 618</p>	
<p><b>g. Other Experience and Qualifications relevant to the proposed project</b> Post-Office Square Park, Boston, Massachusetts Site design, design development for 1.7 acre passive urban park in financial district. Project Manager/designer. Boylston Street Streetscape, Boston, Massachusetts Master plan through design development of Boylston Street from Arlington to the Fenway. Includes street tree planting, lighting, pavement patterns and streetscape amenities. Project Manager. Southwest Corridor Mission Hill Deck Park, Boston, Massachusetts Schematic design through Construction Documentation of linear park including 2 play areas, fountain, basketball and tennis courts, amphitheatre and parkland. Extensive community participation. Project Landscape Architect.</p>	<p><b>1. Active Registration: Year First Registered/Discipline</b></p> <p><b>g. Other Experience and Qualifications relevant to the proposed project</b> <u>Newburyport Waterfront Park</u>, Newburyport, Massachusetts Site design and Construction Documentation for park and promenade along Merrimac River on downtown waterfront.</p>



<p><b>a. Name &amp; Title:</b> Thomas R. Doolittle Associate</p>	
<p><b>b. Project Assignment:</b></p>	<p>Staff Landscape Architect/Associate</p>
<p><b>c. Name of Firm with which associated:</b></p>	<p>The Halvorson Company, Inc.</p>
<p><b>d. Years experience: With This Firm ___</b>      <b>With Other Firms __2__</b></p>	
<p><b>e. Education: Degree(s) / Year / Specialization</b></p>	<p>B.L.A., 1983, Landscape Architecture Ball State University</p>
<p><b>f. Active Registration: Year First Registered/Discipline</b></p>	<p>1986 Mass. Reg. No. 835</p>
<p><b>g. Other Experience and Qualifications relevant to the proposed project:</b></p>	<p>1) <u>Forestdale and Ridge Schools</u>, Sandwich, Massachusetts Site Planning, Design, Contract Document preparation and Construction Observation for two new schools (K through 8).</p> <p>2) <u>Hernandez School Playground</u>, Roxbury, Massachusetts Contract Document preparation and Construction Observation for large school yard including tot lots; amphitheater; paved play areas; student gardens and landscaping and lighting.</p>
<p><b>a. Name &amp; Title:</b></p>	<p><b>b. Project Assignment:</b></p> <p><b>c. Name of Firm with which associated:</b></p> <p><b>d. Years experience: With This Firm ___</b>      <b>With Other Firms ___</b></p> <p><b>e. Education: Degree(s) / Years / Specialization</b></p> <p><b>f. Active Registration: Year First Registered/Discipline</b></p> <p><b>g. Other Experience and Qualifications relevant to the proposed project:</b></p> <p>3) <u>Cleary Square/Logan Square Site Improvements</u>, Hyde Park, Massachusetts Schematic Design, Design, Contract Document preparation and Construction Observation for renovation and rehabilitation of sidewalks and roadways, including traffic island reconfiguration; new sidewalks; curbs; lighting and street trees.</p>





<p><b>a. Name &amp; Title:</b> Ann Frick Associate</p>	
<p><b>b. Project Assignment:</b></p>	<p>Staff Landscape Architect/Associate</p>
<p><b>c. Name of Firm with which associated:</b></p>	<p>The Halvorson Company, Inc.</p>
<p><b>d. Years experience: With This Firm ___ With Other Firms __2_</b></p>	
<p><b>e. Education: Degree(s) / Year / Specialization</b></p>	<p>B.A. Bowdoin College, 1977 History M.L.A., University of Virginia, 1983 Landscape Architecture</p>
<p><b>f. Active Registration: Year First Registered/Discipline</b></p>	<p>1986 Mass. Reg. No. 851</p>
<p><b>g. Other Experience and Qualifications relevant to the proposed project:</b></p>	<p>1) <u>Beaver Brook Reservation, M.D.C., Belmont/Waltham, Massachusetts</u> Master Planning, Design, Contract Document preparation and Construction Observation for renovation of a 65-acre park including natural woodlands; picnic areas; tot lot play areas (2) and large children's spray pool.</p> <p>2) <u>Tenshin-en, Museum of Fine Arts, Boston, Massachusetts</u> Design Interpretation, Contract Document preparation and Construction Observation for large Japanese garden.</p>



Michael J. Basil

b. Project Assignment:  
Staff Landscape Architect

c. Name of Firm with which associated:  
The Halvorson Company, Inc.

d. Years experience: With This Firm 1 With Other Firms 3

e. Education: Degree(s) / Year / Specialization  
BSLA - 1984 Landscape Architecture

f. Active Registration: Year First Registered/Discipline

g. Other Experience and Qualifications relevant to the proposed project:

Post Office Square Park - Boston, Massachusetts  
Responsible for schematic design studies and presentation drawing preparation for a major civic park in downtown Boston.

Charles Park - Cambridge, Massachusetts  
Provided design input, presentation sketches and technical research for preliminary park studies.

Lake Washington Boulevard, Seattle, Washington  
Project co-designer for 9.2 mile boulevard restoration project. Project involved redevelopment of boulevard parks and roadways consistent with the 1903 Olmsted plan.

b. Project Assignment:

c. Name of Firm with which associated:

d. Years experience: With This Firm \_\_\_\_\_ With Other Firms \_\_\_\_\_

e. Education: Degree(s) / Years / Specialization

f. Active Registration: Year First Registered/Discipline

g. Other Experience and Qualifications relevant to the proposed project:

The Shipyard, Kirkland, Washington

Prepared design alternatives, landscape guidelines, and Phase I master plan for a mixed-use development on Lake Washington. The program included design of 2 waterfront parks and a comprehensive pedestrian linkage system throughout the site.

Washington State Vietnam Veterans Memorial, Olympia, Washington

Responsible for preliminary design and construction documents sited to be compatible with the existing Olmsted plans for the capitol grounds, the Memorial includes a 6' circular granite wall, cut into an existing grassed slope, which bears the names of the 1065 War Veterans.



<p><b>a. Name &amp; Title:</b> April Potter</p> <p><b>b. Project Assignment:</b> Staff Landscape Architect</p> <p><b>c. Name of Firm with which associated:</b> The Halvorson Company, Inc.</p> <p><b>d. Years experience: With This Firm</b> <u>1</u> <b>With Other Firms</b> <u>1</u></p> <p><b>e. Education: Degree(s) / Year / Specialization</b> M.L.A. Cornell University, 1986, Landscape Architecture</p> <p><b>f. Active Registration: Year First Registered/Discipline</b></p> <p><b>g. Other Experience and Qualifications relevant to the proposed project:</b> 1) <u>Beaver Brook Reservation, M.D.C., Belmont/Waltham, Massachusetts</u> Contract Document preparation for renovation of a 65-acre park including natural woodlands; picnic areas; tot lot play areas (2) and large children's spray pool. 2) <u>Denmark Elementary School, Denmark, Maine</u> Product Research, Design Development, Contract Document preparation and Cost Estimates for two play areas (K-3; 4-6).</p>	<p><b>a. Name &amp; Title:</b></p> <p><b>b. Project Assignment:</b></p> <p><b>c. Name of Firm with which associated:</b></p> <p><b>d. Years experience: With This Firm</b> <u>    </u> <b>With Other Firms</b> <u>    </u></p> <p><b>e. Education: Degree(s) / Years / Specialization</b></p> <p><b>f. Active Registration: Year First Registered/Discipline</b></p> <p><b>g. Other Experience and Qualifications relevant to the proposed project:</b> 3) <u>Highland Park Master Plan, Roxbury, Massachusetts</u> Preparation of documentation for master plan of historic park including paved plaza; water tower; tot lot; circulation systems; lighting; vegetation restoration and planting.</p>
--	--



<p><b>a. Name &amp; Title:</b> ROBERT J. CATON SENIOR VICE PRESIDENT</p>	<p><b>a. Name &amp; Title:</b> GEORGE L. EARLE III ASSOCIATE</p>
<p><b>b. Project Assignment:</b> Principal-in-Charge</p>	<p><b>b. Project Assignment:</b> Project Manager</p>
<p><b>c. Name of Firm with which associated:</b> FAY, SPOFFORD &amp; THORNDIKE, INC.</p>	<p><b>c. Name of Firm with which associated:</b> FAY, SPOFFORD &amp; THORNDIKE, INC.</p>
<p><b>d. Years experience: With This Firm</b> 32 <b>With Other Firms</b> ---</p>	<p><b>d. Years experience: With This Firm</b> 23 <b>With Other Firms</b> ---</p>
<p><b>e. Education:</b> Degree(s) / Year / Specialization B.S., 1957, Civil Engineering</p>	<p><b>e. Education:</b> Degree(s) / Years / Specialization, B.S., 1963, Civil Engineering, University of Maine Special Studies, 1964 M.S., 1975, Engineering Management, Northeastern Univ.</p>
<p><b>f. Active Registration:</b> Year First Registered/Discipline 1971, P.E., Civil Engineering</p>	<p><b>f. Active Registration:</b> Year First Registered/Discipline 1972, P.E., Civil Engineering</p>
<p><b>g. Other Experience and Qualifications relevant to the proposed project:</b> Mr. Caton specializes in project administration and has directed numerous urban design projects. These have required site preparation, extensive utility alteration, with relocation and reconstruction of sewerage, drainage, waterworks, street lighting, and coordination of public and private utility relocations. Of the many urban park and streetscape projects are several requiring extensive coordination among the engineering and landscape architecture disciplines, such as several roadway projects and Government Plaza, Malden, MA; community planning/engineering design of a \$4 million urban systems project, Peabody; engineering design for Harbor Gateway development, Boston, for EDIC; planning and engineering for Crosstown Industrial Park, Boston; site preparation, roadway construction, and utility relocation contracts for Washington Park, Boston; East Central Project, Worcester; Point Pleasant Park, Cambridge; and many others.</p>	<p><b>g. Other Experience and Qualifications relevant to the proposed project:</b> Mr. Earle has extensive experience in planning, design and construction management of street, highway, park, site development, utility relocation, and water, sewer, drainage projects. Recently, he was Project Manager for rehabilitation of public roadways and resident inspection of roadway construction/reconstruction on separate contracts for Boston Public Works Dept. He was Project Engineer on a Combined Sewer Separation Project in Worcester, a complex project involving installation of large diameter overflow collectors and interceptor sewers. Previous work includes major infrastructure improvements for Washington Park Urban Renewal Park Area for the BRA. Other design support activities have included field survey, subsurface soils investigations and preparation of land plans for temporary construction easements, utility easements, land acquisition, etc.</p>





<p><b>a. Name &amp; Title:</b> <b>GEORGE PROTASOWICKI</b> <b>ENGINEER</b></p>	<p><b>a. Name &amp; Title:</b> <b>PATRICIA G. DOMIGAN</b> <b>ASSISTANT ENGINEER</b></p>
<p><b>b. Project Assignment:</b> Project Engineer</p>	<p><b>b. Project Assignment:</b> Drainage</p>
<p><b>c. Name of Firm with which associated:</b> <b>FAY, SPOFFORD &amp; THORNDIKE, INC.</b></p>	<p><b>c. Name of Firm with which associated:</b> <b>FAY, SPOFFORD &amp; THORNDIKE, INC.</b></p>
<p><b>d. Years experience: With This Firm</b> <u>6</u> <b>With Other Firms</b> <u>15</u></p>	<p><b>d. Years experience: With This Firm</b> <u>1</u> <b>With Other Firms</b> <u>1</u></p>
<p><b>e. Education:</b> Degree(s) / Year / Specialization B.S., 1977, Civil Engineering, Northeastern University</p>	<p><b>e. Education:</b> Degree(s) / Years / Specialization B.S., 1987, Civil Engineering, Univ. of Massachusetts Concentration in Water Resource Engineering</p>
<p><b>f. Active Registration:</b> Year First Registered/Discipline</p>	<p><b>f. Active Registration:</b> Year First Registered/Discipline</p>
<p><b>g. Other Experience and Qualifications relevant to the proposed project:</b> Mr. Protasowicki has extensive experience in planning, urban site design, and construction administration of private and municipal facilities. He has served in responsible charge of site work, utilities, retention ponds and onsite wastewater disposal systems including construction administration for the Visitor's Center at Plimouth Plantation; design of site; utilities; and two linked water retention ponds for drainage runoff, chilled plant water, and overflow control measures to recharge onsite water wells via percolation beds; and construction services for Codex World Headquarters, Canton, MA; design of street widening/reconstruction and construction services for improvements at the Bradford School site, Dorchester, for Boston Public Facilities Department; engineering for Kennedy Park, Cambridge; and numerous street reconstruction projects for Washington Park Urban Renewal Area Projects in Roxbury, for the BRA.</p>	<p><b>g. Other Experience and Qualifications relevant to the proposed project:</b> Ms. Domigan's background includes highway engineering, water resources engineering, hydrology and hydraulics, and considerable experience in computer-aided design and various computer models, such as the U.S. Soil Conservation Service TR-55 method of computing site runoff; Corps of Engineers HEC-2 backwater program; and design of open and closed storm drain systems. She had an engineering position with MDPW, responsible for design, estimation, and inspection of roadway maintenance projects. In Burlington, MA, she was responsible for design and inspection of two \$200K drainage projects and inspection of a \$400K roadway reconstruction. At FST, she has prepared hydraulic/hydrologic computations and design for various projects including bridge replacements in Simsbury, CT for ConnDOT. She also prepared computations and analyses for drainage on a proposed waste-to-energy plant in Shirley, MA.</p>



<p>b. Project Assignment: Community Liaison</p>	<p>b. Project Assignment: Civil Engineering/21e Site Assessment</p>
<p>c. Name of Firm with which associated: FAY, SPOFFORD &amp; THORNDIKE, INC.</p>	<p>c. Name of Firm with which associated: FAY, SPOFFORD &amp; THORNDIKE, INC.</p>
<p>d. Years experience: With This Firm <u>6</u> With Other Firms <u>22</u></p>	<p>d. Years experience: With This Firm <u>1</u> With Other Firms <u>5</u></p>
<p>e. Education: Degree(s) / Year / Specialization 1945, B.A., History, Rutgers University 1975, M.C.P., Community Planning, Harvard University</p>	<p>e. Education: Degree(s) / Years / Specialization B.S., 1983, Civil Engineering, Univ. of Massachusetts</p>
<p>f. Active Registration: Year First Registered/Discipline n/a</p>	<p>f. Active Registration: Year First Registered/Discipline 1987, Engineer-in-Training</p>
<p>g. Other Experience and Qualifications relevant to the proposed project: At FST since 1981, Ms. Snyder served as community planner during construction of the MBTA Southwest Corridor Project, Section One. FST was Coordinating Consultant and Section One Designer for this \$744 million relocation of light rail, commuter rail, and Amtrak facilities in Boston. Ms. Snyder's role was to provide the communications link among the MBTA, contractor, designer and community. She has been responsible for coordination with owners, residents, and agencies on several projects in Boston including a Fort Point Channel/South Boston Roadway Improvements Study for the Boston Transportation Dept. Other recent and current Boston projects include the Boylston Street Streetscape Improvements Project for the City Public Works Dept. and the St. Botolph Street improvements for the BRA. Ms. Snyder has also participated in many other diverse environmental and site planning studies at FST.</p>	<p>g. Other Experience and Qualifications relevant to the proposed project: Mr. Nuthmann has highly diverse experience including considerable experience preparing environmental permits associated with construction projects, such as special permit plan preparation, hazardous waste site assessment reports, coordination and supervision of underground storage tank and hazardous waste removal. Actual permit requirements include preparation of Notice of Intent plans and supporting drainage design reports, Environmental Notification Form for MEPA review, Water Quality Certification for State and Corps of Engineers review. Other environmental regulatory experience includes preparation of Chapter 21E site assessment reports concerning oil and hazardous materials; design of associated recovery and removal programs; groundwater treatment; and preparation of discharge permit applications. He has also performed structural and foundation analysis and design and prepared condition reports on a number of building sites throughout New England.</p>



HARVEY H. STOLLER  
SENIOR ENGINEER

KAYED S. KHALIL  
SENIOR ENGINEER

b. Project Assignment: Geotechnical Engineering

b. Project Assignment: Construction Inspection

c. Name of Firm with which associated:

FAY, SPOFFORD & THORNDIKE, INC.

c. Name of Firm with which associated:

FAY, SPOFFORD & THORNDIKE, INC.

d. Years experience: With This Firm 16 With Other Firms 14

d. Years experience: With This Firm 1 With Other Firms 6

e. Education: Degree(s) / Year / Specialization

B.S., 1958, Civil Engineering, City College of New York

e. Education: Degree(s) / Years / Specialization

B.S., 1980, Civil Engineering, Kansas State Univ.  
B.S., 1986, Electrical Engineering, Kansas State Univ.

f. Active Registration: Year First Registered/Discipline

1962, P.E., Civil Engineering

f. Active Registration: Year First Registered/Discipline

Engineer in Training

g. Other Experience and Qualifications relevant to the proposed project:

Mr. Stoller specializes in geotechnical engineering and directs geotechnical work at FST. He has prepared soil studies and designed foundations for a wide variety of projects including rapid transit, airports, bridges, highways, buildings, pipelines, wastewater treatment plants, and drydocks. He directed FST's geotechnical coordination of the MBTA's Southwest Corridor in Boston and for a \$50 million underground rapid transit station and pocket track structure on the Los Angeles Metro Rail Project. He has participated in many highway and bridge design projects throughout New England and design of pavements for street reconstruction. He provided geotechnical expertise on several projects at Logan International Airport involving runway pavement design, boring layouts, analysis of boring results, and determination of types of foundations to be used.

g. Other Experience and Qualifications relevant to the proposed project:

Mr. Khalil recently joined the firm's Urban Design Department, following several years of varied engineering experience on civil engineering projects. At FST, Mr. Khalil has been involved in roadway reconstruction projects which include preparing engineering estimates for construction at Broadway and Eastern Avenue in the City of Malden. Also, he was involved in the widening of Beech Street in West Roxbury for the City of Boston Public Works Department, and design for a roadway reconstruction contract at Washington Park in Roxbury for the Boston Redevelopment Authority. Previous work experience included assignments with two construction companies in Abu-Dhabi, where Mr. Khalil provided construction inspection services for major construction projects such as buildings, bridges, roads, waterworks, and utility relocations.



**SENIOR ENGINEER**

**ALAN J. GREENE  
ENGINEER**

b. Project Assignment: **Electrical Engineering**

b. Project Assignment: **Mechanical Engineering - Fountain**

c. Name of Firm with which associated:

**FAY, SPOFFORD & THORNDIKE, INC.**

c. Name of Firm with which associated:

**FAY, SPOFFORD & THORNDIKE, INC.**

d. Years experience: With This Firm 9 With Other Firms 5

e. Education: 1970, B.S., Electrical Engineering, Tufts Univ.  
M.S., 1975, Electrical Engineering, Northeastern Univ.

d. Years experience: With This Firm 1 With Other Firms 6

e. Education: Degree(s) / Years / Specialization  
B.S., 1980, Mechanical Engineering, Northeastern Univ.

f. Active Registration: **Year First Registered/Discipline**

**P.E., 1986, Electrical Engineering**

f. Active Registration: **Year First Registered/Discipline**

**Engineer-in-Training**

g. Other Experience and Qualifications relevant to the proposed project:

Mr. Sheldon is experienced in design and installation of electrical distribution systems, interior and exterior, overhead and underground, and at many different voltage classes; interior lighting; area lighting and flood lighting; motor power and control circuits; fire and other alarm systems. Project experience includes parks, highways, piers and wharves, rapid transit systems, and other diverse facilities. A Boston resident, he was Electrical Engineer on two major parkland projects: on the MBTA's Southwest Corridor Project in Boston, he coordinated closely with the landscape architects in lighting for the Corridor's linear parkland as well as providing services for rapid transit traction power, substations, and tunnel lighting. He served in a similar capacity for lighting and amenities at Lechmere Canal Park in Cambridge, MA. In this context, he was also responsible for review of the fountain designers' work.

g. Other Experience and Qualifications relevant to the proposed project:

Mr. Green recently joined the Mechanical Engineering Department at FST as an HVAC/plumbing design engineer with diversified background and experience. His early experience was as a Plant Engineer with a private water utility, where he was responsible for plant operations and maintenance, design of pumping plants, and electromechanical troubleshooting, repair, and overhaul. He is presently working on a modular building for the U.S. Air Force. His responsibilities include all mechanical design for HVAC. He is assigned as Project Engineer on another project for the U.S. Air Force designing a clean room to house an oxidation/diffusion furnace and associated equipment at Hanscom AFB. Other assignments at FST have included HVAC design and fire protection for a new baggage handling system and facility for American Airlines at Logan International Airport.





Linual P. Harless	b. Project Assignment: Surveyor	b. Project Assignment:
c. Name of Firm with which associated: Schoenfeld Associates, Inc.	c. Name of Firm with which associated:	
d. Years experience: With This Firm <u>1</u> With Other Firms <u>20</u>	d. Years experience: With This Firm _____      With Other Firms _____	
e. Education:    Degree(s) / Year / Specialization B.S. / 1970 / Civil Engineering / Surveying	e. Education:    Degree(s) / Years / Specialization	
1. Active Registration: Year First Registered/Discipline 1971 / Registered Land Surveyor	1. Active Registration: Year First Registered/Discipline	
g. Other Experience and Qualifications relevant to the proposed project  Mr. Harless has over twenty years of experience in civil engineering and land surveying. His survey work encompasses projects in residential, commercial, and government owned areas. He has participated in redevelopment programs in congested urban streets, in new development design, both urban and suburban in character, and on large-scale highway projects. He has worked with many government agencies and so is familiar with their policies, procedures, and requirements.	g. Other Experience and Qualifications relevant to the proposed project:	



a. Project Name & Location	b. Nature of Firm's Responsibility	c. Project Owner's Name & Address	d. Completion Date (actual or estimated)	e. Estimated Cost (in thousands)	
				Entire Project	Work for which Firm was/is responsible
1) Market Landing Park Newburyport, Massachusetts	Landscape Architectural Design, Project Management, Construction Administration	Newburyport Redevelopment Authority City Hall Newburyport, MA 01950	1984	\$ 1,200	All
2) Coastal Cement Park Boston, Massachusetts	Complete Park Design, Construction Documents preparation, Construction Administration	Economic Development Industrial Corporation 10 Drydock Avenue Boston, MA 02210	1988	500	All
3) Front Park Cambridge, Massachusetts	Landscape Architectural Design, Project Management, Construction Administration	Cambridge Community Development Department City Hall Annex, 57 Inman St. Cambridge, MA 02139	1987	600	All
4) Post Office Square Park Boston, Massachusetts	Landscape Architectural Design, Project Management, Construction Administration	Friends of Post Office Square 50 Federal Street Boston, MA 02110	1991	4,000	All
5) Charles Park Cambridge, Massachusetts	Landscape Architectural Design, Contract Documents, Project Management, Construction Administration	Cambridge Community Development Department City Hall Annex, 57 Inman St. Cambridge, MA 02139	1990	1,000	All
6) Boston Open Space Survey .. Boston, Massachusetts	Park Inventory & Evaluation	Mayor's Office of Capital Planning City Hall, 1 City Hall Plaza Boston, MA 02201	1987	125 (fee)	All
7) Point Park Cambridge, Massachusetts	Full Landscape Architectural Design Services, Construction Documentation, Construction Administration	Cambridge Redevelopment Authority 336 Main Street Cambridge, MA 02139	1989	1,200	All

(continued)



a. Project Name & Location	b. Nature of Firm's Responsibility	c. Project Owner's Name & Address	d. Completion Date (actual or estimated)	e. Estimated Cost (in thousands)	
				Entire Project	Work for which Firm was/is responsible
8) Corbett Park Boston, Massachusetts	Landscape Architectural Design, Contract Documents, Project Management, Construction Administration	Boston Parks and Recreation Department 294 Washington Street Boston, MA 02108	1990	1,000	All
9) Highland Park	Master Planning and Schematic Design	Boston Parks and Recreation Department 294 Washington Street Boston, MA 02108	1988	20 (fee)	All
10) Hernandez School Park Roxbury, Massachusetts	Landscape Architectural Design, Contract Documents, Project Management, Construction Administration	City of Boston Public Facilities Department 15 Beacon Street Boston, MA 02108	1989	300	All



a. Project Name & Location	b. Nature of Firm's Responsibility	c. Agency (Responsible Office) Name & Address	d. Percent complete	Entire Project	Work for which firm is responsible
Not Applicable					





338 of The Halvorson Company's staff members assigned to Hayes Park are Boston residents.

11. The foregoing is a statement of facts.

Signature:  Typed Name and Title: Craig C. Halvorson

Date:

October 31, 1988



## **5 FEE FOR SERVICES**



Cont

832,000 + 20000

832,000

126,000

126,000

1,084,000

**5. FEE FOR SERVICES**

**5A. FEES AND EXPENSES**

**PROJECT FEES**

	The Halvorson Company	Fay, Spofford and Thorndike	Schoenfeld Associates
1. Preliminary Design & Engineering	\$10,000	\$8,900	12,900
2. Construction Contract Documents	\$16,000	\$17,100	33,000
3. Resident Engineering Services	\$5,000	\$45,500	50,000
4. Drawings & Reports for PIC, or Other Agencies	0	Not Anticipated	
5. Borings, Tests, Land Surveys, Visual Inspections & Other Special Investigations	\$500	\$10,800	\$6,108 17,708
6. Consultation, Advice & Coordination	\$1,500 *	\$4,400	5,900
<b>TOTAL</b>	<b>\$33,000</b>	<b>\$86,700</b>	<b>\$6,108</b>

\*Condition - Limit of three (3) community meetings

125,308



## REIMBURSABLE EXPENSES

The Halvorson Company, Inc.	\$990
Fay, Spofford & Thorndike, Inc.	\$5,500
Schoenfeld Associates, Inc.	\$25

## FEES AND EXPENSES SUMMARY

Design/Engineering Fees	\$119,700
Design/Engineering Expenses	\$6,490
Surveying Fees	\$6,108
Surveying Expense	\$25

## 5B. STAFF AND BILLING RATES

### The Halvorson Company, Inc.

Name	Title	Hourly Billing Rate
Craig C. Halvorson	Principal	\$80.00
Cynthia W. Smith	Senior Associate	59.85
Thomas R. Doolittle	Associate	45.75
Ann Frick	Associate	45.75
Michael J. Basil	Landscape Architect	40.50
April Potter	Landscape Architect	33.10

### Fay, Spofford & Thorndike, Inc.

Name	Title	Hourly Billing Rate
Robert J. Caton	Senior Vice President	\$98.80
Christine Dangora	Technical Typist	28.60
Patricia G. Domigan	Assistant Engineer	36.40
George L. Earle III	Associate	67.88
Gilbert A. Ferreira	Senior Drafter	32.86
Alan J. Greene	Engineer	44.98
Lee F. Harvey	Technical Typist	28.60
Laurel A. Haug	Technical Typist	32.08
Melanie J. Hurley	Technical Typist	24.12
Kayed S. Khalil	Engineer	44.20
Larry M. LaPointe	Detailer	35.98
William M. Martel	Drafter	28.60
William J. Mulcahy	Engineer	49.76
Conrad C. Nuthmann	Engineer	45.50
William E. Polcsa	Drafter	29.02
George Protasowicki	Engineer	55.90
Jeffrey P. Sheldon	Senior Engineer	54.86
Mary H. Snyder	Senior Planner	45.50
Harvey H. Stoller	Senior Engineer	53.56





Schoenfeld Associates, Inc.

Title	Hourly Billing Rate
Principal	\$100.00
Project Manager	60.00
Engineer	60.00
Technician	45.00
Party Chief One	45.00
Instrument Person One	34.00
Rod Person One	25.00
Drafter	34.00
Technical Typist	28.00



## **6 AFFIRMATIVE ACTION POLICY STATEMENTS**



## AFFIRMATIVE ACTION POLICY/PLAN STATEMENT

The Halvorson Company, Inc. hereby adopts the following Affirmative Action Policy and Plan:

### A. General

1. The Halvorson Company, Inc. will not discriminate against any employee or applicant for employment because of race, creed, color, national origin or sex. The Halvorson Company, Inc. will take affirmative action to insure that applicants are employed and that employees are treated during employment without regard to their race, creed, color, national origin or sex. Such action shall include but not be limited to, the following: employment, upgrading, demotion or transfer; recruitment or recruitment/advertising; layoff or termination; rates of pay or other forms of compensation; and selection for training, including apprenticeship. The Halvorson Company, Inc. agrees to post in conspicuous places, available to employees and applicants for employment, the provisions of this non-discrimination policy.
2. The Halvorson Company, Inc. will, in all solicitations or advertisements for employees placed by or on behalf of The Halvorson Company, Inc., state that all qualified applicants will receive consideration for employment without regard to race, creed, color national origin or sex.
3. The Halvorson Company, Inc. will permit access to all books, records, and accounts pertaining to its employment practices by the Federal, State or Local Offices of Human Rights, their representatives, Contracting Officers, or agents for purposes of investigation to ascertain compliance with this provision.

### B. Utilization of Minority Business Enterprises

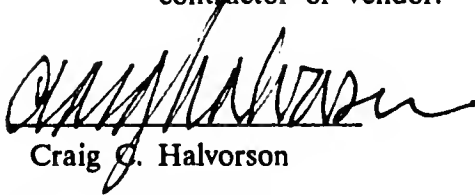
1. It is the policy of The Halvorson Company, Inc. that minority business enterprises shall have the maximum practicable opportunity to participate in the performance of its contracts.
2. The Halvorson Company, Inc. agrees to use its best efforts to carry out this policy in the award of its sub-contracts to the fullest extent consistent with the efficient performance of its contract work.



C Applicability to Sub-Contracts

1. The Halvorson Company, Inc. will include the provisions of the foregoing paragraphs in every sub-contract, unless superceded by rules, regulations or orders of the Federal, State or Local Government, so that such provisions will be binding upon each sub-contractor or vendor.

By:

  
Craig Q. Halvorson

Date:

01 31 1988





**EMPLOYEE CLASSIFICATION MATRIX**

Classification	Total Employees		Total Boston Residents		Total Minority		Percent	
	M	F	M	F	M	F	M	F
Landscape Architects (Registered)	6	2	1	1	0	0	75	25
Technicians	4	4	0	2	0	1	44	56
Clerical	0	3	0	1	0	0	0	100
<b>TOTALS</b>	<b>10</b>	<b>9</b>	<b>1</b>	<b>4</b>	<b>0</b>	<b>1</b>	<b>50</b>	<b>50</b>



## AFFIRMATIVE ACTION

### FAY, SPOFFORD & THORNDIKE, INC.

FST has a longstanding tradition of hiring, training, educating, and advancing minorities and women, and since its inception has complied both with the spirit and substance (approved by federal authority) of Affirmative Action and Equal Employment Opportunity. Affirmative Action applies to all our employment practices including recruiting, advertising, rates of pay, and other compensation and benefits. It also applies to many other activities of our organization, such as community involvement and youth opportunity programs.

As a long-established engineering firm, FST has consistently employed and sought to increase employment of members of minority ethnic groups and women, has established a tuition reimbursement program to encourage employees to improve their skills and training, and encourages, through paid time off, employees taking qualifying examinations (i.e., registrations) to their professional advantage. FST employees are further encouraged to participate in various professional societies such as the Boston Society of Civil Engineers, the Women's Transportation Seminar, and the Society of Women Engineers.

Recently, in furtherance of our AA/EEO program, FST has established an active recruitment program at seven Greater Boston area colleges and universities. Over the next several months, senior management officials of the firm will be visiting these institutions with the intent of meeting and screening potential job candidates and inviting promising individuals for interviews with FST Department Heads. Of paramount importance is the objective to identify promising young women and minority engineers.

FST participates annually in the United Negro College Fund, utilizes minority students from Northeastern University and Wentworth Institute during their co-op work training curriculum, and advertises employment opportunities in Boston minority and neighborhood newspapers such as La Semana, Bay State Banner, South End News, and Sampan.

FST prohibits discrimination or denial of benefits of any activity, program, or employment process, especially with regard to assuring that Blacks, Hispanics, Asian Americans, American Indians, women, and handicapped persons, are treated fairly and equitably. No person will be discriminated against on the basis of race, creed, color, religious beliefs, national origin, ancestry, marital status, age, or gender.

Currently, approximately 27% of the firm's total employees are minorities and/or women. FST solicits and encourages minority/women firm participation on its projects, and utilizes the services of minority vendors or suppliers whenever possible.



FST's commitment to Affirmative Action/Equal Employment Opportunity is evidenced by the assignment of women and minority in-house personnel and Boston residents to key roles on this project.

During FST's joint-venture participation, as Coordinating Consultant and Section One Designer, for the Massachusetts Bay Transportation Authority's Southwest Corridor Project in Boston, FST was responsible for conceptualization, design, and implementation of an Education/Training Program to enable local project area high school students to work as interns in the project offices and learn the fundamentals of engineering and architecture. These minority and women interns have subsequently made new career choices, applied to, and been accepted in local colleges to enable them to continue this training. The program included career guidance and assistance with college applications and funding.



# SCHOENFELD ASSOCIATES, INC.

## AFFIRMATIVE ACTION POLICY STATEMENT

---

Schoenfeld Associates, Inc., a consulting engineering firm with nearly 30 years of experience, is a Woman-Owned Business. Upon the passing of our Founder, Richard J. Schoenfeld, Jr., in March, 1983, 100% of the corporate stock and management of the firm has been transferred to Mary J. Schoenfeld, thus qualifying Schoenfeld Associates as a Women's Business Enterprise (WBE), with certification by S.O.M.B.A. Mary J. Schoenfeld, the firm's Chief Operating Officer as well as Owner, is continuing the outstanding reputation of Schoenfeld Associates by maintaining a constant participation in the firm and upholding the company's high requirements of affirmative action.

Schoenfeld Associates has had an aggressive Affirmative Action Program for several years. The firm is currently over the 46% percent mark in minority employment and is continually striving to improve this record even further.

It has always been the policy of Schoenfeld Associates to provide equal employment opportunity; we have undertaken Affirmative Action to ensure that no person will be discriminated against on the grounds of race, color, sex, religion, national origin, age, marital status, physical handicap, criminal record, ancestry, or political beliefs.

The firm will further attempt to ensure that no reduction occurs in the present percentage of minority and women employees; to make a concerted effort to increase the number of minority and women applicants in professional positions, to continue to update the Affirmative Action Plan as required to reflect changes in the laws, and, when recruiting, to contact all appropriate employment services and schools as deemed necessary.

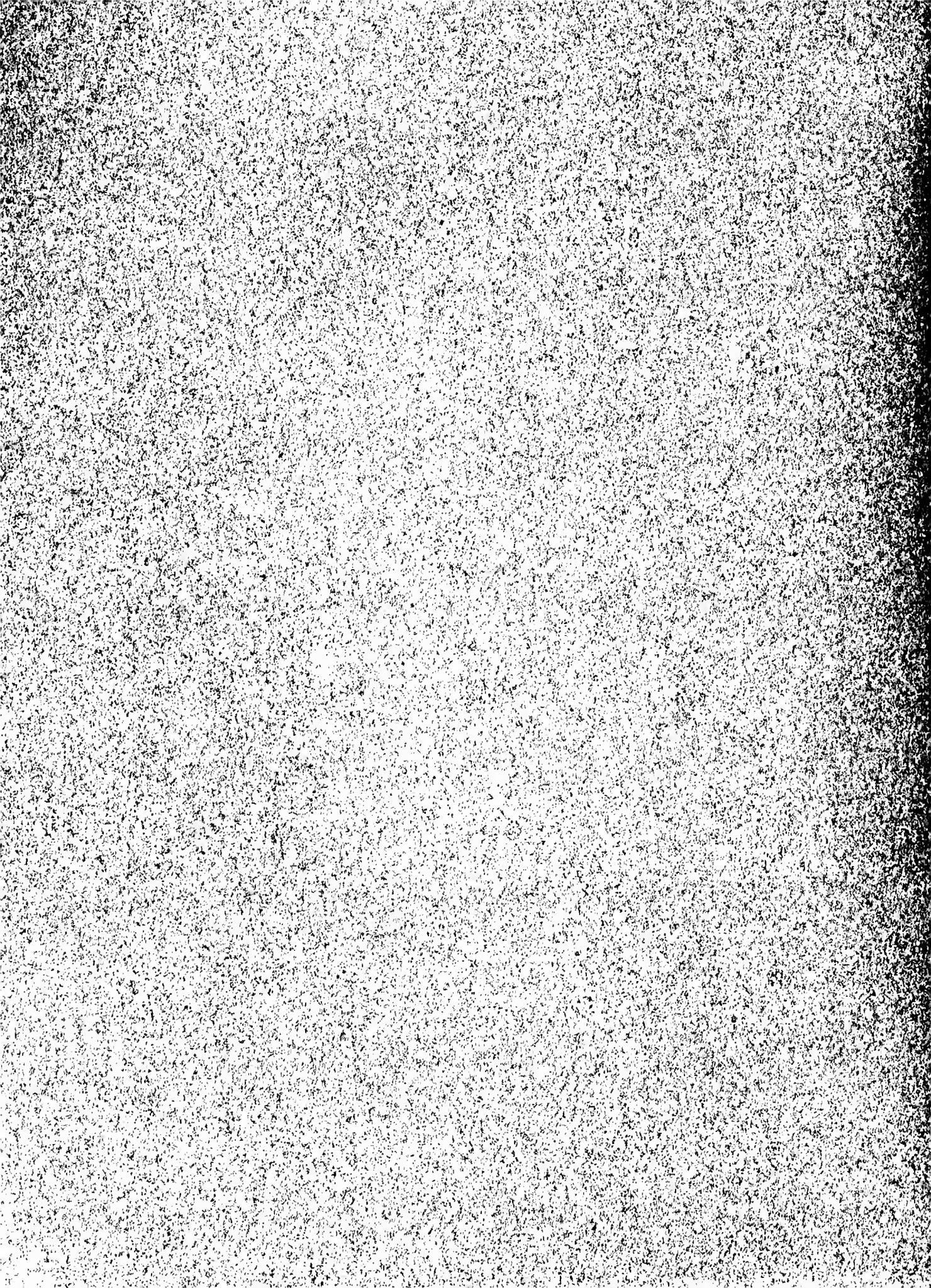
It is the continued goal of Schoenfeld Associates to improve its Affirmative Action Program through hiring procedures, personnel procedures, and contractual agreements with minority subconsultants. To eliminate any discrimination, each project manager is critically analyzed to ensure that equal opportunity is provided to each employee. Positive and aggressive measures are undertaken to eliminate discrimination problems in recruiting, hiring, training, and promoting minorities.

Thus, Schoenfeld Associates is committed to a program of Affirmative Action in order to assure employment opportunity for all people. This commitment is made in keeping with Title VII of the Civil Rights Acts of 1965, Federal Executive Order 11246.











BOSTON PUBLIC LIBRARY



3 9999 06315 856 0



