

in His our time

—1944

LIBRARY
OF
BIRMINGHAM-SOUTHERN
COLLEGE

Margaret -

No words of German, Greek, or Latin
seem appropriate, but I just
wanted you to have a copy of
"Toy Child" for old times' sake,
and just because you're you!

Love,

Jimmy

12.2.44

BIRMINGHAM-SOUTHERN COLLEGE



5 0553 01001511 0

Digitized by the Internet Archive
in 2010 with funding from
Lyrasis Members and Sloan Foundation

<http://www.archive.org/details/southernaccent1944birm>

... WHEREIN WE Record





THE *time* OF OUR



... THOSE



LIVES



EVENTFUL DAYS OF 1944

ON THE



"SMITTY"



FRESHMAN CLASS 1940

HIGHEST...

LTOP

WITH A



"GIG" AND COMPANY



Southern



ANN HAS YER NUMBER



TIT-TAT-TOW

IS THAT MY VERSE?!?!?



THEY ALL LAIED

Accent . . .

Published by
THE STUDENT BODY OF
BIRMINGHAM-SOUTHERN COLLEGE
BIRMINGHAM, ALABAMA

JIMMY WATTS, *Editor*
JOHN W. GRAHAM, *Business Manager*

Copyright
1944

DUDIN' UP

DATIN' UP



Southern



TIT-TAT-TOW

ANN HAS YER NUMBER

THIS *time* HONORING

MISS MARIAN JANE CRAWFORD

Accent . . .

Published by
THE STUDENT BODY OF
BIRMINGHAM-SOUTHERN COLLEGE
BIRMINGHAM, ALABAMA

JIMMY WATTS, *Editor*
JOHN W. GRAHAM, *Business Manager*

Copyright
1944

DUDIN' UP

DATIN' UP



THIS *time* HONORING

MISS MARIAN JANE CRAWFORD

A graduate of the famous Webb School and Randolph-Macon, a Phi Beta, and the holder of a Master's Degree from Southern Methodist University, Miss Crawford came to Birmingham-Southern College in 1939 as Secretary to the President and Instructor in Latin.

Indefatigably, since the time she has served as Acting Dean of Women for three summers, Instructor of Algebra, guardian of the campus activities calendar, and counsellor par excellence to students.

Her friendly graciousness, together with her natural dignity and uncanny initiative, go to make her the ideal co-ordinator of the intricate affairs of the office of a busy college president. Her sympathetic approach to the individual needs of her students, plus her delightful sense of humor, make her classes stimulating and interesting.

This is our humble way of expressing our sincere appreciation to her. . . .

. . . . T O W H O M W E

figures
L.S.
451
.E5664
1944



DEDICATE THIS BOOK

97963

“ N O M O R E *time*
 . . . *Said the*



DR. GEORGE R. STUART, *President*

FOR FOOLISHNESS" ADMINISTRATION

MRS. MARY HOLMES SENSABAUGH
Acting Dean of Women



DR. HENRY T. SHANKS
Dean



DR. E. SYDNOR OWNBEY
Acting Registrar



MR. N. M. YEILDING
Bursar

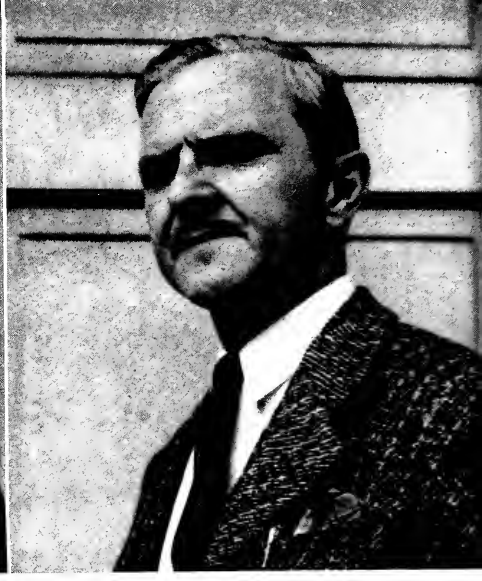
... and from the F A



MISS LUCIE MARIE FORD
Choir



DR. EOLINE WALLACE MOORE
Education



MR. WALLACE GRIEVES
Orchestra

DR. WILBUR DOW PERRY, *English*
DR. AUSTIN PRODOLHL, *German*
DR. WILLIAM ADOLPHUS MOOKI, *Mathematics*



MR. C. M. REAVES, JR.,
Assistant Bursar

CULTY—“Approved”



MR. R. H. WALSTON
Assistant to Bursar



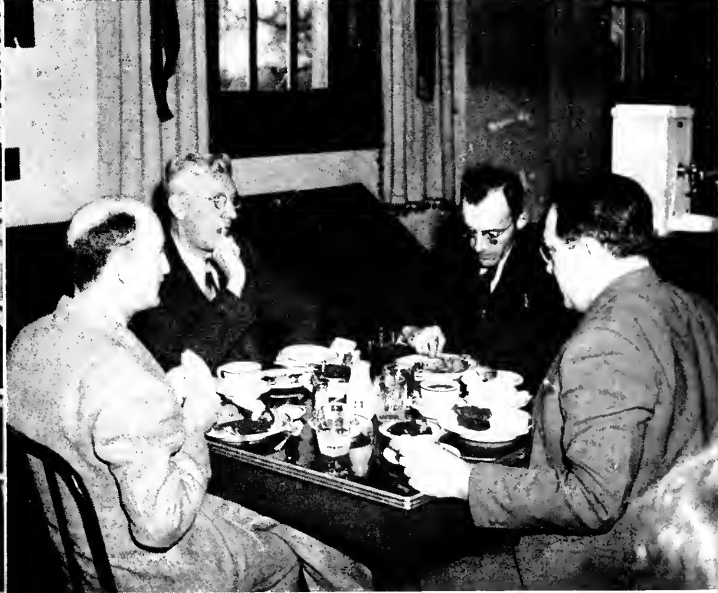
DR. RUSSELL S. POOR
Assistant to President



MR. S. V. TOWNSEND
Journalism



DR. DOUGLAS L. HUNT, *English*
DR. M. F. EVANS, *Speech*
MR. R. G. McWILLIAMS, *English*



MR. McWILLIAMS DR. W. A. WHITING MR. L. L. STEPHAN DR. POOR
Biology *Geography*

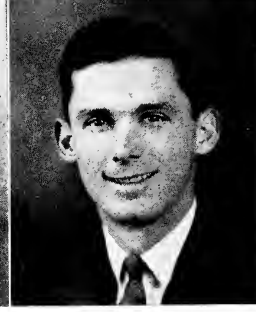
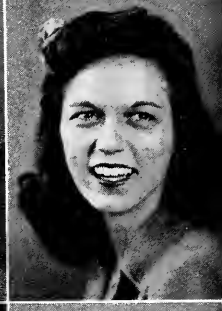
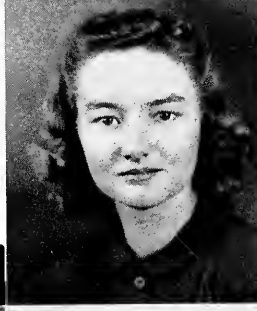
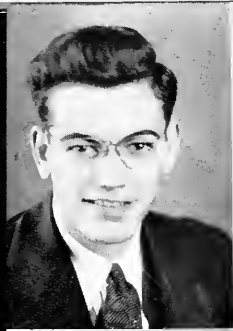
WE PAUSE IN MEMORY OF THESE MEN OF THE HILLTOP



RAY WILSON BARTLETT
JEROME KENT BOWERS
OSCAR URIAH COOK
KENNETH WALTER DEAN
WILLIAM LEE FAUCETTE
LUTHER ALONZO HARRELL
ROBERT LORENZO McNUTT
ROBERT MABRY NEWMAN
EDWIN BURGESS DUDDY
HENRY EDESEL WILSON
WILLIAM EDWARD WILSON



time AFTER *time* WE MET
OUR CLASSES



ABERNATHY
BANKS, M. C.
BOYKIN

ADAMS
BIGGS
BRANDES

ARNOLD
BLEVINS
BROWN

BALCH
BOLIN
CLEVELAND

BANKS, M. V.
BOWLING
COLEMAN

The

ABERNATHY, JAMES ROBERT, JR. KA
Vice President Kappa Alpha 3, 4; Y.M.C.A. 1, 2; Intramural Board 4; Orchestra 1, 2, 3, 4; Outstanding Athlete '44; Senior Sports Manager '44; Social Committee Senior Class; All Star: Soft Ball '43, Football '43.

ADAMS, EVA ELIZABETH ZTA
Corresponding Secretary Setz Tau Alpha 3; Pan-Hellenic Council 3; BSU 1, 2; Pi Delta Psi 3, Treasurer 4; Invitation Committee Senior Class.

ARNOLD, DOROTHY JEAN
President Sophomore Class 2; president Junior Class 3; president Tau Tau Tau 3; president Co-ed Club 3; president Honor Council 4; Hilltop News 1, 2; president Y.W.C.A. 4; secretary Tau Kappa Alpha 4; Mortar Board 3, 4; Director College Defense Council 3, 4; College Theatre 1, 2, 3, 4; Tennis Team 1; Who's Who 4; post-graduate student '43-'44.

BALCH, SAMUEL ALLEN, JR.
Executive Council 4; Y.M.C.A. 2, 3, 4; Choir, 3, 4; Kappa Phi Kappa 3, president 4; Pi Delta Psi 3, 4; Intramural Board 3, 4; Ring Committee Senior Class; All Star: Basketball 4.

BANKS, MARTHA VIVIEN TΦB
Hilltop News 2, 3; BSU 2, 3; Rusurbe 1, 2, 3; Choir 1, 2, 3; Le Cercle Francais; International Relations Club 3; Chi Sigma Phi 1, 2, 3, 4.

BANKS, MARY CORNELIA ΠΒΦ
Phi Beta Kappa 4; Mortar Board 3, president 4; Alpha Lambda Delta 1, 2; Who's Who 3, 4; Executive Council 1, 4; Student Life Committee 3, 4; Y.W.C.A. 1; Southern Accent 3; Hilltop News 1, 2, editor 3, 4; Choir 3; Freshman Commission 1; Le Cercle Francais 1, 2; Quad 1, 2, 3; Omicron Mu Kappa 4.



PREXY GIBBS AND HIS VICE, MEACHAM, THE "ROSENWALL" GAL . . .

You are welcome here, come from far and near

SENIORS

BIGGS, WILLIE NELL ZTA
Alpha Lambda Delta 1; Executive Council 1, 2; Amazons 3; Y.W.C.A. 1, 2, vice president 3; Freshman Commission 1; Eta Sigma Phi 4.

BLEVINS, ANN WINN ΠΒΦ
Phi Beta Kappa 4; Secretary Pi Beta Phi 2, 3; Mortar Board 3, 4; Alpha Lambda Delta 1, 2; Who's Who 4; Hilltop News 1, 2, 3, 4; Y.W.C.A. 1, vice president 2, treasurer 3; Phi Sigma Iota, president 3.

BOLIN, RUTH RAMSAY ΘΥ
Theta Upsilon 1, 2, treasurer 3, president 4; Alpha Lambda Delta 1, 2; Pan-Hellenic Council 3, 4; Amazons 3, treasurer 4; Chi Nu Tau 4; Intramural Board 4; Biology Lab Assistant 4; Accent Beauty 3.

BOWLING, EDNA JO ΑΟΠ
Y.W.C.A., freshman commission 1, secretary 2; Choir 1, 2, 3, 4; Mu Alpha 1, 2, 3, vice president 4; Kappa Delta Epsilon 3, 4; Invitation Committee Senior Class.

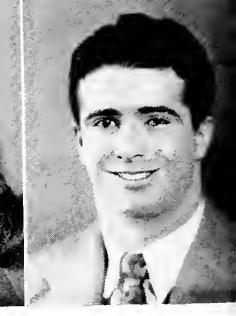
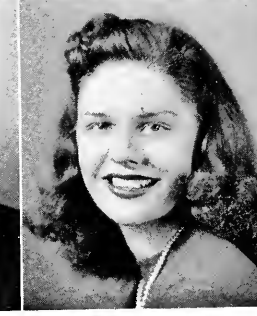
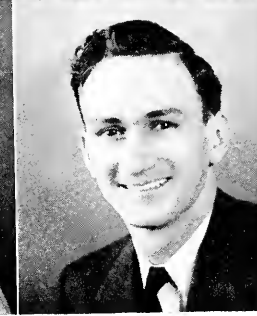
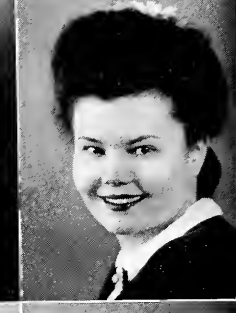
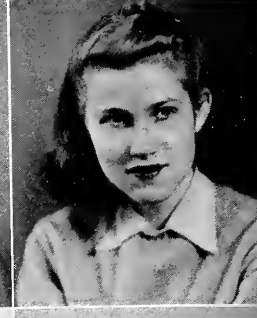
BOYKIN, ELEANOR GAINES
Phi Beta Kappa 4; Alpha Lambda Delta 1, secretary 2; Y.W.C.A. 1, 2; Red Cross 4; International Relations Club, president 4.

BRANDES, ELY MAX
Phi Beta Kappa 4; Honor Council 4; Hilltop News 2, 3, 4; Le Cercle Francais 1, 2; Quad 2; International Relations Club, secretary 3, 4.

BROWN, FRANCES RAPER ΘΧ

CLEVELAND, RICHARD DOSS KA
Kappa Alpha, treasurer 2, president 3, 4; Omicron Delta Kappa 3, 4; Most Outstanding Athlete 2, 3; Theta Sigma Lambda 2, 3, 4; Theta Chi Delta 2, 3, 4; Intramural Board 3, 4; Skull & Bones 4; Interfraternity Council 3, 4.

COLEMAN, MARTIN EUGENE



CONSTANTINE
DAVIS
FOLLY

CRANSHAW
DOUGLAS
GARRETT

CRANSHAW
DUFFLEY
GIBBS

CRUMPTON
DULMADGE
GIBSON

CULLEY
ELLNER
GILLESPY

CONSTANTINE, EVANGELINE

Phi Beta Kappa 4; Mortar Board 3, vice president 4; Alpha Lambda Delta 1, 2; Who's Who 4; Executive Council, Chairman Women's Division 3; Student Life Committee 3; Accent Beauty 2, 4; Entre Amigos 2, 3; Phi Sigma Iota 3, vice president 4; Le Cercle Francais 1, secretary 2, president 3, president 4; International Relations Club 3, 4.

CRANSHAW, JAKE, JR.

ΔΣΦ

Southern Accent, photographer 1; Hilltop News, photographer 1; Biology Lab Assistant 4; Skull & Bones 3, 4; Quad, photographer 1.

CRANSHAW, MYRA WARE WILLIAMS

Alpha Lambda Delta 1, treasurer 2; Southern Accent 2, editor 3; Hilltop News 1, 2, 3, 4; Rusurbe 1, 2, 3; Red Cross, vice chairman 4, publicity chairman 4; Quad, editor 2; Independents 1, 2, 4; International Relations Club 4.

CRUMPTON, EVELYN

Who's Who 4; Hilltop News 1, assistant editor 2, 3, editor 4; Rusurbe 1; Gift Committee Senior Class; Quad 1, editor 2; Omicron Mu Kappa, secretary 4; Phi Beta Kappa Scholarship, 4-year.

CULLEY, LILIAN LELAND

ΚΔ

Phi Beta Kappa 4; Mortar Board 3, editor 4; Alpha Lambda Delta 1, 2; Who's Who 4; Executive Council 2, secretary 4; Y.W.C.A. 1; Chi Nu Tau 3, 4; Theta Chi Delta 4; Tau Kappa Alpha 3, 4; Intramural Board 2; Orchestra 1, 2, 3, 4; Biology Lab Assistant 2, 3; Sadie Hawkins 2; College Theatre 2; May Court 1, 2; Treasurer Kappa Delta 3, secretary 4; Speech Bureau, 2, 3, 4.

DAVIS, ANNIE FRANCES

AOII

Phi Beta Kappa 4; Mortar Board 3, activities chairman 4; Alpha Lambda Delta 1, 2; Honor Council 4; Y.W.C.A. 1, 2, 3, 2-vice president 4; Hilltop News 1, 2; Choir 3; Kappa Delta Epsilon 4; Entre Amigos, secretary-treasurer 3; Phi Sigma Iota 3, president 4;

The



AW, WHADDA YOU MEN KNOW ABOUT MACHINERY?

SENIORS

Tau Tau Tau, secretary 3; Le Cercle Francais 1, 2, 3, 4; "Ferdinand" 3; "Gondoliers" 3; English Assistant 2, 3; WAA 1, 2.

DOUGLAS, GEORGE CAPERS

DUFFEY, IMOGENE ZTA
Zeta Tau Alpha, guard 4; Kappa Delta Epsilon 4; Rusurbe 1, vice president 2, president 3; Chi Sigma Phi 1, 2, 3, secretary 4; Religious Council 3, secretary-treasurer 4; Y.W.C.A. 1, 2, cabinet 3, cabinet 4; Physical Ed Club 3, vice president 4; Intramural Board 1, 2, 3, 4; Intramural High Ten 1, 2, 3, 4.

DULMADGE, ELIZABETH ANN ZTA
Y.W.C.A. 1, 2, Cabinet 3, 4; Southern Accent 4; Choir 4; Chi Nu Tau 3, secretary-treasurer 4; Intramural Board 2; Physical Ed Club 1, 2, 3, 4; Tau Tau Tau 2, 3; Chi Sigma Phi 4.

ELLNER, SARA ELIZABETH
Hilltop News 1, 2; Rusurbe 1; Gift Committee Senior Class; Le Cercle Francais 1, 2, 3, treasurer 4; Inter-

national Relations Club 4; "Ferdinand," chairman make-up.

FOLEY, JOSEPH DAYTON ΔΣΩ
Choir 1; Skull & Bones 4.

GARRETT, DOROTHY MAE AXΩ
Alpha Chi Omega, president 4; Pan-Hellenic Council 4; Amazons 3, 4; Y.W.C.A. 1, 2, 3, vice president 4; Kappa Delta Epsilon 3, president 4; Pi Delta Psi 3, 4; Red Cross 4; Freshman Commission 1; Le Cercle Francais 1.

GIBBS, MARION MCCOY IIAA
Pi Kappa Alpha, president 4; Interfraternity Council 4; Y.M.C.A. 1, 2, 3, 4; Choir 1, 2, 3, 4; Kappa Phi Kappa 3, 4; Ushers' Club 1, 2; President Senior Class; Chi Sigma Phi, 1, 2.

GIBSON, MARY ODELL AXΩ
Y.W.C.A. 1, 2; Delta Phi Alpha 3, secretary 4; Kappa Delta Epsilon 4; Tau Tau Tau 2, 3; International Relations Club 4.

GILLESPY, ROBERT ROSE XΦ

To join us on the Hilltop; and we hope the fun



GRAGG
JONES
MALONE

HARDIMAN
KEENER
MEACHAM

HIGGINBOTHAM
KIDD
MILTON

HORTON
LITTLE
NORMENT

HUDDLESTON
MCBRIDE
NORTON

GRAGG, CLYDE STEPHENSON IIBΦ
Pi Beta Phi, president 4; Alpha Lambda Delta 1, secretary 2; Who's Who 4; Executive Council 2; Pan-Hellenic Council 2, 4; Amazons 3, president 4; Y.W.C.A. 1, 2; Chi Nu Tau 3, president 4; Biology Lab Assistant 2, 3; Freshman Commission 1; May Court 2.

HARDIMAN, ANDREW ROWE
International Relations Club 4; Chi Sigma Phi 4; transfer from Bob Jones College.

HIGGINBOTHAM, ROY WILLIAM ΘX
Y.M.C.A. 1; Kappa Phi Kappa 4; Senior Class Committee.

HORTON, KATHRYN LOUISE ZTA
Executive Council 2; Y.W.C.A. 1, cabinet 2; Rururbe 1, 2; Choir 1, secretary 2, 3, president 4; Mu Alpha 1, 2, 3, 4; Secretary Senior Class; Invitation Committee Senior Class; "Ferdinand," "Gondoliers."

HUDDLESTON, JANE SHERRILL KΔ
Hilltop News 2, 3, social editor 4; Theta Chi Delta; Kappa Delta, treasurer 3, 4.

JONES, MARGUERITE NABORS KΔ
Kappa Delta, pledge president 1, assistant treasurer 3, president 4; Pan-Hellenic Council, treasurer 4; Amazons 3, 4; Y.W.C.A. 1, 2; Rururbe 3; Intramural Board 1, 2, 3, 4; Physical Ed Club 4; Outstanding Athlete 1, 2, 3, 4; Senior Sports Manager 3, 4; Physical Ed Assistant 3, 4; All Star; Volley Ball 4, soccer 4; basketball 4; Southern Accent 4.

KEENER, BETTY JANE AOPH
Y.W.C.A. 1, 2; Kappa Delta Epsilon 4; Red Cross 4; Tau Tau Tau 1, 2.

KIDD, ANNA CATHERINE IIBΦ
Pi Beta Phi, secretary 4; Y.W.C.A. 1, 2; Choir 2, 3, 4; Mu Alpha 3, secretary 4; Freshman Commission 1; Le Cercle Francais 1, 2, 3, 4; "Ferdinand."

The



MALT-MUNCHING BOOKSTORE BROWSERS' MELEE . . .

SENIORS

LITTLE, WALTER FORREST

Pi Kappa Alpha, president 3; Interfraternity Council 2, 3; "Mr. Hilltopper" 2; Y.M.C.A. 1, 2, 3, 4.

IKKA

MCBRIDE, BETTY SUE

ZTA

MALONE, BESS GILDER

AOII

Alpha Omicron Pi, treasurer 3, vice president 4; Y.W.C.A. 1, 2, 3, corresponding secretary 4; Freshman Commission 1; Cabinet 3; WAA 1, 2, 3, 4; Tau Tau Tau 2, 3, recording secretary 4; Intramural Board 3, 4; Kappa Delta Epsilon, treasurer 4.

MEACHAM, CHARLOTTE ELIZABETH

PBΦ

Mortar Board 3, 4; Who's Who 4; Executive Council 3; Honor Council 4; Y.W.C.A. 1, vice president 2, cabinet 3; Southern Accent, sports editor 3; Hilltop News 4; Intramural Board 2, 3, 4; Outstanding Athlete 2; Senior Sports Manager 3; Vice President Senior Class; Freshman Commission, president 1; Le Cercle Francais 1; WAA 1, 2, secretary 3; Secretary of Freshman Class.

MILTON, JOSEPHINE

Zeta Tau Alpha, secretary 3; Y.W.C.A. 1; Speakers' Bureau 2, 3; WAA 1.

ZTA

NORMENT, ELEANOR ANNETTE

Alpha Chi Omega, recording secretary 4; Y.W.C.A. 1, 2, 3, cabinet 4; Entre Amigos 3, president 4; Choir 3, 4; WAA 2, 3.

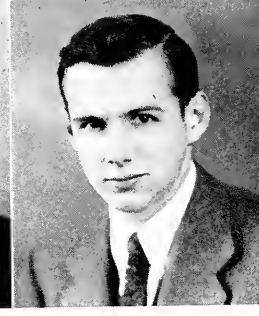
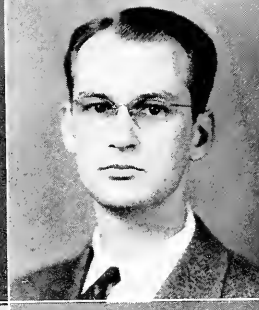
AXΩ

NORTON, ETHEL MAE

Kappa Delta, assistant treasurer 2, treasurer 3, vice president 4; Amazons 4; Y.W.C.A. 1, 2, 3, cabinet 4; Chi Nu Tau 3, 4; Kappa Delta Epsilon 3, secretary 4; Intramural Board 3, 4; Physical Ed Club, president 4; Orchestra 1; Outstanding Athlete 3; Intramural High Ten; All Star; Basketball 4.

KΔ

That's to be begun, just never. never. never willstop.



PIERSON
RICHARDSON
STEPHENS

PITTMAN
SHELL
TEAGUE

LOSSER
SMITH, G.
WATTS

PRUDE
SMITH, J. B.
WHITCOMB

RENEGAR
SPAIN
WIGLEY

PIERSON, NINA MAE ANΩ
Alpha Chi Omega, treasurer 3, vice president 4; Executive Council 2; Y.W.C.A. 2; Choir 2, 3, 4; Chi Nu Tau 3, vice president 4; Red Cross 4; Biology Lab Assistant 2, 3, 4; Ring Committee Senior Class; Tau Tau 2, 3.

PITTMAN, MERCEDES
Y.W.C.A. 1; Chi Nu Tau 3; Entre Amigos 2; Tau Tau 1; Le Cercle Francais 1; Independents 3, 4.

LOSSER, EDITH CALDWELL ZTA
Zeta Tau Alpha, president 4; Pan-Hellenic Council 4; Amazons 4; Y.W.C.A. 1, 2; Choir 1, 2, 3, 4; Mu Alpha 1, 2, treasurer 3, 4; Pi Delta Psi 3, secretary 4; Ring Committee Senior Class; Freshman Commission; Le Cercle Francais 1, 2; "Ferdinand."

PRUDE, MARY BETH POWELL ZTA
Y.W.C.A. 1, 2, 3, 4; Cabinet 2, 3; Freshman Commission; Chi Sigma Phi 1, secretary 2.

RENEGAR, NELLIE ILVES ZTA
Alpha Lambda Delta 1, president 2; Rusurbe, president 1, 2, treasurer 3; Y.W.C.A. 1, cabinet 2, vice president 3; Theta Chi Delta 2, secretary 3; WAA 1, 2; Executive Council, secretary 3; Chi Sigma Phi 3; Religious Council, secretary 3; Tau Tau 3; Southern Accent 3; Mortar Board 3, 4.

RICHARDSON, MARY ESSLINGER ΠΒΦ
Mortar Board 3, secretary 4; Who's Who 4; Executive Council, vice president 3; Y.W.C.A. 2; Choir 2, 3, secretary 4; Mu Alpha 2, 3, president 4; Kappa Delta Epsilon 3, 4; "Ferdinand," "Gondoliers;" May Court 2; "Iolanthe," Celia 2; Pi Beta Phi, Scholarship Chairman 2, corresponding secretary 3, pledge supervisor 4; transfer from Virginia-Intermont College; Phi Theta Kappa 1; Accent Beauty 4.

SHELL, LOIS ANNE
Alpha Lambda Delta 1, 2; Theta Sigma Lambda 2, 3; Chi Nu Tau 3.

SMITH, GENE AOH
Phi Beta Kappa 4; Mortar Board 3, treasurer 4; Alpha Lambda Delta 1, 2; Who's Who 4; Executive Council 2, 4; President of Student Body 4; Religious Council 4; Student Life Committee 3, 4; Pan-Hellenic Council 2, vice president 3, president 4; Amazons 3, secretary 4; Y.W.C.A., freshman commission 1, cabinet 2, 3,

The



AIN'T IT JUST LIKE A WOMAN . . . !

SENIORS

president 4; Southern Accent 4; Hilltop News 1, 2; Tau Kappa Alpha, vice president 2, president 3, 4; Kappa Delta Epsilon 3, vice president 4; Chi Sigma Phi 2, 3; Speakers' Bureau 2, 3, 4; Intramural Board 2; Red Cross, president 4; Chairman Gifts Committee Senior Class; Tau Tau Tau, vice president 2, president 3; International Relations Club 4; WAA 1, vice president 2, president 3; Alpha Omicron Pi, rush captain 2, president 3 & 4.

SMITH, JAMES BERT

ΔΣΦ

Who's Who 4; Religious Council 3, 4; Student Life Committee 4; Interfraternity Council, vice president 4; Y.M.C.A. 2, 3, president 4; Kappa Phi Kappa 3, 4; Pi Delta Psi 4; Delta Sigma Phi 2, 3, president 4.

SPAIN, FRANCES EDWARD

ΚΔ

Kappa Delta, rush captain 3; Pan-Hellenic Council 3; Amazons 3, 4; "Miss Southern Accent" 3; Accent Beauty 4.

STEPHENS, MARIAN RUTH

Religious Council 3, 4; Y.W.C.A. 3, secretary 4; Ru-

surbe 3, 4; Treasurer Senior Class; Ring Committee Senior Class; Chi Sigma Phi, vice president 3, 4; Tau Kappa Alpha 4.

TEAGUE, FRANCES EVELYN

Y.W.C.A. 1, 2, 3; BSU, 2-vice president 1, vice president 2, 3, 4; Rusurbe, treasurer 1, secretary 2, vice president 3, 4; Red Cross 4.

WATTS, JAMES BAKER

ΚΑ

Omicron Delta Kappa 3, treasurer 4; Who's Who 4; Religious Council 1, 2, president 3; Student Life Committee 2, 3; Interfraternity Council 3, 4; Y.M.C.A. 1, secretary 2, president 3, 4; editor Freshman Handbook 2, 3; Member State Executive Board Y.M.C.A. 3; Chi Sigma Phi 1, 2, treasurer 3, 4; Mu Alpha 2, 3, 4; Le Cercle Francais 2, 3, 4; Southern Accent 1, 3, editor 4; Hilltop News 3, 4; Kappa Phi Kappa, secretary-treasurer 3, 4; Assistant to Bursar 2, 3, 4; Kappa Alpha, corresponding secretary 4; Alumni Scholarship, 4-year; Choir 3, 4; Ushers' Club 1, 2, 3, 4; Li'l Abner 3; Program Committee Senior Class.

WHITCOMB, LEE PECK

ΣΑΕ

Sigma Alpha Epsilon 1, 2, vice president 3, correspondent 3, president 4; Interfraternity Council 3, president 4; Southern Accent, associate editor 4; Ushers' Club 3, 4; Program Committee Senior Class; Chairman Upper Division Activities Sadie Hawkins' Day 4; Skull & Bones 3, president 4.

WIGLEY, MILDRED FAYE

Pi Beta Kappa 4; Y.W.C.A. 1; Chi Nu Tau 3, 4.

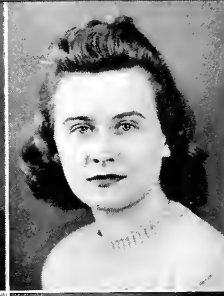
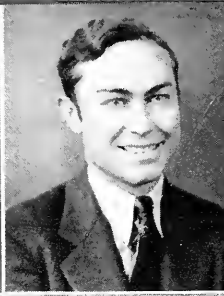
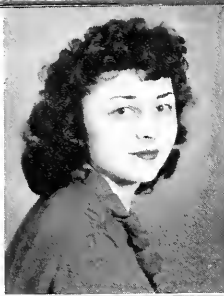
We have opened wide on each and every side

ATKINSON

BAKER

BLAKI

BRANDON

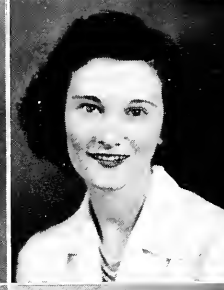
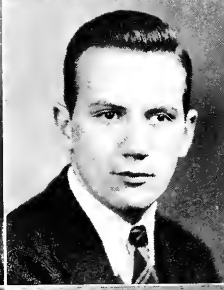
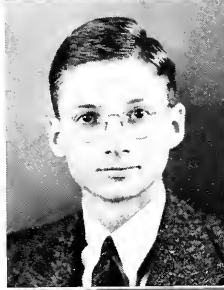


CALHOUN

CANNON

CATHEY

CLEVELAND

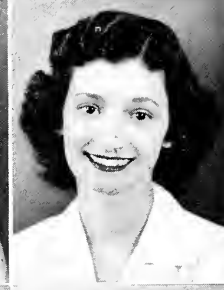
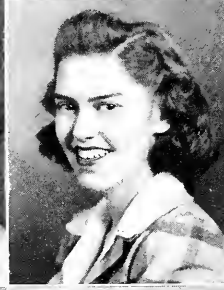


COTTEN

CRISSINGER

CURL

DAVIS

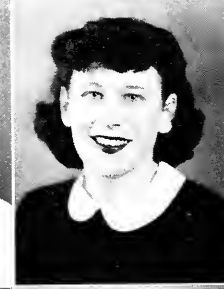
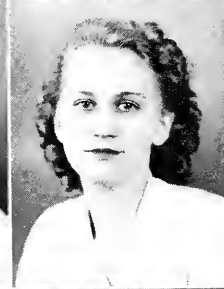


DORMAN

FRANKLIN

GALLAGHER

GLAZE

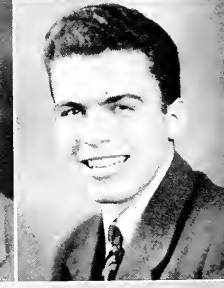
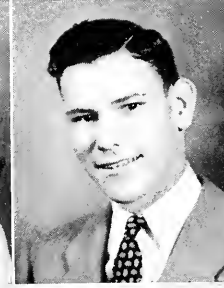
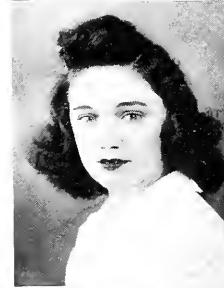


GREENE

GRIFFIN

GRIFFITH, A.

GRIFFITH, M.

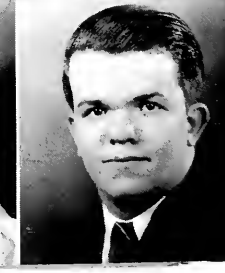
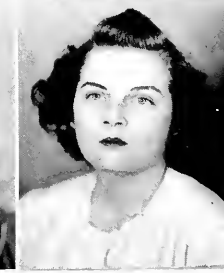
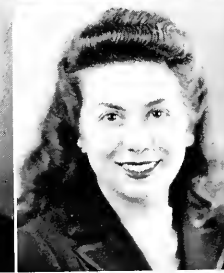
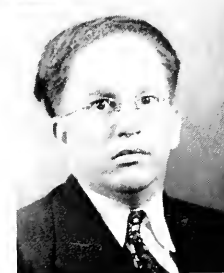


GUTHRIE

HAGESTRATOU

HAGLER

HOLMQUIST



The JUNIORS

ATKINSON, RUTH LOUISE

Alpha Lambda Delta 1, 2; Amazons 3; Theta Chi Delta 2, Secretary-treasurer 3; Theta Sigma Lambda 2, vice president 3; Chemistry Lab Assistant 3.

BAKER, BRAXTON

Y.M.C.A. 1, 2, 3, 4; Hilltop News 1; Physical Ed Club 1, 2, 3, 4; Red Cross 4.

BLAKE, EMILY VIRGINIA

ΓΦΒ

Mortar Board 3; Hilltop News 1, 2, 3; Southern Accent 2, 3; Chi Sigma Phi 1, 2, 3; Amazons 3; Tau Kappa Alpha 4; Mu Alpha 2, 3.

BRANDON, ANNE HENRY

ΑΟΗ

Alpha Lambda Delta 1, 2; Executive Council 2, 4; Pan-Hellenic Council 3, 4; Amazons 3, 4; Y.W.C.A. 2; Kappa Delta Epsilon 3, 4; Pi Delta Psi 3, secretary 3, president 4; "Ferdinand."

CALHOUN, WILLIAM FLETCHER, JR.

Y.M.C.A. 1, 2, 3; Choir 2, 3.

CANNON, WILLIAM MAURY, JR.

ΚΑ

Executive Council 1, 2, 3; Kappa Phi Kappa 3; Mu Alpha 2, 3; Y.M.C.A. 1, 2, vice president 3.

CATHEY, ELIZABETH CATHERINE

ΠΒΦ

Theta Sigma Lambda 2, 3; Kappa Delta Epsilon 2, 3; Rusurbe 3.

CLEVELAND, ROBERT EDWARD

ΚΑ

Kappa Alpha, secretary 3; Kappa Phi Kappa 3; Eta Sigma Phi 2, president 3; Choir 3; Intramural Board 3.

COTTEN, FRANCES

ΚΔ

Y.W.C.A. 1, 2, 3, Cabinet; Freshman Commission, 'Tau Tau Tau 3; International Relations Club 3.

CRISSINGER, JANE HANLIN

ΘΥ

Pan-Hellenic 2, 3; Amazons 2, 3; Mu Alpha 2, 3; Orchestra 1, 2, 3; Red Cross 3; Le Cercle Francais 1, 2; "Ferdinand" 2.

CURL, FAYE LITTLE

Mu Alpha 1, 2, 3; Choir 1, 2, 3; "Gondoliers," "Ferdinand."

DAVIS, BETTY MAY

ΠΒΦ

Mortar Board 3; Alpha Lambda Delta 1; Executive Council, Chairman Women's Division 2; Pan-Hellenic Council 2; Amazons, 2; Y.W.C.A. 1, treasurer 3; Choir 3; Pi Delta Psi 3; Red Cross, production chairman 3; Entre Amigos, secretary 1; Pi Beta Phi, rush captain 2, vice president 3.

DORMAN, V. MARJORIE

FRANKLIN, CATHERINE

Y.W.C.A. 1, 2, 3; "Ferdinand;" Choir 1, 2, 3.

GALLAGHER, MARY CATHERINE

ΠΒΦ

Amazons 3; Y.W.C.A. 1; Chi Nu Tau 3; Intramural Board 2, 3; Physical Ed Club 3; Red Cross 3; Senior Sports Manager 3; Outstanding Athlete 2; Entre Amigos 2; "Ferdinand."

GLAZE, LUCILE HESTER

BSU 1, 2, 3; Kappa Delta Epsilon 3.

GREENE MARY LOUISE

ΓΦΒ

Y.W.C.A. 1, 2, 3; Entre Amigos 3.

GRIFFIN, BRUCE ORREN

Y.M.C.A. 1, 2, Cabinet 3; Choir 1, 3; Kappa Phi Kappa 3; Pi Delta Psi 2, 3; Eta Sigma Phi 2, 3.

GRIFFITH, ALBERT VICTOR, JR.

ΑΧΑ

Choir 1, 2, 3; Kappa Phi Kappa 2, vice president 3; Intramural Board 2, 3; Ushers' Club 1, 2; All Star: Football 2; Le Cercle Francais 2; International Relations Club 2; "Ferdinand."

GRIFFITH, MARGARET JULIA

ΘΥ

Theta Upsilon, secretary 3; Amazons 3; Y.W.C.A. 1, 2, 3.

GUTHRIE, CHARLES ANDREW

Y.M.C.A. 2, 3; Choir 2, vice president 3; Kappa Phi Kappa 3; Chi Sigma Phi 2, 3; Freshman Commission 2; Eta Sigma Phi 3.

HAGESTRATOU, TOULA

Mu Alpha, 1, 2, 3; Miss Birmingham 2; Accent Beauty 3.

HAIGLER, MILDRED SUE

Y.W.C.A. 1, 2, 3; Rusurbe 2, 3, 4; Red Cross 4; "Ferdinand," make-up; Old Maids' Club, rush captain 4; Chi Sigma Phi 2, 3, 4.

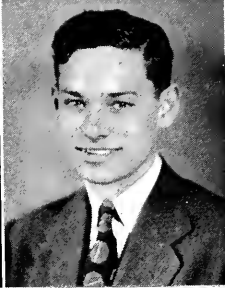
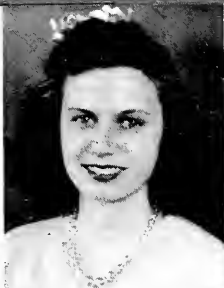
The Gates to the Magic City. If you don't decide

INGRAM

JENNINGS

JOHNSON, N.

JOHNSON, W.

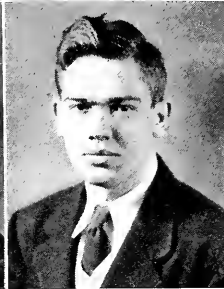
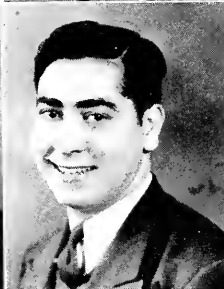
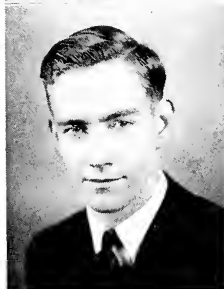


KEGLEY

LEO

LYLE

McCOY

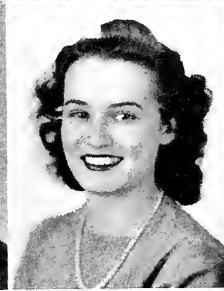


McDANIEL

MILLER

MOORE

OSMENT

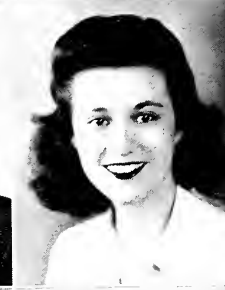
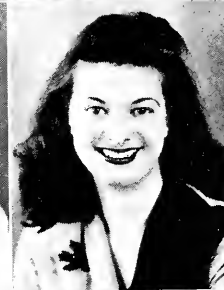
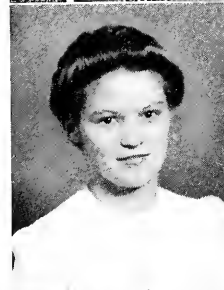


PARSONS

PEEPLES

REESE

ROSENSTEIN

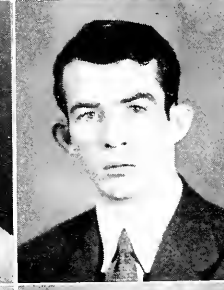
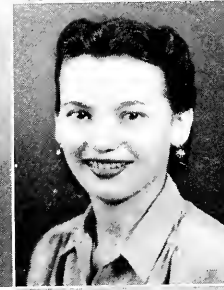
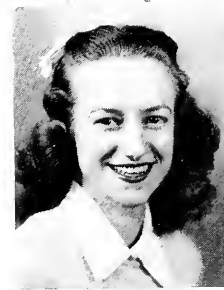


ROSS

SEBREE

SHURBET

SMOOT

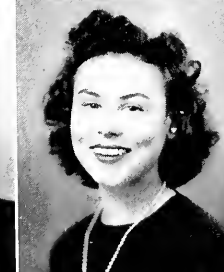
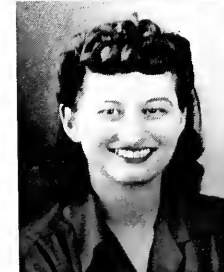


STEWART

THOMAS

VANCE

WRIGHT



The JUNIORS

- HOLMQUIST, JAMES PHILLIP ΔΣΦ
Executive Council 2, treasurer 3; Interfraternity Council 2, 3; Y.M.C.A. 3; Theta Chi Delta 2, 3; Theta Sigma Lambda 2, secretary 3; Chemistry Lab Assistant 2, 3; Freshman Commission.
- INGRAM, MARTHA OWEN ΓΦΒ
Alpha Lambda Delta 1, 2; Pan-Hellenic Council 3; Amazons 3; Y.W.C.A. 1, 2, 3; Theta Sigma Lambda 2, 3; Pi Delta Psi, secretary 3; Red Cross 3; Gamma Phi Beta, president 3.
- JENNINGS, LAURA LOIS ΠΒΦ
Mortar Board 3; Who's Who 3; Honor Council 3, president; Y.W.C.A. 1; Southern Accent 1, 2, 3; Hilltop News 1, 2, 3, 4; Rusurbe 2, 3; Red Cross, secretary 4; Chemistry Lab Assistant 3, 4; Le Cercle Francais 1, 2.
- JOHNSON, NORMA LEE
Mortar Board 3; Executive Council 2; Southern Accent 2; Hilltop News 1, assistant editor 2, business manager 3; Publication Board 2, 3; Eta Sigma Phi 2, vice president 3; Old Maids' Club, rushee 3; Red Cross 3.
- JOHNSON, JAMES WELDON
Choir 3, 4; Ushers' Club 4.
- KEGLEY, MITCHELL ΔΣΦ
Y.M.C.A. 1, 2, 3.
- LEO, AUGUSTINE GREGORY
- LYLE, JOHN PAUL ΑΤΩ
Theta Sigma Lambda 2, president 3; Theta Chi Delta 3; Omicron Delta Kappa 3; Interfraternity Council 2, secretary-treasurer 3; Alpha Tau Omega, vice president 2, president 3.
- MCCOY, MARY JEAN ΑΟΡ
Alpha Omicron Pi, corresponding secretary 3.
- MCDANIEL, JAMES MARK
Kappa Phi Kappa 2, 3; transfer from Southwestern, Ministerial Club.
- MILLER, RINIE ARRENGTON ΚΔ
Amazons 3; Le Cercle Francais 2, 3.
- MOORE, DOROTHY MAXINE ΑΧΩ
Y.W.C.A. 1, 2; Tau Tau Tau 3; Kappa Delta Epsilon 3, 4; Alpha Chi Omega, corresponding secretary 3, 4.
- OSMENT, LAMAR SUTTON
Omicron Delta Kappa 3; Theta Chi Delta 3; Theta Sigma Lambda 3.
- PARSONS, MARY LOIS
- PEEPLES, AUDREY JEAN ΚΔ
Accent Beauty 2, 3; Choir 3.
- REESE, HOWARD LANIER
Omicron Delta Kappa, 3, president 4; Who's Who 4; Executive Council, vice president 4; Student Life Committee 4; Delta Phi Alpha 3, treasurer 4; Theta Chi Delta 2, 3, president 4; Theta Sigma Lambda 4; Tennis Champion 3; Biology Lab Assistant 2, 3, 4; Chemistry Lab Assistant 3; Skull & Bones 2, secretary-treasurer 3, 4; International Relations Club 3, 4; Student Affiliate of American Chemical Society 3, president 4.
- ROSENSTEIN, MARTHA ANN ΖΤΑ
Y.W.C.A. 3; Pi Delta Psi 3; Red Cross 3.
- ROSS, ANN SARTOR ΖΤΑ
Zeta Tau Alpha 1, treasurer 2, vice president 3; Amazons 3; Y.W.C.A. 1, 2; Southern Accent 3; BSU 1, 2; Tau Kappa Alpha 3; Freshman Commission; Tau Tau Tau 1, 2; Le Cercle Francais 1, 2.
- SEBREE, MARTHA ΡΒΦ
Pi Beta Phi, president 3; Choir 2, 3; Executive Council 3; Chi Nu Tau 3; Mortar Board 3; "Ferdinand" 2; Old Maids' Club 3; Accent Beauty 2, 3.
- SHUBERT, ROBERT LEE
Kappa Phi Kappa 3; Y.M.C.A. 1, 2, 3; International Relations Club 3.
- SMOOT, MELVIN JENKINS ΑΧΑ
Lambda Chi Alpha 1, vice president 2, president 3; Interfraternity Council 2, 3; Hilltop News 2, 3; BSU 1, 2, 3; Choir 1, 2, 3.
- STEWART, MILDRED
- THOMAS, ALMA ΑΧΩ
Y.W.C.A. 1, 2; Chi Nu Tau 2, 3; WAA 1, 2; International Relations Club 2, 3; Tau Tau Tau 1, treasurer 2.
- VANCE, MARY LOUISE STRICKLAND ΑΧΩ
Y.W.C.A. 3; Red Cross 3.
- WRIGHT, MARJORIE JUNE ΑΧΩ
BSU 3; Chi Nu Tau 3; Tau Tau Tau 1, 2, 3.

To come right inside, it sure'll be a tragic pity

ADAMS
AKEROYD
ANDERSON
ANGELAKIS
ATKINSON
BARSTEIN



BASS
BATTLE
BEAVEN
BEFNI
BELYUC
BENTHOLD



BERRY
BERTHON
BIARD
BLAIR
BLOCK
BLOOD



BOTELF
BRENT
BRITTAIN
BROWN
BROWN, C.
BROWN, M.



BUCK
BURLAND
BUTSCH
BYRD
CALHOUN, A. S.
CALHOUN, B.



CALLAHAN
CAMPBELL, C.
CAMPBELL, E.
CARFOPOULOS
CARR
CHAPPIE



COCHRAN, J.
COCHRAN, R.
COKER
COLLINS
CONNORS
CONSTANTINI



COOK
COOPER
COREY
CORRETTI
CRELL
CROWT



CRUMB
CUNNINGHAM
CURL
DIADONI
DAVIS
DAVIS



DIAN
DESHAZO
DOUGLASS
EDWARDS
ELLIOTT, C.
ELLIOTT, K.



THE LOWER DIVISION

ADAMS, MICKIE
AKERROYD, MARY ELIZABETH, ΠΒΦ
ANDERSON, ANN, ΑΟΙΙ
ANGELAKIS, THEODORA
ATKINSON, MARY ANNE
BARSTEIN, GOLDIE

CALLAHAN, ALBERT, ΠΚΑ
CAMPBELL, CHARLES, ΚΑ
CAMPBELL, EVELYN, ΑΧΩ
CARFOPOULOS, GREGORY
CARR, KAY
CHIAPPLE, ERNESTINE, ΑΟΙΙ

BASS, MARY ADELE
BATTLE, MARY VIRGINIA, ΑΟΙΙ
BEAVEN, BILLIE FRANCES
BEENE, RUTH PASS, ΖΤΑ
BELYEU, KATHRYN
BENEFIELD, MARY, ΚΔ

COCHRAN, JEAN, ΖΤΑ
COCHRAN, ROBERTA
COKER, MARY LOUISE, ΑΧΩ
COLLINS, PATSY
CONNORS, DOROTHY, ΑΟΙΙ
CONSTANTINE, ALICE

BERRY, BLANCHE
BERTHON, MAXINE, ΑΧΩ
BIARD, ROSALIE, ΠΒΦ
BLAIR, JOE NEAL, ΠΚΑ
BLOCK, MAURICE, ΚΝ
BLOOD, LEONARD, ΠΚΑ

COOK, CLYDE, ΠΚΑ
COOPER, JOSEPHINE
COREY, ROSEMARY, ΚΔ
CORRETTI, BETTY
CREEL, ELLINOR
CROWE, JACK, ΑΤΩ

BOTELER, VIRGINIA, ΑΧΩ
BRENT, BARBARA, ΚΔ
BRITAIN, JIMMIE, ΠΚΑ
BROWN, BETTY, ΚΔ
BROWN, CAROLYN
BROWN, MARIAN

CRUMB, BETTY JEAN, ΖΤΑ
CUNNINGHAM, LADY PORTIS
CURL, DOROTHY
DIADONE, ANNIE ROSE
DAVIES, FRANK, ΚΑ
DAVIS, KATHRYN, ΓΦΒ

BUCK, BETTY, ΠΒΦ
BURLAND, BUDDY, ΚΑ
BUTSCH, MARTUA ELLEN
BYRD, ANNA JO, ΘΥ
CALHOUN, ANNIE STEWART, ΖΤΑ
CALHOUN, BETTY, ΑΟΙΙ

DEAN, FRANCES
DESHAZO, DOROTHY
DOUGLAS, LILLIAN
EDWARDS, GRACE
ELLIOTT, CHRISTINE, ΠΒΦ
ELLIOTT, KYLE, ΚΑ

Glad you chose our school. glad you didn't fool

ELLIS
 ELLISON
 ELROD
 ENGLISH
 ESTOCK
 EVANS



FARRELL
 FEALY
 FIELDS
 FISCH
 FIQUETT
 FITZ



FORD
 FOY
 FRANKE
 GADDY
 GARDNER
 GARRETT



GIBSON
 GILMORE
 GLOVER
 GOODALL
 GRAHAM
 GRAVES



GREEN
 HALL
 HAMILTON
 HARPER
 HARRIS, B.
 HARRIS, S.



HART
 HASL
 HAWKINS, B.
 HAWKINS, M. E.
 HAWTHORNI
 HELMS



HENAGEN
 HENCKELL
 HILL
 HOLNE
 HOLLOWAY
 HOLT



HOOD
 HOPKINS
 HORNSBY
 HOWARD
 HUDDLESTON
 HUNVALD



HURD
 HURLBERT
 INGRAM
 JACOBSON
 JAMISON
 JEWELL



JOHNSON, J.
 JOHNSON, D.
 JOHNSON, L. S.
 JOINER
 JONES, A.
 JONES, B.



THE LOWER DIVISION

ELLIS, ANNE, ZTA
ELLISON, KATHLEEN, ΓΦΒ
ELROD, HARVEY
ENGLISH, ANN, ZTA
ESTOCK, CLARENCE, ΘΧ
EVANS, FRED, ΑΤΩ

HART, JEANNE, ΑΟΗ
HASE, GORDON, ΘΧ
HAWKINS, BETTY, ΑΟΗ
HAWKINS, MARY ELEANOR
HAWTHORNE, SARAH JEAN
HELMS, RUBY

FARRELL, GRACE, ΠΒΦ
FEALEY, JACK, ΠΚΑ
FIELDS, KAY, ΑΟΗ
FISCH, SARAH, ZTA
FIQUETT, LAWRENCE
FITE, CHARLES

HENAGEN, FLORENCE, ΠΒΦ
HENCKELL, FRANCES, ΓΦΒ
HILL, JIMMY, ΣΑΕ
HOENE, LOUIS, ΠΚΑ
HOLLOWAY, MILDRED, ΚΔ
HOLT, J. N., ΚΑ

FORD, PETE, ΔΣΦ
FOY, KATHRYNE
FRANKE, JEAN, ZTA
GADDY, GLORIA
GARDNER, EDWARD
GARRETT, WALTON, ΠΚΑ

HOOD, BETTY, ΑΧΩ
HOPKINS, ERSKINE
HORNSBY, HELEN, ΠΒΦ
HOWARD, IDAMAE, ΑΟΗ
HUDDLESTON, NANCY, ΚΔ
HUNVALD, IRENE

GIBSON, NANCY, ΚΔ
GILMORE, GLORIA
GLOVER, ANDALENE
GOODALL, GLORIA, ZTA
GRAHAM, JOHN W., ΚΑ
GRAVES, LORETTA, ΑΟΗ

HURD, HOMER, ΣΑΕ
HURLBERT, DONALD, ΑΤΩ
INGRAM, FRED
JACOBSON, ROBERT
JAMISON, JOSEPHINE, ΑΟΗ
JEWELL, VIRGINIA RAY, ΘΧ

GREEN, LUGENE
HALE, ANN, ΚΔ
HAMILTON, HERBERT
HARPER, JANE
HARRIS, BUTTERCUP, ZTA
HARRIS, SUSIE, ΠΒΦ

JOHNSON, JUNE
JOHNSON, DOT, ΑΟΗ
JOHNSON, LOLA SUE
JOINER, C. HERBERT, JR.
JONES, ANNE, ΓΦΒ
JONES, BARBARA

Around with any otherin' . . . So again we'll say

JONES, E.
JUSTIN
KEITH
KESSLER
KIRK
LANIER



LASATER
LAWSON
LEE
LEVINE
LINN
LITTLE



LOGAN
LONG
McALLISTER
McCORMACK
McCoy
McCRACKEN



McDEVITT
McGOWAN
McLAUGHLIN
McMATH
McMILLAN
McREYNOLDS



MALONE
MARIAN
MARTIN, REBECCA
MARTIN, RUTH
MAYS
MILLS



MILLER, D.
MILLER, J.
MINTER
MONCRIEF
MOORE, J.
MOORE, M.



MORGAN
MURCHISON
NABORS
NATHAN
NICHOLS
NOEL, C.



NOEL, T.
NORMAN
NORTON
OBENCHAIN
ODOM
OGLTREL, A.



OGLTREL, B.
OWEN, A.
OWEN, B.
PARHAM
PASS
PATTERSON



PINKARD
PIXTON
PRESTON
PRICE
PUCKITT
PULS



THE LOWER DIVISION

JONES, ELIZABETH
JUSTIN, PEGGY, ΘΥ
KEITH, LARRY, ΗΚΑ
KESSLER, BETTY
KIRK, MARY ELIZABETH
LANIER, LYNN

MILLER, DORIS, ZTA
MILLER, JO, ZTA
MINTER, BARBARA, ΑΧΩ
MONCRIEF, CELFSTE, ΗΒΦ
MOORE, JOAN, ΑΧΟ
MOORE, MARGARET, ΑΟΗ

LASATER, MARY NELL, ΑΟΗ
LAWSON, BILL, ΚΑ
LEE, DOROTHY
LEVINE, LOUISE
LINN, ROBERT
LITTLE, SIBYL, ΑΧΩ

MORGAN, CECILE, ΗΒΦ
MURCHISON, MARY, ΚΔ
NABORS, LILLIAN
NATHAN, ERNEST
NICHOLS, RALPH
NOEL, CAROLYN, ΟΑΗ

LOGAN, ROGER, ΚΑ
LONG, FAY
MCALLISTER, FRANCES, ΚΔ
McCORMACK, IMOGENE, ΓΦΒ
MCCOY, LOGAN, ΚΑ
MCCRACKEN, BETTYE, ZTA

NOEL, THELMA, ΑΟΗ
NORMAN, GLORIA
NORTON, JEAN, ΚΔ
OBENCHAIN, M. ELIZABETH ΑΧΩ
ODOM, JANICE
OGLETREE, ANN, ΚΔ

MCDEVITT, FRANCES, ΗΒΦ
MCGOWAN, CATHERINE
MCLAUGHLIN, MARTHA GEORGE
MCMATH, BETTY
MCMILLAN, EVELYN
MCREYNOLDS, ADELAIDE, ZTA

OGLETREE, BETTY, ΚΔ
OWEN, ANNE, ΚΔ
OWEN, BUBS
PARHAM, WILMA JEAN
PASS, EDWINA
PATTERSON, ARA

MALONE, GLORIA
MARIAN, ROBERT
MARTIN, REBECCA, ΗΒΦ
MARTIN, RUTH, ZTA
MAYS, DENNIS
MILES, EDWIN

PINKARD, WILOLA SMITH
PIXTON, DOROTHY
PRESTON, MARGARET, ΚΔ
PRICE, POLLY, ΗΒΦ
PUCKETT, EUGENIA
PULS, CONSTANCE

In our most cordial way

REYNOLDS, MARTHA
 REYNOLDS, MELVIN
 RICE
 ROBINSON
 ROGERS, A.
 ROGERS, M.



ROMEO
 ROSE
 ROSENTHAL
 ROUSS
 SARINOPOULOS
 SCOTT



SCRUGGS
 SELGER
 SELLERS, M. C.
 SELLERS, M. M.
 SHARP
 SHERROD



SHOEMAKER
 SHOOK
 SHORES
 SKELTON
 SMITH, A.
 SMITH, H.



SMITH, N.
 SOUTHARD
 STALLINGS
 STALLWORTH
 STAMATIADAS
 STARCHER



STEARNS
 STEPHENSON
 STUART
 STONE
 THOMAS
 THOMPSON, E.



THOMPSON, M.
 THOMPSON, Z.
 TILL
 TOLLSON
 TYRRELL
 YANN, D.



YANN, M. L.
 VAUGHN
 VIRCHOT
 WALKER
 WALTERS
 WESTERHOUSE



WHERRY
 WILKINS
 WILLIAMS, L.
 WILLIAMS, J.
 WINGFIELD
 WOODS
 WOODSON



THE LOWER DIVISION

REYNOLDS, MARTHA, ΠΒΦ
REYNOLDS, MELVIN
RICE, INEZ
ROBINSON, JANE
ROGERS, AGNES, ΠΒΦ
ROGERS, MAURICE

STEARNS, BETTY JOYCE, ΑΧΩ
STEPHENSON, COSETTE, ΑΟΠ
STEWART, ROSEMARY
STONE, CATHERINE
THOMAS, KATHERINE, ΓΦΒ
THOMPSON, EVELYN, ΠΒΦ

ROMEO, ANTHONY
ROSE, LORRAINE, ΚΔ
ROSENTHAL, SONYA
ROUSS, JOE
SARINOPOULOS, FLORA
SCOTT, ELMORE, ΣΑΕ

THOMPSON, MILDRED, ΠΒΦ
THOMPSON, ZELDA, ΑΟΠ
TILL, ANNETTE, ΖΤΑ
TOLLESON, CARL
TYRRELL, DOT, ΖΤΑ
VANN, DOT, ΓΦΒ

SCRUGGS, JANE, ΚΔ
SEEGER, GENEVIEVE
SELLERS, MARY CLAUDE, ΓΦΒ
SELLERS, MARY MARTHA
SHARP, EVELYN, ΠΒΦ
SHERROD, RUTH, ΑΟΠ

VANN, MARY LOU, ΓΦΒ
VAUGHN, EDWARD
VERCHOT, EDWARD
WALKER, HAROLD, ΠΚΑ
WALTERS, CHARLES, ΚΑ
WESTERHOUSE, JESSIE LOU

SHOEMAKER, ANN, ΑΟΠ
SHOOK, M. P., ΚΔ
SHORES, JAMES, ΚΑ
SKELTON, BEULAH, ΟΥ
SMITH, ANNE, ΚΔ
SMITH, HERMAN

WHERRY, JACK
WILKINS, KATHLEEN
WILLIAMS, EMILY
WILLIAMS, JAMES, ΠΚΑ
WINGFIELD, J. REYNOLDS, ΑΟΠ
WOODS, B. MARGARET, ΑΟΠ

SMITH, NATALIE
SOUTHARD, ALICE, ΑΧΩ
STALLINGS, HAROLD, ΚΑ
STALLWORTH, MARY VIRGINIA, ΓΦΒ
STAMATIADIS, A. E.
STARCHER, H'LLDA, ΑΟΠ

WOODSON, NANCY, ΑΟΠ

Welcome to Birmingham - Southern . . . !

THOSE WHOSE PHOTOS DO NOT APPEAR IN THE CLASS SECTION

SENIORS

ANDERSON, THOMAS JEFFERSON, JR., KA KIRKPATRICK, PHYLLIS
CHRISTIAN, ALLIE, ΘΥ PORTERFIELD, CHARLES ELLINGTON, KA
DE YAMPERT, HATTIE DENMAN REYNOLDS, ANNIE LAURIE, ZTA
GLOVER, ALLISON WHATLEY, G. B., JR., AXA

HOLT, LEROY LYON, KA WHATLEY, WILLA MAE PANTER, AXΩ
KAMPAKIS, CRYSTAL WHITE, DEWEY, ΣAE
KENNEDY, WILLIAM
KESSLER, WILLIAM, ΘX

JUNIORS

ABRAMSON, KATHERINE HAGOOD, BONNIE, ΘΥ
ADAMS, MARY ANNE, KA IRVING, LOUISE, ZTA
BALLARD, SAM JOHNSON, BOB
BATSON, LUCIEN JOHNSON, RUSSELL
BETHEA, DONA MCCLAIN, ELSIE
CULVER, ROLAND MCCLENDON, FRANCES
GREENWOOD, BILLY MARTIN, JOHN LENOIR, AXA

MYER, MARTHA ANNE
OGBURN, JAMES, AXA
RAPER, CHESTER LEE
REDDICK, HILLIE, ΠKA
SHANKWILER, REED, ΠKA
SMITH, OREN COLLINS
SUTHERLAND, CAROL JEAN

LOWER DIVISION

COCHRAN, GEORGE, ΣAE JOHNSON, DOT, AOH
KELLY, CHARLOTTE, KA JOHNSON, LOLA SUE
JOHNSON, JUNE JOINER, HERBERT

JONES, ANN, ΓΦB
JONES, BARBARA



ACTIVITIES

Our STUDENT



DAVIS, BRANDES, JENNINGS, MEACHAM

HONOR COUNCIL

President..... CISSIE JENNINGS

ELY BRANDES

ANNIE FRANCES DAVIS

HARVEY ELROD

CHARLOTTE MEACHAM

THE EXECUTIVE COUNCIL

Under the guidance of capable Gene Smith, the governing organization of the Student Body continued the good work set forth by its predecessors. Early in the year, this group entertained at the traditional Sunday Afternoon Tea in Stockham. Among projects for the year have been the fostering of sales of stamps for the War Relief Drives, the establishing of a blood bank on campus, and the instigation of a full-fledged chapter of Red Cross on the Hilltop.

Members worked arduously, setting up files for activities-point systems, and the council collaborated to sponsor such out-

standing events as Sadie Hawkins' Day, Cat's Paw, and May Day.

Perhaps the most outstanding single contribution the council made during the year was the clearing up of the constitution as to its relationship with the Publications Board in a joint meeting.

During the Summer and Fall Quarters, versatile Patsy Kirkpatrick was at the helm of our governing body.

Sponsored by the executive body, the Honor Council, now well-established, functioned smoothly and adequately. Led by Cissie Jennings, this group aided in orientation of new students.

G O V E R N M E N T

THE EXECUTIVE COUNCIL

OFFICERS

<i>President of the Student Body</i>	GINI SMITH
<i>Vice-President</i>	SPARKY REESE
<i>Secretary</i>	LILLIAN DOUGLAS
<i>Treasurer</i>	JIMMY HOLMQUIST
<i>Chairman of Men's Division</i>	LEONARD BLOOD
<i>Chairman of Women's Division</i>	MARTHA SEBREE
<i>Faculty Adviser</i>	DR. M. F. EVANS

MEMBERS

Summer

CORNELIA BANKS
ANN BLEVINS
BILL CANNON
LIL CULLEY
GEORGE DOUGLAS
SUSIE HARRIS
JIMMY HOLMQUIST
NORMA JOHNSON
PATSY KIRKPATRICK
MORRIS MAYER
ALFRED PARKER
SPARKY REESE
JANE SCRUGGS

Fall

TOM ANDERSON
CORNELIA BANKS
BILL CANNON
LIL CULLEY
LEONARD BLOOD
LILLIAN DOUGLAS
JIMMY HOLMQUIST
PATSY KIRKPATRICK
MORRIS MAYER
CAROLYN NOEL
SPARKY REESE
JANE SCRUGGS
MARTHA SEBREE

Winter

ALLEN BALCH
ANN BRANDON
LEONARD BLOOD
LIL CULLEY
LILLIAN DOUGLAS
JIMMY HOLMQUIST
HOMER HURD
JANICE ODOM
LAMAR OSMENT
SPARKY REESE
JANE SCRUGGS
MARTHA SEBREE
GENE SMITH

Seated: HOLMQUIST, REESE, SMITH, SEBREE, CULLEY

Standing: ODOM, OSMENT, BRANDON, CANNON, SCRUGGS, EVANS, DOUGLAS, HURD





The

EDITOR

JIMMY WATTS



BUSINESS MANAGER

JOHN W. GRAHAM

This year the staff of *'Southern Accent* assumed a never-say-die attitude, ordered more aspirin, and undertook to edit a college annual despite, as Dr. Parks would say, "various and sundry" handicaps. It was not until near the end of the Fall Quarter that the student body decided definitely to have an annual for '44. Finally, after lengthy discussions and numerous plans, to say nothing of a few fallings-out, a belated election was held for editor and business manager.

Still beaming over their election, these new officers launched their program with enthusiasm, only to find themselves confronted with what then seemed insurmountable obstacles. First, and naturally most important, was the problem of drastically curtailed finances. Furthermore, at least six months of the year had elapsed, and nothing had been started.

Determined not to be outdone, the editor made dozens of visits to engravers, printers, and photographers. Everywhere he met the same problem: increased prices, rapidly diminishing staffs, not enough time. During this hectic

period neither the clock nor calendar seemed the least inclined to retard their stealthy, relentless progress.

After ruthless cutting of budgets, anticipated costs were brought down to an incredible minimum. Because business was rushing, most concerns forewent the opportunity of advertising through our book, thereby depriving us of additional income. As an eleventh hour measure of safety, the student body generously voted to give an extra dollar per student during the Spring Quarter. This last move took care of most of the financial worries, leaving only the element of time.

So obsessed with the pressure of time did the staff become that it decided "time", of which there was so little, should be the theme for the publication. And so it became, depicting the nostalgic, hurried days of our lives—the time we would seek to hold but cannot. *In this our time* we have laughed and loved and lived, and, not infrequently, sighed. Now, in retrospection, we present it to you through your 1944 *'Southern Accent*.

' S O U T H E R N A C C E N T

EDITORIAL STAFF

Editor JIMMY WATTS
Assistant Editor EMILY BLAKE
Associate Editor PECK WHITCOMB *Fraternities* BOB CLEVELAND
Organizations GENE SMITH *Sports* WITA JONES, J. N. HOLT
Sororities ANN ROSS *Photography* ELLIS GLENN
Evelyn Crumpton . . . Elizabeth Ann Dulmadge . . . Betty Hawkins . . . Frances
McDevitt . . . Cosette Stevenson.

BUSINESS STAFF

Business Manager JOHN W. GRAHAM
Associate Business Manager AGNES ROGERS
Martha Reynolds . . . Peck Whitcomb . . . Cosette Stevenson . . . Elizabeth Ann
Dulmadge . . . Gene Smith.

WATTS, ROSS, HOLT, SMITH, GRAHAM



The HILLTOP NEWS

The second woman ever to become editor of the Hilltop rag, La Crumpton carried on the journalistic traditions set up by her predecessor. Along with her cohorts she flooded the campus with as much news as Johnson could go out and get the money for printing. All in all, notwithstanding the practically all-girl cast, this publication put on a show definitely in keeping with our time. There were periods when we did without our paper, just as we often did without butter, or gasoline. But we sorta grew accustomed to that.

Since all (not just the most promising) student photographic fiends had gone away to war (or, worse, to marriage), Crump' did the only feasible thing and molted into that wierd combination among journalists known as editor-photographer. Of course, never having been a photographer before, she had to do a lotta cramming and experimenting. But the result was that she produced many

pictures which would have drawn for her a \$50-per-week salary at BMP or somewhere.

Even during "the duration", Johnson managed somehow to get the Scrooges to shell out the shekles. Some folks charged it up to womanly charm, others to her industriousness. But we knew all the time it was due to her thorough foundation in the classics that she was able to exercise the mythical touch of Midas.

With everything on the accelerated program (which somebody once inadvertently called the "exhilarating program"), there were plenty of times when people were just too busy to make news. But the HTN covered the home front on everything from days of May and Sadie to news of dirt and datey.

It's probably a good thing there are some experienced women journalists on the Hill now, what with next year and the disheartening prospect of even fewer men students.



BUSINESS
MANAGER

NORMA LEE JOHNSON



EDITOR

EVELYN CRUMPTON

STAFF MEMBERS

<i>Editor</i>	EVELYN CRUMPTON
<i>Editorial Assistant</i>	ELY BRANDES
<i>Society Editor</i>	JANE ROBINSON
<i>Sports Editors</i>	DON HURLBERT, HOMER HURD, CHARLOTTE MEACHAM
<i>News and Makeup Editor</i>	SUSAN LEE
<i>Proof Reader</i>	IRENE HUNVALD

REPORTERS

Ernest Nathan . . . Barbara Brent . . . Betty Hawkins . . . Emily Blake . . . Martha Banks . . . Lawrence Fiquett . . . Mary Kirk . . . Becky Martin . . . Susan Montgomery . . . Cissie Jennings.

<i>Business Manager</i>	NORMA JOHNSON
<i>Assistant Business Manager</i>	IRENE HUNVALD

STAFF

Mary Kirk . . . Betty Marlin . . . Sunny Rosenthal



MR. RAYMOND F. ANDERSON, *Director*

T H E C H O I R

Director..... RAYMOND F. ANDERSON
Assistant Director..... LUCIE MARIE FORD
Accompanist..... LUCIE MARIE FORD

OFFICERS

President..... KATHRYN HORTON
Vice-President..... CHARLES GUTHRIE
Secretary..... MARY RICHARDSON
Treasurer..... DOROTHY COX

This year "Mr. Musso", too, has been short of men. Yet this handicap hasn't kept him from having a creditable a capella choir, an ensemble, and a flock of good soloists.

Under the famous Andersonian touch, beautifully accompanied by the inimitable Ford, the choir has made numerous appearances, including engagements with the North Alabama Conference of the Methodist Church, a Fall Concert, a jam-up Christmas program at both McCoy and the First Methodist Churches' Birmingham Music Teachers' Association, Alabama State Music Teachers' Association, Alabama Educational Association, Jasper First Methodist Church (ah, memorable trip! ah chartered bus! ah, fun!), weekly Convocation programs, a Spring Concert, the highly successful Music Demonstration School, Sunday

afternoons at the local USO, just to name a few.

Going beyond the line of duty, Directors Anderson and Ford have won hundreds of friends through their generous contributions of time and effort in behalf of the Air Crew Students of the AAF stationed on our campus, to say nothing of campus parties, Cat's Paw, Sadie Hawkins' Day, May Day, and the whole gamut of extracurricular activities.

Through Mr. Anderson's excellent guidance, students catch a glimpse of the vast store of pleasure in music of all types. His magnetic personality and contagious enthusiasm, coupled with his keen interest in each individual student, make it possible for Mr. Anderson to mold from a group of average college-student voices a unified, atristic choral group. To us, he's tops!

COLLEGE CHOIR

MEMBERS

Allen Balch . . . Ted Beavers . . . Emily Blake . . . Virginia Boteler . . . Jimmy Brittain . . . Marian Brown . . . Bob Cleveland . . . Mary Louise Coker . . . Clyde Cook . . . Dorothy Cox . . . Dorothy Curl . . . Faye Little Curl . . . Dorothy DeShazo . . . Elizabeth Ann Dulmage . . . Mimi Gibson . . . Mac Gibbs . . . Bruce Griffin . . . Albert Griffith . . . Toula Hagestratou . . . Herbert Hamilton . . . Jane Harper . . . Betty Hood . . . Kathryn Horton . . . Idamae Howard . . . Weldon Johnson . . . Anna Catherine Kidd . . . Larry Keith . . . Dennis Mays . . . James McDaniel . . . Annette Norment . . . Janice Odom . . . Nina Mae Pierson . . . Edith Plosser . . . Eugenia Puckett . . . Mary Richardson . . . Martha Sebree . . . Melvin Smoot . . . Catherine Stone . . . Harold Walker, Jr. . . . Jimmy Watts . . . Emily Williams.



1st Row: PIERSON, BOWLING
2nd Row: HOWARD, HORTON, RICHARDSON, BOTELER
3rd Row: FOLEY, GRIFFITH, BRITTAİN, PARKS, MAYS, HARRIS

1st Row: HOOD, HARPER, GIBSON, BOTELER, PIERSON, BLAKE, COKER, SEBREE, STONE, HAGESTRATOU, WILLIAMS
2nd Row: ODOM, PUCKETT, HOWARD, BROWN, RICHARDSON, KIDD, DESHAZO, PLOSSER, CURL, HORTON, DULMADGE, F. CURL
3rd Row: KEITH, HAMILTON, CLEVELAND, COOK, GUTHRIE, BALCH, NORMENT, BEAVERS, GIBBS, GRIFFITH, SMOOT, MCDANIEL, JOHNSON
4th Row: MAYS, GRIFFIN, WATTS, BRITTAİN, WALKER



The RELIGIOUS

So unobtrusive and unpublicized is the important work of this organization that many people on our campus are never aware of its existence. Yet upon this group falls the responsibility of co-ordinating all religious organizations and their activities.

Those who are not familiar with the work of the Religious Council probably do not know of the long sessions which are held long before the year gets under way in an effort to make it possible for

our campus to have a well-integrated, interesting, educational, and still appealing, program of religious work. Nor do they know of the countless conferences with advisors, speakers, ministers, lawyers, doctors, students, which make it possible for all phases of students' religious needs to be reached on our campus. Not so many weeks after Christmas, the crabapple tree, as if by magic, appears on fine morning resplendent with delicate blooms, and not so long after that Re-

Seated: NICHOLS, DUFFEY, BLAIR, G. SMITH, B. SMITH

OFFICERS

President JOE NEAL BLAIR

Secretary-Treasurer
..... IMOGENE DUFFEY

Faculty Adviser.....
..... DR. HAROLD H. HUTSON

MEMBERS

GRACE EDWARDS

RALPH NICHOLS

EDWINA PASS

BERT SMITH

GENE SMITH

MARIAN STEPHENS



U S C O U N C I L

ligious Emphasis Week comes to the Hill-top. To the casual student this might seem something that happens every Spring. But not so. Just as an efficiently directed Easter Program culminates with an effective Easter service because of long hours spent in planning, experimenting, and preparing, so this Religious Emphasis Week is the result of careful, detailed planning, of tedious committee meetings, of persistent appeals to campus leaders for assistance, of back-breaking ordeals with mimeograph and duplicating ma-

chines, of an insatiable desire to present in concentrated but palatable form for one week specific accent upon religion as a way of life in a meaningful and effective manner—all these things, and then some.

Led this year by Joe Blair, the Council assisted with the Alabama Student Conference at Jacksonville State Teachers' College, and presented its annual Spring Retreat, in addition to the Religious Emphasis Week and routine work of the organization.

Standing: McMILLAN, EDWARDS, PASS, STEPHENS, WRIGHT





Seated: GUTHRIE, CANNON, SMITH, BLAIR, HOLMQUIST
Standing: BALCH, LANIER, GRIFFIN, LYLE, WATTS, PICKENS, COOK, CRANSHAW, NICHOLS

The Y. M. C. A.

OFFICERS

President BERT SMITH
Vice-President BILL CANNON
Secretary-Treasurer JOE NEAL BLAIR
Faculty Advisor DR. HAROLD H. HUTSON

Faced with an increasingly problematic lack of male students from which to replenish its rapidly depleting ranks, the YM nevertheless has maintained throughout the year an active program. Despite small attendances, Cannon has kept the programs varied and interesting, while Smith has kept running efficiently the machinery behind the movement.

Included in activities for the year were participation in orientation weeks, teas, parties, Red Cross and War Bond Drives, and the all-important Religious Emphasis Week and Spring Retreat.

Our hats are off to this valiant group of boys for their efforts to keep alive an organization which has contributed much to our campus life.

The Y. W. C. A.

OFFICERS

President	GENE SMITH
Vice-President	DOROTHY GARRETT
Second Vice-President	ANNIE FRANCES DAVIS
Secretary	MARIAN STEPHENS
Corresponding Secretary	BESS MALONE
Treasurer	BETTY DAVIS

CABINET

Betty Buck . . . Annie Frances Davis . . . Lillian Douglas . . . Elizabeth Ann Dulmage
. . . Ann English . . . Loretta Graves . . . Thelma Noel . . . Annette Norment . . . Ethel
Mae Norton . . . Mary Elizabeth Obenchain . . . Edwina Pass . . . Juanita Perkins.

Due to drastically curtailed revenue of the Studentac Fund, the YW was not allotted any money from that fund for the year, yet, despite this handicap, the girls worked hard, raised their own money, and carried on their program as usual.

A Christmas party (with gifts) for the Ensley Community House and the sending of a child to the Fresh Air Camp were among their philanthropic enter-

prises. In April they entertained the National YW Secretary.

The only completely feminine religious organization on campus, the YW promoted a fine religious program of outstanding speakers from the fields of civic, educational, and religious life. Its members were primarily responsible for the advent of the campus chapter of the American Red Cross, which has met with such success that ensuing years' activities give promise of exceptional service.

R. STEWART, J. MOORE, PASS, T. NOEL, E. NORTON, C. BROWN, B. DAVIS, SHERROD, SMITH, JOHNSON, McMILLAN, GARRETT, F. DAVIS, STEPHENS, DUFFEY, OWEN, STARCHER, DOUGLAS, LASATER, CHAPPLF. CARTER, ENGLISH





STEARNES, C. NOEL, GRAVES, OWEN, ELLISON, COCHRAN,
BROWN, CARTER, Z. THOMPSON, SHERROD

The FRESHMAN COMMISSION

OFFICERS

President.....LORETTA GRAVES
 Vice-President.....JEAN COCHRAN
 Secretary.....ZELDA THOMPSON

MEMBERS

Carolyn Brown . . . Lenora Carter . . . Jean Cochran . . . Kathleen Ellison . . . Loretta Graves . . . Carolyn Noel . . . Bubs Owen . . . Ruth Sherrod . . . Betty Joyce Stearns . . . Zelda Thompson.

This group is becoming more important every year. To assist in raising money for YW this year, it sold subscriptions for Omnibook and sold homemade candy and cookies at Cat's Paw. Plans were already under way for issuing wool to be knitted into scarfs for the Red Cross when the local chapter was established. After the establishment of the campus chapter, members of the Freshman Com-

mission arranged a musical program for the entertainment of knitters.

The first week of March the Commission planned and presented the program at YW, at which time Jean Arnold, former president of YW, spoke, Jean Cochran presented the devotional, Bubs Owen made an appeal for the Red Cross Drive, and Loretta Graves presided.



GREEKS



HOLMQUIST, SMITH, WHITCOMB, LYLE, GIBBS
GRAHAM, HASE, COST, WATTS, SMOOT, TILLER, FEALY, COCHRAN

Inter - FRATERNITY Council

OFFICERS

President..... PECK WHITCOMB
 Vice-President..... BERT SMITH
 Secretary-Treasurer..... PAUL LYLE

MEMBERS

ATΩ: Paul Lyle, Ralph Tiller . . . ΔΣΦ: Bert Smith, Jimmy Holmquist . . . KA: John
 Graham, Jimmy Watts . . . ΑΧΑ: Melvin Smoot . . . IKA: Mac Gibbs, Jack Fealy . . .
 ΣΑΕ: Peck Whitcomb, George Cochran . . . ΘΧ: Gordon Hase.

Rushing rules are compiled by this Council, which passes them on to the fraternities and supervises their enforcement. Governing all legislation and regulation of the seven Greek groups on the campus, this vital organization fills a definite need.

This year, when fraternities all over the country are fighting for their very existence, the Council has had its hands full. Besides handling rushing and subsequent rules, it presented the customary scholarship cup to the fraternity having the highest average, held a party in the Spring, and assisted the Executive Council in undertaking its social functions.

T H E T A C H I

Beta Xi Chapter

OFFICERS

President GORDON HASE
Vice-President ROY HIGGINBOTHAM

MEMBERS

Francis Brown . . . Jimmy Cost . . . Jimmy Estock . . . Gordon Hase . . .
Roy Higginbotham . . . Billy Kessler.

ARMY AIR CORPS
JESSE HAMBY
LONNIE HANKS
WALTER GUNN
GEORGE HOURANEY
ALBERT LATHAN

NAVY AIR CORPS
BILLY HAYWOOD
BURNETTE MCWHORTER
JAMES WEATHERLY

MERCHANT MARINE
EUGENE DONALDSON
BOB HILDRETH
J. V. McQUEEN
BILLY STANFIELD

NAVY
LYNN BATHURST
BILL DONALDSON
GAUDIN GREENE
RALPH PASS
OWENS SIMS
LES WACHMAN

ARMY
CLAYTON CAMP
ADOLPH CREW
JAMES FELDER
JAMES MAYFIELD
GEORGE MOSS
JACK MULLINS
PAUL CHAMBERS
DAVID SIMS
JOHN RITTENHOUSE
GENTRY MARTIN
HERMAN LOWE
PAUL GOINS
HENRY HUBBERT
LLOYD GOWER
CHARLES PETERSON
WILBUR MCDUFF

COST, BROWN, HASE, ESTOCK, HIGGINBOTHAM, BROOKS



ALPHA TAU OMEGA

The A-Two-Horseshoe boys have been busy this year in a big way. With Hurlbert and Evans on the *Hill-top News* staff, Tiller as vice president of Skull & Bones, Lyle as president of Theta Sigma Lambda, and Evans and Crowe working with The Cellar, just to give you a rough idea, they've had a finger in about all the pies on campus.

Early in the year, prexy Lyle joined the ranks of recognized BMOC's, when he began dangling his ODK key. Predominant in Theta Chi Delta, Interfraternity Council, and other organizations, Paul quietly and effectively has made a valuable contribution to campus life.

With Ritchie managing the house and wrangling with grocers over points and stuff, it is reported that many a fine dinner passed over the festive board during the year.

Brother Culwell, now with the Good Ship Howard, has been nothing short of spectacular in football on the East Lake gridiron; Brother Collier has been conspicuous on the same campus for other reasons.

Well-represented in military service, the ATO's are scattered to the far corners of the globe, but those still here are carrying on in an admirable way the fine traditions that have been theirs for years.



OFFICERS

<i>President</i>	PAUL LYLE
<i>Vice-President</i>	RALPH TILLER
<i>Secretary</i>	JACK CROWE
<i>Treasurer</i>	FREDERICK EVANS
<i>Faculty Advisor</i> ..	DR. M. F. EVANS
<i>Interfraternity Council</i>	
.....	PAUL LYLE, RALPH TILLER



CROWE, HURLBERT, TILLER, LYLE, GORE, EVANS

Alabama Beta Beta Chapter

MEMBERS

JACK CROWE
FREDERICK EVANS
JACK GORE

DON HURLBERT
PAUL LYLE
RALPH TILLER

IN MILITARY SERVICE

DAVE ALMON
CHARLES BAKER
BOBBY BOWEN
BILL BROWN

BOB GRACE
PERRY HOOPER
JOHN ROBERT HUGHES
RAEFORD LILES

LEO RICHARD
RALPH RITCHIE
JOE ROBERTSON
LOFTIN RUTLEDGE

DON BRUSH
FELTON COLLIER
HOPKINS COLMANT
FRED CULWELL

B. W. MCNAIR
WALTER MEYER
BILLY PADGETT
WAYNE PLANT

JOHN SIBLEY
SAM SMITH
BILL STEWART
HUNT THOMPSON

DELTA SIGMA PHI

Delta Sig's this year have been extremely active, despite war conditions. Aply led by the ubiquitous J-Bert, who is listed in colleges' *Who's Who*, they have participated in nearly every activity on campus. Smith himself was a shining light on Sadie Hawkins Day, when he appeared bedecked in authentic Zoot Suit and served as genial master of ceremonies. Later in the year he served in a similar capacity at the famous Pirate's Party. A perpetual menace to the ladies' hearts, Smith climaxed the year by finding a single brand on which to lavish his attentions.

Every inch of him friendliness, Jimmy Holmquist was next BMOG in line. Ruling with tact and efficiency from his post as treasurer of the Executive Council, Jimmy still found time to serve on numerous committees, sell war stamps, aid in Red Cross drives, prepare for Sadie Hawkins Day and in general make valuable contributions to the Hilltop. Proof that not all service goes unrewarded, Holmquist was signally honored by the Oracle of ODK in the Spring. Just for good measure, he took over the business management of next year's *'Southern Accent'*.

Although extra-curricular things on campus kept them busy most of the time, Delta Sig's still found time for regular monthly meetings, monthly dinners (gad, they musta got pow'ful hungry in-between-times!), and a gala Founders Day Banquet.

The Chapter felt keenly the loss of their Brother, Faculty Member Dr. R. S. Poor, who left Enon Ridge at the end of the year to become Dean of the Graduate School at Auburn. They are glad, though, to have fun-loving Mr. Glenn still on hand to carry on the good work.

With alumni, members, and pledges scattered from Savannah to Suez, the Delta Sig's certainly are participating in the war effort in a meaningful way.



OFFICERS

Bert Smith
PRESIDENT AND VICE-PRESIDENT

Jimmy Holmquist
.....SECRETARY AND TREASURER

Faculty Advisor.....
.....MR. W. E. GLENN



GLENN, HOLMQUIST, SMITH, POOR, FORD, CRANSHAW, FOLEY

Beta Delta Chapter

MEMBERS

JAKE CRANSHAW

DAYTON FOLEY

PETE FORD

JIMMY HOLMQUIST

MITCHELL KEGLEY

BERT SMITH

FACULTY

DR. R. S. POOR

MR. W. E. GLENN

K A P P A A L P H A

The wearers of the Crimson Cross have had a full year, and we aren't kidding. Here's a brief resume: In the sports world, they walked off the championship titles in horseshoe, badminton, football, paddleball, and basketball, with Herky Holt as paddleball champ, Tojo Jones as horseshoe champ, and Uno Holt as badminton ditto; Sadie Hawkins' Day brought an exhibition game, with All Stars Uno Holt, Gravel-voice Elliott, Herky Holt, Duo Abernathy swelling the ranks of a football eleven. King Size Anderson and Herky Holt led the fraternity in volley ball, both being on the All Star team. At the end of the Fall Quarter, the first ten best athletes were KA's. Jimmy Watts edited this book, assisted by J. Graham as business manager; Watts, Anderson, and LeRoy Holt were ODK's; Cannon, Cleveland, Holt, Anderson, and Watts were Kappa Phi Kappa guys; Cleveland and J. N. Holt belonged to Eta Sigma Phi, of which Cleveland was local prexy and national secretary; Elliott, Anderson, and L. Holt were members of Skull & Bones; brothers were numbered among members of every honorary organization open to men on campus. The most important milepost in the year's program was the pledging and initiation of Dr. J. M. Malone, professor of mathematics, and Registrar Felix C. Robb, Jr., now Ensign Robb. These new brothers represent valuable additions to the chapter, and the boys have plenty of reason to gloat.



OFFICERS

President.....JOHN W. GRAHAM
Vice-President,.....
J. ROBERT ABERNATHY
Secretary...ROBERT E. CLEVELAND
Treasurer.....J. N. HOLT
Faculty Advisor.....
DR. W. D. PERRY
Interfraternity Council.....
 JOHN W. GRAHAM, JIMMY WATTS

With everything else just about overshadowed by the traditional Christmas banquet, social life was nonetheless at a standstill. It included a whizz-bang "Duffy's Tavern" party given by the pledges for the actives, a banquet for the Army-Navy brothers, a house-unwarming (night before moving), and the customary rush parties and house gatherings.

The boys forfeited their house in February, which meant giving up gracious Mrs. Victor R. White, Sr., housemother. This was a distinct loss, and the Grand Ole Gang is eagerly looking forward to the day when they can swap their apartment on Arkadelphia for a new house and have Mrs. White with them again.

What with Porterfield, D. Cleveland, Dempsey, Fletcher, Gore, Preston, Locke, Hunter, and dozens of others in various branches of military service KA's feel the war is under pretty good guidance, particularly since Generals Marshall and Patton are both brothers.



JONES, CANNON AND DEAN, HOLT, ABERNATHY, GRAHAM, CLEVELAND, SHORES, ELLIOTT
 TROXWELL, STALLINGS, LAWSON, DAVIES, LOGAN, WATTS, BURLAND, MCCOY, WALTERS, HOLLUMS

Phi Chapter

MEMBERS

BOBBY ABERNATHY
 BUDDY BURLAND
 CHARLES CAMPBELL

BILL CANNON
 BOB CLEVELAND
 FRANK DAVIES

KYLE ELLIOTT
 JOHN W. GRAHAM
 CLAUDE HOLLUMS

J. N. HOLT
 CHARLES JONES
 BILL LAWSON

ROGER LOGAN
 LOGAN MCCOY
 BILL MORIARTY

JIMMY SHORES
 HAROLD STALLINGS
 JOHN TROXELL

CHARLIE WALTERS
 JIMMY WATTS
 MICKEY WILLIAMS

FACULTY

W. R. BATTLE, JR.

FELIX C. ROBB, JR.

J. M. MALONE

R. S. WHITEHOUSE

W. D. PERRY

PI KAPPA ALPHA

This Spring former Pike prexy Homer Ellis became a full-fledged Navigator with Unca Sammy's AAF. He was a cinch for the place, as has been seen in the work he began two years ago to navigate the Shield-and-Diamond boys from their position as the smallest Greek group on the Hill to the next-to-the-largest one. Subsequent prexies Rex Windham, Hillie Reddick, and Mac Gibbs all did swell jobs in carrying on the groundwork laid by Deacon-trained Ellis, but to him should go the laurels for having visualized years ago what we now see as an actuality.

One of the only two frat groups to have full teams, the Pike's have participated prominently in football, volleyball, badminton, basketball, and paddleball.

Coming out on top scholastically, they not only received recognition locally but nationally as well, being awarded a scholarship placque by their national office.

Lanky Joe Blair presided over Chi Sig and guided the Religious Council for the year, serving as prexy of both groups. Corpuscles Blood was Chairman of the Men's Division of the Executive Council and did an outstanding piece of work. Genial prexy Mac Gibbs was president of the Senior Class, and about a dozen of the good brothers swelled the ranks of the Choir.



OFFICERS

<i>President</i>	MAC GIBBS
<i>Vice-President</i>	JACK FEALY
<i>Secretary</i>	HAROLD WALKER
<i>Treasurer</i>	JACK SHORT
<i>Faculty Advisor</i>	MR. H. B. ENGLEBERT
<i>Interfraternity Council</i>	MAC GIBBS, JACK FEALY

Never lagging socially, the boys found time somewhere for parties at the house (one of the last to be kept), wiener roasts, a Founder's Day Banquet, and a house party at Double Oak.

Their brothers are uniformed in all branches of the service. Most of them who, only last year, sauntered leisurely across the quadrangle, are now flying, sailing, driving, fighting.



GARRETT, SHORT, FEALY, GIBBS, WALKER, COOK
 FIQUETT, KEITH, BLACKBURN, BLAIR, BRITTAIN, HOENE, WILLIAMS

Delta Chapter

MEMBERS

BENTON BLACKBURN
 JIMMY BRITTAIN
 CLYDE COOK
 JACK FEALY
 EMMETT GIBBS

MAC GIBBS
 LOUIS HOENE
 JACK SHORT
 ALEX WALKER
 JIMMY WILLIAMS

PLEDGES

JIMMY AULT

LEONARD BLOOD

LAWRENCE FIQUETT

IN MILITARY SERVICE

BUENA AVANT
 A. C. BURKE
 MARIS CAMERON
 STEWART CARLTON
 ALLEN BOYD EDWARDS

HOMER ELLIS
 BRUCE ELROD
 DAVID HOLLIE
 BENNETT HUGHEN
 MORRIS MAYER

BILLY MORRIS
 ALFRED PARKER
 CECIL PRESCOTT
 HILLIE REDDICK
 BILLY ROGERS

SIGMA ALPHA EPSILON

The Sleepyhead boys may have been few in number this year, but they certainly were prominent on campus. Under the enthusiastic leadership of dynamic, genial Peck Whitcomb the lads copped an appreciable share of honors and had an all-round good time to boot.

Whitcomb headed the ill-fated Inter-Fraternity Council, with which he did an excellent job despite a bit of ruthlessness toward the end of the year. To complete his calendar, gregarious (or is it 'GERA-ous?') Peck of "'s bad boy fame" was prexy of Skull & Bones, a neat high-power politico, tapped by ODK, and—the \$64 award—Salutatorian of the Class of 1944. Discovering vast, latent capacities for literature, he also was one of most frequent caller at The Cellar, where he took Dr. Ab' at his word and did his best to curl up and sleep in every ash tray to be found. When not in class, he usually could be reached by dialing 4-4078.

Lanky George Cochran did his bit to keep the YM functioning, altering this work with Bookstore jabber and chemistry sessions. His and Peck's contributions Sadie Hawkins' Day and the Pirate Party will long be remembered. Homer Hurd's work with the Executive Council was especially outstanding. His letters to the editor and his promotion of war stamp sales are just two of the phases of this fine job.

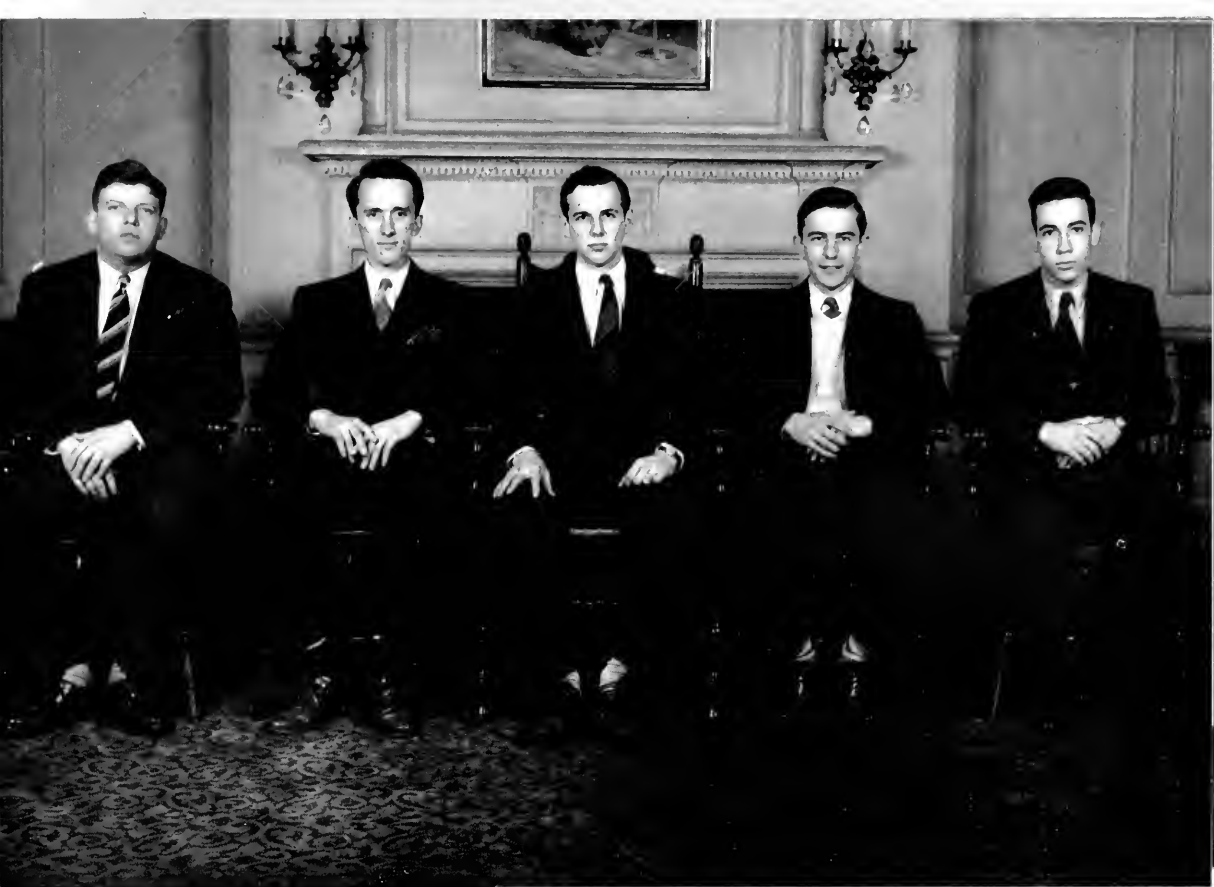
Pledge Jimmy Hill certainly has been with us, as has Hanlin Scott's carbon-copy kid brother, Elmore; Joe Hammock passed through.

It was a strange year, without The Mighty Termite, Loquacious Lively, Yoe-baby, and the Culley-White duo; but the remaining brothers managed to retain the same old spirit and customs traditional to the Sons of Minerva. "Three cheers for Bill Hudson—he's one keen guy. . . !"



OFFICERS

President..... LEE PECK WHITCOMB
Vice-President... GEORGE COCHRAN
Secretary..... GEORGE COCHRAN
Treasurer..... HOMER HURD, JR.
Inter-Fraternity Council.....
PECK WHITCOMB,
GEORGE COCHRAN



Alabama Iota Chapter

MEMBERS

DR. CECIL ABERNETHY
 GEORGE COCHRAN
 HOMER HURD, JR.

MR. HARRY E. MCNEEL
 DR. GEORGE R. STUART, JR.
 LEE PECK WHITCOMB

PLEDGES

JOE HAMMOCK

JIMMY HILL

ELMORE SCOTT

IN MILITARY SERVICE

BILL MAYFIELD
 HARRY MEGILL
 ELBERT NORTON
 LAMAR REID
 CHARLES REYNOLDS
 HARRIS SAUNDERS

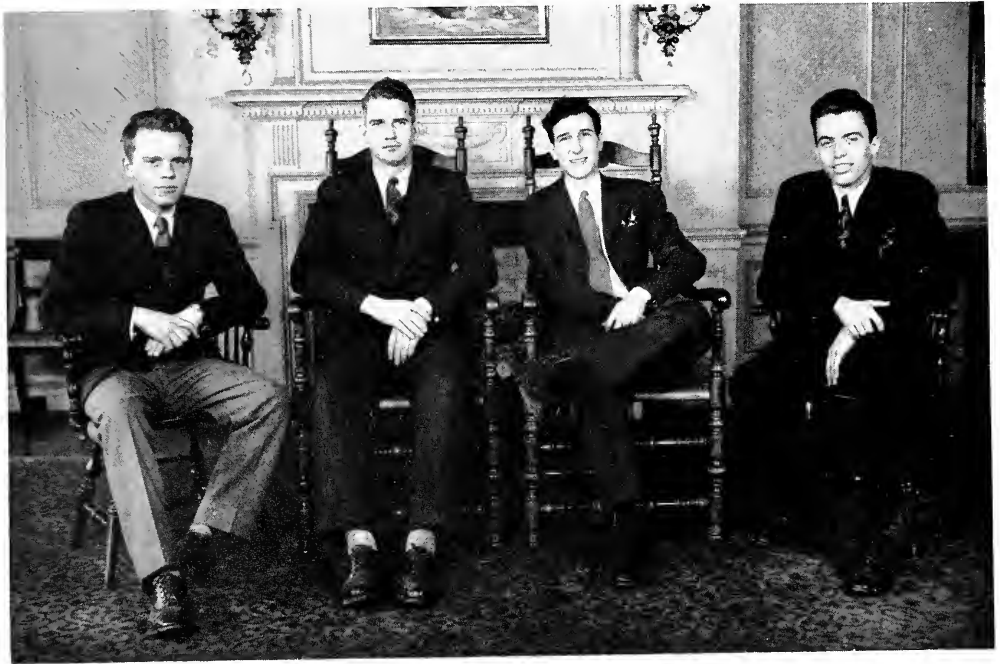
HANLIN SCOTT
 VICTOR SHAMBURGER, JR.
 CLIFTON SHELBY
 JAMES SHROPSHIRE
 GEORGE SIMPSON
 EDWIN SPIEGLE

JACK STEVENSON
 JIMMY TRENT

EDWIN UPDIKE

BILL WEST
 CHARLES WEST
 JEFF WEST
 DEWEY WHITE, JR.
 CLAUDE WHITEHEAD
 ROBERT YOE

LAMBDA CHI ALPHA



McWHORTER, OGBURN, SMOOT, GRIFFITH

Theta Mu Zeta Chapter



OFFICERS

President.....EDWIN JINKS
 Vice-President.....JAMES OGBURN

Secretary.....ALBERT GRIFFITH
 Treasurer.....CLEM McWHORTER

MEMBERS

ALBERT GRIFFITH
 EDWIN JINKS

JAMES McLEROY
 CLEM McWHORTER

JAMES OGBURN
 MELVIN SMOOT

IN MILITARY SERVICE

ALBERT ALEXANDER
 RAYMOND BATES
 EDWIN BARTEE
 DAN BROWN

GEORGE BROWN
 BILLY CAPPS
 ALBERT DANIELS
 STEVE DOWNS

JOHN DUDDY
 JAMES EMMETT
 SAMUEL EUGENE EVANS
 TRENYON GAMBLE

CLAUDE GARVER
 JAMES GILMER
 GEORGE GOMPERTS
 FRED HARRISON

MARLY HAZLEWOOD
 LEE HIGGINS
 LEWIS KENDRICKS
 ROBERT LONG

MARVIN MAXWELL
 ARTHUR LEWIS MILLER
 JOHN MOORE
 WILLIS NEALY

JOHN OUTLAW
 JOHN PARKER
 MARVIN PHILLIPS
 GRADY REGISTER

JAMES ROWELL
 RAYMOND SHERRILL
 TERRELL TAYLOR
 BRYAN WILLIAMS

ROBERT WINSTON
 ORMAND YEILDING

HENRY EDEL WILSON

Pan - HELLENIC Council

OFFICERS

President..... GENE SMITH
Vice-President..... RUTH BOLIN
Secretary..... VIRGINIA BOTELER

MEMBERS

ΑΧΩ: Virginia Boteler, Dorothy Garrett . . . ΑΟΗ: Gene Smith, Ann Brandon . . .
ΓΦΒ: Martha Owen Ingram, Mary Louise Greene . . . ΚΔ: Wita Jones, Pike Preston . . .
ΠΒΦ: Clyde Gragg, Betty Buck . . . ΘΥ: Ruth Bolin, Jane Crissinger . . . ΖΤΑ: Edith
Plosser, Louise Irving.

This has been a full year for Pan-Hellenic, what with USO doings, rush rules to be revised, scholarship cups to be given, and general supervisory work to be done for sororities.

The governing body of all women's Greek groups on campus, Pan-Hellenic sent sor-

ority girls to assist in entertaining at USO seven days a week. In connection with the revision of rush rules, they are to be commended for abolishing the dread silence of former rush weeks and for making it possible for our organizations to comply with National Pan-Hellenic's requirements.

BUCK, BOTELER, SMITH, BOLIN, W. JONES, A. JONES
GARRETT, CRISSINGER, GRAGG, IRVING, BRANDON, ATKINSON, PLOSSER, BRENT



ALPHA CHI OMEGA

Whenever you see a group of Alpha Chi's together, you can be sure there's where a good time is being had by all, for these girls certainly work together well and always enjoy everything they enter.

True to the principle upon which they were originally founded, the girls walked off with the Inter-Sorority Sing cup last spring, hands down. Directed by petite Virginia Boteler, the presentation of the sentimental "Night and Day" and the haunting "Lyre of Alpha Chi" was something to remember.

Always campus-spirited, the Alpha Chi's had girls in all functions on Enon Ridge. Prexy Dot Garrett was vice president of YWCA, and jovial Betty Joyce Stearns served on the Freshman Commission. Nina Mae Pierson was vice president of Chi Nu Tau, of which Alma Thomas and June Wright were members also. Senorita Norment swung the gavel for Entre Amigos, and counted Sybil Little, Alice Southard, Barbara Jones, and Barbara Minter among her members. In KDE, Garrett was prexy, and Dot Moore and Gibson were members, while Boteler was secretary of Pan Hellenic and, of course, Garrett was a member. Never lacking for beauty, the girls had a full-page lass in that section of this book. . . Virginia Boteler. With six representatives in the choir, they more than did their share by their heritage of music, and, to round out the picture, Berthon belonged to the French Club, and Mimi Gibson was a Delta Phi Alpha.



OFFICERS

<i>President</i>	DOT GARRETT
<i>Vice-President</i>	NINA MAE PIERSON
<i>Recording Secretary</i>	ANNETTE NORMENT
<i>Corresponding Secretary</i>	DOT MOORE
<i>Treasurer</i>	ALICE SOUTHARD
<i>Pan-Hellenic Council</i>	DOT GARRETT, VIRGINIA BOTELER

Contributing in an important way to the work of the local chapter of the Red Cross, the sorority listed a half dozen members in key positions with that organization.

So, you see, although basically sweet, cultured ladies, Alpha Chi's have also been industrious, enthusiastic, and interested in all phases of college life. What could make a better group?



STEARNS, THOMAS, BOTELER, SOUTHARD, *National President*, GARRETT, PIERSON, NORMENT, D. MOORE, BERTHON, COKER
 WRIGHT, GIBSON, CAMPBELL, B. JONES, KESSLER, MINTER, LITTLE, BARFIELD, PASS, HAWTHORNE, OBENCHAIN, HOOD, VANCE, J. MOORE

Alpha Omega Chapter

MEMBERS

CAROLINE BARFIELD
 MAXINE BERTHON
 VIRGINIA BOTELER
 EVELYN CAMPBELL

BETTY HOOD
 BARBARA JONES
 BETTY KESSLER
 SYBIL LITTLE

MARY ELIZABETH OBENCHAIN
 EDWINA PASS
 NINA MAE PIERSON
 ALICE SOUTHARD

MARY LOUISE COKER
 DOT GARRETT
 MIMI GIBSON
 JEAN HAWTHORNE

BARBARA MINTER
 DOT MOORE
 JOAN MOORE
 ANNETTE NORMENT

BETTY JOYCE STEARNS
 ALMA THOMAS
 LOUISE STRICKLAND VANCE
 JUNE WRIGHT

ALPHA OMICRON PI

The AOPi's were led again this year by BWOC Gene Smith, twice elected president of the sorority, president of Pan-Hellenic, president of the YWCA, president of Tau Kappa Alpha, and president of the Student Body. "Smitty" was also treasurer of Mortar Board, member of Phi Beta Kappa, listed in *Who's Who Among Students*, president of the college Red Cross chapter, member of the Student Life Committee and the Religious Council. "Smitty" was certainly the most outstanding girl on the Hill this year, and she has held every major woman's office on the campus. Brains, ability, and personality all entitle her to a place among Southern's all-time great.

But "Smitty" was not the only AOPi to capture honors on the campus, scholastically or otherwise, for book-juggler Annie "Francoise" Davis is a Phi Bete and Mortar Board activities chairman, a member of the Honor Council and Phi Sigma Iota. YWCA boasts prexy "Smitty", vice-prexy Annie Frances Davis, and minutes-keeper Bess Malone; cabinet members numbered Thelma Noel and Margaret Brasfield amongst them; the Freshman Commission president was Loretta Graves; Ruth Sherrod, Lenora Carter, and Zelda Thompson were other members of the commission. Fortune-teller Ann Brandon was an Executive Council member and prexy of Pi Delta Psi. Amazons had among its members this year Gene Smith, secretary, Ann Brandon, and Bess Malone. "Tiny" Carter, Ruth Sherrod, Loretta Graves, and Noel Junior have had a good time sitting together in Chi Sigma Phi assemblies. The same thing happens when KDE meets—it's just like an AOPi "get-together", with "Smitty" as vice-prexy, Malone as treasurer, and future educators Jo Bowling, Ann Anderson, Betty Keener, Brandon, and Davis.

Mu Alpha's vice president has been Jo Bowling, with Ruth Sherrod and the "Countess", Nancy Woodson, helping out. Numbering among students in the choir are Idamae Howard, Jo Bowling, and Margaret Moore. Internationally inclined were Gene Smith, Annie Frances Davis, and Jeanne Wingfield, members of Dr. Sensabaugh's International Relations Club. Wingfield was also chairman of the Canteen Corps of our Red Cross Chapter.

The otherwise part might well be sports, for the AOPi's, vying for top honor points, were outstanding in that field. Under the leadership of Sports Manager Dot Johnson, they walked away with the bowling cup, being undefeated. Johnson is a member of the Intramural Board and the Phys Ed Club. Incidentally, Johnson and Ann Anderson were among the Outstanding Women Athletes on campus. Social Life on the Hilltop consisted mainly of playing bridge in the bookstore, and, of course, the AOPi's were well-represented in this activity by Wingfield, Howard, Woodson, Johnson, Brasfield, Woods, Fields, and many others. Outside of hanging around Deacon's Den the AOPi's supper-in-the-room habits filled the war-time social books for campus-doings. Off campus they kept up their morale by parties at the Highland Terrace Garden, Countess Woodson's, and Jean Hart's homes. December was filled with fun and frolic, beginning with a Founder's Day Banquet and several Christmas parties.



OFFICERS

<i>President</i>	GENE SMITH
<i>Vice-President</i>	BESS MALONE
<i>Corresponding Secretary</i>	MARY JEAN MCCOY
<i>Recording Secretary</i>	MILDRED ANN TATE
<i>Treasurer</i>	ANNIE FRANCES DAVIS
<i>Faculty Advisor</i>	DR. LEON SENSABAUGH
<i>Pan-Hellenic Council</i>	GENE SMITH, ANN BRANDON



STEPHENSON, JAMISON, HART, FIELDS, STARCHER, SHERROD
 HOWARD, LONG, KEENER, DAVIS, WOODSON, SMITH, BRANDON, MCCOY, WINGFIELD, BOWLING, T. NOEL, MOORE, CARTER
 LASATER, HAWKINS, BRASFIELD, JOHNSON, GRAVES, ANDERSON, THOMPSON, WOODS, CHAPPLE, BATTLE, C. NOLL, SHOEMAKER,
 CALHOUN, CONNORS

Tau Delta Chapter

MEMBERS

ANN ANDERSON
 EDNA JO BOWLING
 ANN BRANDON
 MARGARET BRASFIELD
 LENORA CARTER
 DOROTHY CALLAHAM
 DOROTHY CONNORS
 MARTHA CAROLYN CREWS
 ANNIE FRANCES DAVIS
 LORETTA GRAVES
 JEANNE HART
 IDAMAE HOWARD

DOROTHY JOHNSON
 BETTY KEENER
 FAY LONG
 BESS MALONE

MARY JEAN MCCOY
 MARY LOUISE NASH
 MARGARET MOORE
 CAROLYN NOEL

THELMA NOEL
 RUTH SHERROD
 ANNE SHOEMAKER
 GENE SMITH

COSETTE STEPHENSON
 MILDRED ANN TATE
 ZELDA THOMPSON
 JEANNE WINGFIELD

BETTY MARGARET WOODS
 NANCY WOODSON

PLEDGES

MARY VIRGINIA BATTLE
 BETTY CALHOUN
 ERNESTINE CHAPPLE
 KAY FIELDS

JEAN HANCOCK
 SARAH HAWTHORNE
 BETTY HAWKINS
 JOSEPHINE JAMISON

MARY NELL LASSATER
 HILDA STARCHER
 BETTY WELCH

G A M M A P H I B E T A

Gamma Phi's piled up a respectable list of honors this year, with president Martha Owen Ingram elected to Theta Sigma Lambda, honorary math fraternity, and serving as secretary of Pi Delta Psi, psychology organization. Ruth Atkinson, the chapter's recording secretary, is also vice president of Theta Sigma Lambda and Treasurer of Theta Chi Delta, honorary chemical society, while Emily Blake, corresponding secretary, is a member of Tau Kappa Alpha, treasurer of Mu Alpha, and a newly-tapped member of Mortar Board, as well as a member of the campus' new organization, Omicron Mu Kappa. On the musical end of things, Anne Jones, Emily Blake, and Martha Banks are members of the choir. Anne is a star pupil at the conservatory, where she studies with Dr. Whittington, and Martha and Emily are members of the *Hill-top News* Staff. Emily is assistant editor of the 1944 *Southern Accent*. Kathleen Ellison is on the Fresh-Atkinson, and Emily Blake are all members of the black-stockinged Amazons.

Despite the shortage of males this season, the Gamma Phi's have managed to keep things going in a social way with numbers of dinner parties, hay rides, picture show parties, and a bowling party after which members and pledges spent the night at Mary Virginia Stallworth's house and rubbed one another down with alcohol(!).

Patriotic, the Gamma Phi's have done quite a bit of knitting for the Red Cross, and many of the members are enrolled in the Red Cross classes on the Hill-top. The Gamma Phi's have their own Bond Booth in the Alabama Theatre on Sunday afternoons, and in one afternoon they rang up sales amounting to over two thousand dollars.

Joining the ranks of college women engaged to men in the service are Imogene Macormick and Emily Blake. Also Anne Jones will be seen sporting a Pi Kappa Phi pin . . . and beaming.



OFFICERS

<i>President</i>	MARTHA OWEN INGRAM
<i>Vice-President</i>	MARY VIRGINIA STALLWORTH
<i>Secretary</i>	RUTH ATKINSON
<i>Treasurer</i>	MARY LOU VANN
<i>Pan-Hellenic Council</i>	MARTHA OWEN INGRAM, MARY LOUISE GREENE



GREENE, McCORMACK, STALLWORTH, HENCKELL, VANN, BANKS,
 ATKINSON, BLAKE, DAVIS, JONES, INGRAM

Alpha Rho Chapter

MEMBERS

RUTH ATKINSON

MARTHA BANKS

EMILY BLAKE

KATHRYN DAVIS

KATHLEEN ELLISON

FRANCES HENCKELL

MARTHA OWEN INGRAM

IMOGENE McCORMACK

GLORIA NORMAN

MARY CLAUDE SELLERS

MARY VIRGINIA STALLWORTH

CATHERINE THOMAS

DOROTHY VANN

MARY LOU VANN

MARY LOUISE GREENE

ANNE JONES

K A P P A D E L T A

Under Queenie Jones' dynamic leadership, the KΔ's have enjoyed one of the most successful years in their long history on the Hilltop. Pledging ten lassies in the fall, they wound up rush season with a banquet at Tom's Steak House (that was in the days of steaks . . . remember?) and a raft of parties honoring the new pledglings. A Christmas banquet at the Molton, complete with a tree and gifts, vied with the others for clamour. Starting off the new year right, they indulged in all sorts of food orgies, from breakfasts-hikes to swank dinner doings at the Redmont. Traditionally the sports stars of the Hellenistic women on campus, the KΔ's copped the volleyball, basketball, and badminton cups to add to their voluminous collection, placing Q. Jones and Moe Owen in the badminton race as finalists. Not to shirk work, the gals came through in second place in the scholarship tourney, averaging 1.6, with Betty Brown joining the ranks of Alpha Lambda Delta. Bubbling over with energy, the dames populated nearly every place in town, from the Red Cross headquarters both downtown and on campus, the blood donation center, to the USO and Officers' Club. They gave magazine subscriptions to the USO and financed several hospital beds. Placing six out of the ten high point women in intramurals, they added further to their prowess in that sphere. Boasting three scholarship winners, Anne Smith, Betty Ogletree, and Ann Ogletree, the gals also gloat over Jane Scruggs (of Latin and French fame) who was one of three on the committee instigating and conducting the Cellar. Audrey Peeples helped with this, too.



OFFICERS

President.....WITA JONES
Vice-President
ETHEL MAE NORTON
Secretary.....LIL CULLEY
Treasurer.....JANE HUDDLESTON
Assistant Treasurer .. ANNE OWEN
Editor.....RINIE MILLER
Pan-Hellenic Council
 ... WITA JONES, PIKE PRESTON

Some people have rather wilyly (?) referred to the KΔ's as "biceptic", but the fact that four of their girls grace the beauty section of this book (one of them "Miss 'Southern Accent'!") certainly speaks in a loud voice for the grace, charm, and pulchritude of the group.

Sadie Hawkins' Day found the KΔ's not only interested and participating, but planning and running the activities. "Devil" Norton arranged the program, Wita had charge of women's competition for the day, and Anne Owen and Ann (monotonous, anne'tit!) Ogletree were more than active. It is rumored that Ogle ran too hard, but we wouldn't know. "Moe," old crazy, was first one caught!



MCALLISTER, SMITH, COREY, HOLLAND, J. NORTON, SPAIN, BRENT
 HOLLOWAY, HUDDLESTON, OWEN, E. NORTON, JONES, CULLEY, MILLER, B. OGLETREE
 GIBSON, COLE, LANKFORD, MURCHISON, ROSE, SHOOK, BENEFIELD, PRESTON, SCRUGGS, KELLY, PEEPLES, BROWN, HALE

Alpha Upsilon Chapter

MEMBERS

MARY ANNE ADAMS
 BARBARA BRENT
 BETTY BROWN

MARGARET COLE
 LIL CULLEY
 NANCY GIBSON

ANN HALE
 GERA HOLLAND
 MILDRED HOLLOWAY

JANE HUDDLESTON
 NANCY HUDDLESTON
 WITA JONES

GENE LANKFORD
 FRANCES MCALLISTER
 RINIE MILLER

MARY MURCHISON
 ETHEL MAE NORTON
 JEAN NORTON

ANN OGLETREE
 BETTY OGLETREE
 ANNE OWEN

AUDREY PEEPLES
 MARGARET PRESTON
 LORRAINE ROSE

JANE SCRUGGS
 MARY PORTER SHOOK

PLEDGES

MARY BENEFIELD

ROSEMARY COREY

CHARLOTTE KELLY

P I B E T A P H I

Honestly, if we printed all the long list of honors and activities turned in to us by the "Error" wearers, we'd hafta have two addenda to the book. We'll try to tell you as much as the time and space will allow, though.

Yeah, you guessed it . . . the Pi Phi's kept the scholarship honors again. Cornelia Banks was prexy of Mortar Board, Mary Richardson was vice president, and Ann Blevins was treasurer. Some people looked askance at this majority (which included more than the officers), when three more sisters were added to the wearers-of-the-flat-hat this year, but we know that was silly. With two of the sistern flaunting Phi Bete keys, and three still classified as Alpha Lambda Delta's, the "Angel's" closed the current chapter on their scholastics.

The muchly disguised gals were prominent on campus otherwise, as many of them have no doubt told you. Six of them (count 'em) were listed in *Who's Who Among Students*, three are portrayed in the beauty section of this book, and six flexed their biceps on the quadrangle; three consented to train as nurses' aides (remember how pretty Mary Richardson was in her uniform?), and two sat on the honor council (no casualties reported therefrom). Richardson courageously tried to fill Hatchers' shoes as prexy of Mu Alpha, while Sebree walked away with honors as Miss Sadie Hawkins of '44.

All work and no play makes Jane . . . or something like that . . . said these femmes, so they pitched some of their notorious cookie shines, a circus party, practiced cutting up chicken just-among-the-gang, donated blood, knitted for the service guys.

The last item on their long list was something to the effect that alumna Betty Caldwell is a member of this year's debutante club. Although we fail to see the connection between this juicy morsel of news and the activities of the local chapter, we present it here for what it's worth. After all, how many college sororities can practically assure a lady-in-waiting of a successful coming-out?



OFFICERS

President.....	CLYDE GRAGG
Vice-President.....	ANN BLEVINS
Secretary	ANNA KATHERINE KIDD
Treasurer.....	LOIS JENNINGS
Pan-Hellenic	CLYDE GRAGG, BETTY BUCK



MORGAN, ROGERS, GALLAGHER, BUCK, JENNINGS, GRAGG, DAVIS, KIDD, RICHARDSON, SEBREE, M. THOMPSON
 AKEROYD, McDEVITT, BIARD, CATHEY, HORNSBY, MARTIN, MEACHAM, E. THOMPSON, FARRELL, PRICE, HENAGIN, REYNOLDS, HARRIS

Alabama Iota Chapter

MEMBERS

MARY ELIZABETH AKEROYD
 CORNELIA BANKS
 ROSALIE BIARD
 ANN BLEVINS
 BETTY BUCK
 ELIZABETH CATHEY
 BETTY DAVIS
 GRACE FARRELL

MARY CATHERINE GALLAGHER
 CLYDE GRAGG
 SUSIE HARRIS
 FLORENCE HENAGAN
 HELEN HORNSBY
 LOIS JENNINGS
 ANNA KATHERINE KIDD
 FRANCES McDEVITT

CHARLOTTE MEACHAM
 CELESTE MORGAN
 POLLY PRICE
 MARTHA REYNOLDS
 MARY RICHARDSON
 AGNES ROGERS
 MARTHA SEBREE
 EVELYN THOMPSON

PLEDGES

CHRISTINE ELLIOTT

REBECCA MARTIN

EVELYN SHARP

MILDRED THOMPSON

THETA UPSILON

Prexy Ruth Bolin's natural charm, plus Crissinger's pep and Griffith's efficiency, made it possible for the Theta U's to again prove quietly effective and essentially most worthwhile this year. Never grabbing for publicity of plaudettes, these admirable girls have put their greatest efforts into everything vitally concerning campus life as a whole, rather than as revolving around their own group in particular.

Bolin shone as a staunch member of the Intramural Board, an Amazon, a member of Chi Nu Tau, and a Pan-Hellenic, and Crissinger specialized in music through the orchestra and Mu Alpha, still finding time to help Sister Bolin with Pan-Hellenic and Amazons, while Griffith served as secretary-treasurer of Rusurbe and headed a committee planning the "Pirate" party which proved so much fun. Haggood, president of the pledge group, also wielded the gavel for Rusurbe. To complete the pledge group, Anna Jo Byrd was vice president, Beulah Skelton was secretary, and Peggy Justin was treasurer.

Never lacking for originality or ingenuity, the Theta U's ranged in social functions all the way from buffet suppers, valentine party (in honor of a visitor from Beta Alpha in New York, Betty Levery), a kid party, and teas. Just to prove that, when they wanted to, they could put on the dawg equal to any other greek group, they threw a ritzy banquet in the spring.

Prexy Bolin, versatile and gracious, added much to the beauty section of this year's *Accent*.



OFFICERS

President.....RUTH BOLIN
Secretary.....MARGARET GRIFFITH
Treasurer.....JANE CRISSINGER
Pan-Hellenic Council

RUTH BOLIN, JANE CRISSINGER



HAWKINS, CRISSINGER, CARTER, JEWEL, HAGOOD, DEAN,
GRIFFITH, BOLIN, BYRD, JUSTIN, SKELTON, BERRY

Beta Xi Chapter

MEMBERS

BLANCHE BERRY

JANE CRISSINGER

MARY ELEANOR HAWKINS

RUTH BOLIN

FRANCES DEAN

VIRGINIA RAY JEWELL

ANNA JO BYRD

MARGARET GRIFFITH

PEGGY JUSTIN

ANNIE MAE CARTER

BONNIE HAGOOD

BEULAH SKELTON

Z E T A T A U A L P H A

Because the quarter system makes it possible for students to complete their work at the end of any quarter, the Zetas this year underwent three metamorphic changes in president: Ann Reynolds, "graduating" in December, relinquished her reign to Edith Plosser who, in turn, passed the sceptor on to Louise Irving at the end of the Winted Quarter. Yet, despite these rather frequent changes, the Zeta Tau Mamas have racked up a fine year of activities.

Numbered among Amazonians were Ann Reynolds, Edith Plosser, Louise Irving, Ann Ross, and Sue Ambler Smith. Ann Ross, reputedly the best assistant Miss Crawford has had, found time somewhere in her busy schedule to serve as Zeta treasurer, social editor for the *Accent*, and to be tapped by Tau Kappa Alpha. Edith Plosser and Annie Stewart Calhoun graced the beauty section of this book, Jean Cochran was active with the Freshman Commission of the YWCA, and Ann English and Sarah Fisch were members of Theta Sigma Lambda, while Eva Adams, Martha Rosenstein, and Edith Plosser were mainstays of Pi Delta Psi.



OFFICERS

President..... ANNE REYNOLDS,
Fall Quarter;
 EDITH PLOSSER, *Winter and*
Spring Quarters.

Vice-President

..... KATHRYN HORTON

Recording Secretary.....

..... SUE AMBLER SMITH

Corresponding Secretary.....

..... BETTY SUE MCBRIDE

Treasurer..... ANN ROSS

Historian..... ANN ENGLISH

Pan-Hellenic Council

ANNE REYNOLDS
 EDITH PLOSSER
 LOUISE IRVING

Giving all the other sororities a good trouncing, the Zetas marched off triumphantly with the new soccer cup, with high-point 'Gene Duffey leading in women's sports.

Traditional parties came and went fast and furious, and plenty of good times were enjoyed. At the annual Inter-Sorority Fraternity Sing the Zetas presented a very novel interpretation of "Swinging on a Star", with amusing characterizations by Sarah Fisch, all directed by Kathryn Horton, recipient of the 1944 Jack McGill award for the most valuable member of the College Choir.

With six or eight weddings added to their rapidly mounting score for the year, Zetas have proven that they have not only looked for but *found* their "Zeta Tau men" as well!



Alpha Nu Chapter

MEMBERS

EVA ADAMS
 RUTH PASS BEENE
 BILLIE BIGGS
 ANNIE STEWART CALHOUN
 JEAN COCHRAN
 BETTY JEAN CRUMB
 IMOGENE DUFFEY
 ELIZABETH ANN DULMAGE

MARY GREY ELLIS
 ANN ENGLISH
 SARAH FISCH
 JEAN FRANKE
 KATHRYN HORTON
 LOUISE IRVING
 BETTY SUE MCBRIDE
 BETTY MCCRACKEN

ADLLAIDE McREYNOLDS
 DORIS MILLER
 JO MILLER
 EDITH PLOSSER

MARY BETH PRUDE
 ANNE REYNOLDS
 ANN ROSS

SUE AMBLER SMITH
 ANNETTE TILL
 DOROTHY ANN TYRRELL

PLEDGES

ANNE ELLIS
 GLORIA GOODALL

BUTTERCUP HARRIS
 RUTH LEE MARTIN



A M A Z O N S

OFFICERS

<i>President</i>	CLYDE GRAGG
<i>Vice-President</i>	ANN REYNOLDS
<i>Secretary</i>	GENE SMITH
<i>Treasurer</i>	RUTH BOLIN

MEMBERS

AXΩ: Virginia Boteler, Dorothy Garrett, Billie Whatley . . . AOII: Anne Brandon, Bess Malone, Gene Smith . . . ΓΦΒ: Ruth Atkinson, Emily Blake, Martha Owen Ingram . . . KA: Wita Jones, Ethel Mae Norton, Frances Spain . . . ΠΒΦ: Betty Davis, Mary Catherine Gallagher, Clyde Gragg . . . ΘΥ: Ruth Bolin, Allie Christian, Jane Crissinger . . . ZTA: Billie Biggs, Edith Plosser, Ann Reynolds.

Although for the duration dances and such are out, Amazons kept up their usual high spirits. Plans are being made now to

resume the practice of the backwards ball as soon as the war is over.



A/S STANLEY JOSEPH KINKA SELECTS

BEAUTIES

Betty Brown

"MISS SOUTHERN ACCENT"





Cecile Morgan

Gene Smith





Annie Stewart Calhoun

Virginia Boteler





Martha Sebree

Audrey Peeples



Frances Spain



Evangeline Constantine



Ruth Bolin

Emily Williams



Janice Odom

Mary Richardson



Edith Plosser



Ann Ogletree



Tola Hagestraton



ORGANIZATIONS



LYLE, WATTS, REESE, OSMENT
MOORE, REYNOLDS, BATTLE, POOR, WALSTON, EVANS, PERRY

OMICRON DELTA KAPPA

OFFICERS

<i>President</i>	SPARKY REESE
<i>Vice-President</i>	LEROY HOLT
<i>Secretary</i>	DR. J. PAUL REYNOLDS
<i>Treasurer</i>	JIMMY WATTS

MEMBERS

Dr. Cecil Abernethy . . . Tom Anderson . . . Dr.
 J. E. Bathurst . . . Mr. William R. Battle, Jr. . . .
 Dr. D. P. Beaudry . . . Dr. J. H. Chitwood . . .
 Mr. H. B. Englebert . . . Dr. M. F. Evans. . . Mr.
 W. E. Glenn . . . LeRoy Holt . . . Paul Lyle . . .
 Mr. R. G. McWilliams . . . Dr. J. M. Malone . . .
 Ray Monsalvatge . . . Dr. W. A. Moore . . . Dr. R.
 S. Poor . . . Lamar Osment . . . Dr. E. S. Ownbey
 . . . Mr. C. M. Reaves, Jr. . . . Howard Reese . . .
 Dr. J. Paul Reynolds . . . Dr. L. F. Sensabaugh . . .
 Dr. H. T. Shanks . . . Dr. George R. Stuart, Jr. . . .
 Mr. Robert H. Walston . . . Jimmy Watts . . .
 Dr. W. A. Whiting . . . Mr. N. M. Yeilding.

What with males getting scarce as the proverbial hen's teeth, ODK has had its hands full keeping up with leadership. Activities for the year included publishing the college directory, which fell treasurer Jimmy Watts' lot, and in aiding Civilian Defense work.

M O R T A R B O A R D

With most of the male contingent off at war, the Mutter Birds have had almost complete run of the field of leadership this year. They sponsored their usual Career Conference for high school girls, presenting twelve (12, count 'em!) speakers who discussed various fields of activity for women. For Alpha Lambda Delta they took a survey of freshman girls' interests, and helped PTA hold a citywide conference on campus. Orientation of freshman, tapping, suppers, and dinner parties rounded out their work for the year.

OFFICERS

President CORNELIA BANKS
Vice-President PEGGY CONSTANTINE
Secretary MARY RICHARDSON
Treasurer..... GENE SMITH
Editors..... LIL CULLEY, ANN BLEVINS
Activities Chairman..... ANNIE FRANCES DAVIS

MEMBERS

Cornelia Banks . . . Emily Blake . . . Ann Blevins
 . . . Peggy Constantine . . . Dorothy Cox . . . Lil
 Culley . . . Annie Frances Davis . . . Betty Davis . . .
 Cissie Jennings . . . Norma Johnson . . . Patsy Kirk-
 patrick . . . Charlotte Meacham . . . Nellie Renegar
 . . . Mary Richardson . . . Martha Sebree . . .
 Gene Smith.

SMITH, DAVIS, CULLEY, CONSTANTINI, BANKS, MEACHAM, RICHARDSON





GIBBS, McDANIEL, GRIFFITH, BALCH, BLAIR, CLEVELAND,
SHURBET, COLEMAN, GRIFFIN, WATTS, CANNON, SMITH, NICHOLS, MALONE

K A P P A P H I K A P P A

OFFICERS

President ALLEN BALCH
Vice-President ALBERT GRIFFITH
Secretary-Treasurer JOE NEAL BLAIR
Program Chairman BILL CANNON
Faculty Advisor DR. J. M. MALONE

MEMBERS

Dr. C. E. Abernethy . . . Tom Anderson . . . Allen Balch . . . Ted Beavers . . . Joe Neal Blair . . . Bill Cannon . . . Father Gregory Carfopoulos . . . Bob Cleveland . . . Martin Coleman . . . Mr. H. B. Englebert . . . Mac Gibbs . . . Mr. W. E. Glenn . . . Bruce Griffin . . . Albert Griffith . . . Charles Guthrie . . . Roy Higginbotham . . . LeRoy Holt . . . James McDaniel . . . Dr. J. M. Malone . . . Ralph Nichols . . . Dr. R. S. Poor . . . Robert Shurbet . . . Bert Smith . . . Oren C. Smith . . . Dr. George R. Stuart, Jr. . . . Carl Tolleason . . . Jimmy Watts . . . Mrs. R. S. Whitehouse.

This year the potential teachers among our men have been few and rather far between, yet Kappa Phi Kappa has been able to recognize a goodly portion of the student body. It has held three initiations, a luncheon with the National Secretary, and a joint party with the KDE girls.

KAPPA DELTA EPSILON

To National Convention this year went Dr. Eoline Moore, National President, Dorothy Garrett, local president. With the theme, "Education of Alabama" the group presented vitally interesting programs. The social side of their activity was well-rounded with parties, some of which were shared with Kappa Phi Kappa. Allie Christian, Bess Malone, and Dot Garrett attended the Southern States meeting in Atlanta, and the whole group assisted in improving the picnic spot on the Hill.

OFFICERS

President DOROTHY GARRETT
Vice-President GENE SMITH
Recording Secretary ETHEL MAE NORTON
Corresponding Secretary
 MARY BETH PRUDE
Treasurer MRS. J. W. DEYAMPERT
Faculty Member... DR. EOLINE W. MOORE
Advisor..... MRS. W. E. GLENN

MEMBERS

Ann Anderson . . . Edna Jo Bowling . . . Anne Brandon . . . Elizabeth Cathey . . . Allie Christian . . . Annie Frances Davis . . . Mrs. J. W. deYampert . . . Imogene Duffey . . . Dorothy Garrett . . . Mimi Gibson . . . Lucile Glaze . . . Mrs. W. E. Glenn . . . Kathryn Horton . . . Betty Kessler . . . Bess Malone . . . Dot Moore . . . Ethel Mae Norton . . . Mary Beth Prude . . . Janette M. Rainwater . . . Mary Richardson . . . Gene Smith.

BOWLING, GIBSON, NORTON, GARRETT, SMITH, PRUDE, D. MOORE, E. MOORE DAVIS, ANDERSON, CATHEY, GLENN, KEENER, BRANDON, DUFFEY, GLAZE





STEPHENS, SMITH, KESSLER, MOORE, EDWARDS, BLAIR, DUFFEY, THOMPSON, BANKS, STONE, SHOEMAKER
GUTHRIE, RICE, HARPER, OWEN, BALCH, GRAVES, GRIFFIN, BIARD, NICHOLS, HAIGLER, NOEL,
WILKINS, SHLRROD

CHI SIGMA PHI

OFFICERS

President.....JOE NEAL BLAIR
Vice-President GRACE EDWARDS
Secretary-Treasurer.....IMOGENE DUFFEY
Faculty Advisor... DR. HAROLD H. HUTSON

MEMBERS

Allen Balch . . . Martha Banks . . . Emily Blake . . .
Lenora Carter . . . Imogene Duffey . . . Elizabeth
Ann Dulmage . . . Loretta Graves . . . Bruce Griffin
. . . Charlie Guthrie . . . Bonnie Hagood . . . Sue
Haigler . . . Andrew Hardiman . . . Jane Harper . . .
Cissie Jennings . . . Betty Kessler . . . Mary Murchison
. . . Ralph Nichols . . . Carolyn Noel . . . Betty
Ogletree . . . Bubs Owen . . . Serene Poarsh . . .
Jean Rice . . . Ann Shoemaker . . . Bert Smith . . .
Betty Joyce Stearns . . . Marian Stephens . . .
Catherine Stone . . . Zelda Thompson . . . Jimmy
Watts . . . Kathleen Wilkins.

With programs centered this year around "Hobbies" and "What Every College Student Should Know", Chi Sig's never lacked for interest and entertainment. Among their social functions were included a skating party, folk dancing, and suppers. Their help with Religious Emphasis week aided in making it a success.

ETA SIGMA PHI

Although basically interested in developing a finer appreciation and better understanding of the classic languages, this organization has by no means been of the stick-in-the-mud variety. This was due largely to its informal atmosphere, completely bereft of togas, Hemlock, sackcloth and ashes—and to not a little of the often corny Cleveland-Hutson witticisms. Plays were read, papers were presented, yarns were told, and many of Mrs. Key's delicious meals were consumed with, yes we might even say, "classic" gusto.

The group felt keenly the loss of its great champion and faculty adviser, Dr. Key, who retired this year after having headed the classical languages department for a number of years. As a token of appreciation for his untiring work, Eta Sigma Phi presented Dr. Key with several handsomely bound volumes of his beloved classics.

OFFICERS

<i>President</i>	BOB CLEVELAND
<i>Vice-President</i>	NORMA LEE JOHNSON
<i>Secretary</i>	BRUCE GRIFFIN
<i>Treasurer</i>	JANE SCRUGGS

MEMBERS

Bob Cleveland . . . Miss Marian Crawford . . . Lady
Portis Cunningham . . . Bruce Griffin . . . Charles
Guthrie . . . J. N. Holt . . . Irene Hunvald . . . Dr.
Harold Hutson . . . Norma Lee Johnson . . . Mrs.
D. M. Key . . . Dr. D. M. Key . . . Betty McMath
. . . Dr. W. D. Perry . . . Julian Pickens . . . Jane
Scruggs . . . Dr. George R. Stuart, Jr. . . Jimmy
Watts.

SCRUGGS, CLEVELAND, JOHNSON
GUTHRIE, HUTSON, CRAWFORD, GRIFFIN, KEY, PERRY





BATHURST, ADAMS, BRANDON, PLOSSER, BALCH
SMITH, GARRETT, DAVIS, INGRAM, GRIFFIN

Ψ Δ Ε Λ Τ Α Ψ Ξ Ι

OFFICERS

<i>President</i>	ANNE BRANDON
<i>Vice-President</i>	OREN SMITH
<i>Secretary</i>	EDITH PLOSSER
<i>Treasurer</i>	EVA ADAMS
<i>Faculty Advisor</i>	DR. J. E. BATHURST

MEMBERS

Eva Adams . . . Allen Balch . . . Anne Brandon . . .
 Betty Davis . . . Dorothy Garrett . . . Bruce Griffin
 . . . Martha Owen Ingram . . . Edith Plosser . . .
 Bert Smith . . . Oren Smith . . . Dr. Harold Hutson
 . . . Mr. Felix C. Robb, Jr.

Although their primary interest is in psychology, this group was by no means a stick-in-the-mud for interest. Two prominent speakers, Dr. Tender and Mr. Bridges, were presented, a Christmas party and a picnic were enjoyed, as well as a musicale by Vivian Von Hermann. Initiation of new members Bert Smith, Martha Owen Ingram, Allen Balch, and Betty Davis completed the year's work.

T A U K A P P A A L P H A

OFFICERS

Again this year TKA sponsored the Speakers' Bureau, which furnished speakers for practically any occasion. Recognizing outstanding talent and ability in forensic activities on campus, the organization sponsored Spanish-American Contest forums and assisted with the conducting of speech contests of all kinds throughout the city.

President..... GENE SMITH

Vice-President..... LIL CULLEY

Secretary-Treasurer..... DR. M. F. EVANS

MEMBERS

Jean Arnold . . . Emily Blake . . . Lil Culley . . .

Dorothy Garrett . . . Ann Ross . . . Gene Smith . . .

Marian Stephens.

SMITH, ARNOLD, EVANS, CULLEY





A. CONSTANTINE, HARRIS, ATKINSON, LYLE, HOLMQUIST, PARSONS, INGRAM
GRAHAM, FISCH, WAGER, HASE, ESTOCK, CATHEY, HOPKINS, MOORE, GLENN, ENGLISH, OSMENT

THETA SIGMA LAMBDA

OFFICERS

President.....PAUL LYLE
Vice-President.....RUTH ATKINSON
Secretary.....JIMMY HOLMQUIST
Treasurer.....LOIS PARSONS

MEMBERS

Ely Brandes . . . Elizabeth Cathey . . . Alice Constantine . . . Ann English . . . C. T. Estock . . . Sarah Fisch . . . W. E. Glenn . . . John W. Graham . . . Lugene Greene . . . Susie Harris . . . Erskine Hopkins . . . Martha Owen Ingram . . . Sibyl Little . . . J. M. Malone . . . Edwin Miles . . . W. A. Moore . . . Lamar Osment . . . Sparky Reese . . . Jack Short . . . A. T. Wager . . . Billie Panter Whatley.

Future Einsteins this year have maintained a varied program, which has included socials as well as philosophical discussions of theories and such. The aim of the group is to stimulate interest in the field of mathematics and to recognize outstanding ability in that field. Since the war has placed such importance upon this phase of training, the organization has really come into its own.

THE T A C H I D E L T A

At meetings Theta Chi Delta presented speakers of merit in the field of chemistry. They discussed war problems and problems which will be eminent in the post-war period. Sponsors of the Student Affiliate chapter of the American Chemical Society, members wrote essays on different phases of chemistry to be submitted to the essay contest held annually by the national chapter of Theta Chi Delta.

OFFICERS

President ————— SPARKY REESE
Vice-President ————— LAMAR OSMENT
Secretary ————— RUTH ATKINSON

MEMBERS

Ruth Atkinson . . . Lil Culley . . . Lillian Douglas
. . . Harvey Elrod . . . Charles Fite . . . Gordon
Hase . . . Ruby Helms . . . Jane Huddleston . . .
Billy Kennedy . . . Paul Lyle . . . Lamar Osment . . .
Ed Phelps . . . Sparky Reese . . . Ralph Tiller . . .
Emily Williams.

CARR, DOUGLAS, HELMS, ATKINSON, REESE, OSMENT, HOLMQUIST, HARRIS
HUDDLESTON, JENNINGS, BROWN, TILLER, JONES, LYLE, CANNON, FITE, HASE, ARNOLD, CULLEY





REESE, TILLER, "JENNY", WHITCOMB, REYNOLDS
CRANSHAW, LINN, GILLESPIE, HASE, ELLIOTT

SKULL AND BONES

OFFICERS

President PECK WHITCOMB
Vice-President RALPH TILLER
Secretary-Treasurer SPARKY REESE

MEMBERS

Tom Anderson . . . John Creamer . . . Jake Crenshaw . . . Kyle Elliott . . . Dayton Foley . . . Bob Gillespy . . . LeRoy Holt . . . Billy Kessler . . . Robert Linn . . . Ray Monsalvatge . . . Sparky Reese . . . Ralph Tiller . . . Peck Whitcomb . . . Dcwey White. . .

Traditionally the saw-bones of the campus, these future medicoes always have a rare program of activities. Among their outstanding events this year have been their proverbially gruesome initiations which accented a glut-tony for gore; combined meetings with Chi Nu Tau, their amazonian counterpart; fasci-nating lectures by successful men in medi-cine; and, just to break the monotony, a party. Not once fooled by their boyish, innocent faces, Goon Gals are looking askance at the Saw-bones as to the whereabouts of the late Alice-Bert, feline mascot of the Castle on the Hill. With rougish leers the boys' only com-mitment is to the effect that A-B grew tired of it all, so she went out and got herself stewed . . . in formaldehyde.

C H I N U T A U

This group recognizes outstanding ability and interest in the field of biology. During the year it sponsored a newspaper promoting the cause of the Red Cross Blood Bank on campus, and it aided in recruiting work for the Hospital Corps of the WAVES. Several joint functions with Skull & Bones, together with lectures from time to time, concluded the year's activities.

OFFICERS

President CLYDE GRAGG
Vice-President NINA MAE PIERSON
Secretary-Treasurer
..... ELIZABETH ANN DULMADGE
Historian MARTHA SEBREE

MEMBERS

Ann Blevins . . . Ruth Bolin . . . Lil Culley . . .
Elizabeth Ann Dulmadge . . . Mary Catherine Gal-
lagher . . . Clyde Gragg . . . Ethel Mae Norton . . .
Nina Mae Pierson . . . Mercedes Pittman . . . Lois
Ann Shell . . . Alama Thomas . . . Willa Mae Panter
Whatley . . . Faye Wigley . . . June Wright.

WRIGHT, NORTON, BOLIN, WIGLEY, SEBREE, PIERSON, PITTMAN, GALLAGHER, GRAGG, THOMAS





CRISSINGER, HORNE, WILLIAMS, BOWLING, RICHARDSON, KIDD, WOODSON, HAGESTRATOU, SHERROD
BERTHON, NORMENT, DOUGLAS, WATTS, PLOSSER, BOTELER, ODOM

M U A L P H A

OFFICERS

<i>President</i>	MARY RICHARDSON
<i>Vice-President</i>	EDNA JO BOWLING
<i>Secretary</i>	ANNA KATHERINE KIDD
<i>Treasurer</i>	EMILY BLAKE
<i>Publicity Chairman</i>	DOROTHY COX
<i>Advisor</i>	LUCIE MARIE FORD

MEMBERS

Emily Blake . . . Marion Brown . . . Maxine Berthon
 . . . Ted Beavers . . . Virginia Boteler . . . Edna Jo
 Bowling . . . Bill Cannon . . . Dorothy Cox . . .
 Jane Crissinger . . . Lillian Douglas . . . Toula
 Hagestratou . . . Ruth Horne . . . Kathryn Horton
 . . . Anna Katherine Kidd . . . Annette Norment
 . . . Janice Odom . . . Edith Plosser . . . Mary
 Richardson . . . Ruth Sherrod . . . Jimmy Watts . . .
 Jean Wilkins . . . Emily Williams . . . Nancy
 Woodson.

Despite the departure of the ubiquitous Hatcher, Mu Alpha has managed to hobble along this year. Presided over by gracious Mary Richardson, the organization has had two student concerts . . . one in December, featuring Ted Beavers, Janice Odom, Kathryn Horton, and Jane Crissinger . . . and one in the spring, featuring Edith Plosser, Kathryn Horton, and Dorothy Cox. A banquet in the winter at the Ridgely concluded the social whirl.

O R C H E S T R A

This has been practically a woman's world this year (or have we sed that before?) . . . with only one boy to list among the orchestra's ranks. Serving faithfully in convocation, the orchestra also furnished the music for the famous "Ferdinand", May Day, a Spring Concert of its own, and for graduation and USO work.

ORCHESTRA

Conductor — MR. WALLACE GRIEVES

MEMBERS

Kathryn Belyeu . . . Maxine Berthon . . . Rosemary
Corey . . . Jane Crissinger . . . Jack Crowe . . . Lil
Culley . . . Ruth Horn . . . Cecile Morgan . . .
Bubs Owen . . . Jean Wilkins.

CULLEY, COREY, MORGAN, BERTHON, OWEN, CRISSINGER, GRIEVES, GLUTZ, BELYEU, HORN, WILKINS





A. CONSTANTINE, GIBSON, BOYKIN, BRANDES, WINGFIELD, P. CONSTANTINE
HARDIMAN, SCRUGGS, SMITH, REESE, BANKS, SHURBET

INTERNATIONAL RELATIONS CLUB

OFFICERS

President..... ELEANOR BOYKIN
Secretary-Treasurer..... ELY BRANDES
Faculty Advisor DR. L. F. SENSABAUGH

MEMBERS

Martha Banks . . . Eleanor Boykin . . . Emily Blake
 . . . Ely Brandes . . . Frances Cotten . . . Myra W.
 Crenshaw . . . Sara Ellner . . . Harvey Elrod . . .
 Mimi Gibson . . . Andrew Hardiman . . . Sparky
 Reese . . . Jane Scruggs . . . Robert Shurbet . . .
 Gene Smith . . . Jeanne Wingfield . . . Dr. J. H.
 Parks . . . Miss Elizabeth Peeler . . . Dr. H. T. Shanks.

This organization is one of the latest additions to campus life. As more and more stress is being placed upon international relations, particularly Pan-American relations, this group's organization is both timely and interesting. Monthly they meet for supper, after which a prominent speaker is presented. Frequently throughout the year they hold student-faculty forums.

R E D C R O S S

This was truly an innovation for the Hilltop . . . a full-fledged chapter of the American Red Cross. Although a little late in the year getting started, the first basic course resulted in the awarding of thirty certificates. \$310 was collected, averaging .80 per student, for the Red Cross Drive. 15 girls were secured for Nurses Aide classes at the Hillman, a senior life saving class was organized, 25 were trained for canteen work, stacks of wool knitted into scarfs, mittens, caps, and the like, and girls were furnished for USO work and campus collaboration on such things as serving for the Phi Beta spread.

OFFICERS

President GENE SMITH
Vice-President
MYRA WARE WILLIAMS CRENSHAW
Secretary..... CISSIE JENNINGS
Treasurer..... DOROTHY GARRETT
2nd Vice-President..... JANE ROBINSON

COMMITTEE CHAIRMEN

Canteen.....JEANNE WINGFIELD
Production..... BETTY DAVIS
Volunteer Special Services.....
MARY ELIZABETH OBENCHAIN
Mortor Corps..... DOROTHY PIXTON
Nurses Aide.....SARA FISCH





I N D E P E N D E N T S

OFFICERS

President JANICE ODOM
Vice-President LILLIAN DOUGLAS, EMILY WILLIAMS
Secretary..... JANE HARPER, MARIAN BROWN
Treasurer..... JANE HARPER

MEMBERS

Mickie Adams . . . Theodora Angelakis . . . Mary Ann Atkinson . . . Goldie Barstein . . . Betty Bass . . . Martha Ellen Butsch . . . Billie Frances Beaven . . . Marian Brown Patsy Collins . . . Josephine Cooper . . . Betty Corretti . . . Dorothy Cox . . . Elinor Creel . . . Dorothy Carl . . . Faye Little Carl . . . Dorothy de Shazo . . . Annie Rose Diadone . . . Lillian Douglas . . . Grace Edwards . . . Kathryn Foy . . . Gloria Gilmore . . . Andalene Glover . . . Lucene Green . . . Toulia Hagestratou . . . Sue Haigler . . . Jamie Catherine Harris . . . Jane Harper . . . Ruby Helms . . . Irene Hunvald . . . Norma Johnson . . . June Johnson . . . Dorothy Lee . . . Ruth Lee . . . Catherine McGowan Evelyn McMillan . . . Gloria Malone . . . Mary Myers . . . Lillian Nabors . . . Gloria Norman . . . Janice Odora . . . Bubs Owen . . . Wilma Jean Parham . . . Lois Parsons . . . Pat Patterson . . . Mercedes Pittman . . . Serene Poarch . . . Eugenia Puckett . . . Constance Puls . . . Jean Rice . . . Jane Robinson . . . Inez Rice . . . Flora Sarinopoulos . . . Genevieve Seegar . . . Marian Stephens . . . Mildred Stewart . . . Rosemary Stewart . . . Catherine Stone . . . Catherine Franklin Vandergrift . . . Margie Fay Ware . . . Jean Wilkins . . . Kathleen Wilkins . . . Emily Williams.

For the first time the Independent Girls became organized this year. With the help of the Independent Boys (loosely organized), the girls walked off with the Cat's Paw plaque again this year, making the third successive time they came out on top in that event. The greatest achievement for this group during the year was the establishment of the erstwhile "Y" room in Stockham as the Independent Room, thereby providing for non-sorority girls a room of their own on campus in which they might rest, study, lounge, hold bull-fests, eat, and keep their books and things between classes. The venture has been highly successful, and prexy Janice Odom is in line for some sort of meritorious recognition for the fine work she has done. Never to be outdone by any Greek group in captivity, these girls had a tea, numerous parties, raked in the honors in athletics, scholarship, and beauty.

R U S U R B E

Filling a definite need for those girls whose homes are out of town, this club proves one of the most active every year. The girls meet twice each month, at which times three girls from the group prepare and serve a meal. Other forms of activity include hiking and picnics off campus.

OFFICERS

President BONNIE HAGOOD
Vice-President GRACE EDWARDS
Secretary-Treasurer MARGARET GRIFFITH

MEMBERS

Ann Anderson . . . Martha Banks . . . Rosalie Biard
. . . Barbara Brent . . . Carolyn Brown . . . Elizabeth Cathey . . . Imogene Duffey . . . Grace Edwards . . . Margaret Griffith . . . Bonnie Hagood . . . Jeanne Hancock . . . Sue Haigler . . . Helen Hornsby . . . Lola Sue Johnson . . . Ann Jones . . . Gloria Malone . . . Evelyn McMillan . . . Carolyn Noel . . . Thelma Noel . . . Bubs Owen . . . Ann Ogletree . . . Betty Ogletree . . . Inez Rice . . . Betty Joyce Stearns . . . Evelyn Teague . . . Kathleen Wilkins.





MRS. SHERROD, BROWN, R. SHERROD, DUFFEY, CRUMPTON, ELLNER, HAIGLER, MARTIN, JENNINGS
RICE, BIARD, WILKINS, BRENT, COREY

A L P H A H O U S E

OFFICERS

President.....CISSIE JENNINGS

House Mother..... MRS. FLORIDA SHERROD

RESIDENTS

Rosalie Biard . . . Barbara Brent . . . Carolyn Brown
. . . Rosemary Corey . . . Evelyn Crumpton . . .
Imogene Duffey . . . Sara Ellner . . . Sue Haigler . . .
Lois Jennings . . . Ruth Lee Martin . . . Jean Rice . . .
Ruth Sherrod . . . Kathleen Wilkins

During this, the second year of its existence, the Alpha House, better known as Goon Castle, has certainly had its share of campus life. Beginning with an open house in the Fall, the girls managed to squeeze in, somewhere between honorary tappings and dates, initiation for six new Goonlings, a Christmas dinner party, dancing parties for cadets on Saturday afternoons, and birthday parties for all residents of the house.

B E T A H O U S E

This year the Beta gals set out to prove they were anything but "pills". Of course, with such dignitaries in residence as Robinski, Oglethe-vogul, Hattie Pearl, Wita and Mandy, there could never be a dull moment in the house. A glance at their social calendar supports this point, with a Christmas party, featuring music, food, gifts; birthday parties (we hear Robinski's boasted real champagne from the Czar himself), Impy's with three cakes; hikes to Snark's Knoll for breakfast a la Impy; 100% participation in both Sadie Hawkins' Day and the War Fund Drive. To this add the experiences of the "They-died-with-their-putees-on Hiking Club", Stearnes' "me and the moon", Wita's "I-just-wanna-ask-you-one-simple-question", Moe's intermittant "ole crazy", and Mrs. Booker's "now girls", and you have a rare time any year.

OFFICERS

President THILMA NOLL
Secretary-Treasurer MARY MURCHISON
House Mother..... MRS. WALTER BOOKER

RESIDENTS

Mary Benefield . . . Gloria Goodall . . . Gere Holland . . . Wita Jones . . . Mary Murchison . . . Carolyn Noel . . . Thelma Noel . . . Ann Ogletree . . . Betty Ogletree . . . Bubs Owen . . . Jane Robinson . . . Mary Porter Shook . . . Ann Smith . . . Betty Joyce Stearnes . . . Catherine Stone.

SHOOK, STEARNES, HOLLAND, A. OGLETREE, OWEN
 JONES, T. NOEL, MRS. BOOKER
 ROBINSON, MURCHISON, C. NOEL, B. OGLETREE, BENEFIELD, STONE, GOODALL



ALPHA LAMBDA DELTA



DOUGLAS, AKEROYD, KELLY, ROGERS, BROWN, REYNOLDS, SCRUGGS

OFFICERS

President..... AGNES ROGERS
Vice-President..... MARTHA REYNOLDS
Secretary..... MARY ELIZABETH AKEROYD
Treasurer..... LILLIAN DOUGLAS

MEMBERS

Mary Elizabeth Akeroyd . . . Betty Brown . . .
 Dorothy Cox . . . Lillian Douglas . . . Charlotte
 Kelly . . . Martha Reynolds . . . Agnes Rogers . . .
 Jane Scruggs.

OFFICERS

President..... EDWINA PASS
Vice-President..... LOLA SUE JOHNSON
Secretary..... LOIS PARSONS
Treasurer..... MARY LOU VANN

MEMBERS

Marian Brown . . . Betty Corretti . . . Charles
 Fite . . . Lucile Glaze . . . Jeanne Hart . . . Lola
 Sue Johnson . . . Ann Jones . . . Evelyn McMillan
 . . . Lois Parsons . . . Edwina Pass . . . Ara Pat-
 terson . . . Melvin Smoot . . . Mary Lou Vann
 . . . June Wright.

BROWN, McMILLAN, JOHNSON, PASS, VANN, McNEEL, JONES, PATTERSON, FITE,
 BANKS, SMOOT, PARSONS, GLAZE, WRIGHT



BAPTIST STUDENT UNION



A. CONSTANTINE, BERTHON, P. CONSTANTINE, BROWN, SCRUGGS, MILLER,
CONSTANS, KELLY, WATTS, DAVIS

LE CERCLE FRANCAIS

OFFICERS

President..... PEGGY CONSTANTINE
Vice-President..... BETTY BROWN
Secretary-Treasurer..... DOROTHY COX
Faculty Adviser..... DR. ANTHONY CONSTANS

MEMBERS

Maxine Berthon . . . Betty Brown . . . Rosalie
Biard . . . Alice Constantine . . . Peggy Constant-
tine . . . Dorothy Cox . . . Annie Frances Davis
. . . Albert Griffith . . . Toula Hagestratou . . .
Helen Hornsby . . . Betty Igleheart . . . Charlotte
Kelly . . . Frances McAllister . . . Doris Miller
. . . Jane Scruggs . . . Natalie Smith . . . Jimmy
Watts.

OFFICERS

President..... ANNETTE NORMENT
Vice-President..... SYBIL LITTLE
Secretary..... JEAN HAWTHORNE
Treasurer..... ALICE SOUTHARD

MEMBERS

Billie Frances Beaven . . . Mary Louise Coker . . .
Annie Frances Davis . . . Kathleen Ellison . . .
Betty Hood . . . Barbara Jones . . . Catherine Mc-
Gowan . . . Barbara Minter . . . Mary Elizabeth
Obenchain . . . Edwina Pass . . . Katherine
Thomas.

LITTLE, WHITEHOUSE, HAWTHORNE, NORMENT, COKER, MINTER, OBENCHAIN



ENTRE AMIGOS

DELTA PHI ALPHA



OFFICERS

President.....LAMAR OSMENT
Vice-President.....JOHN GRAHAM
Secretary.....MIMI GIBSON
Treasurer.....SPARKY REESE
Faculty Advisor.....DR. AUSTIN PRODOEHL

OFFICERS

President.....ETHEL MAE NORTON
Vice-President.....IMOGENE DUFFEY
Secretary-Treasurer.....BARBARA MINTER

MEMBERS

Ann Anderson . . . Braxton Baker . . . Martha
 Ellen Butsch . . . Imogene Duffey . . . Elizabeth
 Ann Dulmage . . . Mary Catherine Gallagher . . .
 Dot Johnson . . . Wita Jones . . . Frances Mc-
 Clendon . . . Barbara Minter . . . Ethel Mae Nor-
 ton . . . Janice Odom . . . Ann Owen . . . Mr.
 W. R. Battle . . . Mr. H. B. Englebert . . . Miss
 Elizabeth Lewis.



PHYSICAL ED CLUB



ATHLETICS

The INT

Directors

WILLIAM RAINES BATTLE, JR.

HIRIAM BENJAMIN ENGLEBERT

ELIZABETH VASS LEWIS

A. C. CURRY

FALTON LECROY



BATTLE



LEWIS

The Intramural Department this year again has been headed by Coach Bill Battle, who has been assisted by Coach Ben Englebert and Miss Elizabeth Lewis. Helping with the AAF PT classes have been Coaches Falton LeCroy and A. C. Curry. Through the closely co-ordinated efforts of this fine staff, the department has been able to record a most successful year.

From our point of view, Intramurals have hit a war-time high this year, with practically capacity per capita participation in all sports offered. Men's sports continued on the Hilltop, despite the lack of male students, in much the usual manner. In PE classes, coaches drilled the boys, carried them (would "drove" be more adequate?) on cross-country trips, and led them over the obstacle course. Making boys physically fit for the Army life they were soon to enter was the Intramural Staff's aim.

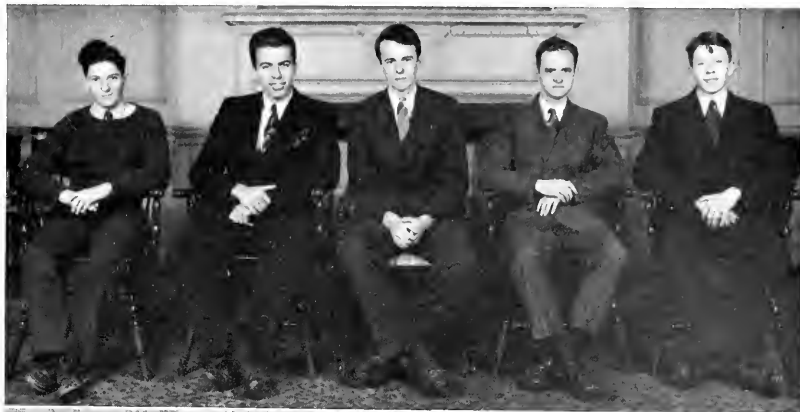
In the afternoons, organized teams participated in extra-curricular intramural competition in football, volleyball, badminton, horseshoe, paddle-ball basket-

CURRY, LECROY, ENGLEBERT



RAMURAL PROGRAM

BLOCK, GRIFFITH,
HOLT,
BALCH, WALKER



BOLIN, DAVIS, LEWIS,
JONES,
OWEN, DUFFEY



GALLAGHER, MINTER,
JOHNSON,
DOUGLAS, NORTON

ball, swimming and softball. Fraternal, Independent, and Amalgamated Greek teams vied for top honors. This competition displayed skilled, spirited, and sportsmanlike athletes. In the opinion of the participants and coaches, war time produced only a slight change in this program.

Introduced this year was the Intramural Board, composed of two sections, Girls' and Boys'. This board met every Monday and set forth rules to be used in tournaments, time limits for these tournaments, schedules, and scoring tables. This is the governing body of the

Intramurals. It settles any controversies, governs all decisions, regulates the point system.

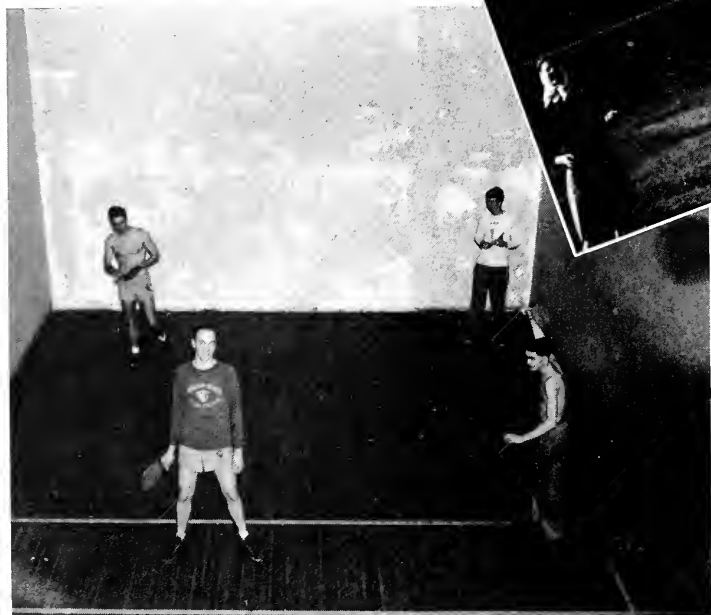
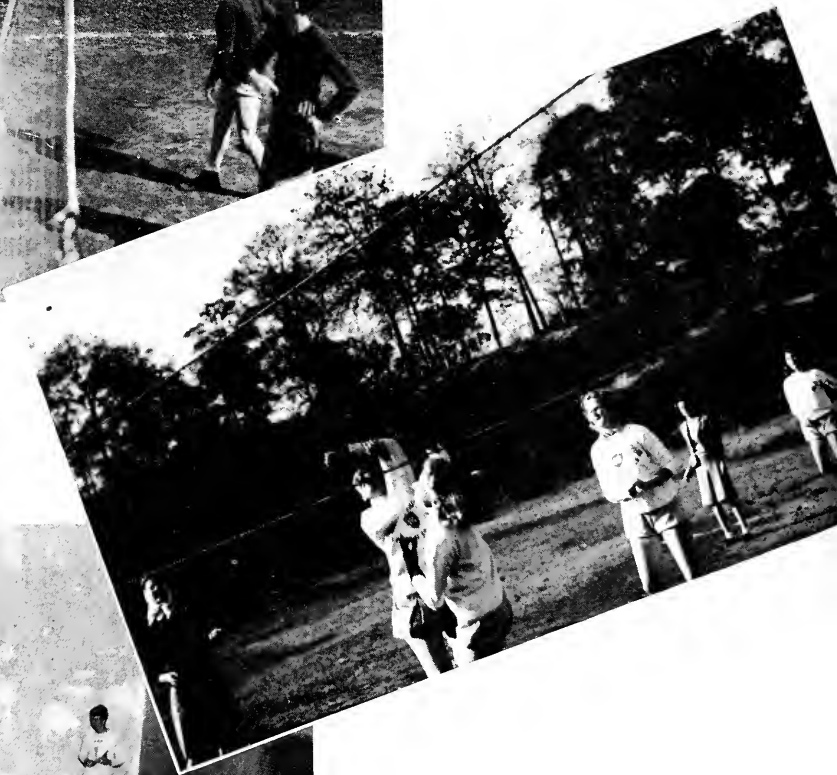
The Girls' half of the Intramural Department has been especially active this year, led by such high-pointers as Wita Jones, Moe Owen, and 'Gene Duffey. They have participated in a raft of sports, ranging from table-tennis to bowling, and enthusiasm waxed high. The advent of girls' softball on the quadrangle brought quite an innovation to the campus, and the avid spectators of the opposite sex were many in number.

NO "time out"



Volley Ball—Men

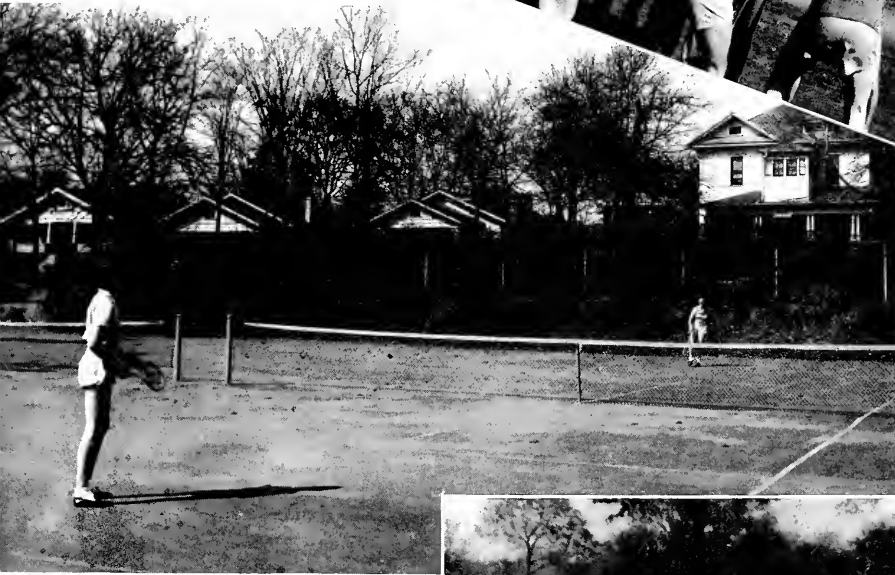
Volley Ball—Women



Tennis

HERE

Basketball—Men



Tennis

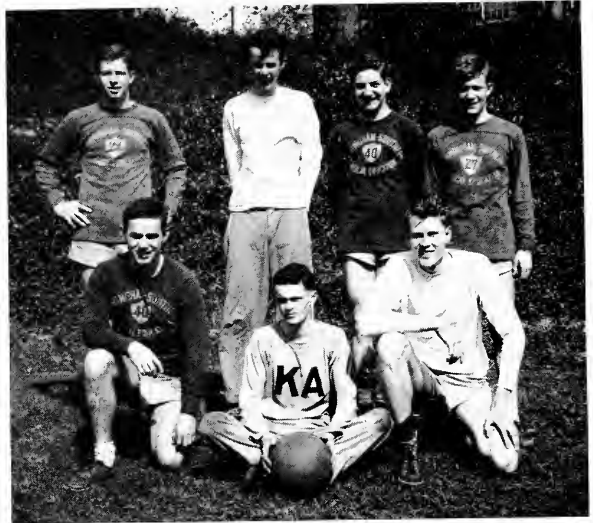
Touch Football—Women



CHAMPIONSHIP TEAMS

No record of a year's activities would be complete without a word for championship teams. This year, the Boys' Sweepstake cup went again to the KA's for best participation in most sports offered. With many of their teams' members ranking among all-stars, the group also boasted as one of their number J. N. Holt, high-point man for the year.

Top prize for Girls' participation throughout the year, went this year to the KD's, who proudly added the award to their magnificent collection. Spurred on by the prowess of Wita Jones, Moe Owen, Ann Ogletree, and Devil Norton, these lasses have given whole-hearted support to the entire Intramural program.



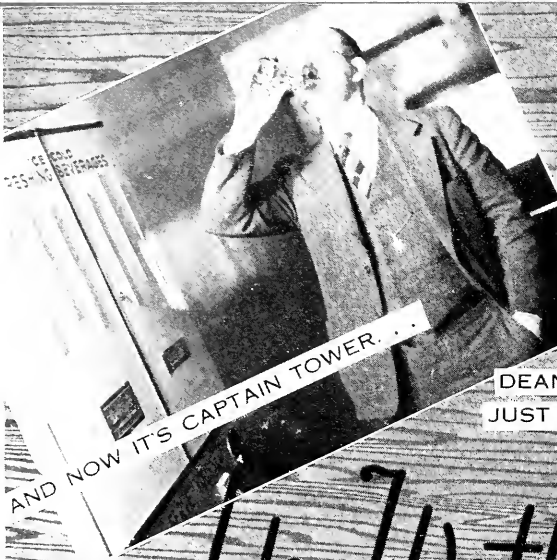
GRAHAM, CLEVELAND, LOGAN
STALLINGS, HOLT, CAMPBELL, TROXWELL



E. NORTON, OWEN, JONES, MURRILL, CULLEY
GREEN, PRESTON, J. NORTON, HOLLOWAY, SCRUGGS
HUDDLESTON, OGLETREE, ROSE, BROWN



SNAPSHOTS



AND NOW IT'S CAPTAIN TOWER...



DEAN SHANKS (CIVILIAN) CONGRATS REGISTRAR ROBB JUST BEFORE HE ASSUMES DUTIES AS ENSIGN ON THE BOUNDING MAIN...

Us With Unca Sam.

CAPTAIN MATTHEWS IS NOW IN ITALY WITH AMGOT.



OUR GLOBE-TROTTERING COLONEL... OF CHILDERS FAME...



"LITTLE JAKE" IS ON THE FACULTY AT WEST POINT

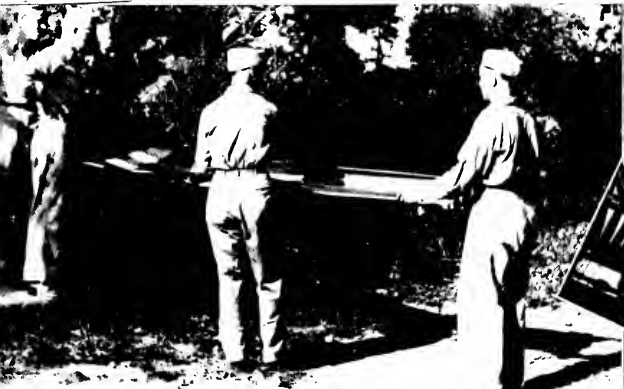


AND "MA GOON" BOYD IS THE PRETTIEST OF WAC'S...

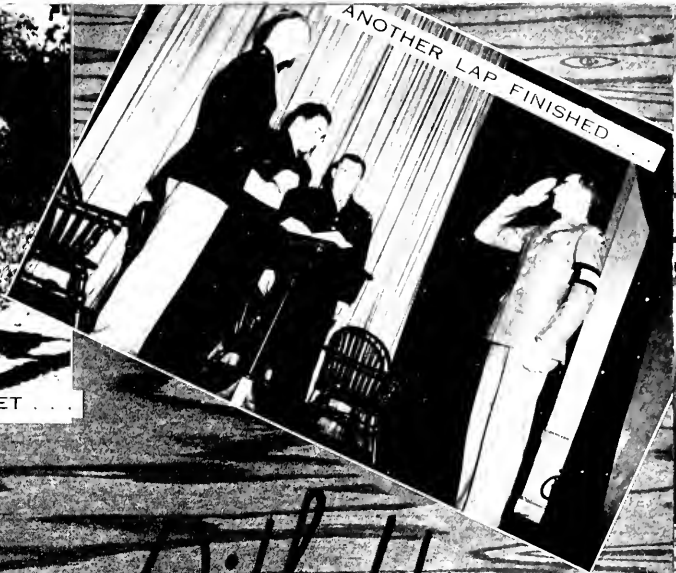


"OLD CRAZY", BETTY-GRABLE TURNER IS WITH THE RED CROSS IN ITALY...





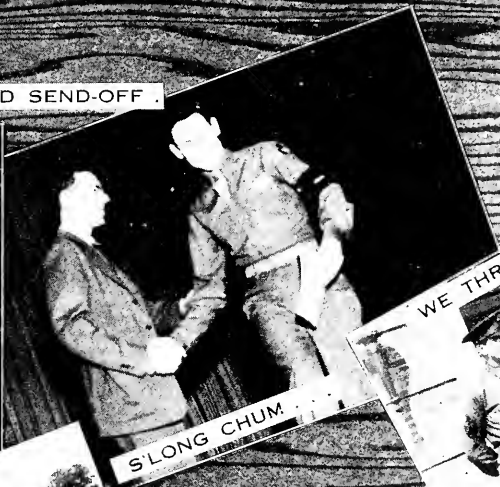
AND WE, TOO, STOOD RESPECTFULLY QUIET . . .



ANOTHER LAP FINISHED

At Once Sam With Us

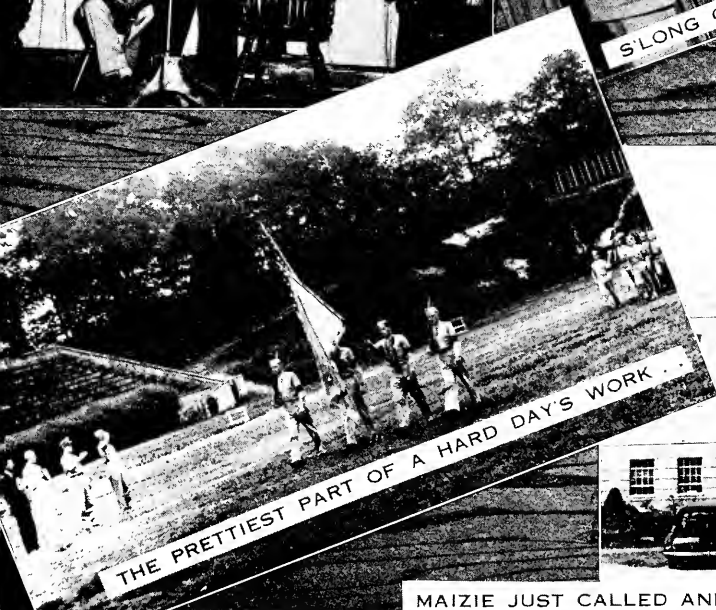
THE "PORE" DOCTOR GIVES 'EM A GOOD SEND-OFF . . .



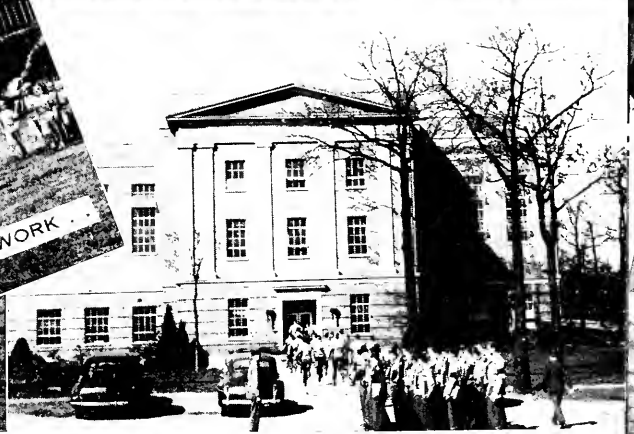
S'LONG CHUM



WE THREE THAT WERE



THE PRETTIEST PART OF A HARD DAY'S WORK



MAIZIE JUST CALLED AND ASKED TO SPEAK WITH "HONEY-CHILE"



THE BOYS COME FROM CHURCH . . .



A TYPICAL MAYTAG BOMBER
... BUT THEY FLEW . . .

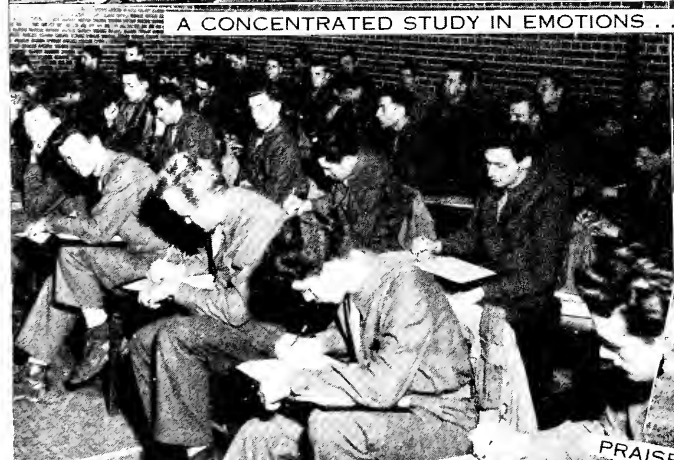


YE OLDE PASTIME (GENERALLY DURING QUARANTINE) . . .

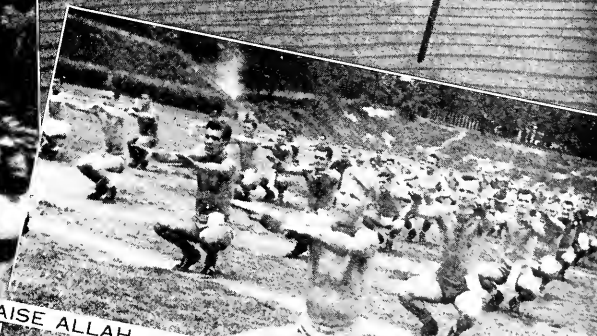


LIEUTENANT FRAZER (NOW CAPTAIN)
PLANS WITH DR. STUART . . .

On Our Own Hilltop . . .



A CONCENTRATED STUDY IN EMOTIONS . . .



PRaise ALLAH . . . ! (HE IN THE FOREGROUND, JUST UNDER THE SMOKE, BECAME "MR. KLUTTZ")



"RACK 'EM BACK, MISTAH . . . !"



"BETWEEN SMITHFIELD AND ENSLEY, AND BOY COULD THEY SHRIEK . . ."



...the 17th C.D.T.



THE PERMANENT PARTY . . . T SGT. CAREY, SGT. JATKO, S SGT. OTOOLE, SGT. EICHINGER, PFC. O'BRIEN, CPL. GALLAWAY, S SGT. GINDELL, CPL. PILGREEN, (AW. YOU REMEMBER CLYDE!), AND SGT. SHANLEY



C. O. CAPTAIN HOKE REQUESTS SOME JIVE . . .



SAY, BUB, HOW 'BOUT DAT TEN SPOT YOU OWES ME?



FALSE PRETENSE — HE AIN'T TRYING TO GET AWAY . . .

SEBREE WAS CROWNED "MISS SADIE" . . . AND BRITTAIN "LI'L ABNER"



AND THIS WAS BEFORE SHE EVEN KNEW . . .

Sadie Hawkins Day



OOOOO AIN'T UM CUTE . . . !



AW REET . . . STRICKLY AW REET . . .



COMING EVENTS CAST THEIR SHADOWS BEFORE . . . ?

ONE WHITCOMB, WELL TREED . . .



CRUMP GETS THE LOW-DOWN ON THE ARMY FROM EX-BMOC GINGÖLD . . .



FIRST LADY OF STOCKHAM . . . WITH THE DEAN AS A BACKDROP



NOW, NOW, FELLOWS . . . SUCH WOIDS!

and 'Most any Day

WHO'D A-THUNK OGLE COULD LOOK SO INTELLIGENT . . .



MUTTERBIRDS COMPILING DATE LISTS. NO DOUBT . . .



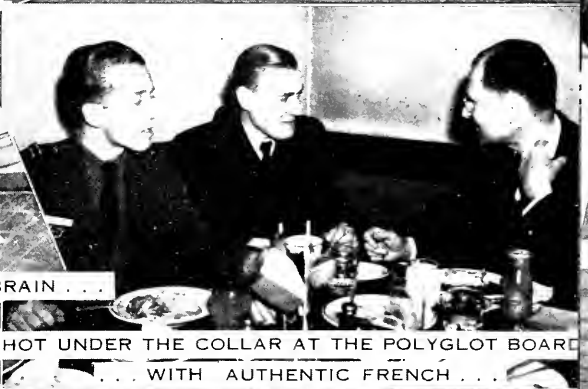
SPAIN AND CLEVELAND LED OUR LAST DANCE FOR THE DURATION . . .



AND WHO SAID "SUNNY SOUTH" . . . ?



BEAUTY ENCASES THIS BRAIN . . .



TONY HOT UNDER THE COLLAR AT THE POLYGLOT BOARD . . . WITH AUTHENTIC FRENCH . . .

"MR. MOOSE" DOES IT RIGHT . . .



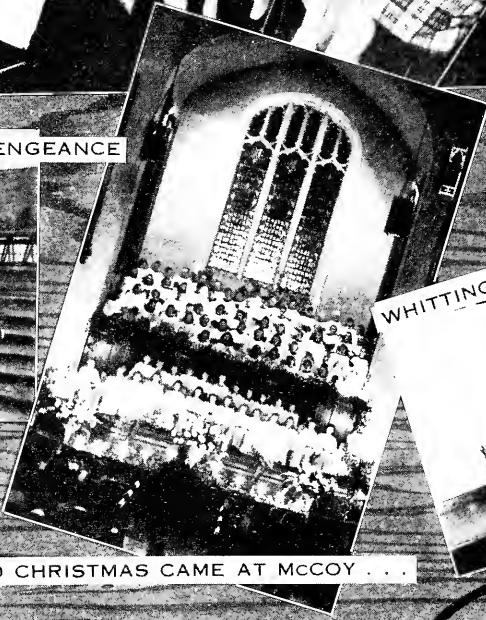
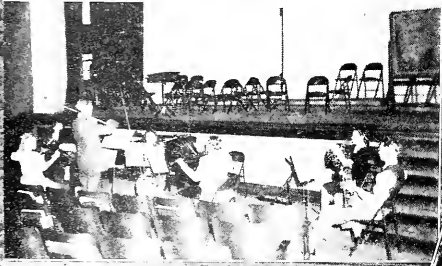
INCOMPARABLE FORD AND ANDERSON TEAM . . .



"FRAMED" . . .



GRIEVES SWINGS OUT WITH A VENGEANCE



WHITTINGTON. EIGHT TO THE BAR . . .



AND CHRISTMAS CAME AT MCCOY . . .

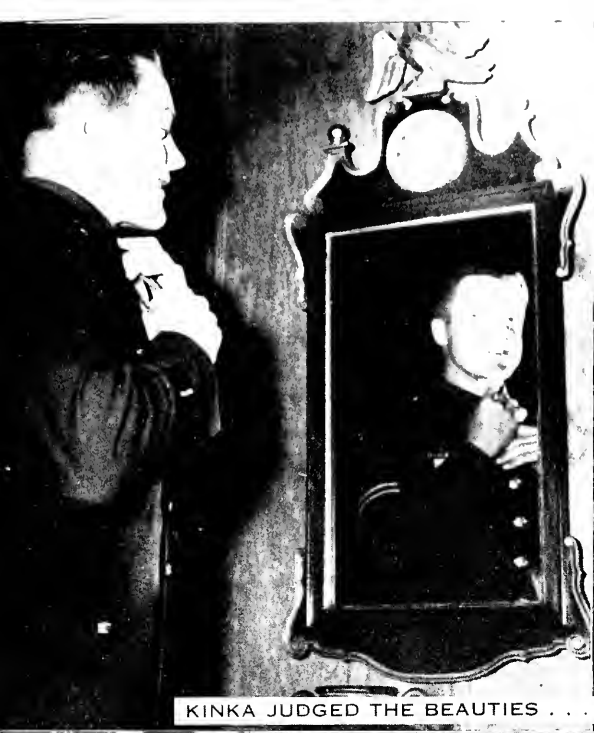
MUSIC ON CAMPUS



"MY YO-YO AND ME . . ."



"ONE, TWO SIX . . . ROOT-TOOT-TI-TOOT . . ."



KINKA JUDGED THE BEAUTIES . . .



CADEK SCOPED WITH HIS CONCERT . . .

Outstanding Events . . .

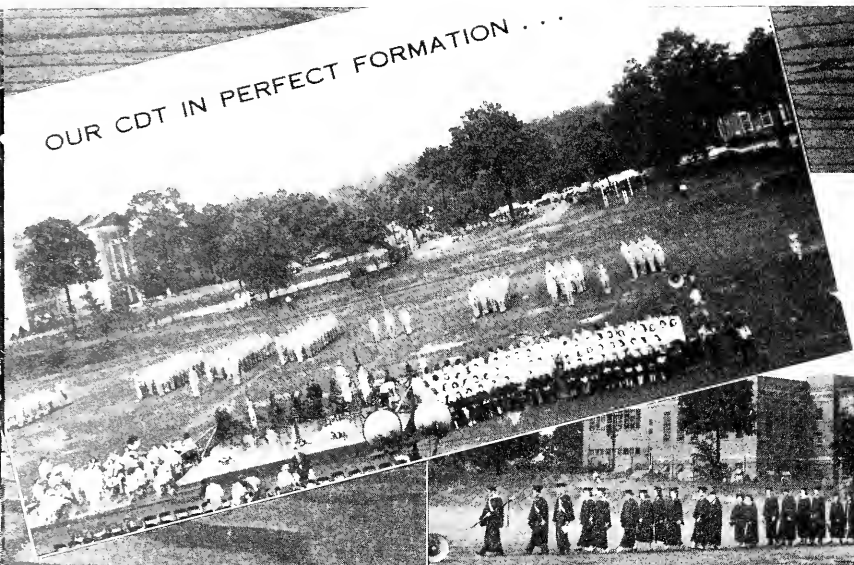


DR. CRANE SET US TO THINKING



THE CELLAR PACKED 'EM IN CONSISTENTLY . . .

OUR CDT IN PERFECT FORMATION . . .



THE LAST MILE . . .

Commencement with Willkie . . .

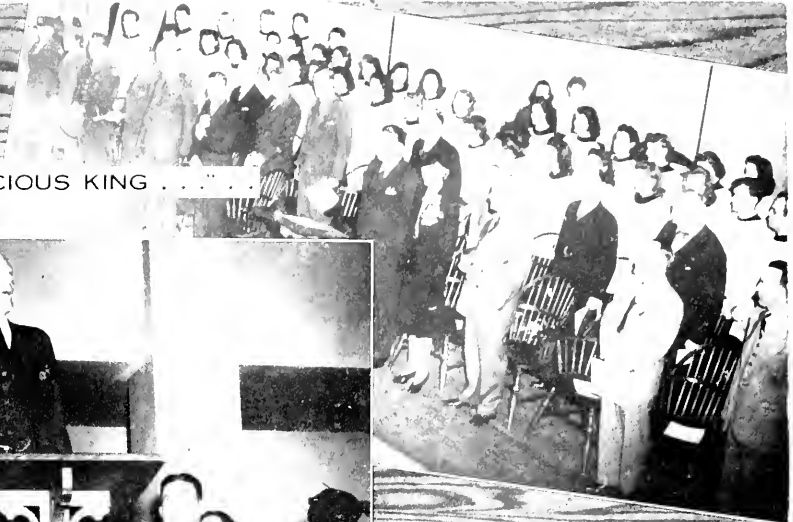


THE GREAT AMERICAN . . .



MRS. W. IS THE ONE WITH THE CORSAGE . . .

"GOD SAVE OUR GRACIOUS KING . . ."



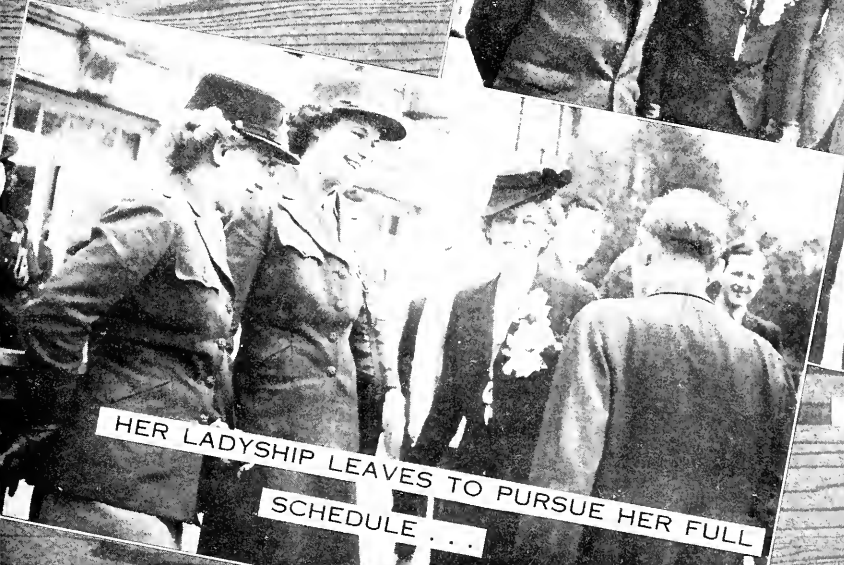
LORD HALIFAX . . . RAWTHAR . . .

Chapel with Royalty . . .

and



DR. PATY AND FRIENDS . . .



HER LADYSHIP LEAVES TO PURSUE HER FULL SCHEDULE . . .



LADLE ME A LITTLE, LADY . . .



THE STUARTS EXTEND THE RIGHT HAND OF FELLOWSHIP . . .

Teas for Seniors.



AND SO I SEZ TO THIS ANEMIC AMOEBA . . .



TWO PREXIES . . . AND PULCHRITUDE . . .



COME INTO THE PARLOR. SED THE SPIDER . . .



ZETA'S GET IN SOME PREMATURE RUSHING DURING A TEA . . .

and for Freshmen . . .



WITH THIS MEDAL I THEE ADORN . . .



OH, YOU MUST TAKE IT . . . IT'S FREE . . .



THE GORGEOUS GAL IN THE CENTER ORCHID 'N' ALL IS PEEPLES . . . WOO-WOO!



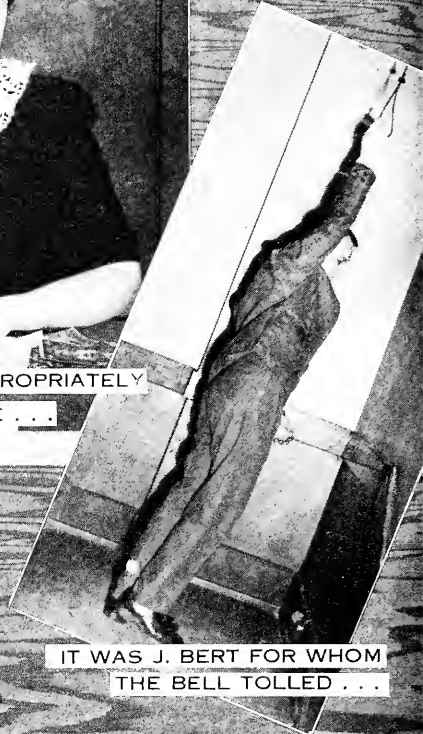
"IT WAS SAD . . . IT WAS SAD . . .



MRS. GILMER, OF GRADE-TIME FAME ...



"THE DEACONESS", APPROPRIATELY
AND FLANKED WITH LUCRE ...



IT WAS J. BERT FOR WHOM
THE BELL TOLLED ...

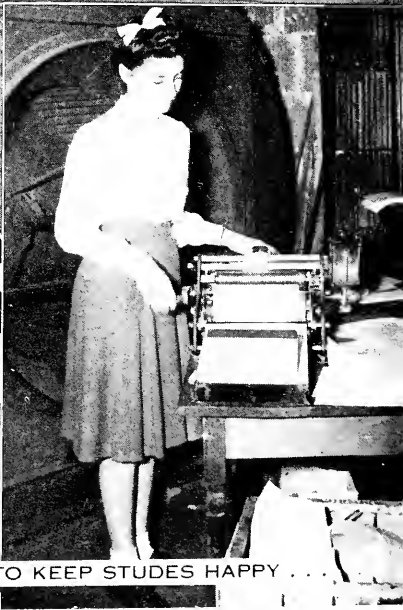


EDWARDS GRACED THE CIRCULATION DESK ...

*and
these
Also Served.*



MRS. POWELL, OF THE DEAN'S DIVE ... AND LUCIOUS
MORGAN, ASSISTANT ...



FLORA RAN OFF TESTS TO KEEP STUDES HAPPY ...

IN NO *time* AT ALL



Singuefield

TAKES US TO OUR

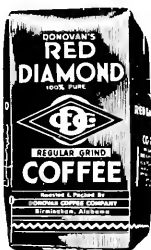
FAVORITE

PATRONS

Official Fraternity Jewelry
L. G. BALFOUR CO.

2104 5th Ave., N.

Compliments of a Friend



DONOVAN'S
**RED
DIAMOND
COFFEE**

Compliments of



1916 5th Ave., No.

Phone 3-7181

Invisible Resoling
Goodyear Shoe Hospital
Phone 7-9153

Compliments
Alabama Produce Company
2020 Morris Ave.
Birmingham

STOCKHAM
for EVERY PIPING
REQUIREMENT



**FITTINGS
VALVES**



GENERAL VIEW OFFICE AND FACTORY BIRMINGHAM, ALABAMA
WAREHOUSES AND SALES OFFICES

BOSTON NEW YORK PHILADELPHIA WASHINGTON, D. C.
CHICAGO HOUSTON LOS ANGELES SAN FRANCISCO

Compliments Of



Brown-Service Insurance Co., Inc.
Birmingham, Ala.

DR. GUS

Invites you to visit his newly re-modeled and redecorated.

DRIVE-IN RESTAURANT

18th St. at Ave. G., S.

Known throughout the Southeast for its Delicious Golden Fried Chicken and Hickory Pit Barbecue.

Two other convenient locations:—

No. 2 place 18th St. & 2nd Ave., North, right in the heart of the Theatre District.

No. 3 Coffee House, 214 North 21st St.

GUS L. CONSTANTINE,
Owner

**Laboratory Apparatus and
Reagents**

*

Only Complete Stock in the South

*

McKesson & Robbins

Doster-Northington Div.

1706-08-10-12 First Avenue North

BIRMINGHAM, ALA.

Long Distance, Phone 3-4171

MILLER, MARTIN & LEWIS

ARCHITECTS AND ENGINEERS

Title Guarantee Building
Birmingham, Alabama

Designers of

Gymnasium and Physical Education Bldg.

Stockham Woman's Building

Student Activity Building

Munger Memorial Hall

Munger Bowl Stadium

McCoy Memorial

President's Home

Andrews Hall

Phillips Library

Schultz-Hodo Realty Company

Real Estate - Rentals - Loans
General Insurance

T. R. SCHULTZ, President
MARK HODO, Vice-President
GEO. M. FOUCHE, Treasurer
CHAS. WEBB, Secretary

Ground Floor Protective Bldg.
Birmingham, Alabama

For the Best in Food

Ridgely Apartment Cafe

COLLEGE CLEANERS

729 W. 8th Ave.
8-5645

Carr Floral Company

Day 3-1236 Night 4-7221
422 North 20th Street
Birmingham, Ala.

**DIXIE CLUB
COFFEE & TEA**

JOHN'S

FUNERAL CHAPEL

Leading Funeral Directors

WALLACE C. JOHNS

LLEWELLYN W. JOHNS

Family Reserve Policies

3-5281 Ambulance Service 3-5282

Hood-McPherson Furniture Co.

Two Big Stores

2016 3rd Ave. 2013 4th Ave.

DOUGLAS BROS.

Wholesale Fruit and Produce
2017 Morris Avenue
Phone 3-5104

Surtees Jewelry Company

504 19th Street, Ensley

Serving Western Birmingham

Troy Laundry Co.
1911 Ave. F. Ensley



Tom's Steak House

Famous for Its Steaks
1927 4th Ave., No.
Birmingham, Alabama

Montgomery's Flowers

For All Occasions
Phone 3-7236
413 No. 21st Street

Compliments

HERBERT J. BAUM

General Agent
Protective Life Insurance Co.
Protective Life Building

Both Business and Government
Needs Trained Office Help
Massey Business College
Can Give You That Training
Call 3-7278 for Information

There is Only One Genuine

BRILLIANT COAL

Only 2% Ash

Leaves No Clinkers

LUMP EGG, WASHED NUT
AND STOKER

Produced Exclusively by

BRILLIANT COAL COMPANY

Birmingham, Alabama

ROLLER CHAMPION

The Flour the Best

Cooks Use

COSBY - HODGES MILLING CO.

Call the
HEAD Man
3-8183

Office Equipment,
Furniture, Supplies,
and Stationery

James A. **HEAD** and
Co.

2015 First Ave.

Hamilton-Robinson
Distributors
BEST FOODS PRODUCTS

A. C. MONTGOMERY, *President*
A. C. MONTGOMERY, JR., '36, *V.-Pres.*
ROBERT MONTGOMERY, '36, *Treas.*

MONTGOMERY
REAL ESTATE
& INSURANCE
COMPANY

REAL ESTATE, RENTALS, MORTGAGE
LOANS, INSURANCE

528 No. 20th St. Birmingham, Ala.
Phone 4-3325

Your DOCTOR knows
that LANE knows*

* Trusted more than 15 MILLION times

LANE DRUG STORES

"Always the Best"

Compliments

of

**HILL
GROCERY COMPANY**

**There is a Store in Your
Neighborhood**

Alabama By-Products Corporation

Birmingham, Alabama

Manufacturers of

A. B. C. DOMESTIC COKE

For Sale by

SMOKELESS FUEL COMPANY

"Nothing But ABC Coke"

Telephone 52-2744

BOHEMIAN BAKERY

The Home of Quality Foods
1804 4th Ave., N.

Compliments

S. H. HANOVER
JEWELERS
206 N. 20th St.

Compliments of

WIMBERLY & THOMAS
HARDWARE CO., INC.

Everybody Bowls at

LUCKY STRIKE
Also Cars Rented

COMPLIMENTS OF A FRIEND

THE SOUTH'S STANDARD OF
SLEEP COMFORT . . .



Perfection
BEDS MATTRESSES SPRINGS

*"More Alabama People
sleep on Perfection mat-
tresses and springs than
on any other kind!"*

The New Home of the Blum Studio
1909½ First Avenue, North

Otto Blum Studio

FINE PHOTOGRAPHY

Birmingham, Alabama

Compliments of

WOOD-FRUITTICHER GROCERY COMPANY

Compliments

**R. D. BURNETT
CIGAR CO.**

Distributors

**SCHRAFFT'S and
NESTLE'S CANDIES**

**BETSY
ROSS
BREAD**

McGough Bakeries

Save on your Insurance:

- ★ AUTOMOBILE
- ★ COMPENSATION
- ★ PLATE GLASS
- ★ GENERAL LIABILITY



PATRONIZE
THESE
ADVERTISERS



Ready to Face the World

★ ★ COME WHAT MAY.

CONFIDENCE is the heritage of youth it is also a fundamental requirement of business attained by long study, training and experience • We have enjoyed the confidence of yearbook Staffs throughout the country for over thirty years an accomplishment for which we are truly grateful and justly proud

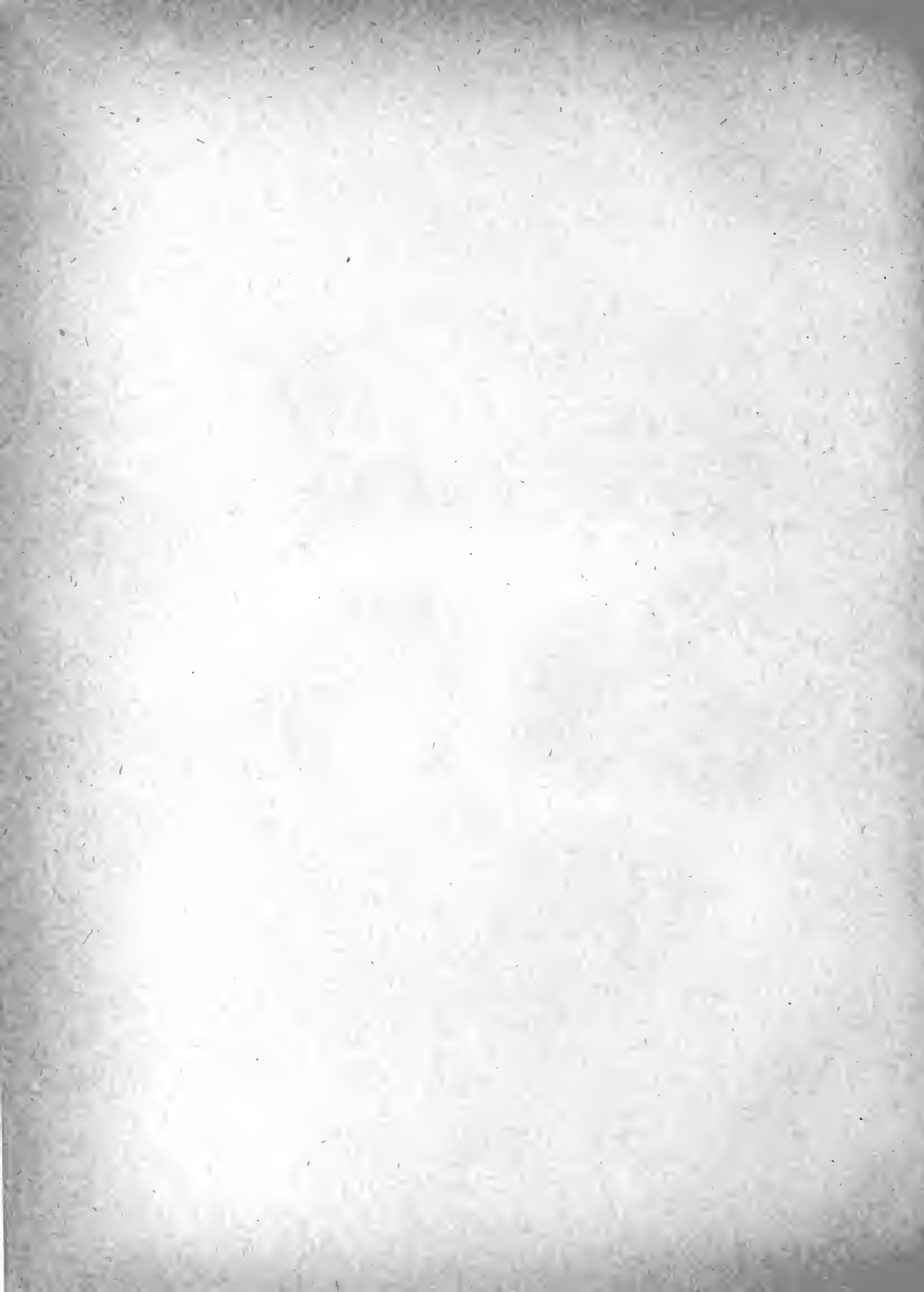
★ ★ ★ ★ ★
COLLEGE ANNUAL DIVISION
ALABAMA ENGRAVING COMPANY
BIRMINGHAM

THE EMBLEM OF
FINE PRINTING



BIRMINGHAM PRINTING COMPANY
Birmingham, Alabama





LIBRARY
OF
BIRMINGHAM-SOUTHERN
COLLEGE

