

THE

Southern

ACCENT

1924

M. Paul Phillips Library
Birmingham-Southern
College



LIBRARY
OF
BIRMINGHAM-SOUTHERN
COLLEGE

BIRMINGHAM-SOUTHERN COLLEGE



5 0553 01001650 6

Tom L. McGuire
PHOTOGRAPHER

FOREWORD

We have chosen the message of the "Open Door" as the theme of our 1954 Southern Accent. We hope that these pages will portray the doors Birmingham-Southern has swung wide open for us to develop clear minds, clean hearts, and a deep understanding of our fellowman. We realize that today's informed youth are tomorrow's good citizens; so, reverently and joyfully the students of this great college have entered its open doors, eagerly anticipating the time when we may join forces with our fellowmen in building a better nation and a better world!



"THOU ART AN OPEN DOOR . . ."

BIRMINGHAM SOUTHERN COLLEGE



TO



Opp

Arthur
and
Betty
Sunday

ortunity

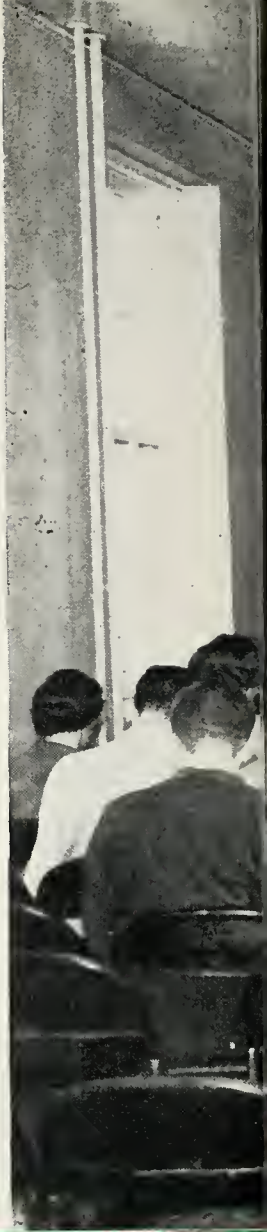


TO



KNOWLEDGE AND WISDOM





TO

Religious Growth.





To
FRIENDSHIP . . .





TO



Recreation . .



THE SOUTH



ERN

Accent

OPENS THE DOOR ON
SCENES FROM LIFE AT
BIRMINGHAM-SOUTHERN
COLLEGE IN

1954



JACK SHEARER
Editor

JO TAYLOR
Business Manager



DEDICATION

With gratitude for his untiring efforts in our behalf, with sincere appreciation of his personal worth, and with an abiding and deep affection for him, we dedicate this edition of the Southern Accent to

Our President,

DR. GEORGE R. STUART, JR.

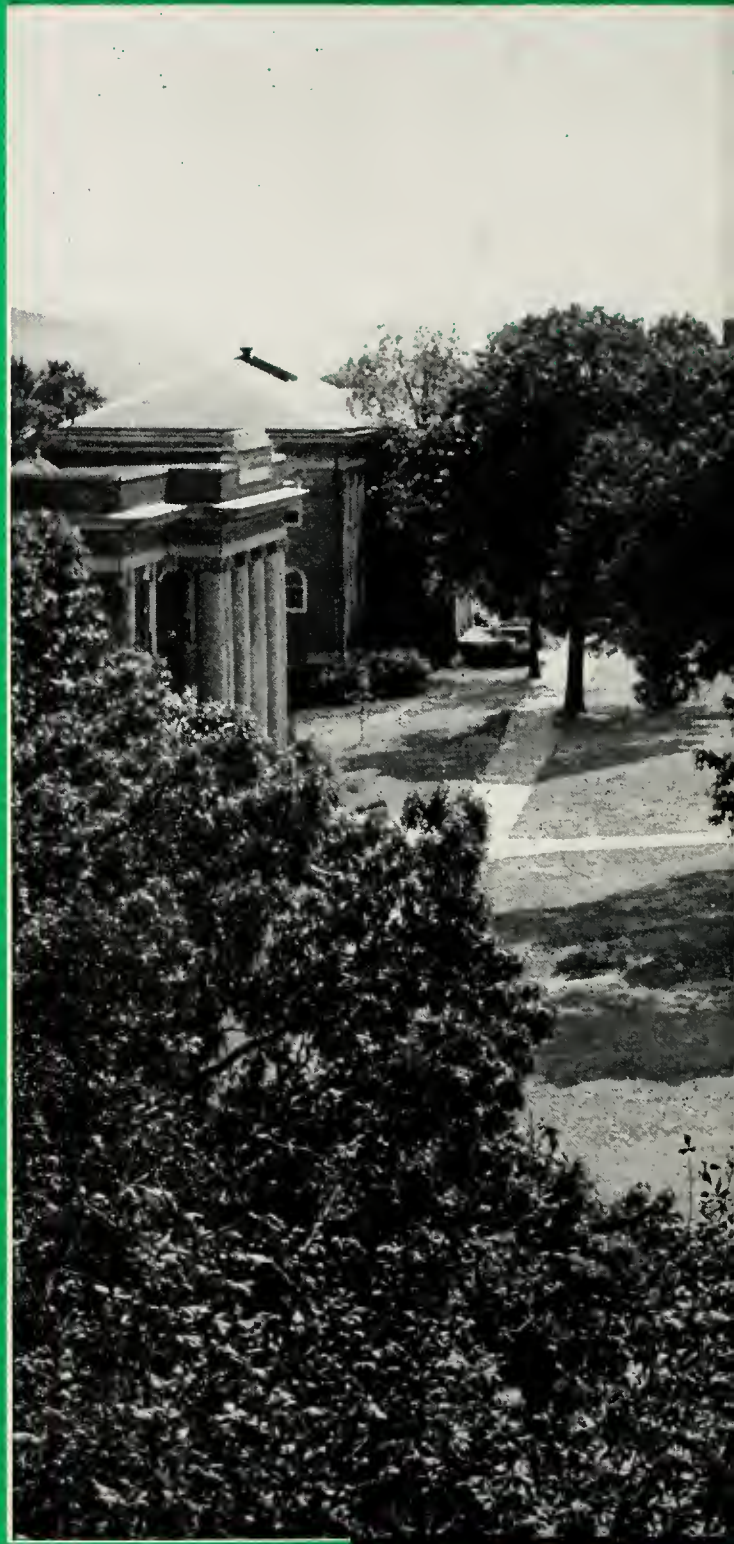


207-1
• B.5504
1950
L.2



97689

THE
School





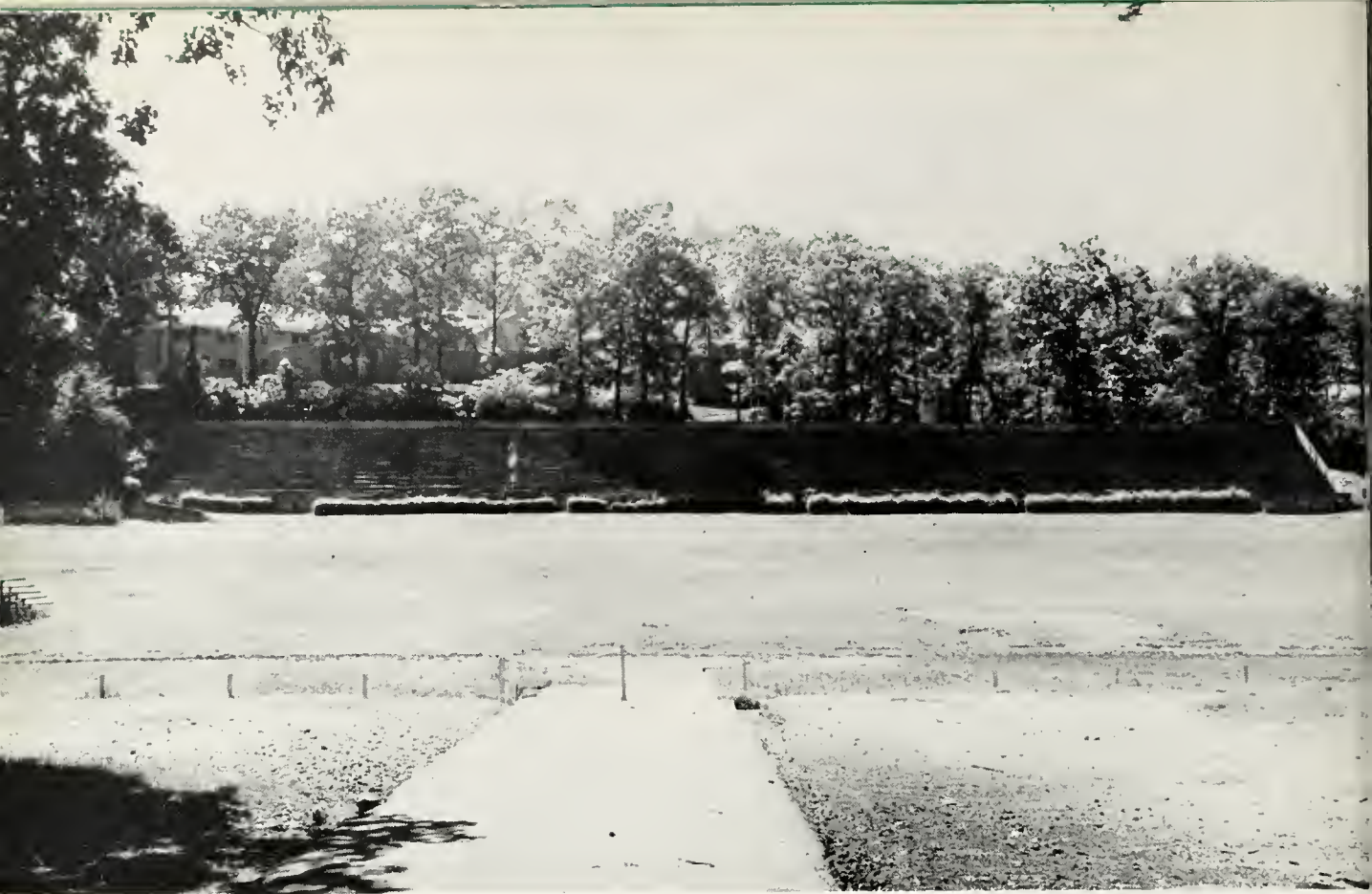


HANSON HALL

This fall the doors of Hanson Hall were opened to the Birmingham-Southern co-eds. Built in memory of Victor H. Hanson, it is one of the most modern dormitories in the country. It is equipped to accommodate 120 girls in suites. The dorm has a lounge, a study hall, and an infirmary. The recreation room, the outdoor barbecue pit, the television set, and the air-conditioning add to the beauty and comfort for the girls. The solarium has a wonderful view of the campus and is always being used to entertain dates with dancing, bridge, or cokes.

**McCOY METHODIST
CHURCH**





MUNGER BOWL

PHILLIPS SCIENCE BUILDING





STOCKHAM

PHILLIPS LIBRARY





ANDREWS HALL

RAMSAY HALL





CONSERVATORY OF MUSIC

PHYSICAL EDUCATION BUILDING





STUDENT ACTIVITIES BUILDING

PRESIDENT'S HOME



BOARD OF TRUSTEES

OFFICERS

President	S. M. Baker
Vice-President	Ervin Jackson
Secretary	J. H. Chitwood

EXECUTIVE COMMITTEE

Herbert C. Stockham, Chairman
James B. Hill, Vice-Chairman
Lonnie P. Munger, Secretary

Ex-Officio

President, George R. Stuart, Jr.
Treasurer, Newman M. Yeilding

MEMBERS FROM ALABAMA CONFERENCE

Rev. S. M. Baker	Mr. Tupper Lightfoot
Mr. E. L. Boatner	Rev. E. C. Moore
Mrs. W. S. Brewbaker	Rev. Herbert W. Rice
Mr. Frank F. Earle	Rev. A. E. Shafer
Mr. Robert F. Henry	Rev. D. P. Slaughter
Mr. Berry D. Joyce, Jr.	Rev. Paul Duffey

MEMBERS FROM NORTH ALABAMA CONFERENCE

Rev. R. E. Branscomb	Mr. Ervin Jackson
Rev. J. H. Chitwood	Rev. Otis E. Kirby
Rev. Paul Clem	Judge Hugh A. Locke
Rev. Paul Hardin	Mr. L. P. Munger
Rev. Wm. M. Harris	Mr. Edward L. Norton
Mr. J. B. Hill	Mr. H. C. Stockham



THE

GEORGE R. STUART, JR., President
A.B., Birmingham-Southern College; M.A., Emory University;
LL.D., University of Alabama.

TO YOU, THE STUDENTS:

*This college exists and progresses to fill your needs
in the rich experiences of education and of college life.*

*You -- the students of today -- are our first interest
and we measure the worth of Birmingham-Southern College by the
manner in which we meet your needs and fulfill your expectations.*

*Sincerely,
George R. Stuart*



HENRY THOMAS SHANKS
Dean

A.B., Wake Forest College; A.M.,
ibid; A.M., University; Ph.D., Uni-
versity of North Carolina.



MARY HOLMES SENSABAUGH
Dean of Women

A.B., Vanderbilt University.



NEWMAN MANLY YIELDING
Treasurer

A.B., Birmingham-Southern College.

ADMINISTRATION

WILLIAM E. GLENN
Registrar

B.S., Alabama Polytechnic Institute;
M.A., Emory University.

ROBERT H. WALSTON
Bursar

A.B., Birmingham-Southern College.



LEFT TO RIGHT BELOW:

ALFRED O. CANON
Director of Admissions
A.B., Southwestern University; M.A.,
Duke University; Ph.D., ibid.

VIRGINIA HAMILTON
Assistant to the President for
Public Relations
A.B., Birmingham-Southern College.

HIRAM B. ENGLEBERT
Administrative Assistant
A.B., Birmingham-Southern College.

VIRGINIA D. McMAHON
Alumni Secretary
B.S., Birmingham-Southern College.



THE



MARGARET HARVEY HUGHES
Director of the Library
A.B., Oberlin College; B.S. in
L.S., Carnegie Institute of Tech-
nology; M.S., Columbia Univer-
sity



FRANCES DINSMORE McLAUGHLIN
Library Order Assistant



MARIAN S. STEEDMAN
A.B., Birmingham-Southern
College



BARBARA MILLER DAWSON
Assistant Librarian
B.S., State Teachers College,
Genesco, New York



MRS. GRIFFIN DOSTER
Instructor in Biology

STAFF

MRS. E. S. OWNBEY
Manager of The Cellar

HAZEL LEAVITT BURGDORF
Assistant to the Bursar



CALVIN HOPKINS
Assistant to the Bursar

MADelyn THOMAS HALE
Assistant Registrar



LOLA COOKE CRUTCHFIELD
Assistant to the Registrar

RUTH BAKER TRUSS
Secretary to the Treasurer
A.B., Birmingham-Southern College



THE



MARIAN JANE CRAWFORD
Secretary to the President
A.B., Randolph-Macon Woman's
College; A.M., Southern Meth-
odist University

JEAN LOUISE SEYMOUR
Secretary to the Dean
A.B., Birmingham-Southern College



ILA DUNCAN BOOKER
House Mother, Hanson Hall

FLORIDA HERNDON SHERROD
House Mother, Hanson Hall



HELEN COLE BOYD
Dietitian

MAE E. PENCE
Assistant Dietitian

STAFF

ELLAREE DEAN SPEER
Manager of the Book Store

MRS. R. B. COATS
Manager of the Book Store



JAMES B. COLLINS
Superintendent of Buildings and
Grounds

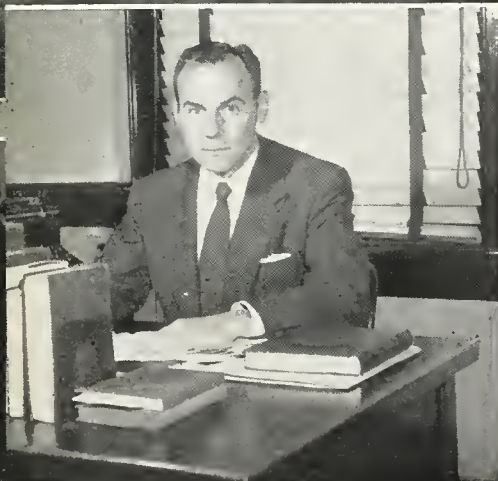
MURPHY C. BAKER
Night Watchman



THE



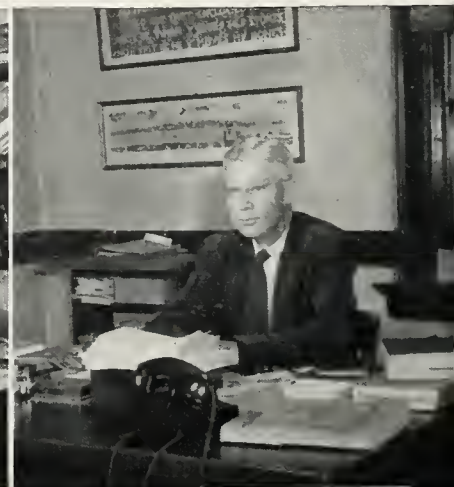
RICHEBOURG GAILLARD McWILLIAMS
Chairman of the Humanities Division
Professor of English
B.S., University of Alabama; M.A., *ibid*;
M.A., Harvard University



CECIL EMORY ABERNETHY
Professor of English
A.B., Birmingham-Southern College;
A.M., University of North Carolina;
Ph.D., Vanderbilt University

HOWARD HALL CREED
Professor of English
A.B., Central College; M.A., Vanderbilt
University; Ph.D., *ibid*.

EGBERT SYNDON OWNBEY
Professor of English
A.B., Vanderbilt University; M.A., *ibid*;
Ph.D., *ibid*.



FACULTY

RAYMOND FLOYD ANDERSON
Professor of Music
A.B., Maryville College; A.M., Columbia
University



HERMAN ROBERT BUTTS
Professor of Classics
A.B., University of Missouri; M.A., State
University of Iowa; Ph.D., *ibid.*



ANTONY CONSTANS
Professor of French
A.B., University of Grenoble, France;
LL.B., *ibid.*; Licencie es Lettres, *ibid.*;
Ph.D., Harvard University; Certificat de
Prononciation, University of Paris; Di-
plome de Phonetique, *ibid.*



GUSTAVO RENE HERNANDEZ
Professor of Spanish
A.B., Maryville College; A.M., Univer-
sity of North Carolina; Ph.D., *ibid.*

HARRY EARL McNEEL
Associate Professor of Spanish
Ph.B., Emory University; A.M., Univer-
sity of Chicago



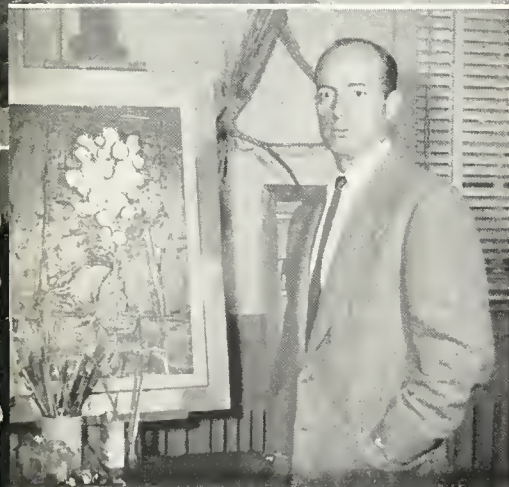


AUSTIN PRODEHL
Professor of German
A.B., Dubuque College; Ph.D., Fribourg
University

THE



MARSEE FRED EVANS
Professor of Speech
A.B., Cornell College; M.A., *ibid*; B.D.,
Drew University; Ph.D., University of
Iowa



RAYMOND JOHN MacMAHON
Associate Professor of Art
B.F.A., University of Georgia; M.F.A.,
Northwestern University; Ph.D., *ibid*.

REBECCA JENNINGS
Instructor in Dramatics
A.B., Alabama College; M.A., Univer-
sity of Denver.

DOROTHY THAMES SCHWARTZ
Instructor in Dramatics
B.S., Mississippi State College for Wom-
en; American Academy of Dramatic
Arts



FACULTY

ADDISON STUART MIMS
Instructor in Radio
A.B., University of Alabama



OLIVER CORNELIUS WEAVER, JR.
Associate Professor of Philosophy
A.B., Birmingham-Southern College;
B.D., Garrett Biblical Institute; M.A.,
Northwestern University; Ph.D., *ibid.*



MARION FRANCIS CHRISTIE
Professor of Religion
A.B., Hendrix College; B.D., Southern
Methodist University; M.A., *ibid.*; Ph.D.,
Vanderbilt University

WILLIAM ALONZO WHITING
Division Head of Natural Sciences
Professor of Biology
B.S., Allegheny College; Ph.D., Cornell
University.



THE



CHARLES BARKLEY BLAIR, JR.
Associate Professor of Biology
A.B., Maryville College; Ph.D., University of North Carolina



JAMES ARTHUR DOUBLES
Associate Professor of Biology
A.B., University of North Carolina; M.A.,
ibid; Ph.D., ibid.

HOYT McCOY KAYLOR
Associate Professor of Physics
B.S., Birmingham-Southern College;
M.S., University of Tennessee

JOHN FRANKLIN LOCKE
Professor of Mathematics
B.S., Memphis State College; M.A., Vanderbilt University; Ph.D., University of Illinois.



FACULTY

JAMES ROBERT WESSON
Assistant Professor of Mathematics
B.S., Birmingham - Southern College;
M.A., Vanderbilt University.



WILLIAM ROYALL SMITHY, JR.
Professor of Chemistry
B.S., Virginia Military Institute; M.S.,
University of Virginia; Ph.S., *ibid.*



GEORGE R. SIMMONS, JR.
Associate Professor of Chemistry
B.S., Birmingham - Southern College;
M.S., Ohio State University; Ph.D., *ibid.*



JAMES ALLEN TOWER
Professor of Geography
A.B., University of Washington; M.S.,
ibid.; Ph.D., *ibid.*



WILEY SAMUEL ROGERS, III
Assistant Professor of Geology
A.B., Emory University; M.A., *ibid.*





LEON FRANKLIN SENSABAUGH
Division Head of Social Sciences
Professor of History
A.B., Vanderbilt University; Ph.D., Johns
Hopkins University

THE



JOSEPH HOWARD PARKS
Professor of History
B.S., Middle Tennessee Teachers Col-
lege; M.A., University of Alabama;
Ph.D., Ohio State University



EVELYN VIRGINIA WILEY
Associate Professor of History
A.B., Birmingham - Southern College;
M.A. Vanderbilt University

WILLIAM RAINES BATTLE, JR.
Professor of Physical Education
A.B., Birmingham-Southern College;
M.A., Peabody College for Teachers

BILL PENDLEY BURCH
Assistant Professor of Physical
Education
B.S., Middle Tennessee State College;
M.A., Peabody College



FACULTY

ELIZABETH DAVIS

Assistant Professor of Physical
Education
Diploma, New Haven Normal School of
Gymnastics; A.B., Birmingham-Southern
College



EMORY QUINTER HAWK

Professor of Economics
A.B., Bridgewater College; A.M., Uni-
versity of Virginia; Ph.D., *ibid.*



DAVID PHILLIP BEAUDRY, JR.

Associate Professor of Economics
B.S., University of Kansas; M.B.A., *ibid.*;
A.M., Harvard University

HOWARD HARPER HARLAN

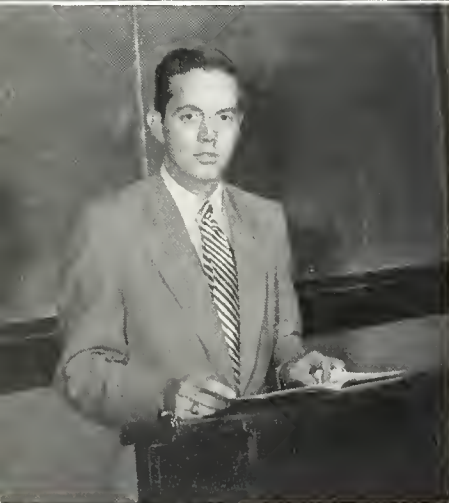
Professor of Sociology
A.B., University of Richmond; A.M., Uni-
versity of Virginia; Ph.D., *ibid.*



THE



ELLEN FLAUTT WALKER
Instructor in Secretarial Studies
A.S., University of Alabama; A.M., Columbia University



PAUL R. GIVENS
Associate Professor of Psychology
A.B., Peabody College; M.A., Peabody College; Ph.D., Vanderbilt University

MARJORIE W. McWHORTER
Instructor in Education
A.B., Wellesley; M.E., Harvard University.

EOLINE WALLACE MOORE
Lecturer in Education
A.B., Birmingham-Southern College;
A.M., *ibid*; Ph.D., George Peabody College for Teachers



FACULTY

JOHN MILTON MALONE
Professor of Education
B.S., Birmingham-Southern College;
A.M., *ibid*; Ph.D., George Peabody
College for Teachers



JOSEPH HUGH THOMAS
Director of the Conservatory
A.B., Birmingham-Southern College;
B.M., Birmingham Conservatory of Music;
M.M., *ibid*.



DORSEY WHITTINGTON
Consultant of the Conservatory
Artist Diploma, Institute of Musical
Art; Musical Doctorate, Boguslarvski



LOCKE WHITE
College of Music
Instructor in Chemistry
B.S., Birmingham-Southern College

HAROLD EDWIN WILCOX
Professor of Chemistry
A.B., Ohio Wesleyan University; M.Sc.,
Ohio State University; Ph.D., *ibid*.

ARNOLD FRANCIS POWELL
Associate Professor of English
A.B., Birmingham-Southern College;
M.A., Vanderbilt University; Ph.D., *ibid*.





Along Faculty Row



Dr. Parks' Home

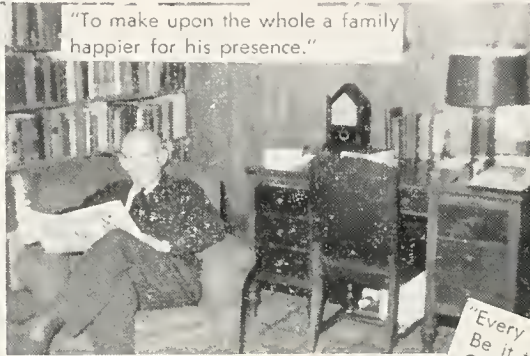


"Smile for Daddy?"

Faculty Row



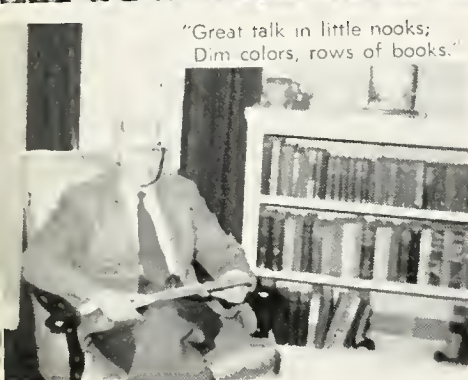
"So, loving all our children, she will see,
Sometimes, a remnant of the child in me!"



"To make upon the whole a family
happier for his presence."



"There followeth after me today
A youth whose feet must pass this way."



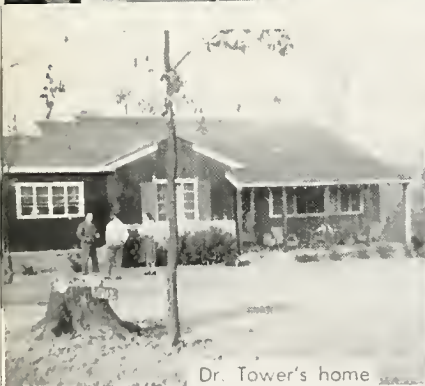
"Great talk in little nooks;
Dim colors, rows of books."



Daily Art Lesson



"Every soul that touches yours
Be it the slightest contact -
Gets therefrom some good."



Dr. Tower's home



Dean Shanks' home



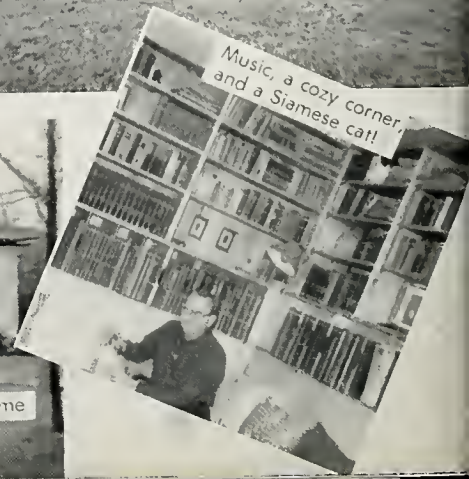
Dr. Harlan's home



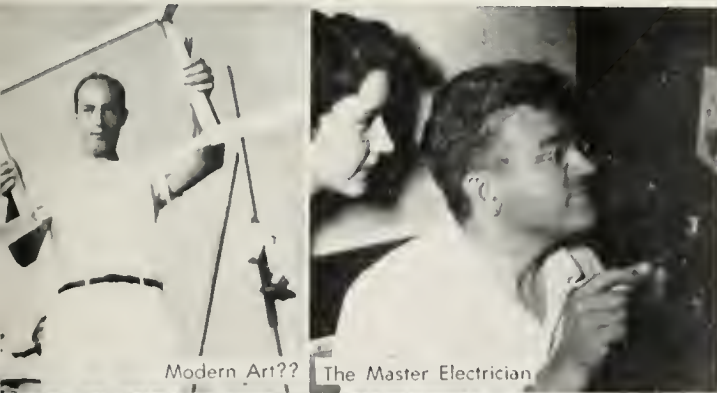
Dr. Powell's home



Dr. Abernethy's home



Music, a cozy corner,
and a Siamese cat!



Modern Art??

The Master Electrician

Faculty in Action



Worship at Freshman Camp

"the mind, which is divine runs never to decay"



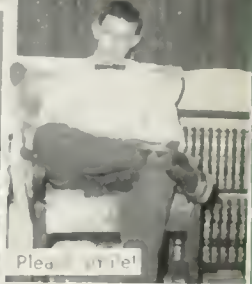
Southern's Future Football Team



A Family Joke



Like Father Like Daughter

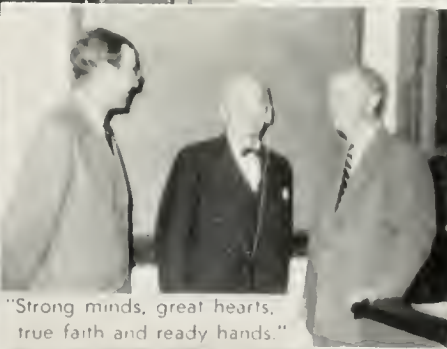


Please write!

Coffee Goes Up!



Informal Conference with Advisee



"Strong minds, great hearts, true faith and ready hands."



Mascots of the College!



The Four Stooges



H. Mewell at a desk

THE Classes

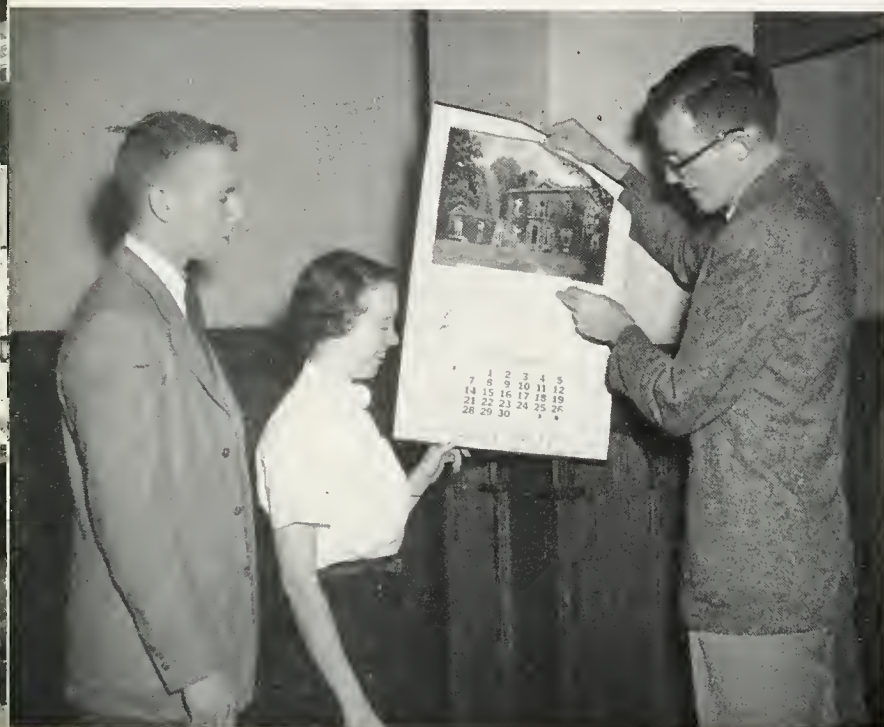




The SENIOR CLASS

OFFICERS

President Charles Browdy
Vice-President Bob Gray
Secretary-Treasurer Mary Jacq Snow





ALVAREZ, HELEN JOANNE
Theta Upsilon
Houston, Texas

Phi Sigma Iota, 3, 4; Entre Amigos, 1, 2, 3, 4; Mortar Board, 4; Kappa Delta Epsilon, 3, 4; Amazons, 3, 4; M. S. M., 1, 2; YWCA 1; Theta Upsilon President 4.

BALCH, EVIE SEALES
Theta Upsilon
Birmingham, Alabama

Theta Upsilon Secretary 3; Intramural Manager 4; Triangle Club 2; P. E. Club 1, 2, 3, 4; Vice President 3; M. S. M., 1, 2; IHS 3, 4; Kappa Delta Epsilon 3, 4; YWCA 1, 2, 3.

BATES, ANN LOUISE
Theta Upsilon
Birmingham, Alabama

Mortar Board President 4; Editor of Southern Accent 3; Eta Sigma Phi 3, 4; Secretary 4; Alpha Lambda Delta 2; President 2; Theta Upsilon President 4; YWCA 1; Freshman Commission 1; Amazons 3, 4; Treasurer 4; College Theatre 2; Hilltop News 1, 2, 4; Pan-Hellenic Council 3, 4; Triangle Club 1; Elections Board 4; Student Life Committee 4; Publications Board 3; Who's Who 4.

BARROW, ALICE McSHERIDAN
Empire, Alabama
Kappa Delta Epsilon 4.

BARR, ANN
Alpha Omicron Pi
Birmingham, Alabama

Water Ballet 1, 3; M. S. M., 1, 3, 4; College Theatre 2; Eta Sigma Phi 2; Vice President 3; President 4; Nu Alpha 2, 3, 4; Favorite 3; Beauty 4; Galileans 2; YWCA 2; Triangle Club 2; Kappa Delta Epsilon 3, 4; Vice President 4.

BERRY, JIM G.
Springville, Alabama
Ministerial Association 3, 4.

THE SENIOR CLASS

BERRY, JUDITH JANE
 Kappa Delta
 Birmingham, Ala.
 YWCA 1, 2; Choir 1.



BISHOP, V. GENE
 Lambda Chi Alpha
 Birmingham, Ala.
 College Theatre 4.

BOYD, JO ANN
 Pi Beta Phi
 Palmetto, Fla.
 Mu Alpha 1, 2, 3, 4.



BRITTAIN, MARILYN
 Pi Beta Phi
 Anniston, Ala.
 Mortar Board Vice-President 4; Baptist Student Union 2, 3, 4; President 4; Executive Council 4; College Theatre 2, 3; YWCA 2, 3, 4; Le Cercle Francais 3, 4; Treasurer 3; Religious Council 3, 4; PBF Corresponding Secretary 4; Galileans 2, 3, 4; Dorm Council 3; P. E. Club 3; Who's Who 4.



THE SENIOR CLASS



ROWDY, CHARLES A.
Sigma Alpha Epsilon
Birmingham, Ala.
Geology Club 2, 3, 4; Secretary-Treasurer 2; President 3; Honor Council 3; Executive Council 2; Omicron Delta Kappa 4; President 4; Varsity Basketball 2, 3, 4; SAE Secretary 2, 3, 4; Elections Board Student Life Committee 4; Senior Class President 4; Who's Who 4.

BURKE, PATRICIA ANNE
Theta Upsilon
Birmingham, Ala.
Choir 3; Secretary-Treasurer Entre Amigos 4; M.S.M. 3, 4; College Theatre 3, 4.

BUTLER, MARILYN JANE
Alpha Omicron Pi
Memphis, Tennessee
Secretary Entre Amigos 2; Intramural Manager 3; YWCA 2, 3; AOP Secretary 3; Vice-President 4; President 4; P. E. Club 3.

SHAW, JOHN SHAW
Birmingham, Ala.

CLARK, HOWARD BERT
Lambda Chi Alpha
Birmingham, Ala.
Kappa Phi Kappa 3.

CONSTANTINE, JOHN G.
Lambda Chi Alpha
Birmingham, Ala.
Who's Who 4; Editor Hilltop News 4; LCA Corresponding Secretary 4.

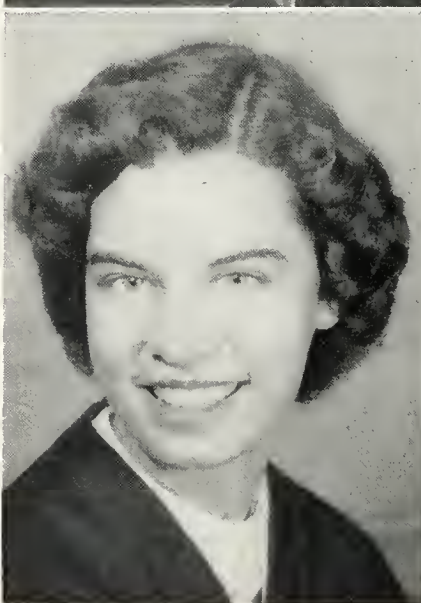
THE SENIOR CLASS

COSBY, PAUL E.
Pi Kappa Alpha
Birmingham, Ala.
Eta Sigma Phi 3, 4; College Choir 2, 3;
College Theatre 3, 4; MSM 1, 2, 3, 4;
Galileans 1; Ministerial Association Treasurer 3.

deYAMPERT, Lucius D.
Alpha Tau Omega
Birmingham, Ala.
Varsity Basketball 1, 2, 3, 4; Geology Club President 4.

EARNSHAW, DORIS MAE
Gamma Phi Beta
Mitchellville, Md.
Dormitory House Council 4.

ELMORE, V. JACKSON
Sigma Alpha Epsilon
Birmingham, Ala.



THE SENIOR CLASS



ETCHISON, ELLYN FAYE
 Gamma Phi Beta
 Atlanta, Ga.
 Transfer from LaGrange College 3;
 Amazons 3, 4; Pan-Hellenic Council 4;
 Executive Council 4; MSM 3, 4; Vice-
 President GPB 3.

FAWAL, ABE SALEM
 Jerusalem, Palestine
 Newman Club 2, 3; College Theatre 2,
 3, 4; President 4.

FILLINGIM, LEON, JR.
 Tuskegee, Ala.
 Executive Council 3; Eta Sigma Phi 3,
 4; Treasurer 4; Ministerial Association 1,
 2, 3, 4; Galileans 1, 2, 3, 4; Vice-Pres-
 ident 4; MSM; Southern Accent 4.

FURIO, VINCENT PETER, JR.
 Alpha Tau Omega
 Birmingham, Ala.
 Triangle Club 2; Ministerial Association
 4; MSM 4.

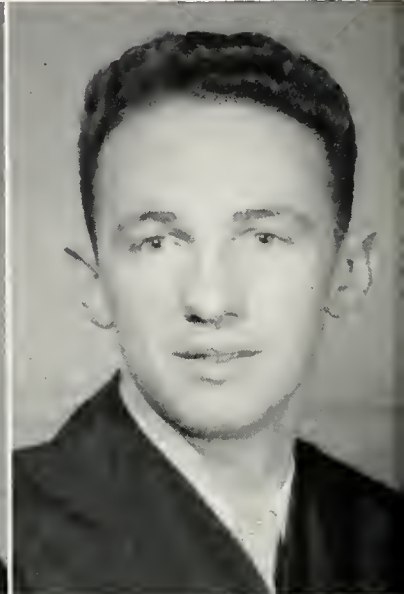
GODFREY, GERALD EDWARD
 Adamsville, Ala.
 College Choir 3, 4; Kappa Phi Kappa
 3, 4.

GOSSETT, EARL FOWLER
 Birmingham, Ala.
 College Theatre 1, 2, 3, 4; Ministerial
 Association 1, 2, 3, 4; French Club 1, 2.

THE SENIOR CLASS

GRAY, ROBERT

Alpha Tau Omega
Birmingham, Ala.
Omicron Delta Kappa 4; Alpha Tau
Omega President 4; Who's Who 4.

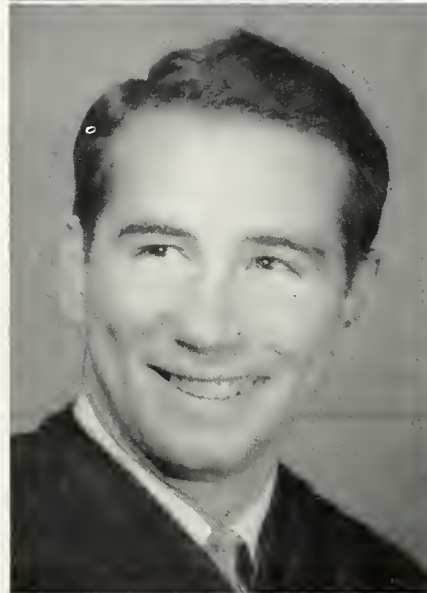


GRIFFITH, JAMES R.

Irondale, Ala.
Secretary-Treasurer Theta Chi Delta 4.

GUTHRIE, W. NELSON, JR.

Birmingham, Ala.
Eta Sigma Phi 3, 4; Ministerial Association 1, 2, 3, 4; President 4; MSM 1, 2, 3, 4; Executive Council 2, 3; Treasurer 3; Triangle Club 2; Galileans 1, 2, 3, 4; Religious Council 4.

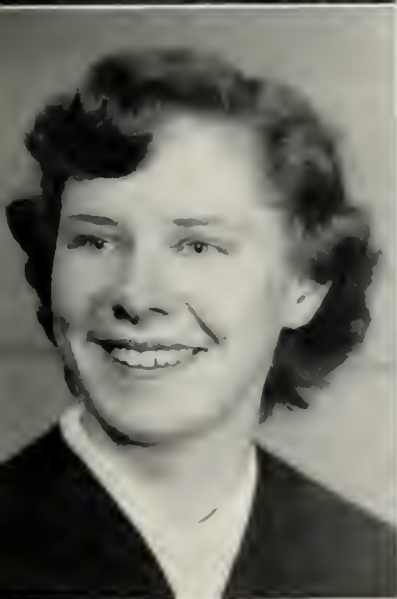
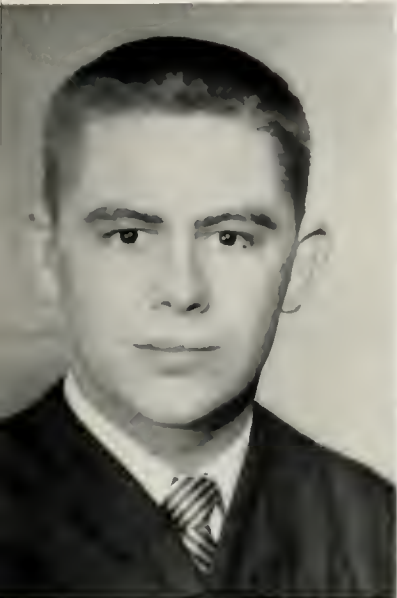


HALLMAN, HELEN WYNONA

Birmingham, Ala.
Le Cercle Francais 2, 3, 4; American Chemical Society 2, 3, 4; President Dormitory House Council 4; College Nurse 2, 3, 4; Independent Women 1, 2, 3, 4.



THE SENIOR CLASS



HARRISON, DONALD CAREY
Sigma Alpha Epsilon
Garden City, Ala.
Theta Chi Delta 2; American Chemical Society Vice-President 2, Executive Council 4.

HINES, SHIRLEY MICHAEL
Pi Beta Phi
Birmingham, Ala.
French Club 2, 3; BSU 2, 3, 4; Secretary 4; YWCA 2, 3; Triangle Club 2; Amazons 3, 4; Treasurer 4; Pan-Hellenic Council 1, 2, 3, 4; PBP Vice-President 3, 4.

HASLAM, MARY ANN
Zeta Tau Alpha
Piedmont, Ala.
Amazons 4; PiKA Sweetheart 4; Intramural Manager 4; Secretary ZTA 4; Entre Amigos 1; YWCA 1; Freshman Commission 1.

HOLLEY, JAMES WILLIAM
Sidon, Miss.
American Chemical Society 1, 2, 3, 4; President 3.

HERZBERG, LOUIS F.
Delta Sigma Phi
Birmingham, Ala.
Transfer, Jacksonville State Teachers College 4.

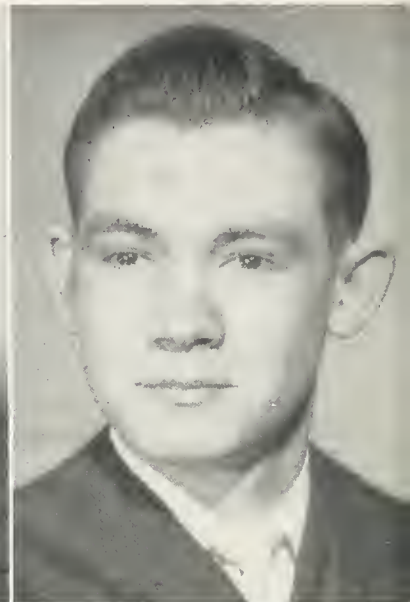
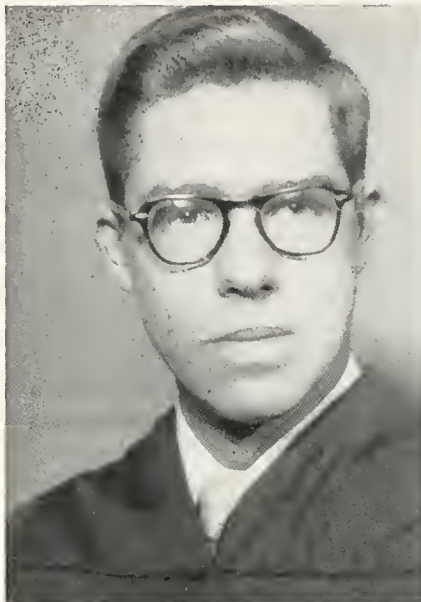
HOWARD, CHARLES HENRY
Town Creek, Ala.
Ministerial Association 2, 3, 4; Vice Pres. 4; MSM 2, 3, 4; Omicron Delta Kappa 3, 4; Galileans, Eta Sigma Phi 3, 4; Religious Council 3, 4; President 4.

THE SENIOR CLASS

HOWARD, WILLIAM HENRY

Theta Chi
 Albertville, Ala.

American Chemical Society 1, 2, 3, 4; Secretary 3; President 4; Theta Chi Delta 2, 3, 4; Kappa Phi Kappa 2, 3, 4; Secretary 3; Vice-President 4; Theta Chi 1, 2, 3, 4; Vice-President 2; Secretary 3; Treasurer 4; Theta Sigma Lambda 3, 4; Treasurer 4.



JAGGERS, ROLAND

Theta Chi
 Transfer student 4.

JENNINGS, ROBERT W.

Kappa Alpha
 Birmingham, Ala.



JETT, ROBERT HOWARD

Pi Kappa Alpha
 Buffalo, N. Y.

Triangle Club 2; Eta Sigma Phi 2, 3, 4; Mu Alpha 2, 3, 4; Treasurer 4; Choir 1, 2, 3, 4; President 3; Intramural Football Manager 3; Senior Intramural Manager 4; Ministerial Association 1, 2, 3, 4; MSM 1, 2, 3, 4; College Theatre 1, 2, 3; Vice-President PKA 4; Galileans 1, 2; Opera Workshop 4.



THE SENIOR CLASS



KRUEGER, BETTY LEE
 Theta Upsilon
 Birmingham, Ala.
 Mortar Board 3; Mu Alpha 2, 3, 4
 Secretary 3; Vice-President 4; Phi Sigma
 Iota 2; Triangle Club 2; College Theatre
 3; TU Vice-President 2; Treasurer 3, 4;
 Le Cercle Francaise 1, 2; Alpha Lambda
 Delta 1; Westminster Fellowship; Chair-
 man Red Cross 2; Hilltop News 1; Who's
 Who 4.

LEE, ROBERT EDWARD
 Kappa Alpha
 Birmingham, Ala.
 Ministerial Association 1, 2, 3, 4; MSM
 1, 2, 3, 4; Interfraternity Council; French
 Club.
LOVELACE, WILLIAM VAN
 Pi Kappa Alpha
 Birmingham, Ala.
 Kappa Phi Kappa 4; Vice-President 4;
 Hilltop News 2, 3; College Theatre 3; Go
 ology Club 2.

LEWIS, GENE W.
 Pi Kappa Alpha
 Birmingham, Ala.
MALONEY, MRS. SUZANNA DAVIS
 Alpha Omicron Pi
 Birmingham, Ala.
 AOP Vice-President 3; President 4; Al-
 pha Lambda Delta 1; Triangle Club Presi-
 dent 2; P. E. Club 2, 3, 4; Vice-President
 4; Mortar Board Secretary 4; Executive
 Council Secretary 2; Honor Council Secre-
 tary 3; Water Ballet 1, 2, 3; Kappa Delta
 Epsilon 3, 4; Secretary 4; Pan-Hellenic
 Council 3, 4; Southern Accent Favorite 2,
 4; Beauty 3; Who's Who 4.

LEITCH, CHARLES EDWARD
 Birmingham, Ala.
 Toreadors' Club 2, 3, 4; Vice-President
 2, 3; President 4.

THE SENIOR CLASS

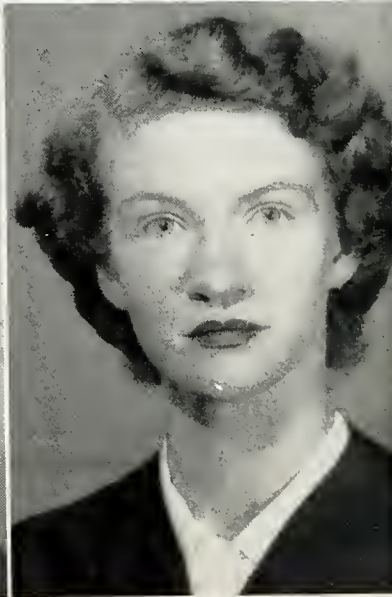
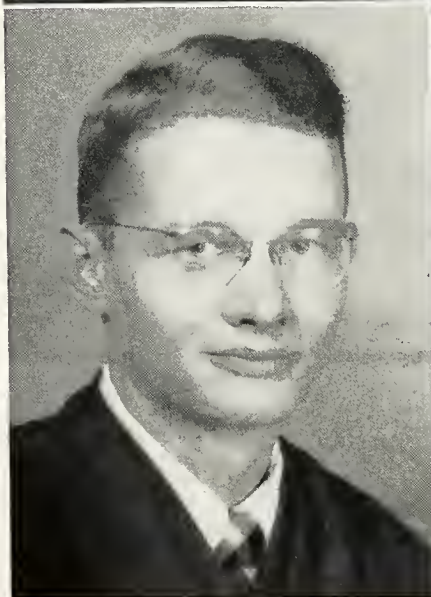
MATTHEWS, CHARLES
Red Bay, Ala.



MITCHELL, ELIZABETH ANN
Zeta Tau Alpha
Hartselle, Ala.

College Theatre 1, 2; Kappa Pi 1, 2, 3, 4; Vice-President ZTA 4; Secretary 2; Favorite 3; YWCA 1, 2, 3, 4; Freshman Commission 1; Triangle Club 1; BSU 1, 2, 3, 4; Choir 1.

MURPHY, JOSEPH W.
Theta Chi
Birmingham, Ala.



Theta Chi Delta 3; Vice-President 3; President 3; ACS 2.

NEELY, MARTHA MAE
Kappa Delta
Birmingham, Ala.

Triangle Club 2; Executive Council 2; Amazons 3, 4; Vice-President 4; Honor Council 4; Pan Hellenic Council 3, 4; Secretary 3; Vice-President 4; Kappa Delta Secretary 2, 3; President 4; College Choir 3; Mu Alpha 3, 4; Who's Who 4.



THE SENIOR CLASS



O'BRIEN, ELMER J.
Delta Sigma Phi
Kemmerer, Wyoming
Kappa Phi Kappa 3, 4; Eta Sigma Phi 3, 4; College Theatre 3; Southern Accen. 4; Ministerial Association 1, 2, 3, 4; Secretary-Treasurer 4; MSM 1, 2, 3, 4; Gallileans; Executive Council Treasurer 4; Delta Sigma Phi President 4; IFC 4; Omicron Delta Kappa 4.

ORR, SULU
Gamma Phi Beta
Birmingham, Ala.
YWCA 1, 3, 4; Spanish Club 1, 2, 3; IHS 1, 2, 4; Methodist Student Movement 1, 2, 4; Kappa Delta Epsilon 4.

ODOM, ROY RONALD
Theta Chi
Fairfield, Ala.
Mu Alpha 2, 3, 4; Theta Sigma Lambda 3, 4; Vice-President 3; Theta Chi Delta 3, 4; President 4; American Chemical Society 3, 4; Interfraternity Council 3, 4; Secretary 4; Omicron Delta Kappa 3, 4; Treasurer 4; TX President 4.

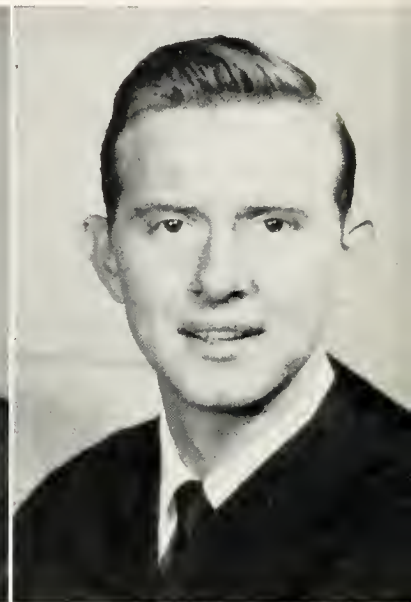
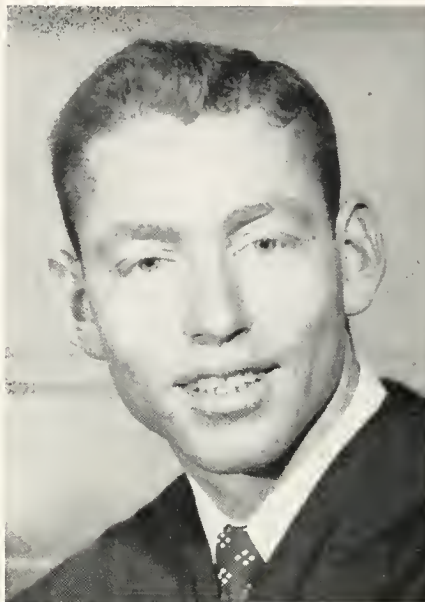
OWEN, JEANNE BATTLE
Ashland, Ala.
YWCA 1; College Theatre 2, 3, 4; Triangle Club 2.

OLIVER, NANCY
Theta Upsilon
Birmingham, Ala.
College 2, 3; Vice-President 3; Mu Alpha 2, 3, 4; President 4.

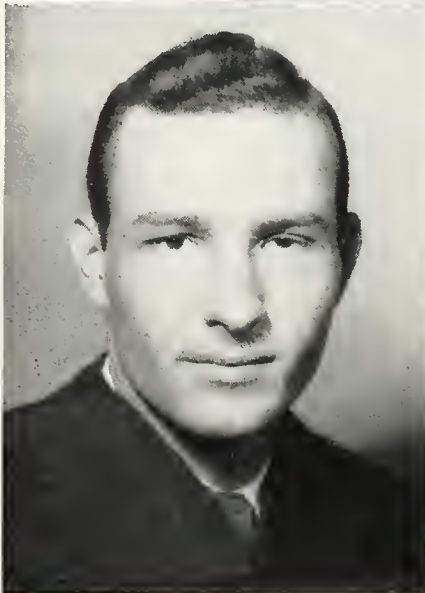
PALFREY, GERALDINE L.
Pi Beta Phi
Birmingham, Ala.
PBP Treasurer 3; President 4. Hilltop News 1, 2, 3, 4; Business Manager 3, 4; College Theatre 1, 2, 3, 4; Mortar Board 4; Pan-Hellenic Council 1, 2, 3, 4. President 4. Amazons 3, 4; Publications Board 3, 4; YWCA 1; Triangle Club Secretary 2; Who's Who 4.

THE SENIOR CLASS

POLLOCK, JAMES GASTON
Columbus, Ga.
Varsity Basketball 3, 4; Omicron Delta Kappa 4.



PORTER, WILLIAM O., JR.
Sigma Alpha Epsilon
Birmingham, Ala.
Lower Division Executive Council 2; Honor Council 3; IFC 4; Vice-President Student Body 4; President SAE 4; President Toreadors Club 4; BSU 1, 2; Who's Who 4.



POWELL, WILLIAM J.
Birmingham, Ala.
Toreadors Club 4.

RYAN, BETTY JEAN
Gamma Phi Beta
Helena, Ala.
Le Cercle Francais 1; Vice-President 3; Newman Club 4; GPB Vice-President 3; Amazons 2; Choir 3; Religious Council 4; Southern Accent Staff 1, 4; Hilltop News Staff 1; College Theatre 1; YWCA 1, 2; Freshman Commission 1.



THE SENIOR CLASS



SCHLOSSER, FRED F.
Decatur, Ala.
College Choir 1, 2, 3, 4; Mu Alpha 3, 4;
French Club 2.

SCOFIELD, MARILYN ELIZABETH
Alpha Omicron Pi
Birmingham, Ala.
BSU 2, 3, 4; IHS 3, 4.

SNOW, MARY JACQ
Alpha Omicron Pi
Birmingham, Ala.
French Club 1, 2; YWCA 1, 2, 3, 4;
Secretary 3; President 4; BSC 1, 2, 3, 4;
Vice-President 3; Triangle Club 2; Executive
Council Secretary 3; Amazons 3, 4;
Honor Council Secretary 4; P. E. Club 2,
3, 4; President 4; Pan-Hellenic Council
4; Student Life Committee 4; Religious
Council 4; AOP Treasurer 2, 3; Publica-
tions Board Secretary 3; Cheerleader 4;
Who's Who 4.

TERRY, MARILYN
ISA
Langdale, Ala.

THOMPSON, JEAN
Pi Beta Phi
Birmingham, Ala.
YWCA 3. Freshman Commission 1; PBF
Treasurer 3, 4. Water Ballet 2; Entre
Amigos 2; College Choir 1, 2, 3, 4; Tri-
angle Club 2; Kappa Delta Epsilon 3, 4
College Theatre 2; MSM 3.

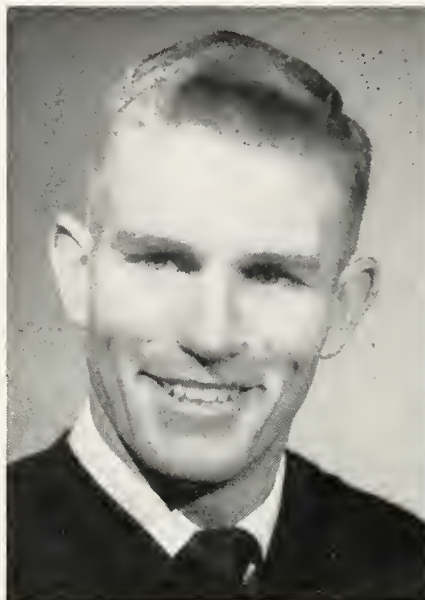
SULLIVAN, GILBERT MANN
Birmingham, Ala.

MSM 1, 2, 3, 4; Kappa Delta Epsilon
3, 4; Treasurer 4; Dorm Council 3, 4;
IHS 2, 3, 4; Galileans 1, 2; Entre Amigos
1; YWCA 1.

THE SENIOR CLASS

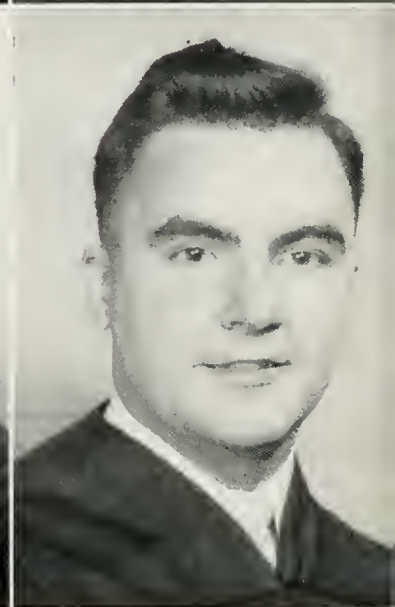
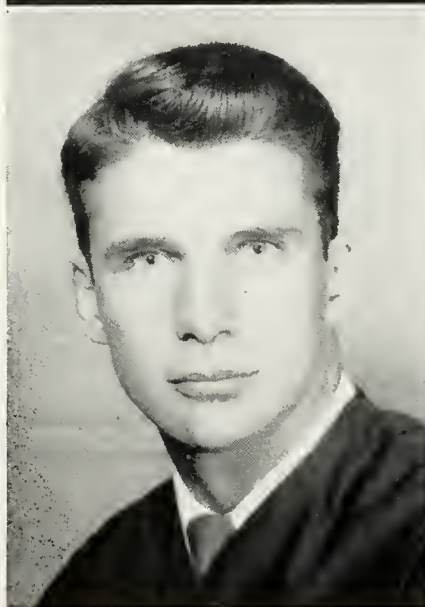
THORN, WILLIAM
Kappa Alpha
Birmingham, Ala.
Ministerial Association 2, 3, 4:

VEAZEY, MYRTLE E.
Birmingham, Ala.
Toreadors 3, 4.

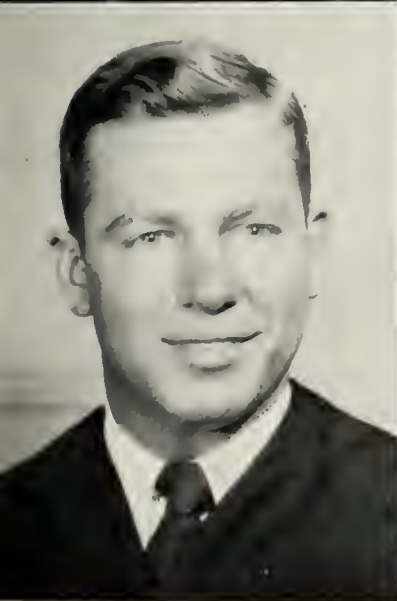


WADSWORTH, GAYLE BRYAN
Pi Kappa Alpha
Birmingham, Ala.

WALLER, ROBERT L.
Pi Kappa Alpha
Birmingham, Ala.
Treasurer PKA 2; Toreadors Club 2, 3,
4; Treasurer 3.



THE SENIOR CLASS



WALTON, DAN WELLS
Sigma Alpha Epsilon
Jemison, Ala.
Interfraternity Council 3; French Club
2; Intramural Board 2, 4; Hilltop News 2,
3; Intramural Sports 1, 2, 3, 4; College
Choir 3, 4.

WATES, ROYE ELIZABETH
Phi Beta Phi
Birmingham, Ala.
Senior Intramural Manager 4; Collego
Theatre 1, 2, 4; Hilltop News 3, 4; YWCA
1; Southern Accent 1; Triangle Club 2.

WESSON, HERMAN R.
Birmingham, Ala.
Theta Sigma Lambda 3, 4; American
Chemical Society 4.

WEST, JOHN PIERCE, JR.
Pi Kappa Alpha
Birmingham, Ala.
Eta Sigma Phi 3, 4; Ministerial Associa-
tion 1, 2, 3, 4; MSM 1, 2, 3, 4.

WHITE, FRANCES CHARLOTTE
Theta Upsilon
Birmingham, Ala.
Alpha Lambda Delta Sec.-Treas. 2;
YWCA 2; Westminster Fellowship 1, 2, 3,
Sec. 3, Pres. 3; Religious Council 2; Mu
Alpha 2, 3, 4; Collego Theatre 2, 3, 4;
French Club 2; College Choir 2, 3; Theta
Upsilon Treas. 2, Vice-Pres. 3; Eta Sigma
Phi 3, 4, Vice-Pres. 4; Mortar Board 4,
Treas. 4; Southern Accent 4; Hilltop News
1, 2; Kappa Delta Epsilon 4; Who's Who
4.

WHITTAKER, FRED PAUL, JR.
Pi Kappa Alpha
Birmingham, Ala.
Kappa Phi Kappa 3, 4; President 4.

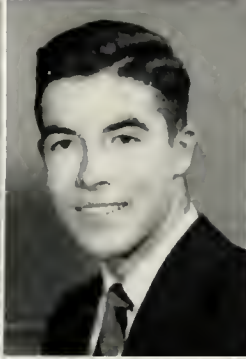
U N D E R G R A D S



FRESHMAN CLASS OFFICERS

President Don McNeil
Vice-President Bob Porter
Sec.-Treas. Susan O'Steen





ANDERSON, J.
BAGLEY

ADAMS
ANDERSON, R.
BAILEY

AKIN
ANGWIN
BAKER

ALLEN, B.
ARMSTRONG
BALLOW

ALLEN, J.
ASH
BARNARD

ANDERSON, B.
BACON
BARNETT

ADAMS, GWEN
ISA
Hueytown, Ala.

ANDERSON, BARRY
ATO
Tuscaloosa, Ala.

ARMSTRONG, DELYNN
PBP
Orlando, Fla.

BAKER, BENTON
KS
Birmingham, Ala.

AKIN, JUDY
ZTA
Birmingham, Ala.

ANDERSON, JOHN
Birmingham, Ala.

ASH, ANN LOUISE
Birmingham, Ala.

BALLOW, MARY ANN
AXO
Birmingham, Ala.

ALLEN, BARBARA
TU
Birmingham, Ala.

ANDERSON, RICHARD
ATO
Birmingham, Ala.

BAGLEY, FLORENCE W.
TU
Birmingham, Ala.

BARNARD, AUBREY
Pi KA
Birmingham, Ala.

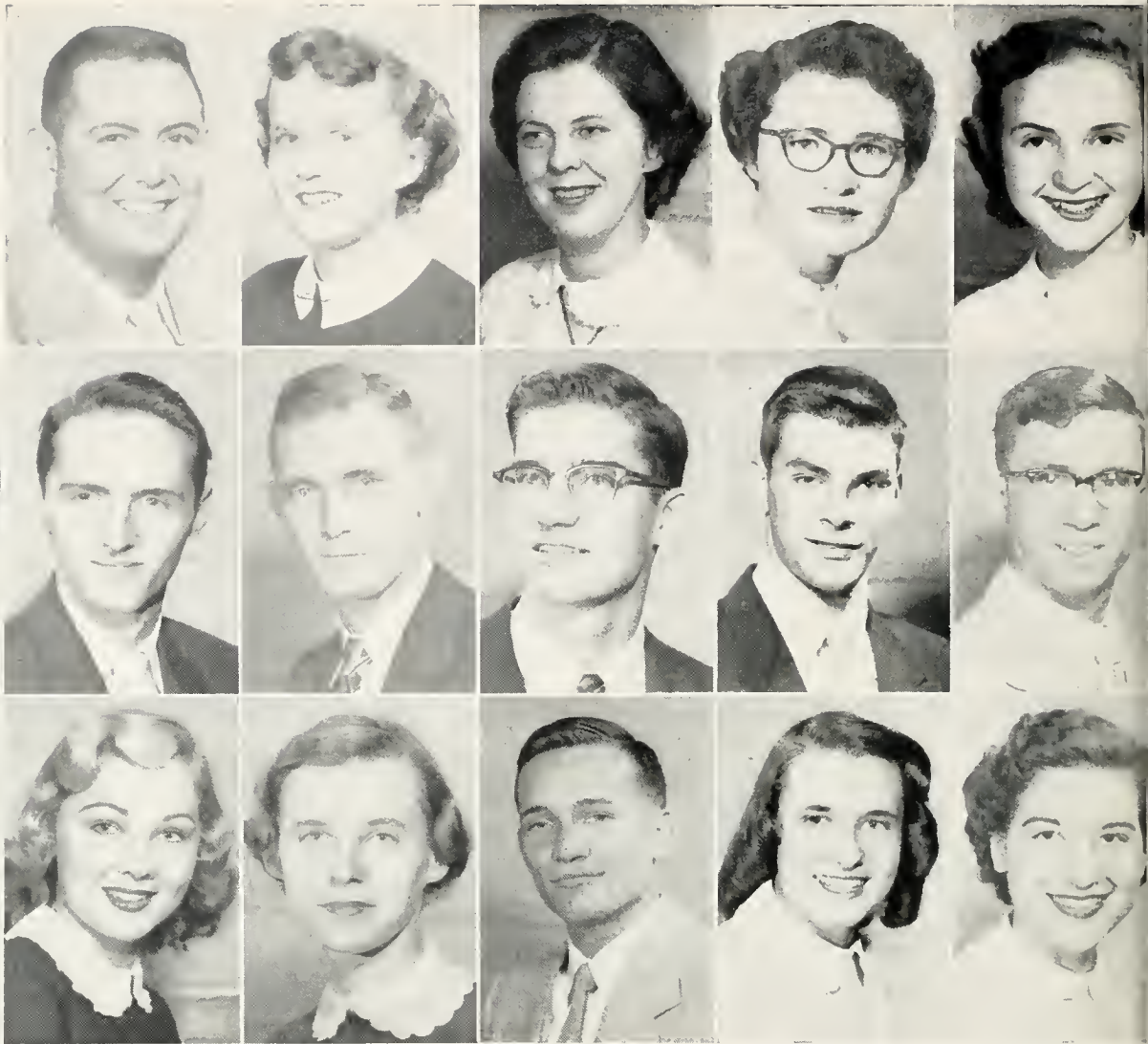
ALLEN, JAMES J.
SAE
Birmingham, Ala.

ANGWIN, DAVID R.
SAE
Birmingham, Ala.

BAILEY, MARY
ISA
Birmingham, Ala.

BARNETT, ROY
LXA
Birmingham, Ala.

U N D E R G R A D S



BISCHOFF
BOWKER

BEDSOLE
BLACKWELL
BRANCH

BERNHARDT
BONER
BRANNON

BERRY, M. A.
BOONE
BRANSCOMB

BERRY, MARY
BOSTON
BRASHER, C.

BERRY, N. R.
BOWERS
BRASHER, JO A. B

BEDSOLE, JAMES
TX
Montgomery, Ala.

BERNHARDT, VIRGINIA
ISA
Birmingham, Ala.

BERRY, MARY ANN
ZTA
Mobile, Ala.

BERRY, MARY
ISA
Gadsden, Ala.

BERRY, NELLIE RUTH
ISA
Attalla, Ala.

BISCHOFF, CAROLYN
Birmingham, Ala.

BLACKWELL, JIM
LXA
Birmingham, Ala.

BONER, M. C.
Birmingham, Ala.

BOONE, DAN, JR.
SAE
Birmingham, Ala.

BOSTON, BOBBY
KA
Birmingham, Ala.

BOWERS, DAVID
Birmingham, Ala.

BOWKER, ROBERT
PKA
Birmingham, Ala.

BRANCH, JEAN
AOP
Birmingham, Ala.

BRANNON, MADGE
GPB
Columbus, Ga.

BRANSCOMB, RICHARD
ATO
Florence, Ala.

BRASHER, CHARLENE
AOP
Bessemer, Ala.

BRASHER, JO ANN BIGGS
Birmingham, Ala.

U N D E R G R A D S



BRASHER BRUCE BUTTRAM	BRITTON BRYANT, C. CARVER	BROCKMAN BRYANT, M. CASEY	BROOKE BURNAM CECIL	BROWN, C. BURTON, E. CHANCEY	BROWN, E. BURTON, W. CHASTAIN
-----------------------------	---------------------------------	---------------------------------	---------------------------	------------------------------------	-------------------------------------

BRASHER, WILBURN
Birmingham, Ala.

BRITTON, RALPH
DSP
Birmingham, Ala.

BROCKMAN, WILLIAM
TX
Birmingham, Ala.

BROOKS, DONALD
ATO
Birmingham, Ala.

BROWN, CHARLES
SAE
Birmingham, Ala.

BROWN, EVELYN
KD
Mobile, Ala.

BRUCE, JULIA
ISA
Birmingham, Ala.

BRYANT, CLYDE
Birmingham, Ala.

BRYANT, MARY
TU
Birmingham, Ala.

BURNUM, MARY EMILY
KD
Decatur, Ala.

BURTON, EMORY
Birmingham, Ala.

BURTON, WILLIAM
PKA
Tuscaloosa, Ala.

BUTTRAM, DAVE
PKA
Birmingham, Ala.

CARVER, LOUISE
ZTA
Birmingham, Ala.

CASEY, COLLEEN
TU
Birmingham, Ala.

CECIL, ANNA LOIS
ISA
Mobile, Ala.

CHANCEY, CATHERINE
AOP
Birmingham, Ala.

CHASTAIN, BEN
PKA
Birmingham, Ala.

U N D E R G R A D S



CLARK
COVINGTON
CROSSLEY

CLAYTON
COWART
CUNNINGHAM

COFIELD
COWEN
DOUGHTY

COGGIN
COX, C.
DAVENPORT

CONWAY
COX, E.
DAVIS

COPELAND
CRISP
DEAN

CLARK, CATHERINE
ZTA
Birmingham, Ala.

CLAYTON, ROGER
ATO
Birmingham, Ala.

COFIELD, BILL
SAE
Birmingham, Ala.

COGGIN, SAMMY
Bessemer, Ala.

CONWAY, CONNIE JEAN
AOP
Birmingham, Ala.

COPELAND, FRANCES
PBP
Montgomery, Ala.

COVINGTON, VIRGINIA
KD
Sylacauga, Ala.

COWART, W. G.
Clem, Ga.

COWEN, DORA
AOP
Bessemer, Ala.

COX, CAROLYN
PBP
Birmingham, Ala.

COX, ELIZABETH
KD
Lineville, Ala.

CRISP, LAWRENCE
Birmingham, Ala.

CROSSLEY, MARY ANN
GPB
Birmingham, Ala.

CUNNINGHAM, NANCY
Birmingham, Ala.

DOUGHTY, ZACHIE
AOP
Birmingham, Ala.

DAVENPORT, GENE
ATO
Sylacauga, Ala.

DAVIS, DONALD
Birmingham, Ala.

DEAN, BILL
ATO
Trussville, Ala.

U N D E R G R A D S



OENDY
ERWIN
FARMER

DICKERSON
ESTOCK
FENN

OIXON
ESCO
FERRELL

DRENNEN
EVERSOLE
FOLKS

DUFFEY
EZELL
FOWLER

FAIRLEY
FRANKE

DENDY, NELL
AOP
Birmingham, Ala.

DICKERSON, SYLVIA
ZTA
Birmingham, Ala.

DIXON, LILLIAN
PBP
Gorgas, Ala.

DRENNEN, WILLIAM
ATO
Birmingham, Ala.

DUFFEY, WALTER
Birmingham, Ala.

ERWIN, WILLIAM
Birmingham, Ala.

ESTOCK, HAROLD
SAE
Fairfield, Ala.

ESCO, JAMES G.
PKA
Birmingham, Ala.

EVERSOLE, FINLEY
PIKA
Birmingham, Ala.

EZELL, SHIRLEY
PBP
Birmingham, Ala.

FAIRLEY, LOIS ELAINE
AXO
Eden, Ala.

FARMER, JILL
GPB
Birmingham, Ala.

FERRELL, MARIANNE
TU
Birmingham, Ala.

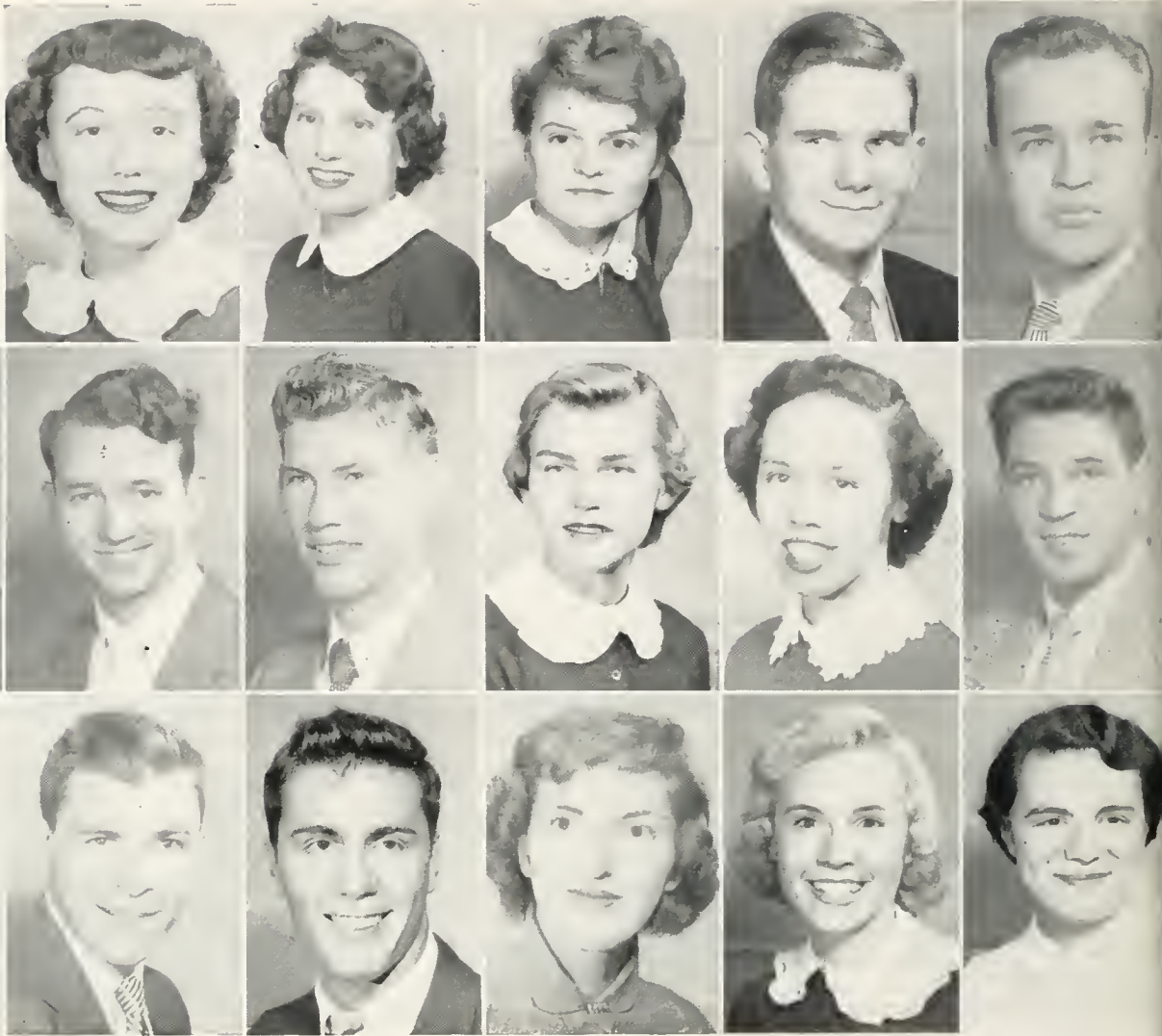
FENN, MARY EVELYN
Birmingham, Ala.

FOLKS, BARBARA
KD
Sylacauga, Ala.

FOWLER, JANIS
GPB
Fayette, Ala.

FRANKE, PAUL
SAE
Birmingham, Ala.

U N D E R G R A D S



GARRETT
GRABEN

FREIL
GARRISON
GRABOWSKI

FROST
GARSON
GRAFFIO

FULLER
GEBEL
GRAFF

GANDY
GODFREY
GRAVLEE

GARNER
GOLDMAN
GRAVES

FREIL, BARBARA
ZTA
Fairfield, Ala.

FROST, MARGARET
KD
Florence, Ala.

FULLER, SHIRLEY ANN
TU
Bessemer, Ala.

GANDY, BILL
ATO
Birmingham, Ala.

GARNER, DONALD
Birmingham, Ala.
GARRETT, CATHERINE
Vincent, Ala.

GARRISON, JOHN
Mulga, Ala.

GARSON, WILLIAM
Birmingham, Ala.

GEBEL, KRISTIN LEE
PBP
Batavia, Illinois

GODFREY, BETTY ANN
ISA
Oneonta, Ala.

GOLDMAN, RONALD
Bessemer, Ala.

GRABEN, WILLINGHAM
Lineville, Ala.

GRABOWSKI, JOHN
Birmingham, Ala.

GRAFFIO, CHARLES
ATO
Birmingham, Ala.

GRAFF, JANET
ZTA
Birmingham, Ala.

GRAVLEE, ANN
ZTA
Fairfield, Ala.

GRAVES, NANCY
AOP
Decatur, Georgia

U N D E R G R A D S



GRAY
HAMBY
HARDY

GREENE
HAMILTON, E.
HARKINS

GRIFFIN
HAMILTON, J.
HARRALSON

GRIFFIN
HAMMETT
HARPOLE

GUY
HANNA
HARRIS, S.

HASLIP
HANNERS
HARRIS, W.

GRAY, JIM
ATO
Birmingham, Ala.
GREENE, MYRTICE ANN
GPB
Opelika, Ala.

GRIFFIN, EUGENE
KA
Birmingham, Ala.

GRIFFIN, RODNEY
LXA
Birmingham, Ala.

GUY, SHIRLEY
PBP
Birmingham, Ala.

HASLIP, JOHN
PKA
Birmingham, Ala.

HAMBY, BETTY
ISA
Birmingham, Ala.

HAMILTON, ELEANOR
ZTA
Decatur, Ala.

HAMILTON, JO ANN
KD
Fairfield, Ala.

HAMMETT, CLARA LEE
KD
Sylacauga, Ala.

HANNA, MRS. VIRGINIA
Birmingham, Ala.

HANNERS, BARBARA
TU
Birmingham, Ala.

HARDY, SUE
AXO
Birmingham, Ala.

HARKINS, ANNIE
Birmingham, Ala.

HARRALSON, DORIS
Birmingham, Ala.

HARPOLE, JANE
PBP
Atlanta, Ga.

HARRIS, SEALE
SAE
Birmingham, Ala.

HARRIS, W. E.
SAE
Tarrant, Ala.

U N D E R G R A D S



HARRIS
HAYGOOD
HINES

HATFIELD
HENDERSON
HODGES

HAUER
HENDRIX
HOOK

HAYDEN, C.
HICKS
HOOTEN

HAYDEN, G. L.
HIGDON
HOOVER

HAYES
HINAHARA
HOPKINS

HARRIS, WINIFRED
AXO
Birmingham, Ala.

HATFIELD, GERTRUDE
GPB
Birmingham, Ala.

HAUER, BILL
PKA
Huntsville, Ala.

HAYDEN, CELESTE
KD
Birmingham, Ala.

HAYDEN, G. L.
SAE
Birmingham, Ala.

HAYES, MARY LYNN
AOP
Little Rock, Arkansas

HAYGOOD, HUGH
Birmingham, Ala.

HENDERSON, HAZEL
Guntersville, Ala.

HENDRIX, FAYE
AOP
Hueytown, Ala.

HICKS, BARBARA
GPB
Gadsden, Ala.

HIGDON, HARRIETT
AOP
Decatur, Ala.

HINAHARA, TAKAKO
Hiroshima, Japan

HINES, MARGARET E.
Hanceville, Ala.

HOOTEN, WILLIARD B.
Ashland, Ala.

HOOK, JOHN
DSP
Birmingham, Ala.

HODGES, JANE
ISA
Scottsboro, Ala.

HOOVER, DOROTHY JANE
AXO
Birmingham, Ala.

HOPKINS, CALVIN
SAE
Selma, Ala.

U N D E R G R A D S



HOUSTON
HUGHES, M.
HUTCHESON, J.

HOWARD
HUGHES, V.
HUTCHESON, L.

HOWE
HURLEY
HYDE

HOWELL
HURST
ISSOS

HUBBARD
HURT
IVIE

HURVICH
JARRARD

HOUSTON, HARRIETTE
TU
Besemer, Ala.

HOWARD, JO ANN
Birmingham, Ala.

HOWE, ROBERT E.
SAE
Birmingham, Ala.

HUBBARD, CAROLE
Birmingham, Ala.

HURLEY, DAVID
Wedowee, Ala.

HUGHES, MARTHA
KD
Birmingham, Ala.

HUGHES, VIRGINIA ANN
KD
Birmingham, Ala.

HURST, FLORENCE S.
ISA
Leeds, Ala.

HOWELL, BETTY ANN
AOP
Birmingham, Ala.

HURT, MARY
ZTA
Anniston, Ala.

HURVICH, MARIE
Birmingham, Ala.

HUTCHESON, JOHN
LXA
Birmingham, Ala.

HUTCHESON, LEWIS B.
KA
Birmingham, Ala.

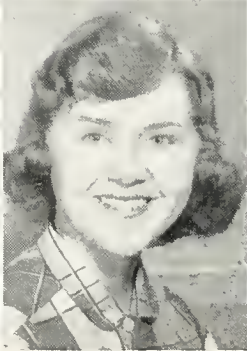
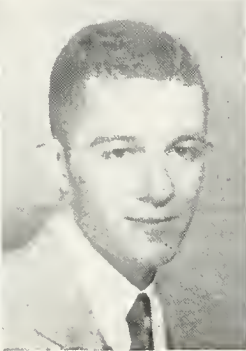
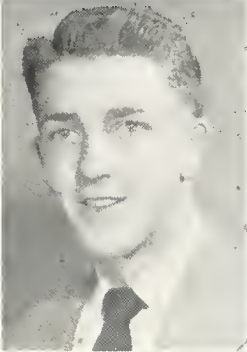
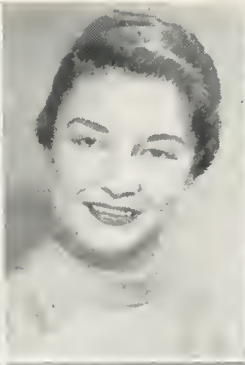
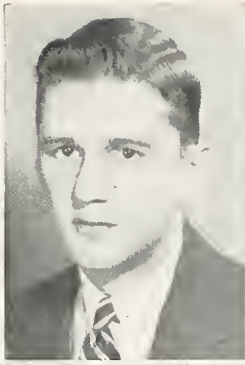
HYDE, JOYCE
GPB
Birmingham, Ala.

ISSOS, JAMES
DSP
Birmingham, Ala.

IVIE, MONA
CPB
Birmingham, Ala.

JARRARD, BERMA
AOP
Birmingham, Ala.

U N D E R G R A D S



KELLY, M.
LAMBERT

JARVIS
KELLY, N.
LAMON, C.

JONES, L.
KENNEMER
LAMON, D.

JONES, S.
KETCHAM
LANE

JONES, S.
KIRBY
LATHAM

JOHNSON
KIRBY
LAYTON

JARVIS, GAIL
KA
Birmingham, Ala.

JONES, LORETTA
ZTA
Jasper, Ala.

JONES, SANDRA
AOP
Birmingham, Ala.

JONES, SHIRLEY
Birmingham, Ala.

JOHNSON, MARYALYCE
AOP
Birmingham, Ala.

KELLY, MARY
AXO
Birmingham, Ala.

KELLY, NANCY
PBP
Holts Summit, Mo.

KENNEMER, ANN
KD
Athens, Ala.

KETCHAM, PAUL
Birmingham, Ala.

KIRBY, RICHARD
PKA
Jasper, Ala.

KIRBY, SARAH LEE
PBP
Opelika, Ala.

LAMBERT, GERALD
PKA
Birmingham, Ala.

LAMON, CONRAD
OSP
Birmingham, Ala.

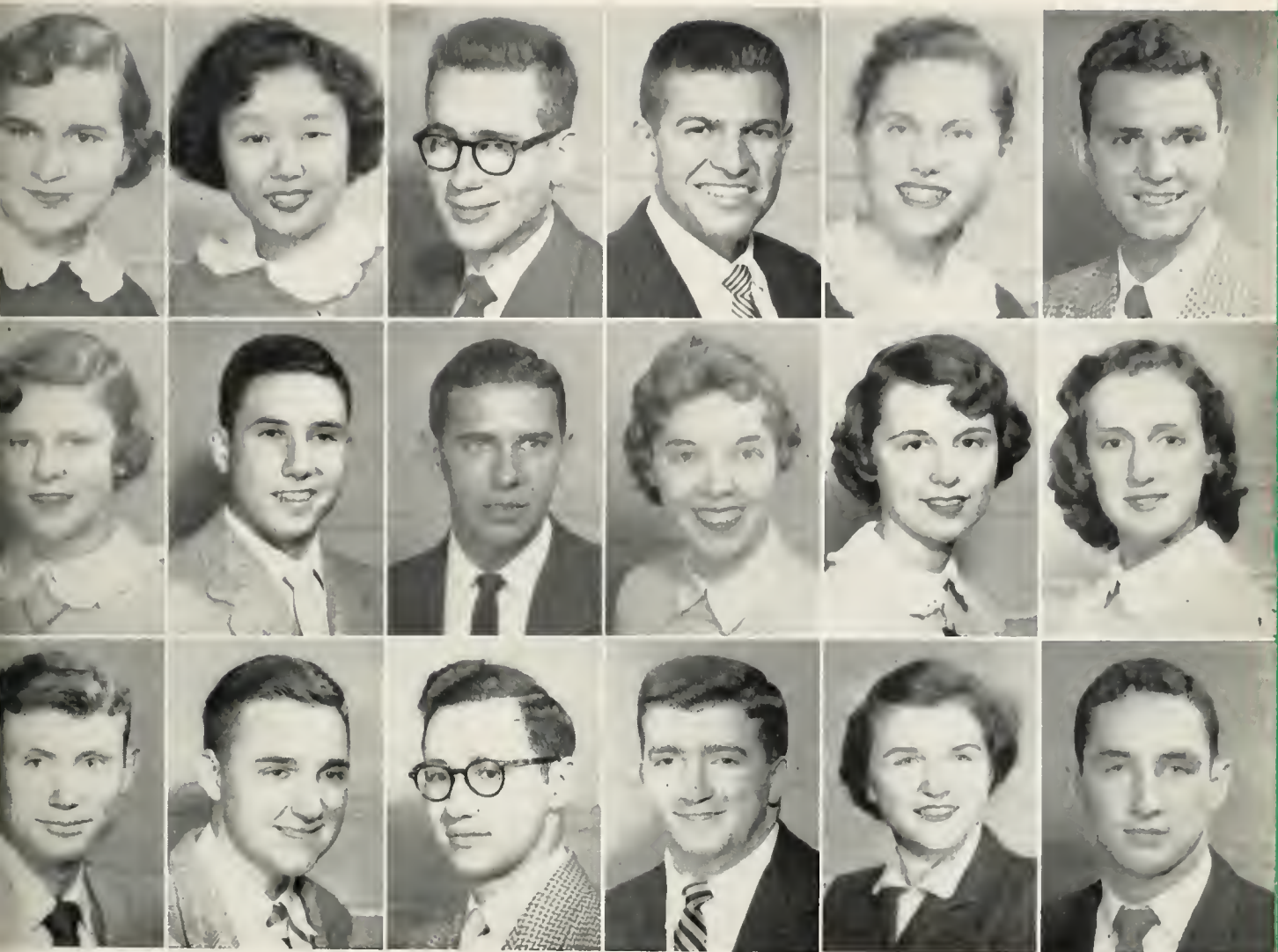
LAMON, DONALD
OSP
Birmingham, Ala.

LANE, CHARLOTTE
AOP
Alexander City, Ala.

LATHAM, TERRELL G.
KA
Birmingham, Ala.

LAYTON, DELORES
ZTA
Sylacauga, Ala.

U N D E R G R A D S



LEDBETTER LEE, J. LEE, R. LEGG LEHMANN LIEGEBER
 LEWIS, B. LEWIS, W. LILE LLOYD LOEMAKER LONG
 LOONEY LOTT LOWERY LUQUIRE LURTON McBRIDE

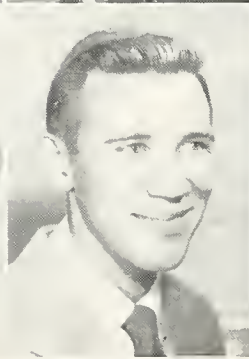
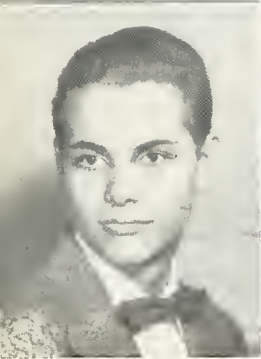
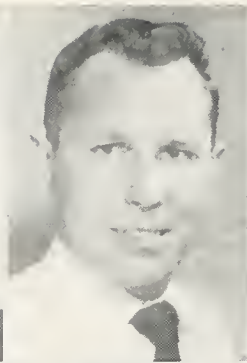
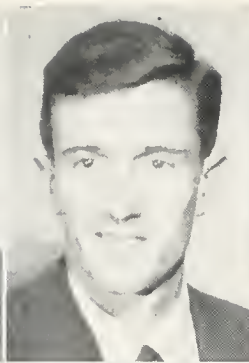
LEDBETTER, JANE
 DDD
 Birmingham, Ala.
 LEE, MARY ANN
 Seoul, Korea
 LEE, ROLAND
 PKA
 Birmingham, Ala.
 LEGG, JOE
 SAE
 Jasper, Ala.
 LEHMANN, FREIDA
 TU
 Birmingham, Ala.

LEIGEBER, JACOB
 DSP
 Birmingham, Ala.
 LEWIS, BARBARA C.
 Birmingham, Ala.
 LEWIS, WALTER J.
 ATO
 Birmingham, Ala.
 LILE, KENNETH
 ATO
 Hopkinsville, Ky.

LLOYD, PEGGY SUE
 ZTA
 Birmingham, Ala.
 LOEMAKER, ELSA
 PBP
 Atlanta, Ga.
 LONG, BETTY LENITA
 ZTA
 Moulton, Ala.
 LOONEY, GRADY
 ATO
 Montgomery, Ala.

LOTT, JOHN LEWIS
 DSP
 Birmingham, Ala.
 LOWERY, J. F.
 Birmingham, Ala.
 LUQUIRE, RUSSELL
 ATO
 Birmingham, Ala.
 LURTON, ALLEINE
 TU
 Ensley, Ala.
 McBRIDE, RICHARD
 Birmingham, Ala.

U N D E R G R A D S



McCOLLUM
MARTIN
MOBBS

McCLUNG
MASSEY
MOBLEY

McCULLOUGH
MERCER
MOBLEY

McDANIEL
MIDDLETON
MOKROS

MARKS
MILLER, H.
MONTEITH

MARSHALL
MILLER, W.
MONTGOMERY

McCOLLUM, WALTER
Birmingham, Ala.
McCLUNG, RICHARD
SAE
Birmingham, Ala.
McCULLOUGH, RICHARD
ATO
Birmingham, Ala.
McDANIEL, E. R.
Birmingham, Ala.
MARKS, JESSE
Birmingham, Ala.

MARSHALL, FRANK
LXA
Birmingham, Ala.
MARTIN, MARY K.
AOP
Birmingham, Ala.
MASSEY, PEGGY LEE
KD
Florence, Ala.
MERCER, JIM
SAE
Birmingham, Ala.

MIDDLETON, DON C.
KA
Birmingham, Ala.
MILLER, HENRY P.
PKA
Pratt City, Ala.
MONTEITH, SAMYE SUE
AOP
Birmingham, Ala.
MOBBS, LARRY
DSP
Birmingham, Ala.

MOBLEY, ANNETTE
AXO
Birmingham, Ala.
MOBLEY, DAVID
Birmingham, Ala.
MOKROS, DONNA
KD
Sylacauga, Ala.
MILLER, WALTER
Birmingham, Ala.
MONTGOMERY, FELIX
Birmingham, Ala.

U N D E R G R A D S



MONTGOMERY, H.
MORGAN
NEWMAN, G.

MONTGOMERY, G.
MULLINAX
NEWMAN, P.

MOONEY
MURCHISON
NOAH

MOORE
MURPHREE
NORRIS

MOOTY
NEELY
OGLETREE

NELSON
OLIVER

MONTGOMERY, H. T.
ATO
Birmingham, Ala.

MONTGOMERY, GENE
ATO
Birmingham, Ala.

MOONEY, CHARLES
ATO
Birmingham, Ala.

MOORE, WILLIAM T.
TX
Winfield, Ala.

MOOTY, JANE
PBP
Birmingham, Ala.

MORGAN, ROBERT
KA
Birmingham, Ala.

MULLINAX, ESTEL
Albertville, Ala.

MURCHISON, JOSEPH
SAE
Birmingham, Ala.

MURPHREE, JERE
PBP
Gadsden, Ala.

NEELY, EUNICE ANN
Birmingham, Ala.

NELSON, CHARLES
PKA
Birmingham, Ala.

NEWMAN, G. DREW
Pinson, Ala.

NEWMAN, PATRICIA
KD
Athens, Ala.

NOAH, PEGGY
ZTA
Birmingham, Ala.

NORRIS, DOROTHY JEAN
KD
Florence, Ala.

OGLETREE, THOMAS W.
ATO
Birmingham, Ala.

OLIVER, ANN ELIZABETH
PBP
Birmingham, Ala.

U N D E R G R A D S



PALMITER
PEREZ

ORR
PARSON
PERRY

O'STEEN
PARSONS
PILON

OWENS
PATILLO
PINION

PACE
PATTERSON
PLASSE

PALMER
PEAK
POER

ORR, AMELIA
Bessemer, Ala.

O'STEEN, SUSAN
PBP
Tuscaloosa, Ala.

OWENS, ANNIE B.
AXO
Helena, Ala.

PACE, PATSY
PBP
Russellville, Ala.

PALMER, CLAIRE
PBP
Tuscaloosa, Ala.

PALMITER, SHIRLEY
GPB
Mobile, Ala.

PARSON, MARY JEAN
ZTA
Birmingham, Ala.

PARSONS, JAMES
Flat Creek, Ala.

PATILLO, JOHN C.
Birmingham, Ala.

PATTERSON, WAYNE
ATO
Birmingham, Ala.

PEAK, ELLEN
ZTA
Fairfield, Ala.

PEREZ, JULIO
B'ham and Havana, Cuba

PERRY, ALLEN
TX
Panasoffkee, Fla.

PILON, MARY JANET
Birmingham, Ala.

PINION, TOMMY DELANO
SAE

Birmingham, Ala.
PLASSE, DONALD
Birmingham, Ala.

POER, JOHNNY
SAE
Birmingham, Ala.

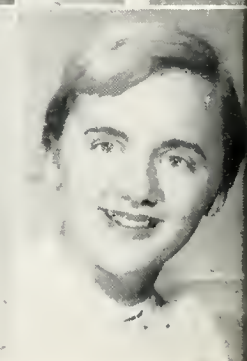
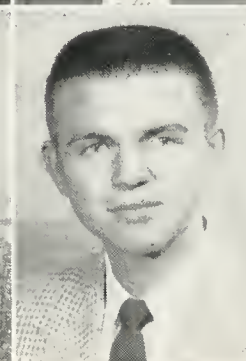
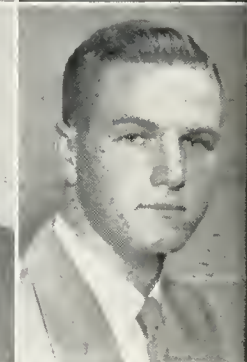
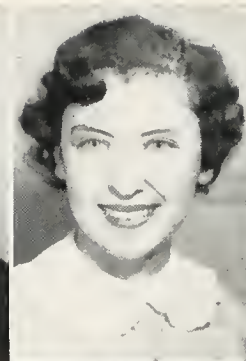
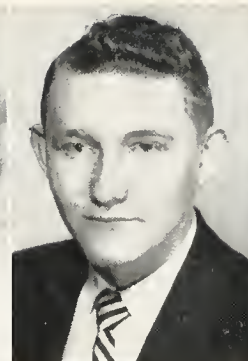
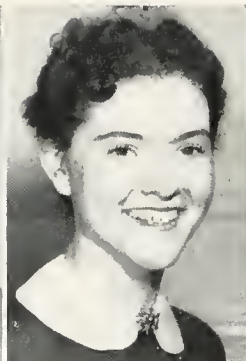
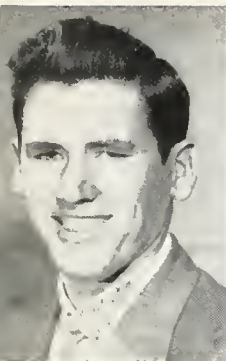
U N D E R G R A D S



POLNY RABUN SARTAIN	PORTER RAINES SATTEFIELD, J.	POTTER REED SATTEFIELD, R.	PRIESTLY RICHARDS SAXON	PRITCHETT ROBERTS SCHNEIDER	PYLANT SANDERS SCOTT
---------------------------	------------------------------------	----------------------------------	-------------------------------	-----------------------------------	----------------------------

POLNY, MICHAEL Birmingham, Ala.	PYLANT, MARY ZTA Cullman, Ala.	RICHARDS, MARGARET AOP Birmingham, Ala.	SATTEFIELD, RICHARD PKA Birmingham, Ala.
PORTER, ROBERT L. SAE Birmingham, Ala.	RABUN, ROBERT V. Birmingham, Ala.	ROBERTS, LARRY J. Birmingham, Ala.	SAXON, SALLY KD Sylacauga, Alabama
POTTER, ROBERT SAE Birmingham, Ala.	RAINES, EUDALIA SUE Birmingham, Ala.	SANDERS, JAMES L. SAE Birmingham, Ala.	SCHNEIDER, LARRY SAE Birmingham, Ala.
PRIESTLY, JANNETTE Ensley, Ala.	REED, MARY BETTY PBP Russellville, Ala.	SARTAIN, BOB ATO Bessemer, Alabama	SCOTT, JAMES Leeds, Ala.
PRITCHETT, FRANCES TU Birmingham, Ala.		SATTEFIELD, JOHN PKA Birmingham, Ala.	

U N D E R G R A D S



SEALE
SIMMONS, F.
SMITH, M.

SENSABAUGH
SIMMONS, J.
SMITH, O.

SHAW
SIRLES
SMITH, R.

SHEARER
SMITH, B.
SNUGGS

SHELTON
SMITH, G.
SPARKMAN

SHINN
SMITH, M.
SPARKS

SEALE, ROBERT GARY
LXA
Graysville, Ala.

SENSABAUGH, FRANCES
PBP
Birmingham, Ala.

SHAW, ANN LEE
ZTA
Columbiana, Ala.

SHEARER, JACK R.
PKA
Mobile, Ala.

SHELTON, DORIS
GPB
Birmingham, Ala.

SHINN, PATSY
KD
Sylacauga, Ala.

SIMMONS, FLORA
TU
Augusta, Ga.

SIMMONS, JOYCE
GPB
Birmingham, Ala.

SIRLES, JANE MARLENE
ZTA
Birmingham, Ala.

SMITH, BONNIE
AOP
Birmingham, Ala.

SMITH GRADY
PKA
Birmingham, Ala.

SMITH, MARTIN
ATO
Birmingham, Ala.

SMITH, MARY CHARLES
Lineville, Ala.

SMITH, ORIN G.
Birmingham, Ala.

SMITH, RUTH L.
ISA
Brunswick, Ga.

SNUGGS, MILNER
ATO
Birmingham, Ala.

SPARKMAN, BILL
TX
Hartselle, Ala.

SPARKS, VANCE
ZTA
Birmingham, Ala.

U N D E R G R A D S



SPRADLEY STARNES STEINER STEVENS STONE TAYLOR
 STORY, B. STORY, G. STOWERS SURELLIS TATUM SURELLIS
 THORNTON TIFFIN TIMBERLAKE TOMMIE TRIMBLE TURNER

SPRADLEY, JOYCE
 ISA
 Albertville, Ala.

STARNES, HELEN
 GPB
 Birmingham, Ala.

STEINER, JANE
 TU
 Birmingham, Ala.

STONE, BETTY JANE
 PBP
 Birmingham, Ala.

STEVENS, TOM
 Birmingham, Ala.

STORY, BETTIE WILSON
 ISA
 Birmingham, Ala.

STORY, G. L., JR.
 Birmingham, Ala.

STOWERS, MARY
 PBP
 Gadsden, Ala.

SURELLIS, MARGUERITE
 TU
 Birmingham, Ala.

TATUM, MILDRED ANN
 AOP
 Birmingham, Ala.

TAYLOR, JO ALISON
 TU
 Birmingham, Ala.

THORNTON, ANNETTE
 ZTA
 Birmingham, Ala.

TIFFIN, WILLIAM O.
 TZ
 Scottsboro, Ala.

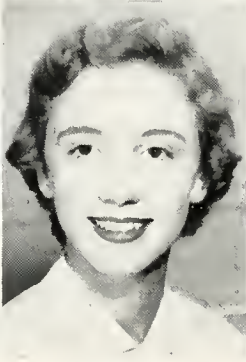
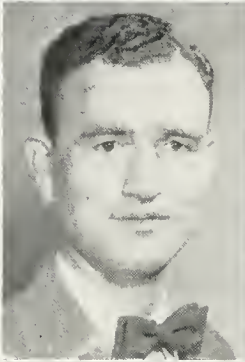
TIMBERLAKE, PHILLIP
 ATO
 Birmingham, Ala.

TOMMIE, REYNOLDS
 Bessemer, Ala.

TRIMBLE, GINNY SUE
 ZTA
 Birmingham, Ala.

TURNER, PATTIE
 ZTA
 Birmingham, Ala.

U N D E R G R A D S



WADDELL
WALLER

TYLER, D.
WADE
WAMP

TYLER, R.
WADE
WARREN

UPCHURCH
WALKER, C.
WARTH

VALLEY
WALKER, R.
WATKINS

VICKERY
WALLACE
WEEKS

TYLER, DOTTIE
AOP
Birmingham, Ala.

TYLER, RICHARD
Pinson, Ala.

UPCHURCH, JIMMY
ATO
Birmingham, Ala.

VALLEY, JAMES W.
PKA
Birmingham, Ala.

VICKERY, WAYNE
PKA
Birmingham, Ala.

WADDELL, HILDA
ISA
Rogersville, Ala.

WADE, CELESTE
AOP
Birmingham, Ala.

WADE, GLORIA
Miami, Fla.

WALKER, CHARLES
Dothan, Alabama

WALKER, ROBERT
Maplesville, Ala.

WALLACE, WILLIAM
DSP
Birmingham, Ala.

WALLER, JEANNE
AOP
Birmingham, Ala.

WAMP, JEAN
Hanceville, Ala.

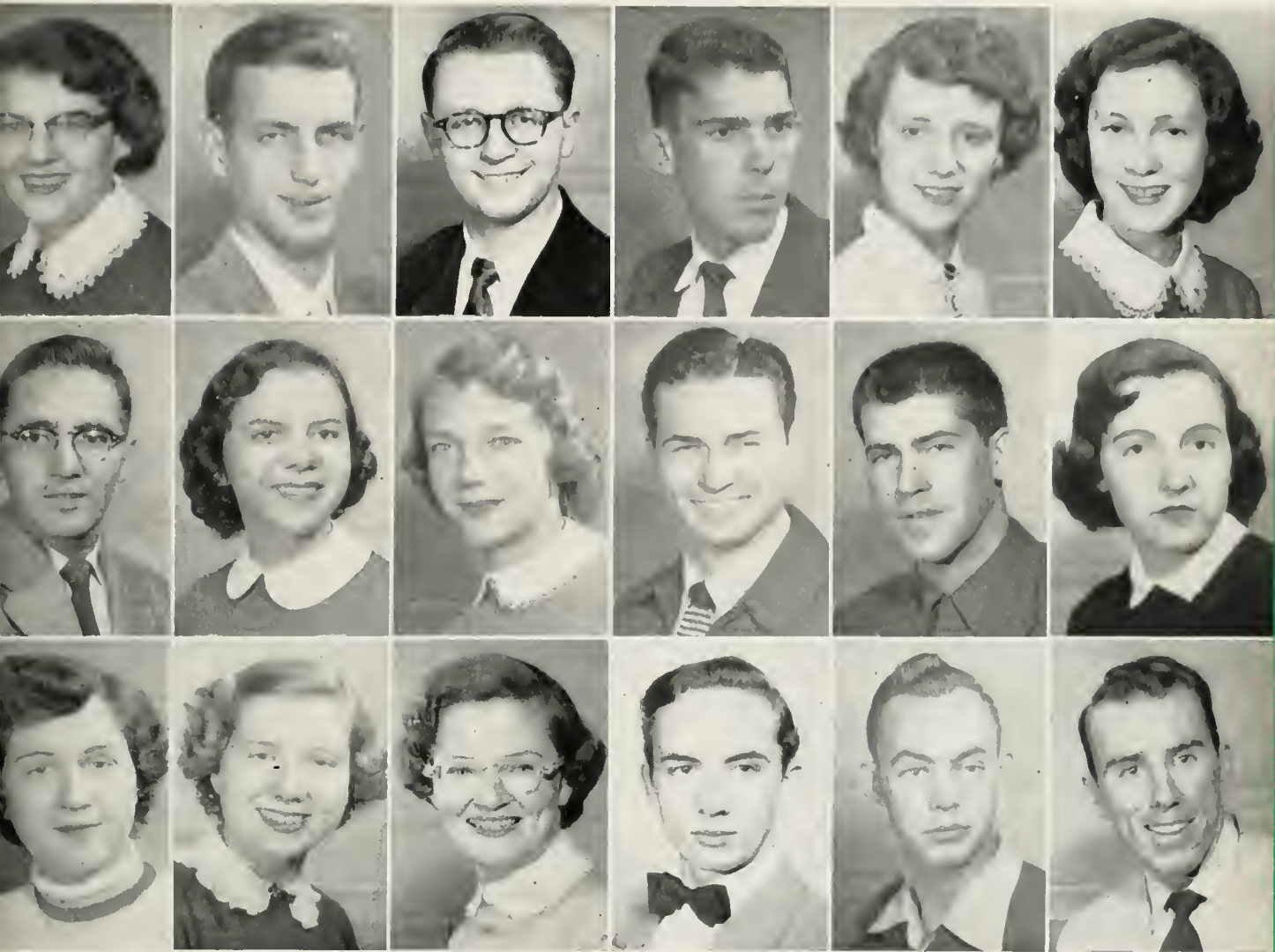
WARREN, PEGGY
PBP
Bessemer, Ala.

WARTH, RAY
KA
Birmingham, Ala.

WATKINS, WILLIAM M.
KA
Birmingham, Ala.

WEEKS, BRENDA
GPB
Birmingham, Ala.

U N D E R G R A D S



WELCH
WHETSTONE
YARBROUGH, M.

WELLS
WHITLOCK
YARBROUGH, S.

WERTZ
WILSON, J.
YATES, A.

WESLEY
WILSON, W.
YATES, K.

WESSON
WINTER
YEILDING

WEST
WINTERS
YOUNG

WELCH, CAROLYN
TU
Birmingham, Ala

WELLS, ROY, JR.
PKA
Birmingham, Ala

WERTZ, GEORGE
Birmingham, Ala

WESLEY, ALLEN
TX
Birmingham, Ala

WESSON, MARY FOREST
Birmingham, Ala

WEST, BEVERLY
TU
Graysville, Ala.

WHETSTONE, BOBBY
Alexander City, Ala.

WHITLOCK, SARAH JO
KD
Sheffield, Ala.

WILSON, JEAN
KD
Birmingham, Ala

WILSON, WRAY
Birmingham, Ala

WINTER, CLYDE
PKA
Birmingham, Ala

WINTERS, LENA MELLE
PBP
McWilliams, Ala.

YARBROUGH, MARY ANN
Birmingham, Ala

YARBROUGH, SARA A.
ZTA
Belle Mina, Ala.

YATES, ANN
AOP
Birmingham, Ala

YATES, KENNETH
Lineville, Ala.

YEILDING, BILLY
Quinton, Ala.

YOUNG, JAMES H.
PKA
Birmingham, Ala.

U N D E R G R A D S

THE

Features







Chosen from among candidates selected by the various college organizations, Miss Southern Accent typifies the beauty, poise, and personality which the girls of Birmingham-Southern College possess.

Shining eyes and a friendly smile characterize Miss Southern Accent. She is Miss Julia Bruce, 20, a music major at the college. For the past two years Julia has competed in the Miss Alabama Contest where she won scholarships to Alabama College and to Birmingham-Southern. A mezzo-soprano, she sings in the choir of the First Methodist Church. On campus she is a member of Independents, the College Theatre, and the College Choir.

MISS SOUTHERN



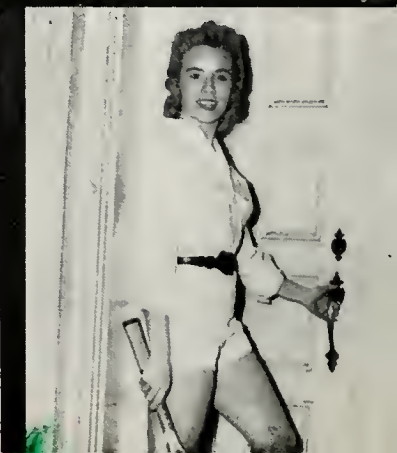
MISS JULIA BRUCE

ACCENT



ANN GRAVLEE

BEAUTY



BEAUTY



VIRGINIA McVEA





PEGGY WARREN

BEAUTY





BEAUTY

BARBARA HICKS





ANN BARR

BEAUTY



FAVORITES

JEAN BRANCH



FRANCES SENSABAUGH



BETTY ANN HOWELL



FAVORITES

BONNIE SMITH



BETTY HAMBY



EVIE BALCH

SHIRLEY EZELL





JOYCE SPRADLEY



EVELYN FENN



FAYE WOODY

SUZANNA DAVIS MALONEY





ANN BATES
Editor of SOUTHERN ACCENT
President of Mortar Board



MARILYN BRITAIN
Mortar Board
Executive Council
Religious Council



CHARLES BROWDY
President of ODK
Secretary of SAE



JOHN CONSTANTINE
Editor of HILLTOP NEWS

WHO'S WHO

IN AMERICAN COLLEGES
AND UNIVERSITIES . . .

Election to Who's Who in American Colleges and Universities is a coveted honor for those senior students who have merited an award for worthwhile activities on the campus and service to the college.

MARTHA MAE NEELY
President of KD
Pan-Hellenic Council
Executive Council





SUZANNA DAVIS MALONEY
President of AOPi
President of P. E. Club



BOB GRAY
President of ATO
Honor Council
ODK



BETTY KRUEGER
Mortar Board
Vice-President of Mu Alpha

GERRY PALFERY
Business Manager HILLTOP NEWS
Mortar Board
President of PBP

BILL PORTER
Vice-President of Student Body
President of SAE
Honor Council

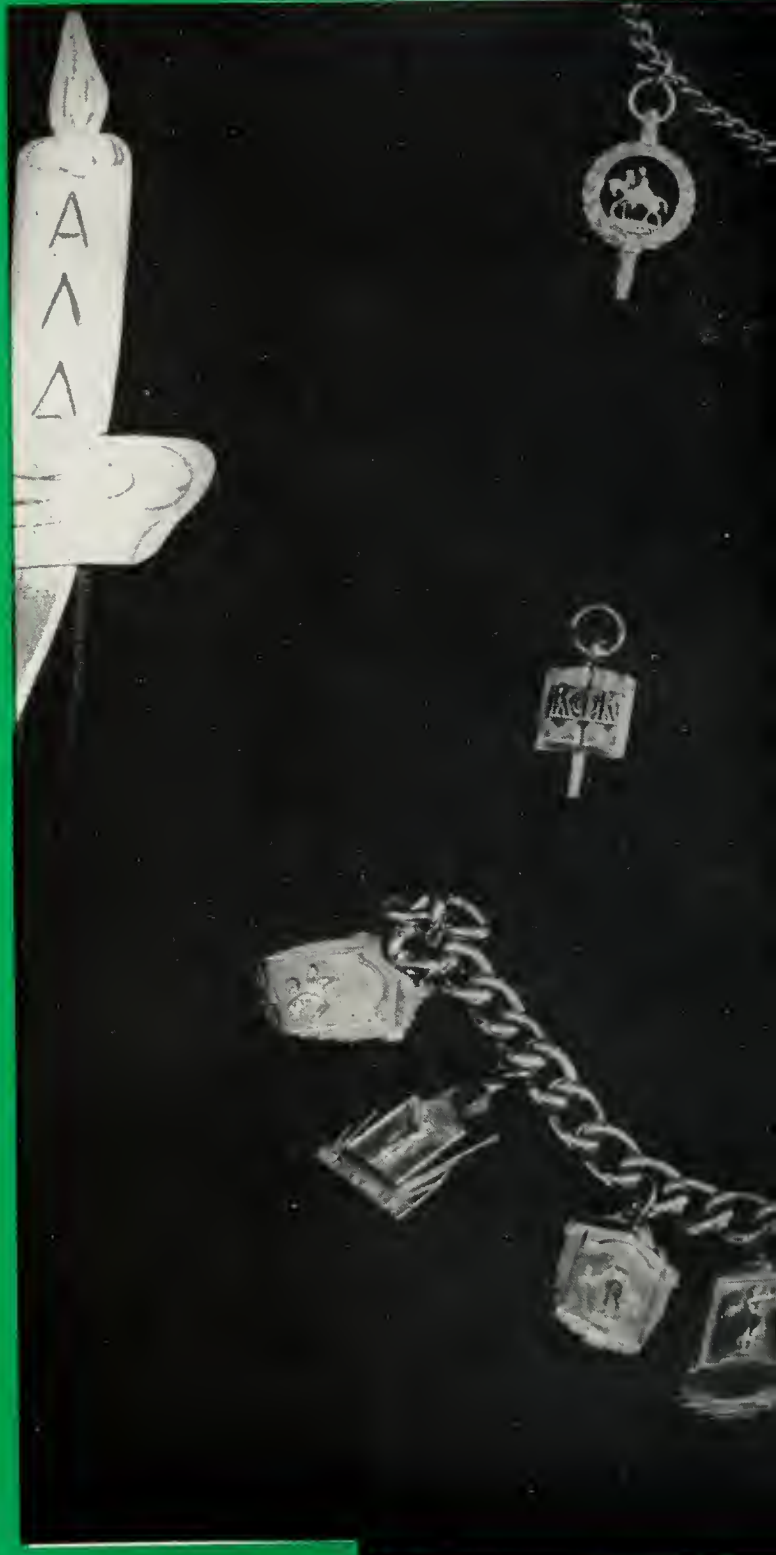
MARY JACQ SNOW
President of P. E. Club
President of YWCA
Religious Council

FRANCES WHITE
Mortar Board
Mu Alpha
Eta Sigma Phi



THE

Organizations





OMICRON DELTA KAPPA

Omicron Delta Kappa is a national leadership honor society for junior and senior men. The society recognizes the leaders in scholarship, athletics, social and religious affairs, publications, speech, music and dramatic arts. The members are chosen on the basis of scholarship, leadership and service to the college. To be eligible for membership, each candidate must be in the upper thirty-five per cent of his class. ODK places emphasis on the development of the well-rounded future citizen in his community.

Each fall ODK publishes the student directory and presents it to each student with no charge. This year a supplementary directory was issued in the spring of those students who entered in the winter and spring. The society helps during elections and in many other activities during the year.

OFFICERS

President	Charles Browdy
Vice-President	John Paul Tate
Secretary	H. R. Butts
Treasurer	Roy Ronald Odom

MEMBERS

Charles Browdy	Thomas Ogletree
H. R. Butts	Gaston Pollock
Robert Gray	William O. Porter
Walter Green	W. R. Smithy
G. R. Hernandez	G. L. Story
Charles Howard	John Paul Tate
Ronald Odom	Robert Walston





MORTAR BOARD

Mortar Board is the national honorary society for senior women, and taps members on the basis of scholarship, leadership, and service. Its traditional projects include the award of a scholarship in the fall, co-sponsorship of the annual Career Conference, maintenance of an activity file for all students, and sponsorship of the campus-wide "Ugliest Man" contest.

OFFICERS

President	Ann Bates
Vice-President	Marilyn Brittain
Secretary	Joanne Alvarez
Treasurer	Frances White
Historian	Betty Lee Kreuger

MEMBERS

Joanne Alvarez	Faye Hendrix
Marilyn Brittain	Betty Lee Kreuger
Suzanna Davis	Gerry Palfrey
Betty Ann Godfrey	Frances Sensabaugh
Eleanor Hamilton	Frances White



ALPHA LAMBDA DELTA

OFFICERS

President Betty Hamby
 Vice-President Carolyn Cox
 Secretary-Treasurer Peggy Massey

Established at Birmingham-Southern in 1934, Alpha Lambda Delta is an honorary scholastic sorority for freshmen women who maintain a 3.4 average their first college year.

MEMBERS

Carolyn Cox
 Betty Hamby
 Sue Frances Hardy
 Alleine Lurton
 Peggy Massey
 Mary Jean Parson

TRIANGLE CLUB

The Triangle Club is a sophomore service organization whose members are selected for qualities of leadership shown in their freshman year. The group assists the administration in the orientation of new students during registration and also lends assistance at the Freshman Camp at Winnataska each September.

OFFICERS

President Barry Anderson
 Vice-President Virginia Covington
 Secretary Evelyn Fenn

MEMBERS

Barry Anderson
 Dick Anderson
 Dave Bu tram
 Connie Conway
 Virginia Covington
 Carolyn Cox
 Evelyn Fenn
 Merry Lynne Hayes
 Betty Ann Howell
 Alleine Lurton
 Russell Luquire
 Peggy Massey
 Mary Jean Parson
 Jack Shearer
 Pril Timberlake
 Dottie Tyler
 Peggy Warren





ETA SIGMA PHI

Students who excel in Latin and Greek are members of Eta Sigma Phi, a national honorary language fraternity. The group maintains interest in the classical languages and traditions.

OFFICERS

President	Ann Barr
1st Vice-President	G. L. Story
2nd Vice-President	Frances White
Secretary-Treasurer	Leon Fillingim

MEMBERS

Ann Barr	Charles H. Howard
Ann Bates	Elmer J. O'Brien
William W. Baxter	Tommy Ogletree
Paul E. Cosby	Betty Wilson Story
Donald M. Davis	G. L. Story, Jr.
Leon Fillingim, Jr.	Charles R. Walker
Betty Ann Godfrey	John Pierce West, Jr.
W. Nelson Guthrie, Jr.	Frances C. White

KAPPA DELTA EPSILON

OFFICERS

President Joanne Alvarez
Vice-President Ann Barr
Secretary Elizabeth Davis
Treasurers Suzanna Davis, Marilyn Terry

Being an honorary education sorority for women, Kappa Delta Epsilon tries through speakers, debates, and social gatherings to promote a deeper understanding and a higher idea of education.

MEMBERS

Jean Clark	Judith Jane Berry
Joanne Alvarez	Betty Jane Stone
Jean Thompson	Clara Lee Hammett
Marilyn Scofield	Dorothy Faye Hendrix
Evie Seales Balch	Martha Fillmer
Suzanna Davis	Ellen Fay Peak
Ann Barr	Mary Ruth Berry
Marilyn Terry	Marilyn Clyde Brittain
Rolaine Mann	Sulu Orr
Frances White	Mary Jacq Snow
Betty Lee Krueger	Eleanor Hamilton
Betty Jean Hamby	Ann LaRue Bayer



KAPPA PHI KAPPÄ

OFFICERS

President Fred Whittaker, Jr.
 Vice-President Bill Howard
 Secretary Richard L. Tyler, Jr.
 Treasurer Lonnie Walker

MEMBERS

Howard B. Clark	William V. Lovelace
Albert E. Dennis	Elmer O'Brien
Gerald E. Godfrey	Richard L. Tyler, Jr.
William H. Howard	Lonnie Walker
Herman W. King	Fred Whittaker, Jr.



Kappa Phi Kappa is an honorary professional education fraternity whose membership is limited to those men who have done outstanding work in courses in the department of education. Kappa Phi Kappa strives to keep its members informed on the latest developments in the field of education.

PHI SIGMÄ IOTÄ



Juniors and seniors excelling in French and Spanish belong to this national honorary romance language fraternity.

OFFICERS

President	Ellen Peak
Vice-President	Joanne Alvarez
Secretary	Hilda Waddell
Treasurer	Dr. G. R. Hernandez
Corresponding Secretary	Dr. Antony Constans
Adviser	Dr. G. R. Hernandez

MEMBERS

Doris Haralson	Mrs. Frances McLaughlin
Faye Hendrix	Julio Perez
Mona Ivie	Joyce Spradley
Lee Kirby	Sarah Jo Whitlock
Betty Lee Krueger	Jere Williams

THE RELIGIOUS COUNCIL

Composed of two representatives from each religious organization on campus, the Religious Council has control of appropriations allotted to the organizations from the Student Activity fees. The main project of this body is sponsorship of Religious Emphasis Week. The group was fortunate in securing Dr. Nels Ferre of Vanderbilt University as this year's speaker. After a series of three convocation hours featuring Dr. Ferre, outstanding ministers from various churches led student discussion groups.

OFFICERS

President Charles Howard
Vice-President Felix Montgomery
Secretary Sarah Jo Whitlock

MEMBERS

Dick Anderson	Felix Montgomery
Virginia Bernhardt	Tommy Ogletree
Joanna Biggs	Doris Shelton
Marilyn Brittain	Mary Jacq Snow
Nelson Guthrie	G. L. Story
Betty Hamby	Charles Walker
Charles Howard	Sarah Jo Whitlock





METHODIST STUDENT MOVEMENT

MSM represents the Methodist Church on campus. Through programs designed to provide worship, recreation and Christian fellowship for all Methodist students, this organization strives to create in Methodist college students an interest in their church. Deputation teams sent out to various churches to help the young people organize into active youth groups have been very successful. Aid to a German ministerial student has been the group's international interest. Southern's MSM has been active in the state and national MSM also. The State vice-president is a member of the group and ten members were delegates to the Quadrennial Conference of Methodist Students in December, 1953.

OFFICERS

President	G. L. Story, Jr.	State Vice-President	Tommy Ogletree
Vice-President	Betty Hamby	Program Chairman	Ruth Smith, Carolyn Cox
Secretary	Sara Jo Whitlock	Publications	Charles Walker
Treasurer	Dick Anderson	Deputations	Betty Ann Godfrey
Publicity	Gwen Adams	Methodist Student Fellowship Fund	Betty Story

MEMBERS

Gwen Adams	Anna Lois Cecil	Leon Fillingim	Susan O'Steen	Peggy Massey	Betty Story
Judy Akin	Paul Cosby	Pete Furio	Claire Palmer	Sammye Sue Monteith	G. L. Story
Dick Anderson	Carolyn Cox	Betty Ann Godfrey	Wayne Patterson	Bill Moore	Marilyn Terry
Delynn Armstrong	Elizabeth Cox	Nancy Graves	Harriette Houston	Jere Murphree	Hilda Waddell
James Bedsole	Gene Davenport	Myrtice Ann Green	Charles Howard	Elmer O'Brien	Charles Walker
Virginia Bernhardt	Billy Dean	Max Hale	Roland Jagers	George M. Randle	Oliver C. Weaver
Jim Berry	Nell Dendy	Betty Hamby	Loretta Jones	Mary Betty Reed	George West
Mary Berry	Ellyn Etchison	Tom Hess	Lee Kirby	Margaret Richards	Pe e West
Richard Branscomb	Finley Eversole	Takako Hinahara	Mary Ann Lee	Jack Shearer	Sara Jo Whitlock
Evelyn Brown	Evelyn Fenn	Jane Hodges	Kenneth Lile	Ruth Smith	
Marilyn Brittain	Marianne Ferrell	Tommy Ogletree	Russell Luquire	Bill Sparkman	

BAPTIST STUDENT UNION

Our aim is to interest especially the Baptist students on campus in the work of the B. S. U. on the Hilltop, and to promote Christian living in our everyday activities. The project for this year has been weekly visits to Cook Springs Home for Old People, where we present religious services.

OFFICERS

President.....	Marilyn Brittain
Vice-President	Felix Montgomery
Secretary	Shirley Hines





NEWMAN CLUB

The Newman Club is an organization whose membership consists of Catholic students at Birmingham-Southern. Regular meetings are held and all Catholic students are invited to participate in activities.

OFFICERS

President.....	Joanna Biggs
Vice-President	Celeste Hayden
Secretary	Carolyn Bischoff
Treasurer	Ann Gravlee

MEMBERS

Joanna Biggs	Celeste Hayden
Carolyn Bischoff	Jerome Ippolito
Wilburn Brasher	Robert Potter
Charles Captain	Annette Thornton
Catherine Clark	Joseph Tombrello
Charles Graffeo	George Wertz
Ann Gravlee	



IN HIS SERVICE

OFFICERS

President Betty Hamby
 Vice-President Gwen Adams
 Secretary-Treasurer Sara Jo Whitlock

MEMBERS

Gwen Adams	Gertrude Ann Hatfield
Mary Bailey	Harriette Houston
Mary Ruth Berry	Jere Murphree
Virginia Bernhardt	Amelia Orr
Anna Lois Cecil	Mary Betty Reed
Mary Ann Ferrell	Doris Shelton
Betty Ann Godfrey	Ruth Smith
Nancy Graves	Marilyn Terry
Myrtice Ann Green	Sara Jo Whitlock
Betty Jean Hamby	

I. H. S., an organization of girls who are going into a religious service vocation, meets the spiritual needs of its members while they are preparing for this service.

FRESHMAN COMMISSION

Freshman Commission is the little sister group to YWCA and is made up of ten girls selected from the freshman class. Programs are presented and projects are undertaken by this group in order to practice Christian living. A Christmas party is given each year for underprivileged children.

OFFICERS

President Mary Pylant
 Secretary Louise Carver
 Treasurer Evelyn Fenn

MEMBERS

Mary Pylant	Anne Oliver
Louise Carver	Jennie Sue Trimble
Evelyn Fenn	Ann Yates
Frieda Lehman	Zackie Doughty
Sylvia Dickerson	Annette Thornton





Y. W. C. A.

OFFICERS

President	Mary Jacq Snow
1st Vice-President	Virginia Covington
2nd Vice-President	Lee Kirby
Secretary	Judy Akin
Treasurer	Doris Shelton

Membership in the Young Women's Christian Association is open to all women on the campus. Well-known speakers and devotionals provide the meetings' programs. Contributions to the underprivileged are the philanthropic work of the group.



MINISTERIAL ASSOCIATION

The purpose of the Ministerial Association shall be of a two-fold nature: To aid the individual student in preparing himself for full-time Christian vocations through enlightening programs and through opportunities to gain practical experience in specific work within churches of this area: To carry out projects of a definite nature which will not only give experience to the student but aid in the growth of the Kingdom of God.

OFFICERS

President.....W. Nelson Guthrie, Jr.
 Vice-President.....Charles H. Howard
 Secretary.....Barry Anderson
 Treasurer.....Elmer O'Brien

MEMBERS

John J. Anderson	Felix E. Montgomery	Bill R. Emerson	Charles R. Walker	Wm. Oliver Kirkes
Jim Berry	Wayne H. Patterson	John H. Fadely	George R. West	Grady B. Looney
Milton P. Burns	Joseph P. Rush	Paul Franke	Shirl E. Brogdon, Jr.	R. Gordon McKinney
Paul E. Coxby	Jack Shelton	Johnny M. Garrison	Robert C. Morgan	Thomas W. Ogletree
Gene Davenport	Billy C. Sparkman	Edward G. Gould	James Bedsole	George M. Randle
Walter E. Duffey	K. Wayne Vickery	Robert D. Hall	Wm. G. Brockman	Jack R. Shearer
Finley T. Eversole	Charles C. West	David Hurley	V. Thomas Cooley	Joseph H. Spain
Charles E. Fiquette, Jr.	Bill Wright	Kenneth Lile	E. H. Cramer	William D. Tiffin
Wm. F. Gandy	Willard Bruce Hooten	J. Howard Marks	Frank Dawson	Roy D. Wells
Earl Gossett	James W. Bates	James N. Northcutt	Joe Estes	John Pierce West
G. Maxwell Hale	Marion C. Boner	James G. Pollock	Leon Fillingim, Jr.	Howard E. Collins
Thomas Hess	Charles E. Burton	Henry J. Segars	Peter Furio	William J. Thorn
Robert E. Lee	W. G. Cowart	Orin G. Smith	Edwin P. Grice, II	
Russell Luquire	Donald M. Davis	G. L. Story, Jr.	Billy Hauer	





GALILEANS

Students of all denominations work together in Galileans to stimulate greater interest in religion on campus. This aim is carried out by sponsorship of the daily Morning Watch services, weekly prayer meetings, and the annual all-campus retreat.

OFFICERS

President	Tommy Ogletree
Vice-President	Leon Fillingim
Secretary	Betty Ann Godfrey
Treasurer	Charles Walker
Publicity	George West

Membership is open to all interested students on campus

MU ALPHA

Students outstanding in the field of music are invited to become members of this honorary music fraternity. The group sponsors campus musical activities as well as Birmingham musical programs.

OFFICERS

President Nancy Oliver
 Vice-President Betty Lee Kreuger
 Corresponding Secretary Betty Ann Howell
 Recording Secretary Frances White
 Treasurer Bobby Jett

MEMBERS

David Adams	Martha Mae Neely
Dick Anderson	Ronald Odom
Ann Barr	Thomas Ogletree
Jo Ann Boyd	Nancy Oliver
Roger Clayton	Robert Patrick
Frances Copeland	Fred Schlosser
Mary Ann Crossley	Deborah Smith
Betty Ann Howell	Grady Smith
Bobby Jett	Joyce Spradley
Betty Lee Kreuger	John Paul Tate
Mary Ann Lee	Ray Warth
Mary Katherine Martin	Frances White
Virgina McVea	Glenn Youngblood





1954 CHOIR

The College Choir went through another successful year under the direction of Mr. Raymond Anderson who guided the group through forty-three performances in the course of three activity-filled quarters. During the Fall quarter a chorus from the choir sang the supporting roles of "Amahl and the Night Visitors," while an ensemble sang the introductory segment. The quarter was climaxed by the annual carol service at McCoy Methodist Church with the fifty-voice choir singing two performances to packed houses. The Winter quarter was filled with rehearsals, luncheon appearances, short trips, radio performances, and was ended with a five-day journey into southern Alabama and northern Florida by the thirty-eight voice touring choir. In the Spring quarter the choir gave a television performance on Easter Sunday, sponsored the appearance of the Dartmouth Glee Club, made some short trips and teamed up with Mr. Anderson's Choral Union to perform Hayden's "Creation," a perfect climax for a wonderful year.

OFFICERS

President	Fred Schlosser
Vice-President	Ray Warth
Secretary	Kit Martin
Treasurer	Robert Jett



THETA CHI DELTA and American Chemical Society

OFFICERS

- President Ronald Odom
- Vice-President Robert Gray
- Sec.-Treas. James Griffith

Theta Chi Delta, an honorary organization for students with a major or minor in chemistry, provides opportunities for scientific discussions, hearing lectures on chemistry, and a chance for friendly gatherings among friends with a mutual interest.

MEMBERS

- | | |
|-------------------|------------------|
| Ben Chastain | Joe Murphy |
| Helen Hallman | Ronald Odom |
| Donald Harrison | Allen Perry |
| Robert Holley | Phil Timberlake |
| William Howard | Herman Wesson |
| Merry Lynne Hayes | Bobby Williamson |
| James Issos | |

The student affiliate group, the American Chemical Society, is open to all students who are interested in chemistry
 Officers—President, William Howard; Vice-President, Donald Harrison; Secretary, Herman Wesson. Members—Joe Clayton, Bobby Gray, Jimmy Griffith, Don Harrison, William Howard, Joe Murphy, Ronald Odom.

THETA SIGMA LAMBDA

Theta Sigma Lambda is an honorary math fraternity recognizing excellence in mathematics.

OFFICERS

- President Paul Franke
- Vice-President Faye Hendrix
- Secretary Sara Jo Dewyer
- Treasurer Bill Howard





TOREADORS

The Toreadors Club has as its purpose the promotion of interest and understanding of economic practices, principles, and problems, and the encouragement of a spirit of fellowship among those whose field of interest is economics.

OFFICERS

President	Charles Lietch
Vice-President	Fred McDaniel
Secretary-Treasurer	Clyde Bryant
Adviser	Dr. E. Q. Hawk

MEMBERS

Robert Waller	Larry Roberts
Sue Hardy	Bob Walker
Conrad Lamon	Clyde Bryant
John Perusini	Bill Porter
Louis Jones	Walter Greene
Myrtle Veazey	Elmer McDaniel
Fred McDaniel	J. T. Madderra
Gene Head	Fred Johnson
Jacob Leigeber	Milner Snuggs
William Ausman	Charles Lietch

LE CERCLE FRANCAIS

This year Le Cercle Francais has enjoyed a series of lectures on different aspects of French culture and history. Talks on the geography, history, music, art, and religion of France have greatly stimulated interest in Le Cercle Francais. All students interested may be members.

OFFICERS

President	Joyce Spradley
Vice-President	Bobby Cargo
Corresponding Secretary	Kit Martin
Recording Secretary	Ellen Peake
Treasurer	Hilda Waddell
Advisers	Dr. Anthony Constans, Miss Zoe Lyon

MEMBERS

Gwen Adams	Ellen Fay Peake
Barbara Allen	Hilda Waddell
Ann Bayer	Joyce Spradley
Bobby Cargo	Peggy Warren
Virginia Covington	Jeanne Wamp
Kris Gebel	Kit Martin
Mary Ann Lee	Charles Matthews
Joe Murchison	Helen Hallman





ENTRE AMIGOS

Entre Amigos is open for membership to everyone who wishes to share his interests in the Spanish language and the culture of the Spanish speaking countries.

OFFICERS

President	Ellen Bryant
Vice-President	Jane Thomas
Secretary-Treasurer	Pat Burke
Adviser	Dr. G. R. Hernandez

MEMBERS

Joanna Biggs	Mary Jean Parson
Willis Cunningham	Ellen Peak
Elaine Fairly	Robert Thornton
Winifred Harris	Jeanne Waller
Harriett Higdon	Beverly West
Mrs. Florence Johnson	Walter Miller
Mary Kelly	Julio Perez
Lewis Lott	

SKISH CLUB

The Skish Club is dedicated to the improvement of casting among fishermen as a recreational sport between fishing trips and for more enjoyable fishing when on lake and stream. Skish is an organized game with definite rules by the National Skish Board.

OFFICERS

President..... Robert H. Walker
Vice-President..... Clarence Farmer
Secretary-Treasurer..... Fred McDaniel

FACULTY MEMBERS

Dr. Emory Q. Hawk Dr. Anthony Constans
Coach Bill Battle Dr. G. R. Hernandez
D. P. Beaudry, Jr. R. G. McWilliams

STUDENT MEMBERS

Billy Hauer	David Mobley
Clarence Farmer	Jim Vallely
George Anselmo	Robert Walker
Alvin Thomas	John Perusini
Joe Tombrello	Ronnie Nelson
Dave Wyne	Fred Johnson
Gene Lewis	James Esco
Clyde Bryant	James Roberts
James Scott	Walter Lewis
Bill Wallace	Fred McDaniel
Roland Jaggars	Robert Jennings





PHYSICAL EDUCATION CLUB

Much has been done by the P. E. Club to stimulate interest in physical education and recreational activities this year. The sponsoring of Sock Hops after several of the basketball games by this group has been quite successful.

OFFICERS

President	Mary Jacq Snow
Vice-President	Faye Hendrix
Secretary	Lee Kirby
Treasurer	Bill Thorne
Publicity	Connie Conway

MEMBERS

Eleanor Hamilton
 Rodney Wells
 Suzanna Davis
 Harriett Higdon
 Ann Gravlee
 Zackie Doughty
 Ann Yetes

Patti Turner
 Jane Harpole
 Berry Jarrard
 Lynn Crouch
 Evie Seales Balch
 Mary Betty Reed
 Jeannette Bryant

THE COLLEGE THEATRE

The College Theatre continues to seek variety in its offerings. Opening the Fall season with the indestructible "Arsenic and Old Lace," the Theatre turned its attention in the Winter to Children's Theatre with a junior Program's production of "Simple Simon." College actors also had a variety of directors. Stuart Mims, radio impresario and playwright, guided the "Arsenic" cast through its hilarious paces. Dorothy Schwartz, Mrs. Children's Theatre of the 20th Century, put the charming "Simple Simon" on the stage, and Rebecca Jennings, the College Theatre technician, pulled herself away from the glue-pots and the rheostats to make her directing debut with the Spring production, "The Enchanted Cottage."

MEMBERS

Barbara Allen	Howard Carl	Barbara Eskew	Barbara Hanners	Mary Jean Parson	Betty Jane Stone
Ann Ash	Louise Carver	Shirley Ezell	Mary Hurt	Gerry Palfrey	Marguerite Surellis
Ann Bacon	Roger Clayton	Abe S. Fawal	Glenn Hewett	Dasrell Perkins	Mildred Ann Tatum
Worth Bagley	Katy Clark	Evelyn Fenn	Rip Kirby	Tom Screven	Frances White
Gene Bishop	Connie Conway	Bill Gandy	Frieda Lehmann	Jack Shearer	Celeste Wade
Jim Blackwell	Paul Cosby	Kristin Gebel	Frank Marshall	Flora Simmons	Jean Wamp
Julia Bruce	Carolyn Cox	Earl Gossett	Donna McKros	Grady Smith	Peggy Warren
Theresa Bruno	Virginia Covington	James Gillespy	Ginger McVea	Milner Snuggs	Roye Wates
Mary Emily Burnum	Don Davis	Winkie Hall	Elmer O'Brien	Joyce Spradley	Avlona Yarbrough

OFFICERS

President	Abe S. Fawal
Vice-President.....	Ginger McVea
Secretary	Mary Jean Parson
Treasurer	Shirley Ezell





HANSON HALL COUNCIL

The Victor H. Hanson Residence for Women, opened in September, 1953, provides for women students at Birmingham-Southern College the finest and most modern type of college residence hall. The building is designed in two units to fit its hilltop setting and occupies the highest point of the campus with a beautiful view of the valley of Birmingham and surrounding hills.

The council is the group which is representative of all the girls in residence at Hanson. Recommendations concerning discipline, socials and general advice are made by this council.

MEMBERS

Helen Hallman, President	Celeste Hayden
Ruth Smith	Doris Earnshaw
Marilyn Terry	Susan O'Steen
Peggy Massey	Avlona Yarbrough

The Independent Women's Organization

Membership in The Independent Women's Organization is open to all non-sorority women on campus. The Independents are active in every phase of campus life and attain a good share of the campus honors. We are especially proud of our "Miss Southern Accent" this year.

OFFICERS

President Betty Ann Godfrey
Vice-President Helen Hallman
Secretary Ruth Smith
Treasurer Betty Hamby

MEMBERS

Mary Berry	Mary Faye Hunter
Nellie Ruth Berry	Jo Ann Howard
Virginia Bernhardt	Mary Ann Lee
Anna Lois Cecil	Ann Hamilton
Hilda Waddell	Barbara Eskew
Gwen Adams	Carol Hubbard
Joanna Biggs	Joyce Spradley
Jane Hodges	Julia Bruce
Annie Belle Owens	Loretta Jones
Mary Bailey	Ruth Harkins
Bettie Story	





AMAZONS

The membership of Amazons comprises three outstanding women from each of the national sororities on campus. To further its purpose of the promotion of better inter-sorority relations, the group sponsors three functions each year: A coffee for sorority pledges immediately following the Fall rush season, the traditional Winter backward dance, and a dessert party in the Spring to introduce new initiates and new officers.

OFFICERS

President	Eleanor Hamilton
Vice-President	Martha Mae Neely
Secretary	Faye Hendrix
Treasurer	Shirley Hines

ALPHA OMICRON PI
 Jeanne Waller
 Mary Jacq Snow
 Faye Hendrix

PI BETA PHI
 Gerry Palfrey
 Frances Sensabaugh
 Shirley Hines

GAMMA PHI BETA
 Ellyn Etchison
 Betty Jean Ryan
 Joyce Hyde

ZETA TAU ALPHA
 Ellen Bryant
 Eleanor Hamilton
 Mary Ann Haslam

KAPPA DELTA
 Clara Lee Hammett
 Ann Kennemer
 Martha Mae Neely

THETA UPSILON
 Joanne Alvarez
 Ann Bates
 Colleen Casey

THE

Greeks







PAN-HELLENIC COUNCIL

The Pan-Hellenic Council is Birmingham-Southern's governing body for sororities, which is composed of the president and one other representative from each of the sororities on campus. The Council sponsored the first Birmingham-Southern Pan-Hellenic dance in the fall.

OFFICERS

President	Gerry Palfrey
Vice-President	Martha Mae Neely
Secretary	Joyce Hyde
Treasurer	Ellen Bryant

MEMBERS

Mona Ivie	Suzanna Davis
Mary Ann Randall	Mary Jacq Snow
Joanne Alvarez	Peggy Warren
Coleen Casey	Ann Gravlee

INTER-FRATERNITY COUNCIL

OFFICERS

President	Bill Baxter
Vice-President	Jim Blackwell
Secretary	Bob Morgan
Treasurer	Ronald Odum

MEMBERS

Jim Blackwell	Ronald Odum	Bob Morgan
Ray Cantrell	Gerald Lambert	Bob York
Walter Lewis	Bill Porter	Elmer O'Brien
Ray Warth	Bill Baxter	Conrad Lamon
Bob Bowker	Bob Gray	

The Inter-Fraternity Council is Birmingham-Southern's governing body for fraternities, which is composed of the president and one other representative from each of the fraternities on campus. Its main purpose is to make and enforce rush rules and maintain good fraternity relationships. The Council sponsored the first Birmingham-Southern Inter-Fraternity Dance which is to remain as an annual affair.



ALPHA CHI OMEGA



Last year was Alpha Chi "new look" year. January saw the coming of five bright new actives and a freshly painted room to match. But, of course, by far the most exciting event of the year was the visit of Mrs. Suppes, our national president, and Mrs. Nordwall, our national Pan-Hellenic delegate. Their enthusiasm and wholehearted support of our chapter has truly inspired us.

The Lyre girls are no strangers to achievement and activity. We point proudly to Sue Hardy, who was tapped for Alpha Lambda Delta last Spring. There are Alpha Chis in BSU, IHS, the YWCA, and our girls grace the meetings of Entre Amigos.

National Convention was held last year in Banff, Canada, and not without a delegate from Alpha Omega Chapter. From all reports the place, the time, and the people just couldn't have proved better.

The Alpha Chi "new look" has given us a bright outlook for the years ahead.

OFFICERS

President	Winifred Harris
Vice-President	Elaine French
Secretary	Elaine Fairley
Treasurer	Mary Kelly
Rush Chairman	Mary Anne Ballow





Elaine Fairley
Sue Hardy



Winifred Harris
Mary Kelly



Annette Mobley
Annie Belle Owens



ALPHA OMEGA CHAPTER

ALPHA OMICRON PI

ALL ABOARD—

On the Red and White Constellation leaving from track number one and making stops at the AOPi capitol—the Tau Delta chapter room, Stockham, Gymnasium, Student Activities Building, and finally setting down at Hanson Hall.

It's the fall quarter and in the chapter room we find the Interfraternity Sing trophy and the "Miss Victory" cup. Taxiing down the runway we catch a glimpse of the City Philanthropic Plaque with AOPi enscribed upon it.

Hopping across to Munger we see the AOPi Hilltopper chorus line and Mary Jacq Snow being named the outstanding senior. In the Public Relations office we see Connie Conway busily writing up the "Amahl" opera, in which Kit Martin starred.

Hitting an air pocket we drop down to the gym to see the AOPi's heading the list of total intramural points for the fall quarter. AOPi's also placed second in the volleyball tournament. Taking a dive we see nine members practicing their surface dives for the Water Ballet. Catching our attention are Mary Jacq Snow, Jean Branch, and Faye Hendrix leading yells for the Panthers.

Stopping for fuel we see Faye Hendrix and Suzanna Maloney at Mortar Board meeting, Ann Barr presiding over Eta Sigma Phi, and Mary Jacq Snow presiding over YWCA and PE Club. In the service garage we see four AOPi Triangle Club members.

Always on time we land at Hanson Hall taking the SOUTHERN ACCENT down the ramp. There are five AOPi's in the favorite section and one in the Beauty section. Mary Jacq Snow and Suzanna Maloney were elected to "Who's Who" section.

There's no better pilot than Marilyn Butler and thus we arrive safe and sound and settle down for a long night's rest.

OFFICERS

President	Marilyn Butler
Corresponding Secretary	Mildred Ann Tatum
Recording Secretary	Faye Hendrix
Treasurer	Mary Katherine Martin



Ann Barr
 Jean Branch
 Charlene Brasher
 Catherine Chancey
 Connie Conway



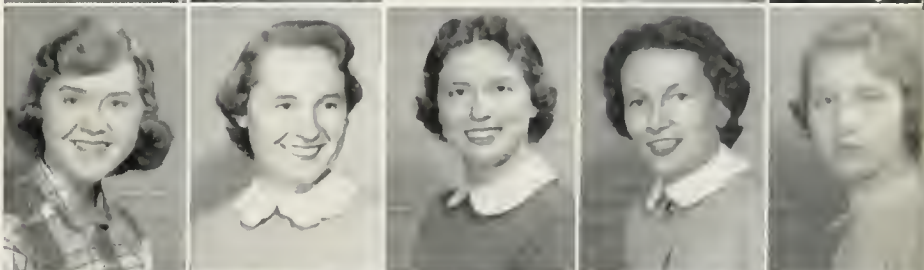
Dora Cowen
 Zackie Doughty
 Nancy Graves
 Merry Lynn Hayes
 Faye Hendrix



Harriett Higdon
 Betty Ann Howell
 Berma Jarrard
 Mary Alice Johnson
 Sandra Jones



Charlotte Lane
 Marilyn Butler
 Kit Martin
 Suzanna Maloney
 Samye Sue Montieth



Margaret Richards
 Bonnie Smith
 Mary Jacq Snow
 Mildred Ann Tatum
 Dettie Tyler

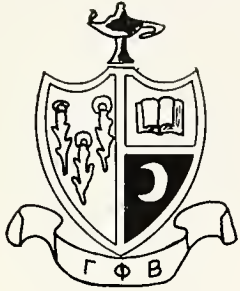


Celeste Wade
 Jeanne Waller
 Ann Yates



TAU DELTA CHAPTER

GAMMA PHI BETA



Alpha Rho chapter has had a fine combination of beauty, brains and talent this year as usual.

In the beauty realm, Mary Ann Crosby, Charlotte Clapp, and Barbara Hicks were finalists in the Miss Alabama Contest. Barbara was also selected as one of the five top beauties for the SOUTHERN ACCENT.

Ellyn Etchison campaigned herself into the Executive Council, and Joyce Hyde served as Secretary of Pan-Hellenic. B. J. Ryan and Myrt Greene served on the Religious Council.

They still found time for the "Lady of the Moon" dance with Mona Ivie honored.

The Crescent Girls hope to make next year even better.

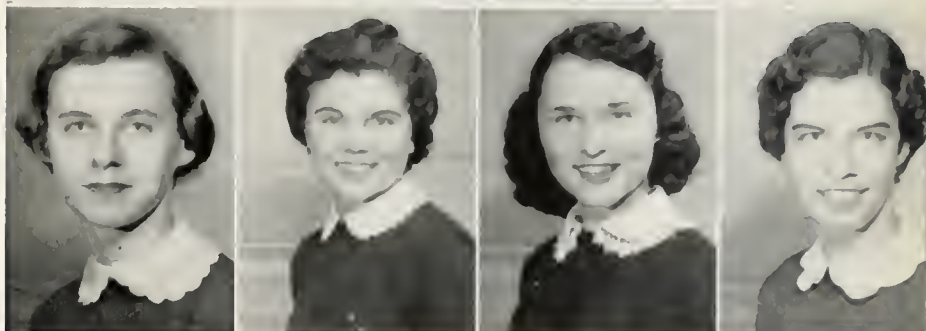
OFFICERS

President	Joyce Hyde
Vice-President	Gertrude Hatfield
Secretary	Doris Shelton
Treasurer	Mary Ann Crossely





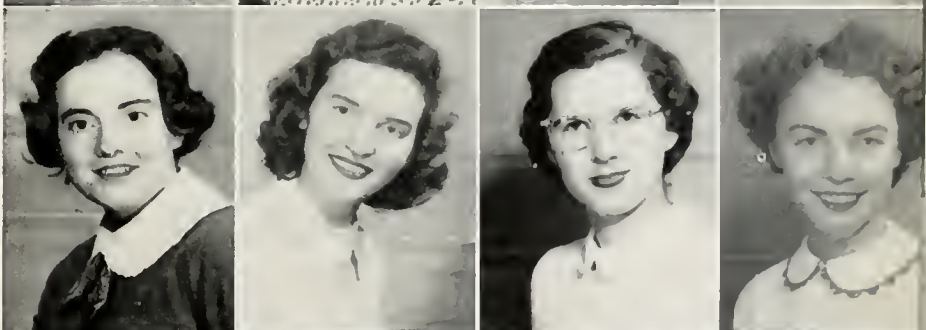
Madge Brannon
 Mary Ann Crossley
 Nell Dendy
 Doris Earnshaw



Ellyn Etchison
 Jill Farmer
 Janice Fowler
 Myrtice Ann Greene



Gertrude Hatfield
 Barbara Hicks
 Joyce Hyde
 Mona Ivie



Shirley Palmiter
 Betty Jean Ryan
 Doris Shelton
 Joyce Simmons



Helen Starnes
 Brenda Weeks



ALPHA RHO CHAPTER

KAPPA DELTA



Kappa Deltas returned this fall to a redecorated room and a full program of activities. Climaxing a successful rush season, ten girls were pledged with Sara Jo Whitlock receiving the Scholarship cup and Mary Emily Burnum the Best Pledge ring.

Not lacking in leadership ability, two KD's served on the Executive Council and one on the Honor Council. KD's held offices in the Triangle Club, Alpha Lambda Delta, YWCA, the Religious Council, IHS, Galileans, MSM, and the Newman Club. Amazons, KDE, Entre Amigos, and Phi Sigma Iota also had KD's among their members. Leading the cheers at the varsity basketball games was KD Jean Wilson.

Kappa Deltas were active in College Theatre, Water Ballet, and Choir, and worked on the SOUTHERN ACCENT.

In sports, Kappa Delta claimed an All-Star volleyball player and an Intramural Tennis Manager.

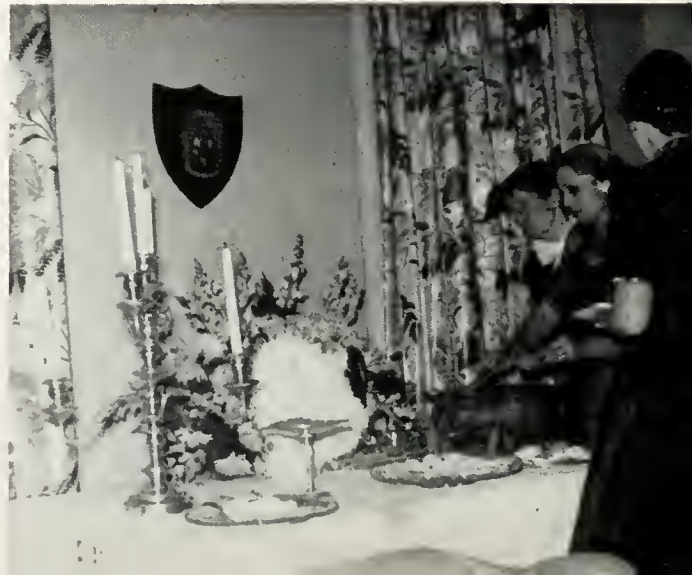
In individual honors, Martha Mae Neely was elected to "Who's Who", and Jean Clark reigned as Sweetheart of Lambda Chi.

On the lighter side, Martha Hughes and Jean Clark were named the official Daisy Mae and Moonbeam McSwine on Sadie Hawkins Day.

With the visit of Province President Florence Tryon, Kappa Delta evaluated 1953 as a very successful and enjoyable year.

OFFICERS

President	Martha Mae Neely
Vice-President	Clara Lee Hammett
Secretary	Peggy Massey
Treasurer	Ann Kenemer



Mary Emily Burnum
 Judith Berry
 Evelyn Brown
 Virginia Covington
 Elizabeth Cox



Barbara Folks
 Margaret Frost
 Jo Ann Hamilton
 Clara Lee Hammett
 Celeste Hayden



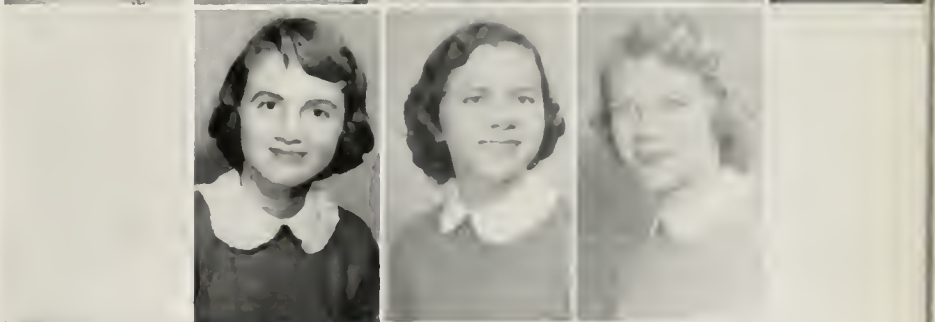
Martha Hughes
 Virginia Hughes
 Ann Kennemer
 Barbara Lewis
 Peggy Massey



Donna Mokros
 Martha Mae Neely
 Pat Newman
 Dorothy Jean Norris
 Sally Saxon



Patsy Shinn
 Sarah Jo Whitlock
 Jean Wilson



ALPHA UPSILON CHAPTER

PI BETA PHI



Life on the Hilltop was a memorable one for the wearers of the arrow. In the world of sports, Roye Wates guided the Intramural Council as Senior Manager, while Shirley Hines was among the volleyball All-Star team. The March production of the Water Ballet featured six Pi Phis.

Lending their talents to the College Theatre were Kris Gebel, featured in the fall production, and Shirley Ezell and Gerry Palfery in "Simple Simon." Five choir members were busily engaged in the world of music.

Senior Marilyn Brittain took charge of BSU while other Pi Phis were on the roll of such organizations as Mortar Board, Triangle Club, Honor Council, YWCA, and MSM. A Pi Phi worked on the SOUTHERN ACCENT while the positions of assistant editor and business manager of the HTN were in the hands of two Pi Phi sisters.

Honors came our way, too. We again earned first place in the fall quarter to retain the scholarship cup. Selected to "Who's Who" were seniors Brittain and Palfery. In the beauty section of the SOUTHERN ACCENT are sisters McVea, Warren, Sensabaugh, and Ezell. Lil Dixon, Jane Mooty, and Nancy Kelly rode the horse and wagon to first place in the Sadie Hawkins Day float contest.

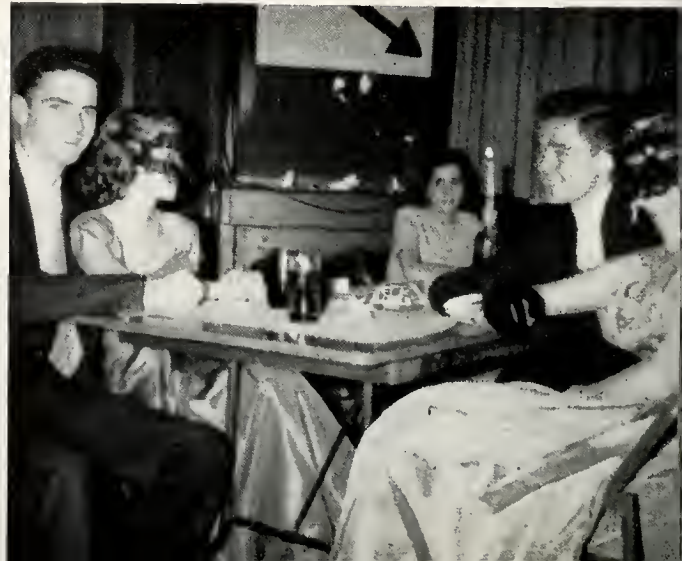
During the year the chapter became foster mother to a German war orphan, Marianne.

The wine and blue girls enjoyed their traditional "cook-shines", the Mothers Club supper which honored Brother Bob Walston, and the pledge party. Leading the first Pan-Hellenic dance was prexy Gerry. The January Mardi Gras Ball was enjoyed by all.

For us, the year was one which we will "Remember"—remember the Pi Phi arrow and the fun we shared on the Hilltop.

OFFICERS

President	Gerry Palfery
Vice-President	Shirley Hines
Recording Secretary	Ginger McVea
Corresponding Secretary	Marilyn Brittain
Treasurer	Betty Jane Stone

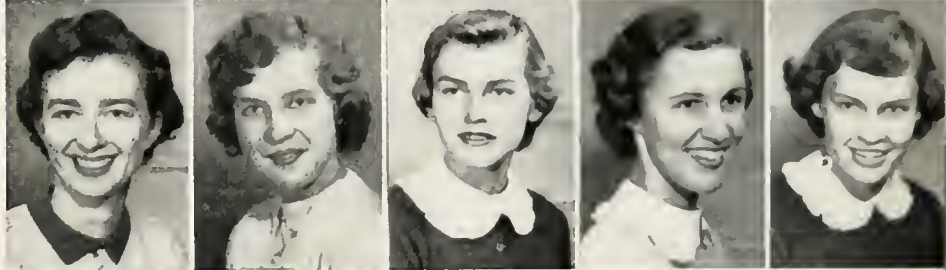




Delynn Armstrong
 Jo Ann Boyd
 Marilyn Brittain
 Frances Copeland
 Carolyn Cox



Lillian Dixon
 Shirley Ezell
 Kris Gebel
 Shirley Guy
 Jane Harpole



Shirley Hines
 Nancy Kelly
 Lee Kirby
 Elsa Loemaker
 Jane Mooty



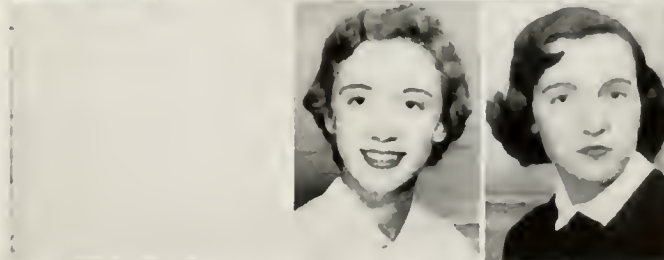
Jere Murphree
 Anne Oliver
 Susan O'Steen
 Patsy Pace
 Gerry Palfery



Claire Palmer
 Mary Betty Reed
 Frances Sensabaugh
 Betty Jane Stone
 Mary Stowers



Peggy Warren
 Lena Melle Winters



ALABAMA ALPHA CHAPTER

THETA UPSILON



Looking forward to a year of fun, partying, and honors, the Theta U's returned to school amid the furor and excitement of rush week. After proudly admitting ten new pledges into the sisterhood, the sorority enjoyed several social activities, among them the annual Halloween party and square dance, the Pan-Hellenic dance, and the New Year's Eve party.

But aside from the social activities, the Theta U's were participating wholeheartedly in campus activities. The Theta U's took part in intramural sports, winning the badminton tournament. Along the scholastic line, the names of Theta U members were found in abundance on the Dean's list and in Alpha Lambda Delta. The Theta U's worked with many organizations such as the College Theatre, the College Choir, YWCA, Entre Amigos, Le Cercle Francais, the Triangle Club, Mortar Board, and the religious denominational organizations.

Theta U members served as officers for many groups on campus: Mortar Board, Eta Sigma Phi, Entre Amigos, Kappa Delta Epsilon, Phi Sigma Iota, and Mu Alpha. Moreover, the Theta U's were outstanding in other campus activities. A Theta U picture appears in the Beauty Section of the SOUTHERN ACCENT and another TU served as Business Manager of that publication. While Theta U was represented in Mortar Board by four members, three of the Theta U's also were elected to Who's Who.

As the Theta U sisters look backward over the events of this year, it seems that the fun and honors even surpassed their highest expectations—it has been a wonderful year.

OFFICERS

President	Joanne Alvarez
Vice-President	Flora Simmons
Secretary	Jo Taylor
Treasurer	Betty Lee Krueger





Barbara Allen
Joanne Alvarez
Mary Bryant
Patricia Burke
Florence Worth Bagley



Evie Balch
Ann Bates
Colleen Casey
Jo Taylor
Marianne Ferrell



Shirley Ann Fuller
Barbara Hanners
Harriette Houston
Betty Lee Krueger
Frieda Lehmann



Alleine Lurton
Frances Pritchett
Flora Simmons
Jane Steiner
Marguerite Surellis



Carclyn Welch
Beverly West
Frances White



XI CHI CHAPTER

ZETA TAU ALPHA



From most campus organizations come reports of offices being held by members of Zeta Tau Alpha. Zetas are serving as president of Entre Amigos, Freshman Commission, Kappa Pi, and Phi Sigma Iota honorary organizations, and for the second successive year, as president of Amazons, while other Zetas are treasurer of Pan-Hellenic Council and Newman Club, secretary of YWCA and College Theatre, Assistant Editor of the SOUTHERN ACCENT, and five of the ten members elected to Freshman Commission were Zetas. ZTA is represented in Triangle Club and Executive Council.

The title of "Wolf Girl" on Sadie Hawkins Days went to a Zeta, and also the honor of "Sweetheart of Pi Kappa Alpha." In intramural fall sports, the Zetas won first and second place in the tennis doubles tournament, and the two top high women were Zetas. Zeta placed first in free-throw, second in basketball, and won the Swim Meet.

Five Zetas took part in Water Ballet, and one directed the event.

When "Mr. Hilltopper" was elected, the Zeta candidate, for the second successive year, was chosen for the honor. A Zeta starred in "Arsenic and Old Lace," and another was Technical Director of the show. A Zeta starred in "Simple Simon" while another was a featured dancer in the dream sequence.

During the year Zeta Tau Alpha has excelled in their philanthropic work, visiting Ketona Home for the Aged, and the Cerebral Palsy Hospital, and sending Christmas toys and Easter baskets to underprivileged children.

These are only a few reasons why this has been a successful year and why each of us is happy to say, "Gee, I'm glad I'm a Zeta."

OFFICERS

President Ellen Bryant
 Vice-President Mitchie Mitchell
 Secretary Mary Ann Haslam
 Treasurer Mary Jean Parson

Guard Judy Akin
 Historian Eleanor Hamilton
 Rush Chairman Ann Gravlee





Judy Akin
 Mary Ann Berry
 Ellen Bryant
 Louise Carver
 Catherine Clark



Sylvia Dickerson
 Barbara Friel
 Janet Graff
 Ann Gravlee
 Eleanor Hamilton



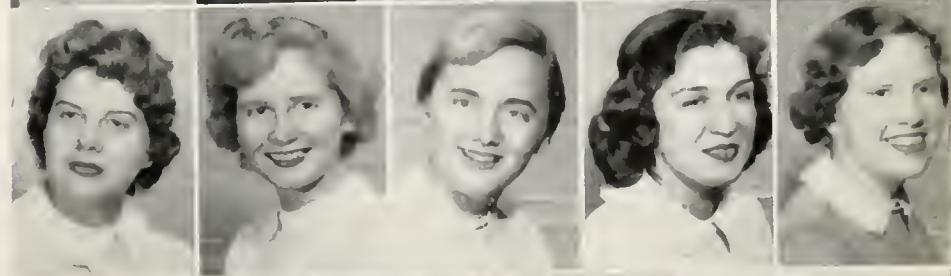
Mary Ann Haslam
 Mary Hurt
 Loretta Jones
 Dolores Layton
 Peggy Lloyd



Lenita Long
 Peggy Noah
 Mary Jean Parson
 Ellen Peak
 Mary Pylant



Jane Sirles
 Ann Lee Shaw
 Vance Sparks
 Annette Thornton
 Ginny Sue Trimble



Patti Turner
 Avlona Yarbrough



Not pictured:
 Rebecca Holt
 Mitchie Mitchell

ALPHA NU CHAPTER

ALPHA TAU OMEGA



The Alpha Taus really improved their "shack" this year with the addition of a few shiny trophies. They got one of the birds (badminton), they sang for one (Interfraternity Sing), and got another for being the smartest fraternity on the hill (scholarship).

In addition to the cups, they added a new overcoat of green paint. A few potted plants—they match the brothers—were added for their chlorophyll content. A green cushioned pool table completed the decorations.

They embarked on a project called "Help Week" during which time they cleaned up Ensley.

Over the year the ATO athletic teams and the great house parties in Florida had the other organizations turning green with envy. They matched our color scheme.

OFFICERS

President	Bob Gray
Vice-President	Tommy Ogletree
Secretary	Dick McCulloch
Treasurer	Walter Lewis

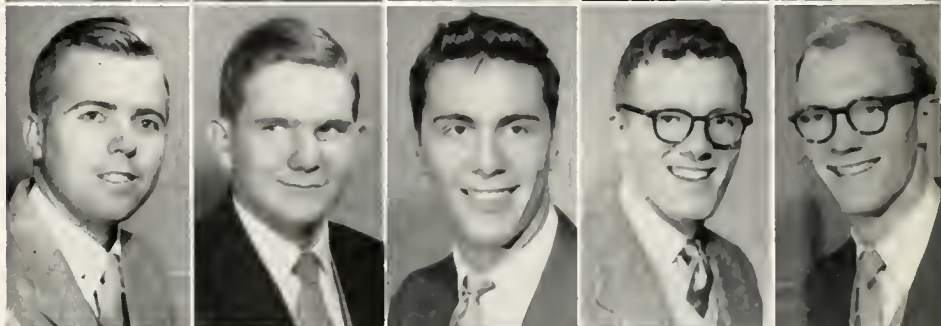




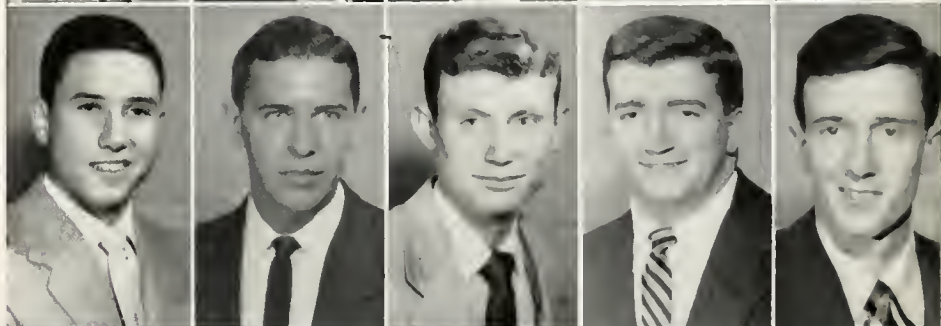
Barry Anderson
 Dick Anderson
 Richard Branscomb
 Don Brooks
 Roger Clayton



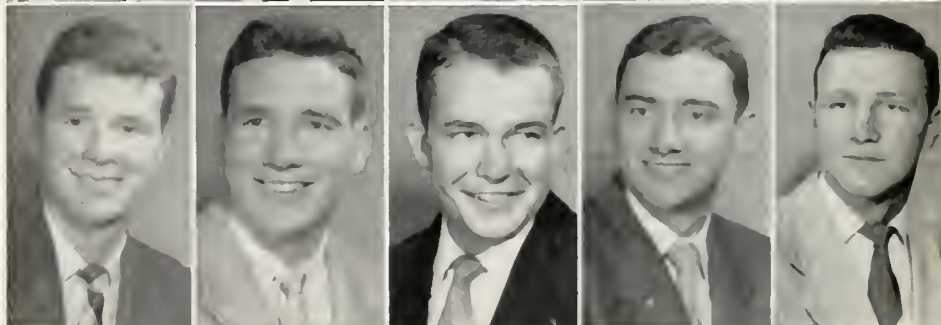
Bill Drennen
 Bill Gandy
 Charles Graffeo
 Bob Gray
 Jim Gray



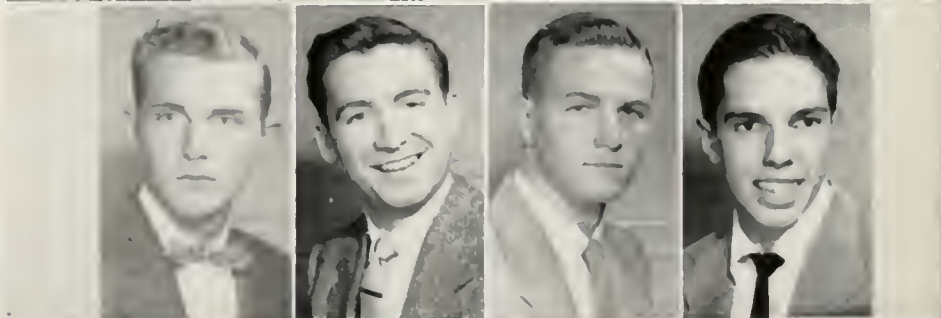
Walt Lewis
 Ken Life
 Grady Looney
 Russell Luquire
 Dick McCullough



Bid Montgomery
 Gene Montgomery
 Charles Mooney
 Tommy Ogletree
 Wayne Patterson



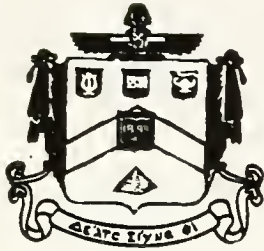
Bob Sartain
 Milner Snuggs
 Martin Smith
 Phil Timberlake



NOT PICTURED:
 Gene Davenport
 Bill Dean

B E T A B E T A C H A P T E R

DELTA SIGMA PHI



The Delta Sigs—men of the silent Sphinx—have made this a year of loyalty and service to their brotherhood. Parties, sorority coffee hours, the annual Parent-Faculty tea, and the house party at Silver Beach, Florida, were some of the highlights of our social calendar. The climax was Founder's Day Banquet on the eve of the Alabama-Auburn game.

The wearers of the green and white were active in such widely separated activities as the College Theatre, Eta Sigma Phi, the Toreadors Club, Kappa Phi Kappa, and the SOUTHERN ACCENT. A Delta Sig was treasurer of the Executive Council.

The new Sphinx which graces the mantle of the house is fast becoming a tradition of Beta Delta Chapter. It symbolizes the well-rounded activities of Delta Sigma Phi.

OFFICERS

President	Elmer O'Brien
Vice-President	Conrad Lamon
Secretary	Louis Herzberg
Treasurer	Larry Mobbs
Chapter Supervisor	Dr. G. R. Hernandez
Faculty Adviser	Dr. H. R. Butts

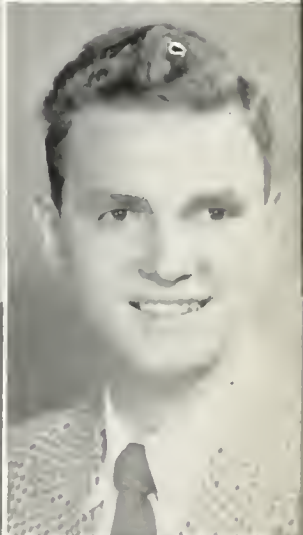




Louis Herzberg
John Hook
James Issos



Conrad Lamon
Don Lamon
Jacob Liegeber



Larry Mobbs
Elmer O'Brien
Bill Wallace



BETA DELTA CHAPTER

LAMBDA CHI ALPHA



During the past year the boys in the House on the Hill have looked over the whole range of college activities. Brother Walter Greene, as Student Body President, led campaigns during the year in a number of major campus crusades. "Fighting John" Constantine was editor of the Hilltop News. Brothers Frank Marshall, Gene Bishop, and Jim Blackwell were in the Fall production of "Arsenic and Old Lace," and appeared again in "Simple Simon."

Congratulations went to Brother Constantine for his election to "Who's Who" and to Brother Green for his selection to ODK.

Brother Gary Seale ran away with the L'il Abner prize Sadie Hawkins Day. Brothers Greene and Constantine were on the Publications Board and the Student Life Committee. Brother Blackwell was vice-president of IFC.

At the Club in November, Jean Clark was chosen the Lambda Chi Crescent Girl for the year. At a stag party at Highland Terrace Gardens during the Fall, we gave a banquet in honor of Dr. W. A. Whiting, former national president of our parent fraternity, Theta Kappa Nu.

The Big Four Dance, the Bowery Party, the Scholarship Dinner, the Comic Strip Party, and the Hawaiian Lu'au Party were events of the winter and spring quarters.

From the doorway of the House on the Hill comes that familiar call—Welcome, Brother!

OFFICERS

President	Jim Blackwell
Vice-President	Frank Marshall
Secretary	Howard Clark
Treasurer	Al Nuttall





Gene Bishop
Jim Blackwell
Howard Clark



John Constantine
Charles Copeland
Clarence Farmer



Walter Greene
Rodney Griffin
John Hutchison



Frank Marshall
Gary Seale

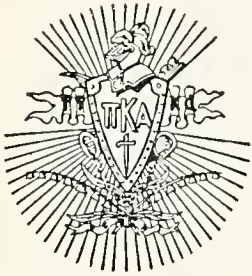


NOT PICTURED:

- George Allen
- Roy Bates
- Roy Burnette
- Ray Cantrell
- Al Nuttall
- John Pearce
- Clyde Wade
- Jere Williams

THETA MU CHAPTER

PI KAPPA ALPHA



With a victorious year behind them, the Delta Chapter is looking forward to an even more vigorous campaign in the future.

Some of the outstanding exploits were as follows: President of College Choir was Brother Jett; president of the Interfraternity Council was Brother Lambert, also treasurer of the Executive Council; Brother Whittaker was president-elect of Kappa Phi Kappa; among the high point men in intramural sports and also winner of the horseshoes tournament, not to mention Mister Hilltopper, was Brother Buttram; Mayor of Dogpatch on "Sadie Hawkins Day" was Brother Hauer.

Beginning also in the fall quarter was Brother Shearer as editor of the SOUTHERN ACCENT. A scholarship award from national headquarters went to our chapter, while on the campus the Pikes placed second in scholarship among the fraternities during the fall quarter.

Climaxing a long term project of systematic saving is the beginning of the construction of the PiKA House! It should be finished sometime during the winter or spring quarter of 1954. Going out to "bring home the bacon" again are the Pikes of 'Southern.

OFFICERS

President	Gerald Lambert
Vice-President	Bobby Jett
Treasurer	Bob Bowker





David Adams
Aubrey Barnard
Bob Bowker
Bill Burton
Dave Buttram



Ben Chastain
Paul Cosby
Finley Eversole
John Haislip
Bill Hauer



Bob Jett
Rip Kirby
Gerald Lambert
Bill Lovelace
Roland Lee



Preston Miller
Charles Nelson
Mike Polny
Bob Satterfield
John Satterfield



Jack Shearer
Grady Smith
Jim Valley
Wayne Vickery
Gale Wadsworth



Fred Whittaker
Clyde Winter
Jim Young



NOT PICTURED: Jim Box,
Howard Carle, Jack Flippo,
Roy Hanks, Frank Jones,
Wayne Jones, Don Kirkpatrick,
Fred Lovelace, Scott Mead,
Al Owens, Bob Waller,
Pete West, Glen Youngblood.

DELTA CHAPTER

SIGMA ALPHA EPSILON



Another year has just left us, and we review the past months with much pride. First, several of our men have been outstanding in scholastic achievements. Charles Browdy was president of Omicron Delta Kappa, and Bill Porter was chosen for membership in this honorary fraternity. Porter was also vice-president of the student body.

Another Bill, Baxter, took the reins of leadership in Interfraternity Council. "Who's Who" claimed two of our brothers, Browdy and Porter.

Brothers Browdy and Hinton gave much of their time to varsity basketball this year. Richard McClung and Joe Legg were among the high point men of the football season.

Plenty of good times were held also, with the Halloween Party, the Pledge Party, the Valentine Party, and the Spring House Party.

Five of our brothers are now serving with the U. S. Army.

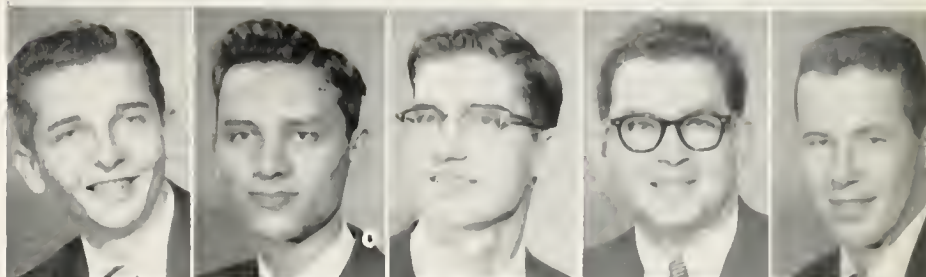
OFFICERS

President	Bill Coffield
Vice-President	Larry Schneider
Secretary	Jim Mercer
Treasurer	Calvin Hopkins

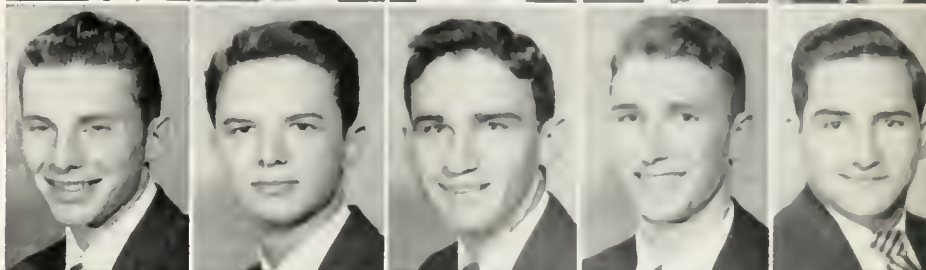




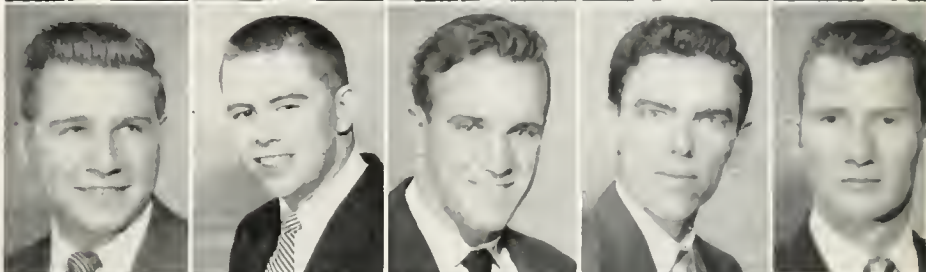
James Allen
David Angwin
Dan Boone, Jr.
Charles Brown
Bill Cofield



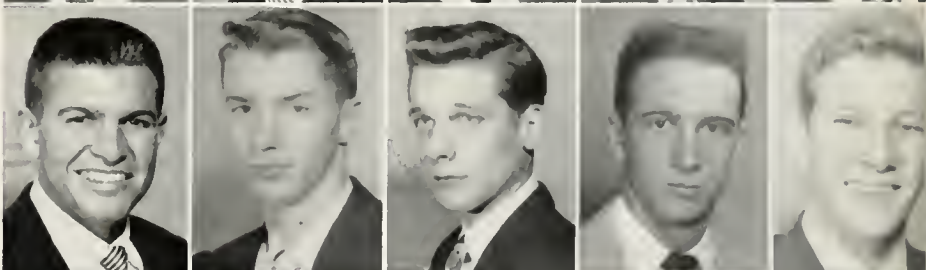
Larry Crisp
Jack Elmore
H. M. Estock
Paul Franke
W. E. Harris



Seale Harris
Don Harrison
Y. L. Hayden
Calvin Hopkins
Robert Howe



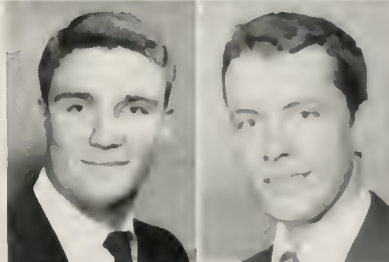
J. L. Legg
Richard McClung
Jim Mercer
Joe Murchinson
Johnny Poer



Tommy Pinion
Bob Potter
Bob Porter
Bill Porter
Jim Sanders



Larry Schnieder
Dan Walton



ALABAMA IOTA CHAPTER

THETA CHI



Beginning the Fall with a successful rush season, Beta Xi welcomed six new pledges into the fellowship of Oxmen.

Just before the Christmas party, Beta Xi won the Stanford Scholarship Trophy for having the highest scholastic average of all the Theta Chi chapters.

Two Oxmen served as presidents of campus organizations, and one man was elected to ODK.

Two of the brothers have been awarded graduate assistantships for next year at California and Northwestern.

The annual houseparty at Double Oak and the Rebel Reunion at Auburn were also big events on the Theta Chi calendar.

OFFICERS

President *[Name obscured]* Ronald Odom
Vice-President *[Name obscured]* Bob York
Treasurer *[Name obscured]* Bill Howard





James Bedsole
Bill Howard
Roland Jagers



Bill Moore
Joe Murphy
Ronald Odum



Allen Perry
Bill Sparkman
Alan Wesley



NOT PICTURED:
Bob York
Rodney Wells

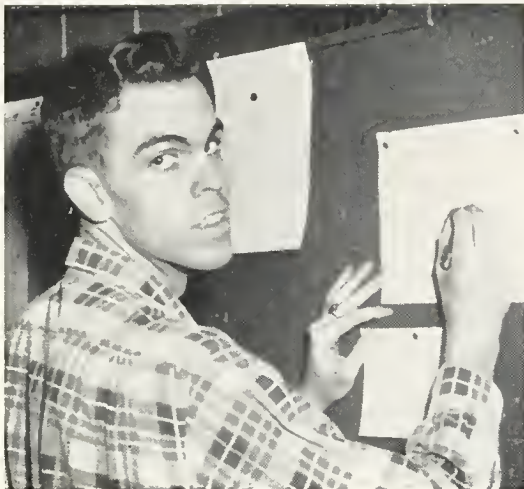
BETA XI CHAPTER

Sports





Tom L. McGwire
PHOTOGRAPHER



BOBBY JETT
Senior Manager



BILL BATTLE
Intramural Director

INTRAMURAL COUNCIL REPORT

One of the most significant trends in education today is the increased emphasis being given to a well-balanced health and recreation program for all students. Therefore, we have at Birmingham-Southern College a program of Intramural Sports offering an opportunity for wholesome recreation that is mentally stimulating and satisfying, and socially rounded.

Intramurals are recognized as an excellent medium for making contact with other students, and afford an opportunity for each student to be a "participator" rather than merely a spectator. Entering into competition with other students on the field of friendly combat is the basis for some of the best college friendships. These varied and interesting recreational activities encourage sportsmanship and reliability.

Intramural Sports is the division of the Department of Physical Education which promotes, furnishes equipment for, and supervises competition in sports for which the members of the student body indicate a decided interest. All students are encouraged to participate voluntarily in the Intramural Sports program which offers opportunity for exercise, recreation, social contacts, and friendly competition.

Each fraternity and independent organization has a Senior and Junior athlete councilman who is the student representative to the Intramural Department. These councilmen receive all information relating to their groups, organize teams, create interest in the various activities, and have their teams or the individuals participating on hand to play when scheduled.

Intramural Council meetings are held at 1:45 each Monday in the Physical Education Building. The program for the coming week is discussed, changes in the by-laws and constitution are made, and tournaments are drawn up

along with much other business pertaining to Intramurals.

The guiding light of the Intramural Department is Coach Bill Battle, the Intramural Director, who is directly responsible for the proper conduct of the department in accordance with its functions as outlined in the Constitution. He handles all the details in regard to supplies, purchase of equipment, and making of schedules and notices. He also supervises the work of the student managers.

The Senior Manager is the student in charge of the entire men's intramural program and is responsible to the Intramural Director.

Separate Sports Managers are appointed by the council for Touch Football, Basketball, and Softball. Their duty is to promote and supervise the program of the respective sports and they are responsible to the Senior Manager.

Birmingham-Southern offers ten sports in their intramural program. They are: Badminton, Basketball, Horseshoes, Paddleball, Softball, Swimming, Table Tennis, Tennis, Touch Football, Volleyball.

Individuals and teams participating in these sports are awarded points. A certain number of points are given for entering and additional points are awarded for games won or for the winners. Awards are given the ten men with the most number of points at the end of each year.

As you can see, Birmingham-Southern offers its students a good, well-rounded program of Intramural Sports with many opportunities for individual leadership both on and off the playing field, which, if utilized effectively, can aid in turning out from our college healthy, well-rounded individuals. It is hoped that every student will take advantage of their programs. The Intramural Department urges every student to set aside a part of every week for some type of recreation.

BOBBY JETT, Senior Manager

PING PONG



CHAMP, GENE MONTGOMERY

Year-round the most played, most popular sport is ping pong. The six tables in the gym lobby are always busy. This year in the men's competition, Gene Montgomery emerged victor. The KA's took team honors.



PING PONG ACTION IN LOBBY

BADMINTON

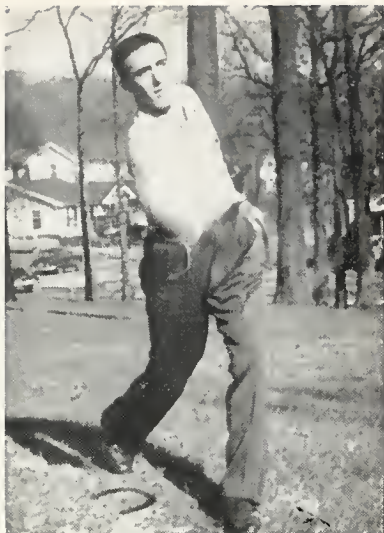


CHAMP, PHIL TIMBERLAKE

When winter rolls around, indoor sports take the attention. The first scheduled indoor sport at Southern is Badminton. The sport has been steadily increasing in popularity on the campus. This year, Phil Timberlake won the championship and the ATO's won the team honors.



ACTION ON THE COURTS



CHAMP, DAVE BUTTRAM



TEAM CHAMPS, PiKA'S

Left to right, Bob Bowker, Dave Buttram, Bob Jett, John Satterfield, Bob Satterfield, and Jack Flipflo.

HORSESHOES

The Horseshoe tournament opens up the sports schedule in the fall. This year more interest was displayed than in preceding tournaments. Dave Buttram won the championship for the second straight year. The PiKa's took team honors.

At press time the PiKa's and ATO's are tied for first place, both having a 6-0 record. Eleven teams entered the competition, which is growing in interest as it progresses. The tournament is split, half of it being played after the beginning of the spring quarter.

VOLLEYBALL



VOLLEYBALL COURTS IN ACTION



HOW'S THE WATER?

PADDLEBALL

Paddleball has already risen to the top as one of the main individual sport attractions on the Hilltop. ATO took team honors, Phil Timberlake emerging champ. Paddleball, like ping pong, does not stop when the tournament is completed, but is played year-round.

PADDLEBALL COURT IN ACTION



SWIMMING

Swimming, which is enjoyed year-round on the Hilltop, culminates its activities in the annual men's swim meet late in the spring quarter. Competition is expected to be keen as usual, since off-the-cuff practice sessions have already begun.



AND HE'S OFF—



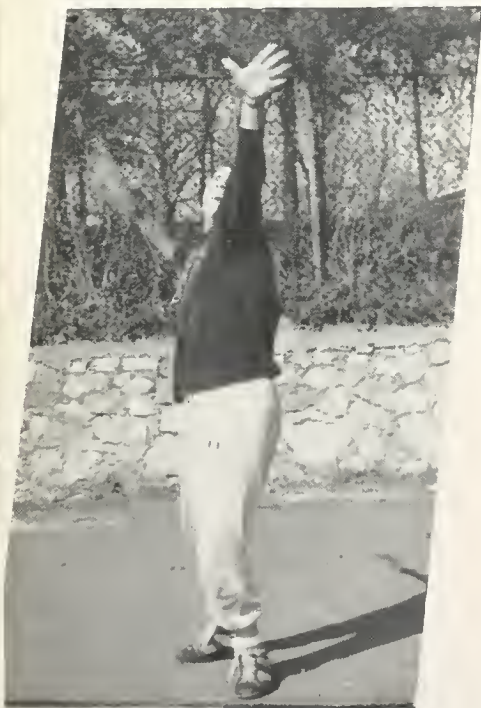
PREACHER VS. CAT

TENNIS

When spring comes, the tennis courts come alive with activity.

Among the outstanding players are: Joe Legg, Bill Hauer, Johnny Lee Smith, Gayle Wadsworth, Phil Timberlake, and Bob Gray. Practice sessions have already begun, and one can see the fuzzy spheroids buzzing across the campus. The intramural tennis tournament begins in the spring quarter.

Varsity tennis will return to the Hilltop this spring. Matches have already been scheduled with several other schools, including Sewanee, Howard, Emory, and Millsaps. Coach Bill Burch is planning several more matches to make a well-rounded, successful tennis season.



OVER THE NET

FOOTBALL IN DOGPATCH





KA—CHAMPS INTRAMURAL FOOTBALL

STANDINGS

Team	Won	Lost	Tied
KA	7	1	0
ATO	6	1	1
IND	5	2	1
SAE	5	2	1
LXA	1	5	2
PiKA	1	6	1
TX	1	6	1
DSP	0	8	0

TOUCH FOOTBALL

The largest fall sport attraction is touch football. Every afternoon in Munger Bowl a game is played, or several teams can be seen practicing.

Sadie Hawkins Day saw the ATO's breeze by the KA's in the Dog Patch game, but the KA's won the championship.

The tournament was close throughout, and full of upsets.



"BAIVWI"

OUR ENTHUSIASTIC SPECTATORS



ATO's
Tournament Winners

BASKETBALL

This year's tournament saw a very close, hard fought season terminating with a three-way tie for first place between the Independents, the KA's and the ATO's.

A playoff was held for the league trophy with the ATO's winning.

The regular Shaughnessy playoff was held, the KA's emerging victorious.



KA's
Winners of the Shaughnessy Playoff

STANDINGS

Team	W	L	Team	W	L
Ind	8	1	Fac.	5	4
KA	8	1	Rel. S.	5	4
ATO "a"	8	1	PiKA	3	6
ATO "b"	7	2	LXA	1	8
SAE	5	4	TX	0	9

AND HE'S . . . ? ?

SOFTBALL

Another popular team sport held in the spring is softball. The tournament is usually greeted with much enthusiasm as students strip to shirt sleeves and start the never-ending heckling. Eleven teams entered the competition last year, and a full schedule is expected again this season.



VARSITY BASKETBALL

The basketball team this year was studded with sophomores. The season was not too successful, but the players returning next year will have more varsity experience under their belts, and better results are expected.

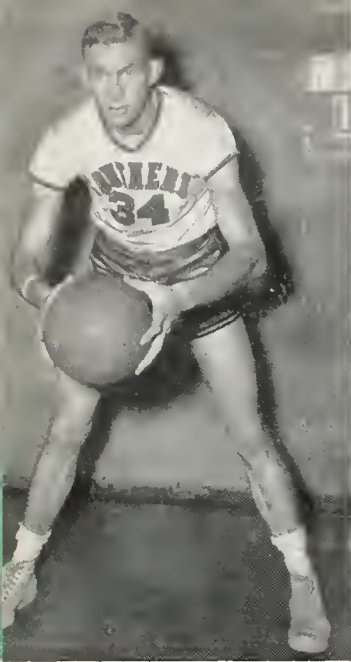
The Burch boys were defeated in several close games. Student enthusiasm for varsity basketball is increasing as was seen in the support of the Panthers this year.



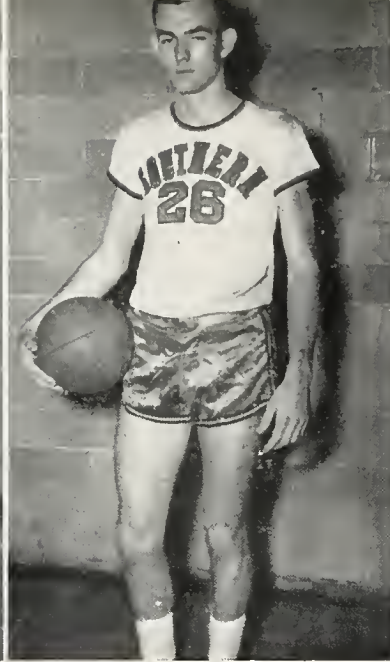
COACH BURCH

VARSITY TEAM PLAYERS: Left to right, front row, Pollock, Lee, Smith, Gilreath, Crouch, Hinton. Second row, Mgr. Bennet, York, Baker, Coach Burch, Wells, Browdy, Mgr. Looney.





WELLS
Center



CROUCH
Forward



HINTON
Guard



GILREATH
Guard

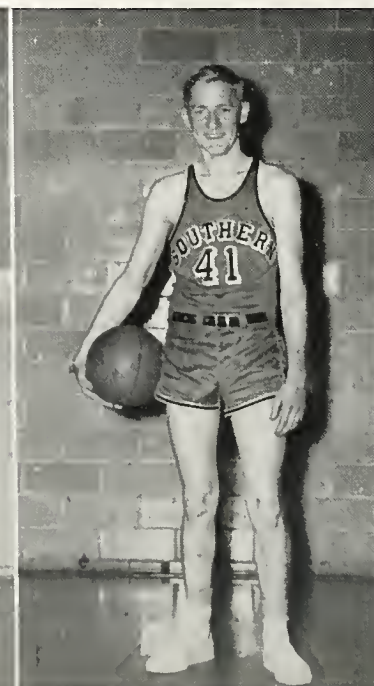


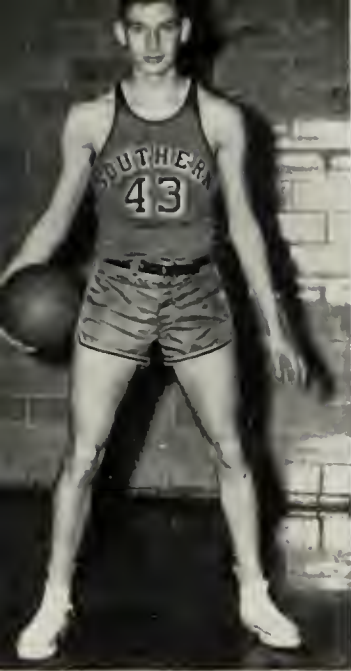
BAKER
Center

SMITH
Guard

BROWDY
Forward

BASKET

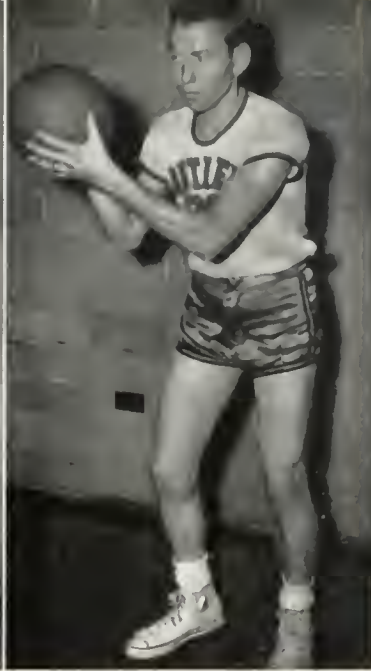




YORK
Forward



LEE
Forward



POLLOCK
Guard

BALL . . .



WOMEN'S

Take your choice—volleyball, badminton, tennis, swimming, basketball, ping pong, free-throw.

Girls at Southern have no trouble finding their favorite sport on the intramural calendar. In fact, most of them take part in almost all of the various tournaments.

Doing the big job of directing the intramural program is the Intramural Council with the aid of Elizabeth Davis. Heading the Council this year is Roye Wates, with Eleanor Hamilton as junior manager. Other intramural managers are Merry Lynn Hayes, basketball and freethrow; Evie Balch, volleyball and badminton; Connie Jean Conway, swimming, ping pong singles; Anna Lois Cecil, softball and ping pong doubles; Clara Lee Hammett, tennis singles and doubles.

Climaxing the year, "The Miss Victory" cup is presented to the team with the most points.

At the end of the fall quarter AOPi was leading in the race with the Independents close behind. In third place were the Zetas with the Theta Upsilon in fourth. Rounding out the list were the Kappa Deltas in fifth, the Pi Phis in sixth and the Gamma Phis in seventh.

The "top ten" girls in the individual points are awarded high point medals. As of the fall quarter, the top ten were: Haslam, ZTA; Hamilton, ZTA; Butler, AOPi; Balch, TU; Snow, AOPi; Hendrix, AOPi; Waddell, Ind.; Conway, AOPi; Graves, AOPi; Hallman, Ind.; Hayes, AOPi; Maloney, AOPi; Jarrard, AOPi; Story, Ind.; Cecil, Ind.



INTRAMURAL COUNCIL



MISS ELIZABETH DAVIS
Women's Athletic Director

FALL HIGH POINT WINNERS



YEA PANTHERS, FIGHT!



INTRAMURALS

Volleyball, badminton, and tennis doubles are the scheduled sports for the fall quarter. A close race all season, the Independents added another cup to their trophy case remaining undefeated. The freshman additions of Harpole and Loemaker added the needed strength for the championship team.

Runner-ups were the AOPi's with one loss. In third place were the Zetas, and the Theta U's rounded out the top four.

All-Stars elected were Balch, Theta Upsilon; Etchison, Gamma Phi; Butler and Hayes, AOPi; Harpole and Loemaker, Independents; Hines, Pi Phi; Haslam and Hamilton, Zeta; and Neely, KD. Alternates were Celeste Hayden and Clara Lee Hammett, KD, and Mary Jacq Snow and Ann Yates, AOPi.

Evie Balch, Theta U, was the winner of the badminton tournament. Semi-finalists were Balch, Harpole, Palfrey, and Wilson.

In the tennis doubles Hamilton and Haslam, ZTA, defeated Mitchell and Bryant, ZTA, for first place honors. Other semi-finalists were Shinn and Hammett, KD, and Butler and Higdon, AOPi.



TOP: INDEPENDENTS, VOLLEYBALL CHAMPS
BELOW: VOLLEYBALL ALL-STARS

EVIE BALCH
Badminton Champ



HAMILTON AND HASLAM
Place first in tennis doubles



SPIKE THAT BALL!





HAMILTON



STOWERS



GUY



MALONEY

SWIM MEET

The Zeta Tau Alpha team walked away with the Girls' Swim Meet with a total of 32 points. Of these, Eleanor Hamilton alone scored 25 to pace the individual winners.

Second place scoring honors went to Pi Phi with Mary Stowers and Shirley Guy leading the way and tying for second place individual honors. The Arrow team of Guy, Stowers, Kirby, and Wates copped the relay event.

The AOPi's placed third in the meet as Suzanna Davis Maloney held down the third spot in individual points. Making up the red and white relay team which came in second were Davis, Tyler, Martin, and Hendrix.

Other blue ribbons went to Martha Mae Neely, dog paddle; Shirley Palmiter, watermelon float, Mary Hurt, plunge for distance; Suzanna Maloney, side stroke for form; and Jere Murphree, diving.



ZETAS WIN SWIM MEET



"STARS FELL ON ALABAMA"

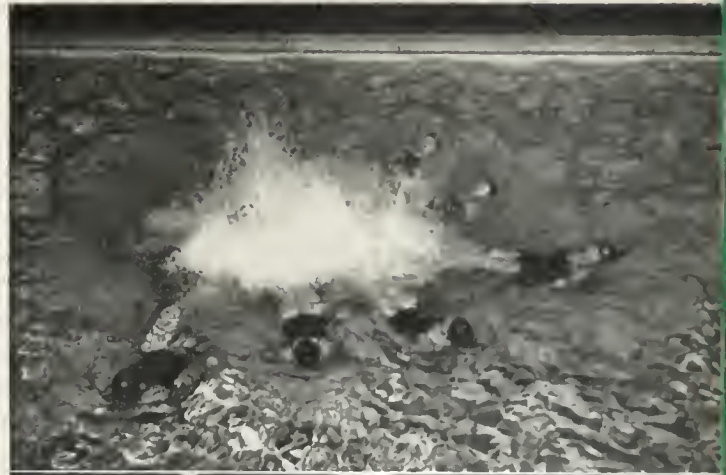


Or at least on those at Southern's tenth annual water ballet. The swimmers, accompanied by a choral ensemble, honored Alabama, the "Star of the South." Beginning in the days of the Indians, the cast swam through acts saluting the seven flags which have flown over our state and climaxed the show with a candlelight tribute to the Christian flag and America's freedom of religion.

Directing the ballet was Eleanor Hamilton, student director, and Elizabeth Davis, faculty director. Swimmers were Lee Kirby, Faye Hendrix, Kit Martin, Dottie Tyler, Connie Jean Conway, Ann Yates, Susan O'Steen, Charles Elliott, Mary Hurt, Anna Lois Cecil, Shirley Guy, Mary Stowers, Mary Jacq Snow, Jane Mooty, Pat Newman, Zackie Doughty, Marian Moss, Delynne Armstrong, Charles Graffe, and Avlona Yarbrough.

Don Davis narrated the performance and Nancy Graves was pianist. Assisting on various committees were Rebecca Jennings, Elizabeth Mitchell, Frieda Lehmann, Virginia Bernhardt, Ann Gravlee, Mrs. A. E. Speer, Mrs. Hattie Coats, Betty Ann Godfrey, Jack Shearer, Mrs. James B. Collins, and Mr. Louis Gibson.

Adding much to the water ballet was the music under the direction of Raymond Anderson. Ensemble members were Mildred Ann Tatum, Mary Jean Parson, Betty Ann Howell, Betty Jane Stone, Ann Bacon, Mary Ann Berry, Don Stewart, Grady Smith, and Dick Anderson.



BASKET

PI PHI—With the spectacular play of Frosh Jane Harpole, the Pi Phis tied for first place tournament honors, going on to win the playoff. Never missing Harpole led the league in total points. Top backing came from forwards Elsa Loemaker and Lena Melle Winters, and guards Peggy Warren, Shirley Guy, and Mary Stowers. Reserve strength came from Shirley Hines, Lee Kirby and Carolyn Cox.

AOPi—Paced by the high scoring combination of Merry Lynn Hayes and Marilyn Butler, the AOPi squad tied with Pi Phi for first place in regular season play. Added strength came from forwards Harriet Higdon, Nancy Graves, Faye Hendrix, and Berma Jarrard. Speed was the main asset of the AOPi guards—Ann Yates, Dottie Tyler, Connie Jean Conway and Mary Jacq Snow.

KD—Another tie came as the Kappa Deltas and the Zetas tied for second place. The height and accuracy of Celeste Hayden and Jean Wilson and the terrific guarding of Peggy Massey and Clara Lee Hammett were the mainstays in the KD team. Right in there, adding that extra punch were Barbara Folks, Liz Cox, Pat Newman, Dorothy Jean Norris, Martha Mae Neely, and Ann Kennemer.

ZTA—The Hamilton to Haslam combination was the one-two punch of the Zeta Tau Alpha team. Frosh Mary Hurt proved to be a star performer. Rounding out the Zeta roster were Ellen Bryant, Mitchie



BALL

Mitchell, Ann Gravlee, Sylvia Dickerson, Becky Holt, and Lenita Long. This combo led the team to their second place tie.

IND.—Minus the Carroll twins, the Independents still proved to be a tough team to beat. The accuracy of Hilda Waddell was the big wheel in the Independent attack. She was supported by Helen Hallman, Jo Ann Howard, Ruth Smith, Anna Lois Cecil, Nancy Evans, and Betty Hamby.

TU—Evie Balch was easily the star of the Theta U squad. Boasting mostly a lower division team, the Theta U's should be one of the top teams next year. Making up the roster were Shirley Fuller, Carolyn Welsh, Barbara Hanners, Marguerite Surrelis, Jo Ann Alvarez, Flora Simmons, Jeannette Bryant, and Barbara Allen.

GPB—Although small, the Gamma Phi team boasted experience which is of great importance. Players included Myrtice Ann Green, Sulu Orr, Doris Shelton, Joyce Hyde, Mona Ivie, Gertrude Hatfield, Betty Jean Ryan and Helen Starnes.





AOPI, PiPhi BASKETBALL ACTION

This year's basketball tournament was nip and tuck all the way with the Pi Beta Phi and Alpha Omicron Pis fighting it out for the title. The regular season ended with both teams having last one game, and thus both teams were given first place points. In a playoff for the cup the Arrow team defeated the red and white squad by two points.

Among the high scorers as the season ended were Jane Harpole, Eleanor Hamilton, Merry Lynn Hayes, Marilyn Butler, Hilda Waddell, Evie Balch, Celeste Hayden, and Mary Ann Haslam.

Hitting for 41 out of fifty shots, Jane Harpole took top honors in the basketball free throw. Second place went to Ellen Bryant. A four-way tie for third spot was between Hatfield, Wilson, Hurt, and Folks.

Playing a big part in the intramural program are the referees. Besides gaining a better knowledge of the various sports, the referees get points toward high point women. Basketball referees were Snow, Hendrix, Hamilton, Hayden, Hammett, Hayes, Balch, Bryant, Yates, Guy, Cecil, Greene, Harpole, Loemker, and Massey.



HARPOLE
Free Throw Champ

FOUL ON WILSON, YELL THE REFEREES!



BASKETBALL STANDINGS

Team	W	L
Pi Beta Phi	5	1
Alpha Omicron Pi	5	1
Kappa Delta	4	2
Zeta Tau Alpha	4	2
Independents	2	4
Theta Upsilon	1	5
Gamma Phi Beta	0	6



YATES, HYDE HAYES GET THEIR PITCHING ARMS WARMED UP



HINES SLIDES IN SAFE AT FIRST

SPRING SPORTS

"Take Me Out To The Ball Game . . ."

Spring quarter brings softball to the Hilltop campus. One of the best liked of all the sports, softball allows a majority of the sorority girls to participate.

Another outdoor sport of the spring quarter is tennis singles.

There has always been competition in both ping pong singles and doubles. Ping pong singles is an event of the winter quarter, while doubles come in the spring.



CHECK THAT CUT!



OVER IT GOES



TOP—BATTING PRACTICE
BOTTOM—SNOW AND HENDRIX GETTING READY FOR PING PONG DOUBLES

THE
Activities





Tom L. McGinnis



EXECUTIVE COUNCIL

President Walter Greene
 Vice-President Bill Porter

LOWER DIVISION

Dave Buttram
 Lynn Crouch
 Russell Luquire
 Virginia Covington
 Peggy Massey
 Ellyn Etchison

UPPER DIVISION

Gerald Lambert
 Elmer O'Brien
 John Paul Tate
 Marilyn Brittain
 Eleanor Hamilton
 Betty Hamby

The Executive Council serves as the students' representative in the administration of student affairs. Its members are elected by vote of the student body. The Council is in charge of the May Day activities and Sadie Hawkins Day each year, as well as working with the administration to help smooth out student problems.



HONOR COUNCIL

Chairman Tommy Ogletree
Secretary Mary Jacq Snow
Publicity Chairman Bob Gray

MEMBERS

Carolyn Cox
Frances Sensabaugh
Barry Anderson
Martha Mae Neely
Joyce Spradley

As a part of the student government, the Honor Council plays an important part in striving to uphold the Honor Code. The members, who are elected by the Executive Council at the end of each year, explain the Honor Code to incoming freshmen, supervise signing of Honor Code pledge cards, and also hold hearings for those who have violated the Code.



STUDENT LIFE COMMITTEE

All non-athletic student activities of the different college groups are supervised by this committee, composed of representative students and faculty members. The group prepares the schedule of activities for the school year and oversees the establishment of an official school calendar, which helps to prevent conflicting school activities.

Chairman.....Mr. William R. Battle

Faculty—Dr. Charles B. Blair, Mr. P. B. Burch, Dr. Francis Christie, Dr. John M. Malone, Mr. Raymond F. Anderson, Mrs. Mary H. Sensabaugh, Mr. Robert H. Walston.

MEMBERS

Walter Greene
 Charles Browdy
 Ann Bates
 Jerry Palfery
 Betty Ann Godfrey
 Bill Porter

Bill Baxter
 John Constantine
 Charles Howard
 Benton Baker
 Mary Jacq Snow
 Don McNeil



PUBLICATIONS BOARD

MRS. VIRGINIA V. HAMILTON, Chairman

Dr. H. H. Creed
Dr. Sydnor Ownbey
Eleanor Hamilton
Gerry Palfery

Jo Taylor
John Constantine
Jack Shearer
Walter Greene

The functions of the Publication Board are the organization and supervision of the Hilltop News and the Southern Accent. The Board is a joint student-faculty committee authorized by the student body constitution.



JOHN CONSTANTINE
Editor



GERRY PALFERY
Business Manager

HILLTOP NEWS

THE HILLTOP NEWS is the campus weekly newspaper. This year the HTN has been progressive, has taken stands on many controversial issues, has featured various extra-curricular topics, such as "Prehistoric Alabama Indians", "Profanity in Drama", and "Canada A Power", has made letters to the editor an important feature once more, and most important of all, has given many students majoring in many different fields the opportunity to contribute to the campus "life-in-print".

Working on a school paper provides a student the opportunity for a full awareness of campus activities, gives students a significant voice in school affairs, and enables students to develop their talents for various forms of writing, from sports, funny or serious features, to factual news reporting. The valuable experience gained in every case outweighs the so-called "burden" of time and effort spent.

Purely a student responsibility, the HTN is the medium for the student's views of campus affairs. It is written and supported by the Hilltop students—it is the mirror of campus life.

—John Constantine



Editor-in-Chief
JOHN CONSTANTINE

Business Manager
GERRY PALFERY

Managing Editor
WILEY CLEMENTS

News Staff: Marilyn Scofield, Grady Smith,
Mary Jean Parson

Staff Feature Writers: Gene Bishop, Louis Herz-
berg, John Hook, Frances Copeland, Eleanor
Hamilton

Photography: Grady Smith and George Allen

Production Staff: Mary Ann Berry, Peggy Noah,
Vance Sparks

Men's Sports: John Hutcheson, Grady Looney

Women's Sports: Harriet Higdon, Connie Conway

Cartoonists: Vernon Russell, Winkie Hall, Fran-
ces Copeland, John Hutcheson, Jere Williams





THE 1954 SOUTHERN

Editor
JACK R. SHEARER

THE STAFF

- Editor: Jack R. Shearer
- Business Manager: Jo Taylor
- Copy Editor: Mary Jean Parson
- Literary Editors: Barbara Allen, Barbara Hanners
- Faculty: Betty Wilson Story
- Classes—Seniors: Elmer O'Brien
Undergraduates: Betty Hamby, Leon Fillingim
- Organizations: Carolyn Cox, Marilyn Drash
- Greeks: B. J. Ryan, Grady Looney
- Activities: Donna Mokros, Harriett Higdon, Patti Turner
- Sports: Connie Jean Conway, Evelyn Fenn, Grady Smith, Robert Jett
- Features: Frances Sensabaugh, Patsy Pace
- Photographers: Bill Dean, Grady Smith, Charles Mooney, Clarence Farmer
- Ads: Barbara Hanners, Jean Wilson



ACCENT

Business Manager
JO TAYLOR



The staff of the 1954 Southern Accent has worked hard this year to give the students of Birmingham-Southern something to enjoy now and in the years to come. Their ultimate goal was to produce an interesting and representative portrayal of campus life. This idea was begun by electing Jack Shearer, editor, and Jo Taylor, business manager, last spring quarter.

From front cover to back students have been used in every job available so that in the end it could be said, "This is a Student Publication."

For an excellent job of gathering and recording yearly events, the whole staff is to be commended.

It was long and tedious work, with many long hours spent when deadlines loomed ahead, but it was fun, to say the least.



"On Stage" with BSC College Theatre



The dramatics arts program at Birmingham-Southern has grown as varied and nearly as extensive as the theatre programs found on any liberal arts campus of this size. Sponsored by the Department of English and Dramatic Arts, the College Theatre was composed of three units this year—the College Theatre proper, the Conservatory, and the Children's Theatre. Dr. Cecil E. Abernethy is the faculty advisor of the College Theatre. Their goal is to bring to the college the "best in theatre." Those who didn't see "Amahl and the Night Visitors" under the direction of Mrs. Martha Dick McClung, "Arsenic and Old Lace" directed by Stuart Mims, "Simple Simon" led by Mrs. Dorothy T. Schwartz, and "The Enchanted Cottage" directed by Miss Rebecca Jennings, missed some splendid acting.



Imaginations ran wild in all these productions. "Simple Simon", which was given for Birmingham Junior Programs, was enjoyed by both students and children.

The "Green Room", a place of reading, acting, and theatre talk was furthered this year. A new constitution was written, and a program of awards for outstanding work in college theatre was set up also. It was a pretty full year, with much variety in program.





FRESHMAN CAMP

New freshmen were made to feel right at home when the dean decided to take college to camp. Triangle Club members helped the faculty members to make Camp Winnatoska into a pleasant week-end for the incoming frosh.

Orientation in the out-of-doors proved to be even a bigger success than last year, with the enrollment at its biggest peak since post-war years.



A little relaxation



Choose your partners and circle left

Dr. Christie enlightens the freshmen



Do the bunny hop!



Ministerial Student proves he's a real 'hep-cat'!





HEY—FELLOWS, HELP!

Their perttiness is unquestioned. They is more'n likely husband hunting an' ah'm thinkin' it ud be a good idea to be awares of the fack so's not to be caught. This, as ah guess yawl already knows, is

Sadie Hawkins Day

DOGPATCH'S BEST-DRESSED



PI BETA PHI WINNING FLOAT



HOME WAS NEVER LIKE THIS—





A little cheesecake, please



Serenade of the Skunk Hollow Six



How'd you like to be in Dogpatch?



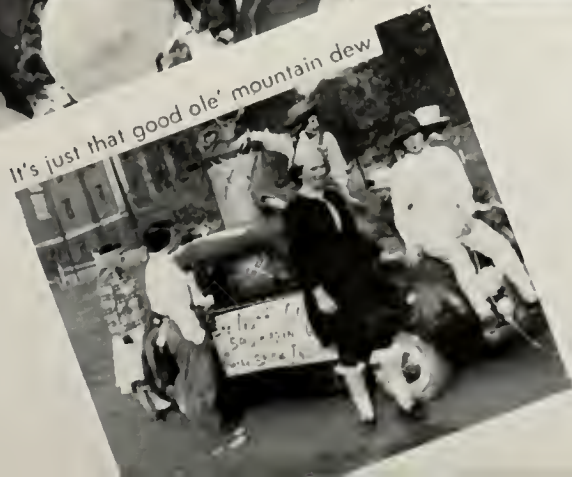
Is the money worth it?



On top of ole' Smoooookee!



Ain't this fun!



It's just that good ole' mountain dew



This can't be true, dear.

Miss Southern Accent



In the fall, a young editor's fancy lightly turns to thoughts of Miss Southern Accent. The winner is chosen each year from a group of thirty-two girls representing various campus organizations in a contest sponsored by the Southern Accent. The judges this year—Mrs. William E. Griffith, fashion expert; Mrs. William Van Gelder, professor of English; and Mr. Tom McGuire, photographer—had the unenviable but delightful task of picking a prize rose among prize roses. However, they carefully selected five beauties, eleven favorites, and named Miss Julia Bruce as Miss Southern Accent of 1954.

MR. HILLTOPPER

Mr. Hilltopper, the all-campus talent show sponsored by Alpha Omicron Pi sorority, introduced talent 'Southern hadn't seen before. Highlights were Marilyn Tate, ventriloquist, and her dummy Emma; Tommy Pinion and his piano; and the AOPi chorus line.

Dave Buttram, candidate of Zeta Tau Alpha, was elected "Mr. Hilltopper". Mary Jacq Snow was the outstanding senior from AOPi.





The AOPi's for the third consecutive year won Inter-Fraternity Sing. Mildred Ann Tatum directed them in "Louisiana Hayride" and "Jacquimonet Rose," and retired the cup.

Zeta Tau Alpha was second and Kappa Delta was third.

In the fraternities, Ken Lile led the winning Maltese Crossmen in the ATO "Pep Song" and "Charlottown".

The KA's took second place honors and the PiKA's third.

INTER-FRATERNITY SING



CAT'S PAW

Even TV has invaded CAT'S PAW. "What Should My Line Be?" and "You Were There", two of the skits, were evidence.

"From Here to Fraternity", written by Frances Copeland and directed by John Paul Tate, was the winning skit in the annual night of satire. The group included Pi Beta Phi, Kappa Alpha, Gamma Phi Beta, and Theta Chi.

"The Worst Show on Earth", directed by Frank Marshall, was the second place winner.

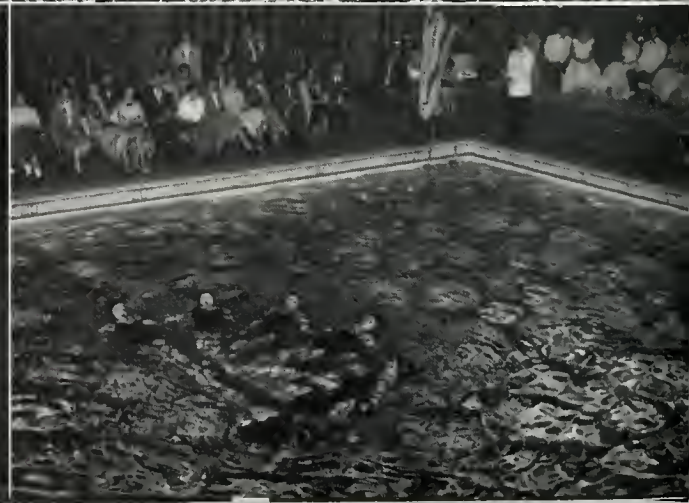
The Independents put on a show satirizing a "Tour of the Campus with Phi Beta Kappa", and the Faculty did a hilarious take-off on well-known College Theatre characters and roles.

All in all, it was quite a night!



WATER BALLET

The Physical Education Department held its eighth annual Water Ballet this year, using "Alabama, Star of the South," as its theme. The historical panorama of Alabama was presented with music, lights, flags, and perfectly-synchronized arms and legs. It included scenes depicting Alabama under seven flags. The ballet was under the direction of Miss Elizabeth Davis and Miss Eleanor Hamilton, student director.





But I got half of it back



Christmas AOPi style



New parking place



You like it?



Dr. Hall - visiting professor from Princeton



M. M. ...



Why shouldn't Southern have a Southern Flag?



Watermelon and tree climbing party?



The ...



Put your little foot - put your little foot



But they said it was ...



M-Coy meets the ministers-to-be



The last lecture

Life at Hanson Hall.

Quiet hours, please!



Rules are made to be broken!



Say the password.



Music majors don't have to study!



Saturday supper for Charles and the girls



Sunday, I'll bet



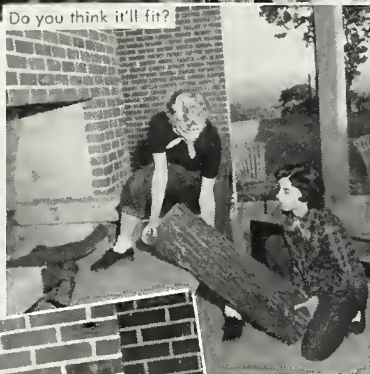
Modern, air-conditioned, fireproof?



Think about us!



Do you think it'll fit?



This is the life!



Pass the marshmallows



Let's have a party!

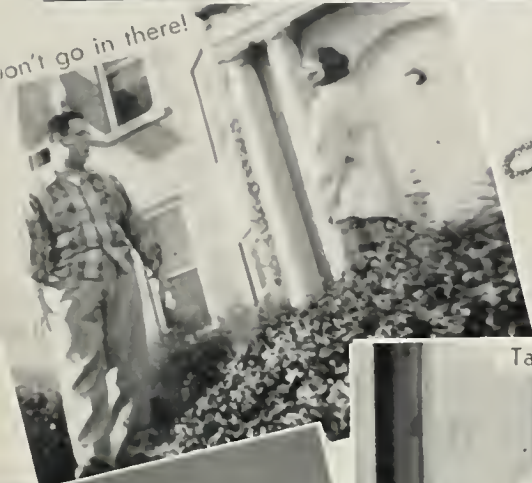




Cause



Effect



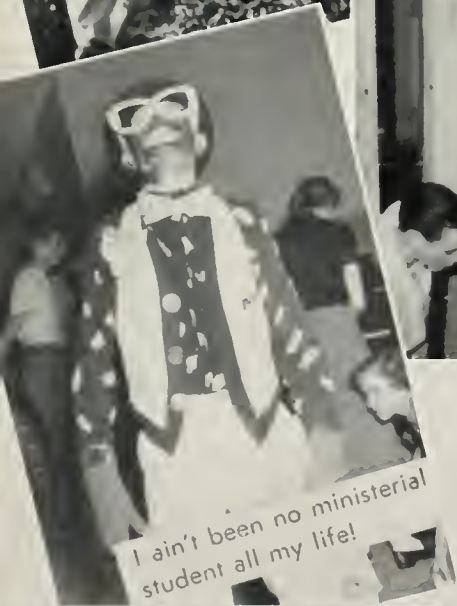
Life at Andrews



Take two, they're small!



The Collins and cat.



I ain't been no ministerial student all my life!



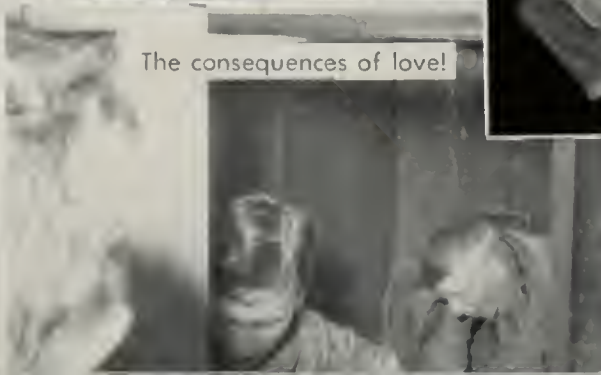
Close shave!



Dum-ta-dum-dum!



Congratulations!



The consequences of love!

THE

Ads





COMPARE
Your Entire Food Bill---
See How You Save, At

Hills

IT'S A
PLEASURE
TO SERVE

• For nearly **44** years Hill Stores have served the housewives of Alabama with the finest quality foods that the markets afford. Our stores are so arranged and so stocked with the finest quality nationally known foods that the most discriminating housewives find it a pleasure to shop their neighborhood Hill store.

We invite you to visit our nearby Hill store and see for yourself.

HILL
GROCERY
CO.



The South's Leading Commercial Producer of

COAL - COAL CHEMICALS - COKE

**ALABAMA BY-PRODUCTS
CORPORATION**

FIRST NATIONAL BLDG.

PHONE 7-5171

BIRMINGHAM

Compliments of

JOY YOUNG

**ALABAMA PRODUCE
COMPANY**

Mary Ball Candies

"The Pride of the South"

2015 5th Ave., North

1810 3rd Ave., North

943 South 20th Street

Candy — Ice Cream

Salads — Sandwiches — Lunches

COMPLIMENTS

of

LIBERTY NATIONAL LIFE INSURANCE CO.

and

BROWN-SERVICE INSURANCE COMPANY

FRANK P. SAMFORD, President

Birmingham, Alabama

HAMMOND ORGANS

Mason & Hamlin, Wurlitzer
and Chickering Pianos
Sheet Music and Books
Phonograph Records Magnavox Radios
Television and Phonograph
Pictures and Fine Furniture
Combinations
All Kinds of Small Musical
Instruments

If You Can't Call, Write

E. E. FORBES & SONS PIANO CO.

403 N. 20th Street

Birmingham, Ala.

Always Remember

"THE COFFEE CUP"

Shopping Center at Five Points West

Dixie Club Coffee

All-Purpose Grind

100% Pure

Roasted and Packed by

Dixie Coffee Co.

BIRMINGHAM, ALABAMA

Compliments of

Dales' Cellar Restaurant

Compliments of

College Book Store

and

Cafeteria

Balfour

Fraternity Jewelry

Our Birmingham Branch

Can Serve You At All Times

Enoch Benson

Frank McGinn

1926 4th Ave., No.



South's Greatest Producers of

Crushed and Screen Slag

Crushed Stone

Sand and Gravel

Ready-Mixed Concrete

Ready-Mixed Asphalt

Paving Material

Post Office Drawer 155

2019 N. 6th Ave.

Compliments of

THE COLLEGE HILLS CORNER

COLLEGE HILLS REXALL DRUG STORE

Telephone 6-4108

"We fill any Doctor's Prescription"

COLLEGE HILLS GROCERY COMPANY

Telephone 58-0141

"Your Friendly Food Store"

THE COLLEGE BARBER SHOP

645 Eighth Street, West

"We Will Do Our Best To Serve You"

A. C. MONTGOMERY, *President*

MONTGOMERY

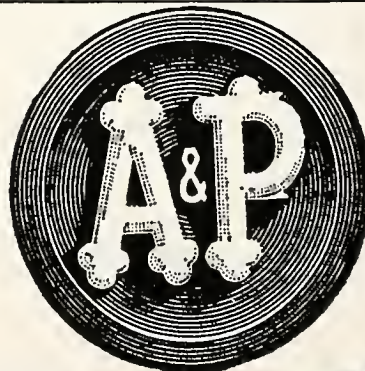
REAL ESTATE
& INSURANCE CO.

SALES, RENTALS, INSURANCE,
MORTGAGE LOANS

528 No. 20th St.

Birmingham, Ala.

Phone 4-3325



No Coffee at any price gives you
more Good Cups per pound
than A&P Coffee!

There Is Only One Genuine

BRILLIANT COAL

Only 2% Ash

Leaves No Clinkers

LUMP, EGG, WASHED NUT
AND STOKER

Produced Exclusively by

BRILLIANT COAL COMPANY

Birmingham, Alabama

All Forms Hazard Casualty

Insurance

JACKSON

Insurance Agency

Barber's Puretest
Milk and Ice Cream



delight of the campus
at
Birmingham-Southern

Start a Savings Program Now

You can start building
your future while still in
school with a Jefferson
Federal savings account.
Begin with as little as
\$1.00 weekly. Come in and
open an account today.

JEFFERSON FEDERAL
The Soundly Managed
Savings & Loan Association
213 North 21st St. Phone 7-0281

AMERICAN CAST IRON PIPE CO.

BIRMINGHAM, ALABAMA

Producers of Cast Iron Pressure Pipe
Fittings, and Cast Steel Products



"The Latchstring Is Always Out"

JEMISON REALTY COMPANY

Established 1903

2105 Third Avenue North

Phone 3-5141

PETE WILSON ROOFING AND HEATING CO., INC.

1748 Warrior Road

Phone 58-6528

R. B. BROYLES

Complete Home Furnishings
Including All Electrical Appliances
JESSE BATES, Class of '41 Home Decorator
2021 No. 2nd Ave.

PH. 3-7171 Bus.

56-1559 Home

Compliments of

Wood-Fruitticher Grocery Company

"Your invitation to a
Delicious Lunch"

WAITE'S

2101 7th Ave., So.

3-9224

A COMPLETE CATERING SERVICE



Layouts and Engravings by
ALABAMA ENGRAVING COMPANY
Birmingham, Alabama

Printed by
TIMES PRINTING COMPANY
Montevallo, Alabama





LIBRARY
OF
BIRMINGHAM SOUTHERN
COLLEGE

Tom L. McGuire
PHOTOGRAPHER

