

Digitized by the Internet Archive  
in 2009 with funding from  
Lyris Members and Sloan Foundation

<http://www.archive.org/details/southerncolumns381coll>

MAR 13 1986

McKEE LIBRARY  
Southern Missionary College  
Collegedale, Tennessee 37315

SPECIAL SECTION:  
THOSE WHO GAVE

# C SOUTHERN COLUMNS S

Magazine of Southern College of Seventh-day Adventists

Volume 38, No. 1, 1986



Endowed Business Chair  
Named For Ruth McKee

# SOUTHERN COLUMNS

The official magazine of  
Southern College of Seventh-day Adventists,  
published by the Alumni Association  
to provide news and information to former students  
and to the Southern Union family.

Southern College Alumni Association  
P. O. Box 370  
Collegedale, Tennessee 37315-0370  
(615) 238-2026  
Office hours: Weekdays 8 a.m. - 5 p.m.  
Fridays 8 a.m. - 12 noon

**FORGIVE US.** Your name may be on more than one mailing list. If you receive more than one SOUTHERN COLUMNS, won't you please write to us at the address listed above. Thank you.

#### Alumni Association Officers 1986-1988

ROBERT LORREN, '57	President
JAN D. RUSHING, '58	President-Elect
JOHN WM. HENSON III, '54	Past President

#### Executive Committee Members

JOHN WM. HENSON III, '54	DEBRA E. McKEE, '81
RUTH JACOBS, hon.	PETER READ, '55
JOLENA KING, '61	JAN D. RUSHING, '58
ROBERT LORREN, '57	DAVID R. WINTERS, '71

#### The College

JOHN WAGNER	President
WILLIAM ALLEN	Vice President for Academic Administration
KENNETH SPEARS	Vice President for Finance
EVERETT SCHLISNER	Vice President for Student Services
JACK McCLARTY	Vice President for Development and Alumni Relations
RON BARROW	Vice President for Admissions and College Relations
KENNETH R. DAVIS	Associate Director of Alumni Relations
VINITA SAUDER	Director of Public Relations

#### Staff of SOUTHERN COLUMNS

DORIS STICKLE BURDICK	Editor
GARY HOWE	Photographer
GEORGE TURNER	Layout Artist
SHEILA ELWIN	Student Writer

#### SOUTHERN COLUMNS Editorial Board

KENNETH R. DAVIS, Chairman	FRANCES ANDREWS
WILLIAM TAYLOR	RON BARROW
VINITA SAUDER	ROBERT LORREN
EVERETT SCHLISNER	JACK McCLARTY

COPYRIGHT — The entire contents of SOUTHERN COLUMNS is copyrighted by Southern College of Seventh-day Adventists, © 1986.

## Alumni President's Message


Dear Friends,

The holidays are over and the thoughts of our families getting together brought pleasant feelings. It was also a time to reflect on the first coming of Christ to this world and what that means to us. We recalled the blessings of the past year.

I have enjoyed the leadership of J. W. Henson and the other executive officers of the Alumni Association the past two years. I truly appreciate the opportunity I now have to represent each of you as president of the Alumni Association. The officers are already working on plans for alumni weekend next October 31 through November 2, and encourage you to start your planning for that enjoyable weekend.

I also represent you on the Board of Trustees of Southern College of Seventh-day Adventists, and as I see the financial problems facing colleges and students, am impressed with the great importance of the BECA and Endowment Fund drives. If Southern College of Seventh-day Adventists is to continue in a strong manner, it must have the support of each one of us. Thank you for this support.

Sincerely,



Robert A. Lorren, D.D.S., '57

## Mailbag

*The Alumni Association received several letters following Homecoming. Here are excerpts:*

Thanks for the warm hospitality, the honor bestowed, and the privilege of speaking at Homecoming '85.

Don Hunte  
Loma Linda, Cali

What a fantastic weekend I enjoyed at Southern College's 1985 Homecoming! Everything was planned to the "T." Loved the students in authentic southern attire. The Sabbath meals were outstanding (delicious and well planned). The Saturday night concert was very enjoyable. The organ concert was great. Surely many hours of effort and planning went into making the entire weekend be one to remember always.

Connie (Arnold) Jackson, '61  
Goodlettsville, Tenn

I should like to express my heartfelt thanks as well as the sincere appreciation of my sister Myrtle for the wonderful weekend which you and your co-workers worked so diligently to prepare for the alumni of Southern College.

Most sincerely  
Sarah (Slate) Gaic  
Hendersonville, N.C.

# Excellence

BY DORIS BURDICK

It's only natural that the tie between business and philanthropy is a close one. Both involve the transfer of assets.

The business department at Southern College is the first academic area to benefit from a magnificent gesture that breaks ground among Adventist colleges. A generous gift has established the Ruth McKee Chair for Entrepreneurship and Business Ethics. The \$400,000 endowment enables the college to add a new member to the business faculty. Interest income will provide continued funding. This is the first fully endowed chair on any Adventist college campus in North America.

"We have some prospective names for the newly funded teaching position," Dr. Wayne Vandevere reports, "and screening of candidates is in process." The individual selected will have strong interests in business ethics, management, and business development in a free-enterprise environment.

"It is fitting that our first endowed chair is named for someone whose entrepreneurial skills have been demonstrated over the past five decades and someone who has consistently modeled ethical principles," said President John Wagner. Ruth King McKee is the vice president for purchasing and receiving at McKee Baking Company. Since 1934 Mrs. McKee has been an equal partner with her husband in all of their business enterprises. Her business ability has played a large part in the success of the company.

Computer literacy is fast becoming a necessary skill in many fields, business among them. Again in this area a generous gift has been invested in business students at Southern Col-

lege. Ten new microcomputers and attendant printers have already been ordered to provide business computer laboratory experience. They and a like number yet to be ordered will be located in Brock Hall.

For 15 years now, another philanthropic gesture has had its impact on Southern's business students and the Chattanooga business community. In 1970, Eugene A. Anderson, an Adventist businessman in Atlanta, set up funding for a business lecture series. Each year it has brought to the campus a broad spread of speakers—a budget expert, a lawyer, a car salesman or personnel manager, even a woman police officer and a former con artist—to enrich students' understanding of business topics. This year 62 students enrolled for the hour of credit available as a seminar course. "The turnout is tremendous from the community," said Dr. Vandevere. "I'm pleased to see what the series is doing in acquaint-

provide us a total of \$18,000 annually to make possible our LTHC curriculum. In many cases our graduates accept administrative positions at nursing homes operated by one of those organizations."

Giving has been a two-way street with the business department over the years. For example, Dr. Vandevere has undertaken auditing treks to far places in conjunction with the church's auditing service. Last summer, he audited in Africa for five weeks. Field experience provides a teaching perspective unavailable from textbooks alone. And certainly it's a credit to the quality and thoroughness of Southern's business program that at least five of this year's prospective graduates have already been invited to join the General Conference Auditing Service.

These examples of what philanthropy is doing for one department are illustrative of what gifts mean to other areas as well. During the last

## LECTURES, COMPUTERS, ENDOWED CHAIR



Economist Ziad Keilany chats with some of the audience following his presentation in the E. A. Anderson Lecture Series.

### COVER

Ruth King McKee receives a plaque recognizing the naming of the new entrepreneurship and business ethics chair in her honor. At the left is Dr. Wayne Vandevere, chairman of the business administration department. Making the presentation is Dr. John Wagner, president. (Photo by David Brooks)

ing our Chattanooga neighbors with the college."

"Another area in which philanthropy has strengthened our department is our long-term health care administration program," Dr. Vandevere added. "Life Care Centers of America, CareMore, Inc., and the long-term health care branch of Adventist Health System/Sunbelt

fiscal year, gifts to the college totaled more than \$2.5 million, according to Dr. Jack McClarty, vice president for development. This includes nearly \$1 million in subsidies.

"Every gift is significant and has a bearing on the future not only of the college itself but of the young people who come to learn," says Dr. McClarty.

## Eminent Author Chaim Potok To Speak



**B**est-selling American novelist Chaim Potok will be visiting the campus March 19 and 20 as a part of the President's Lecture Series.

His most recent book, *Davita's Harp*, was published in the spring of 1985. He is widely known for his five previous stories of contemporary Jewish life in America. In addition, Dr. Potok, a conservative rabbi, has written *Wandering*, a highly readable history of the Jewish people.

In *The Chosen*, his first published work, Potok focused on the conflicts of individuals seized by the crosscurrents of the secular world and personal religious convictions. "I think I stumbled quite inadvertently upon the central problem of any system of faith in the secular world," the author says. The book was subsequently the basis for a film.

An evening lecture at 8 p.m. on the first day of his visit will be given in Ackerman Auditorium. The public is especially invited to this presentation. When he speaks at the student convocation the following day (10:30 a.m. in the Physical Education Center), the public may also attend.

Dr. Rosalyn Yalow, 1977 winner of the Nobel Prize in physiology or medicine for her work in the development of radioimmunoassay, charmed her audiences as the first of two guest lecturers in the new series.

She stressed the importance of confidence and the willingness to put in the time and effort to do well. She told one student reporter, "It is the responsibility of the faculty, even as my teachers encouraged me, to help their students achieve as much as possible. My theory is that you are not simply teaching courses, you are teaching people. You have to know about the problems your students have, not just in your field of interest, but their general problems. I think on a campus like this students probably get much more guidance in this way than at state universities where you are one of the mob." ■



Sanford and Martha Ulmer, of Landsdale, Pa., with plaque

## Ulmer Student Center Named

**T**hey've shared love with hundreds of students. They've given visionary leadership to the ten million dollar endowment campaign. They've provided numerous scholarships. They've earned the respect and admiration of students, faculty, and members of the Board of Trustees."

With these words, the student center became the Sanford and Martha Ulmer Student Center, "dedicated in honor of the Ulmers' 50th wedding anniversary and in grateful recognition of their total commitment to the students of Southern College of Seventh-day Adventists."

A plaque and an album of campus photos were presented to the Ulmers by President John Wagner a few days before their Christmas Eve anniversary. At a student convocation in January, with the Board of Trustees convened and present as guests,

a brief ceremony marked the official naming of the center. Board members expressed further appreciation for the Ulmers' role in helping students.

"The Ulmers are an example of philanthropy at its best," said Dr. Wagner, "because their generosity flows untainted from a pure spring of love. All of us are inspired by it."

The Student Center, with its lounge, snack bar (KR's Place), Student Association offices, the Teaching Learning Center, Counseling and Testing Center, campus chaplain's office, CARE office, and prayer room, is actually an extension of Wright Hall. It was completed in 1973. In the lounge area (named the L. T. Haney Room) is a plaque recognizing the 1977 gifts of L. T. Haney which, along with employer matching gifts, provided its furniture and equipment. ■

*For the glory of God and the uplifting of man*

## April Organ Dedication Set

by Sheila Elwin

Whether you're an organist, a musician in general, or simply a lover of great music, there is only one place to be April 23 through 27: Collegedale, Tennessee.

Not exactly the cultural center of the South, you say? No, but it is the home of the Anton Heiller Memorial Organ, and the site of inspiring dedication services to be held in the Collegedale Seventh-day Adventist Church.

This very special organ, built by John Brombaugh, is the largest mechanical action organ in the United States, and one of the three largest in the world, built in this century. Named for the late Anton Heiller, distinguished Viennese organist, composer, and conductor, the organ has 4,926 pipes, 70 stops, 4 keyboards, and a glockenspiel.

The dedication ceremonies will begin Wednesday, April 23, with a concert by Leonard Raver, professor of organ at the renowned Juilliard School of Music, and official organist of the New York Philharmonic. Winning entries in the college's international composition competition planned for this event will be performed at the recital. Other concerts include the following: Peter Panyavsky, organist and music director for St. Stephen's Cathedral in Vienna, Austria, and professor of organ at the Vienna Academy of Music, will perform Thursday. This will be followed by Harald Vogel, director of the North German Organ Academy, in concert on Friday. Vogel is also a professor at the Hochschule fur Musik und Theater in Hanover. All three concerts will be in the Collegedale Church at 8 p.m.

The main dedication service will be on Sabbath at 11 a.m., and will be broadcast live on FM90.5 WSMC. Judy Glass, professor of organ at Southern College, and Peter Panyavsky will be the organists for the morning service. It will include the world premiere of a work composed by Panyavsky especially for the dedication.

In addition, a hymn festival is scheduled for 4 p.m. with Klaas Bolt, church organist to the Grote of St.

Bavokerk in Haarlem, Holland, and professor at Sweelinck Conservatory in Amsterdam. Saturday night's concert will be by Michael Radulescu, professor of organ at the Hochschule fur Musik in Vienna, Austria.

A dedication concert of the meantone organ in Ackerman Auditorium will be held Sunday, at 10 a.m. This organ, also built by Brombaugh & Associates, will be played by William Porter, professor of organ and harpsichord at the New England and Oberlin Conservatories of Music. Dedication activities will conclude the same day at 2 p.m., with another concert by Harald Vogel, on the meantone instrument.

In addition to this superior concert schedule, two days of workshops will be held.

There is a suggested donation of \$5 per concert or \$25 for all seven dedi-



cation concerts. The entire series will be taped by American Public Radio for distribution via satellite to over 300 public radio stations in the United States, Canada, and Australia. More information on all concerts and workshop sessions may be obtained by calling (615) 238-2880. ■

## Sahly Chosen Next President

Dr. Donald Ross Sahly, 43, has accepted the invitation to become the 22nd president of Southern College of Seventh-day Adventists.

The invitation was extended upon the vote of the Southern College Board of Trustees, which met January 23. He will follow Dr. John Wagner, who leaves Southern College in May to assume the presidency of Union College in Lincoln, Neb.

Sahly now lives in Singapore, where he is the associate director of education for the Far Eastern Division of the Seventh-day Adventist Church. He supervises all levels of Adventist schools in the Philippines and Guam/Micronesia, an area with a graduate school, a seminary, three senior colleges, 23 high schools, and 131 elementary schools.

Concurrently he directs Home Study International (Far East). His six years overseas also include experience as academic dean and interim president at Southeast Asia Union College.

Before his move to Singapore, Dr.

Sahly was administrator of the Adventist English School in Bangkok, Thailand, from 1979 to 1981. The school has a student body of 1,200.

The college president-elect also has about 15 years of experience in elementary school teaching and administration. In 1978-79 Dr. Sahly was assistant to the vice president for public relations and development at Andrews University in Michigan.

Born in Canada, Dr. Sahly earned both a bachelor's degree and a master's degree at Andrews University. His doctor of education degree in educational administration was earned at the University of the Pacific in Stockton, Calif.

He and his wife, the former Wesslynne Choban, have a daughter, April, 17; and a son, Quentin, 14.

A 12-member screening committee, composed of board, faculty, administration, student, staff, and alumni representatives, was appointed last October. Their list of 39 suggested candidates was narrowed to nine names which were presented to the Board in December. ■



## CARE Encourages Christian Growth

An average of 300 students are attending the weekly Afterglow programs following Friday evening vespers, reports Allan Martin, Afterglow leader. Other opportunities for nurturing and sharing, both on and off campus, reflect similar Christian commitment. CARE (Collegiate Adventists Reaching Everyone) is headed up this year by Bill Dubois, left, assistant chaplain and Taskforce worker. Other students pictured with Bill are Bob Folkenberg, in charge of Campus Ministries; John Dysinger, leader of CABL (Collegiate Adventists for Better Living); and David Forsey, president of the Collegiate Missions Club.

## Lecture Series Off and Running

Now at the half-way point, the 1986 E. A. Anderson Lecture Series has already included a reformed con artist (Frank Abagnale), a woman police officer (Nancy Hightshoe), a newspaper editor (Lee Anderson), an economist (Ziad Keilany), and an insurance corporation president (Thomas Gaines III).

Yet to come are five more lectures in March and April. "Success Performance Behavior—The Critical Differences" is the title of Dean Basham's lecture on March 20. He is director of training for Olan Mills, Inc. Paul Cinquemani, president of Adventist Living Centers, Inc., will speak March 27 on "Long-Term Care and Acute Care. Why? What Role for Church Health Care?"

On April 3 Karen Stophel, founder of Woman Alive, Inc., will present "Guides to Becoming the Person You Are Meant to Be." The following Thursday's subject will be nonverbal communication. Lecturer will be Cody Sweet, president and founder of Nonverbal Communications, Inc. The lecture series will conclude April 17 with Bob Scott's presentation, "I Cannot Recommend This Individual Too Highly Because . . ." Scott is president of Glendale Adventist Medical Center.

Each Thursday evening lecture begins at 8 p.m. in Brock Hall. ■

## Religion Division Expresses Thanks

At refurbished Miller Hall—now So-Ju-Conian Hall, the Religion Center—almost every planned improvement is now in place and functioning. The few exceptions await delivery of goods.

"Spontaneous expressions of appreciation are heard in the offices and classrooms every day," says Dr. Gordon Hyde, division director. "The division takes this opportunity to salute the generosity of the So-Ju-Conians, which has made this delightful and practical improvement a reality. A parallel salute goes to the Engineering Department of the college, which has implemented the improvements. Debra DeGrave and Associates are responsible for the interior decorating." ■



## March 16 to 21

Alumni over 60 have a fresh new opportunity to sample campus life at Southern College. *Elderhostel* is coming March 16 to 21.

The *Elderhostel* program is tailored to the growing number of older learners. It offers anyone 60 or more (or the spouse of someone that age) a great way to keep the mind active. One, two, or three classes, food, and lodging for the week are offered for the same inclusive price (\$195) applied to *Elderhostel* weeks on hundreds of other American campuses.

Most *Elderhostel* participants take all three courses offered, but only one is required. The classes do not presuppose previous knowledge of the subject, but offer mental adventure in a friendly atmosphere.

Classes this year are: *Current Topics in Nutrition* (to be taught by Bill

Allen, vice president for academic administration); *Organs and Organ Music Through the Ages* (by Judy Glass and Marvin Robertson of the music department); and *The Influence of Judaism in the Writings of Chaim Potok* (by Jerry Gladson of the division of religion). To make the week even more memorable, Potok himself will be lecturing on campus on Wednesday and Thursday.

Though *Elderhostelers* will be sharing teachers and other campus resources with younger students, they enjoy an advantage the full-time students might wish for: no exams to take and no papers to write.

Because the number of *Elderhostelers* is generally limited to 45, those interested in enjoying this special week at Collegedale are encouraged to make reservations as soon as possible: *Elderhostel*, Division of Adult Studies and Special Programs, Southern College, Collegedale, TN 37315. (616) 238-2910. ■





Photo by Barry Aslinger, News-Free Press

Desmond Doss, second from right, presented the December commencement address. Pictured from left are A. C. McClure, chairman of the board; Dale Morgan, senior class pastor; Michael Palsgrove, a nursing graduate; Mr. Doss, and William M. Allen, vice president for academic administration.

## PR Office Takes the Cake

Benchmarks of performance have been provided the public relations office at Southern College by successes in three recent competitions.

Three Silver Quill awards for excellence were given to Southern College in the 1985 IABC District II competition.

IABC is the International Association of Business Communicators. Winning entries were the poster depicting Southern College as one crystal apple surrounded by many ordinary apples, the *Activities Calendar*, and the *Viewbook*.

In the local Golden Pen competition, Southern College also was a favorite. Of 28 awards given to Chattanooga area communicators, 7 rewarded creative projects of SC's public relations office, under the direction of Vinita Sauder. Awards of Excellence were earned by the poster, the *Viewbook*, *Transcript* (SC's employee newsletter), the feature "A World View" in a recent issue of this magazine, and by SOUTHERN COLUMNS as a whole. *Advantage* (newsletter for prospective students) and the *Activities Calendar* garnered two Merit Awards.

In a district competition sponsored by CASE (Council for Advancement and Support of Education), Southern College again came out on top. *Advantage* won a Grand Award in the printed newsletter category, which had 19 entries. Among 46 entries in the special print communication category, Southern's apple poster took another Grand Award.

## Graduation Celebrated

For 106 students, graduation day arrived in December rather than the more traditional May.

Desmond Doss, recipient of the Congressional Medal of Honor for his heroism as a wartime army medic, challenged the graduates to "Let Your Light Shine." The afternoon commencement service followed a nurses' pinning ceremony for 42 associate degree and 15 baccalaureate degree students. Jan Haluska, associate professor of English at Southern College, chose the title, "Pins and Needles," for his address at the pinning.

Among the 46 baccalaureate graduates, 6 earned academic dis-

tinctions. Donna Lynn (B.Mus.) graduated summa cum laude with a grade point average above 3.90. Sondra Snider (B.A. Music) graduated magna cum laude (high honors). Gaye Colvin, Edward Lyons, Dale Moran, and Vivian Ott graduated cum laude.

Sixty students completed associate degree programs. Honored among them were Paul Cannon II and Jeanie Young (magna cum laude); and Claire Wiese Blum, Sue Crews, Becky Everett, Reba Sherrill, and Eva Wilkinson (cum laude).

Southern College has 370 seniors this year, the majority of whom will graduate May 4. ■

## McKee Library Recipient of Wyeth Book

An Andrew Wyeth limited edition volume has been given to Southern College by Mr. and Mrs. Joseph F. Decosimo of Chattanooga in honor of their friends, Mr. and Mrs. O. D. McKee.

The gilt-edged, suede- and buckram-bound volume is one of only 300 copies, each numbered and signed by the artist. The gift, with its faithful reproductions of Andrew Wyeth paintings, rough sketches, excerpts from Mr. Wyeth's handwritten letters and notes, and text by Richard Meryman, is No. 35.

"This is indeed a beautiful piece of work," said President John Wagner of the gift. "We sincerely appreciate the generosity of Joe and Rachel Decosimo." Joseph F. Decosimo is head of Chattanooga's largest CPA firm. The volume will be on special reserve in McKee Library. Of interest to most anyone, the volume will be of particular value as a reference work for art students.

Several years ago *Andrew Wyeth* was published by Houghton Mifflin Company and the complete printing of 50,000 copies quickly sold out.

(Since that time, single copies have been resold at 15 times the original cost.) The limited edition dates back to the same time, but was printed by a more exacting process, Colotype, with extraordinary care. For example, color reproductions were taken to the original paintings, including those in a major exhibit on American tour, in order to check first-hand on printing quality and color fidelity. The limited edition, with 194 numbered pages, has 10 pages not in the regular edition. ■

## Jan Rushing Voted Alumni President-Elect

Ballots cast in the recent Alumni Association election gave the president-elect position to Jan Rushing, '58. After two years as president-elect, he becomes president for two years, and then continues to serve the Alumni Association as past president for two more years.



Jan Rushing

Rushing is an executive vice president for Adventist Health System/Sunbelt Health Care Corporation. His duties involve Region I hospitals in Kentucky, Tennessee, North Carolina, and Georgia. He also is an elected member of the board of commissioners for the City of Collegedale. He was an associate professor of business administration at Southern College from 1971 to 1977. His wife, Patricia (Wilson), joined the SC nursing faculty in 1982. They have a son and a daughter.

On the same ballot, Jolena (Taylor) King, '61, sales/executive secretary at Collegedale Casework, Inc., was chosen to join the Alumni Association executive committee. Her husband, Roger S. King, '60, is a dentist in Collegedale and both of their sons have attended SC.

Debra McKee, '81, vice president for human resources at McKee Baking Company, is also newly elected to the committee. Deb majored in history at SC and now is working toward a master's degree in business administration.

One more new name on the slate of officers is Peter Read, '55. He pastors the Chattanooga First Church. He and his wife, Valmae (Minchin), have two daughters. Kathleen, '84, has completed her B.S. degree in nursing, and Cheryl, '85, also is a nurse. She received her associate degree last May.

At the same time, the Collegedale Alumni Chapter elected its new officers. David Winters, '71, a physician, is chapter president. Cliff Myers, Jr., '71, will be serving as vice president. The chapter secretary is Vickie Hall, '71. ■

## At Rest

JAMES M. ACKERMAN, 82, died Dec. 11, 1985, in Collegedale. He had been director of testing, audio-visual services, and admissions, and taught education classes at Southern College prior to his retirement in 1970. He was also the first city manager of Collegedale upon incorporation in 1969.

Ackerman was born in Yorkton, Saskatchewan, Canada. He graduated from Union College and Vanderbilt University. Later he was awarded a doctorate in education by the University of Tennessee at Knoxville.

He was an ordained minister and youth leader in Canada and Kansas before being called to the South for similar work. After leaving the Georgia-Cumberland Conference, he was principal at Forest Lake Academy and staff member at Madison College prior to coming to Collegedale in 1957.

Dr. Ackerman's first wife, Lois Palmer Ackerman, and a daughter were killed in an accident in Atlanta in 1948. Later he married Verna Bee Staley, who died of cancer. Survivors include his wife of 32 years, Dorothy Evans Ackerman, a former music teacher at Southern College; two daughters: Jean Kelln and Joyce Haynes, both of California; seven grandchildren and eight great-grandchildren.

ALMA (CHAMBERS) AGER, 68, died Oct. 17, 1985, in Rapid City, S. Dak. She was chairman of the behavioral science department at Southern from 1965 to 1972. She was born and raised in Alabama, and came to Collegedale for academy and her first college studies.

In 1945 she joined the staff of Plainfield Academy in South Dakota, then in 1955 moved to Loma Linda, Calif., to supervise a medical laboratory. In 1967 she was awarded a Ph.D. degree by the University of Southern California. After leaving Southern, she worked in South Dakota as a clinical psychologist with the Veterans' Administration. In 1974 she married Grant Ager.

WILLIAM P. BRADLEY, 87, science and mathematics teacher at Southern from 1923 to 1925, died Oct. 6, 1985, in Laurel, Md. His lifetime career in the Seventh-day Adventist Church also included service as educational secretary in the Southern and North Pacific unions, a number of years as a missionary to the Far East, and 25 years as an associate secretary of the General Conference.

Survivors include his wife, Mildred; one son, James; a sister, Ruth Jobs; and three grandchildren.

GENEVIEVE (ILES) McCORMICK OST, who taught communication classes at Southern from 1966 to 1974, passed away in Orlando, Fla., on Jan. 17, 1986. She was 70. She and her husband of ten years, Walter M. Ost, M.D., had moved to Deltona, Fla., from Collegedale a few years ago.

While at Southern she had traveled widely with a speech choir, and was active in recruitment and as a sponsor for the Student Association. In the Collegedale SDA Church she was head deaconess for several years. Survivors include her spouse, a son, a daughter, and two grandsons.

*adventure in*  
**Europe**

Travel to Europe with Southern College  
and your fellow alumni  
June 12 to July 11  
Price: \$2650

Write: Dr. William Wohlers, Director  
Division of Humanities, Southern College, P.O. Box 370  
Collegedale, TN 37315-0370

# SOUTHERN PEOPLE



Peggy Bennett



Jerry Gladson



Floyd Greenleaf



Art Richert

■ The faculty affairs committee has recognized the following individuals for their scholarly activities: **Peggy Bennett**, for "Discussion of Retrospective Conversion Utilizing the Solinet Lambda System In-House," a presentation to the Alabama Library Association; **Jerry Gladson**, for a presentation on theodicy and another on Job at the Society of Biblical Literature, and "The Book of Wisdom, Song of Songs," a book review in the *Catholic Biblical Quarterly*; **Floyd Greenleaf**, for "The True Church and the Poor," a book review in the *South Eastern Latin Americanist*; and **Art Richert**, for an article on parabolas in the *American Mathematical Monthly*.

■ **Orlo Gilbert**, professor of music, has won by audition the position of assistant conductor for the

Chattanooga Symphony Orchestra. Mr. Gilbert is also the music director of the Chattanooga Youth Orchestra, which gave its first performance of the season in December. He will be conducting the Southern College Symphony Orchestra on a tour to the Orient at the close of this semester.

■ A scholarship for the great-grandson of William Burchard has been given to **Tony Burchard**, a sophomore religion major from Russellville, Ala., by So-Ju-Conians (alumni of the 1916 to 1944 era). Will Burchard was an Adventist coal miner arrested in 1894 along with George Colcord, founder of Graysville Academy (forerunner of Southern College), and several other Graysville Adventists for state Sunday-law violations. A *School of His Planning* recounts their chain gang experiences on pages 6 to

10. Tony's father attended Southern in 1965-66.

■ On the Orlando campus, five faculty members were inducted into Sigma Theta Tau, a nationwide nursing honor society, recently. **Flora Adams, Debby Edgerton, Johanna Neubrandner, Cherie Thompson, and Marlene Young** were invited into Sigma Theta Tau on the basis of their excellence in

clinical, academic, and research achievements.

■ An invitation to be a key speaker for camp meeting is taking **Norman Gulley**, professor of religion, to Great Britain in April. The invitation to the North British Camp Meeting came as a response to Dr. Gulley's articles on Christology in the June and August issues of *Ministry*.



## A Street in Their Honor

In 1958 William H. and Elsie Mae Taylor arrived in Collegedale. Some 28 years later they still are very much a part of Southern.

Bill has been assistant to the president and director of alumni relations since 1981, after serving in other capacities such as director of student affairs, director of public relations, and professor of communication. Though retiring now from the alumni directorship, he anticipates working part time with the scholarship endowment campaign and the Committee of 100. For nearly 20 years Mrs. Taylor has provided answers as switchboard operator and receptionist in the administration building. Their children are all SC graduates—a medical doctor, a CPA, and a nurse.

The vision of Bill Taylor has reached beyond the campus for which it is estimated he has raised or helped raise \$18 million. Participation in United Way, the American Diabetic Association, and the Lions Club extended his influence. Ingathering field days and a year of service at Southeast Asia Union College in Singapore demonstrated the Taylors' openness to world needs. In recognizing their loyal service by the naming of the road in front of Wright Hall, President John Wagner said, "Taylor Drive will provide us all with the opportunity to literally as well as figuratively follow in their tracks of dedicated service to God and humanity."



Don Crane, '60

# A MONTAGE of MEMORIES



A chat in the Garden of Prayer

Some alumni called Homecoming 1985 the best ever. Surely it ranked as a wonderful occasion for the hundreds and hundreds of alumni and family members who came back to the campus the end of October. An open house and Friday afternoon program and concert in So-Ju-Conian Hall, followed by supper, music, and remembering in the Harold Miller Choir Room of Mabel Wood Hall were Founders' Day highlights. The Garden of Prayer was dedicated that same afternoon.

From the vesper service with Marvin Williams, through Don Hunter's Sabbath sermon, lunch for 1350 guests, music—both in the church on the Heiller Memorial Organ and with Brad and Olive Braley at So-Ju-Conian Hall, supper fellowship, a meditative parable by Carolyn Luce Kujawa, to the business meeting with its introductions and awards, alumni participated with enthusiasm. The day was capped off with Mac Frampton's piano concert and an alumni-student basketball game, won by the future alumni.



Brad and Olive Braley, with a friend



Leaving the Religion Center, So-Ju-Conian Hall

*Homecoming* HIGHLIGHTS



Heritage Room discoveries



John Wagner in Pierson Chapel



Fred Cothren, Helen and Charles Boykin, '28



Gordon Hyde at So-Ju-Conian Hall



Founder's Day



Ruth and O. D. McKee, '28



Margaret Connell Thompson, Jan Henke, Katharyn Anderson Crowder



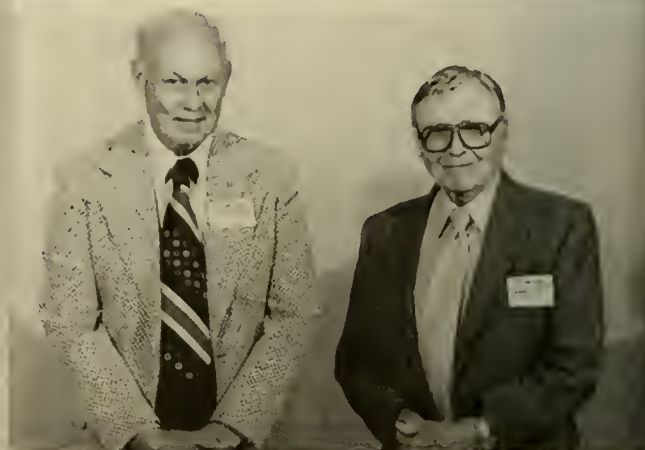
Dolly Darbo Fillman, '53



Brad Braley meets friends



1925  
Left to right: D. W. Hunter, Herman Slate, Mildred Bradley, Merrill Dart, and Jesse Cowdrick



1935  
Left to right: W. Everett Coolidge and Lowell Byers



1945  
Left to right: Verne C. Dortch, Ruth Risetter Watson, and Gunter W. Koch



1980  
First row: Ken Shaw, Raymond Eggert, Beth Best Sabo, Ron D. Smith  
Second row: C. Doreen Estes, Duane Shaffer, John Lazor, David L. Cotton



### HONOR CLASSES

1960  
Left to right, front row: Carolyn Luce Kujawa, Helen Elliott Krall, Norma Grubb Watkins, Phyllis Moore Dickerhoff, Phyllis Finney Driscoll, Esther Tyler  
Second row: Joan McIntyre Young, Truman Parrish, Wilfred Reyna, H. Lane Schmidt, Ruth Tyler Streffling  
Third row: Roger S. King, David McFaddin, Richard C. Larsen, Roy A. Shouppe, Don E. Crane, Bernard D. DeVasher

# Homecoming HIGHLIGHTS

1975

Left to right, front row: Jim Henderson, Dwight Herod, Alice Robertson Voorheis, Susan Ward Nielsen, Donald Schlender, Terry Sheldt Norris.

Second row: Jean McLarty Elmendorf, Nancy Bacheller, Janice Davies Yost, Melody Skoretz White, Kathy Lord, Betty Beaulieu Brown, Susan Bossenbery, Terrence Dunder, Bob Moore.

Third row: Thomas Bischoff, Laurence Mader, Lonnie Anderson, Becky Anderson, Carl Swafford, Kenneth Powers, Peggy Smith, William H. Taylor II, Richard Carey.

Fourth row: Marvin R. Williams, David Kratzer, Harry D. Best, Sharon Crago, Sue Bremson Gilk, Jesse Landess, Susan Gaspard Landess, Paula Furr Foust, Deborah Hyde Simmons.



## HOMECOMING '86 October 31 - November 2

Can you help put  
these people in  
the picture?

The Alumni Office is working very hard to update alumni records, and is especially working on updating the honor classes that will be represented at Homecoming 1986.

If you are on this "missing" list, it is because the Alumni Office has no current address for you, though you may be receiving this magazine on the basis of living in the Southern Union. Please send your current address, phone number, and any career and/or family information that would be of interest to your fellow alumni.

If you have helpful information about yourself or someone else on this list, please write: Pauline Pierson, Alumni Office, Southern College, Box 370, Collegedale, TN 37315-0370.

### Class of 1926

Palmer, Fred M.

### Class of 1946

Harris, Corinne (Dortch)

### Class of 1936

Brown, Maxine  
Meacham, Bernice

### Class of 1961

Brewer, Frances Jane  
Frith, Roy Kenneth, DDS  
Kissinger, Kenneth C.  
Weldon, Ross William

### Class of 1976

Anderson, James Ronald  
Brown, Vickie Carolyn  
Dasilva, Betty Clementina  
Davis, Charles Eric  
Davis, Jefferey Lynn  
Dorish, Denise (Knight)  
Fleischmann, Michael  
Foster, Ronda (Ramsey), Mrs. Jimmy  
Gay, Nancy Dawn  
Gayan, Beverly (Emm)  
Green, Debra Sue  
Groves, Gay Darlene  
Gurdon, Rebecca (Hafner), Mrs. T. J.  
Harrington, Susan Elizabeth  
Harris, Jon Michael  
Hayne, Shannon Rose Lee  
Heath, Marilyn, Mrs.  
Hickey, Daniel Eugene  
Higgenbotham, Rebecca (Blackwood)  
Hill, Linda (Holbrook)  
Hill, Sheila  
Hodgkin, Dorothy Jean (Walker)  
Hung, Jean  
Irish, Susan Gail  
Jeffers, Rhonda (Bernard)  
Joham, Erwin  
Jones, Peggy Angelika  
Jorgensen, Kay, Mrs. Gilbert  
Juhl, Shanda Ranae  
Kelly, Russell Earl  
Kenaston, Diane Elaine  
Lawson, Deborah Ann  
Loomis, Pamela Sue  
Luper, George Calvin  
Martinez, Donell (Kirkman)  
Mauck, David Richard  
McDonald, Farris Carter  
Mehner, Gunter Herbert  
Mitchell, Wendy (Findler), Mrs. Tim  
Peeples, Deborah Lynn  
Peters, Moses T.  
Pettigrew, Ursula  
Platt, Brenda Louanne

Pope, Debra Naomia  
Puerto, Rosita  
Ramsey, Kay Ellen  
Rasmussen, Merri Beth  
Rojas, Alexander  
Sigsworth, Dale Eugene  
Skender, Johnnie Lynn (Jump)  
Stitzer, Beatriz (Montejo), Mrs. Rich  
Stitzer, Richard Bruce  
Sullins, Alean (Dartt), Mrs. Wm. D.  
Ulise, Donna (Damazo)  
Urbina, Jeanne (Phelps), Mrs. Joe  
Waagen, Jack Alan  
Waagen, Linda (Vanderlaan), Mrs. Jack  
Ward, John Millar  
Warner, Mrs. Lucinda  
Wood, Dennis Vernon  
Zima, Jane, Mrs. Robert

### Class of 1981

Alzamora, Amparo Liz  
Anderson, Gwyann Iola  
Britt, Sanford Raymond  
Fast, Curtis Wayne  
Ladd, Margaret Jeanne  
Lechner, Patricia Louise  
Levens, June  
Mahoney, Katherine (Haughland)  
Monteith, Kathryn (Teixeira)  
Mwero, Amos Juma Merengo  
Myhre, Lois, Mrs. Les  
Newlon, Richard R.  
Ramsay, Homer Lindsay  
Ramsay, Laura Lynn (Pervis)  
Rodeghero, Mrs. Deborah  
Smith, Elizabeth (Dittes), Mrs. Chas.  
Steger, Ingrid H.  
Stiles, Marcia Dawn  
Tritch, Harold Ray III  
Umber, Patricia Kay (Imler)  
Warren, Peggy (McDonald), Mrs. Willie  
Wentworth, Elizabeth J.

## College Honors Come Even After Graduation

The past year was an honorable one for the Alumni Association.

Two new Honorary Alumni were chosen. Their service records give a hint of their dedication to Southern. **Ray Hefferlin**, professor of physics, has been on the faculty for 30 years, his entire career. Exchanges with foremost scientists in other countries, including the Soviet Union and the People's Republic of China, have kept him from provincialism. **K. R. Davis** joined the faculty in 1959 as a Bible teacher and the dean of men, and was here for seven years. After four years away, he returned in 1970. He now is



Ray Hefferlin



K. R. Davis

director of counseling and testing, and sponsors the Student Association. Summer recruitment activities have given him friends all over the Southern Union.

**Fred and Edythe Cothren** were honored together as Alumni of the



Fred and Edythe Cothren

Year. He, a retired medical doctor, and she, a recent recipient of a doctorate in music, have given exemplary support to the college. Edythe

Stephenson Cothren is a member of the Board of Trustees and has provided leadership for the So-Ju-Conian group of alumni. The Cothrens belong to the Committee of 100, and have provided scholarship funds and other financial support.

Young Alumnus of the Year honors went to **Denzil McNeilus**, of



Denzil McNeilus with President John Wagner

Dodge Center, Minn., executive vice president of McNeilus Companies, major manufacturer of cement trucks. He illustrates the fact that Southern's Alumni Association encompasses former students as well as graduates. Denzil's wife, Donna, is a 1979 graduate. Denzil was named to the SC Board of Trustees in 1984, and he and his wife joined the Committee of 100 last year.

Two Distinguished Alumnus Service Awards were presented. **Ruth Kneeland Jacobs** was honored for her support of alumni activities. A So-Ju-Conian, she received an honorary diploma last May. **Don Hunter** of Loma Linda, Calif., member of the Class of 1925 and main speaker for Homecoming 1985, received recognition for his 60 years of service for the church here and abroad, and his support of Christian education.

Besides these whose names have been added to plaques at the head of the staircase in Wright Hall, many other alumni received recognition. Three couples who were main con-

tributors of seed money for the alumni giving program in the past five years were honored: **David**, '69, and **Evelyn (Erickson) Castleberg**, '68, of Durand, Wis.; **James, Jr.**, '60, and **Joy (Tanner) McElroy**, '61, of Cuba, Ala.; and **William**, '55, and **Myrtle (Ezell) Hulsey**, former student, of Collegedale.

**J. W. Henson III** was presented a gavel in appreciation for his service as Alumni Association president during the past two years. **Mazie Herin**, '37, of Fletcher, N.C., was recognized in the 25th anniversary year of the baccalaureate nursing program at Southern, which she helped found. **William A. Iles**, Apopka, Fla., was given a plaque recognizing his leadership in the Committee of 100. **Ruth Battle** received group appreciation for her gracious hostessing of Sabbath lunches at homecoming time.

Relating especially to So-Ju-Conian projects, a commemorative plaque is at the entrance to the new Garden of Prayer. This beautiful spot is a memorial to **Symon and Leota King**, parents of **Ruth King McKee**. **Charles and Gloria Lacey** were recognized for their impressive landscaping work in the entire area by So-Ju-Conian Hall, the Religion Center which formerly was Miller Hall. **Charles Lucas** was commended for his leadership in the actual restoration of the building. Memorial donations—the baptistry by **Theo Maddox, Jr.**, in honor of his wife, **Nellie Henderson Maddox**, and the piano and organ by the family of **Claiborne Bell and Edythe Hand Stephenson**—were also marked with plaques.

**Olive and Brad Braley**, '56, of Glendale, California, were given a plaque in appreciation of their music for the church over the years. A painting of **Harold Miller** was accepted by Marvin Robertson on behalf of the Music Department, now housed in Mabel Wood Hall. Mounted door knobs from old Jones Hall were presented to the following: **Jesse Cowdrick**, **Don Hunter**, **Walter Clark** (in absentia), **Lorene Fox**, **Jean Wingate Schill**, **Mildred Bradley**, **J. W. Henson III**, **K. R. Davis**, and **Dewitt Bowen**. ■



# THE PAST MEETS THE FUTURE

Those Who Gave, Fiscal Year, 1984-85



Once again the monetary gifts of alumni and friends are recognized. The President's Circle and the Associate listings (Century, Diamond, Golden, and Silver) represent cumulative giving by an individual or couple of more than \$2,500 over the years. The Club groups reflect gifts in the 1984-85 year alone (July 1 to June 30), which have not yet advanced a donor into an Associate group.

What each donor should know is that his gift is appreciated, whatever its size. It's like the children's song, "Little drops of water, little grains of sand, make the rolling ocean and the bounteous land." Because 1,888 alumni contributed \$132,572 during the 1984-85 fiscal year, BECA (Business Executives Challenge Alumni) kicked in bonuses of \$24,000. The class of 1954 deserves special mention for its 93 percent participation, which brought SC an additional bonus of \$6,000.

Every attempt has been made for accuracy in these listings. If your name is misplaced or omitted, please accept our apologies and notify the Alumni Office so that records may be corrected.

The 1985-86 goal to be met by June 30 is \$150,000 from at least 2,080 alumni. To all who have given in the past, and to all who will be giving, THANK YOU from the student body, the faculty, staff, administration, and board of Southern College of Seventh-day Adventists.

# DONOR GIFT CLUBS

## President's Circle \$25,000 and up cumulative

Anderson, E. A.  
Bowers, Robert E. & Norma  
†Cason, Albert & Gail  
Castleberg, David L. & Evelyn  
†Collins, Thomas  
Cothren, Fred & Edythe  
Fisher, P. L.  
Fleming, Charles & Betty  
Hulsey, Bill & Myrtle  
Iles, Bill & Jean  
\*Maxwell, Myrtle  
McKee, Ellsworth & Sharon  
McKee, Jack & Betty  
McKee, O. D. & Ruth  
†McNeilus, Denzil & Donna  
Niver, Roy  
Preston, Forrest  
Schill, Jean  
Snodgrass, Ethel  
Starkey, Frances & \*Glen  
Starkey, Leola & \*W. C.  
Stover, Raymond & Elmyra  
Talge, J. H.  
Ulmer, Sanford & Martha  
Williams, Carolyn S.  
\*Wood, Lynn

## Century Associate \$10,000 to \$25,000 cumulative

Bowen, Dewitt & Josie  
†Byrd, B. T. & Sonya  
Burdick, Paul & Bille  
Clark, D. J. & Maryanne  
†Cowdrick, Jesse & Lois  
†Dart, Merrill  
Donald, Ruby  
Dean, Olivia & \*George  
Elkins, Harold  
†Eurick, Dewey, Jr.  
Garner, Julius & Beverly  
Hall, Albert N.  
Haney, Lyman T.  
Harder, Lyndon & Linda  
Hunter, Don & Kitty  
Janzen, Wayne & Elaine  
Johnson, Oscar R. & Mary  
Levering, Irad & Thelma  
McElroy, James, Jr. & Joy  
McKinney, James  
Mills, Don G. & Betty  
Schmidt, Ehrich  
Sharp, Margaret  
†Sines, Al & Lynora  
\*Talcott, Joe  
Taylor, William & Elsie Mae  
Waller, Louis & Sue

Watt, Elsie  
Wheeler, Ira  
Wilson, Charles H.  
†Williams, Larry  
\*Wood, Mable J.

## Diamond Associate \$7,500 to \$10,000 cumulative

†Baker, Sue  
†Butterfield, Arthur  
†Campbell, T. K.  
Chastain, Chalmer  
†Chong, Dayton  
†Fuller, Fred & Dorothy  
Graves, Charles  
Haegel, Robert E.  
Henriksen, C. David  
Jacobs, Les & Faith  
Kutzner, Waldemar  
†McChinnis, Bill & Kitty  
†Merchant, Bob & Agnes  
Michals, Herbert J.  
Ost, Walter & \*Genevieve  
Rimmer, Wayne & Neita  
†Sommerville, Lewis & Carol  
†Stanaway, Samuel E.  
Stevens, John V. & Winifred

## Golden Associate \$5,000 to \$7,500 cumulative

Brickman, Theresa  
Brock, Richard  
Conway, Bruce  
Cushman, Willis & Thelma  
Davis, K.R. & Jeanne  
Findley, P. T.  
Fogg, Frank  
†Ford, A. Carol & Betty  
Fuller, Forrest & Norma  
Henson, J.W. III & Audrey  
†Jarrett, David L. & Darlyn  
Johnson, Joan C.  
Kendall, Robert  
Knittel, Frank & Helen  
Leland, J. H.  
†Martin, Gerald & Kathleen  
†McClarty, Jack & Wilma  
Messinger, Martha & \*Harold  
Preston, Winton & Lorene  
Reiner, Richard & Lynnet  
Rogers, Herbert L.  
Rushing, Jan O. & Patricia  
†Smith, Evadne Thatcher  
Sommerville, Lewis & Carol  
Spanos, Alberta & Theodore  
Trimble, Robert & Callie  
Von Henner, C.  
Wallack, Dwight & Marijane  
Williams, James R.  
Williams, Robert W.  
Wong, Charles

†first time in category  
\*deceased

## Silver Associate \$2,500 to \$5,000 cumulative

Adams, Robert  
†Austin, Wiley  
Aussner, Rudolf R. & Kathe  
Bainum, Mark E. & Elaine  
†Barrow, Ron & Colleen  
Barto, Michael A.  
†Blair, Mardian  
Bouland, T. G.  
†Boyle, Jim & Darleen  
†Boskind, Richard & Darleen  
\*Bowen, R. G.  
Brown, Gordon  
Chastain, Andrew F. & Shirley  
Clark, Jerome & Ann  
\*Cross, Chester  
Durichek, John T. & Helen  
Edgmon, John H. & Marty  
Evans, Dorothy  
†Fitzgerald, C. V. & Janet  
Futcher, Cyril & Gladys  
Garner, J. M.  
Gebert, Paul H.  
†Gilbert, Orlo & Ellen  
Griffin, Betty Jo  
Gulley, Norman R. & Leona  
Hanson, Larry & Eleanor  
†Hilts, G. D.  
Huenergardt, Howard & Charlotte  
Hulsey, Steve  
†Jacobs, Carl & Ruth  
Keele, A. W.  
†Kerr, Elton R. & Marga  
Larsen, Richard C.  
Lawing, Lloyd & Etheline  
Ledford, O. M.  
Lien, Jerry  
Loh, Daniel  
Ludington, Clifford  
†Maddox, Theo  
Martin, Don  
McGill, Jerry & Carolyn  
McKee, Debra  
McKee, Russell  
Mitzelfelt, Richard W.  
†Murphy, Harvey  
Nelson, William S.  
†Nelson, William & Florence  
\*Nicholas, R. F.  
Payne, Doris I.  
Pendleton, Leslie & Barbara  
Rebman, A. F. III  
Reifsnnyder, Ed  
Reynolds, William O. & Mable  
†Robertson, Charles & Charlene  
Rogers, Herbert  
Rolfé, Cecil & Becky  
Ruf, Rolland & Barbara  
Simmons, Marion S.  
Smith, William  
Speyer, John F.  
Stoddard, Marlin H.  
Sue, W. A. & Ruby  
Tait, S. Reid  
Taylor, Debra S.  
†Taylor, Dennis & Joan  
Taylor, Victor & Ruth  
†Taylor, William H. II & Pam  
Thompson, Lois Rae  
Van Arsdell, Roger  
†Wagner, John & Lilya  
Ward, Jack  
Welch, Wallace D.

Williams, Carol  
Williams, Robert W.  
Willruth, Calvin W.  
Winters, David & Judy  
Wright, Clara

## Ambassador Club \$500 to \$2,500

Arellano, Joyce  
Berkey, Candace & William  
Bishop, Helen & Wilbur  
Center, Richard P.  
Coffey, Barbara & Cecil  
Colvin, Gerald  
Cowley, Doris  
Cross, Darrell & Billie  
Cruise, Joseph S.  
Defoor, Kenneth & Melissa  
Drayson, Ronald & Grace  
Hurt, Louise  
Johnson, Bill  
Kelly, J. Bruce  
Kinzer, Suzanne  
McClure, Alfred C. & Frances  
McClure, Baird  
Menard, Albert L.  
Moody, Harold W., Jr.  
Odom, Martha & Robert  
Odom, Robert Leo  
Perkins, Christene  
Richards, Evan Williams, Sr. & P  
Roll, H. F.  
Summerour, Brooke & Edna  
Swayze, Donald & Mary  
Wear, Elisabeth A.  
Whitehead, John Henson  
Zapara, Tom

## Loyalty Club \$250 to \$500

Bottsford, John, Jr. & Barbara  
Bowen, Robert & Dorothy  
Cowdrick, Elizabeth  
Crandell, Doris  
Crook, Stewart & Martina  
Daugherty, Harry M., Jr.  
Gentry, David Wayne  
Gentry, Michael Vance  
Gentry, Patti L.  
Grindley, Tom C. & Murlita  
Henderson, Lyle 'Rocky' & Lind  
King, Cecil  
Lewis, Daniel Gene  
Markoff, Jane Angell  
Murphy, Gladys Z.  
Shaw, Ronald  
Smith, Elouise & Warren  
Sparks, Vernon C.  
Yelvington, Clare

## Patron \$10 to \$250

Aalborg, Bryan & Sharon  
Abbott, Maurice & Dorothy  
Abernathy, Jocelyn G.

Abernathy, Marcia E.  
Abu-el-haj, Fawzi J.  
Acuff, Calvin C. & Lori  
Acuff, Fred E. & Chloe  
Adams, Bonnie J.  
Adams, Howard Jr. & Barbara  
Adels, Daniel Joseph  
Adkins, Lynnette Rochelle  
Adersol, Charles  
Aguilera, Ronald Jr.  
Aiken, Kathy  
Akins, Olivia  
Albock, Doris  
Albritton, Jerry & Elizabeth  
Albury, Candace Christyne  
Aldrich, Betty  
Aldrich, Edith  
Alexander, James Thomas  
Alcea, Waleska  
Allen, Betty  
Alonso, Rene Ramiro  
Alpin, Harold  
Almons, Robert H.  
Anderson, Alton Glenn  
Anderson, David W.  
Anderson, Elbert  
Anderson, Jeanette  
Anderson, Julius  
Anderson, Lonnie Gordon  
Anderson, Vernon  
Anderson, Wallace  
Andrews, Frances  
Arner, Sandra & Dennis  
Armet, Karen  
Arthur, Richard E.  
Ashcraft, Alan & Donna  
Ashlock, Donald & Jan  
Ashlock, Marcella & \*J. Frank  
Astalas, Anna Diana  
Atkins, David Lincoln  
Attridge, Sherry  
Austin, Elissa Michelle  
Ayers, Marcella Lyne  
Ayers, Marla Leigh  
Abbitt, Vernon Lee  
Acheller, Nancy  
Acheller, Rachel & Orren  
Adger, Charles Lee  
Adger, Ruth  
Aez, Michael  
Aunum, Timothy Ewing  
Auzer, Kenneth & Pearl  
Aker, Bernice E.  
Aker, Elisa Kay  
Aker, John E. & Murdnal  
Aker, Karen & Darrel  
Aker, Ruth  
Addwin, Clementine P.  
Allard, Thomas & Mary  
Alme, Mark Edward  
Alukes, Elizabeth & Howard  
Alukes, Edward C.  
Alurger, R. Curtis  
Alumes, Laura  
Almett, James  
Alrrett, William E.  
Alrow, Tresa & Ronald  
Alrtel, Larry & Johnnie  
Alro, Leonard W. Jr. & Anita  
Altram, Jerry & Chris  
Alschelor, Shirley  
Alguess, Dolores A.  
Alays, Sandra June  
Alal, Barbara  
Alason, C. L. & Mary  
Alker, Larry & Laura  
Alkett, John & Barbara  
Alkner, Horace R. & Sue  
Alldwell, Sandra Diane  
Alers, Robert Dewayne  
Aliden, Brenda

Benedicto, Donald Edward  
Bennett, Louise  
Bennett, Peggy Elizabeth  
Benson, Wayne & Martha  
Bentjen, G. Charles & Joanne  
Bentzinger, Ronald Bruce  
Berg, Helen  
Bergey, William & Merieta  
Berggren, Mildred  
Bernall, William  
Berry, James C.  
Beugnot, Eva  
Bevis, John David  
Biggs, Brian Eugene  
Bilbo, Joan  
Bird, Martin  
Bird, Mrs. Robert W.  
Bishop, Joseph Arthur  
Bishop, Loren Everett  
Bissell, Kay Anne  
Black, Patricia Mrs.  
Blackwell, Sarah  
Blackwood, Claire Vivia  
Blair, Wallace Buddy  
Blake, W. P.  
Blake, Robyn  
Blanco, Jack  
Blaney, Barbara Lynn  
Bleich, Deborah Jean  
Blinn, Gary Alan  
Bliznick, Bill & Betty  
Blue, June  
Bobalki, Virginia  
Bodiker, Marceil Elaine  
Boehme, Johannes Max Jr.  
Bogar, Larry Paul  
Bohannon, Donald Joel  
Bohannon, Jack B.  
Boksberger, Hans-Peter  
Boles, Julia Ruth  
Bolton, Lillian D.  
Bolton, Rhonda  
Bond, Cindy A.  
Bonjour, Kathleen  
Boston, Bill Eugene  
Boston, Valerie  
Bothe, Barbara  
Bowen, Jodee Marie  
Bowers, David Neil  
Boyd, Kathy  
Boyd, Maurine  
Boyd, Miriam  
Boyd, Robert Kenneth  
Boyd, Velma  
Boykin, Charlie A.  
Boyle, Claudine  
Boynton, Ruth.  
Brackett, Jimmie  
Bradley, Kenneth Wayne  
Bradley, Mildred  
Bradwell, Mrs. C. O.  
Bralay, Brad & Olive  
Brand, Jay Lloyd  
Brandt, Emilia Croft  
Brane, Fred & Alma  
Brann, Mary Denise  
Brannan, Kathryn  
Brass, Buddy  
Breece, Carmen A.  
Breece, Kathy A.  
Breece, Linda  
Brendle, Alvin Jay  
Brent, Florence  
Brett, Beverly  
Brewer, Teena Darlene  
Brewer, W. Eugene  
Bricker, Kathy  
Bridges, Astrid  
Bridges, John Thomas  
Brinegar, Dennis Gayle

Briner, Nancy  
Britt, Allison Lee  
Brockway, Teresa Ann  
Bromback, Jerald Edwin  
Brooks, Clyde F.  
Brooks, David Nathan Jr  
Brooks, Louise  
Brooks, Philip Brian  
Brooks, William Edmond  
Brown, Bevin Lee  
Brown, Deloris Gay  
Brown, Diane  
Brown, Edith  
Brown, Esther  
Brown, Gary Dean  
Brown, Gladys B.  
Brown, Glenda  
Brown, Harry III  
Brown, Jane E. & Newell G.  
Brown, Jane  
Brown, Roy Thomas  
Brown, Norman E.  
Brown, Oleta Lee  
Brown, Ronald Clifford  
Brown, V. Clifford  
Brown, Victor R.  
Brown, Walter E.  
Brownlow, John Richard  
Brownlow, Renee  
Brozny, John Frank  
Bryson, Mae E.  
Buch, Marc Daniel  
Buchanan, Kevin Lee  
Bucher, Larry Eugene  
Buck, Elsie  
Buckner, James Roy  
Buckner, Robert Scott  
Bucy, Elizabeth  
Buell, Homer Dexter, Jr.  
Buhler, Frances G.  
Bunch, Luke & Esther  
Bunch, Patricia  
Burby, Wade Simon  
Burchard, Robert & Ann  
Burdette, Emma G.  
Burdick, Gary  
Burdick, J. Gordon Jr.  
Burger, Dorothy  
Burke, Kenneth Iber  
Burke, Lisa Doreen  
Burke, M. Eugene  
Burke, Theresa  
Burks, Michael Odell  
Burnett, J. T.  
Burns, Robert Lee  
Burtnett, Helen  
Bush, Shirley J  
Butler, Alma Mae  
Butler, David Alan  
Butterfield, Edith  
Butterfield, Georgia G.  
Butterfield, Karen  
Byers, Lowell H.  
Byrd, Bernard  
Caddell, Troy  
Cagle, Julianne  
Caldwell, Norman Bruce  
Caldwell, Otho Richard  
Calloway, Larry Vernon  
Camacho, Gladys Esther  
Cantrell, Jacquelyn  
Cantrell, Tammy  
Cantrell, Terrance Gene  
Capman, Cherrie Lou  
Carballal, Manuel  
Carey, Andrew W. & Anne  
Carey, Michael  
Carithers, Juanita Jo  
Carlson, Nobel A.  
Carlton, Ashley R.  
Carlton, Karen

Carroll, Frances  
Carron, Ellen  
Carron, Verlie  
Cartabianca, Carmen  
Cash, Robert William III  
Cason, Janet Leigh  
Caudill, Billie  
Center, Myra Sue  
Center, Pamela Lynne  
Cеровski, Peter  
Chaij, Nicholas  
Challenger, Ava Doria  
Chapin, Betty  
Chapin, E. Y. III  
Charnetzky, Zelda Glee  
Chase, Alice  
Chase, Kerry Mark  
Chenoweth, Elbert E.  
Cherne, Scott Anthony  
Chesney, Darell  
Chesney, Richard  
Chestnut, Ruth  
Chin, Daniel Yee Yan  
Chinn, Penny Cheryl  
Chisholm, Cheryl  
Chism, Eobert L.  
Christensen, Alfred  
Christensen, E. Pearl  
Christian, Constance  
Christiansen, Hugo W.  
Church, Terri  
Cirigliano, Anthony  
Clapp, Richard Lowell  
Clark, Frances Inez  
Clark, Glenn  
Clark, Karen  
Clark, Pegan Sue  
Clark, Rondal Ellis  
Clark, Walter B.  
Clavet, Marceil  
Clayton, Rob Eugene  
Cleall, Andrea  
Cleaves, Richard B.  
Clemons, Marguerite  
Clifton, Keith Allan  
Closser, Jim & Myma  
Coble, John L., Jr.  
Coble, Normalou  
Cobos, Ellen  
Cochran, Mary  
Codington, Jo Anna  
Codington, Mark Russell  
Coe, Barry Joe  
Coffey, Marsha  
Coker, June  
Colburn, H. D.  
Cole, Michelle Lanet  
Collins, Edward Milton  
Collins, Lettie  
Collins, Vanetta Patrice  
Collver, Rebecca Lyn  
Cometa, Estrella Arbis  
Cook, Cheri  
Cook, Kenneth Richard  
Cook, Laura  
Cook, Russell Dennis  
Coolidge, Herbert  
Coolidge, William LeRoy  
Coon, Ethel L.  
Coon, Glenn  
Cooper, Adrian Paul  
Cooper, Amos Henry  
Cooper, Gloria  
Cooper, Graham  
Cooper, L. Ann  
Cooper, Vera  
Cortes, Rito & Aida  
Costerisan, Francis, Jr.  
Coston, Howard Paul  
Cotham, Joyce  
Couch, Kathleen

Couey, Janice Faye  
 Coulter, James  
 Cowdrick, Mary R.  
 Crabtree, James I.  
 Crabtree, Myra Liliana  
 Crago, Sharon  
 Craig, O. W.  
 Cramer, Geraldine A.  
 Cranford, Sherrie Lea  
 Craven, Ruth & John  
 Crawford, Ben Eugene  
 Crawford, Joyce  
 Crawford, Rolland Melvin  
 Crawford, Roy W.  
 Cress, James Andrew  
 Crews, Joseph A.  
 Crews, Sue Racheal  
 Crittenden, Jean  
 Croker, Edward  
 Cromwell, Michael James  
 Crook, James Donald  
 Crosby, Bobra  
 Crosby, Timothy & Carol  
 Cross, Dale Duwayne  
 Crowder, Ivan T.  
 Crowder, Katharyn  
 Crowson, Linda  
 Crutcher, James Kent  
 Crutcher, Reba  
 Cruz, Damaris Margarita  
 Cruz, Obed Ismael  
 Culbert, Dorothy  
 Cullens, Frances  
 Culpepper, James C.  
 Culpepper, Judy  
 Culvey, Marie  
 Cunningham, Edith  
 Curry, Candace Rae  
 Curry, Walter  
 Curtis, Ruth  
 Cutter, Charles Lewis  
 Dalton, John Charles  
 Damron, Mary  
 Daniel, Troy F.  
 Dannenberger, Chris William  
 Dannenberger, Martha  
 Darbo, Doris  
 Darbo, Jere  
 Darmody, Steven  
 Darnell, Nolan Bryant  
 Dart, Archa  
 Daszkiewicz, Trudy  
 Davidson, Susan  
 Davis, Bryan Glen  
 Davis, Charles Arthur  
 Davis, Crosby Menniffce  
 Davis, John Paul  
 Day, Donna  
 Deely, Joseph Edward  
 Deindoerfer, Richard Duane  
 Dekle, Deanne  
 Deloney, George Alfred  
 Derry, Carole Marrie  
 Desens, Dorreen Marie  
 Dickerhoff, Beverly Fay  
 Dickerson, Albert Lee  
 Dickinson, Robert Weldon  
 Dinger, Edward Lowell  
 Dittburner, Tami Terese  
 Dittes, Albert  
 Dittes, Patricia  
 Doherty, Lois  
 Dombrosky, Brenda  
 Donesky, Melinda Gail  
 Donesky, Peter W.  
 Donets, Peter N.  
 Dove, Christine Anne  
 Drake, Beverly  
 Dresser, Emily  
 Dubose, Robert E.  
 Dubose, Robert Jr.

Dudley, C. E.  
 Duerksen, Penelope  
 Duerksen, Russell  
 Duff, David Patrick  
 Duge, John & Mildred  
 Duke, Donna Kay  
 Dukeshire, Robert L.  
 Duncan, Omin Fastena  
 Dunham, Gerald Owen  
 Dunhill, Joy Elizabeth  
 Dunning, Terry Lynn  
 Durichek, Peter  
 Durichek, Rebecca & John, Sr.  
 Durkin, Walter & Connie  
 Duska, Rozelle  
 Duty, Carolyn  
 Dysinger, P. William  
 Earnhardt, Jeanette Ruby  
 Earp, Royce Jourmet  
 Easley, Brenda Michelle  
 East, Marie  
 East, Robert  
 Easterday, Tamera  
 Eberhardt, Penny Marie  
 Eby, Karen  
 Eckert, Connie K.  
 Edgar, Juliann  
 Edmister, Bessie  
 Edwards, Janet  
 Eggers, John  
 Ehlers, Waldemar  
 Eirich, Paul Ronald  
 Ekkens, Renita Kimberly  
 Elam, Mary  
 Elder, Ada  
 Eldridge, Gary Lynn  
 Eldridge, Paul & Retha  
 Elliott, Dorothy A.  
 Elliott, Robbie  
 Elmadjian, Madeleine  
 England, Cathryn Jane  
 English, Harvey Wayne  
 Erb, Brenda Marlene  
 Ermer, Susan Arlene  
 Ernest, Robert Scott  
 Erskine, Everette Edwin  
 Ertel, Nancy Christine  
 Erwin, James E.  
 Erwin, Robin Winfred Jr.  
 Esquilla, Agnes  
 Esquilla, Clarice  
 Esterline, Richard Eugene  
 Estrada, Tamara  
 Ethridge, Craig Neal  
 Evans, Jerry Lynn  
 Evans, Kevin Wayne  
 Everts, Paula  
 Facundus, Leanne Adonna  
 Facundus, Rhonda Mae  
 Falkowski, Pete Douglas  
 Falsnes, Judith Aitken  
 Farr, Henry Elsworth  
 Farwell, Clayton  
 Fegarido, Joel Edward  
 Felix, Lucy Andrea  
 Fenderson, Wynene  
 Ferguson, Charles Rayburn  
 Ferguson, Dana  
 Ferguson, Lowell Todd  
 Fernando, Lynette  
 Ferree, Nellie  
 Fickett, Thea  
 Fields, Sally  
 Filler, Judson C.  
 Fillman, Don & Dolly  
 Fillman, L. Noel  
 Finley, Lucy Jeannine  
 Fishell, Karen  
 Fisher R. Dale  
 Fitzgerald, Douglas L.

Fitzgerald, Steven Jay  
 Flach, Charles William  
 Fleming, Gertrude  
 Flood, Kimberly  
 Flynt, Harold Lewis  
 Fogg, A. David  
 Foote, Harvey E.  
 Forbes, Judith  
 Forbes, Sandra Annette  
 Ford, Blanche  
 Ford, Randall Paul  
 Forsey, Laronda & David  
 Foster, Glenda  
 Foster, Patricia  
 Fountain, Jewell  
 Fowler, Gladys  
 Fowler, John & Marilyn  
 Fowler, Lynda  
 Fox, Archie & Lorraine  
 Fox, David C.  
 Fox, Lorene  
 Foxworth, Dennis Keith  
 Franz, Clyde O.  
 Frederick, Gelia Loveveta  
 Frederick, Rosalie  
 Fritts, Susan  
 Fry, Lois Faye  
 Fuchcar, Stephen  
 Fulfer, James G.  
 Fullbright, Maryetta  
 Fuller, George Steve  
 Fuller, George V.  
 Fuller, Glenn Arthur  
 Fuller, Myrtle  
 Fuller, Robert Laverne  
 Fulton, William  
 Futcher, Terrance & Arlene  
 Futcher, Carol Margaret  
 Gabbard, Rosa  
 Gackenheimer, E. T.  
 Gager, George N.  
 Gallay, Sidney & Louise  
 Gano, David Lee  
 Gantt, Mabel  
 Garber, Colleen  
 Garcia, Ileana  
 Garner, Casandra  
 Garner, Norman Duwayne  
 Garren, Eliza  
 Garrett, Philip  
 Garrett, Stephen Michael  
 Carver, Philip & Betty  
 Gaskin, Sara A.  
 Gates, Brenda  
 Gates, Douglas Lowell  
 Gaver, Paul & Ethel  
 Geach, Patricia  
 Geach, Robert Willard Sr.  
 Gearhart, Bernice  
 Genton, Ila M.  
 Genton, Lola Marie  
 Gentry, Anita Rae  
 George, Susan Kunjala  
 Gershon, James Louis  
 Giacomozzi, Dorothy  
 Gibbon, Bruce  
 Gibson, Audrey Ann  
 Gibson, Ruth  
 Giebel, Herbert Norman  
 Giles, Monte Lynne  
 Giles, Ollie Mae  
 Gilkes, Lucia Ann  
 Gillham, Delinda Beth  
 Gilmore, Carol Lenore  
 Gladson, Jerry A.  
 Glass, Roger Wilson  
 Glass, Shauna Michelle  
 Gleason, Robert & Jackie  
 Glenn, Danette Lynn  
 Goffin, Wayne A.  
 Goggans, Gary Noel

Gomez, Daisy  
 Gonzalez, Rene A.  
 Gooch, Kathryn  
 Goodbrad, John  
 Goodloe, Kathleen Rose  
 Goodner, Elbert Wade  
 Goodrum, Norris Keith  
 Goodwin, Howard Thomas  
 Graham, Leon Jr.  
 Graham, Obed O. & Coretta  
 Grant, Loren Hunter  
 Graves, Cecil & Lucille  
 Graves, George Nathaniel  
 Graves, Jimmie Gorman  
 Graves, Melanie & George  
 Graves, Ted  
 Graves, Timothy Allen  
 Gray, Douglas & Ellen  
 Gray, Glenn Stewart  
 Green, Waive M.  
 Greenawalt, Dennis  
 Greene, John Frank Jr.  
 Greene, Paul & Kristine  
 Greenwood, Henry Emile III  
 Green, Floy  
 Greve, Kent Duane  
 Griesman, John A.  
 Griffin, Helen Claire  
 Griffin, Peggy  
 Griffin, Robert B.  
 Griffin, Walter Neil Jr.  
 Grimm, Ethel  
 Grimm, Terry Craig  
 Grindley, Timothy James & Jamie  
 Grindley, Thomas III & Jeri Lyn  
 Groome, Robert & Jewell  
 Groate, Erwin Paul, Sr.  
 Grundset, Edgar O. & Valera  
 Guild, Esther S.  
 Guinn, Janye Duane  
 Gunderson, Kelley Deanne  
 Guraat, Ebin & Magdalena  
 Gutekunst, Gerald  
 Habenicht, Karen Joy  
 Habenicht, R. Harvey III  
 Hagan, B. J.  
 Hakes, David Lee  
 Hakes, James A.  
 Hakes, Robert  
 Hale, Joyce & James  
 Hale, Robert & Gloria  
 Haley, L. Pierce III  
 Haley, Steven Lee  
 Hall, Pearl  
 Hall, Stephen Anthony  
 Hallman, Hazel  
 Hallock, Norman & Allene  
 Halverson, Robin  
 Halverson, Mary  
 Hamilton, Cindy Lou  
 Hamilton, Kenneth & Jeanne  
 Hamilton, T. E.  
 Hammond, Warren G.  
 Hand, Ronald Milton  
 Hand, Roxine R.  
 Hanks, Larry W.  
 Hannum, James Calvin  
 Hansen, Robert Eugene  
 Harawa, Jennifer  
 Harder, Margaret  
 Harding, Kenneth & Eva Mae  
 Hardy, Linda  
 Harlow, Bruce George  
 Harlow, Wayne Dryden  
 Harold, Donna  
 Harrelson, Amos L.  
 Harrison, Carol  
 Hartle, Roderick John  
 Hartwell, Thelma

Haskell, Billy Page  
 Hassencahl, Janice Louise  
 Haveman, Leisha Anne  
 Hawkins, Joan Marie  
 Hawthorne, Bill & Mary  
 Hay, William Scott  
 Hayward, Joe C.  
 Hazelton, Lavanee  
 Heath, Evelyn & Steven  
 Hedrick, Mary  
 Heers, Robert & Dorothea  
 Hefferlin, Ray & Inelda  
 Helgren, Nancy  
 Helm, Linda  
 Hendershot, Ralph E.  
 Henderson, David James  
 Henderson, Herbert Harvey  
 Henderson, Karen  
 Henderson, Kenneth York  
 Henderson, Mark Stephen  
 Henderson, Mary B.  
 Henderson, Mary  
 Henderson, Orville Rogers  
 Henderson, Staci Jennice  
 Hendry, Malone H.  
 Henson, Will J.  
 Herin, Mazie Alice  
 Herod, J. Dwight  
 Heronymus, Earle & Lucille  
 Herring, Lorraine  
 Herrington, V. D.  
 Herrmann, Lyle & Teresa  
 Hersch, Nancy Lynn  
 Herzell, E. F.  
 Hess, Charles & Deborah  
 Hester, Laura Lea  
 Hickman, J. W.  
 Hickok, David Arthur  
 Hicks, Shirley  
 Hiebert, Floyd  
 Highsmith, Hororine  
 Hilaire, Kellman Haddon  
 Hildebrand, Bruce Edward  
 Hilderbrandt, Dwight  
 Hill, Vernon C.  
 Hinds, Janine  
 Hinkle, John & Sue  
 Hirsch, Karen  
 Hittle, Theodore Allen  
 Ho, Rosalind  
 Hobbs, Melvin Gerald  
 Hobbs, Stanley Nelson  
 Hodges, Rebecca  
 Hoekenga, Julie Ann  
 Hoesechele, Marie  
 Holdridge, S. R. Jerry  
 Holland, Christina Grace  
 Holland, David Lee  
 Holland, Donald E.  
 Holland, Judith  
 Holley, John Stuart  
 Holley, Maria Lynne  
 Hollis, Geraldine  
 Hols, Mary  
 Holloway, Marie Frances  
 Holmes, Laura  
 Holt, Jerry  
 Honaker, Janice  
 Hooper, C. Violet  
 Hooper, Ralston & June  
 Hoover, Gregory & Melody  
 Hoskins, Leah Lucille  
 Hoth, Lesa Marie  
 Huck, Duane  
 Houle, Nancy Renee  
 Howard, Edgar Randall  
 Howard, Melvin D.  
 Howell, Walter  
 Howes, Bradley Stuart  
 Hoyle, Jerry Donald



Well-known Adventist musicians Brad and Olive Batson Braley have presented a portrait now hanging in the Heritage Room at J. Mabel Wood Hall. They also have shared scrapbooks, recordings, clippings, and other memorabilia. Back in the 1940's Olive was teaching speech and music at Southern when Brad came to install a campus organ. They have been combining their musical talent ever since.

Hoyt, Emery Floyd  
 Huddleson, Jamie Lynn  
 Huff, Terril Lee  
 Hughes, Ross Eugene  
 Huh, Young Uk  
 Huitt, Michael Kline  
 Hulsey, Harry W.  
 Hume, Katherine  
 Hummell, Rebecca Elizabeth  
 Hunt, Katye  
 Hunt, Thomas Carlton  
 Hunter, Robert George  
 Huntzberry, Mary  
 Hurd, David Paulsson  
 Hursh, Patricia Lois  
 Hust, William A.  
 Hyde, Bradley Garth  
 Hyde, Gordon & Irma  
 Iles, Avery Dale  
 Iles, Jean W.  
 Ingram, Ruth  
 Irizarry, Kathryn  
 Isaak, Gregory Spencer  
 Israel, Margaret E.  
 Ivey, Alyce Marie  
 Ivey, E. Rackley  
 Jackson, Connie  
 Jackson, Laurie Lynn  
 Jacobs, Lois & Jamile  
 Jacobs, Ray  
 James, Cynthia Ann  
 James, Pauline Claudette  
 Jameson, Masie  
 Jansen, Carl  
 Jansen, J. M.  
 Jansen, Marie  
 Jeffrey, Diane  
 Jennings, Margie  
 Jewell, Everett L.  
 Jewett, David George  
 Jewett, Kimberly  
 Jobe, Bob  
 Johannes, Joseph  
 Johnson, Diane  
 Johnson, Elizabeth Ann  
 Johnson, Ertis Lee

Johnson, Harold S.  
 Johnson, Icy M.  
 Johnson, Leslie Christine  
 Johnson, Lillian B.  
 Johnson, Louise T.  
 Johnson, Renita  
 Johnson, Sonja  
 Johnson, Stephen W.  
 Johnson, Sylvia  
 Johnson, Thelma  
 Johnson, Virginia S.  
 Johnston, Ronald Laverne  
 Johnston, Thomas Allen  
 Joiner, James L.  
 Joiner, Johnita  
 Joiner, Judy  
 Joiner, Jefferson Keith  
 Jones, C. V.  
 Jones, Elvine  
 Jones, Lynnette Ruth  
 Jordan, Chester L.  
 Jorgensen, Gail  
 Jurysta, Deborah Kay  
 Kamienski, Robert  
 Kearns, Fern S.  
 Keaton, Marlene  
 Keefe, Patricia  
 Keith, Nellah  
 Keller, Bobby Sidney  
 Keller, Jim Albert  
 Kelley, Gerald Byron  
 Kellogg, Jule  
 Kelly, Ronald S.  
 Kenerson, Sharon Joy  
 Kenny, E. Fisher  
 Kenny, Gladys  
 Kenyon, Donald & Eleanor  
 Kenyon, Gerald  
 Kenyon, Sheryl  
 Keplinger, John Edgar  
 Keppler, Burton  
 Keppler, Dorothy  
 Kickliter, Helen  
 Kidwiler, Thelma F.  
 Kierstead, Marion  
 Kihogo, David Wambura

Kijak, Marie Cowles  
 Kilgore, Nancy  
 Kilgore, Rochelle P.  
 Killen, Edward Francis  
 Kim, Grace  
 Kime, Ethel M.  
 Kinder, F. Geneva  
 Kinder, J. B.  
 King, Cindy Jeanne  
 King, Glee H.  
 King, Gregory Alan  
 King, James H.  
 King, Jane  
 King, Jeffrey Milton  
 King, Joan Rachelle  
 King, Jolena  
 King, Kimberly  
 King, Mary Lou Laura  
 King, Roger Symon  
 Kingry, David Arnold  
 Kinsey, Herbert Dean  
 Kinsman, Jacqueline Linda  
 Kirkham, Kenneth Alan  
 Kiture, Andrea Gabrielle  
 Kleppe, Betty  
 Klingstrand, Ame  
 Klinvex, Christopher Paul  
 Klocko, Roxanne  
 Knapp, Patty Jean  
 Knarr, Catherine K  
 Knarr, Lori Ann  
 Knight, Lori  
 Kochenower, Benjamin Doug  
 Koester, Carl & Beverly  
 Koger, John E.  
 Kohn, Clifford L.  
 Krall, Jeffrey Alex  
 Kravig, Paul A.  
 Kruger, Thomas Leroy  
 Krum, Ruth M.  
 Kuhlman, Marian  
 Kuist, Irene  
 Kukome, Aggrey Elisante  
 Kummer, Christine Elizabeth  
 Kuutti, Dian  
 Kuykendall, Fred Henry

Kwasneski, John  
 Kwiek, Blanche E.  
 Kyzer, H. Le Noy  
 Labrenz, Phyllis  
 Lacey, Ronda Rae  
 Ladd, Cleo L.  
 Lambeth, James Herman  
 Land, Edith  
 Lang, Mauri Jean  
 Lang, Robert Kelly  
 Lange, Oliver W.  
 Lara, Marco Antonio  
 Larsen, C. J.  
 Laubach, Chaucey & Florence  
 Lawrence, Paula  
 Lawrence, W. P.  
 Lawter, Michelle Dawn  
 Learned, Linda  
 Leas, Larry Laverne  
 Lebaron, Judith  
 Leblanc, Argenta  
 Leblanc, Paul F.  
 Lechler, Donald  
 Lechler, Elizabeth  
 Lechler, Linda  
 Lee, Ching-Yen  
 Lee, Genevieve Patricia  
 Lee, Katherine Miae  
 Lee, Richard D.  
 Leech, Larry J.  
 Leeper, James Charles  
 Leeper, Judy  
 Leggett, Hugh V.  
 Lietner, Jack  
 Lesko, Arthur & Lennette  
 Lester, Vera Fay  
 Lester, Vesta  
 Lester, Vickie Lynne  
 Lewis, Edmund Charles  
 Lewis, Rod Lee  
 Leyva, William Henry  
 Liebrand, Frederic  
 Lightbourne, Rosalyn E.  
 Lighthall, Thomas Wiliam  
 Liles, Aubrey H.  
 Liles, Sandra Janice  
 Lilley, Lilah  
 Lilly, Michael Brian  
 Lincoln, Sharon Lynn  
 Linderman, Gerald Arnold  
 Lindsey, Charles  
 Linebaugh, J. C.  
 Linebaugh, Joan  
 Linton, Richard Kenneth  
 Lippert, Helen Jeanne  
 Lippert, Richard & Karen  
 Litchfield, Thelma  
 Lobdell, Opal  
 Lockard, Porter  
 Logan, Anna  
 Logan, Aundrette  
 Loggins, Cathy A.  
 Lonberg, John R.  
 Long, Matthew Shane  
 Long, Wendy  
 Loomis, Pamela Sue  
 Loor, June  
 Lopez, Delpha Lee  
 Lopez, Rubin  
 Lord, William  
 Loree, Carol Joyce  
 Lorren, Katrina Elise  
 Lounsbury, Ryan Jay  
 Lowe, Jeanne  
 Lowley, Myra  
 Loy, Monroe Franklin  
 Lucas, Clyde  
 Lukat, Lucille  
 Luke, Martin C.  
 Lynn, James C.  
 Lynn, Robert E.

Macalpine, Robert Thomas  
 Mace, Lisa Rena  
 Mackel, George Scott  
 Mackenzie, Malcolm George  
 MacLafferty, Merritt L.  
 MacLafferty, Robert Mark  
 Macmillan, Katherine  
 Mahorney, Barry Mitchell  
 Maksimowich, Laura Lee  
 Malin, Douglas Lee  
 Mallernee, Rollin & Karen  
 Marchant, Sylvia  
 Marion, Dora  
 Marlow, Stephen William  
 Marlowe, Linda  
 Marrero, Joseph Michael  
 Marshall, John L.  
 Marshall, Louann Lorinda  
 Marshall, Walter Armstrong  
 Martin, Eva  
 Martin, Merilee  
 Martin, Pamela  
 Martin, Richard Kim  
 Martin, Scott Douglas  
 Martin, Terri Huff  
 Martin, Weldon Dale  
 Martinez, Nellie  
 Martinez, Tomas T.  
 Martling, Nettie E  
 Martone, Arlene Rae  
 Martz, Jack & Alma  
 Mashburn, Joe Don  
 Mashburn, Sally  
 Masse, Edgar J.  
 Massengill, Cloie  
 Mathews, Kenneth M.  
 Mathieu, Raymond  
 Mattern, J. Hubert  
 Mauldin, Lois Lorraine  
 Mayberry, Daryl  
 McAllister, Ione  
 McArthur, Benjamin  
 McBroom, Dan Delano  
 McCalla, J. E.  
 McCarthy, Miehle Ann

McClarty, Julie Lee  
 McClellan, Suzanne  
 McClung, Michael Christian  
 McClure, Alfred V.  
 McClure, Edith  
 McClure, Evelyn  
 McClure, Herbert C.  
 McClure, Howard Everett  
 McClure, Warner E.  
 McCluskey, Phyllis J.  
 McColpin, Lois  
 McConnell, Mary  
 McCumber, Robert  
 McCurdy, Lynda  
 McElroy, James Glenn  
 McFadden, Karen  
 McFaddin, David Allen  
 McFarland, Martyn Ingram  
 McGrady, Jay Ross  
 McHutchinson, Roberta  
 McKee, A. C.  
 McKee, Lois Evelyn  
 McKenzie, Michael Lynn  
 McKinney, William M.  
 McLarty, John Thomas  
 McMillan, Frank & Nancy  
 McMillan, Paul J.  
 McMillan, Robert C.  
 McNeal, Steven James  
 McNulty, John & Frances  
 McNutt, D. Wayne  
 Meade, Charles  
 Medanich, Jerry  
 Medford, Menton Amos  
 Meister, Edwina  
 Melendy, Clifford & Norma  
 Mendez, Hermes Samuel Jr.  
 Mensing, Kenneth E.  
 Mercer, A. Ruth  
 Mercer, Holly Lynn  
 Merriman, Margarita  
 Meyer, Bonnie  
 Meyer, Louis  
 Meyer, Mearle Edwin  
 Meyers, Kerstin

Michaelis-Pope, Michael L.  
 Mickiff, Lorabel  
 Millburn, Dennis Sumner  
 Miller, Ann Marie  
 Miller, George Arnold  
 Miller, Jon Michael  
 Miller, Opal Lucille  
 Miller, Scott Allen  
 Miller, Sheri Lynn  
 Millet, Jean Elizabeth  
 Mills, Charles Henning  
 Mills, Harry & Joyce  
 Minchin, E. L.  
 Minder, Nicholas Earl  
 Minner, Fred  
 Minzey, May Eliz  
 Miranda, Carmen Ana  
 Mitchell, Alfred B  
 Mitchell, Brian Andrew  
 Mitchell, Cynthia  
 Mitchell, Debra Earleen  
 Mitchell, Ronald E.  
 Mixon, Gina  
 Mixon, Larry  
 Mizelle, Catherine  
 Mizelle, Helen Constance  
 Mizelle, Roscoe C. Jr.  
 Mizelle, S. Dianne  
 Moffitt, L. L.  
 Mohr, Ronald Michael  
 Montgomery, Leigh Ann  
 Moore, Daniel Vincent  
 Moore, Kay  
 Moore, P. Jones Jr.  
 Moore, Patricia  
 Moore, Thelma  
 Moots, Judith Walker  
 Moreno, Marina  
 Morgan, Kevin Luke  
 Morgan, Lisa Mechelke  
 Morgan, Roy Lockwood  
 Morgans, Al  
 Morris, Caroline  
 Morris, James Olin  
 Morris, Sharon



An unusual part of the annual tree-lighting in front of Wright Hall was the naming of Hickman Drive (the road from the service station northwest to Industrial Drive). Marvin Hickman, left, a colorful, quaint, and lovable member of the Collegedale community for 57 years, was thanked by President John Wagner, center, for his helpfulness over the years. Rain or shine, Marvin cheerfully delivers school and church publications around campus. His Sante suit and cycle are characteristic. As Dr. Wagner told him that cold December night, "Truly your unselfishness is in the spirit of Christmas all year long!"

Morris, Stephen Ralph  
Morrison, Bill Edward  
Mosby, Fannie  
Moses, Miriam  
Mote, Rene  
Mountcastle, Timothy  
Mulhern, James E.  
Mullinax, David E.  
Mundy, "Bill" W. C.  
Munilla, Fernando Jr.  
Murphy, Robert & Anne  
Muschette, V.  
Myers, Clifford  
Myers, David Arthur  
Myers, Elaine  
Nall, Andrew Jerome  
Namihas, Ivan  
Nasvall, Raymond  
Negron, Dennis  
Neill, Carl & Mary Jane  
Nelsen, Esther  
Nelson, Harry C.  
Nelson, Lorene  
Neo, Dinny Peck Hoon  
Newbern, John H.  
Newmyer, Bryan John  
Newmyer, Mark Jason  
Nicholaides, Mitchell  
Nicholaides, Stephen Luke  
Nielsen, Penny  
Nieves, Wilfredo  
Niswonger, Jerone W.  
Noonan, Barbara Ann  
Norrell, Juanita  
Norrell, Milton  
Norris, Terry S.  
Northcut, Jack M.  
Northrop, Robert Ellsworth  
orton, Peggy  
Norwood, Lori Michelle  
Nosworthy, John Albert  
Nusbaum, Gail  
O'Brien, Nancy  
O'Brien, Scott Eugene  
O'Ffill, Richard Wesley  
O'Quinn, Ronald W.  
Oakes, William Warren  
Oetman, Harvey Earl  
Oft, Juvernia Estella  
Ohman, Lisa Nannette  
Okimi, Wayne Daniel  
Oldham, Lois Mae  
Oliphant, W. Walker  
Oliver, John N.  
Olstead, Lila  
Olsen, Cynthia Elaine  
Olsen, Hollis Huntington  
Olsen, Nathlene  
Olsen, Oluf Edwin  
Olson, Jessie May  
Orange, Patricia  
Orquia, Anita  
Ort, Virginia  
Ott, Vivian  
Otto, Margaret  
Owen, Susan Gay  
Owensby, Peggy  
Oxberger, Everett Earl  
Paden, Cecil A.  
Paden, Scott Edward  
Palmer, Elaine  
Palmour, Frank  
Palsgrove, John E.  
Parfitt, Janice  
Park, Betty  
Park, Lester E.  
Parker, A. Roland  
Parker, Barbetta Ruth  
Parker, David Wallace  
Parker, Phillip  
Parks, Debra Ann  
Parrish, Donald Ray

Parrish, Lisa & Todd  
Patsel, Wilford H.  
Patterson, Barry Stauffer  
Patton, Kimberly  
Paul, Wesley Earl  
Paxton, Carolyn  
Payne, Benita Delon  
Payne, Laurence Warner  
Peck, Karen Lynelle  
Peek, Norman & Ava  
Peeke, John William  
Peel, James D.  
Peets, Robert Ernest A  
Pelletier, Eugene Paul  
Pendergrass, Robin Rochell  
Pennington, Betty  
Peters, Louesa Ruth  
Peterson, Margaret  
Peterson, Betty  
Peterson, Garland C.  
Peterson, Sherman E.  
Petthey, Anne  
Petthey, Galen A.  
Petty, Lou  
Peyton, Victor Colt  
Pflugrad, Doina  
Phalen, Ruby  
Phillips, Betty  
Phillips, Harold  
Phillips, Louis Edgel  
Phillips, Michael Arzie  
Phillips, Terry Justin  
Philpott, Frankie  
Philpott, Kathy  
Phipps, Cleo  
Piatt, Linda  
Pichler, Floyd L.  
Pierce, Bruce A.  
Pierce, Doris  
Pierson, Pauline  
Pierson, Robert G.  
Pierson, Robert H.  
Pifer, John F.  
Pifer, Lorraine  
Pitman, Tui Devere  
Pitts, Cheri Darlene  
Pleasants, Lloyd  
Poh, Chrisana  
Polen, Donald H.  
Polycarpe, Marjorie  
Pope, Denise  
Pope, Richard Allen  
Port, Mr. & Mrs. Forest C.  
Post, Dorothy  
Potts, Keith Douglas  
Potts, Robert Leslie  
Powell, Cathy Lynette  
Powell, Floyd H.  
Powell, George A.  
Powell, Maureen  
Powell, Robert  
Powers, Stephen Earl IV  
Powers, Sylvia  
Pratt, James Orin  
Pratt, Perry Allen  
Precise, Billie Ann  
Pride, Anita Gayle  
Pritchett, Linda  
Proctor, Philip Wesley  
Prosser, Ruth  
Pumphrey, Edward Allen  
Pyrton, Shirley  
Quimby, Dorothy L.  
Quinn, Sharon  
Radovan, Vanessa Lydia  
Ramsey, John Dean  
Randall, Arlene Louise  
Randall, Larry & Edna  
Randolph, Dennis Wayne  
Randolph, Gary & Karen  
Randolph, Pamela Marie  
Rasnic, Bill

Rathnam, John S.  
Ray, Herman Carlyle  
Read, Billy Mack  
Read, Cheryl Mae  
Read, Jan Denise  
Read, Peter  
Reams, Joseph G.  
Reaves, Charles J.  
Reiber, Candyce Wynona  
Reiber, Milton T.  
Reid, Nelda Mitchell  
Reinhardt, Cheryl Lynne  
Remmers, Eugene T.  
Retzlaff, Alfa Zella  
Reyna, Wilfred Felan  
Reynolds, Terry Lynne  
Rhodes, Susan Elizabeth  
Rice, Reginald Dietel Jr.  
Richards, Evonne Marie  
Richardson, Derrick O'Neal  
Richert, Arthur Jr.  
Ricks, Wade Franklin  
Ridge, Penny Nanette  
Riffel, Andres H.  
Riffel, Ronald Dale  
Riggs, Helene  
Riggs, John Delano  
Rilea, Florence  
Rilea, Lester C.  
Rimer, Harry Benjamin  
Rimmer, Andrew Gordon  
Rimmer, Denita A.  
Rimmer, Gregory Lloyd  
Rimmer, Jeffrey W.  
Rimmer, Jill  
Ringer, Allen Lloyd  
Ringer, Benjamin LeRoy  
Ringer, Bruce L.  
Ringer, Margaret  
Ringstaff, Mykal Layne  
Ritchart, Irma Lou  
Rivera, Priscilla  
Roberts, Jack Franklin Jr.  
Roberts, James Leslie  
Roberts, Robert Eldon  
Roberts, Viola  
Roberts, William P.  
Robertson, Earl Lewellyn  
Robertson, Frances  
Robertson, Juanita  
Robertson, Karla Wynelle  
Robertson, Linwood Alan  
Robertson, Marvin Loomis  
Robertson, Phil Gene  
Robieson, Elizabeth  
Robison, Editha A.  
Robinson, Elenora  
Robinson, Ivan Henry  
Robinson, John D.  
Rock, C. B.  
Roddy, Fairra Ann  
Roddy, Sarah M.  
Rodgers, Barbara  
Rodgers, Bonnie Michele  
Rodgers, Denise E.  
Rodgers, Peggy  
Rodgers, Ronald Brent  
Rodman, Brenda  
Rodriguez, Alberto & Alida  
Rogers, James Pierce  
Rogers, Marvin Edward  
Rojas, Maximo D.  
Rojas, Odil Raquel  
Ronning, Lori Jean  
Rose, Claudia  
Roszyk, Alice Lynn  
Rowlett, Phyllis  
Roy, E. Harold  
Rozell, Daniel W. & Joann  
Rubenwolf, Agnes  
Ruckle, O. Raymond & Shurley  
Ruel, Lisa Anne

Ruf, Tina  
Ruggles, Alan R.  
Runsey, Greg G.  
Rumsey, Shirley  
Runyon, Clyde Benjamin  
Runyon, Sheryl  
Ryals, John W.  
Sagert, Mark Arnold  
Sales, Deborah Anne  
Salhany, Edwin Alan  
Salhany, Phaize J. & Dorothy  
Salhany, Wayne Fremont  
Salsberry, Glenda  
Salstrom, Eugene  
Sanderford, Kathy  
Sanders, Angela  
Sanders, Rebecca  
Sanderson, Janet Lynn  
Santini, Robert V.  
Saphiloff, Andrew W.  
Sauls, R. Lynn  
Sax, Carl Lennard Jr.  
Schiefer, Mark  
Schlisner, Tamara Lynne  
Schmidt, Harold Lane  
Schneider, Karel David  
Schoen, Valentin W.  
Schomburg, Sheila  
Schomburg, William M.  
Schooler, Nora  
Schriber, John William & Manlou  
Schwinn, Karl E.  
Scurry, Latonya Renee  
Seaman, John Gerald & Linda  
Sedwick, Beth  
Seebeck, Beverly  
Seek, Vesta  
Seeley, James Edmond & Pam  
Seely, Margaret  
Serikaku, David Yasuyoshi & Dianna  
Servoss, Larry Jay  
Shafer, Edwin E. G.  
Shaffer, Grace  
Shain, Jacquelyn  
Shanko, James Jay III  
Sharian, Serphouhi T.  
Shaw, Carl & Debra  
Shealy, Ronald Craig  
Shearer, Kimberly Sue  
Sheram, Imogene  
Sherer, Charles Robert  
Shields, David J.  
Shobe, Marie Lynn  
Short, Donald, Sr. & Janice  
Shreve, E. A.  
Shreve, Ruby  
Siddall, Diane  
Sigsworth, Candis Calandra  
Silver, Bob W. & Patricia  
Simmons, Deborah  
Simmons, J. Evelyn  
Simmons, Robert L.  
Simpson, Rose Lynn  
Siu, Brent Omar  
Skender, Adolph J.  
Slate, Herman Ivan  
Slate, Lenora J  
Slate, Myrtle E.  
Slate, Verna A.  
Sloan, Richard & Thyra  
Slusher, Betty J.  
Smart, Leslie Albert III & Constance  
Smith, Albert C.  
Smith, Brian James  
Smith, Carl J.  
Smith, Carlton & Alma  
Smith, Carol  
Smith, Claudia  
Smith, David C.  
Smith, Elouise  
Smith, Ernest & Pauline  
Smith, Hilda Ann

Smith, Jere Dyer  
 Smith, Juanita  
 Smith, Juanita S.  
 Smoot, Joseph Grady  
 Snell, Nancy  
 Snide, Hazel  
 Snider, Kathleen  
 Snider, Kenneth  
 Snow, Timothy & Angela  
 Somers, Dorothy  
 Sorensen, Ruby  
 Sorrell, Norman & Ruth  
 Sotting, Lincoln Frederick  
 Soule, John Edward  
 Soule, Larry Allen & Pia  
 Sparks, Brenda Arlene  
 Spears, Cynthia & Richard  
 Spears, Kenneth & Mildred  
 Spears, Steven Larry & Sylvia  
 Speight, Richard T.  
 Sperka, Marilyn  
 Sperrazza, Jacqueline M.  
 Sperrazza, Robert Bruce  
 Spiva, H. Wesley  
 Spiva, Sylvia M.  
 Springett, Ronald Michael  
 Spruill, Milford  
 Stagg, Ruth Elizabeth  
 Staley, Dorothy  
 Stampfli, Rose Marie  
 Stanley, Richard & Coleen  
 Staples, Thomas W.  
 Starr, Dorothy  
 Starr, Lynn Rene  
 Stebbins, Kelly M.  
 Steele, Byron H.  
 Steele, Dennis F.  
 Steen, Alton Marshall  
 Steen, David Arthur  
 Steen, James F.  
 Steen, James Lee  
 Steffen, Lou Ann Marie  
 Steiner, Pamela Donice  
 Stepanske, Bruce  
 Stepanske, Richard Allan  
 Stephan, Robert Bradley  
 Stephenson, Dorothy  
 Sterndale, Joan  
 Stevens, Clarence Edward  
 Stevens, Delia Marie  
 Stevens, Ernest Albert El  
 Stevens, Ruth  
 Stewart, Ervin B.  
 Stiles, Virginia  
 Stockton, Lenwood D.  
 Stone, Dennis Terrell  
 Stone, Elmer I.  
 Stone, Francis Albert Sr.  
 Stone, Gene Elmer  
 Stone, Thomas S.  
 Stone, William Michael  
 Stonewall, Clark L. Jr.  
 Stout, Alan Wayne  
 Stout, Kathy  
 Stout, Sandra Kay  
 Straine, Kerry  
 Strang, Ruth  
 Straw, Leland  
 Strayer, Brian Eugene  
 Strefling, Ruth  
 Strickland, Mona Jewell  
 Strickland, Sarah  
 Strong, Dixie  
 Strong, William L.  
 Stubbs, Barbara  
 Stubbs, William V.  
 Stultz, Angela  
 Stuyvesant, Cheryl Jean  
 Suarez, Judy  
 Suffridge, Shirley  
 Surkey, George A.  
 Surkey, Willie Mae

Sutter, Lloyd N.  
 Sutton, Layton Ray  
 Swafford, Evelyn  
 Swafford, John  
 Swain, C. L.  
 Swinyar, Carol Adams  
 Swinyar, Gary Thomas  
 Swofford, Robert Gladstone  
 Tait, Stanton M. & Debbie  
 Talbot, Cheryl Denise  
 Tallman, Douglas Irving  
 Talmage, Metha  
 Tarr, Caralynn  
 Tavener, Marry  
 Taylor, David & Ann  
 Taylor, Charles Michael  
 Taylor, Donald Ray  
 Taylor, George O. & Margaret  
 Taylor, Malvina  
 Tennant, M. Dianne  
 Terrell, James Richard  
 Terrell, Sharon  
 Terrill, Harry Eugene  
 Terrill, Linda  
 Tetz, Elsie  
 Thames, Judith  
 Thatcher, R. C. Jr.  
 Thomas, Taletha Caryle  
 Thompson, B. L.  
 Thompson, Joanne Arlene  
 Thompson, Margaret  
 Thompson, Paula  
 Thompson, Wayne Martin  
 Thoresen, Garth Olaf  
 Thurber, John  
 Thurber, Mervin R.  
 Thurmon, Roy B.  
 Thurmond, James E.  
 Timberman, Ellen  
 Timmerman, William  
 Tindall, Lori Michelle  
 Tindall, Mertis  
 Tingle, M. Janelle  
 Tolbert, J. W.  
 Tolhurst, Ethel  
 Tollerton, Wendall G.  
 Toney, Mrs. Arthur  
 Tonge, Kathleen Ann  
 Torres, Sara  
 Torry, Sheryl Lynn  
 Towns, H. L.  
 Townsend, Dale & Janet  
 Travis, Grace Paul  
 Travis, Joseph V. Jr.  
 Trigg, Linda  
 Troxel, Josephine  
 Trubey, Leon Eugene  
 Trubey, Norman  
 Trumper, Richard E.  
 Tryon, Sherry Kay  
 Tucker, James A.  
 Tucker, James  
 Tunnell, Dale & Cheryl  
 Turk, Carol  
 Turlington, Drew Monroe  
 Turnbull, Roselyn R.  
 Turner, Denny Allan  
 Turner, Fred Lee  
 Turner, Mary  
 Turner, Walter Russell  
 Twombly, Deborah Lynn  
 Twombly, William N.  
 Tyler, Esther Virginia  
 Tyndall, William Ernest  
 Uhl, Carol Jean  
 Ullom, S. C.  
 Unger, Carmen Elizabeth  
 Vaina, Eugene Albert  
 Valdez, Gustavo  
 Vallieres, Richard Duane  
 Van Horn, Dorsey Lee  
 Van Rooyen, Smuts & Jan

Vanarsdell, Glen Scott  
 Vance, Kenneth Cloyd  
 VandeVere, Margaret H.  
 VandeVere, Wayne E.  
 Veltman, Fred & Irene  
 Viar, Paul Elvis  
 Vieth, Catherine Ann  
 Vigh, Alexander L.  
 Vigh, Susonya A. L.  
 Vital, Greg Alan  
 Vixie, Douglas Norman  
 Vollmer, Donald Evans  
 Von Kriegelstein, Douglas  
 Vonhof, Leonard Frerick  
 Vonmaack, Hazel  
 Voorheis, Byron Lyle  
 Wade, Juretta J.  
 Wagner, Cynthia Gayle  
 Wagner, L. H.  
 Wagner, Raymond William  
 Waite, Kevin Lawrence  
 Walden, Relious & Catherine  
 Wallack, Nancy  
 Waller, Adele Ann  
 Waller, Benton Eugene  
 Waller, Celia Elizabeth  
 Waller, David Lee  
 Waller, John Louis  
 Waller, Michael Bruce  
 Waller, Robert Vaughan  
 Walters, Clyde David  
 Walters, Dale Lee  
 Walters, Keith Daryl  
 Walters, Lezlee  
 Walther, Louise  
 Wampler, William Dean  
 Ward, Minnie  
 Ward, Paul Peyton  
 Warner, Carol Jean  
 Warren, Dawn Marie  
 Waters, Alane  
 Waters, Cora  
 Watkins, Charles L.  
 Watkins, Ronald  
 Watrous, Arthur LeRoy  
 Watson, Donald Ray  
 Watson, Paul Morris  
 Watson, Ruth  
 Wax, Archie Erving  
 Wax, Sarah  
 Weaver, Leslie Lamont  
 Webb, Erma L.  
 Weber, Melvin & Allene  
 Wedel, Janice  
 Weidemann, Janet  
 Weir, Carolyn  
 Weiss, Maria  
 Weitzel, Lindy Dawn  
 Wellman, Wallace L.  
 West, Donald LeRoy Jr.  
 West, Donald LeRoy Sr.  
 West, Florence Adelia  
 Wetmore, Lynne Jensen  
 Whaley, Joy  
 Whary, Helen L.  
 Wheat, Andrew Robert  
 Wheeler, Ann  
 Wheeler, Ben  
 Wheeler, Betty  
 Wheeler, Martha  
 Wheeler, Mary  
 Wheeling, G. C.  
 White, Eulalia M.  
 White, Napoleon B.  
 Whiting, Albert S., Jr. & Linda  
 Whitt, Alice  
 Wickham, Gloria Ann Howell  
 Wiederkehr, Lynne  
 Wilcox, Brian A.  
 Wilcox, Karen  
 Wildes, Ethel  
 Wilhelm, Kathryn A.

Wilkinson, Donald Eugene  
 Wilkinson, Stanley Warren  
 Wilks, Gilbert D.  
 Will, Kenneth Lamar  
 Williams, Alice  
 Williams, Arthur L. & Hazel  
 Williams, Cindy  
 Williams, Elva L.  
 Williams, Gary DeWayne  
 Williams, H. Haskell  
 Williams, Josie  
 Williams, Lois  
 Williams, Mark Edward  
 Williams, Reba Jonannah  
 Williams, Walton Alfred  
 Williams, William R.  
 Williamson, Grayce  
 Willis, Betty  
 Willis, Mary  
 Willis, William H.  
 Wilson, Cheryl  
 Wilson, Donald Lloyd  
 Wilson, Doris Diane  
 Wilson, Elden R.  
 Wilson, Fred Eugene  
 Wilson, Kenneth Evan  
 Wilson, Stephan Allen  
 Wilson, Woodrow McKendre  
 Wilt, Albert  
 Winfred, Danny  
 Winsted, Bailey Emerson  
 Winters, Richard William  
 Wisner, Linda Sue  
 Wittenberg, Merlin & Jan  
 Wohlers, William & Rita  
 Wolbert, Donna L.  
 Wolcott, James Franklin  
 Wolfe, Teddric Wayne  
 Wolosuk, Deanna Marie  
 Wong, Alice  
 Wong, Beverly Estelle  
 Wong, Robert C. K.  
 Wood, Betty  
 Wood, Izora  
 Wood, Judith  
 Wood, Robert H.  
 Woodall, Hermon  
 Woodall, Irene  
 Woodruff, Douglas R.  
 Woodruff, Velma  
 Woods, Carol Lewis  
 Woods, Cecil L.  
 Woods, Esma Earlene  
 Woodward, Pauline  
 Woolsey, Cora  
 Workman, Ralph C.  
 Wrate, Steven Herbert  
 Wright, Burton L.  
 Wright, Kenneth  
 Wright, Orville D.  
 Wright, Roger Dale  
 Wright, Walter F.  
 Wuttke, Ferdinand  
 Wyman, M. A.  
 Yamniuk, Walter  
 Young, Brenda Lee  
 Young, Cynthia  
 Young, Marlene  
 Young, Martin Steven  
 Young, Paul Leslie  
 Young, Viola Leona  
 Zaska, Neroli  
 Zegarra, Ted  
 Zegarra, Alex A.  
 Zegarra, Stanley  
 Zeigler, Freda  
 Zeigler, James Edgar  
 Zoerb, Ruth  
 Zollinger, Joan  
 Zollinger, Leland & Freda  
 Zollinger, Robert Franklin  
 Zwick, Neldena



garra, Stanley  
 igler, Freda  
 igler, James Edgar  
 erb, Ruth  
 illinger, Freda  
 illinger, Joan  
 illinger, Leland Hale  
 illinger, Robert Franklin  
 wick, Neldena

## RELIGIOUS ORGANIZATIONS

orgia-Cumberland Conference of SDA  
 orida Conference of SDA  
 ernal Conference of SDA  
 Donald Road SDA Church  
 uthern Union Conference of SDA  
 atario Conference of SDA

## CORPORATIONS

A. E. Staley Manufacturing  
 A. G. Edwards and Sons  
 American Enka  
 Archer-Daniels-Midland  
 Bellsouth Corporation  
 Chattanooga Coca-Cola Bottling  
 Collegedale Interiors  
 Committee of 100 for SMC  
 Dow Chemical  
 Everhart Steel Construction  
 Fujitsu Microelectronics  
 General Shale Products  
 IBM, Inc.  
 Interfederal Savings and Loan  
 Joseph Decosimo and Co.  
 Lansford Organ and Piano  
 Logan-Moore, Inc.  
 Lee and Smith  
 McKee Baking Company  
 Ooltewah-Collegedale Telephone Co.  
 O'Neal Steel, Inc.  
 Rock-Tenn, Inc.  
 Roofing & Supply Co.

Southern Bell  
 Southern Blow Pipe & Roofing  
 Syntex Laboratories, Inc.  
 Union Carbide Corp.  
 Upjohn  
 Volunteer Sales, Inc.  
 Vulcan Materials

## FOUNDATIONS

Appalachian Fund, Inc.  
 Ashland Oil Foundation, Inc.  
 Benwood Foundation, Inc.  
 Chatlos Foundation  
 Dixie Yarns Foundation  
 Edyth Bush Charitable Foundation  
 Exxon Education Foundation  
 Four C's Foundation  
 George I. Alden Trust  
 Hand Foundation, The  
 K. W. Grader Foundation  
 Lee Foundation  
 Price Waterhouse Foundation

Proctor and Gamble Fund, Inc.  
 Sears-Roebuck Foundation  
 Tennessee Independent Colleges Fund  
 Thomas F. Staley Foundation  
 William Randolph Hearst Foundation

## ESTATES

Grace Lundquist  
 Mollie Tanzer

## Class Participation in BECA Giving, 1984-85

Class	Class Agent	Donors	Percent	Amount	Class	Class Agent	Donors	Percent	Amount
19-29	Walter Clark	24	51	\$1,338.00	68		30	27	557.50
30-32	Eva Martin	19	46	767.50	69		33	29	627.50
33-37	I. C. Levering	25	52	1,407.50	70		40	30	2,255.00
38-40		23	59	1,207.00	71	Roy Dunn	43	29	1,660.00
41-43	Cliff Ludington	27	61	697.50	72	Dennis & Joan Taylor	36	25	884.00
44-46	Vern Dortch	13	36	633.00	73		37	21	645.00
47-48	Robert Wood	12	29	617.50	74		33	19	488.50
49	Frances Andrews	19	49	807.50	75	Bill Taylor II	44	24	612.50
50	R. C. Mizelle	20	49	552.50	76		47	17	917.50
51	Doug Bennett	34	56	765.00	77		38	14	979.50
52	Layton Sutton	24	55	410.00	78	Debra Sue Taylor	46	16	2,390.00
53	Buddy Blair	45	63	730.00	79		36	14	527.50
54	J. W. Henson III	41	93	3,890.00	80		19	7	322.50
55	Joseph Smoot	26	57	3,280.50	81	Pam Taylor	20	7	565.00
56	Dean Kinsey	19	46	295.00	82		18	7	282.50
57	Ron Rodgers	17	44	787.50	83	Bev Dickerhoff	25	6	650.50
58	Jan Rushing	17	41	1,017.50	84		165	43	847.50
59	Robert Burchard	17	46	285.00	85		208	56	1,404.00
60	Wilfred Reyna	16	29	270.00		Subtotal — Graduates	1,551		45,466.00
61	Dan Rozell	15	25	500.00		Associates — Nongraduating alumni	337		18,419.89
62	James Culpepper	24	38	897.50		Total	1,888	31	63,885.89
63	Lamar Phillips	22	30	1,302.50		Other contributions applied to BECA goal			68,685.98
64	Elder & Mrs. David Osborne	31	46	2,412.50		Total BECA giving			\$132,571.87
65	Herbert Coolidge	33	41	1,646.00					
66	James Newbern	44	42	1,467.50					
67	Glenda Brown	29	29	865.00					

# COMMITTEE OF 100

(Members annually contribute \$500 in dues for the benefit of Southern College)

Robert Adams  
E. A. Anderson  
Frances Andrews  
Sue Baker & Mary Taylor  
Michael Barto  
Mardian Blair  
Wallace Blair  
Jack Blanco  
T. G. Boulard  
Dewitt Bowen  
Mrs. Charles Boyd  
Jim Boyle  
Robert Bowers  
Al Burdick  
Bille Burdick  
Paul Burdick  
Arthur Butterfield  
B. T. Byrd  
Tom Campbell  
Albert Cason  
David Castleberg  
Chalmer Chastain  
Jerome Clark  
Fred Cothren  
Jesse Cowdrick  
Stewart Crook

Des Cummings, Jr.  
Willis Cushman  
Merrill Dart  
James Davis  
K. R. Davis  
Olivia Dean  
Lynn Elkins  
Randy Elkins  
Charles Fleming  
Roger Floren  
Forrest Fuller  
Fred Fuller  
Phil Garver  
H. H. Goggans  
Charles Graves  
Norman Gulley  
John Gutierrez  
Albert Hall  
Stephen A. Hall  
Ted Hamilton  
Lyndon Harder  
Bill Haupt  
C. David Henriksen  
Walter Howell  
Steve Hulsey  
William Hulsey

Allan Hyde  
Dale Iles  
Bill Iles  
Carl Jacobs  
Wayne Janzen  
David Jarrett  
Robert Jensen  
O. R. Johnson  
Elton Kerr  
Gunter Koch  
Charles Kuhlman  
Waldemar Kutzner  
J. H. Leland  
Irad Levering  
D. C. Ludington  
Jack McClarty  
J. C. McElroy  
Tom McFarland  
Bill McGhinnis  
Ellsworth McKee  
Jack McKee  
O. D. McKee  
James McKinney  
Denzil McNeilus  
Donna McNeilus  
Rollin Mallernee

Gerald Martin  
Robert Merchant  
Martha Messinger  
William Metcalf  
Herbert Michals  
R. C. Mills  
Bob Murphy  
Harvey Murphy  
William Nelson  
Frank Palmour  
Forrest Preston  
Winton Preston  
Ed Reifsnnyder  
Richard Reiner  
James Rhodes  
Wayne Rimmer  
Herbert Rogers  
Jan Rushing  
Erich Schmidt  
Bob Scott  
Grace Shaffer  
Margaret Sharp  
Rahn Shaw  
Marion Simmons  
John Sines  
Earl M. Smith

Earl Smith, Jr.  
William O. T. Smith  
Lewis Sommerville  
Don Spears  
Elmyra Stover  
Student Association of S  
Dennis Taylor  
Debra Sue Taylor  
Victor Taylor  
William H. Taylor  
William H. Taylor II  
James Thomas  
Sanford Ulmer  
John Wagner  
Lewis Wagner  
Louis Waller  
Harley and Laurel Wells  
Ira Wheeler  
Charles E. Whidden  
James R. Williams  
Robert W. Williams  
David Winters  
Clara Wright  
H. A. Woodward

## Would You Like An Income for Life?

**S**outhern College of Seventh-day Adventists offers lifetime income in exchange for such assets as cash, securities, or real estate.

Placing your debt-free property in trust with SC has many advantages:

- Lifetime income for you, your spouse, or other beneficiary
- Competitive rate of return on your investment
- Reduction or elimination of capital gains tax
- Immediate income tax deductions possible
- No cost for creating or managing annuities
- Trust services provided by highly skilled professionals
- Estate tax savings through support of private higher education
- Options suited to the needs of any donor, young or old
- Immediate recognition of your support
- Satisfaction of investing in young lives

Call or write today for complete information on how you can exchange assets for a life income. There is never an obligation and all inquiries are confidential.

Department of Planned Giving  
Southern College of Seventh-day Adventists  
P.O. Box 370  
Collegedale, TN 37315-0370  
(615) 238-2111



### Committee of 100 Honors Fleming

For students at Southern between 1946-1975, this man was practically an institution in himself. As general manager for finance and development, Charles Fleming's primary interest was in the industrial and commercial operation of the college which provided students with opportunities. During that time, a completely new physical plant was developed and enrollment rose from 250 to its peak at 1,700 plus.

One of the founders of the Committee of 100 when it began in 1963-64, Mr. Fleming later served as its executive director for about 10 years. A plaque was presented to him at the most recent board meeting of the committee. Since its incorporation in 1964, William A. Iles has presided over the support group for the college. Bill McGhinnis is the current executive director and senior president. Mr. Fleming remains active in the Collegedale community and in Chattanooga service organizations. He is a member of the SC Board of Trustees and the SC Industrial Board. Also, he is the first elder of the Collegedale SDA Church and board chairman of Collegedale Interiors, Inc., a carpet brokerage operation with an annual volume of about \$4 million.

# Those Who Walked These Halls

## 1920's

Those attending the 1985 homecoming in Collegedale from the 1920's decade included: Rose Meister Allen, Masie White Jameson, Robert and Martha (Montgomery) Odom, Robert and Elizabeth Cowdrick, D. W. Hunter, Merrill Dart, Herman Slate, Jesse Cowdrick, Katharyn Anderson Crowder, Thelma Levering, Carl and Ruth Jacobs, Ray Jacobs, John Speyer, Margaret Thompson Connell, Charlie and Helen (Watts) Boykin, Nellie Ferree, and O. D. and Ruth (King) McKee.

**Jennie (Stagg) Hudson**, '28, was sorry not to be at homecoming, as "Southern College has always been close to my heart." She adds, "Always interested in what is doing."

**Ruby (Wade) Jensen**, '23, is living in Christianburg, Va. Though virtually incapacitated by rheumatoid arthritis, she wrote recently of fond SJC memories. She recounted a 1920 experience in Elder Field's Old Testament history class when she, Dorothy Tolman, and Lucille Whiteneck decided to write a composition incorporating class members' names. "We were sitting right in front and got so tickled he should have sent us out of class, or made us read it aloud," she says.

**Herman I. Slate**, '25, took two years of high school at SJC, resulting "in a deepening of my Christian beliefs." Later he graduated at Loma Linda with his degree in medicine, and became a general surgeon. In '40, he married Esther Grace Heiser of Beacon, N. Y. From 1952 to 1968 he was chief of surgery at Hadley Memorial Hospital in Washington, D.C. He retired from surgery in 1975. He describes his greatest thrills as "the occasions of three of my major operative cases becoming members of the Seventh-day Adventist Church." The Slaters continue to live in Arlington, Va., not far from their two married daughters, Grace Langley, a systems analyst; and Glenda Brenner, a CPA.

**Don Steinman**, '27, writes from National City, Calif., where he and his wife have a large garden with berries, fruit and nut trees. They grow bananas and lots of flowers. At 80, he is in excellent health and "of good courage as we see so many evidences of the soon return of Jesus." Don completed nurses training at Hinsdale in 1929 and the theology course at Washington Missionary College in 1935. He pastored in the Potomac and Ohio conferences, worked with J. L. Shuler in evangelism, and was on the youth camp staff at Tar Hollow, Ohio. He worked in Illinois 5 years and then in California at Paradise Valley Hospital. He has two daughters, grandchildren, and a great-grandson.

**Virginia (Leach) Thatcher**, '24, '29, '63, and her husband, Mel, are retired in Paradise, Calif. She taught for many years. Their daughter Jackie Ruskjer lives in Paradise, and a second daughter, Barbara Jane Studer, lives in Avon, Ohio. There are six grandchildren.

**Minnie Ward**, '24, passed away August 6, 1985. She was buried in Keene, Texas. She is survived by two sons, Marceus L. Ward of Dallas, and Clovis Wendell Ward of Eagle Lake, Texas; a daughter, Wanda Easley of Gentry, Ark.; 13 grandchildren and 11 great-grandchildren.

## 1930's

**Kenneth Crofoot**, '36, passed away on Oct. 11, 1984, in Orlando, Fla. As a student, he worked in the library, and his wife, Eleanor (Andrews), recalls the priceless education she herself received from reading during those years. She later taught school and earned a M.Ed. from Maryland University. Dr. Crofoot taught, pastored, and was a chaplain and clinical psychologist. In retirement he was a volunteer family and marriage counselor for the Forest Lake SDA Church as well as for a county health clinic. Daughters are Ellen (Mrs. Robert) Nixon, treasurer of Takoma Academy, and Kathleen (Mrs. John) Harrington, who works in Quality Care.

**Lois Mae Franz**, '34, died on Oct. 2, 1985, in Berkeley Springs, W. Va. Lois was a secretary at the General Conference for 11 years, retiring in 1977 because of illness. Her husband, Clyde, '32, was an associate secretary there from 1970 to 1980. For 21 years they were at various posts in the Inter-American Division. They have a son, Charles, an orthodontist in Calif., and a daughter, Sue Smith, who lives in Maryland.

**Vera Fay Lester**, '36, was last employed as teacher and registrar at Rio Lindo Academy in Healdsburg, Calif., where she still lives. After completing a two-year music degree here, she went on to other colleges to get her B.A. in modern languages. B.Mus. in music education, and her M.Mus.Ed.

**Audice L. Lynd**, student '35, is a former Kentucky-Tennessee Conference treasurer. He and his wife, Delia (Banks), have one daughter, Virginia Orr. The Lynds are retired in Candler, N.C.

## 1940's

**Earl L. Clough**, '49, though retired from the ministry, is presently a camp ranger for the Mountain View Conference in W. Va. He and his first wife, Dorothy, had a son and a daughter. After her death, his second wife, Louise, gave him two step-children and a daughter.

**Curtis C. Johnson, Jr.** student '44 to '45, is a retired X-ray technologist, and his wife is retired from nursing. They have rental property near their home in Largo, Fla. They have a daughter in North Carolina and a son in California, "plus four wonderful grandchildren."

**Alice (Perkins) KImber**, '47, is residing in Sanford, Fla., with her husband, Victor. She has been awarded an honorary doctorate in social work by the World University Roundtable International Secretariat in Tucson, Ariz. She has also been included in the 1985 book, *2,000 Notable Americans*. This fall she was invited to attend the World Conference of Doctors in Tucson.

**Clarence D. Wellman**, '46, died Feb. 10, 1985, in Keene, Texas, after a year's fight with cancer. He was a member of the first four-year senior class at Collegedale. He enjoyed almost 40 years as a minister, serving in the Georgia-Cumberland

and Texas conferences. He and his wife, Allene (Hasty), had celebrated their 50th wedding anniversary just five months before his death. Their daughters, Joyce Williams and Nelda Fields, live near Allene.

## 1950's

**Tom O. Suarez**, student '52, is married to **Judy (Addison)**, '70. They reside in Winter Springs, Fla. Tom owns Florida Desk Company and Judy is the management coordinator for the business. Both are involved with several church building projects and an orphanage in Dominican Republic. They have three sons: **Dennis**, '75, **Desi**, '80, and **Jay Jones**, who is currently a sophomore at Southern College.

**Norman L. Trubey**, '57, died on July 24, 1985, of complications following surgery. He was 51. He was vice president for finance of Andrews Industries. Before his association with Andrews University, he was director of financial affairs at Hialeah Hospital in Florida and from 1971 to 1977 he worked in South America for Granix Food Factory. He is survived by his wife, **Alice (Dean)**, '57; a son, **Jeffrey**; two daughters, **Lisa** of Berrien Springs, Mich., and **Pamela Rouse** of Virginia.

## 1960's

**Delmar Dean Anderson**, student '69, graduated from Walla Walla College in '72 with a degree in engineering. He is now the chief engineer at the Park Ridge Hospital, Fletcher, N.C., in the AHS/Sunbelt system.

**Norman Bruce Caldwell**, attended '64, resides in Whites Creek, Tenn.

**Harry Hartgrove**, student '65-'67, resides in Portland, Tenn.

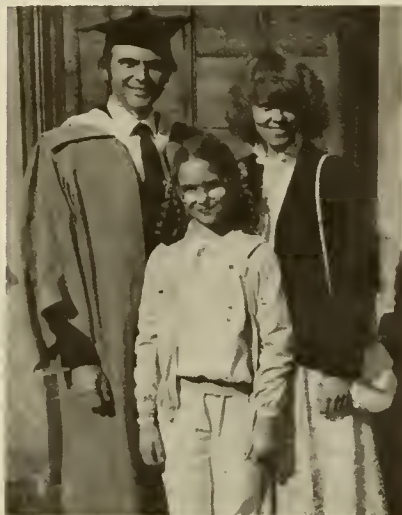
**Gerald Kovalski**, '63, is the director of communication for the Georgia-Cumberland Conference. He was principal of Bass Memorial Academy, Lumberton, Miss., for the past three years, and communication director of the Alabama-Mississippi (Gulf States) and New York conferences prior to that. His son, **Jerry**, is working this year as a student missionary on Guam at the Adventist World Radio/Asia station. **Jerry** and his wife, **Cindy**, have an apartment overlooking the ocean on the west side of the island.

**Charles N. Martin, Jr.**, '64, is now the executive vice president of marketing and development for Hospital Corporation of America. He joined HCA in September, 1980, after serving as president and chief operating officer of General Care Corp. Martin resides in Nashville, Tenn., home base for HCA.

**Ron Shoemaker**, '68, has recently moved to a new location near Ringgold, Ga. He is a sales representative for a uniform rental service. He and his wife have two sons, ages 7 and 10.

# Those Who Walked These Halls

**Ronald M. Smith**, '65, is field representative, Trust Services, for the Oregon Conference. He had been senior pastor of the Hood View/Pleasant Valley District. Before going to Oregon in 1976 he had pastored in Florida for 10 years. His wife, **Kathleen (Detamore)**, '65, is a nurse. Their children are: Daryl, Darlene, Laurel, and Lauren.



Steve and Kristin Thompson, '69 and daughter Tina

**Steven Thompson** is principal of Newbold College in England. After he and his wife, **Ellen-Kristin (Peterson)**, graduated from Southern in 1969, they both completed master's degrees at Andrews University. While pastoring the Dundee church in Scotland, he took studies at St. Andrews University. In 1976 he received his Ph.D. in New Testament. After being a pastor in England for two years, he joined the Newbold College faculty. In June 1984 he became principal of the 250-student Adventist college. Kristin teaches in the Newbold Church School and they have two daughters, Lisa and Tina.

**Heidi Marta (Gallner) Uptegrove**, student '65 to '68, received a B.A. degree in psychology from the University of California, Riverside, and a masters degree in counseling from the University of San Francisco. She is currently working toward state licensing as a marriage and family therapist. She is the mediator/conciliator of the Family Conciliation Court, Superior Court of Tehama County (northern California). Her husband, Tim, is the business manager for the Tehama County Department of Education.

**Charles Lloyd Williams**, '69, and **Margery Sue (Schacklett)**, '68, of Hagerstown, Md., left San Francisco for Singapore with their three children on August 21. Charles is the new director of the publishing department for the Far Eastern Division.

**Bill Wolcott**, '69, is now at Forest Lake Academy in Florida, where he is dean of boys and coach of the gymnastic team. He and his wife, Sharon, have three children, Kelly, '85, Bill, and Todd.

**Joan (McIntyre) Young**, '60, and her husband live in Roanoke, Va., where they own a 16-reporter court reporter firm. Their daughter, Rondi, is a senior at Mount Pisgah Academy and Scott is a freshman there. Their younger son, Brett, is in grade five. The Youngs attended the recent Adventist-Laymen's Services and Industries convention in Montana.

## 1970's

**Judith (Clayburn) Anderson**, '75, lives in Smyrna, Ga., and works at the Institute of Nuclear Power Operations as a secretary. Her husband, John, is self-employed as an attorney and is also a co-senior partner in a firm of five lawyers in Atlanta.

**Ed Bigham**, student '74 to '77, and his wife, **Gwen (Williams)**, student '76 to '78, are living in Biglerville, Pa. They had a baby girl, Jennefer Lauren Scoville Bigham, on June 28. She was dedicated in the Gettysburg SDA Church in August by James Frost, pastor of the Arlington SDA Church, and his wife, **Marsha (Tuttle) Frost**, '77, pastor of the Fairfax SDA Church.

**Marceil E. Bodtker**, '79, is a certified public accountant in Asheville, N.C. She is with Studebaker & Bodtker P.A.

**Sheila Denise (Keller) Burnette**, '75, is currently the supervisor of graduate admissions at Andrews University. She is married to **Robert Burnette**, student '75, who is the assistant director of admissions and marketing at AU. He has been named in *Who's Who in American Colleges and Universities* and *Outstanding Young Men of America* for the past two years. They have one daughter, Shannon, who enjoys second grade.

**Russell Cooper**, '78, is a clinical pastoral education resident at Kettering Medical Center, Kettering, Ohio. He has an M.Div. degree from Andrews University.

**E. Bryant Davidson**, '78, and his wife, **Joy (Southard)**, '77, reside at 5912 Dixon, Norman, OK 73071, an Oklahoma City suburb. He is head of the engineering and drafting department at Lippert Masonry Systems, Inc., and Joy is a full-time mom to their son, Edwin Bryant II, age 2. She also works part time as a teacher's aide in their new church school. Calls or visits from friends are welcome.

**Ben Davis**, student '69 to '72, and his wife, **Elsie Rae (Pike)**, '71, have moved to the Northern New England Conference from Kentucky-Tennessee. He is involved with evangelism and radio programming. Their children are Tawnya, 9, and Benton, Jr., 7.

**Rolando de Leon**, '75, is senior auditor at McKee Baking Company. As well as his degree in accounting from SC, he has a law degree from the University of the Philippines.

**Marilyn Kay (Blecha) Emery**, '75, received her master's degree in nursing from Loma Linda University in '80. She is now working as a diabetes educator at Porter Memorial Hospital in Denver, Colo. She has one daughter.

**Mark T. Godenick**, '78, and his wife, Constance, have recently finished a family practice residency program in Orlando, Fla., and have joined two other Adventist physicians in northern West Virginia. Having survived the worst floods of the century, they look forward to serving rural health needs.

**Richard Lee Griffin**, and his wife, **Bettie (Chastain)**, both '73, are at Platte Valley Academy in Shelton, Nebr. This is his third year as boys' dean there, though his thirteenth in deaning. Their children are: Tera, 10; Mandi, 7, and Bekki, 4.

**Nita (Daniels) Griffiths**, '70, is living at Route 1, Box 165-J3, Cheney, WA 99004. She would love

to hear from friends and classmates. Her husband, Richard, is a spray pilot. They have two daughters, Melissa, 10, and Maegen, 8.

**Rick Hale**, '75, is now the vice president of operations at Smyrna Hospital in Georgia. Before his promotion, he was human resource administrator. Prior to 1981 he was the senior personnel specialist for American Hospital Supply Corp. in Macon, Ga. His work history also includes personnel experience at Hinsdale Hospital. He is earning credits toward an MBA from Georgia State University.

**Cindy (Martin) Hanson**, '78, '81, and her husband, Mark, are enjoying rural life in Punta Gorda, Fla. Mark is practicing as a general dentist and Cindy works part time in labor and delivery and is a busy mother of Chris, 3, and a newborn.

**Leslie Willard Hardin**, '75, has recently moved to Truckee, Calif., as pastor. Will and his wife, Judy, and son, Daniel, came from Paradise, Calif., where he had been head of the nursing staff at Feather River Hospital, as well as serving on the pastoral staff at the Paradise SDA Church. Previously he pastored in eastern Kentucky.

**James Francis Henderson**, '75, and his wife, Janice, are living in Carrollton, Ga. Jim is currently working in management with Royal Creations, and Janice is at home with their two sons, Todd, 5, and Nathan, 3.

**Jerry Holt**, '78, has joined the staff at Kettering Medical Center in Ohio, as director of communications. He holds a degree in religion as well as a master's degree in public health. He has served as director of community relations, marketing, and development at Takoma Adventist Hospital in Greeneville, Tenn. He and his wife, Kitty, have two sons, Andrew and Jason.

**Lillian R. (Ambrose) Hughes**, '70, and her husband, William, live in Texas. She is an R.N. at Reeves County Hospital in Pecos. The hospital is part of AHS/Sunbelt. They have two children, Lisa Marie, 5, and Charles, 3.

**Stanley Jackson Knight**, '78, received his M.Div. from Andrews University in 1981, and is now a pastor in the Gulf States Conference. He is a member of the board of education for Gulf States Conference and Bass Memorial Academy. His wife, **Valeri Mae (Johnson)**, '78, is a registered nurse, and is staff development instructor for Crippled Children's Service. The Knights have a son, Ryan Patrick, 2.

**Marsha Fay Koppel**, '77, received a B.S. from Andrews University in 1980, an M.P.H. from Loma Linda School of Health in 1981, and an M.A. from Loma Linda Graduate School in 1983. She is a school nurse for the Colton School District and lives in Loma Linda, Calif.

**Susan (Mills) LaFever**, '72, lives in Kingston Springs, Tenn. She and her husband, Mitchel, a nurse anesthetist, have two daughters, Leesa Marie, 4, and Kimberly Song, 2, a Korean adopted child.

**Jesse Earl Landess**, '75, received his M.Ed. from the University of New Orleans in 1980, and is now administrator of Pickett County Nursing Home in Byrdstown, Tenn. His wife, **Susan (Gaspard)**, '76, was the school nurse at Georgia Cumberland Academy when they were on the staff there. The couple have two daughters, Jacqueline, 6, and Jessica, nearly 3.

**Carolyn Frances Lanfear**, '72, received her M.A. from Andrews University in 1975. Carolyn lives in Mt. Pleasant, Mich., and teaches mathematics, primarily the calculus sequence, at Central Michigan University. She is a member of Pi Mu Epsilon, the mathematical honor society.

**Philip Loy Lawless**, '75, is principal and a teacher at Laurelbrook School in Smithville, Ga. He and his wife, Donita (Abston), have a daughter, April Lynne, 5.

**Donald R. Lechler**, '74, and his wife, **Linda (Carnes)**, '74, accompanied their BECA annual fund contribution with a note. 'We are proud of our alma mater, and are glad to have a small part in its continuing activities.' They reside in Chattanooga.

**Lyon Ludden**, '73, is now vice president for finance at Glendale Adventist Medical Center in California. He and his wife, **Connie (Eiken)**, '73, have one son, Todd. He joined Ernst and Whinney as a senior accountant in 1978 and became a CPA in 1979. Most recently he had been vice president at Sonora Community Hospital.

**Timothy C. Patton**, student '78 to '81, graduated from Kettering College of Medical Arts in '83 with a degree in respiratory therapy. He and his wife, **Caroline**, recently transferred from Shady Grove Adventist Hospital in Rockville, Md., to Lakeland, Ga. He is assistant director of respiratory therapy at Smith Memorial Hospital, and his wife is night shift supervisor of nurses.

**Charles Aubrey Shields**, '75, lives in Long Beach, Calif., and works in Ocean Beach Hospital as a social service worker. He is also working part time on his master's degree.

**Jonathan Shields**, '76, and his wife, **Maureen (Koles)**, are residing in Bismarck, N. D., where he is working at Dakota Adventist Academy as treasurer. She is a full-time homemaker. They have two children, Nathan, 5, and Esther, under a year.



Stanton M. Tait

**Stanton M. Tait**, '79, was recently promoted from controller to vice president for finance at Highland Hospital in Portland, Tenn. He was controller at Coon Memorial Hospital, Delhart, Texas, before moving to Highland Hospital in 1983. He is married to **Debbie (Straw)**, '80.

**Tanya Gorman Wells**, '71, is director of the nursing division at Chattanooga State Technical Community College. She was recently awarded a doctorate in educational administration and supervision from UT Knoxville. Twice named an *Outstanding Woman of America*, she has been a participant in the national 'Women Leaders of the '80's,' a privately funded project to assist women in developing as leaders.

**Ron H. Whitehead**, '78, is currently the youth and health educator director for the Arkansas-Louisiana Conference. His wife, **Betty (Becker)**, '78, is a full-time mother of three children: twin girls, Stacy and Heidi, 3; and a son, Ryan, 2. They live in Shreveport, La.



## 1980's

**Kim (Wygol) Arellano**, '80, has completed a master of accountancy degree from the University of Oklahoma and has returned to the audit department of McKee Baking Company. She began working there after her junior year of college, and now is responsible for auditing data processing and computer operations. She and her husband, **Tim Arellano**, '82, live in the Collegedale area.

**Penny (Hill) Beihl**, '82, her husband, Gary, and their son, David Timothy, born June 6, live in Colorado Springs, Colo. Gary graduated from Walla Walla College in '80 and received his Ph.D. from Stanford University in 1984. He is a senior CAD engineer and Penny is a full-time homemaker.

**Stefan**, '81, and **Kristi Burnham**, '82, have recently accepted positions at East Pasco Medical Center near their home in Zephyrhills, Fla. Stefan is working in personnel and Kristi in intensive care. They have one son, Brad, who is 2.

**Delores (Foreman) Dever**, '82, is teaching grades 1 through 3 at Pewee Valley Junior Academy in Louisville, Ky. She and her husband, Michael, have a new son born on Thanksgiving day. They named him Michael Douglas II.

**Jeff Filiberto**, '81, and his wife are residing in Covington, La., about 30 miles north of New Orleans. Jeff headed the darkroom crew for the General Conference session. Previously a staff photographer at Florida Hospital, he now has his own photography business. His wife is a nursing supervisor for a local home health agency. Their church in Metairie conducted a Revelation Seminar in Covington this past fall.

**Howard Thomas Goodwin**, '83, left Miami last September for Special Service as biology teacher at West Indies College, Mandeville, Jamaica. He had been in Loma Linda, Calif., before that.

**Carl Ray Greek, Jr.**, '80, received the doctor of medicine degree from the University of Alabama School of Medicine last June.

**Greg William Hagopian**, '82, is living in Madison, Tenn., and taking anesthesia nursing.

**Judith Willene Hartgrove**, student '81, married John Richard Mollard last June 23. They are residing in Inglewood, Tenn. Judy's father, Harry Hartgrove, attended Southern from '65 to '67.

**Jeanette (Monnier) Hazlett**, '80, and her husband, Mike, live in Escondido, Calif. Mike is the head dean of boys at San Pasqual Academy, and she is the principal's secretary and labor coordinator. They have a daughter, Michele, 1.

**Nileta (Chesnut) Jackson**, '82, is married to Faron Levi Jackson, a specialist in the U.S. Army. Her current address is Killeen, Texas.

**Angelina Fay Johnson**, '84, teaches kindergarten through second grade, and lives in Forest, Va.

**Melinda Joiner**, '84, is teaching first grade at the Highland Elementary School in Portland, Tenn.

**Patricia V. (Carbajal) Jones**, '82, is married to Dr. Kenneth T. Jones, a chief dental officer for the U.S. Public Health Service. They live in Anthony, Texas.

**Rowland Knight**, '83, and **Lori Pleasants**, '82, were married in Orlando, last June 16. They both work at Hialeah Hospital where he is the senior accountant and she is secretary to the president. They live in Miami Lakes, Fla.

**David Marx**, '80, is living in Tulsa, Okla., in his second year at Oral Roberts University School of Medicine, and is still single.

**Leslie Mathewson**, '83, is teaching Bible at Maplewood Academy in Hutchinson, Minn. Les is also assistant dean of boys. He writes that the training received from Deans Evans, Christman, and Qualley has helped beyond words.

**Vicki Lynn (Brown) Morgan**, '81, an operations analyst, recently was awarded the Certificate in Management Accounting. She lives in South Carolina.

**Carole Morris**, student '82, attends Volunteer State Community College and works as women's fitness director for the Y. She lives in Hendersonville, Tenn.

**Cynthia Morris**, student '79 to '81, is attending Loma Linda School of Allied Health. She will receive a degree in occupational therapy in June, 1986. She resides in Colton, Calif.

**Donna (Sutherland) Mounce**, '84, has been pursuing a bachelor of science degree in graphics technology at Walla Walla College. She lives in College Place, Wash.

**Todd K. Parrish**, '83, and his wife, **Lisa (Howe)**, '84, are now in Burleson, Texas. He is the new development assistant at Huguley Memorial Medical Center in Fort Worth, and Lisa works as an R.N. in the nursery there. Todd is the former director of programming, development, and public relations at FM 90.5 WSMC.

**Barbara (Doherty) Rendalen**, '82, flew back from Oslo, Norway, for Pat Silver's music reunion at Forest Lake Academy in December. Her husband, **Age Rendalea**, '75, their 7-year-old daughter, **Cristin**, and Age's parents also made the trip and enjoyed Christmas with Barbara's parents in Collegedale. In Norway Barbara is in demand as a vocal soloist, and sings with a professional choir.

**Donna (Gray) Sweeney**, '84, is teaching commercial arts at Forest Lake Academy. Previously she was executive secretary for two Florida Hospital administrators. She also is a private pilot. Her husband, Don, manages the Clermont Recreation Center in Clermont, Fla.

**Angela Ruth Stroud**, '84, was married to W. Steven Tankersley, Dec '83, in Tulsa, Okla., Aug. 11, 1985. They are making their home in Colton, Calif. She is an ICU specialist at St. Bernardine Hospital in San Bernardino, and Steve is in his second year of medicine at Loma Linda University.

**Joan (Menhennet) Zollinger**, '82, and her husband, **Robert**, former student, are living in Dublin, Va. She is enjoying raising their daughter, **Jaime Lee**, now over a year. Robert is a patient accounts manager at Albans General Hospital.

# Try Before You Buy

INGREDIENTS: ART;  
BUSINESS; ENGLISH;  
HISTORY; NURSING;  
BIOLOGY; COMMUNI-  
CATIONS; MUSIC;  
EDUCATION; HOME  
EC; INDUSTRIAL ART;  
ALTO BODY; COMPUTER  
SCIENCE; MATH *and more!*

## FREE SAMPLE

### THIS FREE SAMPLE INCLUDES:

- ✓ FREE ROOM & BOARD
- ✓ SCHOLARSHIP INFO
- ✓ CAMPUS TOURS
- ✓ FINANCIAL AID INFO
- ✓ GYMNASTICS SHOW *and that's the start!*

TWO DAYS ONLY—  
**APRIL 13 & 14**  
BE THERE!

THIS PRODUCT MEETS DEGREE  
STANDARDS OF THE US-SDA  
JEAN-TURNER!

# SOUTHERN COLLEGE

of SEVENTH-DAY ADVENTISTS

**FORTIFIED**  
*with*  
FUN, EXCITEMENT,  
and LEARNING!



NET DATE APR. 13-14

April 13-14

# COLLEGE DAYS

'86

For more info  
contact your pastor  
or call toll free, 1-800-624-03  
In TN call 615-238-2111.

## Southern College

OF SEVENTH-DAY ADVENTISTS

Collegedale, TN 37315

Address Correction Requested

Nonprofit Organization  
U.S. POSTAGE  
PAID  
Permit No. 6  
Collegedale, TN 37315

Car. Rt. Presort



