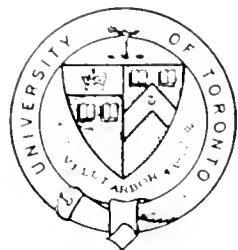


UNIVERSITY OF TORONTO



3 1761 00015220 7

F
5545
S57C3



Presented to
The Library
of the
University of Toronto
by

W. J. ...
M. A. B. G. S.

SPARROW LAKE & SEVERN RIVER



Issued by
General Passenger Dept
April, 1914



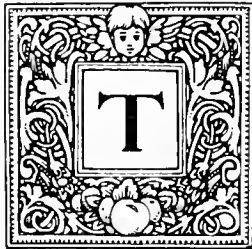
F.
5545

S57C3

814487



Sparrow Lake and Severn River



THE Canadian Northern Railway operates a service during the tourist season to Sparrow Lake and Severn River resorts by its famous "Lake Shore Line" that has won hosts of friends from all parts of the Continent. Fast, solid vestibuled trains, with the highest class of equipment, run from the points adjacent to the cottages and hotels on the river and lake. Sparrow Lake district has become a well-established resort, and one that is attracting a continually growing list of summer visitors year by year. The Canadian Northern line runs along the side of Severn River and on to the lake shore. Accordingly, some of these resorts can be reached from Hamlet, on the Severn, and the remainder from Sparrow Lake Station, where direct connection is made with "Sparrow Lake Steamer Line," almost at the train side.

Sparrow Lake is somewhat circular in shape. Pretty promontories jut out all round it and there are some beautiful islands upon which cosy homes are being constructed in ever-increasing numbers. The clearness of the water produces the most beautiful shadow pictures. All round the lake when it is calm, tree and brush are mirrored in the water in vivid reflection; in some shady bays are seen reeds which seem almost to float in the air—so striking is the illusion. Just the place the artist and photographer will revel in.

For a body of water of its size—not much more than 20 miles in area—it has a most wonderful diversity of shore, high, rocky crags, low broken shore line and sandy beaches, the contrast

between the vivid reds of the granite and the green of the pine on the water side making a beautiful coloring.

Nature has been bountiful here, but to add to the pleasure of the district, there are some splendidly kept hotels and boarding houses, a full list of which is shown at the back of this publication. The people keeping these places take a pride in being second to none in giving excellent service and accommodation. Unlike most of the Muskoka resorts, the country surrounding to the south and east is a farming district, consequently fresh supplies of all kinds are easily obtained. Many of these summer resorts provide their own milk, eggs, poultry and vegetables.

In Lake Simcoe, Couchiching and Severn River, is found that prince of fresh water fish, the Maskinonge—a 20 pounder is a common catch, and they are known to run as high as 40 pounds; to hook one of those big fellows will give the disciple of Isaac Walton the time of his life; the Lunge is a fierce fighter and it takes some time for him to exhaust his great strength; beware! don't try to land him too soon or there may be a flurry, some broken tackle and a disappointed fisherman. Guides can be had at Hamlet, on the Severn River; they charge \$2.50 a day and provide a canoe. On the Lower Severn, pike and pickerel abound.

There are some splendid canoe trips in the vicinity of Sparrow Lake, particularly down the Lower Severn. Those desiring to make this journey can now take the train to Ragged Rapids and start from there down the River. It is a most interesting paddle, with short portages and rapids to shoot, and splendid places to camp. For the man who leads a sedentary life, there could be no better prescription than a trip of this kind, where he will have nothing worse to worry him than how to satisfy a voracious appetite; and will return bright of eye and with a wealth of memories that will not end with a summer vacation.

THROUGH TICKETS

Tourists coming from all points in the United States and Canada can obtain through tickets and the advantage of reduced round trip rates, when they are in effect, to Sparrow Lake and the various points named in this publication.

Through tickets may be purchased via Montreal and Toronto, to all points in the Provinces of Ontario and Quebec, on this Company's lines.



A SUMMER IDYL—SPARROW LAKE



OFF FOR A CANOE TRIP—SPARROW LAKE



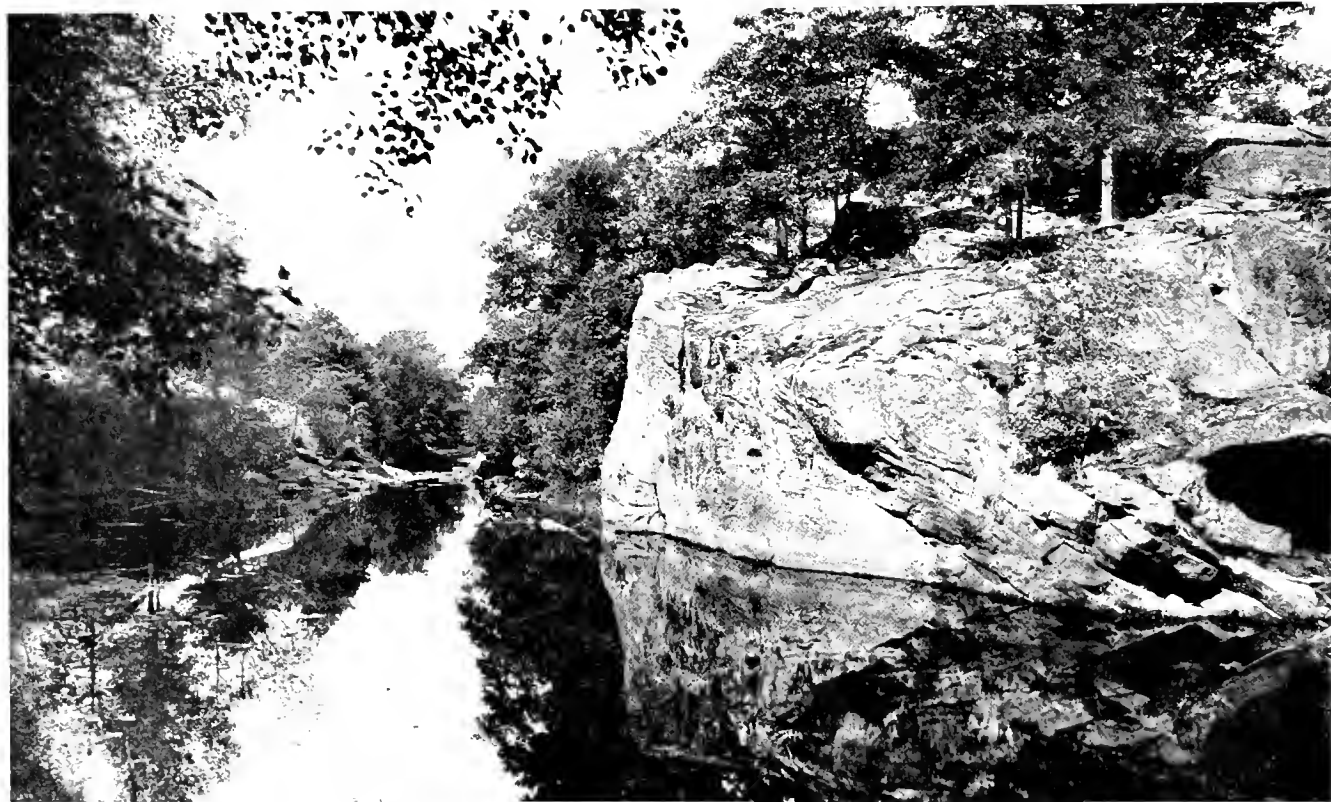
“WAITING FOR THE GUIDE”—SPARROW LAKE



SPARROW LAKE



DON VALLEY—ON THE WAY TO SPARROW LAKE



MOUTH OF KA-SHE RIVER - SPARROW LAKE



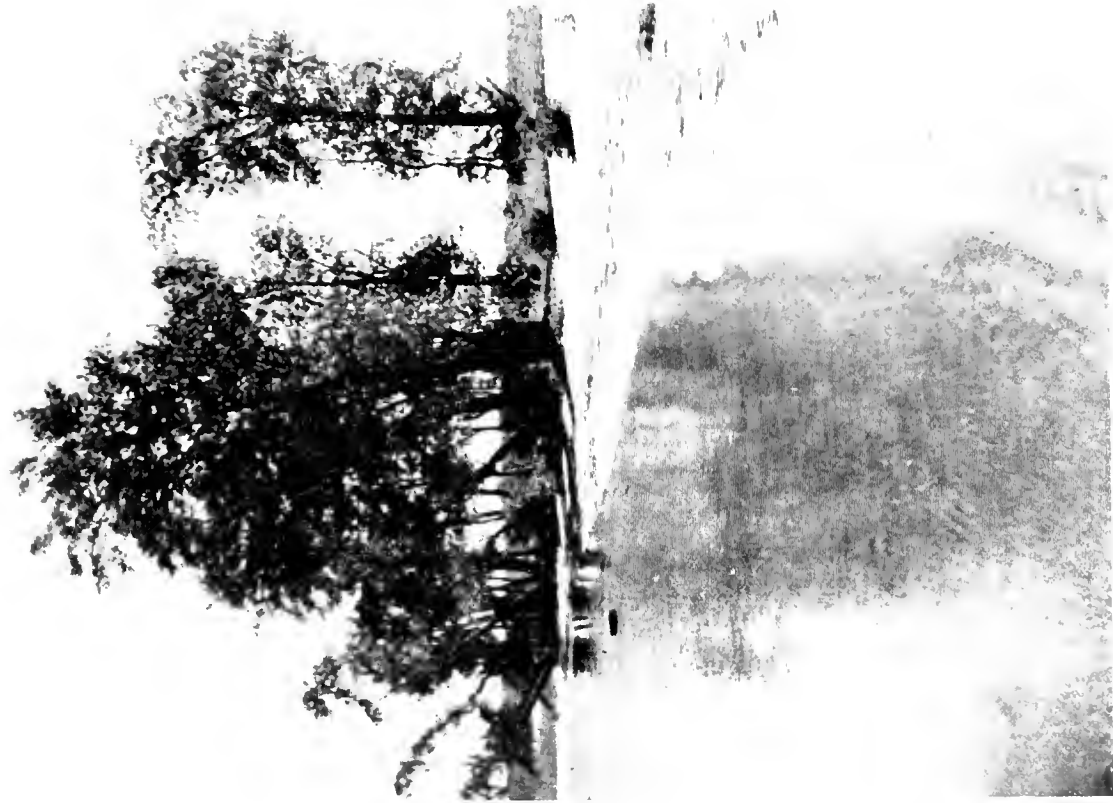
ON THE SEVERN RIVER



ENTERING DON VALLEY—C.N.O. RY.



INDIAN GUIDE AND FAMILY—SPARROW LAKE



“THE CRYSTAL SANDS”—LANGMUIR’S POINT



A MORNING SPIN—SPARROW LAKE



A QUIET NOOK — SPARROW LAKE



SEVERN RIVER—SEEN FROM THE TRAIN

Summer Tourist and Week-end Excursion Fares to Sparrow Lake Resorts

FROM	TORONTO, ONT.	Brooklin Ont.	Port Hope Ont.	Cobourg Ont.	Trenton Ont.	Picton Ont.	Belleville Ont.	Napanee Ont.	Yarker Ont.	
	Week-end Fares	SUMMER TOURIST FARES								
TO—Armstrong ..	\$3 55	\$4 70	\$4 80	\$5 40	\$5 70	\$7 30	\$8 90	\$7 65	\$8 70	\$9 40
Buena Visto ..	3 75	4 90	4 80	5 40	5 70	7 30	8 90	7 65	8 70	9 40
Delmonte ..	3 55	4 70	4 80	5 40	5 70	7 30	8 90	7 65	8 70	9 40
Franklin's ..	3 65	4 80	4 80	5 40	5 70	7 30	8 90	7 65	8 70	9 40
Hamlet ..	3 05	4 20	4 75	5 35	5 65	7 25	8 85	7 60	8 65	9 35
Lake View ..	3 45	4 60	4 80	5 40	5 70	7 30	8 90	7 65	8 70	9 40
Massey Camp ..	3 45	4 60	4 80	5 40	5 70	7 30	8 90	7 65	8 70	9 40
Mount Royal ..	3 65	4 80	4 80	5 40	5 70	7 30	8 90	7 65	8 70	9 40
Roehl's ..	3 65	4 80	4 80	5 40	5 70	7 30	8 90	7 65	8 70	9 40
SparrowLake Station	3 05	4 20	4 80	5 40	5 70	7 30	8 90	7 65	8 70	9 40
Unecda Rest ..	3 55	4 70	4 80	5 40	5 70	7 30	8 90	7 65	8 70	9 40
Vanomi Point ..	3 65	4 80	4 80	5 40	5 70	7 30	8 90	7 65	8 70	9 40
Wiancko House ..	3 55	4 70	4 80	5 40	5 70	7 30	8 90	7 65	8 70	9 40

Summer Tourist tickets to Sparrow Lake points are available at other points on the Canadian Northern Lines than shown above, also from points on connecting rail and steamer lines. Tickets may be purchased, and baggage checked through to destination; baggage checked on through tickets via steamer lines to Toronto, the C.N.O. Ry. and connections, will be transferred between steamer dock and railway station at Toronto free.

Stop-overs are permitted at any point on Canadian Northern Lines, within limit of ticket.

HOTELS AND SUMMER RESORTS

SPARROW LAKE	Accommo- dation.	RATES		Name of Proprietor or Manager and Address.
		American Plan		
		Per Day.	Per Week.	
Delmonte	80	\$1 25	\$7 to \$8	O. N. Sanderson, Sparrow Lake P.O.
Franklin House ..	20	1 25	6 to 7 50	John Franklin, Sparrow Lake P.O.
Idlwild	60	1 50	7 to 9	James Whiteside, Hamlet P.O.
Lake Shore House ..	100	1 50	8 to 10	Albert Stanton, Port Stanton P.O.
Lake View House ..	125	\$1 50 to 2 00	8 to 10	Tony Miller, Hamlet P.O.
Maple Villa	25	1 25	7 to 8	W. H. Keeler, Severn Bridge, P.O., R R No. 1
Mount Royal	80	1 25	6 to 8	August Schultz, Sparrow Lake P.O.
Peninsula Farm	75	1 to 2 50	7 to 12	N. E. Bennett, Hamlet P.O.
Roehl's House	150	1 25	7 to 8	Otto Roehl, Sparrow Lake P.O.
Severn Grange	12		6 to 8	T. W. Davis, Hamlet P.O.
Sparrow Cottage	25	1 25	6 to 8	F. Stanton, Port Stanton, P.O.
Stanton House	75	1 25	7 to 8	Miss A. E. Stanton, Port Stanton P.O.
Unecda Rest	120	1 50 to 2 00	8 to 12	J. W. Clipsham, Sparrow Lake P.O.
Vanomi Point	125	2 00	7 to 10	J. H. Jackson, Sparrow Lake P.O.
Wenona	60	1 25	6 to 8	Jas. Maguire, Severn Bridge, P.O., R R No. 1
Wiancko House	60	1 25 to 1 50	7 to 8	H. W. Wiancko, Sparrow Lake P.O.

Summer Tourist and Week-end tickets to points named above, except Sparrow Lake Station and Hamlet, are on sale June 15th to September 2nd. Summer Tourist tickets to Sparrow Lake Station and Hamlet are on sale May 1st to November 20th, and Week-end Excursion tickets to same points May to October inclusive.

Summer Tourist tickets are good to return until November 30th of year in which sold.

Week-end Excursion tickets are valid to go on P.M. trains Fridays, all trains Saturdays, and to return on Monday following date of sale.

R. L. FAIRBAIRN, General Passenger Agent, TORONTO, ONTARIO





575

PLEASE DO NOT REMOVE
CARDS OR SLIPS FROM THIS POCKET

UNIVERSITY OF TORONTO LIBRARY

