





Thomas Barbour

HARVARD UNIVERSITY



LIBRARY OF THE MUSEUM OF  
COMPARATIVE ZOÖLOGY

---

GIFT OF  
THOMAS BARBOUR

*November 20, 1946*









300004  
Spix

Jortensis.





SPECIES NOVAE  
TESTUDINUM

QUAS

IN ITINERE ANNIS MDCCCXVII—MDCCCXX.

PER

BRASILIAM

JUSSU ET AUSPICIIS

MAXIMILIANI JOSEPHI I.

BAVARIAE REGIS AUGUSTISSIMI

SUSCEPTO

COLLEGIT ET DESCRIPSIT

*Dr. JOANNES BAPT. DE SPIX,*

*Quondam ordinis Regii Coronae Bavarici civilis Eques, Academiae Scientiarum Bavaricae  
Socius ordinarius, Musei Regii zoologici, zootomici et ethnographici Conservator rel.*

OPERIS A SPIXIO ANNO MDCCCXXIV. PRIMUM EDITI TABULAS REVISIT, DENUO IMPRIMENDAS  
ET EMENDATIS COLORIBUS IMBUENDAS CURAVIT

*Dr. CAR. FRID. PHIL. de MARTIUS.*

TABULAE XVII. A MICH. SCHMID MONACENSI DELINEATAE.

MONACHII,

---

IMPENSIS EDITORIS.

1838.

LIBRARY  
NOV 20 1961

T. B. ...

HARVARD UNIVERSITY  
CAMBRIDGE, MASS. U.S.A.

# A M P H I B I A.

## Ordo III. Testudines.

Animal testa immobili, cum costis connata obtectum, tetrapodum, caudatum, repens vel natans, animalculis, herbis vel fructibus victitans, mas pene simplici instructus feminam insidendo fecundans, foemina ova numerosa subrotunda membranacea in fossa arenosa ad maris, fluvii vel lacus ripam excavata deponens, non incubans; tympano aurium extus conspicuo; maxillis corneis edentatis pyxidum instar se cludentibus; digitis unguiculatis; ventriculo cordis simplici biauriculato; pulmonibus persistentibus, metamorphosi, uti in ranis, non subjectis.

### GENUS I. E M Y S.

*Fluviatilis vel lacustris testa convexo-depressa, oblonga; palmis pentadactylis, plantis tetradactylis, utrisque depressis; digitis elongatis semipalmatis vel palmatis, acute unguiculatis; sterno immobili.*

SPECIES I. **EMYS AMAZONICA.** TAB. I. adulta. TAB. II. FIG. 1, 2. pul-  
lus. FIG. 3. ovum.

Maxima, magnitudine Chelonis Mydae, brunneo nigricans vel grisea, subtus flavescens; capite squamoso, depresso, antice compresso, brevi, vix adunco, supra inter oculos approximatos sulcato, postice largissimo; scutello verticali triangulo postice elongato; gula unicirrhosa; testa ovata, immarginata, postice dilatata, planiuscula; scutello dorsi marginali antico intermedio nullo; bractea pectoris versus caudam bifurcati pentagona, pone acuminata; pedibus squamatis, large palmatis, squamis latis aliisque linearibus transversis.

**D**ESCRIPTIO. Caput in embryonibus flavum, in vertice nigro-bipunctatum, in adultis fusco-flavicans, pyramidale, postice largissimum, membrana colli obvolutum, antice compressum, breve, acutum, supra inter oculos approximatos sulcatum, squamis papyraceis quatuor munitum, quarum verticalis unica, subhexagonali-trigona, oblonga, antice larga, postice angustior; nares membranaceae, rotundae, vix separatae, subsuperae; maxilla superior et inferior corneae, obliquae, apice vix aduncae, flavescens, cirrho in gula unico; collum subcrassum, rugosum, breve, flavescens, occiput involvens. Testa maxima, magis ovata, convexo-depressa, in medio adultorum dorso planiuscula, antice subangusta, vix emarginata, vel immarginato-truncata, postice largissima margine planiore, in junioribus flavo-virescens dorso convexiore subangulato, in adultioribus brunneo nigra sive grisea, subtus flavescens dorso planiore; scuta disci in junioribus punctulato-rugosa, in adultioribus undulato-stri-

gilata, in medio dorso tuberoso - elevata, in adultis glabra, nigro-grisea, in medio dorso planiuscula; scuta disci spinalia 5, quorum primum declive, subquadratum, antice largiusculum, subsinuoso-, medio subacuminato - marginatum, secundum et tertium quadrilateralia, longa, pone subcoarctata, quartum subtriangulum vel subcordiforme, pone subacutum, quintum hexagonum, subrotundum, convexum, antice subacutum, medio impressum; scuta disci lateralia 4, versus dorsum medium planiuscula, versus marginem testae oblique descendente, subrectangula, quorum primum trapezoideum, largum, extrorsum angulato - rotundatum, introrsum acutiusculum, secundum et tertium rectangula, subconvexa, supra et infra subangulato - marginata, quartum subrectangulum, subhexagonum, supra subcoarctatum; scuta marginalia 24, intermedio antico impari deficiente, nullibi revoluta, quorum anteriora trapezoidea subhorizontalia, media rectangula, longa, descendente, posteriora pentagona, latiora, planiora, medio fere plana, subconcava, immarginata, postica gemina, subquadrata. Pectus flavescens glabrum, oblongum, planiusculum, medio subelevatum, antice rotundatum, testam fere superans, postice aequae largum, ad latera emarginatum, apice medio excavatum, angulato - bifurcatum, testam non adaequans; bractee pectoris 15, quarum anterior intermedia unica, pentagona, pone maxime acuminata, antice rotundato marginata, laterales brevissimae, triangulae, intus acutae, subsequentes aequae triangulae maiores, reliquae quadratae, praecipue media maior, postrema trapezoidea, medio subacute excavata, bifurcata. Pedes virescentes, depressi, squamosi, squamis latis nigris, aliisque linearibus transversis hispidi; membrana palmaris usque ad unguium apicem excurrentes; ungues depressi, flavi, apice obtusiores; cauda uno pollice extra testam exserta, ad basin maxime crassa, post anum testam fere exsuperantem angustior, ad latera squamis linearibus transversis hispida. Longitudo corporis a rostro usque ad apicem caudae  $5^{\circ} 9'$ , capitis  $6\frac{1}{4}'$ , testae  $2^{\circ} 7'$ , pectoris  $2^{\circ} 2\frac{1}{3}'$ ; latitudo occipitis 6', testae  $1^{\circ} 7\frac{1}{2}'$ , altitudo testae 10'.

Habitat in fluvio Solimoens et confluentibus Javary, Rio Branco, gramine fructibusque victitans, Novembre insulas arenosas gregarie investigans, ova 150 in fossa arenosa tripedali deponens, depositisque arenam pectore conculcans, pullus post duas hebdomades ex arena egressus cicatrice umbilicali adhucdum (Tab. 2. fig. 5.) instructus, testudo adulta ab onçis, avibus Tujuju, Jabiru Indiisque infestata, nutrimento inserviens oleumque ex ovis destillandum suppeditans, ab incolis Tartaruga Grande nominata.

SPECIES 2.      **EMYS VIRIDIS.**      TAB. II. FIG. 5.      TAB. III. FIG. 1.

Mediocris, supra olivaceo virescens, subtus viridi flavicans, testa elliptica, subaequali; scutello dorsi intermedio antico impari sublineari, rectangulo, pectoris impari cordiformi, largissimo; pectore oblongo, antice largiusculo, truncate marginato, postice angustiore, bifurcato.

**D**ESCRIPITIO. Testa elliptica subaequalis olivaceo virescens, versus marginem maculis vel lineis fusco-brunneis variegata, depresso-convexa, antice subdeclivis, rotundato-marginata, medio subcoarctata margine subreflexo, postice suboblique descendens, subelevata, subacuta scutis marginalibus longioribus planioribus extus emarginatis, in medio dorso convexo-planiuscula; scuta papyracea testae adnata laevia, spinalia 5, quorum anticum largius, cordiforme, heptagonum, apice largiusculum, bisinuoso-marginatum, postice subbifurcate marginatum, medio subtuberosum, secundum subrectangulum, oblongum, sinuose marginatum, tertium subrectangulum, oblongum, sinuose marginatum, praecipue postice angulatum, medio nodosum, quartum oblongum, apice largiusculum, bifurcatum, medio nodosum, quintum triangulano-rotundatum, antice angustius, supra convexo-tuberosum, lateraliter compressum; lateralia disci utrinque 4, quorum anticum largum, intus tenuius, aequae, ac postremum, trapezoidum, subhexagonaliter marginatum, media rectangula, longa; marginalia 25, supra olivacea, brunneo-fusco strigilata vel maculata, subtus flava, fusco-strigilata, quorum anticum intermedium impar lineare, rectangulum, secundum subrectangulum, tertium pentagonum, intus acute angulatum, quintum medio impressum, media rectangula, breviora margine sursum subreflexo, posteriora rectangula subquadrata, largiora, subconcava, extus planiuscula, subangulate marginata, postremum geminum, ad latera compressum, supra tuberoso descendens, apice angulate fissum. Pectus virescenti-flavum, obsolete fusco nubilatum, oblongum, antice largius, truncate marginatum, testam subaequans, postice ad latera angulate marginatum, apice angulate bifurcatum, testam fere adaequans; bractee 13, subcrenulatae, testae adnatae, quarum prima antica intermedia impar magna, cordiformis, pentagona, antice larga, rotundata, postice acuminata, laterales breves sinuoso-triangularae, intus acuminatae, tertia trapezoidea, intus subangustior, quarta subtenuis, rectangula, quinta rectangula maior, sexta trapezoidea, magna, infra sinuose, extus angulate marginata, septima obliqua, quadrangula, medio excavata, extus bifurcata. Cauda testam parum exsuperans. Longitudo testae  $8\frac{1}{2}'$ , pectoris  $7\frac{3}{4}'$ ; latitudo testae  $6\frac{1}{4}'$ ; altitudo testae 5'.

Habitat in aquis lacustribus fluminis Carinhanhae, confluentis Sti Francisci.

SPECIES 3. *EMYS DEPRESSA*. TAB. III. FIG. 2. 3.

Exigua, rufescente nigricans, capite non squamis sed membrana tecto; collo cirrhoso, exserto; testa elliptica, postice gibbosa, acute, ad femora angulate marginata, supra dorsum subsulcata; scutis dorsi reticulatis, medio nodosis, antico spinali maximo; bractea marginali pectoris impari pentagona, longa; pectore postice subbifurcato; cauda brevissima, vix exserta.

**D**ESCRIPTIO. Caput oblongum, depressum, membranaceum, supra brunnescenti nigricans, subtus flavo-rufescens, gula non cirrhosa; collum tenue, exsertum, fuscum. Testa rufo-nigra, elliptica, depresso convexa, versus femora extus subangulata et pone sinuata, apice, medio et postice tenuior, postice gibbosa, acuta, antice rotundato-marginata, supra in medio dorso planiuscula, subsulcata; scuta in junioribus brunnescentia, reticulata, medio nodosa, subaspera striis in tuberculum medium convergentibus, in adultis nigricantia, obsolete striata, spinalia disci 5, quorum anterius maximum, octogonum, medio nodosum, postice angustius et oblique ascendens, secundum et tertium subhexagona, medio planiuscula, subsulcata, quartum hexagonum, conchiforme, minus, lateralia disci utrinque 4, oblique versa, quorum anterius trapezoideum, largum, intus angustatum, secundum, tertium et quartum rectangula, vel pentagona, marginalia disci minora, quadrangula, longa, 25, quorum anticum impar subpentagonum, apice largiusculum rotundato-marginatum, subsequencia subrectangula, subplana, media compressa margine sursum subreflexo, versus femora subdilatata, versus caudam acuta, angulata, posticum geminum convexo-elevatum, lateraliter subcompressum, extus sinuato-marginatum, subtus concavum. Pectus nigro-rufescens, oblongum, planum, extus sinuato-marginatum, apice largiusculum, rotundato-marginatum, testae adpressum, postice angustius, subbifurcatum, depressum, testam subattingens; bracteae 13, subsulcatae, quarum antica impar pentagona, conica, postice angustior, antice dilatata, laterales triangulae, breves, tertia irregulari-rhomboidea, intus subelevata, quarta rectangula, oblonga, subtenuis, penultima quadrata, maxima, postrema excavata, acute angulata. Pedes nigricantes, subsquamosi, semipalmati; ungues breves, fuscii; cauda brevissima subrugosa, testam vix excedens, infra anum tenuis, medio sulcata. An eadem cum *Emyde depressa Merremii* et *radiolata Mikanii*?

Longitudo corporis 7', capitis  $\frac{3}{4}$ ', colli  $1\frac{1}{4}$ ', testae  $5\frac{3}{4}$ ', pectoris  $5\frac{1}{4}$ ', caudae  $\frac{1}{4}$ '; latitudo testae  $2\frac{3}{4}$ '; altitudo testae  $2\frac{1}{4}$ '.

Habitat in aquis paludosis provinciarum Rio de Janeiro et fluminis Sti Francis ci.

SPECIES 4.      **EMYS MACROCEPHALA.**      TAB. IV.

Grandis, supra nigerrima, subtus nigro-rufescens; capite crassissimo, convexo, supra nasum non sulcato; collo exserto, minus crasso; testa cylindrico-ovata, maiore quam in *Emyde Tragaxa*, antice angustiore, minus emarginata magisque elevato-convexa; scutis dorsi laevibus, non striatis, nigerrimis, minus sinuose emarginatis, posticis marginalibus geminis; bractea pectoris antice impari pentagona, apice largiore, rectangula; pectore postice testam non attingente; unguibus depressis, validis, nigris.

**D**ESCRPTIO. Caput crassissimum, postice convexum, dilatatum, sexscutellatum, apice tenue, breve, maxillis aduncis flavo-corneis, superiore emarginata, brevior, quam inferiore, supra scutis quatuor nigris, nasali planiore, apice convexo, postice concavo, elato, verticali intermedio unico, elongato, subrectangulo, antice angustiore, postice rotundato-marginato, laterali utrinque superiore subconvexo, longo, subpentagono, postice largiore, inferiore sinuose elongato tympano largo; collum mediocre, subcrassum, laeviusculum, exsertum. Testa nigra, ovata, cylindrica, elevata, in medio dorso planiuscula, ad marginem externum medium rotundata, versus collum minus elevata, convexo-planiuscula, obliqua margine antico subsinuato, versus pedes posteriores extus dilatator, planior, postice supra gibbose declivis et ad latera subcompressa, margine laterali et postico planiusculo, ovato, subemarginato; scuta dorsalia laevia, non striata, nigerrima, testae quasi adnata, media sive spinalia subconvexa, quorum primum quadratum, antice vix largiusculum, margine antico medio obtuse angulato, secundum hexagonum, planiusculum, lateraliter subalatum, tertium subquadrato-hexagonum, subconvexum marginibus obsolete sinuatis, quartum oblongum, heptagonum, subcordiforme, postice angustius, ad marginem anticum bisinuatum, quintum subgibbum, subrotundatum, praecedente latius, devexum; scuta lateralia utrinque quatuor, quorum primum trapezoideum, latissimum, versus dorsum angustius, acute angulatum, antice angulato-rotundatum, secundum et tertium subpentagona vel subrectangula, longissima, quartum maius, irregulariter pentagonum, postice excavato-marginatum; scuta marginalia 24, quorum anteriora angustiora, oblonga, antica intermedia gemina, minora, subquadrata, lateralia sive media cataphracta, angusta, margine subrotundato, vix sursum reflexo, postica larga, quadrata, subconcava, penultimum pentagonum, apice acutum, postremum geminum, subminutum quadratum marginibus sinuosis, extrorsum subconcavum, medio convexum.

Pectus ferrugineo-fuscum, planiusculum, lobo anteriore largiore, subrotundato-marginato, posteriore rectangulo, subangustiore, postice medio excava-

to, obtuse angulato et bifurcato, testam non attingente, ad locum conjunctionis pectoris cum testa vix, et in mare solum convexo-elevatum; bractee tredecim, vix striatae, quarum antica impar subtenuis, minima, pentagona, apice larga, rectangula, postice acuminata, laterales triquetrae, minores, tertia utrinque irregulariter rhomboidea, introrsum tenuior, minor quam in Emyde Tragaxa, quarta subquadrata, maior, quinta et sexta quadratae, maximae, sexta apice medio obtuse bifurcata; pedes depressi, palmati, intus ad latera squamis transversis linearibus, extus squamis latis hispidi; ungues planiores, apice triquetri, validi, nigri; cauda brevis, testam parum exsuperans. Longitudo corporis  $2^{\circ} 1'$ , capitis  $5'$ , testae  $1^{\circ} 5\frac{1}{2}'$ , caudae  $3'$ , sterni  $1^{\circ} 2\frac{3}{4}'$ ; latitudo occipitis  $4'$ ; testae  $1^{\circ} 1\frac{1}{2}'$ ; altitudo testae  $6\frac{3}{4}'$ .

Habitat solitaria et rarissima, ab incolis Cabeçudo dicta prope pagum Airon ad ripam fluminis Yau, confluentis Rio Negro. Specimina tria seccata in museo brasiliano Monachii conspicienda sunt.

SPECIES 5.      **EMYS TRACAXA.**      TAB. V.

Grandis, supra olivaceo fusca, subtus flavicans; capite subcrasso, postice convexo; testa ovato-subcylindrica, elevata, antice latiore ac minus sinuoso-marginata quam in Emyde Macrocephala; scutis dorsi undulate ac radiatim striatis magisque sinuose marginatis, postico marginali simplici; bracteis pectoris substriatis, antica impari acute rhomboidea, apice angustissima, tertia subtriquetra, largiore quam in Emyde Macrocephala; pectore postice testa brevior.

**D**ESCRIPITIO. Caput subcrassum, postice rotundato-convexum, largum, apice attenuatum, compressum, breve, tympano largo, maxillis aduncis flavis, corneis, scutis capitis supra quatuor olivaceo-nigricantibus; collum retractum, crassum, rugosum. Testa ovata, subgloboso-convexa, in medio dorso planiuscula, antice minus convexa quam in Macrocephala, angusta, vix declivis et vix subsinuate marginata, postice parum dilatata, a dorso oblique et subconvexe descendens, margine largiore, planiore, postice subacute rotundato; scuta dorsi decidua, subimbricata, virescenti nigra, spinalia quinque, undulate striata, striis subconvergentibus, nigricantia, relucientia, quorum primum subquadratum, antice medio acuminate marginatum, postice vix angustius, secundum octogonum, praecedente brevius, largius vero, margine antico trisinuato, la-



terali vix alato, postice angustius, oblique ascendens, tertium sinuoso-subquadrilaterum, quartum triangulum postice acuminatum, quintum globoso-convexum, rotundato-subhexagonum, lateralia dorsi brunneo fusca, 4, quorum primum subtriangulum, anticè dilatatum, secundum et tertium rectangula subelongata, quartum pentagonum, postice convexum, marginalia 24, subtus flava fuscaque, quorum anticum geminum, pentagonum, subaequilaterale, antice subacutum, sinuate marginatum, subsequencia quadrangula, oblonga, subobliqua, media quadrangula margine exteriori rotundato, reflexo, vix oblonga, magis coarctata quam in specie praecedente, (Cabeçudo) posteriora subpentagona, suberecta, versus marginem subexcavata, planiora, scuto postico simplici vel connato, gibboso-convexo, margine planiore, subacuto. Pectus ovatum, planiusculum, flavicans, antice subconvexum, rotundato-marginatum, postice paulo angustius, longius, rectangulum, medio angulate excavatum, postice a margine testae distans; bracteae flavae, corneae, praecipue ad margines regulariter crenulatae, quarum prima antica impar rhomboidea, apice acuta, lateralis utrinque triangula, minima, tertia irregulariter triangula vel rhomboidea, extus rotundata, intus acuta, quarta rectangula, oblonga, intus tenuiuscula, quinta et sexta quadratae, maximae, postica quadrata, apice medio subacute excavata, obtuse bifurcata, a testae margine distans. Pedes palmati; ungues validi, cylindrici, rufo-nigri, apice obtusiusculi; cauda uno pollice testam exsuperans. Longitudo corporis  $1^{\circ}6\frac{1}{2}'$ , capitis  $5'$ , pectoris  $1^{\circ}1'$ , testae  $1^{\circ}5'$ , caudae  $2\frac{3}{4}'$ ; Latitudo testae  $11\frac{3}{4}'$ ; altitudo testae  $4\frac{3}{4}'$ .

Habitat solitaria et monogama ad ripam et insulas fluminis Solimoëns et confluentium, ova tenuiora et magis oblonga in fossa arenosa deponens.

SPECIES 6.      **EMYS RUFIPES.**      TAB. VI.

Mediocris, supra nigro-brunnescens, subtus flavo-ferruginea, capite crasso, depresso, supra scutellis, lateraliter squamulis munito; gula bicirrhosa; testa elliptica, medio dorso longitudinaliter acuta; scuto dorsi marginali impari lineari, pectoris subrotundo, medio excavato; pedibus squamis scutelliformibus hispidis, largissime palmatis; unguibus compressis, acutis.

**D**ESCRIPITIO. Caput pyramidale, depressum, postice dilatatum squamulisque papyraceis munitum, antice tenue, acutum, squama simplici internasali brunneo-fusca tectum, pone oculos, ante et supra aures squamulis reticulatum, naribus antice protuberantibus, maxilla superiore rufo-flavicante, cornea, a naribus declivi,

emarginata, non adunca, inferiore subrotunda, vix cornea; gula bicirrhosa; collum crassitie occipitis, tenerrime rugosum, fusco-brunnescens, subtus flavicans.

Testa fusco-brunnea, subtus flavicans, elliptica, elevato-convexa, antice angustior, subdeclivis, truncate marginata, postice compressa, acute angulata, juxta dorsum medium angulate canaliculata; scuta laevia marginibus obsolete striatis, spinalia dorsi quinque, quorum primum anticum heptagonum, maximum, antice largiusculum, subrotundatum, medio sulcatum, secundum, tertium et quartum pentagona, convexa, canaliculata, subbrevia, quintum octogonum, lateraliter compressum, medio canaliculate angulatum, postice subacutum, lateralia octo, quorum primum anticum maximum, trapezoideum, intus angustum, extus largius, subsinuose marginatum, secundum et tertium subrectangula sive subpentagona elongata, quartum trapezoideo-hexagonum, postice compressum, marginalia viginti quinque extus angulate marginata, antica largiora ac planiora posterioribus, obliqua, quorum primum anticum impar lineare apice acutum, lateralia subquadrata maxima, tertium pentagonum intus acute angulatum, quartum et reliqua usque ad octavum, sive media quadrata, minora, subconcava, nonnum aequae ac undecimum quadrata, largiuscula, decimum et duodecimum pentagona, intus subangulata, oblique descendente, postica gemina compressa subverticalia apice non conniventia. Pectus flavo-rufescens, oblongum, subrectangulum, antice largiusculum, rotundate truncatum, postice angustius, acute bifurcatum, impressum, margine laterali sinuose angulato; bractee tredecim glabrae, ad marginem vix striatae, quarum prima antica impar brevis, subcordiformis, subhexagona, postice acuminata, medio concava, laterales triangulae, minimae, extus rotundato-marginatae, tertia trapezoidea, larga, deorsum acuminata, antrorsum rotundata, mediae oblongae subrectangulae, penultima subquadrata largissima, medio impressa, postrema oblique rectangula, intus angulate excavata, apice acuminata bifurcata. Pedes brunneo-flavicantes, extus acute scutellati, supra squamis scutelliformibus hispidi, usque ad ungues palmati, anteriores postice squamis marginalibus subserrati, digitus pedis posterioris extimus muticus, large palmatus, angulate distans; ungues compressi, subfalciformes; cauda verrucosa, brevis, ad basin crassissima, pone anum tenuis, lineis duabus testam exsuperans. Longitudo corporis 9', capitis 2', caudae 1', testae  $7\frac{3}{4}'$ ; latitudo testae  $5\frac{2}{4}'$ ; altitudo testae 5'.

Habitat ad ripam fluminis Solimoëns.

SPECIES 7.      **EMYS ERYTHROCEPHALA.**      TAB. VII.

Mediocris, supra fusca, subtus flavo-albicans; capite flavo-aurantio; oculis minus approximatis; rostro infra nares subfisso; sulco supra inter oculos longiore quam in *Emyde amazonica*; scutello verticis subcordiformi, antice rotundato, postice acuto, brevi; bractea pectoris marginali impari postice rotundata; pectore postice rotundato-excavato; gula non cirrhosa; scuto antico dorsi marginali intermedio nullo.

**D**ESCRIPŦIO. Caput pyramidale, postice subconvexum, rostro acuto, porrecto, apice flavescenti-ferrugineo, supra inter oculos scutato, flavo, medio longe profundeque sulcato, naribus tubulosis prominentibus, scutello verticis flavo-rufo, cordiformi, antice oblongo-rotundo, postice triangulariter acuto, brevissimo, scutellis capitis reliquis flavo-rufis, nigro-marginatis, maxilla superiore emarginata, apice subfissa, obliqua, fusco-virescente, inferiore flavo-maculata, obliqua, convexa; collum crassum, subrugosum, fuscum. Testa oblonga, elevato-convexa, ad marginem externum sinuata, non revoluta, antice angustior, emarginata, postice dilatata, declivis, versus marginem externum planior. Scuta papyracea, substriata, spinalia quinque, lateralia quatuor, marginalia viginti quatuor, quorum antica gemina minora; trapezia, antice subangusta, postice subrotundo-marginata, secunda utrinque trapezoidea, postice angustiora, tria utrinque subsequencia oblonga, rectangula, coarctata, posteriora subrectangula, largiora, subexcavata, planiora. Pectus flavo-albicans, rectangulum, antice ovato-marginatum, postice rotundato-excavatum, bifurcatum, introrsum recurvatum; bracteae pectoris tredecim, quarum antica impar oblonga, postice largior, subrotundata, laterales acute triangulae, minimae, subsequentes subtriangulae, sublongae, intus subacutae, reliquae quadratae, maiores, postremae trapezoideae, tenues, introrsum elongatae, medio rotundato-excavatae, apice bifurcatae et introrsum curvatae. Pedes virescentes, palmati; ungues nigri, apice acuti; cauda ad basin crassa, post anum intra testam situm tenuis, lateraliter squamis transversis linearibus hispida, e testa subexserta. Longitudo corporis  $11\frac{3}{4}$ ', capitis 2', testae  $9\frac{1}{4}$ ', caudae 2'; latitudo testae 6'; altitudo testae 3'.

Habitat in aquis ripariis fluminis Solimoens, Jurura Campeva cognominata.

SPECIES 8. **EMYS CANALICULATA.** TAB. VIII.

Exigua, fusco-nigricans; capite plano, supra ferrugineo, subtus nigro; collo supra rufo, verrucoso-echinato, subtus squamuloso; testa nigricante, elliptica, convexo-depressa, ad marginem externum sursum revoluta, in medio dorso longitudinaliter laege canaliculata; scutello dorsi antico impari brevi, rectangulo, pectoris pentagono, magno; pedibus brevibus, squamis acutis, hispidis; plantis, praecipue palmis subglobosis; cauda minima, vix exserta.

**D**ESCRIPITIO. Caput pyramidale, depressum, superne squama simplici papyracea pyramidali, rufa, lateraliter squamulis irregularibus, aequae rufis obtectum, antice compressum, breve, nigrum, declive, reliquum nigrum, squamulis reticulatum, ad angulum maxillae inferioris flavo maculatum, infra gulam non cirrhosum; nares minutae, anticae, prominentes; palpebrae flavicantes; tympanum squamulis margaritaceum; collum aequae largum ac occiput, breve, supra flavum, squamosum vel echinatum. Testa depressa, vix convexa, antice rotundato-truncata, margine externo laterali sursum voluto, postice sublarga, apice subacuta; scuta dorsi in junioribus brunneo-nigricantia, medio subgranulosa, in adultis obsoleta, nigrocinereo brunnescentia, medio subimpressa, in dorso medio canalis largi iustar excavata, spinalia canaliculata, quinque, quorum primum maximum, planum, hexagone-trapezoideum, postice angustius, excavatum, antice largius bisinuato-, medio subacuminato-marginatum, secundum, tertium et quartum rectangula, subhexagona, sublonga, medio excavata, posterius pone angustius, quintum subheptagono-triangelum, antice acutiusculum, obtuse marginatum, excavatum, postice subconvexum, largum, obliquum, lateraliter sinuoso-marginatum, lateralia disci quinque, obliqua, supra aequae concava, introrsum flexa, quorum primum maximum, triangulum sive trapezoideum, introrsum subacute angulatum, secundum rectangulum, longum, tertium paulo minus, subrhomboideum, postice angustiusculum, quartum trapezoideum, subconvexum, intus angustius, marginalia dorsi viginti quinque; minuta, medio impressa, extus emarginata, subtus rufescentia, nigro striata, quorum primum anticum impar rectangulum, tenue, breve, anteriora, subsequencia et femoralia maiora subrectangula, planiuscula, media minima, coarctata margine sursum subreflexo, posteriora minuta subconcava, posticum geminum subgibbosum, postice subpatens, subtus concavum. Pectus laeve, ovatum, planum, testae adpressum, nigricans, rufo-marginatum, longitudine fere testae, antice rotundato-truncatum, largiusculum, postice angustius, obtuse bifurcatum; bractee tredecim, quarum prima impar pentagona, apice larga, rectangula, postice acuminata, laterales trigonae intus acutae, subsequentes trapezoi-

deae largae, intus tenuiores; quarta rectangula angustior, quinta et sexta subrectangulae, subaeque largae, postrema gemina, trapezoidea, postice angustior, medio obtuse excavata ac bifurcata, brevior quam testa. Pedes nigri, intus squamosi; planta, praecipue palma globulosae, anterior intus rufo maculata; digiti minus separati, palmati; ungues breves, acuti, subrecti, nigri; cauda minima extus tenuis, vix exserta; anus oblongus. Longitudo corporis  $5\frac{1}{2}'$ , capitis  $11''$ , testae  $4\frac{1}{2}'$ , pectoris  $4'$ , caudae  $6\frac{1}{2}''$ ; latitudo capitis  $7\frac{1}{2}''$ , testae  $5'$ ; altitudo testae  $1'$ .

Habitat sub cognomine Japutipirema in campis paludosis juxta ripam fluminis Solimoens. Testudini Planitiae sive planicipiti Gronovii, Schneideri et Schoepfii simillima, parum, ut affirmant auctores, cognita differt ab illa unguibus plantarum non quinque, sed quatuor, modoque vivendi non in terra, sed in locis aquaticis; pullus colore toto castaneo excellit. Specimina quatuor in Museo Brasiliano Monachii asservantur.

SPECIES 9.      **EMYS DORSUALIS.**      TAB. IX. FIG. 1. 2.

Minima, ovata, supra olivaceo-virescens, depressa, in medio dorso elevata, canaliculata; capite lacertino, supra medio squamoso, nigro, lateraliter flavo-lineato; scutis granulosis; braetis pectoris duodecim; pedibus squamosis, sulphureis, nigro lineolatis; cauda brevissima, apice subaequali.

**D**ESCRIPITIO. Caput lacertinum, subrectangulum, conicum, apice subacute obtusum, supra planum, postice membrana colli obvolutum, nigrum, medio subscutellatum, lateraliter nudum, flavicans, lineolis nigris aequae, ac collum supra, variegatum; linea sulphurea a rostri apice supra oculos ad tympanum; occiput lateraliter flavo-maculatum; maxillae corneae, emarginatae, rectae, subdenticulatae, superior apice recta, subexcavata; gula non cirrhosa; collum breve, flavicans, lineolis nigris. Testa supra flavo virescens, submollis, ovata, depressa, vix convexa, subaequalis, antice subangustior, emarginata, versus femora vix dilatata, subangulate sinuata, postice subrotunda, marginibus angulatis, in medio dorso longitudinaliter canaliculata; scuta dorsi ad marginem striata, medio granulosa, aspera, spinalia quinque, medio cylindrico-carinata, lateralia plana, subcompressa, quorum primum anticum pentagonum, apice medio elongatum, postice quadrangulum, subtenue, vix declive, secundum tertium et quartum heptagona, larga, medio canaliculata, quintum minimum, pentagonum, postice obtusum, antice tenuius,

declive, lateralia quatuor, subobliqua, quorum primum anticum maximum, trapezoideum, intus angustum, impressum, extus polygonatum vel rotundato-marginatum, secundum subrectangulum, longum, intus subacutum, extus subpolygonatum, tertium polygono-vel pentagono-rotundatum, quartum minimum, subpentagonum, antice subacutum, postice rectangulare, marginalia 25, subaequalia, subtus fulva, quorum primum anticum quadratum, vix conspicuum, secundum trapezoideum, largum, intus subacutum, tertium, quartum et quintum subrectangula, postice tenuiora, reliqua subquadrata, media subconcaua, antepenultimum subrectangulum, postica gemina, rectangula, minora, medio subconvexa, apice non conniventia. Pectus subrectangulum, oblongum, medio largissimum, rufo-nigricans, extus sulphureo-marginatum, antice depressum, truncato-marginatum, postice apice tenuius, lateraliter angulatum, medio sinuoso-emarginatum, testam fere attingens; bractee 12, medio striolatae, quarum prima antica gemina, triangula, apice larga, dentata, immarginata, postice acuta, secunda triangula, subtrapezoidea, intus acuta, tertia et quarta subquadratae, largae, quinta trapezoidea, intus tenuior, postice sinuato-marginata, sexta minor, subrhomboidea, intus sublargior, postice sinuoso-marginata; bractee pectus et testam conjungentes non separatae, in fissura licet anteriore tres, in posteriore una. Pedes depressi, citrini, lineolis punctisque nigris variegati, subpalmati, praecipue anteriores squamis imbricatis tecti; ungues breves, subrecti, nigri; cauda brevissima, e testa vix exserta, post annum tenuis, tenerrime rugosa, apice cornea, sursum curvata. Longitudo corporis 4', capitis  $\frac{3}{4}'$ , testae  $3\frac{1}{4}'$ , caudae  $\frac{1}{2}'$ ; latitudo testae  $2\frac{1}{3}'$ , capitis 5"; altitudo testae 1".

Habitat juxta flumen Solimoens. Specimina duo in museo monacensi extant.

SPECIES 10. **EMYS STENOPS.** TAB. IX. FIG. 3. 4.

Minima, nigerrima, planiuscula; capite supra squamulis plurimis obsito; rostro subobtusum, inter oculos angustum; testa depressa, in medio dorso convexa; scutis spinalibus sex, transverse elongatis, granulosis; cauda vix exserta.

**D**ESCRIPTIO. Caput pyramidale, nigrum, planum, squamulis plurimis obsitum, antice subacutum, declive, inter oculos angustum, subimpressum; rostrum subrotundatum; gula bicirrhosa; collum subtenne, granulose. Testa nigerrima, planiuscula, rotundato-oblonga, in medio dorso longitudinaliter canaliculata, margine ex-

terno subemarginata; scuta granulosa, subrugosa, spinalia quinque, quorum anticum maximum, subrectangulum, transverse oblongum, gibbum, antice largiusculum, heptagone marginatum, secundum et tertium hexangula, transverse oblonga, tenuia, lata, quartum rectangulum, transverse angustissimum, minimum, quintum subhexagono-rectangulum, transverse oblongum, minus extensum, sextum maius, trapezoideum, declive, apice subtenue, postice trigonum; lateralia quatuor, quorum anticum subtrapezoideum, antice acutum, duo subsequencia pentagono-subrectangula, longa, sursum angulate marginata, quartum trapezoideum, postice tenue, marginalia viginti quinque, supra nigra, subtus albicantia, subquadrata, planiuscula, maiora, anteriora et posteriora submaiora, media minora, anticum impar rectangulum, tenue, haud longum. Pectus ellipticum, albicanti-nigriceus, antice truncatum, postice acute emarginatum; bracteae tredecim, laeves, quarum antica impar subtrigona, apice largiuscula, laterales trigonae, minores, intus acutae, quarta subtrapezoidea, lata, intus subtenuis, quinta subrectangula, lata, intus tenuis, sexta subquadrata, larga, intus subangustior, septima rhomboidea, minor, postice angulate emarginata. Pedes nigri, reticulati, subpalmati; ungues breves, acuti, fusci; cauda brevissima, post anum tenuis, vix exserta, apice acuta. Longitudo corporis  $2\frac{1}{2}$ ', capitis 8'', testae 1'11'', caudae 2''; latitudo capitis 7'', testae  $1\frac{1}{2}$ '; altitudo testae 8''.

Habitat in locis aquosis ad ripam fluminis Solimoëns; specimen, quod descripsi, juvenile est.

SPECIES II.      **EMYS MARMOREA.**      TAB. X.

Subexigua, olivaceo-brunneoque virescens, subtus flavicans, ad gulam non cirrhosa; capite laevi, non squamoso, lineolis flavis insigni; maxillis pectoreque flavidis; testa ovato-depressa, virescenti-flavo nigroque variegata; scuto marginali antico impari tetragono, subbrevis; scutis flavo-marginatis, marginalibus sursum flavo-dentatis; bracteis pectoris 12; cauda colloque exsertis.

**D**ESCRIPTIO. Corpus Emyde europea minus. Caput supra membranosum, oblongum, antice compresso-obtusum, virescens, postice subdilatatum, angulatum, nigrum, supra subtusque lituris flavidis variegatum, maxillis non aduncis, flavis, superiore verticali, gula non cirrhosa; collum longiusculum, rugosum. Testa olivaceo-

virescens ac brunnescens, ad margines scutorum et subtus flavicans, ovata, subdepressa, versus femora subangulato-dilatata ac sinuosa, postice acuta, gibbosa, antice obtusa, emarginata; scuta ad marginem undulate striata, medio flava, nodosa, spinalia 5, convexa, medio subtorosa, quorum primum anticum oblique descendens, trapezoideum, antice largiusculum, rotundato-, et medio angulato-marginatum, secundum et tertium heptagono-subrectangula, subaequalia, quartum aequale, magis largum et ad latera elatum, postice sinuatum, quintum obliquum, subtrigonum, apice acutum, postice rotundato-marginatum, medio gibbum, lateralia quatuor obliqua, quorum anticum maius, trapezoideum, intus tenuius, extus rotundato-marginatum, secundum et tertium subrectangula, longa, quartum minus, subpentagonum, postice subacutum, marginalia viginti quinque, fere omnia rectangula, margine laterali medio vix angustiore ac vix reflexo, quorum anticum impar breve, rectangulo-subpentagonum, apice subangustius, lateralia trapezoidea, intus tenuiora, reliqua subrectangula, sursum flavo-dentata ac flavo-marginata, posteriora supra femora longiora, postica gemina, compressa, gibba, acute angulata, subtus concava. Pectus ellipticum, planum, flavum, antice emarginatum, postice acute, sed breviter excavatum ac bifurcatum; bracteae duodecim, ad margines nigro striatae, quarum anticae geminae, cordiformes, triangulae, apice rotundo-emarginatae, postice acutae, laterales trapezoideae, intus tenuiores, tertia rectangula, quarta quadrata, maior, quinta trapezoidea, extus largiuscula, sexta rhomboidea, postice angulate breviterque bifurcata. Pedes nigricantes, squamulis subhexagonis reticulati, subpalmati; ungues acuti, fuscii; cauda longa, post anum exterum longe exserta, tenuis, apice acuta, reticulata. Longitudo corporis  $6\frac{3}{4}'$ , capitis  $1'$ , testae  $4\frac{1}{4}'$ , pectoris  $4'$ , caudae  $1\frac{3}{4}'$ ; latitudo occipitis  $10''$ , testae  $5\frac{1}{4}'$ ; altitudo testae  $2'$ .



## GENUS II. CHELYS.

*Capite membranaceo colloque longo depressis, planis, latis, fimbriose appendiculatis; naso tenui, tubuliformi, proboscideo, elongato; rostro tenui, minuto; maxilla inferiore postice crassiore, elevata; ore rotundato; testa depressa, acute carinata, lateraliter acute marginata; palnis pentadactylis, plantis tetradactylis, utrisque palmatis, depressis.*

## SPECIES 12. CHELYS MATAMATA. TAB. XI.

Mediocris, aspectu horribilis, fusco-rufa; capite supra et infra tympanum membrana fimbriata large alato; maxilla inferiore infra superiorem prominente, non serrata; gula colloque appendicibus membranosis fimbriatis verrucisque obsitis; testa ovata, supra dorsum acute tricarinata; scutis concentricè granulatis; pedibus squamosis, squamis solitariis crassis, seriatim positis.

**D**ESCRIPITIO. Caput planum, largum, rufo-fuscum, non squamosum, supra et infra tympanum triangulum, appendice membranoso, subtus miniaceo alatum; rostrum minutum, in nares tubuliformes, tenues, proboscideas prolongatum; oculi parvi; os rotundum, postice valvuloso-tuberosum; maxilla inferior antice infra superiorem prominens, aequè non serrata, subtus utrinque fimbriata, postice, uti in Bufo nasuto, crassa, angulato-elevata, bifimbriata; collum crassum, planum, longum, fusco-rufum, nigro-trilineatum, subtus obscure miniaceum, sex lineis nigris longitudinalibus striatum, verrucis, et ad latera appendicibus membranaceis in serie duplicata positis. Testa rufo-fusca, subconvexa, ovata, antice largior, immarginato-subtruncata, postice angustior, subacuta, in medio dorso depressa, planiuscula, acute tricarinata ac bisulcata, carinis postice approximatis, ad marginem lateralem medium compressa, verticaliter descendens, antice et postice obliqua, scuto singulo gibboso-angulato; scuta papyracea, postice acuta, tuberosa, radiis granulosis concentricis, spinalia quinque, acute carinata, quorum anticum primum largum, pentagonum, antice largiusculum, apice medio acuminatum, secundum et tertium subrectangula, quartum subhexangulum, sublongum, postice gibbum, quintum heptangulum, antice tenuius, postice acutum, medio acute elevatum; scuta lateralia quatuor, supra gibbosa, cataphracta, introrsum sulcata, quorum anterius trapezoidem, intus tenuius, extus angulato-rotundatum, secundum subrectangulum, intus subtenue, tertium

subrhomboideum, margine exteriori triangulato, quartum minus, subhexangulum; scuta marginalia viginti quinque, anteriora et posteriora conchiformia, subplana, extus pone acute angulata, media rectangula, verticalia, extus non angulate marginata, quorum anticum impar minus, subrectangulum, largiusculum, antice medio subcarinatum, secundum trapezoideum, obliquum, intus tenuius, tertium triangulum, intus rotundato-marginatum, quartum subtrapezoideum, pone subtenuius, quintum subpentagonum, subverticale, sextum rectangulum, verticale, posticum geminum, minus rectangulum, transversum, postice medio acute fissum ac patens. Pectus fusco-rufum, oblongum, attenuatum, antice largiusculum, subrotundo-marginatum, planum, testae marginem fere excedens, postice angustius, acute bifurcatum; bractee tredecim, radiatim striatae, quarum antica impar oblonga, antice largiuscula, rotundata, postice angustior, sinuoso-rotundata, laterales triangulae, minores, intus acuminatae, tertia, quarta et quinta subquadratae, sexta rectangula, longior, septima minor, trapezoidea, postice medio acute fissa, bifurcata, a testae margine distans. Pedes fusco-rufescentes, supra et subtus squamis solitariis, transverse prominentibus muniti; ungues tennes, acuti, subrecti, nigri; cauda verrucosa, ad basin crassa, infra anum oblongum testae marginem adaequantem subtenuis, pollice uno extra testam exserta. Longitudo corporis  $1^{\circ}8'$ , capitis  $3'$ , colli  $4'$ , testae  $1^{\circ}$ , pectoris  $11'$ , caudae  $2'$ ; latitudo capitis  $2\frac{3}{4}'$ , testae  $8\frac{1}{2}'$ ; altitudo testae  $3\frac{3}{4}'$ .

Habitat ad urbem Parae in aquis stagnantibus fluminis Amazonarum, Matá-mata vulgo dicta. Specimina sex in museo exstant.

GENUS III. KINOSTERNON.

*Structura Emydis, pectore modo cataphracto; maxillis et capite supra inter oculos nudo squamosis; rostro pervasuto; oculis minus approximatis; gula subtus multicirrhosa; cauda apice unguiculata; bracteis pectoris undecim, illis pectus inter et testam interjacentibus non connatis; palpebris transversis.*

SPECIES 13. KINOSTERNON LONGICAUDATUM. TAB. XII.

Supra rufo-nigricans, subtus nigro-rufum; testa oblonga, in medio dorsi subtricarinata; scutis striate sulcatis; cauda elongata, crassa.

**D**ESCRPTIO. Caput subovatum, postice largum, carnosum, convexo-depressum, nudum, fuscum, albo-virgillatum, antice subtenuis; rostrum subobtusum, subrecte descendens, ad latera impressum, apice aduncum; nares approximatae, anticae, scutellum supra inter oculos fuscum, subcordiforme, planum, medio subimpressum, pone triangulum; maxillae crassae, corneae, aduncae, tigrinae sive nigro fulvoque virgatae, subsinuose marginatae; gula subtus transverse et longitudinaliter cirrhis tribus geminis munita; collum subbreve, subcrassum, subrugosum, nigricans, subtus cinerascens. Testa oblonga, convexa, subaequalis, antice et postice vix angustior, rotundato-carinata, antice subobliqua, extrorsum subexcavato-marginata, postice subverticalis, haud largior, convexa, declivis, oblonga, in medio dorso longitudinaliter acute tricarinata, convexo-planiuscula; scuta papyracea, decidua, subundulate striata ac virgata, spinalia disci utrinque subcanaliculata acuteque tricarinata, quinque, quorum anticum primum oblique descendens, pentagono-triangulari, postice acuminatum, antice largum, subsinuoso-marginatum, medio carinatum, secundum et tertium hexangula, oblonga, lateraliter triangulate marginata sive alata, pone attenuata, quartum gibbum, hexagonum, apice et postice attenuatum, lateraliter alatum et trisinuose marginatum, quintum subverticale, rhomboideum, antice acutum, postice subrotundatum, medio carinatum, lateralia disci subconvexa, subverticalia, utrinque quatuor, quorum anticum largum, trapezoideo-triangulum, intus acutum, extus largissimum, subrotundo-marginatum, secundum et tertium rectangula, longa, supra acute carinata, quartum pentagonum, irregulare, minus, convexum, pone rotundato-marginatum, marginalia viginti quinque, quorum anticum impar sublineare, brevissimum, secundum utrin-

que quadrilaterum, intus subtenue, antice subexcavato-, postice sinuoso-marginatum, tertium subpentagonum, descendens, infra acutiusculum, quartum et septimum rectangula, tenuia, sublonga, margine sulcato, reflexo, duo posteriora maiuscula, subpentagona, subconvexa, margine planiore, posticum geminum, trapezoideum, pone subtenue, subexcavato-planiusculum. Pectus fulvo-vel fusco-brunneo-flavicans, lineariter radiatum vel striatum, oblongum, medio impressum vel cataphractum, antice subelevatum, rotundato-marginatum, testae marginem subadaequans, postice acute bifurcatum, a testae margine subdistans, lobo anteriore et posteriore membranose articulatis ac flexibilibus; bracteae nigro-marginatae, corneae, quarum antica impar cordiformis, larga, postice breviter acutiuscula, antice subangulato-rotundata, duae utrinque subsequentes longae, trapezoideae, intus, praecipue tertiae, tenuiores, quartae sive mediae subquadrato-rectangulae, largae, quintae trapezoideae, sublargae, intus tenuiores, deorsum acuminatae, posticae trapezoideo-triangulae, antice acuminatae, pone angulatae, medio acute excavatae, obtuse bifurcatae; bracteae pectus inter et dorsum interjacentes duae, suturis separatae; pedes viridi-fusci, nudiusculi, palmati, anteriores infra intus, posteriores infra extus squamis linearibus transversis horridi; ungues breves, falciformes, rufo-nigricantes; cauda crassa, trunciformis, 1 extra testam exserta, post anum margini testae parallelum, infra sulcata, lateraliter cirrhosa, apice cornea, acuta, unguiculata. Longitudo corporis  $9\frac{3}{4}'$ , capitis  $2\frac{1}{8}'$ , testae  $6'$ , caudae  $1'9''$ , sterni  $5'$ ; latitudo testae  $5\frac{1}{2}'$ , capitis  $9'2''$ ; altitudo testae  $2'5''$ .

Habitat in campis aquosis, ab incolis Muçua dicta. Museum monacense monstrat specimina duo in spiritu vini asservata.

### SPECIES 13. KINOSTERNON BREVICAUDATUM. TAB. XIII.

Nigro-fuscum, praecedente minus, ovato-subglobosum; cauda brevissima, breviter unguiculata; scutis dorsi non striatis, marginali impari vix conspicuo, pectoris rotundato, largo; pectore subconvexo, apice vix furcato.

**D**ESCRIPITIO. Caput pyramidale, apice acutum, supra inter oculos scutello plano, subpentagono, oblongo, flavo-fuscescente obtectum, postice largiusculum,

carnosum, flavo-fuscum, lateraliter lineolis nigris variegatum, rostro porrecto, acuto, brevi, maxillis fulvo-corneis, subsinuose marginatis, subaduncis, cirrhis infra mentum quatuor, pone aliis duobus; collum subdistinctum, breve, nudum, subtus flavicans. Testa ovato-globosa, supra nigro-fusca, subtus flavicans, antice subangustior, obliqua, apice truncata, sinuosa, postice convexa, subacutior, rotundato-marginata, versus dorsum medium obsolete tricarinata, planiuscula; scuta dorsi non striata, obsoleta, spinalia obscure subtricarinata, convexo-planiuscula, quinque, quorum primum pentagonum, antice alatum, sinuoso-marginatum, postice rectangulare, subobliquum, medio obtuse angulatum, secundum et tertium oblonga, octangula, planiuscula, postice subtenuia, antice et postice angulate emarginata, medio obtuse canaliculata, quartum subhexagonum, convexum, antice et postice tenuius, antice trispinosum, quintum triangulum, convexum, apice obtuse acutum, subverticale, medio canaliculatum, lateralia disci obliqua, convexa, quatuor, quorum anticum primum triangulum, largum, extus dilatatum, media subrectangula, oblonga, versus dorsum introrsum angulate reflexum, posticum minus, subpentagonum, pone angulate subacutum, marginalia dorsi brevia, subrugosa, rotundato-marginata, viginti quinque, quorum primum impar brevissimum, vix conspicuum, subplanum, secundum minus, quadrilaterale, tenue, intus angustius, subobliquum, tertium et sextum subrectangula, oblonga, media verticalia, rotundato-marginata, cataphracta, subtus flava, posteriora paulo largiora, obliqua, subquadrata, non excavata, margine rotundo. Pectus ochraceo-flavicans, varie sinuoso-subsulcatum, oblongum, antice et postice rotundato-marginatum, postice medio obtuse emarginatum, lobo anteriore et posteriore membranoso-articulatis ac flexibilibus; bractee undecim, quarum antica impar rotunda, larga, antice subtruncata, nigro-exsculpta, secunda utrinque rhomboidea, intus subacuta, tertia triangula, intus acuminatissima, medio nigro-sulcata, quarta quadrata, magna, laevis, quinta trapezoidea, intus attenuata, nigro-sulcata, postica subtriangula vel trapezoidea, antice et postice tenuior, postice apice obtuse emarginata, a testae margine remota; bractee pectoris medii laterales duae, suturis separatae; pedes palmati, supra viridi-fusci, membranosi, infra flavicantes, intus transverse bisquamosi; ungues breves, compressi, anteriores falciformes, fusci; cauda brevissima, e testa vix exserta, rugosa, pone anum tenuior, sulcata, apice acuta, breviter unguiculata. Longitudo corporis 7' 3'', capitis 1' 9'', testae 5' 9'', caudae 4'', sterni 4'; latitudo testae 2  $\frac{3}{4}$ ', capitis 1'; altitudo testae 1  $\frac{1}{2}$ '.

Habitat ad ripam fluminis Solimoëns.

GENUS IV.    T E S T U D O.

*Terrestris; capite subglobose elevato; maxillis lacertinis, serratis; gula non cirrhosa; testa elevata, globosa; pedibus squamosis, cylindricis, robustis; palmis plantisque globoso-clavatis; digitis brevissimis, vix distinctis, non palmatis; unguibus crassis, rectis.*

SPECIES 15.    TESTUDO HERCULES.    TAB. XIV.

*Maxima, supra et subtus aurantio-flava; scutis laevibus, planiusculis, viridi-nigro-marginatis, spinali postico maxime gibbo, antice acuminato, marginali antico impari nullo; testa elongata, elliptica, fere cylindrica, supra planiuscula, truncata, vix declivi, ad femora angulata et magis crassa, postice gibba, lateraliter compressa, acute ovata; sterno antice angustiore, longiore, subbifurcato, testam fere exsuperante; disco scutorum medio large ochraceo; pedibus flavicantibus; non rubro-maculatis; cauda testam non exsuperante.*

**D**ESCRPTIO. Caput triangulare, subcylindricum, supra apice elevatum, squamosum, flavicans, postice membranosum; maxillae lacertinae, altae, rectangulae, denticulatae, flavo-virescentes; collum breve. Testa maxima, elongata, fere cylindrica, supra planiuscula, antice vix tenuior, vix declivis, obtuse largeque emarginata, ad femora crassior, angulata, postice compressa, ovata, gibba; scuta subaurantio-flava, planiuscula, virescenti-nigro-marginata, obsolete strigilata, spinalia quinque, planiora, quorum anticum largum, convexum, obtuse hexagonum, antice largiusculum, apice medio obtuse marginatum, postice tenuius, convexo-sinuatum, secundum et tertium obtuse hexangula, largiora, vix convexa, quartum hexangulum, cordiforme, postice subacutum, quintum declive, reliquis maius, elongatum, perverse cordiforme, suboctogonum, antice tenuius, postice rotundatum, medio gibbum, lateralia quatuor, subverticalia, quorum anticum trapezoideum, intus acutum, antice subsinuoso-marginatum, extus subangulato-rotundatum, secundum et tertium maiuscula, subpentagono-rectangula, supra obtuse angulata, quartum subquadratum, marginalia viginti tria, quorum anticum geminum, subobliquum, trapezoideum, sublargum, sublongum, intus tenuius, emarginatum, extus postice obtuse angulatum, secundum subtrapezoideum vel subquadratum, postice vix angustius, tertium trapezoideum, extus longiusculum, quinque subsequencia rectangula, compressa, verticalia, margine externo obtuso, nonum et decimum rectangula, largiora

acutely prominentia, postremum subrectangulum, minus compressum, posticum impar rectangulo-marginatum, medio globoso-gibbum, subtus large concavum. Pectus aurantio-flavum, ellipticum, elongatum, antice subacutum, subconvexum, subbifurcatum, postice obtuse excavato-sinuatum, medio concavum; bracteae duodecim, non striatae, nigro-marginatae, quarum anterior gemina, subrectangula, postice obtusa, antice truncata, medio disjuncta, secunda oblonga, rectangula, extus rotundato-marginata, tertia subtrapezoidea, intus angustissima, quarta maxima, quadrata, quinta subquadrata, minor, postica gemina, minima, transverse subrectangula, postice obtuse excavata, testam vix attingens. Pedes robusti, flavicantes; palmae plantaeque globoso-clavatae, squamosae sive scutellatae; ungues virescentes, obtusi, plani; cauda squamosa, testam non exsuperans. Longitudo corporis  $1^{\circ}5'$ , capitis  $2\frac{3}{4}'$ , testae  $1^{\circ}3'$ , caudae  $1\frac{1}{2}'$ ; latitudo capitis  $1\frac{3}{4}'$ , testae  $3'$ ; altitudo testae  $5\frac{1}{2}'$ .

Habitat in sylvis ad flumen Solimoëns, ubi incolis Japuty Grande audit.

SPECIES 16. TESTUDO SCULPTA. TAB. XV.

Mediocris, citrino-ochracea; testa subcylindrica, globoso-elevata, citrino-flavescente, postice subrotundata; scutis planiusculis, medio granulatis tubercularisque, ad margines fusciscentibus, strigilatis, strigis subrectangulis; scutis spinalibus transverse oblongis, hexagonis, antico impari deficiente; pectore antice dentato, postice brevior quam scutum.

**D**ESCRIPITIO. Caput subglobosum, supra planiusculum, triscutellatum, flavofuscum, reliquum squamulosum, antice obtuse trigonum, truncatum; maxillae subvirescentes, rectangulae, denticulatae, superior antice bidentata; collum breve, membranosum, cinerascens. Testa cylindrico-subrectangula, oblonga, elevato-convexa, ad marginem externum non reflexa, supra planiuscula, antice vix angustior, subdeclivis, medio angulate emarginata, postice angustior, ovata, subconvexa, declivis; scuta planiora, subquadrata, striata, medio tuberculata, granulosa, citrino-flava, spinalia quinque, subhexagona, transverse oblonga, quorum primum anticum pentagonum, apice largiusculum, medio triangulare, subacutum, secundum et tertium aequae magna, hexagona, transverse oblonga, quartum hexagonum, postice angustius, obliquum, quintum trapezoidicum, declive, convexum, antice angustius, postice largum, rotundato-marginatum, lateralia quatuor, subverticalia,

aequalia, quorum primum anticum trapezoideum, intus angustius, secundum et tertium pentagono-rectangulum, longum, supra acutiusculum, quartum subrhomboidem, postice subacutum, marginalia subrectangula, 23, quorum primum intermedium impar omnino deficiens, reliqua subpentagona, longa, extus angustiora, medio angulato-impessa, secundum et tertium subtrapezoidea, intus subangusta, media verticalia, subrectangula, longa, octavum tenue, subrectangulum, intus tenuius, nonum, decimum et undecimum rectangula, posticum unicum, rectangulum, transversum, in junioribus ac in foemina verticale, in mare et adultis globoso-convexum. Pectus citrino-flavum, ellipticum, ad unionem cum testa angulate angustum, antice convexo-depressum, tetrudentate marginatum, postice planum, tenue, bifurcato-excavatum; bracteae duodecim, areolatae ac striatae, quarum antica gemina, minor, subtrigona, antice large truncata, dentata, secunda subquadrata, extus rotundo-marginata, tertia tenuis, transverse rectangula, quarta quadrata, magna, quinta subquadrata, extrorsum infra angulata, postice minor, minus lata, medio obtuse excavata, breviter bifurcata. Pedes fusco-flavicantes, squamis flavis, imbricatis hispidi; ungues subtriquetri, obtusi, validi, fuscii; cauda squamosa, supra anum crassissima, dein tenuis, parum exserta. Longitudo corporis 11', capitis 1'5'', testae 9 $\frac{1}{4}$ ', pectoris 8 $\frac{1}{3}$ ', caudae 1 $\frac{1}{3}$ '; latitudo capitis 1 $\frac{1}{4}$ ', testae 5 $\frac{1}{2}$ '; altitudo testae 4'.

Habitat in sylvis juxta flumen Amazonum, Xurúbariga ab incolis dicta; differt a testudine areolata scuto dorsi impari antico deficiente, scutis tuberculoso-elevatis, ad margines sulcatis. Specimina 5 in museo monacensi obveniunt.

SPECIES 17.      TESTUDO CARBONARIA.      TAB. XVI.

Subgrandis, virescenti-nigra vel nigerrima; disco scutorum subrectangulo-pentagono, minore, aurantio; capite supra antice scutellato; testa cylindrico-elevata, subquadrata, antice et postice obtusiore, in medio dorso vix convexa; pedibus coccineo-maculatis.

**D**ESCRIP TIO. Caput trigonum, elevatum, capiti Iguanae simillimum, supra antice scutellatum; maxillae serratae; collum breve. Testa rectangula, aequalis, cylindrica, antice rotundato-truncata, medio obtuse emarginata, lateraliter subcompressa, ad pedes angulate subprominens, postice gibbosa, obtuse subovata; scuta omnia vel vi-



ridi-nigra vel nigerrima, striis pentagonis, medio maculis flavis, rectangulo-subpentagonis; scuta spinalia quinque, planiuscula, quorum anterius pentagonum, largiusculum, antice acute trigonum, secundum et tertium plana, transversa, hexagona, quartum hexagonum, subcordiforme, postice subattenuatum, declive, quintum trapezoideum, antice angustius, medio gibbum, postice rotundo-marginatum, lateralia subconvexa, 5, quorum anterius trapezium, intus angustum, extus subangulato-rotundatum, secundum et tertium pentagona, extus rectangula, intus subacute angulata, quartum reclinatam, subquadrato-trapezium, extus subangustum, marginalia viginti tria, ad pedes angulate prostantia, medio inter pedes compressa, quorum anticum geminum, trapezium, transversum, antice longius, subtruncatum, medio subexcavatum, postice angustum, secundum trapezium, introrsum subtenue, extrorsum subangulato-rotundatum, tertium subquadratum, angulate reclinatam, quartum et quintum subrectangula, compressa, infra angustiora, sextum et septimum rectangula, octavum et nonum rectangula, extus angulata, rotundo-marginata, penultimum subtus excavatum, posticum rectangulum, gibbum, rotundato-marginatum. Pectus fusco-flavicans, oblongum, antice convexo-depressum, emarginato-truncatum, postice rectangulum, subangustum, apice obtuse excavatum; bractee duodecim, rectangulariter obscure striatae, quarum anterior gemina, minor, acute trigona, apice subrotundato-marginata, secunda subquadrata, introrsum subangustior, tertia tenuissima, rectangula, quarta subquadrata, largissima, quinta subquadrata, minor, concava, a testae margine distans. Pedes clavati, squamosi, flavicantes, rubro-maculati, anteriores elongati; ungues obtusi, fusci; cauda vix exserta. Longitudo corporis  $1^{\circ}5'$ , capitis  $2\frac{3}{4}'$ , testae  $11\frac{1}{2}'$ , caudae  $1\frac{1}{2}'$ ; latitudo testae  $6\frac{3}{4}'$ ; altitudo testae  $5'$ .

Habitat sub cognomine „Capitary“ (?) ad flumen Amazonum.

SPECIES 18. TESTUDO CAGADO. TAB. XVII.

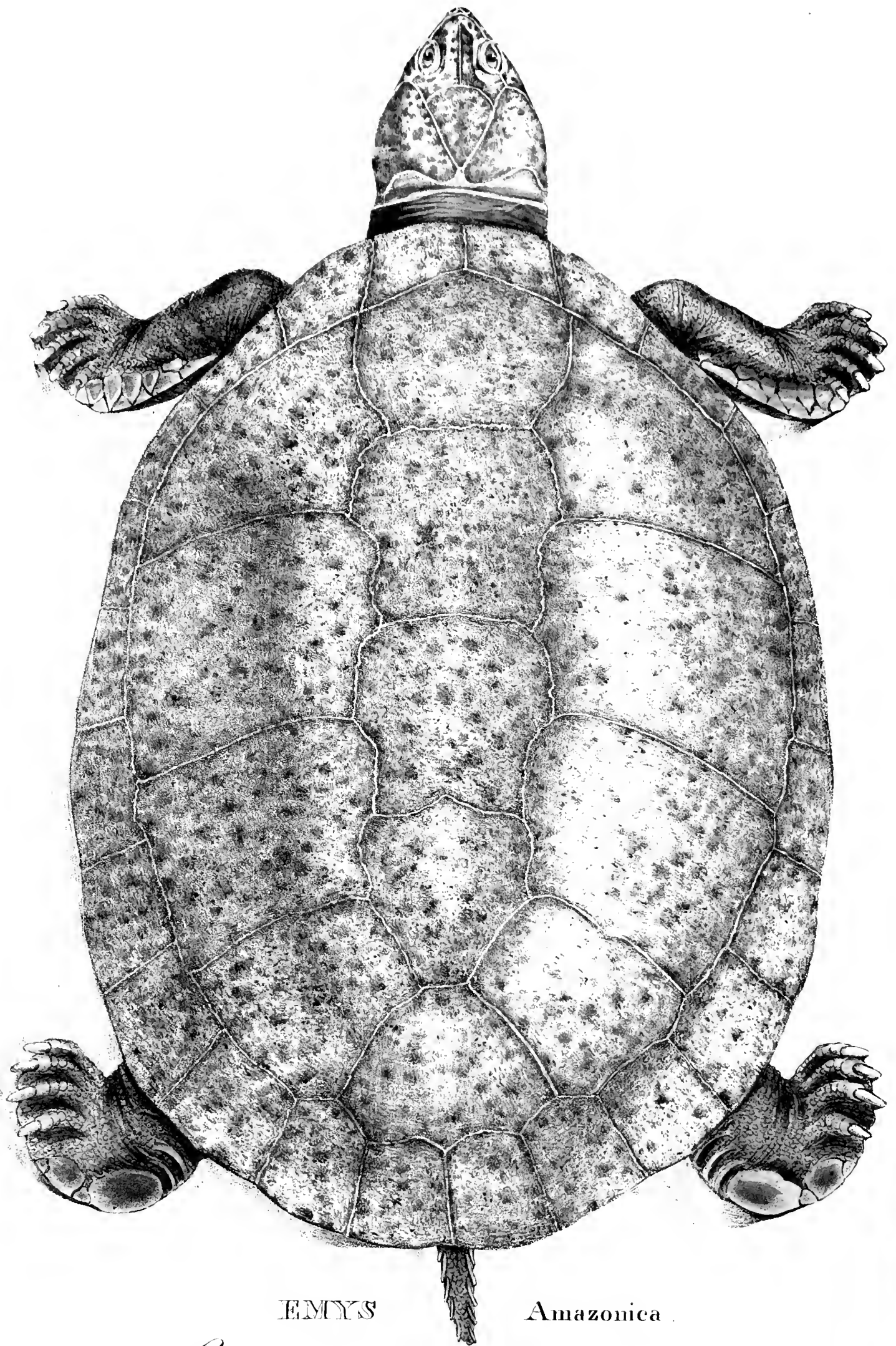
Mediocris, olivaceo-brunnescens, laevis; testa irregulariter flavo-variegata, subaequali, cylindrica, in medio dorso planissima; sculis spinalibus, praecipue penultimo, planis, subquadratis, postico maiore quam in testudine Carolinensi.

**D**ESCRPTIO. Testa brunnescenti-olivacea, disperse flavo-maculata, oblonga, rectangulo-cylindrica, supra planiuscula, antice subangustior, obliqua, truncata, vix emarginata, medio inter pedes extrorsum subcompressa, postice elatior, rotundato-

gibbosa, disco scutorum medio pallidiore, obsoleto, striis angulatis vix conspicuis; scuta subquadrata, laevia, spinalia quinque, subquadrata, planiora, quorum anticum pentagonum, apice trigonum, acuminatum, obliquum, medio convexum, secundum et tertium aequalia, quadrato-hexagona, lateraliter angulata, quartum aequum magnum, subquadrato-hexagonum, postice vix tenuius, supra planum, quintum largissimum, trapezium, postice largius, rotundatum, medio gibbum, lateralia quatuor, subaequalia, vix striata, quorum anterius trapezoideum, introrsum tenue, extrorsum angulato-rotundatum, intermedia aequalia, rectangula, subhex-vel heptagona, quartum subquadratum sive subtrapezium, subpentagonum, planum, vix reclinatum, marginalia viginti tria, subrectangula, vix striata, quorum anticum impar deficiens, lateralia anteriora trapezia sive subpentagona, introrsum medio acuta, secundum rectangulum, subreclinatum, extrorsum rotundatum, inter media quinque, compressa, verticalia, sextum introrsum angustius, extrorsum subpromineus, penultimum sublargius, extrorsum rotundato-excavato marginatum, posticum impar quadratum, convexum, infra introrsum curvatum. Longitudo testae  $9\frac{1}{2}'$ ; latitudo testae  $5\frac{1}{2}'$ ; altitudo testae  $4\frac{3}{4}'$ .

Habitat sub nomine Cagado in campis et nemoribus campestribus Bahiae; differt a testudinibus in itinere per Brasiliam repertis, et in museo monacensi asservatis, a Carolinensi dorso planiore, scutis minus striatis, spinali penultimo planiore, postice non attenuato sed cordiformi, lato magisque quadrato, postico largissimo, a testudine tabulata, quae testam convexam, globosam non rectangulam, in dorso medio elatiorem, marginem anticum profunde excavatum, et scuta medio impressa, gibbosa, large flava, scuta spinalia antice et postice attenuata exhibet.

---



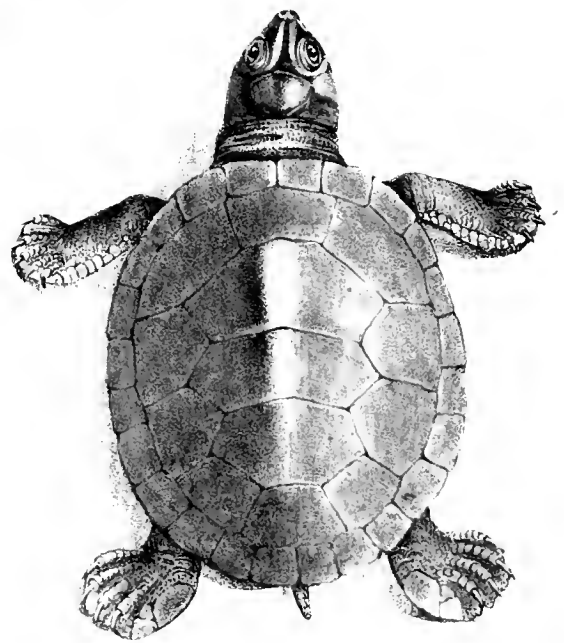
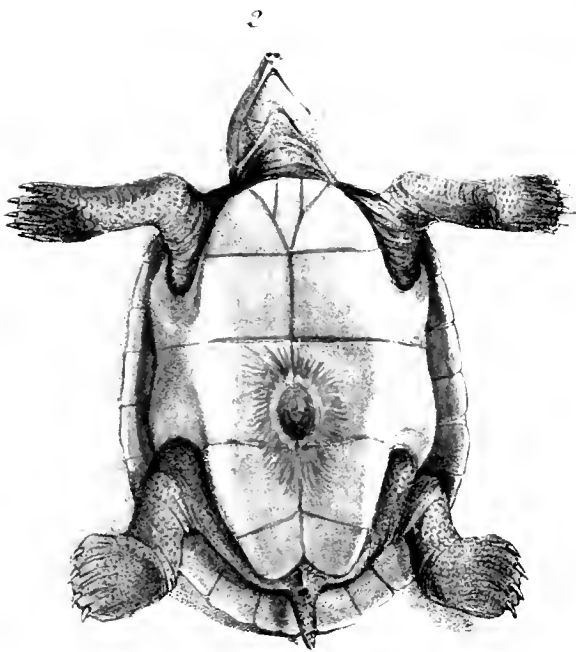
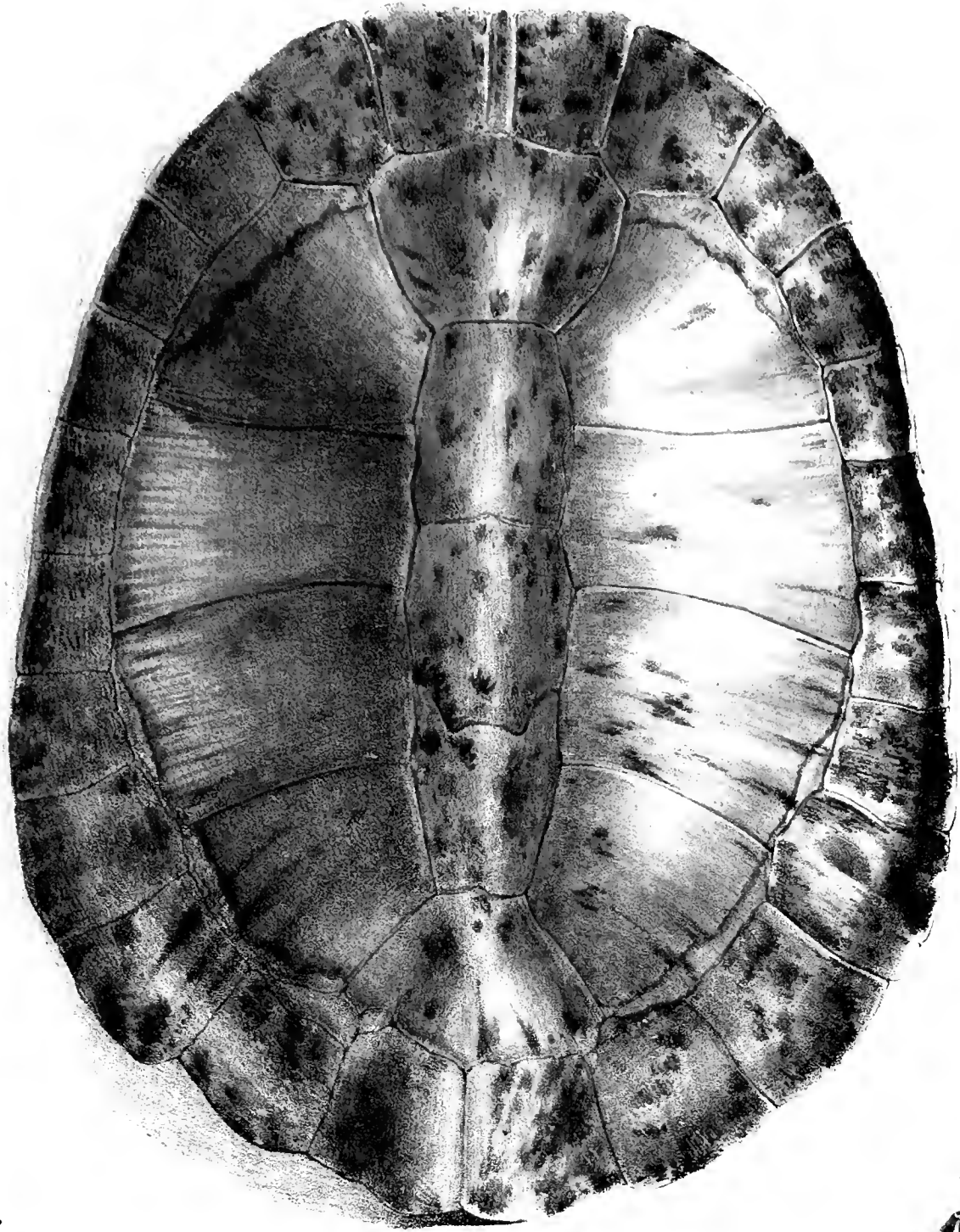
EMYS

Amazonica .

*La grande Tortue de la rivière des Amazones*

Tab I.

MCZ LIBRARY  
HARVARD UNIVERSITY  
CAMBRIDGE, MA USA



1. *EMYD* viridis.

2. *ONYX* Em. Amaz.

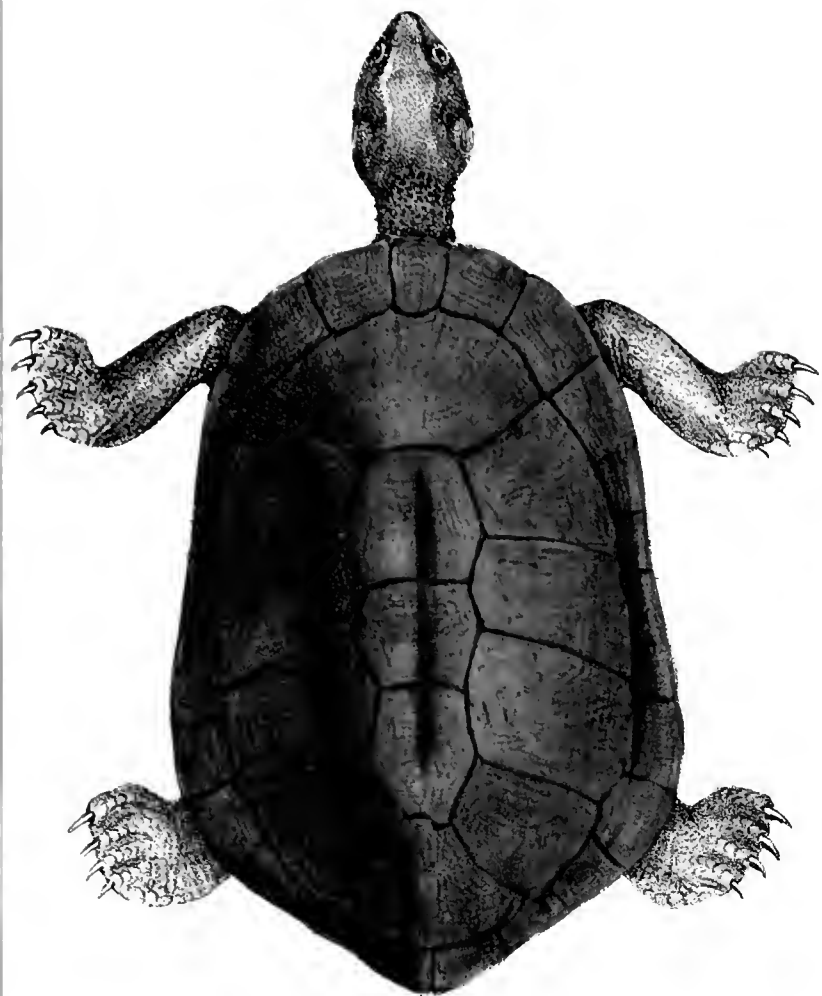
3. *EMYD* Amaz. juv.

*La Tortue verte d'eau douce. L'oeuf d. l'q. 1.*

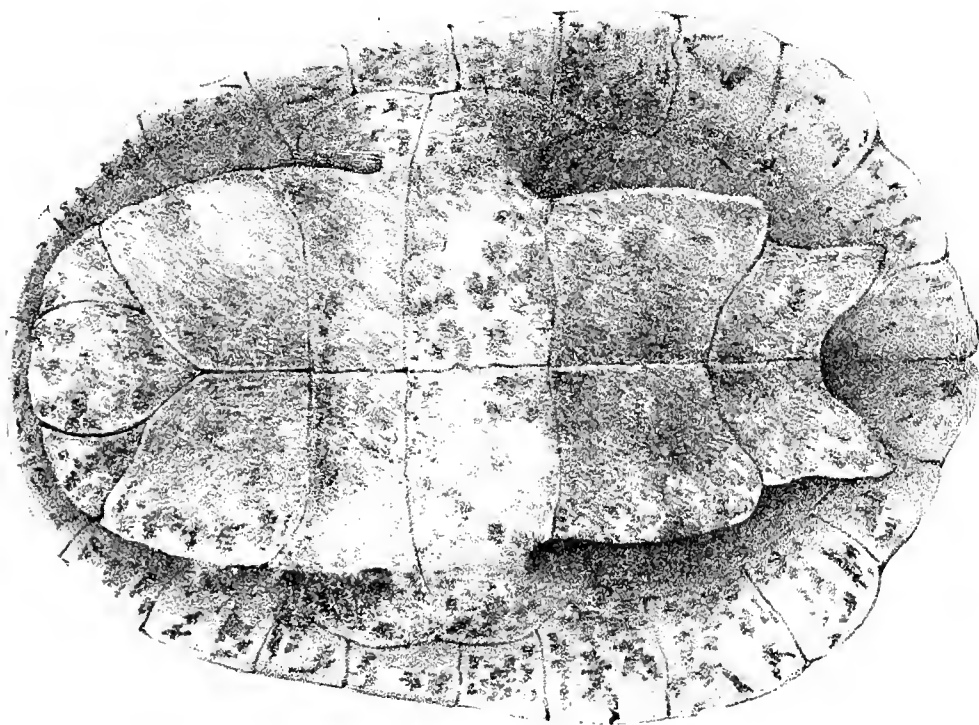
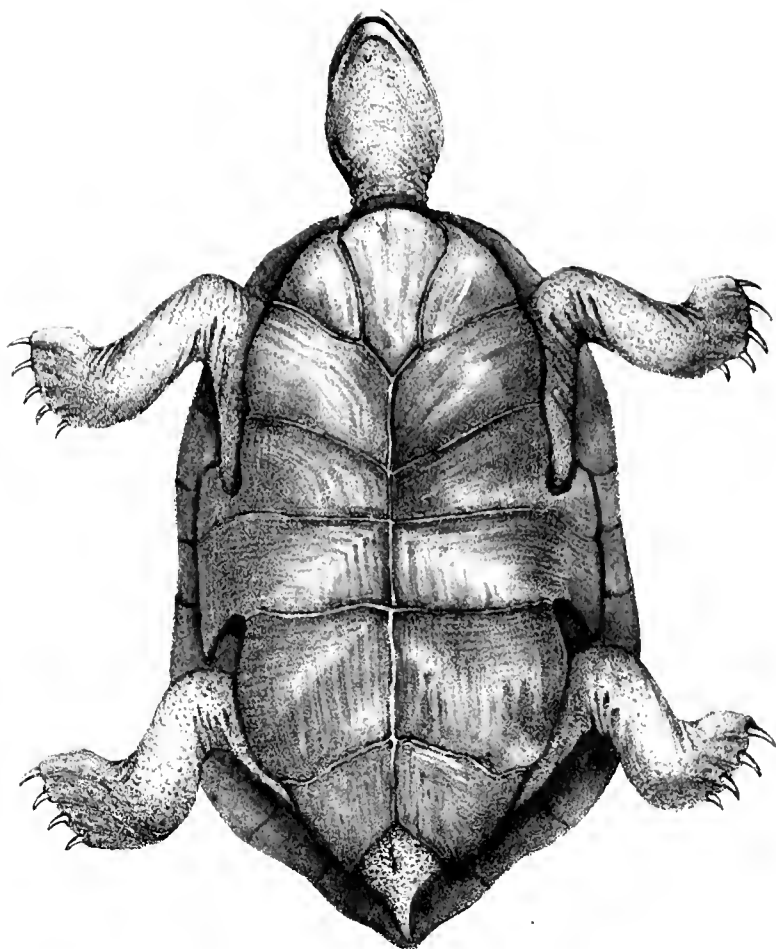
*Le jeune d'grande. Tab. d. en. s. Amaz.*

MOZ LIBRARY  
HARVARD UNIVERSITY  
CAMBRIDGE, MA USA





2



1.

EMYS viridis.

*La Tortue à couleur de porphyre.*

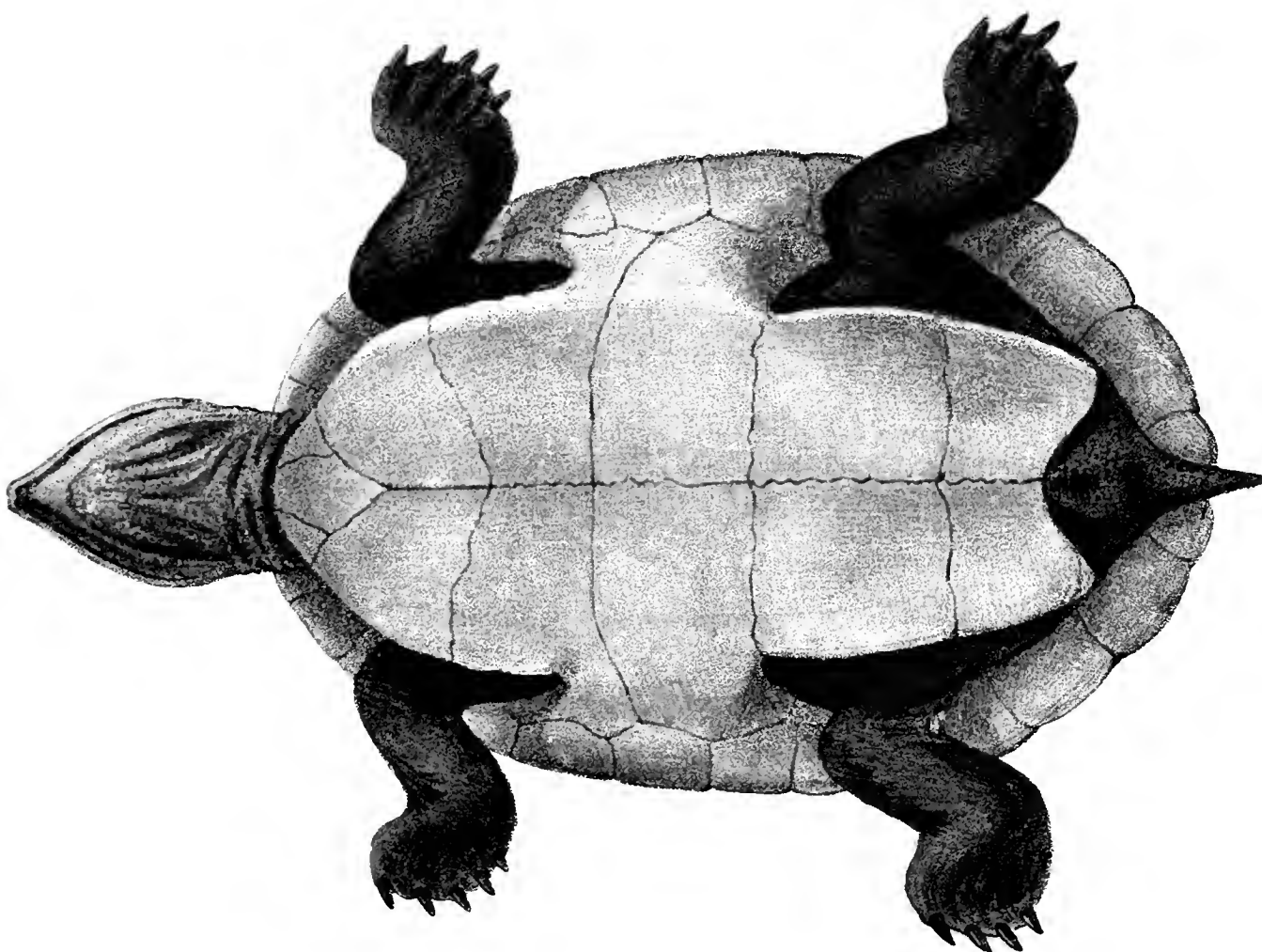
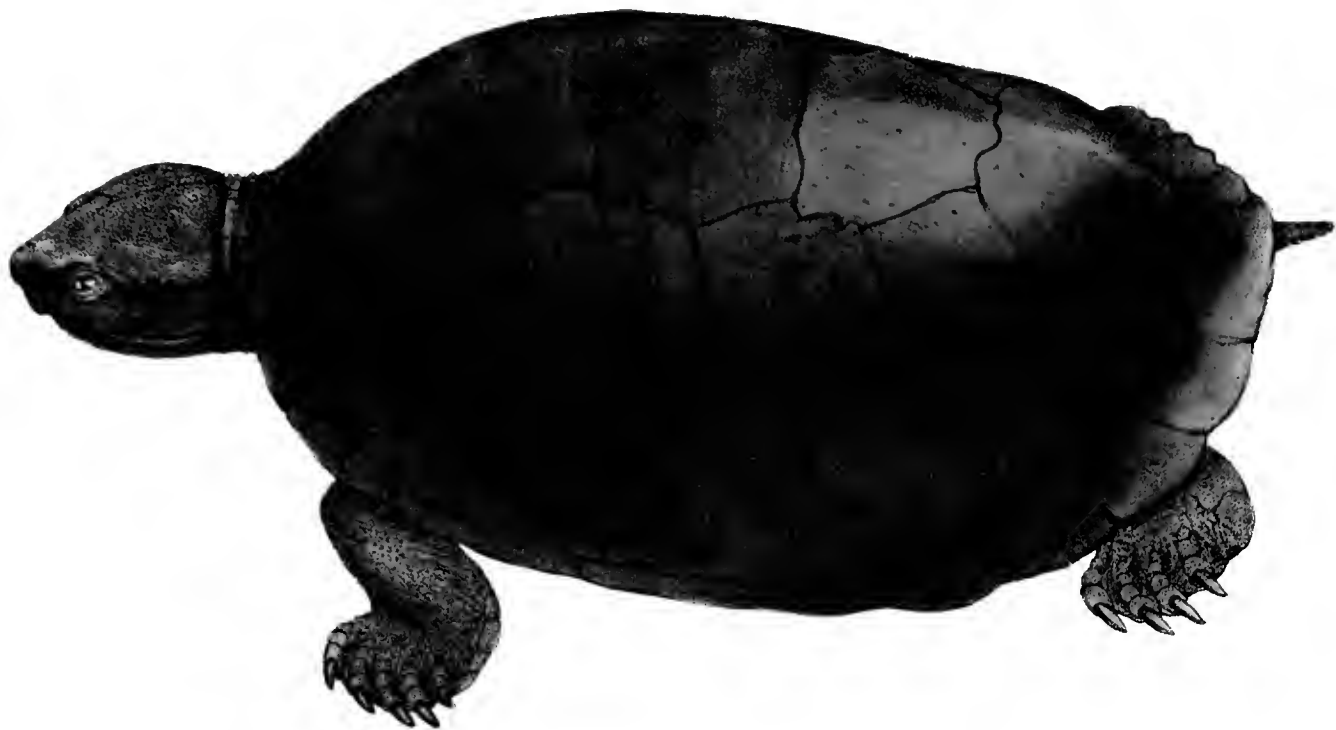
2.

EMYS depressa.

*La Tortue à dos peu sillonné.*



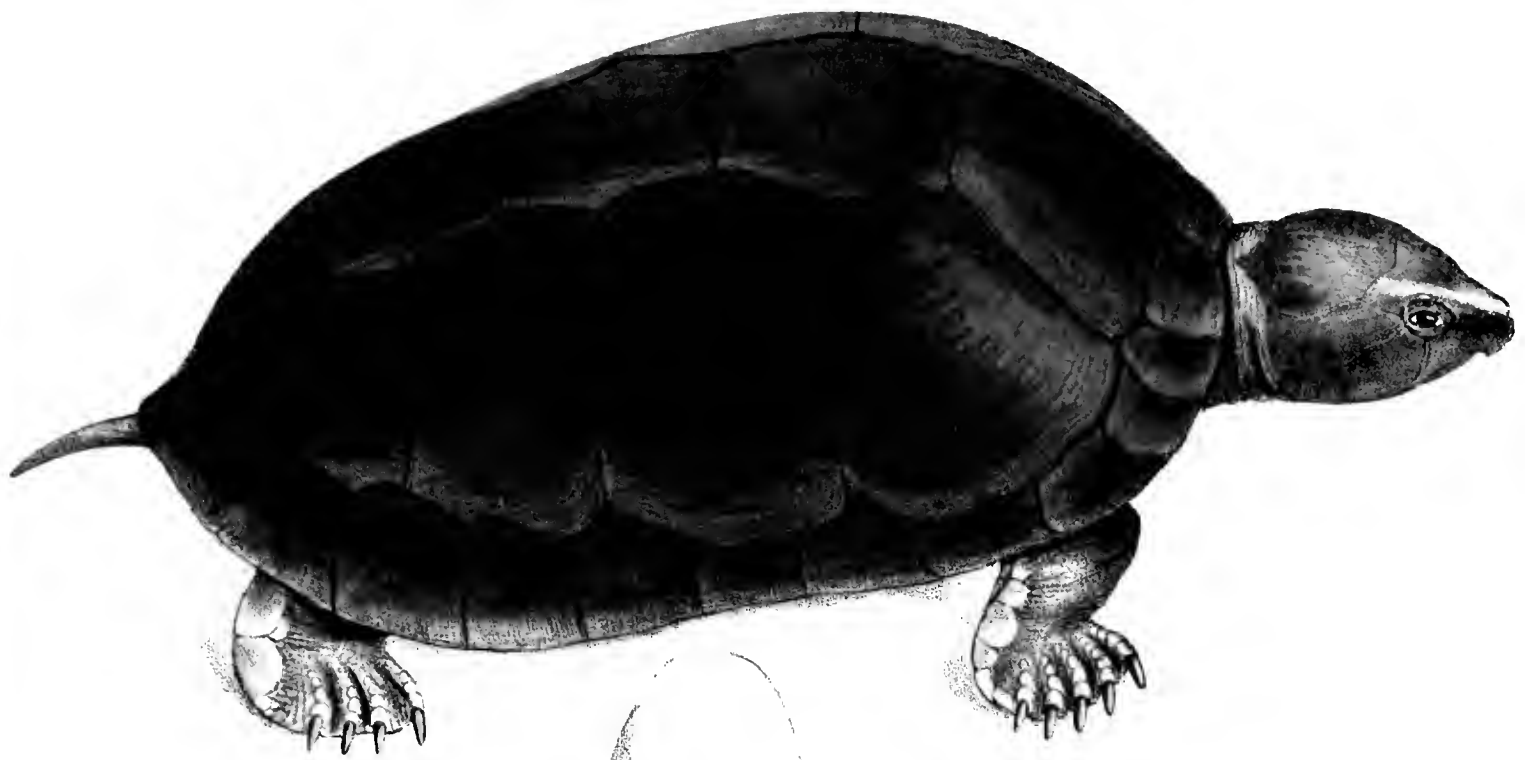




EMYS macrocephala.  
*La Tortue à grosse tête.*

Tab. IV.

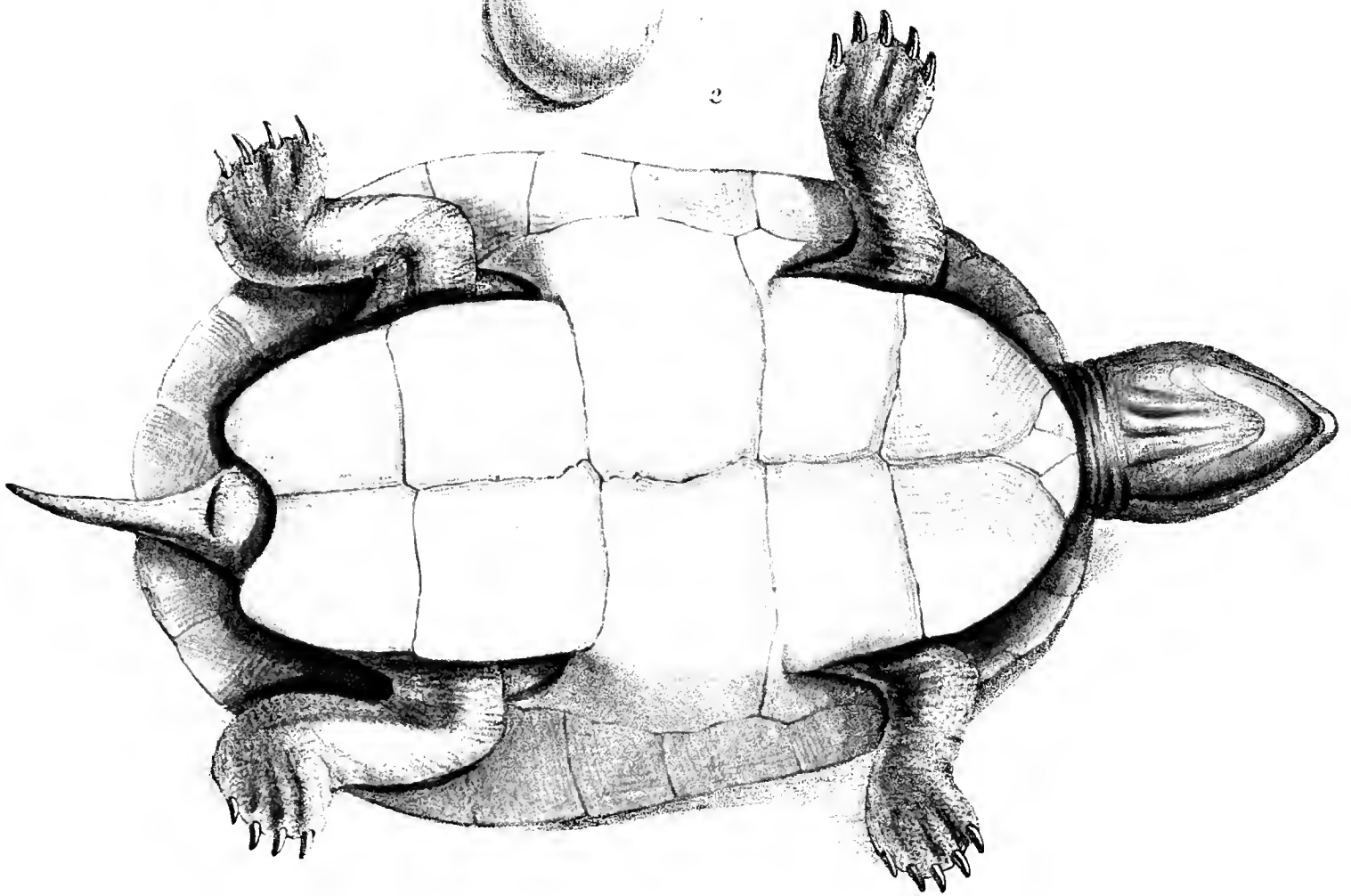
NOTED BY  
HARDING UNIVERSITY  
CARLETON, ONTARIO USA



1.



2.

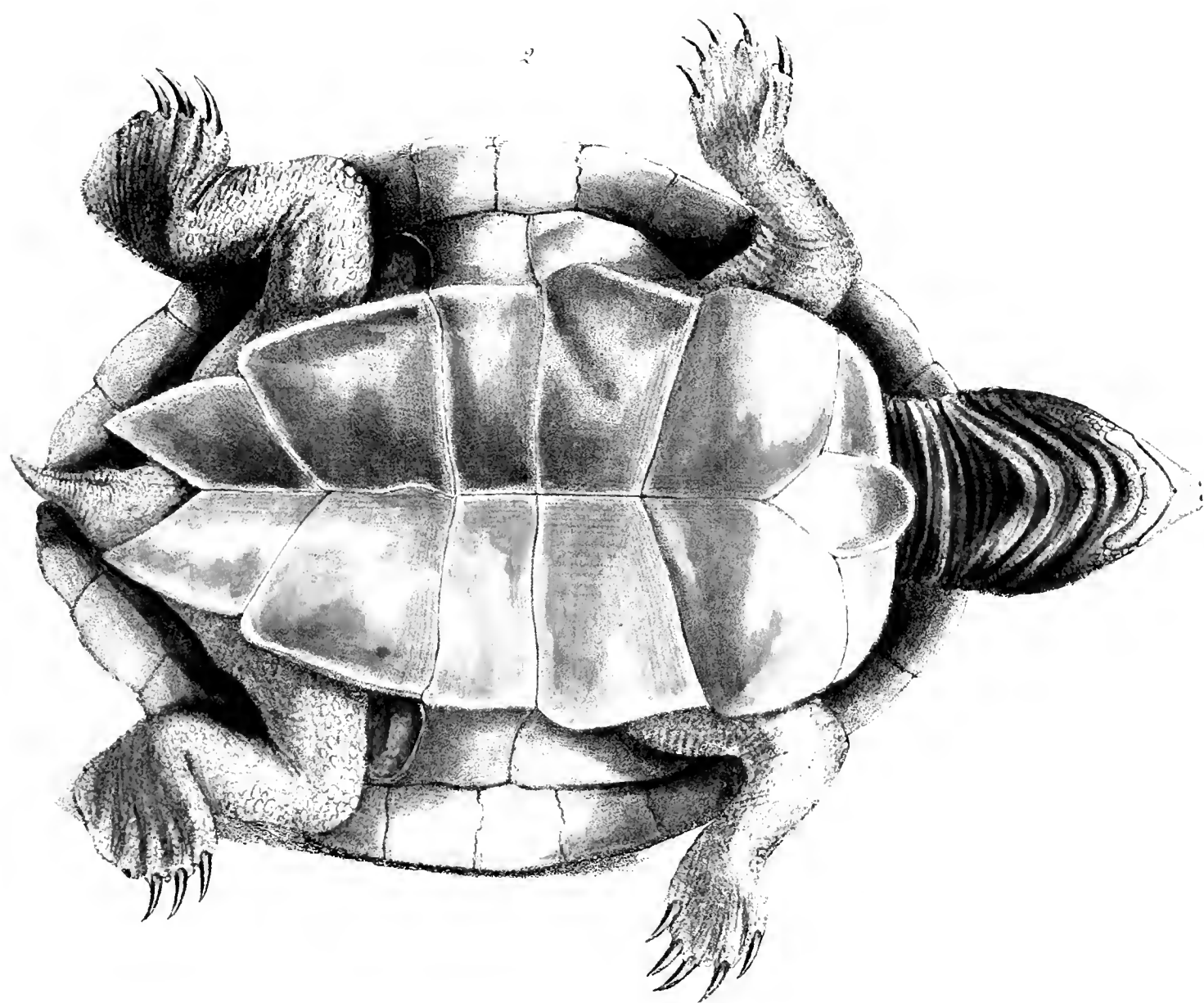
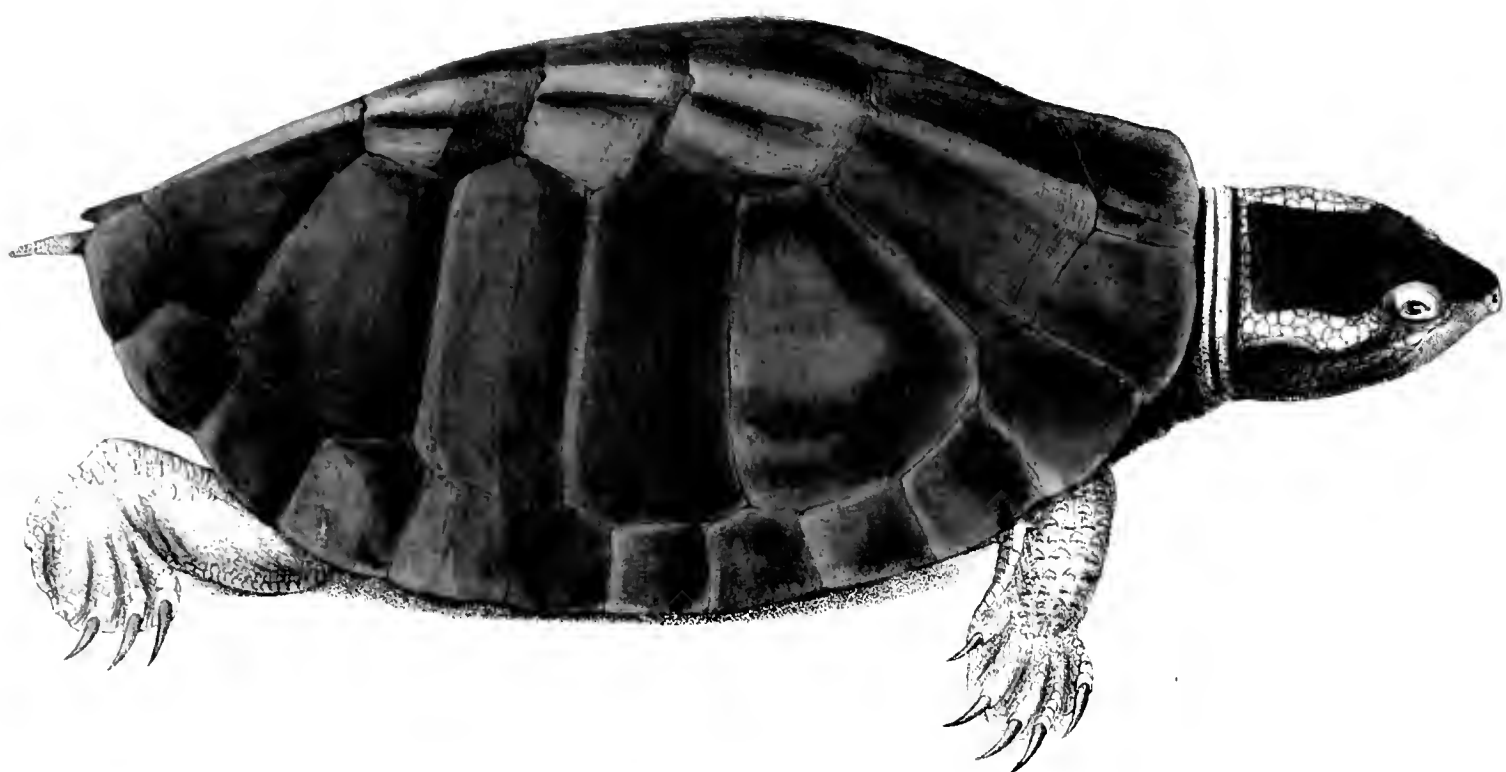


EMYS Tracaxa.

*La Tortue solitaire d'eau douce.*

Tab. V.

MCZ LIBRARY  
HARVARD UNIVERSITY  
CAMBRIDGE, MASSACHUSETTS USA



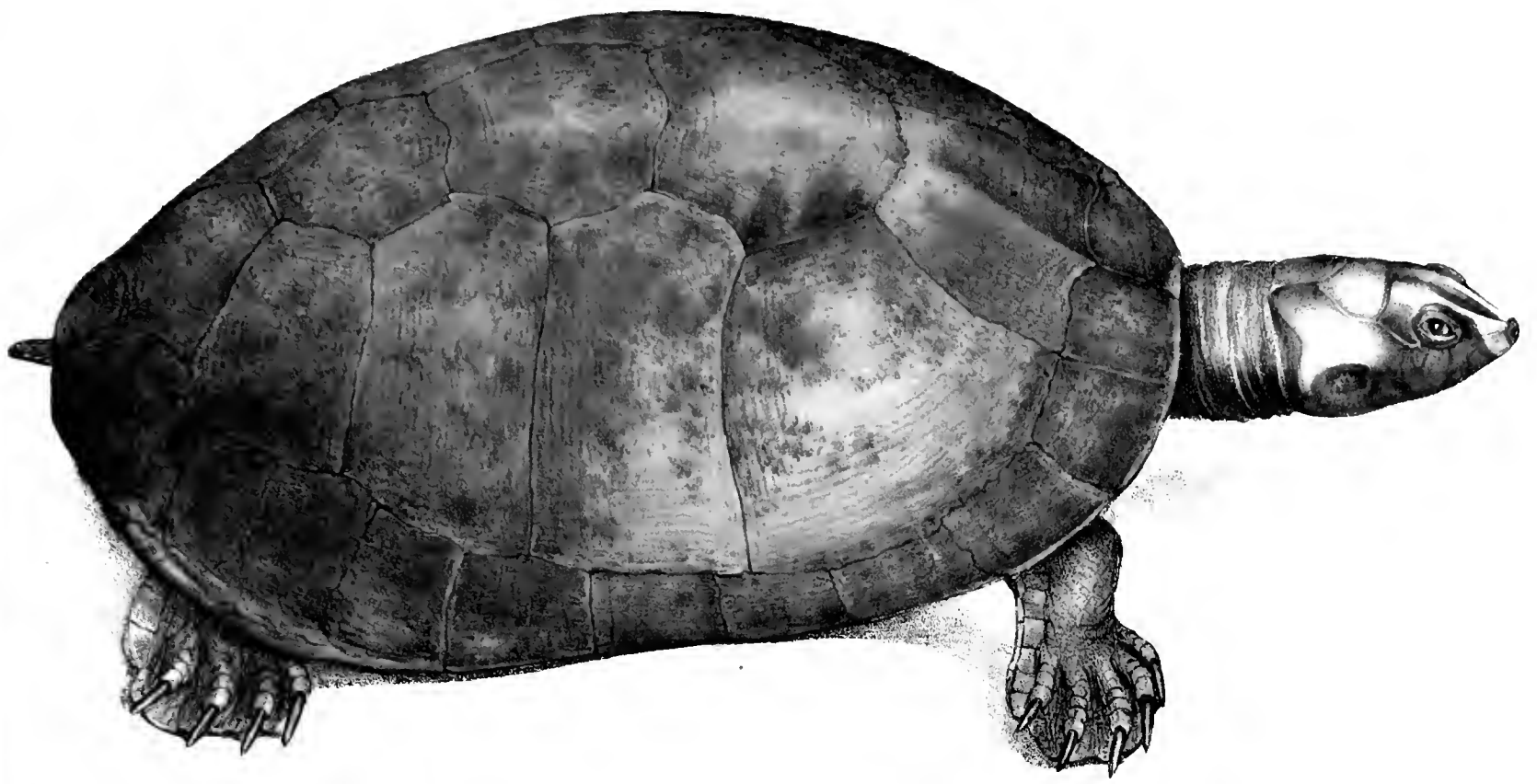
EMYS rufipes

*La Tortue d'eau douce à pieds rouges.*

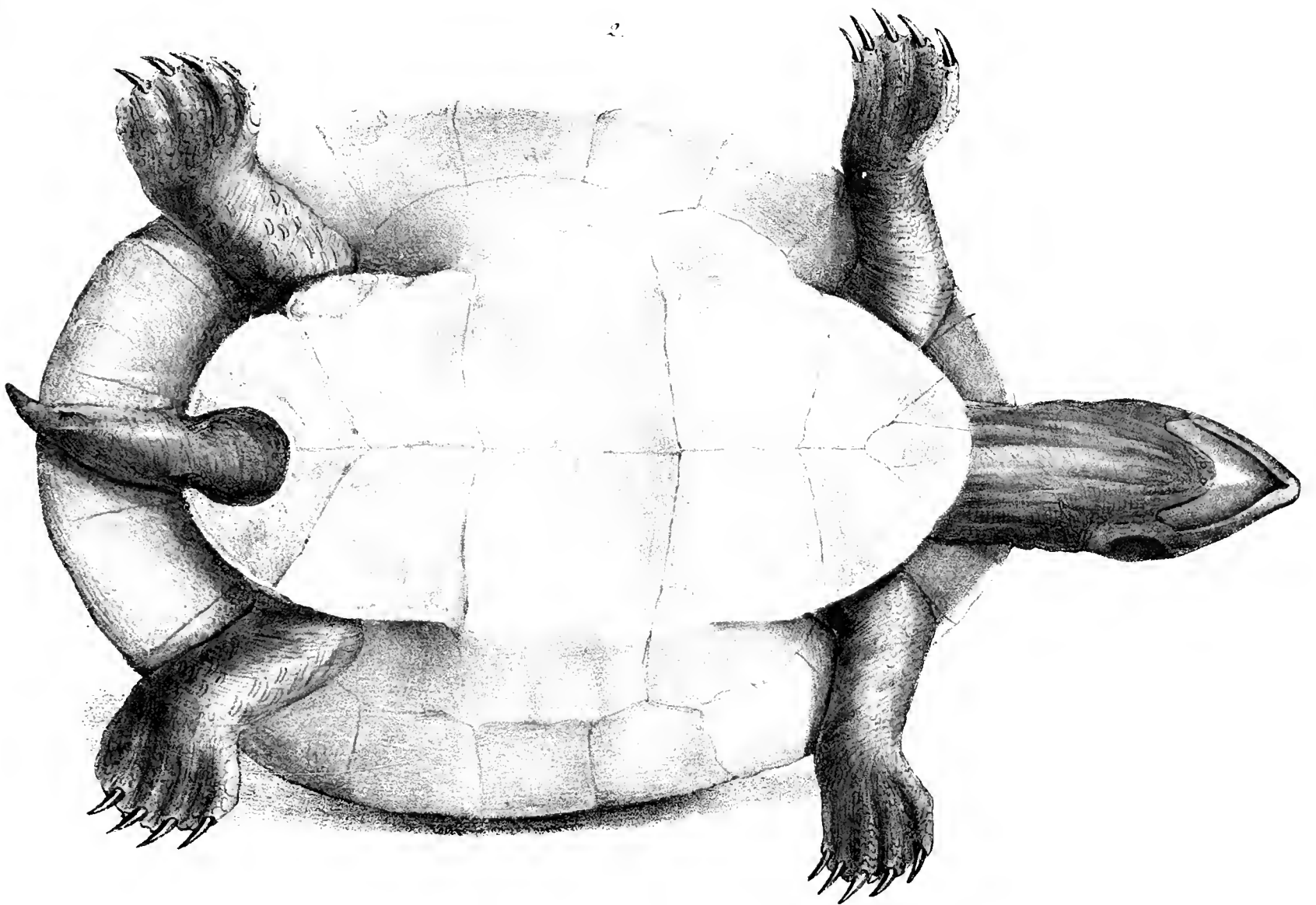
Tab. VI.

1. c

34



2.



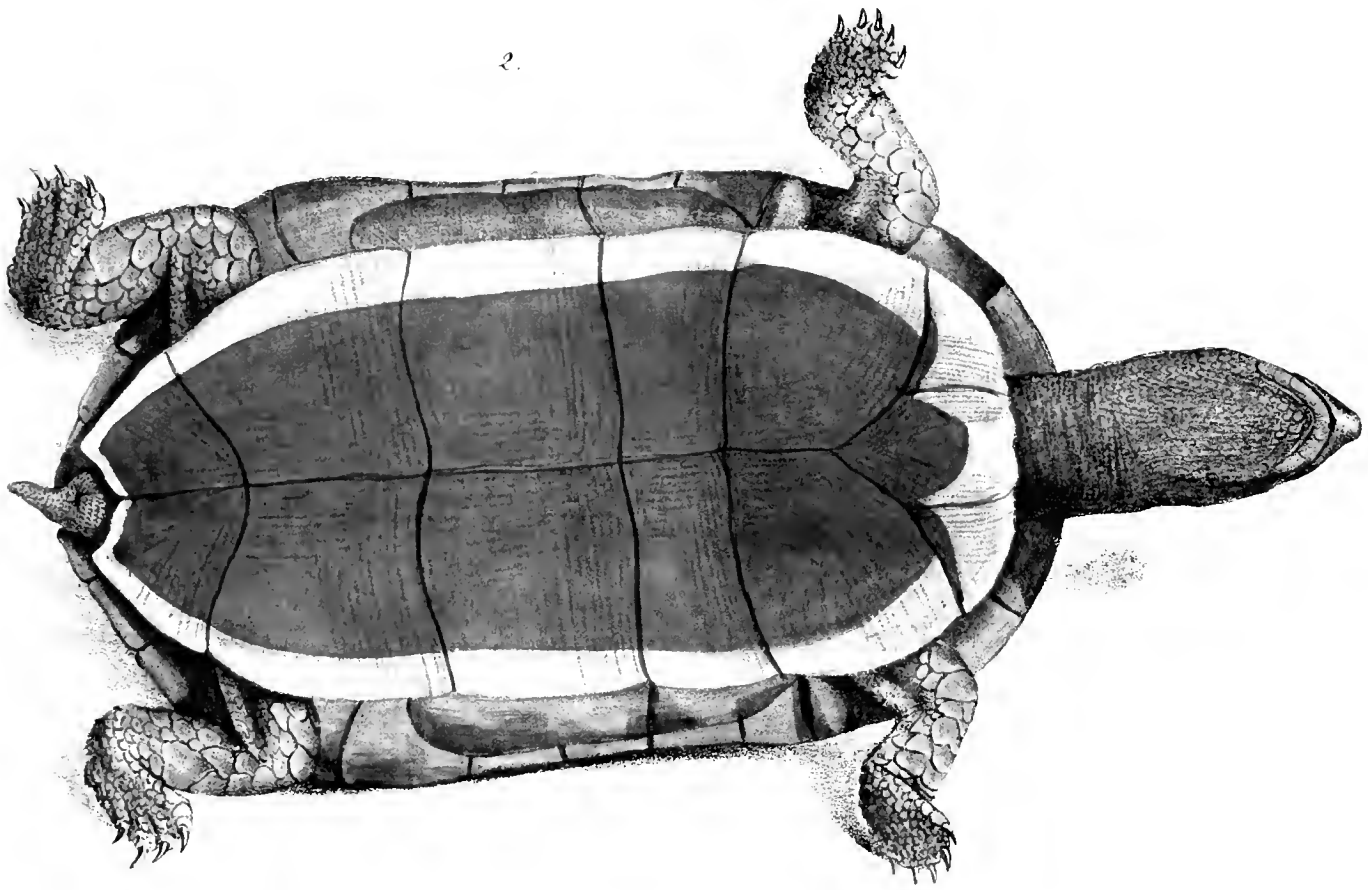
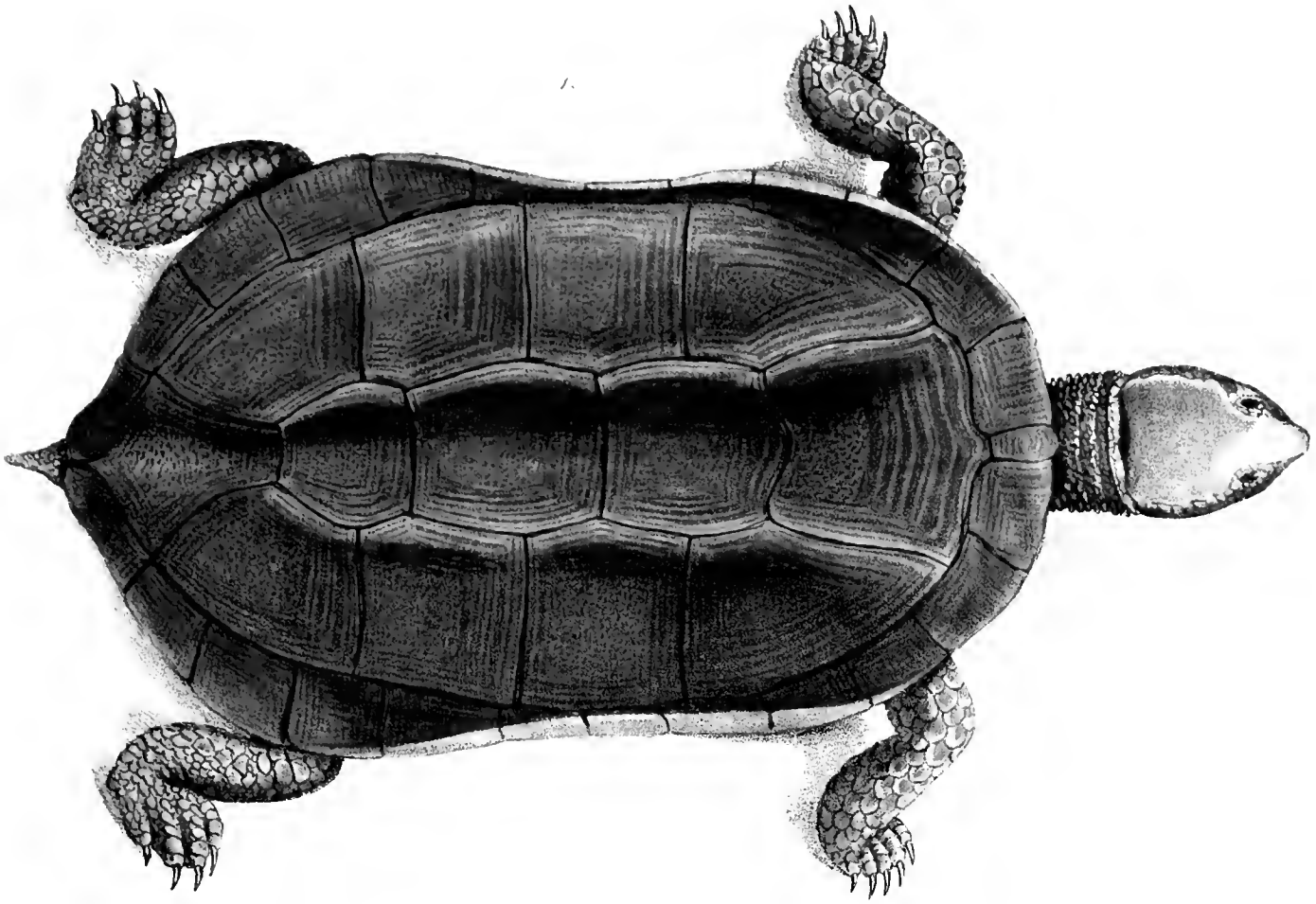
EMYS erythrocephala.

*La Tortue d'eau douce à tête rouge*

Tab. VII.

MA  
UNIVERSITY  
CAMBRIDGE, MA USA



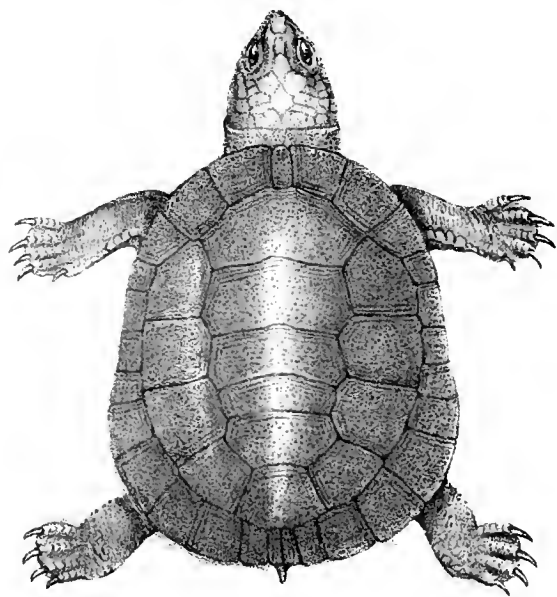
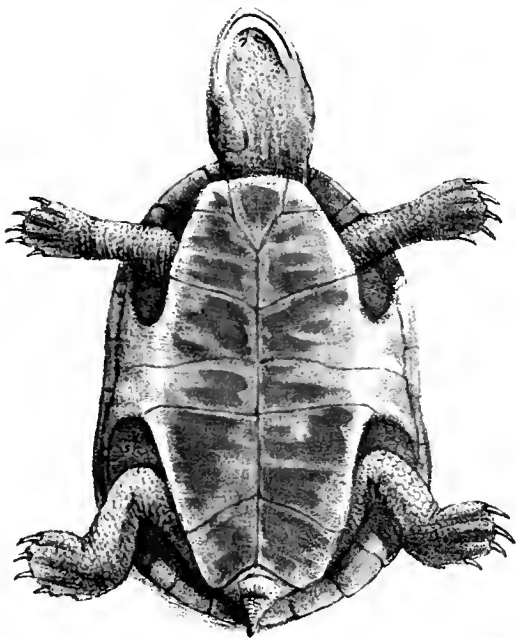
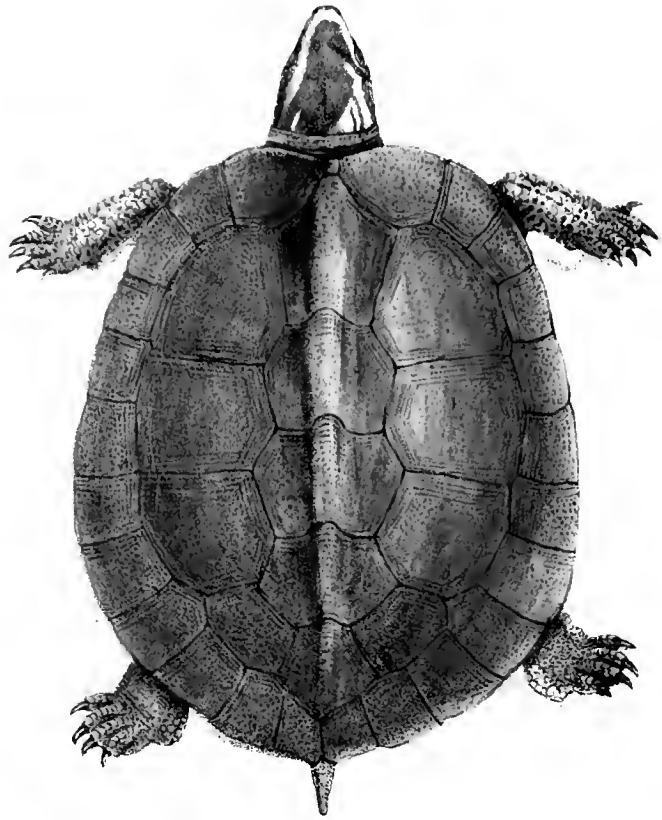
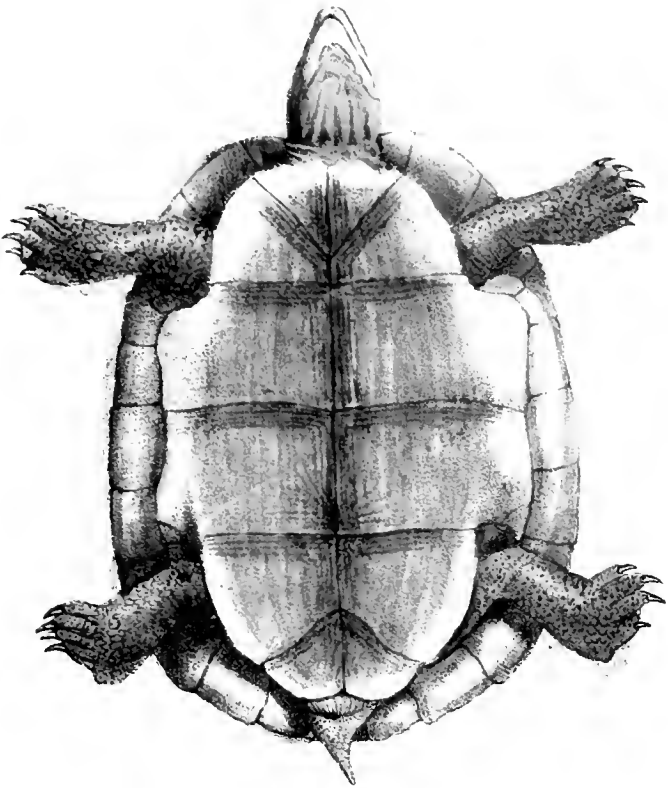


EMYS canaliculata.

*La Tortue d'eau douce à gouttière au dos.*

Tab VIII.

NOT LIBRARY  
HARVARD UNIVERSITY  
CAMBRIDGE, MA USA



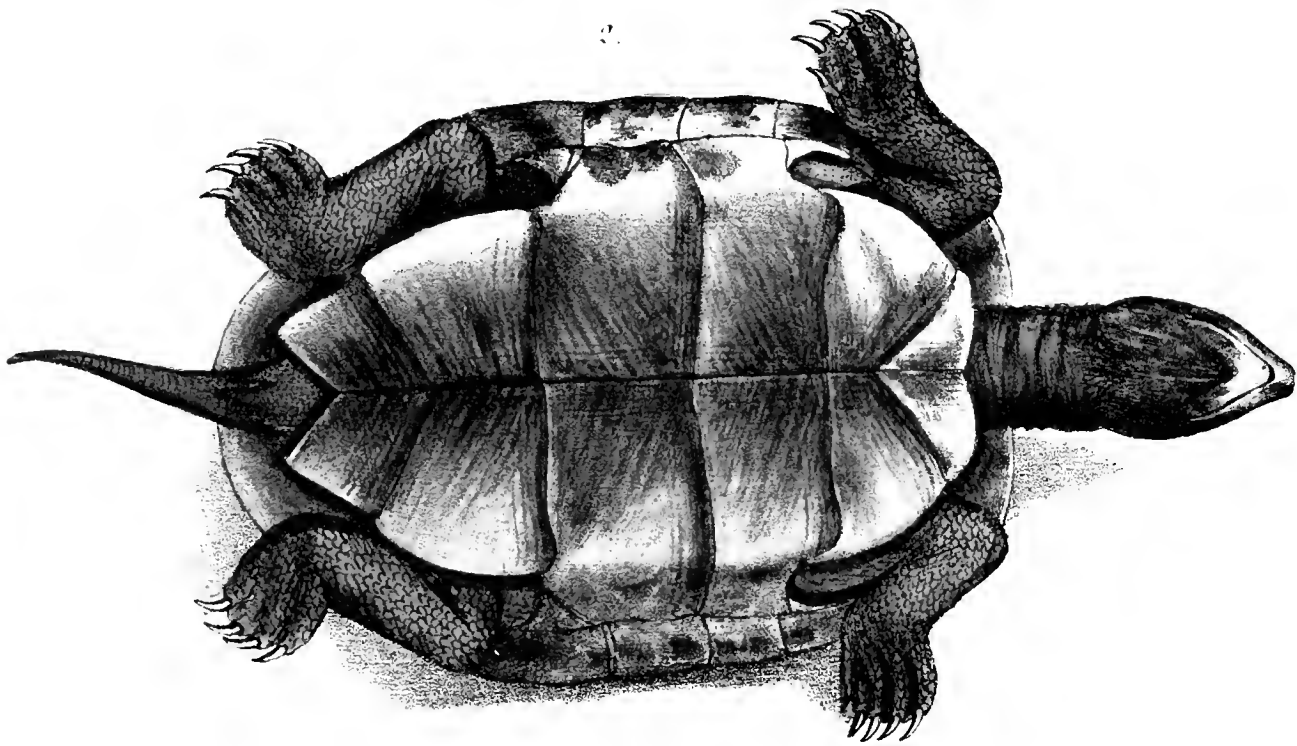
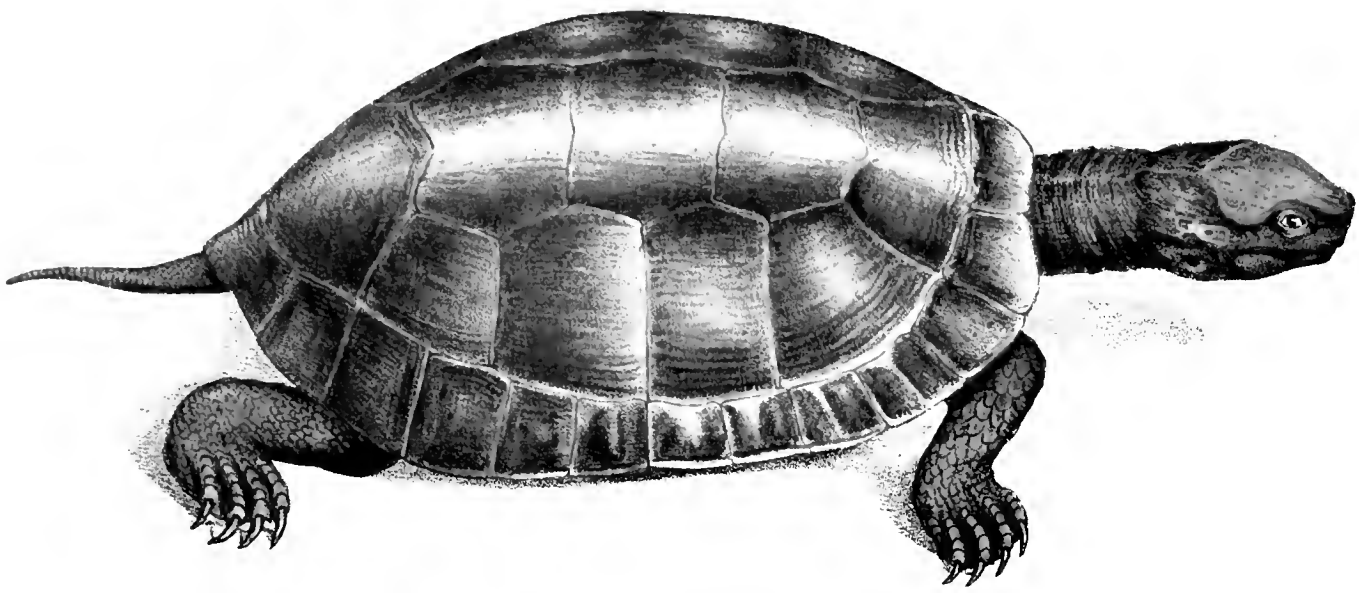
12 EMYS dorsalis

34 EMYS stenops.

*La Tortue d'eau douce à livière au dos.*

*La Tortue d'eau d. à yeux rapprochés.*

MOZ LIBRARY  
HARVARD UNIVERSITY  
CAMBRIDGE MA USA

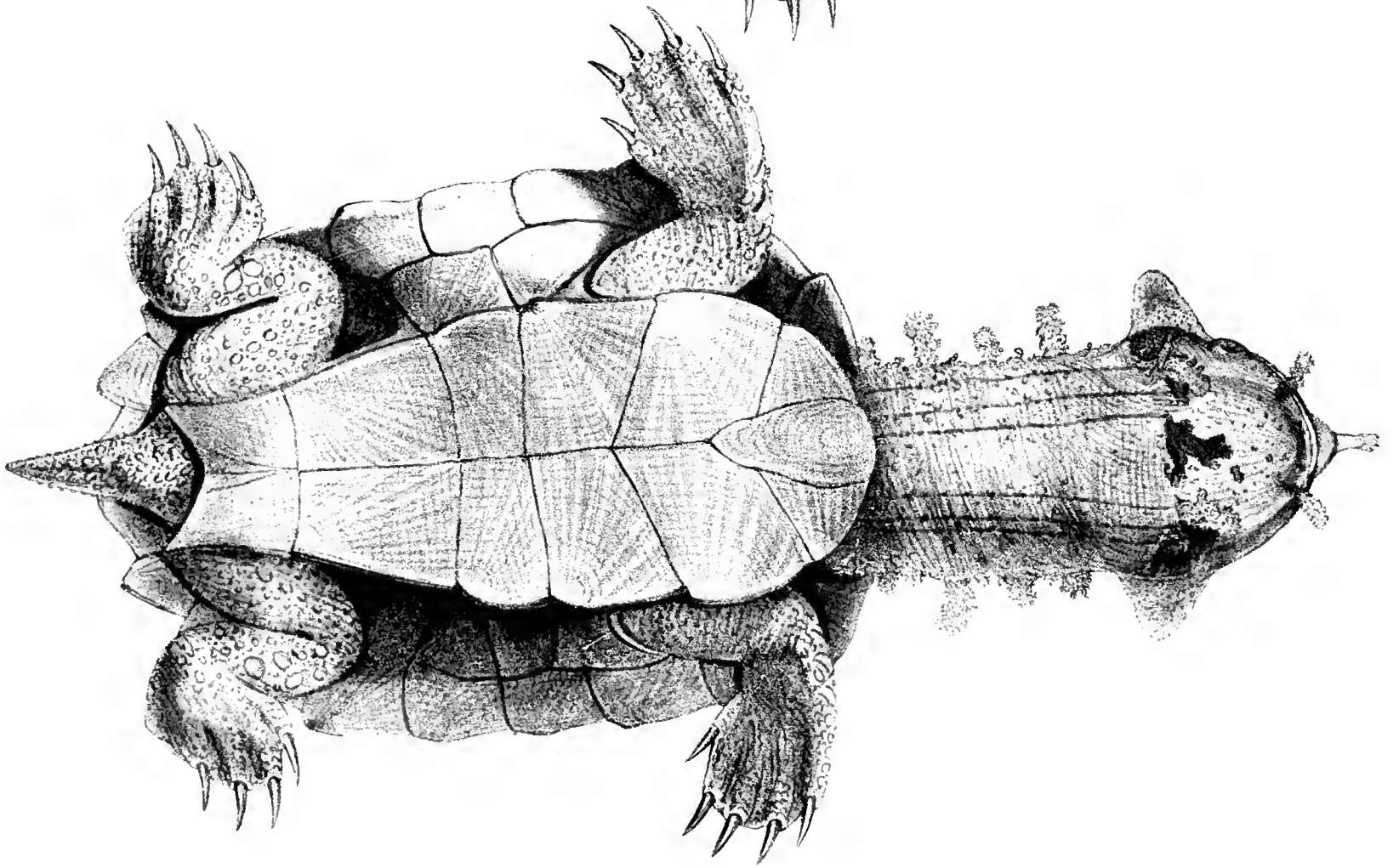
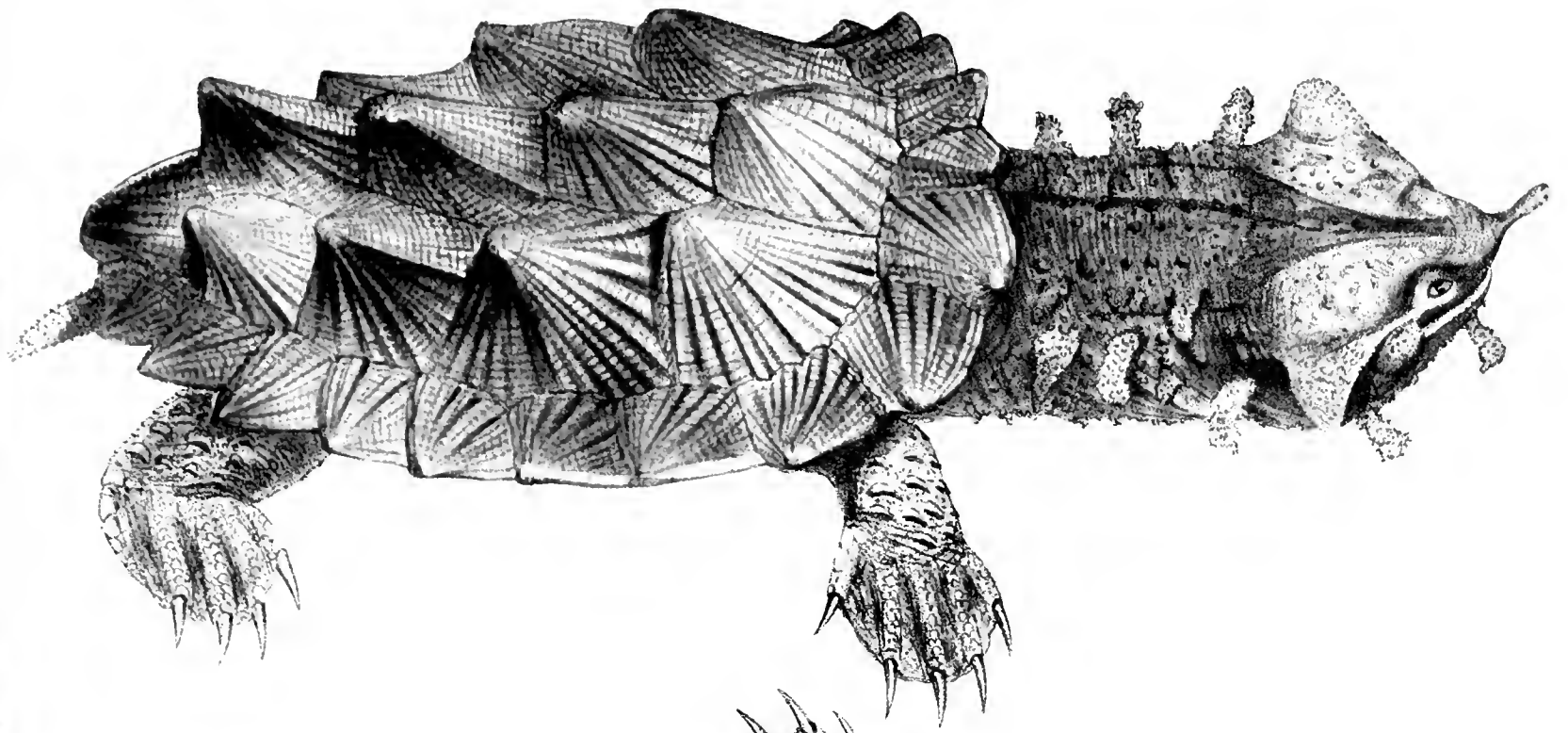


EMYS marmorea.

*La Tortue marbrée d'eau d.*

Tab. X .

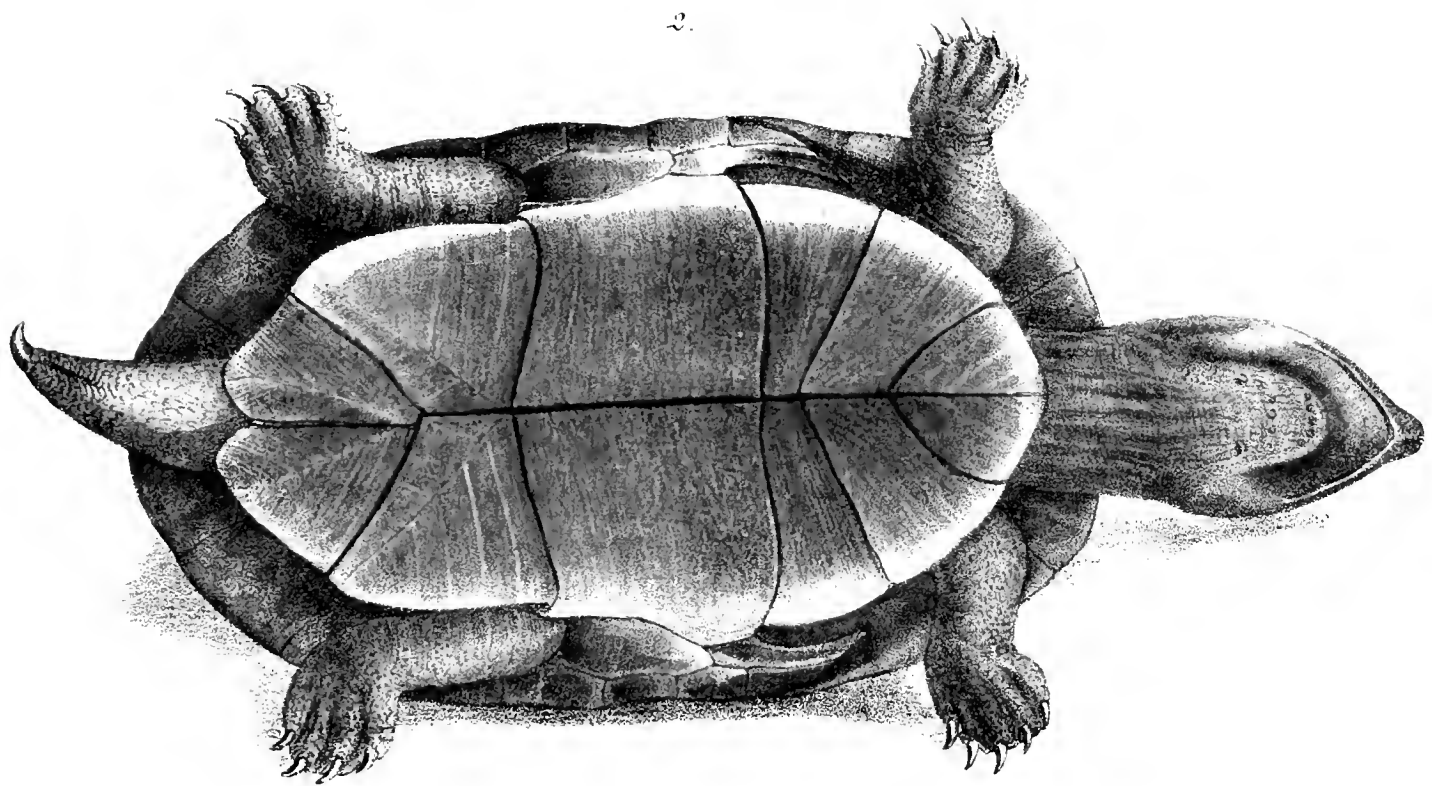
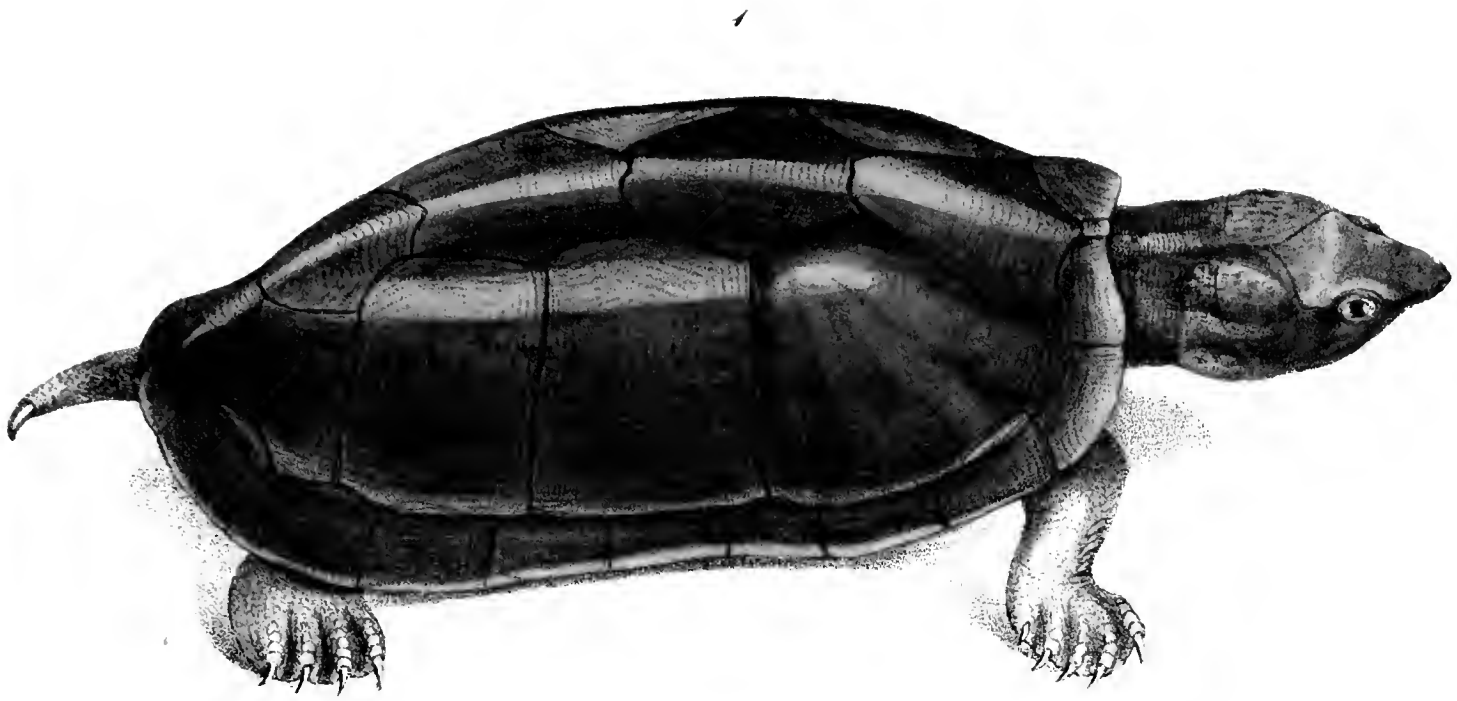
LIBRARY  
HARVARD UNIVERSITY  
CAMBRIDGE, MA USA



CHELYS timbriata.  
*La Tortue & Matamorta.*

INFORMATION  
CAMBRIDGE, MA USA

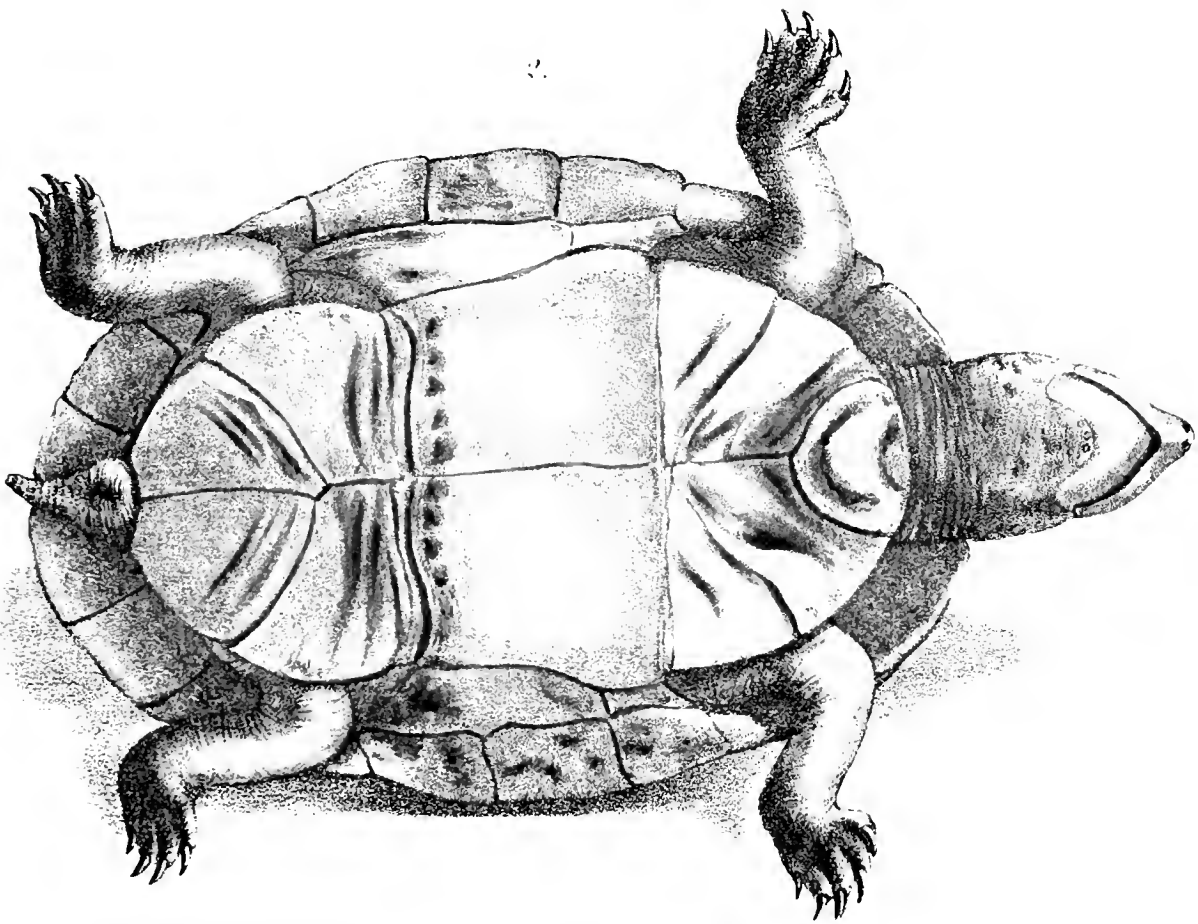
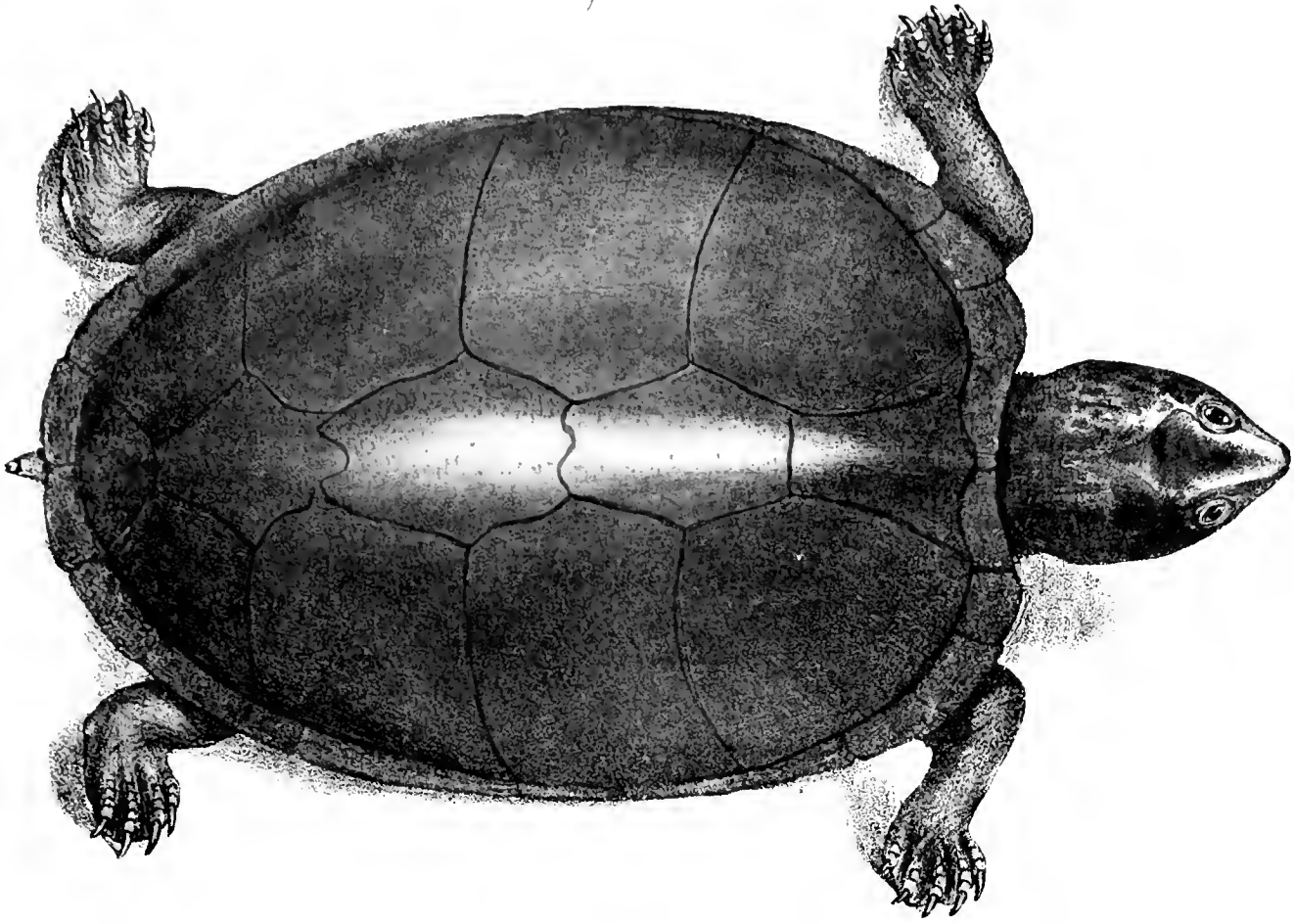




KINOSTERNON longicaudatum.  
*La Tortue articulée à longue queue.*

Tab. XII.

42  
CANTON  
MA USA

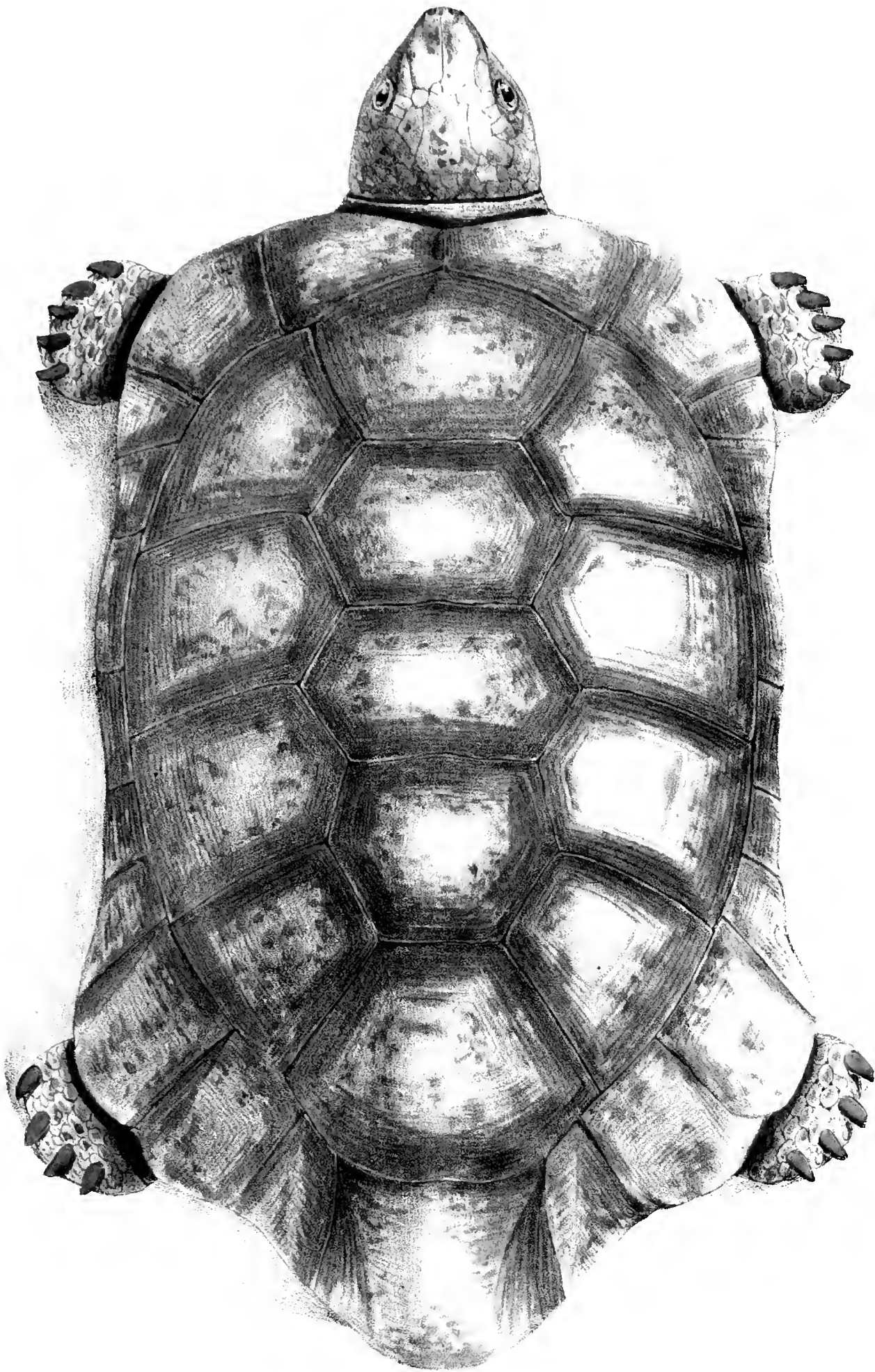


KINOSTERNON brevicaudatum.

*La Tortue articulée à courte queue.*

Tab. XIII.

Y  
UNIVERSITY  
CAMBRIDGE, MA USA

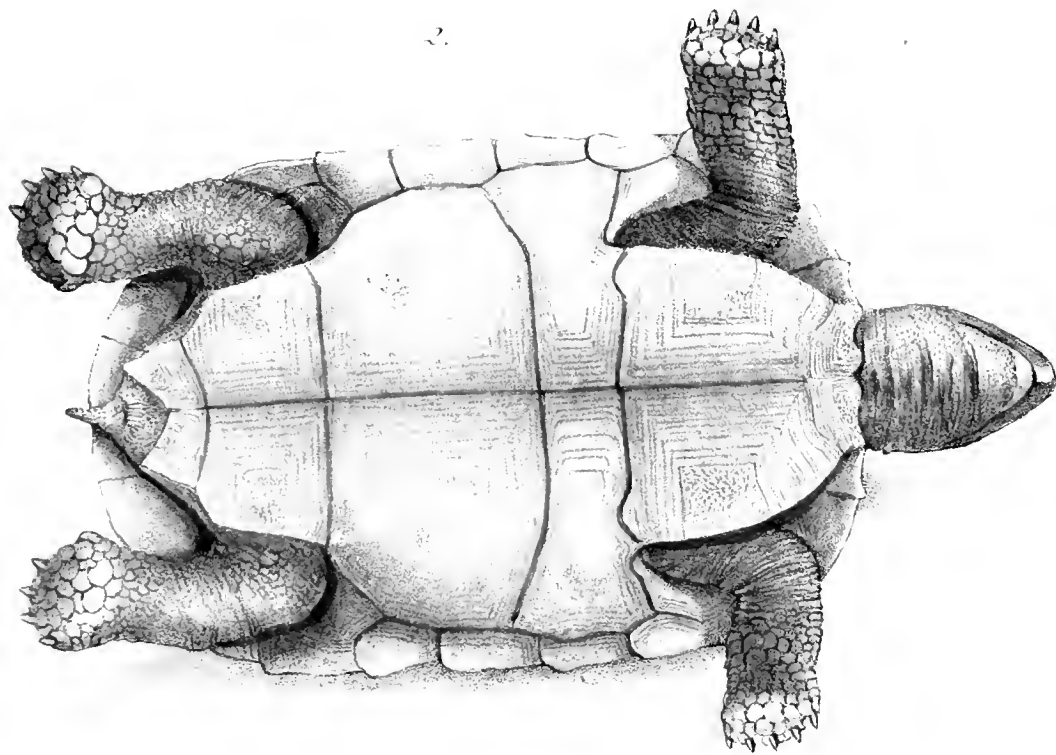
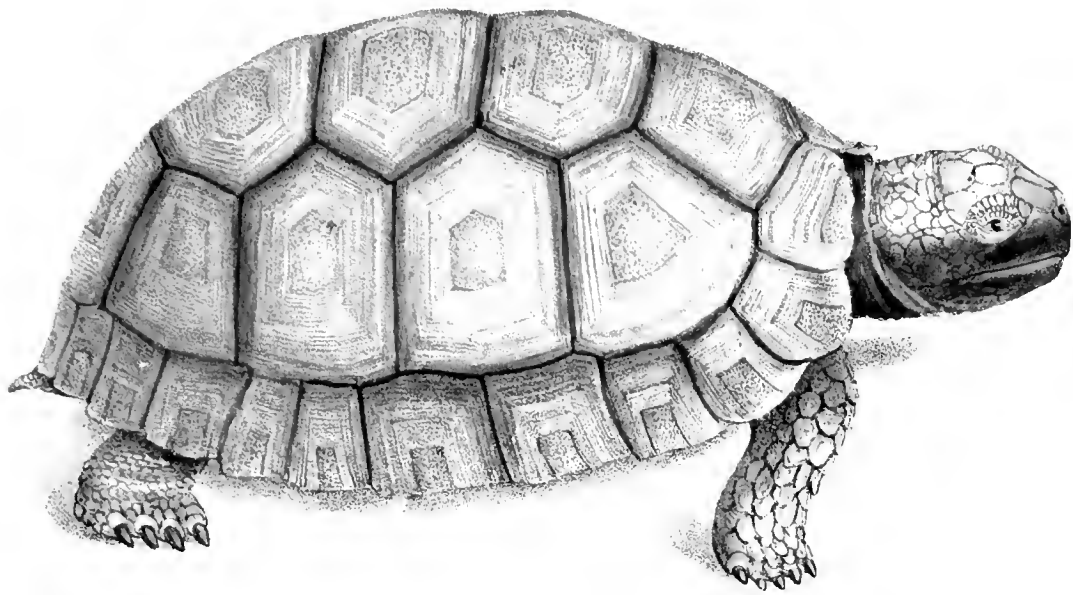


TESTUDO Hercules.

*La grande Tortue terrestre*

Tab. XIV.

MCF 1111 BY  
HARVARD UNIVERSITY  
CAMBRIDGE MA USA



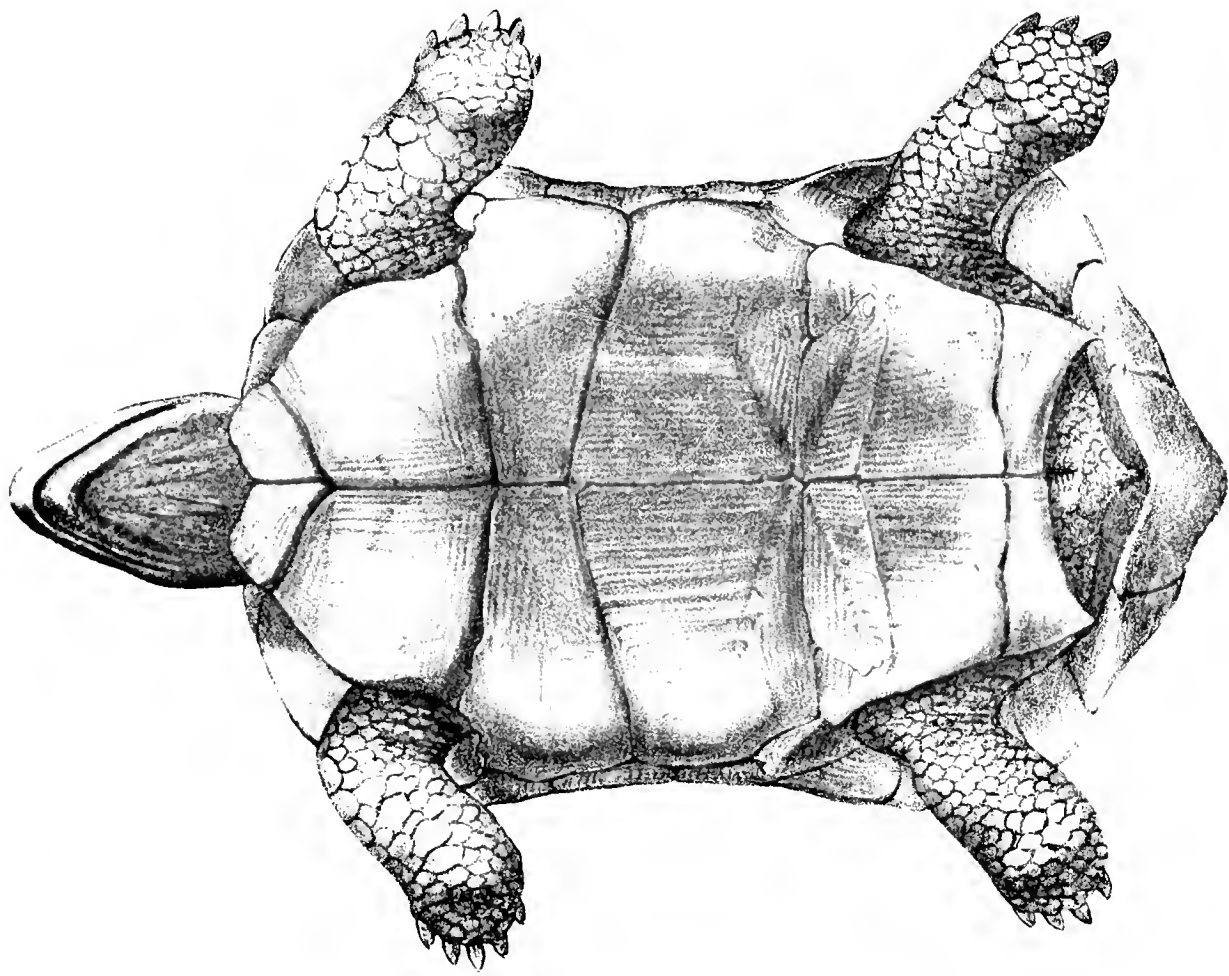
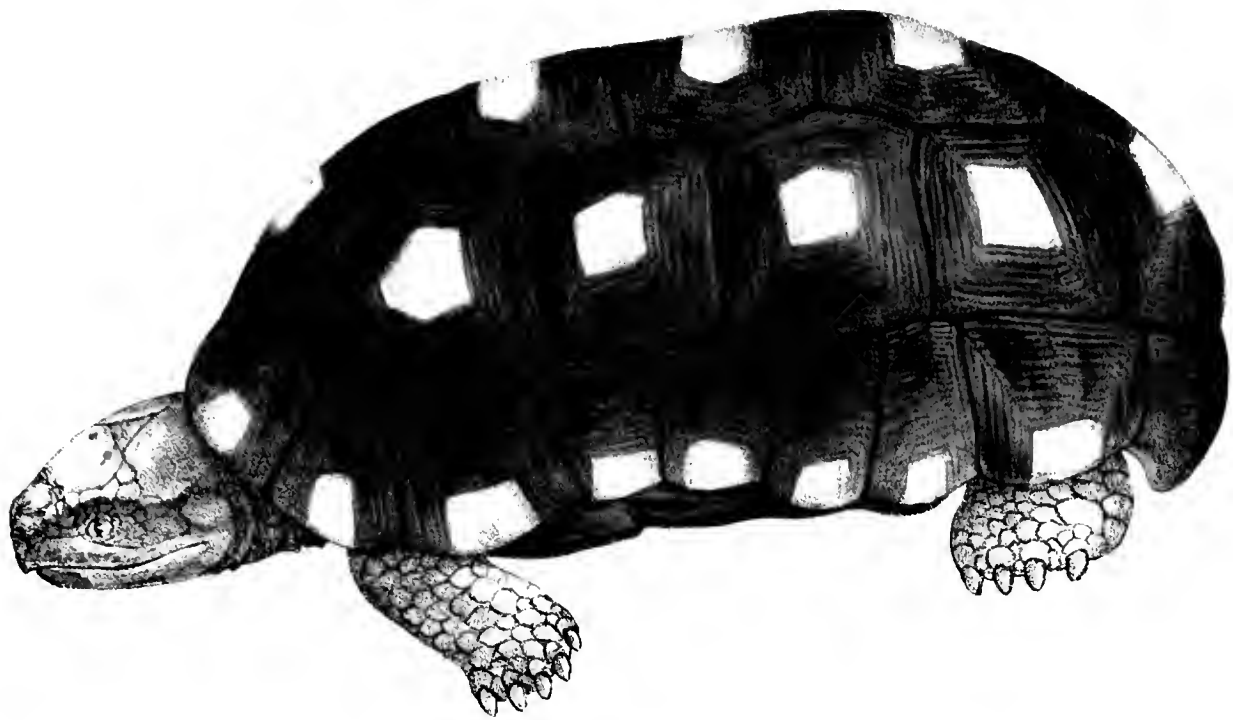
TESTUDO sculpta .

*La Tortue terrestre sculptée*

Tab. XV.

MCZ LIBRARY  
HARVARD UNIVERSITY  
CAMBRIDGE, MA USA





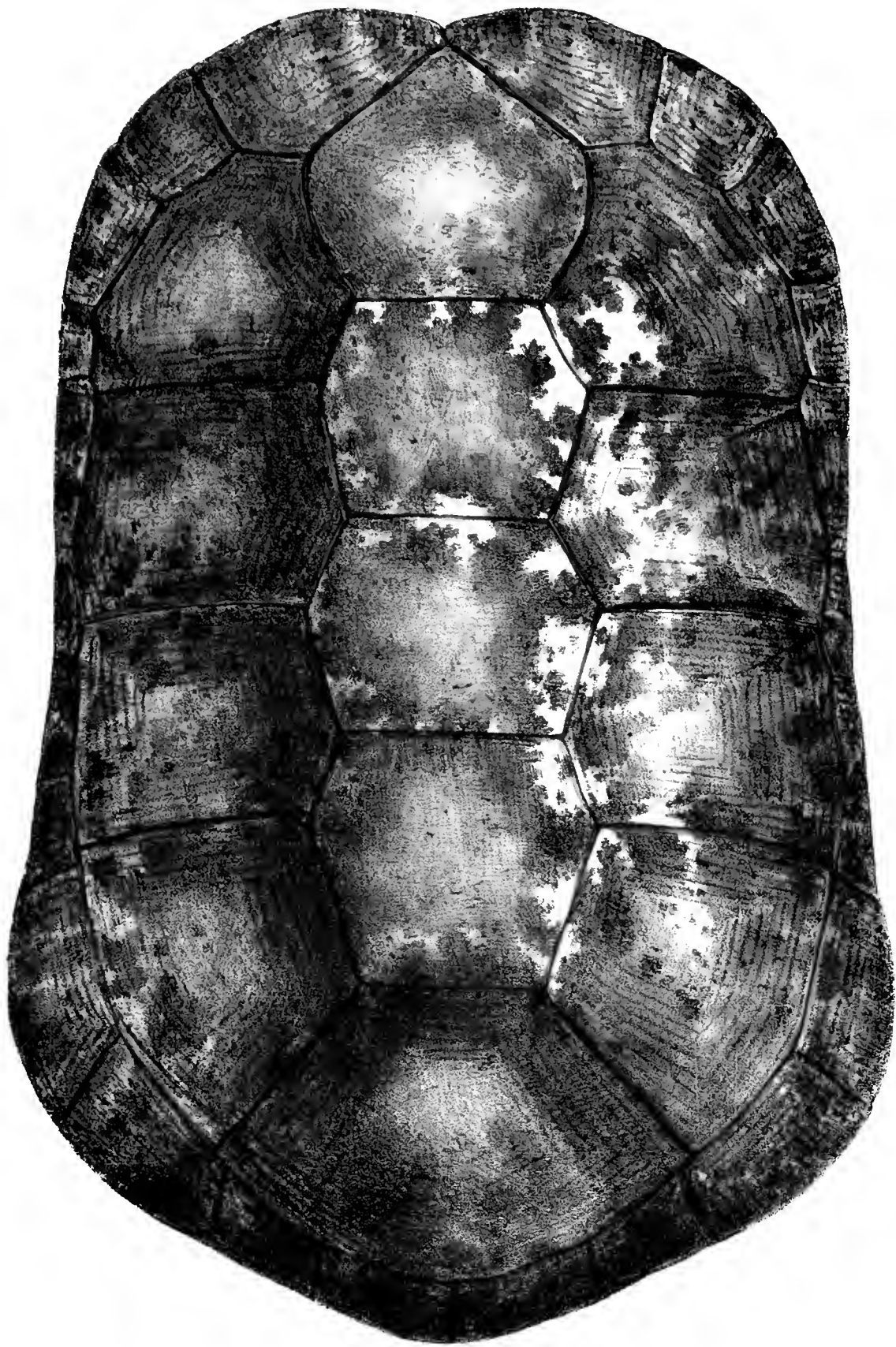
TESTUDO carbonaria .

*La Charbonnière*

Tab . XVI .

*Philippus Schmidt omnes ad naturam del*

MCZ LIBRARY  
HARVARD UNIVERSITY  
CAMBRIDGE, MA USA



TESTUDO Cagado.

*Tortue tachetée à dos plat*

Tab. XVII.

MCZ LIBRARY  
HARVARD UNIVERSITY  
CAMBRIDGE, MA USA

