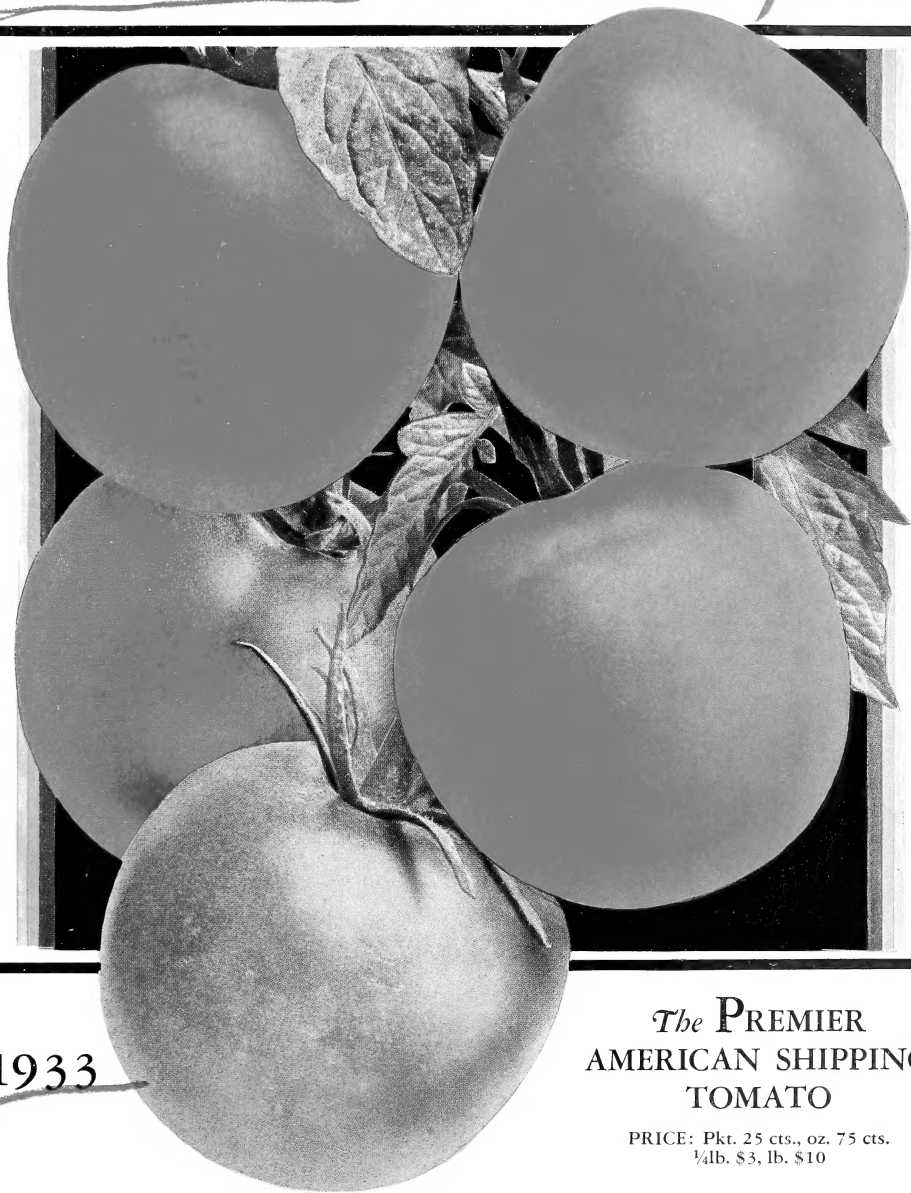


Historic, archived document

Do not assume content reflects current scientific knowledge, policies, or practices.



STOKES *Master Marglobe*



1933

The PREMIER
AMERICAN SHIPPING
TOMATO

PRICE: Pkt. 25 cts., oz. 75 cts.
1/4 lb. \$3, lb. \$10



5200 COLLECTION

*Stokes Giant
Mammoth Zinnias*

CALIFORNIA GIANTS

1. ORANGE KING
2. SCARLET QUEEN
3. ROSE QUEEN
4. MRS. WILMOTT

Separately at 10 cts. per pkt.
The Collection of four for 30 cts.

DEAR LAND OF HOME

(FROM THE TONE POEM, "FINLANDIA," OF JEAN SIBELIUS)

*Dear land of home, our hearts to thee are holden
By loyal love for each familiar scene;
Thy mountains guard the fields of grain all golden,
Thy rivers flow through meadows deep and green.*

*Thy children we, our love and pride confessing
In this fair land, this pleasant place of home;
And may we strive to bring a richer blessing
To crown thee now, and through all years to come.*

—TRANSLATION BY C. F. M.

THIS fair land, this pleasant place of home" is still in heavy difficulties and will, doubtless, remain so until we as a nation realize that we cannot comfortably live unto ourselves alone. Furthermore, we see no reason to expect a change until we offer our sympathetic friendship to all people, a viewpoint based on the premise that we gain only as we serve. Not until then will our name and the products of our fields be welcomed the world over as they once were.

One has but to turn the pages of this Catalog to appreciate that every part of this earth has contributed toward the enrichment of our life. We are living in a completely interdependent world, and until we adjust ourselves to that position we shall not be at ease.

Now a word to those who are weighed down with discouragement. Few places offer greater

security or more complete sanctuary than a garden. Out under the open sky, surrounded by the kindly flowers and fruits of this earth, one can always regain a sense of enchantment and a sanity of outlook.

A Stokes Garden cannot lay exclusive claim to all these blessings, but we would respectfully remind you that the offerings in this modest Catalog will supply the foundation you are looking for. Our job is succeeding well for the reason that for us it is the very best of all possible jobs. Our span of life is not nearly long enough to accomplish one-half the seed-improvement projects we already have outlined. Should you honor us with your business in 1933, we again pledge you of our very best.

Francis C. Stokes

PRESIDENT

PHILADELPHIA, PA.

February 1, 1933



PLANNING IN JANUARY MEANS CONTENTMENT IN JUNE



Asparagus, Mary Washington

NORTHERN EUROPE

*Very large, productive, and rust-resistant.
The most profitable Asparagus*



Mary Washington is by far the most satisfactory all-purpose variety

Twelve years ago our firm offered the original Washington stock. When the superiority of the Mary Washington strain, named in honor of George Washington's mother, was established we were among the first to offer it. Since that time we have done an increasing volume of business with large Asparagus growers, and, in line with our policy of carrying only the best, we have discarded all other types. In view of the prevalence of rust, it is utter folly to plant additional acreage with the old susceptible varieties.

SEED, Postpaid: Pkt. 5 cts.; oz. 10 cts.; 1/4lb. 30 cts.; lb. \$1.

ROOTS, Postpaid: 50 roots \$1.50; 100 roots \$2.25. Not prepaid: 500 roots \$7; 1000 roots \$11; 5000 roots, \$9 per 1000. Larger quantities, write for prices.

BEANS SOUTH AMERICA

Stringless Black Valentine

A completely stringless edition of Black Valentine, and fast replacing that variety

Days to maturity, 45. This variety has already passed the experimental stage. It is a cross between the old Black Valentine and Pencil-pod Wax. As its name implies, it is stringless. In appearance it resembles very much the original, except that the pods are perhaps slightly more curved. It will prove dependable in cold, dry, or wet seasons. The Bean is of delicious flavor and, in our opinion, will replace Black Valentine.

Price, Postpaid: 1/4lb. 15 cts.; 1/2lb. 25 cts.; lb. 40 cts.; 5 lbs. at 35 cts. per lb.

Additional Varieties of Beans

	1/4lb.	1/2lb.	Lb.	5 lbs.
Giant Stringless	\$0 10	\$0 20	\$0 35	\$0 30
Round-Pod Kidney Wax	15	25	40	33
Sure Crop	15	25	40	33
Dwarf Horticultural	15	25	40	33

LIMA BEANS

Fordhook Bush

Days to maturity, 75. This is the most popular Bush Lima Bean. Pods 4 1/2 inches long, containing 3 or 4 thick Beans of high quality. Height of vine, 12 inches.

Price, Postpaid: 1/4lb. 15 cts.; 1/2lb. 30 cts.; lb. 50 cts.; 5 lbs. at 45 cts. per lb.

Burpee's Improved Bush

Days to maturity, 80. Beans of excellent quality. This will partly replace Fordhook Bush this year as that variety is now more expensive.

Price, Postpaid: 1/4lb. 15 cts.; 1/2lb. 25 cts.; lb. 40 cts.; 5 lbs. at 33 cts. per lb.

King of the Garden Pole

Days to maturity, 85. The most satisfactory Pole Lima. Large, broad, flat pods averaging 9 inches in length and containing 4 or 5 Beans.

Price, Postpaid: 1/4lb. 15 cts.; 1/2lb. 25 cts.; lb. 40 cts.; 5 lbs. at 33 cts. per lb.

Tendergreen Beans

*Early. Fine flavor. Unusually prolific.
Completely stringless*

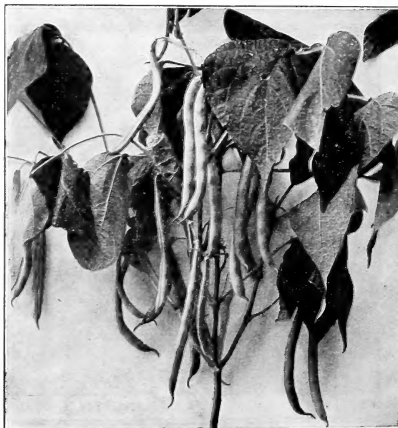
Days to maturity, 42. This new and delicious Snap Bean is a valuable acquisition. It combines unusual vigor with exceptional table quality. The long, green, straight pods are round like a pencil, of very high flavor and of attractive light green color. We believe this new variety is destined to take an important place in private and commercial Bean production.

Price, Postpaid: 1/4lb. 15 cts.; 1/2lb. 25 cts.; lb. 40 cts.; 5 lbs. at 35 cts. per lb.

Bountiful

Days to maturity, 45. Pods over 6 inches long, slightly curved, flat, light green, stringless, 7-seeded. A most important variety commercially, and a Bean of excellent table quality.

Price, Postpaid: 1/4lb. 10 cts.; 1/2lb. 20 cts.; lb. 35 cts.; 5 lbs. at 30 cts. per lb.



The new Tendergreen Bean is very highly recommended



BEET EGYPT

Crosby Special (New)

Earlier, deeper, and darker. Restrained growth

Days to maturity, 45. We take particular pleasure in announcing this new strain—the result of painstaking selection. In our opinion it is the outstanding Crosby Beet. It is almost round, dark crimson, and the tops are small, definitely indicating early maturity. Gardeners looking for an extra-fancy stock will plant this.

Price, Postpaid: Pkt. 10 cts.; oz. 15 cts.; ¼lb. 45 cts.; lb. \$1.50.

Detroit Special

Great uniformity of top, root, and interior color

Days to maturity, 52. This stock represents the standard of excellence in a Detroit Beet for home or market garden, for shipping or for canning. Tops uniform, small, slender, erect. Roots globe-shaped, symmetrical, very dark blood-red. Interior color uniformly dark red. The roots remain tender and of the highest quality until they are fully grown.

Price, Postpaid: Pkt. 5 cts.; oz. 10 cts.; ¼lb. 30 cts.; lb. \$1.

Century or Winter Keeper

A Stokes introduction in 1913

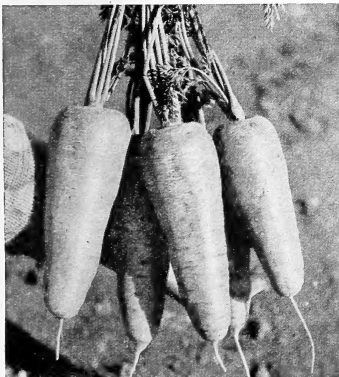
Days to maturity, 60. Persistent demand warrants us in relisting this best of all winter varieties. This is the finest quality Beet of our entire list. Its half-long shape has precluded it on certain markets, but where it is known it is a positive favorite. Root blood-red, of delicate texture, even when grown over a period of three to four months. As a winter keeper it is unequalled. Top bright green, often utilized for greens.

Price, Postpaid: Pkt. 10 cts.; oz. 15 cts.; ¼lb. 35 cts.; lb. \$1.25.

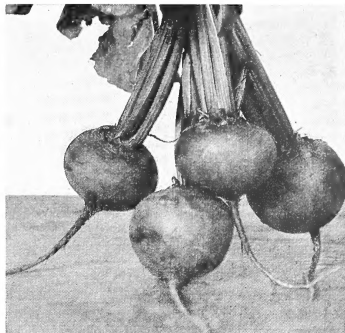
SWISS CHARD, Giant Lucullus

Days to maturity, 60. As a green and as a substitute for spinach, Swiss Chard has an important place in the garden. Giant Lucullus is a broad-stemmed variety, leaves yellowish green, and grows to a height of about 15 inches.

Price, Postpaid: Oz. 10 cts.; ¼lb. 25 cts.; lb. 80 cts.



Red-cored Chantenay Carrots



Crosby Special Beets

Little Egypt (New)

The earliest Beet in cultivation

Days to maturity, 35. Gardeners looking for an extremely desirable, very early, forcing Beet will do well to give this new European variety a thorough trial. This actually will develop a root two weeks in advance of either Crosby or Detroit. The root is somewhat flattened, and the interior color is a brilliant blood-red. The top grows only from 6 to 10 inches.

Price, Postpaid: Pkt. 10 cts.; oz. 15 cts.; ¼lb. 45 cts.; lb. \$1.50.

MANGEL BEET

Mammoth Long Red

Days to maturity, 100. The standard Stock Beet in the United States. The roots attain a length of over 12 inches, averaging from 10 to 25 pounds in weight.

Price, Postpaid: Oz. 10 cts.; ¼lb. 20 cts.; lb. 60 cts.

CARROT BRITISH ISLES

Special Danvers

Longer, smoother, richer color than Danvers

Days to maturity, 75. We consider that this distinguished strain is the outstanding offering of the Danvers Carrot. It will attain a length of between 7 and 8 inches, tapering to a blunt point. When bunched, it makes the most attractive Carrot on the entire market, thus bringing the very best prices.

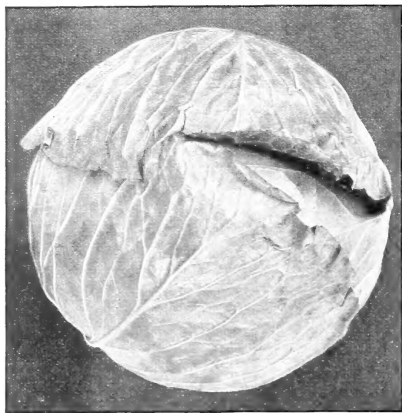
Price, Postpaid: Pkt. 5 cts.; oz. 15 cts.; ¼lb. 35 cts.; lb. \$1.25.

Red-Cored Chantenay

Flesh and core reddish orange

Days to maturity, 65. For growers having a demand for a Carrot that is free from the usual pale yellow core, this carefully bred strain will give complete satisfaction. It is a distinct improvement over the well-known Chantenay. Roots average slightly over 5 inches in length and 2¼ inches at the shoulder; tapered and stump-rooted. Flesh and core reddish orange, fine-grained, tender, of sweet, delicate flavor.

Price, Postpaid: Pkt. 5 cts.; oz. 20 cts.; ¼lb. 45 cts.; lb. \$1.50.



Viking Golden Acre Cabbage is five days earlier than most Golden Acre

Jersey Wakefield Special

Extra early. Hardy. Resists frost

Days to maturity, 90. This stock is characterized by its distinctive, smooth, blue-green leaf. It has all the elements that count for cold resistance and unusually early maturity, being ready for cutting one week ahead of average Jersey Wakefield. The buying public is quick to accept the fresh-cut, sweet-flavored, pointed head. Plant is compact. Set 12 inches apart in the row. Head 7 inches long, 5 inches wide at base. Weight 2 pounds. Critical growers will do well to plant this distinguished strain.

Price, Postpaid: Pkt. 5 cts.; oz. 25 cts.; 1/4lb. 65 cts.

Charleston Wakefield Special

A half pound heavier than Jersey Wakefield

Days to maturity, 95. This is the very finest stock of Charleston Wakefield we know. Both Jersey and Charleston Wakefield make a bid for the early money. This stock, maturing about one week after our Jersey Wakefield Special, will give excellent results.

Price, Postpaid: Pkt. 5 cts.; oz. 25 cts.; 1/4lb. 65 cts.

Penn State Ballhead

Plant for increased tonnage and for better storage

Days to maturity, 120. Records over a period of years show that this strain will surpass 20 tons per acre. This unusually high figure is due to the fact that it has been selected for hard, tight heads weighing one-third more than the usual strains of Danish Ballhead although they are the same size. The plant is short-stemmed. The head is spherical, averaging 7 inches in diameter and weighing 6 pounds or over. Keeps in storage for six months.

Price, Postpaid: Pkt. 10 cts.; oz. 40 cts.; 1/4lb. \$1.25.

Additional Varieties of Cabbage

	Pkt.	Oz.	1/4lb.
Allhead Early	\$0 05	\$0 25	\$0 65
Stein's Flat Dutch	05	25	65
Drumhead Savoy	05	25	65
Mammoth Red Rock	05	25	65
Danish Ballhead	05	25	65

CABBAGE

WEST
EUROPE

Viking Golden Acre

The earliest round Cabbage—five days ahead of other Golden Acre Strains

Days to maturity, 85. In repeated tests over varying parts of the United States in 1932, Stokes Viking Golden Acre again proved its right to claim first place in earliness of maturity—the most important factor to the grower who expects to get the high money in the June market.

Along with this factor of earliness goes the remarkable type uniformity, the leaf-growth being even and restrained. There are many excellent stocks of Golden Acre now available, but in our opinion none of them equals Stokes Viking Golden Acre in value as a money-maker. Records over the past ten years show that there has been a reasonably strong market only for the first ten days of each seasonal cutting. It is for growers who can take advantage of such a market with a quick-maturing, round-headed Cabbage that this strain has been developed. Average size of head 2 1/2 pounds. We advise planting this 12 inches apart in the row; 14 to 15 inches often produces too large a head. This strain, up until now, has been called Viking Copenhagen.

Price, Postpaid: Pkt. 15 cts.; oz. 60 cts.; 1/4lb. \$2.

Copenhagen Market Special

Early, uniform, restrained. The very best in Copenhagen Market

Days to maturity, 95. Copenhagen Market is one of those varieties whose name in itself means little. There is a variance of at least a month in time of maturing, some stocks being large, late, and of little value. Therefore, buy carefully on Copenhagen. The Stokes strain is early, maturing within ten days of Stokes Viking Golden Acre. Heads average 3 1/2 pounds in weight (one pound heavier than its class). Growth is uniform and restrained. It is a leader in this class.

Price, Postpaid: Pkt. 10 cts.; oz. 30 cts.; 1/4lb. \$1.

Glory of Enkhuizen Special

Extra-heavy yield

Days to maturity, 108. The restrained uniformity of this stock assures high production. Its distinct blue-green color is indicative of unusual type purity. Heads will average 6 pounds.

Price, Postpaid: Pkt. 5 cts.; oz. 25 cts.; 1/4lb. 65 cts.



Charleston Wakefield Special is a very dependable Cabbage.



CAULIFLOWER

EUROPE

Super Snowball (New)

Early. Very white. Sure-heading

Days to maturity, 110. This variety, supplied to us directly from Denmark by the originator, will mature ten days earlier than Riverhead Snowball. It may be considered as one of the most valuable Cauliflower developments in recent years. The heads will mature with great evenness ten days ahead of other Snowball strains. The quality is superb.

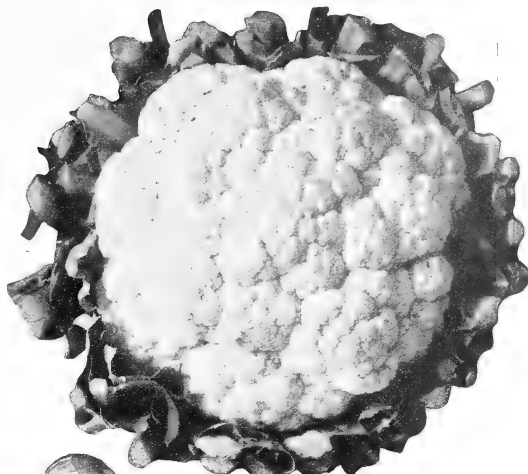
Price, Postpaid: Pkt. 25 cts.; 1/4oz. 75 cts.; oz. \$2.50; 1/4lb. \$8.50.

Riverhead Snowball

Unusually deep head. Withstands considerable frost

Days to maturity, 120. Riverhead Snowball is a Stokes introduction of five years' standing. It is especially recommended for maturing either as an early or late sort. From the standpoint of sheer perfection Riverhead Snowball will stand in the first rank. The plant is vigorous and quick-growing. It is compact, but not too short-leaved. The head has unusual depth, is solid, evenly grained, and will blanch to a pure white.

Price, Postpaid: Pkt. 25 cts.; 1/4oz. 40 cts.; oz. \$1.25; 1/4lb. \$5.50.



Super Snowball Cauliflower

BROCCOLI

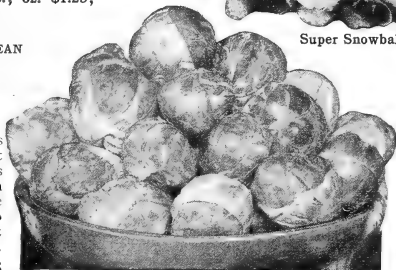
MEDITERRANEAN REGION

Glory of Calabria

Early, self-producing, sprouting type

Days to maturity, 150. In six brief years Broccoli has become one of the very important green vegetables in the United States. The Stokes strain is imported direct from the best Italian source. It has been a specialty with us since 1928 and has always given great satisfaction. To growers who are new in Broccoli, we throw out this one warning: mature it during cool weather.

Price, Postpaid: Pkt. 10 cts.; oz. 35 cts.; 1/4lb. \$1.30.

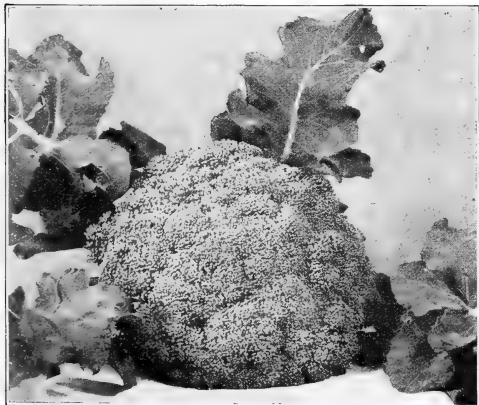


Brussels Sprouts

The outstanding variety of Cauliflower in the United States at present from the standpoint of evenness, pure white color, and sure heading. We know of no other Cauliflower that is in a class with it.

BRUSSELS SPROUTS

BELGIUM



Glory of Calabria Broccoli is easy of cultivation

Long Island Special (New)

Semi-dwarf. Uniform. Heavy producing

Days to maturity, 125. We consider this to be the finest variety of its class that is now available. The compact plant will attain a height of about 20 inches. It is unusually uniform and the stem is completely covered with large, solid sprouts, averaging nearly 1 1/2 inches in diameter—maturing in succession. Market gardeners will find this an unusually true strain.

Price, Postpaid: Pkt. 10 cts.; oz. 35 cts.; 1/4lb. \$1.25.

COLLARDS

EUROPE

Georgia

Days to maturity, 80. Sometimes called Southern or Creole. This vegetable develops a loose-leaved head growing about 2 1/2 feet in height and producing large, light green leaves on medium-long stems. A frost, if not too severe, will improve the crop. In the South the seed may be sown from January to May and from August to October.

Price, Postpaid: Pkt. 5 cts.; oz. 10 cts.; 1/4lb. 20 cts.; lb. 60 cts.



Note the long stalks and full hearts of our Golden Plume Special

CELERY EUROPE

Golden Plume Special

Early. Full heart. Very long rib

Days to maturity, 115. This is one of the accepted leaders in the important Sanford (Florida) Celery district. We take a pardonable pride in it as it is looked upon by the largest growers in the district as being one of the most profitable known strains. It is early in maturity, readily blanched, full hearted, compact, and of excellent table quality. The strain is grown privately for us directly from a famous market gardener's stock.

Price, Postpaid: Pkt. 25 cts.; oz. \$1.25; 1/4lb. \$4.

Golden Phenomenal (New)

Four inches taller than Golden Plume

Days to maturity, 115. This new development is fast establishing a reputation. It has proved particularly adaptable to conditions in certain sections of New York, New Jersey, and Florida. Ready for use early. It is full-hearted and compact with long, edible stalks that are readily blanched.

Price, Postpaid: Pkt. 25 cts.; oz. \$1.25; 1/4lb. \$5.

Golden Self-Blanching

A very dependable strain of Old Golden

Days to maturity, 120. Customers come back to us year after year for this excellent stock. It is a vigorous grower, developing a large golden heart with long upright stalk. Celery growers can place great confidence in the purity of our strain.

Price, Postpaid: Pkt. 15 cts.; oz. 65 cts.; 1/4lb. \$2.50.

Salt Lake (New)

The best green Celery

Days to maturity, 130. We consider this to be an ideal Celery for winter storage. The stalk is very thick, stringless, crisp, and of high flavor. Salt Lake will blanch more readily than other green varieties. It will prove a highly profitable sort.

Price, Postpaid: Pkt. 15 cts.; oz. 65 cts.; 1/4lb. \$2.50.



Our Celery Seed is planted by some of the most successful growers in this country



SWEET CORN PERU

Kingscross Golden Bantam (New)

Inbred hybrid. Ten days earlier. Complete evenness in ripening. Probably resistant to Stewart's Disease

Days to maturity, 60. A new departure in yellow Sweet Corn. The hybridization of inbred strains has developed an astonishingly uniform Sweet Corn of the true 8-rowed Golden Bantam type, maturing ten days earlier than the original. Another result of the cross is great evenness of growth. The stalks are the same height, the ears are in the same position on the stalk, and all mature at one time. The harvest is, therefore, controlled by the planting which is a great saving in labor. This new development has yet to be proved in the states afflicted with Stewart's Disease, but we offer it with the confident expectation that it will prove resistant to that scourge which is wiping out the old Golden Bantam in many areas. Kingscross Golden Bantam is an F' hybrid and thus must be renewed each year from the original parents. This variety must not be confused with Golden Cross Bantam which is a 10-rowed type of Bantam maturing about three weeks later than Kingscross Golden Bantam. It is the progeny of entirely different parents.

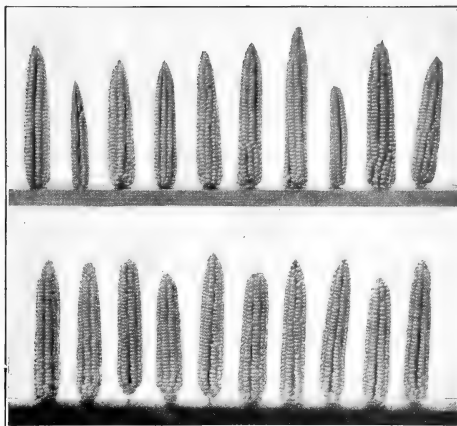
Price, Postpaid: $\frac{1}{4}$ lb. 15 cts.; $\frac{1}{2}$ lb. 30 cts.; lb. 50 cts.; 5 lbs. at 45 cts. per lb.

Stowell's Evergreen Special

Uniformly productive. Handsome 16-row ear. High in sugar-content

Days to maturity, 100. A privately grown Burlington County strain, the result of many years' personal selection. This may be looked on as an outstanding stock of the standard late variety. Stalks grow to a height of 7 feet. The ears are 8 inches long. Kernels very deep, white, sweet, and tender. Growers who desire one of the very purest strains of Stowell's Evergreen can plant this with great confidence.

Price, Postpaid: $\frac{1}{4}$ lb. 10 cts.; $\frac{1}{2}$ lb. 20 cts.; lb. 35 cts.; 5 lbs. at 30 cts. per lb.



Top row: Golden Bantam. Bottom row: Kingscross Golden Bantam. Note larger ears and greater uniformity to the hybrid stock

Stokes Vanguard

White. Very early. Productive. Excellent quality. One of the best money-makers

Days to maturity, 70. Introduced by Stokes in 1926. As its name implies, Stokes Vanguard is a leader in the procession of white Sweet Corn. The stock we offer is unexcelled, being the result of ear-to-row selection over a period of years. Will mature seven days earlier than Howling Mob, developing marketable ears in slightly over two months. Average length, 8 inches.

Table quality excellent. Originally developed by A. L. Richie, a successful New Jersey grower. This stock is grown privately for us in its home county. It has proved enormously profitable in many areas.

Price, Postpaid: $\frac{1}{4}$ lb. 10 cts.; $\frac{1}{2}$ lb. 20 cts.; lb. 35 cts.; 5 lbs. at 30 cts. per lb.

Sunny Slope Special

A Stokes introduction in 1924. Originated by A. L. Richie, a successful New Jersey farmer whose farm-home, "Sunny Slope," has been responsible for several important Corn introductions.

Days to maturity, 72. This variety was developed to meet the demand for an early-maturing Corn of high table quality. Its time of ripening will follow right after Vanguard. The variety has remarkably thick ears, and the kernels are high in sugar-content. The Corn we offer was grown in New Jersey in 1932.

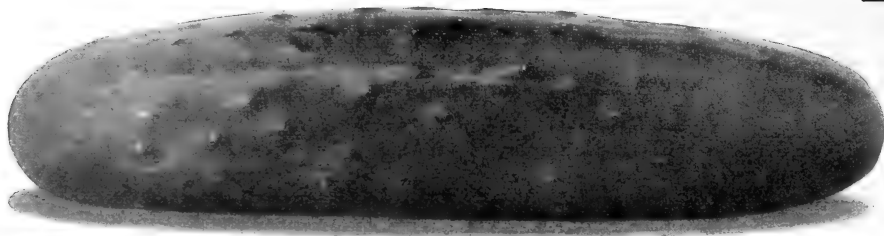
Price, Postpaid: $\frac{1}{4}$ lb. 15 cts.; $\frac{1}{2}$ lb. 25 cts.; lb. 40 cts.; 5 lbs. at 35 cts. per lb.

Additional Varieties

Postpaid	$\frac{1}{4}$ lb.	$\frac{1}{2}$ lb.	lb.	5 lbs. @
Golden Bantam	15c.	25c.	40c.	35c.
Bantam Evergreen	10c.	20c.	35c.	30c.
Country Gentleman	10c.	20c.	35c.	30c.



Air view of our Experimental Gardens at Moorestown, N. J. This photo was taken August 11, 1932, at time of the annual Field Meeting attended by over six hundred persons. Most of the Company's breeding on Tomato, Pepper, and Eggplant is done here.



Early Fortune is an excellent Cucumber for the garden

CUCUMBER EAST INDIES

Stokes Greenpack

Early. Heavy-yielding. Color vivid dark green. Length 7 inches

Days to maturity, 60. This variety has earned high profits for growers on the Atlantic Seaboard. Its distinguishing feature is its ability to hold its luxurious deep green color until sold on northern markets. Unquestionably, it is the heaviest yielding of the White Spine types. In season it will mature slightly ahead of Early Fortune.

Price, Postpaid: Pkt. 5 cts.; oz. 15 cts.; 1/4lb. 30 cts.; lb. \$1.

Clark's Special or Woodruff's Hybrid

Uniform. Brilliant deep green. Length 10 inches

Days to maturity, 68. This variety is sometimes sold as Harris' Perfection. Unusually successful in North Carolina and in Erie County, New York. In general appearance will fit about midway between Early Fortune and Davis Perfect. In many respects it is the very best of the White Spine varieties for market and shipping, being slightly longer and larger than most of its contemporaries.

Price, Postpaid: Pkt. 5 cts.; oz. 15 cts.; 1/4lb. 30 cts.; lb. \$1.



Sweet Italian Fennel

KALE EUROPE

Dwarf Curled Scotch

Days to maturity, 55. A finely curled, low-growing variety of spreading heads. It is extremely hardy. The parsley-like leaves are sometimes used for garnishing.

Price, Postpaid: Pkt. 5 cts.; oz. 15 cts.; 1/4lb. 30 cts.; lb. \$1.

FENNEL or ANISE Sweet Italian

This vegetable, a native of southern Europe, is now well known in the American trade. It is an easily cultivated annual. Seed should be sown in the spring and plants thinned 12 inches apart in the row. When half-grown, the plants should be earthed up and treated like celery, which it resembles in its general growth. Postpaid: Pkt. 10 cts.; oz. 15 cts.; 1/4lb. 30 cts.; lb. 95 cts.; 5 lbs. at 85 cts. per lb.; 25 lbs. at 80 cts. per lb.

Early Fortune

Best all-round shipper. Length 8 1/2 inches

Days to maturity, 65. When grown and picked under proper conditions, the slender, symmetrical, tapering fruit of Early Fortune is remarkably attractive. This, no doubt, accounts for its very general popularity among large growers. It is very dark green, and the color is retained a long time after harvest. This special strain has been developed with great care.

Price, Postpaid: Pkt. 5 cts.; oz. 15 cts.; 1/4lb. 30 cts.; lb. \$1.

Windermoor Wonder

Handsome deep green color. Few seeds. Length 12 inches

Days to maturity, 70. For growers having level, well-prepared, heavily fertilized soil, Windermoor Wonder, a Stokes introduction in 1917, will develop the most attractive Cucumber that can be grown outdoors. The usual blossom-end stripes are absent. Color is a uniform vivid green. The yield is lighter than with the shorter types. Windermoor is a Davis Perfect x English Telegraph cross.

Price, Postpaid: Pkt. 5 cts.; oz. 20 cts.; 1/4lb. 55 cts.; lb. \$2.

Boston Pickling

Sometimes called Green Prolific. Length 6 1/2 inches

Days to maturity, 60. Symmetrical, only slightly tapered. Fruits medium dark green; black-spined. Gather at an early stage for pickling.

Price, Postpaid: Pkt. 5 cts.; oz. 15 cts.; 1/4lb. 30 cts.; lb. \$1.



Dwarf Curled Scotch Kale



EGGPLANT INDIA

Imperial Black Beauty

Rich, handsome fruits. Phomopsis-free. A very profitable strain

Days to maturity, 115. Loss from the organisms of Phomopsis Rot has been serious in many districts. The disease sometimes comes from infected soil, but unless the grower starts with disease-free seed he takes unnecessary risk. Our Imperial strain has been grown under conditions that make us morally certain that the seed is free from these organisms. Customers in the Lower Rio Grande Valley have experienced unusual results with this excellent strain of Black Beauty.

Price, Postpaid: Pkt. 10 cts.; oz. 35 cts.; ¼lb. \$1.25.

New York Special

Early. Heavy-yielding. Black, glossy color

Days to maturity, 125. Growers who are in search of what is probably the very finest strain of New York Improved can plant this stock with the assurance that comes with over ten-years' personal selection. The conscientious work that has been done is responsible for a heavier and earlier yield and a richer and deeper color, combined with a greater resistance to wilt and other diseases. The distinguished heredity of the strain will be immediately recognized by experienced growers.

Price, Postpaid: Pkt. 10 cts.; oz. 35 cts.; ¼lb. \$1.25.

Additional Varieties of Eggplant

	Pkt.	Oz.	¼lb.
Florida High-Bush.....	\$0 10	\$0 35	\$1 25
Italian Long Purple.....	05	30	1 00



Mr. Willard Kille, a good neighbor of ours, holding the New York Special Eggplants he has developed

ENDIVE AND ESCAROLE

Green Curled Endive EAST INDIES

Days to maturity, 100. Our stock as offered has been praised by many market gardeners. The rosette head will average about 15 inches across and is of a rich dark green color. It is finely cut and divided and when tied will blanch to a rich bright yellow.

Price, Postpaid: Pkt. 5 cts.; oz. 15 cts.; ¼lb. 35 cts.; lb. \$1.10.

Stokes Deep Heart Escarole

Early. Broader leaf. Deep, well-blanchd heart. Replaces Broad-leaf Batavian

Days to maturity, 100. The brilliant appearance of this special strain of Escarole has earned a definite place for it in the important Sanford (Florida) district. The head will grow considerably larger than most competing strains. Leaf is broad, thick, slightly wrinkled, and easily blanched.

Price, Postpaid: Pkt. 5 cts.; oz. 20 cts.; ¼lb. 60 cts.; lb. \$2.25.

KOHLRABI EUROPE

Early White Vienna

Days to maturity, 50. This well-known European strain may be used either for forcing or for field cultivation. It is light green, and the root is usually pulled for the table when about 2 inches in diameter. Kohlrabi is a vegetable deserving of more general use.

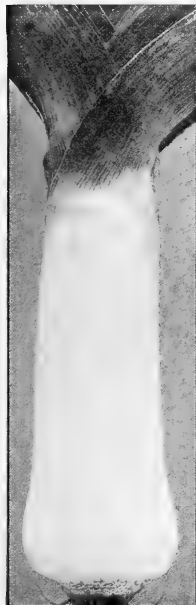
Price, Postpaid: Pkt. 5 cts.; oz. 20 cts.; ¼lb. 50 cts.; lb. \$1.75.

LEEK SWITZERLAND

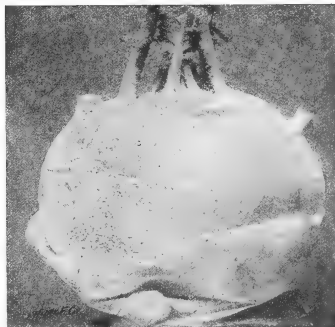
Monstrous Carentan

Days to maturity, 90. This is probably the largest Leek in cultivation. The stems often measure 2½ to 3 inches in diameter, are pure white and of tender quality. It is highly esteemed as a fall and winter substitute for green onions.

Price, Postpaid: Pkt. 5 cts.; oz. 20 cts.; ¼lb. 50 cts.; lb. \$1.75.



Monstrous Carentan Leek



Early White Vienna Kohlrabi



LETTUCE ORIENT

Long-standing White Boston (New)

Very long-standing. Resistant to wilt and tip-burn

Days to maturity, 75. This new and distinct Lettuce is destined for an important future. Fundamentally, it is a very pure strain of the White Boston type, but its great mark of distinction is in its long-standing habit of growth and its freedom from tip-burn. Any Lettuce which will stand up under the dry, burning heat of mid-July as this one does is a stock of outstanding merit. For table quality and tender sweetness we know of no other strain that will compare with Long-standing White Boston. The color is a bright yellow-green. Our prediction is that this Lettuce will largely replace the older White Boston, for it has all of the good qualities of that variety and at the same time holds from two to three weeks longer before shooting to seed and is more resistant to wilt and tip-burn. Give it a thorough trial this year.

Price, Postpaid: Pkt. 10 cts.; oz. 25 cts.; 1/4lb. 70 cts.; lb. \$2.50.

New York No. 12

Matures earlier. Better adapted to eastern climate

Days to maturity, 90. Pacific Coast growers have had a near monopoly in the production of Iceberg type Lettuce. The prevailing cool temperatures there are in their favor. New York No. 12 matures earlier than the original strain and is better adapted to our eastern climate. Among other advantages, it is much less susceptible to loss by tip-burn. For these reasons, growers can plant New York No. 12 in almost any locality, either early in the spring or in the late summer or fall. When grown on well-prepared and well-fertilized ground, it will develop solid, crisp, large heads. The color is a trifle lighter than other strains of New York.

Price, Postpaid: Pkt. 5 cts.; oz. 20 cts.; 1/4lb. 60 cts.; lb. \$2.

Additional Varieties of Lettuce

	Pkt.	Oz.	1/4lb.	Lb.
White Boston	\$0 05	\$0 20	\$0 50	\$1 75
Big Boston	05	15	40	1 50
Romaine or Trianon Cos	05	15	40	1 50
Grand Rapids	05	15	40	1 50



Long-standing White Boston in every way lives up to its name. Especially recommended for summer culture

MUSKMELON INDIA

Honey Rock (New)

Early. Extremely delicious. An outstanding introduction

Days to maturity, 80. This very desirable new Muskmelon deserves the immediate attention of all growers. It is unusually handsome in appearance, being of medium size, round as a ball, and covered with heavy, coarse netting. Its deep orange-colored flesh is extremely thick and of uniformly sweet, high flavor, a feature which does not hold for many varieties. The exterior color of the melon is very light green, turning when ripe to a light, golden yellow. It will ripen early, and it is very productive. We predict an important future for Honey Rock.

Price, Postpaid: Pkt. 10 cts.; oz. 20 cts.; 1/4lb. 45 cts.; lb. \$1.60.

Stokes Hale's Best

A very reliable strain

Days to maturity, 75. There was more Hale's Best planted in the United States than all other varieties of Muskmelon combined. It is the earliest maturing melon of importance, developing fruits ten days ahead of competing sorts. It will produce, with great uniformity, melons 6 to 7 inches in length. The flesh is thick and of a deep orange color. It is as disease-resistant as any strain now in general use.

Price, Postpaid: Pkt. 5 cts.; oz. 15 cts.; 1/4lb. 35 cts.; lb. \$1.25.

Hearts of Gold

Recommended for roadside market sale

Days to maturity, 85. In size this melon is about one-fourth larger than the old Rocky Ford type. It combines the golden flesh of Osage with the heavy netting and thin rind of the Netted Gem. Hearts of Gold has shown a decided resistance to rust. This stock is very highly recommended.

Price, Postpaid: Pkt. 5 cts.; oz. 15 cts.; 1/4lb. 35 cts.; lb. \$1.25.

Additional Varieties of Muskmelon

	Pkt.	Oz.	1/4lb.	Lb.
Bender's Surprise	\$0 05	\$0 15	\$0 35	\$1 25
Fordhook	05	15	35	1 25



The new Honey Rock Melon is a decided addition to any list

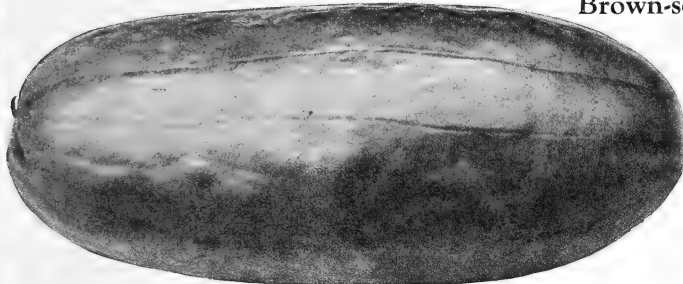


WATERMELON AFRICA

Brown-seeded Klondike (New)

Highly flavored. Bright red

Days to maturity, 90. This melon combines four important features: It is early; flesh is bright red, of delicious flavor; it averages 25 pounds in weight; is oblong with an even, dark green color. This is a particularly well-bred strain, our seed being saved from only the most perfect melons. One feature of the dark brown seed instead of the usual white seed is that the consumer feels that a dark-seeded melon is a ripe melon. **Price, Postpaid: Pkt. 5 cts.; oz. 15 cts.; 1/4lb. 35 cts.; lb. \$1.25.**



The Brown-seeded Klondike Watermelon is excellent for cutting

Pride of Muscatine (New)

A certified, wilt-resistant Kleckley

Days to maturity, 120. Developed after five years of inbreeding a wilt-resistant strain of Kleckley Sweet in Muscatine County, Iowa. This melon is recommended to growers who have experienced losses from fusarium wilt. Where this disease is not known, we recommend planting the original Kleckley. Pride of Muscatine is a long, dark green melon with brown seed and bright red flesh.

Price, Postpaid: Pkt. 10 cts.; oz. 25 cts.; 1/4lb. 60 cts.; lb. \$2.

Weatherford Watson

Days to maturity, 115-130. This represents the highest development of the well-known Tom Watson strain. We secure our stock from the justly famous Weatherford (Texas) Watermelon district. The outstanding features of this variety are its brilliant red interior, combined with great uniformity of size and shape. Melons will average over 20 inches in length and 10 inches in diameter.

Price, Postpaid: Pkt. 5 cts.; oz. 15 cts.; 1/4lb. 35 cts.; lb. \$1.25.

Additional Varieties of Watermelon

	Pkt.	Oz.	1/4lb.	Lb.
Stone Mountain	\$0 05	\$0 10	\$0 30	\$1 00
Tom Watson	05	10	30	1 00
Kleckley Sweet	05	10	30	1 00

ONION WESTERN ASIA

Riverside Sweet Spanish

Spanish type. Acclimated to our conditions

Days to maturity, 115. This Onion fully equals the largest Spanish Onions we have ever seen imported. They mature as early as Prizetaker and are only slightly later than Southport Yellow Globe, although they are twice the size of that variety. At this writing we have specimens in our office measuring 4 1/2 inches across and weighing two pounds. The onions are almost perfect globe shape, slightly flattened at the ends, and of a clear, bright yellow color. Flesh is mild and sweet. There is no difficulty in raising this Onion from seed.

Price, Postpaid: Pkt. 10 cts.; oz. 30 cts.; 1/4lb. 85 cts.; lb. \$3.

Mountain Danvers

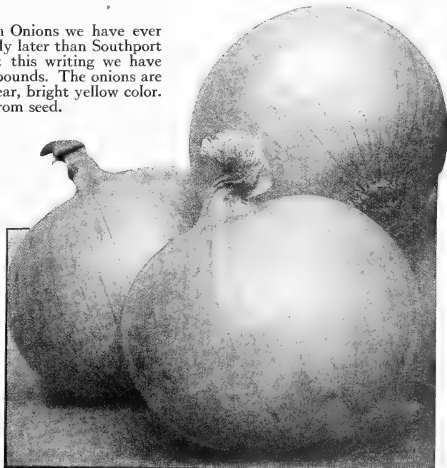
Earlier than Yellow Danvers. Excellent keeper

Days to maturity, 100. This Onion, grown privately for us at an elevation of 5000 feet on the western slope of the Rocky Mountains, will mature a hard, uniform bulb earlier than any variety in its class. It is the best-keeping Onion in our entire list. The skin is slightly thicker than most varieties. Our strain will show high purity and germination. We offer it now for the seventh season. To growers who can take advantage of the early market, or to growers who have partial crop-failure due to shortness of season, Stokes Mountain Danvers will prove especially valuable.

Price, Postpaid: Pkt. 5 cts.; oz. 25 cts.; 1/4lb. 60 cts.; lb. \$2.

Additional Varieties of Onion

	Pkt.	Oz.	1/4lb.	Lb.
Early White Barletta	\$0 05	\$0 20	\$0 50	\$1 75
White Portugal	05	20	50	1 75
Yellow Bermuda	05	25	60	2 25
Crystal Wax	05	25	60	2 25
Ebenezer	05	25	60	2 00



Our Mountain Danvers Onion is early and keeps well



PEAS EUROPE AND ASIA

Laxton's Progress

Days to maturity, 55-60. We consider this the most important of the large-podded dwarf group. It may be distinguished from Peter Pan by being at least a week earlier. Superior to Laxtonian because the pods are much darker in color. The vines are usually limited to 15 inches, and the pods average 3½ inches in length.

Price, Postpaid: ¼lb. 15 cts.; ½lb. 25 cts.; lb. 45 cts.; 5 lbs. at 40 cts. per lb.

Gradus or Prosperity

A very early and prolific variety, about 3 feet tall, with heavy stem and foliage, producing a uniform crop of large, almost round pods 4 to 4½ inches long, well filled with large, deliciously sweet Peas of highest table quality. This is a well-known popular variety of great merit.

Price, Postpaid: ¼lb. 15 cts.; ½lb. 25 cts.; lb. 45 cts.; 5 lbs. at 40 cts. per lb.

Laxtonian

Although about a week later than the very earliest varieties, it fits into a gap in the season otherwise hard to fill. The vines are dwarf and sturdy, producing a prolific crop of large, plump pods packed full of large, luscious Peas. One of the hardiest and most thrifty varieties.

Price, Postpaid: ¼lb. 15 cts.; ½lb. 25 cts.; lb. 45 cts.; 5 lbs. at 40 cts. per lb.

Thomas Laxton

Days to maturity, 55-60. This Pea was introduced by the noted horticulturist and Pea-breeder whose name it bears. The vine grows to a height of about 30 inches, producing blunt-ended pods 3 inches long. As a table variety, Thomas Laxton can hardly be surpassed.

Price, Postpaid: ¼lb. 15 cts.; ½lb. 25 cts.; lb. 45 cts.; 5 lbs. at 40 cts. per lb.

Dark Telephone

Days to maturity, 70. This is an outstanding Telephone type, its great feature being that its long, dark green pods sometimes grow to a length of 5 inches. The vines grow to a height of 4 feet.

Price, Postpaid: ¼lb. 15 cts.; ½lb. 25 cts.; lb. 45 cts.; 5 lbs. at 40 cts. per lb.

PARSLEY

MEDITERRANEAN REGION

Laxton's
Progress
Peas

Champion Moss Curled

Days to maturity, 55-60. This is a very pure strain of garnishing Parsley. It will develop to a height of 8 inches. The color is a rich, deep green, and the leaves are very finely cut.

Price, Postpaid: Pkt. 5 cts.; oz. 10 cts.; ¼lb. 20 cts.; lb. 75 cts.

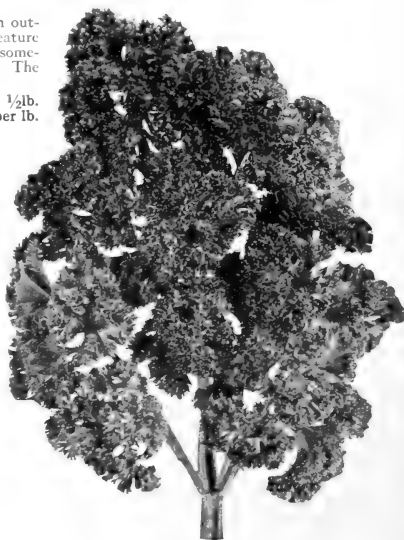
Hamburg Turnip-rooted

The root is the edible part of this variety, resembling in color and shape the root of the parsnip. Its leaves are very similar to those of plain Parsley, and are especially desirable for flavoring and drying.

Price, Postpaid: Pkt. 5 cts.; oz. 10 cts.; ¼lb. 20 cts.; lb. 75 cts.

MUSTARD EUROPE

	Pkt.	Oz.	¼lb.	Lb.
Southern Giant Curled.....	\$0 05	\$0 10	\$0 20	\$0 60
Chinese Broad-leaved.....	05	10	20	60
Fordhook Fancy.....	05	10	20	60



Champion Moss Curled Parsley



In California Wonder Pepper we aim toward the true four-lobed type

PEPPERS

TROPICAL AMERICA

California Wonder

Extremely thick walls. Skin smooth

Days to maturity, 130. The heaviest and among the largest of Peppers. The walls range from 1/4 to 3/8 inch thick. In maturity it is slightly later than World Beater. Each plant will bear from six to eight fruits averaging over one-half pound in weight.

Price, Postpaid: Pkt. 15 cts.; oz. 40 cts.; 1/4lb. \$1.50; lb. \$5.

Stokes World Beater

Uniform quality. High production

Days to maturity, 120. This strain is the result of many years of selection for uniformity, heavy production, and brilliant market appearance. Fruits will average from 5 to 6 inches in length and 3 1/2 inches in diameter.

Price, Postpaid: Pkt. 10 cts.; oz. 35 cts.; 1/4lb. \$1.25; lb. \$4.

Ruby King

Early. Long. Brilliant

Days to maturity, 110. Growers who can take advantage of the early market are particularly recommended to this outstanding stock of Ruby King, a stock which is worthy of the care that has been put on it.

Price, Postpaid: Pkt. 10 cts.; oz. 35 cts.; 1/4lb. \$1.25; lb. \$4.

Harris Early Giant

Earliest maturing of commercial importance

Days to maturity, 105. Especially recommended in the more northerly districts where later varieties do not mature.

Price, Postpaid: Pkt. 5 cts.; oz. 35 cts.; 1/4lb. \$1.25; lb. \$4.50.

Long Thick Red

The best of the elongated hot Peppers

Days to maturity, 115. This variety is the best of its class and is the only hot Pepper we offer.

Price, Postpaid: Pkt. 5 cts.; oz. 30 cts.; 1/4lb. \$1.20; lb. \$4.

PARSNIP EUROPE

All-American Coreless (New)

Roots uniform, smooth, white, coreless

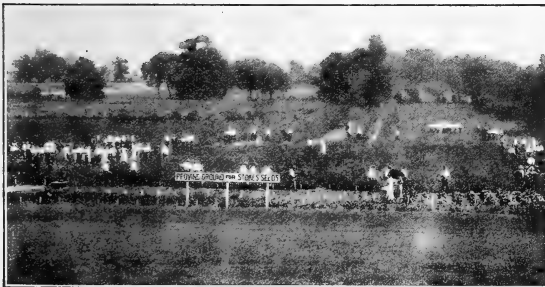
Days to maturity, 130. This new selection is offered as something very superior. It is the result of painstaking selection by an American market gardener. The root is from 8 to 10 inches long, smooth, very white, with core practically eliminated.

Price, Postpaid: Pkt. 10 cts.; oz. 15c.; 1/4lb. 45c.

OKRA AFRICA

We offer three excellent strains of Okra or Gumbo: Perkins' Mammoth, the standard well-known commercial variety. Dwarf Green Long-pod whose characteristics closely follow their descriptive names. White Velvet which produces a pod of a greenish white and is best known throughout the South.

Price, Postpaid of the Three Varieties: Pkt. 5 cts.; oz. 10 cts.; 1/4lb. 20 cts.; lb. 60 cts.



This photograph shows visitors examining our field-trials at Moorestown, N. J.



Early Scarlet Globe Special—a remarkable stock of Radish

RADISH ASIA

Early Scarlet Globe Special

True shape and color. Each bag greenhouse tested

Days to maturity, 25. This is an outstanding strain of what is probably the most popular Radish for forcing and outdoor culture in this country. It is quick-growing, with a restrained top-growth. Color is a bright carmine-red without purple tinge. The shape is a perfect oval with threadlike tap-root. Until they are nearly an inch in diameter, the flesh is crisp and very mild. They are at their best when not quite fully grown. Our Scarlet Globe Special is a proven stock, every bag having been put through a soil-test. It therefore can be planted with complete confidence.

Price, Postpaid: Pkt. 5 cts.; oz. 10 cts.; 1/4lb. 25 cts.; lb. 75 cts.

White Icicle

The attractive, long, white Radish

Days to maturity, 30. This variety grows a pure white root. It is best for table when from 4 to 5 inches long and will hold one week before becoming pithy.

Price, Postpaid: Pkt. 5 cts.; oz. 10 cts.; 1/4lb. 25 cts.; lb. 75 cts.

Additional Varieties of Radishes

	Pkt.	Oz.	1/4lb.	Lb.
Sparkler White-Tip.....	\$0 05	\$0 10	\$0 25	\$0 75
Crimson Giant.....	05	10	25	75
Chinese Rose.....	05	10	25	75
White Chinese.....	05	10	25	75

SQUASH NEW ENGLAND

The Stokes Cocozelle

Italian Vegetable Marrow

Days to maturity, 70. This delicious Summer Squash is in increasing demand. The skin is dark green, marbled with yellow and light green as it matures. Flesh is pale green, firm and tender.

Price, Postpaid: Pkt. 5 cts.; oz. 15 cts.; 1/4lb. 35 cts.; lb. \$1.25.

Early Golden Crookneck

Slightly earlier than the Giant strain

Days to maturity, 70. The best known of the older Summer Squashes. The fruits attain a length of nearly 12 inches but are usually gathered when smaller. We offer a very desirable strain.

Price, Postpaid: Pkt. 5 cts.; oz. 15 cts.; 1/4lb. 35 cts.; lb. \$1.25.

Early White Bush

Early. Uniform. Productive

Days to maturity, 60. We offer an excellent stock of the well-known White Bush. The fruits average from 8 to 10 inches in diameter, but are best for the table when served at 3 to 4 inches.

Price, Postpaid: Pkt. 5 cts.; oz. 15 cts.; 1/4lb. 35 cts.; lb. \$1.25.

Additional Varieties of Squash

	Pkt.	Oz.	1/4lb.	Lb.
Early Golden Straightneck.....	\$0 05	\$0 15	\$0 35	\$1 25
Boston Marrow.....	05	10	30	1 00
Hubbard.....	05	15	40	1 50

PUMPKIN NEW ENGLAND

	Pkt.	Oz.	1/4lb.	Lb.
Connecticut Field.....	\$0 05	\$0 10	\$0 30	\$1 00
Orange Winter Luxury.....	05	15	35	1 25
Small Sugar.....	05	15	35	1 25



Early Golden Crookneck Squash



SPINACH PERSIA

Old Dominion (New)

Blight-resistant. For late fall or very early spring

Days to maturity, 50. We are indebted to the Virginia Truck Experiment Station for this new hybrid. A Virginia Savoy × King of Denmark hybrid, it possesses the blight-resistance of the former and the long-standing habit of the latter. The foliage is dark bluish green and is evenly savoyed except at the leaf-tips. The growth is compact and slightly flatter than Virginia Savoy, and it is two weeks later in shooting to seed. As it makes a slower growth in the fall than does Virginia Savoy, it is not recommended for a fall cutting. It should be sown, therefore, only in the late fall or in the early spring for spring cutting. We look on this as a valuable acquisition to our list.

Price, Postpaid: Oz. 5 cts.; 1/4lb. 20 cts.; lb. 60 cts.

Dark Green Bloomsdale

Darker shading gives plants fresher appearance

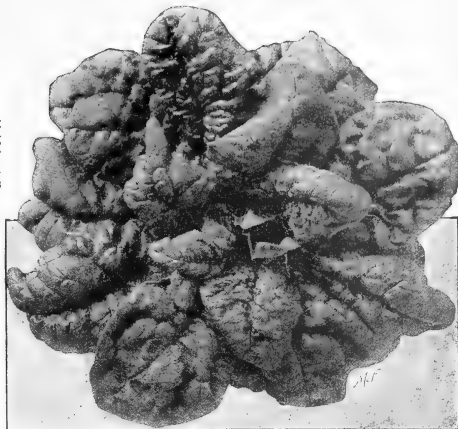
Days to maturity, 40. The rich, dark color of this new strain strongly recommends it over the standard Reselected Bloomsdale. Although not quite so long-standing as the Long-standing Bloomsdale, it remains much longer in marketable condition than the standard Savoy type. On the other hand, it will mature just as early as the Reselected Bloomsdale.

Price, Postpaid: Oz. 5 cts.; 1/4lb. 20 cts.; lb. 60 cts.

Reselected Bloomsdale

Days to maturity, 40. The standard of its class. An extra-fine stock of the well-known Bloomsdale type with leaves completely crumpled and rounded.

Price, Postpaid: Oz. 5 cts.; 1/4lb. 15 cts.; lb. 50 cts.



Long-standing Bloomsdale

Days to maturity, 45. Will hold ten days before shooting to seed, a valuable asset, especially for late spring planting.

Price, Postpaid: Oz. 5 cts.; 1/4lb. 15 cts.; lb. 50 cts.

Additional Varieties of Spinach

	Oz.	1/4lb.	Lb.
Virginia Savoy	\$0 05	\$0 15	\$0 50
Giant-leaved Nobel	05	15	50
New Zealand	10	25	90

TURNIP RUSSIA

Purple-top White Globe

Days to maturity, 60. The standard main-crop Turnip. When grown for market it should be gathered when quite young. The skin is white with a dark red ring around the top.

Price, Postpaid: Pkt. 5 cts.; oz. 10 cts.; 1/4lb. 15 cts.; lb. 50 cts.

White Egg

Days to maturity, 55. A fine-grained, good-keeping table Turnip. The white flesh is firm, solid, and sweet.

Price, Postpaid: Pkt. 5 cts.; oz. 10 cts.; 1/4lb. 15 cts.; lb. 50 cts.

Yellow Aberdeen

Days to maturity, 75. The flesh is yellow, tender, and very solid. In color the Turnip is purple around the top and deep yellow below. The large roots resemble rutabagas in many ways. For table or stock-feeding.

Price, Postpaid: Pkt. 5 cts.; oz. 10 cts.; 1/4lb. 20 cts.; lb. 65 cts.

Japanese Foliage Turnip

Days to maturity, 60. A variety of comparatively recent introduction from the Orient. Already it has been very generally accepted for its delicious greens, particularly in the South.

Price, Postpaid: Pkt. 5 cts.; oz. 10 cts.; 1/4lb. 15 cts.; lb. 60 cts.

Additional Varieties of Turnip

	Pkt.	Oz.	1/4lb.	Lb.
Purple-top Yellow Rutabaga	\$0 05	\$0 10	\$0 20	\$0 65
Seven-Top	05	10	15	50



Purple-top White Globe Turnip



Tomatoes, Our Great Specialty

ANCIENT ORIGIN
MEXICO TO PERU

Stokes Master Marglobe

Ninth-generation selection for greater depth, solidity, and production

See photograph of Stokes Master Marglobe in natural color on front cover of this Catalog

Days to maturity, 130. We consider this the most profitable all-purpose Tomato. This judgment is supported by customers' reports covering widely varying conditions and requirements. Six years ago we set ourselves the task of developing a deeper, more solid, and more productive Marglobe. Using Pritchard's original stock as our foundation, we have selected for these points and now offer: (1) A strain $\frac{1}{2}$ inch deeper, eliminating loss from blossom-end scar and from flats; (2) an interior with distinctly smaller seed-cavities, reducing loss by puff and adding greatly to the solid content; (3) a more open and restrained vine-growth which is fully 40 per cent more productive; many run-out stocks of Marglobe have been very unproductive.

Probably never before has there been a Tomato which, when sliced, was so nearly solid. The grower who does not plant Stokes' Master Marglobe may find himself operating under a distinct handicap, for it is the finest appearing Tomato on the market.

Price, Postpaid: Pkt. 25 cts.; oz. 75 cts.; $\frac{1}{4}$ lb. \$3.



This Master Marglobe interior portrays its unusual solidity

Pritchard

Marglobe quality with Bonny Best earliness

U. S. Dept. of Agriculture introduction in 1931, as Scarlet Topper

Days to maturity, 120. This Tomato has been generally accepted as of outstanding value for the early shipping season. Being a Marglobe \times Cooper's Special hybrid, it has a definite self-topping tendency. That means restricted vine-growth, which must be counteracted by heavy applications of ammonia (fish, king crab, or tankage) in the early weeks to insure full production. The fruit is an intense scarlet, both on its interior and exterior, and in structure is similar to Marglobe, having a thick wall and unusual solidity and depth. Price, Postpaid: Pkt. 15 cts.; oz. 50 cts.; $\frac{1}{4}$ lb. \$2.



Master Marglobe and Pritchard are sold in one ounce, $\frac{1}{4}$ -pound, and pound sealed canisters for your protection.

Bonny Best Special

Earlier. Deeper. Heavy cropper

Days to maturity, 120. As the introducer of this variety twenty-five years ago, we have taken a pardonable pride in helping to maintain its true worth. Many smaller and run-out strains have been offered under the name of Bonny Best. This, our Bonny Best Special, will prove to be particularly effective. It has been selected for greater depth, size, and productiveness. Bonny Best Special is unexcelled as a general-purpose Tomato.

Price, Postpaid: Pkt. 15 cts.; oz. 45 cts.; $\frac{1}{4}$ lb. \$1.50.

Gulf State Market

Early. Globe-shaped. Solid. Ripens pink

Days to maturity, 125. This variety has been particularly valuable to the shippers of eastern Texas. It will ripen slightly earlier than Livingston Globe and is of the true globe shape. The smooth, firm fruits are borne on clusters of from five to seven. The stock that we offer has had a careful breeding program behind it and will give great satisfaction.

Price, Postpaid: Pkt. 10 cts.; oz. 25 cts.; $\frac{1}{4}$ lb. \$1.



The great productiveness of Pritchard is shown in this photograph, taken in the garden of Mr. R. N. Neeley, of Sanford, Fla.



This photograph speaks for itself. We have only to say that it portrays part of the Lange family out in their new Earliana field on their farm near Swedesboro, N. J. Perhaps you too may smile again once you share this new 1933 introduction

Lange's Earliana (New)

Lange's, not Langdon's. Extremely early with full crown development

Days to maturity, 110. Our neighbor, Ernest Lange, of our own Gloucester County, is responsible for this valuable new acquisition. We believe it is destined to give a rebirth to the popularity of the old Sparks' Earliana as introduced by Johnson & Stokes in 1902. Besides being earlier in maturity, Lange's Earliana is enormously prolific, the crown setting itself sometimes having from ten to twenty large Tomatoes. Our seed-field contained literally thousands of plants with from six to twelve fruits in the crown cluster. The fork clusters were also very well developed. Furthermore, there were very few rough or flat specimens in the field, which indicates a high percentage of marketable fruit. Our seed-field was set out the first week in May, and the first ripe Tomato was picked June 17. The first five baskets were marketed on June 22. Thereafter 50 to 100 baskets were picked daily. This Tomato has attracted wide attention among New Jersey agricultural officials. Mr. Lange has chosen our firm as the authorized distributor for this Tomato. The seed we offer was grown by Mr. Lange and saved with our men and machinery. It can be thoroughly depended on.

Price, Postpaid: Pkt. 25 cts.; oz. \$1; 1/4lb. \$3.75

Super-Standard Bonny Best

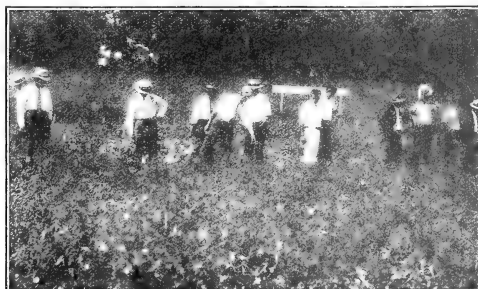
A deeper, larger, and more productive Bonny

Days to maturity, 125. We look on this strain as the highest development of the Bonny Best we have to offer. In the ten years Super-Standard Bonny Best has been offered to the public it has earned thousands of dollars for our customers. As its name implies, this Super-Standard strain is above and beyond the standard. It is recommended for both greenhouse and for intensive field cultivation. This stock will give an excellent account of itself wherever tried.

Price, Postpaid: Pkt. 50 cts.; 1/2oz. \$1.25; oz. \$2.25.

Additional Varieties of Tomato

	Pkt.	1/2oz.	Oz.	1/4lb.
Lloyd Forcing and Blair Forcing	\$0 50	\$1 25	\$2 25	
Standard Bonny Best	05		30	\$1 00
Greater Baltimore	05		25	75
Break o'Day	05		35	1 35
Standard Marglobe	05		30	1 00



The Tomato breeding-plots in our experimental grounds at Moorestown, N. J., are always of interest to visitors, who are welcome six days in the week.



STOKES' FLOWER SEEDS

This Department of our business has been greatly augmented this past season. The list that we offer herewith contains some of the very finest stocks available, including most of the newest varieties. This seed may be purchased with great confidence. As is the case with our entire business, our Flower Seed Department is conducted on a very high standard, and the prices we ask have been made as low as we can make them without affecting quality. The ancient origin of each flower, where known, is given on the title line.

The following symbols with their explanatory notes will be found helpful in the general classification of our offerings.

A—*Annual*. Living only one growing season.

P—*Perennial*. Living over from year to year.

h—*bardy*. Resistant to average seasonal temperature variations.

hh—*half-bardy*. Plants which need protection against extreme low temperatures.

t—*tender*. Plants which will not stand up against extreme heat or cold.

Ageratum Mexico

505 **Blue Ball**. [hA-6in.] The bushes of this compact, ball-shaped plant are completely covered with large heads of fluffy flowers which make a mass of deep clear blue over a long season. This dwarf type is invaluable in the bed or for edging. Pkt. 10 cts.; $\frac{1}{2}$ oz. 30 cts.; oz. \$1.



Antirrhinum

Antirrhinum · Snapdragon

[hA] North America

Snapdragons are one of the most valuable flowers easily grown from seed. They are justly deserving of their popularity. The Tall varieties show to the best advantage in long borders and are well adapted for backgrounds. The Half-Dwarf varieties are suitable for bedding. For early flowering, sow seed indoors during March and transplant to the open when the weather permits, or sow outdoors early in the spring.

MAXIMUM or TALL GIANTS. [3ft.] This recent introduction will produce giant flowers on spikes at least 30 inches tall.

562 **Apple Blossom**. Rosy pink with white throat and yellow lip.

563 **Canary Bird**. Clear canary with golden yellow center.

561 **Copper King**. Bright copper-scarlet, turning copper-bronze.

565 **The Rose**. Soft rose-pink.

566 **Orchid**. Cattleya-lilac.

567 **Ruby**. Velvety ruby-red.

570 **Mixed**.

Any of the above: Pkt. 15 cts.; $\frac{1}{4}$ oz. \$1.

COLLECTION: One pkt. each of the 6 named varieties (value 90 cts.) for 50 cts.

560 **Salmon-Rose**. *New*. Begonia-rose, shaded salmon. Pkt. 20 cts.; $\frac{1}{4}$ oz. 75 cts.
568 **Autumn Glow**. *New*. Old-rose, shaded terra-cotta. Pkt. 20 cts.; $\frac{1}{4}$ oz. 75 cts.

GIANT-FLOWERED HALF-DWARF.

[18in.] The best strains obtainable.

535 **Fawn**. Delicate pink, shading yellow. Pkt. 10 cts.; $\frac{1}{4}$ oz. 20 cts.

533 **Helen**. Lovely salmon. Very free-flowering. Pkt. 15 cts.; $\frac{1}{4}$ oz. 45 cts.

536 **Philadelphia Pink**. Best clear pink. Pkt. 15 cts.; $\frac{1}{4}$ oz. 45 cts.

530 **Ceylon Court**. Finest clear yellow. Pkt. 25 cts.; $\frac{1}{4}$ oz. 55 cts.

531 **Cheviot Maid**. Rose-pink. The earliest of all. Pkt. 25 cts.; $\frac{1}{4}$ oz. 55 cts.

532 **Firebrand**. Deep scarlet. Pkt. 10 cts.; $\frac{1}{4}$ oz. 20 cts.

541 **Roman Gold**. Old-gold, tipped copper. Pkt. 25 cts.; $\frac{1}{4}$ oz. 55 cts.

545 **Jennie Schneider**. Salmon-pink. Pkt. 25 cts.; $\frac{1}{4}$ oz. 55 cts.

542 **His Excellency**. Orange-scarlet. Pkt. 25 cts.; $\frac{1}{4}$ oz. 55 cts.

537 **White Rock**. Glistening white. Pkt. 20 cts.; $\frac{1}{4}$ oz. 50 cts.

540 **Mixed**. Pkt. 10 cts.; $\frac{1}{4}$ oz. 25 cts.

Alyssum Southern Europe

510 **Little Gem or Carpet of Snow**. [hA-4in.]

These popular, free-flowering plants form dense masses of pure white flowers from late spring until frost. Invaluable for edging and bedding, and also in the rock-garden. Pkt. 10 cts.; $\frac{1}{4}$ oz. 20 cts.; oz. 50 cts.

511 **Saxatile compactum**. [hP-9in.] Brilliant golden yellow blossoms cover the compact plants in profusion from April to June. Fine on rockwork. Pkt. 10 cts.; $\frac{1}{4}$ oz. 40 cts.; $\frac{1}{2}$ oz. 70 cts.

Amaranthus

[hA-3ft.] Asiatic Tropics

Brilliant foliage plants much prized for their effectiveness in the formal border or bed. The brightest colors are produced in rather poor soil.

513 **Tricolor**. (Joseph's Coat.) Brilliant red, yellow, and bronze-green leaves. Pkt. 10 cts.; $\frac{1}{4}$ oz. 30 cts.

514 **Molten Fire**. Bronzy crimson foliage, terminating with tufts of brilliant pinstriped-red leaves. Pkt. 15 cts.; $\frac{1}{4}$ oz. 50 cts.

Anchusa Mediterranean Region

515 **Italica**, Lissadell. [hP-4ft.] A very handsome plant with an abundance of forget-me-not-like flowers of deep gentian-blue on drooping sprays, blooming all season and late into fall. Pkt. 15 cts.; $\frac{1}{2}$ oz. 45 cts.; $\frac{1}{4}$ oz. 75 cts.

Aquilegia · Columbine

Northern Hemisphere

This favorite is among the easiest of hardy plants to grow from seed, very often blooming the first year if planted early in the spring. It will thrive in almost any condition, preferring partial shade and plenty of moisture. The variety we are offering bears large, long-spurred blossoms in a wide range of colors on long stems. No garden should be without these.

590 **Mrs. Scott Elliott's Long-spurred Hybrids**. [hP-2 $\frac{1}{2}$ ft.] Beautiful shades of blue, scarlet, rose, pink, cream, and white. Illustrated on the outside cover. Pkt. 15 cts.; $\frac{1}{4}$ oz. 35 cts.

591 **Alpina**. [hP-12in.] The lovely soft blue and white flowers of this dwarf type deserve a place in every rock-garden. Native of Switzerland. Pkt. 15 cts.



All-American Flower Selections

This selection was made by a representative group of seedsmen and commercial growers, and is based on newness, merit, and general popularity. The first three won the Gold Medal distinction for 1932-33, and the following seven won the Award of Merit.

1. Marigold, Guinea Gold (page 25).....	Pkt. \$0 25
2. Nasturtium, Golden Gleam (page 26).....	25
3. Canterbury Bells, Annual (page 21).....	25
4. Verbena, Beauty of Oxford Hybrids (page 28).....	50
5. Lupins, Hartwegii Giants (page 25).....	35
6. Pansy, Maple-Leaf Giants (page 26).....	35
7. Annual Delphinium, (page 22).....	35
8. Asters, Wilt-resistant (page 19).....	10
9. Verbena, Lavender Glory (page 28).....	35
10. Venidium fastuosum (page 29).....	35

ALL-AMERICAN COLLECTION: One pkt. each of the above winners for \$2.50

Arctotis • Blue-eyed African Daisy

Africa

600 **Grandis**. [hA-2½ft.] This handsome, sun-loving annual of branching habit is ornamental in any garden. The large flowers are silvery white on one side and lilac-blue on the reverse. A ring of bright gold rims the steely blue center. They are excellent for cutting and may be started indoors or in the open ground. Pkt. 10 cts.; ¼oz. 30 cts.; ½oz. 55 cts.; oz. 90 cts.

Arabis • Rock-Cress

Europe

595 **Alpina**. [hP-6in.] One of the loveliest and earliest of spring flowers. Pure white blossoms on spreading tufts appear as soon as snow disappears. Excellent in rockeries and for edging. Pkt. 10 cts.; ¼oz. 30 cts.

Armeria • Sea-Pink

Southern Europe

605 **Formosa**. [hP-12in.] Dwarf rosettes of grass-like leaves with rosy pink flowers borne on wiry stems. Excellent for edging and for rock-gardens. Pkt. 10 cts.; ¼oz. 40 cts.

Asparagus

[tA-3ft.] Old World

Because of its foliage it is often called "Asparagus Fern." Grows easily and quickly in a good sunny window. Valuable for cutting and as a pot-plant.

610 **Plumose nanus**. The delicate foliage of this variety is highly valued by florists for cutting. Pkt. 15 cts.; 100 seeds 35 cts.; 1000 seeds \$1.50.

611 **Sprengeri**. (Emerald Feather.) Its graceful, drooping foliage makes this very desirable for hanging-baskets and cutting. May be grown outdoors during summer or indoors in winter. Pkt. 10 cts.; 100 seeds 20 cts.; 1000 seeds \$1.10.

Aubrietia • Rock-Cress

Italy to Persia

690 **Large-flowering Hybrids**. [hP-6in.] The lovely mauve, violet, and rose flowers will add brilliant color to the garden in April and May. It is never seen to better advantage than when used in the rock-garden or in crevices of a wall. Pkt. 15 cts.; ½oz. 45 cts.

Write for a copy of our circular "How to Raise the Finest Asters"



Giant California Sunshine Aster. See page 20

Asters [hhA] China

American-grown Florists' Strains

Asters will make a brilliant display in the garden during the late summer and fall. We are offering below a range of varieties that differ in form and blooming season. In order to obtain the finest flowers, care should be taken that there is no check to their growth from time of starting until flowering season. If early flowers are desired, seed should be started indoors and transplanted after danger of frost has passed. For autumn flowers, seed may be sown outdoors. When long stems for cutting are desired, plants should be set not closer than 12 inches apart.

Stokes Wilt-resistant Strains. After many years' work, wilt-resistance has been developed in many of the leading varieties of Asters. These strains will produce healthier plants of sturdier substance than the old types. Wilt-resistance is not to be confused with disease-resistance as, unfortunately, there is no known way to combat other Aster diseases except by growing the plants in an enclosed space, thereby keeping the leaf-hoppers away from them. We are marking with a * all varieties on which we are offering Wilt-resistant strains.

*IMPROVED GREGO GIANT [2ft.]

A midsummer variety. The fluffy flowers, with long, shaggy twisted petals are considered the finest of the Ostrich-Plume or Comet types. They are excellent for cutting as they will keep a long time in water.

620 Shell-Pink	626 Orchid. New.
621 Azure-Blue	623 Crimson
622 Rose-Pink	625 Dark Blue
624 White	630 Mixed

Any of the above: Pkt. 10 cts.; ½oz. 25 cts.; ¼oz. 40 cts.; oz. \$1.25

COLLECTION: One pkt. each of 6 separate colors for 50 cts.

627 **Indian Summer**. New. The brilliant copper-rose flowers are of true Ostrich-Plume type. Pkt. 25 cts.; ½oz. 40 cts.; ¼oz. 75 cts.

*685 HEART OF FRANCE [2ft.]

This beautiful, distinct Aster will always command admiration. It is the largest of all red Asters, opening pure deep ruby-red and darkening with age. Pkt. 15 cts.; ½oz. 35 cts.; ¼oz. 65 cts.; oz. \$2.

*AMERICAN LATE BRANCHING [2ft.]

The spreading branches of this type produce long-stemmed, chrysanthemum-shaped flowers often measuring 5 inches across. Flowers two weeks later than Grego.

640 Azure-Blue	644 Mary Semple.
641 Crimson	Shell-pink.
642 Deep Blue	645 White
643 Deep Rose	

650 Mixture of all 6 varieties
Any of the above: Pkt. 10 cts.; ½oz. 25 cts.; ¼oz. 40 cts.; oz. \$1.25

COLLECTION: One pkt. each of the 6 separate colors for 50 cts.

EARLY BRANCHING or ROYAL [2ft.]

This free-flowering variety blooms during early summer and lasts over a long period. The branching habit of these plants makes them especially suited for bedding or borders, and the long-stemmed flowers are valuable for cutting.

*660 Azure-Blue	663 White
661 Shell-Pink	*664 Purple
*662 Rose	665 Mixed

Any of the above: Pkt. 10 cts.; ½oz. 25 cts.; ¼oz. 40 cts.; oz. \$1.25



Balsam • Lady-Slipper

India

695 **Double Camellia-flowered, Mixed.** [hA-18in.] This lovely old-fashioned garden flower produces a gorgeous mass of brilliant colors from early summer until fall. Pkt. 10 cts.; $\frac{1}{2}$ oz. 25 cts.; oz. 75 cts.

Begonia

[tP-1ft.] South America

Everblooming Bedding Varieties

These varieties are fine bedding plants, and, while preferring rich soil in the sun, they will do well in shady spots. In the North, start indoors and transplant after danger of frost. They flower profusely over a long season and if taken up will continue to bloom indoors. These varieties are also excellent for pot-culture.

700 **Gustav Knaake.** Large pink flowers, shaded salmon. Attractive bronze-green leaves. Pkt. 20 cts.; $\frac{1}{2}$ oz. \$1.75.

701 **Albert Martin.** Huge brilliant scarlet flowers with dark foliage. Pkt. 25 cts.; $\frac{1}{2}$ oz. \$2.

702 **Semperforans, Mixed.** All colors. Pkt. 15 cts.; $\frac{1}{2}$ oz. 35 cts.; $\frac{1}{4}$ oz. \$1.703 **Christmas Cheer.** New. This variety bears enormous glowing cherry-red blossoms. Fine for Christmas forcing. Pkt. 35 cts.; $\frac{1}{2}$ oz. \$2.50.

715 Blue Lace Flower

Didiscus caerulea

[hA-2 $\frac{1}{2}$ ft.] Australia

Gardeners and florists everywhere appreciate the charm of the lovely airy clusters of lavender-blue florets. Their long stems and fine keeping qualities make them invaluable for cutting. Sow the seed outdoors in a bed after the ground warms. Pkt. 10 cts.; $\frac{1}{2}$ oz. 50 cts.

Bellis Perennis

England, Daisy England

710 **Giant Double, Mixed.** [hhP-8in.] These now rank among the most valuable plants for edging, bedding, or rock-gardens. The button-like flowers, in shades of red, rose, and white, are very attractive. This plant prefers a moist location, and, if given protection in winter, will bloom for many seasons. Pkt. 10 cts.; $\frac{1}{2}$ oz. 45 cts.

Brachycome

Swan River Daisy Australia

720 **Mixed.** [hA-10in.] Dainty, cineraria-like flowers of rose, mauve, and white are borne in profusion from early spring well into summer. Excellent for small beds, edging, or pot-culture, and may be used to great advantage in the rock-garden. Pkt. 10 cts.; $\frac{1}{2}$ oz. 25 cts.; $\frac{1}{4}$ oz. 40 cts.

Buddleia

Butterfly Bush or Summer Lilac

China

721 **Variabilis Veitchiana.** [hP-3 to 8 ft.] A shrub bearing long tapering lavender spikes similar to lilac. Very fragrant and blooms continuously from midsummer until frost. Protection should be given in the winter. Pkt. 10 cts.

Calceolaria

Peru and Chile

722 **Hybrida grandiflora.** [tA-18in.] A lovely selection of the best self-colored and spotted varieties, producing a mass of pocket-like flowers. A favorite for the greenhouse or conservatory. Pkt. 35 cts.; special pkt. \$1.25.

Calendula

[hA-18in.] Canary Islands to Persia

The showiness of this old favorite has few rivals in the garden or as a cut-flower. Besides its popularity in the open garden, Calendula is of great importance to florists for winter forcing.

In Calendula the plant-breeders have glorified the old-fashioned pot marigold by enlarging its size and form, and by purifying and brightening its colors. The vigor of the original has not been lost in this transition. The new varieties we offer will bloom from early summer until frost, with constantly improving size and color.

725 **Ball's Orange.** Giant orange-yellow blooms coming uniformly double. Much prized by florists as well as for growing outdoors. Pkt. 10 cts.; $\frac{1}{2}$ oz. 50 cts.; oz. \$1.50.

727 **Lemon Queen.** Fine double flowers of rich lemon-yellow. Pkt. 10 cts.; $\frac{1}{2}$ oz. 35 cts.; oz. 90 cts.

728 **Ball's Gold.** Deep golden yellow. Pkt. 15 cts.; $\frac{1}{2}$ oz. 50 cts.; oz. \$1.50.

729 **Campfire (Sensation).** Brilliant orange flowers with a scarlet sheen. Pkt. 15 cts.; $\frac{1}{2}$ oz. 50 cts.; oz. \$1.50.

726 **Radio.** A distinct globular variety with beautifully quilled petals of rich orange. Pkt. 15 cts.; $\frac{1}{2}$ oz. 50 cts.; oz. \$1.50.

731 **Golden Radio.** A new development with all the characteristics of Orange Radio except the color is a deep gold. We believe this will be a welcome addition. Pkt. 15 cts.; $\frac{1}{2}$ oz. 75 cts.; oz. \$2.50.

730 **Mixed.** All colors. Pkt. 10 cts.; oz. 20 cts.; $\frac{1}{4}$ lb. 60 cts.

Calliopsis

Eastern United States

738 **Finest Mixed.** [hA-2 $\frac{1}{2}$ ft.] An easily grown graceful border plant producing a wealth of brilliant flowers in combinations of yellow and maroon throughout the summer. The single petals are slightly toothed. Seed should be sown where they are to bloom and thinned to stand 9 to 12 inches apart. Pkt. 10 cts.; $\frac{1}{2}$ oz. 25 cts.; oz. 55 cts.

Candytuft • Iberis

Spain

739 **Unbellata.** [hA-1ft.] This old-fashioned favorite furnishes very attractive beds and borders and is excellent for rockeries. Very easily grown and will succeed in any good garden soil. Plants should be thinned to stand not less than 6 inches apart.

747 **White** 749 **Rose**

748 **Crimson** 750 **Lilac**

755 **Mixed**

Any of above: Pkt. 10 cts.; $\frac{1}{2}$ oz. 20 cts.; oz. 50 cts.

745 **Giant Hyacinth-flowered.** Large, hyacinth-shaped trusses of white flowers on stems 18 inches long. This variety is used very extensively, and the massed effect of the pure white flowers makes a very desirable white bed or border. Pkt. 10 cts.; $\frac{1}{2}$ oz. 25 cts.; oz. 75 cts.



Radio Calendula

CALIFORNIA GIANT ASTERS [3ft.]

This aristocrat of late-flowering Asters produces giant blooms rivaling chrysanthemums in size. The remarkably curled flowers, often measuring 5 to 6 inches across, are borne on stems about 2 feet long. This is a valuable variety for both florists and private gardeners who want the best.

671 **White.** Exceptionally large.

672 **Peach Blossom.** Opens almost white but blushes when in full bloom.

673 **Light Blue.** Clear sky-blue.

674 **Deep Rose.** Similar in color to the well-known American Beauty rose.

675 **Dark Purple.** Rich and vivid.

680 **Mixture of the above 5 colors.**

Any of the above: Pkt. 20 cts.; $\frac{1}{2}$ oz. 50 cts.; $\frac{1}{4}$ oz. 85 cts.; oz. \$2.50

COLLECTION: One pkt. each of the 5 separate colors for 65 cts.

IMPROVED NEW GIANT CALIFORNIA SUNSHINE ASTERS

This new Aster is distinctly unique and is bound to command attention everywhere. Lacy petals in lovely clear shades of pink, rose, blue, and lavender are loosely placed about a cushion-like, quilled center, sometimes yellow, sometimes white. It is difficult to describe the loveliness of this dual-tone effect. The enormous blooms, 4 to 5 inches across, are borne on long stems, making this new race valuable for cutting. The type is not yet set and will come about 50 per cent variable, with the best blooms coming late.

687 **Mixed.** Pkt. 25 cts.; $\frac{1}{2}$ oz. 40 cts.; $\frac{1}{4}$ oz. 75 cts.

**Campanula** World-wide

- 736 **Cup-and-Saucer Varieties, Mixed.** [hP-30in.] Rich blue, white, and rose flowers resembling miniature cups and saucers. They are very effective in the border from early spring to midsummer. Pkt. 10 cts.; $\frac{1}{2}$ oz. 30 cts.
- 735 **Rotundifolia.** (Blue Bells of Scotland.) [hP-1ft.] This well-loved sort is excellent in the rocky or hardy border. Pkt. 10 cts.; $\frac{1}{2}$ oz. 40 cts.
- 733 **Carpatica, Mixed.** [hP-6in.] Tiny blue and white bell-like flowers blooming from early spring until late. Excellent for rockeries and edging. Pkt. 10 cts.; $\frac{1}{2}$ oz. 45 cts.
- 734 **New Annual Canterbury Bells, Mixed.** [2 $\frac{1}{2}$ ft.] Since this new Canterbury Bell will bloom from seed in less than six months, it is now possible to have it in flower at almost any time of the year. The plants will average six to eight spikes of blooms in warm shades of light blue, dark blue, pink, rose, and white. This development won third place in the All-American Flower Selection. Pkt. 25 cts.; $\frac{1}{2}$ oz. 50 cts.

Carnations

[hA-20in.] Southern Europe

Everyone knows the delicious fragrance and beauty of this old favorite. It is invaluable both for greenhouse culture and in the border.

760 **Marguerite, Mixed.** This variety will bloom in about three months after sowing. Our fine strain produces nearly all double flowers in shades of pink, rose, white, yellow, and red. This is probably the most popular Carnation with the amateur. Pkt. 10 cts.; $\frac{1}{2}$ oz. 50 cts.; oz. \$1.50.

Chabaud's Giants. This lovely strain is in bloom about five months after sowing, flowering from midsummer until frost. The giant, fragrant flowers are greatly prized for cutting and resemble very much the greenhouse Carnation.

766 Rose	765 White
769 Yellow	767 Scarlet
770 Mixed	

Any of the above: Pkt. 15 cts.; $\frac{1}{2}$ oz. 30 cts.; $\frac{1}{4}$ oz. \$1

762 **ENFANT DE NICE, MIXED.** A new French hybrid with magnificent flowers sometimes 3 inches in diameter, borne on long, sturdy, upright stems in lavish profusion. So far this is the last word in annual Carnations. It will produce about 90 per cent double flowers in shades of rose, salmon, red and white. Pkt. 25 cts.; $\frac{1}{2}$ oz. 60 cts.; $\frac{1}{4}$ oz. \$1.75.

Celosia • Cockscomb

[hA] Southern Europe and Asia

These ornamental annuals are much prized for the brilliant mass of color their clustered blossoms make.

776 **Plumosa, Mixed.** [3ft.] The majestic grace of these *Celosias* will add dignity to any garden. Their numerous stately plumes, in shades of rose, crimson, red, yellow, and orange, are most effective. Pkt. 10 cts.; $\frac{1}{2}$ oz. 35 cts.; oz. \$1.

777 **Cristata, Mixed.** (True Cockscomb.) [12in.] The large, crested blossoms make a gorgeous showing in the garden. If dwarf growth is desired, do not crowd. Pkt. 15 cts.; $\frac{1}{2}$ oz. 50 cts.; oz. \$1.50.

CELOSIA, continued

778 **Childsii.** (Chinese Woolflower.) [2ft.] Blossoms like balls of silky crimson wool clustered on the ends of the many branches. Pkt. 10 cts.; $\frac{1}{4}$ oz. 25 cts.; oz. 75 cts.

Centaurea[hA-2 $\frac{1}{2}$ ft.] Europe

Cyanus. These slender, branching, double Cornflowers are well deserving of the popularity they hold. Seed may be broadcast wherever the plants are to bloom, and if flowers are desired all summer, successive sowings should be made.

785 **Double Rose-Pink.**786 **Double Blue.**787 **Mixed.** Contains blue, rose, white, mauve, maroon, and rosy red.

Any of the above: Pkt. 10 cts.; $\frac{1}{4}$ oz. 25 cts.; oz. 75 cts.

780 **Imperialis, Finest Mixed.** (Sweet Sultan.) The long-stemmed, gracefully fringed, sweet-scented blossoms are undoubtedly the finest of all *Centaureas* for cutting. Our mixture contains the finest selection of pink, lilac, purple, white, and yellow shades. Pkt. 10 cts.; $\frac{1}{4}$ oz. 25 cts.; oz. 75 cts.

Cerastium

Snow-in-Summer Europe

792 **Tomentosum.** [hP-6in.] Narrow, grayish white leaves and tiny white flowers give this fast-growing creeper the appearance of snow from a distance. It is excellent in rock-gardens and for edging. Pkt. 15 cts.; $\frac{1}{2}$ oz. 40 cts.; $\frac{1}{4}$ oz. 70 cts.

Cheiranthus

Siberia

793 **Allioni.** (Siberian Wallflower.) [hA-12in.] This charming little plant deserves recognition in your rock-garden. The dazzling orange spikes are quite unusual, and although it is a biennial, it will flower from seed the first season and should be treated as an annual. Pkt. 15 cts.; $\frac{1}{2}$ oz. 50 cts.

Chrysanthemum

Mediterranean Region

810 **Single Mixed.** [hA-2ft.] These summer-flowering annuals, often referred to as "Painted Daisies," are very effective in the garden. The long-stemmed flowers in shades of yellow, apricot, and white are very valuable as cut-flowers. Pkt. 10 cts.; $\frac{1}{2}$ oz. 20 cts.

Clarkia

Western North America

820 **Finest Double, Mixed.** [hA-2 $\frac{1}{2}$ ft.] This lovely annual is quickly coming into popularity. The tall spikes, covered with enormous, double blooms set all around the stems, appear like a spray of rosettes. Our special mixture contains a complete range of the best shades of salmon, scarlet, white, and orange-scarlet. Pkt. 10 cts.; $\frac{1}{2}$ oz. 30 cts.



Delphiniums. See page 22

Cineraria hybrida

[tP] Canary Islands

Beautiful ornamental plants for conservatory or house. Seed should be sown from early spring till late fall for a succession of flowers. An important point in the culture of *Cineraria* is to secure hardy plants with medium-sized leaves. After transplanting, place in coldframe facing north, and as pots become full of roots transplant to larger pots until flowering stage.

815 **Stokes Giant-flowering Exhibition, Mixed.** An excellent strain with flowers sometimes measuring 4 to 5 inches across, borne on immense, compact heads in a complete range of lovely colors. Pkt. 50 cts.; 3 pkts. \$1.25.

816 **Multiflora nana, Dwarf Mixed.** The best dwarf strain, with large trusses of small flowers. All beautiful colors. Pkt. 35 cts.; 3 pkts. 90 cts.

Coleus

Africa, India

825 **Large-leaved Bright-colored Varieties, Mixed.** [A-12in.] Our strain produces rich, velvety leaves in superb color combinations attractive for borders or bedding. Easy to start from seed if kept warm. Plantings should be made indoors in early spring. Pkt. 20 cts.; $\frac{1}{2}$ oz. 65 cts.



Eschscholtzia

Cosmos [hA] Mexico

These attractive cutting flowers, with their feathery foliage, are old favorites and are so easily grown that no garden is complete without them. They will thrive under almost all conditions but do best in the sun and in poor soil.

835 Early-flowering Double, Mixed. [3ft.] Beautiful shades of pink, crimson, and white. Pkt. 20 cts.; $\frac{1}{2}$ oz. 60 cts.

830 Late-flowering Giant Single, Mixed. [4ft.] Gigantic blooms in fine shades of crimson, pink, and white. Pkt. 10 cts.; $\frac{1}{4}$ oz. 25 cts.

Cynoglossum

Chinese Forget-me-not

[hA-18in.] China

840 Amabile. Fragrant forget-me-not-like blossoms cover the thrifty plants over a long season. This is a valuable addition to the garden border. Pkt. 10 cts.; $\frac{1}{4}$ oz. 35 cts.

841 Amabile, Pink. *New.* This introduction is the pink counterpart of the better-known blue. Although the blossoms resemble the pink forget-me-not, their rich rosy pink color is far more striking. Pkt. 15 cts.; $\frac{1}{4}$ oz. 50 cts.

Coreopsis

Eastern United States

828 Grandiflora, Mixed. [hP-2ft.] This perennial type of Calliopsis, with large, orange-yellow blooms, is a splendid cut-flower. Pkt. 10 cts.; $\frac{1}{4}$ oz. 25 cts.; oz. 75 cts.

Dahlia [hP] Mexico

One of the most interesting and easy flowers to grow from seed. If sown in the hotbed or coldframe in March and April, and transplanted in May, they will begin to bloom in late August.

865 Large-flowering Double, Mixed. [3ft.] A variety of vivid colorings. Pkt. 15 cts.; $\frac{1}{2}$ oz. 35 cts.

866 Exhibition, Mixed. [3ft.] This special selection has been saved for us by a Dahlia specialist, and seed from only the choicest giant double flowers has been saved. Pkt. 30 cts.; 5 pkts. \$2.

867 Coltness Hybrids. [18in.] These splendid Single Dahlias will bloom from seed in three months, and the neat little bushes bear an abundance of blooms from July until frost. The colors are varied and the flowers have slightly fluted petals. Their long stems make them valuable for cutting. Planted among shrubs, they are very effective. Pkt. 25 cts.; $\frac{1}{2}$ oz. \$1.

Delphinium

Perennial Larkspur

[hP] Europe, Asia

The charm of the Hardy Larkspur is well known for its glamorous adornment of the garden throughout summer. A good, deep, rich soil is essential to produce the finest flowers. Seed may be sown any time from spring till autumn. See illustration page 21.

Stokes Giant Exhibition Hybrids. 6ft.

These have been produced from the choicest named varieties selected from the collections of the best American and English specialists. The huge spikes are heavily set with large blooms in shades ranging from the palest lavender-lilac to rich violet-blue, including the much prized pink, mauve, and pastel shades. Many of the double flowers have crested white or black centers.

856 Art Shades.

859 Medium Blue Shades.

858 Orchid and Light Blue Shades.

857 Dark Blue Shades.

855 Stokes Exhibition Hybrids, Mixed.

Any of the above: Pkt. 50 cts.; $\frac{1}{2}$ oz. \$1.

860 Belladonna Improved. [2 $\frac{1}{2}$ ft.] Lovely light blue, and the freest flowering of all Delphiniums. Pkt. 25 cts.; $\frac{1}{2}$ oz. 70 cts.; oz. \$4.50.

861 Bellamoss. [2 $\frac{1}{2}$ ft.] The dark blue form of the popular free-flowering Belladonna. Pkt. 25 cts.; $\frac{1}{2}$ oz. 70 cts.; oz. \$4.50.

862 Choicest Mixed. [2 $\frac{1}{2}$ ft.] A good selection of single-flowering varieties. Pkt. 15 cts.; $\frac{1}{2}$ oz. 35 cts.; oz. \$2.

863 NEW ANNUAL DELPHINIUM (*D. elbense*). [2 $\frac{1}{2}$ ft.] A fine new addition, similar in color to the well-known Belladonna in the perennial Delphinium, but far surpassing it in brilliancy of color. It is a rich clear blue and will make an excellent cut-flower. Winner of seventh place in the All-American Flower Selection. Pkt. 35 cts.; $\frac{1}{2}$ oz. 75 cts.; $\frac{1}{2}$ oz. \$1.25.

Dianthus · Pink

Mediterranean Region

This distinguished group has long been a garden favorite, and the fine single and double, Carnation-like flowers make excellent border and edging plants. Seed may be sown outdoors as soon as danger of frost is past.

870 Single and Double, Mixed. [hA-12in.]

This is the old favorite garden Pink. Blooms a few weeks after planting and continues until frost. Pkt. 10 cts.; $\frac{1}{2}$ oz. 30 cts.

875 Sweet Wilvesfield. [hA-12in.] This new English hybrid is a cross between Allwood and Sweet William. The flowers are huge and of brilliant coloring. It has few rivals for range of colors. When planted outdoors in early spring it will flower from midsummer until frost. Pkt. 20 cts.; $\frac{1}{2}$ oz. 45 cts.

880 Plumarium semperflorens, Mixed. [hP-12in.] A fine selection of sweet-scented, double, semi-double, and single flowers, beautifully spotted and variegated. Blooms over a long season. Pkt. 15 cts.; $\frac{1}{2}$ oz. 40 cts.

871 ALLWOODI ALPINUS. [hP-4in.] A new hybrid. It is perfect for the rock-garden or hardy border, blooming from early spring until late fall, with huge blooms in shades of pink, white, and purple, beautifully blotched. Single and semi-double flowers. Pkt. 75 cts.; 3 pkts. \$1.75.

Digitalis · Foxglove

Europe, Western Asia

The elegance of the majestic Foxglove is never seen to better advantage than when planted against a dark background of shrubbery.

885 Giant Shirley. [hP-4 $\frac{1}{2}$ ft.] The finest Foxglove now offered. The stately spikes are closely set with glaucous flowers in shades of rose and white, all attractively blotched and spotted with crimson, maroon, and chocolate. Pkt. 15 cts.; $\frac{1}{2}$ oz. 50 cts.

Dimorphotheca

African Daisy

[hA-12in.] South Africa

890 Aurantiaca Hybrids. Gorgeous daisies of golden yellow, salmon, sulphur, rose, and apricot which furnish a brilliant splash in the garden all summer until frost. As a bedding plant it is unusually attractive. Pkt. 10 cts.; $\frac{1}{2}$ oz. 35 cts.

891 Ringens. This distinctive new introduction in Dimorphotheca is just a little more dwarf and a little more free-flowering than Aurantiaca. The large, single flowers are pure white, banded bright blue about the center. Pkt. 15 cts.; $\frac{1}{2}$ oz. 50 cts.; $\frac{1}{2}$ oz. 90 cts.

Eschscholtzia

California Poppy California-Oregon

900 Mixed. [hA-1ft.] From early summer until fall the charming plants will bloom continuously and is most effective in a sunny border or bed. Many improvements have been made in this in recent years, and our mixture contains double and single types saved from all the newest and best varieties in wonderful shades of old-gold, fiery red, cream, salmon, orange, and many others. Pkt. 10 cts.; $\frac{1}{2}$ oz. 20 cts.

**Erinus**

Europe

905 **Alpinus**. [hP-4in.] Snugly set in a wall crevice or in a semi-shaded spot in the rockery, the bright purple and white spikes rising above rosette-like foliage will make a gay spot in late spring. Pkt. 20 cts.

Euphorbia

[hA-2½ft.] United States-Peru

The ornamental foliage of this plant is a welcome addition in a border or in bare spots in the garden.

909 **Variiegata**. (Snow-on-the-Mountain.) Bright green leaves which as they mature become tinged with silvery white. Pkt. 10 cts.; ½oz. 40 cts.

910 **Heterophylla**. (Annual Poinsettia.) Bushy plants with glossy green foliage which, about the middle of summer, turns to a beautiful orange-scarlet, resembling very much the Christmas poinsettia. Pkt. 15 cts.; ½oz. 30 cts.

Forget-me-not · Myosotis

[hhP-6 to 10 in.] Europe

The charm of the lovely Forget-me-not is never more appreciated than when grown in masses. Sow in a moist spot any time during spring or early summer and keep the plants protected where the winters are severe.

915 **Robusta grandiflora**. The best clear light blue. Pkt. 15 cts.; ½oz. 30 cts.

916 **Alpestris, Rose**. An unusual shade of bright rose. Pkt. 10 cts.; ½oz. 25 cts.

917 **Victoria, Indigo**. An upright plant with deep blue flowers. Pkt. 10 cts.; ½oz. 25 cts.

Gaillardia · Blanket Flower

Western America

The bold showiness of Gaillardia is much valued in the garden from early summer until frost. Excellent for beds and cutting.

920 **Double, Mixed**. (*G. pulebilla picta Lorenziana*.) [hA-18in.] A fine selection of crimson and yellow shades. Pkt.* 10 cts.; ¼oz. 35 cts.

921 **Indian Chief**. [hA-18in.] From the large, single-flowering class we have selected this recent introduction because we know the appeal of its glittering metallic red flowers. The center is a deep mahogany-red. Pkt. 10 cts.; ¼oz. 40 cts.

925 **Portola Hybrids**. [hP-2½ft.] The 4-inch flowers of coppery scarlet, tipped yellow in varying widths, are carried on long, strong stems that are excellent for cutting. Pkt. 15 cts.; ½oz. 45 cts.

Gerbera · Transvaal Daisy

South Africa

932 **Jamesoni Hybrids, Mixed**. [hP-2ft.] Showy, daisy-like flowers with slender, pointed petals. Plants quite hardy in warm climates, but in cold climates they should be wintered over in a coldframe. It is also quite valuable in the greenhouse.

The color-range of these hybrids is quite distinct, including delectable shades of cream, yellow, orange, pink, rose, salmon, cerise, violet, and rich purple. Excellent for cutting. Pkt. 25 cts.; 100 seeds 75 cts.; 1000 seeds 6¢.

Geranium

Southern Europe

935 **Zonale**. [tP-20in.] A mixture of the largest and finest varieties. This is readily grown from seed. Sow indoors and plant outside when weather is warm. Pkt. 15 cts.; ½oz. 40 cts.

Geum

[hP-2ft.] Sicily

From out of small, tufted clusters of foliage, the rose-like flowers are borne abundantly on long stems during the entire summer.

933 **Lady Stratheden**. Fine; double; golden yellow.

934 **Mrs. Bradshaw**. Brilliant orange-scarlet.

Any of the above: Pkt. 15 cts.; ½oz. 60 cts.

Gloxinia

Brazil

945 **Giant Mixed**. [tP-10in.] These attractive pot-plants are easily grown where heat and moisture can be regulated. The velvety, bell-shaped flowers come in the richest shades of rose, purple, red, and white, and many of them are spotted very attractively. Pkt. 25 cts.; 5 pkts. \$1.

Globe Amaranth

Gomphrena Tropics

940 **Mixed**. [hA-18in.] Clover-headed Everlastings in shades of brilliant purplish red, violet, pink, and white. They flower from midsummer until fall and are very adaptable for garden design. Sometimes referred to as "Bachelor Buttons." Pkt. 10 cts.; ¼oz. 25 cts.

Godetia · Satin Flower

Western United States

950 **Mixed**. [hA-12in.] This free-flowering annual, with satiny, azalea-like flowers, is deserving of more attention. It will thrive best in partial shade and poor soil and is especially adapted to the cooler sections of the country. Our mixture contains selected shades of pink, crimson, and white. Pkt. 10 cts.; ¼oz. 25 cts.

Gourds

World-wide

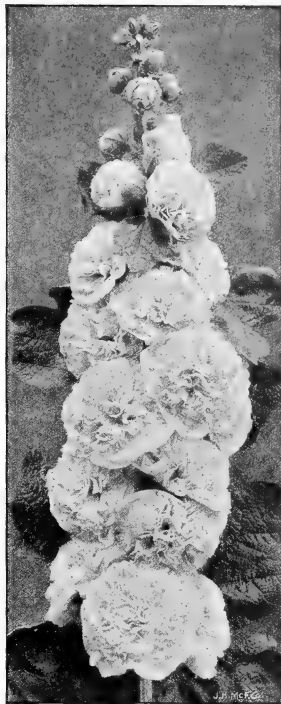
952 **Mixed**. [hA-12ft.] The fruits of these interesting climbers are very ornamental and the foliage is very attractive, too. Pkt. 10 cts.; ½oz. 50 cts.

Gypsophila · Baby's Breath

Pyrenees to Caucasus

Mists of tiny, star-shaped florets borne in profusion on the daintiest of sprays that are indispensable for combining with bouquets of other cut-flowers.

955 **Elegans alba grandiflora**. [hA-20in.] Paris Market Strain. Very free-flowering; pure white Baby's Breath used extensively by florists and gardeners. For a succession, several sowings should be made during the season. Pkt. 10 cts.; oz. 25 cts.; lb. \$2.25.



Double Hollyhock. See page 24

GYPSOPHILA, continued

956 **Elegans grandiflora rosea**. [hA-20in.] A lovely rosy pink. Pkt. 10 cts.; oz. 30 cts.; lb. \$3.

957 **Elegans grandiflora carminea**. [hA-20in.] Brilliant carmine-rose. Pkt. 15 cts.; oz. 40 cts.; lb. \$3.75.

960 **Paniculata, Double White**. [hP-3ft.] A recent introduction of great merit, producing a large percentage of tiny, double flowers on long, graceful sprays. Blooms late spring and early summer. Pkt. 20 cts.; ½oz. 50 cts.

962 **Repens**. [hP-4in.] Trailing clouds of pure white flowers. Excellent for the rockery. Pkt. 15 cts.; ½oz. 25 cts.

Humulus Japonicus

Japanese Hop Vine

[hA-15ft.] China-Japan

997 **Variiegated-leaved**. A very quick-growing vine with hairy leaves, beautifully marked with white, green and yellow. One of the best climbers for covering porches, trellises, etc. Pkt. 10 cts.



Annual Larkspur

Ornamental Grasses

South America

These are very useful in winter bouquets and are very attractive in a mixed flower-bed or border during the summer.

965 **Fountain Grass** (*Pennisetum Ruppelianum*). [hA-3ft.] Feathery, purplish plumes. Pkt. 10 cts.; $\frac{1}{2}$ oz. 30 cts.; $\frac{1}{2}$ oz. 50 cts.

966 **Pampas Grass** (*Gnenerium arzenicum*). [hP-5ft.] Silvery white plumes. Pkt. 10 cts.; $\frac{1}{2}$ oz. 50 cts.

967 **Cloud Grass**. [hA-18in.] Reddish green flower-heads on airy foliage, resembling a mist when in bloom. Pkt. 10 cts.; $\frac{1}{2}$ oz. 50 cts.

Helianthemum • Sun Rose

Mediterranean Region

982 **Mutabile**. [hP-12in.] Low-growing evergreen plants with masses of bright yellow flowers from June to September. Suitable for the rockery. Pkt. 10 cts.; $\frac{1}{2}$ oz. 30 cts.

Helianthus • Sunflower

North America

984 **Double Chrysanthemum-flowered**. [hA-7ft.] Large, double, golden yellow, ball-shaped flowers resembling chrysanthemums. Extra-fine seed produced on our own grounds. Sunflowers thrive best in strong sunlight and are excellent for backgrounds among shrubberies or for divisions. Pkt. 10 cts.; oz. 35 cts.

Heliotrope

[hP] Europe

985 **Lemoine's Giant Hybrids**. Deliciously scented lilac and white flowers borne on large heads. May be started indoors for early blooming or may be sown outdoors in May. Pkt. 15 cts.; $\frac{1}{2}$ oz. 50 cts.

986 **Regale, Mixed**. A dwarf, compact variety with the same large heads as the giant types. Fine in rockeries. Pkt. 15 cts.; $\frac{1}{2}$ oz. 35 cts.

Helichrysum

Straw Flower

[hA-2 $\frac{1}{2}$ ft.] Africa, Australia

This is the finest of the Everlastings for the home-garden, and the large, double flowers, in bright glittering colors, are very attractive in beds or borders. They are especially grown to dry for winter use, and for this purpose they should be cut with the stems as long as possible and when the flower is about one-third open; strip off leaves and hang head down in a dark place until cured.

970 **Fireball**. Brilliant crimson.

971 **Golden Ball**. Rich golden yellow.

972 **Rose Queen**. Deep old-rose.

973 **Violet Queen**. Intense purplish violet.

975 **Mixed**.

Any of the above: Pkt. 10 cts.; $\frac{1}{2}$ oz. 30 cts.

COLLECTION: One pkt. each of the 4 separate colors for 35 cts.

Heuchera • Coral Bells

Southwestern United States

983 **Sanguinea rosea**. [hP-12in.] The plants of this attractive little flower make compact, low-growing mats of deep green leaves from which rise graceful, slender spikes adorned with tiny, bell-like florets in shades of coral. Excellent for the rock-garden. Pkt. 15 cts.; $\frac{1}{2}$ oz. 50 cts.

Hollyhock

[hP-7ft.] China

The majestic elegance of the Hollyhock as a background in the border, as a row against a garden wall or a cottage, has few rivals. During early summer, the stately stalks are heavily set with attractive blooms in a complete range of colors varying from white to darkest red and including many lovely yellows.

990 **Double, Mixed**. Choice selection of the best colors in large, completely double flowers, closely set, on very sturdy stalks. Pkt. 10 cts.; $\frac{1}{2}$ oz. 45 cts.

991 **Imperator**. *New*. A distinct type with large, frilled and fringed petals crested with a 3-inch rosette. The flowers measure about 6 inches across and are produced in a delightful array of colors. Pkt. 25 cts.; $\frac{1}{2}$ oz. 45 cts.

Hunnemannia

Santa Barbara Poppy

[hA-18in.] California

1237 **Fumariæfolia**. A clear lemon-yellow Poppy that is delightful in the border, massed in beds, or as a cut-flower. The flowers are borne on strong stems with fine, feathery, grayish green foliage. Pkt. 10 cts.; $\frac{1}{2}$ oz. 25 cts.; oz. 75 cts.

Impatiens

Zanzibar Balsam

South Africa

1000 **Holstii Hybrids**. [tP-20in.] Bright, waxy flowers for decorative purposes. Excellent for pot-culture. Our mixture contains all colors. Pkt. 20 cts.; 3 pkts. 50 cts.

Kochia

Summer Cypress; Mexican Fire Bush

China

1005 **Childsii**. [hA-23 $\frac{1}{2}$ ft.] Planted in rows, these ornamental plants form a cypress-like green hedge which turns deep red in late summer. Sow thinly early in the spring where the plants are to bloom. Pkt. 10 cts.; $\frac{1}{2}$ oz. 20 cts.

Lantana Brazil

1007 **Fine Mixed**. [tP-2ft.] Shrubby bedding plants that bloom all summer until late autumn. In the verberna-like clusters all shades of crimson, rose, yellow, and orange appear. Pkt. 10 cts.; $\frac{1}{2}$ oz. 25 cts.

Larkspur

[hA-3ft.] Europe, Asia

Giant Imperial. Many improvements have been made on this old favorite in color and growth of the plant. This new type is of particular value for cutting because of its upright, base-branching habit. In the border or in shrubbery it will produce a striking effect.

1010 **Blue Spire**. Deep Oxford-blue. Pkt. 15 cts.; $\frac{1}{2}$ oz. 60 cts.; oz. \$2.

1012 **Carmine King**. Carmine-rose. Pkt. 15 cts.; $\frac{1}{2}$ oz. 60 cts.; oz. \$2.

1016 **Exquisite Pink Improved**. Pink, shaded salmon. Pkt. 15 cts.; $\frac{1}{2}$ oz. 60 cts.; oz. \$2.

1018 **Exquisite Rose**. Deep rose. Pkt. 15 cts.; $\frac{1}{2}$ oz. 60 cts.; oz. \$2.

1020 **White Spire**. Pure white. Pkt. 15 cts.; $\frac{1}{2}$ oz. 60 cts.; oz. \$2.

1013 **Miss California**. *New*. Deep pink on salmon. Pkt. 20 cts.; $\frac{1}{2}$ oz. 75 cts.; oz. \$2.50.

1025 **Mixed**. Pkt. 10 cts.; $\frac{1}{2}$ oz. 25 cts.; oz. 75 cts.

Lathyrus

Everlasting Sweet Pea

World-wide

1030 **Mixed**. [hP-7ft.] This very showy, free-flowering climber is excellent for covering stumps, fences, and the like. Our mixture contains shades of pink, white, and red. Pkt. 10 cts.; $\frac{1}{2}$ oz. 25 cts.

**Lavandula · Lavender**

Canary Islands—India

1031 **Vera**. [hP-2ft.] Delicate gray foliage and lavender-blue flowers that are valued for their fragrance. Easily grown in any garden soil. This is true English Lavender. Pkt. 10 cts.; $\frac{1}{2}$ oz. 20 cts.; oz. 45 cts.

Lilies

[hP] World wide

The growing of Lilies from seed is becoming more popular each year. While occasionally they flower from seed the first year, they are quite hardy and usually excellent results are obtained the second year.

1032 **Regale**. [3ft.] Trumpet-shaped flowers of white, tinged pink, with a canary-yellow throat; delightfully scented. Blooms outdoors in July. Native of West China. Pkt. 15 cts.; $\frac{1}{2}$ oz. 50 cts.

1033 **Subacolum**. (Coral Lily.) [2ft.] One of the easiest Lilies to grow from seed, blooming the second year. The blooms are rich deep coral and are borne in profusion. Excellent for the rock-garden or for forcing. Native of Siberia. Pkt. 25 cts.; $\frac{1}{2}$ oz. 50 cts.

Linaria

Northern Hemisphere

1035 **Cymbalaria**. (Kenilworth Ivy.) [hP] A charming creeping plant with lilac-blue flowers. Adapted for small spaces between rocks, hanging-baskets, or pots. Very easily grown. Pkt. 15 cts.; $\frac{1}{2}$ oz. 35 cts.

Linum · Flax

Mediterranean Region

1040 **Grandiflorum rubrum**. (Crimson Flax.) [hA-15in.] An attractive bedding plant with fine foliage and bright red flowers from early summer until frost. Pkt. 10 cts.; $\frac{1}{2}$ oz. 20 cts.

1045 **Perenne**. [hP-18in.] A delicately graceful plant with haunting blue flowers. ("Irish eyes are blue as the flax.") Try this in your rock-garden. Pkt. 10 cts.; $\frac{1}{2}$ oz. 35 cts.

Lobelia

Eastern United States

1050 **Cristal Palace Compactum**. [hA-4in.] A dense-growing plant with dark foliage and rich deep blue flowers, especially suited for low edgings, beds, rock-gardens and also pot-culture. Pkt. 15 cts.; $\frac{1}{2}$ oz. 45 cts.

Lupinus · Lupin

North and South America

Hartwegii. [2ft.] These stately, easily grown plants, with their lovely pea-shaped flowers on tapering spikes, are valuable for cutting and make a glorious display all during the summer. They prefer a semi-shaded, moist location.

1055 Light Blue	1056 White
1057 Rose	1060 Mixed

Any of the above: Pkt. 10 cts.; oz. 25 cts.

1061 **Subcarneous**. (Texas Bluebonnet.) [hA-15in.] A fine, bushy plant with large deep blue flowers heavily set on small spikes. Cherished in Texas as the State Flower. Pkt. 10 cts.; oz. 30 cts.

LUPINS, continued

1065 **Regale Hybrids**. [hP-2 $\frac{1}{2}$ ft.] An unusual array of colors which will add charm to the garden in June and July. Pkt. 15 cts.; $\frac{1}{2}$ oz. 45 cts.

1062 **NEW HARTWEGII GIANTS, MIXED**. [hA-3 $\frac{1}{2}$ ft.] Winner of fifth place in the All-American Flower Selection. This new development will produce plants about 1 $\frac{1}{2}$ feet taller than the ordinary strain, with the spikes producing 25 to 30 more blooms. The leaves are huge and make a very handsome plant. Colors include dark blue, azure-blue, rose, and white. Pkt. 35 cts.; $\frac{1}{2}$ oz. 75 cts.

Marigold

[hA] Southern Europe and Africa

There are many uses in the garden for this old-fashioned favorite, and, late in the season, when other plants are past their prime, the rich tones of orange and yellow will add a wealth of color in a fading garden. The tall varieties are valuable in the border and the dwarfs are fine for bedding or edging. We would call particular attention to the brilliant new Guinea Gold.

1074 **Tall African, Orange Prince**. [2 $\frac{1}{2}$ ft.] Compact, ball-shaped, curled flowers of rich orange. Pkt. 10 cts.; $\frac{1}{2}$ oz. 35 cts.; oz. \$1.

1072 **Tall African, Lemon Queen**. [2 $\frac{1}{2}$ ft.] Large, double, lemon-yellow flowers. Pkt. 10 cts.; $\frac{1}{2}$ oz. 35 cts.; oz. \$1.

1078 **Tall African, Mixed**. Complete mixture of large, double-flowering sorts. Pkt. 10 cts.; $\frac{1}{2}$ oz. 30 cts.; oz. 90 cts.

1081 **Tall Single, Josephine**. [3ft.] Bush plants with flowers of bright maroon edged golden yellow. Pkt. 10 cts.; $\frac{1}{2}$ oz. 35 cts.; oz. \$1.

1079 **Dwarf Single, Legion of Honor**. [9in.] A fine single Marigold with flowers of golden yellow marked with a blotch of velvety crimson. Pkt. 10 cts.; $\frac{1}{2}$ oz. 35 cts.; oz. \$1.

1080 **Dwarf Double French, Mixed**. [12in.] A complete mixture of the best dwarf varieties. Pkt. 10 cts.; $\frac{1}{2}$ oz. 25 cts.; oz. 75 cts.

1075 **GUINEA GOLD, New**. [2 $\frac{1}{2}$ ft.] A distinct type with semi-double, ruffled, loosely placed petals of brilliant orange. This fine development received first place in the All-American Flower Selection, and is readily being accepted all over because of its fine cutting qualities. The characteristic Marigold odor is not quite so apparent in Guinea Gold. Illustrated on the inside back cover of this Catalog. Pkt. 25 cts.; $\frac{1}{2}$ oz. 40 cts.; $\frac{1}{2}$ oz. 65 cts.

Matricaria · Feverfew

Alps—Caucasus

1112 **Capensis**. [hA-2ft.] Bushy plants with double, button-like white flowers which grow in terminal clusters. Excellent for cutting. Blooms all summer. Pkt. 10 cts.; $\frac{1}{2}$ oz. 25 cts.; oz. 75 cts.



Lupins

Marvel of Peru · Four o'Clock

American Tropics

1110 **Mixed**. [hA-2ft.] Fine 'bush plants bearing an abundance of white, yellow, crimson, and violet flowers which open in late afternoon. Very effective as a hedge, in beds, borders, or in front of a porch. Pkt. 10 cts.; oz. 20 cts.

Mesembryanthemum

Greece, Asia Minor

1108 **Crystallinum**. (Ice-Plant.) [hA-6in.] With foliage that sparkles like tiny pieces of glistening ice, this dainty trailing plant is ornamental and valuable for edging or in a rockery. Pkt. 10 cts.; $\frac{1}{2}$ oz. 25 cts.

Mignonette

[hA-12in.] Northern Africa

A garden would hardly be complete without some of these fragrant flowers. Their greatest use is in combination with more showy flowers which lack fragrance.

1100 **New York Market**. A carefully selected strain for growing outdoors or forcing. Pkt. 15 cts.; $\frac{1}{2}$ oz. 45 cts.

1101 **Red Goliath**. The finest red variety for all purposes. Pkt. 15 cts.; $\frac{1}{2}$ oz. 35 cts.

1105 **Finest Mixed**. All varieties. Pkt. 10 cts.; $\frac{1}{2}$ oz. 35 cts.



Moonflowers and Morning-Glory

Tropics

- 1115 **Moonflowers, Early-flowering Heavenly Blue.** [hA-12ft.] Beautiful azure-blue flowers 5 inches across. Pkt. 15 cts.; $\frac{1}{2}$ oz. 30 cts.
 1120 **Morning-Glories, Mixed.** [hA-10ft.] Large flowers in shades of blue, red, purple, and white. Pkt. 10 cts.; oz. 20 cts.

Nasturtium [hA] Chile-Peru

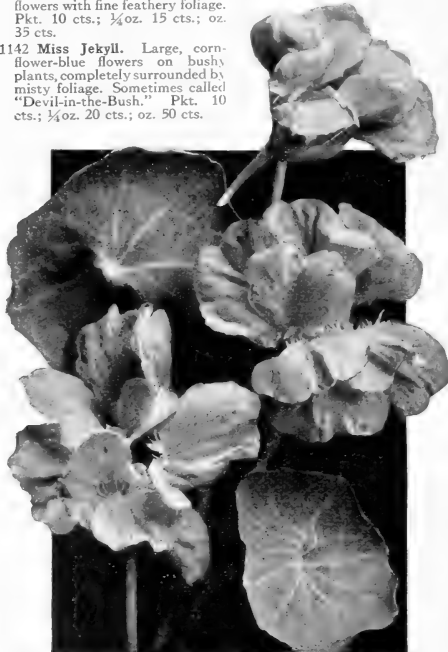
Nasturtiums are among the most popular of our annuals. They have few competitors for duration of bloom, bright coloring, and attractive foliage. The dwarf varieties are excellent in beds or borders and the tall or climbing sorts are well adapted for trailing over rocks or for covering a fence or trellis.

- 1135 **Tall, Mixed.** Trailing. Pkt. 10 cts.; oz. 15 cts.; $\frac{1}{2}$ lb. 40 cts.; lb. \$1.25.
 1125 **Dwarf, Mixed.** [10in.] Pkt. 10 cts.; oz. 15 cts.; $\frac{1}{2}$ lb. 40 cts.; lb. \$1.25.
 1130 **DOUBLE SWEET-SCENTED, GOLDEN GLEAM.** New. This interesting development was introduced for the first time last year, and its sweep to popularity has surpassed any novelty that has been offered for many years. Previously, Double Nasturtiums have been propagated only through cuttings. This newcomer produces large, golden yellow, semi-double flowers on stiff stems 6 inches long, which hold the blossoms well above the foliage, thus adding greatly to the showiness of the plant. Its fragrance, coupled with its many and varied uses as a cut-flower, in beds, borders, or window-boxes, insure its instant appeal to any gardener. In the All-American Flower Selection, Golden Gleam took second place. Pkt. 25 cts.; oz. 90 cts.; $\frac{1}{2}$ lb. \$3.

Nigella - Love-in-a-Mist

[hA-15in.] Mediterranean Region

- 1140 **Blue and White, Mixed.** Charming blue or white rosette flowers with fine feathery foliage. Pkt. 10 cts.; $\frac{1}{2}$ oz. 15 cts.; oz. 35 cts.
 1142 **Miss Jekyll.** Large, corn-flower-blue flowers on bushy plants, completely surrounded by misty foliage. Sometimes called "Devil-in-the-Bush." Pkt. 10 cts.; $\frac{1}{2}$ oz. 20 cts.; oz. 50 cts.



Golden Gleam Double Nasturtium

Nicotiana - Flowering Tobacco Brazil-Uruguay

- 1136 **Affinis Hybrids.** [hA-2ft.] Large, tubular flowers in brilliant shades of purple, rose, red, and white, which open at evening, sending forth a rich fragrance. Pkt. 10 cts.; $\frac{1}{2}$ oz. 25 cts.

Oenothera - Evening Primrose Missouri-Nebraska

- 1144 **Missouriensis.** [hP-12in.] A lovely twilight-blooming Primrose for growing in an exposed sunny spot in either the rocky or border. Produces an abundance of brilliant yellow flowers over the entire summer. Pkt. 15 cts.; $\frac{1}{2}$ oz. 40 cts.

Pansies [hA-10in.] Europe

For early spring blooming, sow seed in August and winter over in the coldframe. If sown in a carefully prepared bed in the spring, the plants will bloom in the early summer.

- 1150 **Giant Trimardeau, Mixed.** The characteristic feature of this variety is that the two upper petals are of a single color that contrasts with another shade on the lower three petals which are attractively blotched. Pkt. 10 cts.; $\frac{1}{2}$ oz. 30 cts.; oz. \$1.50.
 1145 **Stokes Giant Exhibition, Mixed.** A collection of the best varieties of extra-size, heavy-textured types. Our mixture contains every conceivable color combination. Pkt. 35c.; $\frac{1}{2}$ oz. 85c.; oz. \$10.
 1146 **Maple-Leaf Giants or Dwarf Swiss Giants.** In the All-American Flower Selection this excellent strain received an Award of Merit. While it is difficult to surpass the well-known Swiss Giants, the great disadvantage which growers have found in this variety has been their tendency toward legginess in growth. While retaining the fine qualities of size and color of the Swiss Giants, this new Maple-Leaf type produces fine compact plants. Pkt. 35 cts.; $\frac{1}{2}$ oz. 85 cts.; oz. \$10.

Petunias [hA-12in.] Argentine

Petunias are among the most highly prized and most satisfactory summer-blooming annuals in America. For outdoor decoration it is difficult to surpass them. In window-boxes or porch-boxes, in beds, borders, or hanging-boxes, they are a solid mass of brilliant color all summer long. For early flowering in northern states it is advisable to plant indoors and transplant to the open when the weather is warm.

- 1185 **Ruffled Giants.** Enormous, single flowers with waved, fringed, and ruffled edges. A complete mixture of brilliant shades of rose, scarlet, lilac, purple, and many others, quite a number of which are attractively blotched and veined. Pkt. 35 cts.; $\frac{1}{2}$ oz. \$1.50; $\frac{1}{2}$ oz. \$2.25.
 1190 **Dwarf Giants of California.** Immense, frilled blossoms with deep, open throats, all attractively veined. Excellent for pot-culture. Pkt. 35 cts.; $\frac{1}{2}$ oz. \$1.50.
 1195 **Stokes Giant Double Fringed, Mixed.** Fully double flowers in an excellent mixture of brilliant colors saved from the finest collections. A large percentage of the flowers will come perfectly double. Pkt. 50 cts.; 3 pkts. \$1.25.

BEDDING PETUNIAS [2ft.]

Readily grown and excellent for all purposes. Free from the magenta strains.

- 1170 **Balcony Blue** 1171 **Balcony Crimson** 1172 **Balcony White**
 1173 **Balcony Rose** 1174 **Balcony Mixed**

Any of the above: Pkt. 15 cts.; $\frac{1}{2}$ oz. 35 cts.

- 1155 **Howard's Star Improved.** Crimson, centered with a white star.
 1160 **Rosy Morn.** Rosy pink with white throat.
 1158 **Rose of Heaven.** Brilliant rose. Very effective.

Any of the above: Pkt. 10 cts.; $\frac{1}{2}$ oz. 25 cts.

- 1165 **Bedding Mixed.** A complete mixture of all colors. Pkt. 10 cts.; $\frac{1}{2}$ oz. 25 cts.

Physalis Japan

- 1230 **Francheti.** (Chinese Lantern Plant.) [hP-18in.] Dense-growing ornamental plants producing brilliant orange-scarlet seed-pods which very much resemble miniature lanterns. Excellent for winter bouquets when dried. Pkt. 10 cts.; $\frac{1}{2}$ oz. 50 cts.; oz. \$1.50.

Phlox Drummondii [hA-12in.] Texas

One of the most brilliant and satisfactory annuals easily grown from seed. Sown in a sunny location, the plants are a mass of bloom ten weeks after planting and bloom until frost.

- 1221 **Giant White.** 1222 **Carnea.** Rich pink with apricot center.
 1224 **Rose.** Bright rose with darker eye. 1225 **Lilac.**
 1220 **Giant Mixed.**

Any of above: Pkt. 10 cts.; $\frac{1}{2}$ oz. 30 cts.

COLLECTION: One pkt. each of the 5 varieties listed for 35 cts.

**Poppy** France-Persia

- 1235 **Shirley, Mixed.** [hA-18in.] Silky-petaled blossoms in warm shades of apricot, pink, rose, white, and brilliant red. Sow where seed is to bloom as they do not stand transplanting. Pkt. 10 cts.; $\frac{1}{4}$ oz. 25 cts.; oz. 75 cts.
- 1211 **Oriental.** [hP-2 $\frac{1}{2}$ ft.] Huge, glowing scarlet flowers with black blotches on long feathery stems. Pkt. 10 cts.; $\frac{1}{2}$ oz. 30 cts.
- 1212 **Oriental, Princess Victoria.** [hP-2 $\frac{1}{2}$ ft.] A beautiful salmon-pink. Pkt. 15 cts.; $\frac{1}{2}$ oz. 45 cts.
- 1210 **Oriental, Mixed.** [hP-2 $\frac{1}{2}$ ft.] Orange, pink, and red shades. Pkt. 10 cts.; $\frac{1}{2}$ oz. 30 cts.
- 1215 **Iceland.** [hP-18in.] This development in everblooming perennial Poppies will flower within a few months after seed is sown. From a tuft of finely cut foliage, bare wiry stems rise, carrying handsome single flowers in shades of yellow, orange, salmon, rose, and white. Unlike other Poppies, these may be used for cutting. Native of the Arctic regions. Pkt. 15 cts.; $\frac{1}{2}$ oz. 35 cts.

Portulaca · Sun-Plant

[hA-6in.] Tropical America

This gay little flower is truly a gem to the gardener. Broadcast in a bare, sunny spot or sown in a bed or border, a brilliant carpet of lovely shades of pink, rose, yellow, and orange will be the reward.

- 1240 **Double, Mixed.** Pkt. 15 cts.; $\frac{1}{2}$ oz. 35 cts.; $\frac{1}{4}$ oz. 65 cts.
- 1242 **Single, Mixed.** Pkt. 10 cts.; $\frac{1}{2}$ oz. 25 cts.; $\frac{1}{4}$ oz. 35 cts.

Potentilla

Northern Hemisphere

- 1248 **Mixed.** [hP-12in.] A fine trailing plant with single and double flowers in red and orange shades in late spring and early summer. Very desirable in borders or the rock-garden. Pkt. 15 cts.; $\frac{1}{2}$ oz. 40 cts.

Pyrethrum · Painted Daisy

Caucasus-Persia

- 1260 **Single and Double, Mixed.** [hP-2ft.] Fine, upright, slender stalks bearing large, daisy-like flowers in shades of red, rose, pink, and white. It will bloom in the early spring, and, in some locations, again in the fall. Pkt. 15 cts.; $\frac{1}{2}$ oz. 40 cts.

Primula

British Isles to China

- 1255 **Obovata, Giant Mixed.** [hP-10in.] A continuous-blooming plant easily grown in the greenhouse or a sunny window. The brilliancy of their beautiful shades of crimson, rose, and purple will be enhanced when the plants are grown at a temperature around 60 degrees. Sow indoors in the spring in any good soil. Pkt. 20 cts.; 3 pks. 50 cts.
- 1256 **Veris, Mixed.** (Cowslip.) [hP-10in.] A beautiful spring-flowering plant with giant flowers in shades of yellow, orange, and red on strong stems. Pkt. 15 cts.; $\frac{1}{2}$ oz. 45 cts.

Sanvitalia Mexico

- 1268 **Procumbens.** [hA-8in.] Spreading, compact plants with golden yellow flowers resembling tiny double zinnias. Blooms all summer. Valuable for covering bare spots or in the rockery. Pkt. 10 cts.; $\frac{1}{4}$ oz. 50 cts.

Salpiglossis · Painted Tongue

Chile

1280 Large-flowering, Mixed.

[hA-2 $\frac{1}{2}$ ft.] Lily-like flowers of fine velvety texture in a magnificent range of colors. The deep throated flowers, exquisitely penciled and veined with gold and silver, are favorites for cutting. For early blooms, start indoors or in a hotbed and transplant to the open, thinning to 12 inches apart. Pkt. 10c.; $\frac{1}{2}$ oz. 25c.; $\frac{1}{4}$ oz. 40c.

Salvia

Sage Brazil

A favorite plant for effects in beds or borders, flowering profusely from midsummer until frost. Sow indoors in a hotbed and transplant to the open in May.

1265 America.

[hA-15in.] The earliest and most free-blooming of all Scarlet Sages. The growth is very compact and uniform

and the flower-spikes are borne 10 inches above the foliage. The best type for florists. Pkt. 20 cts.; $\frac{1}{4}$ oz. \$1; oz. \$3.50.

- 1266 **Bonfire.** [hA-2ft.] Compact bushes with flower-spikes borne well above the leaves. Pkt. 10 cts.; $\frac{1}{4}$ oz. 65 cts.; oz. \$2.25.

- 1267 **Azurea grandiflora.** [hP-3 $\frac{1}{2}$ ft.] Slender woody spikes of sky-blue blossoms borne in profusion during October and September. Native of our southern states. Pkt. 15 cts.; $\frac{1}{2}$ oz. 30 cts.; $\frac{1}{4}$ oz. 55 cts.

Schizanthus · Butterfly Bush

Chile

- 1315 **Giant Hybrids, Mixed.** [hA-18in.] An effective plant fully covered a few weeks after planting with dainty florets like miniature orchids in lovely pastel shades. Sow seed outdoors in spring in a sunny location, and for use as pot-plants in the house, sow during the fall. Pkt. 15 cts.; $\frac{1}{2}$ oz. 35 cts.

Sedum Europe

- 1318 **Acre.** [hP-3in.] Diminutive, fleshy green foliage completely carpeted with small golden yellow blossoms. For filling cracks in a wall or in the rockery it is invaluable. Pkt. 25 cts.



Ruffled Giant Petunias

Scabiosa · Mourning Bride

Old World

Large-flowering, Double. [hA-2 $\frac{1}{2}$ ft.] Each year the popularity of Scabiosa is increasing. The lovely, long-stemmed flowers are borne in abundance from early summer until fall, and they will be found most effective in a bed or border. Seed may be planted in the open when danger of frost is past.

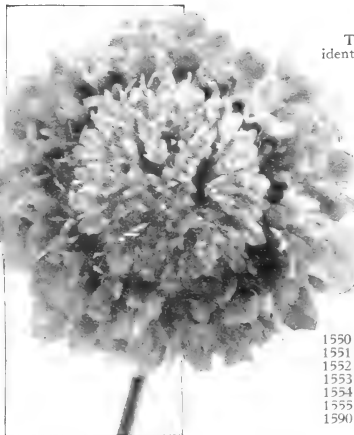
- 1291 **Azure-Blue.**
1297 **Shasta.** White.
1296 **Rose.**
1290 **Peach Blossom.** Soft pink.
1298 **Yellow.**
1292 **King of the Blacks.** Black-purple.
1300 **Mixed.**

Any of the above: Pkt. 10 cts.; $\frac{1}{4}$ oz. 30 cts.

COLLECTION: One pkt. each of the 6 named varieties for 50 cts.

- 1310 **Caucasica, Isaac House's Hybrids.** [hP-3ft.] Frilled and ruffled flowers in shades of lilac, mauve, blue, and white, on long stems. Pkt. 25 cts.; 5 pks. \$1.

- 1309 **Columbaria, Darkest Pink.** [hP-18in.] More dwarf and spreading than Caucasica, with large flowers of deep rose-pink, on long, slender stems that are fine for cutting. Pkt. 15 cts.



Peach Blossom Scabiosa. See page 27

Statice • Sea Lavender

[hA-2ft.] Mediterranean Region

An attractive Everlasting valuable for cutting and for drying for winter bouquets. From a low cluster of leaves arise stiff stalks bearing dense blossoms on sprays. Sow indoors or in the open when the weather is warm. The seed comes in flower-heads which should be planted on their sides.

1321 *Sinuata*, Rose 1322 *Sinuata*, White
1320 *Sinuata*, Blue 1323 *Sinuata*, Mixed

Any of the above: Pkt. 10 cts.; $\frac{1}{4}$ oz. 25 cts.

1324 *Suworowi*. Rat-Tail. A distinct type with tail-like spikes of bright rose flowers. Pkt. 10 cts.; $\frac{1}{4}$ oz. 40 cts.; oz. \$1.25.

1325 *Bonduelli*. Rich lemon-yellow flowers. Pkt. 10 cts.; $\frac{1}{4}$ oz. 25 cts.

Stocks, Giant Imperial

[hA 2ft.] Old World-Australia

Well-branched plants with majestic spikes of fragrant, double flowers. They are excellent either in the greenhouse or in the garden. Seed may be sown during early spring for summer and fall blooming, or in the late summer for growing in the house.

1335 *Antique Copper*. Rich coppery red. Pkt. 25 cts.; $\frac{1}{2}$ oz. 75 cts.

1336 *Rose*. Deep rose-pink. Pkt. 15 cts.; $\frac{1}{4}$ oz. 50 cts.

1339 *Lavender*. Pkt. 15 cts.; $\frac{1}{4}$ oz. 50 cts.

1337 *Royal Purple*. Pkt. 25 cts.; $\frac{1}{4}$ oz. 75 cts.

1338 *Chamois*. Ivory, tinted old-rose. Pkt. 15 cts.; $\frac{1}{4}$ oz. 50 cts.

1341 *Golden Ball*. Canary-yellow. Pkt. 15 cts.; $\frac{1}{4}$ oz. 50 cts.

1342 *Old Rose*. Pkt. 25 cts.; $\frac{1}{4}$ oz. 75 cts.

1340 *Mixed*. All colors. Pkt. 10 cts.; $\frac{1}{4}$ oz. 40 cts.

COLLECTION: One pkt. each of 5 named varieties for 75 cts.

Sweet Peas sicily

There are hundreds of varieties of Sweet Peas, a great many of which are practically identical with others in color, and there are still some which lack many characteristics essential to a really first-class variety. We have confined our list to the varieties which are of proven value. The Early-flowering Sweet Peas are used by florists for forcing under glass and also for growing outdoors in the southern states. The Summer-flowering Sweet Peas are for outdoor growing where the spring is cool and summer not too warm. For best results they should be planted outdoors as soon as the ground can be worked.

Early- or Winter-flowering Spencers

	Pkt.	Oz.	$\frac{1}{4}$ lb.	Lb.
1500 <i>Jeanne Mamitch</i> . Rosy pink.....	\$0 10	\$0 50	\$1 65	\$5 50
1501 <i>Snowstorm</i> . Snowy white. White-seeded.....	10	50	1 65	5 50
1502 <i>Burpee's Orange</i> . Rich, deep orange.....	15	60	2 00	6 00
1503 <i>Glitters</i> . Orange-scarlet.....	10	50	1 65	5 50
1504 <i>Harmony</i> . Clear lavender.....	15	60	2 00	6 00
1505 <i>Mrs. Herbert Hoover</i> . Finest medium blue.....	15	75	2 50	8 00
1506 <i>White Harmony</i> . Pure white. Black-seeded.....	15	60	2 00	6 00
1507 <i>Mrs. Kerr</i> . Fine orange-salmon.....	15	60	2 00	6 00
1530 <i>Mixed</i> . All varieties.....	10	40	1 20	4 00
1508 <i>Miss Annie Laurie</i> . <i>Neu</i> . The richest rose-pink.....	20	1 25	4 00	15 00

Summer-flowering Spencers

1550 <i>Avallanche</i> . Pure white.....	10	25	85	3 00
1551 <i>Mary Pickford</i> . Creamy pink, suffused salmon.....	10	25	85	3 00
1552 <i>Powerscourt</i> . The best lavender.....	10	25	85	3 00
1553 <i>Pinkie</i> . Deep pink; very large.....	10	35	1 10	3 60
1554 <i>Huntsman</i> . Scarlet.....	10	25	85	3 00
1555 <i>Tom Webster</i> . Mid-blue.....	15	35	1 10	3 60
1590 <i>Mixture</i>	10	25	75	2 50

Shasta Daisy

Pyrenees

850 *Alaska*. [hP-2ft.] The graceful, white flowers, measuring 3 inches across, are borne on long stems and are excellent for cutting. Pkt. 10 cts.; $\frac{1}{2}$ oz. 40 cts.

Sweet William • Dianthus

Europe-Asia

1345 *Barbatus*, Mixed. [hP-2ft.] Probably the best known of all perennials and easily grown from seed. For best results, young plants should be started each year as they bloom more freely than old stock. Pkt. 10 cts.; $\frac{1}{4}$ oz. 30 cts.

1346 *Annual*, Mixed. [hA-12in.] A new type which blooms profusely the first year from seed. Fine color combinations. Pkt. 10 cts.; $\frac{1}{4}$ oz. 25 cts.; $\frac{1}{4}$ oz. 40 cts.

Thunbergia

Black-eyed Susan

Africa

1350 *Mixed*. [hA] An ornamental creeper with large flowers in shades of yellow, orange, cream, and white with a jet-black eye. As a ground-cover in a sunny location or overhanging a bank, it is most effective. Pkt. 10 cts.; $\frac{1}{4}$ oz. 30 cts.

Tithonia

The Golden Flower of the Incas;
Mexican Sunflower

Mexico

1348 *Speciosa*. [tP-5ft.] This fine plant is practically unknown to the American gardener, and we believe it will have an enthusiastic welcome from anyone who tries it. It forms a large, shrubby plant with flowers 3 to 4 inches in diameter, of dazzling orange-scarlet whose richness is difficult to describe. These fine flowers, very much resembling huge single Zinnias, are carried on stems 2 to 3 feet long and are excellent for cutting. As a background in the border, among shrubs or as a hedge, it presents a wealth of brilliancy over a long season. Pkt. 25 cts.; 3 pkts. 50 cts.

Verbena

[hA-12in.] Brazil-Argentina

Hybrida grandiflora. The finest free-flowering strain of Verbena, producing large trusses of individual florets often equaling the size of a 50-cent piece. Very valuable for cutting and for massing effects. May be planted outdoors when the ground is warm.

1355 *Giant Blue* with *White Eye*. Pkt. 15 cts.; $\frac{1}{4}$ oz. 45 cts.

1356 *Giant Scarlet*. Pkt. 15 cts.; $\frac{1}{4}$ oz. 45 cts.

1357 *Giant White*. Pkt. 15 cts.; $\frac{1}{4}$ oz. 45 cts.

1359 *Giant Rose* with *Dark Eye*. Pkt. 15 cts.; $\frac{1}{4}$ oz. 45 cts.

1360 *Giant Violet* with *White Eye*. Pkt. 15 cts.; $\frac{1}{4}$ oz. 45 cts.

1358 *Etna*. Geranium-red, with yellow eye. Pkt. 15 cts.; $\frac{1}{4}$ oz. 45 cts.

1365 *Giant Mixed*. Pkt. 10 cts.; $\frac{1}{4}$ oz. 30 cts.

COLLECTION: One pkt. each of 6 colors for 65 cts.

1361 *BEAUTY OF OXFORD HYBRIDS*.

Winner of fourth place in the All-American Flower Selection. Heretofore it was possible to obtain the giant Beauty of Oxford type only by cuttings, but this new hybrid cross between *Luminosa* and *Beauty of Oxford* produces individual florets measuring over 1 inch in diameter, in colors ranging from rose-pink to rose-red. Pkt. 50 cts.

1362 *LAVENDER GLORY*. Another winner in the All-American Flower Selection and the first real lavender Verbena. The rich lavender color is accentuated by a creamy white eye. Pkt. 35 cts.; $\frac{1}{4}$ oz. 75 cts.

Vinca

[hA-15in.] Tropics

One of our best ornamental plants for bedding and general garden effects. Glossy, green foliage. Blooms over a long season. Start in the open ground early in spring.

1378 *Rose with Dark Eye*

1379 *White with Red Eye*

1380 *Mixed*

Any of the above: Pkt. 10 cts.; $\frac{1}{4}$ oz. 45 cts.

**Viola • Tufted Pansy**

Spain

1385 **Cornuta, Mixed.** [hP-6in.] One of the finest plants for the permanent border for the rock-garden. The flowers are not as large as pansies but make a brilliant effect, and if planted in early spring they will bloom from June till frost. Pkt. 15 cts.; $\frac{1}{2}$ oz. 40 cts.

Venidium

South Africa

1350 **Fastuosum.** [A-2 $\frac{1}{2}$ ft.] This recent introduction has received the Award of Merit in the All-American Flower Selection. Rich orange flowers, about 4 inches across, set off by a lustrous purplish black center. It is difficult to germinate until the ground is warm and a sunny, sandy location is preferable. The grayish foliage is very attractive and will be well received. Pkt. 35 cts.; 3 pkts. 90 cts.

Veronica

Europe-Asia

1375 **Spicata, Mixed.** [hP-2ft.] Tall spikes of blue, pink, and white flowers. Attractive in the border and may also be used to advantage in the rockery. Pkt. 10 cts.; $\frac{1}{2}$ oz. 35 cts.

Torenia

Tropical Asia-Africa

1349 **Fournieri.** [hA-10in.] Delicate blue flowers with darker blotches and a yellow throat. Splendid for vases, hanging-baskets, borders, etc. Pkt. 10 cts.; $\frac{1}{2}$ oz. 50 cts.

Solanum • Jerusalem Cherry

Brazil

1319 **Cleveland Red.** [tP-1ft.] Compact rich green foliage and a profusion of brilliant red berries. One of the best house-plants for window decoration. This strain is a very great improvement over all others, being more dwarf. Pkt. 15 cts.



Dwarf Lilliput Zinnias

Ursinia

South Africa

1352 **Anethoides.** [hA-2ft.] Again South Africa contributes a beautiful and distinct daisy. From June to September a profusion of blooms of rich orange with a center ring which varies from ruby-red to darkest purple studded with jewel-like dots will adorn the garden and furnish cutting flowers. Sow outdoors in April. Pkt. 25 cts.; 3 pkts. 90 cts.

Wallflowers

British Isles

1390 **Finest Double, Mixed.** [tP-20in.] An extremely fragrant plant with flowers in shades of lemon, orange, rose, and mulberry. In northern states, protection should be given in the winter. Wallflowers are deserving of more popularity. They are adapted to pot culture as well as outside bedding. Pkt. 15 cts.; $\frac{1}{2}$ oz. 50 cts.



Giant Dahlia-flowered Zinnias

Zinnias

[hA] Mexico

Perhaps there is no other annual in America more popular or more generally satisfactory than Zinnias. They are profuse bloomers and offer a gorgeous display from late spring until frost. Plants may be started in hotbeds or window-boxes and set out when the ground warms, or they may be sown in the open after danger of severe frost has passed.

Giant Double Dahlia-flowered [2 $\frac{1}{2}$ ft.]

Large, deep flowers, 6 inches across, with petals that stand out in dahlia fashion. Very valuable because of the great richness of color-range and showiness of flowers.

- 1425 **Crimson Monarch.** Deep red.
 1426 **Exquisite.** Light rose, with deeper center.
 1428 **Dream.** Lavender-purple.
 1429 **Polar Bear.** White.
 1430 **Oriole.** Orange and gold bicolor.
 1431 **Scarlet Flame.** Bright red.
 1432 **Canary Bird.** Lovely primrose-yellow.
 1433 **Illumination.** Rich deep rose.
 1435 **Giant Double Mixed.** All shades.

Any of the above: Pkt. 10 cts.; $\frac{1}{2}$ oz. 45 cts.; $\frac{1}{2}$ oz. \$1.50

COLLECTION: One pkt. each of 6 Dahlia-flowered Zinnias for 50 cts.

1440 **Crown o'Gold Mixture.** Petals heavily overlaid with deep gold at the base with the individual flower color carried out at the tip. Colors include the finest and most desirable shades. Pkt. 10 cts.; $\frac{1}{2}$ oz. 45 cts.; $\frac{1}{2}$ oz. \$1.50.

Giant Mammoth or California Giants [2 $\frac{1}{2}$ ft.]

Very large, flattened flowers, entirely double. A distinct departure from the objectionable conical shape of the old-type Zinnias. Illustrated on the front inside cover.

- 1444 **Orange King.** Burnt-orange. 1446 **Rose Queen.** Rose shades.
 1445 **Lemon Queen.** Pure canary-yellow. 1447 **Scarlet Queen.** Bright scarlet.
 1448 **Mrs. Willmott.** Soft pink. 1449 **Mixed.**
 1449 **Lavender.** Deep lavender, shaded purple.

Any of the above: Pkt. 10 cts.; $\frac{1}{2}$ oz. 25 cts.; oz. \$1.25

Improved Lilliput or Pompon [15in.]

Dwarf, compact plants with fully double flowers. Fine for cutting and bedding. They are increasing rapidly in popularity.

- 1465 **Golden Gem** 1467 **Salmon-Rose** 1470 **White Gem**
 1466 **Scarlet Gem** 1469 **Canary-Yellow** 1468 **Mixed**

Any of the above: Pkt. 10 cts.; $\frac{1}{2}$ oz. 25 cts.; $\frac{1}{2}$ oz. 75 cts.

COLLECTION: One pkt. each of the 5 named varieties for 35 cts.

Elegans Pumila • Dwarf Double Zinnia; Cut-and-Come-Again [2ft.]

A fine bedding type with fully double flowers in rich shades. Excellent for cutting.

- 1400 **Golden Yellow** 1404 **Salmon-Rose**
 1402 **Fireball** 1410 **Mixed**

Any of the above: Pkt. 10 cts.; $\frac{1}{2}$ oz. 25 cts.; $\frac{1}{2}$ oz. 75 cts.



The Rock-Garden

The Rock-Garden is a source of continuing pleasure to the garden-lover, for there is a recurring thrill in watching the development of the delicate spreading and creeping plants. The comparatively rare plants adaptable to the Rock-Garden will delight even the most experienced gardener. As a guide in maintaining perpetual bloom, we print below a chart showing the flowering season of the recommended list. A careful choice from this list will make a most interesting garden.

1700 COMPLETE ROCK-GARDEN COLLECTION. We will send 1 pkt. each of the thirty-nine Annual and Perennial Rock-Garden Flowers listed on this page for \$4 (value \$5.75).

1750 SPECIAL ROCK-GARDEN OFFER. With-in the 10-ct. pkt. range, we will send any 12 varieties for 75 cts., postpaid.

COLLECTION. One packet each of twelve 10-ct. packets of Rock-Garden Annuals and Perennials for 75 cts.

	Height	Time of Flowering	Color	
A <i>Ageratum</i> , Blue Ball	6 in.	June-Oct.	Blue	Pkt. 10 cts.; ½oz. 35 cts.
P <i>Alyssum saxatile compactum</i>	8 in.	Apr.-May	Yellow	Pkt. 10 cts.; ½oz. 40 cts.
A Little Gem	4 in.	Apr.-Oct.	White	Pkt. 10 cts.; ½oz. 20 cts.
P <i>Aquilegia alpina</i>	12 in.	May-June	Blue, White	Pkt. 15 cts.
P <i>Arabis alpina</i>	6 in.	Apr.-Oct.	White	Pkt. 10 cts.; ½oz. 35 cts.
P <i>Armeria formosa</i>	6 in.	May-June	Rose	Pkt. 10 cts.; ½oz. 40 cts.
P <i>Aubrietia</i> , Rock-Cress	6 in.	Apr.-May	Blue, Rose	Pkt. 15 cts.; ½oz. 45 cts.
P <i>Bellis perennis</i> , Double Daisy	8 in.	Apr.-June	Rose, White	Pkt. 10 cts.; ½oz. 45 cts.
A <i>Brachycome</i> , Swan River Daisy	10 in.	May-Aug.	Rose, Mauve, White	Pkt. 10 cts.; ½oz. 25 cts.
P <i>Campanula carpatica</i>	6 in.	May-Aug.	Blue, White	Pkt. 10 cts.; ½oz. 45 cts.
P <i>randunifolia</i> , Blue Bells of Scotland	12 in.	June-July	Blue	Pkt. 10 cts.; ½oz. 40 cts.
A <i>catyrtufi</i> , Giant Hyacinth-flowered	18 in.	June-Sept.	White	Pkt. 10 cts.; ½oz. 25 cts.
A <i>umbellata</i> , White, Lilac, Crimson, Rose, Mixed	12 in.	June-Sept.	White	Pkt. 10 cts.; ½oz. 20 cts.
P <i>Cerastium tomentosum</i> , Snow-in-Summer	6 in.	May-Oct.	White	Pkt. 15 cts.; ½oz. 40 cts.
P <i>Cheiranthus</i> , Siberian Wallflower	12 in.	June-Sept.	Orange	Pkt. 15 cts.; ½oz. 50 cts.
P <i>Dianthus Allwoodi alpinus</i>	4 in.	June-Oct.	Mixed	Pkt. 75 cts.
A Single and Double, Mixed	12 in.	June-July	Mixed	Pkt. 10 cts.; ½oz. 30 cts.
A <i>Sweet Wivelsfield</i>	12 in.	June-Sept.	Mixed	Pkt. 20 cts.; ½oz. 45 cts.
P <i>plumarius semperflorens</i>	12 in.	June-Aug.	Mixed	Pkt. 15 cts.; ½oz. 40 cts.
P <i>Erius alpinus</i>	4 in.	May-June	Blue	Pkt. 20 cts.; ½oz. 50 cts.
P <i>Geum</i> , Lady Stratheden	2 ft.	June-Sept.	Yellow	Pkt. 15 cts.; ½oz. 60 cts.
P <i>Mrs. Bradshaw</i>	2 ft.	June-Sept.	Scarlet	Pkt. 15 cts.; ½oz. 60 cts.
P <i>Gypsophila repens</i>	4 in.	May-June	White	Pkt. 15 cts.; ½oz. 25 cts.
P <i>Helianthemum mutabile</i>	12 in.	June-July	Mixed	Pkt. 10 cts.; ½oz. 40 cts.
A <i>Heliotrope</i> , Regale, Mixed	12 in.	June-Sept.	Mixed	Pkt. 15 cts.; ½oz. 35 cts.
P <i>Heuchera</i> , Coral Bells	18 in.	May-Sept.	Coral-red	Pkt. 15 cts.; ½oz. 50 cts.
P <i>Linaria Cymbalaria</i>	3 in.	June-Aug.	Lilac	Pkt. 15 cts.; ½oz. 35 cts.
P <i>Linum perenne</i>	15 in.	May-Aug.	Blue	Pkt. 10 cts.; ½oz. 35 cts.
A <i>grandiflorum rubrum</i>	15 in.	May-Aug.	Red	Pkt. 10 cts.; ½oz. 20 cts.
A <i>Lobelia</i> , Crystal Palace	4 in.	May-Aug.	Blue	Pkt. 15 cts.; ½oz. 45 cts.
A <i>Mesembryanthemum</i> , Ice-Plant	6 in.	June-Aug.	White	Pkt. 10 cts.; ½oz. 25 cts.
P <i>Poppy</i> , Iceland, Hybrids	18 in.	June-Aug.	Mixed	Pkt. 15 cts.; ½oz. 35 cts.
P <i>Portulaca</i> , Single, Mixed	6 in.	May-Oct.	Mixed	Pkt. 10 cts.; ½oz. 25 cts.
A Double, Mixed	6 in.	May-Oct.	Mixed	Pkt. 15 cts.; ½oz. 35 cts.
P <i>Potentilla</i>	12 in.	Apr.-June	Orange-red	Pkt. 15 cts.; ½oz. 40 cts.
P <i>Primula veris</i> , Cowslip	10 in.	Apr.-May	Mixed	Pkt. 15 cts.; ½oz. 45 cts.
A <i>Sanvitalia procumbens</i>	8 in.	May-Sept.	Yellow	Pkt. 10 cts.; ½oz. 50 cts.
P <i>Sedum acre</i>	3 in.	May-July	Yellow	Pkt. 25 cts.
P <i>Viola cornuta</i>	6 in.	Apr.-Nov.	Mixed	Pkt. 15 cts.; ½oz. 40 cts.



Stokes Distinguished Dahlias Mexico

Today's Dahlias far surpass those of a decade ago. You who may not have replenished your stock in recent years will be amazed to see the more recent introductions which offer a richness of color and structure never before achieved. All of the varieties offered on this page will be supplied from dormant, field-grown roots. They have been produced under the latest approved methods of culture and are destined to add a richness of color to your fall garden that would otherwise be impossible.

We classify our offerings according to the suggestions of the American Dahlia Society.

- I.D., Informal Decorative; F.D., Formal Decorative; C., Cactus; Po., Pompon**
- Anna Christina.** (Po.) Round, full, double, golden yellow bloom, shaded to bronze in center. 40 cts. each; \$1 for 3.
- Avalon.** (F.D.) Large, clear lemon-yellow blooms of fine form. 20 cts. each; \$1 for 6.
- Bacchus.** (Po.) Compact Pompon profusely covered with bright crimson blooms. 40 cts. each; \$1 for 3.
- Barbara Redfern.** (F.D.) Deep blooms of old-rose and gold in lovely blendings. 60 cts. each; \$1 for 2.
- Champagne.** (F.D.) Rich autumn shadings of copper, gold, and chamois. One of the largest Dahlias. 25 cts. each; \$1 for 5.
- City of Trenton.** (I.D.) Immense blooms of bronzy red, shaded salmon. \$1 each; \$2.75 for 3.
- Edna Ferber.** (C.) Rich coral petals, shaded old-gold, and curled and twisted attractively. \$1 each; \$2.75 for 3.
- Ellnor Vanderveer.** (F.D.) Satiny rose-pink blooms of great depth. Very early. 20 cts. each; \$1 for 6.
- Jane Cowl.** (I.D.) Blended bronze-buff and old-gold. A large, well-shaped Dahlia. 60 cts. each; \$1.65 for 3.
- Jersey's Beacon.** (F.D.) Bright scarlet with a buff reflex. One of the most popular Dahlias. 30 cts. each; \$1 for 4.
- Jersey's Beauty.** (F.D.) Immense flowers of glowing pink. One of the finest Dahlias ever introduced. 20 cts. each; \$1 for 6.
- King Midas.** (I.D.) Enormous golden yellow flowers on long, stiff stems. 25 cts. each; \$1 for 5.
- Kitty Dunlap.** (I.D.) Brilliant American Beauty rose. 25 cts. each; \$1 for 5.
- Little David.** (Po.) Deep orange bloom, making showy display. Profuse bearer. 40 cts. each; \$1 for 3.
- Little Jewel.** (Po.) Pure peach-blossom shade; especially desirable for cutting. 40 cts. each; \$1 for 3.
- Mrs. Carl Salbach.** (I.D.) Huge blooms of lavender-pink, suffused with white. 20 cts. each; \$1 for 6.
- Mrs. I. de Ver Warner.** (F.D.) A very early bloomer with large flowers of mauve-pink on long, strong stems. 20 cts. each; \$1 for 6.
- Mrs. Edna Spencer.** (C.) Delicate lavender-pink, suffused with white; very narrow petals. 20 cts. each; \$1 for 6.



Decorative Dahlia, Jersey's Beauty

- Pierrot.** (C.) Tubular petals of deep amber, tipped white. 25 cts. each; \$1 for 5.
- Queen of the Market Beautiful.** (F.D.) An enormous Dahlia of rich deep yellow. 60 cts. each; \$1.65 for 3.
- Rose Fallon.** (F.D.) Rich old-gold flowers on strong, stiff stems. 25 cts. each; \$1 for 5.
- Sanlican's Bluebird.** (F.D.) An unusual shade in Dahlias. Bright violet-blue outside, blending darker in the center. The very nearest to a real blue Dahlia. 50 cts. each; \$1.25 for 3.
- Sunset Glow.** (C.) Yellow at the base of the petals, suffused scarlet and tipped with yellow. 20 cts. each; \$1 for 6.
- Trentonian.** (F.D.) Very giant blooms with wonderful shadings of old-gold, amber, and coppery bronze, suffused with red in the center. 25 cts. each; \$1 for 5.

Stokes Gorgeous Gladiolus South Africa

The newer varieties of Gladiolus have added enormously to the universal esteem in which this lovely flower is now held. It can easily be classed as the most popular summer-flowering American bulb. The stock we offer contains only the choicest varieties and is made up only of No. 1 size bulbs, which assures the best results. Plantings should be made from early May until July, thus bringing a succession of bloom from late June until frost. Bulbs should be planted about 4 inches deep and about 5 inches apart.

All of Our Bulbs Are Treated

Teniothrips gladioli (Thrips) have brought a lot of trouble to Gladiolus growers of late. This flying insect is about $\frac{3}{16}$ inch long and at 70 degrees can complete its life-cycle—egg, larva, pupa, adult—in 15 days. As a preliminary precaution, all our bulbs have been disinfected, which will eliminate a large part of the trouble. After that a nicotine solution on the growing stalk may be required to guard against field-infection. The Niagara Sprayer and Chemical Company, Middleport, N. Y., is working on a hooded machine which should prove less wasteful and far more effective for this work. Thrips can be controlled. By planting our bulbs you at least start with Thrip-free stock.

- Crimson Glow.** Very large flowers of bright deep crimson. 15 cts. for 3; 50 cts. per doz.; \$3.50 per 100.
- Dr. F. B. Bennett.** Peach-red, overlaid flame. Sturdy spikes. 20 cts. for 3; 50 cts. per doz.; \$3.50 per 100.
- Golden Dream.** Pure golden yellow with large flowers and tall spikes. 20 cts. for 3; 50 cts. per doz.; \$3.50 per 100.
- Golden Measure.** Deep yellow with large, wide-open flowers. 15 cts. for 3; 45 cts. per doz.; \$3 per 100.
- Immet.** Pure lavender, with large, heavy flowers. 25 cts. for 3; 80 cts. per doz.; \$6 per 100.
- Mrs. F. C. Peters.** Rose-lilac with a soft crimson blotch. 15 cts. for 3; 45 cts. per doz.; \$3 per 100.
- Mrs. Dr. Norton.** White, suffused with soft pink; pale yellow throat. 15 cts. for 3; 45 cts. per doz.; \$3 per 100.
- Mrs. Leon Douglas.** Enormous flowers of begonia-rose, striped flame. 15 cts. for 3; 45 cts. per doz.; \$3 per 100.
- Mrs. F. C. Hornberger.** Very large; clear white. Fine keeper. 25 cts. for 3; 70 cts. per doz.; \$6 per 100.
- Scarlet Princeps** (Virginia). Massive blossoms of raspberry-red, with a darker throat. 15 cts. for 3; 45 cts. per doz.; \$3 per 100.
- Veilchenblau.** Deep violet-blue, with a darker blotch on the lower petal. 25 cts. for 3; 90 cts. per doz.; \$7.50 per 100.
- W. H. Phipps.** Soft coral-pink, overlaid with light rose-salmon. Very desirable. 20 cts. for 3; 60 cts. per doz.; \$4 per 100.
- Stokes Extra-Fancy Mixture.** A selection of the finest colorings in large, heavy flowers. 40 cts. per doz.; \$2.75 per 100; \$25 per 1000.

COLLECTIONS

36 bulbs, 3 each of above-named varieties, \$1.75
72 bulbs, 6 each of above-named varieties, \$3.25



Stokes Lawn Grass Seed

We all recognize the importance of a well-maintained lawn. It is the frame in which every garden is set. Fancy quality Grass Seed is one of the important items handled by our firm. The subject is fully covered on this page, and those interested in any phase of it are asked to make a careful study of our various offerings.

We see no legitimate reason for any lack of frankness in the matter of our Grass Seed Mixtures. The formulas that we offer, being the result of the most careful study by the best experts on the subject, are, we believe, admirably suited to most general conditions within our trading area. They do not apply to conditions in the subtropics, which are served by our Florida and Texas branches where almost the only Grasses that are grown with success are Bermuda and Austrian Rye. But with the exception of those areas, they are offered to you with strong recommendation.

In Grass Seed one gets very much what one pays for. Admitting that there are thousands of pounds of seed sold by dealers at prices around 20 and 25 cents per pound, we would point out that they are largely made up of the cheap, quick-growing, but temporary Grasses which soon die out. Timothy, Rye Grass, etc., are examples, and these are very often supplemented by chaff which, unfortunately, is a commodity offered in the regular commercial channels. In our opinion, the Stokes Standard Mixtures as offered herewith represent an honest value. The use of white clover we consider an optional matter—some prefer it and some do not. We are making no difference in the prices in our Standard Mixtures. In our opinion, Grass Seed should be purchased by the pound and not by the quart, peck, or bushel, which is always confusing and carries with it an element of mystery that is quite out of place in these times.

The Stokes Mixtures Nos. 1, 2, and 3 as offered herewith are put up according to the official recommendations of the New Jersey Agricultural Experiment Station. We believe that they are admirably suited to conditions in this area. For those wishing a fine Bent Grass lawn we offer our Bent Grass Mixture. This will make a finer lawn but requires more care. It is particularly adapted to acid soils.

Some of the most beautiful lawns we have ever seen have been made of pure Kentucky Blue Grass. For those who want such, we offer that Grass as a separate item and highly recommend it. Our seed is grown in the famous Blue Grass country of Kentucky.

Stokes Standard Mixture No. 1

(Without White Clover)

Kentucky Blue Grass, 55 per cent.
Red-Top, 25 per cent.
South German Bent, 10 per cent.
Rye Grass, 10 per cent.

Prices on above mixtures, Postpaid: Each, Lb. 40 cts.; 5 lbs. at 35 cts. per lb.; 10 lbs. at 32 cts. per lb.; 20 lbs. at 30 cts. per lb.

Stokes Standard Mixture No. 2

(With White Clover)

Kentucky Blue Grass, 50 per cent.
Red-Top, 25 per cent.
South German Bent, 10 per cent.
Rye Grass, 10 per cent.
White Dutch Clover, 5 per cent.

Stokes Shady Lawn Mixture No. 3

Meadow Fescue, 10 per cent.
Rough-stalked Meadow, 30 per cent.
Red Fescue, 20 per cent.
South German Bent, 10 per cent.
Red-Top, 10 per cent.
Kentucky Blue Grass, 20 per cent.

Stokes Bent Grass Mixture No. 4

Rhode Island Bent Grass, 40 per cent and
Kentucky Blue Grass, 60 per cent.

Prices, postpaid: Each, lb. 60 cts.; 5 lbs. at 55 cts. per lb.; 10 lbs. at 52½ cts. per lb.; 20 lbs. at 50 cts. per lb.

Kentucky Blue Grass

(Fancy Quality)

This seed has been thoroughly re-cleaned and weighs 21 pounds per bushel.

Prices, Postpaid: Lb. 30 cts.; 10 lbs. at 27½ cts. per lb.; 20 lbs. at 25 cts. per lb.

White Dutch Clover

This is in general use where a thick and quick growth is desired. It is particularly adapted for lawns at the seashore.

Prices, Postpaid: ¼ lb. 20 cts.; lb. 75 cts.; 5 lbs. at 70 cts. per lb.

The Making of a Lawn

Preparation. The ideal soil for a lawn is light to medium loam. This should be dug or plowed to a depth of 6 inches, all stones, coarse roots, etc., removed during the raking and leveling process. As all soils contain weed seeds, it is best that some time elapse between the preliminary preparation of the soil and the sowing of the Grass Seed. Seedsmen are often unfairly blamed in this respect.

Sowing of the Seed. A careful study of the formulas offered on this page will show the mixture that is best suited to your purpose. Grass Seed may be sown either in the spring or in the fall. Sow 6 pounds of seed for every 1000 square feet, or about 170 pounds per acre. A fine friable soil-surface is best, and an even distribution of the seed may be obtained by sowing half of the seed in a north and south direction and the remainder in an east and west direction. After sowing the seed, rake it lightly and roll down. It is well to have rolling operation go both ways also. It will require from ten days to two weeks before there is much of a showing of grass.

To Rebuild an Old Lawn. Many are not worth rebuilding and had

better be spaded under for a fresh start. It must be understood, however, that a poor lawn cannot be turned into a good one in a few weeks. It is a gradual process, and one which takes care. Usually, the condition of the soil is at the bottom of the difficulty, for most lawns are lacking in organic matter and plant-food. They should be top-dressed at least once a year with mushroom soil or some other well-rotted manure. The practice of an annual application of Ammonium Sulphate is a good one. Three to four pounds per 1000 square feet should be used in each application, after which there should be a thorough sprinkling. In reseeded an old lawn it is usually best to accompany it with a top-dressing, for unless the soil is prepared for the seed, very little of it grows. We recommend the use of 4 pounds of grass seed per 1000 square feet of rebuilt lawn.

To Prevent Japanese Beetle Damage. In April or May apply Arsenate of Lead, 2 pounds for every 1000 square feet. To get an even distribution, it is best to mix this with sand. The poison, thus applied, works its way down and finally kills the grub.



STOKES GIANT EXHIBITION PANSIES, MIXED. A mixture of the finest varieties in a complete range of color combinations. Gigantic, heavy-textured flowers. Pkt. 35 cts., $\frac{1}{8}$ oz. 85 cts., oz. \$10

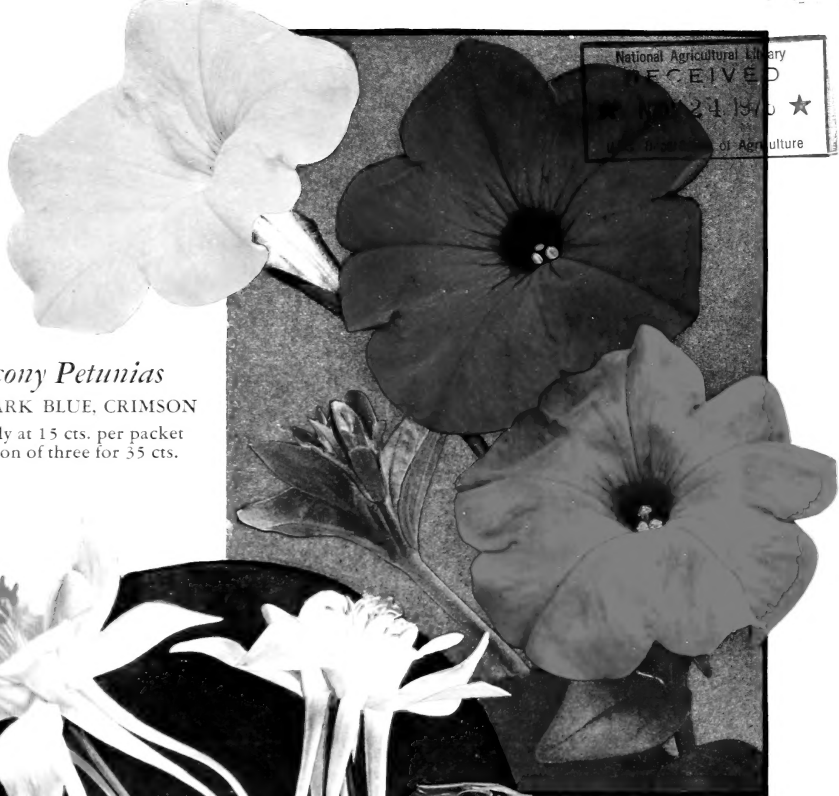


ANNUAL CANTERBURY BELLS, MIXED
Winner of third place in the All-American Flower Selection. Pkt. 25 cts., $\frac{1}{8}$ oz. 50 cts.



GUINEA GOLD MARIGOLD
Winner of first place in the All-American Flower Selection. Pkt. 25 cts., $\frac{1}{8}$ oz. 40 cts., $\frac{1}{4}$ oz. 65 cts.

National Agricultural Library
RECEIVED
MAY 21 1975
U.S. Department of Agriculture



Balcony Petunias

ROSE, DARK BLUE, CRIMSON

Separately at 15 cts. per packet
Collection of three for 35 cts.



*Aquilegia or
Columbine*

MRS. SCOTT ELLIOTT'S
LONG-SPURRED HYBRIDS

Long-spurred blossoms of delicate hues gracefully poised on slender stems, make this ever-popular perennial excellent for cutting as well as a show-piece in the garden in late spring and summer. This fine collection has been bred from the originator's strain.

Pkt. 15 cts., 1/4 oz. 35 cts.

FRANCIS C. STOKES & CO., Inc.

SEED GROWERS