

N K
3630
S78
1907
ENVI

UC-NRLF



QB 1 562







PAM B. 111
Ursae + Ursula

No
Envir. Des

Student's Alphabets

Copyright, 1907, by KEUFFEL & ESSER CO.

NK3630

S78

1907

ENVI

UGB

Envir. Des.

EGYPTIAN

A B C D E F G H I J K L

M N O P Q R S T U V W

X Y Z &

abcdefghijklmnopqrstuvwxyz

1 2 3 4 5 6 7 8 9 0



Digitized by the Internet Archive
in 2007 with funding from
Microsoft Corporation

<http://www.archive.org/details/studentsalphabet00keufrich>

BLOCK

A B C D E F G H I J K L

M N O P Q R S T U V W

X Y Z &

a b c d e f g h i j k l m n o p q r s t u

1 2 3 4 5

v w x y z

6 7 8 9 0



1

ROMAN

A B C D E F G H I J K L M N

O P Q R S T U V W X Y Z.

a b c d e f g h i j k l m n o p q r s t u

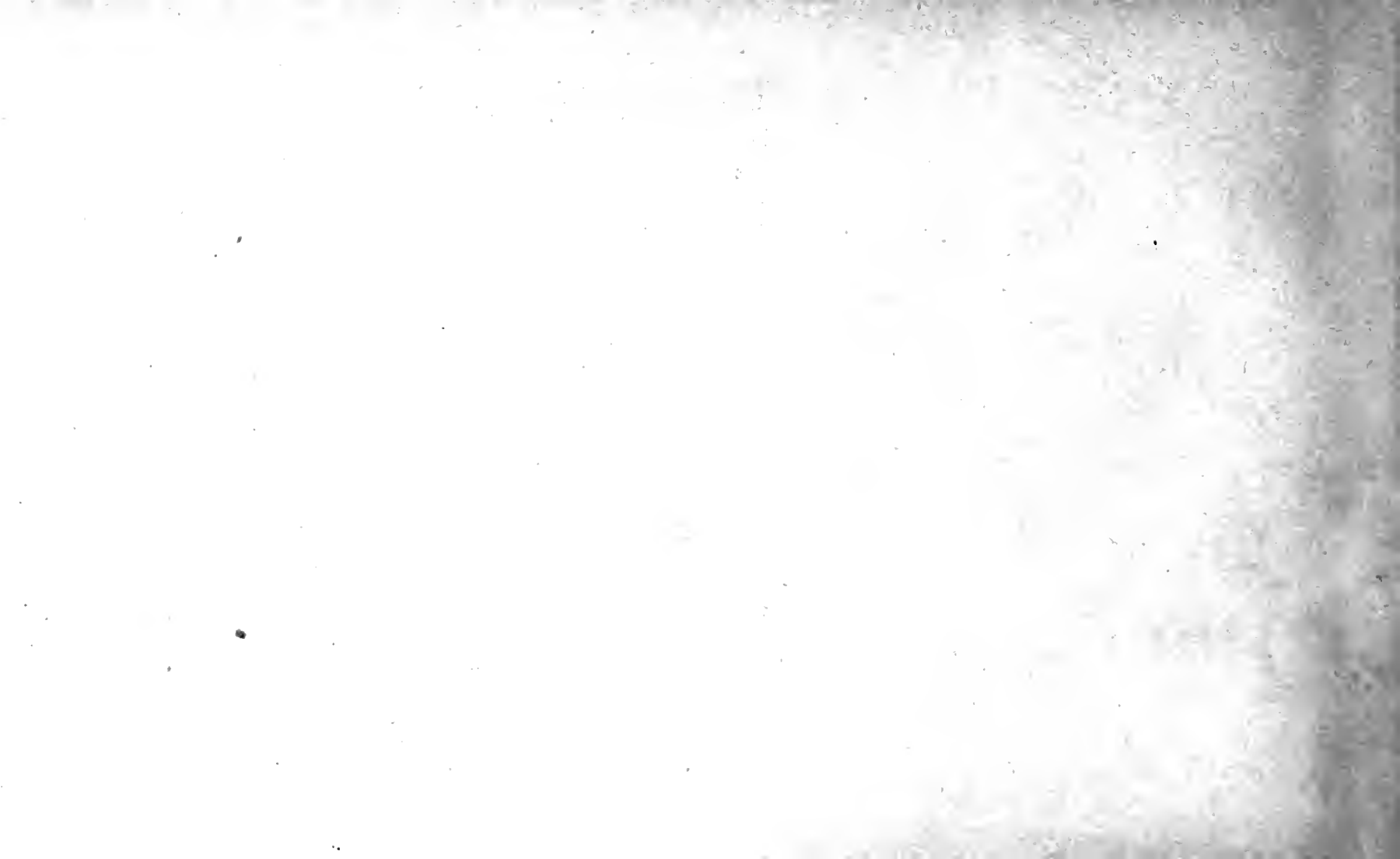
v w x y z &.

I · II · III · IV · V · VI · VII · VIII · IX · X · XV · XX · XXX · XL · L · LX · LXX

1 2 3 4 5 6 7 8 9 10 15 20 30 40 50 60 70

LXXX · XC · C · CXXV · CL · CC · CD · D · DCC · CM · M · MM.

80 90 100 125 150 200 400 500 700 900 1000 2000



German Text

A B C D E F G H I K

L M N O P Q R S T

U V W X Y Z.

abcdefghijklmnopqrstu

vwxyz.

67890



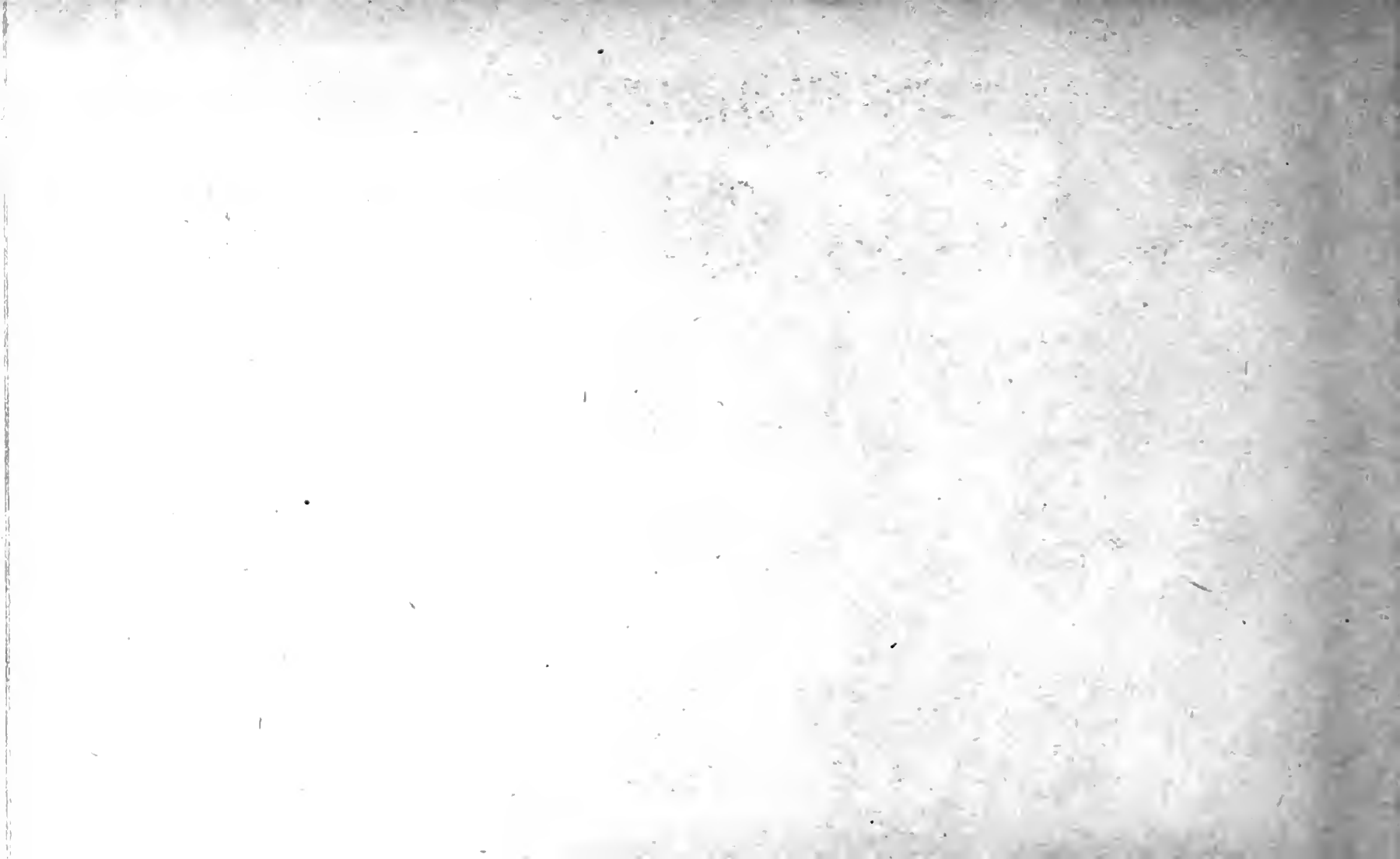
Old English

A B C D E F G H I K L

M N O P Q R S T U V

1 2 3 4 5 W X Y Z 6 7 8 9 0

abcd efghijklmnopqrstuvwxyz



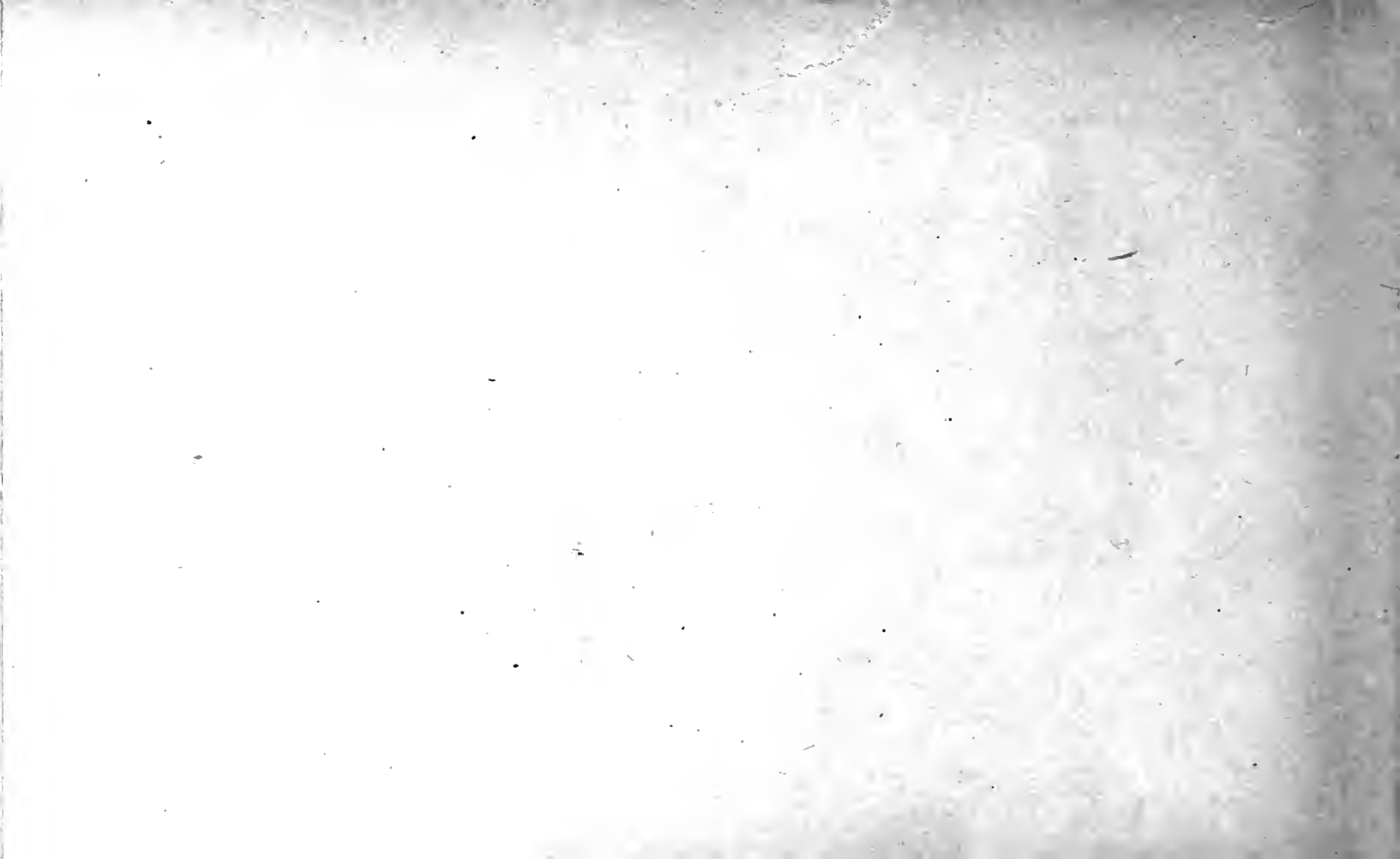
LETTERS VARIOUSLY SHADED

A B C D E F G

H I J K L M N

O P Q R S T U

V W X Y Z

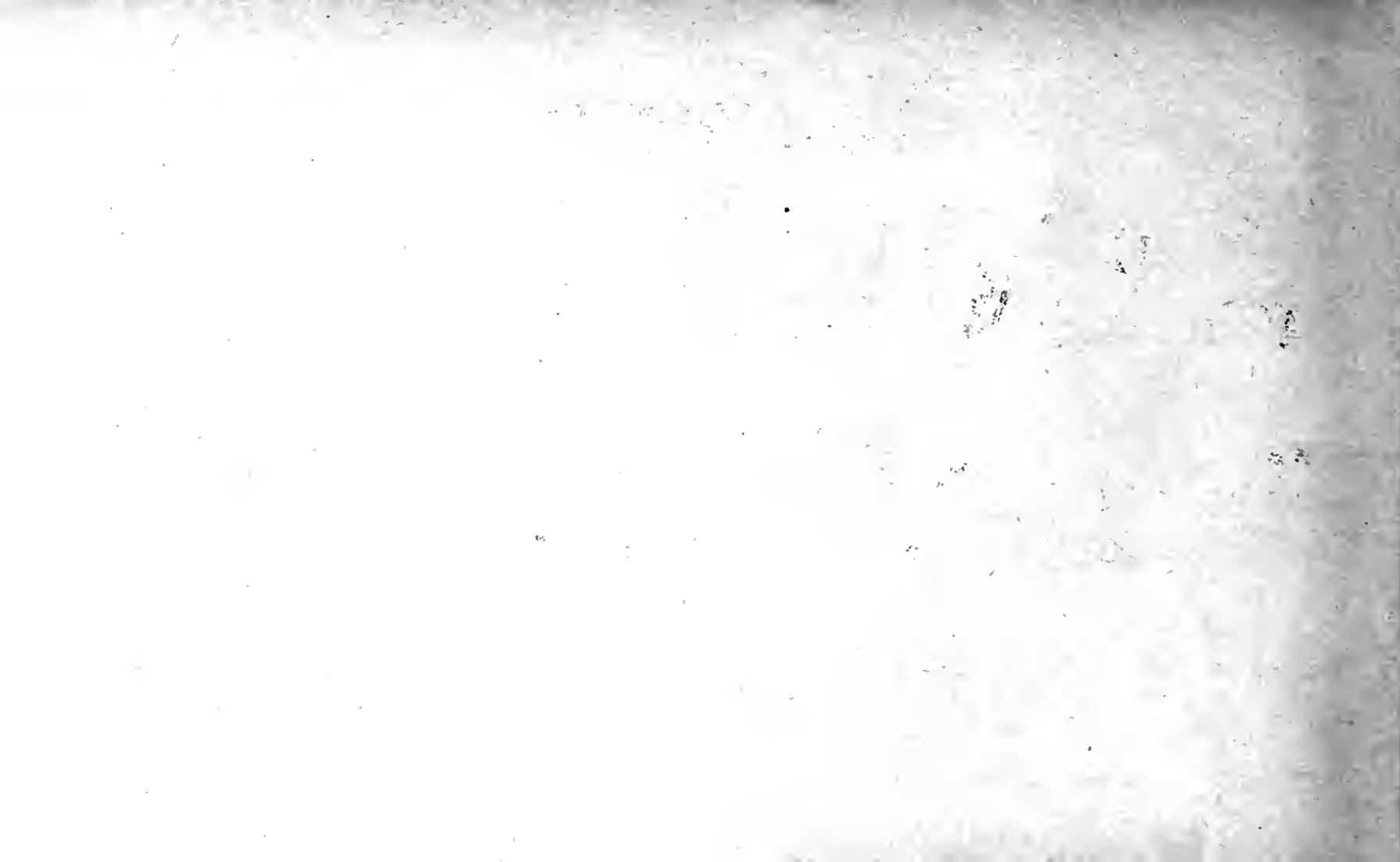


RUSTIC

A B C D E F G H I

K L M N O P Q R

S T U V W X Y Z

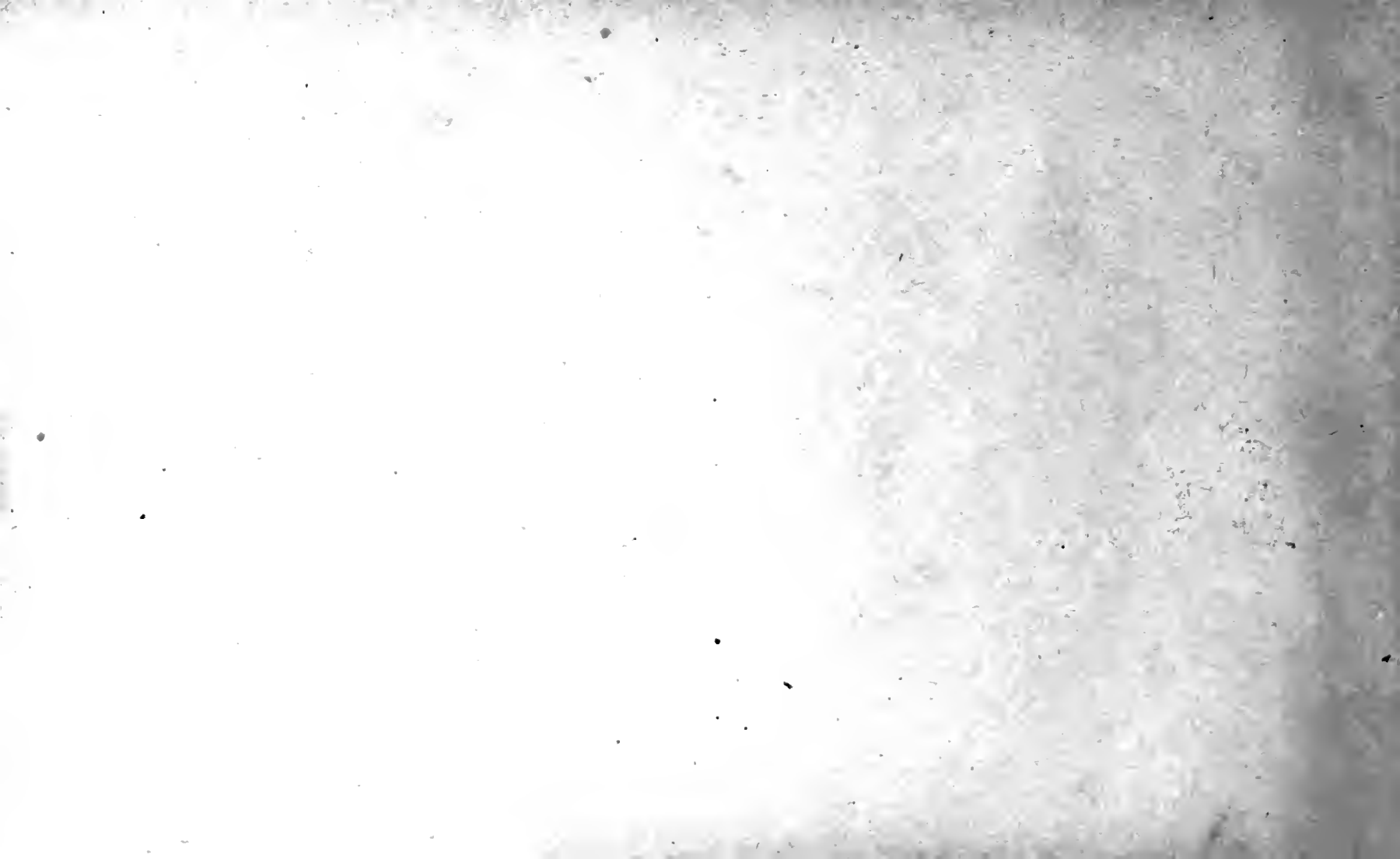


 rnemental

A B C D E F G H I

J K L M N O P R

S T U V W X Y Z



Round Writing

ROUND WRITING PENS



Each gross or $\frac{1}{2}$ gross box contains
Pens of one number only.

8330. Single Pointed Pens, No. 1, 1 $\frac{1}{2}$, 2, 3, 4, 5, 6, 8, 9, 4, 4, 5, 5 $\frac{1}{2}$, 6, any one number, per gross \$ 85 post paid \$ 1 00
8331. do. do. do. do. " $\frac{1}{2}$ " 85 " " 81
8332. Double-Pointed Pens, No. 10, 30, 80, 60, 70, 80, 90, any one number . . . " $\frac{1}{2}$ " 65 " " 71
" do. " " " " " " " " " " " " 35 " " 41
8333. Sample assortment of Single and Double-Pointed Pens, with Inkholder, 25 in a box \$ 85 post paid 41
8330. Methodical Text-Book to Round Writing by F. BOSSWORTH, (published by Keuffel & Esser Co., New York) including an assortment of 25 single and double-pointed pens. . . . each \$ 1 00 post paid \$ 1 10
8331. do. do. do. Book without pens . . . 85 " " 70
8332. do. do. do. do. bound in cloth, with an assortment of 25 pens . . . " 1 60 " " 1 78
8333. Copy Book without Instructions (School Ed.) including an assortment of 25 single and double-pointed pens . . . " 70 " " 80
8334. do. do. do. Book without pens . . . " 85 " " 39

K. & E. CO. STEEL PENS.

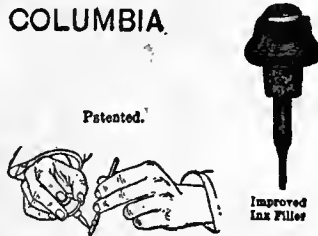


- No. 3200. No. 3202.
8300. Keuffel & Esser Co. Crow Quill Pens, 1 doz. in a box . . . doz. \$ 60.
8301. Keuffel & Esser Co. Crow Quill Pens, 1 doz. pens No. 3200 and Holder, on a card . . . card 60
8302. Keuffel & Esser Co. Drawing and Lettering Pens, 1 doz. in a box . . . doz. 60
8303. Keuffel & Esser Co. Drawing and Lettering Pens, 1 doz. pens No. 3202 and Holder, on a card . . . card 60
8304. Keuffel & Esser Co. Crow Quill Pens, No. 3200, with improved Holder with cork finger piece, each \$ 10
do. do. do. in a pen on a card 1 00

Pens No. 3200 and 3202 are specially made for Draftsmen for drawing and lettering on drawing paper, which has a more or less coarse surface. They have longer nibs and less sharp points than most others, possess great elasticity and permit of more rapid lettering or drawing, without scratching or catching in the grain of the paper. Draftsmen will prefer these pens to any other kind, as most others are intended principally for drawing on stone.

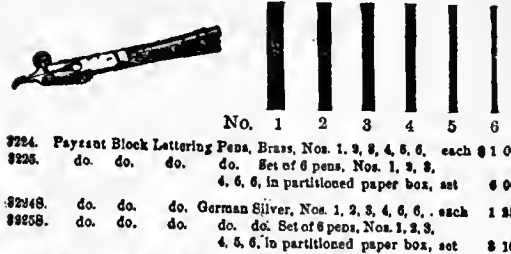
LIQUID INDELIBLE DRAWING INKS.

COLUMBIA



- Columbia Indelible Drawing Ink,
8000. Black each \$ 25
8001. Brown " 25
8002. Blue " 25
8003. Green " 25
8004. Scarlet " 25
3005. Carmine each \$ 25
3006. Yellow " 25
3007. Vermillion " 25
3008. Orange " 25
3009. Violet " 25
- Mailing charges (postage and regulation mailing box) 10
- Columbia indelible inks meet the requirements of a perfect drawing ink and are always ready for use and always uniform in quality and color. They flow freely, dry readily, and are not apt to gum. They therefore possess all features to recommend them as an always reliable ink for general drafting.

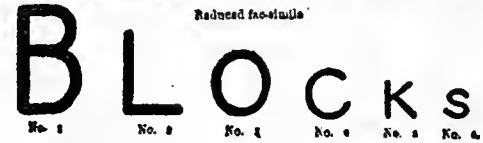
PAYZANT (FREEHAND) BLOCK LETTERING PENS with Ink Reservoir.



8224. Payzant Block Lettering Pens, Brass, Nos. 1, 2, 3, 4, 5, 6, each \$ 1 00
8225. do. do. do. do. Set of 6 pens, Nos. 1, 2, 3, 4, 5, 6, in partitioned paper box, set \$ 6 00
8224B. do. do. do. German Silver, Nos. 1, 2, 3, 4, 5, 6, each 1 35
8225B. do. do. do. do. Set of 6 pens, Nos. 1, 2, 3, 4, 5, 6, in partitioned paper box, set \$ 10

The Payzant Block Lettering Pens are particularly adapted for lettering Engineers' and Architects' Drawings, for border lines or any heavy linework, also for the use of merchants for writing price and show cards, etc.

The common method of forming block letters with a fine pen is slow and tedious work and but few draftsmen are capable of executing neat lettering with reasonable rapidity. With the block lettering pen a letter is formed at a single stroke. There is no dexterity or knack to acquire to use these pens, as they are as simple to operate as a pencil. All irregularities due to the draftsman's failure to produce equal width and parallel lines in forming letters, are avoided in work done with this pen, because all strokes in any direction are uniform in width and density. Work can be done in one-quarter of the time needed with the fine-pen method. It is unnecessary, even on the finest plans, to carefully outline the letters in pencil before inking, as a rough draft with guide lines is all that is needed. These pens are manufactured in six graded sizes: the following is a reproduction of letters made with them:



- ### KEUFFEL & ESSER CO.,
- 127 Fulton Street, CHICAGO, 111 E. Madison St.
General Office and Factories, ROBOKEN, N. J., 48-50 Second St. ST. LOUIS, 252 Notre Dame St. West, SAN FRANCISCO, MONTREAL.
- Drawing Materials,
Mathematical and Surveying Instruments,
Measuring Tapes.





14 DAY USE

RETURN TO DESK FROM WHICH BORROWED

ENVIRONMENTAL DESIGN LIBRARY

This book is due on the last date stamped below, or on the date to which renewed.

Renewed books are subject to immediate recall.

JUL 14 1973	DE UC BERKELEY
Aug 5 Sept 4 Oct 3	AUG 21 2000
	ENVI
MAR 21 1972	
DUE END RECALLABLE ONE WEEK AFTER	
FALL NOV 24 1975	
PERIOD	
JUN 20 1977	
LTC 01 1982	



C031474342

