

THE

S

U

W

W

I

T

1941



Registrar's Office

Presenting





The **S U M M I T** *1941*

JOHN RYMAN, Editor

REID LOWE AND JUNE PARKS,
Business Managers

BILTMORE COLLEGE - ASHEVILLE, NORTH CAROLINA



In Memory

of Dean Charles A. Lloyd, our beloved friend and teacher, whose untimely death on November 10, 1940, brought us so much sorrow. He inspired all those with whom he was associated to higher and more beautiful ideals.

He served Biltmore College untiringly from 1930-1940.

The Faculty

J. J. STEVENSON, JR., M.A.

Dean



- MAY CARTER BLACKSTOCK, Mathematics.
M.A., Brown University; B.A., Meredith College.
- VIRGINIA BRYAN, Dean of Women, English.
M.A., Columbia University; B.A., Erskine College.
- FRANK GOUGH, Voice and Glee Club.
U. of N. C., Peabody Conser., Curtis Inst.
- DR. KLAUS HILZHEIMER, German.
Ph. D., University of Jena, Germany; Drama School, Yale University.
- WILLIAM B. LOGAN, Engineering Drawing, Descriptive Geometry.
B.A., Furman University; National School of Art.
- E. RAY MANN, Mathematics, Physics.
Ph. D., Cornell University; M.A., B.A., University of North Carolina.

- W. ERNEST MERRILL, Biology, Chemistry.
M.S., Tulane University; B.S., Furman University.
- FRANK HOWARD RICHARDSON, Hygiene.
M.D., B.A., Cornell University; F.A.C.P., Zeugnis from Medical College of the University of Vienna.
- EDITH THOMAS STANFORD, French.
Graduate of College de Jeunes Filles, La Rochelle, France.
- ROBERT S. STEELE, Dramatics.
B.A., Ohio Wesleyan University.
- INA RANKIN TRENTHAM, History.
M. A., Duke University; B.A., Carson Newman College.
- FRANCIS S. WILDER, Economics, Psychology, Sociology.
Ph. D., M.A., University of North Carolina; B.A., Dartmouth College.







S O P H O M O R E S



Sophomore Class Officers

Daniel V. Ebb

President

Joseph M. Duncan

Vice-President

Ann Kerr Brown

Secretary

CLASS OF NINETEEN FORTY - ONE

HAROLD VERNON AIKEN
Bowling Team (2).



DEAN ALLISON
Production Staff of "Our
Town" (2).



LaVERNE BALLARD
Dramatic Club (1), Glee Club
(1) (2), Freshman Marshal, So-
cial Club (2), Business Staff of
BLUETS (2).



C. B. BARBRE
Assistant Editor of BLUETS
(2), Softball (1), Basketball "B"
Team (2).



RUTH BARTON
Dramatic Club (2), "Adeste
Fidelis" (2), Production Staff
of "Our Town", SUMMIT (2),
"Bury the Dead" (2).



MARY WIER BEAKLEY
Dramatic Club (1) (2), Social
Club (2), "Honey Chile" (1),
"Adeste Fidelis" (2), Drama
Festival (1) (2), Business Staff
of SUMMIT (2), Freshman Mar-
shal.



MARY ELIZABETH BENNETT
Glee Club (1) (2), Dramatic
Club (1) (2), Circulation Man-
ager of BLUETS (2), Social
Club (2), SUMMIT (2), Inter-
national Relations Club (2).



CLASS OF NINETEEN FORTY - ONE

JOHN BOHANNON
Basketball (1) (2), Manager
(1), Monogram Club (1) (2).



MARY BOHANNON
President of Social Club (2),
Girls' Athletic Council (1) (2),
Freshman Marshal, Activity
Fee Committee (1) (2), Busi-
ness Staff of SUMMIT (2).

ANNE KERR BROWN
Dramatic Club (1) (2), Social
Club (2), Vice-President of In-
ternational Relations Club (2),
Secretary of Sophomore Class
(2), Assistant Editor of SUM-
MIT (2), Girls' Athletic Coun-
cil (1) (2), Cheerleader (2),
"Our Town" (2).



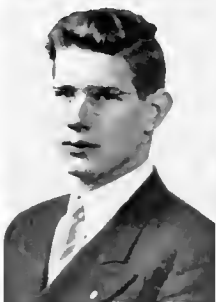
HAMILTON BRYSON

HARRY G. BUCKNER
Glee Club (1) (2).



ALMA LUCILLE COFFEY
Glee Club (1) (2), Dramatic
Club (2), Social Club (2), "Our
Town" (2).

FORREST CHARNOCK
Glee Club (1) (2).



MAY JOSEPHINE DeNARDO
Assistant Editor of BLUETS
(2), Accompanist of Glee Club
(1) (2), Dramatic Club (1) (2),
"Our Town" (2).

CLASS OF NINETEEN FORTY - ONE

BOB DRUITT
BLUETS (1).



JOSEPH M. DUNCAN
Vice-President of Sophomore Class, Basketball (1) (2), President of Monogram Club (1) (2), Activity Fee Committee (2), Athletic Council (1) (2), Captain of Basketball Team (2).

DANIEL V. EBBS
President of Freshman Class, President of Sophomore Class, Vice-President of Dramatic Club (1), President of Dramatic Club (2), Drama Festival (1) (2), "Honey Chile" (1), "Antic Spring" (1), "Bury the Dead" (2), "Our Town" (2), SUMMIT Staff (1), Basketball Team (1) (2), Captain (2), Softball Team (1), Tennis Team (2), Treasurer of Monogram Club (1) (2), Boys' Athletic Council (1), Activity Fee Committee (1), Chief Marshall (1), Glee Club (1).



MARGARET ROSE ENSLEY
Dramatic Club (1) (2), Glee Club (1) (2), "Our Town" (2), Social Club (2), Assistant Business Manager of Dramatic Club (1).

DALES Y. FOSTER
Basketball (1) (2), Softball (1) (2), Art Editor of SUMMIT (2), Monogram Club (1) (2), International Relations Club (2).



VINITA EZELL GREER
Dramatic Club (1) (2), International Relations Club (1) (2), Glee Club (1) (2), Social Club (2), "Women of Gloucester" (1), "Antic Spring" (1), "Our Town" (2), "Bury the Dead" (2), Drama Festival (1) (2).

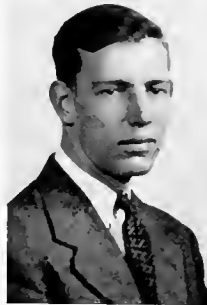
MARY LILLIAN HANCOCK
Dramatic Club (1), Glee Club (2).



JACK VINCENT HENDRICKS
Glee Club (1) (2), Dramatic Club (1) (2), "Honey Chile" (1), "Adeste Fidelis" (2), Drama Festival (1).

CLASS OF NINETEEN FORTY - ONE

JOHN JONES



REBECCA KEEVER

Dramatic Club (1) (2), Social Club (2), Secretary of Dramatic Club (2), Stage Manager of "Our Town" (2), International Relations Club (2), Drama Festival (1) (2), "Adeste Fidelis" (2), Assistant Editor of SUMMIT (2).

REID HARRISON LOWE
Dramatic Club (1) (2), Glee Club (1) (2), Social Club (2), "Antic Spring" (1), "Our Town" (2), Stage Manager of "Bury the Dead" (2), Co-Business Manager of SUMMIT (2).



EDNA MOORE

Dramatic Club (1) (2), Production Staff of "Our Town" (2).

JULIA ELIZABETH MORGAN
SUMMIT (1) (2).



EUGENIA MORRIS

Glee Club (1) (2), Social Club (2), Freshman Marshal.

MARK NAIMAN



JUNE PARKS

Co-Business Manager of SUMMIT (2).

CLASS OF NINETEEN FORTY - ONE

GROVER WOODSON PENLEY
 BLUETS (1), Editor of
 BLUETS (2).



ROBERT N. ROSEN
 International Relations Club
 (1) (2), Dramatic Club (2),
 Sage Crew (2), "Our Town"
 (2).

JOHNNIE RYMAN
 Tennis Team (1) (2), Editor
 of SUMMIT (2), Cheerleader
 (2), Monogram Club (1) (2), In-
 ternational Relations Club (2).



MARK SMITH
 Glee Club (1) (2), Basketball
 "B" Team (1).

**MARGARET FRANCES
 THOMPSON**
 Social Club (1) (2), Dramatic
 Club (1) (2), "Women of
 Gloucester" (1), "Bury the
 Dead" (2), "Our Town" (2),
 Drama Festival (2), Stage Man-
 ager of "Bury the Dead" (2).



GILMER WEATHERLY, JR.
 Glee Club (1) (2).

BILL WESSON
 Tennis Team (1) (2), Ath-
 letic Council (2), Dramatic
 Club (2).



CLASS OF NINETEEN FORTY - ONE

S U P E R L A T I V E S

*Best
All-Round*
Anne Kerr Brown
Dan Ebbs



*Betty Co-Ed
& Joe College*
Mary Weir Beakley
June Parks

*Most
Attractive*
Mary Bohannon
John Ryman



*Most
Athletic*
Anne Kerr Brown
Dales Foster

*Most Likely
to Succeed*
May Jo DeNardo
Mark Naiman



*Most
Friendly*
Vinita Greer
Robert Rosen

*Most
Dignified*
Mary Bohannon
Vernon Garrett



*Most
Dependable*
LaVerne Ballard
C. B. Barbre

*Most
Personality*
Julia Morgan
Dan Ebbs



*Most
Original*
Vinita Greer
Grover Penley



FRESHMEN



Freshmen Class Officers

Sease Koon

President

Rodney Roberts

Vice-President

CLASS OF NINETEEN FORTY - TWO

FRESHMEN

HARRY MOTT ADAMS Washington Irving High School
RAYMOND BASSETT Grace High School
HELEN BELL Lee Edwards High School



DOUGLAS BEVERLY Lee Edwards High School
ANNE ELIZABETH BOHANNON Lee Edwards High School
SELMA BOYD Valley Springs High School



ARTHUR BRIDGERS Lee Edwards High School
CECIL BRIGGS Lee Edwards High School
MAXINE BROOKSHIRE Leicester High School



EVA JANE BROWN Lee Edwards High School
ELIZABETH MANOA BURCHARD Lee Edwards High School
GUY BURCHFIEL Oakley High School



GLORIA CAPLAN Lee Edwards High School
RACHEL ROBERTSON CARTER Biltmore High School
MARY CLARDY Lee Edwards High School



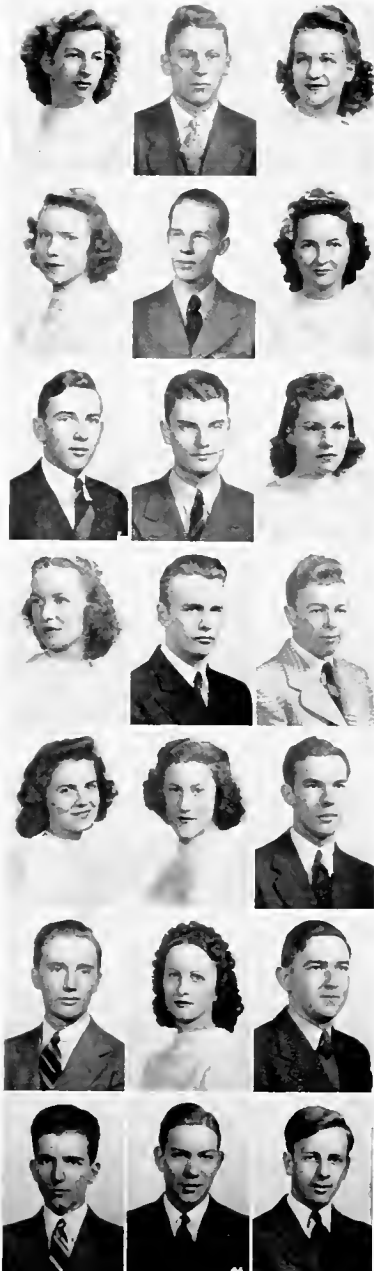
DAVID B. CLAYTON Lee Edwards High School
H. L. FERGUSON Lee Edwards High School
VERNON W. GARRETT Liberty High School



DONALD GILLETTE Lee Edwards High School
SIDNEY R. GOLDSTEIN Lee Edwards High School
FRED E. GORTER Lee Edwards High School



FRESHMEN



IVA LEE GREEN Sylva High School
 O. D. GRIFFIN Biltmore High School
 MARGARET REYNOLDS HALL Lee Edwards High School

BETTY REID HOYLE Lee Edwards High School
 EDMOND D. JACKSON Lee Edwards High School
 JOYCE JOHNSON Bowman High School

THOMAS JOHNSON Lee Edwards High School
 STANLEY KAHN Lee Edwards High School
 MARTHA KELLY Lee Edwards High School

KATHERINE KING Lee Edwards High School
 RALPH LAMSON Lee Edwards High School
 LOUIS LIPINSKY Lee Edwards High School

RAMOTH LOWE Lee Edwards High School
 JANE McINTIRE Lee Edwards High School
 JAMES MANN Lee Edwards High School

RAGLAND MEDICUS Lee Edwards High School
 RUTH MONTGOMERY Lee Edwards High School
 RALPH NOLLNER, JR. Lee Edwards High School

ROBERT OLIVER Lee Edwards High School
 BYRON OSBORNE Lee Edwards High School
 EUGENE RAY Lee Edwards High School

FRESHMEN

FRANCES RICKMOND Lee Edwards High School
 RODNEY ROBERTS Emma High School
 FRANK P. RYMER Lee Edwards High School

ROBERT B. RYMER, JR. Christ School
 PATTY McFARLAND SCHARLE Lee Edwards High School
 ROBERT LEE SMITH, JR. Lee Edwards High School

JOSEPH JAMES STONE, Jr. Lee Edwards High School
 ROY E. SWARTZBERG, JR. Lee Edwards High School
 HELEN UNDERWOOD Lee Edwards High School

ALVIN WARREN Valley Springs High School
 MARIE WATKINS Woodfin High School
 FREDDY ELLEN WEAVER Lee Edwards High School

FRANCES WHITAKER Biltmore High School
 D. J. WILSON Canton High School
 GEORGE C. WINSTON Lee Edwards High School



Summit Staff

Johnnie Ryman Editor
June Parks, Reid Lowe Business Managers

Patty Scharle
Anne Kerr Brown
Gloria Caplan
Anne Bohannon
Rebecca Keever
Dales Foster

Associate Editor
Assistant Editor
Assistant Editor
Assistant Editor
Assistant Editor
Art Editor

Editorial Staff
Ruth Barton, Julia Morgan, Ramoth Lowe
Business Staff
Vinita Greer, Mary Elizabeth Bennett, Ruth
Montgomery, Martha Kelly, Mary Wier
Beakley, Mary Bohannon, Katherine King



Bluets Staff

SPRING SEMESTER

EDITOR-IN-CHIEF
Grover Penley

ASSISTANT EDITORS
Patty Scharle
Gloria Caplan
Jimmy Stanford
May Jo DeNardo

BUSINESS MANAGER
Sidney R. Goldstein

BUSINESS ASSISTANTS
Eugene Ray
Mary Bennett
LaVerne Ballard

ART EDITOR
Ben Blankenship

FALL SEMESTER

CO-EDITORS
Grover Penley
Patty Scharle

ASSISTANT EDITORS
Gloria Caplan
Jimmy Stanford
C. B. Barbre
May Jo DeNardo
Selma Boyd

BUSINESS MANAGER
Sidney R. Goldstein

BUSINESS ASSISTANTS
Eugene Ray
Mary Bennett
Harriet Kent
LaVerne Ballard

FACULTY ADVISOR
Miss Virginia Bryan





Biltmore Dramatic Club

OFFICERS

President ----- Dan Ebbs
 Vice-President ----- Harry Adams
 Secretary ----- Rebecca Keever

MEMBERS

Harry Adams
 Ruth Barton
 Mary Wier Beakley
 Ben Blankenship
 Mary Bohannon
 Selma Boyd
 Anne Kerr Brown
 Janie Brown
 Gloria Caplan
 Alma Coffey
 May Jo DeNardo
 Dan Ebbs

Margaret Ensley
 Sidney Goldstein
 Vinita Greer
 E. C. Green
 Jack Hendricks
 Martha Kelly
 Rebecca Keever
 Reid Lowe
 Ruth Montgomery
 Edna Moore
 Dorothy McClain
 Ted Patton

Robert Rosen
 Patty Schartle
 Harvey Scherr
 Jimmy Stanford
 Bob Smith
 Roy Swartzburg
 Margaret Thompson
 Freddy Ellen Weaver
 June Parks
 Bob Oliver
 Frank Rymer

ACCOMPLISHMENTS

Presented Thornton Wilder's Pulitzer prize play, "Our Town", as fall production.
 Won first place in playwriting contest at Chapel Hill with Freddy Ellen Weaver's "Adeste Fidelis".

Presented series of radio broadcasts over Station W. W. N. C.



"B" Club

OFFICERS

President ----- Joe Duncan Treasurer ----- Dales Foster
 Vice-President ----- Dan Ebbs Secretary ----- John Ryman

MEMBERS

Joe Duncan	John Ryman	Moss Miller	George Parker	Rodney Roberts
Dales Foster	John Bohannon	Bill Wesson	Guy Burchfiel	Louis Lipinsky
Dan Ebbs	Robert Rymer			Martin West

Basketball

Left to right: Duncan, Foster, Burchfiel, Miller, Bohannon, Parker, Presnell, Lipinsky, Coach Nooney.





Glee Club

OFFICERS

President Alma Coffey
 Vice-President Gilmer Weatherly
 Secretary Ben Blankenship
 Accompanist May Jo DeNardo

MEMBERS

LaVerne Ballard
 Betty Burchard
 Katherine Carson
 Alma Coffey
 May Jo DeNardo
 Margaret Ensley
 Iva Lee Green

Mary Hancock
 Helen Underwood
 Ben Blankenship
 Forrest Charnock
 Vernon Garrett
 Jack Hendricks

Thomas Johnson
 Stanley Kahn
 Reid Lowe
 Eugenia Morris
 Glenn Penland
 Mark Smith
 Gilmer Weatherly



International Relations Club

OFFICERS

President ----- Harvey Scherr
 Vice-President ----- Anne Kerr Brown
 Secretary ----- Jimmy Stanford

MEMBERS

Harvey Scherr
 Gloria Caplan
 Jimmy Stanford
 Thomas Patton
 Mark Naiman
 Robert Rosen
 Anne Kerr Brown
 Marshall Gravatt

Rebecca Keever
 Patty Schartle
 Johnnie Ryman
 Betty Hoyle
 Janie Brown
 May Jo DeNardo
 Frank Rymer
 Dales Foster

E. C. Green
 LaVerne Ballard
 Ben Blankenship
 Ramoth Lowe
 June Parks
 Dan Ebbs
 Mary Bennett
 Forrest Charnock



Social Club

OFFICERS

President ----- Mary Bohannon
 Secretary and Treasurer ----- Mary Beakley
 Faculty Adviser ----- Mr. Ernest Merrill

MEMBERS

Mary Beakley
 Mary Bennett
 Ben Blankenship
 Anne Bohannon
 Mary Bohannon
 Anne Kerr Brown
 Gloria Caplan
 Alma Coffey

Margaret Ensley
 Marshall Gravatt
 Iva Lee Greene
 Vinita Greer
 Jack Hendricks
 Betty Reid Hoyle
 Rebecca Keever
 Reid Lowe

Ernest Patton
 Robert Rosen
 Johnnie Ryman
 Patty Schartle
 Jimmy Stanford
 Roy Swartzburg
 Margaret Thompson

Compliments of
A FRIEND

THIRST ASKS

NOTHING MORE . . .

Coca-Cola

in bottles

COCA-COLA BOTTLING CO.

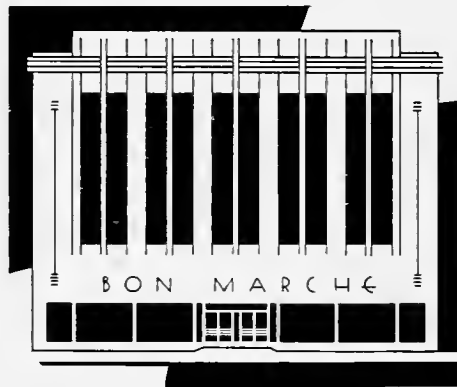
Asheville, North Carolina

B E L K ' S

ASHEVILLE'S

FASHION-VALUE

STORE



Bon Marche

Asheville's Quality Department Store

WISHING
BILTMORE COLLEGE
CONTINUED SUCCESS

IVEY'S
INC.

"One of the Carolinas' Predominating
Stores"

A WORD OF APPRECIATION TO BILTMORE COLLEGE . . .

We are grateful for the opportunity you have so generously given us to serve you during the past year. It has been most pleasant relations that we shall long remember, and we trust these relations may be renewed when you return in the fall. Again we say thank you!



Studio in the Arcade Building



CECIL'S BUSINESS COLLEGE

Train for business --- the richest field in the world. Opportunity for employment never greater than preparation. A business course is the safest, sanest and quickest way to a successful career. Send for catalog.

Address CECIL'S, Asheville, N. C., or Spartanburg, S. C.

Compliments of

GRACE COAL COMPANY

Compliments of

MALVERN SPRINGS COTTAGES

U. S. Hi-Way 19 and 23

Asheville, North Carolina



FIRST
BECAUSE IT'S
FINEST

PARKLAND Chevrolet Co.

50 Coxe Avenue

Asheville, North Carolina



Compliments of

S. H. KRESS & CO.

**Matthews Motor
Sales**



Coxe & Hilliard

PHONE 5200

HAYES & HOPSON
INCORPORATED

Everything Automotive

14-16-20 Spruce Street

Asheville, North Carolina

Compliments of

**Allied-Asheville Van
Lines**

192 Coxe Avenue

Asheville, North Carolina



**Thomas Buick
Company**

Coxe Avenue

**BILTMORE COLLEGE
STUDENTS**

Always Welcome

**KENILWORTH
DRUG STORE**

If You're Looking for a Home see

R. P. BOOTH & CO.
REALTORS

Arcade Building

Phone 73







