

Historic, archived document

Do not assume content reflects current scientific knowledge, policies, or practices.



Superior Fruits and Ornamentals

For Orchard, Garden and Home Plantings

A Personal Message from the Harrison Brothers

ORCHARDISTS

ESTABLISHED 1884

NURSERYMEN

Harrison's
NURSERIES, INC.

GROWERS OF

QUALITY FRUIT AND ORNAMENTAL NURSERY PRODUCTS

BERLIN, MARYLAND October 15, 1936

Dear Friends:

We indeed appreciate the thousands of orders that our friends and customers sent to us last season, and it is with the utmost pleasure we send you all this condensed circular which is full of worth while fruits and ornamentals for orchards, gardens and home plantings.

The confidence that you placed in us is fully appreciated and we know that you will be well pleased with the fine assortment of Quality Fruits and Ornamentals that we have growing to fill your orders with this season.

HARRISONS' Fruit Trees and Small Fruits are true to name, earlier to bear, and yield larger crops because they are scientifically propagated from SUPER SELECTED STRAINS. Likewise the parent plants used for propagating our Ornamentals are of the finest types for their respective varieties.

Now is the time to check up on the missing trees in your orchard or plan the new one. Make a survey of your yard and determine what you need in the way of shade trees, evergreens, hedges, shrubs, flowers, etc. With prices of all things going up, we believe that it would be wise to purchase your stock now.

Again we are emphasizing the greatest values at a low price. By producing in large quantities we are prepared to give you better stock for less money, and remember, Harrison's Trees, Plants and Shrubs are grown, packed and shipped by experts with a lifetime experience in nursery work.

No matter what you pay for your trees, plants and shrubs they are a distinct loss if they fail to give you satisfaction, and it is with this in mind, knowing well that our stock will give you entire satisfaction, that we ask you to send us your order today.

Yours for a more fruitful and beautiful America.

Sincerely yours,

HARRISONS' NURSERIES, Inc.

By *E. Hale Harrison*

GHH/DRC

Plant Now.

Fall and early winter during the months of November and early December are recognized by the most experienced planters as one of the best times for planting most varieties of fruit and ornamental nursery stock. By planting at this time you can be sure that the trees, plants and shrubs that you buy are in ripe condition for transplanting. If they are dug before the sap flow normally stops there is a possibility that much damage will be done to the plants in transplanting.

In states bordering and just south of the Mason-Dixon line practically all items can be planted anytime during the winter that the ground is free from frost.

Do not let a few light frosts and freezes delay your planting this year.

Fall and winter planted stock has one great advantage over spring planted stock in that it will start to grow earlier in the spring. It is a well known fact that the roots on all trees, plants and shrubs grow during the winter time and get well established before the late spring droughts.

It is a mistaken idea among many planters that nursery stock should be planted early in the fall. However, this is entirely wrong as it is necessary to let the stock be fully matured before it can be safely planted. After a few cold periods and before the ground is frozen is the ideal time for planting deciduous stock.

OUR LARGE ORGANIZATION OF TRAINED NURSERYMEN ARE PREPARED TO GIVE YOUR ORDER, LARGE OR SMALL, PROMPT, EFFICIENT SERVICE.

Profits In Fruit Growing

Growers, if you are not making money something is wrong. Other growers are making money—BIG MONEY—and you can do likewise if you will produce something that the people want and are willing to pay for. What is the use of wearing out yourself and your land on crops that pay from \$10.00 to less than nothing per acre? Grow a few acres of fruit along with your other crops.

Fruit will give you a bigger cash profit than any other crop you can grow. You'll make more actual money from an acre of fruit than you will from 10 to 20 acres of ordinary farm crops. Show us a prosperous farmer and we will show you a fruit farmer. The reason for this is plain and simple—there is a big surplus of ordinary farm crops, while on the other hand there is developing a shortage of fruits.

There are no secrets involved in making big money with fruits. Plant our selected-strain varieties and success is assured. Thousands of other farmers with land like yours and with the same training and ability have paid for their farms and become independent growing fruit.

Improve the Appearance Of Your Home Grounds

The vogue for beauty, outside the home, as well as within, is upon us—and this new vogue finds its most charming expression in the modern outdoor living room.

This new fashion results from more than the public's consciousness of "back-yard" barrenness. It is the home-owner's own solution to the problem of how to get the most value out of his property and the most enjoyment out of living. The charm of evergreens, flowering plants and trees, tastefully arranged to create a veritable living room outdoors is irresistible; and the prospect of planting a place outdoors which is attractive, livable and comfortable—where the family can find countless hours of enjoyable pleasure.

More For Your Money

We wish it were possible that everyone who is interested in planting fruits or ornamentals could come to Berlin and personally look over the hundreds of acres of nursery stock which we have growing here. Thousands of visitors acclaim admiration at the manner in which our stock is grown. Our vast commercial orchards of the finest strains of fruits obtainable, which were secured from all parts of the world, offer us a storehouse of information and furnish us the best possible mother trees. This assures our trees not only of being true to name but enables them to come into bearing one to three years sooner than trees propagated from scion blocks or from nursery rows where it has been several generations since the variety to be propagated has fruited. Remember, an orchard is a long time investment and the trees must make good or the whole venture is a financial loss.

Volume production along with favorable climatic and soil conditions enable us to reduce our selling price to the very minimum and yet grow trees, plants and shrubs that are of the very finest quality.

It may be possible to buy a tree that looks as good but it's the parentage of the tree that determines in a large way its fruitfulness and moneymaking possibilities after it is planted in your orchard.

HARRISONS' NURSERIES, Inc.,

BERLIN, MARYLAND

HARRISONS' PEACHES

Plant Peaches for Large Profits

RIO OSO GEM

A TREMENDOUS MONEY MAKER FOR GROWERS

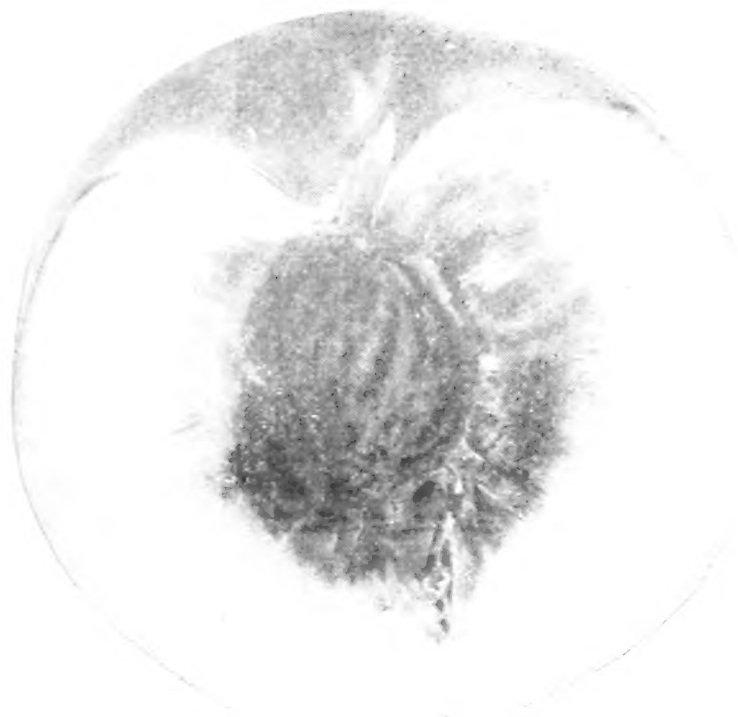
Commercially speaking, Elberta just about ends the peach deal each year, consequently growers for several generations have been anxiously looking for a late ripening, yellow freestone peach of large size, high red color and good flavor, to extend their shipping season and have eventually found it in the newly discovered marvelous Rio Oso Gem.

Protected by U. S. Plant Patent No. 84.

The Rio Oso Gem has been protected by the Government against infringements by U. S. Plant Patent laws for a period of seventeen years from the date Patent was granted, being November 28, 1933. It is unlawful for anyone to propagate and sell the Rio Oso Gem, U. S. Plant Patent No. 84, peach trees without obtaining written permission from the owner.

Harrisons Nurseries, Inc., Berlin, Maryland, have the exclusive propagating and sales rights of the Rio Oso Gem, U. S. Plant Patent No. 84, peach trees for the following states:

Alabama, Arkansas, Connecticut, Delaware, District of Columbia, Florida, Georgia, Kansas, Kentucky, Louisiana, Maryland, Maine, Massachusetts, Mississippi, New Hampshire, New Jersey, New York, North Carolina, Oklahoma, Pennsylvania, Rhode Island, South Carolina, Tennessee, Texas, Vermont, Virginia and West Virginia.



RIO OSO GEM

World's Largest Peach

LARGER THAN J. H. HALE. The Rio Oso Gem is a perfect freestone form is globular, slightly elongated, of extremely large size, averaging in diameter from 2 3/4 to 3 3/4 inches, deep yellow flesh, very fine grain, firm texture, with very excellent flavor, being rich, juicy, sweet and slightly spicy.

The coloring is unique, being a beautiful dark crimson-red, running out to lighter crimson and into a rich mottle of crimson over the orange-yellow ground color. It is a heavy bearer and a good transcontinental shipper.

RIPENS 2 WEEKS LATER THAN ELBERTA. The Rio Oso Gem would be a peach of commercial importance when ripening at any time during the peach season, but is very fortunate that it ripens two weeks later than Elberta, which puts it at a time when there is no other variety of commercial importance as a competitor, and fills a long looked for gap in commercial production, ripening when the markets are clamoring for peaches—this variety has sold at very much higher prices than Elberta and J. H. Hale. To prolong your peach shipping season, we highly recommend to you planting the Rio Oso Gem. Harrisons have planted several thousand Rio Oso Gem in their own famous orchards. We have the utmost faith in the Rio Oso Gem and we will plant more trees this season.

PRICES OF RIO OSO GEM: Only 25c per tree higher than standard varieties.

HILEY

BEARS HUGE CROPS OF FANCY PEACHES

Early white, freestone, medium size highly red colored and is a very handsome peach of exceptionally good flavor. Tree is strong grower, very healthy and an extra heavy bearer. You can depend on Hiley to bear heavy crops year after year. The marvelous color and wonderful flavor have made it popular on the markets.

EXCELLENT SHIPPER

Hiley has the stamina to withstand long hauls under refrigeration better than any other white peach. It is easily packed in six-gallon carriers, bushels or half bushels and has met with wide-spread demand on the American markets. Southern growers claim Hiley is now their most profitable peach.

One of the Best Varieties for Southern Planting

For planting in orchards south of Pennsylvania we can unhesitatingly recommend planting Hiley.

We offer Hiley trees that were propagated from the original strain. Add Harrisons' strain of Hiley to your commercial planting for real profit.



HARRISONS' SELECTED STRAINS OF PEACHES YIELD LARGER AND BETTER CROPS

It Pays To Plant the Best Trees

Harrisons peach trees are the best peach trees you can plant in your orchard. Our superior Berlin climate and soil plus Harrisons' method of propagating, planting, budding, spraying, pruning, digging, grading and packing are what make the fine trees. If we could get you to come to Berlin we would show you all the details. If you cannot come and will send us your order we will stake our reputation on the promise that you will get the very best trees that can be grown.

SELECTED VARIETIES

- | | |
|---------------------------------|------------------------------------|
| Very Early | Veteran. Yellow. |
| Early Rose. White. | Midseason |
| Greensboro. White. | Belle of Georgia. White. |
| June Elberta. Yellow. | Elberta. Yellow. |
| Mayflower. White. | J. H. Hale. Yellow. |
| Red Bird Cling. White. | Old Mixon Free. White. |
| Uneeda. White. | Ray White. |
| Early | Midseason Late |
| Carman. White. | Brckett. Yellow. |
| Cumberland. White. | Crawfords Late. Yellow. |
| Eclipse. Yellow. | Roberta. Yellow. |
| Golden Jubilee. Yellow. | Shippers Late Red. Yellow. |
| Hiley. White. | Late |
| Mamie Ross. White. | Beer Smock. Yellow. |
| South Haven. Yellow. | Berks Favorite. White. |
| Vedette. Yellow. | Fox Seedling. White. |
| Valiant. Yellow. | Iron Mountain. White. |
| Early Midseason | Rio Oso Gem. Yellow. (Pat.) |
| Champion. White. | 25c per tree extra. |
| Crawfords Early. Yellow. | Salberta. Yellow. |
| Early Elberta. Yellow. | Very Late |
| Hale Haven. Yellow. | Krummels. Yellow. |
| Rochester. Yellow. | Salwey. Yellow. |
| Slappy. Yellow. | White Heath Cling. White. |

Better Trees For Less Money

PRICES OF HARRISON GROWN PEACH TREES (Except Rio Oso Gem)

	1 to 9 trees	10 to 49 trees	50 to 299 trees	300 to 599 trees	600 or more trees
1 1/2 to 2 ft.	\$0.25	\$0.20	\$0.15	\$0.12	\$0.10
2 to 3 ft.	.30	.25	.20	.17	.15
3 to 4 ft.	.35	.30	.25	.22	.20
4 to 5 ft.	.40	.35	.30	.27	.25
5 to 6 ft.	.50	.40	.35	.32	.30
6 to 7 ft.	.60	.50	.40	.37	.35

Can be assorted Peaches or other fruit trees.

ELBERTA

THE GREATEST AND BEST MONEY-MAKING PEACH

Yellow, freestone, Midseason. Fruit is large to extra large; golden yellow with brilliant shades of red; firm, juicy, rich, sweet and good flavor. Elberta has the greatest international reputation of any peach. It has been the standard for all other peaches almost since the date of its introduction. The coloring of Elberta is practically perfect. The rich, yellow skin is almost entirely covered with dark red blush upon the sunny side. This attractive appearance and the uniform large size serve to sell it almost on sight.

BEST FOR COMMERCIAL PLANTINGS

Tree is vigorous, very hardy, sturdy, thrives in widely different localities. Elberta is hardier in bud than most varieties, and is a uniform prolific bearer. You can always depend on Elberta as a sure cropper.

ELBERTA IS THE BEST LONG DISTANCE SHIPPER

The large fruit, being uniform in size and shape, along with its high attractive red color and firmness, also its ability to stand shipments of three thousand or more miles under refrigeration in cars for two or three weeks before being consumed, but with stamina enough to still look its best, has won Elberta the reputation of being a peach without a peer and the variety which is always in favor and strong demand with the buying public, therefore demanding the highest possible market prices. Elberta is by far the best canning peach.

We believe we have the best strain of Elberta obtainable. In our own commercial orchards we have tens of thousands of this strain; it was obtained from the late Samuel H. Rumph of Marshallville, Georgia, the originator of Elberta, from the original tree and budded in our nurseries.



GOLDEN JUBILEE

Commercial peach orchardists for a century have been looking for an early peach of high quality, fine flavor, yellow, freestone, attractive color, and firm texture, and eventually they have found it in the marvelous Golden Jubilee. This variety is a sensation of recent introduction of new varieties and is by far better than any early variety of commercial importance which has been introduced in many years. It ripens about four days ahead of Carman.

J. H. HALE

EXTRA LARGE SIZE

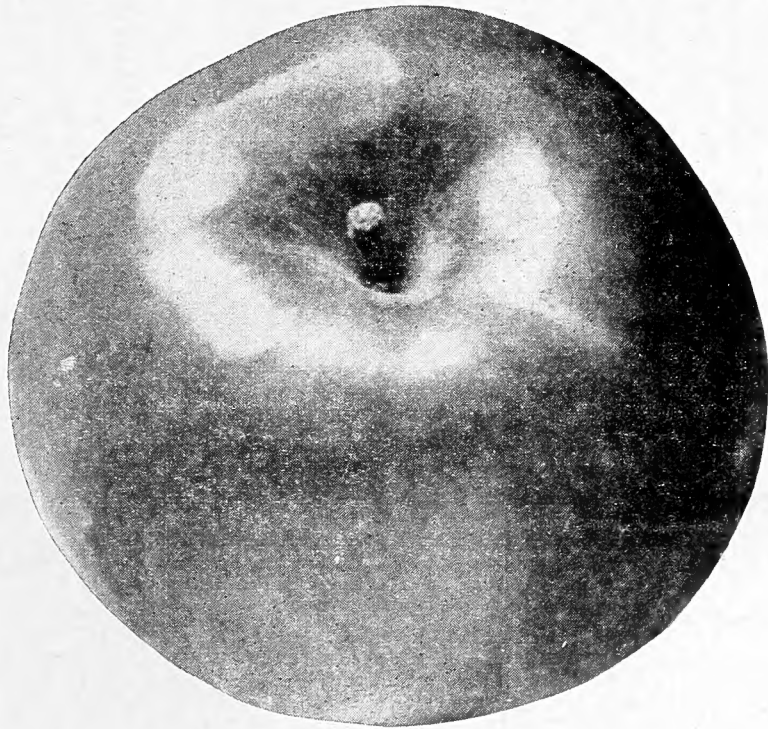
Yellow, freestone, extra large, beautiful red coloring, firm and of the highest quality and enticing flavor. J. H. Hale ripens about two or three days prior to Elberta.

ORIGINAL STRAIN J. H. HALE

Our Hale are propagated direct from the original strain, the variety being originated by the late J. H. Hale of South Glastonbury, Connecticut and Fort Valley, Georgia, who at one time was the "Peach King" of America. There are many types and strains of J. H. Hale grown, but the only one worthy of commercial importance is the original strain, which is the extra large, round, highly colored peach. The original strain necessitates cross-pollination and it is necessary, for proper results, to plant a few Belle of Georgia or Hiley along with Hale for cross-pollination.

HARRISONS' APPLES

True-to-Name—Earlier to Bear—Yield Greater Profits



McINTOSH RED

A fall variety in New York, Michigan and New England States. An exceedingly valuable hardy, attractive apple; medium large size; 100 percent red color when ripe. Flesh white, fine tender, juicy, sub-acid and refreshing, and generally considered as the highest and best flavored apple grown; splendid appearance, which sells it on sight. Demand always exceeds the supply of McIntosh Red and commands the highest prices of any apple on the leading American markets.

HARDY—VIGOROUS

Tree is exceedingly hardy, vigorous, a very prolific bearer, consistent bumper crop producer, a sure annual cropper. Comes into fruiting at an early age.

RED YORKING

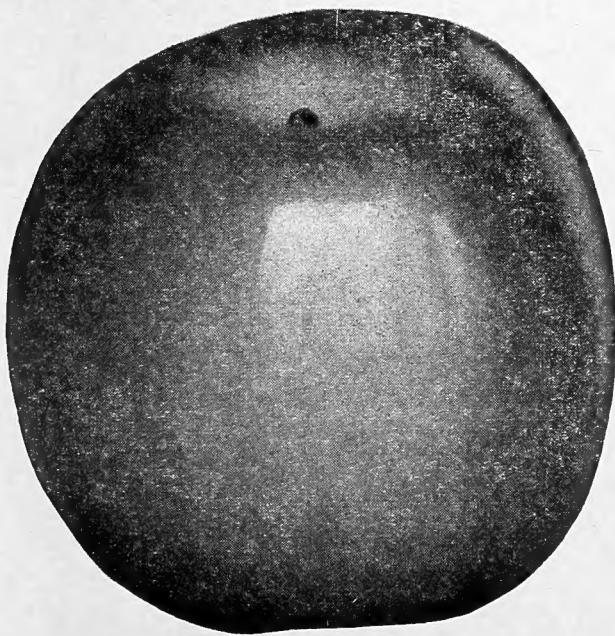
(U. S. Plant Patent No. 125)

THE GLORIFIED YORK IMPERIAL

The Red Yorking is a "bud sport," being a mutation of the famous York Imperial. This "bud sport" originated on a tree, grown with other York Imperial trees, in Harrison's Nurseries and later sold to Mr. W. H. Allison, near Shippensburg, Pennsylvania, for use in planting a large orchard about twenty-five years ago.

EARLIER COLORING—MORE EXTRA FANCY FRUITS

The "Red Yorking" is similar to its parent in size and shape but its chief distinction is that it has very much better red color, being mostly 100 percent bright red color. The Red Yorking takes on high red color from three to five weeks earlier in the fall than York Imperial, which is a distinct advantage in selling, as the earliness in season and high red color will command much higher prices.



STAYMAN WINESAP

Winter. Large size; bright red color; flesh yellow, not in the least mealy; plenty of juice; firm, tender, rich, sub-acid, aromatic, quality the best and finest. Splendid late keeper, but mellows for use in the fall. Tree a quick and large grower; bears young, often producing a barrel to a tree when five years old. Necessary to plant Grimes Golden along with Stayman Winesap for proper cross-pollination; bears every year; crops uniformly heavy. Stayman is now planted in nearly all the orchards in the leading apple districts. One of the most popular apples grown, and demand far exceeds the supply, always bringing highest prices on the large markets; also popular roadside market variety.

JONATHAN

Early fall. Medium to large; brilliant red, juicy, fine grained, tender, mild, sub-acid, and very highly flavored. Good keeper and an excellent shipper. Tree long lived, but comes into bearing very young and produces big crops every year. Popular bushel and box variety, demanding highest prices on account of its attractive red appearance and fine flavor.

LEADING
ORCHARDISTS
PREFER
HARRISON
GROWN
FRUIT TREES

Harrisons' Super Strain Apple Trees

Apple growing pays handsome profits, but in order to get these profits it is necessary to start with the best trees and the most desirable varieties. In our nurseries we have growing the finest apple trees that is possible to produce. Our apple trees are scientifically propagated from selected heavy bearing strain trees of variety desired. You have probably noticed how one tree of a variety yields more fruit than the same variety in the same orchards. We have selected our mother trees for propagation from among the best of thousands of trees in our own commercial orchards. Today we believe that we have more of the best strains of apples in our nursery than any other concern.

COMPLETE LIST OF VARIETIES

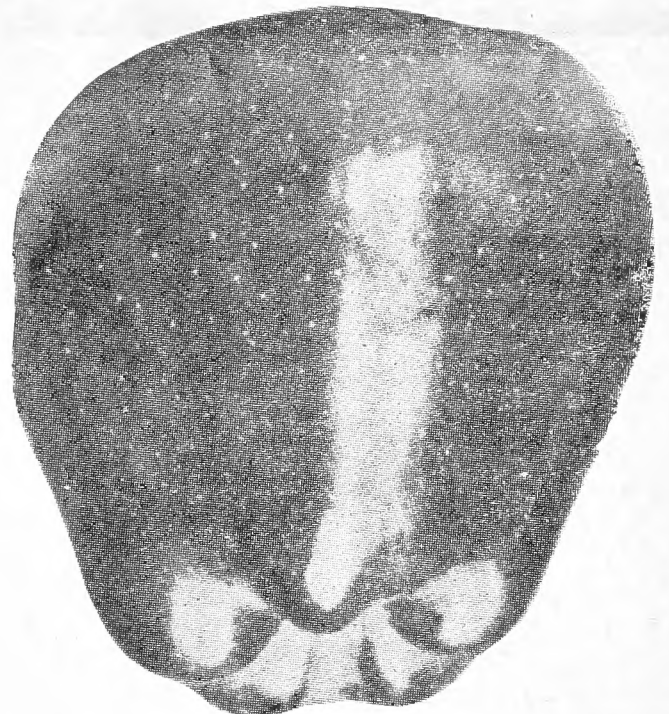
- | | |
|----------------------------------|---|
| Summer Apples | Cortland |
| Duchess | Delicious |
| (Duchess of Oldenburg) | Gallia Beauty |
| Early Harvest | Gano |
| Early McIntosh | Harrisons Red Delicious |
| Lodi (10c per tree extra) | Hyslop Crab |
| Milton | Lowry |
| Red Astrachan | Maccoun (5c per tree extra) |
| Red June | Mammoth Black Twig |
| (Carolina Red June) | (Paragon) |
| Starr | Nero |
| Sweet Bough | Northern Spy |
| Summer Rambo | Opalescent |
| Williams Early Red | Red Spy |
| Wilson Red June | Red Rome Beauty |
| Yellow Transparent | Red Yorking (10c per tree extra) |
| Autumn Apples | Roxbury Russet |
| Gravenstein | Rhode Island Greening |
| Grimes Golden | Rome Beauty |
| Jonathan | Stayman Winesap |
| King David | Stark |
| Kendall | Transcendent Crab |
| Lobo | Turley |
| Maidens Blush | Twenty Ounce |
| McIntosh Red | Wolf River |
| Northwestern Greening | Winesap |
| Red Gravenstein | Winter Banana |
| Smokehouse | Wagener |
| Wealthy | Winter Rambo |
| Yellow Delicious | Yellow Newton |
| Winter Apples | (Albemarle Pippin) |
| Albemarle Pippin | Yellow Belleflower |
| (Yellow Newton) | York Imperial |
| Baldwin | |
| Ben Davis | |

PRICES OF HARRISON GROWN APPLE TREES

(Except as otherwise noted)

	1 to 9 trees	10 to 49 trees	50 to 299 trees	300 to 599 trees	600 or more trees
1 to 2 ft. . .	\$.30	\$.25	\$.22	\$.18	\$.15
2 to 3 ft. . .	.35	.30	.25	.22	.20
3 to 4 ft. . .	.40	.35	.30	.27	.25
4 to 5 ft. . .	.50	.45	.40	.35	.30
5 to 6 ft. . .	.60	.50	.45	.40	.35

(Can be assorted Apples or other Fruit Trees)



HARRISONS' RED DELICIOUS

GRADES MORE EXTRA FANCY FRUIT

One of the newer varieties of apples that is being widely acclaimed by the planting public. It has all the fine qualities of the regular Delicious, with the exception that it colors up weeks earlier than the ordinary strain. It is conceded to be the most beautiful of all apples and commands high prices on local and city markets.

The flavor is delicious, flesh crisp and juicy. Whether you wish to plant a thousand or if you have room for only one tree, Harrison's Red Delicious will give full value.

A SUPERIOR RED STRAIN DELICIOUS

The Harrison's Red Delicious is comparable, if not superior to any of the other several new strains of Delicious as introduced, such as, Starking, Richared Delicious, Shotwell Red Delicious and others.

SAVE MONEY—BUY FROM HARRISONS'

RED ROME BEAUTY

An improved Rome Beauty, identical in vigor and production. Color of fruit much darker and solid red. Produces much higher percentage of fancy apples and also superior in quality than the ordinary strain of Rome Beauty. Red Rome Beauty is renowned for bearing at a very young age, producing bumper crops of large size apples. The tree being a vigorous, strong grower, exceedingly hardy.

We strongly recommend your planting Harrison's Superior Strain of Red Rome Beauty.

GRIMES GOLDEN

THE LEADING YELLOW APPLE

Skin golden yellow, flesh yellow, flavor rich and spicy. Grimes cannot be surpassed for cooking or table use. It makes no difference whether you are after a strictly high class market trade or desire just a few trees for your garden, you should plant Grimes Golden.

Harrisons' Assorted Fruits

Pears, Plums, Apricots, Cherries, Nectarines



PEARS

PRICES OF HARRISONS' PEAR TREES

	1 to 9 trees	10 to 49 trees	50 or more trees
1 to 2 ft.	\$0.40	\$0.30	\$0.25
2 to 3 ft.	.50	.40	.30
3 to 4 ft.	.60	.50	.40
4 to 5 ft.	.70	.60	.50

(Can be assorted Pears or other Fruit Trees).

ANJOU. Large, green in color, somewhat yellow when ripe, buttery, melting, rich vinous, good flavor. Tree vigorous, hardy, prolific bearer.

BARTLETT. Large, rich golden-yellow, with a light red bluish when ripe; buttery, juicy, melting, with a very rich pleasing flavor. Bartlett is without a peer, having won an international reputation as the best and the most profitable commercial pear and also the finest home-orchard variety.

CLAPPS FAVORITE. Large size, hardy and very productive. Thrives where other varieties fail.

DUCHESS. Very large, dull greenish-yellow. Tree somewhat dwarf but a dependable bearer.

KIEFFER. Fruit large, skin yellow with light vermilion cheek. Most popular canning pear.

SECKEL. A beautiful and delicious little pear. One of the richest and highest flavored pears grown. Tree dwarf, bears prolific crops.

SHELDON. Medium size, flesh slightly coarse, melting, juicy.

WORDEN SECKEL. A seedling of Seckel. Superior in size and color.



Concord Grapes

LUSCIOUS PLUMS

ABUNDANCE. Early, large, lemon-yellow, hardy, productive.

BRADSHAW. Midseason, large, dark violet-red, juicy, excellent flavor. Desirable for canning.

BURBANK. Midseason, large cherry-red, high quality, very productive. Popular commercial variety.

GERMAN PRUNE. Late, large, dark purple, sweet. Good for canning and drying.

ITALIAN PRUNE (Fellenberg). Late, medium size, dark purple, delicious. Fine for drying.

RED JUNE. Very early, medium size, deep vermilion-red; good.

SHROPSHIRE DAMSON. Late, medium size, dark purple. Very productive. The best for preserving. The popular old-fashioned Damson variety.

WICKSON. Late, very large, deep maroon-red covered with white bloom, flesh firm, meaty, yellow, rich, aromatic, cling.

APRICOTS

ALEXANDER. Early, prolific, freestone, orange with red bluish. Russian variety. Hardy where peaches cannot be grown.

EARLY GOLDEN. Small, pale orange, juicy and sweet. It is a hardy, prolific bearer; ripens first of July.

SUPERB. Medium size, light salmon colored fruit; hardy.

NECTARINES

BOSTON. Bright yellow, red cheek; flesh yellow.

QUETTA. One of the newer nectarines that is being tested for commercial possibilities in the East. Fruit large, greenish-white, splashed with red. Plant some out this year. 10c per tree extra.

RED ROMAN. Greenish-yellow, red cheek, flesh golden.

SURE CROP. Very vigorous and productive. The fruits are large, roundish, white and overlaid with very attractive red. Very pleasing flavor.

PRICES OF PLUMS, APRICOTS AND NECTARINES

	1 to 9 trees	10 to 49 trees	50 to 299 trees	300 or more trees
2 to 3 ft.	\$0.35	\$0.30	\$0.25	\$0.22
3 to 4 ft.	.40	.35	.30	.27
4 to 5 ft.	.50	.45	.40	.35
5 to 6 ft.	.60	.50	.45	.40

(Can be assorted Plums, Apricots, Nectarines or other Fruit Trees).

GRAPES

2-year No. 1 Vines

	1 to 9 plants	10 to 49 plants	50 to 299 plants	300 or more plants
CONCORD. Dark purplish-black colored berries, juicy, sweet and tender. Vigorous grower, hardy and very productive.	\$0.15	\$0.12	\$0.08	\$0.06
AGAWAM. Red.	.20	.15	.10	.08
CATAWBA. Red.	.23	.15	.10	.08
DELAWARE. Red; sweet.	.25	.20	.15	.10
MOORES EARLY. Purple; early.	.20	.15	.10	.08
NIAGARA. White.	.16	.13	.09	.07
WORDEN. Purple.	.20	.15	.10	.08

RED RASPBERRIES

	1 to 9 plants	10 to 49 plants	50 to 299 plants	300 to 599 plants	600 or more plants
Chief	\$1.25	\$2.00	\$3.50	\$6.50	\$12.00
Latham	1.25	2.00	3.50	6.50	12.00
St. Regis	1.25	2.00	3.50	6.50	12.00

BLACK RASPBERRIES

Cumberland	\$0.85	\$1.40	\$2.50	\$4.75	\$8.50	\$16.00
New Logan	.90	1.50	2.60	5.00	9.00	17.00
Plum Farmer	.90	1.50	2.60	5.00	9.00	17.00

BLACKBERRIES

Alfred	\$1.25	\$2.00	\$3.25	\$6.00	\$11.00	\$21.00
Eldorado	1.10	1.85	3.15	5.75	10.50	20.00
Early Harvest	1.25	2.00	3.25	6.00	11.00	21.00
Mercereau	1.25	2.00	3.25	6.00	11.00	21.00

DEWBERRIES

Lucretia	\$0.75	\$1.40	\$2.50	\$4.50	\$8.00	\$15.00
----------	--------	--------	--------	--------	--------	---------

STRAWBERRY PLANTS

Spring is the best time to plant Strawberries. Write for prices and varieties.

SWEET CHERRIES

BING. Very large dark brown, flesh firm, sweet.

BLACK TARTARIAN. Very large, sweet, purplish-black color, juicy, rich flavor, heavy bearer and most profitable sweet variety grown.

GOVERNOR WOOD. Large, light yellow, marked with red, sweet flavor.

NAPOLEON (Royal Anne). Large, pale yellow bright red cheek, sweet excellent flavor, prolific bearer.

SCHMIDT (Schmidt's Bigarreau). Large, sweet, deep black, tender, fine flavor.

WINDSOR. Large, sweet, almost black, fine quality. Valuable late variety.

YELLOW SPANISH. Large, sweet, yellow with red tinge. One of the most beautiful and popular of the light colored cherries. Heavy bearer.

PRICES OF SWEET CHERRIES

	1 to 9 trees	10 to 49 trees	50 or more trees
1 to 2 ft.	\$0.35	\$0.30	\$0.25
2 to 3 ft.	.40	.35	.30
3 to 4 ft.	.50	.40	.35
4 to 5 ft.	.60	.50	.45
5 to 6 ft.	.70	.60	.55

(Can be assorted Cherries or other fruit trees)

SOUR CHERRIES

DYEHOUSE. Ripens a week ahead of Early Richmond. The earliest good sour cherry.

EARLY RICHMOND. Exceedingly hardy and productive.

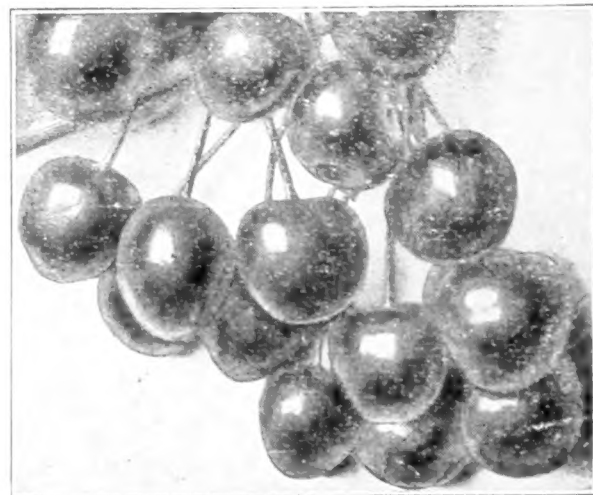
ENGLISH MORELLO. Large, blackish-red cherry. Hardy and productive.

MONTMORENCY (Large Montmorency). Midseason, sour, large, sound and red, slightly acid; flesh is very tender and of unusually good quality, being by far the best variety of sour cherry grown. The best shipper of all sour, which with its wonderful carrying ability for long distance shipments, along with its handsome, appetizing appearance and large size, has made Montmorency in a class by itself, always commanding the highest market prices.

PRICES OF SOUR CHERRIES

	1 to 9 trees	10 to 49 trees	50 to 299 trees	300 to 599 trees	600 or more trees
1 to 2 ft.	\$0.30	\$0.25	\$0.22	\$0.18	\$0.15
2 to 3 ft.	.35	.30	.25	.22	.20
3 to 4 ft.	.40	.35	.30	.27	.25
4 to 5 ft.	.50	.45	.40	.35	.30
5 to 6 ft.	.60	.50	.45	.40	.35

(Can be assorted Cherries or other fruit trees)



Large Montmorency—greatest sour cherry

ASPARAGUS

MARY WASHINGTON

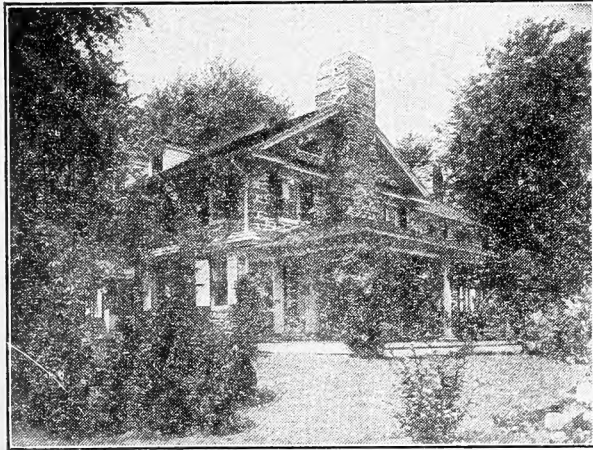
There is no variety of asparagus as good as Mary Washington and whether you are growing for home use only or for market you cannot afford to grow any other. It is rust resistant and growers are discarding all other varieties in favor of the famous Mary Washington because it is earlier, stalks are larger, more tender and more productive. Plant this Pedigreed Strain.

Prices of Harrisons' Pedigreed Mary Washington Asparagus Roots

	25	50	100	250	500	1,000	5,000
1 yr. No. 1	\$0.40	\$0.80	\$1.00	\$2.00	\$3.25	\$5.50	\$22.50
2 yr. No. 1	.60	.90	1.50	2.75	4.25	7.50	32.50

Harrison Grown Ornamentals

Improve the Appearance of Your Home Grounds



Plant Evergreens for Year Around Beauty

ARBORVITAE

AMERICAN ARBORVITAE (*Thuja occidentalis*). The largest sealer of all Arborvitae. Erect, pyramidal habit bright green foliage, dense from ground up. Rapid grower.

CHINESE ARBORVITAE (*Biota orientalis*). Rather stiff columnar habit, bright green foliage. Very attractive.

PYRAMIDAL EVERGREEN (*Thuja occidentalis pyramidalis*). Narrow, columnar shape, retains bright green coloring throughout the winter. Formal type of evergreen. Best quality of Arborvitae grown.

Prices of above Arborvitae: 15 to 18 in., 40c each; 1½ to 2 ft., 60c each; 2 to 3 ft., 80c each; 3 to 4 ft., \$1.15 each; 4 to 5 ft., \$2.00 each; 5 to 6 ft., \$3.00 each; 6 to 8 ft., \$5.00 each

ELLWANGER'S OR TOM THUMB ARBORVITAE (*Thuja occidentalis ellwangeriana*). A low, broad pyramidal form of evergreen with slender branches and feathery foliage.

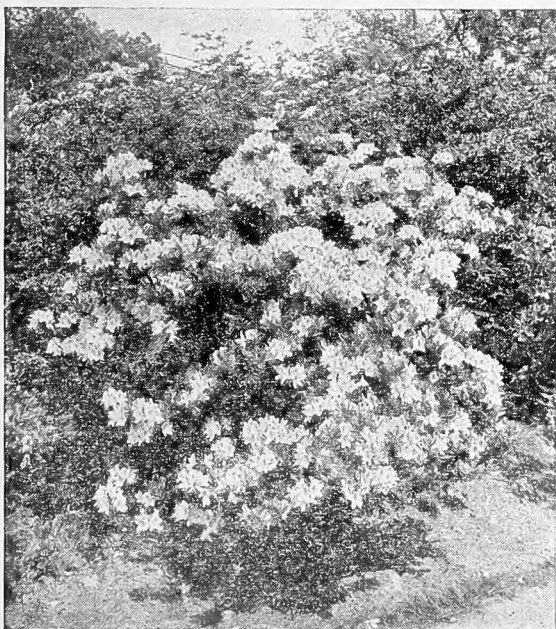
COMPACT GLOBULAR ARBORVITAE (*Thuja occidentalis compacta*). Natural compact globe-shaped. Needs no trimming.

Prices of Ellwangers and Compact Arborvitae: 12 to 15 in., 40c each; 15 to 18 in., 55c each; 18 to 21 in., 75c each; 21 to 24 in., \$1.10 each; 2 to 2½ ft., \$1.50 each.

CEDARS

INDIAN CEDAR (*Cedrus deodara*). Feathery blue-green foliage, graceful drooping branches, tall growing. 1½ to 2 ft., \$1.00 each; 4 to 5 ft., \$3.25 each; 5 to 6 ft., \$4.50 each.

JAPANESE CEDAR (*Cryptomeria japonica lobbii*). A very picturesque looking evergreen; grows tall and narrow and is very rapid growing. Everyone who sees this variety is very enthusiastic about it. 2 to 3 ft., \$2.50 each; 3 to 4 ft., \$3.50 each; 4 to 5 ft., \$4.50 each; 5 to 6 ft., \$5.50 each.



Azalea Hinodegiri

Nursery Stock A Good Investment

Is there any other thing about your home that grows in value, interest and beauty each succeeding year like trees and plants? Most other things are wearing out with use and age and constantly depreciating in value. That is why we say our nursery stock is a permanent and accumulative investment. What is that evergreen that cost you two or three dollars a few years ago now worth to your place? If you are contemplating a planting, not for years have you had such an unusual opportunity to secure plants of Harrisons' quality at such low prices.

Evergreens are too heavy to be shipped by parcels post.

RETINOSPORA

JAPANESE PLUME-LIKE RETINOSPORA. A handsome evergreen from Japan with feathery foliage. Upright grower broad at base, excellent for foundation plantings. We offer it in green or golden foliage.

VEITCH'S JAPANESE RETINOSPORA (*Retinospora squarrosa veitchii*). Foliage silvery blue, feathery and dense, giving soft wooly appearance. Broad pyramidal outline. One of the best Retinosporas.

Prices of Retinosporas above: 1½ to 2 ft., 75c each; 2 to 3 ft., \$1.00 each; 3 to 4 ft., \$1.50 each; 4 to 5 ft., \$2.50 each.

YEWS

IRISH YEW (*Taxus baccata hibernica*). This evergreen is the aristocratic member of the yew family. It grows tall and narrow with stout, crowded branches and spirally arranged leaves which are dark green in color. Fortunately, we have some specimen plants in our nurseries from which we were able to propagate. 12 to 15 in., \$1.00 each; 15 to 18 in., \$1.55 each; 18 to 21 in., \$1.80 each; 21 to 24 in., \$2.25 each.

JAPANESE SPREADING YEW (*Taxus cuspidata*). The beautiful yew of moderate bushy growth, the upright spreading branches densely clothed with short leaves of dull green. Hardest of all yews, grows in semi-shady locations.

SPREADING ENGLISH YEW (*Taxus baccata repandens*). Low spreading, dwarf grower, with dark, glossy green foliage.

UPRIGHT ENGLISH YEW (*Taxus baccata capitata*). Upright grower, dense, green foliage. Makes a most attractive specimen plant when fully matured.

Prices of Yews above (except Irish Yew): 12 to 15 in., 75c each; 15 to 18 in., \$1.25 each; 1½ to 2 ft., \$2.00 each.

JUNIPERS

ANDORRA JUNIPER. Low spreading type, purple bronze color during winter.

GOLDEN SPREADING JUNIPER. Spreading type, bright golden foliage.

PFITZERS JUNIPER. Most popular spreading evergreen.

SAVIN JUNIPER. Spreading vase shaped growth. One of the most attractive spreading evergreens.

Prices of above Spreading Junipers: 15 to 18 in. spread, 75c each; 1½ to 2 ft. spread, \$1.00 each; 2 to 2½ ft. spread, \$1.50 each.

IRISH JUNIPER. Forms a narrow and dense column, compact, bluish-green foliage. Most attractive when planted around the foundation of a home, at corners and entrances. Widely used in formal gardens.

SWEDISH JUNIPER. Tall, columnar habit, dense, fairly broad foliage, drooping tips.

Prices of Irish and Swedish Junipers: 1 to 1½ ft., 35c each; 1½ to 2 ft., 55c each; 2 to 3 ft., 75c each; 3 to 4 ft., \$1.15 each; 4 to 5 ft., \$1.75 each; 5 to 6 ft., \$2.75 each.

SPINY GREEK JUNIPER. A tall grower of upright columnar habit and bluish-green foliage. The growth is so slow that the tree is well adapted for foundation plantings and other situations requiring dwarf trees. 12 to 15 in., 50c each; 15 to 18 in., 75c each; 18 to 24 in., \$1.10 each; 2 to 3 ft., \$1.50 each.

VIRGINIA BLUE JUNIPER. Broadly conical form and beautiful glaucous-blue foliage make it one of the choicest evergreens. 2 to 3 ft., \$1.50 each; 3 to 4 ft., \$2.25 each.

SPRUCE

KOSTER'S BLUE SPRUCE. Foliage intense silvery-blue and very dense on the branch ends. 12 to 15 in., \$2.00 each; 15 to 18 in., \$3.00 each; 18 to 24 in., \$4.50 each.

NORWAY SPRUCE. A lofty, noble tree of open pyramidal habit, green foliage. 15 to 18 in., 40c each; 1½ to 2 ft., 60c each; 2 to 3 ft., 80c each; 3 to 4 ft., \$1.25 each; 4 to 5 ft., \$2.00 each; 5 to 6 ft., \$3.00 each.

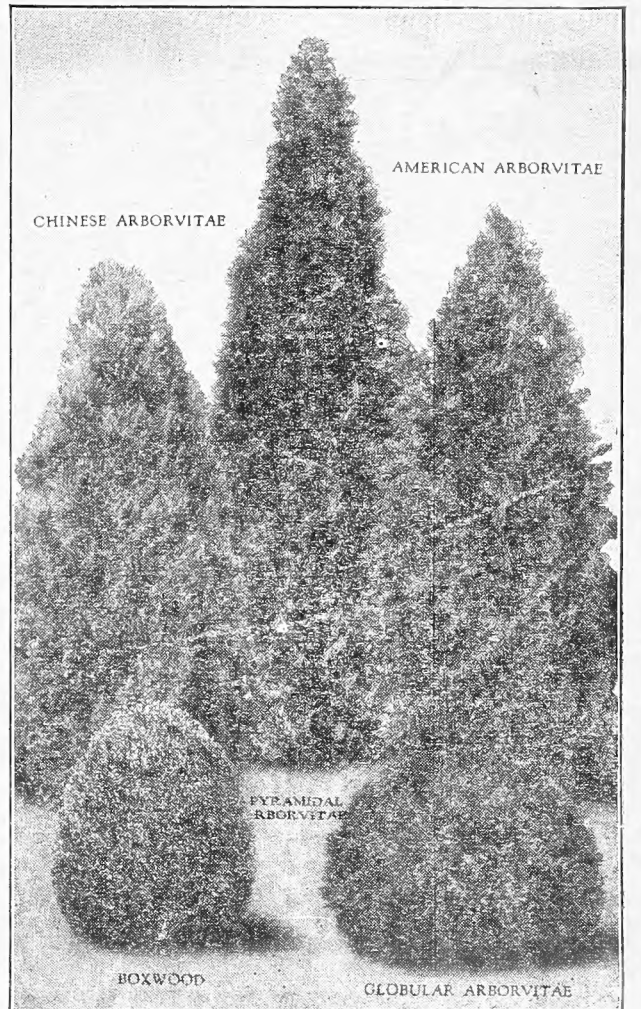
AZALEAS

AZALEA HINODEGIRI. Deep carmine blooms, evergreen foliage. The most desirable kind. Spreading dwarf type grower. 6 to 8 in., 40c each; 8 to 10 in., 60c each; 10 to 12 in., 80c each; 12 to 15 in., \$1.00 each.

AZALEA AMOENA. Rose-purple flowers, blooms in early spring and retains its foliage all year. 6 to 8 in., 35c each; 8 to 10 in., 45c each; 10 to 12 in., 60c each; 12 to 15 in., 80c each; 15 to 18 in., \$1.25 each; 18 to 24 in., \$1.75 each.

AZALEA MACRANTHA. Large, single, salmon-red flowers, late bloomer. 6 to 8 in., 40c each; 8 to 10 in., 60c each; 10 to 12 in., 80c each.

BUSH ARBUTUS (*Abelia grandiflora*). Dark glossy green leaves, pink tinted tubular shaped flowers from June until frost. Very popular. 1 to 1½ ft., 40c each; 1½ to 2 ft., 55c each.



BOXWOOD

Buxus Sempervirens

	1 to 9 plants	10 to 49 plants	50 or more plants
4 to 6 in.	\$0.25	\$0.20	\$0.15
6 to 8 in.35	.30	.25
8 to 10 in.40	.35	.30
10 to 12 in.50	.45	.40
12 to 15 in.60	.55	.50
15 to 18 in.75	.70	.65
18 to 21 in.	1.00	.90	.85
21 to 24 in.	1.30	1.20	1.15
24 to 30 in.	1.75	1.50	1.40

Dwarf English Boxwood

(BUXUS SEMPERVIRENS SUFFRUTICOSA)

A widely known and popular form of dwarf boxwood. It has small, deep green, dense leaves which hold their bright color throughout the winter months. Suitable for very low hedges and edgings. Can be trimmed in various forms.

	1 to 9 plants	10 to 49 plants	50 or more plants
4 to 6 in.	\$0.30	\$0.25	\$0.20
6 to 8 in.45	.40	.35
8 to 10 in.60	.55	.50
10 to 12 in.80	.75	.70
12 to 15 in.	1.10	1.05	1.00

Harrisons' Shade-Flowering Trees

Think of the Future—Plant Your Trees Now



Norway Maple—the most popular shade tree

MAPLES

NORWAY MAPLES (*Acer platanoides*). Most popular and best known shade tree. Green foliage remains until late fall and turns to rich yellow.

SILVER MAPLES (*Acer dasycarpum*). Tall, stately tree, rapid grower, graceful, leaves silvery underneath.

JAPANESE BLOODLEAF MAPLE (*Acer palmatum atropurpureum*). Very dwarf, graceful, red foliage. Best color in sunny locations. A wonderful addition to any lawn. 12 to 15 in., 65c each; 15 to 18 in., 90c each; 18 to 24 in., \$1.15 each; 2 to 3 ft., \$1.50 each.

ELMS

AMERICAN ELM (*Ulmus americana*). A noble native tree of great size, wide spreading, gracefully curving branches, growing up in a form like the outline of long-stemmed flowers in a tall vase. The handsomest American tree for lawns, avenues and parks.

MOLINE ELM. Grows into a dense conical specimen.

CHINESE ELM (*Ulmus pumila*). This tree is of recent introduction in this country. It is a very rapid grower, typical elm-like foliage, adaptable to most every kind of soil and condition.

EUROPEAN MOUNTAIN ASH (*Sorbus aucuparia*). Valuable for a small lawn; orange-scarlet berries.

LOMBARDY POPLAR (*Populus nigra italica*). A tall, spirelike tree used for screens and formal plantings. It is fast growing, distinctly ornamental and beautiful.

Prices of Lombardy Poplars:	1 to 9		10 to 49	
	trees	trees	trees	trees
6 to 8 ft.	\$0.70	\$0.60		each
8 to 10 ft.	.90	.80		each
10 to 12 ft.	1.30	1.00		each
12 to 14 ft.	1.75	1.50		each
14 to 16 ft.	2.25	2.00		each



Lombardy Poplar

SWEET GUM (*Liquidambar styraciflua*). A shapely tree with slender, corky-ridged branches. Leaves are bright green and lustrous; in autumn they change to a pleasing tone of crimson color.

BABYLON WEeping WILLOW (*Salix babylonica*). A rapid-growing, hardy tree, thriving in any moist soil. The willows are valuable and interesting subjects on account of their graceful aspect.

GOLDEN BARK WEeping WILLOW. Similar in habit and growth to the Babylon Weeping Willow, except the bark is of golden color, making a showy effect in the winter time.

Prices of both Willows:	1 to 9		10 to 49	
	trees	trees	trees	trees
6 to 8 ft.	\$1.00	\$0.90		each
8 to 10 ft.	1.30	1.15		each

CATALPA BUNGEI or Umbrella Tree. Umbrella-shaped heads without pruning. Hardy, have large, glossy green leaves; usually planted in pairs on opposite sides of an entrance or walks.

Prices of Catalpa Bungei:	1 to 9		10 to 49	
	trees	trees	trees	trees
5 to 6 ft., 2 yr. heads	\$1.00	\$0.90		each
6 to 7 ft., 2 yr. heads	1.25	1.15		each

Flowering Crab Apples

BECHTEL'S. The only genuine double-flowered Crab, when in bloom appears to be covered with delicate pink, perfectly double small roses of delicious fragrance.

ELEYI. Purple to red foliage, wine-colored bloom. The best red leaf sort.

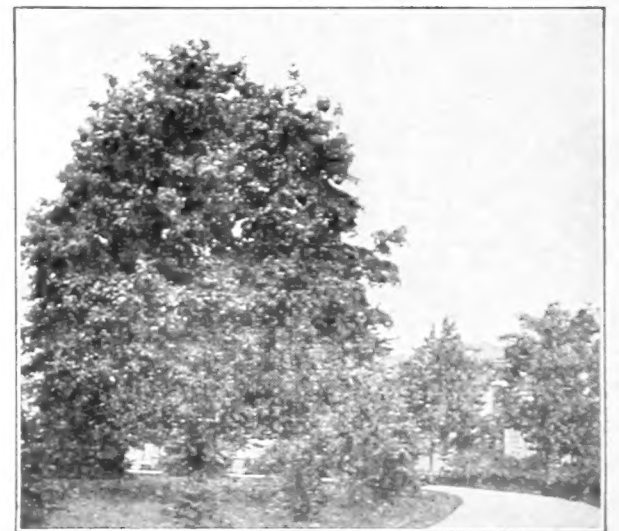
Prices of Flowering Crab Apple: 2 to 3 ft., 40c each; 3 to 4 ft., 50c each.



Oriental Plane

ORIENTAL PLANE (*Platanus orientalis*). A rapid, upright, clean growing tree, long lived, beautiful dense foliage. It is very hardy and not affected by insects.

AMERICAN PLANE OR SYCAMORE (*Platanus occidentalis*). A very rapid growing tree for yard or street planting. The bark is grayish-green and peels off during the winter. Not as desirable as the Oriental Plane but is a much more rapid grower.



Silver Maple

PIN OAK (*Quercus palustris*). The daintiest and most graceful of the oaks, with deeply cut, bright, fresh green foliage; beautiful autumn effect. A very graceful tree for the lawn and fine for streets or roadsides.

FLOWERING TREES

WHITE FLOWERING DOGWOOD (*Cornus florida*). One of the native spring flowering small trees, with white flowers and bright red berries in fall. 2 to 3 ft., 50c each; 3 to 4 ft., 75c each; 4 to 5 ft., \$1.00 each; 5 to 6 ft., \$1.25 each; 6 to 8 ft., \$1.50 each.

FLOWERING PEACH. Very beautiful, large, double blooms in the spring time. The ideal low-priced flowering tree. We can supply the flowering peach in three colors: white, red or pink. 3 to 4 ft., 40c each; 4 to 5 ft., 50c each; 5 to 6 ft., 60c each.

FLOWERING ALMOND. Showy double flowers in spring; a beautiful specimen when in bloom. We can supply it in pink only. 1½ to 2 ft., 40c each; 2 to 3 ft., 55c.

PURPLE-LEAVED OTHELLO PLUM. Upright grower, foliage brilliant, reddish-purple, holding its color throughout season. Prolific bearer, with crimson fruit producing ornamental effect. 3 to 4 ft., 40c each; 4 to 5 ft., 50c each; 5 to 6 ft., 60c each.

Prices of Norway Maple, Moline Elm, Chinese Elm, European Mountain Ash, Sweet Gum and Pin Oak:

	1 to 9		10 to 49	
	trees	trees	trees	trees
6 to 8 ft.	\$1.25	\$1.10		each
8 to 10 ft.	1.65	1.50		each
10 to 12 ft.	2.25	1.90		each
12 to 14 ft.	3.00	2.65		each

Prices of Silver Maple, American Elm, Oriental Plane and American Plane:

	1 to 9		10 to 49	
	trees	trees	trees	trees
6 to 8 ft.	\$0.70	\$0.60		each
8 to 10 ft.	.90	.80		each
10 to 12 ft.	1.35	1.25		each
12 to 14 ft.	2.00	1.75		each



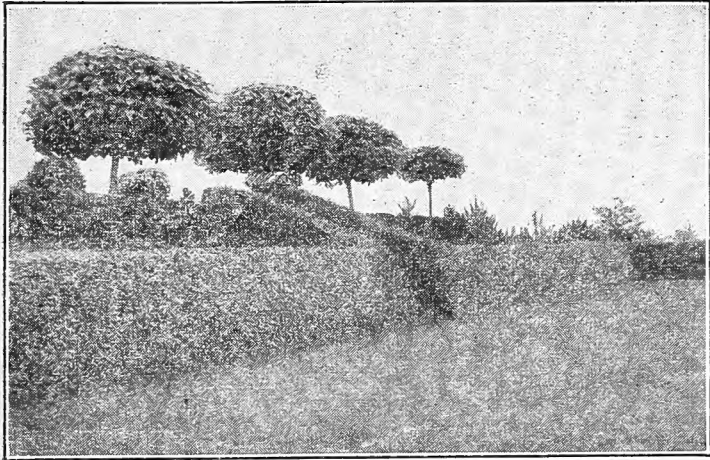
Pin Oak

Attention

RESIDENTS OF DEL-MAR-VA PENINSULA

WE HAVE A COMPLETE LANDSCAPE DEPARTMENT AND ARE EQUIPPED TO DO PLANTINGS ON THE DEL-MAR-VA PENINSULA. WRITE OR COME TO BERLIN FOR FURTHER INFORMATION.

Harrisons' Hedge Plants, Shrubs, & Vines



Catalpa Bungei and Hedge of California Privet

CALIFORNIA PRIVET

(Ligustrum Ovalifolium)

We grow California Privet by the mile. Most popular hedge plant, can be trimmed in any desired shape. For planting long hedges, this is the most economical variety. Quick grower.

	1 to 9 plants	10 to 49 plants	50 to 299 plants	300 or more plants
8 to 12 in.	\$.04	\$.03	\$.02	\$.01½
1 to 1½ ft.	.05	.04	.03	.02½
1½ to 2 ft.	.07	.05	.04	.03½
2 to 3 ft.	.10	.07	.06	.05

FLOWERING SHRUBS

- ALTHAEA OR ROSE OF SHARON.** Double red or semi-double white with crimson center. 2 to 3 ft., 35c each; 3 to 4 ft., 45c each.
- AFRICAN TAMARIX.** Feathery gray-green foliage. 1½ to 2 ft., 25c each; 2 to 3 ft., 35c each.
- BUTTERFLY BUSH.** Lilac colored flowers in midsummer. 2 yr. plants, 25c each.
- CREPE MYRTLE.** Red or pink varieties. 2 to 3 ft., \$1.50 each; 3 to 4 ft., \$2.00 each.
- RED BRANCHED OR CORAL DOGWOOD.** Bright red bark. 2 to 3 ft., 35c each; 3 to 4 ft., 45c each.
- JAPANESE QUINCE (Cydonia Japonica).** Scarlet flowers in early spring. Very popular. 1½ to 2 ft., 25c each; 2 to 3 ft., 40c each.
- GOLDEN BELL (Forsythia).** Upright grower, yellow flowers in early spring. 1½ to 2 ft., 25c each; 2 to 3 ft., 30c each; 3 to 4 ft., 35c each.
- WEeping GOLDEN BELL.** Yellow flowers, arching branches. 1½ to 2 ft., 30c each; 2 to 3 ft., 40c each.
- JAPANESE BUSH HONEYSUCKLE.** Early white flowers followed by red berries. 2 to 3 ft., 30c each; 3 to 4 ft., 40c each.
- TARTARIAN HONEYSUCKLE.** Abundance of pink or white flowers followed by red berries. State color desired. 1½ to 2 ft., 25c each; 2 to 3 ft., 30c each.
- HYDRANGEA PEE GEE.** Large flowers; at first snowy-white, then changing pink to reddish-bronze in the fall. 1 to 1½ ft., 20c each; 1½ to 2 ft., 25c each.
- PINK OR BLUE HYDRANGEA.** Color depends on acidity of soil. 2 yr. field grown, 50c each.

RED LEAVED BARBERRY

(Berberis Thunbergi Atropurpurea)

A highly important introduction among shrubs, giving us for the first time a practical easily grown shrub of medium height, with good, distinctly red foliage. This must prove a boon to all types of landscaping, where studied contrasts are to be worked out with the shrub foliage depended on for colors.

	1 to 9 plants	10 to 49 plants	50 or more plants
9 to 12 in.	\$.15	\$.12	\$.10
12 to 15 in.	.20	.17	.15
15 to 18 in.	.27	.23	.20
1½ to 2 ft.	.35	.30	.25
2 to 3 ft.	.50		

SPIREA VAN HOUTTE

Beautiful in or out of bloom, and the medium tall, broad, compact screen it makes is protective as well as ornamental. It is always hardy, growing anywhere and will do well in partial shade. Even when trimmed and kept low, it is a splendid hedge, dense to the ground.

	1 to 9 plants	10 to 49 plants	50 to 299 plants	300 or more plants
12 to 18 in.	\$.10	\$.07	\$.06	\$.05
18 to 24 in.	.15	.12	.10	.08
2 to 3 ft.	.20	.15	.12	.10
3 to 4 ft.	.25	.20	.15	.12

LILACS

Prices of all Lilacs: 1½ to 2 ft., 40c each; 2 to 3 ft., 50c.

BELLE DE NANCY. Double satiny-rose.

CHARLES X. Single purplish-red.

COMMON PURPLE. Purple.

HUGO KOSTER. Single purple.

LUDWIG SPAETH. Dark purplish-red.

MADAME ABEL CHATENAY. Double white.

MARLEYENSIS. Red.

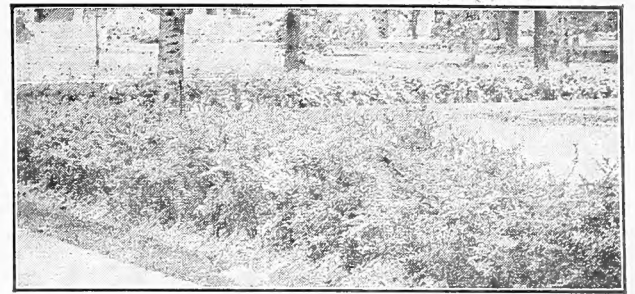
MICHAEL BUCHNER. Pale lilac color.

PERSIAN PURPLE. Purple.

PRESIDENT GREVY. Double bright blue.

ROTHOMAGENSIS. Dark red.

RUBRA DE MARLEY. Light red.



Hedge of Japanese Barberry

JAPANESE BARBERRY

(Berberis Thunbergi)

Best low dense hedge plant grown. Its abundant, small, light green leaves, which turn to rich colors in autumn, and its wealth of scarlet berries make it very attractive. Extremely hardy and requires but little pruning. Ornamental and graceful the whole year.

	1 to 9 plants	10 to 49 plants	50 to 299 plants	300 or more plants
9 to 12 in.	\$.12	\$.07	\$.05	\$.04
12 to 15 in.	.15	.09	.07	.06
15 to 18 in.	.20	.15	.10	.09

SPIREAS

ANTHONY WATERER SPIREA. Dwarf, bright pink flowers in June and July. 1 to 1½ ft., 25c each; 1½ to 2 ft., 35c each; 2 to 3 ft., 40c each.

BILLARDI SPIREA. Long spikes of attractive blooms. White or pink. 1½ to 2 ft., 20c each; 2 to 3 ft., 25c each; 3 to 4 ft., 35c each.

EVA RATHKE WEIGELA. Carmine-red flowers. 1½ to 2 ft., 40c each; 2 to 3 ft., 50c each.

PINK WEGELIA. Delicate pink bell-shaped flowers. 1½ to 2 ft., 25c each; 2 to 3 ft., 35c each; 3 to 4 ft., 45c.

FRAGRANT SNOWBALL. Pink, fragrant flowers in May and June. 12 to 18 in., 75c each.

FRENCH PUSSY WILLOW. Shrub or dwarf tree with fur-like catkins during early spring. 2 to 3 ft., 20c each; 3 to 4 ft., 30c each.

NANDINA DOMESTICA. White flowers followed by red berries. Very attractive. 1½ to 2 ft., 75c each; 2 to 3 ft., \$1.25 each.

FIRE THORN. Brilliant orange-red berries. A very showy plant. 1½ to 2 ft., 75c each; 2 to 3 ft., \$1.25 each.

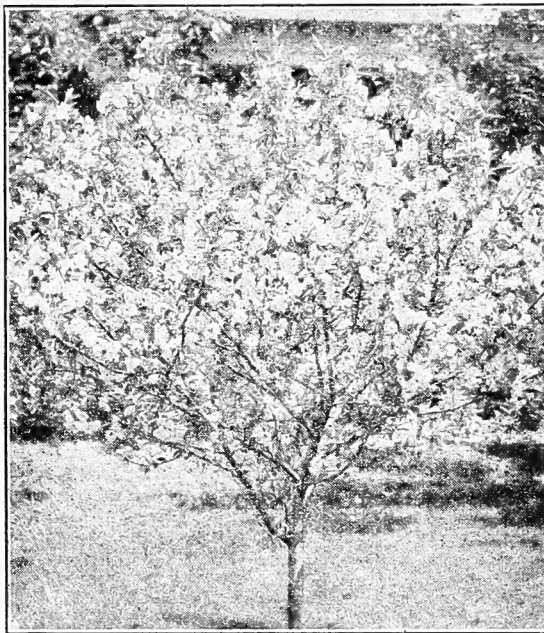
GARLAND OR SWEET MOCK ORANGE. In June a wealth of white fragrant flowers. 1½ to 2 ft., 25c each; 2 to 3 ft., 30c each; 3 to 4 ft., 35c each.

VINES

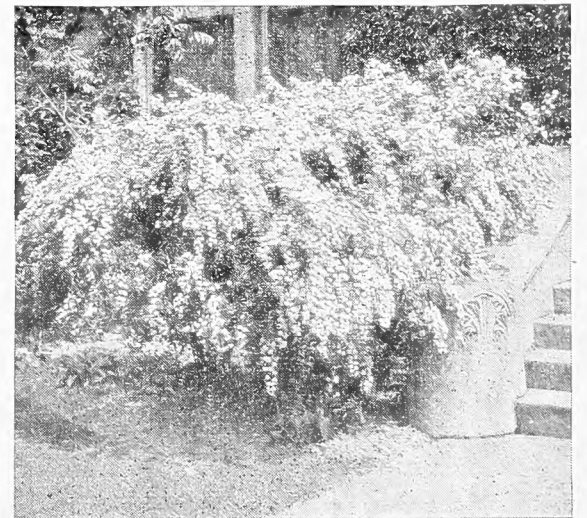
ENGLISH IVY (Hedera helix). The most popular evergreen vine, large deep green glossy foliage. Excellent for covering walls. Useful for shady locations. 2 yr. plants, 25c each; 10 for \$2.00; 100 for \$15.00.

CHINESE WISTERIA. Blue flowers. 2 yr. plants, 40c each.

SWEET AUTUMN CLEMATIS (Clematis paniculata). A splendid climber for covering porches and trellises. Flowers snowy white; produced in immense quantities during late summer and autumn. Strong 2-year plants 40c each; \$3.50 per 10.



Bechtel's Flowering Crab Apple



Spirea Van Houttei

We can furnish in many items large specimen plants not quoted herein. Cities, towns and large estates should submit "want lists" for quotations.

Our Liberal Guarantee

Our nursery stock is guaranteed to reach the customer in good condition. Accept shipment on arrival, examine and count stock and notify us at once should there be any error and the same will be promptly corrected. Also notify the transportation company should stock appear to have been damaged in transit. We do not guarantee continued growth. A tree, shrub, or plant is a living organism—it breathes, drinks and feeds and is liable to attacks of disease and insects after being transplanted to the customer's grounds. Our selling prices are very low and we cannot guarantee growth or be responsible for the nursery stock after delivery to our customers in good condition.

Non-Warranty

In the event that any nursery stock sold by us should prove untrue to name under which it is sold, we hereby agree, on proper proof or such untruthfulness to name to replace the original order or to refund the purchase price. Except for such liability, and in respect to all nursery stock sold by us, we give no warranty, expressed or implied, as to description, quality, productiveness or any other matter.

—HARRISONS' NURSERIES, Inc.

TERMS: F. O. B. BERLIN, WORCESTER COUNTY, MARYLAND

We allow 5 percent discount for cash with order or prior to date of shipment (except strawberry plants). OTHERWISE TERMS NET

IF SHIPMENT IS DESIRED BY PARCEL POST ADD 10 PERCENT TO YOUR REMITTANCE.

Harrisons' "Supreme" Roses

Hardy Field-Grown plants that have bloomed in our nursery



Red Radiance



Kaiserine Auguste Victoria

PRICES OF ALL ROSES—TWO-YEAR BUDDED FIELD GROWN PLANTS
45c each; 3 for \$1.20; 6 for \$2.20; 12 for \$4.00, 50 or more 30c each

EVERBLOOMING HYBRID TEAS

This is the class of roses that bloom continuously throughout the season. They can be had in a complete range of color. Plant them freely in groups close together, so that a dash of color and fragrance can be had even in the smallest garden.

AUTUMN. Orange stained red and pink.
BETTY UPRICHARD. Salmon pink inside, carmine red outside. Very beautiful.
BRIARCLIFF. Flowers silvery pink. Very fragrant.
COLUMBIA. Upstanding garden rose. Bright pink flowers, stiff petals.
CALEDONIA. Opens ivory, changing to pure white. Exquisite long buds on great stems, opening to a large fully double rose of great beauty, soft velvety texture.
CUBA. Large semi-double flowers of blazing orange-scarlet.

CRUSADER. Rich velvety crimson of bright hue and massive form, extremely double.
CHAS. P. KILHAM. Tyrian red veiled with a mist of orange.
DUCHESS OF WELLINGTON. Beautiful buds of soft yellow deeply tinted with orange.
DUCHESS OF ATHOLL. Golden-orange flushed peach.
DAME EDITH HELEN. Clear pink long strong stems.
DIRECTOR RUBIO. Very showy light red large bud.
EDEL. Very large, fragrant, fully double white.
ETOILE DE FRANCE. An old favorite, sparkling red. Very desirable.

ETOILE DE HOLLANDE. Bright red; fragrant.
E. G. HILL. It constantly produces beautiful buds on long stems, opening into large, double, fragrant flowers of shining red. Belongs in every garden.
EDITOR McFARLAND. A very fine brilliant pink rose, destined to great popularity.
EDITH NELLIE PERKINS. Exquisite two toned pink. Always in bloom.
FRANK W. DUNLOP. Rosy pink blooms.
FRANCIS SCOTT KEY. Large, double, perfectly formed flowers of crimson-red.
HADLEY. Deep velvety crimson of fine texture.
INDEPENDENCE DAY. A brilliant orange-copper rose that is always in bloom. Admired by all.
JOANNA HILL. A fine yellow rose; fragrant.
KAISERINE AUGUSTE VICTORIA. Creamy buds which develop into absolutely perfect blooms of dazzling snow-white, tinted slightly with lemon-yellow at center.
LUXEMBURG. A fine yellow rose.
LOS ANGELES. Very popular brilliant salmon-pink.
MRS. W. C. MILLER. Beautiful large flowers of clear rose and soft pink.
MME. BUTTERFLY. Light pink, faintly tinted with gold near base of petals. Richly perfumed.
MRS. HENRY BOWLES. A favorite pink rose. An exceptionally free bloomer and good grower. The flowers come singly on long stems.
MRS. CHAS. BELL. Shell-pink; free bloomer; very fragrant. Should be in every garden.
MRS. PIERRE S. DUPONT. It's a glorious sight from early summer until freezing weather, always a mass of bloom, a rich golden-yellow. We consider it the best yellow rose.
MME EDOUARD HERRIOTT. Brilliant orange-red and salmon flame, always in bloom.

CLIMBING, RAMBLER & POLYANTHA ROSES

AMERICAN PILLAR. Large clusters of single rosy-pink flowers, with yellow shadings. Rank climber.
BABY RAMBLER. Dwarf grower; clusters of crimson flowers.
CLIMBING AMERICAN BEAUTY. Large, rosy-crimson bloom. One of the best climbing roses.
DOROTHY PERKINS. Full, double, shell-pink flowers in large clusters. A very attractive climber.
DR. W. VAN FLEET. Light shell-pink to silver-flesh color blooms; double climber.
ELSIE POULSEN. Rose pink flowers. Hardy as an oak, always in bloom. Polyantha type.
FLOWERS OF FAIRFIELD. Rich red flowers, profuse bloomer.
GLORIA MUNDT. Bright orange-scarlet. Polyantha type.
COLDEN SALMON. Polyantha type. Scarlet-orange overlaid gold.
GARDENIA. Small yellow buds, opening to creamy white; very fragrant climber.
HARRISONS YELLOW. Bright golden yellow; very hardy.
IDEAL. Polyantha type. Dark red; free bloomer.
MME. GREGOIRE STAEHELIN. A fine pink climbing rose. One of the best.
MARY WALLACE. Semi-double, rose-pink blooms; salmon at base of petals. Most attractive climber.
PRIMROSE. A hardy, unfading primrose-yellow climbing rose, double flowers. Vigorous.
PAUL'S SCARLET CLIMBER. Large intense scarlet-colored blooms; freely produced. It is strong and perfectly hardy. The most popular climbing rose.
SCORCHER. A new rose from Australia with enormous ruffled blooms of vermilion-red. Very free bloomer. Grows rapidly to a height of ten feet or more. No other climber like it.

HYBRID PERPETUAL OR JUNE ROSES

AMERICAN BEAUTY. A gorgeous deep red rose.
FRAU KARL DRUSCHKI. Enormous pure white.
GRUSS AN TEPLITZ. The great red bedding rose. Brilliant scarlet, very hardy, always in bloom.
GENERAL JACQUEMINOT. Fragrant perfect formed blossoms of scarlet crimson.
MAGNA CHARTA. A rosy-pink full rounded globular rose of marked fragrance.
MRS. JOHN LAING. Soft pink, beautiful formed large, double blossoms.
PAUL NEYRON. The well-known H. P., immense pink flowers.
ULRICH BRUNNER. Brilliant scarlet-crimson.

GLORIFY YOUR GARDEN WITH PEONIES

PRICES OF ALL PEONIES—STRONG 3 TO 5 EYE DIVISIONS.
30c each; 4 for \$1.00; 8 for \$1.75; 12 for \$2.40; 50 or more at 15c each.

Alexander Dumas. Pink; early.
Aurore. White; late.
Avalanche. Blush white; late midseason.
Baroness Schroeder. Flesh-white; late midseason.
Delachei. Crimson-purple; midseason.
Duc de Wellington. Sulphur-white; late.
Duchesse de Nemours. Sulphur-white; late.
Edulis Superba. Rose-pink; very early.
Felix Crousse. Brilliant crimson; late midseason.
Festiva Maxima. White; early.
Germaine Bigot. Lilac-rose; midseason.
Jeanne D'Arc. Pink; midseason.
La Perle. Soft pink; midseason.
La Roserie. Cream-white; midseason.
Madame Ducl. Old-rose; early midseason.
Madame de Verneville. White; early.
Madame Geissler. Rose-pink; late midseason.
Madame Lemoine. White; very late.
Marechal Valliant. Milk-white; early.
Marguerite Gerard. Pale pink; midseason.
Mons. Dupont. Ivory-white.
Philomele. Dark rose; early.
President Roosevelt. Deep red; midseason.
Sarah Bernhardt. Dark rose-pink; late.
Suzette. Rose-pink; midseason.
Umbellata Rosea. Violet-rose; very early.



Mrs. Pierre S. Dupont



Talisman

HARRISONS' NURSERIES, Inc.

BERLIN, MARYLAND

Growers of the World's Best Fruit and Ornamental Nursery Products

Specialties: Fruit Trees, Shade Trees, Evergreens, Azaleas, Flowering Shrubs, Roses, Hedge Plants Flowering Trees, Grapes, Strawberries and Asparagus