

F 129

.S8 S83



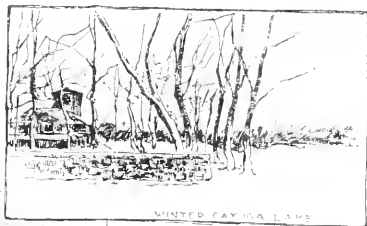
THE PEN DRAWINGS FROM WHICH THESE PLATES WERE ETCHED ARE
FROM PHOTOGRAPHS MADE WITH A KODAK CAMERA, SKETCHES BY THE
ARTIST, AND PHOTOGRAPHS KINDLY LOANED BY MR. R. W. BELLHOUSE.

COPYRIGHTED DECEMBER, EIGHTEEN HUNDRED EIGHTY EIGHT,
BY THE C. L. SHEKELL COMPANY, BUFFALO. ALL RIGHTS RESERVED.

NINE MILE CREEK



HOPPER CLEN



WINTED FAYVA LAKE



Outlet of Irondequoit Lake



Irondequoit Valley

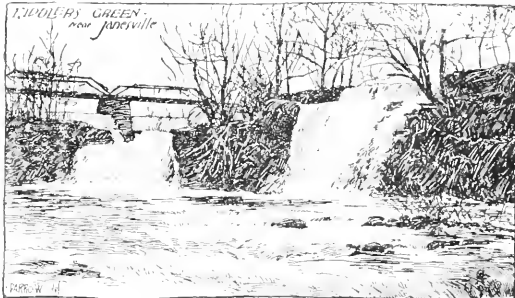


The rapid growth in importance and population during the following decade produced the discussion of its incorporation as a city; the inhabitants differed greatly as to the extent of territory the future city should include, some wanted it to embrace the entire salt springs' reservation, others the village proper only. Up to this time Salina had continued an independent village, but in 1847 it was added to Syracuse and incorporated under one charter, becoming the first ward of the City. In 1850 it had over twenty-two thousand inhabitants; during the next ten years the growth was moderate, comparatively speaking, there being an increase of only six thousand. After the war broke out, however, it attained its greatest prosperity, owing to foreign salt being wholly excluded from the country, and in 1870 the population had reached nearly forty-five thousand, an increase of about seventeen thousand inhabitants, while the census of 1880 showed fifty-five thousand. This rapid growth was considered marvelous in the past, but the years that have since been registered on the calendar have so far surpassed the early records that they are no longer referred to except for comparison. The school census taken in 1887, gives the city a population of eighty-one thousand three hundred and thirty-nine, a gain of over twenty-five thousand in seven years. Syracuse has one hundred and forty-four miles of streets and is cosmopolitan in every respect; her citizens are enterprising and take great interest in developing the city's resources. It is one of the leading manufacturing towns in the country, and the many substantial commercial structures that are being erected insure a constant advance in the value of real estate. The growth is steady and promises to increase even more rapidly in the future, so that it is safe to say the census of the coming year will give the city nearly one hundred thousand inhabitants.

in The New York Central Road



ONONDAGA LAKE



TIDDLERS GREEN
near Jewellville

PAUL W. H.



LAKE VIEW



THE C. & N.

OUTLET ONONDAGA LAKE



ONONDAGA CREEK

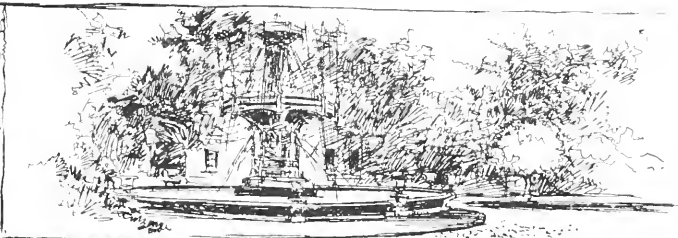




AS a place of residence, Syracuse is a most desirably located city and possesses a delightful climate. It is surrounded on all sides by beautiful scenery and summer resorts innumerable; among these may be mentioned Skaneateles Lake, which by its beauty attracts many to its shores to sojourn for the summer, while Cayuga, Seneca, Oneida, Cazenovia, and other smaller Lakes, Sodus Point, Clayton, Cape Vincent, the Thousand Islands, Saratoga Springs, and the Adirondac Mountains are each within a few hours ride and attract their admirers. Its health is assured by the excellent drainage and natural sewerage, owing to the undulating ground upon which it is built; the area of the city is generous, so that the streets are, as a rule, wide and straight, crossing each other at right angles; they are bountifully shaded and no city can show more palatial mansions and beautiful homes than are to be found on James, Genesee, Onondaga, and other residence streets. There is a good system of rapid transit for the accommodation of the public by means of horse cars and electric railways, whose lines penetrate every section and suburb. There are two first class and well patronized theatres, which are open throughout the season. The excellent schools, colleges, libraries, reading rooms, newspapers and the many fine churches have made an intelligent and refined population. Syracuse is particularly rich in its beautiful parks and squares, which are scattered throughout the city, adding greatly to the enjoyment of the public. The largest of these is Burnett Park, containing one hundred and twenty acres, situated in the ninth ward, overlooking the city; others worthy of note are Fayette and Foreman, in the central part. With its numerous advantages and attractions it is not surprising that the population is increasing so rapidly by the addition of so many permanent residents.



IN FAYETTE PARK



FOREMAN'S PARK



THE BRIDGE TO EAST BRUNDS



FROM FAYETTE PARK



IN FOREMAN PARK

THE L.S. CO.

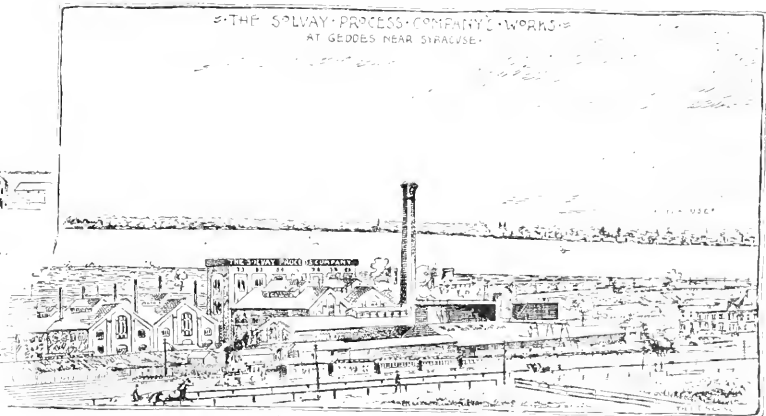


THE city is located at the head of Onondaga Lake, and covers fully eight thousand five hundred acres. Situated in the heart of New York State, it has been correctly named the "Central City." Located on the great water and rail highways between the east and west—by means of the canals—it has direct water connection with the cities and towns on the great lakes, and fully enjoys the advantages of a magnificent railway system, including the New York Central, the West Shore, the Delaware, Lackawanna & Western, the Rome, Watertown & Ogdensburg, and the Syracuse, Ontario & New York. The competition between these great highways insure a low rate of transportation and the consequent cheapness of raw material necessary for profitable manufacturing. The city retained a monopoly of the salt interests in this country for a long period; in fact, at one time it was about the only article of commerce produced in the place. Its existence was known to the Indians at an early date, and in 1797 the State assumed control of Onondaga's vast and important salt springs, appointing a superintendent, having them surveyed and dividing the land into lots which were sold, reserving a royalty on the salt water. This reservation embraced Syracuse, Geddes and Salina, having forty-three wells, varying in depth from two to four hundred feet, with a total pumping capacity of over twenty-five hundred gallons per minute. But the operation of these famous salt springs, though a vast and important industry, constitutes a comparatively small factor in the commercial interests of the city, for at the present time there are over five hundred industrial establishments, giving employment to at least twenty thousand persons. The manufactured products of this city are used not only throughout the country but their exportation in successful competition with foreign goods is a considerable item.

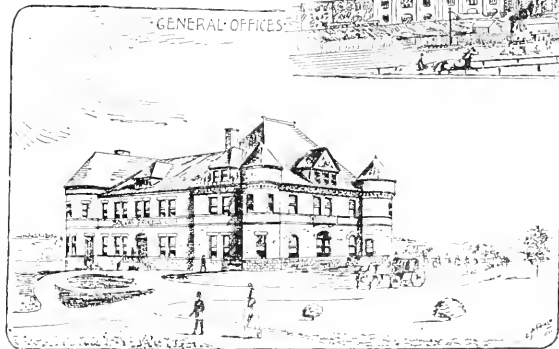
ANOTHER VIEW



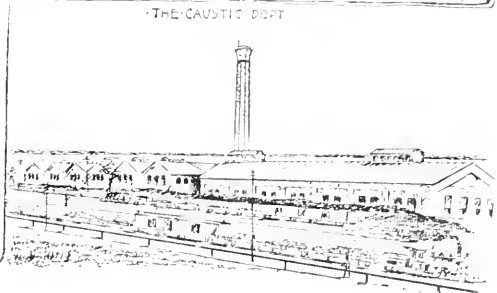
THE SOLWAY PROCESS COMPANY'S WORKS
AT GEDDES NEAR SYRACUSE.



GENERAL OFFICES



THE CAUSTIC DEPT



BRADLEY & COMPANY



TRUSS AND SLATE TOP

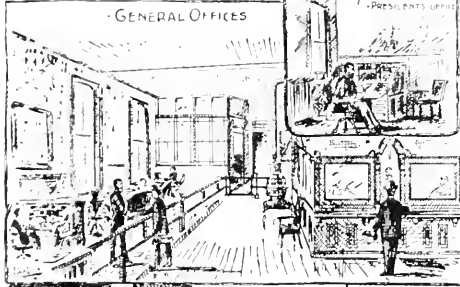


VIEW OF A SLATE

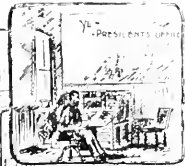


SECTION THROUGH THE SLATE

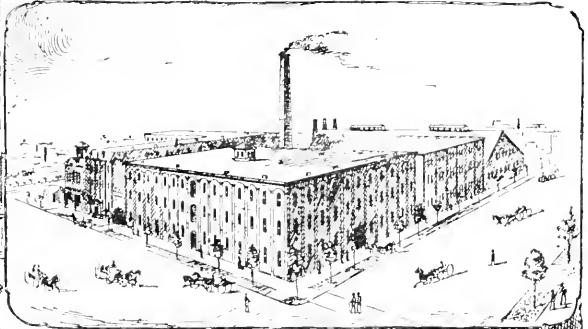
WORKS OF THE SYRACUSE CHILLED PLOW CO



GENERAL OFFICES



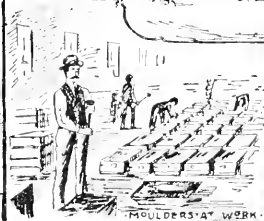
PRESIDENT'S OFFICE



FORGING A PLOW-POINT



GRINDING A PLOW-POINT



MOULDERS' WORK



FINISHING THE HANDLE



PAINTING A PLOW BEAM



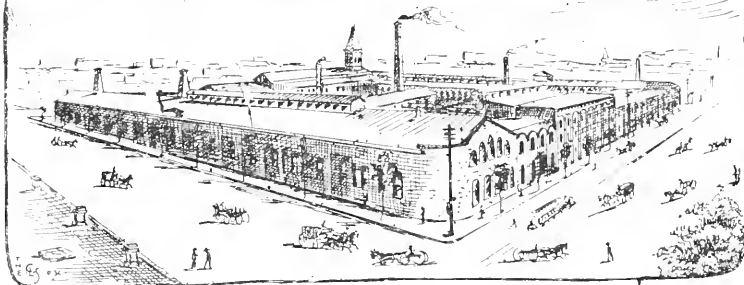
GRINDING DEPT.



POURING A HEAT

THE CUPOLA

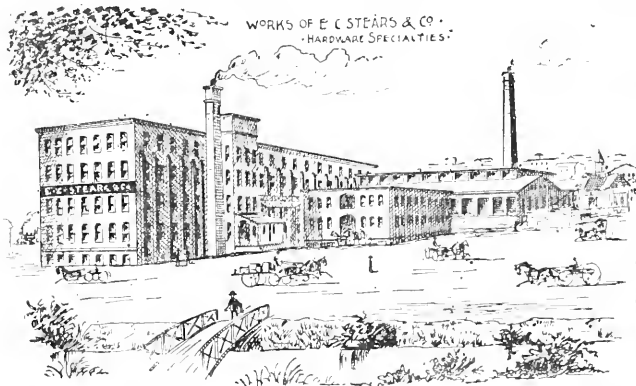
SWEET'S MFG CO'S
STEEL WORKS.



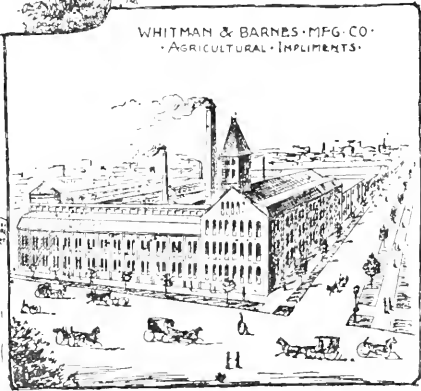
OFFICE OF WHITMAN & BARNES MFG CO.

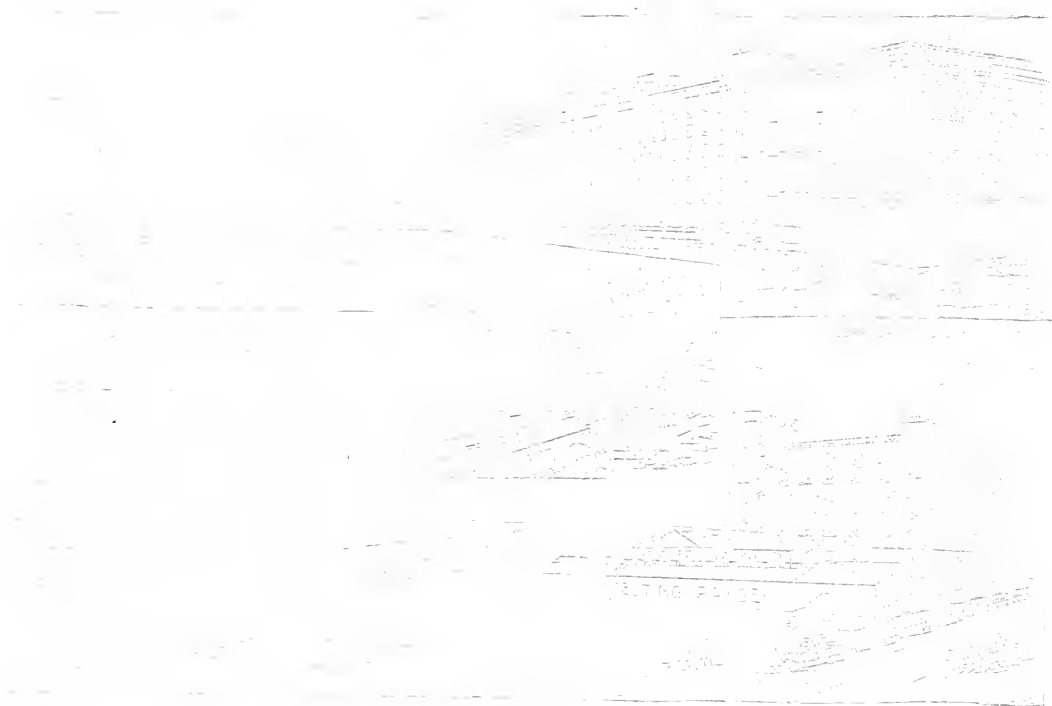


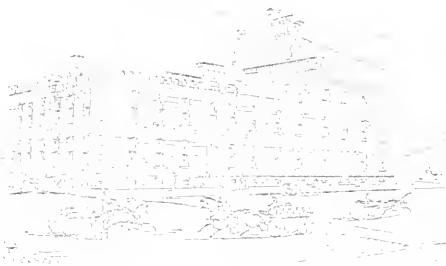
WORKS OF E C STEARS & CO.
- HARDWARE SPECIALTIES.



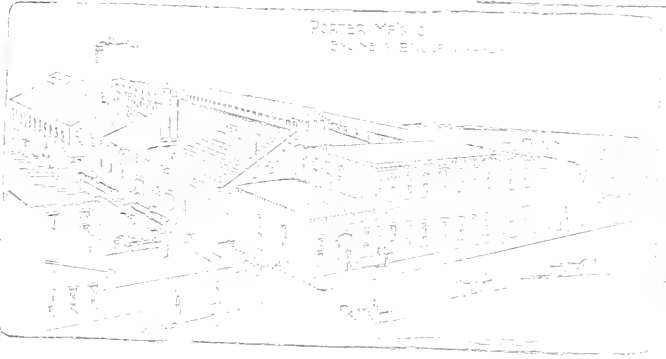
WHITMAN & BARNES MFG CO.
- AGRICULTURAL IMPLEMENTS.

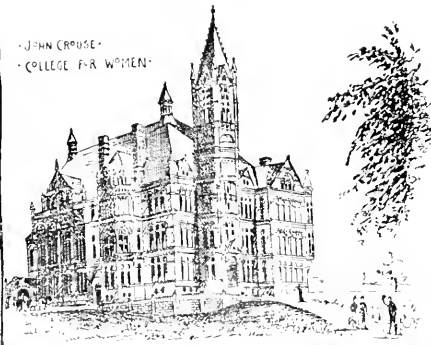
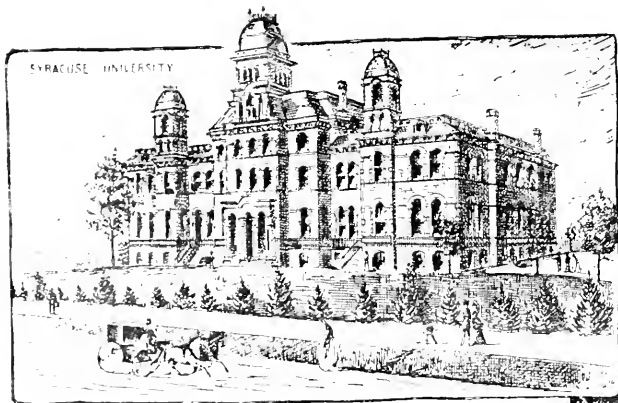






PORTER MAP CO
BUILDING ELEVATION





FRESCOTT SCHOOL

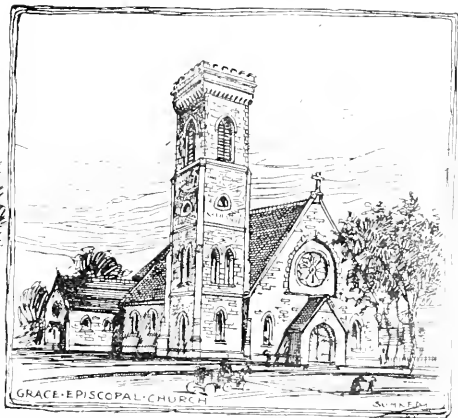




PLYMOUTH CHURCH



UNIVERSITY AVE.
M.E. CHURCH



GRACE EPISCOPAL CHURCH



FOURTH PRESB. CHURCH



CENTRAL BAPTIST
CHURCH



UNIVERSITY
CHURCH

THE G.L.S.C.C

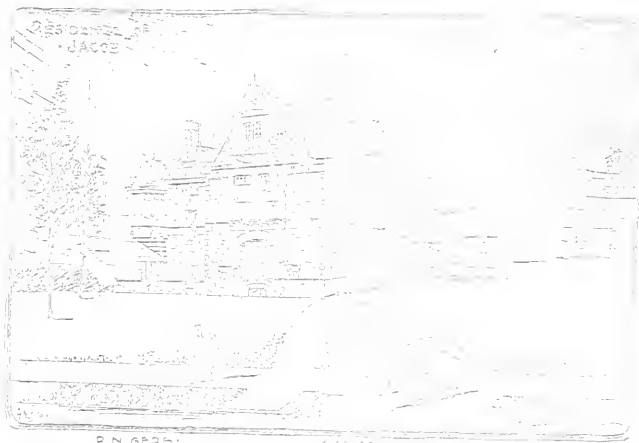




R. SEPP

CHAS. AMOS

BY J. M. MOORE



R. SEPP

CHAS. AMOS

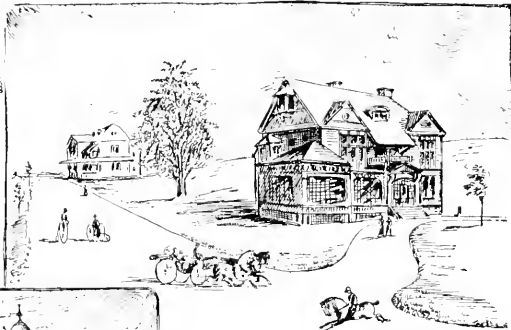


R. SEPP

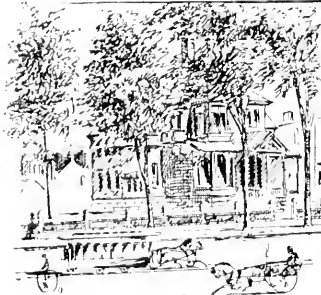
CHAS. AMOS



RES OF HON FRANK HISCOCK



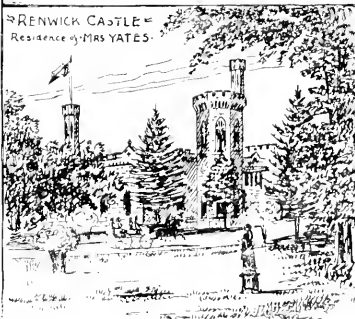
RES OF F. HAZARD
AT GODES



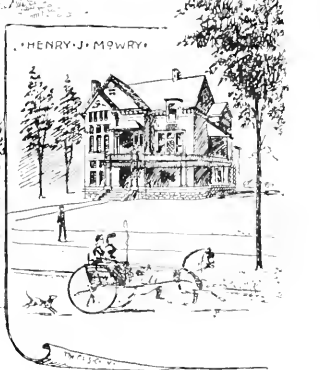
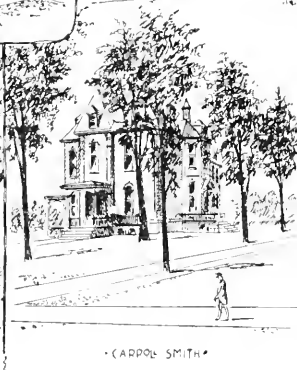
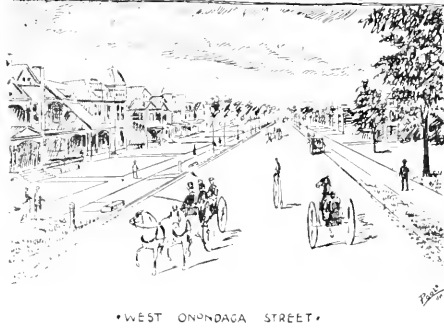
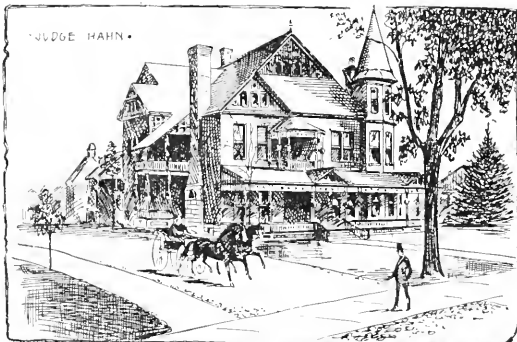
RES OF H S WHITE

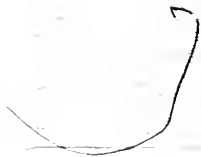


RES OF HON THOS RYAN



RENWICK CASTLE
Residence of MRS YATES









WHITE MEMORIAL BUILDING



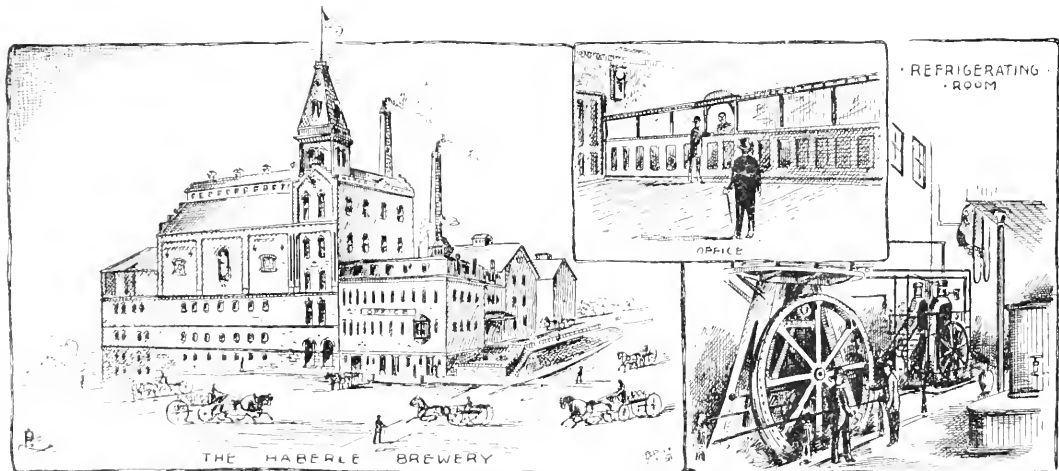
MEMORIAL
TO THE
SOLDIERS

ENTRANCE

THE SNOW BUILDING



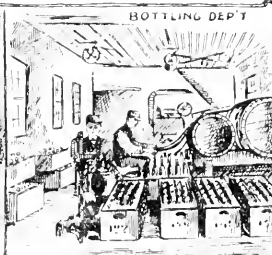
INTERIOR WOLCOTT & WESTS
-BOOK STORE



THE HABERER BREWERY



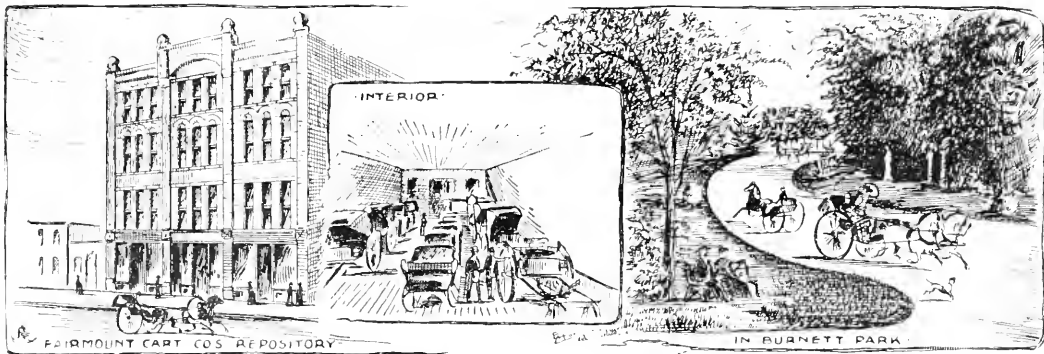
BREWING



BOTTLING DEPT.



STORAGE

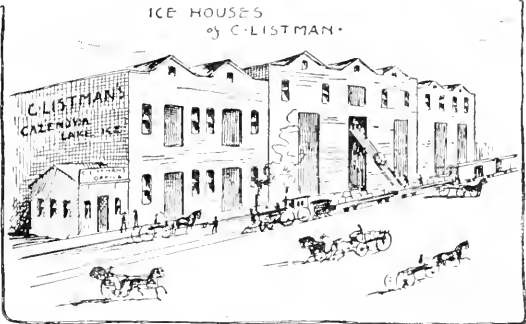


FAIRMOUNT CART CO'S REPOSITORY

IN BURNETT PARK

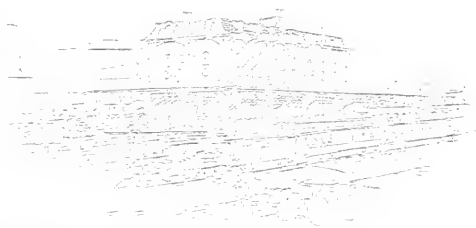


BRITTON'S MILLS & ELEVATOR

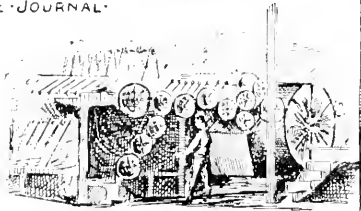
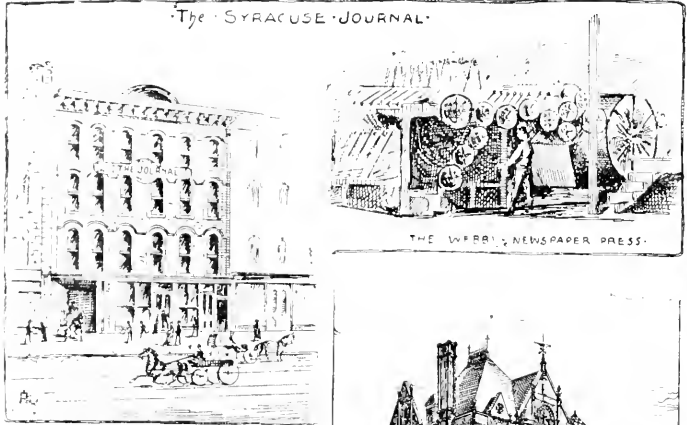


ICE HOUSES
of C. LISTMAN

NEW CENTRAL DEPOT



The SYRACUSE JOURNAL.



THE WERRILL NEWSPAPER PRESS.

WHOLESALE STORE.



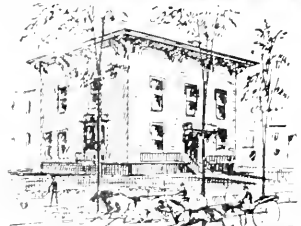
D. MCCARTHY & SONS
DRY GOODS HOUSE.



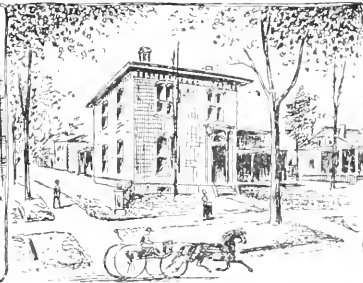
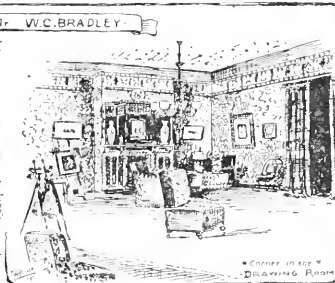
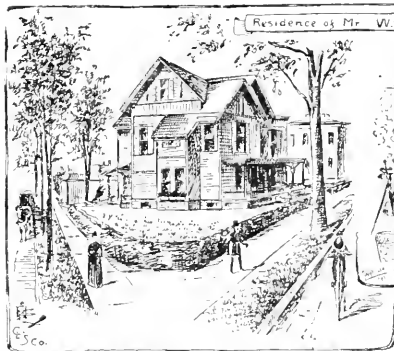
RETAIL STORE.



D'E CROUSE'S NEW STABLE



TRAIL RES
ON FAIETTE PARK





五、

六、

七、

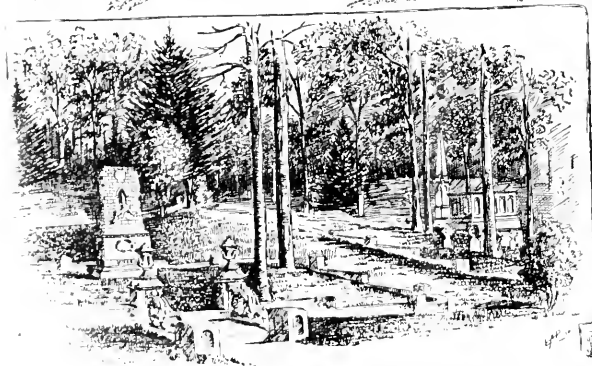
八、

九、

十、

十一、

十二、



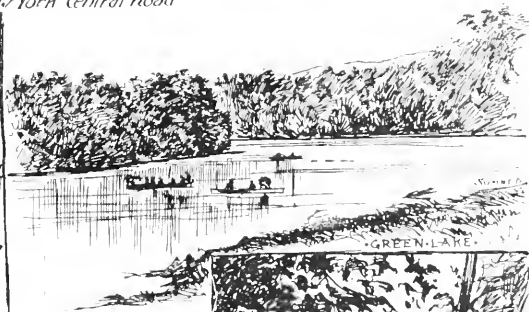
-VIEWS IN OAKWOOD CEMETERY-

-ENTRANCE

• On The New York Central Road



• DEVILS PULPIT •



• GREEN LAKE •

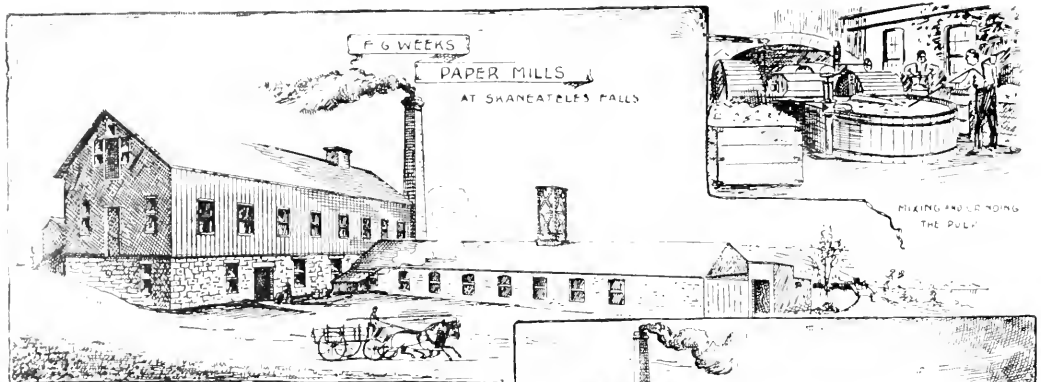


• KIRKVILLE • GREEN LAKE •

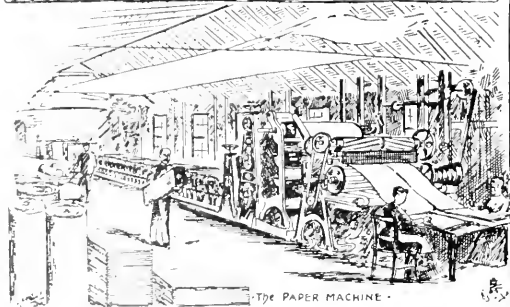


• MANIUS FALLS •

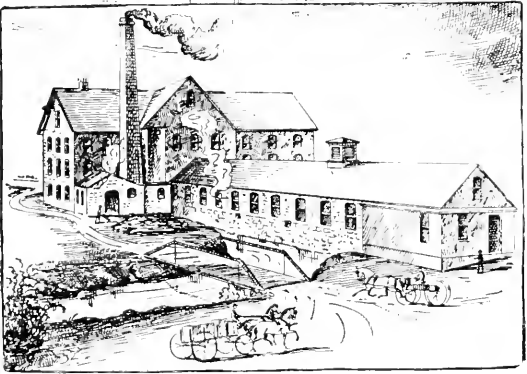




MIXING AND LOADING THE PULP

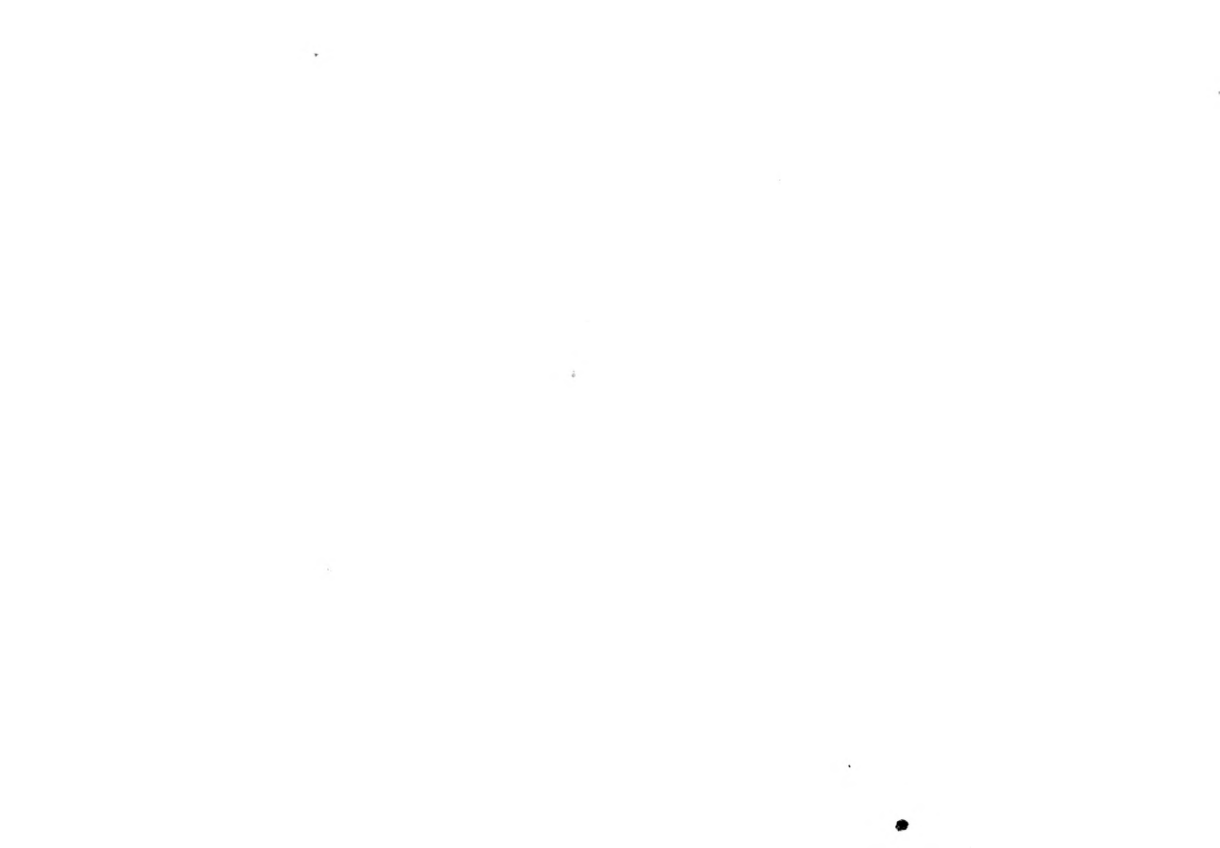


THE PAPER MACHINE



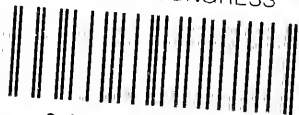








LIBRARY OF CONGRESS



0 014 208 859 9