

PROPERTY OF THE

4137.36.1

Public Library of the City of Boston



From the Townsend Fund
Added

A
SYSTEM
OF
ANATOMICAL PLATES
of the
HUMAN BODY,

Accompanied with Descriptions, and
PHYSIOLOGICAL, PATHOLOGICAL, AND SURGICAL OBSERVATIONS, BY
JOHN (LIZARS) F.R.S.E.

FELLOW OF THE ROYAL COLLEGE OF SURGEONS, CORRESPONDING MEMBER OF THE MEDICAL SOCIETY OF EMULATION OF PARIS, AND

LECTURER ON ANATOMY AND SURGERY, EDINBURGH.

Dedicated by Permission to
THE KING.



Designed & Engraved by W. Blair & Co. Edinburgh

EDINBURGH;

PUBLISHED BY WILLIZARS, 3, 37 JAMES SQUARE DANIEL LIZARS, 5, 37 DAVID STREET;

S. HIGHLEY 174, FLEET STREET AND WEBB STREET ST THOMAS'S HOSPITAL, LONDON;

AND W. CURRY, JUNR & CO. D. UPPER SACKVILLE STREET DUBLIN.

1604

1723

1723

TABLE OF CONTENTS.

PART I.

THE BONES OF THE HUMAN SKELETON.

	Pages of the Plates.
PLATE I.—General View of the Skeleton, - - - - -	1
II.—View of the Trunk, with Individual Vertebræ and Ribs, - - - - -	2
III.—View of the Pelvis, - - - - -	3
IV.—Structure of Bone, with Fetal and Adult Skulls, - - - - -	4
V.—Individual Bones of the Skull, - - - - -	5
VI.—Individual Bones of the Face, - - - - -	6
VII.—Bones of the Upper Extremity, - - - - -	7
VIII.—Bones of the Lower Extremity, - - - - -	8

PART II.

THE BLOOD-VESSELS AND NERVES OF THE HEAD AND TRUNK.

PLATE I.—View of the Viscera of the Thorax and Abdomen, with their Blood-vessels and Nerves, - - - - -	9
II.—The Heart displayed, with the peculiarities of the Fetal Circulation, - - - - -	10
III.—The Trachea and Lungs, with the minute Structure of an Artery and Vein, - - - - -	11
IV.—Deep View of the Blood-vessels and Nerves of the Thorax and Abdomen, with a display of some of the more deeply-seated Viscera of the latter Cavity, - - - - -	12
V.—Further Developement of the Blood-vessels and Nerves of the Abdominal Cavity, with a display of the Pelvic Viscera of the Female, - - - - -	13
VI.—Section of the Female Pelvis, to exhibit the connexion of the Viscera with their Blood-vessels and Nerves, - - - - -	14
VII.—View of the Superficial Muscles, Blood-vessels, and Nerves of the Neck and Face, - - - - -	15
VIII.—View of the Deeper Muscles, Blood-vessels, and Nerves of the Face and Neck, - - - - -	16
IX.—Further Developement of the Blood-vessels and Nerves of the Face and Neck, - - - - -	17
X.—Still further Display of the Blood-vessels and Nerves of the Face and Neck, - - - - -	18

PART III.

THE BLOOD-VESSELS AND NERVES OF THE UPPER AND LOWER EXTREMITIES.

PLATE XI.—Blood-vessels and Nerves of the Axilla, Arm, Fore-arm, and Hand, - - - - -	19
XII.—Deeper View of the Blood-vessels and Nerves of the Arm, Fore-arm, and Hand, - - - - -	20
XIII.—Blood-vessels and Nerves of the Back of the Hand, - - - - -	21
XIV.—Section of the Male Pelvis, exhibiting the connexion of the Viscera with their Blood-vessels and Nerves, - - - - -	22
XV.—Blood-vessels and Nerves of the Thigh, together with those of the Spermatic Cord and Testis, - - - - -	23
XVI.—Deep View of the Blood-vessels and Nerves of the Thigh, together with those of the Spermatic Cord, Testis, and Penis, - - - - -	24
XVII.—Blood-vessels and Nerves on the Dorsum of the Pelvis, with those of the Poples, - - - - -	25
XVIII.—Blood-vessels and Nerves on the Anterior Aspect of the Leg and Foot, - - - - -	26
XIX.—Blood-vessels and Nerves on the Posterior Aspect of the Leg, together with those on the Sole of the Foot, - - - - -	27
XX.—Deeper View of the Blood-vessels and Nerves on the Posterior Aspect of the Leg, together with those on the Sole of the Foot, - - - - -	28

PART IV.

MUSCLES OF THE TRUNK, WITH TWO SUPPLEMENTAL PLATES, ILLUSTRATIVE OF HERNIA.

	Pages of the Plates.
PLATE I.—Superficial Abdominal Muscles, - - - - -	29
II.—The Deeper Abdominal Muscles, - - - - -	30
III.—View of the still more deeply-seated Abdominal Muscles, - - - - -	31
IV.—View of the Diaphragm, - - - - -	32
V.—The Superficial Muscles of the Back and Neck, - - - - -	33
VI.—View of the Deeper Muscles of the Back, with those of the Neck, - - - - -	34
VII.—View of the more deeply-seated Muscles of the Back, with those of the Neck, - - - - -	35
I.—Supplement, illustrates the Surgical Anatomy of Inguinal and Crural Hernia, according to that great master of Surgery, SIR ASTLEY COOPER, Bart., by whom the Dissection was made, - - - - -	36
II.—Supplement, is an Interior or Abdominal View of the Surgical Anatomy of Inguinal and Crural Hernia, from a Dissection also by the hand of SIR ASTLEY COOPER, Bart. - - - - -	37

PART V.

MUSCLES AND JOINTS OF THE UPPER AND LOWER EXTREMITIES.

PLATE VIII.—Illustrates the Muscles of the Thorax and Shoulder, with the Ligaments of the Sternum and Clavicle, - - - - -	38
IX.—Exhibits a View of the Shoulder-joint, with the various Ligaments in the Contiguity; also a View of the Muscles of the Arm, - - - - -	39
X.—The Superficial Muscles of the Fore-arm and Hand, - - - - -	40
XI.—The Deep Muscles of the Fore-arm and Hand, with the Ligaments of the Elbow-joint, Wrist-joint, and Joints of the Fingers, - - - - -	41
XII.—Views of the Superficial and Deep Muscles on the Back of the Fore-arm and Hand, with the Ligaments of the Elbow-joint, and Joints of the Fingers, - - - - -	42
XIII.—The Superficial Muscles of the Thigh, - - - - -	43
XIV.—View of the Deep Muscles of the Thigh, with the Ligaments of the Hip-joint, - - - - -	44

PART VI.

MUSCLES AND JOINTS OF THE LOWER EXTREMITY.

PLATE XV.—Gluteus Maximus Muscle, with the Contiguous Objects, - - - - -	45
XVI.—Gluteus Maximus, Medius, and Minimus Muscles, together with the Tensor Vaginæ Femoris, Piriformis, Obturator Internus and Gemelli, Obturator Externus, and Quadratus Femoris Muscles, - - - - -	46
XVII.—Exterior and Interior View of the Hip-joint, with the insertions of the Muscles around the Joint. These three Plates, with Plate XIV. of Part V., illustrate the Surgical Anatomy of Luxation of the Hip-joint, of Morbus Coxarius, of Fracture of the Neck of the Thigh Bone within the Capsular Ligament, and of Amputation at this Joint, as detailed in the Descriptions, - - - - -	47
XVIII.—Ligaments of the Pelvis, - - - - -	48
XIX.—Exhibits an Exterior and an Interior View of the Knee-joint, - - - - -	49
XX.—Represents an Anterior and a Posterior View of the Interior of the Knee-joint, together with a View of some of the Muscles of the Leg, - - - - -	50
XXI.—Exhibits some of the Muscles of the Leg and Foot, together with the Ligaments of the Ankle-joint, and Articulations of the Toes, - - - - -	51
XXII.—Deeper View of the Muscles of the Leg and Foot, together with some of the Ligaments of the Ankle-joint and Foot, - - - - -	52
XXIII.—Still Deeper View of the Muscles of the Leg and Foot, with some of the Ligaments of the Foot, - - - - -	53
XXIV.—Represents an Anterior and Posterior View of the Ankle-joint, together with the various Ligaments of the Foot and Toes, - - - - -	54

PART VII.

THE HUMAN BRAIN, FIRST PORTION.

	<i>Pages of the Plates.</i>
PLATE I.—General View of the Nervous System, representing the Cerebrum, Cerebellum, Spinal Marrow, and Spinal Nerves, with their Blood-vessels, - - - - -	55
II.—Lateral View of the Cerebrum, Cerebellum, and Cervical Portion of the Spinal Marrow, with the Nerves issuing from the latter, and several of the Blood-vessels of the Cerebrum and Cerebellum, - - - - -	56
III.—View of the Dura Mater, with the Middle Meningeal Artery, and Superior Longitudinal Sinus; together with a representation of the Convolutions of the Right Hemisphere, the Tunica Arachnoidea and Pia Mater, and also the Blood-vessels, - - - - -	57
IV.—Section of the Right Hemisphere of the Cerebrum, in level with the Corpus Callosum, so as to exhibit the latter with its Arteries, the Falx Cerebri with the Superior and Inferior Longitudinal Sinuses, and the Cineritious and Medullary Substances of the Brain, - - - - -	58
V.—Horizontal Section of both Hemispheres of the Cerebrum, parallel with the Corpus Callosum, so as to exhibit the Centrum Ovale Viuessenii. Perpendicular Section of the Cerebellum, representing the Arbor Vitæ, Fourth Ventricle, Valve of Viuessens, and Corpora Quadrigemina. Section of the Medulla Oblongata, to represent the Columns of the Spinal Marrow, - - - - -	59
VI.—Lateral Ventricles cut open to show their three Cornua, and the various bodies contained therein, also their Septum and Foramen of Communication, - - - - -	60
VII.—Illustrates various portions of the Brain, as the Septum Lucidum, the Fornix, the Choroid Plexuses, the Velum Interpositum of Haller, the Corpora Striata, the Thalami, the Commissura Mollis, the Anterior and Posterior Commissures, the Third Ventricle, the Pineal Gland, the Corpora Quadrigemina, the Infundibulum, the Pituitary Gland, and the several Cerebral and Cerebellic Nerves, - - - - -	61

PART VIII.

THE HUMAN BRAIN, SECOND AND CONCLUDING PORTION.

PLATE VIII.—View of the Corpora Striata, Thalami, Pineal Gland, Corpora Quadrigemina, and the Tentorium Cerebelli, - - - - -	62
IX.—View of the Corpora Striata, Thalami, Pillars of the Fornix, Anterior and Posterior Commissures, Pineal Gland, Corpora Quadrigemina, Inferior Cornu of Lateral Ventricle, Cerebellum, with Division of Superior Longitudinal into the two Lateral Sinuses, - - - - -	63
X.—View of the Basis of the Brain, with the different Cerebral and Cerebellic Nerves, together with the Branches of the Internal Carotid and Vertebral Arteries, - - - - -	64
XI.—View of the Interior of the Basis of the Skull lined with the Dura Mater, showing its Duplicatures, the Pituitary Gland, and the emergence of the various Cerebral and Cerebellic Nerves; and also the entrance of the Internal Carotid and Vertebral Arteries, with the different Sinuses, - - - - -	65
XII.—Six figures illustrating various portions of the Brain, as the Spinal Cord; Tuber Annulare, and Medulla Oblongata; section of Cerebellum showing Corpus Dentatum; Section of the Cerebrum and Cerebellum, showing the Thalami, Corpora Striata, and Corpus Niger; Spinal Cord, with the Tuber Annulare, Thalami, and Corpora Quadrigemina; Occipital Bone and Cervical Vertebrae, showing the entrance of the Vertebral Arteries, - - - - -	66
XIII.—View of the Basis of the Brain, to illustrate the course of the Medullary Fibres, - - - - -	67
XIV.—Perpendicular Section of the Cerebrum, Cerebellum, and Medulla Oblongata, illustrating the course of the Medullary Fibres, the Fifth Ventricle, the Third Ventricle, the Iter à Tertio ad Quartum Ventriculum, the Commissura Magna, the Commissura Anterior, Commissura Posterior, the Fornix, the Velum Interpositum, the Vena Magna Galieni, the Torcular Herophili, the Superior Longitudinal Sinus, and the Internal Carotid Artery, with some of its branches, - - - - -	68
XV.—View of the Superficies of both Hemispheres, representing the various convolutions, - - - - -	69

PART IX.

THE ORGANS OF SENSE, &c.

PLATE I.—View of the Muscles of the Pharynx and Larynx, - - - - -	70
II.—View of the Pharynx and Larynx, - - - - -	71

PLATE III.—View of the Pharynx and Larynx, together with the Muscles of the Palate, and Ligaments of the Atlas and Dentata, and Inferior Maxilla,	- - - - -	72
IV.—View of the Muscles and Cartilages of the Larynx, together with the Muscles of the Palate, and Glands of the Mouth,	- - - - -	73
V.—Illustrates various views of the Nostrils,	- - - - -	74
VI.—Also represents several views of the Nares, and the Superior Maxillary Nerve,	- - - - -	75
VII.—Exhibits the Structure of the Tongue in several views,	- - - - -	76
VIII.—Represents the Organ of Hearing in Sixteen Views,	- - - - -	77
IX.—Also Illustrates the Organ of Hearing by a multiplicity of Views,	- - - - -	78
X.—Exhibits Four Views of the Eye,	- - - - -	79

PART X.

THE ORGANS OF SENSE, AND VISCERA OF THE THORAX AND ABDOMEN.

PLATE XI.—Three views of the Muscles and Nerves of the Eye,	- - - - -	80
XII.—Exhibits sixteen views of the Blood-vessels, Coats, and Humours of the Eye,	- - - - -	81
XIII.—Represents four views of the Organ of Touch,	- - - - -	82
XIV.—View of a Lateral Section of the Thoracic and Abdominal Viscera,	- - - - -	83
XV.—Back view of the Thoracic and Abdominal Viscera,	- - - - -	84
XVI.—Illustrates the Liver, Pancreas, Spleen, and Stomach,	- - - - -	85
XVII.—The structure of the Liver, Gall-bladder, Stomach, and Duodenum represented,	- - - - -	86
XVIII.—The structure of the Ileum and Colon represented.	- - - - -	87

PART XI.

ABDOMINAL VISCERA, TOGETHER WITH THE MALE AND FEMALE ORGANS OF GENERATION.

PLATE XIX.—Illustrates the Structure of the Jejunum and the Kidney,	- - - - -	88
I.—View of the Male Organs of Generation,	- - - - -	89
II.—View of the Male Organs of Generation,	- - - - -	90
III.—External View of the Female Organs of Generation,	- - - - -	91
IV.—View of the Muscles of the Female Organs of Generation,	- - - - -	92
V.—View of a Lateral Section of the Female Organs of Generation,	- - - - -	93
VI.—Illustrates the Structure of the Urinary Bladder, the Vagina, Clitoris, Uterus, Ovarium, and Rectum,	- - - - -	94

PART XII.

GRAVID UTERUS, AND LYMPHATICS.

PLATE VII.—View of the Gravid Uterus in situation,	- - - - -	95
VIII.—View of the Fetus in Utero,	- - - - -	96
IX.—View of the Placenta, and several Ova at different periods,	- - - - -	97
X.—View of the Lymphatic Vessels of the Trunk,	- - - - -	98
IX.—View of the Lymphatic Vessels of the Upper Extremity,	- - - - -	99
XII.—View of the Lymphatic Vessels of the Head and Neck,	- - - - -	100
XIII.—View of the Lymphatic Vessels of the Lower Extremity,	- - - - -	101

TO THE KING.

SIRE,

THE voice of antiquity, the nature of disease, the casualties of ordinary life, and the hazards of war, all conspire, with the dictates of sound philosophy, in enforcing the claims of Anatomy and Physiology, as the basis of a successful system of Medicine and Surgery. It is natural, and an act of duty in me, therefore, to desire, that labours intended, and, I trust, calculated, to promote the interests of a practical science, in which, not only Your Majesty's Subjects, but likewise, all the nations of the earth, are essentially and deeply concerned, should receive a due portion of countenance and favour from a Monarch, equally distinguished, by anxiety for the welfare of his People, and estimable, even above the dignity of his exalted station, for the judicious and effectual encouragement of every undertaking and institution, the benefits of which, like the influences of the sun, are common to the human race.

To Your Majesty alone, could admiration, sense of propriety, feelings of loyalty, and generous ambition, unite, in prompting me to look for an adequate Patron; because, from Your Majesty alone, could I hope to obtain, at once, the benevolent pardon of all unintended imperfections, the praise which ennobles success, and the sanction which extends utility.

SIRE, You will graciously permit me to assign a very imperative reason for presuming to solicit the notice of Your Majesty. I am emboldened, by the highest of all obligations, to avail myself of the appearance of this work, to suggest the necessity for speedily adopting some measures, in behalf of the science, to the advancement of which it is conscientiously devoted. It is impossible for me, or for any other teacher, in this department of professional education, not to regret, most painfully, that, through the increase of certain prejudices, as illiberal as they are alien to true philanthropy, obstacles are daily arising, in

Your Majesty's United Kingdoms, to the prosecution of Anatomy. It is equally impossible not to believe, what ample observations demonstrate, that the magnitude, to which they have already attained, is, in its infallible and invincible operation, signally and seriously injurious to Your Majesty's Subjects, both in the public service, and in all the ranks of private society. Many more of these, than unsuspecting benevolence could have imagined, are doomed, it were easy to prove, to a premature grave, by the consequent deficiency in this requisite science, on the part of those to whom the care of life and health is committed: And, I will state, most respectfully, to Your Majesty, in evidence of this alarming truth, well-known and universally deplored, as it is, in the Schools of Medical Learning, one circumstance, of political importance enough, independently of humane considerations, to justify the freedom which I thus assume.

In France, in Germany, and in Denmark, the prosecution of Anatomy is protected by their respective Governments; and, in them, every facility is afforded for its complete and satisfactory study. Hence, in great degree, it is, that, of late years, such of the medical youth, among Your Majesty's Subjects, as are enabled by their circumstances, proceed to these foreign Kingdoms, in search of information of the most valuable kind,—being compelled thereto by the dread of entering on the practice of their profession, while ignorant of some of its fundamental principles, and of having, through the unavoidable fault of a merely British education, to collect by repeated failures in their treatment of the living, that knowledge which they might have early, and safely, and ably, acquired, from intimacy with the dead.

SIRE, I cannot doubt, that, Your Majesty, impressed with a sense of the awful responsibility and agonizing duties of medical men, will be most graciously pleased to recommend the subject of their effective and thorough instruction, in this claimant particular, to the serious attention of Your Majesty's wise and liberal Ministers, with a view to the accomplishment of what science points out as desirable, and what the calamities of mankind decide to be necessary.

That Your Majesty may long live to witness, with delight, the beneficial results of such cogently called-for interference, and to receive, on this account, as for every other act of a patriotic, an enlightened, and a prosperous government, the heartfelt thanks and blessings of a grateful because a fortunate people, is the fervent prayer of,

SIRE,

YOUR MAJESTY'S

Most devoted, very humble, and faithful

Subject and Servant,

JOHN LIZARS.



PLATE II.

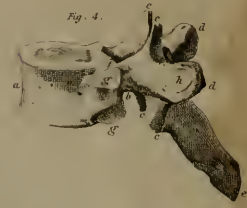
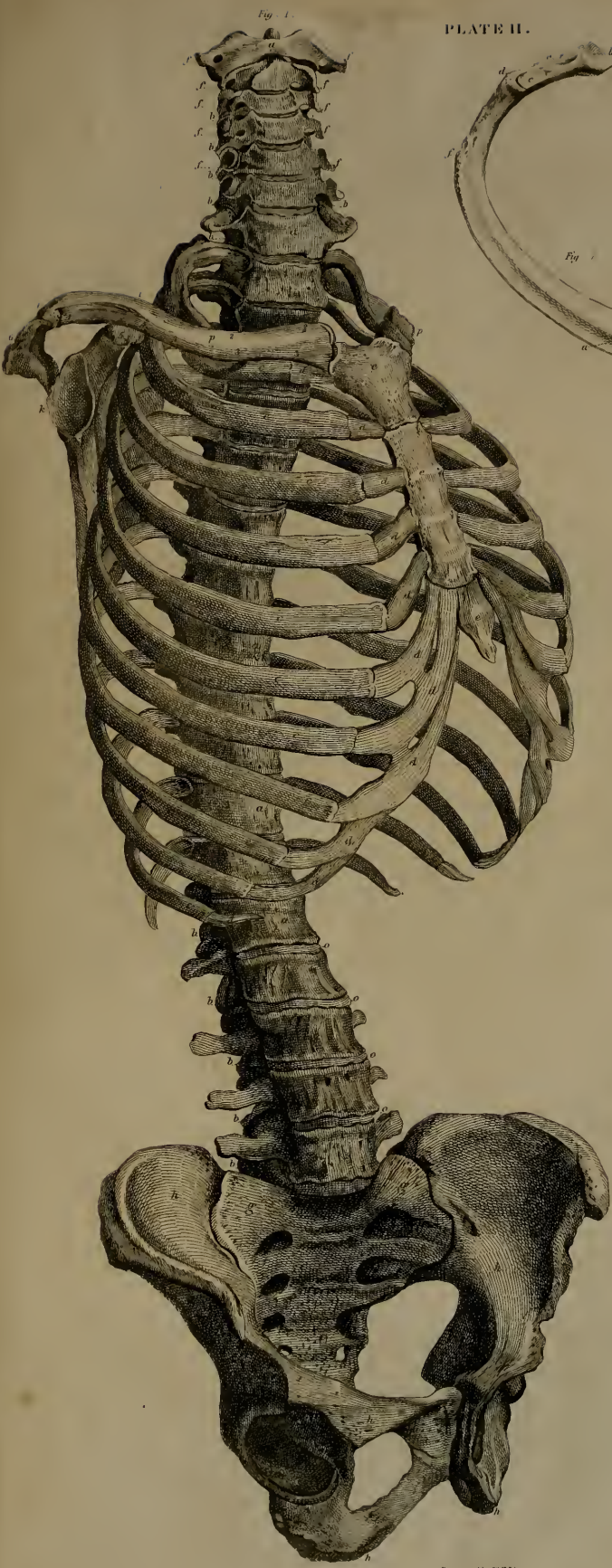


Fig. 1



Fig. 2



Fig. 1



Fig. 3.



Fig. 1

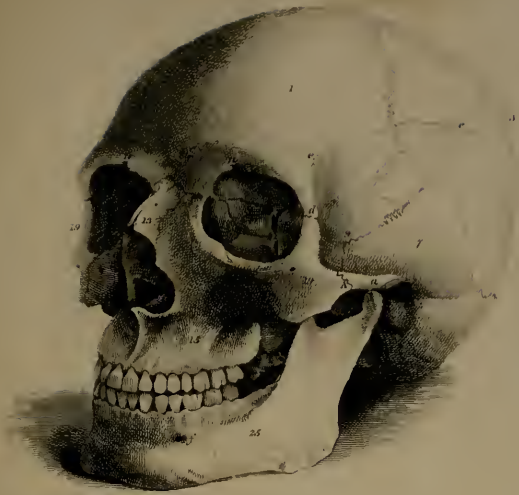


Fig. 3



Fig. 4

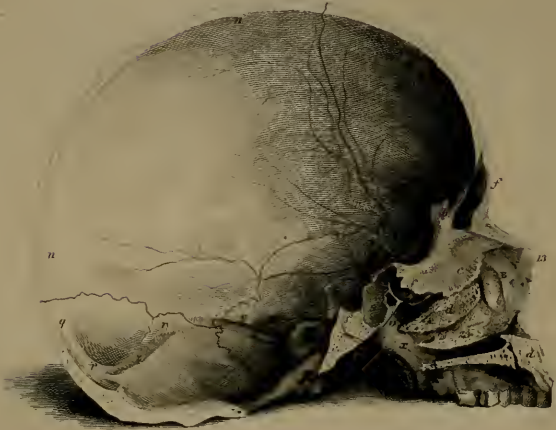
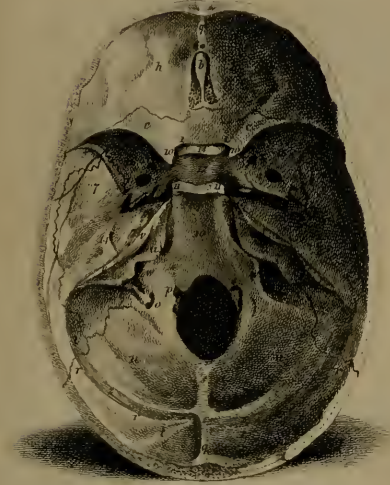


Fig. 5

Fig. 6

Fig. 9

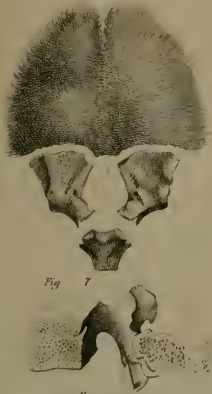


Fig. 7

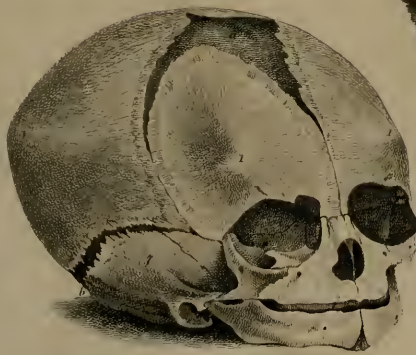


Fig. 8

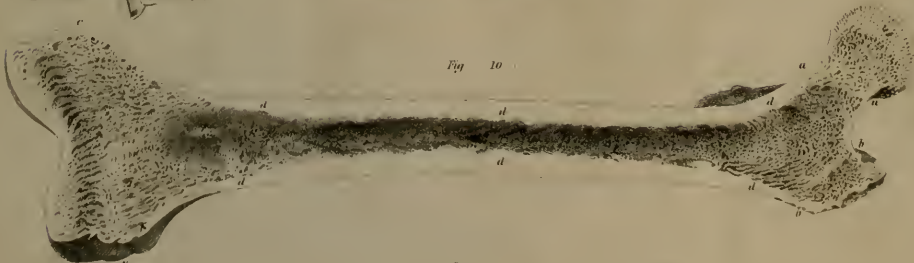


Fig. 10

Fig. 1
16

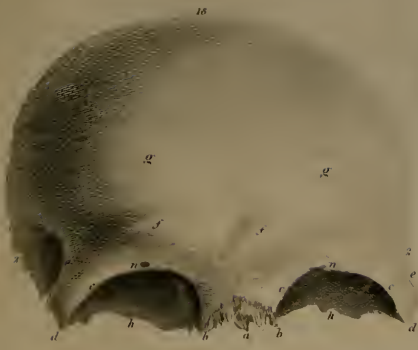


Fig. 12.

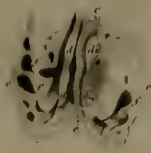


Fig. 3



Fig. 5.

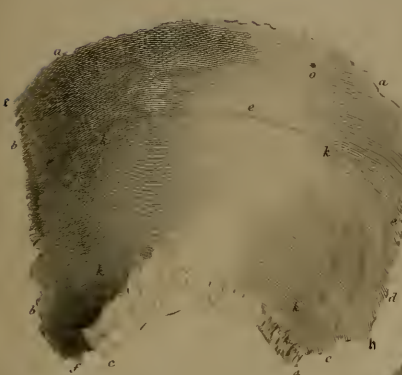


Fig. 11.



Fig. 4.

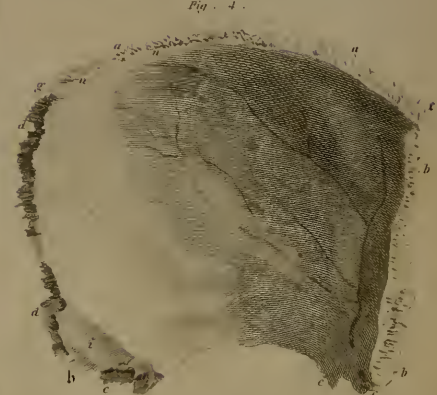


Fig. 7

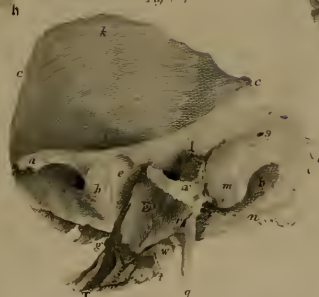


Fig. 5.

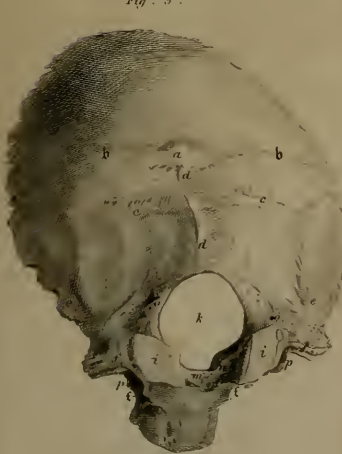


Fig. 6.

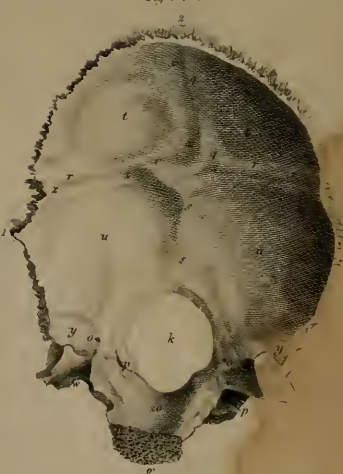


Fig. 8



Fig. 9.

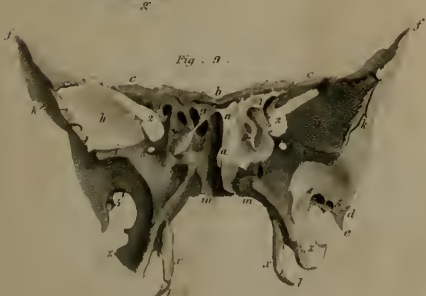


Fig. 10.



Fig. 16.



Fig. 37.

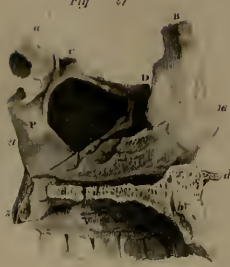


Fig. 15.



Fig. 28.



Fig. 24.



Fig. 25.

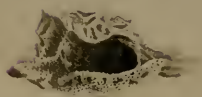


Fig. 25.



Fig. 26.



Fig. 18.



Fig. 20.

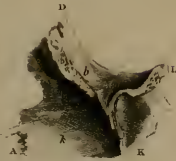


Fig. 19.



Fig. 17.



Fig. 13.

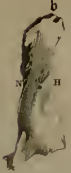


Fig. 29.



Fig. 14.



Fig. 21.



Fig. 22.



Fig. 1



Fig. 2



Fig. 3



Fig. 4



Fig. 5

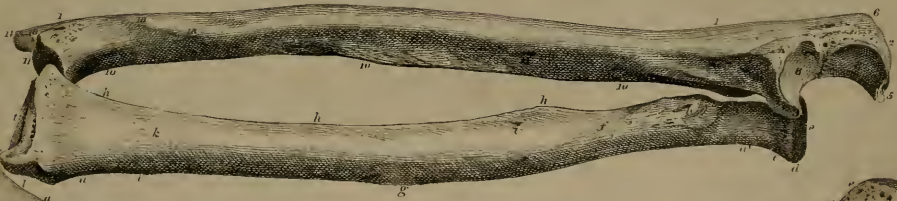


Fig. 6

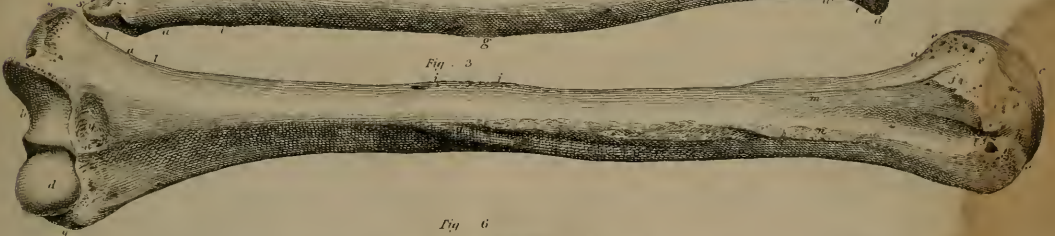


Fig. 7

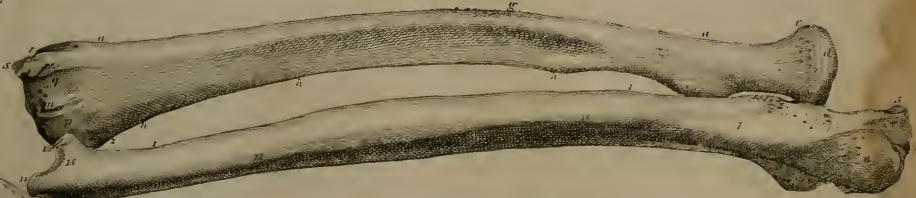


Fig. 8

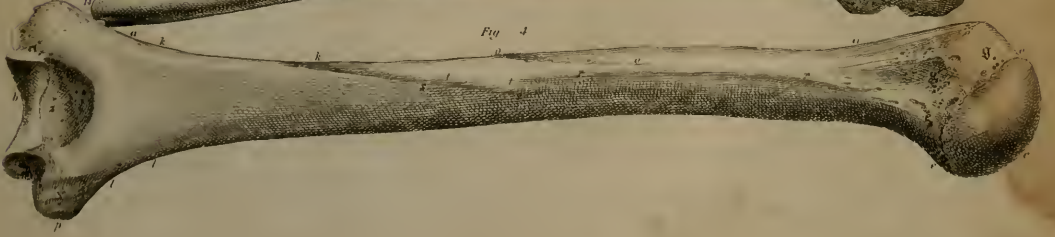


Fig. 1.

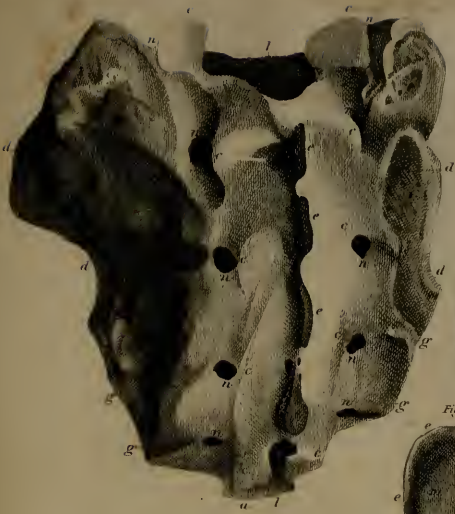


Fig. 2.

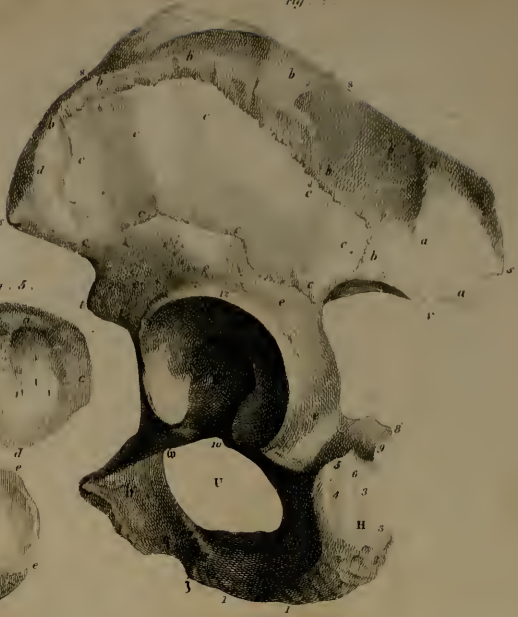


Fig. 5.

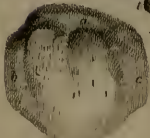


Fig. 6.



Fig. 9.

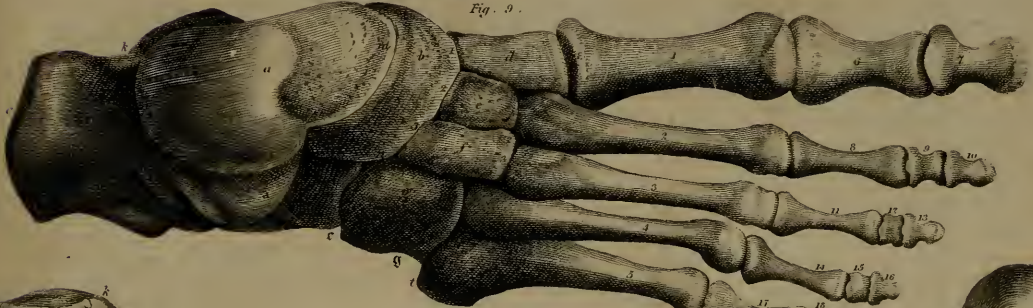


Fig. 4.

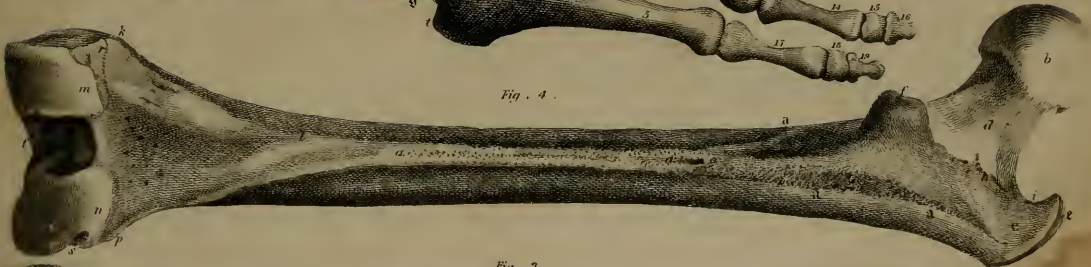


Fig. 3.

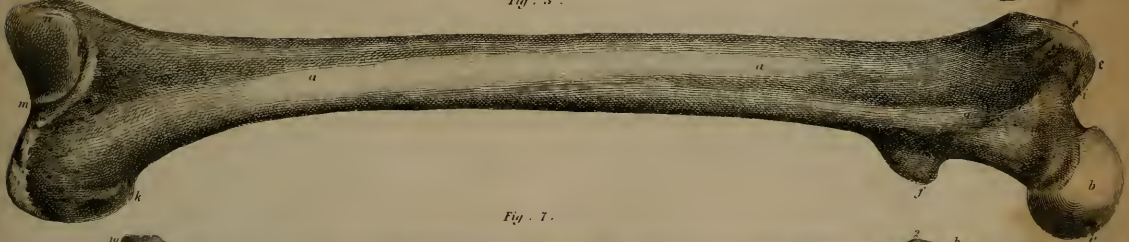


Fig. 7.

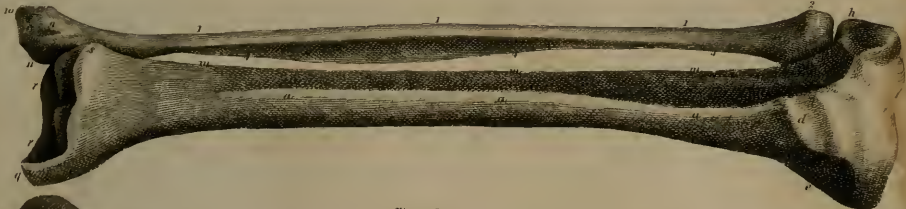
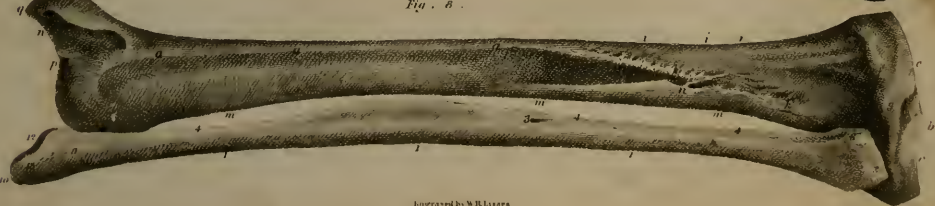


Fig. 8.



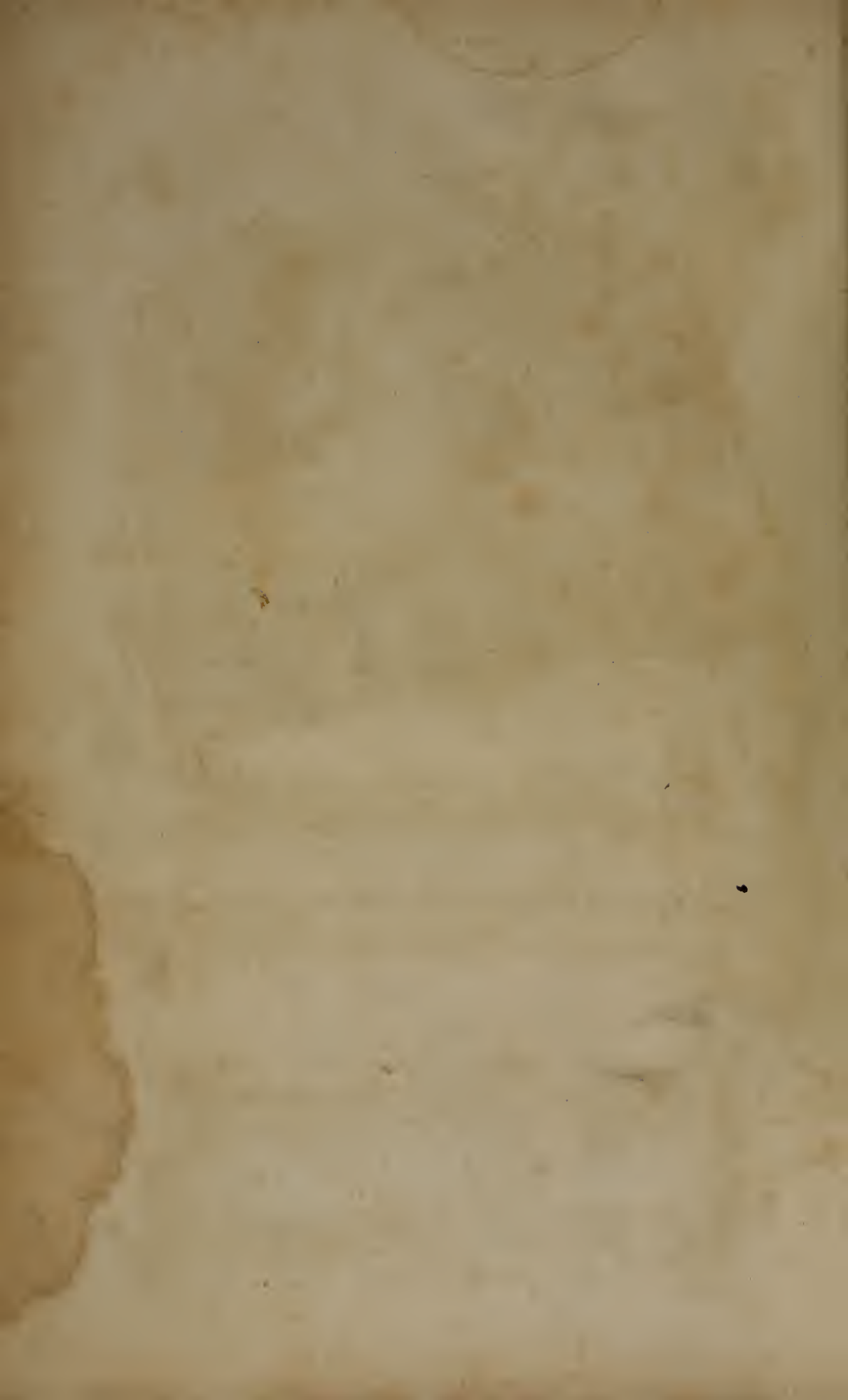




Fig. 1.

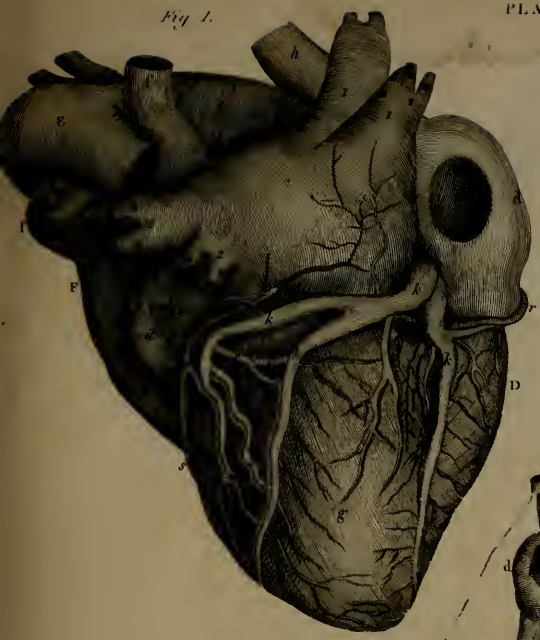


Fig. 2.



Fig. 3.

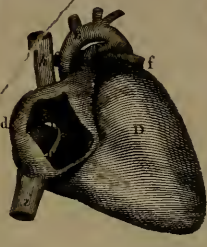


Fig. 4.



Fig. 5.



Fig. 6.

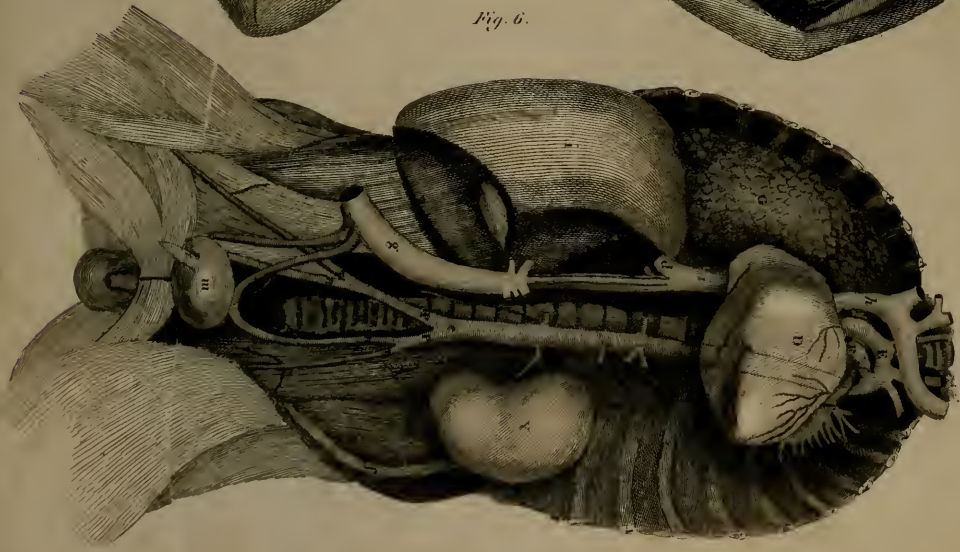


Fig. 2.

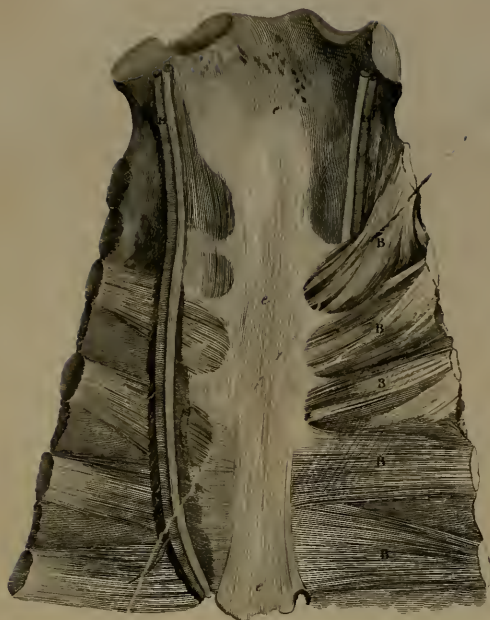


Fig. 3.

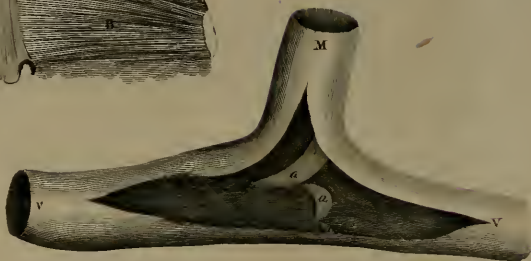
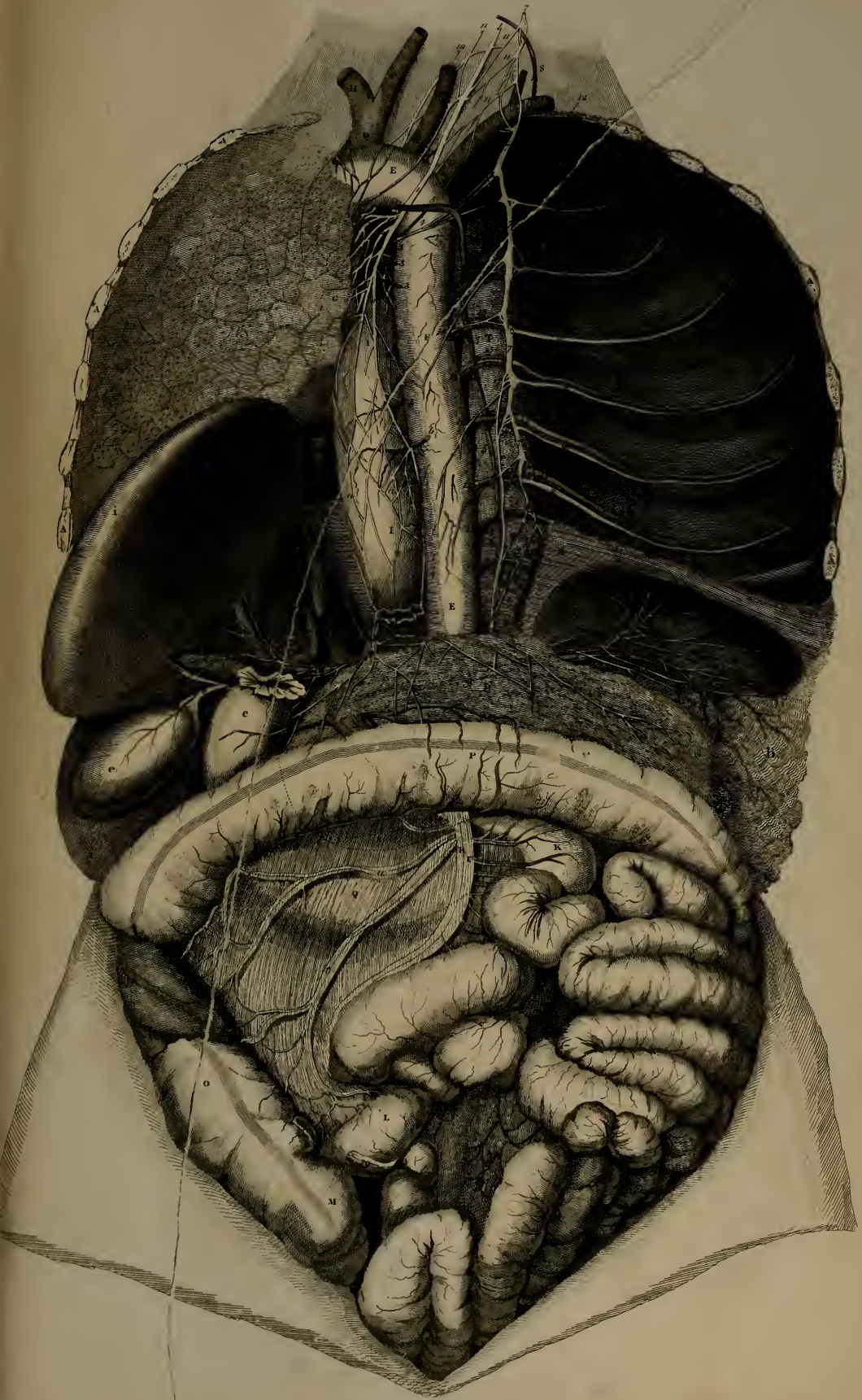


Fig. 4.



Fig. 1.





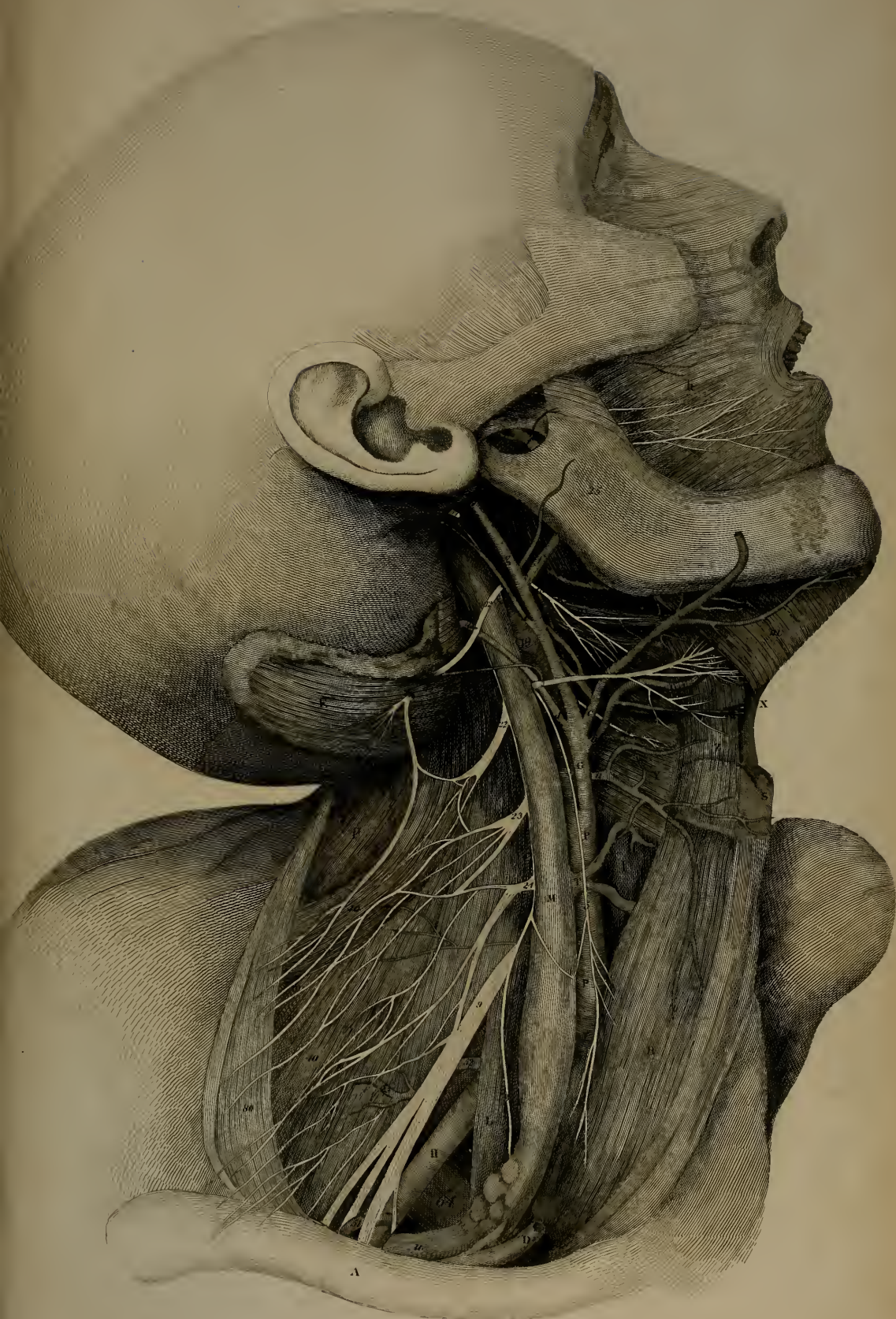




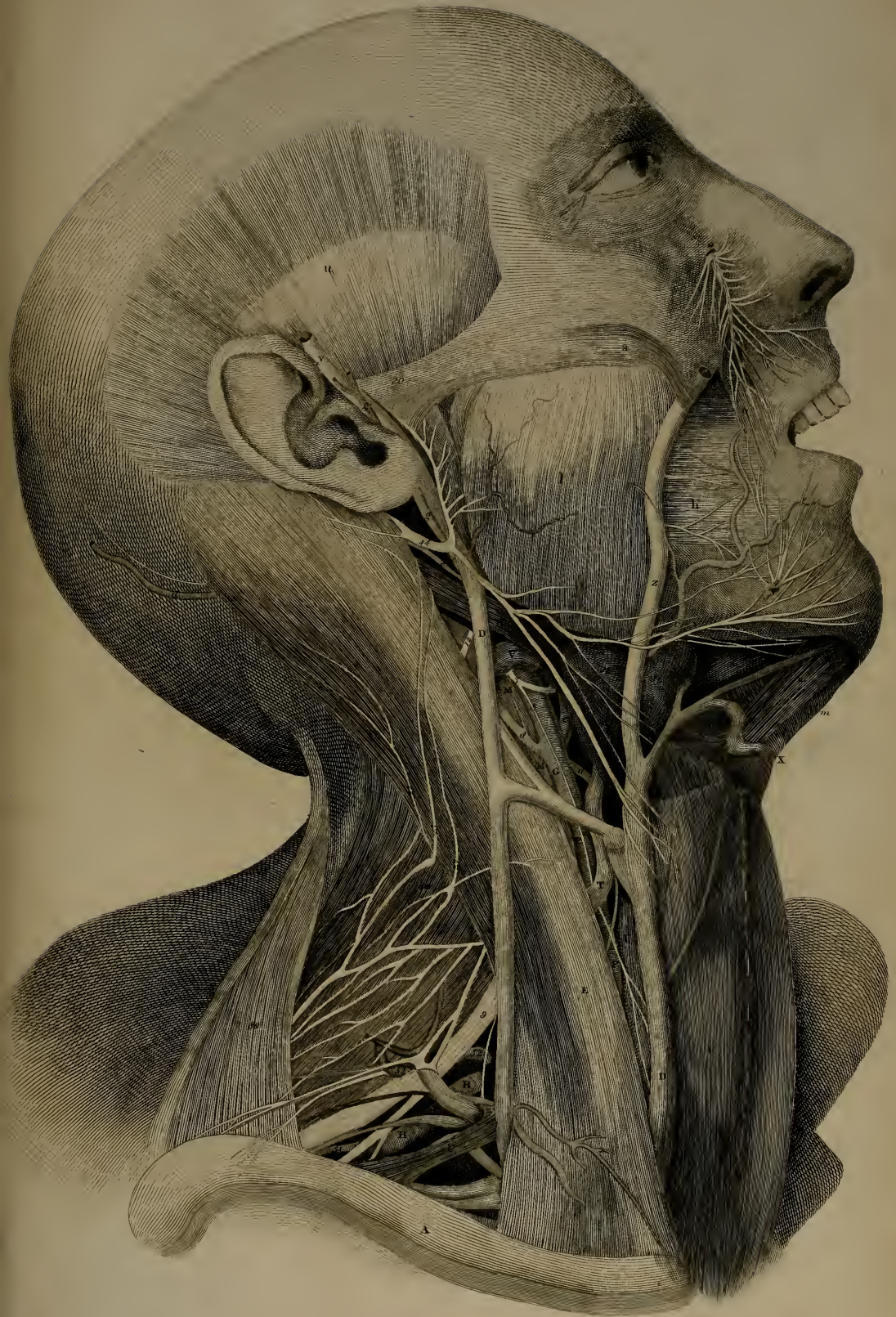








A





A



Fig. 1.

Fig. 2.



Sculp. J. G. W. U. L. Anst.

PLATE XII.

Fig. 2.

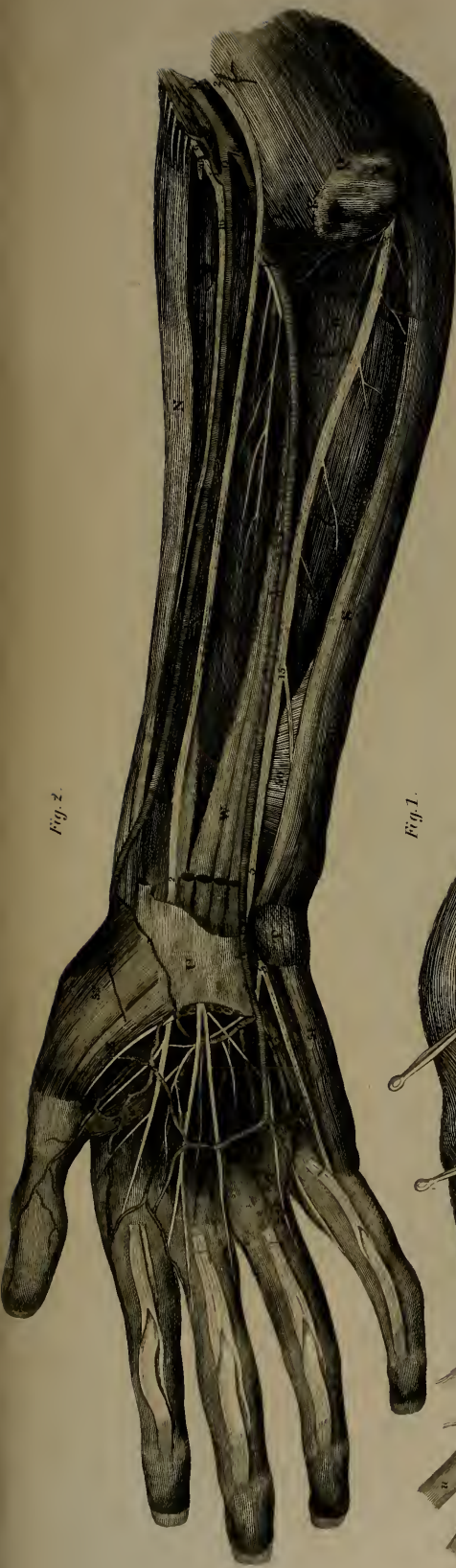


Fig. 1.



Engraved by W. H. Lister.

PLATE XIII.



Engraved by W. H. Miller

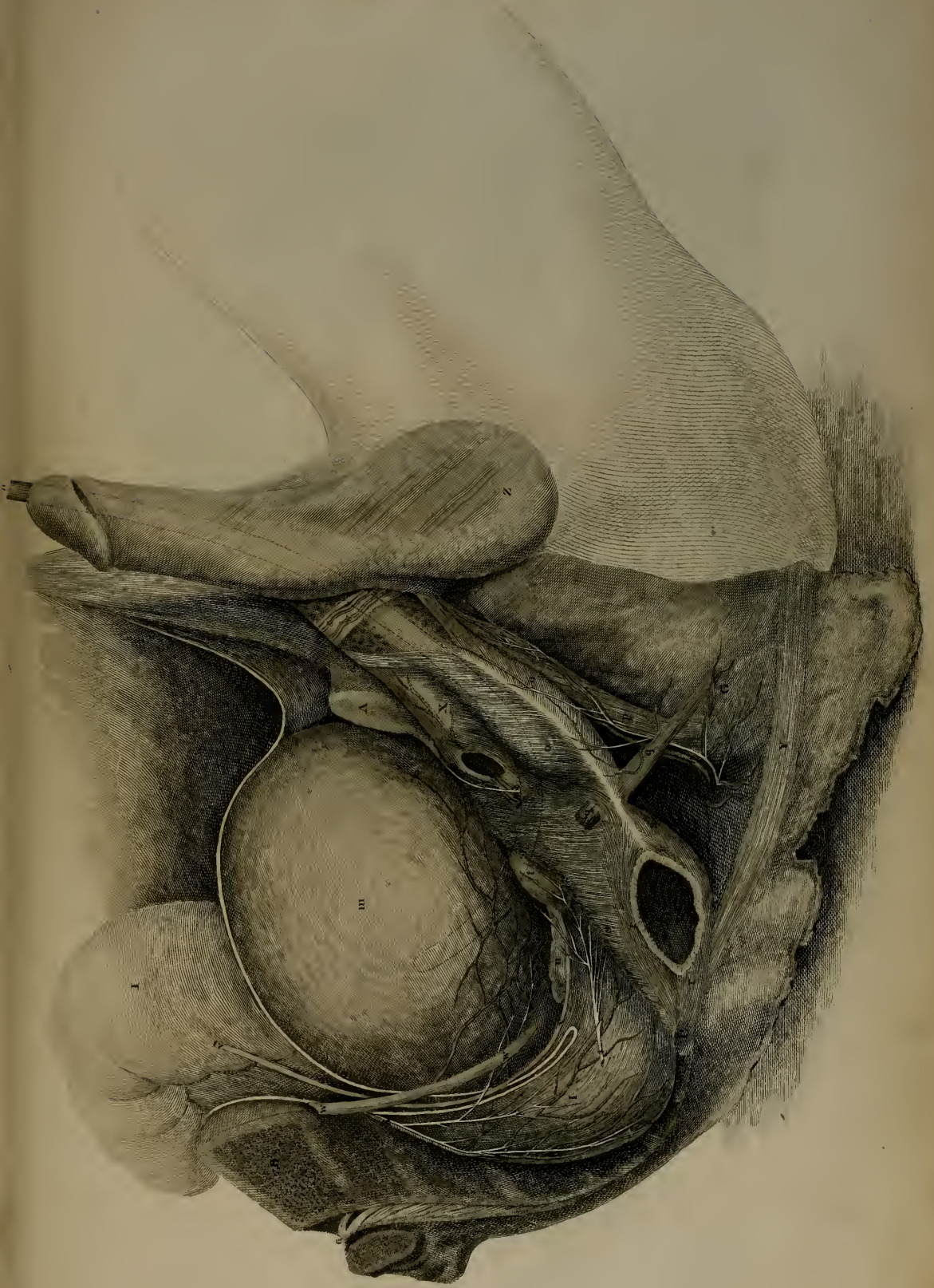


PLATE XV.





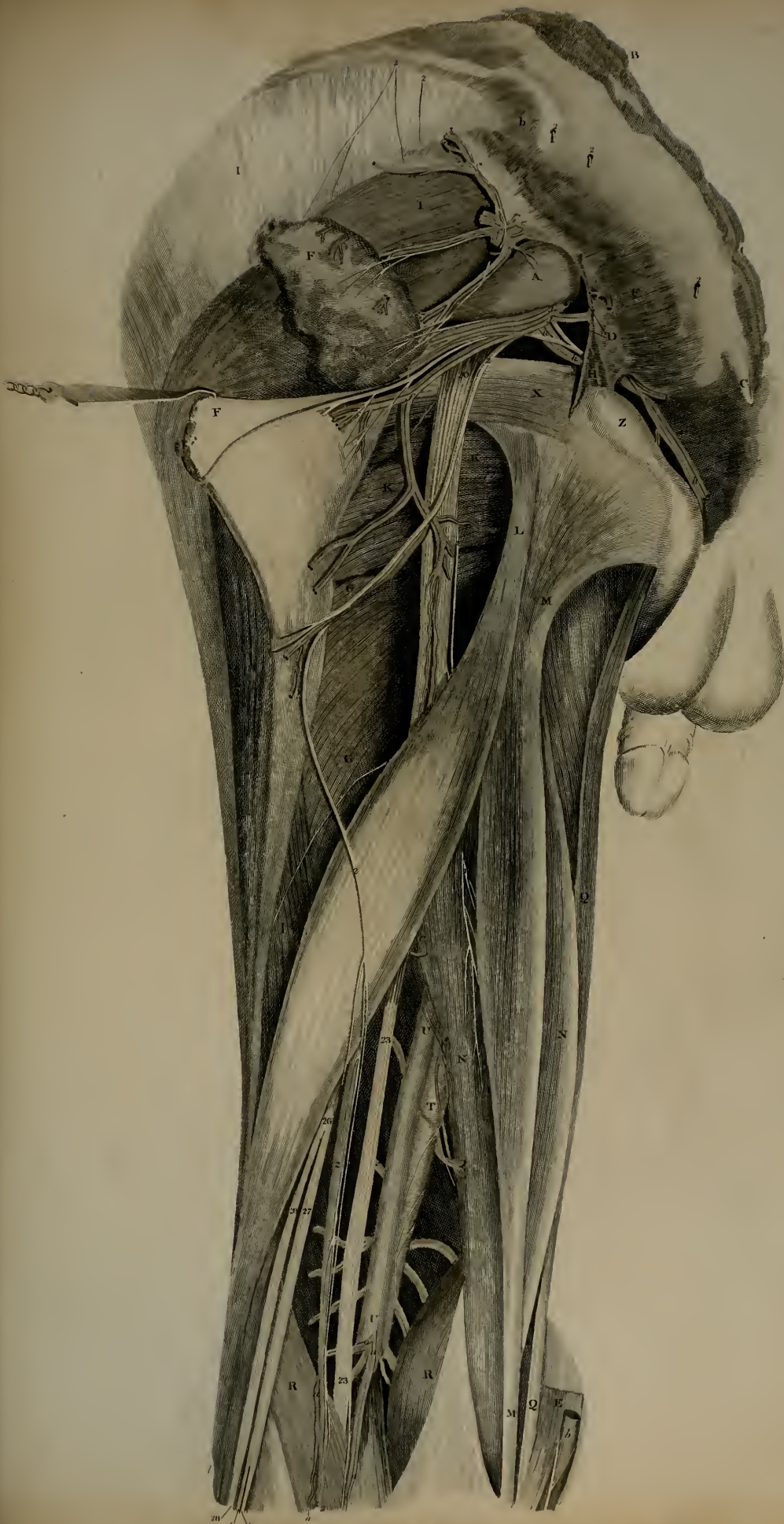
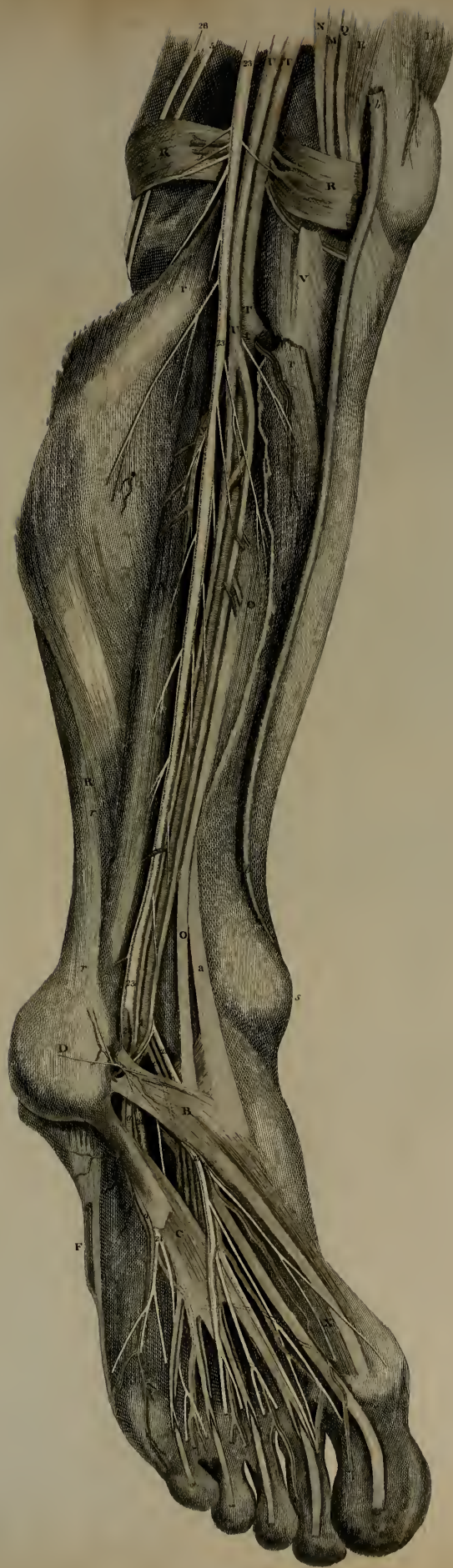


PLATE XVIII.











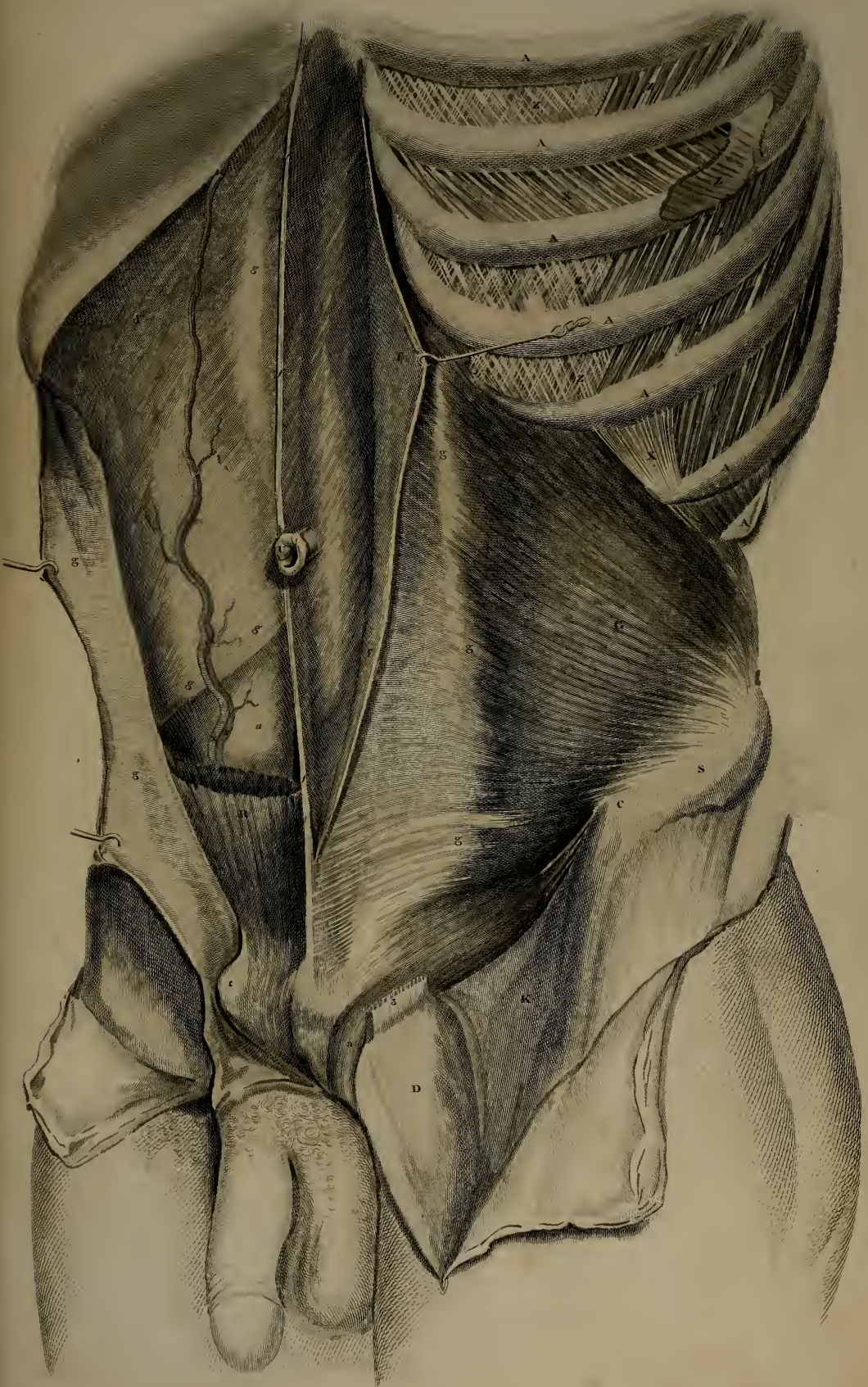
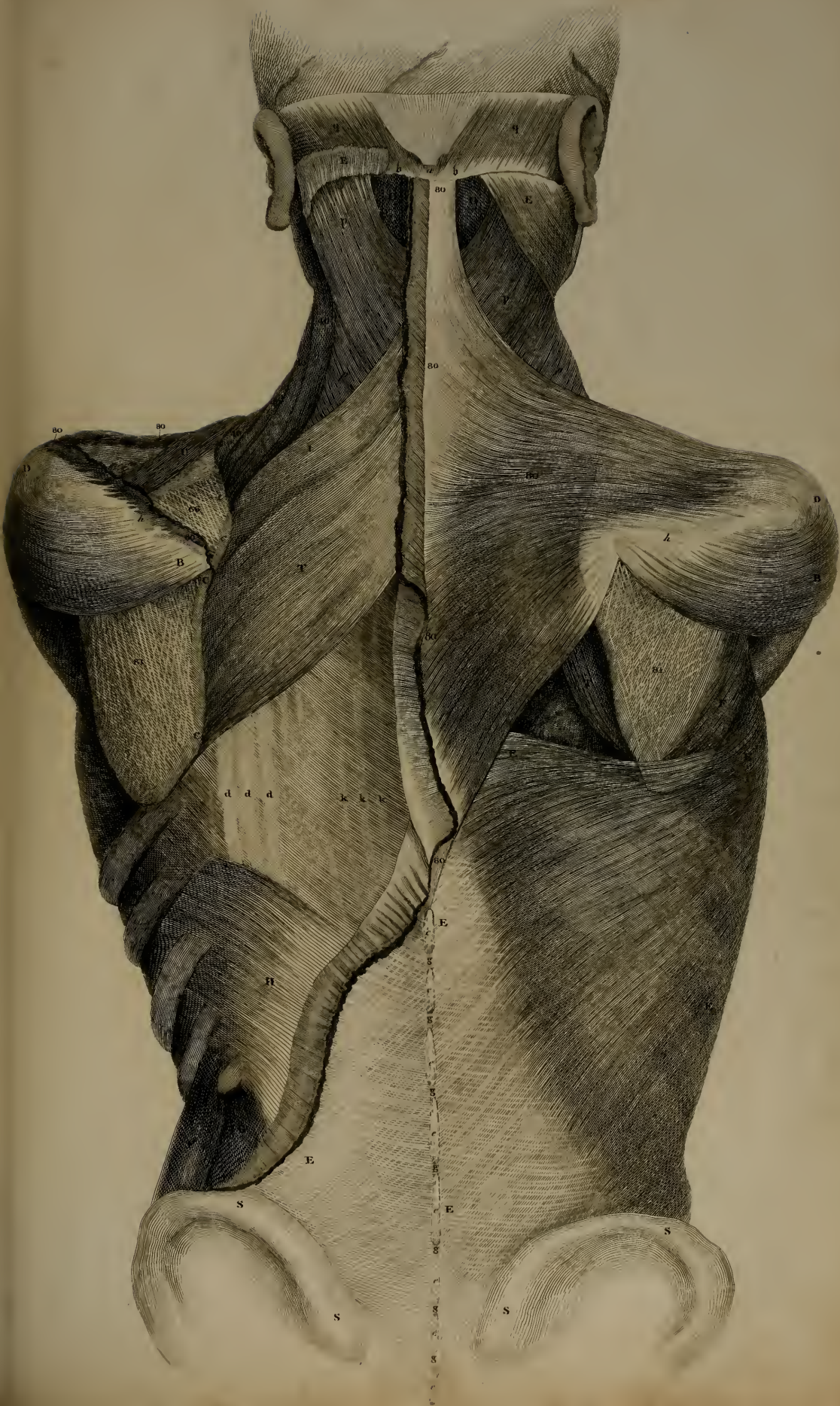


PLATE III.





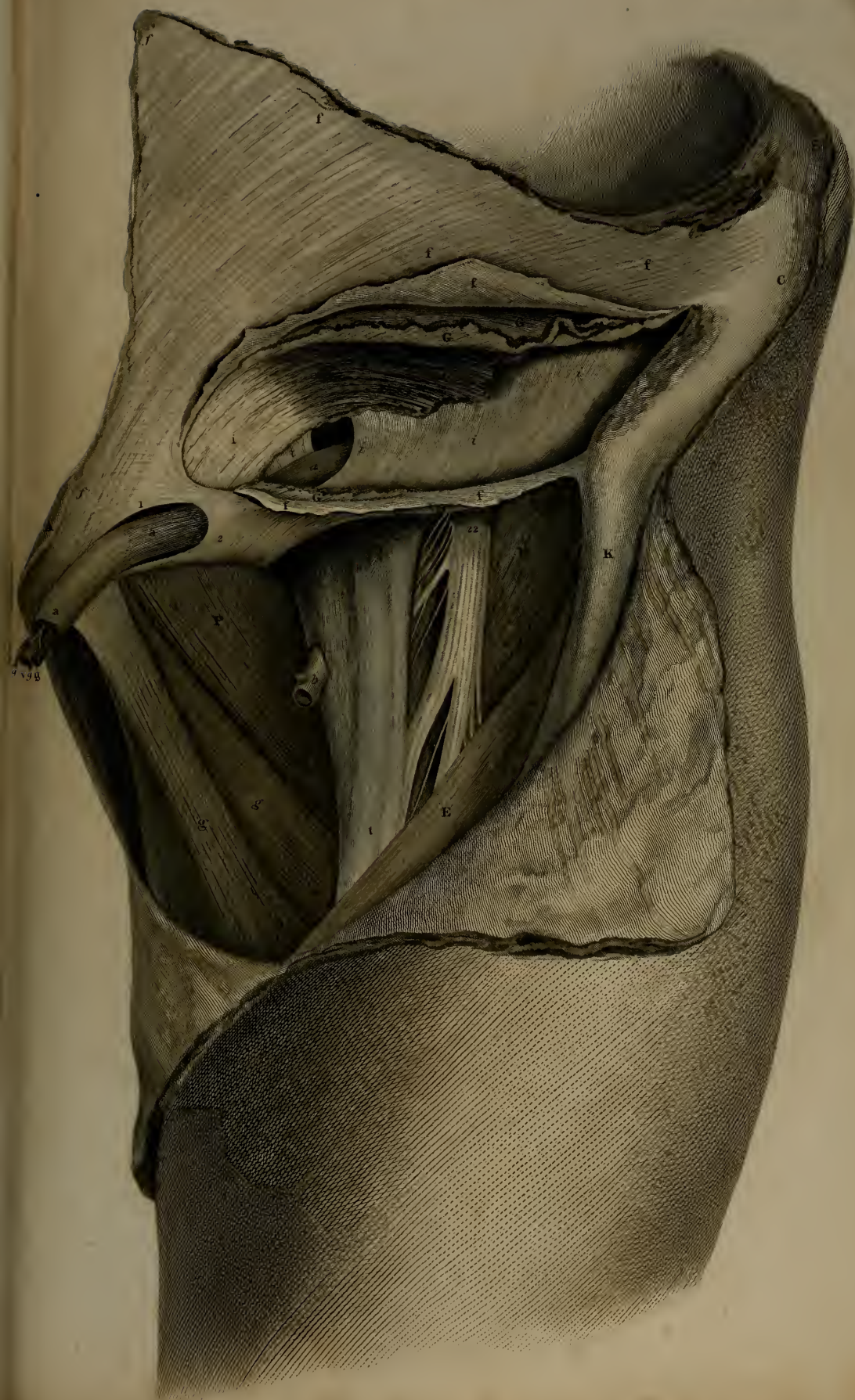
PLATE V.











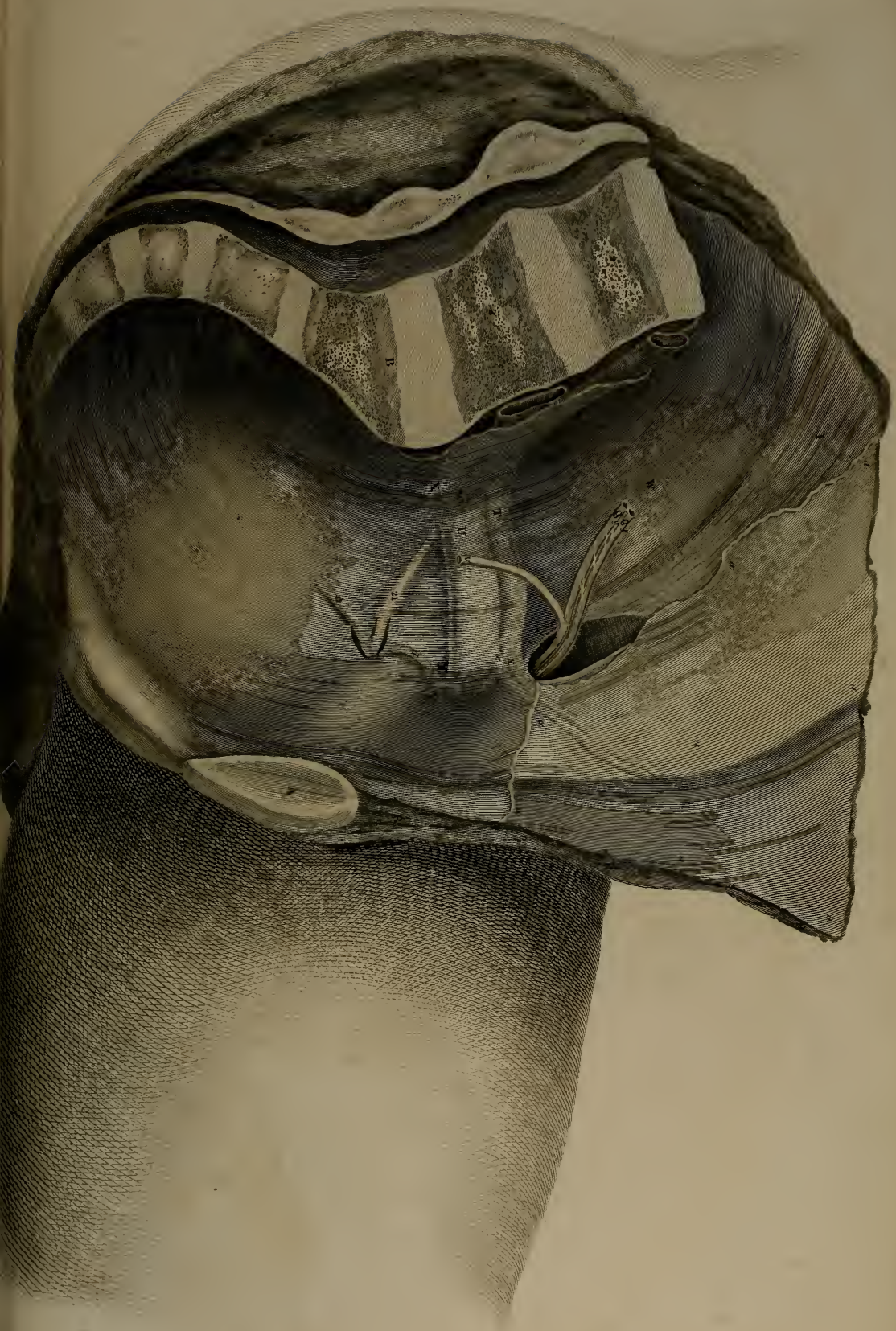


PLATE VIII.



Engraved by W. L. Goussier

Fig. 1.
80



Fig. 2.



Fig. 3.





55

Fig. 10. 11. 12. 13. 14. 15. 16. 17. 18. 19. 20. 21. 22. 23. 24. 25. 26. 27. 28. 29. 30. 31. 32. 33. 34. 35. 36. 37. 38. 39. 40. 41. 42. 43. 44. 45. 46. 47. 48. 49. 50. 51. 52. 53. 54. 55. 56. 57. 58. 59. 60. 61. 62. 63. 64. 65. 66. 67. 68. 69. 70. 71. 72. 73. 74. 75. 76. 77. 78. 79. 80. 81. 82. 83. 84. 85. 86. 87. 88. 89. 90. 91. 92. 93. 94. 95. 96. 97. 98. 99. 100. 101. 102. 103. 104. 105. 106. 107. 108. 109. 110. 111. 112. 113. 114. 115. 116. 117. 118. 119. 120. 121. 122. 123. 124. 125. 126. 127. 128. 129. 130. 131. 132. 133. 134. 135. 136. 137. 138. 139. 140. 141. 142. 143. 144. 145. 146. 147. 148. 149. 150. 151. 152. 153. 154. 155. 156. 157. 158. 159. 160. 161. 162. 163. 164. 165. 166. 167. 168. 169. 170. 171. 172. 173. 174. 175. 176. 177. 178. 179. 180. 181. 182. 183. 184. 185. 186. 187. 188. 189. 190. 191. 192. 193. 194. 195. 196. 197. 198. 199. 200. 201. 202. 203. 204. 205. 206. 207. 208. 209. 210. 211. 212. 213. 214. 215. 216. 217. 218. 219. 220. 221. 222. 223. 224. 225. 226. 227. 228. 229. 230. 231. 232. 233. 234. 235. 236. 237. 238. 239. 240. 241. 242. 243. 244. 245. 246. 247. 248. 249. 250. 251. 252. 253. 254. 255. 256. 257. 258. 259. 260. 261. 262. 263. 264. 265. 266. 267. 268. 269. 270. 271. 272. 273. 274. 275. 276. 277. 278. 279. 280. 281. 282. 283. 284. 285. 286. 287. 288. 289. 290. 291. 292. 293. 294. 295. 296. 297. 298. 299. 300. 301. 302. 303. 304. 305. 306. 307. 308. 309. 310. 311. 312. 313. 314. 315. 316. 317. 318. 319. 320. 321. 322. 323. 324. 325. 326. 327. 328. 329. 330. 331. 332. 333. 334. 335. 336. 337. 338. 339. 340. 341. 342. 343. 344. 345. 346. 347. 348. 349. 350. 351. 352. 353. 354. 355. 356. 357. 358. 359. 360. 361. 362. 363. 364. 365. 366. 367. 368. 369. 370. 371. 372. 373. 374. 375. 376. 377. 378. 379. 380. 381. 382. 383. 384. 385. 386. 387. 388. 389. 390. 391. 392. 393. 394. 395. 396. 397. 398. 399. 400. 401. 402. 403. 404. 405. 406. 407. 408. 409. 410. 411. 412. 413. 414. 415. 416. 417. 418. 419. 420. 421. 422. 423. 424. 425. 426. 427. 428. 429. 430. 431. 432. 433. 434. 435. 436. 437. 438. 439. 440. 441. 442. 443. 444. 445. 446. 447. 448. 449. 450. 451. 452. 453. 454. 455. 456. 457. 458. 459. 460. 461. 462. 463. 464. 465. 466. 467. 468. 469. 470. 471. 472. 473. 474. 475. 476. 477. 478. 479. 480. 481. 482. 483. 484. 485. 486. 487. 488. 489. 490. 491. 492. 493. 494. 495. 496. 497. 498. 499. 500. 501. 502. 503. 504. 505. 506. 507. 508. 509. 510. 511. 512. 513. 514. 515. 516. 517. 518. 519. 520. 521. 522. 523. 524. 525. 526. 527. 528. 529. 530. 531. 532. 533. 534. 535. 536. 537. 538. 539. 540. 541. 542. 543. 544. 545. 546. 547. 548. 549. 550. 551. 552. 553. 554. 555. 556. 557. 558. 559. 560. 561. 562. 563. 564. 565. 566. 567. 568. 569. 570. 571. 572. 573. 574. 575. 576. 577. 578. 579. 580. 581. 582. 583. 584. 585. 586. 587. 588. 589. 590. 591. 592. 593. 594. 595. 596. 597. 598. 599. 600. 601. 602. 603. 604. 605. 606. 607. 608. 609. 610. 611. 612. 613. 614. 615. 616. 617. 618. 619. 620. 621. 622. 623. 624. 625. 626. 627. 628. 629. 630. 631. 632. 633. 634. 635. 636. 637. 638. 639. 640. 641. 642. 643. 644. 645. 646. 647. 648. 649. 650. 651. 652. 653. 654. 655. 656. 657. 658. 659. 660. 661. 662. 663. 664. 665. 666. 667. 668. 669. 670. 671. 672. 673. 674. 675. 676. 677. 678. 679. 680. 681. 682. 683. 684. 685. 686. 687. 688. 689. 690. 691. 692. 693. 694. 695. 696. 697. 698. 699. 700. 701. 702. 703. 704. 705. 706. 707. 708. 709. 710. 711. 712. 713. 714. 715. 716. 717. 718. 719. 720. 721. 722. 723. 724. 725. 726. 727. 728. 729. 730. 731. 732. 733. 734. 735. 736. 737. 738. 739. 740. 741. 742. 743. 744. 745. 746. 747. 748. 749. 750. 751. 752. 753. 754. 755. 756. 757. 758. 759. 760. 761. 762. 763. 764. 765. 766. 767. 768. 769. 770. 771. 772. 773. 774. 775. 776. 777. 778. 779. 780. 781. 782. 783. 784. 785. 786. 787. 788. 789. 790. 791. 792. 793. 794. 795. 796. 797. 798. 799. 800. 801. 802. 803. 804. 805. 806. 807. 808. 809. 810. 811. 812. 813. 814. 815. 816. 817. 818. 819. 820. 821. 822. 823. 824. 825. 826. 827. 828. 829. 830. 831. 832. 833. 834. 835. 836. 837. 838. 839. 840. 841. 842. 843. 844. 845. 846. 847. 848. 849. 850. 851. 852. 853. 854. 855. 856. 857. 858. 859. 860. 861. 862. 863. 864. 865. 866. 867. 868. 869. 870. 871. 872. 873. 874. 875. 876. 877. 878. 879. 880. 881. 882. 883. 884. 885. 886. 887. 888. 889. 890. 891. 892. 893. 894. 895. 896. 897. 898. 899. 900. 901. 902. 903. 904. 905. 906. 907. 908. 909. 910. 911. 912. 913. 914. 915. 916. 917. 918. 919. 920. 921. 922. 923. 924. 925. 926. 927. 928. 929. 930. 931. 932. 933. 934. 935. 936. 937. 938. 939. 940. 941. 942. 943. 944. 945. 946. 947. 948. 949. 950. 951. 952. 953. 954. 955. 956. 957. 958. 959. 960. 961. 962. 963. 964. 965. 966. 967. 968. 969. 970. 971. 972. 973. 974. 975. 976. 977. 978. 979. 980. 981. 982. 983. 984. 985. 986. 987. 988. 989. 990. 991. 992. 993. 994. 995. 996. 997. 998. 999. 1000.

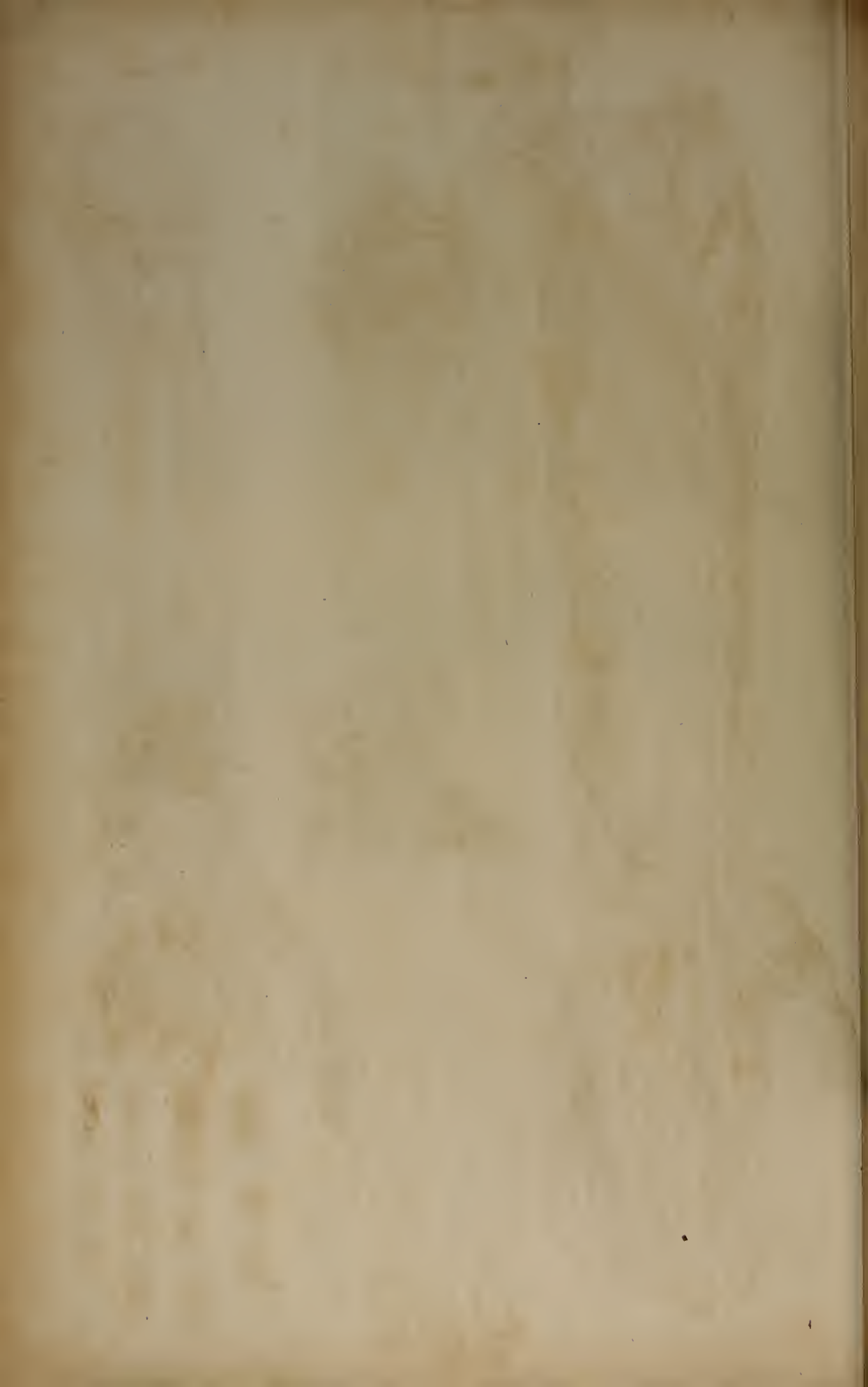


Fig. 1.

PLATE XI.

Fig. 2.

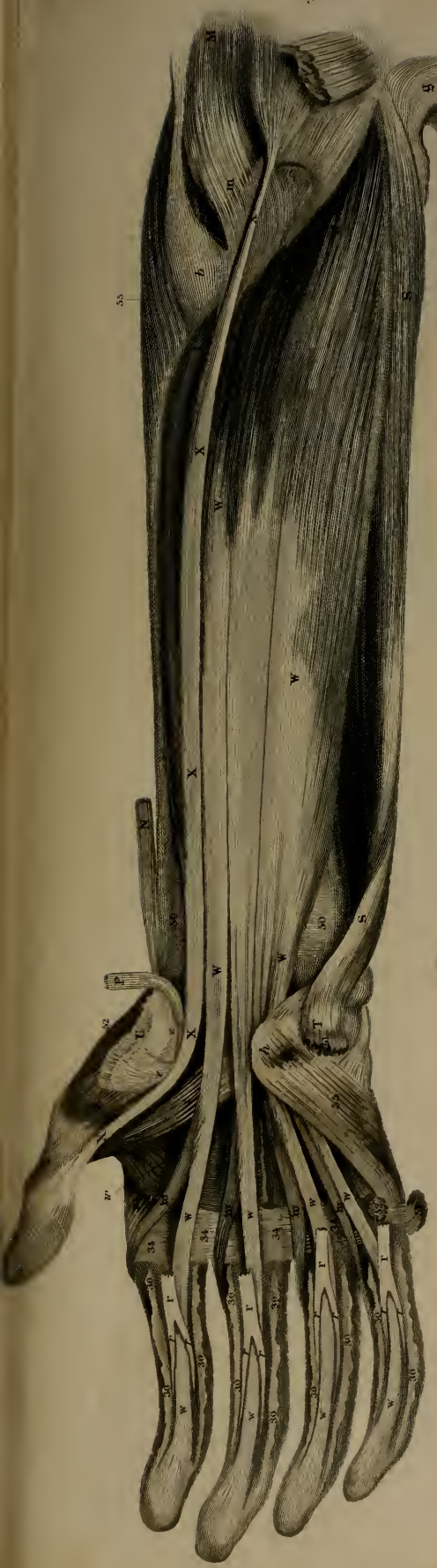


Fig. 3.



Fig. 4.





Fig. 1.



Fig. 2.

PLATE XIII.









Fig. 1.



Fig. 2.





Fig. 1.

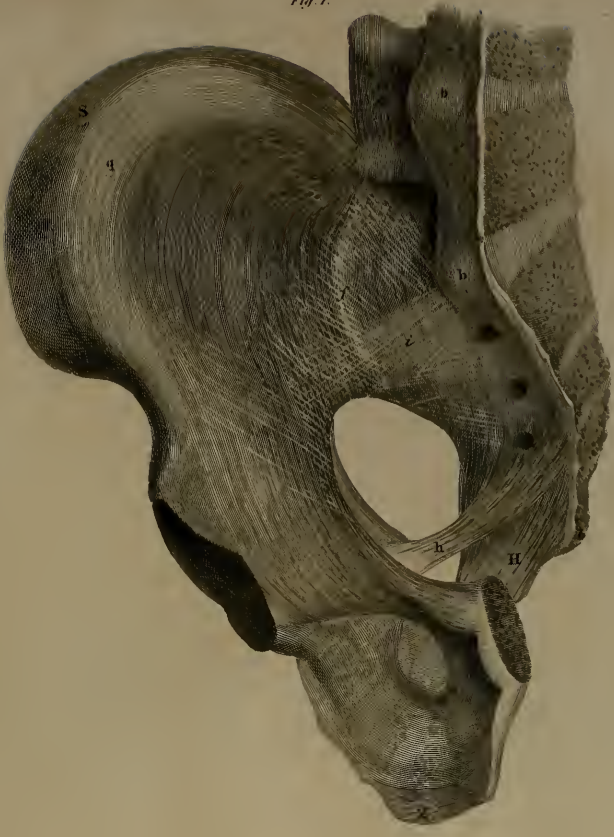


Fig. 2.



Fig. 3.

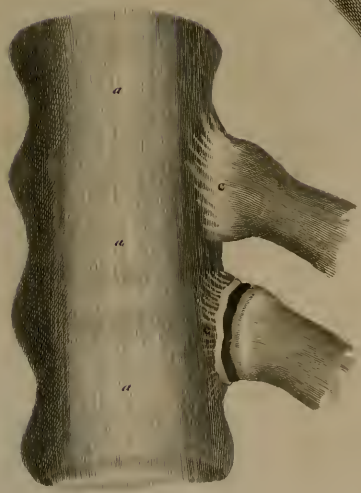




Fig. 1.



Fig. 2.





Fig. 1.



Fig. 2.

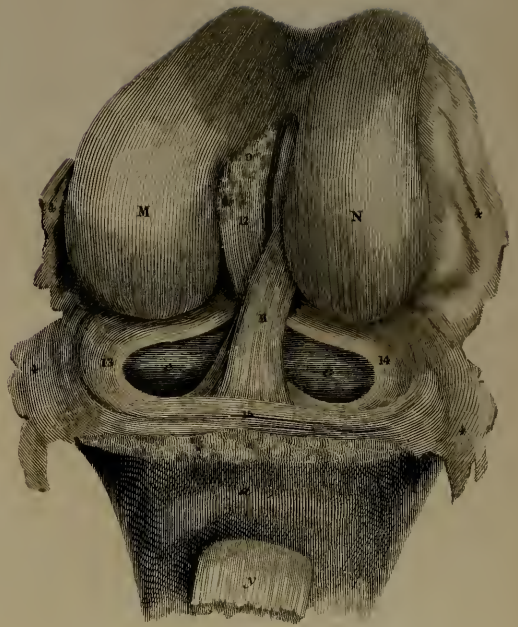


Fig. 3.

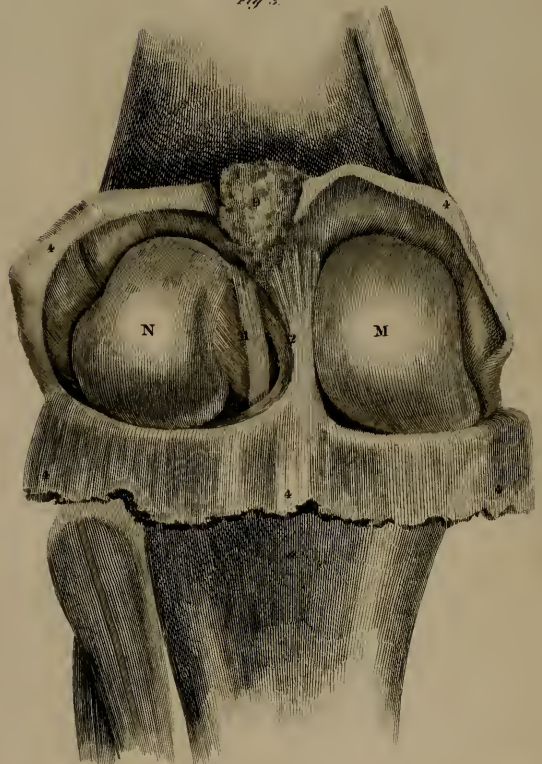


Fig. 1.



Fig. 2.



Fig. 3.

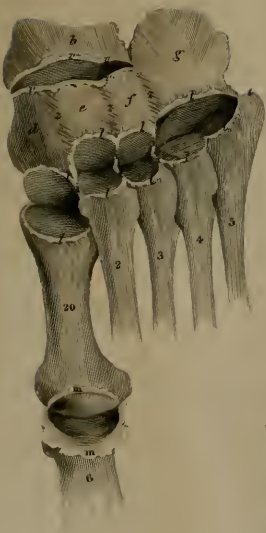


Fig. 1.



Fig. 2.



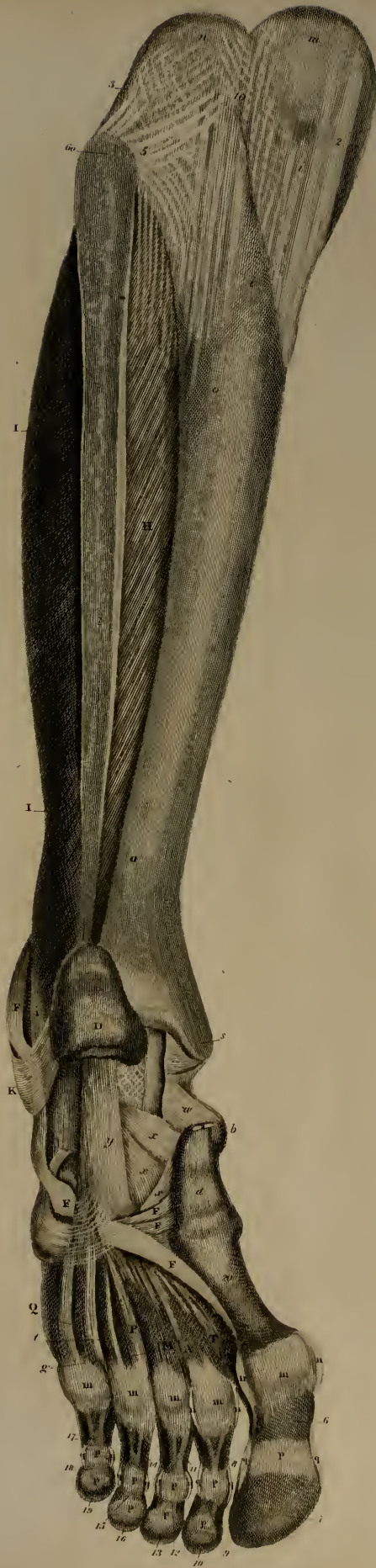


Fig. 1.



Fig. 2.



Fig. 3.

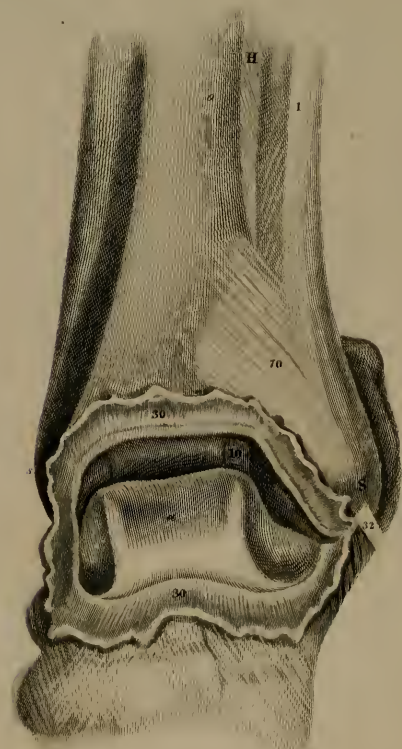




PLATE II.



PLATE III.



PLATE IV.

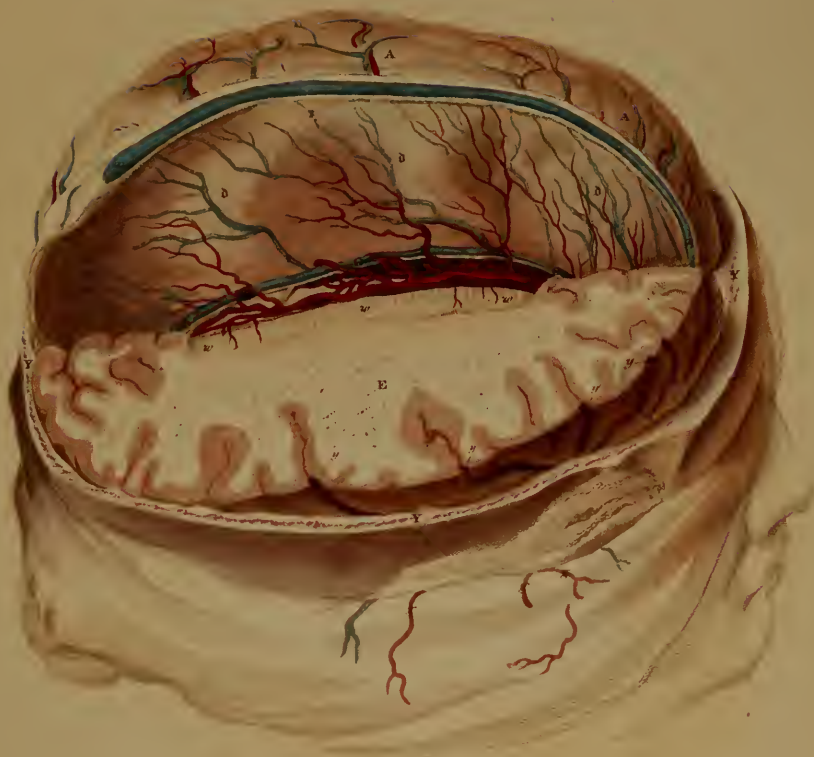


PLATE V.





PLATE VI.



PLATE VII.

Fig. 2.



Fig. 3.

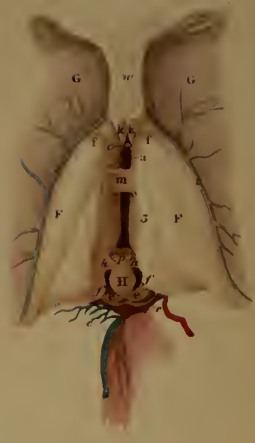


Fig. 1.

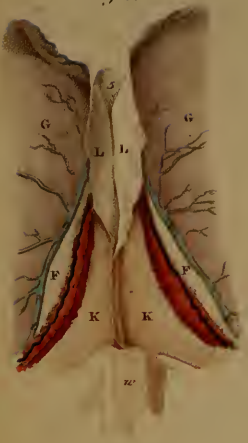


Fig. 4.



Fig. 6.



Fig. 5.



Fig. 7.



PLATE VIII.



PLATE IX.



PLATE X.



PLATE XL.

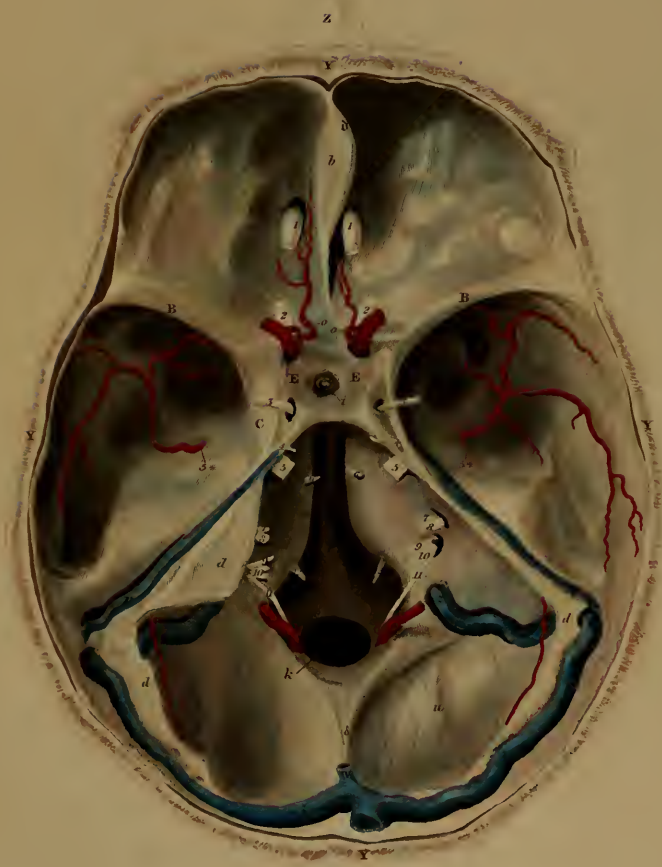


PLATE XII.

Fig. 1



Fig. 3

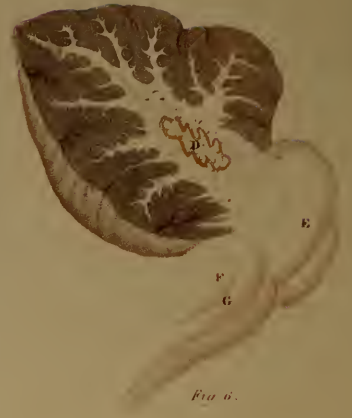


Fig. 5



Fig. 6



Fig. 2

Fig. 4



PLATE XIII



PLATE XIV



PLATE XV.



PLATE I.



PLATE II.



Fig. 2.



Fig. 1.



Fig. 2.

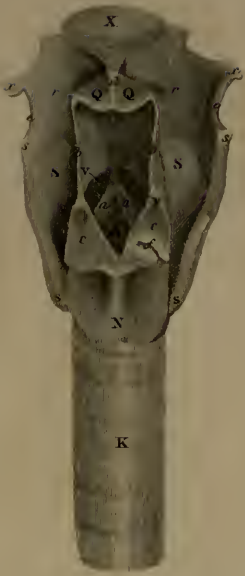


Fig. 3.

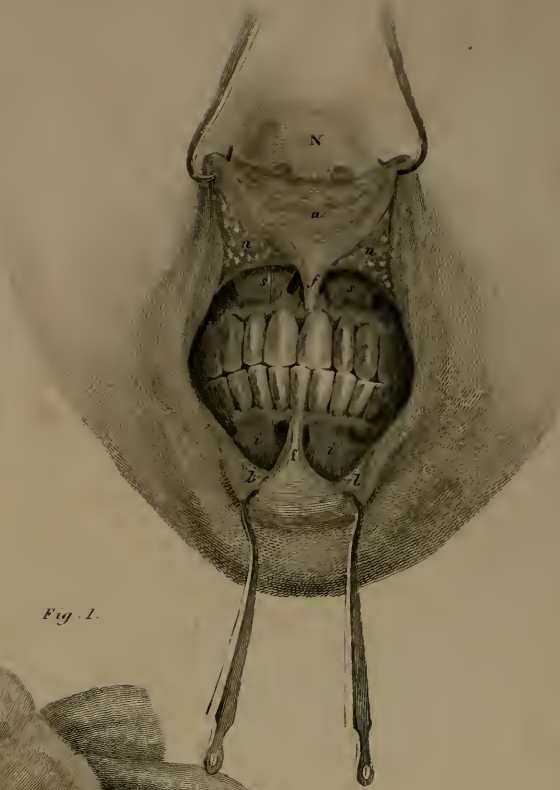


Fig. 1.



Fig. 2.



Fig. 3.

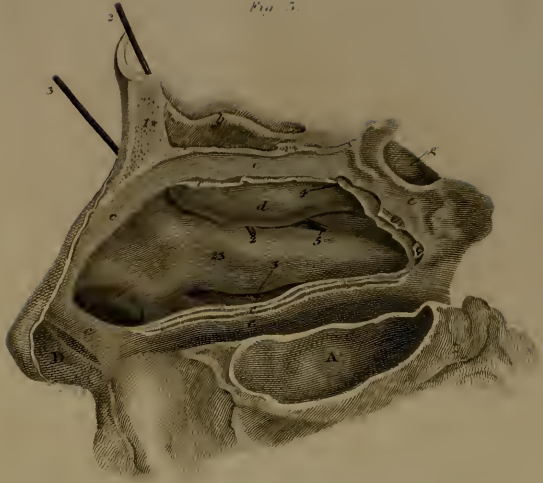


Fig. 1.



PLATE VI.

Fig. 1.



Fig. 2.



Fig. 3.



Fig. 5.



Fig. 4.

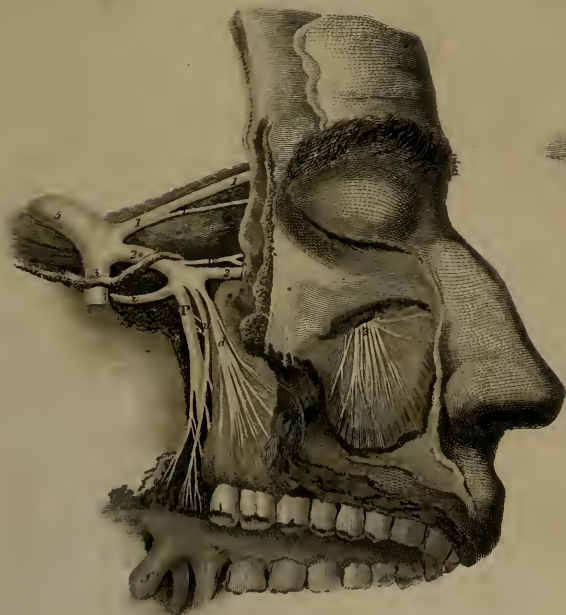


Fig. 2



Fig. 3



Fig. 4

Fig. 1.

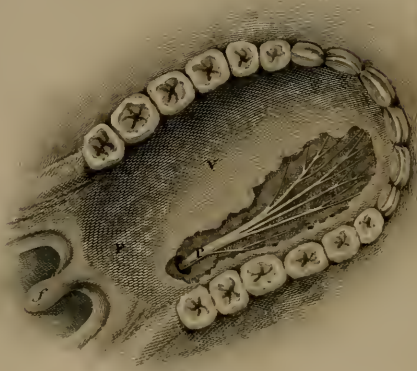


PLATE VIII.

Fig. 4.



Fig. 3.



Fig. 10.



Fig. 11.



Fig. 12.



Fig. 13.



Fig. 14.



Fig. 15.



Fig. 7.



Fig. 16.



Fig. 6.



Fig. 5.



Fig. 9.



Fig. 8.





Fig. 1.

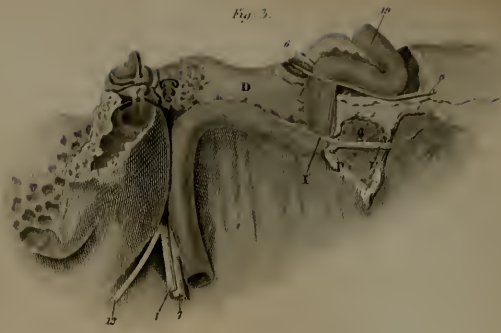


Fig. 3.

Fig. 14.



Fig. 11.

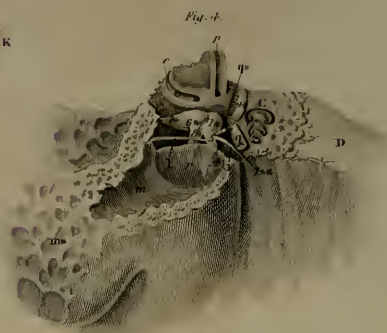


Fig. 4.

Fig. 2.

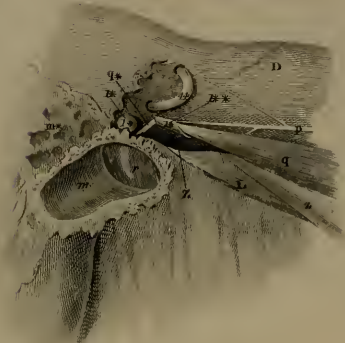


Fig. 13.

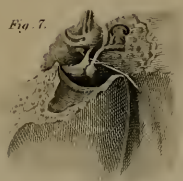


Fig. 7.

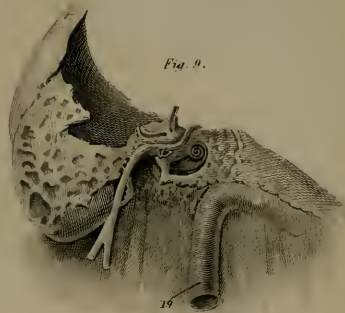


Fig. 9.



Fig. 5.

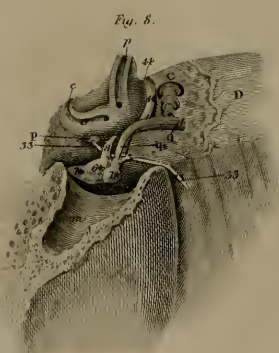


Fig. 8.

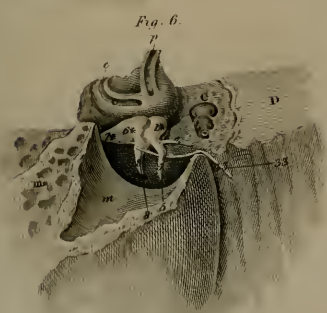


Fig. 6.

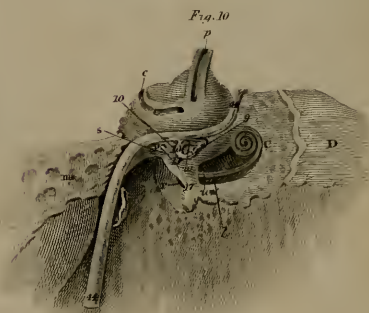


Fig. 10.

Fig. 12.



Fig. 16.

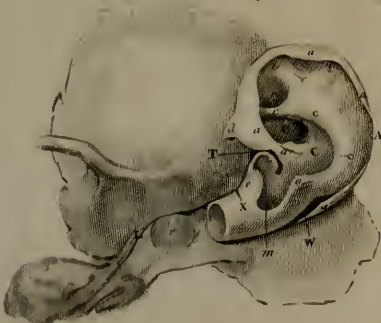


Fig. 15.



Fig. 17.



Fig. 3

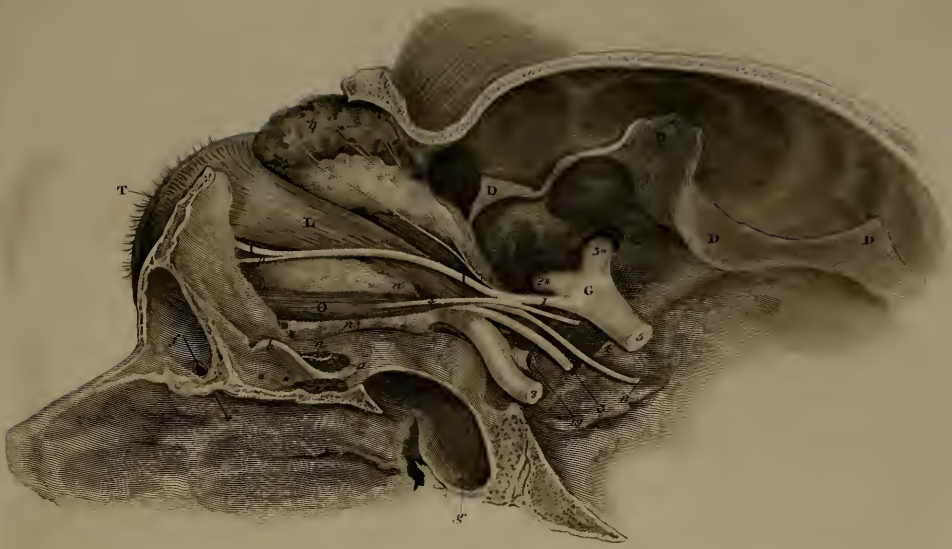


Fig. 1.



Fig. 2.

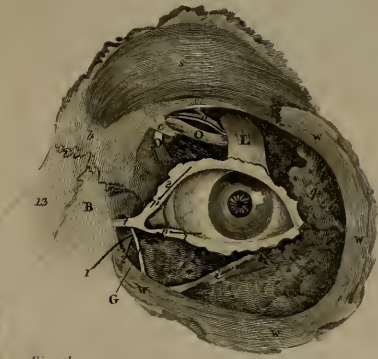


Fig. 4.

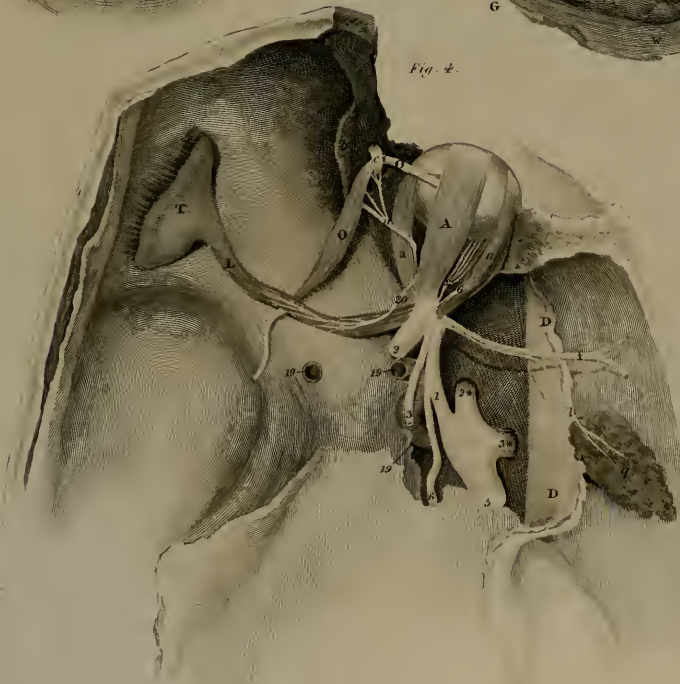


Fig. 2.

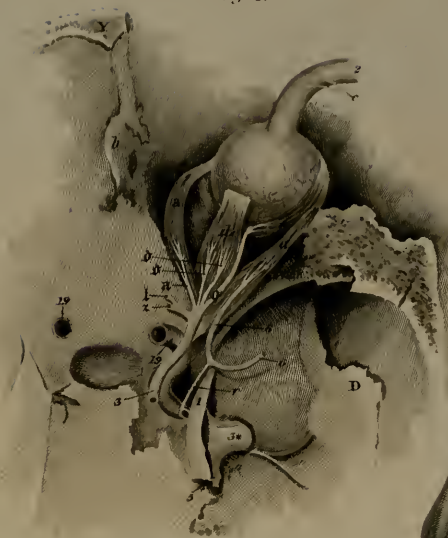


Fig. 3.

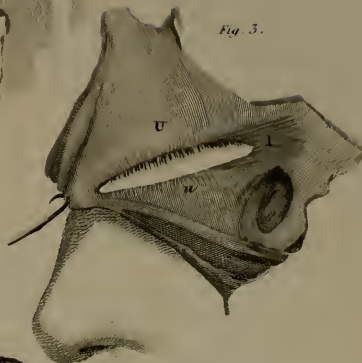


Fig. 1.

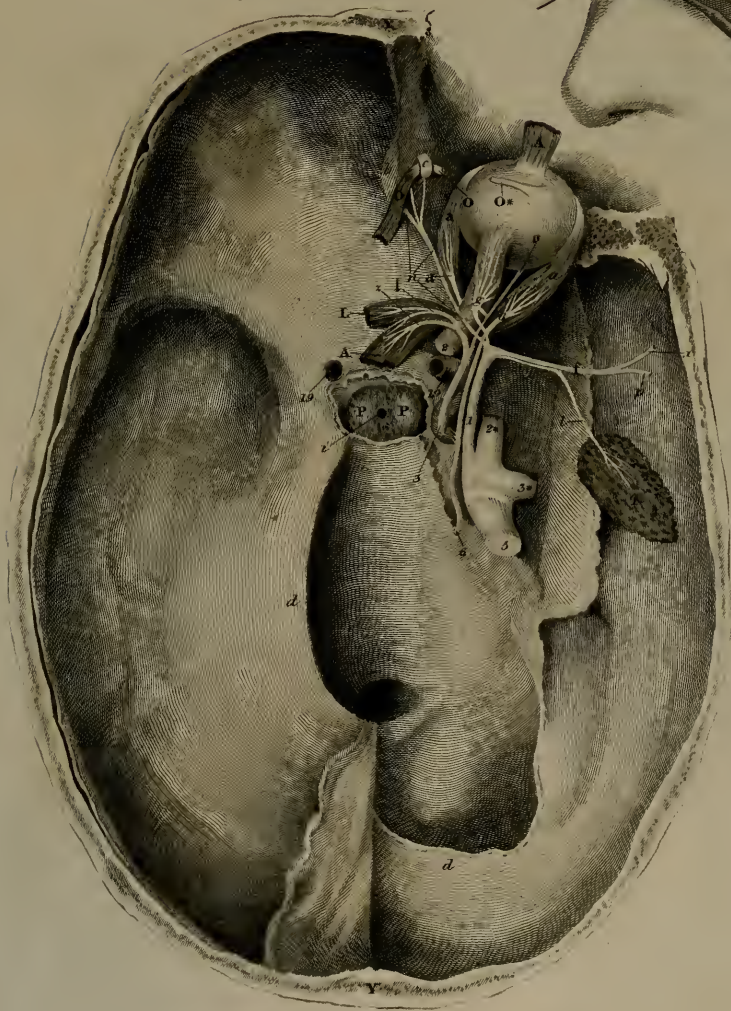


Fig. 11.

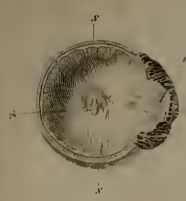


Fig. 10.

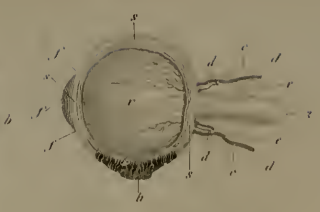


Fig. 8.

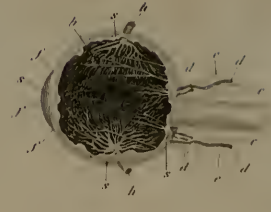


Fig. 1.



Fig. 6.

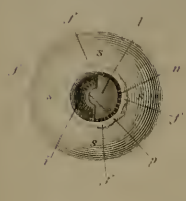


Fig. 7.



Fig. 9.



Fig. 12.



Fig. 4.

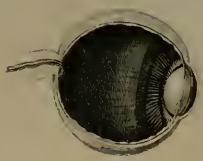


Fig. 2.

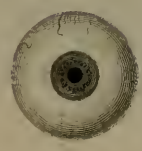


Fig. 14.



Fig. 15.



Fig. 5.

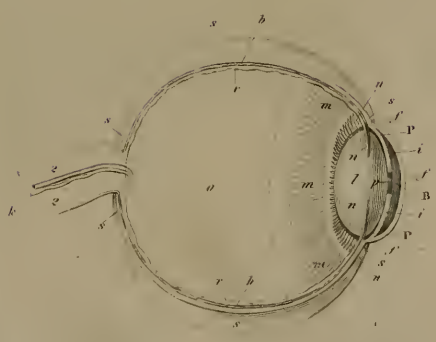


Fig. 5.



Fig. 16.



Fig. 15.



PLATE XIII.

Fig. 3.



Fig. 1.



Fig. 4.



Fig. 2.





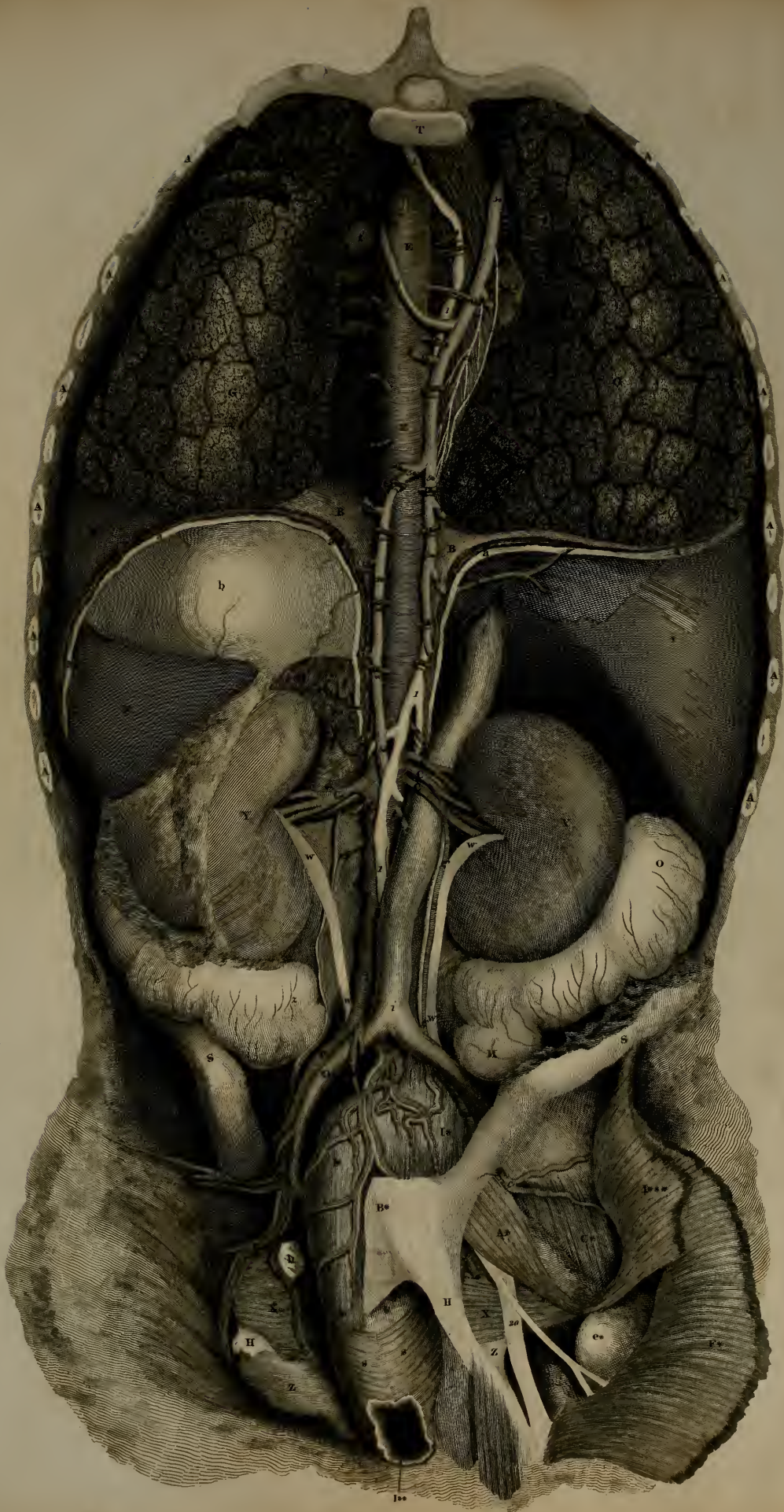




Fig. 3.



Fig. 1.



Fig. 2.



Fig. 1.



PLATE XVIII.

Fig. 1.



Fig. 2.



Fig. 3.

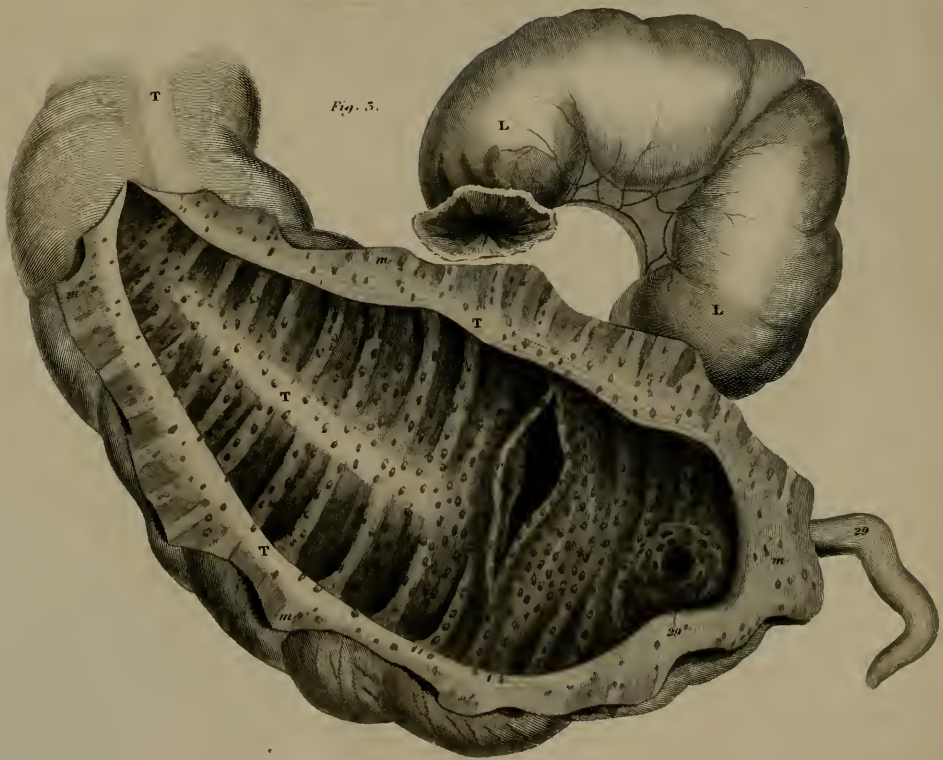


Fig. 2.

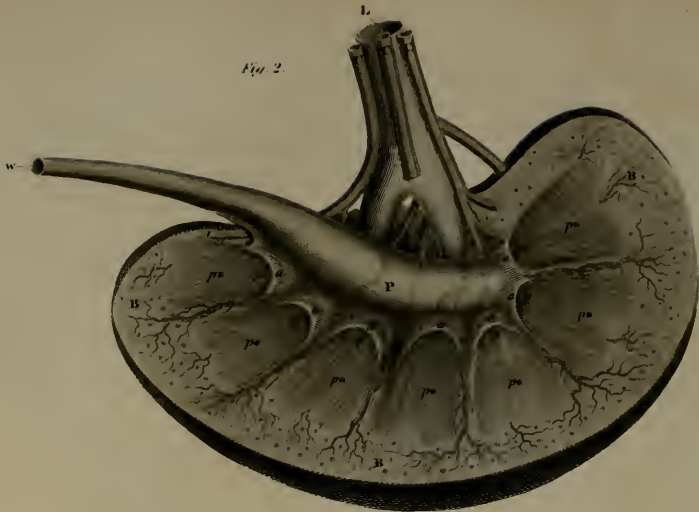


Fig. 3.

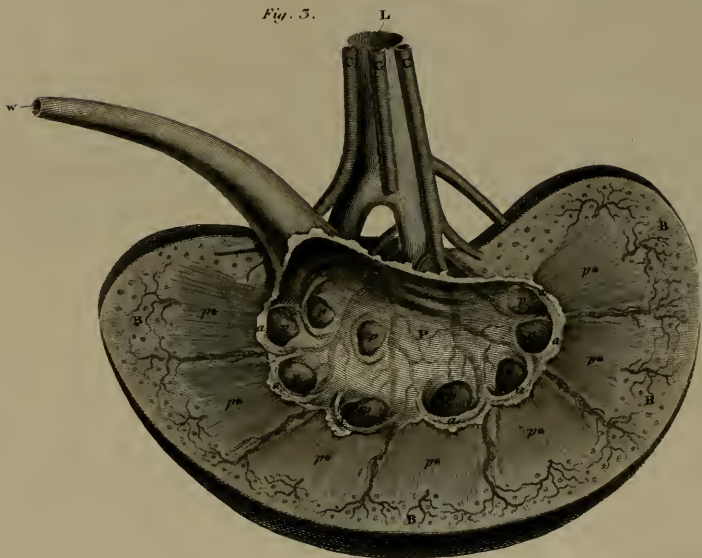


Fig. 1.



PLATE I.

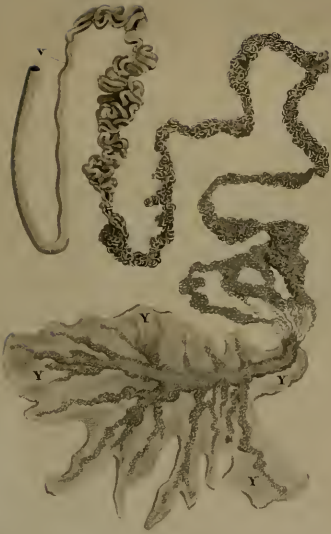


PLATE II.

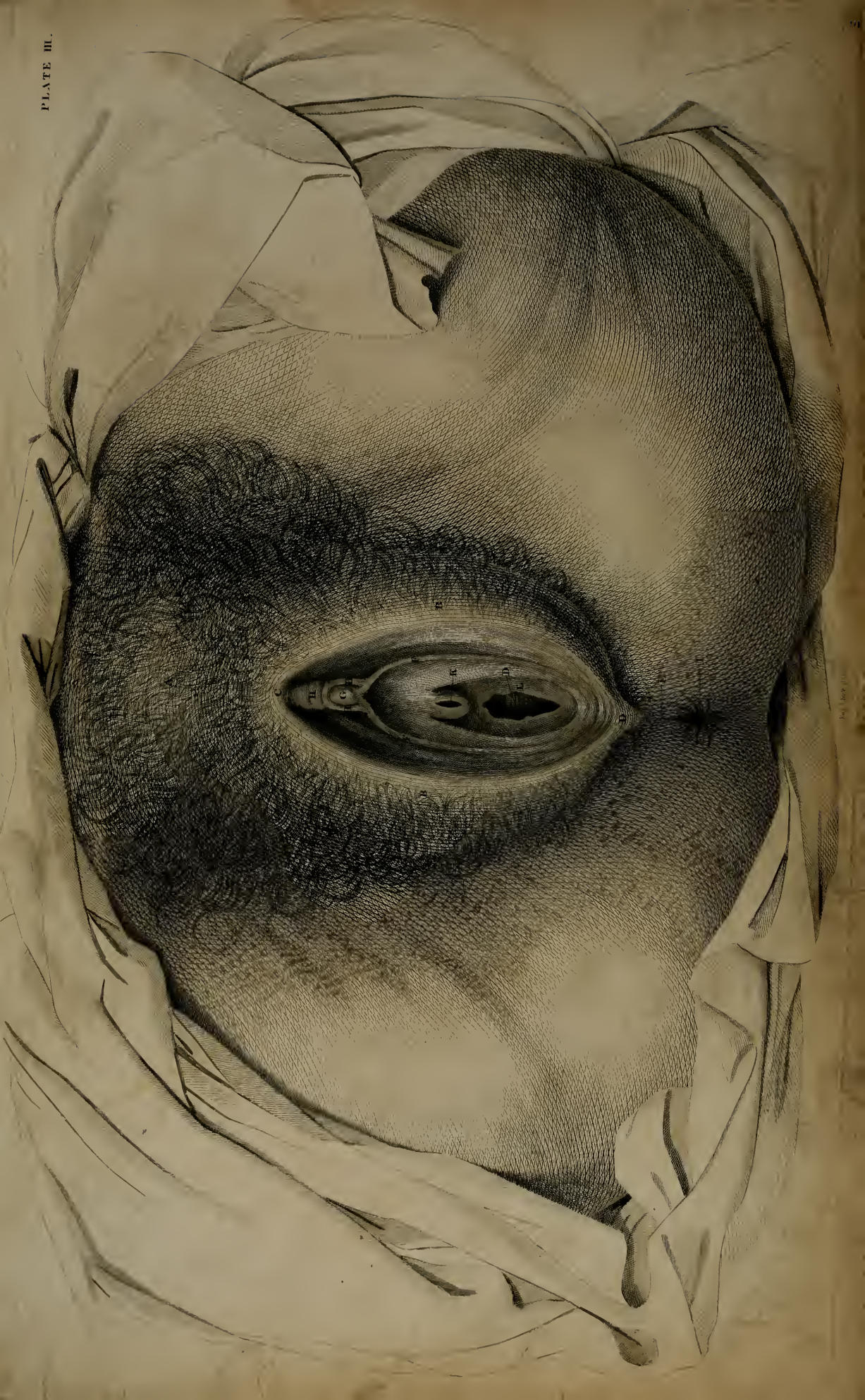
Fig. 1.



Fig. 2.







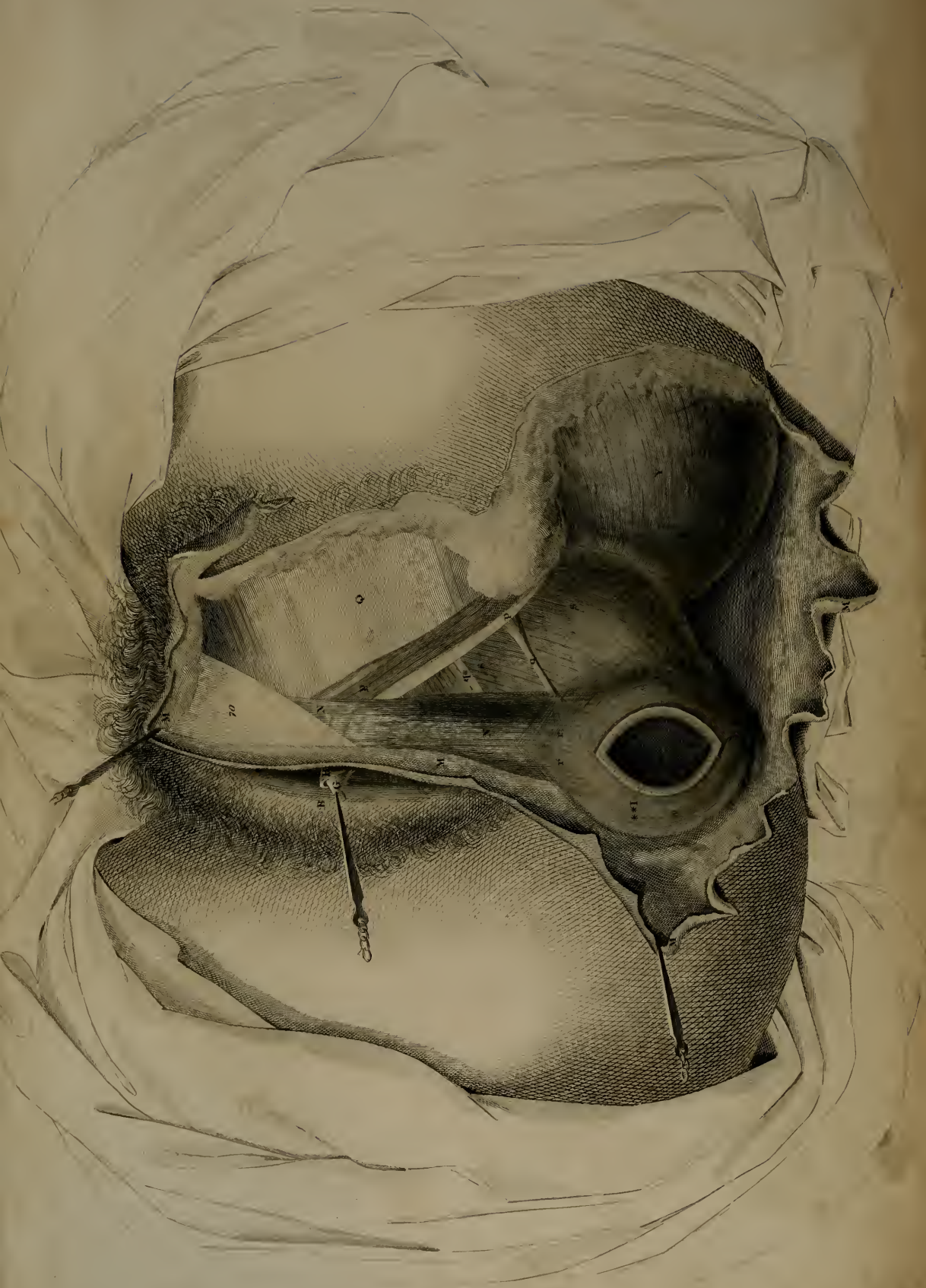


PLATE V.



Engraved by W. H. Lusk.

PLATE VI.



Fig. 2.

Fig. 1.

PLATE VII.







Fig. 2

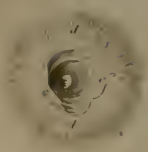


Fig. 3



Fig. 4

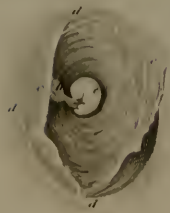


Fig. 5



Fig. 6



Fig. 7



Fig. 8



Fig. 9



Fig. 1.

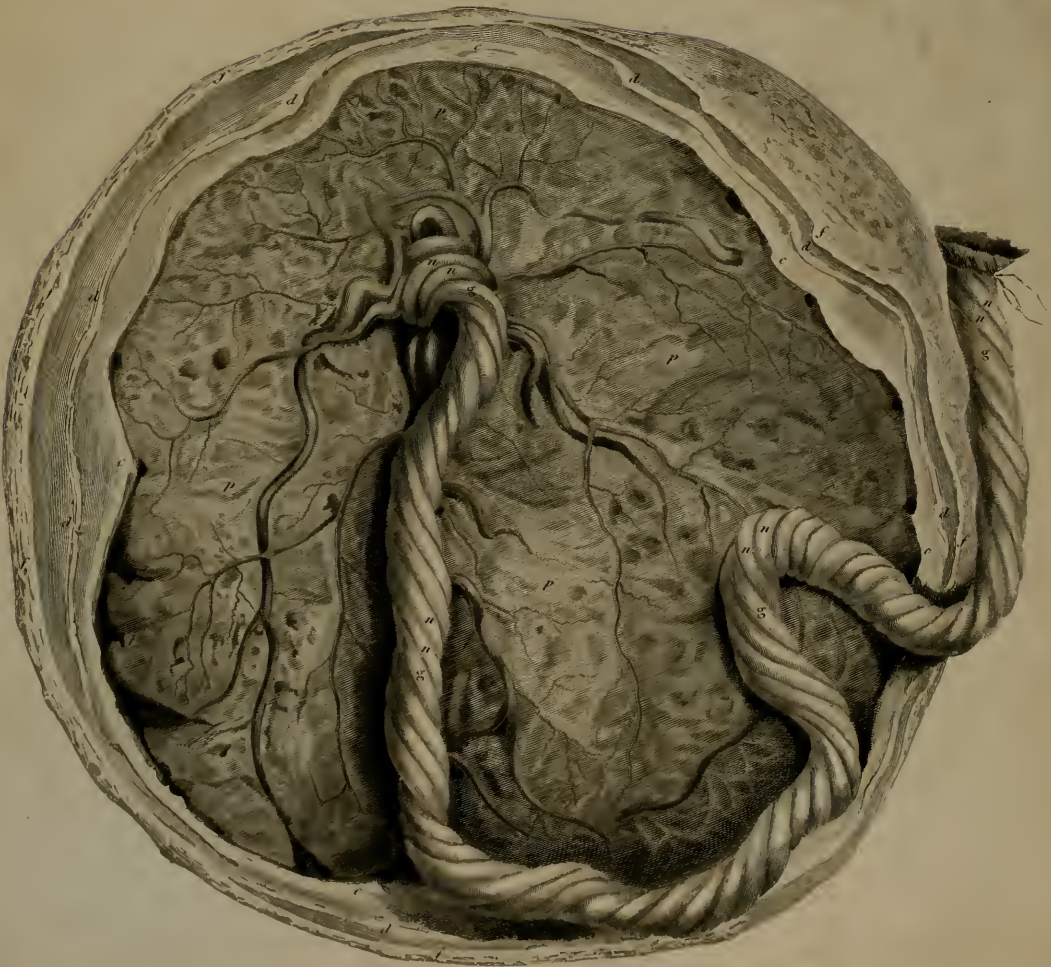




Fig. 1.

Fig. 2.





Fig. 1.



Fig. 2.



BOSTON PUBLIC LIBRARY



3 9999 05493 498 7

