

T
371
C7
1890

UC-NRLF



5B 33 358

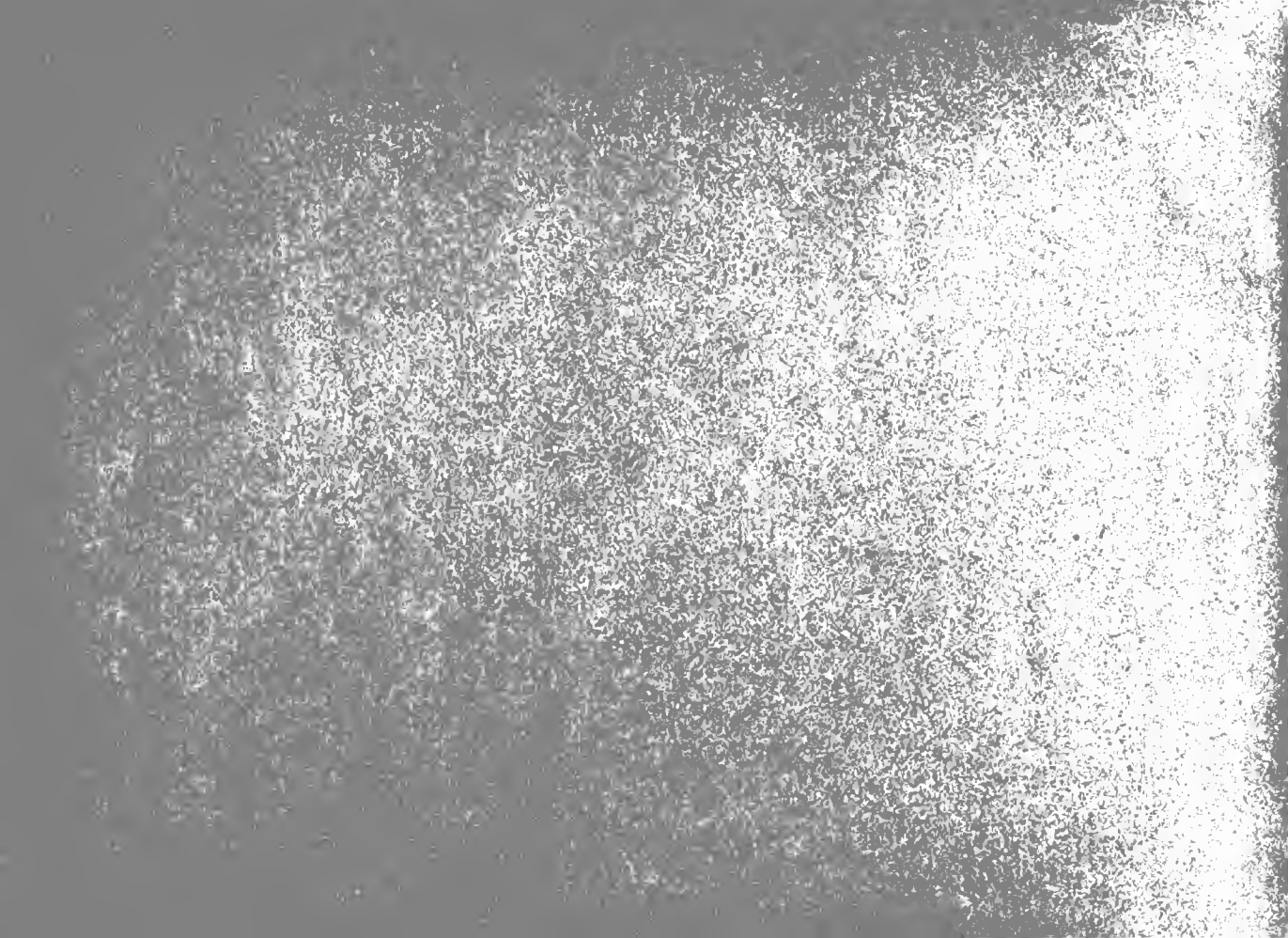
YC 19739

LIBRARY
OF THE
UNIVERSITY OF CALIFORNIA.

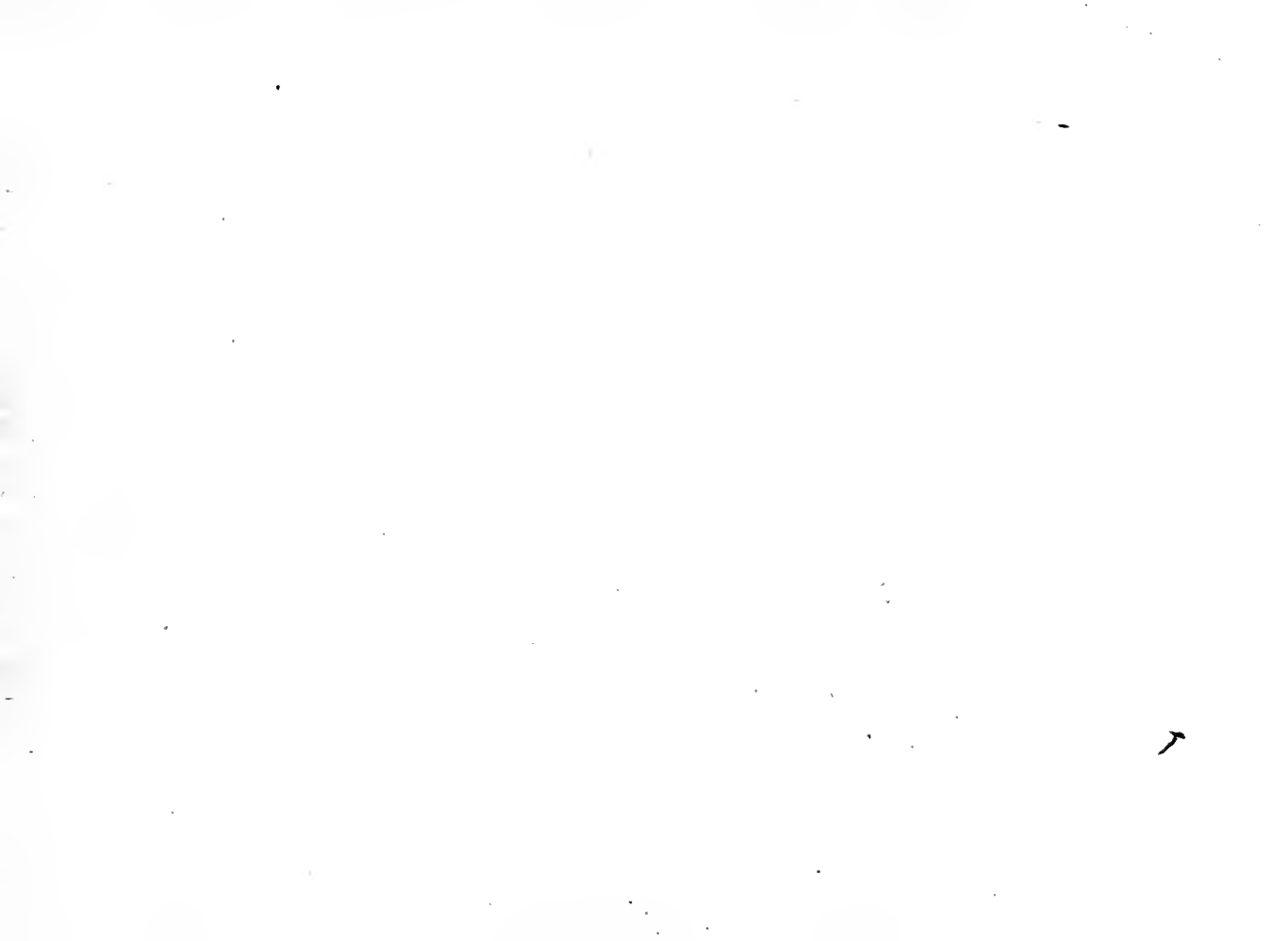
Received *May* 1893

Accessions No. *51863*. Class No.









A
SYSTEM
OF
EASY LETTERING.

BY

J. HOWARD CROMWELL, PH.B.,

AUTHOR OF "A TREATISE ON TOOTHED GEARING," "A TREATISE ON BELTS AND PULLEYS," ETC.

Second Edition.



E. & F. N. SPON,
12 CORTLANDT STREET, NEW YORK.
1890.

T 9
~7
1890

COPYRIGHT, 1887,

BY

WM. CHAMBERLAIN.

51863

P R E F A C E .

The formality of a preface may seem scarcely necessary for the supplementing of a system as simple and comprehensible as the one herewith presented.

We have but to divide any surface we may wish to letter into squares (or parallelograms as the case may be), in pencil lines ; form the required letters, in ink or paint, and according to the style chosen ; erase the pencil lines, and the lettering is complete.

J. H. C.



LIBRARY
OF THE
UNIVERSITY
OF
CALIFORNIA.

Nov 1900

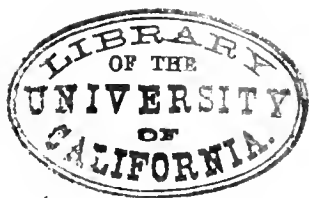
A B C D E F G H I J K L M

N O P Q R S T U V W X Y

Z

a b c d e f g h i j k l m n o p q

r s t u v w x y z æ œ Æ Æ



LIBRARY
OF THE
UNIVERSITY
OF CALIFORNIA.

A B C D E F G H I J K L M

N O P Q R S T U V W X Y

Z

a b c d e f g h i j k l m n o p q

r s t u v w x y z œ œ ff ff .



LIBRARY
OF THE
UNIVERSITY
OF CALIFORNIA



A B C D E F G H I J K
L M N O P Q R S W
T U V X Y Z
a b c d e f g h i j k l m n o p
q r s t u v w x y z æ f Æ .



12
23
33
6
66

A B C D E F G H I J K L M N O P

Q R S T U V W X Y Z Æ £ \$.

a b c d e f g h i j k l m n o p q r s t u v

w
x y z

1 2 3 4 5 6 7 8 9 0



LIBRARY
OF THE
UNIVERSITY
OF
CALIFORNIA.

Handwritten notes: "a" and "2f" above the letters.

A B C D E F G H I J K L M

N O P Q R S T U V W X Y

Z

a b c d e f g h i j k l m n o

p q r s t u v w x y z , .



LIBRARY
OF THE
UNIVERSITY
OF CALIFORNIA.

A B C D E F G H I J K L

M N O P Q R S T U V

W X Y Z

a b c d e f g h i j k l m n o

p q r s t u v w x y z æ ÷



LIBRARY
OF THE
UNIVERSITY
OF
CALIFORNIA

A B C D E F G H I J K L N
M O P Q R S T U V W X
Y Z
a b c d e f g h i j k l m n o p
q r s t u v w x y z æ œ ï ð



LIBRARY
OF THE
UNIVERSITY
OF CALIFORNIA.



A B C D E F G H I J K L M

N O P Q R S T U V W X Y

Z

a b c d e f g h i j k l m n o p q

r s t u v w x y z œ æ ð ñ ò



LIBRARY
OF THE
UNIVERSITY
OF
CALIFORNIA.

the first part of
the map is a part of

1-2

A B C D E F G H I J K L M

N O P Q R S T U V W X Y

Z

a b c d e f g h i j k l m n o p q

r s t u v w x y z æ œ ſ ð ʀ .



400 - Douglas Surveyed by ...

A B C D E F G H I J K L

M N O P Q R S T U V Z

W X Y

a b c d e f g h i j k l m

n o p q r s t u v w x z



LIBRARY
OF THE
UNIVERSITY
OF
CALIFORNIA.

A B C D E F G H I J K L

M N O P Q R S T U V Z

W X Y

a b c d e f g h i j k l m n o p

q r s t u v w x y z æ œ ,



A B C D E F G H I J K L M

N O P Q R S T U V W X Y

Z

a b c d e f g h i j k l m n o p q

r s t u v w x y z œ œ ð ð ð ð .



12
13
A B C D E F G H I J K L M

N O P Q R S T U V W X Y

Z

a b c d e f g h i j k l m n o p q

r s t u v w x y z œ œ ð ð ð.



LIBRARY
OF THE
UNIVERSITY
OF
CALIFORNIA.

A B C D E F G H I J K L M

N O P Q R S T U V W X Y

Z

a b c d e f g h i j k l m n o p q

r s t u v w x y z o e o e f f , ; .



LIBRARY
OF THE
UNIVERSITY
OF
CALIFORNIA.

A B C D E F G H I J K L M

N O P Q R S T U V W X Y

Z

a b c d e f g h i j k l m n o p q

r s t u v w x y z æ œ Æ Æ , ; .



LIBRARY
OF THE
UNIVERSITY
OF CALIFORNIA.

A B C D E F G H I J K L M

N O P Q R S T U V W X Y

Z

a b c d e f g h i j k l m n o p q

r s t u v w x y z œ æ ð ñ , ; .



LIBRARY
OF THE
UNIVERSITY
OF
CALIFORNIA.

A B C D E F G H I J K L M

N O P Q R S T U V W X Y

Z

a b c d e f g h i j k l m n o p q

r s t u v w x y z œ œ Æ Æ Æ.



A B C D E F G H I J K
L M N O P Q R S W
T U V X Y Z
a b c d e f g h i j k l n o p
q r s t u v w x y z æ ð ð .



LIBRARY
OF THE
UNIVERSITY
OF CALIFORNIA.

A B C D E F G H I J K L

M N O P Q R S T U V Z

W X Y

a b c d e f g h i j k l m n o p

q r s t u v w x y z o e d f .



LIBRARY
OF THE
UNIVERSITY
OF CALIFORNIA.

A B C D E F G H I J K L M N O P

Q R S T U V W X Y Z Æ £ \$.

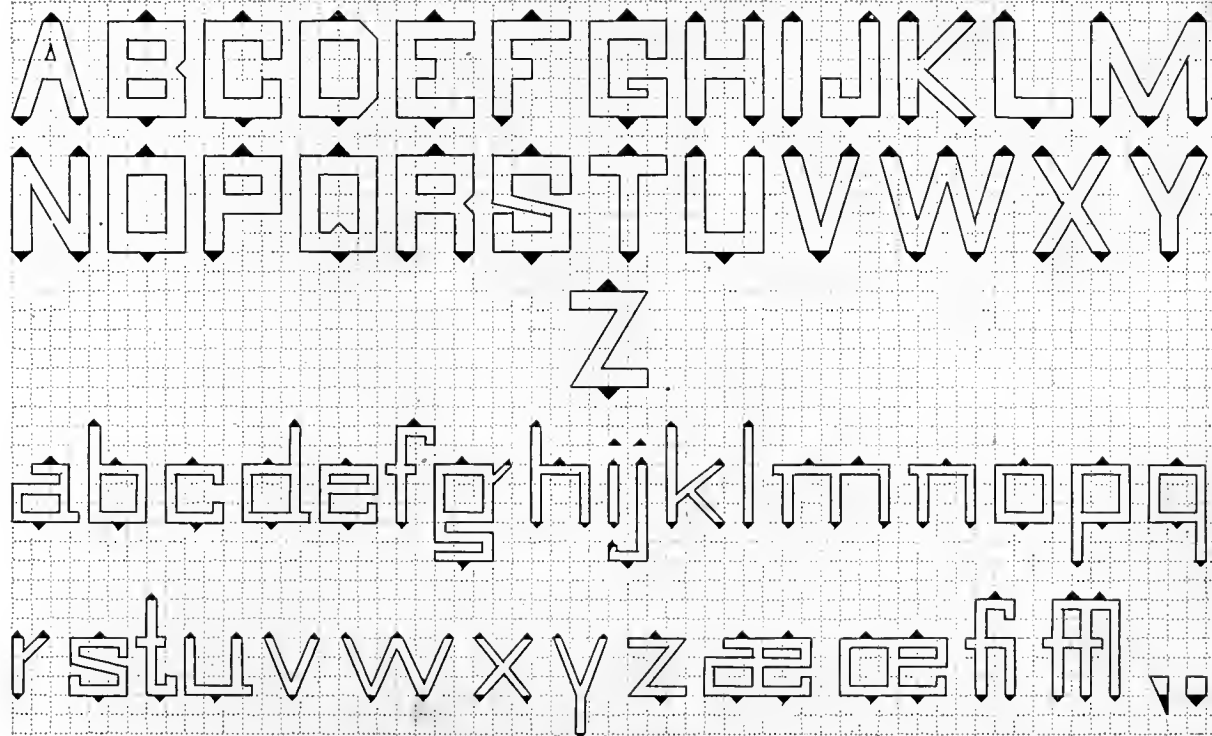
a b c d e f g h i j k l m n o p q r s t u w

v x y z

1 2 3 4 5 6 7 8 9 0

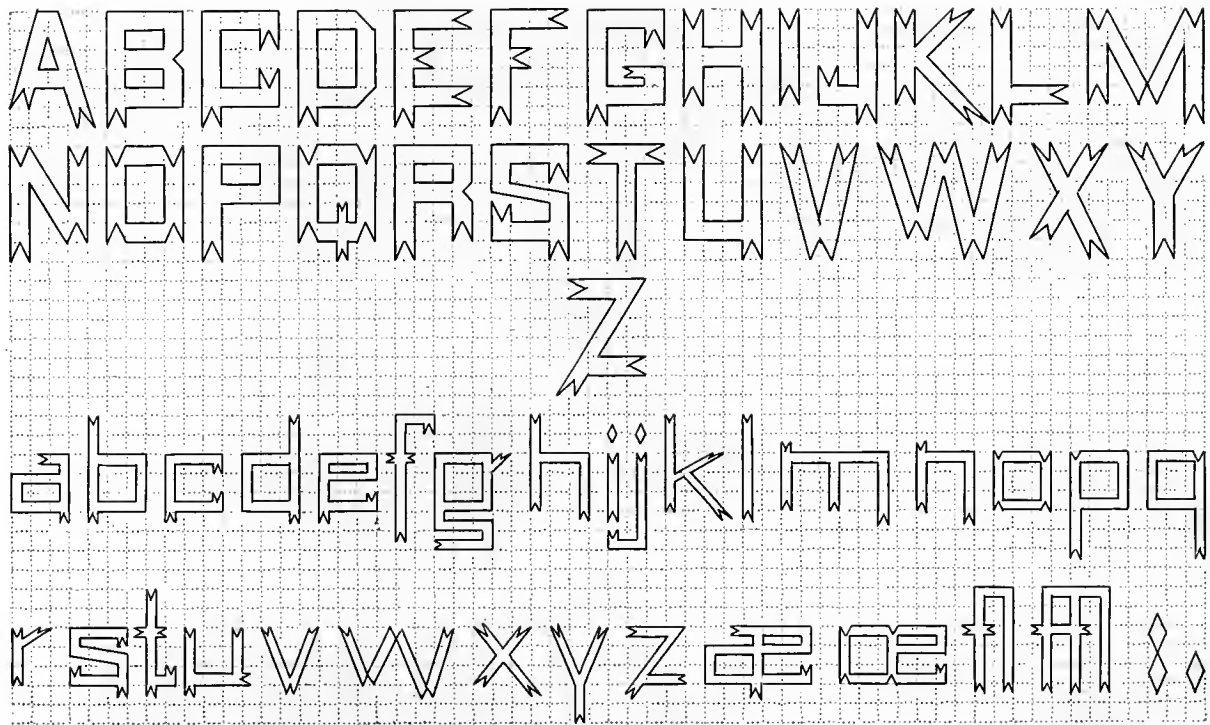


LIBRARY
OF THE
UNIVERSITY
OF CALIFORNIA.





LIBRARY
OF THE
UNIVERSITY
OF CALIFORNIA.





LIBRARY
OF THE
UNIVERSITY
OF CALIFORNIA.

A B C D E F G H I J K

L M N O P Q R S T W

U V X Y Z

a b c d e f g h i j k l m n o

p q r s t u v w x y z f i l a e .



LIBRARY
OF THE
UNIVERSITY
OF
CALIFORNIA.

A B C D D E F G H I J K L M

N O P Q R S T U V W X Y

Z



a b c d e f g h i j k l m n o p q

r s t u v w x y z z f f f f f .



LIBRARY
OF THE
UNIVERSITY
OF CALIFORNIA.

A B C D E F G H I J K L M

N O P Q R S T U V W X Y

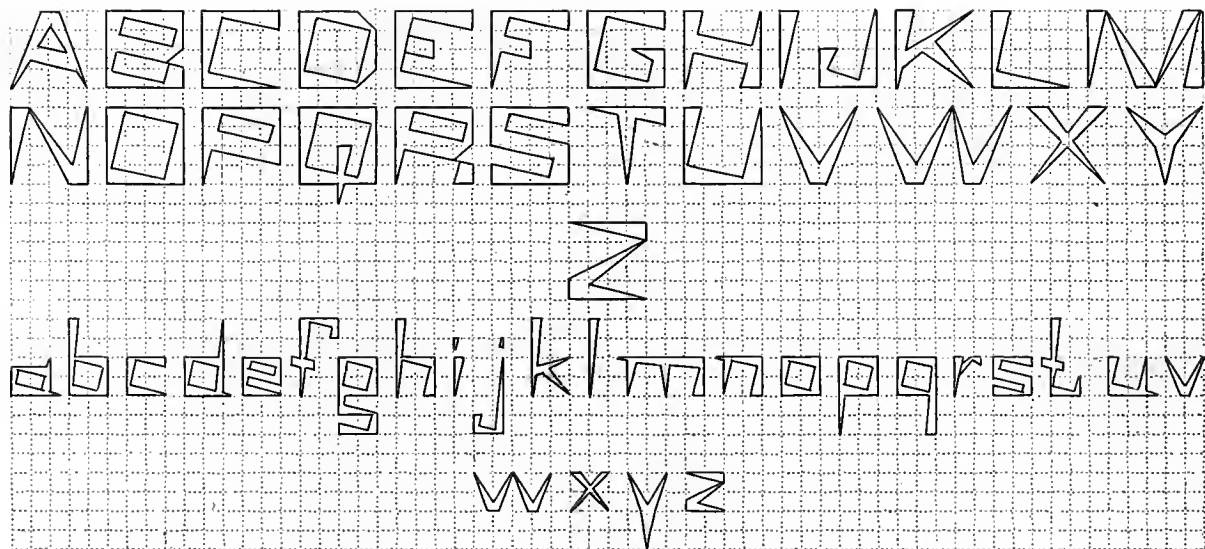
Z

a b c d e f g h i j k l m n o p q r s t u v

w x y z

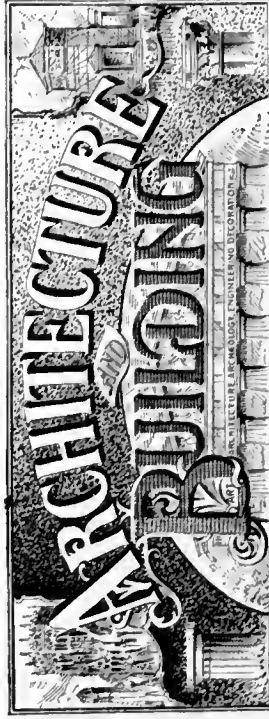


LIBRARY
OF THE
UNIVERSITY
OF CALIFORNIA.





LIBRARY
OF THE
UNIVERSITY
OF CALIFORNIA.



DEVOTED TO

ART, ARCHITECTURE,

ARCHÆOLOGY, ENGINEERING AND DECORATION.

PUBLISHED EVERY SATURDAY.

Subscription, \$6.00 per year.

Foreign Subscription, \$7.50.

Fifteen Cents per copy.

Samples Free.

Two New Departments have been added during this year, ARCHITECTURAL ENGINEERING and SANITARY AND DOMESTIC ENGINEERING, and a Special Feature of one issue each Month is PRACTICAL Details of Exterior and Interior Work, carefully drawn to Scale.

WHAT SUBSCRIBERS SAY.

Mr. Frank Niernsté, Architect of the State House, Columbia, S. C.:

"I must express my pleasure in the great improvements you have made in your journal, both in reading matter and design of cover. I take several architectural publications, and I find your journal second to none—always keeping fully abreast of the times. You have a wide circulation in the South."

Professor N. Clifford Ricker, of the Illinois University:

"I am much pleased to see the new department—Architectural Engineering."

Wm A. Gould, Architect, Denver, Col.:

"Allow me to express my delight and appreciation of the advance step you have undertaken in trying to make ARCHITECTURE AND BUILDING the foremost among such publications. Both new departments are a gratification and a pleasure to me—especially Architectural Engineering."

W. E. W. Hunter, Hamilton, Ont.:

"I received the numbers on the 14th inst. and please accept my sincerest thanks for the same. I think they are the best I have seen, and we take several architectural journals."

Frank J. Grodavant, Denver, Col.:

"I am in receipt of the numbers of ARCHITECTURE AND BUILDING which were due at my last writing, in which I enclosed renewal for 1896. I think the change entered into for the new year very marked and fully appreciated by your many subscribers."

John G. Bauschewer, Smelter P. O., Cascade Co., Mont.:

"I am pleased with the new Engineering Departments, and would like a continuation of the practical examples of building constructions in detail."

WM. T. COMSTOCK, Publisher,

23 Warren Street, - - - New York.

ARCHITECTURAL DRAWING.

Hints on Architectural Draughtsmanship, by G. W. TUNFORD
HALLATT, Architect. 18mo, cloth, 60 cents.

CONTENTS :

Introduction—Freehand Drawing—Plans, Elevations,
and Sections—Perspectives—Etchings—Water-Color Perspec-
tives—Competition Drawings—Architecture and good Draw-
ing inseparable—Concluding Hints.

PLAN AND MAP DRAWING.

The Draughtsman's Handbook of Plan and Map Drawing,
including instructions for the preparation of Engineering,
Architectural, and Mechanical Drawings, *with numerous
illustrations and colored examples*, by G. G. ANDRE, F.G.S.,
M.S.E. Crown 4to, cloth, \$3.75.

CONTENTS :

Part 1. The Essential Elements ; The Drawing Office
and its Functions ; Geometrical Problems ; Lines, Dots, and
their Combinations ; Colors ; Shading. Part 2. Applications ;
Lettering, Bordering, and North Points ; Scales ; Plotting ;
Civil Engineers and Surveyors ; Plans ; Map Drawing ; Me-
chanical and Architectural Drawing ; Copying and Reducing ;
Trigonometrical Formulæ ; Inclined Measure ; Curvature and
Refraction, etc., etc.

Circulars and Catalogues sent free on application.

E. & F. N. SPON, 12 Cortlandt St., New York.

DIXON'S AMERICAN GRAPHITE ARTISTS' PENCILS

10 DEGREES OF HARDNESS.

*EQUAL TO THE FINEST IMPORTED AND COST
LESS. TRY THEM AND BE CONVINCED.*

If your stationer does not keep them mention "Easy Lettering" and
send 16 cents in stamps to

JOS. DIXON CRUCIBLE CO., Jersey City, N. J.,

for samples worth double the money.

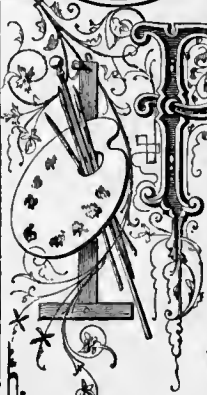
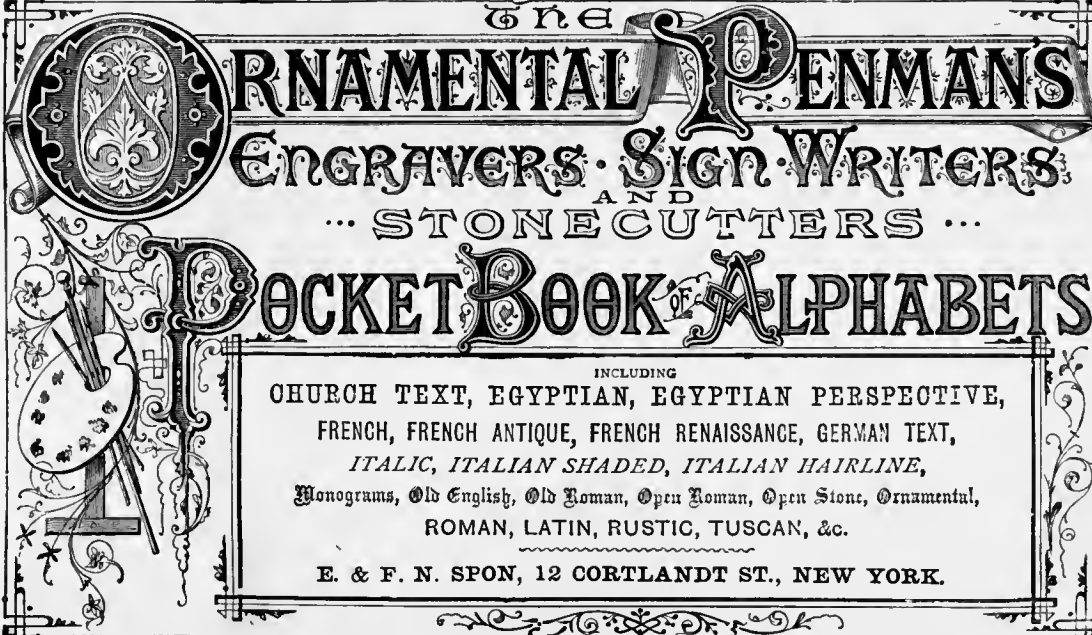
DRAWING COPIES.

*A series of lithographed working drawings of
Architectural and Machine Construction, by W. BUS-
BRIDGE. Price ten cents each sheet.*

Descriptive List free on application.

E. & F. N. SPON, 12 Cortlandt Street, New York.

PRICE TWENTY CENTS, FREE BY MAIL.



THE **ORNAMENTAL PENMANS**
ENGRAVERS · SIGN · WRITERS
... STONECUTTERS ...
POCKET BOOK OF ALPHABETS

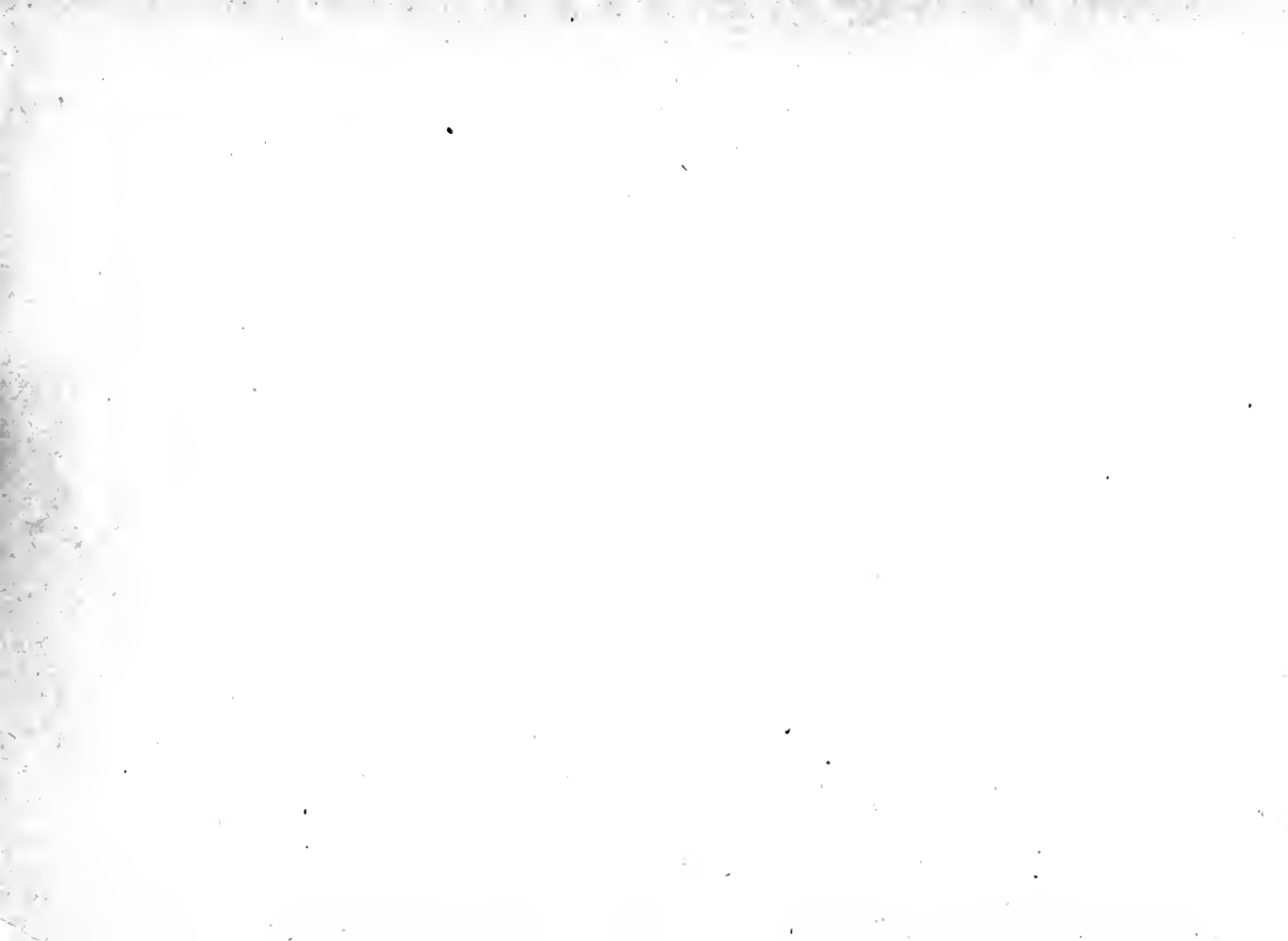
INCLUDING
CHURCH TEXT, EGYPTIAN, EGYPTIAN PERSPECTIVE,
FRENCH, FRENCH ANTIQUE, FRENCH RENAISSANCE, GERMAN TEXT,
ITALIC, ITALIAN SHADED, ITALIAN HAIRLINE,
Monograms, Old English, Old Roman, Open Roman, Open Stone, Ornamental,
ROMAN, LATIN, RUSTIC, TUSCAN, &c.

E. & F. N. SPON, 12 CORTLANDT ST., NEW YORK.



LIBRARY
OF THE
UNIVERSITY
OF
CALIFORNIA.







UNIVERSITY OF CALIFORNIA LIBRARY
BERKELEY

Return to desk from which borrowed.
This book is DUE on the last date stamped below.

FEB 13 1948

MAR 27 1948

5 Jan '54 SCL

DEC 9 1953

1964 '64 Y

REC'D LD

MAR 5 '64 - 11 AM

23 Jul '65 MS

REC'D LD

JUL 9 '65 - 2 PM

DEC 7 1970 S

REC'D LD NOV 30 70 - 10 AM 33

LD 21-100m-9,'47 (A5702s16)476

80MCT 22

YC 19739

T371

C1

1870

57863

Cromwell

