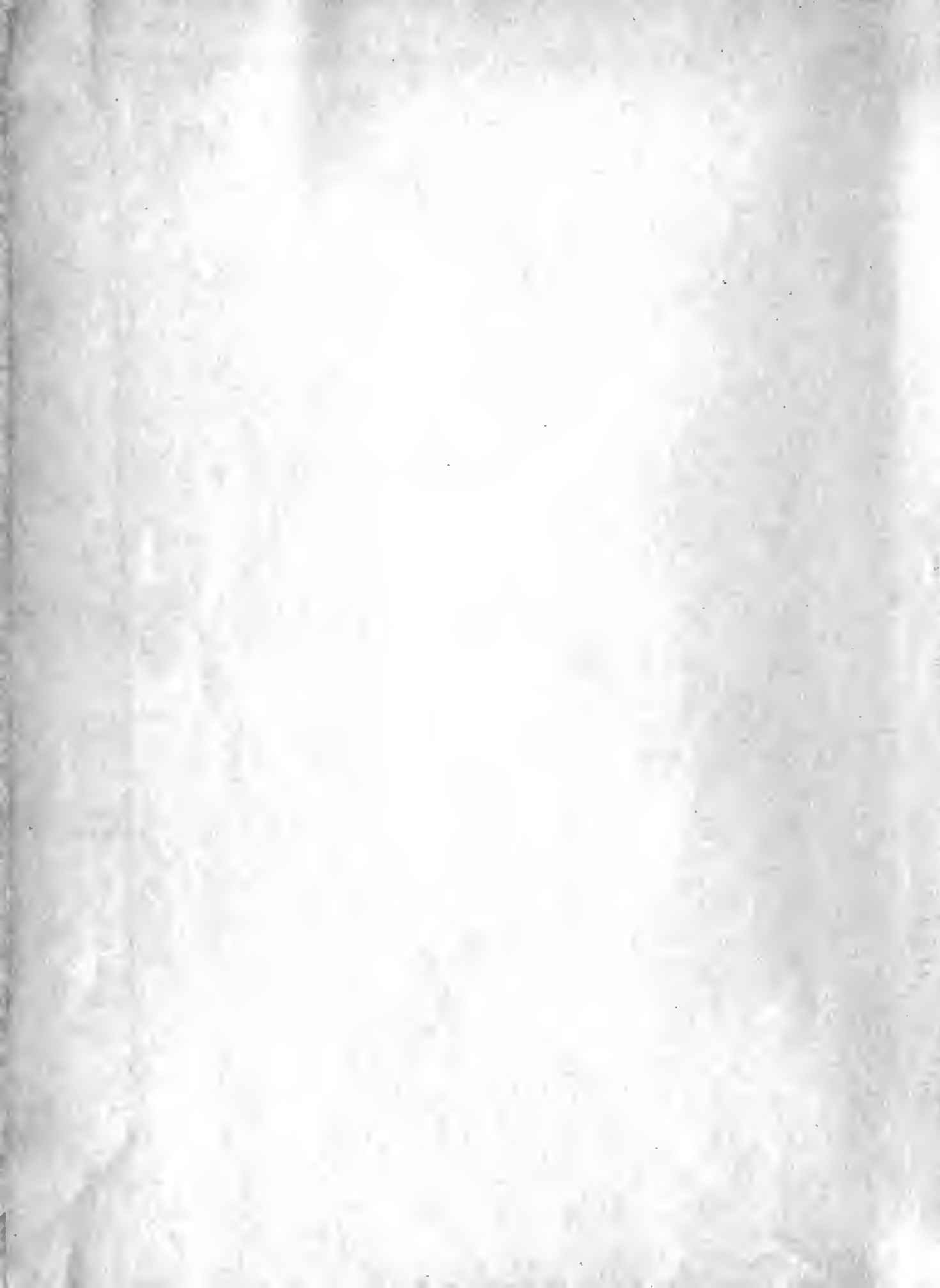




LIBRARY—COLLEGE PARK







Maryland State plan - commissioner
Publication 1-1

Digitized by the Internet Archive
in 2009 with funding from
Lyrasis Members and Sloan Foundation

<http://www.archive.org/details/tablepopulatio04mary>

P. 4

MARYLAND STATE PLANNING COMMISSION

Table 3

POPULATION OF INCORPORATED TOWNS OF MARYLAND

1790-1950

Census counts taken at 10-year intervals

Maryland State Department of Health
2411 North Charles Street
Baltimore, Maryland

1934

LIBRARY—COLLEGE PARK



APR 6 1940

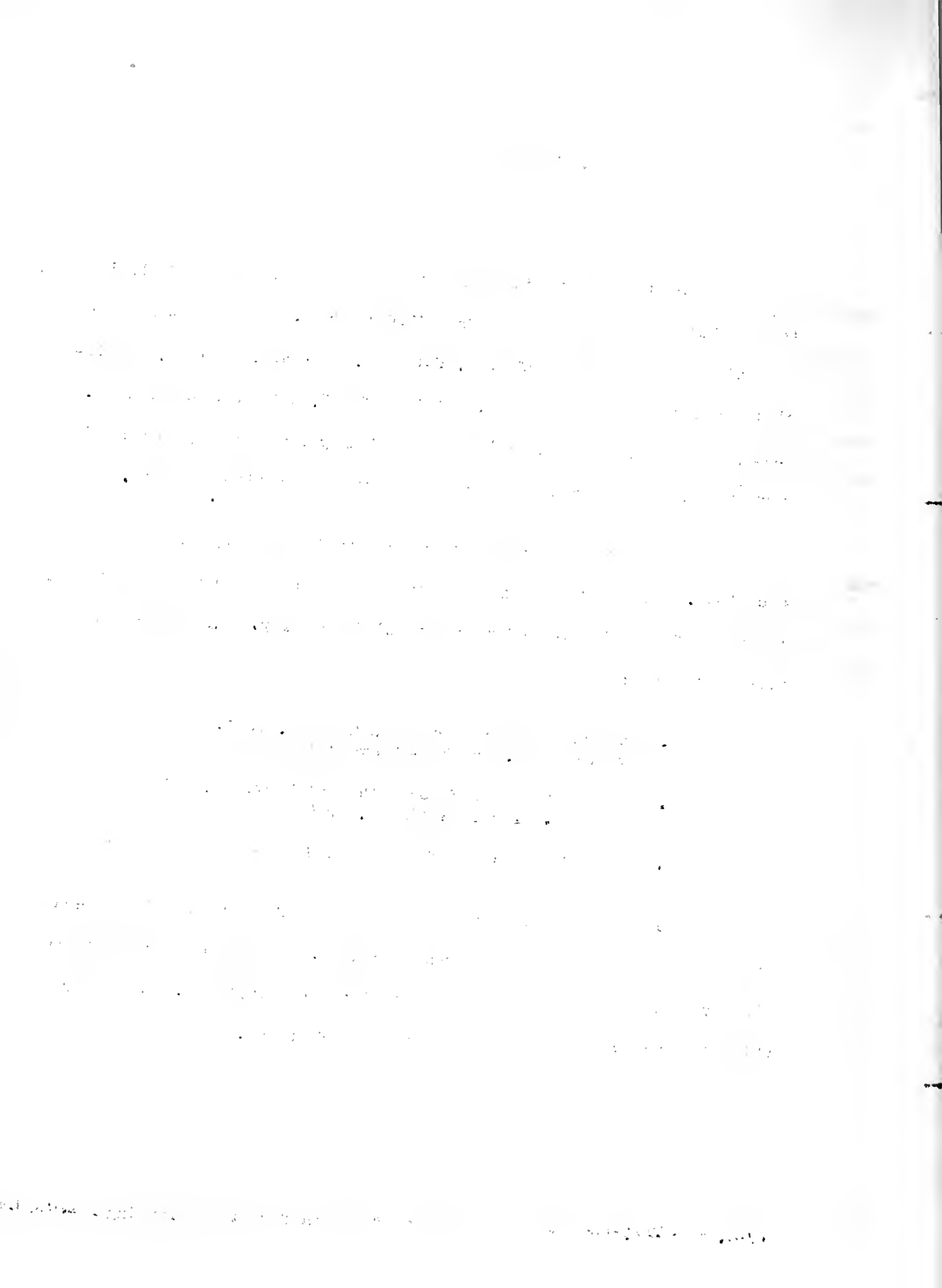
INCORPORATED TOWNS OF MARYLAND

The following tables show the census populations of all incorporated towns of Maryland as published from 1790 to date. The list was taken from the United States Census of 1930, Volume 1, page 492, table 5, and includes all the towns mentioned, a total of 157, although Hubron in Wicomico County and Northwest Park in Montgomery County, apparently are not incorporated. There are no incorporated towns in Baltimore County.

The date of incorporation or establishment by law is given for each town. This information was obtained with the cooperation of the Department of Legislative Reference of Baltimore City. The sources used were as follows:

1. Maryland Public Records Commission, 1904. Appendix, 1906 by Francis C. Sparks - "Towns" (unpublished)
2. Code of the Public Local Laws of Maryland, Edited by Horace E. Flack, Baltimore, 1930
3. Laws of the State of Maryland, 1686 - 1930 inclusive

All populations were taken from the publications of the Bureau of the Census giving decennial census counts. The tables begin with the first year for which the census populations are available. Years for which the census count was not given are left blank.



POPULATION OF INCORPORATED TOWNS OF MARYLAND

Allegheny County

Year of incorporation	Barton 1818	Cumberland 1786*	Frostburg 1839	Lowgonia 1890	Luna 1922	Madison 1902	Westonport 1858
Year	Population						
1840		2,438					
1850		6,073					
1860		4,076					
1870		8,054					
1880		10,693					1,468
1890		12,729	3,804				1,526
1900		17,128	5,274	2,181			1,996
1910		21,859	6,028	1,563		1,173	2,702
1920 T	768	29,387	6,917	2,054		910	3,977
W		28,408	5,811				3,956
C		1,435	206				21
1930 T	689	37,747	5,588	2,426	1,064	865	3,440
W		36,585	5,388	2,425	1,060		3,431
C		1,162	200	1	4		9

*Year of establishment

The following information is provided for your reference:

1. The total number of items is 100.

2. The number of items in each category is as follows:

Category	Number of Items
Category A	20
Category B	30
Category C	15
Category D	10
Category E	15
Category F	10

3. The total value of the items is \$1,000.

4. The average value of the items is \$10.

5. The standard deviation of the values is \$3.

6. The correlation coefficient between the number of items and the value is 0.5.

7. The regression equation is $y = 0.5x + 5$.

8. The coefficient of determination is 0.25.

9. The confidence interval for the mean value is \$8 to \$12.

10. The hypothesis test results are as follows:

Test	Result
Null Hypothesis	Rejected
Alternative Hypothesis	Accepted

11. The p-value is 0.05.

12. The test statistic is 1.96.

13. The critical value is 1.96.

14. The power of the test is 0.80.

15. The type I error rate is 0.05.

16. The type II error rate is 0.20.

17. The significance level is 0.05.

18. The confidence level is 0.95.

19. The margin of error is \$2.

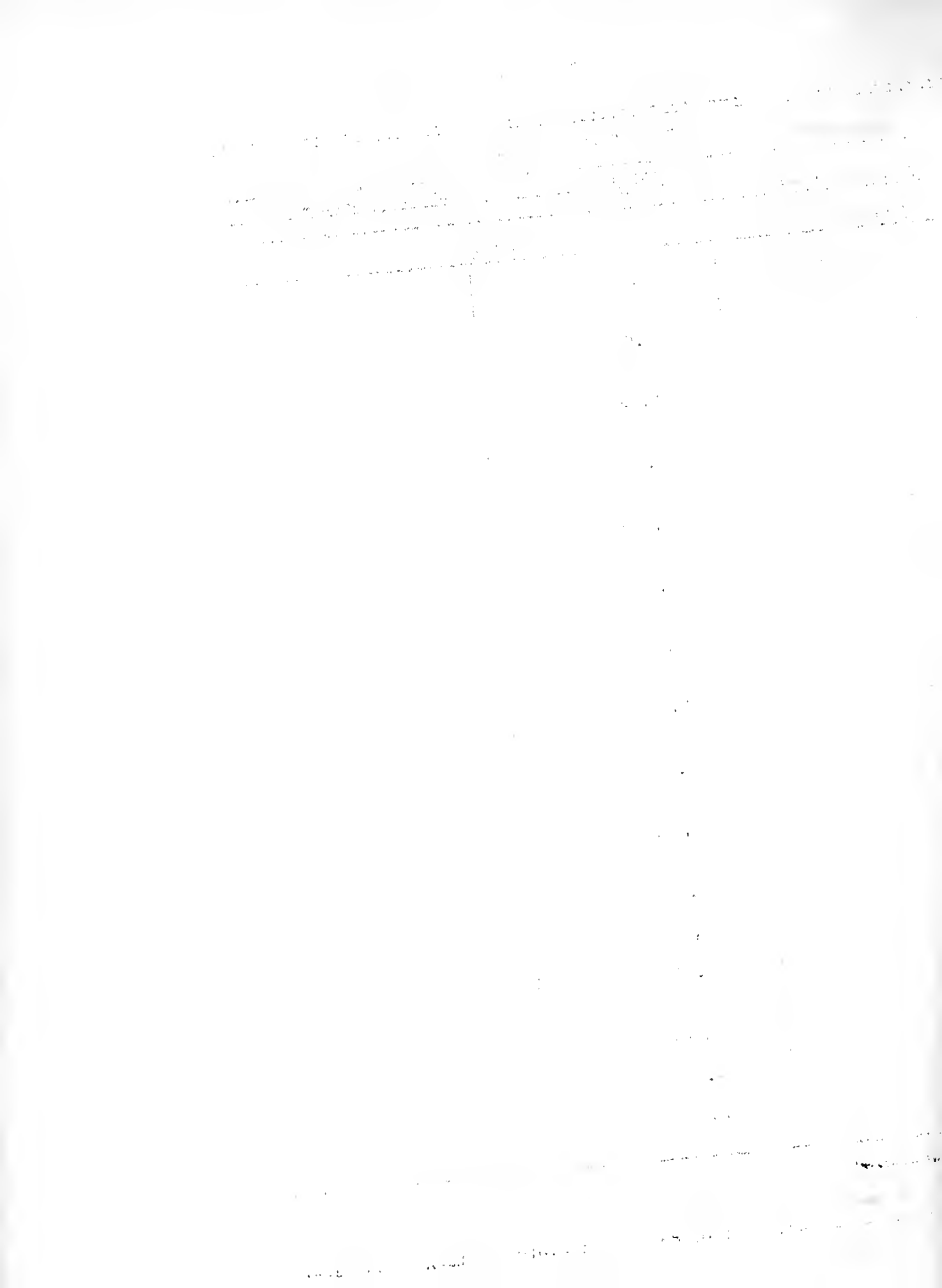
20. The sample size is 100.

POPULATION OF INCORPORATED TOWNS OF MARYLAND

Anne Arundel County

Year of incorporation	Annapolis 1708*	Arundel-on-the-Bay 1898
Year	Population	
1820	2,260	
1830	2,623	
1840	2,792	
1850	3,011	
1860	4,529	
1870	5,744	
1880	6,642	
1890	7,604	
1900	8,525	
1910	8,609	9
1920 T	11,214	12
W	8,252	
C	2,962	
1930 T	12,531	1
W	9,125	
C	3,406	

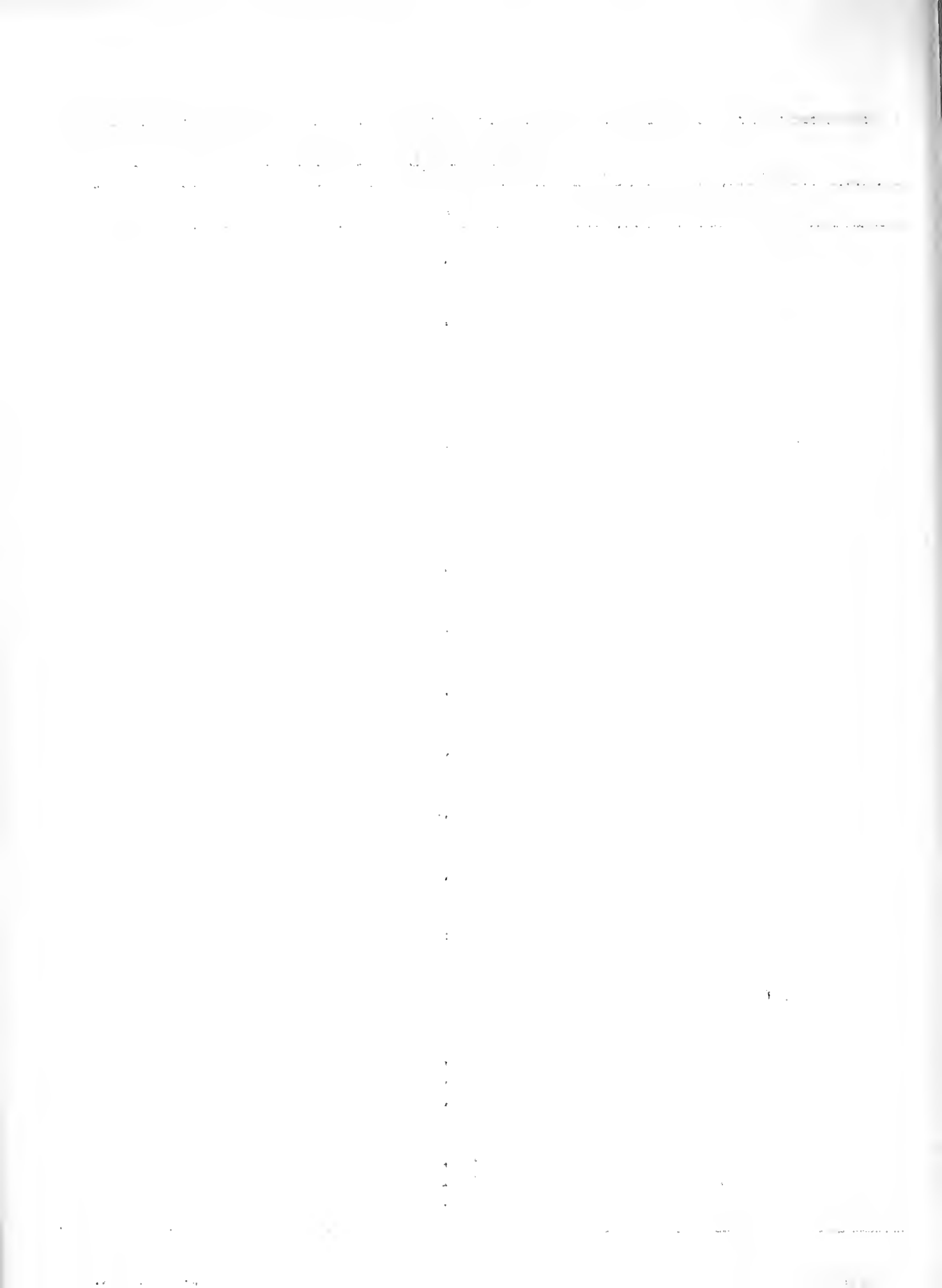
* Year of establishment



POPULATION OF INCORPORATED TOWNS OF MARYLAND

Year of incorporation	Baltimore City
	1797

Year	Population
1790	13,503
1800	26,514
1810	46,555
1820	62,758
1830	80,620
1840	102,313
1850	169,054
1860	212,418
1870	267,354
1880	332,313
1890	434,439
1900	508,957
1910	558,485
1920	T 733,826
	W 625,130
	C 108,696
1930	T 804,374
	W 662,124
	C 142,750



POPULATION OF INCORPORATED TOWNS OF MARYLAND

Calvert County		
Year of Incorporation	Solomons 1892	North Beach 1910
Year	Population	
1910	318	
1920	283	
1930	246	107

1. The first part of the document discusses the importance of maintaining accurate records of all transactions.

2. It is essential to ensure that all entries are supported by appropriate documentation.

3. The second part of the document outlines the various methods used to collect and analyze data.

4. These methods include both qualitative and quantitative approaches.

5. The final part of the document provides a summary of the findings and conclusions.

6. The document concludes by emphasizing the need for ongoing research and evaluation.

POPULATION OF INCORPORATED TOWNS OF CAROLINE COUNTY

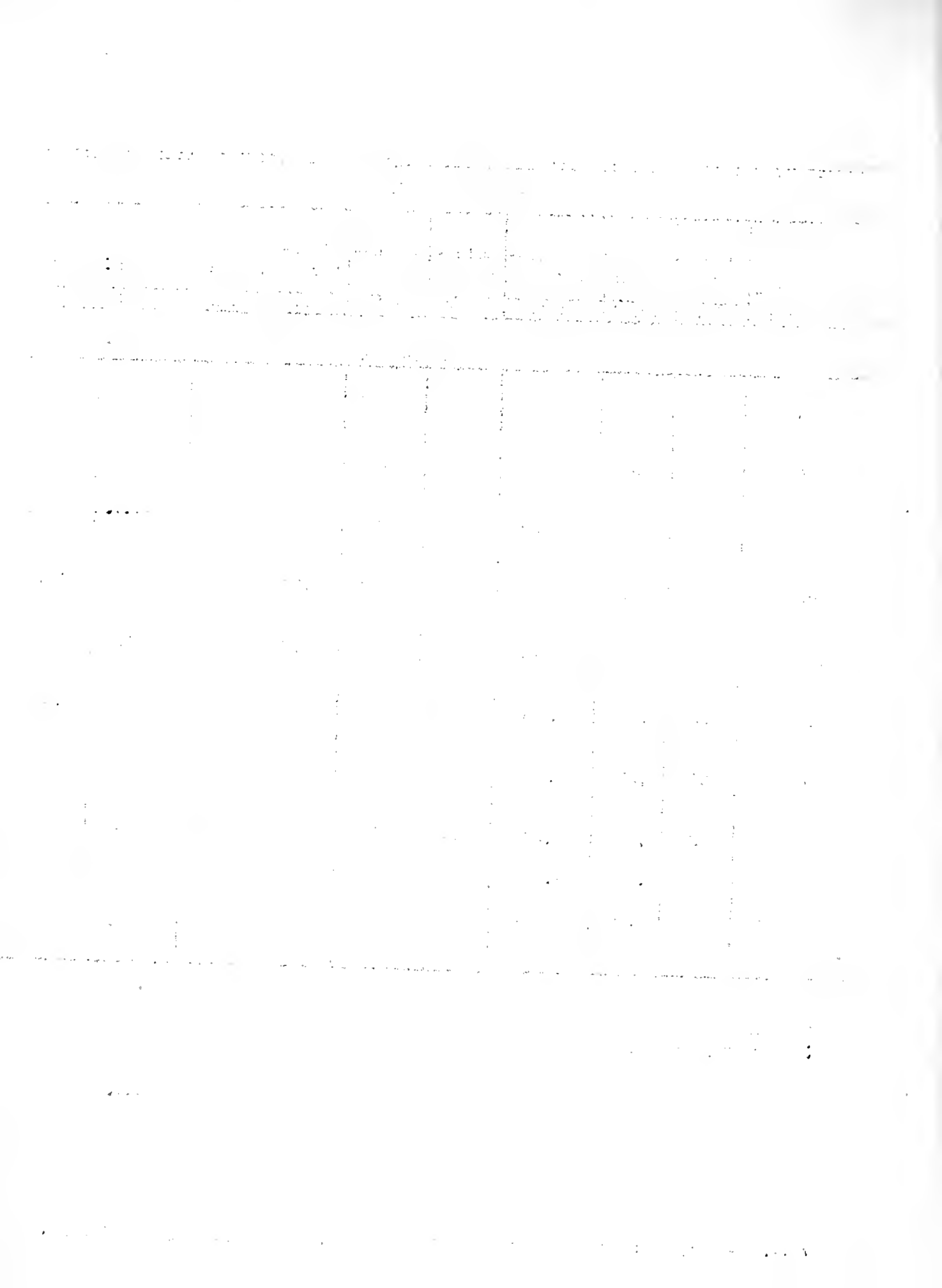
Caroline County

Year of incorporation	Bridge-town 1839	Denton 1796*	Federals-burg 1823	Goldsboro 1906	Greensboro 1870	Hillsboro 1853	Marydel 1929	Preston 1892	Ridgely 1896
-----------------------	---------------------	-----------------	-----------------------	-------------------	--------------------	-------------------	-----------------	-----------------	-----------------

Year	Population								
1860					406				
1870		431			561				
1880		469	338		684	264			81
1890		641	543		902	174			215
1900	50	900	539		641	196		192	713
1910	19	1,481	1,050	201	609	209		288	943
1920	26	1,570	1,288	224	168	222		784	809
1930 T	33	1,604	1,369	211	760	200	127	315	703
W		1,288	1,124						
C		316	245						

* Year of establishment

! Formerly Snow Hill



POPULATION OF INCORPORATED TOWNS OF MARYLAND

Carroll County

Year of incorporation	Hampstead	Manchester	Mount Airy (Total)	Mount Airy (Carroll Co.)	New Windsor	Cykesville	Faneytown	Union Bridge	Westminster
	1844	1853	1894	1894	1843	1904	1836	1872	1818

Year	Population								
1850		517						285	884
1860	198	646						365	
1870	235	755			396		413	823	3,310
1880	306	640			426		619	579	2,507
1890	521	273			414		566	743	2,903
1900	480	609	549	332	430		665	663	3,199
1910	555	523	622	428	446	565	824	604	3,295
1920 T	566	546	754	556	512	610	800	1,082	5,521
V									3,271
C									250
1930 T	905	643	860	590	503	661	938	862	4,463
W									4,158
C									305

POPULATION OF INCORPORATED TOWNS OF MARYLAND

Cecil County									
Year of incorporation	Cecil-ton	Charles-town	Chesa-peake City	Elkton	North East	Perry-ville	Port Deposit ^{1/}	Rising Sun	
	1864	1783*	1849	1787*	1849	1882	1824	1860	
Year	Population								
1850			423	1,099	338		1,008		
1860									
1870	462	223	1,008	1,797	748		1,839	277	
1880	473	211	1,402	1,752	988	143	1,950	314	
1890	485	228	1,155	2,318	1,249	344	1,908	384	
1900	447	244	1,172	2,542	969	770	1,575	382	
1910	518	274	1,016	2,487	974	635	1,394	416	
1920	T	439	177	958	2,660	1,112	652	1,090	442
				2,272					
	C			388					
1930	T	458	286	1,016	3,331	1,412	704	963	565
	V			913	2,920	1,315			
	C			103	411	97			

* Year of establishment
^{1/}Formerly Creswell's Ferry

1. The first part of the document discusses the importance of maintaining accurate records of all transactions and activities. It emphasizes that this is essential for ensuring transparency and accountability in the organization's operations.

2. The second part of the document outlines the various methods and tools used to collect and analyze data. It highlights the need for consistent and reliable data collection processes to ensure the validity of the results.

3. The third part of the document describes the different types of data that are collected and how they are used to inform decision-making. It notes that a combination of quantitative and qualitative data is often used to provide a comprehensive view of the organization's performance.

4. The fourth part of the document discusses the challenges associated with data collection and analysis. It identifies common issues such as data quality, consistency, and availability, and offers strategies to address these challenges.

5. The fifth part of the document provides a summary of the key findings and conclusions of the study. It reiterates the importance of data-driven decision-making and the need for ongoing monitoring and evaluation of the organization's performance.

6. The sixth part of the document offers recommendations for future research and practice. It suggests that further exploration of data collection methods and analysis techniques is needed to improve the effectiveness of data-driven decision-making.

7. The seventh part of the document provides a list of references and sources used in the study. It includes books, articles, and other relevant materials that provide additional context and support for the findings and conclusions.

8. The eighth part of the document contains a list of appendices and supplementary materials. These materials provide additional details and data that support the main findings of the study.

9. The ninth part of the document provides a list of contact information for the authors and other relevant parties. This information is provided to facilitate communication and collaboration with the research team.

10. The tenth part of the document contains a list of acknowledgments and thanks. It expresses appreciation for the support and assistance provided by the research team, funding agencies, and other individuals and organizations.

11. The eleventh part of the document provides a list of definitions and abbreviations used throughout the study. This helps to ensure clarity and consistency in the use of terminology.

12. The twelfth part of the document contains a list of tables and figures. These visual aids provide a clear and concise way to present and analyze the data collected during the study.

13. The thirteenth part of the document provides a list of footnotes and endnotes. These notes provide additional information and references that are relevant to the study but do not fit into the main text.

14. The fourteenth part of the document contains a list of references and sources used in the study. This list is provided to allow readers to access the original sources of information and to verify the accuracy of the findings.

15. The fifteenth part of the document provides a list of contact information for the authors and other relevant parties. This information is provided to facilitate communication and collaboration with the research team.

POPULATION OF INCORPORATED TOWNS OF MARYLAND

Charles County

Year of incorporation	Cobb Island	Indian Head	La Plata
	1929	1920	1888
Year	Population		
1890			116
1900			
1910			269
1920			300
1930 T	14	1,240	332
		1,124	
C		116	

1. The first part of the document is a list of names and addresses of the members of the committee.

MEMBERS OF THE COMMITTEE

Mr. J. H. ...
Mr. ...
Mr. ...

2. The second part of the document is a list of the names and addresses of the members of the committee.

MEMBERS OF THE COMMITTEE

Mr. J. H. ...
Mr. ...
Mr. ...

3. The third part of the document is a list of the names and addresses of the members of the committee.

MEMBERS OF THE COMMITTEE

Mr. J. H. ...
Mr. ...
Mr. ...

4. The fourth part of the document is a list of the names and addresses of the members of the committee.

MEMBERS OF THE COMMITTEE

Mr. J. H. ...
Mr. ...
Mr. ...

5. The fifth part of the document is a list of the names and addresses of the members of the committee.

MEMBERS OF THE COMMITTEE

Mr. J. H. ...
Mr. ...
Mr. ...

6. The sixth part of the document is a list of the names and addresses of the members of the committee.

MEMBERS OF THE COMMITTEE

Mr. J. H. ...
Mr. ...
Mr. ...

POPULATION OF INCORPORATED TOWNS OF MARYLAND

Dorchester County					
Year of incorporation	Cambridge 1792	East New Market 1832	Hurlock 1892	Secretary 1900	Vienna 1877
Year	Population				
1860	1,862				
1870	1,642				
1880	2,262	242			
1890	4,192				424
1900	5,747	282	280	410	
1910	6,407	280	516	409	532
1920	7,467	271	1,075	398	257
	5,160				
	2,507				
1930	8,544	222	765	361	311
	6,280				
	2,264				

[The page contains extremely faint and illegible text, likely bleed-through from the reverse side of the document. The text is arranged in several horizontal lines and is difficult to decipher.]

Frederick County

Year of incorporation	Brunswick (Formerly Berlin)	Burkittsville	Emmitsburg	Frederick	Middletown	Mount Airy (Total)	Mount Airy (Fred. Co.)	Myersville	New Market	Point of Rocks	Thurmont (Formerly Mechanicstown)	Walkersville	Woodsboro
	1890	1894	1824	1786	1833	1894	1894	1904	1878	1847	1831	1882	1836
Year	Population												
1820				3,640									
1830				4,427									
1840				5,182									
1850			812	6,028									
1860				8,143									
1870		293	706	8,526	746								
1880		280	847	8,659	705				402	290		160	336
1890		273	844	8,193	667				423	364	930	255	
1900	2,471	229	849	9,296	665	549	217		360		868	359	
1910	3,721	228	1,054	10,411	692	622	194	240	320	476	903	582	362
1920	3,905	200	940	11,066	749	754	198	239	274	365	1,074	596	385
W	3,756			9,830									
C	149			1,236									
1930	3,671	173	1,235	14,434	818	630	200	262	294	500	1,185	623	345
W	3,540		1,213	12,882							1,184		
C	131		22	1,552							1		

THE UNIVERSITY OF CHICAGO LIBRARY
1215 EAST 58TH STREET
CHICAGO, ILLINOIS 60637
TEL: 773-936-3200
WWW.CHICAGO.LIBRARY.EDU

THE UNIVERSITY OF CHICAGO LIBRARY
1215 EAST 58TH STREET
CHICAGO, ILLINOIS 60637
TEL: 773-936-3200
WWW.CHICAGO.LIBRARY.EDU

POPULATION OF INCORPORATED TOWNS OF MARYLAND

Garrett County								
Year of incorporation	Bloomington ^{1/}	Pear Park	Friendsville	Grantsville	Kitz-millersville	Lock Lynn Heights	Mountain Lake Park	Oakland
	1878	1884	1904	1864	1906	1896	1888	1861
Year	Population							
1880	341	195		220				210
1890	295	179						1,046
1900	395	293		175		215	260	1,170
1910	372	268	466	248	865	216	335	1,366
1920	350	247	408	264	1,044	224	231	1,225
1930	T	369	249	494	400	827	198	322
	W							1,572
	C							11

^{1/} Formerly Langollen

1. Name of the person or organization: [Faint text]

2. Address: [Faint text]

3. City: [Faint text]

4. State: [Faint text]

5. Zip: [Faint text]

6. Telephone: [Faint text]

7. Other: [Faint text]

POPULATION OF INCORPORATED TOWNS OF MARYLAND

HARRIS COUNTY

Year of incorporation	Aberdeen 1892	Bel Air 1782*	Havre de Grace 1839
Year	Population		
1850		258	1,335
1860		197	1,963
1870		633	2,281
1880	191		2,816
1890	448	1,416	3,244
1900	600	961	3,423
1910	616	1,005	4,212
1920	1,067	1,091	4,377
			3,571
			806
1930	1,240	1,650	3,985
	1,212	1,320	3,345
	28	330	640

* Year of establishment

1. The first part of the document discusses the importance of maintaining accurate records of all transactions. This is essential for ensuring the integrity of the financial statements and for providing a clear audit trail. The records should be kept up-to-date and should be easily accessible to all relevant parties.

2. The second part of the document outlines the various methods used to collect and analyze data. These methods include interviews, surveys, and focus groups. Each method has its own strengths and weaknesses, and it is important to choose the most appropriate method for the specific research objectives.

3. The third part of the document describes the process of data analysis. This involves identifying patterns and trends in the data, and then interpreting these findings in the context of the research objectives. It is important to use a systematic and transparent approach to data analysis to ensure the reliability of the results.

4. The fourth part of the document discusses the importance of reporting the results of the research. This involves presenting the findings in a clear and concise manner, and providing a detailed explanation of the implications of the results. It is important to be honest and transparent in reporting the results, and to acknowledge any limitations of the study.

5. The fifth part of the document concludes the report and provides a summary of the key findings. It also offers some recommendations for future research and for the implementation of the findings. The overall goal of the report is to provide a comprehensive and objective analysis of the research topic.

POPULATION OF INCORPORATED TOWNS OF MARYLAND

Howard County

Year of incorporation	Ellicott City 1867
Year	Population
1850	827
1860	1,444
1870	1,645
1880	1,471
1890	1,333
1900	1,331
1910	1,151
1920	1,246
1930 T	1,216
W	921
C	295

1. The first part of the document discusses the importance of maintaining accurate records of all transactions and activities. It emphasizes that this is essential for ensuring transparency and accountability in the organization's operations.

2. The second part of the document outlines the various methods and tools used to collect and analyze data. It highlights the need for consistent and reliable data collection processes to ensure the validity of the results.

3. The third part of the document describes the different types of data that are collected and how they are used to inform decision-making. It notes that a combination of quantitative and qualitative data is often used to provide a comprehensive view of the organization's performance.

4. The fourth part of the document discusses the challenges associated with data collection and analysis. It identifies common issues such as data quality, consistency, and availability, and provides strategies to address these challenges.

5. The fifth part of the document concludes by summarizing the key findings and recommendations. It stresses the importance of ongoing monitoring and evaluation to ensure that the data collection and analysis processes remain effective and relevant over time.

6. The sixth part of the document provides a detailed overview of the data collection and analysis process, including the specific steps and tools used. It serves as a practical guide for implementing the methods described in the document.

7. The seventh part of the document discusses the ethical considerations surrounding data collection and analysis. It emphasizes the need to protect the privacy and confidentiality of the data and to ensure that the collection and use of data are fair and transparent.

8. The eighth part of the document provides a detailed overview of the data collection and analysis process, including the specific steps and tools used. It serves as a practical guide for implementing the methods described in the document.

9. The ninth part of the document discusses the ethical considerations surrounding data collection and analysis. It emphasizes the need to protect the privacy and confidentiality of the data and to ensure that the collection and use of data are fair and transparent.

10. The tenth part of the document provides a detailed overview of the data collection and analysis process, including the specific steps and tools used. It serves as a practical guide for implementing the methods described in the document.

11. The eleventh part of the document discusses the ethical considerations surrounding data collection and analysis. It emphasizes the need to protect the privacy and confidentiality of the data and to ensure that the collection and use of data are fair and transparent.

12. The twelfth part of the document provides a detailed overview of the data collection and analysis process, including the specific steps and tools used. It serves as a practical guide for implementing the methods described in the document.

POPULATION OF INCORPORATED TOWNS OF MARYLAND

Kent County					
Year of incorporation	Betterton 1906	Chestertown 1706	Galena ¹ 1904	Millington ² 1890	Rock Hall 1908
Year	Population				
1860		1,539		306	
1870		1,871	307	420	
1880		2,359	347	444	
1890		2,632	266	485	
1900		3,008	251	406	
1910	308	2,735	262	399	781
1920	T 327	2,537	298	368	572
	W	1,716			
	C	821			
1930	T 296	2,809	265	371	714
	W	1,956			
	C	853			

¹Formerly Georgetown Cross Roads

²Formerly Bridgetown, Kent and Sandtown, Queen Anne's

Faint, illegible text at the top of the page, possibly a header or introductory paragraph.

Main body of faint, illegible text, appearing to be several paragraphs of a document.

Faint text at the bottom of the page, possibly a footer or concluding paragraph.

POPULATION OF INCORPORATED TOWNS OF MARYLAND

Montgomery County

Year of incorporation	Barnesville	Brookeville	Gaithersburg	Garrett Park	Glen Echo	Kensington	Laytonsville	Northwest Park	Poolesville	Rockville	Somerset	Takoma Park (Total)	Takoma Park (Mont. Co.)
	1888	1890	1878	1898	1904	1894	1892	*	1867	1801	1906	1890	1890
Year	Population												
1860										365			
1870										660			
1880										688			
1890										1,568		164	
1900		158	547	175		477	148	236	1,110			756	
1910	154	132	625	185	203	689	133	175	1,181	173	1,242	1,159	
1920 T	149	79	729	159	235	874	133	50	325	1,145	200	3,168	2,845
W												2,940	2,679
C												228	166
1930 T	119	112	1,068	298	222	948	146	133	197	1,422	298	6,415	5,437
W			1,045							1,209		6,058	5,226
C			23							213		357	209

* Not incorporated

POPULATION OF INCORPORATED TOWNS OF MARYLAND

Prince George's County										
Year of incorporation	Berwyn Heights	Bladensburg	Boulevard Heights	Bowie	Brentwood	Capitol Heights	Colmar Manor	Cottage City	Eagle Harbor	Edmonston
Year	1896	1854	1924	1874	1922	1910	1927	1924	1929	1924
Population										
1870		410								
1880		466								
1890		503								
1900		463								
1910		460								
1920		597		677		1,194				
1930	T W C	228	616	227	694	1,842 1,841 1	1,611 1,611 -	1,225 1,225 -	938	3 717

Year of incorporation	Fairmont Heights	Hyattsville	Laurel	Mount Rainier	North Brentwood	Piscataway	Riverdale	Riverdale Heights	Takoma Park (Total)	Takoma Park (P.G.Co)	Upper Marlboro	
Year	1927	1886	1870	1910	1924	1843	1920	1929	1890		1744	
Population												
1870			1,148								492	
1880		288	1,206								541	
1890		1,509	1,984					164			439	
1900		1,222	2,079			95		756			449	
1910		1,917	2,415	1,242		73		1,242	83		361	
1920	T W C	2,675 2,453 222	2,239	2,462		38		3,168 2,940 228	323 261 62		385	
1930	T W C	1,218 7 1,211	4,264 4,063 201	2,532 2,286 244	3,832 3,827 5	641	50	1,533 1,523 10	405	6,415 6,058 357	978 830 148	420

* Formerly Huntington

UNITED STATES DEPARTMENT OF AGRICULTURE

REPORT OF THE COMMISSIONER OF THE GENERAL LAND OFFICE

No.	Name of the land	Section	Township	Range	County	State	Acres
1
2
3
4
5
6
7
8
9
10
11
12
13
14
15
16
17
18
19
20
21
22
23
24
25
26
27
28
29
30
31
32
33
34
35
36
37
38
39
40
41
42
43
44
45
46
47
48
49
50
51
52
53
54
55
56
57
58
59
60
61
62
63
64
65
66
67
68
69
70
71
72
73
74
75
76
77
78
79
80
81
82
83
84
85
86
87
88
89
90
91
92
93
94
95
96
97
98
99
100

POPULATION OF INCORPORATED TOWNS OF MARYLAND

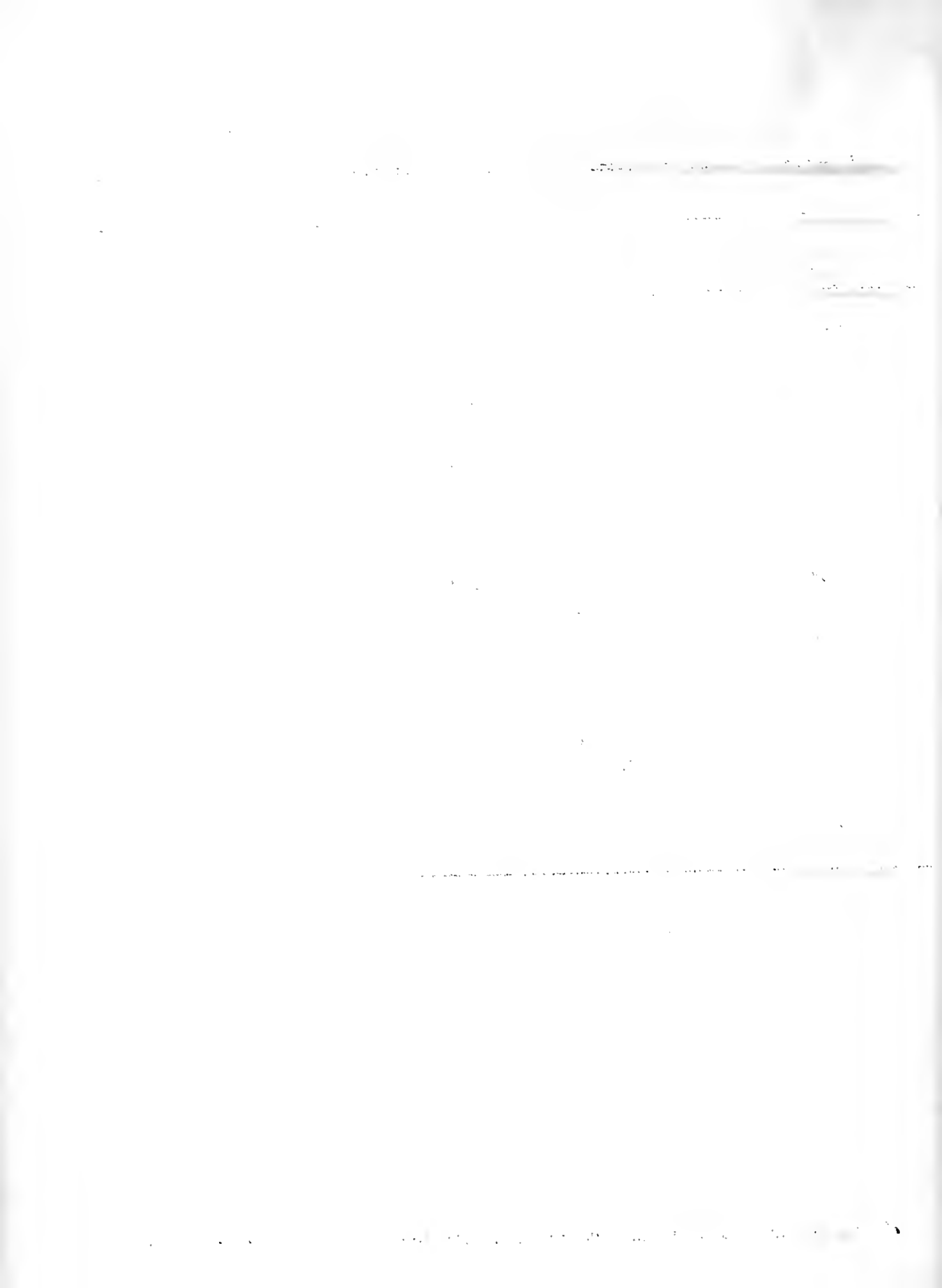
Queen Anne's County

Year of incorporation	Centerville	Church Hill	Crumpton	Queenstown	Sudlersville
	1830	1817	1900	1892	1870
Year	Population				
1870	915				
1880	1,196	250	312		199
1890	1,309	596	517		125
1900	1,231	368	207	374	221
1910	1,435	306	228	279	247
1920	1,765	276	227	270	276
1930 T	1,291	232	202	288	279
W	820				
C	471				

POPULATION OF INCORPORATED TOWNS OF MARYLAND

Saint Mary's County

Year of incorporation	Charlotte Hall	Leonardtown
	1866	1866
Year	Population	
1860		568
1870		468
1880		468
1890		521
1900		463
1910		526
1920	69	557
1930	87	697



POPULATION OF INCORPORATED TOWNS OF MARYLAND

Somerset County

Year of incorporation	Crisfield	Princess Anne
	1872	1867
Year	Population	
1870		805
1880	986	751
1890	1,565	865
1900	3,165	854
1910	3,468	1,006
1920	4,116	968
	2,971	
	1,145	
1930	3,850	975
	2,922	
	928	

... ..

... ..

... ..

... ..

... ..

... ..

... ..

... ..

... ..

... ..

... ..

... ..

... ..

... ..

... ..

... ..

... ..

... ..

... ..

... ..

... ..

... ..

... ..

... ..

... ..

... ..

... ..

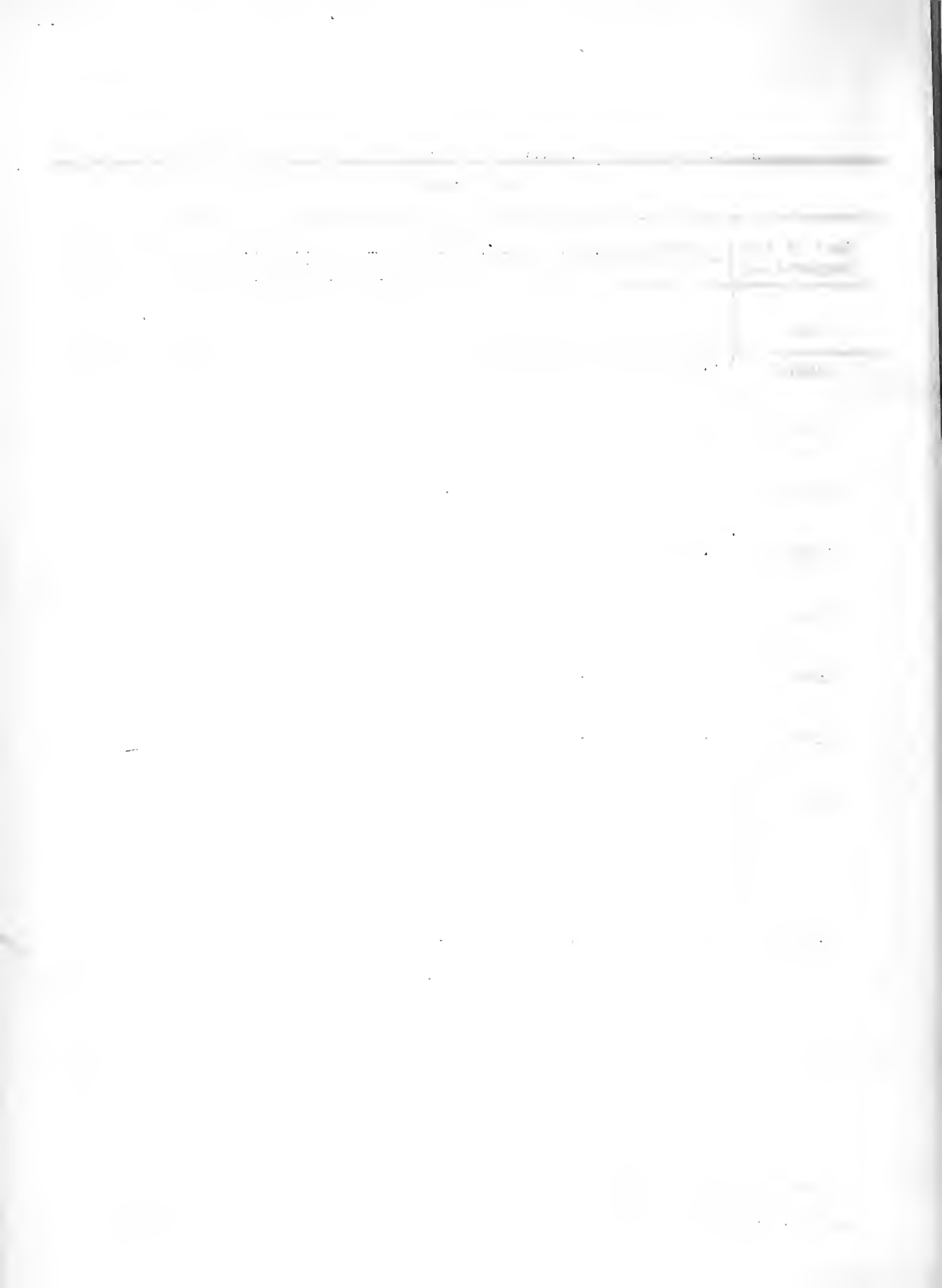
... ..

POPULATION OF INCORPORATED TOWNS OF MARYLAND

Talbot County

Year of incorporation	Easton 1785*	Oxford 1686*	St. Michaels 1805	Trappe 1856
Year	Population			
1850	1,413		863	
1860	1,358		1,016	305
1870	2,110	227	1,095	272
1880	3,005	689	1,175	301
1890	2,939	1,135	1,329	251
1900	3,074	1,243	1,043	279
1910	3,083	1,191	1,517	273
1920	T 3,442	998	1,347	236
	W 2,537			
	C 905			
1930	T 4,092	915	1,308	226
	W 3,071		668	
	W 1,021		440	

* Year of establishment



POPULATION OF INCORPORATED TOWNS OF MARYLAND

Washington County

Year of incorporation	Boonsboro	Clear Spring	Funkstown ¹	Hagerstown ²	Hancock	Keedysville	Sharpsburg	Smithsburg	Williamsport
	1831	1836	1840	1813	1853	1872	1852	1841	1823
Year	Population								
1850	943		947	3,879				366	1,091
1860	864		647	4,132				475	1,016
1870	835	702	671	5,779	860		1,001	459	1,283
1880	859	721		6,627	931	389	1,260	433	1,503
1890	766			10,118	815	420	1,163	487	1,277
1900	700	474	559	13,591	824	426	1,030	462	1,472
1910	759	521	568	16,507	893	367	960	481	1,571
1920 T	1,044	538	620	28,064	972	394	832	586	1,615
W				26,549					
C				1,511					
1930 T	894	539	700	30,861	1,447	503	818	598	1,775
W				29,337					1,533
C				1,524					82

¹ Formerly Jerusalem² Formerly Elizabethtown

1945

...

...

...

...

...

...

...

...

...

...

...

...

...

...

POPULATION OF INCORPORATED TOWNS OF MARYLAND

Wicomico County

Year of incorporation	Delmar (Total)	Delmar (Vic. Co.)	Delmar (Sussex Co. Del.)	Hebron	Mardela Springs	Pitts-ville	Salis-bury	Sharp-town	Wil-lards
	1888	1888	1888	*	1927	1906	1854	1874	1927
Year	Population								
1870							2,064		
1880	265	138	130				2,581	411	
1890			360				2,905	427	
1900	1,103	659	444				4,277	529	
1910	1,489	959	530			300	6,690	722	
1920 T	2,071	1,291	780	651		368	7,553	713	
W							5,933		
C							1,620		
1930 T	2,018	1,180	838	805	370	438	10,997	727	217
W		1,174					9,077		
C		6					1,920		

* Not incorporated

6/21/34

1944

1945

1946

1947

1948

1949

1950

1951

POPULATION OF INCORPORATED TOWNS OF MARYLAND

Worcester County

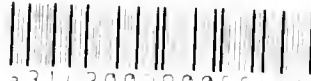
Year of incorporation	Berlin 1868	Ocean City 1880	Pocomoke City ^{1/} 1885	Snow Hill 1886*
Year	Population			
1860	834		704	966
1870	697		1,195	960
1880	1,055	49	1,425	1,276
1890	974	85	1,866	1,483
1900	1,246	365	2,124	1,596
1910	1,317	576	2,369	1,844
1920	1,366	711	2,441	1,684
1930 T	1,480	946	2,609	1,601
W	1,157		1,971	1,045
C	523		638	559

^{1/}Formerly Newtown

* Year of establishment

DO NOT CIRCULATE

3 1430 02900564 4



a31430029005644b

UNIV OF MD COLLEGE PARK

