

VK
639
B75

UC-NRLF



5C 13 660

YD 15689

TABLES

SHOWING THE APPROXIMATE

MAGNETIC DIRECTION

AND ORDINARY RATE (AT SPRINGS & NEAPS)

OF THE

TIDAL STREAMS

IN THE DOVER STRAITS,

AND FROM

AN OFFING OF FROM 3' TO 20' OFF 27 POSITIONS

ON THE

SOUTH COAST OF ENGLAND,

FOR EVERY HALF-HOUR OF THE TIDE AT DOVER;

ALSO

A TABLE TO BE USED FOR CORRECTION, TO BE
APPLIED TO SOUNDINGS.

COMPILED BY

S. H. BROWN,

Trinity House Pilot, London.

LONDON:

PUBLISHED BY J. D. POTTER,

Sole Agent for the Sale of the Admiralty Charts,

31, POULTRY, E.C., AND 11, KING STREET, TOWER HILL, E.

1894.

PRICE ONE SHILLING.

Gift of C. A. Kofoid

TABLES

SHOWING THE APPROXIMATE

MAGNETIC DIRECTION

AND ORDINARY RATE (AT SPRINGS & NEAPS)

OF THE

TIDAL STREAMS

IN THE DOVER STRAITS,

AND FROM

AN OFFING OF FROM 3' TO 20' OFF 27 POSITIONS

ON THE

SOUTH COAST OF ENGLAND,

FOR EVERY HALF-HOUR OF THE TIDE AT DOVER;

ALSO

A TABLE TO BE USED FOR CORRECTION, TO BE
APPLIED TO SOUNDINGS.

COMPILED BY

S. H. BROWN,

Trinity House Pilot, London.

LONDON:

PUBLISHED BY J. D. POTTER,

Sole Agent for the Sale of the Admiralty Charts,

31, POULTRY, E.C., AND 11, KING STREET, TOWER HILL, E.
1894.

PRICE ONE SHILLING.

Digitized by the Internet Archive
in 2007 with funding from
Microsoft Corporation

VK 639
B75

REMARKS AND GENERAL DIRECTIONS.

From Beachy Head to Land's End the GENERAL direction is given, and the rate marked in the columns is the rate at Springs and Neaps as a rule; but this rule is subject to alteration by several disturbing causes—such as winds, barometrical pressure, etc.

The velocity is worked out by placing the greatest strength at from 2 to 4 hours after High Water, and also from 2 to 4 hours before High Water, and then graduated down to Slack Water.

At page 11 will be found Table B, for finding the Height of the Tide at any intermediate hour between High and Low Water, which correction is to be applied to Soundings.

Anywhere between the Lizard and Portland the time of High Water (full and change) is from 5 to 6 o'clock. Whilst East of St. Catherine's it is everywhere High Water between 11 and 12 o'clock, yet in the fairway of the Channel from Start Point to Beachy Head the Tidal Stream turns everywhere almost simultaneously with the time of High and Low Water at Dover; *i.e.*, at about 11 hours it turns Westerly, and at 5 hours it turns Easterly.

Anywhere South of the Shambles, 2' outside of St. Alban's Head, 2' South of St. Catherine's Point, or 4' to 5' South of Owers Lightship, a vessel is not materially affected by indraught on either tide.

There is generally an indraught to all Bays and Bights, and in them the stream turns earlier than in the offing, sometimes as much as two hours earlier.

Each end of Dover Strait (W. of Beachy Head and N. of North Foreland) the stream sets uniformly towards the Strait whilst the water is rising at Dover, and away from it when it is falling.

Strong winds accelerate and prolong the stream running in the same direction, retard the opposing stream, and also affect the height of tides. The atmospheric pressure also affects the tides, especially the rising and falling.

B

AFTER HIGH WATER at DOVER.

NAMES OF PLACES.	$\frac{1}{2}$ Hour.		1 Hour.		$1\frac{1}{2}$ Hours		2 Hours.	
	DIRECTION.	RATE IN KNOTS.	DIRECTION.	RATE IN KNOTS.	DIRECTION.	RATE IN KNOTS.	DIRECTION.	RATE IN KNOTS.
Tongue Lt. V. ...	NW by W	$\frac{1}{2}$ — $2\frac{1}{4}$	NW	$\frac{1}{2}$ — $1\frac{1}{2}$	NW	0— $1\frac{1}{2}$	N	0— $1\frac{1}{2}$
E. Margate Buoy ...	NW by N	0— $\frac{1}{2}$	N	Slack	Ebb Begins		N E	$\frac{1}{2}$ —1
No. Sd. Hd. Lt. V. ...	N NE	$\frac{1}{2}$ —2	N NE	$\frac{3}{4}$ —3	N NE	1—3	N NE	1—3
Elbow Buoy ...	N NE	$\frac{1}{2}$ —2	N NE	$\frac{3}{4}$ —3	N NE	1—3	N NE	1—3
E. Goodwin Lt. V. ...	NE	$\frac{1}{2}$ —3	NE	$\frac{1}{2}$ —4	NE	1— $4\frac{1}{2}$	NE	1— $5\frac{1}{4}$
Gull Lt. V. ...	NE $\frac{1}{4}$ N	$\frac{3}{4}$ — $2\frac{1}{4}$	NE $\frac{1}{4}$ N	1— $2\frac{1}{2}$	NE $\frac{1}{2}$ N	$1\frac{1}{4}$ — $2\frac{1}{2}$	NE $\frac{1}{2}$ N	$1\frac{1}{4}$ —3
So. Sd. Hd. Lt. V. ...	NE	$1\frac{1}{2}$ —3	NE	$1\frac{3}{4}$ —3	NE	$1\frac{3}{4}$ —3	NE	$1\frac{3}{4}$ — $2\frac{1}{2}$
Off S. Foreland, 1' S SE	NE by E	$1\frac{1}{4}$ —3	NE by E	$1\frac{3}{4}$ —3	NE by E	$1\frac{3}{4}$ —3	NE by E	$1\frac{3}{4}$ — $2\frac{1}{2}$
Varne Lt. V. ...	E NE	1—2	E NE	$1\frac{1}{4}$ —3	E NE	$1\frac{1}{4}$ —3	E NE	$1\frac{1}{4}$ — $2\frac{1}{2}$
Dungeness to 15' offing	E NE	2—3	E NE	2—3	E NE	$1\frac{1}{2}$ — $2\frac{1}{2}$	E NE	1—2
Hastings to 15' offing...	E	$\frac{1}{2}$ —1	E	$\frac{1}{2}$ —1	Slack	0—0	Separate	0—0
Royal Sovereign Lt. V.	Slack	0—0	W	$\frac{1}{4}$ — $\frac{1}{2}$	W	$\frac{1}{4}$ — $\frac{3}{4}$	W	$\frac{3}{4}$ — $1\frac{1}{4}$
Beachey Hd. to 15' offing	W	0— $\frac{1}{2}$	W	$\frac{3}{4}$ — $1\frac{1}{2}$	W	1— $1\frac{3}{4}$	W	1—2
Brighton 3' to 15' offing	W	0— $\frac{1}{2}$	W	1— $1\frac{1}{4}$	W	1— $1\frac{1}{4}$	W	1—2
Owers Lt. V. 5' to 15' offg.	W by S	0— $\frac{1}{2}$	W by S	$\frac{1}{2}$ — $1\frac{1}{2}$	W by S	1—2	W by S	$1\frac{1}{2}$ — $2\frac{1}{2}$
St. Cath. bear. NW by W 8'	W by N	1—2	W by N	2—3	W by N	2—4	W by N	2—4
St. Cath. bear. E by N 5'	NW by W	$\frac{1}{2}$ —1	NW by W	1—2	NW by W	1—2	NW by W	2—3
St. Catherine's 5' to 15' off.	W NW	0— $\frac{1}{2}$	W NW	$\frac{1}{2}$ — $1\frac{1}{2}$	W NW	1—2	W NW	$1\frac{1}{2}$ — $2\frac{1}{2}$
Anvil Pt. 2' to 15' offing	W NW	0— $\frac{1}{2}$	W NW	$\frac{1}{2}$ — $1\frac{1}{2}$	W NW	1—2	W NW	$1\frac{1}{2}$ — $2\frac{1}{2}$
Portland 2' to 15' offing	W NW	0— $\frac{1}{2}$	W NW	$\frac{1}{2}$ — $1\frac{1}{2}$	W NW	1—2	W NW	$1\frac{1}{2}$ — $2\frac{1}{2}$
Start Pt. bear. W NW 20'	W	0—1	W	0—1	W	$\frac{1}{2}$ —1	W	1— $1\frac{1}{2}$
Start Pt. 4' off shore ...	W	$1\frac{1}{4}$ — $2\frac{1}{2}$	W	$1\frac{1}{4}$ — $2\frac{1}{2}$	W	$1\frac{1}{4}$ — $2\frac{1}{2}$	W	1—2
Start Pt. 5' to 15' offing	W	0—1	W	0—1	W	$\frac{1}{2}$ —1	W	1— $1\frac{1}{2}$
Eddystone bear. E by N 7'	W NW	$\frac{1}{4}$ — $\frac{1}{2}$	W NW	$\frac{1}{4}$ — $\frac{1}{2}$	W NW	$\frac{1}{4}$ — $\frac{1}{2}$	W NW	$\frac{1}{4}$ — $\frac{1}{2}$
Eddystone to 15' offing	W	$\frac{1}{4}$ — $\frac{1}{2}$	W	$\frac{1}{4}$ — $\frac{1}{2}$	W	$\frac{1}{4}$ — $\frac{1}{2}$	W	$\frac{1}{4}$ — $\frac{1}{2}$
Lizard to 20' SE offing	W	$\frac{1}{2}$ —1	W	$\frac{1}{2}$ —1	W	$\frac{1}{2}$ —1	W NW	$\frac{1}{2}$ —1
Lands End to 20' offing	W	$\frac{1}{4}$ — $\frac{1}{2}$	W by N	$\frac{1}{4}$ — $\frac{1}{2}$	W NW	Slack	Turning	0—0

AFTER HIGH WATER at DOVER.

NAMES OF PLACES.	2½ Hours.		3 Hours.		3½ Hours.		4 Hours.	
	DIRECTION.	RATE IN KNOTS.	DIRECTION.	RATE IN KNOTS.	DIRECTION.	RATE IN KNOTS.	DIRECTION.	RATE IN KNOTS.
Tongue Lt. V. ...	NE by E	0—1½	E NE	½—1½	E by N	1—2	E by N	1—2½
E. Margate Buoy ...	E NE	½—1½	E	¾—2	E SE	1—2	SE by E	1—2½
No. Sd. Hd. Lt. V. ...	N NE	1—3	N NE	1—2¾	N NE	1—2	N NE	½—1¾
Elbow Buoy ...	N NE	1—3	N NE	1—2¾	N NE	1—2	N NE	½—1¾
E. Goodwin Lt. V. ...	NE	1—4½	NE	1—4½	NE	1—3½	NE	1—3½
Gull Lt. V. ...	NE ½ N	1¼—3	NE ½ N	1¼—2¾	NE ½ N	¾—2½	NE ½ N	¼—2
So. Sd. Hd. Lt. V. ...	NE	1—2	NE	1—2	E NE	½—1	E NE	½—1½
Off S. Foreland, 1' S SE	NE by E	1—2	NE by E	1—2	NE by E	½—1	W SW	Turning
Varne Lt. V. ...	E NE	1—2	E NE	¾—1½	E NE	½—1	E NE	0—1
Dungeness to 15' offing	E NE	½—1	E NE	Slack	W SW	begins	W SW	½—1
Hastings to 15' offing...	Slack	0—0	W	½—1	W	½—1	W	¾—1¼
Royal Sovereign Lt. V.	W	¾—1½	W	¾—1¾	W	¾—1½	W	¾—1½
Beachey Hd. to 15' offing	W	1—2	W	1—2	W	1—2	W	1—2
Brighton 3' to 15' offing	W	1—2	W	1—2	W	1—1¾	W	1—1¾
Owers Lt. V. 5' to 15' offg.	W by S	1¼—2½	W by S	1½—2½	W by S	1—1½	W by S	1—1½
St. Cath. bear. NW by W 8'	W by N	3—5	W by N	3—5	W by N	2—4	W by N	1—3
St Cath. bear. E by N 5'	NW by W	2—4	NW by W	2—4	NW by W	2—4	NW by W	2—3
St. Catherine's 5' to 15' off.	W NW	1½—2½	W NW	1½—2½	W NW	1—1½	W NW	1—1½
Anvil Pt. 2' to 15' offing	W NW	1½—2½	W NW	1½—2½	W NW	1—1½	W NW	1—1½
Portland 2' to 15' offing	W NW	1½—2½	W NW	1½—2½	W NW	1—1½	W NW	1—1½
Start Pt. bear. W NW 20'	W	1—1½	W	1—1½	W	1—1½	W	½—1
Start Pt. 4' off shore ...	W	1—2	W	1—2	W	1—2	W	½—1
Start Pt. 5' to 15' offing	W	1—1½	W	1—1½	W	1—1½	W	½—1
Eddystone bear. E by N 7'	W NW	Weak	E SE	begins	E SE	Weak	E SE	¼—½
Eddystone to 15' offing	W	¼—½	W by S	¼—½	SW	Weak	Slack	0—0
Lizard to 20' SE offing	W	¼—½	W	¼—½	W	Weak	Slack	0—0
Lands End to 20' offing	NW	Slack	N	¼—½	NE	¼—½	E	¼—½

AFTER HIGH WATER at DOVER.

NAMES OF PLACES.	4½ Hours.		5 Hours.		5½ Hours.		6 Hours.	
	DIRECTION.	RATE IN KNOTS.	DIRECTION.	RATE IN KNOTS.	DIRECTION.	RATE IN KNOTS.	DIRECTION.	RATE IN KNOTS.
Tongue Lt. V. ...	E	1—3	E	1—2½	E by S	¾—2¼	E by S	¾—2
E. Margate Buoy ...	SE	1—2	SE	¾—2	S SE	½—1½	S SE	½—1
No. Sd. Hd. Lt. V. ...	N NE	½—1½	N NE	¼—1	Slack	0—0	S SW	¼—1¼
Elbow Buoy ...	N NE	½—1½	N NE	¼—1	Slack	0—0	S SW	¼—1¼
E. Goodwin Lt. V. ...	NE	½—3	NE	0—2	Slack	0—0	SW	0—1½
Gull Lt. V. ...	NE ½N	¼—1	Turning	0—0	SW	¼—1	SW	½—1½
So. Sd. Hd. Lt. V. ...	Slack	0—0	S SW	¼—¾	SW	½—1	SW	1—1¼
Off S. Foreland, 1' S SE	W SW	½—¾	W SW	½—¾	W SW	½—1	W SW	1—1½
Varne Lt. V. ...	Turning	0—0	W SW	0—½	W SW	½—1¼	W SW	½—1¼
Dungeness to 15' offing	W SW	½—1	W SW	1—2	W SW	1½—2½	W SW	2—3
Hastings to 15' offing...	W	1—2	W	1—2	W	¾—1¾	W	½—1
Royal Sovereign Lt. V.	W	¾—1¼	W	¾—1¼	W	½—1	W	0—¾
Beachey Hd. to 15' offing	W	1—1¾	W	¾—1½	W	0—½	E	begins
Brighton 3' to 15' offing	W	½—1	W	½—1	W	¼—¾	W	Slack
Owers Lt. V. 5' to 15' offg.	W by S	½—1	W by S	½—1	W by S	Slack	E	begins
St. Cath. bear. NW by W 8	W by N	1—2	Slack	0—0	W	finishes	E	begins
St Cath. bear. E by N 5'	NW by W	1—2	NW by W	½—1	Slack	0—0	SE by E	begins
St. Catherine's 5' to 15' off.	W NW	½—1	W NW	½—1	Slack	0—0	E	begins
Anvil Pt. 2' to 15' offing	W NW	½—1	W NW	½—1	Slack	0—0	E	begins
Portland 2' to 15' offing	W NW	½—1	W NW	½—1	Slack	0—0	E	begins
Start Pt. bear. WNW 20'	W	0—1	W	Weak	Slack	0—0	E	begins
Start Pt. 4' off shore ..	W	Slack	E	Making	E	1—2	E	1—2
Start Pt. 5' to 15' offing	W	0—1	W	Weak	Slack	0—0	E	begins
Eddystone bear. E by N 7'	E SE	¼—½	E SE	¼—½	E SE	¼—½	E SE	¼—½
Eddystone to 15' offing	Turning	0—0	E SE	Weak	E SE	¼—½	E SE	¼—½
Lizard to 20' SE offing	E	Weak	E	¼—½	E	¼—½	E	¼—½
Lands End to 20 offing.	E	½—1	E	½—1	E	½—1	E	½—1

BEFORE HIGH WATER at DOVER.

NAMES OF PLACES.	5½ Hours.		5 Hours.		4½ Hours.		4 Hours.	
	DIRECTION.	RATE IN KNOTS.	DIRECTION.	RATE IN KNOTS.	DIRECTION.	RATE IN KNOTS.	DIRECTION.	RATE IN KNOTS.
Tongue Lt. V. ...	E SE	TO ½—2	E SE	½—I½	SE	TO 0—I½	S	TO 0—½
E. Margate Buoy ...	S by E	½—I	S by E	½—I	S	Slack	S by W	½—I
No. Sd. Hd. Lt. V. ...	S SW	½—I	S SW	¾—2½	S SW	I—2½	S SW	I—3
Elbow Buoy ...	S SW	½—I	S SW	¾—2½	S SW	I—2½	S SW	I—3
E. Goodwin Lt. V. ...	SW	½—I	SW	½—2¾	SW	I—4	SW	I¼—5¼
Gull Lt. V. ...	SW	½—2	SW ½W	I—2¾	SW ½W	I—4	SW ½W	I¼—3
So. Sd. Hd. Lt. V. ...	SW	I½—2	SW	I½—2	SW	I¼—2¼	SW	I¼—2¼
Off S. Foreland, 1' S SE	W SW	I½—2	W SW	I½—2	W SW	I¼—2¼	W SW	I¼—2¼
Varne Lt. V. ...	W SW	½—I½	W SW	¾—2¼	W SW	¾—2¼	W SW	¾—2
Dungeness to 15' offing	W SW	2—3	W SW	2—3	W SW	I½—2½	W SW	I—2
Hastings to 15' offing...	W	½—I	W	½—I	SW	Easy	S	Meeting
Royal Sovereign Lt. V.	Slack	0—0	E	¼—¾	E	¼—I¼	E	I—2¼
Beachey Hd. to 15' offing	E	0—½	E	¾—I½	E	I—I¾	E	I—2
Brighton 3' to 15' offing	E by S	0—½	E by S	¾—I½	E by S	I—I¾	E by S	I—2
Owers Lt. V. 5' to 15' offg.	E by N	0—½	E by N	½—I½	E by N	½—I½	E by N	I½—2½
St. Cath. bear. NW by W 8'	E	I—2	E	2—4	E	3—5	E	3—5
St Cath. bear. E by N 5'	SE by E	½—I	SE by E	I—2	SE by E	I—3	SE by E	2—4
St. Catherine's 5' to 15' off.	E SE	0—½	E SE	½—I½	E SE	½—I½	E SE	I½—2½
Anvil Pt. 2' to 15' offing	E SE	0—½	E SE	½—I½	E SE	½—I½	E SE	I½—2½
Portland 2' to 15' offing	E SE	0—½	E SE	½—I½	E SE	½—I½	E SE	I½—2½
Start Pt. bear. W NW 20'	E	0—½	E	½—I	E	½—I	E	½—I
Start Pt. 4' off shore ...	E	I—2	E	I—2	E	I—2½	E	I—2½
Start Pt. 5' to 15' offing	E	0—½	E	0—½	E	½—I	E	½—I
Eddystone bear. E by N 7'	E SE	¼—¼	E SE	¼—½	E SE	¼—½	E SE	¼—½
Eddystone to 15' offing	E	¼—¼	E	¼—½	E	¼—½	E	¼—½
Lizard to 20' SE offing	E	¼—I	E	½—I	E	¼—½	E by S	¼—½
Lands End to 20' offing	E by S	¼—½	E by S	¼—½	E by S	½—½	Slack	0—0

BEFORE HIGH WATER at DOVER.

NAMES OF PLACES.	3½ Hours.		3 Hours.		2½ Hours.		2 Hours.	
	DIRECTION.	RATE IN KNOTS.	DIRECTION.	RATE IN KNOTS.	DIRECTION.	RATE IN KNOTS.	DIRECTION.	RATE IN KNOTS.
Tongue Lt. V.	W SW	TO 0—1¼	W SW	TO ½—1½	W by S	TO ¾—2	W by S	TO ¾—2
E. Margate Buoy	S SW	½—1½	SW	¾—2	W SW	1—2	W	1—2½
No. Sd. Hd. Lt. V.	S SW	1—3	S SW	1—2¼	S SW	½—2	S SW	¼—2
Elbow Buoy	S SW	1—3	S SW	1—2¼	S SW	½—2	S SW	¼—2
E. Goodwin Lt. V.	SW	1¼—5¼	SW	1¼—4	SW	1¼—4	SW	1—3½
Gull Lt. V.	SW ½W	1¼—3	SW ½W	1¼—2¾	SW ½W	1—2½	SW ½W	¼—2½
So. Sd. Hd. Lt. V.	SW	1—2	SW by W	1—2	W by S	½—1½	W by N	¼—1¼
Off S. Foreland, 1' S SE	W SW	1—2	W SW	1—2	W SW	½—1½	W SW	¼—1¼
Varne Lt. V.	W SW	½—1½	W SW	½—¾	Turning	0—0	E NE	½—¾
Dungeness to 15' offing	W SW	1—2	W SW	½—1	W SW	½—1	E NE	begins
Hastings to 15' offing...	SE	Easy	E SE	¼—1¼	E	1—1½	E	1—2
Royal Sovereign Lt. V.	E	1—2½	E	1—3	E	1—3	E	1—2½
Beachey Hd. to 15' offing	E	1—2	E	1—2	E	1—2	E	1—2
Brighton 3' to 15' offing	E by S	1—2	E by S	1—2	E by S	1—2	E by S	1—2
Owers Lt. V. 5' to 15' offg.	E by N	1½—2½	E by N	1½—2½	E by N	½—1½	E by N	½—1½
St. Cath. bear. NW by W 8	E	3—5	E	3—5	E	2—4	E	1—3
St Cath. bear. E by N 5'	SE by E	2—4	SE by E	2—4	SE by E	2—4	SE by E	2—3
St. Catherine's 5' to 15' off.	E SE	1½—2½	E SE	1½—2½	E SE	½—1½	E SE	½—1¼
Anvil Pt. 2' to 15' offing	E SE	1½—2½	E SE	1½—2½	E SE	½—1½	E SE	½—1¼
Portland 2' to 15' offing	E SE	1½—2½	E SE	1½—2½	E SE	½—1½	E SE	½—1¼
Start Pt. bear. W NW 20'	E	1—1½	E	1—1½	E	1—1½	E	1—1½
Start Pt. 4' off shore ...	E	1—2½	E	1—2	E	Weak	W	makes
Start Pt. 5' to 15' offing	E	½—1	E	½—1	E	½—1	E	½—1
Eddystone bear. E by N 7	E SE	Weak	Slack	0—0	W NW	Weak	W NW	¼—½
Eddystone to 15' offing	E	Weak	Slack	0—0	Slack	0—0	W	begins
Lizard to 20' SE offing	E by S	Weak	Slack	0—0	Slack	0—0	W	weak
Lands End to 20' offing	Slack	0—0	Turning	0—0	W by N	Weak	W by N	¼—½

BEFORE HIGH WATER at DOVER.

NAMES OF PLACES.	$1\frac{1}{2}$ Hours.		1 Hour.		$\frac{1}{2}$ Hour.		At High Water. DOVER.	
	DIRECTION.	RATE IN KNOTS.	DIRECTION.	RATE IN KNOTS.	DIRECTION.	RATE IN KNOTS.	DIRECTION.	RATE IN KNOTS.
Tongue Lt. V. ...	W	1-2	W	1-2 $\frac{1}{2}$	W NW	1-3	W NW	$\frac{3}{4}$ -2 $\frac{1}{2}$
E. Margate Buoy ...	W by N	1-2	W NW	$\frac{3}{4}$ -2	NW by W	$\frac{1}{2}$ -1 $\frac{1}{2}$	NW	$\frac{1}{2}$ -1
No. Sd. Hd. Lt. V. ...	S SW	$\frac{1}{4}$ -1	Turning	0-0	N NE	$\frac{1}{2}$ -1	N NE	$\frac{1}{2}$ -1 $\frac{3}{4}$
Elbow Buoy ...	S SW	$\frac{1}{4}$ -1	Turning	0-0	N NE	$\frac{1}{4}$ -1	N NE	$\frac{1}{2}$ -1 $\frac{3}{4}$
E. Goodwin Lt. V. ...	SW	$\frac{1}{2}$ -2 $\frac{1}{4}$	SW	0-2 $\frac{1}{4}$	Turning	0-0	N E	0-2 $\frac{3}{4}$
Gull Lt. V. ...	Turning	0-0	NE $\frac{1}{2}$ N	$\frac{1}{4}$ -2	NE $\frac{1}{4}$ N	$\frac{1}{4}$ -2	NE $\frac{1}{2}$ N	$\frac{1}{2}$ -2
So. Sd. Hd. Lt. V. ...	Turning	0-0	N NE	$\frac{3}{4}$ -1	NE by N	1-2	N E	1 $\frac{1}{2}$ -2 $\frac{3}{4}$
Off S. Foreland, 1' S SE	E Begins	0-0	E	$\frac{3}{4}$ -1	E	1-2	NE by E	1 $\frac{1}{2}$ -2 $\frac{3}{4}$
Varne Lt. V. ...	E NE	$\frac{1}{2}$ -1	E NE	$\frac{3}{4}$ -1 $\frac{1}{4}$	E NE	1-1 $\frac{1}{4}$	E NE	1-1 $\frac{1}{4}$
Dungeness to 15' offing	E NE	$\frac{1}{2}$ -1	E NE	1-2	E NE	1 $\frac{1}{2}$ -2 $\frac{1}{2}$	E NE	2-3
Hastings to 15' offing...	E	1-2	E	1-1 $\frac{1}{2}$	E	$\frac{3}{4}$ -1 $\frac{1}{4}$	E	$\frac{3}{4}$ -1 $\frac{1}{4}$
Royal Sovereign Lt. V.	E	1-2	E	$\frac{3}{4}$ -1 $\frac{1}{4}$	E	$\frac{1}{2}$ - $\frac{3}{4}$	E	$\frac{1}{2}$ - $\frac{3}{4}$
Beachey Hd. to 15' offing	E	1-1 $\frac{3}{4}$	E	$\frac{3}{4}$ -1 $\frac{1}{2}$	E	0- $\frac{1}{2}$	W	begins
Brighton 3' to 15' offing	E by S	1-1 $\frac{3}{4}$	E by S	$\frac{3}{4}$ -1 $\frac{1}{2}$	E	Slack	Slack	0-0
Owers Lt. V. 5' to 15' offg.	E by N	$\frac{1}{2}$ -1	E by N	$\frac{1}{2}$ -1	Slack	0-0	W	begins
St. Cath. bear. NW by W 8'	E	1-2	E	Weak	Slack	0-0	W by N	$\frac{1}{2}$ -1
St Cath. bear. E by N 5'	SE by E	1-2	SE by E	$\frac{1}{2}$ -1	Slack	0-0	NW by W	begins
St. Catherine's 5' to 15' off.	E S E	$\frac{1}{2}$ -1	E S E	$\frac{1}{2}$ -1	Slack	0-0	W	begins
Anvil Pt. 2' to 15' offing	E S E	$\frac{1}{2}$ -1	E S E	$\frac{1}{2}$ -1	Slack	0-0	W	begins
Portland 2' to 15' offing	E S E	$\frac{1}{2}$ -1	E S E	$\frac{1}{2}$ -1	Slack	0-0	W	begins
Start Pt. bear. W NW 20'	E	$\frac{1}{2}$ -1	E	$\frac{1}{2}$ -1	Slack	0-0	W	begins
Start Pt. 4' off shore ...	W	1-2	W	1-2	W	1-2	W	1 $\frac{1}{4}$ -2 $\frac{1}{2}$
Start Pt. 5' to 15' offing	E	$\frac{1}{2}$ -1	E	0- $\frac{1}{2}$	Slack	0-0	W	begins
Eddystone bear. E by N 7'	W NW	$\frac{1}{4}$ - $\frac{1}{2}$	W NW	$\frac{1}{4}$ - $\frac{1}{2}$	W NW	$\frac{1}{4}$ - $\frac{1}{2}$	W NW	$\frac{1}{4}$ - $\frac{1}{2}$
Eddystone to 15' offing	W	$\frac{1}{4}$ - $\frac{1}{2}$	W	$\frac{1}{4}$ - $\frac{1}{2}$	W	$\frac{1}{4}$ - $\frac{1}{2}$	W	$\frac{1}{4}$ - $\frac{1}{2}$
Lizard to 20' SE offing	W	$\frac{1}{4}$ - $\frac{1}{2}$	W	$\frac{1}{4}$ - $\frac{1}{2}$	W	$\frac{1}{4}$ - $\frac{1}{2}$	W	$\frac{1}{4}$ -1
Lands End to 20' offing	W by S	$\frac{1}{4}$ - $\frac{1}{2}$	W by S	$\frac{1}{2}$ -1	W	$\frac{1}{2}$ -1	W	$\frac{1}{2}$ -1

CORRECTION FOR SOUNDINGS.

	To DOVER		RISE OF TIDE—FULL & CHANGE.		
	Tides.		NAMES OF NEAREST PLACE.	SPRINGS.	NEAPS.
	H.	M.		FEET.	FEET.
Tongue Lt. V.	+	0 38	Margate	15	13
E. Margate By.	+	0 38	Margate	15	13
No. Sd. Hd. Lt.	+	0 32	Ramsgate	15	12
Elbow By.	+	0 32	Ramsgate	15	12
E. Goodwin Lt.	+	0 32	Ramsgate	15	12
Gull Lt.	+	0 32	Ramsgate	15	12
So. Sd. Hd.	—	0	Dover	19	15
So. Foreland	—	0	Dover	19	15
Varne Lt.	—	0 5	Folkestone	20	16
Dungeness	—	0 27	Dungeness	22	19
Hastings	—	0 19	Hastings	24	17
Royl. Sov. Lt.		0	Hastings	24	17
Beachy Hd.	+	0 8	Beachy Hd.	20	15
Brighton	+	0 3	Newhaven	20	15
Owers Lt., V.		0	Littlehampton	16	12
St. Catherines	—	0 52	Atherfield Pt.	8	7
St. Catherines	—	0 52	Atherfield Pt.	8	7
St. Catherines	—	0 52	Atherfield	8	7
Anvil Pt.	—	3 0	Needles	7	5
Portland	—	4 37	Portland	6	6
Start Pt. WNW 20'	—	5 4	Start Pt.	15	11
Start Pt. 4' off	—	5 32	Start Pt.	15	11
Start Pt. 5' to 15'	—	5 32	Start Pt.	15	11
Eddystone W by N 7'	—	6 0	Bigbury Bay	16	11
Eddystone 5' to 15'	—	6 0	Eddystone	16	12
Lizard	—	6 12	Lizard	14	10
Land's End	—	6 42	Penzance	16	12

TABLE B.—For finding the Height of the Tide at any intermediate hour between High and Low Water.

Height above half Tide or mean level of the Sea.		TIME FROM HIGH WATER.																									
		H. M.	H. M.	H. M.	H. M.	H. M.	H. M.	H. M.	H. M.	H. M.	H. M.	H. M.	H. M.	H. M.	H. M.												
		0 00	0 30	1 0	1 30	2 0	2 30	3 0	3 30	4 0	4 30	5 0	5 30	6 0													
		ADD.							SUBTRACT.																		
Feet.	ft.	in.	ft.	in.	ft.	in.	ft.	in.	ft.	in.	ft.	in.	ft.	in.	ft.	in.	ft.	in.									
3	3	0	2	11	2	7	2	1	1	6	0	9	0	0	9	1	6	2	1	2	7	2	11	3	0		
4	4	0	3	10	3	6	2	10	2	0	1	0	0	1	0	2	0	2	10	3	6	3	6	3	10	4	0
5	5	0	4	10	4	4	3	6	2	6	1	3	0	1	3	2	6	3	6	4	4	4	10	5	0	0	
6	6	0	5	10	5	2	4	3	3	0	1	7	0	0	1	7	3	0	4	3	5	2	5	10	6	0	
7	7	0	6	9	6	1	4	11	3	6	1	10	0	1	10	3	6	4	11	6	1	6	9	7	0	0	
8	8	0	7	9	6	11	5	8	4	0	2	1	0	0	2	1	4	0	5	8	6	11	7	9	8	0	
9	9	0	8	8	7	9	6	4	4	6	2	4	0	2	4	4	6	6	4	7	9	8	8	9	0	0	
10	10	0	9	8	8	8	7	1	5	0	2	7	0	2	7	5	0	7	1	8	8	9	8	10	0	0	
11	11	0	10	8	9	6	7	9	5	6	2	10	0	2	10	5	6	7	9	9	6	10	8	11	0	0	
12	12	0	11	7	10	5	8	6	6	0	3	1	0	0	3	1	6	0	8	6	10	5	11	7	12	0	
13	13	0	12	7	11	3	9	2	6	6	3	4	0	0	3	4	6	6	9	2	11	3	12	7	13	0	
14	14	0	13	6	12	1	9	11	7	0	3	7	0	0	3	7	7	0	9	11	12	1	13	6	14	0	

RULE.—Find the time of High Water at the Ship by applying the corrections of the nearest place according to the sign, making Dover the standard Port of reference and using Greenwich mean time.

From the *height* of the rise of tide at the nearest place to the Ship (deciding whether it be Spring Tide or Neap, or something between the two), **SUBTRACT half the height** of the *Spring Tide* at the place. The remainder will be the *Height* above *Half-tide*, with which enter Table B, 1st column, and under *Time from High Water* take out the corresponding correction, and, as directed, add it to or subtract it from *half the height of Spring Tide* at the place. The result will be the approximate Height of the Tide, at that time, above ordinary Low Water Spring Tide soundings marked on the Channel Charts, and to which sounding the correction must be added.

EXAMPLES.

Required—The Correction off the Eddystone at 2 o'clock Greenwich mean time.

H.W. at Dover (say)	HRS. MIN.	6	0	Mean time at Ship	HRS. MIN.	2	0
Correction for Eddystone		—6	0	Time of H.W. at Ship		0	0
Time of H.W. at Ship		0	0	Time from H.W.		2	0

RISE OF TIDE AT THE NEAREST PLACE (p. 10) NEAPS 12 FT.

Height of Rise of Tide at nearest place	FT. IN.	12	0	height above Half-tide.
Half the height of Spring Tide (16 ft.)		—8	0	
1st column of Table B and under		4	0	
2 hours from H.W.	gives Correction	+ 2	0	
Half the height of Spring Tide (16)		8	0	
		10	0	Correction to be added to the sounding marked on the Chart.

Required—The Correction off Beachy Head at 1 o'clock Greenwich mean time.

H.W. at Dover (say)	HRS. MIN.	11	0	Mean time at Ship	HRS. MIN.	1	0
Correction for Beachy (p. 10)		+ 0	8	Time of H.W. at Ship		—11	8
Time of H.W. at Ship		11	8	Time from H.W.		1	52

RISE OF TIDE AT THE NEAREST PLACE (p. 10) SPRINGS 20 FT.

Height of Rise of Tide at nearest place	FT. IN.	20	0	height above Half-tide.
Half the height of Spring Tide (20 ft.)		—10	0	
1st column of Table B and under		10	0	
2 hours from H.W.	gives Correction	+ 5	0	
		15	0	This being the Correction to add to the sounding marked on the Chart.

ADMIRALTY CHARTS.

THE LATEST EDITIONS OF CHARTS, PLANS, AND SAILING DIRECTIONS PUBLISHED BY
THE ADMIRALTY CAN BE OBTAINED FROM

~~~~~ J. D. POTTER, ~~~~~

SOLE AGENT FOR THE SALE OF THE ADMIRALTY CHARTS,  
BY APPOINTMENT OF THE LORDS COMMISSIONERS OF THE ADMIRALTY,  
**31, POULTRY, E.C.,**

—AND—

11, KING STREET, TOWER HILL, E.,  
**LONDON.**

Official Catalogue (corrected annually to 31st December) of Admiralty Charts, Plans, and Sailing Directions, price 1/-

Following the publication of the Catalogue, a Bi-monthly List is printed of additional Charts and Sailing Directions issued from the Hydrographic Department, price 3d.

**NOTICE.**—For the early information and convenience of Shipowners, Captains, and others, all **NEW ADMIRALTY CHARTS** that may be published from time to time are noted every Monday in the “Shipping Gazette and Lloyd’s List,” on page 7; in the “Shipping Gazette and Lloyd’s List Weekly Summary,” every Friday, on page 1; and in the “Lloyd’s Weekly Shipping Index,” every Friday, on page 3 of cover.

THE NEW AND CORRECTED ADMIRALTY CHARTS ARE ALSO NOTED IN THE  
FOLLOWING MONTHLY JOURNALS:—

**The Nautical Magazine**  
**The Geographical Journal**  
**The Shipping World**  
*(published in London.)*

**The Steamship**  
*(published in Leith.)*

Copies of the Charts can be obtained by applying to J. D. POTTER.

## LIST OF NAUTICAL WORKS PUBLISHED BY

J. D. POTTER.

|                                                                                                                                                                                                                                                                                                 |      |
|-------------------------------------------------------------------------------------------------------------------------------------------------------------------------------------------------------------------------------------------------------------------------------------------------|------|
| Cruise Round the World of The Flying Squadron, 1869-70, under the command of Rear-Admiral G. T. Phipps Hornby, and Chart shewing the Track of The Flying Squadron; with illustrations . . . . .                                                                                                 | 21 0 |
| Chart of the Sulina Branch of the Danube (European Commission of the Danube), surveyed by Robert Hansford, Surveyor of the Commission, under the Direction of C. A. Hartley, Engineer in Chief (shewing 45 Nautical Miles of the River from Sulina), size 10 ft. x 2 ft. 3 in. (1860) . . . . . | 20 0 |
| The Practice of Navigation and Nautical Astronomy, by Lieut. Raper, R.N. . . . .                                                                                                                                                                                                                | 16 0 |
| Light as a Motive Power, a Series of Meteorological Essays (1875), by Lieut. R. H. Armit, R.N. . . . .                                                                                                                                                                                          | 15 0 |
| The Wind in his Circuits: with the explanation of the Origin and Cause of Circular Storms and Equinoctial Gales; illustrated with numerous Diagrams and a Chart of the Prevailing Winds of the World for Spring and Summer (1870), by Lieut. R. H. Armit, R.N. . . . .                          | 7 6  |
| Track Chart of the World, large scale, mounted on cloth . . . . .                                                                                                                                                                                                                               | 12 0 |
| Practical Notes on Marine Surveying and Nautical Astronomy, by Capt. Richard C. Mayne, R.N., C.B. . . . .                                                                                                                                                                                       | 10 6 |
| Azimuth Tables (30° N. to 30° S.), by Capt. Davis, R.N. . . . .                                                                                                                                                                                                                                 | 10 6 |
| Physical Geography in its relation to the prevailing Winds and Currents, by John Knox Laughton, M.A. (Mathematical and Naval Instructor at the Royal Naval College) . . . . .                                                                                                                   | 10 6 |
| Elementary Manual for the Deviations of the Compass in Iron Ships, by Capt. F. J. Evans, R.N. . . . .                                                                                                                                                                                           | 6 6  |

## LIST OF NAUTICAL WORKS

|                                                                                                                                                                                                                                                                                                                                                                  |      |
|------------------------------------------------------------------------------------------------------------------------------------------------------------------------------------------------------------------------------------------------------------------------------------------------------------------------------------------------------------------|------|
| Admiralty Procedure against Merchant Ships and Cargoes, &c., in the High Court of Justice and in County Courts, showing the various matters as to which proceedings in Admiralty can be taken, and the mode of commencing action, &c., by <i>R. G. M. Browne</i> , the Admiralty Marshal                                                                         | 10 0 |
| The Statute Law of Merchant Shipping, comprised in an alphabetical analysis, and a summary of the un repealed Merchant Shipping Acts, from 1821 to 1888, by <i>R. G. M. Browne</i> , the Admiralty Marshal                                                                                                                                                       | 6 0  |
| The Landfall of Columbus on his first voyage to America, with a Translation of The Baron Bonnefoux's History of his previous life, also a Chart showing his Track from the Landfall to Cuba and an outline of his subsequent voyages, by <i>Capt. A. B. Becher, R.N., F.R.A.S.</i>                                                                               | 12 0 |
| Navigation of the Indian Ocean, China and Australian Seas; with an account of the Winds, Weather, and Currents found therein throughout the year (with Charts), by <i>A. B. Becher, Capt. R.N.</i>                                                                                                                                                               | 5 0  |
| Navigation of the Atlantic Ocean; with an account of the Winds, Weather, and Currents found therein throughout the year (with Charts), by <i>A. B. Becher, Capt. R.N.</i>                                                                                                                                                                                        | 5 0  |
| Winds and Currents of the Mediterranean, with remarks on its Navigation at different Seasons of the year, compiled from various authorities, chiefly Spanish, by <i>A. B. Becher, Capt. R.N.</i>                                                                                                                                                                 | 3 0  |
| The Binnacle Compass Corrected by itself, or the Deviation found with one Compass by both methods, and the Corrections applied, by <i>A. B. Becher, Capt. R.N.</i>                                                                                                                                                                                               | 1 0  |
| Tables of Mast Head Angles, for five feet intervals from 30 to 280 feet and varying distances from a cable's length to four miles, with their application to Nautical Surveying; also the determination of distance by sound, with an example, by <i>A. B. Becher, Capt. R.N.</i>                                                                                | 2 0  |
| The Storm Compass, or Seaman's Hurricane Companion, containing a familiar explanation of the Hurricane Theory, illustrated with Diagrams and Accounts of Hurricanes, by <i>A. B. Becher, Capt. R.N.</i>                                                                                                                                                          | 1 6  |
| Description of an Artificial Horizon, invented by <i>A. B. Becher, Capt. R.N.</i> , with examples of its application, afloat and ashore (1857)                                                                                                                                                                                                                   | 1 0  |
| Naval Dictionary, English, Dutch, French, and German, for the use of Captains and Shipowners, by <i>D. J. Boom, Lieut. Dutch Royal Navy</i>                                                                                                                                                                                                                      | 10 0 |
| An Essay on Hydrographical Engineering, as applicable to Floating Sea Barriers, Harbours, Batteries, Coast Defences, and Naval Fortifications, by <i>Capt. Adderley Sleigh, K.T.S., F.R.S.L.</i> (with Illustrations), 1859                                                                                                                                      | 10 0 |
| Concise Navigating Directions for the River Thames, including all the Pools, Reaches and Channels, from London Bridge to the South Foreland and Orfordness, and for the English Channel to Beachy Head, also for the Port of Dunkerque and the Approaches to the Scheldt, by <i>Stephen Penney, Trinity Pilot, Gravesend</i> (Illustrated by Twenty-four Charts) | 7 6  |
| Pilot's Handbook for the English Channel, by <i>Capt. King, R.N.</i> (with Twenty-one Charts)                                                                                                                                                                                                                                                                    | 7 6  |
| Foreign Measures and their English Values, compiled from Official Sources, by <i>R. C. Carrington, F.R.G.S.</i>                                                                                                                                                                                                                                                  | 7 6  |
| Tables showing the Length in Feet of a Degree, Minute, and Second of Latitude and Longitude, with the corresponding number of Statute Miles in each Degree of Latitude; and the number of Minutes of Latitude or Nautic Miles contained in a Degree of Longitude, under each Parallel of Latitude, by <i>R. C. Carrington, F.R.G.S.</i>                          | 1 0  |
| The A.B.C. of Sumner's Method of Ascertaining a Ship's Position by Projection, by <i>Digby Murray</i>                                                                                                                                                                                                                                                            | 5 0  |
| Scales of Latitude from 5° to 60° proportional to a scale of Longitude, where 1 in. = one mile, arranged to facilitate the finding of position from two Sumner lines, by <i>R. E. Peake, A.M.I.C.E.</i>                                                                                                                                                          | 5 0  |
| Charts to accompany above                                                                                                                                                                                                                                                                                                                                        | 1 6  |
| Tide Charts of the English and Bristol Channels and Entrance of the Thames, compiled from the Admiralty Tide Tables, by <i>Algernon Heber Percy</i> , late Lieut. Royal Navy                                                                                                                                                                                     | 5 0  |
| 19 Charts of the Isle of Wight and Solent Tides, from Portland Bill to The Owers, by <i>T. B. C. West and F. Howard Collins</i>                                                                                                                                                                                                                                  | 7 6  |
| Notes on the Management of Chronometers and the Measurement of Meridian Distances, by <i>Rear-Admiral Charles Shadwell, C.B., F.R.S.</i>                                                                                                                                                                                                                         | 4 6  |
| Notes on the Reduction of Lunar Observations, Mathematical and Practical, by <i>Rear-Admiral Charles Shadwell, C.B., F.R.S.</i>                                                                                                                                                                                                                                  | 4 6  |
| Formulæ of Navigation, Nautical Astronomy, &c., intended to serve as an "Aide-Mémoire" for the use of Naval Officers, and Students of Nautical Astronomy, by <i>Rear-Admiral Charles Shadwell, C.B., F.R.S.</i>                                                                                                                                                  | 2 6  |
| Tables for Facilitating the Determination of the Latitude and Time at Sea by Observations of the Stars, by <i>Rear-Admiral Shadwell, C.B., F.R.S.</i>                                                                                                                                                                                                            | 2 6  |
| Notes on Interpolation, Mathematical and Practical, <i>do.</i>                                                                                                                                                                                                                                                                                                   | 2 0  |
| Chart of the Navy of Great Britain, from the Earliest Period of History, compiled from historical publications, old records, Parliamentary returns, and other authorities, by <i>Frederick Perigal</i> (of the Admiralty), 1860                                                                                                                                  | 3 6  |

Published by J. D. POTTER.

|                                                                                                                                                                                                                                                                                                                                                 |   |   |
|-------------------------------------------------------------------------------------------------------------------------------------------------------------------------------------------------------------------------------------------------------------------------------------------------------------------------------------------------|---|---|
| An Introduction to the Practice of Navigation and Nautical Astronomy, by <i>R. E. Hooppell, M.A., F.R.A.S.</i> .. .. .                                                                                                                                                                                                                          | 3 | 6 |
| Time-Altitudes for Expediting the Calculation of Apparent-Time, by <i>A. C. Johnson, R.N.</i> .. .. .                                                                                                                                                                                                                                           | 4 | 0 |
| Hour Angles of the Sun, Moon, and Stars, for Latitude and Declination $0^{\circ}$ - $80^{\circ}$ , and Altitude $5^{\circ}$ - $64^{\circ}$ , together with Short Methods of finding the Longitude by Chronometer; and the latitude and Longitude by Two "Chronometers," by <i>A. C. Johnson, R.N.</i> .. .. .                                   | 3 | 6 |
| Short Tables and Rules for Finding Latitude and Longitude, by Single and Double Altitudes, Pole Star, Lunars, &c., by <i>A. C. Johnson, R.N.</i> .. .. .                                                                                                                                                                                        | 3 | 0 |
| How to find the Time at Sea in less than a Minute, being a New and Accurate Method, with specially adapted Tables, by <i>A. C. Johnson, R.N.</i> .. .. .                                                                                                                                                                                        | 2 | 6 |
| Combined Time and Altitude Azimuth Tables, for all Latitudes and Declinations, by <i>A. C. Johnson, R.N.</i> .. .. .                                                                                                                                                                                                                            | 2 | 6 |
| Finding the Latitude and Longitude in Cloudy Weather, by <i>A. C. Johnson, R.N.</i> .. .. .                                                                                                                                                                                                                                                     | 1 | 0 |
| Practical Information on the Deviation of the Compass, for the use of Masters and Mates of Iron Ships, by <i>J. T. Towson, F.R.G.S.</i> .. .. .                                                                                                                                                                                                 | 4 | 0 |
| Tables for the Reduction of Ex-meridian Altitudes, by <i>J. T. Towson, F.R.G.S.</i> .. .. .                                                                                                                                                                                                                                                     | 1 | 0 |
| An Elementary Treatise on the Tides, based upon that of the late Sir J. W. Lubbock, Bart., F.R.S., to which is added a newly-devised method of computation of the heights of high water at Liverpool, with factors for other ports, and Tables adopted by the Admiralty, by <i>James Pearson, M.A., F.R.A.S.</i> .. .. .                        | 3 | 6 |
| The True Principle of the Law of Storms, practically arranged for both Hemispheres, by <i>James Sedgwick</i> .. .. .                                                                                                                                                                                                                            | 3 | 0 |
| A Chart of South Latitudes, beyond 20 degrees, to Facilitate the Practice of Great Circle Sailing; with an accompanying Diagram for the Determination of the Courses and Distances, by <i>Hugh Godfray, M.A.</i> .. .. .                                                                                                                        | 3 | 0 |
| Time Azimuth Diagram, by <i>Hugh Godfray, M.A.</i> .. .. .                                                                                                                                                                                                                                                                                      | 3 | 0 |
| Captain Weir's Azimuth Diagram .. .. .                                                                                                                                                                                                                                                                                                          | 1 | 6 |
| Captains' and Officers' Bridge or Poop Companion. Tables for finding the distance of an object at sea by inspection (without the use of pencil or paper), at the same time giving the distance the ship will go wide of the object before getting to it, and the course to steer to obtain a required distance, by <i>A. Hüttheroth</i> .. .. . | 2 | 6 |
| Practical Nautical Surveying (a Lecture delivered at the Royal United Service Institution, 1872), by <i>Staff Commander Thomas A. Hull, R.N.</i> .. .. .                                                                                                                                                                                        | 2 | 0 |
| Observations on the Rule of the Road at Sea, prepared for and dedicated to Officers and Seamen of the Mercantile Marine, by <i>Thomas Gray</i> .. .. .                                                                                                                                                                                          | 2 | 0 |
| Remarks on Rigging Ships with Flat Surface Sails, by <i>Lieut. William Congalton, R.N.R.</i> .. .. .                                                                                                                                                                                                                                            | 2 | 0 |
| On the Stability of Ships and Floating Bodies, by <i>Alf. J. Cooper</i> (Master Mariner)                                                                                                                                                                                                                                                        | 1 | 6 |
| Seamanship and Navigation, Required for the Ordinary Examination, by <i>Capt. R. Maxwell</i> .. .. .                                                                                                                                                                                                                                            | 1 | 6 |
| Seamanship and Navigation, Required for the Extra Master's Examination, by <i>Capt. R. Maxwell</i> .. .. .                                                                                                                                                                                                                                      | 1 | 6 |
| A Review of the New Methods of Lowering and Disconnecting Boats at Sea, with a proposed Amendment (1857), by <i>Capt. Kynaston, R.N., C.B., &amp;c.</i> .. .. .                                                                                                                                                                                 | 1 | 6 |
| Speed Tables, for finding the Distance run in a given time at a given speed, between the limits of 10 to 18 Knots, by <i>J. D. Macpherson</i> (Pacific Steam Navigation Co.) .. .. .                                                                                                                                                            | 1 | 0 |
| Pole-Star Latitude: a Method of finding the Latitude from an Altitude of the Pole-Star, by <i>Darnton Hutton</i> (Master Mariner), <i>B.A., M.Inst.C.E.</i> .. .. .                                                                                                                                                                             | 1 | 0 |
| Practical Observations on Surveying (on Determining the Position of a Vessel when Sounding), by <i>Commander P. F. Shortland, R.N.</i> .. .. .                                                                                                                                                                                                  | 1 | 0 |
| General Guide to Marine Insurance, by <i>J. P. Godfrey</i> .. .. .                                                                                                                                                                                                                                                                              | 1 | 0 |
| Handbook on the Law and Practice relating to Apprentices to the Mercantile Marine Service, by <i>F. W. Gardner</i> (of the Middle Temple) .. .. .                                                                                                                                                                                               | 1 | 0 |
| A Voice from the Quarter-Deck on the State of our Mercantile Marine, by <i>Joseph Mayne</i> (Master Mariner) .. .. .                                                                                                                                                                                                                            | 1 | 0 |
| How Ships are Lost, and How to Save Life and Property at Sea (Illustrated), by <i>W. P. B. Manser</i> .. .. .                                                                                                                                                                                                                                   | 1 | 0 |
| A Method for finding the Latitude by the Simultaneous Altitudes of Two Stars, by <i>Capt. Burdwood, R.N.</i> .. .. .                                                                                                                                                                                                                            | 1 | 0 |
| Ship's Cook and Steward's Guide, containing Hints for Management, and Two Hundred and Fifty Recipes, by <i>James B. Wilson</i> .. .. .                                                                                                                                                                                                          | 1 | 0 |
| Historical Notes on Shipping, by <i>P. L. Isaac</i> (Member of the Institution of Naval Architects) .. .. .                                                                                                                                                                                                                                     | 1 | 0 |
| Lights in Lyrics, or a Glance at the Channel Lights as Piloting Marks, on a run from Scilly to the Nore, accompanied by a parting precept on Compass Deviation, addressed to all younger Mariners. (With a View of the Caskets), Notes and Charts, (1859) .. .. .                                                                               | 1 | 0 |
| Notes on Cherbourg (Geographical and Historical description of, &c.) and Chart, (1858) by <i>Bedford Pim, Commander R.N., F.R.G.S.</i> .. .. .                                                                                                                                                                                                  | 1 | 0 |
| Navigation, intended for Self-Instruction up to the Second Mate's Examination, by <i>William Roy</i> .. .. .                                                                                                                                                                                                                                    | 0 | 6 |

|                                                                                                                                                                                                                                       |   |   |
|---------------------------------------------------------------------------------------------------------------------------------------------------------------------------------------------------------------------------------------|---|---|
| Swinging Ship for Deviation (Board of Trade, 1859), compiled by <i>Rear-Admiral Fitzroy, F.R.S.</i> .. .. .                                                                                                                           | 1 | 0 |
| A Review of the Proceedings of the Arctic Searching Expeditions, under the command of Captain H. T. Austin, C.B., and Capt. Wm. Penny (with a Chart), 1851 .. .. .                                                                    | 1 | 0 |
| Ditto .. .. . ditto .. .. . Arctic Papers, No. 2 (1851)                                                                                                                                                                               | 0 | 6 |
| Ditto .. .. . ditto .. .. . ditto .. .. . No. 3 (1852)                                                                                                                                                                                | 0 | 6 |
| The Arctic Dispatches, containing an Account of the Discovery of the North-West Passage by Capt. Robert Maclure (commanding H.M.S. "Investigator") with, a Map of the Discoveries in the Arctic Regions, (1852-3) .. .. .             | 2 | 0 |
| The True Direction and Velocity of Wind, observed from Ships while Sailing, by <i>James N. Miller</i> (Member of the Liverpool Polytechnic Society), with Table for Indicating the True Direction of the Winds at Sea, (1870) .. .. . | 0 | 6 |
| An Address delivered to the Boys of The Training Ships "Chichester" and the "Arethusa," by <i>G. M. Coxhead</i> (1885) .. .. .                                                                                                        | 0 | 4 |
| Dock Pass Book .. .. .                                                                                                                                                                                                                | 1 | 0 |

## ADMIRALTY INDEX CHARTS.

PRICE 6D. EACH.

*The Admiralty Chart Index Sheets will be found very useful to Captains in their selection of Charts.*

A—The World. B—England, Ireland, and Channel Islands. C—Scotland. D—North, Baltic, and White Seas. E—France, Spain, Portugal, and the Mediterranean Sea, F—Africa and adjacent Islands. G—Indian Ocean. H—Western Australia and Eastern Archipelago. I—East Australia and New Zealand. J—China Sea, Siam, and Philippine Islands to Japan. K—Japan Islands, Korea, and Manchuria. L—Islands in the Pacific Ocean. M—West Coast of North America. N—South America. O—West Indies and Central America. P—East Coast of North America.

171. Index Chart of Admiralty Sailing Directions, 1/-

Signs and Abbreviations adopted in the Admiralty Charts, 6d.

Official Catalogue of Charts, Plans, and Sailing Directions, 1/-

*Prices for Mounting (on Linen) the Admiralty Charts:—*

|                                  |     |         |
|----------------------------------|-----|---------|
| Small Sheet, 20 × 27 in. .. .. . | s.  | d.      |
| Large Sheet, 40 × 27 in. .. .. . | 1   | 0       |
| Larger Sheets than above .. .. . | 2/- | and 2 6 |

Leather Portfolios (size 27½ × 21½ × 4 in.) with straps and buckles, for the Admiralty Charts (and Printed Sheet for Indexing Charts), 20/- each.

## POTTER'S NAUTICAL ACADEMY,

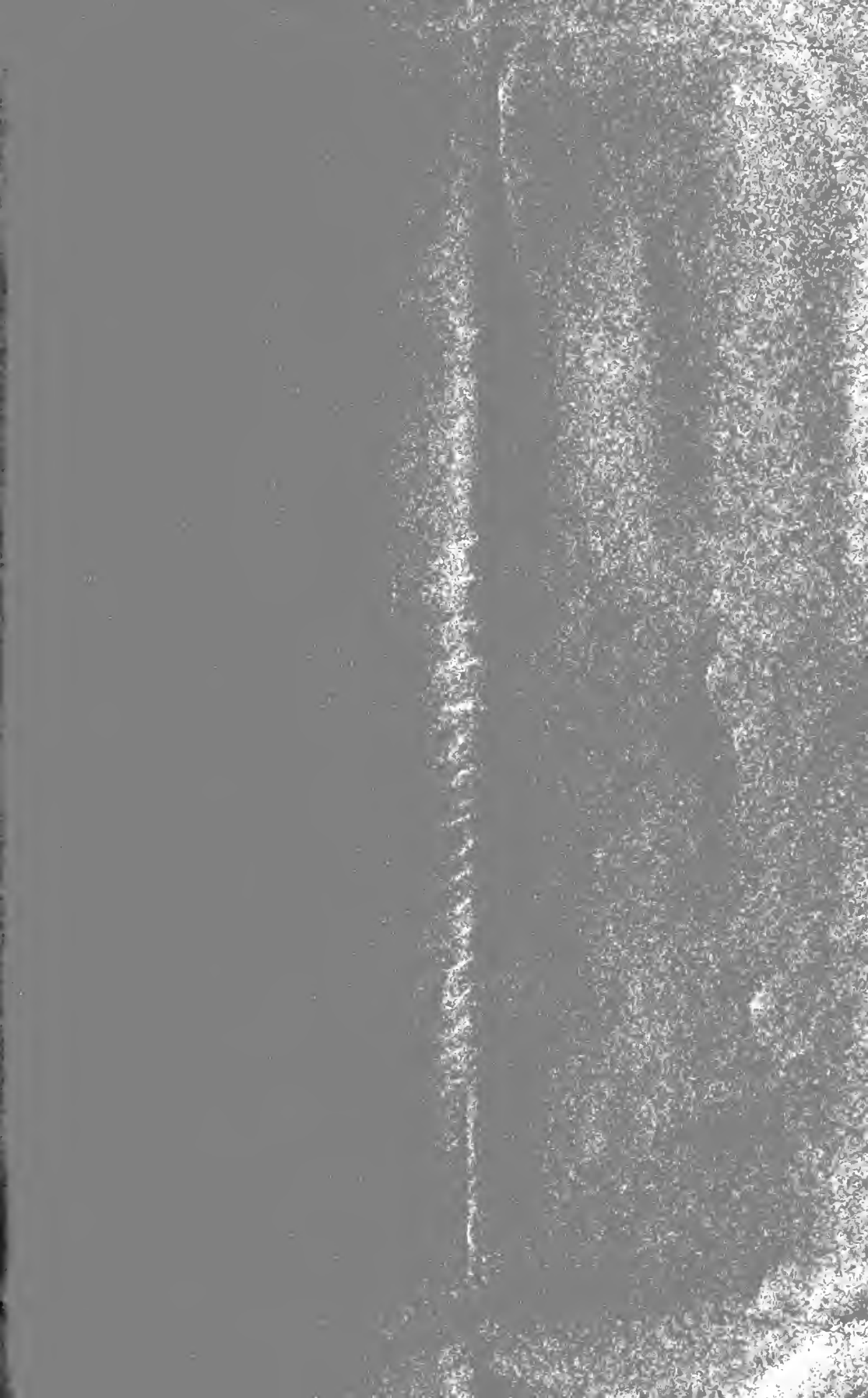
11, KING STREET, TOWER HILL, LONDON.

*Conducted by CAPTAIN R. MAXWELL.*

Captains and Officers of the Merchant Service prepared to pass the Local Marine Board Examinations, both in NAVIGATION and SEAMANSHIP.

Also a complete course of Navigation, Trigonometry, &c., taught on moderate terms.

CAPT. R. MAXWELL has passed his Examinations (Ordinary and Extra) at the LONDON LOCAL MARINE BOARD, and has conducted the above Academy since the year 1867.





GAYLAMOUNT  
PAMPHLET BINDER

*Manufactured by*  
GAYLORD BROS. Inc.  
Syracuse, N. Y.  
Stockton, Calif.

YD 15689

M315174

