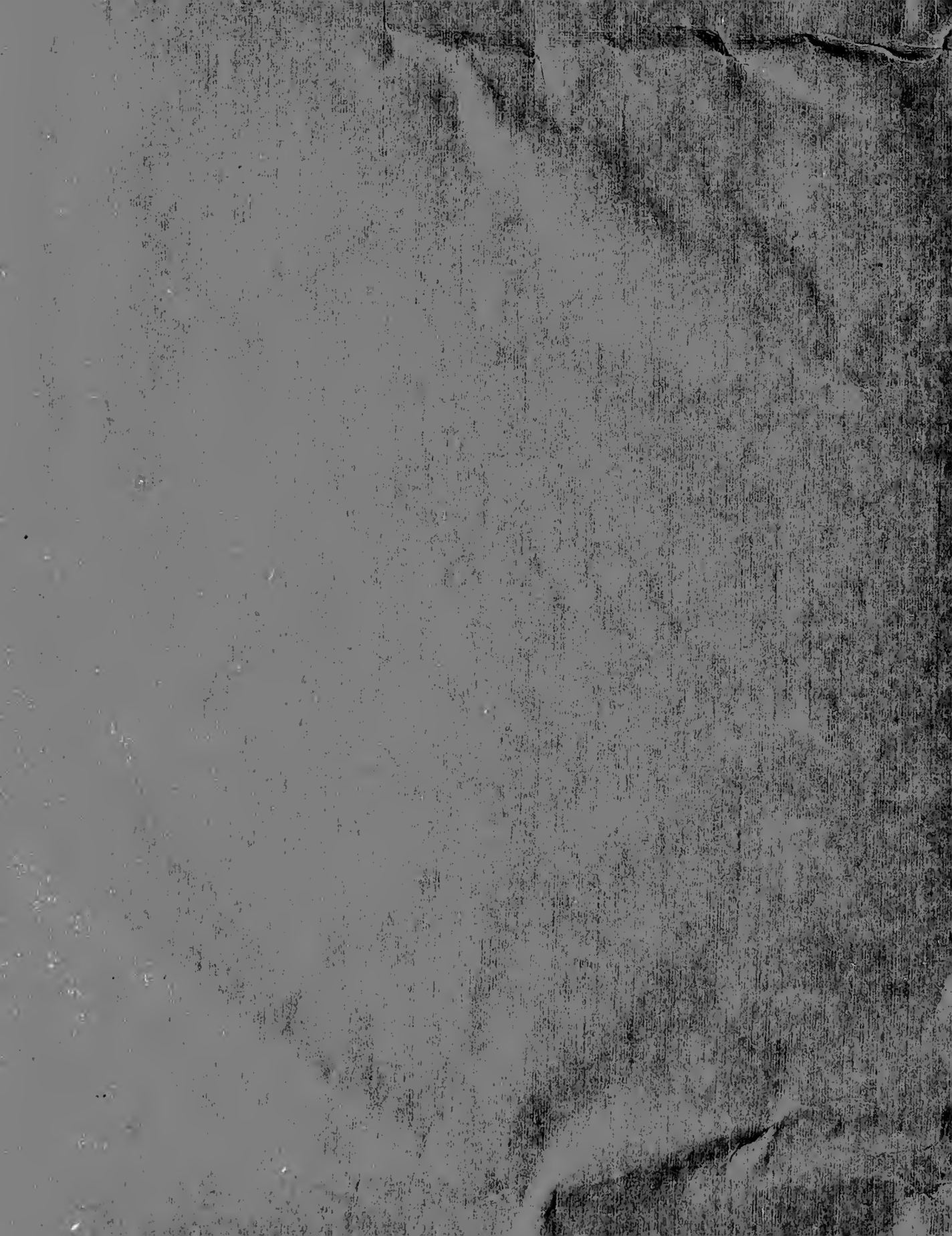
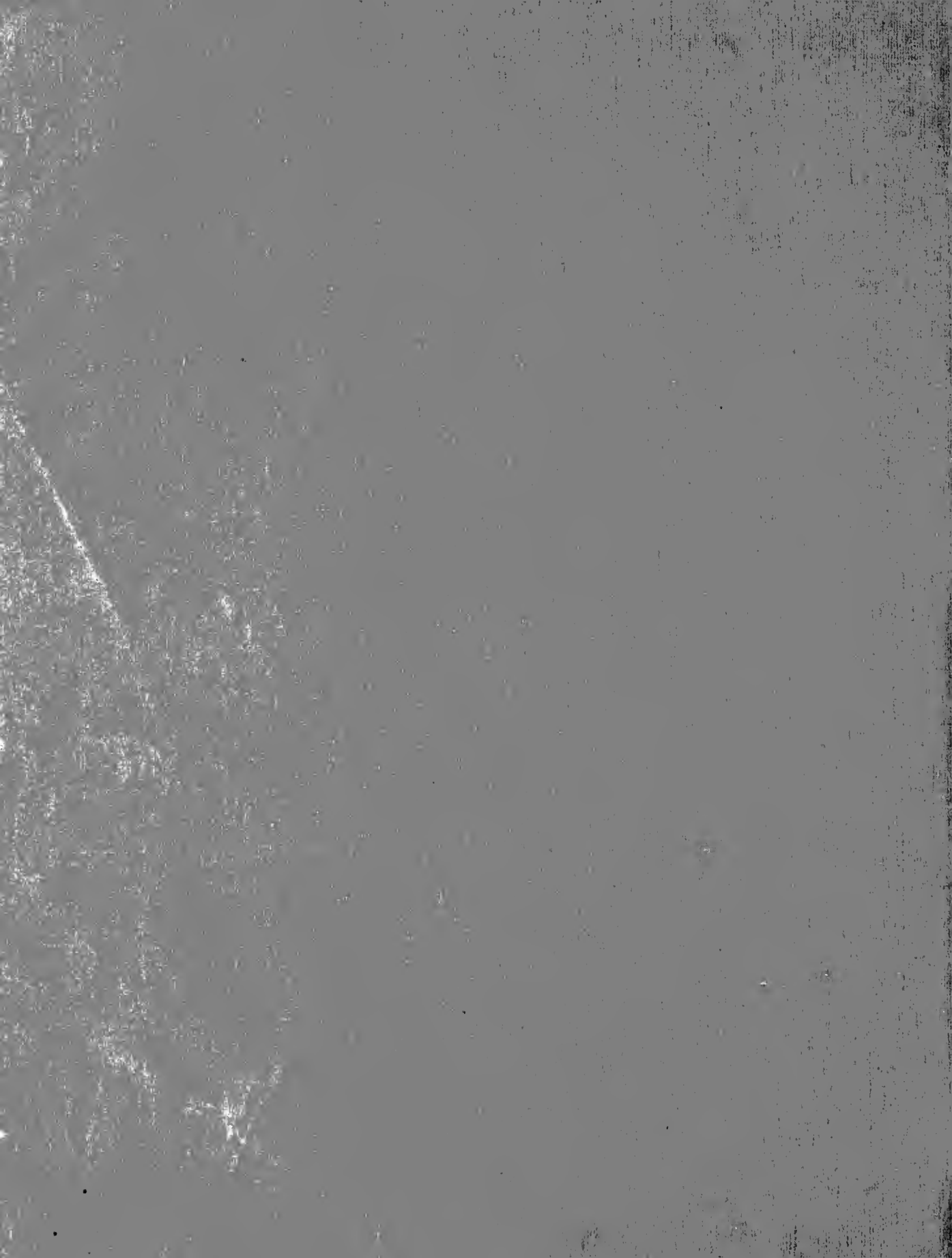




Technala

1911







Digitized by the Internet Archive
in 2011 with funding from
LYRASIS Members and Sloan Foundation

<http://www.archive.org/details/technala51911seni>



TECHNALA

THE SUCCESSOR TO "CHIAROSCURO"

1911

VOLUME V

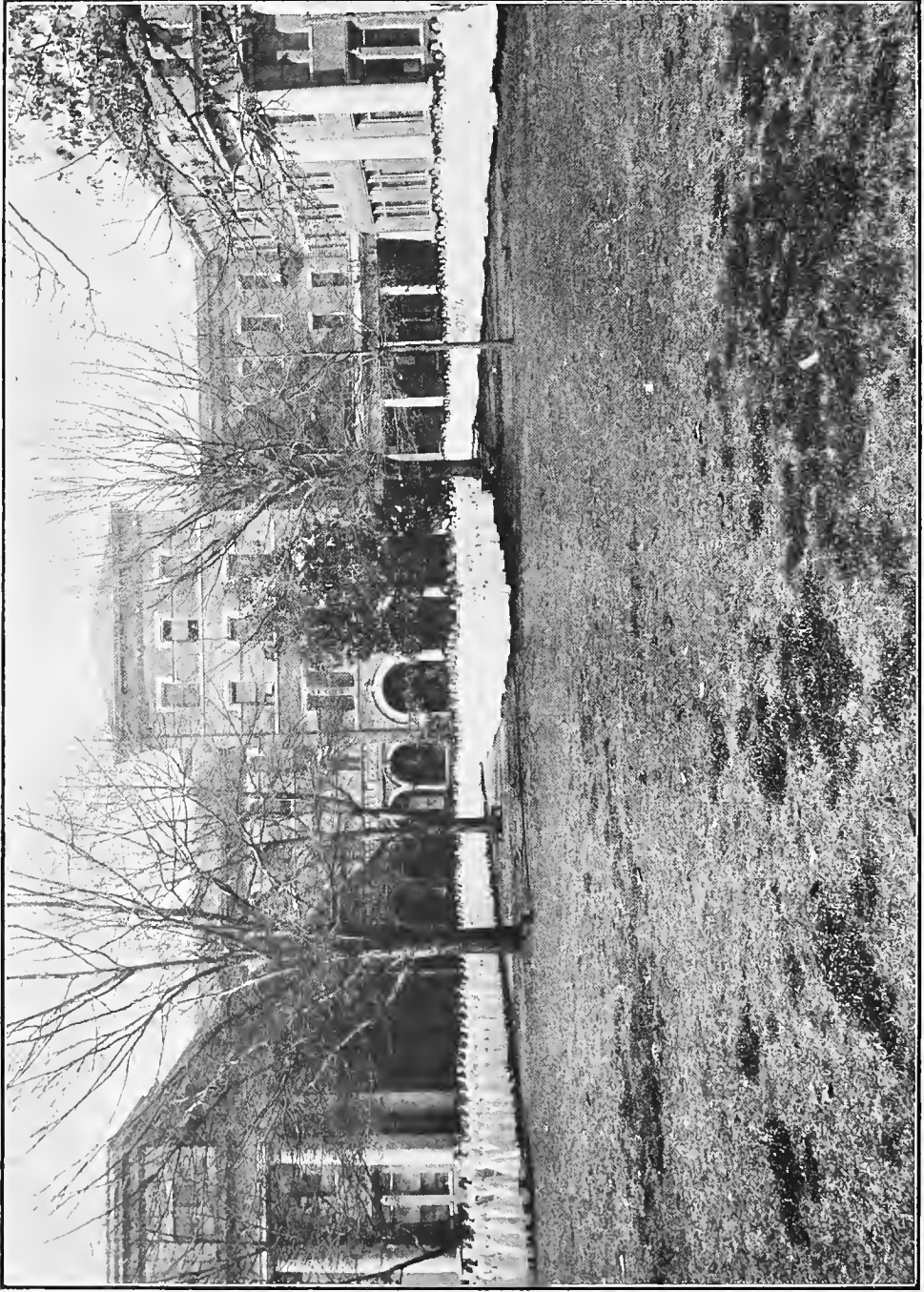
THE ANNUAL RECORD

of The Alabama Girls' Technical Institute



PUBLISHED BY

THE SENIOR CLASS



"M-EM-M-EM-MON-TE-VAL-LO"

TO
THE FACULTY AND OFFICERS
OF OUR SCHOOL,
WHO HAVE GUIDED US PATIENTLY AND WELL
ALONG UNTRIED PATHS,
AND HAVE GIVEN US THE PRICELESS
TREASURE OF WHOLESOME INFLUENCE,
WE, THE CLASS OF NINETEEN HUNDRED ELEVEN,
IN APPRECIATION OF THESE GOOD GIFTS,
GRATEFULLY DEDICATE THIS,
OUR ANNUAL.

Foreword



THE advent on the broader field of life of our Class of 1911 has been characterized by changes in the names of our Annual and of our school—both, we think, profiting happily thereby. If such wholesale change of names seems to call for some explanation, please remember, kind reader, that this is a *girls'* school.

To the class who christened our Annual "*Chiaroscuro*" we offer apologies. We have two reasons for altering it: first, because we could not say "*Chiaroscuro*;" second, we wanted a name that would smack of our school and state—hence "TECHNALA."

We hope that "old girls" who have lived amid the scenes herein pictured, and all friends whose good wishes we possess, will find pleasure in the pages of TECHNALA, and in the thoughts it will awaken of the Alabama Girls' Technical Institute.

HERMANUS ABOVI

We Believe that the things which make for material comfort are most easily achieved — and forgotten — when worked over by trained hands and heads: that these things, capably met and efficiently dealt with, make better way for the things of the Spirit.

We Believe that Loyalty to the Place wherein we have grown and the friends who there have helped us to grow is but just homage, rightly owed, and paid gratefully by all save the Blind.

We Believe that in true comradeship we shall find a refuge from selfishness that is mean and worry that is wrong.

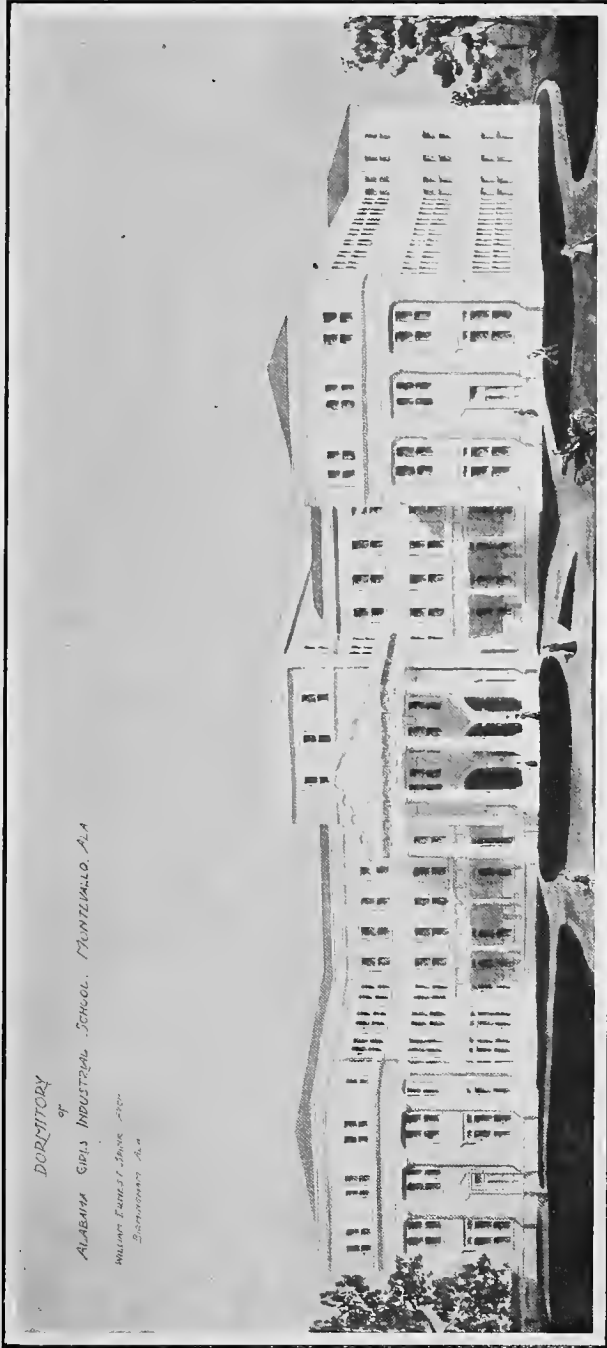
We Believe that always we shall find guidance in the footsteps of those who have before us trodden the path of noble womanhood: we take heart in hoping our own footsteps may not lead astray any who coming later follow after the Vision of Achievement.

We know that our journey must sometimes lead into shadowed valleys; yet We Believe that seeking we shall find way-side shrines whereat to kneel and grow strong.



THOMAS WAVERLY PALMER, A.M., LL.D.

Thomas Waverly Palmer, A.M., LL.D., was prepared for college in the rural schools of his native village, Furman, Ala.; student, Howard College, 1877-78; University of Alabama, 1878-82; received the degree of Master of Arts, 1881; Bachelor of Engineering, 1882; Doctor of Laws, 1906; Instructor of Mathematics, 1881-82; Associate Professor of Mathematics, 1882-83; Professor of Mathematics, 1883-1907; Dean of the Academic Faculty, University of Alabama, 1905-1907; President, Alabama Girls' Technical Institute, 1907; graduate student, University of Chicago, summer quarters, 1897, 1898, 1899; active member, American Mathematical Society, American Association for the Advancement of Science, National Education Association, National Society for the Promotion of Engineering Education.



DORMITORY
of
ALABAMA GIRLS INDUSTRIAL SCHOOL, MONTICELLO, ALA.
MILNER EXHIBIT, 1916
BIRMINGHAM, ALA.

THE COMPLETED DORMITORY OF THE ALABAMA GIRLS' TECHNICAL INSTITUTE

A. G. T. I. Thy praise we sing;
Thy worth, thy pow'r proclaim!
Our hearts with pride all gladly ring
Whene'er we hear thy name!

Editorial Staff of Technala, 1911

CORINNE NEELY - - - - - Editor in Chief
ELIZABETH HODGES }
WINNIE DAVIS NEELY } - - - - - Associate Editors
LETTIE DAFFIN }
DAISY ROWE - - - - - Art Editor
BUNNIE WILLS - - - - - Business Manager
MAMIE MERONEY }
FLETCHER DUPREE } - - - - - Class Editors
GENE POWELL }
MATTIE CARGILE - - - - - Athletics Editor
EVELYN PEYTON - - - - - Advertisements
MARY McMILLAN - - - - - Novelties
LESSIE REYNOLDS - - - - - Subscriptions
NINA ALLISON - - - - - Illustrations
GRACIE BERRY - - - - - Jokes
MAMIE ROSS - - - - - Typist



EDITORS IN CHIEF OF TECHNALA STAFF



ASSISTANT EDITORS OF TECHNALA STAFF

Board of Trustees



HIS EXCELLENCY, EMMET O'NEAL, Governor of Alabama, President, ex officio
HENRY J. WILLINGHAM, State Superintendent of Education, ex officio
HUGH S. D. MALLORY, State at large - - - - - Selma
VIRGIL BOULDIN, State at large - - - - - Scottsboro
HURIEOSCO AUSTILL, First District - - - - - Mobile
SOL. D. BLOCH, Second District - - - - - Camden
AUGUSTUS H. ALSTON, Third District - - - - - Clayton
JOSIAH THOMAS MANGUM, Fourth District - - - - - Enterprise
MALCOLM A. GRAHAM, Fifth District - - - - - Prattville
WILLIAM E. W. YERBY, Sixth District - - - - - Greensboro
WILLIAM W. HARALSON, Seventh District - - - - - Fort Payne
JAMES C. KUMPE, Eighth District - - - - - Moulton
SAMUEL WILL JOHN, Ninth District - - - - - Birmingham
C. L. MERONEY, Secretary of Board - - - - - Montevallo
E. S. LYMAN, Treasurer - - - - - Montevallo
SOL. D. BLOCH, Land Commissioner - - - - - Camden

COMMITTEES OF THE BOARD

- Judiciary**—MESSRS. BOULDIN, AUSTILL, HARALSON.
- Executive**—MESSRS. MALLORY, KUMPE, YERBY.
- Educational**—MESSRS. ALSTON, AUSTILL, MANGUM.
- Finance**—MESSRS. BLOCH, GRAHAM, MANGUM.
- Building and Grounds**—GOVERNOR O'NEAL, MESSRS. JOHN, MALLORY, GRAHAM, ALSTON, YERBY, MANGUM.
- School Lands**—MESSRS. JOHN, BLOCH, BOULDIN, KUMPE.



Mr. Mallory



Mr. Bloch



Mr. Kumppe



Mr. John



Governor O'Neal



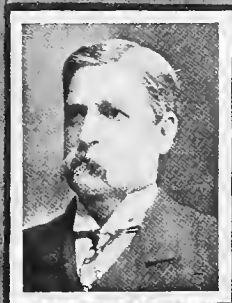
Mr. Austill



Mr. Graham



Mr. Mangum



Mr. Alston



Mr. Willingham



Mr. Ye-ly

Officers of Instruction and Government



MARY GOODE STALLWORTH,
MATHEMATICS.

MARY MYRTLE BROOK, A.B.,
PSYCHOLOGY AND EDUCATION.

MERLE MARIE STEPHENS,
DOMESTIC ART.

ALICE BOLTON,
ASSISTANT DOMESTIC ART.

ALICE SEARCY WYMAN,
LIBRARIAN.

MARY ELIZABETH HAYNES,
DIRECTOR OF MUSIC.

LIDA INGE HATCH,
VIOLIN.

ERNESTINE GROTE,
PRIVATE SECRETARY.

MRS. HARDINIA B. HOWIE,
.....

Senior Class



Colors: Brown and Orange.

Flower: Nasturtium.

Motto: "As ever in our great Taskmaster's eye."

OFFICERS

CORINNE NEELY - - - - - President
GENE POWELL - - - - - Vice President
IRENE CLEVELAND - - - - Secretary and Treasurer
GLENNIE HAYMANS - - - - - Historian
WINNIE DAVIS NEELY - - - - - Poet
DAISY ROWE - - - - - Artist
MERLE McWILLIAMS - - - - - Musician
ELIZABETH HODGES - - - - - Prophet
MATTIE CARGILE - Captain of Athletics

CLASS OF 1911

Allen, Ila Mary, Quito.	Meroney, Mamie Louise, Montevallo.
Avant, Emma Cordelia, Tallassee, R. 2.	McMillan, Mary Serena, Columbiana.
Burns, Maud, Warrior.	McWilliams, Mary Elizabeth, Oak Hill.
Burch, Louise, Midway.	McWilliams, Merle, Oak Hill.
Cargile, Mattie, Stevenson.	Nash, Pansy Lavinia, Burnt Corn.
Cary, Phoebe, Auburn.	Neely, Ida Corinne, Hillsboro.
Cleveland, Irene, Centerville, R. 4.	Neely, Winnie Davis, Hillsboro.
Cocciola, Bianca, Birmingham.	Palmer, Minnie Lee, Carson.
Collins, Donna Lou, Warrior.	Parker, Eulette, Speigner.
Cook, Alma, Auburn.	Peters, Ella Wilson, Montevallo.
Dale, Irma Brice, Oak Hill.	Peyton, Laura Evelyn, Selma.
Dowling, Claude, Cullman.	Powell, Genie, Greenville.
Dowling, Luly Berry, Cullman.	Reynolds, Lessie, Jemison.
Dupree, Mary Fletcher, Dadeville, R. 1.	Rowe, Daisy Morridean, Birmingham.
Greene, Lucy Nora, Dadeville, R. 4.	Speigner, Katie Ruth, Prattville.
Haas, Elise Greenwald, Gainesville.	Thigpen, Judith Elvie, Uchee.
Haymans, Glennie Izlar, Wilton.	Tillman, Mary Lena, Clio.
Hodges, Elizabeth, Ashville.	Wills, Bunnie, Alberta.
Kelly, Sudie Lavinia, Headland.	Wimberly, Sallie Ethel, Belmont.
Young, Kate Jones, Oak Hill.	

Senior Class Poem



The Class of Eleven now hold out their hands
To bid Montevallo good-by,
With a lump in the throat, maybe, sobs in the voice,
And perhaps a tear in the eye;
For jolly good comrades, and closest of friends,
And hosts of good times—we give up.
Half afraid are we even to start on our way,
For bitter, they say, is Life's cup.
But if, Alma Mater, the trials we meet
Seem heavy and hard to bear;
If friends that we meet with are not friends at all,
And sometimes we're weary of care,
Then let us come back to thy walls for a day,
Grow young with the mem'ries of youth,
Forgetting the pain and the falseness of life,
Rememb'ring the joy and the truth.
'Twill sweeten our lives for many a day,
And scatter the clouds from the sky;
And we shall go on, with hearts fresh and strong,
"As e'er in our Taskmaster's eye."

WINNIE DAVIS NEELY ('11).



ILA MARY ALLEN

Quito, Ala.

Sophomore, 1908-9.
Subscription Committee of Technala, 1910-11.
N₂O Club, 1910-11.

PHOEBE CARY

Auburn, Ala.

Junior Class, 1909-10.
Tutwiler Club, 1909-10,
1910-11.
Junior Tennis Club, 1909-10.
Critic of Emma Hart Willard Club, 1910-11.
Junior Kodak Club, 1909-10.
Social Committee of Y. W. C. A., 1910-11.

Manager of Senior Basket-Ball Team, 1910-11.
Senior Walking Club, 1910-11.
Novelty Committee of Technala, 1910-11.
Track Team, 1910-11.
"Mint Master" of the Ramblers, 1910-11.

IRENE CLEVELAND

Centerville, Ala.

Sophomore, 1908-9.
St. Cecilia Club, 1908-9.
Intercollegiate Committee of Y. W. C. A., 1908-9.
Musician Class, 1909-10.
President of Castalian Society, 1910-11.
Billiken Basket-Ball Team, 1909-10.
Secretary of Y. W. C. A., 1910-11.
Secretary and Treasurer of Class of 1910-11.
Senior Basket-Ball Team, 1910-11.
Schumann Society, 1910-11.
Didonian Chapter, Vergilian Club, 1910-11.

MATTIE ALLAN CARGILE

Stevenson, Ala.

Sophomore, 1908-9.
White Basket-Ball Team, 1909-10.
Devotional Committee of Y. W. C. A., 1910-11.
Captain of Billiken Basket-Ball Team, 1909-10.
Chairman of Athletic Committee, Annual, 1910-11.
Treasurer of Tutwiler Club, 1910-11.
Senior Walking Club, 1910-11.
Treasurer of Loafers' Club, 1910-11.
Captain of Senior Basket-Ball Team, 1910-11.
Treasurer of Emma Hart Willard Club, 1910-11.
Ænean Chapter, Vergilian Club, 1910-11.

DONNA LOU COLLINS

Warrior, Ala.

Freshman, 1906-7.
Secretary of Philomathic Club, 1909-10.
Senior Walking Club, 1910-11.

Honorary Member of Alpha Phi Club.
Tennis Club, 1910-11.
Subscription Committee of Technala, 1910-11.
N₂O Club, 1910-11.

IRMA BRICE DALE

Oak Hill, Ala.

Sophomore, 1908-9.
Tutwiler Club, 1909-10, 1910-11.
Schumann Club, 1908-9.
Emma Hart Willard Club, 1910-11.
President of Thendora Club, 1910-11.
Walking Club, 1910-11.
Chorus Club, 1910-11.
N₂O Club, 1910-11.



CLAUDE DOWLING

Cullman, Ala.

Freshman, 1907-8.
St. Cecilia Club, 1908-9.
Critic of Castalian Literary Society, 1910-11.
Senior Basket-Ball Team, 1910-11.
Sophomore Basket-Ball Team, 1908-9.
Schumann Society, 1910-11.
Joke Committee of Technala, 1910-11.
Subscription Committee of Technala, 1910-11.
Senior Walking Club, 1910-11.
N₂O Club, 1910-11.

FLETCHER DUPREE

Dadeville, Ala.

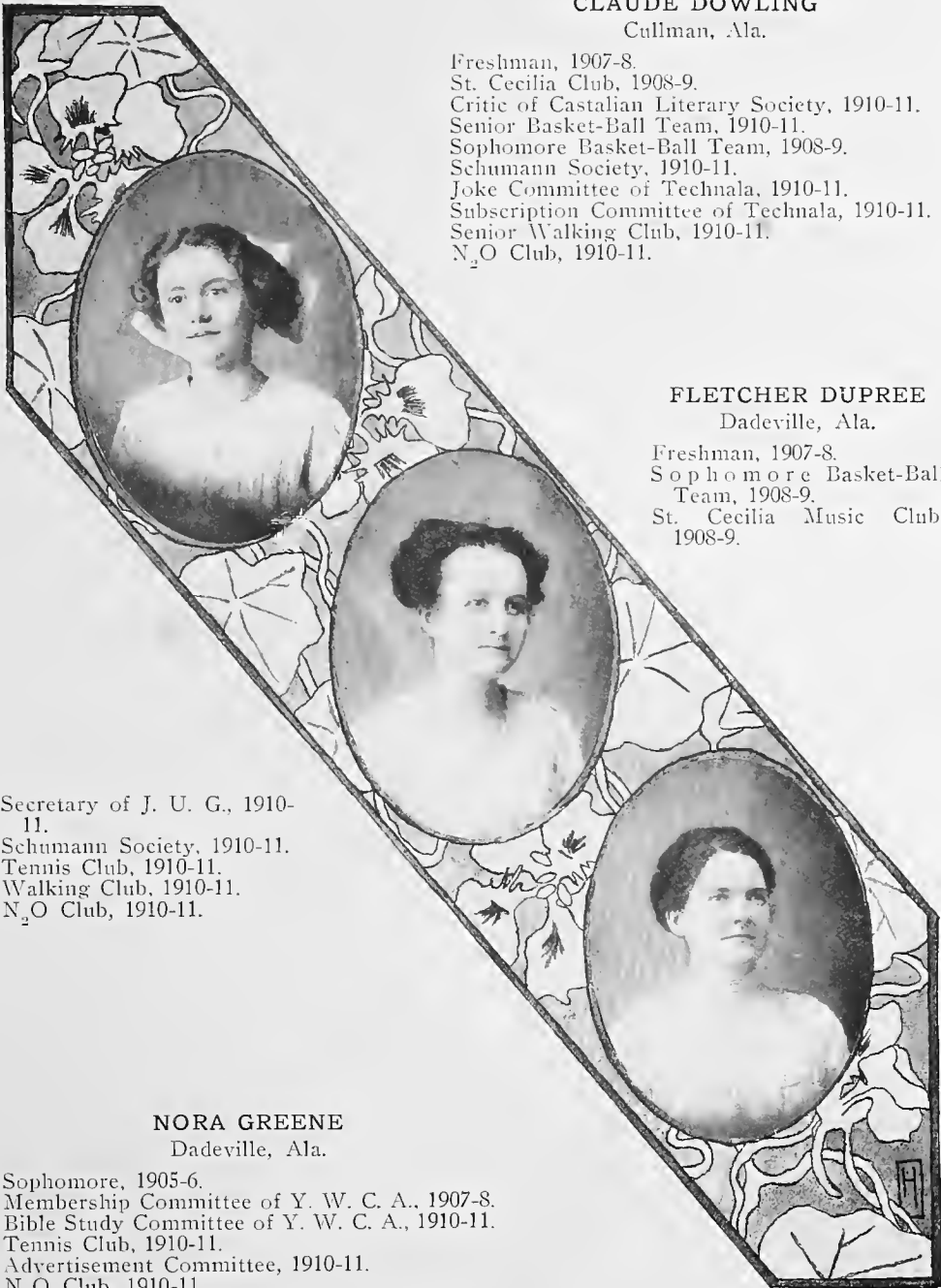
Freshman, 1907-8.
Sophomore Basket-Ball
Team, 1908-9.
St. Cecilia Music Club,
1908-9.

Secretary of J. U. G., 1910-11.
Schumann Society, 1910-11.
Tennis Club, 1910-11.
Walking Club, 1910-11.
N₂O Club, 1910-11.

NORA GREENE

Dadeville, Ala.

Sophomore, 1905-6.
Membership Committee of Y. W. C. A., 1907-8.
Bible Study Committee of Y. W. C. A., 1910-11.
Tennis Club, 1910-11.
Advertisement Committee, 1910-11.
N₂O Club, 1910-11.



ELIZABETH HODGES

Ashville, Ala.

Junior, 1909-10.
Vice President of Class of 1909-10.
Critic of Emma Hart Willard Club, 1909-10.
Secretary of Emma Hart Willard Club, 1910-11.
Tutwiler Club, 1909-10, 1910-11.
President of Y. W. C. A., 1910-11.
Missionary Committee of Y. W. C. A., 1909-10.
Junior Kodak Club, 1909-10.
Senior Walking Club, 1910-11.
Literary Editor of Technala, 1910-11.
Second Grand Loafer of Loafers' Club, 1910-11.
Basket-Ball Team, 1910-11.
Class Prophet, 1910-11.
Manager of Track Team, 1910-11.
N₂O Club, 1910-11.

**GLENNIE IZLAR HAY-
MANS**

Gainesville, Fla.

Freshman, 1906-7.
Class Poet, 1906-7.

Historian, 1910-11.
Castalian Club, 1910-11.
Emma Hart Willard Club,
1910-11.
Senior Walking Club, 1910-
11.
Senior Tennis Club, 1910-11.
N₂O Club, 1910-11.

ELISE HAAS

Gainesville, Ala.

Junior, 1909-10.
Senior Walking Club, 1910-11.
Advertisement Committee of Technala, 1910-11.
Senior Tennis Club, 1910-11.
N₂O Club, 1910-11.





SUDIE KELLY

Headland, Ala.

Freshman, 1907-8.
Art Club, 1907-8.
Secretary of Art Club, 1907-8.
Senior Walking Club, 1911.
N. O. Club, 1910-11.

MARY McWILLIAMS

Oak Hill, Ala.

Junior, 1909-10.
Tutwiler Club, 1909-10,
1910-11.
Schumann Society, 1909-10,
1910-11.
Intercollegiate Committee,
1909-10, 1910-11.

Story-Tellers' League, 1910-11.
Senior Basket-Ball Team,
1910-11.
Emma Hart Willard Club,
1910-11.
Track Team, 1910-11.
Senior Walking Club, 1910-11.

MERLE McWILLIAMS

Oak Hill, Ala.

Sophomore, 1908-9.
Schumann Society, 1908-9.
Story-Tellers' League, 1908-9.
Tutwiler Club, 1909-10, 1910-11.
Class Secretary, 1909-10.
Emma Hart Willard Club, 1910-11.
Musician Class, 1910-11.
Chairman of Membership Committee of Y. W.
C. A., 1910-11.
Ænean Chapter, Vergilian Club, 1910-11.

MAMIE LOUISE MERONEY

Montevallo, Ala.

Sophomore, 1906-7.
Tutwiler Club, 1908-9, 1909-10, 1910-11.
Schumann Society, 1910-11.
President of Junior Class, 1908-9.
President of Subsenior Class, 1909-10.

CORINNE NEELY

Hillsboro, Ala.

Sophomore, 1908-9.
President of Story-Tellers' League, 1908-9.
President of Junior Class, 1909-10.
President of Senior Class, 1910-11.
Chairman of Bible Study Committee of Y. W. C. A., 1910-11.
Delegate to Students' Volunteer Convention, New York, 1909-10.
Tutwiler Club, 1909-10, 1910-11.

Independent Order of Old Maids, 1909-10, 1910-11.
Chairman of Missionary Committee of Y. W. C. A., 1910-11.
Senior Walking Club, 1910-11.
Didonian Chapter, Vergilian Club, 1910-11.

WINNIE DAVIS NEELY

Hillsboro, Ala.

Sophomore, 1908.
Secretary of Y. W. C. A., 1909-10.
Vice President of Y. W. C. A., 1910-11.
Story-Tellers' League, 1908-9, 1909-10, 1910-11.
Class Poet, 1908-9, 1909-10, 1910-11.
Technala Staff, 1911.
Tutwiler Club, 1909-10, 1910-11.
Independent Order of Old Maids, 1909-10, 1910-11.
Delegate to Athens Conference, Y. W. C. A., 1910.
Senior Walking Club, 1910-11.
Glee Club, 1908-09.
Didonian Chapter, Vergilian Club, 1910-11.



"What is Ila Allen's future?" asked some one.
 "Teaching History at A. G. T. I."
 "Hope I won't be the only one. Shall I?" asked Ila.
 "Miss Kelly will assist."
 "What will Irma Dale be?"
 "Gentle housewife."
 "How about roommates Haymans and Haas?"
 "They will coach those deficient in Chemistry."
 Miss Haas was heard to groan.
 "What will Nora Greene be?"
 "Assistant dentist in Montevallo."
 A smile passed around the circle.
 "O, we mustn't forget the town girls! What is to become of Mamie and Ella?"
 "Both will soon marry."
 "What are we going to be? We just now heard what was going on," said Alma and Minnie Lee, coming in quite breathless.
 "Both will teach Domestic Science."
 "O!" said Alma; but at that instant the lights "winked."
 "My! I'd no idea it was so late!" exclaimed Lessie. "And I have not written up my Sunday-school notebook, either."

The last words heard of the meeting, Kate was calling over the banisters down to second floor: "You'd better be hurrying, Phœbe! Miss Stallworth will surely get you when you get to her hall, and you know the rest."

ELIZABETH HODGES ('11).



Acrostic



All the little girlies who have ever striven here
 Loved thee, as we love thee, O Alma Mater, dear!
 And now, maidenlike, you have gone and changed your name,
 But not your great glory, nor yet your resplendent fame.
 All adown the long ages may thy praises roll;
 May thy story to new generations be told,
 And countless loves thy memory enfold.

To them that would harm thee we will each be a foe;
 Every one of thy beauties and virtues we know.
 Can we think of thee ever, unless the tears start?
 Hard, 'tis so hard, that from thee must we part!

GRACE GAST ('12).

The History of History



TWO days each week the poor, miserable, weary, overburdened Seniors assemble for forty-five minutes of "intellectual" discussions of Civil Government, United States and Alabama Histories, accompanying a few lecture courses along lines of moral and social training. Some few girls, reaching the room early, endeavor to get points they did not have time to look up the preceding night. The 7:55 gong sounds, and every one becomes silent. A gentle step is heard approaching the class room, where sits every Senior trying to get a peep at every word in the first paragraph.

Miss Instructor enters, places all her "scratch" notebooks and texts in their particular places, and says: "This seems like *Senior* girls. I wonder if all of you have been this quiet ever since you came in."

(Elizabeth's hand goes up.)

Miss I.: "Miss Elizabeth has something to say, I believe."

Elizabeth: "Miss I., I must confess that I have not, but I feel justified in saying all that I have."

Miss I.: "Well, Little Girls, I must ask you what you were talking about before I came in. How many were talking? Well, I believe Miss Mattie's hand went up first."

Mattie C.: "I asked Irene what basket-ball team was going to play us this afternoon."

Miss I.: "You Senior girls know that you should not be discussing athletics in the History Room. This is a place for more serious subjects. I believe there was a hand up over yonder—Miss Phoebe Cary. Miss Cary, pardon me for not seeing your hand sooner, but the little girl in front of you has such an immense bow of ribbon on her hair that I failed to see it. Will that little girl please change her position? You would be better off if you would take more time for putting something *in* your heads instead of so much *on* them. Now, Miss Cary."

Phoebe: "I just asked Lily what it was Miss Stream sat upon her for last night—was it for wearing low neck and short sleeves."

Miss I.: "The idea of a Senior using such unbecoming language and looking after the matters of the Discipline Committee! But we must hasten with the lesson; we have taken too much time already. [*Scratches her head and gives her watch charm its daily slide.*] I wish to ask the class how far they have studied; but will Miss Daisy close the blinds for us first? [*Every girl looks toward the window.*] Little Girls, Miss Daisy alone can attend to that; you show your thoughtlessness so clearly. I believe Miss Glennie had her hand up to tell us how far she had studied."

Glennie: "Miss I., I studied the first four chapters and read the others over; but I did not have much time for learning the last ones, since I have four tests to-day, and the lecture last night took up so much time that I did not have opportunity for either the library work or study of the text. I looked up the bills of the Legislature in all the back papers; read Governor Comer's speech to the Legislature, which I outlined for my permanent notebook; looked up the national officers; read that article on moral training, taking notes on it; looked up Charlemagne's life, and found his other name, 'Charles the Great,' and why he was so called, also the life of Egbert; but I did not find any connection between his work and that of the Crusades."

Miss I.: "I hate to interrupt, but I wish to tell the class that I shall give them another day on that last point before we take it up in class; but they must have a paper on Egbert before the work of this department is complete. Continue, please."

Glennie: "I looked up those modern ideas on the gods in all the magazines you told us—"

Miss I.: "I dislike so much to break into your answer, but I feel that I must take the time to ask if you did not look up what was said concerning the female goddesses, too."

Glennie: "Yes'm, but I forgot to say so. I believe they are all the references I had time to read. O, yes! I copied sixty-six pages on my permanent notebook, and found out all I could about the beginning of the State of Alabama."

Miss I.: "Pshaw, pshaw! You did not even look up about the sons of Noah."

Glennie: "Miss I., I just did not have time."

Miss I.: "I know you Little Girls have a great deal of work, but you should not try to carry so much that you cannot do justice to all of it. You are not Seniors if you cannot do the work assigned you. That is what I say about the girls in this school, especially in History, which is, without

doubt, the weakest department in the school. You don't know how to study and use your time. I am afraid that I cannot recommend all of you for graduation. The Freshmen may be excused for not knowing all these things, so the other classes. Really, the best way I know to characterize the four classes is: The Freshmen don't know it, and think they do know it; the Sophomores don't know it, and know they do not; the Juniors know it, and don't know they know it; and the Seniors know it, and know they know it. How many of you got as far as Miss Haymans?"

(All hands go up but three.)

Miss I.: "So much for that. I'll ask those three girls to stop and see me after class, since we have no time to discuss weak girls here. How many looked up those national officers?"

(Several hands go up.)

Miss I.: "Who is President?"

All Together: "Dr. Palmer."

Miss I.: "Little Girls, Little Girls! I am surprised! We are talking about *national* officers. You have all been asleep. Before I go further, though, I would like to say to Miss Pansy, before I forget, that she must not get loose in her work just because she has had measles. I believe Miss Nora's hand went up."

Nora G.: "Well—er—Miss I—"

Miss I.: "We have no time for Miss Nora's 'wells;' so if you can't go, sit down and let me pass you."

Nora G.: "Miss I., I thought you were talking about the school, for I know the President of the United States."

Miss I.: "Well, Little Girls, I guess I didn't make myself clear. Let me put my question to you again, and make myself more distinct. Who is *President* of the *United States*—not the state itself, but our own nation, country? Of course *not* the *school*! Let Miss Greene answer."

Nora: "Roosevelt."

Miss I.: "Miss Greene you are a little excited, and have your facts mixed. However, your work is usually very good, except your handwriting. I'm afraid that will make your life a failure. I believe I will state my question again, since so many of you seem to think I did not make myself clear. First, I'll ask Miss Winnie Davis Neely how she understood the question."

Winnie O.: "I understood you to ask who the present President of the United States is."

(All hands go up a little uncertain.)

Miss I.: "I'll ask Miss Winnie Davis to venture the answer."

Winnie D.: "I think Taft is."

Miss I.: "Very good, indeed. I am very proud of you, for you are the first to give any definite answer."

(8:45 bell rings.)

Miss I.: "Well, I guess that is our bell; but the period has been so short. O, I'm very sorry we didn't cover the ground! I don't know what I am to do with this class." [Exit girls.]



Dormitory Regulations



1. Quiet need not be maintained during study hours, and girls may have frequent feasts after the lights are out at night.
2. Running on the halls is to be indulged in at all times, freely and noisily.
3. Tacks, pins, screws, or nails may be driven into the walls continually, and pictures be fastened to walls by mucilage. Every girl is urged to write on woodwork and walls.
4. All trash must be thrown from the window; trash baskets are too expensive.
5. On leaving the rooms, turn on steam and leave all windows wide open, so that "all of Shelby County may be kept warm."
6. Talking from windows is encouraged.
7. Lights must be kept on when occupants are not in the rooms, to keep "ghosts from circulating."
8. Every girl is encouraged never to sleep in her own room at night.
9. Any pupil who changes her room is paid the fee of fifty cents. This privilege is readily granted.
10. Any glass broken by occupants of rooms must not be reported to the office, for all damages of this kind are paid out of the lecture fund.
11. Girls may come to meals occasionally if they so desire.
12. Friends and relatives are urged to spend the night in the Dormitory.
13. Study hours may be used as a period of "permiscuous" visiting.
14. When lights "wink," all conceivable noises must be made, and students must congregate on halls, always running on cross halls.
15. Every girl must have a chafing dish to prevent eating at regular meals.

Our Lone Professor



A man he was to all the Seniors dear,
For him we never entertained a fear!
Though late to class, he never did complain,
And from harsh words he ever did refrain.
Unpracticed he to keep in after school,
A thing the other teachers made a rule.
If some point in the text we did not get,
"The text's to blame," he said, and did not fret.
And if perchance he absent was from class,
"Your notebooks, girls, will help the time to pass."
The trait of his that always pleased us best
Was that he strongly disapproved of tests.
If feeling blue when we came into the room,
With jokes and smiles he soon dispelled the gloom.
And every member of the Science Class
Was sorry when the hour ten-thirty had passed.
Full many a lesson rare and rich he taught;
A wealth of knowledge to our minds he brought.
Now, in conclusion, I've a word to say
To those dear friends who here expect to stay:
If Chemistry's the thing you have in view,
Our "lone professor" is the man for you.

ELISE HAAS ('11).
(Occasionally.)



Some A. G. T. I. Recipes



Brown Pudding

30 pounds Whole-Wheat Flour.
10 pounds Raisins.
10 pounds Dates.
5 pounds Butter.
6 gallons Milk.
16 cups Brown Sugar.
11 cups Molasses.
10 tablespoonfuls Soda.
Steam three hours.

Sauce for Brown Pudding

10 pounds Butter.
20 pounds Sugar.
20 Eggs (whites).

Fish Chowder

20 pounds Boneless Cod.
10 pounds Beef (juices from).
½ bushel Sliced Irish Potatoes.
40 Onions.
½ cup Pepper.
3 pounds Bacon.
25 gallons Milk.
½ peck Flour.
10 pounds Cracker Crumbs.

Bread for Two Meals

196 pounds Flour.
120 pounds Water.
1 pound Yeast.
5 pounds Lard.
6 pounds Sugar.
3 pounds Salt.

Problems for the Faculty to Solve

I. Divide two hours and a half into seven parts of one hour and a half each, said hour and a half necessary to prepare each lesson assigned.

II. What is the discriminated wholeness in our immediate perception if the deductive reasonings, emotional impressiveness, and elemental tranquillizing experiences of unsympathetic emotions are psychologically deducted by careful introspection? To be worked out by analytic-synthetic reasonings, with conventional language.

III. Write a theme on "The Imagination of a Flea Sitting upon the Top of the Capitol at Washington."

IV. How long does it take a Senior to review eight hundred and four lines of Latin for a test, if she has to bring up forty new lines written and read forty by sight? How long would it take to find out said Latin lesson requires over forty-five minutes?

V. Name all the national officers, from the date of George Washington's inauguration to the present time, of the United States, England, France, Germany, Russia, Italy, Portugal, and all other countries, with dates and grandfathers of each.

VI. Sketch from nature the entire globe as seen from the studio window, with a mule in the foreground.

VII. Place the heels together, arms sideways, shoulder high, and, without moving the hands, raise the *hair* twenty times while ten is being counted.

VIII. Why do the gongs keep such correct time?

IX. How can a girl make her *payment* when she has only ten cents and a one-cent stamp, and can't hear from home?

X. Discuss the following as a definition of the library: A place in which books are out.

XI. If two lines are going up and one line is coming down a stairway four feet wide, would it be more culpable for a fourth line waiting at the top to slide down the railing or to be ten minutes late for class?

Senior Signboard

NAME	NICKNAME	PECULIARITY	FAMOUS FOR	EXPRESSION
ILA ALLEN	"Demosthenes"	Vanity (?)	Reading "distinctly"	"Have you done your trig.?"
PHOEBE CARY	"Phebe"	Fondness for onions	Wearing gloves	"I <i>really</i> do not think so"
MATTIE CARGILE	"Ginger"	Pessimistic	Orating	"Now doesn't that jar you?"
IRENE CLEVELAND	"Cuteness"	Casino	Her many admirers	"Hush! I'm in a ferocious hurry"
BIANCA COCCIOLA	"Duck"	Mathematical genius	Foreign accents	"O, mercy me!"
DONNA COLLINS	"Chuckie"	Conceit	Her "aggressive" attitude	"O, if I can just squeeze through!"
IRMA DALE	"Fan"	Hasn't any	Breaking dishes	"Aw, sure enough!"
LILY DOWLING	"Bill"	Gum-chewing	Indifference to the world	"That's darling"
CLAUDE DOWLING	"Frog"	Wearing curls	Playing in recitals	"Sure enough, Miss S., I did know that"
FLETCHER DUPREE	"Calamity"	Fidgeting	Playing "Amen"	"O, I positively didn't mean <i>that!</i> "
NORA GREENE	"Norrie"	Wearing model coiffures	Going to town	"Yessum, I think so"
ELISE HAAS	"Midget"	Tripping	<i>Running</i> to breakfast	"I'll be glad when 10 P.M. comes"
GLENNE HAYMANS	"Glenn"	Egotistical	Harmonic posing	"Has the bell rung?"
ELIZABETH HODGES	"St. Bet"	Being good	Oratorical genius	"Please, may I ask a question?"
SUDIE KELLY	"Sue"	Independence	Going to art room	"There's not no use"
MAMIE MERONY	"Pi"	Indifference	Immaculate toilette	"Help me over the back fence"

To Miss Poynor, wonderful to relate, we bequeath our forgiveness for having thus far continually annoyed us with Latin verbs. It is our wish that she may forget, as we have already done, not only the annoyance she has caused us, but also every rule in the Latin grammar, and every verb, except "amo."

To Miss Moore we give our voices to have and to hold if she can hold them.

To Mrs. Howie we give our stock of jokes to use instead of the one about Adam, Eve, and the toad.

To Miss Leake we leave our collection of rag, coon songs, vaudeville snatches and variations. We would give her something more, but this is all we have that would interest her.

To Miss Grote we leave our knowledge of electricity, provided that she will use the same in a successful repairing of the gongs.

To Miss Bolton, our handbags.

To Miss Stephens, our gray uniforms, dyed pink.

To Miss Franklin, that better word for which she is continually searching, also Gene Powell's treatise on "The Proper Way of Drinking Water, Milk, or Coffee from a Large Soup Bowl."

3. Having expressed our love for the Faculty, and desiring to do the most good with our property, we will the following-named articles to our friends among the undergraduates:

To the Juniors, our Psychologies and sympathies.

To the Sophomores, our prettiest dresses; our highest-heeled slippers; our paint, powder, and puffs; our hair ribbons; our frat. pins; our U. of A. and Auburn College hats; and our love.

To the Freshmen we give our measles, failures, defeats, losses, crosses, and worries, in order that they may know how sublime a thing it is to suffer. Furthermore, we bequeath to the aforesaid Freshmen all our mental capacity, to be placed at interest until 1913-14. We do hereby appoint Miss Henry as their guardian.

[Seal] CLASS OF 1910.

PRO ILA ALLEN ET AL.

Signed, sealed, and declared by said Senior Class to be its last will and testament, in the presence of us, we, the witnesses, do subscribe our names hereto.

(Witnesses) NORA GREENE.

PANSY NASH.

CLAUDE DOWLING.

MATTIE CARGILE.

May 23, 1911.

Organization of Class of 1912



Motto: "Non palma sine labore."

Colors: Black and Gold.

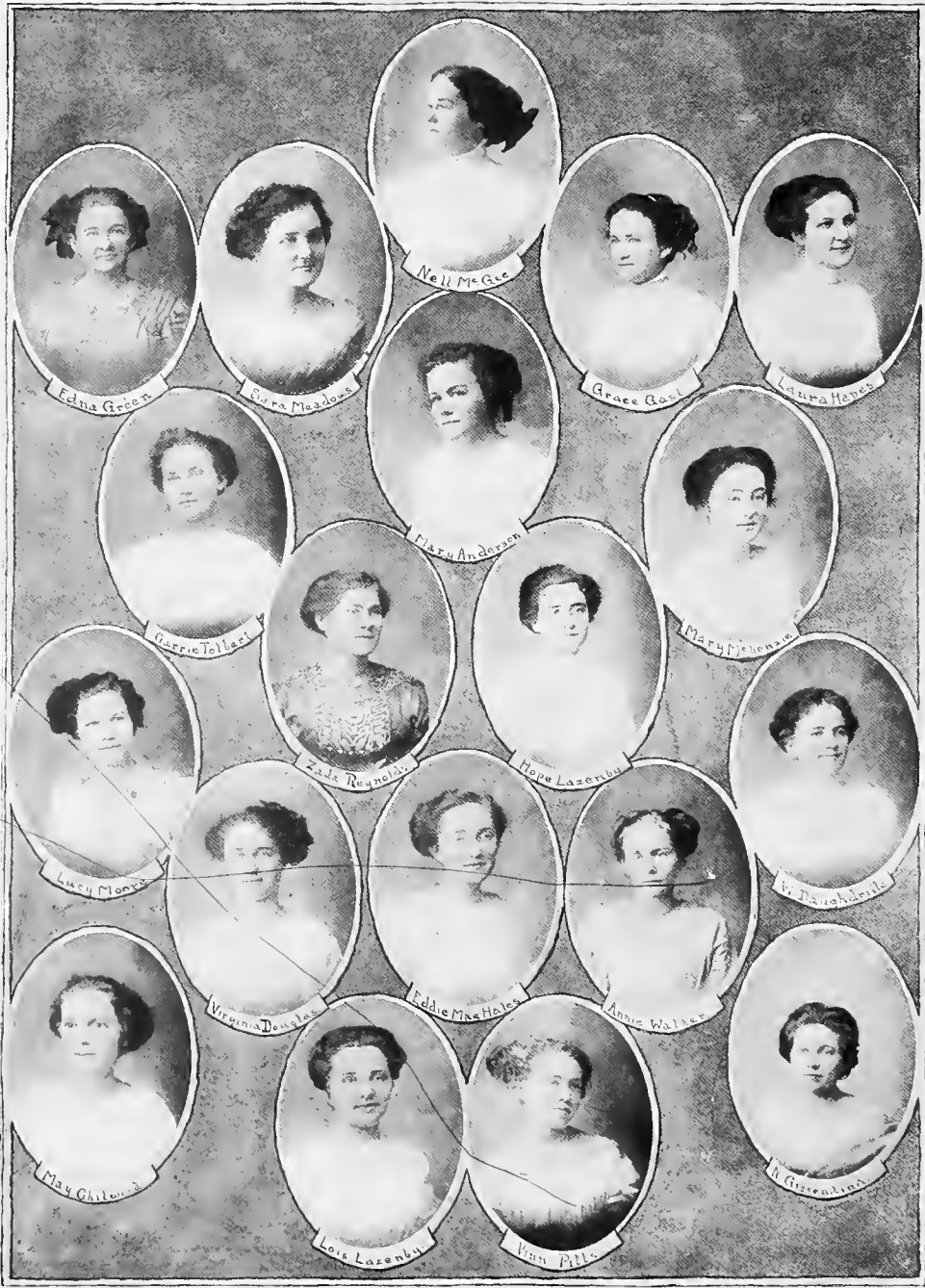
Flower: Black-Eyed Susan.

OFFICERS

LETTIE DAFFIN	-----	President
AGNES HITT	-----	Vice President
VINN PITTS	-----	Secretary and Treasurer
MARY ANDERSON	-----	Historian
IRMA DUMAS	-----	Poet
MARY BREWER	-----	Musician
IRENE SAVAGE	-----	Critic
ALICE LONGSHORE	-----	Artist

CLASS OF 1912

Agee, Myrtle Ellen, Sweetwater.
Allison, Ida Nell, Springville.
Allison, Nina Inez, Springville.
Alverson, Ruby Hawthorne, Coal City.
Anderson, Mary Elizabeth, Selma.
Bell, Dorothy Virginia, Birmingham.
Bell, Ola Pauline, Repton.
Berry, Gracie McPherson, Montevallo.
Brantley, Eunice Loutitia, Atmore.
Brewer, Mary Linda, Dadeville.
Burns, Maud, Warrior.
Bynum, Mary Elinor, Blountville.
Capell, Mary Amanda, Louisville.
Carlisle, Maude, Auburn.
Caton, Bonnie Lee, River Falls.
Chitwood, Mary Louise, DeArmanville.
Casper, Ada May, Alexander City, R. 3.
Daffin, Lettie, Grove Hill.
Daughdrille, Winifred Elizabeth, Gadsden.
Douglass, Virginia, Brewton.
Dumas, Irma Clyde, Arlington.
Edwards, Glennie, Society Hill.
Farr, Lola, Bessemer.
Ferrell, Lou Vivian, Eutaw.
Frazer, Annie Clay, Montevallo.
Gast, Grace, Russellville.
Gaston, Ruby, Gastonburg.
Gay, Grace, Wadley.
Gay, Inez, Lineville.
Gentry, Elizabeth, Tuskegee.
Gilder, Minnie Lee, Mount Meigs.
Gissendanner, Winona, Pinckard.
Greene, Mary Edna, Dadeville.
Hales, Eddie Mae, West Greene.
Hanson, Ruth Rebekah, Waverly.
Hatton, Ruth Delana, Sedalia, Mo.
Haynes, Laura Elsie, Tyler.
Henderson, Jennie Lee, Drewry.
Herron, Maggie Annie, Tuscaloosa.
Hicks, Lillian Grace, Columbiana.
Hitt, Agnes, Herrick, Ill.
Holcombe, Medora Lobelia, Birmingham.
Kroell, Georgia Marie, Montevallo.
Lazenby, Bessie Hope, Monroeville.
Lazenby, Gertrude, Forest Home.
Lazenby, Lois, Forest Home.
Leatherwood, Bessie Mae, Braggs.
Livingston, Elsie Mae, Kellyton.
Longshore, Alice Virginia, Columbiana.
Lyon, Marguerite, Shorter.
Massey, Velma Matilda, Wellington.
Meadors, Sarah Frances, Cusseta.
Meroney, Mildred, Montevallo.
Moore, Lucy Brown, Sellers.
Murphree, Ruth, Gadsden.
McFaddin, Dorothy, Greensboro.
McGee, Nell Louise, Bonita.
McKenzie, Mary Pauline, Letohatchie.
McMillan, Celia Anne, Columbiana.
McMillan, Nannie Margaret, Columbiana.
McRae, Jeffie Elizabeth, Brundidge.
McWhorter, Virginia, Montgomery.
Nelson, Ina Maude, Columbiana.
Peterson, Mary Winifred, Montevallo.
Pitts, Marion Calvina, Columbiana.
Porter, Lois Anchors, Piper.
Posey, Mary Montgomery, Harpersville.
Powell, Mary, Greenville.
Rainer, Olive Katherine, Elba.
Ramey, Clara Ruth, Greensboro.
Reynolds, Zada Davis, Selma.
Roberts, Mamie, Talladega.
Robinson, Sidney Ellen, Five Points.
Ross, Mary Ellen, Fremont.
Sanders, Helen Bertha, Montevallo.
Saportas, Isabel Napoleon, Maplesville.
Savage, Charlotte, Piedmont.
Savage, Margaret Irene, Coal City.
Selman, Alice Brown, Kellyton.
Shelton, Leola Penn, Avondale.
Thompson, Vera Gertrude, Goldville.
Torbert, Carrie Elizabeth, Society Hill.
Turk, Mollie Lee, Autaugaville.
Walker, Annie Elmira, Rockford.
Watson, Gertrude Angeline, Opelika.
White, Clarice, Columbiana.
Williamson, Lillian Judson, Uchee.
Wright, Willie Eugenia, Birmingham.



Felna Green



Vera Meadows



Nell McGee



Grace Cass



Laura Hanes



Gerrie Tolson



Clara Anderson



Mary Peterson



Lucy Moore



Zada Reynolds



Hope Lazombo



H. Casselton



Virginia Douglas



Fannie M. Holmes



Annie Walker



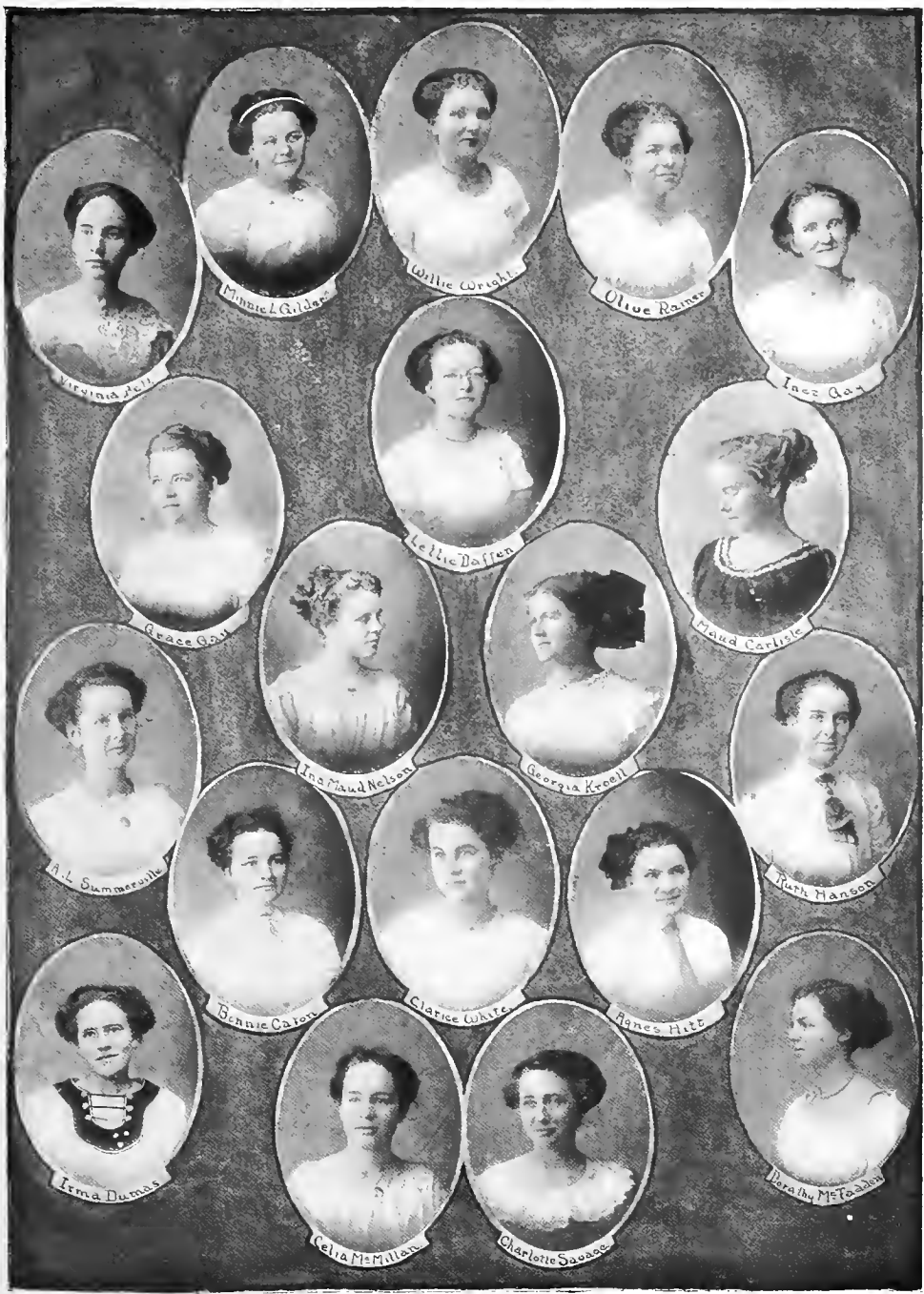
May Chilwell



Lois Lazombo



Vera Pitts



Virginia Bell



Minnie L. Giddens



Willie Wright



Olive Raines



Inez Gay



Grace Gay



Lottie Dalton



Grand Carlisle



A. L. Summersville



Ina Paul Nelson



Georgia Kneel



Park Hanson



Bennie Catron



Clarice White



Agnes Hitt



Irma Dumas



Selva McMillan



Charlotte Doan



Dorothy McEdden



Mary Capell

Ruth Hatten

Grace Hicks

Ann Shelton

Vera Leatherby

Vera Tompson

Alice Oelmer

Elizabeth Gorton

Ruth Murphy

Gertrude Lopez

Mary Beaton

Vera Mabson

Vivian Farrell

Ruby Gorton

Jennie Hendrickson

Alice Longshore

Glennie Edwards

Irene Davage

Ruby Albee

Junior Class History



THE JUNIORS' PROLOGUE

Whan that school life with its nightes soote
The Blisse of Ignorance hath perced to the roote,
And hath brought every maide to Junior pow'r,
Than feel we Time hath struncke the houre,
Than smale girles maken melodye
And slegen after ten with open eye;
So priketh hem Nature in hir corages
All longen to goon Turkey Pilgrimages,
And form Litel Girliens into jollie bandes
That loven to follow their own commandes.
Specially thir energies not to bend
From Science and Math. thir secretes to rende.
Bifel that in that sesoun on that daye
Came '12 to A. G. T. I. in great arraye,
Ready to wenden on our pilgrimage
To Juniordom, with ful devout corage.
In Septembre was come into that Dormitorye
Ful nigh eighty in that companye
Of sondry girles, by aventure i- falle
In fellow-and-scholarship weren they alle,
That toward Seniordom woulde striven
With mindes alle alerte and aliven.
Evene as Freshmen weren atte beste
When Aline Robertson led alle reste;
And schortly came we to Sophomoricdom
Whan we weren ledde by Marye Anderson;
Than Lettye Daffyne came upon the ryse
To Juniordom, as I now yow devise.
But natheless, I have not time or space
Any further in this tale to pace:
Methought it accordant to resoun
To sprinkle in this Historye, as season,
Such factes as it doth seme to me
Will help telle you what is our degre,
And eek what state Juniores are inne:
And now this tale I here ende.

MARY ANDERSON,
Historian ('12).

Junior Class Poem



THE JUNIOR'S LAMENT

The melancholy days are come, the saddest of the years,
Of wailing sounds, and sad laments, and lessons that stir tears.
Buried 'neath a load of care, our earlier hopes lie dead;
A mournful strain they echo to Memory's silent tread.
Those childish hopes and dreams are flown, and now we have to say
Physics, Ethics, and Theorems throughout the livelong day.

Where are the dreams, the fresh young dreams, that lately sprang and stood,
In brighter light and softer airs—our Freshman sisterhood?
Alas! they all are in their graves; the tender, soft, young dreams
Are lying in their lowly beds, and dark the future seems.
Those were happy, care-free days back in the Freshman Class;
But now it's toil and troubles sad to win a decent pass.

The Sophomores' love of finery—it perished long ago;
The crown of puffs, the dear soft curls, and painted cheeks aglow;
Aspiration to social claims was mania with us there,
For we were gay and giddy, and had not a single care,
Till time rolled on, and poor, harassed Juniors we became,
And the brightness of our smiles was gone, as were our hopes to fame.

When, after weary toiling, we Juniors were at last,
Then there was no more turning, for our bitter fate was cast;
For our troubles were only beginning, we learned with utter grief;
And we wept that time so gay and glad could have a life so brief;
Yet 'twas not unmeet, we knew, that joyous time should perish,
For lessons learned through labor we shall forever cherish.

Then welcome that day, long wished, that brings us to Seniority,
When every one shall recognize our great superiority.
Our highest hopes will be realized, though we seek for knowledge still,
And we'll always keep our faces bright, come whatsoever will,
"No victory without labor," our motto none can surpass,
Is dear to us as the Black and Gold, the banner of our class.

IRMA C. DUMAS ('12).

Organization of Class of 1913



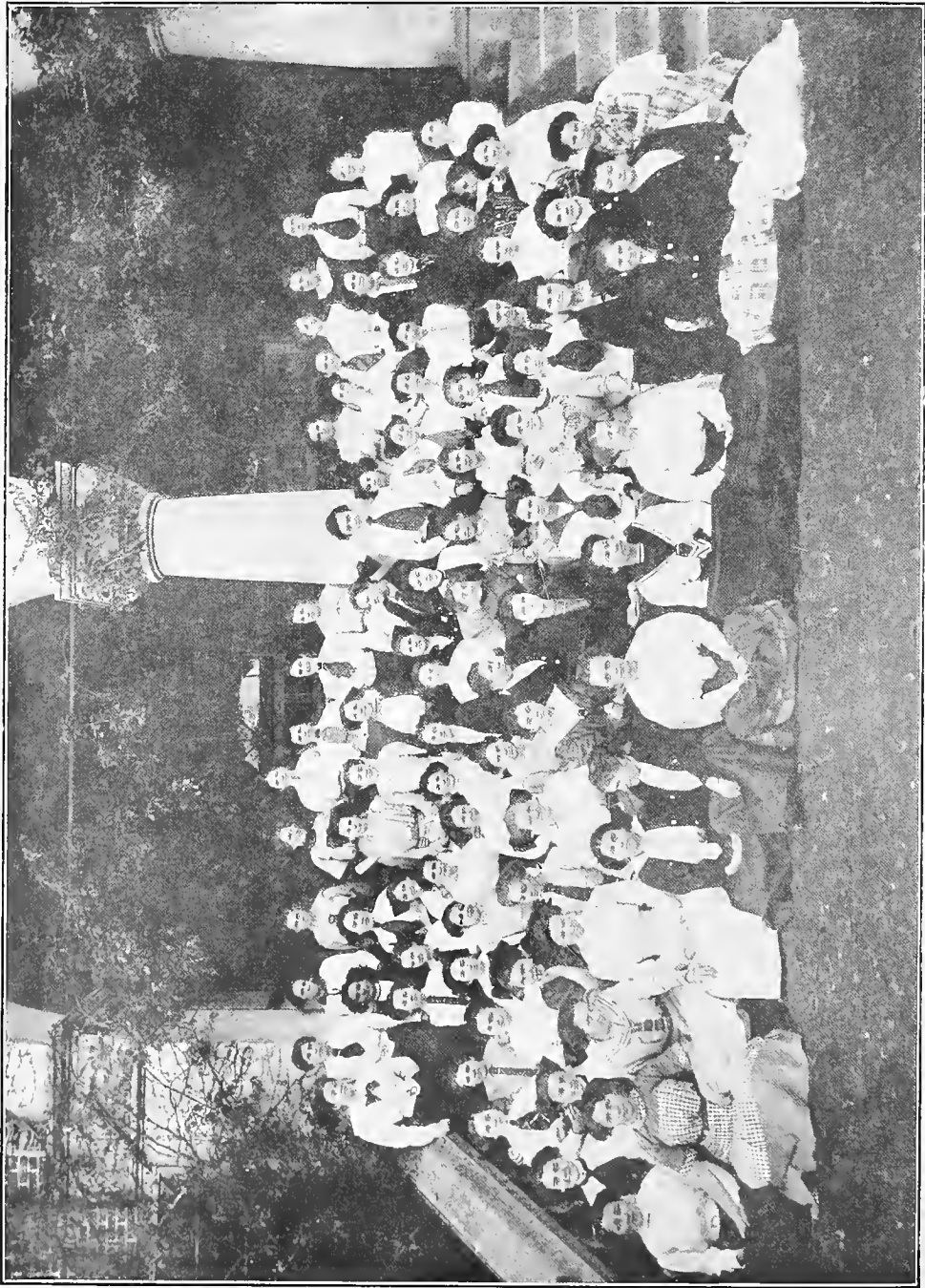
Flower: Violet.

Colors: Lavender and White.

Motto: "Nothing is impossible to labor."

OFFICERS

DAISY DALE	- - - - -	President
KATHERINE HODGES	- - - - -	Vice President
JIMMIE CLARKE	- - - - -	Secretary and Treasurer
MABEL HITT	- - - - -	Historian
META PHELPS	- - - - -	Poet
ANNIE REYNOLDS	- - - - -	Artist
LAURINE LILES	- - - - -	Musician



CLASS OF 1913

CLASS OF 1913

Anderson, Ethel Lucile, Choccolocco.
Armistead, Edna Beulah, Campbell.
Arnold, Fay, Walnut Grove.
Avant, Hester Mae, Tallassee, R. 2.
Ballard, Jessie Elizabeth, Alexander City,
R. 2.
Bell, Nannie Ellenda, Repton.
Bingham, Effie Lena, Montgomery.
Bishop, Winnie, Marianna, Fla.
Bryant, Ethel Pearl, Mobile.
Cargile, Frances, High Ridge.
Clark, Jimmie Helen, Lower Peachtree.
Casper, Nora, Childersburg.
Coward, Nellie Belle, Nauvoo.
Cox, Zelma Mildred, Furman.
Daffin, John D., Grove Hill.
Dahlberg, Dora, Suggsville.
Dale, Daisy, Oak Hill.
Darden, Ruby Elizabeth, Oneonta.
Dison, Witherby Elizabeth, Birmingham,
R. 3.
Donnally, Edwina, Billingsley.
Drake, Mary Frances, Auburn.
Duggan, Inez, Camden.
Esslinger, Roxie Irene, Gurley.
Faye, Mary Ellen, Prattville.
Fuller, Mary Louise, Fredonia.
Funderburk, Jonnie Bertha, Alexander
City, R. 2.
Fnqua, Leila, Blue Springs, R. 1.
Garrett, Grace, Boaz.
Garrett, Manta, Tallassee, R. 1.
Gates, Sallie Lee, Mount Willing.
Gentry, Beulah, Lawley, R. 1.
Glasgow, Clara, Ensley.
Hale, Emma Sophrona, Birmingham,
R. 3.
Hale, Eunice Lee, Birmingham, R. 3.
Hall, Helen Elise, Thorsby.
Hall, Sallie, Thorsby.
Hall, Sallie Bell, Fort Deposit, R. 1.
Harper, Agnes Janette, Montevallo.
Head, Walter Frances, Wilton.
Henderson, Nannie Ruth, Drewry.
Hinesley, Ellie Beatrice, Acton.
Hingle, Marjorie Jeanette, Talladega.
Hinton, Mabel Lambertine, Troy.
Hitt, Mabel, Herrick, Ill.
Hix, Elizabeth, Birmingham.
Hodges, Katherine, Ashville.
Hughey, Annie Schoola, Sprott.
Jenkins, Margaret Bonham, Geneva.
Jones, Erie, Clintonville.
Jones, Lillie Matilda, Clintonville.
Jones, Mattie Mary, Clintonville, R. 1.
Jones, Minnie, Clintonville, R. 1.
Joyner, Birdie Mae Belle, Pierce.
Kelly, Allie Mae, Fairford.
Kelly, Willie, Headland.
Killingsworth, Norma, Montevallo.
Krentzman, Rebecca, West Blocton.
Lide, Kate Knox, Minter.
Liles, Laurine, Albertville.
Lindsay, Ruth, Headland.
Lovvorn, Lillian, Newell.
Lyman, Nina Nabors, Montevallo.
Massey, Vera Rosa, Wellington, R. 2.
Mathers, Julia Marie, Toinette.
Mathews, Zelma Arden, Birmingham.
Mellen, Helen Van De Graaf, Knoxville,
Tenn.
Mixon, Pauline Walker, Ozark.
Moore, Maggie Wilma, Perryville.
Moore, Robie, Perryville.
Morgan, Emma Frances, Honoraville.
Morgan, Pearl May, Slocomb.
McCaskey, Elizabeth, Birmingham.
McEwen, Kate, Rockford.
McFarland, Pauline Ella, Empire.
McGowin, Lillie, Brewton, R. 1.
McGowin, Lula Belle, Mason.
McIntyre, Katie Mae, Corona.
McMillan, Jeannette, Pine-Barren, Fla.
McRee, Annie Murphy, Brundidge.
Nance, Ruth, Bessemer.
Neely, Teresa, Orrville.
Neighbors, Mattie Lillian, Goodwater.
Nickerson, Mera, Siluria.
Odom, Lucy Myrtle, Hillsboro.
Page, Fannie, Pink.
Parham, Mary St. Clair, Gainesville.
Parker, Elaine Goodale, Billingsley.
Parker, Lois Evelyn, Beatrice.
Pearce, Julia Alvoid, Columbia, S. C.

Phelps, Frances Meta, Montgomery.
Pippin, Dora, Naomi, Fla.
Poole, Mittie, Montevallo.
Rawls, Antoinette, St. Stephens.
Reynolds, Annie, Jemison.
Ricks, Carrie Virginia, Vick.
Roberts, Elizabeth, Bessemer, R. 5.
Rodgers, Kathleen Colin, Grove Hill.
Russell, Mattie, Tuskegee.
Sands, Willie Belle, Five Points.
Selman, Flora Chapman, Kellyton.
Sewell, Mary Ida, Knoxville.
Shaffer, Olive June, Ensley.
Sims, Ruth Lee, Renfroe.
Smith, Gladys Lee, Randolph.
Smith, Rosalie, Graceville, Fla.

Somerville, Annelee, Tuscaloosa.
Spencer, Ora, Greensboro, R. 1.
Stallworth, Katie Belle, Beatrice.
Steele, Annie Norris, Boaz.
Stephens, Mary Emma, Tuscaloosa.
Stitt, Arrie, Wallace.
Straughn, Annie Lou, Wehadkee.
Thompson, Esther, Wadley.
Waldrop, Bernice, North Birmingham.
Waldrop, Lola, Goodwater, R. 3.
Waldrop, Myrtle Splawn, North Birmingham.
White, Lou Ellen, Salem.
Williamson, Mattie Marie, Whatley.
Woolley, Lizzie, Montevallo, R. 1.
Worrell, Willie Branch, Tallassee.

Yow, Clara Lucile, Pine Hill.

FRESHMAN



HAVEN'T SCRATCHED YET!

Organization of the Class of 1914



Colors: Green and White.

Flower: White Rose.

Motto: "We aim to reach the highest."

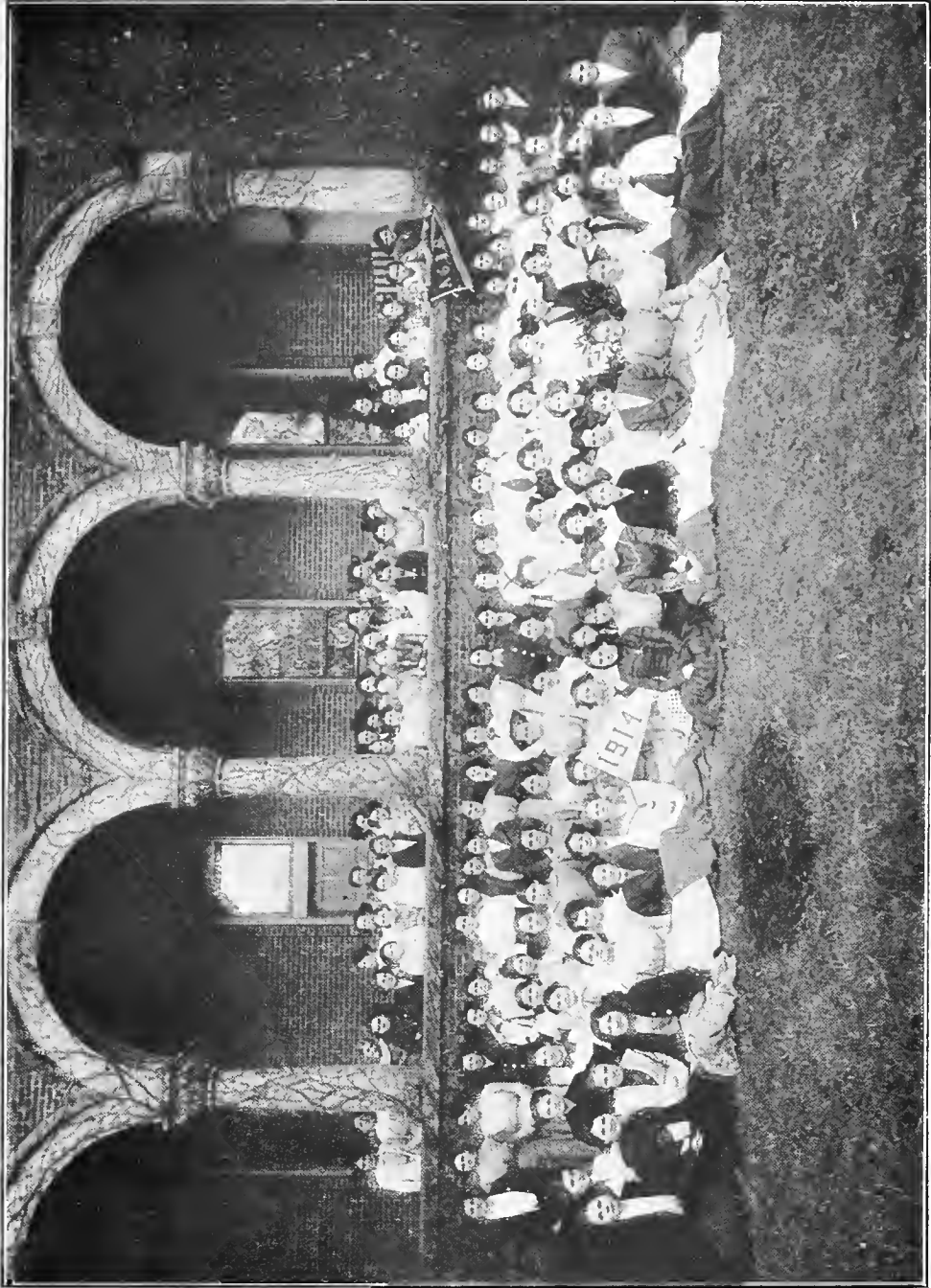
OFFICERS

ALLEEN McKENZIE	- - - - -	President
LAURA MAY BAXTER	- - - - -	Vice President
MARIE STEELE	- - - - -	Secretary
ALLEYNE WALLACE	- - - - -	Treasurer
ERIN WALKER	- - - - -	Musician
SADIE MURPHY	- - - - -	Poet
MABEL DOWLING	- - - - -	Historian

CLASS OF 1914

Alexander, Gladys Mae, Bessemer.
Allen, Bertie Mae, Alpine.
Allen, Ella, Dayton.
Allen, Margaret Scott, Dayton.
Allen, Mary Porter, Renfroe.
Andrews, Eula, McWilliams.
Armstrong, Alice Lula, Montevallo.
Armstrong, Mary Lena, Montevallo.
Atsinger, Naomi, Warrington.
Baker, Etha Mae, Montgomery.
Baker, Lavin, Goodwater.
Baker, Rebecca Whitson, Plantersville.
Barnes, Stella, Kymulga.
Baskin, Pearl, Murrycross.
Baxter, Laura Mae, Vinegar Bend.
Bean, Bessie, Montevallo.
Billingslea, Willie Mae, Browns.
Bordon, Belle, Cordova.
Bowdon, Lillian, Selfville.
Bowdon, Pearl, Selfville.
Boyd, Mary Croft, Winter Garden, Fla.
Brand, Ruth Ester, Randolph.
Breithaupt, Eunice, Ackerville.
Bryant, Dovie Estelle, Hollywood.
Burgin, Clara Irene, Montevallo.
Butts, Lena, Blue Springs.
Bynum, Minnie, Oneonta.
Caffee, Jennie, Woodstock.
Caldwell, Bertha Irene, Montevallo.
Caldwell, Pauline, Montevallo.
Callaway, Georgia Lowe, Brooklyn.
Christian, Ruth Elizabeth, Northport.
Cogdell, Lena, Inverness.
Collins, Mildred Estelle, Warrior.
Comer, Ruth Estelle, Wilton.
Cook, Jeanie, Nauvoo.
Corley, Vida Eunice, Rockford.
Cox, Alice Jackson, Randolph.
Cross, Alva Madge, Pelham.
Cross, Lillian Maylene, Montevallo.
Cross, Lucy Pritchett, Letohatchie.
Cross, Ola Hildred, Quito.
Curry, Addie, Montevallo.
Dabbs, Bertha, Bessemer.
Darby, Annie, Chandler.
Davis, Ada, McFall.
DeFreese, Iva, Piedmont.
Dennard, Clara King, Selma.
Deupree, Clara Estelle, Renfroe.
Dowling, Mabel Glenn, Cullman.
Duncan, Ala Lou, Fleta.
Dupree, Nannie Mae, Dadeville.
Dyke, Mabel, Eden.
Evans, Bonnie Alberta, Fulton.
Evans, Callie, Biloxi, Miss.
Ferguson, Kathleen Earle, Birmingham.
Franke, Bertha Aurelia, Birmingham.
Foster, Velma, Luverne.
Galatas, Ida May Elizabeth, Montgomery.
Galloway, Lonie Cecelia, Summerfield.
Gayle, Leila Louise, Selma.
Gayle, Margaret Marcella, Birmingham.
Gentry, Mary Emma, Tuskegee.
Gould, Jeanie Huldah, Boligee.
Griffith, Margaret Louise, Blountville.
Hallmark, Pauline, Pratt City.
Harris, Edith, Eclectic.
Harper, Annie Kathleen, Shelby.
Harrison, Bessie Jane, Montevallo.
Hayes, Mirtis Agnes, Langdale.
Haynes, Pauline, Ashland.
Hays, Eunice, Helena.
Henson, Leska, Wilton.
Hightower, Annie Euart, York.
Holder, Sidney, Carlton.
Horn, Lucile, Montevallo.
Howard, Arinza, Sellers.
Howard, Virginia Keene, Montgomery.
Hughey, Martha Ollie Laura, Sprott.
Hughey, Nellie May, Sprott.
Hunter, Annie Lee, Equality.
John, Maud, Coleanor.
Johnson, Effie, Meltonsville.
Johnson, Mattie Burgess, Slocomb.
Johnson, Sarah Elizabeth, Nanafalia.
Jordan, Beulah, Russellville.
Kearley, Annie Belle, Scotland.
Kearley, Fannie Alma, Franklin.
Kelly, Ruth Evelyn, Society Hill.
Keys, Maggie, Aldrich.
Killian, Frances, Birmingham.
Kirby, Addie Burgess, Collum.
Krentzman, Annie, West Blocton.

Kunstler, Beatrice, Straven.
 Lacey, Annie Elizabeth, Maylene.
 Lathem, Exa Irene, Marvel.
 Johnson, Sallie, Birmingham.
 Lawley, Blanche, Montevallo.
 Lawley, Essie, Montevallo.
 Lewis, Grace Beatrice, Attalla.
 Martin, Alline, Nanafalia.
 Meroney, Ethel Gertrude, Montevallo.
 Miller, Josephine Dorothea, Sylacauga.
 Monts, Mary Sudie, Morgan Springs,
 R. 1.
 Moore, Marie Streit, Birmingham, R. 6.
 Moore, Nannie Lucile, Coleanor.
 Moore, Nina, Selville.
 Morgan, Lula May, Maplesville.
 Mullins, Veronica, Tallassee, R. 1.
 Murphy, Sadie Corrine, Montgomery.
 Murray, Annie, Adamsville.
 McGaughy, Agnes, Montevallo.
 McGee, Edith Belle, Bonita.
 McKenzie, Alleen Pelham, Thomaston.
 McKibbin, Elna, Montevallo.
 McKinnon, Minnie Coleman, Selma.
 McLane, Ellen Ethleen, Saginaw.
 McLeod, Lizzie, Evergreen.
 McMillan, Emmie Kate, Pensacola.
 McRae, Nancy Elizabeth, Tallassee.
 Nabors, Lucile, Oneonta.
 Nabors, Haseltine, Sylacauga.
 Owens, Martha Lizzie, Lineville.
 Ozley, Sudie Mary, Siluria, R. 1.
 Pacely, Frankie Lucile, Montevallo.
 Padgett, Ruth, Andalusia, R. 6.
 Parker, Berniece Miriam, Billingsley.
 Patrick, Ida Evelyn, Billingsley.
 Parsons, Lillie, Bessemer, R. 4.
 Patterson, Berenyece, Oneonta.
 Patton, Ethel Frances, Ralph.
 Payne, Pearl, Bessemer.
 Peaks, Mittie Mae, Evergreen.
 Peebles, Mary Emma, Aliceville.
 Peterman, Maggie Davis, Florala.
 Piper, Inez Elizabeth, Lafayette.
 Pitts, Bessie, Thompson, R. 1.
 Pitts, Janie Belle, Birmingham.
 Poindexter, Mamie Louise, Montgomery.
 Price, Bertha, Wilton.
 Puckett, Pettie, Springville.
 Quarles, Susie May, Vance.
 Reed, Mary Louise, Tombigbee.
 Reed, Ruby Eloise, Tombigbee.
 Reynolds, Winnie Davis, Clanton.
 Roberson, Edna Erlene, Mount Hope.
 Rockwell, Ouida Mabel, Vinegar Bend.
 Rogers, Irma Lee, Dothan.
 Ross, Annie, Fremont.
 Salter, Martha Ann, Bessemer.
 Sands, Nina Lucile, Five Points.
 Sessions, Estelle, Montevallo, R. 2.
 Sessions, Lena Sarah, Maylene.
 Shaver, Mary Lou, Garden City.
 Shivers, Marion, Montevallo.
 Shortt, Annie Lorraine, Calera.
 Slaughter, Elsie Leoline, Oxford.
 Slaughter, Nancy Nettie, Oxford.
 Smith, Janie, Evergreen.
 Stoudemire, Tensie Hilliard, Alexander.
 Starr, Eilee, Montevallo.
 Steele, Marie Elizabeth, Selma.
 Stephens, Florence, Tuscaloosa.
 Straughn, Bessie Burt, Wallace.
 Strother, Bessie Lucile, Lineville.
 Sturdivant, Mary Frank, Selma.
 Swanson, Mary Sibley, Finchburg.
 Trimble, Susie Adella, Cullman.
 VanDerveer, Bessie, Clanton.
 Vines, Alice Mae, Bessemer.
 Waites, Mary Alphie, Rockford.
 Waldrop, Myrtle, Salem, R. 1.
 Walker, Erin Oslin, Selma.
 Wallace, Alleyne Vivian, York.
 Whiteside, Esther, Ohatchie.
 Williams, Annie Gertrude, Ensley.
 Williams, Blanche, Birmingham.
 Williams, Fannie Lillian, Ensley.
 Williams, Lizzie Mae, Eufaula.
 Wood, Gladys Gertrude, McFall.
 Woolley, Gertrude, Stanton.
 Wooten, Lula Watson, Oneonta.



CLASS OF 1914

Freshman Class History



ONE afternoon in the month of September, 1910, we, one hundred and seventy-three classmates, met for the purpose of organizing our class. Not having yet been "through the mill," the accomplishments of the girls were not generally known, so the qualifications which won offices were ready wit and extreme good looks. It is said that our President won her office by a superior amount of back hair. We chose for our class colors green and white. We thought these colors very appropriate. Green was chosen as a sign of freshness, of capacity for growth; white, as an emblem of the purity of our minds.

Alleen McKenzie was elected President; Laura Mae Baxter, Vice President; Marie Steele, Secretary; Alleyne Wallace, Treasurer; Erin Walker, Musician; Sadie Murphy, Poet; and Mabel Dowling, Historian.

We were happy when our existence was first recognized on December 14, 1910, when we celebrated Alabama Day.

The Freshman Class is noted for its ambitious members. We long for the time when we can throw off that apologetic air that belongs to those of our years and experience. One of our great ambitions is to be treated as though we are not infants. That important, self-satisfied Senior look, which we so often see, is one of our longings. Some of our number have already achieved to some extent this much-to-be-admired air. Still another burning desire of our hearts is to grow accustomed to eating syrup with a spoon and looking natural meanwhile. Many other things for which we yearn are too sacred for expression.

Our class has been saddened by the loss of two of its members, Georgia Lowe Callaway and Haseltine Nabors, who have been called to that land where problems are no more. We miss them.

But we shall not always be Freshmen. In three more years we should enter the world equipped with all modern improvements. Meanwhile we trust that the outside world is awaiting us with proper anxiety. If the reader desires to keep informed of the doings of this class in years to come, he will do well to read diligently the writings of the future great minds, where doubtless our further acts will be honored.

MABEL DOWLING ('14).

Freshman Class Poem



THE FATE OF THE FRESHIES

We Freshmen have an awful time
In being hourly Sat Upon!
'Tis common in our schoolgirl clime
When we try to have some fun.
We go to Math, a second late,
We get Sat Upon right hard.
O, ours is the saddest fate!
(Words fail this limping bard.)

In Science, and in every class,
Our fate's always the same;
So rapidly the questions pass,
One hardly knows her name;
And, missing, she is Sat Upon,
Then Sat Upon some more,
From peep of day till set of sun,
Till it gets an awful bore!

We try to snatch an extra nap,
And find shut the dining-room door.
In Study Hall an extra rap
Will call forth teachers galore.
Short sleeves in winter, or low necks,
Call forth the same old thing,
Until our nerves make of us wrecks,
And "14's hard luck," we sing!

SADIE C. MURPHY ('14).
(Maybe.)

Subfreshman Organization



OFFICERS

WINNIE BAILEY - - - - - President
EDITH HAYES - - - - - Musician
MYRTLE MOSELY - - - - - Poet
VERA BYARS - - - - - Joker
MARY STALLWORTH - - - - - Historian

SUBFRESHMAN CLASS

Able, Emma Leola, Gantt.	Harrison, Ethel, Montevallo.
Baker, Sarah, Anniston.	Moody, Lillie Louise, Montevallo.
Bailey, Winnie Myrtle, Talladega.	Moreland, Lenna Armburg, Wilton.
Bush, Mary Elizabeth, Birmingham.	Mosely, Myrtle, Selma.
Byars, Vera, Johns.	Mulkey, Lillie, Montevallo.
Cook, Marguerite, Cochrane.	McDonald, Carrie Lee, Intercourse.
Dison, Blanche, Birmingham, R. 3.	Norris, Bessie, Sulligent.
Galatas, Ruth Agnes, Montgomery.	Payne, Gussie, East Lake.
Gilbert, Cora, Warrior, R. 2.	Sewell, Geneva Gertrude, Randolph.
Hardaway, Minnie Carter, Montgomery.	Shaver, Minnie, Garden City.
Hayes, Edith Palm, Birmingham.	Shaw, Agnes Gertrude, Montevallo.
Herbert, Elizabeth, Birmingham.	Stallworth, Mary, Repton.
Wooten, Gertrude Alice, Oneonta.	



SUBFRESHMAN CLASS

Unclassified Organization



OFFICERS

BERTHA GILLAM - - - - - President
MYRTLE CAFFEE - - - - - Vice President
LILLIE ATKINS - - - - - Secretary and Treasurer
EDNA WALKER - - - - - Musician
MAGGIE HUGULEY - - - - - Artist
MAUD PEGUES - - - - - Joker
SUSIE GALLAGHER - - - - - Poet

SPECIAL STUDENTS

Brand, Rebecca Smith, Randolph.	Pegues, Maude, Scottsboro.
Clifton, Lucile Ella, Holt.	Quinn, Nannie Elizabeth, Montevallo.
Deasy, Ella Josephine, Mobile.	Snowdon, Anna, Brooklyn.
Lee, Mattie, Hayneville.	Thackerson, Smirrah May, Seddon.
Raiford, Mary Howard, Selma.	Walker, Mary Edna Earle, Birmingham.
Scarborough, Pearl, Montevallo.	White, Alma, Salem.
O'Donnell, Ellen Malissia, Chesson.	Wooten, Leona, Siluria.
Wright, Belma, Corona, R. 1.	

UNCLASSIFIED ROLL

Allen, Cora Fannie, Eclectic, R. 1.	Gillam, Bertha, Gadsden.
Atkins, Lillie Lenora, Wellington, R. 2.	Gunter, Vista, Reform, R. 1.
Batson, Lallah Mae, Bessemer.	Hamner, Alice Gertrude, Bankston, R. 1.
Brooks, Vicie, Chandler Springs.	Hendricks, Jennie, Bessemer.
Caffee, Myrtle, Woodstock.	Huguley, Maggie, Pigeon Creek.
Carr, Callie, Legrand.	Knight, Doshia Catherine, Oakman.
Couch, Lile, New Decatur.	Mason, Genie Emma, Alexander City.
Cruise, Elizabeth, Vida.	Melton, Emma, Dickert.
Frost, Ludie, Montevallo.	McGehee, Mary Jennie, Goodwater.
Gallagher, Susie Cecil, Blocton.	Odom, Idella, Montevallo.



UNCLASSIFIED STUDENTS

A Sonnet



My face is laid against the windowpane;
Without I see the tender grass, whose tips
Just peep above the sod; and now there drips
From eaves and tiny leaves a gentle rain;
'Tis silvering each budding thing. I'd lain
All night to dream wide-eyed of one whose lips
No more might call my name. How grief now grips
The soul! How much in worth things lost do gain!

But stay; no more shall I to bitter tears
Give o'er. As after showers so the day
But brighter grows, who knows but that my years
Of life shall purer be because some gray
And lonely days are known? And now my fears
Relieved, I henceforth welcome clouds, away.

ELIZABETH HODGES ('11).



In memoriam

Georgia Lowe Callaway
Obit Januarius X·MCM·XII

Hasetine Nabors
Obit Februarius X·MCM·XII

Fannie Page
Obit Februarius X·MCM·XII



Clubs
and
Organizations

Y. W. C. A. Cabinet



Motto: "Not by might, nor by power, but by my Spirit, saith the Lord of hosts."

OFFICERS

FRANCES Y. SMITH - - - - - General Secretary
ELIZABETH HODGES - - - - - President
WINNIE DAVIS NEELY - - - - - Vice President
IRENE CLEVELAND - - - - - Secretary
EULETTE PARKER - - - - - Treasurer

CHAIRMEN OF COMMITTEES

ETHEL HOUSER - - - - - Intercollegiate
GENE POWELL - - - - - Finance
MARY McMILLAN - - - - - Social
CORINNE NEELY - - - - - Mission Study
CLARICE WHITE - - - - - Membership
MARY CAPELL - - - - - Bible Study
IRENE SAVAGE - - - - - Mission Boards

ADVISORY BOARD

MRS. T. W. PALMER - - - - - Chairman
MISS MYRTLE BROOKE - - - - - Vice Chairman
MISS MINNA GROTE - - - - - Secretary

MISS LILA McMAHON MISS VIRGINIA WITHERS
MISS VETA FRANKLIN REV. J. T. MANGUM



Julia Strudwick Tutwiler Club



Motto: "Ad astra per aspera."

Colors: Red and White.

Flower: Carnation.

OFFICERS

MARY McMILLAN - - - - - President
PANSY NASH - - - - - Vice President
KATE YOUNG - - - - - Secretary
MATTIE CARGILE - - - - - Treasurer
EULETTE PARKER - - - - - Critic
HELEN SANDERS - - - - - Historian

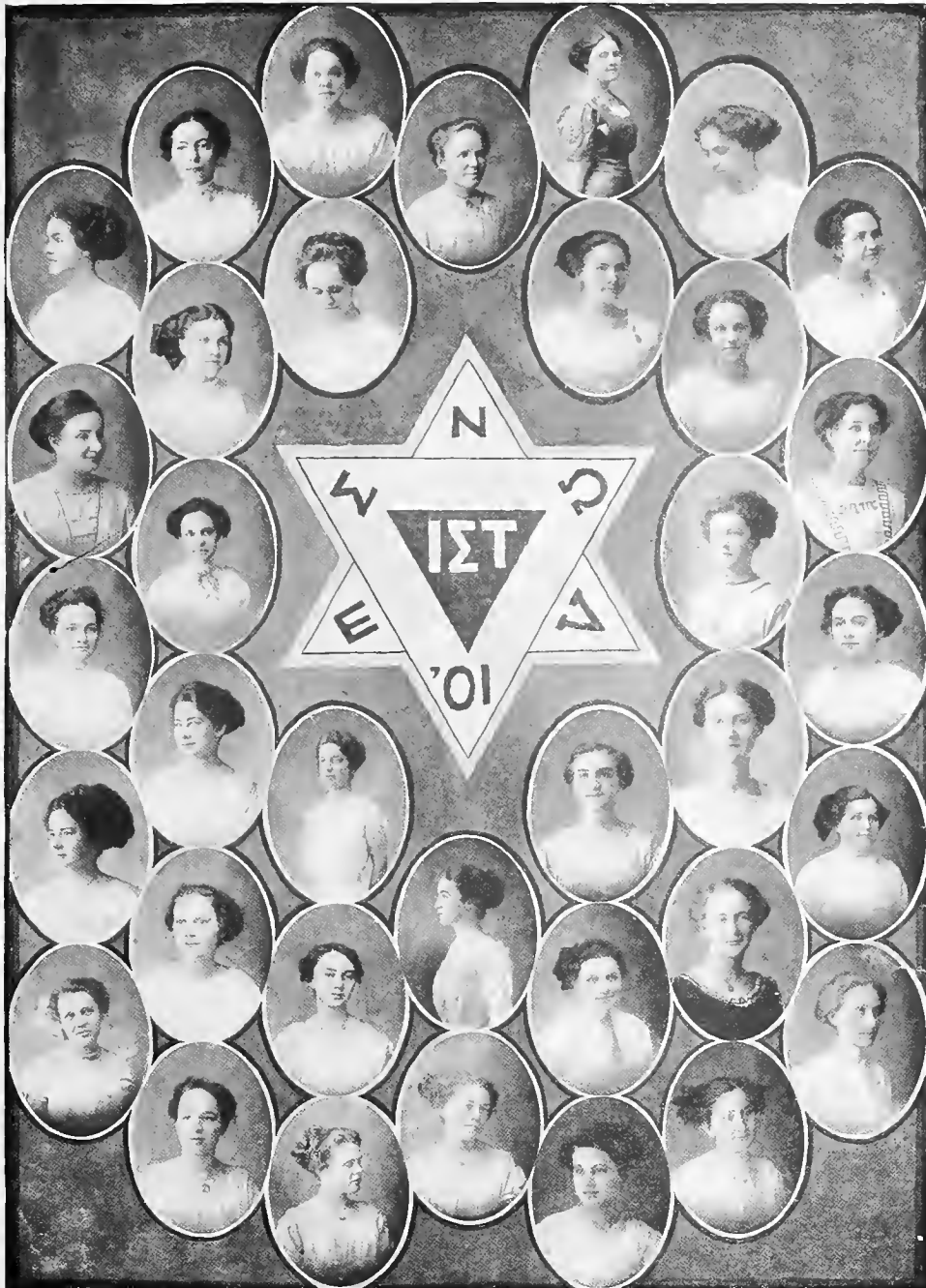
MEMBERS

Nina Allison.	Mildred Meroney.
Nell Allison.	Celia McMillan.
Mattie Cargile.	Mary McWilliams.
Phoebe Cary.	Mary McMillan.
Bonnie Caton.	Merle McWilliams.
Bianca Coccicola.	Pansy Nash.
Alma Cook.	Ina Maud Nelson.
Mae Chitwood.	Corinne Neely.
Irma Dale.	Winnie Davis Neely.
Lucile Ellenburg.	Eulette Parker.
Marguerite Fisher.	Ella Peters.
Ruth Hatton.	Evelyn Peyton.
Agnes Hitt.	Mary Peterson.
Elizabeth Hodges.	Vinn Pitts.
Grace Hicks.	Helen Sanders.
Bessie Leatherwood.	Katie Ruth Speigner.
Alice Longshore.	Clarice White.
Mamie Meroney.	Bunnie Wills.

Kate Young.

HONORARY MEMBERS

Miss Minna Grote.	Miss Anne Moore.
Miss Lida Hatch.	Miss Julia Ann Poynor.
Mrs. Hardinia Burley Howie.	Miss Mary Goode Stallworth.
Miss Truxie Lackland.	Miss Virginia Reese Withers.
Miss Alice Martin.	Miss Helen Vickers.



Castalian Club



Motto: "Ad astra per aspera."

Colors: Yellow and White.

Flower: Daisy.

OFFICERS

IRENE CLEVELAND - - - - - President
VIRGINIA McWHORTER - - - - - Vice President
ETHEL HOUSER - - - - - Secretary
MARGUERITE LYONS - - - - - Treasurer
LESSIE REYNOLDS - - - - - Historian
GRACIE BERRY - - - - - Critic

MEMBERS

Mary Anderson.	Junia Franklin.
Virginia Bell.	Ruby Gaston.
Mary Brewer.	Inez Gay.
Gracie Berry.	Glennie Haymans.
Mary Capell.	Ethel Houser.
Maude Carlisle.	Marguerite Lyons.
Irene Cleveland.	Dorothy McFaddin.
Lettie Daffin.	Ruth Murphree.
Virginia Douglas.	Lucy Moore.
Claude Dowling.	Virginia McWhorter.
Lillie Dowling.	Lessie Reynolds.
Irma Dumas.	Daisy Rowe.
	Penn Shelton.

HONORARY MEMBERS

Miss Brooke.	Miss Leake.
Miss Franklin.	Miss Lull.
Miss Higgins.	Miss McMahon.
Miss Kennedy.	Miss Stephens.
	Miss Wyman.



AD

PER

ASTRA = ASPERA.

Emma Hart Willard Club



Flowers: Roses.

Colors: Red and Gold.

Motto: " Evolution is necessary to expression."

OFFICERS

EVELYN PEYTON - - - - - President
KATE YOUNG - - - - - Vice President
ELIZABETH HODGES - - - Secretary
MATTIE CARGILE - - - - - Treasurer
PHEBE CARY - - - - - Critic

MEMBERS

Mattie Cargile.	Glennie Haymans.
Phoebe Cary.	Mary McKenzie.
Irma Dale.	Merle McWilliams.
Irma Dumas.	Mary McWilliams.
Elizabeth Hodges.	Evelyn Peyton.
Laura Haynes.	Kate Young.

HONORARY MEMBERS

Miss Higgins.	Miss Lull.
Miss Poynor.	



MELIN PLYTON



KATE YOUNG



ELIZABETH HODGES

EMMA HART WILLARD

E.N.T.E.

A.G.T.I.



PHOEBE CAREY



MATTIE GARGILE



MARY MCKENZIE



LAURA HAYNES



GLENNIE HARRIS



MARY JAMES



EMMA JONES



EMMA AILE



MARY WILLIAMS

Schumann Society



Colors: Lilac and White.

Motto: "Poco a Poco."

Flower: Lilac.

OFFICERS

LOIS LAZENBY - - - - - President
MARY CAPELL - - - - - Vice President
OLIVE SHAFFER - - - - - Secretary and Treasurer

HONORARY MEMBERS

Miss Hatch.	Miss Leake.
Miss Haynes.	Miss Moore
Miss Franklin.	Mrs. W. P. McConaughy.

ACTIVE MEMBERS

Nell Allison.	Mamie Meroney.
Nina Allison.	Maggie Moore.
Edna Armistead.	Robie Moore.
Gracie Berry.	Margaret McMillan.
Mary Capell.	Celia McMillan.
Irene Cleveland.	Merie McWilliams.
Bonnie Caton.	Mary McWilliams.
Claude Dowling.	Pansie Nash.
Fletcher Dupree.	Iua Maude Nelson.
Marguerite Fisher.	Vinn Pitts.
Ruby Gaston.	Lessie Reynolds.
Eunice Hayes.	Winnie Reynolds.
Emma Hale.	Katie Ruth Speigner.
Ruth Hatton.	Olive Shaffer.
Ethel Houser.	Judith Thigpen.
Nina Lyman.	Bunnie Wills.
Lois Lazenby.	Lula Wooten.
Laurine Liles.	Erin Walker.



The Ate-Hoo-Ate Club



Colors: Chocolate and Egg.

Motto: "Life's too short to worry."

Flower: Sunflower.

OFFICERS

LETTIE DAFFIN - - - - - President
MAUDE CARLISLE - - - - - Vice President
AGNES HITT - - - - - Secretary and Treasurer
IRMA DUMAS - - - - - Critic

HONORARY MEMBERS

Miss Franklin. Miss McMahon.
Miss Hatch. Miss Withers.
Miss Wyman.

ACTIVE MEMBERS

Mary Anderson. Alice Longshore.
Virginia Bell. Dorothy McFaddin.
Mary Brewer. Celia McMillan.
May Chitwood. Margaret McMillan.
Virginia Douglas. Lucy Moore.
Vivian Ferrell. Ruth Murphree.
Inez Gay. Ina Maude Nelson.
Emma Hale. Vinn Pitts.
Grace Hicks. Annie Reynolds.
Olive Shaffer.



ATE-HOO-ATE CLUB



UNCLE REMUS CHAPTER, STORY TELLERS' LEAGUE

Story-Tellers' League

OFFICERS

Poe Chapter

AGNES HITT - President, and Ex-Officio President of the League
 MARY ANDERSON - - - - - Vice President
 IRMA DUMAS - - - - - Secretary and Treasurer

Wyche Chapter

EMMA HALE - - - - - President
 EUNICE HAYES - - - - - Vice President
 META PHELPS - - - - - Secretary and Treasurer

Uncle Remus Chapter

ANNIE HIGHTOWER - - - - - President
 MARIE STEELE - - - - - Vice President
 BETTIE PUCKETT - - - - - Secretary and Treasurer

HONORARY MEMBERS

Miss Brooke. Mrs. Palmer.

Poe Chapter.
 Miss McMahon.
 Miss Wyman.
 Miss Higgins.

Wyche Chapter
 Miss Reid.
 Miss Withers.

Uncle Remus Chapter
 Miss Kennedy.
 Miss Lull.



Athletics



SENIOR BASKET-BALL TEAM AND SUBSTITUTES (MATTIE CARGILE, CAPTAIN)



1911 TRACK TEAM (ELIZABETH HODGES, CAPTAIN)



SENIOR WALKING CLUB



1931 WOULD-BE TENNIS CLUB



JUNIOR BASEBALL TEAM (VIRGINIA BELL, CAPTAIN)



WOULD-BE TENNIS PLAYERS OF 1911



ON-PARADE QUILTS PLAYERS



1913 WOULD-BE TENNIS CLUB



CHICKTAW BASKET-BALL TEAM (PENN SHELTON, CAPTAIN)



LOVE WOULD-BE TENNIS CLUB (ALMA COOK, CAPTAIN)



ROMPERS BASKET-BALL TEAM (BONNIE CATON, CAPTAIN)



SOPHOMORE BASEBALL TEAM (JULIA PIERCE, CAPTAIN)



BABY BASKET-BALL TEAM (SUSIE QUARLES, CAPTAIN)



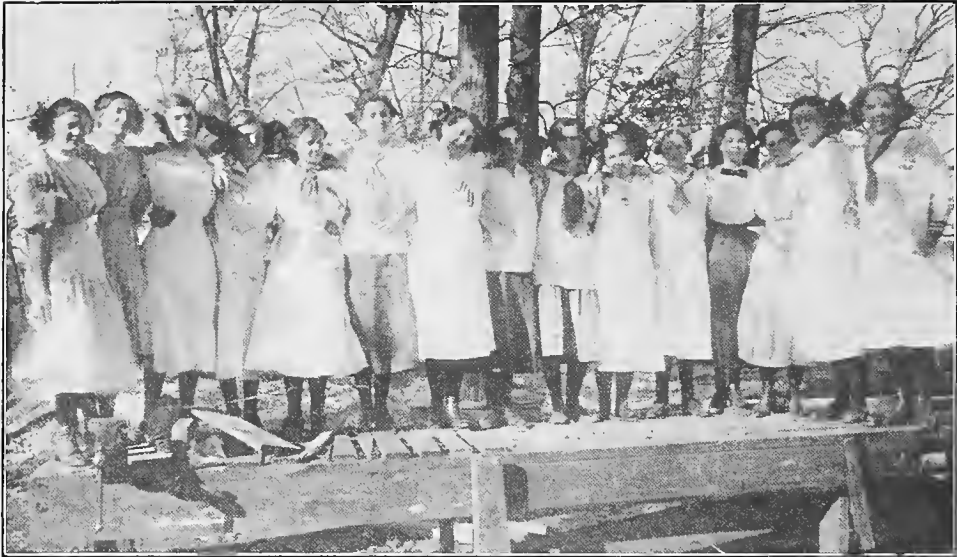
AMAZON BASKET-BALL TEAM (LUCILE ELLENBURG, CAPTAIN)



1914 CROQUET CLUB



FRESHMAN BASEBALL TEAM (MARY EMMA GENTRY, CAPTAIN)



IMPS (WHICH IS ANGLO-SAXON FOR "KIDS")



Miscellaneous

A decorative flourish consisting of a central scroll-like element with symmetrical, ornate flourishes extending outwards to the left and right.



THE NIGHT OF GHOST-FILLED HALLOWE'EN



MISS REMBAUGH, AS PRISCILLA



MISS MARTIN, AS BETSY ROSS

YE BIRTHDAY OF WASHINGTON



YE COLONIAL SCHOOL



YE WELL-KNOWN POCAHONTAS AND CAPTAIN JOHN SMITH, WASHINGTON'S BIRTHDAY



A MOCK FACULTY MEETING



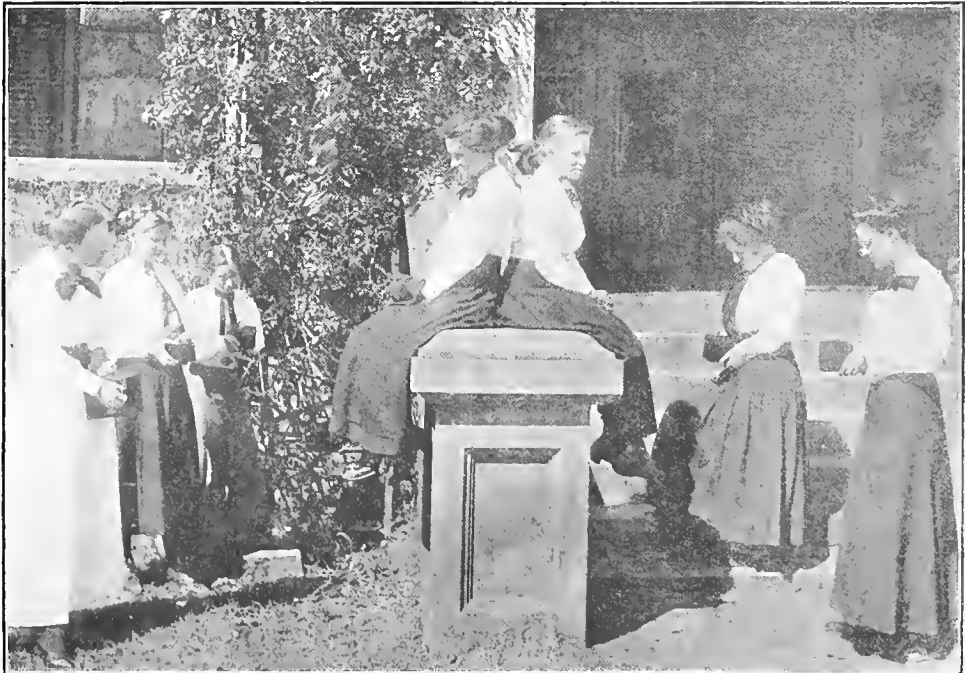
FRESHMAN KODAKERS



THE MONTGOMERY CLUB



Y. W. C. A. DELEGATION OFF FOR MOBILE



A DELICATE MOMENT



"LITTLE MOTHER" AND HER BROOD



1911 BROWN EYES ENTERTAIN BLUE EYES



THE N:O CLUB, UNDER PROFESSOR CHESTNUTT II



INDEPENDENT ORDER OF OLD MAIDS



THE THENDORA CLUB



THE LOAFERS' CLUB, AT HOME



J. U. G'S (MOLASSES EATERS ALL)



ALPHA GAMMA (MARIE STEELE, PRESIDENT)

of Tobacco." The Indians thought that this star watched over their tobacco patches.

A strange thing noticeable about Francesyancey, one of the clearest stars in the entire group, is that near the Mardi Gras season it is observed to depart from its path and go toward Mobile.

A legend quite as pathetic as that of Kendymian is told of Overtona, a star of surpassing loveliness. She was, ages ago, a girl, and had a pet goose which she greatly loved. One day, as she was playing with her pet, it began to soar heavenward. As the astonished girl gazed, the goose gradually changed its form from a goose to an old man riding a hay fork, just as witches ride broomsticks. Greatly amazed, she could but look, anxiously and sorrowfully. Finally she could no longer see anything in the blue sky. Still she gazed, sad-eyed. Thus she sat for days, paying heed to no one. At last she felt herself lifted up, up, up, until she found herself a star among many others of a like kind. She had reached the Faculty zenith.

"Thou art a lovely mystery, Flaming Star!
Throughout the diamond-pointed, glittering sky,
In beds of deepest, purest sapphire, lie
Thy rolling orbs, which we see from afar."

Another luminous star is Wills. This name ever brings to our mind the familiar verses:

"Twinkle, twinkle, little Wills!
How their heart with pleasure fills
When the stars up in the sky
See you drawing ever nigh!

"But this wonder fills my heart:
'Which star do you like the best?'
For your vague, uncertain 'spark'
Keeps us strangely in the dark.

"I fear I'll ne'er find out which one,
For the bright and glorious sun
Of this term is almost set,
And I see no diamond yet.

"So I ponder this all night:
'When you show your little light,
Which heart most with pleasure fills?'
Twinkle, twinkle, little Wills!"

W. D. N. ('11).

I Remember, I Remember

(A.D. 1921.)



I remember, I remember
The school where I was taught;
Where I, with hard, unceasing toil,
My stock of wisdom bought.
And several things about that place
I never shall forget:
Although my mem'ry's dimmed and blurred,
They stand out clearly yet.

I remember, I remember
The 'bus that took me there—
That rackle-shackle-shambly 'bus,
The Kroell-Mulkey "coach and pair."
But—O!—the joy in our young hearts
At Christmas time and May,
When those same old 'buses came to bear
Us on our homeward way!

I remember, I remember
The soup—I guess I oughter;
We had it every day for lunch;
'Twas plentiful as water.
If I had all the soup we drank,
I'd make a swimming pool
So cold and dark and deep and dank,
And will it to the school.

I remember, I remember,
From nine o'clock till noon
On Sundays, sermons—none too short—
And "amens"—none too soon.
But lengthy sermons trained us for
The lectures. O, my soul!
We endured them both, thanks be to Sleep,
"Beloved from pole to pole."

I remember, I remember
The gongs that ne'er worked right;
They silent were, sometimes, all day,
Then started up at night.
When they began, we never knew
When they would stop again.
O, signals, shall I call you gongs?
Or but a fitful din?

I remember, I remember
The Infirmary, 'cross the way,
Where murky doses, capsules thick,
Were handed out all day.
If we had taken half that stuff,
None were left the tale to tell.
As 'twas, we threw it in the fire,
And got entirely well.

I remember, I remember,
Besides these, more details;
But, notwithstanding all of this,
A strange fact yet prevails:
Although I studied long and hard
To improve my mind so shallow,
I've forgotten everything I learned
In school at Montevallo!

WINNIE D. NEELY ('11).



Consignments for Hallowe'en Caldron



QUISS KENNEDY'S watch slide; Mr. Wills' nose glasses; Miss Higgins' 4-o'clock matinées, also her "background;" Long's Literature, accompanied by Woolley; Miss Grote's Physics notebooks; the Discipline Committee, and all rules thereof; all Laboratory apparatus; *Lectures*, every one of them; Recreation Period; our lovely uniforms; *6-o'clock Whistle*; the Gongs, always wrong; all rats and puffs; Mary Mc-Millan's little gray sweater; Miss Poynor's 4-o'clock engagements; sitting in chapel; uniform inspection; Soup; all Dormitory Regulations; all Latin verbs; Miss Franklin's lavenders; high shoes and long sleeves; Miss Melown's capsules; and all other things not herein specified that make our days hideous.

Recipe for Soup

(Excuse the meter.)



To make this soup I'd like for you to know
The few things put in it to make it so:
A bushel of potatoes, and left-over hash;
Some outside bread crusts, and such like trash;
Let onion atoms lurk within the pot,
And then red pepper to make it hot;
Leave out the salt (it costs too much a sack),
And put in some flour so it won't look slack,
Or else a little meal, just for a change;
After that, you may just set it on the range:
Pour in water, barrels at a time;
Put in canned tomatoes, just worth a dime;
Let it boil and boil until it is nice;
Then take it up and set it on ice;
Then when it cools as long as it is able,
Take it in and put it on the table.
O, great, glorious, heavenly treat!
'Twould tempt an ancient hero to eat.
Back to the world he'd turn his fleeting soul,
And plunge his lips into our soup bowl.
Serenely full, the epicure would say:
"Fate cannot harm me; I have dined to-day."



How it Happened



The A. G. T. I. girls to meals are never, never late;
The cause of this strange circumstance to one and all I'll state.
It happened just like this, at a time when all was gay,
And the heart of each girl was light as a bird's in May:
For days we had been late to breakfast, lunch, and dinner;
So something must be quickly done, and woe to every sinner!
'Twas then—alas!—we heard the words which forever sealed our fate:
"Hereafter in this dining room no meals to students late!"
Now this is just the reason we all now so promptly flock
To the dining room at mealtime, at the sounding of the clock.

IRENE SAVAGE ('12).

Laws of the Maids and Persecutors



THOU SHALT NOT

1. Take a cold or cough, for short sleeves and low shoes are not for thee.
2. Wear heels on thy shoes, or bows on thy hair.
3. Run down the halls, or cross thy feet in class.
4. Be late to meals, or steal sugar from the dining room.
5. "Monkey," "flirt," or "show thy affections in public."
6. Cram for exams.
7. Be afflicted with "Sunday sickness."
8. Spy upon the teachers when they talk in chapel.
9. Visit "promiscuously" after 9:30.
10. Sleep during lectures.
11. Run the elevator, for thou mightest hurt thyself.
12. Use the telephone, especially when teachers are around.
13. Sit on the stone steps or "hot boxes."
14. Be extravagant with thy "pin money."
15. Grumble over going to lectures; they are more important far than thy lessons.

THOU SHALT

1. Remember the monument to thy dear teacher who wastes her life "pouring water through a sieve."
2. Be sat upon sixty seconds in every minute, and bear it cheerfully.
3. Eat soup, for it is very fattening.
4. Carry thy message to Garcia.
5. Love thy teachers and let it be known.
6. Learn the "A B C's of construction."
7. Attend all dry lectures, and profit thereby.
8. Learn that the "longer thou leanest, the leaner thou gettest."
9. Report all thy wrongdoings to the Discipline Committee.
10. "Unlock."
11. "Recreate," rain or shine.
12. "By all manner of means," "be accurate."
13. Do two hours of "reference" work, practice, and learn all thy many lessons in two and one-half hours.
14. Hold thy peace in chapel.
15. Always "keep in class."

Miss Smith's "Mustard" Plaster



There was a girl who had a pain
That hurt her awful bad;
She feared it would attack her brain,
And that would be too sad.

Then dear Miss Smith, so good and kind,
Rushed in her pain to ease.
"O, Miss Mellown, what must I do?
O, tell me quick; do, please!"

"Go get the mustard on the shelf,
And make a plaster thick."
She hurried out and got the jar,
And made the plaster quick.

How Miss Smith in triumph stood!
And how her heart did flutter!
Alas! the plaster did no good;
'Twas made of peanut butter.

M. M. AND C. N.



Hear the wild, chaotic gongs—
Brazen gongs!
What a mad confusion reigns because they will go wrong!
How they jangle, jangle, jangle,
In the awful dead of night,
Or at break of early morning
Ring out their unearthly warning,
With a fiendish, mad delight!
Out of time, time, time,
Without reason, without rhyme,
Causing wrath and consternation, causing maledictions strong
On the gongs, gongs, gongs, gongs, gongs, gongs, gongs,
On the clanging and the banging of that Gong!
Always wrong!!

Genuine Bits from a Genuine A. G. T. I. Diary



A. G. T. I., FRIDAY, SEPTEMBER 23, 1910.—“There would be no sunshine if there was no darkness.” Perhaps that’s why this past week has been so lonesome. Came to this place last Tuesday a week ago—September 13, 1910. It seems as if I have been here over a year. My, but I’m homesick! Will I ever forget the night I came? When I was shown to my room, there were about fifteen girls there to see my roommate. I shall always remember the sensation I had on entering the room. Ginger Clang, my roommate, came forward and introduced Sis and me to the girls. They were all so sweet and jolly I soon felt like one of them. Thought I was going to be delighted with this place, but I’m not. My roommate is just darling. She is the cutest thing ever. I haven’t done much of anything but cry. I cry every night at about twelve o’clock. Last Tuesday mamma called me up, and I had hysterics. Every one in the school heard me and thought some one was dead. Hadn’t cried since three to-day. Got a letter from sister, and she said Sarah couldn’t come down Saturday. I was so disappointed I just had to shed a few tears. Mamma wrote me that Jimmie Doodle came by home and didn’t even ask about me. Don’t I feel little?!?!?!

Ginger and I have a time getting down to breakfast in time. It seems impossible to complete our toilet. Ginger never gets time to put on her hair, and my face is never clean.

Our Dormitory is just great, and the campus is so nice with swings and benches under all the trees. The Infirmary is a dear, picturesque old place; such a grand house to be sick in. We have a crackerjack tennis court and a fine basket-ball diamond out back of the Dormitory. I like all my teachers fine, and I know I shall be more content after I get over my homesick spell. Well, good-by for this time.

SEPTEMBER 26.—I have just emerged from the bath room. What a bath I did have! It was great. Have had the best time since last Friday. My! Saturday night Mary and I put on our gym. suits. We slid down the fire escape after 8:30 and went all over the campus. We also danced, danced, danced that night. I was certainly ready for the bed at 10.

Sunday morning went to church. Came back, and we took some kodak pictures in our uniforms. Finish this to-morrow; Ginger has something to eat.

SEPTEMBER 27.—My, it was good! Well, Sunday afternoon Mary Gay went home. How I wanted to go with her! Sunday night I went to see Eliza Herman, and met Mera Holder. Like her fine.

Monday morning we put on our gym. suits and went kodaking. Had a dandy time. Mrs. H. and I went to town to-day. We had such a great time. About sixty girls went, and we were all in the drugstore at once. Came back in time for supper; studied, and then started this; but Ginger gave me something to eat, so that ended everything. Nothing doing so far to-day, Tuesday. So by-by.

FRIDAY, NOVEMBER 25.—O, my! I haven't written my diary in such an age. I just can't find time. I went home and stayed sixteen days, and had the best of time. How many things have happened! Have been back to school about four weeks, and have been having some jolly times, but won't stop to enumerate them. Yesterday was Thanksgiving. I just hate to write this, but will spare a little of my time, anyway. Well, here goes:

A few Sundays ago I started to church, and decided not to go; so when I got to the corner in town, I took a rock and knocked the heel off my shoe. Of course I came back. The teachers didn't suspect me in the least.

But I was certainly "stung" last week. Didn't know my lessons, so reported to Infirmary to stay all day; but, instead, Miss M. gave me the most horrid dose of salts and made me report to classes. Horrid!!!

Sunday before last Ginger and I prepared some Xmas stockings and hung them on Kiti's and Mag's door during meditation. Miss O. heard us, and said that whoever did that certainly would catch it. We denied having done it, so nothing happened.

NOVEMBER 29.—Nothing doing Monday, 'cept I was homesick. To-day I confessed going to Crape's during meditation Sunday. Am in chapel now, and have finished all my lessons and this, so will stop and dream of Lops. Wonder what he'll be doing twenty years from now, and where I'll be? Good night.

Wouldn't it Jar You To—



- See Miss Franklin wear lavender?
- See Miss Kennedy without her watch chain, and the slide thereof?
- Not hear Mary McWilliams say, "I'm in a hurry?"
- Hear that Miss Stallworth has taken to something besides Math.?
- See Judith hurry; ditto, telling jokes?
- See Dr. Palmer without his hands in his pockets?
- Know how Miss Holbrook likes her "*neighbors?*"
- See the Faculty in uniform, at a *lecture?*
- Visit Faculty meeting, and hear ourselves discussed?
- See Miss Funk and Miss Putnam at a ball?
- See Miss Vickers baldheaded?
- See Miss Moore "keepin' company?"
- Hear Mrs. Howie say "seven thousand?"
- Do without soup for lunch?
- See Miss Higgins scare some poor girl half to death by saying "Good night?"
- See Minnie Lee buy carnations?
- Have your cousin (?) come to see you on Sunday?
- Hear Dr. Palmer say, "Let's govern ourselves accordingly?"
- Not to have to wear our uniforms to lectures?
- Hear that all of us "date our notes properly?"
- See Miss Moore blush?
- See Miss Withers wear rats and look solemn?
- See Miss M. Grote with a diamond?
- See Daisy R. wear a hobble skirt?
- Not to have to recreate?
- See Maude Carlisle wear her own dresses and stay away from Disc. Com.?
- See a Senior chaperon a *Senior* to the dentist?
- See Miss Wyman at chapel?
- See Miss Rembaugh without her keys?

Hall Echoes



- “ Has the bell rang? ”
- “ Lend me your hair to-day.”
- “ Why does Bessie Mc. always wear her green coat to breakfast? ”
- “ Do we have to wear our uniforms to the lecture? ”
- “ Do we have to recreate this afternoon? ”
- “ Child, I flunked flat in History.”
- “ Were you in the Turkey Trot last year? ”
- “ Please give me your picture.”
- “ Are you going to the matinée at four o'clock? Miss Higgins said for all Freshmen to be there! ”
- “ Do you know any one who has any crackers? ”
- “ Hand me some candy! ”
- “ Button my dress quick! The whistle has blown! ”
- “ Lend me something to wear! ”
- “ Throw a shoe at those rats! ”
- “ How do you like that new girl? ”
- “ Don't laugh so loud; Miss Blank will catch you! ”
- “ Has the mail come? Did I get anything? ”
- “ Have you had the measles? ”
- (Third Floor, West Wing, 5:30 A.M.)—“ Selections from Bach! ”
- “ I smell sausage frying in Miss Brooke's room.”
- (9:50 P.M.)—“ Good night. Come to see me. Don't forget what I told you.”
- “ Did you get any express? ”
- “ I sure did get squelched to-day.”
- “ Did you flunk on Spherical? ”
- “ Hello, ' Beautiful! ’ ”
- “ Have you written up your Physics notebook? Let me see it.”
- “ Any dancing in Gym. to-night? ”
- “ Maggie, can us go to the dressmaker? ”
- “ You better not go up on Miss Kennedy's hall in that kimono! ”

To Capsules

(With apologies to Robert Burns.)



O, were I in the Infirmary
I yonder see, I yonder see,
Upon the ground, you Capsules Dread,
I'd scatter thee, I'd scatter thee!
Or did Miss Mellown's white-capped form
Above me stand, above me stand,
I'd choose the wild of any storm,
Had she thee in hand, had she thee in hand.

When thy dread selves before me rise,
I pull my hair, I pull my hair.
This school would be a paradise
Without thee here, without thee here.
O, were I monarch of the globe,
With realms about, with realms about,
The day I donned my queenly robe
I'd blot thee out, I'd blot thee out!

M. M. AND N. A.



Measles

(With more apologies to Burns.)



O, my face's like a red, red rose
That's newly sprung in June!
O, my face is a perfect sight,
And I feel like a perfect loon!

As fair as thy face, my measly friend,
So deep in hue is mine;
And I will look the same, my dear,
So long as I here recline.

Until the weather gets dry, my dear,
And the earth warms with the sun,
I must stay in my room, my dear,
Till the course o' measles is run.

My classes leave me far behind,
And bid me farewell for a while;
But I will catch up soon, my dear,
Though it were ten thousand mile.

SENIOR VICTIMS.

Jokes and Pokes



Miss K.: "Now, girls, be very sure that you can name all the female goddesses."

Instructor: "What important fact does Carlyle tell us about Webster?"

Mattie C.: "That he had a tan complexion."

Elaine P.: "I wonder if the 'ark of the covenant' is the same as Noah's."

Hope L. (kneeling to say her prayers): "55 B.C., Roman invasion; second century, Christianity; 449, Saxons—O, pshaw!"

Girl (to Miss R.): "Please give me a plate; Miss Grote has a fish in class."

Miss R.: "Miss Grote has a fit! Where is she?"

Maude C.: "Inez, I know that Chaucer *was* born in 1340 and died in 1600."

Girl (with perplexed frown): "I don't see why they call Dr. Palmer *doctor*. I never hear of his practicing medicine."

Ethel: "Merle, what is circumstantial evidence?"

Merle: "For goodness sake! I'm studying Harmony; don't bother me with Psychology questions."

Girl: "Hawthorne was born in 1804; but feeling it would not be a success, he moved to Salem."

Mary A. (to Lucy Moore): "Look here, Lucy; this Literature lesson for to-morrow says Swift didn't like the curriculum at Dublin University. Who wrote that?"

Lucy: "Law, child, I don't know! I just can't remember all these books. 'Curriculum'—it sounds to me kinder like Bacon."

ALABAMA POLYTECHNIC INSTITUTE

AUBURN

THE OLDEST SCHOOL OF TECHNOLOGY IN THE SOUTH

64 Professors and Instructors

20 well-equipped Laboratories

SESSION BEGINS WEDNESDAY, SEPTEMBER 6, 1911

Location high and healthful

Attendance last session 761 students

NEW BUILDINGS

Smith Dining Hall, Carnegie Library, Agricultural Hall, Broun Engineering Hall, Dairy and Horticultural Laboratories and Greenhouses.

COLLEGE OF ENGINEERING AND MINES

B.S. degree (4 years), professional degree (5 years)—Civil, Electrical, Mechanical, and Mining Engineering and Architecture. Mechanic Arts, Technical Drawing, Machine Design, Etc.

COLLEGE OF AGRICULTURAL SCIENCES

B.S. degree (4 years), M.S. degree (5 years)—Agriculture, Animal Industry, Botany, Horticulture, Plant Pathology, Etc.; Chemistry and Metallurgy; Pharmacy—Three-year course in Pharmacy, Ph.C.; Two-year course in Pharmacy, Ph.G.

ACADEMIC COLLEGE

B.S. degree (4 years), M.S. degree (5 years)—History, English, Mathematics, Latin, German, French, Physics and Astronomy, Political Economy, Psychology, Etc.

COLLEGE OF VETERINARY MEDICINE

D.V.M. degree (3 years). Only college in the South conferring this degree.

EXPENSES

There is no charge for tuition to residents of Alabama; only \$20.00 to non-residents. Board in dormitory and with private families; cost reasonable.

For catalogue and further information, address

CHAS. C. THACH, M.A., LL.D., President, Auburn, Ala.

THE PARAGON PRESS



PRINTERS *and* PUBLISHERS

W. PIERCE CHILTON, PRESIDENT

A.D. 1897

Montgomery, Alabama

Spring 1911 Greetings

QUR study of Fashion's dictates enables us to offer you in **SPRING SHOES** an assortment of beautiful effects in Pumps, Ties, and Oxfords in Velvet, Suede, Satin, Patent, Cravenette, and Tan.

You Must See Them to Appreciate Their Beauty

Prices, \$3.00 to \$5.00

—
We invite you to make our store your headquarters while in Selma.

—
ROWELL SHOE CO., INC.

Selma, Ala.

J. L. WIKLE DRUG CO.

ANNISTON, ALA.

The Largest Retail Store in Northeast Alabama

Drugs, Medicines, Chemicals,
Fancy and Toilet Articles,

Perfumery, Stationery, Toilet Soaps,
Sponges, Brushes, Etc.



NUNNALLY'S FAMOUS CANDIES



Prescriptions and Recipes Carefully Compounded

The Selma National Bank

Selma, Alabama

—
Capital and Surplus, - - - \$250,000.00
Resources, - - - - \$1,200,000.00



ALL business and professional men, as well as all wide-awake, well-trained women of to-day, realize the value of a checking account. We solicit such accounts, whether large or small.



E. C. MELVIN, President A. W. CAWTHON, Vice Prest.
R. P. ANDERSON, Cashier J. W. CRAIG, Asst. Cashier

THE REXALL STORE

We acknowledge with many thanks the past patronage of both teachers and students of the A. G. T. I., and in asking a continuation of your business we want to assure you of the same efficient service that has marked our dealings with you in the past. We call your especial attention to the following:

Nunnally's delicious candies, fresh by express every week. Gridley-Lee Ice Cream, purest and best. Rexall "93" Hair Tonic. The very best grades in Stationery for fine correspondence.

Our prompt and polite service delight our many patrons. The public shall be pleased.

R. A. REID, DRUGGIST

"THE CONVENIENT STORE"

Phone 41

::

::

Next to Post Office

MORGAN BROS. MERCANTILE COMPANY

DEALERS IN

**General Merchandise, and
Cotton Buyers**

Montevallo,

::

Alabama

In our Goods you will find

**BEST QUALITY
AND
PRICES RIGHT**

Clearing House for all Home- Economics Literature

☞ We handle everything in print on the subject and we publish some of the best books.

☞ Send us your orders from anywhere. They will have prompt and careful attention.

Whitcomb & Barrows PUBLISHERS

BOSTON,

::

MASS.

Steam Heated

Screened Throughout

Imperial Hotel

EUROPEAN

B. WOLFF, Proprietor

Rates \$1.00, \$1.50, and \$2.00



Two Blocks From Union Station
First-Class in Every Detail



Montgomery, :: Alabama

Gay-Teague Hotel

Montgomery, Ala.



The Capital City's Newest and
Most Up-to-Date Hotel



Gay-Teague Hotel

Montgomery, Ala.

MONTGOMERY

CARRIAGE WORKS

COMPANY

Builders and Rebuilders of

HORSE-DRAWN VEHICLES

AUTOMOBILE WOODWORK

TRIMMING AND PAINTING

215 Bibb Street

MONTGOMERY, - ALABAMA

Rosemont Gardens

W. B. PATTERSON, Proprietor

Roses and Carnations

a Specialty

*Cut Flowers and Designs Made up
on Short Notice Any Day in the Year*

*Correspondence Solicited. Any Suggestions
for Weddings, Etc., Cheerfully Furnished*

TELEPHONE

200 from 8 a. m. to 8 p. m.

250 from 8 p. m. to 8 a. m.

Greenhouse Southwest Corner Oak Park
City Store 116 Dexter Avenue

Montgomery, :: Alabama

LIEPOLD BROTHERS

Headquarters for

Choice Millinery, Dress Goods, Ladies'
Suits and Ready-to-Wear Goods

SELMA, :- :- ALABAMA

WE ARE LEADERS IN

LADIES' SHOES

MAIL ORDERS SOLICITED

CARRE-FIELD SHOE COMPANY

ANNISTON, ALABAMA



KODAKS AND FILMS

TRESSLAR

MONTGOMERY, ALA.

WE FINISH YOUR SNAPS

The Peoples Bank & Trust Co.

SELMA, ALA.

Capital, Surplus and Profits, \$115,000.00

Total Resources - - \$550,000.00

Selma's Most Progressive Banking Institution

We Invite Your Patronage and Confidence; and We Merit It

4% on Savings

DR. A. K. PARKS

DENTIST

MONTEVALLO, :- ALABAMA

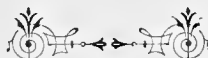
E. H. HOBBS

JEWELER AND OPTICIAN

SELMA, :- :- ALABAMA

AGENT—EASTMAN KODAKS

“IF THE BODY IS WHOLE
WE CAN SAVE THE SOLE”



SELMA SHOE SURGERY

SELMA, :- :- ALABAMA

NATHANIEL WALLER

COTTON AND INSURANCE

LIFE, FIRE, MARINE, CASUALTY

Shipments of Cotton Solicited—Personal Attention
to Grade and Weight

SELMA, :- :- ALABAMA

JOHN G. MCKAY

JEWELER

OFFICIAL WATCH INSPECTOR FOR
WESTERN RY. OF ALABAMA

SELMA, :- :- ALABAMA

S. A. FOWLKES & COMPANY

MONEY BROKERS, REAL ESTATE
FIRE INSURANCE & SURETY BONDS

909-911 South Water Street

SELMA, :- ALABAMA

"AMERICA'S GREAT DIAMOND HOUSE"

JACCARD'S

Fine Solid Gold Jewelry is Most Pleasing in Design and the Very Best Value



This Handsome, Solid Gold Signet Ring, \$4.00; others at \$2.25, \$3.50, \$4.00, and up to \$8.00; Diamond Mounted, \$8.00, \$9.00, \$10.00, and up to \$33.00.



Artistic Hand-Pierced Monograms for Fobs, Purses, Etc., in Sterling Silver, \$3.50; 12K Gold Front, \$5.50; 10K Solid Gold, \$12.00; 14K Solid Gold, \$18.50.



Class and "Frat" Pins at \$2.00, \$3.00, \$4.00, \$5.00, \$10.00, \$15.00, and up to \$150.00 each. Special Signet Rings and Class Pins made to order. Write for samples and prices.

FRATERNITY STATIONERY—We will furnish Stationery stamped with your "Frat" or Sorority emblem at prices ranging from 50c. to \$1.00 per box, and will engrave a name, initial, or pin die, without extra cost, for an order of 20 quires or more.

CALLING CARDS—For 100 of the finest cards from your own plate, \$1.00; for 100 cards and engraved script plate, \$1.50; for 100 cards and solid Old English engraved plate, \$2.75; for 100 cards and engraved shaded Old English plate, \$3.50. Write for complete illustrated catalogue, mailed free.

MERMOD-JACCARD & KING CO., on Broadway, Corner Locust, St. Louis, Mo.

LOVEMAN, JOSEPH & LOEB

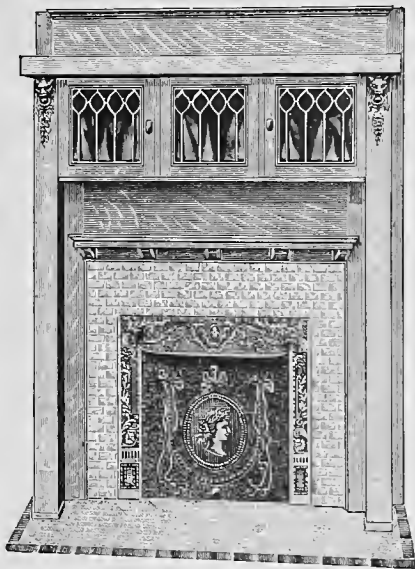
BIRMINGHAM

Alabama's Greatest Department Store

We take pride in our name, our goods, our friends, our future

The mail will bring our beautiful stock
♣ ♣ to your home ♣ ♣

LADIES OF THE A. G. T. I., WE SOLICIT YOUR REMEMBRANCE



FOR
Mantels and Tiles

It will be to your interest
 to get our prices before
 placing your order else-
 where. Also ask for
 special booklet. ♣ ♣

**MOORE-HANDLEY
 HARDWARE COMPANY**

BIRMINGHAM, :: ALABAMA

**GEORGE KROELL
 GENERAL MERCHANDISE**

All kinds of Household and Kitchen
 Supplies, Table Dainties

FRESH FRUITS A SPECIALTY



LIVERY STABLE

Everything from the "Bus" to
 the Swift-footed "Gyp," the
 envy of every horseman in
 Montevallo ♣ ♣ ♣ ♣

HUGH WALKER

ATTORNEY AT LAW

General Practice and Collections

Corner 11th and Noble Streets

ANNISTON, :: :: ALABAMA

F. E. PERKINS

DENTIST

BIRMINGHAM, ALABAMA

R. B. CREAGH

TRAVELING PASSENGER AGENT
SOUTHERN RAILWAY COMPANY

ALBERT HOTEL BUILDING SELMA, ALA.

Write me for any information desired

ORR & LANNING

CARRIAGES AND LIGHT LIVERY

TELEPHONE 1062

BIRMINGHAM, :: :: ALABAMA

FITZPATRICK'S CAFE

FOR LADIES AND GENTLEMEN

OPEN DAY AND NIGHT

MONTGOMERY, :: :: ALABAMA

J. H. FRIED, Pres. L. KLEIN, Treas.
M. FRENKEL, Sec.

Alabama Storage & Ice Co.

WHOLESALE

FRUITS AND PRODUCE

MONTGOMERY, :: :: ALABAMA

USE GAS FOR COOKING
THE YEAR AROUND



MONTGOMERY LIGHT & WATER
POWER COMPANY

PHONE 2720

G. SCHIRMER (Inc.)

3 East 43rd Street NEW YORK

MUSIC DEALERS

ESTABLISHED 1892

STEPHEN LANE FOLGER

MANUFACTURING JEWELER

Club and College Pins and Rings—Gold, Silver
and Bronze Medals

180 Broadway NEW YORK

WHEN YOU THINK OF MUSIC

THINK OF

CLARK & JONES

Box 707 KNOXVILLE, TENNESSEE

Catalogs upon request

COMPLIMENTS OF

F. W. DEVOE

AND

C. T. RAYNOLDS COMPANY

THE
ALABAMA TECHNICAL GIRLS

Should call at the Fount of

J. E. WILKINSON

PRATTVILLE, :: :: ALABAMA

G. F. PETER, President

C. F. HUNTER, Secretary

SOUTHERN COAL & COKE CO.

MAYLENE, -- ALABAMA

Miners and Shippers of

GLEN CARBON HIGH-GRADE CAHABA STEAM COAL

Exquisite Creations in our Spring Slippers

Make the Inspection of them a real pleasure
ALL THE NEWEST SHAPES

HOSIERY

Our Hosiery Department is complete in every detail

SILK HOSIERY 50c TO \$1.50

Prompt and careful attention to mail orders

YOUNG SHOE COMPANY

BROAD STREET

SELMA, ALA.



The Skilled Mechanic Requires Good Tools The Skilled Cook Should Also Have Good Tools

Every modern convenience and labor-saving device—
in fact, everything needed in the kitchen—is sold by

SPIRO HARDWARE COMPANY

BIRMINGHAM, ALABAMA

STARR

DESCRIPTIVE CATALOG
FOR THE ASKING

is the leading high-grade piano bought
by the prominent Colleges throughout
the United States.

THE STARR PIANO COMPANY
MANUFACTURERS

1921 Third Avenue, Birmingham, Ala.

J. H. HOLCOMBE, Manager

SHIPPERS OF



**VEGETABLES, FRUITS, POULTRY,
EGGS, ETC.**

Will do well to get in touch with us. We have
an excellent outlet for such commodities and
always command the very highest market
prices. † † † † † † †

DOUGLASS BROTHERS, Commission Merchants
BIRMINGHAM, ALABAMA

FLORENCE HOTEL

EUROPEAN PLAN

THE BEST AND MOST UP-TO-DATE CAFE IN THE CITY

AFTER-THEATER SUPPERS A SPECIALTY

H. M. BURT, Manager

Birmingham, Ala.

MILTON BRADLEY CO.

ATLANTA, GA.

Full lines of ART MATERIALS, KINDER-
GARTEN GOODS, MANUAL TRAIN-
ING SUPPLIES

—————
CATALOGUES FREE

IT IS BETTER TO HAVE
BRANNON
do your PRINTING
THAN TO WISH YOU HAD
BRANNON PRINTING CO.
Talladega, Ala.

THE PICKWICK CAFÉ

FRED RIDOLPHI, Proprietor

103 COMMERCE ST. MONTGOMERY, ALA.

American Service for Ladies and Gentlemen

Special Rates to Theatrical Companies

Open Day and Night

CHAS. F. DOUGLASS

LAWYER

ANNISTON, ALA.

L. G. PIERSON

DENTIST

902½ Broad St.

Selma, Ala.

D. R. McMILLAN

J. J. HAYNES

McMILLAN & HAYNES

ATTORNEYS AT LAW

Columbiana, - -

Alabama

Don't Fail

When buying a Composition Book, Thesis
Tablet, Notebook, or Scratch Pad, to get a
"Blue Ribbon."

It's the Tablet with the horse's head in blue.

MONTAG BROS.

ATLANTA, - - - GA.

Hofmayer Dry Goods Co.

Albany, Ga.

IMPORTERS AND JOBBERS
DRY GOODS, NOTIONS, AND MEN'S
FURNISHINGS

Newest Styles

Prompt Deliveries

YOUNG LADIES OF THE A. G. T. I.

When in need of Kodaks and Supplies,
Newest Popular Books, McKinley
Music, Visiting Cards, and Wed-
ding Invitations, write the

SELMA STATIONERY CO.

SELMA, ALA.

Scarborough Drug Co.

THE "REXALL" STORE

ANNISTON, ALA.

Special Attention Given Mail Orders

L. N. NABORS

L. C. ELLIOTT

Nabors & Elliott
Gents' Furnishings

We also carry a full line of
Ladies' High-Grade
Shoes and Hosiery

CALL and be CONVINCED

MONTEVALLO, ALABAMA

Merchants
and Planters Bank

MONTEVALLO, ALA.



YOUR ACCOUNT
WILL BE APPRECIATED

W. B. Howard, Pres. A. G. Bunkley, Sec. and Treas.

Brock Grocery Company

CASH GROCERS and
COFFEE ROASTERS

Packers of
Montala
Pure-Food Goods

W. B. Strong & Son

Druggists

Dealers in DRUGS, DRUG SUN-
DRIES, STATIONERY, TOILET
ARTICLES, ETC.



Agents for

Steere's Candies—the Best



MONTGOMERY, - - ALABAMA Phone 21 MONTEVALLO, ALA.



