



The
Treellan
1930

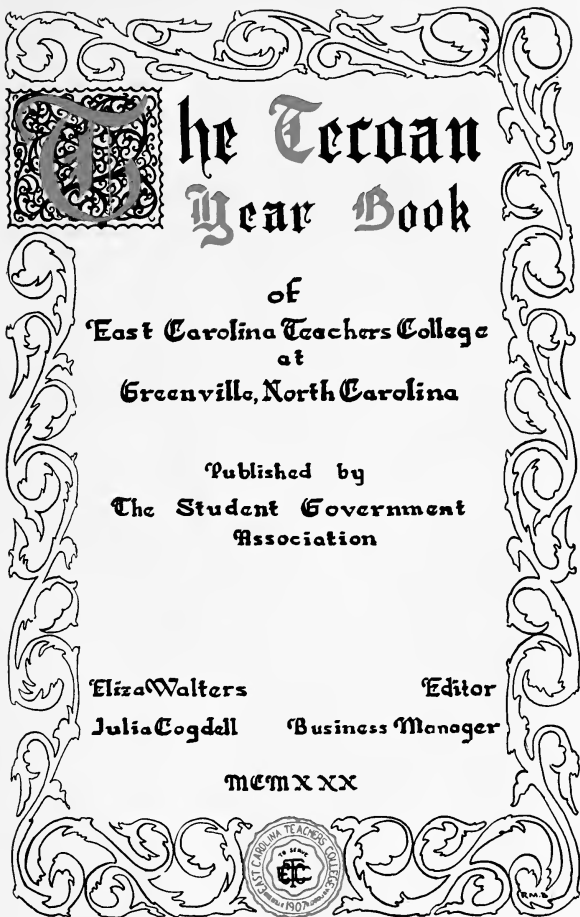


Digitized by the Internet Archive
in 2010 with funding from
University of North Carolina at Chapel Hill

<http://www.archive.org/details/tecoan1930east>



T
This is from the library of



The Tecoan Year Book

of
East Carolina Teachers College
at
Greenville, North Carolina

Published by
The Student Government
Association

Eliza Walters

Editor

Julia Cogdell

Business Manager

MCMXX





M

ay this annual in
time become, for
all of us, one of

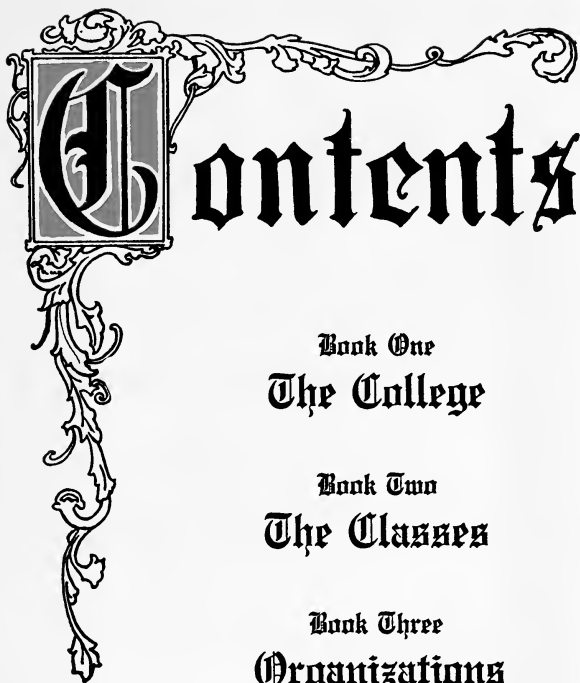
The pleasant books,
that silently among

Our household treasures
take familiar places,

And are to us as if a
living tongue

Spake from the printed
leaves or pictured faces."

The Editors



Book One

The College

Book Two

The Classes

Book Three

Organizations

Book Four

Feature Section

Dedication



As a token of our appreciation of her whose interests are one with ours, whose friendship is genuine, whose sympathy is sincere, whose patience is long suffering, and whose unstinted service and loyalty are ever an inspiration, we dedicate this book

to

Annie L. Morton





Annie L. Morton















The

College

Officers of
Administration

Faculty



DR. ROBERT H. WRIGHT
President



Herbert E. Austin



A wise and a good man has left his indelible imprint upon this college: a master teacher, a strong administrator, a staunch supporter of high ideals, a loyal friend — a Christian gentleman:

As charter member of the faculty, one of the chief foundation stones upon which the institution is built;

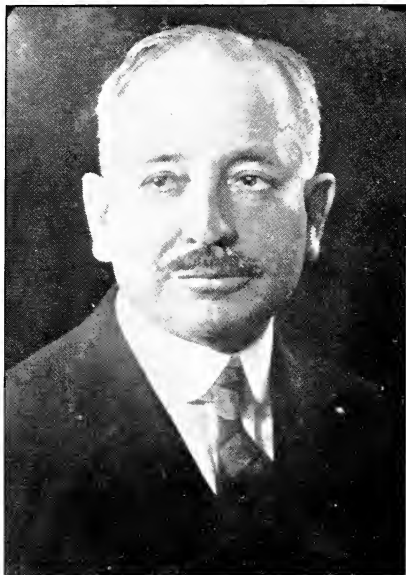
As leader in important professional and administrative activities throughout the first twenty years of its history, without intermission, for fall, winter, spring, and summer terms, one of the master builders of the superstructure;

As master teacher, first of science and then of geography alone, a shaping hand in the lives of hundreds of students;

As executive next in line to the president for nearly a decade, a wise and forceful administrator;

As chairman of the Appointment Committee for many years, the connecting link between the college and the public schools, a strong influence in the profession of teaching in North Carolina;

As a church member, a man of deep religious conviction, and as a member of fraternal and civic organizations, whether serving in the ranks or as officer, a tireless worker for high standards in church and state.



Herbert E. Austin


1866 1929

Twenty years of unbroken service to
East Carolina Teachers College

1909 1929



DR. LEON R. MEADOWS
Director of Summer School



Faculty Members of East Carolina Teachers College

ADMINISTRATION AND SUPERVISION

E. L. HENDERSON

ENGLISH

LEON R. MEADOWS MAMIE E. JENKINS MARY H. GREENE EMMA L. HOOPER
LILLOU BURNS MADELINE MILLER
(On Leave of Absence, 1929-1930)
ALICE LUCILE TURNER

HISTORY AND GOVERNMENT

A. D. FRANK SALLIE JOYNER DAVIS E. C. HOLLAR
BEECHER FLANAGAN LAURA T. ROSE

MATHEMATICS

HERBERT REARKER MARIA D. GRAHAM
ELLA O. WILKES
(On Leave of Absence, 1929-1930)
ELIZABETH TOLAND

EDUCATION AND PSYCHOLOGY

CARL L. ADAMS HOWARD J. MCGINNIS
AGNES L. WHITESIDE HUBERT C. HAYNES
ANNIE C. NEWELL
LUCILE CHARLTON ELIZABETH HYMAN

SCIENCE

R. J. SLAY ALICE V. WILSON CATHERINE CASSIDY BETTY WHITE

SOCIOLOGY

M. L. WRIGHT

HOME ECONOMICS

KATHARINE HOLTZCLAW MRS. ADELAIDE BLOXTON

FOREIGN LANGUAGE

R. C. DEAL ELLA GRAVES THOMPSON

GEOGRAPHY AND AGRICULTURE

P. W. PICKLESIMER J. B. CUMMINGS MARIE W. PETERSON

PUBLIC SCHOOL ART

KATE W. LEWIS RUTH M. BONNEWITZ

MUSIC

LOIS V. GORRELL GUSSIE KUYKENDALL EUGENIA THOMAS DORA E. MEAD

PHYSICAL EDUCATION

MABEL B. OGDEN

LIBRARIANS

HELEN G. GRAY MARGARET SAMMON

Officers of Administration

ROBERT H. WRIGHT	<i>President</i>	MIRIAM GOODWIN	<i>Asst. Dean of Women</i>
L. R. MEADOWS	<i>Director Summer School</i>	ARLEY V. MOORE	<i>Dormitory Matron</i>
J. B. SPILMAN	<i>Treasurer</i>	MRS. M. G. BRADSHER	<i>Dormitory Matron</i>
MRS. J. B. SPILMAN	<i>Assistant Treasurer</i>	MRS. W. G. MCKEAN	<i>Dormitory Matron</i>
B. W. GINN	<i>Bookkeeper</i>	EUNICE HELMS	<i>Secretary Training School</i>
HAZEL WILLIS	<i>Secretary</i>	DR. J. E. NOBLES	<i>Physician</i>
HOWARD J. MCGINNIS	<i>Registrar</i>	ANNIE MORRIS	<i>Superintendent of Infirmary</i>
OLA S. ROSS	<i>Assistant Registrar</i>	MARY LEA SMITH	<i>Asst. Supt. of Infirmary</i>
MATTHE SCOVILLE	<i>Secretary</i>	A. A. HENDERSON	<i>Steward</i>
AGNES WADLINGTON	<i>Secretary</i>	WADE H. HOLMES	<i>Engineer</i>
MRS. KATHERINE LOTT	<i>Secretary</i>	J. C. COCKRELL	<i>Electrician</i>
MRS. NANNIE F. JETER	<i>Dictitian</i>	A. C. FORNES	<i>Supt. Buildings and Grounds</i>
ANNIE L. MORTON	<i>Dean of Women</i>	J. L. WILLIAMS	<i>Campus Policeman</i>

Campus Training School

Critic Teachers

M. K. FORT, *Director*

DORA E. COATES	<i>First Grade</i>	CLEO RAINWATER	<i>Fifth Grade</i>
RUTH FAISON	<i>First Grade</i>	MARY MURRAE	<i>Sixth Grade</i>
LUCY NULTON	<i>Second Grade</i>	On leave of absence 1929-1930	
CHRISTINE JOHNSON	<i>Second Grade</i>	FRANCES WAHL	<i>Seventh Grade</i>
EUNICE MCGEE	<i>Third Grade</i>	On leave of absence 1929-1930	
MRS. J. L. SAVAGE	<i>Third Grade</i>	JONNIE GORE	<i>Sixth Grade</i>
ALMA BROWNING	<i>Fourth Grade</i>	JEANNETTE WEDMORE	<i>Seventh Grade</i>

Winterville Training School

Critic Teachers

JENNIE D. EVANS	<i>First Grade</i>	JANET M. GRIER	<i>Fourth Grade</i>
BERTHA M. HART	<i>Second Grade</i>	GENEVA EXUM	<i>Fifth Grade</i>
LYDIA P. ROSS	<i>Third Grade</i>	ELLEN MAY LEWIS	<i>Sixth Grade</i>

Greenville High School

J. A. KEECH, *Supervisor and Principal*

Critic Teachers

MAUDE B. BOWEN	<i>English</i>	LORAIN HUNTER	<i>Science</i>
MADGE W. DANIELS	<i>English</i>	GLADYS MOORE	<i>Latin</i>
SARA M. SCOTT	<i>English</i>	RACHEL SCARBOROUGH	<i>History</i>
MARY BERRY CLARK	<i>Home Economics</i>	DIXIE REED	<i>French</i>
CLEM BRIDGERS	<i>Mathematics</i>		



The

Classes

Senior Junior

^
Sophomore

^
Freshman

^
Senior Normal

^
Junior Normal

The
Senior
Class





MARY BORDEN TAYLOR
Senior Class Mascot

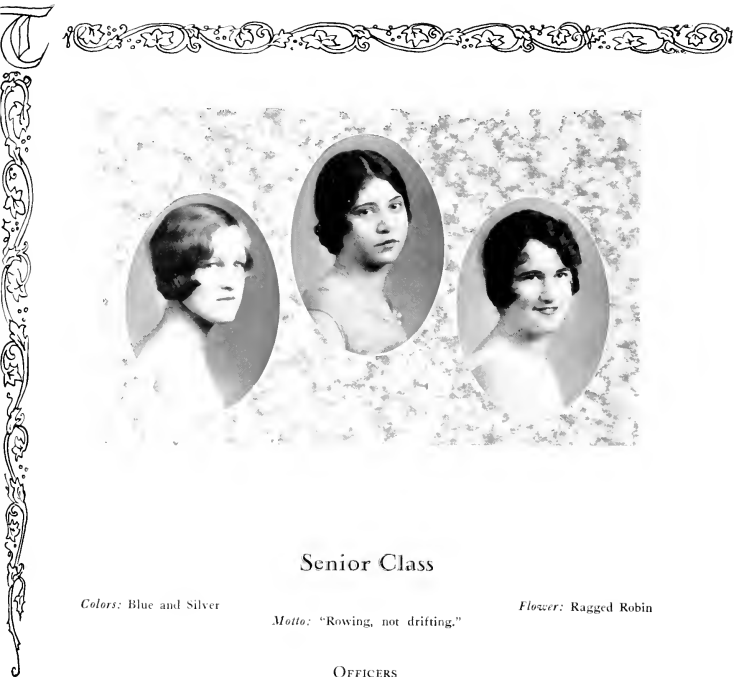
To Our Alma Mater

*We look upon your walls with tender thought,
While sinks behind the cloud the glowing sun,
And ponder on the victories we have won,
And how you gave us courage as we fought.
Dark, lengthening shadows lie thy walks along;
The twilight deepens; from afar we hear
A bird's song break the silence—soft, yet clear—
Then swelling thrillingly in heights of song.
This, Alma Mater, seems to us in thought
Your voice, a noble tender note that brings
Us courage, hope, and joy. And still it rings
In ever soaring song and seems with triumph fraught.
We hear you sing this theme in wordless song:
"Be true, my daughters, loyal, just and strong."*

RUTH LEMMOND



KAY LEE CLOANINGER
Senior Class President



Senior Class

Colors: Blue and Silver

Motto: "Rowing, not drifting."

Flower: Ragged Robin

OFFICERS

KAY LEE CLOANINGER	<i>President</i>
HELEN GUTHRIE	<i>Vice-President</i>
KATHERINE WHITEHURST	<i>Secretary</i>
FRANCES MURRAY	<i>Treasurer</i>
JANIE GOLD HARDEE	<i>Tecoo Representative</i>
BESSIE FERGUSON	<i>Teco Echo Reporter</i>
ELIZABETH SPEARS	<i>S. G. Representative</i>
EARTHA MITCHELL	<i>Cheer Leader</i>
SARA COBB	<i>Assistant Cheer Leader</i>

Seniors

MAMIE ELIZABETH BARTHOLOMEW
ROCKY MOUNT, N. C.

French, History

Y. W. C. A.; Y. W. C. A. Cabinet; Phi Sigma; Emerson Society; President Emerson Society; Inter-Society Committee; Chairman of Inter-Society Committee; Athletic Association; Marshal.

INDIA BATEMAN
COLUMBIA, N. C.

Intermediate Education

Poe Society; Y. W. C. A.; Basketball Team; Student Council; Athletic Association.

ETHEL ROZAMIA BASKIN
PORTSMOUTH, VA.

Intermediate Education

Poe Society; Y. W. C. A.; South Carolina Club; Chairman World Fellowship Committee; Glee Club.

ELIZABETH BEAVANS
ENFIELD, N. C.

Intermediate Education

S. T. College, Farmville, Va.; Y. W. C. A.; Emerson Society; Elementary Council.



Seniors



ELLA LEE BOOMER

LAKE LANDING, N. C.

Primary Education

Emerson Society; Hyde County Club; Y. W.
C. A.

HORTENSE CLARE BOOMER

SWAN QUARTER, N. C.

History

Lanier Society; Y. W. C. A.; Vice-President of
English Club.

CLEO BRENDLE

BOONVILLE, N. C.

Home Economics

Poe Society; Y. W. C. A.; Athletic Association;
Phi Epsilon; Delta Omicron Sigma; Student
Council; Basketball Team; Proctor.

RUBY EVELYN BRITE

ELIZABETH CITY, N. C.

Primary Education

Y. W. C. A.; Lanier Society; Elementary Council;
Pasquotank County Club; Albemarle District
Club.

Seniors

HELEN CLYDE BUTLER

VANCEBORO, N. C.

French, History

Poe Society; Y. W. C. A.; Craven County Club; Phi Sigma; Class Treasurer; Secretary-Treasurer of Phi Sigma; Secretary-Treasurer of Craven County Club.

EVELYN CALDWELL

DILLON, S. C.

Home Economics

Y. W. C. A.; Poe Society; Delta Omicron Sigma; Proctor; "Tecoan" Representative; Phi Epsilon; Vice-President of Phi Epsilon; Advertising Manager "Teco Echo"; Delegate to N. C. C. P. A.; Business Manager of "Teco Echo"; Delegate to N. C. C. P. A.

LOUISE CARR

ROSE HILL, N. C.

English, French

Poe Society; Y. W. C. A.; English Club; Proctor; Vice-President Phi Sigma; President Phi Sigma; Class Historian; Class Play.

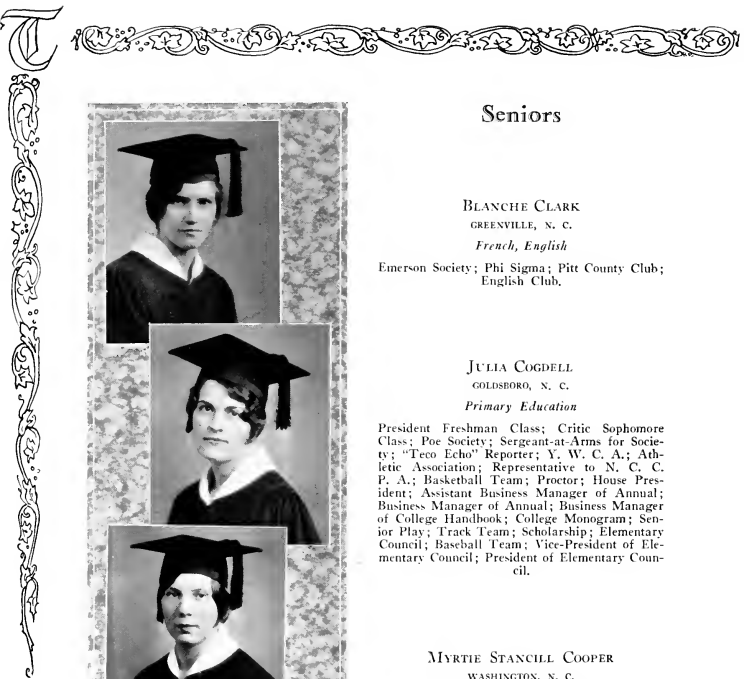
KAY LEE CLOANINGER

KINSTON, N. C.

History, French

Y. W. C. A.; Emerson Society; Assistant Cheer Leader of Class; Delegate to State Convention of Y. M. C. A. and of Y. W. C. A.; College Monogram; Athletic Association; Proctor; Iredell County Club; Lenoir County Club; Y. W. C. A. Cabinet; Delegate to Blue Ridge; Class Basketball Team; Student Council; Statistics; Phi Sigma; Class Play; President of Y. W. C. A.; President of Class (2, 3, 4).





Seniors



BLANCHE CLARK

GREENVILLE, N. C.

French, English

Emerson Society; Phi Sigma; Pitt County Club;
English Club.



JULIA COGDELL

GOLDSBORO, N. C.

Primary Education

President Freshman Class; Critic Sophomore Class; Poe Society; Sergeant-at-Arms for Society; "Teco Echo" Reporter; Y. W. C. A.; Athletic Association; Representative to N. C. C. P. A.; Basketball Team; Proctor; House President; Assistant Business Manager of Annual; Business Manager of Annual; Business Manager of College Handbook; College Monogram; Senior Play; Track Team; Scholarship; Elementary Council; Baseball Team; Vice-President of Elementary Council; President of Elementary Council.



MYRTIE STANCILL COOPER

WASHINGTON, N. C.

Mathematics, Science

Emerson Society; Y. W. C. A.; Athletic Association; Mathematics Club.



VERNA DARE COREY

GREENVILLE, N. C.

Home Economics, Science

Emerson Society; Sigma Omicron Delta; Phi Epsilon.

Seniors

CORA EVELYN CREECH

PINE LEVEL, N. C.

French, History

Lanier Society; Y. W. C. A.; Phi Sigma; Proctor; Glee Club; Johnston County Club.



SARA NINETTA COBB

PARKTON, N. C.

Primary Education

Meredith College; Robeson County Club; Y. W. C. A. Choir; Poe Society; Elementary Council; House President; Assistant Senior Cheer Leader.



CLARA BELLE DAUGHERTY

NEW BERN, N. C.

Home Economics

Emerson Society; Y. W. C. A.; Delta Omicron Sigma; Treasurer of Delta Omicron Sigma; Phi-Epsilon; Craven County Club; "Tecoan" and "Teco Echo" Representative.

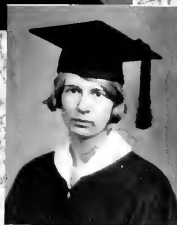


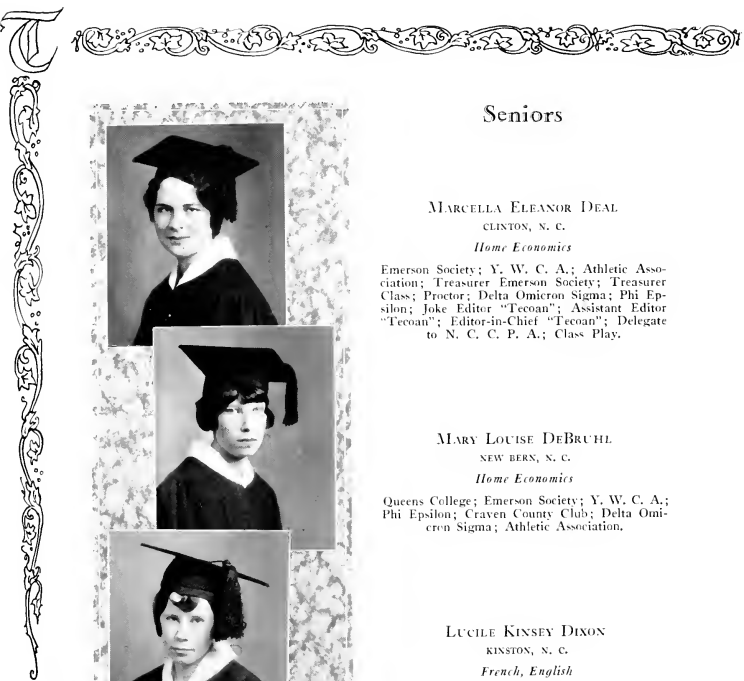
ELIZABETH DEAL

GREENVILLE, N. C.

French, English

Class Critic; Vice-President of Class; Poe Society; Secretary Sophomore Class; President Poe Society; English Club; French Club; Pitt County Club, Secretary and Treasurer; Athletic Association.





Seniors



MARCELLA ELEANOR DEAL
CLINTON, N. C.

Home Economics

Emerson Society; Y. W. C. A.; Athletic Association; Treasurer Emerson Society; Treasurer Class; Proctor; Delta Omicron Sigma; Phi Epsilon; Joke Editor "Tecoan"; Assistant Editor "Tecoan"; Editor-in-Chief "Tecoan"; Delegate to N. C. C. P. A.; Class Play.



MARY LOUISE DEBRUHL
NEW BERN, N. C.

Home Economics

Queens College; Emerson Society; Y. W. C. A.; Phi Epsilon; Craven County Club; Delta Omicron Sigma; Athletic Association.



LUCILE KINSEY DIXON
KINSTON, N. C.

French, English

Poe Society; Y. W. C. A.; English Club; Phi Sigma; "Tecoan" Representative of Phi Sigma.



MILDRED HOBBS EVERETTE
HAMILTON, N. C.

English, History

Emerson Society; English Club; Y. W. C. A.; Emerson Inter-Society Committee.

Seniors

BESSIE FLORIDA FERGUSON

MURFREESBORO, N. C.

Latin, English

Y. W. C. A.; Lanier Society; English Club; Classical Club; Class "Techo Echo" Reporter; Proctor; Y. W. C. A. Cabinet; Glee Club; Class Prophet; Hertford County Club; Hill Meadows Scholarship; Delegate to Blue Ridge Conference; Vice-President Classical Club.



MARJORIE MAE FLOYD

FAIRMONT, N. C.

Home Economics

Y. W. C. A.; Poe Society; President Roberson County Club; Delta Omicron Sigma; Athletic Association.



MILDRED GILBERT

CRIFTON, N. C.

Primary Education



HELEN LORRAINE GUTHRIE

NEW BERN, N. C.

Intermediate Education

Secretary Craven County Club; "Teco Echo" Reporter Emerson Society; Student Council; Inter-Society Committee; President Elementary Education Council; Vice-President Senior Class; Emerson Society.



Seniors



JANIE GOLD HARDEE
GREENVILLE, N. C.

Primary Education

Emerson Society; Athletic Association; President
Athletic Association; "Tecoan" Representative;
Wearer of Letter; Captain Basketball Team;
Track Team; Baseball Team; Y. W. C. A.;
Elementary Council; "Tecoan" Representative
Elementary Council; Pitt County Club; Proctor;
Senior Play.



LUCILE HEARNE
GREENVILLE, N. C.

Science, Geography



ANNIE JANE HINSON
MT. PLEASANT, N. C.

Grammar Grade

Emerson Society; Elementary Council; Athletic
Association.



MARTHA ELIZABETH HODGES
WASHINGTON, N. C.

Intermediate Education

Emerson Society; Y. W. C. A.; Beaufort County
Club; Elementary Education Council; Athletic
Association.

Seniors

HELEN HOGGARD
HARRELLSVILLE, N. C.

MARY EVELYN JENNINGS
ELIZABETH CITY, N. C.

Latin, Mathematics

Y. W. C. A.; Poe Society; Pasquatank County Club; Athletic Association; English Club; Proctor; Marshal; U. G. Representative Y. W. C. A.; Albemarle District Club; Mathematics Club; Classical Club; Representative to Blue Ridge; President Y. W. C. A.; Student Government.

LUCILE KEE
PLEASANT HILL, N. C.

Elementary Education

Poe Society; Y. W. C. A.; Athletic Association; Elementary Education Council; Proctor; Northampton County Club.

SONIA BELLE LAMM
WILSON, N. C.

Mathematics, Science

Poe Society; Y. W. C. A.; Treasurer Poe Society; Mathematics Club; Phi Epsilon; Student Volunteer Band; Wilson County Club; "Tecoan" and "Teco Echo" Reporter for Wilson County Club; Debater for Poe Society; Senior Play.



Seniors



LUCY JUSTINE LANE

DOVER, N. C.

Primary Education

Emerson Society; Y. W. C. A.; Craven County Club; Emerson Society; Athletic Association; Elementary Education Club; Proctor.



RUTH ELIZABETH LEMMOND

WAXHAW, N. C.

English, Latin

Y. W. C. A.; Lanier Society; Athletic Association; English Club; Classical Club; Union County Club; Class Poet; Class Secretary; Delegate to Student Volunteer Conference; Managing Editor "Teco Echo"; Editor-in-Chief "Teco Echo"; Delegate to N. C. C. P. A.; Delegate to S. P. A.



MARY LENA LINEBERGER

MARSHALLBERG, N. C.

English, History

Poe Society; Mars Hill College; Proctor; Inter-Society Debater; English Club; Vice-President Y. W. C. A.; Pitt Scholarship; Carteret County Club; Inter-Society Committee; "Tecoan" Reporter for English Club.



LILLIAN MADRY

ROCKY MOUNT, N. C.

Grammar Grade

Y. W. C. A.; Poe Society; Elementary Council; Louisberg College.

Seniors

JULIA ELIZABETH MATTHEWS

WILLARD, N. C.

Grammar Grade

Athletic Association; Poe Society; Elementary Education Council; Y. W. C. A.; Basketball Team.



ELIZABETH VIRGINIA MAYO

GREENVILLE, N. C.

French, History

Emerson Society; Marshal; Statistics; Phi Sigma; Pitt County Club.



MATTIE VINES MAYO

GREENVILLE, N. C.



ANNA MADELEINE McCAIN

WAXHAW, N. C.

Mathematics, Science

Y. W. C. A.; Athletic Association; Lanier Society; Phi Epsilon; Mathematics Club; Union County Club; Student Volunteer Band; Basketball Team; "Tecoan" Representative; President Lanier Society; Inter-Society Committee; Senior Play.



Seniors



EDNA MARIE MCHAN

ALMOND, N. C.

History, English

Emerson Society; Y. W. C. A.; Athletic Association.



ELBA LOUISE MCGOWAN

GREENVILLE, N. C.

French, English

Secretary Class; Emerson Society; Athletic Association; English Club; Phi Sigma; Cheer Leader Sophomore Class; Statistics.



EARTHA MITCHELL

COLERAIN, N. C.

Grammar Grade

Poe Society; Class Cheer Leader; Treasurer Bertie County Club; Assistant College Cheer Leader; Cheer Leader Poe Society; "Teco Echo" Staff; Marshal; Y. W. C. A.



JESSIE LEE MORRIS

ATLANTIC, N. C.

Mathematics, English

Poe Society; Y. W. C. A.; Athletic Association; Basketball Team; English Club; President English Club; Carteret County Club; Marshal.

Seniors

ANNIE LEE MORGAN

SPRING HOPE, N. C.

Grammar Grade

Lanier Society; Y. W. C. A.; Athletic Association;
Elementary Education Council; Alumnae
Secretary.

FRANCES JAMES MURRAY

LAURINBURG, N. C.

French, English

Flora Macdonald College; Basketball Team;
Athletic Association; Class Treasurer.

ERNESTINE PARHAM

OXFORD, N. C.

Primary Education

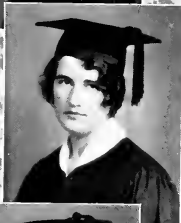
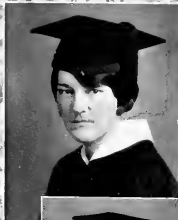
Meredith College; Emerson Society; Y. W. C.
A.; Granville County Club; Elementary Council.

CATHERINE ROBASON PATRICK

WASHINGTON, N. C.

Latin, French

"Tecoan" Representative; Basketball Team; Y.
W. C. A.; Student Volunteer Band; Athletic As-
sociation; Violin Ensemble; Beaufort County
Club; Phi Sigma; President Classical Club.



Seniors



RUTH CALDWELL PIERCE

SALISBURY, N. C.

Grammar Grade

Western Carolina Teachers College; Poe Society; Y. W. C. A.; Elementary Education Council.



EDITH RANDOLPH QUINERLY

GREENVILLE, N. C.

Grammar Grade

Poe Society; Elementary Council; Pitt County Club.



MILDRED CATHERINE SASSER

GOLDSBORO, N. C.

Home Economics

Treasurer Poe Society; "Tecoan" Representative for Class; Proctor; Y. W. C. A.; Treasurer Delta Omicron Sigma; Student Volunteer Band; Phi Epsilon; Wayne County Club; Glee Club; Student Council; Y. W. C. A. Choir; Entertainment Committee.



EUNICE FELTON SETZER

MAIDEN, N. C.

Science, History

Poe Society.

Seniors

JEANNETTE SSSOMIS

WINDSOR, N. C.

Primary Education

Emerson Society; Y. W. C. A.; Choir; Secretary Normal Class; Chief Marshal; Secretary Student Government Association; Budget Committee; Cheer Leader; Representative at S. I. A. S. G. at Newcombe College; Representative at Y. W. C. A. Conference at Blue Ridge; President Student Government Association.



ELOISE SCOTT

ROCKY POINT, N. C.

Mathematics, Science

Y. W. C. A.; Poe Society; Mathematics Club; Phi Epsilon; Secretary Poe Society; Vice-President Mathematics Club; Cape Fear Club.



EVA SCOTT

ROCKY POINT, N. C.

Home Economics

Y. W. C. A.; Athletic Association; Delta Omicron Sigma; Basketball Team; Poe Society; Secretary Delta Omicron Sigma; Cape Fear Club.



IRENE SCOTT

ROCKY POINT, N. C.

Home Economics

Y. W. C. A.; Athletic Association; Delta Omicron Sigma; Poe Society; "Teco Echo" Staff; Phi Epsilon; Cape Fear Club.



Seniors



ETHEL MILLINGTON SHELTON

SPEED, N. C.

Primary Education

St. Mary's; Edgecomb County Club; Glee Club;
Y. W. C. A. Choir; Poe Society; Elementary
Council; Vice-President Student Government;
Y. W. C. A.



CATHERINE SMITH

GREENVILLE, N. C.



BUNNIE ELIZABETH SPEARS

GOLDSBORO, N. C.

Home Economics

Y. W. C. A.; Poe Society; Athletic Association;
Wayne County Club; Delta Omicron Sigma;
Proctor; Phi Epsilon; President Phi Epsilon;
Student Council.



LILLIAN WOOD SUMMERLIN

MT. OLIVE, N. C.

History, English

Emerson Society; Y. W. C. A.; Wayne County
Club; English Club.

Seniors

ALIDA LEE SWINDELL
SWAN QUARTER, N. C.

Primary Education

Emerson Society; Y. W. C. A.; Athletic Association.



MARTHA TRAYNHAM
FAIRMONT, N. C.

History, Science

Y. W. C. A.; Poe Society; Phi Epsilon; Proctor;
President Roberson County Club.



ANNIE ELAINE TUNNELL
SWAN QUARTER, N. C.

English, French

Poe Society; Y. W. C. A.; Hyde County Club;
Student Council; English Club; Phi Sigma;
Editor-in-Chief Student Handbook; Assistant
Editor "Teco Echo"; Vice-President Poe Society.



ANNA BELLE TYSON
AYDEN, N. C.

Home Economics

Poe Society; Y. W. C. A.; Pitt County Club;
Delta Omicron Sigma.



Seniors



BETTY ANN UZZELL

BONITA SPRINGS, FLA.

History, English

Y. W. C. A.; Poe Society; English Club; Athletic Association.



DOROTHY WARD

GREENVILLE, N. C.



ELIZA LARUE WALTERS

LA GRANGE, N. C.

Home Economics

Y. W. C. A.; Emerson Society; Freshman Council Representative; Delta Omicron Sigma; Phi Epsilon; Proctor; Secretary Phi Epsilon; Associate Editor "Tecoan"; President Delta Omicron Sigma; Delegate to N. C. C. P. A.; Delegate to National Home Economics Association in Boston, Mass.; Editor "Tecoan."



RUTH WHISONANT

SHELBY, N. C.

Primary Education

Seniors

DAISY WHICHARD
GREENVILLE, N. C.



HELEN G. WHITE
WINFALL, N. C.
History, French

Lanier Society; Phi Sigma; Vice-President Y.
W. C. A.; Albemarle County Club.



CHARLOTTE WHITE
POLLOCKSVILLE, N. C.
Primary Education

Lanier Society; Y. W. C. A.; Athletic Association.



MARY GRACE WHITLEY
MIDDLESEX, N. C.
Home Economics

Treasurer Emerson Society; Proctor; Delta Omicron Sigma; Y. W. C. A.; Athletic Association.



Seniors



KATHERINE VIRGINIA WHITEHURST
SOUTH MILLS, N. C.

History, English

"Teco Echo" Reporter; Proctor; Cabinet; Class Critic; Treasurer Y. W. C. A.; Secretary Class; Albemarle District Club; English Club; Poe Society.



DOROTHY CARR WILLIAMS
FARMVILLE, N. C.

Mathematics, Science

Poe Society; Mathematics Club; Y. W. C. A.; Secretary-Treasurer Mathematics Club; Class Play.



LILLIAN IRIS WILLIAMS
KINSTON, N. C.

Grammar Grade

Poe Society; Y. W. C. A.; Athletic Association; Elementary Education Council; Lenoir County Club.



IVA ROCHELLE WILLIS
ATLANTIC, N. C.

French, English

Y. W. C. A.; Basketball Team; Athletic Association; Carteret County Club; Poe Society.

Seniors

NANNIE ESTHER WILLIFORD

ELM CITY, N. C.

English, History

Emerson Society; Wilson County Club; Y. W.
C. A.; Proctor; Athletic Association.



LINA WORTHINGTON

WINTERVILLE, N. C.

History, Science

Y. W. C. A.; Poe Society; Monogram Club;
Pitt County Club; Athletic Association.

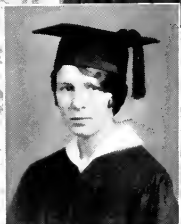


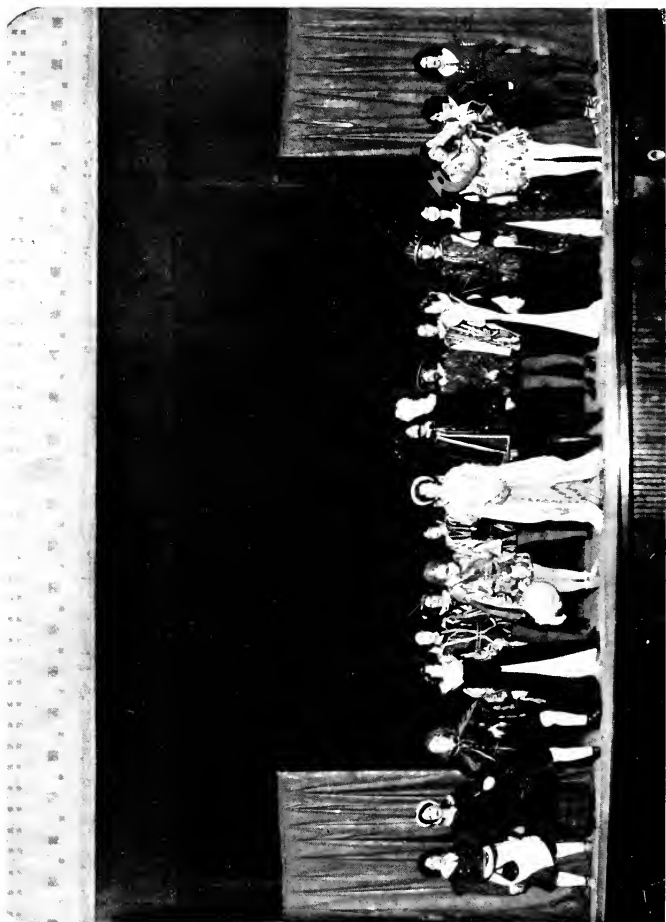
FRANCES YELVERTON

FREMONT, N. C.

Home Economics

Delta Omicron Sigma; Phi Epsilon; Louisburg
College; Lanier Society.





SENIOR PLAY

The
Junior
Class





A. O. JUNIOR and MARGARET JOYCE CLARKE
Junior Class Mascots

Colors: Gold and White

Motto: "Not to the top, but climbing."

Flower: Daisy

Junior Class Poem

*Behold our Alma Mater,
In splendid raiment dressed,
Upon her brow she wears a crown,
A star upon her breast.
A beacon of light she sent to us
From out her azure dome,
Bidding us to enter
And adopt her as our home.
She imparts to us a message,
In solemn tones and low:
"You are 'not at the top, but climbing'—
Your journey treacherous and slow."
Lead onward, O Alma Mater!
Lead onward, day by day!
We follow, as humble daughters should—
Proud mother, lead the way!*

KATHERINE LEMMOND.



Junior Class Officers

- HANNAH TURNAGE *President*
- JOHNIE GREY CURRIN *Vice-President*
- MARTHA WHITEHURST *Secretary*
- MARY L. SMITH *Treasurer*
- ALICE MORGAN *S. G. Representative*
- LELA GORDON *Teco Echo Reporter*
- MILDRED WHITEHURST *Tecoan Representative*
- LELA GORDON *Cheer Leader*
- ALMA MCGINNIS *Critic*



Junior Class

MARY ADAMS
MERRY HILL, N. C.

LAMINA BAKER
PACTOLAS, N. C.

ELEANOR BARR
GREENVILLE, N. C.

GRACE A. BAZEMORE
WINDSOR, N. C.

SADIE BELK
WINGATE, N. C.

BEATRICE BOYD
WASHINGTON, N. C.

ANNIE LAURIE BRINKLEY
DOVER, N. C.

MARGARET BRYAN
LA GRANGE, N. C.

ANNA CLARK
WARRENTON, N. C.

LUCILE COLE
BURLINGTON, N. C.

Junior Class

JOHNIE GREY CURRIN
GREENVILLE, N. C.

MARY ELLA CUTLER
WASHINGTON, N. C.

VIRGINIA DAVIS
WARRENTON, N. C.

LARUE DIXON
GRIFTON, N. C.

MIRIAM EDGERTON
ROANOKE RAPIDS, N. C.

MABELLE FITTS
MACON, N. C.

DORIS FREEMAN
POWELLSVILLE, N. C.

GENEVA LOU FRANKLIN
RALEIGH, N. C.

FANNIE PEARL FULCHER
OCRACOKE, N. C.

GRACE GARDNER
GOLDSBORO, N. C.





Junior Class

ANNIE GARRIS
LITTLEFIELD, N. C.

LELIA GORDON
PILOT MOUNTAIN, N. C.

JOSEPHINE GRANT
GARYSBURG, N. C.

RENA GRANT
SELMA, N. C.

LENORA ELIZABETH GRIFFIN
WILMINGTON, N. C.

ESTHER MAE GRIFFIN
PINETOPS, N. C.

EVELYN GRIFFIN
WOODLAND, N. C.

HELEN GRIFFIN
WOODLAND, N. C.

VERLA LEE GRIFFIN
MONROE, N. C.

BESSIE GREY GRISSOM
HARRELLSVILLE, N. C.

Junior Class

KATHERINE GROSS
GREENVILLE, N. C.

VERNA HARDY
LA GRANGE, N. C.

BERNICE HARRELL
HARRELLSVILLE, N. C.

SADIE HARRELL
MERRY HILL, N. C.

JOSIE HARRISON
WILSON, N. C.

MAGGIE HINSON
MOUNT PLEASANT, N. C.

SELMA GREY HOOKS
KENLEY, N. C.

ANNIE LAURIE HUNT
WAKE FOREST, N. C.

KATHLEEN JOHNSON
KERR, N. C.

KATHLEEN M. JOHNSON
CURRITUCK, N. C.





Junior Class

OLLIE JONES
WINGATE, N. C.

FERRY LANE KNOX
HUNTERVILLE, N. C.

MARIAN LANGLEY
ORIENTAL, N. C.

BEULAH LASSITER
RICH SQUARE, N. C.

DELLA LAWRENCE
TARBORO, N. C.

BETSY LEE
FREMONT, N. C.

KATHERINE LEMMOND
WAXHAW, N. C.

ISABEL LENNON
MANTEO, N. C.

ROLAND LEWIS
BETHEL, N. C.

BEULAH MAYO
MESIC, N. C.

Junior Class

ALMA MCGINNIS
GREENVILLE, N. C.

ORELLE McLAMB
SALEMBURG, N. C.

MILDRED McLAWHORN
VANCEBORO, N. C.

MABEL MENEFEF
GREENVILLE, N. C.

IRENE MIZELLE
SNOW HILL, N. C.

ALICE LILLON MORGAN
WINGATE, N. C.

BETH MORRISON
STATESVILLE, N. C.

HELEN MOSELY
KINSTON, N. C.

MIRIAM MULLEN
BUNN, N. C.

MARGARET MYERS
SALEMBURG, N. C.





Junior Class

LETHA NEWTON
ELM CITY, N. C.

LAURA OVERTON
GREENVILLE, N. C.

ELMA PARRISH
CLIO, S. C.

ADDIE PINNELL
WARRENTON, N. C.

RUTH PITTMAN
FORKLAND, N. C.

WILLIE POWELL
FAIRMONT, N. C.

MILDRED POWELL
SUNBERRY, N. C.

ABRIGAIL ROBERTS
GREENVILLE, N. C.

EDNA SMITH
GREENVILLE, N. C.

MARY LOUISE SMITH
CHARLOTTE, N. C.

Junior Class

HELEN SPRULL
COLUMBIA, N. C.

RUBY STEWART
MONROE, N. C.

JEWELL STONE
EFFINGHAM, S. C.

MIRANDA STRICKLAND
SPRING HOPE, N. C.

MILDRED STROUD
KINSTON, N. C.

GLADYS SWINDELL
WASHINGTON, N. C.

FLORENCE TAFT
GREENVILLE, N. C.

HANNAH TURNAGE
KINSTON, N. C.

MARGARET VICK
KELFORD, N. C.

VIOLA WALKER
BATTLEBORO, N. C.





Junior Class

EMMA WATSON
WILDWOOD, N. C.

EDNA THOMAS WEST
DOVER, N. C.

MARTHA VIVIAN WHITEHURST
PARMELE, N. C.

MILDRED WHITEHURST
BETHEL, N. C.

DORIS WOODARD
PENDLETON, N. C.

LUCY WYNNE
WASHINGTON, N. C.

LUCILE YELVERTON
FOUNTAIN, N. C.

. The .
Sophomore
Class





ANN WARLICK HILLMAN
Sophomore Class Mascot

Sophomore Class Poem

*We, the Class of Thirty-two,
Take these ideals, both good and strong,
To guide us on. Be just; be true;
Work with a will to right the wrong.
And to our Alma Mater dear
We give our deep-felt loyalty;
Our love to Her whom we revere—
Our hope to serve Her steadily.*

Nancy Jane Poole.



Sophomore Class

OFFICERS

HAZEL FUTRELL	President
ALICE TILLEY	Vice-President
OLIVE GILBERT	Secretary
MARGUERITE LANE	Treasurer
MILLIE MOORE	S. G. Representative
MARJORIE FLYTHE	Teco Echo Reporter
SHIRLEY MILLER	Tecoa Representative
KATHLEEN MCDANIEL	Cheer Leader
CATHERINE FLAUGHER	Cheer Leader
CULLIE STAFFORD	Critic
NANCY JANE POOLE	Poet



Sophomore Class

MARGARET ALLEN
 ELIZABETH BAIN
 LELA BARNHILL
 EULA BASS
 LELA ELLEN BELK
 LOUISE BRAKE
 ANNIE LEE BRYANT

LESSIE BRYANT
 RUTH BURKETTE
 JANETTA CAIN
 MARGARET CARLTON
 MARY BELLE CLARK
 CAROLYN CONNER
 GENEVA DAIL
 JULIA GRIFFIN

ELIZABETH DAVENPORT
 PATSY DAVENPORT
 CATHERINE FLAUGHER
 MARJORIE FLYTHE
 HAZEL FUTRELL
 OLIVE GILBERT
 LEAH GODWIN



Sophomore Class

MARJORIE GRIFFIN
 TINY HAMMOND
 RUTH HARDY
 NORA LEE HARRIS
 LOUISE HERRING
 ISABEL HUNT
 ELOISE HYDE

MILDRED IVES
 MAGGIE INMAN
 MARJORIE JACKSON
 SUSIE JENKINS
 LINA JOHNSON
 SARA JOHNSON
 IRENE JONES
 MARGUERITE LANE

LOUISE JOYE
 MILDRED JOYNER
 MARY KELLY
 RUTH KING
 IRMA KNOWLFS
 TUCKER LYNCH
 ETHEL LITTLE



Sophomore Class

JAMIE MARTIN
 EDITH MITCHELL
 SHIRLEY MILLER
 LOLA MINGES
 ELLA MOORE
 MILLIE MOORE
 PAULINE McCULLEN

EDNA McCULLEN
 KATHLEEN McDANIEL
 RACHEL McKEY
 MAGGIE McPHERSON
 OLIVE PARKER
 RUTH PICKLESIMER
 NANNIE POLLOCK

NANCY POOLE
 RUTH NEAL REDFERN
 EMILY REESE
 RUTH ROWE
 ROSLYN SATTERWHITE
 ERMA SMALL
 NANNIE SMITH

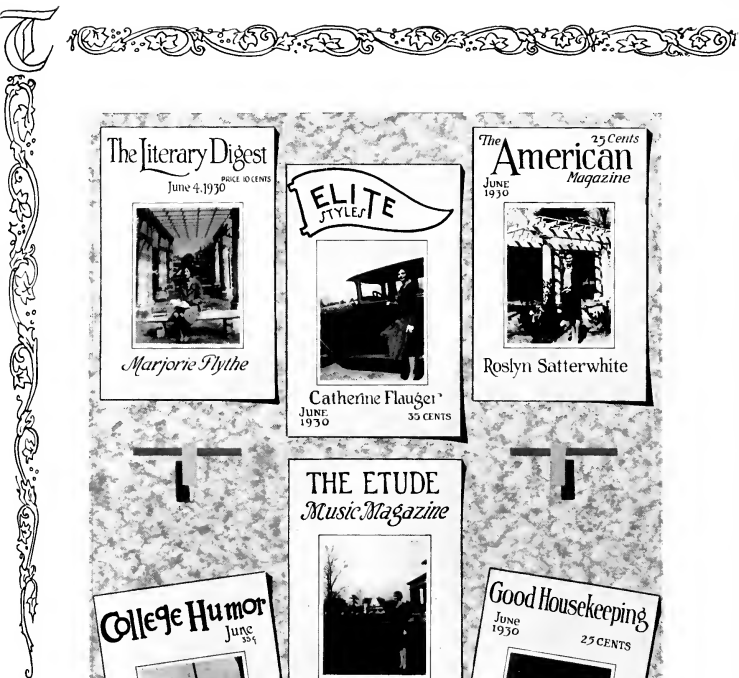


Sophomore Class

RUBY SMITH
 GRACE SNELL
 RUBY SPRATT
 CULLIE STAFFORD
 MARY E. STEVENSON
 ELSIE TAYLOR

ALICE TILLEY
 ZELOTA TRIPPE
 CAROLYN TYSON
 ANNIE D. UPCHURCH
 HANNAH WISE WARD
 LELA WHITEHURST
 HAZEL WHITEHURST
 HELEN WILLIAMS

SARA WILLIAMS
 LUCY WILLIFORD
 THELMA WILSON
 RENA WOODARD
 VERA WORTHINGTON
 EVELYN WRIGHT



The Literary Digest

June 4, 1930 PRICE 10 CENTS



Marjorie Flythe

ELITE
STYLES



Catherine Flauger

JUNE 1930 35 CENTS

The American 25 Cents
Magazine

JUNE 1930



Roslyn Satterwhite

College Humor

June 30¢



Marguerite Lane

THE ETUDE
Music Magazine



Alice Tilley

JUNE, 1930

Price 25 cents \$2.00 A Year

Good Housekeeping

June 1930

25 CENTS



CULLIE STAFFORD

. The .
Freshman
Class





IONE HOOKER BRADSHER
Freshman Class Mascot



Freshman Class

Colors: Green and White

Class Flower: Lily-of-the-Valley

Motto: "To strive; to seek; to find; but not to yield."

OFFICERS

MARGARET MURCHISON	President
ZELL FOLEY	Vice-President
NINA WALSTON	Secretary
DOROTHY SLOAN	Treasurer
KARA LYNN COREY	Critic
HUNTER SPEARS	Student Council Representative
TENNY THORNTON	Cheer Leader
JULIA FARRIOR	Tecoan Representative
HAZEL WALSTON	Teco Echo Reporter





CLASS

Freshman Class Members

MAXINE ALLEN	MARJORIE GRIFFIN	MARGARET MURCHINSON
FRANCES ALLISON	BERENICE GRIMES	ZULEKIA NELSON
JUANITA ARTHUR	EDRIE HALL	DOLLIE PARKER
JAMES T. ATKINSON	JANE HALL	ETHEL C. PARKER
NELL AUTRY	LAURA K. HAMMOND	EONA PEELE
ANNIE MAE BAKER	LENA EVELYN HELLEN	FLORENCE PIGOTT
MARGARET BALDWIN	VIVIAN HELLEN	MARY BELLE RABB
INEZ BECTON	JEWELL HERRING	NINA B. REEL
MARY BUFORD BEST	MARICE HESTER	EVELYN ROGERS
ELIZABETH BIDDLE	HELEN HICKS	BETTY BRUCE ROUSE
MARY BRILEY	LILLIE HINSON	ELIZABETH ROYLAND
VERA BROUGHTEN	RUTH HOLLOWELL	LILLIAN F. SAVAGE
JULIA HOLLAND BUTLER	EVELYN HOWELL	ADAH B. SESSOMS
LDREE CAGLE	ADA HUDSON	DOROTHY SLOAN
HELEN CARLTON	VERA JENNINGS	MARIE SPEAR
REBECCA CHENAULT	REBECCA JOHNSON	HUNTER SPEARS
CLAFTON CHERRY	MARGARET JOHNSON	CAROLYN SPENCER
THELMA CHERRY	DORIS MAY JONES	BEATRICE STALLS
ELLEN CLIFTON	KATHERINE JONES	BLANCHE C. STATON
VIVIAN COOKE	MARY LOUISE JONES	JESSE STRICKLAND
KARA LYNN CAREY	VIRGINIA JONES	JACQUELINE SWINDELL
GRACE COX	LOUISE JORDAN	HAZEL TAYLOR
MARGARET C. DAUGHTERY	VIRGINIA KIRBY	MARY TAYLOR
HILDA DAVIS	EDNA KNOWLES	RUBY TAYLOR
MILDRED DAVIS	DOROTHY KNOX	MARY E. TATTERTON
MARY EDNA DOBSON	BIRDIE DELL LAMM	TENNYSS THORNTON
EMMA DOZIER	MARY SUE LANGSTON	EVELYN TOLAR
ALICE MAE ELKS	MABEL LEWIS	BERTHA WALSTON
JULIA FARRIOR	MAMIE RUTH LONG	HAZEL M. WALSTON
BERNEICE FIELDS	MARY MCCORMICK	NINA WALSTON
MARGARET FISHER	BESSIE McLAMB	HAZEL WARD
JENNIE L. FLEMING	LOIS McLAMB	LOLA WATSON
PAULINE FLOYD	IRENE McLAURIN	INA WHITAKER
IRIS P. FLYTHE	MARY MANN	MARY F. WHITEHURST
ZELLE FOLEY	GLADYS MEASLEY	CHRISTINE WILKINSON
KATIE MANN GIBBS	BEULAH MEWBORN	DOROTHY W. WILLIAMS
ELLA BRITT GILBERT	IMA E. MEWBORN	GRACE WILLIFORD
EVELYN GILLIAM	DOROTHY MILLIS	SHIRLEY WILSON
CORINNE GOOCH	SYBIL MITCHELLE	VIRGINIA WOODBURY
MILDRED GRAY	CLARA BELLE MEDLIN	JUANITA WORSLEY
EUNICE GREEN	ELIZABETH MOORE	JUANITA YOUNG

The Senior Normal Class





KNOTT PROCTOR, JR.
Mascot of Senior Normal Class

Senior Normal Class

Colors: Pink and White

Flower: Carnation

Motto: "Live your best, act your best today; for today is the sure preparation for tomorrow"

Poem

*All hail, East Carolina Teachers College!
You swung your famous portals wide
And opened up your halls of pride
That we might enter and abide—
The Class of 1930!*

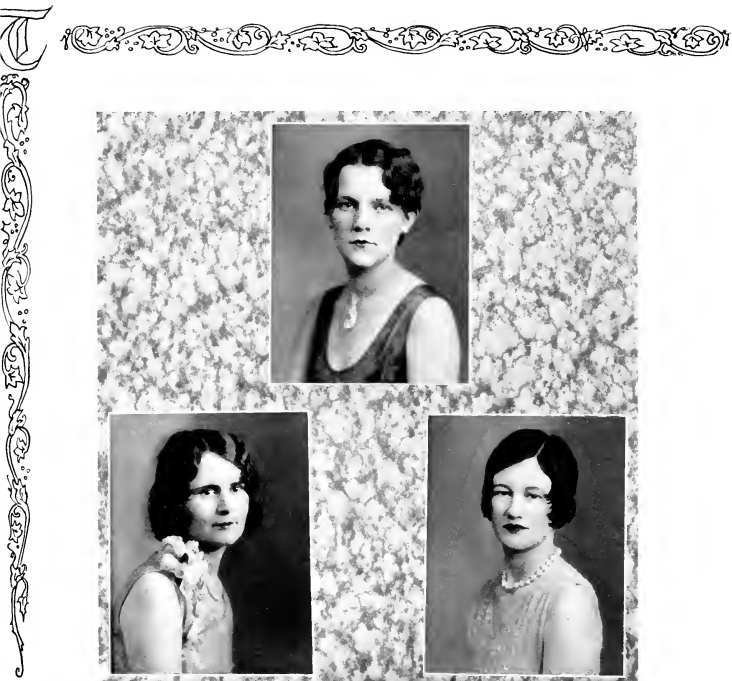
*Two years have fled on golden wings
Since we entered these portals dear
To prepare ourselves for the best things e'er
That life distributes, year by year,
For the Class of 1930!*

*To thee, East Carolina Teachers College,
We promise our faith, our fidelity,
Our service, to enhance thy celebrity,
Our supplications for thy longevity,
The Class of 1930!*

WILLIE MAE WHITT.



CASSIE CARTY, *Class President*



Senior Normal Class

OFFICERS

CASSIE CARTY	<i>President</i>
MARGARET VAUGHN	<i>Vice-President</i>
MABEL COLLIER	<i>Secretary</i>
HALLIE LEE	<i>Treasurer</i>
MARGARET SILVER	<i>Cheer Leader</i>
KATE MURRAY	<i>Tecoan Representative</i>
NELL MARSH	<i>Teco Echo Reporter</i>
BETSY BAIRD	<i>Critic</i>

Senior Normal

Class Roll

COURTNEY GORDAN ABBOTT
SOUTH MILLS, N. C.

Poe Society; Y. W. C. A.; Albemarle District Club.

MARGARET ABBOTT
GRIFTON, N. C.

Emerson Society; Y. W. C. A.

RUTH GERTRUDE ADCOCK
MCADENVILLE, N. C.

Y. W. C. A.; Emerson Society; Gaston County Club.

MATTIE LUCILE ALLEN
FOUR OAKS, N. C.

Poe Society; Student Club; Y. W. C. A.; Johnston County Club.

ANNE GERALDINE ANDREWS
WENDELL, N. C.

Lanier Society; Y. W. C. A.; Wake County Club.

BETSY BAIRD
OXFORD, N. C.

Emerson Society; Y. W. C. A.; House President; Granville County Club.

ROSA JANIE BARBER
BISCOE, N. C.

Y. W. C. A.; Emerson Society; Athletic Association.

HELEN BARKER
COLERAIN, N. C.

Poe Society; Y. W. C. A.; Athletic Association; Bertie County Club.

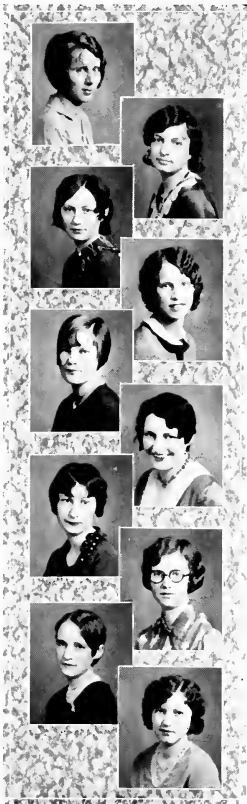
VIRGINIA BARNHILL
ROBERSONVILLE, N. C.

Emerson Society; Y. W. C. A.

LOUISE BARTHOLOMIEW
ROCKY MOUNT, N. C.

Emerson Society; Y. W. C. A.





Senior Normal

Class Roll

LILLIAN BASS
LUCAMA, N. C.
Poe Society.

MARY BELLE BASS
DUNN, N. C.
Emerson Society.

DELMA BAZEMORE
LEWISTON, N. C.
Poe Society; Athletic Association; Y. W. C. A.

GRACE MOORE BAZEMORE
WINDSOR, N. C.
Emerson Society; Y. W. C. A. Choir; Y. W. C. A.

ESSIE MAE BELK
MONROE, N. C.
Emerson Society; Union County Club.

LUCY HARRIETTE BEST
GOLDSBORO, N. C.
Y. W. C. A.; Lanier Society; Athletic Association; Wayne County Club; "Tercio Echo" Reporter; Glee Club; "Tee-oon" Representative.

HELEN ELIZABETH BLACKMORE
WARSAW, N. C.
Emerson Society; Athletic Association; Wearer of College Monogram.

LONA ELIZABETH BONNER
SWAN QUARTER, N. C.
Y. W. C. A.; Poe Society; Secretary of Hyde County Club; Secretary of Red-Headed Club.

EDNA BOOMER
SWAN QUARTER, N. C.
Emerson Society; Vice-President of Hyde County Club; Y. W. C. A.

NANCY LOUISE BOWEN
LAURINBURG, N. C.
Y. W. C. A.; Poe Society; Society Marshal; Athletic Association; Glee Club; College Quartet; Scotland County Club.

Senior Normal

Class Roll

NAOMI VELMA BOYKIN
TARBORO, N. C.

Poe Society; Edgecomb County Club; Y. W. C. A.

MINNIE LELA BLALOCK
NASHVILLE, N. C.
Emerson Society.

FLORA ROSS BRIDGES
NASHVILLE, N. C.

GERTRUDE HILLIARD BRIGHT
HOOKERTON, N. C.

Emerson Society; Y. W. C. A.

ELLA RINKER BROWN
KINSTON, N. C.

Lanier Society; Critie Lanier Society; Athletic Association; Treasurer, Athletic Association; Y. W. C. A.

LLEWELLYN BROWN
COLERAIN, N. C.

Poe Society; Y. W. C. A.; Bertie County Club.

BERTHA BUNTING
PALMYRA, N. C.

Y. W. C. A.; Emerson Society; Athletic Association; Halifax County Club.

WINNIE BELLE BUNN
ZEBULON, N. C.

Lanier Society; Y. W. C. A.

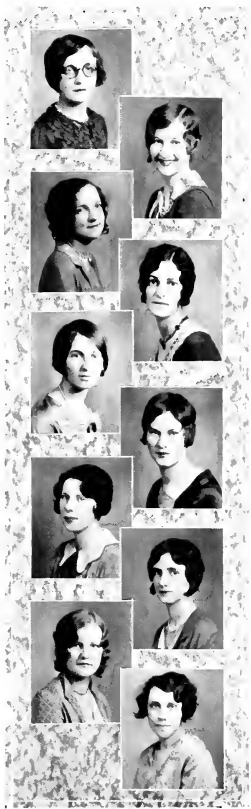
ROSA MAE BURKHEAD
CANDOR, N. C.

Y. W. C. A.; Emerson Society; Glee Club.

HELEN REBECCA BURNETTE
RICH SQUARE, N. C.

Poe Society; Y. W. C. A.; Praetor; Northampton County Club.





Senior Normal

Class Roll

EULA BUTLER
DUNN, N. C.

MARGARET NIXON BYRD
SCOTLAND NECK, N. C.

House President; Proctor; Emerson Society;
Halifax County Club; Y. W. C. A.; Assistant
Business Manager of Hand Book.

LUCY ELIZABETH CAIN
BUIES CREEK, N. C.

Y. W. C. A.; Poe Society; H. B. C. Club; "Teco
Echo" Representative.

CASSIE AUGUSTA CARTY
BELHAVEN, N. C.

Emerson Society; Y. W. C. A.; Athletic Asso-
ciation; "D" Class President; Proctor.

LILLIAN ELIZABETH CARTER
AHOSSIE, N. C.

Poe Society; Hertford County Club; Y. W. C. A.

FLORELLA ELIZABETH CARROLL
MONROE, N. C.

Emerson Society; Athletic Association; Y. W.
C. A.; Union County Club; Monogram Club.

MARY ELIZABETH CHANDLER
BLANCHE, N. C.

Emerson Society; Y. W. C. A.

EMILY GRAY CLARKE
VIRGINIA, VA.

Poe Society; Granville County Club.

PHEBE CLARK
REIDSVILLE, N. C.

Emerson Society; Proctor.

HELEN VIRGINIA CHEEK
GREENVILLE, N. C.

Senior Normal

Class Roll

ANNE COLEMAN
REIDSVILLE, N. C.

Emerson Society; Glee Club; Y. W. C. A. Choir;
Secretary-Treasurer of Glee Club.

BEATRICE CHERRY
STOKES, N. C.

Emerson Society.

NELLIE HAZEL CHERRY
STOKES, N. C.

Emerson Society.

EMMA GREY COBB
SHARPSBURG, N. C.

Emerson Society; Wilson County Club.

EVELYN COBB
ELM CITY, N. C.

Emerson Society; Wilson County Club.

IDA PRIDGEN COBB
TARBORO, N. C.

Poe Society; Edgecombe County Club; Y. W.
C. A.; Proctor.

FRANCES VIRGINIA COOKE
KINSTON, N. C.

Poe Society; Y. W. C. A.

MARGARET CHARLOTTE COPELAND
PITTSBORO, N. C.

Poe Society; Y. W. C. A.

NINA COMPTON
MEBANE, N. C.

Poe Society; Glee Club; Student Government
Representative; "Terc Echo" Reporter for Ath-
letic Association.

MABEL COLLIER
WHITEVILLE, N. C.

Y. W. C. A.; Treasurer Columbia County Club;
Poe Society; Proctor; Social Committee H. B.
C. Club; Secretary "D" Class.





Senior Normal

Class Roll

ADA ELIZABETH CONLEY
MARION, N. C.

Emerson Society; Y. W. C. A.; Proctor.

ELIZABETH BRYAN COUNCIL
WHITE OAK, N. C.

Lanier Society; Athletic Association; Y. W. C. A.; H. B. C. Club Vice-President.

JOSEPHINE PHILLIPS COVINGTON
ROCKINGHAM, N. C.

Emerson Society; Y. W. C. A.; Proctor.

LOUISE CORNELIA COVINGTON
ROCKINGHAM, N. C.

Emerson Society; Y. W. C. A. Choir; Y. W. C. A.; Glee Club; Athletic Association.

SARAH JENNINGS COWAND
AULANDER, N. C.

Emerson Society; Y. W. C. A.

LILA MAE CRAWLEY
RAEFORD, N. C.

Poe Society; Y. W. C. A.; Meredith College.

FRANCES CRAIG
GASTONIA, N. C.

House President; Emerson Society; Vice-President Gaston County Club; Proctor.

ANNA VIRGINIA CREDLE
LAKE LANDING, N. C.

Emerson Society.

MARTHA RUBY CREECH
KENLY, N. C.

Poe Society; Johnston County Club; Glee Club; Y. W. C. A.

MILDRED HENRIETTA CRENSHAW
MONROE, N. C.

Athletic Association; Assistant Cheer Leader; Union County Club.



Senior Normal

Class Roll

HELEN ARMFIELD CROWDER
WADESBORO, N. C.

Poe Society; Y. W. C. A.; Y. W. C. A. Choir;
Proctor.

CAROLYN ELIZABETH DEAN
OXFORD, N. C.

Poe Society; Y. W. C. A.; Granville County
Club.

VERLON ELIZABETH DEAN
STOVAL, N. C.

Lanier Society; Y. W. C. A.; Granville County
Club; World Fellowship Committee.

VALDAH COPELAND DEATON
EAGLE SPRINGS, N. C.

Poe Society; Y. W. C. A.; Sandhill Club.

MARGARET ELIZABETH DORSEY
LAURINBURG, N. C.

Poe Society; Y. W. C. A.; Proctor; Scotland
County Club.

MINNIE FRANCES DUNKLEY
VIRGINIA, VA.

Poe Society; Granville County Club.

MARY ELIZABETH DUPREE
FARMVILLE, N. C.

Poe Society; Pitt County Club; Y. W. C. A.

CLARICE ELLERBE
ROBERDEL, N. C.

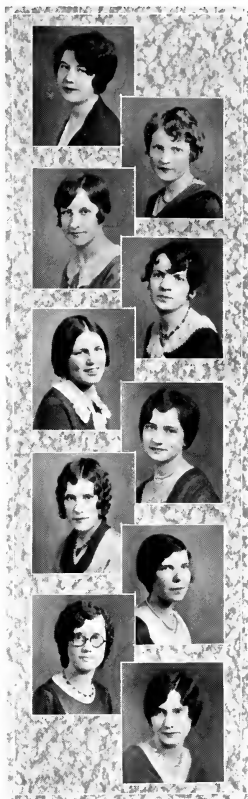
Emerson Society; Y. W. C. A.; "Teevan" Rep-
resentative of Sandhill Club; Student Volunteer
Band.

MERLE FAIRCLOTH
FAYETTEVILLE, N. C.

Y. W. C. A.; Poe Society; Athletic Association;
H. B. C. Club.

ELIZABETH FARLEY
ROXBORO, N. C.

Emerson Society; Y. W. C. A.





Senior Normal
Class Roll

MARGARET FELTON
GATES, N. C.

Poe Society; Athletic Association; Y. W. C. A.;
Student Volunteer Band; Gates County Club;
Y. W. C. A. Choir.

HILDA JAMES FLOWE
ALLEN, N. C.

Poe Society; Y. W. C. A.

WILMA FLOWE
ALLEN, N. C.

Emerson Society; Y. W. C. A.

ELLA MARIE FUTRELLE
RICH SQUARE, N. C.

Poe Society; Y. W. C. A.; Northampton County
Club.

MARIE FLOYD
FAIRMONT, N. C.

Poe Society; Y. W. C. A.; Proctor; Vice-Pres-
ident of Robeson County Club.

MARY LOU FOGLEMAN
BURLINGTON, N. C.

Poe Society.

GEARL DEAN FORD
LOWELL, N. C.

Emerson Society; Gaston County Club; Y. W.
C. A.

GWENDOLYN FORREST
WINTERVILLE, N. C.

Y. W. C. A.; Emerson Society; Athletic Asso-
ciation.

FLAY GADDY
MONROE, N. C.

Emerson Society; Athletic Association; Debat-
ing Team; Basketball Team.

LUCY GAMBILL
HENDERSONVILLE, N. C.

Emerson Society; Y. W. C. A.

Senior Normal

Class Roll

IDA MYRTLE GEDDIE
ERWIN, N. C.

Poe Society; Athletic Association; Y. W. C. A.;
Treasurer of H. B. C. Club; Basketball Team.

VIRGINIA GEORGE
KINSTON, N. C.

Emerson Society; Athletic Association; Y. W.
C. A.

MARGARET GIBSON
LAUREL HILL, N. C.

Scotland County Club; Y. W. C. A.; Poe Society.

NANCY GORDON
ROCKY MOUNT, N. C.

Lanier Society; Advertising Manager of "Teco
Echo"; "D" Play; Marshal; "D" Class Repre-
sentative; Y. W. C. A.; Alternate for Society
Debate.

COURTNEY TEXANNA GORDAN
SOUTH MILLS, N. C.

Y. W. C. A.; Poe Society; Albemarle District
Club.

FRANCES GODDARD
DUNN, N. C.

EMILY FEREBEE GOODING
ORIENTAL, N. C.

Poe Society.

MARY LEE GREENE
INGOLD, N. C.

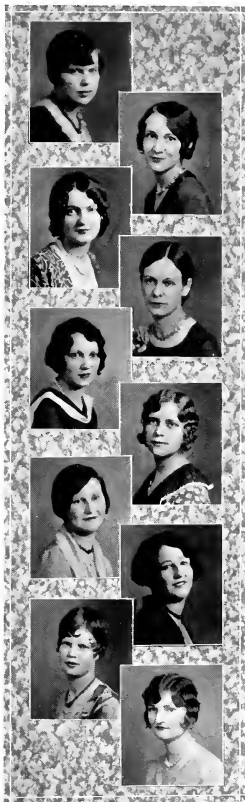
Lanier Society.

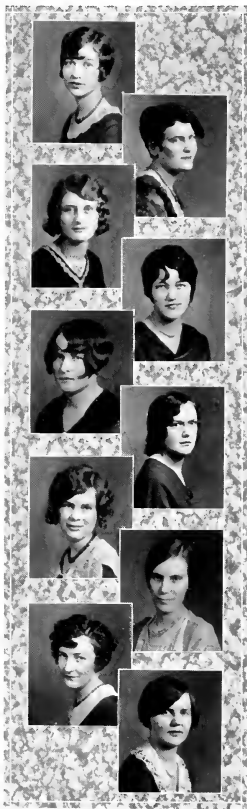
EULA ELIZABETH GRIFFIN
RED OAK, N. C.

Emerson Society; Y. W. C. A.; Y. W. C. A.
Choir.

LYNDA LEWIS GRANT
RIDGEWAY, N. C.

Poe Society; Y. W. C. A.; Athletic Association;
Warren County Club; Basketball Team.





Senior Normal

Class Roll

ANNIE CHRISTINE HALL

BAHAMA, N. C.

Poe Society; Athletic Association; Wearer of College Monogram; Y. W. C. A.; Circulation Manager of "Teo Echo"; Chief Marshal.

DORA MILDRED HAM

PIKEVILLE, N. C.

Lanier Society; Y. W. C. A.; Athletic Association; Class Cheer Leader; Lanier Society Cheer Leader.

ELIZABETH HARDEE

GREENVILLE, N. C.

Emerson Society; Pitt County Club.

ELVA LEE HARDEE

BENSON, N. C.

Lanier Society; Johnston County Club.

MARY WARD HARDY

KINSTON, N. C.

Poe Society.

SELMA HARDY

LA GRANGE, N. C.

Lanier Society; Greensboro College; Vice-President of Lanier Society.

MILDRED LOUISE HARPER

KINSTON, N. C.

Poe Society; Y. W. C. A.

RUTH HAZEL HARRIETT

POLLOCKSVILLE, N. C.

Lanier Society; Y. W. C. A.

DANIE HAYES

ROCKY POINT, N. C.

Poe Society; Y. W. C. A.

NELLIE MAY HENDRICKS

HERTFORD, N. C.

Lanier Society; Y. W. C. A.; Religious Education Committee.

Senior Normal

Class Roll

LOIS HERRING

GREENVILLE, N. C.

Emerson Society; Pitt County Club.

ELIZABETH B. HILL

VIRGINIA, VA.

Poe Society; Y. W. C. A.; Athletic Association.

IRENE B. HILL

WINSTON-SALEM, N. C.

Glee Club; Athletic Association.

EDITH ADELAIDE HICKS

TABOR, N. C.

Poe Society.

WILLIE LEE HOBGOOD

OXFORD, N. C.

Poe Society; Granville County Club; Proctor.

ALETHIA HODGES

WASHINGTON, N. C.

Poe Society.

LOUISE HODGES

WASHINGTON, N. C.

Lanier Society; Y. W. C. A.; Athletic Association.

HELEN HOUSE

BETHEL, N. C.

Poe Society; Pitt County Club; Y. W. C. A.; Athletic Association.

ESTELLE HOLLOWAY

DURHAM, N. C.

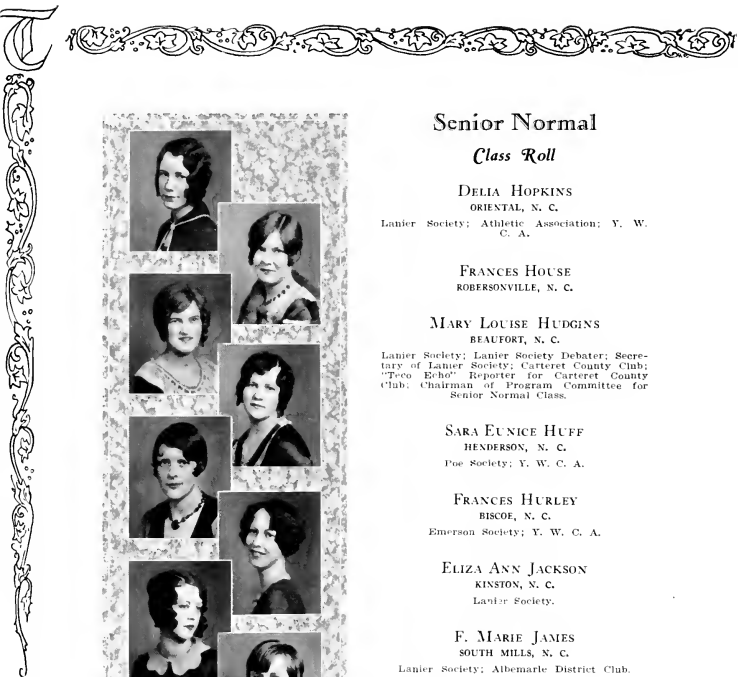
Lanier Society; Y. W. C. A.

MAXINE HOPKINS

ELIZABETH CITY, N. C.

Emerson Society; Athletic Association; Albemarle District Club.





Senior Normal

Class Roll

DELIA HOPKINS

ORIENTAL, N. C.

Lanier Society; Athletic Association; Y. W. C. A.

FRANCES HOUSE

ROBERSONVILLE, N. C.

MARY LOUISE HUDGINS

BEAUFORT, N. C.

Lanier Society; Lanier Society Debater; Secretary of Lanier Society; Carteret County Club; "Teco Echo" Reporter for Carteret County Club; Chairman of Program Committee for Senior Normal Class.

SARA EUNICE HUFF

HENDERSON, N. C.

Poe Society; Y. W. C. A.

FRANCES HURLEY

BISCOE, N. C.

Emerson Society; Y. W. C. A.

ELIZA ANN JACKSON

KINSTON, N. C.

Lanier Society.

F. MARIE JAMES

SOUTH MILLS, N. C.

Lanier Society; Albemarle District Club.

JAVAN JARMAN

MAGNOLIA, N. C.

Y. W. C. A.; Lanier Society; Student Volunteer Band.

HAZEL GRIFFIN JARRELL

GRIFFON, N. C.

Emerson Society.

NELLIE JARVIS

SWAN QUARTER, N. C.

Poe Society; Hyde County Club; Social Committee Hyde County Club; Y. W. C. A.

Senior Normal

Class Roll

RUTH JENKINS

FAIRMONT, N. C.

Poe Society; Y. W. C. A.; Vice-President of
Robeson County Club; W. C. T. College.

ALICE LEE JOHNSON

BENSON, N. C.

Lanier Society; Athletic Association; Johnston
County Club.

WILHELMINA JOHNSON

FOUR OAKS, N. C.

Lanier Society; Johnston County Club.

CHARLOTTE HILDA JONES

TURKEY, N. C.

Poe Society; Y. W. C. A.

ILA MAE JONES

LUCAMA, N. C.

Poe Society; Athletic Association; Y. W. C. A.;
Basketball Team.

MARY SHEPPARD KEEL

GREENVILLE, N. C.

Emerson Society.

MARTHA KERLEY

MORGANTON, N. C.

Lanier Society; Y. W. C. A.

MATILDA KLEIN

WILMINGTON, N. C.

Emerson Society; Y. W. C. A.; New Hanover
County Club.

LOUISE KITTRELL

WINTERVILLE, N. C.

ANNIS LOUISE KNOX

HUNTERVILLE, N. C.

Emerson Society; Y. W. C. A.



Senior Normal

Class Roll

PATTIE MAE LATTA
HILLSBORO, N. C.

Y. W. C. A.; Poe Society; Treasurer of Poe Society.

ELIZABETH GLENN LAWRENCE
ENFIELD, N. C.

Vice-President of Halifax County Club; Athletic Association; Poe Society; Y. W. C. A.

INEZ LEATH
CONWAY, S. C.

Emerson Society; Y. W. C. A.

CALLIE MAE LEE
LINDEN, N. C.

HALLIE LEE
MARSHVILLE, N. C.

Emerson Society; Treasurer of Class; Inter-Society Committee; Student Council; Union County Club; Y. W. C. A.

OCEY LEE
DUNN, N. C.

Emerson Society; Sampson County Club.

WILHELMINA LEE
SWAN QUARTER, N. C.

Poe Society; Y. W. C. A.; Hyde County Club; Treasurer of Hyde County Club.

LOLA PEARL LEONARD
LOUISBURG, N. C.

Poe Society; Y. W. C. A.

MARGARET ELIZABETH LEWIS
FARMVILLE, N. C.

Poe Society; Pitt County Club; Y. W. C. A.

MARJORIE LEIGH LEWTER
ROSEMARY, N. C.

Y. W. C. A.; Athletic Association; Emerson Society; Halifax County Club; Student Government.



Senior Normal

Class Roll

EVELYN GRACE LONG
FRANKLINTON, N. C.
Lanier Society.

SOPHIE WILLIAMS LITTLE
PACTOLUS, N. C.
Emerson Society; Y. W. C. A.; Phi County
Club.

LAURA MAE MARTIN
POLKTON, N. C.
Emerson Society; Athletic Association; Proctor;
Appalachian State Teachers' College.

NELL RUTH MARSH
MARSHVILLE, N. C.
Vice-President of Class; Emerson Society; "Teco
Echo" Reporter; Athletic Association; Union
County Club; Y. W. C. A.

MYRTLE MELTON
TARBORO, N. C.
Poe Society; Edgecombe County Club.

EDNA CATHLEEN MIZELLE
ROPER, N. C.
Athletic Association; Lanier Society; Class
Treasurer; Washington County Club; Marshal;
Y. W. C. A.

PATSY MOUNTAGUE
OXFORD, N. C.
Emerson Society; Proctor; Y. W. C. A.

LUCILE ELIZABETH MOORE
KINSTON, N. C.
Emerson Society; Edgecombe County Club.

MAUDE ELIZABETH MOORE
STOKES, N. C.
Poe Society.



Senior Normal

Class Roll

SALLIE MERRYMON MOORE

AYDEN, N. C.

Lanier Society; Y. W. C. A.; Lanier Society
Treasurer; Pitt County Club.

ANGELINE MORRISSETTE

CURRITUCK, N. C.

Lanier Society; Albemarle District Club.

DAISY MAE MORSE

WEEKSVILLE, N. C.

Emerson Society; Albemarle District Club.

MARTHA SCOTT MORTON

WILMINGTON, N. C.

Y. W. C. A.; New Hanover Club; Red-Head
Club; "Tecoan" Representative of Violin En-
semble.

SELEMA MULLEN

BUNN, N. C.

Lanier Society.

KATHRYN CONNOR MURRAY

WILSON, N. C.

"Teco Echo" Staff; "Tecoan" Staff; Chairman
of Publicity Committee for Class; Wilson Coun-
ty Club; Y. W. C. A.

EMMA LEE McARTHUR

GREENVILLE, N. C.

Emerson Society; Y. W. C. A.

MARTHA McARTHUR

GREENVILLE, N. C.

EDNA LEA McCALL

ELLERBE, N. C.

Emerson Society; Athletic Association; Basket-
ball Team.

NELLIE REID MACDONALD

ST. PAULS N. C.

Robeson County Club; Poe Society.



Senior Normal

Class Roll

ROBERTA McCULLOCH
ELKTON, N. C.

LOIS EVELYN NEWSOME
AHOOKIE, N. C.
Emerson Society; Y. W. C. A.; Athletic Association; Hertford County Club.

LUCILLE IONA NICHOLS
MCADENVILLE, N. C.
Emerson Society; Y. W. C. A.; Gaston County Club Secretary and Treasurer.

BLANCHE NEWTON
STEM, N. C.

SARA O'NEAL
BELHAVEN, N. C.

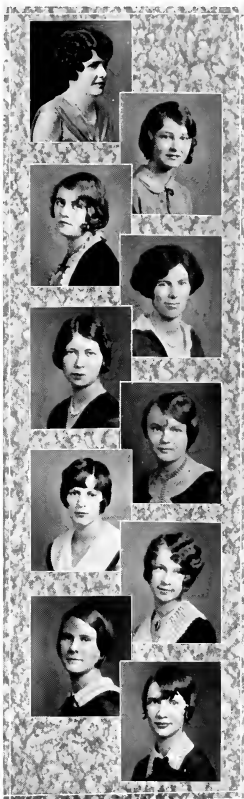
MARY ELLA ORR
WALLACE, N. C.
Emerson Society; Y. W. C. A.

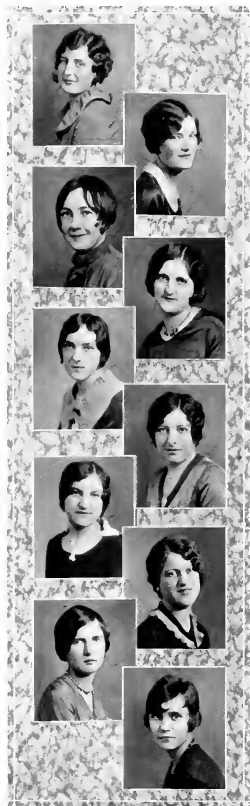
JULIA HUNTER PARHAM
KINSTON, N. C.
Emerson Society; Y. W. C. A.; Athletic Association; Emerson Cheer Leader.

MARY ELIZABETH PARKER
SELMA, N. C.
Poe Society; Y. W. C. A.; Johnston County Club; Club Reporter.

JULIA ADELENE PARKIN
BEAUFORT, N. C.
Y. W. C. A.

WILLIE MIRIAM PEELE
LAURINBURG, N. C.
Scotland County Club; Y. W. C. A.; Poe Society; Athletic Association.





Senior Normal

Class Roll

DOROTHY MAE PEGRAM
WASHINGTON, N. C.

Emerson Society; Y. W. C. A.; Athletic Association.

RUBY CLIVE PERKINSON
KITRELL, N. C.

Poe Society; Y. W. C. A.

SALLIE PAGE PERKINSON
WISE, N. C.

Poe Society; Warren County Club.

GENEVA PHILLIPS
MCFARLON, N. C.

Poe Society; Y. W. C. A.

ELLA ROSE PIPKIN
MT. OLIVE, N. C.

Emerson Society; Glee Club.

LOTTIE LILLIAN PIPKIN
MT. OLIVE, N. C.

Emerson Society; Glee Club.

MARGARET EVELYN PIPKIN
MT. OLIVE, N. C.

Emerson Society.

CHARLOTTE POPE
ATKINSON, N. C.

Y. W. C. A.; Glee Club; Y. W. C. A. Choir.

ELIZABETH CATHERINE POWELL
WISE, N. C.

Poe Society; Vice-President of Warren County Club.

TREVA SHIRLEY PORTER
FAVETTEVILLE, N. C.

Poe Society; Glee Club; College Quartet; Y. W. C. A. Choir; Athletic Association; Basketball; President of H. B. C. Club; Violin Ensemble; Proctor.

Senior Normal

Class Roll

ILMA CHRISTINE PRATT
MORVEN, N. C.

Poe Society; Y. W. C. A.; Class Critic.

REBA PROCTOR
ROCKY MOUNT, N. C.

Y. W. C. A.; Emerson Society; Athletic Association; Basketball.

LETTIE PRIDGEN
SHARPSBURG, N. C.

Emerson Society; Y. W. C. A.; Glee Club.

THELMA PRITCHARD
AULANDER, N. C.

Y. W. C. A.; Emerson Society.

ELLA WOOD QUINN
WALLACE, N. C.

Y. W. C. A.; Emerson Society.

LILLIAN MARIE RANSOM
ANDREWS, S. C.

Emerson Society; Y. W. C. A.; Warren County Club; Student Volunteer Band.

ATHA ROWENA REDFEARN
MONROE, N. C.

Emerson Society; Y. W. C. A.; Athletic Association; Vice-President of Union County Club; State Teachers' College at Fredericksburg, Va.; State Teachers' College at Boone, N. C.

KATHERINE REID
PILOT MOUNTAIN, N. C.

Y. W. C. A.

ANNIE LAURIE ROBESON
WHITE OAK, N. C.

Lanier Society; Y. W. C. A.; Athletic Association; H. B. C. Club.

IDA LEE ROBINSON
IVANHOE, N. C.

Lanier Society; Y. W. C. A.



Senior Normal

Class Roll

HAZEL RODWELL

MACON, N. C.

Poe Society; President of Warren County Club;
Y. W. C. A.

MARJORIE ELLEN ROEBUCK

ROBERSONVILLE, N. C.

Emerson Society; Y. W. C. A.

PHOEBE ROLISON

VANDEMERE, N. C.

Poe Society; Y. W. C. A.

LENORE AVERETTE ROUSE

KINSTON, N. C.

Emerson Society.

SUSAN SPRUILL RUMLEY

BEAUFORT, N. C.

Lanier Society; Y. W. C. A.; Carteret County
Club; Treasurer of Carteret County Club.

ELLA MAE SALLINGER

KNIGHTDALE, N. C.

Lanier Society; Wake County Club; Y. W. C.
A.; Athletic Association; Glee Club; Y. W. C. A.
Choir.

MINNIE ELIZABETH SANFORD

STEM, N. C.

Poe Society; Granville County Club; Y. W. C. A.

ROSA KEY SAUNDERS

BURGAW, N. C.

Y. W. C. A.

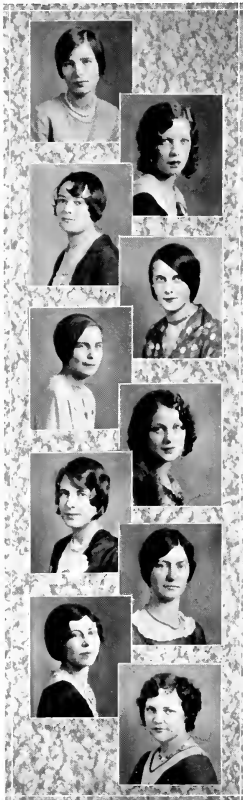
MILDRED CLAUURINE SAWYER

HOBGOOD, N. C.

Y. W. C. A.; Glee Club.

REBECCA SCOVILLE

GREENVILLE, N. C.



Senior Normal

Class Roll

MARY ELIZABETH SEARS
SCRANTON, N. C.

Emerson Society; Social Committee of Hyde
County Club.

BESSIE LOUISE SHEARIN
ROCKY MOUNT, N. C.

Lanier Society; Y. W. C. A.

DOROTHY TAYLOR SHOTWELL
STOVALL, N. C.

Lanier Society; Y. W. C. A.; Granville County
Club; World Fellowship Committee.

HILDA GRACE SHUTE
KINSTON, N. C.

Lanier Society; Y. W. C. A.; Athletic Associa-
tion.

MARGARET ANNE SILVER
SOUTHERN PINES, N. C.

Poe Society; Y. W. C. A.; Athletic Association;
Glee Club; Poe Society Cheer Leader; Class
Cheer Leader; Y. W. C. A. Choir; Basketball
Team; Sandhill Club.

HELEN MAE SIMMONS
STOKES, N. C.

Poe Society; Athletic Association.

ONEDIA SILER
APEX, N. C.

LOUISE GREY SMITH
REIDSVILLE, N. C.

Poe Society.

ALPHA SNIPES
HILLSBORO, N. C.

Poe Society; Chairman Initiation Committee of
Poe Society; Y. W. C. A.; Basketball Team;
Athletic Association; Secretary Athletic Asso-
ciation; Wearer of Monogram.

ELIZABETH VANCE SPARKMAN
BURGAW, N. C.

Poe Society; Y. W. C. A.; Athletic Association.





Senior Normal

Class Roll

AELINE SPIVEY
HOBBSVILLE, N. C.
Poe Society.

LAURA LUCIELLE STANLEY
FOUR OAKS, N. C.

Emerson Society; Johnston County Club; Y. W. C. A.; Social Service Chairman; Athletic Association.

MILDRED BALSLEY STANLEY
GOLDSBORO, N. C.

Lanier Society; Y. W. C. A.; Proctor, "Teehan" Representative.

EDNA LOUISE STANTON
ELIZABETH CITY, N. C.

Emerson Society; Y. W. C. A.; Social Service Committee.

LELA BROWN STENCIL
GREENVILLE, N. C.

DORIS STEPHENSON
SEABOARD, N. C.

Y. W. C. A.; Poe Society; Northampton County Club; Treasurer.

HELEN STEWART
MOCKSVILLE, N. C.

Meredith College; Emerson Society; "Teehan" Staff.

MARY ELIZABETH SUMMER
AHOSKIE, N. C.

Poe Society; Y. W. C. A.; Athletic Association; Hertford County Club; Vice-President of Hertford County Club.

EUGENIA WARD SUTTON
MOUNT OLIVE, N. C.

Poe Society; Y. W. C. A.

THELMA OPAL TAYLOR
SEALEVEL, N. C.

Viola Ensemble.

Senior Normal

Class Roll

SARA ELIZABETH TAYLOR
KINSTON, N. C.

Athletic Association; Y. W. C. A.; Lanier Society; Marshal; Duke University.

HELEN THOMPSON
HENDERSON, N. C.

Poe Society; Y. W. C. A.

MARGUERITE THOMPSON
SLOOP POINT, N. C.

Poe Society.

EDITH HELENE TOLAND
LEECHVILLE, N. C.

Emerson Society; Y. W. C. A.; Emerson Society Marshal; Athletic Association.

ADA MEREDITH TUNNELL
SWAN QUARTER, N. C.

Y. W. C. A.; Poe Society; Hyde County Club.

EUGENIA TULL
KINSTON, N. C.

Lanier Society Marshal; Y. W. C. A.; Athletic Association.

ORA KATE TURNER
JACKSON, N. C.

Y. W. C. A.; Poe Society; Athletic Association; Northampton County Club Secretary; Y. W. C. A. Choir.

CARRIE BELLE TUNSTALL
OXFORD, N. C.

Lanier Society; Proctor.

IVADEAN TWIFORD
MIDDLETOWN, N. C.

Emerson Society; Y. W. C. A.

MARGARET ELIZABETH VAUGHAN
ROCKY MOUNT, N. C.

Emerson Society; Y. W. C. A.; Vice-President of Class.





Senior Normal

Class Roll

FLORENCE VINCENT

VULTARE, N. C.

Emerson Society; Y. W. C. A.; Athletic Association; Northhampton County Club.

KATHERINE WALL

LITTLETON, N. C.

Poe Society; Warren County Club; Y. W. C. A.

LENA WALLER

KINSTON, N. C.

Poe Society; Y. W. C. A.

ZOE WALLER

KINSTON, N. C.

Poe Society; Y. W. C. A.; Lenoir County Club; Athletic Association.

ANNIE WALKER

NASHVILLE, N. C.

Lanier Society.

MARY ALICE WALSTON

PINETOPS, N. C.

Emerson Society; Y. W. C. A.; State Teachers' College, Farmville, Va.

ANNIE JORDAN WARD

MERRY HILL, N. C.

Poe Society; Bertie County Club.

GRACE OLIVIA WATSON

KENLY, N. C.

Emerson Society; Y. W. C. A.; Johnston County Club.

LIZZIE MAE WARREN

SPRING HOPE, N. C.

Emerson Society.

VIRGINIA LOUISE WARREN

SPRING HOPE, N. C.

Emerson Society.

Senior Normal

Class Roll

MARY ERNEST WASHINGTON

GREENVILLE, N. C.

Emerson Society; Pitt County Club.

MYRTLE ALLENE WESTON

LAKE LANDING, N. C.

Emerson Society.

ELIZABETH WHICHARD

BETHEL, N. C.

Y. W. C. A., Poe Society; Critic Poe Society;
Pitt County Club.

WILLIE MAE WHITT

VIRGINIA, VA.

Poe Society; Y. W. C. A.; Athletic Association;
Red-Headed Club President; Basketball Team;
Student Volunteer Band; World Fellowship
Committee; Class Poet.

IVOR WILKINSON

GOLDSBORO, N. C.

Emerson Society; Athletic Association; Y. W.
C. A.; Monogram Club; Basketball Team; "Te-
coan" Staff.

SUSIE THELMA WILLIAMS

PACTOLUS, N. C.

Emerson Society; Pitt County Club.

CAMILLE WINSTEAD

ELM CITY, N. C.

Emerson Society; Glee Club; Y. W. C. A. Choir;
President Glee Club.

MILDRED EDNA WINSTEAD

RANSOMVILLE, N. C.

Emerson Society; Y. W. C. A.

SALLIE WOOD

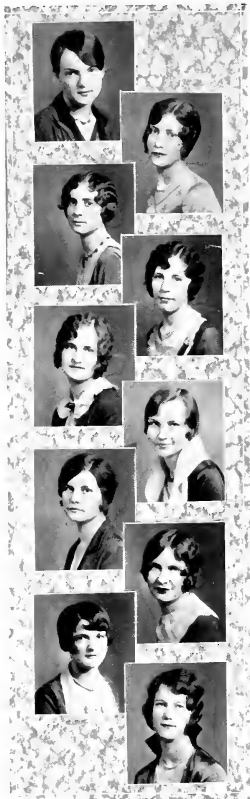
ESSEX, N. C.

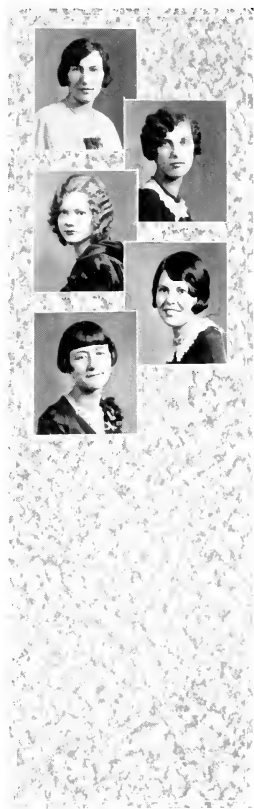
Y. W. C. A.; Poe Society; Athletic Associa-
tion.

GENEVA WOODARD

KENLY, N. C.

Poe Society; Y. W. C. A.; Johnston County
Club; Y. W. C. A. Choir.





Senior Normal

Class Roll

IRENE WOODARD
KENLY, N. C.

Poe Society; Y. W. C. A.; Johnston County Club.

MARTHA ELIZA WOODRUFF
GARYSBURG, N. C.

Poe Society; Y. W. C. A.; Northampton County Club.

ANNIE LAROGUE WORTHINGTON
GRIFTON, N. C.

Lanier Society; Y. W. C. A.

NANCY IRENE YELVERTON
BLACK CREEK, N. C.

Poe Society; Y. W. C. A.

OLEVA ZAHNISR
GREENVILLE, N. C.

Poe Society; Pitt County Club.



The Junior Normal Class





ANN BEATTY and BOBBY FURR
Junior Normal Class Mascots

Junior Normal Class Poem

*The "C" Class hails you with smiles bright and clear;
We lift our glad voices in song and in cheer.
We'll soon pass the first milestone;
How great sounds the name!
Oh, "C" Class! Dear "C" Class!
Here's health, wealth, and fame!
May we in the future
Be brave, pure, and bright,
And love our class colors—
The red and the white.
We're to pass the first milestone—
How great sounds the name!
Oh, "C" Class! Dear "C" Class!
Here's health, wealth, and fame!*

MARY PARROTT, '31.



Junior Normal Class

OFFICERS

NELLIE STEWART	President
POLLY McLEOD	Vice-President
MARGARET NIVEN	Secretary
ALMA McDANIEL	Teco Echo Reporter
ELIZABETH ROGERS	Tecoan Reporter
KATHERINE SESSOMS	Cheer Leader
KATIE BELL SMITH	Critic
MARY LEWIS CLAYTER	Treasurer



JUNIOR N



L CLASS

Junior Normal Class

MARION ADLER	LOUISE BIGGS	MARY KEMP BUNN
ILA MAE ALLEN	AUTHULA BISSETTE	MARGARET BURKHEAD
LIDA ALLSBROOK	INEZ BISSETTE	DORIS BURNETTE
ETHEL ANDERSON	MINNIE LELA BLALOCK	EDNA BURNERY
MIRIAM AUSBON	PARRIELEIGH BOBBIT	NANCY HOLMES BUTLER
EDITH AUSLEY	MILDRED BONEY	ELIZABETH CAHOON
ELSIE AUTRY	VIOLA BOYCE	LOLA CAHOON
EFFIE AYCOCK	DOROTHY BRIGHT	LUCY CAIN
ANNIE CLARA BAKER	MARY ETTA BRINKLEY	MILDRED CAIN
ANNIE RUTH BAKER	IOLA BRITT	CATHERINE CAMPBELL
IRENE DORIS BARNES	PEARLE BRITT	RUBY LEE CARPENTER
DAISY V. BELL	ENID BROADWELL	MARY CARTER
ELIZABETH BELL	EDNA BRYAN	OLIVE CASEY
MARY BAXTER BELL	LILA GRAY BRYAN	LYNN CASH
LOIS BENNETT	NANNIE BULLOCK	FANNIE CHAPMAN

HELEN CHEEK	BLANCHE DAVIS
ANNIE M. CHERRY	JULIA DAVIS
MARY LEWIS CLAYTOR	LESSIE DAVIS
MARGARET COLE	MARGARET DAVIS
FRANCES COOKE	VALDAH DEATON
VIRGINIA COOPER	ESTELLE DEES
CHARLOTTE COPELAND	ELIZABETH DOUGLAS
KATIE CORBETT	PAULINE EAGLES
ELDRIDGE CREECH	MARY EBORN
VIRGINIA CRUTCHLOW	SARA EOMONDSOON
MOZELLE DANIELS	LOUISE EDWARDS
MARY WISE DAVENPORT	KATHLEEN ELLIS
ANNIE DAVIS	LOIS ENNIS

ANNE ESTER
MATTIE EURE
ERNESTINE EVERETTE
RUTH FARABOW
MARY FELTON
ANNIE RUTH FIDLER
SARA FIRESHEETS
JANIE BELLE FITZGERALD
LILLIE MAE FLOYD
LUCILLE FLOYD
ELIZABETH FORESTER
LUCY FORTESCUE



Junior Normal Class

ALICE FUSSELL	ELVA HARDEE	KATHLEEN HOOKS
EDA MARIE FUTRELLE	RUBY HARPER	FRANCES HOPKINS
ELOISE GALLUP	MARY HARRELL	BETTIE WHITE HOUSE
SADIE MAE GASKINS	PRISCILLA HARRIS	GERTRUDE HOUSE
DOROTHY GODWIN	VIRGINIA HARRISON	MARGARET HUDGINS
CLEMENT GODON	MABEL HASSEL	MARGARET HUFF
JESSIE GRIGGS	MARY BELL HENLEY	MARIE JACKSON
MARTHA GRIGGS	IRENE HILL	WILMA JARVIS
ESTHER GRIMSLEY	MYRTLE HILL	WILMA JENKINS
KATHLEEN GUARD	DAISY HOBBS	EDNA JONES
ALICE HACKETT	ELIZABETH HOBBS	EVELYN JONES
LUCILLE HAIZLIP	CLYDE HOBGOOD	ADA JOYNER
CHRISTINE HALL	WILLIE HOBGOOD	SARA KEMP
CATHERINE HALL	MARGARET HOOD	ANNIE LAURIE KENNEDY
HELEN HAND	DORIS HOOKS	VICTORIA KORNEGAY

MYRTLE KUYKENDALL	BLANCHE MOORE
LOLA LEONARD	CHRISTINE MOORE
WILHELMINA LEE	GEORGIA MOORE
VELMA LEE	MARGARET T. MORRIS
ELSIE LEARY	MAE MUNNALYN
SUE BODDIE MACON	KATHRYN McALLISTER
LUCY MAY MARSHBURN	ALMA M. MCDANIEL
BROWNIE MARTIN	MARGARET MCGOWAN
EVA MAYNARD	LUCILLE McLAURIN
IDA MAYO	PAULINE McLEOD
MARY EDNA MELVIN	DOROTHY McMILLAN
LUCILLE MITCHELL	KATHERINE NEWELL
WILLARD MOORE	BERTHA MAE NEWMAN

MARGARET NIVEN
RUTH NEWSOME
SUSIE NEWTON
DOROTHY OVERTON
ANNIE M. OVERTON
DAISY PARKER
FLOSSIE PARKER
MARY PARROT
CECILLE PATRICK
NELLIE PENNY
MALLIE PERRY

Junior Normal Class

VIRGINIA PETERSON	FLEETA RHYNE	MAY DELL SMITH
MARTHA PHELPS	DOCIA RICH	JESSIE SMITH
KATHERINE PIERCE	MABEL ROBERTS	KATIE BELL SMITH
ELOISE PIERCE	FRANCES ROBERTS	MARY WILSON SPENCE
MARGARET PIPKIN	ELIZABETH ANNE ROGERS	EULA STANTON
ROSE PIPKIN	VIOLA ROYCE	EDNA STANTON
IRENE PITT	TUCKER ROXY	BESSIE STEWART
GLADYS PLEASANT	VIVIAN SAWYER	NELLIE STEWART
FRANCES PLONK	MARVEL SAUNDERS	BEULAH SUTTON
CHARLOTTE POPE	MARY SEARS	BERNICE SYLVANT
ABBIE M. PORTER	MARY CATHERINE SESSOMS	ELOISE TATUM
HAZEL PROCTER	ELIZABETH SHADRACK	EDNA W. TAYLOR
ELLA QUINN	MAUDGENIA SHEARIN	THELMA TAYLOR
KATHERINE REID	MARY SHEARIN	WINIFRED TAYLOR
ALICE REEN	MARGARET SILVER	SARA TERRY

MARGUERITE THOMAS	MELISSA WARD
MARGUERITE THOMPSON	ELIZABETH WARREN
SARA THOMPSON	GRACE WARWICK
PATTY THOMPSON	JULIA WARWICK
DELILAH TART	VIRGIE WEST
ANNA BELL THORNTON	INA WHITAKER
LESSIE TILLEY	CHARLOTTE WHITE
MARIE TRASK	EMILY WHITEHURST
MAMIE TURNER	CLYDE WHITEFIELD
RUTH TURNER	FLOSSIE WHITLEY
IVADEAN TWIFORD	MARIE WHITLEY
MARY ELLEN VICK	ETHEL WILLIAMS
MARY ALICE WALSTON	MARY LOUISE WILLIAMS
LILLIAN WARD	MARGARET WILSON

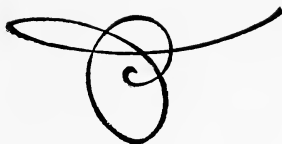
RUTH WINFREE
BEULAH WINSLOW
ANNIE WOOD
SALLIE WOOD
LEOLA WOODARD
VERNEDA WOODARD
TILLIE WOOLARD
IDA PEARLE WORSLEY
MARY WORTHINGTON



The

Student

Organizations





Student Government

**Young Women's
Christian
Association**

Athletic Association

Publications

Clubs



Student Government Association

OFFICERS

JEANNETTE SESSOMS	<i>President</i>
ETHEL SHELTON	<i>Vice-President</i>
GRACE GARDNER	<i>Secretary</i>
LINA JOHNSON	<i>Treasurer</i>
INDIA BATEMAN	<i>Chairman Campus Committee</i>
EVELYN JENNINGS	<i>President Y. W. C. A.</i>
ELIZABETH SPEARS	<i>Senior Representative</i>
ALICE MORGAN	<i>Junior Representative</i>
MILLIE MOORE	<i>Sophomore Representative</i>
HUNTER SPEARS	<i>Freshman Representative</i>
MARJORIE LEWTER	<i>"D" Representative</i>
FLETA RHYNE	<i>"C" Representative</i>

HOUSE PRESIDENTS

KATHERINE LEMMOND	MARGARET BYRD
ANNIE LAURIE HUNT	BESSIE GRISSOM
JOSEPHINE GRANT	BEULAH LASSITER
FRANCES CRAIG	BETSY BAIRD
SARA COBB	



JEANETTE SESSOMS, Windsor, N. C.
President Student Government Association



ETHEL SHELTON



GRACE GARDNER



LINA JOHNSON



INDIA
BATEMAN



ELIZABETH
SPEARS



EVELYN
JENNINGS



ALICE
MORGAN



MILLIE MOORE



HUNTER SPEARS



MARJORIE LEWTER

STUDENT COUNCIL



FLETA RHYNE

KATHERINE LEMMOND

ANNIE LAURIE HUNT

JOSEPHINE GRAWT

FRANCES CRAIG

MARGARET BYRD

BEULAH LASSITER

BESSIE GRISSOM

BETSY BAIRD

SARA COBB

STUDENT COUNCIL



EVELYN JENNINGS, Elizabeth City, N. C.
President Young Women's Christian Association



Y. W. C. A. Cabinet

OFFICERS

EVELYN JENNINGS	President
LENA LINEBERGER	Vice-President
CULLIE STAFFORD	Secretary
KATHERINE WHITEHURST	Treasurer
SELMA GRAY HOOKS	Reporter
HANNAH TURNAGE	Religious Education
LEAH GODWIN	Social
LUCIELLE STANLEY	Social Service
ETHEL BASKINS	World Fellowship
BESSIE FERGUSON	Music
GRACE BAZEMORE	Publicity
MAMIE BARTHOLOMEW	Store Keeper



STUDENT VOLUNTEER BAND



JUNIOR CABINET



Athletic Association

Colors: Purple and Gold

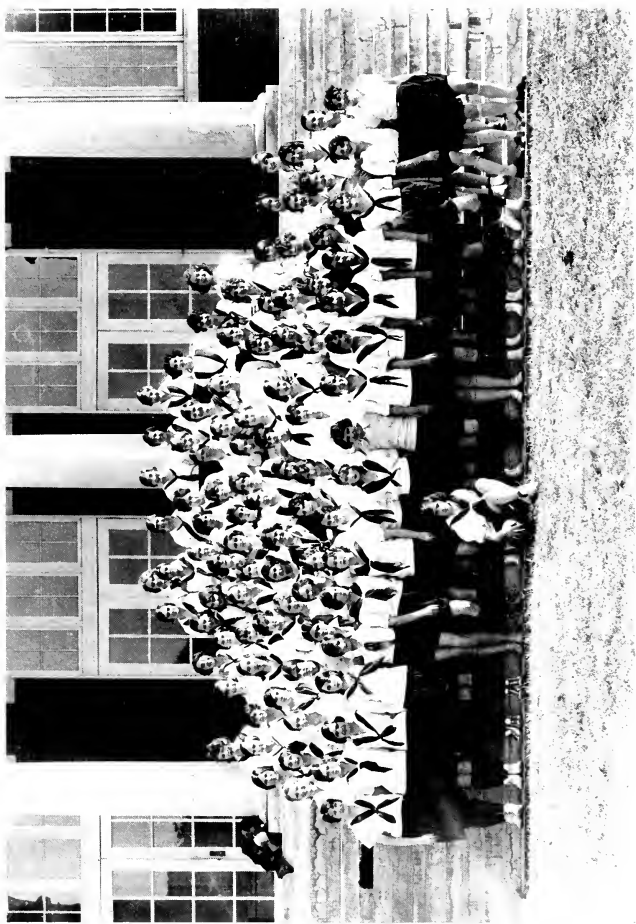
Motto: B²

Mascot: Wildcat

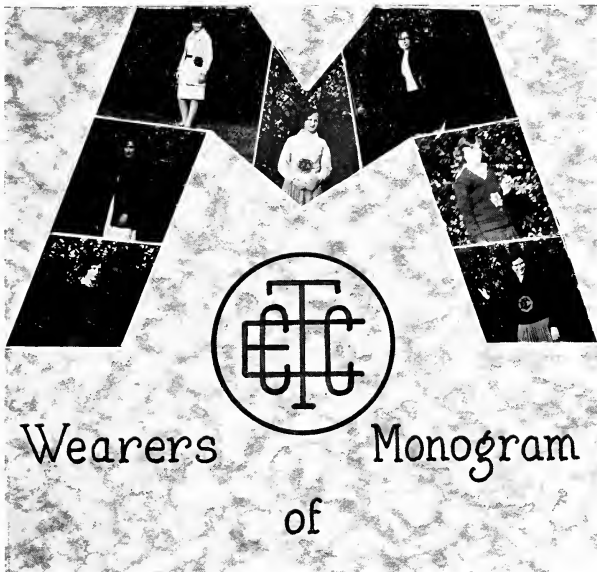
Symbol: Oak Leaf

OFFICERS

JANIE GOLD HARDEE	<i>President</i>
LELA BROWN STENCIL	<i>Vice-President</i>
ALPHA SNIPES	<i>Secretary</i>
ELLA RINKER BROWN	<i>Business Manager-Treasurer</i>
ROSLYN SATTERWHITE	<i>Tecoa Representative</i>
MARGUERITE LANE	<i>Teco Echo Reporter</i>



ATHLETIC ASSOCIATION



The Athletic Association awards a monogram to each member who, by participating in various forms of athletics and by conforming to certain health rules, makes five hundred points.

ALPHA SNIPES

HELEN BLACKMORE

ANNIE LEE BRYANT

IVOR WILKERSON

MARGARET CARLTON

JANIE GOLD HARDEE

FLORELLA CARROLL



SENIOR BASKETBALL TEAM
Winners of the Cup for Three Successive Years



JUNIOR NORMAL TEAM
WINNING BASKETBALL TEAMS



COLLEGE CHEER LEADERS

Members of the Winning Basketball Teams

SENIOR TEAM

Forwards

KAY LEE CLOANINGER
JESSIE LEE MORRIS

ELIZABETH MATTHEWS
CLEO BRENDE

ALIDA SWINDELL
BETTY UZZELL

Guards

GRACE WHITLEY

JANIE GOLD HARDEE, *Captain*
JULIA COGDELL FRANCES MURRAY

INDIA BATEMAN

JUNIOR NORMAL TEAM

Forwards

LESSIE TILLEY
ELOISE PIERCE
ELIZABETH DOUGLASS

MARY E. BRINKLEY
RUTH OBRIANT
CATHERINE CAMPBELL

SUE BODDIE MACON
LUCILE HAYSLIP
DOROTHY McMILLAN

Guards

MARY L. WILLIAMS, *Captain*
HAZEL PROCTOR

BLANCHE MOORE
SARA EDMONDSON

ELIZABETH FORESTER
MARY PARROT



CLASS BASKETBALL TEAMS



SENIOR



JUNIOR



SOPHOMORE



FRESHMAN



SENIOR NORMAL POE SOCIETY



JUNIOR NORMAL



EMERSON SOCIETY



LANIER SOCIETY

CHEER LEADERS



The Tecoan

THOUGH it had for some years been the desire of the students of East Carolina Teachers College to publish a year book, it was not until 1923 that the first annual appeared. The book, taking its name from a contraction of the words, "Teachers College Annual," was christened "Tecoan," and has kept this title in subsequent editions. In this initial volume the aim of the editors was to present by pictures and by the written word a well-rounded account of life on our campus during the scholastic year of publication. Editors of the six annuals which have followed have in general adhered to this plan. The published volumes of the "Tecoan" thus give a history of student life at the college for the period of the past seven years.

The following girls have headed the editorial and business staffs, respectively: Lois Haskins and Hilda Jeanette, Annie H. Felton and Grace Straussburger, Millie Jane Roebuck and Annie Blanche Herring, Bruce Ellis and Lessie Cogdell, Nancy Hinson and Inez Van Dyke, Mary Hecutt and Delma Smith, Marcella Deal and Lucille Sermons, and Eliza Walters and Julia Cogdell.

The annual each year has been dedicated to some person whose service to the college has merited appreciation from the students. In 1923 the "Tecoan" was dedicated to the president of the college, Dr. Robert H. Wright. In succeeding years it has been dedicated to Dr. Leon R. Meadows, Mr. Ralph C. Deal, Mr. Herbert E. Austin, Miss Sallie Joyner Davis, Miss Maria D. Graham and Miss Mamie E. Jenkins, and Dr. Ronald J. Slay.

The publication was admitted to the North Carolina Collegiate Press Association in 1926. The editor and the business manager have attended each meeting of the organization since that time.

The faculty advisers are Miss Mary Greene, for the editorial staff, and Dr. R. J. Slay for the business staff.



JULIA COGDELL, *Business Manager*



ELIZA WALTERS, *Editor-in-Chief*

The 1930 Tecocoan

Member of North Carolina Collegiate Press Association

EDITORIAL STAFF

MARCELLA DEAL *Assistant Editor*
ALICE TILLEY *Associate Editor*
HELEN SIEWART *Associate Editor*

IVOR WILKINSON *Typist*
EMILY REESE *Snapshot Editor*
NANCY POOLE *Joke Editor*

BUSINESS STAFF

PAULINE McLEOD *Asst. Business Manager*

EVELYN WRIGHT *Asst. Business Manager*



MARY GREENE



TECOAN ADVISERS


RUTH BONNEWITZ




DR. R. J. SLAY



TECOAN STAFF



The Teco Echo

HE TECO ECHO of East Carolina Teachers College had its beginning in 1925. At that time the college had no newspaper edited by the student body. Since, however, a desire for college news published by the college community was felt, a special vote of the entire student body provided for the establishment of a semi-monthly newspaper.

The name for the publication was chosen by a contest. A reward of five dollars was offered to the student submitting the best and most appropriate name. Miss Christine Vick, at that time a member of the Senior Class and president of the Student Body, won the prize. The name was derived from Teachers College, the first two letters of each word being combined to form "Teco", and the "Echo" was added.

In 1926 the publication was admitted into the North Carolina Collegiate Press Association, and has sent two representatives, the editor and the business manager, to each meeting of the organization since that time.

Since 1926 the TECO ECHO has been a member of the Columbia Scholastic Press Association of New York City. The two members of the staff previously mentioned are sent to each of the annual meetings. The TECO ECHO won fourth place in the contest of the C. S. P. A. in 1928. In 1929 the publication won third place. Those who represented the TECO ECHO this year at the meeting of the C. S. C. P. in New York City were Ruth Lemmond and Evelyn Caldwell.

The faculty advisers are Miss Mamie E. Jenkins for the editorial staff and Mr. M. L. Wright for the business staff.



RUTH LEMMOND, *Editor-in-Chief*



EVELYN CALDWELL, *Business Manager*

THE TECO ECHO

Published Bi-Monthly During the College Year by the Student Government Association of East Carolina Teachers College.

Entered as Second-class matter December 3, 1925, at the Postoffice, Greenville, N. C., under the Act of March 3, 1879.

Subscription Rates for the College Year, \$1.50. Advertising Rates, 20c per Column Inch per issue.

Staff

RUTH LEMMOND	<i>Editor-in-Chief</i>
EVELYN CALDWELL	<i>Business Manager</i>
MISS MAMIE E. JENKINS	<i>Faculty Adviser</i>
MR. M. L. WRIGHT	<i>Faculty Adviser</i>

Associate Editors

KATHERINE LEMMOND	<i>Managing Editor</i>
KATE MURRAY	<i>Assistant Editor</i>
NANCY POOLE	<i>Assistant Editor</i>
ELAINE TUNNELL	<i>Assistant Editor</i>
LEAH GODWIN	<i>Assistant Editor</i>
LEAH LEE MORGAN	<i>Alumnæ Editor</i>

Business Staff

JAMIE MARTIN	<i>Assistant Business Manager</i>
GLADYS SWINDELL	<i>Advertising Manager</i>
HILDA SHUTE	<i>Advertising Manager</i>
ALPHA SNIPES	<i>Advertising Manager</i>
CHRISTINE HALL	<i>Circulation Manager</i>
GENEVA LOU FRANKLIN	<i>Circulation Manager</i>
KATHERINE LEMMOND	<i>Typist</i>



TECO ECHO STAFF



Emerson Society Song

Tune: "Clayton's Grand March"

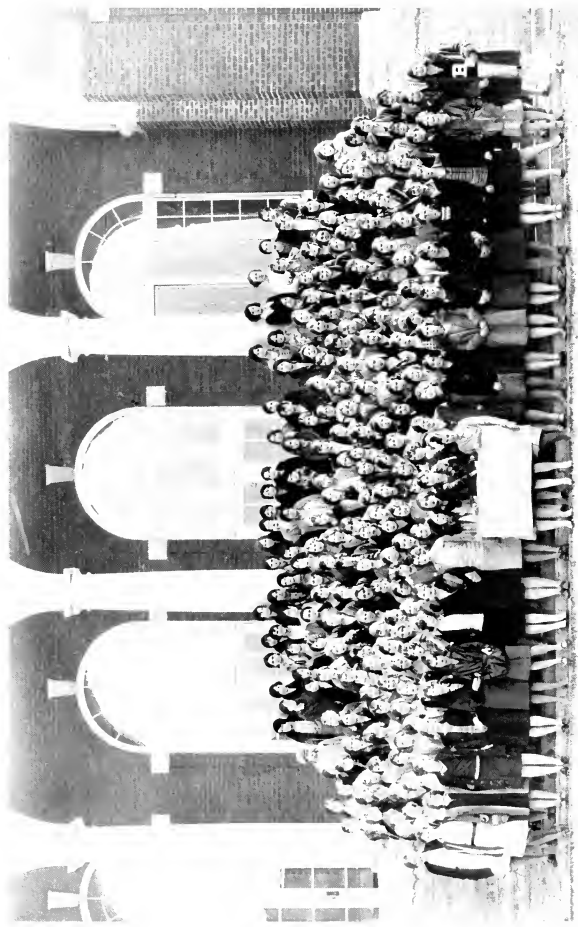
*Oh, Emerson Society,
Dear old White and Blue!
For you our hearts beat merrily
As we sing this song to you.
For when we see our colors there,
Blue and White, everywhere,
We know that they mean only you,
And all you hold so true.
So here we are, the Emersons,
Boosting for our clan.
Oh, Emerson! Oh, Emerson!
For you we'll always stand!*



Emerson Society

OFFICERS

GLADYS SWINDELL	<i>President</i>
MARCELLA DEAL	<i>Vice-President</i>
LELA BROWN STANCILL	<i>Secretary</i>
HELEN GUTHERIE	<i>Treasurer</i>
RACHEL McKEY	<i>Teco Echo Reporter</i>
CULLIE STAFFORD	<i>Tecoan Representative</i>
KAY LEE CLOANINGER	<i>Critic</i>



EMERSON SOCIETY



Poe Song

*Oh, Edgar! Oh, Edgar Allan!
We are the Edgar Allan Poes.
We are the society,
Choice and picked variety.
Oh, Edgar! Oh, Edgar Allan!
We are the Edgar Allan Poes.
March on!—March on!
Beneath the red and white,
For we will conquer all our foes,
And we're sure to win in every fight.*



EARTHA
MITCHELL

ELOISE
SCOTT

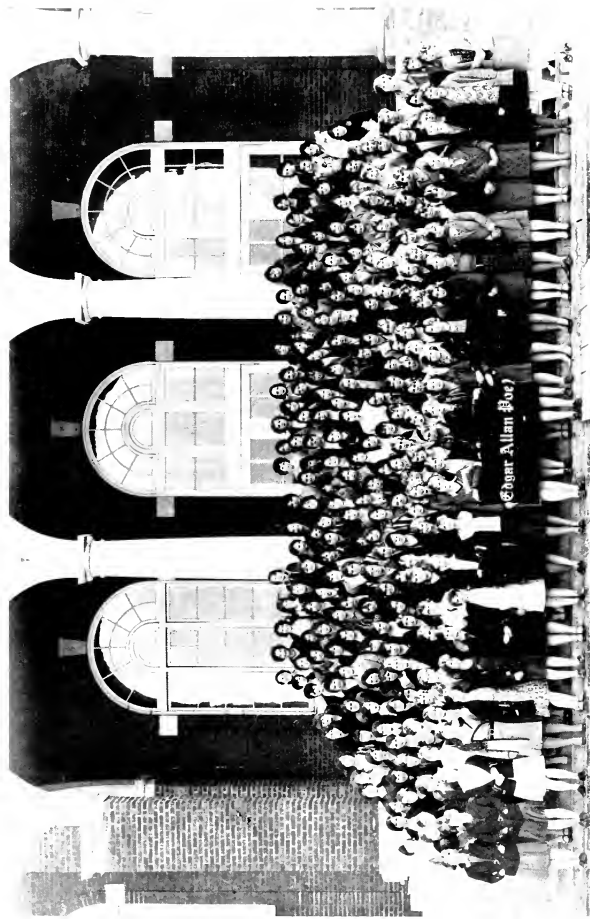
ELOISE
SCOTT

PATTIE MAE
LATTA

Poe Society

OFFICERS

EARTHA MITCHELL	President
ELOISE SCOTT	Vice-President
PATTIE MAE LATTA	Secretary
MARGARET SILVER	Treasurer
ELIZA WHICHARD	Cheer Leader
MARGUERITE LANE	Critic
HELEN MOSELEY	Teco Echo Reporter
	Tecoan Representative



POE SOCIETY



Lanier Society Song

Tune: "On the Mall"

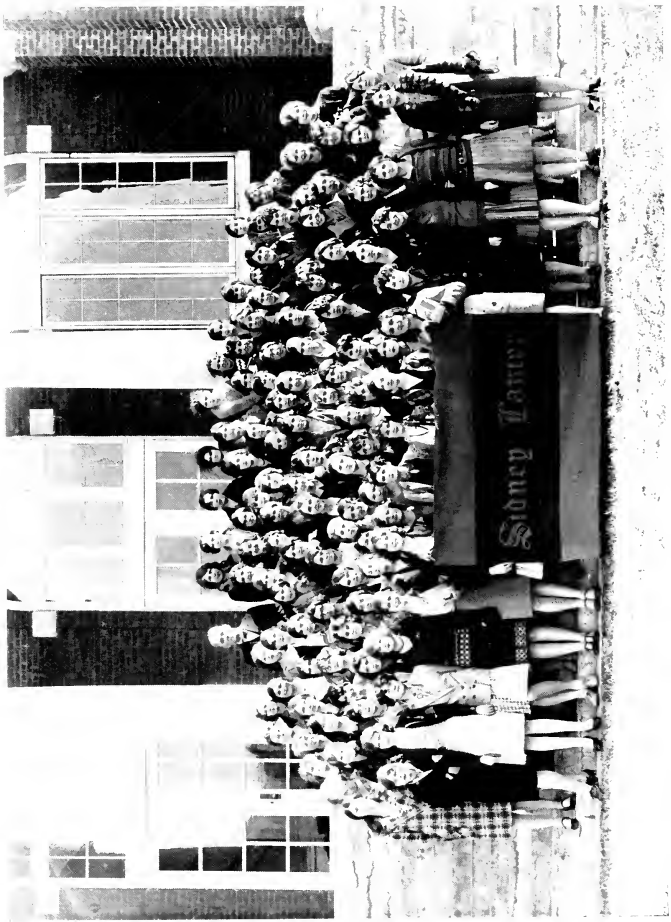
*Let us sing a song of praise to our Society,
Hail to thee, O Sidney Lanier!
Loyal members ever proving your sobriety,
Though our fun to us will e'er be dear.
Then let us to our banner each a tribute pay—
Let us ever our motto uphold,
Always faithful, true, and loyal to thee, night and day,
Hurrah for the Green and Gold!*



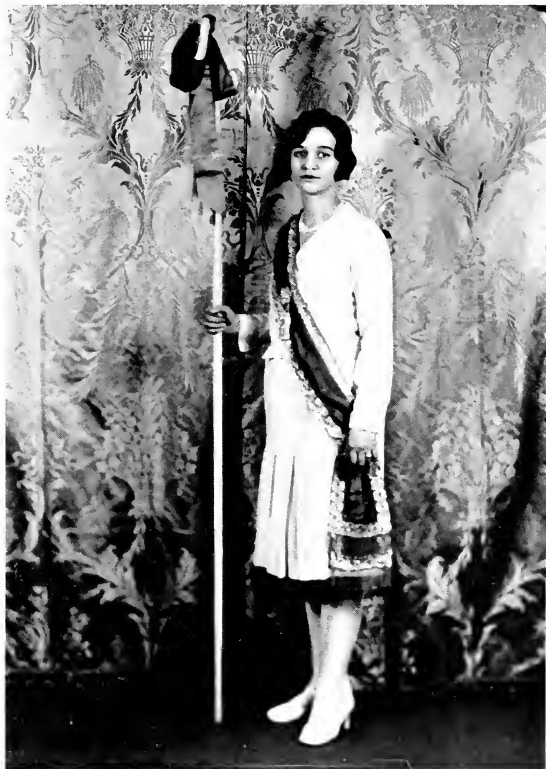
Lanier Society

OFFICERS

MADELEINE McCAIN	President
SELMA HARDY	Vice-President
MARY LOUISE HUDGINS	Secretary
SALLIE MOORE	Treasurer
TUCKER LYNCH	Cheer Leader
ELLA RINKER BROWN	Critic
CORA CREECH	Teco Echo Reporter
MILDRED STANLEY	Tecoan Representative



LANIER SOCIETY



CHRISTINE HALL, Bahama, N. C.
Chief Marshal Poe Society



JULIA HUNTER PARHAM



HELEN TOLAND



GENEVA LOU
FRANKLIN



DOROTHY WARD



CULLIE STAFFORD

EMERSON SOCIETY MARSHALS



CATHERINE
FLAUCHER

JESSIE LEE
MORRIS

LOUISE
BOWEN

HAZEL FUTRELL

JAMYE MARTIN

POE SOCIETY MARSHALS



TUCKER LYNCH



SARA TAYLOR



EDNA
MIZELLE



LOUISE HODGES



EUGENIA TULL

LANIER SOCIETY MARSHALS



Phi Sigma

- | | | |
|----------------|-------|---------------------|
| LOUISE CARR | | President |
| ELAINE TUNNELL | | Vice-President |
| HELEN BUTLER | | Secretary-Treasurer |
| MR. DEAL | | Faculty Adviser |



Phi Epsilon

Colors: Gold and Black

Flower: Black-Eyed Susan

Motto: "I do"

OFFICERS

ELIZABETH SPEARS *President*
GRACE GARDNER *Vice-President*
HELEN MOSELEY *Secretary-Treasurer*
MILDRED SASSER *Teccon Representative*

MEMBERS OF THE FACULTY

MISS BETTY WHITE	MISS CATHERINE CASSIDY
MR. KEECH	MR. R. J. SLAY
MRS. A. E. BLOXTON	MISS KATHERINE HOLTZCLAW

MEMBERS

MARCELLA DEAL	KATHERINE LEMMOND
MADLINE McCAINE	VIRGINIA DAVIS
EVELYN CALDWELL	GENEVA DAIL
MILDRED SASSER	ELOISE SCOTT
ELIZA WALTERS	IRENE SCOTT
CLEO BRENDEL	EVA SCOTT
ADDIE PINNELL	CLARA BELLE DAUGHERTY
ELIZABETH SPEARS	MARY LOUISE DE BRUHL
MARTHA TRAYNHAM	FRANCES YELVERTON
HANNAH TURNAGE	VERNA HARDY
GRACE GARDNER	ALICE TILLEY
HELEN MOSELY	JAMVE MARTIN
MARTHA WHITEHURST	EVELYN WRIGHT
HELEN HOGGARD	CULLIE STAFFORD
BERNICE HARRELL	SARA JOHNSON
ESTHER MAE GRIFFIN	HELEN GRIFFIN
SARA WILLIAMS	SONNA BELLE LAMM

LELIA ELLEN BELK



PHI EPSILON



MATHEMATICS CLUB



The Classical Club

Symbol: Caduceus of Hermes

Motto: "Forsan et haec olim meminisse juvabit"

OFFICERS

- | | |
|---------------------------|----------------------------|
| KATIE PATRICK | <i>President</i> |
| BESSIE FERGUSON | <i>Vice-President</i> |
| RACHEL MACKEY | <i>Secretary-Treasurer</i> |

MEMBERS

- | | | |
|--|-----------------|--------------------|
| RUTH HOLLOWELL | KATIE PATRICK | RUTH LEMMOND |
| ELOISE HYDE | NINA WALSTON | RACHEL MACKEY |
| BESSIE FERGUSON | EVELYN JENNINGS | MARGARET MURCHISON |
| DOROTHY SMITH | MARY TAYLOR | |
| MISS ELLA GRAVES THOMPSON, <i>Faculty Member</i> | | |



Delta Omicron Sigma

OFFICERS

GRACE GARDNER	<i>President</i>
ANNA BELLE TYSON	<i>Vice-President</i>
ESTHER MAE GRIFFIN	<i>Secretary</i>
CLARA BELL DAUGHTERY	<i>Treasurer</i>
LUCILLE COLE	<i>Teco Echo Reporter</i>
CULLIE STAFFORD	<i>Tecoan Representative</i>

MEMBERS

EULA BASS	GRACE GARDNER	EVA SCOTT
ANNIE MAE BAKER	CORINNE GOOCH	IRENE SCOTT
CLEO BRENDE	JOSEPHINE GRANT	ELIZABETH STEPHENSON
EVELYN CALDWELL	ESTER MAE GRIFFIN	ELIZABETH SPEARS
LUCILLE COLE	HELEN GRIFFIN	MARIE SPEARS
LOREE CAGLE	BERNICE GRIMES	ANNA BELLE TYSON
HELEN CARLTON	VERNA HARDY	ANNIE DELL UPCHURCH
REBECCA CHENAULT	MILDRED IVES	ELIZA WALTERS
MILDRED DAVIS	SARA JOHNSON	DOROTHY WARD
VIRGINIA DAVIS	JAMYE MARTIN	EDNA THOMAS WEST
PATSY DAVENPORT	IRENE MIZZELLE	GRACE WHITLEY
CLARA BELLE DAUGHTERY	HELEN MOSELY	DORIS WOODARD
MARCELLA DEAL	IRENE McLAMIN	FRANCES YELVERTON
MARY LOUISE DEBRUHL	NINA REEL	SARA WILLIAMS
PAULINE FLOYD	ABIGAIL ROBERTS	ALICE TILLEY
MARJORIE FLOYD	MILDRED SASSER	CULLIE STAFFORD



The Elementary Educational Council

OFFICERS

JULIA COGDELL	<i>President</i>
ANNIE LAURIE BRINKLEY	<i>Vice-President</i>
LUCY LANE	<i>Secretary-Treasurer</i>
ERNESTINE PARHAM	<i>Teco Echo Reporter</i>
LILLIAN WILLIAMS	<i>Tecoan Representative</i>

MEMBERS

MARY ADAMS
 INDIA BATEMAN
 ELIZABETH BEAVANS
 ANNIE LAURIE BRINKLEY
 JULIA COGDELL
 MIRIAM EDGERTON
 RENA GRANT
 EVELYN GRIFFIN
 HELEN GUTHRIE
 JANIE GOLD HAROFE
 ANNA JANE HINSON

ELIZABETH HODGES
 KATHLEEN JOHNSON
 LUCILE KEE
 FERRY LANE KNOX
 LUCY LANE
 ISABEL LENNON
 LILLIAN MADRY
 ELIZABETH MATTHEWS
 EARTHA MITCHELL
 ANNIE LEE MORGAN
 LUCILE YELVERTON

ERNESTINE PARHAM
 RUTH PIERCE
 RUTH PITTMAN
 WILLIE POWELL
 JEANNETTE SESSOMS
 MIRANDA STRICKLAND
 MILDRED STROUD
 MILDRED WHITEHURST
 RUTH WHISONANT
 LOIS WHITLEY
 LILLIAN WILLIAMS

FACULTY MEMBERS

DR. ADAMS
 MISS BROWNING
 MISS COATES
 MISS FAISON
 MR. FORT

MISS GORE
 MR. HOLLAR
 MISS HYMAN
 MISS JOHNSON
 MISS MCGEE
 MISS WHITESIDE

MISS NEWELL
 MISS NULTON
 MISS RAINWATER
 MISS SAVAGE
 MISS WAHL



English Club

OFFICERS

JESSIE LEE MORRIS	<i>President</i>
HORTENSE BOOMER	<i>Vice-President</i>
KATHERINE WHITEHURST	<i>Secretary-Treasurer</i>
LENA LINEBERGER	<i>Tecoan Representative</i>
EMMA WATSON	<i>Teco Echo Reporter</i>

ENGLISH CLUB ROLL

HORTENSE BOOMER	JESSE LEE MORRIS	EMMA WATSON
BESSIE FERGUSON	LENA LINEBERGER	SELMA GREY HOOKS
RUTH LEMMOND	LOUISE CARR	GRACE A. BAZEMORE
ELIZABETH DEAL	LUCILLE DIXON	ELAINE TUNNELL
MILDRED EVERETTE	BEULAH LASSITER	BETTY UZZELL
KATHERINE WHITEHURST	KATHERINE LEMMOND	



Inter-Society Committee

OFFICERS

MAMIE BARTHOLOMEW, *Emerson Society* *Chairman*
 GLADYS SWINDELL, *Emerson Society* *Secretary*

FACULTY MEMBERS

MR. PICKLESIMER *Emerson Society*
 MR. HOLLAR *Emerson Society*
 MR. DEAL *Poe Society*
 MR. ADAMS *Poe Society*
 MISS PETERSON *Lanier Society*
 MR. SLAY *Lanier Society*

STUDENT MEMBERS

GLADYS SWINDELL *President Emerson Society*
 MAMIE BARTHOLOMEW *Emerson Society*
 MILDRED EVERETT *Emerson Society*
 HALLIE LEE *Emerson Society*
 EARTHA MITCHELL *President Poe Society*
 INDIA BATEMAN *Poe Society*
 LINA LINEBERGER *Poe Society*
 MADELINE MCCAIN *President Lanier Society*
 GRACE GARDNER *Lanier Society*
 HELEN HOGGARD *Lanier Society*



Union County Club

Motto: "Don't sit down and sit, but git up and git"

Flower: Goldenrod

OFFICERS

RUBY STEWART	<i>President</i>
ATHA REDFERN	<i>Vice-President</i>
HALLIE LEE	<i>Secretary-Treasurer</i>
RUTH NEAL REDFERN	<i>Teco Echo Reporter</i>
OLLIE JONES	<i>Tecoan Representative</i>

MEMBERS

ESSIE MAE BELK	OLLIE JONES
LELIA ELLEN BELK	HALLIE LEE
SADIE BELK	KATHERINE LEMMOND
CLEO BIGGERS	RUTH LEMMOND
FLORELLA CARROLL	NELL MARSH
MILDRED CRENSHAW	WILLARD MOORE
FLAY GADDY	ALICE MORGAN
CLEMENT GORDON	MADELEINE MCCAIN
VERLA GRIFFIN	ATHA REDFERN
MARY BELLE HEMBLY	RUTH NEAL REDFERN
RUBY STEWART	



Johnston County Club

Colors: Yellow and White

Flower: Daisy

OFFICERS

RENA GRANT	<i>President</i>
GRACE WATSON	<i>Vice-President</i>
SELMA GREY HOOKS	<i>Secretary</i>
RENA WOODARD	<i>Treasurer</i>
CORA CREECH	<i>Teco Echo Reporter</i>

MEMBERS

EDITH AUSLEY
 EFFIE AYCOCK
 JUANITA ARTHUR
 LUCILE ALLEN
 EVA BATTEN
 LOUISE BIGGS
 RUBY CREECH
 ELDRIDGE CREECH
 KATIE CORBETT
 PAULINE EAGLES
 JANIE BELLE FITZGERALD

RENA GRANT
 SELMA GREY HOOKS
 DORIS HOOKS
 ELVA LEE HARDEE
 ALICE JOHNSON
 WILHELMINA JOHNSON
 MARGARET HOOD
 VELMA LEE
 FLOSSIE LEE PARKER
 MARY ROBB
 RUTH ROVE
 VARNEDA WOODARD

LUCILE STANLEY
 GLADYS PLEASANTS
 MARVEL SAUNDERS
 ANNA BELLE THORNTON
 RENA WOODARD
 IRENE WOODARD
 GENEVA WOODARD
 GRACE WATSON
 FLOSSIE WHITLEY
 SHIRLEY WILSON
 LEOLA WOODARD



"H. B. C." Club

Motto: "Happy; buoyant; carefree"

Colors: Green and Gold

Flower: Goldenrod

OFFICERS

TREVA PORTER	<i>President</i>
BETSY COUNCIL	<i>Vice-President</i>
LESSIE BRYANT	<i>Secretary</i>
IDA MYRTLE GEDDIE	<i>Treasurer</i>
DOCIA RICH	<i>Tecoan Representative</i>
LUCY CAIN	<i>Teco Echo Reporter</i>
MABEL COLLIER	<i>Chairman Social Committee</i>
ANNIE LAURIE ROBESON	<i>Chairman Program Committee</i>

MEMBERS

ETHEL ANDERSON
 IRENE MCLAURIN
 IDA MYRTLE GEDDIE
 TREVA PORTER
 MERLE FAIRCLOTH
 LESSIE BRYANT
 DOROTHY McMILLAN
 EVA MAYNARD

LUCY CAIN
 DOCIA RICH
 HAZEL WARD
 MAXINE ALLEN
 KATHLEEN McDANIEL
 KATHRYN McALLISTER
 BETSY COUNCIL

NELLIE PENNY
 MABEL COLLIER
 ANNIE LAURIE ROBESON
 LUCILE MCLAURIN
 EDNA MELVIN
 LOIS McLAMB
 MARY BELLE BASS
 ETHEL WILLIAMS



The

Feature
Section

Class
Representatives

Wit and Humor

Feature Section

EACH student whose picture appears in the feature section was chosen as representative by the class of which she is a member or by the student body as a whole. A number of considerations affected the choice. As usual, pulchritude played no small part in deciding the voting. The students, however, endeavored to select a girl by whom they would be proud to be represented for other reasons as well. And so, in choosing, they kept in mind such determining factors as participation in class and school activities, scholastic standing, loyalty to the college, willingness to serve wherever and whenever need might arise, and personal popularity gained because of such qualities of character as sincerity, friendliness, trustworthiness. Thus each girl whose picture appears in the following pages is in many senses of the words truly a class representative.





Eartha Mitchell ' ' ' ' ' ' ' ' *College Representative*



Marvel Saunders † † † † † † † † *College Representative*



Elba McGowan ‘ ‘ ‘ ‘ ‘ ‘ ‘ ‘ *Senior Representative*



Alice Morgan



Junior Representative



Thelma Wilson † † † † † † † *Sophomore Representative*



Elizabeth Moore , , , , , , , *Freshman Representative*



Nancy Gordon * * * * * * *Senior Normal Representative*



Eloise Gallup * * * * * *Junior Normal Representative*



Entertainments

October 15

ISADORA DUNCAN DANCERS

Irma Duncan and Ten Russian Dancers

† †

November 25

UNITED STATES ARMY BAND

"Pershing's Own"

† †

December 5-6

SENIOR PLAY

"THE TAMING OF THE SHREW."

† †

January 14

TONY SARG'S MARIONETTES

"THE STOLEN PRINCESS"

"THE BREMEN BAND"

"RIP VAN WINKLE"

† †

May 8-9

SENIOR NORMAL PLAY

† †

MOVIES-SATURDAY EVENINGS

February 4

FESTIVAL OPERA COMPANY

"THE BARBER OF SEVILLE"

† †

February 25

CAROLINA PLAYMAKERS

"THE NO 'COUNT BOY"

"JOB'S KINFOLKS"

"MAGNOLIA'S MAN"

† †

March 15

DUKE GLEE CLUB

† †

April 14

COUNT VON LUCKNER

"THE SEA DEVIL"



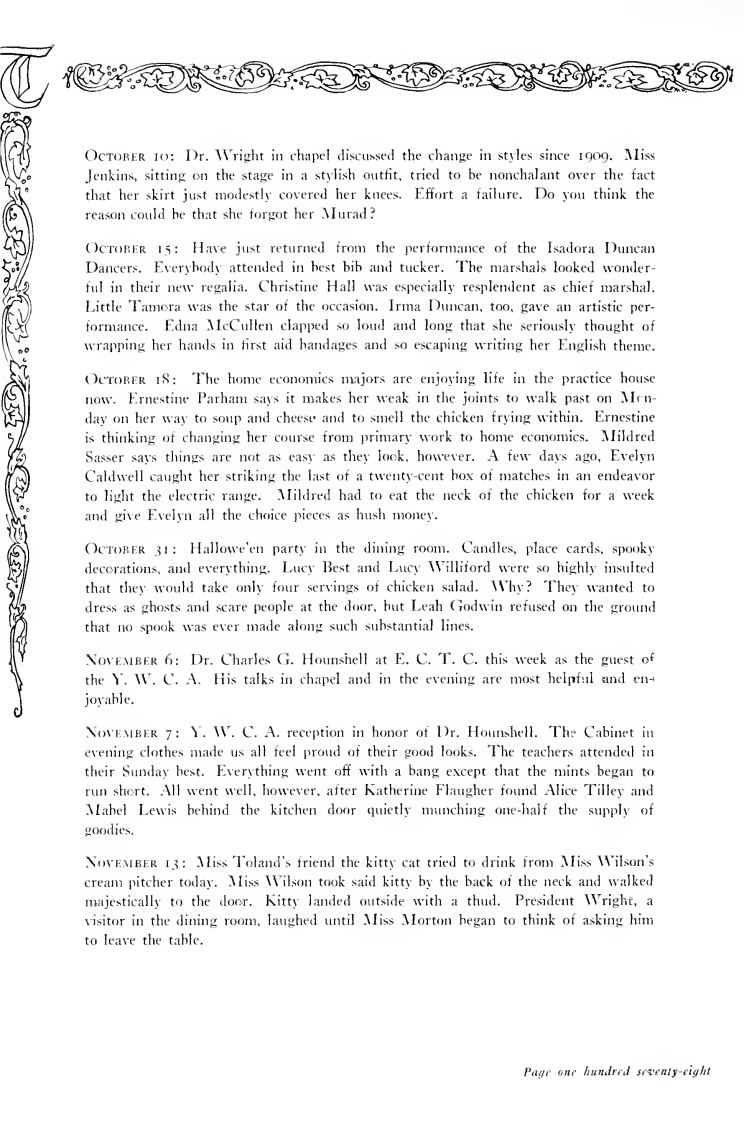
Leaves From An E. C. T. C. Diary

SEPTEMBER 25: Returned today to E. C. T. C. Bags and baggage so thick in all the halls that everybody is nursing bruised shins. All of us more than happy over seeing our old friends once more. Katie Patrick declared this afternoon she had kissed three hundred girls since morning. We unpacked in the evening. At night we gathered in the hall to see what the summer had brought forth. Margaret Vaughn, of course, has once more met the world's noblest young man. Wails from down the hall interrupted our breathless discussion and announced the annual epidemic of nostalgia. We retired to console the weeping Freshmen. Margaret Murchison became for the moment Niagara Falls. Sara Taylor suggested that since the pipe water is rather muddy we cork up the lavatory and catch the tears for a shampoo.

SEPTEMBER 26: We registered today. What a tumult! The uproar was almost as bad as when Addie Pinnell saw a snake wriggling calmly along the dormitory floor. Miss Ross announced that she had registered everybody from Aba Abac to Zyra Zyx. Jane Hall says she has signed up for everything except anthropology and ichthyology. Two hundred girls signed up for geography before they heard that the new professor has not been a bachelor for lo! these many years. Consternation in Jarvis during the morning. Doris Jones was found in the hall howling loudly. On being questioned, she said that her room was being searched. We dashed wildly in. It was only the maids inspecting the beds. Elizabeth Spears suggested that we retire and sing "With Verdure Clad."

OCTOBER 7: All of us went to Sunday School parties today. Dora Ham ate twenty weiners at the Presbyterian roast at the country club. Hot water bottles much in demand on her return.

OCTOBER 12: Practice teaching has begun. Elizabeth Deal became so excited in her first class that she assigned a poetry lesson on Sheets and Kelly. Louise Carr suggested that her class read "To A Field Mouse." One meek pupil raised a timid hand and quavered: "But, Miss Carr, I haven't a field mouse." Katherine Whitehurst, on returning from the high school yesterday, reported that her pupils in history were doing exceptional work and could answer hard thought questions. Today, Mr. Frank stopped at the door long enough to hear some of the unusual G. H. S. reasoning. "In what battle," asked Katherine earnestly, "did General Wolfe, upon hearing of victory, cry 'I die happy'?" "I think," replied one of Katherine's stars, "that it was in his last battle."



OCTOBER 10: Dr. Wright in chapel discussed the change in styles since 1909. Miss Jenkins, sitting on the stage in a stylish outfit, tried to be nonchalant over the fact that her skirt just modestly covered her knees. Effort a failure. Do you think the reason could be that she forgot her Murad?

OCTOBER 15: Have just returned from the performance of the Isadora Duncan Dancers. Everybody attended in best bib and tucker. The marshals looked wonderful in their new regalia. Christine Hall was especially resplendent as chief marshal. Little Tamora was the star of the occasion. Irma Duncan, too, gave an artistic performance. Edna McCullen clapped so loud and long that she seriously thought of wrapping her hands in first aid bandages and so escaping writing her English theme.



OCTOBER 18: The home economics majors are enjoying life in the practice house now. Ernestine Parham says it makes her weak in the joints to walk past on Monday on her way to soup and cheese and to smell the chicken frying within. Ernestine is thinking of changing her course from primary work to home economics. Mildred Sasser says things are not as easy as they look, however. A few days ago, Evelyn Caldwell caught her striking the last of a twenty-cent box of matches in an endeavor to light the electric range. Mildred had to eat the neck of the chicken for a week and give Evelyn all the choice pieces as hush money.

OCTOBER 31: Hallowe'en party in the dining room. Candles, place cards, spooky decorations, and everything. Lucy Best and Lucy Williford were so highly insulted that they would take only four servings of chicken salad. Why? They wanted to dress as ghosts and scare people at the door, but Leah Godwin refused on the ground that no spook was ever made along such substantial lines.

NOVEMBER 6: Dr. Charles G. Hounshell at E. C. T. C. this week as the guest of the Y. W. C. A. His talks in chapel and in the evening are most helpful and enjoyable.

NOVEMBER 7: Y. W. C. A. reception in honor of Dr. Hounshell. The Cabinet in evening clothes made us all feel proud of their good looks. The teachers attended in their Sunday best. Everything went off with a bang except that the mints began to run short. All went well, however, after Katherine Flaughter found Alice Tilley and Mabel Lewis behind the kitchen door quietly munching one-half the supply of goodies.

NOVEMBER 13: Miss Toland's friend the kitty cat tried to drink from Miss Wilson's cream pitcher today. Miss Wilson took said kitty by the back of the neck and walked majestically to the door. Kitty landed outside with a thud. President Wright, a visitor in the dining room, laughed until Miss Morton began to think of asking him to leave the table.



NOVEMBER 21: Misses Ogden, Kuykendall, Cassidy, Holtzclaw, Greene, and Lewis have purchased yo-yos. Mr. M. L. Wright has declared his objections to the childish tendencies of the faculty. His son, Dan, however, let the cat out of the bag when he declared his father a yo-yo champion.

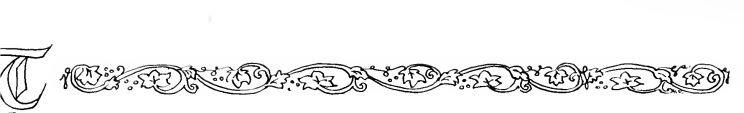
NOVEMBER 25: The United States Army Band was at E. C. T. C. tonight. All of us patted our feet until the soles of our best shoes grew thin. When the "Stars and Stripes Forever" was played, the audience rose with a vim, that is, everybody but Mr. Frank. Then everybody looked sheepish and sat down. Mr. Frank then regarded us erring ones with scornful triumph. Emily Reese, in her interest in the xylophone player, leaned so far over the balcony rail that I was afraid Captain Stannard was going to point his baton at her and order her to lean back. And so to bed.

NOVEMBER 28: The last of Thanksgiving games held in the high school gym. Everybody yelled herself hoarse for her side. The Senior and the Junior classes were victorious in the contests. Janie Gold Hardee and Eloise Pierce were the stars of the performance. And then turkey! What a glorious dinner! After we had eaten, and eaten, and eaten turkey, and cranberry sauce, and celery, and salad, and everything, here came ice cream, and cakes four stories high. Infirmary filled that night. Miss Morris hurriedly ordered a quart of pills.

DECEMBER 6: Was ever anything funnier than the Senior play, "The Taming of the Shrew"? Ernestine Parham as Katherine and Kay Lee Cloaninger as Petruchio played the leading parts. Sonia Bell Lamm as Grumio, the crazy clown, kept the audience roaring. The Mayo twins, India Bateman and Elizabeth Beavens, looked lovely and danced gracefully at the Shrew's wedding feast. Eva Maynard asked everybody who the author of the play is and where a copy might be found. Margaret Johnson explained that the author is Shakespeare. "What's his first name?" anxiously inquired Eva.

DECEMBER 17: Home economics majors displayed their handiwork in hall of administration building today. Their dolls, dressed as famous characters in literature so as to illustrate the development of costume from the time of Cleopatra until the present day, attracted much attention. Nina Walston and Kathleen Ellis aided the designers with their ready pens. Most interested on-looker: Evelyn Wright, who was at great pains to show everybody what the fair Eighteenth Century Belle wore underneath.

DECEMBER 18: Exams begin. Much burning of midnight oil. Even Tucker Lynch was found bent double over her history. Beulah Lassiter studied "Macbeth" so hard that she began talking in blank verse, and was heard muttering as she rubbed a blouse with Mufti, "Out, damned spot! Out, I say!"



DECEMBER 20: Christmas holidays at last! Administration building a regular bedlam. Suitcases, valises, trunks, everything, in the halls. We all ate ham sandwiches and pickles whole and fell exhausted into our buses. Miss Morton, calm and collected as usual, helped all the poor rattled souls to find their tickets, baggage, bus seats, compacts and what not. Miss Hooper graded forty papers in so many minutes, while Miss Gray, Miss Morton, and Mr. Adams delayed the driver of her bus. At last the engines roared. We dashed through the Saturday Evening Posts. No more Jeter balls for two weeks!

JANUARY 3: Through the Saturday Evening Posts again. No more turkey and fruit cake! No more Santa Claus! We silently descended from our buses. Then everybody began to see everybody else. Much hugging and kissing. After supper we opened our baggage and showed the Christmas spoils. Kathleen M. Johnson brought back a diamond ring (lucky girl); Julia Cogdell a wrist watch; and the rest of us an array of things such as cedar chests, toilet sets, lingerie outfits, compacts, and pictures galore!

JANUARY 14: Tony Sarg's marionettes gave three performances at E. C. T. C. today." "The Bremen Band," "The Stolen Princess," and "Rip Van Winkle" delighted everybody. So skillful were the performances that Ruth Whisonant thought it nothing short of a miracle, the way in which Tony Sarg had made the little figures so that they talked all by themselves.

JANUARY 20: Great mystery in French class today. Mr. Deal lost his glasses. First, he looked in his pocket, then in his desk, then in the drawer; then he began to root around among his papers. Finally Johnie Grey Currin mustered up courage to suggest that he examine the bridge of his nose. And sure enough, there they were, black cord and all. We nominate Johnie Grey for the Sherlock Holmes Club.

JANUARY 22: Grades in the post office boxes. The mad rush like the charge of the Light Brigade. The office force must be careless; they interpreted many of our I's for IV's. In solemn conclave we all agree that grades are not everything anyhow.

FEBRUARY 4: At last the annual has gone to press. Eliza Walters and Julia Cogdell breathe a final sigh of relief, and tell us all, in the words of Tony Sarg's manikin, "We hopes you like it!"







Jokes

Believe It or Not:

The author will be glad to send you conclusive proof of any statement appearing here. But first you must find the author.

Once two co-eds sauntered into the library at E. C. T. C. and not a single girl looked up from her book. Katie Patrick, for instance, was too absorbed in *De Rerum Natura* by Lucretius to be bothered; and Miriam Ausbon simply could not bear to miss a word of Wordsworth's *Ode on the Intimations of Immortality*. And so the two co-eds took their seats unobserved by the studious girls of E. C. T. C.

Mr. Deal, having been asked by a committee from the faculty and the students to accept the position of official announcer refused on the grounds that he was too timid to appear in public and that before a crowd he felt at a loss for words. And so the committee retired and asked Kate Murray to become official announcer.

Mr. Picklesimer once let the question fall.

Once somebody passed Ruth Pierce a large, delicious piece of cake with lots of icing on it. "No thanks," said Ruth. "I never eat cake. In fact, I have very little appetite tonight. I don't think I'll eat anything. A glass of water, please."

When Evelyn Jennings goes to take a shower, she attires herself in full rainy-day dress—slicker, rain hat, galoshes—and carries an umbrella in her hand. For when Evelyn takes a shower, she makes an event of it.

The following teachers hold forth at E. C. T. C.: Miss Kurkendawl, Mr. Pickersimon, Miss Wilts, Miss Holtescloth, Miss Growell, Mr. Atoms, and Miss Bonniwits. (Accurate information from student papers.)

/ / /

Helen Hoggard (at high school): "Jimmy, name three things with starch in them.

Jimmy Slay: "Two cuffs and one collar."

/ / /

Mr. Flanagan: "Miss Mitchell, you are a candidate for flunking."

Eartha Mitchell (carelessly): "Well, I hope I'm defeated."

/ / /

AT THE ARMY AND NAVY BAND CONCERT.

Kathleen Ellis: "What's the name of that selection the band is playing?"

Nina Walston: "Go Feather Your Nest."

Kathleen: "Go jump in the lake. I asked you a civil question."

/ / /

Dr. Adams was delivering the final lecture of the term. He dwelt with much emphasis on the fact that each student should devote all the intervening time preparing for final exams.

"The examination papers are now in the hands of the printer. Are there any questions to be asked?"

Silence prevailed. Suddenly from the rear Frances Murray timidly inquired: "Who's the printer?"





Figure This Out:

Dr. Rebarker went into the drug store and requested change for \$5.00. The druggist was unable to change the bill.

"Then give me \$1.00 and you keep the bill. I'll come back later," said Dr. Rebarker.

The druggist gave him \$1.00. Later in the day Dr. Rebarker returned, gave the druggist \$4.00 and got his \$5.00 bill. The next day each contended that he had lost by the transaction. Did the druggist gain or lose and how much? Did Rebarker lose or gain and how much? Or did the two come out even?

✓ ✓ ✓

Mr. Picklesimer: "Where are the most island found?"

Alma McGinnis: "In the ocean."

✓ ✓ ✓

Dorothy Bright: "I want to buy some gloves."

Clerk: "Kid gloves?"

Dorothy Bright: "I should say not! I'm a college student now."

✓ ✓ ✓

Salesman: "This book will do half your work for you."

Sara Johnson: "That's fine; give me two."

✓ ✓ ✓

Posted by Miss Cassidy, the instructress in astronomy:

"Anyone wishing to see Venus, please see me."

✓ ✓ ✓

Grace Whitley: "What did I make on my test?"

Mr. Frank: "Mistakes."

✓ ✓ ✓

Rachel McKey: "I dream my themes."

Roslyn Satterwhite: "How you must dread going to bed!"

✓ ✓ ✓

Edna Smith: "Great Scott, who wrote *Ivanhoe*?"

Laura Overton: "I'll tell you if you will tell me who in the Dickens wrote *Tale of Two Cities*."

✓ ✓ ✓

I Wonder — I Wonder . . .

If President Wright ever played "hookey."

If Mildred Harper will ever be as tall as Miss Morton.

If Mr. Flanagan really wears lace.

How many times Kathryn Lemmond has been squeezed.

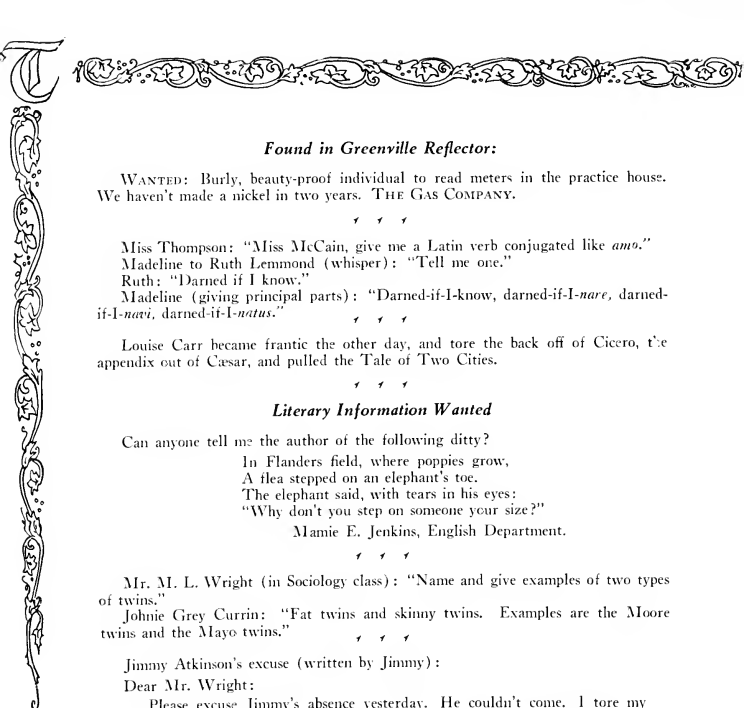
If Miss Newell really serves biscuits with a spoon.

Why Ferry Lane Knox.

Why our English teacher must be Greene.

Who will be official announcer in the dining-hall when Lucy Best graduates.

If the author of "Ramona" got his inspiration from the rambler rose in Ma Jeter's hair.



Found in Greenville Reflector:

WANTED: Burly, beauty-proof individual to read meters in the practice house. We haven't made a nickel in two years. THE GAS COMPANY.

✓ ✓ ✓

Miss Thompson: "Miss McCain, give me a Latin verb conjugated like *amo*."

Madeline to Ruth Lemmond (whisper): "Tell me one."

Ruth: "Darned if I know."

Madeline (giving principal parts): "Darned-if-I-know, darned-if-I-nare, darned-if-I-navi, darned-if-I-natus."

✓ ✓ ✓

Louise Carr became frantic the other day, and tore the back off of Cicero, t'è appendix out of Caesar, and pulled the Tale of Two Cities.

✓ ✓ ✓

Literary Information Wanted

Can anyone tell me the author of the following ditty?

In Flanders field, where poppies grow,

A flea stepped on an elephant's toe.

The elephant said, with tears in his eyes:

"Why don't you step on someone your size?"

Mamie E. Jenkins, English Department.

✓ ✓ ✓

Mr. M. L. Wright (in Sociology class): "Name and give examples of two types of twins."

Johnie Grey Currin: "Fat twins and skinny twins. Examples are the Moore twins and the Mayo twins."

✓ ✓ ✓

Jimmy Atkinson's excuse (written by Jimmy):

Dear Mr. Wright:

Please excuse Jimmy's absence yesterday. He couldn't come. I tore my breeches. His Mother.

✓ ✓ ✓

IF: A Study in Bad Puns

If Lucy Gambols,
Does Gladys Swindell?
If Oneida is a Silver,
Is Beatrice a Stall?
If Virginia is George,
Is Marjorie Floyd?
If Louise is a Carr,
Is R. J. a Slay?
If Betty is White,
Is Mary Greene?
If Grace is Long,
Is Sophie Little?

Ads



We wish to express our gratitude to the C. Heber Forbes Company for their interest and valuable assistance in the photographing of our class representatives.





EAST CAROLINA TEACHERS COLLEGE

GREENVILLE, NORTH CAROLINA

Courses Offered

- I. A Two-Year Normal Course
- II. A Four-Year College Course
- III. Graduate Course for M.A. Degree



The two-year normal course leads to a diploma which entitles the holder to a Primary or Grammar Grade Certificate Class B. All work given in these courses will count toward graduation from this institution. The four-year college course leads to the A.B. degree, which entitles the holder to a Primary, Grammar Grade, or High School Teachers' Certificate Class A.

The graduate course requires one year to qualify for the M.A. degree.

Special courses are offered with the purpose of preparing Principals of elementary schools, Supervisors of elementary schools, High School Teachers of English, History, Science, Biology, Mathematics, Geography, Latin, French, and Home Economics.

For further information, address

HOWARD J. MCGINNIS, *Registrar*



J. N. and J. L.
Williams

Wholesale Butchers

Phone 472-J

ASSOCIATED WITH
WILLIAMS AND
WALDROP

Retail Market
Phones 661-660

THE PERKINS
COMPANY

Offers at All Times the Latest
Styles in

Ladies' Ready-to-Wear
AND
Shoes at Popular
Prices

419 Evans Street
GREENVILLE, N. C.

THE
W. A. Bowen Co.

*Dependable
Merchandise*

Piece Goods
Ready-to-Wear
Hosiery
Beautiful Shoes

"THE COLLEGE GIRLS'
STORE"

THE
Rouse Printery

*QUALITY
PRINTING*

Engraved Wedding
Announcements
Fine Stationery
Office Supplies
Prices Reasonable

GREENVILLE, N. C.

**THE MUSIC AND
ART STORE**

Pianos, Victrolas, Records
Tuning and Repairing
Picture Framing
GREENVILLE, N. C.

**JOHN FLANAGAN
BUGGY COMPANY**

Ford Agent
Phone 47

*QUALITY
We Have It*

*SERVICE
We Give It*

*SATISFACTION
We Guarantee It*

Smith Shoe Shop

Griffin Shoe Co.

Incorporated

SMART FOOTWEAR

GREENVILLE, N. C.

Phone 347

**DAD'S BARBER
SHOP**

Our Work is the Best
TRY US

The One Gift That
Only You Can
Give—

Your Photograph



HILL HORNE

*Dependable
Druggist*

BAKER'S STUDIO



THE COLLEGE STORE

"On-the-Minute Service"

Students of the East Carolina Teachers
College and Faculty are Always
Welcome Here

TRY US FIRST

TRADE AT HOME

We Have It Right in the College Store

HIGH GRADE STATIONERY
COSMETICS OF ALL KINDS
PILLOW TOPS AND PENNANTS
STATIONERY AND KODAK FILMS

Also a Complete Line of Class-Room Supplies at a
Saving to You

7:45 to 9:20 A.M. OPEN 1:20 to 3:30 P.M.
6:20 to 7:30 P.M.

COLLEGE STATIONERY STORE



We Welcome the Accounts of Teachers
and Students

THE GREENVILLE BANKING
& TRUST CO.

UNITED STATES DEPOSITORY

The Oldest and Largest Bank in Pitt County

OUR SERVICE

Casting aside all else, the true spirit of this organization is to serve its many friends and customers in a way that will create good will.

To better serve, to acquire good will and retain it, is our aim, because the success of this business is founded on the same principles of true service and honest value as the merchandise we sell.

Facilities and knowledge to render a service second to none, efficient, polite and reliable salespeople always alert to the requirements of our customers.

THE BLOUNT-HARVEY COMPANY

GREENVILLE, NORTH CAROLINA



YOUNG'S

FOR THE NEWEST STYLES IN
DRESSES

Specially Priced

We Always Get the Newest Novelties
in Oxfords and Pumps
First

Our Silk Hosiery is the Best
Obtainable

Extra Good Heavy Silk Hose, Triple
Seam, Full Fashioned, Pointed
Heel

ALL COLORS, \$1.39

Corner Dickerson Avenue and
Greene Street

Ladies' Ready-to-Wear and Millinery

*We Show the New Things
First*



C. Heber Forbes

GREENVILLE, N. C.

MUNFORD BUILDING No. 2

Williams-Chapman

Incorporated

*Catering to Those Who Want
Individuality*

ALWAYS SHOWING NEW
THINGS IN

Ladies' Ready-to-Wear
Millinery and
Accessories


Phone 566

Greenville, N. C.

BLOON'S SMART WOMEN'S WEAR

*Official College
Clothier*

GREENVILLE, N. C.





NATIONAL BANK OF GREENVILLE

GREENVILLE, N. C.

THE BIG BANK ON FIVE POINTS

CAPITAL, \$100,000.00

SURPLUS AND UNDIVIDED PROFITS, \$69,134.00

This Bank is a member of the Greatest Financial System in the world, the Federal Reserve, with unlimited resources.

Will Be Pleased to Serve You

J. L. LITTLE, *President*
F. G. JAMES, *Vice-President*

F. J. FORBES, *Cashier*
CHAS. JAMES, *Assistant Cashier*

COBURN SHOE COMPANY

"Your Shoe Store"

Real College Styles
Combined with Quality
and Comfort

Ask Your Friends About
Our Shoes

THEY KNOW

STATIONERY, OFFICE
SUPPLIES

Renfrew Printing Company

PRINTERS AND
STATIONERS

We Have All Kinds of Sta-
tionery and Supplies for
College Girls

EVANS STREET

Opposite Proctor Hotel



**GREENVILLE
SUPPLY COMPANY**

Incorporated
WHOLESALE GROCERS
Greenville N. C.

J. L. PERKINS, President
R. E. HARRIS, Vice-President
W. O. BILBRO, Treasurer-Manager

A. G. WALTERS

Jeweler and Optician

Everything in First-Class Jewelry
See Our Line

Greenville, North Carolina

**HOME FURNITURE
COMPANY**

Everything for the Home

THE RIGHT PRICE
FURNITURE STORE

Phone 79 Greenville, N. C.

The Proctor Hotel

Caters Especially to College Students
and Their Families

Call Us at 393 for Any Service We
May Be Able to Render
At Any Time

W. DAVID TURNER, *Manager*
Greenville, N. C.

**NORFOLK SHOE
REPAIRING SHOP**

BEST MATERIALS
BEST WORKMANSHIP

Satisfaction Guaranteed

SHOE REPAIRING

Is a sign that almost any one may hang
out in front of a shop, but when you
bring shoes to an establishment like this
you are assured of the best material, the
longest possible wear, the finest of work-
manship, and satisfaction throughout.

**Goodyear Shoe Repair
Shop**

Fourth Door from White's Theater

B. S. WARREN

*An Up-to-Date
Drug Store*

Try Us Phone 68

WILLARD'S

FANCY GROCERIES

Food of Superior Excellence

23—Phones—93

GREENVILLE, N. C.



Drink

Coca-Cola

In Bottles

**GREENVILLE
FLORAL COMPANY**

"Say It With Flowers"

Blooming Plants, Wedding Bouquets,
Corsages, Funeral Designs

THE HOME OF FLOWERS

Phone 443-W

J. CON LANIER

*Attorney
At Law*

GREENVILLE, N. C.

**LAUTARES CANDY
PALACE**

Quality—Service

Complete Line of
TOILET ARTICLES
EASTMAN KODAKS
CONKLIN LIFE-TIME
FOUNTAIN PENS
PURE ICE CREAM

Our Soda Fountain is one of the
most up-to-date in the state
Including Hot Water Service
Service and Quality

**LAUTARES CANDY
PALACE**

W. L. BEST

Official College Jeweler

Established 1901

POE PINS
LANIER PINS
PHI EPSILON PINS
EMERSON PINS
GLEE CLUB PINS
COLLEGE SEALS
GUARDS

*Special Prices to College
Girls*

Watch Repairing, Jewelry Repairing,
Engraving

We Sell "Divided Pay Plan"



CAROLINA'S LARGEST PHOTOGRAPHIC
STUDIO

SIDDELL STUDIO

RALEIGH, N. C.



Official Photographer for the Tecoan

J. C. PENNEY
COMPANY

GREENVILLE, N. C.

We are always glad to show
the college girls our values,
which we are sure are un-
paralleled. Made pos-
sible by our tremen-
dous buying
power.



McKAY'S

FORMERLY

McKay, Washington & Co.
400 Evans St.
Greenville, North Carolina

THE LADIES' STORE


AGENTS FOR

Phoenix Hosiery, Humming
Bird Hosiery, Warner's
Wrap Arounds

Dry Goods and Notions

Showing at All Times the Newest
Creations in Ready-to-Wear
and Millinery

SECOND FLOOR



THIS BOOK PRINTED BY BENSON



LARGEST COLLEGE ANNUAL
PUBLISHERS IN THE WORLD

HIGHEST QUALITY WORKMANSHIP
SUPERIOR EXTENSIVE SERVICE



COLLEGE ANNUAL HEADQUARTERS



TECOAN STAFF ROOM



