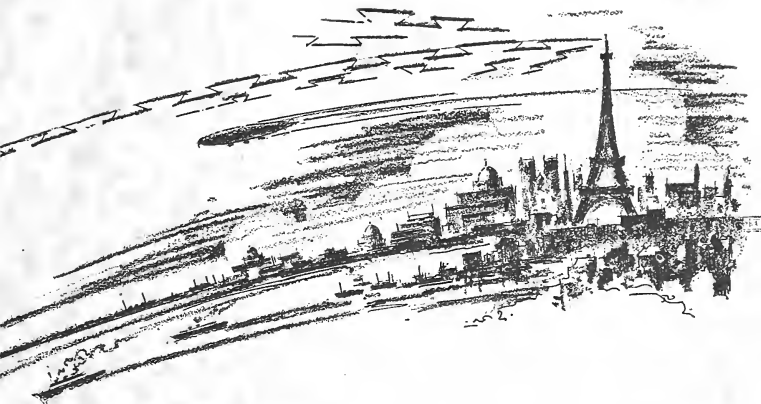


THE
TECOAN
1933





EX LIBRIS







DESIGNED AND EXECUTED
UNDER DIRECTION OF
EDWARDS & BROUGHTON COMPANY
RALEIGH, N. C.



THE 1933 TECOAN



LOREE CAGLE

EDITOR

FRANCES HARVEY

BUSINESS MANAGER



The
TECOAN
Year Book of
EAST CAROLINA TEACHERS COLLEGE
Greenville N.C.

CONTENTS



Book I
THE COLLEGE

Book II
CLASSES

Book III
ATHLETICS and ORGANIZATIONS

Book IV
FEATURES

6751
3771
223



FOREWORD

Within the memory of many now living the ships that braved the seas were the only bearers of messages between the nations of the world.

Today, friendly international relations are fostered also by cable, telephone and radio and the world is better because of such communications.



PRESIDENT WILSON
ARRIVES IN PARIS

PROLOGUE

America has blended the traits of her parent nations. England contributed a sense of justice and order; France gave philosophy and a love of beauty; from Italy she came scientific and inventive genius; while Hitler's share is expressed in the highest, non-e-loving qualities of her people. The other countries have each added marks, and from the spirit of all our nation has grown.

Evening so small a group as we find on the campus, we can discuss of the different nations and our "seen" World. Because the modern world is not together than ever before, making nations neighbors, but also because we feel the forces of other nations a part of us, we offer the

Teccon this year as a World Book.



To the people of Greenville, the
little city in which our vision of
international affairs has been
broadened and associations so
pleasant this

1933 TECOAN

is dedicated in friendship
and understanding

SPONSORS for 1933 TECOAN



Mrs. J.C. Cagle
Rutherfordton
N.C.



Mrs. E.W. Harvey
Greenville N.C.



Loree Cagle
Editor



Frances Harvey
*Business
Manager*



Pansy Lanier



Ellen Baker
EDITORIAL STAFF



Doris Mae Jones



Kathryn Hines



Hula B Leach
BUSINESS STAFF



Margarett Rogers



Miss Katherine Holtzclaw



M L Wright
ADVISORS

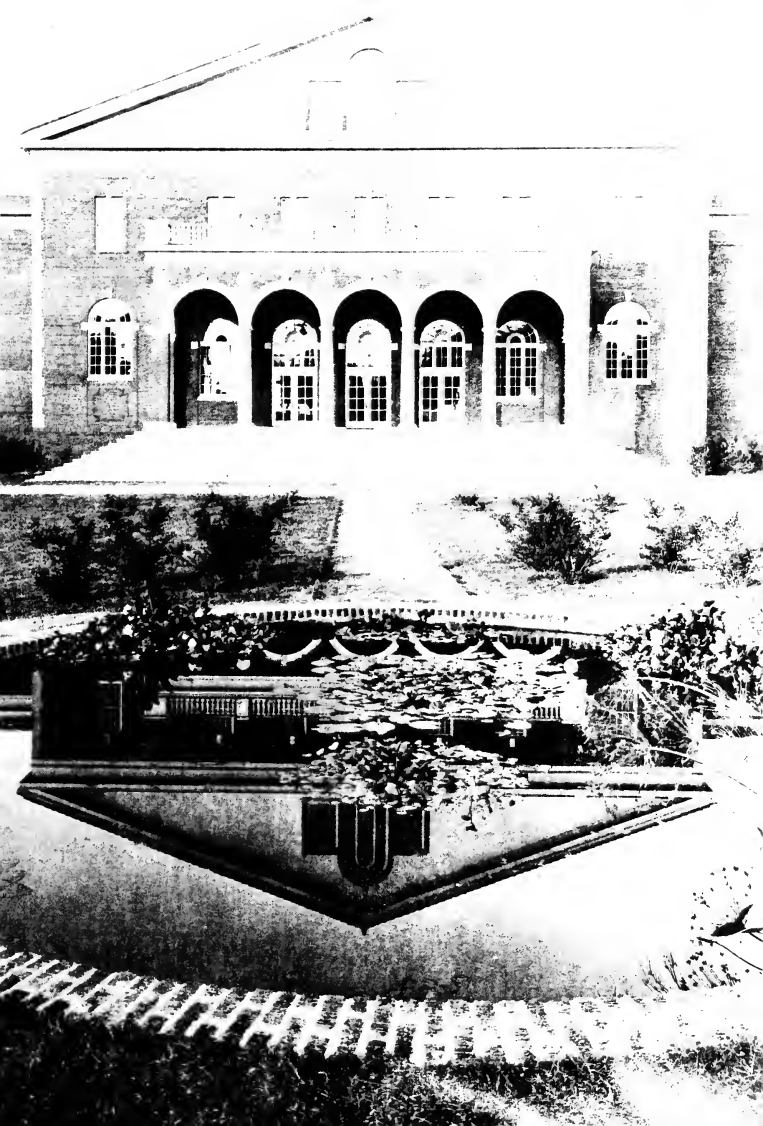


Marion K Fort



Book I
The COLLEGE

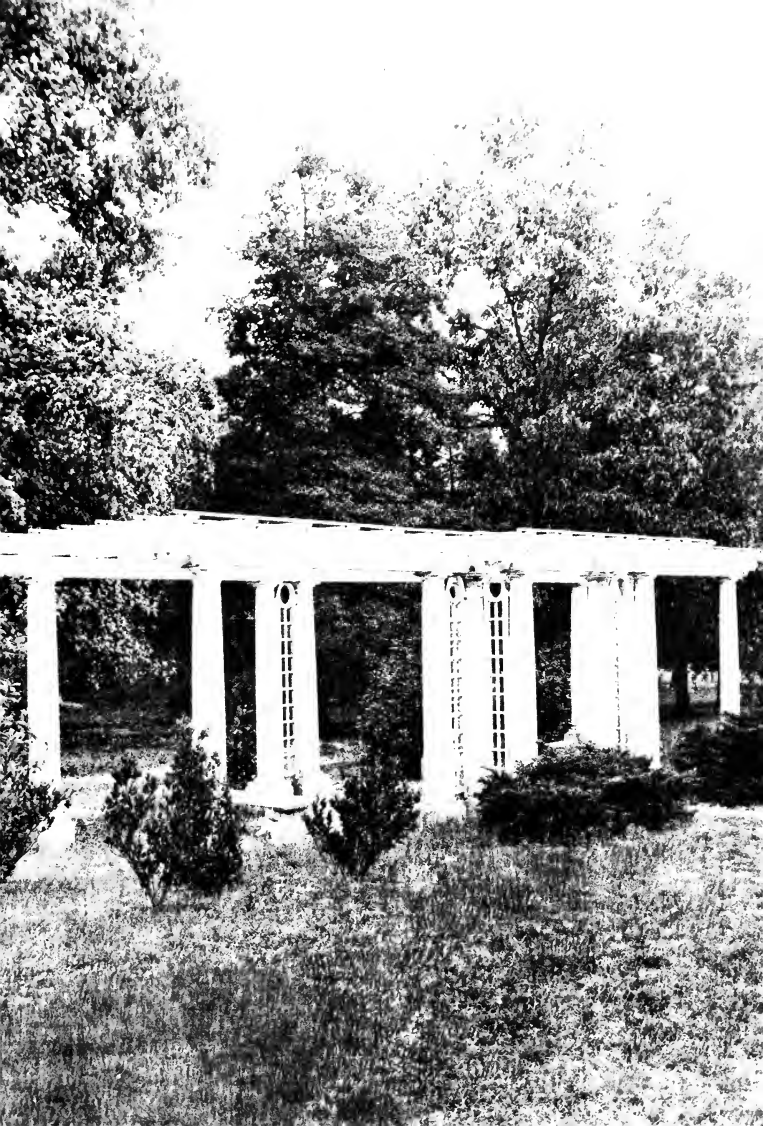


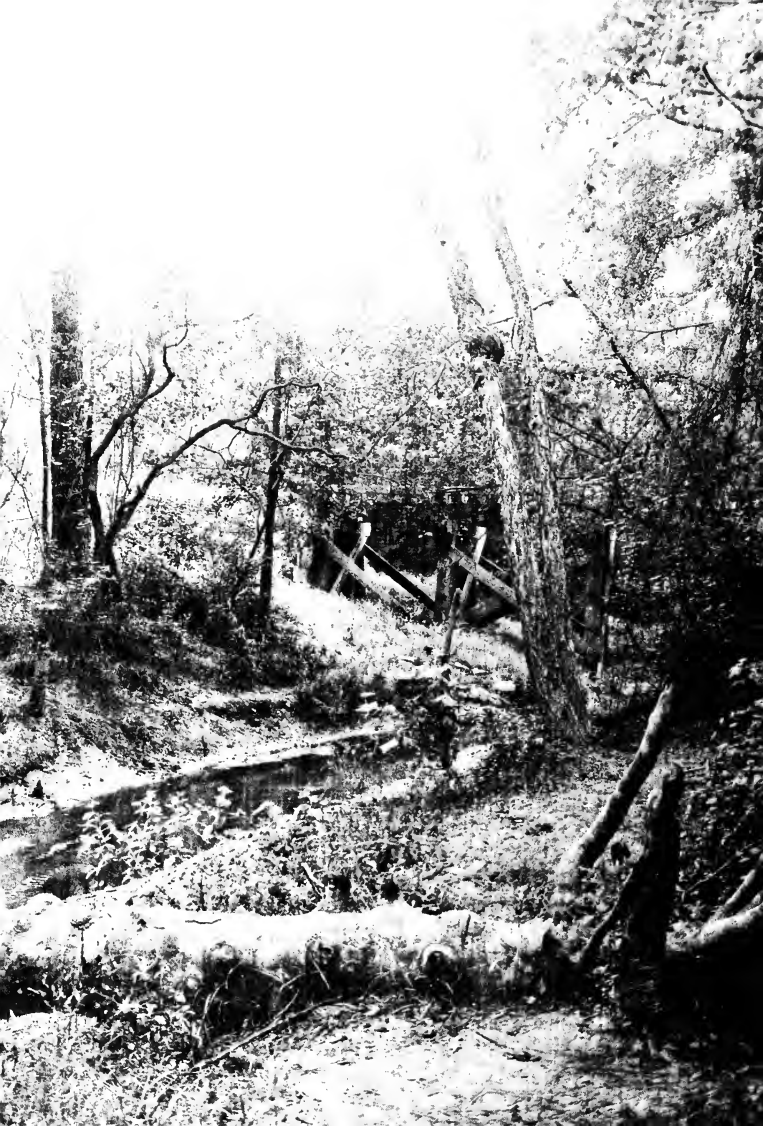




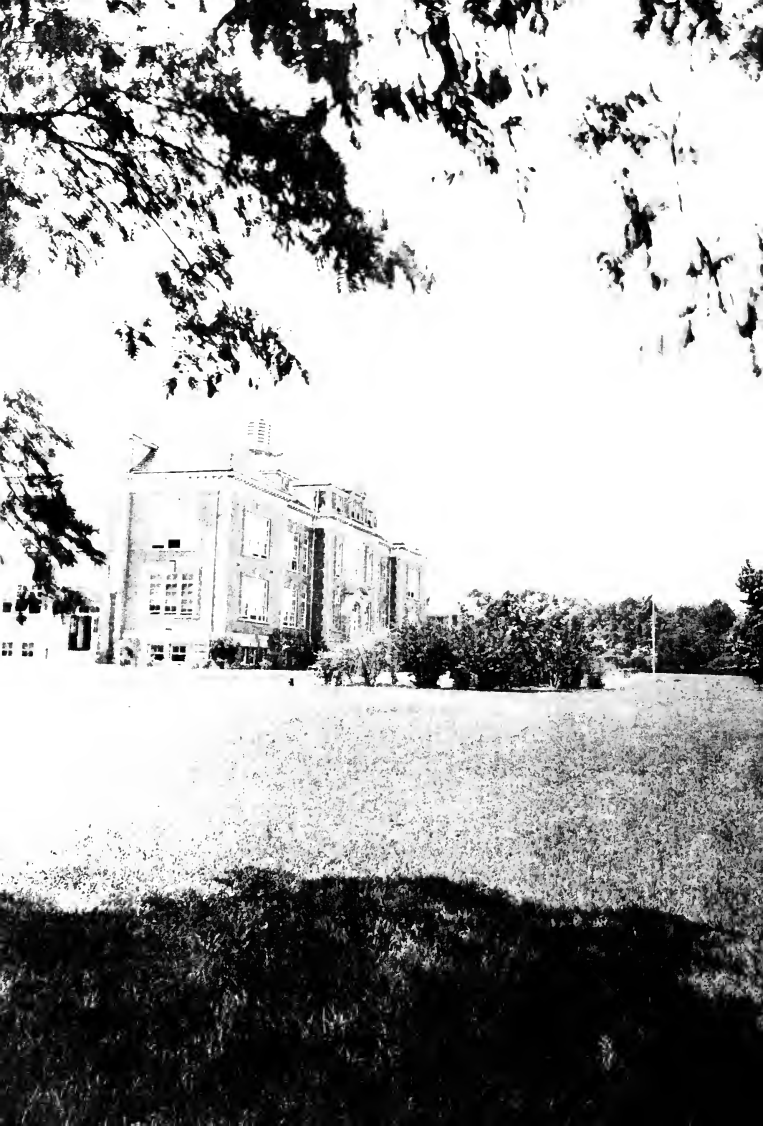












OFFICERS AND ADMINISTRATION

ROBERT H. WRIGHT.....	<i>President</i>
LEON R. MEADOWS.....	<i>Director of Summer School</i>
J. B. SPILLMAN.....	<i>Treasurer</i>
MRS. J. B. SPILLMAN.....	<i>Assistant Treasurer</i>
B. W. GINN.....	<i>Bookkeeper</i>
HAZEL WILLIS.....	<i>Secretary</i>
HOWARD J. MCGINNIS.....	<i>Registrar</i>
OLA ROSS.....	<i>Assistant Registrar</i>
MATTIE SCOVILLE.....	<i>Secretary</i>
AGNES WADLINGTON.....	<i>Secretary</i>
ELLEN BOWEN.....	<i>Secretary</i>
MRS. NANNIE JETER.....	<i>Dietitian</i>
ANNIE L. MORTON.....	<i>Dean of Women</i>
ELIZABETH SMITH.....	<i>Assistant Dean of Women</i>
ARLEY V. MOORE.....	<i>Dormitory Matron</i>
MRS. MAMIE G. BRADSHER.....	<i>House Director</i>
MRS. W. G. MCKEAN.....	<i>House Director</i>
IRENE HILL.....	<i>Secretary of Training School</i>
DR. J. E. NOBLES.....	<i>Physician</i>
ANNIE MORRIS.....	<i>Superintendent of Infirmary</i>
MARY LEA SMITH.....	<i>Assistant Superintendent of Infirmary</i>
A. A. HENDERSON.....	<i>Steward</i>
WADE H. HOLMES.....	<i>Electrician</i>
J. C. COCKRELL.....	<i>Electrician</i>
A. C. FORNES.....	<i>Superintendent of Grounds and Buildings</i>
W. L. BALDER.....	<i>Carpenter</i>
J. L. WILLIAMS.....	<i>Policeman</i>

BOARD OF DIRECTORS

HON. A. T. ALLEN, <i>Chairman Ex Officio</i>	Raleigh, N. C.
O. P. MAKEPEACE.....	Sanford, N. C.
J. K. WARREN.....	Trenton, N. C.
W. S. MOYE.....	Rocky Mount, N. C.
H. D. WILLIAMS.....	Kenansville, N. C.
MRS. J. D. DAWSON.....	Kinston, N. C.
MRS. CHAS. S. FORBES.....	Greenville, N. C.
CARL GOERCH.....	Washington, N. C.
MRS. W. B. MURPHY.....	Snow Hill, N. C.
H. C. BRIDGERS.....	Tarboro, N. C.
E. G. FLANAGAN.....	Greenville, N. C.
JAMES L. GRIFFIN.....	Pittsboro, N. C.
F. C. HARDING.....	Greenville, N. C.



DR. ROBERT H. WRIGHT
President



MISS ANNIE L. MORTON
Dean of Women



DR. HERBERT REBARKER
Dean of Men



DR. LEON R. MEADOWS
Director of Summer School



Faculty and Administration



E. L. HENDERSON
Administration and Supervision

C. L. ADAMS
*Director of Instruction in Education and
Psychology*



HOWARD J. MCGINNIS
Psychology

HUBERT C. HAYNES
Education



MARION K. FORT
Director of Training School

LUCILLE CHARLTON
Education



DORA E. COATES
Education

ANNIE C. NEWELL
Education



HERBERT REBARKER
Director of Instruction in Mathematics

LOUISE WILLIAMS
Mathematics

Faculty and Administration

L. R. MEADOWS
Director of Instruction in English

ALICE LUCILLE TURNER
English

MARY GREENE
English

LOIS GRISBY
English

EMMA HOOPER
English

MAMIE JENKINS
English

R. C. DEAL
Director of Instruction in Foreign Language

A. D. FRANK
Director of Instruction of History

E. C. HOLLAR
History

LAURA T. ROSE
History





Faculty and Administration



M. L. WRIGHT
*Director of Instruction in Sociology and
Economics*

BEECHER FLANAGAN
Economics



DORA E. MEADE
Piano

LOIS V. GORRELL
Piano



GUSSIE KUYKENDALL
*Director of Instruction in Public School
Music*

EUGENIA THOMAS
Public School Music



P. W. PICKLESEIMER
Director of Instruction in Geography

J. B. CUMMINGS
Geography



MARIE PETERSON
Geography

SARA G. SOMERVILLE
Physical Education

Faculty and Administration

KATHARINE HOLTZCLAW
*Director of Instruction, Home Economics,
and Textiles*

MRS. A. E. BLOXTON
*Director of Instruction, Home Economics,
and Foods*

R. J. SLAY
Director of Instruction, Science

LORAIN HUNTER
Science

CATHERINE CASSIDY
Science

KATE W. LEWIS
Director of Instruction, Public School Art

HELEN G. GRAY
Librarian

MARGARET SAMMON
Assistant Librarian

GLADYS HUGHES
Critic Teacher

CHRISTINE JOHNSTON
Critic Teacher





Faculty and Administration



EUNICE MCGEE
Critic Teacher

ELIZABETH HYMAN
Critic Teacher



ANNE REDWINE
Critic Teacher

LOUISE GALPHIN
Critic Teacher



FRANCES WAHL
Critic Teacher

HERMA TAYLOR
Critic Teacher



J. H. ROSE
City Superintendent

CONNIE HORN
Critic Teacher



VESTER MULHOLLAND
Critic Teacher

MARY YORK
Critic Teacher

Faculty and Administration

MRS. C. A. BOWEN
Critic Teacher

CLEM BRIDGES
Critic Teacher

MRS. P. W. PICKLESEIMER
Critic Teacher

HAZEL WILLIS
Secretary

OLA S. ROSS
Assistant Registrar

MRS. J. B. SPILLMAN
Assistant Treasurer

B. W. GINN
Bookkeeper

AGNES WADLINGTON
Secretary

ELLEN B. BOWEN
Secretary, Placement Bureau

ELIZABETH C. SMITH
Assistant Dean of Women



Faculty and Administration



ARLEY V. MOORE
Dormitory Matron



MRS. MAMIE G. BRADSHIER
Dormitory Matron



MRS. M. G. MCKEAN
Dormitory Matron



ANNIE MORRIS
Superintendent of Infirmary



MARY LEE SMITH
Assistant Superintendent of Infirmary



MRS. NANNIE JETER
Dietitian

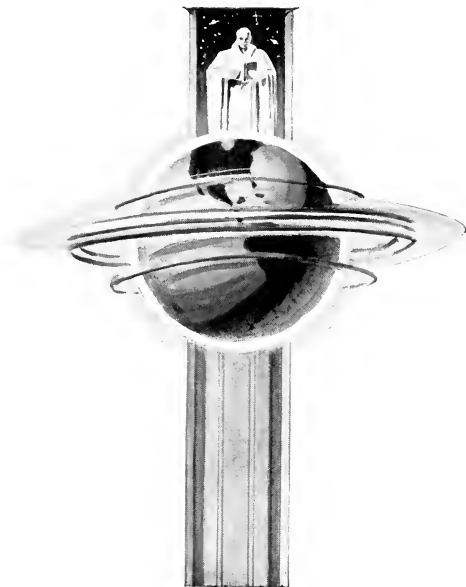


MR. A. A. HENDERSON
Steward



Book II

· CLASSES ·



SENIORS



IONE HOOKER BRADSHER
Senior Class Mascot

COLORS: *Green and White*

FLOWER: *Lily-of-Valley*

MOTTO: *"To strive; to seek; to find; but not to yield"*

CLASS POEM

*"To strive; to seek; to find,
But not to yield—"
The Senior class has bound
Itself to this ordeal.*

*No conquerors great are we
In fields unknown,
Yet ever do we say
Alma Mater, lead on.*

*To you, O Alma Mater,
We owe our all;
To you we pledge ourselves;
We heed your call.*

*You gave to us the best
You had to give;
Your thoughts of us came first;
That we might live.*

*When college days are done you bid
Us live abundantly,
Yet we would walk with you awhile,
This class of '33.*

BERTHA WALSTON.



EVELYN GILLAM
Harrelsville, N. C.
President of the Senior Class





SENIOR CLASS OFFICERS

KATHERINE BLALOCK
MAMIE RUTH LONG
HELEN HICKS

Vice President
Secretary
Treasurer



INEZ BECTON
Bachelor, N. C.

Home Economics and Science

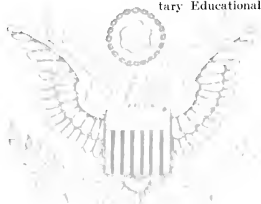
Poe Society; Inter-Society Committee '33; Delta Omicron Sigma; Science Club; Y. W. C. A.



ELIZABETH FIDDLE
Dover, N. C.

Primary Education

Y. W. C. A.; Lanier Society; Proctor, '30; Junior "Y" Cabinet; Class President, '31; Class Representative Student Government, '32; Senior "Y" Cabinet, '32; Vice President Y. W. C. A., '33; Elementary Educational Council.





KATHERINE BEALOCK
Jonesboro, N. C.

Home Economics and Science

Louisburg College, '30, '31; Lanier Society, '32, '33; Marshal, '33; Y. W. C. A.; Delta Omicron Sigma; Class Vice President, '33; Class Superlative, '33.

MARY BRILEY
Chicod, N. C.

Primary Education

Emerson Society.





VERA M. BROUGHTON
Merritt, N. C.

English and French

Emerson Society; Athletic Association, '31-'33; *Techo Echo* Reporter for Athletic Association, '33; Scribbler's Club, '32, '33; English Club, '31-'33; Phi Sigma, '31-'33; Student Volunteer, '33; Wearer of College Monogram; Class Basketball Team, '31-'33; Young Women's Christian Association, '32, '33.



MARY WALKER BROWNE
Wilson, N. C.

Home Economics

Emerson Society; Class Basketball Team, '31-'33; Athletic Association, '31-'33; Delta Omicron Sigma.





LOREE CAGLE
Rutherfordton, N. C.

Home Economics and Science

Delta Omicron Sigma; Emerson Society; Y. W. C. A.; Y. W. C. A. Choir, '30, '31; Junior Y. W. C. A. Cabinet, '30; Athletic Association, '30, '31; Proctor, '30; Glee Club; Vice President Glee Club, '31; Delegate to John R. Mott "Y" Conference, '30; Vice President of Class, '31; President Class, '32; Delegate to N. C. C. P. A., '32, '33; Associate Editor *TECOAN*, '32; Editor *TECOAN*, '33.

MARY CARSON
Stokes, N. C.

Science and History

N. C. C. W., '30; Emerson Society; Y. W. C. A.; Science Club; Proctor, '31





NAOMI CARR
Teachey, N. C.

Home Economics and Science

Poe Society; Delta Omicron Sigma;
Athletic Association.



CLIFTON CHERRY
Cornelius, N. C.

Home Economics and Science

Poe Society; Delta Omicron Sigma;
Inter-Society Committee, '33; Poe Society
Critic; Vice President Delta Omicron
Sigma, '33; President Poe Society, '33.





MARY ABERNATHY CLARK
Warrenton, N. C.

Primary Education

Emerson Society.

MARY ELLEN CLIFTON
Faison, N. C.

Intermediate Education

Y. W. C. A.; Elementary Education
Council; Poe Society; James Johnston
Pettigrew Scholarship, '30, '31, '32, '33.





JESSIE GLYN COLE

French and Mathematics

Appalachian State Teacher's College;
Y. W. C. A.; Lanier Society; Phi Sigma;
Scribblers' Club; Mathematics Club;
Secretary and Treasurer Mathematics
Club; *Teco Echo* Representative;
Mathematics Club Proctor.



VIVIAN COOKE

Louisburg, N. C.

English and History

Poe Society; English Club; Athletic
Association; Class Basketball Team;
Y. W. C. A., '33.





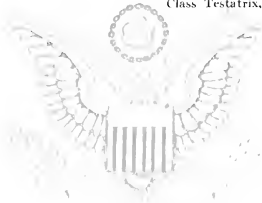
EDITH CORBETT
Currie, N. C.

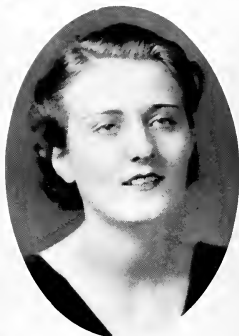
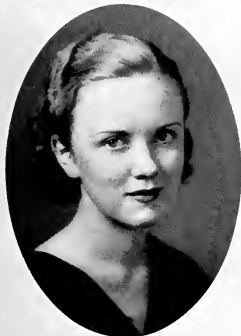
Home Economics and Science
Poe Society.

KARA LYNN CORLEY
Greenville, N. C.

English, History, Geography

Class Critic, '30; Athletic Association, '30; Emerson Society; English Club; Geography Club, '31, '32; Secretary and Treasurer Geography Club, '32; Budget Committee, '33; Class Superlative, '33; Class Testatrix, '33.





FRANCES DAVIS
Waxhaw, N. C.

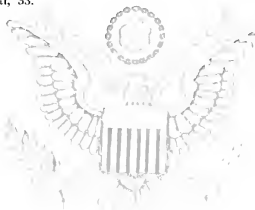
Primary Education

N. C. C. W., '30, '31; Poe Society, '32, '33; Athletic Association, '32, '33; Basketball, '32; Poe Cheerio Club, '32; Y. W. C. A., '33; Assistant Cheer Leader of Senior Class, '33; Advertising Manager of *Teco Echo*, '33; Marshal, '33.

HILDA BERYL DAVIS
Mount Olive, N. C.

English and History

Emerson Society, '29, '30, '32, '33; Y. W. C. A., '29, '30, '32, '33; Athletic Association, '29, '30; Proctor, '30; English Club; Duplin-Pender County Club, '30, '31; Proctor, '32, '33.





MILDRED DAVIS
Fairmont, N. C.

Primary Education

Poc Society; Y. W. C. A.; Cheerio Club, '31; Proctor, '30; Elementary Educational Council, '31, '32; Delta Omicron Sigma, '30.

BIRDIE LEE DEBNAM
Snow Hill, N. C.

History and French

Meredith College, '30; Emerson Society; Phi Sigma; Class Secretary, '32; Y. W. C. A., '31; Class Council Representative, '33; Class Superlatives, '33; Class Testatrix, '33.





LOUISE DENNING
Benson, N. C.

Elementary Education

Post Graduate Work; Graduate of
Greensboro College.



JOSEPHINE E. DIXON
New Bern, N. C.

Home Economics and Science

Lanier Society; Proctor, '31; Athletic
Association; Y. W. C. A., '31, '33; Inter-
Society Committee; Delta Omicron
Sigma.





MARY EDNA DOBSON
Kenansville, N. C.

English and History

Poe Society, '30, '33; Y. W. C. A., '30, '33; English Club, '31, '33; Athletic Association, '30; Duplin-Pender County Club, '31.

ALICE MAE ELS
Grimesland, N. C.

Primary Education

Emerson Society; Athletic Association, '30, '31; Y. W. C. A., '30-'32; Y. W. C. A. Choir, '32; Pitt County Club, '30; Poe Cheerio Club, '33.





JULIA ARCHER FARRIOR
WATSHAW, N. C.

English and History

Y. W. C. A.; Emerson Society; English Club; Y. W. C. A. Cabinet, '32; Secretary of English Club, '33.

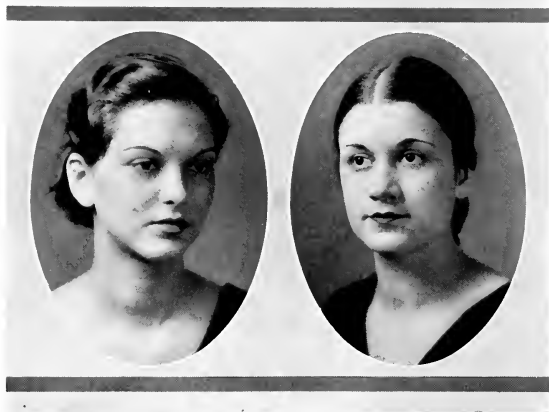


SALLY JO BIRD FIELDS
Metter, Ga.

History and English

Brenau College, '29, '30; South Georgia Teachers College, '31; Lanier Society; English Club; Proctor, '33.





MARGARET FISHER
Swan Quarter, N. C.
Science and English

Emerson Society; Y. W. C. A.; Science Club; English Club.

IRIS PLEASANT FLYTHE
Pendleton, N. C.
History and English

Y. W. C. A.; Y. W. C. A. Cabinet; Athletic Association, Secretary, '30, President, '33; Class Basketball Team, '30-'33, Captain, '30-'33; Wearer of College Monogram; Medal; Baseball Team, Captain; Secretary of Emerson Society; Vice President of Science Club; Senior Play; Senior-Superlatives.





ZELLE FOLEY
Greenville, N. C.

English and Science

Vice President Class, '30; Emerson Society; English Club; Science Club, '32, '33; Secretary Science Club, '32; Assistant Class Cheer Leader, '32; Senior Play, '33; Class Superlatives, '33; Athletic Association, '30, '31; TECOAS Representative, '31.

EDITH TULL FORNES
Greenville, N. C.

Primary Education

Lanier Society.





KATIE MANN GIBBS
Swan Quarter, N. C.

Science and Mathematics

Emerson Society; Proctor, '31; Y. W. C. A.; Mathematics Club; Science Club, '31-'33.

EVELYN FREDERICK GILLAM
Harrellsville, N. C.

Primary Education

Y. W. C. A.; Junior Y. W. C. A. Cabinet, '30; Poe Society; Poe Cheerio Club; Proctor, '30, '32; Elementary Education Council, Vice President, '33; Class TECOAN Representative, '32; Class President, '33.





CLEMENT GORDON
Waxhaw, N. C.

Primary Education

Lanier Society; Y. W. C. A.; Union
County Club, '30.

MARGARET GRIFFIN
Marshville, N. C.

Primary Education

N. C. C. W., '30, '31; Poe Society;
Athletic Association, '32; Y. W. C. A.;
Y. W. Choir, '33; Chief Marshal, '33.





MARJORIE GRIFFIN

Toronto, Canada

English and French

Emerson Society; Society Marshal, '32, '33; TEXCOAN Representative for Emerson Society, '32; Phi Sigma, President, '32; English Club; Y. W. C. A.; Athletic Association, '30; House President, '31; Vice President Student Government Association, '33; Representative to N. C. S. F., '32; Representative to B. S. U., '31; Entertainment Committee, '33; Editor-in-Chief Handbook, '32; Chairman Point Committee, '33; Senior Play; Senior Superlative.

RENA ELIZABETH HAYWOOD

Trenton, N. C.

English and French

Louisburg College, '30; Emerson Society; Y. W. C. A.; English Club; Phi Sigma; Delegate to N. C. C. P. A. Conventions, '32-'33; Associate Editor *Teco Echo*, '32, Editor-in-Chief, '33; Jones County Club; Council of S. G. A., '33; Superlative, '33.





VIVIAN HELLEN
Vanceboro, N. C.

French and Science

Y. W. C. A.; Emerson Society; Science
Club; Phi Sigma.

MARY ELIZABETH HELMS
Goldshoro, N. C.

Home Economics and Science

Flora Macdonald College, '30, '31;
Delta Omicron Sigma; Emerson Society;
Science Club; Y. W. C. A.





MARICE HESTLER
Creedmoor, N. C.
Grammar Grade

Emerson Society; Y. W. C. A.

HELEN HICKS
Wise, N. C.

Primary Education

Poe Society; Y. W. C. A., '32, '33;
Class Treasurer, '33; Elementary Educa-
tion Council, '33.





WYATT HIGHSMITH

Greenville, N. C.

English and French

Graduate Work; Graduate of Elon
College.



ELIZABETH RELFE HOBBS

Belhaven, N. C.

Grammar Grade

Duke University, '28, '29; *Teco Echo*
Business Staff, '31; Senior Normal Play,
'31; Emerson Society; *Teco Echo*
Alumnae Editor, '33.





RUTH EVELYN HOLLOWELL
Hertford, N. C.

Mathematics and Latin

Y. W. C. A.; Lanier Society; Athletic Association, '30, '31; Wearer of College Monogram; Albemarle District Club, '30, '31; Mathematics Club; Classical Club.

KEMP HOUSE
Greenville, N. C.

Mathematics and Latin

Emerson Society; Classical Club, '31-'33; Mathematics Club, '31-'33; Secretary-Treasurer Classical Club, '32, Vice President, '33; Pitt County Club, '30.





NELSON HUNSUCKER
Winterville, N. C.

Mathematics and Science

Wake Forest College, '30; Lanier Society; Co-ed Club, '31-'33, President, '32; Vice President of Mathematics Club, '32; Science Club, '32, '33, President, '33; Class Treasurer, '32; Basketball, '32; Baseball, '32, '33; Co-ed Representative to Council, '33.



MARY EMMA HURST
Williamston, N. C.

Home Economics and Science

Lanier Society; Delta Omicron Sigma;
Y. W. C. A.

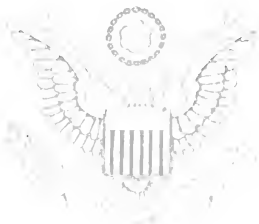




FRANCES ROBENA JENKINS
Robersonville, N. C.
Grammar Grade
Emerson Society; Y. W. C. A.



VIRGINIA FAISON JENKINS
Shelby, N. C.
History and French
St. Mary's, '30; Entertainment Com-
mittee, '33; Phi Sigma, '32, '33.





VERA M. JENNINGS
Elizabeth City, N. C.

Mathematics, Science, French

Y. W. C. A.; Junior Y. W. C. A. Cabinet, '30; Chairman Publicity Committee, Y. W. C. A., '31, Treasurer, '32; Poe Society; Athletic Association, '30, '31; Phi Sigma, '32, '33, Vice President, '33; Math Club, '31-'33; Trioxas Representative Math Club, '31; Social Chairman Math Club, '32, President, '33; Science Club, '32, '33, Advertising Manager, '33; Albemarle District Club, '31; Scribblers' Club, '33; Proctor, '33; Violin Ensemble, '30, '31; College Orchestra, '32, '33; Budget Committee, '32, '33; Entertainment Committee, '32, '33.

MARGARET MAHOOD JOHNSTON
Emporia, Va.

Primary Education

Emerson Society; Freshman Cheer Leader; Y. W. C. A., '30; Proctor, '32; Athletic Association, '30; Cheerio Club, '33.



DORIS MAE JONES
Goldsboro, N. C.

Primary Education

Emerson Society; Athletic Association, '30; Marshal, '30; Student Council, '30; Assistant Business Manager TECOAN, '31; Y. W. C. A., '29, '30; Senior Play, '32; Delta Omicron Sigma, '32; Associate Editor TECOAN, '33.



ALICE LOUISE JORDAN
Powellsville, N. C.

Intermediate Education

Poe Society; Elementary Education Council, '32; Y. W. C. A.; Proctor, '30, '32; Poe Society Critic, '31; Class Basketball Team, '30; Athletic Association, '30, '31; Secretary Poe Society, '33; Y. W. C. A. Choir, '31.





VIRGINIA JONES
Greenville, N. C.

Primary Education

Emerson Society.

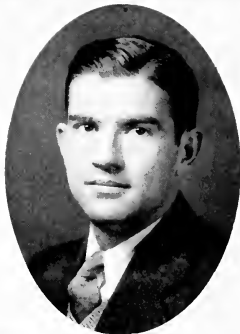


ANNIE LAURIE KENNEDY
Kinston, N. C.

Elementary Education

Lanier Society; Y. W. C. A.





CHARLES KING
Greenville, N. C.

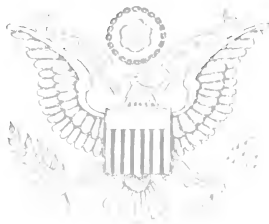
English and Science

Duke University, '30; Emerson Society;
Science Club; Co-ed Club; Football, '32;
Basketball, '32, '33; Baseball, '32, '33;
Boys' Athletic Association; Senior Play,
'33.

DOROTHY PARKS KNOX
Huntersville, N. C.

Primary Education

Emerson Society; Y. W. C. A.; Ap-
palachian State Teachers College.





EMILY LANE
Hertford, N. C.

History and Science

Lanier Society, Secretary, '32; Y. W. C. A.; Lanier Marshal, '33; President Lanier Society, '33; Proctor, '32; Inter-Society Committee, Chairman, '32; Science Club, '32; Lanier Debater, '31, '32.

ROSA LEE LANG
Farmville, N. C.

Elementary Education

Meredith College, '29, '30; Lanier Society, '32, '33; Elementary Education Council, '32, President, '33; House President, Summer, '32; Athletic Association, '33; Senior Class TECOAN Representative, '33; Chairman Chapel Program Committee, '33; Superlative, '33.





MARY SUE LANGSTON
Gates, N. C.

Science, History and Geography

Poe Society; Basketball Team; Y. W.
C. A.; TECOAN Representative, '32.

PANSY ELLEN LANIER
Oxford, N. C.

Primary Education

St. Mary's; Emerson Society, Vice
President, '32, '33; College Cheer Leader,
'32, '33; Assistant Editor TECOAN, '32;
Inter-Society Committee, '33.





RUTH LLOYD
Spencer, N. C.

Intermediate Education

Catawba College, '29; Y. W. C. A.;
Poe Society, '31, '32; Y. W. C. A. Choir,
'32, '33; Student Volunteer Band.

CHAS. M. LOMINAC
Wilson, N. C.

Mathematics and English

Biltmore Junior College, '28, '29; Ashe-
ville Teachers College, '30, '31; Ap-
palachian Teachers College, '32; Foot-
ball, '33; Basketball, '33.





MAMIE RUTH LONG
Oxford, N. C.

French and English

Emerson Society; Y. W. C. A., '30, '32;
English Club, '31-'33; Phi Sigma, '32,
'33; Class Secretary, '33; TECOAN Repre-
sentative of English Club, '33.

LARCE MANGUM
Creedmoore, N. C.

Elementary Education

Mars Hill College, '29, '30; Glee Club,
'31-'33; Y. W. C. A.; Lanier Society;
Y. W. C. A. Choir, '31, '32.





MARY MANN
Middletown, N. C.

Primary Education

Emerson Society.



MARY D. McCORMICK
McColl, S. C.

Science and Geography

Emerson Society; Science Club; Athletic Association, '30, '31; Y. W. C. A. Basketball Team, '30, '31.





PEARL MCHAN
Almond, N. C.

Home Economics and Science

Western Carolina Teachers College, '31;
Delta Omicron Sigma; Emerson Society;
Proctor, '32; Y. W. C. A.

BESSIE McLAMB
Parkton, N. C.

History and English

Y. W. C. A.; Emerson Society; English
Club.





GLADYS E. MEASLEY
Goldsboro, N. C.

French, English, History

Emerson Society; English Club;
Proctor, '30; Phi Sigma, '32, '33; Pres-
ident Phi Sigma, '33.

BEULAH B. MEWBORN
Snow Hill, N. C.

Home Economics and Science





IMA MEWBORN
Snow Hill, N. C.
English and Science

DELIA MITCHELL
Bunn, N. C.
Primary Education
Lanier Society; Athletic Association,
'30, '31; Y. W. C. A., '31-'33.





CHRISTINE MOORE
Grifton, N. C.

Primary Education

Emerson Society.

ELIZABETH MOORE
Greenville, N. C.

Science and Geography

Emerson Society; Class Superlative,
'30; Class Cheer Leader, '31; Geography
Club; Athletic Association, '30, '31;
Senior Play, '33.





LULA MOORE
Dillon, S. C.

English and French

Poe Society; English Club; Phi Sigma;
Y. W. C. A., '29, '30.

FRANCES MORTON
Greenville, N. C.

Elementary Education

Salem College, '30; Emerson Society,
'31-'33; Glee Club, '32; Orchestra, '32, '33.





MARGARET MOYE
Goldsboro, N. C.

Primary Education

N. C. C. W., '29, '30; Emerson Society.



MARGARET MURCHISON
Greensboro, N. C.

French and English

Class President, '30; Junior "Y"
Cabinet, '30; House President, '31; Secretary Student Government Association,
'32, '33; N. S. F. A. Delegate,
'32, '33; Y. W. C. A.; Emerson Society;
Superlative, '32, '33; Senior Play, '33;
Class Superlative, '33.





CARRIE MOORE NASH
Goldsboro, N. C.

History and English

Saint Mary's, '30; N. C. C. W., '31;
Lan'er Society; Proctor; House Pres-
ident, Summer, '32.



HULDAH ELIZABETH NOBLES
Greenville, N. C.

History, English

St. Mary's, '30; Emerson Society;
English Club; Senior Play, '33; Class
Superlative, '33.





ETHEL PARKER
Weldon, N. C.

English and Science

Lanier Society; *Tech Echo* Reporter Lanier Society, '30; Junior Cabinet, '30; Athletic Association, '30, '31; Basketball Team, '31; Class Secretary, '31; Geography Club, '31; English Club, Secretary and Treasurer, '32; Y. W. C. A., Vice President, '32; Delegate to N. S. U. Conference; Blue Ridge, '32; Assistant Advertising Manager of *Tech Echo*, '32; Debating Team Lanier Society, '32; Council, '33; President of Y. W. C. A., '33.



MARTHA A. PICKETT
Kerensville, N. C.

Home Economics

Flora Macdonald, '30; Poe Society; Y. W. C. A.; Delta Omicron Sigma.





ANNIE LEE POWELL
Warrenton, N. C.

Elementary Education

Louisburg College; Elementary Education Council, '33; Y. W. C. A., '31, '32; Poe Society; Y. W. C. A. Choir, '31, '32.



MARY RABB
Marion, N. C.

English and French

Lanier Society; Class Treasurer, '31; Y. W. C. A.; Y. W. C. A. Choir, '30-'32; Y. W. C. A. Cabinet, '33; House President, '33; English Club.





LORENA EVELYN ROGERS
Wilmington, N. C.

Home Economics and Science

Emerson Society, Secretary, '32, President, '33; Athletic Association, '30; Y. W. C. A., '30, '33; Delta Omicron Sigma, Secretary, '32; Proctor, '31; Delegate to State Home Economics Convention, '31; Business Manager Handbook, '32; Chairman of Campus Committee, '32, '33.



ELIZABETH ROWLAND
Castalia, N. C.

English and History

Poe Society; Athletic Association; English Club; Y. W. C. A.





ROSA LEE SAIED
Greenville, N. C.
History and Science



THELMA SHACKELFORD
Portsmouth, Va.
Primary Education
State Teachers College, Farmville, Va.;
Emerson Society.





DOROTHY SLOAN
Wallace, N. C.

Mathematics and English

Emerson Society; Y. W. C. A., Choir, '30-'32; Junior "Y" Cabinet, '30; Senior Cabinet, '32; Class Treasurer, '30; Proctor, '30, '31; English Club, '30, '31; Treasurer S. G. A., '31; Math Club, '32, '33; *Teco Echo* Reporter, '32; Lida Hill Meadows Scholarship, '31.

DOROTHY MADGE SMITH
Farmville, N. C.

English and Latin

Emerson Society; Y. W. C. A.; English Club; Classical Club, President, '32, '33.





HUNTER SPEARS
Rocky Mount, N. C.

Primary

Lanier Society; Athletic Association, '29-'32; Student Council, '29; State Teachers College, Fredericksburg, Va.; Vice President Class, '32; Y. W. C. A., '29, '31; Senior Play; Delta Omicron Sigma, '33.

CAROLYN SPENCER
Swan Quarter, N. C.

Mathematics and French

Y. W. C. A.; Emerson Society; Math Club, Secretary and Treasurer, '31; Phi Sigma; English Club.





ALICE BEATRICE STALLS
Robersonville, N. C.

French and English

Y. W. C. A. Cabinet, '30; Poe Society; Student Volunteer Group, Vice President, '30, Secretary-Treasurer, '32; Scribblers Club; Phi Sigma; English Club; Delegate to Students' Conference on Missions, '30; Delegate to Y. W. C. A. Officers Training Conference, '31; Proctor, '32.



MARTHA STARLING
Pine Level, N. C.

English and History

Y. W. C. A.; Poe Society; English Club; Athletic Association, '33; Scribblers Club, '33; *Teco Echo* Reporter for Johnston County Club, '33, for Athletic Association, '33; English Club Critic, '33.





JACQUELINE SWINDELL
Swan Quarter, N. C.
History and Science

MARY LOUISE TAYLOR
Elin City, N. C.
Latin and English

Junior "Y" Cabinet, '30; Secretary-Treasurer of Classical Club, '30, Vice President, '31; Y. W. C. A.; Scribblers Club; English Club; Poe Society; *Teco Echo* Reporter for Senior Class.

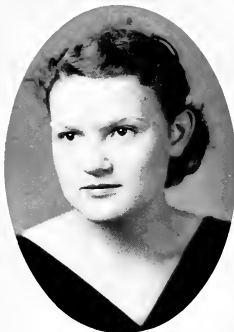




RUBY EVELYN TAYLOR
Snow Hill, N. C.

French, Mathematics, English

Poe Society; Phi Sigma, Secretary, '32; English Club; TECOAX Representative, '32; Math Club; Scribblers, Vice President, '33; Glee Club, '32, '33; Y. W. C. A., '30-'33; Choir; Delegate to B. S. U. Conference, '32, '33; Athletic Association, '31.



SARA JANE TREVATHAN
Pinetops, N. C.

English and French

Emerson Society; Athletic Association, '31, '32; English Club, '31, '32; Phi Sigma, '32; Class Basketball Team, '31.





MAE TUCKER
Marshville, N. C.

Grammar Grade Education

N. C. C. W., '29, '30; Wingate Junior
College, '31; Lanier Society; Y. W. C. A.;
Athletic Association.



W. ERIC TUCKER
Greenville, N. C.

Mathematics and Science

Duke, '30; Poe Society; Co-ed Club,
Co-ed *Treo Echo* Assistant Editor;
Scribblers Club; Math Club; Science
Club; Football Team, '33; Basketball,
'32, '33; Baseball, '32, '33; Men's Athletic
Association.

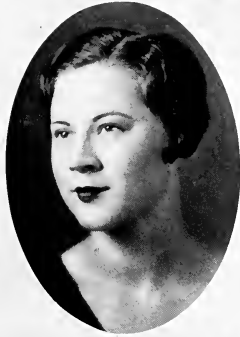




PATTIE MAY TURNAGE
Ayden, N. C.

Primary Education

N. C. C. W., '29; Lanier Society, '32,
'33; Assistant Cheer Leader Class, '33.



BERTHA E. WALSTON
Stantonsburg, N. C.

English and History

Emerson Society, '30, '31; Class Re-
porter, '31, '32; President Scribblers Club,
'32; President English Club, '33; Athletic
Association, Business Manager, '32; As-
sociate Editor *Teco Echo*, '33; Delegate
Baptist Student Convention, '32; English
Club; Y. W. C. A.; Superlative, '33.





KATHERINE WEATHERS

Raleigh, N. C.

History and Geography

Coker College; Lanier Society, '30,
Vice President, '31; Class Cheer Leader,
'31; Geography Club, '31.

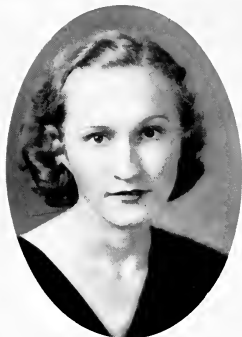
PAULINE WIELESS

Adsonville, N. C.

English, French, History

House President, '33; Poe Society, '31;
English Club, '32; Phi Sigma, '32; Y. W.
C. A., '33.





EMMA LEE WILKINSON
Stonewall, N. C.

Elementary Education

Hamilton College and Transylvania University, '30, '31; Glee Club, '32; Scribblers Club, '32; Emerson Society, '32, '33; Y. W. C. A., '32, '33; Proctor, '32, '33; Athletic Association, '33.

DOROTHY VOIGHT WILLARD
Greenville, N. C.

Intermediate Education

Emerson Society; Athletic Association; Basketball, '32; Student Volunteer; Pitt County Club, '31.





ROSA WILLIAMS
Currituck, N. C.

Home Economics and Science

Campbell College, '30, '31; Poe Society,
'32, '33; Delta Omicron Sigma, '32, '33;
Y. W. C. A.

MELVIN C. WILLARD
Greenville, N. C.

Math and Science

N. C. State, '29-'31; Emerson Society;
Science Club; Co-ed Club.





SARA MAIE WINSLOW
Belvidere, N. C.

Elementary Education
Graduate Work.

MARY GLADYS WOMBLE
Lillington, N. C.


Grammar Grade Education
Graduate Campbell College; Lanier
Society; Y. W. C. A.





JUANITA YOUNG
Lake Landing, N. C.
Primary Education
Emerson Society; Y. W. C. A.





THE CLASS OF '33 AT COLLEGE

THE rain came down in torrents. One look at the downpour made a person want to curl up on the sofa and sleep.

To those of us who were entering East Carolina Teachers College for the first time, the day was particularly dreary. Those red brick buildings cast a spirit of gloom over us; we felt as if we were being carried to prison. The only relief to our downcast spirits came from the Y. W. C. A. cabinet girls who kindly helped us fill out our cards and showed us to our rooms.

The first few days were terrible. How we disliked the endless routine of having our lives regulated by bells! Every day had to adhere to a certain schedule. But gradually we adjusted ourselves to the bells and other features of college and accepted the campus as our home.


We had only one thing to dread—initiation. The horrible week came, and to our astonishment it was fun.

With Margaret Murchison as president we started to work. Did I say work? I believe I did. And I suppose we did have to put forth some effort in preparing our lessons but not enough to keep us from exercising our few privileges. In spite of the great many regulations that we had to adhere to, we enjoyed the parties and entertainments that we attended. The Juniors gave us a kid-party, and in return we gave them a St. Patrick's Day Party. Among the entertainments we enjoyed were the United States Band, the North Carolina Playmakers, and the Isadore Duncan Dancers.

The fall of 1930 found most of us back at E. C. T. C. This year we chose Elizabeth Biddle as president. Spalding Kryl's Band, and other entertainments relieved the monotony of school work. We had delightful Senior-Sophomore and Sophomore-Senior parties. But the life of a Sophomore isn't so thrilling.

Then came our most important year. As Juniors we were given more privileges: we could sit nearer President Wright in chapel; we could go down the street any afternoon; and we were respected by the Sophomores and Freshmen. With our president Loree Cagle and our advisers, Dr. Slay and Miss Bonewitz to help us, we began making plans for the banquet.

Margaret Murchison attended a National Student's Association and brought back many helpful suggestions for our campus. We heard Galli Curci and the Don Cossacks.



The summer vacation passed quickly, and we came back as *Seniors*. Was this E. C. T. C., or was it fairyland? Here we were with the new Senior privileges, the Senior dignity, and the Senior responsibility. Soon we realized that the Seniors were the busiest yet the happiest people in college. Practice-teaching, school work, and outside activities kept us as busy as bees, and by keeping us busy kept us happy.

Our Senior play, "The Charm School" showed the audience what splendid actors and actresses the class has.

Event followed event; everything seemed important. The Juniors gave a banquet which we can never forget. Spring came, and we went on a camping trip to Bayview. Don't ask us what we did.

And now we have almost completed the college chapter of our history. We are glad to graduate, and yet we look back over the happy days we have spent here with regrets.

My goodness! It is ten o'clock. Commencement begins at eleven. We must don our caps and gowns, the symbols of Senior dignity, and go forth to receive our degrees.

MARTHA STARLING.



LAST WILL AND TESTAMENT

WE, the class of nineteen hundred and thirty-three, on the eve of graduation, do hereby make this our last will and testament.

To our Alma Mater we bequeath our undying love and gratitude for all she has done to train us in lessons of patience, of service, of happy coöperation, and of aspiration, from the care-free thoughtlessness of our freshman year to the more serious and appreciative attitude of today.

To the faculty and officers of administration we bequeath our gratitude for many pleasant memories we have of our years at college and for their sympathy and understanding both in and out of class.

To the Juniors we bequeath all the privileges, trials, happiness and hopes of a Senior.

To the Sophomores, our sister class, we bequeath our studious qualities and the assurance of our interest in their future successes.

To the Freshmen, we bequeath all the optimism and self-assurance of our Sophomore year.

We bequeath to those coming after us all those intangible things which go to make life great, good, happy, beautiful:

Honor, so that the children of our Alma Mater may face the world unshamed.

The Spirit of Service, the highest ideal of our Alma Mater;

Faith in ourselves and in others, and in the ultimate worth-whileness of life;

Courage, not mere physical bravery but the mental and moral courage to go against the crowd, if need be, and to face the world unafraid;

Ambition to live not merely a good life but a full and complete life, one of definite, worthy of purposes and accomplishments;

A Love of Beauty, not only of form and color but in the souls and deeds of men; and finally;

An *Outlook on Life* that is both broad and deep, brightened with happiness, and softened by pity and understanding.

Signed on this sixth day of June, one thousand nine hundred thirty-three, A.D., at East Carolina Teachers College, Greenville, North Carolina.

KARA LYNN COREY }
BIRDIE LEE DEBNAM } *Testatrices.*

1933—Senior Class Prophecy—1943

Evelyn Gillam		Chairman of City Board in Detroit
Bertha Walston		Engaged
Margaret Marchison	}	Advisers of the National Federation of Student Government
Marjorie Griffin		
Dorothy Sloan	}	Instructor of Physical Education at Flora Macdonald
Iris Flythe		
Mary Carson	}	Chemists in Berlin
"Pete" Honsucker		
Elizabeth Rowland		History teaching at New Hanover High School
Zelle Polley	}	Co-stars for Metro-Goldwyn Mayer
Eric Tucker		
Vivien Helen	}	Waitresses in an American Café in France
Mary Taylor		
Martha Pickett	}	Proprietor of above café
Beulah Mewborn		
Clifton Cherry		Dancer
Ethel Parker		Owner of a three-ring circus
Ruby Taylor		
Rosa Lee Lang	Acrobat	}
Lib Moore	Animal Trainer	
Irma Mewborn		All in Ruby's Circus
Kathryn Blalock	}	
Kara Lynn Cory		Clowns
Sara Trevathan	}	Charlie King's wife
Hulda Nobles		
Charlie King		Farmer
Bessie McLamb	}	Chorus girls
Beatrice Stalls		
Gladys Measley		Paramount's baby star
Dorothy Willard	}	Pattern designers
Dorothy Knox		
Christine Moore	}	Working on Doctor's Degree at Columbia University
Hilda Davis		
Mary Edna Dobson	}	Members of an old maid's Sewing Circle
Hunter Spears		
Marice Hester	}	Metropolitan singer
Mary Elizabeth Helms		
Helen Hicks	}	La Rue's pianist
Kemp House		
La Rue Mangum		Married
Mary Rabb		At a French University
Emma Lee Wilkerson		Married to Hal Connell
Lula Moore		Operating "The Hotcha Cookery" in Panama
Annie Lee Powell		
Carrie Moore Nash	}	President of the World Y. W. C. A.
Mary McCormick		
Thelma Shackelford	}	Director Y. W. C. A. in South America
Dorothy Smith		
Mary Sue Langston		
Mary Walker Brown		

Edith Corbit	Directing Y. W. C. A. in Spain
Josephine Dixon	Directing Y. W. C. A. in England
Doris Mae Jones	Directing Y. W. C. A. in Mexico
Margaret Johnson	Head of Student Volunteers in America
Mary A. Clark	Owner of a road show
Carolyn Spencer	Mary's comedies
Alice Mae Elks	
Inez Becton	Toe dancer
Margaret Fisher	Actress in road show
Virginia Faison Jenkins	Palmist
"Lizzie" Relfe Hobbs	Owner of a dairy near Sharpsburg
Louise Harris	Dairy maids
Louise Jordan	
Margaret Griffen	
Birdie Lee Debnam	
Julie Farrior	
Elizabeth Biddle	Richest woman in Canada
Frankie Davis	Lib's maid
Vera Broughton	Assistant Postmaster General of the United States.
Amelia Black	Chief Accountants for the White Star Shipping lines
Ellen Clifton	
Mary Briley	
Mildred Davis	Paris divorcee
Vivian Cooke	Teaching Gymnastics in China
Margaret Edwards	
Edith Fornes	
Virginia Jones	
Frances Morton	
Lorie Cagle	Anthropologists
Margaret Moye	Manager of an old maid's home in Rutherfordton
Panay Lanier	Fastidious inmates of Loree's old maid's home
Katherine Weathers	
Vera Jennings	
Juanita Young	Head nurses in Johns Hopkins Hospital
Mary Gladys Womble	
Emily Lane	
Mae Tucker	
Martha Starling	Nurses at Johns Hopkins Hospital
Sally Jo Fields	
Clement Gordon	Editor of Ballyhoo
Elizabeth Heywood	
Mamie Ruth Long	
Ruth Lloyd	Manager of a toy menagerie in Jamaica
Annie Laurie Kennedy	Owner of a menagerie
Jacqueline Swindell	Doing historical research work
Katie Mann Gibbs	Dance instructor
Ruth Hollowell	Teachers
Mary Mann	
Pearl McHan	Home Demonstrator
Ruby Goley	Dean at E. C. T. C.
Pauline Wheless	World famed dietitian
Rosa Williams	Married to a loafer



1



2



3



4



5

**Senior Class
Statistics**

1 MOST CHARMING
KATHERINE BLALOCK

2 BEST DRESSED
MARJORIE GRIFFIN

3 BEST ALL AROUND
MARGARET MURCHISON

4 MOST STUDIOUS
MARY TAYLOR

5 MOST ATHLETIC
IRIS FLYTHE

6 MOST TALENTED
KARA LYNN COREY

7 WITTIEST
BERTHA WALSTON

8 MOST POPULAR
BERDIE LEE DEBNAM

9 MOST ATTRACTIVE
ZELLE FOLEY

10 CUTEST
HULDAH NOBLES



6

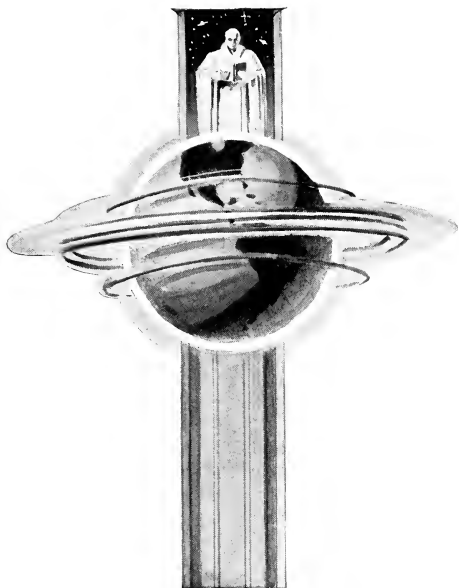
7

8

9

10





JUNIORS



ELLEN MOORE FORT
Junior Class Mascot

COLORS: *Blue and Silver*

FLOWER: *Ragged Robin*

MOTTO: "*Rowing, not drifting*"

JUNIOR POEM

T*O strive for all the highest, best, and truest;
To seek for every good that may be gained;
To find a wealth of hidden truth and wisdom;
And not to yield a point we have attained;
To work for joy of working, not as duty;
To hold securely to a fair ideal;
To have a lofty goal, and then to reach it,
To keep our lives aglow with faith and zeal—
This is our aim, and always we shall follow
The moving star that travels toward success,
The star that calls to honor and achievement,
To worthy life, and will accept no less.*

EMMA LEE DAVIS.



JUNIOR CLASS OFFICERS

CLARA VANN FREEMAN
MARGARET SMITH
HILDA THOMPSON
ETHELYN SANDERS

President
Vice President
Secretary
Treasurer



PAULINE BARBER
Biscoe, N. C.

LOULA MAY BARKER
Greenville, N. C.



HILDA BARNHILL
Bethel, N. C.

GEORGIE WEEKS BELL
Bogue, N. C.



AMELIA BLACK

STELLA BLEVINS
Grassy Creek, N. C.



HILDA BOYCE
Tyner, N. C.

HAZEL BRASWELL
McFarland, N. C.



CAROLYN BROOKS
Woodsdale, N. C.

LOLA BROOKS
Tarboro, N. C.



SALLIE BROOKS
Greenville, N. C.



CLYDE BROWN
Greenville, N. C.

EDWINA BURCH
Walstonburg, N. C.



HELEN BURNETTE
Greenville, N. C.

TROY BURNETTE
Greenville, N. C.



MEDRITH BYRD
Durham, N. C.

VIRGINIA CALE
Tyder, N. C.



FRANCES CAPEL
Wadesboro, N. C.

MARY WILLIAMS CARR
Williamston, N. C.



HALLYBURTON COOK
Dillon, S. C.



MATTIE LOU COTTON
Scotland Neck, N. C.

REBECCA CURTIS
Wilson, N. C.



MARGARET CUTHRELL
Selma, N. C.

ELIZABETH DAIL
Hookerton, N. C.



EMMA LEE DAVIS
Dunn, N. C.

FLORENCE DENNING
Benson, N. C.



ELIZABETH DENNY
Wilson, N. C.

MABEL DICKENS
Varina, N. C.



WILLA MAE DILLS
Sylva, N. C.

MILDRED DIXON
Plymouth, N. C.

GLENNE DRAPER
Conway, N. C.



BERNICE ELLIOTT
Rich Square, N. C.

LAURA EURE
Beaufort, N. C.



ROBERT EASON
Greenville, N. C.

ARLENE EVERETT
Folkston, N. C.



EDNA E. FARROW
Middletown, N. C.

JESSIE FINCH
Bailey, N. C.



LAMAE FITZGERALD

PAULINE FLOYD
Fairmont, N. C.



CLARA VANN FREEMAN
Coleraine, N. C.



ELIZABETH FULCHER
Leasburg, N. C.

MARGARET GARRENTON
Bethel, N. C.



ELOISE GARRETT
Greenville, N. C.

TEMPERANCE GARRISS
Wilson, N. C.



RUBY GOLEY
Wilmington, N. C.

MARY BAUGHAM GRAY
LaGrange, N. C.



NELL GRIFFIN
Marshville, N. C.

NELLIE GRISSOM
Rocky Mount, N. C.



HELEN L. HARKEY
Lexington, N. C.

ANNA HARRIS
Greenville, N. C.

FRANCES HARVEY
Greenville, N. C.

LOIS HAYES
Woodsdale, N. C.



WILL HIGDON
Sylva, N. C.

MYRTIE GRAY HODGES
Ayden, N. C.



JOHN HODGES
Greenville, N. C.

MILDRED HORTON
Greenville, N. C.



BEULAH HOUSE
Bethel, N. C.

MILDRED HOWARD
Roseboro, N. C.



MARIETTA HOYLE
Shelby, N. C.

HATTIE LEE HUMPHREY
Beaufort, N. C.





ALEEN HUNT
Wilmington, N. C.

RHETA HYATT
Hayesville, N. C.



HATTIE MAE JOHNSON
Benson, N. C.

IVA JOHNSON
Lillington, N. C.



DOROTHY JOHNSON
Tarboro, N. C.

DORIS JONES
Manteo, N. C.



ELEANOR JONES
New Bern, N. C.

MARY ELIZABETH KING
Littleton, N. C.



LORNA LANGLEY
Oriental, N. C.

ELIZABETH LEAKE
Rich Square, N. C.

NELLIE K. LEE
Wilmington, N. C.

RACHEL LEWIS
Farmville, N. C.

MILDRED MANSFIELD
Camden, N. C.

AUDREY MARTIN
Mount Olive, N. C.

MARGARET MATTHEWS
Willard, N. C.

ELCY MILLER
Marshville, N. C.

RUTH MOORE
Ayden, N. C.

PEARL MOORING
LaGrange, N. C.

OLA MORRIS
Washington, N. C.

BLANCHE MOSELY
Kinston, N. C.





EDNA McCALL
Ellerbe, N. C.

ESTELLE McCULLEN
Mount Olive, N. C.



LUCILE NOEL
Hillsboro, N. C.

ELIZABETH ODOM
Clinton, N. C.



BETSY ODOM
Nashville, N. C.

DOROTHY ODHAM
Greenville, N. C.



LUCILE PAIT
Hamlet, N. C.

MARY G. PARKER
George, N. C.



RUTH PARKER
Goldsboro, N. C.

FREDA PARKS
LaGrange, N. C.



LOIS PARRISH
Clio, S. C.

MARGARET PATRICK
Washington, N. C.

MARY LYNN PIPKIN
Goldsboro, N. C.

LEOLA PLEASANT
Angier, N. C.

CARRIE POWELL
Calypso, N. C.

HATTIE POWELL
Greenville, N. C.

ESTHER PRIDGEN
Elm City, N. C.

EVELYN RICE
Stonewall, N. C.

BROWNIE ROBERSON
Greenville, N. C.

HENRY L. RIVERS
Greenville, N. C.





JOSEPHINE ROBERTSON
Greenville, N. C.

LUCILLE ROSE
Norlina, N. C.



ELIZABETH ROYALL
Clinton, N. C.

ETHELYN SANDERS
Hubert, N. C.



IRENE SANDLING
Wake Forest, N. C.

ALICE JAMES SAVAGE
Corapeake, N. C.



LOUISE SIMMONS
Dover, N. C.

MARGARET SMITH
Kinston, N. C.



MARGARET STATON
Bethel, N. C.

JULIA STILLEY
Edward, N. C.

AGNES STRICKLAND
Rocky Mount, N. C.

FRANCES SWINDELL
Washington, N. C.



FAYE TABLOCK
Windsor, N. C.

VIRGINIA TAYLOR
Bachelor, N. C.



AILEEN TEDDER
Fairmont, N. C.

AVIS TEW
Dunn, N. C.



HILDA THOMPSON
Windsor, N. C.

LAURA THORNTON
Greenville, N. C.



MARGARET WALTER
Farmville, N. C.





HELEN FORBES WHITE
Greenville, N. C.

MATTIE WILDER
Louisburg, N. C.



MILDRED B. WILLIAMS
Knightdale, N. C.

OLA WILLIAMS
Rush, N. C.



RUTH WILLIAMS
Nashville, N. C.

GEORGE WILKERSON
Greenville, N. C.



CHRISTINE WILSON
Benson, N. C.

MARY BELLE WILSON
Benson, N. C.



HAZEL WOODARD
Stonewall, N. C.

LUCILE WOOLARD
Greenville, N. C.

LILA WYNNE
Bethel, N. C.

ALVA VAN NORTWICK
Greenville, N. C.



NOT PHOTOGRAPHED

MIRIAM COURTNEY
Williamston, N. C.

PAULINE ROBERTSON
Wendell, N. C.

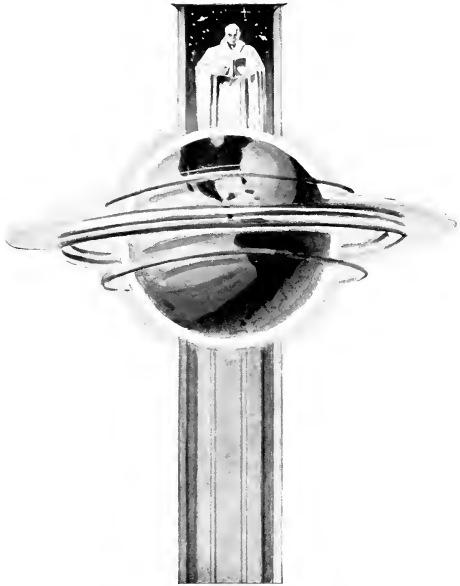
MARIE ROYSTER
Bullock, N. C.

ELIZABETH TEDDERTON
Plymouth, N. C.

RUTH TEW
Clinton, N. C.

ALICE WHARTON
Ruffin, N. C.





SOPHOMORES



JOAN BLOOM
Sophomore Class Mascot

COLORS: *Gold and White*

FLOWER: *Daisy*

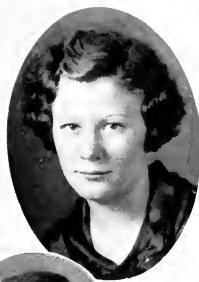
MOTTO: *"Not to the top but climbing"*

SOPHOMORE CLASS POEM

*I think that there was n'er alive,
A class as good as '35
A class whose aims and ideals high,
Meant "do your very best or die."
A class, who in a losing game,
Could boast the winning class to fame.
Our class is made of fools like me,
But its fame shall live eternally.*

(With apologies to Joyce Kilmer.)

HELEN BOOMER, *Class Poet.*



SOPHOMORE CLASS OFFICERS

FRANCES WATSON
KATHERINE HINSON
ELIZABETH DAVIS
MINNIE MARGARET GORHAM

President
Vice President
Secretary
Treasurer



SOPHOMORE CLASS

C. O. ARMSTRONG
HELEN BARCOCK
PHOEBE BARNES
KATHRYN BARNET
JACK BARRET
SUSAN BEVERIDGE
HELEN BOOMER

FRANCES BOWEN
MARY ALICE BROWN
ELOISE BURCH
MARY BRAWLEY
ELOISE CAMP
ELIZABETH CARSWELL

CONSTANCE CHEEVEN
ELIZABETH CLARK
HELEN CLARK
CLIFTON CRAWFORD
VIVIAN COBB
KATHERINE CROW
HENRIETTA CROW



SOPHOMORE CLASS

MARGARET DAVENPORT
 ELIZABETH DAVIS
 MARIE DAVIS
 RALPH DEAL
 JOE DRESBACK
 NELLIE DUNN
 JOSEPHINE ESSEY

PAUL FITZGERALD
 ROBERT SUGG FLEMING
 CLARENCE GALLOWAY
 MILDRED GIBSON
 MINNIE MARGARET GORHAM
 SELMA GURGANUS
 JEWEL HERRING

EMMA FRANCES HARDEE
 HELEN M. HARKEY
 LOUISE HARRINGTON
 MILDRED HARRISON
 MAE HEARNE
 ALICE HERRING



SOPHOMORE CLASS

KATHRYN HINES

BESSIE HINSON

KATHERINE HINSON

MARY VIRGINIA HORNE

RACHEL HURST

JANICE JENKINS

KATIE LEE JOHNSON

VERONA LEE JOYNER

MARY KING

PENNIE KEEL LANG

MARGARET LEE

LUCY LEROY

DECTRESS LANIER

ROBERT LITTLE

EVELYN MATHEWS

EDITH MARSLENDER

NORMA MELVIN

ALMA MEWBORN

WARDELL MILLS

RUTH MOORE



SOPHOMORE CLASS

CLYDE MORTON
 AUBREY McCLEAN
 IDA MAE NANCE
 BILLIE NESBIT
 FRANCES NEWSOME
 ADELIA NORRIS
 CHRISTINE NELSON

MELBA O'BRIEN
 ELIZABETH OVERTON
 EDWARD PARKER
 ELSIE PARKER
 MILDRED PEARSON
 MARTHA HART PEELE

THELMA PEELE
 ADELAIDE PEIFFER
 REBECCA PITTMAN
 LOU PITTS
 MARY SHAW ROBESON
 DOROTHY ROGERSON
 MAYHEW SAWYER



SOPHOMORE CLASS

DRURY SETTLE

SUE SEWELL

LOUISE SHARPE

LUCY SHEARIN

FLORENCE SINCLAIR

ELIZABETH SMITH

EVELYN TURNAGE

ALMA TYNDALL

SELMA VANHORNE

JOE WALKER

RUBY WALL

FRANCES WATSON

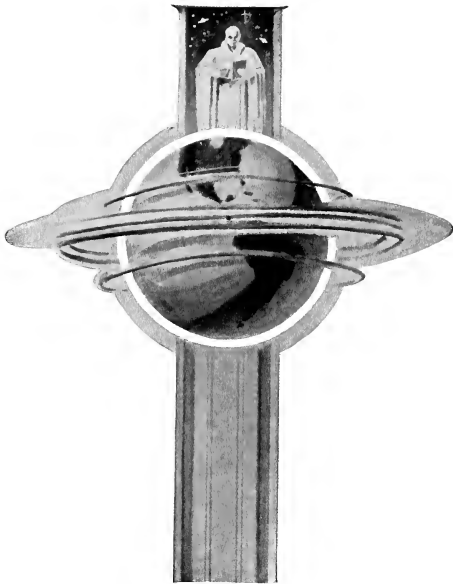
VERDA WILSON

WOODROW WOODWARD

EVELYN WRIGHT

ALICE YANCEY

MARY ELLA BUNN



FRESHMEN



JANICE CAMPBELL
Freshman Class Mascot

COLORS: *Purple and Gold*

FLOWER: *White Rose*

MOTTO: *Not failure, but low aim, is crime*



FRESHMAN CLASS OFFICERS

ETHEL VICK
ELLEN JENKINS
MALENE GRANT
ISA COSTEN GRANT.

President
Vice President
Secretary
Treasurer

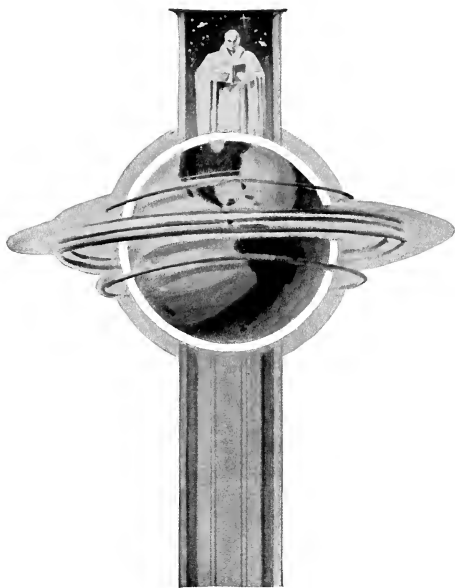


FRESHMAN CLASS

FRESHMAN CLASS ROLL

LUCY BETT ABBOTT	ANNA R. HARTMAN	ELIZABETH MUSSELWHITE
KELLY ABBEYONNIS	ANNE LADUE HARTMAN	CHRISTINE O'BERRY
INEZ ALLEN	MAUDE PELLE HEDSPATH	TRESSIE ODMOND
TRESSIE AUMAN	THOMAS HENDERSON	JANIE OUTLAND
T. G. BASNIGHT	ELIZABETH HINES	ALVAH PAGE
JOHN C. BLANCHARD	MYRTIE HOLIDAY	J. EDWARD PARKER
CAROLYN BRINKLEY	LOLA HOLT	EUGENIA PARRISH
JACK BROADHURST	DOROTHY HOOKS	BLANCHIE PEARSON
BILL BROWN	RUTH HORNE	GRAYCE PELLE
KARIE LEE BUCK	FOY HURBLE	NOBELE PHILLIPS
WILLIAM C. BULLOCK	IRENE JAMES	MARY ELIZABETH POWERS
NANCY BURTON	ELLEN JENKINS	LULA PROCTOR
VIVIAN CAROLUS	JULIA JOHNSON	LOUISE ROBBINS
JAMES CARR	WILLIAM JOHNSON	SUE C. SANDLAGE
TAYLOR CARR	W. O. JOLLY, JR.	MARGORIE T. SAVAGE
MARY ANNE CHASE	CLIFTON JONES	SIBYL SILVERTHRONE
LINELLE CLARKE	DOROTHY JONES	EVELYN SMITH
MARY EMMA CLARK	JULIA JONES	MAUDE STARLING
SIBYL CLARKE	DANIEL JORDAN	RACHEL STONE
JEWEL COLE	JAMES JOYNER	MARGARET STROUOE
JUANITA COOKE	JAMES KEEL	HOWARD M. SUMMERELL
ALEX DAIL	MARY ELIZABETH KEITH	JEAN TATE
MARGORIE DAVENPORT	W. PERRY KING	CARRIE JEAN THOMAS
THOMAS M. DENNIS	BELMONT KITTRILL	MARGARET JEAN THOMAS
DOROTHY LEE EARLE	EDNA KNIGHT	ETHEL VICK
ILA GRAY EASON	MYRTLE W. LANE	IRMA WALKER
ELIZABETH B. FAISON	HELEN LASSITER	VIOLA WARD
LOUISE FARRIOR	LILLIAN LILES	JOHN WARREN
EMMA LOUISE FELTON	ROBERT T. LITTLE	MYRA WESTBROOK
VIRGINIA FRYAR	HATTIE PEARL MOLLARD	ALTON WHITTHURST
J. CLARENCE GALLOWAY	CLARA MACMARTIN	FRANCES WILLARD
HAZEL GILLIAM	MARGARET MARTIN	GRETCHEN WILLARD
MARY GOBHAM	GLENNIE MAYO	ELIZABETH WILSON
ISA COSTEN GRANT	MAE MCFARLAND	W. HAZEL WOODARD
MALENE GRANT	FRANCES MACGOWEN	LEON WOODRUFF
CARRIE CONGLETON GRAY	CARLETON MACMILLAN	WILLIAM WOOLARD
EUGENE GRAY	KATIE MILLER	ANNIE WORTHINGTON
RUTH THORSON GRIFFIN	BELLE MITCHNER	TOM WORTHINGTON
EVELYN L. GRIMSBEY	MARY MITCHNER	WOODROW WORTHINGTON
THELMA HAINSLIP	ROY MOORE	DAN WRIGHT
HELEN HARDY	ROBERT MUNNS	J. C. WYNN, JR.





SENIOR NORMAL

Senior Normal Class Mascots

DOROTHY NELL HENDERSON and ED. HILLMAN

COLORS: *Lavender and White*

FLOWER: *Sweet Pea*

MOTTO: *"Upward and Onward"*

SENIOR NORMAL CLASS POEM

*Apollo had driven his fiery chariot
Into its purple sapphire gate,
When before me in strange array
Passed a procession of white-gowned ladies
Decked with daisies white and gay,
On went the march of the procession strange
While I followed in its wake;
On went the daisy-bedeked ladies
To Education's massive gate,
Each lady bowed and left a flower
For a token as she passed through;
Each daisy took root in Learning's bowyer
Until a garden of daisies grew.*

*Through Time, goes the scattering of daisies
In rows from left to right;
Till Eternity's end, will the ladies
Make their Harvest daisy-white.*

NELLE WISE, '33.



MARGARET RUSSELL
Dunn, North Carolina
Senior Normal Class President



SENIOR NORMAL CLASS OFFICERS

MARGARET RUSSELL	<i>President</i>
ELEANOR BRINKLEY	<i>Vice President</i>
MARGARETTE ROGERS	<i>Secretary</i>
ELSIE TILGHMAN	<i>Treasurer</i>

SENIOR NORMAL

BEVIE IRENE ADAMS
Benson, N. C.

Grammar Grade

Poe Society; Y. W. C. A., '32, '33; Johnston County Club, '32, '33.

LOUISE ADAMS
Wilmington, N. C.

Two-Year Grammar Grade

Emerson Literary Society, '32, '33; Glee Club, '32, '33.

HAZEL DEE AINSLEY
Hertford, N. C.

Grammar Grade

Lanier Society; Y. W. C. A., '32, '33; Athletic Association, '32, '33.

SELMA WILSON ANDERSON
Tarboro, N. C.

Primary Grade

Lanier Society; Y. W. C. A.

WINONA ASBELL
Tyder, N. C.

Grammar Grade

Lanier Society, '31-'33; Y. W. C. A., '32, '33.

ANNE ASKEW
Greenville, N. C.

Grammar Grade

LOUISE ASKEW
Henderson, N. C.

Primary Grade

Emerson Society, '32, '33; Y. W. C. A., '32, '33.

MARY ELLEN BAKER
Reidsville, N. C.

Grammar Grade

Y. W. C. A., '32, '33; Junior "Y" Cabinet, '32; Scribblers Club, '32; Lanier Society, '32, '33; Associate Editor of TECOAN, '33.





SENIOR NORMAL



GRACE BAKER
Snow Hill, N. C.

Grammar Grade

Emerson Society; Y. W. C. A.; Athletic Association.

RUTH BIVINS
Hillsboro, N. C.

Primary Grade

Poe Society.



LAURA ELIZABETH BORDEAUX
Wilmington, N. C.

EDITH GRIGGS BOWMAN
Wadesboro, N. C.

Two-Year Primary Grade

Emerson Society.



BETH E. BRANTLEY
Durham, N. C.

Two-Year Grammar Grade

Y. W. C. A., '32, '33; Emerson Society, '32, '33; Glee Club, '32, '33; President, '32, '33.

LOUISE BRILEY
Greenville, N. C.

Primary Grade



CATHERINE BRINKLEY
Valdese, N. C.

Primary Grade

Emerson Society; Y. W. C. A.; Vice President Class, '33.

ELEANOR BRINKLEY
Valdese, N. C.

Primary Grade

Lanier Society; Y. W. C. A. Choir, '33; Proctor, '33.

SENIOR NORMAL

KATHLEEN BRYCE
Rose Hill, N. C.

Primary Grade

Duplin County Club, '31; Glee Club, '31, '33;
Y. W. C. A. Choir, '33.



LILLIE DARE BROWN
Bethel, N. C.

Primary Grade

Poe Society; Athletic Association, '32, '33.



MILDRED BULLOCK
Primary Grade

Lanier Society; Y. W. C. A.

THEO. CAIN
Buie's Creek, N. C.

Primary Grade

Wake Forest College, '24; Teacher Training,
'28, '29; N. C. C. W., '29; Campbell College,
'30; Poe Society; Scribblers Club, '33; Y. W.
C. A.



BESSIE LOUISE CAPPS
Arcola, N. C.

Grammar Grade

DILLEY CATHERINE CAMPBELL
Maxton, N. C.

Primary Grade

Lanier Society, '32, '33; Y. W. C. A., '33;
Athletic Association, '32.



LULA BRASWELL COBB
Elm City, N. C.

Primary Grade

Lanier Society; Y. W. C. A.

MARY LEE COCKRELL
Norfolk, Va.

Primary Grade

Lanier Society; Y. W. C. A.





SENIOR NORMAL

MARGARET E. COLE
Hillsboro, N. C.
Grammar Grade

N. C. C. W., '32.

MARGARET MINERVA COTTAGE
Vanceboro, N. C.
Primary Grade

Emerson Society; Math Club, '32; English Club, '32; Y. W. C. A., '32, '33; Proctor, '33.



RACHEL COPPEDGE
Spring Hope, N. C.
Primary Grade

Y. W. C. A., '32, '33, Choir, '33; Lanier Society; Athletic Association, '33; Class Historian.

CARMA CREDLER
Lake Landing, N. C.
Primary Grade

Emerson Society; Y. W. C. A.



LUCILLE CREECH
LaGrange, N. C.
Elementary Grade

Lanier Society.

ANNIE ROSA CROSS
Elizabethtown, N. C.
Primary Grade

Lanier Society; Y. W. C. A.



PAULINE DAIL
Mount Olive, N. C.
Grammar Grade

Lanier Society; Y. W. C. A.

SIBYL DANIELS
Wanchese, N. C.
Primary Grade

Lanier Society; Y. W. C. A., Choir, '32; Athletic Association; Dare County Club, '33.

SENIOR NORMAL

KATHERINE M. DAVIS
Southport, N. C.

Primary Grade

Lanier Society; Y. W. C. A.

MARGARET DAVIS

Farmville, N. C.

Elementary Grade

Salem College, '31; Lanier Society, Marshal, '33; Y. W. C. A.; Class Critic, '32; Superlative, '33.



KATHERINE DICKERSON

Warrenton, N. C.

Primary Grade

Poe Society; Y. W. C. A.; Athletic Association; Basketball Team, '31, '32.

WILLA MITCHELL DICKEY

Laurinburg, N. C.

Grammar Grade

X. C. C. W., '31; Lanier Society; *Teen Echo* Reporter for Scribblers Club, '32; Reporter for Class, '32, '33; *Teen Echo* Staff, '32, Managing Editor, '33; Scribblers Club, '32, Corresponding Secretary, '33.



EDITH DILLARD
Rocky Mount, N. C.

Primary Grade

President Junior Normal Class, '32; Junior Y. W. C. A. Cabinet, '32; Lanier Society; Y. W. C. A.; Athletic Association; Rotary Cradle Club, '32.



JENNIE C. DRAUGHON
Clinton, N. C.

Grammar Grade

Poe Society; Sampson County Club.



THELMA EDMUNDSON
Bethel, N. C.

Primary Grade

Poe Society.

CHARLES S. EDWARDS
Macclesfield, N. C.

Grammar Grad

Lanier Society; Secretary-Treasurer Co-ed Club; Assistant Manager Basketball, '32, '33.





SENIOR NORMAL

ELIZABETH EDWARDS
Lemon Springs, N. C.

Elementary Grade

Poe Society; Y. W. C. A.

ERNESTINE EVERETT
Cotetoe, N. C.

Grammar Grade

Emerson Society; Y. W. C. A.



ELSIE EDWARDS
Pendleton, N. C.

Primary Grade

Poe Society; Glee Club, '32, '33.

BESSIE TAYLOR EFLAND
Efland, N. C.

Grammar Grade

N. C. C. W., '32; Poe Society; Athletic Association.



RUTH FALLS
Gastonia, N. C.

Primary Grade

Emerson Society; Y. W. C. A.

HELEN FREEMAN
Hamlet, N. C.

Primary Grade

Lanier Society; Y. W. C. A.



MARGARET LOUISE FULCHER
Leasburg, N. C.

Grammar Grade

Poe Society.

ELEANOR MATILDA GASKILL
Straits, N. C.

Primary Grade

Poe Society; Athletic Association, '32, '33;
Y. W. C. A., '33; Rotary Cradle Roll, '32.

SENIOR NORMAL

INEZ GLOVER

Bailey, N. C.

Primary Grade

Emerson Society; Y. W. C. A.; Athletic Association.

DOROTHY GORDON

Hillsboro, N. C.

Grammar Grade

Poe Society; Y. W. C. A.

KATIE LEE GORDON

Waxhaw, N. C.

Primary Grade

Poe Society; Y. W. C. A.

LULA G. HARDY

LaGrange, N. C.

Primary Grade

Emerson Society, Marshal, '32; Y. W. C. A.; Athletic Association.

DOROTHY HARMON

Massachusetts

Grammar Grade

Emerson Society; Student Volunteer.

ELIZABETH HARRIS

Elizabeth City, N. C.

Grammar Grade

Poe Society; Y. W. C. A.; Proctor, '31.

ADA CLAY HEDGEPEETH

Rocky Mount, N. C.

Elementary Grade

Poe Society; Y. W. C. A.

NAOMI HEDGEPEETH

Primary Grade

Lanier Society; Y. W. C. A.



SENIOR NORMAL



LUCILLE HENDERSON
Mooresville, N. C.

Two-Year Grammar Grade

Emerson Society; Y. W. C. A.; Junior "Y"
Cabinet, '31.

MARGARET LEE HERRING
Clinton, N. C.

Two-Year Grammar Grade

Lanier Society; Sampson County Club.



JOSEPHINE ELIZABETH HIGHSMITH
Dunn, N. C.

Grammar Education

Lanier Society; Glee Club; Proctor, '33.

ELOISE STOREY HILL
Boykins, Va.

Grammar Grade

Emerson Society; Y. W. C. A.; Junior
Cabinet, '32.



RUTH HOOD NORTON
Selma, N. C.

Primary Grade

Lanier Society; Y. W. C. A.; Superlative,
'32.

BEATRICE S. HOOKS
Kenly, N. C.

Two-Year Primary Grade

Emerson Society; Y. W. C. A.; Johnston
County Club.



LESSIE HOOPER
Stumpy Point, N. C.

Primary Grade

Poe Society; Y. W. C. A.; Athletic Associa-
tion; Dare County Club.

SYBIL HOOPER
Stumpy Point, N. C.

Grammar Grade

Lanier Society; Y. W. C. A.; Athletic As-
sociation; Dare County Club.

SENIOR NORMAL

DORIS HUMPHREY
Richlands, N. C.
Elementary Grade

Poe Society; Y. W. C. A.

MARY HUMPHREY
St. Pauls, N. C.
Two-Year Grammar Grade

Emerson Society; Y. W. C. A.; Scribblers Club.

THELMA IRELAND
Alliance, N. C.
Primary Grade

Poe Society; Y. W. C. A., '32; Athletic Association, '33.

OLETA JACKSON
Cooper, N. C.
Primary Grade

Athletic Association, '31; Class Basketball Team; Emerson Society.

MADLINE JENKINS
Greenville, N. C.
Primary Grade

MILDRED LOUISE JERNIGAN
Fayetteville, N. C.
Primary Grade

Lanier Society; Y. W. C. A.; Athletic Association, '32, '33.

ANNIE LORENE JONES
Newse, N. C.
Grammar Grade

Lanier Society; Y. W. C. A.

ROSA MAE JONES
Baltimore, Md.
Two-Year Grammar Grade



SENIOR NORMAL



EDITH KEMP
Louisburg, N. C.
Grammar Grade

Poe Society.

LUCY KELLEY
Jonesboro, N. C.
Primary Grade

Treasurer Junior Normal Class, '32; Lanier Society; Y. W. C. A.; Athletic Association.



ELLA JOHNSON KINLAW
Elizabethtown, N. C.
Intermediate Grade

Emerson Society; Y. W. C. A.; Athletic Association.

ELSIE KNIGHT
Bynum, N. C.

Emerson Society.



LAVERNA MARY LANGSTON
Bentonville, N. C.
Two-Year Grammar Grade

Lanier Society; Johnston County Club, '32, '33.

MARY LOUISE LAWRENCE
Tarboro, N. C.
Primary Grade

Peace Junior College, '30; Lanier Society; Y. W. C. A.



HULA B. LEACH
Wilson, N. C.
Primary Grade

Student Government Representative, '32; Lanier Society; *Teca Echo* Staff, '32, '33; Y. W. C. A.; Associate Business Manager *TECOAN*, '33.

GRACE LEE
Dunn, N. C.
Grammar Grade

Lanier Society; Glee Club, '32, '33; Y. W. C. A. Choir, '32.

SENIOR NORMAL

RUBY BELVIA LEE
Willow Springs, N. C.

Elementary Education

Lanier Society; Y. W. C. A.; Athletic Association; Johnston County Club, '32, '33; Class Basketball Team, '33.

MAY LEWIS
Rocky Mount, N. C.
Two-Year Grammar Grade



RUTH MANGUM
Creedmoor, N. C.
Elementary Grade

MILDRED MANNING
Primary Grade



MARGARET MERANE
Burlington, N. C.
Primary Grade
Emerson Society; Proctor, '32.

ANNIE LAURIE MELVIN
Elizabethtown, N. C.
Grammar Grade
Wingate Junior College, '31; Emerson Society; Y. W. C. A.



ETNA MILLER
Mocksville, N. C.
Two-Year Primary Grade
Catawba College, '28; Poe Society.

ALICE MENEFEE
Greenville, N. C.
Primary Grade
Emerson Society.



SENIOR NORMAL



MARY ALMA MONROE

Raeford, N. C.

Grammar Grade

Athletic Association, '33.

RACHEL ELAINE MORGAN

Spring Hope, N. C.

Primary Grade

Class Secretary, '32; Glee Club; Lanier Society; Y. W. C. A., Choir, '32; Basketball, '32; T. N. T., '32.



DORIS EVELYN MORRIS

Hartsville, N. C.

Grammar Grade

Po. Society.

EDITH LOUISE MORTON

Wilmington, N. C.

Two-Year Grammar Grade

Emerson Society; Emerson Debater, '22; Marshall, '33; Student Government Treasurer, '33; Y. W. C. A.



MAUDE MARINETT MURRAY

Wadeboro, N. C.

Primary Grade

Emerson Society; Y. W. C. A.; Athletic Association.

BEATRICE McCOTTER

Alliance, N. C.

Primary Grade

Po. Society; Y. W. C. A.; "D" Class Council Representative.



MARY McFADYEN

Raeford, N. C.

Primary Grade

Y. W. C. A., '33.

MAGGIE LEE MCGLOHON

Greenville, N. C.

Grammar Grade

SENIOR NORMAL

ANNIE McINTYRE
Merrimon, N. C.
Primary Grade

Emerson Society; Junior Y. W. C. A. Cabinet, '32; Vice President Class, '32.

RENNO McLAWHORN
Ayden, N. C.
Primary Grade

Lanier Society; Y. W. C. A.

LIZZIE LEE NELMS
Nashville, N. C.
Two-Year Primary Grade

Lanier Society; Y. W. C. A.

RUTH NIXON
Stumpy Point, N. C.
Grammar Grade

Poe Society; Athletic Association; Y. W. C. A. Choir; Glee Club; Secretary and Treasurer Dare County Club.

LILLIAN INEZ OGLESBY
Winterville, N. C.
Two-Year Grammar Grade

FRANCES OVERTON
Mount Gilead, N. C.
Primary Grade

Louisburg College; Y. W. C. A.; Emerson Society.

THELMA PARKER
Winterville, N. C.
Primary Grade

ALICE PEACOCK
Benson, N. C.
Grammar Grade

Poe Society; Johnston County Club.



SENIOR NORMAL



HAZEL PEARCE
Micro, N. C.
Primary Grade

Poe Society; Y. W. C. A.; TECOAN Representative for Johnston County Club; Student Volunteer Band.

MILDRED PEELE
Raford, N. C.
Primary Grade

Emerson Society.



PATTIE MAE PATTERSON
Elm City, N. C.

Two-Year Primary Grade

Lanier Society; Y. W. C. A.

ALICE LEIGH PELLETIER
Greenville, N. C.
Primary Grade



VASHITI PERRY
Hobbsville, N. C.
Grammar Grade

Lanier Society.

KITTY SNOW PHILLIPS
Pinetops, N. C.
Primary Grade

Emerson Society.



JOY PICKARD
Charlotte, N. C.
Primary Grade

Chairman Junior "Y" Cabinet, '32; "G" Class Representative Student Government, '32; House President, '33; Emerson Society; Y. W. C. A. Cabinet, '32; Delegate to "Y" Officers Training Conference, '32; to Blue Ridge, '32; to Southern Student Faculty Conference, '32.

MARIE PINNELL
Warrenton, N. C.
Primary Education

Poe Society; Y. W. C. A.; Athletic Association; Basketball Team.

SENIOR NORMAL

SARAH BELLE PITT
Pinetops, N. C.

Primary Grade

Emerson Society.

FRANCES ANNE POLLOCK
Trenton, N. C.

Primary Grade

Emerson Society; Glee Club, '33.

MAYDE REYNOLDS
Clinton, N. C.

Grammar Grade

Poe Society; Proctor, '33.

CORNELIA RHYNE
Gastonia, N. C.

Primary Grade

Asheville Normal and Teachers College,
'30; Emerson Society.

MARY LENA RICE
Alliance, N. C.

Primary Grade

Poe Society.

KATHLEEN RIDDLE
Laurel Hill, N. C.

Primary Grade

Poe Society; Y. W. C. A.; Glee Club.

MARGARETTE HOLT ROGERS
Denton, N. C.

Primary Grade

Secretary Junior "Y" Cabinet, '32; Y. W.
C. A. Cabinet, '33; Emerson Society; Class
Secretary, '33; Associate Editor TECOAN, '33;
Scribblers Club, '33.

JANIE MILDRED ROSE
Snow Hill, N. C.

Grammar Grade

Emerson Society; Y. W. C. A.



SENIOR NORMAL



DELLA UNDINE ROSS
Robersonville, N. C.
Grammar Grade
Emerson Society; Y. W. C. A.

BONNIE MAE RUSHEN
Belmont, N. C.
Primary Grade
Lanier Society; Y. W. C. A.



MARGARET TAYLOR RUSSELL
Dunn, N. C.
Primary Grade
Lanier Society; Y. W. C. A., '33; Scrib
ler's Club; "D" Class, President, '33; Teen
Echo Reporter; Lanier Society, '33.

INEZ SMITH
Goldsboro, N. C.
Grammar Grade



LAURA E. SMITH
Greenville, N. C.
Two-Year Primary Grade
Emerson Society.

MATTIE RUTH SMITH
Fountain, N. C.
Primary Grade
Poe Society, '32, '33.



PAULINE ONEDIA SMITH
Gibsonville, N. C.
Primary Grade
Y. W. C. A.; Junior Cabinet, '32; Athletic
Association, '33; Lanier Society.

MARY WILLIE SUTHERLAND
Henderson, N. C.
Two-Year Primary Grade
Y. W. C. A.; Emerson Society; Y. W. C. A.;
Junior Cabinet.

SENIOR NORMAL

MARY ROSS SQUIRES
Washington, N. C.

Primary Grade

Emerson Society; Class Cheer Leader, '32, '33; Emerson Cheer Leader, '33.

JANE STEWART
Henderson, N. C.

Primary Grade

Emerson Society; Y. W. C. A.



IRIS ELIZABETH STOKES
Colerain, N. C.

Primary Grade

Y. W. C. A.; Poe Society, Matron, '33.

LUCILLE STOKES
Greenville, N. C.

Grammar Grade

Poe Society.



MARGARET STRICKLAND
Dunn, N. C.

Elementary Grade

Y. W. C. A. Choir, '32, '33; Glee Club, 'D' Class TROOP Representative, '33.

VIRGINIA STRICKLAND
Nashville, N. C.

Primary Grade

Lanier Society.



GRACE STRINGFIELD
Fayetteville, N. C.
Grammar Grade

Lanier Society; Athletic Association.

SARA TANKARD
Bath, N. C.

Grammar Grade

N. C. C. W., '29, '30; Emerson Society.





SENIOR NORMAL

HELEN JOSEPHINE TAYLOR
Goldshoro, N. C.
Grammar Grade

Poe Society; Assistant Cheer Leader, '33;
Athletic Association; Y. W. C. A.; Scribblers
Club; President, '33.

LELA MAE TAYLOR
Snow Hill, N. C.
Grammar Grade

Poe Society; Glee Club; Y. W. C. A.;
Delegate to B. S. U. Conference, '33.



MARTHA TEAL
Wadesboro, N. C.
Primary Grade

Emerson Society; Y. W. C. A., Choir.

ELSIE REID TILGHMAN
Kinston, N. C.
Grammar Grade

Lanier Society; Y. W. C. A.; Treasurer
of Senior Normal Class.



SARAH MILDRED TOLAR
Lumber Bridge, N. C.
Grammar Grade

Lanier Society; Y. W. C. A.; Athletic As-
sociation.

HELEN BARROW TURNAGE
LaGrange, N. C.
Grammar Grade

Emerson Society; Y. W. C. A., Choir.



FLORA CHRISTINE TYNDALL
Trenton, N. C.
Elementary Grade

Emerson Society.

MABEL BERNICE TYNDALL
Trenton, N. C.
Elementary Grade

Emerson Society.

SENIOR NORMAL

LOIS WADDELL
Fair Bluff, N. C.
Grammar Grade

Emerson Society; Glee Club, '33; Athletic Association, '33; Y. W. C. A.; "D" Basketball Team, '33.

LOIS FRANCES WALKER
Hillsboro, N. C.
Grammar Grade

Lanier Society.

EMILY MARTHA WARREN
Durham, N. C.
Grammar Grade

Poe Society; Athletic Association; Basketball Team.

MELBA LOUISE WATSON
Kenly, N. C.
Primary Grade

Y. W. C. A.; Jun'or Y. W. C. A. Cabinet, '32; Poe Society; Poe Chorus Club, '32; Johnston County Club, Vice President, '33; TECOAN Representative of "C" Class, '32; College Orchestra; TECOAN Representative of Poe Society, '33; Class Critic, '33; Proctor, '33; Class Poet, '32.

VIRGINIA DARE WHITE
LaGrange, N. C.
Primary Grade

Emerson Society; Athletic Association; Y. W. C. A.; Proctor, '33.

ETHEL WHITEHURST
Beaufort, N. C.
Primary Grade

Emerson Society; Advertising Manager *Teen Echo*, '33; Y. W. C. A.

MARGARET WHITEHURST
Bethel, N. C.
Grammar Grade

CLIO LOUISE WHITFIELD
Franklin, Va.
Primary Grade

Y. W. C. A.; Lanier Society, Secretary, '33; Class Prophet, '33.





SENIOR NORMAL

ELLA ESTELLE WILLIAMS

McCallers, N. C.

Elementary Grade

Lanier Society; Athletic Association; Y. W. C. A.; Johnston County Chh, Treasurer, '33.

FRANCES WILLIAMS

Atlantic, N. C.

Primary Grade

Lanier Society.

SALLIE ELIZABETH WILLIAMS

Clinton, N. C.

Primary Grade

N. C. C. W., '31; Poe Society.

NELL S. WILLIFORD

Elm City, N. C.

Elementary Grade

Emerson Society; Y. W. C. A.; Junior Y. W. C. A. Cabinet; Athletic Association.

NELLIE WISE

Stumpy Point, N. C.

Grammar Grade

Lanier Society; Y. W. C. A.; Athletic Association; Class Cheer Leader, '33; *Teen Echo* Reporter, '33; Scribblers Club; Dare County Chh.

HILDA WISE

Swan Quarter, N. C.

Grammar Grade

FLORENCE WOODARD

Columbia, N. C.

Grammar Grade

Lanier Society; Y. W. C. A.

ALICE WOODRUFF

Whitakers, N. C.

Primary Grade

Randolph Macon College, '30; Lanier Society; Y. W. C. A.





SENIOR NORMAL

VERDIE WILSON
Greenville, N. C.
Primary Grade



LENORE WINSTED
Elm City
Primary Grade
Lanier Society.



LUCILLE YATES
Morrisville, N. C.
Grammar Grade
Emerson Society; Athletic Association;
Y. W. C. A.; Glee Club.



MARY ELLEN YELVERTON
Farmville, N. C.
Elementary Grade
Lanier Society; Tennis Club; Baseball
Team, '32; Captain Baseball Team, '32.



ELIZABETH YOUNG
Elizabethtown, N. C.
Primary Grade
N. C. C. W., '32; Emerson Society.



HISTORY OF THE "D" CLASS

AS we sit fondly fingering our well-worn memory books which are really scrap-books containing autographs, cartoons, souvenirs, and a bit of a diary—all dating from the never-to-be-forgotten day of September 28, 1931, what a floodgate of memories—memories that bless and burn—are awakened! How beautiful are some of the pictures that hang in Memory's Hall. How comical are some of the recollections of those First Days at college.

We were one hundred fifteen in number as we entered the doors of our favorite Shrine to Knowledge, dear old East Carolina Teachers College. From all arts of North Carolina we hailed jolly girls, sad girls, big girls, little girls, brave girls and timid girls.

Parties, teas, mass meetings and registering, together with getting acquainted with each other, occupied our first few days.

Soon we were meeting classes (not the hopes and ambitions our instructors had for us)! To those first questions the answers quite frequently were, "Teacher, I don't know."

Then came INITIATION! Not one among our number but had enlarged imaginations, anticipations (and in some cases apprehensions) concerning this event. Each resolved inwardly to assume the nonchalant attitude and appear as sensible as green "C's" could. Alas! like "best laid plans of mice and men," ours too, went astray—arrayed in many petticoats, rouged noses, adorned by alarming clocks, wearing slickers, carrying umbrellas, we must have been an attractive group! But altogether it was lots of fun, and having experienced it, we saw to it that the incoming 1933 society members derived full benefit and had something to write home about.

Then came Thanksgiving. Home and friends never seemed dearer. As we packed our bags in eager haste we forgot the tears we had shed; our hearts forgot the aches it had had. Everyone was happy. Although the holidays passed very quickly we brought back with us many pleasant memories.

As we turn other pages, bits of programs, a line jotted here and there remind us anew of some of the wonderful things the college provided in the way of entertainment. We shall long remember the Don Cossack Russian Male Chorus, Galli-Curei, The Abbey Theater Irish Players, Harold Kreutzberg and his Dancing Group—how we enjoyed them!

Almost before we knew it we were handing in our spring finals, and asking ourselves anew, "What is so rare as a day in June?" For were we not eager for our promising vacation?

We entered our senior year one hundred sixty-four in number. Visions of practice teaching became realities, and many, many times did we hear that "Teacher, I don't know"—it sounds different too, when one says it and it's said to one!

The outstanding entertainment during the first term was the delightful show performed by Doris Kenyon. She sang in many different languages and expressed her wonderful personality in all of it.

We have enjoyed many motion pictures shown in Austin Hall on Saturday evenings. Nor must we leave our Ex-Governor Gardner and the various speakers who from time to time have inspired us to better effort by their messages.

Graduation—the goal for which we have zealously labored—approaches! We must soon say that pathos-filled word "Farewell" as we part from the sunshine of accomplishment and temporary clouds of disappointment in some of our work.

On the very last page is pasted an invitation to one Graduating Exercise. We are elated yet,

"A feeling of sadness comes o'er me
That my soul cannot refrain,
And resembles sorrow only
As the mists resemble rain."

As we think of parting from those who have been closely associated with us, both in our classes and on the campus, we think of this selection:

"Here awa and there awa,
Up the world and doon,
You and I are going friend,
Under sun and moon;
Whether roads divide or no,
Whether alone or met,
Whether we hail or bid farewell—
Oh, dinna forget!"

And now to teachers, friends, and members of Senior Normal Class of 1933 in the words of Tiny Tim,

"God bless us all!"



SENIOR NORMAL CLASS LAST WILL AND TESTAMENT

State of North Carolina
County of Pitt
Town of Greenville

WE, the Senior Normal Class of nineteen hundred thirty-three, while on the eve of our graduation, look back with love and loyalty for our Alma Mater, do hereby make and declare our Last Will and Testament.

We bequeath:

To the Faculty, our most sincere wishes that the "Depression" come to an end in the near future, as we ourselves hope to become faculty members soon, and we feel that we shall be able to sympathize with them regarding such matters.

To our Parents, we devote our future lives with the desire that we do all we can to repay them for what they have done for us.

To the Junior-Normal Class:

First, our charm and teaching personality that are such essential assets at the Training School;

Second, a full supply of notebooks, note-cards, and files;

Third, the beloved privilege of sharing in the persecution of the new society members, as you have been persecuted this year;


Fourth, our chapel seats at the front of the auditorium.

To all concerned, a clear field, as far as we are concerned, in pursuit of our irresistible co-eds.

MELBA WATSON,
MARGARETTE ROGERS,
Testatrices.

Witnesses:

CARMA CREDE.
ANNE McINTYRE.



PROPHECY "D" CLASS

THE meeting will please come to order" called Margaret Russell at the class reunion in June 1942. "As Margaret Rogers calls the roll will each answer in a few words what she is doing?"

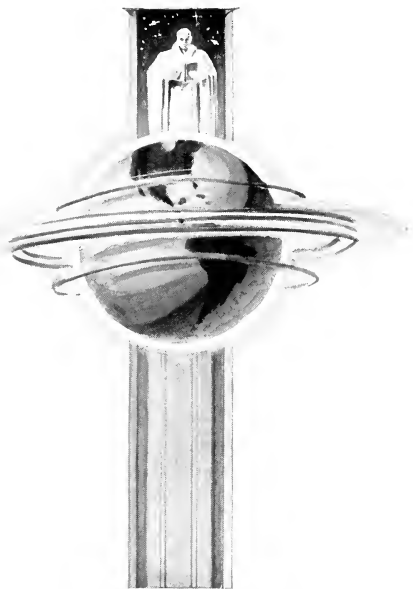
Bevie Adams: Follies girl.
Louise Adams: Old maid.
Hazel Ainsley: Piano tuner.
Mabel Allen: Publishing poem books.
Selma Anderson: Nun.
Winona Asbell: Waitress.
Anne Askew: Tap dancer.
Ellen Baker: Missionary.
Grace Baker: Debater.
Mahel Barbour: Lion hunter.
Ruth Bivens: America's platinum blond.
Edith Bowman: Photographer.
Beth Brantley: Big woman in a circus.
Jessie Brewer: Famous fortune teller.
Louise Briley: Artist model.
Catherine Brinkley: Librarian.
Eleanor Brinkley: Postmistress.
Kathleen Bryce: Demonstrator of cosmetics.
Lillie Brown: Coach in Cuba.
Theo Cain: Teaching at Campbell College.
Katheryne Campbell: Social director for P. J. C.
Bessie Louise Capps: Voice instructor.
Lillian Carowan: Gown shop in Paris.
Virginia Carowan: Professor at Columbia.
Lula Cobb: Working for Ph.D.
Mary Lee Cockerell: Secretary.
Margaret Coppage: Speakeasy hostess.
Rachel Coppedge: Anne Harding's successor.
Carma Credle: Opera star.
Lucille Creech: Ballet dancer.
Irene Creech: Pianist.
Annie Cross: Clerk.
Pauline Dail: Beauty culture teacher.
Sybil Daniels: Hostess in nightclub.
Katheryne Davis: Living in S. A.
Margaret Davis: Music instructor here.
Katherine Dickerson: Struggling for A.B. at E. C. T. C.
Willa Mitchell Dickey: Editor of *Ballyhoo*.
Edith Dillard: Proprietor of Denton's.
Thelma Edmundson: Teaching phonics.
Jennie Draughon: Teaching school.
Charles Edwards: Director of Physical Education at E. C. T. C.

Elizabeth Edwards: Radio announcer.
Ernestine Everett: Deep sea diver.
Ruth Falls: Kindergarten teacher.
Hamae Fitzgerald: Poet.
Hazel Forrest: Choir leader.
Helen Freeman: Broadway dancer.
Margaret Fulcher: Card shark.
Matilda Gaskin: Coaching dramatics.
Inez Glover: Artist.
Lula G. Hardy: Boothblack.
Ora Hammond: Telephone operator.
Elizabeth Harris: Olympics champion.
Ada Hedgepeth: Invented permanent curling fluid.
Lucille Henderson: Clerk in Woolworth's.
Alice Herring: Auctioneer.
Elizabeth Highsmith: Beauty parlor operator.
Margaret Lee Herring: Dean at E. C. T. C.
Eloise Hill: Advertising Barrett's Rolls.
Vera Hobbs: Making phonograph records.
Virginia Hoffman: Bandmistress.
Beatrice Hooks: Bicyclist.
Lessie Hooper: Prima donna.
Sybil Hooper: Recently divorced.
Doris Humphrey: Cashier.
Mary Humphrey: Working for M.A.
Thelma Ireland: Drummer.
Oleta Jackson: Running tea room.
Mildred Jernigan: Parachute jumper.
Lillian Johnson: Hair dresser.
Louise Jones: Governor of State.
Lorine Jones: Florist.
Edith Kemp: Sculptress.
Lucy Kelly: Studying men abroad.
Ella Johnson Kindaw: Librarian.
Elsie Knight: Dancing Director.
Laverna Langston: County superintendent.
Mary Louise Lawrence: Dream interpreter.
Hula B. Leach: Farmer's wife.
Grace Lee: Running hot dog stand.
Ruby Lee: Swimming instructor.
May Lewis: Matron in Fleming.
Ruth Mangum: Patent on "Sur-Blonde Liquid."
Evelyn Matthews: Playwright.
Margaret Mebane: School teacher.
Annie Laurie Melvin: Worlds prettiest brunette.
Annie Menefee: Answering fan mail.

Frances Mewborne: Bellhop in Waldorf.
 Euna Miller: Demonstrating cooking.
 Mary Alma Monroe: N. C. Senator.
 Rachel Morgan: Miss Graham's successor.
 Leona Morgan: Mail carrier.
 Doris Morris: Dealer in toilet articles.
 Edith Morton: Interior decorator.
 Dell Moye: Lounging.
 Jessie Munn: Telegraph operator.
 Wilma Murphy: Owns silk factory.
 Marnette Murray: Song writer.
 Beatrice McCotter: Salvation Army worker.
 Mary McFadgen: Minister's wife.
 Maggie McGlohn: Lilly Pond's successor.
 Annie McIntyre: Maid in Biltmore Hotel.
 Renno McLawhorn: Old maid.
 Lizzie Lee Nelms: Book agent.
 Ruth Nixon: Welfare worker.
 Inez Oglesby: Dress maker.
 Frances Overton: Running boarding house.
 Thelma Parker: Toe dancer.
 Alice Peacock: Studying art.
 Hazel Pearce: Telephone operator.
 Mildred Peele: Raising chickens.
 Alice Pelletier: Still reducing.
 Vashti Perry: Matron of Sand Rock Hotel.
 Kittye Phillips: Palmist.
 Joy Pickard: Editor of *True Story*.
 Marie Pinnell: Running Private Kindergarten.
 Sarah Belle Pitt: Keeping house.
 Frances Pollock: Sign painter.
 Mayde Reynolds: Music teacher.
 Cornelia Rhyne: Home Economics Teacher.
 Mary Lena Rice: Doctor's wife.
 Kathleen Riddle: Mayor of Laurel Hill.
 Margarette Rogers: Ring agent.
 Mildred Rose: Elocutionist.
 Delha Ross: Mother of six.
 Bonnie Rushen: Tennis Star.
 Margaret Russell: Nurse in Rudy's Hospital.
 Inez Smith: Bathing beauty.
 Mattie Laura Smith: Magazine salesman.
 Mattie Ruth Smith: Model for Kaiser's Underwear.
 Mildred Smith: Tight Rope Walker.
 Pauline Smith: Aviatrix.

Mary Southerland: Studying fashions abroad.
 Mary Ross Squires: Nun.
 Jane Stewart: Broker on Wall Street.
 Iris Stokes: Selling Angola Cats.
 Lucille Stokes: Geography Instructor at Duke.
 Margaret Strickland: Bathing Beauty.
 Grace Stringfield: Church Secretary.
 Sara Tankard: In Reno getting a divorce.
 Helen Taylor: Associate Editor of *College Humor*.
 Lela Mae Taylor: Designer in Furniture Factory.
 Martha Teel: Blues Crooner.
 Elsie Tilghman: Bookkeeper.
 Helen Turnage: Toe Dancer in New York.
 Inez Turner: Proprietor of a Luncheonette.
 Mildred Tolar: Basketball Coach.
 Flora Tyndall: Architect.
 Mabel Tyndall: Hostess at the St. Regis Hotel, N. Y.
 Lois Waddell: Geography teacher.
 Lois Walker: Critic in E. C. T. C. Training School.
 Mrs. May H. Watson: Kindergarten Instructor.
 Melba Watson: Pianist in Alva van Northwick Orchestra.
 Emily Warren: Milliner in Richmond.
 Virginia White: Working in a hosiery mill.
 Ethel Whitehurst: Advertising Manager of Kress.
 Louise Whitfield: United States Congressman's wife.
 Estelle Williams: Accountant at E. C. T. C.
 Nell Williford: In Arizona trying to gain.
 Verdie Wilson: Movie Actress in California.
 Hilda Wise: Building bridges to Manteo.
 Nelle Wise: Teaching Elocution in Hyde County.
 Florence Woodard: Home Economist.
 Alice Woodruff: Taking life easy.
 Mary Ellen Yelverton: Politician.
 Elizabeth Young: Saleslady.

Written by
 WILLA MITCHELL DICKEY.
 LOUISE WHITFIELD.



JUNIOR NORMAL



WADE COLBURN
"C" Class Mascot

COLORS: *White and Lavender*

FLOWER: *Sweet Pea*

MOTTO: *"Perseverance"*

"C" CLASS POEM

*Our Class in approximation
Is two hundred forty strong;
And as to zeal and animation—
We'll rule the place before long!*

*But thinking in a serious way,
We gladly will cooperate;
And at some not so far off day
We will make this our college great.*

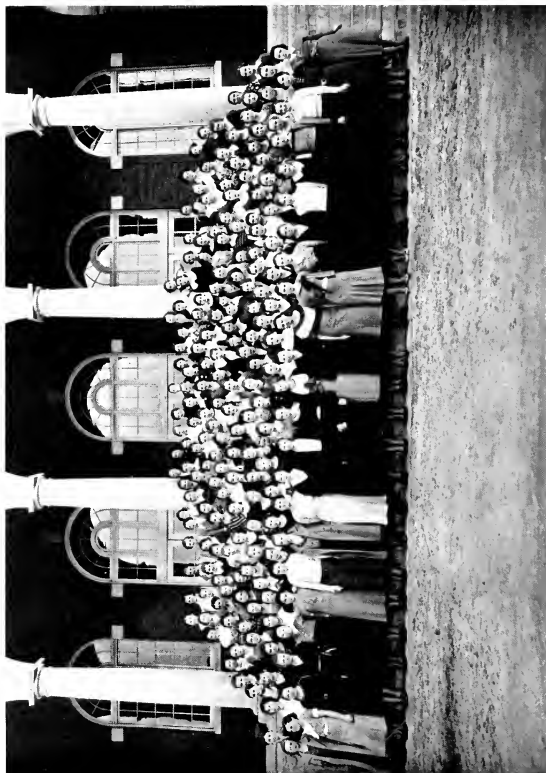
*Now let us go forward and persevere
Until our work is done;
For we want our memory here
To be a grand and brilliant one!*

DOROTHY BROOKS.



JUNIORS NORMAL CLASS OFFICERS

MARIE DANIELS	President
CAROL POLLOCK	Vice President
DOROTHY BROOKS	Secretary
INEZ DAVIS	Treasurer



JUNIOR NORMAL CLASS

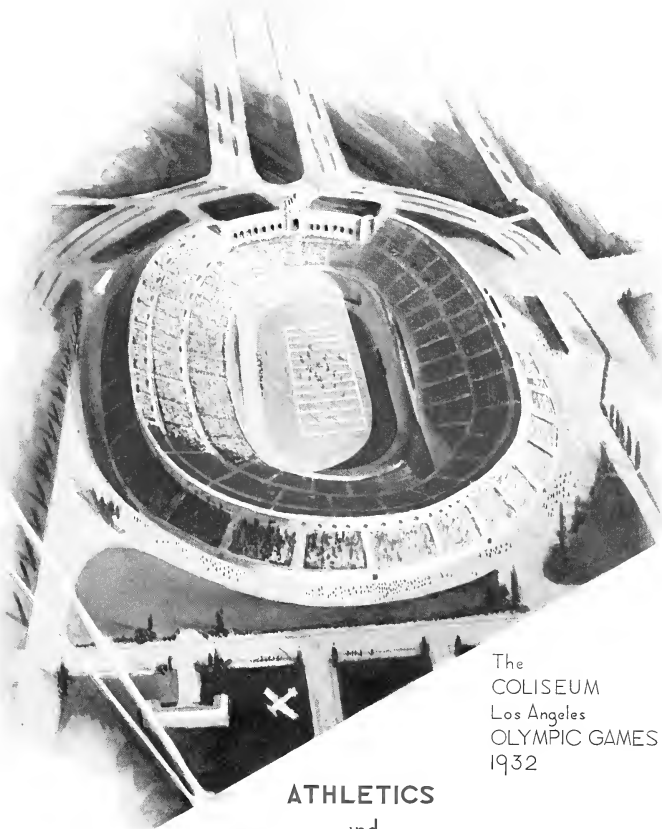
JUNIOR NORMAL CLASS ROLL

MARGARET ANDERSON
 RUBY ANDREWS
 RUTH MELBA ARNOLD
 GRACE AYSUCE
 GLADYS BAKER
 MILDRED HOCKUM
 LOUISE BANCK
 RACHEL BARBE
 MOLLY NEAL BARRINGER
 MATTIE ELIZABETH BARROW
 LUCY BARROW
 ROSE BATEMAN
 WILLIE LEWIS BAZEMORE
 MARY BOOTH
 ILLIA MAY BORDEAUX
 MARGARET BOSTIC
 NORMA BOYLES
 ESMOND BRADLEY
 RUBY BRANCH
 CATHERINE BRASWELL
 SELMA BRAXTON
 DAISY SUE BRITT
 ELIZABETH BRITT
 ALICE BROOKS
 DOROTHY BROOKS
 ALMA BROUGHTON
 LILLIE DARR BROWN
 MARY ELIZABETH BROWNE
 ABELL BRUMLEY
 NITA BRUMLEY
 MARY BUNNY
 GRACE BURRELL
 MAYBE BRIDGER BUTLER
 HILDA BYRD
 SARA HOOKER CARR
 RACHEL CAUBLE
 ATTIE CHAPPELL
 BLANCHIE CHAPPELL
 SYBIL CLARKE
 ANNIE MAE COLLIER
 ROSE COLLINS
 VALERIE CONNER
 MIRIAM CUDWORTH
 ELEANOR DALY
 FANNIE W. DANIEL
 MARIE DANIELS
 MAXINE DANIELS
 EDNA DARDEN
 LIDA FRANCES DARK
 MARGARET DAUGHTRIDGE
 SIDNEY DAVENPORT
 INEZ DAVIS
 JAMES ETHEL DAVIS
 MARIE DAVIS
 MARY RUTH DAVIS
 MILHARD DAVIS
 NANCY DAWSON
 NELLIE RAE DAWSON
 THELMA DAWSON
 JOY DELGATOCHE
 JESSIE RUFFIN DENTON
 MARY GAROSER DINKINS
 ELVA DRIGERS
 FLORENCE ESTELLE EAGLES
 DOROTHY EARLE
 EMMA EARLEY
 FRANCES EDMUNDSON
 LOUISE EDMUNDSON
 REBECCA EDWARDS
 BESSIE EPLAND
 MARY ELLENBERG
 LUCY ETHELBERG
 RUTH EVANS
 NANCY EWING
 PAULINE FINCH
 RUTH YEVERTON FENBER
 ELLEN FLEETWOOD
 FRANCES FLEETWOOD
 LAURA S. FLEMING

MARGORIE FODRIE
 ANNIE ROSE FTLLER
 MARY R. FULTON
 ANNIE LOIS FUTRELL
 HAZEL GAYNOR
 LUCILE GAMMON
 MARGUERITE GARDNER
 ALMA GODFREY
 ABELL GODWIN
 IRMA GRANT
 CATHERINE GREGG
 GRACE GRIFFIN
 ANNIE HALL
 ALMA HAMMOND
 LAURA HARBELL
 HELEN L. HARDY
 ELIZABETH MOORE HELMS
 LUCILE HARRIS
 ALPHIA HERRING
 SARA HERRING
 JANIE HESTER
 HELEN HINTON
 ROSLYN HOLLINGSWORTH
 MARGARET HOLT
 MELBRED HOOKER
 ANNIE LAURIE HUDSON
 JEANNE ISLEY
 ALMA EARLE IVY
 VICTORIA JACKSON
 MARY JENKINS
 LESSIE MAE JENNINGS
 ELIZABETH JOHNSON
 RUTH JOHNSON
 BETSIE ANN JORDAN
 VIRGINIA KERR
 HAZEL GONELLE KIMREY
 ANNIE KORNBLAY
 PEARL LAUTARUS
 WILLIE C. LEVINSON
 ELOISE LEWIS
 OLIVE LEWIS
 MARY LINDSAY
 NANCY LEE LITTLE
 LUCILE LONG
 ALICE MANNING
 MARGARET MATTOX
 LESSIE MAY
 EDNA M. MIBOETTE
 BEILE MITCHNER
 LOIS B. MOORE
 RACHEL MOORE
 LOUISE MORRIS
 HAZEL MORTON
 VIVIAN MURRAY
 ATHALFAH MYSE
 SUE TAYLOR MYERS
 SARA McFADYEN
 ELIZABETH MCGEE
 ELLEN MCGLAGDON
 JANICE MCGOWEN
 CATHERINE MCNAIR
 IRENE NOBLES
 SUE NOELL
 MARY NORTON
 FERNALINE O'BRIAN
 MARGARET LEE OLDBAM
 MARY OUTLAW
 EMMA AVENT OUTTEBRIDGE
 ANABEL PARKER
 ARLINE PARKER
 BETSY PARKER
 VIRGINIA PARRISH
 EUGENIA PARRISH
 LILLIE FRANK PEARCE
 FLORENCE PEAROCK
 OPHELIA PEARCE
 MILDRED PITT
 GRACE PENNY
 HILDA PERKINS
 MARY FOY PETERSON

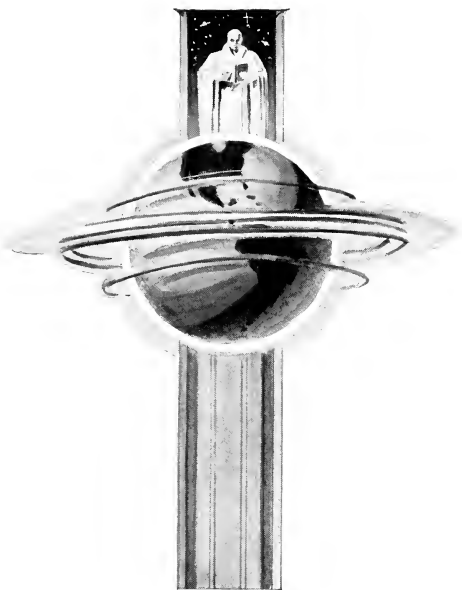
MAUDE ELLEN PHILLIPS
 REBA PICKETT
 LOU ELBA PINNELL
 MINNIE LEAH PITTMAN
 CAROL POLLOCK
 JULIA POLLOCK
 ANNIE NEALE PRAYATTE
 MARGARET PRAYATTE
 MARGORIE PRITCHARD
 ODELL PRITCHARD
 DAISY PRINELL
 MAUD RANKIN
 DAISY RAPER
 MARGARET RAWLS
 NORMA REDFEARN
 NAOMI RIDDICK
 LOUISE ROBERSON
 INEZ ROLLINS
 DORA ROUNTREE
 BETTIE ROUSE
 JULIA ROUSE
 NANNIE ROWLETT
 BERKELEY SAULS
 EVELYN SAWYER
 MIRIAM SLOAN
 EDNA SMITH
 ELEN SMITH
 FRANCES ELIZABETH SMITH
 HANNAH SNEAD
 HAZEL SPIVY
 INEZ STEVENS
 RUBY STOCKS
 NINA RUTH STONE
 WILMA STOREY
 JULIA STRINGFIELD
 RUTH STRANGE
 ALMA STRICKLAND
 HATTIE B. STRICKLAND
 BETTY STUCKEY
 MARY ANNA SUGG
 ISABELLE SUTTER
 ALMA TAYLOR
 CHRISTINE TAYLOR
 CARRIE JEAN THOMAS
 ELEANOR THOMPSON
 MINNIE LEIGH THOMPSON
 LUCY TILLET
 VIRGINIA TILLY
 DORA TINGLE
 MINNIE LOU TOMLINSON
 MAMIE TRENLER
 ANNIE BOYD TROLLINGER
 EVA MAY TURNAGE
 ALENE TYRENTON
 CATHERINE TYSON
 JULIA UNDERWOOD
 EVA VAUGHAN
 ANNIE VINSON
 EMILY VIN MINGROM
 STELLA WALSTON
 VIOLA WARD
 ERNA LEE WATSON
 GLADYS WEST
 LIZZIE J. WHITE
 ANNIE WHITLEY
 ELSIE WHITLEY
 WINSTON WICKER
 LOUISE WILDER
 RUTH WILLARD
 CLARICE WILLIAMS
 GENEVA WILLIAMS
 SALLY WILLIAMS
 REBA WINSTEAD
 MAGDALENE M. WILSON
 ELSIE WOOD
 LOUISE WOOD
 MAVIS WOODARD
 SARA MAE WOODARD
 SARA WOOTEN





The
COLISEUM
Los Angeles
OLYMPIC GAMES
1932

ATHLETICS
and
ORGANIZATIONS



ATHLETICS



FOOTBALL GROUP



BASKETBALL SQUAD



BASEBALL SQUAD

...



MEN'S ATHLETIC ASSOCIATION



WOMAN'S ATHLETIC ASSOCIATION

IRIS FLYTHE
HELEN L. HARKEY
MABEL DICKENS
PAULINE BARBER

President
Vice President
Secretary
Treasurer



Miss Flynn



Marlene Barber



Mabel Dickens



Mary Sue Langston



Vera Broughton

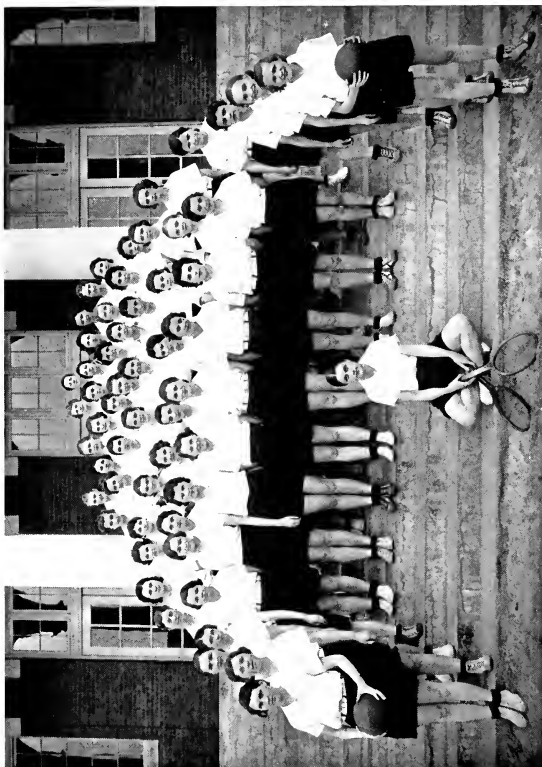


Sara S Summerville



Martha Starling

• ATHLETIC • BOARD •



ATHLETIC ASSOCIATION



SOPHOMORE BASKETBALL TEAM

WINNERS

FLORENCE SINCLAIR
ALICE HERRING
MAY HEARNE

LUCY LEROY
MILDRED HARRISON
ELIZABETH OVERTON

CLYDE MORTON



JUNIOR NORMAL BASKETBALL TEAM

WINNERS

GRACE PENNY
ALLENE TURLINGTON
RACHEL BARBEE

IRMA GRANT
HILDA PERKINS
BESSIE EFLAND

MARGARET COLE



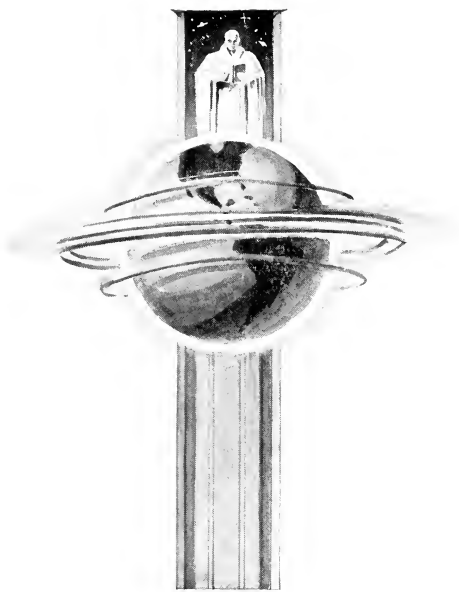
BASKETBALL GROUP



COLLEGE CHEER LEADERS

MILDRED DIXON, *Chief*
MYRTIE GRAY HODGES

PASSY LANIER
GEORGE WILKERSON



ORGANIZATIONS

STUDENT GOVERNMENT ASSOCIATION

OFFICERS

MARGARET MURCHISON	<i>President</i>
MARJORIE GRIFFIN	<i>Vice President</i>
REBECCA CURTIS	<i>Secretary</i>
EDITH MORTON	<i>Treasurer</i>
EVELYN ROGERS	<i>Chairman of Campus Committee</i>
ETHEL PARKER	<i>President of Y. W. C. A.</i>
ELIZABETH HAYWOOD	<i>Editor-in-Chief Teco-Erho</i>
BIRDIE LEE DERNAM	<i>Senior Class Representative</i>
MARY PARKER	<i>Junior Class Representative</i>
EDITH MARSLENDER	<i>Sophomore Class Representative</i>
JANIE OUTLAND	<i>Freshman Class Representative</i>
BEATRICE MCCOTTER	<i>Senior Normal Class Representative</i>
ISABEL SUTER	<i>Junior Normal Class Representative</i>
LAURA EURE	<i>House President Cotton Hall</i>
HATTIE LEE HUMPHREY	<i>House President Cotton Hall</i>
STELLA BLEVINS	<i>House President Cotton Hall</i>
AGNES STRICKLAND	<i>House President Fleming Hall</i>
JOY PICKARD	<i>House President Fleming Hall</i>
ALEEN HUNT	<i>House President Jarvis Hall</i>
MARY RABE	<i>House President Jarvis Hall</i>
MARY LYN PIPKIN	<i>House President Wilson Hall</i>
PAULINE WHEELLESS	<i>House President Wilson Hall</i>
ELIZABETH MOORE	<i>Town Representative</i>
NELSON HUNSUCKER	<i>Young Men's Representative</i>



MARGARET MURCHISON
Greensboro, N. C.
President of Student Government Association



Marjorie Griffith



Rebecca Curtis



Edith Morton



Evelyn Rogers



Ethel Parker



Elizabeth Haywood



Evelyn Debuert



Mary O'Brien



Edith Marslender



Helen Smith



Helen Smith



Isabel Suter

STUDENT COUNCIL



Laura Lore



Ruth Lee Humphrey



Stella Blevins



Agnes Strickland



Joy Pickard



Aileen Hunt



Mary Robb



Mary Lynn Pipkin



Pauline Wheelless



Elizabeth Moore



Nelson Hunsucker

STUDENT COUNCIL



ETHEL PARKER
Woodland, N. C.

President of Young Women's Christian Association



Y. W. C. A. CABINET

ELIZABETH BIDDLE.....	<i>Vice President</i>
KATHERINE HINSON.....	<i>Secretary</i>
MELBA O'BRIEN.....	<i>Treasurer</i>
MARGARETT ROGERS.....	<i>Teco-Echo Reporter</i>
ELIZABETH DENNEY.....	<i>Religious Education</i>
MARGARET MURCHISON.....	<i>Ex Officio</i>
PAULINE BARBER.....	<i>Publicity</i>
JOY PICKARD.....	<i>Morning Watch</i>
ETHELYN SANDERS.....	<i>Social Service</i>
LUCILLE ROSE.....	<i>Student Volunteer</i>
MARY RABB.....	<i>Music</i>
LOUISE SHARPE.....	<i>Social</i>
RUTH PARKER.....	<i>World Fellowship</i>
IRIS FLYTHE.....	<i>Store Keepers</i>
HELEN HARKEY.....	



JUNIOR CABINET



STUDENT VOLUNTEER BAND



GLEE CLUB



Y. W. C. A. CHOIR

Merry Christmas

THE TECO ECHO

Happy New Year

ESTABLISHED 1915 BY THE COLLEGE

Volume 12

COLLEGE GLEE CLUB APPEARS IN A PROGRAM OF CAROLS

White Gift Service
Feature of Work

White Gift Service
Feature of Work



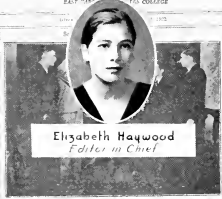
Willa Mitchell Dickey
Managing Editor

Editorial content for the top left column.



Mary G Parker
Assistant Editor

Editorial content for the bottom left column.



Elizabeth Haywood
Editor in Chief

Editorial content for the top middle column.



Bertha Walston
Assistant Editor

Editorial content for the middle column.



Miss Mamie Jenkins
Features Editor

Editorial content for the bottom middle column.

'THE CHARM SCHOOL' MAKES VERY FAVORABLE IMPRESSION

At the convention...

Article text for 'THE CHARM SCHOOL'.



Clyde Morton
Assistant Editor



Marquet Wolfer
Assistant Editor

Editorial content for the bottom right column.

SOPHS AND 'CS' WIN W. A. & C. P. IN FINAL GAME

Article text for Sophs and 'CS'.

'CHRISTMAS MESSAGE' OF THE WRIGHT

Article text for Christmas Message.

TEACHERS WIN FIRST GAME OF THE SEASON

Article text for Teachers win.

DISREGARD PLAY MATS

Article text for Disregard play mats.

THE SUGGESTION IS FAVORABLE

Article text for The suggestion is favorable.

WITH EIGHT MEMBERS

Article text for With eight members.

THE CLASS EXTENDING THE PREVIOUS REASON

Article text for The class extending.

MISS MAMIE JENKINS

Article text for Miss Mamie Jenkins.

FIRST ISSUE
TELETYPE BY
FOEDS

THE TECO ECHO

EAST CAROLINA COLLEGE

WASA-FRALL
STATE FRESHMAN
SATURDAY

Volume 12

Number 1

1933

Number 1

Y.W.C.A. HAS STUNT NIGHT

Each Club To Present A
Party

Each of the Young Women's Christian Association clubs will present a stunt night at 8 o'clock on Saturday, Sept. 16. The clubs are: Alpha, Beta, Gamma, Delta, Epsilon, Zeta, Eta, Theta, Iota, Kappa, Lambda, Mu, Nu, Xi, Omicron, Pi, Rho, Sigma, Tau, Upsilon, Phi, Chi, Psi, Omega. Each club will present a different stunt, such as a play, a musical, or a variety show. The event is open to all members of the Y.W.C.A. and is a great opportunity for the clubs to show their talents and creativity.

FIRST DEAN OF MEN



Myrtle Gray Hodges
Business Manager

Comparison of Records Of Men And Women Students

An comparison of the records of men and women students at East Carolina College has been made. The records show that women students are making excellent progress in all departments. In the field of literature, women students have shown a marked improvement in their writing and composition. In the field of mathematics, women students have shown a marked improvement in their problem-solving abilities. In the field of science, women students have shown a marked improvement in their understanding of the natural world. The records also show that women students are participating in a wide variety of extracurricular activities, including sports, clubs, and organizations. This shows that women students are well-rounded individuals who are committed to their education and to their community.

Carolina Playmakers Bring Three One-Act Plays To Campus To-morrow Night

APPRECIATION TO COLDS BEATS

There is no doubt that the appreciation of colds is a very important part of life. It is a common ailment that affects almost everyone at some time or another. The appreciation of colds is a testament to the human condition and to the resilience of the human spirit. It is a reminder that we are all vulnerable to the same ailments and that we must take care of ourselves and each other. The appreciation of colds is also a reminder that life is short and that we should make the most of every day. It is a reminder that we should cherish the people we love and the things we do. The appreciation of colds is a beautiful thing and it is one that we should all strive to understand and appreciate.

Don Coburn's "Four Or A Kind" "Blanching In Dixie" "An Play"

Don Coburn's "Four Or A Kind" "Blanching In Dixie" "An Play" is a collection of three one-act plays. "Four Or A Kind" is a comedy about a man who is forced to live with four other people in a small apartment. "Blanching In Dixie" is a drama about a man who is trying to escape the South. "An Play" is a comedy about a man who is trying to win the affection of a woman. The plays are well-written and feature strong characters. They are a great addition to the Carolina Playmakers' repertoire and are sure to be a hit with the audience.

Virginia Taylor Assistant Business Manager

Virginia Taylor is the Assistant Business Manager of The Echo. She is a hardworking and dedicated individual who has been instrumental in the success of the publication. She is responsible for the day-to-day operations of the business office and for ensuring that the publication is produced on time and to the highest quality. She is also a member of the Y.W.C.A. and is active in its activities. Virginia Taylor is a role model for all students and is a true leader.

IS OFFICIALLY THE DEAN OF MEN

The Dean of Men is a position of great responsibility and honor. It is a position that requires a strong leadership ability and a deep understanding of the needs of the male students. The Dean of Men is responsible for the overall well-being of the male students and for ensuring that they are provided with the best possible educational experience. The Dean of Men is also a member of the faculty and is an important part of the college's administration. The Dean of Men is a true leader and is a role model for all students.

PRESIDENT'S WRIGHT DUES

The President's Wright Dues are a special honor that is bestowed upon students who have made significant contributions to the college. The dues are named after Wright, a former president of the college. The dues are a testament to the recipient's leadership ability and to their commitment to the college. The dues are a great honor and are a source of pride for the recipient. The dues are also a source of inspiration for all students and are a reminder that we can all make a difference.

Elizabeth Donny Advertising Manager

Elizabeth Donny is the Advertising Manager of The Echo. She is a creative and imaginative individual who has been instrumental in the success of the publication's advertising program. She is responsible for finding and securing advertising opportunities for the publication and for ensuring that the advertisements are well-designed and effective. Elizabeth Donny is a role model for all students and is a true leader.

Jessie Glyn Cole Circulation Manager

Jessie Glyn Cole is the Circulation Manager of The Echo. She is a hardworking and dedicated individual who has been instrumental in the success of the publication's circulation program. She is responsible for ensuring that the publication is distributed to all students and for ensuring that the circulation is as high as possible. Jessie Glyn Cole is a role model for all students and is a true leader.

Lucy Le Roy Circulation Manager

Lucy Le Roy is the Circulation Manager of The Echo. She is a hardworking and dedicated individual who has been instrumental in the success of the publication's circulation program. She is responsible for ensuring that the publication is distributed to all students and for ensuring that the circulation is as high as possible. Lucy Le Roy is a role model for all students and is a true leader.

Frances Davis Advertising Manager

Frances Davis is the Advertising Manager of The Echo. She is a creative and imaginative individual who has been instrumental in the success of the publication's advertising program. She is responsible for finding and securing advertising opportunities for the publication and for ensuring that the advertisements are well-designed and effective. Frances Davis is a role model for all students and is a true leader.

M.L. Wright Faculty Advisor

M.L. Wright is the Faculty Advisor of The Echo. He is a hardworking and dedicated individual who has been instrumental in the success of the publication. He is responsible for providing guidance and support to the staff and for ensuring that the publication is produced to the highest quality. M.L. Wright is a role model for all students and is a true leader.

Mildred Gibson Circulation Manager

Mildred Gibson is the Circulation Manager of The Echo. She is a hardworking and dedicated individual who has been instrumental in the success of the publication's circulation program. She is responsible for ensuring that the publication is distributed to all students and for ensuring that the circulation is as high as possible. Mildred Gibson is a role model for all students and is a true leader.

Lucille Rose Circulation Manager

Lucille Rose is the Circulation Manager of The Echo. She is a hardworking and dedicated individual who has been instrumental in the success of the publication's circulation program. She is responsible for ensuring that the publication is distributed to all students and for ensuring that the circulation is as high as possible. Lucille Rose is a role model for all students and is a true leader.

Francis Britton For Winter Term

Francis Britton is the Editor of The Echo for the Winter Term. He is a hardworking and dedicated individual who has been instrumental in the success of the publication. He is responsible for providing guidance and support to the staff and for ensuring that the publication is produced to the highest quality. Francis Britton is a role model for all students and is a true leader.

Mildred Gibson Circulation Manager

Mildred Gibson is the Circulation Manager of The Echo. She is a hardworking and dedicated individual who has been instrumental in the success of the publication's circulation program. She is responsible for ensuring that the publication is distributed to all students and for ensuring that the circulation is as high as possible. Mildred Gibson is a role model for all students and is a true leader.

M.L. Wright Faculty Advisor

M.L. Wright is the Faculty Advisor of The Echo. He is a hardworking and dedicated individual who has been instrumental in the success of the publication. He is responsible for providing guidance and support to the staff and for ensuring that the publication is produced to the highest quality. M.L. Wright is a role model for all students and is a true leader.

Mildred Gibson Circulation Manager

Mildred Gibson is the Circulation Manager of The Echo. She is a hardworking and dedicated individual who has been instrumental in the success of the publication's circulation program. She is responsible for ensuring that the publication is distributed to all students and for ensuring that the circulation is as high as possible. Mildred Gibson is a role model for all students and is a true leader.

Lucille Rose Circulation Manager

Lucille Rose is the Circulation Manager of The Echo. She is a hardworking and dedicated individual who has been instrumental in the success of the publication's circulation program. She is responsible for ensuring that the publication is distributed to all students and for ensuring that the circulation is as high as possible. Lucille Rose is a role model for all students and is a true leader.



SCRIBBLERS CLUB



INTER-SOCIETY COMMITTEE

OFFICERS

MARY LYNN PIPKIN, Chairman
 MILDRED DIXON, Secretary

Emerson Society
Poe Society

FACULTY MEMBERS

MISS CHARLTON
 DR. SLAY
 MR. PICKLESEIMER

Lanier Society
Lanier Society
Emerson Society

MR. HOLLAR
 DR. REBARKER
 DR. MEADOWS

Emerson Society
Poe Society
Poe Society

STUDENT MEMBERS

EVELYN ROGERS
 MARY LYNN PIPKIN
 PANSY LANIER
 EMILY LANE
 ELIZABETH DENNY
 CLAYTON CHERRY
 MILDRED DIXON
 INEZ BECTON

Emerson Society
Emerson Society
Emerson Society
Lanier Society
Lanier Society
Poe Society
Poe Society
Poe Society



EMERSON SOCIETY

OFFICERS

EVELYN ROGERS
PANSY LANIER
IRIS FLYDIE
ELIZABETH DAVIS

President
Vice President
Secretary
Treasurer



EMERSON SOCIETY SONG

Tune: "Clayton's Grand March"

*Oh, Emerson Society,
Dear old White and Blue!
For you our hearts beat merrily
As we sing this song to you.
For when we see our colors there,
Blue and White, everywhere,
We know that they mean only you,
And all you hold so true.
So here we are the Emersons,
Boosting for our clan.
Oh, Emerson! Oh, Emerson!
For you we will always stand!*



POE SOCIETY

OFFICERS

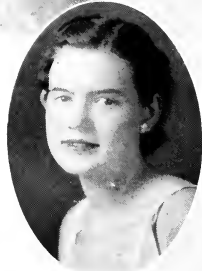
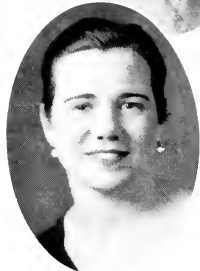
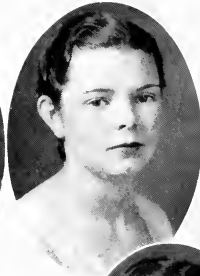
CLIFTON CHERRY
ELIZABETH CARSWELL
LOUISE JORDAN
HELEN M. HARKEY

President
Vice President
Secretary
Treasurer



POE SOCIETY SONG

*Oh, Edgar! Oh, Edgar Allan!
We are the Edgar Allan Poes.
We are the society,
Choice and picked variety.
Oh, Edgar! Oh, Edgar Allan!
We are the Edgar Allan Poes.
March on!—March on!
Beneath the red and white,
For we will conquer all our foes,
And we're sure to win in every fight.*



LANIER SOCIETY

OFFICERS

EMILY LANE	<i>President</i>
ETHELYN SANDERS	<i>Vice President</i>
LOUISE WHITFIELD	<i>Secretary</i>
FRANCES NEWSOM	<i>Treasurer</i>



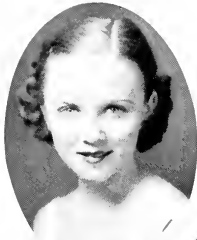
LANIER SOCIETY SONG

Tune: "On the Mall"

*Let us sing a song of praise to our Society,
Hail to thee, O Sidney Lanier!
Loyal members ever proving your sobriety,
Though our fun to us will e'er be dear.
Then let us to our banner each a tribute pay—
Let us ever our motto uphold,
Always faithful, true, and loyal to thee, night and day,
Hurrah for the Green and Gold!*



MARGARET GRIFFIN
Marshville, N. C.
Chief Marshal Poa Society



Frances Davis



Melba O'Brien



Clara
Van
Freeman

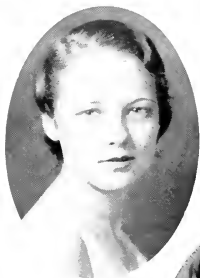


Iris Stokes



Lucy Le Roy

POE SOCIETY MARSHALS



Mary Lynn Pipkin



Edith Morton



Mildred
Gibson



Lulu G Hardy

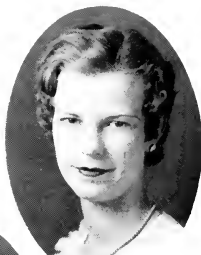


Marjorie Griffin

EMERSON SOCIETY MARSHALS



Margaret Davis



Mildred Horton



Rebecca
Curtis



Emily Lane



Katherine Blalock

LANIER SOCIETY MARSHALS



DELTA OMICRON SIGMA



PHI SIGMA



CHAPEL PROGRAM COMMITTEE

ROSA LEE LANG

REBECCA PITTMAN

LUCY LEROY

MARY SHAW ROBESON

BOB EASON

Chairman

Student Body Representative

Student Body Representative

Town Representative

Young Men's Representative



CLASSICAL CLUB

DOROTHY SMITH

President

ELIZABETH CARSWELL
ALLEN HUNT
KEMP HOUSE

RUTH HOLLOWELL
SUE SEWELL
MARY TAYLOR

PROFESSOR R. C. DEAL

Faculty Adviser





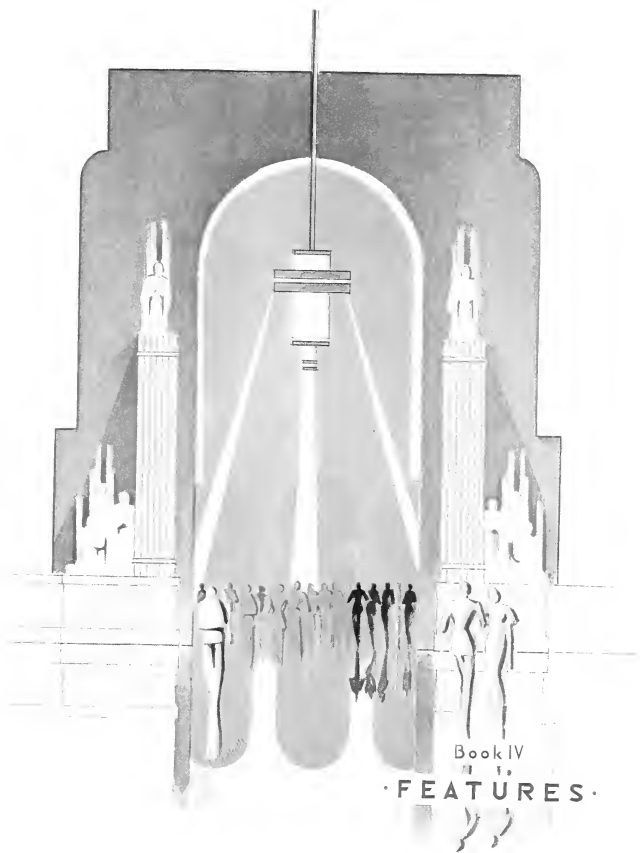
SCIENCE CLUB



ENGLISH CLUB

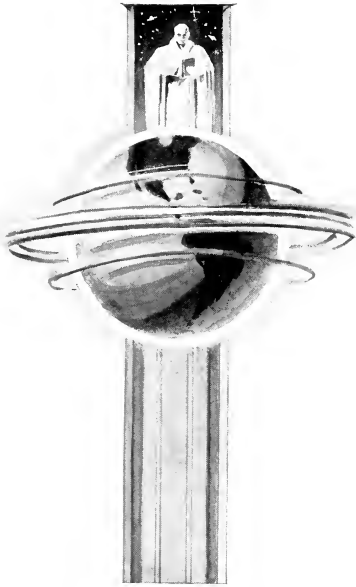


POE SOCIETY



Book IV

· FEATURES ·



FEATURES

MARGARET MURCHISON

Best-all-Around

American



MARGARET DAVIS

Most Beautiful

Spanish



ROSA LEE LANG

Most Intellectual

Roman



MILDRED DIXON

Most Vivacious

French



ELIZABETH HAYWOOD

Most Industrious

German



BERTHA WALSTON

Wittiest

Irish



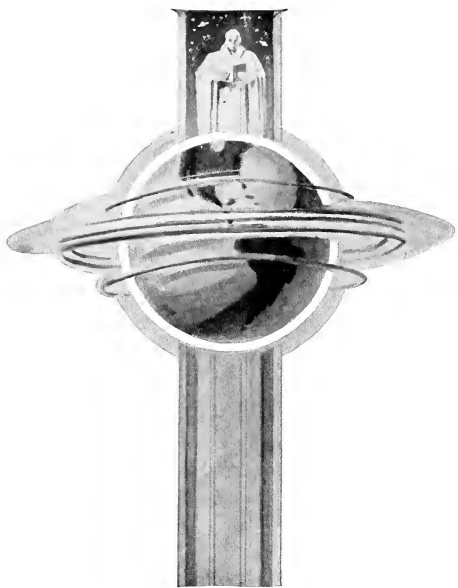












THERE'S MORE
YET

Lizzie Lee: Now before we drive much farther, I want you to understand that I don't neck, so don't try to hold my hand or kiss me. Is that clear?

Harry: Yes.

L. L.: Now, since that is settled, where shall we go?

Harry: Home.

It is reported that Barnum and Bailey have sold their old big-top to Kate Smith to use as a morning wrap.

Headline—"Husband Leaves Wife's Bridge Party; Disappears."
Just a fugitive from a chin gang.

A big car pulled up to the curb. The little girl's heart missed a beat. "Going north, Babe?"

"Why, yes."

"Well, give my regards to the Eskimos"—and the big car continued up Fifth Street.

Mrs. Fort: Mrs. Frank, does your husband talk in his sleep?

Mrs. Frank: No, and it's awfully exasperating. He only smiles.

Do you neck?

That's my business.

Well, how's business during this depression?

A stout woman drove up to a filling station.

"I want two quarts of oil," she said.

"What kind, heavy?" asked the attendant.

"Say, young man, don't get fresh with me," was the indignant response.

Moena Horton: Gee, but that date last night was fresh.

Julia: Why didnt you slap his face?

Moena: I did; and take my advice, never slap a guy when he's chewing tobacco.

COBURN SHOE
COMPANY

"Your Shoe Store"

Real College Styles
Combined with Quality
and Comfort

*Ask Your Friends About
Our Shoes
They Know*

THE PERKINS
COMPANY

Offers At All Times the
Styles in

*Ladies' Ready-to-Wear
and
Yard Material*

412 Evans Street
GREENVILLE, N. C.

B. HARVEY

The
ROUSE PRINTERY

QUALITY
PRINTING

*Engraved Wedding
Announcements
Fine Stationery
Office Supplies*

PRICES REASONABLE

Greenville, N. C.

One of the Freshmen at State can't understand why he has to take courses in husbandry in order to get his bachelor's degree.

"Do you like women who talk or the other kind?"
"What other kind?"

They say that love is blind and that the home is an institution—therefore marriage must be an institution for the blind!

"Will we ever have a woman president?"
"Of course not. A president has to be over thirty-five years of age."

Cassie: Isn't it dreadful? I refused to marry Dan last January and he's been drinking ever since.

Annie Boyd: I should say that's carrying it too far.

Alva: So Miss Greene is going to get married at last? Who's the lucky man?
Charlie: Her father—her father.

"Has anybody seen Tibbie?"
"She's wrestling with her conscience."
"Yeah, a featherweight match."

The old maid's lament:

I wish I were dead,
I frightened a man
Who was under my bed.

Joe: I'm getting a new siren for my car.

Frances: Oh Joe, does that mean that it's all over between us?

Hula B.: Troy is so original. He says things that no other boy would dream of saying.

Mary Baugham: What's he been up to now? Asking you to marry him?

IDEAL GIRL

Ruth Biven's hair—

Moena Horton's eyes—

Ruth Hood Norton's nose—

Myrtle Gray Hodges' mouth—

Jessie Glynn Cole's dimples—

Margaret Davis' complexion—

Kat. Hines' figure—

Lucy Kelly's legs—

Frankie Davis' personality—

Hula B. Leach's technique—

What a woman!

QUINN-MILLER
FURNITURE STORE

The Home Furniture Store

CITY SHOE SHOP

Near Five Points

WE CALL FOR AND DELIVER

Just suppose:

Miss Morton was 5 feet tall and weighed 200 lbs.

We had no co-eds.

We didn't have the depression to talk about.

Mr. Haynes would cut a class.

Dr. Slay wouldn't smile at all.

Nobody went to the Postoffice at 11:30 a.m.

There was no "Y" store.

There was no Student Council.

President Wright were to say everybody ought to smoke cigarettes.

First Kangaroo: Annabelle, where's the baby?

Second Kangaroo: My goodness, I've had my pocket picked.

"So you've been to college, eh?"

"Yeah."

"How high can you count?"

"One, two, three, four, five, six, seven, eight, nine, ten, jack, queen, king."

A Scotch Telegram—10 words.

Bruise: hurt erode afford erector analysis hurt too infectious dead.

Frances: Does that boy you had a date with last nite talk very much?

Loree: I was wondering about that myself.

The college laundry seriously pinned the following note to a fat girl's nightgown and returned it—"We are not equipped to launder stage curtains."

Crowd: "We've been out to play."

Margaret: "I'm going cut to Pla-to."

Carrie Moore: "Is he really a member of the K. K. K.?"

Vera: "Yea, Kourt 'em, Kiss 'em, and Kick 'em."

Alva Paige: E. C. T. C. is a school of "Liberal Hearts."

*The One Gift That Only
You Can Give—*

Your Photograph

BAKER'S STUDIO

B L O O M ' S

*Smart Women's
Wear*

Greenville, N. C.

HILL HORNE

*Dependable
Druggist*

Here's to the girl who steals, lies,
and swears—: (1) Steals into your
arms. (2) Lies there contentedly.
(3) Swears she'll always love only
you.

Alva: Why the lipstick on your
nose?

Bob: I just tried to stick it in
somebody else's business.

**JOHN FLANAGAN
BUGGY COMPANY**

Authorized FORD Dealer

Phone 47

GOODYEAR TIRES

STATIONERY : OFFICE SUPPLIES

Renfrew Printing Co.

Printers and Stationers

*We Have All Kinds of Stationery
and Supplies for College Girls*

Evans Street

Opposite Proctor Hotel

HOW IT BEGAN

Once upon a time, a fellow was
walking down the street with his
girl friend. As they approached a
moving picture show, he felt in his
pockets but he had no money; thus
the expression, "Alas and Alack."

Exclusive Apparel
for Women

=====
*We Show the
New Things First*
=====

C. Herber Forbes
Greenville, N. C.

W. L. BEST
Official College Jeweler
Established 1901

POE PINS
LANIER PINS
PHI EPSILON PINS
EMERSON PINS
GLEE CLUB PINS
COLLEGE SEALS
GUARDS

Special Prices to College Girls
WATCH REPAIRING
JEWELRY REPAIRING
ENGRAVING
We Sell "Divided Pay Plan"

Lautares Candy
Palace

Quality — Service

Complete Line of
TOLIET ARTICLES
EASTMAN KODAKS
CONKLIN LIFE-TIME
FOUNTAIN PENS
PURE ICE CREAM

*Our Soda Fountain is one of the
Most Up-to-date in the State*

Including Hot Water Service
Service and Quality

LAUTARES CANDY
PALACE

GRIFFIN SHOE
CO., Inc.

"Smart Footwear"

ONLY EXCLUSIVE
LADIES' SHOE STORE
IN EASTERN CAROLINA

Autographs



BUILDERS DREAMS

VISIONS created by the imagination precede the achievement of any really great accomplishment. The ability to weave the threads of imagination into the finished fabric is equally important.

It has been the privilege of the EDWARDS & BROUGHTON COMPANY to cooperate with the TECOAN staff in creating their vision into material form.

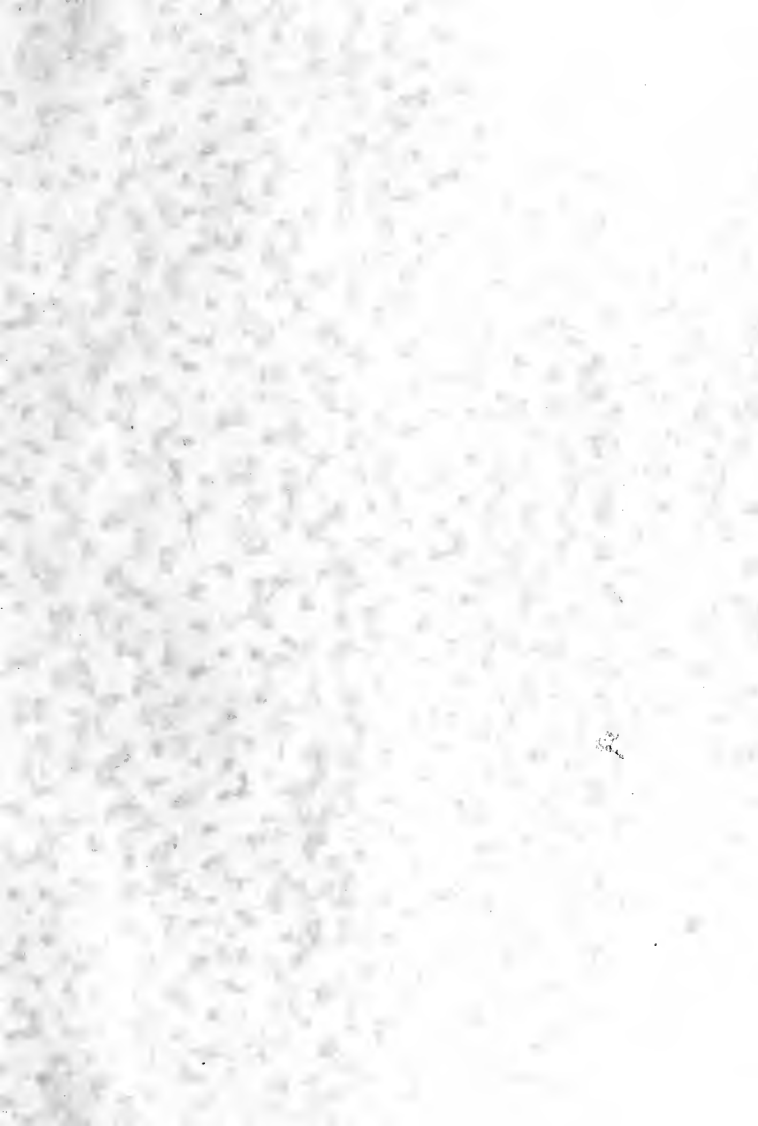
Such cooperation is one of the "visions" which precede the building of a successful business, and is a part of the working policy of the EDWARDS & BROUGHTON COMPANY.

To those Staffs desiring complete cooperation, we offer unexcelled service.

You, too, may be proud of your annual.

Correspondence is Invited

EDWARDS & BROUGHTON CO.
RALEIGH, NORTH CAROLINA





FOR REFERENCE

Do Not Take From This Room

