



The  
**TEEDAN**  
1940



Bessie Jay Hunt  
May 29, 1940





The  
1940  
TECOAN

P R I N T I N G

The  
**TECOAN**  
of  
1940



*Copyright*  
*Editor*..... HARVEY DEAL  
*Business Manager*..... PRUE NEWBY  
PUBLISHED BY THE STUDENT BODY OF  
EAST CAROLINA TEACHERS COLLEGE  
GREENVILLE, N. C.

# F O R E W O R D



The little clay figures which grace the pages of this volume are harmless creatures—dug from the ground and mashed into crude shape. If, by this very crudity, which resolves itself into caricature, we have hurt anyone's feelings, we did not intend it. We present them as whatever you wish—symbols, dolls, caricatures—take them as you like. Life is fun.

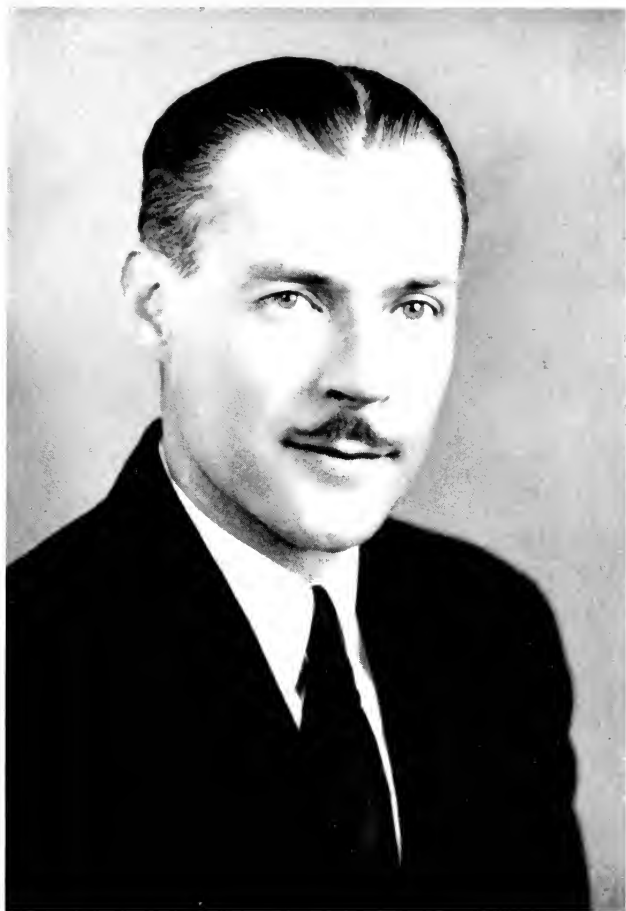




C O N T E N T S

THE COLLEGE  
CLASSES  
ACTIVITIES  
ATHLETICS  
FEATURES

To Mr. Dean Tabor, teacher  
and friend, we, the students of  
East Carolina Teachers College,  
affectionately dedicate the 1940  
edition of the TECOAN.





The COLLEGE





AUSTIN BUILDING  
AND  
VIEW FROM ENTRANCE





EAST OF AUSTIN  
ADMINISTRATION  
BUILDING



THE DAVIS ARBORETUM





BACK CAMPUS VIEW



THE LIBRARY



THE WRIGHT BUILDING



LIBRARY INTERIOR



WRIGHT BUILDING LOBBY



DR. LEON R. MEADOWS  
President

You are leaving College at a critical period in the world's history; but if conditions are bad, your opportunities are equally as great. Few people possess the power, the ability to alter the situation as do you. There is a conflict between democratic and autocratic ideals. Enter this conflict; choose wisely from the values at your disposal; set standards that are high; encourage group thinking and group leadership as opposed to dictatorship. Only in this way can the people continue to control and operate their social and economic plans.

May the future hold for you happiness and success.

LEON R. MEADOWS



## MISS ANNIE L. MORTON

Nail to the masthead of your life the motto of your State, "To be rather than to seem to be," and you will find yourself far along the road to happiness and success.

## DR. HERBERT REBARKER

Successful life cannot be expressed in terms of amusement, wealth, notoriety, popularity, or even goodness. To unselfishly love, labor with, and serve mankind lifts one out of the commonplace into the realm of complete and abundant living. The profession of teaching capitalizes the possibilities of life.



# FACULTY



*Top Row:* DR. L. R. MEADOWS, *Director of Instruction, English;* DR. LUCILLE TURNER, *English;* DR. DENVER BAUGHAN, *English;* MISS MARY GREENE, *English;* MISS LOIS GRIGSBY, *English.*

*Middle Row:* MISS EMMA I. HOOPER, *English;* MISS MAMIE JENKINS, *English;* DR. M. N. POSEY, *English;* MR. R. C. DEAL, *Director of Instruction, French;* MISS MARGUERITE AUSTIN, *French.*

*Bottom Row:* DR. A. D. FRANK, *Director of Instruction, History;* MISS LAURA ROSE, *History;* DR. R. L. HILLDRUP, *History;* MR. E. C. HOLLAR, *History;* MR. O. A. HANKNER, *Director of Instruction, Physical Education.*



# FACULTY



*Top Row: MR. GORDON GILBERT, Physical Education; MR. BOLFY FARLEY, Physical Education; MISS HELEN MCELWAIN, Physical Education; MR. DEAN C. TABOR, Director of Instruction, Music Education; MISS GUSSIE KUYKENDALL, Music Education.*

*Middle Row: MR. A. L. DITTMER, Music Education; MISS LOIS V. GORRELL, Music Education; DR. R. J. SLAY, Director of Instruction, Science; DR. CHARLES REYNOLDS, Science; DR. R. C. BRANDT, Science.*

*Bottom Row: DR. HELEN SPANGLER, Science; MISS MARY CAUGHEY, Science; DR. DANIEL STULL, Science; MRS. ADELAIDE BLOXTON, Home Economics; MISS RUBY SHOLTZ, Home Economics.*

# FACULTY



*Top Row:* MISS EVELYN ROGERS, *Home Economics*; MR. PARNELL PICKLESIMER, *Director of Instruction, Geography*; MR. J. B. CUMMINGS, *Geography*; DR. BROWN, *Geography*; MISS KATE LEWIS, *Director of Instruction, Art*.

*Middle Row:* MISS ALMA SPARGER, *Art*; MR. ELMER BROWNING, *Director of Instruction, Commerce*; MISS LENA C. ELLIS, *Commerce*; MISS VELMA LOWE, *Commerce*; MISS MIRIAM MOHL, *Commerce*.

*Bottom Row:* MR. M. L. WRIGHT, *Sociology*; DR. BEECHER FLANAGAN, *Economics*; DR. PAUL TOLL, *Economics*; DR. F. L. HENDERSON, *Director of Instruction, Administration and Supervision*; DR. CARL L. ADAMS, *Director of Instruction, Psychology*.

# FACULTY



*Top Row:* MISS ANNIE NEWELL, Education; MISS LUCILLE CHARLTON, Education; DR. HUBERT C. HAYNES, Education and Psychology; MISS DORA COATES, Director of Supervision, Primary and Grammar Grades; DR. HERBERT R. BARKER, Director of Instruction, Mathematics.

*Middle Row:* MISS LOUISE WILLIAMS, Mathematics; MISS ELIZABETH ENGLAND, Mathematics; MR. WILLIAM MCHENRY, Industrial Arts; MR. VESTER MULHOLLAND, Principal Scotts High School, English; MISS DEANIE BOONE HASKETT, Critic Teacher, English.

*Bottom Row:* MR. R. G. WALSER, Critic Teacher, English; MR. ELMER ROBINSON, Critic Teacher, Science; MISS LACY, Critic Teacher, Home Economics; MISS IMOGENE RIDDICK, Critic Teacher, French; MR. HERMAN DALLY, Critic Teacher, History.

# FACULTY



*Top Row: MISS LAURA BELL, Critic Teacher, Commerce; MISS FRANCES WAHL, Principal, Training School; MISS ANNE REDWINE, First Grade; MISS RUTH FAISON, First Grade; MISS CHRISTINE JOHNSON, Second Grade.*

*Middle Row: MISS LUCY NULTON, Second Grade; MRS. LINDSAY SAVAGE, Third Grade; MISS EUNICE MCGEE, Third Grade; MISS ALMA BROWNING, Fourth Grade; MISS LOUISE GALPHIN, Fourth Grade.*

*Bottom Row: MISS CLEO RAINWATER, Fifth Grade; MISS COBB, Sixth Grade; MISS HYMAN, Sixth Grade; MISS KATHIFFEN PLUMB, Seventh Grade; MR. J. L. DUNCAN, College Treasurer.*

# FACULTY



*Top Row: MRS. OWENS, Treasurer's Assistant; MR. RUFUS JOHNSON, Treasurer's Assistant; MISS HAZEL WILLIS, Secretary; MISS OLA ROSS, Assistant Registrar; MISS STELLA GROGAN, Superintendent of the Infirmary.*

*Middle Row: MISS MARY LEA SMITH, Assistant Superintendent of the Infirmary; MR. S. R. GULLEDGE, Librarian; MISS MARGARET SAMMON, Assistant Librarian; MISS RUTH WHITE, Dormitory Matron; MISS MARY CHEATHAM, Dormitory Matron.*

*Bottom Row: MISS ELIZABETH SMITH, Assistant Dean of Women; MISS ARLIE V. MOORE, Supervisor of Buildings; MRS. AGNES BARRETT, Secretary to the President; MRS. L. L. REEVES, Stenographer to Dining Hall.*



The CLASSES







# SENIORS



CLIFTON BRITTON . . . . . *President*  
NELL BREEDLOVE . . . . . *Vice-President*  
MARIE TRIPP . . . . . *Secretary*  
JOHN DAVID BRIDGERS . . . . . *Treasurer*

# SENIORS



**JULIUS ABERNETHY, JR.**

Nashville, N. C.

*Mathematics and Commerce*

Class Treasurer 1; M.S.G.A. 2; Mathematics Club 1, 2, 3, 4; Vice-President 4; Commerce Club 2, 3, 4; Treasurer 4; Speech Choir 3, 4.

**EVFLYN AIKEN**

Snow Hill, N. C.

*Home Economics and Science*

Junior "Y" Cabinet, President 1; Class Representative TROIAN 1; Y.W.C.A. 1, 2, 3, 4; Poe Society 1, 2, 3, 4; Science Club 3, 4; Home Economics 3, 4.



**MARGARET MARIA ALLEN**

Franklinton, N. C.

*History and Mathematics*

Mathematics Club 2, 3, 4; Y.W.C.A. 2.

**MARION ALLEN**

Creedmoor, N. C.

*Grammar Grade Education*

Y.W.C.A. 1; Emerson Society 1, 2, 3, 4; Methodist Student Association 1, 2, 3, 4; Cabinet 1, 2, 3, 4; Delegate to Methodist Conference 1; Granville Country Club 1, 2, 3, 4.



**ALICE ALLGOOD**

Fayetteville, N. C.

*Grammar Grade Education*

Poe Society 1, 2, 3, 4; Ki Pi Players 2, 3, 4; Sophomore Play 2; Junior Play 3; Dramatic Club Play 3; W.A.A. 1; Y.W.C.A. 1; Glee Club 1, 2; F.T.A. 3, 4; Senior Play 4.

**VILEIGH AUSTIN**

Willow Springs, N. C.

*Mathematics and French*

Mathematics Club 1, 2, 3, 4; Phi Sigma 1, 2; W.A.A. 1, 2, 3, 4; Basketball Varsity 1, 2; Head of Volley Ball 4; Technical Staff, Senior Play 4.

# 1940

# E.C.T.C.

**EVELYN BAKER**  
 Washington, N. C.  
*Commerce*  
 Commerce Club 1; Y.W.C.A. 1; Poe Society 1, 4.



**RACHEL LOUISE BARBÉE**  
 Nashville, N. C.  
*Primary Education*  
 Y.W.C.A. 1, 2, 3, 4; Lanier Society 1, 2, 3, 4;  
 W.A.A. 1, 2; Basketball Team 1, 2.

**MILDRED BARNES**  
 Severn, N. C.  
*Primary Education*  
 Poe Society 1, 2, 3, 4; A.C.E. 1; Y.W.C.A. 1, 2, 3, 4;  
 Vice-President Northampton Club 2.



**LUCY ANN BARROW**  
 LaGrange, N. C.  
*English and History*  
 S.G.A. 1; Y.W.C.A. 2, 3, 4; Cabinet 3, 4; Delegate  
 to "Y" Conference at Blue Ridge 3; English Club  
 2, 3, 4; History Club 2, 3, 4; Dramatics Club 3, 4;  
 Verse Speaking Choir 3; Junior Play 3; Triox  
 Staff 4; Senior Play 4.

**SAM BASS**  
 Black Creek, N. C.  
*Social Science and Mathematics*  
 Atlantic Christian College 1, 2, 3; Glee Club 1, 2,  
 3, 4; Male Chorus 1, 2, 3, 4; Male Quartet 1, 2, 3;  
 Kappa Alpha Fraternity 2, 3; Social Science Club  
 4; Mathematics Club 4.



**BIRTRUM BATEMAN**  
 Greenville, N. C.  
*Mathematics and Science*  
 Phi Sigma Pi 3, 4; College Band 2, 3, 4.

# T.E.C.A.N.

# SENIORS



MARIE BAYSDEN  
Richlands, N. C.

*Home Economics and Science*  
Home Economics Club 2, 3, 4, Vice-President 4.



ANNIE LAURIE BEALE  
Pendleton, N. C.

*Commerce and History*  
Y.W.C.A. 1, 2, 3, 4; Junior "Y" Cabinet 1; Methodist Student Association Council 2, 3, 4, Treasurer 2; Chairman of Program Committee 3; President 4; Secretary Northampton Club 2; KJ P Players 2, 3, 4, Second Vice-President 4; Stage Manager Class Plays 2, 3; Stage Manager Senior Plays 2, 3; W.S.G.A. 4; *Who's Who in American Universities and Colleges* 4; Commerce Club 1, 2, 3, 4, President 3; Vice-President State Methodist Student Conference 4; Hall Proctor 3; Delegate to National Methodist Student Leadership Conference 3; Zeta Delta Chapter of Alpha Iota Sorority 4.



LUCILLE BELL  
Rocky Mount, N. C.

*Grammar Grade Education*



TOMPY BENTON  
Indian Trail, N. C.

*Home Economics and Science*  
Senior Play 4.



JOSEPH D. BIGGS  
Washington, N. C.

*History and Science*  
Y.M.C.A. 1, Cabinet 4; Science Club 3, 4; History Club 4; Glee Club 2.



BETTIE B. BLANCHARD  
Wallace, N. C.

*Primary Education*  
Y.W.C.A. 1, 2, 3; W.A.A. 1, 2; Poe Society 1, 2; W.S.G.A. 3, 4; House President 3, 4.

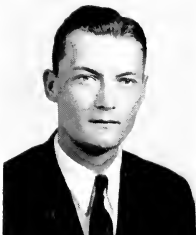
# 1940

DORIS ANN BLANCHARD  
Sunbury, N. C.  
*Grammar Grade Education*  
Poe Society 1, 2, 3, 4; W.A.A. 4.



RACHEL BLANCHARD  
Greenville, N. C.  
*Physical Education*  
W.A.A. 1, 2, 4.

ELMER BLAND  
Bethel, N. C.  
*History and Physical Education*



ELOISE BONE  
Nashville, N. C.  
*Grammar Grade Education*  
Lanier Society 1, 2, 3, 4, Secretary 2; Glee Club  
1, 2, 4; Y.W.C.A. 1, 2, 3, 4; Junior "Y" Cabinet  
1; S.G.A. 3; Asheville Teachers' College 3; Senior  
Superlative 4.

ANNIE HART BOONE  
Pendleton, N. C.  
*French and English*

Emerson Society 1, 2, 3, 4, Secretary 4; Phi Sigma  
2, 3, 4, President 4; English Club 1, 2, 3, 4; Verse  
Speaking Choir 3; Delegate to Sigma Pi Alpha  
Conference 3.



LOUISE BOONE  
Jackson, N. C.  
*Grammar Grade Education*  
Poe Society 2, 3.

# SENIORS



MAMIE LEE BOYD

Lane, S. C.

*Grammar Grade Education*

A.C.E. 3, 4; F.T.A. 3, 4, Librarian 4; Y.W.C.A. 2, 4; W.S.G.A. 4, House President 4.

ANNIE RUTH BOYETTE

Benson, N. C.

*Grammar Grade Education*

VIRGINIA LEE BOYETTE

Wilson, N. C.

*Grammar Grade Education*

Sons and Daughters Club 3, 4; Y.W.C.A. 1; Poe Society 1; Dramatic Club 3, 4.

ALICE BRAGG

Franklinton, N. C.

*Grammar Grade Education*

Y.W.C.A. 1, 2, 3, 4; Emerson Society 1, 2, 3, 4; Granville County Club 1, 2, 3, 4; Marshal 3; Methodist Student Association 1, 2, 3, 4, Cabinet 3, Delegate to Methodist Student Conference 3, 4.

DOROTHY BRAGG

Stem, N. C.

*Home Economics and Science*

Granville County Club 1, 2; Poe Society 1, 2.

NELL BREEDLOVE

Oxford, N. C.

*Primary Education*

Peace Junior College 1; Poe Society 2, 4; Y.W.C.A. 2, 3, 4, Cabinet 4; W.S.G.A. 3, Vice-President 3, Editor of Handbooks 3; Chairman of Class Dance Committee 2, 3; Chairman Courtesy Card Committee 3; Representative to Southern Federation of W.S.G.A. 3; Representative to Southern Interracial Y.W.C.A. Conference 4; "Miss E.C.T.C." 3; Y.W.C.A. House of Comradeship Program 3; Granville County Club President 2; Vice-President Senior Class 4; Entertainment Committee 4; *Who's Who in American Universities and Colleges* 3; Class Executive Council 3, 4; Chairman Class Play Committee 4; Sponsor Junior "Y" Cabinet 4; Senior Play 4; Senior Superlative 4.

# 1940

AILEEN BREWER

Marshville, N. C.

*Home Economics and Science*

Home Economics Club 3, 4; Science Club 3, 4;  
W.A.A. 3, 4; Volley Ball 3; Y.W.C.A. 2, 3, 4.



ROBERT BREWER

Greenville, N. C.

*History and Science*

Campbell College 1, 2; Varsity Debater 1, 2;  
Y.M.C.A. 3, 4; Glee Club 3; Phi Sigma Pi, Tau  
Chapter 4.

JOHN DAVID BRIDGERS

Greenville, N. C.

Sophomore Play 1; Senior Play 2, 3, 4; Junior  
Play 3; Mathematics Club 2, 3; Science Club 2, 3;  
Phi Sigma Pi 3, 4; Historian 4; Y.M.C.A. 3, 4;  
Cabinet 4; *Teco Echo* 1, 2, 3, Associate Editor 3;  
Ki Pi Players 2, 3, 4, Vice-President 3; Class  
Treasurer 4; Pre-Med Society 4; Varsity Club  
Play 4; Senior Superlative 4.



JENNIE MAE BRINKLEY

Coleraine, N. C.

*Primary Education*

Poe Society 1, 2, 3, 4; Vice-President Class 1;  
Junior "Y" Cabinet 1; A.C.E. 3, 4; Y.W.C.A. 1.

ALBERTINA LOUISE BRINSON

Pollockville, N. C.

*Grammar Grade Education*

Poe Society 1, 2, 3, 4; Y.W.C.A. 1.



GILBERT A. BRITT

Conway, S. C.

*Mathematics and History*

Mathematics Club 1, 2, 3, 4; *Teco Echo* Repre-  
sentative 3; Glee Club 2; History Club 3, 4;  
Y.M.C.A. 3, 4, Cabinet 3, 4; Senior Play 1.

# SENIORS



MARGUERITTE BRITT  
Mount Olive, N. C.  
*Primary Education*  
A.C.E. 1, 2, 3, 4; Poe Society 1, 2, 3, 4.

SARAH MAE BRITT  
Wendell, N. C.  
*Primary Education*  
Emerson Society 1, 2, 3, 4; Y.W.C.A. 1, 2, 3, 4;  
Social Committee 3, 4; A.C.E. 3, 4; Tecon Staff 4.



CLIFTON BRITTON  
Milwaukee, N. C.  
*History and English*  
President Class 1, 2, 3, 4; Director Senior Play 1,  
2, 3, 4; Ki Pi Players 3, 4; Student Director 3, 4;  
Business Staff Tecon 2; Science Club 2, 3; Direc-  
tor Senior Normal Play 1; Director Sophomore,  
Junior and Varsity Club Plays; Ki Pi Play 3;  
*Who's Who in American Universities and Col-  
leges* 3, 4; Director Y.M.C.A. and Y.W.C.A.  
Passion Play; Y.M.C.A. 3, 4; Senior Superlative.

MAXIE BROADWELL  
Winterville, N. C.  
*Primary Education*  
A.C.E. 3, 4.



DONALD BROCK  
Trenton, N. C.  
*History and Physical Education*  
North Carolina State College 1, 2; Basketball 3, 4.

MRS. LEWELLYN THORNTON BROOME  
Greenville, N. C.  
*Primary Education*

# 1940



BERT BROWNE

Bethel, N. C.

Y.W.C.A. 1; Poe Society 1; Phi Sigma Chapter of the Sigma Pi Alpha; University of North Carolina, Summer 3.

VIRGINIA BRYAN

Wilmington, N. C.

*Primary Education*

Emerson Society 1, 2, 3; Y.W.C.A. 1, 2; A.C.E. 2, 3, 4.



FLORA NEILL BULLOCK

Autryville, N. C.

*English and French*

Campbell College 1, 2; English Club 1; Phi Sigma 1.



DORIS ELIZABETH BURNEY

Lumberton, N. C.

*Grammar Grade Education*

Poe Society 1, 2; Glee Club 2, 3; Reportorial Staff *Teco Echo* 2; Wake Forest College, Summer 3; Junior Class Play 3; Proctor 3; W.S.G.A. 4; House President 4; Assistant Business Manager of Handbook 4; Methodist Student Association 3, 4.



SUDIE ELVA BUTLER

Clinton, N. C.

*Primary Education*

A.C.E.; Y.W.C.A.; Y.W.A.; Pineland College 1, 2.

MARY LOU BUTNER

Greenville, N. C.

*Primary Education*

A.C.E. 3, 4; President 1; College Band 3, 4.





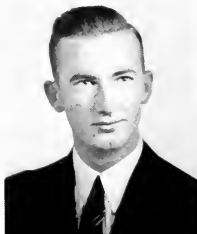
MARY FRANCES BYRD  
Wilmington, N. C.  
*Commerce and History*  
Louisburg College 1; Zeta Delta Chapter Alpha  
Iota 4.

LOURAY CAISON  
Roseboro, N. C.  
*Commerce*  
Pineland Junior College 1, 2; Commerce Club 3, 4.



URSULA BARROW CARR  
Farmville, N. C.  
*History and English*  
Proctor 3, 4; History Club 3; English 3, 4; Busi-  
ness Staff TECOAN 4; Senior Play 4.

ESTHER MARIE CARMACK  
Richlands, N. C.  
*Primary Education*  
Y.W.C.A. 3, 4; A.C.E. 3; Class Representative  
TECOAN 4.



EVA CAROLYN CARTER  
Warsaw, N. C.  
*Primary Education*  
Poe Society 1, 2; A.C.E. 4; Marshal 2; *Teco Echo*  
3; TECOAN 3, 4; Junior Executive Council 3;  
Senior Superlative; Proctor 4.

VANCE CHADWICK  
Straits, N. C.  
Phi Sigma Pi Fraternity 2, 3, 4, President 4;  
M.A.G.A. 3, 4; Y.M.C.A. 3, 4, Secretary 3, 4;  
Mathematics Club 2, 3, 4.

1940

ELIZABETH CHAMBERS  
Reidsville, N. C.  
*Primary Education*



LILA JUNE CHANDLER  
Greensboro, N. C.  
*Grammar Grade Education*  
Poe Society 1, 2, 3, 4; A.C.E. 4; Proctor 2, 4.



EVELYN CLARK  
Grimesland, N. C.  
*Grammar Grade Education*

Y.W.C.A. 1, 2, 3, 4; W.A.A. 1, 2, 3, 4; *Teco Echo* 2; W.A.G.A. 3; Methodist Student Association 1, 2, 3, 4; Cabinet 2, 4; Emerson Society 1, 2, 3, 4; English 2, 3, 4.



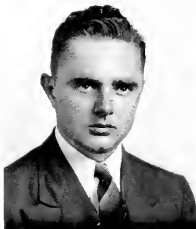
CAMILLE B. CLARKE  
Lake Landing, N. C.  
*Home Economics and Science*

Home Economics Club 2, 3, 4, Vice-President 3, President 4; Science Club 4.



GORDON L. CLARKE  
Greenville, N. C.  
*History and Science*

Y.M.C.A. 3, 4; Elon College 2, 3; Emerson Society 1.



KATRINE COLLIE  
Spring Hope, N. C.  
*Grammar Grade Education*

Y.W.C.A. 2, 3; A.C.E. 4; Baptist Student Union 1, 2, 3, 4; A.C.E. Council 4.



MEMBERS



EMILY JANE COPELAND

Ahoskie, N. C.

*Primary Education*

Chowan Junior College; Y.W.C.A. 3. Secretary 3; Junior "Y" Cabinet 1; Class Treasurer 2; Lucalian Literary Society 2; Lanier Society 1, 4; Glee Club 1; A.C.E.; Senior Play 4.

MARY LYON COPPERSMITH

Littleton, N. C.

*Primary Education*

Y.W.C.A. 2; A.C.E. 4; Louisburg College.



VIRGIE COWARD

Merry Hill, N. C.

*Grammar Grade Education*

Chowan Junior College; Y.W.C.A.

KATHLEEN CRAWFORD

Pikeville, N. C.

*Grammar Grade Education*

Y.W.C.A. 1, 2, 3; F.T.A. 3.



ERNESTINE CREECH

Clayton, N. C.

*Mathematics and Science*

Poe Society 1, 2, 3, 4; Science Club 2, 3, 4; Mathematics Club 2, 3; Y.W.C.A. 2; House President 3.

MARGARET CROWELL

Statesville, N. C.

Mitchell College; A.C.E. 3, 4.

1940

EUNICE CULLIPHER

Merry Hill, N. C.

*Home Economics and Science*

Home Economics Club 2, 3, 4; Poe Society 2, 3, 4; Y.W.C.A. 2.



MARGUERITE CURRIN

Oxford, N. C.

*Home Economics and Science*

Home Economics Club 2, 3, 4; Social Chairman 3; Science Club 2, 3, 4; Treasurer 3, Vice-President 4; Lanier Society 1; Y.W.C.A. 1, 4; Granville County Club 2, 3; Delegate Inter-Racial Conference 2, 3.



FRANCES JOSEPHINE CUTCHIN

Washington, N. C.

*Commerce and English*

Mary Washington College 1, 2; Commerce Club 3, 4; Editor of *Business Beacon* 1; Y.W.C.A. 3, 4; Poe Society 4; English Club 4.



JOSEPHINE DANIEL

Stem, N. C.

*Primary Education*

Poe Society 1, 2, 3, 4; A.C.E. 2, 3, 4.

ANITA DAUGHTRIDGE

Rocky Mount, N. C.

*History and English*

History Club 2, 3, 4; English Club 2, 3, 4; A.D.S. 3, 4; Vice-President 3, President 4; Y.W.C.A. 2, 3, 4.



SYBLE DAUGHTRY

Murfreesboro, N. C.

*Grammar Grade Education*

Chowan College 1; A.C.E. 3, 4; Baptist Student Union Council 4.

# SENIORS



**IDA FARRIOR DAVIS**  
Burgaw, N. C.

*Grammar Grade Education*

Poe Society 1, 2, Secretary 2; Science Club 2, 3, Vice-President 3; Class Treasurer 3; W.S.G.A. 4; Social Committee 3; Entertainment Committee 3; Business Staff TROON 2.



**IRIS DAVIS**  
Stantonsburg, N. C.

*French and English*

Louisburg College 1; Poe Society 2, 3, 4, President 4; Sponsor Poe Dance 4; Y.W.C.A. 2, 3, 4; English Club 2, 3, 4; Phi Sigma Chapter of Sigma Phi Alpha 2, 3, 4; Ki Pi Players 2, 3, 4, Secretary 4; House President 4; W.S.G.A. 4; Associate Director of Passion Play 4; Associate Director of Class Play 3; President's Club 4; M.S.A. Conference 3, 4; Senior Superlative; *Who's Who in American Universities and Colleges*.



**MAYME DAVIS**  
Seaboard, N. C.

*Grammar Grade Education*

Chowan Junior College 1, 2; W.A.A. 3.



**PAGE DAVIS**  
Milwaukee, N. C.

*Primary Education and Public School Music*

Glee Club 1, 2, 3, 4; A.C.E. 1, 2, 3, 4; M.S.A. 4, 2, 3, 4; Y.W.C.A. 4; Secretary M.S.A. 4; Secretary-Treasurer A.C.E. 3, 4.



**WINNIE RUTH DAVIS**  
Fremont, N. C.

*Primary Education*

Poe Society 1, 2; A.C.E. 4.



**HARVEY DEAL**  
Greenville, N. C.

*English and French*

English Club 2, 3, 4, Vice-President 3; Phi Sigma Chapter Sigma Pi Alpha 2, 3, 4; Tau Chapter Phi Sigma Pi 2, 3, 4, Vice-President 3; Glee Club 1, 2, 3, 4; College Orchestra 1, 2, 3, 4; College Band 2, 3, 4; *Troo Echo* 1, 2, Associate Editor 2; TROON Associate Editor 3, Editor-in-Chief 3; Budget Committee 2; Entertainment 3; Social Committee 3; Constitution Committee 4; Ki Pi Players 2, 3, 4; "D" Play 1; Freshman Play 1; Sophomore Play 2; Junior Play 3; Technical Staff Senior Play 1; Delegate to N.C.C.P.A. 3, 4; Presidents Club 4; Class Executive Council 1, 2, 3, 4; M.S.G.A. 2; *Who's Who in American Universities and Colleges* 4; Publications Board 4; Senior Superlative.

# 1940

BEATRICE DEAN  
Wendell, N. C.

*Primary Education*



DORIS DOBSON  
Kenansville, N. C.

*Commerce and History*

Commerce Club 1, 2, 3, 4; Y.W.C.A. 1, 4; Zeta  
Delta Chapter of Alpha Iota, Historian 4.

HOWARD DRAPER  
Conway, N. C.

Y.M.C.A. 3, 4; Vice-President 3, 4; Cabinet 3, 4;  
Phi Sigma Pi 3, 4; Vice-President 3, 4; Constitu-  
tional Committee 4; Social Science Club 3, 4,  
Chairman of Social Committee 4; Northampton  
County Club 1, 2, 3, 4; President 3; Dormitory  
Club 3, 4.



MILLIE GRAY DUPREE  
Angier, N. C.

*Primary Education*

Junior "Y" Cabinet 1; Poe Society 1; W.S.G.A.  
4; *Teco Echo* Representative 3; F.T.A. 4; Treas-  
urer 4; A.C.E. 4; M.S.A. Council 4.

MARY EAKES  
Greenville, N. C.

*Commerce*

A.S.T.C. Summer School, Commerce Club 3, 4;  
Y.W.C.A. 3, 4; Poe Society 3, 4; Ki Pi Players 4;  
*Pieces O'Eight* Staff 4.



LUCILLE EDGE  
Lumberton, N. C.

*Mathematics and French*

Mathematics Club 1, 2, 3, 4; Phi Sigma 2, 3;  
Y.W.C.A. 2; Poe Society 1; W.A.A. 3; *Teco Echo*  
2; B.S.U. Council 3.

WOMEN



**ATHA LEA EDMUNDSON**  
Pikesville, N. C.  
*Primary Education*  
Emerson 1; A.C.E. 4.

**MILDRED JUANITA ETHERIDGE**  
Whitakers, N. C.  
*French and English*

Poe Society 1, 2, 3, 4, President 3; English Club 1, 2, 3, 4; Phi Sigma 1, 2, 3, 4; Vice-President Class 2; Marshal 2; W.S.G.A. 3, 4, President 4; Representative to S.I.A.S.G. 3, 4; Representative to N.C.S.F.A. 3; Chairman Budget Committee 1; Chairman Entertainment Committee 1; Social Committee 1; Chairman Publications Board 4; Feature 3; Y.W.C.A. 1, 4; Senior "Y" Cabinet 4; Representative N.S.F.A. 4; Senior Superlative 4.



**MARY GOODWIN FEREBEE**  
Camden, N. C.  
Meredith College 1; Y.W.C.A. 2; A.C.E. 2, 3, 4; B.S.U. Council 4.

**KATHRYNNE FLEETWOOD**  
Edenton, N. C.  
*Primary Education*  
Lanier Society 1; A.C.E. 4.



**HELEN PERKINS FLANAGAN**  
Greenville, N. C.  
*Mathematics and Science*

W.C.U.N.C. 1; History Club 2, 3, Vice-President 3; Math Club 2, 3, 4, Vice-President 3; Science Club 1; Ki Pi Players 2, 3, 4; Emerson Society 2, 3, 4; *Teco Echo* Staff 3, 4, Business Manager 4; Delegate to N.C.C.P.A. 3, 4; Constitution Committee 4; International Relation Club 1; Senior Play 4, Technical Staff 4.

**EDITH FORREST**  
Greenville, N. C.  
*Primary Education*  
A.C.E. 4.

1940



RUTH FRAZELLE

Richlands, N. C.

*Commerce and English*

English Club 2, 3, 4; Commerce Club 1, 2, 3, 4; Treasurer 3, Chairman Social Committee 4; Y.W. C.A. 1, 2, 3, 4; W.A.A. 1, 3, 4; Poe Society 1, 2, 3, 4; Zeta Delta Chapter Alpha Tota Sorority 4; Senior Play Technical Staff 1.



ELIZABETH FUSSELL

Rose Hill, N. C.

*Grammar Grade Education*



HAZEL GAINAY

Dunn, N. C.

B.S.U. Council; A.C.E.; Y.W.A.

MILDRED GAMMON

Whitakers, N. C.

*Primary Education*

W.A.A. 1; President Edgecombe County Club 3; Y.W.C.A. 1; A.C.E. 3, 4.



GLADYS GASKINS

Cove City, N. C.

*Home Economics and Science*

Home Economics Club 1, 2, 3, 4; Y.W.C.A. 1, 2.

ETHEL GASTON

Greenville, N. C.

*History and Physical Education*

Emerson Society 2, 3, 4; Choric Speaking Group 2, 3; W.A.A. 3, 4; History Club 2, 3, 4; Band 2, 3; Ki Pi Players 2, 3, 4; President 4; Sophomore Play 2; Junior Play 3; Ki Pi Play 3; Social Committee 4; Chairman Student Chapel Committee 4; *Who's Who in American Universities and Colleges* 4; Assistant Director Varsity Club Play 4; Associate Editor *TITAN* 4; Exchange Editor *Pieces O'Eight* 1; *Teco Echo* 3; Superlative 4; Senior Play 1.



# WINTERS



MARY IVE GAY  
Zebulon, N. C.

*Grammar Grade Education*  
Campbell College 1, 2; A.C.E. 4.

MARY HELLON GEDDIE  
Fayetteville, N. C.

Pineland Junior College 1; Y.W.C.A. 2; W.A.A. 3; Y.W.A. 1; Glee Club 2, 3, 4; Poe Society 2.



ESTHER GILES  
Lenden, N. C.

*Home Economics and Science*  
Campbell 1, 2; Home Economics Club 3, 4; Science Club 4.

HELEN GRAY GILLAM  
Windsor, N. C.

*English and French*  
Y.W.C.A. 1, 2, 3, 4; Junior "Y" Cabinet 1; Poe Society 1, 2, 3, 4; Phi Sigma 2, 3, 4; English Club 2, 3, 4; Ki Pi Players 2, 3, 4; Vice-President 4; Dramatics Club Play 3; Class Representative *Teco Echo* 3; Senior Play 4.



PATSY MONTAGNE GLASS  
Oxford, N. C.

*Primary Education*

GERALDINE GLOVER  
Wilson, N. C.

*Grammar Grade Education*  
Lanier Society 1, 2, 3, 4; Daughters and Sons Club 3, 4; Y.W.C.A. 1, 2, 3, 4.

# WINTERS

**JOHN GLOVER**

Morehead City, N. C.

*Science and Social Science*

Glee Club 2, 3, 4; Band 2, 3; Football 2, 4; Social Science Club 3, 4; Publicity Chairman 3, 4; Erskine College 1; Senior Play 4.



**LILLIAN REBECCA GRANT**

Garysburg, N. C.

*Commerce*

Poe Society 1, 2, 3, 4, Vice-President 3; Y.W.C.A. 1, 2; English Club 2; W.A.A. 2; Commerce Club 2, 3, 4.

**DOROTHY GREENE**

Roanoke Rapids, N. C.

*Primary Education*

Poe Society 1, 3; A.C.E. 2, 3, 4.



**ALETA JONES GRIFFIN**

Summerfield, N. C.

*Home Economics*

W.C.P.N.C. 1, 2; Home Economics Club 3, 4.

**MARY HELEN GULLEDGE**

Greenwood, S. C.

*Commerce*

Lander College 1; Commerce Club 1, 2, 3, 4, Secretary 3; Texan Representative 4; Assistant Student Treasurer 3; Student Treasurer 4; Social Committee 3, 4, Chairman 4; Budget Committee 3, 4; Executive Council Junior Class 3; Constitution Committee 4; Texan Business Staff 4; Publications Board 4; *Who's Who in American Universities and Colleges* 4; Senior Superlative; Zeta Delta Chapter Alpha Iota Sorority 4, President 4.



**MYLDRED GUPTON**

Essex, N. C.

*Grammar Grade Education*

W.A.A. 1, 2, 3, 4; Dormitory Head for Sports 4; Y.W.C.A. 1, 2; Poe Society 1, 2; Softball Varsity 3; Volley Ball Varsity 3.

# SENIORS



**META VIRGINIA HAMMOND**  
Andrews, S. C.

*Commerce and French*

Emerson Society 1, 2, 3, 4; Secretary 2; Marshal 2; Vice-President 3; President 1; Y.W.C.A. 1, 2, 3; TICOON Staff 2, 3; Commerce Club 1, 2; Phi Sigma 1, 2; Social Committee 2.



**MARGUERITE VIRGINIA HARDEE**  
Greenville, N. C.

*Commerce and Mathematics*

Mathematics Club 2, 3, 4; Commerce Club 2, 3, 4.



**CHARLES D. HARRIS, JR.**  
Marshallberg, N. C.

*History and Social Science*

Phi Sigma Pi Fraternity; Tau Chapter; Social Science Club; Vice-President; Y.M.C.A.; Tennis Team; International Relations Club.



**CHRISTINE HARRIS**  
Thomasville, Tenn.

*English and French*

English Club 1, 2, 3, 4; Phi Sigma Chapter of Sigma Phi Alpha 2, 3, 4; Poe Society 2, 3, 4; Y.W.C.A. 1, 2, 3, 4; Choral Speaking Choir 3, 4; Marshal 3; Chief Marshal 4; Sponsor Poe Dance 1; Treasurer Phi Sigma 3; Treasurer English Club 1; Feature 2, 4; Senior Superlative.



**EDITH W. HARRIS**  
Louisburg, N. C.

*English and History*

Louisburg College 1, 2; Poe Society 3, 4; Vice-President 4; English Club 4.



**MRS. FRANCES HARRIS**  
Greenville, N. C.

*Science and English*

Science Club 1, 2, 3; Poe Society 1, 2, 3, 4.

**GERALDINE HARRIS**

Greenville, N. C.

*French and English*

*Teen Echo* Representative 1; Freshman Class Play 1; Lanier Society 2, 3, 4; Sophomore Class Play 2; K. P. Players 2, 3, 4, Vice-President 3; Junior Class Play 3.



**MARIE HART**

Ayden, N. C.

*Primary Education*

Lanier Society 1.

**RUTH HAWKES**

Willow Springs, N. C.

*Home Economics and Science*

Lanier Society 1, 2, 3, 4, Treasurer 2; Home Economics Club 3, 4; Science Club 2, 3, 4, Publicity Manager 3; W.A.A. 3, 4; Y.W.C.A. 1; Technical Staff Senior Play 4.



**VENETIA HEARNE**

Greenville, N. C.

*Home Economics and Science*

Poe Society 1, 2, 3; Home Economics Club 2, 3, 4; Science Club 2, 3, 4.

**MARJORIE HEATH**

Newport, N. C.

*Primary Education*

Junior "Y" Cabinet 1; Y.W.C.A. 1, 2, 3, 4; Poe Society 1, 2; Vice-President M.S.A. 2; President Methodist S. S. Class 3; A.C.E. 4.



**FAYE HELMS**

Unionville, N. C.

*Home Economics and Science*

Lanier Society 1, 2, 3, 4; Science Club 2, 3, 4; Home Economics Club 2, 3, 4; P.S.A. 1, 2, 3, 4.

# SENIORS



**ROWENA HICKS**

Oxford, N. C.  
Y.W.C.A. 1, 2; Mathematics Club 1, 2, Secretary 2.

**ROSALINE HIGH**

Wendell, N. C.  
*Primary Education*



**INDIA HILL**

Benson, N. C.  
*Mathematics and English*

Glee Club 1, 3; Mathematics Club 1, 2, 3, 4;  
English Club 1, 2, 3, 4; B.S.U. Council 3, 4.

**CORNELIA HILL**

Murfreesboro, N. C.  
*Primary Education*  
Chowan College 1, 2.



**JOYCE ELAINE HILL**

Ayden, N. C.  
*Commerce and English*

Poe Society 1, 2, 3, 4; Commerce Club 1, 2, 3, 4;  
English Club 2, 4; Ki Fi Players 3, 4; Y.W.C.A.  
1; Commerce Club Secretary and Reporter 4;  
Treasurer Ki Fi Players 4; Proctor 4; Senior  
Play 4; Zeta Delta Chapter Alpha Iota Sorority  
4, Marshal 4.

**JENNIE HINSON**

Stanfield, N. C.  
*Primary Education*  
Pfeiffer Junior College 1; W.A.A. 3, 4; Y.W.C.A.  
2, 4; Head of Hiking 4.

# 1940

ARTHUR L. HODDER

Braddock, Pa.  
Appalachian 1, 2, 3; Football 4.



SYBIL HOFFMAN

Kinston, N. C.  
*Grammar Grade Education*  
M.S.A. 2, 3, 4.



MIRIAM HOGGARD

Lewiston, N. C.  
*Home Economics and Science*  
Chowan Junior College 1, 2.



OLGA HOGGARD

Lewiston, N. C.  
*Grammar Grade Education*  
Chowan College 1, 2.



DOROTHY HOLLAR

Greenville, N. C.  
*History, English and French*  
English Club 2, 3, 4; *Teco Echo* Reporter 2; Poe Society 2, 3, 4; W.A.A. 2, 3; Associate Editor *Teco Echo* 2, 3, Editor 4; History Club 2, 3, 4, Secretary-Treasurer 2; KJ Pi Players 3, 4; Marshal 3; KJ Pi Players Historian 3; English Club Reporter 3; Budget Committee 3; N.C.C.P.A. Delegate 3; Pi Sigma 4; Publications Board 4; Co-Editor *Teco Echo* Summer 3; W.S.G.A. 4; Pitt County Club 1, Secretary 1; *Who's Who in American Universities and Colleges* 4.



MARY PEACE HOWARD

Salemberg, N. C.  
*Primary Education*  
Meredith 1; Pineland Junior College 2; Y.W.C.A. 3; W.A.A. 3; A.C.E. 4; Y.W.A. 4.



# SENIORS



LUCY HUDGINS  
Sunbury, N. C.  
*Home Economics and Science*  
Hom: Economics Club 1, 2, 3, 4.

CASSIE HUDSON  
Pantego, N. C.  
*French and English*  
English Club 1, 2, 3, 4; Phi Sigma 1, 2, 3, 4;  
Verse Speaking Choir 3; English Club TROOP  
Representative 4; Secretary-Treasurer Phi Sigma  
4.



MARGUERITE HUTCHINSON  
Rockingham, N. C.  
*Mathematics and French*  
Y.W.C.A. 1; Mathematics Club 1, 2, 3, 4. Presi-  
dent 3; Proctor 2; House President 3.

GLADYS IPOCK  
Erul, N. C.  
*Commerce and French*  
W.S.G.A. 3, Secretary 2; Commerce Club, Presi-  
dent 2; *Who's Who Among Students in American  
Colleges and Universities*; Zeta Delta Chapter  
Alpha Iota Sorority 4.



G. A. JACKSON  
Winterville, N. C.  
*Science and Physical Education*  
Wake Forest College 1, 2, 3.

JOSEPHINE JACKSON  
Godwin, N. C.  
*Home Economics and Science*  
Y.W.C.A. 1, 2, 3, 4; W.A.A. 1, 2, 3, 4; Poe Society  
1, 2; Science Club 2, 3, 4; Home Economics Club  
2, 3, 4; Head of Hiking 2; Head of Individual  
Sports 3, 4; Head of Outdoor Cookery Club 4;  
Varsity Basketball 2.

# 1940



MARGARET JACKSON  
Grifton, N. C.

*Primary Education*  
A.C.E. 4; Y.W.C.A. 4.



MATTIE LEE JACKSON  
Lumberton, N. C.

*English and History*  
English Club 2, 3, 4, President 4; History Club  
2, 3, 4, President 4; Speech Choir 3, 4; B.S.U.  
Council 4; Y.W.C.A. 2.



EDNA JAMES  
Burgaw, N. C.

*Grammar Grade Education*  
Poe Society 1, 2; W.A.A. 2, 3; Y.W.C.A. 1, 2.

MARGARET GILLIAM JARVIS  
Moyock, N. C.

*Commerce and Science*  
Science Club 1; Emerson Society 1, 2; Comm. rec  
Club 1, 2; Y.W.C.A. 1, 2, 3, 4; W.A.A. 1, 2;  
Associate Editor TECOAN 4; M.S.A. Council 4;  
N.C.C.P.A. Delegate 4; Technical Staff Senior  
Play 4.



EVELYN JERNIGAN  
Goldsboro, N. C.

*Home Economics and Science*  
Glee Club 1, 2, 3, 4; Y.W.C.A. 1; Y.W.A. 4;  
Science Club 2, 3, 4; Home Economics Club 2, 3,  
4.

LUCILLE JOHNSON  
Ayden, N. C.

*Primary Education*  
A.C.E. 2, 3, 4; *Teco Echo* Staff 2, 3, 4, Business  
Manager 3; Publications Board 3, 4; P.S.A. 3, 4,  
Vice-President 4; N.C.C.P.A. Delegate 2, 3.

# SENIORS



MYRTIS JOHNSON  
Roseboro, N. C.  
*Primary Education*  
A.C.E. 4.



MARY PARKER JOHNSON  
Goldsboro, N. C.  
*Primary Education*  
Junior "Y" Cabinet 1, Senior "Y" Cabinet 4, Y.W.C.A. 1, 2, 3, 4; Methodist Cabinet 2, 3; A.C.E. 1, 2, 3, 4; Secretary 2; W.S.G.A. 2, 3, House President 3; Poe Society 1, 2; *Who's Who in American Universities and Colleges* 3; Entertainment 4.



SULOU JOHNSON  
Kenly, N. C.  
*Primary Education*  
Poe Society 1, 2, 3, 4; Y.W.C.A. 1, 2, 3, 4; A.C.E. 1, 2, 3, 4; W.A.A. 2.



THADYS ELAINE JOHNSON  
Pendleton, N. C.  
*Commerce and English*  
W.A.A. 2; Y.W.C.A. 2, 3; B.S.U. 1, 2, 3, 4; English Club 2, 3, 4; Phi Sigma 2, 3, 4; Commerce Club 2, 3, 4; President 4; Poe Society 1, 2, 3, 4; Secretary 4; Proctor 3; Band 4; Dormitory Hostess 4; Ki Pi Players 3, 4; Zeta Delta Chapter Alpha Iota Sorority 4; Social Secretary 4.



ANNA WINIFRED JONES  
Farmville, N. C.  
*Grammar Grade Education*  
Y.W.C.A. 4; Lanier Society 1.



VERA JOYNER  
Louisburg, N. C.  
*Grammar Grade Education*  
Pineland Collere 1, 2; F.T.A. 3, 4.

1940

CAROLYN ELIZABETH LAMBE  
Pantego, N. C.

*Commerce and French*

Poe Society 1; Commerce Club 1; Phi Sigma 1;  
Y.W.C.A. 1; *Tero Echo* Business Staff 2; Pres-  
ident Student Branch of Episcopal Church; Zeta  
Delta Chapter Alpha Iota 4.



FRANCES PEELE LAMBE  
Pantego, N. C.

*History and Social Science*

Poe Society 1; Y.W.C.A. 1; TECOAN Staff 2; Eng-  
lish Club 1.



BERTHA PEARL LAMM  
Wilson, N. C.

*Grammar Grade Education*

W.C.U.N.C. 1; Poe Society 2, 3, 4; Y.W.C.A. 2,  
3, 4.

LOUISE LATHAM  
Mocksville, N. C.

*Home Economics and Science*

Brevard Junior College 1, 2; Home Economics  
Club 3, 4; Science Club 4.



SHIRLEY GRAY LATHAM  
Bath, N. C.

*Grammar Grade Education*

Senior Play 4.

SUE HARLEE LAWRENCE  
Tarboro, N. C.

*Home Economics and Science*

Home Economics Club 2, 3, 4; Y.W.C.A. 1; Stu-  
dent Auxiliary Episcopal Church 2, 3, 4.



# SENIORS



MARGARET LAWRENCE  
Tarboro, N. C.

*Primary Education*  
Peace Junior College 1, 2; Y.W.C.A. 3; A.C.E. 3;  
Glee Club 3.

BELMA LEE  
Arapahoe, N. C.

*History and English*



KATHERINE P. LEWIS  
Enfield, N. C.

Louisburg College 1, 2; Proctor 3; History Club  
3; Phi Sigma 3, 4; Ticoan Staff 4; Pieces O'Eight  
Staff 4; Circulating Manager 4; I.R.C. 4; Senior  
Superlative.

ELSIE LILLEY  
Eure, N. C.

*Home Economics and Science*

Home Economics Club 2, 3, 4; Science Club 2, 3,  
4; W.W.A. 3.



RUTH LUTHER  
Eleazer, N. C.

*History and English*

English Club; History Club; Y.W.A.; Verse  
Speaking Choir.

NELL MANESS  
Butes Creek, N. C.

*Home Economics and Science*

Campbell College 1, 2; Home Economics Club 3,  
4; Science Club 3, 4; Lanier Society 4.

# 1940

WILLINE MANESS

Troy, N. C.

*Primary Education*

Campbell College 1, 2; A.C.E. 3, 4; B.S.U. Council 4.



EDITH MARTIN

Red Oak, N. C.

*Primary Education*

A.C.E. 3, 4; Verse Speaking 3; Poe Society 3, 4; Delegate to A.C.E. Convntion 3; W.C.U.N.C. 1, 2.



VIRGINIA MARTIN

Parkton, N. C.

*Primary Education*

SARAH ANN MAXWELL

Pink Hill, N. C.

*English and French*

*Teco Echo* Staff 1, 2, 3, Reporter 1, 2, Associate Editor 2; W.S.G.A. 2; Glee Club 2; Poe Society 1, 2, 3, 4; English Club 2, 3, 4; Phi Sigma 2, 3, 4; Speech Choir 3, President 3; M.S.A. Cabinet 1, 2, 3, 4, President 3; Vice-President N.C.M.S.A. 3; Delegate to National M.S.A. Convention 2; Y.W.C.A. 2, 3, 4, Cabinet 3, President 1; Delegate Blue Ridge Conference 3; Chapel Committee 3; Marshal 4; Alumni Sons and Daughters 3, 4; *Who's Who in American Universities and Colleges* 3; Senior Superlative.



MARY ELLEN MATTHEWS

Raleigh, N. C.

*Commerce and English*

Y.W.C.A. 1, 2, 3, 4; Commerce Club 1, 2, 3, 4; English Club 1, 2, 3, 4; Kl Pi Players 3, 4; Chairman Class Dance 4; Executive Council Junior Class 3; Senior Play 4.

ANNIE MEADOWS

Maysville, N. C.

*Primary Education*

Poe Society 1; Y.W.C.A. 2; A.C.E. 2; M.S.A. 1, 2, 3, 4.



# SENIORS



LEON MEADOWS, JR.  
Greenville, N. C.  
*Mathematics and Science*  
Mathematics Club 2; Tennis 2, 3, 4; Band 2, 3.



MAUDE MELVIN  
Salemberg, N. C.  
*Primary Education*  
Pineland College 1, 2; Greensboro College 3; Glee Club 1, 2, 3, 4; Superlative 4; W.S.G.A. 4; A.C.E. 3, 4; Y.W.C.A. 4.



THOMAS J. MEEKS  
Bethel, N. C.  
*Mathematics and Science*  
Science Club 2, 3, 4; Band 3, 4; Orchestra 3;  
Y.M.C.A. 4.



IVA MESSICK  
Lowland, N. C.  
*Primary Education*



DOROTHY REED MILLER  
Wilmington, N. C.  
*Grammar Grade Education*  
Y.W.C.A. 2, 3, 4; A.C.E. 3, 4; May Queen 3, 4;  
Feature 3, 4; Duke University 1.



ELSIE MAE MILLS  
Greenville, N. C.  
*Science and Social Science*

# 1940

MYRTLE MITCHELL

Kittrell, N. C.

*Home Economics and Science*

Home Economics Club 3, 4; Science Club 4; Girl Scouts 3; Louisburg College 1, 2.



EDNA MOORE

Greenville, N. C.

*Primary Education*

Poe Society 1, 2; A.C.E. 4.



LOTTIE MOORE

Kinston, N. C.

*Grammar Grade Education*

Glee Club 1, 2, 3, 4; W.S.G.A. 2, 4; Lanier Society 1, 2; Y.W.C.A. 1, 2.



MARGARET WADE MOORE

Bethel, N. C.

NATALIE LARUE MOORING

Stokes, N. C.

*English, French and History*

*Teco Echo* Reporter 1, 3; Phi Sigma 1, 2; English Club 1, 2, 3; *Teco Echo* Associate Editor 4; *Pieces O'Eight* 4; Business Associate 4; Alumni Sons and Daughters 3, 4; Senior Play, Technical Staff.

KATHERINE E. McCLEES

Page, W. Va.

*Grammar Grade Education*

Poe Society 1, 4; Glee Club 2, 3, 4; A.C.E. 4; Y.W.C.A. 1, 4; Senior Play 4; Senior Superlative.





ROSA LEE MCGOWAN

Greenville, N. C.

*History and English*

Latin Society 1; English Club 1, 2, 3, 4; History Club 2, 3, 4; Poe Society 2, 3, 4; Budget Committee 4.

ORA MCHAN

Almond, N. C.

*Home Economics and Science*

Y.W.C.A. 1, 4; Junior "Y" Cabinet 1; Emerson Society 1; Home Economics Club 3, 4; Science Club 3; B.S.U. Council 4; Proctor 4; Y.W.C.A. Cabinet 4.



ANNA MCLAWHORN

Vanceboro, N. C.

*Commerce and History*

EVA McMILLAN

Godwin, N. C.

*Home Economics and Science*

Y.W.C.A. 1, 2, 3, 4; Science Club 2, 3, 4; Home Economics Club 2, 3, 4; W.A.A. 1, 2, 3, 4; Proctor 2; Girl Scouts 2; W.A.A. President 1; Head of Intramural Sport 2, 3; Poe Society 1, 2; Varsity 1, 2, 3.



ANNIE RUTH McMILLAN

Wade, N. C.

*Grammar Grade Education*

W.C.U.N.C. 1, 2; Y.W.C.A. 4; A.C.E. 4.

FRANCES NANCE

Bonlee, N. C.

*English and French*

Band 3, 4; W.A.A. 2, 3, 4; Treasurer 4; Phi Sigma 3, 4; Vice-President 1; English Club 3, 4.

1940



**BETTY NEAL**

Louisburg, N. C.

*Grammar Grade Education*



**ANITA PAULINE NELSON**

Atlantic, N. C.

*Home Economics and Science*

Home Economics Club 2, 3, 4; Y.W.C.A. 1, 2, 4;  
Orchestra 3, 4; Music Club 1, 2; County Club 2,  
3, Secretary 2, President 3.

**PRUE COLLINS NEWBY**

Hertford, N. C.

*Home Economics and Science*

Poe Society 1; Y.W.C.A. 1, 2, 3, 4, Junior "Y"  
Cabinet 1, Advisor to Junior "Y" Cabinet 2,  
Vice-President 3, Secretary 2; Vice-President  
Class 3; Basketball Team 1; Tennis Team 2;  
Home Economics Club 2, 3, 4; W.A.A. 1, 2;  
TICOAN Staff 2, 3, 4, Business Staff 2, 3, Business  
Manager 4; *Who's Who in American Universities  
and Colleges* 3; M.S.A. Council 2, 3; N.C.C.P.A.  
3, 4; Publications Board 1; Senior Play 4.



**GRACE NEWELL**

Goldsboro, N. C.

*Home Economics and Science*

Louisburg College 1, 2; Science Club 3, 4; Home  
Economics Club 3, 4; Band 3.

**FRANCES E. NEWSOME**

Winton, N. C.

*Home Economics and Science*

Science Club 2, 3, 4, Treasurer 4; Home Eco-  
nomics Club 2, 3, 4; W.A.A. 1, 2, 3, 4.

**HAMPTON NOE**

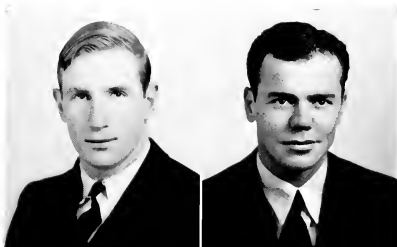
Wilmington, N. C.

*Science and History*

Citadel 1; History Club 2, 3, 4; Science Club 2,  
3, 4; Football 2; Cheerleader 4; Senior Play,  
Technical Staff 4.



# SENIORS



JOHN C. NOE

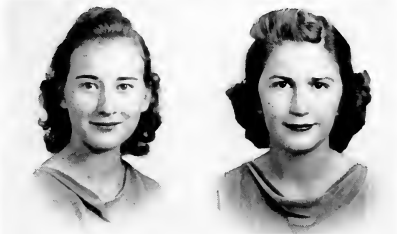
Bath, N. C.

Football 1, 2, 3, 4; Baseball 1, 2, 3, 4; Varsity Club 2, 3, 4; I.R.C. 4.

U. S. NORWOOD

Norwood, N. C.

*History and Social Science*  
N. C. State.



LAURA OATES

Faison, N. C.

*Commerce and History*  
Commerce Club 2, 4; History Club 3; Lanier Society 1, 2.

EDNA OGBURN

Angier, N. C.

*Home Economics and Science*  
Meredith College 1, 2; Science Club 3, 4; Lanier Society 3, 4; Marshal 4; Home Economics Club 3, 4; Secretary 4.



PAULINE OUTLAW

Seven Springs, N. C.

*Home Economics and Science*  
Poe Society 1; Home Economics Club 2, 3, 4; Science Club 2, 3, 4; Girl Scout 2, 3; Y.W.C.A. 2, 3, 4.

MABEL OWENS

Walstonburg, N. C.

W.A.A. 1, 2, 3, 4; *Teco Echo* Reporter 2; TECOAN Representative W.A.A. 4.

# 1940

# FOUR

**ETHEL PADGETT**

Rocky Mount, N. C.

*Grammar Grade Education*

Y.W.C.A. 1; Poe Society 1, 2, 3; Glee Club 1, 2; Ki Pi Players 3, 4; *Teco Echo* Staff 2, 3, 4, Associate Editor 2, 3, Associate Business Manager 1; *Paces O'Eight* Business Manager 4; Executive Council Sophomore Class 2; N.C.C.P.A. 3, 4.



**EILEEN PAKE**

Marshallberg, N. C.

*Grammar Grade Education*

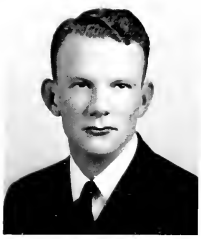
Y.W.C.A. 1, 2; Poe Society 1, 2.

**ANNIE LAURIE PARKER**

Pollocksville, N. C.

*Physical Education and English*

English Club 2, 3, 4; W.A.A. 3, 4; Head of Sport 4; Soccer Varsity 3, 4; Y.W.C.A. 1; M.S.A. 2, 3, 4; Poe Society 1, 2.



**HOMER VANN PARKER, JR.**

Murfreesboro, N. C.

Chowan College 1, 2; Science Club 3, 4; Phi Sigma Pi Fraternity 3, 4; Y.M.C.A. 4; Senior Superlative.

**ISABEL PARKER**

Speed, N. C.

*Commerce and Social Science*

Lanier Society 1, 4; A.C.E. 2; Commerce Club 2, 3, 4; Zeta Delta Chapter of Alpha Iota Sorority 4.



**GERALDINE PATE**

Pollocksville, N. C.

*Primary Education*

Campbell College 1, 2; A.C.E. 4; Lanier Society 4.

# FIVE

# SENIORS



**ALTON W. PAYNE**  
Gull Rock, N. C.

*Commerce and Science*

Superlative 4; Commerce Club 1, 2, 3, 4; Science Club 1, 2, 3, 4; Glee Club 1, 2, 3, 4; Y.M.C.A. 3, 4; Poe Society 1, 2, 3, 4; Dramatics Club 3, 4; M.S.G.A. 3; Phi Sigma Pi 2, 3, 4; Treasurer 4; *Pieces O' Eight*, Assistant Business Manager and Business Manager 4; Social Committee 4; Y.M.C.A. Chairman of Social Committee 4; Executive Council Junior Class 3; Senior Play 1; Speech Choir 3; Constitution Committee 4.



**JENNIE LOWE PEEBLES**  
Advance, N. C.

*Grammar Grade Education*

Appalachian State Teachers College 1, 2, 3; F.T.A. 3, 4; A.C.E. 4.



**EVELYN PENDERGRASS**  
Tomahawk, N. C.

*Home Economics and Science*

Home Economics Club 2, 3, 4; Science Club 2, 3, 4; Poe Society 1; Proctor 3; Senior Play 4.



**ANNIE LOUIS PERRY**  
Merry Hill, N. C.

*Grammar Grade Education*

Campbell College 1, 2.



**MABEL LOIS PERRY**  
Powellsville, N. C.

*Grammar Grade Education*

Poe Society 1, 2, 3, 4; A.C.E. 4; F.T.A. 4.



**MIRIAM PERRY**  
Colerain, N. C.

*Primary Education*

Poe Society 1, 2, 3, 4; Treasurer 1; A.C.E. 3, 4; Proctor 4.

# 1940

E. C. T. C.

MARY FRANCES PERSON  
Louisburg, N. C.  
*Primary Education*  
Louisburg College 1, 2; Lanier Society 3, 4; A.C.E. 3, 4; Y.W.C.A. 3, 4; Band 3.



MAUDE EVANS PHELPS  
Ahoskie, N. C.  
*Grammar Grade Education*  
Junior "Y" Cabinet 1; Y.W.C.A. 1; F.T.A. 3, 4; A.C.E. 3; Poe Society 1, 2, 3, 4.

HAZEL IRENE PHILLIPS  
Warsaw, N. C.  
*Grammar Grade Education*  
Y.W.C.A. 1, 2; W.A.A. 3, 4; F.T.A. 3.



LAURA E. PITTMAN  
Rocky Mount, N. C.  
*Social Science and History*  
I.R.C. 4; History Club 2, 3; Y.W.C.A. 1; W.A.A. 3, 4; Poe Society 1, 2, 3, 4.

ISABEL O. POLLARD  
Virgilina, Va.  
*Primary Education*  
Y.W.C.A. 1, 2; A.C.E. 4; Publications Board of A.C.E. 4; Junior "Y" Cabinet 1; W.S.G.A. Summer 4, Secretary 4; Vice-President of Methodist Sunday School 3, 4.



JULIA MEREDITH POOLE  
New Hill, N. C.  
*Home Economics and Science*  
Home Economics Club 2, 3, 4; Science Club 2, 3, 4; Proctor.

Y. E. C. A. H.

# SENIORS



**MAGDALENE POWELL**  
Fremont, N. C.

*Social Science and History*

Poe Society 1, 2, 3, 4; Y.W.C.A. 1, 2, 3; Social Science Club 3, 4; President 4; History Club 2, 3, 4; Verse Speaking Choir 3; Junior "Y" Cabinet 1; English Club 3, 4.

**LILLIAN PRICE**  
Pineville, N. C.

*French and English*

English Club 2, 3, 4; French Club 2, 3, 4; Y.W.C.A. 2; Proctor 3; Speech Choir 3, 4.



**IOLA PRITCHARD**  
Seaboard, N. C.

*Home Economics and Science*

Louisburg College 1; Y.W.C.A. 2; Home Economics Club 2, 3, 4; M.S.A. Council 3; Lanier Society 3, 4.

**RUTH WOOD PRITCHARD**  
Elizabeth City, N. C.

*Home Economics and Science*

Lanier Society 1, 2, 3, 4; Home Economics Club 2, 3, 4; W.S.G.A. 3; Vice-President Lanier Society 3; President Lanier Society 4; Marshal.



**ANNA BELLE PRIVOTT**  
Edenton, N. C.

*French and Mathematics*

Mathematics Club 1, 2, 3, 4; Y.W.C.A. 1, 2, 3, 4.

**MARIAN REED**  
Elizabeth City, N. C.

*Grammar Grade Education*

Class Secretary 1, 3; W.S.G.A. 2, 3; Treasurer 2; House President 3; Budget Committee 3; Secretary 3; Co-Chairman Social Committee 4; Representative to N.C.S.L. 2; Representative to N.C.S.F.; Lanier Society 1, 2, 3, 4; Marshal 2; A.C.E. 4; Y.W.C.A. 1, 2, 3, 4; Chairman Constitution Committee 4.

# 1940

# E. C. C.

**GLADYS RICHARDSON**  
 Kenly, N. C.  
*Primary Education*  
 Poe Society 1; Y.W.C.A. 1.



**ELIZABETH RIVERS**  
 Raleigh, N. C.  
*Grammar Grade Education*  
 Poe Society 1, 2, 3, 4; Presbyterian Students Association 1, 2, 3, 4; Y.W.C.A. 1; A.C.E. 1.

**MARENA ROSE ROBINSON**  
 Wilmington, N. C.  
*Primary Education*  
 A.C.E. 4; M.S.A. 1, 2, 3, 4; Y.W.C.A. 1, 2, 3, 4; Emerson Society 1, 2, 3, 4.



**VIRGINIA ROGERS**  
 Mebane, N. C.  
*Primary Education*  
 Y.W.C.A. 2; W.A.A. 2; Poe Society 1, 2, 3, 4; B.S.U. Council; A.C.E. 4.

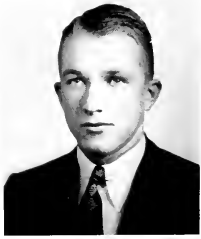
**AUDREY SALTER**  
 Sea Level, N. C.  
*Primary and Music Education*  
 M.S.A. 1, 2, 3, 4; Y.W.C.A. 1, 3, 4; A.C.E. 3, 4; Glee Club 3, 4; Junior Orchestra 3; Senior Orchestra 4; Band 3, 4.



**EMMETT FRED SAWYER**  
 Belcross, N. C.  
*History and Social Science*  
 Glee Club 1, 2; B.S.U.C. 3, 4; Y.M.C.A. 3, 4; President 3, 4; Representative to Blue Ridge 3; Cabinet 3, 4; State Y.M.-Y.W.C.A. Cabinet 4; Courtesy Card Committee 3; Phi Sigma Pi 3, 4; Associate Secretary 3, Secretary 4; M.S.G.A. 1; Constitutional Committee 4; Social Science Club 1; Christian Organization Council 4; Senior Superlative.

# TEEDAN

# SENIORS



MIRIAM SHERLOCK SAWYER  
Elizabeth City, N. C.

*Science*

Home Economics Club 1; Y.W.C.A. 1; Lanier Society 1, 2, 3; Science Club 2, 3, 4; Features 1, 4.

STANLEY SCARBOROUGH  
Grifton, N. C.

*Mathematics and Science*

Mathematics Club 1; Science Club 1; Glee Club 3, 4; Manager Baseball 2, 4; Manager Basketball 2; Varsity Club 4.



RENA SESSOMS  
Roseboro, N. C.

*Home Economics and Science*

Home Economics Club 3, 4; Science Club 3, 4.

WILLIAM SHELTON  
Danville, N. C.

*Commerce and Physical Education*

Football 1, 2, 3, 4; Basketball 1, 2, 3, 4; Baseball 1, 2, 3, 4; Varsity Club 1, 2, 3, 4; President 3, 4; M.S.G.A. 3, 4; Secretary-Treasurer 3; President 4; Phi Sigma Phi Fraternity 3, 4; Budget Committee 4; Entertainment Committee 4; Social Committee 4; Courtesy Card Committee 4; Senior Superlative.



ELIZABETH SINGLETARY  
Elizabethtown, N. C.

*Grammar Grade Education*

Y.W.C.A. 1; Emerson Society 1, 2, 3, 4; Science Club 2, 3, 4.

KATE SITTON  
Almond, N. C.

*History and Social Science*

Brevard College 1, 2; I.R.C. 4.

# 1940



# ARTS

**BARBARA LOUISE SMITH**  
Atlantic, N. C.

*English and French*

Y.W.C.A. 1, 2, 3; English Club 2, 3; Phi Sigma 2, 3; Poe Society 1, 2, 3; Ki Pi Players 2; Senior Superlative.



**MABEL DARE SMITH**  
Fuquay Springs, N. C.

*Physical Education and English*

Campbell College 1, 2; W.A.A. 3, 4; English Club 3, 4; B.S.U. Council 4.



**MARY THOMAS SMITH**  
Greenville, N. C.

*Public School Music and Grammar Grade Education*

Glee Club 3, 4; Poe Society 1, 2, 3, 4.



**MAVIL SMITH**  
Magnolia, N. C.

*French and English*

Lanier Society 1; Phi Sigma 1, 2, 3, 4; English Club 4; Senior Play 4.

**VIRGINIA DARE SMITH**  
Robersonville, N. C.

*Grammar Grade Education*

**JULIA SPENCER**  
Swan Quarter, N. C.

*Commerce and Science*

Y.W.C.A. 1, 2, 3, 4; Emerson Society 1, 2; Science Club 2; Commerce Club 2, 3, 4; M.S.A. 1, 2, 3, 4; Cabinet 4; Delegate 4; Zeta Delta Chapter of Alpha Iota Sorority 4, Secretary 4.



# TECHNICAL

# SENIORS



STELLA RAY SPENCER  
Scranton, N. C.  
*French, English and History*  
Emerson Society 1, 2, 3.



NELLIE B. STANFORD  
Tyner, N. C.  
*Grammar Grade Education*  
Lanier Society 3, 4; Y.W.C.A. 4; A.C.E. 3, 4;  
Publications Committee 4; Entertainment Com-  
mittee 4.



ETHEL STEPHENSON  
Willow Springs, N. C.  
*Grammar Grade Education*  
Poe Society 1; F.T.A. 4.



HILDA STEPHENSON  
Hobgood, N. C.  
*Grammar Grade Education*  
Y.W.C.A. 1; Varsity Basketball 1, 2, 3; Lanier  
Society 1.



KATHLEEN STRICKLAND  
Nashville, N. C.  
*Grammar Grade Education*  
Y.W.C.A. 1, 2, 3, 4; Junior "Y" Cabinet 1, Senior  
"Y" Cabinet 2; State "Y" delegate 2; W.A.A. 1;  
Lanier Society 1, 2, 3, 4; Marshal 2; Trojan  
Business Staff 2, 3; Feature 2; Social Committee  
3; Ki Pi Players 2, 3, 4; Speech Choir 2, 3; F.T.A.  
3, 4; President 3, 4; *Who's Who in American Uni-  
versities and Colleges* 4.



VIRGINIA SULLIVAN  
Ansonville, N. C.  
*Grammar Grade Education*  
Wingate College 1, 2; F.T.A. 4.

# 1940

# E. C. T. C.

ROSALIE SUTTON

La Grange, N. C.

*Home Economics and Science*

Home Economics Club 2, 3, 4, Secretary 1; W.S.G.A. 2.



ANNA LOUISE TAYLOR

Everetts, N. C.

*Primary Education*

ANNA M. TAYLOR

Southport, N. C.

*Primary Education*

Greensboro College 1, 2; A.C.E. 3, 4, Publications Representative 1; W.A.A. 3; Poe Society 3, 4.



ELIZABETH TAYLOR

Lillington, N. C.

*Home Economics and Science*

Y.W.C.A. 1; Home Economics Club 2, 3, 4; Science Club 2, 3, 4.

MAY FRANCES TAYLOR

Hookerton, N. C.

*Primary Education*

Sigma Phi Kappa 1, 2; Current Events Club 1; Peace Junior College 1, 2; Glee Club 2; A.C.E. 3, 4; Y.W.C.A. 3, 4.



MILDRED JANE TAYLOR

South Mills, N. C.

*Grammar Grade Education*

Lanier Society 1, 2, 3, 4; Marshal 2; F.T.A. 3, 4, Secretary-Treasurer 3, Secretary 1; W.S.G.A. Summer 3; Proctor 1.

# TECOAN

# SENIORS



MILDRED JEWELLE TAYLOR  
Sea Level, N. C.

*Grammar Grade Education*

M.S.A. 1, 2, 3, 4; Y.W.C.A. 1, 2, 3, 4; A.C.E. 3, 4;  
Co-Chairman Music Group 4; Music Club 2; Glee  
Club 3, 4; Junior Orchestra 3; Senior Orchestra  
4; Band 3, 4.

ELIZABETH THOMAS  
Cameron, N. C.

*Home Economics and Science*

Campbell College 1, 2; Home Economics Club 3,  
4; Science Club 4; Alumni Daughters and Sons  
Club 3, 4; Outdoor Cookery Club 4.



LOIS THOMPSON  
Leasburg, N. C.

*Grammar Grade Education*

Poe Society 1, 2, 3, 4; W.A.A. 3; Y.W.C.A. 1, 2,  
4; F.T.A. 4.

MARIE TRIPP  
Blounts Creek, N. C.

*Commerce and Science*

Commerce Club 1, 2, 3, 4; Poe Society 1, 2, 3;  
Y.W.C.A. 1, 2; Science Club 1, 2; Proctor 2, 4;  
Ki Pi Players 3, 4; Executive Council Junior  
Class 3; Class Secretary 4; Zeta Delta Chapter  
Alpha Iota Sorority 4; Vice-President 4; Business  
Staff Pieces O'Eight 4.



ROSA LEE TRIPP  
Bethel, N. C.

*Grammar Grade Education*

Y.W.C.A. 4; A.C.E. 4; F.T.A. 3, 4; M.S.A. 1, 2,  
3, 4.

CATHERINE TYSON  
Greenville, N. C.

*Primary Education*

# 1940

# FALL

**DORIS VAUGHAN**  
Ahoskie, N. C.

*Grammar Grade Education*  
Poe 1, 2, 3, 4; W.A.A. 4; A.C.E. 4.



**MARGARET WATSON**  
Severn, N. C.

*Primary Education*

**LARUE WEATHERS**  
Wendell, N. C.

*English and History*  
English Club 1, 2, 3, 4; History Club 1, 2, 3, 4;  
Ki Pi Players 3, 4; Glee Club 2, 3, 4; Y.W.C.A.  
2; Senior Play 4.



**MARJORIE WEATHERS**  
Wendell, N. C.

*History and Physical Education*  
Lanier Society 1, 2, 3, 4; W.A.A. 1, 2, 3, 4; Y.W.  
C.A. 1, 2; W.S.G.A. Summer 3; Senior Superlat-  
ive.

**FRANCES WEEKS**  
Tarboro, N. C.

*Home Economics and Science*  
Junior "Y" Cabinet 1; Y.W.C.A. 1; Home Eco-  
nomics Club 1, 2, 3, 4; Science Club 1, 2, 3, 4;  
Poe Society 1, 2, 3, 4.



**MARIE WELLS**  
Cedar Grove, N. C.

*Grammar Grade Education*  
Poe Society 1, 2; A.C.E. 4; Y.W.C.A. 4; Presby-  
terian Student Association 1, 2, 3, 4.

# YEAR



**BARBARA ANNE WEST**

Moyock, N. C.

*Home Economics and Science*

Y.W.C.A. 1, 2, 3, 4; Emerson Society 1, 2, 3, 4;  
Home Economics Club 2, 3, 4.

**RICHARD ROBERT WEST**

Moyock, N. C.

*History and Science*

N. C. State College 1; Appalachian State Teachers  
College Summer 3; History Club 3; Science Club  
3, 4; Y.M.C.A. 3, 4.

**LINDSAY WHICHARD**

Stokes, N. C.

*History and English*

Mars Hill College 1; Poe Society 3, 4; English 2,  
3, 4; History Club 2, 3, 4; Ki Pi Players 2, 3, 4;  
*Teco Echo* 2, 3, 4; Associate Editor 3; *TECUM*  
Associate Editor 3; N.C.C.P.A. 3; Phi Sigma Pi  
3, 4; Junior Play 3; Ki Pi Play; Assistant Tech-  
nical Director Senior Play 3; Varsity Club Play  
1; Class Treasurer 3; Director Poe Society Play  
1; Chapel Committee 4; Entertainment Commit-  
tee 1; Glee Club 3; Speech Choir 2, 3; Senior  
Superlative; Senior Play 1; Technical Staff Senior  
Play 4.



**MARJORIE WHITEHURST**

Bethel, N. C.

*French and English*

Y.W.C.A. 1; Poe Society 1; Phi Sigma 1, 2, 3.

**HERBERT M. WILKERSON**

Greenville, N. C.

*Mathematics and Science*

Mars Hill College 1; Boxing 2, 3, 4; Tennis Team  
2, 4; Baseball 2; Varsity Club 3, 4; Mathematics  
Club 2; Science Club 2; Pre-Med Society 4.



**DORRIS WILLEY**

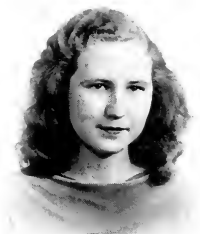
Tarboro, N. C.

*Primary Education*

Meredith College 1, 2.

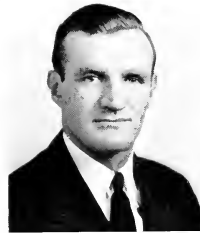
# E. C. C.

**HAZEL C. WILLIAMSON**  
 Kenansville, N. C.  
*Primary Education*  
 A.C.E. 2, 4; Y.W.C.A. 1.



**MARY LOU WILLETS**  
 Whiteville, N. C.  
*French and English*  
 Meredith College 1; Phi Sigma 2, 3, 4; Glee Club 4.

**CECIL WILLIS**  
 Hickory, N. C.  
*Science and History*  
 Rutlerford College 1; W.C.T.C. 2; Football 1, 2.



**FRANCES WILSON**  
 Henderson, N. C.  
*Home Economics and Science*  
 Y.W.C.A. 1, 2, 3, 4; Home Economics Club 2, 3, 4; Science Club 2, 3; Lamier Society 1, 2, 3, 4.

**AGNES WOOD**  
 Essex, N. C.  
*Home Economics and Science*  
 Poe Society 1, 2; Y.W.C.A. 1, 2, 3, 4; Science Club 1, 2, 3; President 4; Proctor 2; W.A.A. 4; Marshal Summer 3.

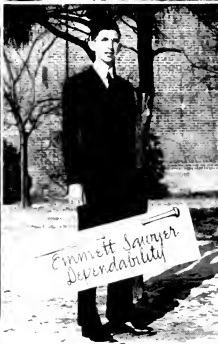


**VIRGINIA WOODS**  
 Hurdle Mills, N. C.  
*Primary Education*  
 Poe Society 1, 2, 3, 4; Marshal 3; W.A.A. 2; Y.W.C.A. 2; A.C.E. 3.

**WILLIAM VICTOR WORKMAN**  
 Asheville, N. C.  
*Commerce*  
 Mars Hill College 1, 2; W.C.T.C. 3; Commerce Club 3, 4; Ki Pi Players 3.

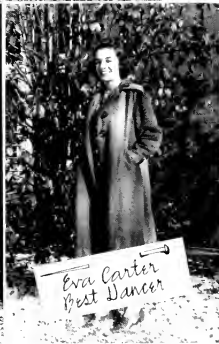
# TECOAN

# SENIOR

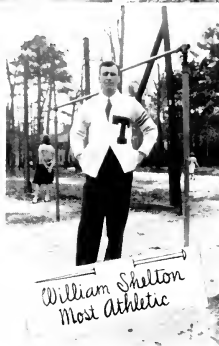




# SUPERLATIVES



# SENIOR SUPERLATIVES



# JUNIORS



MERNER



CASTLEBURY



POWELL



ROSS

BILL MERNER ..... *President*  
MAISIE CASTLEBURY ..... *Vice-President*  
ALICE POWELL ..... *Secretary*  
REBECCA ROSS ..... *Treasurer*



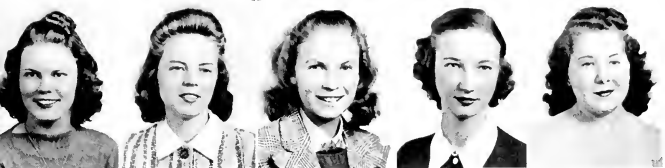
## JUNIORS

*First Row:* LILLIAN ABBE, Greenville, N. C.; PAULINE E. ABEYOUNIS, Greenville, N. C.; MADELINE ADAMS, Grimesland, N. C.; YVONNE S. ALDERMAN, Rose Hill, N. C.; EUGENIA ALLEN, Elizabethtown, N. C.

*Second Row:* GLADYS ALLEN, Albemarle, N. C.; MARY AGNES ALSTON, Inez, N. C.; O. D. ANDREWS, Rocky Mount, N. C.; TULA NELL ATKINSON, Orrum, N. C.; MARY KATE AUSTIN, Peachland, N. C.

*Third Row:* ELOISE AVERETTE, Wake Forest, N. C.; MARY GRANT BAILEY, Selma, N. C.; SARAH ANN BAKER, Youngsville, N. C.; MARGARET BARCLIFT, Wilmington, N. C.; LAUMETA BARDEN, Orrum, N. C.

*Fourth Row:* BESS BARNHARDT, Acme, N. C.; PEARLIE WARD BARNHILL, Greenville, N. C.; REO BASS, Nashville, N. C.; LESSIE BATEMAN, Columbia, N. C.; EVELYN BAZEMORE, Lewiston, N. C.



## JUNIORS

*First Row:* MARY ELIZABETH BEASLEY, Lumberton, N. C.; ELIZABETH BELCH, Colerain, N. C.; JOSEPHINE BETTS, Beaufort, N. C.; CAMILLA BISSETTE, Wilson, N. C.; DORIS BLALOCK, Black Creek, N. C.

*Second Row:* ANNA BELLE BOYD, Greenville, N. C.; RAYCHEL BOYD, Pinetown, N. C.; MARY HELEN BOYKIN, Williamston, N. C.; RUBY BRAXTON, Greenville, N. C.; DAVID S. BREECE, Raleigh, N. C.

*Third Row:* ELSIE BRENDLE, Bryson City, N. C.; MILDRED BRILEY, Robersonville, N. C.; AGNES BRITT, Clinton, N. C.; PATRICIA BROOKS, Greenville, N. C.; ADRIAN BROWN, Manteo, N. C.

*Fourth Row:* ALVA BROWN, Belcross, N. C.; EVELYN BRUMMITT, Kitterell, N. C.; ELIZABETH BRYAN, La Grange, N. C.; GERALDINE BULLUCK, Rocky Mount, N. C.; FRANCES BUNTING, Palmyra, N. C.



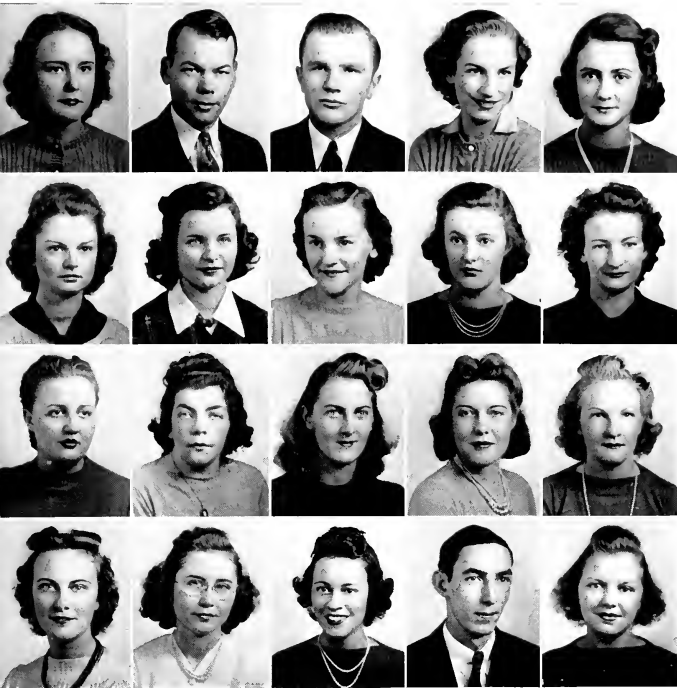
## JUNIORS

*First Row:* ROBERT BURTON, Bethel, N. C.; ANNIE GRAY BYRD, Bailey, N. C.; LULA CAMERON, Cameron, N. C.; JOYCE CAMPBELL, Lucama, N. C.; L. C. CAPPS, JR., Jacksonville, N. C.

*Second Row:* FRANCES CASH, Wendell, N. C.; MAISE CASTLEBURY, Apex, N. C.; ELIZABETH COPPEDGE, Greenville, N. C.; WISTA COVINGTON, Dillon, S. C.; ELEANORA CROMARTIE, Garland, N. C.

*Third Row:* MARY FRANCES CUTTS, Stovall, N. C.; HELEN DAVENPORT, Kinston, N. C.; KATHERINE DAVENPORT, Greenville, N. C.; LELA B. DAVENPORT, Roper, N. C.; WILLIAM A. DAVIDSON, Plymouth, N. C.

*Fourth Row:* DOROTHY DAVIS, Burgaw, N. C.; EVELYN DAVIS, Beaufort, N. C.; LOUISE EVELYN DAVIS, Fremont, N. C.; MATTIE DAVIS, Pikeville, N. C.; MABEL DEANS, Goldsboro, N. C.



## JUNIORS

*First Row:* MARY KATHRYN DOBSON, Beulaville, N. C.; JEROME DONALDSON, Metter, Ga.; BILL DUDASH, Massena, N. Y.; FLORENCE DUDLEY, Greenville, N. C.; NANCY DUNN, Scotland Neck, N. C.

*Second Row:* MARY ELIZABETH EAGLES, Pinetops, N. C.; JEANETTE EARLEY, Ahoskie, N. C.; EVELYN EARNHARDT, Durham, N. C.; NYMPIE EDGERTON, Kenly, N. C.; ESTELLE M. EDWARDS, Newport, N. C.

*Third Row:* JULIA WORTH EDWARDS, Tabor City, N. C.; MARY D. ELLIOTT, Edenton, N. C.; SARAH EVANS, St. Pauls, N. C.; BERLINE FAIRCLOTH, Roseboro, N. C.; SAMMIE FARLOW, Carthage, N. C.

*Fourth Row:* CHRISTINE FENTRESS, Knotts' Island, N. C.; HELEN FLOWERS, Goldsboro, N. C.; SUE FOY, Pollocksville, N. C.; CHARLEY J. FRAZZELLE, Richlands, N. C.; FLORENCE GADDY, Jacksonville, N. C.



## JUNIORS

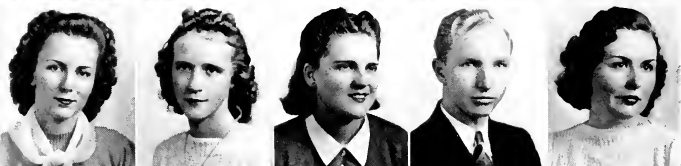
*First Row:* ANNIE ELIZA GARRIS, Ayden, N. C.; EDWENA GARRIS, Ayden, N. C.; PHILIP GARRIS, Greenville, N. C.; MARTHA GASKINS, New Bern, N. C.; NINA GATLING, Gates, N. C.

*Second Row:* IDA MARIA GEORGE, Comfort, N. C.; MYRA GODFREY, Jonesboro, N. C.; THERA GODWIN, Falcon, N. C.; ANNE SEVILLE GOOLSBY, Greenville, N. C.; FRANCES GULLEDGE, Raleigh, N. C.

*Third Row:* LORENE HAMRICK, Shelby, N. C.; ARTIS HARDEE, Greenville, N. C.; ERNESTINE HARDEE, Grimesland, N. C.; MARY FRANCES HARDY, Maury, N. C.; RUTH GLENN HARDY, La Grange, N. C.

*Fourth Row:* ELIZABETH H. HARRELL, Gates, N. C.; BELVA DARE HARRIS, Greenville, N. C.; MARCELIA E. HESS, Lancaster, Pa.; FLOYD HINTON, Rocky Mount, N. C.; MARTHA HOELL, Grimesland, N. C.





## JUNIORS

*First Row:* ELIZABETH HOLLIDAY, Greenville, N. C.; MYRTLE HOPKINS, Plymouth, N. C.; ETHEL HOWIE, Monroe, N. C.; ALICE HUMPHRIES, Woodsdale, N. C.; CLARISSA HUMPHREY, Wilmington, N. C.

*Second Row:* KATHRYN HURST, Jacksonville, N. C.; BETSEY HUTCHINSON, Bladenboro, N. C.; JIM H. IPOCK, New Bern, N. C.; MARY FRANCES IRVIN, Shelby, N. C.; WILLIAM WARD JAMES, Winterville, N. C.

*Third Row:* HELEN BROWN JEFFERSON, Fountain, N. C.; INEZ JENNINGS, Halifax, Va.; LOUISE JONES, Pink Hill, N. C.; LEON JUSTICE, Jacksonville, N. C.; ANNIE LAURIE KEENE, Smithfield, N. C.

*Fourth Row:* HELEN KEMP, Louisburg, N. C.; JESSIE KENDRICK, Ellenboro, N. C.; ELOISE KENNEDY, Kerr, N. C.; BARBARA KEUZENKAMP, Greenville, N. C.; BETTY KEUZENKAMP, Greenville, N. C.



## JUNIORS

*First Row:* HELEN KING, Gates, N. C.; EDNA KIRBY, Lucama, N. C.; MARY ESTHER KOONCE, Richlands, N. C.; MARGARET LAMB, Fort Barnwell, N. C.; JOANNA LANE, Tabor City, N. C.

*Second Row:* HELEN LANE, Dover, N. C.; MILDRED LANGLEY, Greenville, N. C.; THELMA LANGSTON, Rocky Point, N. C.; GEORGE LAUTARES, Greenville, N. C.; WILMA GRAY LEE, Dunn, N. C.

*Third Row:* MARY HINES LEONARD, Nashville, N. C.; EFFIE SENORA LEWIS, Farmville, N. C.; DOROTHY CLARK LEWIS, Fountain, N. C.; KATHLEEN K. LEWIS, Wilmington, N. C.; SARAH EDITH LINDLEY, Snow Camp, N. C.

*Fourth Row:* MARY LENORA LITTLE, Freeland, N. C.; WOODROW LONG, Leggetts, N. C.; INEZ LYDAY, Brevard, N. C.; ALBERT MANESS, Chadbourne, N. C.; REON MANESS, Hcmp, N. C.



## JUNIORS

*First Row:* CARPIE MAE MANN, Lake Landing, N. C.; EDNA MARSHBURN, Clinton, N. C.; KELLY MARTIN, Conway, N. C.; ELIZABETH MASHBURN, Benson, N. C.; SALLY MARY MATHIAS, Gates, N. C.

*Second Row:* EVELYN MATTHEWS, Kipling, N. C.; ADDIE LEE MEADOR, Williamston, N. C.; ELIZABETH MEADOWS, Greenville, N. C.; ELIZABETH MEIGGS, Camden, N. C.; BILL MERNER, Durham, N. C.

*Third Row:* ELIZABETH MERRITT, Rosehill, N. C.; NELL MICHAEL, Mebane, N. C.; IRENE MITCHAM, Goldsboro, N. C.; BRUCE MODLIN, Jamesville, N. C.; EMILY MONTAGUE, Oxford, N. C.

*Fourth Row:* EDNA MONTGOMERY, Warronton, N. C.; GENEVA MOORE, Stokes, N. C.; MARGARET D. MOORE, Greenville, N. C.; NOVINE MOORE, Micro, N. C.; NANCY LEE MOORE, Greenville, N. C.



## JUNIORS

*First Row:* RUTH MOORING, Snow Hill, N. C.; PEGGY MOSS, Stokes, N. C.; EVELYN MYRICK, Littleton, N. C.; MATT McBRAVER, Rutherfordton, N. C.; MARGARET MCDANIFI, Woodland, N. C.

*Second Row:* ELLEN MCINTYRE, Red Oak, N. C.; PATSY MCINTYRE, Red Oak, N. C.; ELIZABETH McLEMORE, Roseboro, N. C.; RACHEL McPHERSON, Graham, N. C.; NORWOOD NORTH CUTT, Cary, N. C.

*Third Row:* JUANITA O'BRIEN, Stovall, N. C.; HAZEL VIRGINIA OWENS, Fountain, N. C.; MYRTIE PARNELL, Pikeville, N. C.; GEORGE PATTERSON, Farmville, N. C.; ELIZABETH PEARSALL, Wallace, N. C.

*Fourth Row:* ETHEL PHIFFER, Peachland, N. C.; MARY ELIZABETH PHILLIPS, Fountain, N. C.; MATT PHILLIPS, Greenville, N. C.; ELIZABETH PILAND, Norfolk, Va.; LYDIA PINER, New Bern, N. C.



## JUNIORS

*First Row:* LEEAH BLANCHE PITTMAN, Whitakers, N. C.; RUTH YOUNG POLLARD, Garner, N. C.; MAYBELLE POLLOCK, Pollocksville, N. C.; DOROTHY POTEAT, Marion, N. C.; ALICE POWELL, Clinton, N. C.

*Second Row:* ALICE M. PROCTOR, Rocky Mount, N. C.; MRS. SARA M. PROCTOR, Greenville, N. C.; THIELMA RAYFORD, Newton Grove, N. C.; ALICE RICH, Wake Forest, N. C.; MADELINE RIDDICK, Hobbsville, N. C.

*Third Row:* DORIS ROBERTS, Shawboro, N. C.; LAURA ANN ROBINSON, Atlantic, N. C.; FRANCES ROEBUCK, Washington, N. C.; MELBA GRACE ROGERS, Williamston, N. C.; WALTER ROGERS, Woodsdale, N. C.

*Fourth Row:* VINCENT ROMANO, Huntington, N. Y.; REBECCA ROSS, Aurora, N. C.; RAY SAINT-AMAND, Wilmington, N. C.; ERLENE H. SAWYER, Powells Point, N. C.; MAUDE SAWYER, Belcross, N. C.



## JUNIORS

*First Row:* REBECCA SHANKS, Oxford, N. C.; RACHEL SLOAN, Calypso, N. C.; ETHEL MAE SMITH, Hubert, N. C.; GRACE SMITH, Fuquay Springs, N. C.; LERA SMITH, Vanceboro, N. C.

*Second Row:* MAVIS MARIE SMITH, Mebane, N. C.; RUBELLE SMITH, Winterville, N. C.; SARA LOU SMITH, Fairmont, N. C.; THEMISE SMITH, Deep Run, N. C.; EVELYN SNIPPS, Ahsokie, N. C.

*Third Row:* HELEN SORRELL, Hubert, N. C.; MARGIE SPIVEY, Greenville, N. C.; HAZEL STARNES, Hickory, N. C.; MARGARET STATON, New London, N. C.; GRACY STEPHENSON, Halifax, N. C.

*Fourth Row:* RACHEL TEMPLETON, Union Grove, N. C.; HILDA TEW, Clinton, N. C.; SUSIE THARRINGTON, Warrenton, N. C.; JAMES J. THOMPSON, Goldsboro, N. C.; EILEEN TOMLINSON, Black Creek, N. C.



## JUNIORS

*First Row:* ELIZABETH K. TOMLINSON, Black Creek, N. C.; ROSALIND TUCKER, Greenville, N. C.; EDNA M. TURNAGE, Greenville, N. C.; DOROTHY TURNER, Pink Hill, N. C.; NORMA LEE TYNDALL, Kinston, N. C.; VERNON TYSON, Greenville, N. C.

*Second Row:* HILDA ROSE UPCHURCH, Lillington, N. C.; ZOPA WALIER, Kinston, N. C.; AGNES WATSON, Kenly, N. C.; VIRGINIA WELDON, Norlina, N. C.; HELEN WETHERINGTON, Clarks, N. C.; MABEL WILDER, Garner, N. C.

*Third Row:* ANNIE ALLEN WILKERSON, Roxboro, N. C.; ELLEN WILLIAMS, Pollocksville, N. C.; VIRGINIA WILLIAMS, Kinston, N. C.; LOIS WILLIAMSON, Kenansville, N. C.; HELEN WILLOUGHBY, Kelford, N. C.; ELIZABETH M. WILSON, Crossnore, N. C.

*Fourth Row:* NANCY FLEMING WINSTON, Youngsville, N. C.; DORIS WOODARD, Keily, N. C.; MADELINE WOOLARD, Greenville, N. C.; MARY WOOLARD, Greenville, N. C.; JANE YONG'UE, Brevard, N. C.; ADA ROSE YOW, Henderson, N. C.





# SOPHOMORES



KUETEMEYER



WHITE



DeLOATCHE



KEITH

VERN KUETEMEYER .....*President*  
 MARGENETTE WHITE .....*Vice-President*  
 BRANTLEY DeLOATCHE .....*Secretary*  
 JESSIE KEITH .....*Treasurer*



## SOPHOMORES

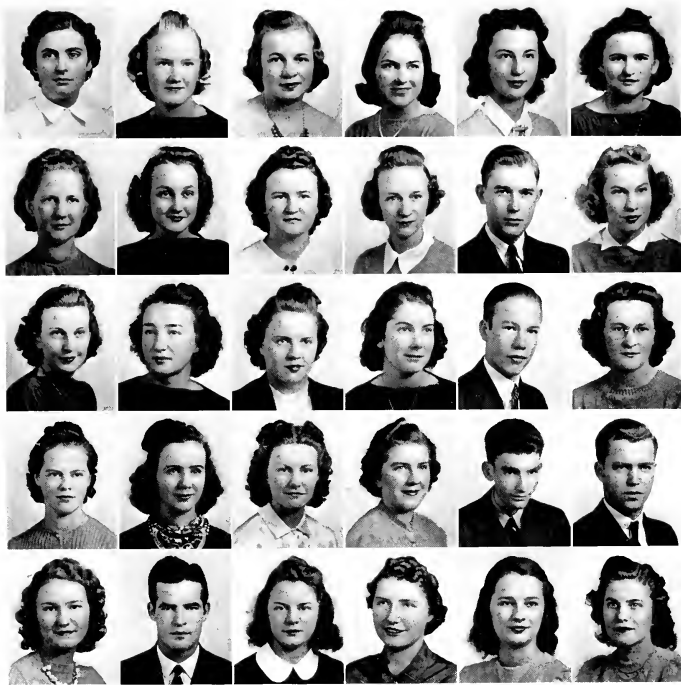
*First Row:* EUGENIA ABEYOUNIS, HOWARD ADAMS, THELMA ADAMS, FRANCES ALLEN, VIRGINIA ALLEN, BESSIE ANDERSON.

*Second Row:* MARY ARRINGTON, KATHLEEN ASBELL, MARGENETTE ASBELL, RUTH ASKEW, VIRGINIA ATKINSON, HOLTON AVERY.

*Third Row:* MILDRED AYCOCK, MARY T. BAILEY, MARTHA REID BAKER, ESTELLE BAKER, MARGIE BAKER, DELLA BARKLEY.

*Fourth Row:* KATHLEEN BARKLEY, ELSIE BARKER, ALDINE BARNHILL, JUANITA BASS, VOLENA BASS, KATRINA BAUM.

*Fifth Row:* BETTY BEAM, EUGENIA BECTON, NELL BEDDARD, RUSSELL BEDDARD, LUCILLE BEDFORD, AELINE BELCH.



## SOPHOMORES

*First Row:* MYRTLE LEIGH BELCHE, LEOLA MAE BELL, MARJORIE BELL, MYRA BLOUNT, ALICE LEIGH BLOW, MELZA BOSTIC.

*Second Row:* HAZEL BOWEN, FRANCES BOYD, HAZEL BOYKIN, VERNA BRADLEY, FRANK E. BRILFY, DOROTHY BRINKLEY.

*Third Row:* RUTH BRITT, KATHARINE BROWN, MARY ELIZABETH BROWN, MARY QUINN BROWN, WILBUR H. BROWN, MARGUERITE BROWNING.

*Fourth Row:* CATHERINE BRYANT, CLEO BURNEY, ELIZABETH BURNS, HELEN BUTNER, JOHN F. CARSON, NORMAN CARSON.

*Fifth Row:* MCCREE CARTER, RICHARD CHADWICK, RUTH CHANDLER, BLANCHE CHAPPELL, MARY THAD CHAPPELL, VERNON CHASON.



*1935-1936 Yearbook*  
*Class of 1936*  
**SOPHOMORES**

*First Row:* DOROTHY CLEMENT, CECELIA COBB, ROSE COLLIE, ELMER M. COX, MILTON COX, SARAH ELIZABETH COX.

*Second Row:* THOMAS E. COX, CELIA BLANCHE DAIL, DOROTHY DALRYMPLE, MARY ELIZABETH DARDEN, NORMA DAVIS, RUTH DAVIS.

*Third Row:* MARY AGNES DEAL, DORIS DAWSON, JULIA DEAN, BRANTLEY DELOATCH, ELIZABETH DICKENS, VIRGINIA O. DIXON.

*Fourth Row:* THERA YVONNE DOWNING, ROSE CARLTON DUNN, DORIS DUVAL, LILLIE OWENS EASOM, CLARISSA BROOKS EDWARDS, IRENE ELLINGTON.

*Fifth Row:* FREDERICK ERVIN, WILLIE EVANS, RACHEL JOHNSON FARRIOR, PECOLIA FISHER, VISTA FLOYD, KATE FOLEY.



## SOPHOMORES

*First Row:* ELIZABETH FORREST, MARY ELIZABETH FOUTZ, MERWIN FRAZELLE, LILLIAN WHITE GARDNER, MARJORIE GARDNER, CAMILLE GASKINS.

*Second Row:* ELIZABETH GATES, CAROLYN GATLING, MARGARET GATLING, ROSEBUD GAYLORD, HILDA GILLIKIN, FRANCES GILLIKIN.

*Third Row:* SARA GORHAM, JESSE GRAY, CARLOTTA GRUSSNER, MARIE GUPTON, JUSTINE GURLEY, DOROTHY GUPTON.

*Fourth Row:* EDITH GUTHRIE, RETA GUY, ROBERTA HALL, DOROTHY MAE HARDEE, KATHERINE HARDISON, BRUCE HARDY.

*Fifth Row:* LILLIAN HARRIS, EDITH VARINA HARRIS, MARY LOU HARRIS, LILL HART, SPENCER HATLEY, GEORGE HEAFNER.



## SOPHOMORES

*First Row:* HICKS HENDERSON, DORIS HERRING, EDNA HERRING, ROBERT HOLLAR, MATTIE LAWRENCE HOLLIDAY, KATIE BELLE HONEYCUTT.

*Second Row:* MARY D. HORNE, LOIS HUGHES, MARTHA REED HUTCHINSON, LUDA MAE JENKINS, HELEN MARGARET JENKINS, ALICE JOHNSON.

*Third Row:* EMILY JOHNSON, ETHEL JOHNSON, NORENE JOHNSON, SHIRLEY JOHNSON, DAISY RAYE JONES, JESSIE KEITH.

*Fourth Row:* MABEL KENNEDY, FERDINAND B. KERR, EVELYN KILPATRICK, IDA RUTH KNOWLES, VERN KUETEMEYER, OPHELIA LANCASTER.

*Fifth Row:* CLARA E. LAUGHINGHOUSE, HARRIETTE LAWRENCE, AUDREY LEE, JULIA FULLER LEE, BETTY LEEPER, REBECCA LEWIS.



## SOPHOMORES

*First Row:* CHARLIE H. LITTLE, MILDRED LIVERMAN, CHARLES L. MARKS, HARRIET MARSHBURN, LURA ALICE MASON, BETH MATTHEWS.

*Second Row:* EDITH MATTHEWS, LOREEN MAYO, NORMAN MAYO, WILEY S. MAYO, EDNA MITCHELL, ERLENE MITCHELL.

*Third Row:* PAULINE MITCHELL, LOUISE MIZELLE, WALTER MORITZ, ORVAL MORTON, RUTH MOYE, MARY MULLEN.

*Fourth Row:* MARGARET WHITE MUNDEN, EMILY MURPHY, ROBERT MUSSELWHITE, LORRAINE MYERS, GRACE McCLEES, LOIS McCORMICK.

*Fifth Row:* DOROTHY McDANIEL, LOONIS MCGLOHON, MALISHA McLAMB, VIVIAN ELIZABETH McLAWHON, ELIZABETH NOE, RUTH M. NOWARAH



## SOPHOMORES

*First Row:* GERALDINE OLIVER, ZELDA O'NEAL, GERTRUDE PARKER, KATE BRYAN PARKER, MARTHA PARROTT, ELIZABETH SPRUILL PARTIN.

*Second Row:* JANIE REID PHILLIPS, EDNA PIERCE, ELIZABETH PIERCE, DOROTHY POWELL, EDITH POWELL, ADNA LEE PRIDGEN.

*Third Row:* LUCILLE PRIVETTE, FRANCES PRIVOTT, MARY PRIVOTT, WILDA ROYALL, HARRY S. RIDDICK, GERALDINE SANDERS.

*Fourth Row:* DORIS SATTERWHITE, EMMY LOU SCALES, GLADYS SCULL, VIRGINIA DARE SEEGARS, MARY GRACE SIVERTSEN, ALBERTA SMITH.

*Fifth Row:* LENA MAE SMITH, MARION L. SMITH, MAUD E. EMILY SMITH, NINA E. SMITH, FRANCES SUTHERLAND, MILDRED SPANGLER.





## SOPHOMORES

*First Row:* ROXIE SPEAR, LEON RAY SPARROW, DOROTHY HILL SPENCE, VIRGINIA SPENCER, C. KENNETH SPRUILL, ELIZABETH STACEY.

*Second Row:* AMBROSE RICHARD STANKUS, AUDREY STANLEY, JOE STATON, LAURA STRICKLAND, HULDA STRICKLAND, MARGARET TART.

*Third Row:* HAROLD K. TAYLOR, HELEN TAYLOR, HELEN LOUISE TAYLOR, ESTALINE TEW, ELIZABETH THOMASSON, JESSIE THOMPSON.

*Fourth Row:* CHRISTINE TRIPPE, ANNIE RUTH TUCKER, WALTER TUCKER, LOYS TURNAGE, ELIZABETH WADF, KENNETH D. WALKER.

*Fifth Row:* DORIS MARIE WALLACE, HELEN C. WARD, MYRTLE WARD, MADELINE WARREN, LALLAH B. WATTS, NORMA WELLONS.



## SOPHOMORES

*First Row:* JEAN WENDT, GEORGE L. WEST, MARTHA ELEANOR WHELESS, AMY WHITE, CAMILLA WHITE.

*Second Row:* ELVA WHITE, MARY WHITE, MARGIE WHITE, LULA MAE WHITEHURST, JAMES WHITFIELD.

*Third Row:* FRANCES WHITLEY, VIRGINIA WHITLEY, DOROTHY WIGGINS, JANE WILLIAMS, MARGARET WISE.

*Fourth Row:* HELEN WOLFE, MARGARET WOOD, ATLAS W. WOOTEN, LUNA WORTHINGTON, RUTH WRIGHT, DOROTHY WYCKOFF.

# FRESHMEN



COX



DAVIS

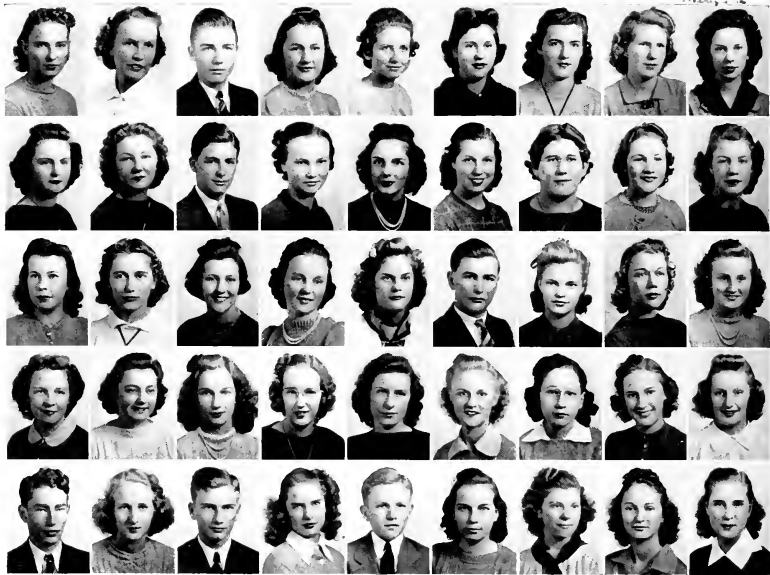


JOHNSON



CASTEEN

DAVID COX .....*President*  
ESTELLE DAVIS .....*Vice-President*  
MARY TYSON JOHNSON .....*Secretary*  
JOHN L. CASTEEN .....*Treasurer*



## FRESHMEN

*First Row:* EDITH ALLEN, MARY L. ARNOLD, MITCHELL AVERY, MILDRED LEE AYCOCK, ALENE BAILEY, ERNESTINE BAKER, DOROTHY JANE BALLENTINE, MARY ELIZABETH BANKS, JONNIE FAYE BARNES.

*Second Row:* BEATRICE BARNETTE, CATHERINE BARNHILL, BILL BASDEN, RUBY ELIZABETH BATCHELOR, FAY BATEMAN, ESTELLE BATTEN, GLADYS D. BEARD, ALICE BELL, ANNETTE BELL.

*Third Row:* ALMA LOUISE BENNETT, MILDRED BEVERLY, ELIZABETH LEE BISHOP, ELLA RUTH BIZZELL, MARY ALICE BLACKHAM, MARLOW F. BOSTIC, DOROTHY BOSWELL, MARIE BRANCH, PEARL BRAVALDO.

*Fourth Row:* DORIS BRITT, EVELYN LOUISE BRETT, MARTHA BROOKS, RACHEL BROOKS, DOROTHY BROOME, MARGARET BROUGH-TON, ANNA LEA BROWN, DORIS BROWN, HELEN JOSEPHINE BROWN.

*Fifth Row:* PAUL E. BROWN, CAROL HARRY BRYAN, JAMES BULLOCK, NANCY GRAY BURDEN, WILLIAM MILLER BURKS, LOIS M. CAIN, DOROTHY CAINE, ELLA BLAND CALHOUN, ZALIA CAROWAN.



## FRESHMEN

*First Row:* MARGARET CASH, J. L. CASTEEN, EVELYN CAVANAUGH, SARA CAVANAUGH, CATHFRINE CHAPPELL, HAZEL AILENE CLARKE, VIRGINIA CLARKE, ETTA CLOWE, EMILY ANN COLLINS.

*Second Row:* EVELYN CONYERS, FLORENCE COOKE, TOMMIE LOU CORBITT, CHARLOTTE RUTH COREY, V. T. COREY, MINNIE LEORA COUNCIL, FRANCES COWARD, DAVID MARSHALL COX, LAVERNE COX.

*Third Row:* MARGARET COX, SAMUEL HOWARD CRANDELL, SUE CRENSHAW, MIRIAM CREW, MARGARET CROCKER FRISH, CLELLIE MAE CROOM, JANE CURRIN, NANCY COCKE DARDEN, ELIZABETH JANE DAVIS.

*Fourth Row:* ESTELLE DAVIS, ELIZABETH DAWSON, ANNIE LAURIE DENNING, FLORENCE DENNING, MILDRED DEWAR, NANCY DICKSON, LOUISE DOZIER, JACK DULONG, JOYCE DUNHAM.

*Fifth Row:* MARY ELIZABETH EAKES, ZULA ANN EATMAN, GRACE EDWARDS, MARTHA JOY EDWARDS, PEARL EDWARDS, VIRGINIA ELAM, FRANCES ELLIOTT, VIRGINIA ENGLISH, ADMINTA EURE.



## FRESHMEN

*First Row:* ESTHER EVANS, FAYE EVERETTE, R. O. EVERETT, CLIO FARLESS, MARY FIELD, MARGARET FEULEY, ELLA NELL FLETCHER, FLORENCE FLOYD, ELSIE FORD.

*Second Row:* MARY LONG FORD, OLA H. FORREST, SOPHIA GUY FUZZELLE, CHRISTINE GARDNER, DOROTHY GARNER, MARY BECTON GASKINS, PRISCILLA GHOLSON, FRANCES GILBERT, MAE GILLIAM.

*Third Row:* JOSEPHINE GODDARD, AGATHA GOLDEN, GWEN GOODSON, ELNORA GRAHAM, RUBY GRANT, MARGARET GRAY, LOIS GREENE, AGNES GRIFFIN, CAROLYN GRIFFIN.

*Fourth Row:* EVAN GRIFFIN, ELEANOR GREY GURKINS, FLORINE GUY, NAN GUY, RUTH HALL, ANNETTE HANDLEY, CAROLINE HARPER, ELIZABETH HARRIS, JEAN HARRIS.

*Fifth Row:* WILLIAM HARRIS, ELSIE HATSELL, JOE HATEM, MARY HAWKS, CROFFARD HEDSPETH, BEATRICE HELMS, EUNICE HERRING, CAROLINE HINES, MARGARET HERRANT.



## FRESHMEN

*First Row:* EDITH HODGES, NORMA HODGES, MARIAN HOGGARD, CHARLES HORNE, LORAINÉ HORNE, PEARL HOUSE, LUCILLE HOWELL, BESSIE FAY HUNT, VIOLET HOPSON.

*Second Row:* SARAH LOUISE INGRAM, GERALDINE JACKSON, ANNIE MAE JARWAN, CLAIRE JENKINS, EDNA EARLE JENKINS, LOUISE JENNINGS, LOIS JERNIGAN, LOUISE JERNIGAN, ELIZABETH JILEOTT.

*Third Row:* ISABELLE JOHNSON, JIMMIE JOHNSON, LINA PEARL JOHNSON, LOVIC JOHNSON, MARGARET JOHNSON, MARY TYSON JOHNSON, TRUMAN JOHNSON, JOHN JOHNSTON, CATHERINE JONES.

*Fourth Row:* GRACE JONES, MARJORIE JONES, JEAN FORBES KELLY, JOHNNYE BROWN KENNEDY, KATIE GEORGE KENNEDY, FRANKLIN D. KIZES, KATHERINE KYZER, DORIS LAMM, NANCY LOU LANCASTER.

*Fifth Row:* MADGE LANE, JEWEL LANGLEY, IRIS LANGSTON, ELUDA RAE LASSITER, NELLIE AUDRY LEE, FRANCES LEGGETT, OLA LEA LILLEY, MARY LOUISE LINDSAY, JAMES A. LITTLE.



## FRESHMEN

*First Row:* NAN LOVELACE, JAMES ALTON MANNING, HILDA MARTIN, RACHEL MARTIN, DOROTHINE MASSEY, HELEN MASSEY, NANCY ARLINE MERCER, WINIFRED MERCER, AILINE MFWBORN.

*Second Row:* CAROLINE MILES, MILDRED MITCHELL, G. CONNOR MOORE, SARAH MOORE, MARY MORRIS, ELISE MORRISON, MARGUERITE MOYE, REBECCA MOYE, KATHLEEN MULLEN.

*Third Row:* JANE MURRAY, NELL McCULLEN, MARJORIE McDANIEL, VIRGINIA CRAIG McGEE, MABEL McLAWHORN, REID McLAWHORN, LUCILLE NELMS, ZULA NEWMAN, EVELYN NICHOLSON.

*Fourth Row:* RUTH CAROL NIX, NELL NYE, MERLE OUTLAW, MILDRED OWEN, MILDRED OWENS, ELIZABETH PAGE, ALAN O. PARKER, ELIZABETH PARKER, ESTHER MAE PARKER.

*Fifth Row:* MARY JOHN PARKER, JOYE PARNELL, MAUDE R. PARRISH, HELEN PEACOCK, DALLAS PEEL, JEAN PARIS PHILLIPS, VERNELLE PIERCE, ELEANOR PITTMAN, MARY DALE PITTS.





*Best wish  
to a son  
Gabi  
Wynne  
Mrs.*

## FRESHMEN

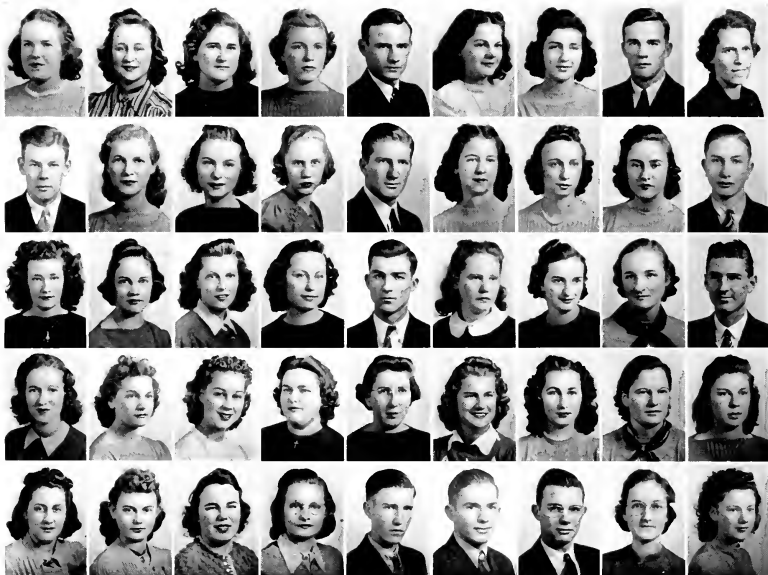
*First Row:* IRVING POLIAKOFF, MARGARET POLLOCK, SARA POTTER, HARRIET SIMPSON POWERS, JEAN POWELL, ANNE POYTHRESS, MAY PRICE, OVELLA PRICE, MINNIE LORRAINE PRITCHARD.

*Second Row:* D. E. PROPST, MINNIE LILLIAN QUINN, MARGIE RAYNOR, ADELAIDE READE, MARGARET REED, BEATRICE REYNOLDS, NANCY LOUISE RICHARDS, MAGGIE PEARL RIVENBARK, LOMBE H. RIVES.

*Third Row:* ELEANOR RIVES, LILLIAN ROBBINS, EDITH WARD ROEBUCK, MOZELLE ROGERS, MYRTLE ROGERS, HAZEL C. ROPER, RANDOLPH ROPER, GRACE ROSS, JULIA DEANE SANDLIN.

*Fourth Row:* BETTY WARREN SAVAGE, FRANCES SEARS, HELEN SCARBOROUGH, MARJORIE SELBY, MARTHA SELBY, JESSIE SESSOMS, CHARLOTTE SHEARIN, MARIE SHYVER, METSEL SIMMONS.

*Fifth Row:* MARY SMITH, CLARE SPENCE, HELEN SPENCE, RALPH SPENCER, MARGARET E. SPIRES, INEZ STEPHENSON, LUCILE STEPHENSON, RACHEL STRICKLAND, JUNIUS SURLS, JR.



## FRESHMEN

*First Row:* MARGARET TABLOCK, VIOLET A. TALBERT, GRACE TAYLOR, LOUISE TEW, JAMES THOMAS, SARAH THOMFSON, RUTH M. TUCKER, WAYLAN TUCKER, HATTIE TURNER.

*Second Row:* W. VERNON TYSON, HALLIF VERNA UPCHURCH, BESS USRY, FRANCES VINSON, PAUL WALDROP, IRIS WALKER, NELLIE WALKER, HAZEL WALL, NORWOOD WALL.

*Third Row:* MARY LOUISE WALLACE, MATTIE LEE WARD, VIRGIL WARD, LUCY WARREN, HERBERT WARRICK, MARY JANE WATERS, MILDRED WATKINS, SARA WATKINS, FREEMAN WATKINS.

*Fourth Row:* MARJORIE WEBB, FRANCES WEBSTER, ELIZABETH WEEKS, JOSEPHINE WEEKS, MAYME WEEKS, LORRAYNE WEST, AUDREY WHITE, ETHEL WHITE, HAZEL WHITE.

*Fifth Row:* LUTHIA WHITE, MARGARET WHITE, REID WHITE, KATHLFEN WHITEHURST, DALLIS WHITFORD, ROBERT B. WHITLEY, NORMAN WILKFRSON, BLANCHE EUGENIA WILLIAMS, LOIS WILLIAMS.



## FRESHMEN

MARY FRANCES WILLIAMS, MILDRED WINDLEY, GENEVA WINSTEAD, LAURA FAYE WOOD, RACHEL WOODARD, KENNETH ALTON WOOLARD, JOHN BRYCE WORLEY, LUCILE WRIGHT, MARY MOSS YOUNG, ARCHIBALD C. YOW, JR.



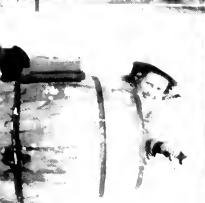
# AT E. C. T. C.

Highlighting this page is the picture at the right of our swing band in action—in, believe it or not, the student council room. Notice also the industrious girls doing industrial work in the Industrial Arts Department.



# CAMPUS LIFE

The top picture at the left is of that newly organized bunch of intellectuals that calls itself the commerce sorority, under the alias of some Greek name. As the pictures are evidence, we are proud of our snow (no connection to the commerce sorority).



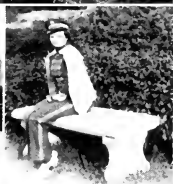
# AT E. C. T. C.

More campus scenery—outdoor fire place at the lake; bird bath and inhabitant; the campus fort (i.e. the eight-incher), and its marksman; clansmen; more snow; Romeo and Broughton.



# CAMPUS LIFE

Here we have hikers to the lake (one-tenth milers), fire-escapers, another snow-maiden, posturesque band members, loafers, foot-scratchers, and what not.





# AT E. C. T. C.

It takes all kinds to fill a page, as this one is easily evidence. The staff was unable to find out to whom the infant bore resemblance to numerous people, we decided it deserved a place in the book along with the other freshmen.





# ACTIVITIES



# WOMEN'S STUDENT



## OFFICERS

JUANITA ETHERIDGE  
*President*

DORIS BLALOCK  
*Vice-President*

HARRIET MARSHBURN  
*Secretary*

SARA GORHAM  
*Treasurer*



The Women's Student Government Association is an organization to which all women students of the college automatically belong. The purpose of this organization is to develop student honor and self-control, and to promote high ideals and a sense of responsibility among the students of the college.

# GOVERNMENT ASSOCIATION

Contacts with other campuses have been made through delegates who attended the National Student Federation Congress at the University of Minnesota, at Minneapolis; the Southern Inter-Collegiate Association at Shorter College, Rome, Georgia; the North Carolina Federation of Students at the University of North Carolina; and the Southern Conference at New Orleans, Louisiana.



*First Row:* IDA RUTH KNOWLES, IRIS DAVIS, MILLIE GRAY DUPREE, MAMIE LEE BOYD.

*Second Row:* REBECCA SHANKS, BETTY BLANCHARD, WILDA ROYALL, ANNA LAURIE BEALE.

*Third Row:* DORIS BURNLEY, IDA FARRIOR DAVIS, HAZEL OWENS.

# THE MEN'S STUDENT

## OFFICERS

WILLIAM SHELTON .....*President*

WALTER ROGERS.....*Vice-President*

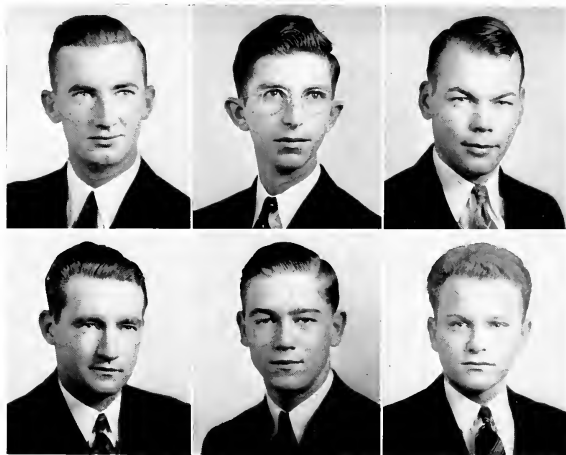
JAMES WHITFIELD.....*Secretary-Treasurer*



The Council of the Men's Student Government Association has strived diligently this year to promote all objectives in the interest of the men's student body. Acting under the authority of power vested in this body by men students, the Council undertook the task of revising the old constitution of the Men's Student Government Association. A United States flag was purchased from its appropriation, and it is flown daily on the front campus.

# GOVERNMENT ASSOCIATION

The men students on the campus are still gaining in number, and with the growth of the Men's Student Body, the council that guides it must also grow. Higher ideals of democracy, wisdom, and fairness are all symbols of growth in a student body, and these, carefully handled, can be the mainstay of student government.



VANCE CHADWICK

EMMETT SAWYER

JEROME DONALDSON

BILL MERNER

WALTER TUCKER

WALTER MORITZ

# YOUNG WOMEN'S

## OFFICERS

SARAH ANN MAXWELL.....*President*

ANNIE ALLEN WILKERSON.....*Vice-President*

VIRGINIA WHITLEY.....*Secretary*

DORIS BIALOCK.....*Treasurer*



Through its Sunday and Friday evening vesper services, the Y. W. C. A. this year has attempted to realize its purpose—to make for its members a full and creative life through a growing knowledge of God. Among the outstanding speakers at these services have been Mrs. Mildred Morgan, University of Iowa; Dr. Hornell Hart, Duke University; and Madame Sheu-Riesz of Chapel Hill, N. C.

Deputation teams from Meredith College and North Carolina State have contributed to our programs, while we, in turn, have sent representatives to take part in their religious activities. Candle-



# CHRISTIAN ASSOCIATION

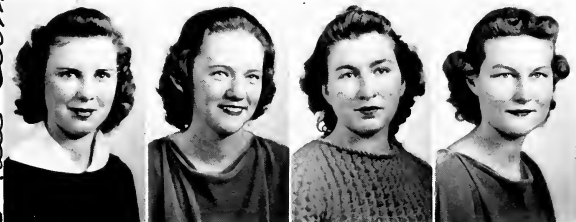
lighting services have helped make our organization more inspirational and more beautiful for the student body.

Delegates from the association have attended all conferences of the Student Christian Movement of the state and, in the spring, delegates attended the leadership conference held at Blue Ridge, N. C.

Cabinet members pictured below are:

First Row: REBECCA ROSS, NELL BREEDLOVE, CELIA B. DAIL, AND MARGARET LAWRENCE.

Second Row: WILDA ROYALL, ORA MCHAN, SARA GORHAM, AND LUCY ANN BARROW.



more, I'm looking forward to  
 being on Cabinet with  
 you next year. Always,  
 Wilda  
 Will see you next Fall Term.

*Dear ...*

*...*

# YOUNG MEN'S

## OFFICERS



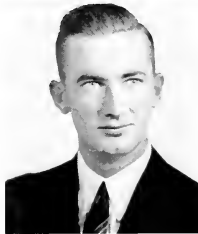
EMMETT SAWYER ..... *President*



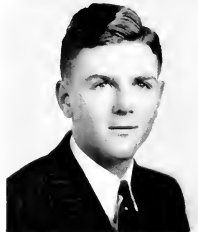
HOWARD DRAPER ..... *Vice-President*

VANCE CHADWICK ..... *Secretary*

BRANTLEY DELOATCHE ..... *Treasurer*



The Y. M. C. A. was organized in the spring of 1939. It has for its purpose the realization of a full and creative life through a growing knowledge of God. The Y. M. and Y. W. have cooperated in bringing about this purpose through vesper services. Among the outstanding speakers of the year were Mrs. Mildred Morgan, who spoke on men and women relations, and Mr. Wiley Critz, Southeastern Y. M. C. A. secretary.



The organization is a member of the Inter-racial Group of the Y. M. and Y. W. C. A.'s of the State. Last summer the "Y" sent two delegates to the Southeastern Regional Conference at

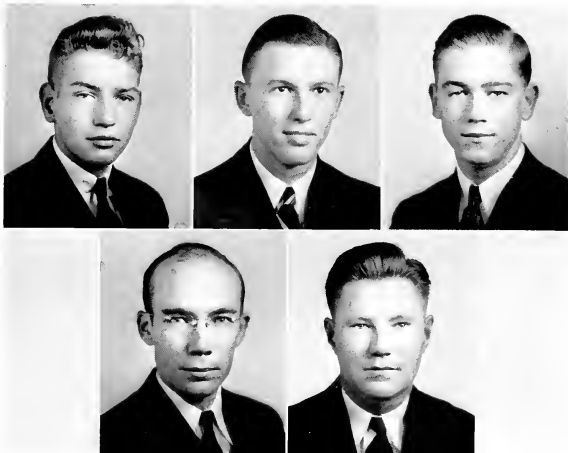
# CHRISTIAN ASSOCIATION

Blue Ridge. We have also taken part in the State "Y" conferences in Raleigh and Durham this year. One of the outstanding entertainments was a square dance given in the fall. It is the hope of those who have been its founders, that our "Y" will steadily push forward, fulfilling its purpose, until every boy on our campus has been reached.

Cabinet members pictured below are:

*First Row:* JOHN DAVID BRIDGERS, ALTON PAYNE, WALTER TUCKER.

*Second Row:* JOE BIGGS, GILBERT BRITT.





## JUNIOR "Y" CABINET

The Junior "Y" Cabinet, as a co-worker with the Senior "Y" Cabinet, has played an important part in the Young Women's Christian Association on our campus. They have helped the success of this organization by participating in Friday and Sunday evening vespers, and actively attending morning watch. Their success is due largely to the chairman, and to Margaret Lawrence, cabinet adviser.



JOYCE DUNHAM  
*Chairman*



## SCIENCE CLUB

The Science Club during the years 1939-40 has made much progress through the cooperation of its officers, members and advisors. The club has sponsored a variety of interesting programs given by students and outside speakers. Interest has been created in the study of Science Museums. During the spring term the club plans to do actual museum work. The annual club trip will complete the year's program.

The aim and purpose of the Science Club is to inspire science students and to stimulate in them a desire for a deeper, more meaningful study, and to challenge them to become more conscious of the scientific world.



AGNES WOOD  
*President*



## VERSE SPEAKING CHOIR



MISS MARY GREENE  
*Director*

The Verse Speaking Choir is an organization three years old. Though identified with the English Club, it draws its membership from the entire student body, and since its beginning has had about seventy students actively interested in its work. Programs have been given for the English Club, for chapel and Y. W. C. A. exercises, and for the Third Street and the Greenville High Schools.



## ALUMNI DAUGHTERS and SONS of E.C.T.C.

The purpose of the Alumni Daughters and Sons of East Carolina Teachers College is to develop loyalty, to promote a closer feeling of friendship among the sons and daughters of the alumni, and to preserve the memory of the students of the past.

The main event of the year was the tea given by the club for all alumni who returned for Commencement.



ANITA DAUGHTRIDGE  
*President*



## ENGLISH CLUB

The English Club has had entertaining and instructive monthly programs throughout this college year. The club, at the invitation of the Poe Society, was co-sponsor in bringing to our campus Miss F. Meredith Dietz, Editor of *The Southern Literary Messenger*. It organized and sponsors the Verse-Speaking Choir, under the leadership of Miss Mary Greene. Other groups of members are working on dramatics and creative writing.

The well-equipped club laboratory is a constant help to the English majors. Among the most important parts of the equipment, other than books, are three large filing cabinets of clippings and pictures, a duplicator, projector, and a recording machine.



MATTIE LEE JACKSON  
*President*





## MATHEMATICS CLUB

The Mathematics Club, with the help of its advisors, Miss Maria D. Graham, Miss Louise Williams, and Miss Elizabeth England, a newcomer to our department, has completed another successful year at East Carolina Teachers College. Our aim for more student programs and better attendance, has been fulfilled. The purposes of the club, which are: to appreciate the wonder and greatness of mathematics and how it has come to be what it is today, as well as, to explore the recreational side of life, have been carried out in the programs under the direction of the Vice-President, Julius Abernathy.



RUTH GLENN HARDY  
*President*



## HOME ECONOMICS CLUB



CAMILLE B. CLARKE  
*President*

The Home Economics Club has as its motto: "Serving our community, our schools and our families". From this motto came the club's purpose: To develop personality, leadership, initiative, and poise. During the year outstanding speakers have been: Mrs. Stella R. Cusick, assistant Farm Administrator from Raleigh, who spoke of Farm Security work in North Carolina; Miss Mamie E. Jenkins of the college faculty, who spoke on her trip to Europe; and Mrs. Adelaide E. Bloxton of the Home Economics faculty who spoke on the early history and significance of Williamsburg.

A club bulletin was edited and sent to some of the recent alumnae of the club. Delegates were sent to the North Carolina Association of Student Home Economics Clubs at Queens-Chicora College, Charlotte. Agnes Watson, one of our members was chosen state president. The 1940 meeting of this association will be held at East Carolina Teachers College November 15-16.



## ASSOCIATION for CHILDHOOD EDUCATION

"The purpose of this organization shall be to gather and disseminate knowledge of the movement for the education of young children; to bring into active cooperation all childhood education interests, including parent education; in nursery school, kindergarten and primary grades, and to raise the standard of the professional training for teachers and leaders in this field."

### ARTICLE II, A. C. E. CONSTITUTION

The East Carolina Teachers College Association for Childhood Education is a student branch of the state and national organization. Elementary majors and others who are interested in early childhood education are eligible for membership.

Studio group activities, outstanding speakers, and informal socials—all of these—provide opportunity for growth, both professionally and socially.

Among the speakers during the year was Dr. Hornell Hart, Professor of Social Ethics at Duke University, who was brought to our campus by the A. C. E., with the co-sponsorship of the Y. W. C. A.

This student branch was selected to edit the first North Carolina Branch News Bulletin, which was distributed among the fifteen state branches this year.

The following compose the executive board for the ninety-seven members: Mary Lou Butner, President; Ada Rose Yow, Vice-President; Page Davis, Secretary-Treasurer; Anna M. Taylor, Publications Representative; Mary Agnes Dent, Reporter; Mary Frances Hardy, Hazel Owens, Katrine Cullie,



MARY LOU BUTNER  
*President*



## COMMERCE CLUB



THADYS JOHNSON  
*President*

The Commerce Club has made its aim this year the increasing of interest in professional work and teaching.

At the regular monthly meetings, programs which will give some insight into business conditions, explain what the business world expects of those who enter this field, and how the commercial teacher can prepare others to meet these needs are presented. They have included social as well as educational entertainment.

One of the main projects for this year has been collecting articles of commercial interest for a museum in the Commercial Department.

The Club has also been active in organizing the Zeta Delta Chapter of Alpha Iota Sorority—an international honorary business sorority—on the campus. This chapter was officially installed on March 30 at an installation banquet. The Zeta Delta has twenty-four charter members and with Miss Velma Lowe and Miss Lena C. Ellis as sponsors great things are expected of this organization in the future. A group picture of the sorority appears in the snapshot section of this volume.



## SIGMA PI ALPHA

### Phi Sigma Chapter

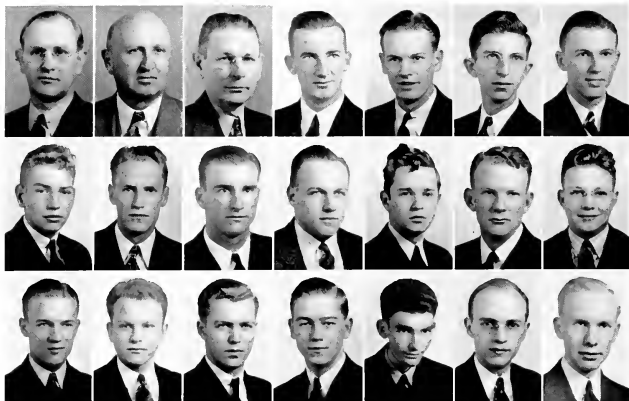
Organized in 1925 under the name "Le Cercle Francais," the French Club of East Carolina Teachers College began its work with the purpose of encouraging the study of French, and fostering and developing a spirit of friendship among its members. Later the club adopted the name "Phi Sigma."

Last year we joined the Sigma Pi Alpha, national honor fraternity for students of foreign languages, and we have had a big part in its work this year. Professor R. C. Deal, head of the French department was elected National President of the fraternity for this year, and we also had the honor of being host to the National Congress which met on our campus April 20, 1940.

Members of the organization have enjoyed many social hours, including a weiner roast at Mr. and Mrs. Deal's.



ANNIE HART BOONE  
*President*



*Top Row:* DR. BEECHER FLANAGAN, DR. HUBERT C. HAYNES, DR. HERBERT REBARKER—*Honorary Members:* VANCE CHADWICK, HOWARD DRAPER, EMMETT SAWYER, ALTON PAYNE.

*Middle Row:* JOHN DAVID BRIDGERS, CHARLES HARRIS, BILL SHELTON, WALTER ROGERS, LINDSAY W. WHICHARD, HOMER PARKER, JAMES WHITFIELD.

*Bottom Row:* ROBERT BREWER, WALTER MORITZ, EUGENE CARSON, WALTER TUCKER, JOHN CARSON, VERN KUFTMEYER, HARVEY DEAL.

*Not Photographed:* SPENCER HATLEY, TOM COX, ORVAL MORTON, ARTIS HARDEE.

## PHI SIGMA PI

VANCE CHADWICK.....	<i>President</i>
HOWARD DRAPER.....	<i>Vice-President</i>
EMMETT SAWYER.....	<i>Secretary</i>
ALTON PAYNE.....	<i>Treasurer</i>
CHARLES HARRIS.....	<i>Sergeant-at-Arms</i>

The Phi Sigma Pi, national honorary educational fraternity, has completed another milestone in educational progressiveness, and in campus activities for 1939-40.

Among the principal undertakings of the fraternity this year were the annual carnival; the presentation of "Peck vs. Peck", a courtroom farce in one act, and the Founders' Day program on May 11.

The fraternity is composed of members who strive to promote a feeling of brotherhood and use the light of knowledge as their guiding star.

## PUBLICATIONS BOARD



JUANITA ETHERIDGE  
Chairman

This clandestine committee, little-known and less cared about, herewith betrays to the public its deep and dark secrets in the form of purpose and function. It certifies eligibles for publications offices, and is responsible, no more, no less, for the actions of those two bodies—*The Teco Echo*, and THE TECOAN. Latest to join the ranks of the scribblers and photo-snappers is the *Pieces of Eight*, a humor-literary magazine, or vice-versa. Although the magazine isn't responsible for until next year, it is already a member of the board in body and spirit.

First Row: HARVEY DEAL, PRUE NEWBY, MARY HELEN GULLEDGE, MR. J. B. CUMMINGS, DR. R. J. SLAY.  
Second Row: DOROTHY HOLLAR, HELEN FLANAGAN, LUCILLE JOHNSON, DR. BEECHER FLANAGAN, MISS LOIS GRIGSBY.





DEAN C. TABOR  
*Director*

## COLLEGE BAND

### Officers

ORVAL MORTON.....	<i>President</i>
VERNON KUETEMEYER.....	<i>Vice-President</i>
VIRGINIA WILLIAMS.....	<i>Secretary</i>
VINCENT F. ROMANO.....	<i>Librarian</i>
HICKS HENDERSON.....	<i>Sergeant-at-Arms</i>

The East Carolina Teachers College band, organized during the winter quarter of 1938, is now beginning its third year of progress. The band, under the direction of Mr. Dean Tabor, has grown to a present membership of fifty-five. Officers were

chosen for the first time this year. This organization has aroused much enthusiasm among the students by playing at the sports events, special programs on the campus, and parades. We are proud of the development and interest shown in our band.





# ORCHESTRA

While the orchestra of East Carolina Teachers College has been organized as an indispensable unit for prospective music teachers in a state whose strides in the field of music during the last few years have been immense, it still provides an enjoyable as well as a profitable source of activity for college students and teachers as well. It has fostered the love of good music during this year more than ever before through playing for chapel programs, plays, and various other functions on the campus. In this progressive institution, it is truly the best orchestra we have yet had.



A. L. DITTMER  
*Director*





A. L. DITTMER  
*Director*

## MEN'S GLEE CLUB

The joy of singing in harmony is especially enhanced by the association of comradeship men find in such organizations as this. United in presenting the music to be rendered, these men have felt the thrill of musical achievement on numerous occasions on and off the campus during the past year.

Pictured below are:

*First Row:* RUSSELL BEDDAED, J. L. CASTEEN, VERN KUETEMEYER, HICKS HENDERSON, AND ROBERT MUSSELWHITE.

*Second Row:* GROFFORD HEDSPETH, accompanist, ED HARRIS, HOLTON AVERY, SPENCER HATLEY, NORMAN WILKERSON, AND MR. DITTMER.

*Third Row:* VINCENT F. ROMANO, ARCH YOW, WILLIAM BASDEN, AND JOHN DAVID BRIDGERS.

*Members Not Photographed Are:* SAM BASS, SAMUEL CRANDALL, OLA FORREST, GEORGE HEAFNER, FERDINAND KERR, CHARLES LITTLE, ALTON PAYNE, FREEMAN WATSON, AND DALLAS WHITFORD.



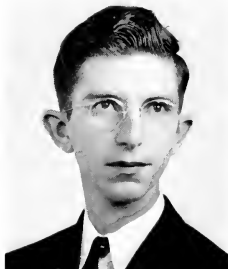


MISS GUSSIE KUYKENDALL  
*Director*

## WOMEN'S GLEE CLUB

The Women's Glee Club plays a definite part in musical activities of the college life. It presents various seasonal performances during the year, outstanding among which are the Christmas and Easter programs sung a cappella. The club contributes to chapel programs and lends inspiration to important college days and events.





EMMETT SAWYER  
*President*

## INTERNATIONAL RELATIONS CLUB

In the fall of 1939 the International Relations Club was formed on the campus by merging the History and the Social Science Clubs. The purpose of the club is to encourage the study of international relations in affiliation with the Carnegie Endowment of International Peace.

During the year various programs were presented by students who debated, lectured, and gave book reviews on international relations.

One of the highlights of the year's activities was the Southeastern Regional Conference of the International Relation Clubs' held at Chapel Hill, to which our Club sent representatives.



# KI PI PLAYERS

The Ki Pi Players is composed of about fifty members. The purpose of this club is to give its members practical experience in the interpreting and producing of outstanding plays, to promote interest in the dramatic activities of the school, to develop the creative talent of the students of the school, to encourage the reading and witnessing of better plays, and to promote an enthusiasm for the drama in all its phases.

During the 1940 program, the club sponsored several one-act plays, with their major production coming in the spring quarter. The Ki Pi Players is a member of the Carolina Dramatics Association and the Alpha Psi Omega, a national honorary dramatics fraternity. Ethel Gaston, president of the group is pictured standing in front of the members photographed below.





KATHLEEN STRICKLAND  
*President*

## THE FUTURE TEACHERS OF AMERICA

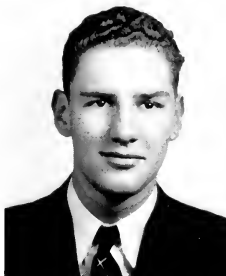
In the spring of 1939 the Robert H. Wright Chapter of the Future Teachers of America was organized through the guidance of its sponsor, Miss Emma L. Hooper. Our club is affiliated with the National Education Association. The purpose of the club is to give teachers in training practical experience in working together in a democratic way on the problems of the profession. Programs in the club this year have included social entertainment as well as educational discussion.



## PIECES OF EIGHT

Although the *Pieces of Eight* made its debut in the spring of 1939, it was not presented to the students until the fall of '39. During the past year it has financed itself, and kept under control

by its own power. Next year this humor-literary magazine will reach every student, and become an E. C. T. C. publication in its own right. This spring it braved the terrors of the deep and became, by student approval, a member of the Publications Board, that unknown quantity mentioned elsewhere in this pretentious pamphlet.



GEORGE LAUTARES  
*Editor*



ALTON PAYNE  
*Business Manager*



HARVEY DEAL  
*Editor*

◆  
**EDITORIAL STAFF**

We, the staff of THE TFCOAN present this, the 1940 edition of the yearbook of East Carolina Teachers College to the students. With hopes and fears we give and take. If we have made mistakes, we apologize. If we have pleased you, of course we have succeeded. We wish here to thank Mr. A. L. Dittmer for his help on our theme, and give due credit to Ethel Gaston, a member of our staff, for her indeed creditable work on the figures used as a theme center.



# THE 1940



*Left to Right:* DOROTHY DALRYMPLE, KATHERINE P. LEWIS, BILL MERNER, ETHEL GASTON, MARGARET JARVIS, AND LINDSAY WHICHARD.  
*Seated:* HARVEY DEAL.





PRUE NEWBY  
*Business Manager*



## BUSINESS STAFF

The business staff is justly proud of the amount of advertising it has obtained this year, and is grateful to the firms who have helped to make the publication of the 1940 yearbook a financial success. It wishes to acknowledge the valuable assistance, for both staffs of Herbert Hitch, Charlotte Engraving Co., Charlotte; Frank Fleming, Lassiter Press, Charlotte; and "Rev." Danbar, Dunbar Studio, Charlotte. The staffs also wish to thank all students who have helped us in any way—there have been many.

## TECOAN



*Left to Right:* URSULA CARR, EVA CARTER, MARY HELEN GULLEDGE, PRUE NEWBY, SARAH BRITT, AND JESSIE KEITH.



EDITOR'S SPONSOR: MRS. R. C. DEAL



BUSINESS MANAGER'S SPONSOR: MRS. W. G. NEWBY

DOROTHY HOLLAR  
*Editor*



## EDITORIAL STAFF

The policy of the *Teco Echo* this year has been to make the publication the voice of the students through its news stories, open forum, and editorials. During the year there have been five special editions. The first came in the fall quarter before the Varsity Club play. Before the senior play, "Stage Door," the second special issue was published. The third special issue was in the form of an eight-page homecoming, dedication, and good will issue, of which over 3,000 copies were distributed over Greenville and to the visitors on the campus on dedication day. In the spring quarter two special issues were published; one being an April Fool issue which was distributed over the campus in addition to the regular issue which was distributed later in the week. Also an Alumni issue was published and distributed to approximately 1,600 former students.



# TECO



LENA MAE SMITH, BARBARA KEUZENKAMP, PATSY MCINTYRE, ELIZABETH MEADOWS, BETTY KEUZENKAMP, MARY HORNE, LARUE MOORING.

HELEN FLANAGAN  
*Business Manager*



## BUSINESS STAFF

The advertising staff of the *Teco Echo* has endeavored to serve the students as a source of information, as a medium of publicity, and as an aid in financing the paper.

We feel that cooperation among the staff members, the students and all others connected, is responsible for whatever success we have had.



# ECHO



LALLAH B. WATTS, BRANTLEY DELOATCHE, MARY AGNES DEAL, ALICE POWELL, JEAN WENDT, ELLEN MCINTYRE.





CHRISTINE HARRIS  
*Chief Marshal*

# Emerson Society

With success as its goal, the Emerson Society has done much during the year 1939-40 to carry forth the success of its previous years.

The high lights of our year have been: an informal dance given for the freshmen, the one-act play, "Girls in White," and the sponsorship of the winter dance. All of these were great successes—thanks to our loyal Emersons.

Throughout this year, we have tried to enrich our lives with the more beautiful works of literature and on the whole we consider this year a real success—a year each Emerson may well be proud of.



META VIRGINIA HAMMOND  
*President*



FRANCES M. BOYD  
*Vice-President*



ANNIE HART BOONE  
*Secretary*

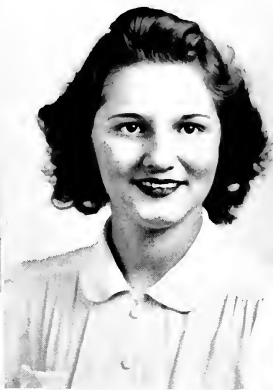
JANE WILLIAMS  
*Treasurer*







FRANCES M. BOYD  
*Marshal*



DOROTHY SPENCE  
*Marshal*



DOROTHY DALRYMPLE  
*Marshal*

RUTH BRITT  
*Marshal*



VERNA RAE BRADLEY  
*Marshal*



# Poe Society

During the school year of 1939-40, the Edgar Allan Poe Literary Society tried to grow in membership, appreciation of music, art, and literature, and in prestige on the campus.

Three of our outstanding activities were: one, a very successful dance, having sponsors for the first time here; two, speeches by Miss F. Meredith Deitz, editor of the *Southern Literary Messenger*, who was here for three days, and; three, a one-act play, "Sanatorium," which won the silver loving cup in the contest between the three societies. WGTC, the new radio station in Greenville, asked the Poe Society to give a program on the air, representing the organizations on the campus.



IRIS DAVIS  
*President*



EDITH W. HARRIS  
*Vice-President*



THADYS JOHNSON  
*Secretary*

MIRIAM PERRY  
*Treasurer*





SARAH ANN MAXWELL  
*Marshal*



IDA RUTH KNOWLES  
*Marshal*



REBECCA ROSS  
*Marshal*

JEAN WENDT  
*Marshal*



REBECCA SHANKS  
*Marshal*



# Lanier Society



RUTH WOOD PRITCHARD  
*President*

The worthy purpose for which Sidney Lanier himself lived—those are the ideals ever before the loyal members of the Lanier Society. We began our work for the year by a friendly welcome to the freshman class of 1939-40 through an outdoor supper at the college lake. Terminating the comical initiation of the new members, they enjoyed a delightful social hour.

One of the highlights of the year was the Inter-Society one-act play contest in which our talent was well recognized. Our programs for monthly meetings are always planned for their literary interest as well as entertainment for the members.

Under the sponsorship of the Lanier Society, the spring dance, through its original planning, excellent orchestra was the greatest success of the year.



ELLEN MCINTYRE  
*Vice-President*



JESSIE KEITH  
*Secretary*

AGNES WATSON  
*Treasurer*





RUTH WOOD PRITCHARD  
*Marshal*



FRANCES HARDY  
*Marshal*



EDNA OGBURNE  
*Marshal*

EMILY MURPHY  
*Marshal*



JOYCE CAMPBELL  
*Marshal*





# ATHLETICS



# Varsity





# Club



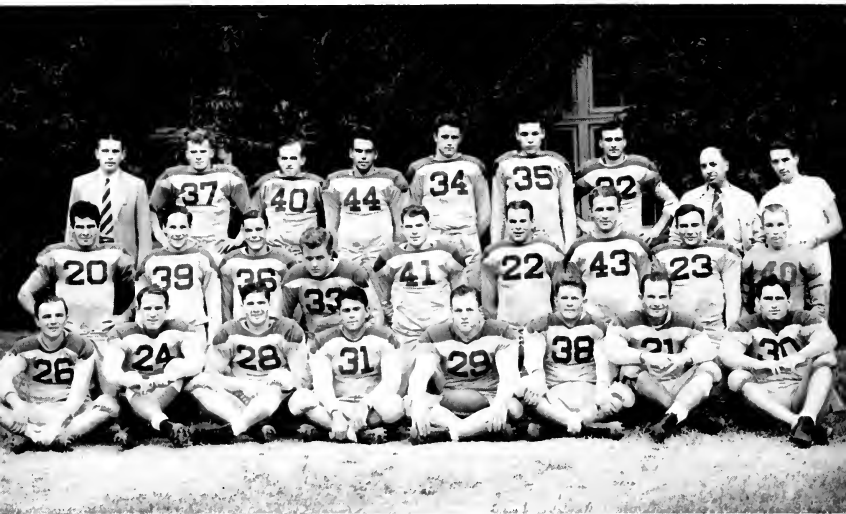
The Varsity Club draws its members from lettermen in the various sports on the campus: football, basketball, baseball, boxing, and tennis. This year for the first time monogram sweaters were awarded to boys earning them in tennis, one of the minor sports.



Outstanding among the club's activities this year were: the Varsity Club play, "The Milky Way," at which the "Varsity Club Sweetheart" was crowned, and the third annual Varsity Club dance, centered around the club sweetheart, Miss Jean Wendt.



# FOOTBALL



The 1939 edition of the Pirate football squad assembled at the college two weeks before school opened for what they hoped would be one of their best seasons. The squad, although not large in size or number was an average small college squad and with several lettermen returning to form a nucleus, prospects looked better than they had for the past three years.

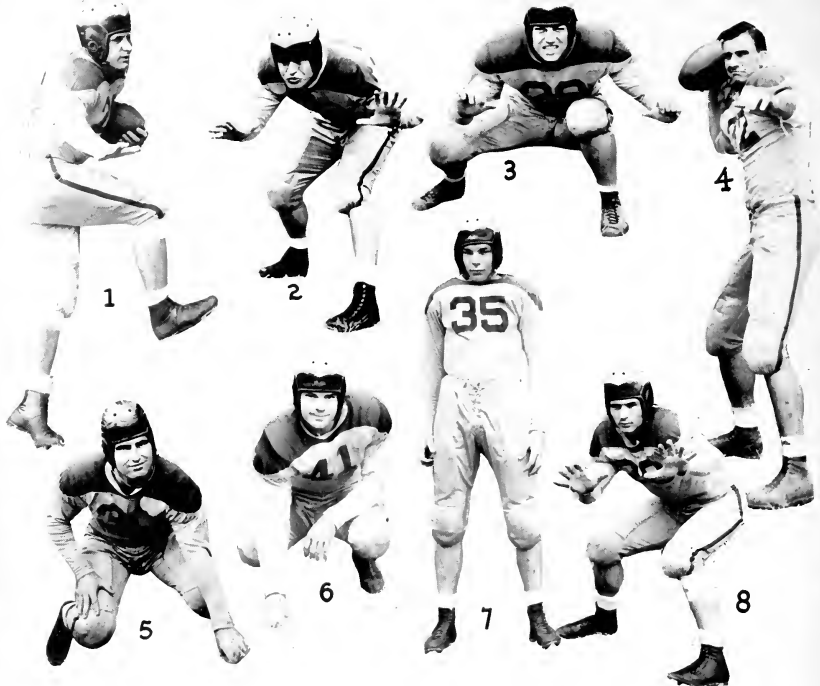
After about two weeks training and only a week before the opening game injuries began to occur that put a damper on the spirits of everyone concerned. Two lettermen went out for the season with injured knees.

During the entire season the squad was never at full strength and consequently suffered reverse after reverse in many hard fought games.

Although the team from a winning standpoint, was far from successful, valuable experience was gained, and without abnormal injuries next year's prospects are already looking brighter.

Coach O. A. Hankner opened his coaching career on the campus with a tough schedule facing him, and in spite of injuries and other handicaps facing him, guided the squad through the season, often beaten, but unconquered in spirit.



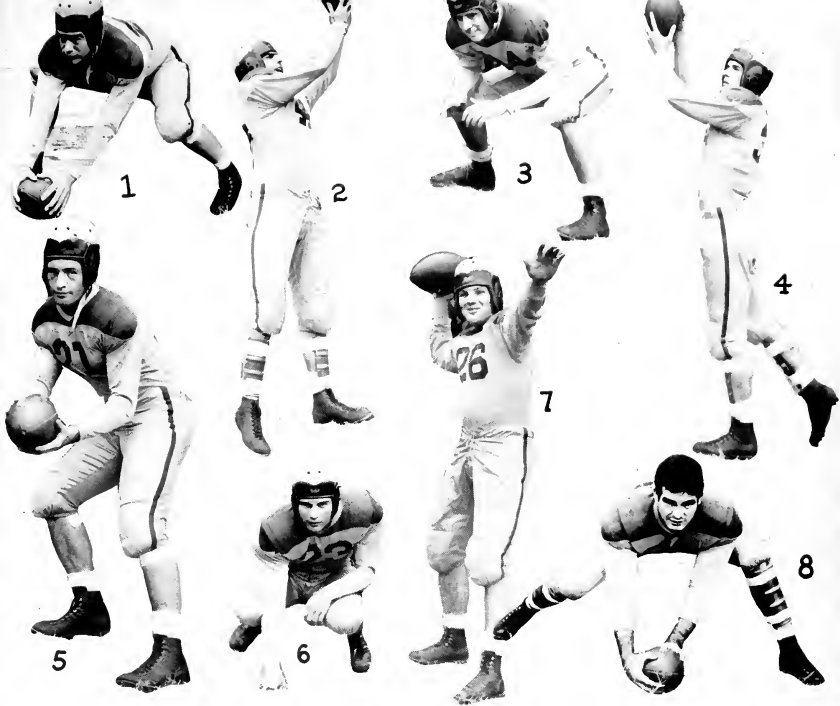


1—AMBROSE STANKUS 2—WILLIAM HARRIS 3—WALTER ROGERS 4—BILL SHELTON 5—IRVING POLIAKOFF  
6—NORMAN MAYO 7—WILEY MAYO 8—JOE WILLIAMS

MERWIN FRAZELLE

*Given medal for being most valuable player*





1—ARTHUR HODDER 2—JOE HATEM 3—MATT PHILLIPS 4—WAYLAN TUCKER 5—JACK MCJUNKIN  
6—ADRIAN BROWN 7—BILL DUDASH 8—RICHARD CHADWICK



ALBERT MANUS  
*Manager*

# BASKET

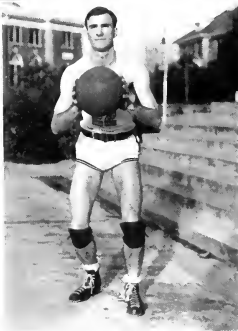


*Front Row:* TOM COX, BILL SHELTON, TOM PARRISH, HARRY RIDDICK, WILEY BROWN, JIMMIE DEMPSEY

*Second Row:* KELLY MARTIN, DAVE WATSON, DONALD BROCK, GEORGE LAUTARES, RANDOLPH ROPER, FLOYD HINTON.



FARLEY  
*Coach*



BILL SHELTON  
*Captain*

# BALL

Coach "Bo" Farley's East Carolina Pirates concluded a relatively successful basketball season here the last of February with a 67-51 victory over Langley Field's Aces. Though the Pirates piled up an early advantage, the game was a hard fought one. Lautares, Brock, and Shelton were high scorers.

Among the hard fought games high-lighting the season, the traditional battle with Atlantic Christian ranks among the highest. After the furious battle was over, the scoreboard showed 49 to 46 as the final score. Causing considerable student interest was the fact that the victory entitled the Pirates to retain the Bohunk trophy—a prize fought over by the rival teams from year to year.

A victory over Westinghouse Apprentice team rated considerable cheering and excitement due to the fact that the Pirates entered the game as underdogs, and then emerged victorious with a score of 51-44. Brock, rangy center, paced the Pirates with a total of 19 points.



SHELTON, PARRISH, HINTON, and the vanishing man run off a play for us.

# BASEBALL

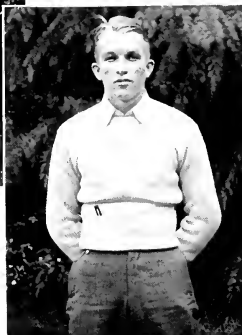


*Front Row:* MARTIN, HATEM, MAYO, SHELTON, RIDENHOUR, BREECE, WELLS.

*Back Row:* SCARBOROUGH, ROEBUCK, NORTHCUTT, HINTON, PHILIPS, MORITZ, FUTRELL. *Coach* GILBERT.



RIDENHOUR  
*Captain*



SCARBOROUGH  
*Manager*





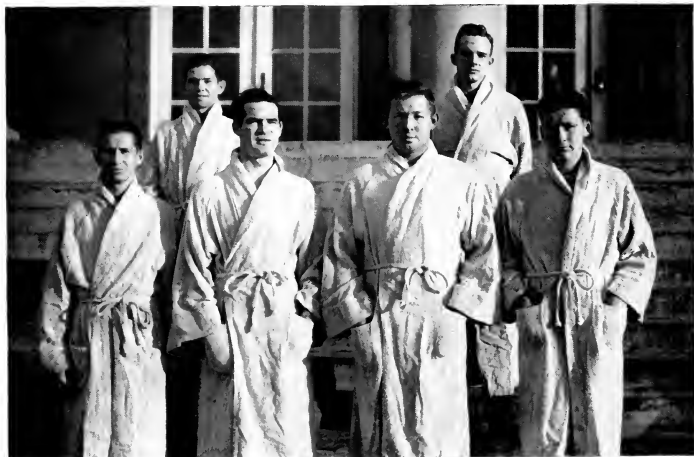
Coach Gordon Gilbert's Pirates got off to a bad start for the 1939 season, by dropping the first game to Campbell College's nine to the tune of 13-5. Joe Hatem and Floyd Hinton led the Teachers in hits.

During the remainder of the season the Pirates picked up considerably. On April 10 and 11, the Pirates split a pair of games with the High Point College nine. In the first game Earl Smith, Bill Shelton, and Floyd Hinton led the Teachers as they walked away with the game, 22-3, to Kelly Martin's pitching. The following day they dropped a close game to the same nine. Results: 9-8. On April 23, the Pirates dropped another close one to The Atlantic Christian Bulldogs, 10-9.

In close succession, the Pirates defeated William and Mary (Norfolk Division), 16 to 1; Louisburg's Trojans, 4 to 1; and the Middies of the United States Naval Base (Norfolk), 10 to 9.

As a whole the season was rather a successful one for the Pirates, although during the last week of the season, they dropped games to High Point, split a two-game series with West Carolina. Bright spot in closing the season was the win over the Norfolk Naval Base May 13, 10-9.

# BOXING



Due to insufficient participation and interest, no boxing matches were scheduled this year. The boys pictured above trained up until the last minute, when plans were finally and definitely dropped, thereby earning a place in the yearbook. Fleming and Chadwick, the first two on the front row are both Golden Gloves state champions.



## BOYS TENNIS

The boys tennis team, composed of Charles Harris, Louis Wilkerson, Douglas Glover, Leo Burks, Charles Greene, and Leon Meadows beat Louisburg College's team 5 to 3, and lost the return match 5 to 4.

On May 6, darkness halted a match with Oak Ridge Military Academy, with the score 4-4.

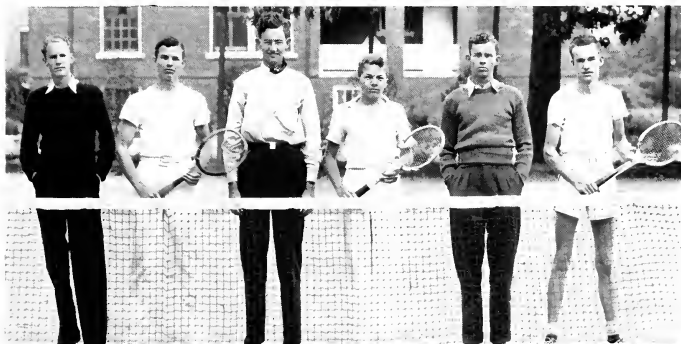
In subsequent matches they defeated Atlantic Christian 9-0; Appalachian 5-2; and a match with Wake Forest was halted by darkness with Wake Forest in the lead, 6-1.

## GIRLS TENNIS

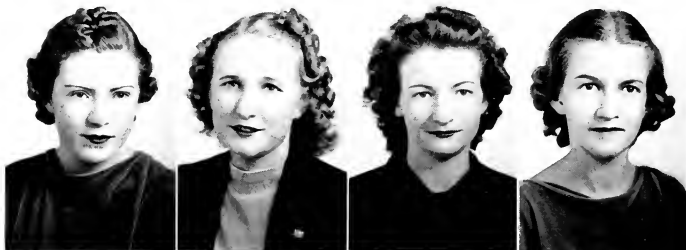
The girls tennis team scheduled only three matches; one home game, with Long Island University, and two with Blackstone Junior College, at Blackstone, Va.

The Long Island game was canceled, and the girls won the two Virginia matches by a wide margin.

On the team were Nancy Albright, Ruth Parker, Mary Frances Byrd, Dorothy Dalrymple, and Prue Newby.



# WOMEN'S ATHLETIC ASSOCIATION



EVA McMILLAN  
*President*

MYRTLE HOPKINS  
*Vice-President*

ESTELLE EDWARDS  
*Secretary*

FRANCES NANCE  
*Treasurer*

The Women's Athletic Association sponsors the intra-mural sports of basketball, volley ball, and tennis, besides promoting interest in field, track, and play days.

Special divisions of the club embrace the sports of softball, basketball, croquet, tennis, horseshoes, soccer, hiking, table tennis, and archery. College letters, sweaters, and an intramural medal reward outstanding work in these fields.



# SPOTS of SPORTS



Usually unpictured are the drudgeries undergone in preparing for a game of tennis. These pictures were unposed (notice the barefooted girl adjusting the net), and therefore should picture truthfully the preparation for, and the playing of a game of tennis.



# HEADS *of* DEPARTMENTS



VILEIGH AUSTIN  
*Head of Volley Ball*



ANNIE L. PARKER  
*Head of Soccer*

This year the intercollegiate program for girls' athletics has been dropped to make way for more intramural activities. The purpose in mind is to provide some form of sport for all members of the student body. Another is to develop a cooperative spirit among the different members. A larger number of students are participating in these sports this year and additional events have been added to the Intra-mural program.



The heads of these departments, under the capable advisorship of Miss Helen McElwain carefully plan out programs for their various departments. Play nights were held throughout the year during which large numbers of students played volley ball, badminton, shuffleboard, indoor tennis, target shooting, etc.

In the spring and fall week-end hikes were planned, and tennis, softball, archery, soccer and other outdoor sports were given much attention.



ELIZABETH TOMLINSON  
*Head of Softball*



NICK PROCTOR  
*Head of Basketball*



JOSEPHINE JACKSON  
*Head of Individual Sports*



JENNIE HENSON  
*Head of Hiking*



EILEEN TOMLINSON  
*Head of Field Hockey*



The above group is a composite of members of the various branches of the women's athletic department. A number of the department heads are in the group, together with miscellaneous members who have done representative work in the departments.

## DORMITORY HEADS



MARY GRACE SIVERTSEN  
*Wilson Hall*



DORIS ROBERTS  
*Cotton Hall*



MARGARET WOOD  
*Lavin Hall*



MILDRED GUPTON  
*Fleming Hall*

## ALL STAR INTRAMURALS



### SOFTBALL TEAM

The softball team was newly organized on the campus last spring, and this group comprises the charter members.



## SOCCER TEAM

The soccer team, with its captain, Annie Laurie Parker pictured in the center, takes on all comers, and in the spring holds its place of prestige on the athletic field.



## VOLLEY BALL

All the year round this group of girls plays, both in the gymnasium, and on the field, tackling even faculty and boys' teams.



## FIELD HOCKEY

This group, too, terrorizes the athletic field, both fall and spring, waylaying all challengers, and, in spite of falls, they get up and go again.





# FEATURES





DOROTHY REED MILLER



MARY FRANCES IRVIN



CHRISTINE HARRIS



MIRIAM SAWYER



GERALDINE BULLOCK





FRANCES ROEBUCK



SARAH THOMPSON



MARY ELIZABETH BEASLEY



# ADVERTISEMENTS

*Congratulations*

SENIORS

Greenville News-Leader

*"The Morning Daily"*

COBURN SHOE CO.

*"Your Shoe Store"*

Ask Your Friends About  
Our Shoes—They Know

Greenville, N. C.

PEOPLES BAKERY



*Patronize the  
College "Y"  
Store*

Relax—And Enjoy

ROYAL CROWN COLA

Best by Taste—Test

You are always welcome to the store  
that carries the Juniors' and Women's  
smart apparel.

WILLIAMS

*The Ladies Store*

Greenville, N. C.

*For 20 Years  
The Largest And  
Most Complete  
Department Store  
in  
Eastern Carolina*

Everything In

COSMETICS

SODA FOUNTAIN • LUNCHEONETTE

**BISSETTE'S**  
DRUG STORE

Near Five Points

•  
BLOUNT-HARVEY

**BEST JEWELRY COMPANY**

*"Eastern Carolina's Leading Jeweler"*

Established 1901

**QUALITY • VALUE • SERVICE**

*"YOUR JEWELERS"*

**BRODY'S**

LADIES' DEPARTMENT STORE

*Style • Quality  
Economy*

**Photographs**

**BAKER'S STUDIO**

Greenville, N. C.

**ALL WORK GUARANTEED**

*Compliments of*

**KARES BROS.**

Restaurant, Soda and News Service

*"We Serve the Best"*

*Compliments of*

**GREENVILLE FLORAL  
COMPANY**

Telephone 443

**Gift Dept. Beauty Salon**  
Gifts for all Occasions

**The Colonial Shop**  
Personality Hairstyling

**426 Evans St. Dial 2349**

**TOMORROW'S STYLES TODAY**

**SALLY FROCKS**

*Smart Clothes for Smart Girls*

**Greenville - Fayetteville - Wilmington**

*Compliments*

**WHITES STORE, INC.**

Greenville, N. C.  
Washington, N. C.  
Windsor, N. C.  
Ahsokie, N. C.  
Scotland Neck, N. C.  
Mount Olive, N. C.

**Eric G. Flannagan**  
Architect

Henderson, N. C.



**HOME FURNITURE STORE**

Complete line of  
Home Furnishings

J. A. Collins  
Manager

701 Dickinson Ave.  
Greenville, N. C.

*On and Off the Campus*  
*Look For*

**NISBET-PROCTOR'S**  
CUTE CLOTHES

**To Say CONGRATULATIONS**

**Is Not Enough**

We would be most  
ungrateful if we didn't  
take this opportunity  
of saying

**THANKS**

For the many visits you've paid  
our store

**BELK-TYLER COMPANY**

Greenville, N. C.

**First Federal Savings & Loan  
Association of Greenville**

Your Savings are Fully Guaranteed  
up to \$5,000.00  
By An Agency Of The Federal Government

*Compliments of*

**GUARANTY BANK & TRUST CO.**  
Greenville, N. C.

*Ask Your Friends About  
Our Service — They Know*

**CITY SHOE SHOP**  
Greenville, N. C.

Shop at

**E F I R D S**  
*"Friendly Store"*  
Greenville, N. C.



DUNBAR STUDIO

*Fine Portraits*

228½ N. Tryon Street

Charlotte, N. C.

OFFICIAL PHOTOGRAPHERS

FOR

The 1940 TECOAN



**CHARLOTTE ENGRAVING CO.**

*School Annual Engravers*

Charlotte, North Carolina

# ***School Publications***



The many high awards won each year by school publications produced by us is the result of many years' specialization based on a comprehensive knowledge of art motifs, design, layout and publication trends.

A modern printing plant, operated by highly efficient craftsmen in every department, provides a quality and distinctiveness that is unsurpassed.



**The LASSITER PRESS, Inc.**

QUEEN CITY PRINTING COMPANY

**CHARLOTTE, NORTH CAROLINA**

**PRINTERS OF THE 1940 TECOAN**

Business, I must  
think of you as that  
young man who is  
the one who is  
the one who is  
the one who is

Dearest FAY-

Now that the year is NEARLY UP, I LOOK BACK WITH A GREAT DEAL OF PLEASURE AT HAVING BEEN IN ENGLISH AND MATH WITH YOU, AND IF I MAY SAY SO - AT HAVING BEEN FRIENDS. DEAR OLD JARVIS HALL - WHAT WOULD IT BE LIKE WITHOUT YOU? SOME OF THESE DAYS I HOPE TO BE .0001 AS SMART AS YOU HAVE BEEN THIS YEAR WITH ALL OF YOUR (1)5.

LOTS OF LOVE & LUCK -  
AS EVER -  
"SHIP"





