

NoCar  
Rare  
Oversize  
LB  
1927  
E3x  
1948  
c. 2

*the 1948 team*



*East Carolina teachers College*







Mar. 1948  
Tecum of East Carolina Teachers College  
Mercedes Duge, Truman  
Editer, Maxwell  
Marlynn



*A Student Publication*

# TECOAN

Society Dance ... "The Family Portrait."



Homecoming ... Sadie Hawkins Day ... Soda

Sharp Breakfast ... Eight O'clock Pops.



## As The Days Pass By..

*May the 1948 TECOAN bring back memories of four years well spent. To the seniors, may your steps of progress be firm and sure and not as footprints in the shifting sands of time.*







*To Our Friend and Advisor*

*the* TECOAN *of 1948*



In our struggle in life, too many people forget to live; they merely exist. They lack those priceless possessions that shine forth—without restraint—in a smile. But we have Dean Jenkins to thank for renewing our faith that in this tumultuous, sometimes unfriendly world there are still some who draw their abundant living from deep wells and who comfort by the warmth of their genuine smiles.

DR. LEO W. JENKINS *We Dedicate*



*Dr. John Decatur Messick*  
President



*Annie L. Morton*  
Dean of Women

*Dr. Leo W. Jenkins*  
Academic Dean



THE



Growth in any endeavor requires effort. Satisfaction results from the realization of an achieved goal. Each new accomplishment marks a niche in the path of progress. There is always another frontier for the person with vision.

Your education has just begun. A foundation has been laid for the building of a super structure. Your future is in your own hands. As you attain objectives, your ambitions will multiply, your capacities will increase, and your life will grow richer and fuller. But in all your successes remember to have an abiding faith in the eternal Master who is always present in time of need.

East Carolina Teachers College is proud of you, and will be just as great a friend as you will let it be. We of the faculty wish to be remembered by you, and to share in the honors and prestige which will continuously attend your efforts.

DR. JOHN DECATUR MESSICK  
*President*

You, the seniors, are to be congratulated for your willingness to accept the difficult and highly significant test of turning youth into productive citizens. Your future work will not be easy. The physical mental and spiritual requirements are so high that only a few of the many who try become teachers. You are among those few who have succeeded. The faculty and staff are proud of you and wish for you further success, health and happiness in all your future endeavors.

DR. LEO W. JENKINS  
*Academic Dean*

Character is the most important attribute of a successful leader. There is no equivalent for it. It can have no substitute.

To inspire the oncoming generations to think rightly, to act honorably and to raise the level of thinking and living is the big job of the teachers of today.

ANNIE L. MORTON  
*Dean of Women*

# ADMINISTRATION

*First Row:* Dr. Howard J. McGinnis, Field Service; Dr. J. L. Oppelt, Administration and Supervision; Jean Lane, Art, Acting Director; Paul Powell, Art; Mrs. Bernice Wragge, Art; Norman Cameron, Business Education. *Second Row:* Audrey Dempsey, Business Education; Lena C. Ellis, Business Education; Dr. Carl Adams, Education and Psychology; Lucile Charlton, Education and Psychology; Dora E. Coates, Education and Psychology; Annie C. Newell, Education and Psychology.



# Faculty of

Lucile Turner, English, Director; Mary Greene, English; Louise Greer, English; Lois Grigsby, English; Dr. M. N. Posev, English.



Mrs. D. E. Vornholt, English; Marguerite Austin, Foreign Language; Dr. Calvin Claudel, Foreign Language; Dr. P. W. Picklesimer, Geography, Director; J. B. Cummings, Geography.



Elwood Terry, Geography; Dr. N. M. Jorgensen, Health and Physical Education, Director; James Johnson, Health and Physical Education; Nell Stallings, Health and Physical Education; Thursa Steed, Health and Physical Education.



Mrs. Adelaide Bloxton, Home Economics, Director; Mabel Lacy, Home Economics; Ruth Lambie, Home Economics; Mary Poinletter, Home Economics; Virlynn Usry, Home Economics.



Wendell M. Smiley, Library Science, Director; Dale Bentz, Library Science; Margaret Sammon, Library Science; Elizabeth Walker, Library Science; Dr. P. C. Scott, Mathematics, Director.



Ellen R. Caldwell, Mathematics; John D. Reynolds, Mathematics; Louise Williams, Mathematics; Dr. Rudolph Willmann, Music Education, Director; Herbert Carter, Music Education.



# East Carolina



Elizabeth Drake, Music Education; Dr. Karl V. Gilbert, Music Education; Dan Vornholt, Music Education; J. O. Derrick, Science.



Christine Wilton, Science; Dr. A. D. Frank, Social Studies, Director; Peter Babich, Social Studies; Dr. L. F. Brewster, Social Studies.



Dr. Beecher Flanagan, Social Studies; Dr. P. A. Toll, Social Studies; Alma Browning, Critic Teacher; Eunice McGee, Critic Teacher.



Ann Redwine, Critic Teacher; Ruth White, Assistant Dean of Women; Kathleen Venters, Dormitory Counselor; Mrs. Agnes Barrett, Secretary to the President.



Mrs. Mildred Owens, Assistant to the Treasurer; Camille B. Clark, Dietitian; Mrs. Clem Garner, Alumni Secretary; Mrs. Susie Webb, Secretary, Alumni Office.



Lloyd Bray, Manager Student Stores.

"From Eight 'til Five"



. Society Dance ... "The Family Portrait."



... Homecoming ... Sadie Hawkins Day ... Soda

Sharp Breakfast ... Eight Black Pops.



## While Strolling

*We speak to the same familiar people, remark about the usual rainy weather, admire the cam-*





## From Class to Class...

*pus, and begin to realize, in  
time, how much a part of the  
college we have become.*





## SENIOR CLASS

---

*Left to Right:* Elizabeth Carter, treasurer; Francis M. Coiner, president; Anne T. Cates, vice-president; Hennie Ruth Whichard, secretary.

**M**ANY YEARS FROM NOW we will look back to the days of college life—the Soda Shop, a football game, the leaves on the campus in the Fall. Remembering this, we will understand that the books and papers of those bygone days were the arms and armor that protected us in the days of our never-ending futures.

# SENIOR

## First Row:

**A. J. Abdalla** . . . . . **Selma, N. C.**

*Science and Business Education*

Louisburg College, 1, 2; Student Legislature, 1; Science Club, 2, 3; President Catholic Club, 4.

**Eugenia Anderson** . . . . . **Burlington, N. C.**

*Primary Education*

Point System Committee, 3; Student Legislature, 3; Association for Childhood Education, 3, 1; Y. W. C. A., 4.

**Mercedes Ange** . . . . . **Jamesville, N. C.**

*Art and English*

Meredith College, 1; Commerce Club, 2; Art Club, 3, 4; Secretaries, 3; Women's Chorus, 2, 3, 4; Associate Business Manager *Tecan*, 3; Business Manager, 1; House Committee, 1.

**Iris Gay Arnold** . . . . . **Louisburg, N. C.**

*Grammar Grade Education*

Poe Society, 1, 2; International Relations Club, 2, 3.

**Alma L. Arrington** . . . . . **Hollister, N. C.**

*Home Economics and Social Science*

Home Economics Club, 1; Association for Childhood Education, 1; Y. W. C. A., 1, 2, 3, 4, Cabinet, 2, 3, President, 4; Presidents' School, Summer '47.

## Second Row:

**Anne Hope Atkinson** . . . . . **Elizabethtown, N. C.**

*Home Economics and Science*

Science Club, 1, 2, 3; Home Economics Club, 1, 2, 3; Poe Society, 1, 2; W. A. A., 1, 2; Y. W. C. A., 1, 2.

**Mrs. Frances Sutton Bailey** . . . . . **Kinston, N. C.**

*Physical Education and Social Science*

Women's Athletic Association, 1, 2, 3, 4; Secretaries, 2; Vice-President, 3; President, 4; Tennis Varsity, 1, 2, 3, 4; Softball Varsity, 3; Student Legislature, 4; Emerson Society, 1, 2, 3, 4; *Tecan Echo* Representative, 3; House Committee, Summer, '46; Vice-President House Committee, Summer, '47; Senior Superlative.

**Kathleen Barker** . . . . . **Lumberton, N. C.**

*Business Education and Social Science*

Coker College, 1, 2; Lamer Society, 3, 4; Secretaries, 4; Y. W. C. A., 3, 4; Cabinet, 1; Commerce Club, 3; Vice-President House Committee, 4.

**Clyde Myrell Barrett** . . . . . **Conway, N. C.**

*Grammar Grade Education*

Budget Committee, 2; House Committee, 3.

**Frances Virginia Bass** . . . . . **Wilmington, N. C.**

*Home Economics and Science*

College Band, 1, 2, 3; Y. W. C. A., 1, 2; Women's Athletic Association, 1, 2, 3, 4; Cabinet, 2; Volleyball Varsity, 2; Softball Varsity, 2, 3; Science Club, 1, 2, 3, 4; President, 3; Home Economics Club, 2, 3, 4; Handbook Committee, 3.

## Third Row:

**Ann Battle** . . . . . **Rocky Mount, N. C.**

*Home Economics and Social Science*

Science Club, 1; Women's Athletic Association, 1, 2; Poe Society, 1, 2, 3, 4; *Tecan* Class Representative, 2; Home Economics Club, 1, 4; House Committee, 2.

**Nell Battle** . . . . . **Rocky Mount, N. C.**

*Home Economics and Social Science*

Science Club, 1; Y. W. C. A., 1, 2, 3, 4; Women's Athletic Association, 1, 2; Poe Society, 1, 2, 3, 4; Home Economics Club, 1, 4; Junior Class President, *Tecan Echo* Class Representative, 2.

**Lola Beacham** . . . . . **Washington, N. C.**

*Science and Physical Education*

Science Club, 1, 2, 3, 4; College Band, 1, 2, 3; English Club, 1; Y. W. C. A., 1; Women's Athletic Association, 1, 2, 3, 4; Wesley Foundation Council, 4.

**Dorothy Bennett** . . . . . **Edward, N. C.**

*Business Education and Mathematics*

Y. W. C. A., 1, 2, 3, 4; Secretary of Freshman "Y"; Chairman World Student Service Fund, 2; Vice-President, 3; Big Sister, 2, 3, 4; Math Club, 1, 2, 3, 4; Secretary and Treasurer, 2; Commerce Club, 1, 2, 3, 4; Phi Omega Pi, 2, 3, 4; Treasurer, 3; President, 4; Miami Daughters and Sons, 2, 3; Poe Society, 2, 3, 4; Student Legislature, 3, 4; Senior Superlative.

**Belvin B. Beck, Jr.** . . . . . **Lexington, N. C.**

*Business Education and Social Science*

Phi Sigma Pi, 2, 3, 4; Commerce Club, 2, 3, 4; International Relations Club, 2, 3, 4; Veterans' Club, 3, 4; Senior Superlative.



# CLASS

---



# SENIOR

## First Row:

Hubert B. Bergeron . . . . . Spring Hope, N. C.

*History and English*  
English Club, 2, 3, 4; Y. W. C. A., 1, 4; International Relations Club, 3, 4; *Town Echo* Staff, 2; *Pieces of Eight* Staff, 2; Lanier Society, 1, 2; Wesley Foundation Players, 3, 4; Chi Psi Players, 1, 2, 3, 4; *Gladius, Jane Eyre, You Can't Take It With You, Twin Beds, A Murder Has Been Arranged, Admirable Crichton*, Assistant Student Director, *I Remember Mama*, Student Director, *Snow White and the Seven Dwarfs*, Student Director, *Family Portrait*; Senior Superlative.

Annie Maude Bivins . . . . . Graham, N. C.

*Home Economics and Science*  
Home Economics Club, 1, 2, 3, 4, President, 4; Science Club, 1, 2, 3, 4, Vice-President, 3; Y. W. C. A., 1, 2, 3; Handbook Committee, 1; Student Legislature, 1; John Fenley Spear Award, 3.

Christine Marie Bowen . . . . . Ahoskie, N. C.

*Primary Education*  
Poc Society, 1, 2, 3, 4, Vice-President, 3; Y. W. C. A., 1, 2, 3; Women's Chorus, 1, 2, 3, 4; Association for Childhood Education, 1, 2, 3, 4; College Marshal, 1; Big Sister, 2; Assistant Editor *Pieces of Eight*, 4; Treasurer of Women's Judiciary, 1.

Edith Bowles . . . . . Greenville, N. C.

*Business Education and Social Science*

Edward B. Bright . . . . . Chocowinity, N. C.

*Physical Education and Social Science*  
Jarvis Forensic Club, 1, 2, 3, 4, President, 3; Debate Team, 2, 3; International Relations Club, 3; Men's Athletic Association, 1, 2, 4.

## Second Row:

Doris H. Brown . . . . . Greenville, N. C.

*Business Education and English*

Helen Brown . . . . . Magnolia, N. C.

*Music and English*

James E. Bullock . . . . . Greenville, N. C.

*History and English*

Marion Burton . . . . . Bethel, N. C.

*Primary Education*  
Association for Childhood Education, 1, 2, 3, 4; Y. W. C. A., 1, 2, 3, 4; Wesley Foundation, 2, 3, Vice-President, 3; Worship Chairman, 2; Vice-President Home Committee, 3.

Margaret Elaine Carr . . . . . Wallace, N. C.

*Business Education and English*  
Commerce Club, 1, 2, 3, 4, Vice-President, 1; English Club, 1, 2, 3, 4; Beta Kappa Chapter of Phi Omega Pi, 1, 4; House Committee, Summer, '37; Treasurer Student Legislature, Summer, '37; Budget Committee, 4.

## Third Row:

Ruth Carroll . . . . . Raleigh, N. C.

*English and Business Education*

Elizabeth Tucker Carter . . . . . Greenville, N. C.

*Mathematics and History*  
Alumni Daughters and Sons, 4; Future Teachers of America, 4; Mathematics Club, 1, 2, 3, 4, Publicity Chairman, 3, Vice-President, 4; International Relations Club, 2, 3, 4; Secretary-Treasurer Women's Day Student Committee, 4; Treasurer Senior Class, Alpha Alpha Sigma, 4; College Orchestra, 1, 2, 3; Senior Superlative.

H. Winfield Carter, Jr. . . . . Greenville, N. C.

*Mathematics and Science*  
College Orchestra, 1, 2; Delegate to Student Legislative Assembly, 2; Phi Sigma Pi, 1, 2, 3, 4; Mathematics Club, 1, 3, 4.

Ella Mae Cashwell . . . . . Saxapabaw, N. C.

*English and French*  
Co-Editor *Town Echo*, 4, Managing Editor, 3, Editorial Staff, 1, 2; Editorial Staff *Pieces of Eight*, 3; English Club, 2, 3, 4; Y. W. C. A., 1, 2, 3, 4; *Poc Society*, 3, 4; Elections Committee, 3; Jarvis Forensic Club, 2, 3, 4; International Relations Club, 2, 3; Phi Sigma Chapter of Sigma Pi Alpha, 2, 3, 4; Student Legislature, 4; Publications Board, 4; Executive Council, 4.

Louise Caviness . . . . . Fuquay Springs, N. C.

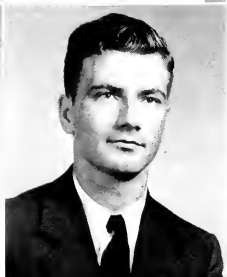
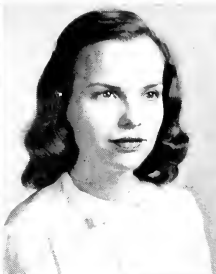
*Home Economics and Science*  
Home Economics Club, 1, 2, 3, 4; Y. W. C. A., 1, 2; Lanier Society, 1, 2, 3; Women's Athletic Association, 1, 2; Big Sister, 2; House Committee, 1, Vice-President, 2; Student Legislature, 2; Courtesy Card Committee, 3; State President of Home Economics Clubs, 4.





# CLASS

---



# SENIOR

## First Row:

Annie Thompson Cates . . . . . Hurdle Mills, N. C.

*Grammar Grade Education*

Amos O. Clark . . . . . Greenville, N. C.

*Business Education and English*

Y. M. C. A., 1, 2; Men's Day Student Committee, 1, 2, 3; *Teco Echo* Staff, 2, 3, 4, Associate Editor, 2, 3, Art and Features, Summer, 3; Co-Editor-in-Chief, 4; Veterans Club, 3, 4; Minstrel, 3; Publications Board, 3; Student Legislature, 4; Executive Council, 4; Phi Omega Pi, 3, 4; Phi Sigma Pi, 3, 4.

Francis Marion Coiner . . . . . Newport News, Va.

*English and History*

Phi Sigma Pi, '43, '46, '47, Secretary, '46; Lanier Society, '41; Men's Judiciary, '41, Chairman, '42; Art Editor *Paces of Eight*, '41, '42, Feature Editor, '42; *Teco Echo* Reporter, '41, Associate Editor, '46; Veterans Club, '46, '47, Minstrel, '46; Student Legislature, '41, '42, '46, '47; International Relations Club, '41, '42; Vice-President House Committee, '46; Advisory Board, '46, '47; Constitution Committee, '46; President Senior Class, *Who's Who Among Students in American Colleges and Universities*, '47.

Dorothy Cothran . . . . . Rougemont, N. C.

*Primary Education*

Louisburg College, 1, 2; Y. W. C. A., 3; Association for Childhood Education, 3, 4.

Mary Sue Cotton . . . . . Kipling, N. C.

*Home Economics and Social Science*

Alpha Alpha Sigma, 2, 3, 4, President, 4; College Band, 1; Home Economics Club, 1, 2, 3, 4, Secretary, 3; Jarvis Forensic Club, 2, 3, 4; Poe Society, 1, 2, 3, 4; Student Legislature, Summer, '46, 4; Y. W. C. A., 2, 3, 4.

## Second Row:

Mrs. Ann Satterwhite Cottrell . . . . . Granville, N. C.

*Home Economics and Science*

Ann Cox . . . . . Greenville, N. C.

*English and Social Science*

Paul U. Craver . . . . . Lexington, N. C.

*Business Education and Social Science*

Y. M. C. A., 1, 2, 3, President, 2, 3; State Planning Board, 3; Wesley Foundation, 2; Student Legislature, 2, 3; Varsity Club, 2, 3; Alpha Alpha Sigma, 2, 3; Beta Kappa Chapter of Phi Omega Pi, 3; Cheerleader, 3; International Relations Club, 3; Veterans Club, 1, 2; Chi Pi Players, 3.

Mary Lou Daniel . . . . . Stem, N. C.

*Primary Education*

Association for Childhood Education, 1, 2, 3, 4; Emerson Society, 1; Poe Society, 3, 4; Women's Chorus, 2, 3, 4; Chi Pi Players, 3, 4; Big Sister, 3.

Gordon Bell Davis . . . . . Beaufort, N. C.

*English and History*

Treasurer Freshman Class; Y. M. C. A., 1, 2, Cabinet, 1, 2; Lanier Society, 1, 2; International Relations Club, 2, 3; *Teco Echo* Reporter, 3; English Club, 3, 4; Phi Sigma Pi, 2, 3, 4, Treasurer, 2, 3; Men's Judiciary, 2, 3, Chairman, 3; Vice-President House Committee, 2; Chi Pi Players, 3, 4; *The Admirable Crichton*, 1; *Remember Mama, Snow White and the Seven Dwarfs*; *The Family Portrait*; Wesley Foundation Council, 2, 3, 4, Treasurer, 3, President, 4; College Marshal, 3; *Who's Who Among Students in American Colleges and Universities*.

## Third Row:

Doris Dawson . . . . . Dunn, N. C.

*Home Economics and Science*

Home Economics Club, 1, 2, 3, 4; Poe Society, 2, 3; Y. W. C. A., 1, 2, 3, 4; College Choir, 1, 2, 3, 4.

Nancy Dilday . . . . . Ahoskie, N. C.

*Primary Education*

Association for Childhood Education, 1, 2, 3, 4; Poe Society, 2, 3, 4, Secretary, 3; House Committee, 4; College Marshal, 4; Big Sister, 4.

Agnes Dillingham . . . . . Burlington, N. C.

*Social Science and English*

Tilly Eakes . . . . . Fuquay Springs, N. C.

*English and Social Science*

Louisburg College, 1, 2; College Marshal, 4; *Senior Superlatives*.

Marian Early . . . . . Aulander, N. C.

*Primary Education*

Association for Childhood Education, 1, 2, 3, 4, Secretary and Treasurer, 3; Poe Society, 2, 3, 4; Marshal, 3; House Committee, 4; Elections Committee, 2, 3; Social Committee, 4.



# CLASS

---





— Miss Sophie Fischel

*Vaughan, North Carolina*



Miss Marilynn Maxwell —  
*Greenville, North Carolina*

# SENIOR

## First Row:

Geraldine Edwards . . . . . Greenville, N. C.

College Band, 2, 3, 4; Music Education Club, 4; Commerce Club, 4.  
*Business Education and Music*

Edna Jane Eldridge . . . . . Dunn, N. C.

Commerce Club, 1, 2, 3, 4.  
*Business Education and History*

Nell Rose Ellis . . . . . Gatesville, N. C.

Museum Club, 1, 2, President, 2; Home Committee, 2, 3, Secretary, 2, President, 3; Women's Judiciary, Summer, '47; Alpha Alpha Sigma, 2, 3, Vice-President, 3; International Relations Club, 1, 2, 3; Lanier Society, 1, 2, 3; Chi Psi Players, 1, 2, 3.  
*Science and Social Science*

Della Evans . . . . . Hertford, N. C.

International Relations Club, 4; Home Economics Club, 1, 2, 3, 4; Y. W. C. A., 1, 2, 3.  
*Home Economics and Social Science*

Sophie Fischel . . . . . Vaughan, N. C.

Class President, 1; Student Legislature, 1; *Tecoa* staff, 1, 2, 3; Emerson Society, 1, 2, 3, Marshal, 1, 2; Women's Athletic Association, 1, 2, 3, Cabinet, 1, Soccer Varsity, 2, Field Hockey Varsity, 2, Basketball Varsity, 2, 3, Head of Basketball, 1; Budget Committee, Summer, '46; House Committee, Summers, '45, '46; Secretary Student Legislature, Summer, '46; International Relations Club, 1, 2; Manager of Student Stores, Summer, '45; Y. W. C. A., 2; *Teco Echo* Staff, 2; *Feature*, 3; Delegate to Columbia Scholastic Press Association Convention, 2.  
*Physical Education and Social Science*

## Second Row:

Leon B. Fleming, Jr. . . . . Greenville, N. C.

College Choir, 1, 3; College Singers, 3, 4; Music Education Club, 3, 4; Commerce Club, 1, 2, 3, 4; Alumni Daughters and Sons, 1.  
*Business Education and Music Education*

Ruth Kathleen Floyd . . . . . Cerro Gordo, N. C.

*Home Economics and Science*

Jean Fodrie . . . . . Beaufort, N. C.

Louisburg College, 1, 2; Women's Athletic Association, 3, 4; Poe Society, 3, 4; International Relations Club, 3, 4.  
*Physical Education and Social Science*

Frances Gardner . . . . . Pikeville, N. C.

*Grammar Grade Education*

Marie Gentry . . . . . Roxboro, N. C.

*Grammar Grade Education*

## Third Row:

Virginia Doris Gibson . . . . . Aberdeen, N. C.

Flora Macdonald College, 1, 2; Lanier Society, 3, 4.  
*Grammar Grade Education*

Katheryn Gibson . . . . . Wilmington, N. C.

*Social Science and English*

Mrs. Alma Lee Jones Grady . . . . . Winterville, N. C.

*Grammar Grade Education*

Edna Rose Graham . . . . . Turkey, N. C.

Louisburg College, 1; Poe Society, 2, 3; International Relations Club, 2, 3.  
*Business Education and History*

Wannie F. Gray . . . . . Clarksburg, W. Va.

*History and English*



# CLASS

---



# SENIOR

## First Row:

Mildred Griggs . . . . . Point Harbor, N. C.

*Primary Education*  
 Association for Childhood Education, 1, 2, 3, 4; Emerson Society, 1, 2; Poe Societies, 3, 4; Y. W. C. A., 1, 2, 3; Women's Chorus, 1, 2, 3, 4; Big Sister, 2, 3.

Dixie Lee Gurley . . . . . Goldsboro, N. C.

*Grammar Grade Education*  
 Poe Society, 2, 3, 4; Y. W. C. A., 1, 2, 4; Association for Childhood Education, 4; Future Teachers of America, 2, 3, 4.

Lavina Harper . . . . . Pikeville, N. C.

*Home Economics and Social Science*  
 Home Economics Club, 1, 2, 3; Chi Pi Players, 2, 3; Y. W. C. A., 1, 2, 3, Cabinet, 3; International Relations Club, 2, 3; House Committee, 2.

Miriam Harper . . . . . Spring Hope, N. C.

*Music and English*  
 Chairman Wesley Foundation Players, 1; Wesley Foundation Council, 1; *Teco Echo* Staff, 1; Entertainment Committee, 1, 2, 3, 4; College Choir, 2, 3, 4, Secretary, 2; College Singers, 3, 4; College Band, 3; College Marshal, 3; Chi Pi Players, 1.

Hazel Marie Harris . . . . . Greenville, N. C.

*English and Social Science*  
 Emerson Society, 2, 3, 4; Women's Chorus, 2; English Club, 3, 4; Science Club, 3; Y. W. C. A., 3; International Relations Club, 1.

## Second Row:

Annie Doris Heath . . . . . Kinston, N. C.

*Grammar Grade Education*  
 Y. W. C. A., 1, 4; College Choir, 2, 3; Art Club, 2, 3, 4, Publicity Chairman, 3, Secretary and Treasurer, 4; Chi Pi Players, 3, 4; Poe Society, 3, 4; Association for Childhood Education, 1; Big Sister, 2.

Juanita Herring . . . . . Goldsboro, N. C.

*Home Economics and Science*  
 Science Club, 1, 2, 3, 4; Home Economics Club, 2, 3, 4; Big Sister, 2, 3.

Mrs. Ruth Beddard Herriott . . . . . Winterville, N. C.

*Business Education and History*

Joseph Walker Hines . . . . . Washington, N. C.

*Mathematics and Social Science*  
 Veterans Club, 1, 2; Mathematics Club, 2, 3; International Relations Club, 1, 2; Student Federalist Club, 3.

Margaret Honeycutt . . . . . Clinton, N. C.

*French and Physical Education*

## Third Row:

Keith C. Hudson . . . . . Thomasville, N. C.

*Science and Social Science*

Mary Moseley Humphrey . . . . . Kinston, N. C.

*Home Economics and Science*  
 Home Economics Club, 4; Science Club, 1, 2; Emerson Society, 1, 2, 3, 4, Secretary, 4.

Elsie Jenkins . . . . . Wallace, N. C.

*Home Economics and Social Science*

Mrs. Georgia King Jenkins . . . . . Durham, N. C.

*History and Mathematics*  
 Student Legislature, 1, 2; Y. W. C. A., 1, 2, 3, 4, Treasurer Freshman "Y", Cabinet, 2; Lanier Society, 1, 2, 3; Mathematics Club, 1, 2, 3, 4; Vice-President Student Legislature, 3; *Who's Who Among Students in American Colleges and Universities*, 1.

Suzanne Jernigan . . . . . Selma, N. C.

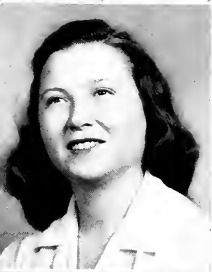
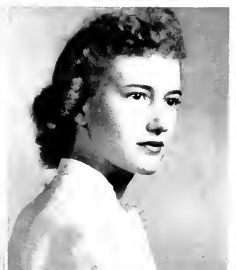
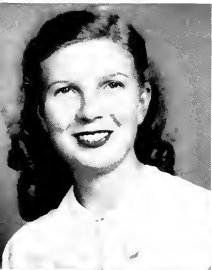
*Social Science and English*  
 International Relations Club, 2, 3, 4; Future Teachers of America, 2, 3; Women's Chorus, 2, 3, 4; Canterbury Club, 1, 2, 3, 4.





# CLASS

---



# SENIOR

## First Row:

- Roxie Geraldine Johnson . . . . . Rose Hill, N. C.  
*Home Economics and Science*
- Ruth Johnson . . . . . New Holland, N. C.  
*Business Education and English*  
 Commerce Club, 1, 2, 3, 4; *Teco Echo* Reporter, 2; Beta Kappa Chapter of Pi Omega Pi, 3, 4, Vice-President, 4; Y. W. C. A., 1, 2, 3; Budget Committee, 4.
- Josie Joyner . . . . . Sharpsburg, N. C.  
*Science and Social Science*  
 Mathematics Club, 1; Y. W. C. A., 1; Science Club, 1, 2, 3, 4; Treasurer, 3, Vice-President, 4; International Relations Club, 3, 4.
- Jack E. Kimbrell . . . . . Waxhaw, N. C.  
*Social Science and English*  
 Wingate Junior College, 1, 2; Student Legislature, 4; International Relations Club, 3, 4, President, 4; English Club, 3, 4; Jarvis Forensic Club, 1; College Choir, 3, 4; Y. W. C. A., 3, 4; Baptist Council, 4.
- Doris E. King . . . . . St. Pauls, N. C.  
*Primary Education*  
 Y. W. C. A., 1, 2, 3, 4, Cabinet, 2; Association for Childhood Education, 2, 3, 4.

## Second Row:

- Arline Koonce . . . . . Richlands, N. C.  
*Home Economics and Social Science*  
 Home Economics Club, 2, 3, 4.
- Ruth Krank . . . . . Poplar Branch, N. C.  
*English and History*  
 Y. W. C. A., 1, 2, 3, 4, Forum Chairman, 3; English Club, 2, 3, 4; Big Sister, 2; Elections Committee, 3; Advisory Board, 4; College Marshal, 3, 4; Student Legislature, 3, Summer, '47; Nominating Committee, 3; Delegate to National Student Association, 3; International Relations Club, 1, 2, 3, 4; Emerson Society, 2, 3; Poe Society, 4; Features, 4.
- Thomas G. Larkins . . . . . Scotia, N. Y.  
*English and Social Science*  
*Teco Echo* Staff, 4; Secretary Men's Day Student Committee, 3, 4; English Club, 4.
- Joe Lassiter . . . . . Conway, N. C.  
*Mathematics, Science, and Physical Education*  
 Y. M. C. A., 1, 2, 3, 4, Treasurer, 2; Chi Psi Players, 1, 2; Senior Play, '44; College Band, 1, 2, 3, 4, President, 4; College Choir, 1, 2; Mathematics Club, 4, 2; Science Club, 1; Phi Sigma Pi, 2, 3, Historian, 4; Basketball, 1, 2; Baseball, 1, 2; Men's Judiciary, 2; Chairman, 4; House President, 2, Vice-President, 4; College Dance Band, 2, 3, 4; Student Legislature, 4; Executive Council, 4; Handbook Committee Chairman, 4; Who's Who Committee, 4; Veterans Club, 3; Men's Athletic Association, 3, 4; Senior Superlative, *Who's Who Among Students in American Colleges and Universities*, 3.
- Ruth Muriel Lassiter . . . . . Smithfield, N. C.  
*Science and Home Economics*  
 Home Economics Club, 1, 2, 3, 4, Publicity Chairman, 3, Constitution Chairman, 4; Science Club, 4; Art Club, 1, 2, 3; Publicity Chairman, 1, Secretary, 2, President, 3; Y. W. C. A., 1, 2, 3, Big Sister, 2; Lanier Society, 1, 2; Handbook Committee, 3; Baptist Student Union, 1; Student Legislature, 2, 3; Senior Superlative.

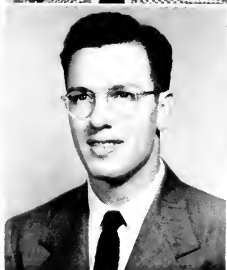
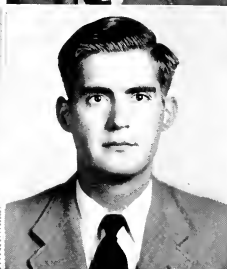
## Third Row:

- Rena Lowery . . . . . Trenton, N. C.  
*Business Education and Mathematics*  
 Y. W. C. A., 1, 2, 3, 4, Secretary, 2, Treasurer, 3, Big Sister, 2, 3, 4; Mathematics Club, 1, 2, 3, 4, President, 4; Commerce Club, 1, 2, 3, 4; Emerson Society, 1, 2, 3, 4; Student Legislature, 4; Wesley Foundation, 1, 2.
- Corinne Manning . . . . . Bethel, N. C.  
*Business Education and Mathematics*  
 Y. W. C. A., 1, 2; Mathematics Club, 2, 3, 4; *Teco Echo* Representative, 3, Social Chairman, 4; Commerce Club, 2, 3, 4, Treasurer, 3; Poe Society, 2, 3, 4; Big Sister, 3.
- Fred H. Martin . . . . . Asheville, N. C.  
*Science and English*  
 Brevard Junior College, 1, 2; Vice-President Veterans Club, 3; House President, Summer, '46; Phi Sigma Pi, 3, 4; Jarvis Forensic Club, 4; Y. M. C. A., 3, 4; Science Club, 4; President Student Legislature, 3, 4, Summers, '46 and '47; Senior Superlative, *Who's Who Among Students in American Colleges and Universities*.
- Eleanor Glenn Mason . . . . . Newport, N. C.  
*Business Education and Spanish*  
 W. C. U. N. C., 1; Commerce Club, 2, 3, 4; Phi Sigma Chapter of Sigma Pi Alpha, 3, 4.
- Marilyn Maxwell . . . . . Greenville, N. C.  
*English and Music Education*  
 Lanier Society, 1; Emerson Society, 2, 3; Commerce Club, 1; Music Education Club, 2, 3; English Club, 1, 2, 3; Y. W. C. A., 1, 3, Big Sister, 2; Associate Editor *Teco Echo*, 2; Business Manager *Teco Echo*, Summer, '47; Poetry Editor *Pieces o' Eight*, 2; Associate Editor *Tecoon*, 2; Editor *Tecoon*, 3; Who's Who Committee, 3; Chairman Publications Board, 3; Student Legislature, 3; Women's Chorus, 2; College Singers, 2, 3; Delegate to Columbia Scholastic Press Association Convention, 2; Features, 3; *Who's Who Among Students in American Colleges and Universities*.



# CLASS

---





— Miss Mercedes Ange

*Jamesville, North Carolina*



Miss Hilda Riley —  
*Wilson, North Carolina*

# SENIOR

## First Row:

- Mattie Harris Mayo . . . . . Greenville, N. C.  
*Business Education and Mathematics*
- Wiley S. Mayo, Jr. . . . . Mesic, N. C.  
*Science and Social Science*
- Mrs. Ann W. Mercer . . . . . Fountain, N. C.  
*Primary Education*
- Louise Mewborn . . . . . Hookerton, N. C.  
*English and History*
- English Club, 2, 3, 4, Vice-President, 3, President, 1; International Relations Club, 2, 3, 4; Jarvis Forensic Club, 2; Lanier Society, 1, 2, 3, 4; Y. W. C. A., 1, 2, 3, 4.
- Della Jane Mobley . . . . . Williamston, N. C.  
*Primary Education*

## Second Row:

- Jocelyn Moore . . . . . Delco, N. C.  
*Primary Education*
- Tom Moseley . . . . . Kinston, N. C.  
*Physical Education and History*
- Lottie Murphy . . . . . Warrenton, N. C.  
*Grammar Grade Education*
- Y. W. C. A., 1, 4, Big Sister, 2; Association for Childhood Education, 3, 4, Secretary-Treasurer, 4; House Committee, 3, 4, Secretary, 4; Baptist Student Council, 4.
- Rebecca Murphy . . . . . Henderson, N. C.  
*Physical Education and Mathematics*
- Mathematics Club, 1, 2, 3, 4; Women's Athletic Association, 1, 2, 3, 4; Cabinet, 1, 2, 3; Volleyball Varsity, 2, 3; Basketball Varsity, 2, 3; Softball Varsity, 3; Poe Society, 1, 2; Alumni Daughters and Sons, 1, 2; Y. W. C. A., 4; President House Committee, 4; *Who's Who Among Students in American Colleges and Universities*.
- Betty Sue McGee . . . . . Monroe, N. C.  
*Primary Education*
- Y. W. C. A., 1, 2, 3; Lanier Society, 1, 2, 3; Association for Childhood Education, 1, 2, 3, 4, Publicity Director, 2, Corresponding Secretary, 3, Vice-President, 1; Student Legislature, 4; Women's Chorus, 2, 3, 4.

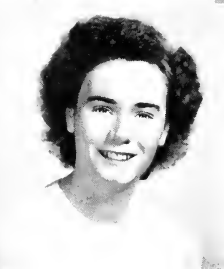
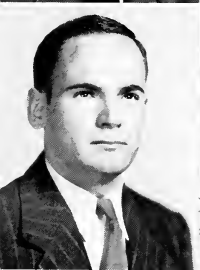
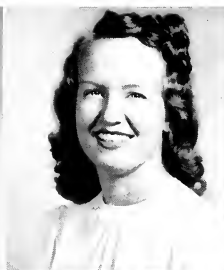
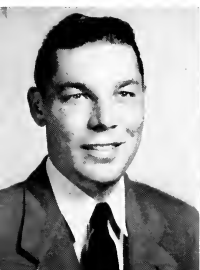
## Third Row:

- Daphne Olena Pake . . . . . Beaufort, N. C.  
*Home Economics and Social Science*
- Flora Macdonald College, 1; Home Economics Club, 2, 3, 4; International Relations Club, 3, 4; Poe Society, 2, 3, 4, Secretary, 4; House Committee, 4.
- Jeanette O. Parker . . . . . Sunbury, N. C.  
*Social Science and Geography*
- Poe Society, 1, 2, 3, 4; International Relations Club, 1, 2, 3, 4.
- Mary Lee Parker . . . . . Rocky Mount, N. C.  
*Music Education and English*
- Flora Macdonald College, 1, 2; University of North Carolina, Summer, '46; Field Hockey Varsity, 3; Alumni Daughters and Sons, 3, 4; English Club, 1; College Choir, 3, 4; College Orchestra, 3; Music Education Club, 4.
- Mattie V. Parker . . . . . Mount Olive, N. C.  
*Physical Education and Mathematics*
- Women's Athletic Association, 1, 2, 3, 4, Volleyball Varsity, 2, Softball Varsity, 3, 4, Basketball Varsity, 3, 4, Field Hockey Varsity, 3; Y. W. C. A., 1, 2; Poe Society, 1, 2; Mathematics Club, 2.
- Myrtle Agnes Paul . . . . . Pike Road, N. C.  
*Business Education and Social Science*
- Lanier Society, 1, 2, 3, 4; Alpha Alpha Sigma, 3, 4, Secretary, 3; Commerce Club, 1, 2, 3, 4.



# CLASS

---



# SENIOR

## First Row:

Myrtle Peedin . . . . . Willow Springs, N. C.

*Home Economics and Science*

Home Economics Club, 1, 2, 3, 4; Lanier Societies, 1, 2, 3, 4.

Evelyn Peele . . . . . Lewiston, N. C.

*Primary Education*

Home Committee, 2, 3; Vice-President, 3; Chairman Women's Judiciary, 1; Executive Council, 4; Emerson Society, 2, 3; Women's Athletic Association, 2, 3; Y. W. C. A., 2, 3, 4; Association for Childhood Education, 1; Women's Chorus, 3; Big Sister, 4.

Bernese Pender . . . . . Goldsboro, N. C.

*English and French*

Nell Perry . . . . . Louisburg, N. C.

*Home Economics and Science*

Home Economics Club, 1, 2, 3, 4; Science Club, 1, 2, 3, 4; Y. W. C. A., 1, 2, 3; Alumni Daughters and Sons, 1, 2, 3, President, 3; Student Legislature, 3; Big Sister, 2, 3; Baptist Student Union Council, Summer, '45.

Sarah Pickett . . . . . Kenansville, N. C.

*Physical Education and Business Education*

Women's Athletic Association, 1, 2, 3; Emerson Society, 1, 2, 3, 4, Secretary, 3.

## Second Row:

O. Beatrice Player . . . . . Greenville, N. C.

*Business Education and History*

Rachel Pleasant . . . . . Angier, N. C.

*Music Education and Business Education*

Music Education Club, 3, 4, Vice-President, 1; Women's Chorus, 2, 3, 4; College Band, 2, 3, 4; Commerce Club, 1; Lanier Society, 1, 2, 3, 4, President, 3, Marshal, 4; House Committee, 2, 3; Big Sister, 3.

Richard L. Powers . . . . . St. Pauls, N. C.

*English and Science*

Assistant Editor *Process of Eight*, 1.

Annette Pridgen . . . . . Warsaw, N. C.

*English and Physical Education*

English Club, 2, 3; Jarvis Forensic Club, 2, 3; Women's Athletic Association, 2, 3, 4; Business Manager *Process of Eight*, 1.

Patsy Pridgen . . . . . Elm City, N. C.

*Physical Education and Mathematics*

Mathematics Club, 1; Women's Athletic Association, 1, 2, 3, 4, Cabinet, 4; Y. W. C. A., 1, 2, 3, Recreation Chairman, 2, 3; Women's Chorus, 2, 3, 4; Cheerleader, 2, 3, 4; College Marshal, 4; Big Sister, 2, 3, 4; Wesley Foundation Council, 2, 3; Chi Pi Players, 3.

## Third Row:

Mildred Pruitt . . . . . Danville, Va.

*Business Education and English*

Commerce Club, 1, 2, 3, 4; Pi Omega Pi, 3, 4, Historian, 3; Y. W. C. A., 1; Jarvis Forensic Club, 2, 3, 4, Vice-President, 2, Secretary and Treasurer, 3, 4; Secretary of Student Legislature, 4.

Issac N. Reynolds . . . . . Columbia, N. C.

*Business Education and English*

Commerce Club, 1, 2, 3; Pi Omega Pi, 2, 3, 4, Historian, 4; Secretary International Relations Club, 4; Student Federalist Club, 1; Canterbury Club, 1, 2, 3, Treasurer, 3; English Club, 1; Director of News Bureau, Summer, '47; Veterans Club, 3, 4.

Hilda Gray Riley . . . . . Wilson, N. C.

*Primary Education*

Lanier Society, 1, 2, *Teco Echo Reporter*, 1; *Poe Society*, 3, 4; Y. W. C. A., 1, 2, 3; Association for Childhood Education, 1, 2, 3, 4, Publicity Manager, 3; Big Sister, 2; *Teco Echo Staff*, 1, 2, Associate Editor, 2; Assistant Editor *Process of Eight*, 3, Editor, 4; Publications Board, 3, 4; Student Legislature, 4; *Features*, 4.

Emily Jean Roberson . . . . . Parmele, N. C.

*Home Economics and Social Science*

Home Economics Club, 2, 3, 4; Y. W. C. A., 1, 2, 3, Cabinet, 3; *Poe Society*, 3; Wesley Foundation Council, 2, 3; International Relations Club, 1; Big Sister, 2.

Joyce Roberson . . . . . Spring Hope, N. C.

*Home Economics and Science*



# E. C. T. C.



# CLASS

---



# SENIOR

## First Row:

Mary Robinson . . . . . Elizabethtown, N. C.  
*Science and Physical Education*  
 Women's Athletic Association, 1, 2, 3, 4; Lanier Societies, 1, 2, 3, 4; Y. W. C. A., 1.

Autrey Rogers . . . . . Manteo, N. C.  
*Business Education and Social Science*  
 Oak Ridge Military Institute, 1, 2; Historian Student Legislature, 3, 4; Commerce Club, 3; Phi Sigma Pi, 3, 4; Catholic Students Club, 1; Vice-President Chi Pi Players, 3, 4; *The Admirable Cuckoo*, 1; *Remember Mama, Nana & White and the Seven Dwarfs*.

Janet Earle Rose . . . . . Nashville, N. C.  
*Primary Education*

Marie Rouse . . . . . Greenville, N. C.  
*Business Education and Mathematics*

J. Robert Russ, Jr. . . . . Washington, N. C.  
*Business Education and Science*  
 Jarvis Forensic Club, 2, 3; Debating Team, 3; International Relations Club, 2, 3; Veterans Club, 2, 3; Commerce Club, 2, 3.

## Second Row:

Leslie Earl Sadler . . . . . Winterville, N. C.  
*Business Education and English*  
 Veterans Club, 1, Historian, 1.

Betty Jean Sanders . . . . . Jonesboro, N. C.  
*Grammar Grade Education*

Earl L. Sawyer . . . . . Jamesville, N. C.  
*Mathematics and Social Science*  
 Y. M. C. A., 1, 2, 3, Secretaries, 2, 3; Phi Sigma Pi, 2, 3; Chi Pi Players, 1, 2, 3; Veterans Club, 1, 2, 3.

Annie Ruth Sealey . . . . . Barnesville, N. C.  
*Honors Economics and Science*

Barbara Selby . . . . . Dudley, N. C.  
*English and History*  
 Poe Society, 1, 2, 3, 4; English Club, 1; International Relations Club, 3, 4; Women's Judiciary, Summer, '47; President Canterbury Club, 4.

## Third Row:

Camilla Selby . . . . . Engelhard, N. C.  
*English and Social Science*  
 Women's Athletic Association, 1, 2; Lanier Societies, 1, 2, 3, 4; Y. W. C. A., 1, 2, 3, 4; Commerce Club, 1, 2; Secretary Junior Class; Associate Business Manager *Tecum*, 3, 4; Circulation Manager *Paces w' Eight*, 1; Big Sister, 2; *Footnote*, 4.

Amos Sexton . . . . . Montgomery, Ala.  
*Physical Education and Social Science*

Mrs. Christine Gray Smith . . . . . Kinston, N. C.  
*Science and Physical Education*  
 Peace College, 1; Vice-President Junior Class; Y. M. C. A., 2, 3, 4; Cabinet, 3; Delegate to Y. W. and Y. M. C. A. Southern Regional Conference, 3; Women's Athletic Association, 2, 3, 4; Cabinet, 3; Emerson Society, 2, 3, 4; Treasurer, 1; Basketball Varsity, 2, 3; Softball Varsity, 2, 3; Big Sister, 3; Science Club, 2, 3, 4; Publicity Chairman, 3.

Mrs. Edith Sutton Smith . . . . . La Grange, N. C.  
*Primary Education*

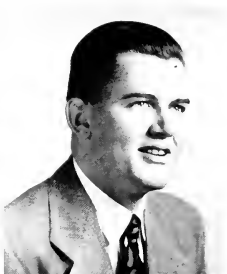
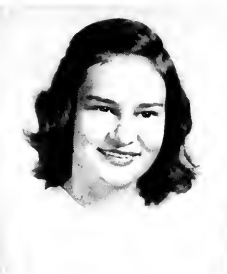
Jake Smith . . . . . Greenville, N. C.  
*Science and Mathematics*



# E. C. T. C.

# CLASS

---





Miss Camilla Selby

*Engelhard, North Carolina*



Miss Mattie Harris Mayo —  
*Greenville, North Carolina*

# SENIOR

## First Row:

- James C. Smith . . . . . Greenville, N. C.  
*English and Business Education*
- Mary Speight . . . . . Windsor, N. C.  
*Grammar Grade Education*  
 Future Teachers of America, 1, 2; Y. W. C. A., 3, 4; Alumni Daughters and Sons, 1, 2.
- Edith Starling . . . . . Clinton, N. C.  
*Home Economics and Science*
- Daisy Virginia Steele . . . . . Winton, N. C.  
*Science and Mathematics*  
 Poe Society, 1, 2, 3, 4; *Tecum Reporter*, 2; President, 3; Y. W. C. A., 1, 2, 3, 4; Big Sister, 2; Junior Class *Tecum Echo Reporter*, Secretary Sophomore Class, Women's Chorus, 3, 4; Handbooks Committee, 3; Student Legislature, 3; Vice-Chairman Women's Judiciary, 4; Executive Council, 4; Assistant Editor *Pieces o' Eight*, 4.
- Clarke Stokes . . . . . Hertford, N. C.  
*Physical Education and History*

## Second Row:

- Elizabeth Sutton . . . . . La Grange, N. C.  
*Primary Education*  
 Association for Childhood Education, 3, 4; Executive Board, 4; Historian, 4.
- Lillian Sanders Talton . . . . . Zebulon, N. C.  
*Grammar Grade Education*  
 Campbell College, 1.
- Mrs. Peggy Adams Tatarski . . . . . Reidsville, N. C.  
*Home Economics and Science*  
 Home Economics Club, 1, 2, 4; Cheerleader, 2; College Marshal, 3; Poe Society, 1; Y. W. C. A., 1, 2, 3; Senior Superlative.
- Fountain Taylor . . . . . Richlands, N. C.  
*Mathematics and Science*
- Leyta Ozell Taylor . . . . . Robersonville, N. C.  
*Home Economics and Science*

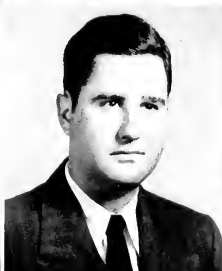
## Third Row:

- Margaret Eleanor Taylor . . . . . Richlands, N. C.  
*Mathematics and English*  
 Secretary and Treasurer Mathematics Club, 3, 4.
- Joe Tew . . . . . Thomasville, N. C.  
*Business Education and Social Science*
- John F. Thigpen, Jr. . . . . Williamston, N. C.  
*Science and Physical Education*  
 Mars Hill College, 1, 2; Phi Sigma Pi, 3, 4; President, 4; Varsity Club, 4; Student Legislature, 4; Manager of Baseball Team, 3; Senior Superlative, *Who's Who Among Students in American Colleges and Universities*.
- Margery Lee Thomas . . . . . Warsaw, N. C.  
*Primary Education*  
 Y. W. C. A., 1, 2, 3, 4; College Choir, 1, 2; Business Staff *Tecum*, 2; Lanier Society, 1, 2; Poe Society, 3, 4; President, 4; Publications Board, 3; Social Committee, 3; Association for Childhood Education, 1, 2, 3, 4; Business Staff *Pieces o' Eight*, 3; Handbooks Committee, 1; Women's Athletic Association, 1, 2, 3; Student Legislature, 4.
- Marjorie Louise Thomas . . . . . Conetoe, N. C.  
*Primary Education*  
 International Relations Club, 1, 2; Emerson Society, 2, 3; Association for Childhood Education, 2, 3, 4; Baptist Student Union, 1, 2, 3, 4; Secretary, 4.



# CLASS

---



# SENIOR

## First Row:

Janice Trebuchon . . . . . Jonesboro, N. C.

*Primary Education*

Elizabeth Trippe . . . . . Greenville, N. C.

*English and Social Science*

English Club, 2, 3, 4; Chi Pi Players, 3, 4; *Snow White and the Seven Dwarfs, The Family Portrait; Jarvis Forensic Club*, 2, 3, 4.

Wanda Tyndall . . . . . Pink Hill, N. C.

*Music Education and French*

Annie Crisp Warren . . . . . Conetoe, N. C.

*Business Education and History*

International Relations Club, 1, 2, 3, 4; Commerce Club, 1, 2, 3, 4; Lanier Society, 1, 2, 3, 4.

Nell Marie Webster . . . . . Leaksville, N. C.

*Mathematics and Social Science*

Lees-McRae College, 1, 2; Emerson Society, 3, 4; Vice-President, 4; Math Club, 3; College Choir, 1; College Marshal, 4.

## Second Row:

Dorothy Wheeler . . . . . Benson, N. C.

*Home Economics and Social Science*

Hennie Ruth Whichard . . . . . Greenville, N. C.

*Business Education and English*

Secretary Freshman Class; Secretary Women's Day Student Committee, 1; Vice-President, 3; Women's Chorus, 1; English Club, 1, 2; Commerce Club, 1, 2; Canterbury Club, 1, 2, 3, 4; Pi Omega Pi, 2, 3, 4; Social Committee, 3, 4; Student Legislature, 3; College Choir, 3, 4; President, 4; *Snow White and the Seven Dwarfs; Secretary Senior Class; Senior Superlative, Who's Who Among Students in American Colleges and Universities.*

Mary Andrews Whichard . . . . . Greenville, N. C.

*Business Education and Spanish*

Canterbury Club, 1, 2, 3, 4; Vice-President, 4; Day Student Committee, 1; Commerce Club, 1; Women's Chorus, 1, 2; Sigma Pi Alpha, 2, 3, 4; President, 3; Student Legislature, 1, 3; College Choir, 3, 4; College Singers, 3, 4.

Betty Jean Whitehurst . . . . . Bethel, N. C.

*Grammar Grade Education*

Frances Young Whitehurst . . . . . Bethel, N. C.

*Grammar Grade Education*

## Third Row:

Marietta Whitfield . . . . . Kinston, N. C.

*Primary Education*

Y. W. C. A., 1, 2, 3, 4; Association for Childhood Education, 3, 4; Executive Board, 4; Second Vice-President, 4.

Alma Lee Whitley . . . . . Enfield, N. C.

*Music Education and English*

Alumni Daughters and Sons, 1, 2, 3, 4; Music Education Club, 3, 4; Courtess Card Committee, 1, 2; Chairman, 2; Y. W. C. A., 3; College Band, 1, 2, 3; Women's Chorus, 1, 2, 3, 4; College Singers, 1, 3, 4; *Teco Echo Staff*, 1, 2; Lanier Society, 1, 2, 3, 4.

Beaufort Williams . . . . . Inez, N. C.

*Home Economics and Science*

Associate Editor *Tecoom*, 1, 2, 3, 4; Home Economics Club, 1, 2, 3, 4; Vice-President, 2; Big Sister, 2, 3; Y. W. C. A., 1, 2; Fox Society, 3, 4.

Mrs. Betty Cole Williams . . . . . Forest City, N. C.

*Business Education and Mathematics*

Y. W. C. A., 1, 2, 3, 4; Cabinet, 2; Commerce Club, 1, 2, 3, 4; Math Club, 1, 2, 3, 4; Pi Omega Pi, 2, 3, 4; President Home Committee, 3; Women's Judiciary, 3; College Marshal, 3; Lanier Society, 1, 2, 3, 4.

Ray Wooten . . . . . Clinton, N. C.

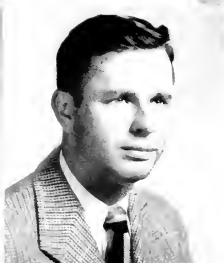
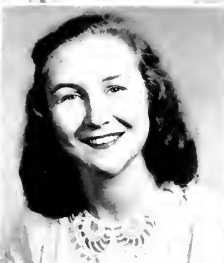
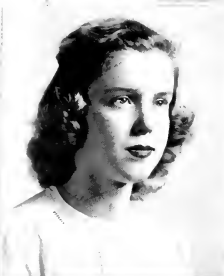
*Social Science and Physical Education*





# CLASS

---

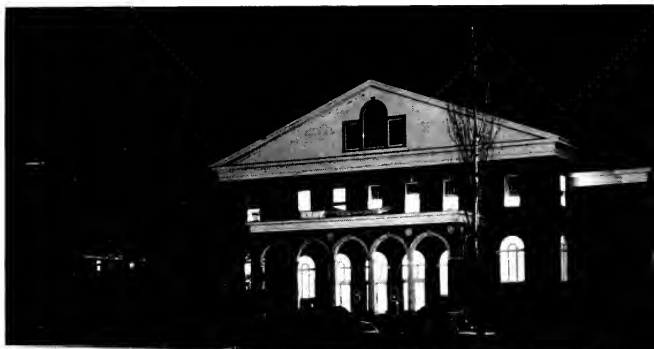




— Miss Ruth Krank  
*Poplar Branch, North Carolina*

# East Carolina —

*at night*



# WHO'S WHO

## *Among Students*

*First Row:* Alma Arrington,  
Annie T. Cates, Francis M.  
Coiner, Gordon Davis, Nell  
Rose Ellis.



*Second Row:* Mrs. Georgia  
King Jenkins, Fred Martin,  
Mattie Harris Mayo, Mari-  
lynn Maxwell, Rebecca Mur-  
phy.



*Third Row:* Evelyn Peele,  
Dorothy Powell, Clarke  
Stokes, John Thigpen, Hen-  
nie Ruth Whichard.



## *n American Colleges and Universities*



These students have distinguished themselves in scholarship, leadership, and citizenship. For their outstanding work this honor has been bestowed on them.

MRS. FRANCES S. BAILEY  
*Most Athletic Girl*



BELVIN BECK  
*Best Dressed Boy*



HUBERT BERGERON  
*Most Original*



## Senior

JOE LASSITER  
*Best Dancer, Best Looking Boy*



RUTH LASSITER  
*Most Likely to Succeed*



FRED MARTIN  
*Best Leader, and Friendliest Boy*



## Superlatives

ELIZABETH CARTER  
*Most Intellectual*



TILLY EAKES  
*Best Dressed Girl*



PEGGY HUNNECUTT  
*Most Popular, Best Dancer, and Best All-Round Girl*





MATTIE HARRIS MAYO  
*Most Sincere*

ANNETTE PRIDGEN  
*Most Studious*

BARBARA SELBY  
*Wittiest*

## Senior



AMOS SEXTON  
*Most Athletic Boy*

CLARKE STOKES  
*Most Popular and Best All-Round Boy*

MRS. PEGGY A. TATARSKI  
*Prettiest*

## Superlatives



JOHN THIGPEN  
*Best Personality*

HENNIE RUTH WHICHARD  
*Most Talented and Friendliest Girl*



## JUNIOR CLASS

---

Left to Right: Ann Beddard, secretary; John Heath, vice-president; June Bass, president; Nita Ballenger, treasurer.



**T**HAT ONE LAST YEAR is getting closer, and we are beginning to feel that we have a great deal of work to do before we graduate. As we move on, we hope to make our last year the best.

*First Row:* Edmond J. Acree, Rosa Asbell, Mary Lou Austin, Juanita Balenger, Jacqueline Barnhill, June Bass, Mary Ann Bass, Ruth Bass.

*Second Row:* Etta Bazemore, Sarah Bazemore, Ann Beddard, Bobbie Claire Bennett, Margaret Bickel, Hilda Blalock, Lucille Blalock, Mary Catherine Blue.

*Third Row:* Annie Lou Bobbitt, Ruby Lee Bordeaux, Jean Bostian, Martha Bowen, Mary Lou Bowen, Fenner Boyd, Brownie Bradshaw, Virginia Brandon.

*Fourth Row:* Corinne Braswel, Julia Bray, James Briley, Susan Brinson, Linwood Bryan, John Ballard, Eileen Peggy Burney, Grace Butler.

## Junior



*First Row:* Mary Byrd, Rosemary Canady, Iola Carrowan, Anne Ford Carson, Margaret Cartledge, Robert Chinnis, Ellen Joyce Clark, Virgil Clark.

*Second Row:* Emily Cocke, Charles Connor, Carl Thomas Cox, Colleen Carrier, Shirley Currin, Frances Daniels, Lovestine Daughtry, Helen Davenport.

*Third Row:* Myrtle Davis, Raymond Jack Davis, Rockie Lee Davis, Foy Wray Dewar, Ruth Gray Edmundson, Emma Jean Edwards, Lucille Edwards, Sarase Edwards.

*Fourth Row:* William J. Edwards, Jr., Lucia B. Elliott, Mary E. Ellis, Sarah Jean Ellis, Louise Enzor, Audrey Feezor, Alton Finch, John D. Finch.

# Class

---



*First Row:* Virginia Lee Floyd, Gerald Cox Frazelle, Kenneth Frazelle, Rachel Futrell, Helen G. Gaskins, Virginia Gaylord, Mary Alice Gay, Carol Gore.

*Second Row:* Lucille Gray, Robert Alton Gray, Billie B. Greene, Sallie Joe Gurganus, Emma Gurley, Janice Haislip, William L. Hales, Milton Hamilton.

*Third Row:* La Verne Hardeson, Rose Hardison, Genora Jane Harris, Vera Scott Harris, John W. Heath, Gene B. Hedgepeth, Jean Bryan Hilton, Frances Hobgood.

*Fourth Row:* Edna Earle Holloman, Harritte Hooker, Margaret Howell, John Huff, Polly Ingold, Edith Ipock, Estelle Jernigan, Carolyn Jessup.

## Junior



*First Row:* Martha Johnson, Ruby Mae Jones, Sammie Lou Jones, Thelma Joyner, Rosalie Kearney, Sophie Marie Kelly, Helen J. Kemp, Jesse Lamm.

*Second Row:* Margie Lamm, L. M. Lancaster, Sue Lanier, George Lassiter, Catherine Lawyer, Lucy Henry Layton, Margie Lewis, Christine Lilley.

*Third Row:* Myra Little, James F. Lockridge, Dolores Lokotzke, Nina Ruth Long, Lydia Long, Elizabeth Lowe, Audrey Mallard, Elna Mae Mangum.

*Fourth Row:* A. E. Manning, Lena Manning, Ruffin Manning, Lessie Mae Maready, Marion Martin, Margaret Matthews, Mary Matthews, Phillip Meekins.

# Class



*First Row:* Lila Rose Melvin, Evelyn C. Mills, Mary Elizabeth Mills, Blanie Moye, Lois McCormick, Jesse McDaniel, Rageline McGranahan, Betsy McKenzie.

*Second Row:* Mary Elizabeth Nichols, Mildred Agnes Oakes, Eugene O'Neal, Carol Parker, Ophelia Parker, Shirley Parker, Virginia Partin, Mildred Patrick.

*Third Row:* Frances Peele, Gilbert Peel, Willard Pendleton, Enid Petteway, Josephine Pinnell, Susan W. Pitt, Marjorie Pollard, Carrie Sylvia Parter.

*Fourth Row:* Dorothy G. Powell, Hilda Lee Priest, Lynn Raper, Edith Rhodes, Helen Rich, Barbara Ridditt, Mary Robertson, R. G. Robertson.

## Junior



*First Row:* John L. Roberson, Carolyn Roulfs, Betty Lou Saiced, Edna Sawyer, Elizabeth Sawyer, Marshall Scruggs, Marjorie Selby, Julia Senter.

*Second Row:* William Shelton, Mrs. Esther Moore Sheppard, Mae Sheppard, R. L. Shuford, Betty Mae Smith, Dean Smith, Mrs. Doris N. Smith, Lou Smith.

*Third Row:* Margaret E. Smith, Edna Mae Squires, Nell R. Stallings, Ruth Stevens, Bernice Stone, Blonnie Ellen Stott, Barbara J. Stovall, Gladys Talley.

*Fourth Row:* Richard Tarravechia, Mary Taylor, Mary Frances Taylor, Ruth Taylor, Dorothy Thomas, Frostie Thompson, Bernice G. Turner, Raymond Uzzell.

# Class

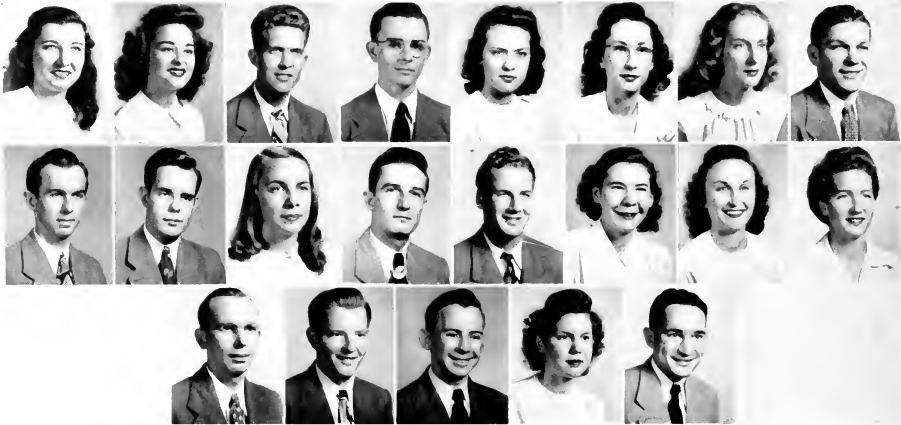


*First Row:* Mrs. Jessie Rose Waller, Marion Ward, Willie Warner, Calvin Warren, Earnestine Warren, Sue W. Weathers, Mary Weston, Robert D. Wheeler.

*Second Row:* Howard Whitehurst, Charles R. Williams, Nancy Wilson, Richard Wilson, Frank Winesette, Helen Winslow, Joann Winslow, Ann Winstead.

*Third Row:* Grover C. Wood, Wade Woodley, Jerome Worsley, Joyce Younce, John M. Young.

## Junior Class









## SOPHOMORE CLASS

---

*Left to Right: Sullivan Nelson, treasurer; William Sutton, vice-president; Josephine Herring, secretary; Morris Hill, president.*

**W**ITH TWO YEARS REMAINING the Sophomores can look back at past mistakes and forward to greater success. We have proved our worth. Now, we are ready to continue growing.

# Sophomores

*First Row:* Nina Abernathy, F. C. Adams, R. C. Adams, Jr., Maxine Anderson, Frances Andrews.

*Second Row:* Douglas Amerson, Jerry A. Amundson, Lloyd N. Bagley, Marshall Baines, Correll E. Bass.

*Third Row:* Jerry Bennett, Mildred Best, Myra P. Best, Frank T. Bonner, Ruth Bostian.

*Fourth Row:* Thomas C. Boykin, Roland C. Braswell, Jessie Brown Braxton, Virginia Brooks, Melba Ruth Browne.

*Fifth Row:* Rupert T. Browning, Jeanette Brumsey, William Earl Bryant, Paul J. Casey, Paul M. Casey.

*Sixth Row:* Thomas Edward Casey, W. F. Cherry, Doland R. Clark, Milton V. Clarke, Jane Cole.

*Seventh Row:* Lewis Collier, Floyd R. Collins, Velva M. Collins, Ernest Connelly, Johnny F. Corey.

*Eighth Row:* J. F. Cozart, Bettie Croom, James R. Croom, C. V. Cross, Jr., Edythe Grace Daniel.





*First Row:* William H. Daniel, Ruth M. Daughtie, Graham J. Davis, Robert M. Davis, William B. Davis.



*Second Row:* J. P. Dean, Maynard A. Dean, William H. Durham, Jr., William T. Early, Jr., Robert W. Eason.



*Third Row:* Lester Earl Edmundson, Howard Etheridge, Jack S. Everton, William H. Exum, Milton Fields.



*Fourth Row:* Frances Fischel, Samuel M. Fischel, Frances F. Flora, Rachel Floyd, William Fort.



*Fifth Row:* Roscoe Frazelle, Jimmy Fryar, Bill R. Fulp, Bruce Gay, Russell M. Gaylord.



*Sixth Row:* William C. Gay, Robert M. Glover, Carnie C. Gooding, Baxter Gray, Joe Gregory.



*Seventh Row:* Howard C. Grey, Joseph W. Griffin, James Hall, Walter F. Hannan, Paul M. Hansell.



*Eighth Row:* Ben Harper, Ben Hayes, Woodard Hayes, Jack Hedgepeth, Josephine Herring.

# Sophomores

*First Row:* Ben S. Hester, George T. High, Aubrey K. Hill, Garland E. Hill, Morris L. Hill.



*Second Row:* Robert Hokum, Richard D. Holloman, Charles Jackson Howard, Craven Hughes, Dan Hunt.



*Third Row:* Myra Hunt, Richard J. Hunt, Leon W. Jackson, Walter M. Jackson, Hazel Jacobs.



*Fourth Row:* Benjamin James, James E. Jarvis, Javan Rogers, Sterling Johnston, Steven N. Johnston.



*Fifth Row:* Vernon Jones, Virginia Joyce, Carl L. Kinlaw, Warren Koonce, Chester Langley.



*Sixth Row:* Arab Lee, Charles Lee, Robert B. Lee, Coye Lewis, John W. Liles.



*Seventh Row:* Cletus M. Link, Mack Liversay, Joe Lynch, Kenneth Manning, Zack B. Manning.



*Eighth Row:* Carlton T. Marsh, Zack S. Matthews, Alton Mayo, Robert E. Midyette, James E. Montague.





*First Row:* C. H. Moore, William D. Moore, George E. Morris, Paul R. Morris, Annie M. Morton.



*Second Row:* Eloise B. Morton, Mary Moye, Cecil Murphy, Julian Murphy, Hubert Musselwhite.



*Third Row:* Robert T. McClaren, Jr., Robert L. McCoy, Elizabeth McDonald, Samuel G. Nelms, Luther S. Nelson.



*Fourth Row:* Curtis Nichols, Thad Nobles, Joan Oppelt, Bob Ostrander, Frederick C. Ourt.



*Fifth Row:* Lorene Owens, Esther Parker, Gilliam Parker, Betsy Parkerson, James C. Payne.



*Sixth Row:* Melbourne Pearson, A. H. Perry, Lewellyn Phillips, Noah Curtis Phipps, Louise Carolyn Phippen.



*Seventh Row:* William H. Pittman, Jr., Brian Porter, John Pournaras, Jean Powell, Marvis Price.



*Eighth Row:* Louise Pridgen, Aubrey W. Pridgen, Christine Badford, Milton Raynor, Jo Reynolds.

# Sophomores

*First Row:* Winifred H. Richardson, Richard S. Ricks, Jr., E. H. Riddick, Sidney Riddick, Arthur Ritch.



*Second Row:* James Rodney Roberts, Ledyard Ross, Janice Sasser, Henry D. Satterwaite, Claude Sawyer.



*Third Row:* Elizabeth Schuereger, Henry B. Selby, Haywood C. Sellers, Hugh B. Sherrod, W. H. Skarren.



*Fourth Row:* Marvin Slaughter, G. W. Smith, Lieland Leroy Smith, John N. Smith, Robert S. Stallings.



*Fifth Row:* Peggy Steed, Lola Stephenson, Alan L. Stoddard, Edwin M. Strand, Hilton Styron.



*Sixth Row:* Dora Louise Suggs, Hugh I. Sutton, Jr., William Sutton, Herbert Taylor, Paul Taylor.



*Seventh Row:* Doris Teachey, Stanley Terrell, Jr., J. L. Thompson, Marjorie J. Thompson, William Tuttle.



*Eighth Row:* Marshall G. Warren, William P. Warren, James L. Waters, Geraldine C. Weathers, James O. Weeks.







*First Row:* Bernard C. West, Robert N. Weston, Virginia Whitehurst.



*Second Row:* Dorothy A. Whitfield, Norman Wicker, William D. Windley.



*Third Row:* Doris Willard, Edith Williams, Marjorie D. Williams.



*Fourth Row:* Laura Marie Williamson, Lemuel M. Williford, Curtis Wilson.



*Fifth Row:* John Wilson, Patricia A. Wilson, Johnny Winston.



*Sixth Row:* Micky Witherington, Charles E. Wood, J. D. Woodlief.



*Seventh Row:* Newsome Worsley, George E. Wynne, Ella Frances Vida.



*Eighth Row:* Bill Vincent, Bernard York, John D. Zeh.



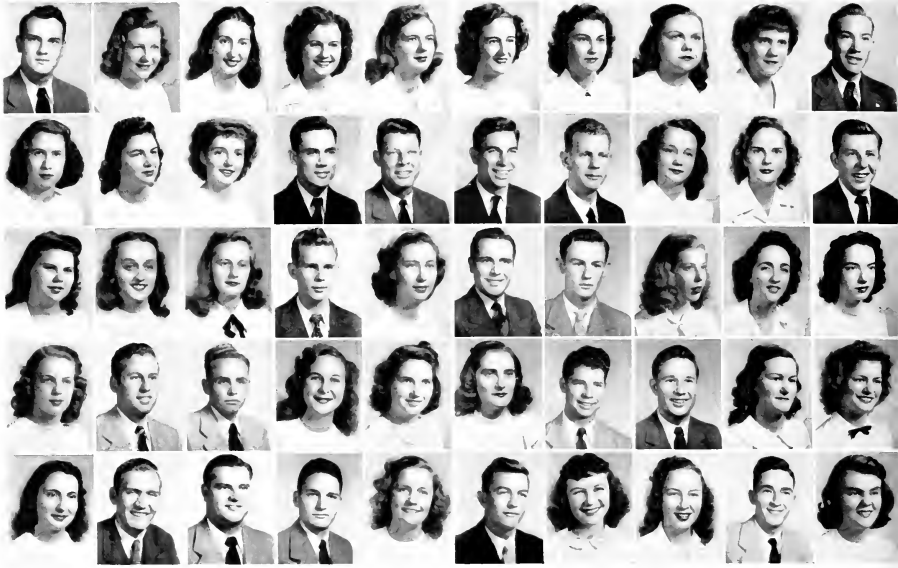
## FRESHMAN CLASS

---

*Left to Right:* Gilbert Carroll, president; Tempe McIntyre, vice-president; Florence Boerckel, secretary; Billy Sutton, treasurer.

**A**T THE END OF OUR FIRST YEAR we realize that there is more to college than just attending classes. We are willing to learn—we are practically Sophomores.

# Freshmen



*First Row:* Thomas Adams, Jane Hortense Albritton, Helen Alderman, Georgia Mae Allen, Evelyn Alphin, Margaret Marie Aycock, Mary Evangeline Baker, Sarah Sue Bartlett, Bessie Ray Bass, Johnny Beaman.

*Second Row:* Betty Catherine Beard, Ann C. Beatty, Margaret J. Bell, Thomas M. Benton, Allen Berry, Danny Berry, William Best, Louise Bizzell, Rachel Blackham, Jimmy Fryar.

*Third Row:* Velma Bland, Joanne Blue, Florence Boerckel, Frank Boddie, Kathryn Ann Bonner, Thomas F. Booth, Milton Bostic, Jacqueline Boyette, Maureen Brannon, Mary Lou Braxton.

*Fourth Row:* Grace Breedlove, Carol R. Britt, Paul C. Brittle, Lois Marie Britt, Audrey Louise Brooks, Polly Brown, Raymond E. Brown, Robert E. Brown, Ella Mae Brundon, Ellyn Buffkin.

*Fifth Row:* Ruby Lee Bullock, Charles Butler, Abner Butterworth, Horace Cahoon, Dorothy Frances Cain, Gilbert Carroll, Edith Marie Cartwright, Virginia Chapin, Frances S. Cheson, Ethel Reid Clements.

*First Row:* Reba Collier, Carl G. Conner, Peggy Jeannette Cooper, Junius Creech, Cloyce Lee Creel, Ray L. Cuddihy.

*Second Row:* W. F. Cuddihy, Joyce Loretta Currier, James N. Daniels, Bill Darby, Barbara Davis, Margaret Davis.

*Third Row:* Patricia Davis, Thomas W. Davis, Donald Denny, Allen Dewar, Helen H. Duncan, Jean Early.

*Fourth Row:* Mary Jack Eason, William Easterling, Ann Eays, Doris Edwards, J. B. Edwards, Mayhue Edwards.

*Fifth Row:* Lucille P. Ellis, Darrell Ernest, Mac Eure, Frances Everett, Roddy M. Everett, Betty Lou Everton.

*Sixth Row:* William Farrell, Wilama Ferrell, Julia V. Ferrill, Minnie Jo Fisher, William H. Flanders, Mary W. Foye.

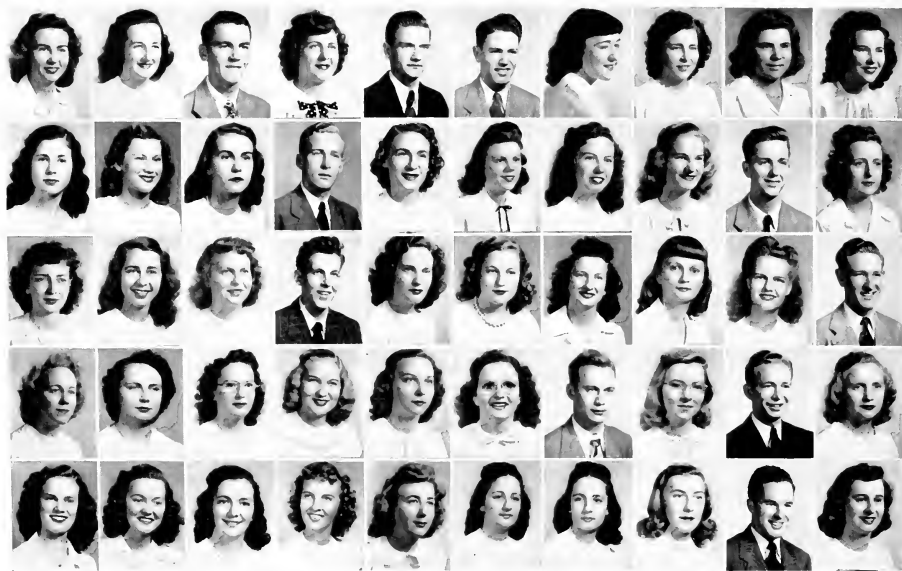
*Seventh Row:* Donald Freeman, Jane Fulghum, Nell Fulgham, Jane Gainey, Barbara N. Gardner, Robert H. Gaskins.

*Eighth Row:* Evelyn Gay, Elizabeth Glasgow, Philip R. Gorham, Sally Sue Graham, James Martin Gray, Lois Griffin.

*Ninth Row:* Gilder Grimes, Jack Gurganus, Jean Gurganus, Jean Harrington, Dorothy Harris, Walter H. Harris.



# Freshmen



*First Row:* Kathleen Hartis, Peggy Jean Hart, Don Hatch, Margaret Jean Head, Howard Heath, Roland Heath, Louise Hines, Betsy Hinnant, Thelma Hinson, Marvis Elaine Hobbs.

*Second Row:* Ramona Hobgood, Lillian Hofer, Jean Holiday, Arthur Hollomand, Leslie B. Homan, Norman F. Hooper, Anne House, Faye Howard, Gene Hoyt, Annette Hughes.

*Third Row:* Dorothy H. Isles, Ella Jean Jackson, Jannie Jackson, Harry M. Jacobs, Jr., Virginia Mae Jernigan, Daphne Jilcott, Betty Sue Jones, Estelle Jones, Enpha Mae Jones, F. A. Jones, Jr.

*Fourth Row:* Hazel Gray Jones, Suzie Jones, Elizabeth Jordan, Shirley Kinlaw, Rachel S. Kirby, Lena Evelyn Kite, Leon V. Klutz, Evelyn F. Kornejy, Richard Krumel, Mary Ellen Lancaster.

*Fifth Row:* Amaryllis Lang, Florine M. Langston, Betty Jean Lewis, Edith M. Lewis, Frances Ann Lewis, Lorraine Elizabeth Lewis, Lorese Mary Lewis, Nancy Lewis, Thomas J. Lindley, Mary Neal Lindsley.

*First Row:* Camille Lockamy, Elizabeth A. Long, Nancy Long, Annie Rose Mallard, Elizabeth Manning, Barbara Martin.

*Second Row:* Carolyn Mason, Margaret L. Mason, Bob Mays, Ruth Mewborn, Evelyn Michael, Joan Ellen Millar.

*Third Row:* Cornelia Mills, Peggy Monroe, Faye Moore, Margaret Annette Moore, Phoebe Moore, Violet Moore.

*Fourth Row:* Horace C. Morris, Lee Ray McDonald, Jr., Helen J. McLawhorn, Tempe Vaughn McIntyre, Charles W. McIver, Joyce Hardy Newell.

*Fifth Row:* James Nichols, Maynell Nichols, Anne Borden Nicholson, M a u d e Noe, Martha Kate Oakley, Marie Orr.

*Sixth Row:* Thelma Page, Richard Palmer, Thelma Ruth Parker, Alberta Parkhurst, Audrey Parks, William E. Parham.

*Seventh Row:* Anne Paschal, Lola O. Peedin, Irene Peele, Martha Pickett, Doris Pleasant, Joe Polilli.

*Eighth Row:* Bruce H. Pope, Jr., Florence B. Pope, Ola Porter, William R. Potter, Claudia Nanse Potts, Grace Powell.

*Ninth Row:* Elton Price, Anne Faye Pullen, David A. Qualls, James L. Ratledge, Louise Reece, Christine Register.



# Freshmen



*First Row:* Elda Richmond, Annie Frances Riddick, Bill Robbins, Junius Rose, Lois H. Ross, Grace Rowe, Lucille Rowe, Virginia Rowles, Thelma E. Russ, Johnnie Mae Sawyer.

*Second Row:* Milton Sawyer, Ramona Sawyer, Charles K. Septer, Cleo Elizabeth Simons, Joseph B. Slaughter, Bertha Smith, Carl Smith, Carrie Mae Smith, Helen Loraine Smith, James D. Smith.

*Third Row:* John H. Smith, Lois Smith, Marie Smith, Sedalia Smith, Susan C. Smith, Joseph C. Speight, Willie M. Spivey, Dorothy Spruill, Jean Spruill, Alice C. Squires.

*Fourth Row:* Avis Faye Squires, Ruth Anne Stainback, Giles Ervin Stallings, Mildred Stapleford, Anne Starling, Janice Starling, John B. Stilley, Christine Strickland, Doris Stroud, Patsy Stroud.

*Fifth Row:* Pensy Stewart, William E. Stevens, Beulah Grace Sugg, Wilton J. Sumner, Rachel L. Sutter, Billy Sutton, Patricia Sutton, Laura Frances Swain, Jack E. Swindell, Joyce Swinson.



# 1948

*First Row:* Russel Tatum, Alvin Taylor, Jean Taylor, Katherine Taylor, Vivian Taylor, Jack Teel, Jr.



*Second Row:* Alton Ray Thomas, Doris Mae Thomas, Laura Sue Thomas, Shirley Thornton, Roger Thrift, Mary Sue Todd.



*Third Row:* Bill Torrans, Frances Tucker, Jack Wallace, Maxine Warren, William Waters, Annette Watson.



*Fourth Row:* Helen Watson, Betty Jane Wells, Walter Wells, C. B. West, O. G. Wheeler, Jr., Charles Whiteford.



*Fifth Row:* Jack K. White, Olene White, Eleanor Whitley, Irma Whitley, Robert L. Whitt, Barbara Jean Williams.



*Sixth Row:* Elmer E. Williams, Jr., Marjory Williams, Patricia Williams, Patty Williams, Alvin B. Willis, Joyce Willis.

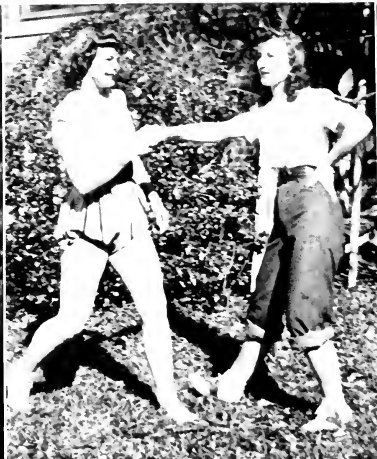


*Seventh Row:* Buck Wilson, Dorothy Wilson, Frances Wilson, Margaret Wilson, Scottie Winstead, Bertha Winstead.



*Eighth Row:* Bobby Wrightenberg, Ralph S. Wright, Dorothy L. Vaughan, Francis Vergara, Frances Vincent, Nancy Zachary.







## Graduate Students

*First Row:* Z. W. Frazelle, Everett Hudson, Douglas Jones.

*Second Row:* Mrs. Ann F. Wells, Joseph Williams, Mrs. Florence H. Warren.

the "After" Hours

... Society Dance ... "The Family Portrait."



... Homecoming ... Sadie Hawkins Day ... Seda

Sharp Remodeling ... Eight Black Pops ...



During Our

*We turn our interests to the  
many organizations and clubs  
that are a part of our college*





## Leisure Time...

*life. With these we may  
broaden our scope in any-  
thing from debating to music.*





*First Row: Fred Martin, Robert Shuford • Second Row: Evelyn Peck, Rebecca Murphy, Rena Lowrey, Dorothy Bennett • Third Row: Audrey Feczo, Mattie Harris Mayo, June Bass, Nell Rose Ellis • Fourth Row: Ruby Lee Borden, Alma Arrington, Ed Casey, Gilbert Carroll • Fifth Row: Lola Stephenson, Annie Maude Bivins, Ellen Joyce Clark, Sue Cotton • Sixth Row: Aubrey Rogers, Fally Ingold, Willie Warner, Morris Hill • Seventh Row: Marilyn Maxwell, Bilda Riley, A. J. Abdalla, Willard Pendleton • Eighth Row: John Pourmaras, Mildred Pruitt, Amos Clark, Amos Sexton, Joe B. Tew • Ninth Row: Peggy McGlohon, Charles D. Connor, Melba R. Browne, Sue McGee, Jack Hedgepeth, Margery Lee Thomas, Peggy Rukey, Joe Arcey, John F. Thigpen • Tenth Row: Colleen Carrier, Jack E. Kimbrell, Dorothy C. Powell, Paul U. Craver, Milton Clark.*

## Student Legislature



**FRED MARTIN**  
*President of the Student Legislature*

Under a revised constitution the Student Legislature has grown into an organization that justly represents the student body. Its advance is marked with better co-operation and co-ordination of the various clubs and organizations toward promoting school spirit.



## Women's Judiciary

The Women's Judiciary made up of eight members has as its main function the promotion and maintenance of high standards of conduct on the campus. These standards are upheld through the combined efforts of this body and the women students.



EVELYN PEELE  
Chairman

*Left to Right: Melba Browne, Nell Rose Ellis, Daisy Steele, Rebecca Murphy, Evelyn Peele, Frances Holmwood, Lynn Raper, Christine Bowen, Myrtle Davis.*

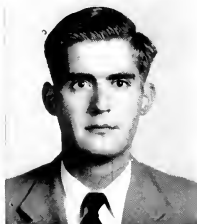


The purpose of the Men's Judiciary is to act as a judicial body in all matters concerning discipline of men students, and to support any movement on the campus for the betterment of the college and the students. The college had its record enrollment of men students this year; thus, the functions of the judiciary were greatly increased.



*Left to Right: Clarke Stokes, Al Stoddard, Joe Grayson, Joe Lassiter, Jack Davis, Joe Acece.*

## Men's Judiciary



JOE LASSITER  
Chairman

## Handbook Committee

*Left to Right: Sue Melier, Joe Lassiter, Annie Maude Bivens.*



## Entertainment Committee

*Left to Right: Marian Ward, Virgil Clark, Dr. Charles Reynolds, Miss Ellen Caldwell, Miss Marguerite Austin, Jack Howard.*

## Budget Committee

*Left to Right: Dorothy Powell, Marian Ward, John Fournaras, Margaret Carr, Clyde Barrett.*



## Point System Committee

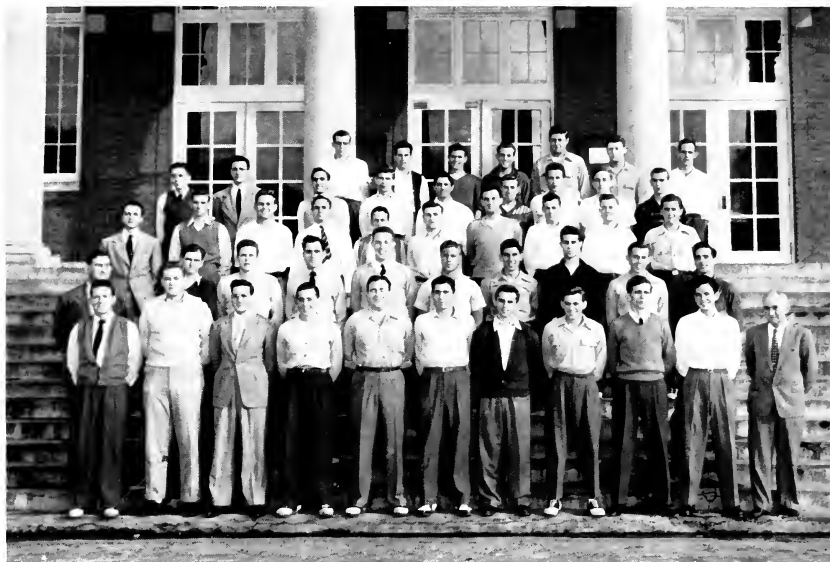
*Left to Right: Milton Clark, Ann Waddard.*

# Standing Committees

Through the efforts of the committees, the students are provided with entertainments throughout the year, a handbook to help them learn about the college, and other works that keep the campus activities functioning smoothly.



# Veterans' Club



*First Row, left to right: Jack Hedgepeth, president; Paul Taylor, vice-president; Jack Howard, secretary; Ed Casey, treasurer; Bob Chinnis, Will Pittman, Burke H. Parker, Bob Wheeler, Amos Clark, Garland Hill, Dr. Carl Adams. • Second Row, left to right: James Johnson, Marshall Barnes, Milton Clark, Morris Hill, Raymond Sellars, Ben Harper, Dan Berry, Wilton Sumner, Stephen Johnson, Paul Casey. • Third Row, left to right: John Pournaras, Jesse Lamm, Keith Kilpatrick, Tom Musoley, Hugh Sutton, Jack Davis, Jim Michaels, Newton Wareley, Douglas Anderson, Leland Smith. • Fourth Row, left to right: Joe Hines, Fred Martin, Joe Ten, Victor Bell, Amos Sexton, Don Denny, Thomas Cox, Marshall Scruggs, Bill Hales. • Fifth Row, left to right: Frank Maenley, Al Moore, John Smith, Robert Deans, Mae Eure, Allen Berry, Ike Davis.*

The Veterans' Club of East Carolina was formed in the winter quarter of 1946, with the membership composed of the ex-service personnel connected with the college.

The club's purpose is two-fold: a social organization intended to inspire fraternal feeling among ex-servicemen and help in the solving of their problems; a constructive group interested in the advancement of scholastic and athletic achievement on the campus.

With 140 members the club plans activities that encompass the entire school year. Last year the club sponsored a dance and minstrel with the net profit going into the Athletic Scholarship Fund. The same activities are planned for this year.

# Y. W. C. A.



*First Row:* Helen G. Gaskins, Myrtle C. Davis, Doris E. King, Grace Butler, Louise Mewborn, Nance Patts, Julia Bray, Alma Arrington, Jean Bastian, Frances Daniels, Lola Stephenson, Anne Houser, Grace Sugg, Hazel Jones • *Second Row:* Virginia Rowles, Ethel Clement, Ruby Lee Berdeauy, Sophia Maris Kelly, Iola Carrowan, Faye Howard, Peggy Monroe, Susan Smith, Ellen Joyce Clark, Ruby Mae Jones, Florence Boerckel, Evelyn Peele, Rebecca Murphy • *Third Row:* Rachel Floyd, Marion Burton, Lois Ross, Elma Mangum, Dorothy Frances Cain, Marjorie Pollard, Eupha Mae Jones, Marie Orr, Virginia Chapin, Geneva Harris, Daphne Jilcott • *Fourth Row:* Bessie Ray Bass, Mary Lou Austin, Mary Lou Beaxton, Lola Griffin, Margaret Mason, Marie Aycock, Rachel Kirby, Shirley Parker, Elizabeth Womble, Tempe McIntyre, Bernice Stone, Grace Daniel, Marjorie Thompson, Frances Wilson, Maxine Warren, Ann Fay Pallen, Mary Ann Bass • *Fifth Row:* Doris Stroud, Kathryn Ann Bonner, Florence Pope, Evelyn Kite, Annie Rose Mallard, Jane Gainey, Sallie Bitt Wilson, Patricia Sutton, Elizabeth Jordan, Edith Rhodes • *Sixth Row:* Irene Peele, Laura Frances Swain, Dorothy Isles, Violet Moore, Christine Badford, Mildred Oakes, Louise Sugg, Mary Ann Happer, "Jo" Herring, Mae Sheppard, Virginia Partin.



ALMA ARRINGTON  
President

One of the first organizations to begin on the campus, the Y. W. C. A., is functioning in all its original efficiency. The Friday night vespers, "Night Watch", the traditional Christmas program, the "Big Sister" program, the W. S. S. F. drive and Religious Emphasis week are all a part of the Y. W. C. A. program for the year.

The Young Men's Christian Association was first organized at East Carolina in the spring of 1939, and it continued until the war. It was reorganized in November 1946.

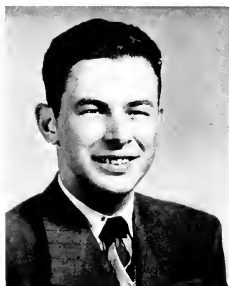
The Y. M. C. A. and the Y. W. C. A. jointly sponsor: vespers every Friday night, the drive for the World Student Service Fund, the White Gift Service each Christmas, Religious Emphasis Week, and Graduation Vespers in June. The Y. M. C. A. sends delegates to the various regional and sectional conferences with one of its members on the state planning board. This summer the organization plans to send its president to Presidents' School in New York.

The Y. M. C. A. is open to all men at East Carolina, either students or faculty, who declare themselves in sympathy with the purposes of the organization.

The pledge of the Y. M. C. A. is: "Having declared my intention of making the purpose of the Young Men's Christian Association my own personal program of allegiance and service, I hereby pledge myself to live by the principle of faith and service through Christ for which it stands."

Y  
M  
C  
A

*First Row, left to right: Paul Craver, president; Maynard Dean, vice-president; Earl Sawyer, secretary; Joe Brown, treasurer. • Second Row, left to right: Dr. Beecher Flanagan, James Bailey, Tom Collins, Hubert Bergren. • Third Row, left to right: Haywood Sellers, Kenneth Exzelle, Joe Lassiter, Bill Durkan, Jack Kimbrell. • Fourth Row, left to right: Blaine Moye, Z. W. Frazelle, Gene Hedgepeth, John Pourmaras.*

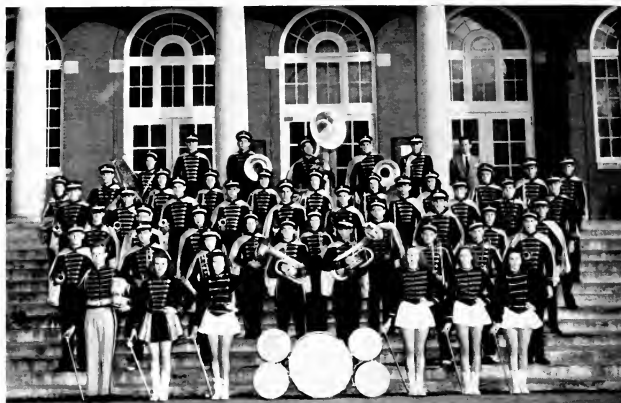


PAUL CRAVER  
President



## THE COLLEGE BAND

During the first part of the year the band started a campaign to get new uniforms. Their dreams have come true. Next year the band will be dressed as well as any other college band.



The Women's Chorus has continued to provide musical entertainment for the college. Their voices can be heard lifted in song at chapel services, concerts, and many other programs throughout the year.



## THE WOMEN'S CHORUS

# THE COLLEGIANS



During the short time that they have been organized the band has grown to be acclaimed one of the better dance bands in Eastern North Carolina. You name it—they can play it!



The College Choir to many students is one of their favorite classes. For a number of years and more to come the choir will continue to provide enjoyment for the students and others.

# THE COLLEGE CHOIR

## THE COLLEGE SINGERS

The College Singers were organized last year. In a short time they have built a reputation for providing programs of pleasure and beauty.



The purpose of the Music Education Club is to develop in its members a deeper knowledge and appreciation of music; and to stimulate an interest in music activities on the campus. The programs combine social activities with student participation, guest speakers, and discussions.



## MUSIC EDUCATION CLUB



## BRASS QUARTET



The Brass Quartet is made up of students who are interested in bettering their technique and learning more about the instruments in the brass family.



This group with the Brass Quartet was organized this year. With the growth of the music department the number of ensembles has increased.

## WOODWIND QUARTET

# Campus Leaders

## E. C. T. C.



These are the leaders of the departmental clubs through whose efforts our organizations function efficiently.

*First Row: Annie Maude Bivins, Home Economics Club; Ruby Lee Bordeaux, Sigma Pi Alpha; Thomas Ed Casey, Commerce Club; Sue Cotton, Alpha Alpha Sigma; Audrey Feezor, Science Club; Jack Kimbrell, International Relations Club; Louise Newborn, English Club; Joan Oppelt, Music Education Club; John Pournaras, Jarvis Forensic Club; Aubrey Rogers, Chi Pi Players; John Thigpen, Phi Sigma Pi; Howard Whitehurst, Future Teachers of America.*



Tau Chapter of Phi Sigma Pi



Beta Kappa Chapter of Pi Omega Pi

## Tau Chapter of Phi Sigma Pi

This chapter of the national education fraternity sponsors speakers with relationship to the education field. Representatives of the F.B.I., Dean's office, Treasurer's office have appeared before the group. A square dance and founders day banquet are annual events.

*First Row: left to right: John Thigpen, president; Kenneth Frazelle, secretary; Gene Holdegrath, treasurer; Frank Coimer, Amos Clarke, Earl Sawyer* • *Second Row: left to right: Dr. Beecher Flanagan, Aubrey Rogers, Gilbert Perle, Gordon Davis, Alton Finch, Calvin Warren* • *Third Row: left to right: B. L. Shuford, Fred Martin, Helvin Beck, Joe Lawdler, Joe Arcece, Douglas Jones* • *Fourth Row, left to right: Willie Warner, Garlan Rulley, Z. W. Frazelle, Raymond Uelle, Joe Brown, Joe Tew.*

## Beta Kappa Chapter of Pi Omega Pi

To promote scholarship and interest in business education is the chief purpose. Pi Omega Pi has as its minimum entrance requirement an average of a two in twenty-one quarter hours of business education and a "three" in other courses.

*First Row, left to right: Ruth Johnson, Frostie Thomson, Alton Finch, Isaac Reynolds* • *Second Row, left to right: Miss Velma Lowe, Frances Daniels, Nina Ruth Long, Jo Ann Winslow, Margaret Carr* • *Third Row, left to right: Miss Lena Ellis, Mildred Pruitt, Mattie Harris, Maxie, Hennie Ruth, W. Richard, Ann Boddard, Miss Audrey Dempsey* • *Fourth Row, left to right: Dr. E. R. Browning, Joe Tew, Amos Clarke, Paul Craver, Wade Woodley, Norman Cameron.*

## Alpha Alpha Sigma

This fraternity's purpose is to promote service and leadership in Social Science education. Sophomore, junior, and senior social science majors with a "three" average are eligible for membership.

*First Row, left to right: Glady Tallie, Helen Winslow, Nell Rose Ellis, Sue Cotten* • *Second Row, left to right: Dr. Beecher Flanagan, Paul Craver, Myrtle Paul.*

## Phi Sigma Chapter of Sigma Pi Alpha

Membership in the Sigma Pi Alpha is limited to those students who have an unusual interest in languages and who have an average of a "two" in foreign languages.

*First Row, seated: Ruby Lee Bordeaux, president; Frances Daniels, vice-president; Rosemary Canady, secretary-treasurer* • *Second Row, left to right: Margaret Riekel, Peggy Steed, Mary A. Whichard, Patricia Lyon, Ella Cashwell, Christine Lilles, Mary Mills* • *Third Row, left to right: Milton Fields, Dan Hunt, Alan Stoddard.*

Alpha Alpha Sigma



Phi Sigma Chapter of Sigma Pi Alpha



## Art Club

The Art Club conducted four work shops for the making of posters on the campus. A print exhibition from the Robert-Lee Galleries was one of our main events besides monthly gallery trips that supplemented our meetings.

*Left to Right:* Mercedes Ange, Annie Doris Heath, A. E. Manning, Mrs. Bernice Wagg, Dorothy Thew, Jimmy Jarvis, Miss Jean Lane.



## Home Economics Club

Good things have come from the Home Economics Club this year—100% membership, the state president, and many interesting programs.

*First Row, left to right:* Annie Maude Bivens, president; Myrtle Davis, vice-president; Bernice Stone, secretary; Edna Squires, treasurer; Beaufort Williams, Sara Lou Edwards, Doris Dawson, Geneva Harris. ● *Second Row, left to right:* Blonnie Stott, Helen Watson, Betty Blinnout, Marie Orr, Tempe McIntyre, Lucille Ellis, Reba Collier, Laving Harper, Mrs. A. E. Blivison, Dorothy Cain. ● *Third Row, left to right:* Jo Pennell, Carrie M. Smith, Rachel Kirby, Corneilia Mill, Dean Smith, Avis Squires, Thelma Ross, Miss Mahol Lees. ● *Fourth Row, left to right:* Carolyn Roulf, Louise Bizzell, Evelyn Gay, Louise Enzer, Frances Wilson, Grace Bevel Love, Julia Carawan, Doris Edwards, Lola Pevden, Ramona Dohgood, Elizabeth Manning. ● *Fifth Row, left to right:* Della Evans, Amayhille Lang, Mary Humphrey, Emily Roberts, Marie Smith, Helen Alderman, Ann Battle, Nell Battle, Juanita Herring, Miss Eunice McGee, Ann Atkinson, Betty Ellis. ● *Sixth Row, left to right:* Audrey Frezer, Helen Gaskins, Sammie Jones, Edith Starling, Esther Parker, Evelyn Mills, Enid Pettway, Lessie Mae Mearns, Dorothy Wheeler, Margaret Dickson, Ernestine Warren, Nell Perry, Mrs. Peggy A. Tatarski. ● *Seventh Row, left to right:* Dorothy Isles, Laura Swain, Louise Caviness, Katherine Barnes, Doris Smith, Daphne Pake, Geraldine Johnson, Nita Ballenger, Elizabeth Wumble, Dorothy Vaughan, Lois McCormick, Jean Boston, Frances Bass. ● *Eighth Row, left to right:* Mrs. Jesse Rose Waller, Marjorie Thompson, Lewellyn Phillips, Carol Gatz, Harriett Bookler, Rachel Pittrell, Sue Catten, Elizabeth Jordan, Margaret Moore, Nina Alhernath, Ruth Bass.



## Science Club

During the fall the club gave a successful Sadie Hawkins Day dance. With this plus their efforts to bring modern scientific trends into their programs, they have made their club outstanding.

*First Row, left to right:* Audrey Frezer, president; Josie Janyer, vice-president; Lola Stephenson, secretary-treasurer; Tom Collins, A. J. Abdalla, Anne Atkinson, Frances Bass, Lola Beacham, Dan Berry. ● *Second Row, left to right:* Annie Maude Bivens, Jean Budington, Thomas Buckler, James Briley, Francis Cheson, Reba Collier, Robert Davis, Thomas Davis, Faye Draper, Doris Edwards, Lurla Elliott. ● *Third Row, left to right:* Ben Harper, Juanita Herring, Warren Hill, Dan Hunt, Andrew Jenkins, Lymwood Johnson, Rosalie Kearney, A. E. Lacey, Fred Martin, Luther Nelson, Nell Perry, Betty Doris Sanders. ● *Fourth Row, left to right:* Haywood Sellers, William Sutton, Fountain Taylor, Bernice Turner, Dixie Hunter Warren, Earl Sawyer, Mr. E. O. Derrick, Miss Christine Wilson, Lois McCormick, Lewellyn Phillips, Mrs. Christine Gray Smith, Helen Gaskins. ● *Fifth Row, left to right:* Max Carrell, Joe Toth, Frank Toothman.

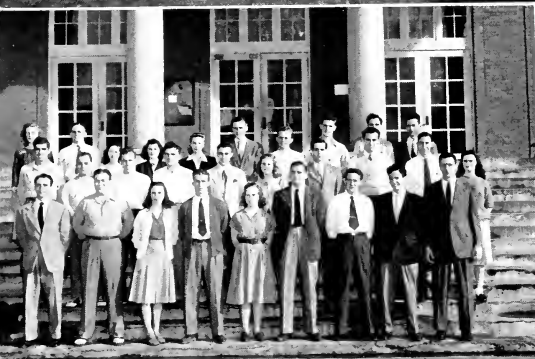




## Alumni Daughters and Sons Club

This club is growing with leaps and bounds! They help to keep their parents and other alumni up to the minute with news from their alma mater by helping prepare and mail the alumni bulletin and offering their services and banquets and other alumni events.

*Seated, left to right:* Mavis Elaine Hobbs, Mary Spaight, Bertha Winstond, Marjorie Perry, Lois Ross, Mary Lee Parker, Elizabeth Carter, Jane Early, Sue Pitt ● *Second Row, left to right:* Patricia Sutton, Rosa Adell, Louise Stanley, Margaret Wilson, Elda Richmond, Evelyn Kornegay, Peggy Cooper, Dotmeagan Lane, Ellen Clark, Margaret Mason, Frances Hobgood, Anne Burden Nicholson, Ethel Clement, Peggy Steed, Alma Whitley, Enid Petteway.



## Jarvis Forensic Club

A notable achievement of the Jarvis Forensic Club was the winning of "National Speaker" and "Big Ten Debate Teams" rating by Edward Bright and Gibbon McNeely at the Grand National Forensic Tournament.

*First Row, left to right:* John Paunmarrs, president; Hal Chinis, vice-president; Mildred Pruitt, secretary-treasurer; Edward Bright, Ella Cashwell, Bob Ross, Milton Fields, Garland Hill, Fred Martin ● *Second Row, left to right:* Cecil Murphy, George Lassiter, George Morris, Morris Paul, Bill Durham, Sumette Fridgen, Charles Williams, Hilton Strawn, Warren Jarvis, Lola Stephenson ● *Third Row, left to right:* Sue Latton, Tom Muscles, Rosalie Kearney, Helen Gaskins, Gerry Amundson, Jack Kimbrell, Frank Toothman, Richard Halloman, Morris Hill, Dr. M. N. Pecos.



## Teachers Playhouse

The players think their organization is one of the most active on the campus. Last year they gave three productions which were acclaimed, they modestly admit, as smash hits by both students and town folk. This year they hope to surmount last year's success with three more major productions.

*First Row, left to right:* Aubrey Rogers, vice-president; Lola Stephenson, secretary; Hubert Bergeron, Gordon Davis, Virgil Clark ● *Second Row, left to right:* Jack Howard, John Paunmarrs, A. E. Manning, Lena Manning ● *Third Row, left to right:* Ruth Carroll, Nell Rose Ellis, Elizabeth Tripp, Mary Lou Daniels, Annie Doris Heath, Iola Carrowan ● *Fourth Row, left to right:* Charles Williams, George Morris, Ruth Bastian, Helen Winslow, Geraldine Amundson, Alton Finch, Tom Muscles, Milton Fields ● *Fifth Row, left to right:* Bill Durham, Marvin Slaughter, Milton Reynor.

## International Relations Club

This club is for everybody, any and all students and faculty members. Under the sponsorship of the social studies department, they have internationally known speakers and group discussions for programs.

*First Row, left to right:* Fenner Boyd, Isaac Reynolds, Nick Enokakis, Jack Kimbrell, Dr. Leo W. Jenkins, Charles Butler, Suzanne Jernigan, Mary Robertson • *Second Row, left to right:* Milton Clarke, Cecil Murphy, Haywood Sellers, Barbara Redditt, Gay Brown, Annette Hughes, Mary Wallace Fox, W. B. West, Jean Holliday, Anne Starling • *Third Row, left to right:* Milton Fields, James Kelley, John Paurmaras, Della Evans, Emily Robertson, Laura Bass, Amy Nulton, W. E. Marshall, Betty Jane Wells, Betty Catherine Beard • *Fourth Row, left to right:* Paul Marcus, L. E. Browler, H. A. Coleman, E. C. Hollar, A. D. Frank, Peggy Steed, Pat Wallace, Margaret Birkel, Patricia Sutton, Frances Everett • *Fifth Row, left to right:* H. Winfield Carter, Elizabeth Carter, Seattle Winstead, Violet Moore, Rachel Kirby, Sue Weathers, Mary Lou Austin, Annie C. Warren, Lee Boy, McWhannell, Horace C. Morris • *Sixth Row, left to right:* A. E. Livesay, Carl Kinlaw, Mildred Oakes, Ruth Taylor, Anne Carson, P. A. Toll, James E. Fleming, James Collins, N. C. Phipps • *Seventh Row, left to right:* George Lanister, George Morris, Ernest Connolly, Howard Fotheridge, Paul Craves, Grover Wood, Steven Nobles, Earl Edmundson, Samuel Fischele, Lewis Collier • *Eighth Row, left to right:* Marshal Sprague, Tom Cox, Leta Stephenson, Sarah Lou Edwards, Gay Arnold, Bob Eason, Joseph Hines, Kenneth Frazelle, Gene Hedgpeeth • *Ninth Row, left to right:* Betty Lewis, "Wags" Carter.



## Association for Childhood Education

This club is a branch of the international, national, and state organization. It is its main purpose to work for the education and well-being of the child.

*First Row, left to right:* Ellen Clark, president; Sue McLee, vice-president; Lottie Murphy, secretary; Christine Bowen, Marion Burton, Mary Lou Daniel, Emma Gurley, Lucille Blahock • *Second Row, left to right:* Helen Rich, Marietta Whitefield, Edith Smith, Hilda Biles, Evelyn Peele, Jocelyn Moore • *Third Row, left to right:* Betty Jean Saunders, Elizabeth Sutton, Edna Sawyer, Barbara Sovell, Dorothy Thomas, Lillian Carter.



## Future Teachers of America

The Robert H. Wright Chapter of F. T. A. is proud that it is honored among the seven chapters which have this year affixed the tenth gold seal to their charters. Pioneers have been these chapters in leading prospective teachers into active membership in the national and state association of "real" teachers; and the club happily celebrates its share in promoting the junior branch of the association.

*First Row, left to right:* Helen Rich, Thelma Jovner, Ellen Clark, Howard Whitehurst, Corinne Braswell • *Second Row, left to right:* Mary Ann Bass, Elizabeth Sawyer, Miss Emma Hooper, Miss Sheppard, Edith Rhodes • *Third Row, left to right:* Emma Gurley, Dixie Lee Gurley, Mary Speight.



## Mathematics Club

Solve problems! This, as well as many other pleasant activities take place in this club. This year, the club plans to give a scholastic medal. Hats off to their new advisor, Dr. John O. Reynolds, whose keen interest will be a stepping stone to success.

*First Row, left to right:* Rena Lowrey, president; Elizabeth Carter, vice-president; Ann Boddard, Carl Conner, Z. W. Frazzelle, Mary Alice Galt • *Second Row, left to right:* Mattie Harris, Maxa, Frostie Thompson, Julia Bray, M. G. Warren, Behrens Murphy • *Third Row, left to right:* Dr. John O. Reynolds, Miss Ellen R. Caldwell, John Robinson, Kenneth Frazzelle.

## Commerce Club

While browsing around in the basement of the Classroom Building, you can see them almost anywhere working on their dance, carnival or Business Education Conference.

*First Row, left to right:* Ed Casey, president; Margaret Cary, vice-president; Ann Boddard, secretary; Genee Hedgepeth, treasurer; Doris Anderson, Marie Aycock, Ruth Boston, Mary Lou Braxton, Carl Britt, Melba Browne, Grace Butler, Paul Casey, Delores Publick • *Second Row, left to right:* Milton Clarke, Paul Craver, Colleen Carrier, Shirley Curran, Frances Daniels, Lavastine Daughtry, Waynard Dean, Phipps Dean, William Durham, Jane Early, J. B. Edwards, Howard Etheridge • *Third Row, left to right:* Betty Lou Everton, William Fort, Kenneth Frazzelle, Z. W. Frazzelle, Howard Gray, Milton Hamilton, Jack Hedgepeth, George High, C. J. Howard, John Howard, Richard Holloman, Edith Ipeck, Steven Johnston, Eupha Mae Jones, Sophia Kelly • *Fourth Row, left to right:* Carl Kinlaw, Warren Kooner, Dotman Lane, Florine Langston, George Lassiter, Lorine Lewis, Lorise Lewis, John Liles, Nina Ruth Long, Rena Lowrey, Elma Mangum, Mary Matthews, Paul Morris, Frederick Overt, Marguerite Perry, John Pourmaras, Audrey Pridgen, Anne Faye Pullen, Christine Radford • *Fifth Row, left to right:* Leland Smith, Nell Stallins, Louise Sauer, Patricia Sutton, Frostie Thompson, Mary Weston, Edith Williams, Joann Winslow, Charles Woods, Wade Woodley, Newsome Worsley, Edith Daniel, Carl Cox, Jean Bennett, Issac Reynolds, Julia Bray, Mary Robinson, George Morris, Elizabeth Lowe, Esther Sheppard, Julian Murphy • *Sixth Row, left to right:* William Warren, Cetus Link, Joe Lynch, C. T. Mars, Estelle James, Hazel Jenkins, Polly Brown, Myrtle Paul, Ruth Johnson, Katherine Taylor, Lola Griffin, Beatrice Player, Lynn Raper, Bob Russ, Mildred Pruitt, Marshall Sprague, Annie Frances Riddick, Maris Elaine Hobbs, Mary Alice Gay, Helen Kemp, Doris Brown, Joe Gregory • *Seventh Row, left to right:* Maude Nace, Jackie Pace, Edna Eldridge, Annie Warrant, Robert McLaran, Nick Fulkakis, Rachel Pleasant, Bennie Whiteard, John McDonald, Norman Cameron, Lena Liles, William Forcso, Audrey Dempsey, Velma Lowe, Elmer Browning.

## English Club

Something new has been added—a new advisor—Miss Grigsby. Programs of various types pertaining to the field of English are held in the English Laboratory.

*First Row, left to right:* Louise Newborn, president; Josephine Herring, vice-president; Christine Liles, secretary; Elizabeth Lane, treasurer; Laura Williamson, Sylvia Parter, Marilynn Maxwell • *Second Row, left to right:* Elma Mangum, Mary Lee Parker, Jo Ann Winslow, Geraldine Amundson, Ruby Lee Bordeaux, Bernice Pender, Ruth Taylor, Miss Louise Greer • *Third Row, left to right:* Helen Winslow, Mildred Osbes, Martha Johnson, Jack Kinrell, Gordon Davis, Elizabeth Tripp, A. E. Manning, Bill Durham, Hubert Bergeron.



# Publications

The Publications Board includes the editors-in-chief, business managers, and faculty advisors of the publications, the Dean of the College, the Director of Student Affairs, and the president of the college. These are the people who try to give the students the kinds of publications they want.



Hilda Riley



Annette Pridgen



Marilynn Maxwell



Mercedes Ange



Ella Cashwell



Amos Clark



Betsy Parkerson



Dr. Leo W. Jenkins



Miss Mary Greene



Dr. Beecher Flanagan





## The Teco Echo, 1948

Published bi-weekly, the *Teco Echo*, college newspaper, is a student publication. All students are eligible for membership on the staff of the paper. Associate editors of the editorial staff are appointed by the co-editors-in-chief. Each year members of the staff are selected to represent the college at a meeting of the Columbia Scholastic Press association in New York City. The college news organ is a member of various national collegiate press associations and has received excellent rating from these a number of times.



*Top Circle:* Ella Cashwell and Amos Clark, co-editors-in-chief.  
*Bottom Circle:* Betsy Parkerson, business manager.

*Seated, left to right:* Charles Williams, Ella Cashwell, Amos Clark, Bernard West, Frances Andrews, Carl Conner ● *Standing, left to right:* Ellen Clark, Jimmy Jarvis, Jane Butler, Tom Larkins, Euid Petteway, Jack Hedgepeth, Estelle Jones, Jimmy Fattelle, Patricia Davis.



# The 1948 TECOAN

This is probably one of the first yearbook staffs to turn out two annuals in one year! Even with the millions of questions every day of "Where are the annuals?" and "Will we get the '48 *Tecoon* this year?" we have enjoyed it. We only hope you enjoy the annual.



*Seated, left to right:* Sophie Fiesel, Marilyn Maxwell, Dr. Lou W. Jenkins, Mercedes Ange, Sue Lanier • *Standing, left to right:* Christine Balford, Veva Collins, Mildred Best, Beaufort Williams, Camilla Selby.

*Top Circle:* Marilyn Maxwell, Editor-in-Chief.  
*Bottom Circle:* Mercedes Ange, Business Manager.



While trying to compile this yearbook, the business staff has tortured the merchants, worried the budget office, and counted and recounted; but the editorial staff, well, they have lost sleep, pictures, typed material, fingernails, and friends.



Seated: Mildred Best and Sue Lanier • Standing: Sophie Fischel, Christine Radford, Camilla Selby, Beaufort Williams.

Left to Right: Marilyn Maxwell, Mercedes Ange, Dr. Leo W. Jenkins.

We hope that our work has not been in vain, and that in the years to come this yearbook will take you back to some of the happiest days of your life.



Left to Right: Christine Radford, Mildred Best, Beaufort Williams, Camilla Selby, Sophie Fischel, and Sue Lanier.

# Pieces o' Eight 1948

Your college magazine, Pieces O' Eight, is of the students, by the students, and for the students. It is of the students, in the respect that it represents every phase of student ability in the most democratic way possible; by the students reveals that the magazine is compiled, produced, fought for and finally achieved by the efforts of hard work and creative ability; and last it is primarily for the students' enjoyment trying to give those who wish to do so a chance to expand.



*Seated, left to right:* Margaret Wilson, Richard Powers, Annette Pridgen, Hilda Riley, Milton Fields, Camilla Selby • *Standing, left to right:* Jimmy Fryar, Carol Parker, Hayward Sellers, Daisy Steele, Christine Bowen.

*Top Circle:* Hilda Riley, Editor-in-Chief.  
*Bottom Circle:* Annette Pridgen, Business Manager.



# The "After Assembly" Rush



*Walking*



*Riding*



*Running*



---

MRS. M. W. MAXWELL

*Sponsor Tecoan Editor in Chief*



MRS. W. C. ANGE \_\_\_\_\_  
*Sponsor Tecoan Business Manager*

"The Fighting Pirates"



. Society Dance ... "The Family Portrait."



... Homecoming ... Sadie Hawkins Day ... Soda

Swap Breakfast ... Eight O'clock Pops.



## "Fifteen Rahs

*Just watching our teams at work  
makes us prouder still of our  
school. Intramural as well as*





or the Pirates"

*inter-collegiate sports have  
grown and will continue to  
grow.*



## Varsity Club

The Varsity Club is made up of athletes who have earned letters for participation in varsity sports. Each member who earns one is given a sweater by the club. Each year the club sponsors its annual dance in honor of the Varsity Sweetheart who is chosen by the members from the girls on the campus.

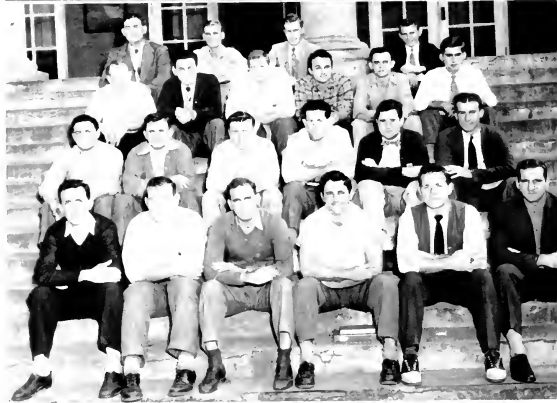
*First Row, left to right:* Willard Pendleton, treasurer; R. B. Lee, Keith Kilpatrick, president; Jack Davis, vice-president ● *Second Row, left to right:* Bob Miller, Ellie Earing, Colin Peck, John Wyatt, John Thigpen, Paul Craver, Amos Sexton, Jack Exerton, Jack Hedgworth, Emory Briley ● *Third Row, left to right:* C. O. McMullan, Zack Manning, Garland Bailey, Blaine Mays, Dennis Hasnight, Russell Gaylord, Everett Hudson, Jesse Eason ● *Fourth Row, left to right:* Coach James Johnson, Frank Winsette, George Wynne, Clayton Morrisette, Doug Jones, C. B. Mays, Mui Williams, Henry Burman, M. Wetherington.



## Men's Athletic Association

The Men's Athletic Association is open for all men who are interested in athletics and the betterment of physical education on the campus. The association strives for better health standards and better sportsmanship through intramural games during the year.

*First Row, left to right:* C. O. McMullan, John Wyatt, Ellie Earing, Amos Sexton, Jack Hedgworth, Willard Pendleton ● *Second Row, left to right:* Joe Pullitt, Ray Wooten, Jack Davis, R. L. Shuford, John Thigpen, Eds and Bright ● *Third Row, left to right:* Otis Powell, Paul Craver, R. B. Lee, Garland Little, Richard Riels, Joe Lassiter ● *Fourth Row, left to right:* James Johnson, F. E. Holscher, Edwin Everett, James Briles.



## Women's Athletic Association Cabinet

"The purpose of the Women's Athletic Association is to encourage the spirit of play for its own sake, to work for the promotion of physical activities among the student body under the leadership and environmental conditions that foster health, physical efficiency, and to develop good citizenship." Every woman student on the campus is a member. The club has sixty active members with Miss Nell Stallings and Miss Thursa Steed as advisors.

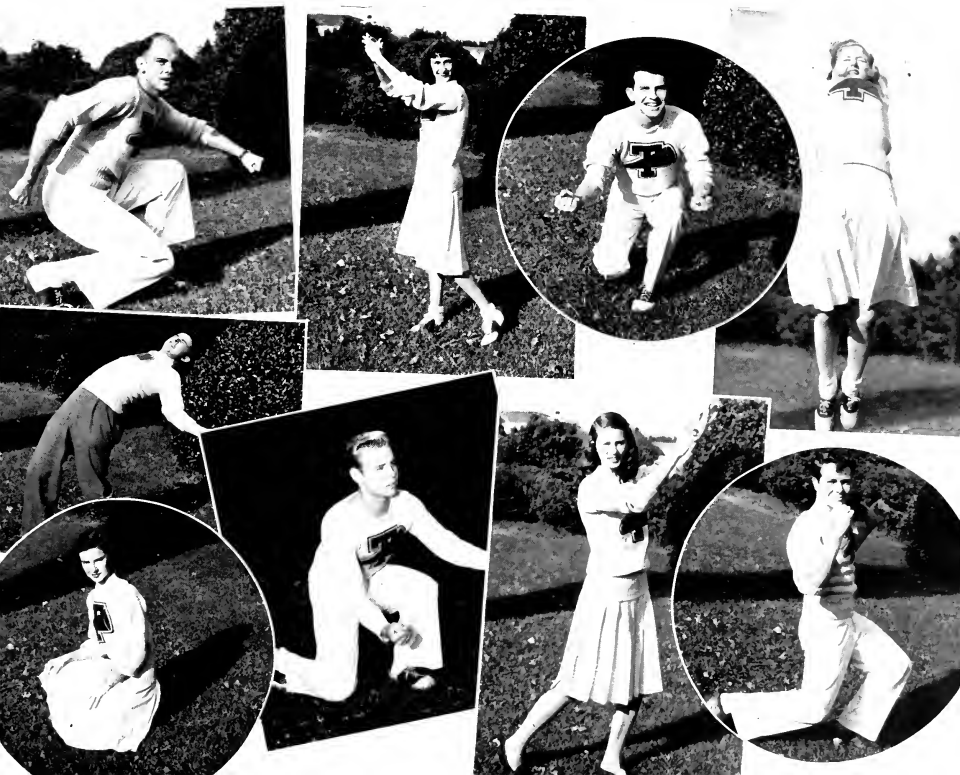
*Left to Right:* Mary Robinson, Mrs. Frances S. Bailey, Patsy Pridden, Sarah Bazemore, Helen Duncan, Annette Pridden, Emma L. Gurley, Evelyn Mills.



# Athletics of East Carolina

What would college be without athletics? What would athletics be without cheerleaders? Throughout the various sports seasons the cheerleaders have kept up the school's spirit and encouraged the teams to win.

*Left to Right: Clarke Stokes, Dean Smith, Henry Selby, Patsy Fridgen, Paul Craver, Ann Beillard, Jimmy Fryar, Peggy Hannoncutt, Paul Upchurch.*





# FOOTBALL of

The Pirates' record for this year shows marked progress over the team's records in the past. Let's keep it up!

*First Row: Frank Winsett, Ends: R. B. Lee, Tackle • Second Row: Henry Andrews, Guard: C. O. McMullan, Center • Third Row: Jack Davis, Backs: Amos Sexton, Guard.*

**JAMES JOHNSON**  
*Head Coach*

*Coaches: Left to Right: Ellic Fearing, James Johnson, Howard Porter, Pete Everett.*



# Nineteen Forty-Seven—Forty-Eight

When the school joined the North State Conference several valuable players were ineligible for varsity football. Even with the losses of the players the team ended its first year in the conference remarkably well with brighter prospects for future seasons.

JOHN WYATT  
Captain



## The Squad

Front Row, left to right: Bill Darby, Jack Davis, Allen Berry, Charles Connor, John Wyatt, Paul Walters, C. O. McMullen, Henry Andrews, B. B. Lee, Frank Winesett, Roger Thrift, Hubert Musselwhite • Middle Row: Publicity Director Jack Hedgpeth, Ike Davis, Bob Miller, Henry Barneman, Keith Kilpatrick, John Young, Garrell Bass, Amos Sexton, Victor Bell, Willard Pendleton, Ray Long, Zack Manning, Stanley Peete, Don McKenzie, Sam Stell, Charles Little • Back Row: Manager Dennis Basnight, Assistant Coach Howard Porter, Student Coach Pete Everett, Charles Byrd, Lew Bauer, Jim Micheals, Allen Dupree, Buck Wilson, Abh Williams, Franz Holscher, Junior Hayes, Joe Follini, Milton Glover, Johnny Smith, Linwood Kilpatrick, Max Enns, Manager-Trainer George Jackson, Student Coach Ellie Fearing and Head Coach Jim Johnson.



# THE PIRATES — ON



**BILL DARBY**  
*Back*

Each member of the team has worked hard to give the students the kind of football they want. Throughout the season they displayed their sportsmanship and technique to a high degree.



**RAY LONG**  
*Guard*



**STAN PEELE**  
*End*



**WILLARD PENDLETON**  
*Center*



**BUCK WILSON**  
*Center*



# TO VICTORY!

When the practice season opened, eighty hopefuls reported—the largest number in the school's history. Remember too, the team brought the Bohunk back to East Carolina by defeating A. C. 12-7.



JOHNNY SMITH  
*Back*



HUBERT MUSSELWHITE  
*Back*



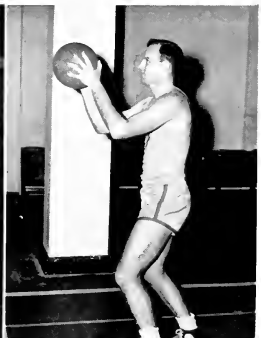


Coach Howard Porter giving instructions to Charlie Bill Mose.

# PIRATES



Left to Right: Douglas Jones, Len Bauer, Frank Macnille, Larry James.



# ON THE HARDWOOD

This year the Pirates brought the team into the first place position in the North State Conference. The season also brought several promising players to East Carolina. These Pirates really know how to handle that ball!



*Left to Right: Managers Bill Hales, R. B. Lee and Jack Davis.*

*Left to Right: Jack Everton, Jack Wilson, Horace Cahoon, Mike Euro and Blainie Moye.*



"The Girls' Day"

.. Society Dance ... "The Family Portrait."



Homecoming... Sadie Hawkins Day... Soda

Sharp Breakfast... Eight O'clock Pops...



Marjorie Thomas, president



Daphne Pake, secretary



Marshals: Herbert Taylor and Marion Ward.

## POE

During the year the Poe Society presented speakers on Poe's life at their meetings to promote a better interest in his literature. With the other two societies, they sponsored a dance during the Winter quarter and gave receptions for the guests during the entertainment.



Jimmy Fryar, treasurer



Peggy Burnce, *president*



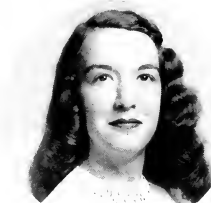
Nell Marie Webster, *vice-president*

## EMERSON

An old saying is the nicest things come in small packages—which refers to the Emerson Society. This is a small group but an active one. As Ralph Waldo Emerson says: "Me too thy nobleness has taught, to master thy despair. The fountains of my hidden life, are through thy friendship fair."



*Marshals: Josephine Herring and Eloise Morton.*



Mary Humphrey, *secretary*



Mrs. Christine G. Smith

# LANIER



Galleen Carrier, *president*

Virginia Chapin, *vice-president*



*Marshals: Scottie Harris, Barkie Lee Davis, and Rachel Pleasant.*

The Lanier Society, named for the poet Sidney Lanier, has sought to further the mental, moral and social development of each member and to create a greater love for the best in literature, music and art. They began the work for the year by a friendly welcome to the Freshmen class with a party at the "Y" hut.



Kathleen Barker, *secretary*

Shirley Curran, *treasurer*



## CHIEF MARSHAL \_\_\_\_\_

*Miss Annie "Pat" Morton* • CAROLINA BEACH, NORTH CAROLINA



# MARSHALS

*First Row:* June Bass, Florence Boerckel, Frances Brown, Helen Brown, Anne Thompson Cates.



*Second Row:* Nancy Dilday, Tilly Eakes, Betty Ellis, Helen Gaskins, Esther Parker.



*Third Row:* Martha Pickett, Patsy Pridgen, Barbara Stovall, Nell Marie Webster, Nancy Wilson.



# Nineteen Forty-Eight



*Congratulations . . .*

CLASS OF '48

BLOUNT-HARVEY COMPANY

*"Eastern Carolina's Shopping Center"*

The citizens of Greenville consider East Carolina Teachers College one of the community's greatest assets, and sincerely appreciate the value of having it in their midst.

Through their City Government and Chamber of Commerce, they extend hearty congratulations to the Student Body and Faculty for their achievements.

To the Graduates of the Class of 1948, and to the student body as a whole, they extend best wishes for success in future undertakings.

## STUDENTS' SUPPLY STORES

- Book Store
- Soda Shop
- Stationery Store

### *Congratulations . . .*

Seniors:—We are going to miss you—We are looking forward to the return of those of you who are coming back—To all of you we say:—

May you live as long as you like and have everything you like as long as you live.

## BELK-TYLER COMPANY

*"The Home of Better Values"*

GREENVILLE, NORTH CAROLINA

*Best Wishes For Better Health  
and Happiness*

**Carolina  
Dairy**



GRADE  
Milk & Ice Cream

*Compliments of*

**Kares Brothers**

Restaurant, Soda and News Service



*"We Serve The Best"*

*Compliments of*

**GUARANTY BANK  
& TRUST CO.**



Established 1901. Time Tested. Safe,  
Sound, Secure. Member Federal De-  
posit Insurance Corporation. Capital  
and Surplus—\$1,000,000.00.

*Congratulations to  
The Seniors of 1948*

*The Bootery*

*Quality Footwear*

Greenville, North Carolina  
New Bern, North Carolina  
Washington, North Carolina

**LAUTERES BROS., JEWELERS**

*Watches—Jewelry—China*

Gifts, Watch and Clock Repairing

**HOTEL PROCTOR DINING  
ROOM**

*Featuring Popular Meals*

Lunch 70c, Dinner \$1.25, Tarle de Hote  
et a le carte Service

*Compliments of*

**SCOTT'S DRY CLEANERS**

Greenville, North Carolina

**J. A. COLLINS AND SON**

Furniture, Rugs, Stoves, and House  
Furnishings

*Try Us First*

703 Dickinson Avenue  
Greenville, North Carolina

**BOSTIC-SUGG FURNITURE  
COMPANY, INC.**

*Everything for the Home*

Cash or Terms, Dial 2513

118 East Third St.      Greenville, N. C.

*Courtesy and Service Await you at*

**NORFOLK SHOE SHOP**

Located off 5th Street, back of Old Towne  
Inn on Cotanche Street

J. W. Bunch, Owner and Manager

**PENNEY'S**

*Where the Nation Shops and Saves*

EVERYTHING FOR THE ENTIRE  
FAMILY

**EFIRD'S DEPARTMENT STORE**

In a Friendly City

*"We Clothe the Entire Family"*

Your Stationer

**CAROLINA  
OFFICE EQUIPMENT CO.**

*Printers, Stationers, Office Outfitters*

Greenville, N. C.

*Underwood Typewriters*

*Congratulations and Best Wishes*

**BISSETTE'S DRUG STORES**

427 Evans Street

*"Greenville's Finest Drug Store"*

*For The Best In Foods*

**HONEYCUTT'S MARKET**

*Compliments of*

**STAUFFER'S JEWELERS**

Your Authorized Keepsake Diamond Dealer

*Congratulations to*

SENIORS OF 1948

**SAIEED'S**

*Compliments of*

**WHITE'S STORES**

Greenville, N. C.      Washington, N. C.  
Windsor, N. C.      Ahoskie, N. C.  
Scotland Neck, N. C.      Mount Olive, N. C.

**HOME FURNITURE STORE**

*"Right Price Furniture Store"*

R. W. Davenport, Manager

701 Dickinson Ave.      Greenville, N. C.

**PEOPLE'S BAKERY**

*Patronize the College Soda Shop*



**BEST JEWELRY COMPANY**

*"Eastern Carolina's Leading Jewelers"*

Established 1901, Honest Values  
Prices That Defy Competition

*"Your Jewelers"*

*Compliments of*

**LEE'S SPORT SHOP**

*"Everything for the Sportsman"*

200 East Fifth St.      Greenville, N. C.

*Compliments of*

**C. HEBER FORBES**

Greenville, North Carolina

*Congratulations to the*  
GRADUATES OF 1948

**STATE BANK AND TRUST  
COMPANY**

*Compliments of*

**THE WAGON WHEEL**

*Short Orders Our Specialty*

513 Dickinson Ave.      Greenville, N. C.

Mr. Gentry Galloway Invites you to come  
in and Dine at

**OLDE TOWNE INN**

*Better known to students as O. T. I.*

*Congratulations and Best Wishes from*

**LOWE'S**

*Smart Apparel for Women*

Greenville, North Carolina

**TAFF OFFICE EQUIPMENT CO.**

Remington Standard and Portable  
Typewriters—New and Used

*Compliments of*

**JOHN FLANAGAN BUGGY CO.**

Your Ford, Lincoln, Mercury Dealer

Serving Greenville and Eastern Carolina

Since 1866

*Congratulations to the*  
SENIOR CLASS OF 1948

**MARGOLIS BROTHERS**

*Style Headquarters*

Williamston, North Carolina

*Visit*

**DIANA SHOP**

For the Smartest in Junior Miss Fashions

*Compliments of*

**BRODY'S**

Ladies' Department Store

Greenville, N. C.

*Congratulations from*

**PENDER'S STORE**

**DEE'S CLOTHING STORE**

*Men's and Women's Ready-To-Wear*

Greenville, N. C.

*Compliments of*

**J. KEY BROWN**

*Druggist*

Five Points—Greenville, N. C.

School Supplies, Greeting Cards and  
Stationery

**A. B. ELLINGTON & CO.**

426 Evans Street

*There's only one Williams for Your Smart  
Apparel*

**WILLIAMS' LADIES' STORE**

*Shop at*

**THE WATCH SHOP**

205 East Fifth Street

**GARRIS GROCERY**

*See Us First*

*Compliments of*

**MOSELY BROTHERS**

INSURANCE

**GREENVILLE FLORAL CO.**

Phone 2827

315 Cotanche Street

*Best Wishes from*

**CLEM GARNER'S SERVICE  
STATION**

WALLER AND SMITH

*Photographers*



OFFICIAL PHOTOGRAPHERS FOR *The Tecoan*



12 EAST HARGETT STREET

RALEIGH

NORTH CAROLINA



**CHARLOTTE  
ENGRAVING  
COMPANY**

*Engravers and Designers of College Yearbooks*  
**CHARLOTTE, D. C.**





*The Lassiter  
Press, Inc.*

*Charlotte, North Carolina*

SCHOOL PUBLICATIONS

PRINTERS OF YOUR  
YEARBOOK























30372 0101 0246 9

