



TERRA MARIAE

School of
Pharmacy



UNIVERSITY OF MARYLAND
AT BALTIMORE


Office of the Dean
20 North Pine Street
Baltimore, Maryland 21201-1180

Donated by Alumni, Public Affairs Office



Digitized by the Internet Archive
in 2013

<http://archive.org/details/terramariae1990>



TERRA MARIAE
1990
University of Maryland
School of Pharmacy

TEACHER OF THE YEAR



DR. DAVID ROFFMAN



CLASS ADVISOR



DR. ROBERT
BEARDSLEY



DEAN'S MESSAGE

Welcome back Terra Mariae!

They say that you never know how much you appreciate something until it's gone, and such is the case with the Terra Mariae. There is nothing better at the end of a school year than to be able to curl up with a good yearbook — to relive the high points and the stress points of the year, complete with pictures, all through the eyes of the students who lived it and now write about it. This combination of words and pictures will never be replaced by videotapes or computers. The Terra Mariae will always be there — in hard copy — to pull out and browse throughout the years.

We owe special thanks to Editor Elisabeth Setzler for reviving the Terra Mariae after a two-year hiatus, and for organizing the students who put the book together with the help of Faculty Advisor Jacquelyn Lucy. As you read through the book, always remember that it is totally the product of volunteer efforts!

Each year we survey the graduating students to find out what they like most about their years at the School of Pharmacy. Universally the response is the opportunity to develop friendships with other students, faculty and staff. These friendships endure throughout the years and, if distance intervenes, are often rekindled by browsing again through the yearbook. The Class of Ninety should be proud that it reestablished the Terra Mariae to fulfill its important functions.



David A. Knapp

Acting Dean

DEDICATION



Though hard as it may be to find cause or justification for the hand of fate in the untimely loss of my father, we all must march on. Our memories and experiences of him and their effect upon us are surely bonded in cement now as we continue on our own journeys perhaps in that we can extract some solace. Whatever impression he cast on your life, hold it close. Use what he gave to the fullest, and in that I believe, we can find a foothold to push on in a world so hard to explain.

— Eric D. Leavitt

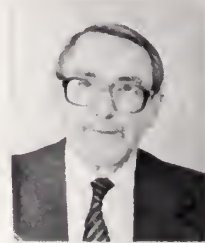
DEAN E. LEAVITT MEMORIAL HALL

THE UNIVERSITY OF MARYLAND
SCHOOL OF PHARMACY

DEAN E. LEAVITT, Ph.D.

HIS SCHOOL, HIS STUDENTS

HIS PROFESSION



DEAN E. LEAVITT, Ph.D.
1929 - 1989

PHARMACIST - EDUCATOR - ADMINISTRATOR

1954-59

1974-76

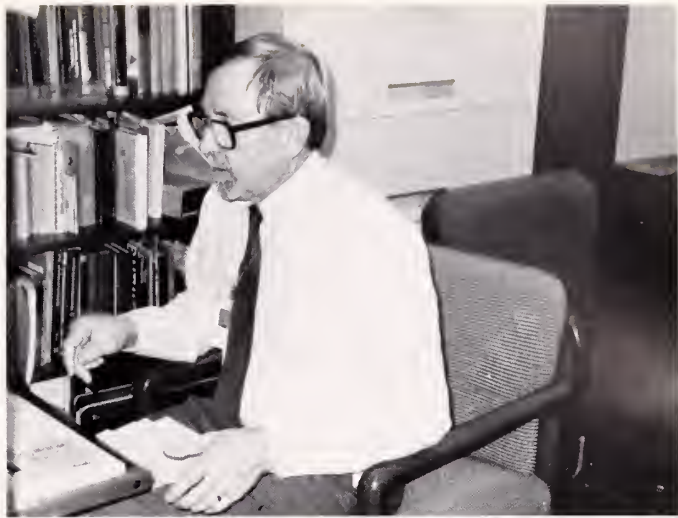
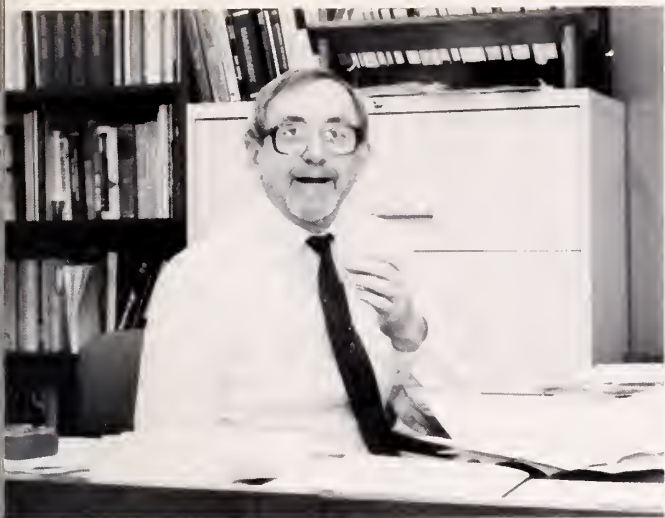
1976-89

1987-88

1980-81

1987-88

1985-86



DEAN E. LEAVITT 1929-1989



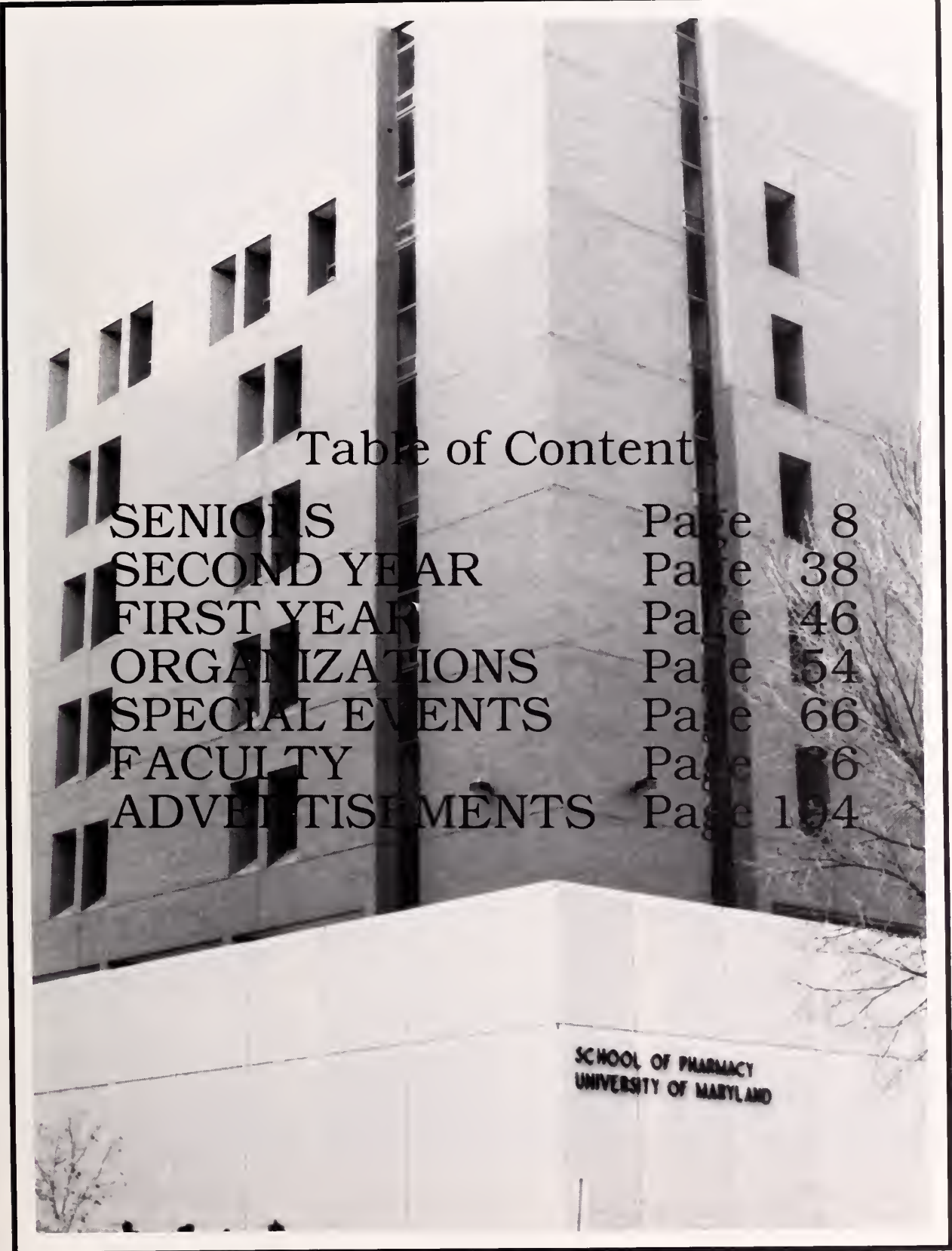


Table of Content

SENIORS	Page	8
SECOND YEAR	Page	38
FIRST YEAR	Page	46
ORGANIZATIONS	Page	54
SPECIAL EVENTS	Page	66
FACULTY	Page	86
ADVERTISEMENTS	Page	104

SCHOOL OF PHARMACY
UNIVERSITY OF MARYLAND

CLASS OF 1990



Isabel handing out senior superlatives



Fun at the jazz club in Indianapolis



RICHARD ABATE

ASP 1, 2, 3; Boat Bash 87, 88; Spring Dance 88, 89



ANA ISABEL ALMEIDA

ASP member for too long; ASP Treasurer; ASP President; Lilly trip; every Boat Bash; School Picnic; Spring Dance; Coffehouse. No, I do not have another ASP announcement to make but I would like to thank my family and friends for patience and support throughout these past 3 years.



MICHELLE ANDOLL

Class President 87-89, Treasurer 88; SNAPhA 87-89; Phi Delta Chi 88; Boat Bash; Spring Dance; Halloween Ball; Lilly Trip. "Attention class I have an announcement." All exams are cancelled. I love each and every one of you. I will miss you all. Please keep in touch. Best wishes and may all your dreams come true.



Why is your date dancing with my date?



MARIA BASIL



JOAN CAMBIAS



JULIE CAMPBELL

Boat Bash all 3 years; Lilly; Spring Dance;
Eviction Party '89.



Alison preparing for the Preakness.



"Let the games begin!"



Intently listening to Dr. Augsburger's explanation of particle properties.



CINDY CHAN



RANDY CHIAT



MARY GILLET CHRISTY

Phi Delta Chi-Worthy Chief Counselor 88-89; SGA Vice-President 89-90; ASP; Lilly '89; Spring Break '89; Open House 88, 89 (90?); Portland St. Commandos; Herpes Striders Olympic Team; Boat Bash X 3; Inner Harbor Diving Club; Eviction Party '89; Gate 4 Buddy; Skull Buddy; Ms. PDX Most Pathetic Runner Up; Back Row Bombers.

Secretary Class of 1990; Phi Delta Chi Brother, Corresponding Secretary 88, 89; APHA/ASP 88-90; Boat Bash 87-89; Lilly Trip 89; Phoneathon 88-89; Loyal Manny Patron 87-90; Spring Break 89; Official Keeper of the Log; Official Back Row Bomber; Portland St. Commandos' Ladies Auxillary; Thanks to Mom and Dad for putting up with me all these years.



Gillet adorns the second place winner of the PDX Olympics



JACQUELINE CELIA CLINGERMAN

Lilly Trip 1989; Boat Bash 87, 88, 89; Admixed "Pain Killer Shooter"; Remember Dennis Quaid, Val? Why are we here? Bob — you can have the living room back! Thanks to those who helped me keep my sanity — insanity???



ALISON DION

Lilly Trip 88; Rho Chi, Treasurer 89; Bicycling at Patapsco State Park; Swing Dancing; Playing with my cats; God, grant me the serenity to accept the things I cannot change, the courage to change the things I can and the wisdom to know the difference. Thanks to all the professors who taught me that life isn't fair.



ELIZABETH ANN DITZLER

Boat Bash 87, 88, 89; Spring Dance 88, 89, 90; Rho Chi Honor Society; ASP 87, 88, 89; Phi Delta Chi Party-Goer; Val, we're gonna be late — again! What's the game plan for tonight? I need a man. PICKLES!



(Left) "Afterglow". (Upper right) Margaret prepares to go skinny dipping!, (Lower right) Impaired pharmacy students visit Indianapolis



CATHERINE DONAHUE

Special thanks to Mr. and Mrs. Donahue, Captain Michael Burt, Thomas Phipps, and Dr. Robert Beardsley.



MARGARET MARY DONNELLY

Academy of Students of Pharmacy (87-90); ASP Secretary 88; Thanks Mom and Dad for all the love and support. Because of you, I was given the chance to carry on the family profession.



VALERIE ANN DOPSON

Lilly Trip 89; Boat Bash 87, 88, 89; co-ordinator of the "Painkiller Shooter?"; "Betsy, what time is it?"; "Jackie, have you slept in any pajamas lately?"; "Alicia, what's so funny?"; "Susie, we finally made it!"; "SSS"; "Thanks to all my friends in the class of 1990 for making life easier for me."

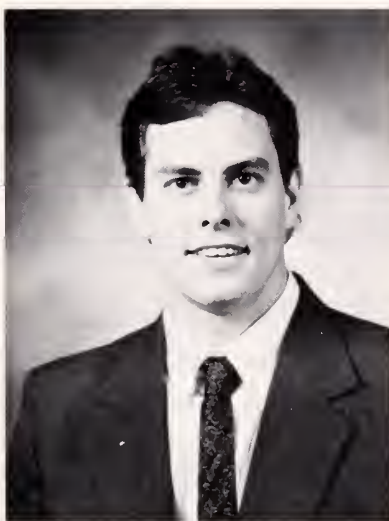


(Above) Bring on the food!, (Right) Rho Chi Member, Matt Esslinger, completes his required assignments for graduation at the senior party., (Below) Lisa Langer two fisting at a basketball game in Indianapolis.



MATTHEW R. ESSLINGER

Rho Chi; ASP; manager '89 Pharmacy Olympics champions; "Lo Chi"; Thanks to professors and friends, especially Mom and Dad. Studying is over Sharon!



ROBB FOOTE

Lilly Trip; Boat Bash 88, 89; ASP 87, 88, 89; Thanks to my wife, Lisa for all her support. "Yea Joe, we had an exam this morning."



JOSEPH FRANCISCO



Couple #1 are Carl and Gina from Baltimore, MD



ALICIA MARIE GIRO



ELIZABETH ANN GRABNER



GINA GRAHAM

SCODAE. Program Coordinator; Elder Ed; Boat Bash (What Boat Bash?); Anything but study! What's the scoop? Hold on a minute — Girri — Sara, we made it! Valerie, Betsy — what's the game plan? Summer trips with Stef, Scodave and Ton Loc. Suzy, Jim, Jackie, Rob, Mike — Thanks for your moral support! Dad, Mom — Grit — This is it! A lo loco!

ASP; Boat Bashes; picnics; Lilly Trip 1989; "Shut up Carl, so I can take good notes notes"; "Dive!Dive!"; "Why don't you boys in the back take off your hats?"

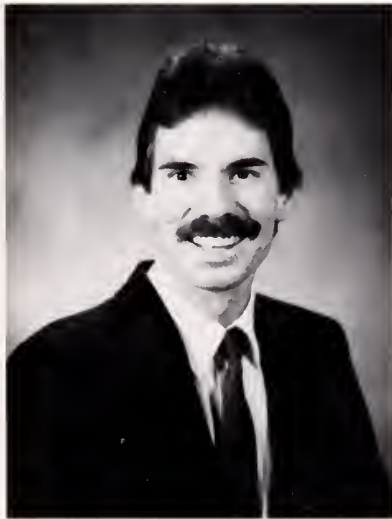


(Above) Brothers — Can't you see the resemblance?



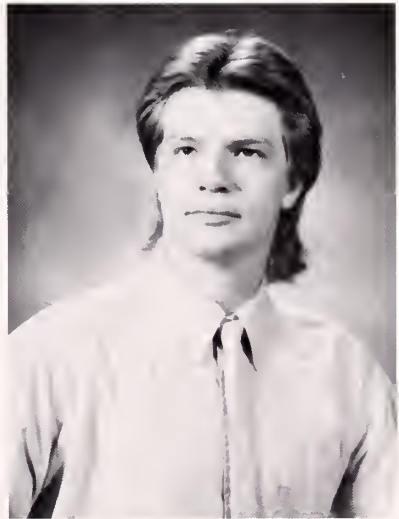
DARLENE JENNIFER GRONCKI

Phi Delta Chi 1, 2, 3; Lo Chi 1, 2, 3; Phi Delta Chi Olympic Champion 1989; ASP 1, 2, 3; Lilly Trip; Ski Trips, etc.; Most Obnoxious Pledge Name; World's Biggest Advocate of Bulk Food and Vacation; "SKI-RACK"; "Is it time for Guiding Light?"; "But . . . I *did* NEED it, Talane." Special thanks to Karen and Bill and to Mom and Dad.



MICHAEL C. HAWK

Phi Delta Chi, Xerox expert; Chairman: Edward Stanley Krikorian Wardrobe Foundation; "Thanks Mom & Dad for your encouragement and support." Here's to the "Bad Medicine" tour of '89 at Eli Lilly; Nutritional requirement: 1 Manny Dog Q A.M.



D. RODNEY HENDERSHOT

Phi Delta Chi (Master at Arms); Lilly Trip 89; Boat Bash 87-89; Spring Break 89; Portland St Commandos; Inner Harbor Diving Club; Eviction Party 89; Miss PDX 89; Back Row Bomber; Skull buddy; Weenie Bongs; Tues. Night at Hammerjack's; "Wow fire"; "Out the window you go"; "I have gained much through alcohol"; Thanks to PDX; Brothers Forever.



(Above) "Come on April, what's really in that McDonald's cup?"



APRIL L. HUDSON

Lilly Trip; Subcommittee for undergraduate admissions 88-90; SNPhA 87-90; SNPhA Vice-President 88; KINKO's #1 sales rep. 88-90. Thanks Mom, Dad and all others who patiently listened to me gripe. No more trips to the roof. Remember my victory tune. (Dec, DeeDec . . .) Future plans: to get some sleep!



CINTHIA JUSTINIANO

ASP member



LORI KEYS

Back Row Bomber 87-90; Top Ten Lists; Zoonose Comics; Pickles; Boat Bash 87, 88, 89; Parties at 639 Portland St. Can I borrow your notes? Let's go to Gampy's! Is that right, Michelle? Jonathan, let's go to the record store. Hold my hair! (NY 88) Thanks everyone for making this place fun!



(Above) Jenny and Eunkyung — Two of our lovely ladies at Indianapolis.



DIANA JUNGHEE KIM



EUNKYUNG KIM



ADRIENNE KRAUSE

Lilly Trip; Boat Bash 88; UMAB Bible Study 87, 88. My special thanks to Mom and Dad and God. "When you have found the answer, go and do it." Answer: "Just do the next thing — even if you walk through the shadow of the valley of death."

Lilly Trip; Boat Bash 87, 89; Thanks Mom and Dad for the wonderful support.

Lilly Trip; Spring Dance; Honors Convocation.



John looking through his beer goggles.



Sallie O. and Tricia K. perform at ASP Coffee house.



PATRICIA E. KOKOSKI



LISA A. LANGER



HANNAH LEE

Tricia: USGA Senator 1, 2, 3 (Treasurer 2); SGA Secretary 3; all ASP Coffeehouses, ASP; Lilly Trip 89; Maryland Poison Center; Perfect Attendance Award 87-89; Billy Joel Concert 90; New Mexico 89; Eviction Party 89; talked during class with Kamlesh, Nita, Michelle A. & friends. Thanks to Mom, Dad, Nana and family and friends.

Lo Chi; Lilly Trip 89; Phi Delta Chi; 1989 Pharmacy Olympics Champs. Pharmacy School Redskin Fan Club President, Democrats for a Better America; "Phyllis Donahue knows her serum creatinine." "9 Seconds."



John Lippert — Transvestite with a mission



Lisa does Indian rain dance in New Mexico



Lo Chi in training with their awesome coach, Matt



JENNY Y. LEE



JUN H. LEE



JOHN A. LIPPERT

Lilly Trip, 1989; Boat Bash, 1989; Thanks Mom and Dad and also my friends.

Lilly Trip; Boat Bash, 87, 88, 89; Rho Chi: ASP; Open House, 87, 88; Class Treasurer, 87, 88, 89; Phi Delta Chi, Worthy Inner Guard, 88, 89; Pharmacokinetics Fellowship; Herpes Striders; Portland St. Commandos; Gate 4 Buddy: "I speckled a Mercedes!" "Can I have a huge massive mound of ketchup?!"



Gina, Carl, and Scodave — who can smile the longest?



"Step right up Gentlemen. Don't be shy."



Dave explains the dangers of Substance Abuse.



Isabel, Pilar and Beth. Hard at work studying for their Management final.



JONATHAN A. LOUCAS

Portland St. Commandos; Back Row Bomber; Top Tens; Panhandling; Weenie Bongs; Zamboni Fan Club; Editor-in-Chief Backrow Publishing Exam Scam 88; Lilly Trip; Boat Bash, 87, 88, 89, etc . . . ; Damn Zoonose; Pass the Old Bay; Get me a Beer; and I AM OUTTA HERE!



PILAR MACHADO

Class Vice Pres., 89-90; Class Secretary, 88-89; Lilly Trip, 89; ASP and ASIP member; Spring Dances; class picnics; Boat Bashes, etc . . . ; Coordinator of Lilly Trip.



HOUDA MAHAYNI

Lilly Trip, 89; Boat Bash, 89. Thank you to my classmates, who all were great, friendly, and supportive. Thank you to my professors who encouraged, stimulated and provoked me to be as competent and as qualified as I can. Thank you to Dr. Fedder. My most important thank you is to my family.



Evening ice soccer games — refreshments provided



Johnathon enjoys Hacky Sack in the lobby.



Echo & the Bunnymen



MAGED MAKAR



DAVID McCAFFREY



MICHELLE McFARLAND

SCODAE. 87, 88, 89

All Boat Bashes; All picnics; Phi Delta Chi 87-90 (Worthy Keeper of Records and Seals 88-89); SGA Secretary 88-89; SGA President, 89-90; Back Row Bomber, Lilly Trip; ASP; Top Ten Lists; eating I made it up so that's what it is. Let's go to Gampy's. Jonathan, make some brownies.



Sarah can't wait to get up in North Carolina again



Carl (Crocodile Dundee) Hogan gets his lady



SARAH MILLS

Phi Delta Chi; Lilly Trip; Boat Bash, 87, 88, 89; Back Row Bomber; Spring Break Trip.



SHIRIR MOHAMMADI



CARL MOLTZ

Phi Delta Chi; ASP; Lilly Trip; Tuesday nights a Hammerjacks; Portland Street Commandos; Eviction Party; Boat Bash 87, 88, 89; "Hey Gina, Take good notes"



Lo Chi doing what they do best



Tom Bolton, _____ Head!



Studying Through Osmosis.



PAUL JUNG NA



LINH NGUYEN



TALANE LYNN NICHOLS

SAPhA, UMAB Bible Study; Thanks Jesus, Mom and Dad, Dr. McKay, and Especially to the late Dr. Leavitt who gave me an opportunity to be what I am today. I will always remember his dedication to his students whom he could name every one. [Isaiah 43:18-19]

Phi Delta Chi, Lilly Trip; Class Vice Pres., 1987; Art, RPh, Taekwondo define my future. See you there and I miss you all!

Phi Delta Chi, Worthy Prelate; Lo Chi - Olympic Champions; ASP. "Now let me get this straight . . . What classes are we going to?" "How Much for a Penny?" "Uh-huh!"



"Cockroach!"



"Gimme a Vodka!"



Godwin's Angels



SONYA NUDELMAN



CYNTHIA O'DEA



GODWIN OKAJIE

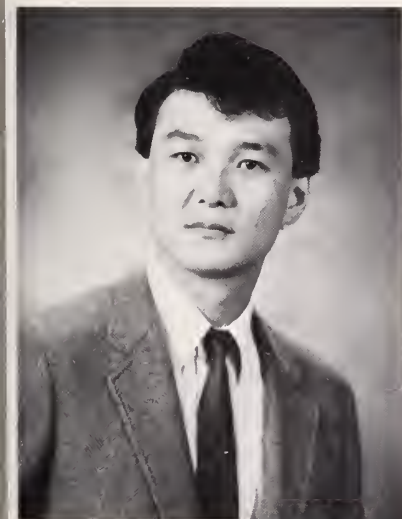
I would like to take this opportunity to say a big thank you to my family for all their support and understanding. I know I can never repay them, but I hope to be an important family member. Also thanks to all my close classmates and soccer buddies. It was fun while it lasted.



Mike & the Greenhouse Babes



(Above) John — Most likely to practice gynecology without a license.
 (Left) "Where's the pineapple juice, Mon?"



JIM S. PAK



DEEPA PATEL



NITA PATEL

Hungarian Camel Jockey "Where's Minoo?"
 Life Goal: To sell air conditioners in Alaska with Minoo.

Lilly Trip; Boat Bash 88, 89; Spring Dance;
 Coffee House. Education is learning what you
 didn't even know you didn't know! S: Lab
 Practical, classes O: Written and Oral Exams A:
 Pass P: Get out into the real world. There is only
 one success — to be able to live your life in your
 own way.



Soon to be Alumni on Alumni Ski Trip to Blueknob.



You've just won a free dinner for 2 with Burton Pogell!



Jane & Maria enjoy elegant dining at Indianapolis.



KAMLESH R. DHALLAN

ASP member 87, 88, 89; Boat Bash, 87, 88, 89; Coffee House, 87, 88, 89; Lilly Trip, Spring Dance, 87, 88, 89; Class Secretary, 87-88; "The years teach much which the days never know."



ELIZABETH JANE PULLEN

SCODAE; Rho Chi, Secretary; Lilly trip; ASP; Boat Bash, 87, 88, 89; ALICE?! "Maria, I knew that three years ago."



STANLEY A. PYLES

Boat Bash, 87; SNPhA member; I am finally finishing going to school.



Suzy and Talane — Roomies at Indy.



Randy's Famous pancakes at the Ronald McDonald House.



Stuffing it in



ROSALIND RICHARDSON

SNAPhA member



ANDREA RIGGINS

Rho Chi Member



SUZANNE RUNYEON

ASP; Elder Ed; Lilly Trip; Boat Bash, 87, 88, 89; Thanks for the great times Alicia, Jackie, Val, Jim, Rob, and Mike! Mom and Dad, thanks for the emotional and S support. "Believe it, Gus! ... we made it!!!"



"Did you see her?" "No, but did you see her?"



"Now all I need is my Blankey!"



"But, these are just for my friends!"



Here's Dave . . . Just hanging out with the guys, doing guy things



MARK R. SANFORD

Phi Delta Chi, Treasurer, 88-89; Rho Chi, vice pres., 89-90; ASP, 87, 88, 89, 90; SGA Lilly Trip, 89; Boat Bash, 87, 88, 89; Spring Break 89; Portland St. Commandos Eviction party, 89; Tuesday nights at Hammerjacks; Herpes Striders Olympic Team. "Look at the Stars . . ."



MINOO SHAFINOURI

Assistant of a Hungarian Camel Jockey. "Where is Deepa?" Life Goal: To have my portrait in the Halls of the Rite Aid Corp.



ELIZABETH KESECKER-SHAPIO

Boat Bash, 87, 88; Lilly Trip, 89; ASP, 87, 88, 89; NARD member 88, 89; Spring Dance, 89; Class picnic, 89. "Thanks to my new husband, Tom, whom means everything to me, for being there for me through some of the toughest times of my life." Thanks for "Angus". Thanks also to my family for support.



"Do you have dibs on this one?"



"Mr. Mam:ou works the crowd"



Pillow talk



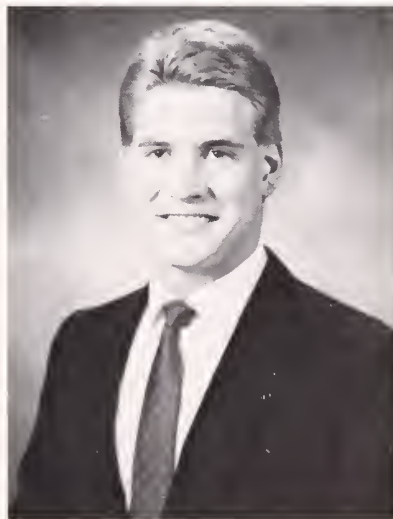
Joe grabs a Heiny!



HEE SULK SHIN



DINA SMITH



JAMES SMITH

Lilly Trip, 1989; Boat Bash, 87, 88, 89; Elder Ed, ASP Member. "Thanks Mom and Dad for all your support and love that you've given me all these years." For my friends, thanks for all the wonderful memories and moments that we've shared. I will cherish these special thoughts always.

Boat Bash, 87, 88, 89; Lilly Trip. Valerie, Alicia — Did you ever date anyone that wasn't named John? Suzy — What does sustained release really mean? Suzy, Rob, Alicia, Mike, Valerie, Jackie, John: And fun was held by all. Good luck forever.



Rob gets some pointers from Mr. Manly



Young saves Kevin from a savage teddy bear attack



"I see tongues, I see tongues!"



Don catches the great Muskellunge



YOUNG AE SONG

ASP, MSHP; Lilly trip, 1989; Boat Bash, 87, 88, 89; To all my friends I've known and met in pharmacy school. Thanks for all the good times. I'll miss you!



DONALD STEELE

Spring Dance, I'm happy it's over!



SUSAN SULLIVAN

ASP, Admissions Committee



Go ahead Randy, you can put your arm around me



THE CHAMPIONS!!!



Nightlife at Indianapolis



ROB TAYMANS

Spankin' at GBMC; To my family — Thanks, lots O'love. Jim, Mike — Written Guarantees What? Suzy — 5 to a bed — your gelle or mine? Alicia & John?! . . . You're a Med Student?!?! Val Can I crash at your place? Jackie — I probably still owe you dinner. Michelle, Lori — Gampy's? I'll drive.



THEODORE TETKOWSKI

Phi Delta Chi, V.P., 88, 89; Eastern Regional Correspondent, 88, 89, 90; Executive Council, 89, 90; Eviction Party, 89; Inner Harbor Diving Club; Back Row Bomber. "Man is measured by the depth of his convictions . . . Hey Rooster gimme another Natty Bob." . . . No Way! Let's go to Campus Inn!"



THANH T. TRAN

Rho Chi ASP; Subcommittee on Undergraduate admissions Committee. Thanks Mom and Dad. Sorry I will miss you both on my graduation day. I wish you could live longer to share my happiness on that day. Thank you Phuong, my beloved fiance, for all the love and support.



Tony refuses to participate in the wave!



Are they really married?



John and Lisa drinking like the Navahos.



Friends' birthdays are more important than studying for drug card quizzes



CECILIA SO TSE



JESSI UM



MARYIRENE VIVIRITO

Lilly trip 1989, Boat Bash 87, 88, 89.

Phi Delta Chi, 88, 89; ASP; APhA, 88, 89, 90; Annual Phonathon, 89; Boat Bash, 88, 89; Lilly trip; SCODAE; Elder Ed.; PDC Bros. I will remember you fondly. Love to my mother and Mel who never stopped supporting me and loving me even through the tough times — even if it was all the way from Virginia.



Cecella and John Layover in Cleveland



"Party at Isabel's. Everyone's coming!"



MENG-CHIN GRACE WU



ANTHONY KWEKU WUTOH



SUSAN W. YUN

SNPhA, pres. 88-89; USGA rep., Rep. — Md. Higher Education Commission; Student Advisory Board; Recipient Lois Thomas — Young Guild Scholarship, 1989. "Man cannot function without an adequate amount of sleep, so use class time whenever necessary."

Elder Ed. 87, 88, 89. SCODAE 88, 89; ASP. Thanks Mom and Dad for being there.



The Farmer and the Pharmacist



Kim's sheep place fourth at the State Fair



AWARD: "Least likely to teach Pharm Chem"



Kim's roomies celebrate when she finally passes Pharm Chem. It only took three tries.



KIMBERLY J. ZEITLER

Phi Delta Chi; Lo Chi; ASP; Yearbook; USGA Rep.; Back Row Bomber; Spring Break Trip. "KIMMYHEAD!!!" "It takes guts to admit You're Lamb and Wool Queen" "I love my Roomies" "Where's the blonde?" "Let's order a pizza" "Thanks Jamie, without you I would not be graduating."



CATHERINE ZULKARNAIN

Lilly Trip, 1989; Boat Bash 1989; APhA member, 1987, 1988, 1989. To my parents, who have given so much for my education even though life is hard at home, yet both of you are there for me, thru thick and thin, no matter what happens, I love you both a lot!



TUNG TRINH



THE GANG



1987-1990



"Don't blame me, the TA's graded them."



Ted's date to the Spring Dance



"They're mine, all mine."



"Mark, let me tell you about the birds and bees."



STUDENT LOUNGE



FACULTY LOUNGE



Phi Delta Chi Reject



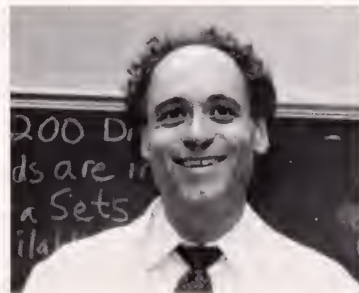
Prelab proved to be too much for Lisa



"Acting what? You've got to be kidding!"



"Honest, this is the first time I've looked at this."



ROGAINE
POSTER
CHILD

CLASS OF 1991



Kwasi Abankwah, Akwasi Adjei, Freddy Banks, Kellie Bedford, Steve Beres, Alisa Billington, Susan Bowen, Delane Buff, Pamela Burns, Danny Carter, David Chen, Alice Cherry, Helen Chim, Hye Choe, Sun Choi, Jeff Clark, Brian Clatterbuck, Angelita Collins, Marilyn Cox, Stephanie Cox, Sharon Currie, Denise Delorso, Ann Marie Devoles, Maite Eguia, Sam Elbers, Catherine Fields, Sean Finn, Stefanie Folb, Michelle Forrest, Dan Fronc, George Garmer, Dan Glisson, Amy Gorsuch, Jerry Groves, Sam Haidar, Tania Hanna, Tracy Hicks, Alice Hill, Trang Hoang, Carolyn Hockaday, Karen Huber, Uche Ilo, Mahrokh Imanuel, Steve Joyce, Bang Hee Kim, Hee Jung Kim, Noriko Kim, Jason Kirby, Scott Kirkpatrick, Tina Koehle, Joe Kotten, Devi Koung, Julie Kubitsky, Mark Lamb, Kyong Lee, Raymond Lee, Amy Lietzau, Jami Lingle-Barclay, Lara Linn, Nicole Little, Dee Lovelace, Mike Madsen, Marion Malinowski, Mark McDowell, Matt McGovern, Tom Means, Wilson Meng, Sara Myers-Clark, Lisa Miranda, Kate Moore, Phyllis Muir, Carol Mundt, Ken Murray, Lisa Murray, Sophia Nam, Bao-Anh Nguyen-Khoa, Anna Oberste, David Olson, Bridget Petry, Art Price, John Ramp, Steve Samson, Lisa Setzler, Sangeeta Shirodkar, Lori Spicer, Brian Trentler, Anne Tschirgi, Kim Updegraff, Rosemarie Valino, Wendy Washington, Tom Wats, Aaron Weiner, Berhane Wold, Steve Wiener, Anne Wiland, Lee Winde, Eric Yospa, Peter Yurkowski, Karen Ziemski



CLASS OFFICERS — Sharon Currie, Bang Hee Kim, Dr. Alan McKay — Advisor, Lori Spicer, Alisa Billington

















GOOD-BYE DR. MCKAY — WE'LL MISS YOU!

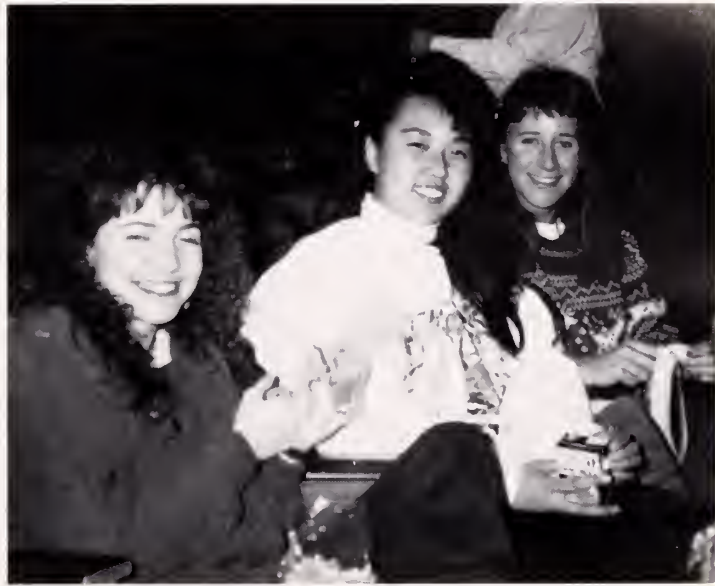
CLASS OF 1992



Nicole Altman, Lori Beauregard, Sian Bigora, Lynette Bradley, Keith Broome, Terrill Burnworth, Betsy Campana, Hope Campbell, Jennifer Carroll, Paul Chinnaraj, Amy Corbett, Mary Kate Cleary, Nicholas Cornias, Dana Couch, Michele Cybert, Jodi Dagold, Debbie D'Amato, Ruthanne Daniel, Alex Davis, Jean Dinwiddie, Suman Dhallan, Omolola Elliott, Emine Erol, Lisa Esser, Modupeola Famuyiwa-Kennedy, Michael Farren, Kim Feese, Schela Filipour, Faith Fisk, Douglas Fraser, Timothy Garten, Gary Gay, Kathy Georgiou, Nazita Ghassemian, Dina Giganti, Wesley Glaudin, Marina Hadjoglou, Mary Handley, Brenda Hawbecker, Dick Hurtz, Nigel Isaacs, Darla Jackson, Jeanne Jacobsen, Julie Jannuzi, Farideh Kashani, Sarah Kang, Michelle Keidel, Jenny Kim, Yeon Kim, Nelson Kline, Gary Knoss, Christine Kuchma, Yue Sarah Lam, George Lauder, Neil Leikach, Malea Lemon, Michele Lovick, Pamela Maher, Iain Margand, Lynn Messick, Vashti Miles, Lenny Modzeleski, Abby Nejfelt, Phil Neubauer, Theresa Ng, Mai Nguyen, James Norris, Laurie O'Neill, Faye Oppenheimer, Joanne Padousis, Ashish Patel, Nola Powell, Tina Puthenpurackal, Karla Schmidt, Kristine Schmidt, Denise Seldon, T. J. Seoni, Kelly Shaner, James Sheckels, John Shih, Lowell Showalter, Kimberly Simpson, Marla Singer, Kara Sink, James Smathers, Susan Starr, Todd Stephens, Karen Tafoya, Shamim Tejani, Stephen Tristani, Jesus Valentin, Marguerite Voitek, Thu-Trinh Vu, Laura Wachter, Kirsten Weiblen, Jody Whetstone, Deanna White, Larry Wirtley, Bruce Wiltshire, Lisa Wolfson, Suk Yi, Han Zhang



CLASS OFFICERS — Secretary: Suk Yi, President: Hope Campbell, Treasurer: Alex Davis, Vice President: Shamim Tejani















ORGANIZATIONS





STUDENT GOVERNMENT ALLIANCE



Officers: Michelle McFarland, President, Steve Beres, Treasurer, Above. Not Pictured — Randy Chiat, Vice President, Patricia Kokoski, Secretary, Patricia Kokoski, Anthony Wutoh, USGA Senators.

UNDER THE COUNTER



Editors — Dan Glisson, Steve Beres

TERRA MARIAE



Staff: Hye Choe, Bao Ahn-Nyguen, Sam Haidar, Lisa Setzler, Production Editor.



Advisor — Jacqute Lucy



Staff: Not Pictured — Kim Zeitler, Senior Section Editor, Pam Maher, Bang Hee Kim, Anne Wiland



Staff: Karen Tafoya

APhA ACADEMY OF STUDENTS OF PHARMACY

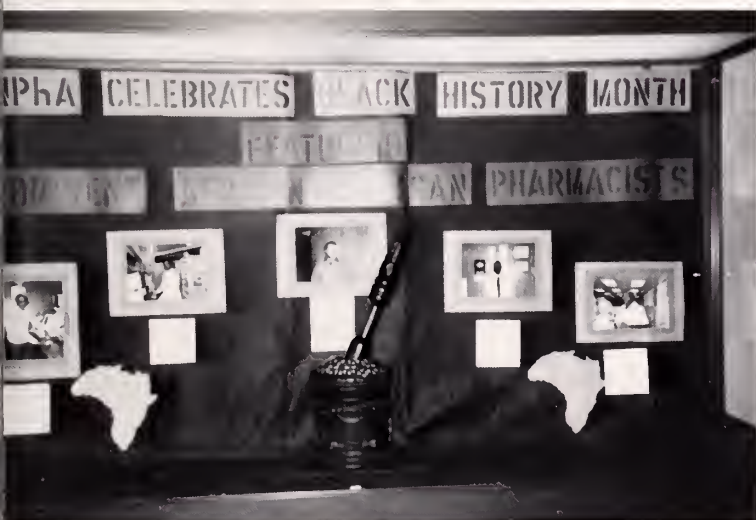


APhA

**Join the
American
Pharmaceutical
Association**



STUDENT NATIONAL PHARMACEUTICAL ASSOCIATION



SNPHA Members: Michelle Andoll, Lynette Bradley, Hope Campbell, Danny Carter, Dana Couch, Lola Elliott, Dupe Fam-Kennedy, Michelle Forrest, Wesley Glaudin, Carolyn Hoekaday, April Hudson, Uche Ilo, Nigel Isaacs, Michele Lovick, Vashiti Miles, Rosalind Richardson, Denise Seldon, Wendy Washington, Berhane Wold, Tony Wutoh.

LAMBDA KAPPA SIGMA



LKS MEMBERS — Sun Choi, Ann Grabner, Karen Huber, Ameltia Koh, Julie Kubitsky, Nicole Little, Kate Moore, Anna Oberste, Bridget Petry, Mary Ann Strine, Thu-Trinh Thi Vu, Wendy Washington, Sarah Keny, Anne Tschirgi, Dr. Marilyn Speedie — Advisor



KAPPA PSI



Kappa Psi Members: Hye Choe, Marilyn Cox, Lisa Esser, Pamela Burns, Bao Nguyen-Khoa, Delane Buff, David Chen, Dan Fronc, Lisa Miranda

PHI DELTA CHI

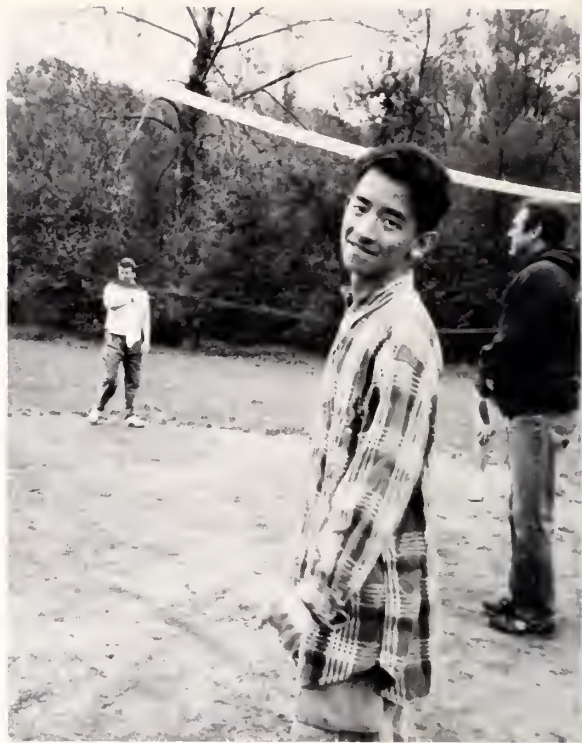
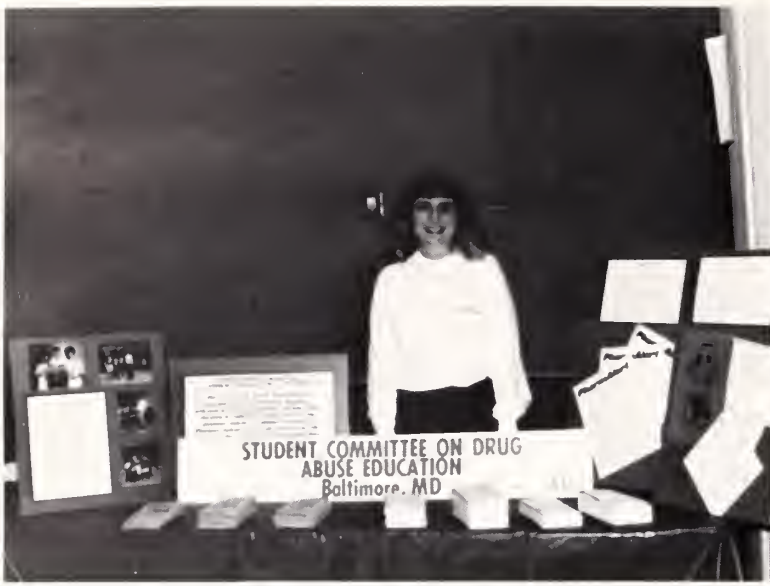


Aaron Weiner, Tania Hanna, Trang Hoang, Matt McGovern, Amy Lietzau, Lihn Nguyen, Michelle McFarland, Lynn Messick, Berhane Wold, Shamim Tejani, Nicki Altman, John Lippert, Mark Sanford, Michelle Andoll, Jennifer Carroll, Kara Sink, Christine Kuchma, Jami L-Barclay, Lori Beauregard, Keith Broome, Darlene Groncki, Kim Zeidler, Lisa Langer, Talane Nichols, Randy Chiat, Pam Mayer, Marina Hadjoglou, Lisa Murray, George Garmer, Larry Wirtley, Mary Irene Vivirito, George Lauder, Cari Moltz, Mike Hawk, Gillet Christy. Not Pictured: Alisa Billington, Amy Corbett, Rodney Hendershot, Nelson Kline, Tina Koehle, Sarah Mills, Lenny Modzelewski, Ashish Patel, Ted Tetkowski

President	Jami Lingle-Barclay
Vice President	Keith Broome
Treasurer	Amy Lietzau
Master at Arms	Matt McGovern
Inner Guard	George Lauder
Recording Secretary	Shamim Tejani
Corresponding Secretary	Marina Hadjoglou
Alumni Liaison	Christine Kuchma

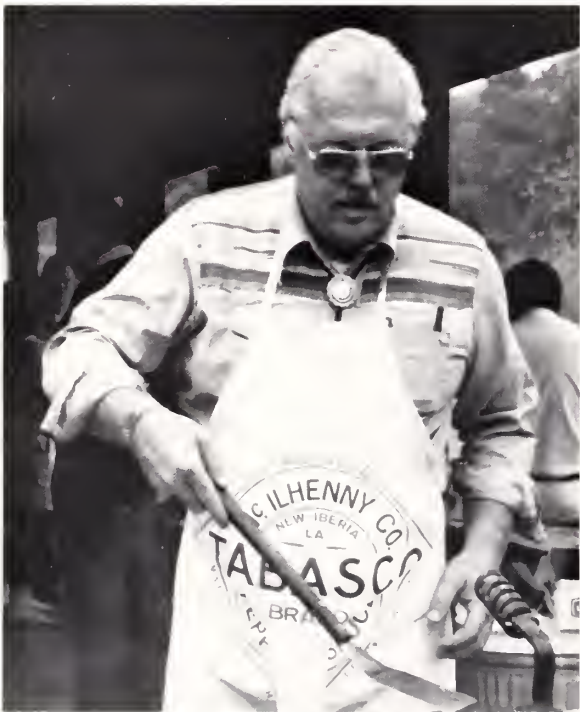






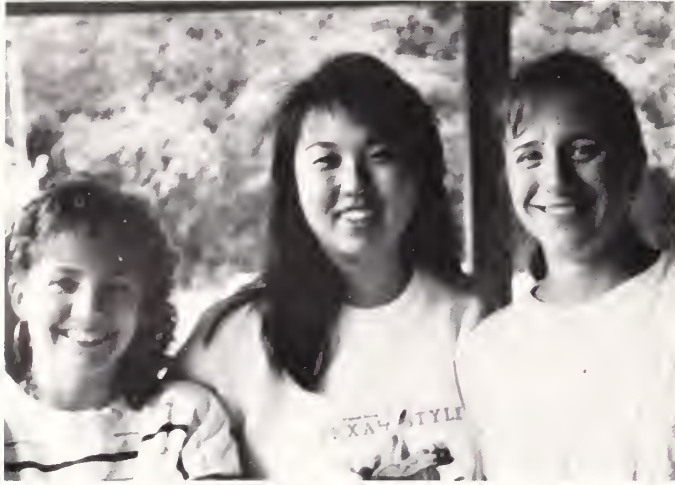


SPECIAL EVENTS





FALL PICNIC





BOAT BASH!!



ASP COFFEE HOUSE



HONORS CONVOCATION

RHO CHI BOOK AWARD

Anne M. Wiland
Julie D. Kubitsky

ACADEMIC EXCELLENCE

Class of 1990

Theresa L. Bengston
Joan E. Cambias
Alison R. Dion
Kevin R. Forrester
Michael J. Fossler, Jr.
Michele D. Foster
Andrea G. Hershey
Carl F. Krisch
Amelita P. Koh
Adrienne G. Krause

Judith A. Krieger
John A. Lippert
David J. McCaffrey, III
Suzanne J. Peirson
Andrea L. Riggins
Mark R. Sanford
Mary A. Strine
Thanh T. Tran
Tung T. Trinh

Class of 1991

Brian E. Clatterbuck
Sharon A. Currie
Tracy A. Hicks
Alice H. Hill
Bang H. Kim
Julie D. Kubitsky

Mark F. Lamb
Susanna Moore
Lloyd A. Price, Jr.
Lori A. Spicer
Anne M. Wiland

EXTRACURRICULAR AWARDS

Class of 1990

Michelle Andoll
Randy Chiat
Patricia Kokoski
Michelle McFarland
Ted Tetkowski

Class of 1991

Alisa Billington
Trang Hoang
Jami Lingle-Barclay
Matthew McGovern
Elisabeth Setzler

RHO CHI SOCIETY

CHAPTER INITIATES

Undergraduates

Kellie Bedford
Alisa Billington
Brian Clatterbuck
Sharon Currie
Stefanie Folb
Dan Glisson
Amelia Gorsuch
Tracy Hicks
Alice Hill
Bang Hee Kim
Julie Kubitsky

Mark Lamb
Jami Lingle-Barclay
Wei Meng
Catherine Moore
Lisa Murray
Art Price
Lori Spicer
Brian Trentler
Anne Wiland
Peter Yurkowski

Graduates

Andrew Ferguson
Yuing Huan
Bruce Jones
Jennifer Kiefer
Lieser Mayo-Michelson

Richard Kline, Jr.
Patrick McNeilly
Girish Pande
Nicole Paquette
Wanida Surichamorn

Faculty

Dr. Rochelle Long
Dr. Kevin Reynolds
Dr. Gerald Rosen

CLASS OF 1991 AUCTION!



SPRING COFFEE HOUSE

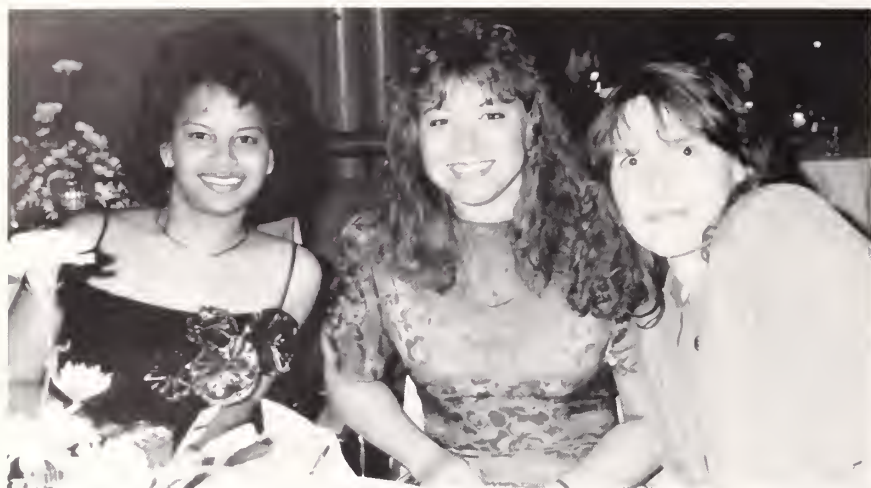


LILLY TRIP





SPRING FORMAL





SPRING PICNIC



PHI DELTA CHI OLYMPICS



ALUMNI BANQUET





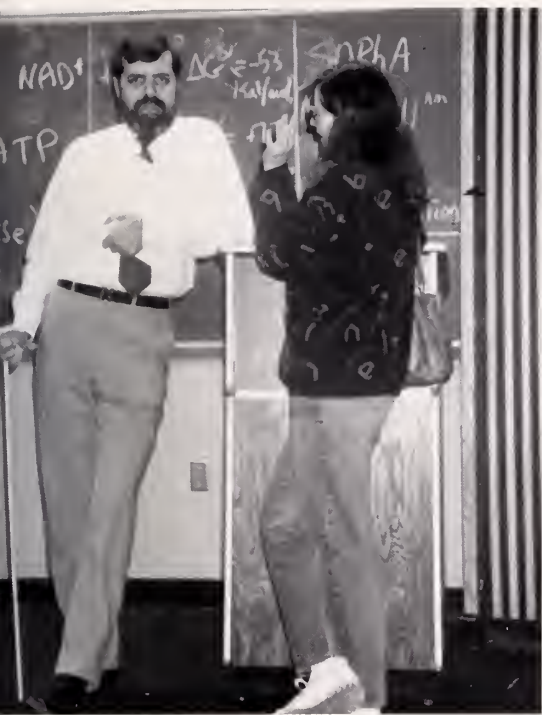
GRADUATION





FACULTY





ADMINISTRATION



David A. Knapp, R.Ph., Ph.D., (1965), Purdue University, Acting Dean



Robert S. Beardsley, R.Ph., Ph.D., (1977), University of Minnesota, Assistant Dean for Student Affairs



Stuart M. Speedie, Ph.D., (1973), Purdue University, Assistant Dean for Pharmaceutical Informatics



Grady Dale, Jr., Ed.D., (1985), University of Northern Colorado, Director of Student Services



Peter P. Lamy, Ph.D., Sc.D., (Hon) (1965), Philadelphia College of Pharmacy and Science, Assistant Dean for Geriatrics and Institutional Programs



Gary Oderda, R.Ph., PharmD. (1972), University of California, Director of the Maryland Poison Center and Acting Assistant Dean



Jacquelyn S. Lucy, M.A., M.Ed., Director of Alumni Relations/Public Information



Ann Bonaparte, Administrative Specialist, Student Affairs



Michael Gentry, Technical Equipment, Coffee Man

Not Pictured — Carolyn Footman, Elaine Jackson, Phyllis Lovito, Wiliestine Dargan, Ed Thrush, Nancy Davis, Tammi Bolden, Mary Jo Ivins, Anna Vigil, Kim Barlow, Gwen Matthews, Nora Rcedy, Nanci Watkins.

PHARMACOLOGY AND



Naim Khazan, R.Ph., Ph.D. (1960), Hebrew University, Jerusalem, Professor.



Gary G. Buterbaugh, Ph.D. (1969), University of Iowa, Associate Professor.



Christine U. Eccles, Ph.D. (1980), Johns Hopkins University, Associate Professor.



J. Edward Moreton, R.Ph., Ph.D. (1971), University of Mississippi, Professor.

TOXICOLOGY



Carlos Forray, M.D., Ph.D. (1974), University of Mexico, Associate Professor.



Gerald M. Rosen, J.D., Ph.D. (1988), Clarkson College of Technology, Professor and Chairman of Department of Pharmacology and Toxicology.



Myron Weiner, R.Ph., Ph.D. (1972), University of Maryland, Associate Professor.



Esam El-Fakahany, R.Ph., Ph.D. (1980), University of Minnesota, Associate Professor.

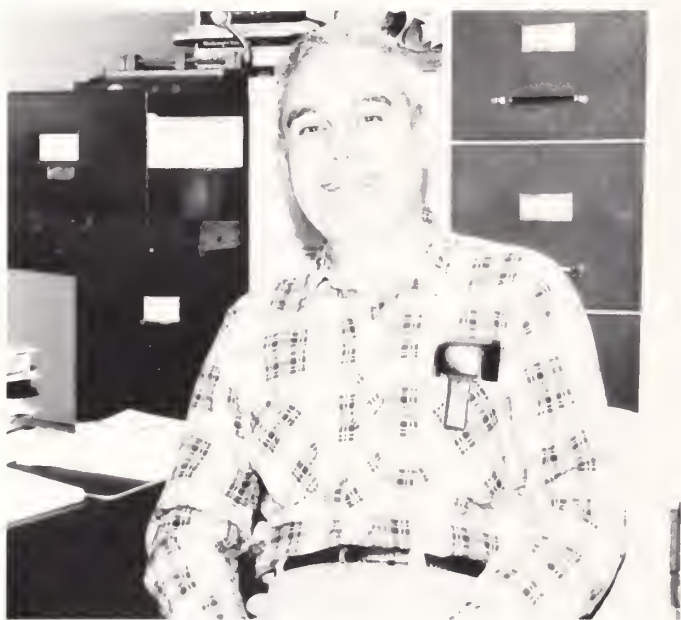
BIOMEDICINAL CHEMISTRY



Marilyn K. Speedie, R.Ph., Ph.D., (1973), Purdue University, Associate Professor and Chairman



Ralph N. Blomster, R.Ph., Ph.D., (1968), University of Connecticut, Professor



S. Edward Krikorian, Ph.D., (1967), Massachusetts Institute of Technology, Associate Professor



Jeremy Wright, R.Ph., Ph.D., (1965), University of London, Associate Professor



Erick S. Callery, R.Ph., Ph.D., (1974), University of California, Associate Professor



Karl-Heinz A. Rosler, R.Ph., Ph.D., (1960), University of Munich, Associate Professor



Barton M. Pogell, Ph.D., (1952), University of Michigan, Professor

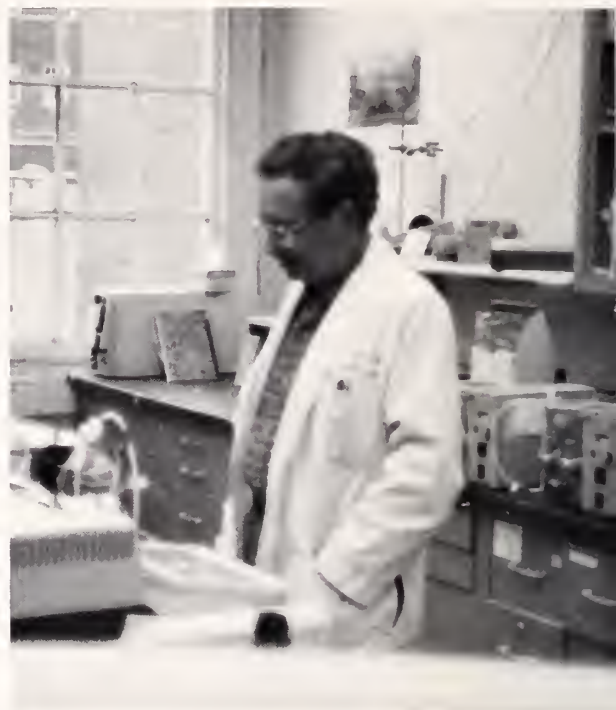


Nicolas Zenker, Ph.D., (1958), University of California, Professor Emeritus

PHARMACEUTICS AND



Ralph A. Shangraw, R. Ph., Ph.D. (1958), University of Michigan, Professor and Department Chairman.



James Leslie, Ph.D. (1959), Queen's University, Belfast, Ireland, Associate Professor.

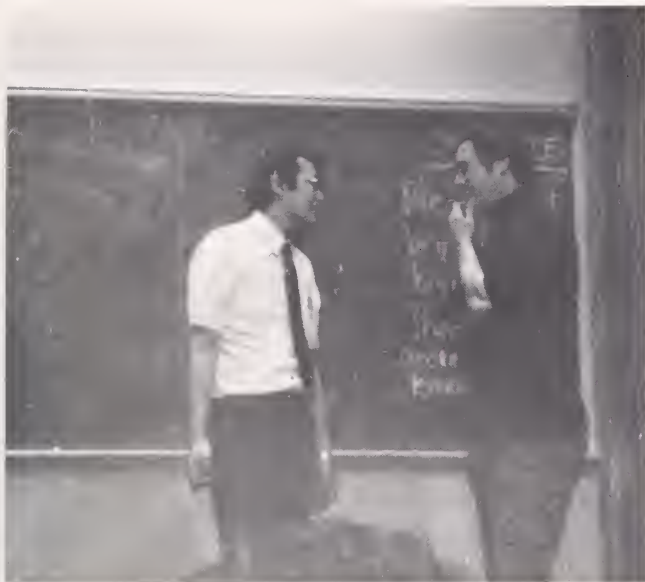


Larry L. Augsburger, R.Ph., Ph.D. (1967), University of Maryland, Professor and Director of Pharmaceutics Graduate Program.



R. Gary Hollenbeck, R.Ph., Ph.D. (1977), Purdue University, Associate Professor.

PHARMACOKINETICS



David Young, Pharm.D., Ph.D. (1982), University of Southern California, Associate Professor. (left)



PHARMACY PRACTICE AND



Donald O. Fedder, R.Ph., Dr.Ph.H., (1982), Johns Hopkins University, Associate Professor and Acting Chairman



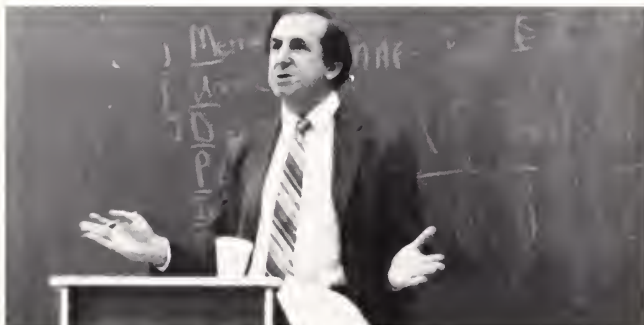
David A. Knapp, R.Ph., Ph.D., (1965), Purdue University, Professor and Acting Dean



Alan McKay, R.Ph., Ph.D., (1980), University of Mississippi, Associate Professor



Robert S. Beardsley, R.Ph., Ph.D., (1977), University of Minnesota, Associate Professor and Assistant Dean for Student Affairs



Fred Abramson, R.Ph., B.S.P., University of Maryland, Assistant Professor

ADMINISTRATIVE SCIENCE



Francis B. Palumbo, R.Ph., Ph.D., (1974), University of Mississippi, Associate Professor



Marvin L. Oed, R.Ph., B.S.P., (1956), University of Maryland, Assistant Professor and Director of the Professional Experience Program



Graduate Students: Walter Siganga, Ming-Haw Liu, Rich Barron, Sylvie Poirier, Donnell Harris, Diane Mijan, Kathleen Gondek, Judy McKay, Dave Miller, Leslye Goren, William Davies

ELDER ED



(Left) Beverly Yachmetz, Kathleen Gondek, Wilhelmine Dargan, Dr. Peter Lamy, (Above) Madeline Feinberg



POISON CENTER

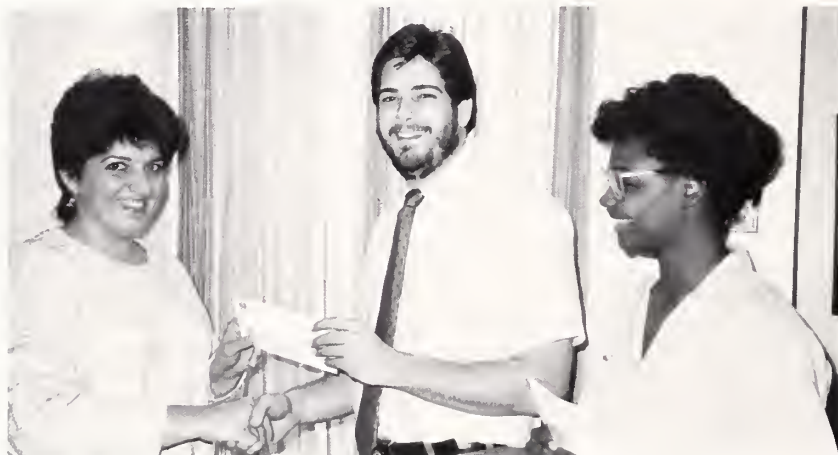


Gary M. Oderda, PharmD., Director; Wendy Klein-Schwartz, PharmD., Assistant Director.

ALUMNI ASSOCIATION



Alumni Association Officers and Board 1989-90: Back Row From Left to Right — Scott Kuperman '88; Harry Bass '58; President-Elect Henry Leikach '69; Charles Sandler '62; 1989 Honorary President Dr. Ralph Blomster; Treasurer Ronald Sanford '67, Front Row — Leon Weiner '58; Vice-President Kathryn Parker '85; Chairman of the Board Brian Sanderoff '84 and President Kathleen Gauthier '85.



Alumni Association Scholarship Program: President Brian Sanderoff presents Jean Dinwiddie with her scholarship check as another recipient, Hope Campbell, looks on.



Alumni Association Spring Banquet: (Top right) President Kathy Gauthier presents the Past President's Gavel to outgoing President Brian Sanderoff. (Bottom right) 1920 graduate Hyman Davidov, who celebrated his 70th anniversary since graduating at the Banquet, poses with President Sanderoff



ALUMNI/PUBLIC AFFAIRS



Alumni Breakfast at APhA Convention: The Office of Alumni/Public Affairs hosts its second annual breakfast at the American Pharmaceutical Convention in Washington DC. This year's event attracted out of state alumni Lt. Cmdr. Robert H. Klotzman USAF ret. '40 from Montana (Center) and Dr. Arthur Schwartz '79, Ph.D. '87 from Illinois (Far Right) seated with Acting Dean David A. Knapp.

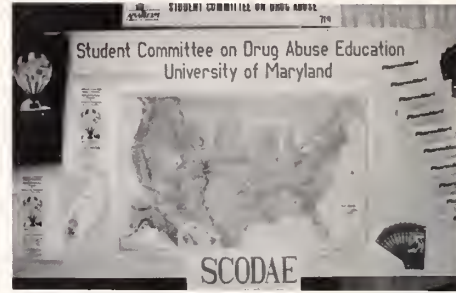


1989-90 Annual Fund Board: Martin B. Mintz '65 (Seated) is the first Chairman of the Board for the school's Annual Fund Drive. Other chairmen are: From Left to Right — George C. Voxakis '58, Alumni Fund; Ilene Zuckerman, PharmD. '83, Faculty Fund and Leonard Winkleman, Friends of the School of Pharmacy Fund.



Fall Football Frolic IV: The Maryland-Penn State game brought out the troops as 134 alumni and friends attended the special pre-game brunch in Pharmacy Hall. This annual event salutes donors of \$100 or more by inviting them to this special event before the Terrapin Football Game at Memorial Stadium.

STUDENT COMMITTEE ON



DRUG ABUSE EDUCATION



Tony Tomasello, Isabel Almeida, Cindy Chan, Robb Foote, Mike Fossler, Alicia Giro, Ann Grabner, Cindy Holland, Elizabeth Kesecker, Trish Kokoski, Pilar Machado, Linh Tuong Nguyen, Eleanor O'Ranger, Tram Mai Pham, Mike Rinde, Mark Sanford, Becky Sowers, Mary Strine, Mary Irene Vivirito, Sue Wood, Jackie Wysocki, Susan Yun, Kim Zeitler, Catherine Zulkarn Xain, Gayle Baur, Danny Carter, Helene Chim, Denise Delorso, Maite Eguia, Catherine Fields, Stephanie Ford, Michelle Forrest, Carolyn Hockaday, Karen Huber, Mark Lamb, Amy Lietzau, Jami Lingle-Barclay, Lara Linn, Nicole Little, Matthew McGovern, Anna Oberste, Bridget Petry, Lori Spicer, Anne Tschirgi, Berhane Wold, Nicole Altman, Kellie Bedord, Alisa Billington, Susan Bowen, Lynnette Bradley, Toni Brooker, Keith Broome, Hope Campbell, Alice Cherry, Dana Coach, Marilyn Cox, Alex Davis, Lisa Esser, Brenda Hawbecker, Mahrokh Imanuel, Michelle Keidel, Jenny Kim, Kim Feese, Michele Lovick, Vashti Miles, Phil Neubauer, Joanne Padousis, Kelly Shaner, Kim Simpson, Marla Singer, Shamin Tejani, Laura Wachter, Larry Wirtley.

ADVERTISEMENTS







Washington Heights
PHARMACY

205 WASHINGTON HEIGHTS MEDICAL CENTER
WESTMINSTER, MARYLAND 21157

848-8900

G. LAWRENCE HOGUE, P.D.

ARTHUR N. RILEY, M.S., P.D.

REGISTERED PHARMACISTS

CONGRATULATIONS
TO THE
CLASS OF 1990

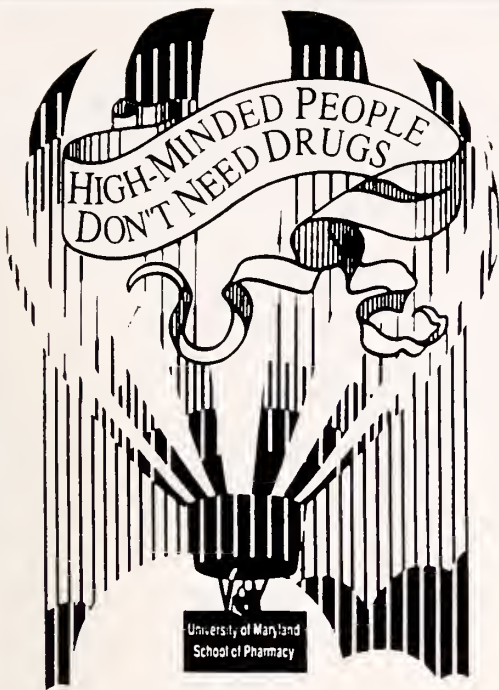
PARADISE
PHARMACIES

Congratulations & Best Wishes
to the Class of '90



From the Staff at
Sinai Hospital Pharmacy

Best Wishes
— From the Land of
Pleasant Living
Leo Mallard & Wally
Szot
Care Drug Centers of
Southern Maryland



Know WHY to say no!

Student Committee on Drug Abuse Education

HEY ALUMNI!

Don't forget community education. Add variety to your pharmacy services . . . Keep SCODAE alive!

Special Thanks to: Isabel, Cindy Chan, Cindy Holland, Robb, Mike, Ann, Elizabeth, Trish, Pilar, Linh, Eleanor, Tram, Mark, Becky, Mary Strine, Mary Irene, Sue, Jackie, Susan, Kim, and Cathy.

And to the Officers Dave McCaffrey and Alicia Giro.

Best Wishes Class of '90
From
CHESTNUT PHARMACY

Ron & Nancy Lubman P.D.
— Class of '61
Cindy Lubman Clayton P.D.
— Class of '86

BIOMEDICINAL
CHEMISTRY
DEPARTMENT

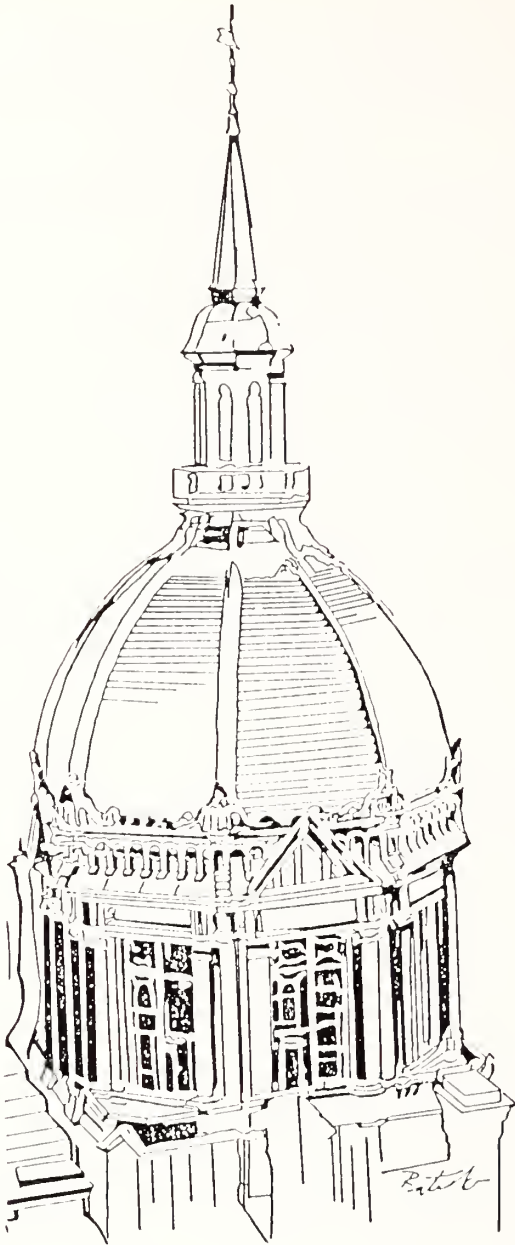
BEST OF LUCK
AND GOOD WISHES
TO THE CLASS OF 1990

Austin Pharmacy
Burroughs & Kemp
Pharmacy
Charles Meade Pharmacy
Keystone Pharmacy
Klotzman's Pharmacy
Medicinal Arts Pharmacy
Park Avenue Pharmacy

THE CLINICAL
PHARMACOKINETICS
LABORATORY
CONGRATULATES
THE
BACHELOR OF
SCIENCE
AND
DOCTOR OF
PHARMACY
GRADUATES OF
1990

BEST WISHES
TO THE
GRADUATES OF
1990
FROM THE
FACULTY AND
STAFF
OF THE
PHARMACEUTICS
DEPARTMENT

BEST WISHES TO
STUDENTS & GRADS
FROM
MCDUGALL'S PHARMACIES
SYKESVILLE
795-2255
ELDERSBURG
795-2662



Congratulations
and
Best Wishes
from the staff of

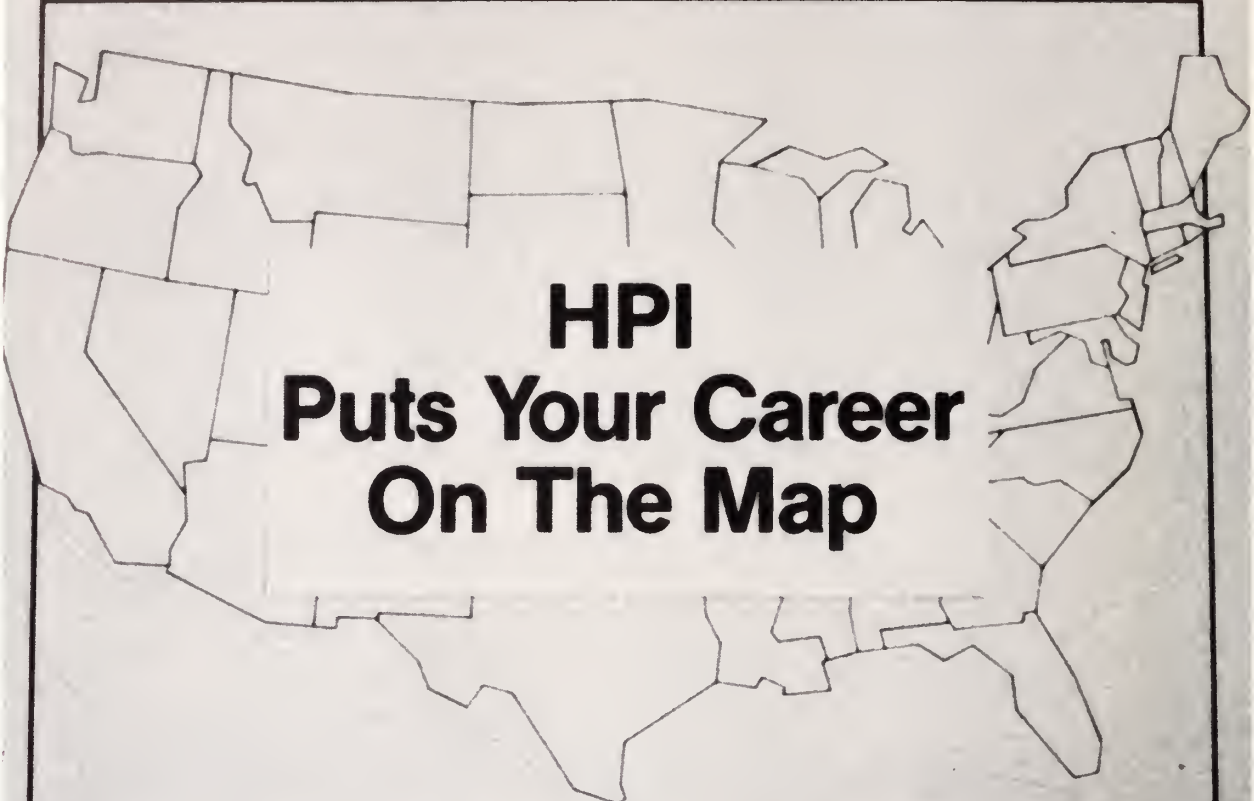
The
Johns Hopkins
Hospital
Department of Pharmacy

BEST OF LUCK CLASS OF 1990
THE DEPARTMENT OF
PHARMACY PRACTICE AND
ADMINISTRATIVE SCIENCE

CONGRATULATIONS
CLASS OF 1990
from
NEW WINDSOR
PHARMACY



Class of 1990
Thanks for
three great years
Your Class
Advisor,
Dr. Robert
Beardsley



HPI Puts Your Career On The Map

Hospital Pharmacy Management

Challenging hospital pharmacy careers begin with HPI. For nearly 25 years, HPI has been a leader in hospital pharmacy management, offering career opportunities nationwide.

HPI pharmacists participate in progressive clinical services, such as pharmacokinetics, drug usage evaluations and therapeutic consultations.

For more information, call toll free **(800) 421-7169**; in New Mexico, **(505) 761-6100**. Learn how HPI can put your pharmacy career on the map today!

HPI Health Care Services
3733 Eubank NE
Albuquerque, NM 87111

HPI is an Equal Opportunity Employer

THE MARYLAND PHARMACISTS'

ASSOCIATION

Congratulations

Class of 1990



The Maryland Pharmacists Association has been behind you during your days in Pharmacy School. But unlike your formal academic experience, your involvement with the MPhA can continue and grow throughout your professional life. If you are serious about progress and concerned about the future of Pharmacy, we urge you to remain active in the Association. Find out how you can contribute and help us all determine the course of the profession you are now embarking upon.



The MPhA is YOUR Association.
Best of luck,
your colleagues in
**THE MARYLAND PHARMACISTS
ASSOCIATION.**



THE UNIVERSITY OF MARYLAND
SCHOOL OF PHARMACY

Congratulations
to the members of the Class of 1990
on your graduation
and
welcome to alumni status!!

* * * *

We encourage
all of you to become active members
of the School of Pharmacy Alumni Association
and to add your voice to those
of other alumni members of the school.

* * * *

Alumni Association Officers

William J. Kinnard, Jr., Ph.D.
Honorary President

Kathleen Gauthier '85
President

Henry D. Leikach, '69
President - Elect

Kathryn L. Parker '85
Vice-President

W. Irving Lottier '59
Secretary

Ronald A. Sanford '67
Treasurer

H. Nelson Warfield '24
Treasurer Emeritus

Donald O. Fedder, Dr.P.H., '50
Honorary Alumnus

Executive Committee 1990

Brian T. Sanderoff '84
Chairman of the Board

David E. Banks '63

Harry Bass '58

Scott S. Kuperman '88

Charles A. Sandler '62

Mark R. Sanford '90

Ralph A. Small, Jr., '74

Leon Weiner '58



Your Doctor May Not Make House Calls. But Now Your Pharmacy Does.

Prompt, free delivery of your prescription and home medical equipment and supplies to your home or office. At NeighborCare, what we deliver is quality health care.

For the NeighborCare
Pharmacy nearest you,

CALL 752-CARE



THANK YOU!

As Editor of the first Terra Mariae to be published in a few years, I wanted to take this opportunity to thank a few people. Without them, there wouldn't be a 1990 Terra Mariae . . .

First, my husband, Don, Who made me finish the last 40 or so pages so that we could make our final deadline. (I almost threw the whole thing out the window that night!)

Next, Kim Zeitler, Senior Section Editor, who did a fantastic job putting together 30 pages even when photos and senior captions were scarce!

Jacque Lucy, who let me bother her at any time and tried desperately to get me organized but never quite succeeded. She took on yearbook even with all her other responsibilities.

To Dr. Lamy, Dr. Beardsley and Dean Knapp for giving us support and a yearbook office to call home.

To Mary Jo, Nora, Anna and the rest of the Finance Office for their help.

To my rag-tag bunch of shutterbugs — Karen Tafoya, Sam Haidar, Bang Hee Kim, Jami Lingle-Barclay, Bridget Petry, and anyone else who answered the cry of "Did anyone take pictures at . . .?!"

And finally to people on the staff who worked throughout the year, even during those two exam weeks . . . Karen Tafoya, Hye Choe, Pam Maher . . .

To all these people, and anyone I might have missed . . .

THANK YOU!

Lisa Setzler

